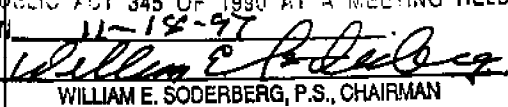


**LAND CORNER RECORDATION CERTIFICATE**  
**Filing Requirement of Act 74, Mich. P.A. 1970**

For corners in

<u>MACOMB</u> <small>(County)</small>	Located In: <u>ERIN</u>	Corner Code # <u>          </u>
1. Public Land Survey	<u>T 1N R 13E</u>	<u>C-13</u>
	T <u>    </u> R <u>    </u>	<u>          </u>
	T <u>    </u> R <u>    </u>	<u>          </u>
	T <u>    </u> R <u>    </u>	<u>          </u>
2. Property Controlling in Section	S <u>    </u> T <u>    </u> R <u>    </u>	<u>          </u>
	S <u>    </u> T <u>    </u> R <u>    </u>	<u>          </u>
3. Miscellaneous Property in Sec.	S <u>    </u> T <u>    </u> R <u>    </u>	<u>          </u>
	S <u>    </u> T <u>    </u> R <u>    </u>	<u>          </u>
4. Lot No <u>          </u> , Recorded Plat <u>          </u>		
5. Private Claims <u>          </u>		

FILED BY THE MACOMB COUNTY CLERK AS THE OFFICIAL CORNER UNDER MICHIGAN PUBLIC ACT 345 OF 1990 AT A MEETING HELD ON 11-18-97  
  
 WILLIAM E. SODERBERG, P.S., CHAIRMAN  
**Register of Deeds Stamp & File Number**

	A	B	C	D	E	F	G	H	I	J	K	L	M
2	6	5	4	3	2	1							
3													
4	7	8	9	10	11	12							
5													
6	18	17	16	15	14	13							
7													
8	19	20	21	22	23	24							
9													
10	30	29	28	27	26	25							
11													
12	31	32	33	34	35	36							
13													

I, STEVEN E. DUNN, in a field survey on OCTOBER 14, 1997, do hereby certify that under requirements of P.A. 74, Michigan P.A. of 1970, the corner points mentioned in lines 1 and 2 above were in conformance with regulations and rules therefore as required in the current manual of survey instructions of the United States Department of the Interior, Bureau of Land Management or by a decree of a Court of Law and for that the corner points mentioned in lines 3, 4 and 5 above were in conformance with the rules of the Michigan Board of Land Surveyors or by a Decree of a Court of Law; established, re-established, monumented, re-monumented, recovered, found as expressed below.

**NOTE: Not more than 2 corners, all in the same town and range, may be recorded on this certificate.**

**A. Description of original monument and accessories and/or subsequent**

- GLO POST - NO EVIDENCE OF ORIGINAL CORNER. GLO SURVEY PERFORMED BY JOSEPH FLETCHER - 1817**
- |                           |  |               |
|---------------------------|--|---------------|
| <b>PLATS</b>              |  |               |
| L 9 P 7                   | OBENAUER BARBER LANG CO'S RIDGEMONT PARK | APR. 28, 1925 |
| L 9 P 60                  | JOHN BOLDT'S AVON PARK SUB.              | JUL. 15, 1925 |
| L 25 P 31                 | RIDGEMONT HOMES SUB.                     | APR. 05, 1950 |
| L 20 P 24                 | RIDGEMONT GOLF COURSE SUB.               | DEC. 24, 1953 |
| L 29 P 31 & 32            | RIDGEMONT GOLF COURSE SUB. NO. 1         | JAN. 18, 1954 |
| <b>M.D.O.T. RAW MAPS:</b> |  |               |
| SH 11&12                  | SEPT. 1981                               |               |

**OTHERS:**  
 L 15965, P. 486 & 598, (W.C.R.) JOINT SURVEY - MACOMB AND WAYNE CO'S - FOR BASE LINE LOCATION - NOTES

**B. Description of corner evidence found and/or method applied in restoring or reestablishing corner:**

**C - 13 NO PHYSICAL EVIDENCE OF CORNER FOUND.**  
 I RE-ESTABLISHED THE CORNER LOCATION BY USING FOUND CONCRETE MONUMENTS IN ABOVE "RIDGEMONT HOMES SUB." TO ESTABLISH THE SECTION LINE COMMON TO SECTIONS 31 & 32. USING DATA SHOWN ON M.D.O.T. RAW MAPS LISTED ABOVE, I ESTABLISHED THE BASE LINE 1.41' SOUTH OF FOUND CORNER C-1, T. 1S., R. 13E., WAYNE CO., MI. I THEN DID AN INTERSECTION WITH THE SECTION LINE STATED ABOVE WITH THE BASELINE USING THE POINT 141' SOUTH OF ABOVE FOUND CORNER AND A-13 AS ESTABLISHED FOR REMONUMENTATION. CORNER FALLS IN FOURTH LANE OF EASTBOUND 8 MILE ROAD.  
 I VERIFIED THIS LOCATION BY COMPARING FIELD MEASUREMENTS TO RECORD MEASUREMENTS OF CORNERS FOUND IN PLATS LISTED ABOVE.  
 NOTE: GLO NOTES MAKE NO MENTION OF DOUBLE CORNERS ALONG THE BASELINE HOWEVER, THE GLO PLAT OF ERIN DOES INDICATE DOUBLE CORNERS ALONG THE BASELINE.

**FIELD MEASUREMENTS AND RECORD MEASUREMENTS:**

C - 13 TO C - 12	C-13 EAST TO FOUND CITY OF DETROIT MONUMENT AT INTERSECTION OF KELLY ROAD AND M-102(8 MILE RD.)	
GLO - 40 CHAINS (2640.00')	ROAD AND M-102(8 MILE RD.)	
PLAT - WEST SIDE 2651.30'	PLATS - 1415.95'	
PLAT - EAST SIDE 2651.05'	FIELD - 1415.69'	
FIELD - 2650.79'		
C - 13 TO B - 13	ANGLE B - 13/C-13/C-12	C-12 TO C-1, T. 1S., R. 13E., WAYNE CO.
GLO - 40 CHAINS (2640.00')	PLAT - 90°01'00"	FIELD - 79.83'
PLATS - 2680.89'	FIELD - 90°00'34"	
FIELD - 2680.60'		
ANGLE C - 12/ C - 13/ FOUND CITY OF DETROIT MONUMENT AT INTERSECTION KELLY RD. AND M-102(8 MILE RD.)		
PLAT - 89°44'40"		
FIELD - 89°32'39"		

**C. Description of monument for corner and accessories established to perpetuate locating the position of the corner:**

C - 13, T 1N R 13E.  
 I SET A 3/4" X 24" IRON WITH 2" DIAMETER ALUMINUM CAP STAMPED "MACOMB COUNTY MONUMENT MI. ACT 345 #28408" IN A NEW MONUMENT BOX IN CONCRETE PAVEMENT.

**WITNESSES**

WEST - 79.83'	FOUND BRASS PLUG IN MONUMENT BOX. (C-1, T. 1S., R. 13E., WAYNE CO.) CORNER IS 1.41' NORTH OF BASELINE
N. 26°E 148.22'	CENTER TOP NUT ON HYDRANT AT THE NE CORNER 8 MILE AND CUSHING.
N. 74°E 123.50'	SW CORNER STEEL TOWER FOR ELECTRIC TRANSMISSION LINE. #8173
N. 73°W 109.94'	SE CORNER STEEL TOWER FOR ELECTRIC TRANSMISSION LINE. #8172
S. 34°W 56.87'	CENTER TOP NUT ON HYDRANT AT SE CORNER 8 MILE & CUSHING.
SOUTH 41.20'	BACK OF CONCRETE CURB SOUTH SIDE OF EASTBOUND 8 MILE ROAD.

THE SELECTED LOCATION IS ACCEPTED BY ME AND IS GENERALLY ACCEPTED BY PROFESSIONAL SURVEYORS AS THE BEST AVAILABLE EVIDENCE OF THE POSITION OF THE ORIGINAL CORNER.

Signed by Steven E. Dunn Date Dec 18, 1997  
 Surveyor's Michigan License No. 28408





MACOMB COUNTY PUBLIC LAND SURVEY  
REMONUMENTATION PROGRAM

RESEARCH DOSSIER

CORNER LOCATION  
T.1N., R.13E., ERIN/LAKE

ACT 74 CORNER CODE  
C-13

SECTION CORNER  
The Southeast Corner of Section 31 and the Southwest Corner  
of Section 32.

ORIGINAL CORNER IDENTIFICATION PER GOVERNMENT LAND OFFICE  
RECORDS:  
Set corner post.

INTERIM CORNER IDENTIFICATION: None.

CURRENT CORNER IDENTIFICATION: None.  
M.C.R.C. right-of-way maps, Sheets 9-10, File 50-R-2 were  
originally checked on 2-22-1956 and are made reference to on  
the Field notes recorded in L.15965, P.491 (Wayne County  
records), Joint Survey-Macomb & Wayne Co's.-for Baseline. The  
right-of-way maps listed above also determine the Baseline to  
follow the Government Corners along the Macomb County side,  
with Baseline ties to found Government Corners along the Wayne  
County side. I use these ties to determine the Baseline location,  
the location of Government Corners for Erin/Lake Township and  
field measurements.

NOTE: G.L.O. notes make no mention of double corners along the  
Baseline. However, the G.L.O. Plat of Erin/Lake does indicate  
Double corners along the Baseline.

I Re-established the location of this corner by using found  
monuments in above "Ridgmont Homes Subdivision" to establish  
the Section Line common to Sections 31 & 32. Using data as shown  
on M.C.R.C. right-of-way maps listed above, I established the  
Baseline East from B-13 thru a point 1.407' South of found corner  
C-1, T1S., R.13E., Wayne County, Mi. I then intersected the  
two lines to set the Section Corner

A field measurement was made between corners.

C-13 to B-13	G.L.O.-40 chains or 2640.00'
	Plats-2680.89'
	Field-2680.60'
C-13 East to found City of Detroit Monument at intersection of Kelly Rd. and M-29(8 Mile Rd.).	
	Plats-1415.95'
	Field-1415.69'
C-13 to C-12	G.L.O.-40 chains or 2640.00'
	Plat-West side-2651.30'
	Plat-East side-2651.05'
	Field-2650.79'

C-13 to C-1, T.1S., R.13E.

Field-79.83'

Angle B-13/C-13/C-12

Plat-90°01'00"

Field-90°00'34"

Angle C-12/C-13/Found City of Detroit Monument at  
intersection of Kelly Rd. and M-29(8 Mile Rd.).

Plat-89°44'40"

Field-89°43'39"

**SUMMARY AND RECOMMENDATIONS:**

The selected location is accepted by me and is generally  
accepted by Professional Surveyors as the best available  
evidence of the corner.

MACOMB COUNTY PUBLIC LAND SURVEY

CORNER VERIFICATION CHECKLIST

RECORDED SURVEY FILE: None

LAND FILES: Composites 14-32E and 14-31g & H.

COUNTY SURVEYOR FILES: G.L.O. notes and plat.

LOCAL SURVEYOR FILES: None.

MUNICIPAL AGENCIES:

- A. MDOT: None.
- B. M.C.R.C.:  
Right-of-way maps Sheets 11 & 12 Sept. 1981
- C. M.D.N.R.: None.
- D. Macomb County Register of Deeds:
  - Land Corner Recordation Certificates: None.
  - Recorded Surveys: None.
  - Recorded Condominium Documents: None.
  - Plats:
    - L.9, P.7 Obenauer Barber Lang Co's. 4-28-1925
    - Ridgemont Park
    - L.9, P.60 John Boldt's Avon Park Sub. 7-15-1925
    - L.12, P.23 Universal Heights Sub. 2-05-1927
    - L.25, P.31 Ridgemont Homes Sub. 4-05-1950
    - L.29, P.24 Ridgemont Golf Course Sub. 12-24-1953
    - L.29, P.31 & 32 Ridgmont Golf Course Sub 1-18-1954
    - No. 1
- E. Wayne County Register of Deeds:
  - L.15965, P.491 Joint Survey-Macomb & Wayne 4-06-1966
  - Counties-Baseline Location-Notes

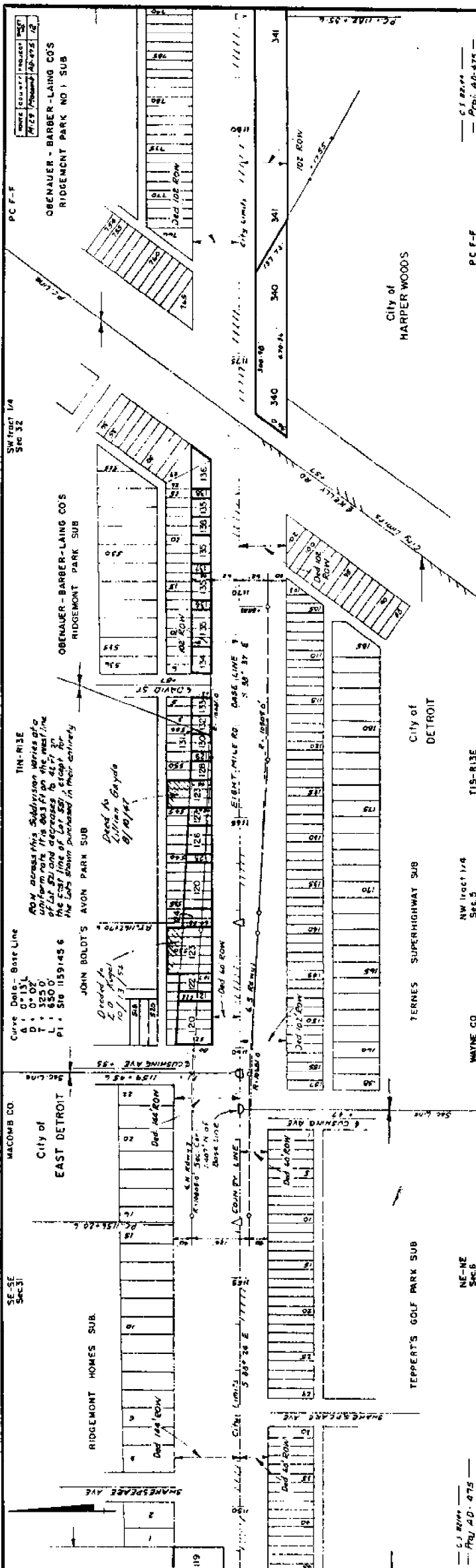
UTILITY COMPANIES:

- A. Detroit Edison: None.
- B. Michigan Bell: None.
- C. Michigan Consolidated Gas: None.
- D. Consumers Energy Company: None.
- E. Pipeline Companies: None.
- F. City of Detroit Water Board: None.
- G. Railroads: None.

CONTACT WITH ADJOINING PROPERTY OWNERS:

No contact was made regarding this corner.









15965 #528

OBENAUBER-  
RIDGSMONT

L. 10

JULIANA

CONCRETE MONUMENT

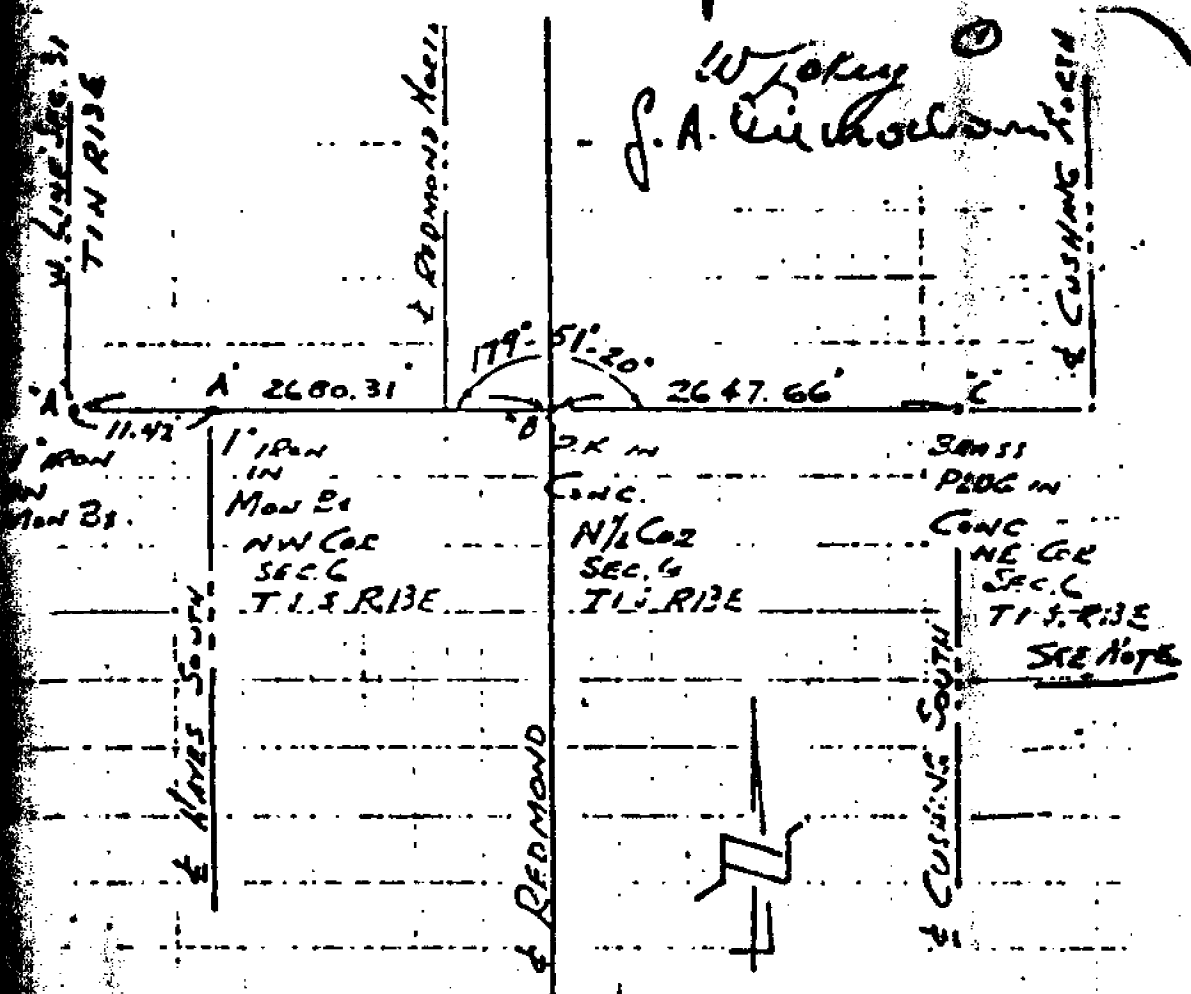
N. 88° 21' 33" E 33'

CITY OF  
DETROIT

KELLY ROAD

CITY OF  
HARPER WOODS

15085 491



W. LANE  
 J. A. CUSHING

IRON A' ON LINE A-B

NOTES NOT TO SCALE

NOTE:

BRASS PLUG SHOWN ON E CUSHING (SOUTH)

IS 1.407' N. OF BASELINE

REFERENCE TO: SHEET 12

FILE 50-R-1 M.S.D.

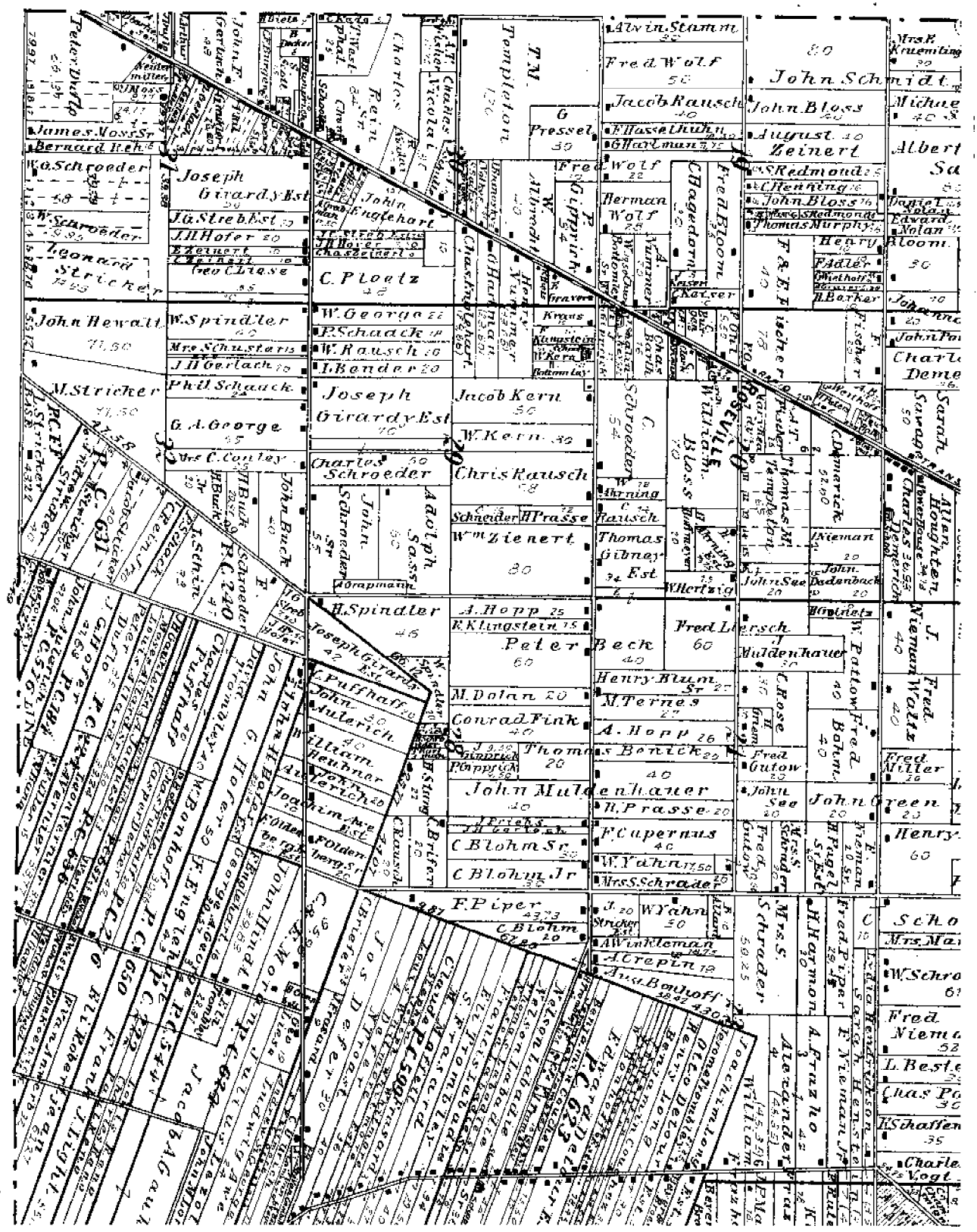
PROJECT AD 475

FURNISHED BY MR. ROSEMAKER, OF CIVIL ENGRS,

4TH FLOOR - NISSON BLDG

LANSING MICH

No. 13, 1/25



Town 1 South Range 13 East.

Town lines.

North Boundary.

ast between T. N. 1. N. 1. S. R. 13 East.  
from post ... T. N. 1. N. 1. S. R. 13  
East.

W. Ash 10 N 60 E 21

Lynn 12 N 19 W 8

9.87 B. Ash 10 Dr.

1.80 Poplar 140 Dr.

10.00 1/4 sect cov.

W. Ash 20 N 81 W 15

B. Ash 6 N 28 E 32

55.50 B. Ash 16 Dr.

70.00 Cov. sect 31. 32 T. N. R. 13 E

Beech 9 N 5 E 31

do 6 N 28 30 E 13

Land, soil, & timber another line.

East

25.16 B. Ash 16 Dr.

40.00 1/4 sect cov.

-Sug 16 N 16 W 12

do 9 N 54 E 27 -

51.20 B. Ash 10. Dr.

East on base line betw T. N. 1. S. R. 13 E

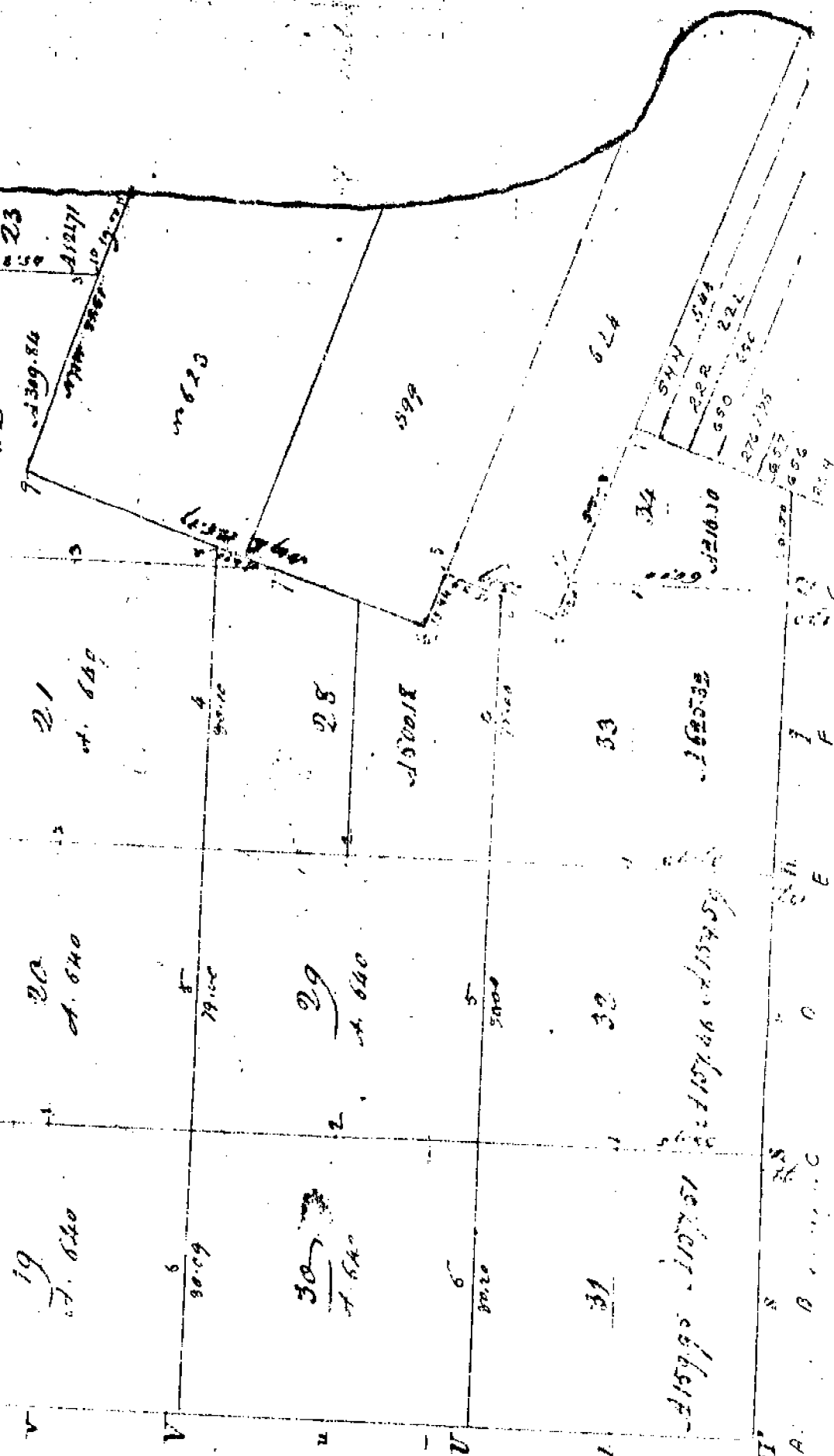
from 1/4 sec cov on line of sec 32

80.00 Establish'd post cov. sec 32 33

T. N. R. 13 E -

Elm 16 S 12 E 7

B. Ash 10 N 25 E 15



... from the ... in this ...

...

...