

LAND CORNER RECORDATION CERTIFICATE
Filing Requirement of Act 74, Mich. P.A. 1970 as Amended

For corners in

City of Eastpointe

Erin Township

Located In:

Corner Code #

MACOMB COUNTY
 (County)

4268633

LIBER 16216 PAGE 202



12/21/2004 02:18:54 P.M.
 MACOMB COUNTY, MI SEAL
 CARMELLA SABAUGH, REGISTER OF DEEDS

Register of Deeds Stamp & File Number

1. Public Land Survey	T	<u>01N</u>	R	<u>13E</u>	<u>C-9</u>
	T		R		
	T		R		
	T		R		
2. Property Controlling In Section	S		T	R	
	s		T	R	
3. Miscellaneous Property in Sec.	S		T	R	
	S		T	R	

4. Lot No. _____, Recorded Plat
 5. Private Claims

I, Robert H. Birkett, in a field survey on August 7, 2004 do hereby state that under requirements of P.A. 74, Michigan P.A. of 1970, the corner points mentioned in lines 1 and 2 above were in conformance with regulations and rules therefore as required in the current manual of survey instructions of the United States Department of the Interior, Bureau of Land Management or by a decree of a Court of Law and /or that the corner points mentioned in lines 3, 4 and 5 above were in conformance with the rules of the Michigan Board of Land Surveyors or by a Decree of a Court of Law; established, re-established, monumented, recovered, found as expressed below:

A	B	C	D	E	F	G	H	I	J	K	L	M
1												
2	6	5	4	3	2	1						
3												
4	7	8	9	10	11	12						
5												
6	18	17	16	15	14	13						
7												
8	19	20	21	22	23	24						
9												
10	30	29	28	27	26	25						
11												
12	31	32	33	34	35	36						
13												

NOTE: Not more than 2 corners, all in the same town and range, may be recorded on this certificate.

A. Description of original monument and accessories and/or subsequent restoration:
 C-9 1818, W. Preston set post.

B. Description of corner evidence found and/or method applied in restoring or reestablishing corner:

C-9 Corner is an obliterated corner. The corner was re-established 1.5 feet south of the centerline of 10 Mile Road using existing field information of the following recorded subdivisions:

- * 1917, W. J. Lehner, No. 123, "Macomb Gardens", L. 003, P. 077, MCR.
- * 1917, W. J. Lehner, No. 123, "Hauss Park Sub.", L. 003, P. 125, MCR.
- * 1923, B. T. Coleman, "Halfway Manor", L. 008, P. 035, MCR.
- * 1924, W. J. Lehner, No. 123, "Hartsung Sub.", L. 008, P. 062, MCR.
- * 1936, P. K. McCarthy, "Assessors Plat No. 4" (Roseville), L. 017, P. 018, MCR.
- * 1936, P. K. McCarthy, "Assessors Plat No. 8", (Roseville), L. 018, P. 027, MCR.
- * 1942, H. J. Fuller, No. 1645, "Assessors Plat No. 2", (East Detroit), L. 022, P. 009, MCR.
- * 1945, J. D. Lehner, No. 5787, "Eschmann Sub.", L. 025, P. 006, MCR.
- * 1956, H. J. Fuller, No. 1645, "Assessors Plat No. 30", (East Detroit), L. 038, P. 030, MCR.
- * 1967, W. J. Coulter, No. 14760, "Rose Pointe Sub.", L. 058, P. 045-046, MCR.
- * 1973, G. J. Landwehr, No. 10065, "Todd Subdivision", L. 063, P. 048-049, MCR

ACCEPTED BY THE MACOMB COUNTY SURVEY PEL GROUP AS THE OFFICIAL CORNER UNDER MICHIGAN PUBLIC ACT 345 OF 1990 AT A MEETING HELD ON 12/17/04

 MARTIN C. GUNN, P.S. CHAIRMAN

FIELD MEASUREMENTS BETWEEN CORNERS

C-9 to D-9
 2004 Remon (2698.42'), Plats North of 10 Mile(2698.22'), Plats South of 10 Mile (2698.86'), 1818 GLO 39.81 Ch. (2627.46').

C-9 TO C-8
 2004 Remon (2695.26'), Plats East of Cushing (2697.26'), 1818 GLO 40.00 Ch. (2640').

C-9 TO C-10
 2004 Remon (2726.05'), 1818 GLO 40.00 Ch. (2640').

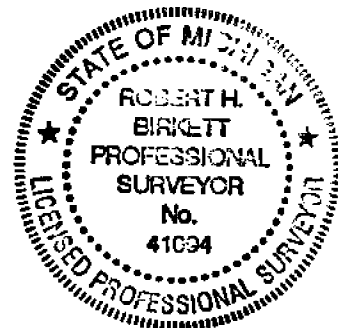
C. Description of monument for corner and accessories established to perpetuate locating the position of the corner:
 C-9 Set 3/4" X 24" Iron with aluminum cap, 1.5 feet south of the centerline of 10 Mile Road, marked "Macomb County Monument, MI, Act 345, 41094, C-9", in a new monument box.

- Az. 55° - 55.91' - Set Remon tag in Southeast face utility pole.
- Az. 150° - 70.68' - Set Remon tag in Southwest face 30" maple.
- Az. 225° - 42.18' - Set Remon tag in Northwest face utility pole.
- Az. 325° - 53.07' - Set Remon tag in Northeast face utility pole with light.

The Selected location is accepted by me and is generally accepted by Professional Surveyors as the best available evidence of the position of the original corner.

Signed by R.H. Birkett
 Surveyor's Michigan License No. 41094

Date 12-15-04



Very good 2^d rate - last half same
 Timber W Oak Poplar Sugar Beech
 Elm B + W. Ash Undergrowth Spice
 Lymns + c.

West On Random between 17.18
 40.00 Set temporary half mile post
 64.00 a W. Ash 1/2
 80.10 Enter^d West boundary 11 links South
 of corner & level level and dry 2^d rate
 Timber W Oak Poplar Beech
 Undergrowth Spice Lymns + c.

East Corrected between 18.19
 40.05 Made 1/4 section corner on a
 Beech 10 ins dia at average
 distance
 80.10 To Section corner

South Between Sections 19.20
 15.54 Beech 24 in dia
 40.00 Set half mile post from which
 a W. Ash 18 in dia bears S 27 W 12 links
 also a Beech 7 ins dia bears S 76 W 12 links
 55.55 a B. Ash 20 in dia
 80.00 Set post for Section 19.20, 30.29 from
 which a Sugar 16 in dia bears S 37 E 26 links
 also a Beech 14 dia bears N 7 E 25 links
 1st half mile level and dry good 2^d rate
 last half mile same
 Timber W Oak Poplar Beech
 Sugar Lymns Elm
 Undergrowth Spice Lymns + c.

227

West On Roadway between S. 19+30

40.00 Set temporary half mile post

80.09 Put West boundary at the corner

Land level and dry good 2^d rate
Timber W. Oak Poplar Elm Lym
Sugar & Undergrowth Spice

East Corrected between 19+30

40.4 Made 1/4 section corner on a

Sugar 10 in dia. at average distance

80.19 3/4 section corner

South Between Sections 30+29

20.18 a Beech 14 in dia

40.00 Made half mile corner on a

Beech 6 in di

80.00 Set post for Sections 30, 29, 31, 32

from which a Beech 8 in dia bears S 7

W 8 links dis also a Beech 14 in dia

bears N 12 W 22 link dis -

1st half mile level and dry 2^d rate

Last half mile same

Timber W. Oak Beech Poplar Lym

Sugar Lym & Undergrowth Spice

Lym &c

West On Roadway between S 30+31

40.00 Set temporary half mile post

80.20 Put West boundary 15 links South

of corner Land level and dry 2^d rate

Timber W. Oak poplar Sugar Beech

Lym & Undergrowth Spice Lym &c

West On Random between S 20 + 29

40.00 Set temporary half mile pt

79.79 End West boundary at sta corner

Land level and dry good 2^d rate

Timber W. Oak Beech Sugar Poplar

Lynn + Undergrowth Spice + c

East Corrected between S. 20 + 29

39.89 Made 1/4 Section corner on and

Ironwood 5 in diam at average dist

79.79 To Section corner

South Between Sections 29 + 28

16.64 an Elm 24 in dia

40.00 Made half mile corner on a

B. Ash 5 in dia

57.17 an Elm 20 in dia

80.00 Made corner for Sections 29, 28, 32, 33

on a B. Ash 6 in dia

1st half mile part dry 2^d rate

last half mile wet 2^d rate

Timber B. Ash Elm Lynn Beech

Undergrowth Hornbeam Birch + c

West On Random between S 29 + 32

40.00 Set temporary half mile Pt

80.00 End West boundary 1/4 link South

of corner Land level and dry good

2^d rate Timber W. Oak Poplar Beech

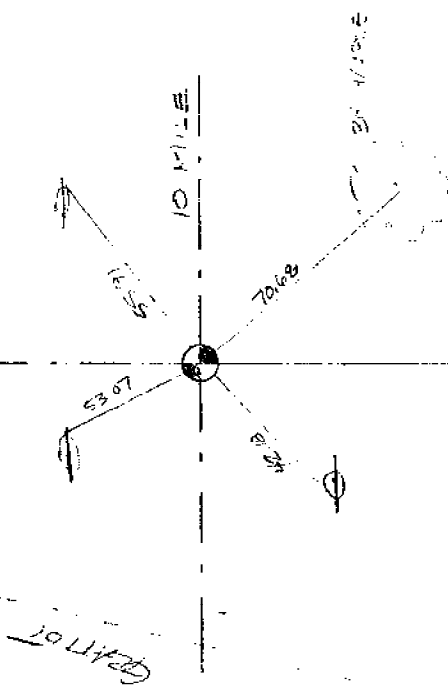
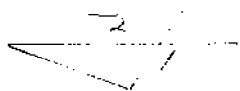
Sugar Lynn Undergrowth Spice

Hornbeam

East Corrected between 29 + 32

40.00 Made 1/4 section corner on a B. Ash 8 in dia
on tree line

No 2340



2004
 2004
 2004

NOT IN ASPH
 29' Sp... 10 MILE

- 12 DEC
- 150 7068 SEB REIN TA... IN SW FACE
~~30~~ 3' MARK
- 225 42.13 SE REIN TA... IN NW FACE
 U.P.
- 300 53.07 SEB REIN TA... IN NE FACE
 U.P.
- 350 31.1/30.6 SEB REIN TA... IN SE FACE
 U.P.

**2004 MACOMB COUNTY RE-MONUMENTATION
C-9, TOWN 1 NORTH, RANGE 13 EAST,
ERIN TOWNSHIP, CITY OF EASTPOINTE, MICHIGAN**

GENERAL LAND OFFICE HISTORY

William Preaton subdivided Town 1 North, Range 13 East in 1814. No evidence of the post set was recovered.

EXISTING CONDITIONS

C-9 is an obliterated corner. The recovered corner is located 1.5 feet south of the centerline of 10 Mile road, east of Gratiot Avenue (400' +/-). Observable occupation to the north and south is not visible or monumented.

CERTIFICATE OF SURVEYS & LAND CORNER RECORDATION CERTIFICATES

No act 132 certificates available for this corner.
No land corner recordation certificates available for this corner.

SUBDIVISIONS REFERENCING C-9

1917, W. J. Lehner, No. 123, "Macomb Gardens", L. 003, P. 077, MCR.
1917, W. J. Lehner, No. 123, "Hauss Park Sub.", L. 003, P. 125, MCR.
1923, B. T. Coleman, "Halfway Manor", L. 008, P. 035, MCR.
1924, W. J. Lehner, No. 123, "Hartsung Sub.", L. 008, P. 062, MCR.
1936, P. K. McCarthy, "Assessors Plat No. 4" (Roseville), L. 017, P. 018, MCR.
1936, P. K. McCarthy, "Assessors Plat No. 8", (Roseville), L. 018, P. 027, MCR.
1942, H. J. Fuller, No. 1645, "Assessors Plat No. 2", (East Detroit), L. 022, P. 009, MCR.
1945, J. D. Lehner, No. 5787, "Eschmann Sub.", L. 025, P. 006, MCR.
1956, H. J. Fuller, No. 1645, "Assessors Plat No. 30", (East Detroit), L. 038, P. 030, MCR.
1967, W. J. Coulter, No. 14760, "Rose Pointe Sub.", L. 058, P. 045-046, MCR.
1973, G. J. Landwehr, No. 10065, "Todd Subdivision", L. 063, P. 048-049, MCR

UNRECORDED INFORMATION

No unrecorded information was received for this corner.

WITNESSES RECOVERED

No previous witnesses for this corner.
C-9 was set using the above record plats field monuments.

FIELD MEASUREMENTS BETWEEN CORNERS

C-9 to D-9
2004 Remon (2698.42'), Plats North of 10 Mile(2698.22'), Plats South of 10 Mile (2698.86'), 1818 GLO 39.81 Ch. (2627.46').

C-9 TO C-8
2004 Remon (2695.26'), Plats East of Cushing (2697.26'), 1818 GLO 40.00 Ch. (2640').

C-9 TO C-10
2004 Remon (2726.05'), 1818 GLO 40.00 Ch. (2640').

RECOMMENDATIONS

To accept the location documented as the faithful recovery of the Obliterated corner C-9.

Place the following statement on the new LCRC:

"The Selected location is accepted by me and is generally accepted by Professional Surveyors as the best available evidence of the position of the original corner."

MONUMENT SET AND WITNESSES

Set 3/4" Iron with aluminum cap, 1.5 feet south of the centerline of 10 Mile Road, marked "Macomb County Monument, MI, Act 345, 41094, C-9", In a new monument box.

Az. 55° - 55.91' - Set Remon tag in Southeast face utility pole.
Az. 150° - 70.68' - Set Remon tag in Southwest face 30" maple.
Az. 225° - 42.18' - Set Remon tag in Northwest face utility pole.
Az. 325° - 53.07' - Set Remon tag in Northeast face utility pole with light.



ROBERT H. BIRKETT, P.S.

41094

12-13-04

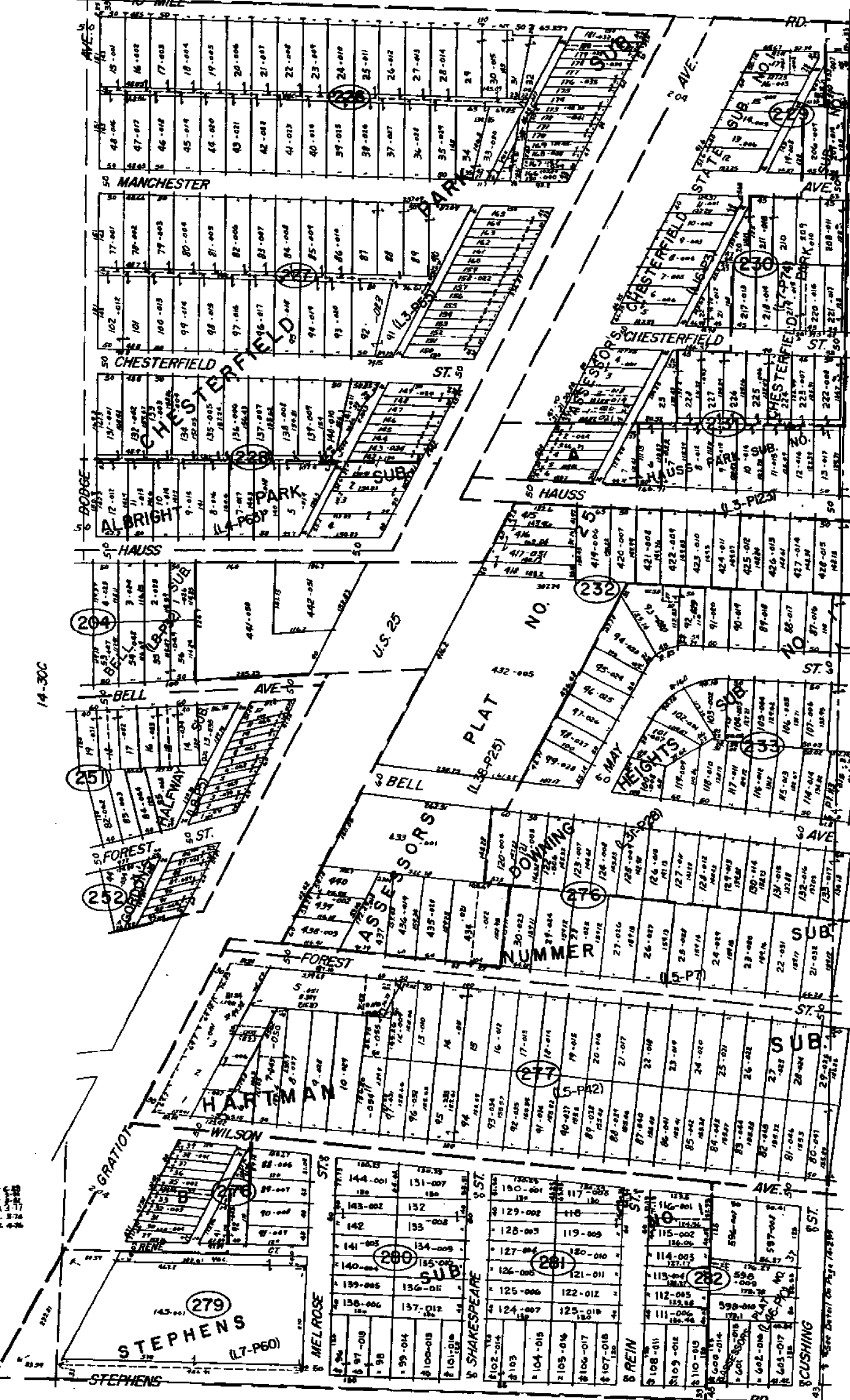
DATE

10 MILE

17
ASSESSOR'S MAPS
STATE SURV. (L-16-P7)
18
ASSESSOR'S
STEPHEN'S STATE
SUR. NO. (L-16-P8)

14-30C

14-29A



Changes to Base MAP
NOT VERIFIED
VERIFIED

14-30H

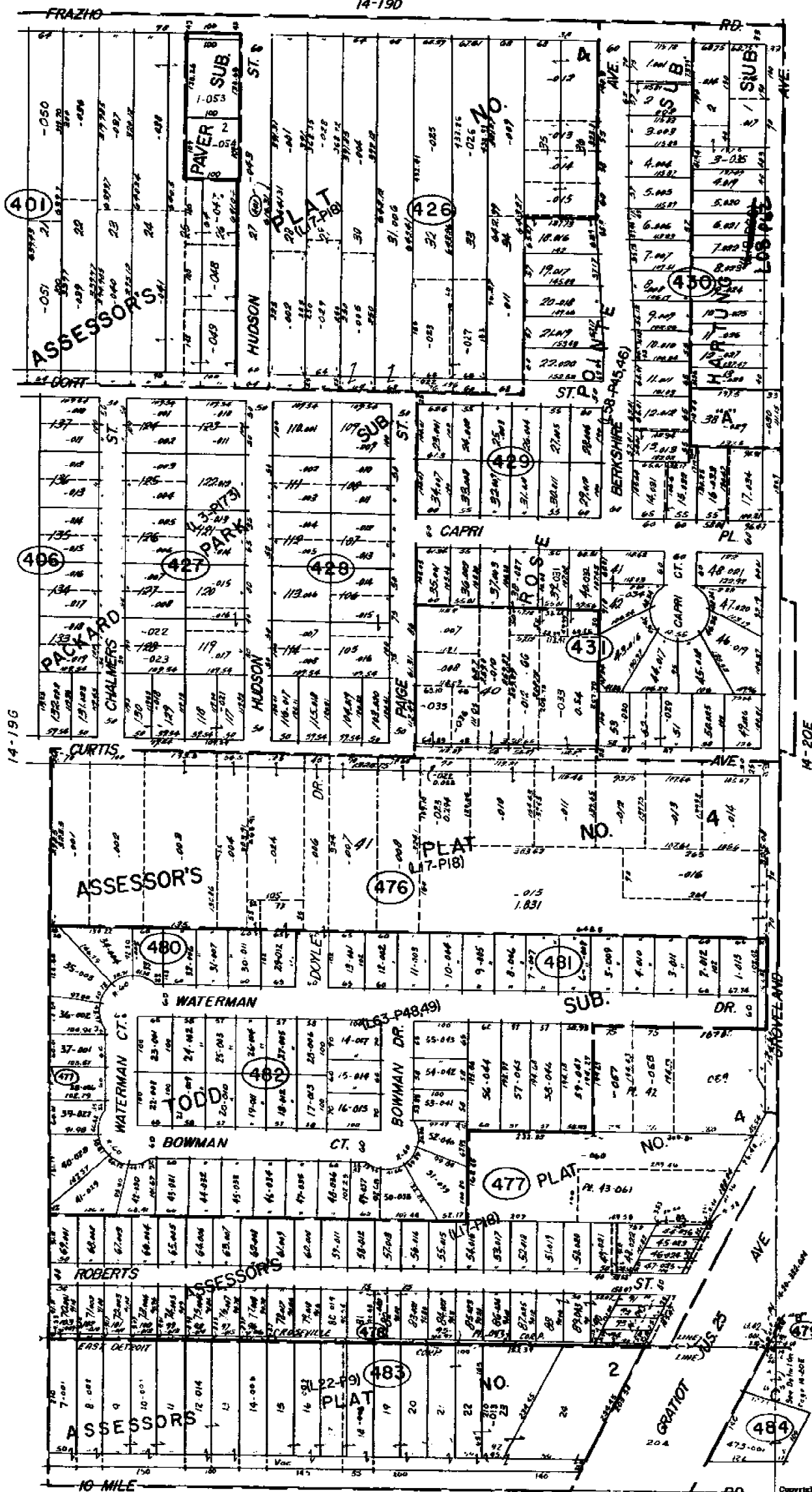
EAST DETROIT

E 1/2 NE 1/4 SEC. 30 T1N R13E.

Copyright 1975
MACOMB COUNTY, MICHIGAN

SCALE: 1" = 100'

14-30D



20'
 ASSessor's SWR
 No. 4 (L.I.P.)
 2
 Assessor's CRD
 No. 8 (U.22.P.)
 1
 Assessor's PLAT
 No. 30 (L.38-P.30)

REV. 1-50
 REV. 4-50
 REV. 7-50
 REV. 11-50
 REV. 7-52
 REV. 1-51
 REV. 11-51
 REV. 1-52
 REV. 11-52
 REV. 7-53
 REV. 1-54
 REV. 11-54
 REV. 7-55
 REV. 1-56

EAST DETROIT & ROSEVILLE
 1/2 SEC 1/4 SEC 19 T1N R1E

SCALE: 1" = 100'
 14-190

EAST DETROIT		240		240	
109	50	109	50	109	50
-019	197	315	383	457-002	
-020		317-003	384-018	450-008	
71		310-004	385-019	455-004	
021		315-005	386-020	454-005	
-022		314-006	387-021	455-000	
72-023		313-007	388-022	452-007	
73-024		312-008	389-023	451-008	
74-025		311-009	390-024	450-009	
75-026		310-010	391-025	449-010	
76-027		309-011	392-026	448-011	
77		308-012	393-027	447-019	
78-029		307	394-028	446-020	
79-030		306-013	395-029	445-015	
80-031		305-014	396-030	444-014	
81-032		304	397-031	443-015	
82-033		303-015	398-032	442	
83-034		302-016	399-033	441-016	
84-035		301-017	400-034	440-017	
85-036				439-018	
86-037					

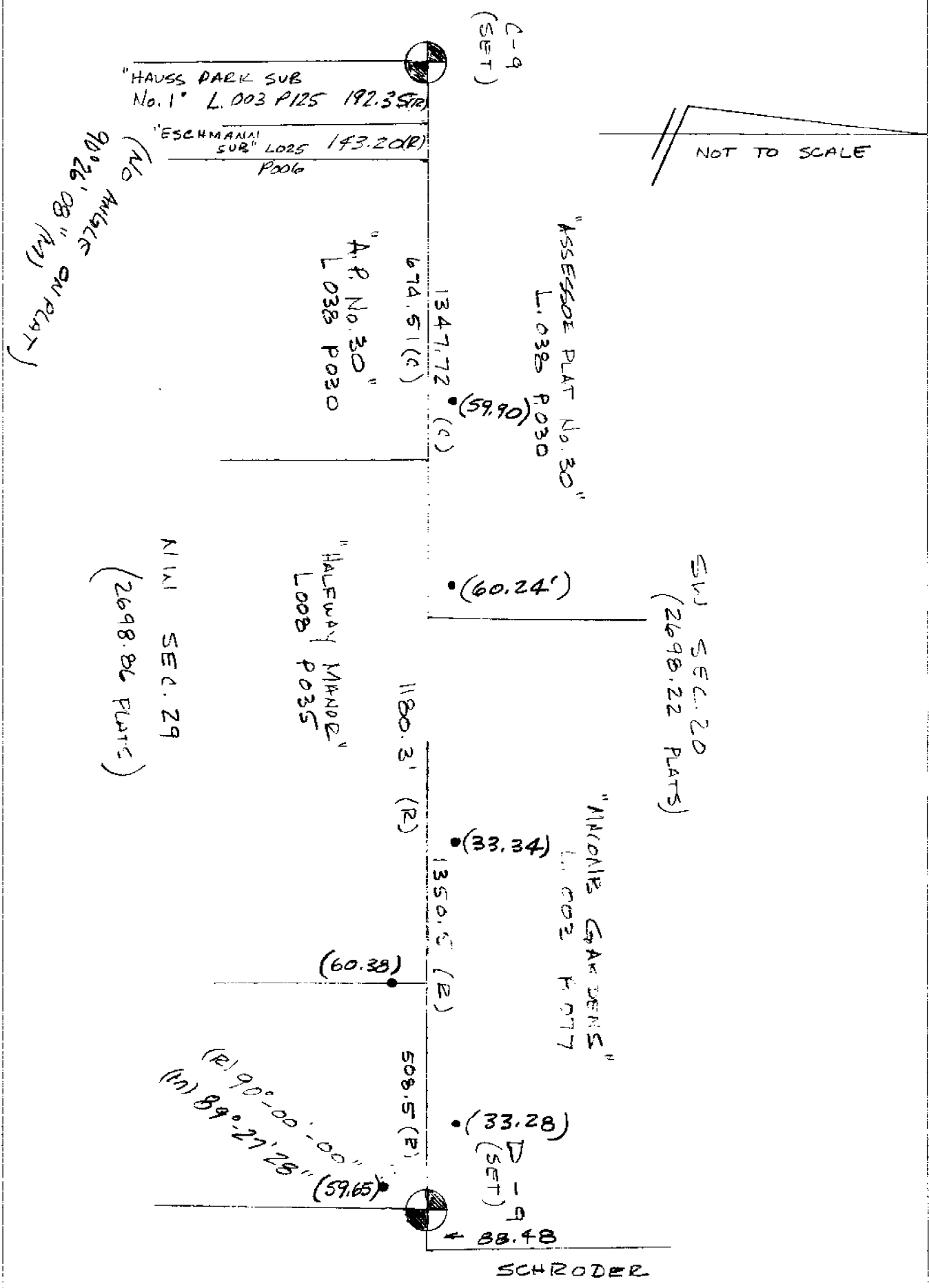
HAUSS		240		240	
109	50	109	50	109	50
87-018	214-028	299-002	352-031	437	
88-019	172-002	298-003	353-032	430-002	
89-017	171-003	297-004	354-033	435-003	
90-018	170-004	296-005	355-034	434-004	
91-019	169-005	295-006	356-035	433-005	
92-020	168-006	294-007	357-036	432-006	
93-021	167-007	293-008	358-037	431-007	
94-022	166-008	292-009	359-038	430	
95-023	165-009	291-010	360-039	429-008	
96-024	164-010	290-011	361-040	428-009	
97-025	163-011	289-012	362-041	427-010	
98-026	162-012	288-013	363-042	426-011	
99-027	161-013	287-014	364-043	425-012	
100	160-014	286-015	365-044	424-013	
101-028	159-015	285-016	366-045	423-014	
102-029	158-016	284-017	367	422-015	
103-030	157-017	283-018	368-042	421-016	
104-031	156-018	282-019	369	420-017	
105-032	155-019	281-020	370-043	419-018	
106-033	154-020	280-021	371	418-019	
107-034	153-021	279-022	372-044	417-020	
108-042	152-022	278	373-045	416-021	
109-043	151-023	277-023	374-046	415-022	
110-044	150-024	276-024	375-047	414-023	
111-045	149-025	275-025	376-048	413-024	
112-046	148-026	274	377-049	412-025	
113-047	147-027			411-026	

FOREST		240		240	
109	50	109	50	109	50
114-049	140-001	273-001	378-012	411	
115-041	145-002	272-002	379-013	410	
116-048	144-003	271-003	380-014	409-002	
117-049	143-004	270-004	381-015	408-003	
118-050	142-005	269-005	382-016	407-004	
119-051	141-006	268-006	383	406-005	
120-052	140-007	267-007	384-017	405-006	
121-053	139-008	266-008	385-018	404-007	
122-054	138-009	265-009	386-019	403-008	
123-055	137-010	264-010	387-020	402-009	
124-056	136-011	263-011	388-021	401-010	
125-057	135-012			400-011	

LAMBRECHT		240		240	
109	50	109	50	109	50
126-003	203-028	310-010	391-025	449-010	
127-004	202-029	309-011	392-026	448-011	
128-005	201-030	308-012	393-027	447-012	
129-006	200-031	307-013	394-028	446-013	
130-007	199-032	306-014	395-029	445-014	
131-008	198-033	305-015	396-030	444-015	
132-009	197-034	304-016	397-031	443-016	
133-010	196-035	303-017	398-032	442-017	
134-011	195-036	302-018	399-033	441-018	
135-012	194-037	301-019	400-034	440-019	
136-013	193-038			439-020	
137-014	192-039			438-021	
138-015	191-040			437-022	
139-016	190-041			436-023	
140-017	189-042			435-024	
141-018	188-043			434-025	
142-019	187-044			433-026	
143-020	186-045			432-027	
144-021	185-046			431-028	
145-022	184-047			430-029	
146-023	183-048			429-030	
147-024	182-049			428-031	
148-025	181-050			427-032	
149-026	180-051			426-033	
150-027	179-052			425-034	
151-028	178-053			424-035	
152-029	177-054			423-036	
153-030	176-055			422-037	
154-031	175-056			421-038	
155-032	174-057			420-039	
156-033	173-058			419-040	
157-034	172-059			418-041	
158-035	171-060			417-042	
159-036	170-061			416-043	
160-037	169-062			415-044	
161-038	168-063			414-045	
162-039	167-064			413-046	
163-040	166-065			412-047	
164-041	165-066			411-048	
165-042	164-067			410-049	
166-043	163-068			409-050	
167-044	162-069			408-051	
168-045	161-070			407-052	
169-046	160-071			406-053	
170-047	159-072			405-054	
171-048	158-073			404-055	
172-049	157-074			403-056	
173-050	156-075			402-057	
174-051	155-076			401-058	
175-052	154-077			400-059	
176-053	153-078			399-060	
177-054	152-079			398-061	
178-055	151-080			397-062	
179-056	150-081			396-063	
180-057	149-082			395-064	
181-058	148-083			394-065	
182-059	147-084			393-066	
183-060	146-085			392-067	
184-061	145-086			391-068	
185-062	144-087			390-069	
186-063	143-088			389-070	
187-064	142-089			388-071	
188-065	141-090			387-072	
189-066	140-091			386-073	
190-067	139-092			385-074	
191-068	138-093			384-075	
192-069	137-094			383-076	
193-070	136-095			382-077	
194-071	135-096			381-078	
195-072	134-097			380-079	
196-073	133-098			379-080	
197-074	132-099			378-081	
198-075	131-100			377-082	
199-076	130-101			376-083	
200-077	129-102			375-084	
201-078	128-103			374-085	
202-079	127-104			373-086	
203-080	126-105			372-087	
204-081	125-106			371-088	
205-082	124-107			370-089	
206-083	123-108			369-090	
207-084	122-109			368-091	
208-085	121-110			367-092	
209-086	120-111			366-093	
210-087	119-112			365-094	
211-088	118-113			364-095	
212-089	117-114			363-096	
213-090	116-115			362-097	
214-091	115-116			361-098	
215-092	114-117			360-099	
216-093	113-118			359-100	
217-094	112-119			358-101	
218-095	111-120			357-102	
219-096	110-121			356-103	
220-097	109-122			355-104	
221-098	108-123			354-105	
222-099	107-124			353-106	
223-100	106-125			352-107	
224-101	105-126			351-108	
225-102	104-127			350-109	
226-103	103-128			349-110	
227-104	102-129			348-111	
228-105	101-130			347-112	
229-106	100-131			346-113	
230-107	99-132			345-114	
231-108	98-133			344-115	
232-109	97-134			343-116	
233-110	96-135			342-117	
234-111	95-136			341-118	
235-112	94-137			340-119	
236-113	93-138			339-120	
237-114	92-139			338-121	
238-115	91-140			337-122	
239-116	90-141			336-123	
240-117	89-142			335-124	
241-118	88-143			334-125	
242-119	87-144			333-126	
243-120	86-145			332-127	
244-121	85-146			331-128	
245-122	84-147			330-129	
246-123	83-148			329-130	
247-124	82-149			328-131	
248-125	81-150			327-132	
249-126	80-151			326-133	
250-127	79-152			325-134	
251-128	78-153			324-135	
252-129	77-154			323-136	
253-130	76-155			322-137	
254-131	75-156			321-138	
255-132	74-157			320-139	
256-133	73-158			319-140	
257-134	72-159			318-141	
258-135	71-160			317-142	
259-136	70-161			316-143	
260-137	69-162			315-144	
261-138	68-163			314-145	
262-139	67-164			313-146	
263-140	66-165			312-147	
264-141	65-166			311-148	
265-142	64-167			310-149	
266-143	63-168			309-150	
267-144	62-169			308-151	
268-145	61-170			307-152	
269-146	60-171			306-153	
270-147	59-172			305-154	
271-148	58-173			304-155	
272-149	57-174			303-156	
273-150	56-175			302-157	
274-151	55-176			301-158	
275-152	54-177			300-159	
276-153	53-178			299-160	
277-154	52-179				

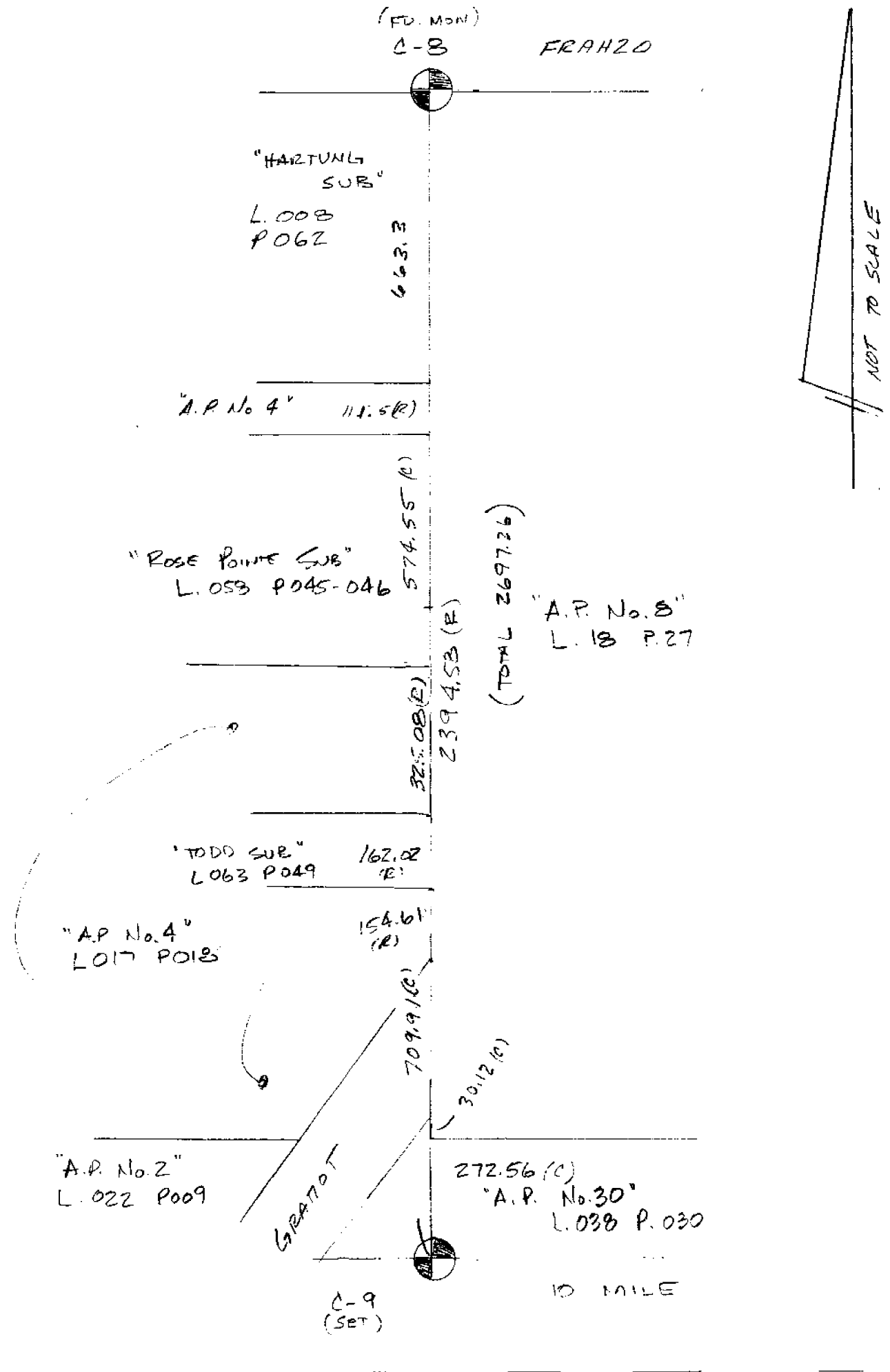
NO. 1000 OF
MICHIGAN'S CONSTITUTION

W. STAUBER



30 820 4110
Engineers, Incorporated
3141 EAST 12th AVE
DENVER, CO 80202

14-19 H



COMMITMENT FOR TITLE INSURANCE
BURTON ABSTRACT AND TITLE COMPANY
 1650 W. PINE BEAVER ROAD CENTRAL OFFICE TROY, MICHIGAN 48064

EFFECTIVE DATE: **October 20, 1976 at 8 AM**

COMMITMENT NO. **50-094928**

BURTON ABSTRACT AND TITLE COMPANY, a Michigan Corporation, hereby agrees to issue a policy of title insurance as hereinafter set forth upon payment of the prescribed premium. THE POLICY WILL BE ISSUED SUBJECT TO EACH ENCUMBRANCE AND EXCEPTION LISTED BELOW, OR WHICH ARISES AFTER THE EFFECTIVE DATE HEREOF, UNLESS ELIMINATED TO OUR SATISFACTION.

FORM OF POLICY TO BE ISSUED

A.L.T.A. OWNER'S POLICY Informational \$ Purposes	A.L.T.A. MORTGAGE POLICY WITHOUT EXCEPTIONS \$	A.L.T.A. MORTGAGE POLICY WITH EXCEPTIONS \$
--	--	---

PARTY TO BE INSURED

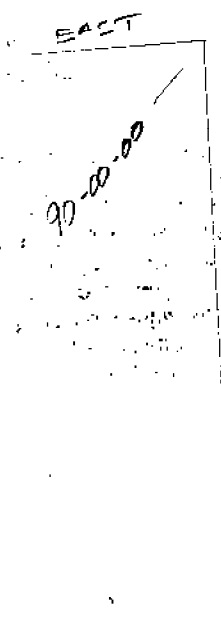
TO BE FURNISHED LATER

DESCRIPTION OF REAL ESTATE

Situated in **City of East Detroit, Macomb County, Michigan**,
 Part of the Northwest 1/4 of Section 29, town 1 north, range 13 east,
 described as follows: Beginning at the North 1/4 post of Section 29;
 thence South 2,697.50 feet; thence West 508.70 feet; thence North
 2,702.50 feet; thence East 508.50 feet to a point of beginning.
 Subject to the rights of the public and of any governmental unit in
 any part thereof taken, used or deeded for street, road or highway
 purposes.

OWNER, ENCUMBRANCES, EXCEPTIONS AND REQUIREMENTS

1. Owner: **City of East Detroit, a Michigan Corporation**
2. **1975 County Taxes: Not Assessed.**
1976 City Taxes: Not Assessed.



DFR

Countersigned by **H. Mathiak** Authorized Signature
BURTON ABSTRACT AND TITLE COMPANY
[Signature] PRESIDENT

If countersigned by an authorized officer or agent of the company, this commitment is valid and binding for a period of 90 days from the date hereof.

NOTE: The reverse side hereof is part of this commitment.

AUDIT NUMBER **C 333341**

L.3 P.125

9334

well, Jeffrey

PLAT

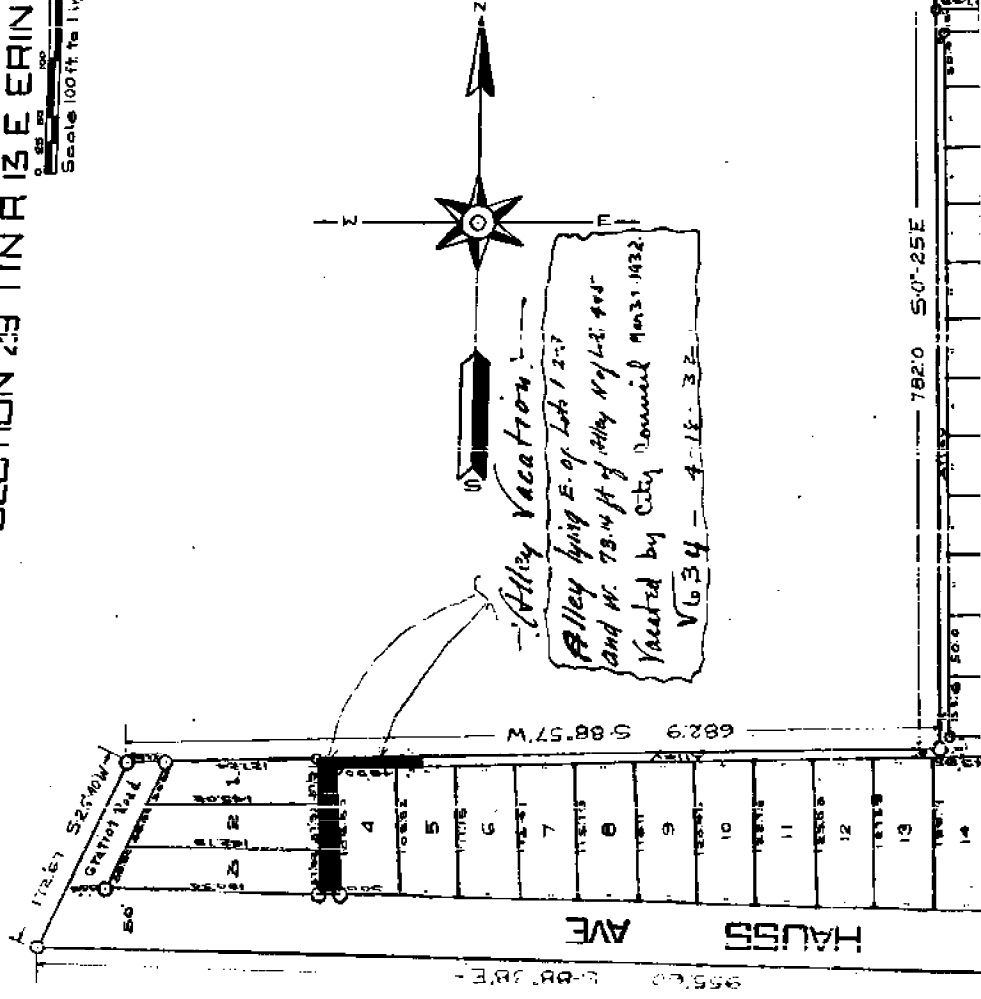
HAUSS PARK SUBDIVISION No 1

OF PART OF NE 1/4 OF SECTION 30 AND PART OF NW 1/4 OF SECTION 29 T13N R13E ERIN TOWNSHIP, MACOMB COUNTY MICHIGAN.

Scale 100 ft. to 1 inch

1/16/18
B.K. OR
2/3

July 7-1978
John P. Skene
Surveyor

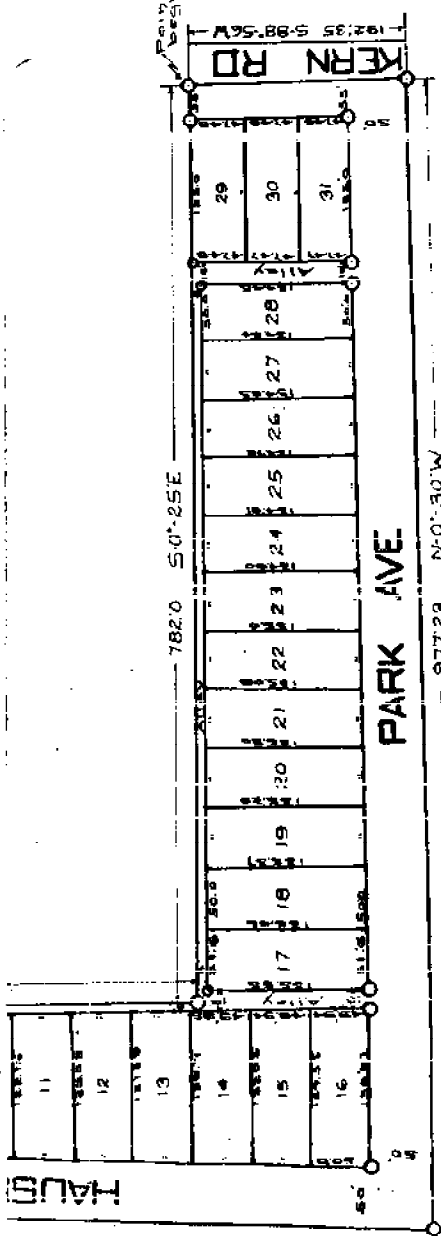


I hereby certify that this plat herein delineated is a correct one and that no monument

Surveyor's Certificate

792.0 S-0°-25'E

HAUSS



SHAYNE'S COND. FIGURE

I hereby certify that the plat herein delineated is a correct one and that permanent monuments consisting of 2" galvanized pipe 10' long have been planted at points marked thus (O) as thereon shown at all angles in the boundaries of the land plat, and at all intersections of streets and alleys.

Walter J. Ketchum
 Macomb County Surveyor.

DEDICATION

KNOW ALL MEN BY THESE PRESENTS, that *Henry Hauss*, as proprietor and *Oliver Hauss*, his wife and *Edna Hauss*, his wife and *John Hauss*, his wife, do hereby dedicate to the public, as shown on said plat, the streets and alleys as shown on said plat are hereby dedicated to the use of the public.

Witness my hand and seal in presence of
Edna Hauss
John Hauss
 Myself

STATE OF MICHIGAN
 COUNTY OF MACOMB

on this 12th day of April 1917, before me, a Notary Public in and for said County, personally came the above named *Henry Hauss*, *Edna Hauss* his wife, and *Rudolph Hauss* a bachelor, known to me to be the persons who executed the above dedication, and acknowledged the same to be their free act and deed.

Albert J. Rein
 Notary Public, Macomb Co., Mich.

My commission expires April 12th 1918

DESCRIPTION

The land embraced in the above plat is a portion of the Hauss Park Subdivision No. 1 of Part of N.E. 1/4 Sec. 9, and part of N.W. 1/4 of Sec. 29 T19N R18E E1/2 of Township, Macomb County, Michigan is described as follows: Beginning at the N.W. corner of Sec. 9, T. 19 N., R. 18 E., thence S. 0° 25' W. 732.7 feet; thence S. 88° 57' E. 312.9 to 2.500 feet; thence N. 0° 31' W. 260.40 feet; thence S. 88° 36' E. 955.60 feet; thence N. 0° 31' W. 977.25 to the north line of said Sec. 29; thence S. 88° 50' W. 192.35 to place of beginning.

CERTIFICATE OF MUNICIPAL APPROVAL

This plat was approved by the township board of the Township of Fern at a meeting held April 12th 1917 at 7:30 P.M.

George E. ...
 Clerk.

CERTIFICATE OF APPROVAL BY COUNTY BOARD

This plat was approved on the 12th day of April 1917 by the County Board of Macomb County.

Henry M. ...
 County Treasurer

CERTIFICATE OF THE COUNTY TREASURER

I hereby certify that there are no tax liens or titles held by the State on the lands described in this plat, and that there are no tax liens or titles held by individuals on said lands, for the five years preceding the date of this office, and that the taxes for said period of five years are paid, as shown by the records of this office.

Henry M. ...
 County Treasurer

Harold ...
 Macomb County Clerk

George E. ...
 Clerk

Filed in 1917
George E. ...
 County Clerk

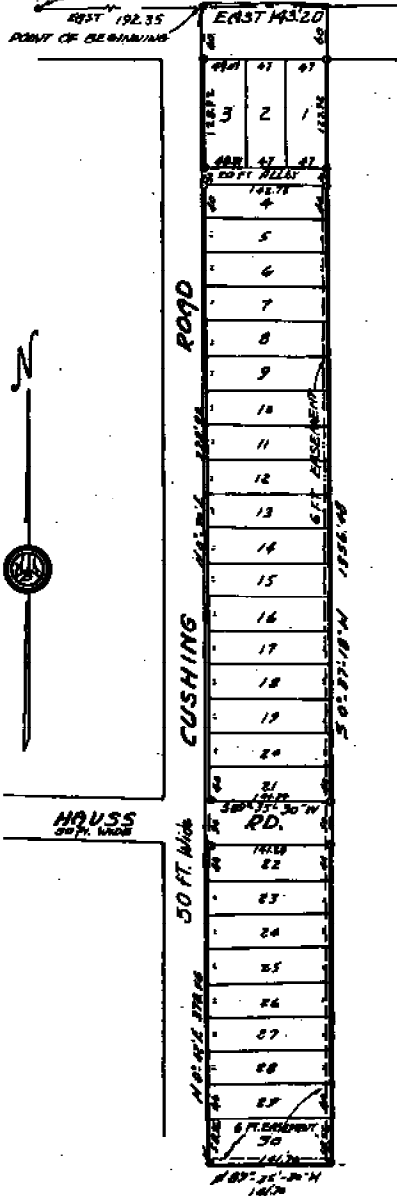
"ESCHMANN SUB"

PART OF THE NW 1/4 OF SEC. 29, T19R13E, CITY OF EAST DETROIT, MACOMB CO, MICHIGAN

SCALE 1"=100'
ALL DIMENSIONS IN FEET AND DECIMALS THEREOF

WALTER J. LEDWEN & SONS
CIVIL ENGINEERING & SURVEYING
204 LAWYERS BUILDING
MT. CLEMENS, MICHIGAN

120 FT. WIDE
TEN MILE ROAD
POINT OF BEGINNING



DEDICATION

KNOW ALL MEN BY THESE PRESENTS, That we, Walter Eschmann as proprietor, and Josephine Eschmann, his wife have caused the land embraced in the annexed plat to be surveyed, laid out and platted, to be known as "ESCHMANN SUBDIVISION," a part of the N.W. 1/4 of Section 29, T. 19 N., R. 13 E., City of East Detroit, Macomb County, Michigan, and that the streets and alleys as shown on said plat are hereby dedicated to the use of the Public.

Signed and Sealed in Presence of

Walter Eschmann
Walter Eschmann

Josephine Eschmann
Josephine Eschmann

Edward A. Schutte
Edward A. Schutte

STATE OF MICHIGAN
COUNTY OF MACOMB

On this 24th day of May, A.D., 1949, before me, a Notary Public in and for said county, personally came the above named, Walter Eschmann and Josephine Eschmann, his wife, known to me to be the persons who executed the above dedication, and acknowledged the same to be their free act and deed.

Edward A. Schutte
Notary Public, Macomb Co., Michigan.

My commission expires: February-10-1950

CERTIFICATE OF MUNICIPAL APPROVAL

This plat was approved by the City Council of the City of East Detroit at a meeting held May 23, 1949 A.D.,

W. J. Williams
City Clerk

CERTIFICATE OF APPROVAL BY COUNTY BOARD

This plat was approved on the 7th day of June, 1949 A.D.,

Oliver Cassel
Register of Deeds

Arthur H. Smith
County Clerk

Samuel Wilson
County Treasurer

Examined and Approved
June 20, 1949
Walter J. Ledwen
Surveyor

DESCRIPTION OF LAND PLATED

The land embraced in the annexed plat of "Eschmann Subdivision," a part of the N. W. 1/4 of Section 29, T. 19 N., R. 13 E., City of East Detroit, Macomb County, Michigan, is described as follows:

Commencing at a point 194.35 ft. East of the N. W. corner of said Section 29, and thence extending East 145.20 ft.; thence S. 0°-37'-18" W. 1254.48 ft.; thence S. 89°-55'-30" W. 141.70 ft.; thence N. 0°-45' E. 378.68 ft.; thence N. 0°-30' E. 978.92 ft., to the point of beginning.

SURVEYOR'S CERTIFICATE

I hereby certify that the plat hereon delineated is a correct one and that permanent metal monuments consisting of bars not less than one-half inch in diameter and 48 inches in length encased in a concrete cylinder at least 4 inches in diameter and 48 inches in depth have been placed at points marked thus ("o"), as thereon shown at all angles in the boundaries of the land platted, at all intersections of streets, intersections of alleys, or at streets and alleys, and at the intersections of streets and alleys with the boundaries of the plat as shown on said plat.

John W. Ledwen
Registered Land Surveyor

CERTIFICATE OF APPROVAL

BY BOARD OF COUNTY ROAD COMMISSIONERS

This plat has been examined and approved the 16th day of June, 1949, by the Board of County Road Commissioners of Macomb County.

W. E. Malow
Chairman

Ray Carver
Vice-Chairman

Alfred Thacker
Member

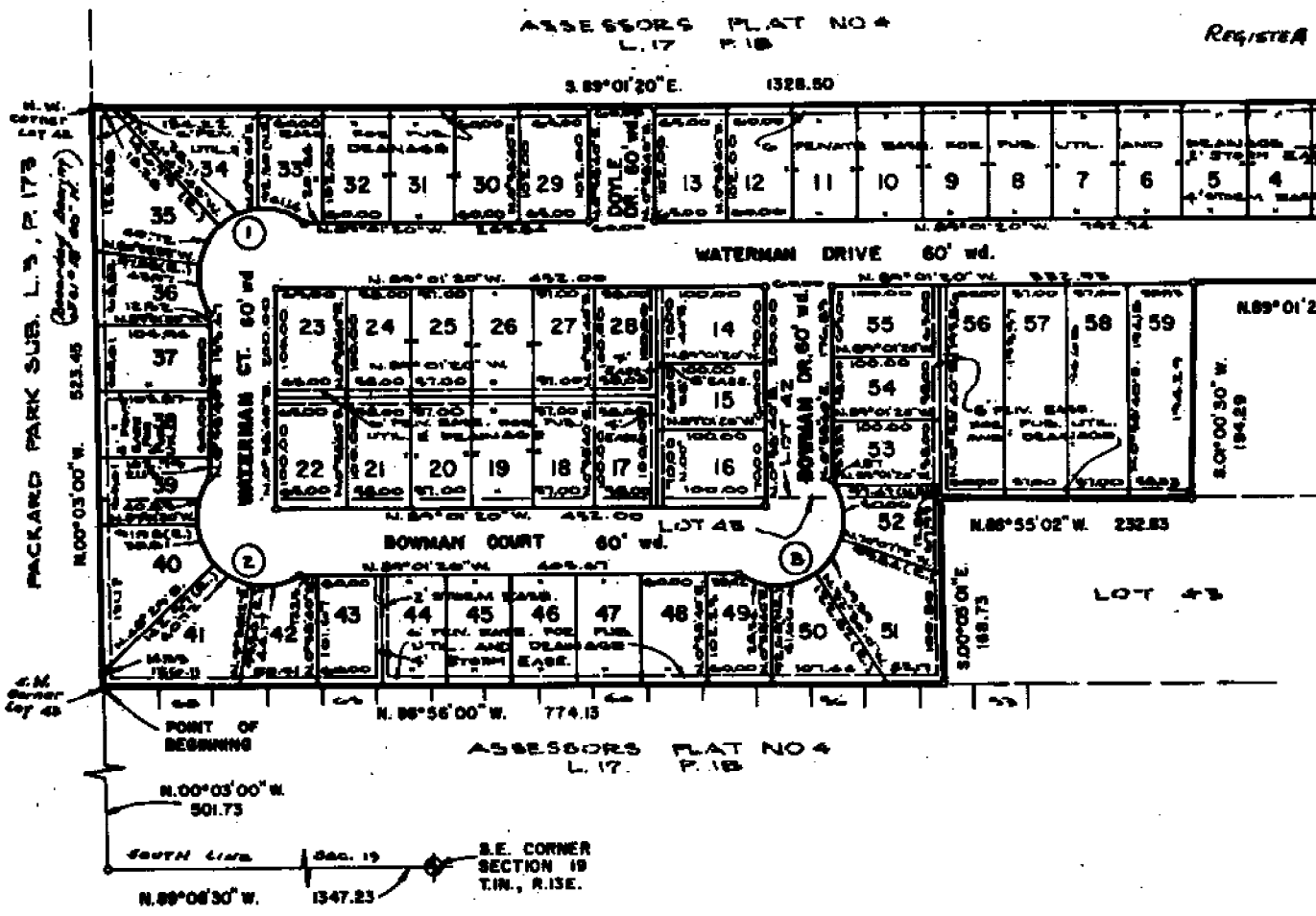
REGISTER'S OFFICE
County of Macomb

Received for Record this 24th day of May, A.D. 1949 at 10:37 o'clock A.M. and Recorded in Lib. of 30816 at 10:45 o'clock A.M.

This is to certify that the above plat was filed in the County of Macomb, Michigan, on this 24th day of May, 1949, at 10:37 o'clock A.M. and that the same is a true and correct copy of the original as filed in the County of Macomb, Michigan, on this 24th day of May, 1949, at 10:37 o'clock A.M.

PLAT LEGEND

All dimensions are given in feet, are given along the arc. The symbol points of permanent concrete 1/2" diameter by 18" long iron bar the west line of previously platte recorded in liber 17, page 18 of t



SURVEYOR'S CERTIFICATE

I, Gerald J. Landwehr, surveyor, certify:

That I have surveyed, divided and mapped the land shown on this plat described as follows: "TODD SUBDIVISION" of part of the S.E. 1/4 of Section 19, T. 1 N., R. 13 E., City of Roseville, Macomb County, Michigan, all that part of lots 42 and 43, of Assessor's Plat No. 4, as recorded in Liber 17 of plats on page 18 of the Macomb County Records, described as beginning at the S.W. corner of said lot 43, being a distance of 1347.23 feet N. 89° 08' 30" W. along the South line of said Section 19 and a distance of 501.73 feet N. 00° 03' 00" W. of the S.E. corner of said Section 19; thence N. 00° 03' 00" W. 523.45 feet along the West line of said lots 42 and 43 to the N.W. corner of said lot 42; thence S. 89° 01' 20" E. 1328.50 feet along the North line of said lot 42 to the N.E. corner of said lot 42; thence due South 162.02 feet along the East line of said lot 42; thence N. 89° 01' 20" W. 317.85 feet; thence S. 01° 00' 30" W. 194.29 feet to a point in the line common to lots 42 and 43; thence N. 88° 55' 02" W. 232.83 feet along said common line; thence S. 00° 03' 01" E. 168.73 feet to a point in the South line of said lot 43; thence N. 88° 56' 00" W. 774.13 feet to the point of beginning. Containing 59 lots numbered 1 thru 59 inclusive in 12.418 Acres of Land.

That I have made such survey, land division, and plat by the direction of the owner of such land.
 That the required monuments and lot markers have been located in the ground or that surety has been deposited with the municipality, as required by Section 125 of the Act.
 That the accuracy of survey is within the limits required by Section 126 of the Act.
 That the bearings shown on the plat are expressed as required by Section 126 (3) of the Act and as explained in the legend.

MAVIS, LANDWEHR & ASSOCIATES, INC.
 29400 Van Dyke Avenue
 Warren, Michigan 48093
 Gerald J. Landwehr, R.L.S.
 Michigan Reg. No. 10065

Oct 29 1978
 Date



TODD SUBDIVISION

OF

PART OF THE S.E. 1/4 OF SECTION 19,
T.1N., R.13E., CITY OF ROSEVILLE,
MACOMB COUNTY, MICHIGAN.

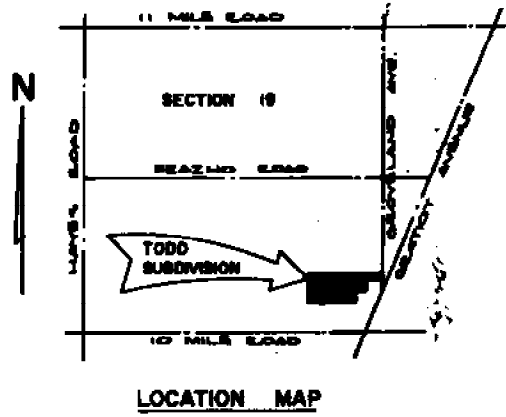
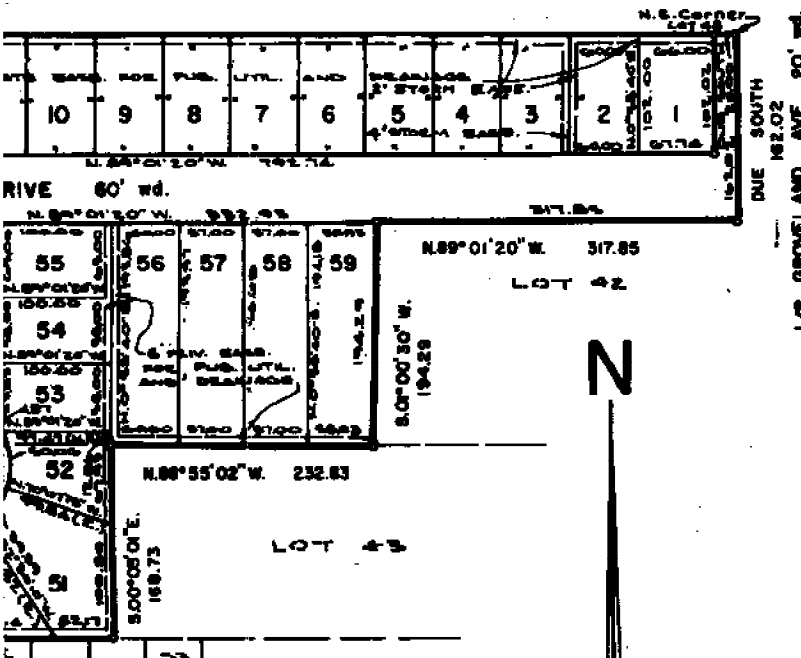


SCALE 1 inch = 100 feet

PLAT LEGEND

All dimensions are given in feet. All curvilinear dimensions are given along the arc. The symbol "o" represents the location points of permanent concrete monuments. Lot markers are 1/2" diameter by 18" long iron bars. Bearings comply with the West line of previously platted ASSESSORS PLAT NO. 4, as recorded in liber 17, page 18 of the Macomb County Records.

REGISTER # A 176433



CURVE DATA CHART						
N ^o	RADIUS	ARC	DELTA	TANGENT	CHD. BEARING	CHORD
1	500.00	162.02	157° 03' 50"	294.42	N. 44° 01' 30" W.	117.61
2	500.00	162.02	157° 03' 50"	294.42	N. 44° 01' 30" W.	117.61
3	500.00	162.02	157° 03' 50"	294.42	N. 44° 01' 30" W.	117.61

It described as follows: "TODD SUBDIVISION" Roseville, Macomb County, Michigan, all that lot 43, being a distance of 1347.23 feet distance of 501.73 feet N. 00° 03' 00" W. 1.45 feet along the West line of said lot 43, thence S. 00° 03' 00" W. 194.29 feet along the North line of said lot 43, thence S. 00° 03' 00" W. 194.29 feet to a point in the line of said common line; thence S. 00° 03' 00" E. 88° 56' 00" W. 774.13 feet to the point (2.418 Acres of Land.

also for East side of road. from Sub. Bearing recorded (S. 00° 15' 00" W.)

RECORDING CERTIFICATE

State of Michigan)
County of Macomb) ss

This plat was received for record on the 27th day of March, 1973 at 2:00 P.M., recorded in Liber 63 of Plats on page 48-49.

Raymond P. Lewis
Register of Deeds - Macomb County, Michigan

EXAMINED AND APPROVED
Date *Mar 14, 1973*

Allison Green
ALLISON GREEN
STATE TREASURER
By *Richard E. Lamm, Notary*

Section 126 (3) of the Act and as

WHEHR & ASSOCIATES, INC.
100 Van Dyke Avenue
Farmington, Michigan 48033
Richard E. Lamm
Notary Public, F.C.S.
Reg. No. 10065



ROSE POINTE SUBDIVISION

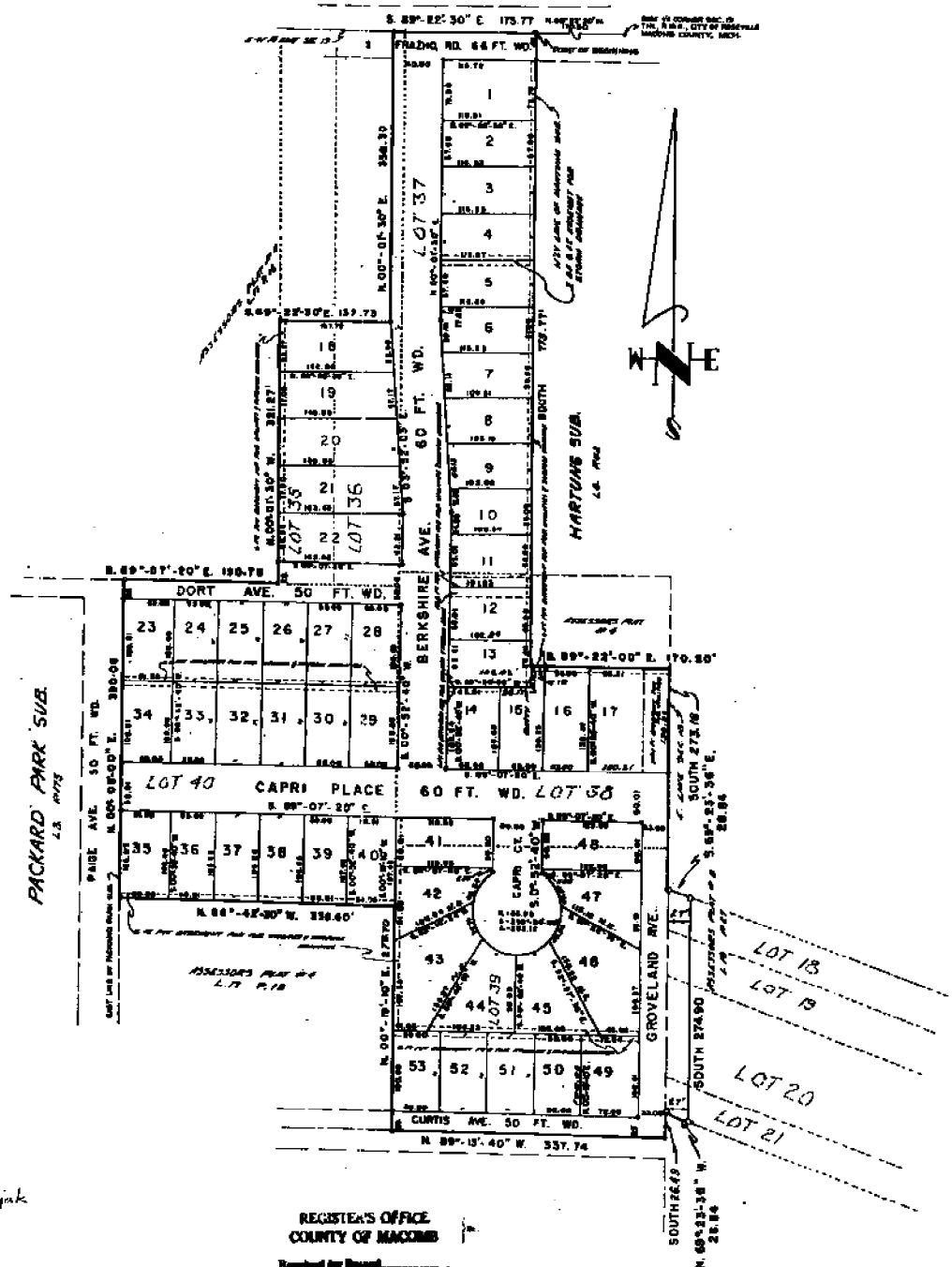
PART OF THE S.E. 1/4 SEC. 19 AND THE S.W. 1/4 SEC. 20, T. 1 N., R. 13 E.
CITY OF ROSEVILLE, MACOMB COUNTY, MICHIGAN



000639

CERTIFIED PLAT BY:
M'MAHON ENGINEERING CO.
DETROIT, MICHIGAN

ALL DIMENSIONS ARE SHOWN IN FEET AND DECIMALS THEREOF.
ALL CURVILINEAR DIMENSIONS ARE SHOWN ALONG THE ARC.
ALL LOT LINES ARE RADIAL OR PERPENDICULAR TO STREET
LINES UNLESS OTHERWISE SHOWN, (N.R.)



Wm. J. McMahon
REGISTERED PROFESSIONAL ENGINEER
No. 12345
DETROIT, MICHIGAN

Eleanor Burnett

REGISTER'S OFFICE
COUNTY OF MACOMB

Received for Record
MARCH 14, 1968
11:30 AM
Vol. 58 PLATS
Page 46
Raymond P. Davis
Deputy Register & Clerk

L58-P45

ROSE POINTE SUBDIVISION

PART OF THE S.E. 1/4 SEC. 19 AND THE S.W. 1/4 SEC. 20, T.1N., R.13E.
CITY OF ROSEVILLE, MACOMB COUNTY, MICHIGAN



900639

CERTIFIED PLAT BY:
M'MAHON ENGINEERING CO.
DETROIT, MICHIGAN

ALL DIMENSIONS ARE SHOWN IN FEET AND DECIMALS THEREOF.
ALL CURVILINEAR DIMENSIONS ARE SHOWN ALONG THE ARC.
ALL LOT LINES ARE RADIAL OR PERPENDICULAR TO STREET LINES UNLESS OTHERWISE SHOWN, (N.B.)

DEDICATION

KNOWN ALL MEN BY THESE PRESENTS: THAT WE Joseph J. Hense, a single man, and Frank Mollicone and Clara Mollicone, his wife, and Alfred Pussuoli and Arcangela Pussuoli, his wife, as proprietors, have caused the land embraced in the Annexed Plat to be surveyed, laid out and platted, to be known as Rose Pointe Subdivision, part of the S.E. 1/4, Sec. 19, T. 1 N., R. 13 E., City of Roseville, Macomb County, Michigan, and that the streets as shown on said plat are hereby dedicated to the use of the public, and that the private easements shown on said plat are hereby reserved for the use of the public utilities, or for the use of specific utilities or specific uses, as thereon noted, subject to regulation and control of the use thereof by the local governmental authorities, and that no permanent structures are to be erected within the boundaries of said easements.

WITNESSES:

James P. McNeill
1491 5TH AVE EAST
DETROIT, MICH 48205

Henry L. Brite
750 GREENWICH AVE.
DETROIT, MICH 48221

Orville C. Hense
15042 CARVILLE DR.
DETROIT, MICH 48205

Joseph J. Hense L.S.
Joseph J. Hense, a single man
14256 Warrington Ct.
East Detroit, Michigan 48021

Frank Mollicone L.S.
Frank Mollicone
16655 Curtis, Roseville, Michigan.

Clara Mollicone L.S.
Clara Mollicone, his wife
16655 Curtis, Roseville, Michigan.

Alfred Pussuoli L.S.
Alfred Pussuoli
16665 Curtis, Roseville, Michigan.

Arcangela Pussuoli L.S.
Arcangela Pussuoli, his wife
16665 Curtis, Roseville, Michigan.

DESCRIPTION

The land embraced in the annexed plat of Rose Pointe Subdivision, part of the S.E. 1/4, Sec. 19, T. 1 N., R. 13 E., City of Roseville, Macomb County, Michigan, comprising Lots 1 through 53, being a re-subdivision of Lot 37 and part of Lots 35, 36, 38, 39 and 40 of Assessor's Plat No. 4, as recorded in Liber 17 of Plats, Page 18, Macomb County Records, is described as follows: Beginning at a point on the E-W 1/2 line of Section 19, T. 1 N., R. 13 E., distant E. 89° 22' 30" W. 170.50 feet from the East 1/2 corner of said Sec.; thence due South along the westerly line of Hartung Sub., as recorded in Liber 8 of plats, page 61, and its extension southerly a distance of 773.77 ft.; thence S. 89° 22' 00" E. 170.50 feet, to the east line of Sec. 19; thence due South 270.16 ft. along said east line; thence N. 89° 13' 40" W. 337.74 ft.; thence N. 0° 19' 10" E., 276.70 ft.; thence N. 88° 42' 30" W. 339.60 ft. to the east line of Fankard Park Sub., as recorded in Liber 3 of Plats, Page 173; thence N. 0° 08' 00" E., 390.08 ft. along said east line; thence N. 89° 07' 20" E., 198.78 ft.; thence N. 0° 01' 30" W., 321.27 ft.; thence S. 89° 22' 30" E. 137.73 ft.; thence N. 0° 01' 30" E. 356.30 ft. to the E-W 1/2 line of Sec. 19; thence S. 89° 22' 30" E. 175.77 ft. along said E-W 1/2 line to the point of beginning.

CERTIFICATE OF MUNICIPAL APPROVAL

This plat was approved by the City Council of the City of Roseville, at a meeting held March 2, 1967, and is in compliance with Section 19A, and the width of lots conforms with the requirements of Section 30, Act 173, of 1929, as amended, and that sewer and water facilities are installed and ready for connection within the plat.

Robert J. Nunni
ROBERT J. NUNNI, Clerk

SURVEYORS CERTIFICATE

I hereby certify that the plat hereon delineated is a correct one, and that permanent monuments consisting of iron rods 1/2" in diameter and 36" in length encased in concrete cylinders 4" in diameter and 36" in length, have been placed at all points marked thus (a) as thereon shown at all angles in the boundaries of the land platted, at all intersections of the lines of streets, and at intersections of the lines of streets with the boundaries of the plat, except as indicated thus (a).

Prepared and drafted by:

William J. Coulter
William J. Coulter - Reg. Land
Surveyor #14760
13205 Charlevoix Avenue
Detroit, Michigan 48215

ACKNOWLEDGMENTS

STATE OF MICHIGAN)
COUNTY OF WAYNE)

On this 25th day of August, A.D., 1967 before me, a notary public in and for said county, personally came the above named, Joseph J. Hense, a single man, and Frank Mollicone and Clara Mollicone, his wife, and Alfred Pussuoli and Arcangela Pussuoli, his wife, known to me to be the persons who executed the above dedication and acknowledged the same to be their free act and deed.

John J. McMahon
Notary Public, Wayne County, Michigan
John J. McMahon My Comm. Expires February 21, 1971

Lynn Wheeler E.B.
Lynn Wheeler, County Clerk

CERTIFICATE OF APPROVAL BY COUNTY BOARD

This Plat was approved on the 10th day of January, 1968 by the Macomb County Plat Board.

Aaron Burr
Aaron Burr, Register of Deeds

Edna Miller
Edna Miller, County Clerk

Lynn Wheeler
Lynn Wheeler, County Treasurer
Thomas S. Walsh
Thomas S. Walsh, County Drain
Commissioner
April 25, 1967, Deputy

APPROVED
SPECIAL PLANNING COMMISSION

John J. Mackovick
John J. Mackovick

EXAMINED AND APPROVED
DATE

Daniel J. Jones
Daniel J. Jones

REGISTER'S OFFICE
COUNTY OF MACOMB

Received for Filing

MARCH 16, 1968

11:52 AM A. M. and recorded

in vol. 58 PLATS, on

pages 45 & 46.

Raymond P. Craig
Raymond P. Craig, Register of Deeds

L-58-P-46

DESCRIPTION OF LAND PLATTED

The land embraced in the annexed plat of "ASSESSORS PLAT NO. 304" part of Sections 19, 20 and 29 T. 18 R. 13 E. City of East Detroit, Macomb Co., Michigan, and replat of Lots 1, 2, 3, 4, 5, 6 of Assessors Plat No. 1 and other land of the City of East Detroit, Macomb Co., Michigan and more fully described as follows:

Commencing at the S. W. corner post Section 20, T. 18 R. 13 E., thence N. 88°-29' E. 153 feet, thence S. 27°-54' E. 304.53 feet, thence S. 88°-39' E. 14.2 feet, thence S. 89°-53' E. 1345 feet, thence S. 80°-13' W. 269.8 feet, thence East 337.60 feet, thence S. 0°-21' W. 335.83 feet, thence S. 89°-59'-30" W. 143 feet, thence N. 0°-12' E. 15.90 feet, thence S. 89°-56' W. 423.33 feet, thence N. 0°-35' E. 16.96 feet, thence S. 89°-56' E. 40 feet, thence N. 0°-35' E. 303 feet, thence West 337.60 feet to the point of beginning, consisting of Lots 473 to 497 inclusive, numbering 19 lots.

SURVEYOR'S CERTIFICATE

I hereby certify that the plat hereon delineated is a correct one and that permanent metal monuments consisting of bars of not less than one-half inch in diameter and thirty six inches in length encased in a concrete cylinder at least 4 inches in diameter and thirty six inches in depth have been placed at points marked thus (a) as thereon shown at all angles in the boundaries of the land platted, at all the intersections of the streets, intersections of alleys, of streets and alleys, and at the intersections of streets and alleys with the boundaries of the plat as shown on said plat.

Harold Fuller
 HAROLD FULLER, Registered Land Surveyor

CERTIFICATE OF MUNICIPAL APPROVAL

This plat was approved by the City Council of the City of East Detroit of Macomb County, Michigan at a meeting held February 12, 1956

Charles Benubien
 Charles Benubien, Clerk

CERTIFICATE OF APPROVAL BY COUNTY BOARD

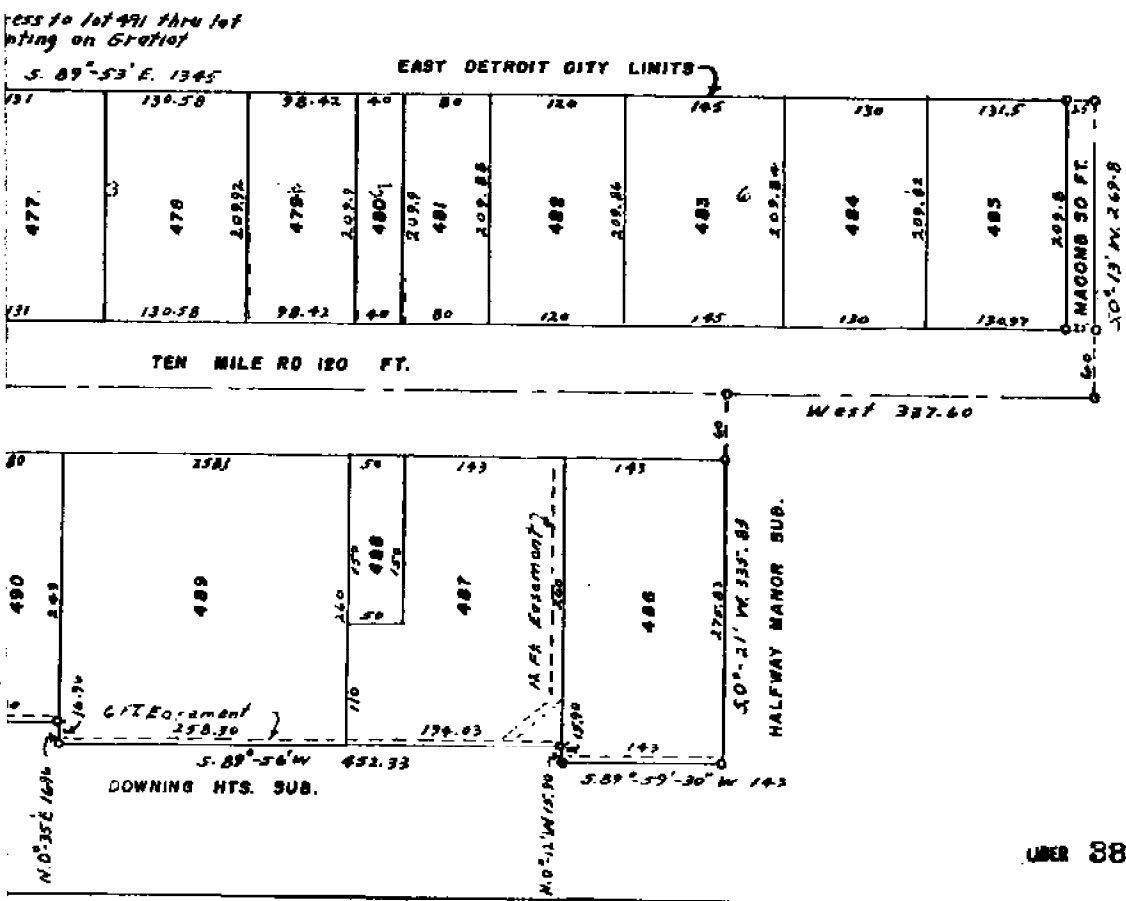
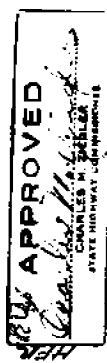
This plat was approved on the 31st day of February, 1956.

Alton Burr
 Alton Burr, County Register of Deeds

Albert Warner
 Albert Warner, County Clerk

Frank Loht
 Frank Loht, County Treasurer

Frank Loht
 Frank Loht, County Drain Commissioner

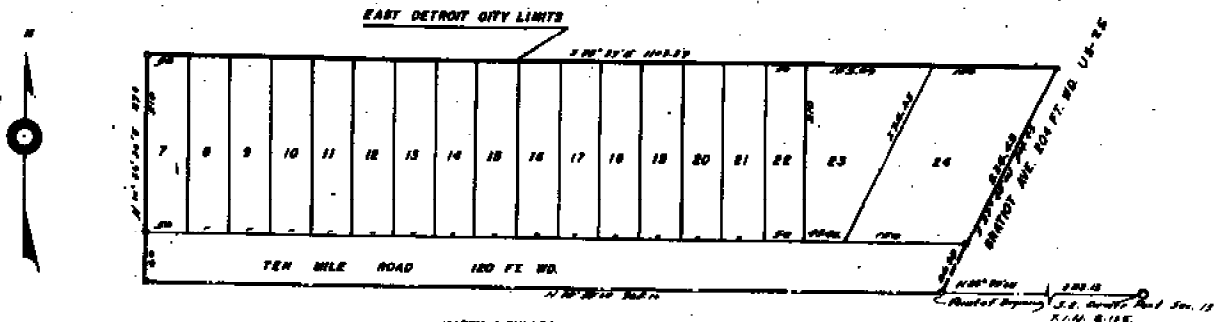


"ASSESSORS PLAT NO. 2" OF PART OF THE S.E. 1/4 OF SEC. 19 T. 1 N. R. 13 E. CITY OF EAST DETROIT MACOMB CO. MICH.

6749

SCALE: 1" = 100'

NOTE: ALL MEASUREMENTS ARE IN FEET AND DECIMALS THEREOF.



HARRY J. FULLER
REGISTERED CIVIL ENGINEER & LAND SURVEYOR
MI. CLEMENS HIGH.

DEDICATION

KNOW ALL MEN BY THESE PRESENTS, That I, Stephen Henderson, Assessor of the City of East Detroit, Macomb County, State of Michigan, by virtue of authority in me vested by Section 51, Act 172, of 1929, having been duly authorized by the City Council have caused the land described in the annexed plat to be surveyed, laid out and platted, to be known as "ASSESSORS PLAT NO. 2" of part of the S.E. 1/4 of Sec. 19 T. 1 N. R. 13 E. City of East Detroit, Macomb Co. Mich., and that the streets and alleys as shown on said plat are now being used for such purposes.

Witnesses:
Edward P. Schuber
Stephen Henderson
Stephen Henderson
Assessor of the City of East Detroit.

DESCRIPTION OF LAND PLATTED

The land embraced in the annexed plat of ASSESSORS PLAT NO. 2 of part of the S.E. 1/4 of Sec. 19 T. 1 N. R. 13 E. City of East Detroit Macomb Co. Mich. is described as follows: Commencing at the S.E. Corner post of Sec. 19 T. 1 N. R. 13 E. City of East Detroit, thence N 82° 30' W 302.13 feet, thence to the point of beginning, thence S 82° 30' W 302.13 feet, thence N 00° 25' 30" E 270 feet, thence S 82° 30' W 302.13 feet, thence S 27° 45' W 302.13 feet to the point of beginning.

SURVEYOR'S CERTIFICATE

I hereby certify that the plat hereon delineated is a correct one and that permanent metal monuments consisting of bars of not less than one half inch in diameter and forty eight inches in length encased in a concrete cylinder at least 4 inches in diameter and forty eight inches in depth have been placed at points marked thus * as thereon shown at all angles in the boundaries of the land platted, at all the intersections of the streets, intersections of alleys, or of streets and alleys, and at the intersections of streets and alleys with the boundaries of the plat as shown on said plat.

Harry J. Fuller
Harry J. Fuller Registered Land Surveyor

ACKNOWLEDGMENT

STATE OF MICHIGAN, Co. of Macomb
On this 27th day of January A.D. 1942, before me a Notary Public in and for said county, personally came the above named Assessor of the City of East Detroit, known to me to be the person who executed the above dedication and acknowledged the same to be his free act and deed as such Assessor.
John May
Notary Public in and for Macomb County.
My commission expires February 22-1942

CERTIFICATE OF MUNICIPAL APPROVAL

This plat was approved by the City Council of the City of East Detroit at a meeting held January 26, 1942.
Stephen Henderson
Stephen Henderson City Clerk

CERTIFICATE OF APPROVAL BY COUNTY BOARD

This plat was approved on the 20th day of February 1942.
Oliver L. Tucker
Oliver L. Tucker
County Clerk
John L. Brown
John L. Brown
County Treasurer

CERTIFICATE OF APPROVAL BY BOARD OF COUNTY CLERKS

This plat has been approved on the 20th day of February 42 by the Board of County Clerks of Macomb County.
Henry W. Purcell
Henry W. Purcell
County Clerk
John L. Brown
John L. Brown
County Treasurer

REGISTER'S OFFICE
County of Macomb
Received by _____
of _____ A.D. 1942
in _____
for _____

Examined and Approved
February 1942
John L. Brown
County Treasurer

Having read with and location of said Town Line and found all requirements to place on file, I hereby approve this plat.
Donald K. Smith
Donald K. Smith
State of New York

8824

ASSESSOR'S PLAT NO. 8, PART OF W 1/2 SEC 20, T11N, R13E, VILLAGE OF ROSEVILLE, MACOMB COUNTY, MICHIGAN.

Scale - 1 inch = 200 ft

NOTE: All dimensions hereon are in feet and decimals thereof.

RECITATION

KNOW ALL MEN BY THESE PRESENTS, That I, Edith A. Roseville, Assessor of the Village of Roseville, Macomb County, State of Michigan, by virtue of authority in me vested by Section 51, Act 172, of 1929, having been duly authorized by the Village Council, have caused the land described in the annexed plat to be surveyed, laid out and platted, to be known as "ASSESSOR'S PLAT NO. 8", part of W 1/2 Sec. 20, T11N, R13E, Village of Roseville, Macomb County, Michigan, and that the streets and alleys as shown on said plat are now being used for such purposes.

Witnesses:

Frank J. [Signature]
James C. [Signature]

Edith A. Roseville
Assessor of the Village of
Roseville.

ACKNOWLEDGMENT

STATE OF MICHIGAN,) ss
County of Macomb,)

On this 14th day of June, A. D. 1956, before us, a Notary Public in and for said county, personally came the above named Assessor of the Village of Roseville, Macomb County, Michigan, known to me to be the person who executed the above dedication and acknowledged the same to be his free act and deed as such Assessor.

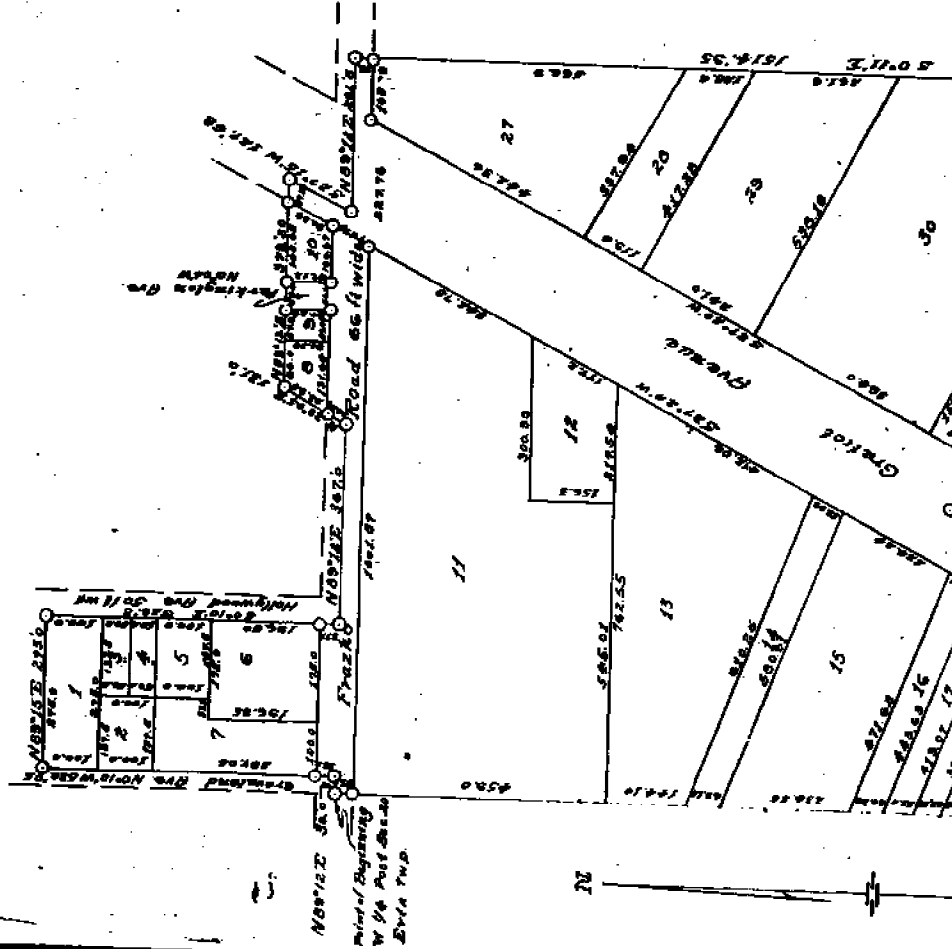
Frank J. [Signature]
Notary Public in and for Macomb County.

My Commission Expires: Feb. 11, 1958

SURVEYOR'S CERTIFICATE

I hereby certify that the plat herein delineated is a correct one and that permanent metal monuments of not less than one inch in diameter and fifteen inches in length set in a concrete base at least four inches in diameter and forty-eight inches in depth have been placed at points marked thus: "0", as thereon shown at all angles in the boundaries of the land platted, at all the intersections of streets, intersections of alleys, or of streets and alleys, and at the corners shown on said plat.

R. K. [Signature]



My Commission Expires: March 11, 1939

SURVEYOR'S CERTIFICATE

I hereby certify that the plat hereon delineated is a correct one and that permanent metal monuments of not less than one inch in diameter and fifteen inches in length set in a concrete base at least four inches in diameter and forty-eight inches in depth have been placed at points marked that "9" as thereon shown at all angles in the boundaries of the land patented, at all the intersections of the streets, intersections of alleys, or of streets and alleys, and at the intersections of streets and alleys with the boundaries of the plat as shown on said plat.

Robert W. Gandy
Registered Civil Engineer

DESCRIPTION OF LAND PLATTED

The land embraced in the annexed plat of "RESERVES" is 10.87 part of Sec. 20, T11S, R18E, Village of Rossville, Liberty County, Missouri, is described as follows: beginning at the N. Post and 29.50, thence N 0°10' E 829.8 ft; thence N 0°10' W 829.08 ft; thence S 89°15' W 875.0 ft; thence N 0°10' E 829.8 ft; thence N 89°12' E 87.0 ft; thence N 29°05' E 131.0 ft; thence S 89°15' W 875.0 ft; thence S 89°15' W 127.68 ft; thence N 89°12' E 87.0 ft; thence S 0°11' E 131.96 ft; thence N 89°59' 30" W 885.53 ft; thence S 89°59' 30" W 100.10 ft; thence S 24°48' 17" W 115.9 ft; thence S 84°58' 30" W 870.20 ft; thence S 0°11' E 205.45 ft; thence S 89°59' 30" W 1361.67 ft; thence N 23°24' 58" E 2394.58 ft. to point of beginning.

CERTIFICATE OF MUNICIPAL APPROVAL

This plat was approved by the Council of the Village of Rossville at a meeting held on March 11, 1938, A. D. 1938.



John E. ...
Village Clerk.

CERTIFICATE OF APPROVAL BY COUNTY BOARD

This plat was approved on the 14th day of March, 1938.

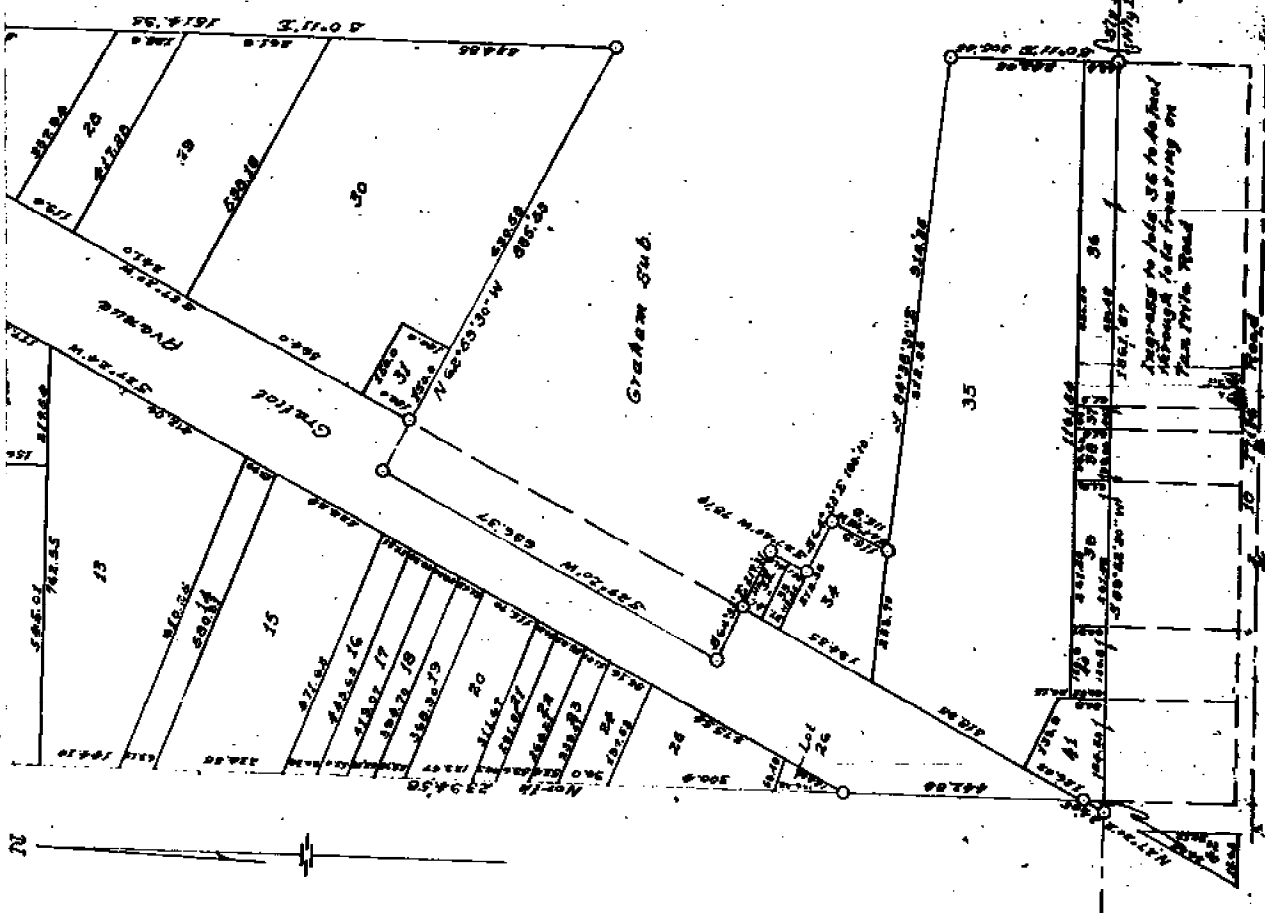
William ...
Judge of Probate

James F. ...
County Clerk

Carl ...
Register of Deeds

Examined and Approved

...
County Clerk



HARTUNG SUBDIVISION

A PART OF THE NE 1/4 OF THE NW 1/4 OF THE SE 1/4 OF SECTION 27

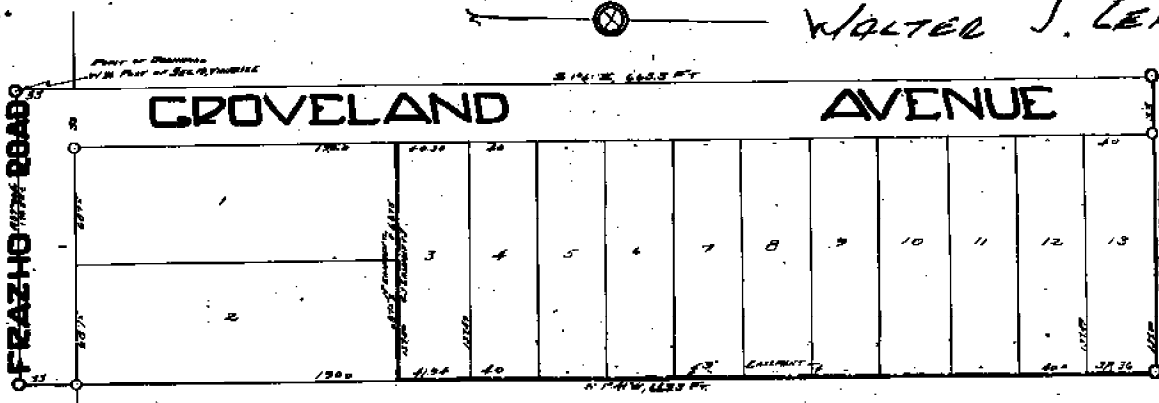
ERIN TWP. MACOMB CO. MICHIGAN

Dec 4-1924
G. L. Warren

SCALE
1"=50'

WALTER J. LEHNER, REC'D
MT. CLEMENS, MICH.

WALTER J. LEHNER



Know all men by these presents that the said land hereinafter described has caused the land embraced in the annexed plat to be surveyed, divided and divided to be known as follows:

and that the streets and alleys as shown on said plat are hereby dedicated to the use of the public.

Witness my hand and seal this 4th day of December 1924.

Notary Public for Macomb Co., Mich.

This is to certify that the above plat was approved by the Township Board of the Township of Erin, Macomb County, Michigan, at a meeting held this 27th day of December 1924.

Walter J. Lehner, Township Clerk.

I hereby certify that the plat hereon delineated is a correct one and that permanent monuments consisting of 1/4 x 1 1/2 inch iron stakes have been placed at points marked "O" as thereon shown at all angles in the boundaries of the land platted and at all intersections of streets or streets and alleys.

Walter J. Lehner, Township Clerk.



County of Macomb, Michigan

On this 4th day of December 1924, before me, a Notary Public in and for said County, personally came the above named Walter J. Lehner, known to me to be the person who executed the above declaration, and acknowledged the same to be his free act and deed.

Walter J. Lehner
Notary Public for Macomb Co., Mich.

My Commission Expires _____

WALTER J. LEHNER
Notary Public for Macomb Co., Mich.

Description of Land Platted

The Land embraced in the annexed Plat of Hartung Subdivision is described as follows: BEGINNING AT THE SE CORNER OF SAID SECTION 27, A PORTION OF SAID SECTION 27, BEING A PORTION OF THE NE 1/4 OF THE NW 1/4 OF THE SE 1/4 OF SAID SECTION 27, A DISTANCE OF 314.25 FT. TO THE POINT OF BEGINNING.

STATE OF MICHIGAN

ON THE 27th DAY OF DECEMBER 1924

BEFORE ME, the undersigned authority, personally appeared Walter J. Lehner, known to me to be the person whose name is subscribed to the foregoing instrument, and acknowledged to me that he executed the same for the purposes and consideration therein expressed.

Walter J. Lehner
Notary Public for Macomb Co., Mich.

This plat was received by the County Clerk for Macomb County, Michigan, on the 27th day of December 1924.

Walter J. Lehner
Notary Public for Macomb Co., Mich.



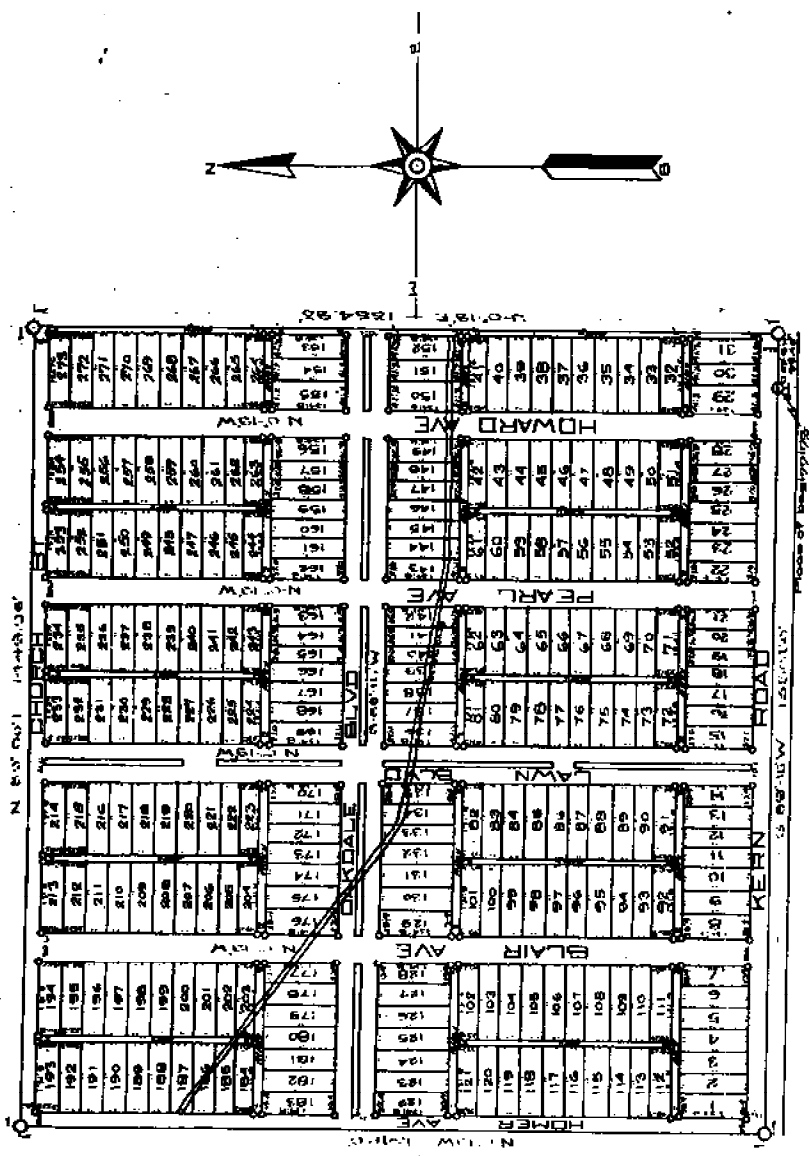
0.00

Examined and approved
August 30-1911
John P. Hanson
County Clerk

PLAT "MACCOMB GARDENS"

OF PART OF S¹/₄ OF S¹/₄ OF SECTION 20 T¹/₂N 17R
ERIN TOWNSHIP
MACOMB COUNTY MICHIGAN

Scale 200 ft to 1 inch



REGISTER'S OFFICE
I have examined the plat and find it correct
and ready for recording
August 30-1911
John P. Hanson
County Clerk

INDICATION.

SURVEYOR'S CERTIFICATION.

116	107	96	87	78	69	60	51	42	33	24	15	6	1
115	106	95	86	77	68	59	50	41	32	23	14	5	0
114	105	94	85	76	67	58	49	40	31	22	13	4	0
113	104	93	84	75	66	57	48	39	30	21	12	3	0
112	103	92	83	74	65	56	47	38	29	20	11	2	0
111	102	91	82	73	64	55	46	37	28	19	10	1	0
110	101	90	81	72	63	54	45	36	27	18	9	0	0
109	100	89	80	71	62	53	44	35	26	17	8	0	0
108	99	88	79	70	61	52	43	34	25	16	7	0	0
107	98	87	78	69	60	51	42	33	24	15	6	0	0
106	97	86	77	68	59	50	41	32	23	14	5	0	0
105	96	85	76	67	58	49	40	31	22	13	4	0	0
104	95	84	75	66	57	48	39	30	21	12	3	0	0
103	94	83	74	65	56	47	38	29	20	11	2	0	0
102	93	82	73	64	55	46	37	28	19	10	1	0	0
101	92	81	72	63	54	45	36	27	18	9	0	0	0
100	91	80	71	62	53	44	35	26	17	8	0	0	0
99	90	79	70	61	52	43	34	25	16	7	0	0	0
98	89	78	69	60	51	42	33	24	15	6	0	0	0
97	88	77	68	59	50	41	32	23	14	5	0	0	0
96	87	76	67	58	49	40	31	22	13	4	0	0	0
95	86	75	66	57	48	39	30	21	12	3	0	0	0
94	85	74	65	56	47	38	29	20	11	2	0	0	0
93	84	73	64	55	46	37	28	19	10	1	0	0	0
92	83	72	63	54	45	36	27	18	9	0	0	0	0
91	82	71	62	53	44	35	26	17	8	0	0	0	0
90	81	70	61	52	43	34	25	16	7	0	0	0	0
89	80	69	60	51	42	33	24	15	6	0	0	0	0
88	79	68	59	50	41	32	23	14	5	0	0	0	0
87	78	67	58	49	40	31	22	13	4	0	0	0	0
86	77	66	57	48	39	30	21	12	3	0	0	0	0
85	76	65	56	47	38	29	20	11	2	0	0	0	0
84	75	64	55	46	37	28	19	10	1	0	0	0	0
83	74	63	54	45	36	27	18	9	0	0	0	0	0
82	73	62	53	44	35	26	17	8	0	0	0	0	0
81	72	61	52	43	34	25	16	7	0	0	0	0	0
80	71	60	51	42	33	24	15	6	0	0	0	0	0
79	70	59	50	41	32	23	14	5	0	0	0	0	0
78	69	58	49	40	31	22	13	4	0	0	0	0	0
77	68	57	48	39	30	21	12	3	0	0	0	0	0
76	67	56	47	38	29	20	11	2	0	0	0	0	0
75	66	55	46	37	28	19	10	1	0	0	0	0	0
74	65	54	45	36	27	18	9	0	0	0	0	0	0
73	64	53	44	35	26	17	8	0	0	0	0	0	0
72	63	52	43	34	25	16	7	0	0	0	0	0	0
71	62	51	42	33	24	15	6	0	0	0	0	0	0
70	61	50	41	32	23	14	5	0	0	0	0	0	0
69	60	49	40	31	22	13	4	0	0	0	0	0	0
68	59	48	39	30	21	12	3	0	0	0	0	0	0
67	58	47	38	29	20	11	2	0	0	0	0	0	0
66	57	46	37	28	19	10	1	0	0	0	0	0	0
65	56	45	36	27	18	9	0	0	0	0	0	0	0
64	55	44	35	26	17	8	0	0	0	0	0	0	0
63	54	43	34	25	16	7	0	0	0	0	0	0	0
62	53	42	33	24	15	6	0	0	0	0	0	0	0
61	52	41	32	23	14	5	0	0	0	0	0	0	0
60	51	40	31	22	13	4	0	0	0	0	0	0	0
59	50	39	30	21	12	3	0	0	0	0	0	0	0
58	49	38	29	20	11	2	0	0	0	0	0	0	0
57	48	37	28	19	10	1	0	0	0	0	0	0	0
56	47	36	27	18	9	0	0	0	0	0	0	0	0
55	46	35	26	17	8	0	0	0	0	0	0	0	0
54	45	34	25	16	7	0	0	0	0	0	0	0	0
53	44	33	24	15	6	0	0	0	0	0	0	0	0
52	43	32	23	14	5	0	0	0	0	0	0	0	0
51	42	31	22	13	4	0	0	0	0	0	0	0	0
50	41	30	21	12	3	0	0	0	0	0	0	0	0
49	40	29	20	11	2	0	0	0	0	0	0	0	0
48	39	28	19	10	1	0	0	0	0	0	0	0	0
47	38	27	18	9	0	0	0	0	0	0	0	0	0
46	37	26	17	8	0	0	0	0	0	0	0	0	0
45	36	25	16	7	0	0	0	0	0	0	0	0	0
44	35	24	15	6	0	0	0	0	0	0	0	0	0
43	34	23	14	5	0	0	0	0	0	0	0	0	0
42	33	22	13	4	0	0	0	0	0	0	0	0	0
41	32	21	12	3	0	0	0	0	0	0	0	0	0
40	31	20	11	2	0	0	0	0	0	0	0	0	0
39	30	19	10	1	0	0	0	0	0	0	0	0	0
38	29	18	9	0	0	0	0	0	0	0	0	0	0
37	28	17	8	0	0	0	0	0	0	0	0	0	0
36	27	16	7	0	0	0	0	0	0	0	0	0	0
35	26	15	6	0	0	0	0	0	0	0	0	0	0
34	25	14	5	0	0	0	0	0	0	0	0	0	0
33	24	13	4	0	0	0	0	0	0	0	0	0	0
32	23	12	3	0	0	0	0	0	0	0	0	0	0
31	22	11	2	0	0	0	0	0	0	0	0	0	0
30	21	10	1	0	0	0	0	0	0	0	0	0	0
29	20	9	0	0	0	0	0	0	0	0	0	0	0
28	19	8	0	0	0	0	0	0	0	0	0	0	0
27	18	7	0	0	0	0	0	0	0	0	0	0	0
26	17	6	0	0	0	0	0	0	0	0	0	0	0
25	16	5	0	0	0	0	0	0	0	0	0	0	0
24	15	4	0	0	0	0	0	0	0	0	0	0	0
23	14	3	0	0	0	0	0	0	0	0	0	0	0
22	13	2	0	0	0	0	0	0	0	0	0	0	0
21	12	1	0	0	0	0	0	0	0	0	0	0	0
20	11	0	0	0	0	0	0	0	0	0	0	0	0
19	10	0	0	0	0	0	0	0	0	0	0	0	0
18	9	0	0	0	0	0	0	0	0	0	0	0	0
17	8	0	0	0	0	0	0	0	0	0	0	0	0
16	7	0	0	0	0	0	0	0	0	0	0	0	0
15	6	0	0	0	0	0	0	0	0	0	0	0	0
14	5	0	0	0	0	0	0	0	0	0	0	0	0
13	4	0	0	0	0	0	0	0	0	0	0	0	0
12	3	0	0	0	0	0	0	0	0	0	0	0	0
11	2	0	0	0	0	0	0	0	0	0	0	0	0
10	1	0	0	0	0	0	0	0	0	0	0	0	0
9	0	0	0	0	0	0	0	0	0	0	0	0	0
8	0	0	0	0	0	0	0	0	0	0	0	0	0
7	0	0	0	0	0	0	0	0	0	0	0	0	0
6	0	0	0	0	0	0	0	0	0	0	0	0	0
5	0	0	0	0	0	0	0	0	0	0	0	0	0
4	0	0	0	0	0	0	0	0	0	0	0	0	0
3	0	0	0	0	0	0	0	0	0	0	0	0	0
2	0	0	0	0	0	0	0	0	0	0	0	0	0
1	0	0	0	0	0	0	0	0	0	0	0	0	0

DEDICATION.

KNOW ALL MEN BY THESE PRESENTS, That we, Louise Bohmhoff, Fred Bohmhoff, William Bohmhoff, & Rose Bohmhoff Reih, as proprietors, have caused the land embraced in the annexed plat to be surveyed, laid out and platted, to be known as THE MADONN SPRINGS, of part of the S. 1 of the S. 1 of Section 20 T. 1 N. R. 13 E. in Township. Macomb County, Mich., and that the streets and alleys as shown on said plat are hereby dedicated to the use of the public.

Witness my hand and seal in presence of) Virgil B. Bohmhoff Attorney at Law (L.S.)
) Fred W. Bohmhoff (L.S.)
) William Bohmhoff (L.S.)
) Louise Bohmhoff (L.S.)

STATE OF MICHIGAN,
 County of Macomb

On this 14th day of January A.D. 1917, before me Leland H. Bohmhoff, a Notary Public in and for said County, personally came the above named Louise Bohmhoff, Fred Bohmhoff, William Bohmhoff, and Rose Bohmhoff

They acknowledged to me to be the persons who executed the above dedication and acknowledged the same to be their free act and deed.
Leland H. Bohmhoff
 Notary Public - Macomb Co.
 My Commission expires March 13th, 1920

DESCRIPTION.

The land embraced in the annexed plat of the Macomb Ordnance Co. of part of the S. 1 of the S. 1 of Section 20 T. 1 N. R. 13 E., in Township, Macomb County, Mich., is described as follows: Commencing at the quarter post corner to Secs. 20 & 29 T. 1 N. R. 13 E., said Erin Township, and thence extending S. 89°-15' W. 1379.5 ft. along the south line of said Sec. 20, to a stake; thence S. 8°-19' W. 1382 ft. to a stake; thence S. 89°-00' W. 1449.96 ft. to a stake; thence S. 0°-19' W. 15 Acres; south line of said Sec. 20; thence S. 89°-15' W. 99.46 ft. to place of beginning, containing 45 acres of land.