

Part A: Corner History:

Craig P. Amey, PS – 1995, Liber 06862, Page 838
Found P.K. nail and Tag #30092 at the intersection of Frazho and Groveland.
Replaced P.K. nail with a 3/4" x 24" iron with MCR Cap #34970 in a new monument box.

Part B: Surveyor's Report on Perpetuation, Restoration, Reestablishment or Monumentation of Corner:

Found remonumentation disc in monument box at the intersection of Frazho and Groveland.

Part C: Field Evidence of Perpetuation or Monumentation of Corner:

Found remonumentation disc in monument box.

Accessories:

| | | |
|-------|--------|---|
| N50°E | 50.30' | Set mag nail in N.W. side of 30" Maple |
| S35°E | 73.55' | N.W. corner of Concrete porch at House #16802 Frazho Road |
| S40°W | 69.34' | N.E. corner of House #16758 Frazho Road |
| N30°W | 89.35' | S.E. corner of House #26201 Groveland Road |

Mathew Michael Barney

12-5-2017

Mathew Michael Barney, P.S.

December 5, 2017

Professional Surveyor's License No.: 64960

Prepared By: (Mannik Smith Group, 2365 Haggerty Road South, Canton, MI, 48188)



LAND CORNER RECORDATION CERTIFICATE
Filing Requirement of Act 74, Mich. P.A. 1970

For corners in

Macomb Located In: Erin/Lake Township Corner Code #C8
 (County)

1. Public Land Survey T 1N R 13E C8
 T R
 T R
 T R

2. Property Controlling S T R
 in Section S T R

3. Miscellaneous S T R
 Property in Sec. S T R

Register of Deeds Stamp & File Number

4. Lot No. _____, Recorded Plat _____
 5. Private Claims _____

I, Craig P. Amey, in a field survey on August 7, 1995 do hereby certify that under requirements of P.A. 74, Michigan P.A. of 1970, the corner points mentioned in lines 1 and 2 above were in conformance with regulations and rules therefore as required in the current manual of survey instructions of the United States Department of the Interior, Bureau of Land Management or by a decree of a Court of Law and for that the corner points mentioned in lines 3, 4 and 5 above were in conformance with the rules of the Michigan Board of Land Surveyors or by a Decree of a Court of Law, established, re-established, monumented, re-monumented, recovered, found as expressed below:

| | | | | | | | | | | | | | |
|----|----|---|----|---|----|---|----|---|----|---|----|---|---|
| | A | B | C | D | E | F | G | H | I | J | K | L | M |
| 1 | | | | | | | | | | | | | |
| 2 | 6 | | 5 | | 4 | | 3 | | 2 | | 1 | | |
| 3 | | | | | | | | | | | | | |
| 4 | 7 | | 8 | | 9 | | 10 | | 11 | | 12 | | |
| 5 | | | | | | | | | | | | | |
| 6 | 18 | | 17 | | 16 | | 15 | | 14 | | 13 | | |
| 7 | | | | | | | | | | | | | |
| 8 | 19 | | 20 | | 21 | | 22 | | 23 | | 24 | | |
| 9 | | | | | | | | | | | | | |
| 10 | 30 | | 29 | | 28 | | 27 | | 26 | | 25 | | |
| 11 | | | | | | | | | | | | | |
| 12 | 31 | | 32 | | 33 | | 34 | | 35 | | 36 | | |
| 13 | | | | | | | | | | | | | |

NOTE: Not more than 4 corners, all in the same town and range, may be recorded on this certificate.

A. Description of original monument and accessories and/or subsequent restoration:

1818 GLO William Preston No witnesses remain
 1994 Unrecorded Survey AEW Set PK and tag #30092 at the intersection of Frazho and Groveland

B. Description of corner evidence found and/or method applied in restoring or reestablishing corner:

Found PK and tag #30092 at the intersection of Frazho and Groveland
 Witnesses from unrecorded survey
 40° 50.66 PK with tag #30092 in the NW face of a 28" maple
 150° 73.55 NW corner of porch at house #16802 Frazho Road
 205° 69.64 SW corner of house #16758 Frazho Road
 325° 89.35 NW corner of house #26201 Frazho Road

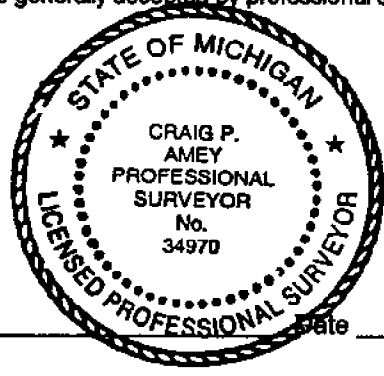
Corner was reestablished by determining the location of the section lines from the adjacent subdivisions and intersecting the section lines

C. Description of monument for corner and accessories established to perpetuate locating the position of the corner:

REPLACED PK WITH 3/4" X 24" IRON WITH MCR CAP #34970 IN A NEW MONUMENT BOX

AZ 40° 50.66 PK with tag #30092 in the NW face of a 28" maple
 AZ 150° 73.55 NW corner of porch at house #16802 Frazho Road
 AZ 205° 69.64 SW corner of house #16758 Frazho Road
 AZ 325° 89.35 NW corner of house #26201 Frazho Road

The selected location is accepted by me and is generally accepted by professional surveyors as the best available evidence of the position of the original corner.



ACCEPTED BY THE MACOMB COUNTY SURVEY PEER GROUP AS THE OFFICIAL CORNER UNDER MICHIGAN PUBLIC ACT 345 OF 1990 AT A MEETING HELD ON 8-15-95
William E. Soderberg
 WILLIAM E. SODERBERG, P.S., CHAIRMAN

Signed by *C. Amey* Date 12-12-95
 Surveyor's Michigan License No. 34970

FORM APPROVED BY MICHIGAN STATE BOARD OF LAND SURVEYORS, JAN. 25, 1971

REVISED MAY 14, 1975
 REVISED JAN, 1983

2-21-94

REQUIRES REL. N 153.14 COR. SEC. 20. FIVE C. TULL, RISE.
L. J. RE. ROSEVILLE, MARYLAND CO.
SET PK. W/TAG # 30092
C.C. FRAZHO AND C. GEORGEAN

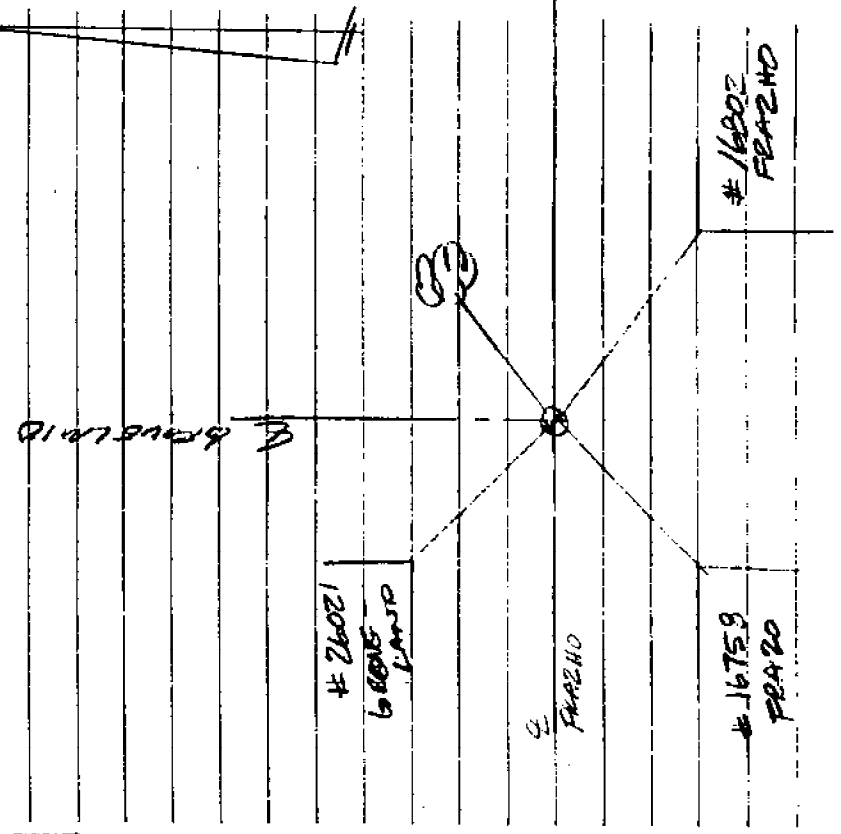
1) 40° 50.66' SET PK. W/TAGS 11 IN. FACE
28' MARKS

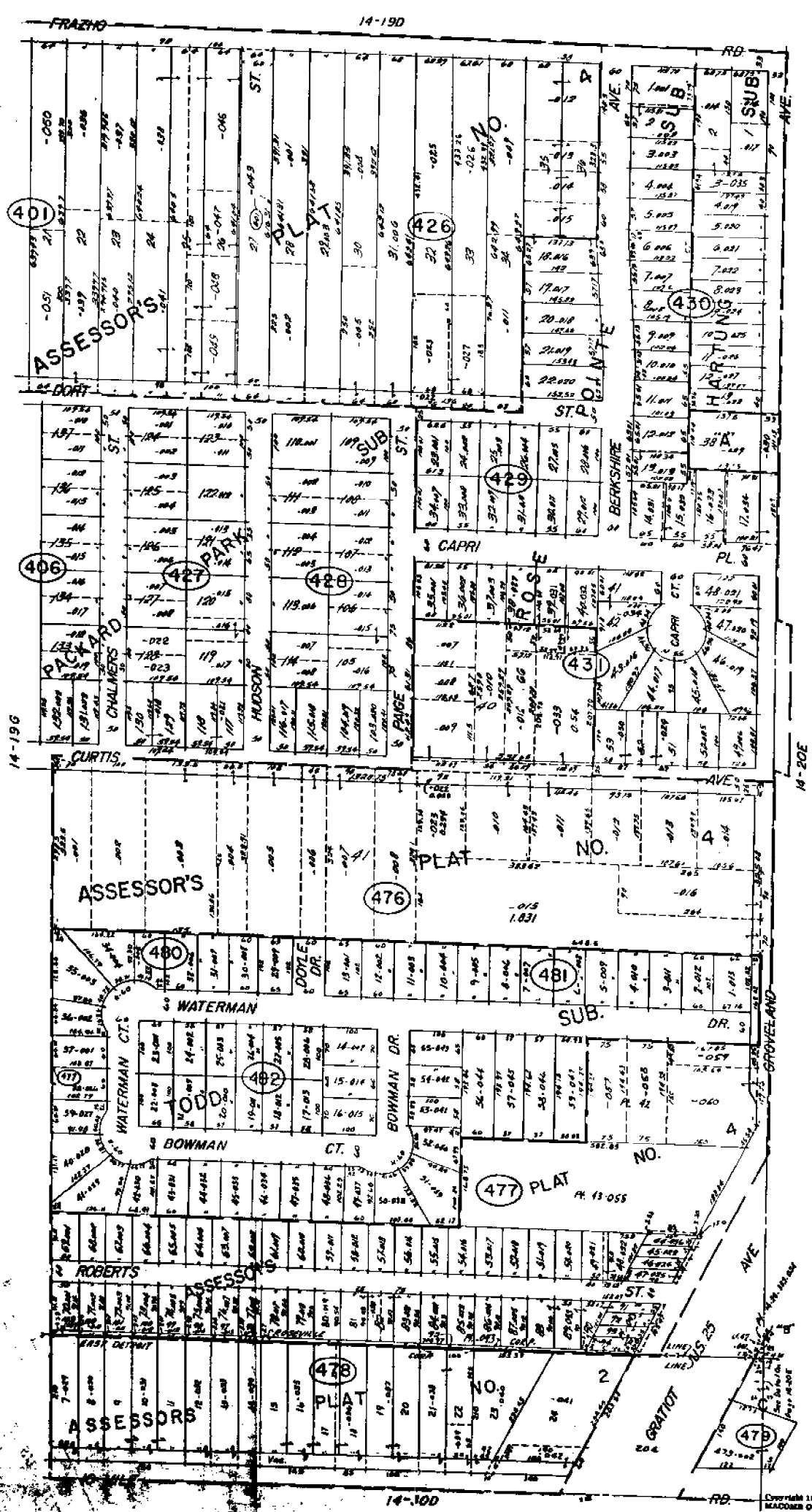
2) 150° 73.55' N.V. COR. CONC. PIERCE.
HSE # 16802 FRAZHO

3) 205° 69.64' S.V. COR. HSE # 16753 FRAZHO

4) 325° 07.35' N.V. COR. HSE # 26021 GEORGEAN

ETA Sec. 19 Book # 1136 177





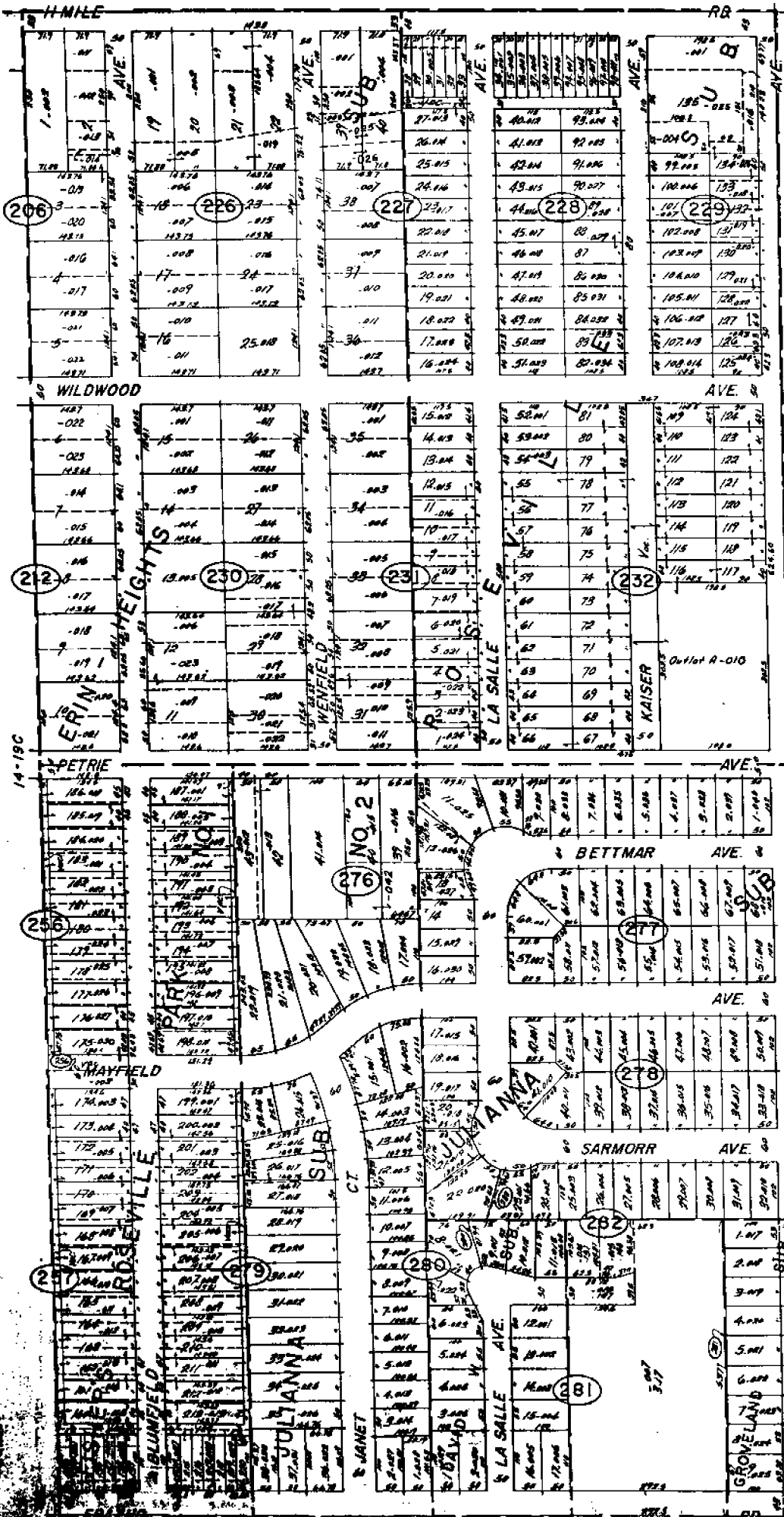
"A"
 ASSASSINATED SUB
 NO. 4
 "B"
 ASSASSINATED SUB
 NO. 8
 "C"
 ASSASSINATED PLAT
 NO. 30

REPRINT
 FROM
 1913

EAST DETROIT & ROSEVILLE
1/2 SE 1/4 SEC. 19 T.1N. R.13E.

Copyright 1913
 MADONN COUNTY, MICHIGAN

14-18H



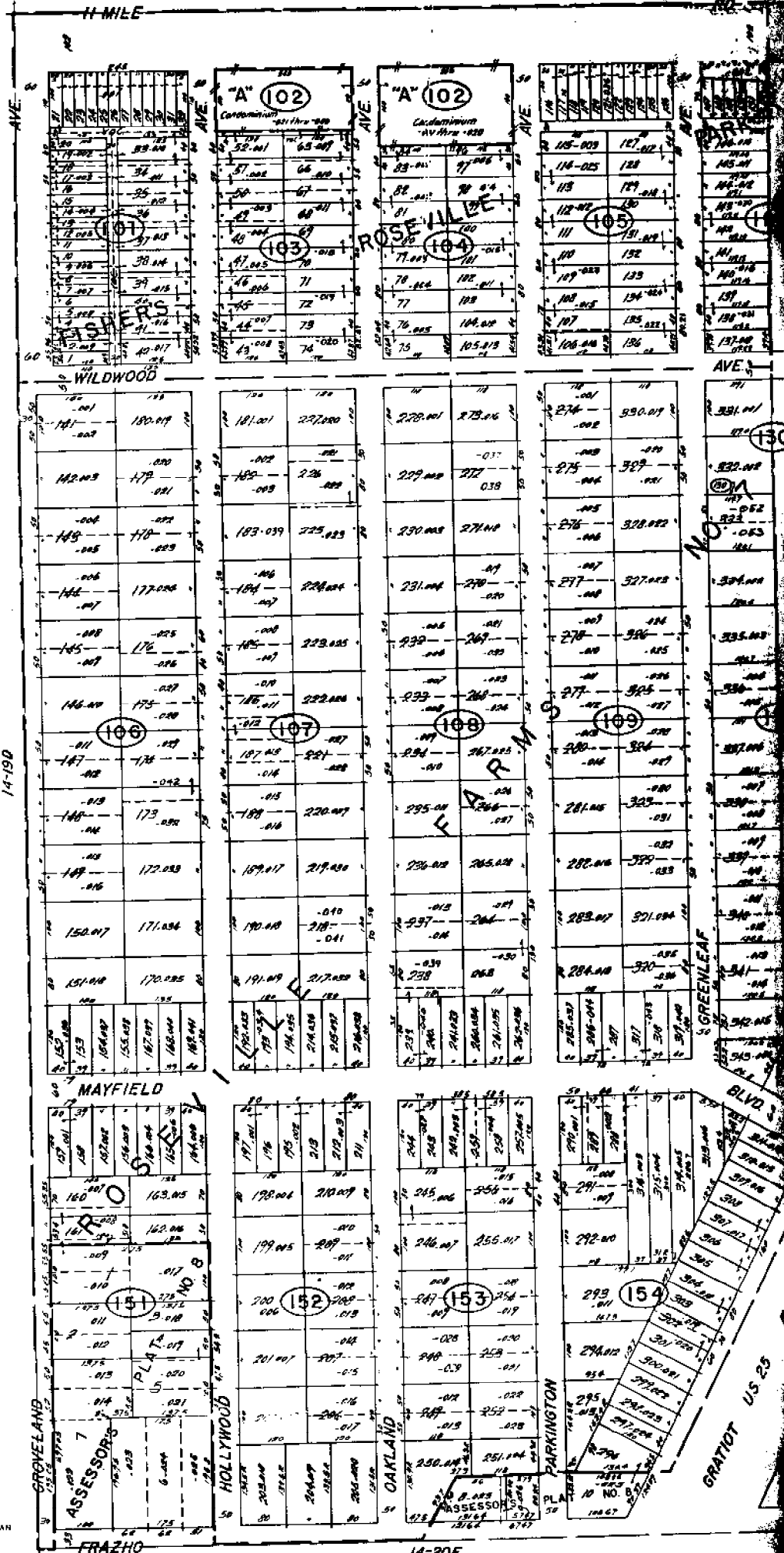
14-19H
ROSEVILLE
 E 1/2 NE 1/4 SEC. 19 T. 1 N. R. 13 E.

Copyright 1972
 MACOMB COUNTY, MICHIGAN

SCALE: 1" = 100'
1842
 14-19D

JL

RECORD COMMUNITY
MAYFIELD CO. CONDO. SUB. PLAN
NO. 30



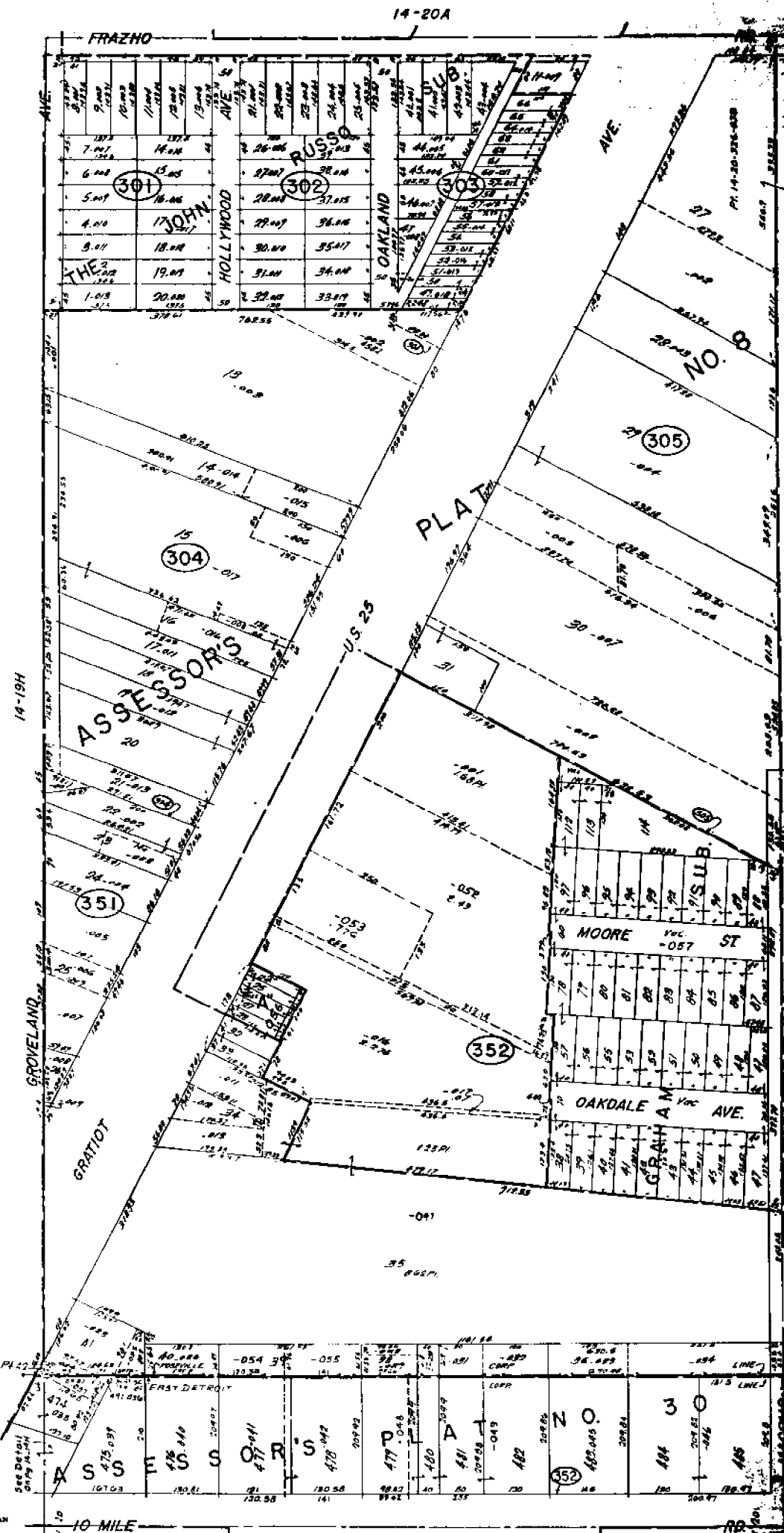
REV. 12-24
REV. 11-74
REV. 11-77
REV. 12-75
REV. 12-74

Copyright 1972
MACOMB COUNTY, MICHIGAN

SCALE: 1" = 100'
1847
14-20A

14-20E
ROSEVILLE
W 1/2 NW 1/4 SEC. 20 T.1N. R.13E.

"A"
GRAHAM SUB.



REV. 11-74
REV. 7-75
REV. 7-76
REV. 11-77
REV. 11-78
REV. 8-78
REV. 7-75
REV. 8-75
REV. 12-74

REV. 11-77
REV. 11-78
REV. 11-79
REV. 11-80
REV. 11-81
REV. 11-82
REV. 11-83
REV. 11-84

Copyright 1975
MACOMB COUNTY, MICHIGAN

SCALE 1" = 100'
14-20E

14-29A
EAST DETROIT & ROSEVILLE
W 1/2 SW 1/4 SEC. 20 T.1N. R.13E.