

**LAND CORNER RECORDATION CERTIFICATE**  
**Filing Requirement of Act 74, Mich. P.A. 1970**

For corners in

<u>MACOMB</u> (County)	Located In: ERIN	Corner Code # B-13
1. Public Land Survey	T <u>IN</u> R <u>13E</u>	<u>B-13</u>
	T <u>   </u> R <u>   </u>	<u>   </u>
	T <u>   </u> R <u>   </u>	<u>   </u>
	T <u>   </u> R <u>   </u>	<u>   </u>
2. Property Controlling in Section	S <u>   </u> T <u>   </u> R <u>   </u>	<u>   </u>
	S <u>   </u> T <u>   </u> R <u>   </u>	<u>   </u>
3. Miscellaneous Property in Sec.	S <u>   </u> T <u>   </u> R <u>   </u>	<u>   </u>
	S <u>   </u> T <u>   </u> R <u>   </u>	<u>   </u>
4. Lot No. <u>   </u> , Recorded Plat <u>   </u>		
5. Private Claims <u>   </u>		

ACCEPTED BY THE MACOMB COUNTY SURVEY REER GROUP AS THE OFFICIAL CORNER UNDER MICHIGAN PUBLIC ACT 345 OF 1990 AT A MEETING HELD ON 11-18-97  
*William E. Soderberg*  
 WILLIAM E. SODERBERG, P.S., CHAIRMAN  
 Register of Deeds Stamp & File Number

I, STEVEN E. DUNN, in a field survey on OCTOBER 14, 1997, do hereby certify that under requirements of P.A. 74, Michigan P.A. of 1970, the corner points mentioned in lines 1 and 2 above were in conformance with regulations and rules therefore as required in the current manual of survey instructions of the United States Department of the Interior, Bureau of Land Management or by a decree of a Court of Law and for that the corner points mentioned in lines 3, 4 and 5 above were in conformance with the rules of the Michigan Board of Land Surveyors or by a Decree of a Court of Law; established, re-established, monumented, re-monumented, recovered, found as expressed below:

**NOTE: Not more than 2 corners, all in the same town and range, may be recorded on this certificate.**

	A	B	C	D	E	F	G	H	I	J	K	L	M
2	6	5	4	3	2	1							
3	7	8	9	10	11	12							
4													
5													
6	18	17	16	15	14	13							
7													
8	19	20	21	22	23	24							
9													
10	30	29	28	27	26	25							
11													
12	31	32	33	34	35	36							
13													

A Description of original monument and accessories and/or subsequent restoration:

GLO POST-NO EVIDENCE CE OF ORIGINAL CORNER FOUND-ORIGINAL GLO SURVEY PERFORMED BY JOSEPH FLETCHER -1817

<b>PLATS</b>	L. 8, P. 25	MICHAEL & JOHN SPRENGER SUBD'N	AUG. 28, 1924
	L. 10, P. 5	DROSTE & WALDMAN'S GOLF VISTA SUB.	SEPT. 23, 1925
	L. 12, P. 23	UNIVERSAL HEIGHTS SUBD'N	FEB. 5, 1927
	L. 25, P. 31	RIDGEMONT HOMES SUB.	APR. 5, 1950
	L. 29, P. 24	RIDGEMONT GOLF COURSE SUB.	DEC. 24, 1953
	L. 29, P. 31 & 32	RIDGEMONT GOLF COURSE SUB. NO. 1	JAN. 18, 1954
	L. 45, P. 31-33	EASTWOOD PLAZA SUB.	
	SEPT. 28, 1959		

M.D.O.T.: RIGHT-OF-WAY MAPS SHEETS 9, 10, 11, 12 & 84 SEPT. 1981

OTHERS: L. 15965, P. 491 (W.C.R.) JOINT SURVEY-MACOMB & WAYNE CO'S-FOR BASELINE LOCATION-NOTES 4-06-1966

B. Description of corner evidence found and/or method applied in restoring or reestablishing corner:  
 B-13 NO PHYSICAL EVIDENCE OF CORNER FOUND.

M.D.O.T. RIGHT-OF-WAY MAPS, SHEETS 9-10, FILE 50-R-2 WERE ORIGINALLY CHECKED ON 2-22-1956 AND ARE MADE REFERENCE TO ON THE FIELD NOTES RECORDED IN L. 15965, P. 491 (W.C.R.), JOINT SURVEY-MACOMB & WAYNE CO'S.-FOR BASELINE. THE RIGHT-OF-WAY MAPS LISTED ABOVE ALSO DETERMINE THE BASELINE TO FOLLOW THE GOVERNMENT CORNERS ALONG THE MACOMB COUNTY SIDE, WITH BASELINE TIES TO FOUND GOVERNMENT CORNERS ALONG THE WAYNE COUNTY SIDE. I USED THESE TIES TO DETERMINE THE BASELINE LOCATION, THE LOCATION OF GOVERNMENT CORNERS FOR ERIN TOWNSHIP, AND FIELD MEASUREMENTS. I RE-ESTABLISHED THE LOCATION OF THIS CORNER BY FIRST COMPARING THE FIELD MEASUREMENT FROM A-13 TO C-13 TO RECORD MEASUREMENTS. I THEN PRORATED THE DISTANCES TO THE 1/4 CORNER TO DETERMINE THE EAST-WEST LOCATION. I THEN SET THE CORNER ON LINE BETWEEN A-13 AND C-13 AT THE PRORATED DISTANCE. CORNER FALLS IN FOURTH LANE OF EASTBOUND 8 MILE ROAD.

**FIELD MEASUREMENTS AND RECORD MEASUREMENTS:**

<b>A-13 TO C-13</b>	GLO-80 CHAINS OR 5280.00'	<b>B-13 TO A-13</b>	GLO-40 CHAINS OR 2640.00'	<b>ANGLE A-13/B-13/C-13</b>
	PLATS-5408.25'		PLATS-2727.38'	M.D.O.T. -180°00'00"
	M.C.R.C.-5407.90'		FIELD-2727.07'	PLATS-179°52'46"
	FIELD-5407.67'			FIELD-179°58'54"
<b>B-13 TO C-13</b>	GLO-40 CHAINS OR 2640.00			
	PLATS-2680.89'			
	FIELD-2680.60'			

C. Description of monument for corner and accessories established to perpetuate locating the position of the corner:  
 B-13 T.1N., R. 13E.  
 I SET A 3/4"X24" IRON ROD WITH A 2" DIAMETER ALUMINUM CAP STAMPED "MACOMB COUNTY MONUMENT MI. ACT 345" #28408 IN A NEW MONUMENT BOX IN CONCRETE PAVEMENT



<b>WITNESSES</b>	N.17°W. - 142.07'	CENTER TOP NUT HYDRANT
	N.51°E. - 71.43'	SW CORNER STEEL TOWER FOR ELECTRIC TRANSMISSION LINE
	S.03°E. - 53.17'	CENTER TOP NUT HYDRANT
	S.53°W.- 96.48'	FOUND PK AND W.C.R. WITNESS TAG IN TOP OF CONCRETE CURB.
	WEST 46.67'	FOUND WAYNE COUNTY REMON. CORNER, T.1S., R.13E, IN MONUMENT BOX. CORNER IS 3.05 SOUTH OF BASELINE
	SOUTH 51.10'	BACK OF CONCRETE CURB SOUTH SIDE OF EASTBOUND 8 MILE ROAD.

THE SELECTED LOCATION IS ACCEPTED BY ME AND IS GENERALLY ACCEPTED BY PROFESSIONAL SURVEYORS AS THE BEST AVAILABLE EVIDENCE OF THE POSITION OF THE ORIGINAL CORNER.

Signed by Steven E. Dunn Date Dec. 18, 1997  
 Surveyor's Michigan License No. 28408



MACOMB COUNTY PUBLIC LAND SURVEY  
REMONUMENTATION PROGRAM

RESEARCH DOSSIER

CORNER LOCATION  
T.1N., R.13E., ERIN/LAKE

ACT 74 CORNER CODE  
B-13

1/4 SECTION CORNER  
The South 1/4 Corner of Section 31.

ORIGINAL CORNER IDENTIFICATION PER GOVERNMENT LAND OFFICE  
RECORDS:  
Set corner post.

INTERIM CORNER IDENTIFICATION: None.

CURRENT CORNER IDENTIFICATION: None.  
M.C.R.C. right-of-way maps, Sheets 9-10, File 50-R-2 were originally checked on 2-22-1956 and are made reference to on the Field notes recorded in L.15965, P.491 (Wayne County records), Joint Survey-Macomb & Wayne Co's.-for Baseline. The right-of-way maps listed above also determine the Baseline to follow the Government Corners along the Macomb County side, with Baseline ties to found Government Corners along the Wayne County side. I use these ties to determine the Baseline location, the location of Government Corners for Erin/Lake Township and field measurements.

NOTE: G.L.O. notes make no mention of double corners along the Baseline. However, the G.L.O. Plat of Erin/Lake does indicate Double corners along the Baseline.

I Re-established the location of this corner by first comearing the field measurement from A-13 to C-13 to record measurement. I then pro-rated the distances to the 1/4 corner to determine the East-West location. I then established the Baseline East from A-13 2.62' North of found corner B-1, T.1S., R.13E., as shown on M.C.R.C. right-of-way map, Sheet 11, and set the corner on this line at the pro-rated distance. This does put a 0°01'06" deflection in the baseline. However, field measurements at C-13 are a closer match to record measurements at this location.

A field measurement was made between corners.

B-13 to C-13            G.L.O.-40 chains or 2640.00'  
                         Plats-2680.89'  
                         Field-2680.60'

B-13 to A-13            G.L.O.-40 chains or 2640.00'  
                         Plats-2727.36'  
                         Field-2727.07'

Angle A-13/B-13/C-13  
                         M.C.R.C. R/W map Sheets 10 & 11-180°00'00"  
                         Plats-179°52'46"  
                         Field-179°58'54"

SUMMARY AND RECOMMENDATIONS:

The selected location is accepted by me and is generally accepted by Professional Surveyors as the best available evidence of the corner.

MACOMB COUNTY PUBLIC LAND SURVEY

CORNER VERIFICATION CHECKLIST

RECORDED SURVEY FILE: None

LAND FILES: Composites 14-31E-H.

COUNTY SURVEYOR FILES: G.L.O. notes and plat.

LOCAL SURVEYOR FILES: None.

MUNICIPAL AGENCIES:

- A. MDOT: None.
- B. M.C.R.C.:  
Right-of-way maps Sheets 9-12 & 84 Sept. 1981
- C. M.D.N.R.: None.
- D. Macomb County Register of Deeds:
  - Land Corner Recordation Certificates: None.
  - Recorded Surveys: None.
  - Recorded Condominium Documents: None.
  - Plats:
    - L.8, P.25 Michael & John Sprenger Sub. 7-28-1924
    - L.10, P.5 Droste & Waldman's Golf Vista Subdivision 9-23-1925
    - L.12, P.23 Universal Heights Sub. 2-05-1927
    - L.25, P.31 Ridgemont Homes Sub. 4-05-1950
    - L.29, P.24 Ridgemont Golf Course Sub. 12-24-1953
    - L.29, P.31 & 32 Ridgmont Golf Course Sub No. 1 1-18-1954
    - L.45, P.31-33 Eastwood Plaza Sub. 9-28-1959
- E. Wayne County Register of Deeds:
  - L.15965, P.491 Joint Survey-Macomb & Wayne Counties-Baseline Location-Notes 4-06-1966

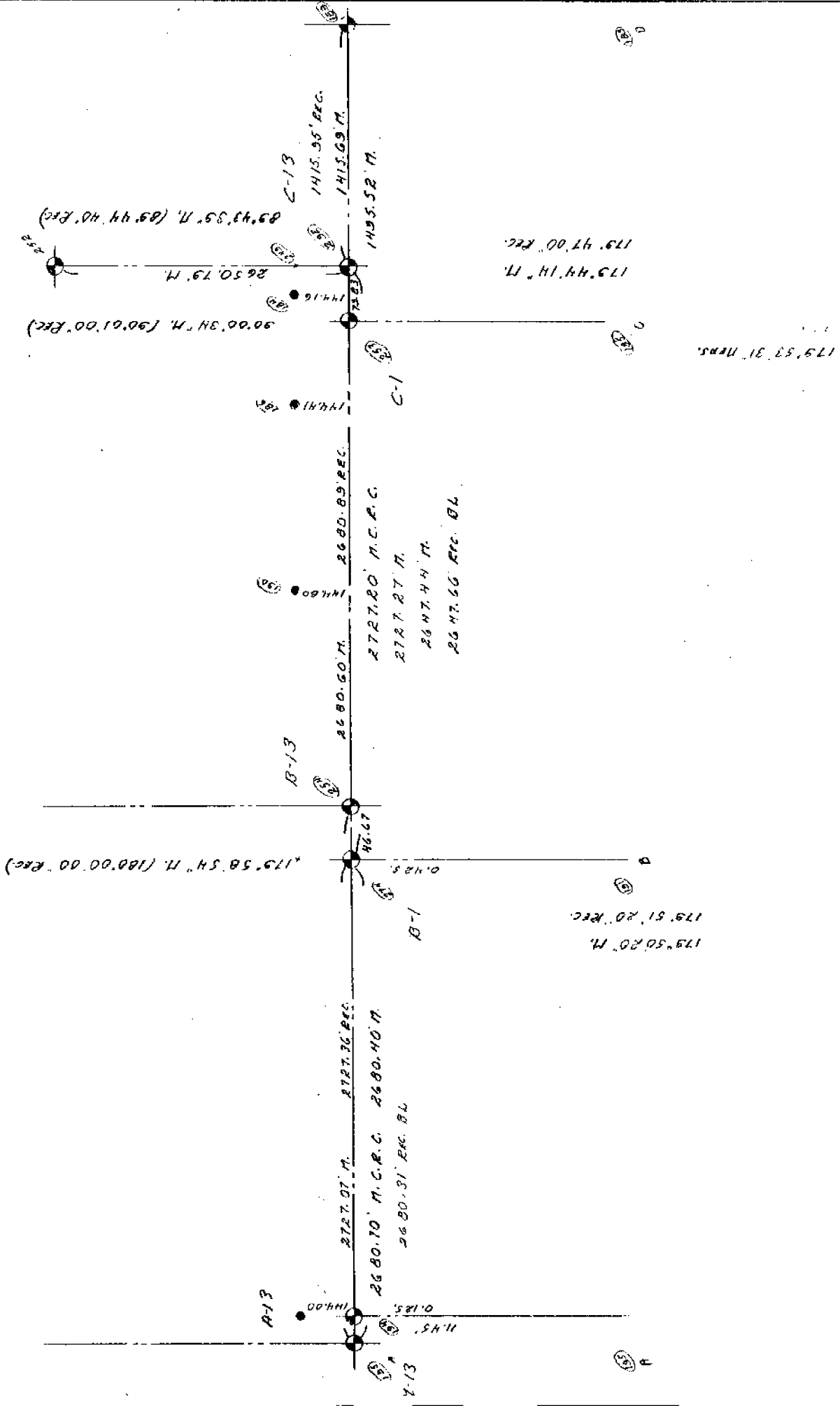
UTILITY COMPANIES:

- A. Detroit Edison: None.
- B. Michigan Bell: None.
- C. Michigan Consolidated Gas: None.
- D. Consumers Energy Company: None.
- E. Pipeline Companies: None.
- F. City of Detroit Water Board: None.
- G. Railroads: None.

CONTACT WITH ADJOINING PROPERTY OWNERS:

No contact was made regarding this corner.

22.141 50 SHEETS  
 22.142 100 SHEETS  
 22.144 200 SHEETS

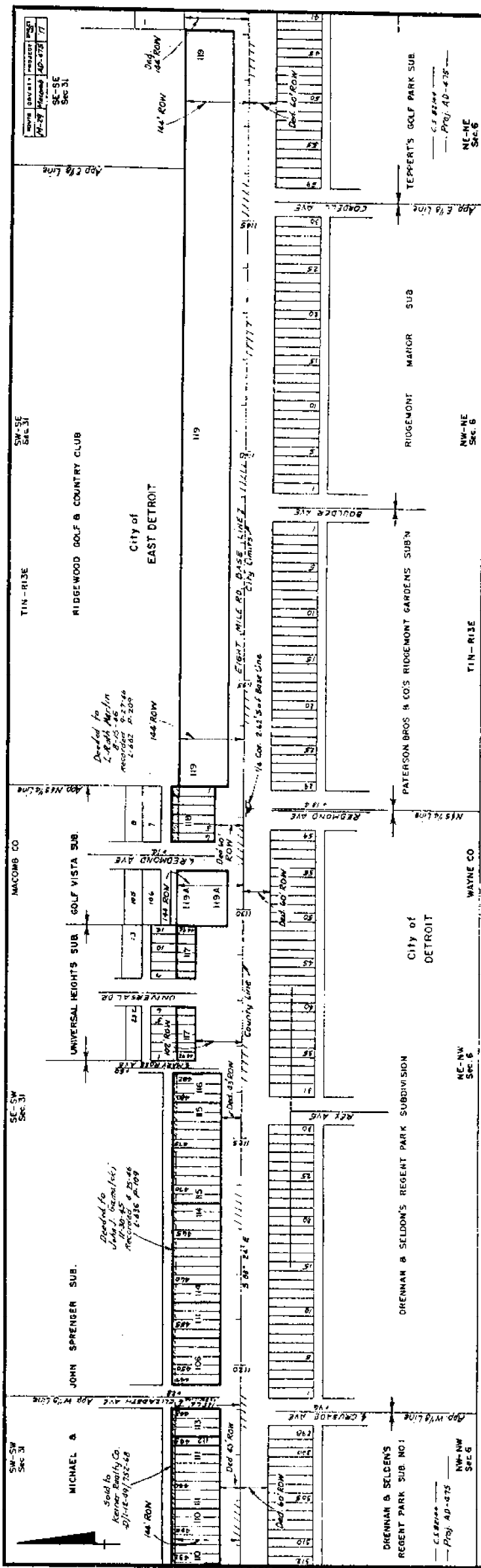


22.141









Macomb Co.

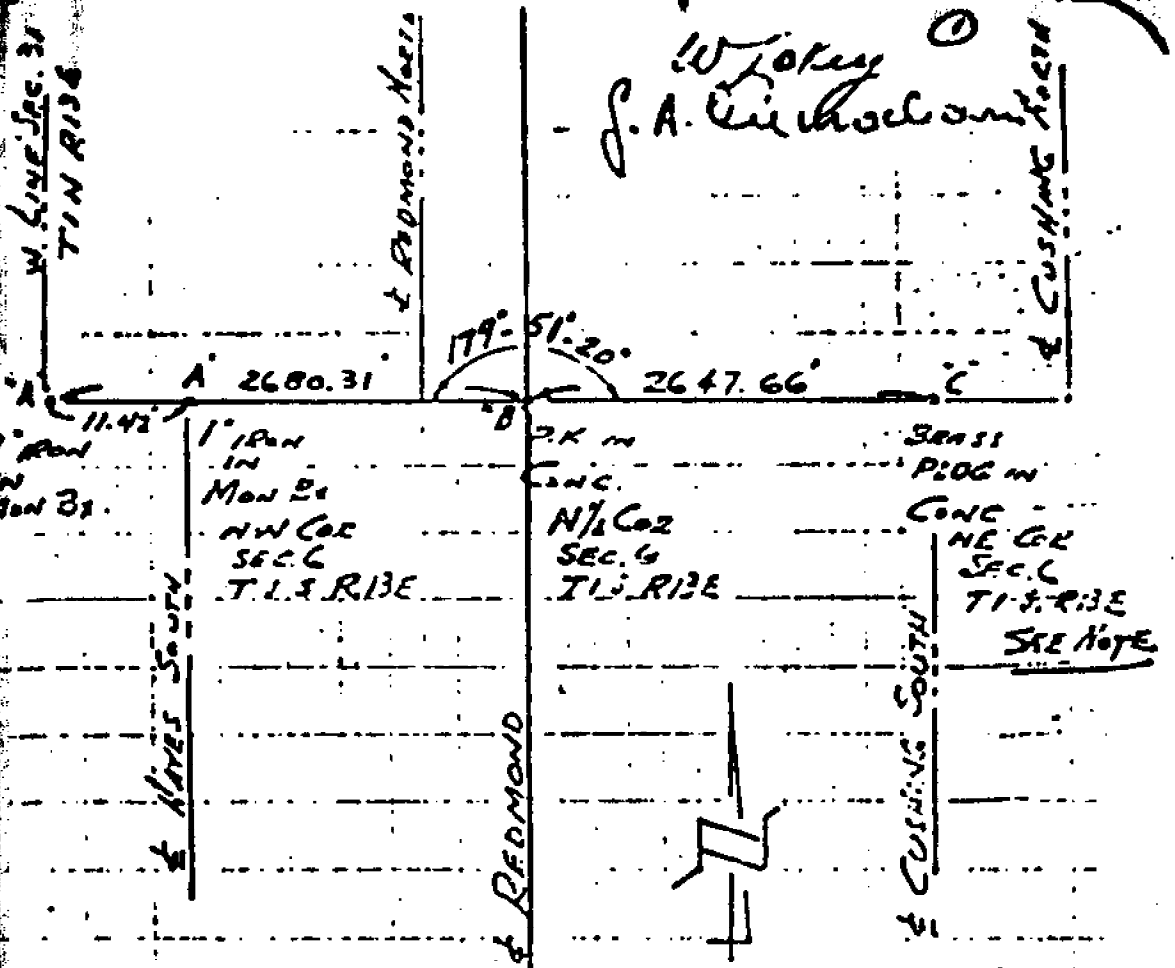
Book	Page	Lot	Owner	Area
100	100	100	Michael Sprenger	24.5-43.7
100	100	101	Michael Sprenger	24.5-43.7
100	100	102	Michael Sprenger	24.5-43.7
100	100	103	Michael Sprenger	24.5-43.7
100	100	104	Michael Sprenger	24.5-43.7
100	100	105	Michael Sprenger	24.5-43.7
100	100	106	Michael Sprenger	24.5-43.7
100	100	107	Michael Sprenger	24.5-43.7
100	100	108	Michael Sprenger	24.5-43.7
100	100	109	Michael Sprenger	24.5-43.7
100	100	110	Michael Sprenger	24.5-43.7
100	100	111	Michael Sprenger	24.5-43.7
100	100	112	Michael Sprenger	24.5-43.7
100	100	113	Michael Sprenger	24.5-43.7
100	100	114	Michael Sprenger	24.5-43.7
100	100	115	Michael Sprenger	24.5-43.7
100	100	116	Michael Sprenger	24.5-43.7
100	100	117	Michael Sprenger	24.5-43.7
100	100	118	Michael Sprenger	24.5-43.7
100	100	119	Michael Sprenger	24.5-43.7
100	100	120	Michael Sprenger	24.5-43.7

100	100	100	100	100	100	100	100	100	100
101	101	101	101	101	101	101	101	101	101
102	102	102	102	102	102	102	102	102	102
103	103	103	103	103	103	103	103	103	103
104	104	104	104	104	104	104	104	104	104
105	105	105	105	105	105	105	105	105	105
106	106	106	106	106	106	106	106	106	106
107	107	107	107	107	107	107	107	107	107
108	108	108	108	108	108	108	108	108	108
109	109	109	109	109	109	109	109	109	109
110	110	110	110	110	110	110	110	110	110
111	111	111	111	111	111	111	111	111	111
112	112	112	112	112	112	112	112	112	112
113	113	113	113	113	113	113	113	113	113
114	114	114	114	114	114	114	114	114	114
115	115	115	115	115	115	115	115	115	115
116	116	116	116	116	116	116	116	116	116
117	117	117	117	117	117	117	117	117	117
118	118	118	118	118	118	118	118	118	118
119	119	119	119	119	119	119	119	119	119
120	120	120	120	120	120	120	120	120	120





1585 191



IRON A' ON LINE A-B

NOTES NOT TO SCALE

NOTE:

BRASS PLUG SHOWN ON E. CUSHING (SOUTH)

IS 1.407' N. OF BASELINE

REFERENCE TO: SHEET 12

FILE 50-R-1 M.S.D.

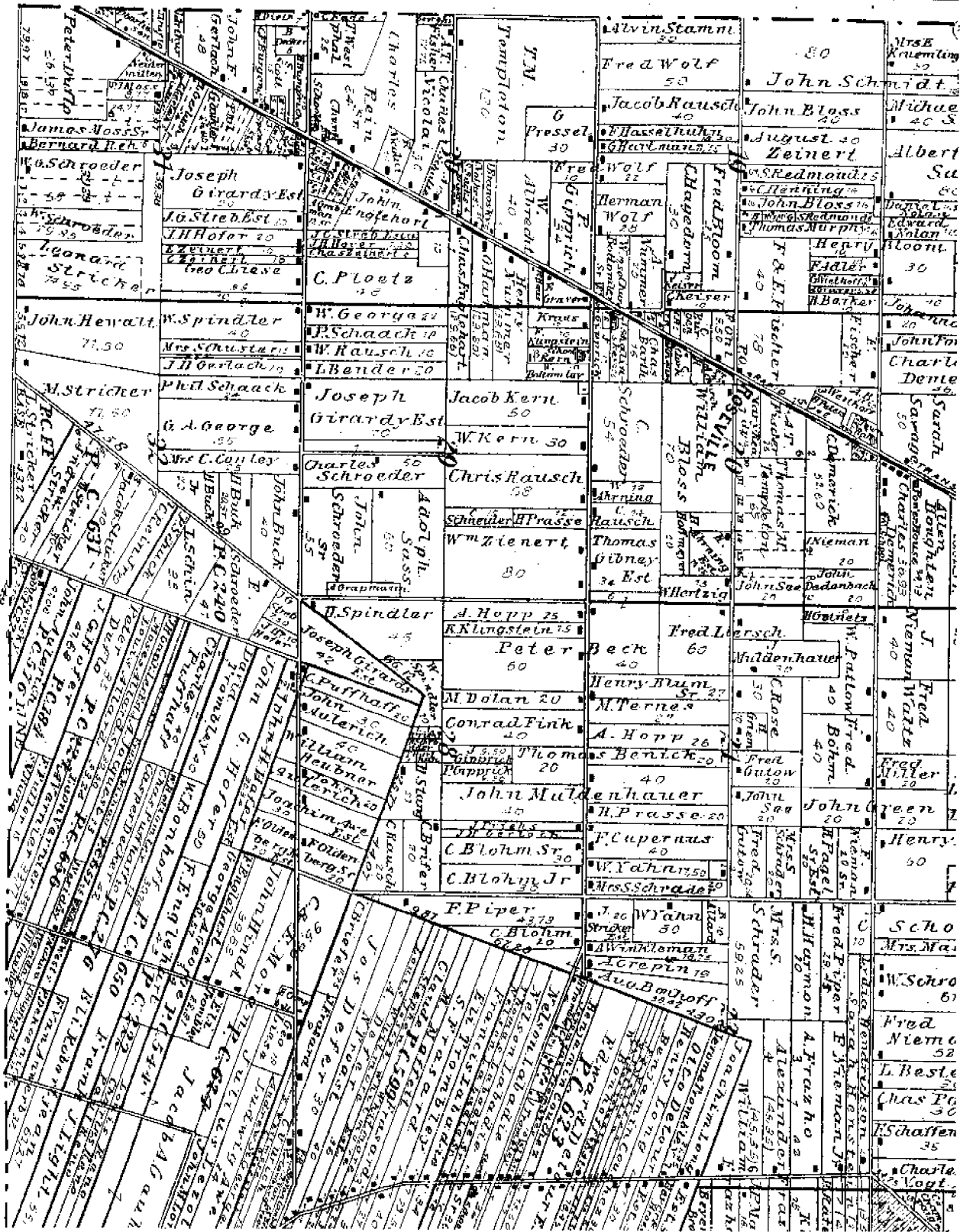
PROJECT AD 475

FURNISHED BY MR. KIDEMACHER, OF CIVIL ENGINEERS,

4TH FLOOR - MARSH BLDG

LANSING MICH

No. 13, 1925



Town 1 South Range 13 East

Town lines

North Boundary

East between T. N. 1 N. 1 S. R. 13 E. 13  
from post ... T. N. 1 N. 1 S. R. 13 E. 13  
East.

W. Ash 10 N 60 E 21

Lignum 12 N 19 W 8

9.87 B. Ash 10 Dr.

1.80 Poplar 40 Dr.

10.00 1/4 sect cov.

W. Ash 20 N 81 W 15

B. Ash 6 N 28 E 32

55.50 B. Ash 16 Dr.

78.00 Cov. sect 31 32 T. N. R. 13 E

Beech 9 N 5 E 31

Do 6 N 29 30 E 13

Land, soil, & timber as other lines.

East

25.16 B. Ash 16 Dr.

40.00 1/4 sect cov.

Lign 16 N 16 W 12

Do 9 N 54 E 27

51.20 B. Ash 10 Dr.

East on base line betw T. N. 1 S. R. 13 E

from 1/4 sec cov on line of sec 32

Establish'd post cov. Sec 32 33

80.00 T. N. R. 13 E

Elm 16 S 12 E 7

B. Ash 10 N 25 E 15

