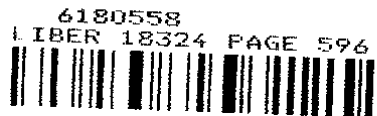


REC'D NOV 14 2006
3:00 P.M.

LAND CORNER RECORDATION CERTIFICATE
Filing Requirement of Act 74, Mich. P.A. 1970

For corners in

<u>Macomb</u> (County)	Located In:	Corner Code #
	City of Eastpointe	
1. Public Land Survey	T <u>1N</u> R <u>13E</u>	<u>B-12</u>
	T <u> </u> R <u> </u>	<u> </u>
	T <u> </u> R <u> </u>	<u> </u>
	T <u> </u> R <u> </u>	<u> </u>
2. Property Controlling in Section	S <u> </u> T <u> </u> R <u> </u>	<u> </u>
	S <u> </u> T <u> </u> R <u> </u>	<u> </u>
3. Miscellaneous Property in Sec.	S <u> </u> T <u> </u> R <u> </u>	<u> </u>
	S <u> </u> T <u> </u> R <u> </u>	<u> </u>



11/22/2006 09:54:03 A.M.
MACOMB COUNTY, MI
CARMELLA SABAUGH, REGISTER OF DEEDS

- 4. Lot No. _____, Recorded Plat
- 5. Private Claims

I, Robert H. Birkett, in a field survey on, August 10, 2006 do hereby state that under requirements of P.A. 74, Michigan P.A. of 1970, the corner points mentioned in lines 1 and 2 above were in conformance with regulations and rules therefore as required in the current manual of survey instructions of the United States Department of the Interior, Bureau of Land Management or by a decree of a Court of Law and/or that the corner points mentioned in lines 3, 4 and 5 above were in conformance with the rules of the Michigan Board of Land Surveyors or by a Decree of a Court of Law; established, re-established, monumented, re-monumented, recovered, found as expressed below:

NOTE: Not more than 2 corners, all in the same town and range, may be recorded on this certificate.

A	B	C	D	E	F	G	H	I	J	K	L	M
2	6	5	4	3	2	1						
3												
4	7	8	9	10	11	12						
5												
6	18	17	16	15	14	13						
7												
8	19	20	21	22	23	24						
9												
10	30	29	28	27	26	25						
11												
12	31	32	33	34	35	36						
13												

A. Description of original monument and accessories and/or subsequent restoration:

- B-12 1818, Center of section 31 was not set by General Land Office
- a-1914, WJ Lehner No 123, "Plat of Cutler Sub", L 002 P 193 M.C.R.
- b-1914, WJ Lehner No 123, "E.W. Eyster Sub", L 002 P 230 M.C.R.
- c-1920, AP Wenzell, "Key's Realty Co's Halfway Small Farms Sub", L 004 P 083 M.C.R.
- d-1921, WJ Lehner No 123, "Glander Sub", L 005 P 046 M.C.R.
- e-1923, WJ Miller No 67, "Scheuren and Mok Sub", L 006 P 068 M.C.R.
- f-1923, H Dawson (CE), "DeBeauglair Sub", L 007 P 014 M.C.R.
- g-1925, JW Irwin (CE), "Goetz Halfway Sub", L 009 P 001 M.C.R.
- h-1925, HR O'Mara (CE), "Gerlach's Ridgemont Sub", L 009 P 025 M.C.R.
- i-1925, HR O'Mara (CE), "Golf Vista Sub", L 010 P 005 M.C.R.
- j-1926, HR O'Mara (CE), "Pleitiz Sub", L 012 P 002 M.C.R.
- k-1927, HR O'Mara (CE), "Girard Gardens Sub", L 012 P 034 M.C.R.
- l-1939, HR O'Mara (CE), "Spens Sub", L 019 P 040 M.C.R.
- m-1941, HR O'Mara (CE), "Assessor's Plat of Bell Sub No 1", L 020 P 048 M.C.R.
- n-1941, HR O'Mara (CE), "Assessor's Plat of Couwlier Estate", L 021 P 001 M.C.R.
- o-1942, HJ Fuller No 1645, "Assessors Plat No 17", L 022 P 019 M.C.R.
- p-1942, HJ Fuller No 1645, "Assessors Plat No 15", L 022 P 020 M.C.R.
- q-1945, AH Arens, "Welcome Homes Sub", L 023 P 012 M.C.R.
- r-1947, HJ Fuller No 1645, "Welcome Homes Sub No 1", L 024 P 023 M.C.R.
- s-1949, HJ Fuller No 1645, "Assessors Plat No 22", L 025 P 016 M.C.R.
- t-1950, HJ Fuller No 1645, "Welcome Homes Sub No 2", L 025 P 022 M.C.R.
- u-1950, LT Brown No 2967, "Ridgemont Homes Sub", L 025 P 031 M.C.R.
- v-1950, HJ Fuller No 1645, "Assessors Plat No 23", L 026 P 005 M.C.R.
- w-1954, LT Brown No 2967, "Ridgemont Golf Course Sub No 1", L 029 P 031 M.C.R.
- x-1956, HJ Fuller No 1645, "Adam Belli Sub", L 038 P 012 M.C.R.
- y-1960, JD Lehner No 5787, "Assessors Plat No 38", L 046 P 039 M.C.R.
- z-1967, JD Lehner No 5787, "Gerlach Sub No 2", L 058 P 003 M.C.R.

ACCEPTED BY THE MACOMB COUNTY SURVEY PEER GROUP AS THE OFFICIAL CORNER UNDER MICHIGAN PUBLIC ACT 345 OF 1990 AT A MEETING HELD ON 9-26-06
Martin C. Dunn
MARTIN C. DUNN, P.S. CHAIRMAN



B. Description of corner evidence found and/or method applied in restoring or reestablishing corner:

B-12 No monumentation at the location of this corner. Existing evidence consists of paved Toepfer Road east and west, platted subdivisions north and south. Located from calculated position supported by monumentation in (d), (e), (r), and (u) from section A. above, and the measured distance between adjacent government corner B-11.

Field Measurements Between Corners

- B-12 To B-11- Remon 2006 = 2610.24', Record East = 2610.25', Record West = N/A
- B-12 To B-13- Remon 2006 = 2675.64', Record East = 2678.45', Record West = N/A
- B-12 To A-12- Remon 2006 = 2667.05', Record North = N/A, Record South = N/A
- B-12 To C-12- Remon 2006 = 2707.52', Record North = N/A, Record South = 2708.49'

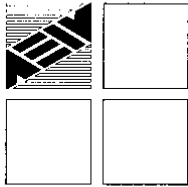
C. Description of monument for corner and accessories established to perpetuate locating the position of the corner:

B-12 Set a 3/4" x 24" iron with an aluminum cap stamped "Macomb County Monument, MI, ACT 345, 41094, B-12" in centerline of Toepfer, in a new monument box.

- AZ 15° - 25.95' - Set Macomb County Witness tag in east face utility pole.
- AZ 85° - 76.30' - Southeast corner brick fence.
- AZ 175° - 78.73' - Northwest corner house number 16110.
- AZ 257° - 104.35' - Centerline top nut hydrant set chiseled "X".

The selected location is accepted by me and is generally accepted by Professional Surveyors as the best available evidence of the position of the original corner.

Signed by R.H. Birkett Date 11-7-06
Surveyor's Michigan License No. 41094



**Report of Survey
B-12, Eastpointe
Town 1 North, Range 13 East
Macomb County, Michigan**

Corner Information

B-12 was not set by General Land Office. During the original survey in 1818
B-12 is the center of section 31

Existing Conditions

No monumentation at the location of this corner. Existing evidence consists of paved Toepfer Road east and west platted subdivisions north and south. Corner location was re-established from calculated position supported by monumentation in (d), (e), (r), and (u) from plats below, and the measured distance between adjacent government corner B-11.

Plats

a-1914, WJ Lehner No 123, "Plat of Cutler Sub", L 002 P 193 M.C.R.
b-1914, WJ Lehner No 123, "E.W. Eyster Sub", L 002 P 230 M.C.R.
c-1920, AP Wenzell, "Key's Realty Co's Halfway Small Farms Sub", L 004 P 083 M.C.R.
d-1921, WJ Lehner No 123, "Glander Sub", L 005 P 046 M.C.R.
e-1923, WJ Miller No 67, "Scheuren and Mok Sub", L 006 P 068 M.C.R.
f-1923, H Dawson (CE), "DeBeauglair Sub", L 007 P 014 M.C.R.
g-1925, JW Irwin (CE), "Goetz Halfway Sub", L 009 P 001 M.C.R.
h-1925, HR O'Mara (CE), "Gerlach's Ridgemont Sub", L 009 P 025 M.C.R.
i-1925, HR O'Mara (CE), "Golf Vista Sub", L 010 P 005 M.C.R.
j-1926, HR O'Mara (CE), "Pleitiz Sub", L 012 P 002 M.C.R.
k-1927, HR O'Mara (CE), "Girard Gardens Sub", L 012 P 034 M.C.R.
l-1939, HR O'Mara (CE), "Spens Sub", L 019 P 040 M.C.R.
m-1941, HR O'Mara (CE), "Assessor's Plat of Bell Sub No 1", L 020 P 048 M.C.R.
n-1941, HR O'Mara (CE), "Assessor's Plat of Couwlier Estate", L 021 P 001 M.C.R.
o-1942, HJ Fuller No 1645, "Assessors Plat No 17", L 022 P 019 M.C.R.
p-1942, HJ Fuller No 1645, "Assessors Plat No 15", L 022 P 020 M.C.R.
q-1945, AH Arens, "Welcome Homes Sub", L 023 P 012 M.C.R.
r-1947, HJ Fuller No 1645, "Welcome Homes Sub No 1", L 024 P 023 M.C.R.
s-1949, HJ Fuller No 1645, "Assessors Plat No 22", L 025 P 016 M.C.R.
t-1950, HJ Fuller No 1645, "Welcome Homes Sub No 2", L 025 P 022 M.C.R.
u-1950, LT Brown No 2967, "Ridgemont Homes Sub", L 025 P 031 M.C.R.
v-1950, HJ Fuller No 1645, "Assessors Plat No 23", L 026 P 005 M.C.R.
w-1954, LT Brown No 2967, "Ridgemont Golf Course Sub No 1", L 029 P 031 M.C.R.
x-1956, HJ Fuller No 1645, "Adam Belli Sub", L 038 P 012 M.C.R.
y-1960, JD Lehner No 5787, "Assessors Plat No 38", L 046 P 039 M.C.R.
z-1967, JD Lehner No 5787, "Gerlach Sub No 2", L 058 P 003 M..R.

Condominiums

None

Land Corner Recordation Certificate

None

Recorded Surveys

None

Observations From B-12

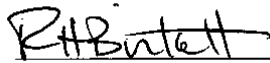
To B-11- Remon 2006 = 2610.24', Record East = 2610.25', Record West = N/A
To B-13- Remon 2006 = 2675.64', Record East = 2678.45', Record West = N/A
To A-12- Remon 2006 = 2667.05', Record North = N/A, Record South = N/A
To C-12- Remon 2006 = 2707.52', Record North = N/A, Record South = 2708.49'

NE 91° 09' 08" L. 006, P. 068 94°05' 47"
SE 88° 54' 40" L. 024, P. 023 88°54'37"
SW 90°59' 52" No subdivision on East or West section line
NW 88°56' 23" No subdivision on East or West section line.

The theoretical location of corner B-12 is 2.13' south of the set corner, and 1.44' west of the set corner.

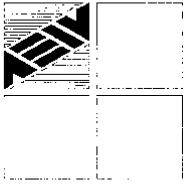
Recommendation

Found monumentation from plats (d), (e), (r), and (u), and the measured distance between adjacent government corner B-11 was used to verify the calculated location of the new monumentation. I therefore recommend to the Macomb County Peer Group that they accept the calculated corner as the best evidence of the corner position as being perpetuated.



11-2-06

Robert H. Birkett, PS 41094
Anderson, Eckstein and Westrick, Inc.



ANDERSON, ECKSTEIN AND WESTRICK, INC .

51301 Schoenherr Road, Shelby Township, Michigan 48315
Civil Engineers • Surveyors • Architects (586) 726-1234

B-12
City of Eastpointe
Macomb County 2006 Remonumentation

Section One

- A. Index
- B. Before and after pictures of the monument.

Section Two

- A. LCRC
- B. Surveyor's report.

Section Three

- 1. Field notes.
- 2. Field notes.
- 3. Field notes.
- 4. Field notes.
- 5. Field notes.
- 6. Field notes.
- 7. Field notes.
- 8. Field notes.
- 9. Field notes.
- 10. Field notes.
- 11. Sketch of area and found monumentation.
- 12. Composite map, 14-31A, 14-31B, 14-31C, 14-31D
14-31E, 14-31F, 14-31G, 14-31H

Section Four

A. Recorded plats.

- a-1914, WJ Lehner No 123, "Plat of Cutler Sub", L 002 P 193 M.C.R.
- b-1914, WJ Lehner No 123, "E.W. Eyster Sub", L 002 P 230 M.C.R.
- c-1920, AP Wenzell, "Key's Realty Co's Halfway Small Farms Sub", L 004 P 083 M.C.R.
- d-1921, WJ Lehner No 123, "Glander Sub", L 005 P 046 M.C.R.
- e-1923, WJ Miller No 67, "Scheuren and Mok Sub", L 006 P 068 M.C.R.
- f-1923, H Dawson (CE), "DeBeauglair Sub", L 007 P 014 M.C.R.
- g-1925, JW Irwin (CE), "Goetz Halfway Sub", L 009 P 001 M.C.R.
- h-1925, HR O'Mara (CE), "Gerlach's Ridgemont Sub", L 009 P 025 M.C.R.
- i-1925, HR O'Mara (CE), "Golf Vista Sub", L 010 P 005 M.C.R.
- j-1926, HR O'Mara (CE), "Pleititz Sub", L 012 P 002 M.C.R.
- k-1927, HR O'Mara (CE), "Girard Gardens Sub", L 012 P 034 M.C.R.
- l-1939, HR O'Mara (CE), "Spens Sub", L 019 P 040 M.C.R.
- m-1941, HR O'Mara (CE), "Assessor's Plat of Bell Sub No 1", L 020 P 048 M.C.R.
- n-1941, HR O'Mara (CE), "Assessor's Plat of Couwlier Estate", L 021 P 001 M.C.R.
- o-1942, HJ Fuller No 1645, "Assessors Plat No 17", L 022 P 019 M.C.R.
- p-1942, HJ Fuller No 1645, "Assessors Plat No 15", L 022 P 020 M.C.R.
- q-1945, AH Arens, "Welcome Homes Sub", L 023 P 012 M.C.R.
- r-1947, HJ Fuller No 1645, "Welcome Homes Sub No 1", L 024 P 023 M.C.R.
- s-1949, HJ Fuller No 1645, "Assessors Plat No 22", L 025 P 016 M.C.R.
- t-1950, HJ Fuller No 1645, "Welcome Homes Sub No 2", L 025 P 022 M.C.R.
- u-1950, LT Brown No 2967, "Ridgemont Homes Sub", L 025 P 031 M.C.R.
- v-1950, HJ Fuller No 1645, "Assessors Plat No 23", L 026 P 005 M.C.R.
- w-1954, LT Brown No 2967, "Ridgemont Golf Course Sub No 1", L 029 P 031 M.C.R.
- x-1956, HJ Fuller No 1645, "Adam Belli Sub", L 038 P 012 M.C.R.
- y-1960, JD Lehner No 5787, "Assessors Plat No 38", L 046 P 039 M.C.R.
- z-1967, JD Lehner No 5787, "Gerlach Sub No 2", L 058 P 003 M.C.R.

B. Copies of original government notes.

None

C. Field notes from other sources.

None

2006

**MACOMB COUNTY REMONUMENTATION
PROGRAM FOR CITY OF EASTPOINTE**

Research Dossier for B-12

Prepared by:
Anderson, Eckstein & Westrick, Inc.
51301 Schoenherr Road
Shelby Twp., Michigan 48315

**Sources of Information Researched
For Macomb County 2006 Remonumentation Program
For City of Eastpointe**

- 1) GLO Notes
- 2) Act 74 Recorded LCRC
- 3) Act 132 Recorded Surveys
- 4) Personal History and Records
- 5) Unrecorded LCRC's and Surveys
- 6) Letters to the Following, Requesting Unrecorded information

Midwestern Consulting LLC
Atwell Hicks Inc
ANR Pipeline Company
BMJ Engineers & Surveyors
Air Land Surveys, Inc.
Lehner Associates, Inc.
Kem-Tec Land Surveyors
Boss Engineering Company, Inc.
Engineering & Surveying Consultant
Charles E. Raines Co.
Johnson & Anderson, Inc.
Earl Gravin Surveyor
Del-Tec Surveying & Engineering
David J. Little Land Surveyors
David C. Adams & Son
Coulter & Associates
Fenn & Associates Surveying, Inc.
Donald H. DeKeyser, Surveyor
Huron Clinton Metropolitan Authority
Fazal Khan & Associates
Davis Land Surveying, P.C.
Guaranty Survey Company
Grant Ward Surveyors
North Star Engineering, LLC
Giffels-Webster Engineers
George Jerome & Company
Michael J. Yambor Associates, Inc.
MCS Associates, Inc.
McNeely & Lincoln Associates, Inc.
King Surveyors & Associates, Inc.
RK Engineering & Survey Associates
RJ Donnelly & Associates, Inc.
Professional Engineering Associates

Rowe, Inc.
Hubble Roth & Clark
John Lansky
Wilcox Professional Services
RCMC
Bruen Land Surveying
SCCRC
Alpine Land Surveying, Inc.
McNamee, Porter & Seeley
Advanced Geomatics
GLA Surveyor
Mason L. Brown & Asso.
RA Duthler Land Surveyor
Project Control Engineering
Tetra Tech
Nowak & Fraus PLLC
Land Engineering Services
Michigan Consolidated Gas
Williams, Gorinac Assoc.
Urban Land Consultants
T & A, Inc.
Detroit Edison, ROW Div.
SSOE, Inc.
Spalding, DeDecker & Assoc
Kennedy Surveying, Inc.
JL Bishop Surveying
Reichert Surveying, Inc.
Metco Services

228-028 2006 REMON
S.E. 06 B-12 ACCUMULATED

MUD, CB

FW A

222028 TR

BASE TWP KENNEDY

1274 m

LAT - 42° 28' 36.95826" N

LONG - 82° 56' 17.11895" W

CURT - 149.6292 m

R #

DESC

028-100 D-10 CHECK PENN. REMON

028-101 B-13 FND REMON IN MON BOX

028-102 A-12 FND REMON IN MON BOX

028-103 C-12 FND REMON IN MON BOX

028-104 PINCH TOP PIPE NE TOEPPER & CUSHING

028-105 PINCH TOP SE CUSHING & ASH

028-106 PINCH TOP NE CUSHING & ASH

028-107 1/2" PIPE NE CUSHING & OAK

028-108 PINCH TOP SW CUSHING & OAK

MEAS - N: 18035.92 E: 11334.50

REC - N: 18036.02 E: 11334.61

UB A - 41.08' W
Lr B - 40.04' W

2006 REMON

B-12 ACCESSORIES.
223028TR

223-028
5-5 06

MID, C&E

PT#	DESC
028-109	1/2" PE SW REIN # OAK
028-110	1/2" PIPE SE REIN # OAK
028-111	1/2" PIPE NW REIN # ASH
028-112	1/2" PIPE SW REIN # ASH
028-113	1/2" PIPE NW TOEPLER # REIN
028-114	1/4" PIPE NE TOEPLER # PAPER
028-115	1/2" PE NW PAPER # ASH

No. 2449

PK - SET CST ADS TO KENNEDY

228-028 2006 REMON
5-15-06

MUD, CE, LIS B-12 ACCESSORIES
FOV. A - G-80 228028TR.1

PK# BASE K G KENNEDY 1336
DCC

RK N-19655.31 E 11061.700

028-114 1/2" PIPE N SIDE TOEPIER 1 Lot. 41
SHUCKRIAGE

A- 2890 RT.
B- 52.608

028-117 1/2" RR NW 1/4th & SHUCKRIAGE

A- 3227 B- 40.42 LT.

028-118 1/4" PIPE 25 OAK & SHUCKRIAGE

028-119 1/2" RR SW OAK & SHUCKRIAGE

028-120 CONX NW SW COR Lot 51 10 1/2 S. 108

028-121 3/4" PIPE NE TOEPIER & PLEASANT

028-122 1/2" RR NE PLEASANT & ASH

028-123 1/2" RR SW PLEASANT 1.25

028-124 CONX NION N. SIDE OAK

A- 6.00 B- 5.70 RT.

No 2449

2006 REMON

228-028
S15-06

B-12 ACCESSORIES

228028 TR.1

POL. A 6.90

PT#

DESC

028-125 1/2" PE # 10085 SW. 9 MILE # BOULDER

028-126 1/2" PIPE W. SIDE BOULDER

028-127 1/2" BOLT E. SIDE BOULDER

028-128 1/2" PE E. SIDE BOULDER

028-129 1/2" PE E. SIDE BOULDER

028-130 1/2" PE E. SIDE BOULDER

028-131 1/2" PE NW BOULDER # 1644

028-132 1/2" PE W. SIDE NWADA

223-020 2006 Remon

5/16/06

MUS/002

B-12 Access.

ROV-A 680 223028TR2

BASSETT KENNEDY 1342

PT #

DEIC

PK

N-19655.33 E-11061.71

028-133 1/2" PIPE E. SIDE NEVADA (LOT 63/64)

028-134 3/4" PIPE E. SIDE NEVADA

028-135 1/2" RR W. SIDE NEVADA

028-136 1/2" RR W. SIDE NEVADA

028-137 PK SE NEVADA # 9 MILE

028-138 CHIS + SE VIRGINIA # 9 MILE

028-139 1/2" PIPE SW VIRGINIA # ESTHELYN

028-140 1/2" PIPE SW VIRGINIA # DAK

028-141 1/2" RR NW VIRGINIA # OAK

2006 EDMON

223-028
S 16.06

B-12 ADDRESS

POV. A 223028-TR-2

PT# DELC
028-142 CONC MONI SW LOT 225 ^{SEARCHED &} _{WORK SUB}

028-143 FENCE POST ON 1/4 LINE

028-144 1/2" PIPE S. SIDE CAUSEWAY ON 1/4 LINE

028-145 3/8" PIPE IN CONC. N. SIDE ACH ON 1/4 LINE

028-146 TRAV. PT. # 20 (145-276) ^{BL 2015} _{RS. 40}

028-147 MINI? NE CORNER OF TOPPER
PT # 107 JOB 145-301 BL 2336 Pa. 4B

028-148 B-11 END 3/4" RR IN MAN BOX

028-149 FENCE POST SE ACH & REDMOND

028-150 1/4" PIPE SW ACH & REDMOND

028-151 CONC MONI @ SUB LINE - S. SIDE ACH

223-028

5-16-06

2006 DEMON

MEASURE

R-12 ACCESSORIES

223028 RZ

PT#

DESC

023-152

CONC. MON. S. SIDE CHESTNUT @ LINS

023-153

1/2" PIPE S. SIDE CHESTNUT BELMONT
1 Lot in of

023-154

1/2" PIPE N. SIDE CHESTNUTS

023-155

CONC. MON. N. SIDE CHESTNUTS

023-156

CONC. MON. S. SIDE CHESTNUTS

023-157

1/2" ZF # M827 S. SIDE CHESTNUTS

RK

228-028
5-18-06

2006 Rumon

MUD, COIL

B-12 Access

Rev A 6:00

223028 TR3

BASE TO KENNEDY 1245

DT#

DESC

EK

N-1965524 E-1106168

- 028-153 FENCE POST SE REDMOND & VERONICA
- 028-159 1/2" PIPE S SIDE VERONICA ON 1/4 LINE
- 028-160 3/4" PIPE SE EGO & REDMOND
- 028-161 3/4" PIPE NE EGO & REDMOND
- 028-162 FENCE POST
- 028-163 FENCE POST ON 1/4 LINE
- 028-164 3/4" PIPE SW EGO & REDMOND
- 028-165 FENCE POST ON 1/4 LINE - 2 MILE
- 028-166 CONC MION NE VIRGINIA & 8 MILE

223-028
5-18-06

2006 RCMMW

M&P

B-12 Acc. 22

223028 TRZ

PT #

DESC

028-167 CONC. MON NE VIRGINIA & STRICKER

028-168 CONC. MON NW EFD & VIRGINIA

028-169 3/4" PIPE SE EFD & VIRGINIA

028-170 1/2" PIPE SE VIRGINIA & SPRENGER

028-171 CONC. MON SE VIRGINIA & COLLINSON

028-172 CONC. MON (2 DEEP) SE VIRGINIA & LINCOLN

028-173 BEAT PINK PIPE SE BOULDER & LINCOLN

028-174 1" PLASTIC PIPE w/ METAL COVER SW TOEPFER & BOULDER

028-175 CONC. MON SW TOEPFER & SHAKESPEARE

028-176 CONC. MON NW SHAKESPEARE & LINCOLN

028-177 CONC. MON SW LINCOLN & CUSHING

028-178

" NW

028-179

SW

TOEPFER & CUSHING

RK N-19655.37 E-11001.67

GOETZ HALFWAY SUBDIVISION

137925
 1/20 & 1/20

OF PART OF

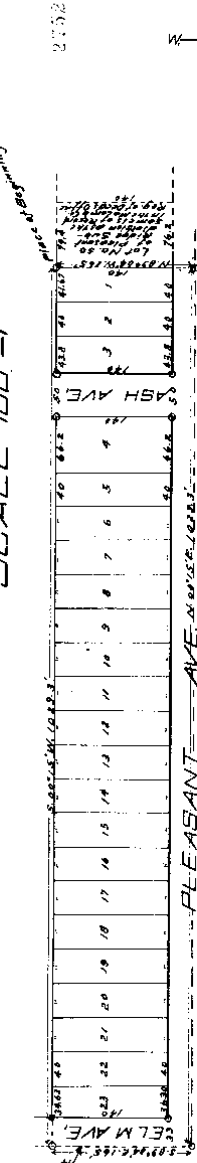
SECTION 31 T. 1 N. R. 13 E.

VILLAGE OF HALFWAY.

MACOMB COUNTY

MICHIGAN

SCALE 100' = 1"



DEDICATION.

KNOW ALL MEN BY THESE PRESENTS, That we Henry A. Goetz and Eleanor A. Goetz, his wife, as proprietors have caused the lands embraced in the annexed plat to be surveyed, laid out and platted to be known as 'GOETZ HALFWAY SUBDIVISION' OF PART OF SECTION 31, T. 1 N. R. 13 E. MACOMB COUNTY, MICHIGAN, and that the streets as shown thereon are hereby dedicated to the use of the public.

Signed and sealed in presence of
 Henry A. Goetz (L.S.)
 Eleanor A. Goetz (L.S.)
 Charles H. Hammann Judge of Probate.
 John H. ... County Clerk.
 James L. ... County Treasurer.

STATE OF MICHIGAN } ss.
 County of Macomb

on this 30th day of March A.D. 1925 before me, a Notary Public in and for said county, personally came the above named Henry A. Goetz and Eleanor A. Goetz his wife, known to me to be the persons who executed the above dedication, and acknowledged the same to be their free act and deed.

My Commission expires January 3rd, 1927.

Notary Public Macomb County Michigan

Note:—All dimensions on this plat are in feet and decimals thereof.

CERTIFICATE OF COUNTY PLATING BOARD.

This plat was approved on the 21st day of

MARCH, A.D. 1925

Charles H. Hammann Judge of Probate.
 John H. ... County Clerk.
 James L. ... County Treasurer.

L. 9
 P. 1

185 100

and deed.
My Commission expires January 3rd, 1927.

DESCRIPTION.

The land embraced in the annexed plat of "OCTE HALFWAY SUBDIVISION" OF PART OF SECTION 31, VILLAGE OF HALFWAY, MACOMB COUNTY, MICHIGAN is described as follows:—Beginning at the southwest corner of lot No. 50 of Pleasant Ridge Subdivision as the same is platted and recorded in Liber No. 4 of Plats on Page No. 65 in the Macomb County Register of Deeds Office; thence S. 00° 15' W. a distance of 1029.3 feet to the east and west quarter section line of said section No. 31; thence S. 89° 04' E. along said quarter section line a distance of 165 feet; thence N. 00° 15' E. a distance of 1029.3 feet to an easterly extension of the south line of said lot No. 50 of said Pleasant Ridge subdivision; thence N. 89° 04' W. a distance of 165 feet to the place of beginning. All of the above described lands are in section No. 31, T. 1 N. R. 13 E. Macomb County, Michigan.

ENGINEER'S CERTIFICATE.

I hereby certify that the plat hereon delineated is a correct one, and that permanent monuments consisting of iron gas pipe 1 1/2 inches long and 1/2 inch in diameter have been planted at all points marked (o) as thereon shown at all angles in the boundaries of the lands platted and at all intersections of streets.

J. J. ...
Registered Civil Engineer

COUNTY TREASURER'S CERTIFICATE.

Office of the County Treasurer... 1925

I hereby certify that there are no tax liens or titles held by the state on the lands described on the annexed plat and that there are no tax liens or titles held by individuals on said lands, for the five years preceeding the 30th day March A. D. 1925, and that the taxes for said period of five years have been paid, as shown by the records of this Office.

...
County Treasurer

CERTIFICATE OF VILLAGE COUNCIL.

This plat was approved by the Village Council of the Village of Halfway, Macomb county, Michigan, at a meeting held... 1925.

...
Village Clerk.

RECEIVED
County of Macomb
Received for Record this ... day
of ... A. D. 1925 at
... M. and Recorded
in Liber ... of ...
on Page ...
... Registrar.

L 9 P. 1

KNOW ALL MEN BY THESE PRESENTS,

That we, Hugo De Beaulieu and Christiane De Beaulieu his wife, as proprietors have caused the land embraced in the annexed plat to be surveyed, laid out and platted, to be known as "De Beaulieu Subdivisions" of a part of the 1/4 of Sec. 31, T.14N, R.13E, E.10th Township, Macomb County, Michigan, and that the streets and alleys as shown on said plat are hereby dedicated to the use of the public.

Signed and sealed in presence of

Christiane De Beaulieu
C. De Beaulieu
Hugo De Beaulieu

STATE OF MICHIGAN } S.S.
COUNTY OF WAYNE }

On this 23rd day of Aug., 1923, before me, a notary public in and for the said County, personally came the above named Hugo De Beaulieu and Christiane De Beaulieu known to me to be the persons who executed the above dedication and acknowledged the same to be their free act and deed.

Edward H. O'Connell
Notary Public

My commission expires Sept. 23, 1924
Wayne Co. Michigan

I hereby certify that the plat herein delineated is a correct one, and that permanent monuments consisting of 4"x1.5" iron pipe have been placed at points marked O as herein shown at all angles in the boundaries of the land platted and at all intersections of streets, and streets and alleys.

Henry A. Dawson
Registered Civil Engineer



COUNTY TREASURER'S OFFICE

This plat was recorded by the County Clerk for the County of Wayne, Michigan, on the 24th day of August, 1923.

Aug. 24 23 James B. Gillett

This plat was recorded by the County Clerk for the County of Wayne, Michigan, on the 24th day of August, 1923.

James B. Gillett

REGISTER'S OFFICE
COUNTY OF MACOMB

Recorded for Record this 24th day

of August, A. D. 1923, at

12:45 o'clock P. M. and indexed

in Book 7 of Plats

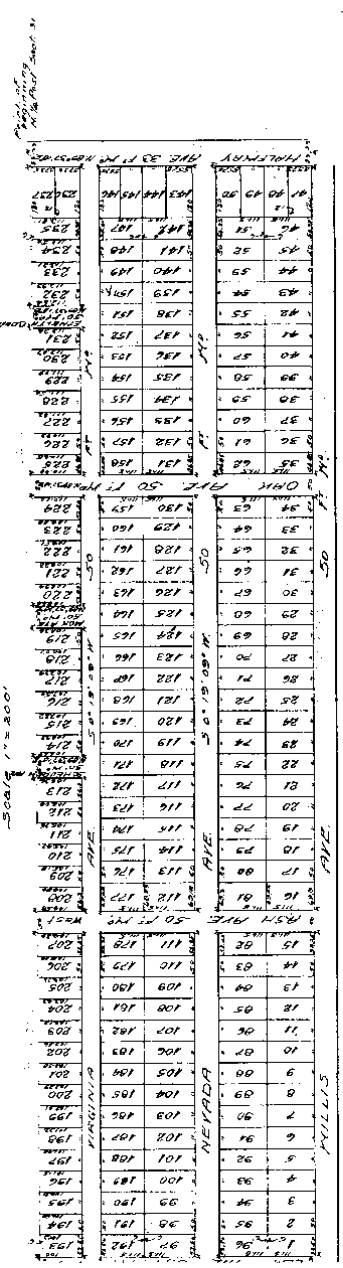
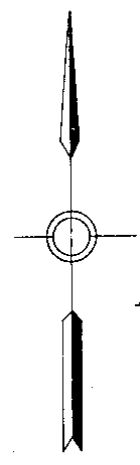
on page 14

Joseph C. Collins

67417

SCHEUREN AND MOK SUBN.

OF W. 1/2 OF N. 1/2 OF N.E. 1/4
OF SECT. 31 T. 1 N. R. 13 E.
MACOMB CO. MICH.



KNOW ALL MEN BY THESE PRESENTS THAT WM HENRY J. MOK
FRANCIS J. MOK, his wife, and JOHN A. SCHEUREN and
MARGARET SCHEUREN, his wife, as vendors and JOHN
MALBURG and MATILDA MALBURG, his wife, as vendor
and purchaser have caused the land embraced in the
annexed plat to be surveyed, laid out and platted,
to be known as "SCHEUREN AND MOK SUBN."

I hereby certify that the plat hereon delineated is
a correct one and that permanent monuments consist-
ing of 1/2 by 1 1/2 inch iron pipe have been planted
at points marked "M" as thereon shown at all angles
in the boundaries of the land platted and at all
intersections of streets or streets and alleys.

This plat was approved by the County Board for Macomb
County, Michigan, this 11th day of May, 1923.

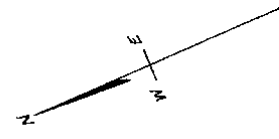
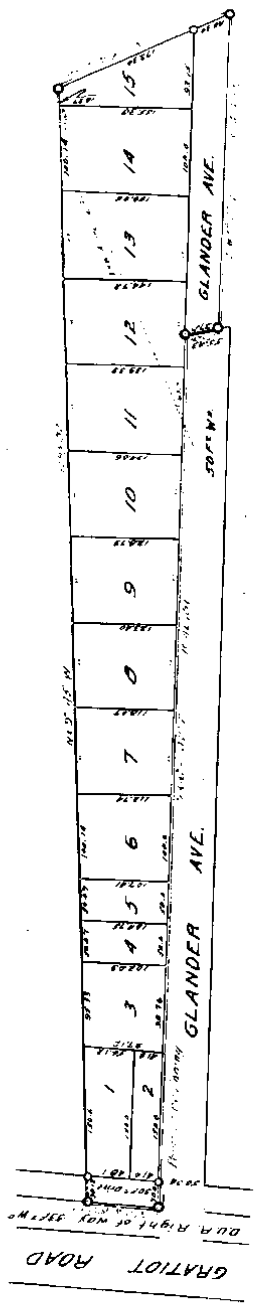
Yuba S. Russell

Examined and approved
June 13-1921
Geo. L. Howard

GLANDER SUBDIVISION A PART OF NW 1/4 AND SW 1/4 OF SEC. 31 T.19.N. R.13.E. ERIN TOWNSHIP MACOMB COUNTY

MICHIGAN
Scale 1" = 100 FT.

Walter J. Lehnert
Registered Civil Engineer
Mt. Clemens, Michigan



This is to certify that the above plat was approved by the
Township Board of the Township of Erin, Michigan, on the 13th day of June, 1921.

Walter J. Lehnert, Registered Civil Engineer, Mt. Clemens, Michigan.
Geo. L. Howard, Township Clerk.

Know all men by these presents, that I, Walter J. Lehnert, Registered Civil Engineer, do hereby certify that the above plat was approved by the Township Board of the Township of Erin, Michigan, on the 13th day of June, 1921, and that the same is a true and correct copy of the original as the same appears on file in my office.

Walter J. Lehnert, Registered Civil Engineer, Mt. Clemens, Michigan.

Geo. L. Howard, Township Clerk.

SUBDIVISION of a part of NW 1/4 and SW 1/4 of Section 17, T. 15 N., R. 15 E., Co. Washtenaw, Michigan
 1921
 Township Clerk

I hereby certify that the plat hereto delineated is a correct one and that permanent monuments representing all 1/4 x 1/8 inch iron stakes have been placed at points marked "a" as shown above at all angles in the subdivision of the land platted on or all interruptions of streets or streets and alleys.

James B. Kibbell Reg. Civil Engineer

State of Michigan
 County of Washtenaw
 On this 19th day of September 1921
 before me, a Notary Public in and for said County, personally appeared *James B. Kibbell* who being known to me to be the person who executed the above declaration, and acknowledged the same to be his free act and deed.

Notary Public
James B. Kibbell
 Co. Wash.

Description of Land Platted
 The land embraced in the annexed plat is called
 SUBDIVISION "A" PART OF THE ANNEXED SECTION 17
 T. 15 N. R. 15 E. CO. WASHTENAW, MICHIGAN

It is described as follows: Beginning at the intersection of the northerly side line of Alameda Ave. and the westerly side line of the D. U. R. right of way; thence S 68° 42' E 144.6117'; thence S 20° 45' 40" E 128.5687'; thence S 65° 37' E 399.477'; thence N 2° 14' 10" W 219.607'; thence N 68° 45' 10" W 128.5687' to the point of Beginning.

RECORDING OFFICE
 COUNTY OF WASHTENAW
 Entered for Record this 12th day of September A.D. 1921
 in Book 5 of Plat Books
 on page 46
James B. Kibbell

Platted by James B. Kibbell, Reg. Civil Eng.

ORIGINAL

Examined and Approved
[Signature] 8-1920
 Deputy Auditor General

**KEYS' REALTY CO'S
 HALFWAY SMALL FARMS SUBDIVISION**
 OF PART OF THE E 1/2 OF THE N.E. 1/4
 OF SEC. 31, T14N, R15E, ERIN TWP,
 MACOMB CO., MICHIGAN
 SCALE 1/2" = 200'

A. J. S. A. P. Wenzell,
 S.A. Engineer
 April 21, 1920 R.W.M.

Note - All dimensions are given in feet and decimals thereof.

We hereby certify that the plot herein delineated is a correct one and that permanent monuments consisting of 1/2" x 1 1/2" iron pipe have been planted at all points marked thus "O" as herein shown at all angles in the boundaries of the land plotted and at all intersections of streets and streets and alleys.

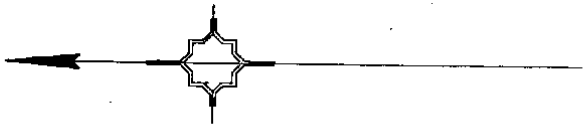
[Signature]
 Registered Civil Engineer

DESCRIPTION -

The land embraced in the annexed plot of the "Keys Realty Co's HALFWAY SMALL FARMS SUBDIVISION" of part of the E 1/2 of the N.E. 1/4 of Sec. 31 T14N, R15E, Erin Twp, Macomb Co., Michigan is described as follows:

Beginning at a point which is East 1625.0 ft along the north line of Sec. 31, T14N, R15E, from the North 1/2 East of said Sec. 31, thence S. 0° 16' W. 2647.91 ft. to a point in the East and West 1/2 line of said Sec. 31, thence S. 85° 50' E. along said 1/2 line 328.87 ft. to a point, thence N. 0° 24' E. 2647.91 ft. to a point in the north line of Sec. 31, thence West along said north line 330.0 ft. to the place of beginning.

KNOW ALL MEN BY THESE PRESENTS, That we the KEYS REALTY CO., a Michigan Corporation, by John F. KEYS, President and Ralph L. Aldrich, Secretary and Henry A. Geetz and Eleanor A. Geetz, his wife, as proprietors, have caused the land embraced in the annexed plot to be surveyed, laid out and plotted to be known as the "Keys Realty Co's HALFWAY SMALL FARMS SUBDIVISION" of part of the E 1/2 of the N.E. 1/4 of Sec. 31, T14N, R15E, Erin Twp, Macomb Co., Michigan, and that the streets and alleys as shown on said plan...



1	2	3	4	5	6	7	8	9	10	11	12	13	14	15	16	17	18	19
51	52	53	54	55	56	57	58	59	60	61	62	63	64	65	66	67	68	69
70	71	72	73	74	75	76	77	78	79	80	81	82	83	84	85	86	87	88
89	90	91	92	93	94	95	96	97	98	99	100	101	102	103	104	105	106	107
108	109	110	111	112	113	114	115	116	117	118	119	120	121	122	123	124	125	126
127	128	129	130	131	132	133	134	135	136	137	138	139	140	141	142	143	144	145
146	147	148	149	150	151	152	153	154	155	156	157	158	159	160	161	162	163	164
165	166	167	168	169	170	171	172	173	174	175	176	177	178	179	180	181	182	183
184	185	186	187	188	189	190	191	192	193	194	195	196	197	198	199	200	201	202
203	204	205	206	207	208	209	210	211	212	213	214	215	216	217	218	219	220	221
222	223	224	225	226	227	228	229	230	231	232	233	234	235	236	237	238	239	240
241	242	243	244	245	246	247	248	249	250	251	252	253	254	255	256	257	258	259
260	261	262	263	264	265	266	267	268	269	270	271	272	273	274	275	276	277	278
279	280	281	282	283	284	285	286	287	288	289	290	291	292	293	294	295	296	297
298	299	300	301	302	303	304	305	306	307	308	309	310	311	312	313	314	315	316
317	318	319	320	321	322	323	324	325	326	327	328	329	330	331	332	333	334	335
336	337	338	339	340	341	342	343	344	345	346	347	348	349	350	351	352	353	354
355	356	357	358	359	360	361	362	363	364	365	366	367	368	369	370	371	372	373
374	375	376	377	378	379	380	381	382	383	384	385	386	387	388	389	390	391	392
393	394	395	396	397	398	399	400	401	402	403	404	405	406	407	408	409	410	411
412	413	414	415	416	417	418	419	420	421	422	423	424	425	426	427	428	429	430
431	432	433	434	435	436	437	438	439	440	441	442	443	444	445	446	447	448	449
450	451	452	453	454	455	456	457	458	459	460	461	462	463	464	465	466	467	468
469	470	471	472	473	474	475	476	477	478	479	480	481	482	483	484	485	486	487
488	489	490	491	492	493	494	495	496	497	498	499	500	501	502	503	504	505	506
507	508	509	510	511	512	513	514	515	516	517	518	519	520	521	522	523	524	525
526	527	528	529	530	531	532	533	534	535	536	537	538	539	540	541	542	543	544
545	546	547	548	549	550	551	552	553	554	555	556	557	558	559	560	561	562	563
564	565	566	567	568	569	570	571	572	573	574	575	576	577	578	579	580	581	582
583	584	585	586	587	588	589	590	591	592	593	594	595	596	597	598	599	600	601
602	603	604	605	606	607	608	609	610	611	612	613	614	615	616	617	618	619	620
621	622	623	624	625	626	627	628	629	630	631	632	633	634	635	636	637	638	639
640	641	642	643	644	645	646	647	648	649	650	651	652	653	654	655	656	657	658
659	660	661	662	663	664	665	666	667	668	669	670	671	672	673	674	675	676	677
678	679	680	681	682	683	684	685	686	687	688	689	690	691	692	693	694	695	696
697	698	699	700	701	702	703	704	705	706	707	708	709	710	711	712	713	714	715
716	717	718	719	720	721	722	723	724	725	726	727	728	729	730	731	732	733	734
735	736	737	738	739	740	741	742	743	744	745	746	747	748	749	750	751	752	753
754	755	756	757	758	759	760	761	762	763	764	765	766	767	768	769	770	771	772
773	774	775	776	777	778	779	780	781	782	783	784	785	786	787	788	789	790	791
792	793	794	795	796	797	798	799	800	801	802	803	804	805	806	807	808	809	810
811	812	813	814	815	816	817	818	819	820	821	822	823	824	825	826	827	828	829
830	831	832	833	834	835	836	837	838	839	840	841	842	843	844	845	846	847	848
849	850	851	852	853	854	855	856	857	858	859	860	861	862	863	864	865	866	867
868	869	870	871	872	873	874	875	876	877	878	879	880	881	882	883	884	885	886
887	888	889	890	891	892	893	894	895	896	897	898	899	900	901	902	903	904	905
906	907	908	909	910	911	912	913	914	915	916	917	918	919	920	921	922	923	924
925	926	927	928	929	930	931	932	933	934	935	936	937	938	939	940	941	942	943
944	945	946	947	948	949	950	951	952	953	954	955	956	957	958	959	960	961	962
963	964	965	966	967	968	969	970	971	972	973	974	975	976	977	978	979	980	981
982	983	984	985	986	987	988	989	990	991	992	993	994	995	996	997	998	999	1000

Apr. 17, 1920

REARLY CO'S HALFWAY SMALL FARMS SUBDIVISION of part of the E. 1/2 of the N.E. 1/4 of Sec. 31, T.14N.R.13E, Brin Trwp Macomb Co. Michigan, and that the streets and alleys as shown on said plat are hereby dedicated to the use of the public.

Signed and Sealed in the presence of
by John F. Keys Pres.
John F. Keys Secy.
STATE OF MICHIGAN, L.S.
COUNTY OF MACOMB, L.S.

On this eight day of May, 1920, before me a Notary Public in and for said county, personally came the above named John F. Keys and Ralph L. Aldrich to me personally known, who being duly sworn did say that they are the President and Secretary respectively of the Keys Realty Co. a Michigan Corporation, and that the seal affixed to said instrument is the corporate seal of said corporation and that said instrument was signed and sealed in behalf of said corporation by authority of its Board of Directors and the said John F. Keys, and Ralph L. Aldrich acknowledged said instrument to be the free act and deed of said corporation.

My commission expires August 17, 1922
Notary Public John F. Keys Co. Mich.

This plat was approved by the Township Board of the Township of Brin at a meeting held April 22, 1920
George F. Thomsen
Township Clerk



This plat was approved by the County Board for Macomb County Michigan, at a meeting held May 22, 1920
John F. Keys Judge of Probate
John F. Keys County Clerk
John F. Keys County Treasurer

45	18	0
46	19	0
47	20	0
48	21	0
49	22	0
50	23	0
51	24	0
52	25	0
53	26	0
54	27	0
55	28	0
56	29	0
57	30	0
58	31	0
59	32	0
60	33	0
61	34	0
62	35	0
63	36	0
64	37	0
65	38	0
66	39	0
67	40	0
68	41	0
69	42	0
70	43	0
71	44	0
72	45	0
73	46	0
74	47	0
75	48	0
76	49	0
77	50	0
78	51	0
79	52	0
80	53	0
81	54	0
82	55	0
83	56	0
84	57	0
85	58	0
86	59	0
87	60	0
88	61	0
89	62	0
90	63	0
91	64	0
92	65	0
93	66	0
94	67	0
95	68	0
96	69	0
97	70	0
98	71	0
99	72	0
100	73	0

REGISTER'S OFFICE
COUNTY OF MACOMB
Booked for Record the 8th day of May, A.D. 1920, at 11:00 A.M.
by John F. Keys Notary Public
in the presence of John F. Keys and Ralph L. Aldrich

STATE OF MICHIGAN, L.S.
COUNTY OF MACOMB, L.S.
On this eight day of May, 1920, before me a Notary Public in and for said county, personally came the above named Henry A. Gaetz and Eleanor A. Gaetz, his wife, known to me to be the persons who executed the above dedication and acknowledge the same to be their free act and deed.

My commission expires August 17, 1922
Notary Public John F. Keys Co. Mich.

COUNTY TREASURERS CERTIFICATE.

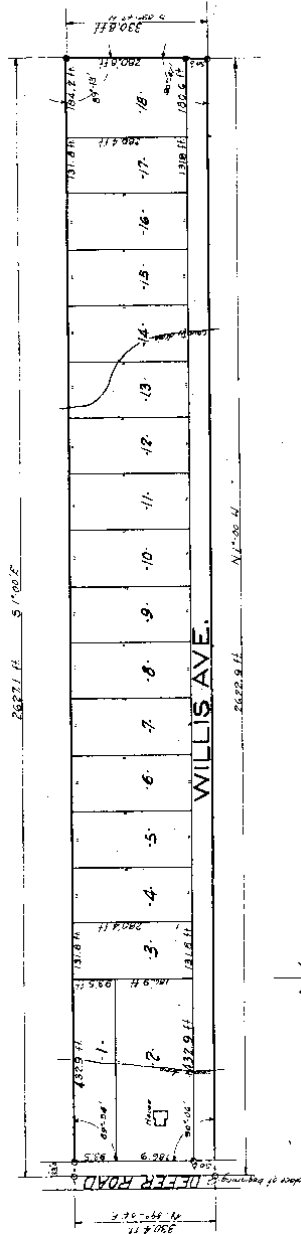
This is to Certify that there are no Tax Liens or Taxes levied by the State or any individual against and due of Taxes or debts described in the annexed list which have been paid FIVE YEARS prior to this date named, appearing in the records of this County Clerk.

May 22, 1920
John F. Keys
County Clerk

Ann L. Henney

E. W. EYSTER SUBDIVISION

WEST 1/2 OF EAST 1/2 OF WEST 1/2
OF NORTH EAST 1/4 SECTION
31, T. 1 N. R. 13 E., ERIN TOWN-
SHIP, MACOMB COUNTY, MICH.



ORDINANCE OF TOWNSHIP APPROVAL.

THIS PLAT WAS APPROVED BY THE TOWNSHIP BOARD OF THE
TOWNSHIP OF ERIN, MACOMB COUNTY, MICHIGAN, AT A MEETING HELD
AT THE OFFICE OF THE TOWNSHIP CLERK, ERIN, MICHIGAN, ON
MAY 12, 1927.

DECLARATION
KNOW ALL MEN BY THESE PRESENTS, that we *E. Louis M. Eyster*
William Eyster, his wife and Patricia Eyster, as grantors,
proprietors have caused the land shown in the annexed plat to be surveyed

L. 9
P. 230

*In Petition filed 64 P. 517.
The plat of Lot 18 and part of 17, Sub 12 of Plate on
See Petition for authorizing the division of Lot 2, Sub 127*

REQUISITION

KNOW ALL MEN BY THESE PRESENTS, that we Charles W. Lyette
Alvin Eyster, his wife and Peter B. Lyette
producers have caused the land embraced in the annexed plat to be surveyed
and out and parted, to be known as the Lyette Subdivision, and that the
division was made in accordance with the provisions of the Public
Act of March 27, 1906, and of Section 3, Chapter 24, Michigan Compiled
Statutes & shall be in presence of

Frederick W. Moore (L. S.)
Charles W. Lyette (L. S.)
Alvin E. Eyster (L. S.)

SEALS & SIGNED IN PRESENCE OF
County of Washtenaw, ss.
On this 21st day of March, 1914
before me, a Notary Public in and for said county, personally came the
above named persons, known to me to be the persons who executed the above
instrument, and acknowledged the same to be their free act and deed.
Frederick W. Moore
Notary Public, Washtenaw Co., Mich.
My Commission expires March 1, 1918.

DESCRIPTION.

The land embraced in the annexed plat of the EXETER SUBDIVISION, is
described as follows, commencing at the center of highway at the north
west corner of the east 1/2 of the west 1/2 of the north east 1/4 Sec. 31 T.
1 N. R. 13 E. (S.W. 1/4) and
thence 600 feet N. 89-00 E. of the
north 1/2 post of said highway to a post; thence S. 10-00 West along
the center of said highway to a post; thence S. 10-00 West along
to the 1/2 line running east & west through said section; thence 1 foot
S. 89-47 E. along said 1/2 line to a post; thence N. 12-00 W. 282.9
feet to place of beginning, containing 17.89 acres.

SURVEYOR'S CERTIFICATE.

I hereby certify that the plat hereon delineated is a correct one
and independent monuments, consisting of 14 galvanized gas pipe iron
lines, have been placed at points marked thus (O) as thereon shown at
all angles in the boundaries of the land platted, and all intersections
of streets.

W. J. Lyette County Surveyor.

CERTIFICATE OF POSSESSION APPROVAL.

This plat was approved by the Township Board of the
TOWNSHIP OF LYETTE, WASHTENAW COUNTY, MICHIGAN at a meeting held
on March 21st 1914
Charles W. Lyette
Chairman of Township Board.

COUNTY TREASURER'S CERTIFICATION.

Office of County Treasurer, Macomb County,
St. Clements, Mich. March 15 1914

I HEREBY CERTIFY that there are 22 tax liens or
titles held by the State on the lands described below, and that
there are 22 tax liens held by individuals on
said lands, for the five years preceding the date of
March 1st 1914 and that the taxes for said period of
five years are 22 paid, as shown by the records of this
office.

W. J. Lyette
County Treasurer.

BOARD OF SUPERVISORS APPROVAL.

This plat was approved by the Board of Supervisors of the
County of Macomb, State of Michigan at a meeting held
on March 31st 1914

John H. Lyette Chairman
W. J. Lyette Secretary

Approved by Board of Supervisors of Macomb County, Mich. on
March 31st 1914
W. J. Lyette
County Treasurer

L2 P. 230

ORDINANCE

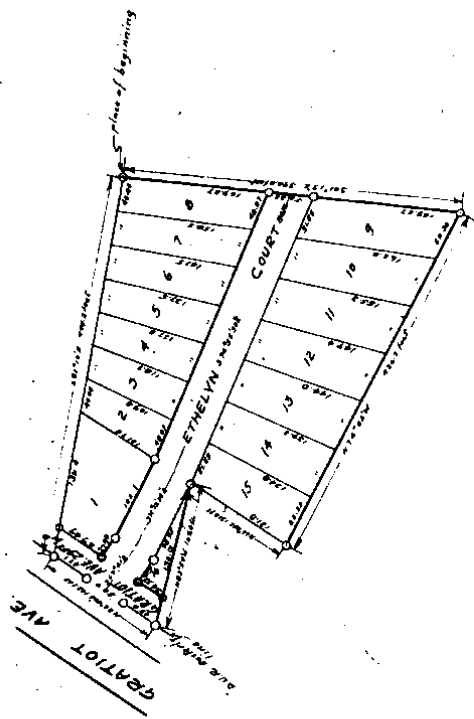
1917
J. P. H. H. H.

PLAT OF "CUTLER SUBDIVISION"

OF PART OF NE 1/4 OF NW 1/4 OF SEC. 31 T19N13E
ERIN TOWNSHIP, MACOMB COUNTY MICHIGAN

Scale 1 inch = 10000 feet.

Walter J. Lehner
County Engineer.



DEDICATION.

KNOW ALL MEN BY THESE PRESENTS, THAT WE Walter J. Lehner County Engineer and Walter J. Lehner his wife,
AS PROPRIETOR, AND THE ANNEXED PLAT TO BE SURVEYED, LAID
HAVE CAUSED THE LAND EMBRACED IN THE ANNEXED PLAT TO BE SURVEYED, LAID
AND PLATED TO BE KNOWN AS "CUTLER SUBDIVISION OF PART OF N.E. 1/4 OF
N.E. 1/4 OF SECTION 31, T19N13E, ERIN TOWNSHIP, MACOMB
COUNTY MICHIGAN, AND THAT THE STREETS AND ALLEYS AS SHOWN ON SAID PLAT
ARE HEREBY DEDICATED TO THE USE OF THE PUBLIC.

SIGNED AND SEALED IN PRESENCE OF _____

SURVEYORS CERTIFICATE.

I HEREBY CERTIFY THAT THE PLAT HEREON DELINEATED IS A CORRECT ONE
AND THAT PERMANENT MONUMENTS, CONSISTING OF 2" GALVANIZED PIPE 15" LONG
HAVE BEEN PLANTED AT POINTS MARKED THUS (O) AS THERON BURN AT ALL ANGLE
IN THE BOUNDARIES OF THE LAND PLATTED AND AT ALL INTERSECTIONS OF
STREETS OR STREETS AND ALLEYS.

SURVEYOR.

CERTIFICATE OF MUNICIPAL APPROVAL.

SURVEYOR.

CERTIFICATE OF MUNICIPAL APPROVAL.
THIS PLAT WAS APPROVED BY THE TOWNSHIP BOARD OF THE TOWNSHIP OF
ERIN AT A MEETING HELD SEPTEMBER 22 1919

[Signature]
CLERK.

This plat was approved by the Board of the National
County, Michigan, at its meeting held at the County Clerk's
office at Erin, Michigan, on the 22nd day of September,
1919.

COUNTY TREASURER'S CERTIFICATE.
This is to Certify That there are no Tax Liens or Liens
by the State or any individual against the Tracts or Lots
described in the annexed plat and that the same have been
paid in the date hereof, according to the records of my
office.

SIGNED AND SEALED IN PRESENCE OF THE PUBLIC.

STATE OF MICHIGAN } 98
COUNTY OF Washtenaw }

ON THIS 22nd DAY OF September 1919 BEFORE ME,
A NOTARY PUBLIC IN AND FOR SAID COUNTY, PERSONALLY CAME THE ABOVE NAMED
Erin AND his wife KNOWN TO ME TO BE
THE PERSONS WHO EXECUTED THE ABOVE DEDICATION, AND ACKNOWLEDGED THE
SAME TO BE THEIR FREE ACT AND DEED.

NOTARY PUBLIC
MY COMMISSION EXPIRES 1920 CO. MICH.

DESCRIPTION.
THE LAND EMBRACED IN THE ANNEXED PLAT OF CUTLER SUBDIVISION OF PART OF
N.E. 23 OF N.W. 23 OF SECTION 31, T. 12 N., R. 23 W., 11th TOWNSHIP RECORDS
COUNTY OF MICHIGAN, BEING THE SAME AS DESCRIBED IN TOWNSHIP RECORDS
N. 17 - 131 E. OF THE NORTH 1/4 COR. OF SAID SECTION 31, T. 12 N., R. 23 W.,
300.8 FEET, THENCE N. 70° - 02' W. 436.7 FEET, THENCE N. 26° - 08' E. 131.8 FEET,
THENCE N. 84° - 50' W. 169.0 FEET TO EASTERLY LINE OF RAPID RAILWAY COMPANY'S
RIGHT OF WAY, THENCE N. 26° - 40' E. 142.1 FEET, THENCE S. 67° - 10' E. 448.3 FEET
TO THE POINT OF BEGINNING.

REGISTERS OFFICE
COUNTY OF MICHIGAN
Recorded for Record this 22nd day
of Sept A.D. 1919
at Erin in the 13 of Washtenaw
County, Michigan.
[Signature]

127

8-19-1911

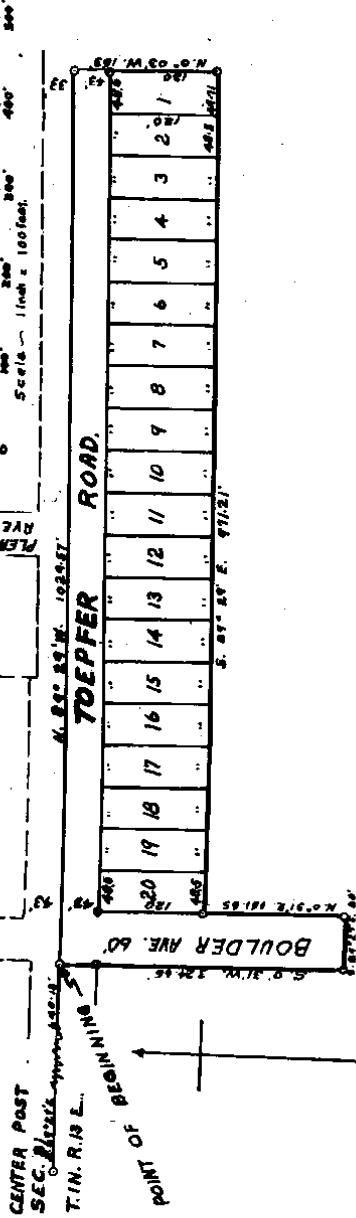
WELCOME HOMES SUB.

OF PART OF S.E. 1/4 OF SEC. 31 T.19.N.R.13E.

CITY OF EAST DETROIT MACOMB COUNTY MICH.

104332

All dimensions in feet and decimals thereof.



Map of Welcome Homes Sub.

DEDICATION

KNOW ALL MEN BY THESE PRESENTS, that we
 Joseph Burk, Marion Burk, his wife
 F.K. Steinlein and Marie Steinlein,
 his wife

do hereby certify that the land embraced in the annexed plat to be surveyed, laid out and platted, to be known as WELCOME HOMES SUB., of part of S. E. 1/4 of Sec. 31, T.19. N. 13 E., City of East Detroit, Macomb County, Mich., and that the street and alleys as shown on said plat are hereby dedicated to the use of the public.

Signed and Sealed in the Presence of

SURVEYOR'S CERTIFICATE

I hereby certify that the plat herein attached is a correct one and that permanent metal monuments consisting of bars not less than one-half inch in diameter and 48 inches in length, or shorter bars of not less than one-half inch in diameter topped over each other, or an iron nail length of not less than 48 inches, entered in a concrete cylinder not less than one-half inch in diameter and 48 inches in length have been placed at points marked (A), (B), (C), (D), (E), (F), (G), (H), (I), (J), (K), (L), (M), (N), (O), (P), (Q), (R), (S), (T), (U), (V), (W), (X), (Y), (Z), (AA), (AB), (AC), (AD), (AE), (AF), (AG), (AH), (AI), (AJ), (AK), (AL), (AM), (AN), (AO), (AP), (AQ), (AR), (AS), (AT), (AU), (AV), (AW), (AX), (AY), (AZ), (BA), (BB), (BC), (BD), (BE), (BF), (BG), (BH), (BI), (BJ), (BK), (BL), (BM), (BN), (BO), (BP), (BQ), (BR), (BS), (BT), (BU), (BV), (BW), (BX), (BY), (BZ), (CA), (CB), (CC), (CD), (CE), (CF), (CG), (CH), (CI), (CJ), (CK), (CL), (CM), (CN), (CO), (CP), (CQ), (CR), (CS), (CT), (CU), (CV), (CW), (CX), (CY), (CZ), (DA), (DB), (DC), (DD), (DE), (DF), (DG), (DH), (DI), (DJ), (DK), (DL), (DM), (DN), (DO), (DP), (DQ), (DR), (DS), (DT), (DU), (DV), (DW), (DX), (DY), (DZ), (EA), (EB), (EC), (ED), (EE), (EF), (EG), (EH), (EI), (EJ), (EK), (EL), (EM), (EN), (EO), (EP), (EQ), (ER), (ES), (ET), (EU), (EV), (EW), (EX), (EY), (EZ), (FA), (FB), (FC), (FD), (FE), (FF), (FG), (FH), (FI), (FJ), (FK), (FL), (FM), (FN), (FO), (FP), (FQ), (FR), (FS), (FT), (FU), (FV), (FW), (FX), (FY), (FZ), (GA), (GB), (GC), (GD), (GE), (GF), (GG), (GH), (GI), (GJ), (GK), (GL), (GM), (GN), (GO), (GP), (GQ), (GR), (GS), (GT), (GU), (GV), (GW), (GX), (GY), (GZ), (HA), (HB), (HC), (HD), (HE), (HF), (HG), (HH), (HI), (HJ), (HK), (HL), (HM), (HN), (HO), (HP), (HQ), (HR), (HS), (HT), (HU), (HV), (HW), (HX), (HY), (HZ), (IA), (IB), (IC), (ID), (IE), (IF), (IG), (IH), (II), (IJ), (IK), (IL), (IM), (IN), (IO), (IP), (IQ), (IR), (IS), (IT), (IU), (IV), (IW), (IX), (IY), (IZ), (JA), (JB), (JC), (JD), (JE), (JF), (JG), (JH), (JI), (JJ), (JK), (JL), (JM), (JN), (JO), (JP), (JQ), (JR), (JS), (JT), (JU), (JV), (JW), (JX), (JY), (JZ), (KA), (KB), (KC), (KD), (KE), (KF), (KG), (KH), (KI), (KJ), (KK), (KL), (KM), (KN), (KO), (KP), (KQ), (KR), (KS), (KT), (KU), (KV), (KW), (KX), (KY), (KZ), (LA), (LB), (LC), (LD), (LE), (LF), (LG), (LH), (LI), (LJ), (LK), (LL), (LM), (LN), (LO), (LP), (LQ), (LR), (LS), (LT), (LU), (LV), (LW), (LX), (LY), (LZ), (MA), (MB), (MC), (MD), (ME), (MF), (MG), (MH), (MI), (MJ), (MK), (ML), (MN), (MO), (MP), (MQ), (MR), (MS), (MT), (MU), (MV), (MW), (MX), (MY), (MZ), (NA), (NB), (NC), (ND), (NE), (NF), (NG), (NH), (NI), (NJ), (NK), (NL), (NM), (NO), (NP), (NQ), (NR), (NS), (NT), (NU), (NV), (NW), (NX), (NY), (NZ), (OA), (OB), (OC), (OD), (OE), (OF), (OG), (OH), (OI), (OJ), (OK), (OL), (OM), (ON), (OO), (OP), (OQ), (OR), (OS), (OT), (OU), (OV), (OW), (OX), (OY), (OZ), (PA), (PB), (PC), (PD), (PE), (PF), (PG), (PH), (PI), (PJ), (PK), (PL), (PM), (PN), (PO), (PP), (PQ), (PR), (PS), (PT), (PU), (PV), (PW), (PX), (PY), (PZ), (QA), (QB), (QC), (QD), (QE), (QF), (QG), (QH), (QI), (QJ), (QK), (QL), (QM), (QN), (QO), (QP), (QQ), (QR), (QS), (QT), (QU), (QV), (QW), (QX), (QY), (QZ), (RA), (RB), (RC), (RD), (RE), (RF), (RG), (RH), (RI), (RJ), (RK), (RL), (RM), (RN), (RO), (RP), (RQ), (RR), (RS), (RT), (RU), (RV), (RW), (RX), (RY), (RZ), (SA), (SB), (SC), (SD), (SE), (SF), (SG), (SH), (SI), (SJ), (SK), (SL), (SM), (SN), (SO), (SP), (SQ), (SR), (SS), (ST), (SU), (SV), (SW), (SX), (SY), (SZ), (TA), (TB), (TC), (TD), (TE), (TF), (TG), (TH), (TI), (TJ), (TK), (TL), (TM), (TN), (TO), (TP), (TQ), (TR), (TS), (TT), (TU), (TV), (TW), (TX), (TY), (TZ), (UA), (UB), (UC), (UD), (UE), (UF), (UG), (UH), (UI), (UJ), (UK), (UL), (UM), (UN), (UO), (UP), (UQ), (UR), (US), (UT), (UU), (UV), (UW), (UX), (UY), (UZ), (VA), (VB), (VC), (VD), (VE), (VF), (VG), (VH), (VI), (VJ), (VK), (VL), (VM), (VN), (VO), (VP), (VQ), (VR), (VS), (VT), (VU), (VV), (VW), (VX), (VY), (VZ), (WA), (WB), (WC), (WD), (WE), (WF), (WG), (WH), (WI), (WJ), (WK), (WL), (WM), (WN), (WO), (WP), (WQ), (WR), (WS), (WT), (WU), (WV), (WW), (WX), (WY), (WZ), (XA), (XB), (XC), (XD), (XE), (XF), (XG), (XH), (XI), (XJ), (XK), (XL), (XM), (XN), (XO), (XP), (XQ), (XR), (XS), (XT), (XU), (XV), (XW), (XZ), (YA), (YB), (YC), (YD), (YE), (YF), (YG), (YH), (YI), (YJ), (YK), (YL), (YM), (YN), (YO), (YP), (YQ), (YR), (YS), (YT), (YU), (YV), (YW), (YZ), (ZA), (ZB), (ZC), (ZD), (ZE), (ZF), (ZG), (ZH), (ZI), (ZJ), (ZK), (ZL), (ZM), (ZN), (ZO), (ZP), (ZQ), (ZR), (ZS), (ZT), (ZU), (ZV), (ZW), (ZX), (ZY), (ZZ).

Joseph H. Arzette
 Registered Land Surveyor (Professional Engineer)
 Adolph H. Arzette

APPROVAL BY BOARD OF COUNTY ROAD COMMISSIONERS

This plat has been examined and was approved on the _____ day of _____ 19____ by the _____ County Board of Road Commissioners.

Joseph H. Arzette
 Registered Land Surveyor (Professional Engineer)
 Adolph H. Arzette

Registered Land Surveyor (Professional Engineer)
August H. Arden

APPROVAL BY BOARD OF COUNTY ROAD COMMISSIONERS

This plat has been examined and was approved on the
day of _____, 19____ by the _____
County Board of Road Commissioners.

N. P. Rund (Chairman)
Wm. E. Malow (Member)
Roy Conner (Member)

MUNICIPAL APPROVAL

This plat was approved by the _____ City Council
of the _____ City of East Detroit
on _____, 19____
at a meeting held _____

Stephan R. Henderson (Chair)

APPROVAL BY COUNTY BOARD

This plat was approved on the _____ day of _____, 19____
by _____
Henry B. Brines (County Register of Deeds)
Roy V. _____ (County Clerk)
Wm. G. Miller (County Treasurer)

This is being returned to the owner of the land on the ground that the plat was not filed for record in the County of Macomb, Michigan, on the _____ day of _____, 19____.

General James J. Miller
CERTIFIED AS TO PLATE E.P. 284



REGISTERS OFFICE
County of Macomb
Filed for Record _____
in _____
on _____
at _____

S. E. 1/4 of Sec. 31, T1N., R13E., City of East Detroit,
Macomb County, Mich.,
and that the street and alleys as shown on said plat are hereby dedicated to the use of
the public.

Signed and Sealed in
the presence of:
Joseph Buck (Witness)
S. Reinstein (Witness)
Marie Reinstein (Witness)

ACKNOWLEDGMENT

STATE OF MICHIGAN
County of _____
On this _____ day of _____, 19____, before me,
a Notary Public in and for said County, personally appearing _____
Joseph Buck, Merion Buck, S. Reinstein, and
Marie Reinstein, all N.A.S. wife.

Knows to me to be the person who executed the above dedication, and acknowledged
the same to be their free act and deed.
Wald Thurgel
Notary Public
My Commission expires _____, Dec. 18, 1945.

DESCRIPTION OF LAND PLATTED

The land embraced in the enclosed plat of "WELCOME HOMESITE"
of part of S. E. 1/4 of Sec. 31, T1N., R13E., City of East
Detroit, Macomb County, Mich.,
is described as follows:

Commencing at the center post of Sec. 31, T1N., R13E.,
City of East Detroit, Macomb County, Mich., thence S.
89° 29' E 640.15 feet to the point of beginning, thence S.
0° 31' W 594.65 feet, thence S. 89° 29' E 60 feet,
thence N. 0° 03' W 161.65 feet, thence S. 89° 29' E 971.21 feet,
thence N. 0° 03' W 163 feet, thence N. 89° 29' W 1029.57
feet to the point of beginning.

See Reinstein filed not recorded 2/25/2

Assessor of the City of East Detroit, Macomb County, State of Michigan, under Act 172 of 1929, having been duly authorized by the City of East Detroit to cause this land described in the annexed plat to be surveyed and to cause the same to be recorded in the public records of the State of Michigan, do hereby certify that the person who executed the above annexed plat is the person who executed the same and that the same is a true and correct copy of the original as the same appears on the records of the City of East Detroit, Macomb County, Michigan, and that the streets and alleys shown thereon have been acquired by dedication and adverse possession.

ATTEST:

Walter J. Gagnier
 Assessor of the City of East Detroit

Walter J. Gagnier
 Assessor of the City of East Detroit

STATE OF MICHIGAN }
 COUNTY OF MACOMB } ss.
 I, the undersigned, Mayor of the City of East Detroit, do hereby certify that the person who executed the above annexed plat is the person who executed the same and that the same is a true and correct copy of the original as the same appears on the records of the City of East Detroit, Macomb County, Michigan, and that the streets and alleys shown thereon have been acquired by dedication and adverse possession.

On this 12th day of May, A. D. 1942, before me, the undersigned, Mayor of the City of East Detroit, known to me to be the person who executed the above annexed plat, and in the presence of the undersigned, the Mayor of the City of East Detroit, known to me to be the person who executed the same and that the same is a true and correct copy of the original as the same appears on the records of the City of East Detroit, Macomb County, Michigan, and that the streets and alleys shown thereon have been acquired by dedication and adverse possession.

By commission expires 1943
Walter J. Gagnier
 Mayor of the City of East Detroit

CERTIFICATE OF MUNICIPAL APPROVAL
 This plat was approved by the City Council of the City of East Detroit at a meeting held April 12, 1942
Stephen H. Anderson
 Stephen H. Anderson, City Clerk

CERTIFICATE OF APPROVAL BY COUNTY BOARD
 This plat was approved on the 12th day of April, 1942.
Miss L. Nicket
 Miss L. Nicket, Register of Deeds
Walter J. Gagnier
 Walter J. Gagnier, County Clerk
Carl E. Wrenschmayer
 Carl E. Wrenschmayer, County Treasurer
 Examined and Approved
Walter J. Gagnier
 Mayor of the City of East Detroit

RECORDS OFFICE
 County of Macomb
 Received for Record on
 of JUN 23 1942 A. D. 19
 at 12:23 o'clock P. M. and Registered
 in Vol. 23 of Plat and
 in Page 27
Walter J. Gagnier
 County Clerk

SURVEYOR'S CERTIFICATE
 I hereby certify that the plat heron delineated is a correct one and that the same is a true and correct copy of the original as the same appears on the records of the City of East Detroit, Macomb County, Michigan, and that the same is a true and correct copy of the original as the same appears on the records of the City of East Detroit, Macomb County, Michigan, and that the streets and alleys shown thereon have been acquired by dedication and adverse possession.

Walter J. Gagnier
 Surveyor

CERTIFICATE OF APPROVAL BY COUNTY BOARD
 This plat was approved on the 12th day of April, 1942.
Miss L. Nicket
 Miss L. Nicket, Register of Deeds
Walter J. Gagnier
 Walter J. Gagnier, County Clerk
Carl E. Wrenschmayer
 Carl E. Wrenschmayer, County Treasurer
 Examined and Approved
Walter J. Gagnier
 Mayor of the City of East Detroit

RECORDS OFFICE
 County of Macomb
 Received for Record on
 of JUN 23 1942 A. D. 19
 at 12:23 o'clock P. M. and Registered
 in Vol. 23 of Plat and
 in Page 27
Walter J. Gagnier
 County Clerk

Plat No. 23 of 1942
 This plat was approved by the City Council of the City of East Detroit at a meeting held April 12, 1942.
Stephen H. Anderson
 Stephen H. Anderson, City Clerk

Plat No. 23 of 1942
 This plat was approved by the City Council of the City of East Detroit at a meeting held April 12, 1942.
Stephen H. Anderson
 Stephen H. Anderson, City Clerk

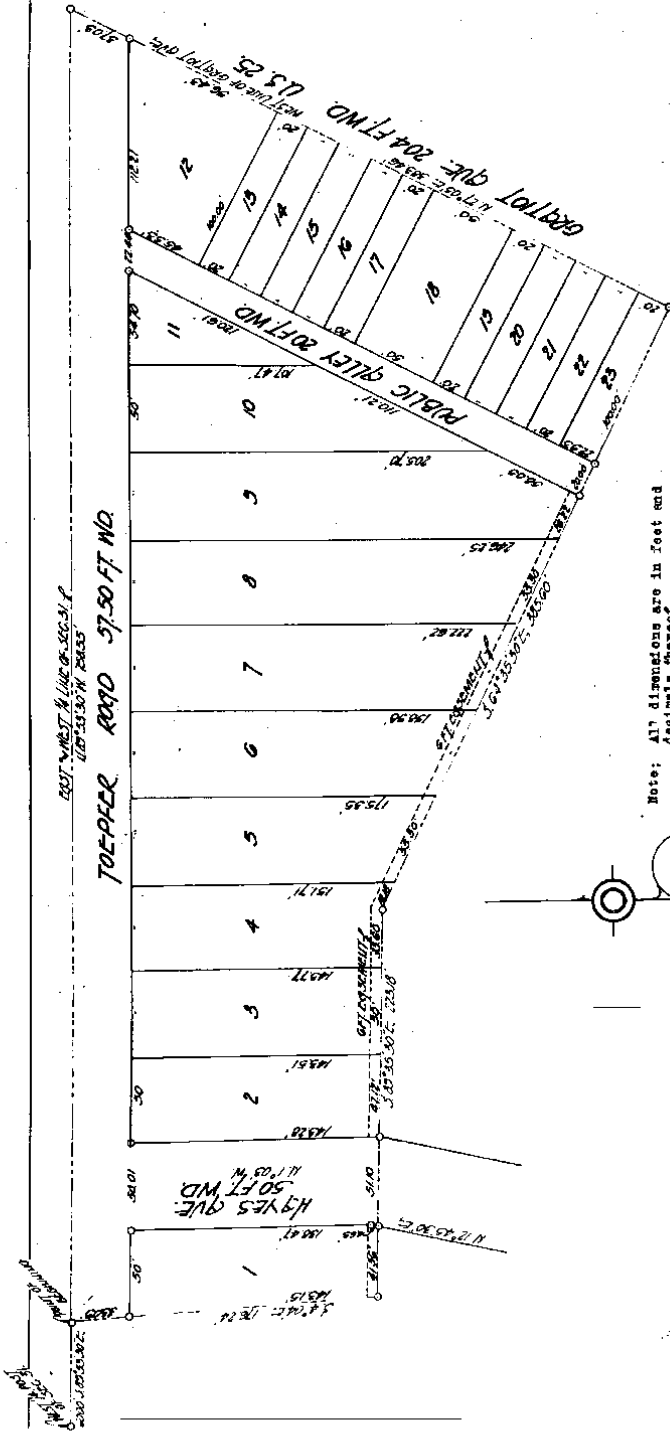
15063

ASSESSOR'S PLAT OF COUNLIER ESTATE

OF PART OF THE 1/4 OF 31/4 OF SECTION 31, T.14.R.15.E.,
CITY OF EAST DETROIT, MACOMB CO. MICH.

JUN 4 10 25 AM '41

A.C. OLMSTED
REG. LAND SURVEYOR
25 WEST WATSON ST. DETROIT, MICH.



Note: All dimensions are in feet and decimals thereof.

DESCRIPTION OF LAND PLATTED.

The land embraced in the annexed plat of "ASSESSOR'S PLAT OF COUNLIER ESTATE" of part of the N 1/4 of S 1/4 of S 34 1/2 T. 14. R. 15. E., City of East Detroit, Macomb County, Mich. is described as follows, to-wit: Beginning at a point a distance of 60.00 feet S 89° 53' 30" E of the N 1/4 post of Section 31, T. 14. R. 15. E., City of East Detroit, Macomb County, Mich.; thence S 4° 04' E a distance of 176.24 feet; thence S 89° 53' 30" E a distance of 228.19 feet; thence S 64° 26' 30" E a distance of 285.50 feet; thence W 84° 41' 21" E a distance of 285.50 feet; thence N 84° 41' 21" E a distance of 285.50 feet; thence S 89° 53' 30" E a distance of 60.00 feet to the beginning point.

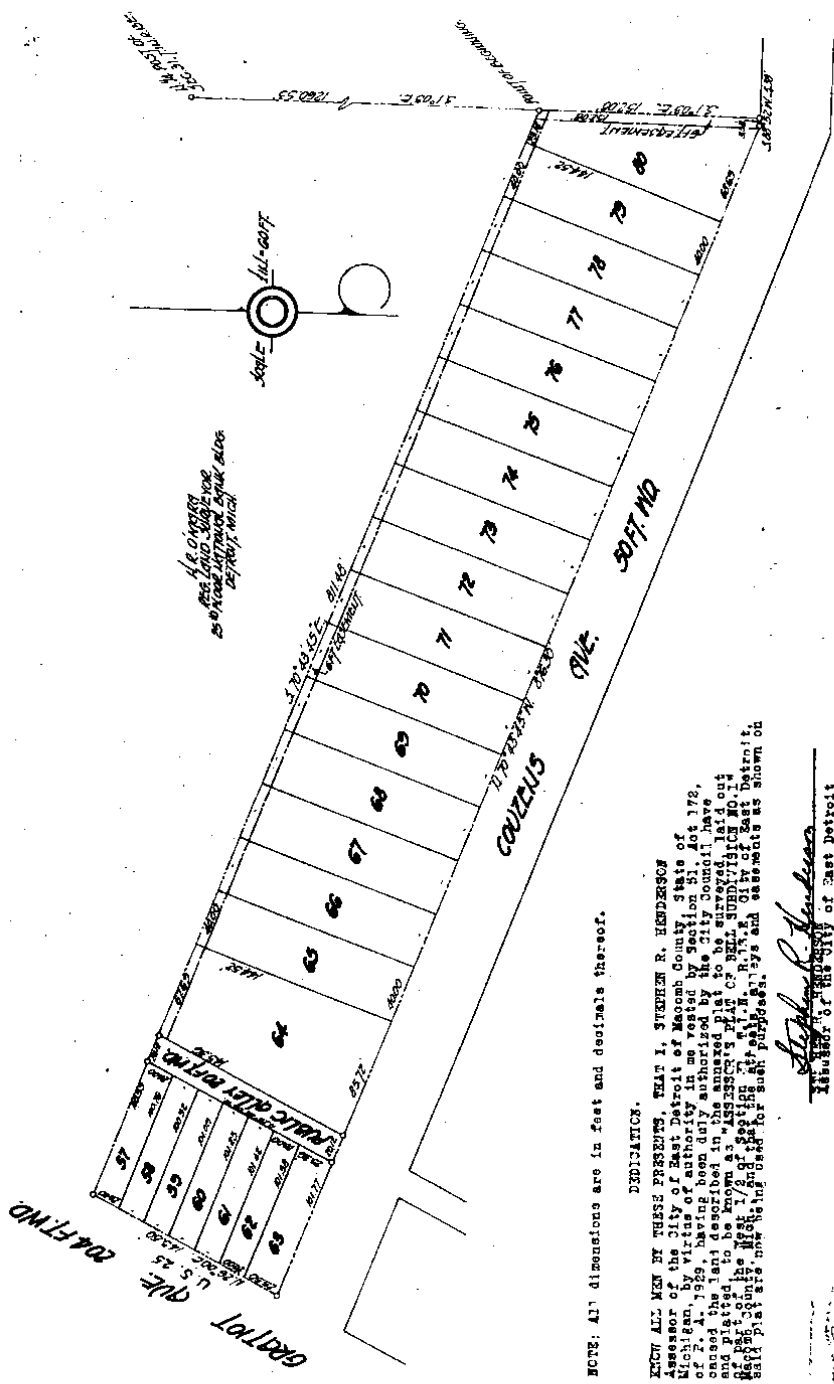
DEDICATION.

BEING ALL LOTS BY THESE PLATTED, THAT I, STEPHEN A. HENDERSON, Assessor of the City of East Detroit, Michigan, by virtue of authority in me vested by Section 31 of the Act of March 15, 1906, having been duly authorized by the City Council have caused the land described in the annexed plat to be surveyed, laid out and platted, to the best of my knowledge and belief, in accordance with the provisions of the Act of March 15, 1906, and the same is hereby dedicated to the public use of the City of East Detroit, Michigan.

ASSESSOR'S PLAT OF BELL SUBDIVISION No. 1

OF PART OF THE WEST 1/2 OF SECTION 31, T14R.19E.,
CITY OF EAST DETROIT, MACOMB COUNTY, MICH.

12-1-58



NOTE: All dimensions are in feet and decimals thereof.

RECITATION
 KNOW ALL MEN BY THESE PRESENTS, THAT I, STEPHEN R. HENDERSON, Assessor of the City of East Detroit, Macomb County, State of Michigan, by virtue of authority vested in me by the City Council of East Detroit, Michigan, having been duly authorized by the City Council of East Detroit, Michigan, to do so, have caused the land described in the annexed plat to be surveyed, laid out and plotted to be known as "ASSESSOR'S PLAT OF BELL SUBDIVISION NO. 1" and the same to be located in the City of East Detroit, Macomb County, Michigan, and the same to be shown on said plat to be now being used for such purposes, by and assented to as shown on

SURVEYOR'S CERTIFICATE.

I hereby certify that the plat herein delineated is a correct one and that permanent metal monuments were set in accordance with the plat in diameter and fifteen inches in length set in concrete bases at least four inches in diameter and forty-eight inches in depth there being placed at least

Stephen R. Henderson
 Assessor of the City of East Detroit

Edward M. Schutte
 Edward M. Schutte
 ACKNOWLEDGMENT.

ACKNOWLEDGMENT.
I, Edward R. Schalte, Assessor of the City of East Detroit, do hereby certify that the above described plat was duly filed in my office on this 22nd day of March, 1941.

On this 22nd day of March, A.D. 1941, before me, a Notary Public in and for said county, the above named STEPHEN R. HENDERSON, Assessor of the City of East Detroit, known to me to be the person who executed the above dedication, and acknowledged the same to be his free act and deed as such Assessor. My commission expires February 22, 1942.

DESCRIPTION OF LAND PLATTED.
The land embraced in the annexed plat of "ASSESSOR'S MAP OF BELL SUBDIVISION NO. 1" of Part of the West 1/2 of Section 31, T11S, R13E, B13W, East Detroit, Macomb County, Michigan, is that portion of said Section 31, that is bounded on the West by the West 1/4 of said Section 31, that is a distance of 5.38 feet; on the East by a distance of 152.28 feet; on the South by a distance of 145.50 feet; and on the North by a distance of 811.48 feet to the point of beginning.

REGISTRY'S OFFICE
County of Macomb
Received for Record this 22nd day of MAY 9, 1941 A.D. 10
in Liber 22 of 1941
at 10:00 a.m.
of East Detroit
on Page 11
Witness my hand and seal this 22nd day of May, 1941
Register

SURVEYOR'S CERTIFICATE.

I hereby certify that the plat hereon delineated is a correct one and that permanent metal monuments of not less than one inch in diameter and fifteen inches in length are placed at least four inches in diameter and forty-eight inches in length at the corners of the plat as thereon shown at all points where the boundaries of the land platted, at all intersections of streets and at the intersections of streets with the boundaries of the plat as shown on said plat.

E. R. O'MARA, Registered Land Surveyor.

CERTIFICATE OF MUNICIPAL APPROVAL.

This plat was approved by the City Council of the City of East Detroit, Macomb County, Mich., at a public hearing held on January 29, A.D. 1941.

STEPHEN R. HENDERSON, City Clerk.

CERTIFICATE OF APPROVAL BY BOARD OF PUBLIC WORKS ROAD COMMISSIONERS.

This plat was examined and approved on the 25th day of March, A.D. 1941.

HARRY W. V. DUMLEY, Chairman

WYOM S. FINDER, Vice-Chairman

CERTIFICATE OF APPROVAL BY COUNTY BOARD

This plat was approved on the 25th day of March, A.D. 1941.

JOHN J. PATTERSON, Judge of Probate

JOHN W. BROWN, County Clerk

CHARLES R. BRADENBURG, County Treasurer

Examined and Approved

Edmond E. K...
Notary Public

Having read with care and examined the above described plat and finding that the same conforms to the laws of Michigan, I hereby approve the same.

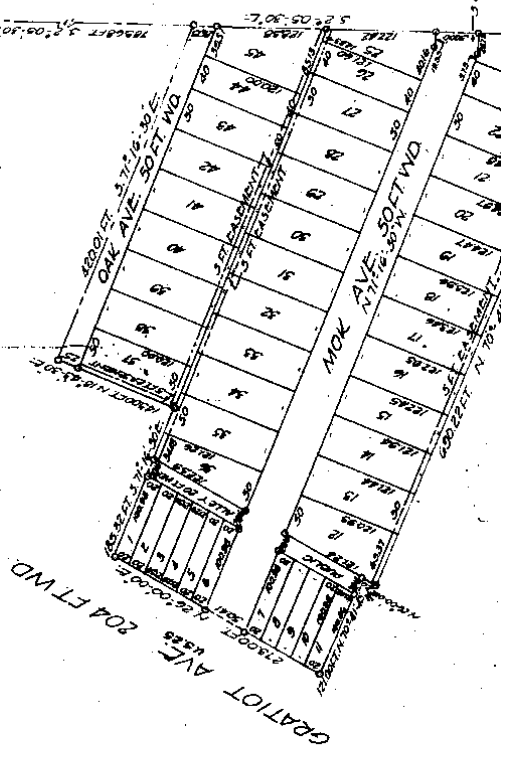
6737

SPENS SUBDIVISION

OF PART OF N.W. 1/4 SEC. 31 N.R. 13 E.
CITY OF EAST DETROIT
MACOMB CO. MICH.

SCALE - 1 inch = 100 feet
NOTE - ALL DIMENSIONS ARE IN FEET AND DECIMALS THEREOF

Examined and Approved
[Signature]
C. V. HARTMAN
Deputy Register General



DESCRIPTIONS OF LAND PLATED

The land embraced in the annexed plat of "Spens Subdivision" of part of the N.W. 1/4 of Section 31, T. 1 N., R. 13 E., City of East Detroit, Macomb Co., Mich., is described as follows: Beginning at a point as described in the plat of the N. 1/4 of said Section 31; thence S. 25° 05' 30" E. 474.85 ft.; thence S. 01° 00' 41" E. 48" W. 690.22 ft.; thence N. 25° 00' E. 23.00 ft.; thence N. 70° 41' 45" W. 121.00 ft.; thence N. 25° 00' 00" E. 273.00 ft.; thence S. 16° 00' E. 185.32 ft.; thence N. 19° 21' 40" E. 145.00 ft.; thence S. 71° 16' 30" E. 483.01 ft. to the point of beginning.

DEDICATION

KNOW ALL MEN BY THESE PRESENTS, That we Christ E. Kales, of the County of Macomb, State of Michigan, do hereby certify that the Spens Subdivision as shown on said plat are hereby dedicated to the use of the public.

SIGNED AND SEALED IN THE PRESENCE OF

16-1917
 Chas. J. Smith

1072

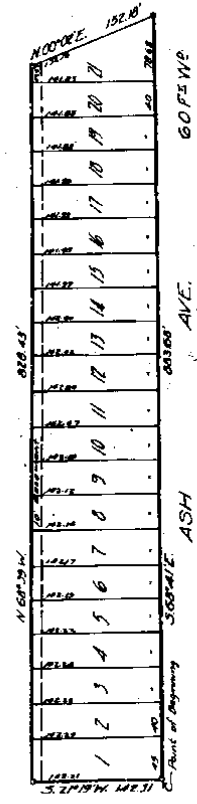
GIRARD GARDENS SUBDN.

OF PART OF THE NW 1/4 SEC. 31, T41N R13E.

VILLAGE OF HALFWAY MICHIGAN.

MACOMB CO.

Scale 400'-1"



H.P. OMARA,
 Reg. Civil Engr.
 HALFWAY, MICH.

KNOW ALL MEN BY THESE PRESENTS that Henry Girard and Christine Girard his wife

do hereby certify that the above described lots are the same as those shown on the plat of the GIRARD GARDENS SUBDN. laid out and platted by the said Henry Girard and Christine Girard his wife, on the 1st day of April, 1927, in the County of Macomb, Michigan, and that the streets and alleys as shown on said plat are hereby dedicated to the use of the public.

SIGNED AND SEALED IN PRESENCE OF:

Richard A. Wain (L.S.)
Paul E. Leach (L.S.)
Richard A. Wain (L.S.)
Paul E. Leach (L.S.)
 _____ (L.S.)
 _____ (L.S.)
 _____ (L.S.)

STATE OF MICHIGAN, } ss
 County of Macomb

On this 1st day of April, 1927, before me a Notary Public in and for said County of Macomb, the above named Henry Girard and Christine Girard his wife known to me to be the persons who executed the above dedication and acknowledged the same to be their free act and deed.

REGISTER'S OFFICE
 County of Macomb
 Received for Record this 17th day
 of May, A.D. 1927, at
 in Liber 12 of Chas. J. Smith and Referred
 on Page 24

REGISTERS OFFICE
County of Macomb, Mich.

Received for Record this 17th day
of July, A.D. 1927, at
11:54 o'clock P.M. and becoming
in Liber 24 of CLAD
on Page 34 at Clad
George S. Hartney Register

County of Macomb, Mich.

On this 1st day of April, 1927, before me a Notary Public in
and for said county, personally appeared the above named
George S. Hartney and Charles E. Hartney
known to me to be the persons who executed the above dedication and
acknowledged the same to be their free act and deed.
George S. Hartney
Notary Public
My Commission expires May 23rd 1930

DESCRIPTION OF LAND EMPOWERED

The land embraced in the annexed plat of "WARD ENDERS SUB'D E" of part of the Sec. 31, T.12 N. R. 13 E., Village of Halfway Macomb Co., Michigan is described as follows: Beginning at the intersection of the center line of Ash Avenue which is 9.68 dec. 41' E. a distance of 291.12 ft. from N.W. corner of Gerlach's Subdivision (a recorded plat) of part of the N.W. 1/4 of Sec. 31, T.12 N. R. 13 E., Village of Halfway, Macomb Co., Michigan thence S. 68 deg. 41' E. a distance of 883.60 ft. thence S. 20 deg. 02' E. a distance of 162.18 ft. thence N. 65 deg. 39' W. a distance of 828.43 ft. thence S. 21 deg. 19' W. a distance of 442.21 ft. to the point of beginning.

ENGINEER'S CERTIFICATE

I hereby certify that the plat hereon delineated is a correct one and that permanent metal monuments of not less than one inch in diameter and fifteen inches in length set in concrete bases at least four inches in diameter and forty-eight inches in depth have been placed at points marked thus (o) as thereon shown at all angles in the boundaries of the land platted, at all the intersections of streets, intersections of alleys, or of streets and alleys, and at the intersections of streets and alleys with the boundaries of the plat as shown on said plat.

Albina
REGISTERED CIVIL ENGINEER

CERTIFICATE OF MUNICIPAL APPROVAL

This plat was approved by the Village Commission of the Village of Halfway at a meeting held March 30, 1927

Arthur J. West



George S. Hartney
Charles E. Hartney

James L. Elliott
3-1927

I hereby certify that the plat herein delineated is a correct one, and that persons mentioned therein are the owners of the lots shown thereon, and that the same are the owners of the land platted, and of all intersections of streets or alleys.

James G. Gillett
REGISTERED CIVIL ENGINEER

CERTIFICATE OF MUNICIPAL APPOINTMENT

This plat was approved by the Village Commission of the Village of Halfway at a meeting held on the day of August, 1925 A.D.

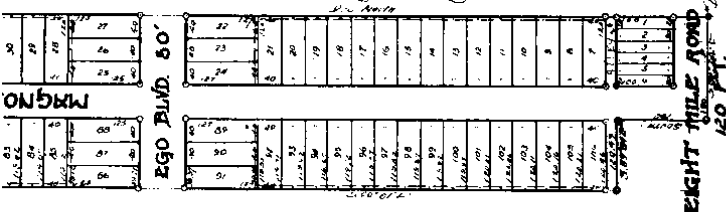
CLERK

235450

Aug. 25 25 James G. Gillett

August 25 1925

James G. Gillett
REGISTERED CIVIL ENGINEER



EIGHT MILE ROAD
120 FT.

The land embraced in the annexed plat of DREW AND MALDEN'S 2017 VISTA SUBDIVISION of part of the E 1/4 of the S.W. 1/4 Sec. 21 Village of Halfway, Macomb Co., Mich. is described as follows: Beginning at the S. 1/4 post Sec. 21 T1N 21S E Village of Halfway, Macomb Co., Mich. Thence North a distance of 234.6 ft. Thence N 88° 44' a distance of 297.5 ft. Thence S 00° 01' a distance of 219.0 ft. Thence S 89° 24' a distance of 180.89 ft. Thence S a distance of 180.0 ft. Thence S 89° 24' a distance of 180.0 feet to the point of beginning.

RECEIVED BY THE CITY OF KANSAS
Received for Record this 22nd day of August, 1925 A.D. Registered in Lib. 606.654 and Recorded on Page 5 of Book 1000
James G. Gillett
REGISTERED CIVIL ENGINEER

LID 117

GERLACH'S RIDGEMONT SUBDN.

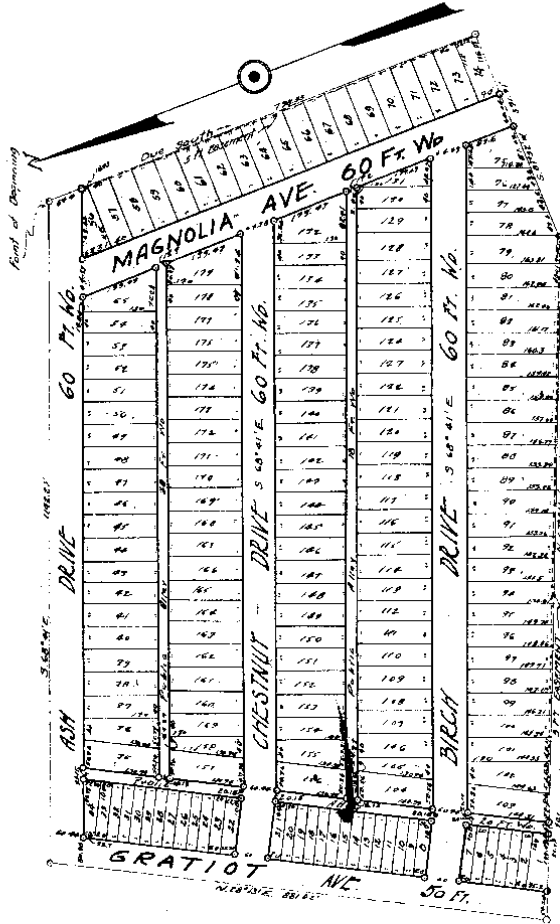
OF PART OF THE W 1/2 SEC. 31.

VILLAGE OF HALFWAY MACOMB CO. MICH.

SCALE - 1" = 150'

4409

May 29-1925
J. F. Hammer



CERTIFICATE OF MUNICIPAL APPROVAL
This plan was approved by the Village Commission of the
Village of Halfway at a meeting held May 1, 1925.

DEDICATION
I, J. F. HAMMER, Surveyor, do hereby certify that the above described
lots have been dedicated to the public use of the Village of Halfway
and that the same are subject to the provisions of the Village Ordinance
relating to the dedication of public property.

L. 9
P. 25

See Plat of date 1 to 36, 102 to 105, 155 to 158 and
160 to 163 of this series.

CERTIFICATE OF MUNICIPAL APPROVAL
This plat was approved by the Village Commission of the Village of Halfway at a meeting held May 1, 1925
Village Clerk

DEVELOPER
I, JAMES C. BERRY, Notary Public for Macomb County, Michigan, do hereby certify that the above plat was duly filed for record in the office of the Register of Deeds for Macomb County, Michigan, on this 27th day of May, 1925, at 10:30 A.M., and that the same is a true and correct copy of the original as the same appears on the books of said Register of Deeds.

Signer and Sealed in the presence of
Gerrit Zerkow L.S.
L.S.
L.S.
L.S.
L.S.
L.S.
L.S.
L.S.
L.S.
L.S.

STATE OF MICHIGAN) SS
COUNTY OF MACOMB)
On this 27th day of May, A.D. 1925, before me a Notary Public in and for said County, personally came the above named _____ and acknowledged the same to be their free act and deed.

My Commission expires _____
NOTARY PUBLIC _____
ENGINEER'S CERTIFICATE
I hereby certify that the plat hereon delineated is a correction and that permanent monuments consisting of 2 1/2" iron pipe six feet long have been placed at all points where the lines intersect and at all intersections at all angles in the boundaries of the lots plat and at all intersections of streets or streets and alleys.

STATE OF MICHIGAN) SS
COUNTY OF MACOMB)
On this 27th day of May A.D. 1925 before me a Notary Public in and for said County, personally came the above named _____ and _____ his wife known to me to be the persons who executed the above dedication and acknowledged the same to be their free act and deed.
My Commission Expires _____

DESCRIPTION
The land embraced in the annexed plat of GERRIT'S HEREDITARY SUBDIVISION of part of the W. 1/2 of Sec. 31, Village of Halfway, Erin Twp., Macomb Co., Mich. is described as follows:
Beginning at a point on the north and north quarter line of Sec. 31, T. 36 N. R. 23 W. 1/2, Erin Twp., Macomb Co., Mich., which is South 84° 15' E. a distance of 170.00 ft. to the corner of Sec. 31, Thence South a distance of 798.55 ft. to the corner of Sec. 31, Thence North 84° 15' E. a distance of 170.00 ft. to the corner of Sec. 31, Thence N. 26° 13' E. a distance of 681.02 ft. Thence S. 68° 41' E. a distance of 1142.23 ft. to the point of beginning.

REGISTER'S OFFICE
County of Macomb
Received for Record this _____ day of _____ A.D. 1925, at _____ o'clock A.M. and Recorded in Liber _____ of _____ on Page _____

COUNTY TREASURER'S RECEIPT
I have received of _____ the sum of _____ Dollars for the fee on the above described plat, and I have thereupon recorded the same in the office of the Register of Deeds for Macomb County, Michigan, on this _____ day of _____ A.D. 1925.

Notary Public
James C. Berry
Notary Public
My Commission Expires _____

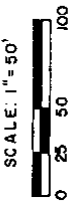
L 9 7 25

COUNTY OF MACOMB
 (Registered for Record)
 August 14, 1967
 recorded in Vol. 58 of Plat. in
 at Page 3

"GERLACH SUB NO. 2"

PART OF N.W. 1/4 OF SEC. 31, T.1N., R.13E.8
 PART OF N.E. 1/4 OF SEC. 36, T.1N., R.12E.,
 CITY OF EAST DETROIT, MACOMB CO., MICHIGAN

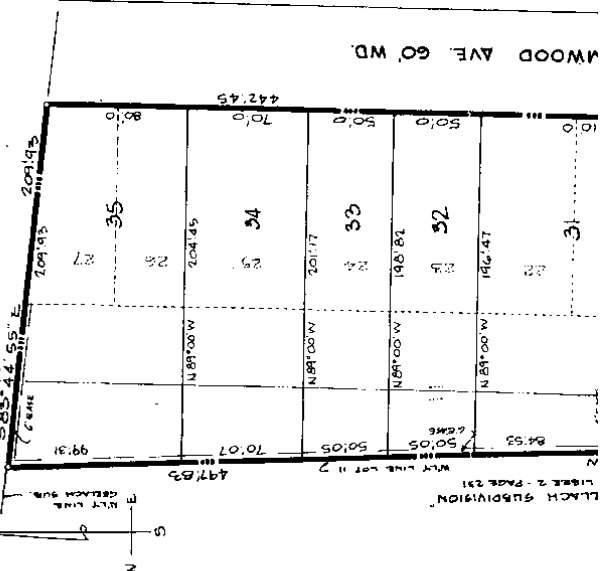
LEHNER ASSOCIATES INC.
 REG. CIVIL ENG. & SURVEYORS
 MT. CLEMENS, MICHIGAN



DESCRIPTION OF LAND PLATTED

The land embraced in the annexed plat of "Gerlach Sub No. 2", a replat of "Gerlach Subdivision #1", as recorded in Liber 28 of Plats, Page 4 of Macomb County Records, part of the N.W. 1/4 of Sec. 31, T.1N., R.13E., and Lot 11 of Gerlach Subdivision, as recorded in Liber 2 of Plats, Page 231, Macomb County Records, part of the N.W. 1/4 of Sec. 31, T.1N., R.13E., & part of the N.E. 1/4 of Sec. 36, T.1N., R.12E., City of East Detroit, Macomb County, Michigan, is described as follows: Commencing at a point on the Westerly section line 24.75 feet N. 17° 20' E. from the West Quarter Four of said Sec. 31, and thence extending S. 89° 00' W. 25.40 feet; thence N. 1° 32' 53" W. 477.83 feet along the Westerly line of said Lot 11; thence S. 85° 04' 53" E. 209.75 feet along the Northernly line of Gerlach Subdivision; thence S. 1° 08' 05" W. 442.45 feet; thence S. 31° 00' W. 40.18 feet; thence N. 89° 00' W. 140.40 feet along the Northernly line of Toepfer Road to the point of beginning. This plat contains Lots 28 thru 35 inclusive.

HALF-WAY LITTLE FARMS #11
 LIBER 3 - PAGE 143



DEDICATION

KNOW ALL MEN BY THESE PRESENTS, That we Albert Puzualli and Catherine Puzualli, his wife and Antonio Cateracci and Anna Cateracci, his wife and Marco Bertoldi, a single man, survivor of himself and his deceased wife Catherine Bertoldi, whose death certificate is recorded in Liber 1779, Page 373, Macomb County Records, as proprietors, have caused the land embraced in the annexed plat to be surveyed, laid out and platted, to be known as "Gerlach Sub No. 2",

T.1N., R.13E., & part of the N.E. 1/4 of Sec. 36, T.1N., R.12E., City of East Detroit, Macomb Co., Michigan, and that the streets as shown on said plat are dedicated to the use of the public.

Signed and Sealed in Presence of:

Joseph Puzualli
 JOSEPH PUZUALLI

KATHRYN PUZUALLI
 KATHRYN PUZUALLI

Antonio Cateracci
 ANTONIO CATERACCI

Anna Cateracci
 ANNA CATERACCI

Marco Bertoldi
 MARCO BERTOLDI

James E. Shannon
 JAMES E. SHANNON

Albert Puzualli
 ALBERT PUZUALLI
 15023 Toepfer Road
 East Detroit, Michigan 48021

Catherine Puzualli
 CATHERINE PUZUALLI
 15023 Toepfer Road
 East Detroit, Michigan 48021

Antonio Cateracci
 ANTONIO CATERACCI
 21801 Elmwood Avenue
 East Detroit, Michigan 48021

Anna Cateracci
 ANNA CATERACCI
 21801 Elmwood Avenue
 East Detroit, Michigan 48021

Marco Bertoldi
 MARCO BERTOLDI
 O.S.I.

5085 PLAT NO. 28
 LIBER 2 - PAGE 231

*all of Subdiv. Sub #1
 to Part 11 Subdiv. Sub
 (you copy from)
 per phone*

NOTE:
 All dimensions are in feet and decimals thereof.
 All easements shown are private easements for public utilities and drainage.

"ASSESSORS PLAT NO. 38"

OF LOTS 7 8 8 AND PART OF LOT 9 OF GERLACH SUB'N. PART OF THE N.W. 1/4 OF SEC. 31, T. 1 N., R. 13 E., CITY OF EAST DETROIT, MACOMB CO., MICH.

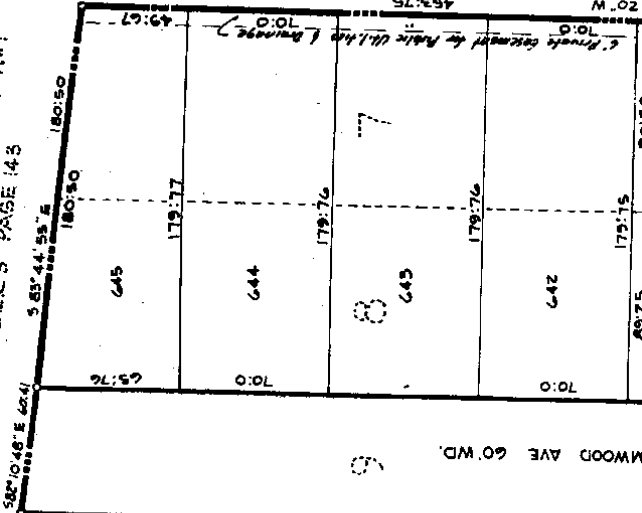
EXAMINED AND APPROVED
Date 11/28/2016
By OTIS W. SMITH
MULTIPLE GENERAL
By [Signature]
By [Signature] P.M.T. ENGINEER

NOTE:
All dimensions are in feet
and decimals thereof.

SCALE: 1" = 40'
0 40 80 120

468583

"HALEWAY LITTLE FARMS NRI"
LIBER 3 PAGE 143



LENNER ASSOCIATES INC.
REG. CIVIL ENG. & SURVEYORS
MT. CLEMENS, MICHIGAN

DEDICATION

KNOW ALL MEN BY THESE PRESENTS, That [Signature], Assessor of the City of East Detroit of Macomb County, State of Michigan, by virtue of authority in me vested by Section 51, Act 172, of 1929, having been duly authorized by the City Council have caused the land described in the enclosed plat to be surveyed, laid out and platted, to be known as "Assessor's Plat No. 38" of Lots 7 & 8 and part of Lot 9 of Gerlach Sub'n., part of the N.W. 1/4 of Sec. 31, T. 1 N., R. 13 E., City of East Detroit, Macomb Co., Mich., and that the streets as shown on said plat are now being used for such purposes.

Witness:

[Signature]
Danis Administrator
[Signature]
Thomas Miller

STATE OF MICHIGAN) ss.
COUNTY OF MACOMB)

ACKNOWLEDGMENT

On this 11th day of November, A.D. 1916, before me, a Notary Public in and for said county, personally came the above named Assessor of the City of East Detroit, known to me to be the person who executed the above dedication, with acknowledged the same to be his free act and deed as such Assessor.

My Commission expires 11/11/17
Notary Public, Macomb County, Michigan.

DESCRIPTION OF LAND PLATTED

The land embraced in the annexed plat of "Assessor's Plat No. 38" of Lots 7 & 8 and part of Lot 9 of Gerlach Sub'n., part of the N.W. 1/4 of Sec. 31, T. 1 N., R. 13 E., City of East Detroit, Macomb Co., Mich., is described as follows: Commencing at a point 140.40 feet S. 89°-00'E. and 24.75 feet N. 1°-17'-20"E. of the West 1/4 Part of said Section 31, T. 1 N., R. 13 E., and thence extending N. 31°-00'E. 40.18 feet; thence N. 1°-08'-05"E. 442.45 feet; thence S. 82°-10'-48"E. 60.41 feet; thence S. 83°-44'-55"E. 180.50 feet; thence S. 1°-08'-20"W. 453.75 feet; thence N. 89°-00"W. 259.75 feet to the point of beginning.

This Plat contains Lots 640 to 645 inclusive.

SURVEYOR'S CERTIFICATE

I hereby certify that the plat hereon delineated is a correct one and that permanent metal monuments consisting of bars not less than one-half inch in diameter and 26 inches in length, enclosed in a concrete cylinder of 4 inches diameter and 26 inches in length have been placed at each marked thus (C)

11/28/16
11:58 AM

I hereby certify that the plat hereon delineated is a correct one and that permanent metal monuments consisting of bars not less than one-half inch in diameter and 36 inches in length, secured in a concrete cylinder at least 4 inches in diameter and 36 inches in depth have been placed at points marked (A) as hereon shown at all angles in the boundaries of the land plat, and at the intersections of the lines of streets, and at the intersections of the lines of streets with the boundaries of the plat of town and said plat.

John D. Lahr
Registered Land Surveyor
No. 5787

CERTIFICATE OF APPROVAL BY BOARD OF COUNTY ROAD COMMISSIONERS

This plat has been examined and was approved on the _____ day of _____ 19____ by the Macomb County Board of Road Commissioners.

Lawrence Oshoke Chairman *Keith Boyerschen* Vice-Chairman *Ernest W. MacCallister* Member

CERTIFICATE OF MUNICIPAL APPROVAL

This plat was approved by the Common Council of the City of East Detroit at a meeting held _____

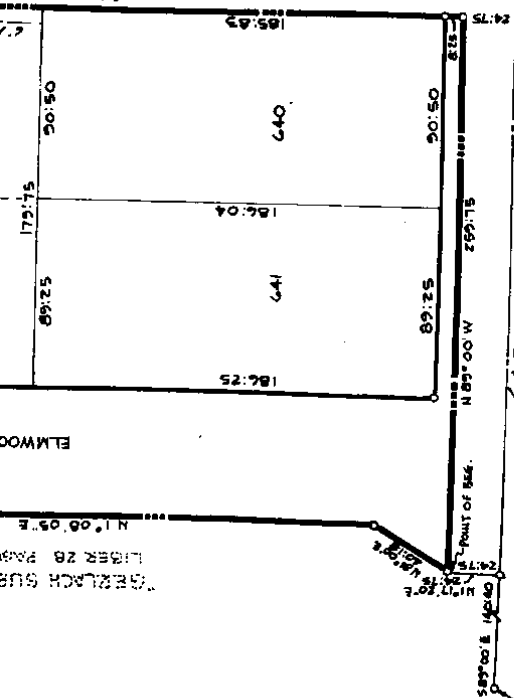
Charles H. B...
Clerk

CERTIFICATE OF APPROVAL BY COUNTY BOARD

This plat was approved on the 18th day of March 1960 by the Macomb County Board.

James B... Register of Deeds
Albert A. Wagner County Clerk
Frank E. Lahr Joint Commissioner

SEARCHED
SERIALIZED
INDEXED
FILED



RECEIVED FOR RECORD
COUNTY OF MACOMB
March 31, 1960
at 8:50 o'clock P.M. and recorded
in Vol. 46 of 1960, on
Page 39
James B... Register of Deeds

L46 P39

Signed and sealed in the presence of

John H. Sawyer
John H. Sawyer
Town of Sawyer

Adam Belli
Adam Belli

ACKNOWLEDGEMENT

STATE OF MICHIGAN } ss.
County of Macomb }

On this 11th day of September, A.D. 1956 before me a Notary Public in and for said county appeared Adam Belli's widow, known to me to be the person who executed the above dedication, and acknowledged same to be his free act and deed.

My Commission expires October 30, 1956.

Notary Public, John H. Sawyer,
Town of Sawyer, Co., Mich.
Sitting in Macomb County

CERTIFICATE OF MUNICIPAL APPROVAL

This plat was approved by the City Council of the City of East Detroit of Macomb County, Michigan at a meeting held October 11, 1956.

Charles Herubion
Charles Herubion (Clerk)

DESCRIPTION OF LAND PLATTED

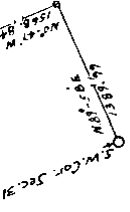
The land embraced in the annexed plat of "ADAM BELLI SUBD'N." is part of the 34 of Section 11, T. 14. N. R. 15. E., East Detroit, Macomb Co., Michigan, a replat of Lot 269 of ASSESSORS PLAT NO. 17, East Detroit, Macomb Co., Michigan, is described as follows:

Commencing at the S.W. Corner of Sec. 11, T. 14. N. R. 15. E. thence N. 69°-58'12" E. 1369.99 feet, thence N. 0°-47' 15" E. 1538.24 feet, thence S. 0°-30' 17" W. 474.9 feet, thence N. 0°-09' 47" W. 426.63 feet to the point of beginning thence S. 65°-03' 14" W. 350.16 feet, thence S. 117°-28' feet, thence S. 88°-57' 12" E. 262.6 feet, thence S. 0°-03' 14" W. 240.4 feet to the point of beginning, consisting of lots 1 to 3 incl.

SURVEYOR'S CERTIFICATE

I hereby certify that the plat hereon delineated is a correct one and that permanent metal monuments consisting of bars of not less than one-half inch in diameter and thirty-six inches in length enclosed in a concrete cylinder at least 4 inches in diameter and thirty-six inches in depth have been placed at points marked thus (a) thereon shown at all angles in the boundaries of the land platted, at all the intersections of the streets, intersections of alleys, or of streets and alleys, and at the intersections of streets and alleys with the boundaries of the plat as shown on said plat.

Harry J. Fuller
Harry J. Fuller, Registered Land Surveyor



CERTIFICATE OF APPROVAL BY COUNTY BOARD
This plat was approved on the 11th day of September, 1956.

Arman Burr
Arman Burr (County Register of Deeds)
Albert Wagner
Albert Wagner (County Clerk)
Lynn Whalen
Lynn Whalen (County Treasurer)
Frank Lehr
Frank Lehr (County Drain Commissioner)

THIS IS TO CERTIFY THAT I HAVE RECORDED THIS PLAT IN THE PUBLIC RECORDS OF THIS COUNTY AND THAT THE SAME IS A TRUE AND CORRECT COPY OF THE ORIGINAL AS FILED IN MY OFFICE.
Lynn Whalen, MACOMB COUNTY CLERK

L-38 P.12

"RIDGEMONT GOLF COURSE SUBDIVISION No 1"

OF PART OF THE S.E. 1/4 OF SEC. 31, T.1N., R.1E.,

CITY OF EAST DETROIT, MACOMB CO., MICHIGAN.

1633032

JAN 18 3 14 PM '54

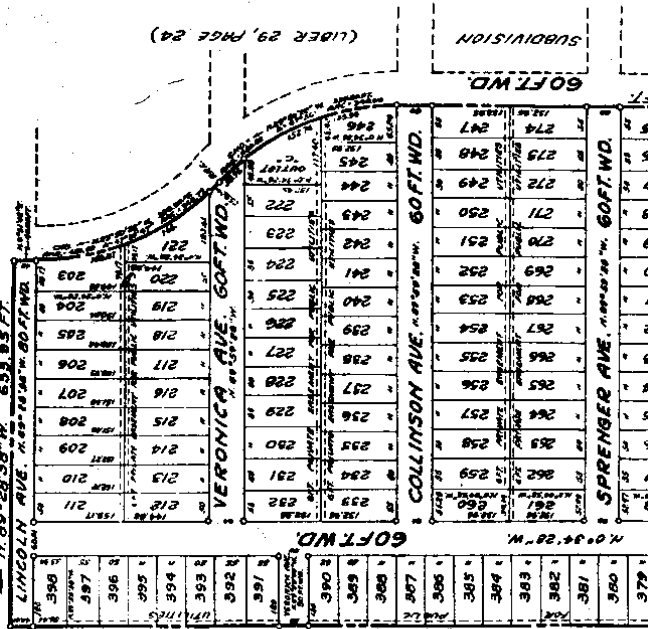
MASON L. BROWN & SON
CIVIL ENGINEERS & SURVEYORS
150 MADISON AVENUE
DETROIT 25, MICHIGAN.

NOTE: Dimensions herein are in feet and
decimals thereof. All curvilinear
dimensions are shown along the arc.

SCALE: 1/4" = 10 FT.



WELCOME HOMES SUB. 1112
(Liber 25, Page 2)



In Disobedience of Restrictions Deed 932 of Deed Book 599 in City

State of Michigan, Wayne Co., Mich.
Gladys Gollard
Notary Public

ACKNOWLEDGMENT

State of Michigan } ss.
County of Wayne }

On this 27th day of January, 1954, before me, a Notary Public in and for said County, appeared Myron Scheffman and Fred Bankle, who being each by me duly sworn did say that they are the President and Secretary respectively of Model Home, Inc. Michigan Corporation, and that the deal affixed to said instrument is the corporate seal of said Corporation and that said instrument was signed and sealed in behalf of said Corporation by authority of its Board of Directors and the said Myron Scheffman and Fred Bankle acknowledged said instrument to be the free act and deed of said Corporation.

My commission expires January 22, 1954
Myron Scheffman
Myron Scheffman, President
Fred Bankle, Secretary
Notary Public, Wayne Co., Mich.

CERTIFICATE OF COUNTY APPROVAL

We hereby certify that this plat was approved by the Macomb County Plat Board at a meeting held on the 2nd day of January, 1953.

Frank E. Lohr
Frank E. Lohr, Co. Clerk Commissioner
Albert A. Wagner
Albert A. Wagner, County Clerk

APPROVAL OF BOARD OF COUNTY ROAD COMMISSIONERS

This plat has been examined and was approved on the day of _____, 1953, by the Macomb County Board of Road Commissioners.

Ray Connor
Ray Connor, Chairman
Wm. E. Malow
Wm. E. Malow, Member
Alfred Footner
Alfred Footner, Vice Chairman

**REGISTRY OFFICE
COUNTY OF MACOMB**

Received for Record
January 14, 1954
John W. Smith
John W. Smith, M., and recorded
in Vol. 27 of Plats, on
1-14-54
Charles E. Smith
Charles E. Smith
Register of Deeds

THIS IS TO CERTIFY THAT APPROVED IN THE COUNTY TREASURER'S OFFICE HERE AND BY THE CLERK OF THE COUNTY AND THE COUNTY CLERK OF THE COUNTY OF MACOMB, MICHIGAN, ON THE 14th day of January, 1954, at Macomb, Michigan.
Charles E. Smith
Charles E. Smith, Register of Deeds
John W. Smith
John W. Smith, M., and recorded
in Vol. 27 of Plats, on
1-14-54

Original

"ASSESSORS PLAT NO. 23" OF PART OF THE W1/2 OF SEC. 31 T. 1 N. R. 13 E. CITY OF EAST DETROIT MACOMBO CO. MICH.

69150

SCALE: 1" = 50'

NOTE: ALL MEASUREMENTS ARE IN FEET AND DECIMALS THEREOF

HARRY J. FULLER
REGISTERED CIVIL ENGINEER
MICH.
AT CLEMENS

INDICATION

BEFORE ALL MEN BY THESE PRESENTS, That I, Charles Beaudin, Assessor of the City of East Detroit, Macomb County, State of Michigan, by virtue of authority in me vested by Section 26 of the Act relating to the assessment of property in the City of East Detroit, have caused the land described in the above plat to be surveyed, laid out, and platted to be known as "ASSESSORS PLAT NO. 23" of part of the E. 1/2 of Sec. 31, T. 1 N. R. 13 E., City of East Detroit, Macomb Co., Mich., and that the streets as shown on said plat have been acquired by deed and application.

WITNESSES:

Edward J. Goff
Charles Beaudin
Assessor of the City of East Detroit

ACKNOWLEDGMENT

STATE OF MICHIGAN)
County of Macomb)

On this 19th day of February, A.D. 1954, before me a Notary Public in and for said County, personally came the above named Charles Beaudin, Assessor of the City of East Detroit, Michigan, who acknowledged to me to be the person who executed the above dedication and acknowledged the same to be his free act and deed as such Assessor.

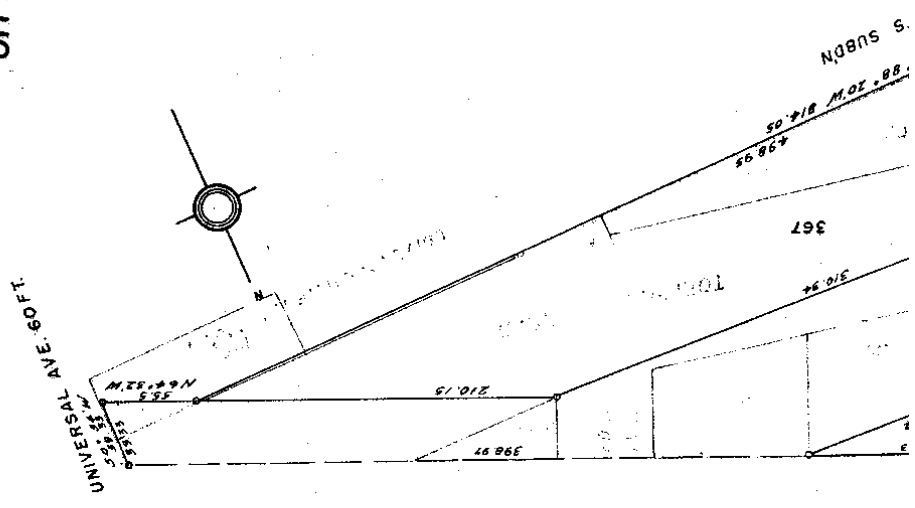
Edwin A. May
Notary Public in and for said County

My commission expires February 10, 1954

DESCRIPTION OF LAND PLATTED

The land embraced in the annexed plat of "ASSESSORS PLAT NO. 23" of part of the E. 1/2 of Sec. 31, T. 1 N. R. 13 E., City of East Detroit, Macomb County, Mich., being a replat of lots 286 to 288 inclusive and relocation of Popper Road and closing of Soda Ave., and Part of the E. 1/2 of Sec. 31, T. 1 N. R. 13 E., City of East Detroit, Macomb Co., Mich., and more fully described as follows:

Commencing at the S.W. corner of Sec. 31, T. 1 N. R. 13 E., thence N 89 degrees 59' E 189.99 feet, thence N 0 degrees 47' W 166.64 feet, thence N 0 degrees 50' W 454.3 feet, thence N 0 degrees 03' E 502.6 feet to the point of beginning, thence N 0 degrees 01' E 252.17 feet, thence N 88 degrees 56' W 57.27 feet, thence N 28 degrees N 269.52 feet, thence S 84 degrees 34' E 228 feet, thence S 0 degrees 54' W 39.33 feet, thence N 64 degrees 28' W 80.5 feet, thence N 88 degrees 20' W 515.05 feet to the point of beginning.



thence S 84 degrees 35' 30" East, thence S 0 degrees 27' 30" East, thence N 64 degrees 38' 55.5" East, thence N 80 degrees 20' 0" West to the point of beginning.

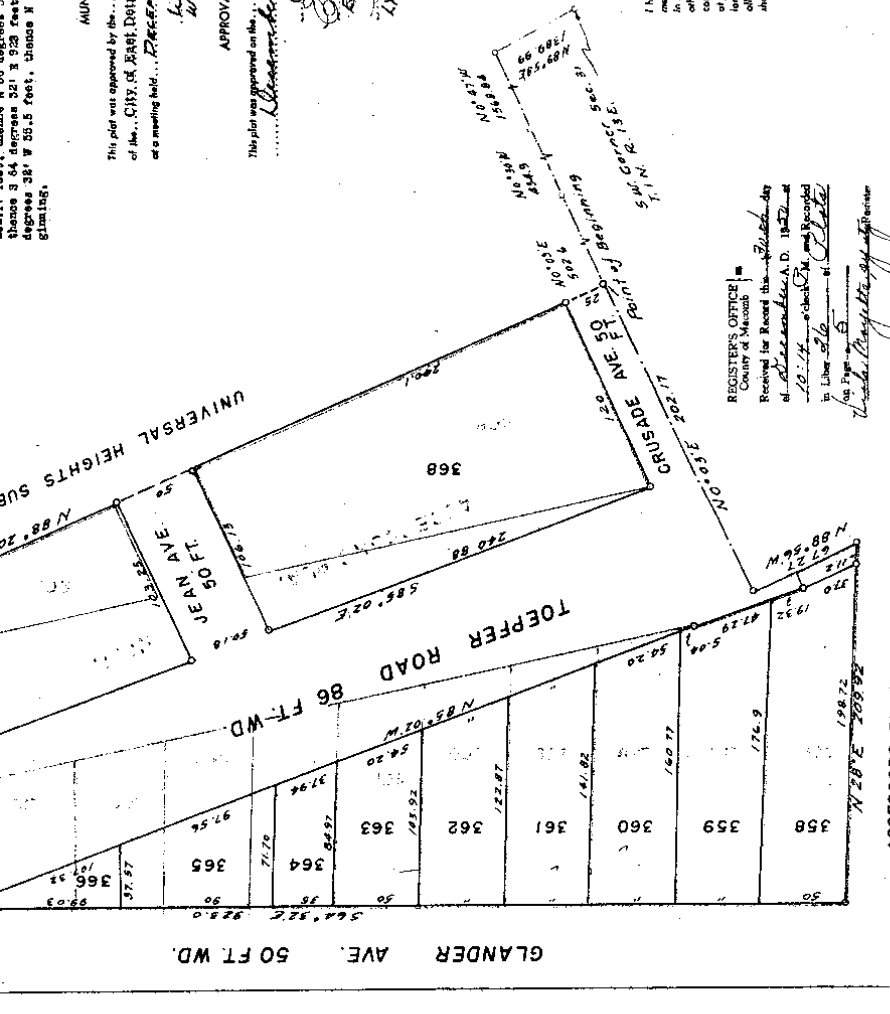
MUNICIPAL APPROVAL
 This plat was approved by the City Council of the City of East Detroit, Michigan, at a meeting held on December 18, 1950 by W. F. Williams (City Clerk)

APPROVAL BY COUNTY BOARD
 This plat was approved on the 19 day of December, 1950 by James J. Ryan (County Register of Deeds), Charles H. ... (County Clerk), ... (County Treasurer), and Ann ... (County Auditor)

Examined and Approved
Maxwell J. ...
 County Auditor (Official)

SURVEYOR'S CERTIFICATE
 I hereby certify that the plat hereon submitted is a correct one and that permanent metal monuments consisting of bars not less than one-half inch in diameter and 40 inches in length, or stone bars of not less than one-half inch in diameter topped over each other at least 5 inches with an overall length of not less than 40 inches, were placed at the corners of the lots shown on this plat, and that the boundaries of the lots shown on this plat are the true boundaries of the lots, and that the intersections of streets and alleys with the boundaries of the plat as shown on said plat.

REGISTRAR'S OFFICE
 Received for Record this 18th day of December, A. D. 1950 at 10:14 o'clock AM and recorded in Liber 28 of Plats Page 5
...



ASSESSORS PLAT NO. 17

L. 26 1.5

5 11 11 AM '05

48064

RIDGEMONT HOMES SUB.

OF PART OF THE S.E. 1/4 OF SEC. 31, T. 1 N., R. 13 E.,

CITY OF EAST DETROIT, MACOMB COUNTY,

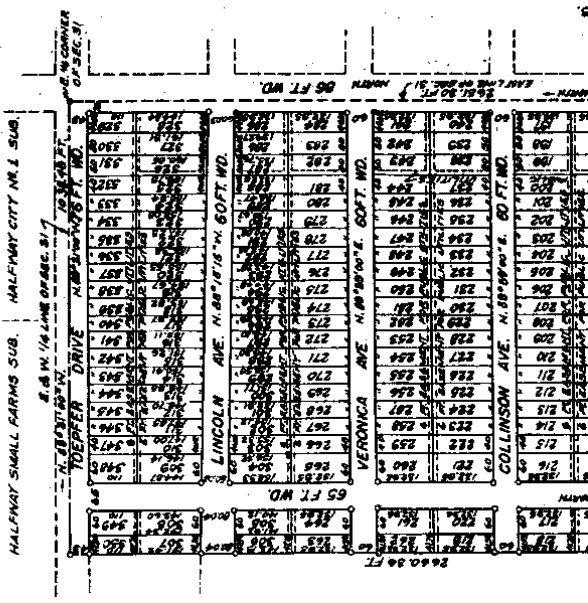
MICHIGAN.

SCALE: 1" = 200 FT.



NOTE: All dimensions in feet and decimals thereof

MASON L. BROWN & SON
CIVIL ENGINEERS & SURVEYORS
180 MADISON AVENUE.
DETROIT 26, MICHIGAN.



CERTIFICATE OF APPROVAL BY COUNTY BOARD

This plat was approved on the 30 day of March 1905.

Charles Ross
Charles Ross
Chief Deputy Clerk

John W. Wilson
John W. Wilson
County Treasurer

ABSTRACT

KNOW ALL MEN BY THESE PRESENTS, that we, Land & Homes, Inc., a Michigan Corporation, by Harold D. Colwell, Vice President, and Norman A. Burns, Secretary, and Everett T. Root and Amelia Root, his wife, as Proprietors, have caused the land embraced in the annexed plat to be surveyed, laid out and platted, to be known as "RIDGEMONT HOMES SUB." of part of the S.E. 1/4 of Sec. 31, T. 1 N., R. 13 E., City of East Detroit, Macomb County, Michigan, and that the streets and easements shown on said plat are hereby dedicated to the use of the public.

Witness:

Harry C. Howick
Harry C. Howick
Secretary

John K. Schaefer
John K. Schaefer

LAND & HOMES, INC.

Harold D. Colwell
Harold D. Colwell, Vice President

Norman A. Burns
Norman A. Burns, Secretary

Everett T. Root
Everett T. Root, Secretary

Amelia Root
Amelia Root

RECORDED

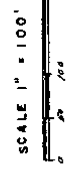
see Restrictions below 790 of Deeds Page 509

Original

See Restrictions & Survey 1844 under Page 226

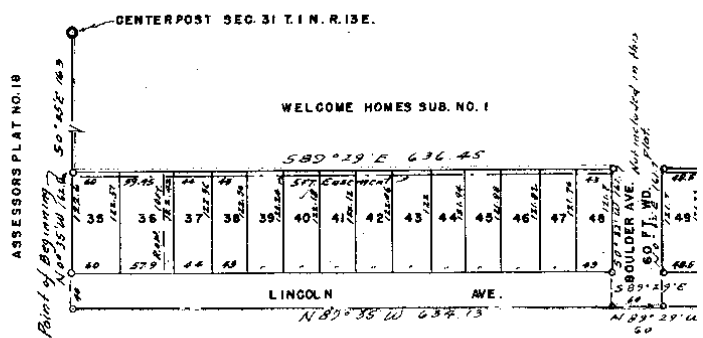
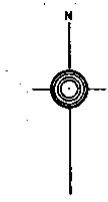
44521
JAN 11 10 11 AM '50

"WELCOME HOMES SUB. NO. 2" OF PART OF THE S.E. 1/4 OF SEC. 31 T. 1. N. R. 13. E. CITY OF EAST DETROIT MACOMB CO. MICH.



NOTE: ALL MEASUREMENTS ARE IN FEET AND DECIMALS THEREOF.

HARRY J. FULLER
REGISTERED CIVIL ENGINEER
MT. CLEMENS MICH.



DEDICATION

KNOW ALL MEN BY THESE PRESENTS, that we, Joseph Burk, and Marion Burk, his wife, F. K. Reinstein and Marie Reinstein, his wife, as proprietors, have caused the land embraced in the annexed plat to be surveyed, laid out and platted, to be known as "Welcome Homes Sub. No. 2" of part of the S.E. 1/4 of Sec. 31, T. 1. N., R. 13. E., City of East Detroit, Macomb County, Michigan, and that the streets and alleys as shown on said plat are hereby dedicated to the use of the Public.

Signed and Sealed in the Presence of
 Joseph Burk
 Joseph Burk (A.S.)
 Evelyn Clark (Witness)
 Evelyn Clark (Witness)
 F. K. Reinstein (A.S.)
 Marie Reinstein
 Marie Reinstein

ACKNOWLEDGMENT

STATE OF MICHIGAN
 County of WAYNE.
 On this 27 day of JANUARY, 1950, before me, a Notary Public in and for said County, personally came the above named Joseph Burk and Marion Burk, his wife, F. K. Reinstein and Marie Reinstein, his wife

20704

"WELCOME HOMES SUB. NO. 1" OF PART OF THE S.E. 1/4 OF SEC. 31 T. 1 N. R. 13 E. CITY OF EAST DETROIT MAGOMB CO. MICH.

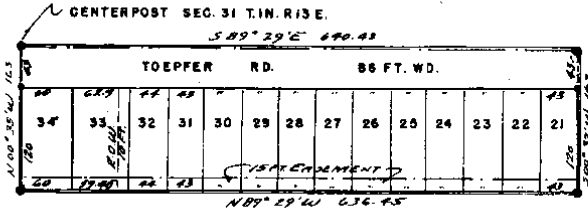
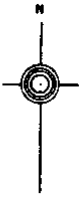
SCALE 1" = 100'



NOTE: ALL MEASUREMENTS ARE IN FEET AND DECIMALS THEREOF.

HARRY J. FULLER
REGISTERED CIVIL ENGINEER
MT. CLEMENS MICH.

ASSESSORS PLAT NO. 16



DEDICATION

KNOW ALL MEN BY THESE PRESENTS, that we, Joseph Burk, Marion Burk, his wife, F. K. Reinstein and Marie Reinstein, his wife, as proprietors, have caused the land embraced in the annexed plat to be surveyed, laid out and platted, to be known as "Welcome Homes Sub. No. 1", of part of the S. E. 1/4 of Sec. 31, T. 1 N., R. 13 E., City of East Detroit, Macomb County, Michigan.

and that the streets and alleys as shown on said plat are hereby dedicated to the use of the public.

Signed and Sealed in the Presence of:
Joseph Burk
Marion Burk
F. K. Reinstein
Marie Reinstein

ACKNOWLEDGMENT

STATE OF MICHIGAN
County of Magomb
On this 11 day of July, 1947, before me,
a Notary Public in and for said County, personally came the above named
Joseph Burk, and Marion Burk, his wife
F. K. Reinstein and Marie Reinstein, his wife

known to me to be the persons who executed the above dedication, and acknowledged the same to be their free act and deed.

Notary Public in and for Magomb County

107-41

L. 24
P. 23

In Restrictioned Lib. 709 Page 54

F. K. Reimold and Marie Reimold, his wife
 My Commission expires on 10-1-57
 My Commission expires on 10-1-57
 My Commission expires on 10-1-57

DESCRIPTION OF LAND PLATTED

The land embraced in the annexed plat of "Waycross, Horner Sub, No. 1" is a part of the S.E. 1/4 of Sec. 31, T. 1 N., R. 13 E., of East Detroit, Macomb County, Michigan.

Commencing at the center post of Sec. 31, T. 1 N., R. 13 E., thence S. 89° 29' E. 649.43 ft., thence S. 00° 32' W. 163 ft., thence N. 89° 29' W. 636.45 ft., thence N. 00° 35' W. 163 ft. to the point of beginning.

SURVEYOR'S CERTIFICATE
 I hereby certify that the plat herein delineated is a correct one and that permanent metal monuments consisting of bars and less than one-half inch in diameter and 48 inches in length, or shorter bars of not less than one-fourth inch in diameter topped over each other at least 5 inches with an overall height of not less than 48 inches, existed in a continuous line from the center post of the section to the boundary of the plat and that the same were observed and measured by me and my assistants on the day and date stated, and that the boundaries of the plat are shown as shown on said plat.

Registered Land Surveyor (or Professional Engineer)
 Harry J. Fuller

MUNICIPAL APPROVAL
 This plat was approved by the City Council of the City of East Detroit, of Macomb Co., Mich. at a meeting held on 10-1-57.

APPROVAL BY COUNTY BOARD
 This plat was approved on the 30th day of 10-1-57.

County Register of Deeds
 Guy B. ...
 County Clerk
 Wm. E. ...

Examined and Approved
 October 7, 1957
 Mayor

City of East Detroit
 City Clerk
 ...