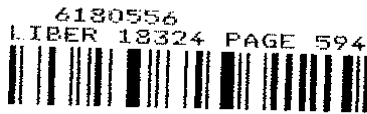


RECORDED NOV 16 2006  
3 00 P.M.

LAND CORNER RECORDATION CERTIFICATE  
Filing Requirement of Act 74, Mich. P.A. 1970

For corners in

<u>Macomb</u> (County)	Located In: City of Eastpointe	Corner Code # _____
1. Public Land Survey	T <u>1N</u> R <u>13E</u>	<u>B-09</u>
	T _____ R _____	_____
	T _____ R _____	_____
	T _____ R _____	_____
2. Property Controlling in Section	S _____ T _____ R _____	_____
	S _____ T _____ R _____	_____
3. Miscellaneous Property in Sec.	S _____ T _____ R _____	_____
	S _____ T _____ R _____	_____
4. Lot No. _____, Recorded Plat		
5. Private Claims		



11/22/2006 09:53:27 A.M.  
MACOMB COUNTY, MI  
CARMELLA SABAUGH, REGISTER OF DEEDS

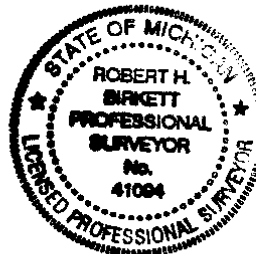
A	B	C	D	E	F	G	H	I	J	K	L	M
2	6	5	4	3	2	1						
3												
4	7	8	9	10	11	12						
5												
6	18	17	16	15	14	13						
7												
8	19	20	21	22	23	24						
9	30	29	28	27	26	25						
10												
11												
12	31	32	33	34	35	36						
13												

I, Robert H. Birkett, in a field survey on, August 10, 2006 do hereby state that under requirements of P.A. 74, Michigan P.A. of 1970, the corner points mentioned in lines 1 and 2 above were in conformance with regulations and rules therefore as required in the current manual of survey instructions of the United States Department of the Interior, Bureau of Land Management or by a decree of a Court of Law and for that the corner points mentioned in lines 3, 4 and 5 above were in conformance with the rules of the Michigan Board of Land Surveyors or by a Decree of a Court of Law; established, re-established, monumented, re-monumented, recovered, found as expressed below:

**NOTE: Not more than 2 corners, all in the same town and range, may be recorded on this certificate.**

**A. Description of original monument and accessories and/or subsequent restoration:**

- B-09 1818, W.S. Preston, Corner was set as a 10" Sugar Maple, General Land Office a-1916, WJ Lehner No 123, "Paradise Gardens Sub.", L 003 P 028 M.C.R.
- b-1916, HL Russell No 5236, "Chesterfield Park Sub.", L003 P055 M.C.R.
- c-1919, JW Irwin, "Seyferth and Reinert's Sub.", L 003 P 121 M.C.R.
- d-1919, WJ Lehner No 123, "Packard Park", L 003 P 173 M.C.R.
- e-1920, WJ Lehner No 123, "Plat of Albright Park Sub.", L 004 P 063 M.C.R.
- f-1924, WJ Lehner No 123, "Gordon's Halfway Sub.", L 008 P 005 M.C.R.
- g-1924, WJ Lehner No 123, "Bell Sub.", L 008 P 022 M.C.R.
- h-1936, PK McCarthy, "Assessor's Plat No 4", L 017 P 018 M.C.R.
- i-1942, HJ Fuller No 1645, "Assessors Plat No 6", L 022 P 010 M.C.R.
- j-1950, LT Brown No 2967, "Geraldine Farms Sub.", L 025 P 044 M.C.R.
- k-1954, JJ McMahon, "Robert T. Sub.", L 029 P 033 M.C.R.
- l-1957, HJ Fuller No 1645, "Assessors Plat No 26", L 038 P 026 M.C.R.



**B. Description of corner evidence found and/or method applied in restoring or reestablishing corner:**

B-09 No monumentation at the location of this corner. Existing evidence consist of paved 10 Mile road east and west, East right of way of paved Cole St. to the north and extended centerline of paved Phlox Ave south. Located from calculated position supported by monumentation in (a), (b), (d) and (l) and the measured distance between adjacent government corners A-9 and C-9.

Field Measurements Between Corners

- To B-10 Remon 2006 = 2708.97, Record East = N/A, Record West = N/A
- To B-8 Remon 2006 = 2687.86, Record East = N/A, Record West = N/A
- To A-9 Remon 2006 = 2696.06, Record North = 2696.49, Record South = 2691.39, GLO = 40.05 Chains (2643.3ft) 1818 William Preston D.S.
- To C-9 Remon 2006 = 2692.61, Record North = 2692.93, Record South = N/A, GLO = 40.04 Chains (2642.64ft) 1818 William Preston D.S

**C. Description of monument for corner and accessories established to perpetuate locating the position of the corner:**

B-09 Set a 3 / 4" x 24" iron with an aluminum cap stamped "Macomb County Monument, MI, ACT 345, 41094, B-09" in centerline of Stephens road 2' East of the east R.O.W. Cole St. to the north, in a new monument box.

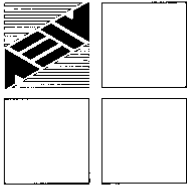
- AZ 8° - 32.00' - Set Macomb County Witness tag east face traffic light utility pole.
- AZ 166° - 26.28' - Set Macomb County Witness tag east face utility pole with light.
- AZ 258° - 64.09' - Set Macomb County Witness tag southeast face utility pole.
- AZ 307° - 51.12' - Set Macomb County Witness tag northeast face traffic light utility pole.

The selected location is accepted by me and is generally accepted by Professional Surveyors as the best available evidence of the position of the original corner.

ACCEPTED BY THE MACOMB COUNTY SURVEY PEER GROUP AS THE OFFICIAL CORNER UNDER MICHIGAN PUBLIC ACT 345 OF 1990 AT A MEETING HELD ON 9-26-06  
*Martin C. Dunn*  
MARTIN C. DUNN, P.S. CHAIRMAN

Signed by Robert H. Birkett  
Surveyor's Michigan License No. 41094

Date 11-2-06



**ANDERSON, ECKSTEIN AND WESTRICK, INC.**  
51301 Schoenherr Road, Shelby Township, Michigan 48315  
Civil Engineers • Surveyors • Architects 586-726-1234

**Report of Survey  
B-9, Eastpointe  
Town 1 North, Range 13 East  
Macomb County, Michigan**

**Corner Information**

Government records for Macomb County show that the  $\frac{1}{4}$  corner of the north line of section 30 and the south line of section 19 was set on a 10" sugar maple. 1818 William Preston D.S.

**Existing Conditions**

No monumentation at the location of this corner. Existing evidence consist of paved 10 Mile road east and west, East right of way of paved Cole St. to the north and extended centerline of paved Phlox Ave south. Corner location was re-established from calculated position supported by monumentation in (a), (b), (d), and (f) from plats below, and the measured distance between adjacent government corners A-9 and C-9.

**Plats**

A-1916, WJ Lehner No 123, "Paradise Gardens Sub.", L 003 P 028 M.C.R.  
B-1919, JW Irwin, "Seyferth and Reinert's Sub.", L 003 P 121 M.C.R.  
C-1919, WJ Lehner No 123, "Packard Park", L 003 P 173 M.C.R.  
D-1920, WJ Lehner No 123, "Plat of Albright Park Sub.", L 004 P 063 M.C.R.  
E-1924, WJ Lehner No 123, "Gordon's Halfway Sub.", L 008 P 005 M.C.R.  
F-1924, WJ Lehner No 123, "Bell Sub.", L 008 P 022 M.C.R.  
G-1936, PK McCarthy, "Assessor's Plat No 4", L 017 P 018 M.C.R.  
H-1942, HJ Fuller No 1645, "Assessors Plat No 6", L 022 P 010 M.C.R.  
I-1950, LT Brown No 2967, "Geraldine Farms Sub., L 025 P 044 M.C.R.  
J-1954, JJ McMahon, "Robert T. Sub.", L 029 P 033 M.C.R.  
K-1957, HJ Fuller No 1645, "Assessors Plat No 26", L 036 P 026 M.C.R.

**Condominiums**

None

**Land Corner Recordation Certificate**

None

**Recorded Surveys**

None

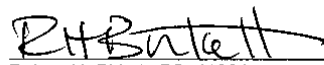
**Observations From B-9**

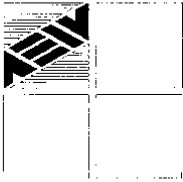
To B-10 Remon 2006 = 2708.97, Record East = N/A, Record West = N/A  
To B-8 Remon 2006 = 2687.86, Record East = N/A, Record West = N/A  
To A-9 Remon 2006 = 2696.06, Record North = 2696.49, Record South = 2691.39, GLO = 40.05 Chains (2643.3ft) 1818 William Preston D.S.  
To C-9 Remon 2006 = 2692.61, Record North = 2692.93, Record South = N/A, GLO = 40.04 Chains (2642.64ft) 1818 William Preston D.S.

Remon NE 90° 50' 07" No subdivision adjacent to section line  
Remon SE 89° 30' 39" No subdivision adjacent to section line  
Remon SW 90° 31' 21" No subdivision adjacent to section line  
Remon NW 89° 07' 53" No subdivision adjacent to section line

**Recommendation**

Found monumentation from plats (a), (b), (d), and (f), and the measured distance between adjacent government corners A-9 and C-9 was used to verify the calculated location of the new monumentation. I therefore recommend to the Macomb County Peer Group that they accept the calculated corner as the best evidence of the corner position as being perpetuated.

  
Robert H. Birkett, PS 41094  
Anderson, Eckstein and Westrick, Inc.



# ANDERSON, ECKSTEIN AND WESTRICK, INC.

51301 Schoenherr Road, Shelby Township, Michigan 48315  
Civil Engineers • Surveyors • Architects (586) 726-1234

B-9  
City of Eastpointe  
Macomb County 2006 Remonumentation

## Section One

- A. Index
- B. Before and after pictures of the monument.

## Section Two

- A. LCRC
- B. Surveyor's report.

## Section Three

- 1. Field notes.
- 2. Field notes.
- 3. Field notes.
- 4. Field notes.
- 5. Field notes.
- 6. Field notes.
- 7. Field notes.
- 8. Field notes.
- 9. Field notes.
- 10. Field notes.
- 11. Field notes.
- 12. Field notes.
- 13. Field notes.
- 14. Field notes.
- 15. Field notes.
- 16. Sketch of area and found monumentation.
- 17. Composite maps, 14-19E, 14-19F, 14-19G, 14-19H,  
14-30A, 14-30B, 14-30C, 14-30D

## Section Four

### **A. Recorded plats.**

- a-1916, WJ Lehner No 123, "Paradise Gardens Sub.", L 003 P 028 M.C.R.
- b-1919, JW Irwin, "Seyferth and Reinert's Sub.", L 003 P 121 M.C.R.
- c-1919, WJ Lehner No 123, "Packard Park", L 003 P 173 M.C.R.
- d-1920, WJ Lehner No 123, "Plat of Albright Park Sub.", L 004 P 063 M.C.R.
- e-1924, WJ Lehner No 123, "Gordon's Halfway Sub.", L 008 P 005 M.C.R.
- f-1924, WJ Lehner No 123, "Bell Sub.", L 008 P 022 M.C.R.
- g-1936, PK McCarthy, "Assessor's Plat No 4", L 017 P 018 M.C.R.
- h-1942, HJ Fuller No 1645, "Assessors Plat No 6", L 022 P 010 M.C.R.
- i-1950, LT Brown No 2967, "Geraldine Farms Sub.", L 025 P 044 M.C.R.
- j-1954, JJ McMahon, "Robert T. Sub.", L 029 P 033 M.C.R.
- k-1957, HJ Fuller No 1645, "Assessors Plat No 26", L 038 P 026 M.C.R.

### **B. Copies of original government notes.**

None

### **C. Field notes from other sources.**

None

2006

**MACOMB COUNTY REMONUMENTATION  
PROGRAM FOR CITY OF EASTPOINTE**

Research Dossier for B-09

Prepared by:  
Anderson, Eckstein & Westrick, Inc.  
51301 Schoenherr Road  
Shelby Twp., Michigan 48315

**Sources of Information Researched  
For Macomb County 2006 Remonumentation Program  
For City of Eastpointe**

- 1) GLO Notes
- 2) Act 74 Recorded LCRC
- 3) Act 132 Recorded Surveys
- 4) Personal History and Records
- 5) Unrecorded LCRC's and Surveys
- 6) Letters to the Following, Requesting Unrecorded information

Midwestern Consulting LLC  
Atwell Hicks Inc  
ANR Pipeline Company  
BMJ Engineers & Surveyors  
Air Land Surveys, Inc.  
Lehner Associates, Inc.  
Kem-Tec Land Surveyors  
Boss Engineering Company, Inc.  
Engineering & Surveying Consultant  
Charles E. Raines Co.  
Johnson & Anderson, Inc.  
Earl Gravlin Surveyor  
Del-Tec Surveying & Engineering  
David J. Little Land Surveyors  
David C. Adams & Son  
Coulter & Associates  
Fenn & Associates Surveying, Inc.  
Donald H. DeKeyser, Surveyor  
Huron Clinton Metropolitan Authority  
Fazal Khan & Associates  
Davis Land Surveying, P.C.  
Guaranty Survey Company  
Grant Ward Surveyors  
North Star Engineering, LLC  
Giffels-Webster Engineers  
George Jerome & Company  
Michael J. Yambor Associates, Inc.  
MCS Associates, Inc.  
McNeely & Lincoln Associates, Inc.  
King Surveyors & Associates, Inc.  
RK Engineering & Survey Associates  
RJ Donnelly & Associates, Inc.  
Professional Engineering Associates

Rowe, Inc.  
Hubble Roth & Clark  
John Lansky  
Wilcox Professional Services  
RCMC  
Bruen Land Surveying  
SCCRC  
Alpine Land Surveying, Inc.  
McNamee, Porter & Seeley  
Advanced Geomatics  
GLA Surveyor  
Mason L. Brown & Asso.  
RA Duthler Land Surveyor  
Project Control Engineering  
Tetra Tech  
Nowak & Fraus PLLC  
Land Engineering Services  
Michigan Consolidated Gas  
Williams, Gorinac Assoc.  
Urban Land Consultants  
T & A, Inc.  
Detroit Edison, ROW Div.  
SSOE, Inc.  
Spalding, DeDecker & Assoc  
Kennedy Surveying, Inc.  
JL Bishop Surveying  
Reichert Surveying, Inc.  
Metco Services



**ANDERSON, ECKSTEIN AND WESTRICK, INC.**

51301 Schoenherr Road, Shelby Township, Michigan 48315  
Civil Engineers • Surveyors • Architects (586) 726-1234

B-9  
City of Roseville  
Macomb County 2006 Remonumentation

**Section One**

- A. Index
- B. Before and after pictures of the monument.

**Section Two**

- A. Preliminary LCRC.
- B. Surveyor's report.

**Section Three**

- A. Field notes.
- B. Sketch of area and found monumentation.

**Section Four**

- A. Copies of original government notes.
- B. Recorded plats.
- C. Field notes from other sources.

203008  
9-15-06

2006 REMON

SET N - 20787.701  
E - 59166.281

MUN. CCB

B-9 EPIN TWP.

No 2449

SET CST E 10 MILE (ASPH)  
2' t. E. OF E. ROW COLE ST  
TO NORTH

AZ DIST DESC

258 64.09 SET REMON TAG SE FACE  
U.P.

166 26.28 SET REMON TAG E. FACE  
U.P. w/ LIGHT

0 32.00 SET REMON TAG E. FACE  
TRAFFIC LIGHT U.P.

307 51.12 SET REMON TAG NE FACE  
TRAFFIC LIGHT U.P.

#

101-040

04-11

04-12

04-15

04-16

DOC

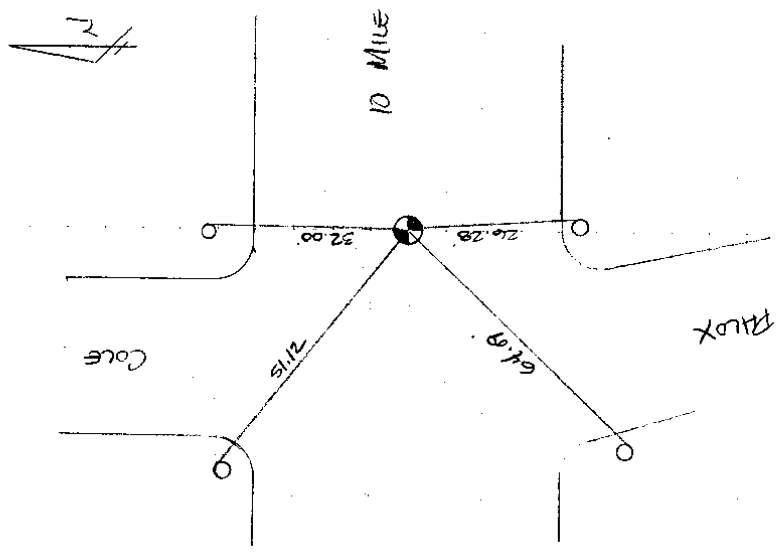
TOP

LOOKING

NORTH

SOUTH

WEST



223-028 2006 Remon

5.27

MID, COB B-10 ACCESSORIES (# B-9)

POVA 6.80 223028TRS

BASE TIC KENNEL 1288

DT# DCC

RK N-11055.25 C-11061.69

028-222 3/4" PIPE NE FOREST & VALLEY

028-223 1" PIPE SW FOREST & VALLEY

028-224 1/2" ER SW FOREST & LAETHEM

028-225 1" PIPE SW FOREST & DALE

028-226 1/2" PIPE SW "

028-227 1/2" ER NE "

028-228 3/4" PIPE SE FOREST & GEDNE

028-229 1/2" PIPE SW FOREST & FLOWER

028-230 1/2" PIPE NW "



028-028  
5-23-06

2006 REMON

MSP, AUB

B-9 / B-10 ACCESSORIES

223028 TFS

PF#

DECK

028-231

FENCE POST SE WILSON & ALLOX

028-232

3/4" PIPE NE WILSON & ALLOX

028-233

3/4" BENT PIPE S SIDE WILSON [E 14090]

028-234

1/2" EE S SIDE WILSON

028-235

3/4" PIPE N SIDE FOREST

028-236

BENT 1/2" PIPE S SIDE FOREST

028-237

1/2" EE N SIDE FOREST

028-238

1/2" PIPE N SIDE BELL

028-239

1/2" EE S SIDE BELL

028-240

1/2" EE S SIDE BAR @ AWAY (N)

028-241

1/2" EE

2006 REGION

223-028  
S-23-06  
MUR, OCE

B-9 / BIO ACCESSORIES  
223-028 TR 5

PT #

DCSIC

028-242 3/4" RR SE PHLOX & HAUSS

028-243 3/4" PIPE S SIDE HAUSS .5' E OF LINE

028-244 1/2" PIPE N. SIDE HAUSS @ ALLEY (W)

028-245 1/2" PIPE NW CHESTERFIELD & GRATIOT

028-246 3/4" PIPE NW CHESTERFIELD & DODGE

028-247 T.P. # 20 DODGE ST. TORO

028-248 T.P. # 21 "

028-249 1/8" RR SW MANCHESTER & GRATIOT

028-250 1/2" PIPE N. SIDE MANCH. E. SIDE ALLEY

RK

A-40.47 B-40.34 FT.

223-028 2006 REMON  
 524.06  
 MUD, CCB B7/B10 Accessories  
 Box A - 680 223028TF6  
 BASE TO KENNEDY / 1319  
 PT- DECC  
 RK N- 19057.34 E 11061.699

228-251	CONC MINS NW	PAILOX #	BELL
228-252	3/4" PIPE SE	ROFEBIC #	BELL
228-253	1/2" PIPE SW	"	"
254	1/2" RZ	7641 SE	FLOWER # BELL
255	3/4" PIPE NW	CHIFFFIELD #	GREY
256	3/4" PIPE NE	"	"
257	1" PIPE SE	"	"
258	1/2" RZ SW	GRONE #	ELEGREFFEN
259	1/2" GRNE NW	"	"
260	3/4" PIPE SE	GRONE #	SEMICALI

A-49.72 B-40.16 LT.

2006 ERMONT

023-028  
5-24-06

MUD/COR B9 | B10 ACCIDENTALS  
223028TR-6

PT# DESC

028-261 3/4" PIPE S. SIDE EUCALYPTUS

262 1/2" PIPE N. SIDE CUEBERGEN

263 1/2" EE NW EUCALYPTUS & GRAPTID

264 2" FENCE POST SE NICOLA & HENRIETTA

265 1/2" EE NW NICOLA & GRAPTID

266 FENCE POST S. SIDE SEMPA, C. ACCT

267 SOUND IN DRIVE N. SIDE SEMPA

268 1/2" PIPE S. SIDE SEMPA

269 1/2" PIPE S. SIDE SEMPA, W. OF DEFL.

EX

028-270 THRU 028-278 USED FOR  
10 MILE & DODGE INTERSECTION

223-009  
525.06

2006 ECIMON

80° Sunny

MUD, COB

B9, Accessories

223028TR7

EASE TRUCK KENNEDY 1286

TRUCK

RK N. RIGGS ST. E. 11061.67

028-279

C-9 5/8" RR IN MASH BOX

B9 - NOTHING 7 FOONSL

028-280

A-9 REMAINS IN MASH BOX

028-281

CHIS. + SE 10 M. + DUNE

028-282

1/2" RR SW 10 MILE + GROVE

283

1/2" RR SW 10 MILE + FFLUX

284

1/2" RR

285

1/2" RR # 10005

286

1/2" RR # 10005

287

1/2" RR # 10005

288

1/2" RR # 10005

289

" " " "

290

" " " "

291

1/2" RR NE FORE # 10005

RK

No 2449

52



223-028 2000 ECRON

MU/C16 B-9 / B-B ACCOUNTS -  
223-0237E-3

PR# INC. SOURCE NW QUARTER 1/4 SECTION 10  
028-202

303 3/4" PIPE S. SIDE E. SIDE

304 3/4" PIPE N. "

305 3/4" PIPE S. SIDE E. SIDE

306 1/2" PC N. "

307 1/2" PIPE NW CORNER & FENCE

308 1/2" PIPE SW CORNER & COLE

309 1/2" EZ W. SIDE CASE 300 OR LINE S. OF DOOR

310 2" FENCE POST SW CORNER & DOOR

311 1/2" PC NE CORNER & FENCE

312 1/2" PIPE SE "

313 1/2" PC SW "

A-29.14 B-28.91 LT.

2200 BERNARD

B-9 / E-8 ACCESSORIES

220003TEB

A-39.18 B-39.04 RT

2200-028

5200-10

1/2" PIP

PT #

028-314 1/2" RC NE CURTIS & JENK

315 1/2" PIPE SW CURTIS & WIERMAN

316 1/2" RC NW CURTIS & DALE

317 CONC MON SW CURTIS & LEAN

318 CONC MON SW CURTIS & SCAL

319 CONC MON SE CURTIS & FORTUNA

028-320 A-B REMAIN IN MON BOX

321 LEANING MON (E BASE) ON 1/4 LINE N-SIDE FRIZZO

322 C-3 FERNON IN MON BOX

323 CONC MON NE FRIZZO & GROVEHEAD

324 1/2" PIPE 100'

RK



No 2449

225028

4.3.00

M.B. CIA

Box A 680

B-9 / B-3

222028-TR9

BASE: 700 KENNEDY 1522

TR 1

EK N 19655.36 E 11061.69

028-325 CONC. MAN. NW FFAZHO & LASALLE CT. 102-104.17 1013-87.24 RT

326 1/2" PIPE SE LASALLE CT

327 1/2" 300SS S. SIDE OF CONC. & SUB LINE

328 CONC. MAN. N. SIDE LASALLE CT @ SUB LINE

329 CONC. MAN. NE FFAZHO & JANET CT. 1014-67.26 1015-72.64 LT.

330 CURB CUT ROW R/W SIDE JANET CT.

028-331 TRAIL 028-349 USCC FOR 10 MILE & FFAZHO

Run 1 North Range 13 East

227

West On Roundout between S. 19+30

40.50 Set temporary half mile post

10.09 Put West boundary at the corner

Land level and dry good 2<sup>d</sup> rate

Timber W. Oak Poplar Elm Lym

Sugar & Undergrowth Spice

East Corrected between 19+30

40.4 Made 1/4 section corner on a

Sugar 10 in dia. at average distance

10.19 3/4 section corner

South Between Sections 30+29

20.18 a Beech 14 in dia

40.00 Made half mile corner on a

Beech 6 in di

80.00 Set post for sections 30, 29, 31, 32

from which a Beech 8 in dia bears S 7

W 8 links dis also a Beech 14 in dia

bears N 12 W 22 links dis -

1<sup>st</sup> half mile level and dry 2<sup>d</sup> rate

Last half mile same

Timber W. Oak Beech Poplar Lym

Sugar Lym & Undergrowth Spice

Lym &c

West On Roundout between S 30+31

40.00 Set temporary half mile post

80.20 Put West boundary 15 links South

of corner Land level and dry 2<sup>d</sup> rate

Timber W. Oak poplar Sugar Beech

Undergrowth Spice Lym &c

# ASSESSOR'S

## CHESTERFIELD, STATE SUBDIVISION NO. 1.

A RESUBDIVISION OF LOTS 182 TO 199, 201 TO 205, 212 TO 216,  
229 TO 230 INCL., AND VACATED ALLEYS OF

CHESTERFIELD PARK SUBDIVISION NO. 1,  
OF A PART OF THE NE 1/4 OF THE NE 1/4 OF SEC. 30, AND  
A PART OF THE NW 1/4 OF SEC. 29, T. 1 N., R. 13 E.,  
CITY OF EAST DETROIT, MACOMB COUNTY, MICHIGAN.

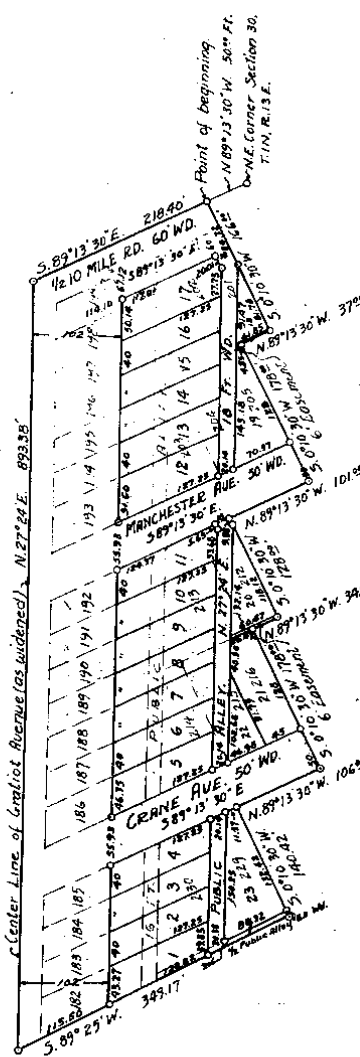
5731

*Ed. J. Thayer*



ALL DIMENSIONS IN FEET AND DECIMALS THEREOF.  
ORIGINAL PLAT RECORDED IN MACOMB COUNTY RECORDS L. 7, P. 74.

GRATIOT AVE. 204 FT. WD.



KNOW ALL MEN BY THESE PRESENTS, That I, *Ed. J. Thayer*, Assessor of the City of East Detroit, County of Macomb, State of Michigan, by virtue of authority in me vested by Section 51, Act 176, Public Acts of 1929, have caused the land described in the annexed plat to be surveyed, laid out and platted, to be recorded in the public records of the State of Michigan, as follows: That I, the Assessor, do hereby certify that the plat of STATE SUBDIVISION NO. 1, a resubdivision of lots 182, 183, 184, 185, 186, 187, 188, 189, 190, 191, 192, 193, 194, 195, 196, 197, 198, 199, 200, 201, 202, 203, 204, 205, 206, 207, 208, 209, 210, 211, 212, 213, 214, 215, 216, 217, 218, 219, 220, 221, 222, 223, 224, 225, 226, 227, 228, 229, 230, 231, 232, 233, 234, 235, 236, 237, 238, 239, 240, 241, 242, 243, 244, 245, 246, 247, 248, 249, 250, 251, 252, 253, 254, 255, 256, 257, 258, 259, 260, 261, 262, 263, 264, 265, 266, 267, 268, 269, 270, 271, 272, 273, 274, 275, 276, 277, 278, 279, 280, 281, 282, 283, 284, 285, 286, 287, 288, 289, 290, 291, 292, 293, 294, 295, 296, 297, 298, 299, 300, 301, 302, 303, 304, 305, 306, 307, 308, 309, 310, 311, 312, 313, 314, 315, 316, 317, 318, 319, 320, 321, 322, 323, 324, 325, 326, 327, 328, 329, 330, 331, 332, 333, 334, 335, 336, 337, 338, 339, 340, 341, 342, 343, 344, 345, 346, 347, 348, 349, 350, 351, 352, 353, 354, 355, 356, 357, 358, 359, 360, 361, 362, 363, 364, 365, 366, 367, 368, 369, 370, 371, 372, 373, 374, 375, 376, 377, 378, 379, 380, 381, 382, 383, 384, 385, 386, 387, 388, 389, 390, 391, 392, 393, 394, 395, 396, 397, 398, 399, 400, 401, 402, 403, 404, 405, 406, 407, 408, 409, 410, 411, 412, 413, 414, 415, 416, 417, 418, 419, 420, 421, 422, 423, 424, 425, 426, 427, 428, 429, 430, 431, 432, 433, 434, 435, 436, 437, 438, 439, 440, 441, 442, 443, 444, 445, 446, 447, 448, 449, 450, 451, 452, 453, 454, 455, 456, 457, 458, 459, 460, 461, 462, 463, 464, 465, 466, 467, 468, 469, 470, 471, 472, 473, 474, 475, 476, 477, 478, 479, 480, 481, 482, 483, 484, 485, 486, 487, 488, 489, 490, 491, 492, 493, 494, 495, 496, 497, 498, 499, 500, 501, 502, 503, 504, 505, 506, 507, 508, 509, 510, 511, 512, 513, 514, 515, 516, 517, 518, 519, 520, 521, 522, 523, 524, 525, 526, 527, 528, 529, 530, 531, 532, 533, 534, 535, 536, 537, 538, 539, 540, 541, 542, 543, 544, 545, 546, 547, 548, 549, 550, 551, 552, 553, 554, 555, 556, 557, 558, 559, 560, 561, 562, 563, 564, 565, 566, 567, 568, 569, 570, 571, 572, 573, 574, 575, 576, 577, 578, 579, 580, 581, 582, 583, 584, 585, 586, 587, 588, 589, 590, 591, 592, 593, 594, 595, 596, 597, 598, 599, 600, 601, 602, 603, 604, 605, 606, 607, 608, 609, 610, 611, 612, 613, 614, 615, 616, 617, 618, 619, 620, 621, 622, 623, 624, 625, 626, 627, 628, 629, 630, 631, 632, 633, 634, 635, 636, 637, 638, 639, 640, 641, 642, 643, 644, 645, 646, 647, 648, 649, 650, 651, 652, 653, 654, 655, 656, 657, 658, 659, 660, 661, 662, 663, 664, 665, 666, 667, 668, 669, 670, 671, 672, 673, 674, 675, 676, 677, 678, 679, 680, 681, 682, 683, 684, 685, 686, 687, 688, 689, 690, 691, 692, 693, 694, 695, 696, 697, 698, 699, 700, 701, 702, 703, 704, 705, 706, 707, 708, 709, 710, 711, 712, 713, 714, 715, 716, 717, 718, 719, 720, 721, 722, 723, 724, 725, 726, 727, 728, 729, 730, 731, 732, 733, 734, 735, 736, 737, 738, 739, 740, 741, 742, 743, 744, 745, 746, 747, 748, 749, 750, 751, 752, 753, 754, 755, 756, 757, 758, 759, 760, 761, 762, 763, 764, 765, 766, 767, 768, 769, 770, 771, 772, 773, 774, 775, 776, 777, 778, 779, 780, 781, 782, 783, 784, 785, 786, 787, 788, 789, 790, 791, 792, 793, 794, 795, 796, 797, 798, 799, 800, 801, 802, 803, 804, 805, 806, 807, 808, 809, 810, 811, 812, 813, 814, 815, 816, 817, 818, 819, 820, 821, 822, 823, 824, 825, 826, 827, 828, 829, 830, 831, 832, 833, 834, 835, 836, 837, 838, 839, 840, 841, 842, 843, 844, 845, 846, 847, 848, 849, 850, 851, 852, 853, 854, 855, 856, 857, 858, 859, 860, 861, 862, 863, 864, 865, 866, 867, 868, 869, 870, 871, 872, 873, 874, 875, 876, 877, 878, 879, 880, 881, 882, 883, 884, 885, 886, 887, 888, 889, 890, 891, 892, 893, 894, 895, 896, 897, 898, 899, 900, 901, 902, 903, 904, 905, 906, 907, 908, 909, 910, 911, 912, 913, 914, 915, 916, 917, 918, 919, 920, 921, 922, 923, 924, 925, 926, 927, 928, 929, 930, 931, 932, 933, 934, 935, 936, 937, 938, 939, 940, 941, 942, 943, 944, 945, 946, 947, 948, 949, 950, 951, 952, 953, 954, 955, 956, 957, 958, 959, 960, 961, 962, 963, 964, 965, 966, 967, 968, 969, 970, 971, 972, 973, 974, 975, 976, 977, 978, 979, 980, 981, 982, 983, 984, 985, 986, 987, 988, 989, 990, 991, 992, 993, 994, 995, 996, 997, 998, 999, 1000.

THE LAND SHOWN IN THE ANNEXED PLAT OF ASSESSOR'S CHESTERFIELD STATE SUBDIVISION NO. 1, a resubdivision of lots 182 to 199, 201 to 205, 212 to 216, 229 to 230 incl., and vacated alleys of Chesterfield Park Subdivision No. 1, of the NE 1/4 of the NE 1/4 of Sec. 30, and a part of the NW 1/4 of the NE 1/4 of Sec. 29, T. 1 N., R. 13 E., City of East Detroit, Macomb County, Michigan, as described as follows: Beginning at a point on the North Section Line of Section 30, T. 1 N., R. 13 E., said point being N. 89° 13' 30" W. 50.00 feet from the North Section Line of Section 30, T. 1 N., R. 13 E., thence S. 0° 30' 30" W. 100.00 feet to the N.E. corner of Section 30, T. 1 N., R. 13 E.,



Original

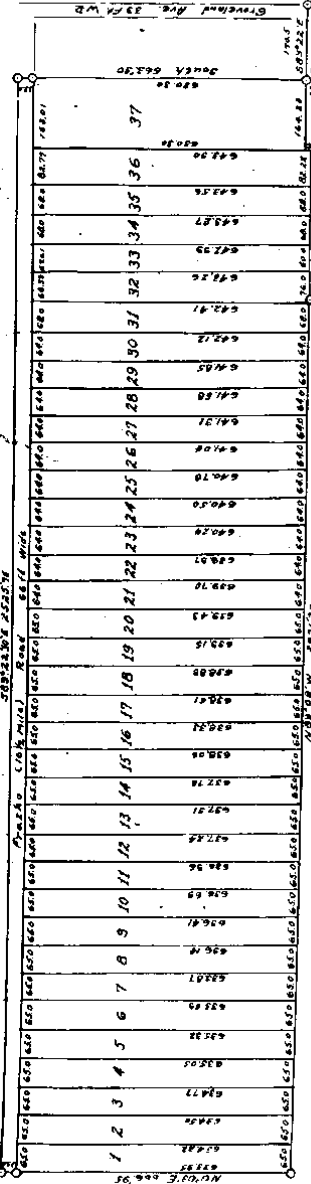
# ASSESSORS PLAT No. 4

## PART OF SE 1/4 SEC 19, T14N, R13E, VILLAGE OF ROSEVILLE, MACOMB COUNTY, MICHIGAN.

Scale: 1 Inch = 200 Ft.

NOTE: All dimensions hereon are in feet and decimals thereof.

Chief of Engineering  
Macomb County



**RECITATION**

That the Board of Assessors, City of Roseville, Michigan, do hereby certify that the above and within plat was prepared and approved by the Board of Assessors of the Village of Roseville, Michigan, on the 19th day of May, 1924, and that the same are correct and true to the original survey and that the same are being filed for such purposes.

*John H. Smith*  
Assessor of the Village of Roseville.

1924

City of Roseville, Michigan

In this case, the Board of Assessors of the Village of Roseville, Michigan, do hereby certify that the above and within plat was prepared and approved by the Board of Assessors of the Village of Roseville, Michigan, on the 19th day of May, 1924, and that the same are correct and true to the original survey and that the same are being filed for such purposes.

*John H. Smith*

...to be the person to execute the above to wit: ... and ... at and ... such as ...

... Public in and for ... County.

... 1934

**SURVEY OF CERTIFICATES**

I hereby certify that the plat heretofore delineated is a correct one ... that permanent metal monuments of not less than one inch in diameter and four inches in length set in a concrete base at least four inches in diameter and four-inch inches in length have been placed at points marked thereon as shown on the plat at all corners, boundaries of the land platted, at all the intersections of the boundaries of the land platted, at all the intersections of the boundaries of the land platted, at all the intersections of the boundaries of the land platted, at all the intersections of the boundaries of the land platted.

*Donald M. ...*  
 Registered Civil Engineer



CERTIFICATE OF DEEDS DEPARTMENT

This plat was removed by the ... on the 11th day of ... 1936.

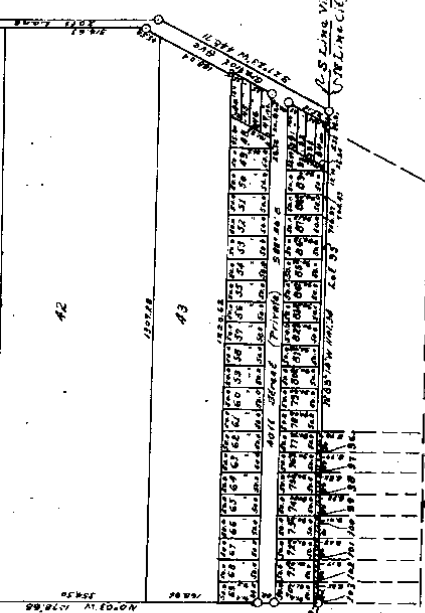
*...*  
 7/11/36

... of ...

*...*  
 1936

RECORDERS OFFICE  
 County of Madison, Wis.  
 1936  
 in Book ...  
 at Page ...

Judges of Probate  
*...*  
 County Clerk  
*...*  
 County Treasurer



**DESCRIPTION OF LAND PLATTED**

The land embraced in the annexed plat of 113,333.33 sq. ft. ... part of Sec. 19, T. 19 N., R. 13 W., ... is described as follows: ...

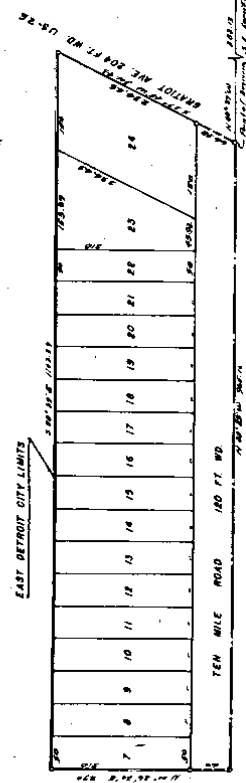
Examined and Approved  
*...*  
 County Clerk

6:49

"ASSESSORS PLAT NO. 2"  
 OF PART OF THE S.E. 1/4 OF SEC. 19 T. 1 N. R. 13 E.  
 CITY OF EAST DETROIT MACOMB CO. MICH.

SCALE: 1" = 100'

NOTE: ALL MEASUREMENTS ARE IN FEET AND DECIMALS THEREOF.



HARRY J. FULLER  
 REGISTERED CIVIL ENGINEER & LAND SURVEYOR  
 MT. CLEMENS MICH.

DEDICATION

BEFORE ALL OF THESE PRESENTS, That I, Stephen Madeworth, of Michigan, by virtue of authority in me vested by Section 217 of the Constitution of the State of Michigan, and by the City of East Detroit, Michigan, having been duly authorized by the City Council of East Detroit, Michigan, to execute and record this plat, do hereby certify that the land shown on this plat was surveyed, laid out and platted, to be known as "ASSESSORS PLAT NO. 2" of part of the S.E. 1/4 of Sec. 19 T. 1 N. R. 13 E. of the City of East Detroit, Michigan, and that the streets and alleys as shown on said plat are now being used for such purposes.

Witness:

*Stephen Madeworth*  
 Stephen Madeworth  
 Register of Deeds

DESCRIPTION OF LAND PLATTED

The land embraced in the annexed plat of assessors plat no. 2 of part of the S.E. 1/4 of Sec. 19 T. 1 N. R. 13 E. City of East Detroit Macomb Co. Mich. is described as follows: Commencing at the S.W. corner of the 1/4 section 19 T. 1 N. R. 13 E. thence S 27° 45' 18" 301.43 feet to the point of beginning.

SURVEYOR'S CERTIFICATE

I hereby certify that the plat herein delineated is a correct

County of Wayne, State of Michigan, City of East Detroit, Michigan, Section 19 of the City Charter, Chapter 100, Section 100-1, which reads: "The City of East Detroit, Michigan, shall be bounded on the north by the intersection of the center line of the street known as 27th Street, on the east by the intersection of the center line of the street known as 3rd Street, on the south by the intersection of the center line of the street known as 1st Street, and on the west by the intersection of the center line of the street known as 1st Street."

**SURVEYOR'S CERTIFICATE**  
I hereby certify that the plat herein delineated is a correct one and that permanent marks monuments described are not less than one half inch in diameter and forty eight inches in diameter and forty eight inches in length and that the points marked thereon are as thereon shown at all angles in the streets intersections of streets and alleys at all the intersections of the streets and alleys shown on said plat and that the boundaries of the plat as shown on said plat.

*Robert J. White*  
Surveyor

*Robert J. White*  
Surveyor

*Robert J. White*  
Surveyor

*Robert J. White*  
Surveyor

County of Wayne, State of Michigan, City of East Detroit, Michigan, Section 19 of the City Charter, Chapter 100, Section 100-1, which reads: "The City of East Detroit, Michigan, shall be bounded on the north by the intersection of the center line of the street known as 27th Street, on the east by the intersection of the center line of the street known as 3rd Street, on the south by the intersection of the center line of the street known as 1st Street, and on the west by the intersection of the center line of the street known as 1st Street."

Witness: *Robert J. White*  
Surveyor

*Robert J. White*  
Surveyor

**ACKNOWLEDGMENT**  
STATE OF MICHIGAN  
County of Wayne  
day of *January*, A.D. 1942  
before me a Notary Public in and for said County, personally came the above named assessor of the City of East Detroit, Michigan, and acknowledged the same to be his free act and deed as such assessor.

*Robert J. White*  
Notary Public in and for the County of Wayne, Michigan.  
My commission expires *February 12, 1942*.

**CERTIFICATE OF MUNICIPAL APPROVAL**  
This plat was approved by the City Council of the City of East Detroit at a meeting held *January 11, 1942*.

*Robert J. White*  
Mayor, City of East Detroit

**CERTIFICATE OF APPROVAL BY COUNTY BOARD**  
This plat was approved on the *20th* day of *February*, 1942.

*Robert J. White*  
County Treasurer, County of Wayne, Michigan

Examined and Approved  
*Robert J. White*  
Notary Public in and for the County of Wayne, Michigan

622 H 1



Original

6750

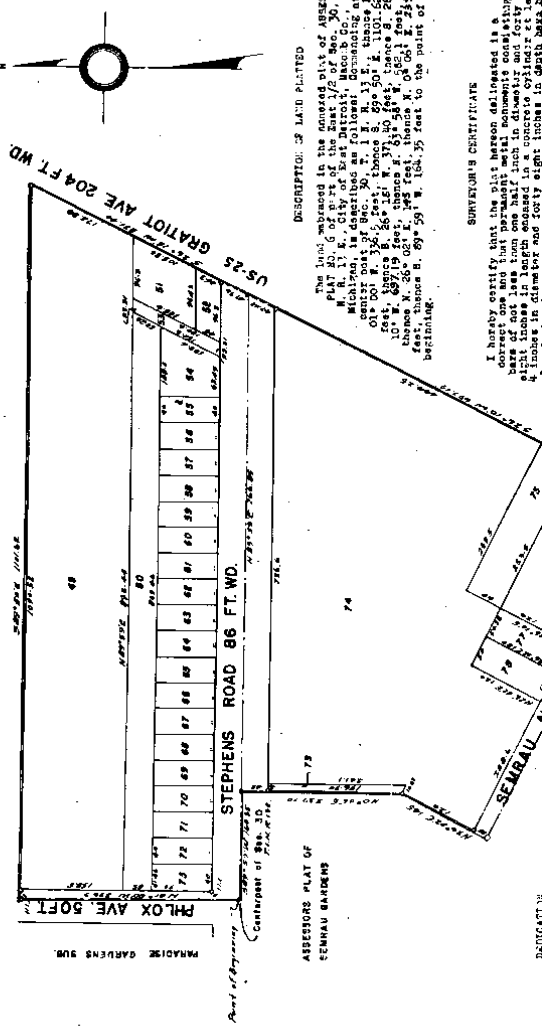
**"ASSESSORS PLAT NO. 6"**  
**OF PART OF THE EAST 1/2 OF SEC. 30 T. 1 N. R. 13 E.**  
**CITY OF EAST DETROIT MACOMB CO. MICH.**

SCALE: 1" = 100'

NOTE: ALL MEASUREMENTS ARE IN FEET AND DECIMALS THEREOF.

HARRY J. GULLER  
 REGISTERED CIVIL ENGINEER & LAND SURVEYOR  
 MT. CLEMENS

BEYERFATH AND REINERTS SUBDIVISION



DESCRIPTION OF LAND PLATTED

The line embraced in the annexed plat of ASSESSORS PLAT NO. 6, City of East Detroit, Macomb Co., Mich., is described as follows, commencing at the center of the intersection of the center line of the line of the Michigan R. R. to the center of the center line of the line of the Stephens Road, thence N. 89° 59' 18.35" W. 164.35 feet to the point of beginning;

**SURVEYOR'S CERTIFICATE**

I hereby certify that the above delineated is a correct and true plat of the land shown on the base of not less than one half inch in diameter and forty feet in length and forty feet in width and forty feet in diameter and forty feet in length in each direction in each direction.

ASSESSORS PLAT OF  
 SEMAU GARDENS

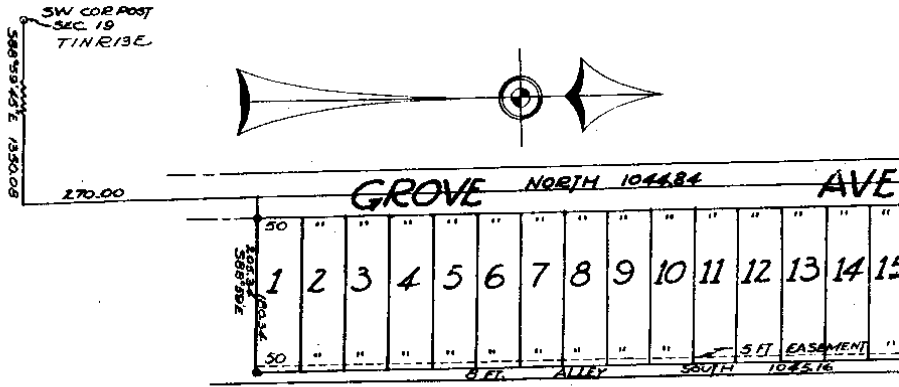
REGISTERED



ORIGINAL

# POLK, THOMAS, & WUNSC

OF PART OF THE W 1/2 OF THE E 1/2 OF THE SW 1/4,  
VILLAGE OF ROSEVILLE MACOMB CO.



SCALE 1" = 100 FT.  
ALL DIMENSIONS IN FEET & DECIMALS THEREOF

**DEDICATION**  
KNOW ALL MEN BY THESE PRESENTS, that we **ALBERT D. THOMAS, INC.**  
Michigan corporation by Albert D. Thomas, Jr.  
President, and Edward S. Wunsch  
Secretary, as proprietor, have caused the land embraced in the annexed plat to be surveyed, laid out and platted to be known as **POLK, THOMAS, & WUNSCH**  
SUBD'N, a part of the W 1/2 of the E 1/2 of the SW 1/4,  
Sec. 19, T 1 N., R 13 E., Village of Roseville, Macomb County,  
Michigan,  
and that the streets and alleys as shown on said plat are hereby dedicated to  
the use of the Public.

Signed and Sealed in the Presence of:  
Albert D. Thomas, Inc.  
Edward S. Wunsch (Witness) Albert D. Thomas, Jr. (President)  
Edward S. Wunsch (Witness) Edward S. Wunsch (Secretary)

**DESCRIPTION OF LAND PLATTED**  
The land embraced in the annexed plat of **POLK, THOMAS, & WUNSCH**  
SUBD'N, a part of the W 1/2 of the E 1/2 of the SW 1/4,  
Sec. 19, T 1 N., R 13 E., Village of Roseville, Macomb County,  
Michigan,  
is described as follows:  
Commencing at the SW corner, Sec. 19, T 1 N., R 13 E.  
Roseville, Macomb Co., Mich. Thence S 88° 59' 45" E.  
1350.08 ft. Thence North, 270.00 ft. to a Point of  
Beginning. Thence continuing North, 1044.84 ft. Thence  
S 89° 06' E., 205.34 ft. Thence South, 1045.16 ft. Thence  
N 88° 59' W., 205.34 ft. to the Point of Beginning.

**ACKNOWLEDGMENT**  
STATE OF Michigan )  
County of Macomb )  
On this 28th day of July, A.D. 1948, before me  
Notary Public in and for said county appeared **Albert D. Thomas Jr. and Edward S. Wunsch**  
to me personally known, who being each by me duly sworn did say that they are the  
President and Secretary respectively of the **ALBERT D. THOMAS, INC.**  
Michigan corporation,  
and that the seal affixed to said instrument is the corporate seal of said corporation and  
that said instrument was signed and sealed in behalf of said corporation by authority  
of its Board of Directors and the said **Albert D. Thomas and Edward S. Wunsch**  
acknowledged said instrument to be the free act and deed of said corporation.

Notary Public  
My Commission expires

**SURVEYOR'S CERTIFICATE**  
I hereby certify that the plat hereon delineated is a correct one and that permanent metal monuments consisting of bars not less than one-half inch in diameter and 48 inches in length, or shorter bars of not less than one-half inch in diameter tapered over each other at least 6 inches with an overall length of not less than 48 inches, secured in a concrete cylinder of four inches in diameter and 48 inches in depth have been placed at points marked thereon as thereon shown at all angles in the boundaries of the land platted, at all the intersections of streets, intersections of alleys, or of streets and alleys, and at the intersections of streets and alleys with the boundaries of the plat as shown on said plat.

Pierre J. O'Non  
Registered Land Surveyor  
This is to certify that there are no other instruments filed in this office  
No. 104516  
The Certificate does not apply  
1948 MACOMB, MACOMB CO.

Macomb Co. Map 115 page 116



ORIGINAL

# GERALDINE FARMS SUBDIVISION

OF PART OF THE S.1/2 OF SEC.19, T.1N., R.13E.,  
VILLAGE OF ROSEVILLE, MACOMB CO., MICHIGAN.

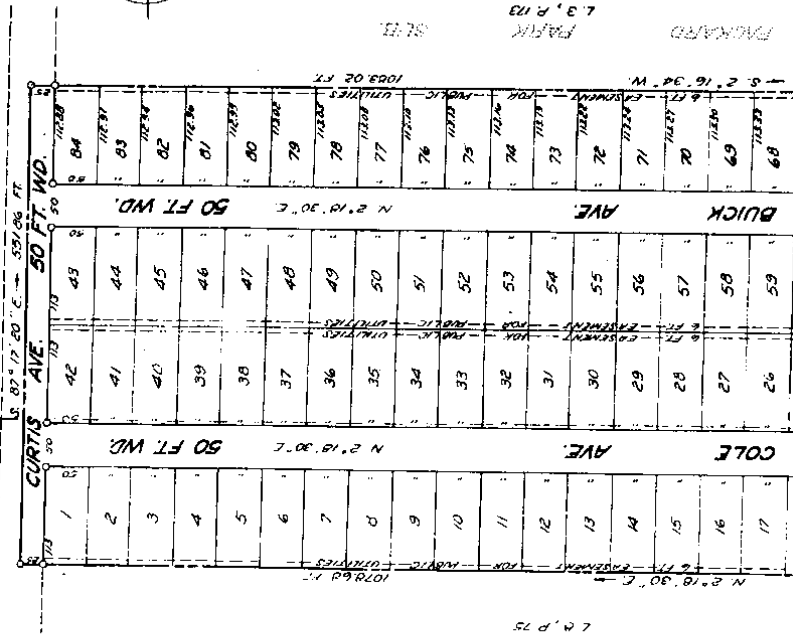
61175

MASON L. BROWN & SON  
CIVIL ENGINEERS & SURVEYORS  
120 MADISON AVENUE  
DETROIT 26, MICHIGAN

SCALE: 1/4"=100 FT.



NOTE: DIMENSIONS HEREON ARE IN FEET AND DECIMALS THEREOF.



### RECITATION

BEFORE ALL MEN BY THESE PRESENTS, that we, the Grant Construction Company, a Michigan corporation, by Lester S. Burton, President, and Nathaniel Share, Secretary, as Proprietor, have caused the land embraced in the annexed plat to be surveyed, laid out and platted to be known as GERALDINE FARMS SUBDIVISION of part of the S. 1/2 of Sec. 19, T. 1 N., R. 13 E., Village of Roseville, Macomb Co., Michigan, and that the streets shown on said plat are hereby dedicated to the use of the public and that the assessments indicated on said plat are hereby reserved for the use of public utilities and that no permanent structures are to be erected within the lines of said easements. In testimony whereof, the seal of said corporation and the signatures of the President and Secretary of this use hereof is vested in the local governmental authority.

Witnesses:

*Lester S. Burton*  
Lester S. Burton, President

*Nathaniel Share*  
Nathaniel Share, Secretary

GRANT CONSTRUCTION COMPANY

### ACKNOWLEDGMENT

State of Michigan) ss.  
County of

On this 24 day of September, 1950, before me, a Notary Public in and for said County, appeared Lester S. Burton and Nathaniel Share, to be personally known, who being each by me duly sworn did say that they are the President and Secretary respectively of the Grant Construction Company, Michigan Corporation, and that the seal affixed to said instrument is the corporate seal of said corporation and that said instrument was signed and sealed in behalf of said corporation by authority of its Board of Directors and the said Lester S. Burton and Nathaniel Share acknowledged said instrument to be the free act and deed of said corporation.

My commission expires

Notary Public

My commission expires \_\_\_\_\_

Notary Public

**DESCRIPTION**

The land embraced in the annexed plat of **GERALDINE FARMS** SUBDIVISION of part of the S. 1/2 of Sec. 19, T. 1 N., R. 1 E., Village of Roseville, Macomb Co., Michigan, is described as follows: Beginning at a point, which point is distant N. 29°19'50" E., 270.00 ft., and S. 86°50'24" W., 166.87 ft., from the S. 1/4 corner of Sec. 19, T. 1 N., R. 1 E.; thence along the E. line of Pleasure Park Sub., N. 29°19'50" E., 1078.68 ft.; S. 29°19'50" E., 331.36 ft.; thence S. 86°50'21" W., 552.52 ft. to the point of beginning.

**SERVICIOUS CERTIFICATE**

I hereby certify that the plat hereon delineated is a correct one and that permanent metal monuments consisting of bars not less than one-half inch in diameter and 48 inches in length, encased in concrete cylinders at least 4 inches in diameter and 48 inches in length have been placed at points marked thus (O) as hereon shown at all angles in the boundaries of the land platted, at the intersection of all streets and at the intersection of streets with the boundaries of the plat.

*[Signature]*  
T. Brown, Registered Land Surveyor

**CERTIFICATE OF MUNICIPAL APPROVAL**

I hereby certify that this plat has been approved by the Village Council of the Village of Roseville at a public meeting held on the 10th day of July, 1950.

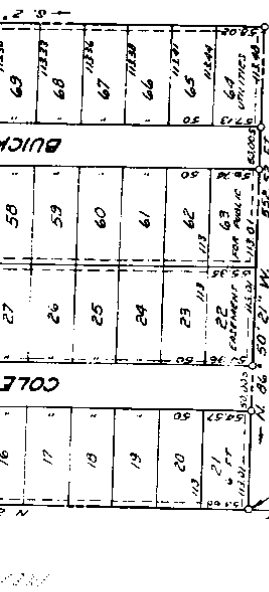
*[Signature]*  
Village Clerk

9-7-50  
ER 12-3-50

When this plat was filed for record it was in conformity with the provisions of the Michigan Platting Act, Act No. 207 of the Public Acts of 1929, as amended, and the Commission does not object to its being recorded.

**Examined and Approved**

*[Signature]*  
Notary Public



I hereby certify that this plat was filed for record on the 11 day of July, 1950.

*[Signature]*  
Asst. Sec. of State

Richard L. Ross, Chief Deputy State Clerk







Original

161557

EXAMINED AND APPROVED  
JAN 20 1954

*John B. Nease*  
John B. Nease  
Municipal Engineer

JAN 20 1954

# ROBERT T. SUBDIVISION OF PART OF THE N.E. 1/4 OF THE S.W. 1/4 OF SECTION 19, T. 1 N., R. 13 E. VILLAGE OF ROSEVILLE, MACOMB COUNTY, MICHIGAN.



NOTE - ALL DIMENSIONS ARE SHOWN IN FEET AND DECIMALS THEREOF.

163.79	N. 87° 10' 35" W.	50
DORT STREET 50 WD.		
163.67	N. 87° 10' 35" W.	70.63
		12
163.34	N. 87° 17' 50" W.	50
		11
163.75		10
162.36		9
162.78		8
162.69		

### DEDICATION

KNOW ALL MEN BY THESE PRESENTS, that the Maurice Verharme and Rosalie Verharme, his wife, as Proprietors, and Robert W. Kirchoff and Olga Kirchoff, his wife, as Vendees, have caused the land embraced in the annexed plat to be surveyed, laid out and platted to be known as **ROBERT T. SUBDIVISION OF PART OF THE N. E. 1/4 OF THE S. W. 1/4 OF SECTION 19, T. 1 N., R. 13 E., Village of Roseville, Macomb County, Michigan**, and that the plat shown on said plat are hereby dedicated to the use and benefit of the public for the use of public utilities and that no easements or rights are to be created within the lines of said easements. Regulation of the use thereof is vested in the local governmental authority.

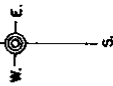
Witnesses:

*Richard W. Blanda*  
Richard W. Blanda  
*Morris H. Taylor*  
Morris H. Taylor

*Maurice Verharme*  
Maurice Verharme  
*Rosalie Verharme*  
Rosalie Verharme  
*Robert W. Kirchoff*  
Robert W. Kirchoff  
*Olga Kirchoff*  
Olga Kirchoff

ACKNOWLEDGMENT  
State of Michigan)  
County of Macomb)

CERTIFIED PLAT BY  
MCMAHON ENG. CO.  
DETROIT, MICHIGAN.  
STATEWIDE SURVEYS



**ACKNOWLEDGEMENT**

State of Michigan) as.  
County of Macomb)

On this 11th day of March, 1954, before me, a Notary Public in and for said County of Macomb, Michigan, the above named Yarhamme and Rosella Kirchoff, his wife, and Robert Kirchoff and Olga Kirchoff, his wife, known to me to be the persons who executed the above dedication, and acknowledged the same to be their free act and deed.

My commission expired 11/1/53  
Notary Public, Macomb County,  
Michigan

**DESCRIPTION**

The land embraced in the annexed plat of ROBERT T. SUBDIVISION of part of the S. E. 1/4 of the S. W. 1/4 of Section 19, T. 1 N., R. 13 E., Village of Roseville, Macomb County, Michigan

Is described as follows:

Beginning at a point distant 166.67 feet measured North 86 degrees 50 minutes 24 seconds West and 143.68 feet measured North 52 degrees 30 minutes 18 seconds East to the quarter corner of Section 19, T. 1 N., R. 13 E., thence South 87 degrees 17 minutes 50 seconds East a distance of 161.19 feet; thence North 22 degrees 31 minutes 20 seconds East a distance of 696.28 feet; thence North 87 degrees 10 minutes 35 seconds West a distance of 163.79 feet; thence South 02 degrees 18 minutes 30 seconds West a distance of 696.90 feet to the point of beginning.

REGISTERS OFFICE  
COUNTY OF MACOMB

Received for Record  
11/1/54  
in Vol. 29 at 11/1/54

**CERTIFICATE OF MUNICIPAL APPROVAL**

I hereby certify that this plat has been approved by the Village Council of the Village of Roseville at a meeting held on the 2nd day of December, 1953

Robert J. Funn, Village Clerk

**SURVEYOR'S CERTIFICATE**

I hereby certify that the plat herein delineated is a correct one, and that permanent monuments consisting of iron rods at least one half inch in diameter and 48 inches in length, secured in concrete cylinders four inches in diameter and 48 inches in length, have been set at points marked (a) on the above plat at all angles to the boundary lines of the land platted, and all intersections of the lines of streets and of intersections of the lines of streets with the boundaries of the plat.

John J. Folscher  
Reg. Land Surveyor

**CERTIFICATE OF COUNTY APPROVAL**

We hereby certify that this plat was approved by the Macomb County Plat Board at a meeting held on the 22nd day of January, 1954.

Frank N. Lohr, District Commissioner

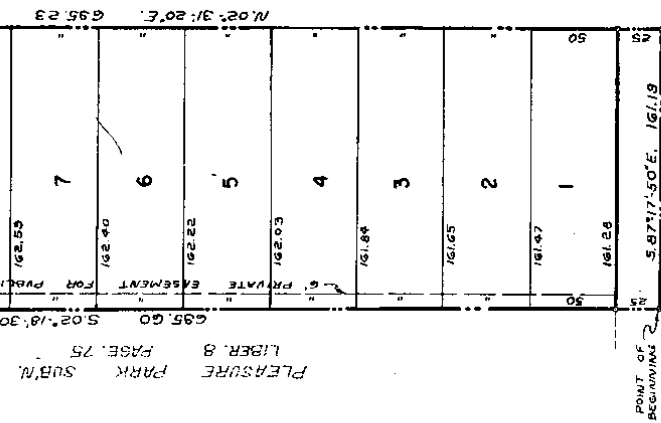
Albert A. Wagner, County Clerk

Frank N. Lohr, District Commissioner

Albert A. Wagner, County Clerk

PACKARD PARK SUBN. LIBER. 3 PAGE. 173

COLE STREET 50



POINT OF BEGINNING  
S. 1/2 LINE OF SEC. 19  
5.8747'-50"E. 161.19

GERALDINE FARMS SUBN.  
LIBER. 25 PAGE. 44

SOUTH 1/4 COR. SEC. 19  
T. 1 N., R. 13 E.

N. 66°-50'-24" W. 165.67  
E. S. LINE OF SECTION 19

82 PAGE 33

**"ASSESSORS PLAT NO. 26"**  
**PART OF SECTIONS 19 & 30 T. 1 N. R. 13 E.**  
**CITY OF EAST DETROIT MACOMB CO. MICHIGAN**

SCALE: 1" = 200'

NOTE: ALL MEASUREMENTS ARE IN FEET AND DECIMALS THEREOF.



EXAMINED AND APPROVED  
 Date JAN - 5 1957

*Frank S. Szymanski*  
 FRANK S. SZYMANSKI  
 COUNTY DEPUTY  
 REGISTRY

REGISTRY'S OFFICE }  
 COUNTY OF MACOMB }

Received for Record  
January 9, 1957  
 at 2:36 o'clock P.M. and recorded  
 in Vol. 38 of Plats, on  
 Page 36  
*James R. Reed*  
 Register of Deeds

**HARRY J. FULLER**  
 REGISTERED CIVIL ENGINEER  
 MICH.  
**MT. CLEMENS**

**DEDICATION**

NOT ALL HER BY THESE PRESENTS, that I Howard L. Le Dobster Assessor of the City of East Detroit, Macomb Co., State of Michigan, by virtue of authority in me vested by Section 51, Act 176 of 1929, having been duly authorized by the City Council, have caused to be laid out, described and assessed as follows the part of Sections 19 & 30 T. 1 N. R. 13 E. City of East Detroit, Macomb County, Michigan and that the streets and easements as shown on said plat have been acquired by deed, dedication and adverse possession.

WITNESSES:  
*Howard L. Le Dobster*  
 Howard L. Le Dobster  
 Assessor of the City of East Detroit

**ACKNOWLEDGMENT**

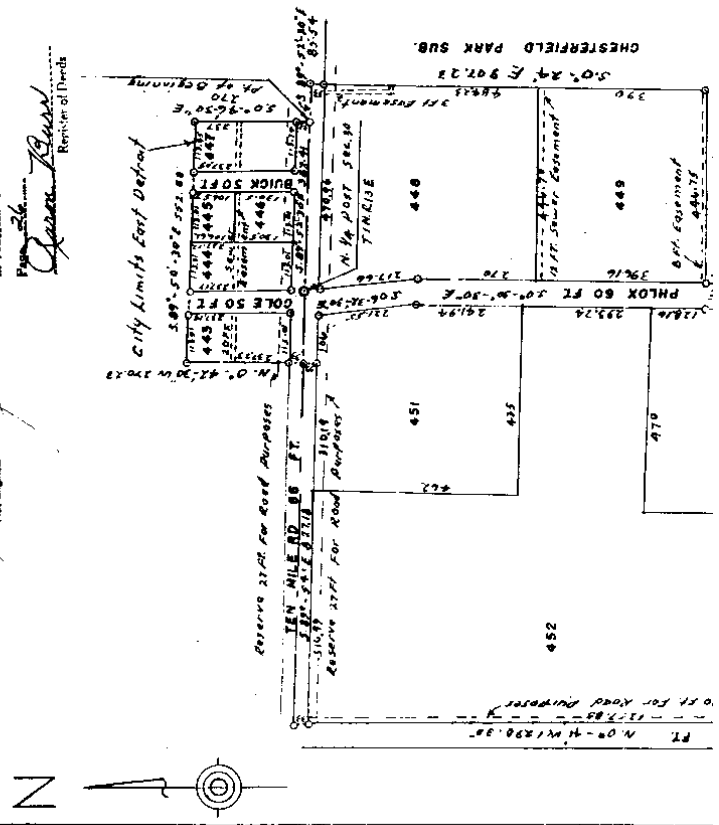
STATE OF MICHIGAN }  
 County of Macomb } ss  
 On this 17th day of December, A.D. 1956, before me a Notary Public in and for said County, personally came the above named Assessor of the City of East Detroit, known to me to be the person who executed the above dedication and acknowledged the same to be his free act and deed as such Assessor.

*Donnell A. ...*  
 Notary Public, Macomb County, Mich.

My Commission expires 1957

**DESCRIPTION OF LAND PLATTED**

The land embraced in the annexed plat of ASSESSORS PLAT NO. 26, part of Sections 19 & 30 T. 1 N. R. 13 E. City of East Detroit, Macomb County, Michigan and other acre fully described as follows:  
 Commencing at the N.E. post of Section 30 T. 1 N. R. 13 E., thence S. 89°-52'-30" E. 327.41 feet to the east of beginning, thence S. 89°-52'-30" E. 45.74 feet, thence S. 0°-24'-1" E. 207.23 feet, thence S. 8°-55'-1" E. 446.75 feet, thence S. 0°-19'-3" E. 157.87 feet, thence S. 0°-31'-7" E. 214.57 feet, thence S. 89°-52'-30" E. 200.8 feet, thence N. 0°-41'-2" E. 1290.35 feet, thence S. 89°-52'-30" E. 827.18 feet, thence N. 0°-42'-30" E. 270.23 feet, thence S. 89°-50'-30" E. 552.88 feet, thence S. 0°-46'-30" E. 270 feet to the point of beginning.



fact, thence S. 00°24' E. 207.23 feet, thence S. 80°55' E. 446.75 feet, thence S. 00°19' E. 157.87 feet, thence S. 01°31' E. 214.57 feet, thence S. 89°59' E. 1004.8 feet, thence N. 00°41' E. 1290.35 feet, thence S. 89°54' E. 227.18 feet, thence N. 00°42' 30" E. 270.23 feet, thence S. 89°50' 30" E. 552.88 feet, thence S. 00°46' 30" E. 270 feet to the point of beginning, consisting of Lots 443 to 452 inclusive, numbering 10 Lots.

**SURVEYORS CERTIFICATE**

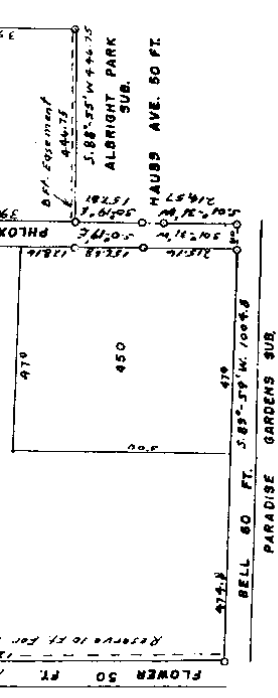
I hereby certify that the plat hereon delineated is a correct one and that permanent metal monuments consisting of bars of not less than one-half inch in diameter and thirty six inches in length exposed in a concrete cylinder at least 4 inches in diameter and thirty six inches in depth have been placed at points marked thus (o) as thereon shown at all angles in the boundaries of the land platted, at all the intersections of the streets, intersections of alleys, of streets and alleys, and at the intersections of streets and alleys with the boundaries of the plat as shown on said plat.

*Harry F. Walker*  
Harry F. Walker, Registered Land Surveyor

**CERTIFICATE OF MUNICIPAL APPROVAL**

This plat was approved by the City Council of the City of East Detroit of Macomb County, Michigan at a meeting held Feb 12 1956

*Charles Beuchin*  
Charles Beuchin, Clerk



**CERTIFICATE OF APPEAL BY COUNTY BOARD**

This plat was approved on the 21th day of February, 1956.

*Marion Surr*  
Marion Surr, County Registrar of Deeds

*Albert Spamer*  
Albert Spamer, County Clerk

*John Malon*  
John Malon, County Treasurer

*Frank Lehr*  
Frank Lehr, County Drain Commissioner

LIBRARY 33 PAGE 26

L.38 P.26

# "ASSESSORS PLAT NO. 36"

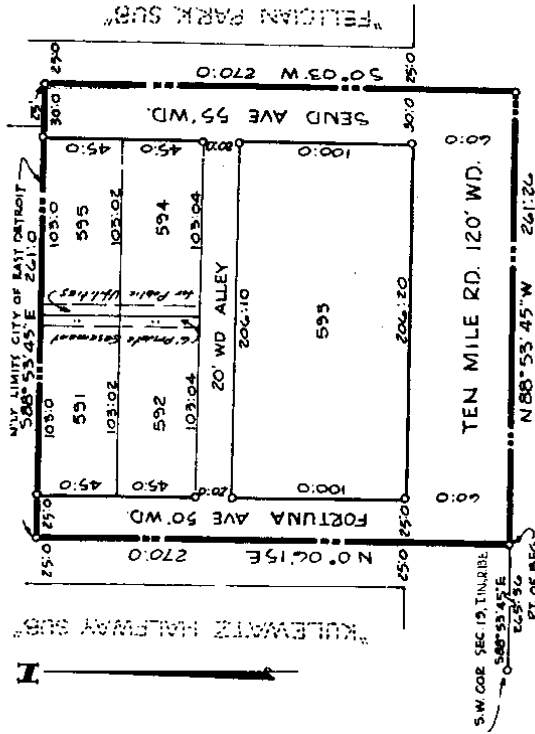
A PART OF S.W. 1/4, SECTION 19, T.1N., R.13E.

CITY OF EAST DETROIT  
 COUNTY OF MACOMB  
 MICHIGAN

NOTE:  
 All dimensions are in feet  
 and decimals thereof.



"ANNEXED SUBS"



### DEDICATION

KNOW ALL MEN BY THESE PRESENTS, That I, Howard L. Ledbetter, Assessor of the City of East Detroit, of Macomb County, State of Michigan, by virtue of authority in me vested by Section 51, Act 172, of 1929, having been duly authorized by the City Council have caused the land described in the annexed plat to be surveyed, laid out and platted, to be known as "Assessor's Plat No. 36" A Part of S.W. 1/4, Section 19, T.1N., R.13E., City of East Detroit, Macomb County, Michigan, and that the streets as shown on said plat are now being used for such purposes.

LENNER-BRIDGES, INC.  
 REG. CIVIL ENG. & SURVEYORS  
 MT. CLEMENS MICHIGAN

394989

EXAMINED AND APPROVED

Date: October 10, 1958

Frank S. Szemanski  
 AUDITOR GENERAL  
 State of Michigan

REGISTER'S OFFICE  
 COUNTY OF MACOMB

Received for Record

at 5:26 o'clock PM on 10/13/58

In Volume 115 of 115

Page 115 of 115

Registered by Howard L. Ledbetter

Register of Deeds

CERTIFICATE OF APPROVAL BY COUNTY BOARD  
 This plat was approved on the 12th day of October, 1958, by the Macomb County Plat Board.

By: John W. Anderson Register of Deeds

By: John W. Anderson Treasurer

... plat are now being used for such purposes.

Witnesses: Edward J. ...  
Howard L. Ledbetter, Assessor of the City of East Detroit, Macomb County, Michigan.

Notary Public, in and for Macomb County, Michigan.  
On this 19 day of ..., 19..., before me, a Notary Public, in and for said county, personally came the above named, Howard L. Ledbetter, Assessor of the City of East Detroit, known to me to be the person who executed the above dedication and acknowledged the same to be his free act and deed as such Assessor.

My Commission expires: ...

SURVEYOR'S CERTIFICATE  
I hereby certify that the plat hereon delineated is a correct one and that permanent metal monuments consisting of bars not less than one-half inch in diameter and 36 inches in length, encased in a concrete cylinder at least 4 inches in diameter and 36 inches in depth have been placed at points marked thus (O) as thereon shown at all angles in the boundaries of the land platted, at all the intersections of the lines of streets, and at the intersections of the lines of streets with the boundaries of the plat, as shown on said plat.

John D. Lehner,  
Registered Land Surveyor,  
No. 5787.

CERTIFICATE OF MUNICIPAL APPROVAL  
This plat was approved by the Common Council of the City of East Detroit at a meeting held ...  
Charles A. Beaubien

...  
Albert A. Wagner, County Clerk  
Frank E. Lohr, Drain Commissioner

CERTIFICATE OF APPROVAL BY BOARD OF COUNTY ROAD COMMISSIONERS  
This plat has been examined and was approved on the 19 day of ..., 19..., by the Macomb County Board of Road Commissioners.  
Lawrence Oettker, Vice-Chairman

DESCRIPTION OF LAND PLATTED

The land embraced in the annexed plat of "Assessor's Plat No. 36" A Part of S. W. 1/4, Section 19, T. 1 N., R. 13 E., City of East Detroit, Macomb County, Michigan, is described as follows: Commencing at a point 265.36 feet S. 88°-53'-45" E. from the Southwest corner of Section 19, T. 1 N., R. 13 E., City of East Detroit, Macomb County, Michigan, and thence extending N. 0°-06'-15" E. 270.00 feet; thence S. 88°-53'-45" E. 261.00 feet; thence S. 0°-03' W. 270.00 feet; thence N. 88°-53'-45" W. 261.26 feet to the point of beginning.

This Plat contains Lots 591 to 595 inclusive.

37

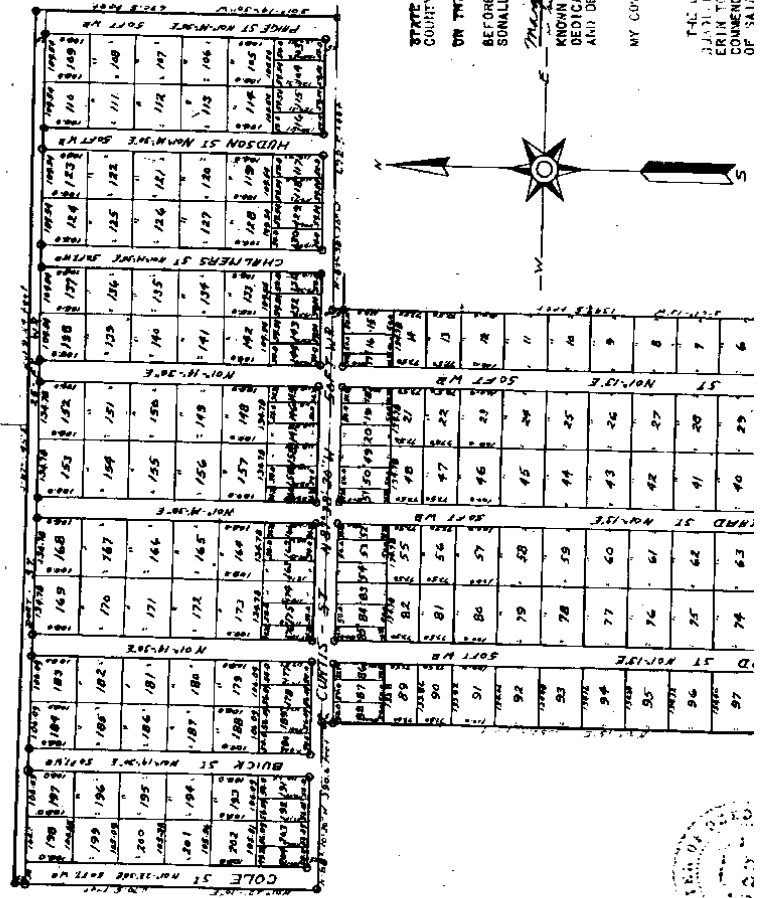
11207

*See Section 563 of Act No. 581*

# PACKARD PARK

SUBDIVISION "A"  
OF PART OF SE. 1/4 OF SEC. 19 T. 14 N. R. 13 E.  
ERIN TOWNSHIP, MACOMB COUNTY, MICH.

Sept 12, 1919  
Chas. L. Hunsley



DEDICATION.  
KNOW ALL MEN BY THESE PRESENTS, THAT WE  
*Charles R. Packard, Mary Packard, Charles R. Packard, Charles R. Packard*  
HAYE CAUSED THE LAND EMBRACED IN THE ANNEXED PLAT TO  
BE SURVEYED, LAID OUT AND PLATTED, TO BE KNOWN AS  
PACKARD PARK SUBDIVISION OF PART OF THE S.E. 1/4 OF  
SEC. 19, T. 14 N., R. 13 E., ERIN TOWNSHIP, MACOMB COUNTY,  
MICH. AND THE STREETS AND ALLEYS AS SHOWN  
SAID PLAT ARE HEREBY DEDICATED TO THE USE OF THE  
PUBLIC.  
SIGNED AND SEALED, IN PRESENCE OF  
*Charles R. Packard*  
*Charles R. Packard*  
*Charles R. Packard*

STATE OF MICHIGAN.  
COUNTY OF MACOMB.  
ON THIS 12th DAY OF September 1919  
BEFORE ME, A NOTARY PUBLIC IN AND FOR SAID COUNTY, PERSONALLY CAME THE ABOVE NAMED *Charles R. Packard*  
*Charles R. Packard, Mary Packard, Charles R. Packard, Charles R. Packard*  
KNOWN TO ME TO BE THE PERSONS WHO CAUSED THE ABOVE  
DEDICATION, AND ACKNOWLEDGED THE SAME TO BE THEIR FREE ACT  
AND DEED.  
MY COMMISSION EXPIRES 1st DAY OF October, 1920.

DESCRIPTION.  
THE LAND EMBRACED IN THE ANNEXED PLAT IS A SUBDIVISION OF PART OF THE S.E. 1/4 OF SEC. 19, T. 14 N., R. 13 E., ERIN TOWNSHIP, MACOMB COUNTY, MICH. THE TOTAL AREA OF SAID SEC. 19, THENCE N. 88° 51' E. 172.6 FT. THENCE





56	57	58	59	60	61	62	63	64	65	66	67	68	69	70	71	72	73	74	75	76	77	78	79	80	81	82	83	84	85	86	87	88	89	90	91	92	93	94	95	96	97	98	99	100
FORD ST										PICKARD ST										DODGE ST																								

Printed beginning  
at Macomb, Mich.

DESCRIPTION:  
THE LAND DESCRIBED IN THE ABOVE IS PART OF SEC. 19, T. 14 N. R. 12 E.,  
ERIN TOWNSHIP, MACOMB COUNTY, MICHIGAN, BEING PART OF THE  
CONNECTION AT A POINT 37.0 FT. N. 51° E. 49.2 FT. W. FROM THE  
N. 80° 10' 10" W. 300.5 FT. THENCE N. 12° 22' 10" W. 150.0  
FT. THENCE S. 87° 45' E. 208.9 FT. THENCE S. 11° 14' W. 300  
FT. THENCE N. 87° 38' W. 301.4 FT. W. 472.0 FT. THENCE  
S. 1° 15' W. 1347.5 FT. THENCE N. 87° 54' W. 950.7 FT. TO  
PLACE OF BEGINNING.

*Robert J. Smith*  
SURVEYOR & CIVIL ENGINEER

I HEREBY CERTIFY THAT THE PLAT HEREON DE INDEED IS A  
CORRECT ONE, AND THAT PERMANENT MONUMENTS, CONSISTING OF 3/4  
INCH GALV. GAS PIPE 18" LONG HAVE BEEN PLACED AT POINTS MARKED  
THEREON AS HEREON SHOWN AT ALL CORNERS IN THE BOUNDARIES OF  
THE LAND PLATED, AND AT ALL INTERSECTIONS OF STREETS AND  
STREETS AND ALLEYS.

*George I. Smith*  
CLERK

CERTIFICATE OF MUNICIPAL APPROVAL,  
THIS PLAT WAS APPROVED BY THE TOWNSHIP BOARD OF THE  
TOWNSHIP OF ERIN, AT A MEETING HELD *July 16, 1911*

RECORDERS OFFICE  
COUNTY OF MACOMB  
Landed this *19th* day  
of *July* 1911  
at *9-30* o'clock A.M. 1911  
by *J. B. Smith* Notary Public  
on file *175*  
*Robert J. Smith* Notary

This plat was approved by the County Board for Macomb  
County, Michigan, at a meeting held *July 16, 1911*  
at *10:00* o'clock A.M.  
by *W. H. Smith* Judge of Probate  
*Edward J. McLaughlin* County Clerk  
*Edward J. McLaughlin* County Treasurer

COUNTY TREASURER'S CERTIFICATE  
I HEREBY CERTIFY THAT THIS ABOVE PLAT IS  
by the State or any individual owner, and that the same is  
described in the approved instrument having in effect five years  
prior to the date thereof, according to the records of this Office.  
*Sept. 10, 1911*  
*Edward J. McLaughlin*  
County Treasurer

*Production of copy about same of copy for a first edition of 1911  
Instructions to copy for a first edition of 1911*



In Remission for change of title of ... of roads - Page 158

# CHESTERFIELD PARK SUB'N.

OF PART OF NE 1/4 SEC. 30 T. 14 N. R. 13 E.

ERIN TWP MACOMB CO. MICHIGAN

Enlight and Approved

July 26-1916

Notary Public

I hereby CERTIFY that the plot hereon delineated is a correct one and that permanent monuments consisting of 1 1/2" gas pipes have been placed in the ground at all points marked (c) as shown thereon at all angles in the boundary of the land platted and at all intersections of streets or streets and alleys



H. L. Powell SURVEYOR

MIC

I hereby CERTIFY that this plat has been approved by the Township Board of the Township of Erin at session held \_\_\_\_\_ 1916

CLERK

STATE OF MICHIGAN }  
COUNTY OF WAYNE } S.S.

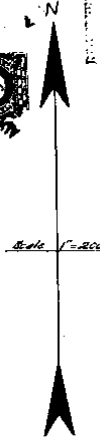
On this \_\_\_\_\_ day of \_\_\_\_\_ 1916, before me a Notary Public, personally came the above named Edgar A. Talbot, and Wilfred J. Lovelace, to me personally known, who being each by me duly sworn did say that they are respectively President and Secretary of THE SUBDIVISION L AND CO. INC. a corporation organized and existing under the laws of the State of Michigan, and that the seal affixed to the foregoing instrument was signed

KNOW ALL MEN BY THESE PRESENTS THAT WE the Subdivision Land Co. a Michigan Corporation by Edgar A. Talbot President and Wilfred J. Lovelace Secretary and Corp. Officers have caused the land in the annexed as proprietors have caused the land in the annexed plot to be surveyed, laid out and platted to be known as "Chesterfield Park Subdivision" of part of NE 1/4 Sec. 30 T. 14 N. R. 13 E. Erin Twp. Macomb Co. Mich. and that the streets and alleys shown on said plat are hereby dedicated to the use of the public

Signed and Sealed in the presence of

Witnesses: On this \_\_\_\_\_ day of \_\_\_\_\_ 1916. Subdivision Land Co. Inc.

by \_\_\_\_\_ L.S.  
by \_\_\_\_\_ L.S.  
James C. Prosser \_\_\_\_\_ L.S.  
Charles H. \_\_\_\_\_ L.S.  
L. \_\_\_\_\_ L.S.  
Edna E. \_\_\_\_\_ L.S.  
Bell \_\_\_\_\_ L.S.





My Commission Expires \_\_\_\_\_  
 NOTARY IN AND FOR WAYNE Co. MICH.

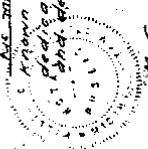


STATE OF MICHIGAN  
 COUNTY OF WAYNE

On this \_\_\_\_\_ day of \_\_\_\_\_ 1916,  
 before me a Notary Public personally came the above named \_\_\_\_\_

\_\_\_\_\_ known to me to be the persons who executed the above  
 dedication and acknowledged the same to be their free act  
 and deed.

Notary in and for Wayne Co. Mich.



**DESCRIPTION** — The land embraced in Chesterfield Park Subdivision of part of NE 1/4 of Sec. 30 T. 14 N. R. 13 E. Erin Twp. Macomb Co. Mich. is described as follows: Beginning at a point 340 ft. W. of NE corner Sec. 30 T. 14 N. R. 13 E. said point being the intersection of the center lines of GERRIOT AVE. and KERN ROAD, thence S. 25° 22' 30" W. 340 ft., thence S. 89° 45' 30" W. 1077 ft., thence N. 67° 23' 15" W. 908 ft., thence E. 1077 ft. to point of beginning.

This is to certify that there is no other plat or subdivision in force in the County of Wayne, Michigan, covering the above described premises, and that all taxes on the same have been paid to the year prior to the date hereof, and that the same are now in the possession of the William McKinnon Co. Inc. dated July 17, 1916.

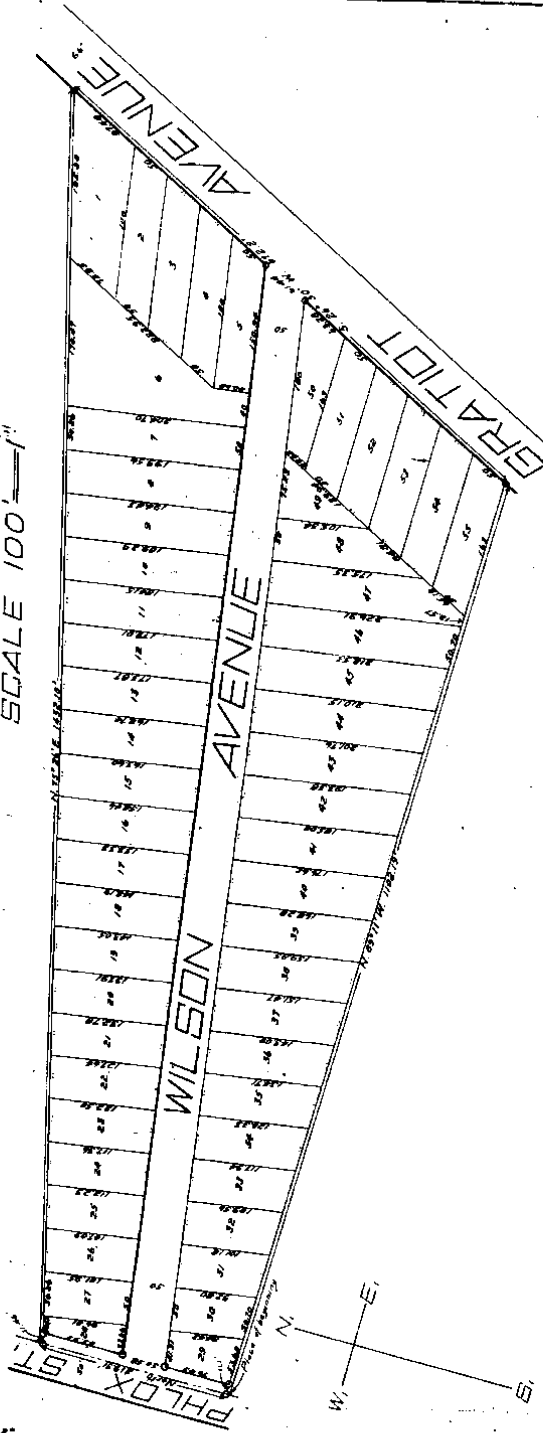
Note: All dimensions in feet.

After 110 days from Page 352  
 Page 346  
 447, 448

62

SEYFERTH AND REINERT'S SUBDIVISION  
 OF PART OF N.E. 1/4 OF SECTION 30 T. 1 N. R. 13 E.  
 MAGOMB COUNTY MICHIGAN

SCALE 100' = 1"



DEDICATION.

KNOW ALL MEN BY THESE PRESENTS, That we Charles Seyferth and Emma Seyferth his wife, Carl Holmstedt and Anna Holmstedt his wife and Emil Wessel and Veronic Wessel his wife, as proprietors, have caused the land embraced in the annexed SUBDIVISION, of part of N. E. 1/4 of Section 30, T. 1 N. R. 13 E., Magomb County, Michigan, and that the streets as shown on said plat are hereby dedicated to the use of the public.

Signed and Sealed in Presence of  
 Charles Seyferth (L.S.)  
 Emma Seyferth (L.S.)  
 Carl Holmstedt (L.S.)  
 Anna Holmstedt (L.S.)  
 Emil Wessel (L.S.)  
 Veronic Wessel (L.S.)

CERTIFICATE OF TOWNSHIP BOARD.

This plat was approved by the Township Board of the Township of Linn at a meeting held, ...

Clerk.

CERTIFICATE OF COUNTY BOARD.

This plat was approved on the 5th day of August 1919.

Judge of Probate.

CERTIFICATE OF COUNTY BOARD.

This plat was approved on the 5th day of August 1919.

JUDGE OF PRODUCE.  
County Clerk.

County Treasurer.

COUNTY TREASURER'S CERTIFICATE.

Office of County Treasurer, Macomb County, Michigan, 1919.  
I hereby certify that there are no tax liens or titles held by the State on the lands described above, and that there are no tax liens or titles held by individuals on said lands for the five years preceding the day of August 1919 and that the taxes for said period of five years have been paid, as shown by the records of this office.

County Treasurer.

REGISTER'S OFFICE  
COUNTY OF MACOMB

Received for Record this 11th day of August, A.D. 1919, at 11:30 o'clock A.M. the following Record Book in 1500 pages of 20 pages each.

(L.S.)  
(L.S.)  
(L.S.)  
(L.S.)

On this 17th day of July 1919 before me, a Notary Public in and for said County, personally came the above named Charles Schwartz and Anna Sophie Zabel, his wife, known to me to be the persons who executed the above dedication, and acknowledged the same to be their free act and deed.

My Commission expires Dec. 30, 1922 Notary Public, Macomb Co., Mich.

DESCRIPTION.

The land embraced in the annexed plat of SEVENTH AND REINHART'S SUBDIVISION, of part of E. E. 1 of section 30, T. 1 N. R. 13 E., Macomb County, Michigan, is described as follows, to wit: lands lying in the N. E. 1/4 of Section 30, T. 1 N. R. 13 E. and more particularly described as follows, to wit: Beginning on the easterly line of 240.84 feet, as located in Paradise Gardens Subdivision, a distance of 512.2 feet west, as located in Paradise as platted in said subdivision; thence N. 219.91 feet; thence S. 79.26' E. a distance of 1452.10 feet to the northwesterly side line of the Greatlot Road; thence S. 26° 50' W. a distance of 572.2 feet; thence N. 89° 11' E. a distance of 1102.19 feet to place of beginning.

ENGINEER'S CERTIFICATE.

I hereby certify that the plat hereon delineated is a correct one, and that permanent monuments, consisting of 4 iron gaspikes, 18' long, have been placed at points marked thus (o) as thereon shown at all angles in the boundaries of the land platted, and at all intersections of streets.

Geo. W. ...  
Civil Engineer.

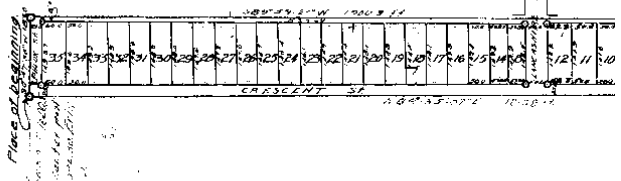
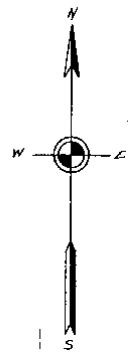
1919

Examined and Approved  
 May 26-1930  
 Deputy Registrar

**PLAT OF  
 ALBRIGHT PARK  
 SUBDIVISION**  
 PART OF THE NE 1/4 OF SEC. 30  
 T14N R13E E34N TWP.  
 MACOMB COUNTY MICH.

W.S. Schaefer, County Surveyor  
 Mt. Clemens, Mich.

Scale 200 ft = 1 inch



Know all men by these presents that William Albert  
and Katherine Albert do hereby

as proprietors, have caused the land embraced in the annexed  
 plat to be surveyed, laid out and platted to be known as  
Albright Park Subdivision and that the streets and alleys as shown on said plat are  
 hereby dedicated to the use of the public.

Witness my hand and seal of the County of Macomb, Michigan, this 20th day of May, 1930.  
W.S. Schaefer  
 County Surveyor

State of Michigan  
 County of Macomb  
 On this 19th day of March, 1930,  
 before me, a Notary Public in and for said County, personally  
 came the above named William Albert and  
Katherine Albert known to me to be the persons who executed the above dedi-  
 cation, and acknowledged the same to be their free act and deed.

Harold T. Bingham  
 Notary Public in and for said County, Michigan.  
 My Commission Expires 20th day of May, 1933.

I hereby certify that the plat herein delineated is a correct one  
 and that permanent monuments consisting of 1/2 x 18 inch iron  
 stakes have been placed at points marked "A" as thereon  
 shown at all angles in the boundaries of the land platted and  
 at all intersections of streets as shown on said plat.

L. 4  
 P. 63

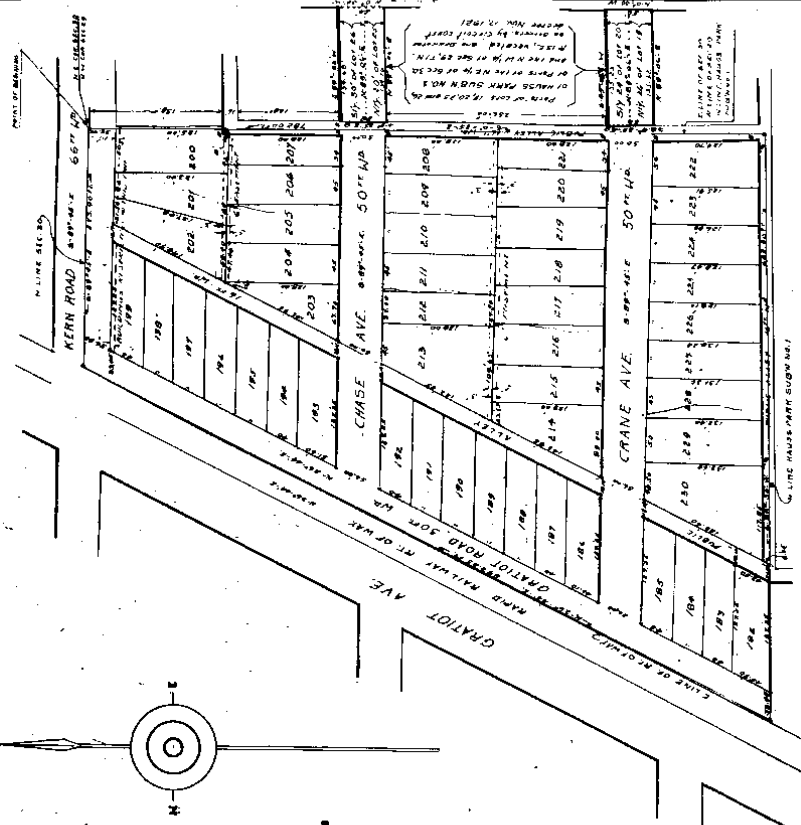
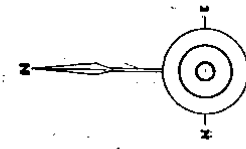


PLANNED

June 6-1921  
J. L. Wilson

# CHESTERFIELD PARK SUB'N. NO. 1.

OF A PART OF THE N.E. 1/4 OF THE N.E. 1/4 OF SEC. 30, AND A PART OF THE NW 1/4 OF SEC. 29  
T. 14, R. 12 E., S. 14, TOWNSHIP 14 S., MICHIGAN.



I hereby certify that the plat herein delineated is a correct one and that permanent monuments consisting of 1 1/2 inch gas pipes have been placed in the ground at all points marked thus (s) as shown thereon, at all angles in the boundary of the land platted, and at all intersections of streets and alleys.

*Frank B. Chambers*  
Registered Surveyor.

KNOW ALL MEN BY THESE PRESENTS: That W. George Chambers and Nellie L. Chambers, his wife and Robert J. Stewart and Nellie Stewart his wife are, Elizabeth and Elizabeth Greaves, married, by Ferdinand E. Stoffer, her legally appointed guardian, have caused this land embraced in the annexed plat to be surveyed, laid out and platted, to be known as CHESTERFIELD PARK SUBDIVISION NO. 1, OF A PART OF THE N.E. 1/4 OF THE N.E. 1/4 OF SEC. 30, AND A PART OF THE NW 1/4 OF SEC. 29, T. 14, R. 12 E., S. 14, TOWNSHIP 14 S., MICHIGAN, and that the streets and alleys shown on said plat are hereby dedicated to the use of the public.

WITNESSED AND SEALED IN THE PRESENCE OF  
WITNESSES AS ABOVE, this 6th day of June, 1921.

*W. George Chambers*, L.S.  
*Nellie L. Chambers*, L.S.  
*Robert J. Stewart*, L.S.  
*Elizabeth Greaves*, L.S.  
*Ferdinand E. Stoffer*, L.S.  
*Elizabeth Greaves*, L.S.  
*Robert J. Stewart*, L.S.  
*Ferdinand E. Stoffer*, L.S.  
her legally appointed guardian.

STATE OF MICHIGAN }  
COUNTY OF MICHIGAN } S. S.

On this 6th day of June, 1921 before me a Notary Public in and for said county, personally came the above named George Chambers and Nellie L. Chambers, his wife, and Robert J. Stewart and Nellie Stewart, his wife, known to me to be the persons who executed the above dedication, and acknowledged the same to be their free act and deed.

*W. G. Chambers*  
Notary Public in and for Michigan County, Mich.







# BELL SUBDIVISION

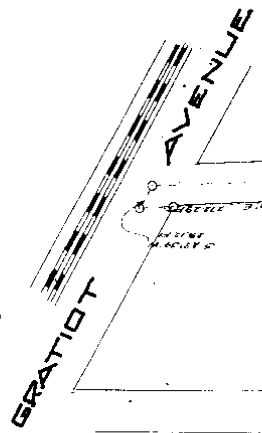
A PART OF THE N.E. 1/4 SEC. 30, T.14N., R.13E.

ERIN TWP. MICHIGAN

SCALE  
1"=100'

Sept 18 1927  
The L.H. Harris

MACOMB CO.  
W. LEHNER REC'D.  
MT. CLEMENS MICH.



L. 8  
P. 39

This plat was prepared by *William C. Bell* and *John C. Bell* and is a part of the N.E. 1/4 Sec. 30, T.14N., R.13E., Erin Township, Macomb County, Michigan, and that the areas and acres as shown on said plat are hereby dedicated to the use of the public.

*William C. Bell*  
*John C. Bell*

Witness my hand and seal of said County of Macomb, Michigan, this 29th day of July, 1927.

*John C. Bell*  
County Clerk

County of Macomb, Michigan, this 29th day of July, 1927.

*John C. Bell*  
County Clerk

Notary Public, Macomb, Co., Mich.  
John C. Bell, Notary Public, Erin, Mich., 18-1928

Stacy Public Mass...  
Stacy Public Mass...  
Stacy Public Mass...

This was approved by the Board of Supervisors  
April 16, 1928  
James C. Smith  
James C. Smith

Use as to certify that the above plan was approved by the  
Board of Supervisors of the Township of...

County of...  
at a meeting held this...  
of...

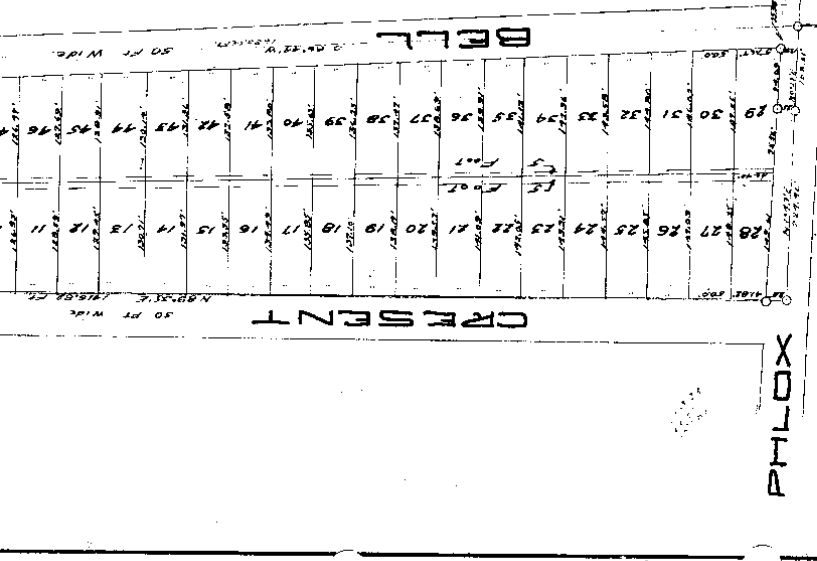
County ready to...  
at all intersections of streets and alleys...

COUNTY TREASURER  
APR 19 1928  
The Public Mass...

County of...  
at a meeting held this...  
of...



STREET





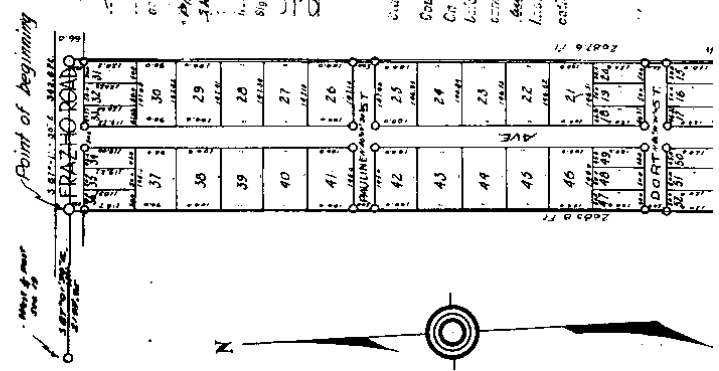
# PLEASURE PARK SUBDIVISION

A PART OF THE E½ OF THE E½ OF THE SW¼ OF SEC. 19  
TIN, RISE, ERIN TWP, MACOMB CO, MICH.

19-1982  
H. & Thumel

Walter J. Lehner, Reg. C.E.  
Mt. Clemens, Michigan.

Scale 1" = 200'



I, all men by these presents, that, *Heretofore*  
*Abraham*  
*Abraham*  
and *Abraham*  
of the County of *Macomb* and State of *Michigan*  
do hereby certify that the above described  
lot is a part of the E½ of the E½ of the SW¼ of the  
Sec. 19 T19N R15E E1/2 SW 1/4 Macomb Co. Mich.  
and that the same are being offered to the public  
by authority of the Board of Public  
Lands and Mineral Resources of the State of Michigan  
and that the same are being offered to the public  
by authority of the Board of Public Lands and Mineral Resources  
of the State of Michigan.

County of *Macomb* ss.  
City of *Orion* 1928  
I, *Thomas F. Bell*, County Clerk,  
do hereby certify that the above described  
lot is a part of the E½ of the E½ of the SW¼ of the  
Sec. 19 T19N R15E E1/2 SW 1/4 Macomb Co. Mich.  
and that the same are being offered to the public  
by authority of the Board of Public Lands and Mineral Resources  
of the State of Michigan.





My Commission Expires Oct 14, 1937  
 Notary Public *Michael De Mink*

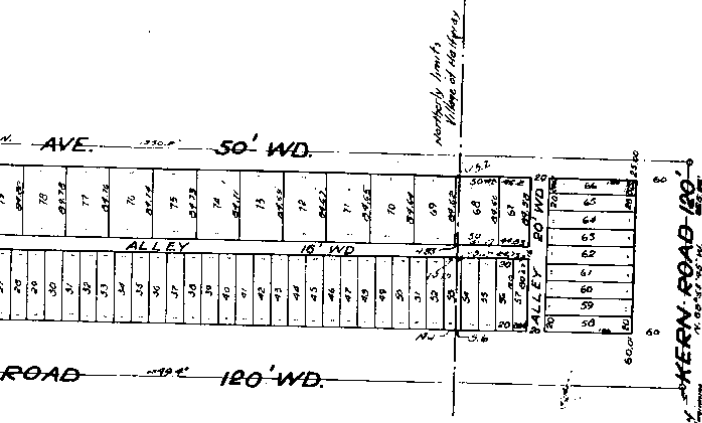
CERTIFICATE OF TOWNSHIP BOARD  
 This plat was approved by the Township Board of *Carroll TWA*,  
 at a *Special* meeting held on the *11* day of *July*,  
*1935*  
*Michael De Mink*  
 Township Clerk

CERTIFICATE OF MUNICIPAL APPROVAL  
 This plat was approved by the Village Commission of the  
 Village of *Shelby* at a meeting held *July 11, 1935*  
*Michael De Mink*  
 Clerk

ENGINEER'S CERTIFICATE  
 I hereby certify that the plat hereon delineated is a correct  
 one and that the present monuments consisting of *3/4" iron pins*  
*60" apart* are in place and that the *lot* shown on the  
 (a) as thereon shown at all angles in the boundaries of the  
 land platted and at all intersections of streets and alleys.

The above plat and subdivision is hereby subjected to the  
 following covenants and agreement which shall be observed by these  
 proprietors hereon and their successors and assigns, and  
 their heirs, assigns and legal representatives, and that the same  
 be sold, rented, conveyed or otherwise disposed of, or shall be  
 same be occupied by, excepting as to domestic servants, any Negro or  
 colored persons of Negro blood.

COUNTY TREASURER  
 TOWN CLERK  
 By the County Clerk  
 July 28, 1935  
*James C. L. White*



Approved by the Board of Supervisors  
 at a meeting held on the *11* day of *July*,  
*1935*  
*Michael De Mink*  
 Clerk

Position of plat of my Subdivision  
 See resolution to which all in my lot 33 50.55 56.57 57 58 59  
 July 28, 1935  
*James C. L. White*

do not show the change of street  
 do show the Board - 10/20/38  
 do not show the 605 yd. lot  
 6870 yd. lot  
 1935

69 160

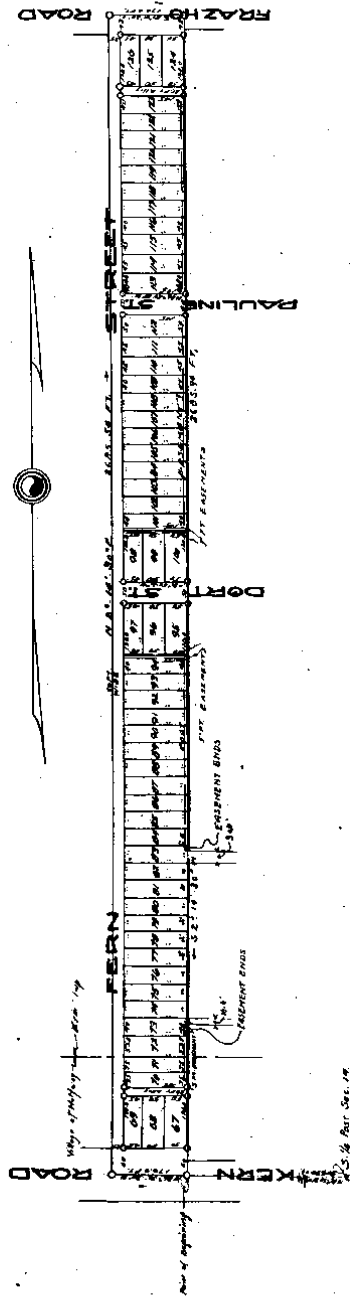


# PLEASURE PARK SUBDIVISION NO. 1

PART OF THE SW 1/4 OF THE SW 1/4 SEC 19 T19 R15E  
 ERIN TWP. AND VILLAGE OF HALFWAY  
 MACOMB CO., MICHIGAN  
 W.J. LEHNER REG. CE.  
 MOUNT CLEMENS MICH.

SCALE 1" = 200'

5611



KNOW ALL MEN BY THESE PRESENTS, That Herman C. Haselhuber and Pauline Haselhuber, His wife, have caused the land embraced in the annexed plat to be surveyed, laid out and platted, to be known as PLEASURE PARK SUBDIVISION NO. 1, a part of the SW 1/4 of the SW 1/4 Sec. 19, T. 19. N. R. 15. E. Erin Twp. and Village of Halfway, Macomb Co., Mich., and that the streets and alleys as shown on said plat are hereby dedicated to the use of the public.

Signed and sealed in the presence of  
*Herman C. Haselhuber*  
*Pauline Haselhuber*

**Description of Land Platted**

The land embraced in the annexed plat of "PLEASURE PARK SUBDIVISION NO. 1", part of the SW 1/4 of the SW 1/4 of Sec. 19, T. 19. N. R. 15. E. Erin Township, and Village of Halfway, Macomb Co., Mich., is described as follows:

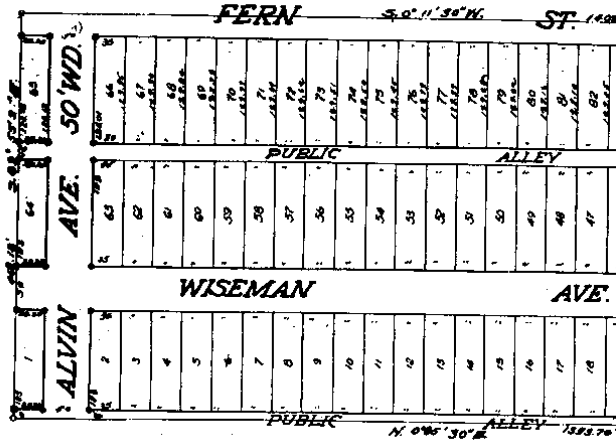
Beginning at a point 264 ft. N. 86°50'130" E. of the S. 1/4 cor. of Section 19, thence N. 86°50'130" E. 170.0 ft. thence N. 29°14'30" E. 2666.54 ft. thence S. 87°01'30" E. 170.0 ft. thence S. 29°14'30" E. 2666.90 ft. to the point of beginning.

Provided:

That the above plat and subdivision is hereby subjected to the following agreement or covenant which shall be observed and assigned of them to wit:



100 11 30 W



County of Wayne, Mich.  
 Received for Record this 16th day of December 1914, A.P. 1888, at 2:30 o'clock P.M. by Recorder in Room 10 of the County of Wayne, Mich. at the City of Detroit.  
 Joseph C. Anthony, Register

KNOW ALL MEN BY THESE PRESENTS: That WALTER J. BAKER, as proprietor of the property herein described, have caused the land embraced in the annexed plat to be surveyed, laid out and platted to be known as VILLAGE DE LYS SUBDIVISION being a part of the W of the S. 1 of the S. 19 of the Sec. 19, Village of Railway, Erin Twp., Macomb Co., Mich., and that the streets and alleys shown on said plat are hereby dedicated to the use of the public.

Signed and Sealed in the Presence of

Walter J. Baker (L.S.)  
 \_\_\_\_\_ (L.S.)  
 \_\_\_\_\_ (L.S.)  
 \_\_\_\_\_ (L.S.)  
 \_\_\_\_\_ (L.S.)  
 \_\_\_\_\_ (L.S.)

STATE OF MICHIGAN  
 COUNTY OF Wayne, 1883

On this 19th day of June A.D. 1914, before me, a Notary Public in and for said County, personally came the above named Walter J. Baker, who acknowledged to me to be the person who executed the above definition and declaration and the same to be their free act and deed.

My Commission expires May 1, 1914

Notary Public John J. Gaudin, Mich.

ENCLOSURE CERTIFICATE





