

Part B: Surveyor's Report on Perpetuation, Restoration, Reestablishment or Monumentation of Corner:

Refer to: 11-22-2006 LCRC for Remonumentation Corner by Robert H. Birkett, PS #41094, B08 recorded in L. 18324 of Deeds on P. 600 & 601. Set a 3/4" X 24" iron with an aluminum cap stamped "MACOMB COUNTY MONUMENT, MI ACT 345, 41094, B08" in a new monument box in centerline of Frazho Road (east-west) ith 4 accessories.

Part C: Field Evidence of Perpetuation or Monumentation of Corner:

2-23-2017 Found a 3/4" X 24" iron with an aluminum cap stamped "MACOMB COUNTY MONUMENT, MI ACT 345, 41094, B08" in a monument box in centerline of Frazho Road (east-west) with 4 of 4 matching accessories from the LCRC listed in Part A.

Occupied corner with GPS to obtain Geodetic Coordinate Data.

Accessories:

- AZ. 37° 81.85' (R&M) Southeast corner brick house #15961
- AZ. 140° 106.74' (R&M) Northwest corner brick house #16000
- AZ. 189° 26.64' (R&M) Found Macomb County Witness Tag in west face utility pole
- AZ. 295° 79.79' (R&M) Found Macomb County Witness Tag in southwest face utility pole

Date of Observation	Latitude	Longitude	Datum and Adjustment Year	Epoch Date
23-Feb-17	N 42D29'13.12868"	W 82D57'26.54937"	NAD83 (2011)	2010.0000

Method for Latitude-Longitude determination: NGS OPUS-RS Solution

State Plane Coordinates in international feet: N-362863.96', E-13503454.75'
 Standard Deviation: 0.06'N, 0.03'W
 Zone: South
 Combined Factor: 0.99990647
 NGSPID: AB5949
 Survey Method: MC GPS
 Orthometric Height: 623.96'
 Elev. Datum: NAVD88

I, Steven E. Dunn, P.S., in a field survey on February 23, 2017, certify under the requirements of the State Survey and Remonumentation Act, 1990 PA 345, MCL 54.261 to 54.279, and the Corner Recordation Act, 1970 PA 74, MCL 54.201 to 54.210d, that the corner identified and described hereon has been perpetuated or monumented as described in Parts A, B, and C above, pursuant to the laws and rules of the State of Michigan.

Steven E. Dunn May 17, 2017
 Steven E. Dunn, P.S. Date

Professional Surveyor's License No.: 28408

Prepared By:
 Steven E. Dunn, PS
 Great Lakes Geomatics, LLC
 12504 Stephens
 Warren, MI 48089



I, Martin C. Dunn, P.S., Macomb County Surveyor Representative, have reviewed the corner perpetuated in parts A, B and C above for the purpose of publishing its Michigan State Plane Coordinate values and relative data and is accepted for filing in the Macomb County Remonumentation Program.

Martin C. Dunn 6-8-2017
 Martin C. Dunn, P.S. Date

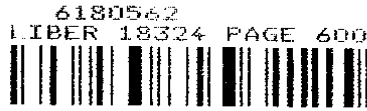
Macomb County Surveyor Representative
 License No. 30081

REC'D NOV 14 2006
3:00 P.M.

LAND CORNER RECORDATION CERTIFICATE
Filing Requirement of Act 74, Mich. P.A. 1970

For corners in

<u>Macomb</u> (County)	Located in: City of Roseville	Corner Code # _____
1. Public Land Survey	T <u>1N</u> R <u>13E</u>	<u>B-8</u>
	T _____ R _____	_____
	T _____ R _____	_____
	T _____ R _____	_____
2. Property Controlling in Section	S _____ T _____ R _____	_____
	S _____ T _____ R _____	_____
3. Miscellaneous Property in Sec.	S _____ T _____ R _____	_____
	S _____ T _____ R _____	_____



11/22/2006 09:54:57 A.M.
MACOMB COUNTY MI SEAL
GARMELLA SABAUGH REGISTER OF DEEDS

- 4. Lot No. _____, Recorded Plat
- 5. Private Claims

I, Robert H. Birkett, in a field survey on, August 10, 2006 do hereby state that under requirements of P.A. 74, Michigan P.A. of 1970, the corner points mentioned in lines 1 and 2 above were in conformance with regulations and rules therefore as required in the current manual of survey instructions of the United States Department of the Interior, Bureau of Land Management or by a decree of a Court of Law and /or that the corner points mentioned in lines 3, 4 and 5 above were in conformance with the rules of the Michigan Board of Land Surveyors or by a Decree of a Court of Law; established, re-established, monumented, re-monumented, recovered, found as expressed below:

NOTE: Not more than 2 corners, all in the same town and range, may be recorded on this certificate.

A	B	C	D	E	F	G	H	I	J	K	L	M
2	6	5	4	3	2	1						
3												
4	7	8	9	10	11	12						
5												
6	18	17	16	15	14	13						
7												
8	19	20	21	22	23	24						
9												
10	30	29	28	27	26	25						
11												
12	31	32	33	34	35	36						
13												

A. Description of original monument and accessories and/or subsequent restoration:

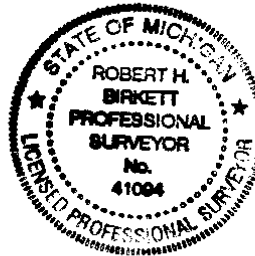
B-8 Continued on reverse side

B. Description of corner evidence found and/or method applied in restoring or reestablishing corner:

B-8 No monumentation at the location of this corner, existing evidence consists of paved Frazho Road east and west, platted subdivisions north and south in line with fence line to north. Located from calculated position supported by Found monumentation from plats (f), (i), (j), and (k), and the measured distance between adjacent government corners A-8, and B-7

Field Measurements Between Corners

To B-9 Remon 2006 = 2687.86, Record East = N/A, Record West = N/A
 To A-8 Remon 2006 = 2705.39, Record North = 2705.83, Record South = 2663.24
 To C-8 Remon 2006 = 2695.98, Record North = N/A, Record South = 2872.02
 To B-7 Remon 2006 = 2686.73, Record East = 2687.11 L.018 P.014, Record West = 2687.10



C. Description of monument for corner and accessories established to perpetuate locating the position of the corner:

B-8 Set a 3/4" x 24" iron with an aluminum cap stamped "Macomb County Monument, MI, ACT 345, 41094, B-8" in centerline of Frazho road, in a new monument box

- AZ 37° - 81.85' - Southeast corner brick house number 15961.
- AZ 140° - 106.74' - Northwest corner brick house number 16000.
- AZ 189° - 26.64' - Set Macomb County Witness tag in west face utility pole.
- AZ 295° - 79.79' - Set Macomb County Witness tag in southwest face utility pole

ACCEPTED BY THE MACOMB COUNTY SURVEY PEER GROUP AS THE OFFICIAL CORNER UNDER MICHIGAN PUBLIC ACT 345 OF 1990 AT A MEETING HELD ON 9-26-06

 MARTIN C. DUNN, P.S. CHAIRMAN

The selected location is accepted by me and is generally accepted by Professional Surveyors as the best available evidence of the position of the original corner.

Signed by R. Birkett
 Surveyor's Michigan License No. 41094

Date 11-02-06

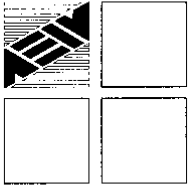
LAND CORNER RECORDATION CERTIFICATE
Filing Requirement of Act 74, Mich. P.A. 1970

For corners in

<u>Macomb</u>		Located In:	Corner Code #
(County)		City of Roseville	
1. Public Land Survey		T <u>1N</u> R <u>13E</u>	<u>B-8</u>
		T ___ R ___	_____
		T ___ R ___	_____
		T ___ R ___	_____
2. Property Controlling in Section	S ___	T ___ R ___	_____
	S ___	T ___ R ___	_____
3. Miscellaneous Property in Sec.	S ___	T ___ R ___	_____
	S ___	T ___ R ___	_____
4. Lot No.	Recorded Plat		
5. Private Claims			

Section A. Continued from front

- 1818, Center of section 19 was not set by the General land Office
 1927, Lehner, Not Described, Field Notes
 A-1919, WJ Lehner (CE), "Parckard Park Sub.", L003 P173 M.C.R.
 B-1923, WJ Lehner (CE), "Bel-Glan Gardens Sub.", L 006 P036 M.C.R.
 C-1923, GL Jerome No 4723, "Fortuna Gardens Sub.", L 006 P076 M.C.R.
 D-1924, WJ Lehner (CE), "Terminal Park Sub.", L 008 P 021 M.C.R.
 E-1924, WJ Lehner (CE), "Hartung Sub.", L 008 P 062 M.C.R.
 F-1925, WJ Lehner (CE), "Pleasure Park Sub.", L 008 P 075 M. C.R.
 G-1925, WJ Lehner (CE), "Pleasure Park Sub. No 1", L 009 P 054 M.C.R.
 H-1926, WJ Lehner (CE), "Fischer's Roseville Park No. 1", L 010 P 070 M.C.R.
 I-1926, WJ Lehner (CE), "Leach Sub.", L 011 P 020 M.C.R.
 J-1936, PK McCarthy (CE), "Assessors Plat No 4", L 017 P 018 M.C.R.
 K-1937, PK McCarthy (CE), "Assessors Plat No. 12", L 018 P 014 M.C.R.
 L-1949, PJ O'Non No 6213, "Maschmeyer Sub. No 1", L 025 P 013 M.C.R.
 M-1949, PJ O'Non No 6213, "Maschmeyer Sub. No 2", L 025 P 014 M.C.R.
 N-1950, LT Brown No 2967, "Geraldine Farms Sub.", L 025 P 044 M.C.R.
 O-1950, TG Bieh! No 6442, "Charlotte E. Maschmeyer Sub.", L 026 P 002 M.C.R.
 P-1952, L Cantor, "Leland V. Maschmeyer Sub.", L 027 P 040 M.C.R.
 Q-1953, HJ Fuller No 1645, "Dennis D. Sub.", L 028 P 014 M.C.R.
 R-1953, EF Speer No 1574, "Mary K. Berndt Sub. No 1", L 028 P 027 M.C.R.
 S-1953, CP McGrath, "Roberts-Edwards Sub.", L 029 P 009 M.C.R.
 T-1953, JJ McMahon, "Robert T. Sub.", L 029 P 033 M.C.R.
 U-1954, JC Jenkins No 3507, "Groveland Sub.", L 030 P 008 M.C.R.
 V-1954, CP McGrath, "Frazho-Petrie Sub.", L 030 P 034 M.C.R.
 W-1954, JC Jenkins No 3507, "Julianna Sub. No 2", L 031 P 017 M.C.R.
 X-1956, EL Pettingill, "Send Avenue Park Sub. No 1", L 037 P 038 M.C.R.
 Y-1957, HJ Fuller No 1645, "Assessors Plat of Coburn's Frazho Road Sub.", L 040 P 022 M.C.R.
 Z-1959, WR McCary No 2485, "David W. Sub.", L 043 P 038 M.C. R.
 AA-1963, JD Lehner No 5787, "Assessor's Plat No 19", L 051 P 025 M.C.R.
 BB-1968, WJ Couiter No14760, "Rose Pointe Sub.", L 058 P 045 M.C.R.
 CC-1998, HH Kemnitz No 16931, "Lehner Court Sub.", L 125 P 043 M.C.R.



**Report of Survey
B-8, Roseville
Town 1 North, Range 13 East
Macomb County, Michigan**

Corner Information

B-8 was not set by General Land Office, during original survey in 1818
This corner is the center of section 19

Existing Conditions

No monumentation at the location of this corner. Existing evidence consist of paved Frazho Road east and west, platted subdivisions north and south. Corner location was re-established from calculated position supported by monumentation in (f), (i), (j), and (k), from plats below, and the measured distance between adjacent government corners A-8, and B-7

Plats

A-1919, WJ Lehner (CE), "Parckard Park Sub", L003 P173 M.C.R.
B-1923, WJ Lehner (CE), "Bel-Glan Gardens Sub.", L 006 P036 M.C.R.
C-1923, GL Jerome No 4723, "Fortuna Gardens Sub.", L 006 P076 M.C.R.
D-1924, WJ Lehner (CE), "Terminal Park Sub.", L 008 P 021 M.C.R.
E-1924, WJ Lehner (CE), "Hartung Sub.", L 008 P 062 M.C.R.
F-1925, WJ Lehner (CE), "Pleasure Park Sub.", L 008 P 075 M. C.R.
G-1925, WJ Lehner (CE), "Pleasure Park Sub. No 1", L 009 P 054 M.C.R.
H-1926, WJ Lehner (CE), "Fischer's Roseville Park No. 1", L 010 P 070 M.C.R.
I-1926, WJ Lehner (CE), "Leach Sub.", L 011 P 020 M.C.R.
J-1936, PK McCarthy (CE), "Assessors Plat No 4", L 017 P 018 M.C.R.
K-1937, PK McCarthy (CE), "Assessors Plat No. 12", L 019 P 014 M.C.R.
L-1949, PJ O'Non No 6213, "Maschmeyer Sub. No 1", L 025 P 013 M.C.R.
M-1949, PJ O'Non No 6213, "Maschmeyer Sub. No 2", L 025 P 014 M.C.R.
N-1950, LT Brown No 2967, "Geraldine Farms Sub.", L 025 P 044 M.C.R.
O-1950, TG Biehl No 6442, "Charlotte E. Maschmeyer Sub.", L 026 P 002 M.C.R.
P-1952, L Cantor, "Leland V. Maschmeyer Sub.", L 027 P 040 M.C.R.
Q-1953, HJ Fuller No 1645, "Dennis D. Sub.", L 028 P 014 M.C.R.
R-1953, EF Speer No 1574, "Mary K. Berndt Sub. No 1", L 028 P 027 M.C.R.
S-1953, CP McGrath, "Roberts-Edwards Sub.", L 029 P 009 M.C.R.
T-1953, JJ McMahan, "Robert T. Sub.", L 029 P 033 M.C.R.
U-1954, JC Jenkins No 3507, "Groveland Sub.", L 030 P 008 M.C.R.
V-1954, CP McGrath, "Frazho-Petrie Sub.", L 030 P 034 M.C.R.
W-1954, JC Jenkins No 3507, "Juliana Sub. No 2", L 031 P 017 M.C.R.
X-1956, EL Pettingill, "Send Avenue Park Sub. No 1", L 037 P 038 M.C.R.
Y-1957, HJ Fuller No 1645, "Assessors Plat of Cobum's Frazho Road Sub.", L 040 P 022 M.C.R.
Z-1959, WR McCary No 2485, "David W. Sub.", L 043 P 038 M.C. R.
AA-1963, JD Lehner No 5787, "Assessor's Plat No 19", L 051 P 025 M.C.R.
BB-1968, WJ Coulter No14760, "Rose Pointe Sub.", L 058 P 045 M.C.R.
CC-1998, HH Kernitz No 16931, "Lehner Court Sub.", L 125 P 043 M.C.R.

Condominiums

NONE

Land Corner Recordation Certificate

NONE

Recorded Surveys

NONE

Miscellaneous

1927, Lehner, Not Described, Field Notes

Observations From B-8

To B-9 Remon 2006 = 2687.86, Record East = N/A, Record West = N/A
To A-8 Remon 2006 = 2705.39, Record North = 2705.83, Record South = 2663.24
To C-8 Remon 2006 = 2695.98, Record North = N/A, Record South = 2872.02
To B-7 Remon 2006 = 2686.73, Record East = 2687.11 L.018 P.014, Record West = 2687.10

Remon NE 90° 49' 26" L.018 P.014 90° 50' 00"
Remon SE 89° 18' 50" L.017 P.018 90° 35' 30"
Remon SW 90° 39' 39" No subdivision adjacent to section line
Remon NW 89° 12' 05" L.027 P.040 87° 03' 41"

The theoretical location of corner B-08 is .60' south of the set corner, and 3.23' west of the set corner

Recommendation

Found monumentation from plats (f), (i), (j), and (k), and the measured distance between adjacent government corners A-8, and B-7 was used to verify the calculated location of the new monumentation. I therefore recommend to the Macomb County Peer Group that they accept the calculated corner as the best evidence of the corner position as being perpetuated.

RH Birkett 11-02-06
Robert H. Birkett, PS 41094
Anderson, Eckstein and Westrick, Inc.



ANDERSON, ECKSTEIN AND WESTRICK, INC.

51301 Schoenherr Road, Shelby Township, Michigan 48315
Civil Engineers • Surveyors • Architects (586) 726-1234

B-8
City of Roseville
Macomb County 2006 Remonumentation

Section One

- A. Index
- B. Before and after pictures of the monument.

Section Two

- A. LCRC
- B. Surveyor's report.

Section Three

1. Field notes.
2. Field notes.
3. Field notes.
4. Field notes.
5. Field notes.
6. Field notes.
7. Field notes.
8. Field notes.
9. Field notes.
10. Field notes.
11. Sketch of area and found monumentation.
12. Composite maps, 14-19A, 14-19B, 14-19C, 14-19D,
14-19E, 14-19F, 14-19G, 14-19H

Section Four

A. Recorded plats.

- a-1919, WJ Lehner (CE), "Parckard Park Sub", L003 P173 M.C.R.
- b-1923, WJ Lehner (CE), "Bel-Glan Gardens Sub.", L 006 P036 M.C.R.
- c-1923, GL Jerome No 4723, "Fortuna Gardens Sub.", L 006 P076 M.C.R.
- d-1924, WJ Lehner (CE), "Terminal Park Sub.", L 008 P 021 M.C.R.
- e-1924, WJ Lehner (CE), "Hartung Sub.", L 008 P 062 M.C.R.
- f-1925, WJ Lehner (CE), "Pleasure Park Sub.", L 008 P 075 M. C.R.
- g-1925, WJ Lehner (CE), "Pleasure Park Sub. No 1", L 009 P 054 M.C.R.
- h-1926, WJ Lehner (CE), "Fischer's Roseville Park No. 1", L 010 P 070 M.C.R.
- i-1926, WJ Lehner (CE), "Leach Sub.", L 011 P 020 M.C.R.
- j-1936, PK McCarthy (CE), "Assessors Plat No 4", L 017 P 018 M.C.R.
- k-1937, PK McCarthy (CE), "Assessors Plat No. 12", L 019 P 014 M.C.R.
- l-1949, PJ O'Non No 6213, "Maschmeyer Sub. No 1", L 025 P 013 M.C.R.
- m-1949, PJ O'Non No 6213, "Maschmeyer Sub. No 2", L 025 P 014 M.C.R.
- n-1950, LT Brown No 2967, "Geraldine Farms Sub.", L 025 P 044 M.C.R.
- o-1950, TG Biehl No 6442, "Charlotte E. Maschmeyer Sub.", L 026 P 002 M.C.R.
- p-1952, L Cantor, "Leland V. Maschmeyer Sub.", L 027 P 040 M.C.R.
- q-1953, HJ Fuller No 1645, "Dennis D. Sub.", L 028 P 014 M.C.R.
- r-1953, EF Speer No 1574, "Mary K. Berndt Sub. No 1", L 028 P 027 M.C.R.
- s-1953, CP McGrath, "Roberts-Edwards Sub.", L 029 P 009 M.C.R.
- t-1953, JJ McMahon, "Robert T. Sub.", L 029 P 033 M.C.R.
- u-1954, JC Jenkins No 3507, "Groveland Sub.", L 030 P 008 M.C.R.
- v-1954, CP McGrath, "Frazho-Petrie Sub.", L 030 P 034 M.C.R.
- w-1954, JC Jenkins No 3507, "Juliana Sub. No 2", L 031 P 017 M.C.R.
- x-1956, EL Pettingill, "Send Avenue Park Sub. No 1", L 037 P 038 M.C.R.
- y-1957, HJ Fuller No 1645, "Assessors Plat of Coburn's Frazho Road Sub.", L 040 P 022 M.C.R.
- z-1959, WR McCary No 2485, "David W. Sub.", L 043 P 038 M.C. R.
- aa-1963, JD Lehner No 5787, "Assessor's Plat No 19", L 051 P 025 M.C.R.
- bb-1968, WJ Coulter No14760, "Rose Pointe Sub.", L 058 P 045 M.C.R.
- cc-1998, HH Kemnitz No 16931, "Lehner Court Sub.", L 125 P 043 M.C.R.

B. Copies of original government notes.

None

C. Field notes from other sources.

1. 1927, Lehner, Not Described, Field Notes.

2006

MACOMB COUNTY REMONUMENTATION

PROGRAM FOR CITY OF ROSEVILLE

Research Dossier for B-08

Prepared by:
Anderson, Eckstein & Westrick, Inc.
51301 Schoenherr Road
Shelby Twp., Michigan 48315

**Sources of Information Researched
For Macomb County 2006 Remonumentation Program
For City of Roseville**

- 1) GLO Notes
- 2) Act 74 Recorded LCRC
- 3) Act 132 Recorded Surveys
- 4) Personal History and Records
- 5) Unrecorded LCRC's and Surveys
- 6) Letters to the Following, Requesting Unrecorded information

Midwestern Consulting LLC
Atwell Hicks Inc
ANR Pipeline Company
BMJ Engineers & Surveyors
Air Land Surveys, Inc.
Lehner Associates, Inc.
Kem-Tec Land Surveyors
Boss Engineering Company, Inc.
Engineering & Surveying Consultant
Charles E. Raines Co.
Johnson & Anderson, Inc.
Earl Gravlin Surveyor
Del-Tec Surveying & Engineering
David J. Little Land Surveyors
David C. Adams & Son
Coulter & Associates
Fenn & Associates Surveying, Inc.
Donald H. DeKeyser, Surveyor
Huron Clinton Metropolitan Authority
Fazal Khan & Associates
Davis Land Surveying, P.C.
Guaranty Survey Company
Grant Ward Surveyors
North Star Engineering, LLC
Giffels-Webster Engineers
George Jerome & Company
Michael J. Yambor Associates, Inc.
MCS Associates, Inc.
McNeely & Lincoln Associates, Inc.
King Surveyors & Associates, Inc.
RK Engineering & Survey Associates
RJ Donnelly & Associates, Inc.
Professional Engineering Associates

Rowe, Inc.
Hubble Roth & Clark
John Lansky
Wilcox Professional Services
RCMC
Bruen Land Surveying
SCCRC
Alpine Land Surveying, Inc.
McNamee, Porter & Seeley
Advanced Geomatics
GLA Surveyor
Mason L. Brown & Asso.
RA Duthler Land Surveyor
Project Control Engineering
Tetra Tech
Nowak & Fraus PLLC
Land Engineering Services
Michigan Consolidated Gas
Williams, Gorinac Assoc.
Urban Land Consultants
T & A, Inc.
Detroit Edison, ROW Div.
SSOE, Inc.
Spalding, DeDecker & Assoc
Kennedy Surveying, Inc.
JL Bishop Surveying
Reichert Surveying, Inc.
Metco Services

223-028
9-15-06

2004 REMON

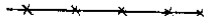
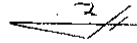
SET N - 23475.504
E - 5103.957

MUB, CCB

B-B ERIN TWP

No 2449

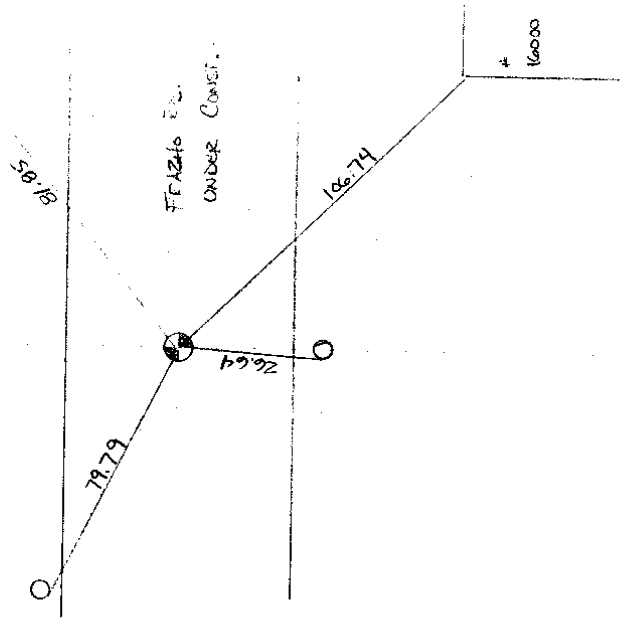
SET 1/2 EA IN E CONC.
JUNT FRIZTO RD - FENCE LINE
TO NORTH



the #
15961

AZ	DIST	DESC
37°	81.85	SE COR BRICK HOUSE # 15961
140°	106.74	NW COR BRICK HOUSE # 16000
189°	26.64	SET REMON TAG W. FACE U.P.
295°	79.79	SET REMON TAG SW FACE U.P.

Photo #	Looking	WEST	NORTH	EAST	SOUTH	TOP
0434						
0437						
0438						
0439						



223-028 2006 REMON

5-26-06

MOBILE

ROW A - 6:00

E 9 ACCESSORIES # B-B

223028-TR9

ENGAGE TO KENNEDY 1249

DECE

RK N-19655.34 E-1106166

PT#

RK

028-292 1/2 PIPE N. SIDE CURTIS SW LOT 132

028-293 3/4 PIPE NE CURTIS # HUDSON

294 BROOKS MON NW DOB # BERKSHIRE

295 3/4 PIPE NW CARP #

296 BROOKS MON NE

297 1/2 PIPE SE CARP # PARKS

298 CONC MON NE DOYLE # WATERMAN

299 CONC MON NW "

300 " " SW BOURNITH #

301 " " SE

A-38.73 B-39.69 RT.

B 46.71 A 59.77 RT

No 2449

223-088
5-26-00

2000 REPAIR

B-9/B-8 ACCESSORIES
22302BTR-5

MEDICAL
PIT

DECK

020-302 SOUND NW QUARTERS & GRAYLAND

303 3/4" PIPE S. SIDE ROBERTS

304 3/4" PIPE N. "

305 3/4" PIPE S. SIDE ROBERTS

306 1/2" PE N. "

307 1/2" PIPE NW CORNER & FORE

308 1/2" PIPE SW CORNER & COLE

309 1/2" PE W. SIDE COLE ³⁰⁰ for LINE S. OF DOCK

310 2" FORCE PRT SW CORNER DOCK

311 1/2" PE NE CORNER & ROSS

312 1/2" PIPE SE "

313 1/2" PE SW "

A 29.14 B- 28.91 LT.

No 2449

- 028-028 2006 REMAIN
- 028-029 B-9/B-B ACCESSORIES
- 028-030 2003 STEB
- PT# DSC
- 028-314 1/2" RC NE CURTIS & FREN
- 315 1/2" PIPE S&S CURTIS & WILKINSON
- 316 1/2" RC NE CURTIS & DALE
- 317 CONC MON S&S CURTIS & LEACH
- 318 CONC W/IN S&S CURTIS & SCANE
- 319 CONC. N/IN SE CURTIS & FORTUNA
- 028-320 A-B REMAIN IN MON BOX
- 321 LEAVING NOW (E ZONE) ON 1/4 LINE N. SIDE FRANKO
- 322 C-B REMAIN IN MON BOX
- 323 CONC MON NE FRANKO & GROVELAND
- 324 1/2" PIPE N/IN
- RK
- A-29.18 B-39.04 RT

225028

S. 23 04

M.D. STA

POI. A-680

B.A. (E.S.)

2230287E9

BASIN C KENNEDY 1322

ICG

EK N. 19.655.36 E. 11061.69

56

No 2449

028-305 Conc. Miss. NW Frazzno # LASALLE CT. 102-104.17 1013-87.24 Ft

326 1/2" Pipe SE LASALLE #

327 1/2" ID # 30055 S. Side LASALLE # SUB LINE

328 Conc. Miss. N. Side LASALLE # SUB LINE

329 Conc. Miss. E. Frazzno # JANET CT. 1012-67.26 1015-72.64 LT.

330 CONC. MISS. 1600 PL W. Side JANET CT.

028-331 TRHO 028-349 USGL
FOR 10 MILE # FRAZNO

No 2449

225-22
95-16

225-22
95-16

225-22
95-16

225-22
95-16

225-22
95-16

225-22
95-16

225-22
95-16

225-22
95-16

225-22
95-16

225-22
95-16

225-22
95-16

225-22
95-16

223-059
9-5-32

Zam. 6000

MUDICE 18,187 Acres
2270522 TE 10

W.C.

- 357 CNE 1/4 Sec NW R. 20, T. 10, S. 10, W. 10, NE 1/4
- 358 FIVE 1/4 Sec NE
- 359 CNE 1/4 Sec NW R. 20, T. 10, S. 10, W. 10, NE 1/4
- 360 1/4 Sec NW R. 20, T. 10, S. 10, W. 10, NE 1/4
- 361 FIVE 1/4 Sec NW R. 20, T. 10, S. 10, W. 10, NE 1/4
- 362 CNE 1/4 Sec NW R. 20, T. 10, S. 10, W. 10, NE 1/4
- 363 1/4 Sec NW R. 20, T. 10, S. 10, W. 10, NE 1/4
- 364 1/4 Sec NW R. 20, T. 10, S. 10, W. 10, NE 1/4
- 365 CNE 1/4 Sec NW R. 20, T. 10, S. 10, W. 10, NE 1/4
- 366 1/4 Sec NW R. 20, T. 10, S. 10, W. 10, NE 1/4
- 367 1/4 Sec NW R. 20, T. 10, S. 10, W. 10, NE 1/4
- 368 CNE 1/4 Sec NW R. 20, T. 10, S. 10, W. 10, NE 1/4
- 369 1/4 Sec NW R. 20, T. 10, S. 10, W. 10, NE 1/4

223-028
9.9.06

2006 ECOMON

MUDCRAY, ME 88/187 ACCESSORIES
ROUCEA 223028TE.11

BASE A @ KENNEDY

- P# DCSU
- RK N-19655.36 E. 11061.72
- 028-370 FMS CORX MWS NE GRANDMONT / PETRIE
- 371 CONK. MWS NW GRANDMONT. E WILWOODS
- 372 BENT MWS NE
- 373 BENT 1/2" RR SW GRANDMONT F 11 MILE
- 374 3/8" RR NE WOODMONT # PETRIE
- 375 1/2" RR NW
- 376 BENT 3/8" RR SW WOODMONT # WILWOOD
- 377 1/2" RR S Side 11 MILE 1 Lo W of WOODMONT
- 378 CONK. MWS NE KATHY E PETRIE
- 379 PUNCH TOP SW KATHY E WILWOODS
- 380 1/2" RR SE 11 MILE E KATHY
- 381 1/2" RR w/CAP # 17023/40104
SW 11 MILE # KATHY
- 382 1" SW Iron NE ANGEC E WILWOOD
- 383 BENT 2" NW BELANGER # "
- 384 BENT RR NE "
- 385 FENCE COE NE CLANCY E WILWOODS
" SE PETRIE E BRYAN
- 386

No 2449

2006 REMAN

223-028
9-9-06

MUD/CEA, MB 82/87 ACCESSORIES
223028 TR "

P#	DESC	QTY	UNIT	SE	RETRIE	E	COMPSON
387	BENT	MUN	SE	RETRIE	E	COMPSON	
388	CONX	MUN	SW	"	"	"	"
390	BENT	24	NE	RETRIE	E	COMPSON	
391	FENCE	COR	SW	RETRIE	E	DALE	
392	FENCE	COR	SE	"	"	"	
393	1/2	PIPE	DAKE	CT			
394							

PK

223028
9-11-06
2006 ELMON

EA/ET ACES / BG
223028 TR 12

PT #
DCLL

EX N 1965.37 E 11061.71 (M)

028-395 COR WALK SE PETRIE & CLANCY

396 COR WALK SW "

397 " " NW "

398 " " NE "

399 MON SE PETRIE & BELANGER

400 MON NE WICKHAM & DALE

401 " " " "

402 FP NE FLOAL & 11 MISE

403 FP NW FLOAL & CHESTNUT

404 PINE PK NE "

405 1/2" PK NW FOUNTAIN & CHESTNUT

406 1" PK NE BRANTON & "

407 FND NEW TRAIL S. SIDE CHESTNUT ^{is of} BRANTON

408 1/2" P. SE CHESTNUT & AADONNY

409 BRANT PK. SE " & GRANDMONT

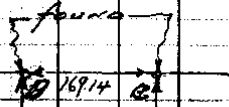
410 CONC MON SW " & BELANGER

411 1/2" PK SE " & PERRY

412 1/2" P NW 11 MILE & LEROY

A-28.50 B-47.52 AT

ALL POINTS FOUND JULY 7. SET 50' MARKS



- A = 90° 50' - 00"
- B = 87° 10' - 00"
- C = 90° 00' - 00"
- D = 90° 00' - 00"

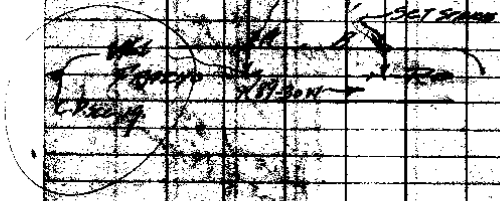
NOTE: DIG UP GEMEL POINT
 CHECKED THE IN AND CHECKED
 STATION FOUND WITH SUB PAINT
 OF TAPING. FOUND ALL FOUR STATIONS
 AND POINT "A"
 B.D. NOT TURNED

1200.00

STATION STAKE 33 FOUND

SET STAKE

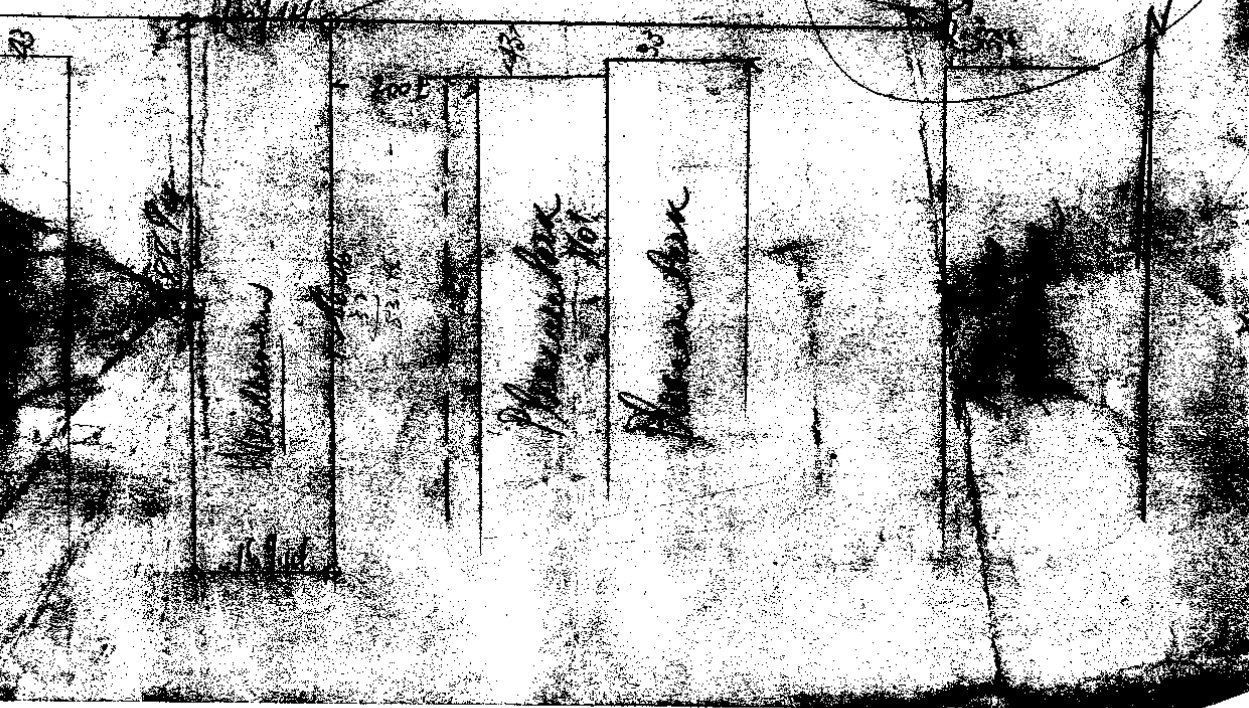
STATION



8

1214 stakes and Alt...
Start from NW 20.5
" " N 20W. S 4.0
" " 2.40 39.2

8466



W. J. LEHNER
REGISTERED CIVIL ENGINEER
MICHIGAN, MICH.

recomputation made by computer

TRAVERSE COMPUTATIONS

NAME *Clay E Green*

COMPUTED BY
CHECKED BY

SECTION *100* TWP. *Wideman Precinct*

DATE *Feb. 24, 1927*

BEARING	DISTANCE	COSINE	NORTH +	SOUTH -	SINE	EAST +	WEST -	BALANCED DEPARTURES		DMD.	DOUBLE AREA
								LATITUDES	DEPARTURES		
N 89° 30' W	169.14	0.0000	+ 1.48		99996						
S 0° 20' E	1288.94	99998		- 1288.91	00552	+ 7.50					
N 89° 40' E	169.14	0.0000	+ 0.98		99998	+ 169.13					
N 0° 20' W	1288.46	99998	128.43		00552						
			1288.89	1288.91		1706.3	7.49				
						1706.3	1706.2				
TOTALS											
CLOSURE											
TOTAL											
DOUBLE AREA											
AREA SQ. FT.											
AREA ACRES											

$$\frac{1288.94 + 1288.46}{2} \times \frac{169.14}{43860} \times 99989$$

$$= \frac{1287.7 \times 169.14}{143860} \times 99989 = 4,999.60$$

31NAE

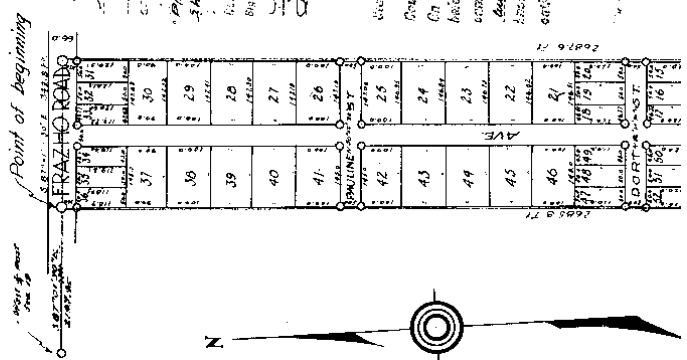
PLEASURE PARK SUBDIVISION

A PART OF THE E 1/2 OF THE E 1/2 OF THE SW 1/4 OF SEC. 19
T 1 N, R 15 E, ERIN TWP, MACOMB CO, MICH.

19-19-23
L. H. HANCOCK

Walter J. Lehner, Reg. C.E.
Mt. Clemens, Michigan

Scale: 1" = 200'



of all men by these parties, that Harmon
H. Hancock and Daniel
H. Hancock, his wife
do hereby certify that the above and contained in this plat
is a true and correct copy of the original
plat of the Pleasure Park Subdivision of the E 1/2 of the E 1/2 of the
SW 1/4 of Sec. 19, T19N, R15E, Erin Twp, Macomb Co, Mich.
as filed for record and approved by the State of Michigan
on the 19th day of August, 1923.

Walter J. Lehner, Reg. C.E.
Mt. Clemens, Michigan

State of Michigan
County of Macomb
On this 19th day of Aug 1923
before me, a Notary Public in and for the State of Michigan, personally
appeared the above named Harmon H. Hancock,
and Daniel Hancock
known to me to be the persons named in the foregoing
action, and acknowledged to me that they executed the foregoing
instrument for the purposes therein expressed.

Thorburn F. Bell
Notary Public, Macomb Co, Mich.
My Commission Expires Sept. 27, 1923

L. 8
P. 75

185 202

ORIGINAL

HARTUNG SUBDIVISION

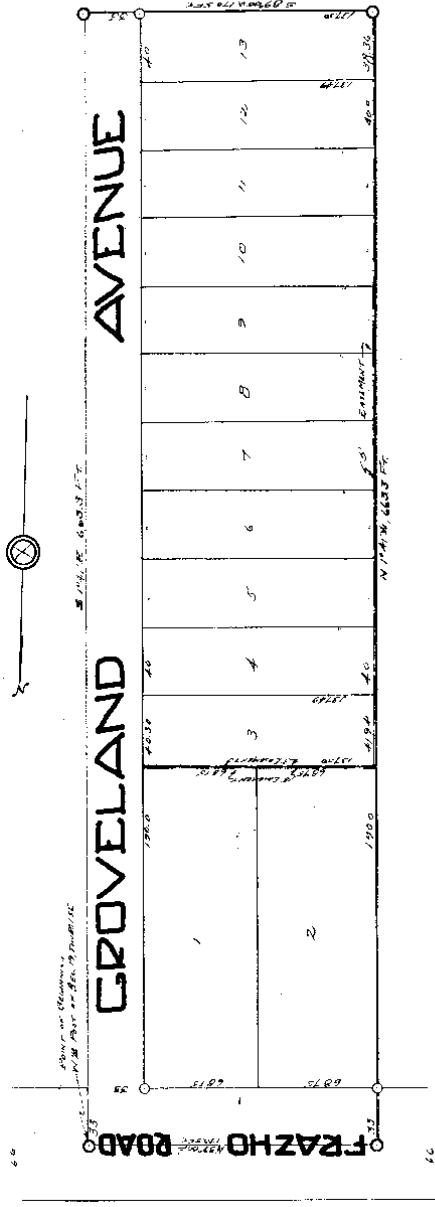
A PART OF THE NE 1/4 OF THE NW 1/4 OF THE SE 1/4 OF SECTION 13E

ERIN TWP - MACOMB CO - MICHIGAN

SCALE
1"=50'

WALTER J. LENNER, KCAD, C.E.
MITCHELL, MICH.

Doc 4-1774
W. S. Larson



now all items of value, including but not limited to, the following, to wit: the land shown on said plat, and the streets and alleys shown on said plat are hereby dedicated to the use of the public.

Witness my hand and the seal of said Township of Erin, Macomb County, Michigan, this 1st day of April, 1924.

Walter J. Lenner, KCAD, C.E.
Township Clerk

This is to certify that the above plat was approved by the Township Board of the Township of Erin, Macomb County, Michigan, at a meeting held this 1st day of April, 1924.

Walter J. Lenner, KCAD, C.E.
Township Clerk

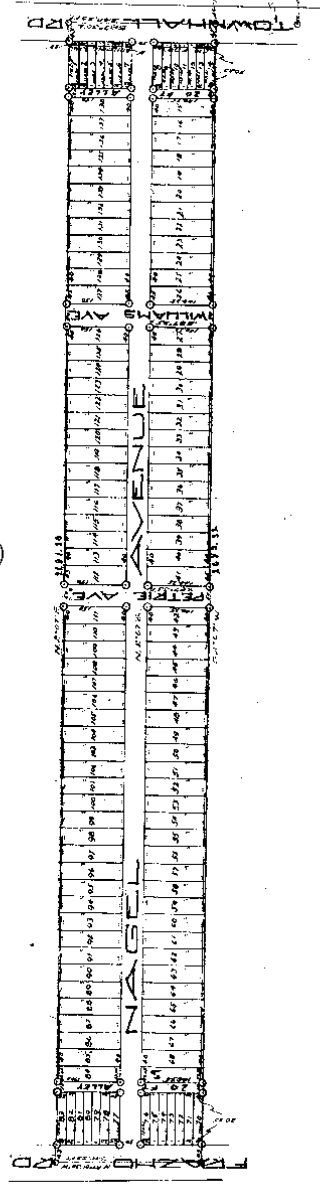
I hereby certify that the plat herein delineated is a correct one

L. 8
P. 62

TERMINAL PARK
 A SUBDIVISION OF PART OF THE NW 1/4 OF SEC. 18, T. 19 N., R. 12 E.,
 ERIN TWP., MACOMB CO., MICH.
 SCALE
 1" = 200'

Aug 21-1924
 WJ. LEHNER REG. CE.
 MT. CLEMENS MICH.

See Resolution bearing date 774 of Board Page 489
 See report of Feb 1-16 incl. + 127 and 128 files 12 Page 44



Description of Land Shown
 a. Subdiv. of part of the E. 1/2 of the N. W. 1/4 of Sec. 19
 T. 19 N., R. 12 E., Erin Twp., Macomb Co., Mich.
 is described as follows: Commencing at the N. 1/4 post of said
 Sec. 19 thence N. 87° 30' W. a dist. of 240.14 ft. to the point
 of beginning, thence S. 7° 09' W. a dist. of 103.11 ft. thence
 West along the N. 1/4 post of said Sec. 19 thence N. 87° 30' E.
 a dist. of 240.14 ft. to the point of beginning.

L. 8
 P. 21

DEDICATION

DEDICATION

Know all men by these presents that we The Terminal Land Company of Michigan Corporation by Burr O'Hara as President and Frank Eason Sec. & Treas. as prolocutor, have caused this land and premises hereinafter described to be laid out and platted to be known as Terminal Land Co. a part of the E.L. of the NW 1/4 of Sec 19 T14N23E E1m T14N Sec 19 County Michigan and that the streets and alleys as shown on said plat are hereby dedicated to the use of the public Terminal Land Company
Witness my hand and seal this 11th day of June 1929
Burr O'Hara - President
Frank Eason - Sec. & Treas.

STATE OF MICHIGAN
COUNTY OF WAYNE

On this 11th day of June 1929 before me a Notary Public in and for said county who being each by me duly sworn did say that they are the president and secretary & treasurer respectively of the Terminal Land Co. a Michigan corporation and that the said instrument was signed and sealed in behalf of said corporation by its Board of Directors and the said Burr O'Hara and Frank Eason acknowledged said instrument to be the free act and deed of said corporation.

Notary Public
My commission expires _____

This is certified to be a true and correct copy of the original of the same as shown and filed in my office in the County of Wayne Michigan this 11th day of June 1929.

June 11 1929
H. H. [Signature]
Notary Public

for recording alley dated 22nd of Dec 1928 page 257



THIS DEED WAS FILED IN THE OFFICE OF THE CLERK OF THE CIRCUIT COURT OF THE COUNTY OF WAYNE MICHIGAN ON THE 11th DAY OF JUNE 1929
By [Signature]
Clerk of the Court

CHAS. W. [Signature]
Notary Public

WILLIAM [Signature]
Notary Public

Notary Public
My commission expires _____

ORIGINAL

"BEL-GLAN GARDENS SUBDN."

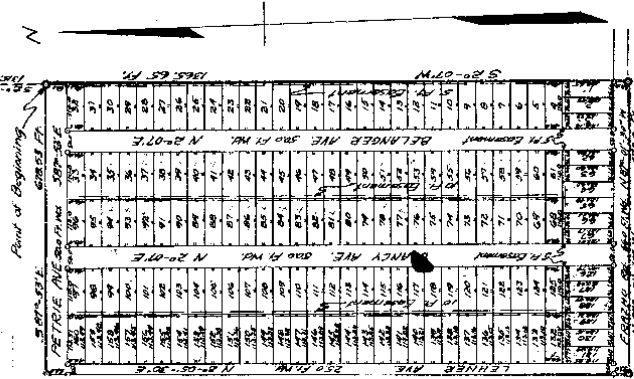
OF PART OF W. 1/2 OF E. 1/4 OF N.W. 1/4 OF SEC. 19
T. 19. 13 E. RIN TWP.
MAGOMB COUNTY MICH.

Jan 29-1923
Geo. L. Heuser

Walter J. Lehner
Clerk Civil Court
Mount Clemens Mich.

Scale 1"=200 Ft.

Part of Beginning
N 20-07 E
1865.65 Ft.



Know all men by these presents, that we, Bel-Glan Gardens Subdn., a Michigan corporation, by Arthur E. Belanger, President, John T. Clancy, Sec. Treas. as proprietor, have caused the land embraced in the annexed plat to be surveyed, laid out and platted, to be known as BEL-GLAN GARDENS SUBDN.

of part of W. 1/2 of E. 1/4 of N.W. 1/4 of Sec. 19, T. 19. 13 E. RIN TWP. MAGOMB Co. Mich. and that the streets and alleys as shown on said plat are hereby dedicated to the use of the public. Bel-Glan Gardens Subdn.

Witness my hand and seal of the Corporation of Bel-Glan Gardens Subdn. this 29th day of January, 1923.



State of Michigan
County of Wayne

On this 29th day of January 1923, before me, a Notary Public in and for said County, appeared Arthur E. Belanger and John T. Clancy, the two legally named, who being duly sworn did say that they are the President and Secretary respectively of the Bel-Glan Gardens Subdn. a Michigan Corporation, and that the said instrument is the corporate seal of said corporation, and that said instrument was duly signed and sealed in behalf of said corporation by authority of the Board of Directors and the said Arthur E. Belanger and John T. Clancy acknowledged said instrument to be the free act and deed of said corporation.

Given Publicly this 29th day of January 1923.

Notary Public Walter J. Lehner
My Commission Expires November 15, 1925

Description of Land Platted
The Land embraced in the annexed Plat of BEL-GLAN GARDENS

In Subdivision of Sec. 4 of Sec. 19 in Township 19 N. Range 581 E. Sec. 19, T. 19 N., R. 581 E., Macomb County, Michigan

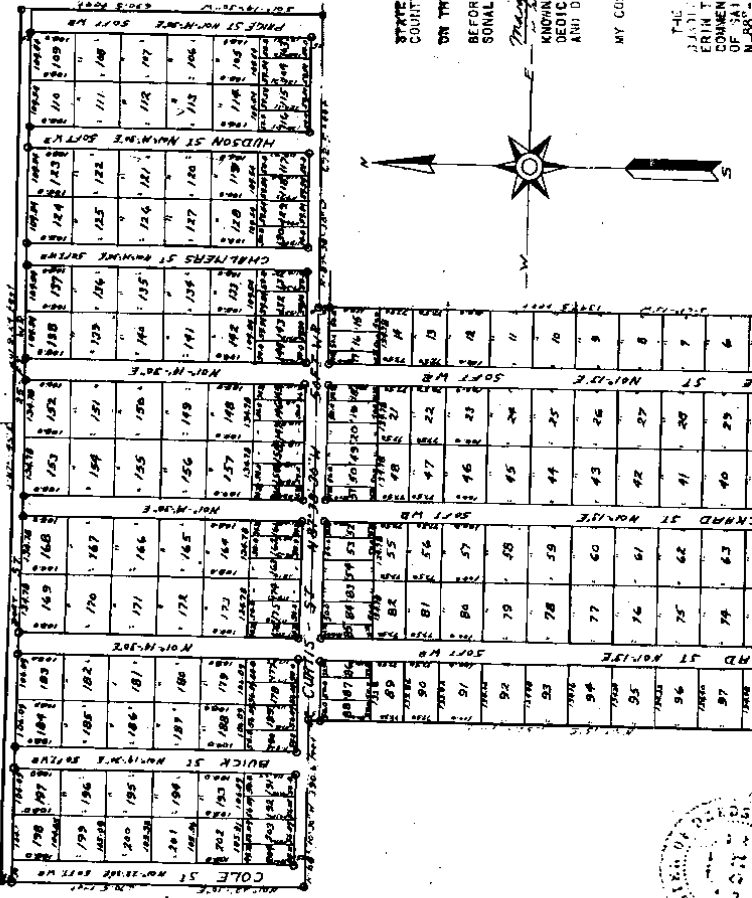
PACKARD PARK

SUBDIVISION "

OF PART OF SE. 4 OF SEC. 19 IN T. 19 N. R. 581 E., ERIN TOWNSHIP, MACOMB COUNTY, MICH.

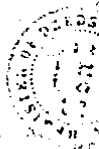
Sept 12, 1919
Geo. L. Hickey

KNOW ALL MEN BY THESE PRESENTS, THAT WE
Edward A. Hickey, Manager of Packard Park
Edward R. Hickey, Secretary
Charles R. Hickey, Treasurer
John J. Hickey
 HAVE CAUSED THE LAND EMBRACED IN THE ANNEALED PLAT TO BE SURVEYED, LAID OUT AND PLATTED, TO BE KNOWN AS PACKARD PARK SUBDIVISION OF PART OF THE SE. 4 OF SEC. 19 T. 19 N. R. 581 E. IN ERIN TOWNSHIP, MACOMB COUNTY, MICH. AND THAT THE STREETS AND ALLEYS AS SHOWN IN SAID PLAT ARE HEREBY DEDICATED TO THE USE OF THE PUBLIC, AND SEALED IN PRESENCE OF
Richard L. Hickey
Edward J. Hickey
Charles R. Hickey



STATE OF MICHIGAN,
 COUNTY OF MACOMB,
 ON THIS _____ DAY OF _____ 1919
 BEFORE ME, A NOTARY PUBLIC IN AND FOR SAID COUNTY, PERSONALLY CAME THE ABOVE NAMED _____
Edward A. Hickey, Edward R. Hickey, Charles R. Hickey
 KNOWN TO ME TO BE THE PERSONS WHO SUBJECT TO THE ABOVE DEDICATION, AND ACKNOWLEDGED THE SAME TO BE THEIR FREE ACT AND DEED.
 MY COMMISSION EXPIRES _____

DESCRIPTION.
 THE LAND EMBRACED IN THE ANNEALED PLAT IS A PART OF THE SE. 4 OF SEC. 19, T. 19 N., R. 581 E., ERIN TOWNSHIP, MACOMB COUNTY, MICH. AS SHOWN ON THE PLAT OF SAID SECTION, COMMENCING AT A POINT 100 FT. S. 150 FT. E. OF THE CORNER OF SEC. 19, T. 19 N., R. 581 E., THENCE N. 88° 10' 40" W. 300.6 FT. THENCE N. 12° 22' 10" E. 570.5



DESCRIPTION.
 THE LAND DESCRIBED IN THE ABOVE IS A
 PART OF THE LAND OF SEC. 19, T. 1 R. 12 S.,
 CRIMMINGTON, AND BEGINS AT THE
 CORNER OF SEC. 19, T. 1 R. 12 S.,
 OF 34.0 SEC. 19, THENCE N. 87° 15' E. 132.0 FT. TO
 N. 88° 10' 30" W. 320.6 FT. THENCE N. 132° 22' 30" E. 100.0 FT. TO
 FT. THENCE S. 87° 45' E. 201.9 FT. THENCE S. 14° 30' W. 30.0 FT. TO
 W. 57.0 FT. THENCE N. 87° 38' 30" W. 272.0 FT. THENCE
 S. 1° 15' W. 134.5 FT. THENCE N. 87° 54' W. 350.7 FT. TO
 PLACE OF BEGINNING.

SURVEYOR'S CERTIFICATE.
 I HEREBY CERTIFY THAT THE PLAT HEREON DE FIGURED IS A
 CORRECT ONE, AND THAT PERMANENT MONUMENTS, CONSISTING OF 3/4
 INCH IRON RODS, 8 INCH LONG HAVE BEEN SET AT POINTS MARKED
 THEREON, AND THAT THE SAME HAVE BEEN PLACED AT THE CORNERS OF
 THE LAND PLATTED, AND AT ALL INTERSECTIONS OF STREETS AND
 STREETS AND ALLEYS.

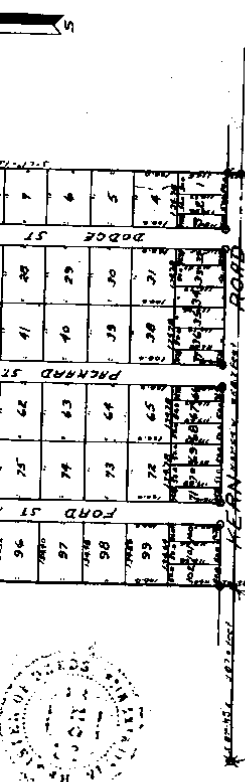
John W. Smith
 Surveyor

CERTIFICATE OF MUNICIPAL APPROVAL.
 THIS PLAT WAS APPROVED BY THE TOWNSHIP BOARD OF THE
 TOWNSHIP OF ERIN, AT A MEETING HELD July 15, 1914.

George I. Smith
 Clerk.

This plat was approved by the County Board for Alameda
 County, Michigan, at a meeting held July 15, 1914
John W. Smith Judge of Probate
Edward J. [unclear] County Clerk
Edward J. [unclear] County Treasurer

NOTICE TO THE PUBLIC.
 THE STATE OF MICHIGAN, County of Alameda.
 By the State and individual owners and holders of the
 described in the above instrument having in full five years
 prior to the date thereof, according to the records of this Office,
July 15, 1914
Edward J. [unclear]
 County Treasurer, Alameda County, Michigan.



KEENAN ST
 PENNARD ST
 DODGE ST
 FORD ST

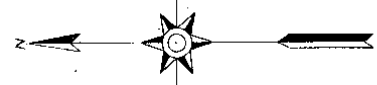
RECORDS OFFICE
 COUNTY OF ALAMEDA
 Located for record this 15th day
 of July 1914, A.D. 1914
 at 9:30 A.M. (Afternoon Session)
 in Book 13 of 1914
 Page 143
John W. Smith Register

Resolution changed that same of 1914 for the first section of 1914 of 1914

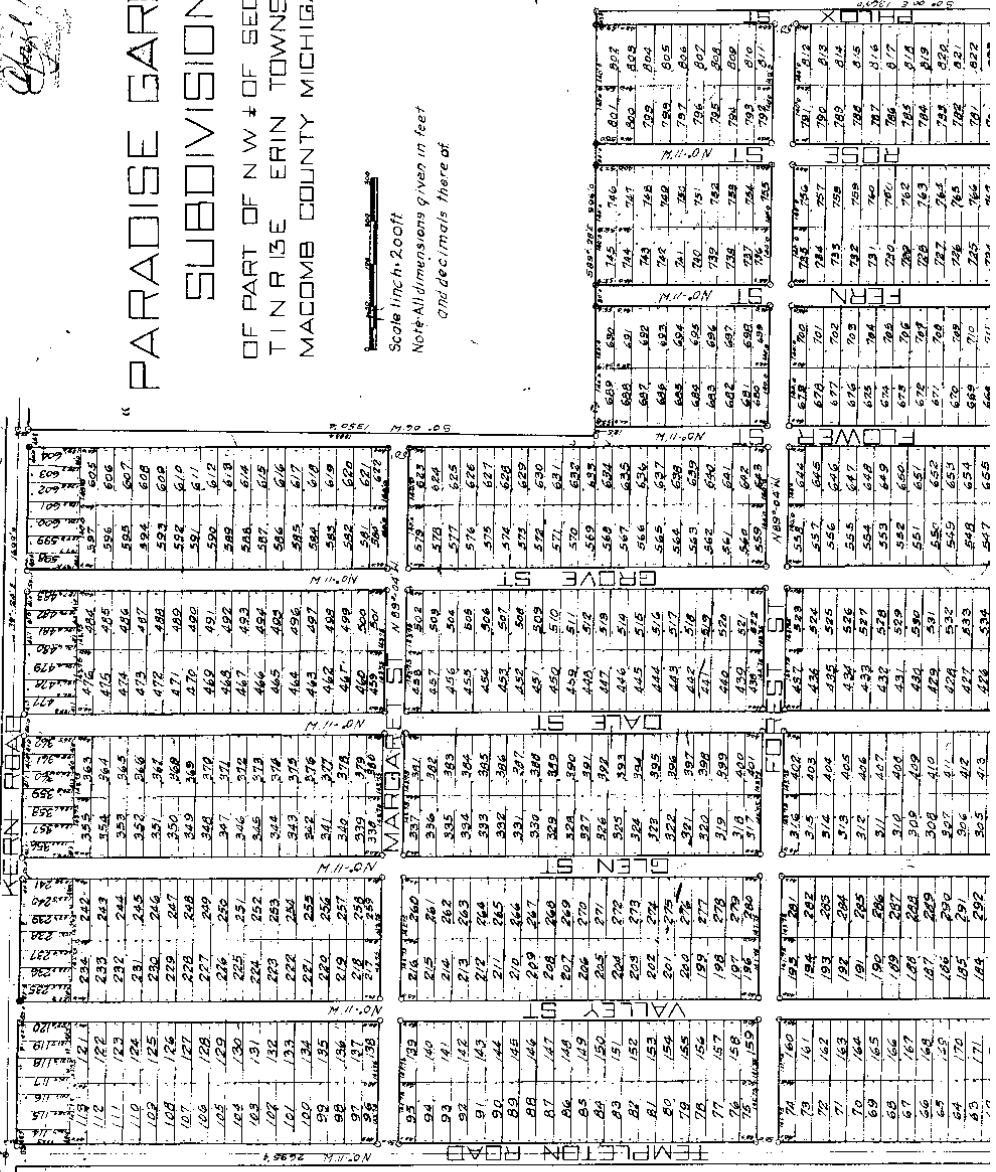
Sept 10-1-1916

PARADISE GARDENS SUBDIVISION

OF PART OF NW 1/4 OF SECT 30
T 1 N R 13 E ERIN TOWNSHIP
MACOMB COUNTY MICHIGAN



Scale 1 inch = 200 ft
Note: All dimensions given in feet
and decimals thereof



L. 3
P. 28

John 1318 Page 15 of 16

John 1318 Page 15 of 16

10121
 2 16 19 45

ORIGINAL

MASCHMEYER SUBDN No. 1

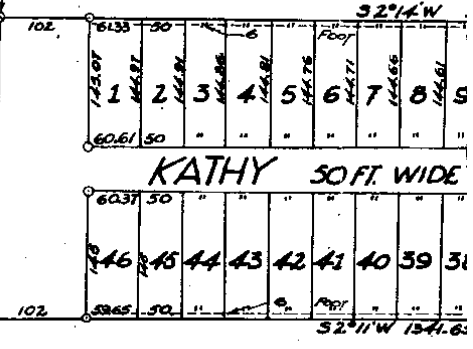
A PART OF THE NW 1/4 OF SEC. 19, T1N., R13E.,
 ERIN TWP. MACOMB CO. MICHIGAN
 VILLAGE OF ROSEVILLE

OWON & BIEHL
 REGISTERED LAND SURVEYORS

SCALE: 1 in. = 100 ft.

ALL MEASUREMENTS ARE IN FEET & DECIMALS THEREOF

38720 1/2 MI. E. of BIEG
 340 1/2 SEC. 19
 T1N., R13E.



REGISTERS OFFICE
 County of Macomb
 Received for Record this 1st day of _____ 1945

12-1-44

KNOW ALL MEN BY THESE PRESENTS, that we
 Walter Wolf and Emma Wolf his wife
 of Erin Twp., Macomb County, Michigan, do hereby certify that the above described land is the same as that shown on the plat hereunto annexed, and that the same is the same as that shown on the plat hereunto annexed, and that the same is the same as that shown on the plat hereunto annexed.

Signed and sealed in presence of
 Walter Wolf
 Emma Wolf
 Walter Wolf
 Emma Wolf

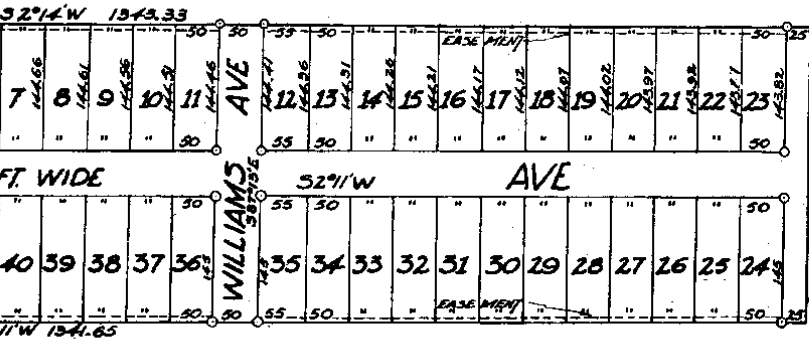
ACKNOWLEDGMENT

STATE OF MICHIGAN
 County of Macomb
 On this 1st day of August, 1945, before me,
 a Notary Public in and for said County, personally appeared the above named
 Walter Wolf and Emma Wolf, his wife,
 known to me to be the persons who executed the above instrument, and acknowledged
 the same to be their free and voluntary act.

DESCRIPTION OF LAND PLATTED

The land embraced in the annexed plat of
 Maschmeyer Subdivision No. 1,
 A part of the NW 1/4, Sec. 19, T1N., R13E.,
 Erin Twp., Macomb County, Michigan,
 Beginning at the N. 1/4 post, Sec. 19,
 T1N., R13E., Erin Twp., Macomb County,
 Michigan, Thence S2° 14' W. 1343.33 ft.,
 Thence N67° 13' W. 338.80 ft., Thence
 N2° 11' E. 1341.65 ft., Thence S87° 30' E.
 340.16 ft. to the Pt. of Beginning.

We hereby certify that this is a true and correct copy of the original as filed in our office.



Examined and Approved
William J. Williams
 County Auditor (General)

PROSECUTOR'S OFFICE
 County of Macomb
 Received for Record this _____ day
 of _____ A. D. 1947 at
 _____ M. and Recorded
 in Liber _____ of _____
 on _____

COUNTY TREASURER'S CERTIFICATE

I hereby certify that there are no tax bills held by the State on the lands described herein, and there are no tax bills held by individuals or said lands, for the five years preceding _____ day of _____ 19____, and that the taxes for said period of five years are all paid, as shown by the records of this office, except _____
 The certificate does not apply to taxes, if any, now in process of collection by township, city or village collecting officers.
 _____ (County Treasurer)

This is to certify that _____ is the holder of title on the property and that _____ is the holder of title on the property described in the plat hereto attached, as shown by the records of this office.
 _____ (County Clerk)

BOARD OF COUNTY ROAD COMMISSIONERS

This plat has been examined on _____ day of _____ 19____ by the Board of County Road Commissioners of Macomb County.

is described as follows: Beginning at the N 1/4 post, Sec. 19, T. 19 N., R. 13 E., Macomb County, Michigan, Thence S 27° 14' W, 1343.33 ft., Thence N 87° 13' W, 336.60 ft., Thence N 2° 11' E, 1341.65 ft., Thence S 87° 30' E, 340.16 ft. to the Pk. of Beginning, Being the North Easterly 10.43 acres of the NW 1/4, Sec. 19, T. 19 N., R. 13 E., Macomb County, Michigan.

SURVEYOR'S CERTIFICATE

I hereby certify that the plat herein delineated is a correct one and that permanent metal monuments consisting of bars not less than one-half inch in diameter and 48 inches in length, or stakes four of one-half inch in diameter topped over each other at least 6 inches with an over-all length of not less than 48 inches, secured in a concrete cylinder at least 4 inches in diameter and 48 inches in length have been placed at points marked (A, B, C, D, E, F, G, H, I, J, K, L, M, N, O, P, Q, R, S, T, U, V, W, X, Y, Z) as shown shown at all angles of the land plat, and that the monuments are placed at the corners of the land plat, and that the monuments are placed at the corners of the land plat as shown on said plat.

MUNICIPAL APPROVAL

This plat was approved by the _____ Commissioner of the _____ at a meeting held _____ day of _____ 19____.

APPROVAL BY COUNTY BOARD

This plat was approved on _____ day of _____ 19____ by _____ (County Board of Road Commissioners)

APPROVAL BY BOARD OF COUNTY AUDITORS

Approved by the Board of County Auditors of _____ County, Michigan, this _____ day of _____ 19____.

1947

"ASSESSORS PLOT NO. 12," PART OF NE 1/4 SEC. 19, T1N, R13E, VILLAGE OF ROSEVILLE, MACOMB COUNTY, MICHIGAN.

Scale: 1 Inch = 200 Ft.
1" = 200'

NOTE: All dimensions hereon are in feet and decimals thereof.

DEDICATION

KNOW ALL MEN BY THESE PRESENTS, that I, William S. Burns, Assessor of the Village of Roseville, Macomb County, State of Michigan, by virtue of authority in me vested by Section 51, Act No. 127, of the Public Acts of 1929, having been duly authorized by the Village Commissioners of said Village, do hereby dedicate and describe in the annexed plat to be surveyed, laid out and platted and described as follows: A certain parcel of land, known as Assessor's Plot No. 12, part of NE 1/4 Sec. 19, T1N, R13E, Village of Roseville, Macomb County, Michigan, and that the streets and alleys as shown on said plat are now being used for such purposes.

Witnesses:

William S. Burns
Assessor of the Village of Roseville.

ACKNOWLEDGMENT

STATE OF MICHIGAN,)
County of Macomb

On this 5th day of July, A. D. 1937, before me, a Notary Public in and for said county, personally came the above named Assessor of the Village of Roseville, Macomb County, Michigan, known to me to be the person who executed the above dedication, and acknowledged the same to be his free act and deed as such assessor.

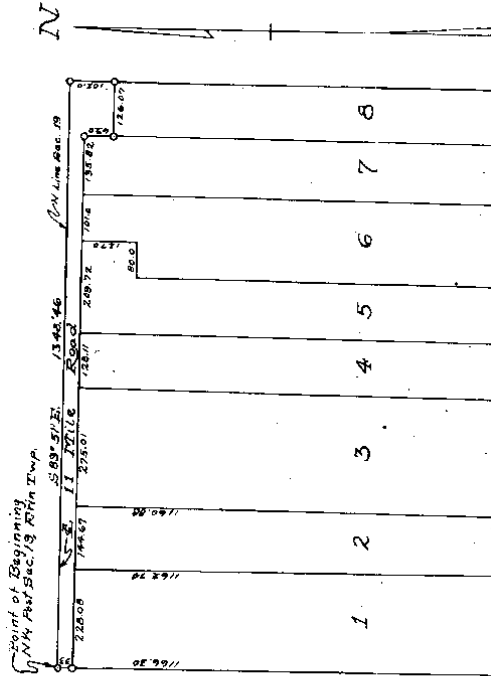
W. S. Burns
Notary Public in and for Macomb County.

My Commission Expires: July 11, 1939

DESCRIPTION OF LAND PLATED

The land embraced in the annexed plat of "ASSESSORS PLOT NO. 12," part of NE 1/4 Sec. 19, T1N, R13E, Village of Roseville, Macomb County, Michigan, is described as follows: beginning at the NE post of said plat, thence S 89°01'2" E 1348.46 ft.; thence S 0°09'1" E 2698.48 ft.; thence N 89°02'1" W 419.00 ft.; thence N 0°10'0" W 1066.20 ft.; thence S 89°42'1" W 561.45 ft.; thence S 0°03'2" E 1067.02 ft.; thence N 89°02'1" W 633.68 ft.; thence N 0°12'1" W 2687.11 ft. to point of beginning.

SUBJECTS: CERTIFICATE



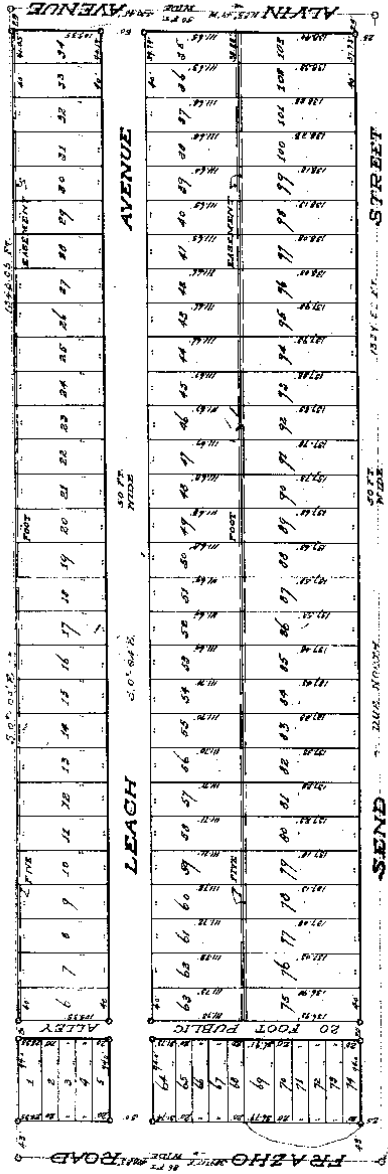
LEACH SUBDIVISION
 A PART OF THE S.W. 1/4 OF SEC. 19 T19N R. 13 E.,
 ERIN TWP. MACOMB CO. MICHIGAN

July 6-1926
 J. J. Lehner

W. J. LEHNER REG. CLERK
 MOUNT CLEMENS, MICH.

SCALE 1" = 100'

Ls. 11
 P. 20



KNOW ALL MEN BY THESE PRESENTS, That Russel G. Leach and Sadie M. Leach, his wife, as owners of legal title, and Albert L. Leach and Ruth J. Leach, his wife, as vendees under land contracts for the East Four acres, and under a single acre, and the Stephens State land contract, all within the Township of Erin, Macomb County, Michigan, and the Michigan corporation of Lewis B. Williams, Vice President, George W. Beaman, Cashier, as mortgagees, have caused the land embraced in the annexed plat to be surveyed, laid out and allotted to be known as "LEACH SUBDIVISION", a part of the S.W. 1/4 of Sec. 19, T. 19 N. R. 13 E., Erin Twp., Macomb Co., Michigan, and that the correct boundaries as shown on said plat are hereby accepted to the use of the public.

Signed and Sealed in the presence of
 W. J. Lehner, Reg. Clerk

The land embraced in the annexed plat of "LEACH SUBDIVISION", a part of the S.W. 1/4 of Sec. 19, T. 19 N. R. 13 E., Erin Twp., Macomb Co., Michigan, is described as follows:

Beginning at a point on the E. and W. 1/4 line of Sec. 19, a distance of 523.7 ft., S. 89° 17', E. of the W. 1/4 post of sec. 19, thence S. 89° 17', E. 426.83 ft., thence S. 0° 04', E. 1043.05 ft., thence S. 88° 49', W. 430.45 ft., thence due North 1039.85 ft. to the point of beginning.

FISCHER'S ROSEVILLE PARK No. 1

A SUBDIVISION OF PART OF THE NE 1/4, SEC. 19, T. 11 N., R. 13 E.

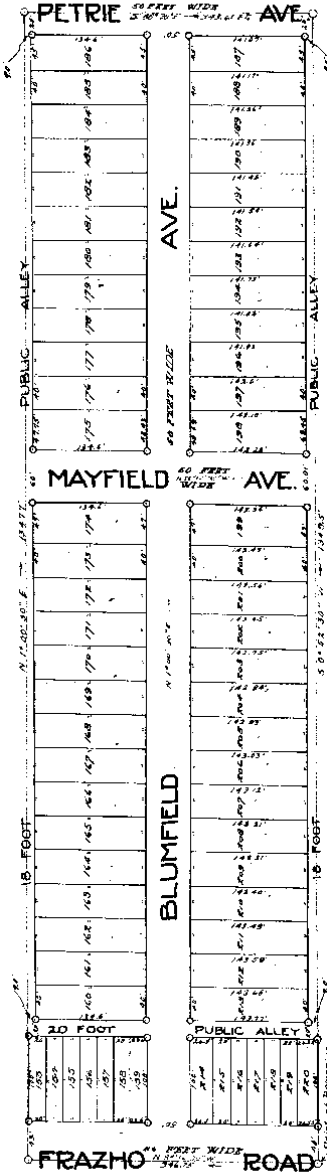
ERIN TWP. MICHIGAN

MICHIGAN

W. J. LEHNER, REG. C.E.
MOUNT CLEMENS, MICH.

SCALE
1" = 100'

May 12-1924
Chas. L. Hester



KNOW ALL MEN BY THESE PRESENTS, that the Roseville Subdivision Company, a Michigan Corporation, by Jno. J. Polozski, President, and George C. Sadowski, Secretary, as owners of legal title, and Fred Otto Fischer, a single man, as mortgagee, have caused the land embraced in the annexed plat to be surveyed, laid out and platted, to be known as FISCHER'S ROSEVILLE PARK No. 1, a subdivision of part of the N.E. 1/4, Sec. 19, T. 11 N., R. 13 E., Erin Twp., Macomb Co., Michigan, and that the streets and alleys as shown on said plat are hereby dedicated to the use of the public.

Signed and sealed in the presence of
John J. Polozski, President
George C. Sadowski, Secretary
Fred Otto Fischer, Mortgagee

Roseville Subdivision Co.
 by *John J. Polozski*, President
George C. Sadowski, Secretary

The land embraced in the annexed plat of "ROSEVILLE PARK No. 1", a subdivision of part of the N.E. 1/4 of Sec. 19, T. 11 N., R. 13 E., Erin Twp., Macomb Co., Michigan, is described as follows:

Beginning at a point on the E. and N. 1/4 line of Sec. 19, a distance of 1067.2 ft., N. 88° 22' 30" W. on the S. 200' part of 156, 19, thence S. 88° 30' E. 343.61 ft., thence S. 0° 55' 30" W. 1349.0 ft. to the point of beginning.

This plat was approved by the Township Board of the Township of Erin, Macomb County, Michigan, at a regular meeting held on 5/12/24.

see Resolution to create Mc. field St. Liber 1418 Page 367 and

STATE OF MICHIGAN
County of Wayne
Notary Public for said county personally known to me to be the person who executed the above declaration, and acknowledged to be same to be his free act and deed.
Leon H. Gajewski
Notary Public for said county
My Commission expires Aug. 5, 1928

STATE OF MICHIGAN
County of Wayne
Notary Public for said county personally known to me to be the person who executed the above declaration, and acknowledged to be same to be his free act and deed.
Leon H. Gajewski
Notary Public for said county
My Commission expires Aug. 5, 1928

STATE OF MICHIGAN
County of Wayne
Notary Public for said county personally known to me to be the person who executed the above declaration, and acknowledged to be same to be his free act and deed.
Leon H. Gajewski
Notary Public for said county
My Commission expires Aug. 5, 1928

STATE OF MICHIGAN
County of Wayne
On this 7th day of May, 1928, before me appeared Jno. J. Poleski and George G. Sadowski to me personally known, who being each by me duly sworn did say that they are the President and Secretary respectively of the Roseville Subdivision Company, a Michigan corporation, and that the seal affixed to said instrument is the corporate seal of said corporation. I have read the contents of said instrument and the same being sealed in behalf of said corporation by authority of its board of directors and the said Jno. J. Poleski and George G. Sadowski acknowledged said instrument to be the free act and deed of said corporation.
Leon H. Gajewski
Notary Public, Wayne Co., Mich.
My Commission expires Aug. 5, 1928

RECEIVED FOR RECORD THIS 11th DAY OF May, A.D. 1928, AT 11:25 A.M. IN Wayne COUNTY, MICHIGAN, AND RECORDED IN 11 VOLUME 11 OF 11 PAGES.

RECORDED FOR RECORD THIS 11th DAY OF May, A.D. 1928, AT 11:25 A.M. IN Wayne COUNTY, MICHIGAN, AND RECORDED IN 11 VOLUME 11 OF 11 PAGES.

RECORDED FOR RECORD THIS 11th DAY OF May, A.D. 1928, AT 11:25 A.M. IN Wayne COUNTY, MICHIGAN, AND RECORDED IN 11 VOLUME 11 OF 11 PAGES.

COUNTY TREASURER'S CERTIFICATE

THIS PLAT WAS FILED FOR RECORD IN THE OFFICE OF THE COUNTY TREASURER ON THIS 7th DAY OF May, 1928, AT 11:25 A.M. IN Wayne COUNTY, MICHIGAN, AND RECORDED IN 11 VOLUME 11 OF 11 PAGES.

May 7 1928
John J. Poleski
George G. Sadowski

THIS PLAT WAS FILED FOR RECORD IN THE OFFICE OF THE COUNTY TREASURER ON THIS 7th DAY OF May, 1928, AT 11:25 A.M. IN Wayne COUNTY, MICHIGAN, AND RECORDED IN 11 VOLUME 11 OF 11 PAGES.

James V. Sadowski
County Treasurer

This plat was approved by the Township Board of the Township of Wain, Wayne County, Michigan, at a meeting held on May 7, 1928, at 11:25 A.M. in the Township Clerk's office.

I hereby certify that the plat herein delineated is a correct and true representation of the land shown on the plat in the Township of Wain, Wayne County, Michigan, and that the same is in accordance with the Township Ordinance in that behalf passed and approved by the Township Board of the Township of Wain, Wayne County, Michigan, at a meeting held on May 7, 1928, at 11:25 A.M. in the Township Clerk's office.

John J. Poleski
Registered Civil Engineer

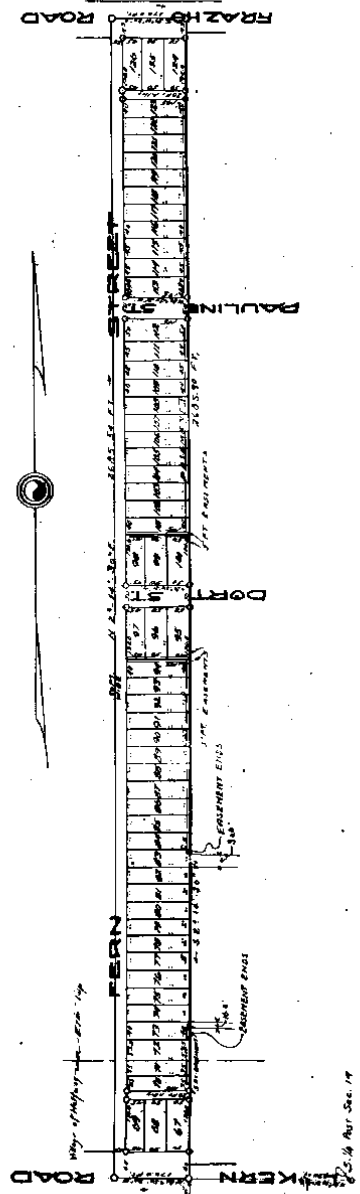
L. 10 P. 70

PLEASURE PARK SUBDIVISION NO. 1

PART OF THE E 1/4 OF THE SW 1/4 SEC. 19 T19R15E M30E2M MICHIGAN
 ERIN TWP. AND VILLAGE OF HALLOWAY
 W.J. LEHNER REG. CE.
 MOUNT CLEMENS MICH.

SCALE 1" = 200'

3614



KNOW ALL MEN BY THESE PRESENTS, That Herman C. Haselhuber, and Pauline Haselhuber, His wife, have caused the land embraced in the annexed plat to be surveyed, laid out and platted, to be known as PLEASURE PARK SUBDIVISION NO. 1, a part of the E 1/4 of the SW 1/4 of Sec. 19, T19R15E, M30E2M, East Township, and Village of Halloway, Macomb Co., Mich., and that the streets and alleys as shown on said plat are hereby dedicated to the use of the public.

Signed and sealed in the presence of
Herman C. Haselhuber
Pauline Haselhuber

Provided:

That the above plat and subdivision is hereby subjected to the following agreement and covenant which shall be observed by these Proprietors herein described and their successors and assigns of them to wit:

That at no time shall any lot in said subdivision or part thereof or any building thereon be rented, leased, transferred or conveyed to, nor shall the same be occupied by, as domestic servants, any Negro or colored person or persons of Negro blood.

Description of Land Platted

The land embraced in the annexed plat of "PLEASURE PARK SUBDIVISION NO. 1" is a part of the E 1/4 of the SW 1/4 of Sec. 19, T19R15E, M30E2M, East Township, and Village of Halloway, Macomb Co., Mich., is described as follows:

Beginning at a point sec. 19, T. 19R. 15E, M. 30E. 2M, of the S. 1/4 post of Sec. 19, thence N. 86°50'30" W. 170.0 ft., thence N. 2°14'30" E. 2685.54 ft., thence S. 87°01'30" W. 170.0 ft., thence S. 2°14'30" W. 2685.90 ft. to the joint of beginning.

This is to certify that the above plat was approved by the Village Board of the Village of Halloway, Macomb County, Mich., at a meeting held this 27th day of July, 1924.

to the following subdivision is hereby subjected to the following easement and covenant which shall be observed by these Proprietors herein described and their successors and assigns of them to wit:

That at no time shall any lot in said subdivision or part thereof or any building thereon be sold, rented, leased, transferred or conveyed to, nor shall the same be occupied by, excepting its domestic servants, any Negro or colored person or persons of Negro blood.

STATE OF MICHIGAN, S.S.,
County of Macomb.

On this 19th day of June, 1925, before me, a Notary Public in and for said County, personally came the above named Herman C. Haselhuber, and Pauline Haselhuber, his wife, known to me to be the persons who executed the above dedication, and acknowledged the same to be their free act and deed.

Herman C. Haselhuber
Notary Public Macomb Co. Mich.
My Commission expires June 11, 1927.

COUNTY TREASURERS CERTIFICATE
This is to certify that the above plat is correct and that permanent monuments consisting of 3x18 inch iron stakes have been planted at points marked as thereon shown at all angles in the boundaries of land platting and at all intersections of streets or streets and alleys.

This plat was approved by the County Board for Macomb County Michigan this 17th day of June, 1925.
James C. Bell
County Clerk

This is to certify that the above plat was approved by the Village Board of the Village of HAWLEY, Macomb County Mich. at a meeting held this 27th day of May, 1925.
John A. May
Village Clerk

This is to certify that the above plat was approved by the Township Board of the Township of Wain, Macomb Co. Mich. at a meeting held this 11th day of May, 1925.
Robert C. Linn
Township Clerk

I hereby certify that the plat hereon delineated is a correct one and that permanent monuments consisting of 3x18 inch iron stakes have been planted at points marked as thereon shown at all angles in the boundaries of land platting and at all intersections of streets or streets and alleys.

Hubert J. ...
Registered Civil Engineer.

REGISTERED OFFICE,
County of Macomb
Required for Record this 17th day of June, A.D. 1925, at 11:00 o'clock A.M. and Recorded in Liber 27 of 1925 on Page 27
W. H. ...
Register

EXAMINED AND APPROVED

Date: June 21 1954

John B. Mertz
JOHN B. MERTZ
Notary Public

By: *John B. Mertz*
JOHN B. MERTZ
Notary Public

183779

FRAZHO - PETRIE SUBDIVISION

PART OF THE N.W. 1/4 OF SECTION 19, VILLAGE OF ROSEVILLE, TIRRISE, ERIN TOWNSHIP, MACOMB COUNTY, MICHIGAN.

COUNTY TREASURER'S CERTIFICATE

I hereby certify that there are on the books of this County, Michigan, no unpaid taxes or other obligations of the kind herein mentioned for the five years immediately preceding the date of this certificate. I further certify that the taxes and other obligations herein mentioned are all paid to the satisfaction of the County Treasurer, Michigan, and that the same are not subject to collection by the County Treasurer, Michigan, or any other officer of the County.

Lynn Whittam
County Treasurer

DEEDS ALL HERETOFORE MADE BY THESE PARTIES, AND BY THEIR PREDECESSORS, HAVE BEEN RECORDED IN THE PUBLIC RECORDS OF THE COUNTY OF MACOMB, MICHIGAN, IN THE YEAR 1954.

AND THAT THE PARTIES HERETO, AND THEIR PREDECESSORS, HAVE BEEN ADVISED OF THE RIGHTS OF THE PUBLIC IN THE MATTER OF THE SUBDIVISION OF THE LANDS HEREIN DESCRIBED, AND THAT THE PARTIES HERETO, AND THEIR PREDECESSORS, HAVE BEEN ADVISED OF THE RIGHTS OF THE PUBLIC IN THE MATTER OF THE SUBDIVISION OF THE LANDS HEREIN DESCRIBED, AND THAT THE PARTIES HERETO, AND THEIR PREDECESSORS, HAVE BEEN ADVISED OF THE RIGHTS OF THE PUBLIC IN THE MATTER OF THE SUBDIVISION OF THE LANDS HEREIN DESCRIBED.

AND THAT THE PARTIES HERETO, AND THEIR PREDECESSORS, HAVE BEEN ADVISED OF THE RIGHTS OF THE PUBLIC IN THE MATTER OF THE SUBDIVISION OF THE LANDS HEREIN DESCRIBED, AND THAT THE PARTIES HERETO, AND THEIR PREDECESSORS, HAVE BEEN ADVISED OF THE RIGHTS OF THE PUBLIC IN THE MATTER OF THE SUBDIVISION OF THE LANDS HEREIN DESCRIBED, AND THAT THE PARTIES HERETO, AND THEIR PREDECESSORS, HAVE BEEN ADVISED OF THE RIGHTS OF THE PUBLIC IN THE MATTER OF THE SUBDIVISION OF THE LANDS HEREIN DESCRIBED.

John B. Mertz
John B. Mertz
Notary Public

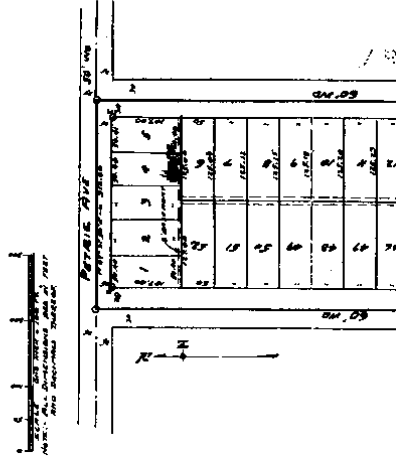
ACK. MICHIGAN

STATE OF MICHIGAN
County of Macomb
On this 21st day of June, 1954, before me, a Notary Public in and for said County, personally appeared the above named John B. Mertz and John B. Mertz, known to me to be the persons who executed the above described and acknowledged instrument to be the free and voluntary act and deed of the said John B. Mertz and John B. Mertz, and they acknowledged to me that they executed the same for the purposes and consideration therein expressed.

My Commission expires April 30, 1955
Notary Public
County

DESCRIPTION OF LAND PLAT

The land contained in the annexed plat of FRAZHO - PETRIE SUBDIVISION is situated in the N.W. 1/4 of Section 19, Village of Roseville, Tirrise, Erin Township, Macomb County, Michigan.



See Restrictions on p. 952, page 230

Original

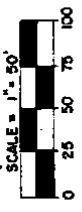
161557

EXAMINED AND APPROVED
DATE JAN 20 1954

John B. Martin
John B. Martin
NOTARY PUBLIC
BY *[Signature]*
CITY ENGINEER

ROBERT T. SUBDIVISION OF PART OF THE N.E. 1/4 OF THE S.W. 1/4 OF SECTION 19, T. 1 N., R. 13 E. VILLAGE OF ROSEVILLE, MACOMB COUNTY, MICHIGAN.

Jan 20 1954



NOTE - ALL DIMENSIONS ARE SHOWN IN FEET AND DECIMALS THEREOF.

163.70	N. 87° 10' - 35" W.	50
163.61	N. 87° 10' - 35" W.	50
163.34	N. 87° 17' - 50" W.	50
163.15		50
162.96		50
162.78		50
162.59		50

DEDICATION

KNOW ALL MEN BY THESE PRESENTS, that we, Maurice Verharme and Rosalie Verharme, his wife, as proprietors, and Robert T. Kirchhoff and Olga Kirchhoff, his wife, as vendees, have caused the land embraced in the annexed plat to be surveyed, laid out and platted to be known as ROBERT T. SUBDIVISION OF PART OF THE N. E. 1/4 OF THE S. W. 1/4 OF SECTION 19, T. 1 N., R. 13 E., Village of Roseville, Macomb County, Michigan, and that the street shown on said plat are hereby dedicated to the use of the public and that the easements indicated on said plat are hereby reserved for the use of public utilities and that no permanent structures are to be erected within the lines of said easements. The use of the use thereof is vested in the local governmental authority.

Witness:

[Signature]
Charles W. Standa
Maurice Verharme
Rosalie Verharme

[Signature]
Maurice Verharme
[Signature]
Rosalie Verharme
[Signature]
Robert T. Kirchhoff
[Signature]
Olga Kirchhoff

CERTIFIED PLAT BY
MCMAHON ENG. CO.
DETROIT MICHIGAN
STATEWIDE SURVEYS

W. - E.
S.

SUB 'N' 75
S 02° 18' 30" W

K SUB 'N' SE. 173

50 WD.

50 55 63

FOR PUBLIC UTILITIES

50 55 63

50 55 63

50 55 63

50 55 63

50 55 63

50 55 63

50 55 63

50 55 63

50 55 63

50 55 63

50 55 63

50 55 63

50 55 63

50 55 63

50 55 63

50 55 63

50 55 63

50 55 63

50 55 63

50 55 63

50 55 63

50 55 63

50 55 63

50 55 63

50 55 63

50 55 63

50 55 63

50 55 63

50 55 63

50 55 63

50 55 63

50 55 63

50 55 63

50 55 63

50 55 63

50 55 63

50 55 63

50 55 63

50 55 63

50 55 63

50 55 63

50 55 63

50 55 63

50 55 63

50 55 63

50 55 63

50 55 63

50 55 63

50 55 63

50 55 63

50 55 63

50 55 63

50 55 63

50 55 63

50 55 63

50 55 63

50 55 63

50 55 63

50 55 63

50 55 63

50 55 63

50 55 63

50 55 63

50 55 63

50 55 63

50 55 63

50 55 63

50 55 63

50 55 63

50 55 63

50 55 63

50 55 63

50 55 63

50 55 63

50 55 63

50 55 63

50 55 63

50 55 63

50 55 63

50 55 63

50 55 63

50 55 63

50 55 63

50 55 63

50 55 63

50 55 63

50 55 63

50 55 63

50 55 63

50 55 63

50 55 63

50 55 63

50 55 63

50 55 63

50 55 63

50 55 63

50 55 63

50 55 63

50 55 63

50 55 63

50 55 63

50 55 63

50 55 63

50 55 63

50 55 63

50 55 63

50 55 63

50 55 63

50 55 63

50 55 63

50 55 63

50 55 63

50 55 63

50 55 63

50 55 63

50 55 63

50 55 63

50 55 63

50 55 63

50 55 63

50 55 63

50 55 63

50 55 63

50 55 63

50 55 63

50 55 63

50 55 63

50 55 63

50 55 63

50 55 63

50 55 63

50 55 63

50 55 63

50 55 63

50 55 63

50 55 63

50 55 63

50 55 63

50 55 63

50 55 63

50 55 63

50 55 63

50 55 63

50 55 63

50 55 63

50 55 63

50 55 63

50 55 63

50 55 63

50 55 63

50 55 63

50 55 63

50 55 63

50 55 63

50 55 63

50 55 63

50 55 63

50 55 63

50 55 63

50 55 63

50 55 63

50 55 63

50 55 63

50 55 63

50 55 63

50 55 63

50 55 63

50 55 63

50 55 63

50 55 63

50 55 63

50 55 63

50 55 63

50 55 63

50 55 63

50 55 63

50 55 63

50 55 63

50 55 63

50 55 63

50 55 63

50 55 63

50 55 63

50 55 63

50 55 63

50 55 63

50 55 63

50 55 63

50 55 63

50 55 63

50 55 63

50 55 63

50 55 63

50 55 63

50 55 63

50 55 63

50 55 63

50 55 63

50 55 63

50 55 63

50 55 63

50 55 63

50 55 63

50 55 63

50 55 63

50 55 63

50 55 63

50 55 63

50 55 63

50 55 63

50 55 63

50 55 63

50 55 63

50 55 63

50 55 63

50 55 63

50 55 63

50 55 63

50 55 63

50 55 63

50 55 63

50 55 63

50 55 63

50 55 63

50 55 63

50 55 63

50 55 63

50 55 63

50 55 63

50 55 63

50 55 63

50 55 63

50 55 63

50 55 63

50 55 63

50 55 63

50 55 63

50 55 63

50 55 63

50 55 63

50 55 63

50 55 63

50 55 63

50 55 63

50 55 63

50 55 63

50 55 63

50 55 63

50 55 63

50 55 63

50 55 63

50 55 63

50 55 63

50 55 63

50 55 63

50 55 63

50 55 63

50 55 63

</

ACKNOWLEDGEMENT

State of Michigan) ss.
County of Macomb)

On this 11th day of January, 1954, before me, a NOTARY PUBLIC in and for said County, personally came the above named Maurice Thomas Kuchel, Sr., his wife, and Robert W. Kirchhoff, both of legal age, single, and competent, who with me read and executed the above declaration, and acknowledged the same to be their free act and deed.

My commission expired March 11, 1954
Notary Public, Macomb County, Michigan

DESCRIPTION

The land embraced in the annexed plat of ROBERT T. SUPERVISOR of part of the N. E. 1/4 of the S. W. 1/4 of Section 19, T. 1 N., R. 13 E., Village of Roseville, Macomb County, Michigan.

Is described as follows:

Beginning at a point distant 165.67 feet measured North 86 degrees 50 minutes 24 seconds West and 1348.68 feet measured North 2 degrees 18 minutes 30 seconds East, from the South one-quarter corner of Section 19, T. 1 N., R. 13 E., Macomb County, Michigan, to a point distant 161.65 feet measured North 87 degrees 31 minutes 20 seconds East a distance of 695.28 feet thence North 87 degrees 10 minutes 56 seconds West a distance of 169.70 feet thence South 02 degrees 18 minutes 30 seconds West a distance of 696.40 feet to the point of beginning.

REGISTRY'S OFFICE
COUNTY OF MACOMB

Received for Record,
Book 25, Page 44, and recorded in Vol. 29 of Clerk's Office, Macomb County, Michigan, on this 11th day of January, 1954.

CERTIFICATE OF MUNICIPAL APPROVAL

I hereby certify that this plat has been approved by the Village Council of the Village of Roseville, Michigan, at a meeting held on the 11th day of January, 1954.

Robert T. Young
Robert T. Young, Village Clerk

SURVIVOR'S CERTIFICATE

I hereby certify that the plat herein referenced is a correct one, and that permanent monuments have been set at each corner of the land and that the same are in accordance with the original plat and that the same are in accordance with the original plat and that the same are in accordance with the original plat.

John J. McMahon
John J. McMahon, Reg. Land Surveyor

CERTIFICATE OF COUNTY APPROVAL

We hereby certify that this plat was approved by the Macomb County Plat Board at a meeting held on the 11th day of January, 1954.

Frank R. Lohr
Frank R. Lohr, Drain Commissioner

Albert K. Warner
Albert K. Warner, County Clerk

PACARD PARK SUBN. LIBER. 3 PAGE. 173

162.59	7	162.40	6	162.22	5	162.03	4	161.84	3	161.65	2	161.47	1	161.28	50
5 02' 18" 30" W. 695.60															
N. 02' 31' 20" E. 655.23															
POINT OF BEGINNING															
S. 7/8 LINE OF SEC. 19															

CURTIS STREET 50 WD.

GERALDINE FARMS SUBN. LIBER. 25 PAGE. 44

SOUTH 1/4 COR. SEC. 19 T. 1 N., R. 13 E.

N. 06° 50' 54" W. 165.67
E. S. LINE OF SECTION 19

LINE 82 PAGE 33

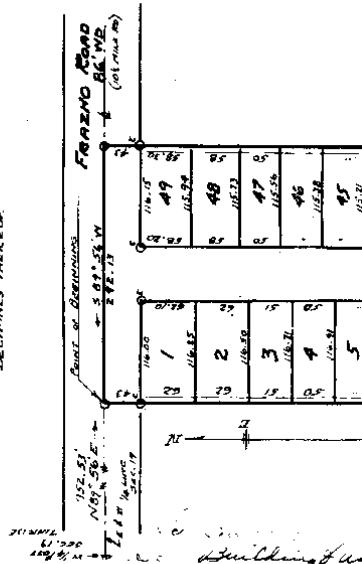
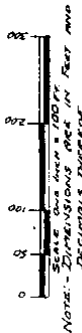
"ROBERT'S-EDWARDS SUBDIVISION"

A PART OF THE S. W. 1/4 OF SECTION 19, T19N, R. 13E, ERIN TOWNSHIP, MICHIGAN, IN THE VILLAGE OF ROSEVILLE, MACOMB COUNTY, MICHIGAN.

October 13, 1955

MEMBERS OFFICE
County of Macomb

Witness for Record this 13th day of October A. D. 1955 in Erin Township, Macomb County, Michigan in the presence of John H. Mackey and John H. Mackey of the County of Macomb, Michigan.



DEDICATION

KNOW ALL MEN BY THESE PRESENTS, that we, I, Sam Brody and Anne Brody, his wife or progeny, have caused this land embraced in the annexed plat to be surveyed, laid out and platted, to be known as Robert's-Edwards Subdivision, a part of the S. W. 1/4 of Section 19, T. 19 N., R. 13 E., Erin Township, in the Village of Roseville, Macomb County, Michigan.

and that the streets and alleys as shown on said plat are hereby dedicated to the use of the public, and that the easements shown on said plat are hereby reserved for the use of Public Utilities, and that no permanent structures are to be erected within the boundaries of said easement.

Signed and Sealed in the Presence of
John H. Mackey

DESCRIPTION OF LAND PLATTED

The land embraced in the annexed plat of Robert's-Edwards Subdivision, a part of the S. W. 1/4 of Section 19, T. 19 N., R. 13 E., Erin Township in the Village of Roseville, Macomb County, Michigan, is described as follows:

Commencing at the West 1/4 part of Section 19, T. 19 N., R. 13 E., Erin Township in the Village of Roseville, Macomb County, Michigan, proceed N. 89° 56' E., 957.53 feet along the E. & W. 1/4 line of Section 19, the apparent centerline of the Franco Road so-called to the Point of Beginning. From this Point of Beginning, proceed S. 0° 04' E., 1266.00 feet; thence N. 89° 48' E., 121.00 feet; thence S. 0° 21' E., 75.00 feet; thence N. 89° 48' E., 171.50 feet; thence N. 0° 06' W., 1342.30 feet to the E. & W. 1/4 line of Section 19; thence on this line S. 89° 56' W., 252.13 feet to the Point of Beginning.

On this 15th day of May, 1953, before me, a Notary Public in and for said County, personally appearing the above named parties, who are known to me to be the persons who executed the above dedication, and acknowledged the same to be their free act and deed.

On this 15th day of May, 1953, before me, a Notary Public in and for said County, personally appearing the above named parties, who are known to me to be the persons who executed the above dedication, and acknowledged the same to be their free act and deed.

Notary Public in and for said County
 My Commission expires 1954

Notary Public in and for said County
 My Commission expires 1954

State of Michigan
 County of Washtenaw

State of Michigan
 County of Washtenaw

On this 15th day of May, 1953, before me, a Notary Public in and for said County, personally appearing the above named parties, who are known to me to be the persons who executed the above dedication, and acknowledged the same to be their free act and deed.

On this 15th day of May, 1953, before me, a Notary Public in and for said County, personally appearing the above named parties, who are known to me to be the persons who executed the above dedication, and acknowledged the same to be their free act and deed.

Notary Public in and for said County
 My Commission expires 1954

Notary Public in and for said County
 My Commission expires 1954

State of Michigan
 County of Washtenaw

State of Michigan
 County of Washtenaw

On this 15th day of May, 1953, before me, a Notary Public in and for said County, personally appearing the above named parties, who are known to me to be the persons who executed the above dedication, and acknowledged the same to be their free act and deed.

On this 15th day of May, 1953, before me, a Notary Public in and for said County, personally appearing the above named parties, who are known to me to be the persons who executed the above dedication, and acknowledged the same to be their free act and deed.

Notary Public in and for said County
 My Commission expires 1954

Notary Public in and for said County
 My Commission expires 1954

State of Michigan
 County of Washtenaw

State of Michigan
 County of Washtenaw

On this 15th day of May, 1953, before me, a Notary Public in and for said County, personally appearing the above named parties, who are known to me to be the persons who executed the above dedication, and acknowledged the same to be their free act and deed.

On this 15th day of May, 1953, before me, a Notary Public in and for said County, personally appearing the above named parties, who are known to me to be the persons who executed the above dedication, and acknowledged the same to be their free act and deed.

Notary Public in and for said County
 My Commission expires 1954

Notary Public in and for said County
 My Commission expires 1954

State of Michigan
 County of Washtenaw

State of Michigan
 County of Washtenaw

On this 15th day of May, 1953, before me, a Notary Public in and for said County, personally appearing the above named parties, who are known to me to be the persons who executed the above dedication, and acknowledged the same to be their free act and deed.

On this 15th day of May, 1953, before me, a Notary Public in and for said County, personally appearing the above named parties, who are known to me to be the persons who executed the above dedication, and acknowledged the same to be their free act and deed.

Notary Public in and for said County
 My Commission expires 1954

Notary Public in and for said County
 My Commission expires 1954

State of Michigan
 County of Washtenaw

State of Michigan
 County of Washtenaw

On this 15th day of May, 1953, before me, a Notary Public in and for said County, personally appearing the above named parties, who are known to me to be the persons who executed the above dedication, and acknowledged the same to be their free act and deed.

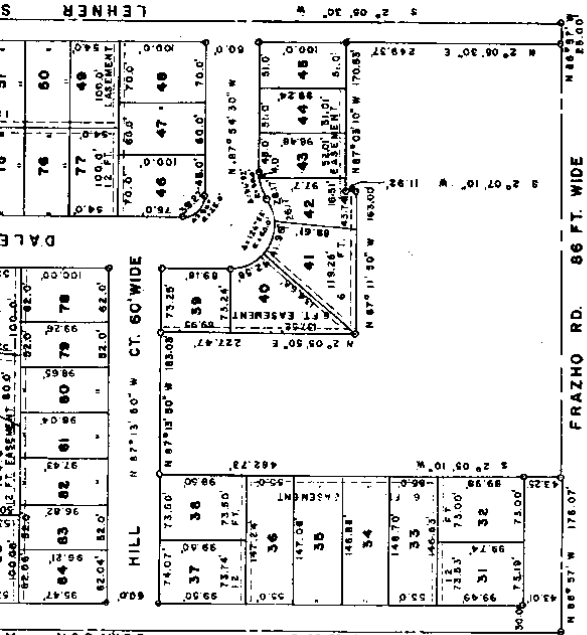
On this 15th day of May, 1953, before me, a Notary Public in and for said County, personally appearing the above named parties, who are known to me to be the persons who executed the above dedication, and acknowledged the same to be their free act and deed.

Notary Public in and for said County
 My Commission expires 1954

Notary Public in and for said County
 My Commission expires 1954

State of Michigan
 County of Washtenaw

State of Michigan
 County of Washtenaw



FRAZHO RD. 86 FT. WIDE

CERTIFICATE OF MUNICIPAL APPROVAL
 This plat was approved by the Commission at the meeting held on May 15, 1953.

Notary Public in and for said County
 My Commission expires 1954

State of Michigan
 County of Washtenaw

On this 15th day of May, 1953, before me, a Notary Public in and for said County, personally appearing the above named parties, who are known to me to be the persons who executed the above dedication, and acknowledged the same to be their free act and deed.

Notary Public in and for said County
 My Commission expires 1954

State of Michigan
 County of Washtenaw

On this 15th day of May, 1953, before me, a Notary Public in and for said County, personally appearing the above named parties, who are known to me to be the persons who executed the above dedication, and acknowledged the same to be their free act and deed.

Notary Public in and for said County
 My Commission expires 1954

State of Michigan
 County of Washtenaw

On this 15th day of May, 1953, before me, a Notary Public in and for said County, personally appearing the above named parties, who are known to me to be the persons who executed the above dedication, and acknowledged the same to be their free act and deed.

Notary Public in and for said County
 My Commission expires 1954

State of Michigan
 County of Washtenaw

On this 15th day of May, 1953, before me, a Notary Public in and for said County, personally appearing the above named parties, who are known to me to be the persons who executed the above dedication, and acknowledged the same to be their free act and deed.

Notary Public in and for said County
 My Commission expires 1954

State of Michigan
 County of Washtenaw

On this 15th day of May, 1953, before me, a Notary Public in and for said County, personally appearing the above named parties, who are known to me to be the persons who executed the above dedication, and acknowledged the same to be their free act and deed.

Notary Public in and for said County
 My Commission expires 1954

State of Michigan
 County of Washtenaw

DESCRIPTION OF LAND PLATTED

The land embraced in the amended plat of the Mary E. Herndt Subdivision No. 1 of part of the Northwest 1/4 of Section 19, Township 3 North, Range 13 East, Village of Roserville, Washtenaw County, Michigan, is described as follows:

Commencing at the N 1/4 post, Section 19, T. 3 N., R. 13 E., Village of Roserville, Washtenaw County, Michigan; thence N 87° 30' W, 680.10 ft., thence S 2° 07' W, 1315.65 ft., thence N 87° 53' W, 878.53 ft., thence S 2° 05' 30' W, 25.00 ft., to the point of beginning; thence S 2° 05' 30' W, 337.78 ft., thence N 86° 57' W, 25.00 ft., thence N 2° 05' 30' W, 219.37 ft., thence N 87° 03' 10' W, 170.53 ft., thence S 2° 07' 10' W, 11.92 ft., thence N 87° 11' 50' W, 131.70 ft., thence S 2° 05' 30' W, 227.17 ft., thence N 86° 57' W, 176.07 ft., thence N 1° 53' 50' W, 131.70 ft., thence S 87° 23' 20' W, 701.78 ft., to the point of beginning.

I hereby certify that the plat herein delineated is a correct one and that permanent metal monuments consisting of bars not less than one-half inch in diameter and 18 inches in length, or shorter bars of not less than one-half inch in diameter spaced around each other at least 6 inches with an over-all length of not less than 18 inches have been placed at points marked thus (O) as thereon shown at all angles in the boundaries of the land alloted, at all the intersections of streets, intersections of alleys, or of streets and alleys, and at the intersections of streets and alleys with the boundaries of the plat as shown on said plat.

SURVEYOR'S CERTIFICATE

Notary Public in and for said County
 My Commission expires 1954

State of Michigan
 County of Washtenaw

On this 15th day of May, 1953, before me, a Notary Public in and for said County, personally appearing the above named parties, who are known to me to be the persons who executed the above dedication, and acknowledged the same to be their free act and deed.

Notary Public in and for said County
 My Commission expires 1954

State of Michigan
 County of Washtenaw

On this 15th day of May, 1953, before me, a Notary Public in and for said County, personally appearing the above named parties, who are known to me to be the persons who executed the above dedication, and acknowledged the same to be their free act and deed.

Notary Public in and for said County
 My Commission expires 1954

State of Michigan
 County of Washtenaw

On this 15th day of May, 1953, before me, a Notary Public in and for said County, personally appearing the above named parties, who are known to me to be the persons who executed the above dedication, and acknowledged the same to be their free act and deed.

Notary Public in and for said County
 My Commission expires 1954

State of Michigan
 County of Washtenaw

On this 15th day of May, 1953, before me, a Notary Public in and for said County, personally appearing the above named parties, who are known to me to be the persons who executed the above dedication, and acknowledged the same to be their free act and deed.

Notary Public in and for said County
 My Commission expires 1954

State of Michigan
 County of Washtenaw

original

1355-0

EXAMINED AND APPROVED

DATE April 15, 1953

Wm. B. Mertz
Notary Public, Michigan

PROFESSOR OF SURVEYING
PLAT # 100000

DENNIS D. SUB'DN

A PART OF THE N. W. 1/4 OF SEC. 19 T. 19 N. R. 13 E.

VILLAGE OF ROSEVILLE MACOMB CO. MICH.

SCALE 1" = 100'

0 10 20 30 40 50 60 70 80 90 100

NOTE: ALL DIMENSIONS HEREON ARE IN FEET AND DECIMALS THEREOF.

APR 17 4 12 PM '53

HARRY J. FULLER
REGISTERED CIVIL ENGINEER
MT. CLEMENS MICH.

DEDICATION

KNOW-ALL-MEN BY THESE PRESENTS, That we Edwin Olaszinski and Stanley Olaszinski, a single man
Edwin Olaszinski (Witness)
Stanley Olaszinski (Witness)
As proprietors, have caused the land embraced in the annexed plat to be surveyed, laid out and platted to be known as Dennis D. Subdivision, a part of the N. 1/4 of Sec. 19 T. 19 N. R. 13 E. Village of Roseville, Macomb County, Michigan and that the streets and alleys as shown on said plat are hereby dedicated to the use of the public.

Signed and Sealed in Presence of
Edwin Olaszinski (L.S.)
Stanley Olaszinski (L.S.)
Mary Gene Jones Ward (Witness)
Edwin Olaszinski (L.S.)
Stanley Olaszinski (L.S.)
Mary Gene Jones Ward (L.S.)

ACKNOWLEDGMENT

STATE OF MICHIGAN }
County of Macomb }

On this 15th day of December, A.D. 1952, before me, a Notary Public in and for said county, personally came the above named Edwin Olaszinski and Stanley Olaszinski, his wife and known to me to be the persons who executed the above dedication, and acknowledged the same to be their free act and deed.

My commission expires Aug. 15, 1953
Notary Public in and for Macomb County
Mary Gene Ward

CERTIFICATE OF MUNICIPAL APPROVAL

This plat was approved by the Village Council of the Village of Roseville at a meeting held April 15, 1953
Robert J. Mertz

PETRIE AVE. 50 FT. WD.

1	2	3	4	5	6	7	8	9	10	11	12	13	14	15	16	17	18	19	20	21	22	23	24	25	26	27	28	29	30	31	32	33	34	35	36	37	38	39	40	41	42	43	44	45
---	---	---	---	---	---	---	---	---	----	----	----	----	----	----	----	----	----	----	----	----	----	----	----	----	----	----	----	----	----	----	----	----	----	----	----	----	----	----	----	----	----	----	----	----

120 FT. WD. BLDG. NORTH 1952 33

AVE 60 FT. WD. N

LIBER 28

14 Amendment to plat original filed 11/11/52

ORIGINAL

LELAND V. MASCHMEYER SUBDIVISION

OF PART OF THE N.W. 1/4 OF SECTION 19, T. 1 N., R. 13 E.
VILLAGE OF ROSEVILLE, ERIN TWP., MACOMB CO., MICHIGAN.

128502

File 2 3 20 PM 153

27

PAGE 40

NOTE:

ALL DIMENSIONS ARE IN FEET AND DECIMALS THEREOF

EXAMINED AND APPROVED

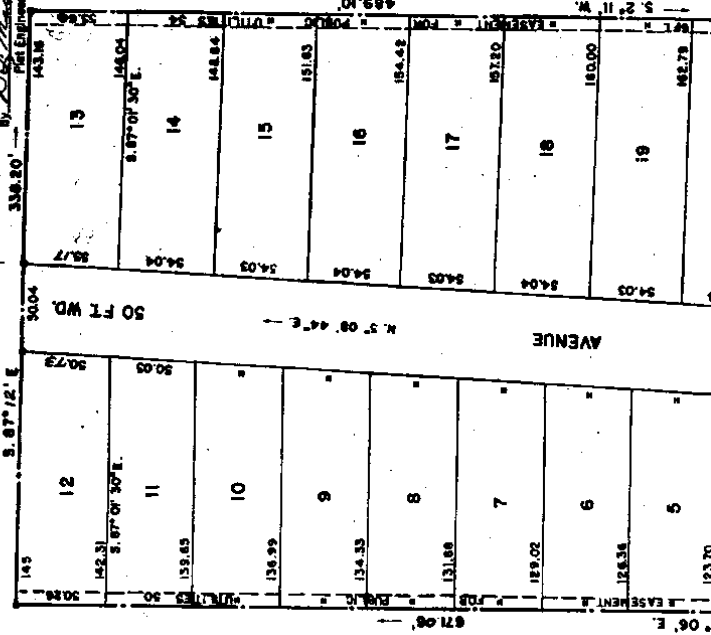
Date January 23, 1953

John E. Martin, Jr.
John E. Martin, Jr.
AUDITOR GENERAL

MASCHMEYER SUBDIVISION No. 2
L. 23 P. 14

Leland V. Maschmeyer
Leland V. Maschmeyer
REGISTERED PROFESSIONAL SURVEYOR

338.20' By
30.04' 50 FT WD.



DEED
 Said plat was by these persons that on Charlotte E. Maschmeyer, a married woman of Erin, Michigan, and Leland V. Maschmeyer, a single man of Erin, Michigan, the last whereof is her husband, to be known as "Leland V. Maschmeyer Subdivision" or part of the "Leland V. Maschmeyer Subdivision" in Erin Township, Michigan, and the plat is to be used for the use of the public and that no person or persons are to be granted within the limits of said subdivision the right to the regulating and control of the same thereof by any person or persons.

Witness my hand and seal in the presence of the following persons:
Leland V. Maschmeyer
 Leland V. Maschmeyer
 REGISTERED PROFESSIONAL SURVEYOR
John E. Martin, Jr.
 John E. Martin, Jr.
 AUDITOR GENERAL

STATE OF MICHIGAN
 COUNTY OF MACOMB

On this 23rd day of January A.D. 1953 before me a Notary Public in and for said county, personally known the above named Charlotte E. Maschmeyer and Leland V. Maschmeyer, who asserted the above to be the true and correct names to be of the said plat of said subdivision.

My Commission Expires *October 20, 1955*
 Notary Public
 State of Michigan

ATTESTED:
 On this 23rd day of January A.D. 1953 before me a Notary Public in and for said county, personally known the above named Charlotte E. Maschmeyer and Leland V. Maschmeyer, who asserted the above to be the true and correct names to be of the said plat of said subdivision.

Protective Covenant See Liber 89 page 555

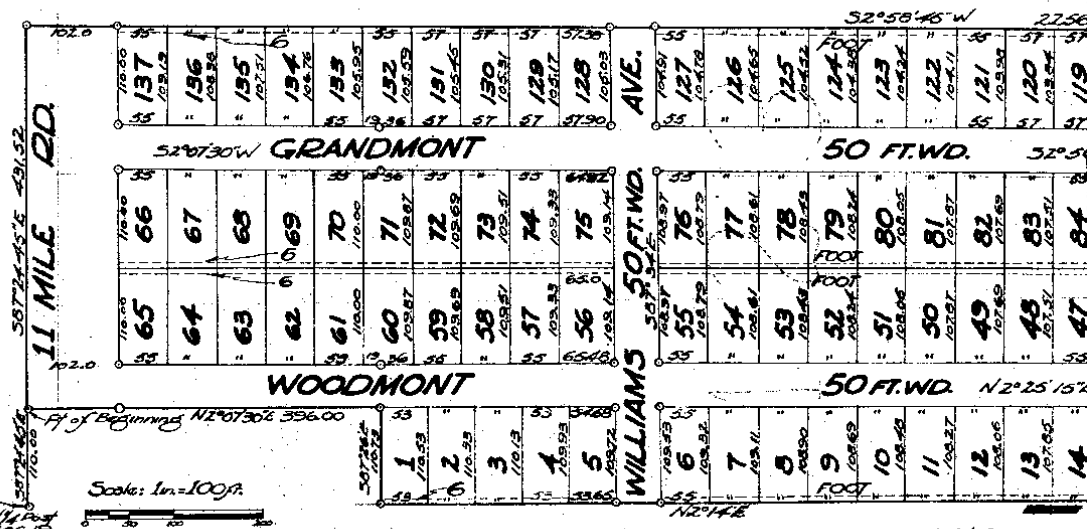
64626

CHARLOTTE E. MA

OF PART OF NE 1/4, OF SEC. 19,
VILLAGE OF ROSEVILLE, MACOMB

Examined and Approved

James Henry Auddy
Deputy Auditor General



ONON & BIEHL
Reg. Land Survey

DEDICATION

KNOW ALL MEN BY THESE PRESENTS, that CHARLOTTE E. MASCHMEYER

and TROY W. MASCHMEYER COMPANY

a MICHIGAN corporation by TROY W. MASCHMEYER

President, and DOROTHY M. KONIG Secretary,

as proprietors, have caused the land embraced in the annexed plat to be surveyed, laid out and platted to be known as Charlotte E. Maschmeyer Subd. N

of part of the NE 1/4, Sec. 19, T 1 N, R 13 E, Village of Roseville, Macomb Co., Michigan

and that the streets and alleys as shown on said plat are hereby dedicated to THE PUBLIC.

Signed and Sealed in the Presence of:

Margaret G. Biehl
MARGARET G. BIEHL (Witness)

Troy W. Maschmeyer
TROY W. MASCHMEYER (President)

Donald P. Bull
DONALD P. BULL (Witness)

Dorothy M. Konig
DOROTHY M. KONIG (Secretary)

ACKNOWLEDGMENT

STATE OF MICHIGAN

County of MACOMB

On this 22nd day of OCTOBER, 1922, before me,

a Notary Public in and for said County, personally came the above named

CHARLOTTE E. MASCHMEYER

known to me to be the persons who executed the above dedication, and acknowledged the same to be their free act and deed.

Margaret G. Biehl
MARGARET G. BIEHL
Notary Public in and for said County

My Commission expires OCTOBER 22, 1924.

SURVEYOR'S CERTIFICATE

I hereby certify that the plat herein delineated is a correct one and that permanent metal monuments consisting of bars not less than one-half inch in diameter and 48 inches in length, or shorter bars of not less than one-half inch in diameter lapped over each other at least 6 inches with an over-all length of not less than 48 inches, encased in a concrete cylinder of least 4 inches in diameter and 48 inches in depth have been placed at points marked thus () as hereon shown at all angles in the boundaries of the land platted, at all the intersections of streets, intersections of alleys, or of streets and alleys, and at the intersections of streets and alleys with the boundaries of the plat as shown on said plat.

Theodore G. Biehl
Registered Land Surveyor
THEODORE G. BIEHL

STATE OF _____

County of _____

On this _____

mo. 1922

for said co

know

being each

ively of the

that the rec

said instr

Board of Di

acknowled

Approved by _____

County, Michi

726 P2

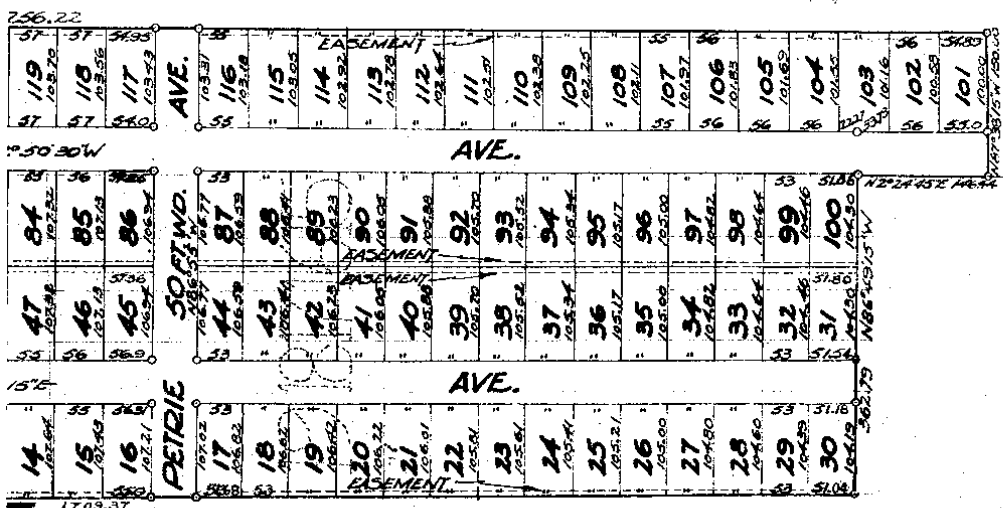
MASCHMEYER SUBD'N.

ORIGINAL

SEC. 19, TOWN 1 N., RANGE 13 E.
MICHIGAN

PAGE 28 LIBER

None
785.4
2nd class file 13.15.19
10-12-50
Rising Sun
Rising Sun



ACKNOWLEDGMENT

STATE OF MICHIGAN
County of MACOMB
I, MARGARET L. LAVOY, Notary Public in and for said county, do hereby certify that on this 27th day of OCTOBER, A.D. 1950, before me personally appeared TERRY W. MASCHMEYER, JR. and MARGARET L. LAVOY, to me personally known, who each by me duly sworn did say that they are the President and Secretary respectively of the ROSEVILLE VILLAGE, a MICHIGAN corporation, and the seal affixed to said instrument is the corporate seal of said corporation and that said instrument was signed and sealed in behalf of said corporation by authority of its Board of Directors and the said TERRY W. MASCHMEYER, JR. and MARGARET L. LAVOY acknowledged said instrument to be the free act and deed of said corporation.
Margaret L. Lavoyn
Notary Public
My Commission expires 25th day of Oct. 1951

MUNICIPAL APPROVAL

This plat was approved by the Village of Roseville of the Village of Roseville at a meeting held October 12, 1950

APPROVAL BY COUNTY BOARD

This plat was approved on the 27th day of October, 1950, at the County of Macomb Register's Office. Received for Record this 27th day of October, A.D. 1950 at 10:30 o'clock A.M. and Recorded in Liber 26 of Plats at Page 21
Caron Burr (County Register of Deeds)
A. W. King (County Clerk)
John W. ... (County Treasurer)

APPROVAL BY BOARD OF COUNTY AUDITORS

Approved by the Board of County Auditors of Macomb County, Michigan, this 27th day of October, 1950.
(Chairman)

CERTIFICATE OF APPROVAL BY BOARD OF COUNTY ROAD COMMISSIONERS

This plat has been examined and approved on the 24th day of October, 1950 by the Board of County Road Commissioners of Macomb County.
W. E. Malow Chairman
Ray ... Vice-Chairman

DESCRIPTION OF LAND PLATTED

The land embraced in the annexed plat of Charlotte E. Maschmeyer, Sub'dn of part of NE 1/4, Sec. 19, T 1 N, R 13 E, Village of Roseville, Macomb County, Michigan is described as follows:
Commencing at the N 1/4 post, Sec. 19, T 1 N, R 13 E, Village of Roseville, Macomb County, Michigan; Thence S 87°24'45" E, 110.00 ft. to the pt. of Beginning. Thence continuing S 87°24'45" E, along the N 1/4 line of Sec. 19, 431.52 ft.; thence S 2°58'45" W, 2256.22 ft.; thence N 87°38'15" W, 150.00 ft.; thence N 2°24'45" E, 146.44 ft.; thence N 86°49'15" W, 362.79 ft.; thence N 2°14' E, ~~110.00~~ ft.; thence S 87°26' E, 110.73 ft.; thence N 2°07'30" E, 398.00 ft. to the pt. of beginning. Described further as being a re-plat of Lot No. 2, and part of Lots No. 1, 3, 15, 16, 17, 18 and 19 of Assessors' Plat No. 12 of part of the NE 1/4 of Sec. 19, T 1 N, R 13 E, Village of Roseville, Macomb County, Michigan.

My commission expires

Notary Public

DESCRIPTION

The land embraced in the annexed plat of **GERALDINE FARMS** SUBDIVISION of part of the S. 1/2 of Sec. 19, T. 1 N., R. 15 E., Village of Rossville, Mecklenburg Co., N.C., is described as follows: Beginning at a point, which point is distant N. 20°15'10" E. 270.00 ft. and N. 86°50'24" W. 152.67 ft. from the S. 1/4 corner of Sec. 19, T. 1 N., R. 15 E.; thence along the E. line of Pleasure Park Sub., N. 2°15'30" E. 1078.66 ft.; S. 87°17'20" E. 531.86 ft.; thence along the E. line of Packard Park Sub., S. 27°54'24" W. 1065.02 ft.; thence N. 86°50'24" W. 552.52 ft. to the point of beginning.

SURVEYOR'S CERTIFICATE

I hereby certify that the plat herein delineated is a correct one and that permanent metal monuments consisting of bars not less than one-half inch in diameter and 48 inches in length, encased in concrete cylinders at least 4 inches in diameter and 48 inches in depth have been placed at points marked thus (O) at the corners at all angles in the boundaries of the land platted, at the intersection of all streets and at the intersection of streets with the boundaries of the plat.

L. T. Brown, Registered Land Surveyor

CERTIFICATE OF MUNICIPAL APPROVAL

I hereby certify that this plat has been approved by the Village Council of the Village of Rossville at a meeting held on the _____ day of _____, 1950.

[Signature]
Village Clerk

See to north and then along the line to the corner of Sec. 19, T. 1 N., R. 15 E. 270.00 ft. and N. 86°50'24" W. 152.67 ft. from the S. 1/4 corner of Sec. 19, T. 1 N., R. 15 E. 1078.66 ft. S. 87°17'20" E. 531.86 ft. S. 27°54'24" W. 1065.02 ft. N. 86°50'24" W. 552.52 ft. to the point of beginning.

Examined and Approved

[Signature]
MAYOR JEWELL BERRY
MAYOR

69	58	57	60	61	62	63	64	65	66	67	68	69
BUICK												
27	26	25	24	23	22	21	20	19	18	17	16	15
COLE												

3/4 CORNER OF SEC. 19, T. 1 N., R. 15 E.

TEN MILE RD.

Board of the _____ day _____, 1950

[Signature]
Asst. Reg. of Deeds

[Signature]
Asst. Reg. of Deeds

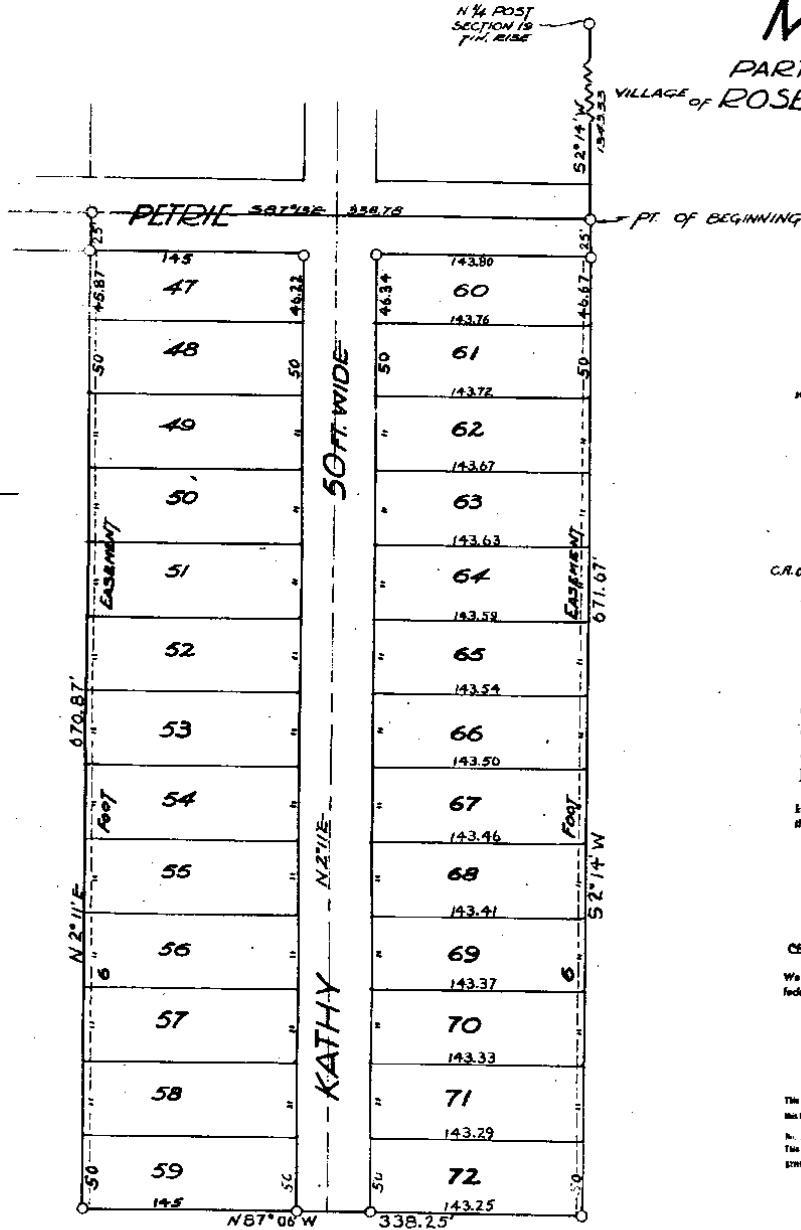
Mayor J. B. Berry, Chief Deputy Village Clerk

ONION & BILHL
REGISTERED SURVEYORS

N 1/4 POST
SECTION 19
T. 11. N. R. 15. E

M.

PART
of VILLAGE of ROSEV.



KMC
JAL
as
lod
DR
RO
and
here
Sign
the P
C.R. OBERN
D/O
D/O

STAT
Count
On th
or Not
[initials]
Known
the sur

CERTIF
We herab
federal or

This is in on
the Instrum
in S
The certifi
DWIN MICAL



SCALE 1" = 60 FT.
ALL DIMENSIONS ARE IN FEET & DECIMALS THEREOF

See map made by Fred Lee

MASCHMEYER SUBDN No. 2

T OF THE E 1/2 OF THE NW 1/4 OF SECTION 19, T1N, R13E.
ROSEVILLE MACOMB CO. MICHIGAN

DEDICATION

KNOW ALL MEN BY THESE PRESENTS, that we, James M. Hanks and Zaida W. Hanks, his wife, as proprietors, have caused the land embraced in the annexed plat to be surveyed, laid out and platted, to be known as, Maschmeyer Subdn. 2, A, part of the E 1/2 of the N.W. 1/4, Sec. 19, T1 N., R 13 E., Roseville, Macomb Co. Michigan, and that the streets as shown on said plat are hereby dedicated to the use of the public.

Signed and Sealed in the Presence of
James M. Hanks
Zaida W. Hanks
Dobyn E. W. W. (Witness)
GLEN L. WALKER (Witness)

ACKNOWLEDGMENT

STATE OF MICHIGAN
County of Macomb
On this 2nd day of November, 1949, before me, Notary Public in and for said County, personally came the above named James M. Hanks and Zaida W. Hanks, his wife, who to me to be the persons who executed the above dedication, and acknowledged the same to be their free act and deed.
Margaret L. J. J. Notary Public
My Commission expires 12-22-51

CERTIFICATE AS TO STATE TRUNK LINE OR FEDERAL AID ROADS

I hereby certify that said plat appears to include land located on a state trunk line or road and road.

To be certified that there are no tax liens or other claims against the property and that taxes are paid for FIVE YEARS previous to date of instrument EXCEPT as noted in this certificate as to 1948
5542
Lorraine G. G. Macomb County Treasurer
GERLAINE BUEHLER

DESCRIPTION OF LAND PLATTED

The land embraced in the annexed plat of Maschmeyer Subdn. 2, A part of the E 1/2 of the N.W. 1/4 of Sec. 19, T1 N., R 13 E., Roseville, Macomb County, Michigan, is described as follows: Commencing at the N 1/4 Post, Sec. 19, T1 N., R 13 E., Roseville, Macomb County, Michigan, Thence S 2° 14' W. 1343.33ft. to the Point of Beginning, thence continuing S 2° 14' W. 671.67ft. Thence N 87° 06' W. 358.25 ft. thence N 2° 11' E., 670.87ft. thence S 87° 13' E. 338.78 ft. to the Point of Beginning.

SURVEYOR'S CERTIFICATE

I hereby certify that the plat herein delineated is a correct one and that permanent metal monuments consisting of bars not less than one-half inch in diameter and 48 inches in length, or shorter bars of not less than one-half inch in diameter tapered one inch at each end of total 48 inches with an over-all length of not less than 48 inches, secured in a concrete cylinder of least 4 inches in diameter and 48 inches in depth have been placed at points marked thus (P.C.) as shown shown on all angles in the boundaries of the land platted, at all the intersections of streets, intersections of alleys, or of streets and alleys, and at the intersections of streets and alleys with the boundaries of the plat as shown on said plat.

Pierre J. O'Neil
Registered Land Surveyor

MUNICIPAL APPROVAL

This plat was approved by the Village Board of Roseville of the Village of Roseville on a meeting held October 3, 1949

APPROVAL BY COUNTY BOARD

This plat was approved on the 9th day of November, 1949
Aaron B. B. County Register of Deeds
Eunice P. P. County Clerk
Lynn W. W. County Treasurer

APPROVAL BY BOARD OF COUNTY AUDITORS

Approved by the Board of County Auditors of Macomb County, Michigan, this 19th day of November, 1949
(Chairman)

REGISTER'S OFFICE

County of Macomb
Received for Record this 1st day of December, A. D. 1949 at 11:00 o'clock A.M. and Recorded in Liber 25 of 1116 on Page 1
Lorraine G. G. County Register

Examined and Approved

December 1, 1949
MAYBEE J. J. Deputy Auditor General

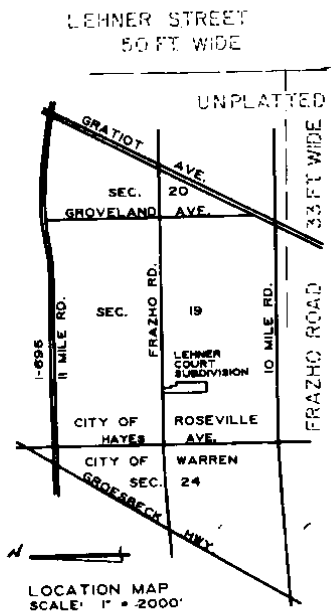
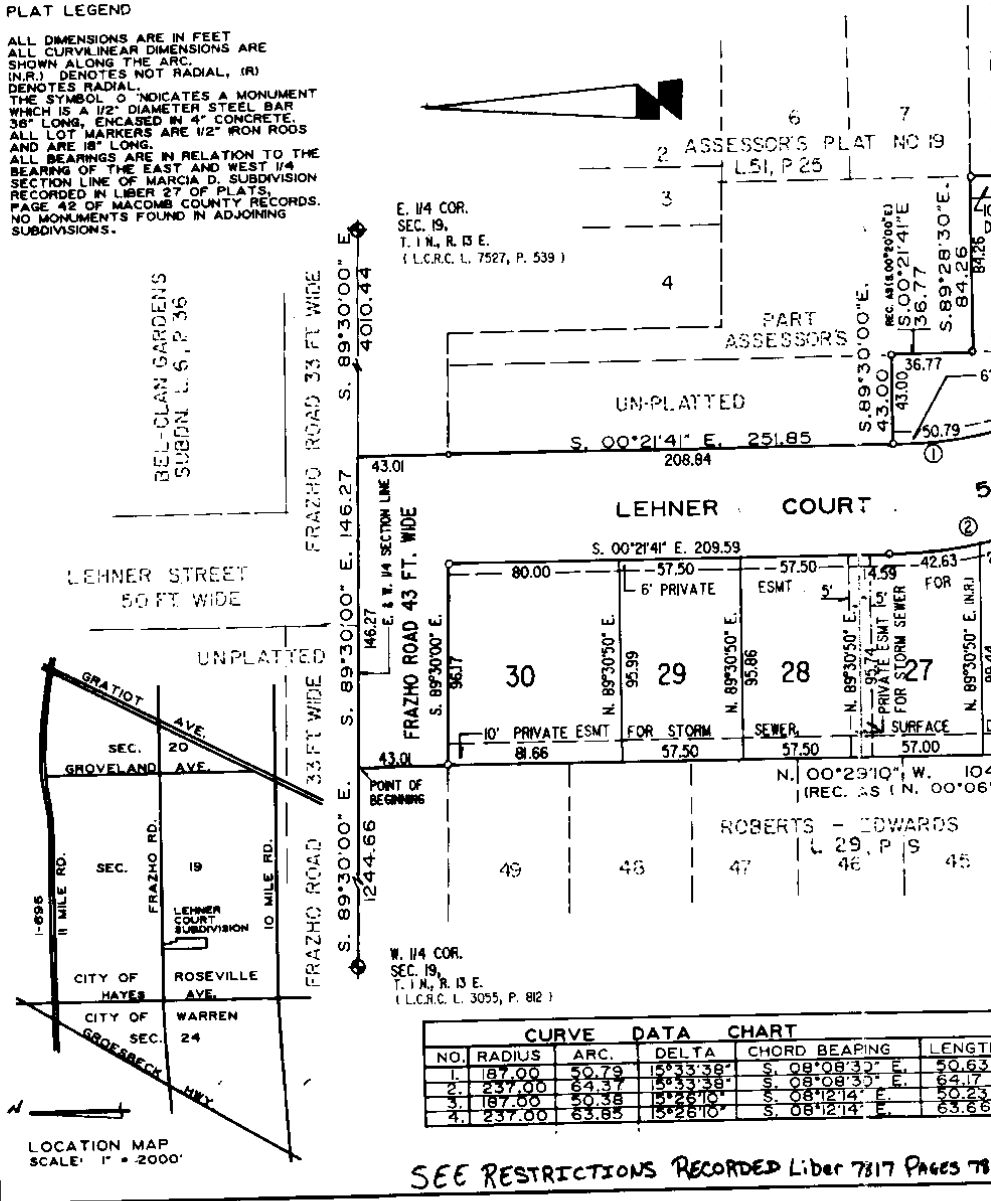
LEHNER COURT SUBDIVISION

PART OF THE S.W. 1/4 OF SECTION 19, T. 1 N., R. 13 E.,
CITY OF ROSEVILLE, MACOMB COUNTY, MICHIGAN.



PLAT LEGEND

ALL DIMENSIONS ARE IN FEET
ALL CURVILINEAR DIMENSIONS ARE
SHOWN ALONG THE ARC.
(N.R.) DENOTES NOT RADIAL, (R)
DENOTES RADIAL.
THE SYMBOL \odot INDICATES A MONUMENT
WHICH IS A 1/2" DIAMETER STEEL BAR
36" LONG, ENCASED IN 4" CONCRETE.
ALL LOT MARKERS ARE 1/2" IRON RODS
AND ARE 18" LONG.
ALL BEARINGS ARE IN RELATION TO THE
BEARING OF THE EAST AND WEST 1/4
SECTION LINE OF MARCIA D. SUBDIVISION
RECORDED IN LIBER 27 OF PLATS,
PAGE 42 OF MACOMB COUNTY RECORDS.
NO MONUMENTS FOUND IN ADJOINING
SUBDIVISIONS.

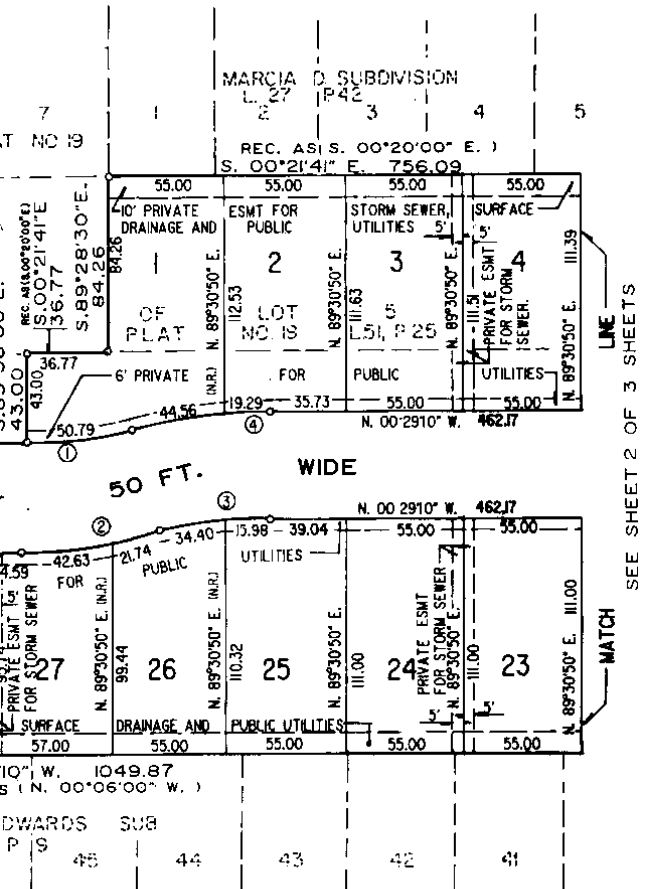


NO.	RADIUS	ARC.	DELTA	CHORD BEARING	LENGTH
1.	187.00	50.79	153°33'38"	S. 08°08'33" E.	50.63
2.	237.00	64.37	133°33'38"	S. 08°08'33" E.	64.17
3.	187.00	50.36	153°28'10"	S. 08°12'14" E.	50.23
4.	237.00	63.65	132°28'10"	S. 08°12'14" E.	63.66

SEE RESTRICTIONS RECORDED LIBER 7817 PAGES 78

REGISTER # C0633864

L.125 P.43



SEE SHEET 2 OF 3 SHEETS

TYPE	LENGTH
10' W. (N. 00°06'00\" W.)	1049.87
10' W. (N. 00°06'00\" W.)	1049.87
10' W. (N. 00°06'00\" W.)	1049.87
10' W. (N. 00°06'00\" W.)	1049.87
10' W. (N. 00°06'00\" W.)	1049.87

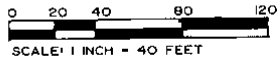


Harry H. Kemnitz

EXAMINED AND APPROVED
DATE Jan. 12, 1998
BY DEPARTMENT OF CONSUMER
AND INDUSTRY SERVICES
BY Maynard R. Dyer
MAYNARD R. DYER, P.S.
MANAGER
SUBDIVISION CONTROL UNIT

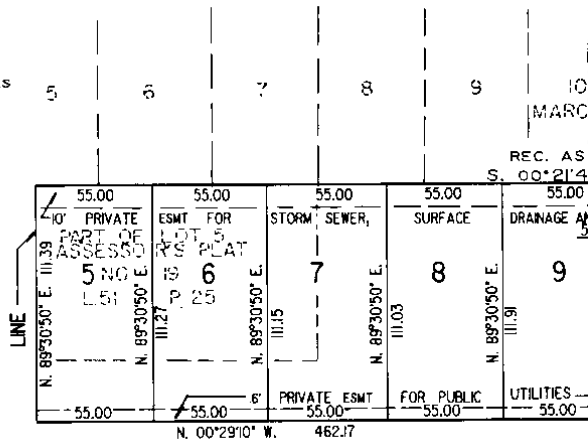
LEHNER COURT SUBDIVISION

PART OF THE S.W. 1/4 OF SECTION 19, T. 1 N., R. 13 E.,
CITY OF ROSEVILLE, MACOMB COUNTY, MICHIGAN.



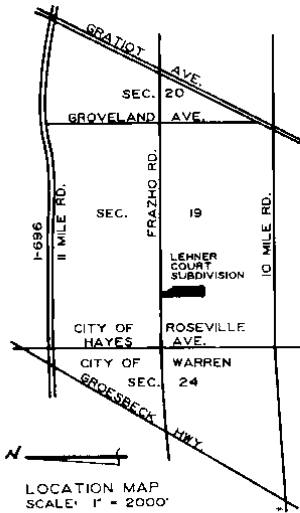
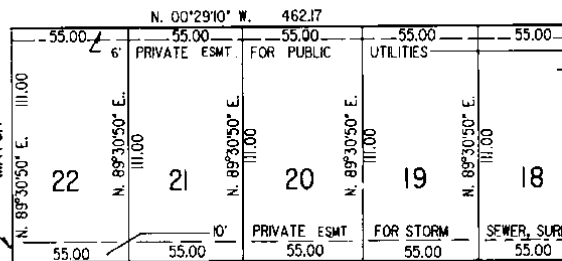
PLAT LEGEND

ALL DIMENSIONS ARE IN FEET
ALL CURVILINEAR DIMENSIONS ARE SHOWN
ALONG THE ARC.
(N.R.) DENOTES NOT RADIAL, (R) DENOTES
RADIAL.
THE SYMBOL \circ INDICATES A MONUMENT
WHICH IS A 1/2" DIAMETER STEEL BAR 36"
LONG, ENCASED IN 4" CONCRETE.
ALL LOT MARKERS ARE 1/2" IRON RODS
AND ARE 18" LONG.
ALL BEARINGS ARE IN RELATION TO THE
BEARING OF THE EAST AND WEST 1/4
SECTION LINE OF MARCIA D. SUBDIVISION
RECORDED IN LIBER 27 OF PLATS,
PAGE 42 OF MACOMB COUNTY RECORDS.
NO MONUMENTS FOUND IN ADJOINING
SUBDIVISIONS



SEE SHEET 1 OF 3 SHEETS

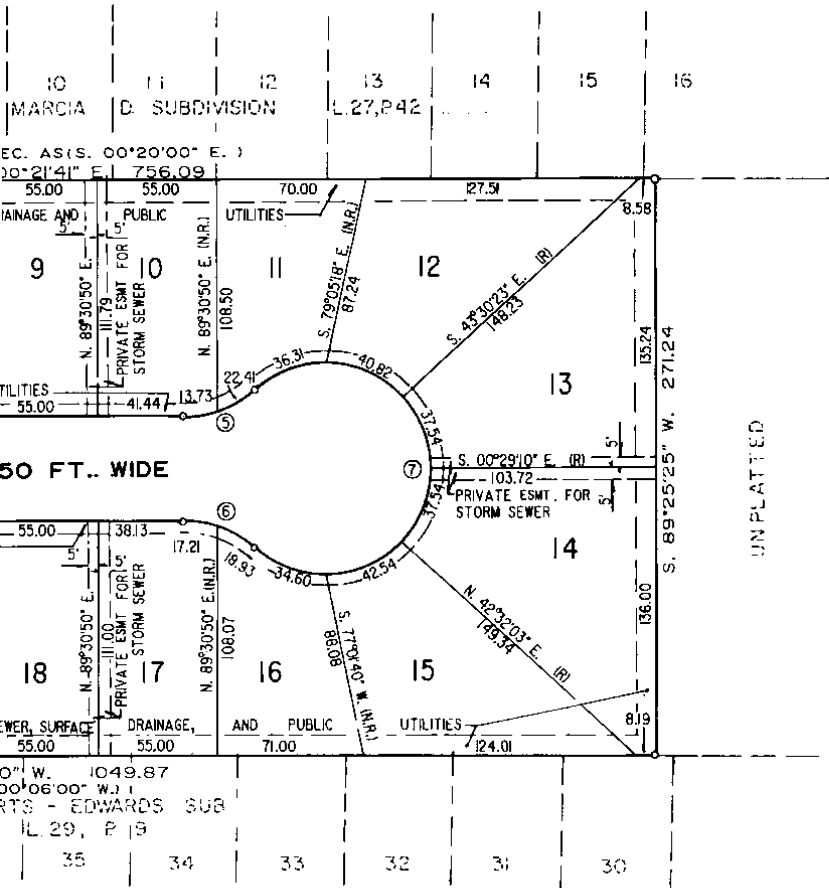
LEHNER COURT 50 F



CURVE DATA CHART					
NO.	RADIUS	ARC	DELTA	CHORD BEARING	LEN
5.	50.00	36.14	41°24'34"	S. 21°01'27" E.	35
6.	50.00	36.14	41°24'34"	S. 20°13'07" W.	35
7.	50.00	229.35	262°49'10"	S. 89°30'50"	7

N. 00°29'10" W.
REC. AS IN 00°06'0
ROBERTS -
IL 21

L.125 P.44



TYPE	LENGTH
E.	35.36
W.	35.36
	75.00



Harry H. Kemnitz

LEHNER COURT SUBDIVISION

PART OF THE S.W. 1/4 OF SECTION 19, T. 1 N., R. 13 E., CITY OF ROSEVILLE, MACOMB COUNTY, MICHIGAN.

SURVEYOR'S CERTIFICATE

I, Harry H. Kemnitz, Surveyor, certify:
That I have surveyed, divided and mapped the land shown on this plat and described as follows:

LEHNER COURT SUBDIVISION part of the S.W. 1/4 of Section 19, T. 1 N., R. 13 E., City of Roseville, Macomb County, Michigan and a replat of part of Lot 5 of Assessor's Plat No. 19, (L. 51, P. 25) described as beginning at a point on the E. 1/4 section line of said Section 19, said point located S. 89°30'00" E. along said E. & W. 1/4 section line 1244.66 ft. from the W. 1/4 corner of said Section 19, thence continuing S. 89°30'00" E. along said E. & W. 1/4 section line 146.27 ft., thence S. 00°21'41" E. 251.85 ft., thence S. 89°30'00" E. 43.00 ft., thence S. 00°21'41" E. rec. as S. 00°20'00" E. along the west line of Lot 5 of Assessor's Plat No. 19, (L. 51, P. 25), 36.77 ft. thence S. 89°28'50" E. 84.26 ft. to the west line of Marcia D. Subdivision (L. 27, P. 42) thence S. 00°21'41" E. rec. as S. 00°20'00" E. along said west line 756.09 ft., thence S. 89°25'25" W. 271.24 ft. to the east line of Robert's-Edwards Subdivision (L. 28, P. 9), thence N. 00°29'10" W. rec. as N. 00°06'00" W. along said east line 1049.87 ft. to the point of beginning. Containing 5.741 acres, more or less.

This plat contains 30 Lots numbered 1 thru 30, both inclusive.

That I have made such survey, land division and plat by the direction of the Owners of such land.

That such plat is correct representation of all exterior boundaries of the land surveyed and the subdivision of it.

That the required monuments and lot markers have been located in the ground or that surety has been deposited with the municipality, as required by Section 125 of the Act.

That the accuracy of survey is within the limits required by Section 126 of the Act.

That the bearings shown on the plat are expressed as required by Section 126 (3) of the Act and as explained in the Legend.

DEL-TEC SURVEYING & ENGINEERING
5800 12 MILE RD.
WARREN, MI 48092

Harry H. Kemnitz
HARRY H. KEMNITZ, PRESIDENT
PROFESSIONAL SURVEYOR NO. 16931

5-23-97



PROPRIETOR'S CERTIFICATE

ADVANCE DEVELOPERS, LTD., a corporation existing under the laws of the State of Michigan as proprietor, has caused the land to be surveyed as represented on this plat and the use of the public, that the public utility easement and that all other easements are for the use of

ADVANCE
26893 E
MADISON

BY

Carl Giordano
President

WITNESSES

Janel M. Kanan
Janel M. Kanan

Kevin Toman Sr.
Kevin Toman, Sr.

ACKNOWLEDGEMENT

STATE OF MICHIGAN)
) S.S.
COUNTY OF MACOMB)

Personally came before me this 29th day
Carl Giordano, President of the above named co
the person who executed the foregoing instrum
such President of said corporation, and acknow
forgoing instrument as such officer as the free
corporation by its authority.

Notary Public *Janel M. Kanan*
JANEL M. KANAN
My Commission Expires 2-18-98

COUNTY TREASURER'S CERTIFICATE

The records in my office show no unpaid taxes
the five years preceding 6-2-97
included in this plat.

Rose Bark
Rose Bark
Deputy County
Macomb Co

COUNTY DRAIN COMMISSIONER'S CERTIFICATE

Approved on June 20th, 1997
Section 192 of Act 288, P.A. 1967, and the
published by my office in the County of Oakland

Anthony V. N
Anthony V. N
Macomb County

SHL 5217

13 E.,

CERTIFICATE OF MUNICIPAL APPROVAL

I certify that this plat was approved by the City Council of the City of Roseville at a meeting on Sept 25, 1997, and was reviewed and found to be in compliance with Act 288, P.A. 1987. Minimum lot width and area required by Section 186 (D), Act 288 P.A. of 1987 has been waived and confirms with the legally adopted zoning and subdivision control ordinances of the City of Roseville. Public water and public sewer are installed and ready for connection. Adequate surety has been deposited with the clerk for the placing of monuments and markers within a reasonable length of time, not to exceed one year from the above date.

Ronald A. MacKool
Ronald A. MacKool
City Clerk

ADVANCE DEVELOPERS, LTD
29393 DEQUINNE
MADISON HEIGHTS, MICH 48071

BY [Signature]
Carl Giordano
President

COUNTY PLAT BOARD CERTIFICATE

This plat has been reviewed and is approved by the Macomb County Plat Board on October 17, 1997, 1997 as being in compliance with all the provisions of Act 288, P.A. 1987, and the Plat Board's rules and regulations.

John C. Hertel Ted B. Wahby
John C. Hertel, Chairperson Ted B. Wahby, County Treasurer
County Board of Commissioners

Carmella Sabaugh
Carmella Sabaugh, County Clerk
Register of Deeds

RECORDING CERTIFICATE

STATE OF MICHIGAN
MACOMB COUNTY)

THIS PLAT WAS RECEIVED FOR RECORD ON THE 16th DAY OF January, 1998, AT 11:07 A.M. AND RECORDED IN LIBER 125 OF PLATS, ON PAGES 43, 44, 45

Carmella Sabaugh
CARMELLA SABAUGH, COUNTY CLERK
REGISTER OF DEEDS
By Jill Cochell
Chief Deputy Register of Deeds

unpaid taxes or special assessments for 2-97 involving the lands

Rose Barkall
Rose Barkall
Deputy County Treasurer
Macomb County

DRAIN COMMISSIONER'S CERTIFICATE

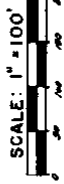
1997, as complying with 1987, and the applicable rules and regulations of Macomb County of Oakland.

Anthony V. Marrocco
Anthony V. Marrocco
Macomb County, Drain Commissioner

ROSE POINTE SUBDIVISION

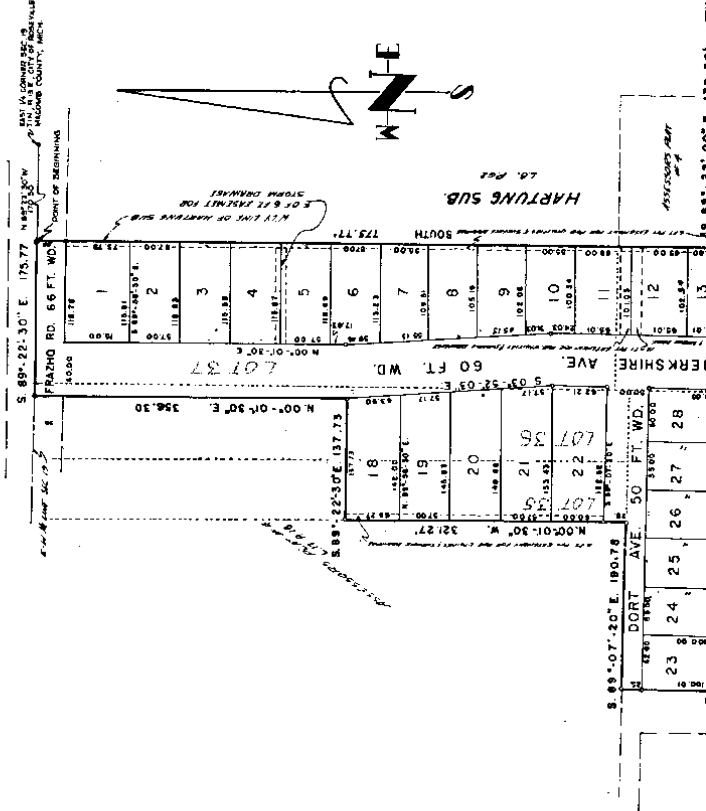
PART OF THE S.E. 1/4 SEC. 19 AND THE S.W. 1/4 SEC. 20, T. 1 N., R. 13 E.
CITY OF ROSEVILLE, MACOMB COUNTY, MICHIGAN

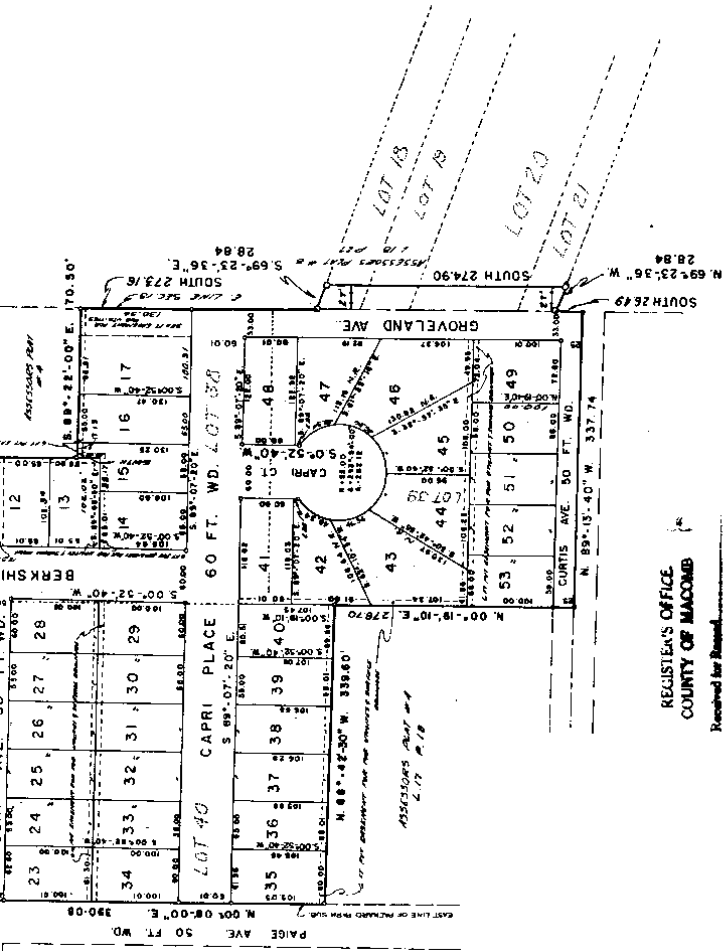
90006319



CERTIFIED PLAT BY:
M' MAHON ENGINEERING CO.
DETROIT, MICHIGAN

ALL DIMENSIONS ARE SHOWN IN FEET AND DECIMALS THEREOF.
ALL CURVILINEAR DIMENSIONS ARE SHOWN ALONG THE ARC.
ALL LOT LINES ARE RADIAL OR PERPENDICULAR TO STREET
LINES UNLESS OTHERWISE SHOWN. (N.A.P.)





REGISTRAR'S OFFICE
COUNTY OF MACOMB

Received for Record
 MARCH 14, 1968
 at 11:30 o'clock A.M. and recorded
 in Vol. 58 of PLATS, on
 pages 45 & 46.
Raymond R. King
 Registrar of Deeds

John S. Blackwelder
 34000
 10000

Eleanor Beard

L58-P45

L58 P45

ROSE POINTE SUBDIVISION

PART OF THE S.E. 1/4 SEC. 19 AND THE S.W. 1/4 SEC. 20, T. 1 N., R. 13 E.
CITY OF ROSEVILLE, MACOMB COUNTY, MICHIGAN

3XN16339



CERTIFIED PLAT BY:
MEMARON ENGINEERING CO.
DETROIT, MICHIGAN

ALL DIMENSIONS ARE SHOWN IN FEET AND DECIMALS THEREOF.
ALL CURVILINEAR DIMENSIONS ARE SHOWN ALONG THE ARC.
ALL LOT LINES ARE RADIAL OR PERPENDICULAR TO STREET
LINES UNLESS OTHERWISE SHOWN, (SEE)

DEDICATION

KNOWN ALL MEN BY THESE PRESENTS: THAT WE Joseph J. Hense, a single man, and Frank Mollicone and Clara Mollicone, his wife, and Alfred Puzsuoli and Arcangola Puzsuoli, his wife, as proprietors, have caused the land embraced in the Annexed Plat to be surveyed, laid out and platted, to be known as, Rose Pointe Subdivision, part of the S.E. 1/4, Sec. 19, T. 1 N., R. 13 E., City of Roseville, Macomb County, Michigan, and that the streets as shown on said plat are hereby dedicated to the use of the public, and that the private easements shown on said plat are hereby reserved for the use of the public utilities, or for the use of specific utilities or specific uses, as thereon noted, subject to regulation and control of the use thereof by the local governmental authorities, and that no permanent structures are to be erected within the boundaries of said easements.

WITNESSES:

JAMES P. 1915 BIRMINGHAM
1915 BIRMINGHAM AVENUE
DETROIT MICH. 48221

MARY L. BARTZ
1750 GARFIELD AVENUE
DETROIT MICH. 48221

CHARLES C. HENSE
10742 CAROLINE DR.
DETROIT MICH. 48205

Joseph J. Hense-a single man
24266 Warrington Ct.
East Detroit, Michigan 48021

Frank Mollicone
16655 Curtis, Roseville, Michigan.

Clara Mollicone, his wife-
16655 Curtis, Roseville, Michigan.

Alfred Puzsuoli
16665 Curtis, Roseville, Michigan.

Arcangola Puzsuoli, his wife-
16665 Curtis, Roseville, Michigan.

DESCRIPTION

The land embraced in the Annexed Plat of Rose Pointe Subdivision, part of the S.E. 1/4, Sec. 19, T. 1 N., R. 13 E., City of Roseville, Macomb County, Michigan, comprising Lots 1 through 53, being a subdivision of Lot 37 and part of Lots 35, 36, 38, 39 and 40 of Assessor's Plat No. 4, as recorded in Liber 17 of Plats, Page 18, Macomb County Records, is described as follows: Beginning at a point on the E-W 1/2 line of Section 19, T. 1 N., R. 13 E., distant N. 88° 22' 30" W. 170.30 feet from the East 1/2 corner of said Sec. 19, thence due South along the westerly line of Hartung Sub., as recorded in Liber 8 of plats, page 62, and its extension southerly a distance of 773.77 ft.; thence S. 89° 22' 00" E. 170.30 feet, to the east line of Sec. 19; thence due South 229.76 ft. along said east line; thence N. 89° 13' 40" W. 337.74 ft.; thence N. 0° 19' 10" E. 276.70 ft.; thence N. 88° 42' 30" W. 339.60 ft. to the east line of Packard Park Sub., as recorded in Liber 3 of Plats, Page 173; thence N. 0° 08' 00" E., 390.08 ft. along said east line; thence S. 89° 07' 20" E., 190.78 ft.; thence N. 0° 01' 30" W., 321.27 ft.; thence S. 89° 22' 30" E. 137.73 ft.; thence N. 0° 01' 30" E. 356.30 ft. to the E-W 1/2 line of Sec. 19; thence S. 89° 22' 30" E. 175.77 ft. along said E-W 1/2 line to the point of beginning.

part of both of them (land) recorded in Liber 18 of Plats, page 27, Macomb County Records.

Thence S. 89° 22' 30" E. 284.4 ft. thence South 274.90 ft. thence S. 89° 22' 30" E. 175.77 ft.

CERTIFICATE OF MUNICIPAL APPROVAL

This plat was approved by the City Council of the City of Roseville, at a meeting held on 10/3/39, and is in compliance with Section 19A, and the width of Lots conform with the requirements of Section 30, Act 172, of 1929, as amended, and that sewer and water facilities are installed and ready for connection within the plat.

REBERT G. NUINN, Clerk

SURVEYORS CERTIFICATE

I hereby certify that the plat herein delineated is a correct one.

OSCAR C. HENRIE
15042 CHARLES DR
DETROIT MICH 48205

Arcangelo Puzsoli, his wife-
16665 Curtis, Roseville, Michigan.

ACKNOWLEDGMENTS

STATE OF MICHIGAN)
COUNTY OF WAYNE) ss

On this 25th day of August, A.D., 1967 before me, a notary public in and for said county, personally came the above named, Joseph J. Henze, a single man, and Frank Mollicons and Clara Mollicons, his wife, and Alfred Puzsoli and Arcangelo Puzsoli, his wife, known to me to be the persons who executed the above dedication and acknowledged the same to be their free act and deed.

John J. McMahon
Notary Public, Wayne County, Michigan
John J. McMahon My Comm. Expires 11-1-77

Agnes Whelan & B

APPROVED
SARAH PLUMMER BRUNS

Sarah Plummer Bruns
Notary Public, Wayne County, Michigan

Thomas Puzsoli

SURVEYORS CERTIFICATE

I hereby certify that the plat hereon delineated is a correct one, and that permanent monuments consisting of iron rods $\frac{1}{2}$ " in diameter and 36" in length encased in concrete cylinders 4" in diameter and 36" in length, have been placed at all points marked thus (o) as thereon shown at all angles in the boundaries of the land platted, at all intersections of the lines of streets, and at intersections of the lines of streets with the boundaries of the plat, except as indicated thus (e).

Prepared and drafted by:

William J. Coulter
William J. Coulter - Reg. Land Surveyor #14760
13205 Charlevoix Avenue
Detroit, Michigan 48215

CERTIFICATE OF APPROVAL BY COUNTY BOARD

This Plat was approved on the 12th day of August, 1968 by the Macomb County Plat Board.

Aaron Burr
Aaron Burr, Register of Deeds

Edna Miller
Edna Miller, County Clerk

Thomas S. Wolski
Thomas S. Wolski, County Treasurer
13205 Charlevoix Avenue
Detroit, Michigan 48215

REGISTERS OFFICE
COUNTY OF MACOMB

Received for Record

MARCH 14 1968

at 11:30 a.m. A. M. and recorded

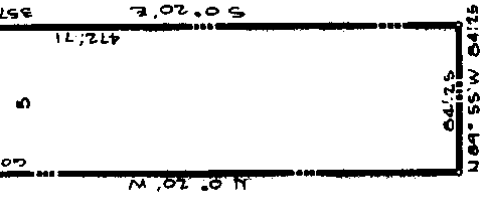
in Vol. 58 of A.R.T.S. on

Page 45 of 46
Raymond R. Cray
Register of Deeds

L.58-P.46

L.58 P.46

MARCIA D. SUTHERLAND
LINE 27 PAGE 4



Signed in the presence of:
 JOHN W. BROWN
 CARL W. LARSON
 ACKNOWLEDGMENT

STATE OF MICHIGAN)
 COUNTY OF MACOMB) SS.

On this 29th day of JANUARY 19 63 before me, a Notary Public in and for said county, personally came the above named, LAIT A. LOREN, Assessor of the City of Roseville, known to me to be the person who executed the above dedication, and acknowledged the same to be his free act and deed as such Assessor.

MABEL ELLEN BRONSON
 Notary Public, MACOMB County, Michigan

My Commission expires: DECEMBER 9th, 1966

CERTIFICATE OF MUNICIPAL APPROVAL

This plat was approved by the City Council of the City of Roseville at a meeting held JANUARY 14th, 1963, 19 63, and is in compliance with Section 19, of Act 150 of Public Acts of 1961 and that the vertices of lots conform with the requirements of Section 30, Act 172 of Public Acts of 1929 as amended.

Robert J. Nunn
 Clerk

SURVEYOR'S CERTIFICATE

I hereby certify that the plat hereon delineated is a correct one and that permanent metal monuments consisting of bars not less than one-half inch in diameter and 36 inches in length, enough in a concrete cylinder at least 4 inches in diameter and 36 inches in depth have been placed at points marked thus (6) as shown shown at all angles in the boundaries of the land platting, at all the intersections of the lines of streets and at the intersections of the lines of streets with the boundaries of the plat as shown on this plat.

John D. Lahner
 Registered Land Surveyor, No. 5787

DESCRIPTION OF LAND PLATTED

The land embraced in the annexed plat of "Assessor's Plat No. 19", Part of the S.W. 1/4 Sec. 19, T. 1 N., R. 13 E., City of Roseville, Macomb Co., Michigan, is described as follows:
 Commencing at a point 64.06 feet N. 89°-30' W. of the Corner Point of said Section 19.
 T. 1 N., R. 13 E., and the following:
 1. 138.75 feet thence S. 89°-21' W. 77.35 feet thence N. 89°-30' W. 135.0 feet; thence S. 0°-20' E. 257.71 feet thence N. 89°-55' W. 84.25 feet thence N. 0°-20' W. 646.32 feet thence S. 89°-30' E. 422.20 feet to the point of beginning.
 This plat contains Lots 1 thru 12, inclusive.

EXAMINED AND APPROVED
 Dated March 14, 1963

MILLS S. PARSONS
 REGISTERED CLERK

REGISTERS OFFICE
 COUNTY OF MACOMB

Received for Record
 March 15, 1963
 at 10:56 o'clock P.M. 1963 recorded
 in Vol. 51 of Plat
 Page 25
 Registered Clerk of Records

L51-P25

L.51 P.25

On this 19th day of March, 1957, before me, a Notary Public in and for said County, personally came the above named Robert Flacher and Lucy Flacher, his wife and Robert W. Kirchoff and Olga Kirchoff, his wife known to me to be the persons who executed the above dedication, and acknowledged the same to be their free act and deed.

My Commission expires August 15, 1958.

Notary Public, Macomb County

ACKNOWLEDGMENT

STATE OF Michigan
County of Macomb

On this 19th day of March, A.D. 1957, before me, Notary Public in and for said County appeared, Arthur Stepp, President and Treasurer of Builders, Inc., a Michigan corporation, and that said instrument was signed and made in behalf of said corporation by authority of its Board of Directors and the said instrument is to be the free and sole act and deed of said corporation.

My Commission expires August 15, 1958.

SURVEYOR'S CERTIFICATE

I hereby certify that the plat herein delineated is a correct one and that permanent monuments consisting of bars not less than one-half inch in diameter and 30 inches in length, or shorter bars of metal fastened to each end in diameter tapered over each other, or other monuments of any kind, were placed at the corners of the plat and at the center of each of the lots shown thereon, and that the plat is a true and correct copy of the original plat on file in the office of the Surveyor of the County of Macomb, Michigan, and that the plat is a true and correct copy of the original plat on file in the office of the Surveyor of the County of Macomb, Michigan, and that the plat is a true and correct copy of the original plat on file in the office of the Surveyor of the County of Macomb, Michigan.

Notary Public, Macomb County

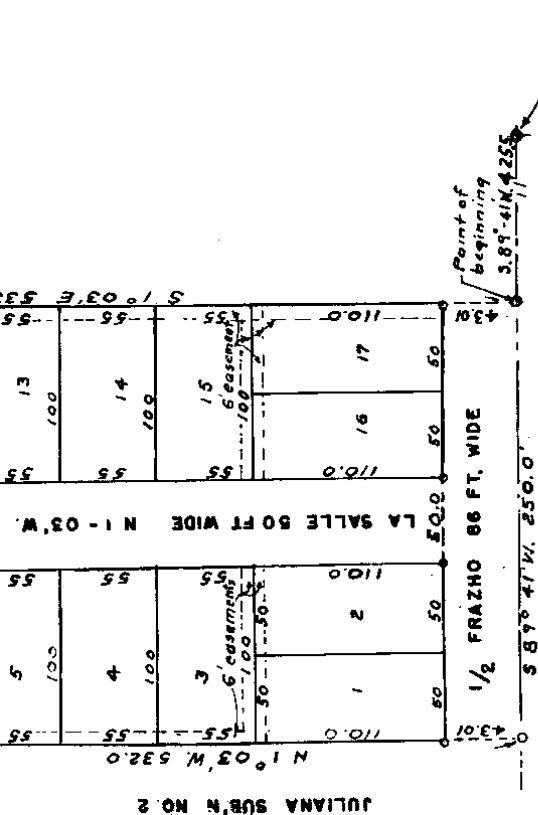
My Commission expires August 15, 1958.

H. R. Mc Carthy
Registered Land Surveyor
W. R. MCCURTNEY No. 2485
CERTIFICATE OF MUNICIPAL APPROVAL

The plat was approved by the Village of Roseville, Michigan, at a meeting held on 6/19/57, and that the width of lots is in compliance with requirements of Section 20, 25, 27, of 1929, or amended.

Robert J. Moran
ROBERT J. MORAN

L 43 P. 33



Point of beginning
S 89° 41' W, 250.0
3.89-41M, 425'

DESCRIPTION OF LAND PLATED

The land embraced in the annexed plat is David W. Subdivision of sec. 19, T1N, R13E, S19, of E1/2, S19, T1N, R13E, Village of Roseville, Macomb Co., Michigan

Beginning at a point located 889' 41" W 435.5 ft. from the E 1/4 corner of sec. 19, T1N, R13E, Village of Roseville, Macomb County, Michigan Thence S89° 41' W 250.0 ft. along centerline of Frazho Rd. Thence N1° 03' W 532.0 ft. Thence S89° 18' E 250.0 ft. Thence E1° 03' E 533.88 ft. to the point of beginning. L 43 P 33 / THOSE 77 AREAS

THIS IS TO CERTIFY THAT ACCORDING TO THE COUNTY TREASURER'S RECORDS THERE ARE NO TAX DUES ON THIS PROPERTY AND THAT TAXES ARE PAID FOR THE YEARS PREVIOUS TO DATE OF THIS INSTRUMENT EXCEPT 1956 AND 1957

ALBERT A. WAGNER (COUNTY CLERK)

FRANK LOHR (DRAW COMMISSIONER)

APPROVAL BY COUNTY BOARD

I HEREBY CERTIFY THAT THIS PLAT WAS APPROVED ON THE 21st DAY OF March 1957

ARLON BURR (COUNTY REGISTER OF DEEDS)

ALBERT A. WAGNER (COUNTY CLERK)

FRANK LOHR (DRAW COMMISSIONER)

Let Lohr (212 page 538 of book)

WITNESSES:

My commission expires
March 1st 1957
Notary Public

Louis J. Loran
Louis J. Loran
Assessor of the Village of Roseville

ACKNOWLEDGMENT

STATE OF MICHIGAN }
County of Macomb } ss.

On this 22nd day of September, A.D. 1956, before me a Notary Public in and for said County, personally came the above named Assessor of the Village of Roseville, known to me to be the person who executed the above dedication and acknowledged the same to be his free act and deed as such Assessor.

My commission expires
Aug. 2, 1957
Notary Public in and for Macomb County

CERTIFICATE OF MUNICIPAL APPROVAL

This plat was approved by the Village Council of the Village of Roseville at a meeting held 1-2-1957

Robert J. Mum
Robert J. Mum
Village Clerk

SURVEYOR'S CERTIFICATE

I hereby certify that the plat hereon delineated is a correct one and that permanent metal monuments consisting of bars of not less than one half inch in diameter and forty eight inches in length placed in a concrete cylinder at least 4 inches in diameter and 12 inches in height have been placed at points marked thus as shown thereon and that the same have been measured and plotted at all the intersections of the strata, intersections of alleys, or of streets and alleys, and at the intersections of streets and alleys with the boundaries of the plat as shown on said plat.

Harry J. Fuller
Harry J. Fuller, Registered Land Surveyor

CERTIFICATE OF APPROVAL BY COUNTY BOARD

This plat was approved on the 25 day of January, 1957.

James W. ...
Register of Deeds
Alvin W. ...
County Clerk
Frank E. ...
County Treasurer
...
Drain Commissioner

L.40 P.22

SEND AVENUE PARK SUBDIVISION NO. I

A REPLAT OF LOT 12 SEND AVENUE PARK SUBDIVISION

PART OF THE S.W. 1/4 OF SEC. 19 T. 1 N. R. 13 E.

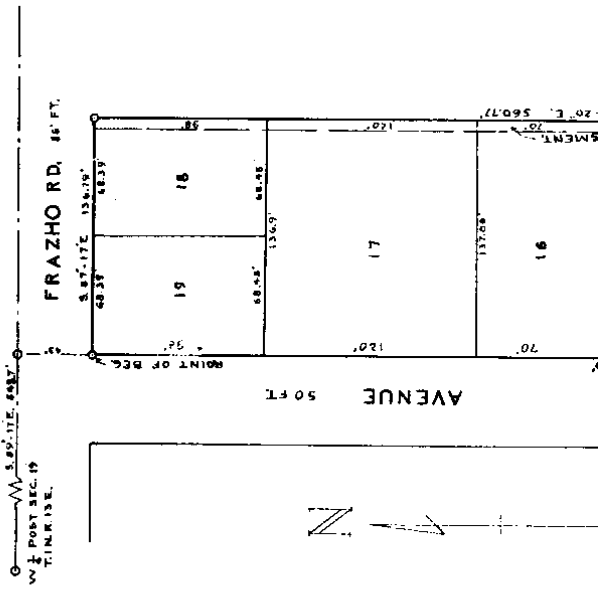
ERIN TWP. VILLAGE OF ROSEVILLE.

MACOMB CO. MICHIGAN.

307545

NOTE: ALL DIMENSIONS ARE IN FEET & DECIMALS THEREOF.

0 25 50 100
SCALE IN. = 50 FT.



EXAMINED AND APPROVED
Date: JUL 3 - 1958
By: *Frank S. Szymanski*
FRANK S. SZYMANSKI
COUNTY CLERK
Macomb Co. Michigan

DENONCATION
KNOW ALL MEN BY THESE PRESENTS, that Felix F. Hallembuyck and Robert A. Hallembuyck, his wife and Gerald Thomas Rattie and Laura Rattie as proprietors, have conveyed the land embraced in the annexed plat to be surveyed, laid out and platted, to be known as Send Avenue Park Subdivision No. 1, a replat of lot 12 Send Avenue Park Subdivision part of The S. W. 1/4 of Sec. 19, T. 1 N. R. 13 E., Erin Twp. Village of Roseville, Macomb Co., Michigan.

and that the streets and alleys hereby dedicated to the use of the public
Signed and Sealed in the presence of
WILLIAM SARGENT (Witness)
Felix F. Hallembuyck
Ester A. Hallembuyck
Gerald Thomas Rattie
Laura Rattie

STATE OF MICHIGAN
ACKNOWLEDGMENT
Page 28

RECORDED
1958
in Vol. 37 of Plat.
Page 28

JULIANNA SUBDIVISION No 2

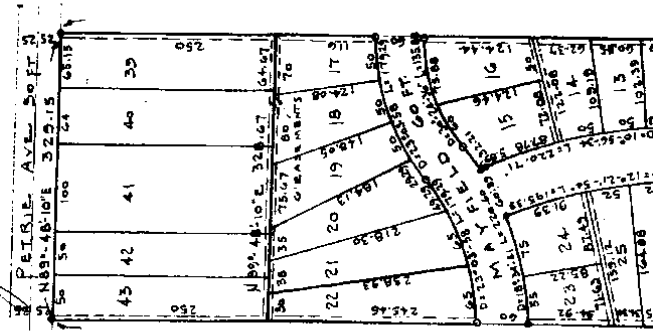
A PART OF THE
 W. 1/2 OF THE S.E. 1/4 OF THE NE 1/4
 SECTION 19, T. 1 N., R. 13 E.,
 VILLAGE OF ROSEVILLE
 MACOMB COUNTY, MICHIGAN

EXAMINED AND APPROVED

DATE, OCT 4, 1954

John S. Hester
 Notary Public
Doyle Hester
 Attorney

SCALE 1 INCH = 100 FT.



NOTE: All dimensions shown are in feet and decimals thereof. All curves shown are computed by arc definition and dimensions related thereto are arc measurements.

DEDICATION

KNOW ALL MEN BY THESE PRESENTS, that we, **Edgar L. Rein** and **Gertrude Smith**, **Florence Rein**, **Loreta De Selger**, **Edna Rein**, **Lucille E. Schulz**, **Robert L. Wampler** and **Spill S. Wampler**, his wife, and **Morris Building Company**, a Michigan Corporation by **Morris Friedman**, President and **Betty Borowitz**, Secretary

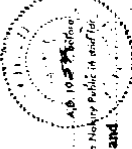
do hereby cause the land embraced in the annexed plat to be surveyed, laid out and platted, to be known as **JULIANNA SUBDIVISION NO. 2** a part of the W 1/2 of the S. E. 1/4 of the N. E. 1/4 Section 19, T. 1 N., R. 13 E., Village of Roseville, Macomb County, Michigan

as shown on and plat as hereby submitted to the public, and all easements, abutments, encumbrances, and other interests therein, shall be deemed to have been accepted and there to be merged in and become a part of the said measurement. Signed and sealed in presence of the following witnesses, in full view of the public, at Roseville, Michigan, this 1st day of October, 1954.

- Edgar L. Rein* (L.S.)
- Gertrude Smith* (L.S.)
- Florence Rein* (L.S.)
- Edna Rein* (L.S.)
- Lucille E. Schulz* (L.S.)
- Robert L. Wampler* (L.S.)

ACKNOWLEDGMENT

STATE OF **Michigan** County of **Macomb** On this **9th** day of **October** 19**54** before me, the undersigned Notary Public in and for said county appeared **Morris Friedman** and **Betty Borowitz** President and Secretary respectively of the **Morris Building Company** a corporation organized under the laws of the State of Michigan, and their authorized representatives, who being sworn said they are the President and Secretary respectively of the **Morris Building Company** a corporation organized under the laws of the State of Michigan, and their authorized representatives, and that the instrument was signed and filed in behalf of said corporation by authority of its Board of Directors and that the instrument is a true and correct copy of the original as the same is now on file in my office.



DESCRIPTION OF LAND PLATTED

The land embraced in the annexed plat of **JULIANNA SUBDIVISION NO. 2**, a part of the W 1/2 of the S. E. 1/4 of the N. E. 1/4 Section 19, T. 1 N., R. 13 E., Village of Roseville, Macomb County, Michigan, is described as follows: Beginning at the E 1/4 post of Section 19 T. 1 N., R. 13 E. in the Village of Roseville, Macomb County, Michigan, thence N 89° 48' 50" W., 676.50 feet to the point of beginning, thence N 89° 48' 50" W., 328.70 feet, thence N 01° 09' 20" W. 1324.50 feet, thence N 89° 48' 10" E., 329.15 feet, thence S 01° 09' E., 1324.30 feet to the point of beginning.

APPROVAL BY COUNTY PLAT BOARD

This plat was approved on the **2nd** day of **October** 19**54** by the **Macomb** County Plat Board *Carroll B. Reed*

ORIGIN
 1954

