

Part B: Surveyor's Report on Perpetuation, Restoration, Reestablishment or Monumentation of Corner:

Refer to: 11-16-2007 LCRC for Remonumentation Corner by Robert H. Birkett, PS #41094, B04 recorded in L. 19051 of Deeds on P. 754 & 755. Replaced found MAG nail with a 3/4" X 24" iron with an aluminum cap stamped "MACOMB COUNTY MONUMENT, MI ACT 345, 41094, B04" in centerline asphalt Common Road in a new monument box with 6 accessories.

Part C: Field Evidence of Perpetuation or Monumentation of Corner:

3-15-2017 Found 3/4" X 24" iron with an aluminum cap stamped "MACOMB COUNTY MONUMENT, MI ACT 345, 41094, B04" in centerline asphalt Common Road in a monument box with 6 of 6 matching accessories from the LCRC listed in Part A.
Occupied corner with GPS to obtain Geodetic Coordinate Data.

Accessories:

- AZ. 35° 82.23' (R&M) Southeast corner brick house #15961
- AZ. 75° 105.63' (R&M) Found Macomb County Witness Tag northwest face utility pole
- AZ. 120° 95.83' (R&M) Found Macomb County Witness Tag northeast face utility pole with a transformer
- AZ. 240° 58.12' (R&M) Found Macomb County Witness Tag west face utility pole with a transformer & light above found CST nail
- AZ. 345° 38.66' (R&M) Found MSHD tag in the east face of a utility pole
- AZ. 355° 71.26' (R&M) Southeast corner brick house #15953

Date of Observation	Latitude	Longitude	Datum and Adjustment Year	Epoch Date
15-Mar-17	N 42D30'59.26113"	W 82D57'31.02988"	NAD83 (2011)	2010.0000

Method for Latitude-Longitude determination: NGS OPUS-RS Solution

State Plane Coordinates in international feet: N-373600.39', E-13502939.44'
 Standard Deviation: 0.06'N, 0.03'W
 Zone: South
 Combined Factor: 0.99990350
 NGSPID: DI6132
 Survey Method: MC GPS
 Orthometric Height: 614.65'
 Elev. Datum: NAVD88

I, Steven E. Dunn, P.S., in a field survey on March 15, 2017, certify under the requirements of the State Survey and Remonumentation Act, 1990 PA 345, MCL 54.261 to 54.279, and the Corner Recordation Act, 1970 PA 74, MCL 54.201 to 54.210d, that the corner identified and described hereon has been perpetuated or monumented as described in Parts A, B, and C above, pursuant to the laws and rules of the State of Michigan.

Steven E. Dunn May 15, 2017
 Steven E. Dunn, P.S. Date

Professional Surveyor's License No.: 28408

Prepared By:
 Steven E. Dunn, PS
 Great Lakes Geomatics, LLC
 12504 Stephens
 Warren, MI 48089



I, Martin C. Dunn, P.S., Macomb County Surveyor Representative, have reviewed the corner perpetuated in parts A, B and C above for the purpose of publishing its Michigan State Plane Coordinate values and relative data and is accepted for filing in the Macomb County Remonumentation Program.

Martin C. Dunn 6-8-2017
 Martin C. Dunn, P.S. Date

Macomb County Surveyor Representative
 License No. 30081

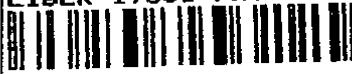
REC'D NOV 05 2007 10:00 am

LAND CORNER RECORDATION CERTIFICATE
Filing Requirement of Act 74, Mich. P.A. 1970

For corners in

<u>Macomb</u> (County)	Located in: City of Roseville	Cornor Code #
1. Public Land Survey	T 1N R13E	B-4
	T R	
	T R	
	T R	
2. Property Controlling in Section	S T R	
	S T R	
3. Miscellaneous Property in Sec.	S T R	
	S T R	

7154721
LIBER 19051 PAGE 754



11/16/2007 12:56:47 P.M.
MACOMB COUNTY, MI
CARNIELLA SABAUGH, REGISTER OF DEEDS
Register of Deeds Stamp & File Number

4. Lot No. _____, Recorded Plat
5. Private Claims

I, Robert H. Birkett, in a field survey on, September 4, 2007 do hereby state that under requirements of P.A. 74, Michigan P.A. of 1970, the corner points mentioned in lines 1 and 2 above were in conformance with regulations and rules therefore as required in the current manual of survey instructions of the United States Department of the Interior, Bureau of Land Management or by a decree of a Court of Law and for that the corner points mentioned in lines 3, 4 and 5 above were in conformance with the rules of the Michigan Board of Land Surveyors or by a Decree of a Court of Law; established, re-established, monumented, re-monumented, recovered, found as expressed below

NOTE: Not more than 2 corners, all in the same town and range, may be recorded on this certificate.

A	B	C	D	E	F	G	H	I	J	K	L	M
2	6	5	4	3	2	1						
3												
4	7	6	5	4	3	2	1					
5												
6	18	17	16	15	14	13						
7												
8	18	20	21	22	23	24						
9												
10	30	29	28	27	26	25						
11												
12	31	32	33	34	35	36						
13												

A. Description of original monument and accessories and/or subsequent restoration:

- B-4 Center post of Section 7. Corner was not set by General Land Office.
- a. 1958, B Warner, "Venetian Village Grove", L. 41, P. 35-38, MCR
 - b. 1959, B Warner, West Grove Sub'n", L. 43, P. 39-41, MCR
 - c. 1959, B Warner, "Loreto Sub.", L. 45, P. 47, MCR
 - d. 1987, R.C.M.C. Witness Card
 - e. 1973, R.C.M.C. Witness Card
 - f. 1981, RL Smith #18052, LCRC, L. 3350, P. 764 (Recovered 1 witness)
 - g. 2000, RL Higgins #21570, Certificate of Survey, unrecorded

B. Description of corner evidence found and/or method applied in restoring or reestablishing corner:

- B-4 Found mag nail 0.3' south asphalt centerline Common Road, no occupation North or South. The found nail is verified by c, f and g from section "A" above and government corner A-4

Field Measurements Between Corners
See reverse side

C. Description of monument for corner and accessories established to perpetuate locating the position of the corner:

- B-4 Replaced found mag nail with a 3/4" X 24" iron with an aluminum cap stamped "Macomb County Monument, MI Act 345, 41094, B-4" in centerline asphalt Common Road in a new monument box.
- AZ. 35° - 82.23' Southeast corner brick house #15961
 - AZ. 75° - 105.63' Set Macomb County Witness Tag northwest face utility pole
 - AZ. 120° - 95.83' Set Macomb County Witness Tag northeast face utility pole with a transformer
 - AZ. 240° - 58.12' Set Macomb County Witness Tag west face utility pole with a transformer & light above found CST nail
 - AZ. 345° - 38.68' Found MSHD tag in the east face of a utility pole
 - AZ. 355° - 71.26' Southeast corner brick house #15953

The selected location is accepted by me and is generally accepted by professional surveyors as the best available evidence of the position of the original corner.

ACCEPTED BY THE MACOMB COUNTY SURVEY PEER GROUP AS THE OFFICIAL CORNER UNDER MICHIGAN PUBLIC ACT 345 OF 1990 AT A MEETING HELD ON 9-18-07
Martin C. Dunn
MARTIN C. DUNN, P.S. CHAIRMAN



Signed by *R. Birkett* Date 10-31-07
Surveyor's Michigan License No 41094

LAND CORNER RECORDATION CERTIFICATE
Filing Requirement of Act 74, Mich. P.A. 1970

For corners in

Macomb
(County)

Located In:
City of Roseville

Corner Code #

- | | | |
|---------------------------------------|-------------------------------------|------------|
| 1. Public Land Survey | T <u>1N</u> R <u>13E</u> | <u>B-4</u> |
| | T <u> </u> R <u> </u> | <u> </u> |
| | T <u> </u> R <u> </u> | <u> </u> |
| | T <u> </u> R <u> </u> | <u> </u> |
| 2. Property Controlling
in Section | S <u> </u> T <u> </u> R <u> </u> | <u> </u> |
| | S <u> </u> T <u> </u> R <u> </u> | <u> </u> |
| 3. Miscellaneous
Property in Sec. | S <u> </u> T <u> </u> R <u> </u> | <u> </u> |
| | S <u> </u> T <u> </u> R <u> </u> | <u> </u> |
4. Lot No. _____, Recorded Plat
5. Private Claims

B. Description of corner evidence found and/or method applied in restoring or reestablishing corner

B-4 Continued from front side

Field Measurements Between Corners

To B-3
Remon 2007 = 2701.88'

To B-5
Remon 2007 = 2684.36'

To C-4
Remon 2007 = 2692.09'

To A-4
Remon 2007 = 2710.26'
Record north = 2710.60'
Record south = 2710.04'



2007

**MACOMB COUNTY REMONUMENTATION
PROGRAM FOR CITY OF ROSEVILLE**

Research Dossier for B-04

Prepared by:
Anderson, Eckstein & Westrick, Inc.
51301 Schoenherr Road
Shelby Twp., Michigan 48315



ANDERSON, ECKSTEIN AND WESTRICK, INC.

51301 Schoenherr Road, Shelby Township, Michigan 48315
Civil Engineers • Surveyors • Architects (586) 726-1234

B-4
City of Roseville
Macomb County 2007 Remonumentation

Section One

- A. Index
- B. Before and after pictures of the monument.

Section Two

- A. LCRC
- B. Surveyor's report.

Section Three

- 1. Field notes.
- 2. Sketch of area and found monumentation.
- 3. Composite maps, 14-07A,B,C,D,E,F,G,H

Section Four

Part "A" from LCRC

- a-1958, B Warner, "Venetian Village Grove", L. 41, P. 35-38, MCR
- b-1959, B Warner, "West Grove Sub'n", L. 43, P. 39-41, MCR
- c-1959, B Warner, "Loreto Sub.", L. 45, P. 47, MCR
- d-1967, R.C.M.C. Witness Card
- e-1973, R.C.M.C. Witness Card
- f-1981, RL Smith #16052, LCRC, L. 3350, P. 764 (Recovered 1 witness)
- g-2000, RL Higgins #21570, Certificate of Survey, unrecorded

**Sources of Information Researched
For Macomb County 2007 Remonumentation Program
For City of Roseville**

- 1) GLO Notes
- 2) Act 74 Recorded LCRC
- 3) Act 132 Recorded Surveys
- 4) Personal History and Records
- 5) Unrecorded LCRC's and Surveys
- 6) Letters to the Following, Requesting Unrecorded information

Midwestern Consulting LLC
Atwell Hicks Inc
ANR Pipeline Company
BMJ Engineers & Surveyors
Air Land Surveys, Inc.
Lehner Associates, Inc.
Kem-Tec Land Surveyors
Boss Engineering Company, Inc.
Engineering & Surveying Consultant
Charles E. Raines Co.
Johnson & Anderson, Inc.
Earl Gravlin Surveyor
Del-Tec Surveying & Engineering
David J. Little Land Surveyors
David C. Adams & Son
Coulter & Associates
Fenn & Associates Surveying, Inc.
Donald H. DeKeyser, Surveyor
Huron Clinton Metropolitan Authority
Fazal Khan & Associates
Davis Land Surveying, P.C.
Guaranty Survey Company
Grant Ward Surveyors
North Star Engineering, LLC
Giffels-Webster Engineers
George Jerome & Company
Michael J. Yambor Associates, Inc.
MCS Associates, Inc.
McNeely & Lincoln Associates, Inc.
King Surveyors & Associates, Inc.
RK Engineering & Survey Associates
RJ Donnelly & Associates, Inc.
Professional Engineering Associates

Rowe, Inc.
Hubble Roth & Clark
John Lansky
Wilcox Professional Services
RCMC
Bruen Land Surveying
SCCRC
Alpine Land Surveying, Inc.
McNamee, Porter & Seeley
Advanced Geomatics
GLA Surveyor
Mason L. Brown & Asso.
RA Duthler Land Surveyor
Project Control Engineering
Tetra Tech
Nowak & Fraus PLLC
Land Engineering Services
Michigan Consolidated Gas
Williams, Gorinac Assoc.
Urban Land Consultants
T & A, Inc.
Detroit Edison, ROW Div.
SSOE, Inc.
Spalding, DeDecker & Assoc
Kennedy Surveying, Inc.
JL Bishop Surveying
Reichert Surveying, Inc.
Metco Services



ANDERSON, ECKSTEIN AND WESTRICK, INC.

51301 Schoenherr Road, Shelby Township, Michigan 48315
Civil Engineers • Surveyors • Architects 586-726-1234



Report of Survey B-4 Roseville Town 1 North, Range 13 East Macomb County, Michigan

Corner Information

B-4 Center Post of Section 7. Corner was not set by General Land Office

Existing Conditions

Found mag nail 0.3' south of centerline asphalt Common Road

Plats

1958, B Warner, "Venetian Village Grove", L. 41, P. 35-38
1959, B Warner, West Grove Sub'n", L. 43, P. 39-41, MCR
1959, B Warner, "Loreto Sub.", L. 45, P. 47, MCR

Condominiums

None that reference corner

Land Corner Recordation Certificate

1981, R.L. Smith No. 16052, Found PK nail, LCRC L. 3350, P. 764
*N 30°W 38.80' PK nail in power pole
S 45°W 52.38' PK nail in power pole
S 70°E 93.45' Nail & M.D.S.H. tag in power pole

Recorded Surveys

None

Unrecorded Surveys

2000, RL Higgins #21570, Certificate of Survey, unrecorded

Miscellaneous

Road Commission of Macomb County Witness Cards
1967, CJ Lisee, Witness Card
1973, J Barnes, Witness Card

1967, CJ Lisee, Witness Card, nail and cap in center of
5" post S 53°E 50.00'
Telephone pole N 20°W 37.55'
Power pole S 5°W 31.81'

1973, J Barnes, Witness Card, nail and cap in center of
Telephone pole NW 38.85'
Telephone pole NE 105.68'
Power pole S 34.85'



Observations From B-4

To B-3 Remon 2007 = 2701.68'

To B-5 Remon 2007 = 2684.36'
Record East = not determined
Record West = not determined

To C-4 Remon 2007 = 2692.09'
Record North = not determined
Record South = not determined

To A-4 Remon 2007 = 2710.26'
Record North = 2710.60'
Record South = 2710.04'

Theoretical Position

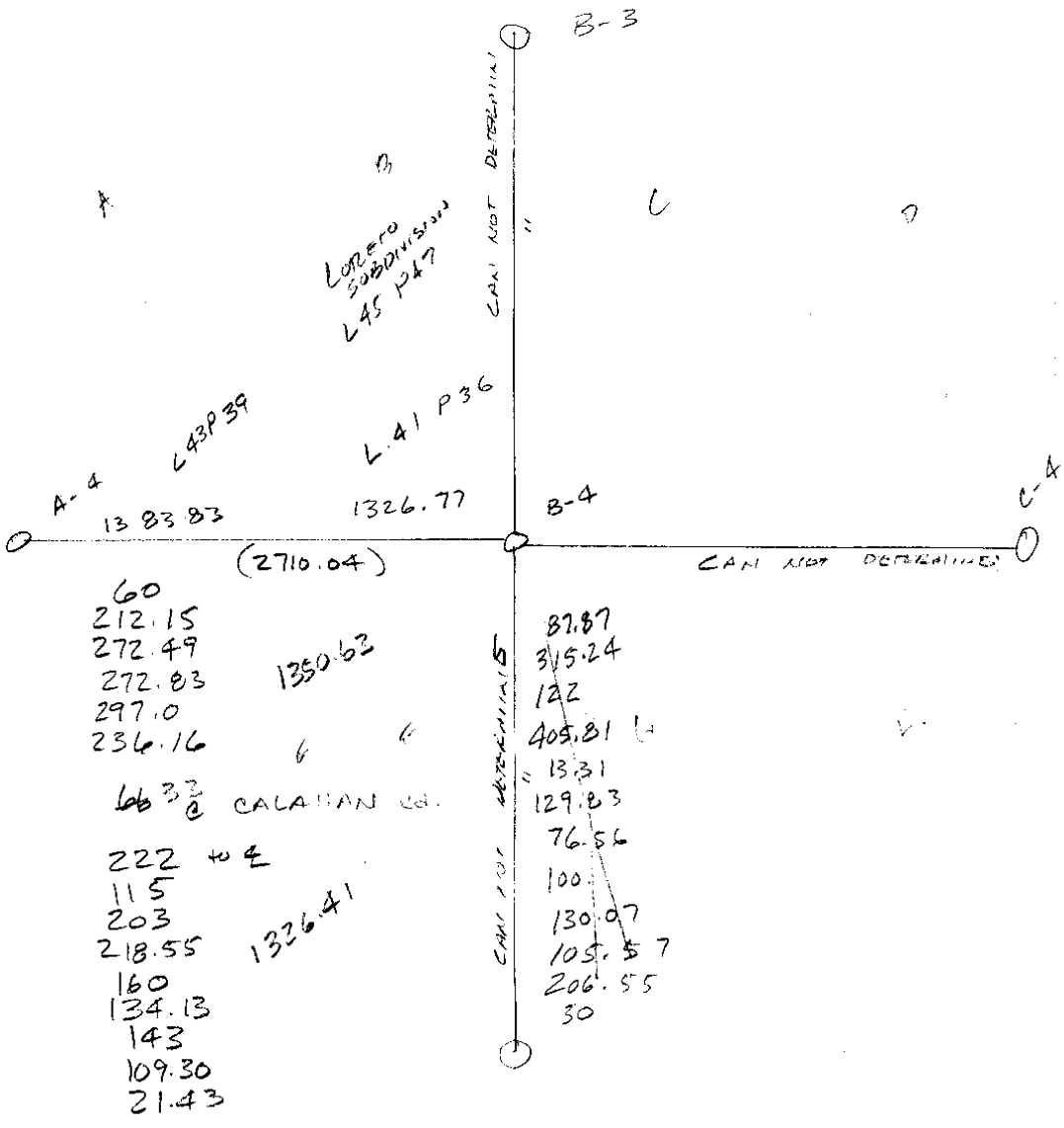
5.00' North
9.09' West

Recommendation

Found mag nail was verified using "Loreto Sub.", LCRC L. 3350 P 764, unrecorded Higgins survey and the existing government corner A-4. I therefore, recommend to the Macomb County Peer Group that they accept the found monumentation as the best evidence of the corner position as being perpetuated.

10/31/07

Robert H. Birkett, PS 41094
Anderson, Eckstein and Westrick, Inc.



223-090
9-4-07
MUD/COS

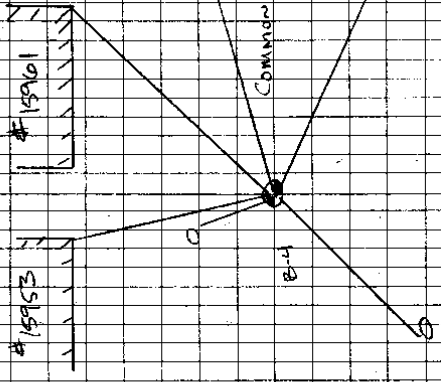
2007 REMON
B-4

END MAG NAIL IN APPR
23' S. OF E COMMON ST.

AZ	DIST	DESC
343°	38.68'	SET REMON E. FACE UP ABOVE FENCE MEASD TAG
74°	105.63'	SET REMON NW FACE UP.
120°	95.83'	SET REMON NE FACE UP. " TRANS.
227°	58.12'	SET REMON NW FACE U.P. " TRANS & LIGHT ABOVE FND CST
354°	71.26'	SE COR. BRICK HSE # 15953
35°	82.23'	COE BRICK HSE # 15961

N - 34225.05 (FND MARK)
E - 6000.65
OSU - 2600

PASTO DEK
103-0678 TDP
1074-677 LOOKING N, E, S, W



223-030
7-24-07
MUD, CCB

2007 REMON

B-2 / B-4 ACCESS
223030A CONT

R#	DESC
030-115	1/2" PIPE N.S. COMMON @ 1/4 LINE
116	1/2" RR w/ SMASHED CAP NE COMMON #
117	1/2" RR NE COMMON # BLOSSOM
118	1/2" RR # 30103 SE COMMON # HAYES
119	3/8" RR NE COMMON # DOULTON
120	1/2" RR SE COMMON # PARKWAY

CALATHAN

223-030
9-4-57
MUD/COR

2007 REMON
B-4

FND MAG. MAIL IN APPR
3' S. OF E COMMON ST.

AZ	DIST	DESC
343°	38.68'	SET REMON E. FACE UP ABOVE FND MSHD TAG
74°	105.63'	SET REMON NW FACE D.P.
120°	95.83'	SET REMON NE FACE U.P. w/TRANS.
237°	58.12'	SET REMON NW FACE U.P. w/TRANS. & LIGHT ABOVE FND CST
354°	71.26'	SE COR BRICK HSE # 15953
36°	82.23'	SE COR BRICK HSE # 15961

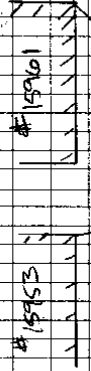
N - 34225.05 (FND MAG)
E - 6000.65
CS - 2600

No 2705
25

FND #
03-0478
674-677

DESC
TOP

LOOKUSE N, E, S, W



COMMON

E-1

S

223-030
7-24-01
MUD, CCB

2007 Lemon

B-2/B-4 Access
223030A Cont

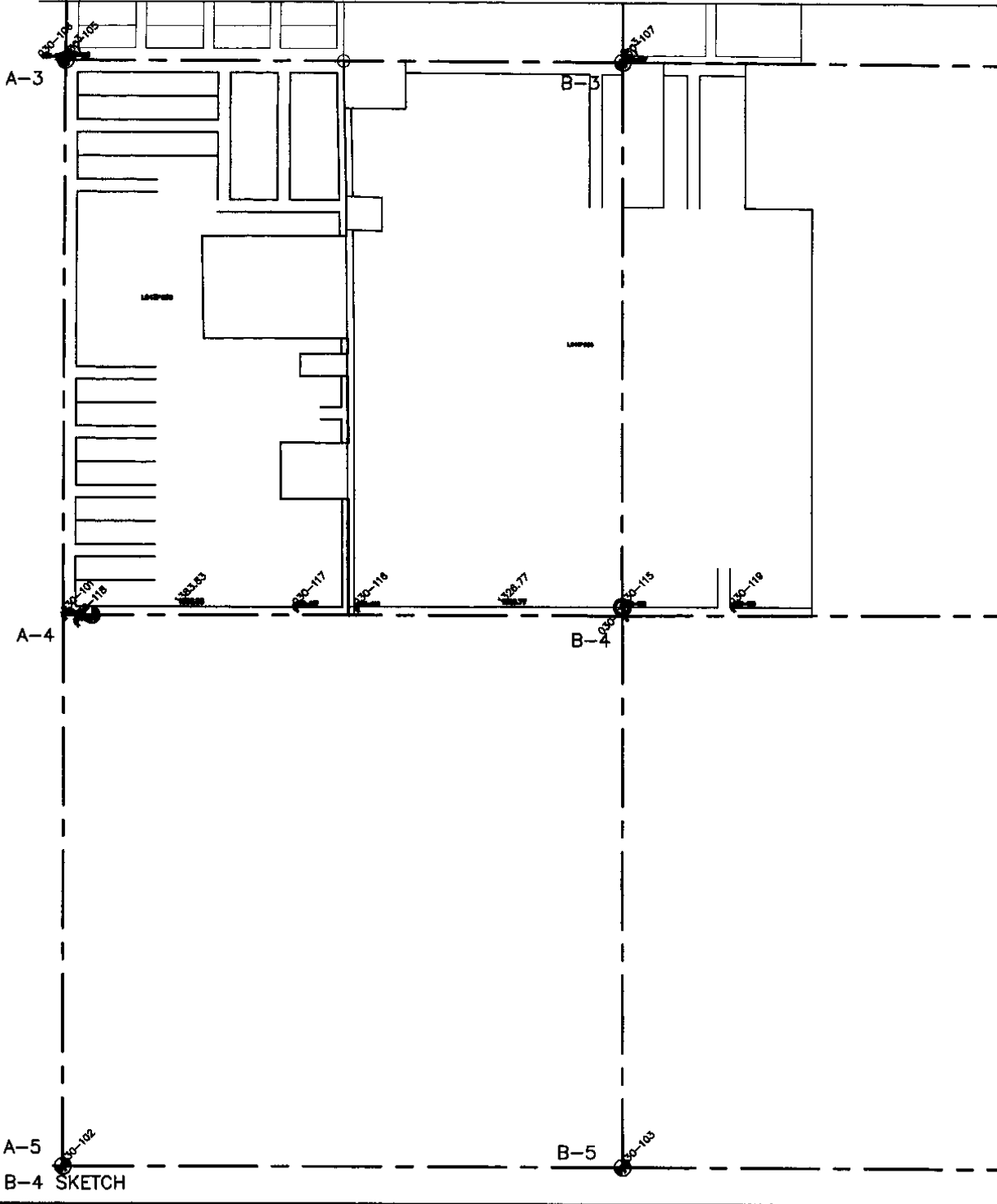
R #	DESC
030-115	1/2" Pipe N.S. Common @ 1/4 Line
116	1/2" RR w/ SMOKED CAP NE Common
117	1/2" RR NE Common @ Blossom
118	1/2" RR # 30103 SE Common @ HAYES
119	3/8" RR NE Common @ DOLPHIN
120	1/2" RR SE Common @ PARKWAY

CALHAN

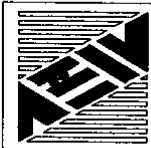
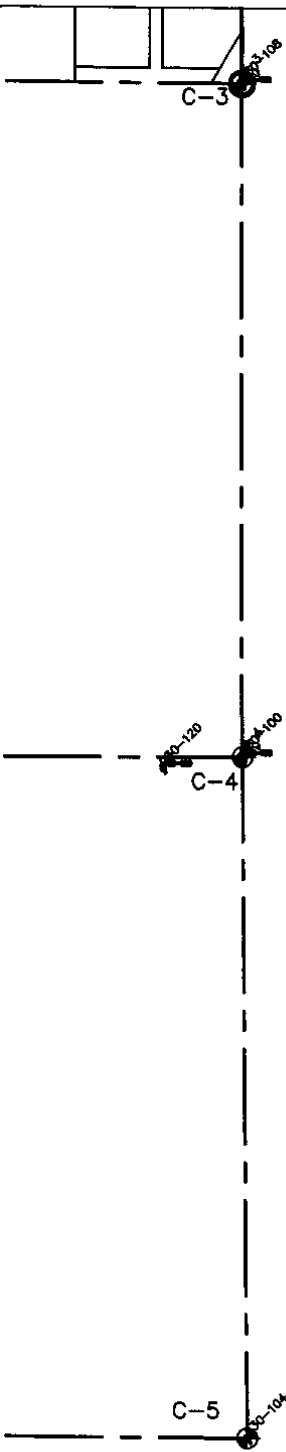
No 2705

8

\\23223-000\dwg\survey\sketches\B4_SKETCH.dwg, Model, 9/18/2007 7:35:38 AM, \\asw-secondary\designer\6680, 1:000



B-4 SKETCH



ANDERSON, ECKSTEIN AND WESTRICK, INC.
Civil Engineers • Surveyors • Architects
51301 Schoenherr Road, Shelby Township, Michigan 48315
Phone 586•726•1234 Fax 586•726•8780

EXAMINED AND APPROVED

Date May 13, 1958

Forrest S. Symmes

Forrest S. Symmes
SURVEYOR GENERAL

Forrest S. Symmes

VENETIAN VILLAGE GROVE.

A SUB'N. OF PART OF THE N. 1/2 OF SEC. 7, T. 1 N., R. 13 E.,
ERIN TWP., MACOMB CO., MICHIGAN.

SCALE - ONE INCH = 100 FEET.

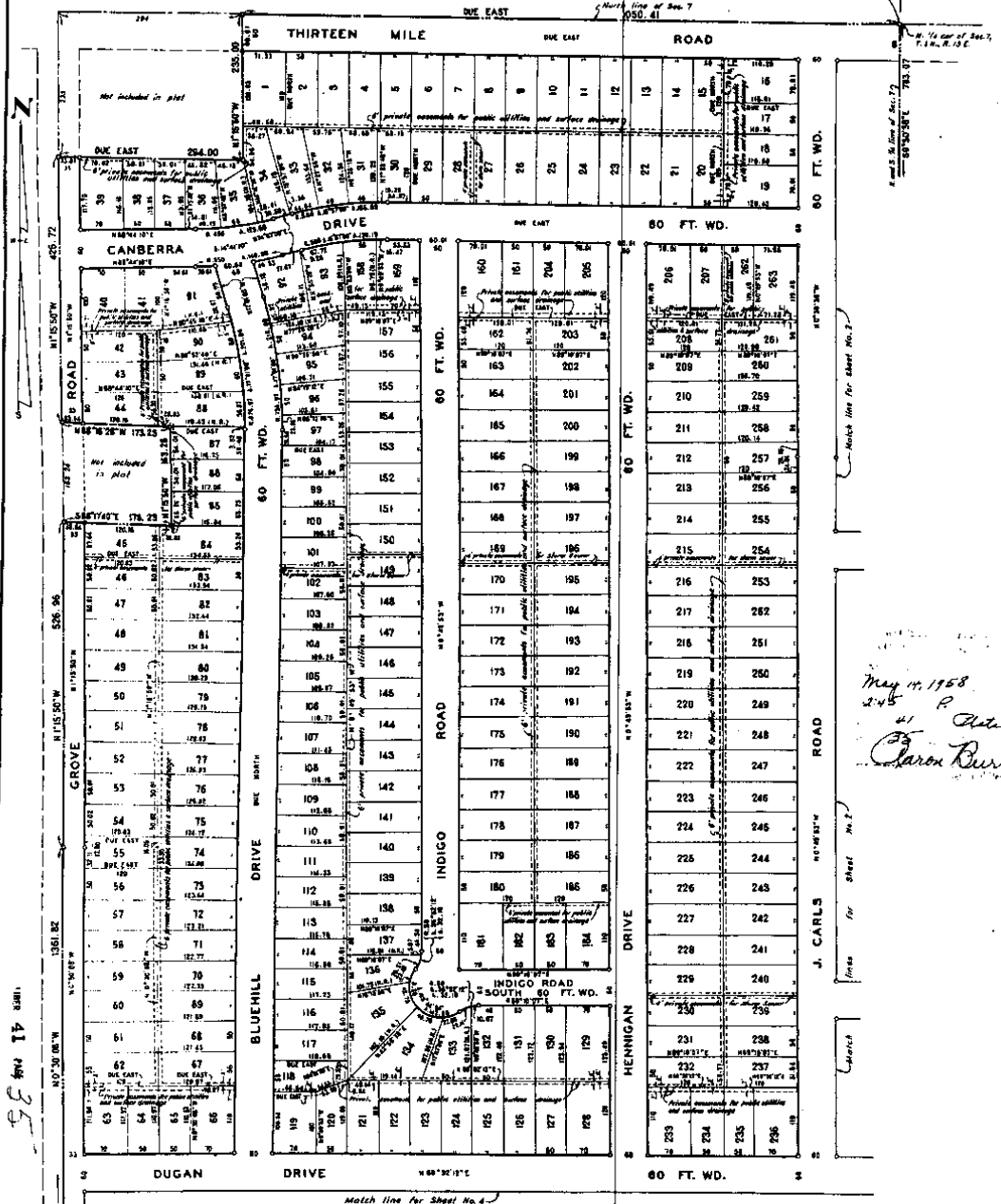
NOTE: All dimensions are shown in feet and decimals thereof.
All corner elevations are shown along the arc.
Line of lot, (Facing as indicated) shall have the
radius (unless otherwise noted as D.C.S.)

NOTES AND REMARKS:
1. All dimensions are shown in feet and decimals thereof.
2. All corner elevations are shown along the arc.
3. Line of lot, (Facing as indicated) shall have the
radius (unless otherwise noted as D.C.S.)

SHEET 1
OF
4 SHEETS

377717

Point of Beginning
CITY OF FRASER



May 11, 1958
2:45 P
41 State
Caron Burr

1958 B. WARNEK

L. 41
P 35-38

COPY

40647

VENETIAN VILLAGE GROVE

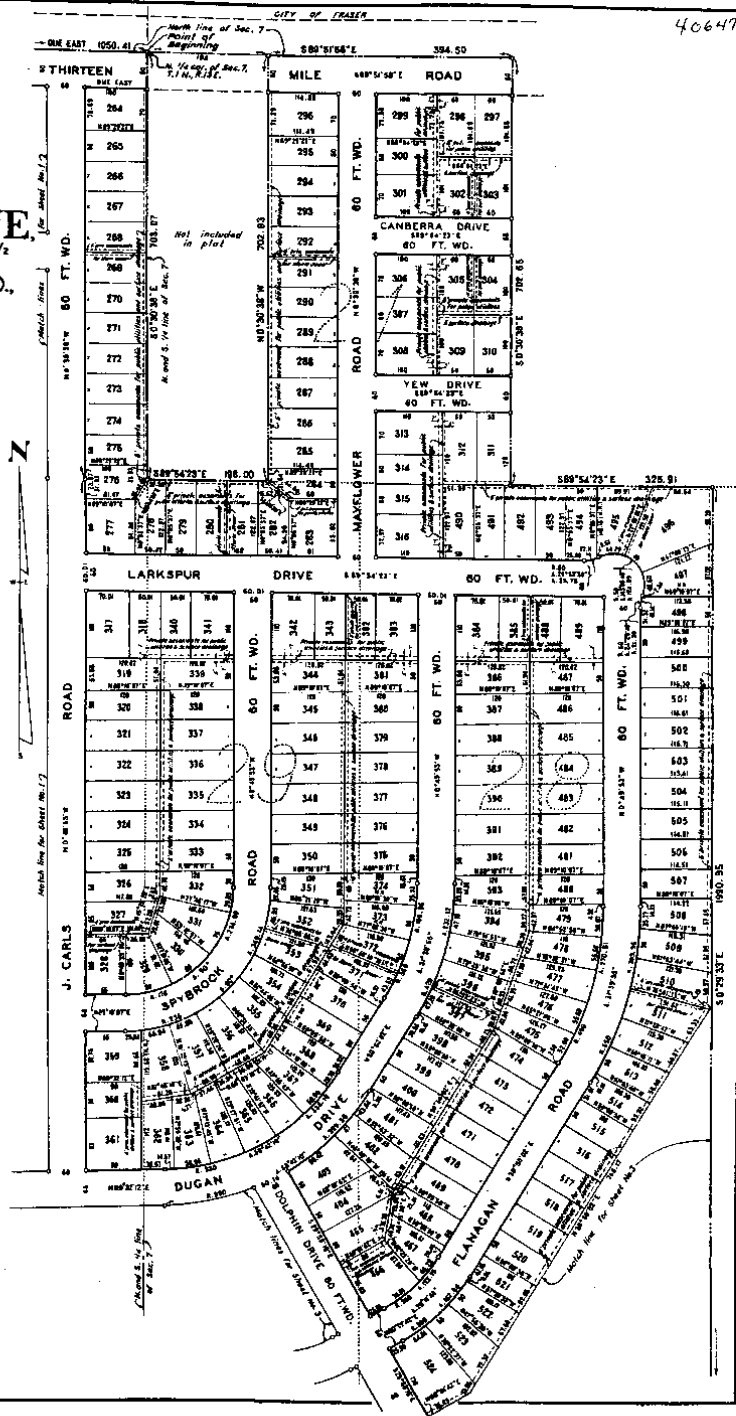
A SUB'N. OF PART OF THE N. 1/2 OF SEC. 7, T. 1 N., R. 13 E., ERIN TWP., MACOMB CO., MICHIGAN.

SCALE—ONE INCH=100 FEET.

NOTE: All dimensions are shown in feet and decimals thereof. All lot lines are shown as shown. All lots are shown as shown. All lots are shown as shown. All lots are shown as shown.

SHEET 2 OF 4 SHEETS

WARRANT AND NOTES:
 Improved City Lots
 and Land Surveyors,
 622 Forest Road,
 Detroit 26, Mich.



VENETIAN VILLAGE GROVE,

A SUB'N. OF PART OF THE N. 1/2 OF SEC. 7, T. 1 N., R. 13 E.,
ERIN TWP., MACOMB CO., MICHIGAN.

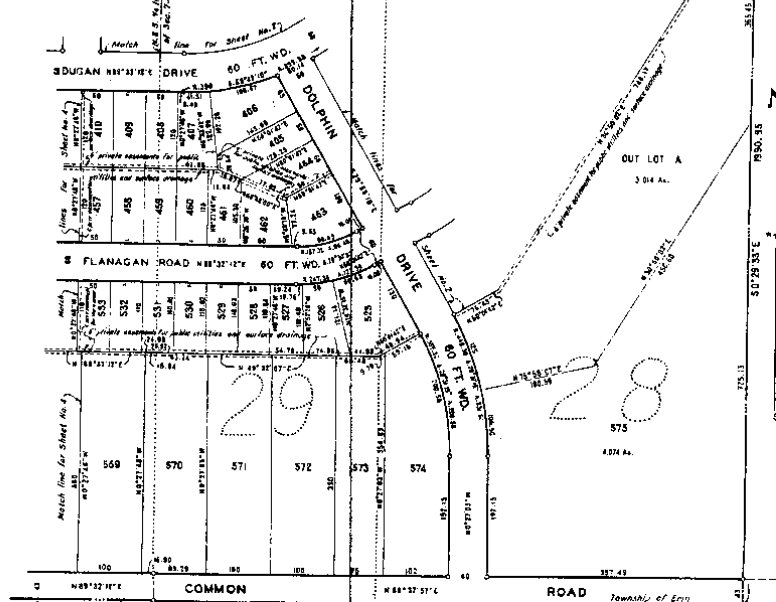
377717

SCALE: ONE INCH = 100 FEET.

SHEET 2
OF
4 SHEETS

NOTE: All dimensions are shown in feet and decimals thereof.
All curvilinear dimensions are shown along the arc.
556 lines of side bearing on curvilinear arcs are
referred to unless otherwise noted as (N.S.).

OWNER AND GRANTOR,
SUPPORTER OF EASEMENTS
AND LAND SURVEYOR
225 FORTSIDE BLDG.
DETROIT 26, MICH.



REGISTRAR'S OFFICE
COUNTY OF MACOMB

Received for Filing
May 14, 1958
Book 248 of 248
in Vol. 44 of 44
Page 373 of 373
C. J. Merrill
Registrar of Deeds

DEDICATION

KNOW ALL MEN BY THESE PRESENTS, THAT WE, LEONARD A. MALIS AND JANE T. MALIS, HIS WIFE, STANLEY KOVALSKI AND TERESA KOVALSKI, HIS WIFE, CASIMIR R. PUPKIEWICZ AND FRANCES PUPKIEWICZ, HIS WIFE, HECTOR BOUSSON AND DOROTHY BOUSSON, HIS WIFE, FRANK BACHES AND MARGARET BACHES, HIS WIFE, FRANK SCHUCH AND HELENE M. SCHUCH, HIS WIFE, ROSE ARBITTER, FORMERLY ROSE SCHOLZBERG, VITTORINO R. TARANTIA, A SINGLE MAN, ETHEL M. BAUER, CLEMENT A. PENNELL AND MARY P. PENNELL, HIS WIFE, AS PROPRIETORS, OF AND GENERAL ENTERPRISES, INC., A MICHIGAN CORPORATION, BY CHAS. J. MERRILL, PRESIDENT, AS VENDORS, HAVE CAUSED THE LAND ENRAGED IN THE ANNEXED PLAT TO BE SURVEYED, Laid OUT AND PLATTED, TO BE KNOWN AS VENETIAN VILLAGE GROVE, A SUB'N. OF PART OF THE N. 1/2 OF SEC. 7, T. 1 N., R. 13 E., ERIN TWP., MACOMB CO., MICHIGAN, AND THAT THE PRIVATE EASEMENTS SHOWN ON SAID PLAT ARE HEREBY DEDICATED TO THE USE OF THE PUBLIC UTILITIES, OR FOR THE USE OF SPECIFIC UTILITIES, OR SPECIFIC USES, AS THEREON NOTED, SUBJECT TO THE REGULATION AND CONTROL OF THE USES THEREOF BY THE LOCAL GOVERNMENTAL AUTHORITIES, AND THAT NO PERMANENT STRUCTURES ARE TO BE CREATED WITHIN THE BOUNDARIES OF SAID EASEMENTS.

WITNESSES:

LEONARD A. MALIS
JANE T. MALIS
STANLEY KOVALSKI
TERESA KOVALSKI
CASIMIR R. PUPKIEWICZ
FRANCES PUPKIEWICZ
HECTOR BOUSSON
DOROTHY BOUSSON
FRANK BACHES
MARGARET BACHES
FRANK SCHUCH
HELENE M. SCHUCH
ROSE ARBITTER, FORMERLY ROSE SCHOLZBERG

VITTORINO R. TARANTIA
RUSSELL E. BAUER
SADIE H. BAUER
ETHEL M. BAUER
CLEMENT A. PENNELL
MARY P. PENNELL
GENERAL ENTERPRISES, INC.
CHAS. J. MERRILL, PRESIDENT

ALBERT H. POOLE
ALBERT H. POOLE
ALBERT H. POOLE

ACKNOWLEDGMENT

STATE OF MICHIGAN) SS
COUNTY OF)
ON THIS 14th DAY OF May, A.D., 1958, BEFORE ME, A NOTARY PUBLIC IN AND FOR SAID COUNTY, PERSONALLY CAME THE ABOVE NAMED LEONARD A. MALIS AND JANE T. MALIS, HIS WIFE, STANLEY KOVALSKI AND TERESA KOVALSKI, HIS WIFE, CASIMIR R. PUPKIEWICZ AND FRANCES PUPKIEWICZ, HIS WIFE, HECTOR BOUSSON AND DOROTHY BOUSSON, HIS WIFE, FRANK BACHES AND MARGARET BACHES, HIS WIFE, FRANK SCHUCH AND HELENE M. SCHUCH, HIS WIFE, ROSE ARBITTER, FORMERLY ROSE SCHOLZBERG, VITTORINO R. TARANTIA, A SINGLE MAN, ETHEL M. BAUER, HIS WIFE, ETHEL M. BAUER, AND CLEMENT A. PENNELL AND MARY P. PENNELL, HIS WIFE, KNOWN TO ME TO BE THE PERSONS WHO EXECUTED THE ABOVE DEDICATION AND ACKNOWLEDGED THE SAME TO BE THEIR FREE ACT AND DEED.

MY COMMISSION EXPIRES: MARCH 25, 1967

ALBERT H. POOLE
NOTARY PUBLIC, 14th CO., MICHIGAN

ACKNOWLEDGMENT

STATE OF MICHIGAN) SS
COUNTY OF)
ON THIS 14th DAY OF May, A.D., 1958, BEFORE ME, A NOTARY PUBLIC IN AND FOR SAID COUNTY, APPEARED CHAS. J. MERRILL, TO BE PERSONALLY KNOWN, WHO BEING BY ME FULLY KNOWN, DID SAY THAT HE IS THE PRESIDENT OF GENERAL ENTERPRISES, INC., A MICHIGAN CORPORATION, AND THAT SAID INSTRUMENT WAS SIGNED IN BEHALF OF SAID CORPORATION BY AUTHORITY OF ITS BOARD OF DIRECTORS, AND THE SAID CHAS. J. MERRILL ACKNOWLEDGED SAID INSTRUMENT TO BE THE FREE ACT AND DEED OF SAID CORPORATION.

MY COMMISSION EXPIRES: MARCH 25, 1967

ALBERT H. POOLE
NOTARY PUBLIC, 14th CO., MICHIGAN

FILED 41 PAGE 37

WEST GROVE SUBN.
 PART OF THE N.W. 1/4 OF SEC. 7, T.1 N., R.13 E.,
 CITY OF ROSEVILLE, MACOMB CO., MICHIGAN.

418162

SCALE - ONE INCH = 100 FEET.

SHEET 1
 OF
 3 SHEETS

NOTE: All dimensions are shown in feet and decimals thereof.
 All boundary descriptions are shown along the area.
 Side lines of lots fronting on common street lines are
 called thereby unless otherwise noted on (R.S.).

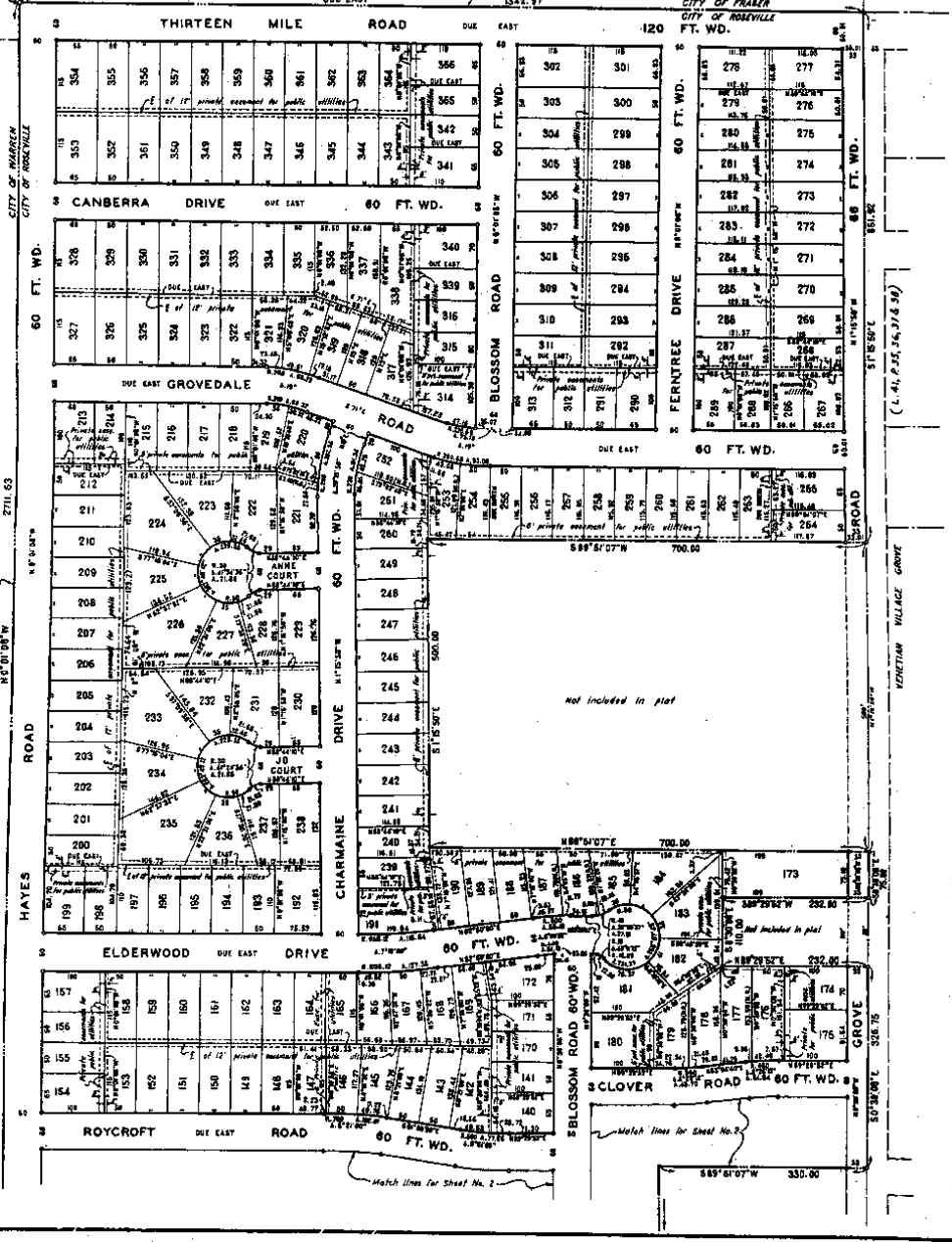
MADE BY: B. WARNER, Engineer, Civil Engineer, No. 10000, State of Michigan, Detroit, Mich.

April 3, 1957
 JAMES H. B. [Signature]
 27-10-41
 [Signature]

N.W. 1/4 of Sec. 7, T.1 N., R.13 E.

POINT OF BEGINNING

FRASER PARK SUBDIVISION (L.S. 2, 42)
 N. 1/2 of Sec. 7



43-1-39

B. WARNER L43
 42 P39-41

1959

B-4

WEST GROVE SUB'N.
 PART OF THE N.W. 1/4 OF SEC. 7, T.1 N., R.13 E.,
 CITY OF ROSEVILLE, MACOMB CO., MICHIGAN.

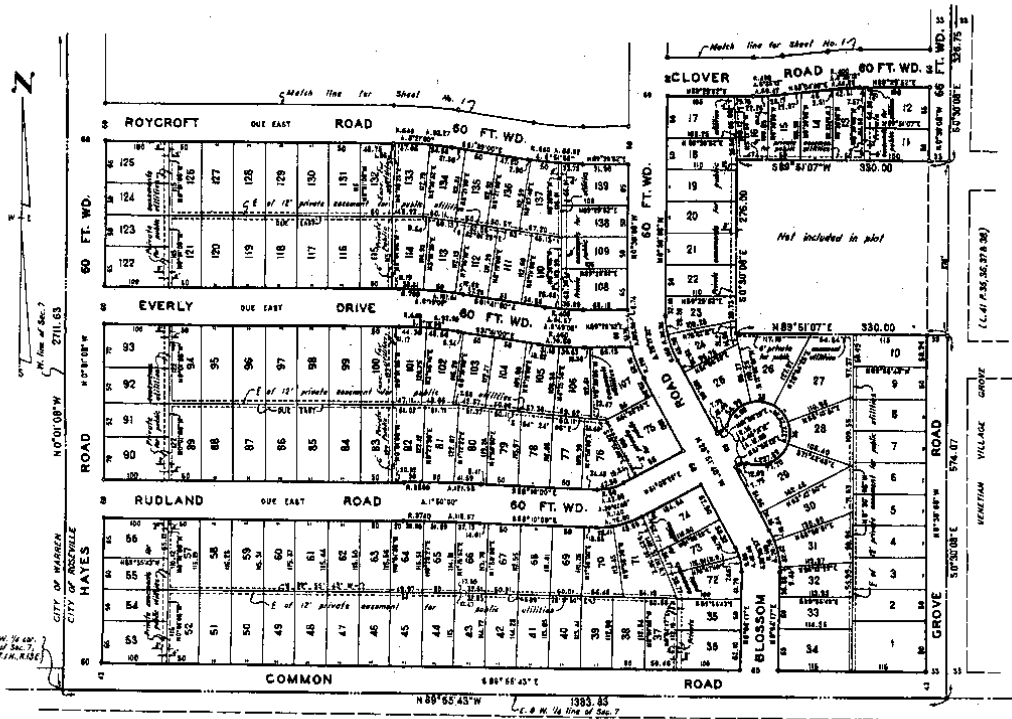
418162

SCALE-ONE INCH=100 FEET.

SHEET 2
 OF
 3 SHEETS

NOTE: All dimensions are shown in feet and decimals thereof.
 All corners are shown as they appear along the line.
 The line of lot fronting on common street does not
 extend to the corner where noted on this plan.

REMARKS AND NOTES:
 Surveyed and plotted
 by
 BURTON BARBER, REG. LAND SURVEYOR



DESCRIPTION

THE LAND EMBRACED IN THE ANNEXED PLAT OF WEST GROVE SUB'N., PART OF THE N.W. 1/4 OF SEC. 7, T. 1 N., R. 13 E., CITY OF ROSEVILLE, MACOMB CO., MICHIGAN, COMPRISING LOTS 1 THROUGH 366, IS DESCRIBED AS FOLLOWS: TO VIZ., BEGINNING AT THE N.W. CORNER OF SECTION 7, T. 1 N., R. 13 E., AND PROCEEDING THENCE ALONG THE N. LINE OF SAID SECTION 7, THE LAST 1342.87' TO A POINT ON THE CENTER LINE OF GROVE ROAD (66.00' WIDE); THENCE ALONG SAID CENTER LINE, S 3° 51' 00" E., 81.53', LAST DESCRIBED LINE BEING IN PART ALONG THE W. 1/2 BOUNDARY OF THE VEGETIAN VILLAGE GROVE SUB'N., (RECORDED IN L. & P. PLATS, P. 25, 36, 37, AND 38); THENCE S. 88° 51' 07" W., 790'; THENCE S. 7° 51' 58" E., 208'; THENCE N. 89° 31' 07" E., 700' TO A POINT ON THE CENTER LINE OF SAID GROVE ROAD; THENCE ALONG SAID CENTER LINE OF SAID GROVE ROAD WHICH LINE IS ALSO THE W. 1/2 BOUNDARY OF VEGETIAN VILLAGE GROVE SUB'N., S. 0° 30' 08" E., 75'; THENCE S. 89° 07' 52" W., 838'; THENCE S. 0° 30' 08" E., 110'; THENCE N. 89° 07' 52" E., 228' TO A POINT ON THE CENTER LINE OF SAID GROVE ROAD; THENCE ALONG SAID CENTER LINE WHICH LINE IS ALSO THE W. 1/2 BOUNDARY OF VEGETIAN VILLAGE GROVE SUB'N., S. 0° 30' 08" E., 328.75'; THENCE S. 89° 07' 52" W., 330'; THENCE S. 0° 30' 08" E., 276'; THENCE N. 89° 30' 07" E., 330' TO A POINT ON THE CENTER LINE OF SAID GROVE ROAD; THENCE ALONG SAID CENTER LINE WHICH LINE IS ALSO THE W. 1/2 BOUNDARY OF VEGETIAN VILLAGE GROVE SUB'N., S. 0° 30' 08" E., 274.07' TO A POINT ON THE E. AND W. S. LINE OF SAID SECTION 7; THENCE ALONG SAID LINE, N. 88° 30' 43" W., 328.83' TO THE N. 2 CORNER OF SAID SECTION 7; THENCE ALONG THE N. LINE OF SAID SECTION 7, N. 0° 00' 00" W., 2721.63' TO THE POINT OF BEGINNING.

SURVEYORS CERTIFICATE

I HEREBY CERTIFY THAT THE PLAT HEREON DELINEATED IS A CORRECT ONE, AND THAT PERMANENT MONUMENTS CONSISTING OF IRON RODS ONE HALF INCH IN DIAMETER AND 36 INCHES IN LENGTH, ENCASED IN CONCRETE CYLINDERS 4 INCHES IN DIAMETER AND 36 INCHES IN LENGTH, HAVE BEEN PLACED AT ALL POINTS MARKED THIS (S) AS THEREON SHOWN AT ALL ANGLES IN THE BOUNDARIES OF THE LAND PLATTED, AT ALL INTERSECTIONS OF THE LINES OF STREETS, AND AT INTERSECTIONS OF THE LINES OF STREETS WITH THE BOUNDARIES OF THE PLAT.

BURTON BARBER, REG. LAND SURVEYOR

APPROVED AND FORWARDED:
 COUNTY CLERK
 April 2, 1957
 Vol. 12
 182-28-4
 Burton Barber, Reg. Land Surveyor

48 140

WEST GROVE SUB'N.

PART OF THE N.W. 1/4 OF SEC. 7, T.1 N., R.13 E.
CITY OF ROSEVILLE, MACOMB CO., MICHIGAN.

418162

SCALE-ONE INCH=100 FEET.

SHEET 3
OF
3 SHEETS

NOTE: All dimensions are shown in feet and decimal thereof. All corners are to be shown along the city. This block of lots together are considered as one lot and are to be shown as one lot on the plan.

SEARCHED AND INDEXED
RECORDED
MAY 10 1952
MICHIGAN RECORDS
DEPT. OF STATE

DEDICATION

KNOW ALL MEN BY THESE PRESENTS, THAT WE, WILLIAM FLOETZ, A WIDOWER, AND WILK ROVACEVIC AND KATE ROVACEVIC, HIS WIFE, AND ARTHUR FLEISCHMAN AND STELLA FLEISCHMAN, HIS WIFE, AND MORRIS W. ZACK AND SARAH ZACK, HIS WIFE, AS PROPRIETORS, AND GENERAL ENTERPRISES, INC., A MICHIGAN CORPORATION, BY CHAS. J. MERRILL, PRESIDENT, DEWEED APT. CO., A MICHIGAN CO-PARTNERSHIP, CONSISTING OF SAMUEL GOODMAN, HENRY GOODMAN, AND ALBERT J. GOODMAN, SOLE PARTNERS, AS VANCEES, HAVE CAUSED THE LAND SHOWN IN THE ANNEXED PLAT TO BE SURVEYED, LAID OUT AND PLATTED, TO BE KNOWN AS WEST GROVE SUB'N., PART OF THE N.W. 1/4 OF SEC. 7, T. 1 N., R. 13 E., CITY OF ROSEVILLE, MACOMB CO., MICHIGAN, AND THAT THE STREETS AS SHOWN ON SAID PLAT ARE HEREBY DEDICATED TO THE USE OF THE PUBLIC, AND THAT THE PRIVATE EASEMENTS SHOWN ON SAID PLAT ARE HEREBY RESERVED FOR THE USE OF THE PUBLIC UTILITIES SUBJECT TO THE REGULATION AND CONTROL OF THE USE THEREOF BY THE LOCAL GOVERNMENTAL AUTHORITIES, AND THAT NO PERMANENT STRUCTURES ARE TO BE UPRIGHT WITHIN THE BOUNDARIES OF SAID EASEMENTS.

WITNESSES:

William Floetz
WILLIAM FLOETZ
Wilk Rovacovic
WILK ROVACEVIC
Kate Rovacovic
KATE ROVACEVIC
Arthur Fleischman
ARTHUR FLEISCHMAN
Stella Fleischman
STELLA FLEISCHMAN
Morris W. Zack
MORRIS W. ZACK
Sarah Zack
SARAH ZACK
Edward A. Mallis
EDWARD A. MALLIS
John T. Mallis
JOHN T. MALLIS
General Enterprises, Inc.
GENERAL ENTERPRISES, INC.
Chas. J. Merrill
CHAS. J. MERRILL, PRESIDENT
Deweed Apt. Co.
DEWEED APT. CO., MICHIGAN CO-PARTNERSHIP
Samuel Goodman
SAMUEL GOODMAN, CO-PARTNER
Henry Goodman
HENRY GOODMAN, CO-PARTNER
Albert J. Goodman
ALBERT J. GOODMAN, CO-PARTNER

CERTIFICATE OF MUNICIPAL APPROVAL

I HEREBY CERTIFY THAT THIS PLAT HAS BEEN APPROVED BY THE CITY COUNCIL OF THE CITY OF ROSEVILLE AT A REGULAR MEETING, HELD ON 1-26 1952, AND THAT THE WIDTH OF LOTS IS IN COMPLIANCE WITH THE REQUIREMENTS OF SEC. 30, ACT 172 OF 1929, AS AMENDED.

Robert J. Mann
ROBERT J. MANN, CITY CLERK

CERTIFICATE OF MUNICIPAL APPROVAL, RE: SEWERS AND WATER MAINS

I HEREBY CERTIFY THAT ADEQUATE SECURITY HAS BEEN DEPOSITED WITH THE CITY OF ROSEVILLE TO INSURE INSTALLATION OF PUBLIC SEWERAGE AND WATER FACILITIES WITHIN THIS PLAT AS OF March 26 1952.

Robert J. Mann
ROBERT J. MANN, CITY CLERK

CERTIFICATE OF APPROVAL BY COUNTY BOARD

THIS PLAT WAS APPROVED ON THE 26 DAY OF March, 1952, BY THE MACOMB COUNTY PLAT BOARD.

Arthur Barr
ARTHUR BARR, CLERK OF BOARD
Frank E. Lahr
FRANK E. LAHR, COUNTY TREASURER
Albert A. Mager
ALBERT A. MAGER, COUNTY CLERK
Frank E. Lahr
FRANK E. LAHR, COUNTY DRAIN COMMISSIONER

EXAMINED AND APPROVED

Date: April 2 1952

Frank S. Sturman
FRANK S. STURMAN
ALTAUTUM CLERK, MACOMB COUNTY

ACKNOWLEDGMENT

STATE OF MICHIGAN ss
COUNTY OF WAYNE
ON THIS 26 DAY OF JANUARY, A.D., 1952, BEFORE ME, A NOTARY PUBLIC IN AND FOR SAID COUNTY, PERSONALLY CAME THE ABOVE NAMED WILLIAM FLOETZ, A WIDOWER, AND WILK ROVACEVIC AND KATE ROVACEVIC, HIS WIFE, AND ARTHUR FLEISCHMAN AND STELLA FLEISCHMAN, HIS WIFE, AND MORRIS W. ZACK AND SARAH ZACK, HIS WIFE, AND EDWARD A. MALLIS AND JOHN T. MALLIS, HIS WIFE, KNOWN TO ME TO BE THE PERSONS WHO EXECUTED THE ABOVE DEDICATION AND ACKNOWLEDGED THE SAME TO BE THEIR FREE ACT AND DEED.
MY COMMISSION EXPIRES: MARCH 20, 1952
Albert H. Poole
ALBERT H. POOLE
NOTARY PUBLIC, WAYNE CO., MICHIGAN

ACKNOWLEDGMENT

STATE OF MICHIGAN ss
COUNTY OF WAYNE
ON THIS 26 DAY OF JANUARY, A.D., 1952, BEFORE ME, A NOTARY PUBLIC, IN AND FOR SAID COUNTY, APPEARED CHAS. J. MERRILL, TO BE PERSONALLY KNOWN, AND BEING BY ME DULY SWORN, AND ASKED THAT HE IS THE PRESIDENT OF GENERAL ENTERPRISES, INC., A MICHIGAN CORPORATION, AND THAT SAID INSTRUMENT WAS SIGNED IN BEHALF OF SAID CORPORATION BY AUTHORITY OF THE BOARD OF DIRECTORS, AND THE SAID CHAS. J. MERRILL ACKNOWLEDGED SAID INSTRUMENT TO BE THE FREE ACT AND DEED OF SAID CORPORATION.
MY COMMISSION EXPIRES: MARCH 20, 1952
Albert H. Poole
ALBERT H. POOLE
NOTARY PUBLIC, WAYNE CO., MICHIGAN

ACKNOWLEDGMENT

STATE OF MICHIGAN ss
COUNTY OF WAYNE
ON THIS 26 DAY OF JANUARY, A.D., 1952, BEFORE ME, A NOTARY PUBLIC, IN AND FOR SAID COUNTY, PERSONALLY CAME THE ABOVE NAMED SAMUEL GOODMAN, HENRY GOODMAN, AND ALBERT J. GOODMAN, SOLE PARTNERS OF DEWEED APT. CO., A MICHIGAN CO-PARTNERSHIP, KNOWN TO ME TO BE THE PERSONS WHO EXECUTED THE ABOVE DEDICATION AND ACKNOWLEDGED THE SAME TO BE THEIR FREE ACT AND DEED.
MY COMMISSION EXPIRES: MARCH 20, 1952
Albert H. Poole
ALBERT H. POOLE
NOTARY PUBLIC, WAYNE CO., MICHIGAN

MICHIGAN
COUNTY OF WAYNE

Received by
April 2 1952
Albert H. Poole
Notary Public
Albert H. Poole
Notary Public

THIS IS TO CERTIFY THAT ACCORDING TO THE COUNTY TREASURER'S RECORDS THERE ARE NO TAXES ON THIS PROPERTY AND THAT THERE ARE NO OTHER TAXES DUE TO THE CITY OF ROSEVILLE EXCEPT THE EXAMINED AND APPROVED TAXES.
FRANK S. STURMAN, ALTAUTUM CLERK, MACOMB COUNTY.
THIS IS TO CERTIFY THAT ACCORDING TO THE COUNTY TREASURER'S RECORDS THERE ARE NO TAXES ON THIS PROPERTY AND THAT THERE ARE NO OTHER TAXES DUE TO THE CITY OF ROSEVILLE EXCEPT THE EXAMINED AND APPROVED TAXES.

48 11

EXAMINED AND APPROVED
 Date March 27, 1959
 O. W. Smith
 Notary Public
 D. L. McKinney, Notary Public

LORETO SUBDIVISION

PART OF THE N. 1/2 OF SEC. 7, T. 1 N., R. 13 E.,
 CITY OF ROSEVILLE, MACOMB CO., MICH.

452541

SCALE: ONE INCH = 100 FEET.

NOTE: All dimensions are shown in feet and decimal fractions thereof. All curve dimensions are shown along the arc. See also of left footings on curbs and lines and are noted thereon unless otherwise noted on this plan.

DESIGNER AND SURVEYOR:
 ROBERT J. HUBBARD
 251 Forest Street
 Detroit 28, MICH.

DEDICATION
 KNOW ALL MEN BY THESE PRESENTS: THAT WE, ROSE ARBITER, FORMERLY ROSE SCHOENBERG, AS PROPRIETOR, AND LORETO D'AGOSTINI, A WIDOWER, AS PROPRIETOR AND VENUEE, AND GENERAL ENTERPRISES, INC., A MICHIGAN CORPORATION, BY CHAS. J. MERRILL, PRESIDENT, AS VENUEE, HAVE CAUSED THE LAND EMBRACED IN THE ANNEXED PLAT TO BE SURVEYED, Laid OUT AND PLATTED, TO BE KNOWN AS "LORETO SUBDIVISION", PART OF THE N. 1/2 OF SEC. 7, T. 1 N., R. 13 E., CITY OF ROSEVILLE, MACOMB CO., MICH., AND THAT THE STREETS AS SHOWN ON SAID PLAT ARE HEREBY DEDICATED TO THE USE OF THE PUBLIC, AND THAT THE PRIVATE EASEMENTS SHOWN ON SAID PLAT ARE HEREBY RESERVED FOR THE USE OF THE PUBLIC UTILITIES, OR SPECIAL USES, AS THEREON NOTED, SUBJECT TO THE REGULATION AND CONTROL OF THE USES THEREOF BY THE LOCAL GOVERNMENTAL AUTHORITIES, AND THAT NO PERMANENT STRUCTURES ARE TO BE ERRECTED WITHIN THE BOUNDARIES OF SAID EASEMENTS.

WITNESSES:
Robert J. Hubbard
Chas. J. Merrill
Edward J. Adams
Edward J. Adams

Paul Armitter
 ROSE ARBITER, FORMERLY ROSE SCHOENBERG
Loretto D'Agostini
 LORETO D'AGOSTINI
 GENERAL ENTERPRISES, INC.
Chas. J. Merrill
 CHAS. J. MERRILL, PRESIDENT

ACKNOWLEDGMENT
 STATE OF MICHIGAN
 COUNTY OF MACOMB
 ON THIS 12th DAY OF September, A.D. 1959, BEFORE ME, A NOTARY PUBLIC IN AND FOR SAID COUNTY, PERSONALLY CAME THE ABOVE NAMED ROSE ARBITER, FORMERLY ROSE SCHOENBERG, AND LORETO D'AGOSTINI, KNOWN TO ME TO BE THE PERSONS WHO EXECUTED THE ABOVE DEDICATION AND ACKNOWLEDGED THE SAME TO BE THEIR FREE ACT AND DEED.
 MY COMMISSION EXPIRES: April 12, 1963
Robert J. Hubbard
 NOTARY PUBLIC, MACOMB CO., MICHIGAN

ACKNOWLEDGMENT
 STATE OF MICHIGAN
 COUNTY OF MACOMB
 ON THIS 12th DAY OF September, A.D. 1959, BEFORE ME, A NOTARY PUBLIC IN AND FOR SAID COUNTY, APPEARED CHAS. J. MERRILL, TO ME PERSONALLY KNOWN, WHO BEING BY ME DULY SWORN, DID SAY THAT HE IS THE PRESIDENT OF GENERAL ENTERPRISES, INC., A MICHIGAN CORPORATION, AND THAT SAID INSTRUMENT WAS SIGNED IN BEHALF OF SAID CORPORATION BY AUTHORITY OF ITS BOARD OF DIRECTORS, AND THE SAID CHAS. J. MERRILL ACKNOWLEDGED SAID INSTRUMENT TO BE THE FREE ACT AND DEED OF SAID CORPORATION.
 MY COMMISSION EXPIRES: April 12, 1963
Robert J. Hubbard
 NOTARY PUBLIC, MACOMB CO., MICHIGAN

SURVEYORS CERTIFICATE
 I HEREBY CERTIFY THAT THE PLAT HEREON DEDICATED IS A CORRECT ONE, AND THAT PERMANENT MONUMENTS CONSISTING OF IRON RODS ONE HALF INCH IN DIAMETER AND 30 INCHES IN LENGTH, ENCASED IN CONCRETE CYLINDERS 4 INCHES IN DIAMETER AND 26 INCHES IN LENGTH, HAVE BEEN PLACED AT ALL POINTS MARKED THUS (O) AS THEREON SHOWN AT ALL ANGLES IN THE BOUNDARIES OF THE LAND PLATTED, AT ALL INTERSECTIONS OF THE LINES OF STREETS, AND AT INTERSECTIONS OF THE LINES OF STREETS WITH THE BOUNDARIES OF THE PLAT.

DESCRIPTION
 THE LAND EMBRACED IN THE ANNEXED PLAT OF LORETO SUBDIVISION, PART OF THE N. 1/2 OF SEC. 7, T. 1 N., R. 13 E., CITY OF ROSEVILLE, MACOMB CO., MICH., COMPRISING LOTS 1 THROUGH 81, AND BEING A RE-SUBDIVISION OF LOTS 537 THROUGH 574 OF VENEZIAN VILLAGE DRIVE (RECORDED IN L. 41, P. 25, 26, 27, AND 28), IS DESCRIBED AS FOLLOWS, TO WIT: BEGINNING AT THE CENTER & CORNER OF SECTION 7, T. 1 N., R. 13 E., AND PROCEEDING THENCE ALONG THE EAST AND WEST & LINE OF SAID SECTION 7, S. 80° 32' 12" W., 1328.77' TO THE S.E. CORNER OF WEST GROVE SUBM (RECORDED IN L. 43, P. 39, 40, AND 41); THENCE ALONG THE EAST LINE OF SAID SUBM, N. 0° 30' 00" W., 393.00' TO THENCE N. 80° 30' 12" E., 1227.00'; THENCE N. 80° 32' 37" E., 349.72'; THENCE N. 0° 51' 42" E., 68.84'; THENCE ON A CURVE CONCAVE TO THE WEST, RADIUS 389.20', CENTRAL ANGLE 28° 31' 18" (THE CHORD OF SAID CURVE BEARS S. 15° 12' 40.3" E., 188.27'); A DISTANCE OF 805.98'; THENCE S. 0° 27' 03" E., 235.15' TO A POINT ON THE EAST AND WEST & LINE OF SAID SECTION 7; THENCE ALONG SAID LINE S. 80° 32' 37" E., 460.20' TO THE POINT OF BEGINNING.

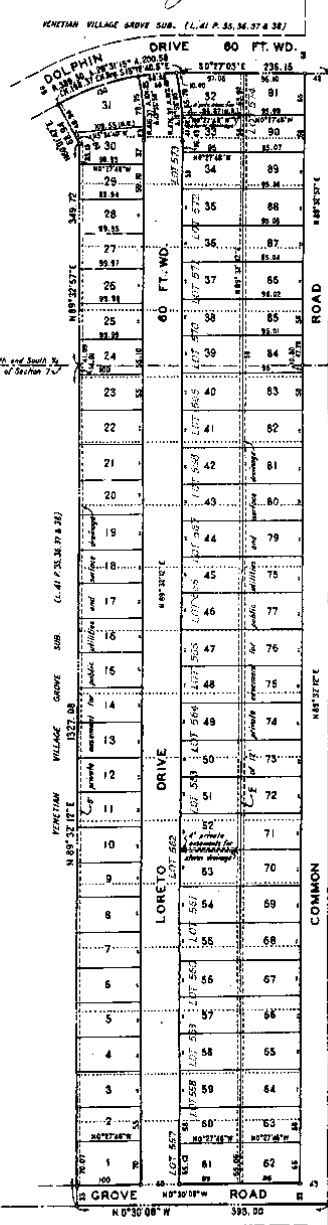
CERTIFICATE OF MUNICIPAL APPROVAL
 I HEREBY CERTIFY THAT THIS PLAT HAS BEEN APPROVED BY THE CITY COUNCIL OF THE CITY OF ROSEVILLE AT A PUBLIC HEARING, HELD March 20, 1959, AND THAT THE WIDTH OF LOTS IS IN COMPLIANCE WITH THE REQUIREMENTS OF S.L.C. 30, ACT 172 OF 1929, AS AMENDED.

I HEREBY CERTIFY THAT ADEQUATE SECURITY HAS BEEN DEPOSITED WITH THE CITY OF ROSEVILLE TO INSURE INSTALLATION OF PUBLIC SEWERAGE AND WATER FACILITIES WITHIN THIS PLAT AS OF September 12, 1959.
Robert J. Hubbard
 ROBERT J. HUBBARD, CITY CLERK

CERTIFICATE OF APPROVAL BY COUNTY BOARD
 THIS PLAT WAS APPROVED ON THE 12th DAY OF September, 1959, BY THE MACOMB COUNTY PLAT BOARD.
James B. Hales
 JAMES B. HALES, COUNTY TREASURER
Albert A. Wagner
 ALBERT A. WAGNER, COUNTY CLERK
Frank C. Low
 FRANK C. LOW, COUNTY ORATH COMMISSIONER

THIS IS TO CERTIFY THAT ACCORDING TO THE COUNTY TREASURERS RECORDS THERE ARE NO TAXES ON THIS PROPERTY WHOSE TAXES ARE PAID FOR THE YEARS PREVIOUS TO 1959. THE INFORMATION DOES NOT INCLUDE CURRENT TAXES NOW BEING COLLECTED.

REGISTERS OFFICE
 COUNTY OF MACOMB
 Received for Record
September 12, 1959
 at 12:00 P.M., and recorded in Vol. 45 of Plats, at Page 47
Walter M. Magister
 County Register



L45P47

1959

B WARNER

L45 P47

B

LAND CORNER RECORDATION CERTIFICATE

FILING REQUIREMENT OF ACT 74, MICH. P.A.1970

CITY OF FRASER

FOR CORNERS OF-- LOCATED IN-- Sec. 7 CORNER CODE NUMBER
1. PUBLIC LAND SURVEY... T. 1 N. 13 E. X B-4 (centerpost)
2. PROPERTY CONTROLLING IN SECTION... T. N. S. R. E. W.
3. MISCELLANEOUS PROPERTY IN SECTION... T. N. S. R. E. W.
4. LOT NO. RECORDED PLAT
5. PRIVATE CLAIMS

LIBER 3350 PAGE 704 1714332

RECORDED IN MACOMB COUNTY RECORDS AT: 2:30 P.M. JUL 23 1981

Edna M. ... CLERK - REGISTER OF DEEDS MACOMB COUNTY, MICHIGAN REGISTER OF DEEDS STAMP AND FILING NUMBER

I, Robert L. Smith do hereby certify that under requirements of P.A. 74, Michigan P.A. of 1970, the corner points mentioned in lines 1 and 2 above (identified with circles on index code diagram-over) were, in a field survey on April 17, 1981, established, re-established, monumented, re-monumented, recovered or restored as expressed below and in conformance with regulations and rules therefore as required in the current manual of survey instructions of the United States Department of the Interior, Bureau of Land Management or by a decree of a court of law. Furthermore, that the corner points mentioned in lines 3, 4 and 5 above were, in a field survey on April 17, 1981, found, recovered, restored, established or re-established as expressed below and in conformance with the rules of the Michigan State Board of Registration for Land Surveyors or, by a Decree of a Court of law:

A. Description of original monument and accessories and/or subsequent restoration:

B. Description of corner evidence found and/or method applied in restoring or re-establishing corner:

B-4 Centerpost - Found P.K. nail

C. Description of monument for corner and accessories established to perpetuate locating the position of the corner:

B-4 Centerpost

- N.30°W. 38.80 ft. P.K. nail in power pole
S.45°W. 52.38 ft. P.K. nail in power pole
S.70°E. 93.45 ft. Nail & M.D.S.H. tag in power pole

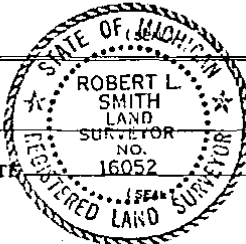
SIGNED BY Robert L. Smith DATE April 20, 1981

SURVEYOR'S MICHIGAN REGISTRATION NO. 16052

FOR STATE AND UNITED STATES AGENCIES:

SIGNED BY CHIEF OF SURVEY PARTY DATE

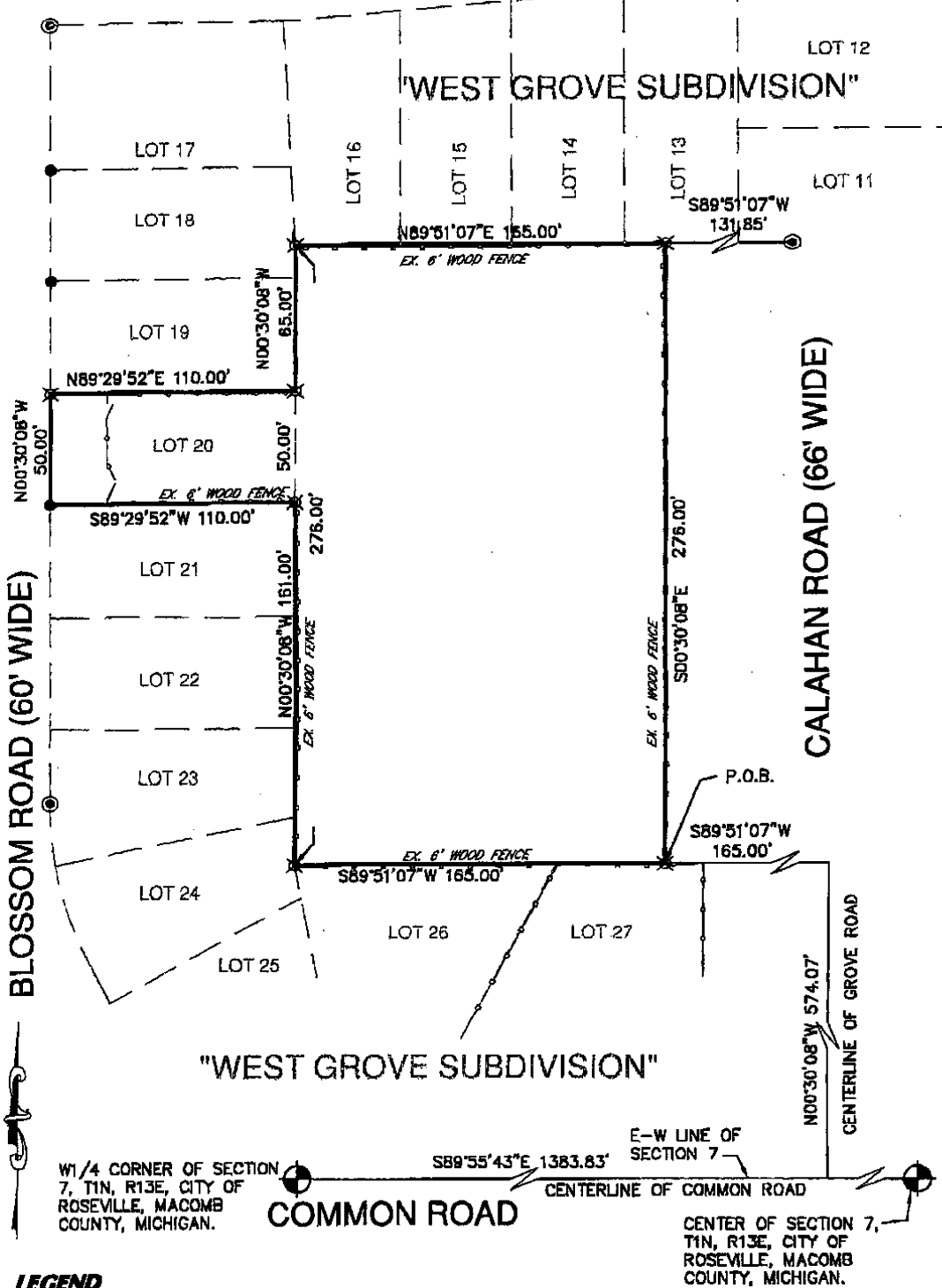
APPROVED AND SIGNED BY MICHIGAN REGISTERED LAND SURVEYOR DATE



SURVEYOR'S MICHIGAN REGISTRATION NO. 01051

B-4

CERTIFICATE OF SURVEY



FKA B-4

LEGEND

- IRON FOUND
- IRON SET
- ⊗ MONUMENT FOUND
- ⊙ MONUMENT SET
- ⊕ SEC. CORNER FOUND
- R. RECORDED
- M. MEASURED

SHEET 1 OF 2

CLIENT KTS BUILDING	PROJECT NO. 00-804
	DATE 01-24-00
SCALE 1" = 60'	DRAWN BY Y.B./B.V.
	CHECKED BY R.L.H.



**FAZAL KHAN
AND ASSOCIATES, INC.**

42818 DARFIELD RD. - SUITE 204
CLINTON TOWNSHIP - MICHIGAN - 48036
PHONE (810) 412-8811

CIVIL ENGINEERS • LAND SURVEYORS

DESCRIPTION OF PROPERTY

LOT 20, "WEST GROVE SUBDIVISION", A PART OF THE NW1/4 OF SECTION 7, T1N, R13E, CITY OF ROSEVILLE, MACOMB COUNTY, MICHIGAN, AS RECORDED IN LIBER 43 OF PLATS, PAGE 39, 40 AND 41, MACOMB COUNTY RECORDS, AND A PART OF THE NW1/4 OF SECTION 7, DESCRIBED AS: COMMENCING AT THE W1/4 CORNER OF SECTION 7; THENCE S89°55'43"E 1383.83 FEET ALONG THE E-W1/4 LINE AND CENTERLINE OF COMMON ROAD; THENCE N00°30'08"W 574.07 FEET ALONG THE CENTERLINE OF CALAHAN ROAD (66 FEET WIDE); THENCE S89°51'07"W 165.00 FEET ALONG THE NORTH LINE OF LOTS 10 AND 27, IN PART, "WEST GROVE SUBDIVISION" FOR A POINT OF BEGINNING; THENCE CONTINUING S89°51'07"W 165.00 FEET ALONG LOTS 27 AND 26, IN PART, "WEST GROVE SUBDIVISION"; THENCE N00°30'08"W 276.00 FEET ALONG THE EAST LINE OF LOTS 24, 23, 22, 21, 20, 19 AND 18, IN PART, "WEST GROVE SUBDIVISION"; THENCE N89°51'07"E 165.00 FEET ALONG THE SOUTH LINE OF LOTS 16, 15, 14 AND 13, IN PART; "WEST GROVE SUBDIVISION"; THENCE S00°30'08"E 276.00 FEET TO THE POINT OF BEGINNING. CONTAINING 51040 SQUARE FEET OR 1.1717 ACRES, MORE OR LESS.

SUBJECT TO RESTRICTIONS, RESERVATIONS AND EASEMENTS, IF ANY.

ALSO KNOWN AS SIDWELL NO. 14-07-155-024.

KTS BUILDING
22657 15 MILE ROAD
CLINTON TOWNSHIP, MICHIGAN 48035

I HEREBY CERTIFY THAT THIS IS A TRUE AND ACCURATE SURVEY; THAT THIS DRAWING IS A CORRECT REPRESENTATION OF ALL THE EXTERIOR BOUNDARIES OF THE LAND SURVEYED; THAT THIS SURVEY WAS PERFORMED WITH AN ERROR OF CLOSURE OF 1 IN 7500; AND THAT THIS SURVEY COMPLIES WITH THE REQUIREMENTS OF SECTION 3, ACT NO. 132, P.A. OF 1970, AS AMENDED.

ROBERT L. HIGGINS, P.S. 21570
FAZAL KHAN AND ASSOCIATES, INC.
42815 GARFIELD ROAD SUITE 204
CLINTON TOWNSHIP, MICHIGAN 48038

DATE

CORNER WITNESSES

A-4 W1/4 CORNER OF SECTION 7, T1N, R13E, CITY OF ROSEVILLE, MACOMB COUNTY, MICHIGAN, FOUND 2" REMON DISK IN MONUMENT BOX

- N61°E 63.01' PK NAIL IN NW FACE OF UTILITY POLE
- S56°E 70.18' PK NAIL IN SW FACE OF UTILITY POLE
- S28°W 106.41' PK NAIL IN W FACE OF UTILITY POLE
- S52°W 63.15' "X" IN SOUTH RIM OF STORM MANHOLE
- N48°W 53.68' MAG NAIL & REMON TAG IN NW FACE OF UTILITY POLE
- N47°W 51.14' PK NAIL & REMON TAG IN NE FACE OF UTILITY POLE

B-4 CENTER OF SECTION 7, T1N, R13E, CITY OF ROSEVILLE, MACOMB COUNTY, MICHIGAN,

- N30°W 38.80' PK NAIL IN POWER POLE
- S45°W 52.38' PK NAIL IN POWER POLE
- S70°E 93.45' NAIL & MDSH TAG IN POWER POLE

SHEET 2 OF 2

FKA B-4

CLIENT KTS BUILDING	PROJECT NO. 00-804	
	DATE 01-24-00	
SCALE NONE	DRAWN BY Y.B./B.V.	CHECKED BY R.L.H.

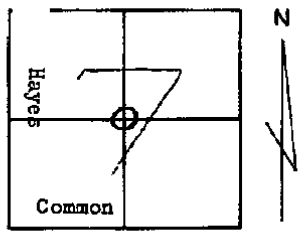


FAZAL KHAN AND ASSOCIATES, INC.
42815 GARFIELD RD. • SUITE 204
CLINTON TOWNSHIP • MICHIGAN • 48038
PHONE (810) 412-8811

CIVIL ENGINEERS • LAND SURVEYORS

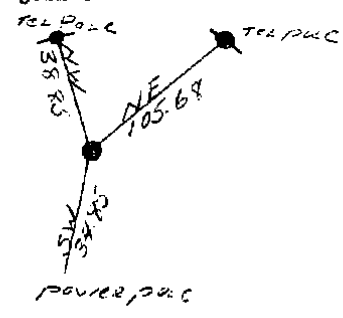
B-4

MONUMENT WITNESSES RECORD



Witnesses
 nail & cap in center of
 Tel.Pole N.W. 38.85
 Tel.Pole N.E. 105.68
 Power Pole S 34.85

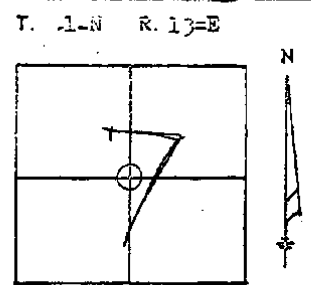
DESCRIPTION
 PK. nail in conc. pavement 0.61'
 south of E joint.



MACOMB COUNTY ROAD COMMISSION John Barnes 8-17-73
 SURVEY CHIEF DATE

B-4

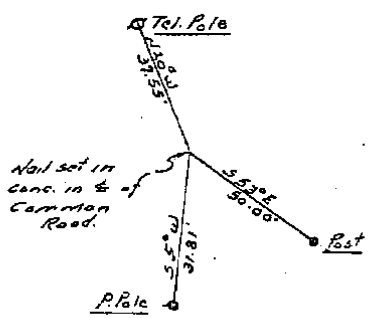
GOV'T. MONUMENT WITNESSES RECORD



WITNESSES
 Nail in center of
 5" post S 53°E 50.00'
 Tel.Pole W 20°W 37.55'
 Power Pole S 5°W 31.81'

ERIN SEC. NO. 7 41

DESCRIPTION
 Center Post Sec. 7
 Found spike set in concrete in
 the 1/4 of Common Road



MICHIGAN STATE HIGHWAY DEPARTMENT C.J. Lisee Jan. 16, 1967
 SURVEY CHIEF DATE

ERIN AND LAKE TOWNSHIP
T.1N.,R.14E.
MACOMB COUNTY

A-01	B-01	C-01	D-01	E-01	F-01	G-01	H-01	I-01	J-01	K-01	L-01	M-01
2190	1328	2192	815	1116	2093	80	984	3391				
	2191		1687	2194		985	3390					
			2193			2094						

A-02	B-02	C-02	D-02	E-02	F-02	G-02	H-02	I-02	J-02	K-02	L-02	M-02
206	207	1626	1118	1116	4377	365	984	3621				
817	364	3615	4439	3618		985	3530					
2635	1625					3529	4247					
	3427					3619						

A-03	B-03	C-03	D-03	E-03	F-03	G-03	H-03	I-03	J-03	K-03	L-03	M-03
2636	364	1290	1290	2485	1745	1111	3620	3622				
3271	1554	2484	2483		2486	2487						
	1624	3270	3270		3531	3528						
	3271											
	3613											

A-04	B-04	C-04	D-04	E-04	F-04	G-04	H-04	I-04	J-04	K-04	L-04	M-04
2679	1051	1197	518	4381	4388	1111						
		3616	1289			2488						
			2783									

A-05	B-05	C-05	D-05	E-05	F-05	G-05	H-05	I-05	J-05	K-05	L-05	M-05
266	265	663	1138	4386	4389	2489						
660	660	898	4416									
2637	663	1138										
	3614	1707										
		3617										

A-06	B-06	C-06	D-06	E-06	F-06	G-06	H-06	I-06	J-06	K-06	L-06	M-06
2680	577	1423	4436	2409	4383	2409						
	4435	1707		4382		2490						
		4440										

ERIN AND LAKE TOWNSHIP

B-4