

LAND CORNER RECORDATION CERTIFICATE
Filing Requirement of Act 74, Mich. P.A. 1970

For corners in

ERIN TOWNSHIP

205061
 LIBER 9942 PAGE 526
 12/26/2000 09:19:20 A.M.
 MACOMB COUNTY, MI
 CARMELLA SABAUGH, REG/DEEDS

MACOMB Located In: _____ Corner Code # _____
 (County)

1. Public Land Survey T 1N. R 13E B-03
 T _____ R _____
 T _____ R _____
 T _____ R _____

2. Property Controlling S _____ T _____ R _____
 in Section S _____ T _____ R _____

3. Miscellaneous S _____ T _____ R _____
 Property in Sec. S _____ T _____ R _____

4. Lot No. _____, Recorded Plat _____

5. Private Claims _____

Register of Deeds Stamp & File
 Number

I, JOHN R. FENN in a field survey on September 25, 2000 do hereby certify that under requirements of P.A. 74, Michigan P.A. of 1970, the corner points mentioned in lines 1 and 2 above were in conformance with regulations and rules therefore as required in the current manual of survey instructions of the United States Department of the Interior, Bureau of Land Management or by a decree of a Court of Law and /or that the corner points mentioned in lines 3, 4 and 5 above were in conformance with the rules of the Michigan Board of Land Surveyors or by a Decree of a Court of Law; established, re-established, monumented, re-monumented, recovered, found as expressed below:

NOTE: Not more than 4 corners, all in the same town and range, may be recorded on this certificate.

	A	B	C	D	E	F	G	H	I	J	K	L	M
1													
2		6		5		4		3		2		1	
3													
4		7		8		9		10		11		12	
5													
6		18		17		16		15		14		13	
7													
8		19		20		21		22		23		24	
9													
10		30		29		28		27		26		25	
11													
12		31		32		33		34		35		36	

A. Description of original monument and accessories and/or subsequent restoration:

Glo 1817 Wampler No evidence of original corner
 1973 LCRC Robert L. Smith 16052 L2459, P582 Found PK with Cap
 1990 LCRC Soderberg 17635 L4888, P317 Found Pk nail
 1991 LCRC Frank DeDecker 8386 L5055, P837 Found PK with washer
 1998 LCRC Wright 40165 L8767, P681 Found 3/4" bar in monument box

Plats
 1924 Eyster's Fraser Gardens No. 1 L7, P48
 1955 The Van Marcke Subdivision L33, P29
 1978 Edison Industrial Park Subdivision L73, P29-30

B. Description of corner evidence found and/or method applied in restoring or reestablishing corner:


I found an iron in a monument box near the centerline of 13 Mile Road (concrete). The Iron matches several witnesses from the LCRC recorded for this location and irons in the Subdivision tied to this corner to the East. There is a brick wall to the North and a fence line to the South.

Distances: B-03 to A-03 B-03 to C-03
 GLO 40 Chains or 2640 feet GLO 40 Chains or 2640 Feet
 Measure 2687.57 feet Measure 2685.40 feet

C. Description of monument for corner and accessories established to perpetuate locating the position of the corner:

I recommend that a standard 3/4" Iron Rod with a standard Macomb County Remonumentation Cap marked Act 345 23505 in the existing monument box.

N05W 52.42' Found PK with tag 17635 East face Utility Pole
 N30°E 59.83' Top Hydrant
 S20°E 50.70' Top hydrant
 S00°W 51.21' Found nail with tag 17635 in East face Utility Pole

ACCEPTED BY THE MACOMB COUNTY SURVEY BOARD
 AS THE OFFICIAL CORNER UNDER MICHIGAN
 ACT 345 OF 1990 AT A MEETING HELD
 11/21/00

 WILLIAM E. SODERBERG, P.S., CHAIRMAN

The selected location is accepted by me and is generally accepted by Professional Surveyors as the best position of the original corner.

Signed by John R. Fenn
 Surveyor's Michigan License No. 23505



Date 12-19-2000

B-03

ERIN TOWNSHIP

T.1N.,R.13E.

SOUTH QUARTER CORNER SECTION 6

NORTH QUARTER CORNER SECTION 7

B-03 ERIN TOWNSHIP

RECORDED INFORMATION:

GLO: 1817 Wampler No evidence of original corner

LCRC'S

1973	Robert L. Smith 16052	L.2459,P.582 Found PK and Cap
	S.45°E. 35.15'	Fire Hydrant
	N.30°E. 59.85'*	Fire Hydrant Found
1990	Soderberg 17635	L.4888,P.317 Found PK nail
	North 52.58'*	PK nail /tag 17635 East face Utility Pole found
	NE 59.85'*	Top of Hydrant found
	SE 34.25'	Top of Hydrant
	South 51.35'*	PK nail/tag 17635 East face Utility Pole found
1991	Frank DeDecker 8386	L.5055,P.837 Fd PK with washer
	AZ 33° 59.78'*	Top nut hydrant found
	AZ 162° 105.43'*	NW corner of house #16020 (brick) found
	AZ 187° 51.32'*	Nail with tag 17635 in East face Util. Pole found
	AZ 359° 52.55'*	Nail with tag 17635 in NE face Utility Pole found
1998	Wright 40165	L.8767,P.681 Found 3/4" bar in monument box
	SSE 50.75'*	Centerline top hydrant found
	NNE 59.80'*	Centerline top hydrant found
	S 51.25'*	Nail w/disk 17635 E'ly side U. pole found
	N 52.50'*	Nail w/disk 17635 E'ly side U pole found

PLATS

1924	Eyster's Fraser Gardens No.1	L7, P48
1955	The Van Marcke Subdivision	L33, P29
1978	Edison Industrial Park Subdivision	L73, P29-30

FIELD EVIDENCE:

The corner has been perpetuated by a 1/2" Iron in a monument box near the centerline of 13 Mile Road. Irons found to the Northeast and Southeast confirmed the location. 13 Mile Road is a concrete surface. There is Brick Wall to the North and a fence to the South.

RECOMMENDATION:

I recommend setting the standard Macomb County Remonumentation Cap stamped 23505 on the found 1/2" iron in the existing monument box.

DISTANCES:

DISTANCES:

B-03 TO A-03

GLO 40 chains or 2640 feet

Measure 2687.57 feet

B-03 to C-03

GLO 40 chains or 2640'

Measure 2685.40 feet

WITNESSES:

N05°W 52.42'

N30°E 59.83'

S20°E 50.70'

S00°W 51.21'

Found PK with 17635 tag in East face Utility Pole

Top of Hydrant

Top of Hydrant

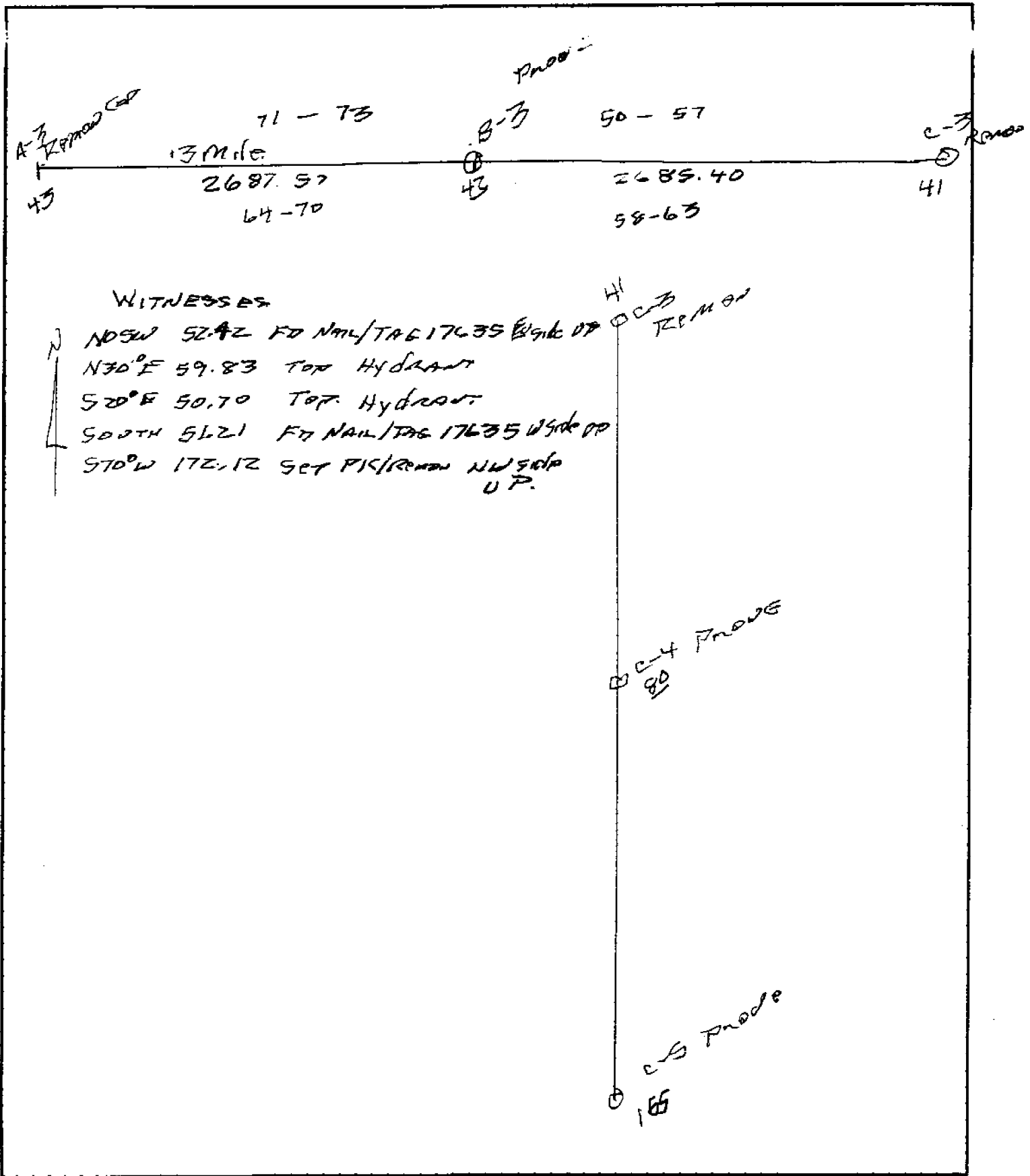
Found nail with tag 17635 in East face Utility Pole



FENN & ASSOCIATES, INC.

LAND SURVEYING & CIVIL ENGINEERING
42802 MOUND ROAD
STERLING HEIGHTS, MI 48314
PHONE (810) 254-9577 • FAX (810) 254-9020

JOB NO. 00-4600	SHEET 9	LOT #
DATE	SCALE	SUB.
FIELD BY	JOB DESC.	



LAND CORNER RECORDATION CERTIFICATE
Filing Requirement of Act 74, Mich. P.A. 1970
 ERIN TOWNSHIP

For corners in

MACOMB Located In: _____ Corner Code # _____
 (County)

1. Public Land Survey T 1N R 13E B-03
 T _____ R _____
 T _____ R _____
 T _____ R _____

2. Property Controlling S _____ T _____ R _____
 in Section S _____ T _____ R _____

3. Miscellaneous S _____ T _____ R _____
 Property in Sec. S _____ T _____ R _____

4. Lot No. _____, Recorded Plat _____

Register of Deeds Stamp & File Number

5. Private Claims _____

I, JOHN R. FENN in a field survey on September 25, 2000 do hereby certify that under requirements of P.A. 74, Michigan P.A. of 1970, the corner points mentioned in lines 1 and 2 above were in conformance with regulations and rules therefore as required in the current manual of survey instructions of the United States Department of the Interior, Bureau of Land Management or by a decree of a Court of Law and /or that the corner points mentioned in lines 3, 4 and 5 above were in conformance with the rules of the Michigan Board of Land Surveyors or by a Decree of a Court of Law; established, re-established, monumented, re-monumented, recovered, found as expressed below:

NOTE: Not more than 4 corners, all in the same town and range, may be recorded on this certificate.

	A	B	C	D	E	F	G	H	I	J	K	L	M
1													
2		6		5		4		3		2		1	
3		X											
4		●		8		9		10		11		12	
5													
6		18		17		16		15		14		13	
7													
8		19		20		21		22		23		24	
9													
10		30		29		28		27		26		25	
11													
12		31		32		33		34		35		36	

A. Description of original monument and accessories and/or subsequent restoration:

Glo 1817 Wampler No evidence of original corner
 1973 LCRC Robert L. Smith 16052 L2459, P582 Found PK with Cap
 1990 LCRC Soderberg 17635 L4888, P317 Found Pk nail
 1991 LCRC Frank DeDecker 8386 L5055, P837 Found PK with washer
 1998 LCRC Wright 40165 L8767, P681 Found 3/4" bar in monument box

Plats
 1924 Eyster's Fraser Gardens No. 1 L7, P48
 1955 The Van Marcke Subdivision L33, P29
 1978 Edison Industrial Park Subdivision L73, P29-30

B. Description of corner evidence found and/or method applied in restoring or reestablishing corner:

I found an iron in a monument box near the centerline of 13 Mile Road (concrete). The Iron matches several witnesses from the LCRC recorded for this location and irons in the Subdivision tied to this corner to the East. There is a brick wall to the North and a fence line to the South.

Distances: B-03 to A-03 B-03 to C-03
 GLO 40 Chains or 2640 feet GLO 40 Chains or 2640 Feet
 Measure 2687.57 feet Measure 2685.40 feet

C. Description of monument for corner and accessories established to perpetuate locating the position of the corner:

I recommend that a standard 3/4" Iron Rod with a standard Macomb County Remonumentation Cap marked Act 345 23505 in a new monument box be located at the determined position.

N05W 52.42' Found PK with tag 17635 East face Utility Pole
 N30°E 59.83' Top Hydrant
 S20°E 50.70' Top hydrant
 S00°W 51.21' Found nail with tag 17635 in East face Utility Pole

The selected location is accepted by me and is generally accepted by Professional Surveyors as the best position of the original corner.

Signed by _____ Date _____

Surveyor's Michigan License No. 23505

LAND CORNER RECORDATION CERTIFICATE

FILING REQUIREMENT OF ACT 74, MICH. P.A. 1970

CITY OF FRASER, MACOMB COUNTY, MICHIGAN

A222460

LIBER 2459 PAGE 582

FOR CORNERS OF: SW 1/4	LOCATED IN: Sec. 6	CORNER CODE NUMBER
1. PUBLIC LAND SURVEY	T. 1 N. R. 13 E. XX	B-2
2. PROPERTY CONTROLLING IN SECTION	T. S. R. W.	B-3
3. MISCELLANEOUS PROPERTY IN SECTION	T. S. R. W.	
4. LOT NO. _____	RECORDED PLAT _____	
5. PRIVATE CLAIMS _____		

RECORDED IN MACOMB COUNTY
RECORDS AT: 11:38a M.
DEC - 7 1973

Edna H. Hill
CLERK - REGISTER OF DEEDS
MACOMB COUNTY, MICHIGAN

REGISTER OF DEEDS STAMP AND
FILING NUMBER

I, Robert L. Smith do hereby certify that under requirements of P.A. 74, Michigan P.A. of 1970, the corner points mentioned in lines 1 and 2 above (identified with circles on index code diagram - over) were, in a field survey on Sept. 1973, established, re-established, monumented, re-monumented, recovered or restored as expressed below and in conformance with regulations and rules therefore as required in the current manual of survey instructions of the United States Department of the Interior, Bureau of Land Management or by a decree of a court of law. Furthermore, that the corner points mentioned in lines 3, 4 and 5 above were, in a field survey on _____ 19____, found, recovered, restored, established or re-established as expressed below and in conformance with the rules of the Michigan State Board of Registration for Land Surveyors or, by a Decree of a Court of law:

A. Description of original monument and accessories and/or subsequent restoration:

B. Description of corner evidence found and/or method applied in restoring or re-establishing corner:

- B-2 (Center post) Found 1/2" iron
- B-3 (South 1/4 corner) Found P.K. nail and cap

C. Description of monument for corner and accessories established to perpetuate locating the position of the corner:

- | | | |
|-----|----------------------|-----------------------------------|
| B-2 | N. 45° E. 28.08 feet | Fire Hydrant |
| | South 26.62 feet | North edge of sidewalk |
| | S. 75° E. 92.05 feet | West edge of sanitary manhole rim |
| B-3 | S. 45° E. 35.15 feet | Fire Hydrant |
| | N. 30° E. 59.85 feet | Fire Hydrant |

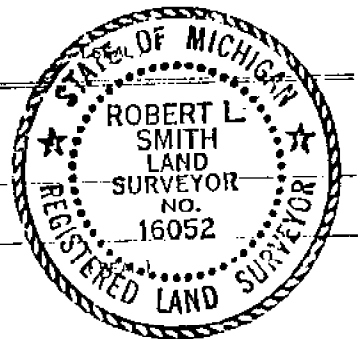
SIGNED BY Robert L. Smith DATE Dec. 1, 1973

SURVEYOR'S MICHIGAN REGISTRATION NO. 16052

FOR STATE AND UNITED STATES AGENCIES:

SIGNED BY _____ DATE _____
CHIEF OF SURVEY PARTY

APPROVED AND SIGNED BY _____ DATE _____
MICHIGAN REGISTERED LAND SURVEYOR



00364

B472459

LAND CORNER RECORDATION CERTIFICATE
Filing Requirement of Act 74, Mich. P.A. 1970

For corners in
MACOMB COUNTY
(County)

CITY OF ROSEVILLE
Located In ERIN TWP. Corner Code ##

RECORDED IN MACOMB COUNTY
RECORDS AT: 9:56 a.m.

JUN - 8 1990

Edna Hill

CLERK - REGISTER OF DEEDS
MACOMB COUNTY, MICHIGAN

Register of Deeds Stamp & File Number

- 1. Public Land Survey T 1N R 13E B-3
T _____ R _____
T _____ R _____
T _____ R _____
- 2. Property Controlling S _____ T _____ R _____
in Section S _____ T _____ R _____
- 3. Miscellaneous S _____ T _____ R _____
Property in Sec. S _____ T _____ R _____

- 4. Lot No. _____, Recorded Plat _____
- 5. Private Claims _____

	A	B	C	D	E	F	G	H	I	J	K	L	M
2	6	5	4	3	2	1							
3	●												
4	7	8	9	10	11	12							
5													
6	18	17	16	15	14	13							
7													
8	19	20	21	22	23	24							
9													
10	30	29	28	27	26	25							
11													
12	31	32	33	34	35	36							
13													

William E. Soderberg in a field survey on January 8, 1990, 19____, do hereby certify that under requirements of P.A. 74, Michigan P.A. of 1970, the corner points mentioned in lines 1 and 2 above were in conformance with regulations and rules therefore as required in the current manual of survey instructions of the United States Department of the Interior, Bureau of Land Management or by a decree of a Court of Law and/or that the corner points mentioned in lines 3, 4 and 5 above were in conformance with the rules of the Michigan Board of Land Surveyors or by a Decree of a Court of Law; established, re-established, monumented, re-monumented, recovered, found as expressed below:

NOTE: Not more than 4 corners, all in the same town and range, may be recorded on this certificate.

A. Description of original monument and accessories and/or subsequent restoration:

B-1: No evidence of original G L O notes found.

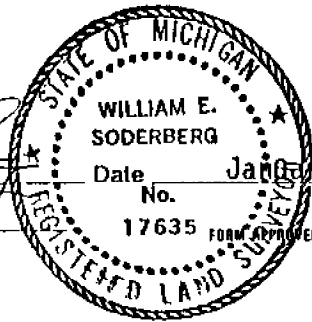
B. Description of corner evidence found and/or method applied in restoring or reestablishing corner:

B-1: A FOUND PK NAIL IN THE CENTERLINE OF 13 MILE ROAD.

C. Description of monument for corner and accessories established to perpetuate locating the position of the corner:

- B-1: A found PK nail in the centerline of 13 Mile Road. The North 1/4 Post of Section 7.
N 52.58' to a found 1" AEW Tag #17635 in the East face of a utility pole.
NE 59.85' to the top of a hydrant.
SE 34.25' to the top of a hydrant.
S 51.35' to a found 1" AEW Tag #17635 in the East face of a utility pole.

Signed by *William E. Soderberg*
Surveyor's Michigan License No. 17635



LAND CORNER RECORDATION CERTIFICATE
Filing Requirement of Act 74, Mich. P.A. 1970

RECORDED IN MACOMB COUNTY
RECORDS AT: 9'079. M.

For corners in

<u>Macomb</u> <small>(County)</small>	Located In:	Corner Code =#
1. Public Land Survey	T <u>1N</u> R <u>13E</u>	<u>B-3</u>
	T _____ R _____	_____
	T _____ R _____	_____
	T _____ R _____	_____
2. Property Controlling in Section	S _____ T _____ R _____	_____
	S _____ T _____ R _____	_____
3. Miscellaneous Property in Sec.	S _____ T _____ R _____	_____
	S _____ T _____ R _____	_____

MAR 12 1991

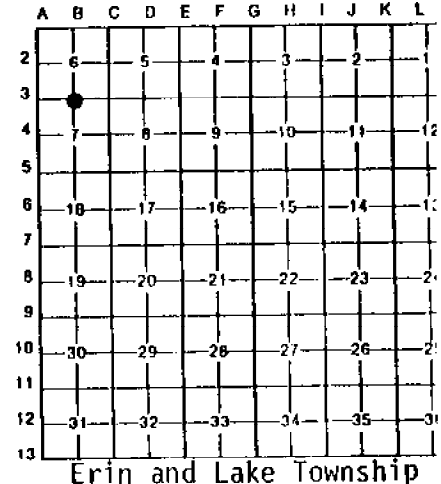
Edna M. ...
CLERK - REGISTER OF DEEDS
MACOMB COUNTY, MICHIGAN

Register of Deeds Stamp & File Number

- 4. Lot No. _____, Recorded Plat _____
- 5. Private Claims _____

I, Frank J. DeDecker, in a field survey on February 28, 19 91, do hereby certify that under requirements of P.A. 74, Michigan P.A. of 1970, the corner points mentioned in lines 1 and 2 above were in conformance with regulations and rules therefore as required in the current manual of survey instructions of the United States Department of the Interior, Bureau of Land Management or by a decree of a Court of Law and/or that the corner points mentioned in lines 3, 4 and 5 above were in conformance with the rules of the Michigan Board of Land Surveyors or by a Decree of a Court of Law; established, re-established, monumented, re-monumented, recovered, found as expressed below.

NOTE: Not more than 4 corners, all in the same town and range, may be recorded on this certificate.



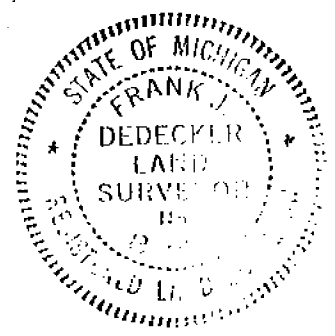
A. Description of original monument and accessories and/or subsequent restoration:
 B-3 PK nail in c 13 Mile Road
 North, 52.58', AEW tag #17635 in E.Face U.P.
 NE, 59.85', top of hydrant
 SE, 34.25', top of hydrant
 South, 51.35', AEW tag #17635 in E.Face U.P.

Above information from Anderson, Eckstein & Westrick, Inc. field notes dated January 1990

B. Description of corner evidence found and/or method applied in restoring or reestablishing corner:
 B-3 Found PK nail in c of 13 Mile Road from above witnesses

C. Description of monument for corner and accessories established to perpetuate locating the position of the corner:
 B-3 S. 1/4 corner Section 6, found PK nail
 Az. 33°, 59.78' c top nut on hydrant
 Az. 162°, 105.43', NW corner of house #16020 (brick)
 Az. 187°, 51.32', nail with RLS tag #17635 in east face U.P.
 Az. 359°, 52.55', nail with RLS tag #17635 in NE face U.P.

Azimuths are from corner to accessory

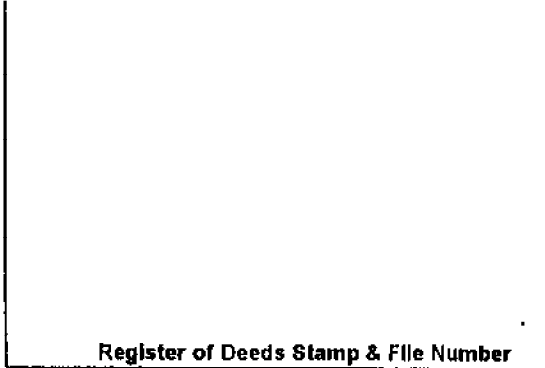


Signed by Frank J. DeDecker
 Surveyor's Michigan License No. 8386

Date 3-7-91

LAND CORNER RECORDATION CERTIFICATE
 Filing Requirement of Act 74, Mich. P.A. 1970

For corners in Macomb (County)	Located In:	Corner Code #
1. Public Land Survey	T 1N. R 13E.	A-3, B-3
	T _____ R _____	_____
	T _____ R _____	_____
	T _____ R _____	_____
2. Property Controlling in Section	S _____ T _____ R _____	_____
	S _____ T _____ R _____	_____
3. Miscellaneous Property in Sec.	S _____ T _____ R _____	_____
	S _____ T _____ R _____	_____



4. Lot No. _____, Recorded Plat _____
 5. Private Claims _____

I, Jeffrey A. Wright, in a field survey on 1 December, 19 98 do hereby state that under requirements of P.A. 74, Michigan P.A. of 1970, the corner points mentioned in lines 1 and 2 above were in conformance with regulations and rules therefore as required in the current manual of survey instructions of the United States Department of the Interior, Bureau of Land Management or by a decree of a Court of Law and/or that the corner points mentioned in lines 3, 4 and 5 above were in conformance with the rules of the Michigan Board of Land Surveyors or by a Decree of a Court of Law; established, re-established, monumented, recovered, found as expressed below:

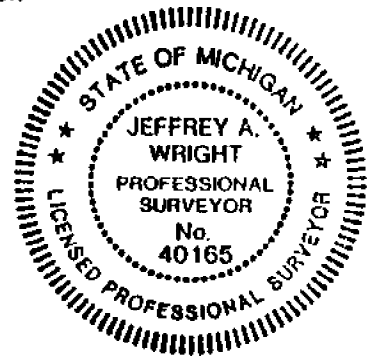
NOTE: Not more than 2 corners, all in the same town and range, may be recorded on this certificate.

	A	B	C	D	E	F	G	H	I	J	K	L
1												
2		6		5		4		3		2		1
3												
4		7		8		9		10		11		12
5												
6		18		17		16		15		14		13
7												
8		19		20		21		22		23		24
9												
10		30		29		28		27		26		25
11												
12		31		32		33		34		35		36
13												

A. Description of original monument and accessories and/or subsequent restoration:

B. Description of corner evidence found and/or method applied in restoring or reestablishing corner:

- A-3 F. Remonumentation marker #28408 in monument box, as previously recorded
- B-3 F. 3/4" bar in monument box



C. Description of monument for corner and accessories established to perpetuate locating the position of the corner:

- A-3 F. Remonumentation marker #28408
 - B-3 F. 3/4" bar
- 62.69' NW to PK w/disk #28408/30081 in NE side U. pole
 70.22' SW to PK w/disk #28408/30081 in SE side U. pole
 71.88' SE to PK w/disk #28408/30081 in NE side U. pole
 64.21' NE to MAG nail NW side U. pole
 71.76' NE to centerline top hydrant
- 50.75' SSE to centerline top hydrant
 59.80' NNE to centerline top hydrant
 51.25' S. to nail w/disk #17635 E'ly side U. pole
 52.50' N. to nail w/disk #17635 E'ly side U. pole
- FOUND ANOTHER NAIL/W/ WASHER "ROCK POINT" "MCA"*

Signed by Jeffrey A. Wright Date: 21 DECEMBER 1998
 Surveyor's Michigan License No. 40165