

C152281

LAND CORNER RECORDATION CERTIFICATE
Filing Requirement of Act 74, Mich. P.A. 1970

94 DEC 14 AM 10:55

CARMEL M. BAUGH
REGISTER OF DEEDS
MACOMB COUNTY, MI

MACOMB

(County)

Located In:
ERINLAKE

Corner Code #

Public Land Survey

T 1N R 13E

B-1

Property Controlling
in Section

S T R

Miscellaneous

S T R

Property in Sec.

S T R

LIBER 6527 PAGE 858

Register of Deeds Stamp & File Number

Lot No. Recorded Plat
Private Claims

Grid table with columns A-M and rows 2-13. Cell B2 contains a dot.

STEVEN E. DUNN, in a field survey on MARCH 20, 19 94, hereby certify that under requirements of P.A. 74, Michigan P.A. of 1970, the corner points mentioned in lines 1 and 2 above were in conformance with regulations and rules therefore required in the current manual of survey instructions of the United States Department of the Interior, Bureau of Land Management or by a decree of a Court of Law and /or that the corner points mentioned in lines 3, 4 and 5 above were in conformance with the rules of the Michigan Board of Land Surveyors or by a Decree of a Court of Law; established, re-established, monumented, re-monumented, recovered, found as expressed below:

ACCEPTED BY THE MACOMB COUNTY SURVEY PEER GROUP AS THE OFFICIAL CORNER UNDER MICHIGAN PUBLIC ACT 345 OF 1990 AT A MEETING HELD ON 10-4-94

Signature of William E. Soderberg, P.S., Chairman

WILLIAM E. SODERBERG, P.S., CHAIRMAN

Description of original monument and accessories and/or subsequent restoration:

GLO POST - NO EVIDENCE OF ORIGINAL CORNER FOUND

GLO ORIGINAL SURVEY PERFORMED BY PRESTON 2-18-1818

Table with columns: L.C.R.C., NAME AND NUMBER, DESCRIPTION, DATE. Lists survey details for William J. Coulter and Gerald L. Landwehr.

Description of corner evidence found and/or method applied in restoring or reestablishing corner:

B-1 1/4 CORNER COMMON TO B-13 CLINTON TOWNSHIP

FOUND 1/2" IRON ROD IN MONUMENT BOX IN CONCRETE PAVEMENT. VERIFIED LOCATION BY COMPARING FOUND WITNESS TIES OF L.C.R.C. LISTED BELOW AND COMPARING DISTANCE FROM B-1 TO A-1 OF PLATS BORIS PARK SUB AND HARRINGTON ESTATES SUB AND DISTANCE FROM B-1 TO C-1 OF ASSESSOR'S PLAT NO. 3.

Table with columns: L.C.R.C., NAME AND NUMBER, DISTANCE, BEARING, DESCRIPTION. Lists found witness ties.

FIELD MEASUREMENTS AND RECORDED DISTANCES

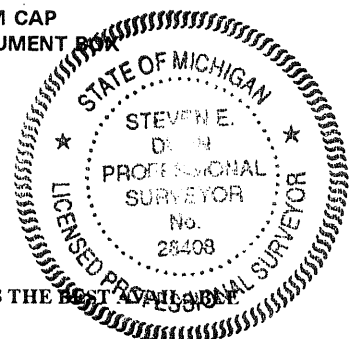
B-1 TO A-1 = 2672.57' (M.) 2672.72' (R.) HARRINGTON ESTATES SUBDIVISION AND BORRIS PARK SUBDIVISION 2640.00' G.L.O. (R.)
B-1 TO C-1 = 2697.74' (M.) 2697.50' (R.) ASSESSOR'S PLAT NO. 3 2640.00' G.L.O. (R.)

Description of monument for corner and accessories established to perpetuate locating the position of the corner:

B-1 T.1N., R.13E. I REPLACED 1/2" IRON ROD WITH A 3/4" x 24" IRON ROD WITH 2" DIAMETER ALUMINUM CAP STAMPED "MACOMB COUNTY MONUMENT MI. ACT 345 #28408" IN AN EXISTING MONUMENT BOX IN CONCRETE PAVEMENT.

WITNESSES

Table with columns: BEARING, DISTANCE, DESCRIPTION. Lists witness locations and findings.

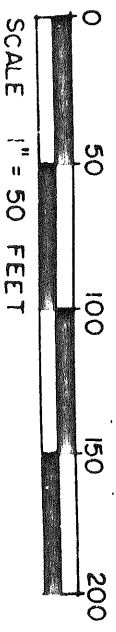


THE SELECTED LOCATION IS ACCEPTED BY ME AND IS GENERALLY ACCEPTED BY PROFESSIONAL SURVEYORS AS THE BEST AVAILABLE EVIDENCE OF THE POSITION OF THE ORIGINAL CORNER

Signed by Steven E. Dunn Date Nov. 9, 1994
Surveyor's Michigan License No. 28408

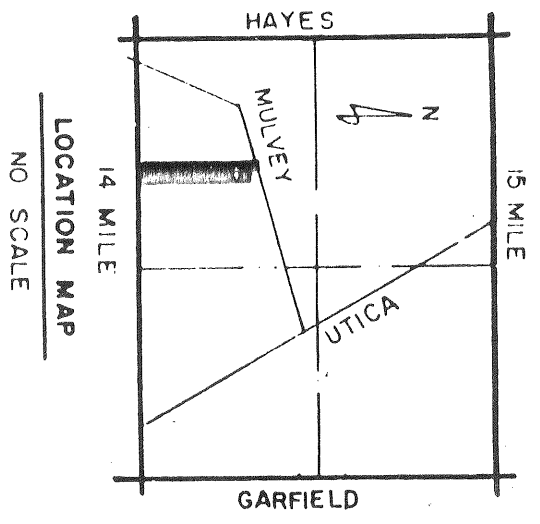
HARRINGTON ESTATES SUBDIVISION

PART OF THE SOUTHWEST 1/4 OF SECTION 31, T. 2N., R. 13E., CITY OF FRASER, MACOMB COUNTY, MICHIGAN.



PLAT LEGEND

ALL DIMENSIONS ARE IN FEET
 ALL CURVILINEAR DIMENSIONS ARE SHOWN ALONG THE ARC
 (R) DENOTES RADIAL (N.R.) DENOTES NOT RADIAL
 THE SYMBOL "o" DENOTES A MONUMENT WHICH IS A 1/2" DIAMETER STEEL BAR 36" LONG, ENCASED IN 4" DIAMETER CONCRETE.
 ALL LOT MARKERS ARE 1/2" IRON PIPES AND ARE 18" LONG
 ALL BEARINGS ARE IN RELATION TO THE BEARING OF THE SOUTH LINE OF SECTION 31 T. 2N., R. 13E., (AS RECORDED IN LIBER 4228 PAGE 705-707) MACOMB COUNTY ROAD COMMISSION DRAWING NO. 1433



EXAMINED AND APPROVED

APR 26, 1993

BY THE DEPARTMENT OF COMMERCE

By *Richard L. Jones*
 Richard E. Lomen, PLS
 Surveyor, First Section

UNPLATTED

N. 02° 25' 15" W. 1002.05'

2.00	62.00	62.00	62.00	62.00	62.00
SMT.	FOR	PUB.	UTIL. AND	SURFACE	DRAINAGE
	6' PVT. ESMT. FOR PUB. UTILITIES	10	0	0	0
	N. 87° 34' 45" E.	N. 87° 34' 45" E.	N. 87° 34' 45" E.	N. 87° 34' 45" E.	N. 87° 34' 45" E.
	149.58	149.58	149.58	149.58	149.58
	FOR	PUB.	UTILITIES		
52.00	62.00	62.00	62.00	62.00	62.00

MATCH LINE

N. 02° 25' 15" W. 878.78'

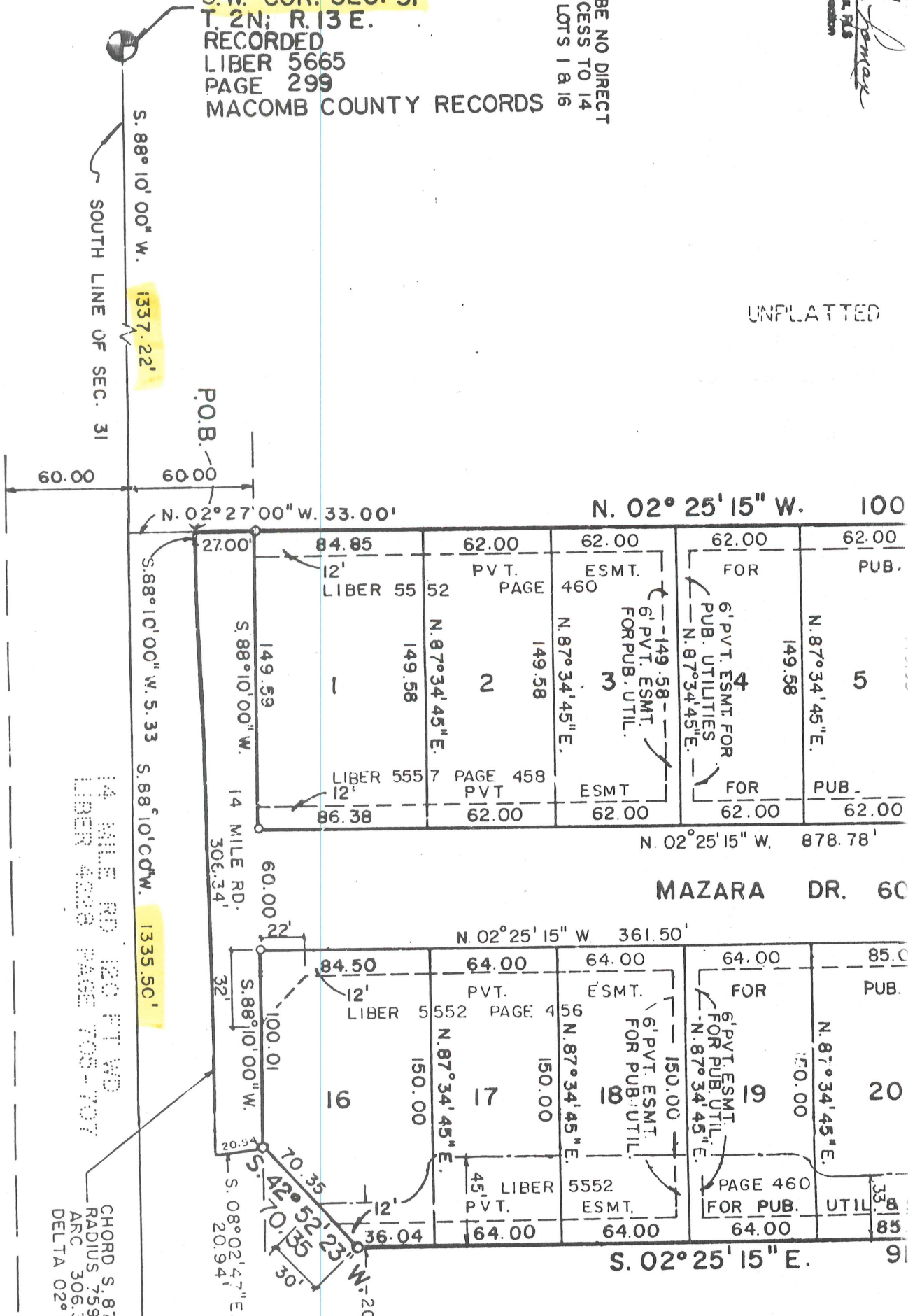
NOTE: THERE SHALL BE NO DIRECT

Richard E. Lerner
Richard E. Lerner, P.L.S.
Manager, Plat Section

NOTE:
THERE SHALL BE NO DIRECT
VEHICULAR ACCESS TO 14
MILE RD. FROM LOTS 1 & 16

S.W. COR. SEC. 31
T. 2N; R. 13 E.
RECORDED
LIBER 5665
PAGE 299
MACOMB COUNTY RECORDS

UNPLATTED

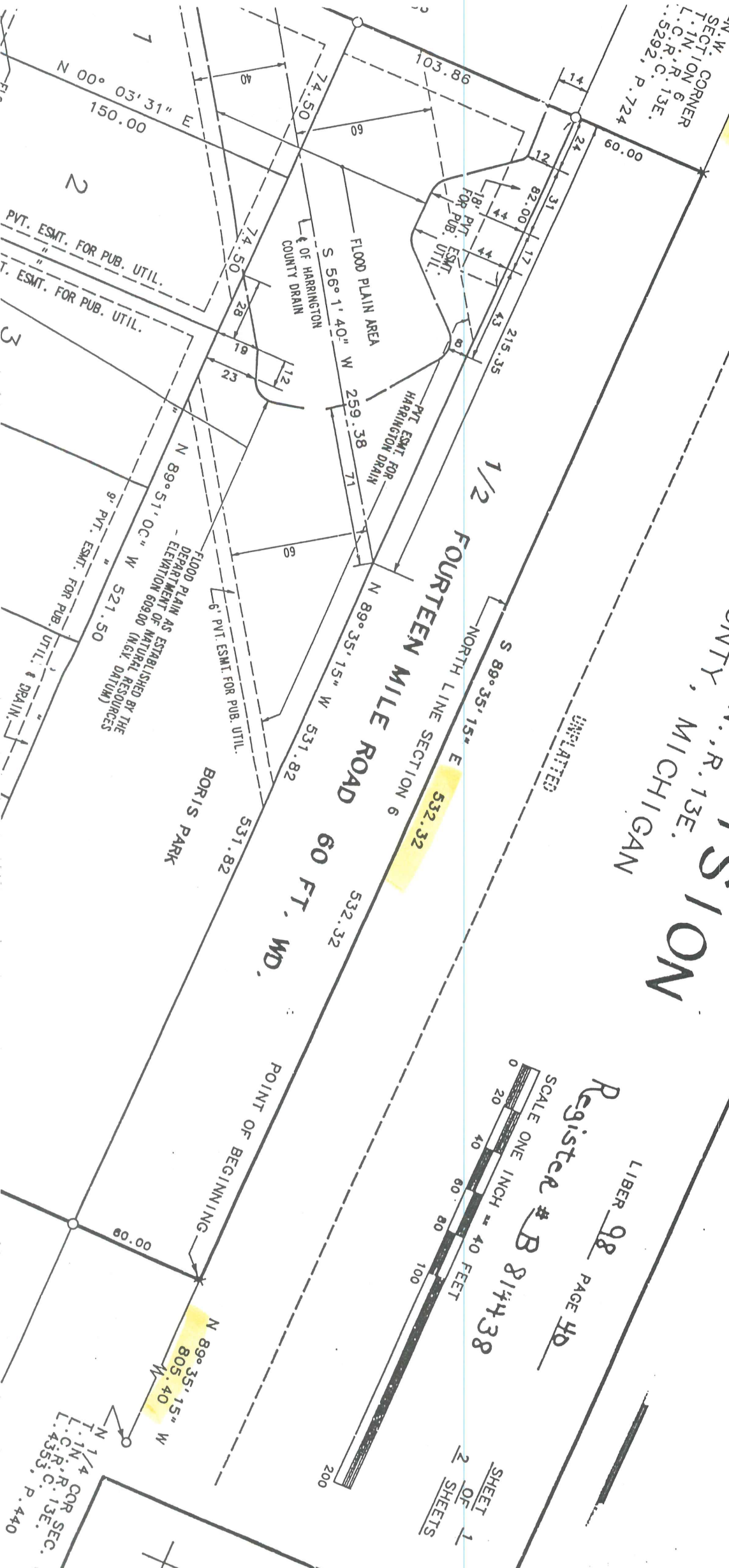


Liber 100 Page 1

DANNA MAURO & ASSOC.
ARCHITECTS ENGINEERS
CLINTON TWN. MI 48038

BORIS PARK
 PART OF THE N.W. 1/4 OF SECTION 6 T.1N., R.13E.
 CITY OF FRASER, MACOMB COUNTY, MICHIGAN

SUBDIVISION



UNPLATTED

LIBER 98 PAGE 40
 Register # B 814438
 SCALE ONE INCH = 40 FEET
 SHEET 2 OF 1 SHEETS

T.1N. 1/4 COR. SEC. 6
 L.C.R. C. 13E.
 4353, P. 440

LAND CORNER RECORDATION CERTIFICATE
Filing Requirement of Act 74, Mich. P.A. 1970

RECORDED IN MACOMB COUNTY
RECORDS AT: 3:41 P. M.

DEC - 1 1992



CLERK - REGISTER OF DEEDS
MACOMB COUNTY, MICHIGAN

Register of Deeds Stamp & File Number

For corners in
Macomb
(County)

Located In:	Corner Code #/
City of Fraser,	Sec. 31
T <u>2</u> R <u>13</u> E.	A-13
T <u>2</u> R <u>13</u> E.	B-13
T _____ R _____	_____
T _____ R _____	_____
S _____ T _____ R _____	_____
S _____ T _____ R _____	_____
S _____ T _____ R _____	_____
S _____ T _____ R _____	_____

1. Public Land Survey

2. Property Controlling
in Section

3. Miscellaneous
Property in Sec.

4. Lot No. _____, Recorded Plat _____

5. Private Claims _____

	A	B	C	D	E	F	G	H	I	J	K	L	M
2	6		5		4		3		2		1		
3													
4	7		8		9		10		11		12		
5													
6	18		17		16		15		14		13		
7													
8	19		20		21		22		23		24		
9													
10	30		29		28		27		26		25		
11													
12	31		32		33		34		35		36		
13													

I, Gerald J. Landwehr, in a field survey on November 27, 19 92, do hereby certify that under requirements of P.A. 74, Michigan P.A. of 1970, the corner points mentioned in lines 1 and 2 above were in conformance with regulations and rules therefore as required in the current manual of survey instructions of the United States Department of the Interior, Bureau of Land Management or by a decree of a Court of Law and/or that the corner points mentioned in lines 3, 4 and 5 above were in conformance with the rules of the Michigan Board of Land Surveyors or by a Decree of a Court of Law; established, re-established, monumented, re-monumented, recovered, found as expressed below:

NOTE: Not more than 4 corners, all in the same town and range, may be recorded on this certificate.

A. Description of original monument and accessories and/or subsequent restoration:

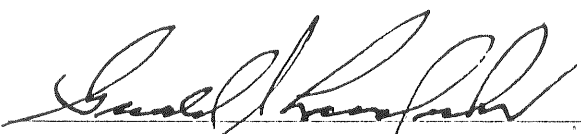
B. Description of corner evidence found and/or method applied in restoring or reestablishing corner:

- A - 13, 1/2" rerod in Mon Box
- B - 13, 1/2" rerod in Lon Box

C. Description of monument for corner and accessories established to perpetuate locating the position of the corner:

- A-13 P.K. Nail in Pow Pole. N.50°E. 64.56', P.K. Nail in Pow Pole S.60°E. 90.89', O.C.R.C. P.K. Nail in Pow Pole S.45°W. 74.99' O.C.R.C. P.K. Nail in Pow Pole N.45°W. 60.80 ft.
- B-13 P.K. Nail Westside 36" Willow Tree S.10°W. 31.80'
Back of Conc Curb - Due South 16.40'
P.K. Nail Westside Pow Pole S.40°E. 28.00'
P.K. Nail Northeast Side 20" Dogwood Tree S.50°E. 51.22 ft.



Signed by 

Date November 30, 1992

Surveyor's Michigan License No. 10065

LAND CORNER RECORDATION CERTIFICATE

FILING REQUIREMENT OF ACT 74, MICH. P.A.1970

1749665

FOR CORNERS OF --:	LOCATED IN --:	CORNER CODE NUMBER
1. PUBLIC LAND SURVEY _____ T. <u>2</u> N. S., R. <u>13</u> E. W.		B-12 & B-13
2. PROPERTY CONTROLLING IN SECTION <u>31</u> , T. <u>2</u> N. S., R. <u>13</u> E. W.		Point on N.S. 1/4 Ln.
3. MISCELLANEOUS PROPERTY IN SECTION _____, T. _____ N. S., R. _____ E. W.		
4. LOT NO. _____, RECORDED PLAT _____		
5. PRIVATE CLAIMS _____		

RECORDED IN MACOMB COUNTY RECORDS AT: 12-41 p.

AUG - 5 1992

Edna
CLERK - REGISTER OF DEEDS
MACOMB COUNTY, MICHIGAN

REGISTER OF DEEDS STAMP AND FILING NUMBER

I, _____ do hereby certify that under requirements of P.A. 74, Michigan P.A. of 1970, the corner points mentioned in lines 1 and 2 above (identified with circles on index code diagram - over) were, in a field survey on _____ 19____, established, re-established, monumented, re-monumented, recovered or restored as expressed below and in conformance with regulations and rules therefore as required in the current manual of survey instructions of the United States Department of the Interior, Bureau of Land Management or by a decree of a court of law. Furthermore, that the corner points mentioned in lines 3, 4 and 5 above were, in a field survey on _____ 19____, found, recovered, restored, established or re-established as expressed below and in conformance with the rules of the Michigan State Board of Registration for Land Surveyors or, by a Decree of a Court of law:

A. Description of original monument and accessories and/or subsequent restoration:

B. Description of corner evidence found and/or method applied in restoring or re-establishing corner:

B-12 (Center Sec. 31) Found "T" Iron
B-13 (S. 1/4 Corner Sec. 31) Found 1/2" Rod in Mon. Box.

Misc. Corner: P.K. nail set in new asphalt Road over Rod used previously when Road was gravel.

C. Description of monument for corner and accessories established to perpetuate locating the position of the corner:

Misc. Corner - See sketch on reverse side.
B-12 North 17.85' P.K. in 12" Apple tree.
East 2.77' P.K. set in Wood fence Post
S.E. 71.37' Corner of Condo Bldg.
South 51.46' Corner of Condo Bldg.
B-13 N.W. 115.53' S.E. Cor. House #15975
N.E. 105.92' P.K. in 18" Poplar
S.E. 27.92' P.K. in Util. Pole
W.S.W. 151.09' P.K. & Washer in Util. Pole

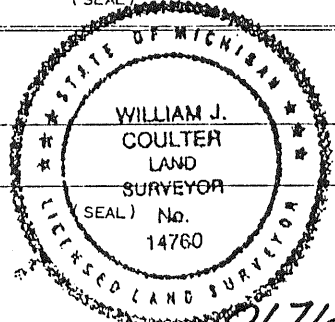
SIGNED BY William J. Coulter DATE Aug. 5, 1992

SURVEYOR'S MICHIGAN REGISTRATION NO. 14760

FOR STATE AND UNITED STATES AGENCIES:

SIGNED BY _____ CHIEF OF SURVEY PARTY DATE _____

APPROVED AND SIGNED BY _____ MICHIGAN REGISTERED LAND SURVEYOR DATE _____



SURVEYOR'S MICHIGAN REGISTRATION NO. _____

"A"
STEFFENS & SCHNEIDER'S
ADD. (L2-P83)
"B" (L2
ASSESSOR'S PLAN
ROSEMARY HOMES
"C"
ASSESSOR'S PLAN
(L14-P28)



0-1

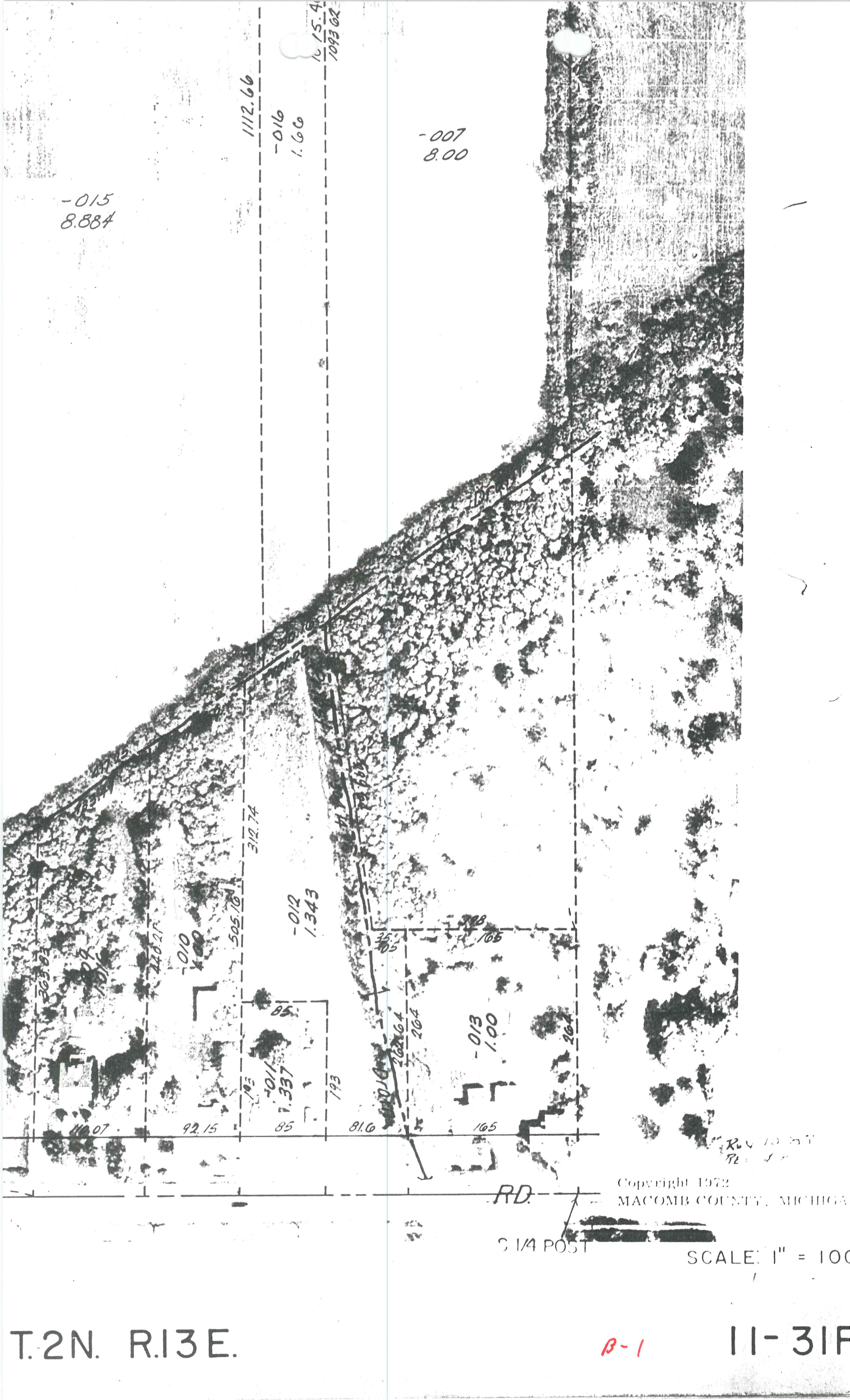
-015
8.884

1112.66

-016
1.66

-007
8.00

10/15/4
1093 62



-010
1.00

-012
1.343

-013
1.00

312.74

505.76

440.25

303.82

101

92.15

1011

1.337

193

81.6

262.64

264

165

RD.

S 1/4 POST

Copyright 1972
MACOMB COUNTY, MICHIGAN

SCALE: 1" = 100'

REV 10/27/71
REV 1/2/72

T.2N. R.13E.

B-1

11-31F

ASSESSOR'S PLAT No 3
 PART OF S. 1/2 OF S.E. 1/4 OF SECTION 31, T. 2 N. R. 13 E.
 VILLAGE OF FRASER,
 MACOMB COUNTY, MICHIGAN.

of Land platted.
 in the annexed plat of Assessor's Plat No 3 of part
 as follows: Commencing at the southeast corner
 Michigan Meridian: Thence S. 88° 12' 20" W. along
 26.9750 feet to quarter post; Thence N. 27° 40' W.
 5.147140° E. 760.66 feet; Thence N. 88° 3' 56" E. along
 Thence N. 41° 30' 20" E. along said center line
 31; Thence N. 88° 3' 56" E. 66.93 feet to one-eighth
 Thence S. 1° 55' 40" E. along said east

Approval.
 of the Village of Fraser at

Wm. R. ...
 VILLAGE CLERK.

Dedication.

KNOW ALL MEN BY THESE PRESENTS, That I, Adolph Eberlein
 Assessor of the Village of Fraser, Macomb county, State of Michigan, by virtue
 of authority in me vested by Section 51, Act 172 of 1929, having been duly
 authorized by the Village Commission, have caused the land described in
 the annexed plat to be surveyed, laid out and platted, to be known as
 Assessor's Plat No 3 of part of S. 1/2 of S.E. 1/4 of Section 31, T. 2 N. R. 13 E. Village of
 Fraser, Macomb county, Michigan; and that the streets and alleys as shown on
 said plat are now being used for such purposes.

WITNESSES
 STATE OF MICHIGAN
 COUNTY OF MACOMB
 before me, a Notary Public
 Adolph Eberlein
 who executed the above dedication, and acknowledged the same
 and deed as such Assessor.
 My commission expires Aug 1-1932

On this 3rd day of February
 Assessor of the Village of Fraser, personally came the
 Assessor for the Village of Fraser,
 and acknowledged the same

Certificate of Approval by
 This plat was approved on the 1st day of Feb 1932
 at Fraser Michigan.
 Notary Public
Wm. R. ...

Surveyor's Certificate.
 I hereby certify that the plat here
 permanent metal monuments of
 in length set in a concrete
 inches in depth have been
 streets, inters
 streets o



Town 1 North Range 13 East

Sta 12 S 63 N 8

Sta 12 S 40 E 6

No public lands East of this corner

North Boundary

East

6.58 B. Oak 24 in diam

19.00 Marsh

33.30 Lift marsh

36.00 Marsh

41.00 made 1/4 Sec cor on a willow in diam

40.50 Lift marsh

43.62 W.C. 24 in diam

10.00 made cor for sections 31, 32 on
a Kambicum 3 in diamLand 1st half mile 2nd rate last 1/2 mile2nd rate part dry Timber W.C. B. Oak

Elm Middle White Kambicum &c.

East

40.00 made 1/4 Sec cor on a Hickory in diam

66.00 W.C. 30 inches diam

10.00 made cor for sections 32, 33

on a Sycamore 40 inches diameter

Land level and dry 2nd rate Timber

W. Oak Spruce Poplar Birch Sugar &c

Wood 1/2 Spruce &c.

46.00 made 1/2 mile cor on an Elm in diam

49.00 Spruce 14 in diam

10.00 Sit part for sections 34, 33, 34

East from point which a Birch 8 in diam

bears N 115 W 11 the dist also a Birch in

diam bears N 41 E 16 the dist - Land

2nd rate level and dry Timber W. Oak

Town 1 North Range 13 East

Sugar Poplar Lynn & Mudgett Spruce

14.13 Birch 16 in diam
 20.00 Run 1/2 the course S. E.
 110.00 Made 1/2 mile cor on a Birch 10 in diam
 80.00 Set post for cor of Sections 2, 3, 34 & 35
 from which a Birch 11 in diam bears
 N 53 E 17 lks dist also an Elm 24 in
 diam bears N 5 W 31 lks distant
 Land first 1/2 mile good 2nd rate
 last half 5th rate Timber Birch Sugar
 W Oak Poplar B. Ash & Mudgett Spruce &c

20.15 W Oak 18 in diam
 30.66 Intersected Birack claim N. 123 1/2 miles
 Set post for cor of Sections 2 & 35
 from which a B. Ash 10 in diam
 bears N 77 E 4 lks dist also a
 Lynn 7 in diam bears N 52 E 7 lks
 dist Land dry good 2nd rate Timber
 Birch B. Ash Poplar &c

West Boundary

North of the first Meridian of the Territory
 Chas. of Michigan

12.34 Poplar 36 inches diameter
 40.00 Set post for cor of 1/4 Section from
 which a Sugar tree 13 inches diam
 bears South 9 lks distant
 118.62 Sycamore 36 in diam
 80.00 Set mile post for cor of sections
25 & 36 from which an Elm 10 in
 diam bears S 77 E 10 lks distant
 also a Lynn 10 in diam bears N 35
 W 20 lks dist Land first half