

LAND CORNER RECORDATION CERTIFICATE
Filing Requirement of Act 74, Mich. P.A. 1970

For corners in

MACOMB
 (County)

Located In:
 ERIN

Corner Code #

1. Public Land Survey T 1N R 13E A-13
 T R
 T R
 T R
 T R
2. Property Controlling in Section S T R
 S T R
3. Miscellaneous Property in Sec. S T R
 S T R
4. Lot No. , Recorded Plat
5. Private Claims

C0623801 LIBER:07784 PAGE:377 08:57A 12/22/1997
CARMELLA SABAUGH-MACOMB COUNTY, MI REG/DEEDS

ACCEPTED BY THE MACOMB COUNTY SURVEY PEEB GROUP AS THE OFFICIAL CORNER UNDER MICHIGAN PUBLIC ACT 345 OF 1990 AT A MEETING HELD ON 11-18-97

William E. Soderberg
 WILLIAM E. SODERBERG, P.S., CHAIRMAN

Register of Deeds Stamp & File Number

I, STEVEN E. DUNN, in a field survey on OCTOBER 14, 1997, do hereby certify that under requirements of P.A. 74, Michigan P.A. of 1970, the corner points mentioned in lines 1 and 2 above were in conformance with regulations and rules therefore as required in the current manual of survey instructions of the United States Department of the Interior, Bureau of Land Management or by a decree of a Court of Law and for that the corner points mentioned in lines 3, 4 and 5 above were in conformance with the rules of the Michigan Board of Land Surveyors or by a Decree of a Court of Law; established, re-established, monumented, re-monumented, recovered, found as expressed below

	A	B	C	D	E	F	G	H	I	J	K	L	M
2	6	5	4	3	2	1							
3													
4	7	8	9	10	11	12							
5													
6	18	17	16	15	14	13							
7													
8	19	20	21	22	23	24							
9													
10	30	29	28	27	26	25							
11													
12	31	32	33	34	35	36							
13													

NOTE: Not more than 2 corners, all in the same town and range, may be recorded on this certificate.

A. Description of original monument and accessories and/or subsequent restoration:

GLO POST-NO EVIDENCE OF ORIGINAL CORNER FOUND-ORIGINAL GLO SURVEY PERFORMED BY WILLIAM PRESTON 1817

PLATS:

L 8, P. 25	MICHAEL & JOHN SPRENGER SUB'DN	AUG. 28, 1924
L 10, P. 5	DROSTE & WALDMAN'S GOLF VISTA SUBDIVISION	SEPT. 23, 1925
L 12, P. 23	UNIVERSAL HEIGHTS SUB'DN	FEB. 5, 1927
L 45, P. 31-33	EASTWOOD PLAZA SUB'N	SEPT. 28, 1959
L 47, P. 41	A.P. #41	SEPT. 30, 1960

M.D.O.T.:

RIGHT-OF-WAY MAPS SHEETS 10 & 11 SEPT. 1981

OTHER:

L. 15965, P. 491 (W.C.R.) JOINT SURVEY-MACOMB & WAYNE CO'S.FOR BASELINE LOCATION-NOTES 4-06-1966

B. Description of corner evidence found and/or method applied in restoring or reestablishing corner:

A-13 FOUND 1/2" IRON ROD IN MONUMENT BOX IN CONCRETE PAVEMENT. CORNER IS COMMON CORNER TO M-13, T.1N, R.12E. ALSO FOUND BOAT SPIKE IN MONUMENT BOX IN CONCRETE PAVEMENT 11.45' EAST OF ABOVE CORNER. CORNER FALLS BETWEEN THIRD AND FOURTH LANES OF EASTBOUND 8 MILE ROAD.

BY COMPARING FIELD MEASUREMENTS TO RECORD MEASUREMENTS I DETERMINED THE FOUND CORNER TO THE WEST TO BE THE TOWNSHIP CORNER. M.D.O.T. RIGHT-OF-WAY MAPS, SHEETS 9-10, FIELD 50-R-2 WERE ORIGINALLY CHECKED ON 2-22-1956 AND ARE MADE REFERENCE TO ON THE FIELD NOTES RECORDED IN L. 15965, P. 491 (W.C.R.), JOINT SURVEY-MACOMB & WAYNE CO'S.-FOR BASELINE. THE RIGHT-OF-WAY MAPS LISTED ABOVE ALSO DETERMINE THE BASELINE TO FOLLOW THE GOVERNMENT CORNERS ALONG THE MACOMB COUNTY SIDE, WITH BASELINE TIES TO FOUND GOVERNMENT CORNERS ALONG THE WAYNE COUNTY SIDE. I USED THESE TIES TO DETERMINE THE BASELINE LOCATION, THE LOCATION OF GOVERNMENT CORNERS FOR ERIN TOWNSHIP AND FIELD MEASUREMENTS.

NOTE: GLO NOTES MAKE NO MENTION OF DOUBLE CORNERS ALONG THE BASELINE. HOWEVER, THE GLO PLAT OF ERIN DOES INDICATE DOUBLE CORNERS ALONG THE BASELINE.

FIELD MEASUREMENTS AND RECORD MEASUREMENTS:

A-13 TO A-12	A-13 TO B-1, T.1S., R.13E	A-13 TO B-13
GLO-40 CHAINS OR 2640.00'	M.D.O.T. RW MAP SHEETS 10 & 11 -2680.70	GLO-40 CHAINS OR 2640.00'
FIELD-2695.18'	FIELD-2680.40'	PLATS-2727.36'
		FIELD-2727.07'

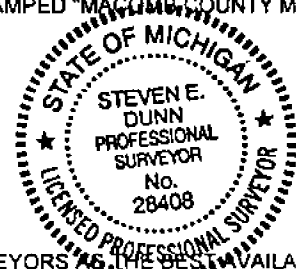
C. Description of monument for corner and accessories established to perpetuate locating the position of the corner:

A-13, T.1N., R. 13E.

I REPLACED FOUND IRON ROD WITH A 3/4x24" IRON ROD WITH A 2" DIAMETER ALUMINUM CAP STAMPED "MACOMB COUNTY MONUMENT MI.ACT 345 #28408" IN EXISTING MONUMENT BOX.

WITNESSES:

EAST-11.45'	FOUND BOAT SPIKE IN MONUMENT BOX.
N 55°E -79.47'	FOUND PK & W.C.R. WITNESS TAG IN WEST FACE 6" MAPLE
N 53°W -65.72'	SE CORNER STEEL TOWER FOR ELEC. TRANS. LINE
S 11°W - 63.33'	CUT "+" IN TOP CONCRETE CURB.
S 53°E - 81.72'	FOUND PK & W.C.R. WITNESS TAG IN SW FACE UTILITY POLE
S 53°E - 87.89'	FOUND CITY OF DETROIT CONTROL MONUMENT IN HANDHOLE



THE SELECTED LOCATION IS ACCEPTED BY ME AND IS GENERALLY ACCEPTED BY PROFESSIONAL SURVEYORS AS THE BEST AVAILABLE EVIDENCE OF THE POSITION OF THE ORIGINAL CORNER.

Signed by Steven E. Dunn
 Surveyor's Michigan License No. 28408

Date Dec. 18, 1997

MACOMB COUNTY PUBLIC LAND SURVEY
REMONUMENTATION PROGRAM

RESEARCH DOSSIER

CORNER LOCATION
T.1N., R.13E., ERIN/LAKE

ACT 74 CORNER CODE
A-13

SECTION CORNER

The Southwest Corner of Section 31. Corner is also common to the Southeast Corner of Section 36, Town 1 North, Range 12 East, Warren Township.

ORIGINAL CORNER IDENTIFICATION PER GOVERNMENT LAND OFFICE RECORDS:

Set corner post.

INTERIM CORNER IDENTIFICATION: None.

CURRENT CORNER IDENTIFICATION:

Found 1/2" iron rod in monument box in concrete pavement. Also found a boat spike in monument box in concrete pavement 11.45' East of above corner.

By comparing field measurements to record measurements I determined the found corner to the West to be the Township Corner. M.C.R.C. right-of-way maps, Sheets 9-10, File 50-R-2 were originally checked on 2-22-1956 and are made reference to on the Field notes recorded in L.15965, P.491 (Wayne County records), Joint Survey-Macomb & Wayne Co's.-for Baseline. The right-of-way maps listed above also determine the Baseline to follow the Government Corners along the Macomb County side, with Baseline ties to found Government Corners along the Wayne County side. I use these ties to determine the Baseline location, the location of Government Corners for Erin/Lake Township and field measurements.

NOTE: G.L.O. notes make no mention of double corners along the Baseline. However, the G.L.O. Plat of Erin/Lake does indicate Double corners along the Baseline.

A field measurement was made between corners.

A-13 to A-12 G.L.O.-40 chains or 2640.00'
 Field-2695.18'

A-13 to B-13 G.L.O.-40 chains or 2640.00'
 Plats-2727.36'
 Field-2727.07'

A-13 to B-1, T1N., R.13S.
 M.C.R.C. R/W map Sheets 10 & 11-2680.70'
 Field-2680.40'

SUMMARY AND RECOMMENDATIONS:

The selected location is accepted by me and is generally accepted by Professional Surveyors as the best available evidence of the corner.

MACOMB COUNTY PUBLIC LAND SURVEY

CORNER VERIFICATION CHECKLIST

RECORDED SURVEY FILE: None

LAND FILES: Composites 14-31A and E.

COUNTY SURVEYOR FILES: G.L.O. notes and plat.

LOCAL SURVEYOR FILES: None.

MUNICIPAL AGENCIES:

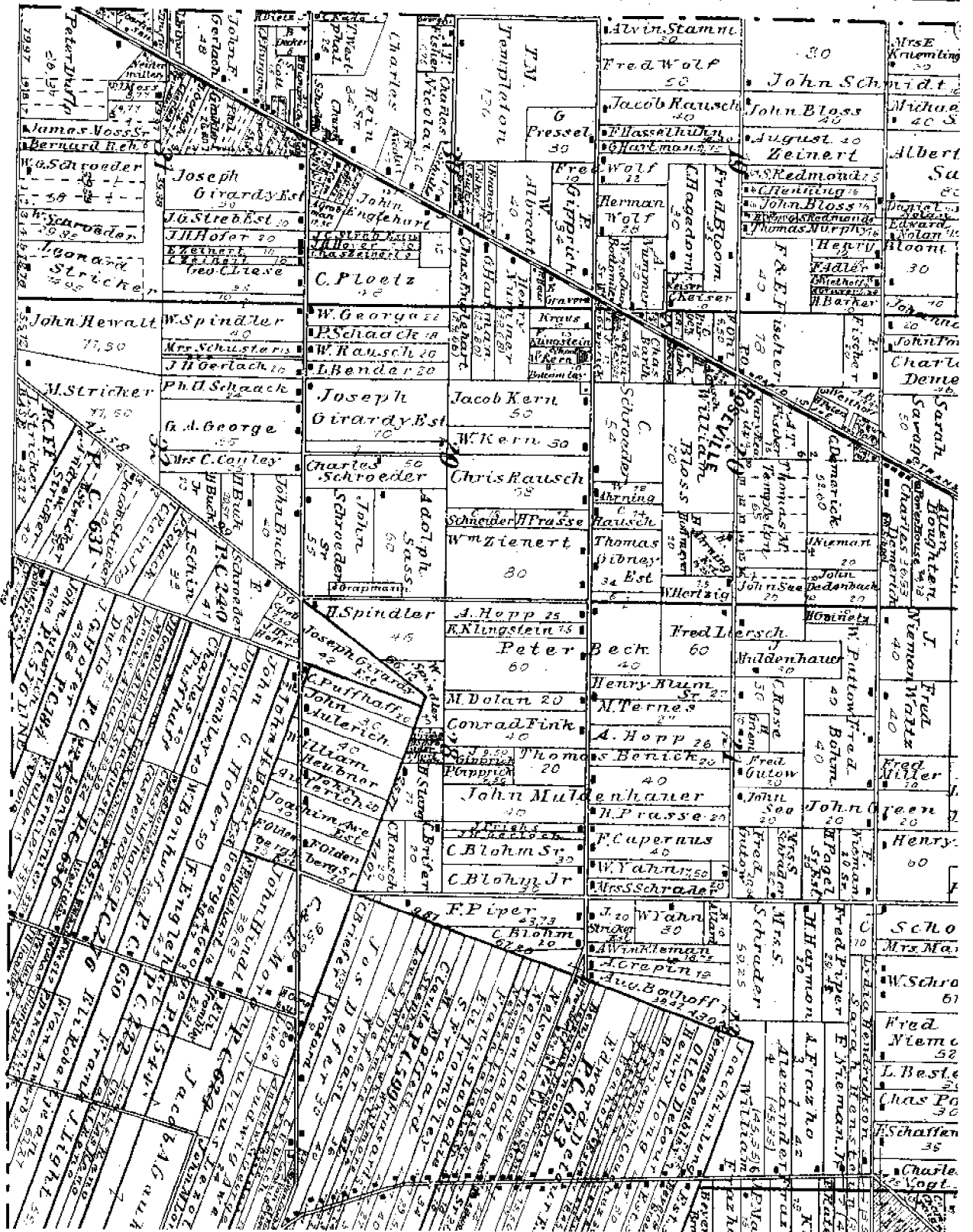
- A. MDOT: None.
- B. M.C.R.C.:
Right-of-way maps Sheets 10 & 11 Sept. 1981
- C. M.D.N.R.: None.
- D. Macomb County Register of Deeds:
 - Land Corner Recordation Certificates: None.
 - Recorded Surveys: None.
 - Recorded Condominium Documents: None.
 - Plats:
 - L.8, P.25 Michael & John Sprenger Sub. 7-28-1924
 - L.10, P.5 Droste & Waldman's Golf Vista Subdivision 9-23-1925
 - L.12, P.23 Universal Heights Sub. 2-05-1927
 - L.45, P.31-33 Eastwood Plaza Sub. 9-28-1959
 - L.47, P.41 A.P. #42 9-30-1960
- E. Wayne County Register of Deeds:
 - L.15965, P.491 Joint Survey-Macomb & Wayne Counties-Baseline Location-Notes 4-06-1966

UTILITY COMPANIES:

- A. Detroit Edison: None.
- B. Michigan Bell: None.
- C. Michigan Consolidated Gas: None.
- D. Consumers Energy Company: None.
- E. Pipeline Companies: None.
- F. City of Detroit Water Board: None.
- G. Railroads: None.

CONTACT WITH ADJOINING PROPERTY OWNERS:

No contact was made regarding this corner.



Worcester Line

East Boundary

North Between Townships N. 19 & 20

Range 12 & 13 East

12.34 Poplar 26 inches diameter

41.11 Set post for corner of Sec. 1

Sugar 12 Sp. 10 9 1/2 lbs

48.62 Sycamore 36 inches diameter

80.00 Set 1/2 mile post for corner of Section 25 & 26

Ash 10 8 7 1/2 lbs

Sycamore 10 5 1/2 lbs

Land 1/2 mile 12 1/2 posts

last half corner Timber Sugar

Ash Sycamore Birch Poplar

North Between Towns 1 & 2 W. Range

12 7 1 1/2 E

11.01 Hickory 12 inches diameter

40.00 Set 1/4 mile post

Beech 14 11 1/2 17 lbs

49.40 Poplar 48 inches diameter

80.00 Set 2 mile post for corner of Section 25 & 26

Beech 18 11 3/4 26 lbs

Maple 15 11 3/4

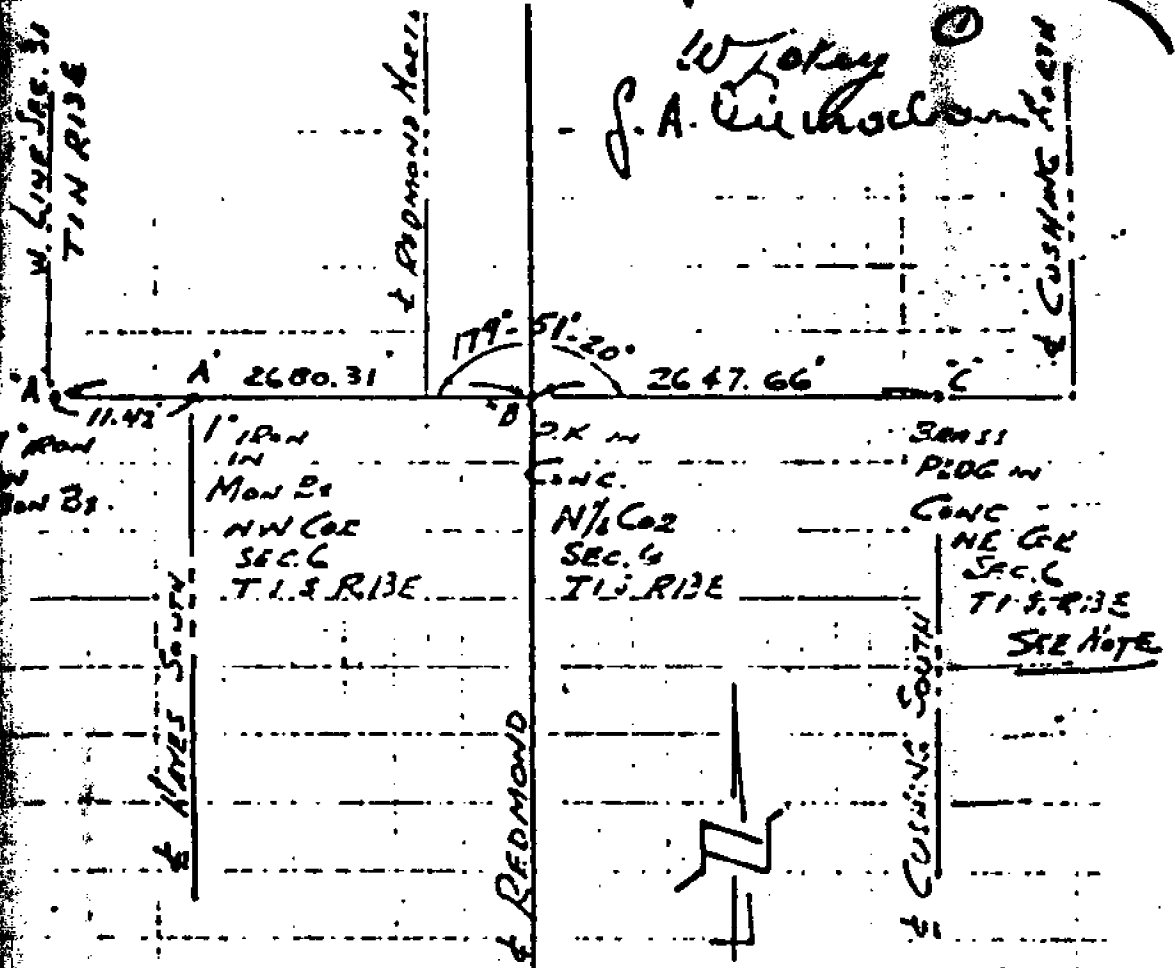
Land first 1/2 mile 2 1/2 mile level

last 1/2 corner Timber Sugar

Beech Ash 10 length Ironwood

Beech

15985 491



W. LINDSEY ST. 30
J. A. CUSHING

IRON A' ON LINE A-B NOTES NOT TO SCALE

NOTE:
 BRASS PLUG SHOWN ON E. CUSHING (SOUTH)
 IS 1.407' N. OF BASELINE
 REFERENCE T.: SHEET 12
 FILE 50-R-1 M.S.D.
 PROJECT AD 475
 FURNISHED BY MR. KIDEMACHER, OF CIVIL ENGRS,
 4TH FLOOR - MARSON BLDG
 LANSING MICH.
 Nov. 13, 1925

North Between Towns 17 1/2 N. Range
 127 13 E
 14.38 Burr Oak 38 inches diam.
 37.50 B. Oak & Tamarack Swamp
 40.00 Sect 14 Section Post
 March 17 at 57 N 11 W
 75.54 Tamarack 15 inches diam.
 80.00 Made 3rd mile post for cor. of
 Section 187 2d
 Tamarack 6 N 4 W 11 W
 Tamarack 5 N 42 W 25 W
 Road 1st half mile 3rd rate post
 to base Twin B. Oak & Tamarack

North Between Towns 17 1/2 N. Range 127 13 E
 32.50 Left Tamarack Swamp
 34.64 Birch 20 inches diam.
 40.00 Sect 14 Sec. Post
 Elm 18 North 5 W
 Standing on the border of Swamp
 44.68 Elm 38 inches diam.
 80.00 Sect 4th mile post
 Elm 24 88 N 11 W
 Birch 8 N 30 E 7 W
 Corner of Section 127 13 Road
 first 1/2 mile 3rd rate post
 Last to corner Timber Beach
 B. Oak 7 W

