

LAND CORNER RECORDATION CERTIFICATE
Filing Requirement of Act 74, Mich. P.A. 1970

For corners in

MACOMB
 (County)

Located In:
 ERIN/LAKE

Corner Code #

1. Public Land Survey T IN R 13E A-12
 T R
 T R
 T R
 T R
 2. Property Controlling S T R
 in Section S T R
 3. Miscellaneous S T R
 Property in Sec. S T R
4. Lot No. _____, Recorded Plat _____
 5. Private Claims _____

C0623800 LIBER:07784 PAGE:376 08:57A 12/22/1997
CARMELLA SABAUGH-MACOMB COUNTY, MI REG/DEEDS

Register of Deeds Stamp & File Number

	A	B	C	D	E	F	G	H	I	J	K	L	M
2	6	5	4	3	2	1							
3													
4	7	8	9	10	11	12							
5													
6	18	17	16	15	14	13							
7													
8	19	20	21	22	23	24							
9													
10	30	29	28	27	26	25							
11													
12	31	32	33	34	35	36							
13													

I, STEVEN E. DUNN, in a field survey on OCTOBER 14, 1997, do hereby certify that under requirements of P.A. 74, Michigan P.A. of 1970, the corner points mentioned in lines 1 and 2 above were in conformance with regulations and rules therefore as required in the current manual of survey instructions of the United States Department of the Interior, Bureau of Land Management or by a decree of a Court of Law and/or that the corner points mentioned in lines 3, 4 and 5 above were in conformance with the rules of the Michigan Board of Land Surveyors or by a Decree of a Court of Law; established, re-established, monumented, re-monumented, recovered, found as expressed below:

NOTE: Not more than 2 corners, all in the same town and range, may be recorded on this certificate.

A. Description of original monument and accessories and/or subsequent restoration:

GLO POST-NO EVIDENCE OF ORIGINAL FOUND-ORIGINAL GLO SURVEY PERFORMED BY WILLIAM PRESTON-1817

PLATS

L. 2, P. 231	GERLACH SUBDIVISION	JAN. 2, 1915
L. 21, P. 1	A.P. OF COUWLIER ESTATE	JUNE 4, 1941
L. 22, P. 15	A.P. #16	MAY 7, 1942
L. 46, P. 39	A.P. #38	MAR. 31, 1960
L. 58, P. 3	GERLACH SUB. NO. 2	AUG. 10, 1967

B. Description of corner evidence found and/or method applied in restoring or reestablishing corner:

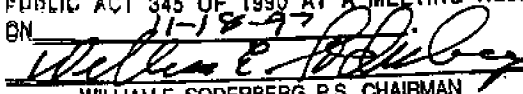
A-12 NO PHYSICAL EVIDENCE OF CORNER FOUND. CORNER IS COMMON CORNER TO M-12 T.1N., R.12E.

I RE-ESTABLISHED THE LOCATION OF THE CORNER BY ESTABLISHING THE SECTION LINE COMMON TO SEC. 31, T.1N., R.13E. AND SEC. 36, T.1N., R.12 E.. BY USING THE CORNER FOUND AT A-11 AND THE FOUND CONCRETE MONUMENT ON SAID LINE AS SHOWN ON "GERLACH SUB. NO. 2" AND EXTENDING THIS LINE SOUTH 24.75'

I VERIFIED THE LOCATION OF THIS CORNER BY COMPARING FIELD MEASUREMENTS TO RECORD MEASUREMENTS OF CORNERS FOUND IN PLATS LISTED ABOVE.

FIELD MEASUREMENTS AND RECORD MEASUREMENTS:

- A-12 TO A-11
 GLO-40 CHAINS OR 2640.00'
 FIELD - 2713.91'
- A-12 TO A-13
 GLO-40 CHAINS OR 2640.00'
 FIELD - 2695.18'

ACCEPTED BY THE MACOMB COUNTY SURVEY PEER GROUP AS THE OFFICIAL CORNER UNDER MICHIGAN PUBLIC ACT 345 OF 1990 AT A MEETING HELD ON 11-18-97

 WILLIAM E. SODERBERG, P.S., CHAIRMAN



C. Description of monument for corner and accessories established to perpetuate locating the position of the corner:

- A-12 T.1N.R.13E.
 1 SET A 3/4X24" IRON ROD WITH 2" DIAMETER ALUMINUM CAP STAMPED "MACOMB COUNTY MONUMENT MI. ACT 345 #28408" IN A NEW MONUMENT BOX IN CONCRETE PAVEMENT.

WITNESSES:

NORTH 24.75'	FOUND CONCRETE MONUMENT
N.49°W. - 35.36'	FOUND CONCRETE MONUMENT
S. 61° E. - 65.36'	FOUND CONCRETE MONUMENT
S.59°W. - 40.81'	NE CORNER CATCH BASIN CASTING
S. 12°W. - 25.96'	SET MAG NAIL AND MACOMB COUNTY REMONUMENTATION WITNESS TAG IN NE FACE UTILITY POLE
SOUTH 3.55'	CENTERLINE JOINT OF TOEPPER

THE SELECTED LOCATION IS ACCEPTED BY ME AND IS GENERALLY ACCEPTED BY PROFESSIONAL SURVEYORS AS THE BEST AVAILABLE EVIDENCE OF THE POSITION OF THE ORIGINAL CORNER.

Signed by Steven E. Dunn
 Surveyor's Michigan License No. 28408

Date Dec. 18, 1997

MACOMB COUNTY PUBLIC LAND SURVEY
REMONUMENTATION PROGRAM

RESEARCH DOSSIER

CORNER LOCATION
T.1N., R.13E., ERIN/LAKE

ACT 74 CORNER CODE
A-12

1/4 SECTION CORNER

The West 1/4 Corner of Section 31. Corner is also common to the East 1/4 Corner of Section 36, Town 1 North, Range 12 East, Warren Township.

ORIGINAL CORNER IDENTIFICATION PER GOVERNMENT LAND OFFICE RECORDS:

Set corner post.

INTERIM CORNER IDENTIFICATION: None.

CURRENT CORNER IDENTIFICATION: None.

I re-established the location of the corner by establishing the Section Line common to Sec. 36 and Section 31, T.1N., R.13E., by using the corner found at A-11 and the found concrete monument on said line as shown on "Gerlach Sub. No. 2" and extending this line 24.75'.

I verified the location of this corner by comparing field measurements to record measurements of corners found in above listed plats.

A field measurement was made between corners.

A-12 to A-11	G.L.O.-40 chains or 2640.00'
	Field-2713.91'
A-12 to A-13	G.L.O.-40 chains or 2640.00'
	Field-2695.18'

SUMMARY AND RECOMMENDATIONS:

The selected location is accepted by me and is generally accepted by Professional Surveyors as the best available evidence of the corner.

MACOMB COUNTY PUBLIC LAND SURVEY

CORNER VERIFICATION CHECKLIST

RECORDED SURVEY FILE: None

LAND FILES: Composites 14-31A and E.

COUNTY SURVEYOR FILES: G.L.O. notes and plat.

LOCAL SURVEYOR FILES: None.

MUNICIPAL AGENCIES:

A. MDOT:	None.
B. M.C.R.C.:	None.
C. M.D.N.R.:	None.
D. Macomb County Register of Deeds:	
Land Corner Recordation Certificates:	None.
Recorded Surveys:	None.
Recorded Condominium Documents:	None.
Plats:	
L.2, P.231 Gerlach Subdivision	1-02-1915
L.21, P.1 A.P. of Couwlier Estate	6-04-1941
L.22, P.15 A.P. #16	5-07-1942
L.46, P.39 A.P. #38	3-31-1960
L.58, P.3 Gerlach Sub. No. 2	8-10-1967

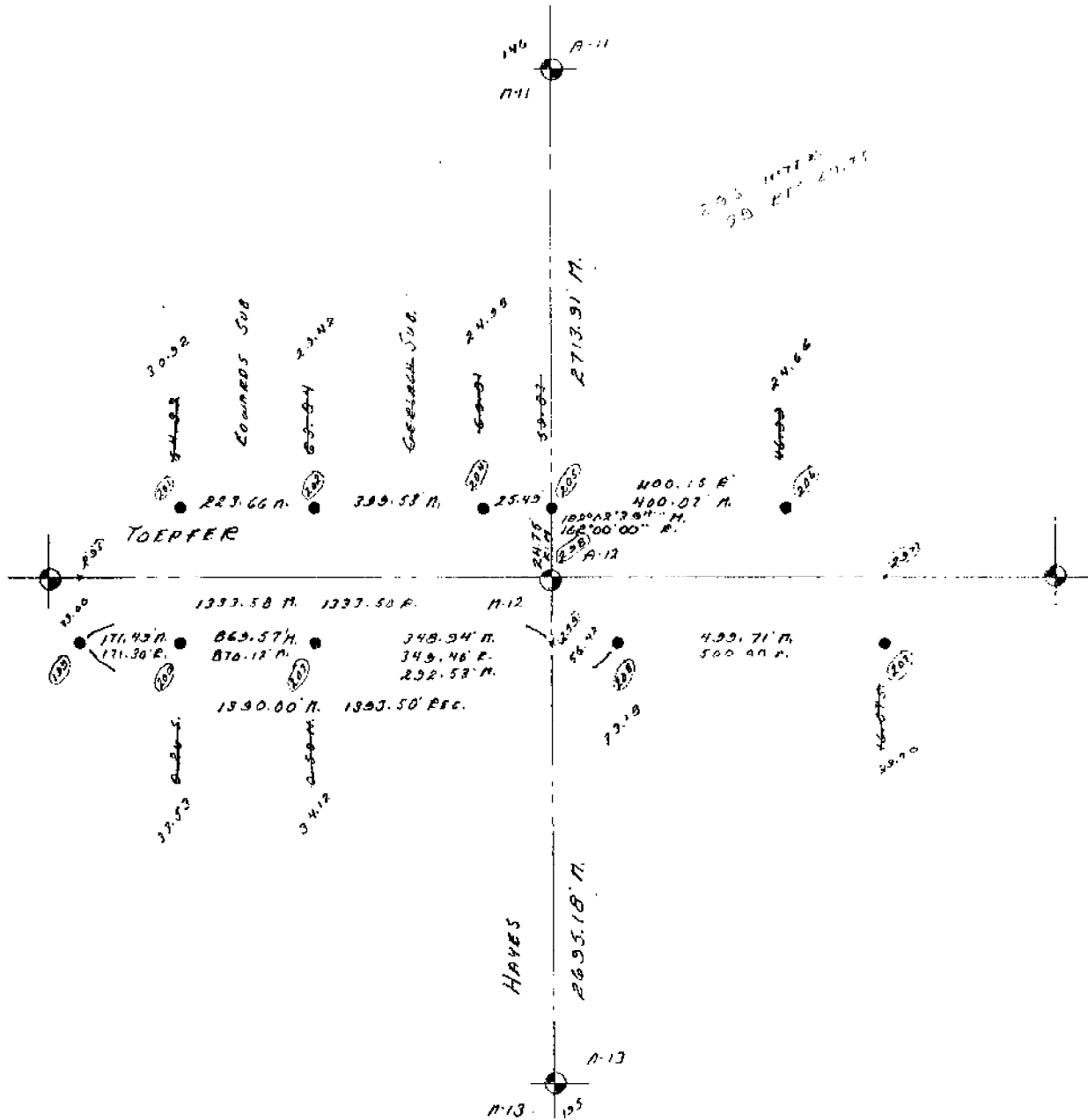
UTILITY COMPANIES:

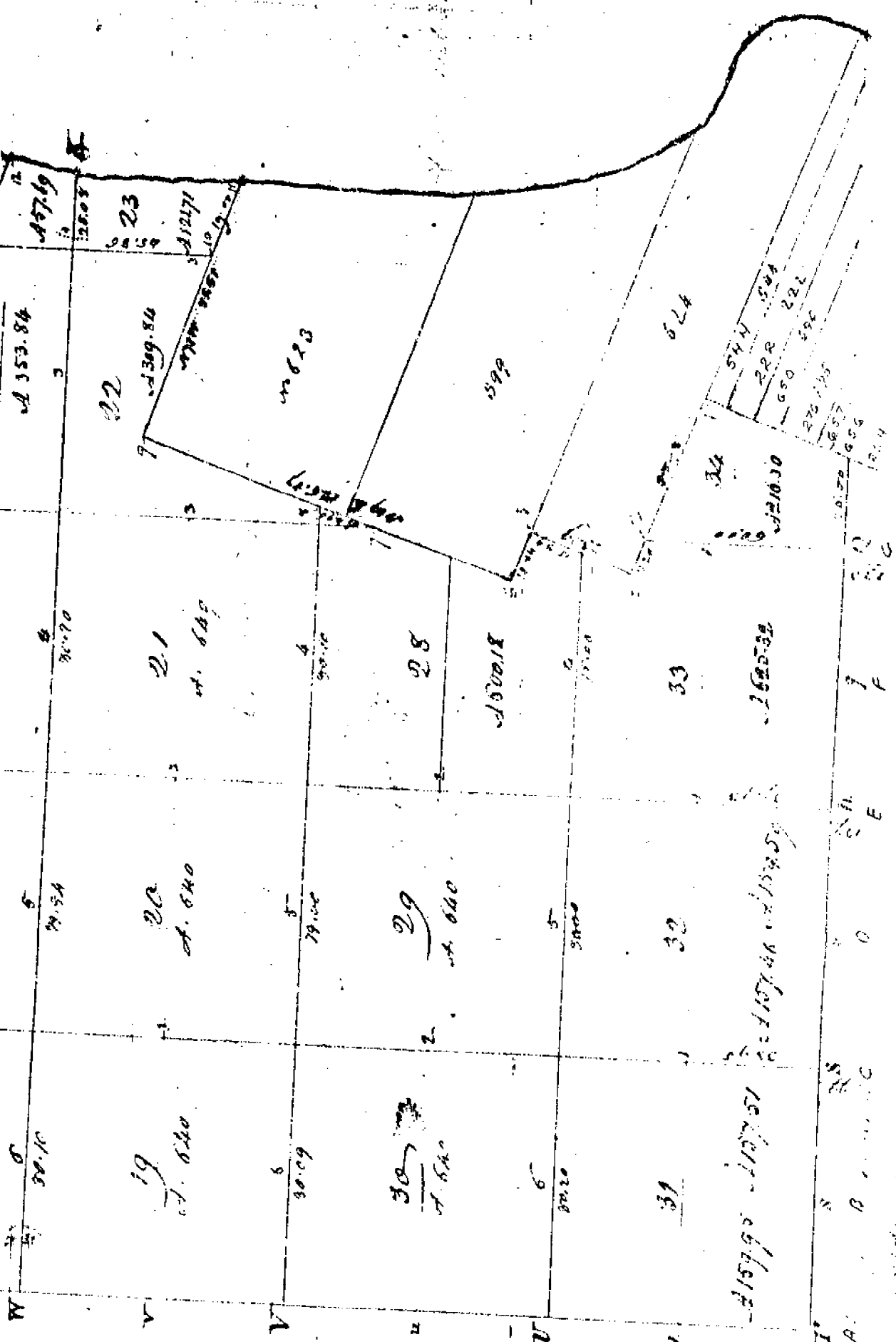
A. Detroit Edison:	None.
B. Michigan Bell:	None.
C. Michigan Consolidated Gas:	None.
D. Consumers Energy Company:	None.
E. Pipeline Companies:	None.
F. City of Detroit Water Board:	None.
G. Railroads:	None.

CONTACT WITH ADJOINING PROPERTY OWNERS:

No contact was made regarding this corner.

22-141 50 SHEETS
22-142 100 SHEETS
22-144 200 SHEETS

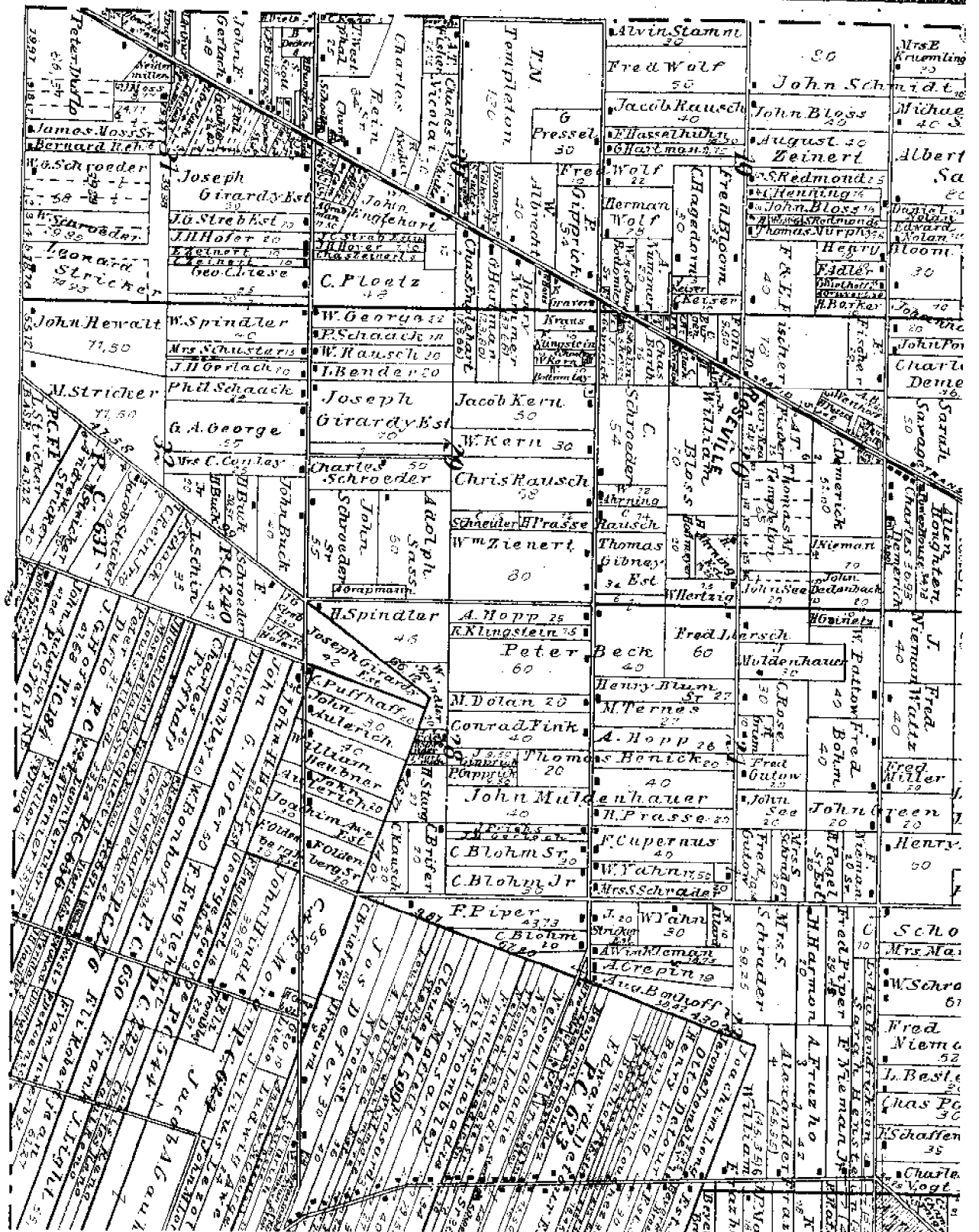




This map was prepared from the original records on file in this office.

Surveyed and returned to the State

[Signature]



North Township Lines

East Boundary

North Between Townships 16 & 17 N,

Range 127 E East

12.34 Poplar 26 inches diameter

41.11 Set Post for corner of 16 sec.

Sugar 18 Spotted 9 lbs

48.62 Sycamore 26 inches diameter

50.00 Set mile post for corner of section

25 & 36. Ash 12 by 7 E 1/4 Sec

Symple 1 of 5 N 20

Stand 1/4 to 1/2 mile W of post

last half section Timber Sugar

Ash Sycamore Birch Poplar

North

Between Townships 17 & 18 Ranges 1

127 E

18.11 Hickory 13 inches diameter

41.11 Set 1/4 Sec Post

Beech 14 N 1/4 E 1/4 Sec

49.40 Poplar 41 inches diameter

50.00 Set 2 mile Post for corner of section

245-25

Beech 18 S 3/4 N 26 Sec

Maple - N 1/4 N 33

Stand first 1/2 mile 29, white lead

last 1/2 section Timber Sugar

Beech Ash to length of timber

Beech etc

North Between Towns 17 1/2 A. Range
 127 13 E
 14.38 Burr Oak 3 inches diam
 37.50 B. Ash 7 Diameter diam
 40.00 S. H. Section Post
 41.00 Birch 12 1/2 11 1/2
 45.54 Diameter 15 inches diam
 50.00 Made 3 1/2 mile post for base of
 Section 187 24
 Diameter 6 1/4 11 1/2
 Diameter 5 1/4 2 1/2 25
 Land 1st half mile 3 1/2 mile last
 to base from B. Ash 7 Diameter

North Between Towns 17 1/2 A. Range 19 1/2 E
 32.50 Left Diameter diam
 34.64 Birch 20 inches diam
 41.00 S. H. Section Post
 45.00 Elm 18 North 5 lbs
 Standing on the border of Swamp
 44.68 Elm 38 inches diam
 80.00 S. H. Section Post
 81.00 Elm 24 1/2 11 1/2
 82.00 Birch 8 1/2 7
 (Curve of Section 12 1/2 3) Land
 first 1/2 mile 3 1/2 mile last
 Last to base from Birch
 B. Ash 7 1/2