

LAND CORNER RECORDATION CERTIFICATE
Filing Requirement of Act 74, Mich. P.A. 1970

For corners in

<u>MACOMB</u> (County)	Located In: <u>ERIN</u>	Corner Code # <u>A-9</u>
1. Public Land Survey	T <u>1N</u> R <u>13E</u>	<u>A-9</u>
	T _____ R _____	_____
	T _____ R _____	_____
	T _____ R _____	_____
2. Property Controlling in Section	S _____ T _____ R _____	_____
3. Miscellaneous Property in Sec.	S _____ T _____ R _____	_____
4. Lot No. _____, Recorded Plat _____		
5. Private Claims _____		

C0623798 LIBER:07784 PAGE:374 08:57A 12/22/1997
CARMELLA SABAUGH-MACOMB COUNTY, MI REG/DEEDS

Register of Deeds Stamp & File Number

I, **STEVEN E. DUNN**, in a field survey on **OCTOBER 14, 1997**, do hereby certify that under requirements of P.A. 74, Michigan P.A. of 1970, the corner points mentioned in lines 1 and 2 above were in conformance with regulations and rules therefore as required in the current manual of survey instructions of the United States Department of the Interior, Bureau of Land Management or by a decree of a Court of Law and/or that the corner points mentioned in lines 3, 4 and 5 above were in conformance with the rules of the Michigan Board of Land Surveyors or by a Decree of a Court of Law; established, re-established, monumented, re-monumented, recovered, found as expressed below:

	A	B	C	D	E	F	G	H	I	J	K	L	M
2	6	5	4	3	2	1							
3	11												
4	7	8	9	10	11	12							
5													
6	18	17	16	15	14	13							
7													
8	19	20	21	22	23	24							
9													
10	30	29	28	27	26	25							
11													
12	31	32	33	34	35	36							
13													

NOTE: Not more than 2 corners, all in the same town and range, may be recorded on this certificate.

A. Description of original monument and accessories and/or subsequent restoration:

GLO POST - NO EVIDENCE OF ORIGINAL CORNER. ORIGINAL SURVEY PERFORMED BY WILLIAM PRESTON - 1817

PLATS:

L.3,P.28	PARADISE GARDENS SUBDIVISION	APRIL 11, 1916
L.6,P.76	FORTUNA GARDENS SUBDIVISION	JULY 19, 1923
L.9,P.23	KULEWATZ HALFWAY SUBDIVISION	OCTOBER 8, 1925
L.10,P.68	FELICIAN PARK SUBDIVISION	MAY 13, 1926

B. Description of corner evidence found and/or method applied in restoring or reestablishing corner:

A-9 FOUND NO PHYSICAL EVIDENCE OF CORNER. CORNER COMMON TO M-9, T.1N.,R.12E.

I RE-ESTABLISHED CORNER BY LOCATING EXISTING CORNERS OF PLATS LISTED ABOVE AND VERIFIED BY COMPARING FIELD MEASUREMENTS TO RECORD MEASUREMENTS. CORNER IS AT INTERSECTION OF CENTERLINE OF HAYES ROAD AND SOUTH LINE OF LEFT TURN LANES AT 10 MILE ROAD.

FIELD MEASUREMENTS & RECORD MEASUREMENTS:

A-9 TO A-8	A-9 TO A-10 (REMON CORNER)
GLO - 40 CHAINS OR 2640.00'	GLO - 40 CHAINS OR 2640.00'
PLAT - 2678.67'	PLATS - 2695.40'
FIELD - 2678.38'	FIELD - 2694.34'

ANGLE A-10/A-9/CALCULATED SECTION LINE (NO CORNER FOUND AT B-9)

PLAT- 89°13'00"
 FIELD- 89°13'37"

ANGLE A-8/A-9/CALCULATED SECTION LINE (NO CORNER FOUND AT B-9)

PLAT- 91°10'00"
 FIELD- 91°03'23"

C. Description of monument for corner and accessories established to perpetuate locating the position of the corner:

A-9 T.1N., R. 13E.

I SET A 3/4" X 24" IRON ROD WITH 2" DIAMETER ALUMINUM CAP STAMPED "MACOMB COUNTY MONUMENT MI. ACT 345 #28408" IN A NEW MONUMENT BOX IN CONCRETE PAVEMENT.

WITNESSES:

N. 45° E	73.17'	FOUND PK NAIL & MCRC TAG IN SOUTH FACE OF UTILITY POLE
S. 47° E	46.84'	FOUND 1/2" IRON ROD WITH CAP #30081.
S. 26° W.	70.83'	NE CORNER BRICK BUILDING (DANICA'S DINER - # 14984 10MILE RD.)
N. 41° W.	56.00'	FOUND CUT "+" IN CONCRETE WALK.
N.34°W.	57.96'	SET MAG NAIL AND MACOMB COUNTY REMONUMENTATION WITNESS TAG IN SW FACE UTILITY POLE

THE SELECTED LOCATION IS ACCEPTED BY ME AND IS GENERALLY ACCEPTED BY PROFESSIONAL SURVEYORS AS THE BEST AVAILABLE EVIDENCE OF THE POSITION OF THE ORIGINAL CORNER.

ACCEPTED BY THE MACOMB COUNTY SURVEY PEER GROUP AS THE OFFICIAL CORNER UNDER MICHIGAN PUBLIC ACT 345 OF 1990 AT A MEETING HELD ON 11/18/97

William E. Soderberg
 WILLIAM E. SODERBERG, P.S., CHAIRMAN



Signed by Steven E. Dunn
 Surveyor's Michigan License No. 28408

Date Dec. 18, 1997

MACOMB COUNTY PUBLIC LAND SURVEY
REMONUMENTATION PROGRAM

RESEARCH DOSSIER

CORNER LOCATION
T.1N., R.13E.

ACT 74 CORNER CODE
A-9

SECTION CORNER

Section corner common to sections 19 and 30. Corner is also being used as a common corner common to sections 24 and 25, Town 1 North, Range 12 East, Warren.

ORIGINAL CORNER IDENTIFICATION PER GOVERNMENT LAND OFFICE RECORDS:

Set corner post.

INTERIM CORNER IDENTIFICATION: None.

CURRENT CORNER IDENTIFICATION: None.

I re-established corner location by tying in found corners of plats listed above and verified location by comparing field measurements to record measurements.

A field measurement was made between corners;

A-9 to A-8 G.L.O.-40 chains or 2640.00'
 Plats-2678.67'
 Field-2678.38'

A-9 to A-10 G.L.O.-40 chains or 2640.00'
 Plats-2695.40'
 Field-2694.34'

Angle A-10/A-9/Calculated Section Line (No corner found at B-9).

Plat-89°13'00"
Field-89°13'37"

Angle A-8/A-9/Calculated Section Line (No corner found at B-9).

Plat-91°10'00"
Field-91°03'23"

SUMMARY AND RECOMMENDATIONS:

The selected location is accepted by me and is generally accepted by Professional Surveyors as the best available evidence of the corner.

MACOMB COUNTY PUBLIC LAND SURVEY

CORNER VERIFICATION CHECKLIST

RECORDED SURVEY FILE: None.

LAND FILES: Composites 14-19E and F, 14-30A and B.

COUNTY SURVEYOR RECORDS: G.L.O. notes and plat.

LOCAL SURVEYOR FILES: None.

MUNICIPAL AGENCIES:

A. MDOT:	None.	
B. M.C.R.C.:	None.	
C. M.D.N.R.:	None.	
D. Macomb County Register of Deeds:		
Land Corner Recordation Certificates:		None
Recorded Surveys:		None
Recorded Condominium Documents:		None
Plats:		
L.3, P.28 Paradise Gardens Sub.		4-11-1916
L.6, P.76 Fortuna Gardens Sub.		7-19-1923
L.9, P.23 Kulewatz Halfway Subdivision		10-8-1925
L.10, P.68 Felician Park Sub.		5-13-1926

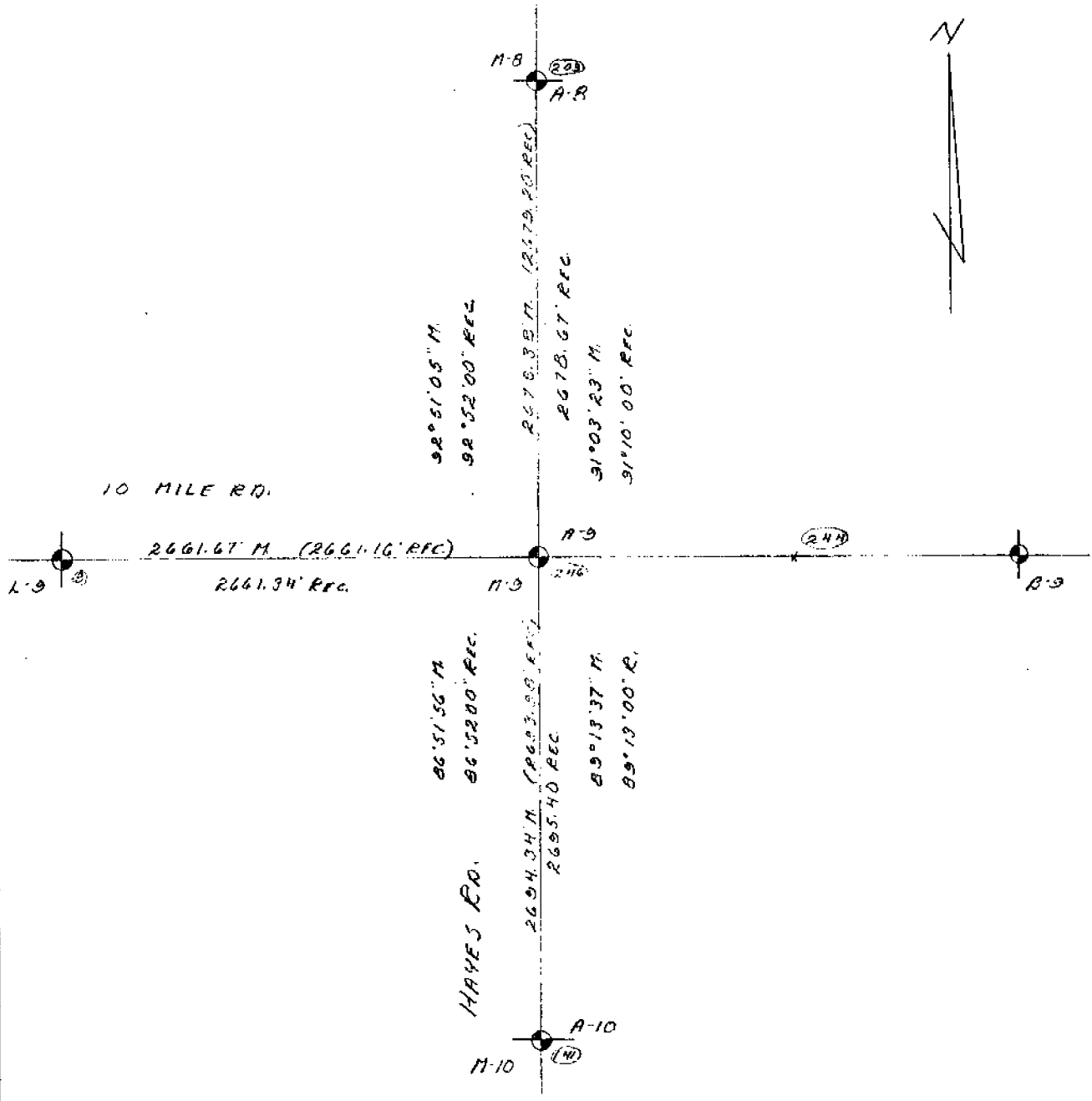
UTILITY COMPANIES:

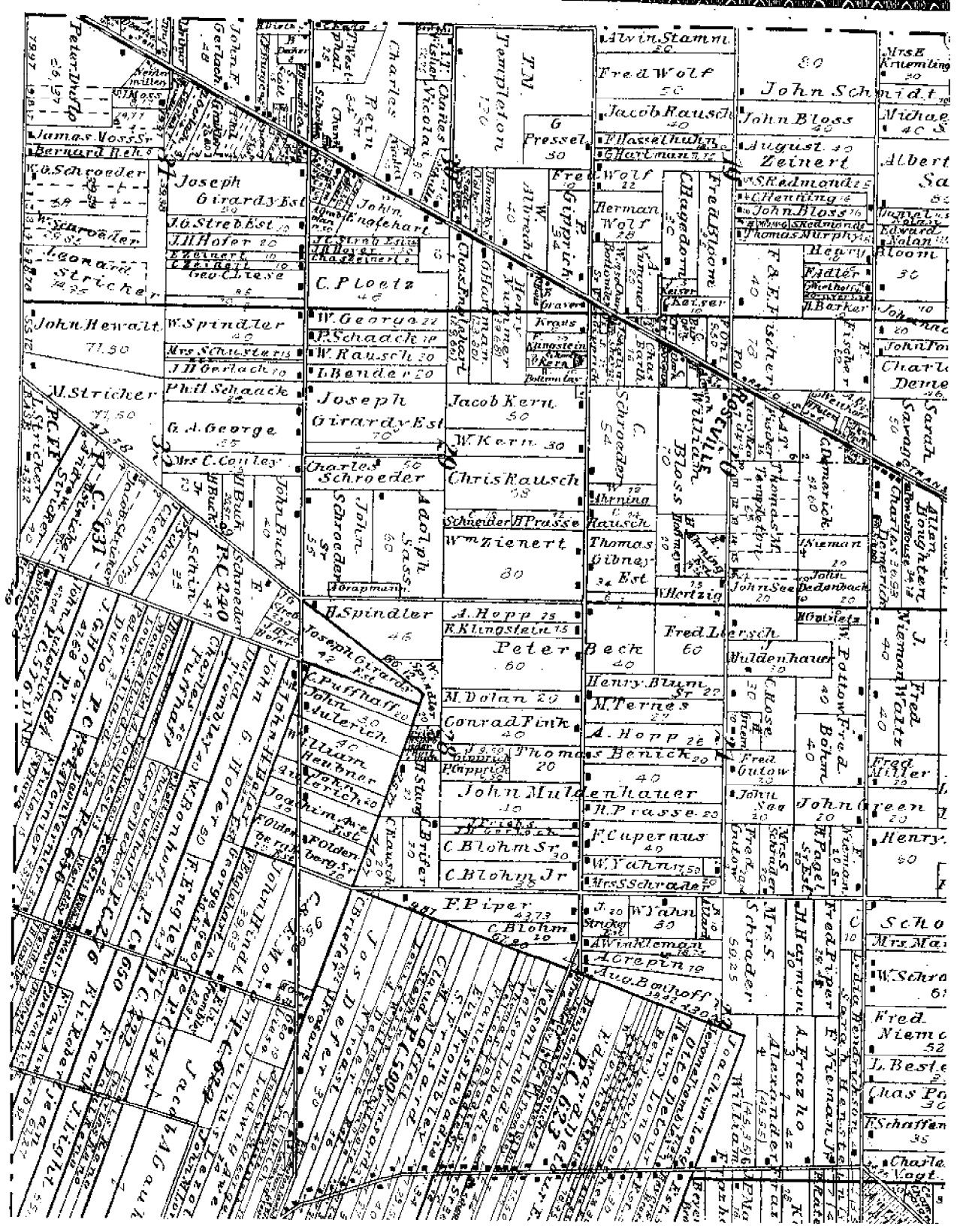
A. Detroit Edison:	None.
B. Michigan Bell:	None.
C. Michigan Consolidated Gas:	None.
D. Consumers Power Company:	None.
E. Pipeline Companies:	None.
F. City of Detroit Water Board:	None.
G. Railroads:	None.

CONTACT WITH ADJOINING PROPERTY OWNERS:

No contact was made regarding this corner.

22-141 50 SHEETS
22-142 100 SHEETS
22-144 200 SHEETS





Township lines

East Boundary

North Between Townships N 19 1 N.

Ranges 12 7 13 East

12.34 Poplar 36 inches diam

40.00 Post for cor. of 14 Secs

Sugar 13 Spouting 10 lbs

48.63 Sycamore 36 inches diam

80.00 1st mile Post for corner of Section

25 36' Ash 10 by 7 1/2 lbs

Lyons 13 1/2 lbs

Land 1/2 1/2 mile 1/4 1/4

Post half barrel Timber Sugar

Ash Lyons Birch Poplar

North Between Towns 17 1 N Range

12 7 13 E

18.00 Hickory 13 inches diam

40.00 Set 1st Sec Post

Burch 14 1/2 1/2 lbs

49.40 Poplar 48 inches diam

80.00 Set 2 mile Post for cor. of Section

26 25

Burch 18 1/2 1/2 lbs

Maple 15 1/2 1/2

Land first 1/2 mile 3/4 1/4

Post 1/2 barrel Timber Sugar

Burch Ash 10 1/2 1/2 lbs

Burch 10

North Between Towns 17 1 N Range

127 13 E

14.38 Burr Oak 28 inches diam.

37.50 B. Oak & Tamarack Swamp

40.00 Sect 14 Section Post

March 12 1874 11 lbs

75.54 Tamarack 15 inches diam.

50.00 Made 34 mile Post for box of

Section 127 2d

Tamarack 6 1/4 11 lbs

Tamarack 5 6 1/2 25 "

Land 1st half mile 34. rate last

to same then B. Oak & Tamarack

North Between Towns 17 1 N Range 127 13 E

37.50 Left Tamarack Swamp

34.64 Burr Oak 28 inches diam.

40.00 Sect 14 Sec. Post

Eden 18 North 5 lbs

Standings on the border of Swamp

44.68 Eden 38 inches diam.

80.00 Sect 4 1/2 mile post

Eden 24 38 1/2 11 lbs

Bloch 8 1/3 7 "

(Corner of Section 127 13) Land

first 1/2 mile 34. rate Post

Last 1/2 corner Timber Bush

B. Oak 7 "

