

LAND CORNER RECORDATION CERTIFICATE
Filing Requirement of Act 74, Mich. P.A. 1970

For corners in

<u>MACOMB</u> (County)	Located In: <u>ERIN</u>	Corner Code # <u>A-8</u>
1. Public Land Survey	<u>T 1N R 13E</u>	<u>A-8</u>
	T <u> </u> R <u> </u>	<u> </u>
	T <u> </u> R <u> </u>	<u> </u>
	T <u> </u> R <u> </u>	<u> </u>
2. Property Controlling in Section	S <u> </u> T <u> </u> R <u> </u>	<u> </u>
	S <u> </u> T <u> </u> R <u> </u>	<u> </u>
3. Miscellaneous Property in Sec.	S <u> </u> T <u> </u> R <u> </u>	<u> </u>
	S <u> </u> T <u> </u> R <u> </u>	<u> </u>
4. Lot No. <u> </u> , Recorded Plat <u> </u>		
5. Private Claims <u> </u>		

ACCEPTED BY THE MACOMB COUNTY SURVEY PEER GROUP AS THE OFFICIAL CORNER UNDER MICHIGAN PUBLIC ACT 345 OF 1990 AT A MEETING HELD ON 11-18-97

William E. Soderberg
 WILLIAM E. SODERBERG, P.S., CHAIRMAN

Register of Deeds Stamp & File Number

I, STEVEN E. DUNN, in a field survey on OCTOBER 14, 1997, do hereby certify that under requirements of P.A. 74, Michigan P.A. of 1970, the corner points mentioned in lines 1 and 2 above were in conformance with regulations and rules therefore as required in the current manual of survey instructions of the United States Department of the Interior, Bureau of Land Management or by a decree of a Court of Law and/or that the corner points mentioned in lines 3, 4 and 5 above were in conformance with the rules of the Michigan Board of Land Surveyors or by a Decree of a Court of Law, established, re-established, monumented, re-monumented, recovered, found as expressed below:

	A	B	C	D	E	F	G	H	I	J	K	L	M
2	6		5		4		3		2		1		
3													
4	7		8		9		10		11		12		
5													
6	18		17		16		15		14		13		
7													
8	19		20		21		22		23		24		
9													
10	30		29		28		27		26		25		
11													
12	31		32		33		34		35		36		
13													

NOTE: Not more than 2 corners, all in the same town and range, may be recorded on this certificate.

A. Description of original monument and accessories and/or subsequent restoration:

GLO POST - NO EVIDENCE OF ORIGINAL CORNER FOUND . ORIGINAL SURVEY PERFORMED BY WILLIAM PRESTON - 1817	
L.C.R.C.	
L. 3055, P. 812	ROBERT L. SMITH #16052 CUT "X" IN PAVEMENT
PLATS	
L. 6, P. 36	BEL-GLAN GARDENS SUBDIVISION
L. 6, P. 76	FORTUNA GARDENS SUBDIVISION
L. 8, P. 21	TERMINAL PARK SUBDIVISION
L. 8, P. 75	PLEASURE PARK SUBDIVISION
L. 9, P. 12	HAYES BOULEVARD SUBDIVISION
L. 9, P. 23	KULEWATZ HALFWAY SUBDIVISION
L. 9, P. 54	PLEASURE PARK SUBDIVISION NO. 1
L. 11, P. 20	LEACH SUBDIVISION
L. 27, P. 12 & 13	ELLEN MASCHMEYER SUBDIVISION
L. 27, P. 40	LELAND V. MASCHMEYER SUBDIVISION
L. 28, P. 14	DENNIS D. SUBDIVISION
L. 28, P. 27	MARY K. BERNDT SUBDIVISION NO. 1
L. 29, P. 09	ROBERT'S EDWARDS SUBDIVISION
L. 30, P. 54	FRAZHO - PETRIE SUBDIVISION
L. 37, P. 38	SEND AVENUE PARK SUBDIVISION NO. 1
L. 40, P. 22	A.P. OF COBURN'S FRAZHO ROAD SUBDIVISION
L. 51, P. 25	A.P. #19
	JAN. 15, 1979
	JAN. 31, 1923
	JULY 19, 1923
	AUG. 25, 1924
	JAN. 20, 1925
	MAY 18, 1925
	OCT. 08, 1925
	JULY 10, 1925
	JULY 07, 1926
	AUG. 14, 1952
	FEB. 02, 1953
	APR. 17, 1953
	JUNE 15, 1953
	AUG. 14, 1953
	JULY 26, 1954
	AUG. 08, 1956
	AUG. 14, 1957
	MAR. 15, 1963



B. Description of corner evidence found and/or method applied in restoring or reestablishing corner:

A-8 FOUND "+" CUT IN CONCRETE PAVEMENT. CORNER COMMON TO M - 8, T. 1N., R. 12E. I VERIFIED LOCATION OF FOUND "+" BY MATCHING 1 OF 3 WITNESS TIES OF RECORDED IN L.C.R.C. LISTED ABOVE AND COMPARING FIELD MEASUREMENTS TO RECORD MEASUREMENTS OF FOUND CORNERS OF PLATS LISTED ABOVE. CORNER IS IN CENTERLINE INTERSECTION OF FRAZHO ROAD AND HAYES ROAD SOUTH AND 23.90' WEST OF CENTERLINE OF HAYES ROAD NORTH.

FIELD MEASUREMENTS AND RECORDED MEASUREMENTS:

L.C.R.C. WITNESS TIES S. 25°E. 47.85' FOUND NAIL & MSHD TAG IN S. FACE OF UTILITY POLE (REC. S. 45°E 47.78')		
A - 8 TO A - 7 (REMON CORNER)	A - 8 TO A - 9	A - 8 TO B - 8 (CALCULATED LOCATION)
GLO - 40 CHAINS OR 2640.00'	GLO - 40 CHAINS OR 2640.00'	GLO - 40 CHAINS OR 2640.00'
PLATS - 2664.30'	PLATS - 2678.67'	PLATS - ON NORTH SIDE - 2705.85'
FIELD - 2663.59'	FIELD - 2678.38'	PLATS - ON SOUTH SIDE - 2707.43'
		FIELD - 2705.48'

ANGLE A - 7/A-8/B-8	ANGLE B - 8/A - B/A - 9
PLATS - 91°01'00"	PLATS - 89°08'30"
FIELD - 91°05'55"	FIELD - 89°08'11"

C. Description of monument for corner and accessories established to perpetuate locating the position of the corner:

A - 8 T. 1N., R. 13E. W 1/4 CORNER
 1 REPLACED THE FOUND CUT + IN CONCRETE PAVEMENT WITH A 3/4" X 24" IRON ROD WITH 2" DIAMETER ALUMINUM CAP STAMPED "MACOMB COUNTY MONUMENT MI. ACT 345 #28408" IN A NEW MONUMENT BOX.

WITNESSES:

N. 69°E.	56.80 - FOUND PK NAIL & TAG #19837 IN THE SOUTH FACE OF UTILITY POLE
S. 25°E.	47.85 - FOUND NAIL & MSHD TAG IN NE FACE OF UTILITY POLE
S. 25°E.	47.20 - FOUND NAIL & TAG (JOHNSON & ANDERSON) IN NORTH FACE OF UTILITY POLE
S. 58°W.	65.40 - FOUND NAIL & MSHD TAG IN SW FACE OF UTILITY POLE
S. 58°W.	65.15 - FOUND NAIL & TAG (JOHNSON & ANDERSON) IN SW FACE OF UTILITY POLE.
N. 66°W.	54.00 - FOUND PK NAIL & TAG #19837 IN THE NE FACE OF UTILITY POLE.

THE SELECTED LOCATION IS ACCEPTED BY ME AND IS GENERALLY ACCEPTED BY PROFESSIONAL SURVEYORS AS THE BEST AVAILABLE EVIDENCE OF THE POSITION OF THE ORIGINAL CORNER.

Signed by Steven E. Dunn Date Dec. 18, 1997
 Surveyor's Michigan License No. 28408

FORM APPROVED BY MICHIGAN STATE BOARD OF LAND SURVEYORS, JAN. 28, 1971
 REVISED MAY 14, 1975
 REVISED JAN., 1983

MACOMB COUNTY PUBLIC LAND SURVEY
REMONUMENTATION PROGRAM

RESEARCH DOSSIER

CORNER LOCATION
T.1N., R.13E.

ACT 74 CORNER CODE
A-8

SECTION CORNER

West 1/4 Corner of Section 19. Corner is also being used as a common corner common to the East 1/4 corner of Section 24, Town 1 North, Range 12 East, Warren.

ORIGINAL CORNER IDENTIFICATION PER GOVERNMENT LAND OFFICE RECORDS:

Set corner post.

INTERIM CORNER IDENTIFICATION:

L.C.R.C.:

L.3055, P.812 Robert L. Smith #16052 Cut "+" in concrete pavement. Jan. 15, 1979

CURRENT CORNER IDENTIFICATION:

Found cut "+" in concrete pavement at intersection of Hayes and 10 Mile Road.

A field measurement was made between corners;

A-8 to A-7	2663.59' meas.
	2664.30' plats.
	40 chains G.L.O. (2640.00')
A-8 to A-9	2678.38' meas.
	2678.67 plats.
	40.00 chains G.L.O. (2640.00')
A-8 to B-9 (Calculated location).	2706.48' meas.
	2705.85' plats on North sides.
	2707.43' plats on South side.
	40 chains G.L.O. (2640.00')
Angle B-8/A-8/A-9	89°08'11" meas.
	89°08'30" plats.
Angle A-7/A-8/B-8	91°05'55" meas.
	91°01'00" plats

SUMMARY AND RECOMMENDATIONS:

The selected location is accepted by me and is generally accepted by Professional Surveyors as the best available evidence of the corner.

MACOMB COUNTY PUBLIC LAND SURVEY

CORNER VERIFICATION CHECKLIST

RECORDED SURVEY FILE: None.

LAND FILES: Composites 14-19A,B,E, and F.

COUNTY SURVEYOR RECORDS: G.L.O. notes and plat.

LOCAL SURVEYOR FILES: None.

MUNICIPAL AGENCIES:

- A. MDOT: None.
- B. M.C.R.C.: None.
- C. M.D.N.R.: None.
- D. Macomb County Register of Deeds:

Land Corner Recordation Certificates:

L.3055, P.812 Robert L. Smith Jan. 15, 1979

Recorded Surveys: None

Recorded Condominium Documents: None

Plats:

L.6, P.36 Bel-Glan Gardens Sub.	1-31-1923
L.6, P.76 Fortuna Gardens Sub.	7-19-1923
L.8, P.21 Terminal Park Sub.	8-25-1924
L.8, P.75 Pleasure Park Sub.	1-20-1925
L.9, P.12 Hayes Boulevard Sub.	5-18-1925
L.9, P.23 Kulewatz Halfway Sub.	10-08-1925
L.9, P.54 Pleasure Park Subdivision No. 1	7-10-1925
L.11, P.20 Leach Subdivision	7-07-1926
L.27, P.12 & 13 Ellen Maschmeyer Sub.	8-14-1952
L.27, P.40 Leland V. Maschmeyer Sub.	2-02-1953
L.28, P.27 Mary K. Berndt Sub. No. 1	6-15-1953
L.29, P.9 Robert's edwards Sub.	8-14-1953
L.30, P.54 Frazho-Petrie Sub.	7-26-1954
L.37, P.38 Send Avenue Sub.	8-08-1956
L.40, P.22 A.P. of Coburn's Frazho Road Sub.	8-14-1957
L.51, P.25 A.P. #19	3-15-1963

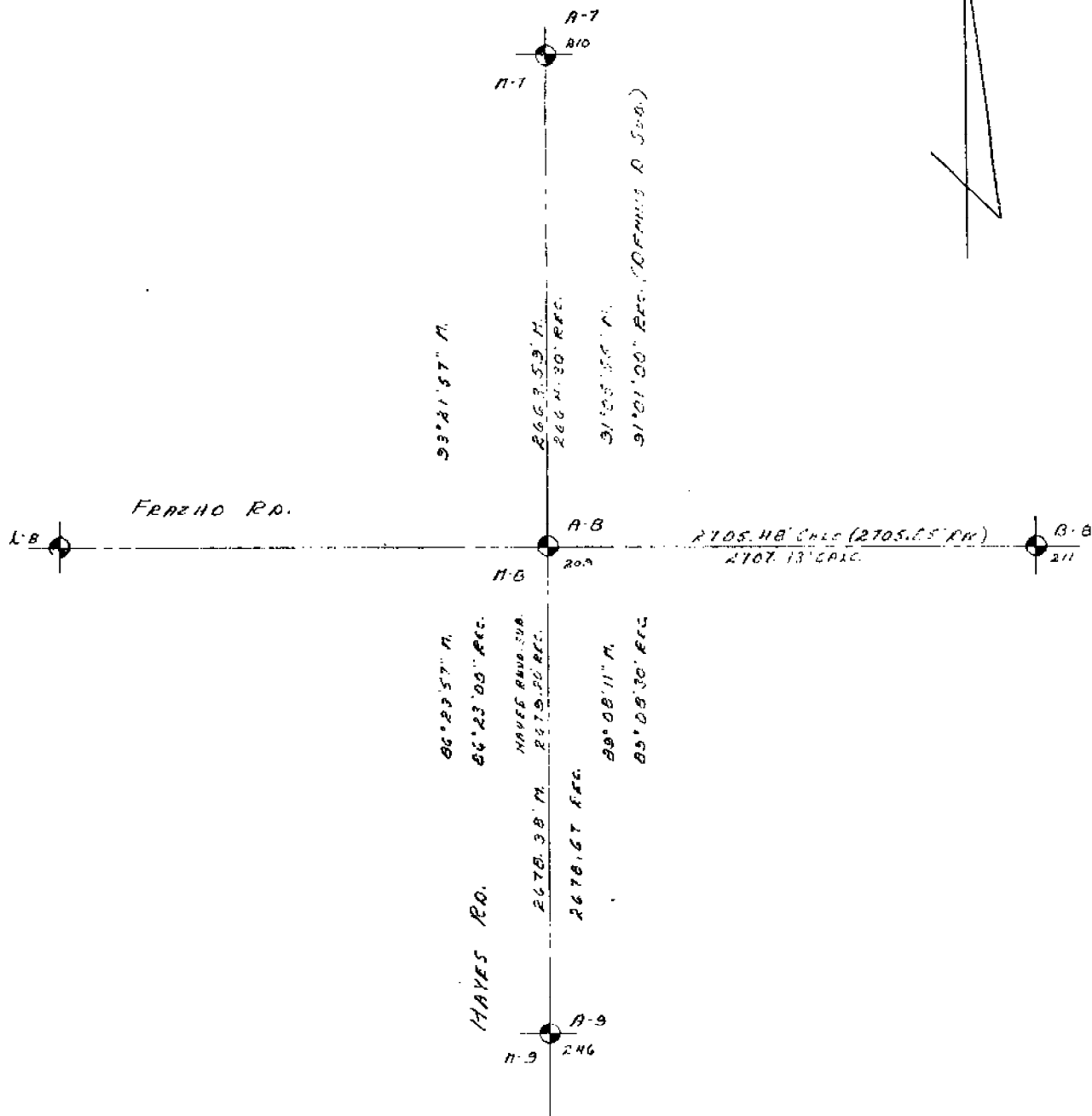
UTILITY COMPANIES:

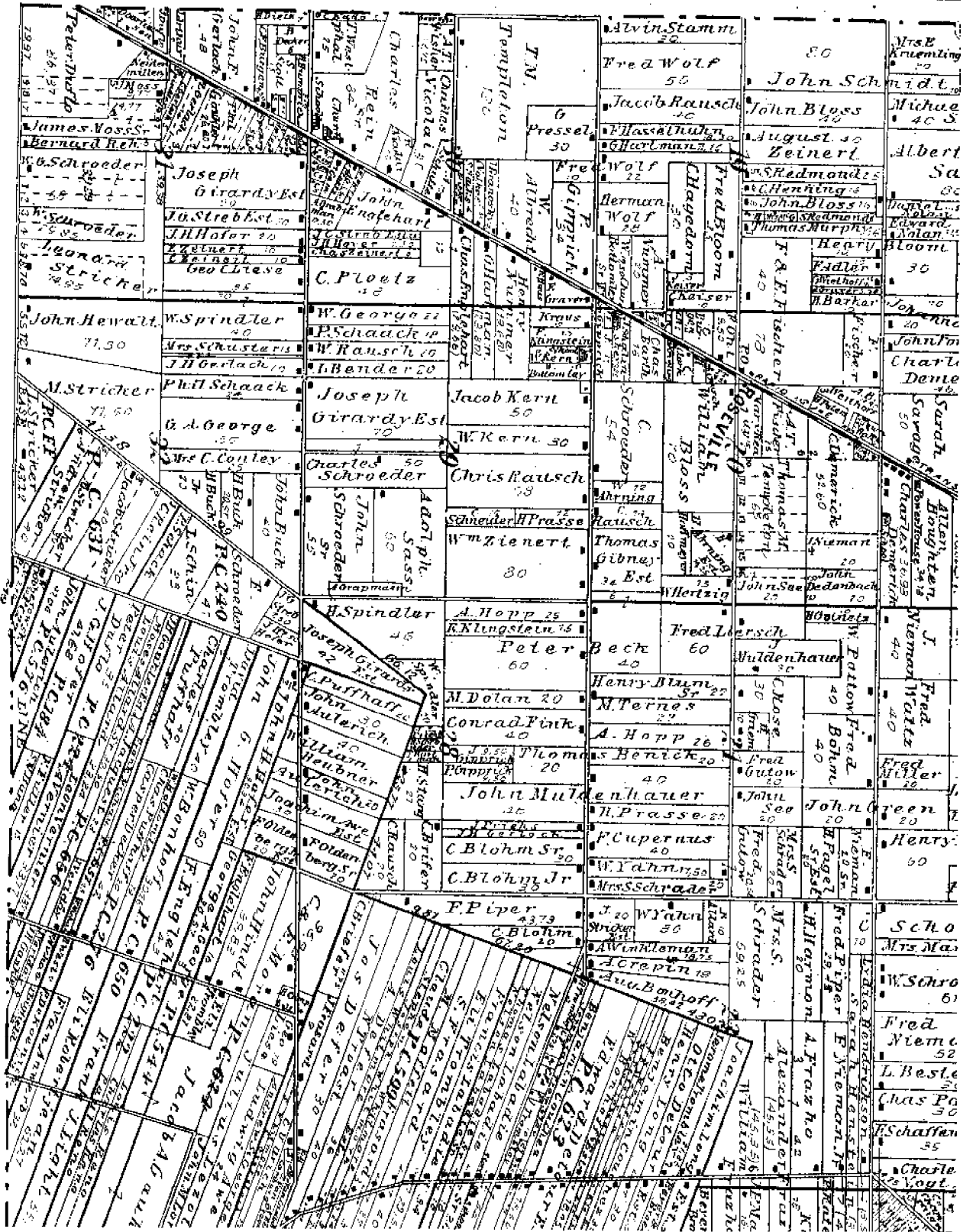
- A. Detroit Edison: None.
- B. Michigan Bell: None.
- C. Michigan Consolidated Gas: None.
- D. Consumers Power Company: None.
- E. Pipeline Companies: None.
- F. City of Detroit Water Board: None.
- G. Railroads: None.

CONTACT WITH ADJOINING PROPERTY OWNERS:

No contact was made regarding this corner.

22-141 50 SHEETS
22-142 100 SHEETS
22-144 200 SHEETS





Township lines

East Boundary

North Between Townships 17 & 18 N.

Ranges 127 & 13 East

12.34 Poplar 36 inches diam

40.00 1st Post for cor. of 14 sec.

Sugar 13 Spotted 9 1/2 lbs

48.63 Sycamore 36 inches diam

80.00 1st mile Post for corner of sections

25 & 36. Ash 10 by 7 Ell 1/2

Gym 11. 1/2 S W 20

Land 1st 1/2 mile 1/2 1/2

Post half square Timber Sugar

Ash Gym. Birch. Poplar

North Between Townships 17 & 18 N

127 & 13 E

18.00 Hickory 13 inches diam

40.00 1st 1/2 mile Post

Bech 14 1/2 Ell 1/2

49.40 Poplar 48 inches diam

80.00 1st 2 mile Post for cor. of section

25 & 35

Bech 18 1/2 1/2 26 lbs

Maple - 15 1/2 1/2

Land first 1/2 mile 2 1/2 water land

1st 1/2 square Timber Sugar

Bech. Ash 10. Length. 1/2

Bech 1/2

J 1 N. R 12 - E

North Between Towns 17 1/2 N. Range
12713 E

1439 Burr Oak 28 inches diam.

3750 B. Oak & Tamarack Swamp

4000 Sect. 4 Section Post
March 12 1857 11 lbs.

7554 Tamarack 15 inches diam.

8000 Made 3/4 mile Post for box of
Sections 187 2d

Tamarack 6 1/4 11 lbs

Tamarack 5 1/4 25 "

Land 1st half mile 3/4 mile last
to same. Then B. Oak & Tamarack.

J 1 N. R 12 E

North Between Towns 17 1/2 N. Range 12713 E

3251 Left Tamarack Swamp

3464 Birch 20 inches diam.

4000 Sect. 4 Sec. Post

Eden 18 North 5 lbs

Standing on the border of Swamp

4468 Eden 38 inches diam.

8000 Sect 4 1/2 mile post

Eden 24 338 11 lbs

B. Oak 5 1/2 7 "

(Corner of Section 12713) Land

first 1/2 mile 3/4 mile Post.

Last 1/2 corner Timber Birch

B. Oak 7 "

J 1 N. R 12 E

North Between Towns 17 1 N. Range
12 & 13 E

14.34 Burr Oak 38 inches diam.

37.52 B. Ash 7 Tamarack Swamp

40.00 bet 14 Section Post
9 Feb 12 45 11 11 lbs

75.54 Tamarack 15 inches diam.

80.00 Made 3d. Mile Post for corner of
Section 18 & 2d

Tamarack 6.44 11 lbs

Tamarack 5.42 11 lbs

Land bet half mile 3d. rate last
to source. Near Black 7 Tamarack.

J 1 N. R 12 E

North Between Towns 17 1 N. Range 12 & 13 E
32.52 Left Tamarack Swamp

34.64 Birch 22 inches diam.

40.00 bet 14 Sec. Post

Eden 18 North 5 lbs

Wardens on the border of Swamp

44.68 Eden 38 inches diam.

80.00 bet 4th Mile Post

Eden 24 33 11 lbs

Black 8 43 7 E 7

Corner of Section 12 & 13. Land
first 1/2 mile 3d. rate West.
Last 1/2 corner. Timber Bush.
B. Ash 7.

J 1 N. R 12 - E

North Between Towns 17 1 N. Range
127 13 E

14.38 Burr Oak 38 inches diam.

37.50 B. Ash & Tamarack Swamp

40.00 Cut 1/4 section Post
March 17 1874 11 lbs.

25.54 Tamarack 15 inches diam.

50.00 Made 3/4 mile Post for box of
Sections 187 2st

Tamarack 6 1/4 11 lbs

Tamarack 5 6 1/2 25

Land 1st half mile 3/4 mile last
to same. Run B. Ash & Tamarack

J 1 N. R 12 E

North Between Towns 17 1 N. Range 127 13 E

32.57 Left Tamarack Swamp

34.64 Burr Oak 28 inches diam.

40.00 Cut 1/4 Sec. Post
Elev 11. North 5 lbs.

Standings on the border of Swamp

44.68 Elev 38 inches diam.

80.00 Cut 4 1/2 mile post
Elev 24 338 11 lbs

B. Ash 5 1/2 7

(Corner of Section 127 13) Land
first 1/2 mile 3/4 mile last
Last 1/2 corner Timber Bush
B. Ash 7 1/2

LAND CORNER RECORDATION CERTIFICATE

FILING REQUIREMENT OF ACT 74, MICH. P.A.1970

CITY OF ROSEVILLE, MACOMB COUNTY, MICHIGAN

A555926

FOR CORNERS OF: NW 1/4 LOCATED IN: Sec. 19

1. PUBLIC LAND SURVEY	T. <u>1</u>	N. <u>X</u>	R. <u>13</u>	E. <u>X</u>	CORNER CODE NUMBER
2. PROPERTY CONTROLLING IN SECTION	T. _____	N. _____	R. _____	E. _____	_____
3. MISCELLANEOUS PROPERTY IN SECTION	T. _____	N. _____	R. _____	E. _____	_____
4. LOT NO. _____	RECORDED PLAT _____				
5. PRIVATE CLAIMS _____	_____				

RECORDED IN MACOMB COUNTY RECORDS AT: 8:30 A.M. JAN 15 1979

Edna Miller
CLERK - REGISTER OF DEEDS
MACOMB COUNTY, MICHIGAN

REGISTER OF DEEDS STAMP AND FILING NUMBER

I, Robert L. Smith do hereby certify that under requirements of P.A. 74, Michigan P.A. of 1970, the corner points mentioned in lines 1 and 2 above (identified with circles on index code diagram - over) were, in a field survey on December 1978, established, re-established, monumented, re-monumented, recovered or restored as expressed below and in conformance with regulations and rules therefore as required in the current manual of survey instructions of the United States Department of the Interior, Bureau of Land Management or by a decree of a court of law. Furthermore, that the corner points mentioned in lines 3, 4 and 5 above were, in a field survey on _____ 19____, found, recovered, restored, established or re-established as expressed below and in conformance with the rules of the Michigan State Board of Registration for Land Surveyors or, by a Decree of a Court of law:

A. Description of original monument and accessories and/or subsequent restoration:

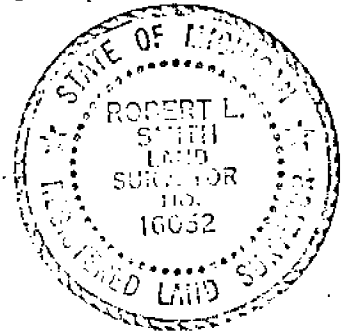
B. Description of corner evidence found and/or method applied in restoring or re-establishing corner:

W. 1/4 corner (A-8) Cut "X" in pavement

C. Description of monument for corner and accessories established to perpetuate locating the position of the corner:

W 1/4 corner witnesses:

N. 45° E.	56.83 ft.	Nail in MDSH cap in power pole
N. 45° W:	65.73 ft.	Nail in MDSH cap in power pole
S. 45° E.	47.78 ft.	Nail in MDSH cap in power pole



SIGNED BY Robert L. Smith DATE January 8, 1979

SURVEYOR'S MICHIGAN REGISTRATION NO. 16052 (SEAL)

FOR STATE AND UNITED STATES AGENCIES:

SIGNED BY _____ DATE _____
CHIEF OF SURVEY PARTY

APPROVED AND SIGNED BY _____ DATE _____
MICHIGAN REGISTERED LAND SURVEYOR (SEAL)

SURVEYOR'S MICHIGAN REGISTRATION NO. _____

00814