

LAND CORNER RECORDATION CERTIFICATE
Filing Requirement of Act 74, Mich. P.A. 1970

For corners in

MACOMB

(County)

Located In:
ERIN/LAKE

Corner Code #

- | | | | | | |
|------------------------------------|---|-----------|---|------------|------------|
| 1. Public Land Survey | T | <u>1N</u> | R | <u>13E</u> | <u>A-6</u> |
| | T | | R | | |
| | T | | R | | |
| | T | | R | | |
| 2. Property Controlling in Section | S | | T | | |
| | S | | T | | |
| 3. Miscellaneous Property in Sec. | S | | T | | |
| | S | | T | | |

Register of Deeds Stamp & File Number

4. Lot No. _____, Recorded Plat _____

5. Plat No. _____
C0458184 LIBER:07298 PAGE:217 10:47A 01/02/1997
CARMELLA SABAUGH-MACOMB COUNTY, MI REG/DEEDS

I, STEVEN E. DUNN, in a field survey on JUNE 3, 19 96, do hereby certify that under requirements of P.A. 74, Michigan P.A. of 1970, the corner points mentioned in lines 1 and 2 above were in conformance with regulations and rules therefore as required in the current manual of survey instructions of the United States Department of the Interior, Bureau of Land Management or by a decree of a Court of Law and/or that the corner points mentioned in lines 3, 4 and 5 above were in conformance with the rules of the Michigan Board of Land Surveyors or by a Decree of a Court of Law, established, re-established, monumented, re-monumented, recovered, found as expressed below:

	A	B	C	D	E	F	G	H	I	J	K	L	M
2	6	5	4	3	2	1							
3													
4	7	8	9	10	11	12							
5													
6	18	17	16	15	14	13							
7													
8	19	20	21	22	23	24							
9													
10	30	29	28	27	26	25							
11													
12	31	32	33	34	35	36							
13													

NOTE: Not more than 2 corners, all in the same town and range, may be recorded on this certificate.

A. Description of original monument and accessories and/or subsequent restoration:

GLO POST - NO EVIDENCE OF ORIGINAL CORNER FOUND
 ORIGINAL SURVEY PREFORMED BY PRESTON IN 1817

- PLATS:
 ASSESSOR'S PLAT NO. 2 L.17, P.16 JULY 21, 1936
M.D.O.T
 I-696 RIGHT-OF-WAY MAP (MACOMB CO.) SHEET NO. 26 JAN, 1978
 M-97 RIGHT-OF-WAY MAP (MACOMB CO.) SHEET NO. 76 APRIL, 1980

B. Description of corner evidence found and/or method applied in restoring or reestablishing corner:

A-6 1/4 CORNER CORNER COMMON TO M-6, T.1N., R.12E.

FOUND 1" IRON ROD IN CONCRETE PAVEMENT (NO MON. BOX).
 VERIFIED LOCATION BY COMPARING MEASURED DISTANCES AND ANGLES TO RECORDED DISTANCES AND ANGLES.

FIELD MEASUREMENTS AND RECORDED DISTANCES

A-6 TO B-6	2721.62'M	2722.25' REC. (A.P. #2)	2722.29' R. (R/W MAP M-97)
A-6 TO A-5	2669.23'M	2669.26' M. (G.P.S.)	40 CHAINS (GLO 2640.00)
A-6 TO A-7	2684.52'M.	2684.60' REC. (R/W MAP I-696)	
ANGLE A-5/A-6/B-6	90°30'23"M.	90°31'00" REC. (A.P. #2)	
ANGLE B-6/A-6/A-7	89°17'53"M.	89°20'48" REC. (R/W MAP M-97)	

ACCEPTED BY THE MACOMB COUNTY SURVEY PEER GROUP AS THE OFFICIAL CORNER UNDER MICHIGAN PUBLIC ACT 345 OF 1990 AT A MEETING HELD ON 8-28-96
William E. Soderberg
 WILLIAM E. SODERBERG, P.S., CHAIRMAN

C. Description of monument for corner and accessories established to perpetuate locating the position of the corner:

A-6 T.1N.,R.13E.

I REPLACED 1" IRON ROD WITH A 3/4" IRON ROD WITH 2" DIAMETER ALUMINUM CAP STAMPED "MACOMB COUNTY MONUMENT, MI ACT 345 #28408" IN A NEW MONUMENT BOX.

WITNESSES

N.70°E.	72.47'	FOUND P.K. NAIL IN NW FACE UTILITY POLE.
S.64°E.	87.25'	FOUND P.K. NAIL IN SW FACE UTILITY POLE.
S.60°W.	63.22'	SET MAG NAIL IN SE FACE UTILITY POLE.
N.60°W.	69.63'	SET MAG NAIL IN SOUTH FACE UTILITY POLE.

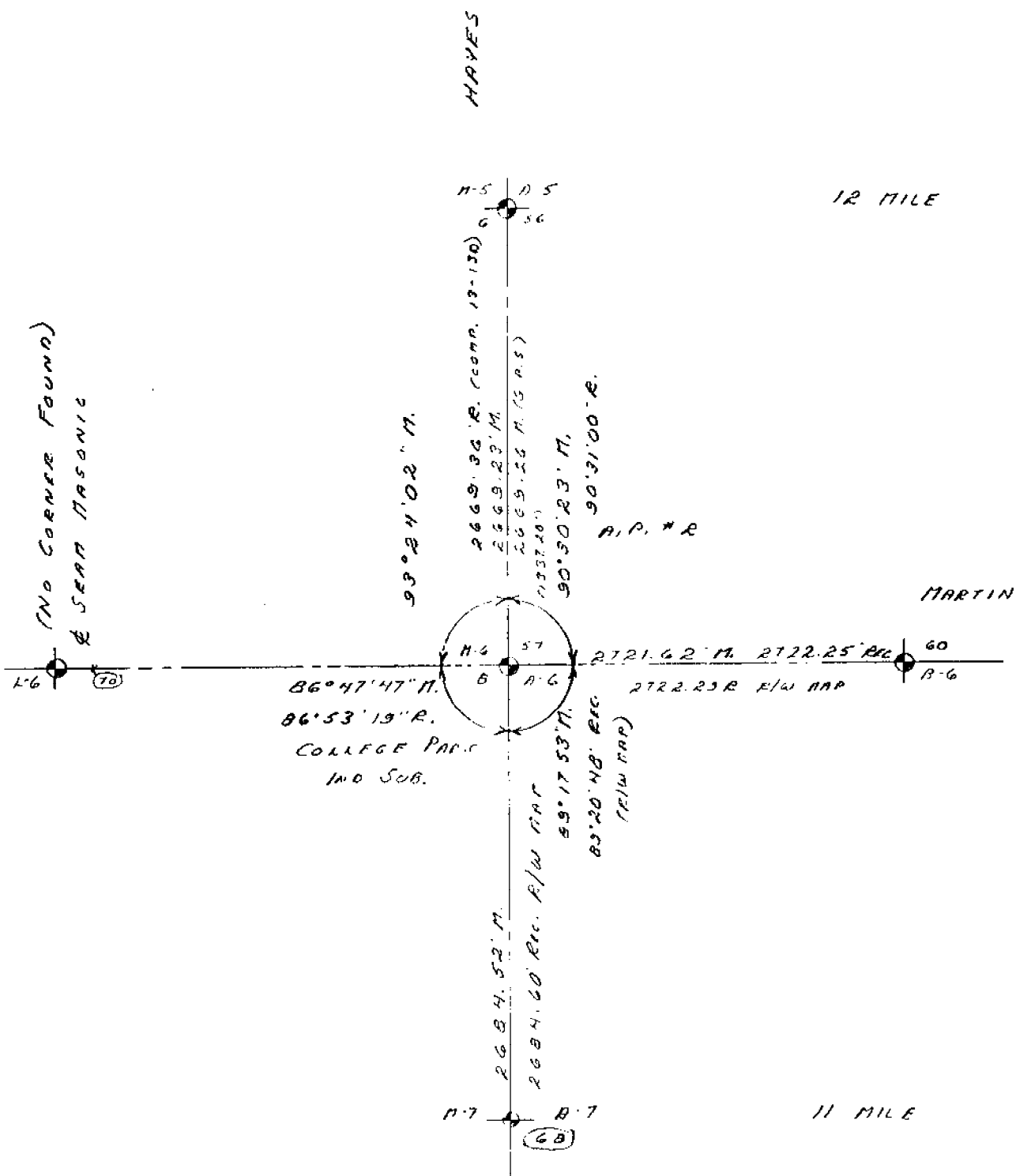


THE SELECTED LOCATION IS ACCEPTED BY ME AND IS GENERALLY ACCEPTED BY PROFESSIONAL SURVEYORS AS THE BEST AVAILABLE EVIDENCE OF THE POSITION OF THE CORNER

Signed by Steven E. Dunn Date Sep. 17, 1996
 Surveyor's Michigan License No. 28408

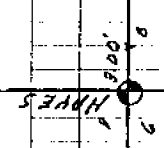
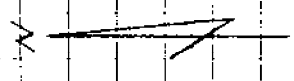
593

22.141 50 SHEETS
 22.142 100 SHEETS
 22.144 200 SHEETS



S. DANN, P. GREGG

12 HME



MARTIN



6 HME



2604.52 M



36.100 Macana Co. Roman

708 - 6

00'00"00" 2669.23

266'35"58" * MASONIC - WEST

00'17"30" 528.55 SET 3/1800 + TANK CAR

271'42"96"

359'59"56"

7'66" - A

00'00"00" 528.55

202'40"46" 3160.12 SET 2/1800 + TANK CAR

57'13"11"

359'53"57"

7'67" - 66

00'00"00" 3160.12

58'32"49" 1107.17 FR. CUT + "N CONC. MED.

30'26"57"

353'58"104"

233'97"15" 1513.20 FR. CUT + "N CONC. FOUNDENT

126'23"26"

359'59"41"

	N	E.	
A-6			
1024	5396.865	15104.721	
1025	5396.850	15104.724	
1026	5396.850	15104.719	
1027	5396.854	15104.716	
1028	5396.869	15104.719	
TOTAL			
MEAN	5396.858	15104.120	(57)

L-6			
1029	2247.226	12588.314	
1030	2247.247	12588.308	
1031	2247.310	12588.335	
TOTAL			
MEAN	2247.261	12588.339	(58)

A-7			
1032	2474.453	15198.882	
1033	2474.456	15198.885	
1034	2474.453	15198.887	
1035	2474.453	15198.887	
1036	2474.453	15198.895	
TOTAL			
MEAN	2474.458	15198.887	(59)

B-6			
1037	5453.793	17825.751	
1038	5453.804	17825.756	
1039	5453.793	17825.762	
1040	5453.790	17825.721	
1041	5453.804	17825.724	
TOTAL			
MEAN	5453.797	17825.743	(60)

FD. 1/2" IRON ROD			
1042	5485.901	17791.755	
1043	5485.890	17791.741	
1044	5485.886	17791.749	
TOTAL			
MEAN	5485.892	17791.749	(61)

FD. 1/2" IRON ROD			
1045	5487.411	17857.656	
1046	5487.411	17857.635	
1047	5487.389	17857.637	
TOTAL			
MEAN	5487.404	17857.643	(62)



	N	E.	
<i>Fd. Conc. Mon.</i>			
1048	16144.959	14710.927	
1049	16144.959	14710.916	
1050	16144.945	14710.808	
TOTAL			
MEAN	16144.954	14710.917	(63)

<i>Fd. 1/2" IRON PIPE</i>			
1051	16008.794	13466.614	
1052	16008.776	13466.617	
1053	16008.772	13466.606	
TOTAL			
MEAN	16008.781	13466.612	(64)

1054	18446.665	4239.893	
1055	18446.684	4239.870	
1056	18446.680	4239.870	
1057	18446.687	4239.875	
1058	18446.665	4239.886	
TOTAL			
MEAN	18446.676	4239.877	(65)



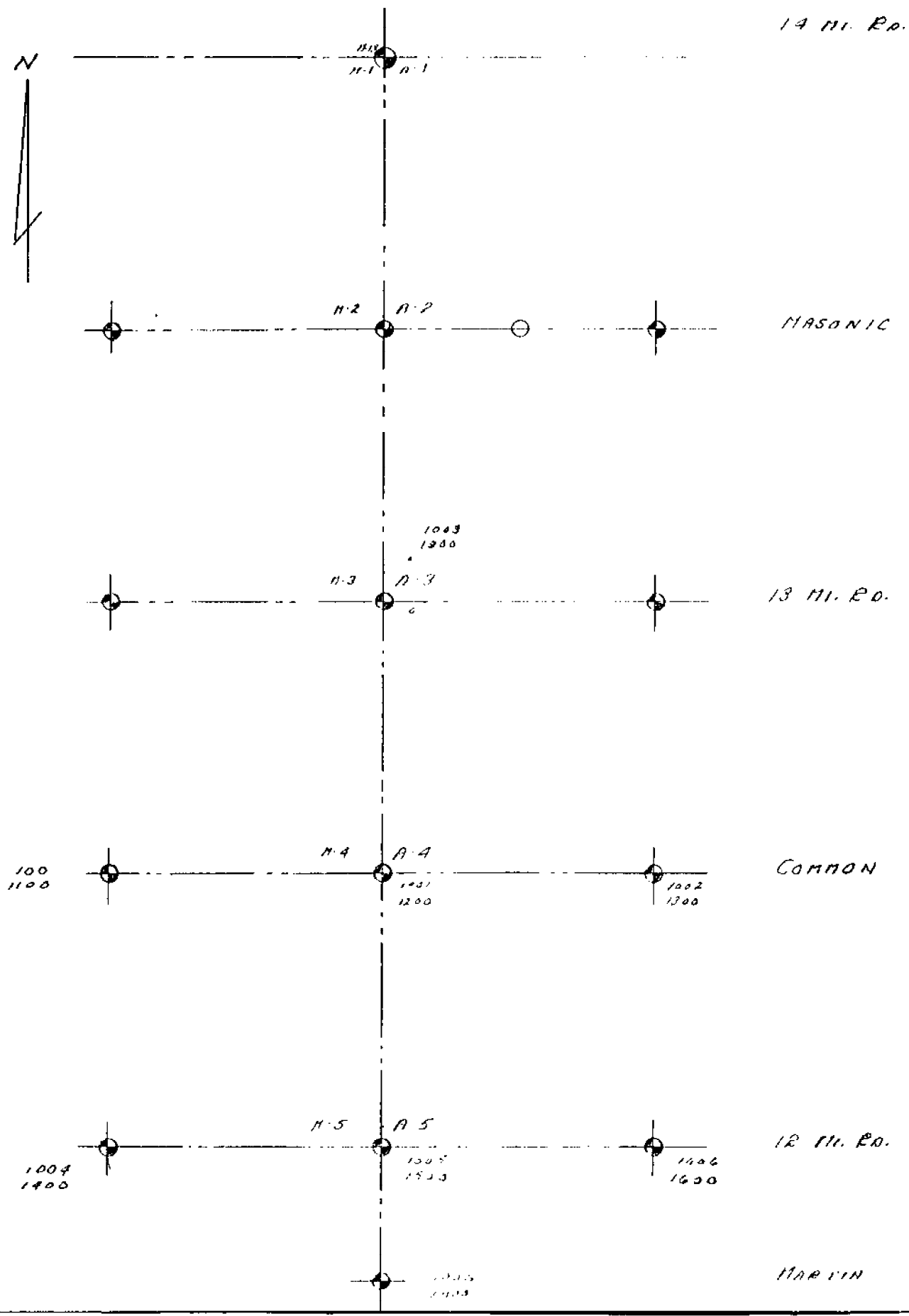
	3-29-96	5-31-96
A-5 To A-6	S.01°42'18" E. 2669.234	S.01°42'18" E. 2669.26
A-4 To A-5	S.01°50'31" E. 2683.811	S.01°50'32" E. 2683.789

22-141 50 SHEETS
22-142 100 SHEETS
22-144 200 SHEETS





22-141 50 SHEETS
22-142 100 SHEETS
22-144 200 SHEETS





L-N	N	L
100	10426.547	12233.023
1100	10426.580	12233.025
TOTAL		
MEAN	10426.564	12233.024

M-N, A-N	N	L
1001	10747.306	14339.017
1000	10747.310	14339.007
1200	10747.317	14339.993
TOTAL		
MEAN	10747.311	14339.008

B-N	N	L
1003	10836.491	17647.840
1300	10836.480	17647.848
TOTAL		
MEAN	10836.486	17647.844

L-5	N	L
1004	7848.595	12471.459
1400	7848.587	12471.453
TOTAL		
MEAN	7848.591	12471.456

M-5, A-5	N	L
1005	8064.887	15025.276
1500	8064.887	15025.281
TOTAL		
MEAN	8064.887	15025.278

B-5	N	L
1006	8153.254	17732.040
1600	8153.250	17732.043
TOTAL		
MEAN	8153.252	17732.042

M-6, A-6	N	L
1007	5396.819	15104.698
1008	5396.834	15104.693
1700	5396.852	15104.735
TOTAL		
MEAN	5396.835	15104.699

	N	E
<i>11-3, A-3 TRAVERSE POINT</i>		
1009	13510.861	14889.118
1900	13510.861	14889.116
TOTAL	27021.722	
MEAN	13510.861	14889.117

PT. No.	N	E	
1	BASE STA.	10,000.000	10,000.000
2	L-4	10,426.564	12,233.024
3	11-4, A-4	10,747.311	14,339.008
4	B-4	10,836.486	17,647.844
5	L-5	7848.591	12,471.456
6	11-5, A-5	8064.887	15,025.278
7	B-5	8153.252	17,732.042
8	11-6, A-6	5396.835	15,104.639
9	11-3, A-3	13,510.861	14,889.117 TRAVERSE POINT

22-141 50 SHEETS
 22-142 100 SHEETS
 22-144 200 SHEETS



MACOMB COUNTY REMONUMENTATION PROGRAM
 WILLIAM E. SODERBERG P.S
 MACOMB COUNTY SURVEYOR - REPRESENTATIVE
 10 NORTH MAIN
 COUNTY BUILDING SECOND FLOOR
 MOUNT CLEMENS, MICHIGAN 48043
 PHONE 810-469-7916 FAX 810-469-5130

Memo 96-07

May 2, 1996

Metco Services, Inc.
 12504 Stevens
 Warren, Michigan 48089

Attention: Steve Dunn

Reference: GLO notes for 1996 Remonumentation program.

I finally got my turn on the microfilm viewer to do the requested search. Here is the information.

South line of Sterling, used as the North line of Warren.
 Surveyed West to East, then corrected back to the West.
 Surveyed by Wampler in 1817.
 From corner common to section 34 and 33 W 40 chs, set post; W 40
 chs, set post common to sec 33 and 32; Page 331
 W 40 chs, set post; W 40 chs, set post common to sec 32 and 31;
 Page 331
 W 40 chs, set post; W 39.98 chs to post common to Township corner.
 Page 332.

Subdivision of Warren, surveyed by Wampler in 1817.
 North between sec 3 & 4, intec 50 lks E. Page 348
 North between sec 4 & 5, intec 42 lks E. Page 353
 North between sec 5 & 6, intec 87 lks E. Page 359

Line common to Warren and Erin/Lake surveyed by Preston in 1817.
 Surveyed S to N. All post were set at 40 chs, including Township
 corner. Page 327.

Erin/Lake surveyed by Preston in 1818.
 Surveyed N to S and W to E.
 W between 6 & 7 to point common with Warren Page 224.
 W between 7 & 18 to point common with Warren Page 225.
 W between 18 & 24 to point common with Warren Page 226.

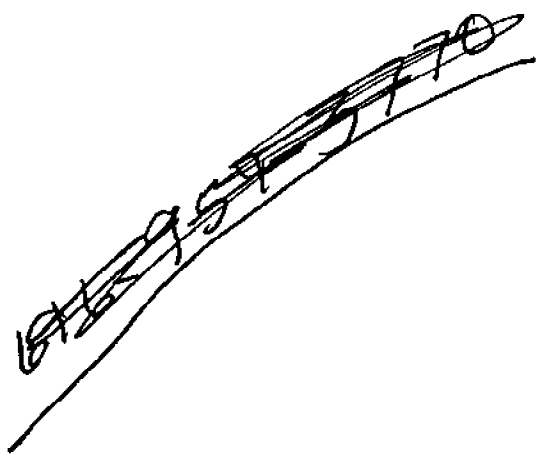
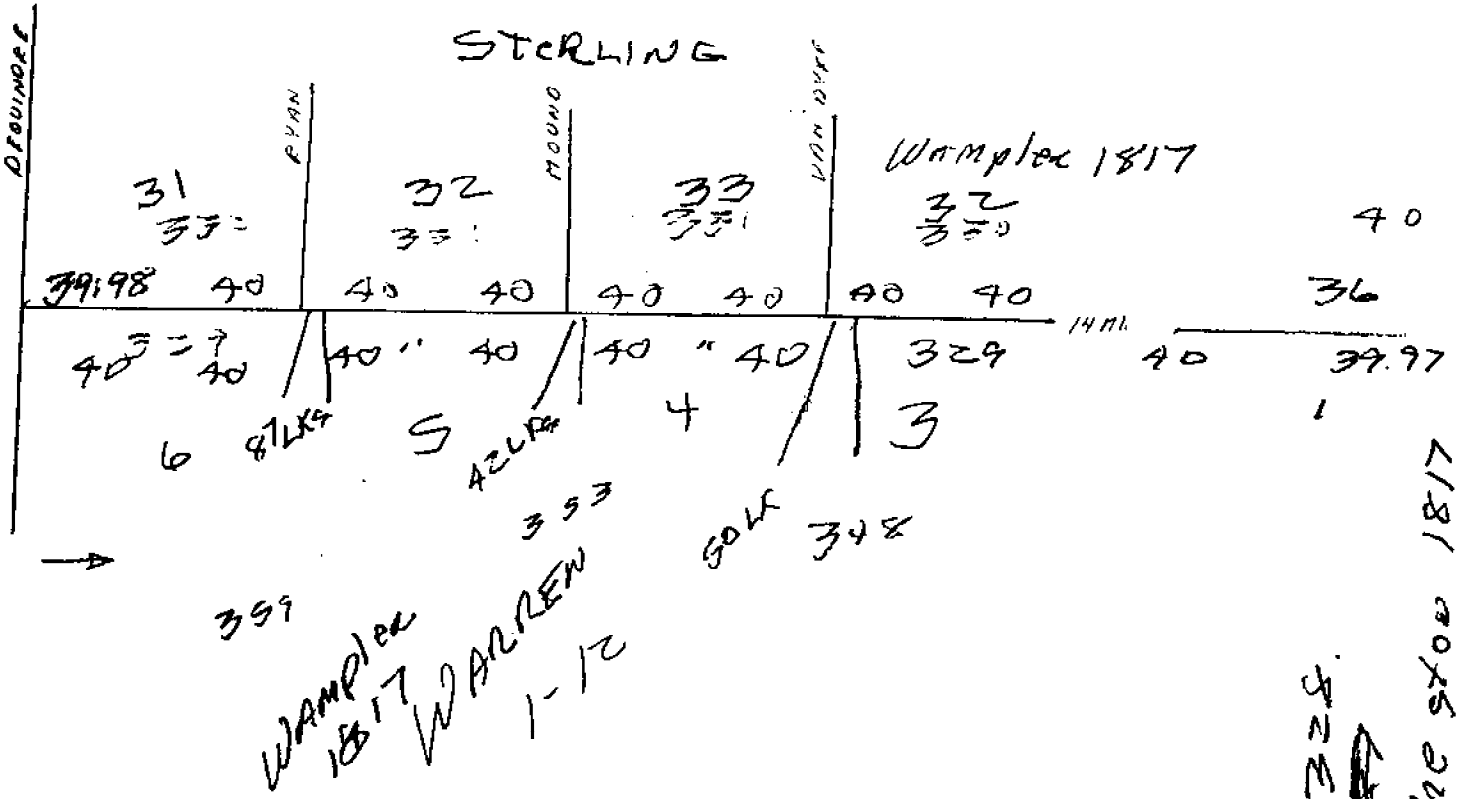
If you have any questions, please contact me.
 Sincerely;



William E. Soderberg, P.S
 Macomb Surveyor/Representative.

2-12

STERLING



NORTH
↓
SOUTH
WEST
TO
EAST

WARREN

