

**LAND CORNER RECORDATION CERTIFICATE**  
**Filing Requirement of Act 74, Mich. P.A. 1970**

For corners in

MACOMB

(County)

Located In:  
ERIN/LAKE TWP.

Corner Code #

- |                                    |   |           |   |            |            |
|------------------------------------|---|-----------|---|------------|------------|
| 1. Public Land Survey              | T | <u>1N</u> | R | <u>13E</u> | <u>A-2</u> |
|                                    | T |           | R |            |            |
|                                    | T |           | R |            |            |
|                                    | T |           | R |            |            |
| 2. Property Controlling in Section | S |           | T | R          |            |
|                                    | S |           | T | R          |            |
| 3. Miscellaneous Property in Sec.  | S |           | T | R          |            |
|                                    | S |           | T | R          |            |

ACCEPTED BY THE MACOMB COUNTY SURVEY PEER GROUP AS THE OFFICIAL CORNER UNDER MICHIGAN PUBLIC ACT 345 OF 1990 AT A MEETING HELD ON 8/20/96

*William E. Soderberg*  
 WILLIAM E. SODERBERG, P.S., CHAIRMAN

Register of Deeds Stamp & File Number

4. Lot No. \_\_\_\_\_, Recorded Plat \_\_\_\_\_

5. Private Claims

C0438538 LIBER:07245 PAGE:399 08:59A 11/14/1996  
CARMELLA SABAUGH-MACOMB COUNTY, MI REG/DEEDS

A	B	C	D	E	F	G	H	I	J	K	L	M
2	6	5	4	3	2	1						
3												
4	7	8	9	10	11	12						
5												
6	18	17	16	15	14	13						
7												
8	19	20	21	22	23	24						
9												
10	30	29	28	27	26	25						
11												
12	31	32	33	34	35	36						
13												

I, STEVEN E. DUNN, in a field survey on MAY 4, 19 96, do hereby certify that under requirements of P.A. 74, Michigan P.A. of 1970, the corner points mentioned in lines 1 and 2 above were in conformance with regulations and rules therefore as required in the current manual of survey instructions of the United States Department of the Interior, Bureau of Land Management or by a decree of a Court of Law and for that the corner points mentioned in lines 3, 4 and 5 above were in conformance with the rules of the Michigan Board of Land Surveyors or by a Decree of a Court of Law, established, re-established, monumented, re-monumented, recovered, found as expressed below:

**NOTE: Not more than 2 corners, all in the same town and range, may be recorded on this certificate.**

A. Description of original monument and accessories and/or subsequent restoration:

**GLO POST - NO EVIDENCE OF ORIGINAL CORNERS FOUND**  
**GLO ORIGINAL SURVEY PERFORMED BY WILLIAM PRESTON-1817**

<u>L.C.R.C.</u>	L.2342 P.618	HERBERT J. KOBS #14097	FOUND 1/2" IRON BAR	NOV. 10, 1972
	L.3055 P.818	GEORGE J. AVENDT, JR.#16034	FOUND 1/2" IRON	JAN. 15, 1979
<u>PLATS</u>	FRASER PARK SUBDIVISION		L.9 P.42	JUNE 25, 1925
	EMERALD ESTATES SUB.		L.68 P. 29 & 30	DEC. 29, 1976
	STONEY BROOK SUB.		L.71 P. 33 & 34	APR. 7, 1978
	DONBY ESTATES SUBDIVISION		L.80 P. 23-25	MAY 28, 1986
	DI STEFANO ESTATE		L.83 P. 42	AUG. 28, 1987

B. Description of corner evidence found and/or method applied in restoring or reestablishing corner:

A-2 1/4 CORNER CORNER COMMON TO M-2 T.1N.,R.12E.  
 FOUND 1/2" IRON ROD IN MONUMENT BOX IN CONCRETE PAVEMENT.  
 VERIFIED LOCATION BY COMPARING MEASURED DISTANCES AND ANGLES TO RECORD DISTANCES AND ANGLES AS LISTED BELOW.

**FIELD MEASUREMENTS AND RECORDED DISTANCES**

A-2 TO B-2 2688.34'M 2688.51' REC. (DI STEFANO ESTATES, STONEY BROOK SUB. & DONBY ESTATES SUB.)

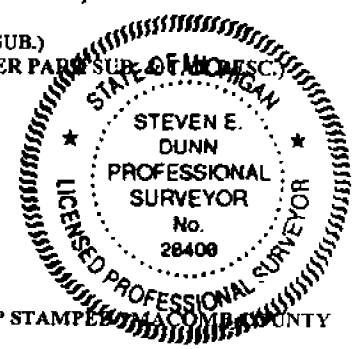
2688.47'REC. (EMERALD ESTATES SUB.)

A-2 TO A-2 (EX. REMON CORNER) 2693.23'M., 40 CH (GLO 2640.00), 2693.26 REC. (STONEY BROOK SUB.)

A-2 TO A-3 2697.80'M., 40 CH (GLO 2640.00), 2697.80 R. (FRASER PARK SUB.)

ANGLE A-1/A-2/B-2 90°06'28"M., 90°06'50" R. (STONEY BROOK SUB.)

ANGLE B-2/A-2/A-3 89°51'03"M.



C. Description of monument for corner and accessories established to perpetuate locating the position of the corner:

A-2 T.1N., R. 13E.  
 I REPLACED 1/2" IRON ROD WITH A 3/4" IRON ROD WITH 2" DIAMETER ALUMINUM CAP STAMPED "MACOMB COUNTY MONUMENT, MI. ACT 345 #28408" IN AN EXISTING MONUMENT BOX

**WITNESSES**

N.37°W.	46.63'	FOUND P.K. NAIL IN NE FACE UTILITY POLE
N.55°E.	51.94'	SET MAG NAIL W/MACOMB COUNTY REMONUMENTATION WITNESS TAG IN NW FACE UTILITY POLE
S.40°E.	63.21'	SET MAG NAIL W/MACOMB COUNTY REMONUMENTATION WITNESS TAG IN SW FACE UTILITY POLE
S.47°W.	44.36'	FOUND P.K. NAIL IN SE FACE UTILITY POLE

THE SELECTED LOCATION IS ACCEPTED BY ME AND IS GENERALLY ACCEPTED BY PROFESSIONAL SURVEYORS AS THE BEST AVAILABLE EVIDENCE OF THE POSITION OF THE ORIGINAL CORNER.

Signed by *Steven E. Dunn*

Date SEP. 19, 1996

Surveyor's Michigan License No. 28408

MACOMB COUNTY REMONUMENTATION PROGRAM  
WILLIAM E. SODERBERG P.S  
MACOMB COUNTY SURVEYOR - REPRESENTATIVE  
10 NORTH MAIN  
COUNTY BUILDING SECOND FLOOR  
MOUNT CLEMENS, MICHIGAN 48043  
PHONE 810-469-7916 FAX 810-469-5130

Memo 96-07

May 2, 1996

Metco Services, Inc.  
12504 Stevens  
Warren, Michigan 48089

Attention: Steve Dunn

Reference: GLO notes for 1996 Remonumentation program.

I finally got my turn on the microfilm viewer to do the requested search. Here is the information.

South line of Sterling, used as the North line of Warren.  
Surveyed West to East, then corrected back to the West.  
Surveyed by Wampler in 1817.  
From corner common to section 34 and 33 W 40 chs, set post; W 40  
chs, set post common to sec 33 and 32; Page 331  
W 40 chs, set post; W 40 chs, set post common to sec 32 and 31;  
Page 331  
W 40 chs, set post; W 39.98 chs to post common to Township corner.  
Page 332.

Subdivision of Warren, surveyed by Wampler in 1817.  
North between sec 3 & 4, intec 50 lks E. Page 348  
North between sec 4 & 5, intec 42 lks E. Page 353  
North between sec 5 & 6, intec 87 lks E. Page 359

Line common to Warren and Erin/Lake surveyed by Preston in 1817.  
Surveyed S to N. All post were set at 40 chs, including Township  
corner. Page 327.

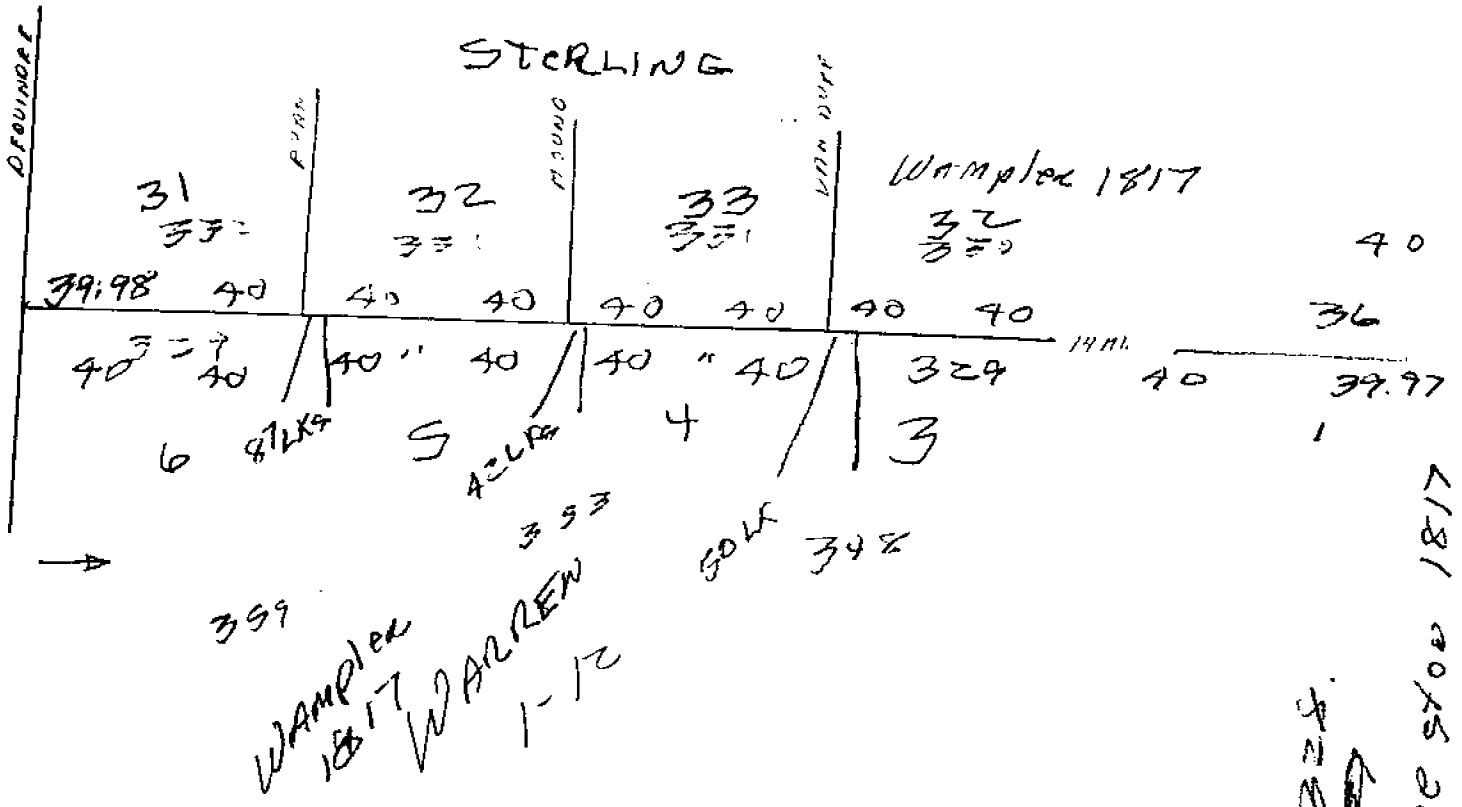
Erin/Lake surveyed by Preston in 1818.  
Surveyed N to S and W to E.  
W between 6 & 7 to point common with Warren Page 224.  
W between 7 & 18 to point common with Warren Page 225.  
W between 18 & 24 to point common with Warren Page 226.

If you have any questions, please contact me.  
Sincerely;



William E. Soderberg, P.S  
Macomb Surveyor/Representative.

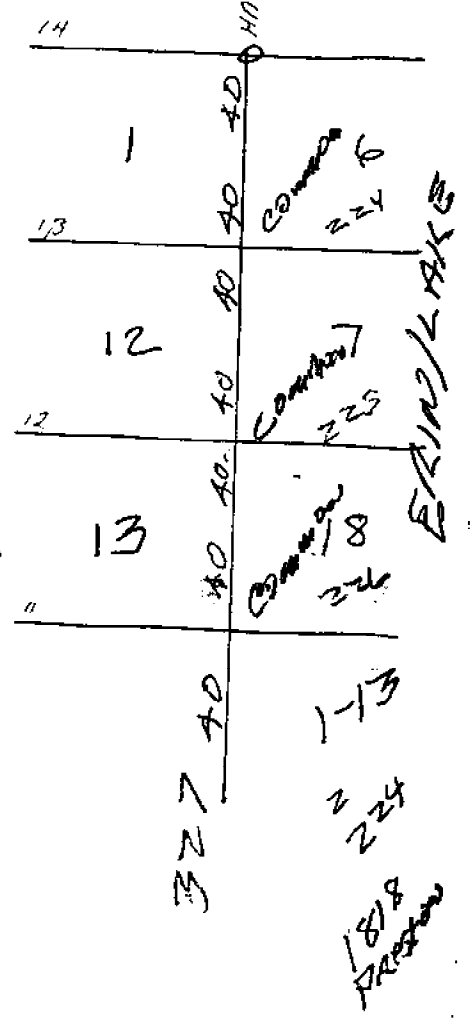
3-12



~~6395770~~

NORTH  
↓  
SOUTH  
WEST  
TO  
EAST

WARREN



# LAND CORNER RECORDATION CERTIFICATE

FILING REQUIREMENT OF ACT 74, MICH. P.A. 1970

LIBER **2342** PAGE **618**

**A153945**

FOR CORNERS OF -:	LOCATED IN -:	CORNER CODE NUMBER
1. PUBLIC LAND SURVEY _____	1 N. 13 E. x R. x	A-2
2. PROPERTY CONTROLLING IN SECTION _____	N. S. R. W.	
3. MISCELLANEOUS PROPERTY IN SECTION _____	N. S. R. W.	
4. LOT NO. _____, RECORDED PLAT _____		
5. PRIVATE CLAIMS _____		

RECORDED IN MACOMB COUNTY  
RECORDS AT: **9:15 A.M.**  
**NOV 10 1972**  
*Edna M. Hill*  
CLERK - REGISTER OF DEEDS  
MACOMB COUNTY, MICHIGAN

---

REGISTER OF DEEDS STAMP AND  
FILING NUMBER

I, Herbert J. Kobs do hereby certify that under requirements of P.A. 74, Michigan P.A. of 1970, the corner points mentioned in lines 1 and 2 above (identified with circles on index code diagram - over) were, in a field survey on August 17, 1972, established, re-established, monumented, re-monumented, recovered or restored as expressed below and in conformance with regulations and rules therefore as required in the current manual of survey instructions of the United States Department of the Interior, Bureau of Land Management or by a decree of a court of law. Furthermore, that the corner points mentioned in lines 3, 4 and 5 above were, in a field survey on \_\_\_\_\_ 19\_\_\_\_, found, recovered, restored, established or re-established as expressed below and in conformance with the rules of the Michigan State Board of Registration for Land Surveyors or, by a Decree of a Court of law:

A. Description of original monument and accessories and/or subsequent restoration:

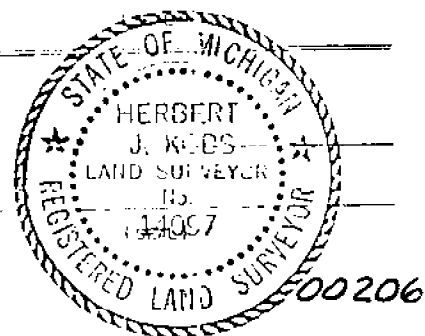
B. Description of corner evidence found and/or method applied in restoring or re-establishing corner:

Found 1/2" iron bar.

C. Description of monument for corner and accessories established to perpetuate locating the position of the corner:

(1/2" iron bar)  
Form nail & cap No. 5797 in D.E. pole - N.W. - 45.11 feet.  
Form nail & cap No. 5787 in D.E. pole - S.W. - 73.34 feet.  
Top of fire hydrant - N.E. - 46.68 feet.

SIGNED BY <i>Herbert J. Kobs</i>	DATE <u>November 2, 1972</u>
SURVEYOR'S MICHIGAN REGISTRATION NO. <u>14097</u>	
FOR STATE AND UNITED STATES AGENCIES:	
SIGNED BY _____ CHIEF OF SURVEY PARTY	DATE _____
APPROVED AND SIGNED BY _____ MICHIGAN REGISTERED LAND SURVEYOR	DATE _____



SURVEYOR'S MICHIGAN REGISTRATION NO. \_\_\_\_\_

3.



MACOMB COUNTY PUBLIC LAND SURVEY  
REMONUMENTATION PROGRAM

RESEARCH DOSSIER

CORNER LOCATION  
T.1N., R.13E.

ACT 74 CORNER CODE  
A-2

SECTION CORNER

West 1/4 Corner Section 6. Corner is common corner to East 1/4  
Corner Section 1, Town 1 North, Range 12 East.

ORIGINAL CORNER IDENTIFICATION PER GOVERNMENT LAND OFFICE  
RECORDS:

Set corner post.

INTERIM CORNER IDENTIFICATION:

1/2" iron bar.

H. Kobbs #14907 L. 2342, P. 618

1/2" iron

G. Avedt, Jr. #16034 L. 3055, P. 818

CURRENT CORNER IDENTIFICATION:

Found 1/2" iron rod in monument box in concrete pavement.

A field measurement was made between corners;

A-2 to B-2

2688.34' meas.

2688.51' rec. DiStefano Estates, Stoney  
Brook Sub., and Donby Estates Sub.

2688.47' rec. Emerald Estates Sub.

A-2 to A-1

2693.23' meas.

2693.26' rec. Stoney Brook Sub.

40 chains G.L.O. 2640.00'

A-2 to A-3

2697.80' meas.

2697.80' rec. Fraser Park Sub. & tax

descriptions.

40 chains G.L.O. 2640.00'.

SUMMARY AND RECOMMENDATIONS:

The selected location is accepted by me and is generally  
accepted by Professional Surveyors as the best available  
evidence of the corner.

MACOMB COUNTY PUBLIC LAND SURVEY

CORNER VERIFICATION CHECKLIST

RECORDED SURVEY FILE:

LAND FILES:

COUNTY SURVEYOR FILES: G.L.O. notes.

LOCAL SURVEYOR FILES: None.

MUNICIPAL AGENCIES:

A. MDOT:	None.
B. M.C.R.C.:	None.
C. M.D.N.R.:	None.
D. Macomb County Register of Deeds:	
Land Corner Recordation Certificates:	
L. 2342, P. 618, H. Kobbs #14097, Nov. 10, 1972	
L. 3055, P. 818, G. Avendt, Jr., Jan. 15, 1979	

Recorded Surveys:	None.
Recorded Condominium Documents:	None.

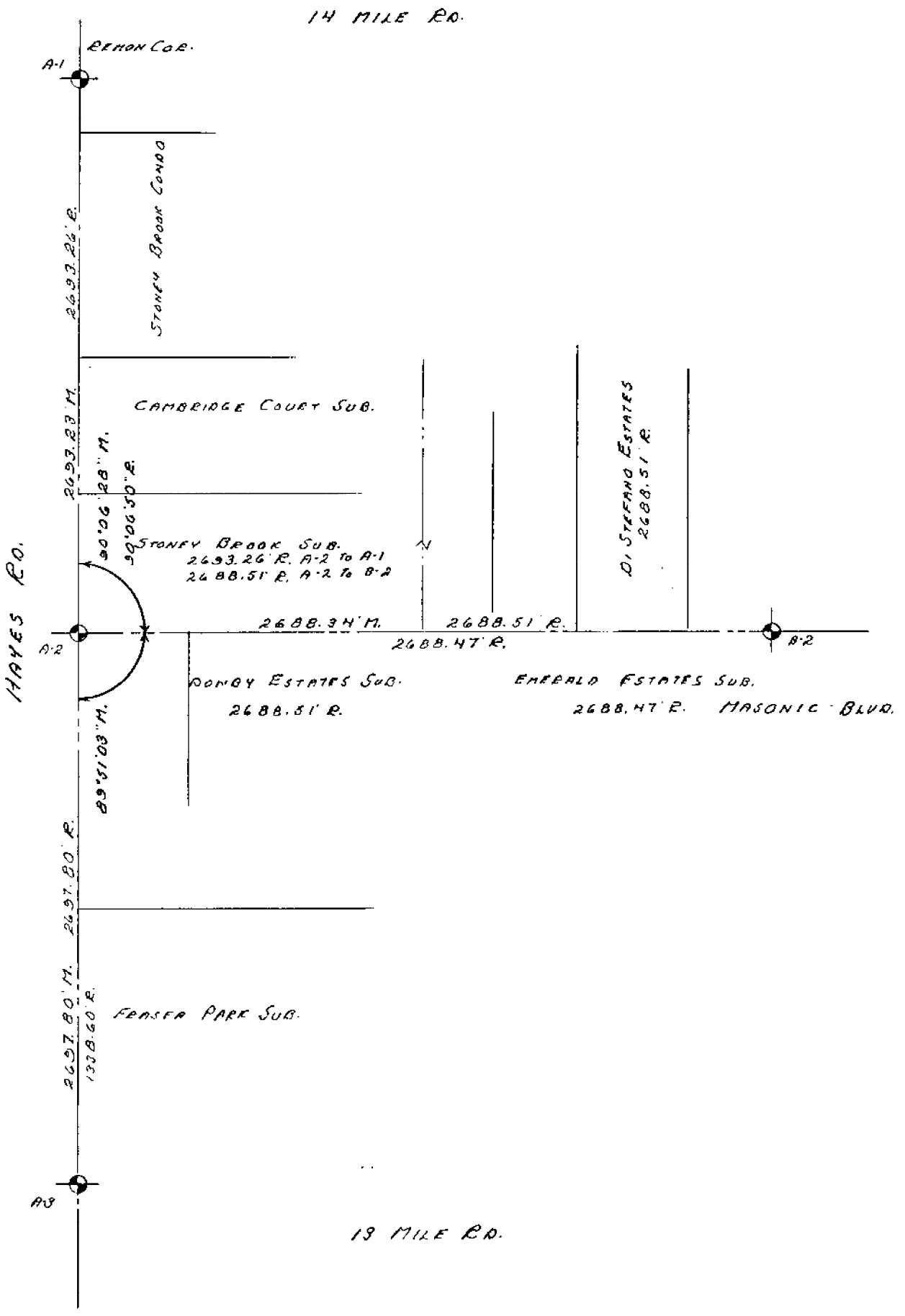
UTILITY COMPANIES:

A. Detroit Edison:	None.
B. Michigan Bell:	None.
C. Michigan Consolidated Gas:	None.
D. Consumers Power Company:	None.
E. Pipeline Companies:	None.
F. City of Detroit Water Board:	None.
G. Railroads:	None.

CONTACT WITH ADJOINING PROPERTY OWNERS:

No contact was made regarding this corner.

22-141 50 SHEETS  
22-142 100 SHEETS  
22-144 200 SHEETS





S. DUNN, A. GREGG, A. KRICHMARUM

5-4-26

36.100 Macoma Co.

A X° 9 → 2032 (12)

(16) 00.00.00.00 1001.68

(17) 168.07.04. 2549.96 Fo. 1/2" I. Pao

191.52.59"

359.59.57"

B X° 17 → 9

(18) 00.10.00. 2549.96

(19) 306.42.55. 144.40 Fo. 1/2" I. PIPE

(20) 222.02.38. 168.41 Fo. 5/8" Fe. Post

(21) X° 3032 → 9

(22) 00.00.00. 1001.68

(23) 182.55.51. 1655.01 Fo. 1/2" I. Pao In Man. Bay

177.04.11"

359.59.57"

(24) 177.01.00. 350.28 Fo. 1/2" I. Pao

A (18) X° 9 → 3032 (15)

(25) 00.00.00.00. 1001.67

(26) 72.55.10. 115.24 Fo. Conc. Man.

(27) 273.12.42. 248.48 Fo. T. Iron.

(28) 171.23.20. 753.86 Fo. 1/2" I. Pao

(29) 158.52.17. 538.93 " " "



LAND CORNER RECORDATION CERTIFICATE

FILING REQUIREMENT OF ACT 74, MICH. P.A. 1970

CITY OF FRASER, MACOMB COUNTY, MICHIGAN

A555929

FOR CORNERS OF: S.W. 1/4 LOCATED IN: Sec. 6 CORNER CODE NUMBER

1. PUBLIC LAND SURVEY... 1. 1 N. 13 W. A-2 W. 1/4 post.

2. PROPERTY CONTROLLING IN SECTION... N. R. W.

3. MISCELLANEOUS PROPERTY IN SECTION... N. R. W.

4. L.O.F. NO. ... RECORDED PLAT

5. PRIVATE CLAIMS

RECORDED IN MACOMB COUNTY RECORDS AT: 8:30 A.M. JAN 15 1979

*Edna M. Hill*  
CLERK - REGISTERED OF DEEDS  
MACOMB COUNTY, MICHIGAN

REGISTER OF DEEDS STAMP AND FILING NUMBER

I, George J. Avendt, Jr. do hereby certify that under requirements of P.A. 74, Michigan P.A. of 1970, the corner points mentioned in lines 1 and 2 above (marked with circles on index code diagram - over) were, in a field survey on August 1978, established, re-established, monumented, re-monumented, recovered or restored as expressed below and in conformance with regulations and rules therefore as required in the current manual of survey instructions of the United States Department of the Interior, Bureau of Land Management or by a decree of a court of law. Furthermore, that the corner points mentioned in lines 3, 4 and 5 above were, in a field survey on 19   , found, recovered, restored, established or re-established as expressed below and in conformance with the rules of the Michigan State Board of Registration for Land Surveyors or, by a Decree of a Court of law:

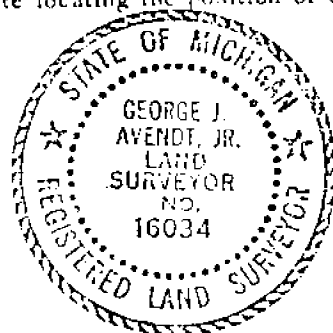
A. Description of original monument and accessories and/or subsequent restoration:

B. Description of corner evidence found and/or method applied in restoring or re-establishing corner:

A-2 Found 1/2" iron

C. Description of monument for corner and accessories established to perpetuate locating the position of the corner:

A-2 West 4.30 ft. East edge of concrete slab  
N.W. 45.15 ft. P.K. nail in power pole  
N.E. 45.47 ft. P.K. nail in power pole  
S.E. 45.10 ft. P.K. nail in power pole



SIGNED BY *George J. Avendt, Jr.* DATE November 15, 1978

SURVEYOR'S MICHIGAN REGISTRATION NO. 16034 (SEAL)

FOR STATE AND UNITED STATES AGENCIES:

SIGNED BY \_\_\_\_\_ CHIEF OF SURVEY PARTY DATE \_\_\_\_\_

APPROVED AND SIGNED BY \_\_\_\_\_ MICHIGAN REGISTERED LAND SURVEYOR DATE \_\_\_\_\_ (SEAL)

SURVEYOR'S MICHIGAN REGISTRATION NO. \_\_\_\_\_

00817

4