

C152280

LAND CORNER RECORDATION CERTIFICATE
Filing Requirement of Act 74, Mich. P.A. 1970

94 DEC 14 AM 10:55

corners in

MACOMB

(County)

Located In: ERINLAKE

Corner Code #

Public Land Survey

T 1N R 13E

A-1

Property Controlling in Section

S T R

Miscellaneous

S T R

Property in Sec.

S T R

MACOMB COUNTY, MI
RECORDS & DEEDS

LIBER 6527 PAGE 857

Register of Deeds Stamp & File Number

Lot No. Recorded Plat

Private Claims

Grid table with columns A-M and rows 2-13. Contains numbers 1-36.

STEVEN E. DUNN, in a field survey on MARCH 20, 19 94, hereby certify that under requirements of P.A. 74, Michigan P.A. of 1970, the corner points mentioned in lines 1 and 2 above were in conformance with regulations and rules therefore required in the current manual of survey instructions of the United States Department of Interior, Bureau of Land Management or by a decree of a Court of Law and/or that the corner points mentioned in lines 3, 4 and 5 above were in conformance with the rules of the Michigan Board of Land Surveyors or by a Decree of a Court of Law; established, established, monumented, re-monumented, recovered, found as expressed below:

NOTE: Not more than 4 corners, all in the same town and range, may be recorded on this certificate.

Description of original monument and accessories and/or subsequent restoration:

GLO POST - NO EVIDENCE OF ORIGINAL CORNER FOUND

GLO ORIGINAL SURVEY PERFORMED BY PRESTON 2-18-1818

Table with columns: L.C.R.C., NAME AND NUMBER, DESCRIPTION, DATE. Includes entries for L. 5292 P. 724 and L. 5665 P. 299.

Table with columns: PLATS, NAME AND NUMBER, DATE. Includes entries for L. 96 P. 42-45, L. 98 P. 40-41, and L. 100 P. 1-7.

Description of corner evidence found and/or method applied in restoring or reestablishing corner:

A-1 TOWNSHIP CORNER COMMON TO: A-13 CLINTON, M-1 WARREN, AND M-13 STERLING:

FOUND 1/2" IRON ROD IN MONUMENT BOX IN CONCRETE PAVEMENT VERIFIED LOCATION BY COMPARING FOUND WITNESS TIES OF L.C.R.C.'S LISTED BELOW AND COMPARING DISTANCE FROM A-1 TO A-13 WITH THAT OF FIELDSTONE SUB AND DISTANCE FROM A-1 TO B-1 WITH THAT OF HARRINGTON ESTATES SUB AND BORIS PARK SUB.

Table with columns: FOUND WITNESS TIES, NAME AND NUMBER, DESCRIPTION. Includes entries for L. 5292 P. 724 and L. 5665 P. 299.

FIELD MEASUREMENTS AND RECORDED DISTANCES

A-1 TO A-13 2669.43' (M.)
A-1 TO B-1 2672.57' (M.) 2640.00' G.L.O. (R.)

Description of monument for corner and accessories established to perpetuate locating the position of the

A-1 T.1N., R.13E. I REPLACED 1/2" IRON ROD WITH 3/4" x 24" IRON ROD WITH 2" DIAMETER ALUMINUM CAP STAMPED "MACOMB COUNTY MONUMENT MI. ACT 345 #28408" IN AN EXISTING MONUMENT BOX.

WITNESSES

Table with columns: WITNESSES, NAME AND NUMBER, DESCRIPTION. Includes entries for S.51°W. 75.03', S.44°W. 68.13', S.61°E. 90.84', N.51°E. 65.05', and N.50°E. 64.13'.

ACCEPTED BY THE MACOMB COUNTY SURVEY PEER GROUP AS THE OFFICIAL CORNER UNDER MICHIGAN PUBLIC ACT 345 OF 1980 AT A MEETING HELD ON 10-4-94
WILLIAM E. SODERBERG, P.S., CHAIRMAN



THE SELECTED LOCATION IS ACCEPTED BY ME AND IS GENERALLY ACCEPTED BY PROFESSIONAL SURVEYORS AS THE BEST AVAILABLE EVIDENCE OF THE POSITION OF THE ORIGINAL CORNER

signed by Steven E. Dunn Date Nov 9, 1994

Surveyor's Michigan License No. 28408

22-141 50 SHEETS
22-142 100 SHEETS
22-144 200 SHEETS
AMRAD

STERLING TWP.

CLINTON TWP.

N

SEC. 36

SEC. 31

2669.43 M.
2669.43 (FIFLSTONE SUB.)

90°06'52" N.

2672.57 M.

2672.72 (HARRINGTON ESTATES SUB.)

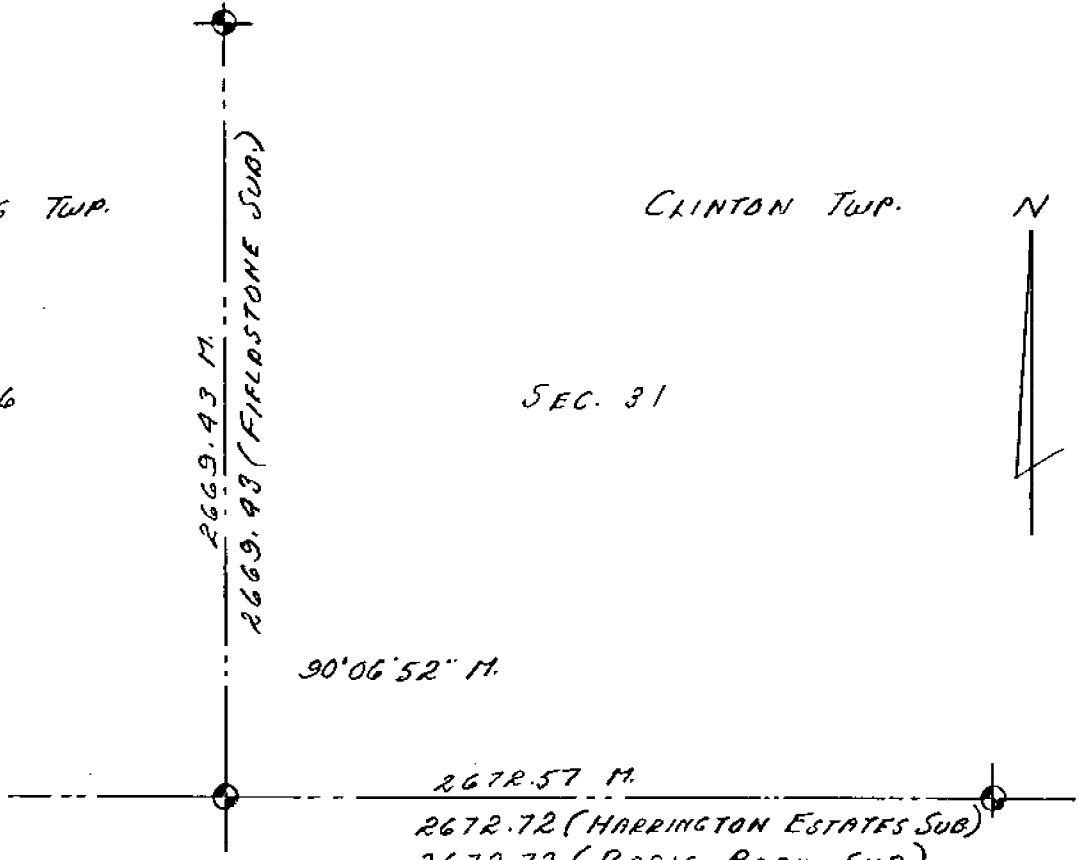
2672.72 (BORIS PARK SUB.)

SEC. 1

SEC. 6

WARREN TWP.

ERIN LAKE TWP.

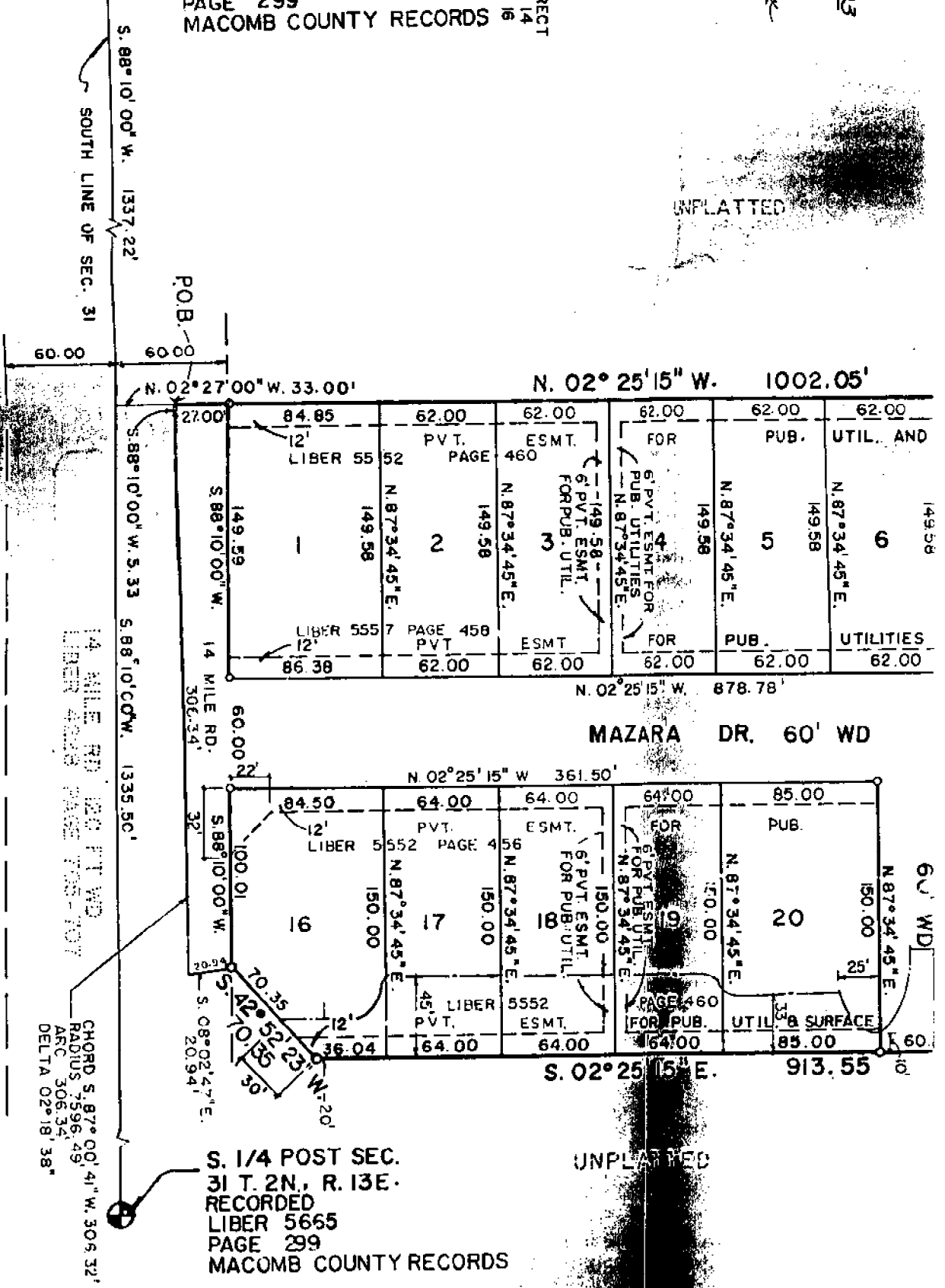


RECORDED AND APPROVED
 26, 1993
 BY THE DEPARTMENT
 OF CONSUMERS
 Edward E. Lamm, M.D.
 Michigan State Registrar

NOTE:
 THERE SHALL BE NO DIRECT
 PARTICULAR ACCESS TO 14
 MILE RD. FROM LOTS 1 & 16

S.W. COR. SEC. 31
 T. 2N; R. 13 E.
 RECORDED
 LIBER 5665
 PAGE 299
 MACOMB COUNTY RECORDS

UNPLATTED



S. 1/4 POST SEC.
 31 T. 2N, R. 13E.
 RECORDED
 LIBER 5665
 PAGE 299
 MACOMB COUNTY RECORDS

UNPLATTED

CHORD S. 87° 00' 41" W. 306.32'
 RADIUS 7596.49'
 ARC 306.34'
 DELTA 02° 18' 38"

HARRINGTON
 ESTATES
 DANA MAURO & ASSOC.
 ARCHITECTS-ENGINEERS
 CLINTON TWP. MI 48038

100
 Page 1

LAND CORNER RECORDATION CERTIFICATE
Filing Requirement of Act 74, Mich. P.A. 1970

RECORDED IN MACOMB COUNTY
RECORDS AT: 3:41 P. M.
DEC - 1 1992

For corners in

<u>Macomb</u> (County)	Located In:	Corner Code #
	City of Fraser,	Sec. 31
1. Public Land Survey	T <u>2</u> R <u>13</u> E.	A-13
	T <u>2</u> R <u>13</u> E.	B-13
	T _____ R _____	_____
	T _____ R _____	_____
2. Property Controlling	S _____ T _____ R _____	_____
In Section	S _____ T _____ R _____	_____
3. Miscellaneous	S _____ T _____ R _____	_____
Property in Sec.	S _____ T _____ R _____	_____

Edna H. Miller
CLERK - REGISTER OF DEEDS
MACOMB COUNTY, MICHIGAN

Register of Deeds Stamp & File Number

4. Lot No. _____, Recorded Plat _____
5. Private Claims _____

	A	B	C	D	E	F	G	H	I	J	K	L	M
2	8		5		4		3		2				
3													
4	7		8		9		10		11		12		
5													
6	18		17		16		15		14		13		
7													
8	19		20		21		22		23		24		
9													
10	30		29		28		27		26		25		
11													
12	31		32		33		34		35		36		
13													

I, Gerald J. Landwehr, in a field survey on November 27, 19 92, do hereby certify that under requirements of P.A. 74, Michigan P.A. of 1970, the corner points mentioned in lines 1 and 2 above were in conformance with regulations and rules therofore as required in the current manual of survey instructions of the United States Department of the Interior, Bureau of Land Management or by a decree of a Court of Law and/or that the corner points mentioned in lines 3, 4 and 5 above were in conformance with the rules of the Michigan Board of Land Surveyors or by a Decree of a Court of Law; established, re-established, monumented, re-monumented, recovered, found as expressed below:

NOTE: Not more than 4 corners, all in the same town and range, may be recorded on this certificate.

A. Description of original monument and accessories and/or subsequent restoration:

B. Description of corner evidence found and/or method applied in restoring or reestablishing corner:

- A - 13, 1/2" rerod in Mon Box
- B - 13, 1/2" rerod in Lon Box

C. Description of monument for corner and accessories established to perpetuate locating the position of the corner:

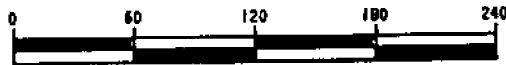
- A-13 P.K. Nail in Pow Pole. N.50°E. 64.56', P.K. Nail in Pow Pole S.60°E. 90.89', O.C.R.C. P.K. Nail in Pow Pole S.45°W. 74.99' O.C.R.C. P.K. Nail in Pow Pole N.45°W. 60.80 ft.
- B-13 P.K. Nail Westside 36" Willow Tree S.10°W. 31.80' Back of Conc Curb - Due South 16.40' P.K. Nail Westside Pow Pole S.40°E. 28.00' P.K. Nail Northeast Side 20" Dogwood Tree S.50°E. 51.22 ft.



Signed by *Gerald J. Landwehr* Date November 30, 1992
Surveyor's Michigan License No. 10065

"FIELDSTONE SUB."

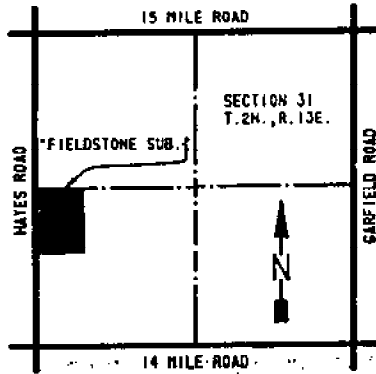
PART OF THE SOUTHWEST 1/4 OF SECTION 31, T.2N.,
CITY OF FRASER, MACOMB COUNTY, MICHIGAN.



SCALE 1 INCH = 60 FEET

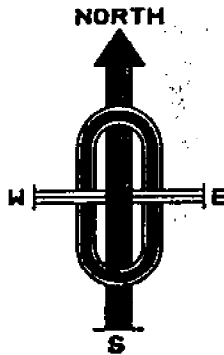
PLAT LEGEND

ALL DIMENSIONS ARE IN FEET.
ALL CURVILINEAR DIMENSIONS ARE SHOWN ALONG THE ARC.
(R.) DENOTES RADIAL. (N.R.) DENOTES NOT RADIAL.
THE SYMBOL "o" INDICATES A MONUMENT WHICH IS A 1/2" DIAMETER
STEEL BAR 36" LONG, ENCASED IN 4" DIAMETER CONCRETE.
ALL LOT MARKERS ARE 1/2" IRON PIPES AND ARE 18" LONG. "NO I.O. CAPS"
ALL BEARINGS ARE IN RELATION TO THE BEARING OF THE WEST LINE OF
FRASER MEADOWS SUB. (PART OF SECTION 31) T.2N., R.13E., CITY OF
FRASER, MACOMB COUNTY, MICHIGAN, AS RECORDED IN LIBER 93, PAGES 5, 6,
7, & 8, M.C.R..



LOCATION MAP

NOT TO SCALE

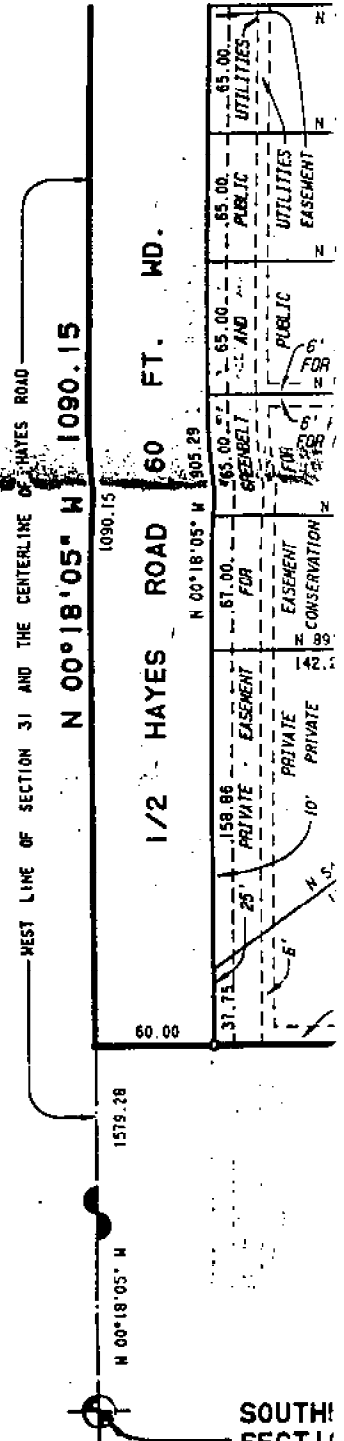


NOTE:
THERE SHALL BE NO DIRECT
VEHICULAR ACCESS TO HAYES
ROAD FROM LOTS 26 THROUGH
32 INCLUSIVE.

CURVE DATA

NO.	RADIUS	ARC	DELTA	CHORD	CHORD BEARING
9	60.00	39.09	37°19'35"	38.40	N 18°36'07" E
10	60.00	133.54	127°31'25"	107.64	N 26°29'49" W
11	25.00	39.36	90°11'50"	35.42	N 45°09'36" W

UNPLATTED



SOUTH
SECTION
11 REF

LAND CORNER RECORDATION CERTIFICATE
Filing Requirement of Act 74, Mich. P.A. 1970

For corners in
Macomb
(County)

Located in: City of Fraser
Corner Code: #

- 1. Public Land Survey T 2N R 13E A11 SEC. 31
T 2N R 13E A13 SEC. 31
2. Property Controlling in Section S T R
3. Miscellaneous Property in Sec. S T R

RECORDED IN MACOMB COUNTY
RECORDS AT: 11:03A

JAN - 7 1992

Clerk-Register of Deeds
MACOMB COUNTY, MICHIGAN

Register of Deeds Stamp & File Number

- 4. Lot No. Recorded Plat
5. Private Claims

Grid table with columns A-L and rows 2-13 containing numbers 6-35.

Robert J. Patterson in a field survey on December 19, 1991, do hereby certify that under requirements of P.A. 74, Michigan P.A. of 1970, the corner points mentioned in lines 1 and 2 above were in conformance with regulations and rules therefor as required in the current manual of survey instructions of the United States Department of the Interior, Bureau of Land Management or by a decree of a Court of Law and/or that the corner points mentioned in lines 3, 4 and 5 above were in conformance with the rules of the Michigan Board of Land Surveyors or by a Decree of a Court of Law; established, re-established, monumented, re-monumented, recovered, found as expressed below:

NOTE: Not more than 4 corners, all in the same town and range, may be recorded on this certificate.

A. Description of original monument and accessories and/or subsequent restoration:

B. Description of corner evidence found and/or method applied in restoring or reestablishing corner:

A11 - N.W. Corner - Iron bar in hand hole center of Hayes Road and Fifteen Mile Road.

A13 - S.W. Corner - 1/2" iron rod in hand hole center of Hayes Road and Fourteen Mile Road

C. Description of monument for corner and accessories established to perpetuate locating the position of the corner:

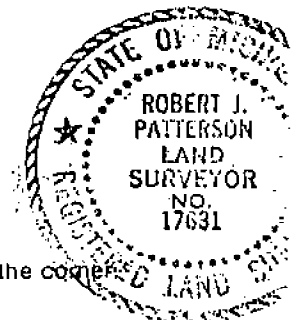
A11 - N.W. Corner - Witness points - Center of M.B.T. Manhole N.40° E. 73.33 ft.; Set P.K. Nail in U.P. S.40° E. 72.57 ft.; Found P.K. Nail in U.P. S.35° W. 59.49 ft.; Stop sign N.30° W. 59.40 ft.

A13 - S.W. Corner - Witness points - Found P.K. Nail in U.P. N.50° E. 64.56 ft.; Found P.K. Nail in U.P. S.60° E. 90.89 ft.; Found O.C.R.C. P.K. Nail in U.P. S.45° W. 74.99 ft.; Found O.C.R.C. P.K. Nail in U.P. N.45° W. 60.80 ft.

Signed by Robert J. Patterson

Date December 26, 1991

Surveyor's Michigan License No. 17631



N.W. COR.

14 MET

170

190.42

30.21

60

RD.

160

-001
0.35

400

400

60

746.75

746.51

13-F

CORNER

-009
1.07

(10)

A-1

REV. 6-91
REV. 3-89
REV. 4-81
REV. 3-78
REV. 4-76
KEY 7-75



Copyright 1972
MACOMB COUNTY, MICHIGAN

SCALE: 1" = 100'

SW COR.

11-31E

A-1

W. 1/2 S

Town 1 North Range 13 East

Thu 12 56 5 21 6

Do 12 5 41 6 6

No public lands East of this corner

North Boundary

East

- 6 58 13 Oak 24 in diam
- 19.50 Marsh
- 33.30 Soft marsh
- 36.50 Marsh
- 41.00 made 1/4 Sec cor on a willow in diam
- 40.50 Soft marsh
- 43.02 N.C. 24 in diam
- 10.00 made cor for sections 5, 6, 31, 32 on a hemlock 3 in diam
land 1st half mile 2nd rate last 1/2 mile
2nd rate part dry Timber N.W. 1/4 Sec
Elm Muller Miller Hemlock &c.

East

- 40.00 made 1/4 Sec cor on a Hickory 7 in diam
- 66.00 N.C. 36 inches diam
- 10.00 made cor for sections 45, 32, 33
on a Sycamore 40 inches diameter
land level and dry 2nd rate Timber
N.W. 1/4 Sec 1/2 Sec 1/4 Sec Sugar &c
Wood 1/2 3/4 Sec &c.

- 46.00 made 1/2 mile cor on an elm 18 in diam
- 49.00 Spruce 14 in diam
- 10.00 Set post for sections 34, 33, 34
East from post which a Birch 8 in diam
bears N 1/2 S 1/2 W 1/2 the dist also a Birch
diam bears N 1/2 E 1/2 the dist - land
2nd rate level and dry Timber N.W. 1/4

Town North Range 13 East

Sugar Poplar Lymus & Hudgth Spruce

14.13 Birch 16 in diam
 20.00 Run 1/2 the course S.E.
 118.00 Made 1/2 mile run on a Birch 10 in diam
 10.00 Set post for cor of sections 2, 3, 24 & 35
 from which a Birch 11 in diam bears
 N 53 E 17 lbs dist also an Elm 24 in
 diam bears N 5 W 31 lbs distant
 Sand first 1/2 mile good 2nd rate
 last half 5th rate Timber Birch Sugar
 Oak Poplar B. Ash & Hudgth Spruce

20.15 Oak 18 in diam
 30.66 Intersected Private claim N. 103 1/2 miles
 Set post for cor of 1/4 sections 2 & 35
 from which a B. Ash 10 in diam
 bears N 77 E 11 lbs dist also a
 Lymus 7 in diam bears N 52 E 7 lbs
 dist Sand dry good 2nd rate Timber
 Birch B. Ash Poplar &c

West Boundary

North of the first Meridian of the Territory
 Chas. W. Michigan

12.34 Poplar 36 inches diameter
 110.00 Set post for cor of 1/4 section from
 which a Sugar tree 13 inches diam
 bears South 9 lbs distant
 118.62 Sycamore 36 in diam
 80.00 Set mile post for cor of sections
 25 & 36 from which an Elm 10 in
 diam bears S 77 E 10 lbs distant
 also a Lymus 10 in diam bears N 35
 W 20 lbs dist Sand first half

T 1 A. R 12 E

North Boundary

East	On Railroad line between Towns 12, 14, 25, 1
40.00	Set Temporary 1/4 mile Post
80.00	Set Temporary Post for Sec. Cor.
40.00	Set Temporary 1/4 mile Post
80.00	Set Temporary Post for Sec. Cor.
40.00	Set Temporary 1/4 mile Post
80.00	Set Temporary Post for Sec. Cor.
40.00	Set Temporary 1/4 mile Post
80.00	Set Temporary Post for Sec. Cor.
40.00	Set Temporary 1/4 mile Post
79.97	Undershot Rollings line stakes, South

T 1 A. R 12 E

West	Corrected Post Between Townships
13.16	1/2 North Range 12 East on
33.32	South Boundary Sec. 36 T. 2. N. 1 -
40.00	Reach 35 inches diam.
	Survey 12 "
	Measure Temporary 1/4 mile post to
	its proper place in true Township line
	At Oct 22 1886. 2 Hrs.
	Reading 5 55 1/2 Min.
50.00	Supp. Post 20 inches diam
76.47	Reach 18 "
80.00	Set Temporary Post to proper place
	on true line for Cor. Section 35
	36 previously
	Survey of 1/4 Sec East 1/4
	Survey 5 132 E 2 "
	First 25 inches Rollings - Reat.
	Surveyed land. Timber Oak,
	Ash, Elm &c.

Town 2 North Range 13 East

Town Lines
South Boundary

6.58 Iron Post Cor. P. 142 N. R. 12 + 13 E
 from which a Gum 12 in diam bears S 11 W 17 the dist
 also a W Oak 36 in diam bears N 31 W 41 the dist
 19.50 March
 33.30 Left March
 36.00 March
 40.00 Made 1/4 Sec Cor on a willow 8 in diam
 40.50 Left March
 43.62 W.O. 24 in diam
 80.00 Made Cor for sections 5, 6, 31, 32 on
 a Hornbeam 3 in diam
 Land 1st half mile 3rd rate
 last 1/2 mile 2nd rate front dry
 Spruce W.O. B. Oak White Willow
 Hornbeam + C.

East

40.00 Made 1/4 Sec. Cor on a
 Hickory 7 in diam
 66.08 W.O. 30 inch diam
 80.00 Made Cor for sections 4, 5, 32 + 33 on
 a Sycamore - 40 inches diameter
 Land level and dry 2nd rate Spruce
 W. Oak. Lyrus Poplar Beach Sugar
 + White Spruce + C.
 40.00 Made 1/2 mile cor. on an
 Elm 18 in diam
 49.00 Lyrus 14 in diam
 80.00 Set front for sections 3, 4, 33 + 34
 from front which a Beech 8 in diam
 bears N 45 W 11 the dist also a
 Beech 18 in diam bears N 41 E 16 the
 dist Land 2nd rate level and dry

Tran 2 North Range 13 East

Timber W. Oak Sugar Poplar
Lynx + Woodg. Spruce

14.13 Beech 16 in diam
20.00 Run 4 lks course S.E.
40.00 made 1/2 mile cr. on a
Beech 10 in diam
80.00 Set post 1/2 in Cor of Section 2, 3, 34 + 35
from which a Beech 11 in diam bears N
53 @ 17 lks dist also an Elm 24 in
bears N 5 W 31 lks distant
Land first 1/2 mile good 2nd rate
last half 3rd rate Timber Beech
Sugar W. Oak Poplar B. Ash +
Woodg. Spruce + c.

21.15 W. Oak 18 in diam
30.66 Intersected Private Claim No 123
from the Set post for cor of said
Sections 2 + 35 from which a B. Ash
10 in diam bears N 7 @ 4 lks dist
also a Lynx 7 in diam bears N 32
@ 2 lks dist Land dry good 2nd rate
Timber Beech B. Ash Poplar + c.

Surveyed 1815 by Wm. Proctor D.S.

Surveyed by Wm. Proctor 1815

South East Boundary
40.00 Set 1/4 Sec post from which an Elm 12 in
diam bears S 15 N 23 lks also a Lynx 12 in
bears N 7 W 21 lks.
46.50 Burr. Oak 30 in diam
46.95 Intersected P. Claim 17.20 East of cor of
Land good and wet 2nd rate Timber B. Ash
Beech Lynx Sugar + c.