

LAND CORNER RECORDATION CERTIFICATE
Filing Requirement of Act 74, Mich. P.A. 1970

For corners in

MACOMB IRA TOWNSHIP
 Located In: Corner Code #
 (County)

1. Public Land Survey T ___ R ___
 T ___ R ___
 T ___ R ___
 T ___ R ___

2. Property Controlling S 7 T 3 N 15 E
 in Section S ___ T ___ R ___

3. Miscellaneous S ___ T ___ R ___
 Property in Sec. S ___ T ___ R ___

189008
 LIBER 3884 PAGE 977
 11/17/2000 12:40:42 P.M.
 MACOMB COUNTY, MI
 CARMELLA SABAUGH, REG/DEEDS

Register of Deeds Stamp & File Number

4. Lot No. _____, Recorded Plat _____
 5. Private Claims 627 NW CORNER

PCG 003

I, ROBERT H. BIRKETT, in a field survey on JUNE 6, 2000 do hereby certify that under requirements of P.A. 74, Michigan P.A. of 1970, the corner points mentioned in lines 1 and 2 above were in conformance with regulations and rules therefore as required in the current manual of survey instructions of the United States Department of the Interior, Bureau of Land Management or by a decree of a Court of Law and for that the corner points mentioned in lines 3, 4 and 5 above were in conformance with the rules of the Michigan Board of Land Surveyors or by a Decree of a Court of Law; established, re-established, monumented, re-monumented, recovered, found as expressed below:

	A	B	C	D	E	F	G	H	I	J	K	L	M
1													
2	6	5	4	3	2	1							
3													
4	7	8	9	10	11	12							
5													
6	18	17	16	15	14	13							
7													
8	19	20	21	22	23	24							
9													
10	30	29	28	27	26	25							
11													
12	31	32	33	34	35	36							
13													

NOTE: Not more than 2 corners, all in the same town and range, may be recorded on this certificate.

A. Description of original monument and accessories and/or subsequent restoration:

NORTHWESTERLY CORNER PRIVATE CLAIM 627.

1810, A. GREELY, G. L. O., POST

(a) 1994, D. LITTLE # 31596, SURVEY, L. 15, P. 33, S.C.C.R.

(b) 1996, J. FENN # 23505, FOUND IRON, L.C.R.C., L. 7152, P. 580, M. C. R.

(c) 1998, "ANDREWS BY THE BAY", L. 130, P. 19.

NORTH - 13.78' - NAIL & TAG E. FACE 24" TREE.

SSE - 8.05' - NAIL & TAG SW FACE 12" TREE.

SW - 9.51' - NAIL & TAG N. FACE 12" TREE.

NW - 11.76' - NAIL & TAG SW FACE 8" TREE.

ACCEPTED BY THE MACOMB COUNTY SURVEY PEER GROUP AS THE OFFICIAL CORNER UNDER MICHIGAN PUBLIC ACT 345 OF 1990 AT A MEETING HELD ON 9/26/00.

William E. Soderberg
 WILLIAM E. SODERBERG, P.S., CHAIRMAN



B. Description of corner evidence found and/or method applied in restoring or reestablishing corner:

NORTHWESTERLY CORNER PRIVATE CLAIM 627

FOUND 1/2" IRON #23505 IN A NORTHEAST AND SOUTHWEST REMAINS OF FENCE. FOUND IRON AGREES WITH "ANDREWS BY THE BAY" AS RECORDED IN L. 130 OF PLATS, P. 19.

FIELD MEASUREMENTS (SEE BACK)

C. Description of monument for corner and accessories established to perpetuate locating the position of the corner:

NORTHWESTERLY CORNER PRIVATE CLAIM 627

REPLACED 1/2" IRON WITH 1/2" X 36" RE-BAR ENCASED IN CONCRETE CAPPED WITH AN ALUMINUM CAP STAMPED "MACOMB COUNTY MONUMENT, MI ACT 345, P. C. C.41094"

- AZ. 350° 11.89' FOUND NAIL AND TAG #23505 IN THE WEST FACE OF AN 8" OAK.
- AZ. 45° 13.93' FOUND NAIL AND TAG #23505 IN THE SOUTH FACE OF A 24" OAK.
- AZ. 265° 9.57' SET REMON TAG ABOVE FOUND NAIL IN NORTHEAST FACE OF A 14" OAK.
- AZ. 155° 8.10' SET REMON TAG ABOVE FOUND NAIL IN THE SOUTHWEST FACE OF A 2" ELM.
- AZ. 350° 12.35' FOUND NAIL AND TAG # 23505 IN THE WEST FACE OF AN 8" OAK
- AZ. 45° 14.34' FOUND NAIL AND TAG # 23505 IN THE SOUTH FACE OF A 24" OAK.
- AZ. 265° 9.46' SET REMON TAG ABOVE FOUND NAIL IN THE NORTHEAST FACE OF A 14" OAK.
- AZ. 155° 7.68' SET REMON TAG ABOVE FOUND NAIL AND TAG IN THE SOUTHWEST FACE OF A 12" ELM
- AZ. 45° 0.70' FOUND IRON #13052

THE SELECTED LOCATION IS ACCEPTED BY ME AND IS GENERALLY ACCEPTED BY PROFESSIONAL SURVEYORS AS THE BEST AVAILABLE EVIDENCE OF THE POSITION OF THE ORIGINAL CORNER.

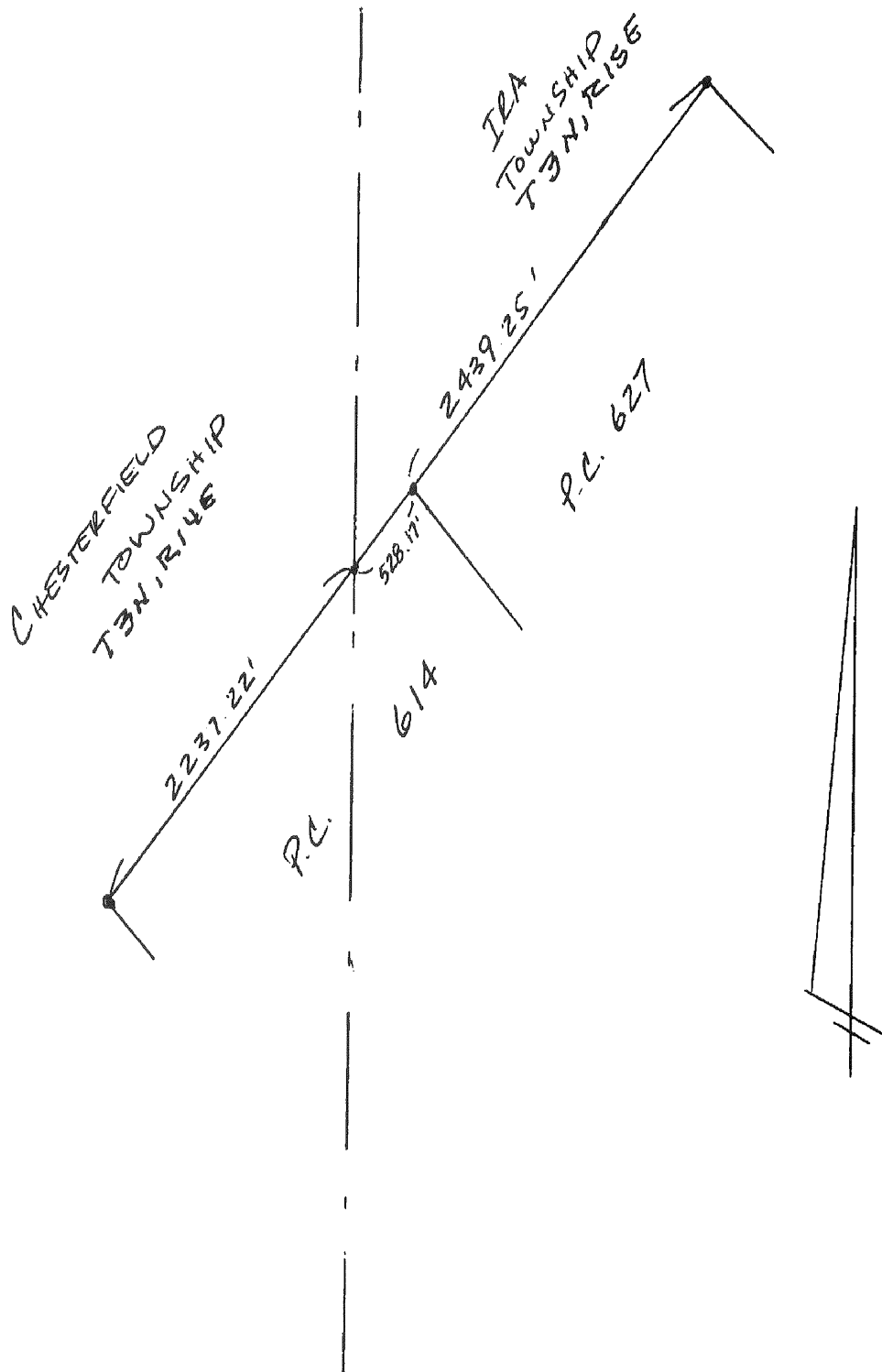
Signed by Robert H. Birkett Date 11-01-2000
 Surveyor's Michigan License No. 41094

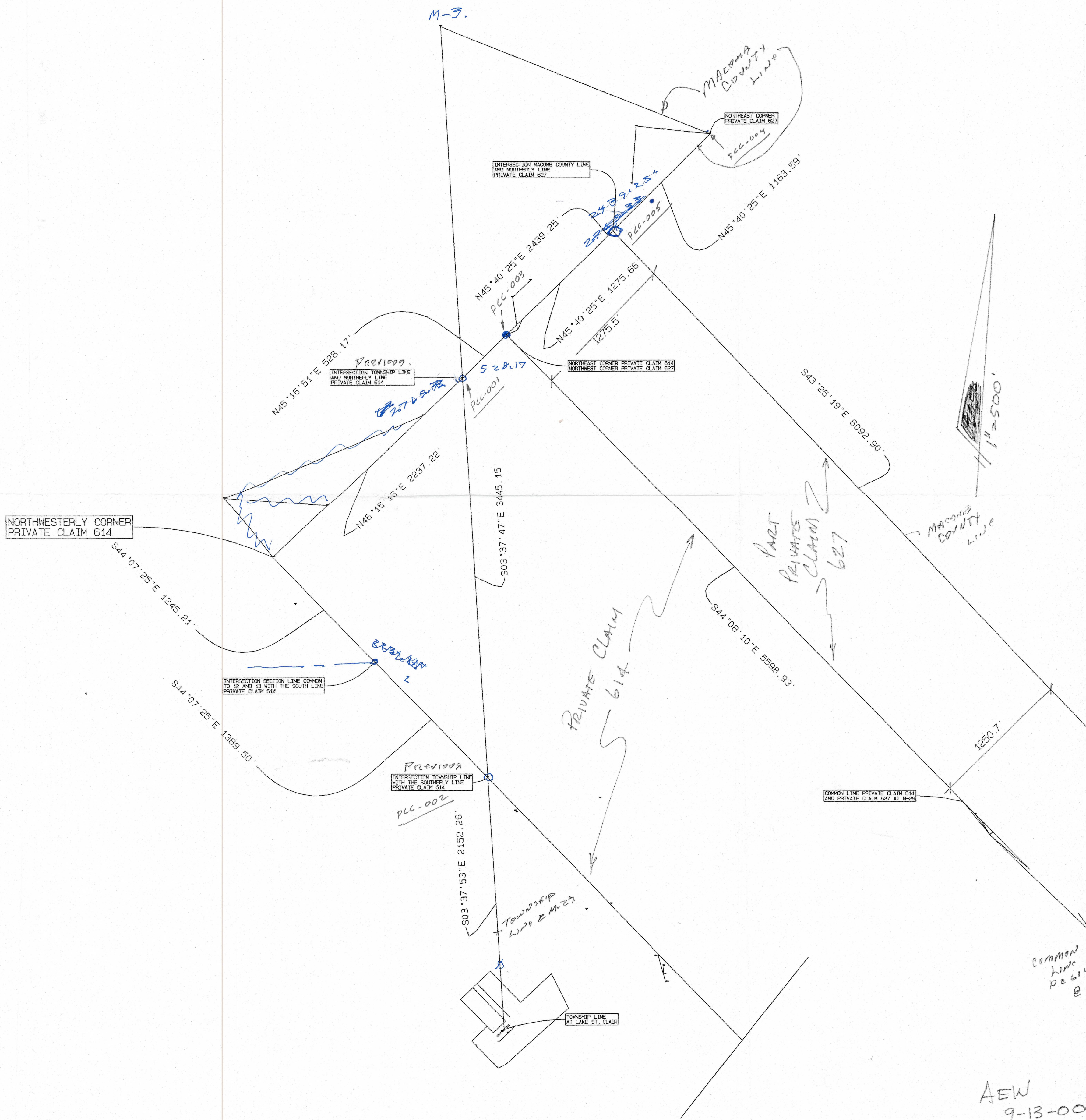
FIELD MEASUREMENTS

TO INTERSECTION NORTHWEST LINE P. C. 614 AND THE EAST LINE OF SECTION 12.
G. L. O. - 7.19 CH. 474.54, (1994) D. LITTLE - 527.61', (2000) REMON - 528.17.

TO NORTHWESTERLY CORNER P. C. 614.
G. L. O. - 40.32 CH. 2661.12, (2000) REMON - 2765.33'.

TO NORTHEASTERLY CORNER P. C. 627
G. L. O. - 36.86 CH. 2432.76', (1994) D. LITTLE - 2438.91', (2000) REMON - 2439.25'.





M-3.

MAZONS COUNTY LINE

NORTHEAST CORNER PRIVATE CLAIM 627

INTERSECTION MAZONS COUNTY LINE AND NORTHERLY LINE PRIVATE CLAIM 627

INTERSECTION TOWNSHIP LINE AND NORTHERLY LINE PRIVATE CLAIM 614

NORTHEAST CORNER PRIVATE CLAIM 614

NORTHWESTERLY CORNER PRIVATE CLAIM 614

INTERSECTION SECTION LINE COMMON TO 12 AND 13 WITH THE SOUTH LINE PRIVATE CLAIM 614

INTERSECTION TOWNSHIP LINE WITH THE SOUTHERLY LINE PRIVATE CLAIM 614

COMMON LINE PRIVATE CLAIM 614 AND PRIVATE CLAIM 627 AT M-28

PRIVATE CLAIM 614

PART PRIVATE CLAIM 627

MAZONS COUNTY LINE

Common line peg 2

AEW
9-13-00