

**REMON 2018**  
**OC-084 - PC146LAKE-INT; T03N, R14E, CHESTERFIELD TOWNSHIP**  
**common with**  
**OC-086 - PC146LAKE-INT; T02N, R14E, HARRISON TOWNSHIP**  
**Macomb County, Michigan**

**Section One**

Index

Pictures:

- Before setting the required monumentation.
- After setting the required monumentation.
- In cardinal directions.

**Section Two**

LCRC

Surveyor's Report

**Section Three**

- 1 Field Notes
- 2 Sketch
- 3 Chesterfield Township Map
- 4 Harrison Township Map
- 5 Tax Map 1973
- 6 Tax Map 1974
- 7 Aerial Pictures 2010/2016

**Section Four**

- |   |      |                                 |                         |            |
|---|------|---------------------------------|-------------------------|------------|
| 1 | 1810 | PC 146 Survey notes             | Greeley                 |            |
| 2 | 1816 | Chesterfield Township map       | Preston                 |            |
| 3 | 1817 | Harrison Township map           | Preston                 |            |
| 4 | 1817 | Chesterfield Township map       | Preston                 |            |
| 5 | 1818 | Harrison Township map           | Surveyor General Office |            |
| 6 | 1818 | Chesterfield Township map       | Surveyor General Office |            |
| 7 | 1926 | Plat – Anchor Bay Shores        | J. Irwin RCE            | L11, P49   |
| 8 | 1936 | Plat – Supervisor's Plat No. 12 | ???                     | L17, P36   |
| 9 | 2006 | Right-of-way map                | MDOT                    | unrecorded |

**OC-084 – PC146LAKE-INT (T03N, R14E)**  
**OC-086 – PC146LAKE-INT (T02N, R14E)**

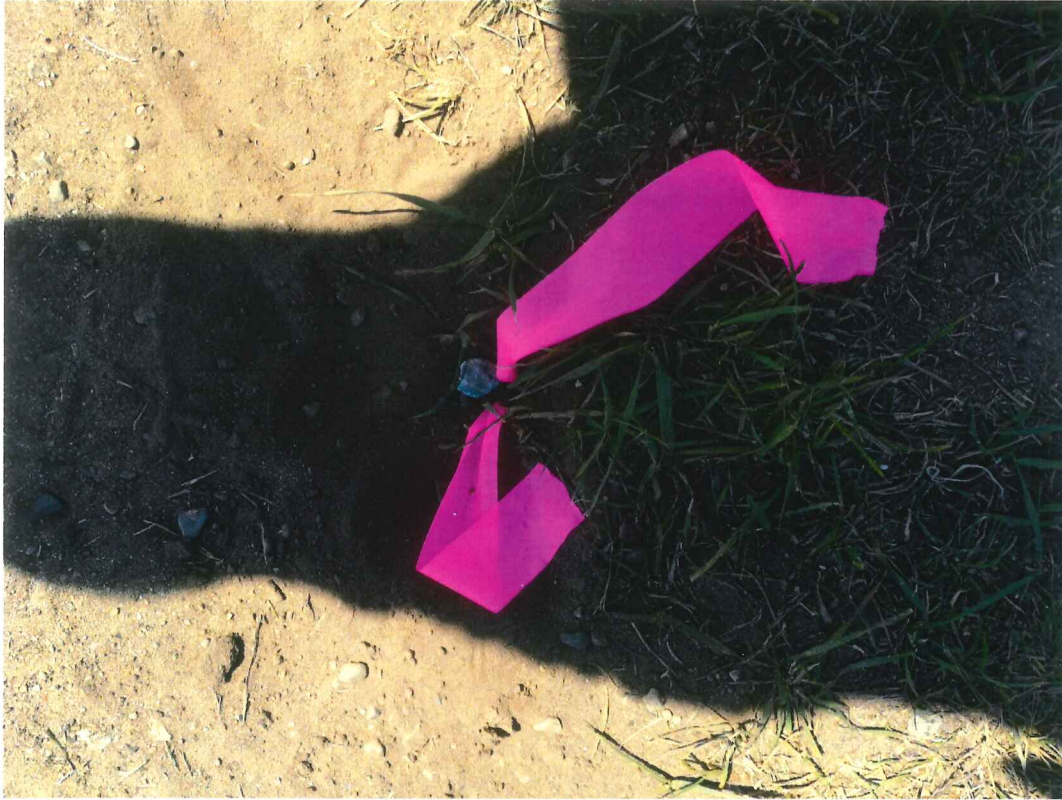


**BEFORE 2018-07-10**



**AFTER 2018-10-03**

**OC-084 – PC146LAKE-INT (T03N, R14E)**  
**OC-086 – PC146LAKE-INT (T02N, R14E)**



**BEFORE 2018-07-10**



**OC-084 – PC146LAKE-INT (T03N, R14E)**  
**OC-086 – PC146LAKE-INT (T02N, R14E)**



**NORTH 2018-07-10**



**EAST 2018-07-10**



**OC-084 – PC146LAKE-INT (T03N, R14E)**  
**OC-086 – PC146LAKE-INT (T02N, R14E)**



**SOUTH 2018-07-10**



**WEST 2018-07-10**

**Land Corner Recordation Certificate**  
**2018 Annual Grant Agreement**  
 Authority: MICH. 1970 PA 74, MCL 54.205

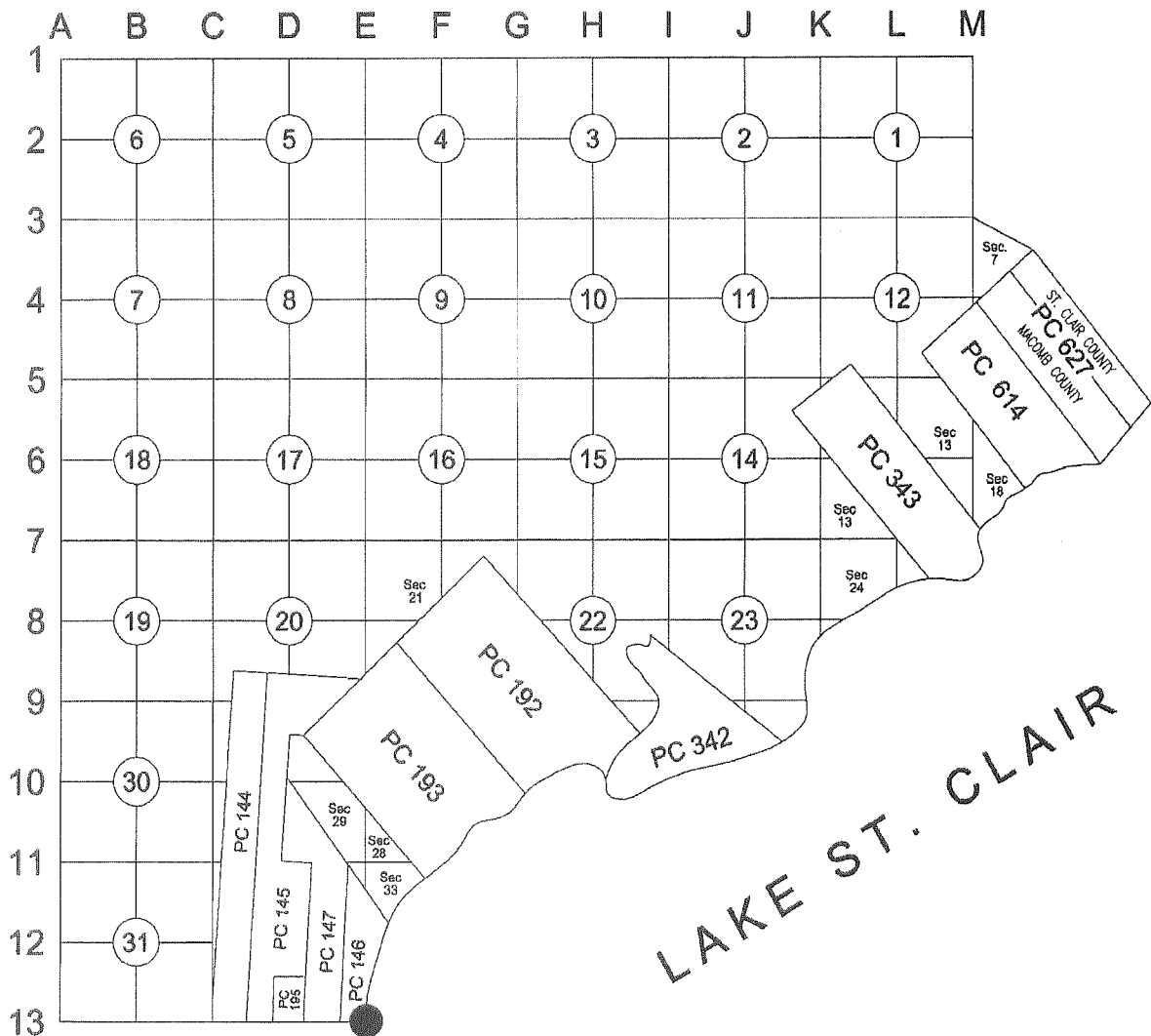
**Surveyor's Name:** Derek Kosicki  
**For Corner(s) in:** Macomb County

**Field Survey Date:** 07/10/2018  
**Municipality:** Chesterfield Township / Harrison Township

Corner Type	Section Private Claim	Survey Township	Corner Code	Other Code
Protracted Public	PC 146	T 03 N R 14 E	PC146LAKE-INT	084
Land Survey Corner	PC 146	T 02 N R 14 E	PC146LAKE-INT	086

**Other Code Corner Description:** Intersection of the west border of Lake St. Clair with the township line common to Harrison Township T2N.R14E and Chesterfield Township T3N.R14E.  
 Common with OC-086 Harrison Township.

**CHESTERFIELD TOWNSHIP T03N R14E**

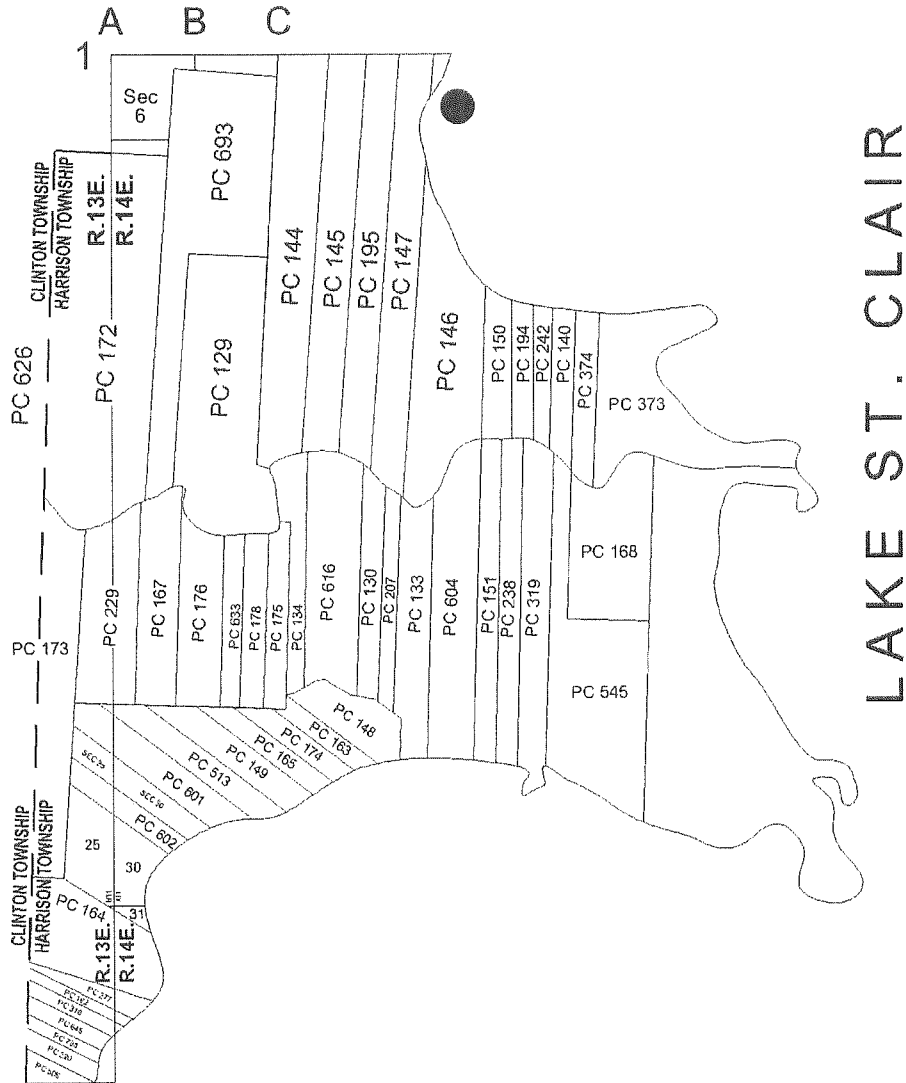


LPT

C



**HARRISON TOWNSHIP T02N R14E**



LAKE ST. CLAIR

**Part A: Corner History:**

1	1810	PC 146	Survey notes	Greeley		Object not stated.
2	1816		Chesterfield Township map	Preston		Object not stated.
3	1817		Harrison Township map	Preston		Object not stated.
4	1817		Chesterfield Township map	Preston		Object not stated.
5	1818		Harrison Township map	Surveyor General Office		Object not stated.
6	1818		Chesterfield Township map	Surveyor General Office		Object not stated.
7	1926		Plat – Anchor Bay Shores	J. Irwin	RCE L11, P49	Plat shows intersection of Township line common to Harrison Twp. and Chesterfield Twp. with Lake St. Clair.
8	1936		Plat – Supervisor's Plat No. 12	W. Lehner	123 L17, P36	Plat shows intersection of Township line common to Harrison Twp. and Chesterfield Twp. with Lake St. Clair.
9	2006		Right-of-way map	MDOT	unrecorded	Document covers land in the vicinity of the corner OC-089 but does not show it.

**Part B: Surveyor's Report on Perpetuation, Restoration, Reestablishment or Monumentation of Corner:**

Nothing was found.  
Occupation: None.

Based on description contained in Item 8, I extend line OC-088 to OC-089 East to its intersection with the West border of Lake St. Clair.

At the intersection of township line with the West border of Lake St. Clair there is a steel seawall. I set witness point.

**Distances:**

WIT/OC-084 to OC-084 (edge of seawall) 12.5' Remon 2018  
WIT/OC-084 to OC-089 625.00' Remon 2018

					Land Corner Recordation Certificate	
T	03	N	R 14	E	Code	OC-084
T	02	N	R 14	E		OC-086







PC 147

PC 146

CHESTERFIELD TWP.  
HARRISON TWP.

OC-089

N87°05'54"E  
12.5'

N87°05'54"E 625.00'

LAKE ST. CLAIR

TOWNSHIP LINE  
WILLIAM ROSSO HWY (M-59)

WIT/OC-084

OC-084

PC 147

PC 146

SELFRIDGE AIR NATIONAL  
GUARD BASE

BEARINGS ARE BASED ON  
SPC-MI SOUTH

						Land Corner Recordation Certificate	
T	03	N	R	14	E	Code	OC-084
T	02	N	R	14	E		OC-086

**REMON 2018**  
**T03N, R14E, CHESTERFIELD TOWNSHIP**  
**OC-084 – PC146LAKE-INT**  
**common with**  
**T02N, R14E, HARRISON TOWNSHIP**  
**OC-086 – PC146LAKE-INT**

**OC-084 - PC146LAKE-INT:** Intersection of the Township line common to Harrison Township T2N R14E and Chesterfield Township T3N R14E with the West border of Lake St. Clair. Common with OC-086 Harrison Township T2N R14E.

**GLO Survey history:**

Survey of PC 146 was performed by A. Greeley in 1810.  
 GLO Survey was performed by William Preston, D.S. in 1817.

Researching the government survey records for Macomb County I have found that the Chesterfield Township was surveyed and subdivided not according to then in force Manual of Surveying Instructions. Due to presence of Lake St. Clair in the Southeast portion of the Township and numerous Private Claims along the shore exterior boundaries of the Township were established by William Preston, D.S. in 1817 in the following manner and order:

1. South boundary was run East from the Southwest Twp. corner.
2. East boundary was run South from the Northeast Twp. corner.
3. North boundary was run West from the Northeast Twp. corner.
4. West boundary was run South from the Northwest Twp. corner.

GLO Survey of South boundary of Chesterfield Twp. (North boundary of Harrison Twp.) stopped at C-13 and according to available data it was never surveyed as a whole East of C-13 to its Eastern terminus at the shore of Lake St. Clair. Location of OC's East of C-13 along the Township line (e.g. OC's-086, 087, 088, 089, 084) shall be established based on local evidence.

**Corner history:**

1	1810	PC 146 Survey notes	Greeley		Corner not set.
2	1816	Chesterfield Township map	Preston		Object not stated.
3	1817	Harrison Township map	Preston		Object not stated.
4	1817	Chesterfield Township map	Preston		Object not stated.
5	1818	Harrison Township map	Surveyor General Office		Object not stated.
6	1818	Chesterfield Township map	Surveyor General Office		Object not stated.
7	1926	Plat – Anchor Bay Shores	J. Irwin	RCE L11, P49	Plat shows intersection of Township line common to Harrison Twp. and Chesterfield Twp. with Lake St. Clair.
8	1936	Plat – Supervisor's Plat No. 12	W. Lehner	123 L17, P36	Plat shows intersection of Township line common to Harrison Twp. and Chesterfield Twp. with Lake St. Clair.
9	2006	Right-of-way map	MDOT	unrecorded	Document covers land in the vicinity of the corner OC-089 but does not show it.

**Field evidence:**

Nothing was found.  
 Occupation: None.

**Recommendation:**

Based on description contained in Item 8, I extend line OC-088 to OC-089 East to its intersection with the West border of Lake St. Clair. At this spot there is a steel seawall. I recommend placing a witness point in safe place.

I recommend placing a 2" aluminum cap stamped "MACOMB COUNTY MONUMENT MI ACT 345; WIT OC-084; 43058" placed on a 1/2"x36" encased in 4" diameter concrete cylinder.

**Distances:**

WIT/OC-084 to OC-084 (edge of seawall)	WIT/OC-084 to OC-089
12.5' Remon 2018	625.00' Remon 2018

**Accessories (to witness point):**

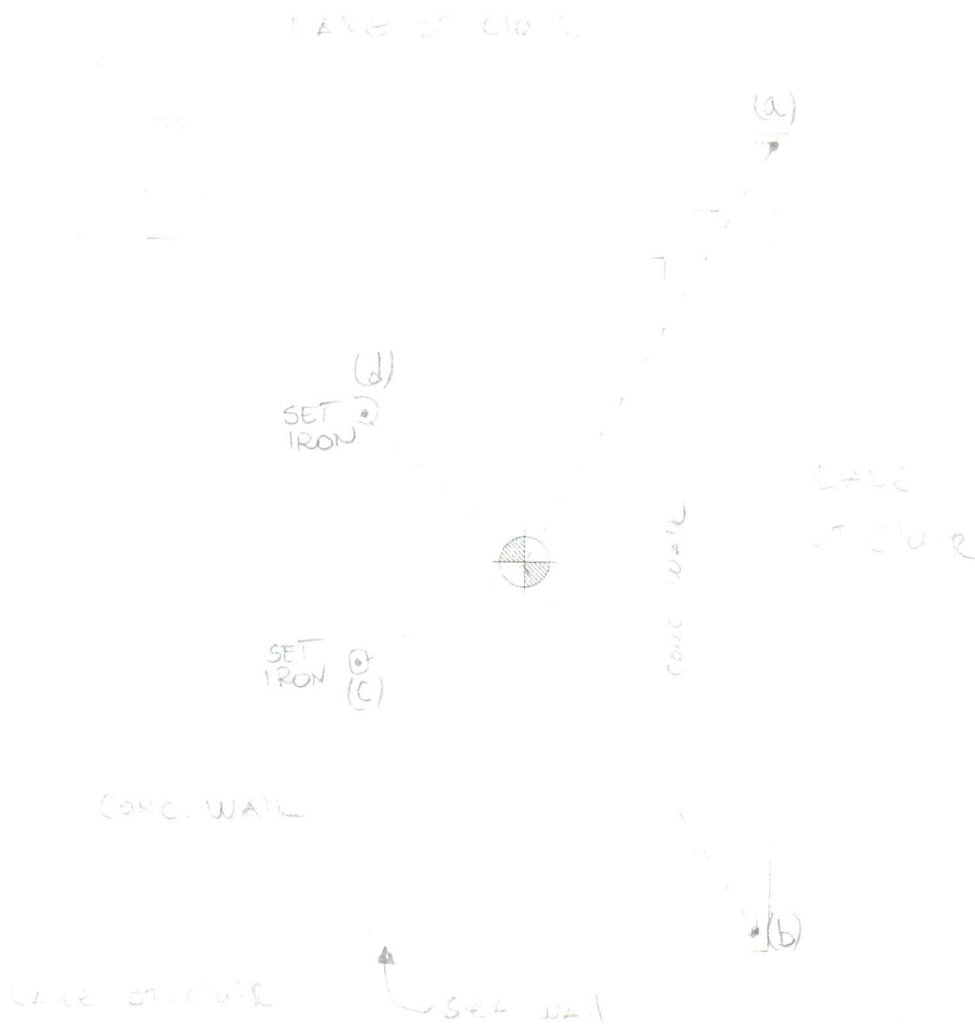
- AZ. 25° 63.30' NE corner of steel seawall.
- AZ. 177° 36.15' SE corner of steel seawall.
- AZ. 247° 11.40' Set iron w/ blue cap "MACOMB COUNTY WITNESS".
- AZ. 303° 12.57' Set iron w/ blue cap "MACOMB COUNTY WITNESS".

Respectfully submitted,  
 Derek Kosicki, PS #43058



**REMON 2018**  
**T03N, R14E, CHESTERFIELD TWP. - OC-084**  
 COMMON WITH  
**T02N, R14E, HARRISON TWP. - OC-086**

DATE: 07-10-19  
 CREW: KT DO  
 OBJECT FOUND: NONE  
 POINT No.: \_\_\_\_\_  
 CTRL. PTS.: \_\_\_\_\_



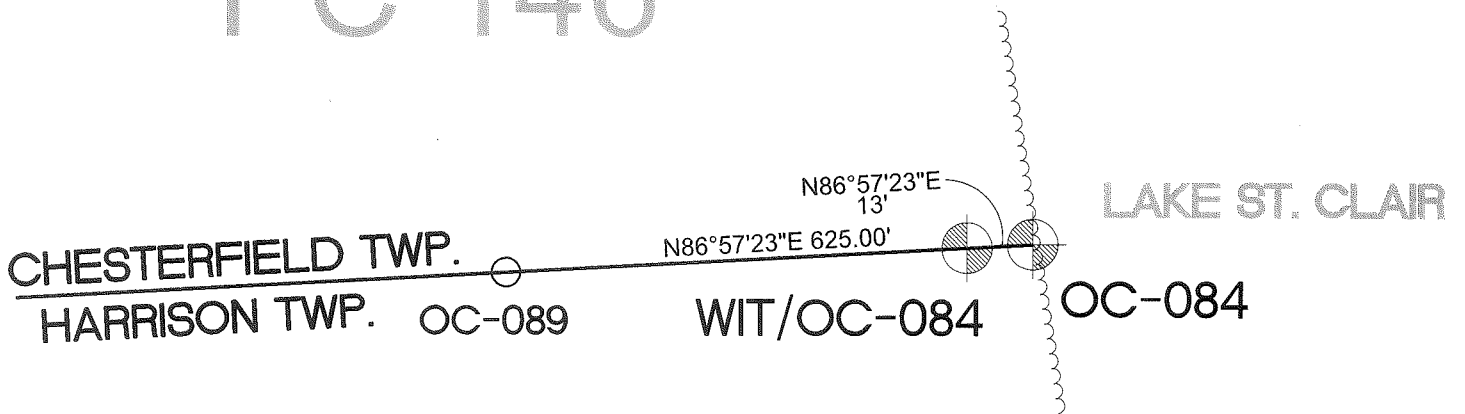
- a) AZ 25° 63.30' - ANGLE IN SEAWALL FROM LAND SIDE.
- b) AZ 177° 36.15' - ANGLE IN SEAWALL FROM LAND SIDE.
- c) AZ 247° 11.40' - SET IRON ROD WITH CAP.
- d) AZ 303° 12.57' - SET IRON ROD WITH CAP.

OCCUPATION  
 (if road state surface)  
NONE  
 \_\_\_\_\_  
 \_\_\_\_\_  
 \_\_\_\_\_

**REMON 2018**  
**T03N, R14E, CHESTERFIELD TWP. - OC-084**  
COMMON WITH  
**T02N, R14E, HARRISON TWP. - OC-086**



PC 146

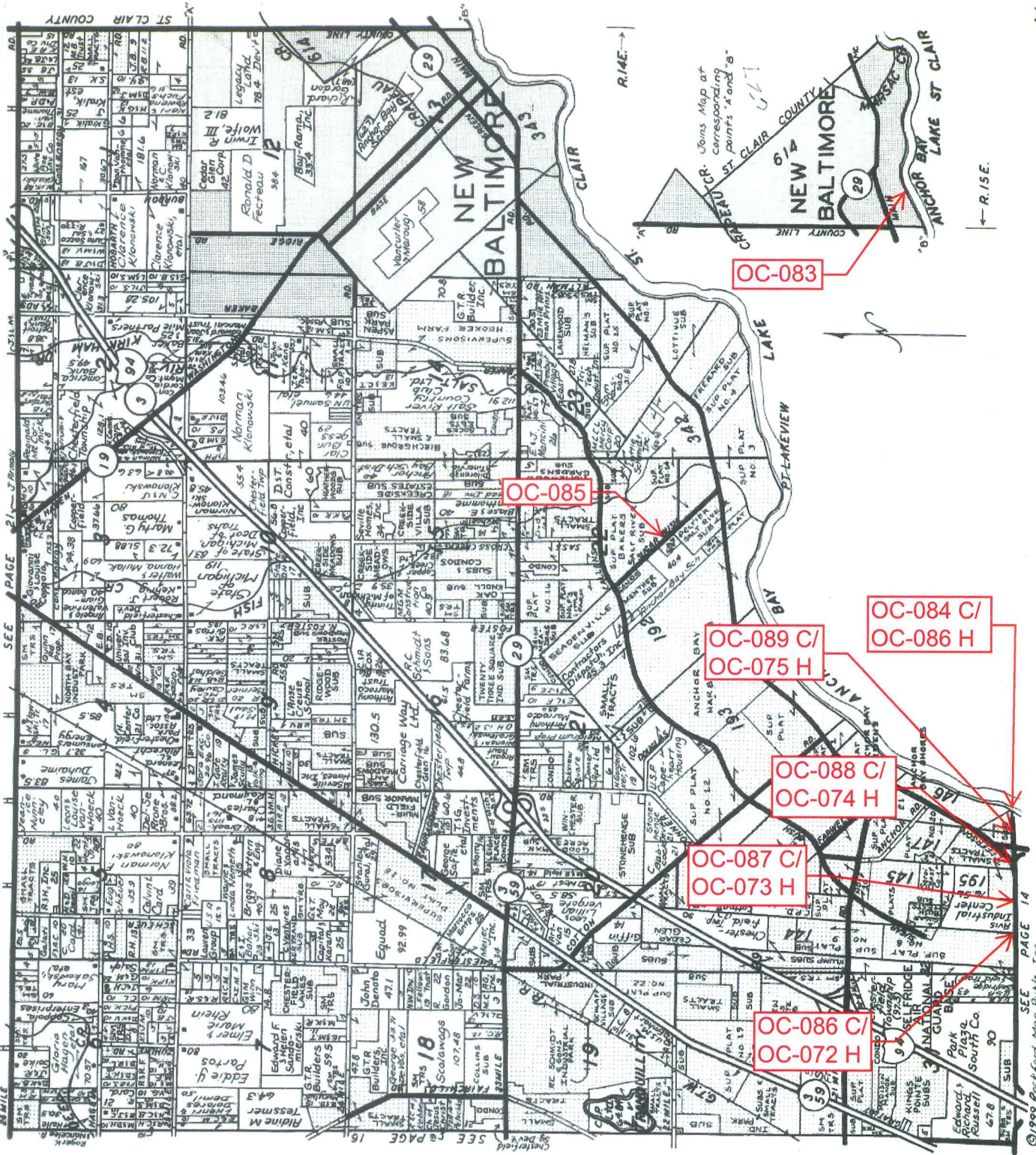


PC 146

BEARINGS ARE BASED ON  
SPC-MI SOUTH



# CHESTERFIELD T.3N-R.14-15E.



## LINCOLN TITLE COMPANY

Flexible closing schedule ❖ Personalized service ❖ Knowledgeable staff

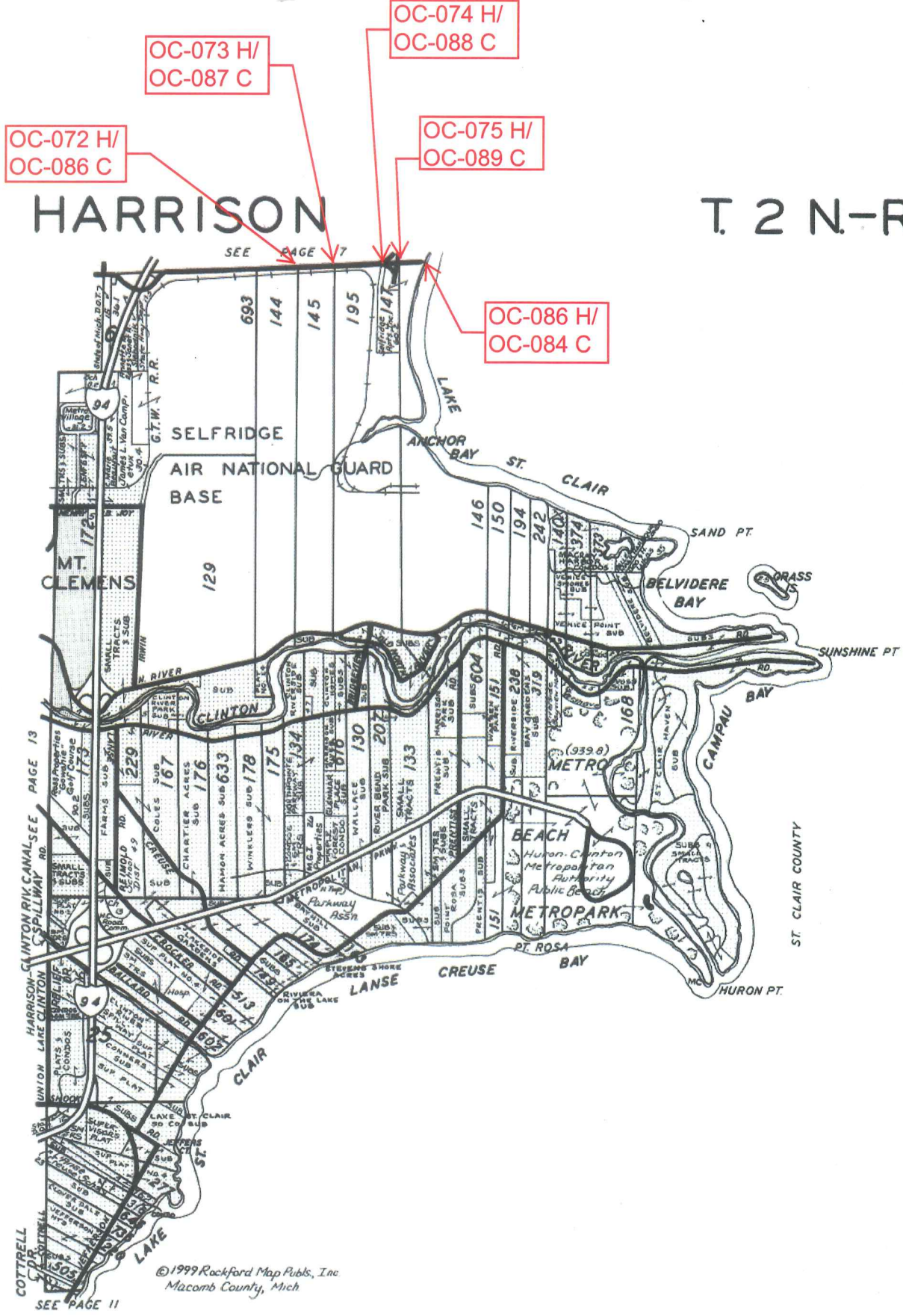
25962 Knollwood Drive South • Chesterfield, Michigan 48051 • Telephone: (810) 598-2930 • Fax: (810) 598-2936

OFFICES ALSO IN PORT HURON & ROSEVILLE



# HARRISON

# T. 2 N.-R. 14 E.



## PHILIP R. SEAVER TITLE COMPANY INC.

**JOHN R. COOK**  
Eastern Regional Manager

37500 GARFIELD, SUITE 150 • CLINTON TOWNSHIP, MICHIGAN 48036  
OFFICE: (810) 263-9900 • PAGER: (810) 717-7539 • FAX: (810) 263-9910

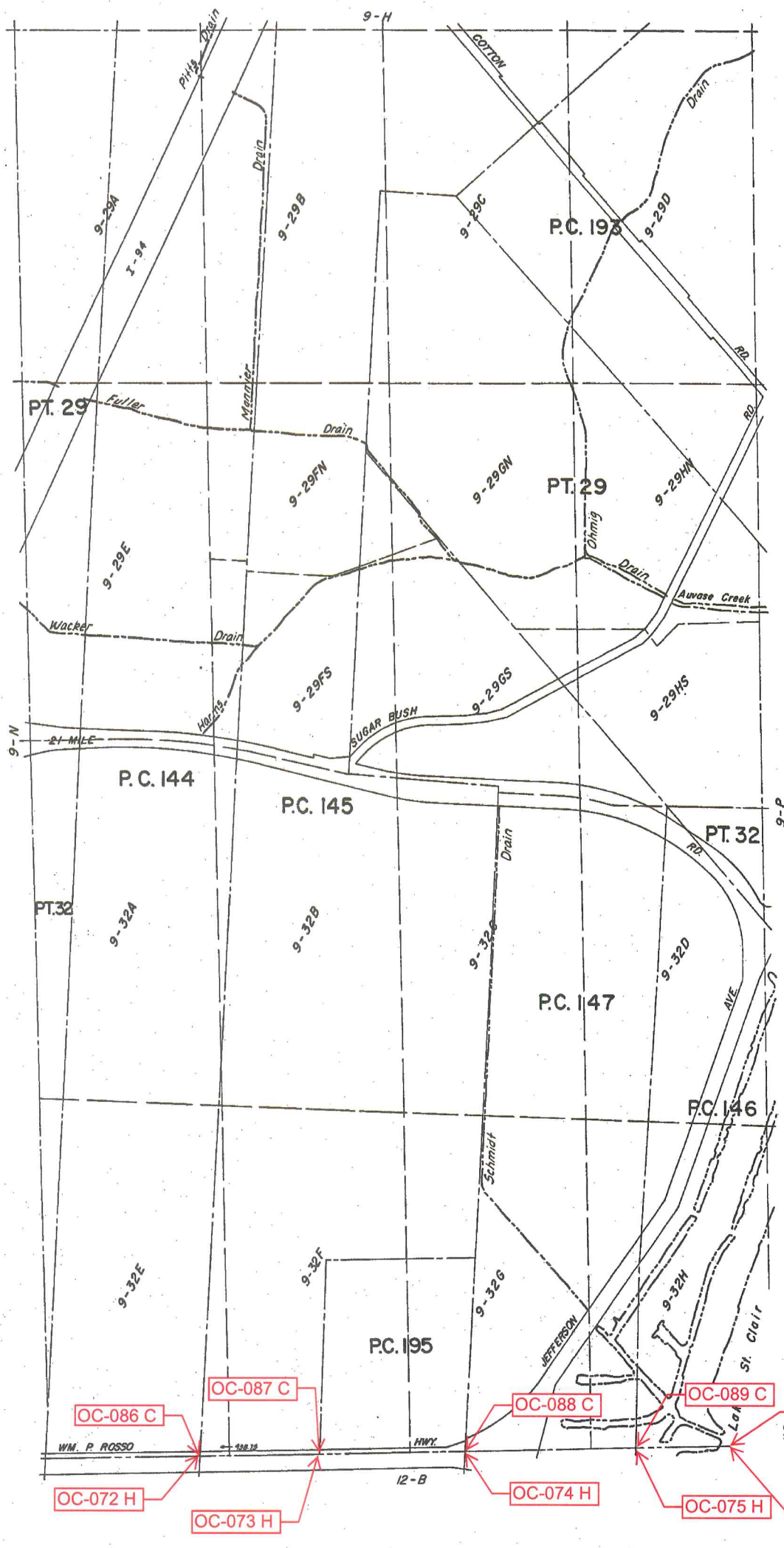
**MAIN OFFICE**  
2700 North Woodward  
Bloomfield Hills, Michigan 48304  
(248) 338-7135 or (248) 647-2171  
Fax: (248) 338-3045

**CLARKSTON OFFICE**  
6715 Dixie Highway (at M-15)  
Clarkston, Michigan 48346  
(248) 625-6100  
Fax: (248) 625-8933

**OXFORD**  
830 South Lapeer  
Oxford, Michigan 48371  
(248) 969-9522  
Fax: (248) 969-9525

**FARMINGTON HILLS OFFICE**  
30640 West 12 Mile Road  
Farmington Hills, Michigan 48334  
(248) 932-0660  
Fax: (248) 932-0664

**SOUTHFIELD**  
30233 Southfield Road #221  
Southfield, Michigan 48075  
(248) 540-1777  
Fax: (248) 540-9553



REV. 12-75  
REV. 3-76

WM. P. ROSSO

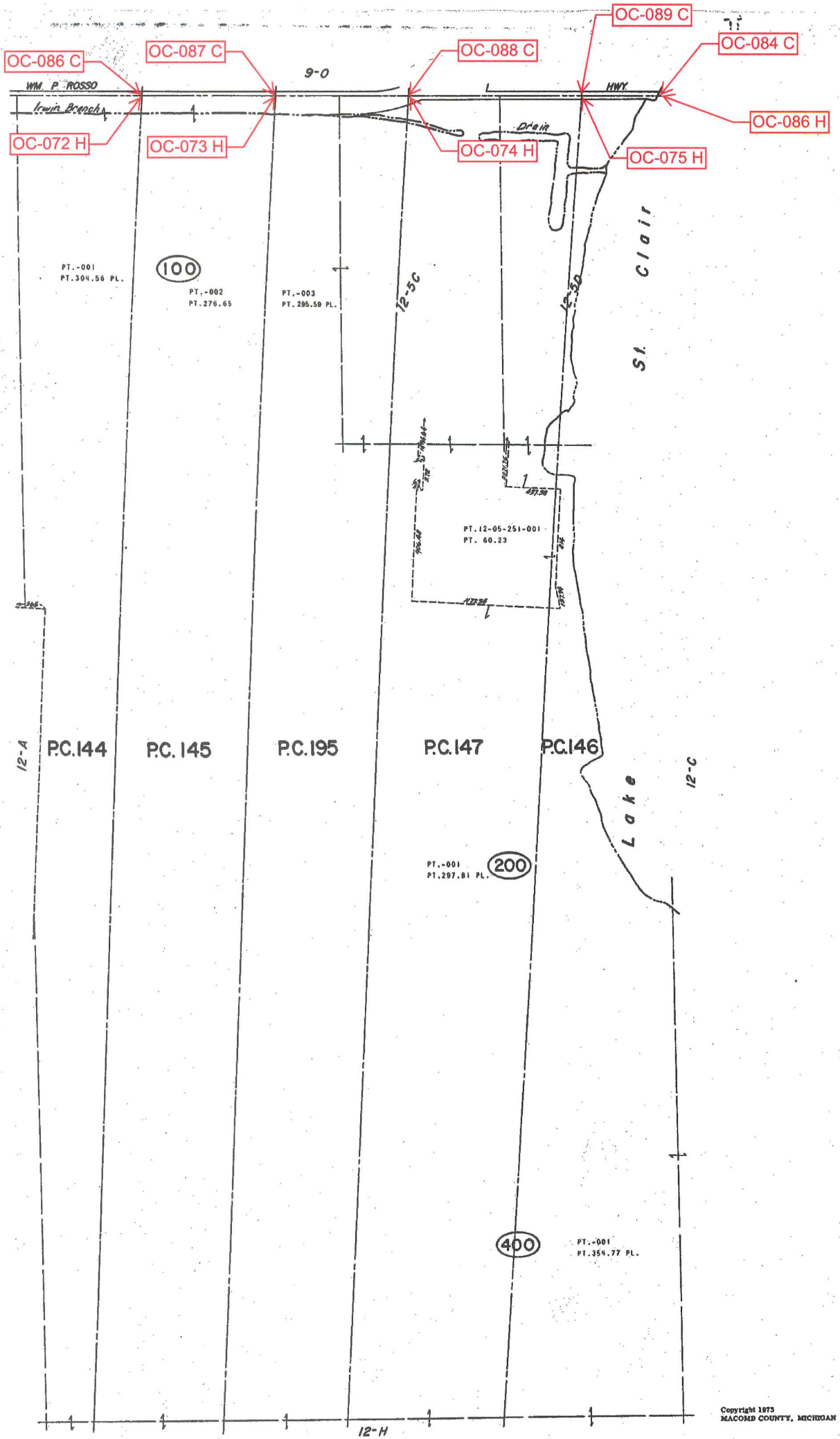
Copyright 1974  
MACOMB COUNTY, MICHIGAN

SCALE: 1" = 400'  
600

CHESTERFIELD TWP.  
SECS. 29 & 32 & PT. P.C. 144, 145, 147, 193, 195 T.3N. R.14E.

9-0  
11



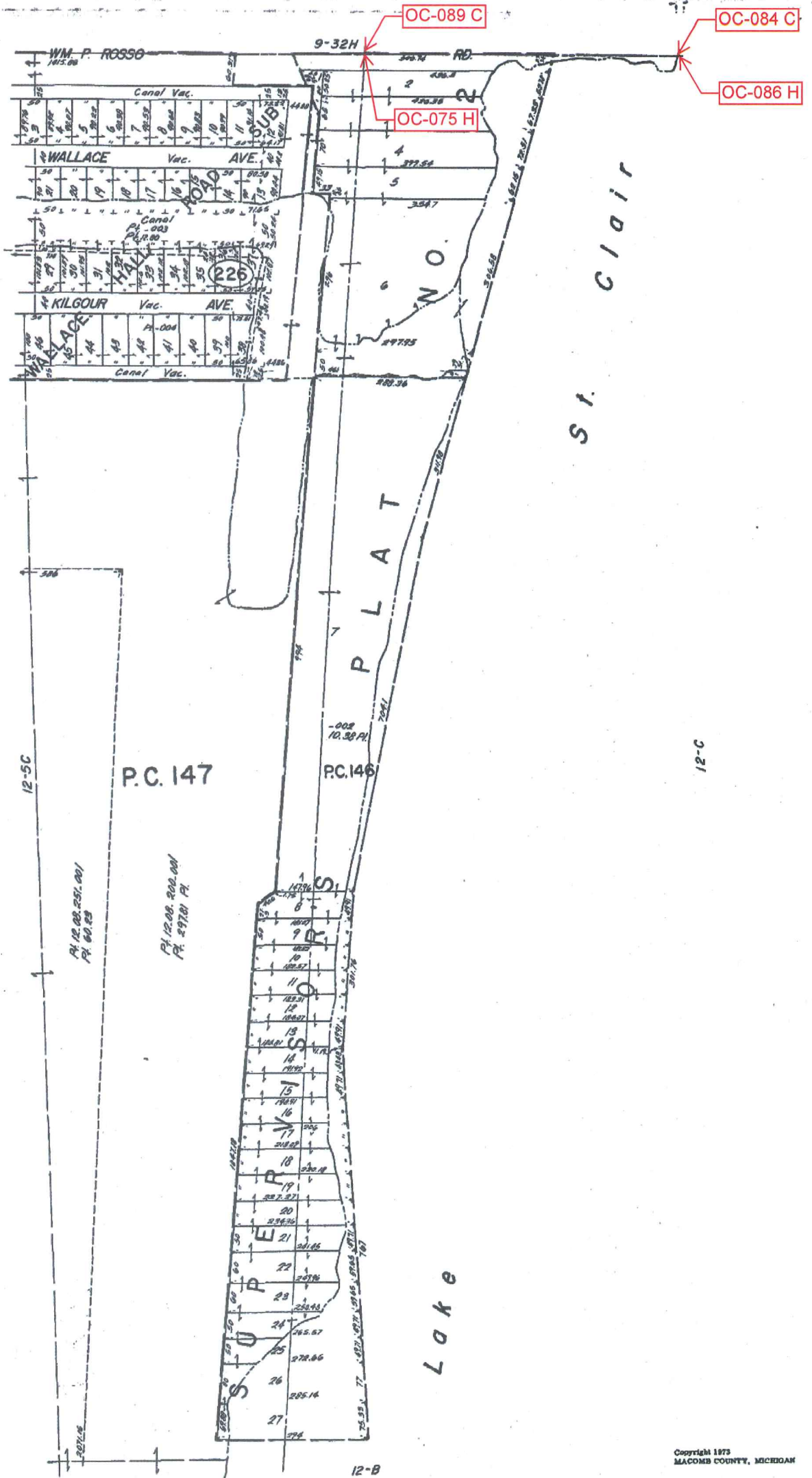


HARRISON TWP.  
 PT. P.C. 144, 145, 146, 147, 195 T.2N. R.14E.

Copyright 1973  
 MACOMB COUNTY, MICHIGAN

SCALE: 1" = 400'  
 1290  
 12-B



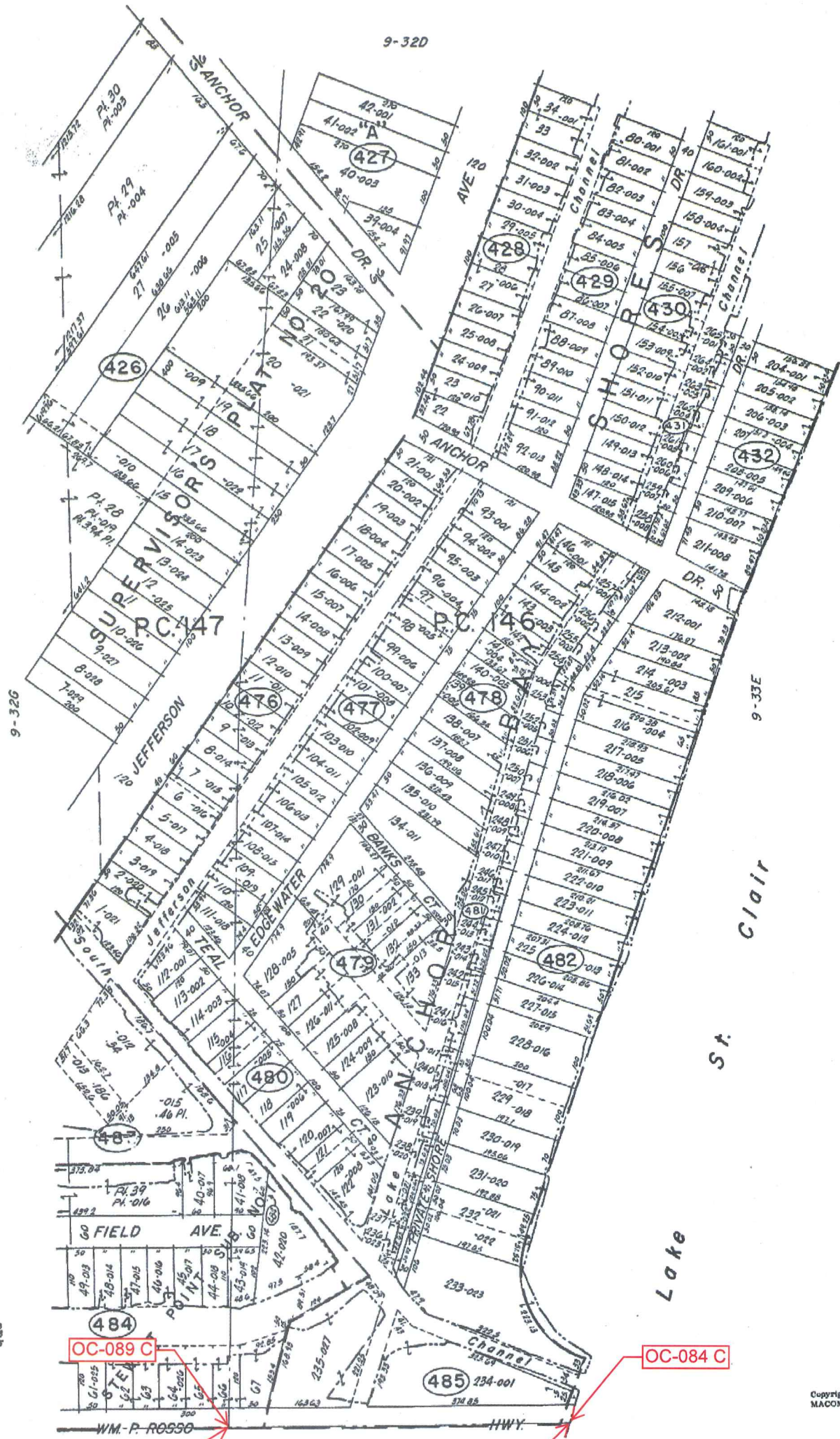


HARRISON TWP.  
 PT. P.C. 146 & 147 T.2N. R.14E.

Copyright 1973  
 MACOMB COUNTY, MICHIGAN

SCALE 1" = 100'  
 1303  
 12-5D

9-320



REV. 4-78  
REV. 1-78  
REV. 12-75

MASONIC CO. 4127

CHESTERFIELD TWP.  
PT. P.C. 146, 147 T3N. R14E.

Copyright 1974  
MACOMB COUNTY, MICHIGAN

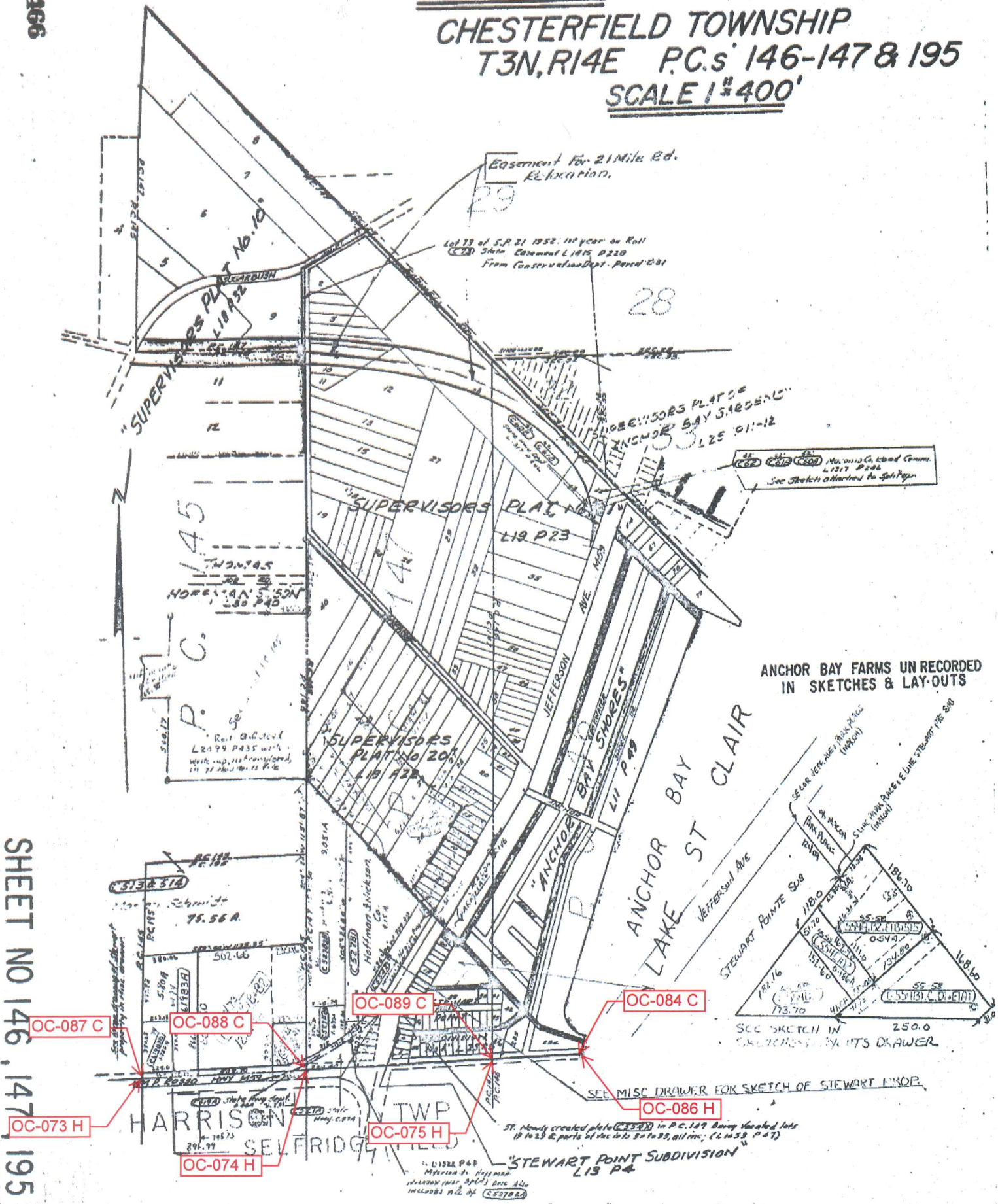
SCALE: 1" = 100'

734

9-32H

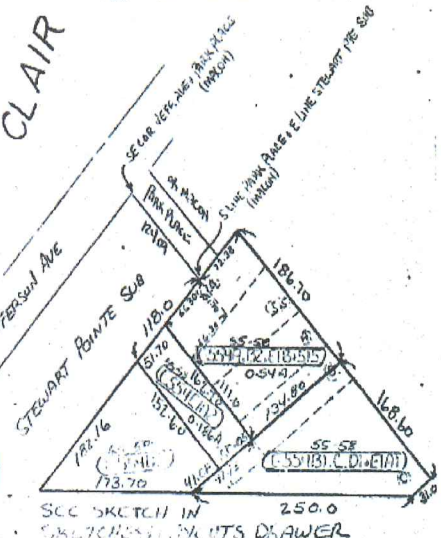


# CHESTERFIELD TOWNSHIP T3N, R14E P.C.s 146-147 & 195 SCALE 1"=400'



SHEET NO 146, 147, 195

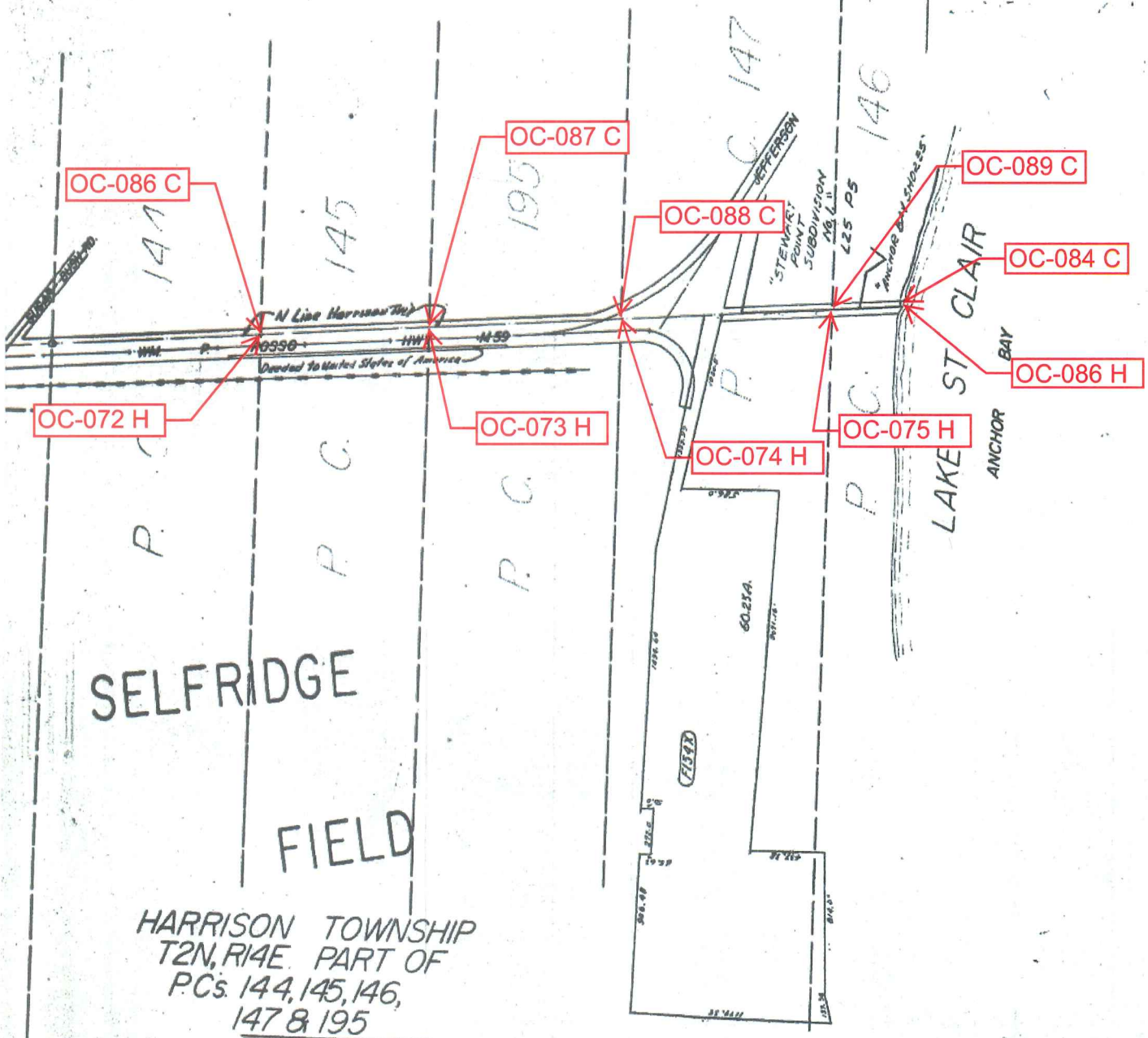
ANCHOR BAY FARMS UN RECORDED  
IN SKETCHES & LAY-OUTS



ST. Newly created plat (L13 P4) in P.C. 147. Being vacated lots 19 to 23 & parts of lots 24 to 28, all inc. (L143 P47)

"STEWART POINT SUBDIVISION"  
L13 P4

CHESTERFIELD TWP



SELF RIDGE FIELD

HARRISON TOWNSHIP  
T2N, R14E PART OF  
P.Cs. 144, 145, 146,  
147 & 195

SCALE 1" = 400'





Date of Photography: Spring 2010  
 100 50 0 100 200 Feet  
 1:1,200

CHESTERFIELD TWP SHEET INDEX

DESCRIPTION OF PERMANENT REAL ESTATE INDEX NUMBER  
**131-19-302-018**

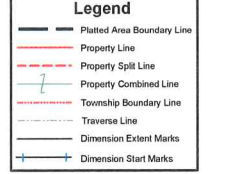
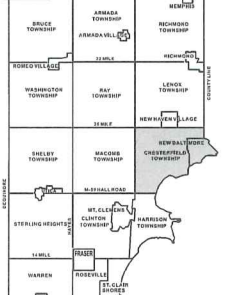
**09-32H**

HARRISON TWP.  
 E. 1/2 S.E. 1/4 SEC. 32 T. 3N. R. 14E.

Source: Macomb County Department of Planning and Economic Development  
 - 2008 Digital Orthophoto Project  
 - Parcel Conversion Project

Note:  
 Digital Orthophoto horizontal positioning accuracy is 3 feet. Parcel boundary lines should be considered a graphical representation and not in any way a legal survey or engineering document. In general, the horizontal positioning and length accuracy is within 15 feet.

This map is intended for general planning purposes. Site specific evaluation should be verified by field inspection. This is a work in progress and may contain errors and omissions. Please report any potential revisions to (586)468-5285.





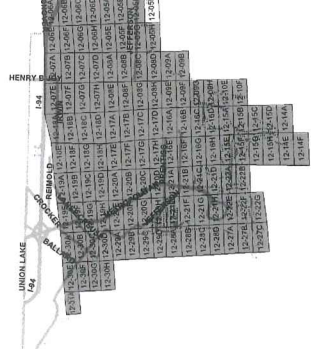


Date of Photography: Spring 2015  
 100 50 0 100 200 Feet

HARRISON TWP SHEET INDEX

DESCRIPTION OF PERMANENT REAL ESTATE INDEX NUMBER  
**13-19-302-018**

**12-05D**  
 HARRISON TWP.  
 E. 1/2 N.E. 1/4 SEC. 5 T. 2N. R. 14E.



AREA NUMBER (TOWNSHIP AND RANGE)	SUB AREA NUMBER (BLOCKS OR GROUPS)	BLOCK NUMBER (OFF-BLOCK)	PARCEL NUMBER (INDIVIDUAL PLOTS)
13-19-302-018			

**Legend**

- Platted Area Boundary Line
- Property Line
- Property Split Line
- Property Combined Line
- Township Boundary Line
- Traverse Line
- Dimension Extent Marks
- Dimension Start Marks

Source: Macomb County Department of Planning and Economic Development  
 - 2015 Digital Orthophotography Project  
 - Parcel Conversion Project

Note:  
 Digital Orthophotography horizontal positioning accuracy is 3 feet. Parcel boundary lines should be considered a graphical representation and not in any way a legal survey or engineering document. In general, the horizontal positioning and length accuracy is within 15 feet.

This map is intended for general planning purposes. Site specific evaluation should be verified by field inspection. This is a work in progress and may contain errors and omissions. Please report any potential revisions to (586)469-5285.

COPYRIGHT 2009  
 MACOMB COUNTY, MI  
 All Rights Reserved



**GIS** MACOMB COUNTY  
 Planning and Economic  
 Development Department

Published: Jul 29 2016



N. 484" North Side of River Huron.

Description N. 146 Confirmed to -  
William Tucker, commencing at a post  
standing on the north border of River Huron  
between this tract and a tract confir-  
med to the Widow Tucker in trust for her  
two sons Jacob & Charles, thence north, two  
hundred and ninety two chains ninety one  
links; to a post standing on the south  
west line of a tract known by the  
name of Maccorres Reserve, thence south  
forty five degrees East - thirty one chains  
ninety six links; to a post standing on  
the border of Lake St. Clair between this  
tract and said Reserve; thence along  
the border of said Lake, south twenty  
three degrees thirty minutes west nineteen  
chains ninety links, thence south fifteen  
degrees west forty seven chains, thence  
south four degrees west sixteen chains.  
thence south two degrees thirty min-  
utes east twenty eight chains, thence south  
sixteen degrees east thirteen chains, thence  
south eleven degrees west ten chains, thence  
south twenty eight degrees east eight ch-  
ains, thence south fifty three degrees East  
eleven chains, thence south thirty eight  
degrees east seven chains eighty links, -  
thence south fifty one degrees east nine-  
teen chains forty links, to a post the bound-  
ary between this tract and tract -  
confirmed to Annas at Obin, thence  
north sixty three chains forty five links  
to a post standing on the border of River  
Huron, thence along the border of said  
River thence north eighty eight degrees west  
ten chains, thence south fifty degrees west  
three chains, thence south eleven degrees  
thirty minutes west fourteen chains, thence  
south nineteen degrees west thirteen chains  
thence south thirty nine degrees west  
twenty one chains thence south twenty  
two degrees west three chains seventy six  
links, to the place of beginning contain-  
ing six hundred and forty acres.

Detroit July 14. 1810

Thomas Guesey Surveyor  
of private claims.

## NORTH SIDE OF RIVER HURON

Description No. 146 Confirmed to William Tucker commencing at a post standing on the north border of River Huron between this tract and a tract confirmed to the widow Tucker in trust for her sons Jacob and Charles, thence north two hundred and ninety two chains ninety one links to a post standing on the southwest line of a tract known by the name of Macconses Reserve thence south forty five degrees east thirty one chains ninety six links to a post standing on the border of Lake St. Clair between this tract and said reserve, thence along the border of said lake south twenty three degrees thirty minutes west nineteen chains ninety links thence south fifteen degrees west forty seven chains thence south four degrees west sixteen chains, thence south two degrees thirty minutes east twenty eight chains, thence south sixteen degrees East thirteen chains, thence south eleven degrees west ten chains, thence south twenty eight degrees east eight chains thence south fifty three degrees east eleven chains, thence south thirty eight degrees east seven chains eighty links, thence south fifty one degrees east nineteen chains forty links, to a post the boundary between this tract and a tract confirmed to Francois St. Oban, thence south, sixty three chains forty five links, to a post standing on the border of River Huron, thence along the border of said River up stream North eighty eight degrees west ten chains, thence south fifty degrees west three chains, thence south eleven degrees thirty minutes west fourteen chains, thence south nineteen degrees west thirteen chains thence south thirty-nine degrees west



-2-

No. 484

twenty one chains, thence south seventy two degrees west three  
chains seventy six links to the place of beginning, containing  
six hundred and forty acres \_\_\_\_\_

Detroit July 14, 1810

Aaron Greeley Surveyor  
of private claims





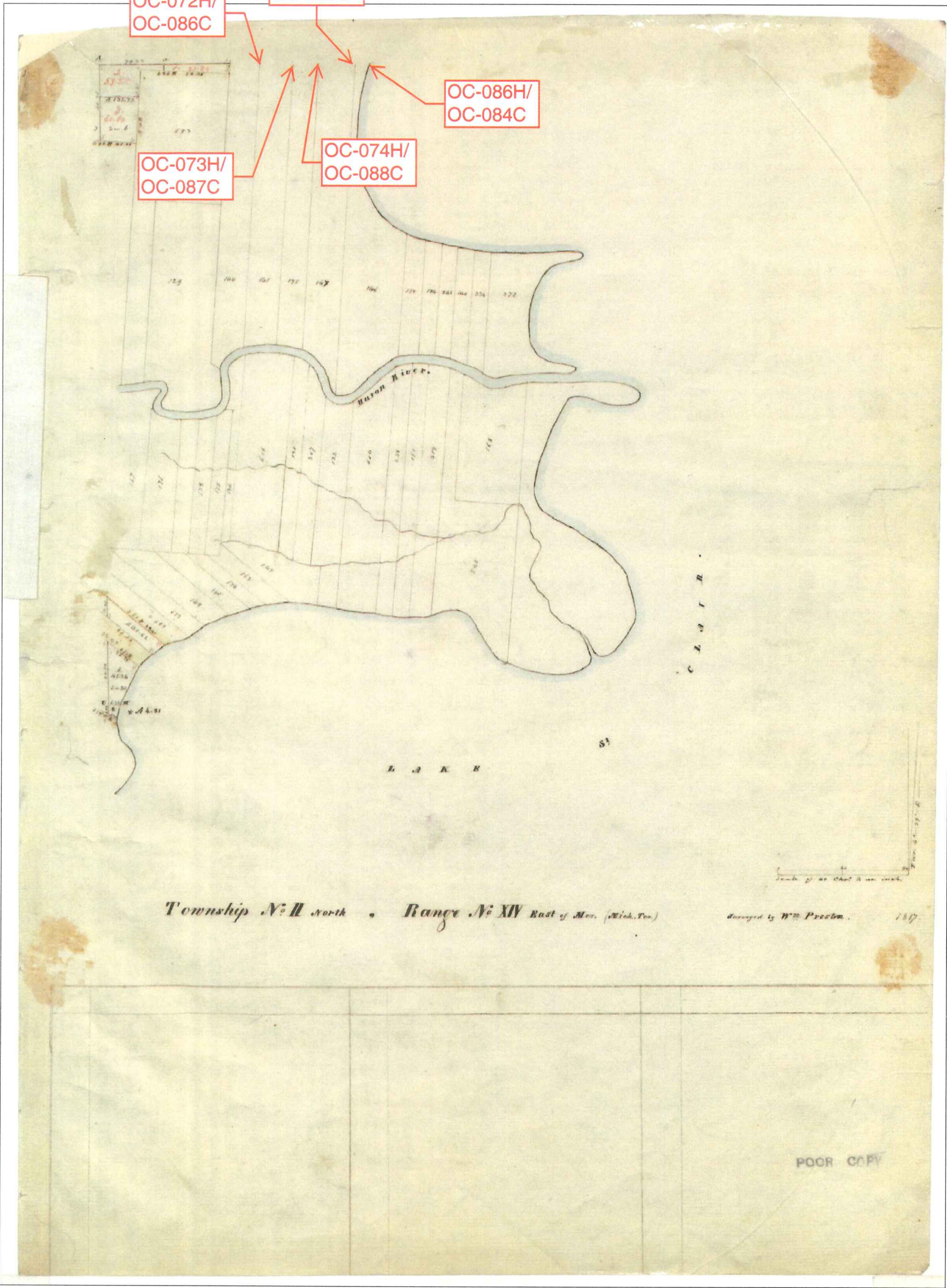
OC-072H/  
OC-086C

OC-075H/  
OC-089C

OC-086H/  
OC-084C

OC-073H/  
OC-087C

OC-074H/  
OC-088C



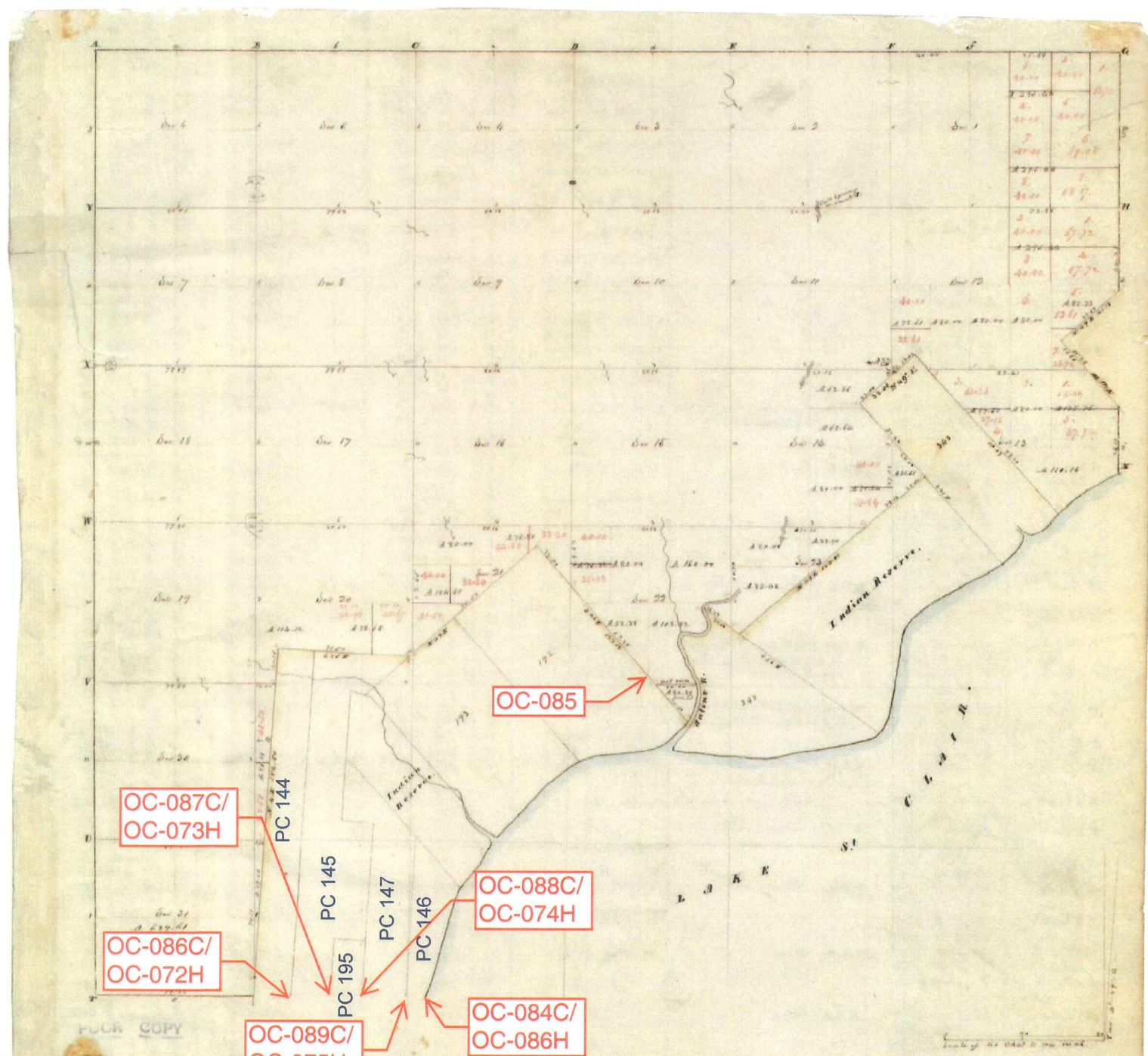
Township N: II north, Range N: XIV East of Mer. (Mich. Ter.)

Designed by W. P. Proctor.

117

POOR COPY





Township N: III North, Range N: XIV East of Mer. (Mich. Ter.) surveyed by W<sup>m</sup>. Preston. 1877

Description of the soil on the interior sectional lines.

Between locations	Locality to	Between locations	Locality to
1-2	1/2 mile S. of line	16-17	S. of line
2-3	S. of line	17-18	S. of line
3-4	S. of line	18-19	S. of line
4-5	S. of line	19-20	S. of line
5-6	S. of line	20-21	S. of line
6-7	S. of line	21-22	S. of line
7-8	S. of line	22-23	S. of line
8-9	S. of line	23-24	S. of line
9-10	S. of line	24-25	S. of line
10-11	S. of line	25-26	S. of line
11-12	S. of line	26-27	S. of line
12-13	S. of line	27-28	S. of line
13-14	S. of line	28-29	S. of line
14-15	S. of line	29-30	S. of line
15-16	S. of line	30-31	S. of line
16-17	S. of line	31-32	S. of line
17-18	S. of line	32-33	S. of line
18-19	S. of line	33-34	S. of line
19-20	S. of line	34-35	S. of line
20-21	S. of line	35-36	S. of line
21-22	S. of line	36-37	S. of line
22-23	S. of line	37-38	S. of line
23-24	S. of line	38-39	S. of line
24-25	S. of line	39-40	S. of line
25-26	S. of line	40-41	S. of line
26-27	S. of line	41-42	S. of line
27-28	S. of line	42-43	S. of line
28-29	S. of line	43-44	S. of line
29-30	S. of line	44-45	S. of line
30-31	S. of line	45-46	S. of line
31-32	S. of line	46-47	S. of line
32-33	S. of line	47-48	S. of line
33-34	S. of line	48-49	S. of line
34-35	S. of line	49-50	S. of line
35-36	S. of line	50-51	S. of line
36-37	S. of line	51-52	S. of line
37-38	S. of line	52-53	S. of line
38-39	S. of line	53-54	S. of line
39-40	S. of line	54-55	S. of line
40-41	S. of line	55-56	S. of line
41-42	S. of line	56-57	S. of line
42-43	S. of line	57-58	S. of line
43-44	S. of line	58-59	S. of line
44-45	S. of line	59-60	S. of line
45-46	S. of line	60-61	S. of line
46-47	S. of line	61-62	S. of line
47-48	S. of line	62-63	S. of line
48-49	S. of line	63-64	S. of line
49-50	S. of line	64-65	S. of line
50-51	S. of line	65-66	S. of line
51-52	S. of line	66-67	S. of line
52-53	S. of line	67-68	S. of line
53-54	S. of line	68-69	S. of line
54-55	S. of line	69-70	S. of line
55-56	S. of line	70-71	S. of line
56-57	S. of line	71-72	S. of line
57-58	S. of line	72-73	S. of line
58-59	S. of line	73-74	S. of line
59-60	S. of line	74-75	S. of line
60-61	S. of line	75-76	S. of line
61-62	S. of line	76-77	S. of line
62-63	S. of line	77-78	S. of line
63-64	S. of line	78-79	S. of line
64-65	S. of line	79-80	S. of line
65-66	S. of line	80-81	S. of line
66-67	S. of line	81-82	S. of line
67-68	S. of line	82-83	S. of line
68-69	S. of line	83-84	S. of line
69-70	S. of line	84-85	S. of line
70-71	S. of line	85-86	S. of line
71-72	S. of line	86-87	S. of line
72-73	S. of line	87-88	S. of line
73-74	S. of line	88-89	S. of line
74-75	S. of line	89-90	S. of line
75-76	S. of line	90-91	S. of line
76-77	S. of line	91-92	S. of line
77-78	S. of line	92-93	S. of line
78-79	S. of line	93-94	S. of line
79-80	S. of line	94-95	S. of line
80-81	S. of line	95-96	S. of line
81-82	S. of line	96-97	S. of line
82-83	S. of line	97-98	S. of line
83-84	S. of line	98-99	S. of line
84-85	S. of line	99-100	S. of line















Original

# SUPERVISOR'S PLAT # 12

A PART OF P.C.S. 146 & 147

HARRISON TOWNSHIP, MACOMB CO., MICH.

WALTER J. LEHNER  
M.T. CLEMENS, MICH.

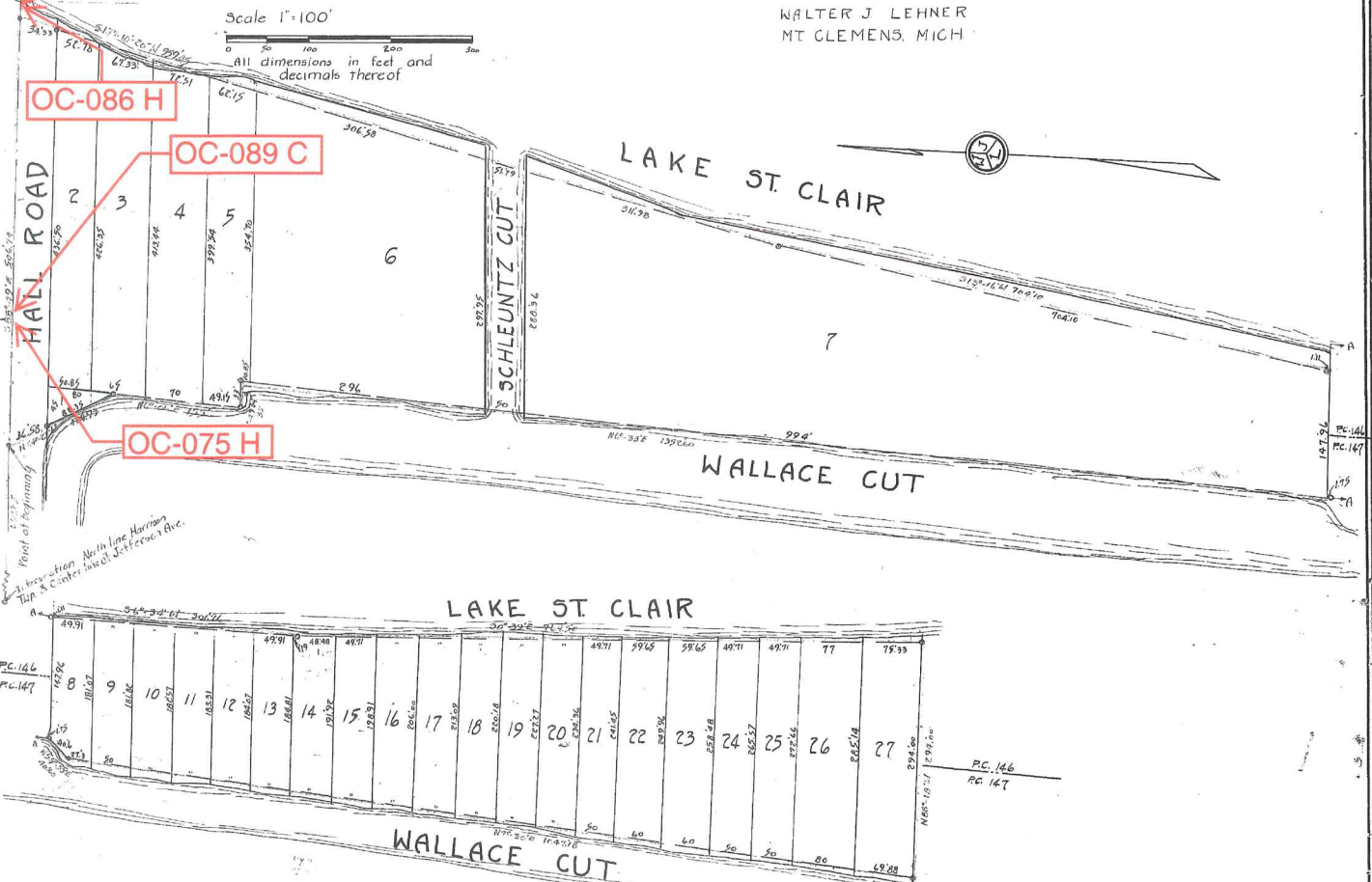
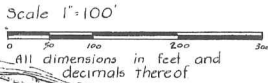
*W.A. Brown*  
8/19/36

OC-084 C

OC-086 H

OC-089 C

OC-075 H



### DEDICATION.

AND WHEREBY THESE PRESENTS, that I, Floyd W. Rosso, Supervisor of Harrison Township, Macomb County, State of Michigan, by virtue of authority in me vested by section 51, Act 172 of P.A. 1928, having been duly authorized by the Township Board, have caused the land embraced in the annexed plat to be surveyed, laid out and platted to be known as "Supervisor's Plat No. 12" a part of P.Cs. 146 & 147 Harrison Township, Macomb Co., Michigan, and that the street as shown on said plat has been dedicated to the use of the public.

Witnesses:  
*Floyd W. Rosso*  
 Supervisor for Harrison Twp.  
*Carl H. Johne*  
 Notary Public

STATE OF MICHIGAN )  
 ) ss.  
 COUNTY OF MACOMB )

On this 4th day of Nov A.D. 1936, before me a Notary Public in and for said County, personally appeared the above named Floyd W. Rosso, supervisor of Harrison Twp., known to me to be the person who executed the above dedication and acknowledged the same to be his free act and deed as such Supervisor.

My Commission expires March 6, 1937  
 Notary Public in and for said Macomb County.

TOWNSHIP APPROVAL.  
 This plat was approved by the Township Board of the Township of Harrison at a meeting held Nov. 4th A.D. 1936.

*Carl H. Johne*  
 Township Clerk.

RECORDED IN BOOK 11  
 AUG 21 1936  
 11:30  
*Vivian Mayette, Deputy*

### SURVEYOR'S CERTIFICATE.

I hereby certify that the plat hereon dedicated is a correct one and that permanent metal monuments or not less than one inch in diameter and fifteen inches in length set in a concrete base at least four inches in diameter and forty eight inches in depth have been placed at points marked thus (o), as shown at all angles in the boundaries of the land platted, at all intersections of the street with the boundaries of the plat.

*Walter J. Lehner*  
 Registered Civil Engineer.

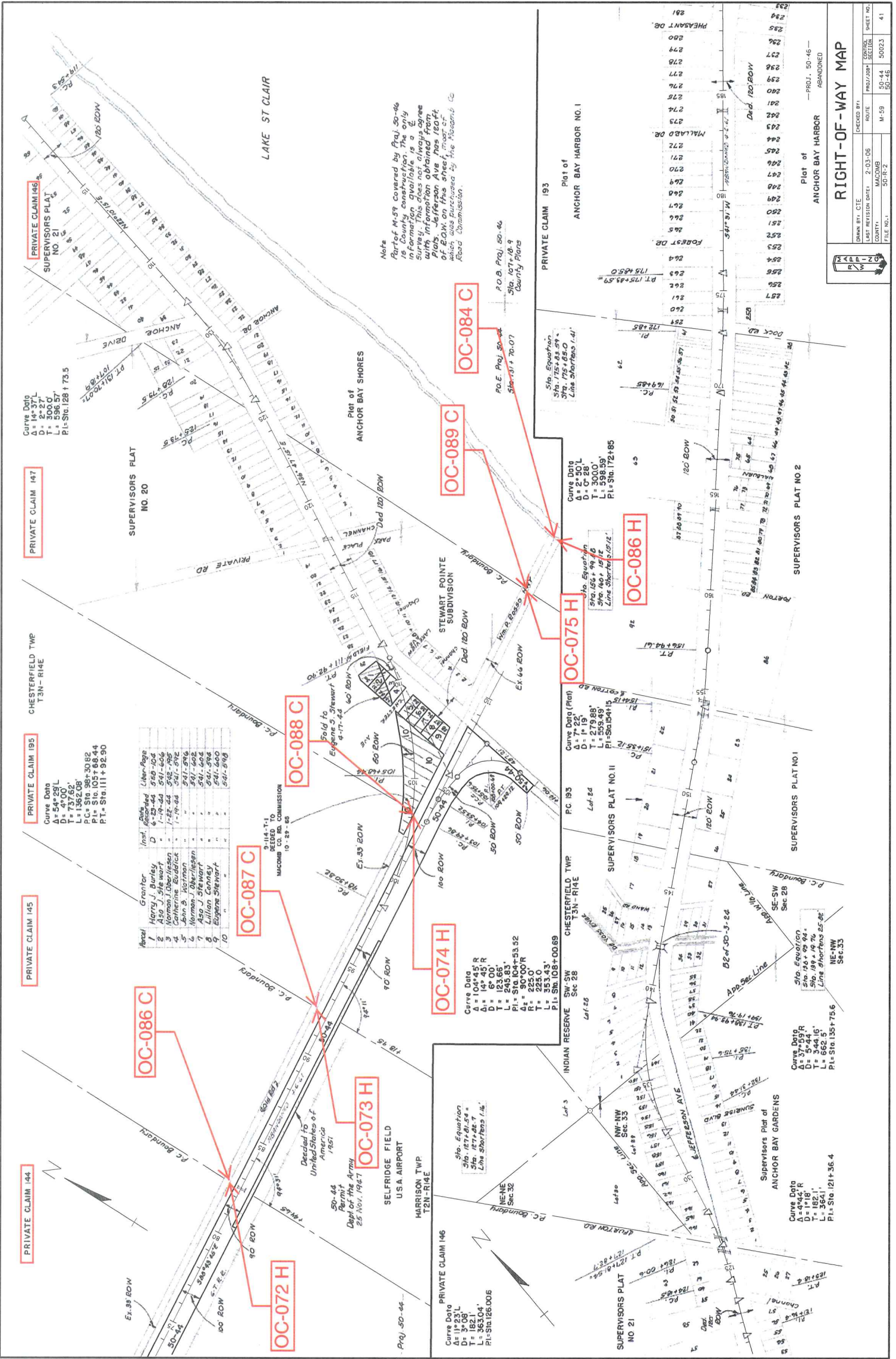
### COUNTY APPROVAL.

This plat was approved by the County Board of Macomb County, Michigan, at a meeting held January 10th A.D. 1936.

*Arthur J. Gentry* Judge of Probate.  
*Ernest J. Jones* county clerk.  
*Carl S. Brandenburg* county Treasurer.

### DESCRIPTION.

The land embraced in the annexed plat of "Supervisor's Plat No. 12" a part of P. Cs. 146 & 147 Harrison Township, Macomb Co., Mich., is described as follows:  
 Commencing at a point on the North line of Harrison Township 667.05 ft. S.88°-49'E. of the intersection of said Twp. line and Jefferson Ave., so called, and thence extending S.88°-49'E. 506.74 ft; thence along the border of Lake St. Clair S. 17°-10'-20"W. 959.45 ft; thence S.13°-16'W. 704.10 ft; thence S.6°-34'W. 301.76 ft; thence S.0°-39'E. 767.50 ft; thence leaving the shore line N.88°-18'W. 294 ft; thence N.7°-30'E. 1047.18 ft; thence N.55°-53'E. 40.60 ft; thence N.6°-33'E. 1352.60 ft; thence N.89°-49'W. 33 ft; thence N.6°-06'E. 155 ft; thence N.24°-23'W. 124.95 ft; to the place of beginning.



Area	Grantor	Inst.	Recorded	Line-Page
1	Agry J. Burley	D	6-23-44	519-104
2	Also J. Stewart	-	1-14-44	541-606
3	Catherine Budick	-	1-19-44	541-572
4	John B. Hoffman	-	1-19-44	541-572
5	Norman J. Oberhagen	-	5-1-51	541-576
6	Also J. Stewart	-	5-1-51	541-602
7	Lillian Conroy	-	5-1-51	541-586
8	Eugene Stewart	-	5-1-51	541-576
9				
10				

Note  
 Part of M-59 covered by Plat. 50-46  
 is County construction. The only  
 information available is a  
 survey. This does not always agree  
 with information obtained from  
 of ROW on the Ave. Maps 120-1  
 which was purchased by the Macomb  
 Road Commission.

DRAWN BY: CTE  
 LAST REVISION DATE: 2-03-06  
 COUNTY: MACOMB  
 PROJECT: M-59  
 SHEET NO.: 41  
 FILE NO.: 50-44  
 50-46  
 50-R-2

**RIGHT-OF-WAY MAP**  
 Plot of  
 ANCHOR BAY HARBOR  
 ABANDONED  
 — PROJ. 50-46 —