

OC-071-C12/13
DOSSIER CONTENT
2016 REMON
T.3N., R.14E.,
Chesterfield Township, Macomb County, Michigan

Section One

Index

Pictures:

- Before setting the required monumentation.
- After setting the required monumentation.
- In cardinal directions.

Section Two

LCRC

Surveyor's Report

Section Three

- 1 Field Notes
- 2 Township Map
- 3 Tax Map 1959
- 4 Tax Map 1974
- 5 Aerial Pictures 2012

Section Four

- | | | | |
|---------|-------------------------------|-------------------------|-------------------|
| 1 1810 | PC 144 Survey notes | Greely | |
| 2 1816 | Township map | Preston | |
| 3 1817 | GLO | Preston | |
| 4 1817 | Township map | Preston | |
| 5 1818 | Township map | Surveyor General Office | |
| 6 1853 | Macomb Field Notes | | |
| 7 1853 | GLO-Field Notes | Morgan | |
| 8 1937 | Plat – Supervisors Plat No. 9 | Hanowey | RCE L18, P18 |
| 9 1937 | Plat – Supervisors Plat No. 8 | Hanowey | RCE L18, P19 |
| 10 1998 | Certificate of Survey | Smith | 16052 L8230, P206 |
| 11 2009 | Right-of-way map | MDOT | unrecorded |

OC-071 C12/13



BEFORE 2016-08-31



AFTER 2016-08-31

OC-071 C12/13



NORTH 2016-08-31



EAST 2016-08-31

OC-071 C12/13



SOUTH 2016-08-31



WEST 2016-08-31

Land Corner Recordation Certificate
2016 Annual Grant Agreement
 Authority: MICH. 1970 PA 74, MCL 54.205

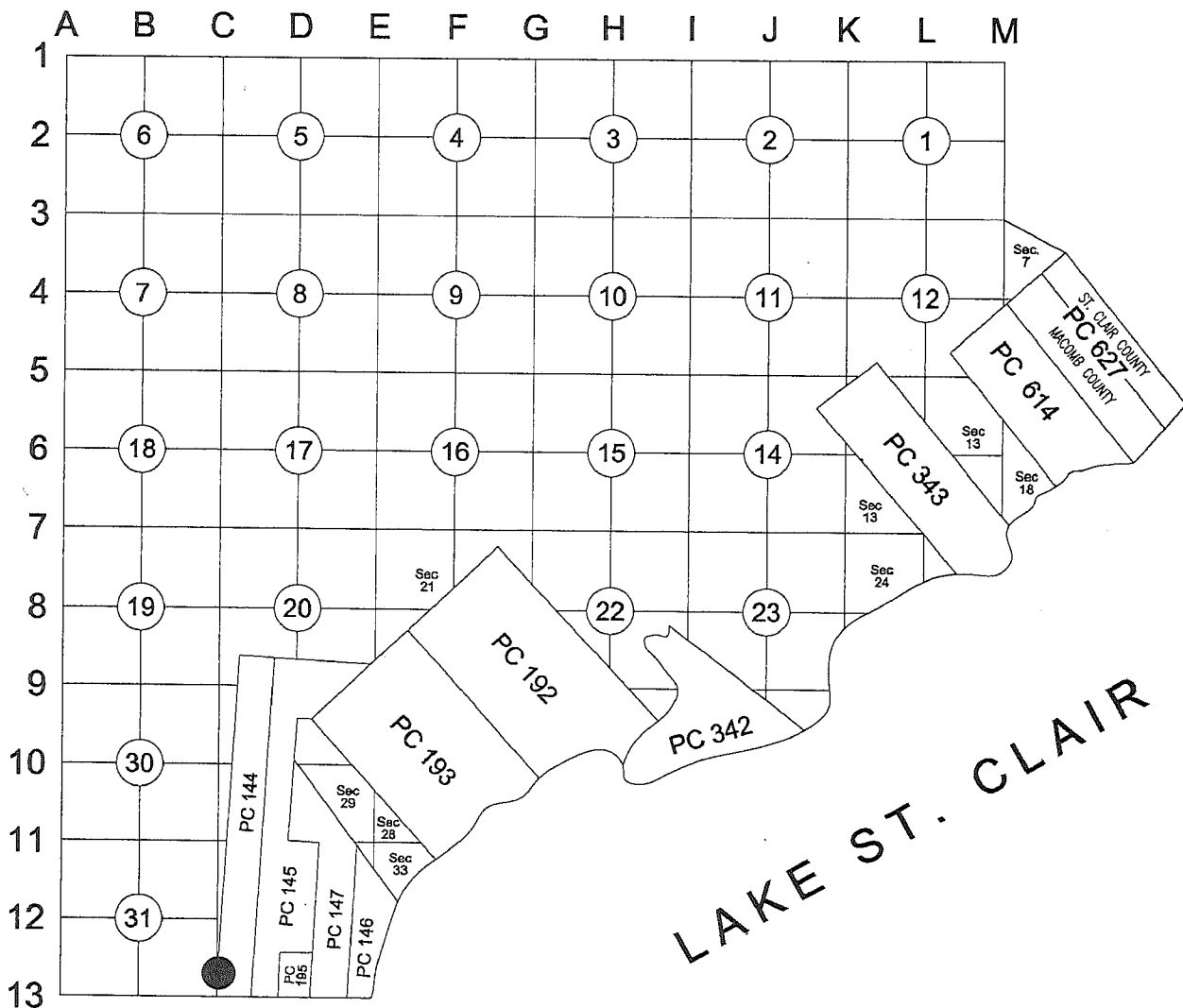
Surveyor's Name: Derek Kosicki
For Corner(s) in: Macomb County

Field Survey Date: 08/31/2016
Municipality: Chesterfield Township

Corner Type	Section	Private Claim	Survey Township	Corner Code	Other Code
Protracted Public Land Survey Corner	S PC	31&32 144	T 03 N R 14 E	C12/13	OC-071

Other Corner Code Description:

Intersection of the Section Line common to Fractional Section 31 and 32 with the West Line of PC 144.



Part A: Corner History:

1 1810	PC 144 Survey notes	Greely	Object not stated
2 1816	Township map	Preston	Object not stated
3 1817	GLO	Preston	Red Oak 28" diam.
4 1817	Township map	Preston	Object not stated
5 1818	Township map	Surveyor General Office	Object not stated
6 1853	GLO-Field Notes	Morgan	Red Oak 28" diam.
7 1853	GLO-Field Notes	Morgan	Object not stated
8 1937	Plat – Supervisors Plat No. 9		
		Hanowey RCE L18, P18	Plat covers land in the vicinity of OC-071 but does not show it.
9 1937	Plat – Supervisors Plat No. 8		
		Hanowey RCE L18, P19	Plat covers land in the vicinity of OC-071 but does not show it. It does show the Westerly Line PC 144.

3
med

C

10 1998 Certificate of Survey	Smith	16052 L8230, P206	Survey covers land in the vicinity of OC-071 but does not show it. It does show the Westerly Line PC 144.
11 2009 Right-of-way map	MDOT	unrecorded	Map covers land in the vicinity of OC-071 but does not show it.

Part B: Surveyor's Report on Perpetuation, Restoration, Reestablishment or Monumentation of Corner:

Nothing was found. I consider it a lost corner.
Occupation: none.

I established position of the corner on line between PC-042 (Harrison Twp.) & OC-070 at the distance 10.17ch (Item 6) from C-13.

Distances:

OC-071 to OC-070	OC-071 to C-13
1986.60' (30.10 ch) 3	
2032.88' (30.80 ch) 6	671.22' (10.17 ch) 6
2039.97' Remon 2016	671.22' Remon 2016

Part C: Field Evidence of Perpetuation or Monumentation of Corner:

I placed a 2" aluminum cap stamped "MACOMB COUNTY MONUMENT MI ACT 345; OC-071; 43058" placed on a 1/2"x36" steel bar encased in 4" diameter concrete monument.

Accessories:

30° AZ. 84.38'	SW bolt in base of navigational light No. 8.
127° AZ 90.40'	NW bolt in base of navigational light No. 9.
225° AZ 24.83'	Set 1/2" iron with blue witness cap.
304° AZ 25.53'	Set 1/2" iron with blue witness cap.

Date of Observation	Latitude	Longitude	Datum and Adjustment Year	Epoch Date
08/31/16	42°37'56.79"	-82°50'11.53"	NAD 83(2011)	2010.0000

Method for Latitude-Longitude determination: GPS Observation

Disclaimer on accuracy of values reported relative to their use: 1' ±.

State Plane Coordinates in international feet: N=416,429.93; E=13,535,081.17
 Standard Deviation: N=0.03'; E=0.02'
 Zone: 2113 MI S
 Combined Factor: 0.99989395
 NGSPID: NE1165
 Survey Method: GPS Observation
 Orthometric Height: 587.22 international feet
 Elev. Datum: NAVD88

I, Derek Kosicki, P.S., in a field survey on August 31, 2016 certify under the requirements of the State Survey and Remonumentation Act, 1990 PA 345, MCL 54.261 to 54.279, and the Corner Recordation Act, 1970 PA 74, MCL 54.201 to 54.210d, that the corner identified and described hereon has been perpetuated or monumented as described in Parts A, B, and C above, pursuant to the laws and rules of the State of Michigan.



Derek Kosicki, P.S.

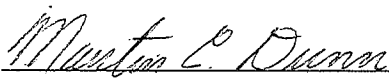
Date 09/30/2016

Professional Surveyor's License No.: 43058

Prepared By:
 Michigan Surveying, Inc.,
 37637 Five Mile Rd., Suite 364,
 Livonia, MI 48154

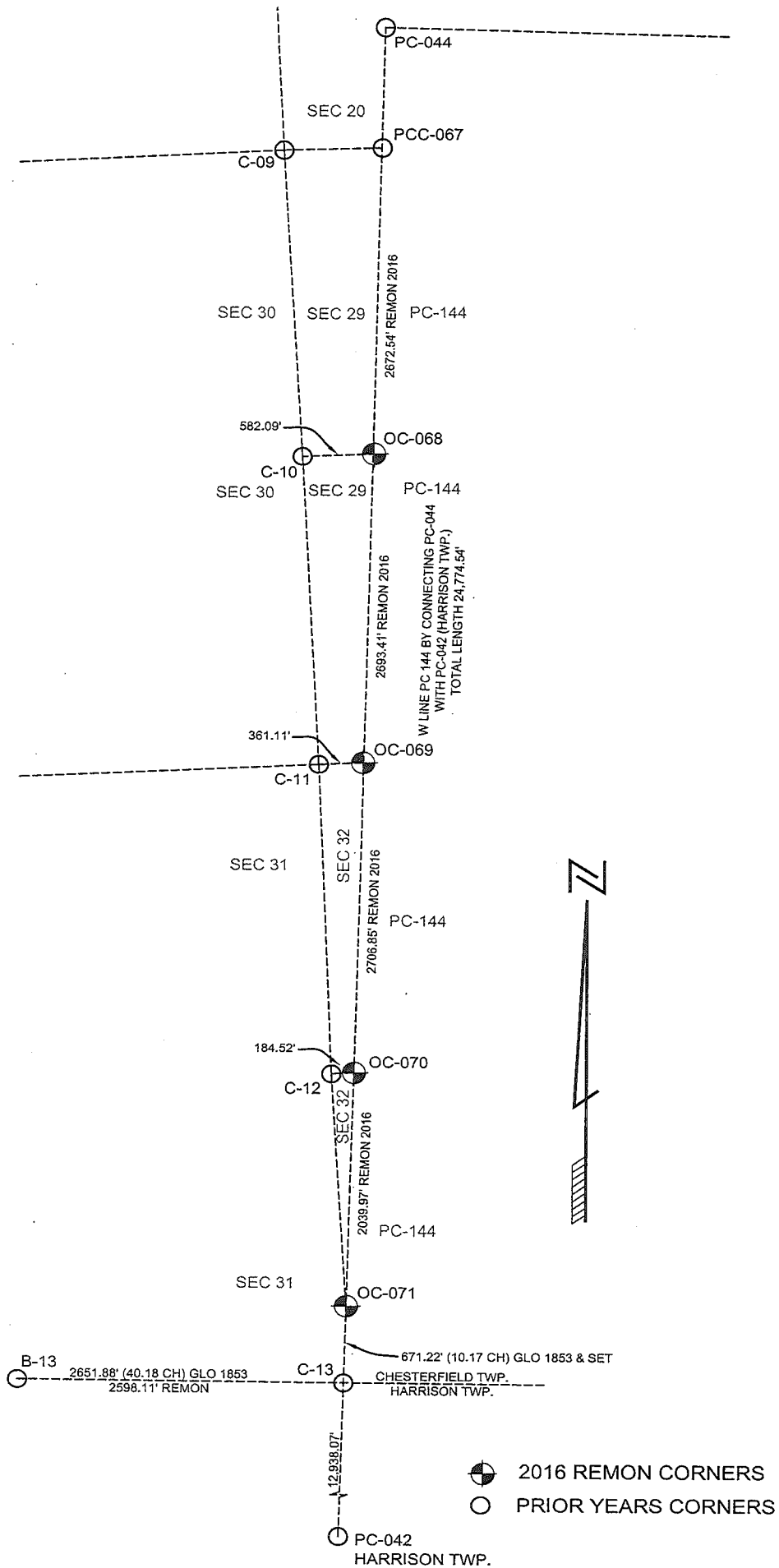


I, Martin C. Dunn, state that the corner(s) identified and described hereon and perpetuated or monumented as described in Parts A, B, and C above was presented to and reviewed by the Peer Review Group on September 6, 2016 and is accepted for filing in the Macomb County Remonumentation Program.



Martin C. Dunn, P.S.
 Macomb County Surveyor Representative
 License No. 30081

12-13-2016
 Date



OC-071-C12/13 CHESTERFIELD TOWNSHIP

OC-071-C12/13: Intersection of the Section Line common to Fractional Section 31 and 32 with the West Line of PC 144.

Survey of PC 144 was performed by A. Greeley in 1810.
GLO survey was performed by Preston in 1817.

Corner history:

1	1810	PC 144 Survey notes	Greeley		Object not stated
2	1816	Township map	Preston		Object not stated
3	1817	GLO	Preston		Red Oak 28" diam.
4	1817	Township map	Preston		Object not stated
5	1818	Township map	Surveyor General Office		Object not stated
6	1853	GLO-Field Notes	Morgan		Red Oak 28" diam.
7	1853	GLO-Field Notes	Morgan		Object not stated
8	1937	Plat – Supervisors Plat No. 9	Hanowey	RCE L18, P18	Plat covers land in the vicinity of OC-071 but does not show it.
9	1937	Plat – Supervisors Plat No. 8	Hanowey	RCE L18, P19	Plat covers land in the vicinity of OC-071 but does not show it. It does show the Westerly Line PC 144.
10	1998	Certificate of Survey	Smith	16052 L8230, P206	Survey covers land in the vicinity of OC-071 but does not show it. It does show the Westerly Line PC 144.
11	2009	Right-of-way map	MDOT	unrecorded	Map covers land in the vicinity of OC-071 but does not show it.

Field evidence:

Nothing was found. I consider it a lost corner.
Occupation: none.

Distances:

OC-071 to OC-070	OC-071 to C-13
1986.60' (30.10 ch) 3	
2032.88' (30.80 ch) 6	671.22' (10.17 ch) 6
2039.97' Remon 2016	671.22' Remon 2016

Recommendation:

I established position of the corner on line between PC-042 (Harrison Twp.) & OC-070 at the distance 10.17ch (Item 6) from C-13.
I recommend placing a 2" aluminum cap stamped "MACOMB COUNTY MONUMENT MI ACT 345; OC-071; 43058" placed on a 1/2"x36" steel bar encased in 4"x36" concrete cylinder.

Witnesses:

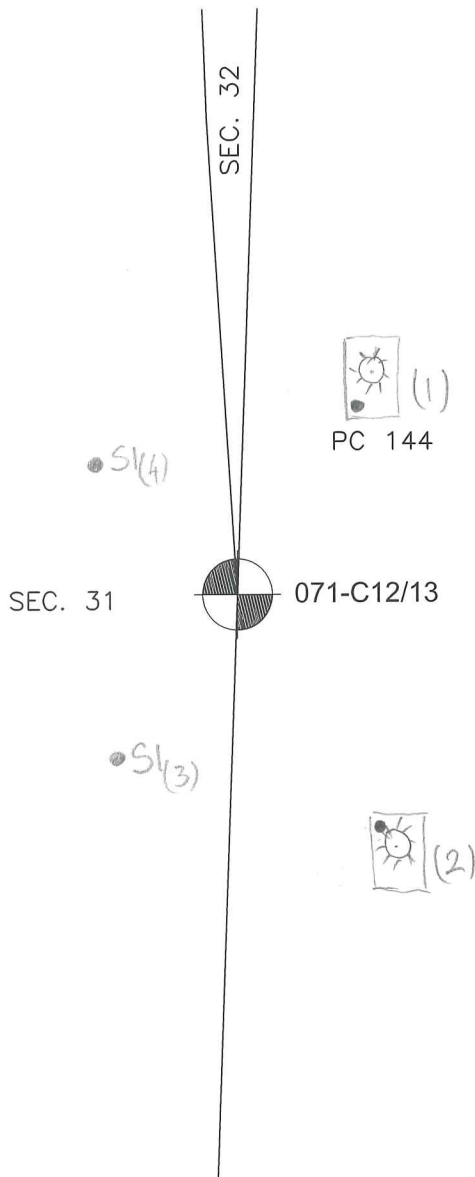
30° AZ.	84.38'	SW bolt in base of avigational light No. 8.
127° AZ	90.40'	NW bolt in base of avigational light No. 9.
225° AZ	24.83'	Set 1/2" iron with blue witness cap.
304° AZ	25.53'	Set 1/2" iron with blue witness cap.

Respectfully submitted,
Derek Kosicki, PS # 43058

071-C12/13

REMON 2016 CHESTERFIELD TWP., T3N, R14E

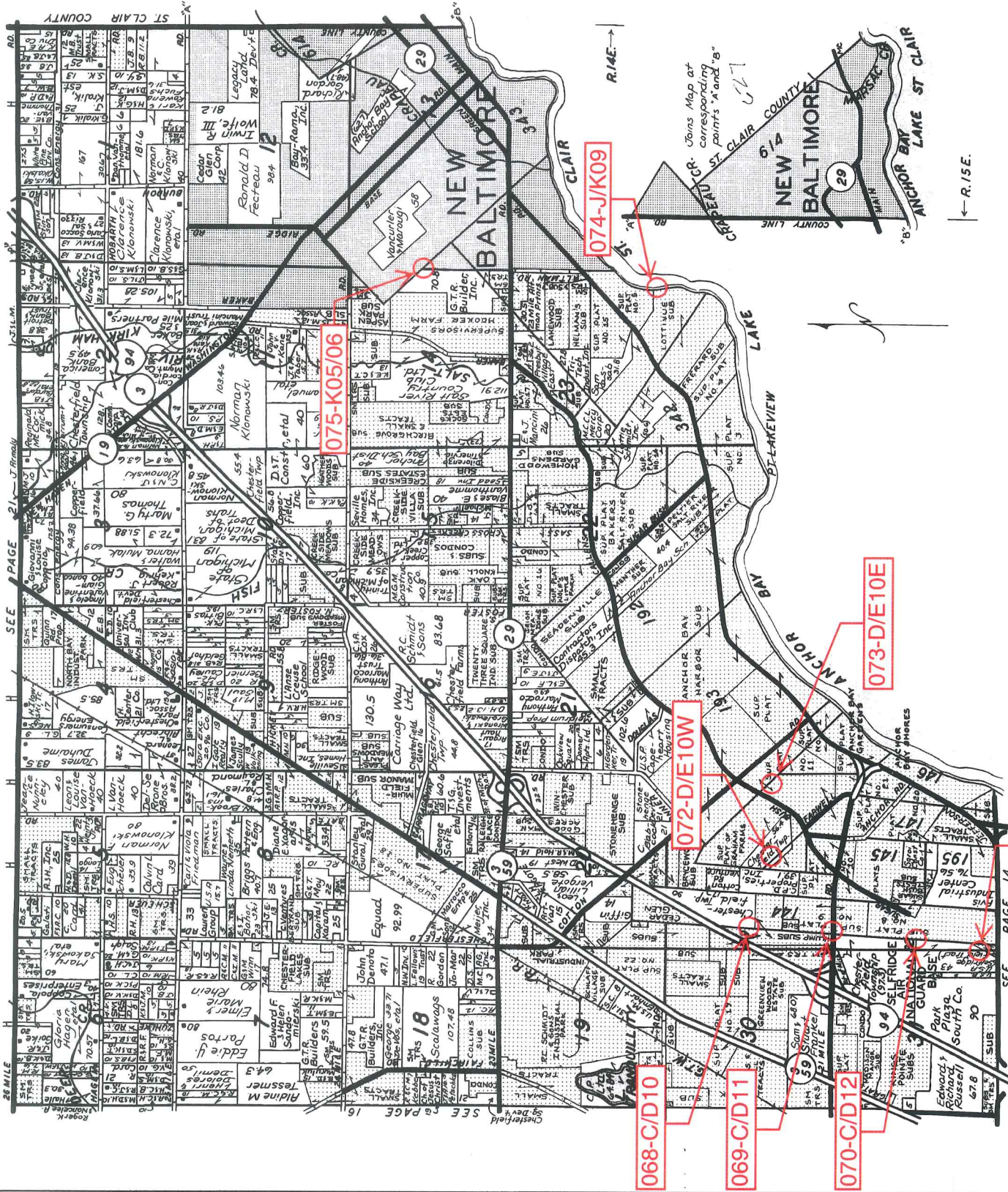
DATE: 08/31/16
CREW: KT, DK
OBJECT FOUND: NO
POINT No.: _____
CTRL. PTS.: _____



- | | | |
|------------|--------|-----------------------------------|
| 1) AZ 30° | 84.38' | SW BOLT OF AVIGATIONAL LIGHT # 8. |
| 2) AZ 127° | 90.40' | NW BOLT OF AVIGATIONAL LIGHT # 9. |
| 3) AZ 225° | 24.83' | SET IRON w/BLUE CAP "MCW" |
| 4) AZ 304° | 25.53' | SET IRON w/BLUE CAP "MCW" |

OCCUPATION
(if road state surface)
NONE

CHESTERFIELD T.3N-R.14-15E.



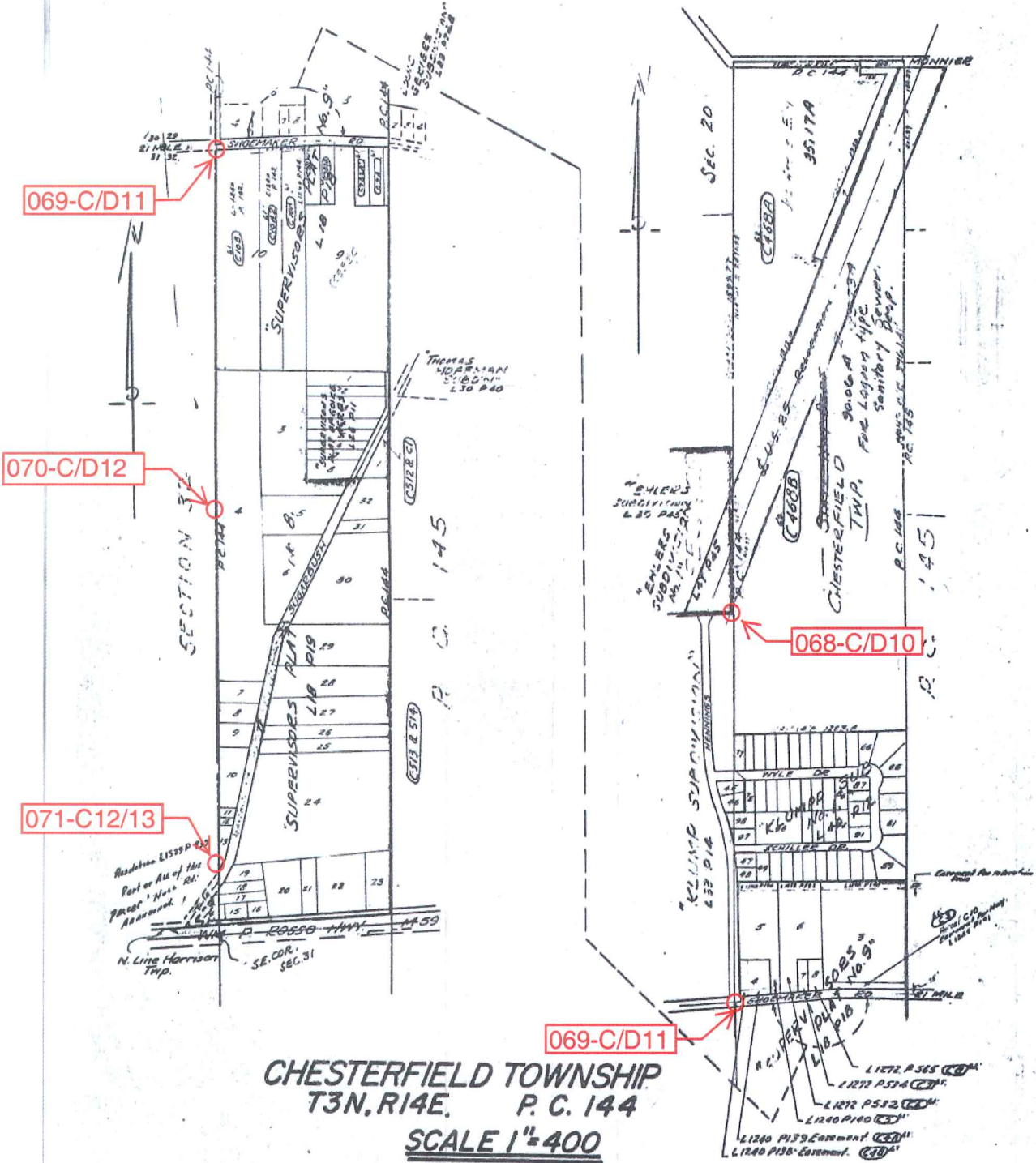
LINCOLN TITLE COMPANY

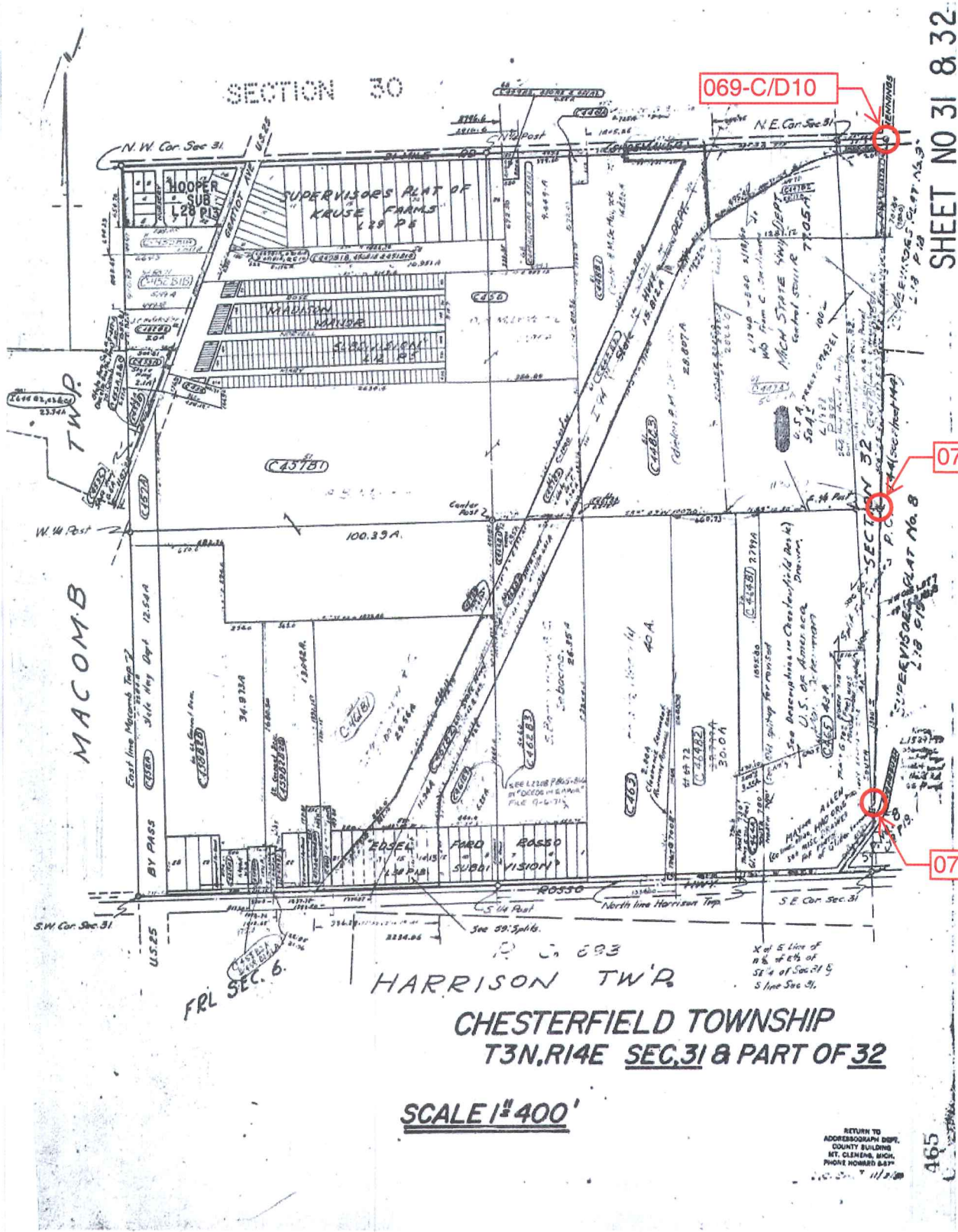
Flexible closing schedule ❖ Personalized service ❖ Knowledgeable staff

25962 Knollwood Drive South • Chesterfield, Michigan 48051 • Telephone: (810) 598-2930 • Fax: (810) 598-2936

OFFICES ALSO IN PORT HURON & ROSEVILLE

Reproduced with permission of Rockford Map Publishers, Inc.
Rockford, Illinois





SHEET NO 31 & 32

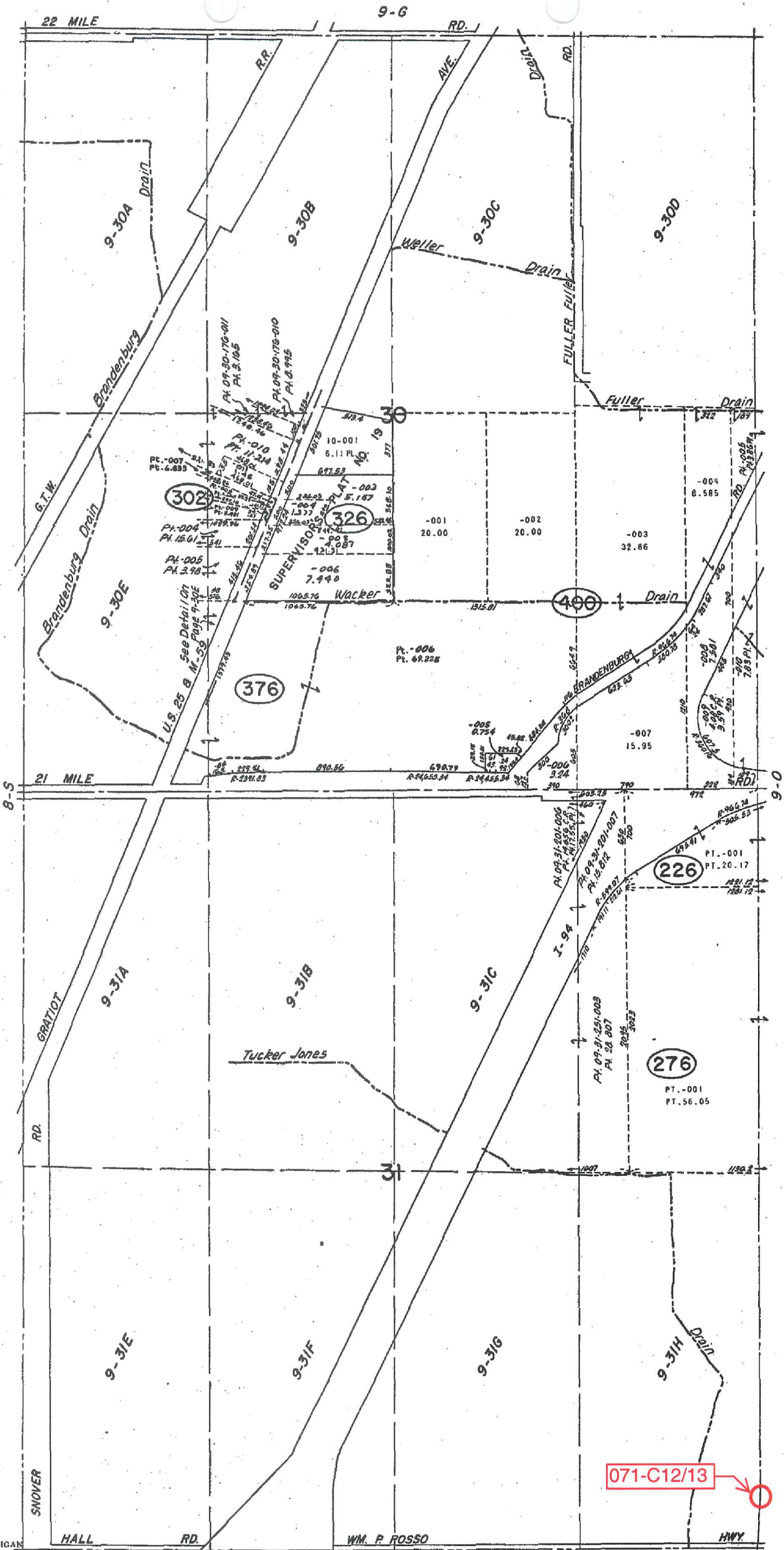
070-C/D11

071-C12/13

SCALE 1"=400'

RETURN TO
 ADDRESSOGRAPH DEPT.
 COUNTY BUILDING
 MT. CLEMENS, MICH.
 PHONE HOWARD 837

465



REV. 2-77
REV. 2-77
REV. 12-75
REV. 3-75

Copyright 1974
MACOMB COUNTY, MICHIGAN

SCALE: 1" = 400'
599
9-N

12-A
CHESTERFIELD TWP.
SECS. 30 & 31 T.3N. R.14E.

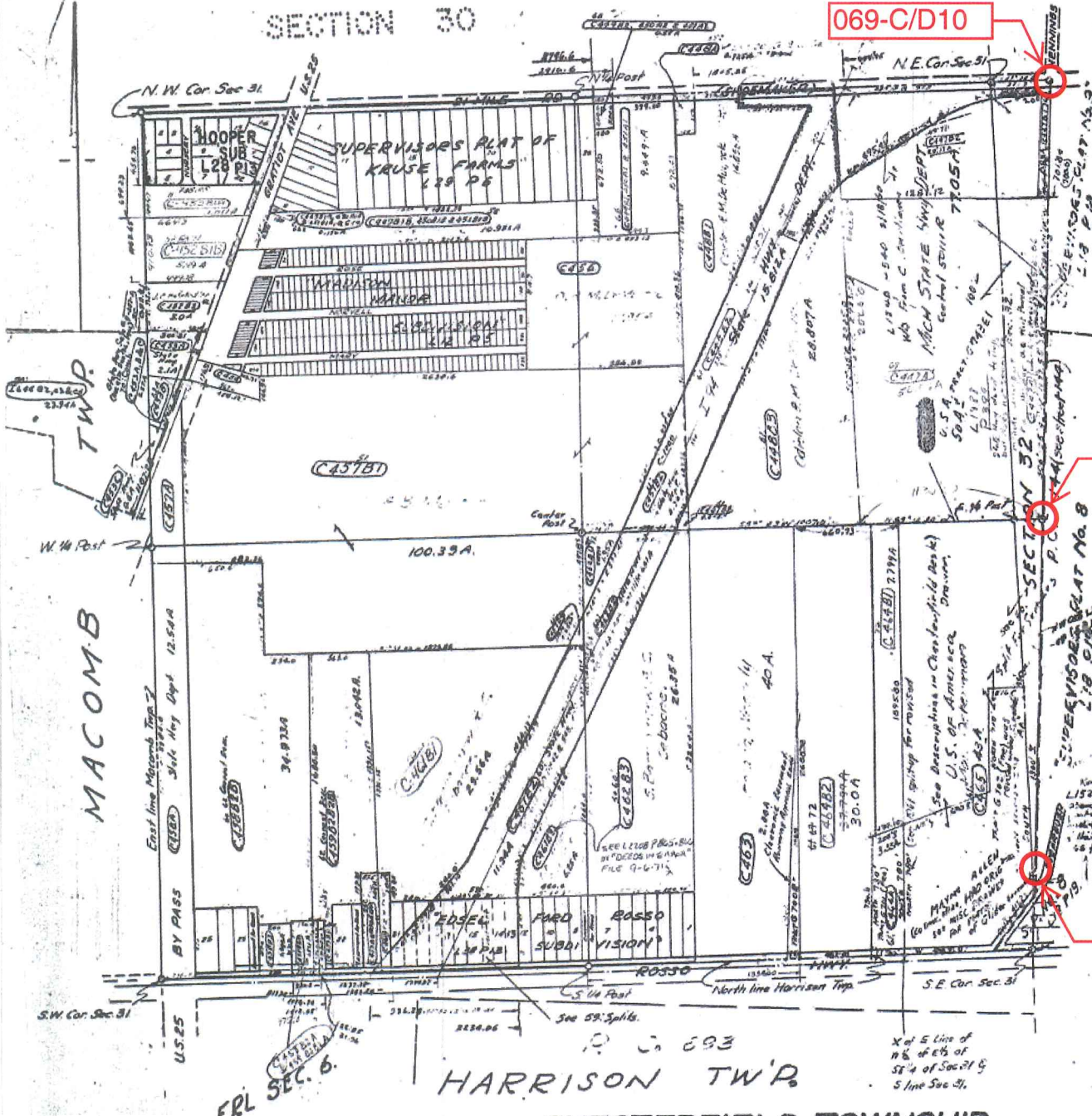
SECTION 30

069-C/D10

SHEET NO 31 & 32

070-C/D11

071-C12/13



HARRISON TWP
 CHESTERFIELD TOWNSHIP
 T3N,R14E SEC.31 & PART OF 32

SCALE 1"=400'

RETURN TO
 ADDRESSOGRAPH DIST.
 COUNTY BUILDING
 MT. CLEMENS, MICH.
 PHONE HOWARD 637

465



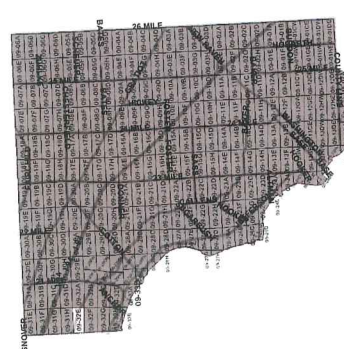
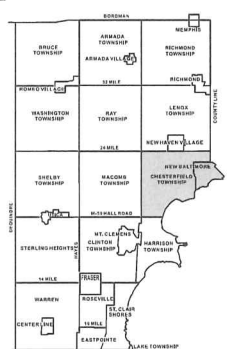
Date of Photography: Spring 2012
 100 50 0 100 200 Feet

CHESTERFIELD TWP SHEET INDEX

DESCRIPTION OF PERMANENT REAL ESTATE INDEX NUMBER
13-19-302-018

09-32E

HARRISON TWP.
 W.1/2 S.W.1/4 SEC.32 T.3N. R.14E.



AREA NUMBER (CONTAINS AND COMMENTS)	SUB AREA NUMBER (BLOCKS WITHIN THE SECTION)	BLOCK NUMBER (SECTION WITHIN THE TOWNSHIP)	PARCEL NUMBER (HOUSE LOT OR PLOT)
13	19	302	018

Legend
Platted Area Boundary Line
Property Line
Property Split Line
Township Combined Line
Township Boundary Line
Traverse Line
Dimension Extent Marks
Dimension Start Marks

Source: Macomb County Department of Planning and Economic Development
 - 2008 Digital Orthophoto Project
 - Parcel Conversion Project

Note: Digital Orthophoto horizontal positioning accuracy is 3 feet. Parcel boundary lines should be considered a graphical representation and not in any way a legal survey or engineering document. In general, the horizontal positioning and length accuracy is within 15 feet.

This map is intended for general planning purposes. Site specific evaluation should be verified by field inspection. This is a work in progress and may contain errors and omissions. Please report any potential revisions to (586)469-5285.



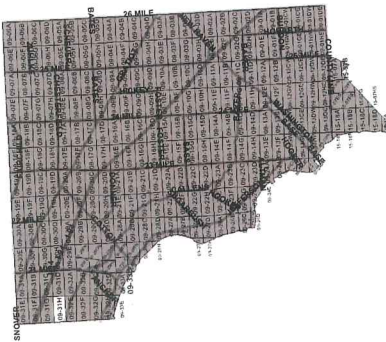
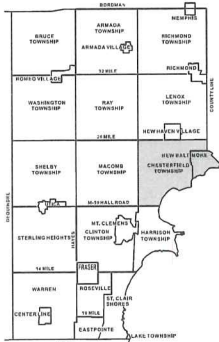


Date of Photography: Spring 2012
 100 50 0 100 200 Feet
 1:1,200

CHESTERFIELD TWP SHEET INDEX

DESCRIPTION OF PERMANENT REAL ESTATE INDEX NUMBER
13-19-302-018

09-31H
 HARRISON TWP.
 E. 1/2 S.E. 1/4 SEC. 31 T. 3N. R. 14E.



Legend

- Platted Area Boundary Line
- Property Line
- Property Split Line
- Property Combined Line
- Township Boundary Line
- Traverse Line
- Dimension Extent Marks
- Dimension Start Marks

Source: Macomb County Department of Planning and Economic Development - 2008 Digital Orthophotography Project - Parcel Conversion Project

Note: Digital Orthophotography horizontal positioning accuracy is 3 feet. Parcel boundary lines should be considered a graphical representation and not in any way a legal survey or engineering document. In general, the horizontal positioning and length accuracy is within 15 feet.

This map is intended for general planning purposes. Site specific evaluation should be verified by field inspection. This is a work in progress and may contain errors and omissions. Please report any potential revisions to (586)469-5265.



No. 487

No. 144 Confirmed to
John Tucker

NORTH SIDE OF RIVER HURON

Description No. 144 Confirmed to John Tucker commencing at an oak tree standing on the border of River Huron between this tract and a tract confirmed to James Connor thence north sixty seven degrees west six chains sixty links to a swamp oak tree thence north three hundred and sixty two chains twenty eight links to a post, thence east seventeen chains eighty links, to a post the north west corner of a tract confirmed to Edward Tucker, thence south three hundred and forty eight chains forty one links, to a post standing on the border of River Huron, thence along the border of said River up stream south thirty five degrees thirty minutes west twenty chains twenty___ links, to the place of beginning, containing six hundred and thirty nine acres _____

Detroit July 14, 1810

Aaron Greeley Surveyor
of private claims

441

North Side of River Huron.

13

No. 4870 North Side of River Huron.
Commenced at 10 1/4 Confirmed to John
Sucker commencing at an Oak Tree -
standing on the border of River Huron -
between his tract and a tract Confirmed
to James Connor, thence north - thirty
seven degrees west six chains fifty links,
to a Spruce Oak Tree thence south, three
hundred and fifty two chains seventy
eight links, to a post, thence East -
seventeen chains eighty links, to a post -
the North west corner of a tract Con-
firmed to Edward Sucker, thence South -
three hundred and forty eight chains -
forty one links, to a post standing on
the border of River Huron, thence along
the border of said River up stream -
South thirty five degrees thirty minutes
west twenty chains twenty links, to the
place of beginning containing six hun-
dred and thirty nine acres. -

Detroit July 14. 1810 -

Aaron Goeley Surveyor
of private Claims.

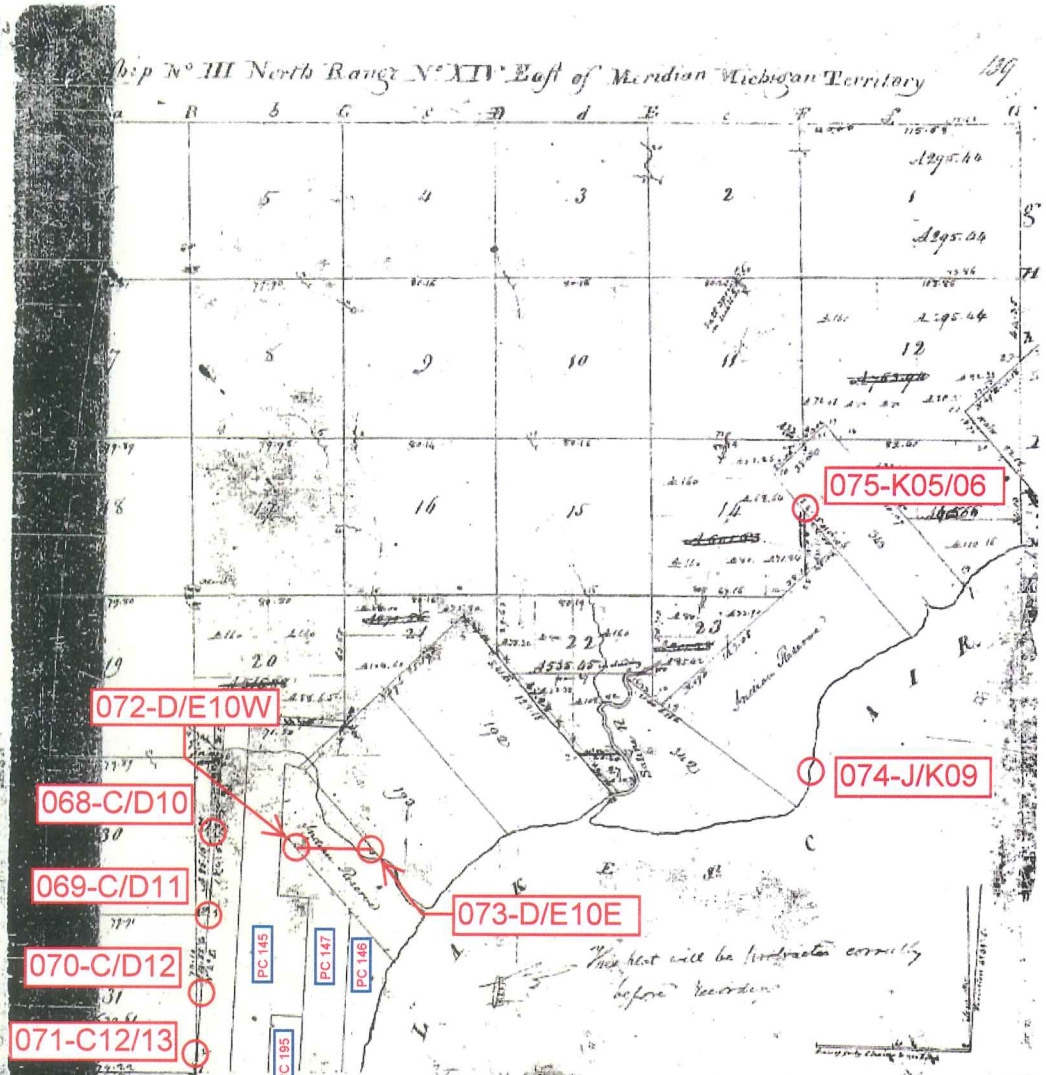
144'

Ship N° III North Range N° XIV East of Meridian Michigan Territory

139

26-38

26-38



Pursuant to a contract with and instructions from Edward Tiffin Esquire Surveyor General
 of the United States bearing date 20th day of November 1816 I have administered and set out and
 surveyed the above described fractional Township and hereby certify that it had such marks
 and bounds both natural and artificial as are represented on said plat and described in the field
 as made hereof and returned with this plat into the Surveyor General's Office. Witness my
 hand this 1st day of February 1818
 William Preston

Town 3 North Range 11 East

Timber Beech Birch B. Ash Elm
Maple & Undergrowth Beech B. Ash
Alder, etc.

West On Randam between S30 & 31
40.00 Set temporary half mile post
79.91 Intersected West boundary 20 links
South corner. Land level and great
front part 3rd rate Timber Beech B. Ash
Maple Birch Undergrowth B. Ash, etc.

East Corner lot between 30 & 31
39.95 made by section corner on a Maple tree
11.5 in diam at average distance on
tree line line
79.91 To Section Corner

South Between Sections 31 & 32

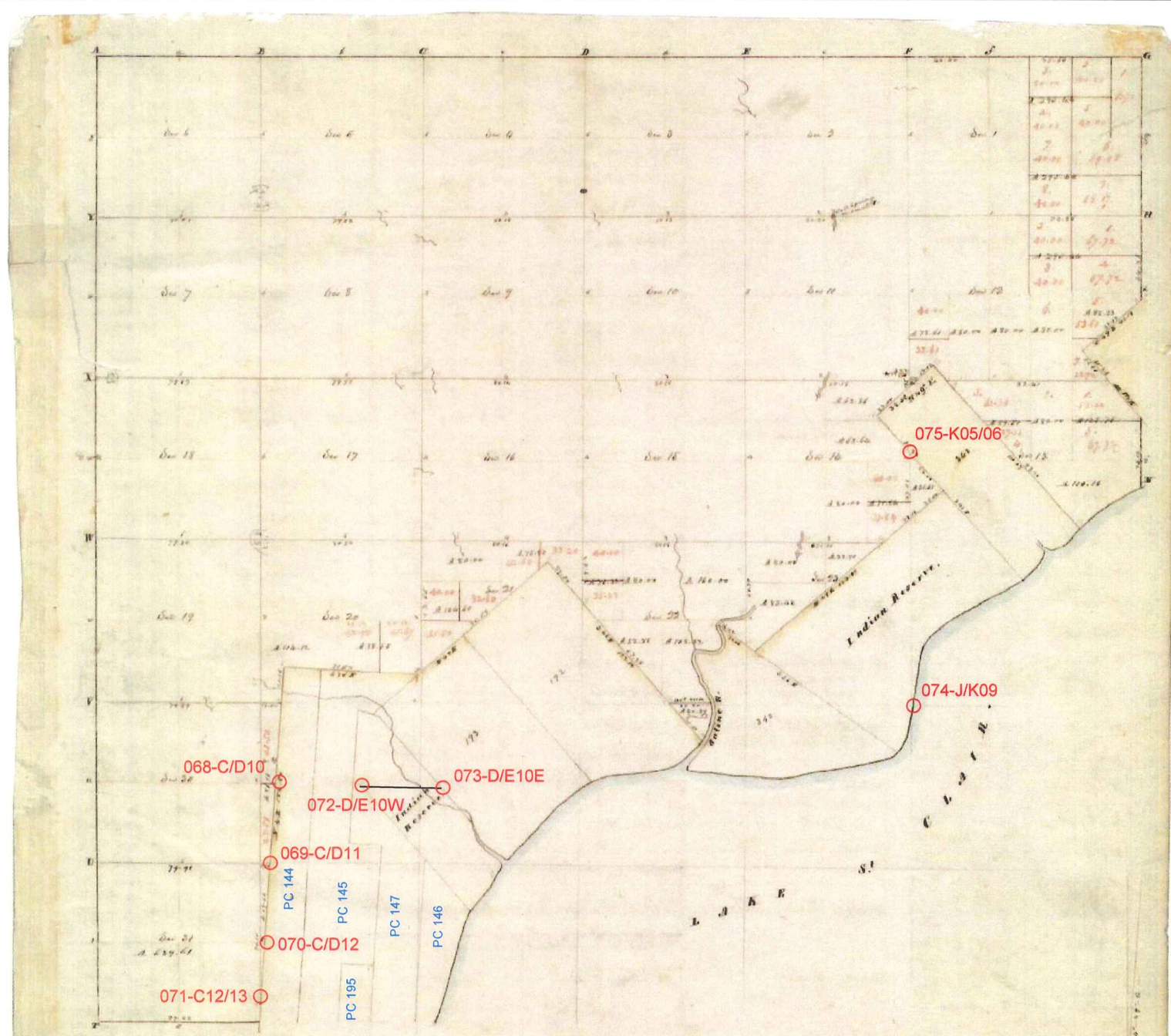
13.20 a Burr Oak 30 ins diam
40.00 Set half mile post from which
a B. Ash 8 in diam bears S5W10
links dist also a B. Ash 6 in diam
bears S52 E 12 links dist

63.25 a B. Ash 24 ins diam

071-C12/13

4626.60'

70.10 Intersected private claim 17.20
chains North of Lot N^o 673, Confirmed
to Made corner for fractional section
on a Red Oak 2.8 ins diam
1st half mile level and very wet 3rd rate
Balance partly dry 2nd rate Timber
B. Ash Beech Maple W Oak Elm
Sugar & Undergrowth B. Ash Beech



FOUR COPY

Chesterfield Twp.

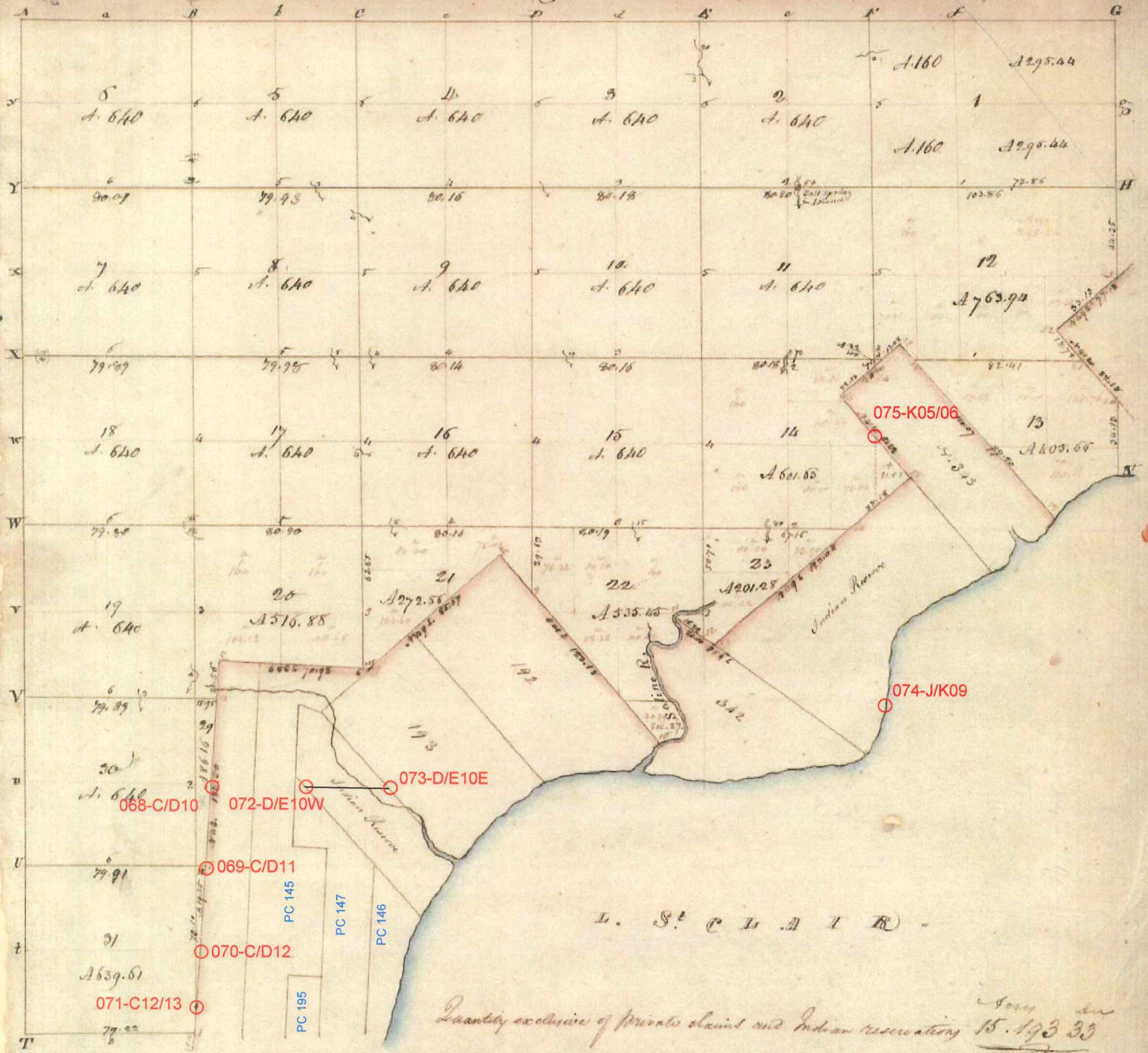
Township N: III North Range N: XIV East of Mer. (Mich. Ter.)

surveyed by W. M. Preston. 1877

Description of the soil on the interior sectional lines.

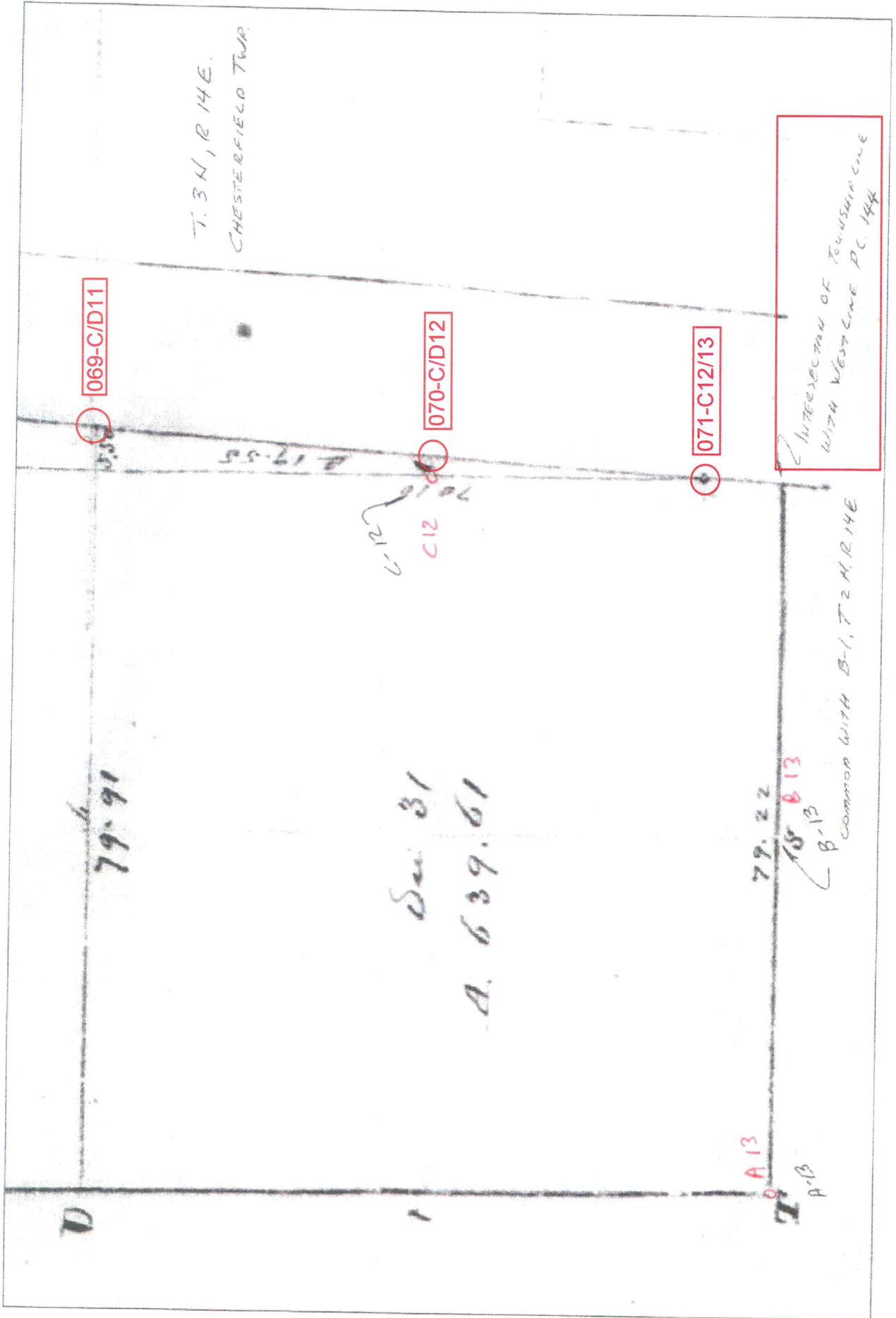
Section	Quality to -	Section	Quality to -
1-6	1 1/2 mile 2 rat. level clay soil 2 rat. soil, level, level	21-22	2 rat. level part soil, 2 rat. level, level, level
7-8	2 rat. level part soil, 2 rat. level, level, level	23-24	2 rat. level part soil, 2 rat. level, level, level
9-10	2 rat. level part soil, 2 rat. level, level, level	25-26	2 rat. level part soil, 2 rat. level, level, level
11-12	2 rat. level part soil, 2 rat. level, level, level	27-28	2 rat. level part soil, 2 rat. level, level, level
13-14	2 rat. level part soil, 2 rat. level, level, level	29-30	2 rat. level part soil, 2 rat. level, level, level
15-16	2 rat. level part soil, 2 rat. level, level, level	31-32	2 rat. level part soil, 2 rat. level, level, level
17-18	2 rat. level part soil, 2 rat. level, level, level	33-34	2 rat. level part soil, 2 rat. level, level, level
19-20	2 rat. level part soil, 2 rat. level, level, level	35-36	2 rat. level part soil, 2 rat. level, level, level
37-38	2 rat. level part soil, 2 rat. level, level, level	39-40	2 rat. level part soil, 2 rat. level, level, level
41-42	2 rat. level part soil, 2 rat. level, level, level	43-44	2 rat. level part soil, 2 rat. level, level, level
45-46	2 rat. level part soil, 2 rat. level, level, level	47-48	2 rat. level part soil, 2 rat. level, level, level
49-50	2 rat. level part soil, 2 rat. level, level, level	51-52	2 rat. level part soil, 2 rat. level, level, level
53-54	2 rat. level part soil, 2 rat. level, level, level	55-56	2 rat. level part soil, 2 rat. level, level, level
57-58	2 rat. level part soil, 2 rat. level, level, level	59-60	2 rat. level part soil, 2 rat. level, level, level
61-62	2 rat. level part soil, 2 rat. level, level, level	63-64	2 rat. level part soil, 2 rat. level, level, level
65-66	2 rat. level part soil, 2 rat. level, level, level	67-68	2 rat. level part soil, 2 rat. level, level, level
69-70	2 rat. level part soil, 2 rat. level, level, level	71-72	2 rat. level part soil, 2 rat. level, level, level
73-74	2 rat. level part soil, 2 rat. level, level, level	75-76	2 rat. level part soil, 2 rat. level, level, level
77-78	2 rat. level part soil, 2 rat. level, level, level	79-80	2 rat. level part soil, 2 rat. level, level, level
81-82	2 rat. level part soil, 2 rat. level, level, level	83-84	2 rat. level part soil, 2 rat. level, level, level
85-86	2 rat. level part soil, 2 rat. level, level, level	87-88	2 rat. level part soil, 2 rat. level, level, level
89-90	2 rat. level part soil, 2 rat. level, level, level	91-92	2 rat. level part soil, 2 rat. level, level, level
93-94	2 rat. level part soil, 2 rat. level, level, level	95-96	2 rat. level part soil, 2 rat. level, level, level
97-98	2 rat. level part soil, 2 rat. level, level, level	99-100	2 rat. level part soil, 2 rat. level, level, level

Township N^o III North, Range N^o XIV East of the Mer. (Mich. Ter.)



A true Copy from the Original on file in this Office
 Surveyor General's Office
 1879-1918.

Richard Tiffin
 Surveyor General



"SUPERVISORS PLAT N^o 9," PART OF P. C. 144, T 3 N, R 14 E, CHESTERFIELD TOWNSHIP, MACOMB COUNTY, MICHIGAN.

Scale: 1 Inch = 200 Ft.

NOTE: ALL DIMENSIONS ARE IN FEET AND DECIMALS THEREOF.

BEFORE ME, the undersigned authority, on this 1st day of April, 1937, personally appeared Robert G. Venzke, Supervisor of the Township of Chesterfield, Macomb County, Michigan, by virtue of authority in respect to section 31, act 128 of 1929 in having been duly authorized by the Township Board, have caused the land described in the within plat to be surveyed, laid out and platted to be known as "SUPERVISORS PLAT N^o 9," part of P. C. 144, T 3 N, R 14 E, Chesterfield Township, Macomb County, Michigan, and that the acreage and all other as shown on said plat are now being used for such purposes.

Witness me:
Walter Collins
John Jensen
Robert G. Venzke
Supervisor of Township of Chesterfield

IN WITNESS WHEREOF, I have hereunto set my hand and the seal of said County of Macomb, this 1st day of April, 1937.

County of Macomb)
City of Detroit)
Notary Public)
Geo. E. Bauer
Notary Public

APPROVED AND ORDERED:
this 23rd day of Aug, 1937

THE BOARD OF SUPERVISORS OF CHESTERFIELD TOWNSHIP, MACOMB COUNTY, MICHIGAN, do hereby certify that the within plat is a true and correct copy of the original plat as the same appears on file in the office of the Township Clerk, Chesterfield Township, Macomb County, Michigan, and that the same is a true and correct copy of the original plat as the same appears on file in the office of the Township Clerk, Chesterfield Township, Macomb County, Michigan.

I hereby certify that the plat hereon set forth is a correct and true copy of the original plat as the same appears on file in the office of the Township Clerk, Chesterfield Township, Macomb County, Michigan, and that the same is a true and correct copy of the original plat as the same appears on file in the office of the Township Clerk, Chesterfield Township, Macomb County, Michigan.

APPROVED AND ORDERED:
this 5th day of July, 1937

Leo B. Blakely
TOWNSHIP CLERK

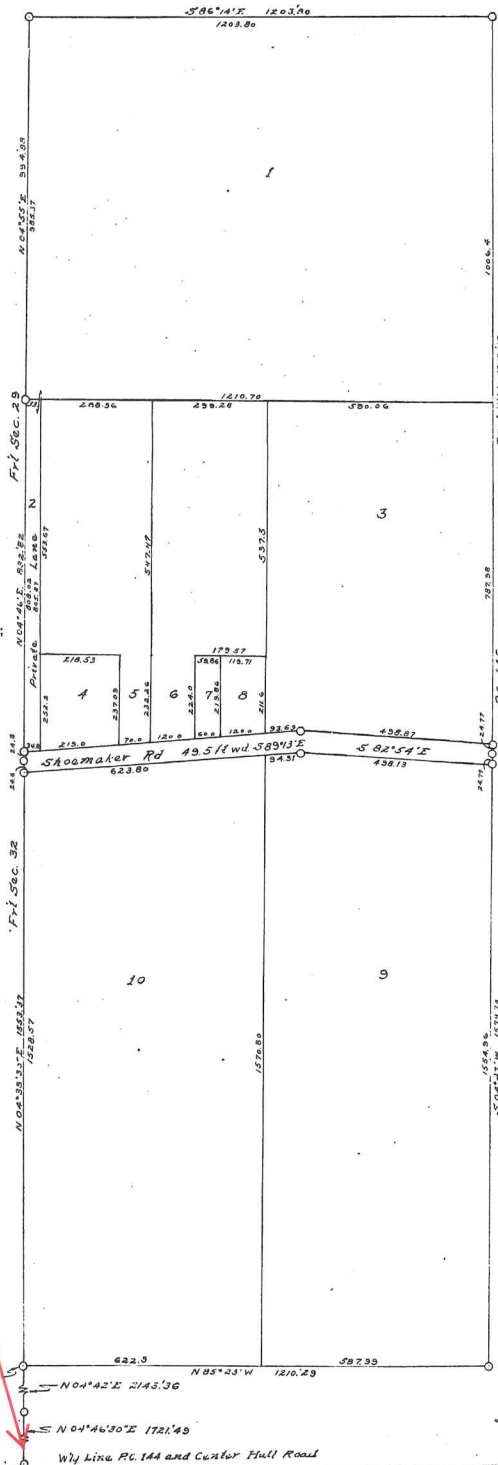
Ray's Callers
TOWNSHIP CLERK

APPROVED AND ORDERED:
this 26th day of April, 1937

James K. Jamieson
TOWNSHIP CLERK

James K. Jamieson
TOWNSHIP CLERK

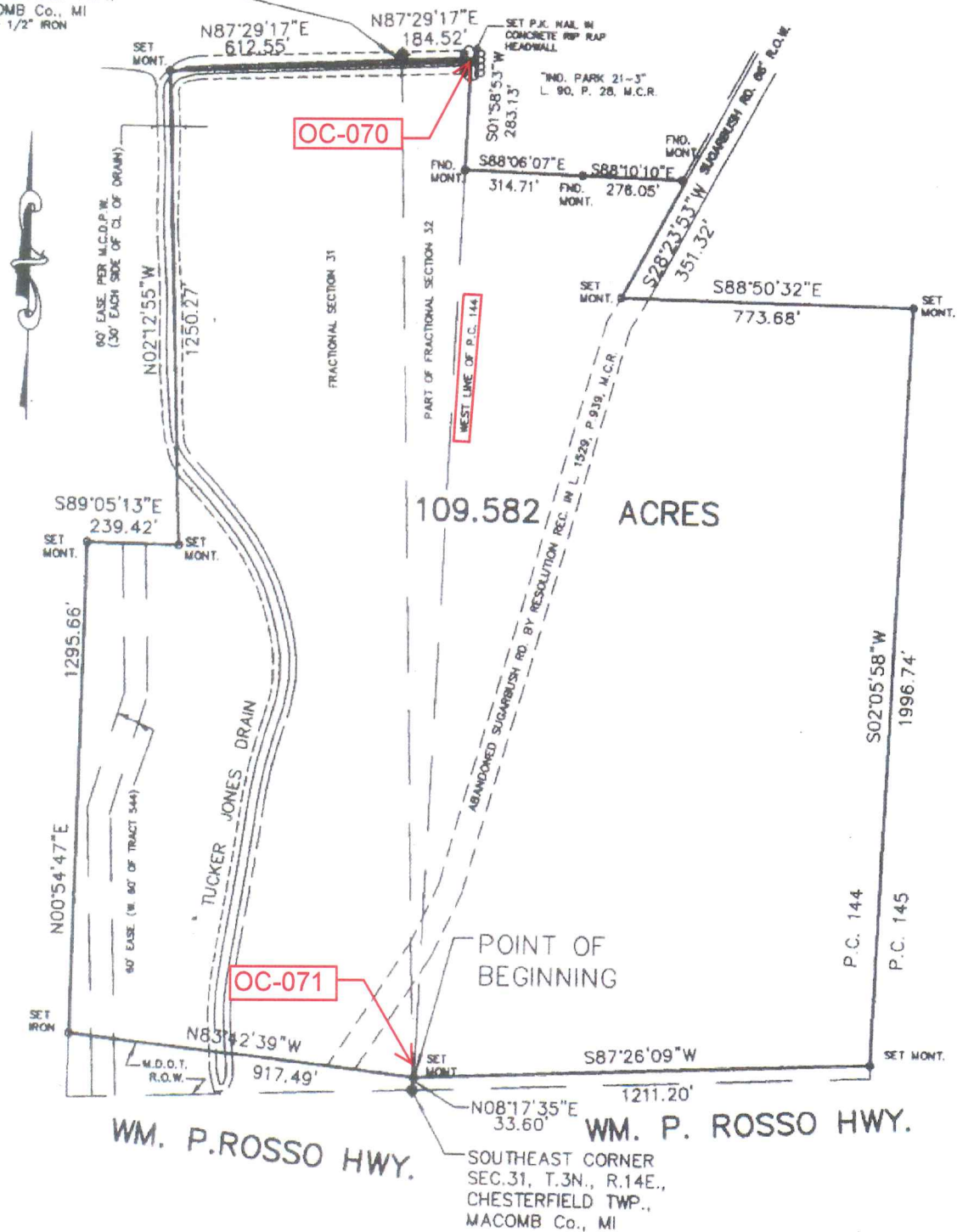
James K. Jamieson
TOWNSHIP CLERK



OC-071

CERTIFICATE of SURVEY

EAST 1/4 CORNER
 SEC.31, T.3N., R.14E.,
 CHESTERFIELD TWP.,
 MACOMB Co., MI
 FOUND 1/2" IRON



109.582 ACRES

PROPERTY DESCRIPTION

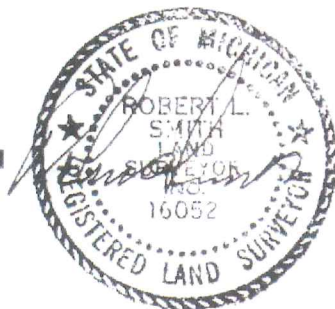
A PARCEL OF LAND LOCATED IN AND BEING A PART OF THE SOUTHEAST 1/4 OF SECTION 31, PART OF THE SOUTH 1/2 OF FRACTIONAL SECTION 32, AND PART OF PRIVATE CLAIM 144, T.3N., R.14E., CHESTERFIELD TOWNSHIP, MACOMB COUNTY, MICHIGAN, AND BEING MORE PARTICULARLY DESCRIBED AS FOLLOWS: COMMENCING AT A POINT 33.60 FT. N.08°17'35"E. FROM THE SOUTHEAST CORNER OF SAID SECTION 31, AND THENCE EXTENDING N.83°42'39"W. 917.49 FT. ALONG THE NORTHERLY RIGHT OF WAY LINE OF WM. P. ROSSO HIGHWAY (VARIABLE WIDTH) THENCE N.00°54'47"E. 1295.66 FT., THENCE S.89°05'13"E. 239.42 FT., THENCE N.02°12'55"W. 1250.27 FT., THENCE N.87°29'17"E. 612.55 FT. ALONG THE EAST/WEST LINE TO THE EAST 1/4 CORNER OF SECTION 31, THENCE N.87°29'17"E. 184.52 FT. ALONG THE EAST/WEST 1/4 LINE OF FRACTIONAL SECTION 32 TO THE WESTERLY LINE OF PRIVATE CLAIM 144, THENCE THE FOLLOWING COURSES AND DISTANCES ALONG THE WESTERLY AND SOUTHERLY LINE OF "INDUSTRIAL PARK 21-3", AS RECORDED IN LIBER 90 OF PLATS, ON PAGE 26, MACOMB COUNTY RECORDS: S.01°58'53"W. 283.13 FT., S.88°06'07"E. 314.71 FT. AND S.88°10'10"E. 278.05 FT., THENCE S.28°23'53"W. 351.32 FT. ALONG THE WESTERLY LINE OF SUGARBUSH ROAD (66' WD.) AS PLATTED IN "SUPERVISOR'S PLAT No. 8", AS RECORDED IN LIBER 18 OF PLATS, ON PAGE 19, MACOMB COUNTY RECORDS, THENCE S.88°50'32"E. 773.68 FT. IN PART ALONG THE LINE COMMON TO LOT 29 AND LOT 30 OF SAID "S.P. No. 8", THENCE S.02°05'58"W. 1996.74 FT. ALONG THE EAST LINE OF SAID "S.P. No. 8", ALSO BEING THE LINE COMMON TO P.C. 144 AND P.C. 145, TO A POINT BEING THE SOUTHEAST CORNER OF LOT 23 OF SAID "S.P. No. 8", THENCE S.87°26'09"W. 1211.20 FT. ALONG THE NORTHERLY RIGHT OF WAY OF WM. P. ROSSO HIGHWAY (66' WD.) TO THE POINT OF BEGINNING AND CONTAINING 109.582 ACRES OF LAND. RESERVING EASEMENTS OF RECORD.

AFTER RECORDING RETURN TO

LEHNER ASSOCIATES, INCORPORATED
 ENGINEERS & SURVEYORS
 22900 WELLINGTON CRESCENT
 CLINTON TOWNSHIP MICHIGAN 48036
 (810) 463-4594
 FAX - 463-0672 C.M.C.

SCALE: 1" = 400'

DATE: 8-25-98



98-108
 S.A.N.G.B.

