

PC-063
DOSSIER CONTENT
 2015 REMON
 T.3N., R.14E.,
 Chesterfield Township, Macomb County, Michigan

Section One

Index

Pictures:

- Before setting the required monumentation.
- After setting the required monumentation.
- In cardinal directions.

Section Two

LCRC

Surveyor's Report

Section Three

- 1 Field Notes
- 2 Sketch
- 3 Township Map
- 4 Tax Map 1959
- 5 Tax Map 1974
- 6 Aerial Pictures 2010

Section Four

- 1 1810 PC 145 Survey notes Greely
- 2 1810 PC 147 Survey notes Greely
- 3 1816 Township map Preston
- 4 1817 Township map Preston
- 5 1818 Township map Surveyor General Office
- 6 1937 Supervisors Plat No. 10
Hanowey RCE L18, P32
- 7 1981 Right-of-way map MDOT unrecorded
- 8 1998 LCRC Platz 38121 L8192, P258
- 9 1998 LCRC Platz 38121 L8192, P259
- 10 1998 LCRC Platz 38121 L8192, P261
- 11 1998 Sugarbush Farms Subdivision
Platz 38121 L131, P1
- 12 1999 Amended Plat of Part of Lot 6 in Supervisor's Plat No. 10
Smith 28422 L138, P5
- 13 2000 Certificate of survey King 30085 L9707, P610

PC-063



BEFORE



AFTER

PC-063



NORTH



EAST

PC-063



SOUTH



WEST

Land Corner Recordation Certificate
Attachment B to 2015 Annual Grant Agreement
 Authority: MCL 54.205 and R54.202

This form is **ONLY** for corners filed under the 2015 State Survey and Remonumentation Grant Agreement

Filing Requirement: MCL 54.268(2)(a), 54.268(2)(d), 54.201 – 54.210d and 2015 State Survey and Remonumentation Grant Agreement

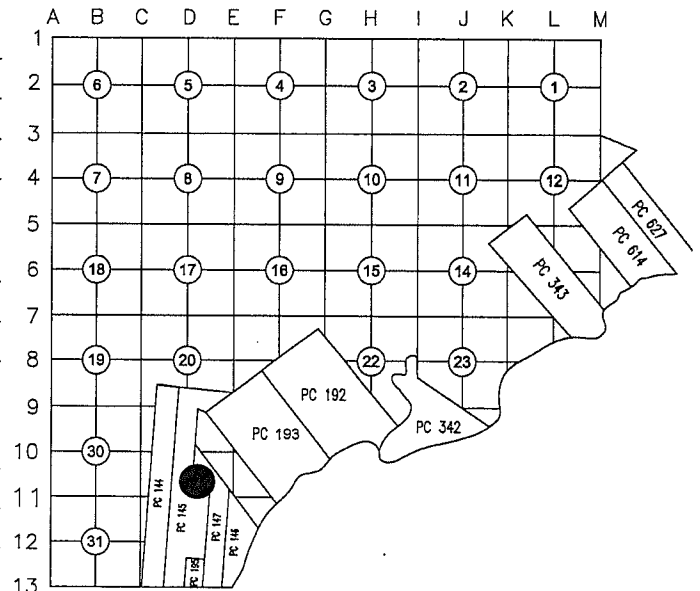
Notes:

- No more than two Original Public Land Survey Corners can be recorded on this certificate
- If a corner reported hereon is common to two or more survey townships, each Town, Range and Corner Code for the corner may be identified on this certificate
- If a corner reported hereon is common to two or more counties, each county may be identified on this certificate and a copy of this certificate filed with the Register of Deeds in each county

For corner in: County: Macomb

Municipality: Chesterfield

Corner Type	Survey Township		Corner Code
Original Public Land Survey Corner	T	R	
• MCL 54.202(g)	T	<u>03 N</u> R <u>14 E</u>	<u>PC-063</u>
• MCL 54.262(g)	T	R	
	T	R	
Property Controlling Corner	S	T	R
• MCL 54.202(i)	S	T	R
• MCL 54.262(h)	S	T	R
Protracted Public Land Survey Corner	T	R	
• MCL 54.202(k)	T	R	
• MCL 54.262(i)	T	R	
	T	R	



PC-063 Corner common with Private Claims 145 and 147 controlling an easterly line of Private Claim 145 common with a westerly line of Private Claim 147, north and controlling a southerly line of Private Claim 147 common with a northerly line of Private Claim 145, east.

Part A: Corner(s) History

1	1810	PC 145 Survey notes	Greely			Post
2	1810	PC 147 Survey notes	Greely			Post
3	1816	Township map	Preston			Object not stated
4	1817	Township map	Preston			Object not stated
5	1818	Township map	Surveyor General Office			Object not stated
6	1937	Supervisors Plat No. 10	Hanowey	RCE	L18, P32	Plat covers land in the vicinity of PC-063 but does not show it.
7	1981	Right-of-way map	MDOT		unrecorded	Document covers vicinity of the corner PC-063 but does not show it.
8	1998	LCRC	Platz	38121	L8192, P258	Set mag nail with tag No. 38121 in asphalt pavement. (1 of 4 wit. fnd.)
9	1998	LCRC	Platz	38121	L8192, P259	Document records deflection in the Easterly line of Private Claim 145 common with Westerly line of Private Claim 147. Not PC-063
10	1998	LCRC	Platz	38121	L8192, P261	Document records deflection in the Easterly line of Private Claim 145 common with Westerly line of Private Claim 147. Not PC-063
11	1998	Sugarbush Farms Subdivision	Platz	38121	L131, P1	Refers to LCRC: L8192, P258

PC-063 CHESTERFIELD TOWNSHIP

PC-063: Corner common with Private Claims 145 and 147 controlling an easterly line of Private Claim 145 common with a westerly line of Private Claim 147, north and controlling a southerly line of Private Claim 147 common with a northerly line of Private Claim 145, east.

Survey of PC 145 and 147 was performed by A. Greeley in 1810.

Corner history:

1	1810	PC 145 Survey notes	Greely		Post
2	1810	PC 147 Survey notes	Greely		Post
3	1816	Township map	Preston		Object not stated
4	1817	Township map	Preston		Object not stated
5	1818	Township map	Surveyor General Office		Object not stated
6	1937	Supervisors Plat No. 10	Hanowey	RCE L18, P32	Plat covers land in the vicinity of PC-063 but does not show it.
7	1981	Right-of-way map	MDOT	unrecorded	Document covers vicinity of the corner PC-063 but does not show it.
8	1998	LCRC	Platz	38121 L8192, P258	Set mag nail with tag No. 38121 in asphalt pavement.
			<u>Witnesses:</u>		
			Az. 47°	87.09'	Set Mag nail with tag No. 38121 in the west face of a utility pole with signal light.
			Az. 202°	55.57'	Set Mag nail with tag No. 38121 in the top of concrete signal pole base.
			*Az. 257°	133.00'	Set Mag nail with tag No. 38121 in the northwest face of a utility pole with signal light.
			Az. 326°	96.89'	Set cut "+" in the top center nut of a fire hydrant.
9	1998	LCRC	Platz	38121 L8192, P259	Document records deflection in the Easterly line of Private Claim 145 common with Westerly line of Private Claim 147. Not PC-063
10	1998	LCRC	Platz	38121 L8192, P261	Document records deflection in the Easterly line of Private Claim 145 common with Westerly line of Private Claim 147. Not PC-063
11	1998	Sugarbush Farms Subdivision	Platz	38121 L131, P1	Refers to LCRC: L8192, P258
12	1999	Amended Plat of Part of Lot 6 in Supervisor's Plat No. 10	Smith	28422 L138, P5	Refers to LCRC: L8192, P258
13	2000	Certificate of survey	King	30085 L9707, P610	Chiseled "+" in conc. Pav't
			<u>Witnesses:</u>		
			Az. 202°	55.57'	Mag nail w/tag No. 38121 in conc. base of signal pole
			*Az. 257°	133.00'	Mag nail w/tag No. 38121 in util. pole w/signal pole light
			Az. 326°	96.89'	Chiseled "+" top of hydrant.

* denotes matching witnesses

Field evidence:

None
Occupation: none in cardinal direction.
Corner falls SE'ly from intersection of CL of 21 Mile Rd. (recently relocated) with CL Sugarbush.

Distances:

PC-063 to PC-057	PC-063 to PC-056	PC-063 to PC-064
2160.18' 2	4421.34' 1	1122.00' 1, 2
		1179.45' 6
2446.12' 11, 12 calc		
2446.12' Remon 2015	4423.62' Remon 2015	1179.37' Remon 2015

Recommendation:

I found nothing in the newer asphalt pavement.
I reestablished the location of PC-063 based on found field monumentation from Item 11 and found witness from Items 8 & 13.
I recommend to the Peer Group to accept such established position of PC-063 as proper location of subject corner.
I recommend placing a 2" aluminum cap stamped "MACOMB COUNTY MONUMENT MI ACT 345; PC-063; 43058" placed on a 3/4"x24" steel bar in new monument box.

Witnesses:

Az. 49°	105.07'	Arrow on the top of a concrete signal pole base
Az. 161°	34.86'	Arrow on the top of a concrete signal pole base
Az. 235°	113.38'	Found 4"x4" Right-of-way conc. monument
Az. 257°	132.87'	Found PK nail with Tag #38121 @ Northeast face of utility pole
Az. 326°	117.65'	Arrow on the hydrant.

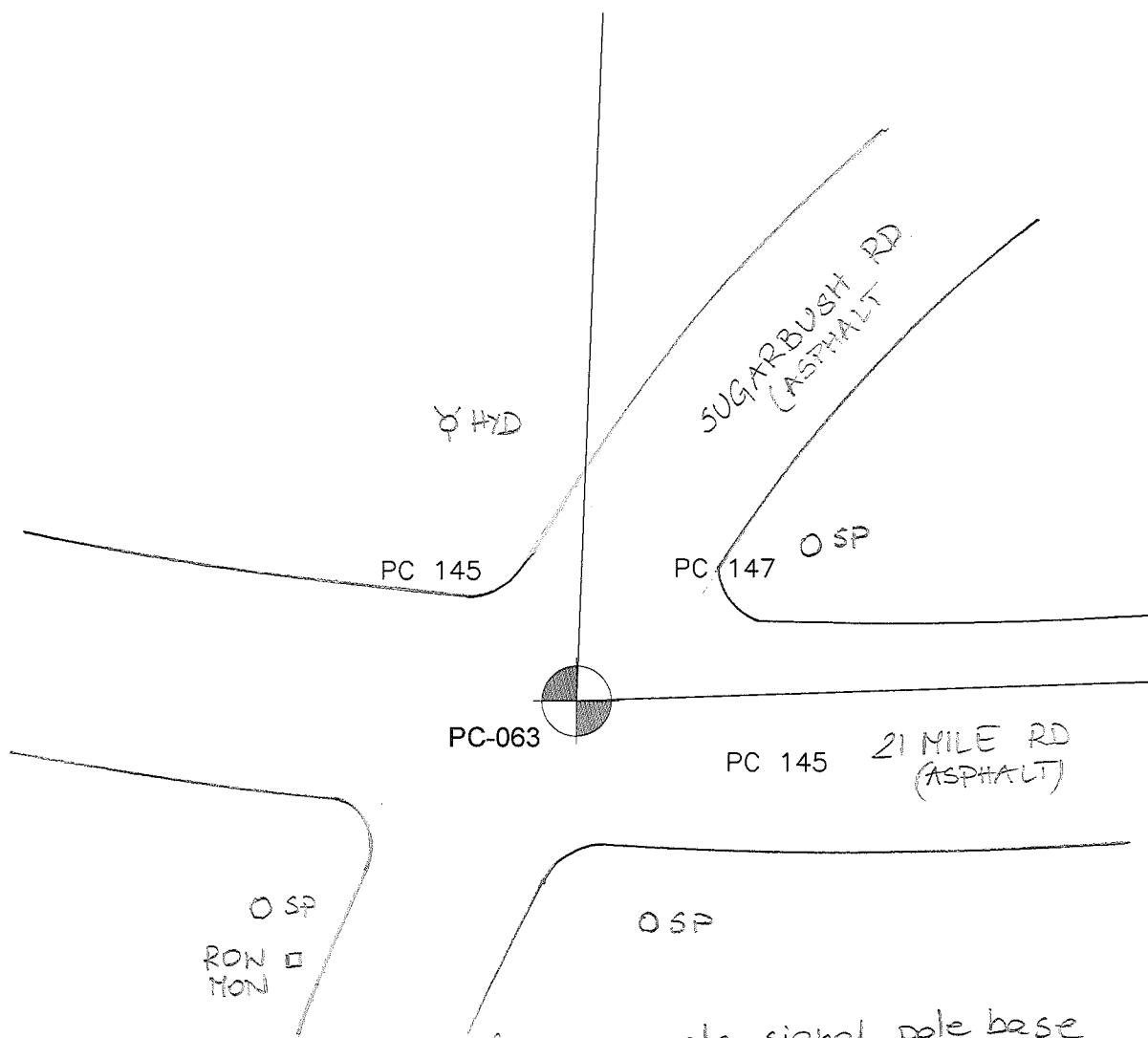
Respectfully submitted,
Derek Kosicki, PS # 43058

PC-063

REMON 2015

CHESTERFIELD TWP., T3N, R14E

DATE: 04/16/2015
 CREW: DK, JO
 OBJECT FOUND: NONE
 POINT No.: 301-306
 CTRL. PTS.: 1031, 1032



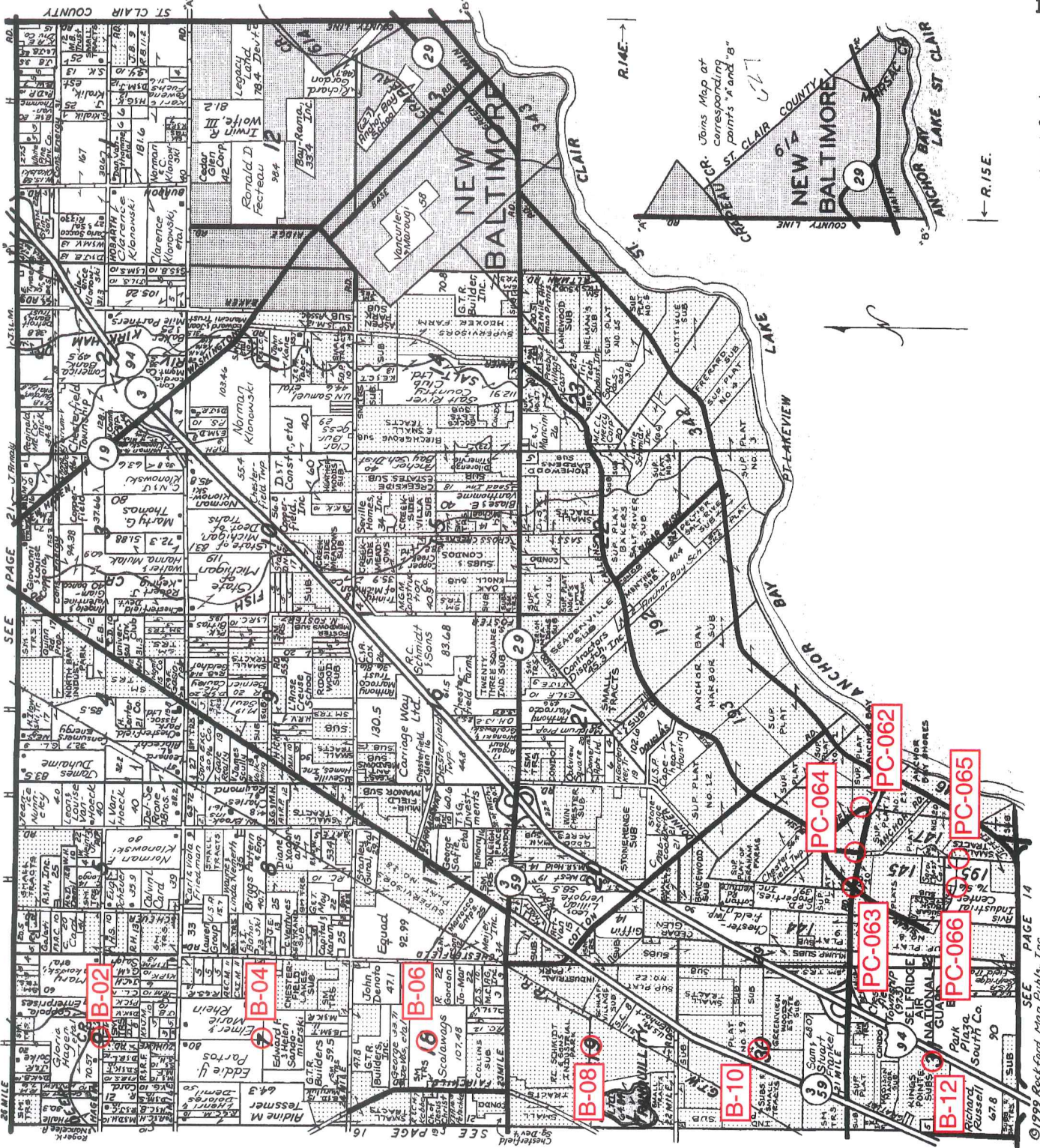
- Az. 49° 105.07'
- Az. 161° 34.86'
- Az. 235° 113.38'
- Az. 257° 102.87'
- Az. 326° 117.65'

Arrow on the top of a concrete signal pole base
 Arrow on the top of a concrete signal pole base
 Fnd. 4" x 4" ROW MON
 Fnd. PK nail w/TAG # 38121 @ NW face of UP
 Arrow on the hydrant.

OCCUPATION

(if road state surface)
NE, SW - SUGARBUSH RD. (asphalt)

CHESTERFIELD T.3N-R.14-15E.



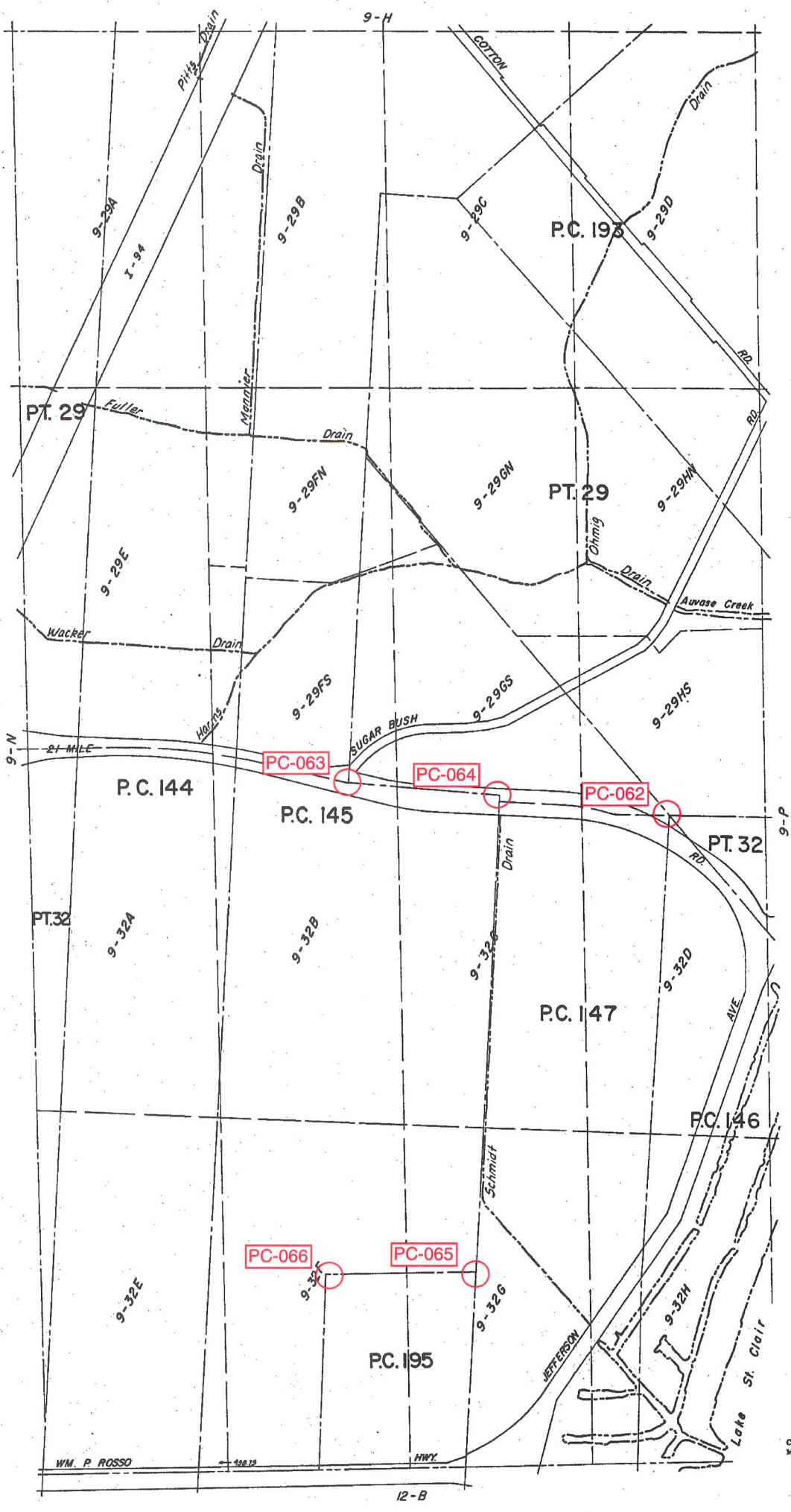
LINCOLN TITLE COMPANY

Flexible closing schedule ❖ Personalized service ❖ Knowledgeable staff

25962 Knollwood Drive South • Chesterfield, Michigan 48051 • Telephone: (810) 598-2930 • Fax: (810) 598-2936

OFFICES ALSO IN PORT HURON & ROSEVILLE

Reproduced with permission of Rockford Map Publishers, Inc.
Rockford, Illinois



CHESTERFIELD TWP.
 SECS. 29 & 32 & PT. P.C. 144, 145, 147, 193, 195 T.3N. R.14E.

REV. 12-75
 REV. 3-76

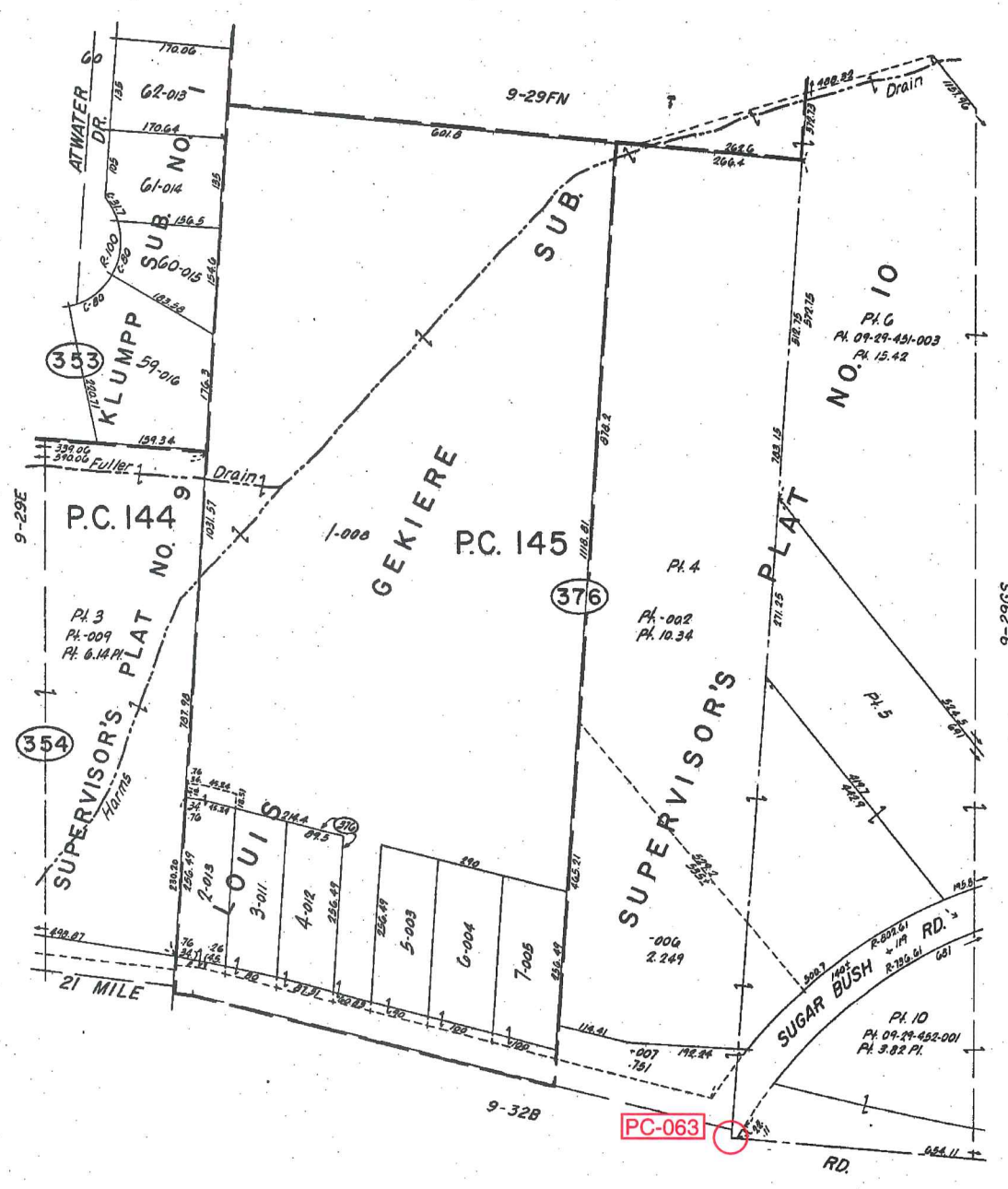
WM. P. ROSSO

Copyright 1974
 MACOMB COUNTY, MICHIGAN

SCALE: 1" = 400'
 600
 9-0

12-B

J.L.



MACOMB CO REC'D

REV. 2-77

CHESTERFIELD TWP.
PT. SEC. 29 & PT. P.C. 144, 145 T.3N. R.14E.

Copyright 1974
MACOMB COUNTY, MICHIGAN

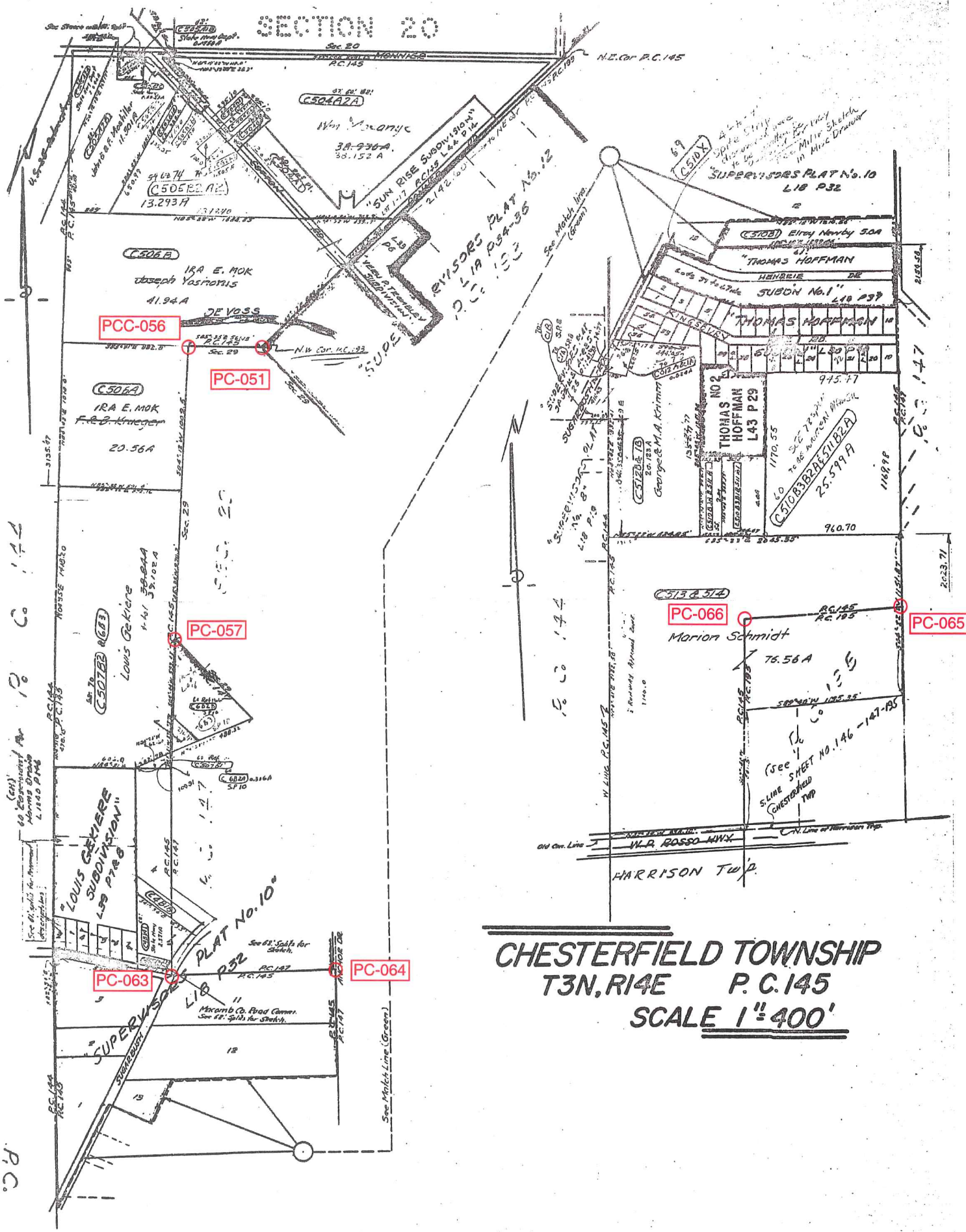
SCALE: 1" = 100'
710
9-29FS

463

SHEET No. 145

P.C.

SECTION 20



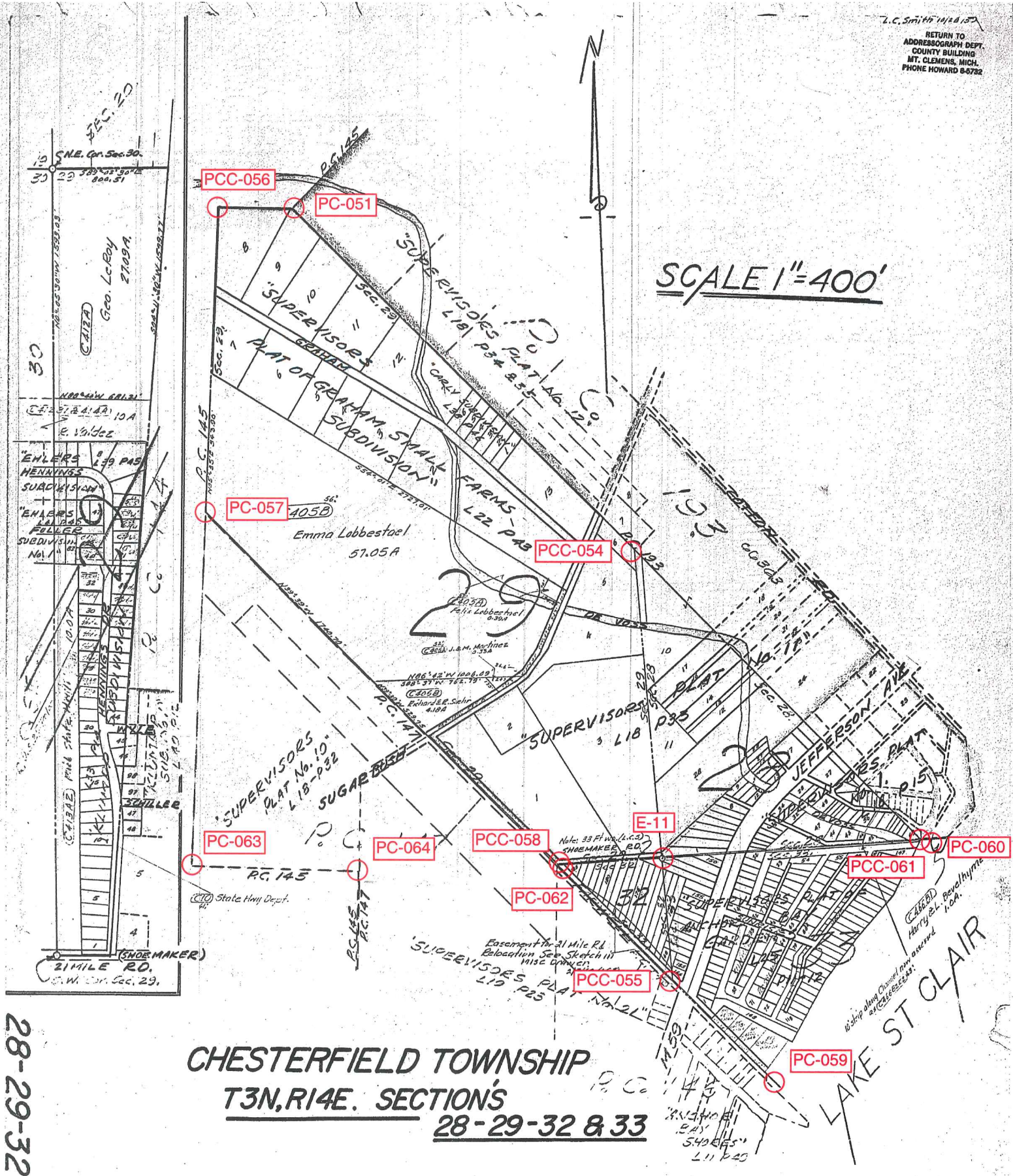
CHESTERFIELD TOWNSHIP
T3N, R14E P. C. 145
SCALE 1" = 400'

SCALE 1"=400'

CHESTERFIELD TOWNSHIP
T3N, R14E. SECTIONS
28-29-32 & 33

28-29-32 & 33

437



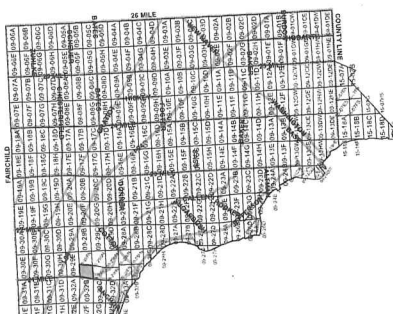
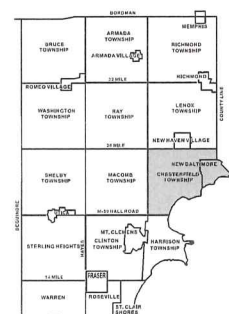


Date of Photography: Spring 2010
 100 50 0 100 200 Feet

CHESTERFIELD TWP SHEET INDEX

DESCRIPTION OF PERMANENT REAL ESTATE INDEX NUMBER
13-19-3021-018

09-29FS



Legend

- Platted Area Boundary Line
- Property Line
- Property Spill Line
- Property Combined Line
- Township Boundary Line
- Traverse Line
- Dimension Extent Marks
- Dimension Start Marks

CHESTERFIELD TWP.
 6. PT. E 1/2 S.W. 1/4 SEC. 29 T. 3N. R. 14E.

Source: Macomb County Department of Planning and Economic Development
 - 2008 Digital Orthophotography Project
 - Parcel Conversion Project

Note:
 Digital Orthophotography horizontal positioning accuracy is 3 feet. Parcel boundary lines should be considered a graphical representation and not in any way a legal survey or engineering document. In general, the horizontal positioning and length accuracy is within 15 feet.

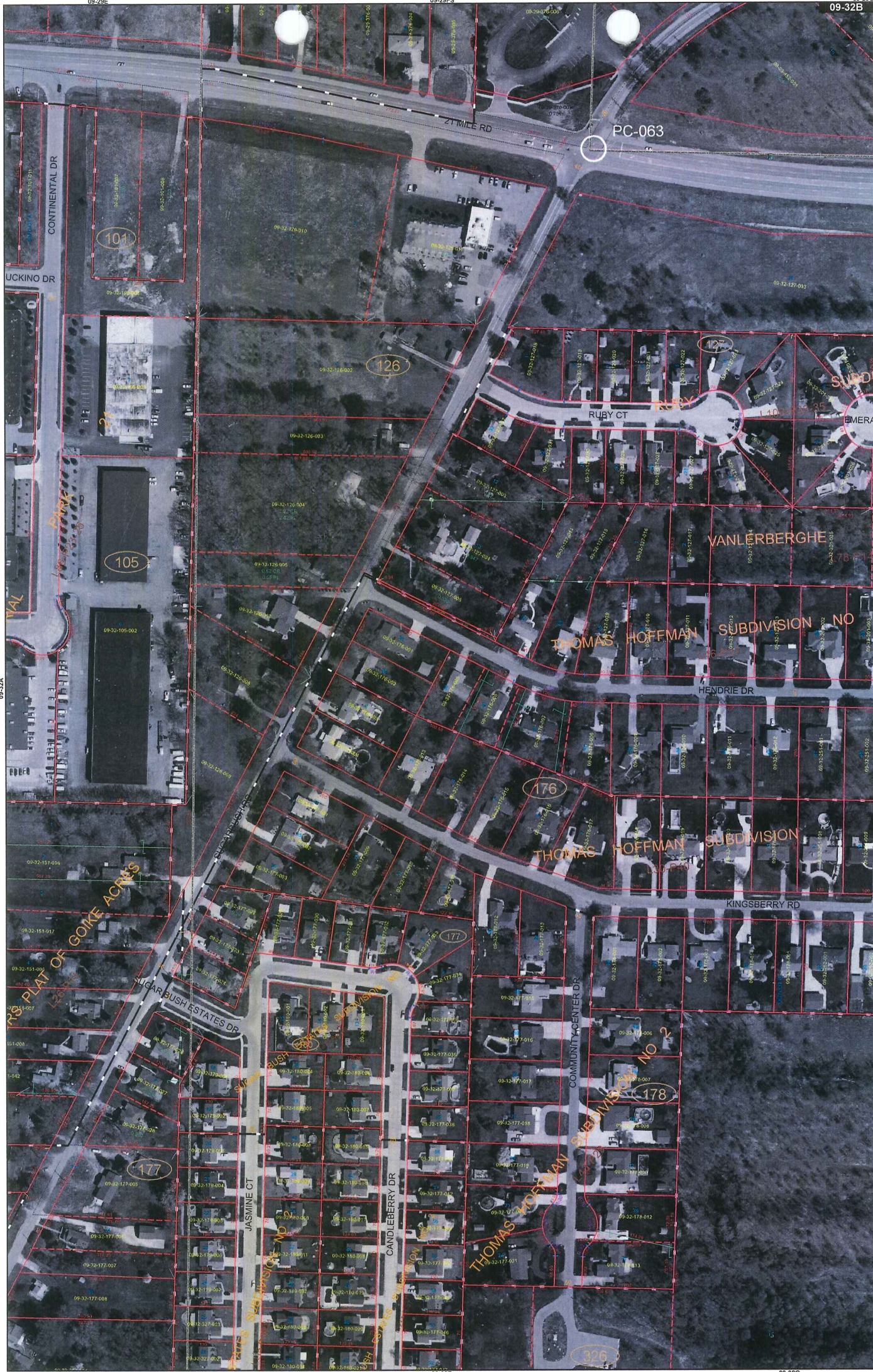
This map is intended for general planning purposes. Site specific evaluation should be verified by field inspection. This is a work in progress and may contain errors and omissions. Please report any potential revisions to (586)469-5285.

COPYRIGHT 2009
 MACOMB COUNTY, MI
 All Rights Reserved



GIS MACOMB COUNTY
 Planning and Economic
 Development Department

Published: Nov 16, 2010



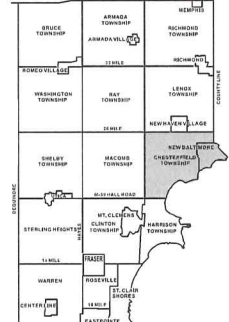
Date of Photography: Spring 2010
 100 50 0 100 200 Feet

CHESTERFIELD TWP SHEET INDEX

DESCRIPTION OF PERMANENT REAL ESTATE INDEX NUMBER
13-19-302-018

09-32B

CHESTERFIELD TWP.
 E. 1/2 N.W. 1/4 SEC. 32 T. 3N. R. 14E.



AREA NUMBER (Township)	SUB AREA NUMBER (Range)	BLOCK NUMBER (Section)	PARCEL NUMBER (Subsection)
13	19	302	018

- Legend**
- Platted Area Boundary Line
 - Property Line
 - Property Split Line
 - Property Combined Line
 - Township Boundary Line
 - Traverse Line
 - Dimension Extent Marks
 - Dimension Start Marks

Source: Macomb County Department of Planning and Economic Development
 - 2008 Digital Orthophotography Project
 - Parcel Conversion Project

Note:
 Digital Orthophotography horizontal positioning accuracy is 3 feet. Parcel boundary lines should be considered a graphical representation and not in any way a legal survey or engineering document. In general, the horizontal positioning and length accuracy is within 15 feet.

This map is intended for general planning purposes. Site specific evaluation should be verified by field inspection. This is a work in progress and may contain errors and omissions. Please report any potential revisions to (586)469-5285.



No. 488

No. 145 Confirmed to
Edward Tucker

NORTH SIDE OF RIVER HURON

Description No. 145 Confirmed to Edward Tucker commencing at a post standing on the border of River Huron between this tract and a tract confirmed to John Tucker thence north three hundred and forty eight chains forty one links, to a post thence east forty six chains ninety four links to a post standing on the north west (or rear) line of a tract confirmed to George Meldrum thence south forty five degrees west thirty two chains eighty

429.00'

links to a post thence west six chains fifty links to a post PCC-056

a boundary between this tract and Kacconses Reserve thence

4,421.34'

PC-063

south sixty six chains ninety nine links to a post thence east

1,122.00'

PC-064

3,835.92'

seventeen chains to a post, thence south fifty eight chains twelve

PC-065

1,122.00'

PC-066

links to a post thence west seventeen chains to a post the

northwest corner of a tract confirmed to Mitchell Tremble, thence south one hundred and ninety eight chains eighty nine links to a post standing on the border of River Huron, thence along the border of said River up stream north eighty degrees west seven chains thence south seventy four degrees west eight chains thirty links to the place of beginning, _____

Containing six hundred and forty acres.

Detroit July 14, 1810

Aaron Greeley Surveyor
of private claims

N. 488. North Side of River Huron.

Description N. 145 Confirmed to Edward Tucker commencing at a post standing on the border of River Huron between this tract and a tract confirmed to John Tucker, thence north three hundred and forty eight chains forty one links, to a post thence East forty six chains ninety four links, to a post standing on the north west (or Bear) line of a tract confirmed to George Meldrum.

thence south forty five degrees west thirty two chains eighty links, to a post thence west six chains fifty links, to a post a boundary between this tract and Macomber Reserve thence south fifty six chains ninety nine links, to a post thence east sixteen chains, to a post thence south fifty eight chains twelve links, to a post thence west seventeen chains, to a post the north west corner of a tract confirmed to Mitchel Fremble, thence south one hundred and ninety eight chains eighty nine links, to a post standing on the border of River Huron thence along the border of said River up stream north eighty degrees west seven chains, thence south seventy four degrees west eight chains thirty links, to the place of beginning containing six hundred and forty acres.

Detroit July 14. 1810

Aaron Greeley Surveyor
of private Claims.

No. 485

No. 147 Confirmed to
the Widow Tucker in
Trust for her two
Sons Charles & Jacob

NORTH SIDE OF RIVER HURON

Description No. 147 Confirmed to the Widow Tucker in trust
for her two sons, Jacob & Charles, commencing at a post
standing on the border of River Huron between this tract and
a tract confirmed to Mitchel Tremble thence north two hundred
& sixty three chains thirty links to a post PC-064 1122.00'
chains to a post PC-063 2160.18' thence west seventeen
chains to a post thence north thirty two chains seventy three
PC-057 3460.38'
links to a post thence scuth forty five degrees east fifty two
chains forty three links to a post PC-062 (standing on the south west
line of Maccanses Reserve) the boundary between this tract
and a tract confirmed to William Tucker thence south two
hundred and ninety two chains ninety one links, to a post
standing on the border of River Huron thence along the border
of said River up stream south seventy two degrees west twenty
four links, thence north twenty five degrees west, thirty five
chains, thence north sixty seven degrees west five chains fifty
links, to the place of beginning, containing six hundred and
forty acres _____,

Detroit July 14, 1810

Aaron Greeley Surveyor
of private claims

N^o. 485. North side of River Huron.

Description. N^o. 487 Confirmed to the
Widow Tucker in trust for her two sons,
Jacob, and Charles. Commencing at a
post standing on the border of River Huron
- one between this tract and a tract -
Confirmed to Mitchell Tremble, thence
north two hundred and fifty three
chains thirty links, to a post thence west
seventeen chains, to a post thence north
thirty two chains seventy three links, to
a post, thence south forty five degrees east
fifty two chains forty three links, to a post
(standing on the south west line of
Maccaus Reserve) the boundary between
this tract and a tract Confirmed to
William Tucker, thence south two
hundred and ninety two chains -
ninety one links, to a post standing
on the border of River Huron, thence
along the border of said River upstream
south seventy two degrees west twenty
four links, thence north twenty five de-
grees west - thirty five chains, thence north
sixty seven degrees west five chains
fifty links, to the place of beginning
containing six hundred and forty
acres. -

Detroit July 14. 1810

Aaron Gaeley Surveyor
of private Claims.

1816

Ship No III North Range No XIV East of Meridian Michigan Territory 139

26-38

26-38

B-02

B-04

B-06

B-08

B-10

B-12

PC-064

PC-063

PC-062

PC-066

PC-065

PC-145

PC-147

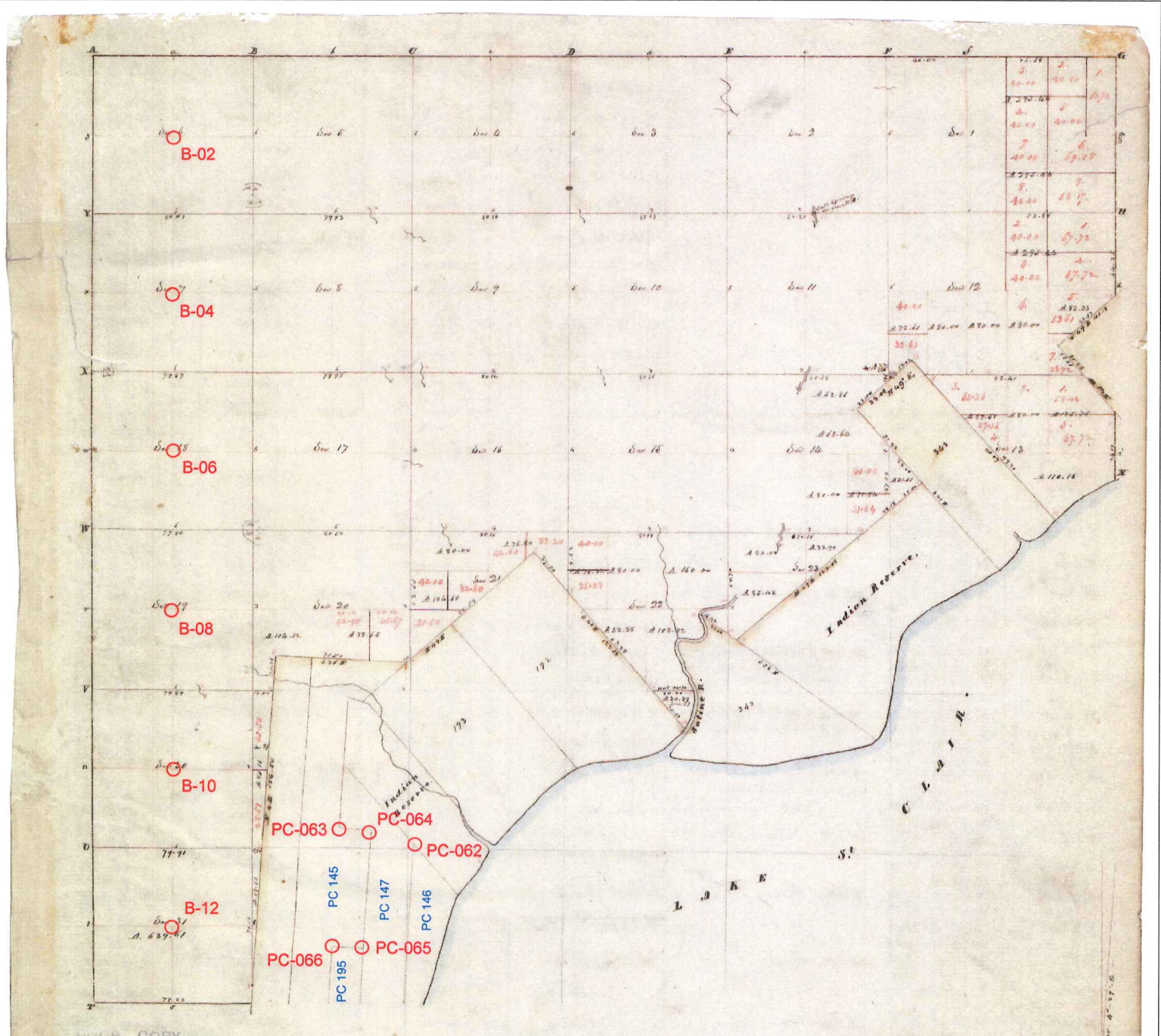
PC-148

PC-198

This tract will be protracted correctly before recorded

Pursuant to a contract with and instructions from Edward Tiffin Esquire Surveyor General of the United States bearing date 20th day of November 1816 I have examined said land and surveyed the above described Fractional Township and hereby certify that it had such marks and bounds both natural and artificial as are represented on said plan and described in the field as made. Myself returned with this plan into the Surveyor General's Office. Witness my hand this 18th day of December 1816. William (Scribble)

1817



FOUR COPY

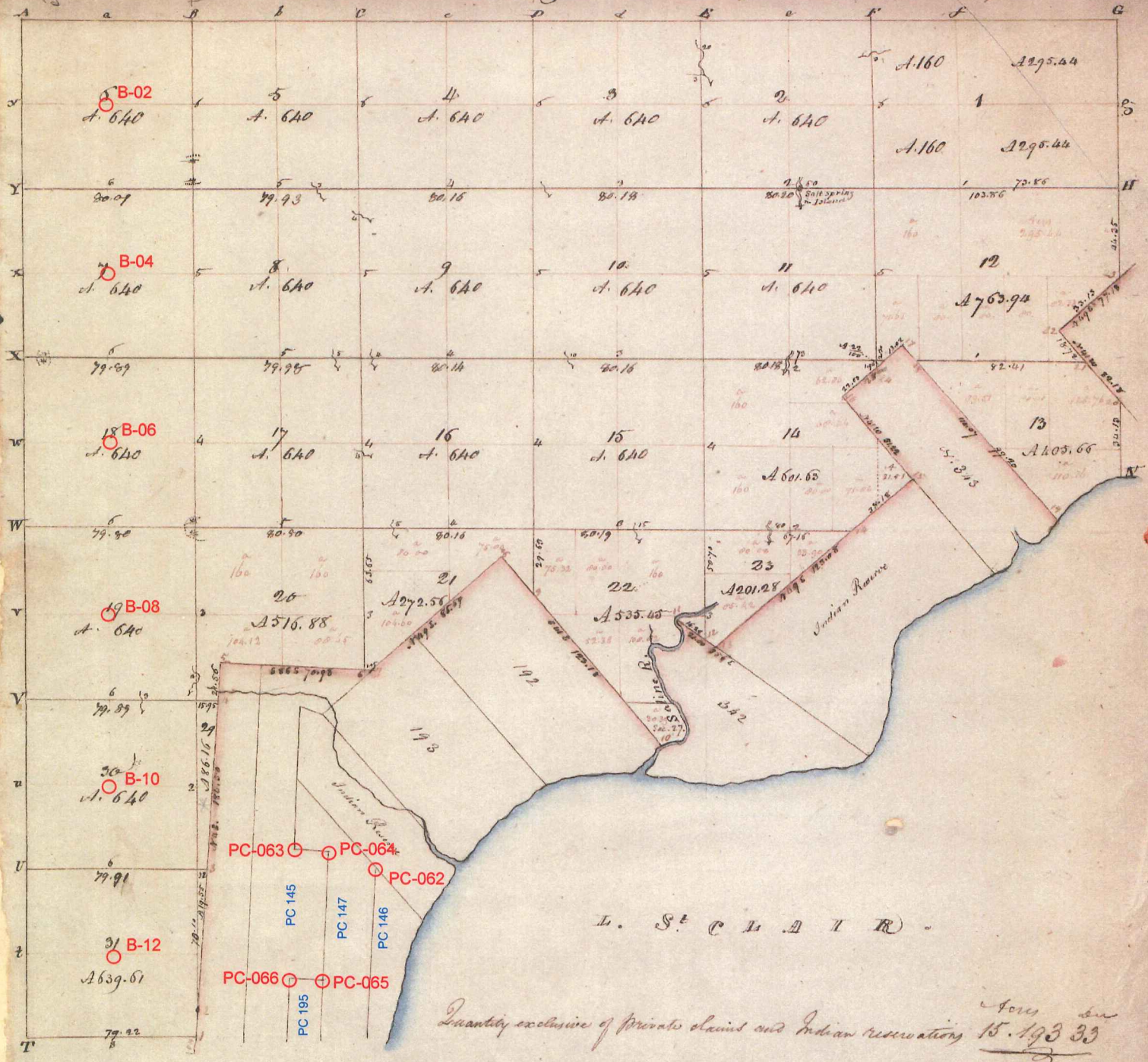
Township N: III North , Range N: XIV East of Mer. (Mich. Ter.) Surveyed by W^m Preston. 1817

Description of the soil on the interior sectional lines.

Section	Quality &c.	Section	Quality &c.
1. 6	1/2 mile 2 ^o rate land 1/2 mile 2 ^o rate land Sugar & Ash	16. 21	2 ^o rate land part wet, W. Oak, Birch, Sugar, Spruce, Ash, Elm
2. 7	2 ^o rate land part wet, W. Oak, Birch, Sugar, Spruce, Ash, Elm	21. 22	2 ^o rate very wet, Birch, Oak, Ash, Elm
3. 8	2 ^o rate good land dry, Spruce, Sugar	2. 3	2 ^o rate land part wet, W. Oak, Spruce, Sugar, Birch
4. 9	2 ^o rate part wet, Birch, Ash, Spruce, Sugar, Elm, Spruce	3. 10	Same - Spruce, Birch, Birch
5. 10	2 ^o rate good - W. Oak, Birch, Sugar, Spruce, Birch, Elm	10. 11	2 ^o rate mostly dry, Birch, Spruce, W. Oak, Spruce, Birch
6. 11	Same	10. 12	2 ^o rate good, part dry, W. Oak, Birch, Birch, Spruce
7. 12	2 ^o rate 1/2 mile wet, part good, dry, W. Oak, Birch, Sugar	10. 13	2 ^o rate part rolling & dry, W. Oak, Birch, Birch, Spruce
8. 13	2 ^o rate good, land dry, W. Oak, Birch, Sugar, Spruce	10. 22	Same
9. 14	1/2 mile 2 ^o rate - part 2 ^o rate very wet, Birch, Birch, Ash, Elm	22. 23	Same
10. 15	2 ^o rate land 1/2 mile wet, Birch, Ash, Elm, Birch	10. 23	Same
11. 16	Same	1. 2	1/2 mile same - part 1/2 wet
12. 17	2 ^o rate good, land dry, W. Oak, Birch, Sugar, Spruce	2. 11	2 ^o rate part dry, W. Oak, Birch, Spruce, Spruce
13. 18	2 ^o rate part wet, W. Oak, Birch, Sugar, Spruce, Birch, Elm	11. 12	2 ^o rate land part wet, W. Oak, Birch, Birch, Birch
14. 19	2 ^o rate part wet, Birch, Sugar, Elm, Birch, Spruce	11. 13	2 ^o rate part rolling & dry, W. Oak, Birch, Birch, Birch
15. 20	2 ^o rate mostly dry, Spruce, W. Oak, Birch, Sugar, Elm, Spruce	1. 12	2 ^o rate land part wet, W. Oak, Birch, Sugar, Elm, Spruce
16. 21	2 ^o rate land wet, Birch, Birch, Birch	12. 13	2 ^o rate part rolling & dry, W. Oak, Birch, Sugar, Elm, Birch, Spruce
17. 22	Same		
18. 23	Same		
19. 24	2 ^o rate good, land dry, part 1/2, part wet, W. Oak, Birch, Ash, Elm		
20. 25	2 ^o rate good, W. Oak, Birch, Sugar, Spruce, Birch		

1818

Township N.° III North, Range N.° XIV East of the Mer. (Mich. Ter.)



L. S. C. L. A. I. R.

Quantity exclusive of Private claims and Indian reservations 15,193 33

A true Copy from the Original on file in this Office

Surveyor General's Office
Feb 27 - 1818.

Edward Tiffin
Surveyor General

1937
L18, P 32

See Report of part of L18, Lines 37 Page 7 Same Eminent Domain

Original

"SUPERVISORS PLAT NO. 10," PART OF P.C.'s 145 & 147, T3N, R14E, CHESTERFIELD TOWNSHIP, MACOMB COUNTY, MICHIGAN.

253

Scale - 1 Inch = 200 Ft.

NOTE ALL DIMENSIONS ARE IN FEET AND DECIMALS THEREOF.

DEDICATION

KNOW ALL MEN BY THESE PRESENTS, That I, Walter Collins, Supervisor of the Township of Chesterfield, Macomb County, State of Michigan, by Virtue of authority in us vested by Section 51, Act 172 of 1929 having been duly authorized by the Township Board, have caused the land described in the annexed plat to be surveyed, laid out and platted to be known as "SUPERVISORS PLAT NO. 10", part of P.C.'s 145 & 147, T3N, R14E, Chesterfield Township, Macomb County Michigan and that the streets and alleys as shown on said plat are now being used for such purposes.

Witnesses:

Walter Collins
John Spence

Richard Morgan
Supervisor of the Township of
Chesterfield

ACKNOWLEDGMENT

STATE OF MICHIGAN)
County of Macomb) ss

On this 4th day of February, A.D. 1937 before me a Notary Public in and for said County, personally came the above named Supervisor of the Township of Chesterfield, Macomb County, Michigan known to me to be the person who executed the above dedication and acknowledged the same to be his free act and deed as such Supervisor.

Diana E. Casper
Notary Public in and for Macomb
County

Commission Expires:

Aug 22, 1937

DESCRIPTION OF LAND PLATTED

The land embraced in the annexed plat of "SUPERVISORS PLAT NO. 10", part of P.C.'s 145 & 147 T3N, R14E, Chesterfield Township, Macomb County, Michigan, is described as follows: Commencing at the intersection of Wly Line of P.C. 145 and the City Line of Chesterfield Township, thence N 4°42' E 3514.91 ft to the point of beginning; thence N 4°45' E 256.27 ft; thence N 4°47' E 1579.78 ft; thence N 4°31' E 1351.10 ft; thence S 84°21' E 969.20 ft; thence N 5°21' E 372.72 ft; thence N 4°44' E 593.42 ft; thence S 39°29' E 2270.65 ft; thence S 65°15' W 497.8 ft; thence S 72°58' W 15.35 ft; thence S 4°25' W 559.2 ft; thence S 85°21' E 13.0 ft; thence S 4°28' W 757.0 ft; thence N 85°16' W 1216.56 ft; thence S 30°56' W 327.58 ft; thence N 5°28' W 220.2 ft; thence S 31°02' W 856.17 ft; to the point of Beginning.

SURVEYORS CERTIFICATE

I hereby certify that the plat hereon delineated is a correct one and that permanent metal monuments of not less than one inch in diameter and fifteen inches in length set in a concrete base at least four inches in diameter and forty-eight inches in depth have been placed at points marked thus: "O", as thereon shown at all angles in the boundaries of the land platted at all the intersections of streets, intersections of alleys, or of streets and alleys and at the intersections of streets and alleys with the boundaries of the plat as shown on said plat.

Dwight W. Hawley
Registered Civil Engineer.

CERTIFICATE OF MUNICIPAL APPROVAL

This plat was approved by the Township Board of the Township of Chesterfield at a meeting held Feb. 5 A.D. 1937.

Leo Blakely
Township Clerk.

CERTIFICATE OF APPROVAL BY COUNTY BOARD

This plat was approved on the 8th day of February 1937.

Ray M. Collins
Judge of Probate.

Nelson Jett
County Clerk.

Carl B. Grandmeyer
County Recorder.

Examined and Approved
5/12/37

James J. Jamieson
T. J. Jamieson

REGISTER'S OFFICE
County of Macomb

Received for Record this
of MAY 17 1937 A.D. 192
2:30 o'clock P.M. and Recorder
in Liber 16 of Maps
on Page 22
W. A. Haggerty, Deputy

See Resolution to split lot 135 3342 247

See Report of L18, Lines 36 of Plat, on page 8 See report of L18, Lines 36 of Plat, on page 7

L. 18
P. 32

PC 145
PC 147
PC 146
PC 144
PC 143

PC 145
PC 147
PC 146
PC 144
PC 143

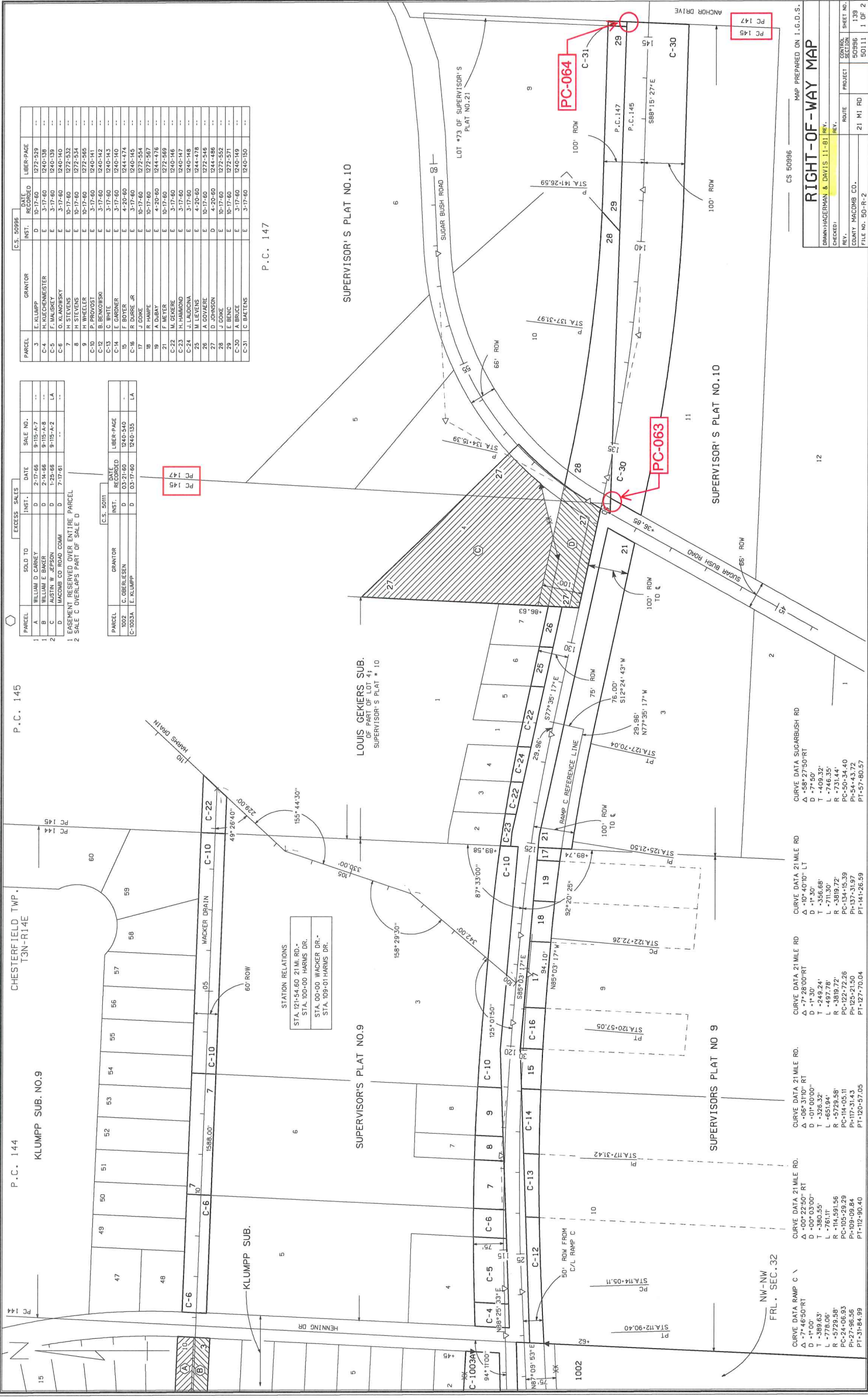
PC 144
PC 143

PC 144
PC 143

PC 144
PC 143

Point of Beginning
S 40°42' E 3314.91
into section of Wly Line P.C. 145
and S7y Township Line

See Resolution splitting lot 1 into 4 parts After 3385 Page 2



PARCEL	SOLD TO	EXCESS SALES	INST.	DATE	SALE NO.	LIBER-PAGE
1	A WILLIAM D CARNEY		D	2-17-65	9-115-A-7	--
1	B WILLIAM E BAKER		D	2-14-66	9-115-A-8	--
2	C WILSON E PERSON		D	1-23-68	9-115-A-2	LA
3	D MURPHY CO		D	7-17-61	---	---

PARCEL	GRANTOR	INST.	DATE	LIBER-PAGE
1002	C. OBERLESEN	D	03-21-60	1240-540
C-1003A	E. KLUMPP	D	03-17-60	1240-135

PARCEL	GRANTOR	INST.	DATE	LIBER-PAGE
3	E. KLUMPP	D	10-17-60	1272-529
C-4	H. RUECHEMISTER	E	3-17-60	1240-138
C-5	F. WALSBY	E	3-17-60	1240-139
C-6	H. STEVENS	E	10-17-60	1272-532
7	H. STEVENS	E	10-17-60	1272-534
8	H. WHEELER	E	10-17-60	1272-565
C-10	P. PROVOST	E	3-17-60	1240-141
C-12	B. LENKOWSKI	E	3-17-60	1240-142
C-13	C. WHITE	E	3-17-60	1240-143
F	F. ROYER	E	4-20-60	1244-474
C-16	R. DURR JR	E	3-17-60	1240-145
17	J. GONIC	E	10-17-60	1272-554
18	R. HAMPE	E	10-17-60	1272-567
19	A. DUBAY	E	4-20-60	1244-476
21	F. MEYER	E	10-17-60	1272-569
C-23	H. WANDER	E	3-17-60	1240-147
C-24	J. LAUDONIA	E	3-17-60	1240-148
25	M. LEVENS	E	4-20-60	1244-478
26	A. GOVAERE	E	10-17-60	1272-546
27	D. JOHNSON	D	4-20-60	1244-486
28	J. GONIC	E	10-17-60	1272-552
C-30	A. BRIDGE	E	3-17-60	1240-149
C-31	C. BAKTENS	E	3-17-60	1240-150

P.C. 147

STATION RELATIONS
 STA. 121+54.60 21 MI. RD.
 STA. 100+00 HARMIS DR.
 STA. 00+00 WACKER DR.
 STA. 109+01 HARMIS DR.

P.C. 145

CHESTERFIELD TWP.
 T3N-R14E

P.C. 144

CLUMPP SUB. NO. 9

CHECKED:	REVISION:	PROJECT:	ROUTE:	SHEET NO.:
DRANN/HAGERMAN & DAVIS 11-61 REV.			21 MI RD	139
				1 OF 2

CONTRACT NO.:	PROJECT:	ROUTE:	SHEET NO.:
CS 50896		21 MI RD	139
			1 OF 2

FILE NO.:	PROJECT:	ROUTE:	SHEET NO.:
50111		21 MI RD	139
			1 OF 2

FILE NO.:	PROJECT:	ROUTE:	SHEET NO.:
50111		21 MI RD	139
			1 OF 2

FILE NO.:	PROJECT:	ROUTE:	SHEET NO.:
50111		21 MI RD	139
			1 OF 2

FILE NO.:	PROJECT:	ROUTE:	SHEET NO.:
50111		21 MI RD	139
			1 OF 2

FILE NO.:	PROJECT:	ROUTE:	SHEET NO.:
50111		21 MI RD	139
			1 OF 2

FILE NO.:	PROJECT:	ROUTE:	SHEET NO.:
50111		21 MI RD	139
			1 OF 2

LAND CORNER RECORDATION CERTIFICATE
 Filing Requirement of Act 74, Mich. P.A. 1970

For corners in

MACOMB (County)	Located In: Chesterfield Township	Corner Code =#
1. Public Land Survey	T _____ R _____	_____
	T _____ R _____	_____
	T _____ R _____	_____
	T _____ R _____	_____
2. Property Controlling in Section	S _____ T _____ R _____	_____
	S _____ T _____ R _____	_____
3. Miscellaneous Property in Sec.	S _____ T _____ R _____	_____
	S _____ T _____ R _____	_____

PC-063

Register of Deeds Stamp & File Number

4. Lot No. _____, Recorded Plat _____
 5. Private Claims **Corner common to Private Claims 145 and 147 located near the intersection of Sugarbush Road and 21 Mile Road (T.3N., R.14E.)**

	A	B	C	D	E	F	G	H	I	J	K	L	M
2	6	5	4	3	2	1							
3													
4	7	8	9	10	11	12							
5													
6	18	17	16	15	14	13							
7													
8	19	20	21	22	23	24							
9													
10	30	29	28	27	26	25							
11													
12	31	32	33	34	35	36							
13													

I, George M. Platz, in a field survey on July, 1998, do hereby certify that under requirements of P.A. 74, Michigan P.A. of 1970, the corner points mentioned in lines 1 and 2 above were in conformance with regulations and rules therefore as required in the current manual of survey instructions of the United States Department of the Interior, Bureau of Land Management or by a decree of a Court of Law and/or that the corner points mentioned in lines 3, 4 and 5 above were in conformance with the rules of the Michigan Board of Land Surveyors or by a Decree of a Court of Law; established, re-established, monumented, re-monumented, recovered, found as expressed below:

NOTE: Not more than 4 corners, all in the same town and range, may be recorded on this certificate.

A. Description of original monument and accessories and/or subsequent restoration:

Chesterfield Township

Corner common to Private Claims 145 and 147 located near the intersection of Sugarbush Road and 21 Mile Road.
 Point was referenced in 1937 "Supervisor's Plat No. 10," part of P.C.'s 145 and 147, T.3N., R.14E., Chesterfield Township, Macomb County, Michigan, as recorded in Liber 18, Page 32 of Macomb County plat records.

B. Description of corner evidence found and/or method applied in restoring or reestablishing corner:

Corner common to Private Claims 145 and 147 located near the intersection of Sugarbush Road and 21 Mile Road.
 Set point at the calculated intersection of north-south line of PC 145/147 and the east-west line of PC 145/147. The north-south line was established based upon found monumentation and information from "Supervisor's Plat No. 10," recorded in liber 18, page 32 of Macomb County plat records. Land Corner Recordation Certificates for points on this line are being recorded by SDA coincident with the recording of this Certificate. The east-west line of PC 145/147 was established based upon record values and found monumentation from "Ruby Subdivision."

C. Description of monument for corner and accessories established to perpetuate locating the position of the corner:

Corner common to Private Claims 145 and 147 located near the intersection of Sugarbush Road and 21 Mile Road.
 Set Mag nail with tag No. 38121 in asphalt pavement near the intersection of Sugarbush Road and 21 Mile Road.
 Az. 47° 87.09'; Set Mag nail with tag No. 38121 in the west face of a utility pole with signal light.
 Az. 202° 55.57'; Set Mag nail with tag No. 38121 in the top of a concrete signal pole base.
 Az. 257° 133.00'; Set Mag nail with tag No. 38121 in the northwest face of a utility pole with signal light.
 Az. 326° 96.99'; Set cut '+' in the top center nut of a fire hydrant.

Signed by George M. Platz Date 8-5-98
 Surveyor's Michigan License No. 38121



LAND CORNER RECORDATION CERTIFICATE
 Filing Requirement of Act 74, Mich. P.A. 1970

For corners in

MACOMB (County)	Located In: Chesterfield Township	Corner Code #
1. Public Land Survey	T _____ R _____	_____
	T _____ R _____	_____
	T _____ R _____	_____
	T _____ R _____	_____
2. Property Controlling in Section	S _____ T _____ R _____	_____
	S _____ T _____ R _____	_____
3. Miscellaneous Property in Sec.	S _____ T _____ R _____	_____
	S _____ T _____ R _____	_____

Register of Deeds Stamp & File Number

4. Lot No. _____, Recorded Plat _____
 5. Private Claims Deflection in the east line of PC145
(T.3N., R.14E.)

	A	B	C	D	E	F	G	H	I	J	K	L	M
2	6	5	4	3	2	1							
3													
4	7	8	9	10	11	12							
5													
6	18	17	16	15	14	13							
7													
8	19	20	21	22	23	24							
9													
10	30	29	28	27	26	25							
11													
12	31	32	33	34	35	36							
13													

Chesterfield Township

I, George M. Platz, in a field survey on July, 19 98, do hereby certify that under requirements of P.A. 74, Michigan P.A. of 1970, the corner points mentioned in lines 1 and 2 above were in conformance with regulations and rules therefore as required in the current manual of survey instructions of the United States Department of the Interior, Bureau of Land Management or by a decree of a Court of Law and/or that the corner points mentioned in lines 3, 4 and 5 above were in conformance with the rules of the Michigan Board of Land Surveyors or by a Decree of a Court of Law; established, re-established, monumented, re-monumented, recovered, found as expressed below:

NOTE: Not more than 4 corners, all in the same town and range, may be recorded on this certificate.

A. Description of original monument and accessories and/or subsequent restoration:

Deflection in the east line of PC 145.
 Point was established in 1937 at the northeast corner of Lot 4 of "Supervisor's Plat No.10," part of P.C.'s 145 and 147, T.3N., R.14E., Chesterfield Township, Macomb County, Michigan, as recorded in Liber 18, Page 32 of Macomb County plat records.

B. Description of corner evidence found and/or method applied in restoring or reestablishing corner:

Deflection in the east line of PC 145.
 Found iron with cap No. 30085 at the above described location. Iron fit relatively well with record plat values and other found monumentation and was accepted by SDA. Iron has been replaced with a concrete monument for the proposed plat of "Sugarbush Farms Subdivison."

C. Description of monument for corner and accessories established to perpetuate locating the position of the corner:

Deflection in the east line of PC 145.
 Set concrete monument.
 Az. 62° 108.15'; Cut '+' in the northeast rim of a catch basin.
 Az. 137° 200.12'; Cut '+' in the top center nut of a fire hydrant.
 Az. 190° 44.77'; Set Mag nail with tag No. 38121 in the east face of a 6" Elm.
 Az. 220° 17.91'; Set Mag nail with tag No. 38121 in the east face of a 6" Elm.

Signed by George M. Platz Date 8-5-98
 Surveyor's Michigan Licence No. 38121



LAND CORNER RECORDATION CERTIFICATE
 Filing Requirement of Act 74, Mich. P.A. 1970

For corners in

<u>MACOMB</u> (County)	Located In:	Corner Code #
	Chesterfield Township	
1. Public Land Survey	T _____ R _____	_____
	T _____ R _____	_____
	T _____ R _____	_____
	T _____ R _____	_____
2. Property Controlling in Section	S _____ T _____ R _____	_____
	S _____ T _____ R _____	_____
3. Miscellaneous Property in Sec.	S _____ T _____ R _____	_____
	S _____ T _____ R _____	_____

Register of Deeds Stamp & File Number

4. Lot No. _____, Recorded Plat _____
 5. Private Claims Deflection in the east line of PC145 (T.3N., R.14E.)

	A	B	C	D	E	F	G	H	I	J	K	L	M
2	6	5	4	3	2	1							
3													
4	7	8	9	10	11	12							
5													
6	18	17	16	15	14	13							
7													
8	19	20	21	22	23	24							
9													
10	30	29	28	27	26	25							
11													
12	31	32	33	34	35	36							
13													

I, George M. Platz, in a field survey on July, 1998, do hereby certify that under requirements of P.A. 74, Michigan P.A. of 1970, the corner points mentioned in lines 1 and 2 above were in conformance with regulations and rules therefore as required in the current manual of survey instructions of the United States Department of the Interior, Bureau of Land Management or by a decree of a Court of Law and/or that the corner points mentioned in lines 3, 4 and 5 above were in conformance with the rules of the Michigan Board of Land Surveyors or by a Decree of a Court of Law; established, re-established, monumented, re-monumented, recovered, found as expressed below:

NOTE: Not more than 4 corners, all in the same town and range, may be recorded on this certificate.

A. Description of original monument and accessories and/or subsequent restoration:

Deflection in the east line of PC 145.
 Point was established in 1937 at the most northerly corner of Lot 6 of "Supervisor's Plat No. 10," part of P.C.'s 145 and 147, T.3N., R.14E., Chesterfield Township, Macomb County, Michigan, as recorded in Liber 18, Page 32 of Macomb County plat records.

B. Description of corner evidence found and/or method applied in restoring or reestablishing corner:

Deflection in the east line of PC 145.
 Found iron with cap No. 30085 at the above described location. Iron fit relatively well with record plat values and other found monumentation and was accepted by SDA. Iron has been replaced with a concrete monument for the proposed "Amended Plat of Part of Lot Nos. 6, 7, and 8 of Supervisor's Plat No. 10."

C. Description of monument for corner and accessories established to perpetuate locating the position of the corner:

Deflection in the east line of PC 145.
 Set concrete monument.

Az. 5° 2.50'; Set Mag nail with tag No. 38121 in the west face of a 5" Elm.
 Az. 18° 5.68'; Set Mag nail with tag No. 38121 in the west face of a 10" Ash.
 Az. 116° 9.23'; Set Mag nail with tag No. 38121 in the north face of a 28" Sycamore.
 Az. 195° 2.93'; Set Mag nail with tag No. 38121 in the west face of a triple-stem Ash.

Signed by George M. Platz Date 8-5-98
 Surveyor's Michigan License No. 38121

Spalding DeDecker Associates, Inc.
 DV95-22



03037

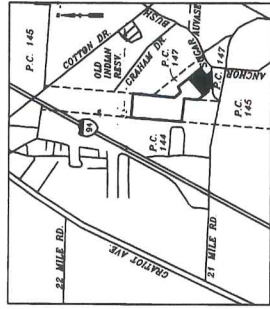
10

1988
L 131, P 1

LIBER _____, PAGE _____ SHEET 1 OF 3

SUGARBUSH FARMS SUBDIVISION

PART OF PRIVATE CLAIM 145 AND PRIVATE CLAIM 147
T.3N., R.14E., CHESTERFIELD TOWNSHIP,
MACOMB COUNTY, MICHIGAN



KEY MAP
NOT TO SCALE

CERTIFIED TRUE COPY OF
RECORDED PLAT
BY DEPARTMENT OF CONSUMER
AND INDUSTRY SERVICES
BY Maynard R. Dyer, P.E.
MANAGER
SUBDIVISION CONTROL SECTION
DATE 10-1-98

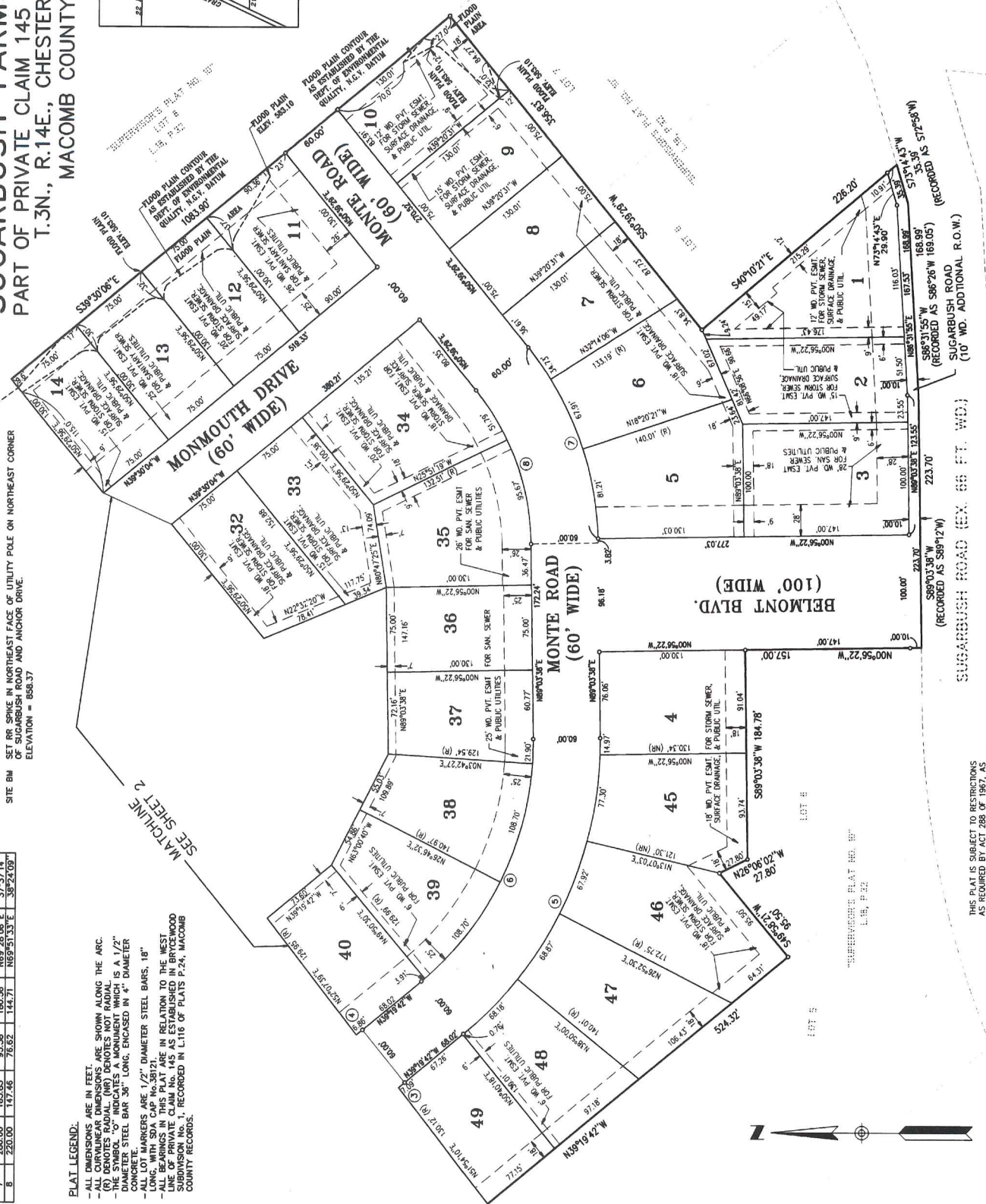


Engineering & Surveying Excellence
Since 1964
SPALDING DICKER ASSOCIATES, INC.
905 SOUTH BLD. EAST
ROCHESTER HILLS, MI. 48307
PHONE: (248) 844-5400
SDA Josef D'95-22

BENCHMARK DESCRIPTIONS
MASTER BM TOP OF HYDRANT ON THE NORTH SIDE OF GRAHAM RD. AT WEST END OF ROAD. SITE BENCHMARK FOR BRYCEWOOD SUBDIVISION TO NORTH. ELEV. = 590.12
SOURCE: CHESTERFIELD TOWNSHIP
SITE BM SET IR SPIKE IN NORTHEAST FACE OF UTILITY POLE ON NORTHEAST CORNER OF SUGARBUSH ROAD AND ANCHOR DRIVE. ELEVATION = 888.37

CURVE	RADIUS	LENGTH	TANGENT	CHORD	BEARING	DELTA
3	330.00	287.48	135.69	291.00	N16°55'34" W	44°42'16"
4	370.00	210.67	111.02	205.36	N16°55'34" W	44°42'16"
5	270.00	243.21	130.56	235.07	N63°08'02" W	51°35'40"
6	270.00	183.85	95.36	180.56	N63°08'02" W	51°35'40"
7	280.00	147.46	76.62	144.71	N69°51'33" E	38°24'09"
8	220.00	147.46	76.62	144.71	N69°51'33" E	38°24'09"

PLAT LEGEND:
-ALL DIMENSIONS ARE IN FEET
-ALL CURVILINEAR DIMENSIONS ARE SHOWN ALONG THE ARC.
(R) DENOTES RADIAL (NR) DENOTES NOT RADIAL.
-DIMENSION WITH AN ARROW INDICATES A MONUMENT WHICH IS A 1/2" DIAMETER STEEL BAR 36" LONG, ENCASED IN 4" DIAMETER CONCRETE.
-ALL LOT MARKERS ARE 1/2" DIAMETER STEEL BARS, 18" LONG, WITH SDA CAP NO. 38121.
-THE LINE OF PRIVATE CLAIM 145 AS ESTABLISHED IN BRYCEWOOD SUBDIVISION NO. 1, RECORDED IN L.116 OF PLATS P.24, MACOMB COUNTY RECORDS.



THIS PLAT IS SUBJECT TO RESTRICTIONS AS REQUIRED BY ACT 288 OF 1967, AS AMENDED, ON CERTAIN LOTS WITH RESPECT TO THE USE OF THE SAME. THE DEPARTMENT OF ENVIRONMENTAL QUALITY, WHICH ARE RECORDED IN LIBER 9290, PAGES 752-764 OF RECORDS OF THIS COUNTY.



65039

11

2000
L 9707, P 610

CERTIFICATE OF SURVEY

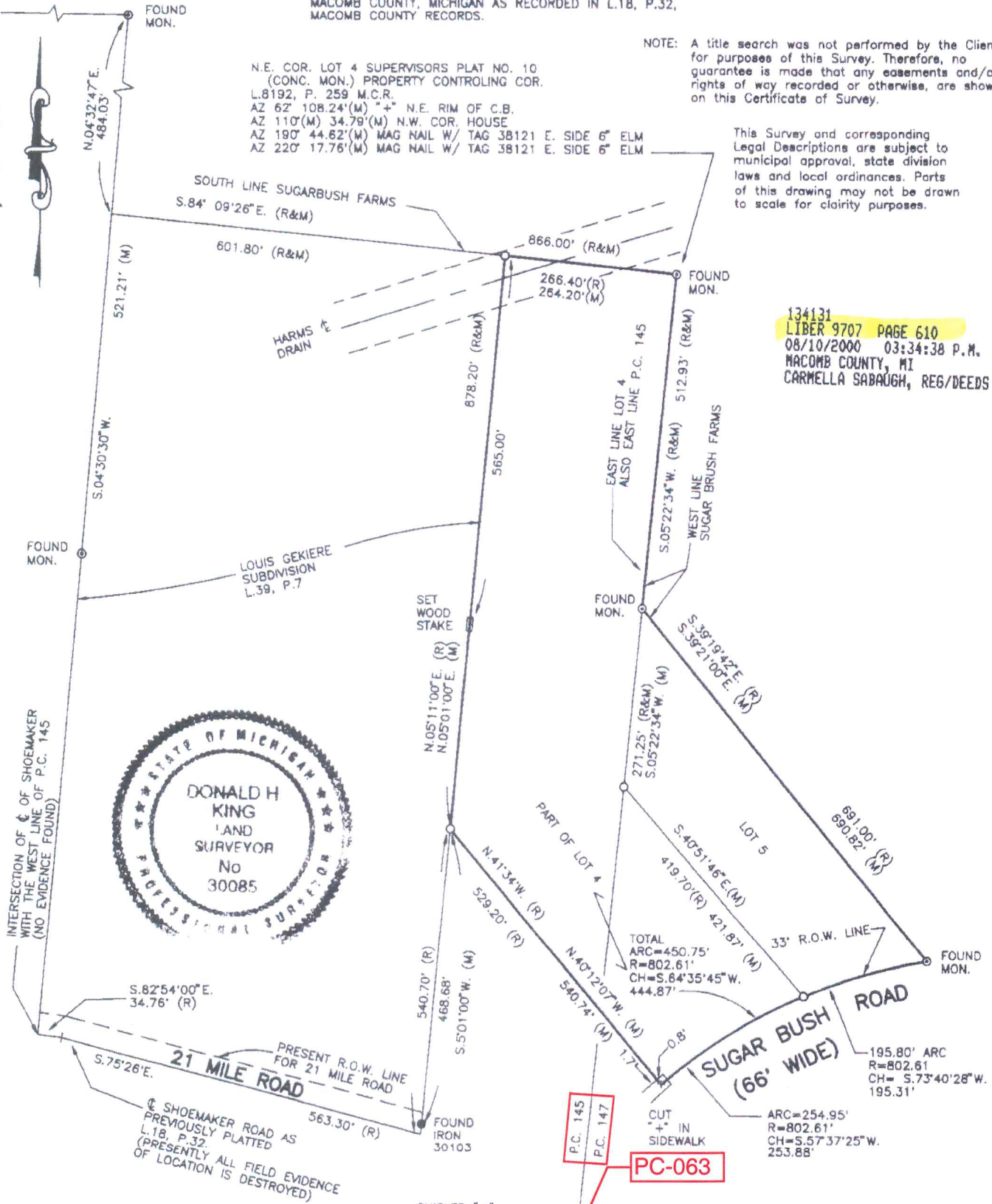
LOT 5 AND PART OF LOT 4 OF "SUPERVISOR'S PLAT NO. 10"
PART OF P.C.'S 145 & 147, T.3N., R.14E. CHESTERFIELD TOWNSHIP,
MACOMB COUNTY, MICHIGAN AS RECORDED IN L.18, P.32,
MACOMB COUNTY RECORDS.

NOTE: A title search was not performed by the Client for purposes of this Survey. Therefore, no guarantee is made that any easements and/or rights of way recorded or otherwise, are shown on this Certificate of Survey.

This Survey and corresponding Legal Descriptions are subject to municipal approval, state division laws and local ordinances. Parts of this drawing may not be drawn to scale for clarity purposes.

134131
LIBER 9707 PAGE 610
08/10/2000 03:34:38 P.M.
MACOMB COUNTY, MI
CARMELLA SABAUGH, REG/DEEDS

KING SURVEYORS & ASSOC., INC.



I hereby certify that I have surveyed the parcel(s) of land described and delineated hereon; that said Survey was performed with an error of closure no greater than 1 in 5000; and that I have complied with the requirements of Section 3, Act 132, P.A. 1970 as amended.

Donald H. King

DONALD H. KING
PROFESSIONAL SURVEYOR
MICHIGAN LICENSE No.30085

22657 IRWIN ROAD ARMADA, MI 48005 (810) 784-4800

CORNER COMMON TO P.C. 145 AND 147
(CHISLED "+" IN CONC. PAV'T.)
PROPERTY CONTROLLING CORNER L. 8192, P. 258.
AZ. 202 55.57' MAG NAIL W/TAG 38121 IN CONC. BASE OF SIGNAL POLE
AZ. 257 133.00' MAG NAIL W/TAG 38121 IN UTIL. POLE W/ SIGNAL POLE LIGHT
AZ. 326 96.89' CHISLED "+" TOP OF HYDRANT.



LEGEND

- R = RECORD
- M = MEASURED
- C = CALCULATED
- ⊙ = SET IRON 30085
- ⊙ = FOUND IRON
- ⊙ = FOUND MONUMENT

CLIENT

RON RADULSKI

DRAWN J.G.

CHECKED BY D.H.K.



1" = 200'

SCALE

SHEET

1 OF 2

4-04-00

DATE

JOB No.

00039

FOR: **RON RADULSKI**
 JOB NUMBER: **00039**
 DATED: **April 10, 2000**
 SHEET: **2 of 2**

LIBER 9707 PAGE 611

LOT 5 AND PART OF LOT 4

Lot 5 and part of Lot 4 of "Supervisor's Plat No. 10," part of Private Claim Numbers 145 and 147, Town 3 North, Range 14 East, Chesterfield Township, Macomb County, Michigan, as recorded in Liber 18 on Page 32 of Macomb County Records, and being more particularly described as follows: Beginning at the Northeast Corner of said Lot 4 of "Supervisor's Plat No. 10," as said Corner being a Property Controlling Corner as recorded in Liber 8192 on Page 259, Macomb County Records, said point of beginning being previously described as located South 82 degrees 54 minutes 00 seconds East 34.76 feet and South 75 degrees 26 minutes East 563.30 feet along the centerline of Shoemaker Road; thence North 05 degrees 11 minutes 00 seconds East (recorded) North 05 degrees 01 minutes 00 seconds East (measured) 1,418.90 feet; thence South 84 degrees 09 minutes 26 seconds East 266.40 feet (recorded) 264.20 feet (measured) along the South line of "Sugarbush Farms Subdivision" from the intersection of the centerline of Shoemaker Road with the West line of P.C. 145 (no evidence was found in the field of said intersection or the centerline of Shoemaker Road as previously described); thence extending South 05 degrees 22 minutes 34 seconds West 512.93 feet; thence South 39 degrees 19 minutes 42 seconds East 691.00 feet (recorded) South 39 degrees 21 minutes 00 seconds East 690.82 feet (measured) along the Easterly line of Lot 5 to the Southeast Corner of Lot 5; thence along the 33-foot right-of-way line of Sugarbush Road 450.75 feet along the arc of a curve concave to the Southeast (radius = 802.61 feet) and whose chord is described as bearing South 64 degrees 35 minutes 45 seconds West 444.87 feet; thence North 41 degrees 34 minutes West 529.20 feet (recorded) North 40 degrees 12 minutes 07 seconds West 540.74 feet (measured); thence North 05 degrees 11 minutes 00 seconds East (recorded) North 05 degrees 01 minutes 00 seconds East (measured) 878.20 feet to the South line of "Sugarbush Farms Subdivision;" thence South 84 degrees 09 minutes 26 seconds East 266.40 feet (recorded) 264.20 feet (measured) to the point of beginning.

Subject to an easement for the Harms Drain across the North end of above-described Parcel, if one exists. Also subject to any easements and/or rights of way, recorded or otherwise.

Prepared by:

Donald H. King
 Donald H. King
 Professional Surveyor
 Michigan License No. 30085



22657 IRWIN ROAD ARMADA, MI 48005 (810) 784-4800