

Witness to PC-050
DOSSIER CONTENT
2012 REMON
T.3N., R.14E.,
Chesterfield Township, Macomb County, Michigan

Section One

Index

Pictures in cardinal directions; before and after setting the required monumentation.

Section Two

LCRC

Surveyor's Report

Section Three

- 1 Field Notes
- 2 Sketch
- 3 Township Map
- 4 Tax Map 1959
- 5 Tax Map 1974
- 6 Aerial Pictures 2009

Section Four

- 1 1810 PC Survey notes Greely
- 2 1817 GLO notes Preston
- 3 1817 Township map Preston
- 4 1818 Township map Surveyor General Office
- 5 1818 Township Map Preston
- 6 1838 Township Map Surveyor General Office
- 7 1959 plat-Lottivue Earl Philips 1728 L37, P18
- 8 1961 plat-Lottivue No. 2 Earl Philips 1728 L49, P 1
- 9 1964 plat-Lottivue No. 3 Earl Philips 1728 L53, P35
- 10 1969 plat-Lottivue No. 4 Fitz Bridges 5779 L60, P34
- 11 1969 plat-Lottivue No. 6 Fitz Bridges 5779 L64, P48







LAND CORNER RECORDATION CERTIFICATE
Filing Requirement of Act 74, Mich. P.A. 1970
REMONUMENTATION CORNER

For corners in:

MACOMB COUNTY

(County)

Located In: CHESTERFIELD TOWNSHIP Corner Code #

Reference to PC-050

- 1. Public Land Survey T.3N R.14E
2. Property Controlling in Section S___ T___ R___
3. Miscellaneous Property in Sec. S___ T___ R___
4. Lot No. ____, Recorded Plat
5. Private Claims PC-342 PC-050 is a Southeast corner of PC 342.

2175907 PAGE 1 OF 2
LIBER 21777 PAGE 147
12/13/2012 09:52:07 A.M.
MACOMB COUNTY, MI SEAL
CARMELLA SABAUGH, REGISTER OF DEEDS

Register of Deeds Stamp & File Number

I, ROBERT E. HORNYAK, in a field survey on August 17, 2012 do hereby certify that under requirements of P.A. 74, Michigan P.A. of 1970, the corner points mentioned in lines 1 and 2 above were in conformance with regulations and rules therefore as required in the current manual of survey instructions of the United States Department of the Interior, Bureau of Land Management or by a decree of a Court of Law and /or that the corner points mentioned in lines 3, 4 and 5 above were in conformance with the rules of the Michigan Board of Land Surveyors or by a Decree of a Court of Law; established, re-established, monumented, re-monumented, recovered, found as expressed below:

NOTE: Not more than 2 corners, all in the same town and range, may be recorded on this certificate.

A. Description of original monument and accessories and/or subsequent restoration:

Table with 5 columns: Item number, Description, Surveyor, Date, and Object. Includes items 1-11 detailing various survey notes, maps, and plat restorations.

B. Description of corner evidence found and/or method applied in restoring or reestablishing corner:

No field evidence was found. I consider it a lost corner. Occupation: none. Northeasterly line of PC-342 is defined by PC-047 and PC-050. I consider both corners as lost corners. The following procedure was applied to restore the corner: 1. Established direction of the Northeasterly line of PC-342 by PCC-048 close to the Northwesterly end and by found monumentation at Items 7-11 close to the Southeasterly end. 2. Established the intersection of the CL Jefferson Avenue with the Northeasterly line of PC-342 by found monumentation at Items 7-11. 3. Established the location of the intersection of the Northeasterly line of PC-342 with the Northwesterly line of Indian Reservation based on record distance at Items 7-11 from the intersection of the CL Jefferson Avenue with the Northeasterly line of PC-342. 4. Established location of PC-050 at record distance shown at Item 2 from the intersection of the Northeasterly line of PC-342 with the Northwesterly line of Indian Reservation. Such established location falls in Lake St. Clair.

I set a Reference Point on the shore of Lake St. Clair 44.82' Northwesterly from actual PC-050 on the Northeasterly line of PC 342. The Reference Point is located in a vacant lot between 49626 and 49684 Goulette Pointe Drive.

Distances: PC-050 to PCC-049 2237.40' (33.90 ch) 2, Remon 2012 PC-050 to Ref to PCC-050 44.82' Northwesterly Remon 2012

C. Description of monument for corner and accessories established to perpetuate locating the position of the corner:

I placed a 2" aluminum cap stamped "MACOMB COUNTY MONUMENT MI ACT 345; REF PC-050; 44286" on 1/2"x36" steel bar encased in 4" diameter concrete monument.

Witnesses:

Table with 2 columns: Direction/Distance and Description of Witness. Includes North 16.30', East 5.70', South 15.00', S80°W 59.75', N58°W 2232.45', S58°E 44.82', and Southeast 28'+/- Edge of Water of Lake St. Clair.

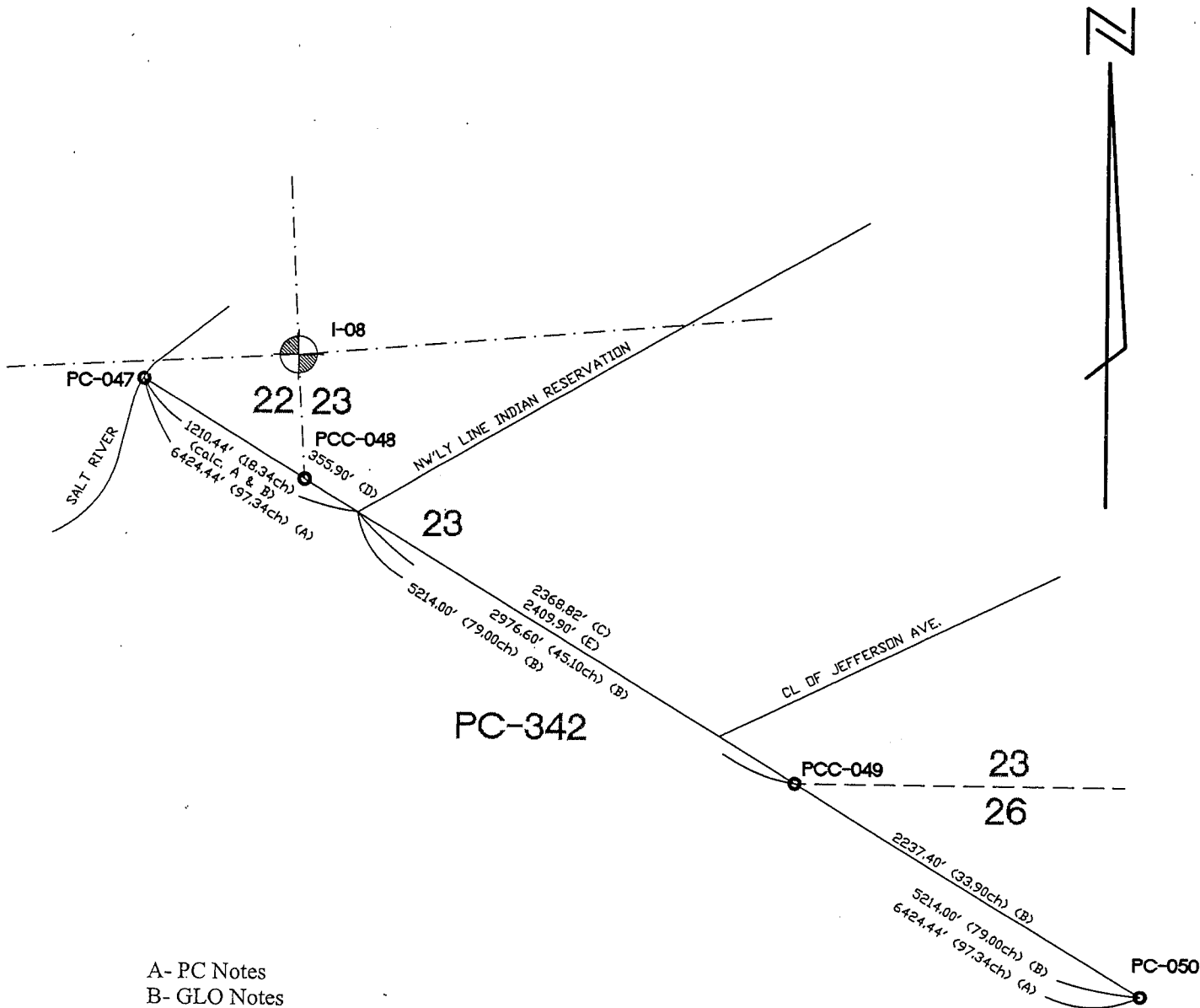
ACCEPTED BY THE MACOMB COUNTY SURVEY PEER GROUP AS THE OFFICIAL CORNER UNDER MICHIGAN PUBLIC ACT 345 OF 1990 AT A MEETING HELD ON 9-25-2012

MARTIN C. DUNN, P.S., CHAIRMAN

Signed by [Signature] Date October 26, 2012

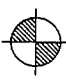

Surveyor's Michigan License No. 44286

NE'LY LINE OF PC-342 REMON 2012 CHESTERFIELD TWP., T3N, R14E



- A- PC Notes
- B- GLO Notes
- C- Supervisor's Plat No. 15
- D- Supervisor's Plat of James
Fuller Small Farms Subdivision
- E- Lottivue Plat No. 6

Distances:	
PC-047	0+00.00'
Ref to PC-047	6+50.35'
PCC-048	8+48.72'
Ref to PCC-049	41+47.17'
PCC-049	41+87.04'
Ref to PC-050	63+79.62'
PC-050	64+24.44'

- SECTION LINE MEASURED DURING GLO SURVEY
AZIMUTH & LENGTH USED FOR INDEXATION
- SECTION LINE NOT MEASURED DURING GLO SURVEY
-  SECTION CORNER
-  PC, PCC CORNERS

Reference to PC-050 CHESTERFIELD TOWNSHIP

PC-050 is a Southeast corner of PC 342.

Survey of PC 342 was performed by A. Greeley in 1810.

GLO survey performed by Preston in 1817.

Corner history:

1	1810	PC Survey notes	Greeley			Standing post
2	1817	GLO notes	Preston			Set post
3	1817	Township map	Preston			Object not stated
4	1818	Township map	Surveyor General Office			Object not stated
5	1818	Township Map	Preston			Object not stated
6	1838	Township Map	Surveyor General Office			Object not stated
7	1959	plat-Lottivue	Earl Philips	1728	L37, P18	Plat shows NE'yly line of PC 342
8	1961	plat-Lottivue No. 2	Earl Philips	1728	L49, P 1	Plat shows NE'yly line of PC 342
9	1964	plat-Lottivue No. 3	Earl Philips	1728	L53, P35	Plat shows NE'yly line of PC 342
10	1969	plat-Lottivue No. 4	Fitz Bridges	5779	L60, P34	Plat shows NE'yly line of PC 342
11	1969	plat-Lottivue No. 6	Fitz Bridges	5779	L64, P48	Plat shows NE'yly line of PC 342

Field evidence:

No field evidence was found. I consider it a lost corner.

Occupation: none.

Distances:

PC-050 to PCC-049 PC-050 to Ref to PCC-050
2237.40' (33.90 ch) 2, Remon 2012 44.82' NW'yly Remon 2012

Recommendation:

Northeasterly line of PC-342 is defined by the PC-047 and the PC-050. I consider both corners as lost corners.

The following procedure was applied to restore the corner:

1. Established direction of Northeasterly line of PC-342 by PCC-048 close to the Northwesterly end and by found monumentation at Items 7-11 close to the Southeasterly end.
2. Established intersection of CL Jefferson Ave. with NE'yly line of PC-342 by found monumentation at Items 7-11.
3. Established location of intersection of NE'yly line of PC-342 with NW'yly line of Indian Reservation based on record distance at Items 7-11 from intersection of CL Jefferson Ave. with NE'yly line of PC-342.
4. Established location of PC-050 at record distance shown at Item 2 from intersection of NE'yly line of PC-342 with NW'yly line of Indian Reservation.

Such established location falls in Lake St. Clair.

I recommend to the Peer Review Board to set Reference point on the shore of Lake St. Clair 44.82' NW'yly from actual PC-050 on NE'yly line of PC 342.

I recommend monumenting witness to PC-050 with 1/2" iron with a 2" aluminum cap stamped "MACOMB COUNTY MONUMENT MI ACT 345; REF PC-050; 44286" placed on a 1/2"x3/6" steel bar encased in 4" diameter concrete monument.

Witnesses:

North	16.30'	Set PK w/"MACOMB COUNTY WITNESS TAG" in E face 24" Maple
East	5.70'	Set iron w/blue cap "MACOMB COUNTY WITNESS " along rock sea wall
South	15.00'	Set iron w/blue cap "MACOMB COUNTY WITNESS " along rock sea wall
S80°W	59.75'	Set PK w/"MACOMB COUNTY WITNESS TAG" in S of Multisteam Apple tree

Respectfully submitted,

Robert E. Hornyak, PS # 44286

PC-050

REMON 2012

CHESTERFIELD TWP., T3N, R14E



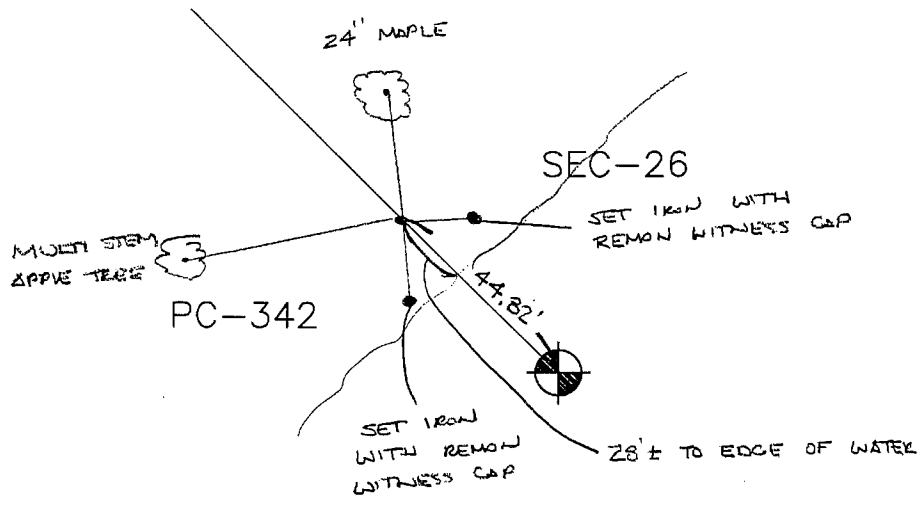
DATE: 08/13/12
 CREW: RH JK
 OBJECT FOUND: NONE
 POINT No.: PC-050
 CTRL. PTS.: _____

SET MONUMENT STAMPED 'REF PT PC 050' 285' NORTHWEST
 OF PC-050, SOUTHEAST OF HOUSE # 49684 GOUVETTE POINT DRIVE

NORTH 16.30' SET PK WITH REMON WITNESS TAG IN
 EAST FACE 24" MAPLE

EAST 5.70' SET IRON WITH REMON WITNESS TAG ALONG
 ROCK SEA WALL

SOUTH 15.00' SET IRON WITH REMON WITNESS TAG ALONG
 ROCK SEA WALL



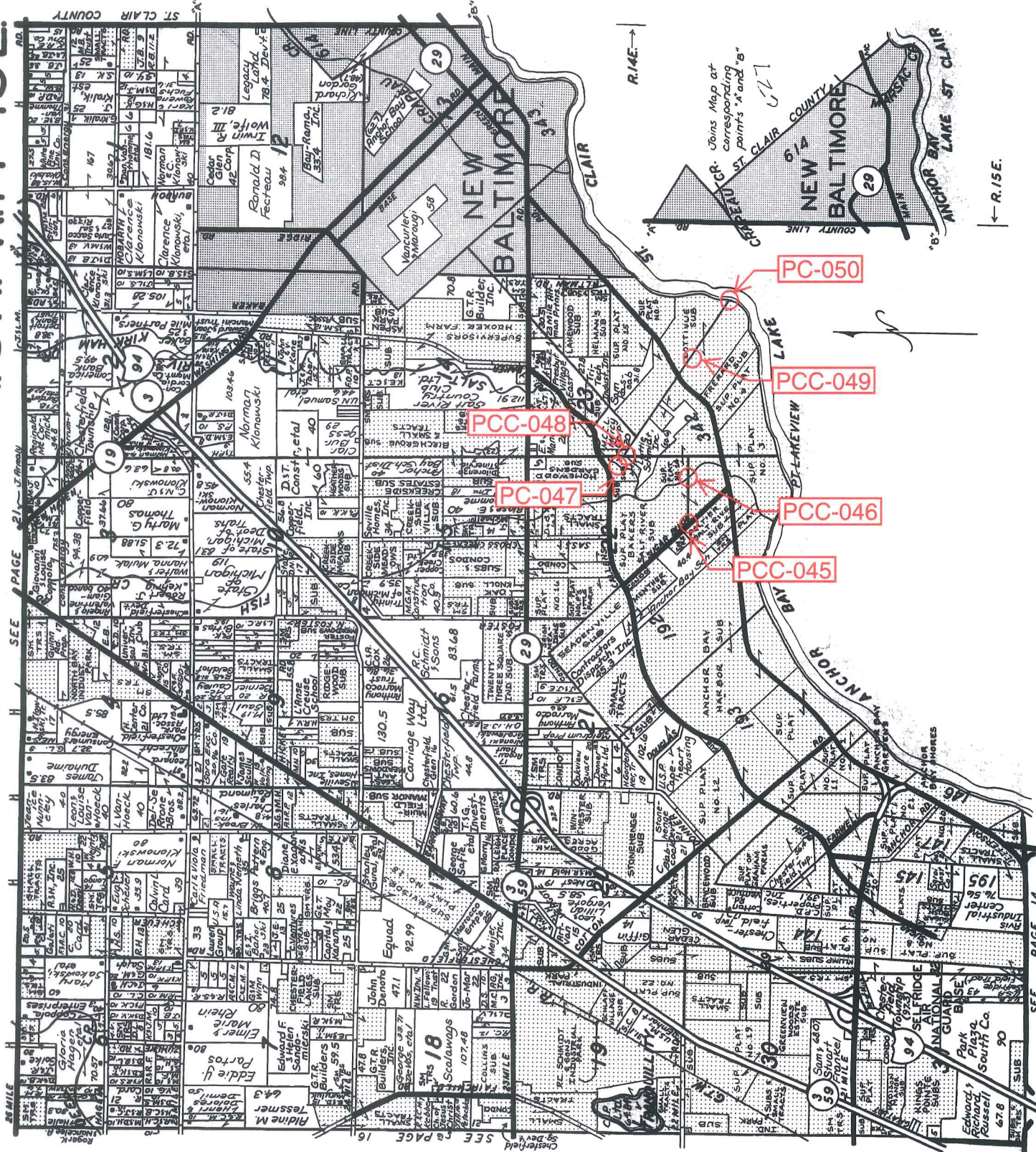
LAKE ST. CLAIR

S 80° W 59.75' SET PK WITH REMON WITNESS TAG
 IN SOUTH FACE OF MULTI STEM APPLE TREE

OCCUPATION
 (if road state surface)
NONE

T.3N.-R.14-15E.

CHESTERFIELD



← R.15E.



LINCOLN TITLE COMPANY

Flexible closing schedule ❖ Personalized service ❖ Knowledgeable staff

25962 Knollwood Drive South • Chesterfield, Michigan 48051 • Telephone: (810) 598-2930 • Fax: (810) 598-2936

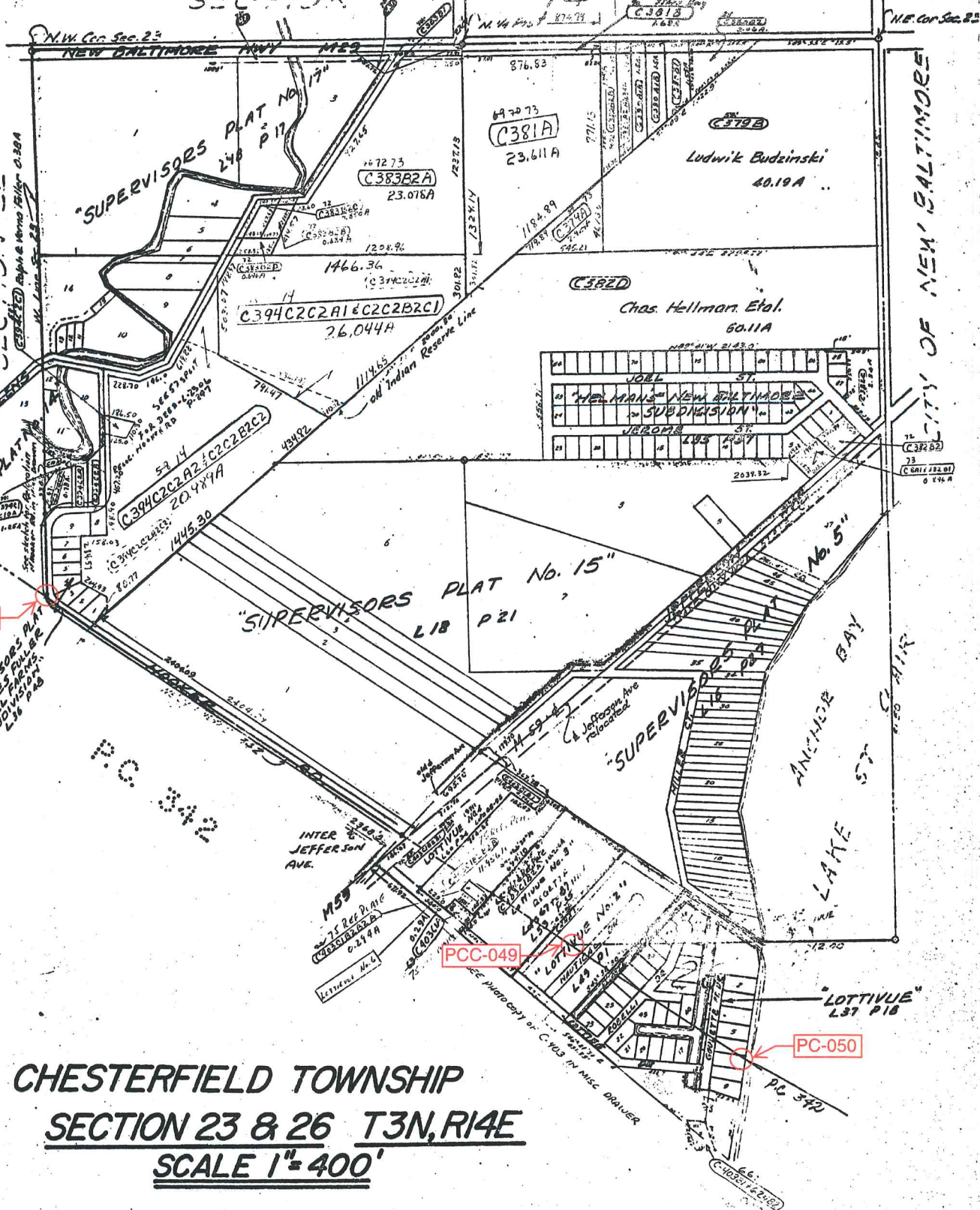
OFFICES ALSO IN PORT HURON & ROSELLE

Reproduced with permission of Rockford Map Publishers, Inc.
Rockford, Illinois

455

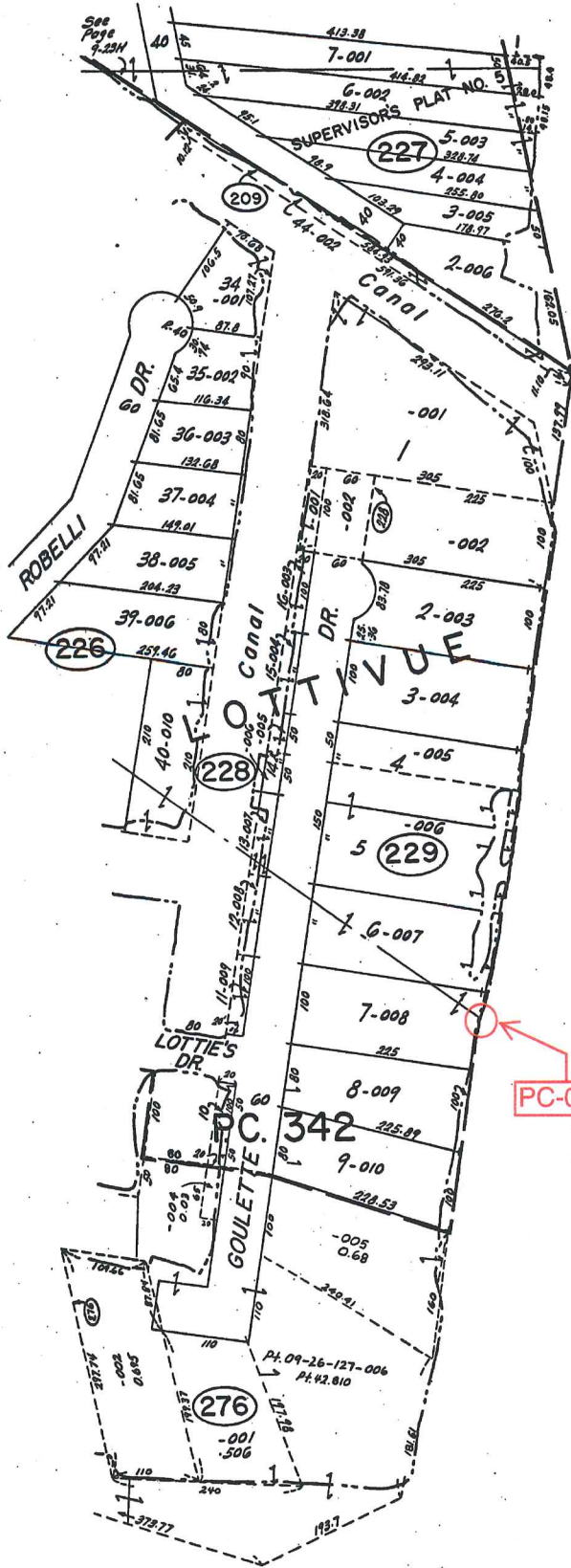
SHEET NO 23 & 26

SECTION 23



CHESTERFIELD TOWNSHIP
SECTION 23 & 26 T3N, R14E
SCALE 1" = 400'

CITY OF NEW BALTIMORE



Clair

St.

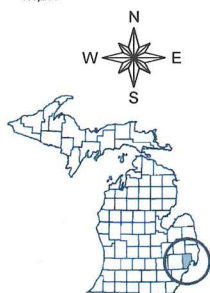
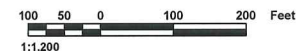
9-26C

PC-050

Lake

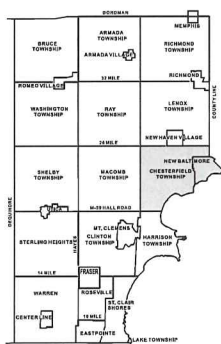


09-26C



COPYRIGHT 2001
MACOMB COUNTY, MI
All Rights Reserved

CHESTERFIELD TOWNSHIP SHEET INDEX



DESCRIPTION OF PERMANENT REAL ESTATE INDEX NUMBER

13-19-302-018

AREA NUMBER TOWNSHIP AND RANGE	SUB AREA NUMBER SECTION AND RANGE	BLOCK NUMBER LOT AND SECTION	PARCEL NUMBER OWNER'S FULL NAME
-----------------------------------	--------------------------------------	---------------------------------	------------------------------------

- Legend**
- Platted Area Boundary Line
 - Property Line
 - Property Split Line
 - Property Combined Line
 - Township Boundary Line
 - Traverse Line
 - Dimension Extent Marks
 - Dimension Start Marks

09-26D

CHESTERFIELD TWP.
E. 1/2 N.E.1/4 SEC.26 T.3N. R.14E.

Source: Macomb County Department of Planning and Economic Development
- 2004 Digital Orthophotography Project
- Parcel Conversion Project

Note:
Digital Orthophotography horizontal positioning accuracy is 3 feet. Parcel boundary lines should be considered a graphical representation and not in any way a legal survey or engineering document. In general, the horizontal positioning and length accuracy is within 15 feet.

This map is intended for general planning purposes. Site specific evaluation should be verified by field inspection. This is a work in progress and may contain errors and omissions. Please report any potential revisions to (586)469-5285.



GIS MACOMB COUNTY
Planning and Economic
Development Department

Published: Mar 04, 2005

No. 435

No. 342 Confirmed to
Francois Dupre'

LAKE ST. CLAIR

Description No. 342 Confirmed to Francois Dupre' commencing at a post standing on the west border of Salt River it being the north east corner of a tract confirmed to George Meldrum thence along the border of Salt River down stream South forty five degrees west thirty chains eighty links to the confluence of said River with Lake St. Clair thence along the border of said lake south seventy four degrees thirty minutes East twenty five chains, thence North sixty one degrees east twenty chains, thence north sixty three degrees East nineteen chains, thence north eighty degrees East thirty three chains thence north sixty five degrees East nineteen chains fifty links, thence North ^{PC-050} six degrees West six chains Seventy five links to a post standing on the border of Lake St. Clair between this tract and a tract reserved for Maccanse, (a Chipawa Indian Chief), ^{97.34 ch = 6424.44'} thence north sixty degrees west ninety seven chains thirty four links to a ^{PC-047} post standing on the border of Salt River thence along the border of said river down stream, South eleven degrees East ten chains thirty seven links, thence south seventy degrees west fifteen chains, thence south thirty degrees East twenty five chains, thence South fifty eight degrees East fifteen chains thence south forty six degrees west twenty chains seventy three links to the place of beginning, containing four hundred and twenty two acres, seventeen hundredths of an acre _____

Detroit July 24, 1810 _____

Aaron Greeley Surveyor of
private claims

N. 435.

Lake St. Clair

Description N. 342, Confirmed to Francis Dupre commencing at a post standing on the west bank of Salt River it being the South East corner of a tract confirmed to George Meldrum, thence along the border of Salt River down stream south forty five degrees west thirty chains eighty links, to the confluence of said River with Lake St. Clair, thence along the border of said Lake south seventy four degrees thirty minutes East twenty five chains, thence north sixty one degrees East twenty chains thence north sixty three degrees East nineteen chains, thence north eighty degrees East thirty three chains, thence north sixty five degrees East nineteen chains fifty links, thence north six degrees West six chains seventy five links, to a post standing on the border of Lake St. Clair between this tract and a tract reserved for Maccany a Chipawa Indian Chief, thence north sixty degrees West ninety seven chains thirty four links, to a post standing on the border of Salt River thence along the border of said River down stream south eleven degrees East ten chains thirty seven links, thence South seventy degrees West fifteen chains, thence South thirty degrees East twenty five chains, thence South fifty eight degrees East fifteen chains, thence South forty six degrees West twenty chains seventy three links, to the place of beginning containing four hundred and twenty two acres seventeen hundredths of an acre.

Detroit July 24. 1810

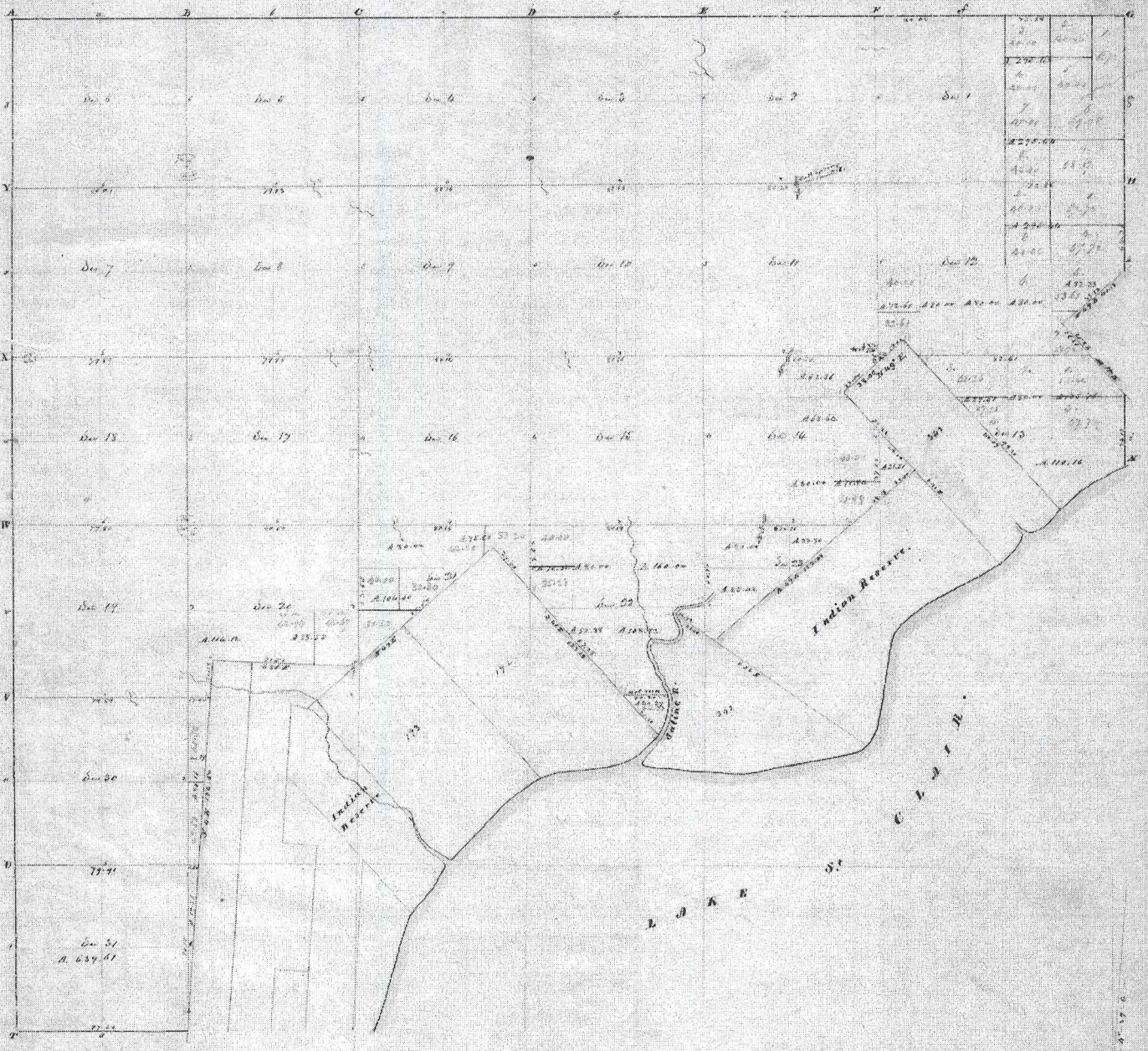
Haron Greeley Surveyor
of private Claims.

Transect 3 North Range 14 East

Beyond at post Eden 18 N.W. Cor. of Reserve thence
 S52°E ~~S52°E~~ along westerly line of Reserve
 17.20 Eden 18
 20.10 Buck 18
 35.00 Enter fields
 45.10 To post Between Sects 23 & 26
 62.00 Leave fields & enter wet marsh
 33.90h 79.00 To Lake St. Clair & set post in Marsh
 No trees
 Found nothing second rate Sugar Buck
 Lymn Ironwood etc. etc.

Beyond at Eden 18 N.W. Cor. of Reserve thence
 N50°E N50°E along Northerly line of Reserve
 11.60 Maple 36
 51.70 Buck 12
 64.25 Buck 18
 72.70 W Oak 36
 84.50 To Sycamore 36 Cor. on Reserve 14 & 23
 78.80 To post Bet Sects 13 & 14
 116.30 Buck 18
 123.30 To Lymn 16 N.E. Cor. of Reserve
 Found nothing second rate Buck
 Lymn Eden etc.

Beyond at Lymn 12 N.E. Cor. of Reserve
 thence
 S49°48' ~~S49°48'~~ along Easterly line of Reserve
 3.72 Buck 18
 25.72 Buck 18
 33.72 To post Bet Sects 13 & 24
 40.12 To Lake St. Clair & set post
 No trees
 thence along Lake Shore



FOR COPY

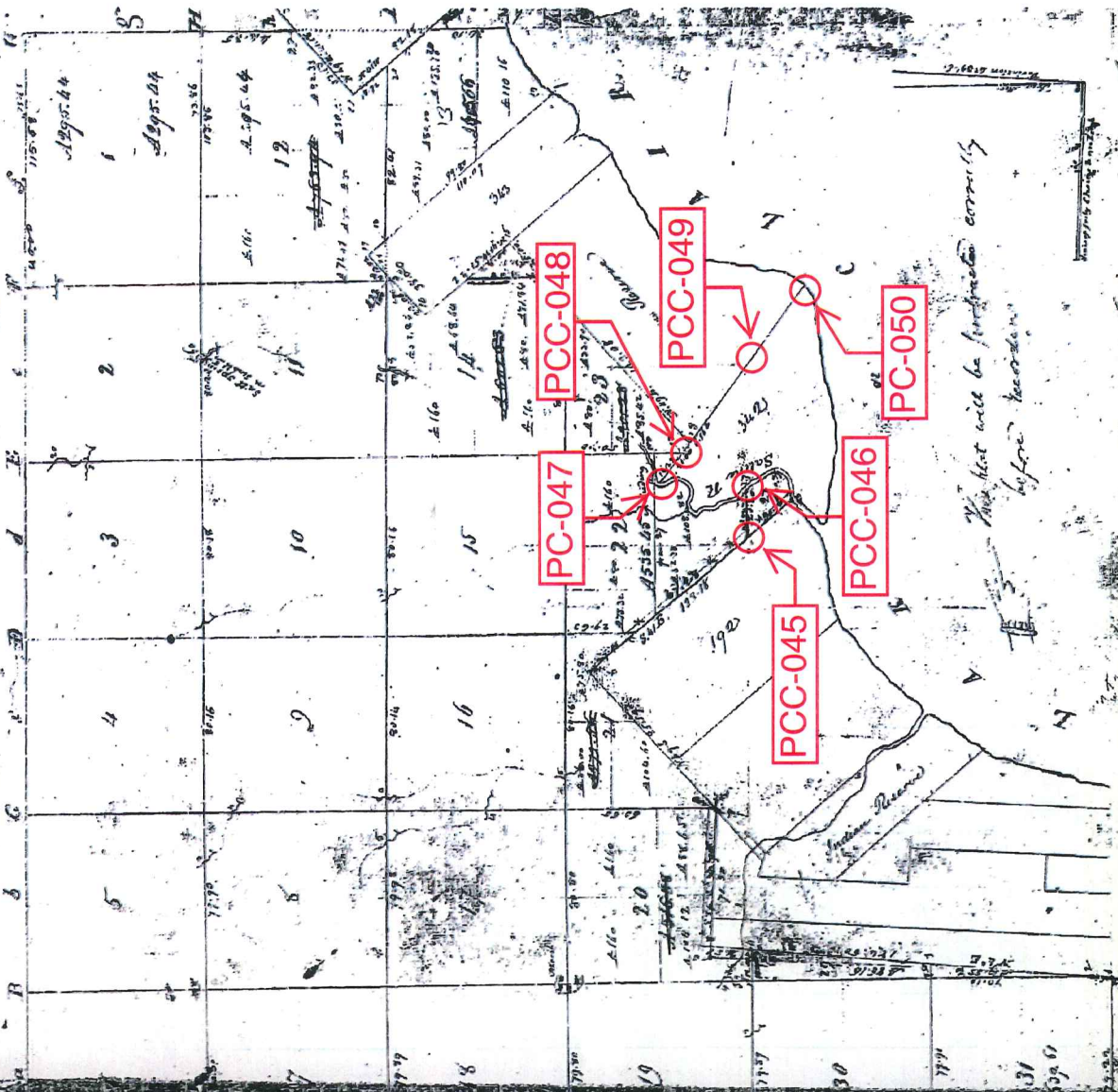
Township N: III North , Range N: XIV East of Mer. (Mich. Ter) surveyed by W. P. Preston. 1871

Description of the soil on the interior sectional lines.

Section	Soil	Section	Soil
1	1 1/2 m. fine, level, land, 1/2 m. out, level, 1/2 m. out	21	2 m. level, part out, 1/2 m. level, 1/2 m. level
2	2 m. level, part out, 1/2 m. level, 1/2 m. level	22	2 m. level, part out, 1/2 m. level, 1/2 m. level
3	2 m. level, part out, 1/2 m. level, 1/2 m. level	23	2 m. level, part out, 1/2 m. level, 1/2 m. level
4	2 m. level, part out, 1/2 m. level, 1/2 m. level	24	2 m. level, part out, 1/2 m. level, 1/2 m. level
5	2 m. level, part out, 1/2 m. level, 1/2 m. level	25	2 m. level, part out, 1/2 m. level, 1/2 m. level
6	2 m. level, part out, 1/2 m. level, 1/2 m. level	26	2 m. level, part out, 1/2 m. level, 1/2 m. level
7	2 m. level, part out, 1/2 m. level, 1/2 m. level	27	2 m. level, part out, 1/2 m. level, 1/2 m. level
8	2 m. level, part out, 1/2 m. level, 1/2 m. level	28	2 m. level, part out, 1/2 m. level, 1/2 m. level
9	2 m. level, part out, 1/2 m. level, 1/2 m. level	29	2 m. level, part out, 1/2 m. level, 1/2 m. level
10	2 m. level, part out, 1/2 m. level, 1/2 m. level	30	2 m. level, part out, 1/2 m. level, 1/2 m. level
11	2 m. level, part out, 1/2 m. level, 1/2 m. level	31	2 m. level, part out, 1/2 m. level, 1/2 m. level
12	2 m. level, part out, 1/2 m. level, 1/2 m. level	32	2 m. level, part out, 1/2 m. level, 1/2 m. level
13	2 m. level, part out, 1/2 m. level, 1/2 m. level	33	2 m. level, part out, 1/2 m. level, 1/2 m. level
14	2 m. level, part out, 1/2 m. level, 1/2 m. level	34	2 m. level, part out, 1/2 m. level, 1/2 m. level
15	2 m. level, part out, 1/2 m. level, 1/2 m. level	35	2 m. level, part out, 1/2 m. level, 1/2 m. level
16	2 m. level, part out, 1/2 m. level, 1/2 m. level	36	2 m. level, part out, 1/2 m. level, 1/2 m. level

26-38-92
4-C-67

Map No. III North Range No. XIV East of Meridian Michigan Territory 139



This list will be further corrected before records.

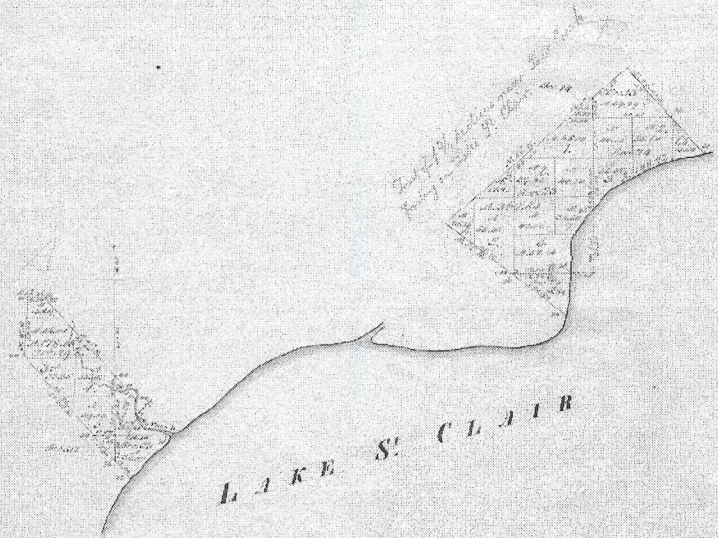
Reference to a contract with and instructions from Edward Jeffrey Esquire Surveyor General the United States Territory date 20th day of November 1816 I had administered land out and beyond the other divided fractional Township and hereby certify that it had been made at various times and that the same is now returned on said list and described in the list as made may be returned with this list into the Surveyor General's office. Great Falls, Mich. 26-38-92

Wm. P. Foster

Township N^o 5 N, Range N^o 14 E. Mer. (Mic.)

Be it remembered that the following is a true and correct copy of the original plat of the Township of North 5, Range of North 14, Meridian (Michigan) as the same is laid out and divided into sections by the Surveyor General of the State of Michigan, in pursuance of an act of the Legislature of the State of Michigan, passed on the 27th day of March, 1837, and approved on the 29th day of the same month and year, and of an act of the Legislature of the State of Michigan, passed on the 27th day of March, 1837, and approved on the 29th day of the same month and year, and of an act of the Legislature of the State of Michigan, passed on the 27th day of March, 1837, and approved on the 29th day of the same month and year.

Section 1	
1	36.00
2	36.00
3	36.00
4	36.00
5	36.00
6	36.00
7	36.00
8	36.00
9	36.00
10	36.00
11	36.00
12	36.00
13	36.00
14	36.00
15	36.00
16	36.00
17	36.00
18	36.00
19	36.00
20	36.00
21	36.00
22	36.00
23	36.00
24	36.00
25	36.00
26	36.00
27	36.00
28	36.00
29	36.00
30	36.00
31	36.00
32	36.00
33	36.00
34	36.00
35	36.00
36	36.00
37	36.00
38	36.00
39	36.00
40	36.00
41	36.00
42	36.00
43	36.00
44	36.00
45	36.00
46	36.00
47	36.00
48	36.00
49	36.00
50	36.00
51	36.00
52	36.00
53	36.00
54	36.00
55	36.00
56	36.00
57	36.00
58	36.00
59	36.00
60	36.00
61	36.00
62	36.00
63	36.00
64	36.00
65	36.00
66	36.00
67	36.00
68	36.00
69	36.00
70	36.00
71	36.00
72	36.00
73	36.00
74	36.00
75	36.00
76	36.00
77	36.00
78	36.00
79	36.00
80	36.00
81	36.00
82	36.00
83	36.00
84	36.00
85	36.00
86	36.00
87	36.00
88	36.00
89	36.00
90	36.00
91	36.00
92	36.00
93	36.00
94	36.00
95	36.00
96	36.00
97	36.00
98	36.00
99	36.00
100	36.00



Total number of acres 3600.00			
Section	Acres	Section	Acres
1	36.00	11	36.00
2	36.00	21	36.00
3	36.00	31	36.00
4	36.00	41	36.00
5	36.00	51	36.00
6	36.00	61	36.00
7	36.00	71	36.00
8	36.00	81	36.00
9	36.00	91	36.00
10	36.00	100	36.00

This is a true and correct copy of the original plat of the Township of North 5, Range of North 14, Meridian (Michigan) as the same is laid out and divided into sections by the Surveyor General of the State of Michigan, in pursuance of an act of the Legislature of the State of Michigan, passed on the 27th day of March, 1837, and approved on the 29th day of the same month and year, and of an act of the Legislature of the State of Michigan, passed on the 27th day of March, 1837, and approved on the 29th day of the same month and year, and of an act of the Legislature of the State of Michigan, passed on the 27th day of March, 1837, and approved on the 29th day of the same month and year.

Surveyed by J. B. ...

1837

J. B. ... the Surveyor General

1956
L 37, P 18

ORIGINAL

301604

"LOTTIVUE"

A PART OF FRAG. SEC. 23 & AC. 342, T.3 N., R.14 E.,
CHESTERFIELD TWP., MACOMB CO.,
MICHIGAN.

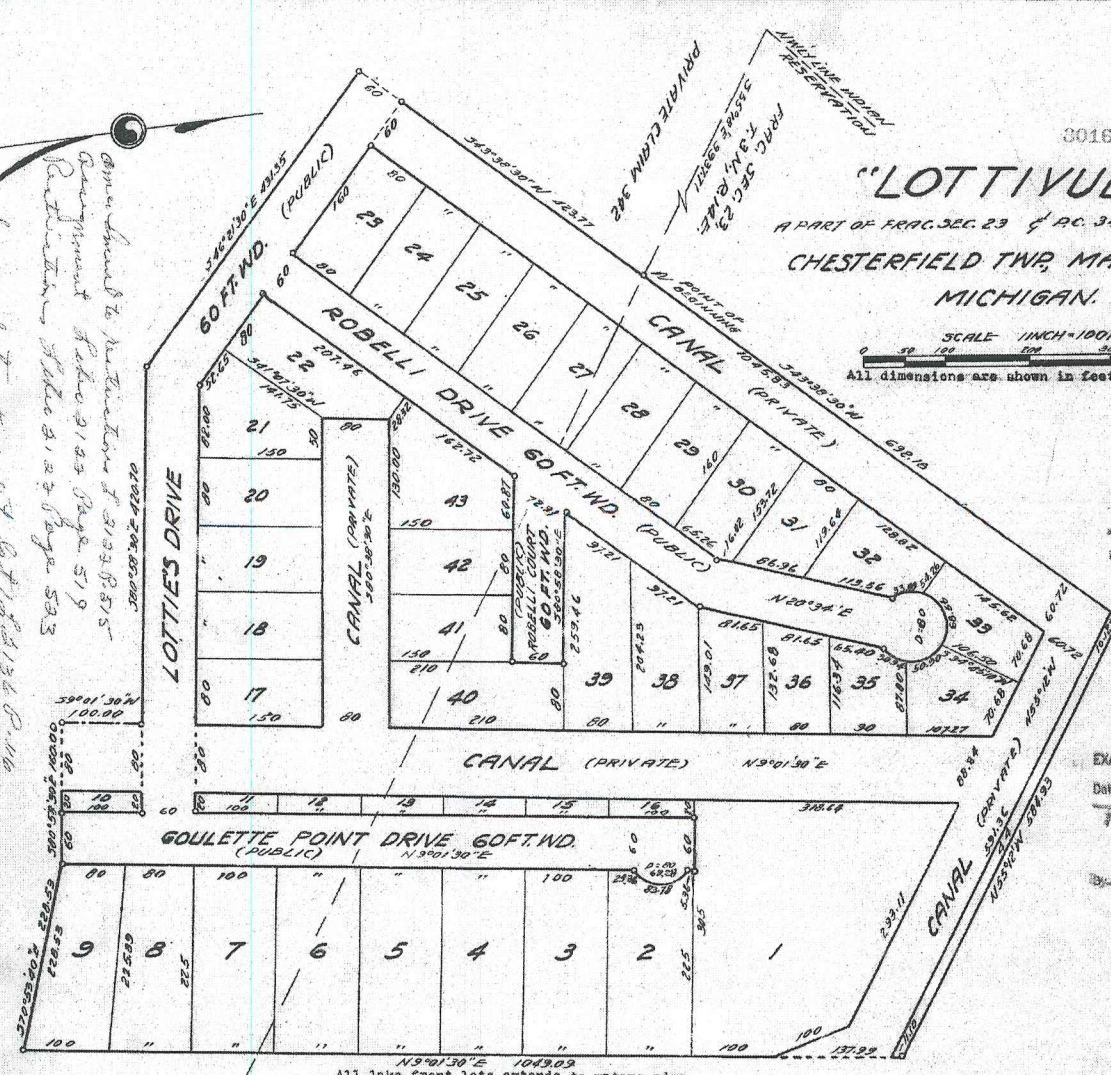
SCALE 1 INCH = 100 FEET
All dimensions are shown in feet and decimals

RECORDER'S OFFICE
COUNTY OF MACOMB

Received for Record
August 23, 1956
at 3:45 P.M. and recorded
in Vol. 37 of Plat. on
Page 18
Carroll Burr
Register of Deeds

EXAMINED AND APPROVED
AUG 23 1956

Frank S. Szymanski
AUDITOR GENERAL
by R. P. M.



LAKE ST. CLAIR

DEDICATION

KNOW ALL MEN BY THESE PRESENTS, that we, Lottie M. Schmidt, Inc., a Michigan Corporation by Betty C. Niemetta President, and Arnold Schmidt Secretary,

as proprietors, have caused the land embraced in the annexed plat to be surveyed, laid out and platted, to be known as "Lottivue", a part of Frag. Sec. 23 & P.C. 342, T.3 N., R.14 E., Chesterfield Twp., Macomb Co., Michigan, and that the streets and private easements shown on said plat, are hereby dedicated to the use of the public and that the streets as shown on said plat are hereby dedicated to the use of the public

Signed and Sealed in the Presence of:
Lottie M. Schmidt, Inc.
Betty C. Niemetta (P.S.) President
Arnold Schmidt (S.S.) Secretary
Beulah Phillips (Witness)

DESCRIPTION OF LAND PLATTED

The land embraced in the annexed plat of "Lottivue", a part of Frag. Sec. 23 & P.C. 342, T.3 N., R.14 E., Chesterfield Twp., Macomb Co., Michigan is described as follows: Commencing South 55°18' East 3937.71 feet along the line between Frag. Sec. 23 and Private Claim 342, T-3 N., R.14 E., from the North Westerly line of the Indian Reservation, thence South 43°38'30" West 423.77 feet, thence South 46°21'30" East 431.35 feet, thence South 80°58'30" East 420.70 feet, thence South 9°01'30" West 100.00 feet, thence South 80°58'30" East 160.00 feet, thence South 70°53'40" East 228.53 feet, thence North 9°01'30" East 1049.09 feet, thence North 55°12' West 584.93 feet, thence South 43°38'10" West 692.18 feet to the point of beginning and includes Lots 1 to 44 inclusive.

APPROVAL BY BOARD OF COUNTY ROAD COMMISSIONERS

This plat has been examined and was approved on the 15th day of August, 1956, by the Macomb County Board of Road Commissioners.

James J. Macdonald (Chairman)
Roy Garner (Member)
Lawrence DeBonne (Member)

MUNICIPAL APPROVAL

This plat was approved by the Township Board of the Township of Chesterfield at a meeting held on August 15, 1956, at Lee Blakely (Clerk)

SURVEYOR'S CERTIFICATE

I hereby certify that the plat herein delineated is a correct one, and that permanent monuments consisting of iron rods at least one half inch in diameter and 36 inches in length, encased in concrete cylinders four inches in diameter and 36 inches in length, have been set at points marked thus (9) as shown on said plat, at all angles to the boundaries of the land platted, at all intersections of the lines of streets and at intersections of the lines of streets with the boundaries of the plat.

Carl Phillips
Registered Land Surveyor

APPROVAL BY COUNTY PLAT BOARD

This plat was approved on the 15th day of August, 1956, by the Macomb County Plat Board

Carroll Burr (County Register of Deeds)
Albert A. Wagner (County Clerk)
Lynn Whalen (County Treasurer)
Frank E. Lohr (County Drain Commissioner)

ACKNOWLEDGMENT

STATE OF Michigan }
County of St. Clair }
On this 15th day of August, A.D. 1956, before me, a Notary Public in and for said county appeared Betty C. Niemetta and Arnold Schmidt

to me personally known, who being each by me duly sworn did say that they are the President and Secretary respectively of the Lottie M. Schmidt, Inc., a Michigan corporation, and that the seal affixed to said instrument is the corporate seal of said corporation and that said instrument was signed and sealed in behalf of said corporation by authority of its Board of Directors and the said Betty C. Niemetta and Arnold Schmidt acknowledged said instrument to be the free act and deed of said corporation.

Beulah Phillips
Notary Public
My Commission expires November 24, 1959

Vertical text on the left margin, possibly a recording or filing note.

1961
L-49, P 1

COPY

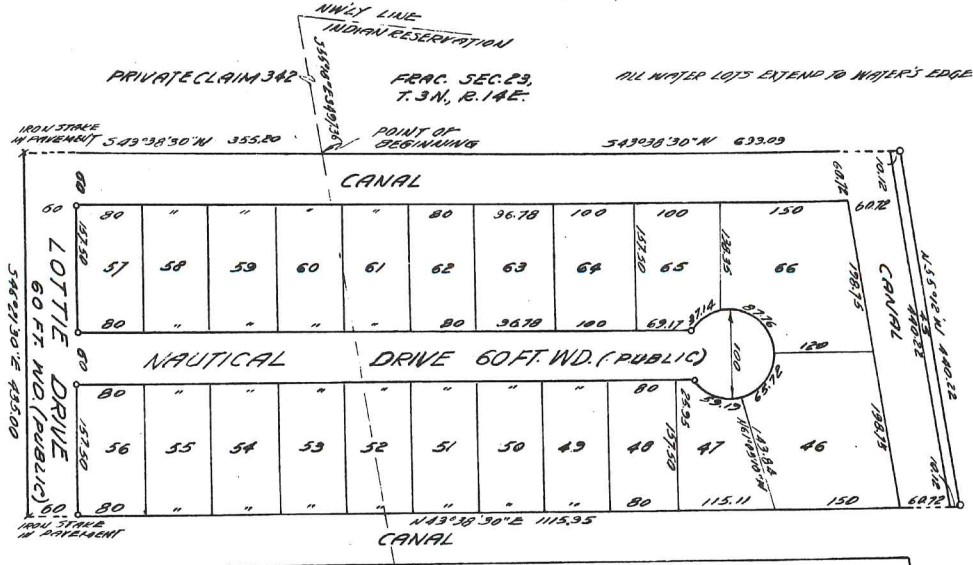
44006

"LOTTIVUE No. 2"

A PART OF FRAC. SEC. 23 & P.C. 342, T.3N, R.14E,
CHESTERFIELD TWP, MACOMB CO, MICHIGAN.



ALL DIMENSIONS ARE SHOWN IN FEET AND DECIMALS



DEDICATION

KNOW ALL MEN BY THESE PRESENTS, that we, **Lottie M. Schmidt, Inc.**, a Michigan Corporation by **Betty C. Niemetta, President**, and **John Niemetta Jr., Secretary**, as proprietors, have caused the land embraced in the annexed plat to be surveyed, laid out and platted, to be known as, "Lottivue No. 2" A part of Frac. Sec. 23 and P.C. 342, T.3 N., R.14 E., Chesterfield Twp., Macomb Co., Michigan

and that the streets as shown on said plat are hereby dedicated to the use of the public, and the canals to be used for public storm drainage purposes only.

Signed and Sealed in the Presence of:
Earl Phillips (Witness) **Betty C. Niemetta, President**
Boulah Phillips (Witness) **John Niemetta Jr., Secretary**

ACKNOWLEDGMENT

STATE OF Michigan }
County of St. Clair }
On this 5th day of May, A.D. 1961, before me, a Notary Public in and for said county appeared **Betty C. Niemetta and John Niemetta Jr.** to me personally known, who being each by me duly sworn did say that they are the President and Secretary respectively of the **Lottie M. Schmidt, Inc.**, a Michigan corporation, and that the seal affixed to said instrument is the corporate seal of said corporation and that said instrument was signed and sealed in behalf of said corporation by authority of its Board of Directors and the said **Betty C. Niemetta, ADA** and **John Niemetta Jr.** acknowledged said instrument to be the free act and deed of said corporation.
Earl Phillips
Notary Public, St. Clair County
My Commission expires **Nov. 9, 1963**

APPROVAL BY BOARD OF COUNTY ROAD COMMISSIONERS

This plat has been examined and was approved on the 25th day of April, 1961, by the Macomb County Board of Road Commissioners.

Lawrence Dehnke (Chairman)
John Boush (Member)
Keith Boysenchen (Member)
Ernest W. McCollum (Member)

APPROVAL BY COUNTY PLAT BOARD

This plat was approved on the 17th day of May, 1961, by the Macomb County Plat Board

Arson Burr (County Register of Deeds)
Arthur J. Miller (County Clerk)
Lynn Whalen (County Treasurer)
Thomas S. Welsh (County Drain Commissioner)

DESCRIPTION OF LAND PLATTED

The land embraced in the annexed plat of "Lottivue No. 2" is a part of Frac. sec. 23 and P.C. 342, T.3 N., R.14 E., Chesterfield Twp., Macomb Co., Michigan is described as follows: Commencing South 55°18' East 3497.36 feet along the line between Frac. Sec. 23 and Private Claim 342, T.3 N., R.14 E., from the North westerly line of the Indian reservation, thence South 43°38'30" West 355.20 feet, thence South 46°21'30" East 435.00 feet, thence North 43°38'30" East 1115.95 feet, thence North 55°12' West 440.22 feet, thence South 43°38'30" West 693.09 feet to the point of beginning and includes Lots 45 to 66 inclusive.

SURVEYOR'S CERTIFICATE

I hereby certify that the plat hereon delineated is a correct one and that permanent metal monuments consisting of bars not less than one-half inch in diameter and 36 inches in length, or shorter bars of not less than one-half inch in diameter tapered over each other at least 6 inches with an over-all length of not less than 36 inches, encased in a concrete cylinder of at least 4 inches in diameter and 36 inches in depth have been placed at points marked thus (O) as thereon shown at all angles in the boundaries of the land platted, of all the intersections of streets, intersections of alleys, or of streets and alleys, and of the intersections of streets and alleys with the boundaries of the plat as shown on said plat.
Earl Phillips
Registered Land Surveyor

CERTIFICATE OF MUNICIPAL APPROVAL

This plat was approved by the Township Board of the Township of Chesterfield at a meeting held May 16, 1961, and that the width of lots is in compliance with requirements of Section 30, Act 172, of 1929, as amended.
Joseph Weisenberger Clerk

I hereby certify that copy is a true copy of this or plat forwarded the Register of Deeds for recording.
Date **June 5, 1961**
Date **June 12, 1961**
Date **June 5, 1961**
Richard E. Jones
Notary Public, St. Clair County

RECORDED
Register's Office
Macomb County
List of
Lottivue No. 2
was recorded this 6th day of June A.D. 1961 at 2:30 p.m. in Liber 49 of plats
Page 1
Raymond R. Craig
Register of Deeds

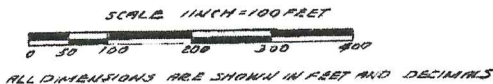
THIS IS TO CERTIFY THAT RECORDED IN THE COUNTY TREASURER'S RECORDS THERE ARE NO TAX DUES ON THIS PLAT AND THAT TAXES ARE PAID FOR FIVE YEARS PREVIOUS TO DATE OF RECORDING. Except 1961
NO. 214, DATE 5-21-61, TWP. CHESTERFIELD, MACOMB COUNTY, MICHIGAN
Treasurer: **Richard E. Jones**
NOT INCLUDING CURRENT TAXES FROM YEAR OF RECORDING

1964
L 53, P 35

ORIGINAL

"LOTTIVUE No. 3"

A PART OF FRAC. SEC. 23 & P.C. 342, T.3N., R.14E.,
CHESTERFIELD TWP., MACOMB CO., MICHIGAN.

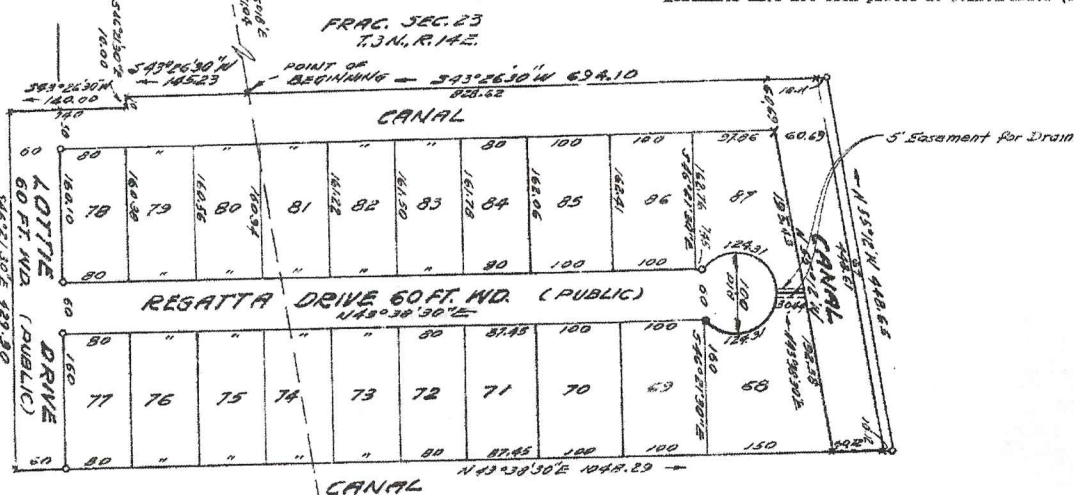


856915

PRIVATE CLAIM 342

WATER LINE
INDIAN RESERVATION

ALL WATER LOTS EXTEND TO WATER EDGE
Monuments have not been placed at points marked (x)



REGISTER'S OFFICE
COUNTY OF MACOMB
Received for Record
July 17, 1964
at 11:35 a.m. dock A, M., and recorded
in Vol. 53 of PLATS, on
Page 35
Raymond R. Quinn
Deputy Register of Deeds

DESCRIPTION OF LAND PLATTED

The land embraced in the annexed plat of "LOTTIVUE No. 3" is a part of Frac. Sec. 23 and P.C. 342, T.3N., R.14E., Chesterfield Twp., Macomb Co., Michigan, as described by following: Commencing South 55°12' East 3051.04 feet along the line between Frac. Sec. 23 and Private Claim 342, T.3N., R.14E., from the North Westerly line of the Indian Reservation, thence South 43°26'30" East 145.23 feet, thence South 46°21'30" East 10.00 feet, thence South 43°26'30" West 140.00 feet, thence South 46°21'30" East 429.93 feet, thence North 43°26'30" East 1043.29 feet, thence North 55°12' West 446.65 feet, thence South 43°26'30" West 654.10 feet to the point of beginning and includes Lots 67 to 87 inclusive.

APPROVAL BY BOARD OF COUNTY ROAD COMMISSIONERS

This plat has been examined and was approved on the 15th day of June, 1964, by the County Board of Road Commissioners:

Kathleen Kovacschen (Chairman)
Ernest W. McCollum (Member)
Lawrence Oehmlke (Member)

APPROVAL BY COUNTY PLAT BOARD

This plat was approved on the 15th day of June, 1964, by the County Plat Board:

Carol Burr (County Register of Deeds)
Eina Miller (County Clerk)
Arvin Whalen (County Treasurer)
Thomas E. Welch (County Drain Commissioner)
By: Arnold F. Rockensuess

SURVEYOR'S CERTIFICATE

I hereby certify that the plat hereon delineated is a correct one and that permanent metal monuments consisting of bars not less than one-half inch in diameter and 36 inches in length, or shorter bars of not less than one-half inch in diameter lapped over each other at least 6 inches with an over-all length of not less than 36 inches, encased in a concrete cylinder at least 4 inches in diameter and 36 inches in depth have been placed at points marked (D) as shown on all angles in the boundaries of the land platted, at all the intersections of streets, intersections of alleys, or of streets and alleys, and at the intersections of streets and alleys with the boundaries of the plat as shown on said plat.

Beulah Phillips
Fair Haven, Michigan

DEDICATION

KNOW ALL MEN BY THESE PRESENTS, that we, Lottie M. Schmidt, Inc., a Michigan Corporation, by Betty C. Niametta, President, and John Niametta Jr., Secretary, as proprietors, have caused the land embraced in the annexed plat to be surveyed, laid out and platted, to be known as "LOTTIVUE No. 3", a part of Frac. Sec. 23 and P.C. 342, T.3N., R.14E., Chesterfield Twp., Macomb Co., Michigan, and that the streets and easement as shown on said plat are hereby dedicated to the use of the Public and the canals to be used for public storm drainage purposes only.

Signed and Sealed in the Presence of:
Lottie M. Schmidt, Inc.
48400 Jefferson Ave. New Baltimore, Mich.
Betty C. Niametta, President
John Niametta Jr., Secretary
Beulah Phillips (Witness)

ACKNOWLEDGMENT

STATE of Michigan, County of Macomb, ss.
On this 15th day of June, A.D. 1964, before me, Beulah Phillips, a Notary Public in and for said county appeared Betty C. Niametta and John Niametta Jr., 48400 Jefferson Ave., New Baltimore, Michigan, to me personally known, who being each by me duly sworn did say that they are the President and Secretary respectively of the Lottie M. Schmidt, Inc., a Michigan corporation, and that the seal affixed to said instrument is the corporate seal of said corporation and that said instrument was signed and sealed in behalf of said corporation by authority of its Board of Directors and the said Betty C. Niametta and John Niametta Jr. acknowledged said instrument to be the free act and deed of said corporation.
Beulah Phillips, Notary Public, My Commission expires October 13, 1967.

CERTIFICATE OF MUNICIPAL APPROVAL

This plat was approved by the Township Board of the Township of Chesterfield at a meeting held on June 15, 1964, and that the width of lots is in compliance with requirements of Section 30, Act 172, of 1929, as amended, and complies with Section 19a.
Joseph M. Weisenberger, Clerk

EXAMINED AND APPROVED
Date: JUL 15 1964
Earle S. Farnum
AUDITOR GENERAL

413 4-27-64
E. Barry

L53-P35

1970
L 60, P 34

COPY

LOTTIVUE N^o 4

A PART OF FRACTIONAL SECTION 23 AND R.C. 342, T. 3N., R. 14E.,
CHESTERFIELD TOWNSHIP, MACOMB COUNTY, MICHIGAN

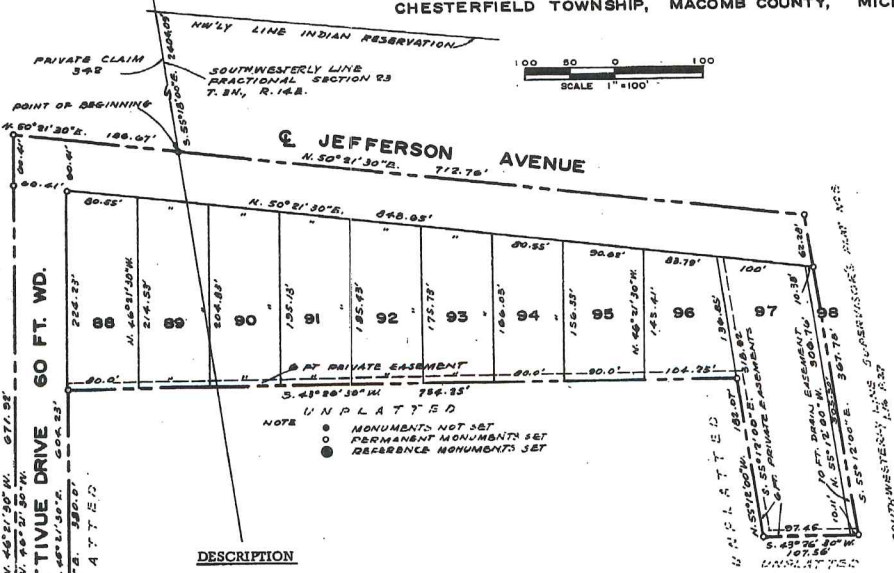
FITZ J. BRIDGES, P.E.
REGISTERED ENGINEER AND SURVEYOR
273 SOUTH GRATIOT AVENUE
MOUNT CLEMENS, MICHIGAN 48043

NOTE: All dimensions in feet and decimals thereof. Easements shown are private for public utilities and drainage. All curvilinear dimensions are in chord lengths.

RECORDING DATA

Certified true copy of the plat recorded on 26 July 1970, at 10:30 a.m., in liber 60 of plats on page 24 by Richard E. Lemast Register of Deeds.

By Richard E. Lemast STATE TREASURER
Richard E. Lemast - Plat Examiner
Date Feb. 19, 1970



DESCRIPTION

The land embraced in the annexed plat of Lottivue No. 4, a part of Fractional Section 23 and P.C. 342, T.3N., R.14E., Chesterfield Township, Macomb County, Michigan.

Commencing at the intersection of the Northwestern line of Indian Reservation and the Southwestern line of Fractional Section 23; thence S.55°18'00"E., 2404.09 ft., along the Southwestern line of Fractional Section 23 to the point of beginning; thence N.50°21'30"E., 712.76 ft., along the centerline of Jefferson Avenue; thence S.55°12'00"E., 367.78 ft., along the Southwestern line of Supervisor's Plat No. 5 as recorded in Macomb County Records, L.16, P.27; thence S.43°26'30"W., 107.56 ft.; thence N.55°12'00"W., 182.07 ft.; thence S.43°26'30"W., 754.25 ft.; thence S.46°21'30"E., 380.0 ft.; thence S.43°26'30"W., 60.0 ft.; thence N.46°21'30"W., 671.92 ft.; thence N.50°21'30"E., 186.67 ft. to the point of beginning and containing Lots 88 through 97 inclusive.

DEDICATION

KNOW ALL MEN BY THESE PRESENTS, that we, Lottie M. Schmidt Inc., a Michigan Corporation, with seal, Betty C. Niemetta, President, and John Niemetta, Jr., Secretary Treasurer as proprietors; Raymond W. Trempler and Gina E. Trempler, his wife, as proprietors; The Citizens State Savings Bank of New Baltimore as mortgagees in part by Thomas M. Stapleton, President, Paul J. Kolarik, Head Cashier, have caused the land embraced in the annexed plat to be surveyed, laid out and platted to be known as LOTTIVUE NO. 4 a part of fractional Section 23 and P.C. 342, T.3N., R.14E., Chesterfield Township, Macomb County, Michigan and that the streets as shown on said plat are hereby dedicated to the use of the public and that the private easements shown on said plat are hereby reserved for the use of public utilities, or for the specific utilities thereon noted, subject to the regulations and control of the use thereof by the local governmental authorities and that no permanent structures are to be erected within the lines of said easements.

ACKNOWLEDGEMENT

STATE OF MICHIGAN - County of MACOMB)ss
On this 14TH day of JULY A.D., 1969, before me, a Notary Public in and for said county appeared Thomas M. Stapleton and Paul J. Kolarik to me personally known, who being each by me duly sworn did say that they are the President and Head-Cashier respectively of The Citizens State Savings Bank of New Baltimore, a National Corporation, with seal, and that the seal affixed to said instrument is the corporate seal of said corporation and that said instrument was signed and sealed in behalf of said corporation by authority of its Board of Directors and the Thomas M. Stapleton and Paul J. Kolarik acknowledged said instrument to be the free act and deed of said corporation.
My commission expires Aug. 4, 1969 Notary Public Collene A. Hall County, Michigan

CERTIFICATION OF MUNICIPAL APPROVAL

This plat was approved by the Township Board of Chesterfield Township, at a meeting held on the 22ND day of JULY A.D., 1969. The foregoing plat as approved complies with the provisions of 19A of the Plat Act as added by Act 150 of Public Acts of 1961. The width of lots is in compliance with requirements of Section 30, Act 172, of 1929 as amended.

Gloria Goike
Gloria Goike, Clerk

CERTIFICATE OF APPROVAL BY THE COUNTY PLAT BOARD

This plat was approved on the 22nd day of December A.D., 1969, by the Macomb County Plat Board.

Edna Miller Edna Miller, Clerk Register of Deeds
Adam E. Nowakowski Adam E. Nowakowski, County Treasurer
Thomas S. Welsh Thomas S. Welsh, Drain Commissioner
Norman Hill Norman Hill, Chairman-Board of Supervisors
By: A.G. Hazen, Deputy

CERTIFICATE OF APPROVAL BY THE BOARD OF COUNTY ROAD COMMISSIONERS

This plat has been examined and was approved on the 25th day of November A.D., 1969, by the Macomb County Board of Road Commissioners.

Keith Bovenschen Keith Bovenschen, Chairman
Ernest W. McCollon Ernest W. McCollon, Vice-Chairman
Lawrence Oehmke Lawrence Oehmke, Member

SURVEYOR'S CERTIFICATE

I hereby certify the Plat hereon delineated is a correct one and that permanent metal monuments consisting of bars not less than one-half inch in diameter and 36 inches in length, encased in a concrete cylinder at least 4 inches in diameter and 36 inches in depth have been placed at points marked thus (0) as thereon shown at all angles in the boundaries of the land platted at all the intersections of the lines of streets, and at the intersections of the lines of streets with the boundaries of the plat as shown on said plat.

Fitz J. Bridges
Fitz J. Bridges, P.E.
Registered Land Surveyor No. 5779
273 South Gratiot Avenue
Mount Clemens, Michigan 48043

Prepared and Drafted By:
This is to certify that according to the County Treasurer's records there are no tax liens on this property and that taxes are paid for the years previous to date of this 1969 No. 678
Date DEC 5 - 1969
By: Adam E. Nowakowski Macomb County Treasurer, Plat
This certification does not include current taxes now being collected. Edna Miller

Signed and sealed in the presence of:
Witness: MARIE L. MONROE
Witness: MARY R. WILBUR
Witness: MARIE L. MONROE
Witness: MARY R. WILBUR
Witness: MARIE L. MONROE
Witness: MARY R. WILBUR
Witness: MARIE L. MONROE
Witness: MARY R. WILBUR
Witness: MARIE L. MONROE
Witness: MARY R. WILBUR

Lottie M. Schmidt, Inc. a Michigan Corporation
48400 Jefferson Avenue
New Baltimore, Michigan 48047
Betty C. Niemetta L.S.
Betty C. Niemetta, President
John Niemetta, Jr. L.S.
John Niemetta, Jr.
Secretary Treasurer
Raymond W. Trempler L.S.
Raymond W. Trempler
49800 Jefferson Avenue
New Baltimore, Michigan 48047
Gina E. Trempler L.S.
Gina E. Trempler
49800 Jefferson Avenue
New Baltimore, Michigan 48047
Thomas M. Stapleton L.S.
Thomas M. Stapleton, President
Paul J. Kolarik L.S.
Paul J. Kolarik, Head Cashier

ACKNOWLEDGEMENT
STATE OF MICHIGAN - County of MACOMB)ss
On this 14TH day of JULY A.D., 1969, before me, a Notary Public in and for said county, appeared Betty C. Niemetta and John Niemetta, Jr. to me personally known, who being each by me duly sworn did say that they are the President and Secretary-Treasurer respectively of the Lottie M. Schmidt, Inc., a Michigan Corporation, with seal, and that the seal affixed to said instrument is the corporate seal of said corporation and that said instrument was signed and sealed in behalf of said corporation by authority of its Board of Directors and the said Betty C. Niemetta and John Niemetta, Jr., acknowledged said instrument to be the free act and deed of said corporation.
My commission expires 10-15-71 Notary Public Collene A. Hall County, Michigan

ACKNOWLEDGEMENT
STATE OF MICHIGAN - County of MACOMB)ss
On this 14TH day of JULY A.D., 1969, before me, a Notary Public in and for said county, personally came the above named Raymond W. Trempler and Gina E. Trempler, his wife, known to me to be the persons who executed the above dedication and acknowledged the same to be their free act and deed.
My commission expires 10-15-71 Notary Public Collene A. Hall County, Michigan

51568

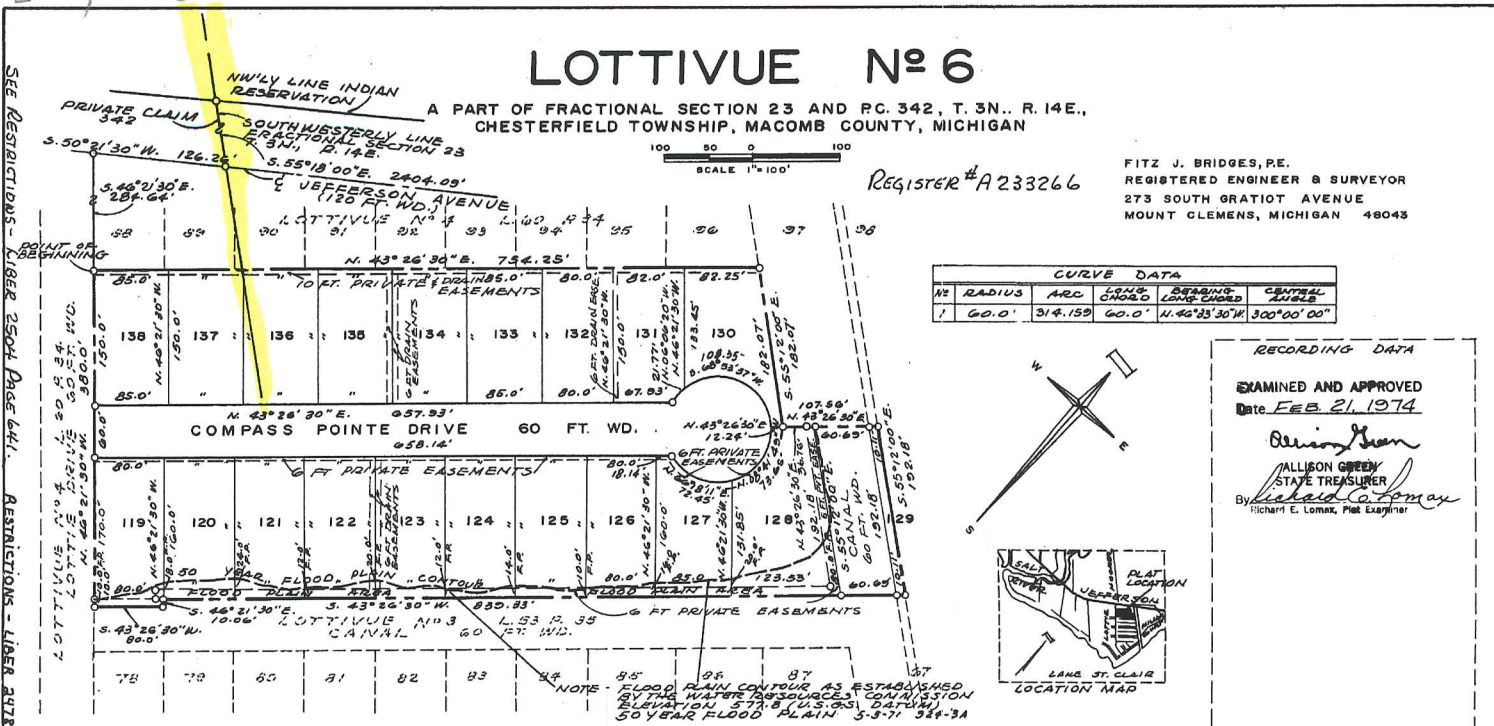
1974
L 64, P 48

LOTTIVUE No 6

A PART OF FRACTIONAL SECTION 23 AND P.C. 342, T. 3N., R. 14E.,
CHESTERFIELD TOWNSHIP, MACOMB COUNTY, MICHIGAN

REGISTER # A 233266

FITZ J. BRIDGES, P.E.
REGISTERED ENGINEER & SURVEYOR
273 SOUTH GRATIOT AVENUE
MOUNT CLEMENS, MICHIGAN 48043



CURVE DATA				
NO	RADIUS	ARC	CHORD	CENTRAL ANGLE
1	60.0'	314.159'	60.0'	N. 43° 26' 30" E. 107.56'

RECORDING DATA
 EXAMINED AND APPROVED
 Date FEB 21, 1974
 Allison Green
 ALLISON GREEN
 STATE TREASURER
 By Richard E. Lomax, Plat Examiner

SURVEYOR'S CERTIFICATE

I, Fitz J. Bridges, Surveyor, certify that I have surveyed, divided and mapped the land shown on this plat, described as follows:
 The land embraced in the annexed plat Lottivue No. 6, a part of fractional Section 23 and P.C. 342, T. 3N., R. 14E., Chesterfield Township, Macomb County, Michigan.

Commencing at the intersection of the Northwestern Line of Indian Reservation and the Southwestern Line of fractional Section 23, thence S. 55°18'00" E., 2404.09 ft., along the Southwestern Line of fractional Section 23, thence S. 50°21'30" W., 126.26 ft., along Centerline of Jefferson Avenue (120 ft. wd.) also the Northwestern Line of Lottivue No. 4 as recorded in L. 60, P. 34 Macomb County Records, thence S. 46°21'30" E., 284.64 ft., along the Northwestern Line of Lottivue No. 4 (60 ft. wd.), thence N. 43°26'30" E. 754.25 ft., thence S. 55°12'00" E., 182.07 ft., thence N. 43°26'30" E., 107.56 ft., thence S. 55°12'00" E. 192.18 ft., thence S. 43°26'30" W., 839.33 ft., along the Northeastern Line of Lottivue No. 3 as recorded in L. 53, P. 35 Macomb County Records, thence S. 46°21'30" E., 10.06 ft., thence S. 43°26'30" W., 80.00 ft., thence N. 46°21'30" W., 380.00 ft., along the Northwestern Line of Lottivue No. 4 as recorded in L. 60, P. 34, Macomb County Records to the point of beginning and containing lots 119 through 138 inclusive (7.14 acres)

That I have made such survey, land-division and plat by the direction of the owners of such land.
 That such plat is correct representation of all the exterior boundaries of the land surveyed and the subdivision of it.
 That the required monuments and lot markers have been located in the ground as required by Section 125 of the Act.
 That the accuracy of survey is within the limits required by Section 126 of the Act.
 That the bearings shown on the plat are expressed as required by Section 126 (3) of the Act and as explained in the legend.

PLAT LEGEND

All dimensions are shown in feet.
 All curvilinear dimensions are in chord lengths.
 Bearings were established from Recorded Lottivue Subdivision No. 4, Liber 60, Page 34, Macomb County Records.
 The symbol "o" indicates a concrete monument.
 All lot markers are iron bars 18" long and 1/2" in diameter.
 Corners not set.
 Irons set on intermediate traverse line at lot line.

PROPRIETOR'S CERTIFICATE - CORPORATION

LOTTIE M. SCHMIDT, INC., a corporation duly organized and existing under the laws of the State of Michigan by Betty C. Niemetta, President and John Niemetta, Jr., Secretary Treasurer as proprietors have caused the land to be surveyed, divided, mapped and dedicated as represented on this plat and that the streets and other facilities are for the use of the public; that the public utility easements are private easements and that all other easements are for the uses shown on the plat. This plat includes all land to the waters edge as shown. Lot 129 shall not be used wholly or in part for residential building purposes.

Witnesses:
 ANNE M. THEIT
 JOHN A. NIEMETTA
 MARIE L. MONROE
 J. GORDON SMITH
 LOTTIE M. SCHMIDT, INC.
 48400 Jefferson Avenue
 New Baltimore, Michigan 48047
 Betty C. Niemetta, President
 John Niemetta, Jr., Secretary Treasurer



Prepared and Drafted by:
 Fitz J. Bridges
 Consulting Engineer
 273 South Gratiot Avenue
 Mount Clemens, Michigan 48043

Fitz J. Bridges
 Registered Land Surveyor #5779
 Date of Certification APRIL 25, 1973

CORPORATION ACKNOWLEDGEMENT

STATE OF MICHIGAN)
 MACOMB COUNTY) s.s.
 Personally came before me this 28th day of APRIL, 1973, Betty C. Niemetta, President and John Niemetta, Jr., Secretary Treasurer of the above named corporation to me known to be the persons who executed the foregoing instrument; and to me acknowledged that they executed the foregoing instrument as such officers as the free act and deed of said corporation, by its authority.

Notary Public Phyllis J. Reynolds
 MACOMB County, Michigan
 My Commission Expires JUNE 24, 1974

PROPRIETOR'S ACKNOWLEDGEMENT

STATE OF MICHIGAN)
 MACOMB COUNTY) s.s.
 Personally came before me this 28th day of APRIL, 1973, the above named Robert F. Messier and Virginia Messier, his wife, to me known to be the persons who executed the foregoing instrument and acknowledged that they executed the same as their free act and deed.

Notary Public John Niemetta, Jr.
 JOHN NIEMETTA, JR.
 My Commission Expires AUGUST 17, 1975

PROPRIETOR'S CERTIFICATE

We as proprietors certify that we caused the land embraced in this plat to be surveyed, divided, mapped and dedicated as represented on this plat and that the streets and other facilities are for the use of the public; that the public utility easements are private easements and that all other easements are for the uses shown on the plat. This plat includes all land to the waters edge as shown. Lot 129 shall not be used wholly or in part for residential building purposes.

Witnesses:
 J. Gordon Smith
 MARIE L. MONROE
 JOHN NIEMETTA, JR.
 PHYLLIS J. REYNOLDS
 Robert F. Messier
 34055 Lottivue Drive
 New Baltimore, MI 48047
 Virginia Messier

PROPRIETOR'S CERTIFICATE - CORPORATION

NATIONAL BANK OF DETROIT a corporation duly organized and existing under the laws of the State of Michigan by J. W. Gurney, Vice President and Robert F. Leech, Assistant Cashier as proprietors have caused the land to be surveyed, divided, mapped and dedicated as represented on this plat and that the street and other facilities are for the use of the public; that the utility easements are private easements and that all other easements are for the uses shown on the plat. NATIONAL BANK OF DETROIT as mortgagee only. Lot 129 shall not be used wholly or in part for residential building purposes. This plat includes all land to the waters edge as shown.

Witnesses:
 Douglas W. Teubert
 JOHN NIEMETTA, JR.
 Douglas W. Teubert
 JOHN NIEMETTA, JR.
 National Bank of Detroit
 Woodward at Fort
 Detroit, Michigan 48232
 J. W. Gurney, VICE PRESIDENT
 Robert F. Leech, ASSISTANT CASHIER

L 64 P 48

11-1

LOTTIVUE N° 6

A PART OF FRACTIONAL SECTION 23 AND P.C. 342, T. 3N., R. 14E.,
CHESTERFIELD TOWNSHIP, MACOMB COUNTY, MICHIGAN

REGISTER # A233266

FITZ J. BRIDGES, P.E.
REGISTERED ENGINEER & SURVEYOR
273 SOUTH GRATIOT AVENUE
MOUNT CLEMENS, MICHIGAN 48043

RECORDING DATA

CORPORATION ACKNOWLEDGEMENT

STATE OF MICHIGAN)
WAYNE COUNTY) s.s.

Personally came before me this 25TH day of APRIL, 1978,
J. W. Gurney, Vice President and Robert F. Leech, Assistant Cashier
of the above named corporation to me known to be the persons who executed the foregoing
instrument and to me known to be such Vice President and Assistant Cashier
of said corporation, and acknowledged that they executed the foregoing instrument as such
officers as their free act and deed of said corporation, by its authority.

John Niemi, Jr.
Notary Public JOHN NIEMI, JR.
My Commission Expires AUGUST 17, 1975
MACOMB County, Michigan
ACTING IN WAYNE COUNTY

COUNTY TREASURER'S CERTIFICATE

The records in my office show no unpaid taxes or special assessments for the five years preceding
MAY 3 1978 involving the lands included in this plat in Macomb County.

Donna Burdo Clerk # 775 Adam E. Nowakowski, County Treas.
Donna Burdo Adam E. Nowakowski, County Treasurer

COUNTY DRAIN COMMISSION CERTIFICATE

Approved on JULY 30, 1973 as complying with Section 192 of Act 288, P.A. 1967
and the applicable rules and regulations published by my office in the County of Macomb.

Thomas S. Welsh
Thomas S. Welsh, Drain Commissioner

CERTIFICATE OF COUNTY ROAD COMMISSION

Approved on AUGUST 7, 1973 as complying with Section 183 of Act 288, P.A. 1967
and the applicable rules and regulations of the Board of Road Commissioners of Macomb County.

Lawrence Oehme Keith Bovenschen Joseph Peki
Lawrence Oehme, Chairman Keith Bovenschen, Vice-Chairman Joseph Peki, Member

CERTIFICATE OF MUNICIPAL APPROVAL

I certify that this plat was approved by the Township Board of the Township of Chesterfield at a
meeting held August 20, 1973 and was reviewed and found to be in compliance with
Act 288, P.A. 1967. That the required monuments and lot markers have been located in the
ground as required by Section 125 of the Act, lots conform with Interim Subdivision Regulations
and the Zoning Ordinance (Ordinance 41) of the Township of Chesterfield. Sanitary Sewer
and Water Facilities exist within the plat.

Gloria Golke
Gloria Golke, Clerk

COUNTY PLAT BOARD CERTIFICATE

This plat has been reviewed and is approved by the MACOMB County Plat Board on
SEPTEMBER 20, 1973 as being in compliance with all of the provisions of Act 288, P.A. 1967,
and the Plat Board's applicable rules and regulations.

Edna Miller Adam E. Nowakowski John J. Zoccola
Edna Miller, Clerk-Register of Deeds Adam E. Nowakowski, County-Treasurer John J. Zoccola, Chairman Board of Commissioners

RECORDING CERTIFICATE

STATE OF MICHIGAN)
COUNTY OF MACOMB) s.s.

This plat was received on 4TH day of MARCH A.D. 1978 at 3:15 P.M.
recorded in Liber 64 of Plats on Pages 48 and 49.

Raymond R. Craig
Raymond R. Craig, Deputy Register of Deeds

AGREEMENTS OF RESTRICTION CERTIFICATE

This plat is subject to restrictions as required by Act 288 of 1967, as amended on certain lots
with respect to the requirements of the Michigan Department of Natural Resources and/or the
Michigan Department of Public Health, which are recorded in Liber 478 Page 659 of records of
this county.



SEE RESTRICTIONS - LIBER 2504 PAGE 641.
RESTRICTIONS - LIBER 2718 PAGE 659

L 64 P 49