

**PCC-038**  
**DOSSIER CONTENT**  
2010 REMON  
T.3N., R.14E.,  
Chesterfield Township, Macomb County, Michigan

**Section One**

Index

Pictures in the four cardinal directions; before and after setting the required monumentation.

**Section Two**

LCRC

Surveyor's Report

**Section Three**

1 Field Notes

2 Sketch

4 Township Map

5 Tax Map 1974

6 Aerial Pictures 2009

**Section Four**

1 1810 Survey of PC 343 A. Greeley

2 1817 GLO notes Preston

3 1817 Township map Preston

4 1818 Township map Surveyor General Office

5 1852 Plat of A. Ashley Sr. Addition to the City of Ashley

Wesolowski L Z, Front Page

6 1959 Diana Rae Robinson Plat Phillips 1728 L44, P46

7 1967 Washington Acres Sub'n Mavis 10400 L58, P37

LAND CORNER RECORDATION CERTIFICATE
Filing Requirement of Act 74, Mich. P.A. 1970
REMONUMENTATION CORNER

130684
LIBER 20515 PAGE 772
11/29/2010 01:46:45 P.M.
MACOMB COUNTY, MI
CARNELLA SABAUGH, REGISTER OF DEEDS
SEAL

For corners in:
MACOMB COUNTY
(County)

Located In: NEW BALTIMORE

Corner Code #
PCC-038

- 1. Public Land Survey T R
2. Property Controlling in Section S 12 T 3N R 14E
3. Miscellaneous Property in Sec. S T R

4. Lot No. , Recorded Plat

5. Private Claims PC 343

PCC-038 intersection of North line of Section 13 with Easterly line of PC 343.

I, ROBERT E. HORNYAK, in a field survey on, July 18, 2010 do hereby certify that under requirements of P.A. 74, Michigan P.A. of 1970, the corner points mentioned in lines 1 and 2 above were in conformance with regulations and rules therefore as required in the current manual of survey instructions of the United States Department of the Interior, Bureau of Land Management or by a decree of a Court of Law and /or that the corner points mentioned in lines 3, 4 and 5 above were in conformance with the rules of the Michigan Board of Land Surveyors or by a Decree of a Court of Law; established, re-established, monumented, re-monumented, recovered, found as expressed below:

NOTE: Not more than 2 corners, all in the same town and range, may be recorded on this certificate.

A. Description of original monument and accessories and/or subsequent restoration:

- 1 Survey of PC 343 was performed by A. Greeley in 1810. Corner not set.
2 1817 GLO notes Preston W. oak 24" diameter

Subsequent Restorations:

- 3 1817 Township map Preston Object not stated
4 1818 Township map Surveyor General Office Object not stated
5 1852 Plat of A. Ashley Sr. Addition to the City of Ashley Object not stated
6 1959 Diana Rae Robinson Plat Wesolowski L Z, Front Page
Phillips 1728 L44, P46 Plat graphically shows the location of PCC-038, but does not reference it dimensional
7 1967 Washington Acres Sub'n Mavis 10400 L58, P37 Object not stated

B. Description of corner evidence found and/or method applied in restoring or reestablishing corner:

No evidence of corner was found.
I reestablished corner at the straight line between PC-034 & PC-036 at the record distance from PC-034 as shown at Item 7. Corner falls 17.08' Northwest of intersection of straight line between K-05 & L-05 with straight line between PC-034 & PC-036.
Corner falls N'ely 0.4' of CL Base Rd.
Occupation: Southeast & Northwest - Base Rd. (asphalt). East & West - none.

Distances:

Table with 4 columns: PCC-038 to L-05 (1402.50'), PCC-038 to PC-036 (6665.13'), PCC-038 to PCC-037 (1085.70'), PCC-038 to PC-034 (709.50')

C. Description of monument for corner and accessories established to perpetuate locating the position of the corner:

I setting a 2" aluminum cap stamped "MACOMB COUNTY MONUMENT MI ACT 345; PCC-038; 44286" placed on a 3/4"x24" steel bar in new monun box.

Witnesses:

- N28°E 23.85' CL top nut on hydrant
S71°E 48.70' Set iron w/Macomb County Witness Cap
South 58.95' Set iron w/Macomb County Witness Cap
S55°W 22.85' Set MAG nail w/Macomb County Remon Cap, N face utility pole
N55°W 36.80' CL of hole in center of storm MH



THE SELECTED LOCATION IS ACCEPTED BY ME AND IS GENERALLY ACCEPTED BY PROFESSIONAL SURVEYORS AS THE BEST AVAILABLE EVIDENCE OF THE POSITION OF THIS CORNER.

Signed by [Signature] Date September 28, 2010.

Surveyor's Michigan License No. 44286



FORM APPROVED BY MICHIGAN STATE BOARD OF LAND SURVEYORS, JAN. 28, 1
REVISED MAY 14
REVISED JAN.
REVISED OCT.

ACCEPTED BY THE MACOMB COUNTY SURVEY PEER GROUP AS THE OFFICIAL CORNER UNDER MICHIGAN PUBLIC ACT 345 OF 1990 AT A MEETING HELD ON 9-21-10

MARTIN C. DUNN, P.S., CHAIRMAN

# PCC-038 CHESTERFIELD TOWNSHIP

PCC-038 is an intersection of North line of Section 13 with Northeasterly line of PC 343.

Private Claim 343 was surveyed by Greely in 1810.

GLO survey performed by Preston in 1817.

## Corner history:

1	1810	PC notes	Greely		Corner not set
2	1817	GLO notes	Preston		W. Oak 24" diameter
3	1817	Township map	Preston		Object not stated
4	1818	Township map	Surveyor General Office		Object not stated
5	1852	Plat of A. Ashley Sr. Addition to the City of Ashley	Wesolowski	L Z, Front Page	Object not stated
6	1959	Diana Rae Robinson Plat	Phillips	1728 L44, P46	Plat graphically shows the location of PCC-038, but does not reference it dimensionally.
7	1967	Washington Acres Sub'n	Mavis	10400	Object not stated

## Field evidence:

No evidence of corner was found.

Occupation: Southeast & Northwest – Base Rd. (asphalt).

## Distances:

PCC-038 to L-05	PCC-038 to PCC-036	PCC-038 to PC-037	PCC-038 to PC-033
1402.50' (21.25 ch) 2		1085.70' (16.45 ch) 2	709.50' 5
1456.22' Remon	6682.87' Remon	1099.44' Remon	710.82' 6
			728.75' Remon

## Recommendation:

I recommend to the Peer Review Board to establish corner at the intersection of line between PCC-037 & L-05 with line between PC-034 & PC-035.

Corner falls N'eely 0.4' of CL Base Rd.

I recommend setting a 2" aluminum cap stamped "MACOMB COUNTY MONUMENT MI ACT 345; PCC-038; 44286" placed on a 3/4"x24" steel bar in new monument box.

## Witnesses:

N02°E 36.86' CL top nut on hydrant

S85°E 33.57' Set iron w/Macomb County Witness Cap

S05°W 42.97' Set iron w/Macomb County Witness Cap

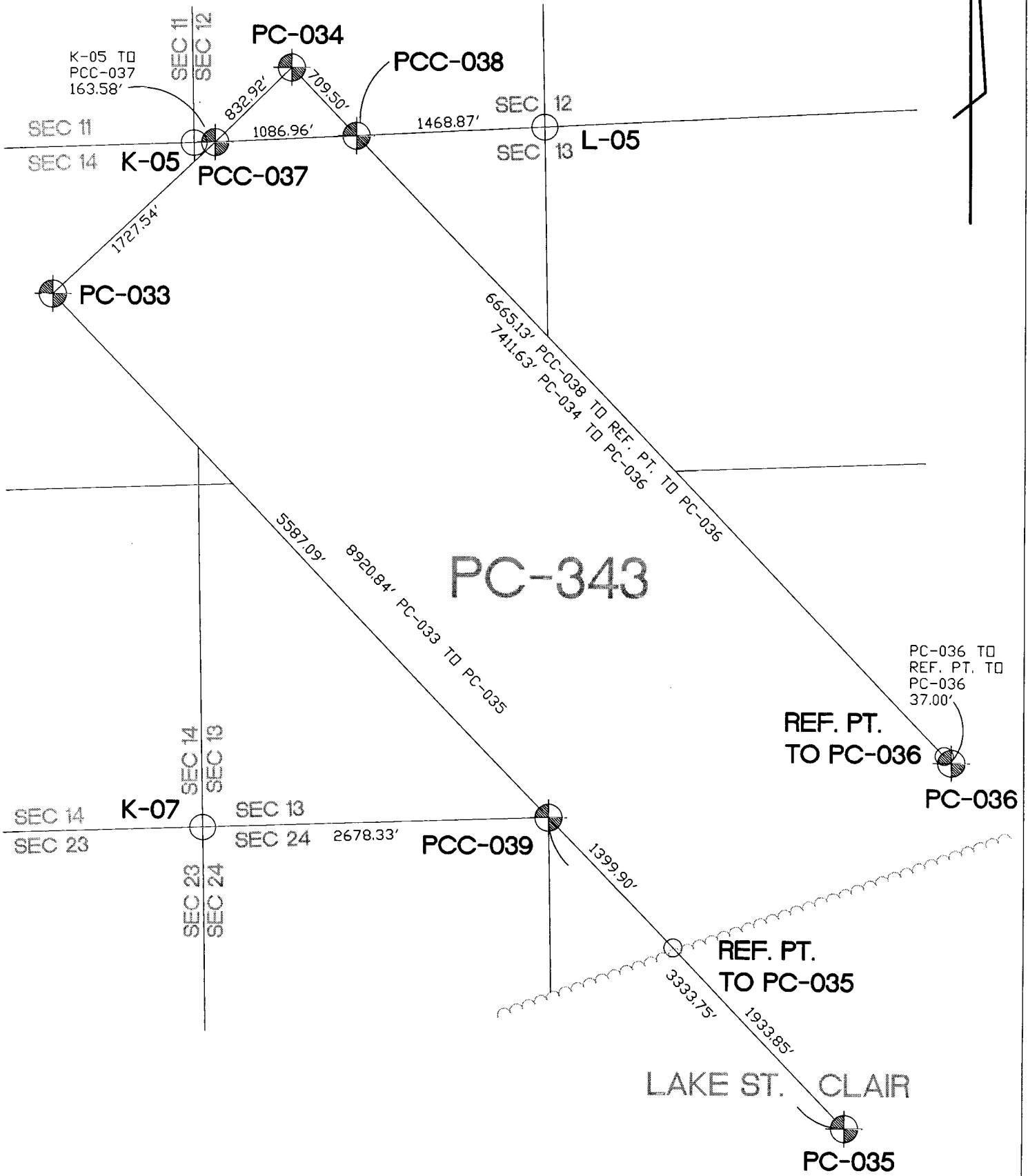
N88°W 27.93' Set MAG NL w/Macomb County Remon Cap, N face utility pole

Respectfully submitted,

---

Robert E. Hornyak, PS # 44286

# PC-343 REMON 2010 CHESTERFIELD TWP., T3N, R14E



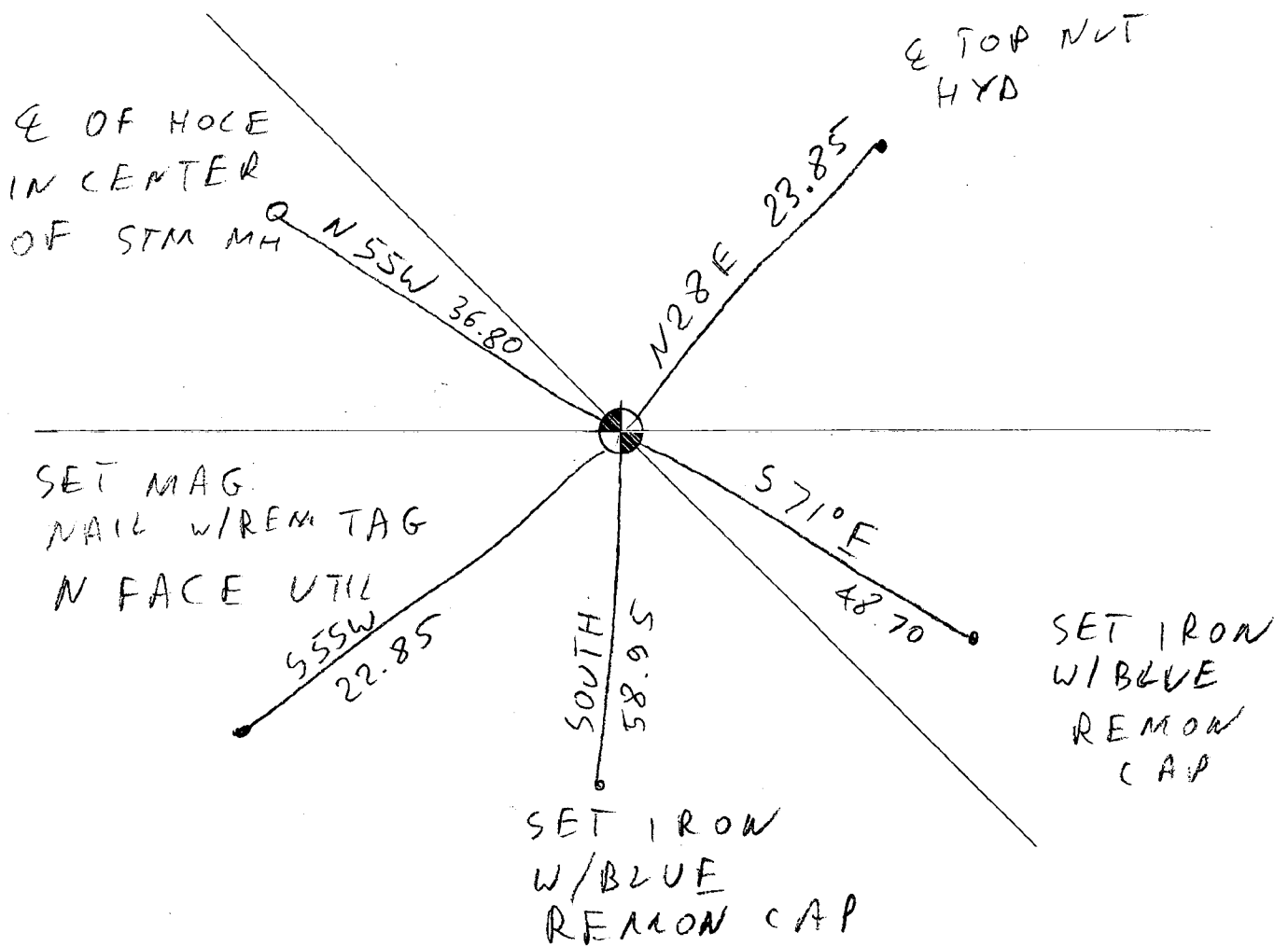
# PCC-038

REMON 2010

CHESTERFIELD TWP., T3N, R14E



DATE: 09/23/10  
CREW: DK, TD  
OBJECT FOUND: NONE  
POINT No.: \_\_\_\_\_  
CTRL. PTS.: \_\_\_\_\_



## OCCUPATION

(if road state surface)

NORTHWEST - BASE RD - ASPH

EAST: \_\_\_\_\_

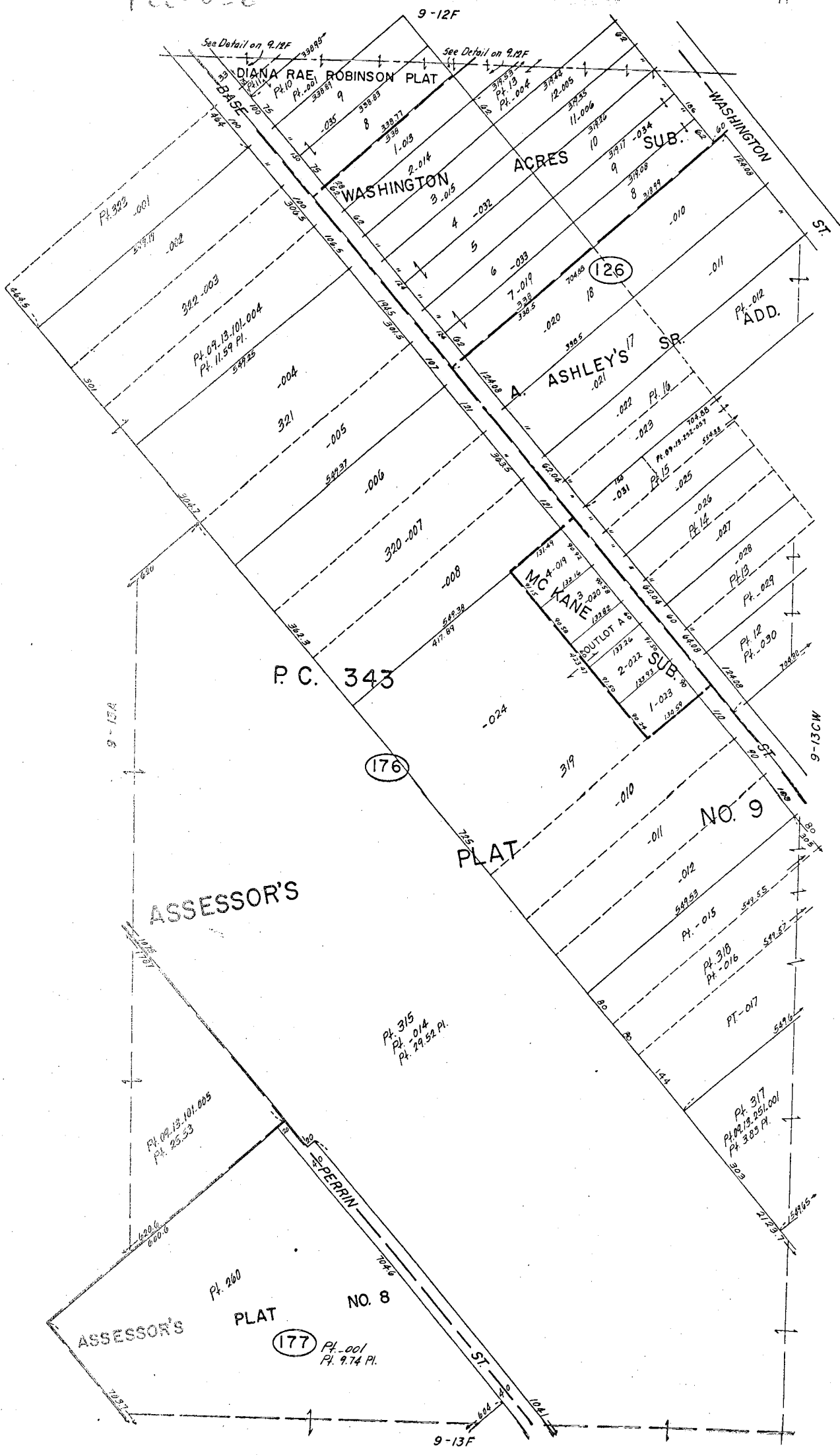
SOUTH: EAST - BASE RD. - ASPH

WEST: \_\_\_\_\_



100-038

77

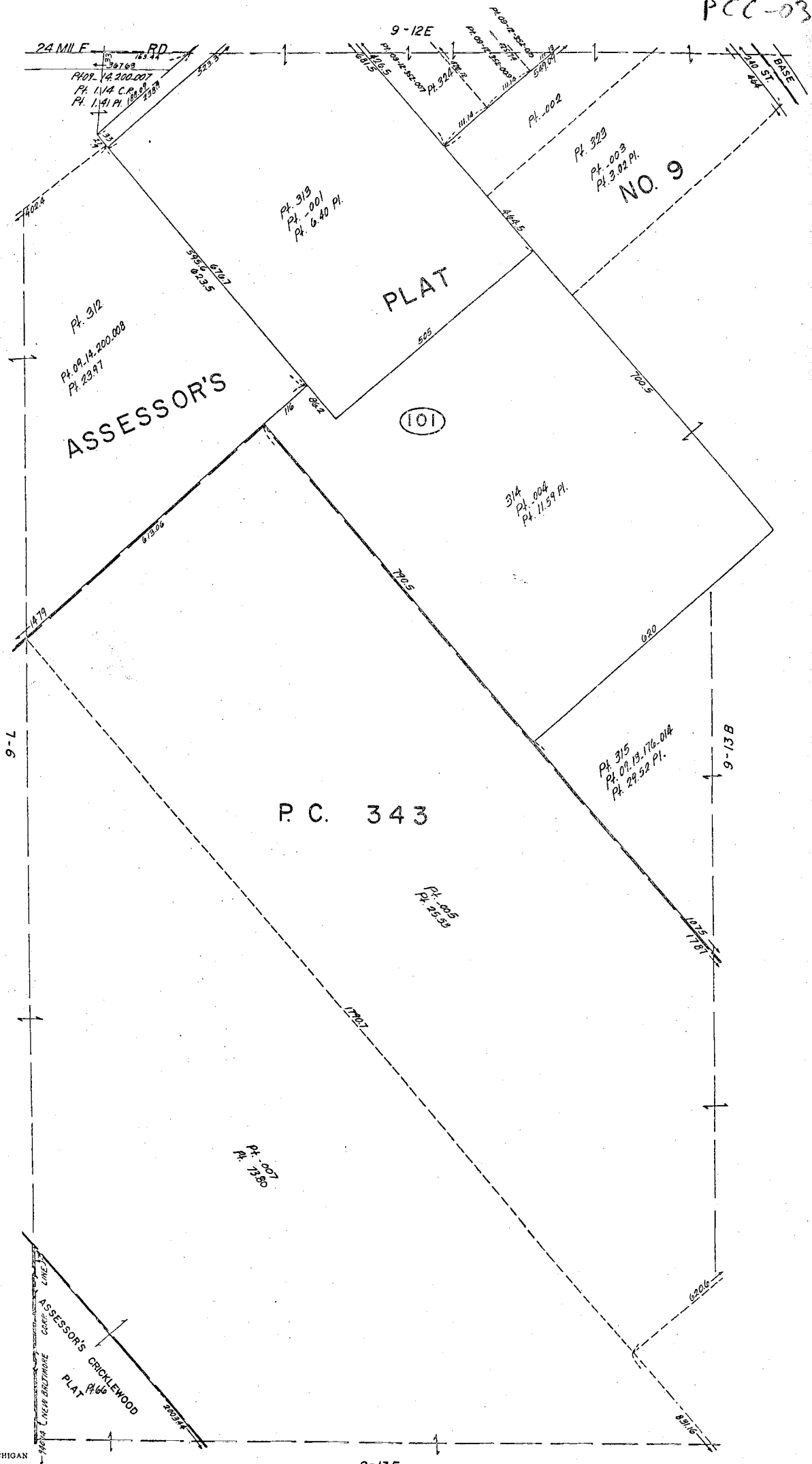


REV. 2-79  
 REV. 3-77  
 REV. 1-76  
 REV. 5-76  
 REV. 9-76  
 REV. 3-75

NEW BALTIMORE  
 PT. SEC. 13 & PT. P.C. 343 T.3N. R.14E.

Copyright 1974  
 MACOMB COUNTY, MICHIGAN  
 SCALE: 1" = 619'  
 9-13B

71  
PCC-038



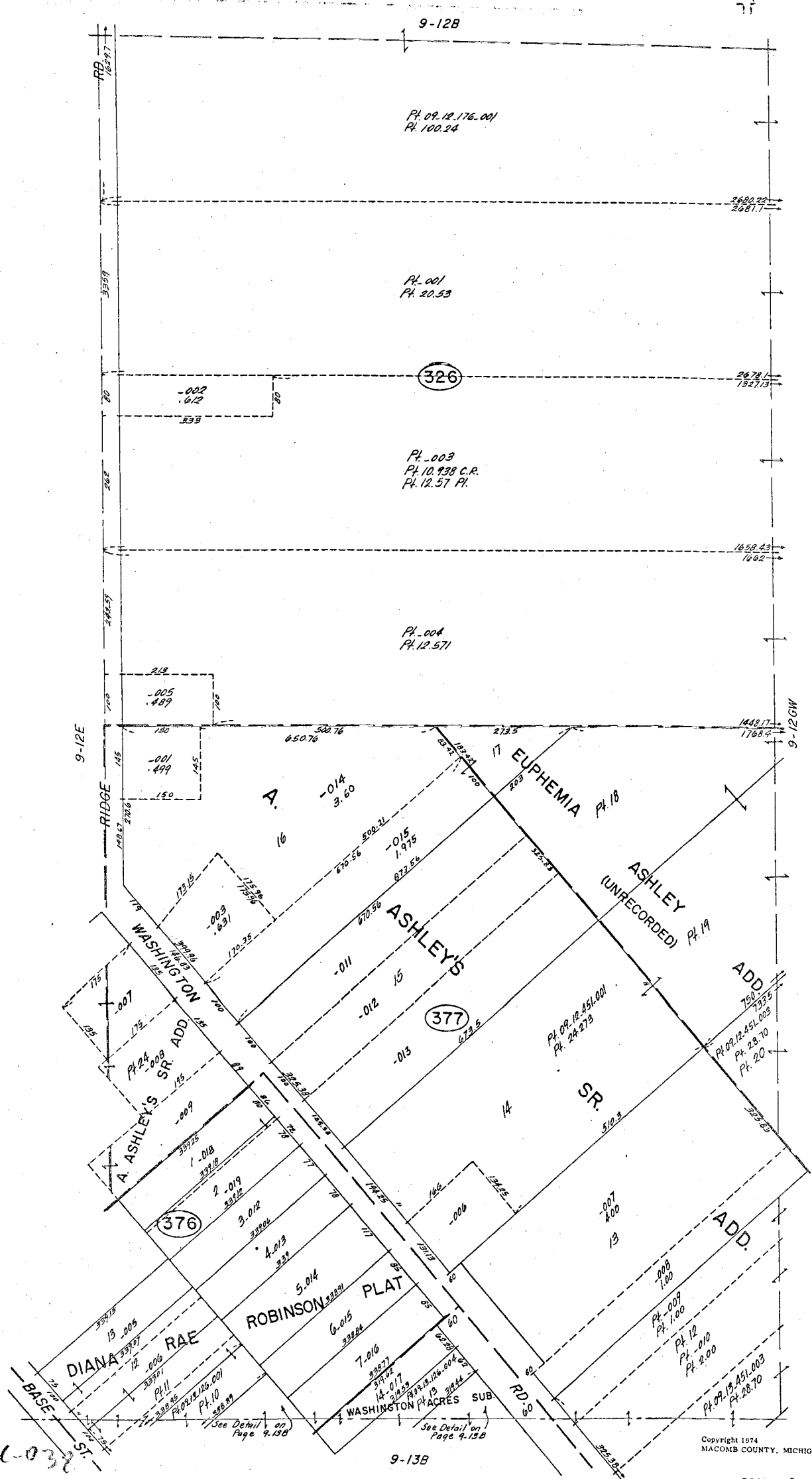
REV. 3-77  
REV. 3-76  
Copyright 1974  
MACOMB COUNTY, MICHIGAN

SCALE: 1" = 100'  
618  
9-13A

NEW BALTIMORE  
PT. SEC. 13 & PT. P.C. 343 T3N. R14E.

REV. 6-75  
REV. 3-74  
REV. 6-70  
REV. 3-76  
REV. 3-75





REV. 8-79  
REV. 3-78  
REV. 3-75

PCC-032

NEW BALTIMORE  
E. 1/2 SW. 1/4 SEC. 12 T.3N. R.14E.

Copyright 1974  
MACOMB COUNTY, MICHIGAN

SCALE: 1" = 100'  
616  
9-12F



Date of Photography: Spring 2008  
 100 50 0 100 200 Feet

1:1,200

CHESTERFIELD TWP SHEET INDEX

DESCRIPTION OF PERMANENT REAL ESTATE INDEX NUMBER

**13-19-302-018**

AREA NUMBER (TOWNSHIP CROSS SECTION SURVEY)	SUB AREA NUMBER (ALWAYS CONSIDER WITH SECTION NUMBER)	BLOCK NUMBER (CITY BLOCK SECTION NUMBER)	PARCEL NUMBER (SUBDIVISION OR PARCEL)
---	---	--	---------------------------------------

**09-12E**

NEW BALTIMORE  
 W 1/2 S.W. 1/4 SEC. 12 T.3N. R.14E.

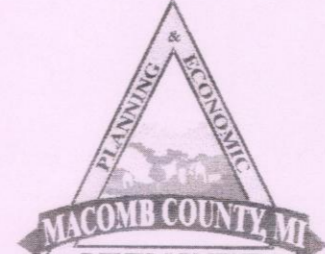
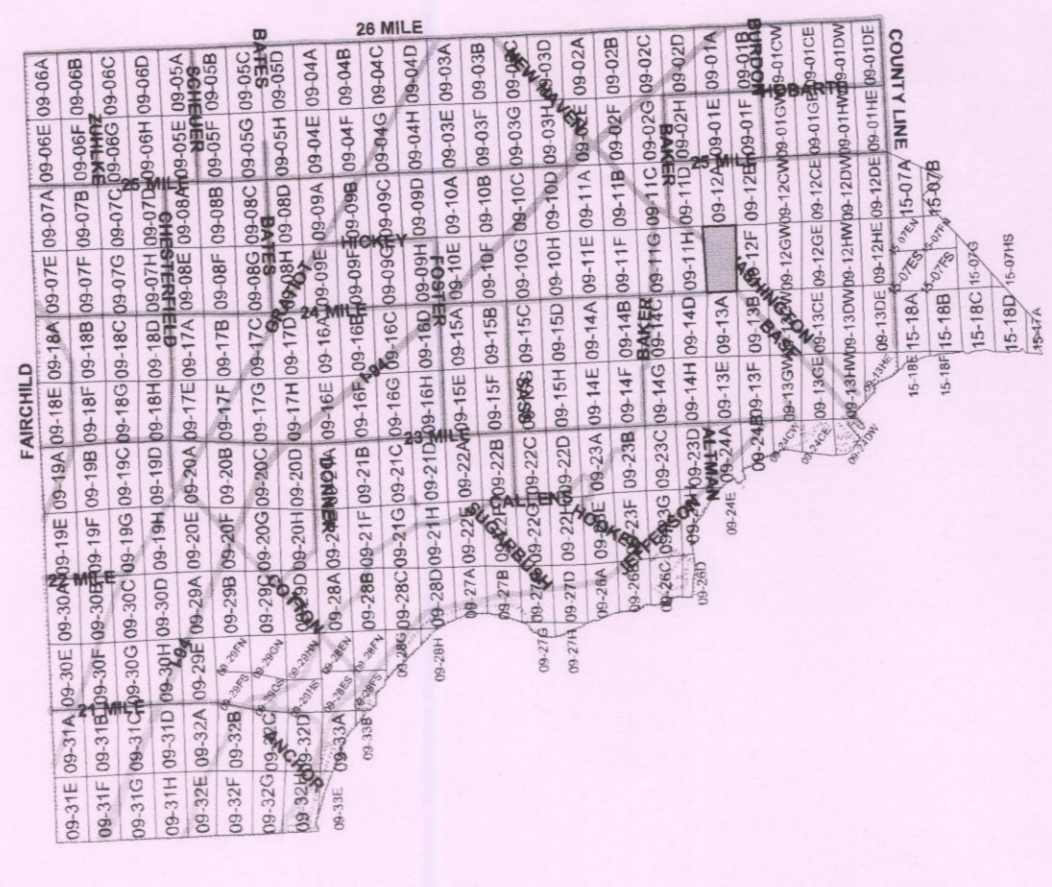
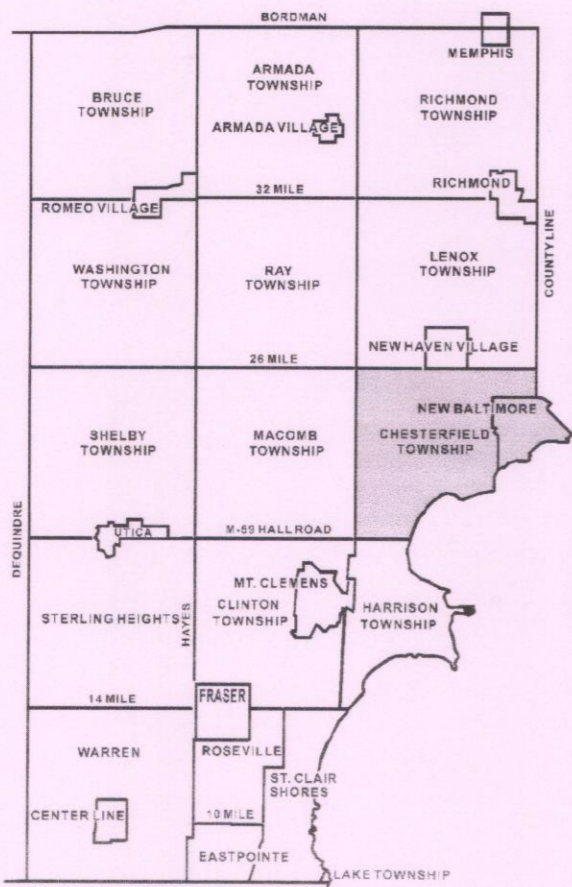
Source: Macomb County Department of Planning and Economic Development  
 - 2008 Digital Orthophotography Project  
 - Parcel Conversion Project

Note:  
 Digital Orthophotography horizontal positioning accuracy is 3 feet. Parcel boundary lines should be considered a graphical representation and not in any way a legal survey or engineering document. In general, the horizontal positioning and length accuracy is within 15 feet.

This map is intended for general planning purposes. Site specific evaluation should be verified by field inspection. This is a work in progress and may contain errors and omissions. Please report any potential revisions to (586)469-5285

**Legend**

- Platted Area Boundary Line
- Property Line
- Property Split Line
- Property Combined Line
- Township Boundary Line
- Traverse Line
- Dimension Extent Marks
- Dimension Start Marks



**GIS** MACOMB COUNTY  
 Planning and Economic  
 Development Department

Published: Mar 12, 2010



Date of Photography: Spring 2008  
 100 50 0 100 200 Feet  
 1:1,200

CHESTERFIELD TWP SHEET INDEX

DESCRIPTION OF PERMANENT REAL ESTATE INDEX NUMBER  
**13-19-302-018**

**09-12F**

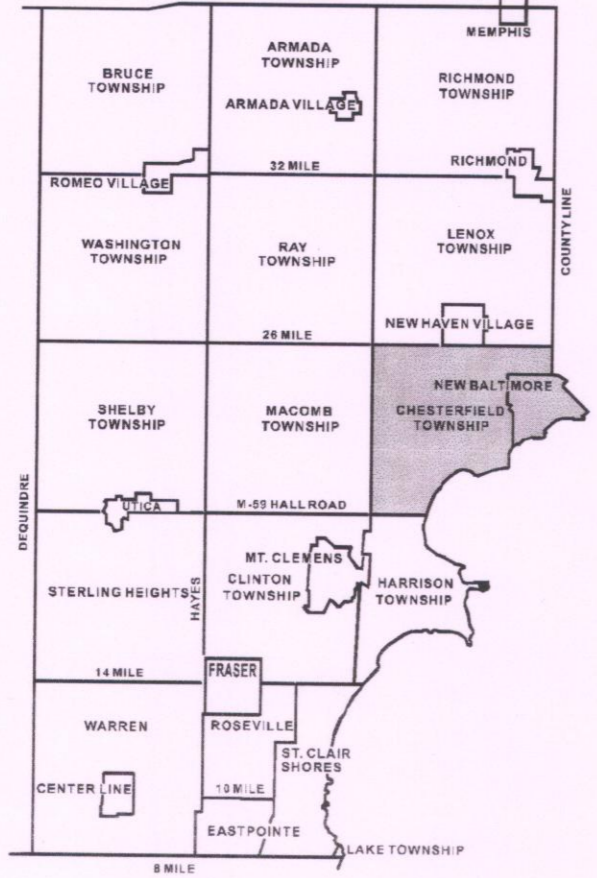
NEW BALTIMORE  
 E. 1/2 S.W. 1/4 SEC. 12 T. 3N. R. 14E.

Source: Macomb County Department of Planning and Economic Development  
 - 2008 Digital Orthophotography Project  
 - Parcel Conversion Project

Note  
 Digital Orthophotography horizontal positioning accuracy is 3 feet. Parcel boundary lines should be considered a graphical representation and not in any way a legal survey or engineering document. In general, the horizontal positioning and length accuracy is within 15 feet.

This map is intended for general planning purposes. Site specific evaluation should be verified by field inspection. This is a work in progress and may contain errors and omissions. Please report any potential revisions to (586)469-5285.

- Legend**
- Platted Area Boundary Line
  - Property Line
  - Property Split Line
  - Property Combined Line
  - Township Boundary Line
  - Traverse Line
  - Dimension Extent Marks
  - Dimension Start Marks



COPYRIGHT 2009  
 MACOMB COUNTY, MI  
 All Rights Reserved



**GIS** MACOMB COUNTY  
 Planning and Economic  
 Development Department

Published: Mar 12, 2010



Date of Photography: Spring 2008  
 100 50 0 100 200 Feet  
 1:1,200

CHESTERFIELD TWP SHEET INDEX

DESCRIPTION OF PERMANENT REAL ESTATE INDEX NUMBER  
**13-19-302-018**  
 AREA NUMBER (TOWNSHIP LOCATION) SUB AREA NUMBER (SUBDIVISION SURVEY) BLOCK NUMBER (CITY BLOCK OR SECTION) PARCEL NUMBER (UNIQUELY IDENTIFY A PARCEL)

**09-13B**

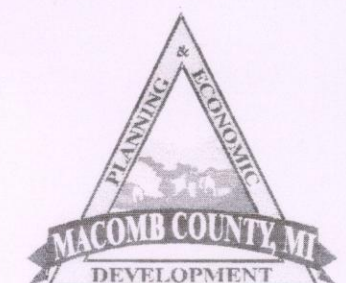
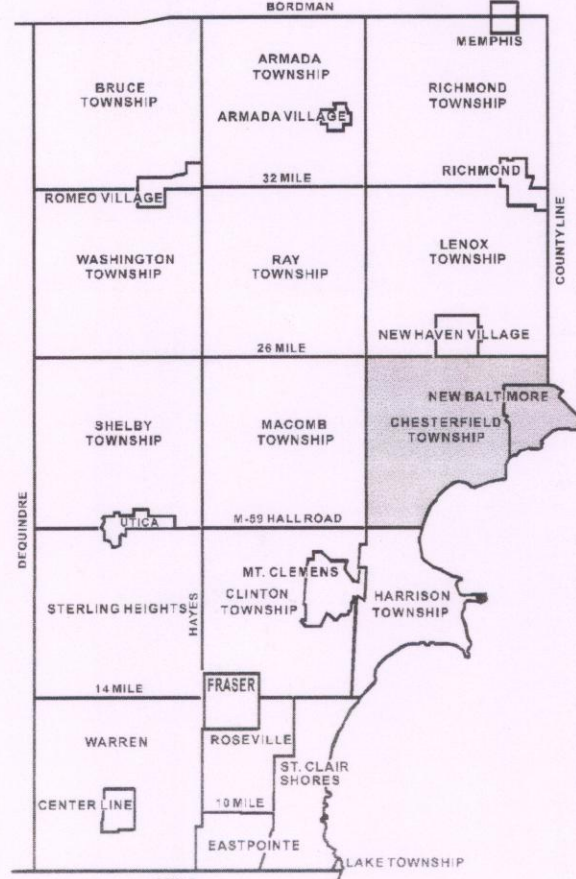
NEW BALTIMORE  
 E. 1/2 N.W. 1/4 SEC. 13 T. 3N. R. 14E.

Source: Macomb County Department of Planning and Economic Development  
 - 2008 Digital Orthophotography Project  
 - Parcel Conversion Project

Note:  
 Digital Orthophotography horizontal positioning accuracy is 3 feet. Parcel boundary lines should be considered a graphical representation and not in any way a legal survey or engineering document. In general, the horizontal positioning and length accuracy is within 15 feet.

This map is intended for general planning purposes. Site specific evaluation should be verified by field inspection. This is a work in progress and may contain errors and omissions. Please report any potential revisions to (586)499-5285.

- Legend**
- Platted Area Boundary Line
  - Property Line
  - Property Split Line
  - Property Combined Line
  - Township Boundary Line
  - Traverse Line
  - Dimension Extent Marks
  - Dimension Start Marks



N<sup>o</sup> 434<sup>th</sup>

Lake St. Clair

Description N<sup>o</sup> 343 Confirmed to  
Pierre Yax commencing at an Elm tree  
standing on the border of Lake St. Clair  
between this tract and a tract Reserved  
for Maconse, thence north forty five

degrees west one hundred and thirty two  
chains forty links, to a Beech tree, thence  
north forty five degrees East thirty eight  
chains, to a white Oak tree, thence south  
forty five degrees East one hundred and  
ten chains, to a white Oak tree standing  
on the border of Lake St. Clair between  
this tract and unconceded land, thence  
along the border of said Lake south  
seventeen degrees East twelve chains six-  
ty six links, thence south forty eight  
degrees west ten chains, thence south  
seventeen degrees west twenty five ch-  
ains, to the place of beginning contain-  
ing four hundred and sixty eight  
acres sixty seven hundredths of an  
acre.

Detroit July 18. 1810

Aaron Gocceley Surveyor  
of private Claims.

343

No. 434

No. 343 Confirmed to  
Pierre Yax

LAKE ST. CLAIR

Description No. 343 Confirmed to Pierre Yax commencing at  
an Elm Tree standing on the border of Lake St. Clair between  
this tract and a tract reserved for Macconse, thence north  
forty five degrees west one hundred and thirty two chains forty  
links to a Beech Tree thence north forty five degrees East thirty  
eight chains to a White Oak Tree thence south forty five degrees  
East one hundred and ten chains to a White Oak Tree standing on  
the border of Lake St. Clair between this tract and unconceded  
land thence along the border of said Lake south seventeen degrees  
east twelve chains sixty six links, thence south forty eight degrees  
west ten chains thence south seventeen degrees west twenty five  
chains to the place of beginning \_\_\_\_ Containing four hundred and  
sixty eight acres sixty seven hundredths of an acre \_\_\_\_.

Detroit July 24th, 1810

Aaron Greeley Surveyor  
of private claims

(Town 3 North Range 11 East -

PCC-037 East Between fractional Sections 12413  
2,30 Intersected Private Claim 302 chains  
East of corner of Lot N<sup>o</sup> 343 P. Yack  
Made corner for fractional Sections 12413  
on a W. Oak 24 ins diam continued

PCC-038 18,75 Through the Claims Made corner on  
a Siberian 6 ins diam 79,20 chains  
North of corner of lot

110,00 Made half mile corner on a B. Oak

110,13 on an Elm 30 in diam 6 ins

115,17 a W. Oak 24 ins

101,16 Intersected Private Claims 63,116 chains

North of corner of Lot N<sup>o</sup> 614 From Massar

Set point for fractional section 12413

from which a B. Oak 10 in diam bears

N 73 W 18 links also an Elm 12 ins diam

bears S 74 W 25 links dist 1<sup>st</sup> half mile

rolling and dry 2<sup>nd</sup> part last half mile

part dry 2<sup>nd</sup> part

Timber W Oak Beech Sugar Elm

B. Oak + Undergrowth Spruce +

Trails

South Between Sections 20421

657 Beech 12 in diam

11,000 Set 74 Sec. front from which a Birch

14 in diam bears N 50 E 14 lks dist

also a Beech 12 in bears S 33 W 15 lks dist

59,03 Elm 10 ins

63,65 Intersected Private Claim N<sup>o</sup> 193,110 N 80

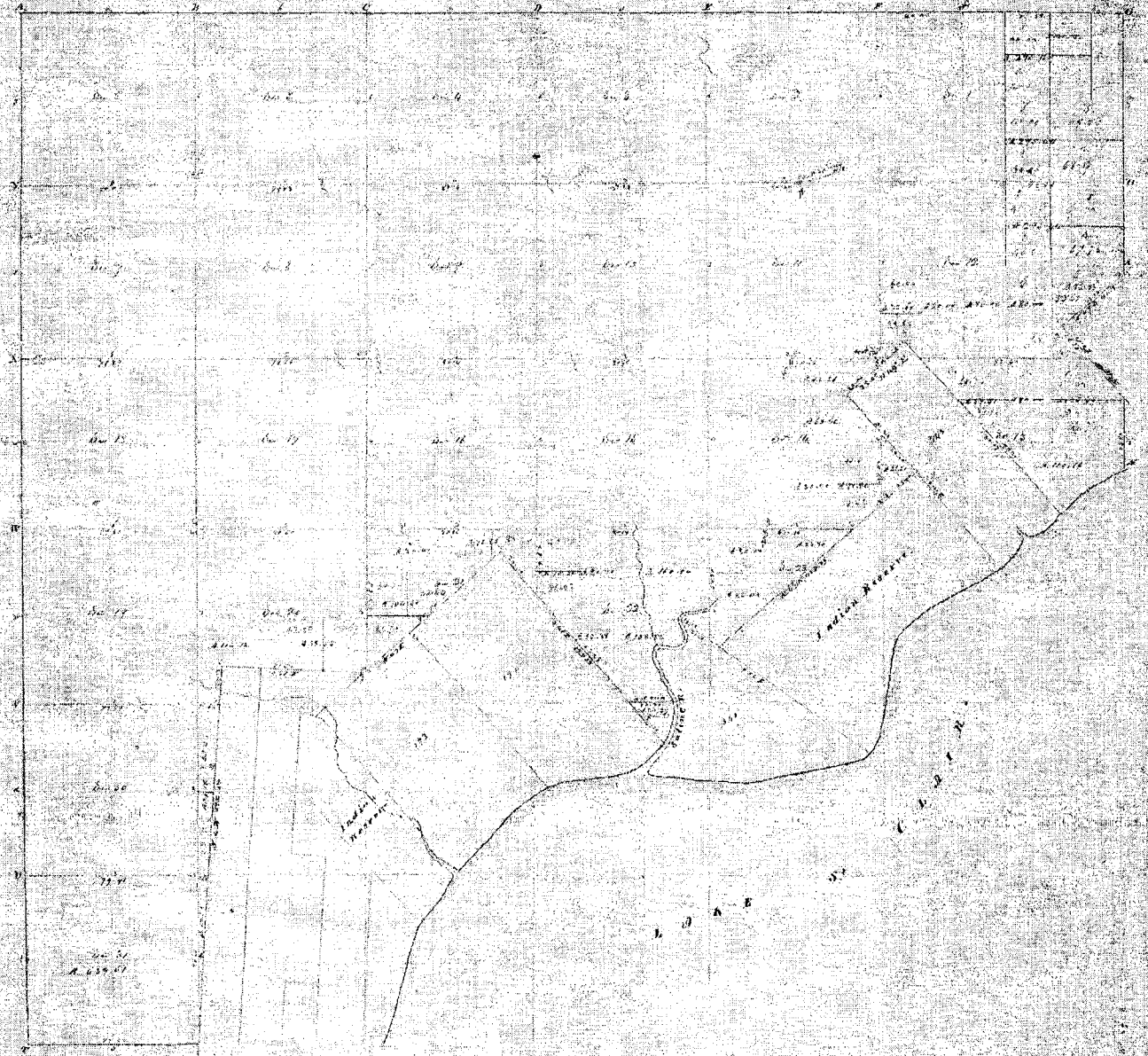
from the N.E. Cor. of Polium N<sup>o</sup> 145

Set point for cor of fractional sections

21422 from which an Elm 20 in diam

bears N 16 E 25 lks dist also an Elm

18 in diam bears N 14 W 29 lks dist



Township N<sup>o</sup> III north Range N<sup>o</sup> XIV East of 100<sup>th</sup> (Milit. Twp)

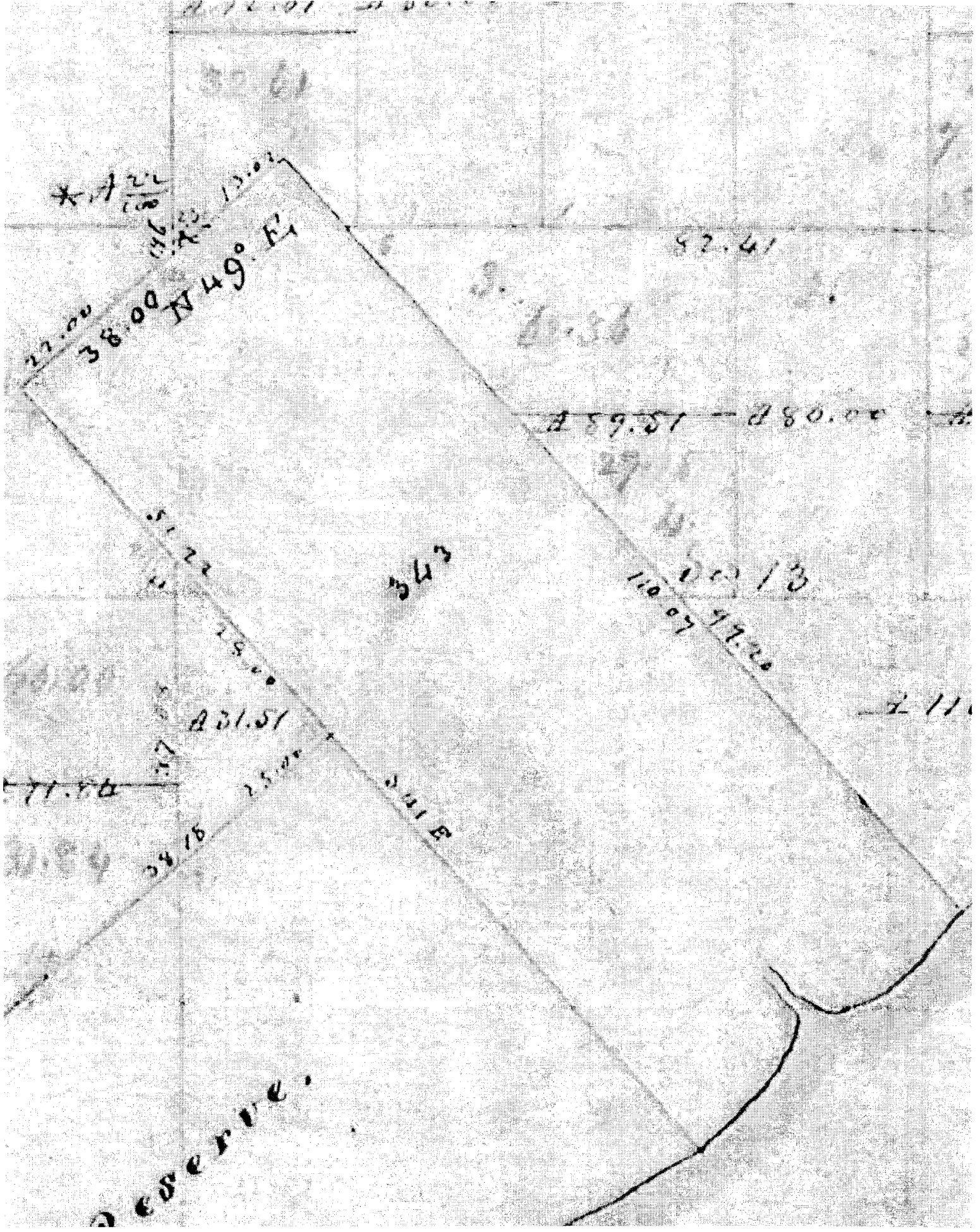
Surveyed by W<sup>m</sup> Preston 1817

Description of the soil on the various sectional lines.

Section	Soil	Section	Soil
1	Dark loam	17	Dark loam
2	Dark loam	18	Dark loam
3	Dark loam	19	Dark loam
4	Dark loam	20	Dark loam
5	Dark loam	21	Dark loam
6	Dark loam	22	Dark loam
7	Dark loam	23	Dark loam
8	Dark loam	24	Dark loam
9	Dark loam	25	Dark loam
10	Dark loam	26	Dark loam
11	Dark loam	27	Dark loam
12	Dark loam	28	Dark loam
13	Dark loam	29	Dark loam
14	Dark loam	30	Dark loam
15	Dark loam	31	Dark loam
16	Dark loam	32	Dark loam
17	Dark loam	33	Dark loam
18	Dark loam	34	Dark loam
19	Dark loam	35	Dark loam
20	Dark loam	36	Dark loam

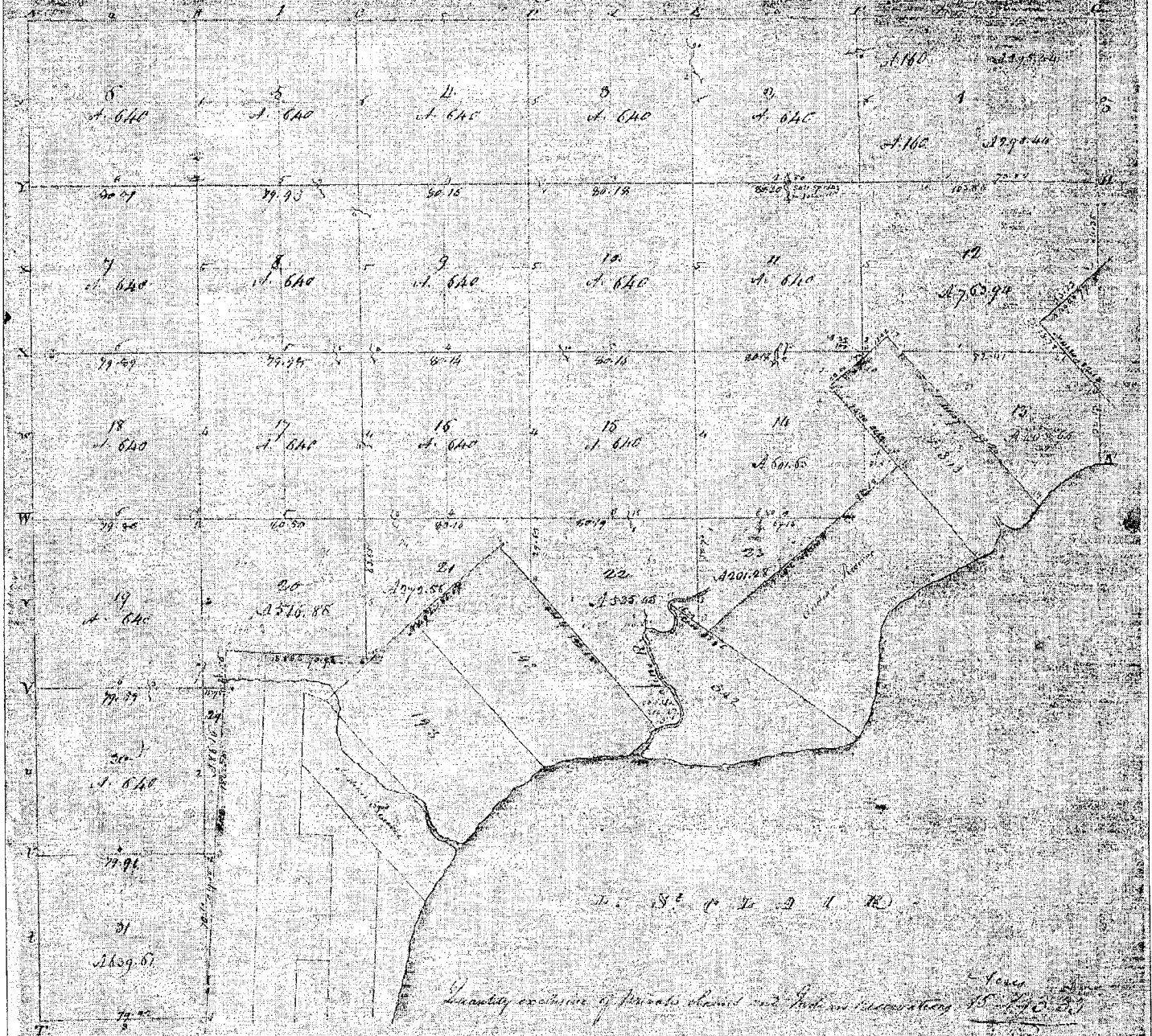


37-21



1818

Township N. III North Range N. VA East of the Mer. (North Part)



A true copy from the Original on file in this Office  
 Surveyor General's Office  
 1818

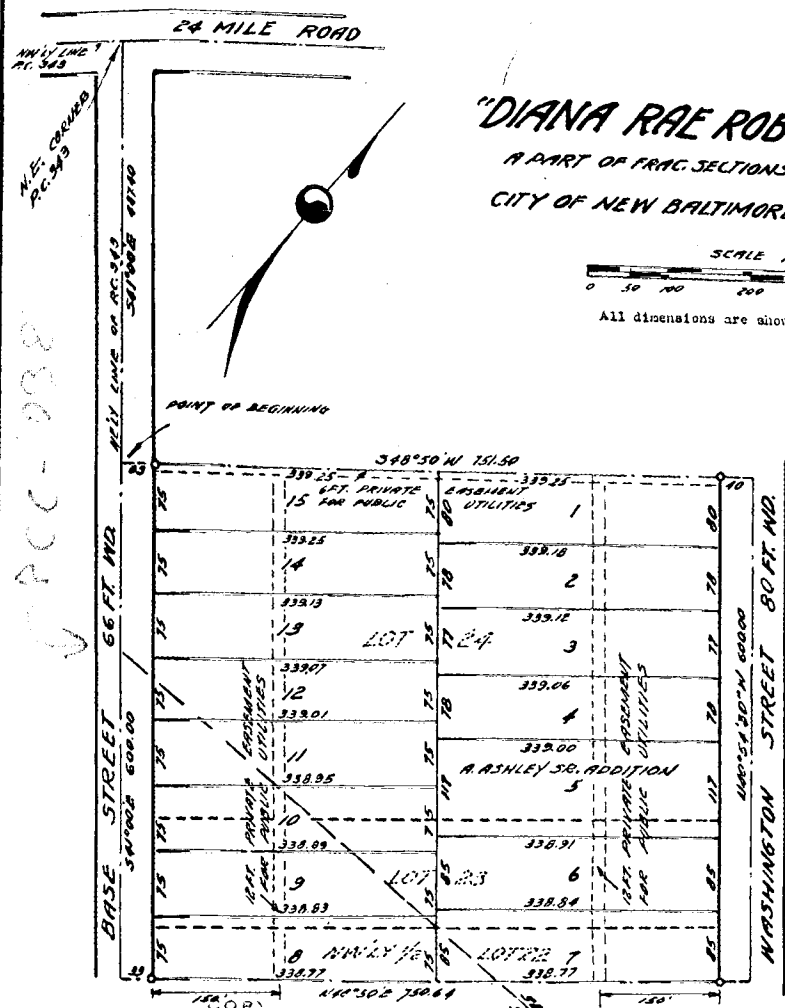
L 44-110  
1722

41925

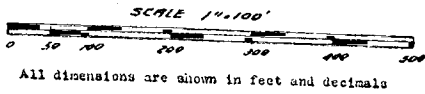
COPY

N.E. CORNER  
P.C. 243

P.C.C. 938



**"DIANA RAE ROBINSON PLAT"**  
A PART OF FRAC. SECTIONS 12 & 13, T.3N, R.1E,  
CITY OF NEW BALTIMORE, MACOMB COUNTY, MICHIGAN.



**DEDICATION**

KNOW ALL MEN BY THESE PRESENTS, that we, Richard D. Robinson, and Labeth Robinson, his wife, as proprietors, have caused the land embraced in the annexed plat to be surveyed, laid out and platted, to be known as "Diana Rae Robinson Plat", a part of Frac. Sections 12 & 13, T.3N, R.1E, Sec. 12 & 13, City of New Baltimore, Macomb County, Michigan, and that the streets as shown on said plat are hereby dedicated to the use of the public and that the private easements indicated on said plat are hereby reserved for the use of public utilities and no permanent structures are to be erected within the lines of said easement.

Signed and Sealed in the Presence of  
Earl Phillips (Witness) Richard D. Robinson  
Earl Phillips (Witness) Labeth Robinson

**ACKNOWLEDGMENT**

STATE OF MICHIGAN  
County of St. Clair  
On this 17th day of March, 1959, before me, a Notary Public in and for said County, personally came the above named Richard D. Robinson and Labeth Robinson, his wife, known to me to be the persons who executed the above dedication, and acknowledged the same to be their free act and deed.  
Earl Phillips  
Notary Public, St. Clair County  
My Commission expires November 24, 1959.

**DESCRIPTION OF LAND PLATTED**

The land embraced in the annexed plat of "Diana Rae Robinson Plat" a part of Frac. Sections 12 & 13, T.3N, R.1E, Sec. 12 & 13, City of New Baltimore, Macomb County, Michigan, is described as follows: Commencing at a point south 41° 00' East 407.40 feet from the North East corner of private Claim 343, thence South 41° 00' East 610.70 feet, thence North 40° 50' East 750.64 feet, thence North 40° 54' 30" East 600.00 feet, thence South 40° 54' West 171.90 feet to the point of beginning, being the North Westerly 1/2 of Lot 22, Lot 23 and part of Lot 24, A. Rashley Sr. Addition and including Lots 1 to 15 inclusive.

**SURVEYOR'S CERTIFICATE**

I hereby certify that the plat hereon delineated is a correct one and that permanent metal monuments consisting of bars not less than one-half inch in diameter and 36 inches in length, or shorter bars of not less than one-half inch in diameter tapered over each other at least 6 inches with an over-all length of not less than 36 inches, are placed at points marked (A) as shown shown at all angles in the boundaries of the land platted, at all the intersections of streets, intersections of alleys, or of streets and alleys, and at the intersections of streets and alleys with the boundaries of the plat or shown on said plat.  
Earl Phillips  
Registered Land Surveyor  
Earl Phillips

**APPROVAL BY COUNTY PLAT BOARD**

This plat was approved on the 30th day of June, 1959, by the Macomb County Plat Board.  
Aron Burr (County Register of Deeds)  
Albert H. Wagner (County Clerk)  
Lynn Whalen (County Treasurer)  
Frank E. Lohr (County Drain Commissioner)

**MUNICIPAL APPROVAL**

This plat was approved by the Common Council of the City of New Baltimore as a platted lot.  
Grace C. Balfour (Clerk)

Register's Office  
Macomb County  
Filed of Diana Rae Robinson Plat  
was Recorded this 17th day of July, A.D. 1959 at 10:40  
of 44 plates  
Raymond R. Craig

I hereby certify this copy is a true copy of what was forwarded the Register of Deeds for recording.  
July 3, 1959  
July 9, 1959  
July 3, 1959  
Frank E. Lohr  
L. L. Mackay

THIS IS TO CERTIFY THAT ACCORDING TO THE COUNTY TREASURER'S REPORTS THERE ARE NO TAX DUES ON THIS PROPERTY AND THAT TAXES ARE PAID FOR FIVE YEARS PREVIOUS TO DATE OF THIS INSTRUMENT EXCEPT 19.....  
NO. 152... DATE... Lynn Whalen, MACOMB COUNTY TREASURER  
Treasurer: Pearl Robinson  
THIS CERTIFICATION DOES NOT INCLUDE CURRENT TAXES NOW BEING COLLECTED.

