

LAND CORNER RECORDATION CERTIFICATE
Filing Requirement of Act 74, Mich. P.A. 1970
REMONUMENTATION CORNER

For corners in:

MACOMB COUNTY
(County)

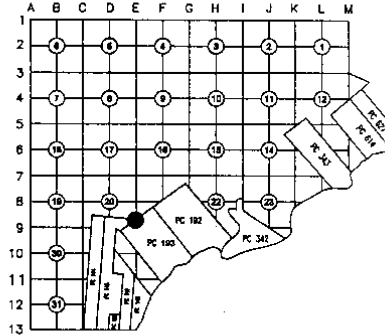
Located in: CHESTERFIELD TOWNSHIP Corner Code #

- 1. Public Land Survey T ___ R ___
2. Property Controlling in Section S ___ T ___ R ___
3. Miscellaneous Property in Sec. S ___ T ___ R ___
4. Lot No. ____, Recorded Plat
5. Private Claims PC-031 S ___ T 3N R 14 E

9136006
LIBER 20074 PAGE 663
12/22/2009 10:49:40 A.M.
MACOMB COUNTY, MI SEAL
CARNELLA SABAUGH, REGISTER OF DEEDS

Register of Deeds Stamp & File Number

I, ROBERT E. HORNYAK, in a field survey on, August 18, 2009 do hereby certify that under requirements of P.A. 74, Michigan P.A. of 1970, the corner points mentioned in lines 1 and 2 above were in conformance with regulations and rules therefore as required in the current manual of survey instructions of the United States Department of the Interior, Bureau of Land Management or by a decree of a Court of Law and/or that the corner points mentioned in lines 3, 4 and 5 above were in conformance with the rules of the Michigan Board of Land Surveyors or by a Decree of a Court of Law; established, re-established, monumented, re-monumented, recovered, found as expressed below:



NOTE: Not more than 2 corners, all in the same town and range, may be recorded on this certificate.

A. Description of original monument and accessories and/or subsequent restoration:

PC 145 was surveyed by Aaron Greeley Surveyor of private claims in 1810. Set Post. GLO Survey performed in 1817 by William Preston, D.S. Corner not set.

Subsequent Restorations:

Table with 6 rows of restoration data including date, plat name, surveyor, plat number, monument type, and object found.

B. Description of corner evidence found and/or method applied in restoring or reestablishing corner:

The corner was perpetuated with the found 60 penny nail in asphalt road 1 foot Northwesterly from painted centerline. Occupation: Northeast & Southwest - CL Dammer Rd. (asphalt); West - none. The witness from Item 2 along with the found monumentation of Items 1, 3 & 6 were used to verify the location of the corner.

Distances:

Table showing distances between PC-031 to PC-032 and PC-031 to PCC-029 in various directions.



C. Description of monument for corner and accessories established to perpetuate locating the position of the corner:

I replaced the found 60 penny nail with a 2" aluminum cap stamped "MACOMB COUNTY MONUMENT MI ACT 345; PC-031; 44286" placed on a 3/4"x24" steel bar in new monument box.

Witnesses:

- N62°E 59.41' Set 2" aluminum cap stamped "MACOMB COUNTY MONUMENT MI ACT 345; PCC-032; 44286" placed on a 1/2"x36" steel bar encased in 4" diameter concrete monument.
S52°E 37.0' W face of 8" gate post
S03°E 45.85' Fnd Mag nail w/PEA tag #43047 in NW face power pole
S70°W 106.07' Fnd PK nail w/GW tag #78732 in NE face power pole
N25°W 23.75' Fnd PK nail w/ METCO tag #30081/28408 in S face power pole

THE SELECTED LOCATION IS ACCEPTED BY ME AND IS GENERALLY ACCEPTED BY PROFESSIONAL SURVEYORS AS THE BEST AVAILABLE EVIDENCE OF THE POSITION OF THIS CORNER.

Signed by [Signature] Date October 28, 2009.

Surveyor's Michigan License No. 44286

FORM APPROVED BY MICHIGAN STATE BOARD OF LAND SURVEYORS, JAN. 28, 1971
REVISED MAY 14, 1975
REVISED JAN., 1983
REVISED OCT. 1995



ACCEPTED BY THE MACOMB COUNTY SURVEY PEER GROUP AS THE OFFICIAL CORNER UNDER MICHIGAN PUBLIC ACT, 345 OF 1990 AT A MEETING HELD ON 10-13-09
MARTIN C. DUNN, P.S. CHAIRMAN

PC-031 CHESTERFIELD TOWNSHIP

Private Claim 145 Survey:

PC 145 was surveyed by Aaron Greeley Surveyor of private claims in 1810. Set post.

GLO Survey History:

Researching the government survey records for Macomb County I have found that the Chesterfield Township was surveyed and subdivided not according to then in force Manual of Surveying Instructions.

Due to presence of Lake St. Clair in the Southeast portion of the Township and numerous Private Claims along the shore exterior boundaries of the Township were established by William Preston, D.S. in 1817 in the following manner and order:

1. South boundary was run East from the Southwest corner.
2. East boundary was run South from the Northeast Twp. corner.
3. North boundary was run West from the Northeast Twp. corner.
4. West boundary was run South from the Northwest Twp. corner.

The subdivision of the Township commenced at the Northeast corner of Section 6; thence run South & West. Thus the closing Sections are along the East and South Township boundaries.

PC-031 is a Northeast corner of PC 145. Said Corner falls on the South line of fractional Section 20 and Northwesterly line of PC 193.

Subsequent Restorations:

1	1991	Plat-Stonchenge No.1 Stecker	30103	L93, P10	Object found not stated.
2	1993	LCRC-Stecker	30103	L6001, P525	Found 1/2" iron * ENE 37.55 to W face of 8" gate post * WNW 23.33 nail & tag in E face UP SSE 47.34 nail & tag in W face UP NE 65.84 to iron on edge of road
3	1994	Plat-Stonchenge No.3 Smith	16052	L103, P13	Refers to LCRC: L6001, P525
4	1995	Plat-Stonchenge No.4 Smith	16052	L110, P26	Refers to LCRC: L6001, P525
5	2000	Plat-Stonchenge No.5 Smith	16052	L127, P29	Refers to LCRC: L6001, P525
6	2008	Condo-Stonchenge Drouillard	52517	MCCSP 771	Object found not stated.

* denotes matching witnesses

Field evidence:

The corner was perpetuated with the found 60 penny nail in asphalt road 1 foot Northwesterly from painted centerline. Occupation: Northeast & Southwest – CL Donner Rd. (asphalt); West – none.

Distances:

PC-031 to PC-032		PC-031 to PCC-029	
64.31	1	2811.41	1, 5
54.70	1, 3 calc	2811.16	3, 4
59.39	Remon 09	2805.97	Remon 09

Recommendation:

The witness from Item 2 along with the found monumentation of Items 1, 3 & 6 were used to verify the location of the corner.

I recommend to the Peer Review Board to accept the found 60 penny nail as proper location for the corner.

I recommend replacing the found 60 penny nail with a 2" aluminum cap stamped "MACOMB COUNTY MONUMENT MI ACT 345; PC-031; 44286" placed on a 3/4"x24" steel bar in new monument box.

Witnesses:

N62°E	59.41'	Set 2" aluminum cap stamped "MACOMB COUNTY MONUMENT MI ACT 345; PCC-032; 44286" placed on a 1/2"x36" steel bar encased in 4" diameter concrete monument.
S52°E	37.0'	W face of 8" gate post
S03°E	45.85'	Fnd Mag nail w/PEA tag #43047 in NW face power pole
S70°W	106.07'	Fnd PK nail w/GW tag #78732 in NE face power pole
N25°W	23.75'	Fnd PK nail w/ME:TCO tag #30081/28408 in S face power pole

Respectfully submitted,

Robert E. Hornyak, PS # 44286

PC-031
DOSSIER CONTENT
2009 REMON
T.3N., R.14E.,
Chesterfield Township, Macomb County, Michigan

Section One

Index

Pictures in the four cardinal directions; before and after setting the required monumentation.

Section Two

LCRC

Surveyor's Report

Section Three

- 1 Field Notes
- 2 Sketch
- 3 Township Map
- 4 Tax Map 1875
- 5 Tax Map 1895
- 6 Tax Map 1916
- 7 Tax Map 1961
- 8 Tax Map 1974
- 9 Aerial Pictures 2009

Section Four

- 0 1810 Field notes of Survey of PC. 145 (original & transcript)
- 1 1991 Plat-Stonehenge No.1 Stecker 30103 L93, P10
- 2 1993 LCRC Stecker 30103 L6001, P525
- 3 1994 Plat-Stonehenge No.3 Smith 16052 L103, P13
- 4 1995 Plat-Stonehenge No.4 Smith 16052 L110, P26
- 5 2000 Plat-Stonehenge No.5 Smith 16052 L127, P29
- 6 2008 Condo-Stonehenge Drouillard 52517 MCCSP 771

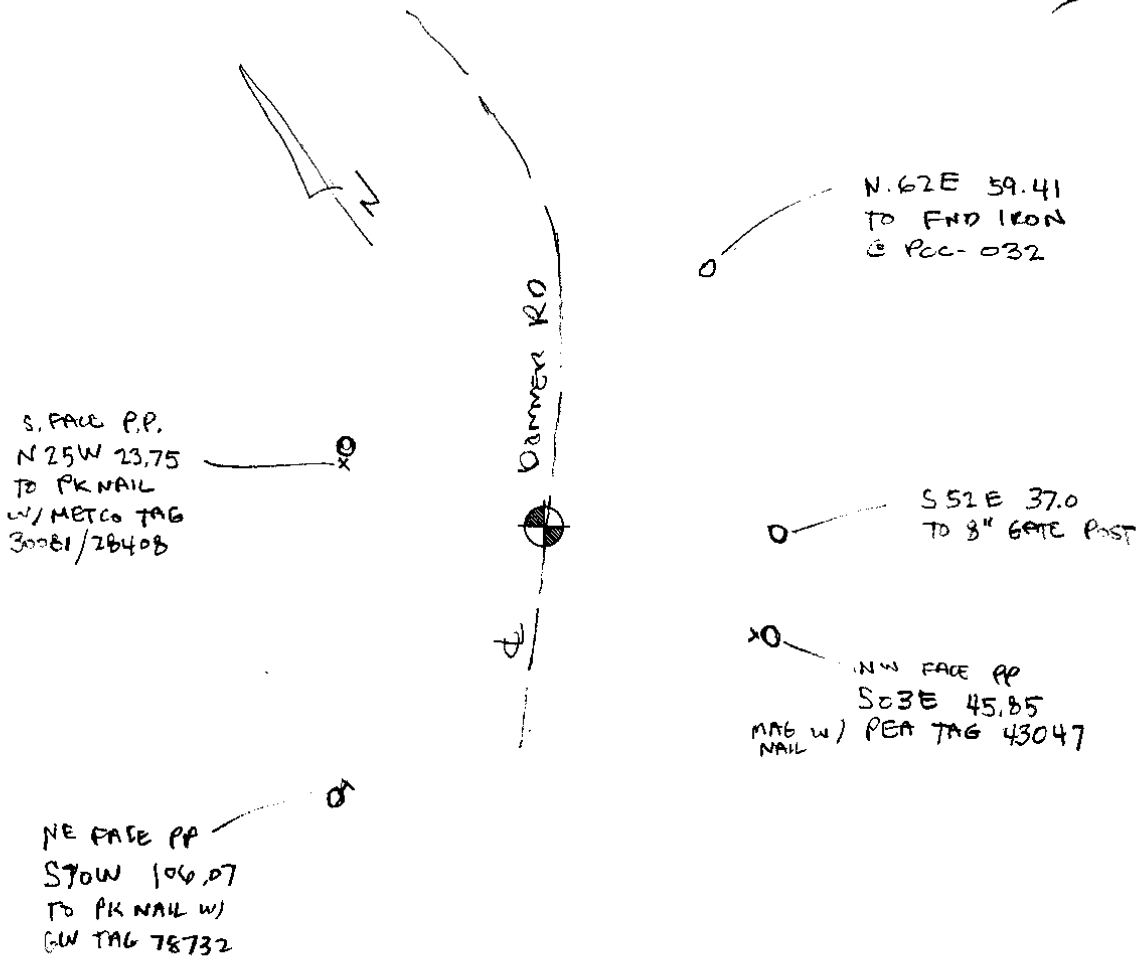
PC-031

REMON 2009

CHESTERFIELD TWP., T3N, R14E



DATE: 9.1.09
CREW: TO/OM
OBJECT FOUND: FND 60 PENNY NAIL IN ROAD ϕ
POINT No.: _____
CTRL. PTS.: _____



OCCUPATION

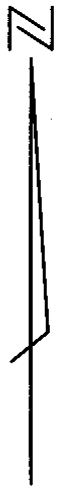
(if road state surface)

NORTH: residential

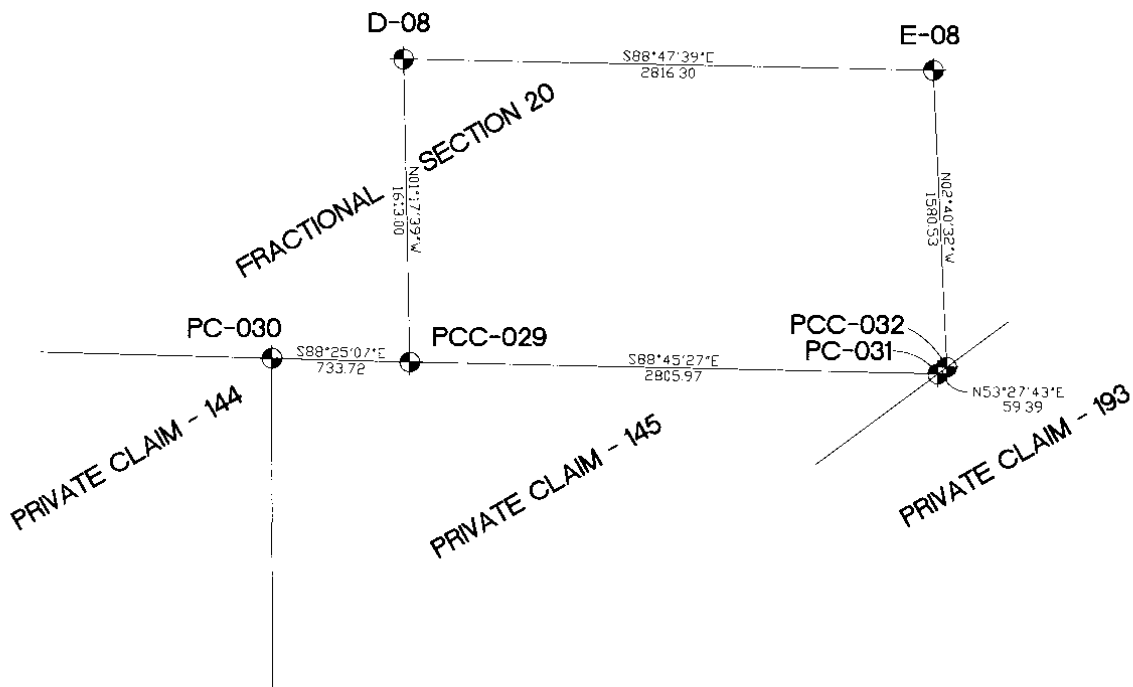
EAST: residential

SOUTH: road

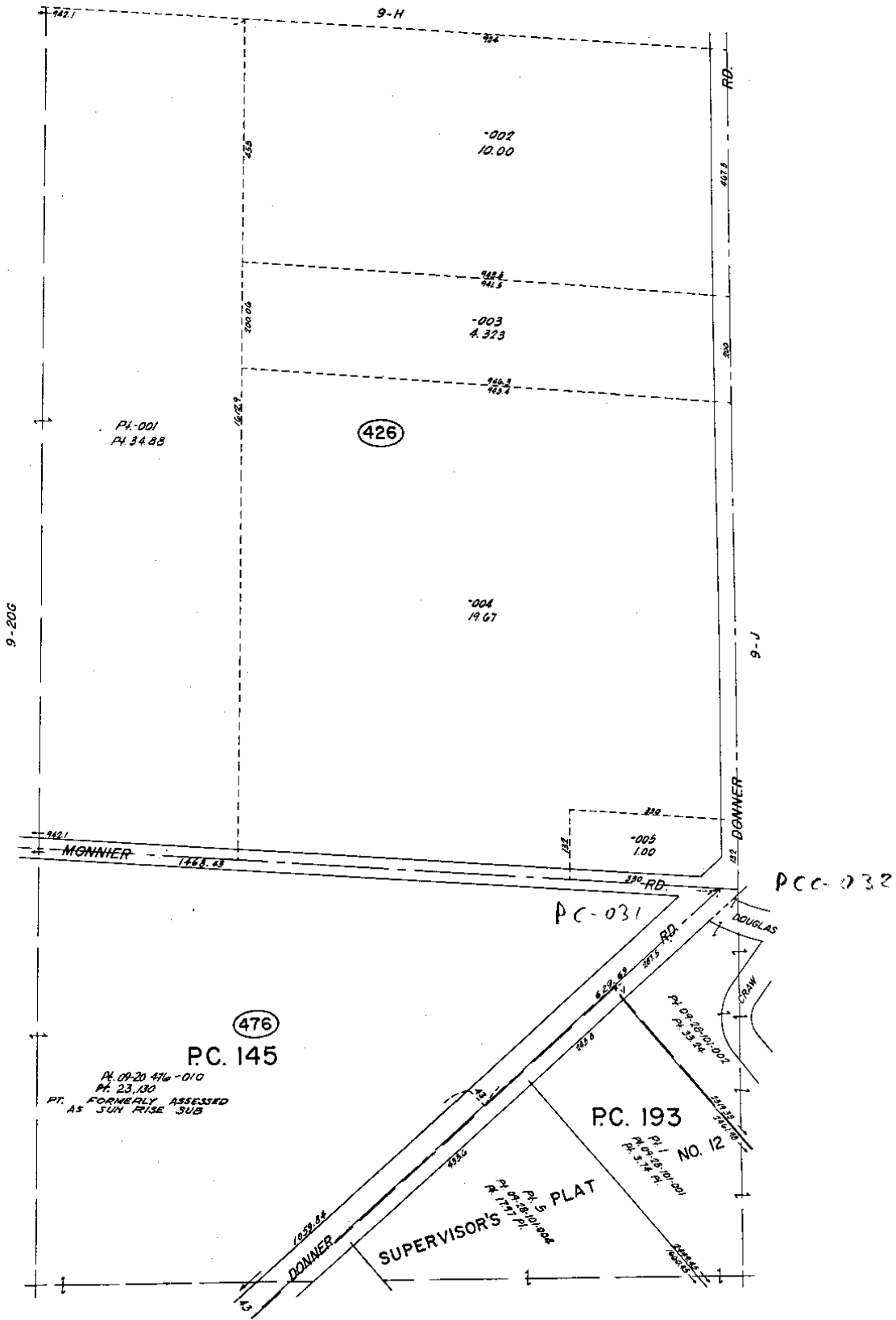
WEST: split rail fence & tree line



REMON 2009 CHESTERFIELD TWP., T3N, R14E



● SECTION, PRIVATE CLAIM CORNER



REV. 4-78
REV. 12-78

9-290

Copyright 1974
MACOMB COUNTY, MICHIGAN

CHESTERFIELD TWP
 E.1/2 S.E.1/4 SEC. 20 & PT. PC. 145, 143 T.3N. R.14E.

SCALE: 1" = 100'
 654
 9-20H

PCC-032

N^o. 488,, North Side of River Huron.

Description N^o. 145 Confirmed to Edward Tucker commencing at a post standing on the border of River Huron between this tract and a tract confirmed to John Tucker, thence north three hundred and forty eight chains forty one links, to a post thence East forty six chains ninety four links, to a post standing on the north west (or Rear) line of a tract confirmed to George Meldrum.

thence south forty five degrees west thirty two chains eighty links, to a post thence west six chains fifty links, to a post a boundary between this tract and Maconses Reserve thence south sixty six chains ninety nine links, to a post thence east sixteen chains, to a post thence south fifty eight chains twelve links, to a post thence west seventeen chains, to a post the north west corner of a tract confirmed to Mitchel Semble, thence south one hundred and ninety eight chains eighty nine links, to a post standing on the border of River Huron thence along the border of said River upstream north eighty degrees west seven chains, thence south seventy four degrees west eight chains thirty links, to the place of beginning containing six hundred and forty acres.

Detroit July 14. 1810

Aaron Greeley Surveyor
of private Claims.

No. 488

No. 145 Confirmed to
Edward Tucker

NORTH SIDE OF RIVER HURON

Description No. 145 Confirmed to Edward Tucker commencing at a post standing on the border of River Huron between this tract and a tract confirmed to John Tucker thence north three hundred and forty eight chains forty one links, to a post thence east forty six chains ninety four links to a post standing on the north west (or rear) line of a tract confirmed to George Meldrum thence south forty five degrees west thirty two chains eighty___ links to a post thence west six chains fifty links to a post a boundary between this tract and Macconses Reserve thence south sixty six chains ninety nine links to a post thence east seventeen chains to a post, thence south fifty eight chains twelve links to a post thence west seventeen chains to a post the northwest corner of a tract confirmed to Mitchell Tremble, thence south one hundred and ninety eight chains eighty nine links to a post standing on the border of River Huron, thence along the border of said River up stream north eighty degrees west seven chains thence south seventy four degrees west eight chains thirty links to the place of beginning._____

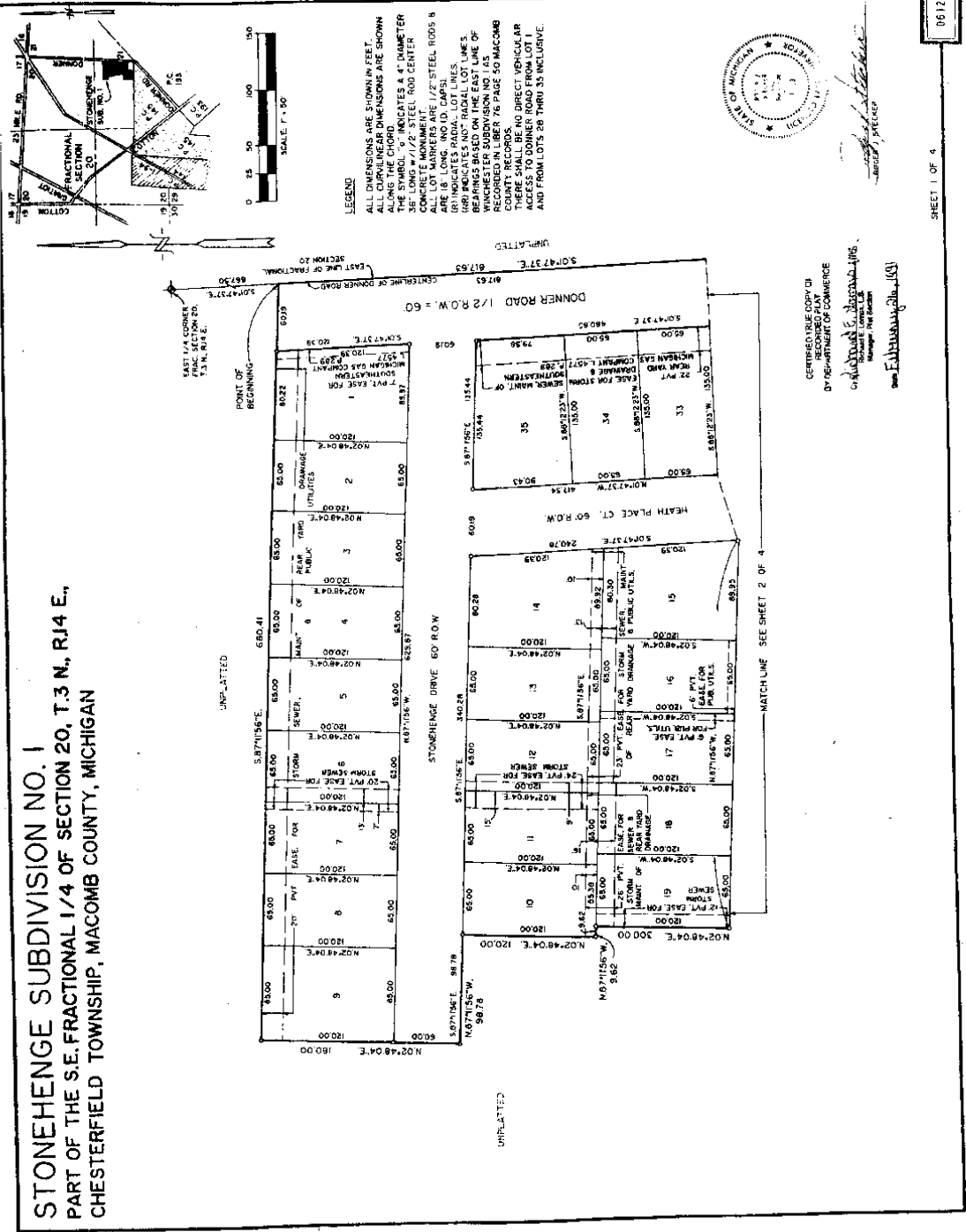
Containing six hundred and forty acres.

Detroit July 14, 1810

Aaron Greeley Surveyor
of private claims

793, P 10

STONEHENGE SUBDIVISION NO. 1
PART OF THE S.E. FRACTIONAL 1/4 OF SECTION 20, T.3 N, R.14 E.,
CHESTERFIELD TOWNSHIP, MACOMB COUNTY, MICHIGAN



LEGEND
 ALL DIMENSIONS ARE SHOWN IN FEET.
 ALL CURVILINEAR DIMENSIONS ARE SHOWN
 ALONG THE CHORDS UNLESS OTHERWISE NOTED.
 DIMENSIONS IN PARENTHESES INDICATE A 4" DIAMETER
 3/8" LONG x 1/2" STEEL ROD CENTER
 CONCRETE MONUMENT.
 ALL LOT MARKERS ARE 1/2" STEEL RODS x
 3/8" LONG x 1/2" STEEL ROD CENTER.
 (R) INDICATES RADIAL LOT LINES.
 (B) INDICATES BEARING AND DISTANCE.
 BEARINGS BASED ON THE EAST LINE OF
 DONNER ROAD. ALL BEARINGS AND DISTANCES
 RECORDED IN LIBER 76 PAGE 50 MACOMB
 COUNTY RECORDS.
 THERE SHALL BE NO DIRECT, INDIRECT,
 OR CONSEQUENTIAL DAMAGES TO THE
 SURVEYOR AND FROM LOTS 50 THRU 55 INCLUSIVE.



CERTIFIED TRUE COPY OF
 RECORDED PLAT
 BY DEPARTMENT OF COMMERCE
 CADILLAC COUNTY, MICHIGAN
 MICHAEL J. JONES, CLERK
 JAMES W. HARRIS, JR., CLERK

061280
 SHEET 1 OF 4

MATCH LINE SEE SHEET 2 OF 4

LIBER 060017525

H937469

93 SEP -7 PM 3: 12

LAND CORNER RECORDATION CERTIFICATE
Filing Requirement of Act 74, Mich. P.A. 1970

MARIELLA SABAUGH
REGISTER OF DEEDS
MACOMB COUNTY, MI

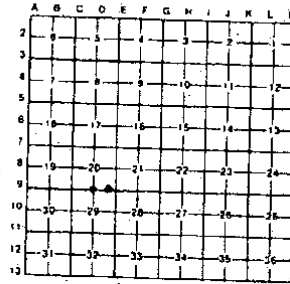
For corners in
MACOMB

County	Located In	Corner Code //
1 Public Land Survey	T 3N R 14E	D-9
CHESTERFIELD	T 3N R 14E	NE CORNER OF PC 145 & INT. OF SOUTH LINE OF FRAC SECTION 20
2 Property Controlling in Section	S 20 T R	
3 Miscellaneous Property in Sec.	S 29 T R	
	S T R	

Register of Deeds Stamp & File Number

4 Lot No
5 Private Claims

Recorded Plat
145



1. ROGER J. STECKER in a field survey on SEPTEMBER 1, 1993 do hereby certify that under requirements of P.A. 74, Michigan P.A. of 1970 the corner points mentioned in lines 1 and 2 above were in conformance with regulations and rules thereto as required in the current manual of survey instructions of the United States Department of the Interior, Bureau of Land Management or by a decree of a Court of Law and/or that the corner points mentioned in lines 3, 4 and 5 above were in conformance with the rules of the Michigan Board of Land Surveyors or by a Decree of a Court of Law, established, re-established, monumented, re-monumented, recovered, found as expressed below

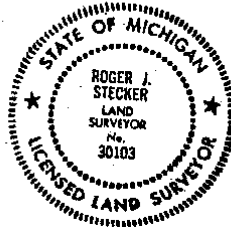
NOTE: Not more than 4 corners, all in the same town and range, may be recorded on this certificate.

A Description of original monument and accessions and/or subsequent restoration

D-9 1/2" IRON & CAP #16052
N.E. CORNER OF PC 145 AND THE INTERSECTION OF THE SOUTH LINE OF FRACTIONAL SECTION 20 - 1/2" IRON

B Description of corner evidence found and/or method applied in restoring or reestablishing corner

D-9 FOUND 1/2" IRON & CAP
FOUND 1/2" IRON N.E. CORNER OF PC 145 AND THE INTERSECTION OF THE SOUTH LINE OF FRACTIONAL SECTION 20



PCC-029

PC-31

C Description of monument for corner and accessions established to perpetuate locating the position of the corner

D-9
WEST 74.60 FT. 1/2" IRON
WEST NORTHWEST 114.78 P.K. & TAG #17635
IN SOUTH FACE UTILITY POLE
SOUTH 51.05 FORM NAIL & MSHD TAG IN EAST FACE
UTILITY POLE
WEST SOUTHWEST 177.87 P.K. & CAG #17635 IN
SOUTH FACE UTILITY POLE

N.E. CORNER OF P.C. 145 & INTERSECTION OF
SOUTH LINE OF FRACTIONAL SECTION 20
EAST NORTHEAST 37.55 FT. TO WEST FACE OF 8"
GATE POST
WEST NORTHWEST 23.33 FT. NAIL & TAG IN EAST FACE
UTILITY POLE
SOUTH SOUTHEAST 47.34 FT. NAIL & TAG IN WEST
FACE UTILITY POLE
NORTHEAST 65.84 FT. TO IRON ON EDGE OF ROAD

370'

23.25
NAIL &
RECORD
STECKER
TAG

Signed by *Roger J. Stecker*
ROGER J. STECKER, PS
Surveyor's Michigan License No. 30103

Date 9-1-93

FORM APPROVED BY MICHIGAN STATE BOARD OF LAND SURVEYORS, JAN. 28, 1971
REVISED MAY 14, 1972
REVISED MAR., 1983

WNW 23.75 TO NAIL & METAL TAG
S FACE OF UTIL POLE

SSE 45.85 TO NW/REA TAG
W FACE OF UTIL POLE

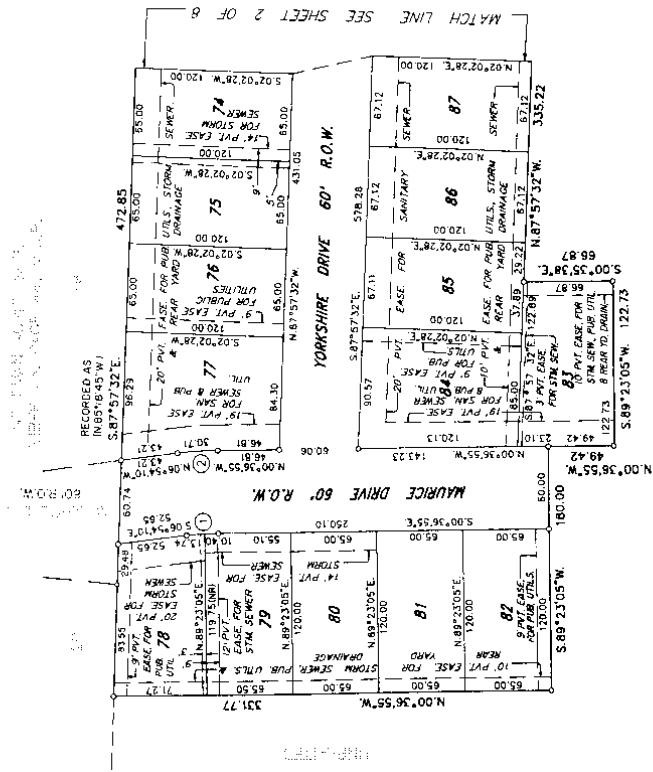
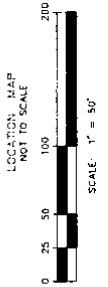
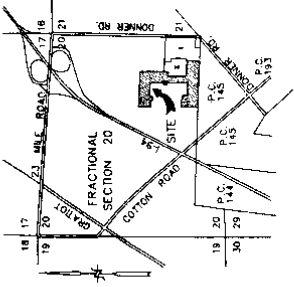
3782

2103, P 13

STONEHENGE SUBDIVISION NO. 3 PART OF THE S.E. FRACTIONAL 1/4 OF SECTION 20, T.3N., R.14E., CHESTERFIELD TOWNSHIP, MACOMB COUNTY, MICHIGAN

CURVE DATA	CHORD	ARC	ANGLE	CHORD BEARING	ARC BEARING
1	220.00	71.14	50°14'53"E	24.13	05°17'15"
2	280.00	50.73	N.03°45'32"W	30.71	06°17'15"

LEGEND
ALL DIMENSIONS ARE SHOWN IN FEET.
ALL CURVILINEAR DIMENSIONS ARE SHOWN IN FEET.
THE SYMBOL "C" INDICATES A 4" DIAMETER 38' LONG #1/2" STEEL ROD CENTER CONCRETE MONUMENT.
ALL LOT MARKERS ARE 1/2" STEEL RODS AND ALL LOT MARKERS ARE 1/2" STEEL RODS.
(R) INDICATES RADIAL LOT LINES.
(MR) INDICATES NOT RADIAL LOT LINES.
BEARINGS BASED ON THE W.V. LINE OF STONEHENGE SUBDIVISION NO. 3 AS RECORDED IN LIBER 92 PAGES 34-38, INCL., MACOMB COUNTY RECORDS.



CERTIFIED TRUE COPY OF
RECORDED PLAT
BY DEPARTMENT OF COMMERCIAL
LAND RECORDS
SUBDIVISION CONTROL UNIT
DATE: APRIL 8, 1974

ROBERT L. SMITH



SHEET 1 OF 8
062707

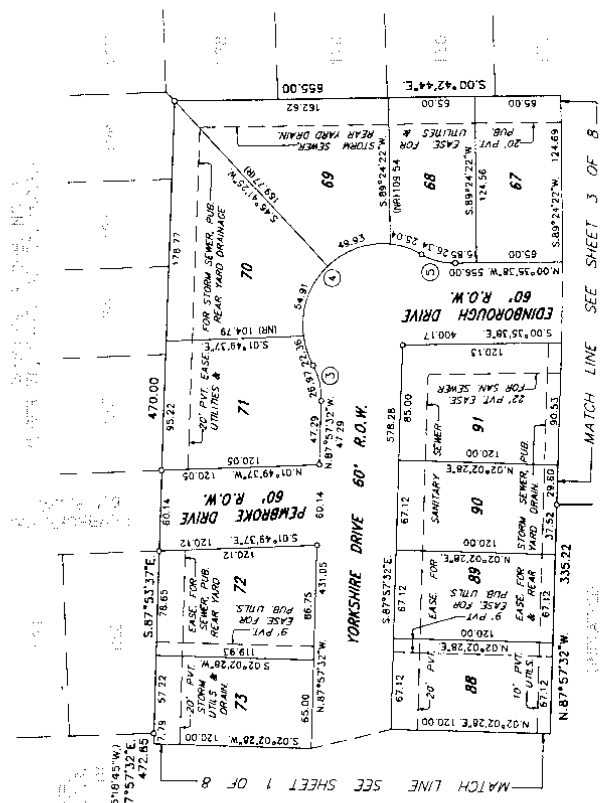
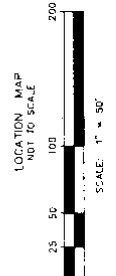
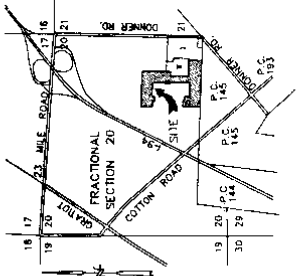
STONEHENGE SUBDIVISION NO. 3 PART OF THE S.E. FRACTIONAL 1/4 OF SECTION 20, T.3N., R.14E., CHESTERFIELD TOWNSHIP, MACOMB COUNTY, MICHIGAN

CURVE DATA	
PIECE #	RADIUS
1	687.5
2	687.5
3	687.5
4	687.5
5	687.5

ARC	CHORD	CHORD BEARING
1	115.89	S 87° 53' 37" W
2	115.89	N 14° 40' 45" E
3	115.89	S 87° 53' 37" W
4	115.89	N 14° 40' 45" E
5	115.89	S 87° 53' 37" W
6	115.89	N 14° 40' 45" E

RECORDED AS INSTRUMENT NO. 111-111-111
S 87° 53' 37" W
472.85

LEGEND
ALL DIMENSIONS ARE SHOWN IN FEET.
ALL CURVILINEAR DIMENSIONS ARE SHOWN
IN FEET. THE CENTER OF CURVILINEAR DIMENSIONS
IS INDICATED BY A 4" DIAMETER
36" LONG 3/4" STEEL ROD CENTER
CONCRETE MONUMENT.
ALL LOT MARKERS ARE 1/2" STEEL RODS AND
ALL LOT MARKERS ARE 1/2" STEEL RODS AND
(R) INDICATES RADIAL LOT LINES.
(NR) INDICATES NOT RADIAL LOT LINES.
BEARINGS BASED ON THE N.T.Y. LINE OF
SECTION 20, T.3N., R.14E., AS RECORDED
IN LIBER 92, PAGES 34-38, INCL., MACOMB
COUNTY RECORDS.



MATCH LINE SEE SHEET 1 OF 8
MATCH LINE SEE SHEET 3 OF 8

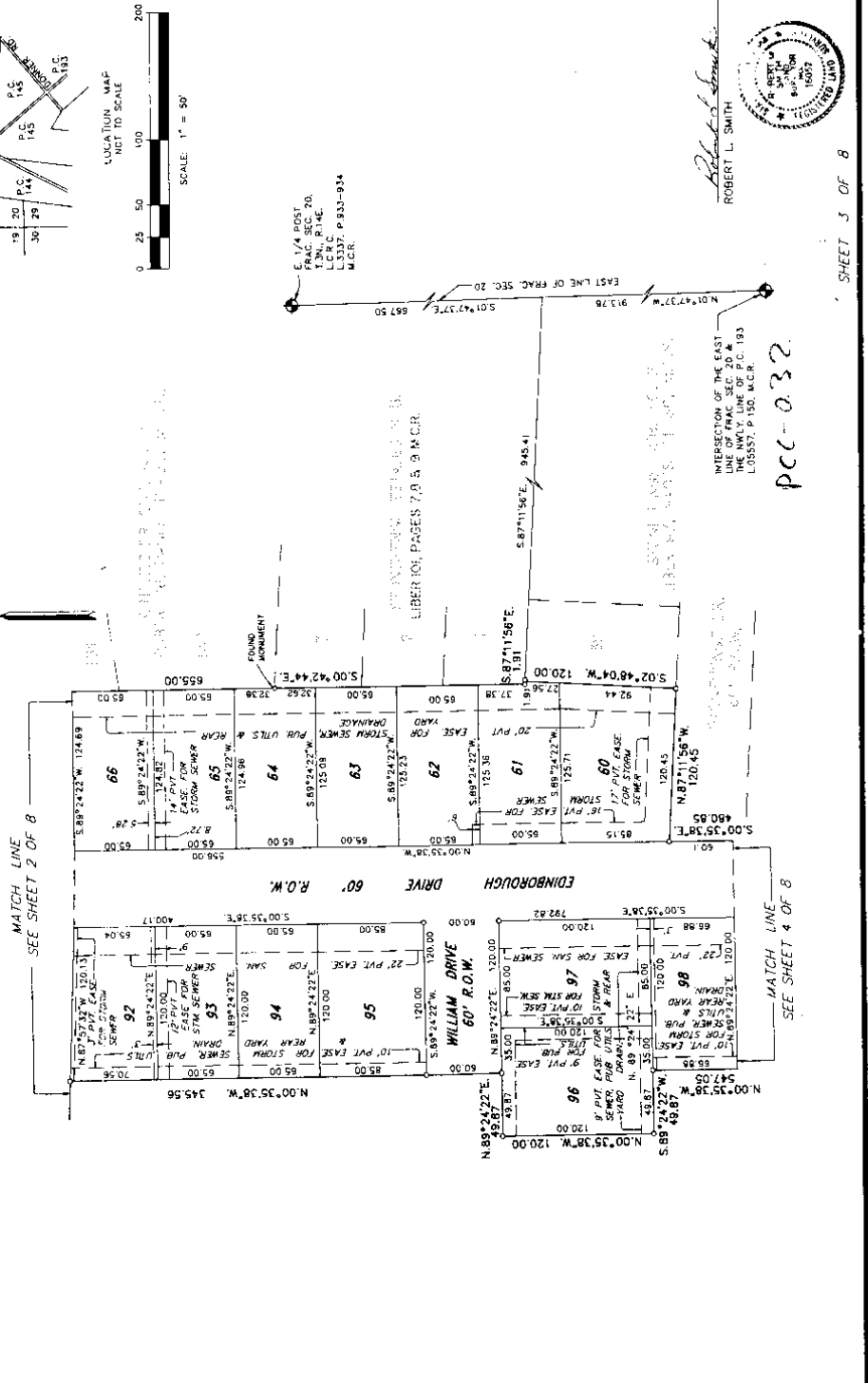
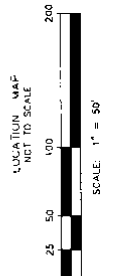
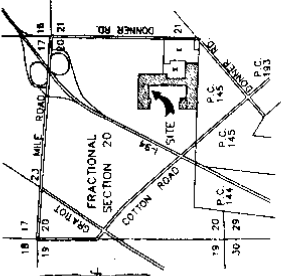
Robert L. Smith
ROBERT L. SMITH



SHEET 2 OF 8
062707

STONEHENGE SUBDIVISION NO. 3
PART OF THE S.E. FRACTIONAL 1/4 OF SECTION 20, T.3N., R.14E.,
CHESTERFIELD TOWNSHIP, MACOMB COUNTY, MICHIGAN

LEGEND
 ALL DIMENSIONS ARE SHOWN IN FEET.
 ALL CURVILINEAR DIMENSIONS ARE SHOWN
 WITH THE CURVE DATA. THE SYMBOL "C" INDICATES A 4" DIAMETER
 36" LONG 4 1/2" STEEL ROD CENTER
 CONCRETE MONUMENT.
 ALL CURVILINEAR DIMENSIONS ARE 1/4" LONG (100.00) (C.A.S)
 ARE 18" LONG (180.00) (C.A.S)
 (R) INDICATES RADIAL LOT LINES
 (NR) INDICATES NOT RADIAL LOT LINES
 BEARINGS BASED ON THE N.W. 1/4 LINE
 OF SECTION 20, T.3N., R.14E., RECORDED
 IN LIBER 97, PAGES 34-35, INCL., MACOMB
 COUNTY RECORDS.



E. 1/4 POST
 T.3N., R.14E.,
 L.C.R.C.
 33337, P. 932-934
 M.C.R.

Robert L. Smith
 ROBERT L. SMITH
 REGISTERED SURVEYOR
 MICHIGAN
 1995

PCC-032

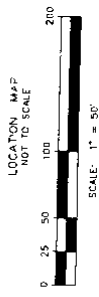
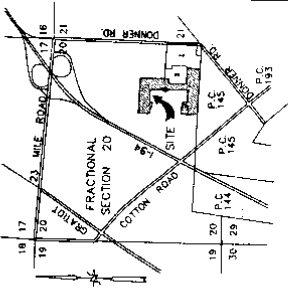
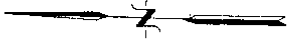
SHEET 3 OF 8

062707

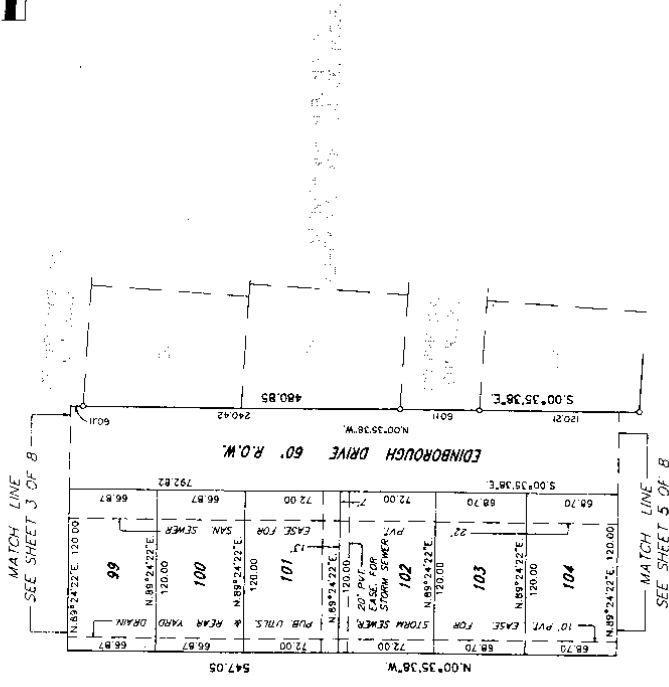
STONEHENGE SUBDIVISION NO. 3
PART OF THE S.E. FRACTIONAL 1/4 OF SECTION 20, T.3N., R.14E.,
CHESTERFIELD TOWNSHIP, MACOMB COUNTY, MICHIGAN

LEGEND

ALL DIMENSIONS ARE SHOWN IN FEET.
 ALL CURVILINEAR DIMENSIONS ARE SHOWN
 ALONG THE CHORD.
 DIMENSIONS A 4" DIAMETER
 3/8" LONG 1/2" STEEL ROD CENTER
 CONCRETE MONUMENT
 ALL LOT MARKERS ARE 1/2" STEEL RODS AND
 CAPS (NO I.D. CAPS)
 (R) INDICATES RADIAL LOT LINES
 (NR) INDICATES NOT RADIAL LOT LINES.
 BEARINGS BASED ON THE W.L.Y. LINE OF
 STONEHENGE SUBDIVISION NO. 2 AS RECORDED
 IN PUBLIC RECORDS, VOLUMES 34-36, INCL., MACOMB
 COUNTY RECORDS.



LOCATION MAP
 NOT TO SCALE



ROBERT L. SMITH

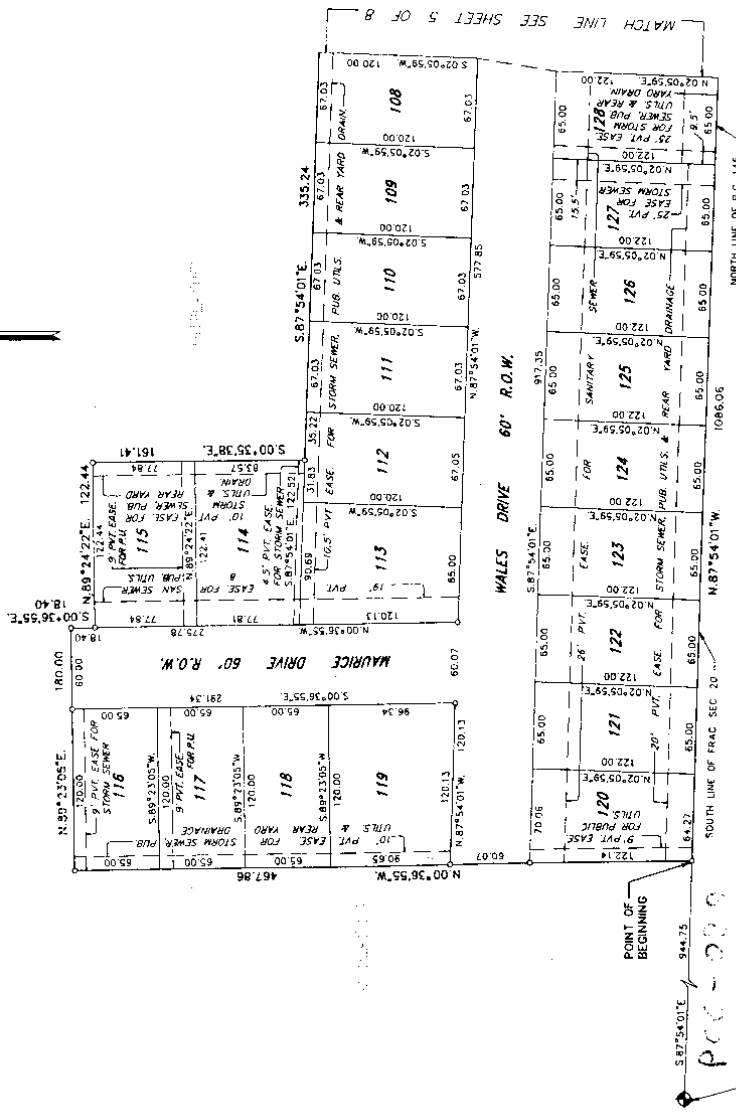
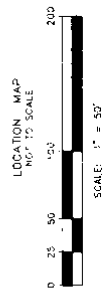
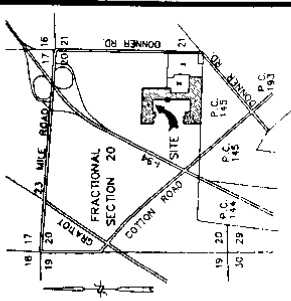


SHEET 4 OF 8

062707

STONEHENGE SUBDIVISION NO. 3 PART OF THE S.E. FRACTIONAL 1/4 OF SECTION 20, T.3N., R.14E., CHESTERFIELD TOWNSHIP, MACOMB COUNTY, MICHIGAN

LEGEND
ALL DIMENSIONS ARE SHOWN IN FEET.
ALL CURVILINEAR DIMENSIONS ARE SHOWN IN FEET.
THE SYMBOL "Ø" INDICATES A 4" DIAMETER
36" LONG W/1/2" STEEL ROD CENTER
CONCRETE MONUMENT.
"Ø" INDICATES 1/2" STEEL RODS AND
ARE 18" LONG (NO ID. CAPS).
(R) INDICATES RADIAL LOT LINES.
(NR) INDICATES NOT RADIAL LOT LINES.
BEARINGS AND DISTANCES ON THE W/L LINE
STAMPED BY SURVEYOR W. L. 2, RECORDED
IN LIBER 97, PAGES 34-35, MCL., MACOMB
COUNTY RECORDS.



POINT OF BEGINNING
S.87°54.01'E 944.75
P.C. - 145
S. 1/2 FOOT
FRAC. SEC. 20,
T.3N., R.14E.,
L.C.R.C. 06001
M.C.R.
062707

ROBERT L. SMITH
Professional Engineer
No. 10000
No. 10000

**STONEHENGE SUBDIVISION NO. 3
PART OF THE S.E. FRACTIONAL 1/4 OF SECTION 20, T.3N., R.14E.,
CHESTERFIELD TOWNSHIP, MACOMB COUNTY, MICHIGAN**

COUNTY TREASURER'S CERTIFICATE

THE RECORDS IN MY OFFICE SHOW NO UNPAID TAXES OR SPECIAL ASSESSMENTS FOR THE FIVE (5) YEARS PRECEDING Sept. 13, 1993, INVOLVING THE LANDS INCLUDED IN THIS PLAT.

John J. Rogocci
MACOMB COUNTY TREASURER'S OFFICE 1201 N. 11th St., DEPUTY TREASURER

COUNTY DRAIN COMMISSIONER'S CERTIFICATE

APPROVED ON Oct 28, 19 93, AS COMPLYING WITH SECTION 192 OF ACT 288, P.A. 1987, AND THE APPLICABLE RULES AND REGULATIONS PUBLISHED BY MY OFFICE IN THE COUNTY OF MACOMB

Anthony V. MaRocco
ANTHONY V. MAROCCO, MACOMB COUNTY DRAIN COMMISSIONER

CERTIFICATE OF COUNTY ROAD COMMISSIONERS

APPROVED ON October 26, 19 93, AS COMPLYING WITH SECTION 183 OF ACT 288, P.A. 1987 AND THE APPLICABLE PUBLISHED RULES AND REGULATIONS OF THE BOARD OF ROAD COMMISSIONERS OF MACOMB COUNTY.

John J. Rogocci, CHAIRPERSON
Mary Louise Damer, VICE CHAIRPERSON
Thomas S. Helsp, COMMISSIONER

CERTIFICATE OF MUNICIPAL APPROVAL

I CERTIFY THAT THIS PLAT WAS APPROVED BY THE BOARD OF TRUSTEES OF THE TOWNSHIP OF CHESTERFIELD, A LEGAL FIELD, AND WAS RECEIVED AND FOUND TO BE IN COMPLIANCE WITH ACT 288, P.A. OF 1987, AND THAT THE LOTS CONFORM WITH THE LEGALLY ADOPTED ZONING SUBDIVISION CONTROL ORDINANCE OF THE TOWNSHIP, AND WAIVE THE MINIMUM LOT SIZES IN SECTION 186, ALSO THAT ADEQUATE SURETY HAS BEEN DEPOSITED WITH THE TOWNSHIP CLERK FOR THE PLACING OF MONUMENTS AND LOT MARKERS WITHIN A REASONABLE PERIOD OF TIME AFTER THE DATE OF RECORDING OF THIS PLAT, AND THAT THE PUBLIC WATER AND PUBLIC SEWER SERVICES HAVE BEEN INSTALLED AND ARE READY FOR USE WITHIN THIS PLAT.

Janice M. Vigus
JANICE M. VIGUS, CLERK

COUNTY PLAT BOARD CERTIFICATE

THIS PLAT HAS BEEN REVIEWED AND IS APPROVED BY THE MACOMB COUNTY PLAT BOARD ON Jan 17, 1994, AS BEING IN COMPLIANCE WITH ALL OF THE PROVISIONS OF ACT 288, P.A. 1987, AND THE PLAT BOARD'S APPLICABLE RULES AND REGULATIONS.

Mark A. Steinhilber, CHAIRPERSON OF THE COUNTY BOARD OF COMMISSIONERS
Carmella Saraugh, CLERK - REGISTER OF DEEDS

Candice S. Miller
CANDICE S. MILLER, MACOMB COUNTY TREASURER


RECORDING CERTIFICATE

STATE OF MICHIGAN)
COUNTY OF MACOMB)

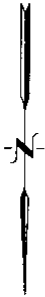
THIS PLAT WAS RECEIVED FOR RECORD ON THE 21st DAY OF NOVEMBER, 19 93, AT 2:55 P.M., AND RECORDED IN LIBER 105 OF PLATS ON PAGE(S) 17-20

Collette M. Dymasak
COLLETTE M. DYMASAK, DEPUTY REGISTER OF DEEDS

Robert L. Smith
ROBERT L. SMITH

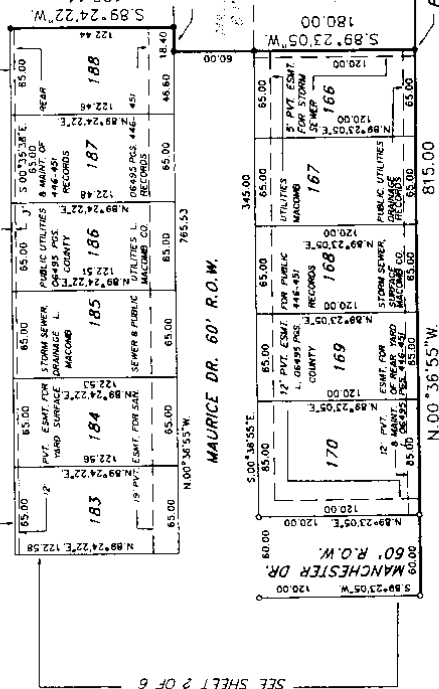


STONEHENGE SUBDIVISION NO. 4 PART OF THE S.E. FRACTIONAL 1/4 OF SECTION 20, T.3N., R.14E., CHESTERFIELD TOWNSHIP, MACOMB COUNTY, MICHIGAN



LEGEND
 ALL DIMENSIONS ARE SHOWN IN FEET.
 ALL CURVILINEAR DIMENSIONS ARE SHOWN
 ALONG THE CHORD.
 "C" INDICATES A 4" DIAMETER
 3/8" LONG WITH 1/2" STEEL ROD CENTER
 CONCRETE MONUMENT.
 ALL LOT MARKERS ARE 1/2" STEEL RODS AND
 ARE SET IN ALL CORNERS.
 (R) INDICATES RADIAL LOT LINES.
 (NR) INDICATES NOT RADIAL LOT LINES.
 BEARINGS BASED ON THE WLY. LINE OF
 STONEHENGE SUBDIVISION NO. 3 AS RECORDED
 IN U.S. DEPARTMENT OF THE INTERIOR
 COUNTY RECORDS.
 * = FOUND MONUMENT 1/2" STEEL ROD IN
 4" DIAMETER CONCRETE

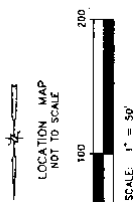
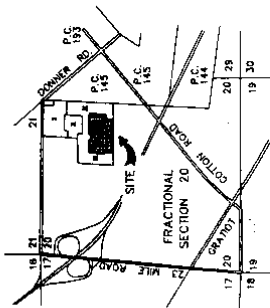
MATCH LINE
 SEE SHEET 4 OF 6



MATCH LINE
 SEE SHEET 2 OF 6

PC-031
 NORTHEAST CORNER OF
 P.C. 145 & THE INTERSECTION
 OF THE WLY. LINE OF
 P.R.L. SECTION 20
 L. 046001
 L. 535
 MACOMB COUNTY RECORDS

SOUTH LINE OF F.R.L. SECTION 20
 944.75
 N. 87° 54' 01" W
 1866.41
 467.86
 N. 00° 36' 55" W
 18.40
 N. 00° 36' 55" W
 815.00
 P.O.B.



LOCATION MAP
 NOT TO SCALE

CERTIFIED TRUE COPY OF
 RECORDED PLAT
 BY DEPARTMENT OF COMMERCIAL
 RECORDS
 BY *Stephanie A. Day*
 Assistant Registrar
 Subdivision Control Unit
 DATE: *NOV. 11, 1995*

ROBERT L. WILSON
 PROFESSIONAL SURVEYOR NO. 16052
 SOUTH 1/4 CORNER
 T.3N., R.14E.
 L.C.R.C.
 MALCOMB COUNTY RECORDS
 SHEET 1 OF 6



L 127, P 29

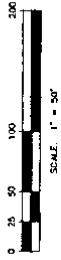
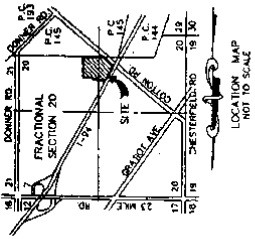
STONEHENGE SUBDIVISION NO. 5
 PART OF THE S.E. 1/4 & S.W. 1/4 OF PRL SEC. 20, T.3N., R.14E.,
 CHESTERFIELD TOWNSHIP, MACOMB COUNTY, MICHIGAN

CURVE #	RADIUS	ARC LENGTH	BEARING	CHORD	DELTA
1	96.00	15.14	S.27°41'37"W	15.09	17°02'29"
2	96.00	15.09	S.27°41'37"W	15.14	17°02'29"
3	480.00	18.54	N.75°50'24"W	18.52	21°55'14"
4	480.00	18.52	N.75°50'24"W	18.54	21°55'14"
5	425.00	16.09	N.77°56'24"W	16.07	21°55'14"
6	425.00	16.07	N.77°56'24"W	16.09	21°55'14"



LEGEND

- ALL DIMENSIONS ARE SHOWN IN FEET
- ALL CHORDS AND BEARINGS ARE SHOWN
- THE SYMBOL "O" INDICATES A 4" DIAMETER CONCRETE MONUMENT STEEL ROD CENTER
- ALL LOT MARKERS ARE 1/2" DIAMETER STEEL ROD
- (R) INDICATES RADIAL LOT LINES.
- (SR) INDICATES NON RADIAL LOT LINES.
- BEARINGS AND DISTANCES OF SUBDIVISION RECORDS IN LIBER 110 PAGES 26 THRU 31 MACOMB COUNTY RECORDS.



NOTE: THERE SHALL BE NO DIRECT VEHICULAR ACCESS TO COTTON ROAD FROM LOTS 202 THRU 205 INCLUSIVE AND LOTS 214 THRU 219 INCLUSIVE.

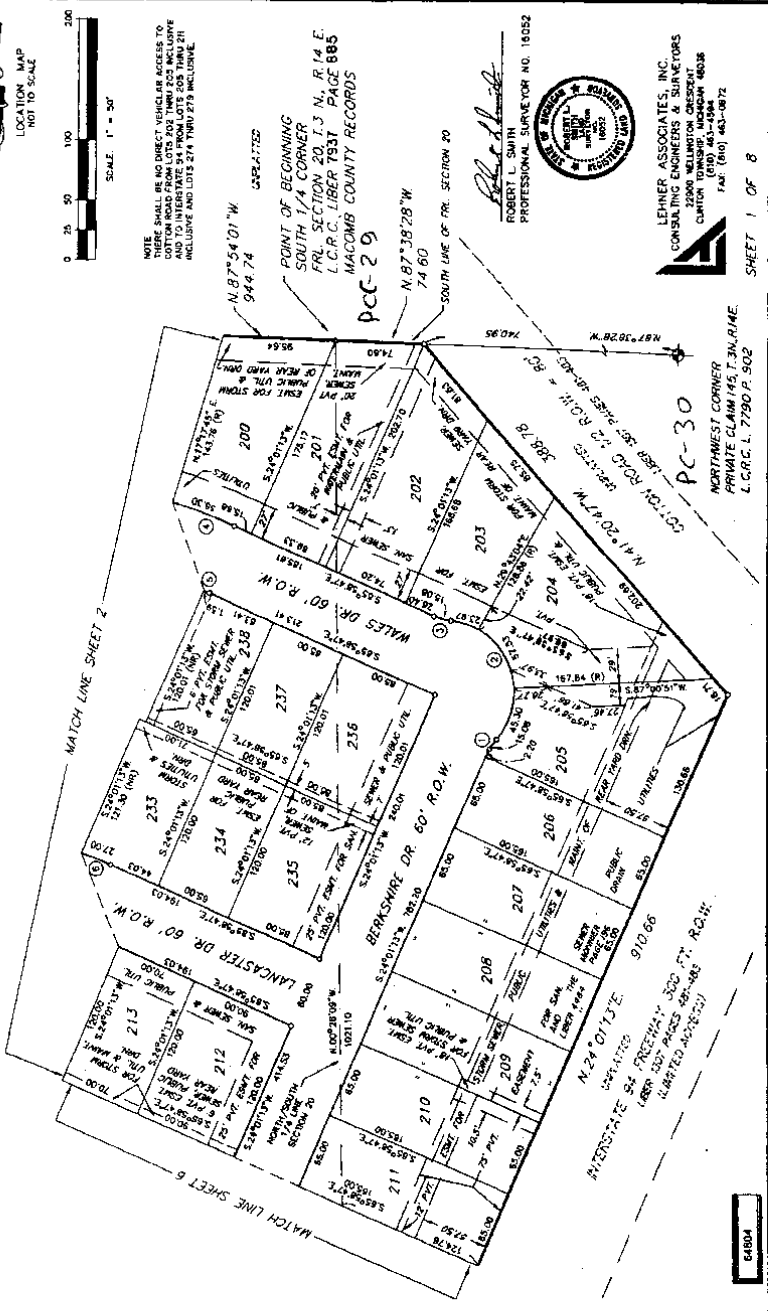
POINT OF BEGINNING SOUTH 1/4 CORNER PRL SECTION 20, T.3 N., R.14 E., L.C.R.C. LIBER 7931 PAGE 885 MACOMB COUNTY RECORDS

ROBERT L. SWAIN
 PROFESSIONAL SURVEYOR NO. 18052



LEHER ASSOCIATES, INC.
 CONSULTING ENGINEERS & SURVEYORS
 CLINTON TOWNSHIP, MICHIGAN 48038
 TEL: (517) 461-4584 FAX: (517) 460-0872

SHEET 1 OF 8



NORTHWEST CORNER PRIVATE CLAIM 145, T.3N.14E. L.C.R.C. L. 7790 P. 502

6480A

STONEHENGE SUBDIVISION NO. 5 PART OF THE S.E. 1/4 & S.W. 1/4 OF PRL SEC. 20, T.3N., R.14E., CHESTERFIELD TOWNSHIP, MACOMB COUNTY, MICHIGAN

CURVE #	ARC	CHORD BEARING	CHORD	DELTA
1	183.64	N. 79° 58' 24" W.	192.52	31° 55' 14"
2	230.00	N. 79° 58' 24" W.	104.43	21° 55' 14"
3	230.00	N. 79° 58' 24" W.	104.43	21° 55' 14"



LEGEND
ALL DIMENSIONS ARE SHOWN IN FEET.
ALL CURVILINEAR DIMENSIONS ARE SHOWN
ALONG THE CHORD.
THE CHORD BEARINGS, DISTANCES, & 4" DIAMETER
CONCRETE MONUMENT
35" LONG WITH 1/2" STEEL ROD CENTER
ALL LOT MARKERS ARE 1/2" DIAMETER STEEL ROD.
ALL LOT MARKERS ARE C.I.P.
(R) INDICATES RADIAL LOT LINES.
(N) INDICATES NON-RADIAL LOT LINES.
BEARINGS AND DISTANCES ARE SHOWN IN DEGREES,
MINUTES AND SECONDS. THIS PLAN IS NOT TO BE
RECORDED IN LUBER 110, PAGES 26 THRU 31
MACOMB COUNTY RECORDS.



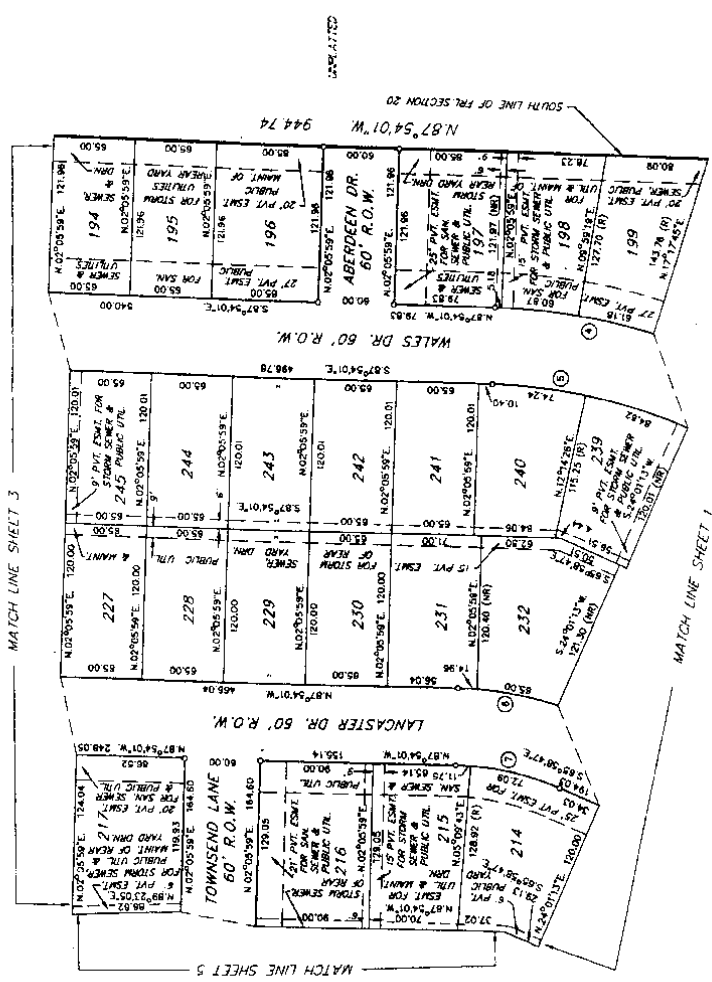
CENTRE TRUE COPY OF
RECORDED PLAN
BY PROFESSIONAL SURVEYOR
AND INDUSTRY SERVICES
BY **Robert L. Smith**
MAYNARD OVER PLS
SUBDIVISION CONTROL UNIT
DATE **4-22-84**

ROBERT L. SMITH
PROFESSIONAL SURVEYOR NO. 16052



LEHNER ASSOCIATES, INC.
CONSULTING ENGINEERS & SURVEYORS
22800 WELLINGTON CRESCENT
ANN ARBOR, MICHIGAN 48106
PHONE (810) 463-4594
FAX (810) 463-0872

SHEET 2 OF 8



64704

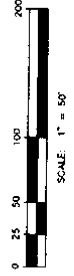
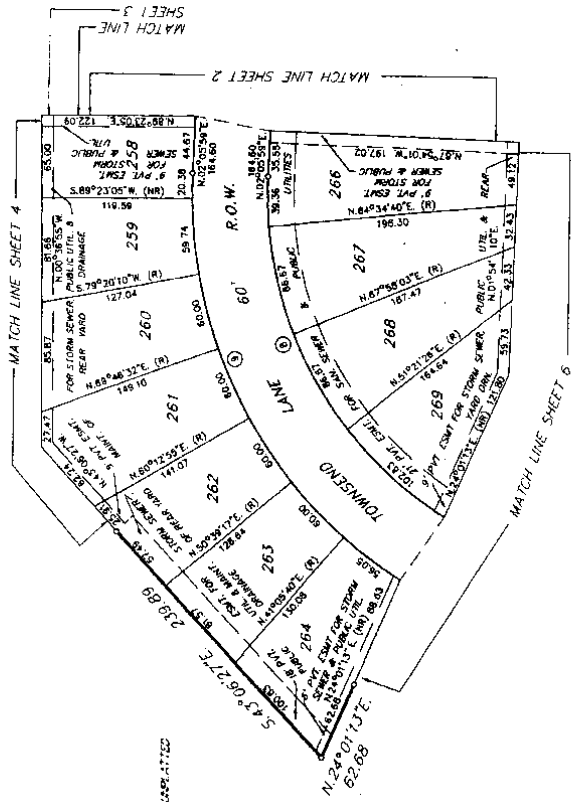
STONEHENGE SUBDIVISION NO. 5 PART OF THE S.E. 1/4 & S.W. 1/4 OF FRL SEC. 20, T.3N., R.14E., CHESTERFIELD TOWNSHIP, MACOMB COUNTY, MICHIGAN

CURVE #	RADIUS	ARC	CHORD	BEARING	CHORD	DELTA
1	300.00	156.47	5.31	88.72°	156.87	88.74°
2	300.00	127.76	5.31	88.72°	128.04	88.74°



LEGEND

ALL DIMENSIONS ARE SHOWN IN FEET.
ALL CURVE RADIUS ARE SHOWN
ALONG THE CHORD.
THE SYMBOL "C" INDICATES A 4" DIAMETER
CONCRETE MANHOLE STEEL RIGID CENTER
LINE.
ALL LOT MARKERS ARE 1/2" DIAMETER STEEL ROD
(1) 10' LONG (NO I.D. CAPS)
(2) 1/2" LONG (NO I.D. CAPS)
(3) 1/2" LONG (NO I.D. CAPS)
(4) 1/2" LONG (NO I.D. CAPS)
(5) 1/2" LONG (NO I.D. CAPS)
BEARINGS BASED ON THE WEST LINE OF
STONEHENGE SUBDIVISION NO. 4
CONTRACT RECORDS PAGES 26 THRU 31
MACOMB COUNTY RECORDS.



Robert L. Smith
ROBERT L. SMITH
PROFESSIONAL SURVEYOR NO. 16052



LEHNER ASSOCIATES, INC.
CONSULTING ENGINEERS & SURVEYORS
2700
CLINTON TOWNSHIP, MICHIGAN 48038
(810) 463-4584
FAX: (810) 463-0672

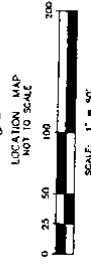
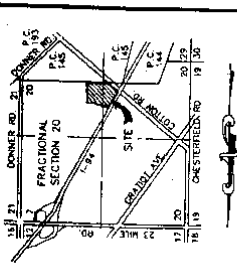
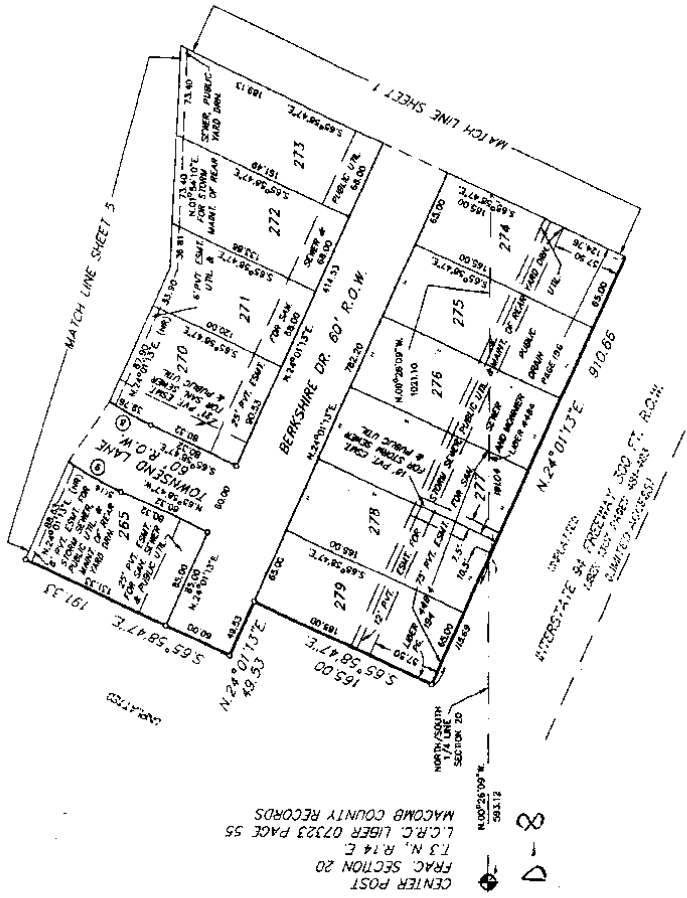
64904
SHEET 5 OF 8

STONEHENGE SUBDIVISION NO. 5
 PART OF THE S.E. 1/4 & S.W. 1/4 OF FRL SEC. 20, T.3N., R.14E.,
 CHESTERFIELD TOWNSHIP, MACOMB COUNTY, MICHIGAN

CURVE I	ARC	CURVE DATA	CHORD	ANGLE
1	100.00	136.47°	2.37	10.14
2	300.00	127.79°	5.70	28.93



LEGEND
 ALL DIMENSIONS ARE SHOWN IN FEET.
 ALL CURVILINEAR DIMENSIONS ARE SHOWN
 WITH THE SYMBOL "C" INDICATES A 4" DIAMETER
 35' LONG WITH 1/2" STEEL ROD CENTER
 ALL LOT MARKERS ARE 1/2" DIAMETER STEEL ROD
 (18" LONG (NO I.D. CAPS))
 (NR) INDICATES NON-RADIAL LINES
 BEARINGS BASED ON THE WEST LINE OF
 TOWNSHIP RANGE 14E, SECTION 20, T.3N., R.14E.
 RECORDED IN JUDICIAL RECORDS NO. 2
 MACOMB COUNTY RECORDS
 * STEEL ROD IN 4" DIAMETER CONCRETE



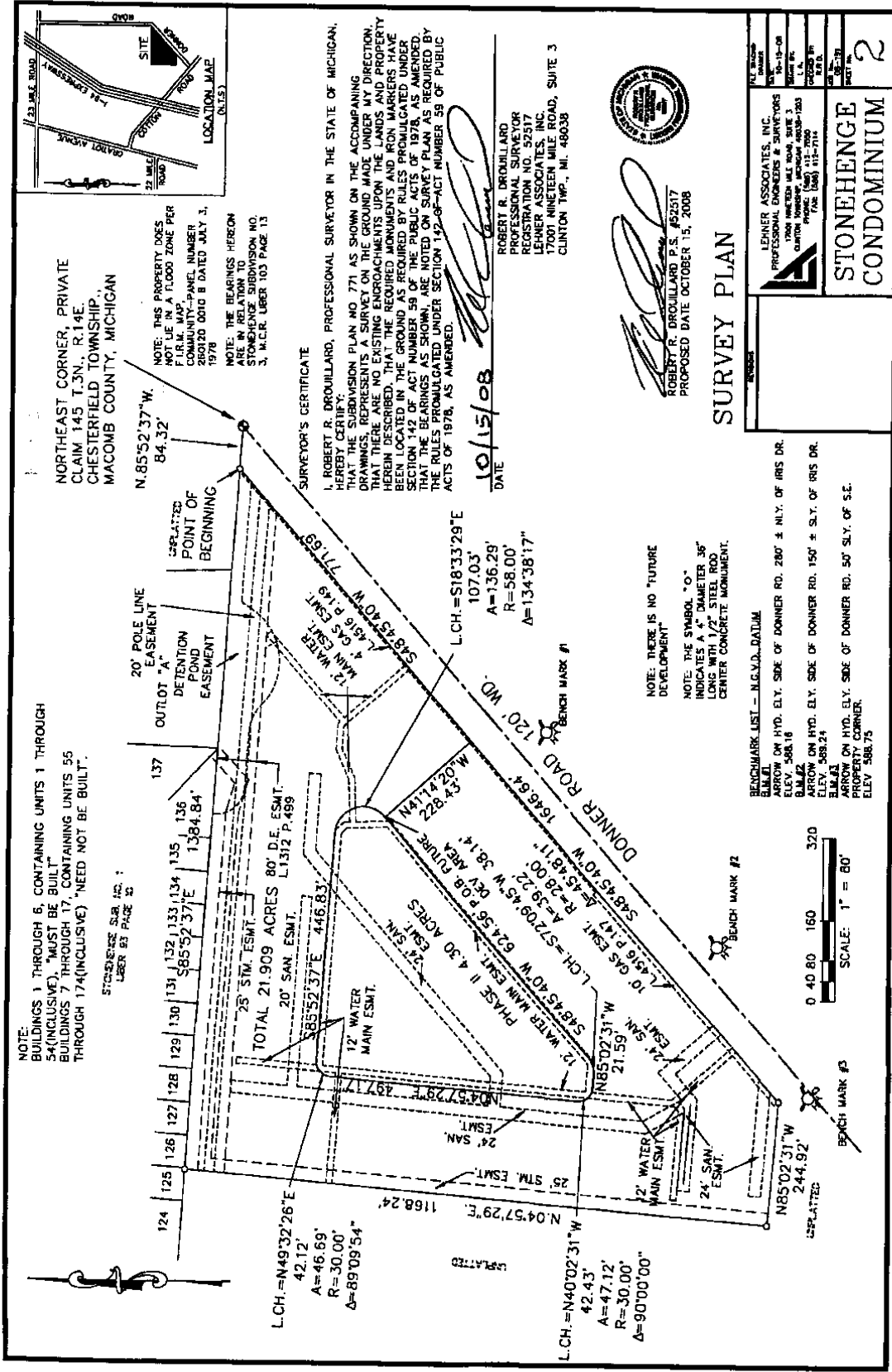
SCALE: 1" = 50'
 LOCATION MAP NOT TO SCALE

Robert L. Smith
 ROBERT L. SMITH
 PROFESSIONAL SURVEYOR NO. 16052



LEHNER ASSOCIATES, INC.
 CONSULTING ENGINEERS & SURVEYORS
 22900 WOODLAND AVENUE
 CLAYTON TOWNSHIP, MICHIGAN 48038
 (810) 461-4584
 FAX: (810) 463-0872

64904 SHEET 6 OF 8



NOTE: THIS PROPERTY DOES NOT LIE IN A FLOOD ZONE PER F.I.R.M. MAP COMMUNITY-PANEL NUMBER 280120 0010 B DATED JULY 3, 1978

NOTE: THE BEARINGS HEREON ARE IN RELATION TO STATIONING SUBVISION NO. 3, N.E.C.R. LIBER 103 PAGE 13

SURVEYOR'S CERTIFICATE

I, ROBERT R. DROUILLARD, PROFESSIONAL SURVEYOR IN THE STATE OF MICHIGAN, HEREBY CERTIFY THAT THE SUBMISSION PLAN NO. 771 AS SHOWN ON THE ACCOMPANYING DRAWINGS, REPRESENTS A SURVEY ON THE GROUND MADE UNDER MY DIRECTION THAT THERE ARE NO EXISTING ENCROACHMENTS UPON THE LANDS AND PROPERTY HEREIN DESCRIBED, THAT THE REQUIRED MONUMENTS AND IRON MARKERS HAVE BEEN LOCATED IN THE GROUND AS REQUIRED BY RULES PROMULGATED UNDER SECTION 142 OF ACT NUMBER 59 OF THE PUBLIC ACTS OF 1978, AS AMENDED. THE RULES PROMULGATED UNDER SECTION 132-6-1 ACT NUMBER 59 OF PUBLIC ACTS OF 1978, AS AMENDED.

DATE: 10/15/08

ROBERT R. DROUILLARD
PROFESSIONAL SURVEYOR
REGISTRATION NO. 52117
LEHNER ASSOCIATES, INC.
17001 NINETEEN MILE ROAD, SUITE 3
CLINTON TWP., MI. 48038



ROBERT R. DROUILLARD, P.S. #52117
PROPOSED DATE OCTOBER 15, 2008

SURVEY PLAN

<p>LEHNER ASSOCIATES, INC. PROFESSIONAL ENGINEERS & SURVEYORS 17001 NINETEEN MILE ROAD, SUITE 3 CLINTON TOWNSHIP, MICHIGAN 48038-1253 OFFICE PHONE (313) 415-7114 FAX (313) 415-7114</p>	<p>DATE: 10-15-08 SHEET NO.: 2</p>
<p>STONEHENGE CONDOMINIUM</p>	

NOTE: THERE IS NO "FUTURE DEVELOPMENT"

NOTE: THE SYMBOL "O" INDICATES A "DIALECTER 36" LONG WITH 1/2" STEEL ROD CENTER CONCRETE MONUMENT.

BENCHMARK LIST - N.G.V.D. DATUM

B.M.#1
ARROW ON HYD. ELY. SIDE OF DONNER RD. 280' ± N.W. OF IRIS DR.
ELEV. 588.16

B.M.#2
ARROW ON HYD. ELY. SIDE OF DONNER RD. 150' ± S.W. OF IRIS DR.
ELEV. 588.21

B.M.#3
ARROW ON HYD. ELY. SIDE OF DONNER RD. 50' S.W. OF S.E. PROPERTY CORNER.
ELEV. 588.75

