

LAND CORNER RECORDATION CERTIFICATE
Filing Requirement of Act 74, Mich. P.A. 1970

For corners in

<u>MACOMB</u> (County)	Located In:	Corner Code #
	CHESTERFIELD TOWNSHIP	
1. Public Land Survey	T ___ R ___	_____
	T ___ R ___	_____
	T ___ R ___	_____
	T ___ R ___	_____
2. Property Controlling in Section	S <u>18</u> T <u>3N</u> R <u>14E</u>	_____
	S <u>18</u> T <u>3N</u> R <u>14E</u>	_____
3. Miscellaneous Property in Sec.	S ___ T ___ R ___	_____
	S ___ T ___ R ___	_____

Register of Deeds Stamp & File Number

4. Lot No. _____, Recorded Plat _____
 5. Private Claims _____

A	B	C	D	E	F	G	H	I	J	K	L	M
1												
2	6	5	4	3	2	1						
3												
4	7	8	9	10	11	12						
5												
6	18	17	16	15	14	13						
7	•											
8	19	20	21	22	23	24						
9												
10	30	29	28	27	26	25						
11												
12	31	32	33	34	35	36						
13												

I, CRAIG P. AMEY, in a field survey on December 12, 1995 do hereby certify that under requirements of P.A. 74, Michigan P.A. of 1970, the corner points mentioned in lines 1 and 2 above were in conformance with regulations and rules therefore as required in the current manual of survey instructions of the United States Department of the Interior, Bureau of Land Management or by a decree of a Court of Law and /or that the corner points mentioned in lines 3, 4 and 5 above were in conformance with the rules of the Michigan Board of Land Surveyors or by a Decree of a Court of Law; established, re-established, monumented, re-monumented, recovered, found as expressed below.

NOTE: Not more than 4 corners, all in the same town and range, may be recorded on this certificate.

A. Description of original monument and accessories and/or subsequent restoration:

CERTIFICATE OF SURVEY 1993 UNRECORDED SHELBY MONEY, #30092 FOUND IRON

B. Description of corner evidence found and/or method applied in restoring or reestablishing corner:

FOUND IRON AT THE INTERSECTION OF THE CENTERLINE OF 23 MILE ROAD AND THE CENTERLINE OF FAIRCHILD ROAD, 0.3' BELOW THE SURFACE (ASPHALT).

1993 CERTIFICATE OF SURVEY UNRECORDED

C. Description of monument for corner and accessories established to perpetuate locating the position of the corner:

REPLACED IRON WITH 3/4" X 24" REBAR WITH ALUMINUM MACOMB COUNTY REMONUMENTATION CAP #34970 IN A NEW MONUMENT BOX

- AZ 40° 77.18 SET PK NAIL AND MCR TAG IN THE NORTHWEST FACE OF A UTILITY POLE
- AZ 160° 58.90 FOUND PK NAIL AND RCMC TAG IN THE NORTHWEST FACE OF A UTILITY POLE
- AZ 235° 84.72 SET PK NAIL AND MCR TAG IN THE NORTHWEST FACE OF A UTILITY POLE
- AZ 320° 83.78 SET PK AND NAIL IIN THE NORTHEAST FACE OF A UTILITY POLE

THE SELECTED LOCATION IS ACCEPTED BY ME AND IS GENERALLY ACCEPTED BY PROFESSIONAL SURVEYORS AS THE BEST AVAILABLE EVIDENCE OF THE POSITION OF THE CORNER.

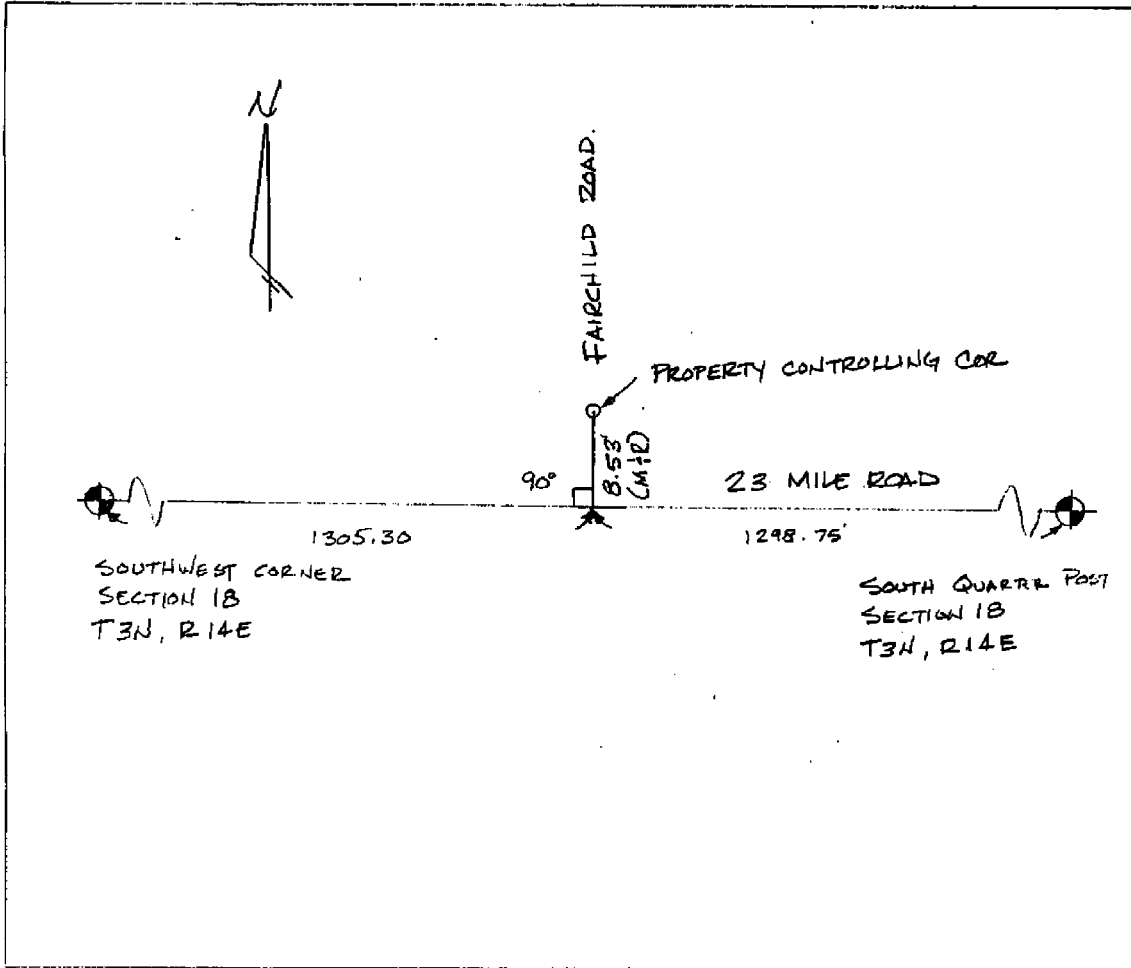
SEE BACK



ACCEPTED BY THE MACOMB COUNTY SURVEY PEER GROUP AS THE OFFICIAL CORNER UNDER MICHIGAN PUBLIC ACT 345 OF 1990 AT A MEETING HELD ON 8-15-95
William E. Soderberg
 WILLIAM E. SODERBERG, P.S., CHAIRMAN

Signed by C.P.A.
 License No. 34970

Date 12-15-95 Surveyor's Michigan



C0292282 LIBER:06862 PAGE:842 11:11A 12/21/1995
 CARMELLA SABAUGH-MACOMB COUNTY, MI REG/DEEDS

