

**INDEX**  
**OC-076 163-SW/174-SE**  
**SOUTHWEST CORNER OF PRIVATE CLAIM 163**  
**COMMON WITH THE SOUTHEAST CORNER OF PRIVATE CLAIM 174**  
**LOCATED ON THE BORDER OF LAKE ST. CLAIR (GLO NOTES)**  
**HARRISON TOWNSHIP**  
**T2N, R14E**

**SECTION 1:**

1. Index
2. Before Pictures of Point and in Each Cardinal Direction
3. After Pictures of Point

**SECTION 2:**

1. LCRC
2. Surveyor's Report
3. Sketch of Private Claims (2 pages) (PC 163 and PC 174)
4. Sketch of 2018 Private Claims Overview

**SECTION 3:**

1. 1818 Surveyor General Office Map (1 page)
2. 1875 Map of Harrison Township (1 page)
3. 1895 Map of Harrison Township (1 page)
4. 1916 Map of Harrison Township (1 page)
5. 2006 Map of Harrison Township (1 page)
6. 2015 Harrison Township Aerial Composite Maps (2 pages - 12-29A, 12-19H)
7. 2015 Harrison Township Line Maps (2 pages - 12-29A, 12-19H)
8. 2015 Harrison Township Line Maps Overview (1 page)
9. 2018 Field Notes with Corner Witnesses (1 page)

**SECTION 4:**


- |                                     |               |          |                            |
|-------------------------------------|---------------|----------|----------------------------|
| 1. 1810 PC 163 Private Claim notes  | Aaron Greeley | Surveyor | (2 pages,1 orig,1 transc.) |
| 2. 1810 PC 174 Private Claim notes  | Aaron Greeley | Surveyor | (2 pages,1 orig,1 transc.) |
| 3. 1810 PC 175 Private Claim notes  | Aaron Greeley | Surveyor | (2 pages,1 orig,1 transc.) |
| 4. 1818 Surveyor General Office Map | Aaron Greeley | Surveyor | (1 page)                   |
| 5. 1915 "Lakeshore Gardens"         | Jno Wm. Irwin | Engineer | (2 pages)                  |
| 6. 1923 "Bay Hill Subdivision"      | Jno Wm. Irwin | Engineer | (1 page)                   |

**OC - 076**

**163-SW/174-SE - SW corner of PC 163 common  
w/SE corner of PC 174, located on border of  
Lake St. Clair (GLO notes)**

**T.2N.,R.14E. Harrison Twp.**



An orange plastic marker, possibly a survey stake or flag, is partially buried in the grass. It has a cylindrical top and a pointed bottom.

**OC - 076**

163-SW/174-SE - SW corner of PC 163 common  
w/SE corner of PC 174, located on border of  
Lake St. Clair (GLO notes).

T.2N.,R.14E. Harrison Twp.









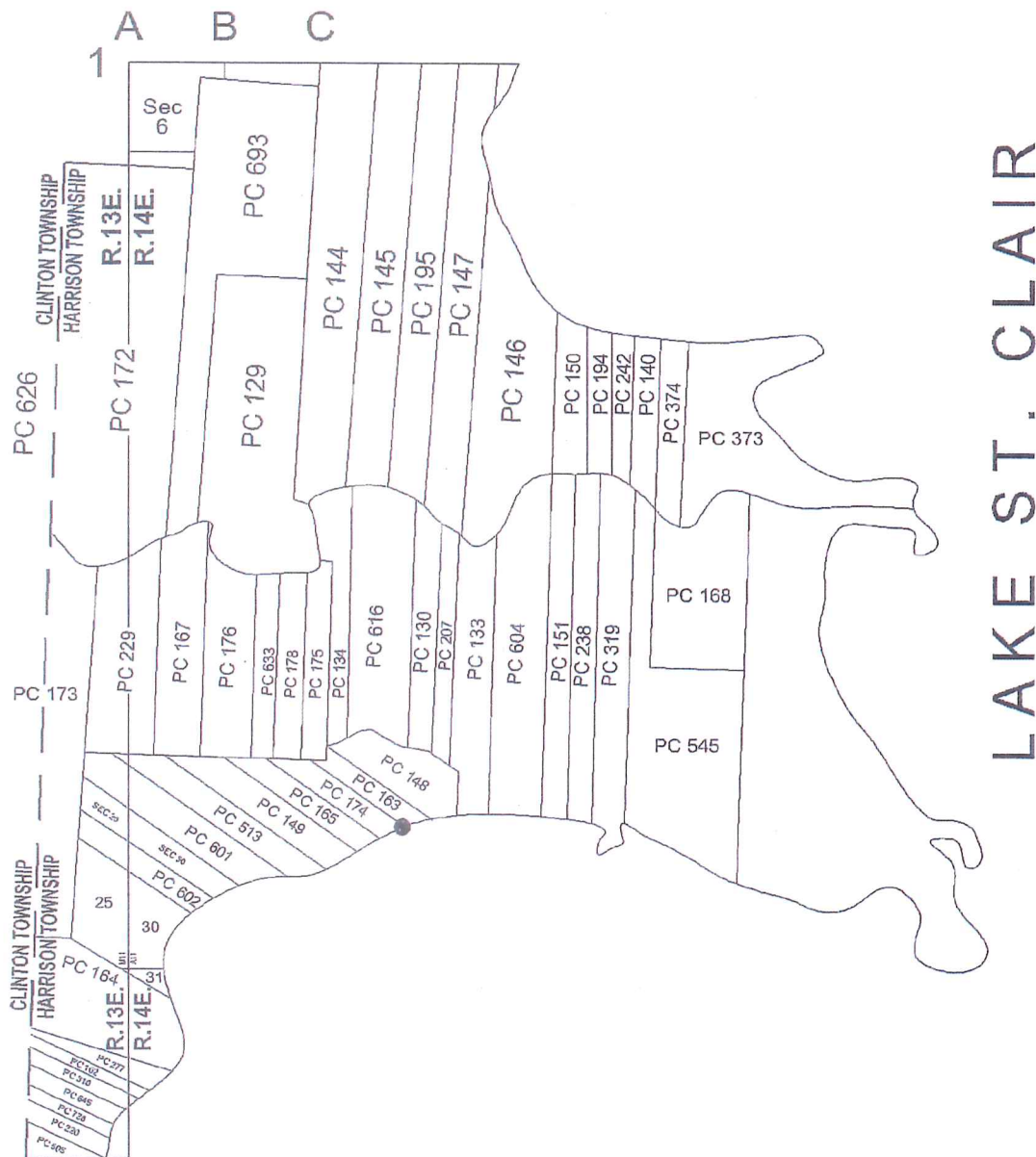
**Land Corner Recordation Certificate**  
**2018 Annual Grant Agreement**  
 Authority: MICH. 1970 PA 74, MCL 54.205

Surveyor's Name: Roger J. Stecker  
 For Corner(s) in: Macomb County

Field Survey Date: 5/31/2018  
 Municipality: Harrison Township

Corner Type	Section Private Claim	Harrison Township	Corner Code	Other Code
Original Public Land Survey Corner	PC 163/174	T 02 N R 14 E	163-SW/174-SE	076

**Other Code Corner Description:** Southwest corner of Private Claim 163 common with the Southeast corner of Private Claim 174, located on the border of Lake St. Clair (GLO notes).





**Part A: Corner History:**

Date	Document	Surveyor Name	License #	Liber & Page	Item
1. 1810	PC 163 Private Claim notes	Aaron Greeley	Surveyor		Post
2. 1810	PC 174 Private Claim notes	Aaron Greeley	Surveyor		Post
3. 1810	PC 175 Private Claim notes	Aaron Greeley	Surveyor		Used to control PC line terminus
4. 1818	Surveyor General Office Map	Aaron Greeley	Surveyor		Object not shown
5. 1915	"Lakeshore Gardens"	Jno Wm. Irwin	Engineer	L.3, P.1 & 2	Used to establish PC line
6. 1923	"Bay Hill Subdivision"	Jno Wm. Irwin	Engineer	L.6, P.18	Used to establish PC line

**Part B: Surveyor's Report on Perpetuation, Restoration, Reestablishment or Monumentation of Corner:**

No evidence of the original post was found. I consider it an obliterated corner. I established the Private Claim line between Private Claim 163 and Private Claim 174 from field evidence found in Items #5 and #6. The Southerly Right-of-Way of Hiller Avenue in "Bay Hill Subdivision" Item #6 and the rear line of Lots 20 through 32 of "Lakeshore Gardens" Item #5 are shown as the P.C. Line. I established P.C. Line 163/174 from the field evidence found. I extended the established P.C. Line 163/174 Southeasterly to the bank of Lake Saint Clair and set a 1/2" iron at a secure location for a witness monument. There are no lines of occupation Southeast of Jefferson Avenue. The point falls 18 feet from the water's edge. I believe the 1/2" iron best represents a secure location for the OC-076 witness monument.

**Distances:**

OC-076 to OC-082 (174-NE/163-NW)	OC-076 witness monument to OC-082 (174-NE/163-NW)
2934.36' (44 chains, 46 links private claim notes)	2680.00' measures 2018
2846.83' prorated	166.83' witness monument to prorated corner

**Part C: Field Evidence of Perpetuation or Monumentation of Corner:**

I set a 4" diameter by 36" concrete monument with a 1/2" steel rod with a 2" diameter aluminum cap stamped "Macomb County Monument MI Act 345 #30103 OC-076" witness monument

**Accessories:**

- N.55°W. 58.29' cut notch in S.E. face of sanitary Manhole
- N.75°W. 43.81' N.E. corner of house #37294 Jefferson
- S.30°W. 87.23' corner of steel sea-wall
- East 38.01' corner of steel sea-wall
- N.50°W. 71.71' set mag nail and Macomb County Witness Tag in South face of triple (18"x12"x12") maple

Date of Observation	Latitude	Longitude	Datum and Adjustment Year	Epoch Date
9-20-2018				
Witness Monument	N.42°34'09.91591"	W.82°49'47.11656"	NAD83 (2011)	2010.000
True Corner	N.42°34'08.89664"	W.82°49'44.94127"		(Calculated Position)

Method for Latitude-Longitude determination: NGS OPUS Solution

Disclaimer on accuracy of values reported relative to their use: 1' ±.

State Plane Coordinates in international feet: N. 393501.23' E. 13537325.13' (Witness Monument)  
 N. 393404.15' E. 13537487.31' (True Corner – Calculated Position)

Standard Deviation: 0.06'N – 0.02'E

South Zone

Combined Factor: 0.99989970

NGSPID: DI 6148

Survey Method: MC GPS

Orthometric Height: 579.96

Elev. Datum: NAVD 88

I, Roger J. Stecker, P.S., in a field survey on 05/31/2018, certify under the requirements of the State Survey and Remonumentation Act, 1990 PA 345, MCL 54.261 to 54.279, and the Corner Recordation Act, 1970 PA 74, MCL 54.201 to 54.210d, that the corner identified and described hereon has been perpetuated or monumented as described in Parts A, B, and C above, pursuant to the laws and rules of the State of Michigan.

Roger J. Stecker  
 Roger J. Stecker, P.S.

10-30-2018

Date

Professional Surveyor's License No.: 30103

Prepared By: Lehner Associates, Inc.  
 17001 19 Mile Road, Suite 3  
 Clinton Township, MI 48038



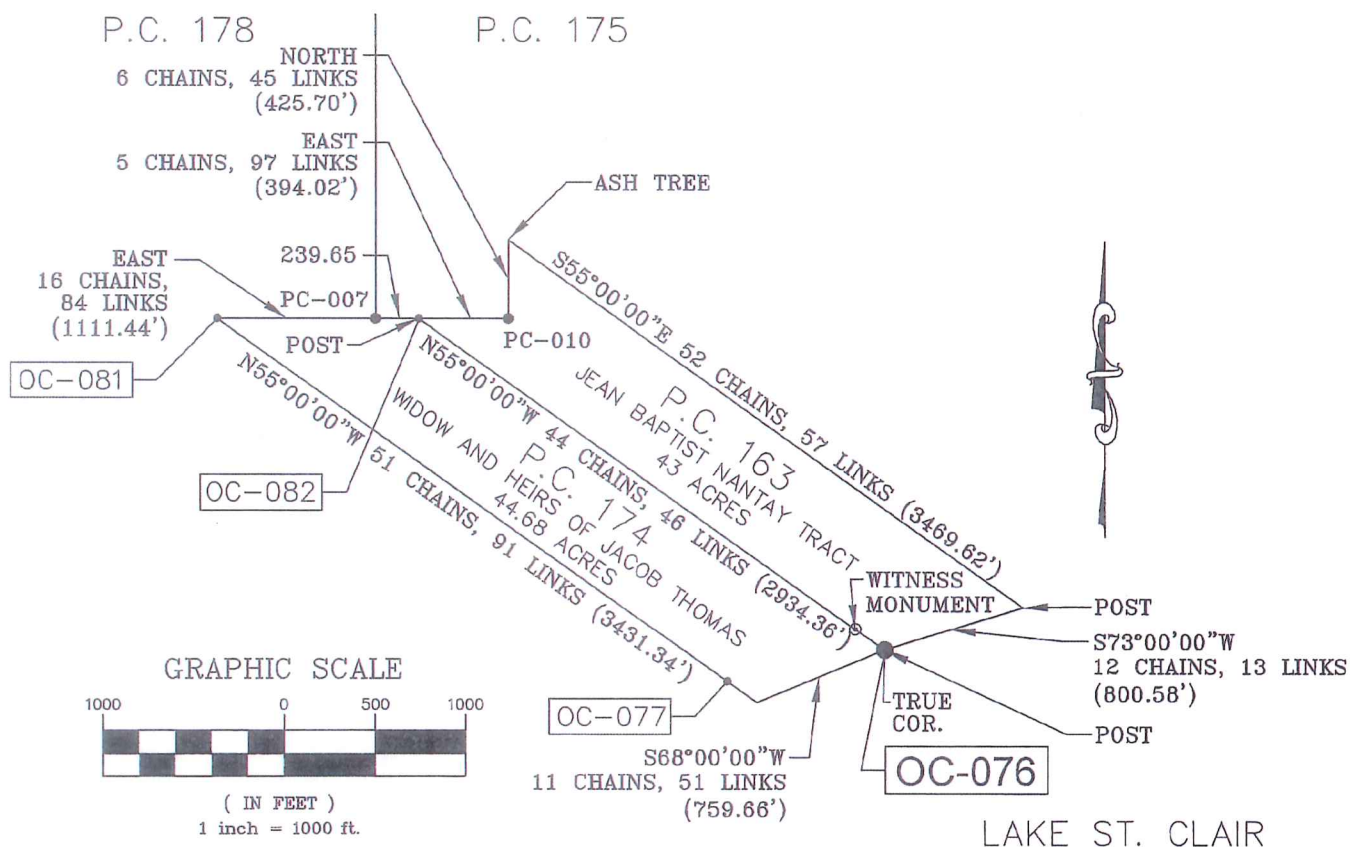
I, Martin C. Dunn, state that the corner(s) identified and described hereon and perpetuated or monumented as described in Parts A, B, and C above was presented to and reviewed by the Peer Review Group on August 7, 2018 and is accepted for filing in the Macomb County Remonumentation Program.

Martin C. Dunn  
 Martin C. Dunn, P.S.

11-5-2018

Date

Macomb County Surveyor Representative  
 License No. 30081



LAKE ST. CLAIR

**SURVEYOR'S REPORT  
 OC-076 163-SW/174-SE  
 SOUTHWEST CORNER OF PRIVATE CLAIM 148  
 COMMON WITH THE SOUTHEAST CORNER OF PRIVATE CLAIM 163  
 LOCATED ON THE BORDER OF LAKE ST. CLAIR (GLO NOTES)  
 HARRISON TOWNSHIP  
 T2N, R14E**

**NO GLO HISTORY:**

**Description of P.C. 174**

CONFIRMED TO THE WIDOW AND HEIRS OF JACOB THOMAS, DECEASED COMMENCING AT A POST STANDING ON THE BORDER OF LAKE ST. CLAIR BETWEEN THIS TRACT AND A TRACT CONFIRMED TO JOSEPH DUBAY THENCE NORTH FIFTY FIVE DEGREES WEST FIFTY ONE CHAINS NINETY NINE LINKS TO A POST STANDING ON THE REAR LINE OF THE CLAIMS ON THE SOUTH SIDE OF RIVER HURON THENCE EAST SIXTEEN CHAINS EIGHTY FOUR LINKS TO A POST THE NORTH WEST CORNER OF A TRACT CONFIRMED TO JEAN BAPTIST NANTAY THENCE SOUTH FIFTY FIVE DEGREES EAST FORTY FOUR CHAINS FORTY SIX LINKS, TO A POST STANDING ON THE BORDER OF LAKE ST. CLAIR THENCE ALONG THE BORDER OF SAID LAKE SOUTH SIXTY EIGHT DEGREES WEST ELEVEN CHAINS FIFTY ONE LINKS TO THE PLACE OF BEGINNING, CONTACING FORTY FOUR ACRES SIXTY THREE HUNDRDTHS OF AN ACRE. DETROIT JULY 18, 1810  
 AARON GREELEY SURVEYOR  
 OF PRIVATE CLAIMS

**Description of P.C.163**

CONFIRMED TO JEAN BAPT NANTAY LAKE ST. CLAIR DESCRIPTION NO. 163 CONFIRMED TO JEAN BAPTIST NANTAY COMMENCING AT A POST STANDING ON THE BORDER OF LAKE ST. CLAIR BETWEEN THIS TRACT AND A TRACT CONFIRMED TO THE WIDOW AND HEIRS OF JACOB THOMAS DECEASED THENCE NORTH FIFTY FIVE DEGREES WEST FORTY FOUR CHAINS FORTY SIX LINKS TO A POST STANDING ON THE REAR LINE OF A TRACT CONFIRMED TO LOUIS PETTIT ON THE SOUTH BORDER OF RIVER HURON THENCE EAST FIVE CHAINS NINETY SEVEN LINKS TO AN ASH TREE THENCE NORTH SIX CHAINS FORTY FIVE LINKS TO AN ASH TREE STANDING ON THE BORDER OF A COULEE (VENTRE DE BOUEF), AND ON THE EAST LINE OF SAID LOUIS PETTITS TRACT ON RIVER HURON THENCE SOUTH FIFTY FIVE DEGREES EAST FIFTY TWO CHAINS FIFTY SEVEN LINKS TO A POST STANDING ON THE BORDER OF LAKE ST. CLAIR BETWEEN THIS TRACT AND A TRACT CONFIRMED TO PHILLIS PELTIER THENCE ALONG THE BORDER OF SAID LAKE SOUTH SEVENTY THREE DEGREES WEST TWELVE CHAINS THIRTEEN LINKS TO AT THE PLACE OF BEGINNING, CONTAINING FORTY THREE ACRES. DETROIT JULY 18, 1810  
 AARON GREELEY SURVEYOR  
 OF PRIVATE CLAIMS

**EXISTING CONDITIONS:**

No evidence of the original post was found. I consider it an obliterated corner. I established the Private Claim line between Private Claim 163 and Private Claim 174 from field evidence found in Items #5 and #6. The Southerly Right-of-Way of Hiller Avenue in "Bay Hill Subdivision" Item #6 and the rear line of Lots 20 through 32 of "Lakeshore Gardens" Item #5 are shown as the P.C. Line. I established P.C. Line 163/174 from the field evidence found. I extended the established P.C. Line 163/174 Southeasterly to the bank of Lake Saint Clair and set a 1/2" iron at a secure location for a witness monument. There are no lines of occupation Southeast of Jefferson Avenue. The point falls 18 feet from the water's edge. I believe the 1/2" iron best represents a secure location for the OC-076 witness monument.

**RECORDED & UNRECORDED SURVEYS & FIELD NOTES:**

1. 1810	PC 163 Private Claim notes	Aaron Greeley	Surveyor		Post
2. 1810	PC 174 Private Claim notes	Aaron Greeley	Surveyor		Post
3. 1810	PC 175 Private Claim notes	Aaron Greeley	Surveyor		Used to control PC line terminus
4. 1818	Surveyor General Office Map	Aaron Greeley	Surveyor		Object not shown
5. 1915	"Lakeshore Gardens"	Jno Wm. Irwin	Engineer	L.3, P.1 & 2	Used to establish PC line
6. 1923	"Bay Hill Subdivision"	Jno Wm. Irwin	Engineer	L.6, P.18	Used to establish PC line

**DISTANCES:**

OC-076 to OC-082 (174-NE/163-NW) 2934.36' (44 chains, 46 links private claim notes) 2846.83' prorated	OC-076 witness monument to OC-082 (174-NE/163-NW) 2680.00 measures 2018 166.83' witness monument to prorated corner
---	---

**RECOMMENDATIONS:**

I set a 4" diameter by 36" concrete monument with a 1/2" steel rod with a 2" diameter aluminum cap stamped "Macomb County Monument MI Act 345" #30103 OC-076 witness monument

**ACCESSORIES:**

N.55°W. 58.29' cut notch in S.E. face of sanitary Manhole

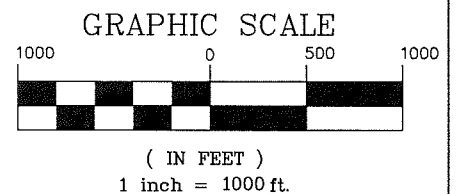
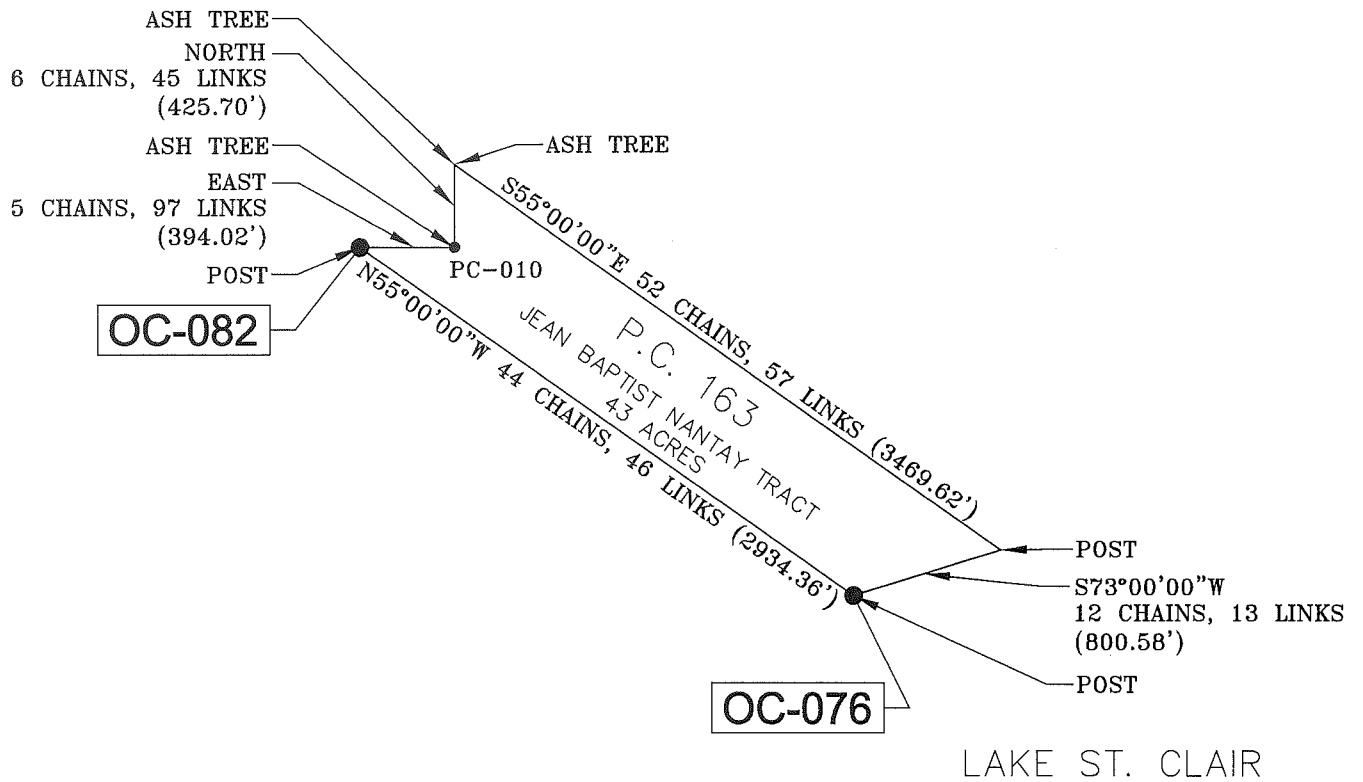
N.75°N. 43.81' N.E. corner of house #37294 Jefferson

S.30°W. 87.23' corner of steel sea-wall

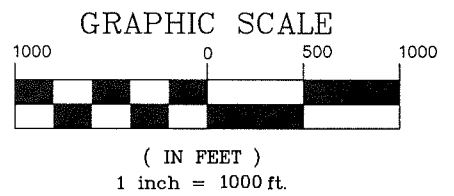
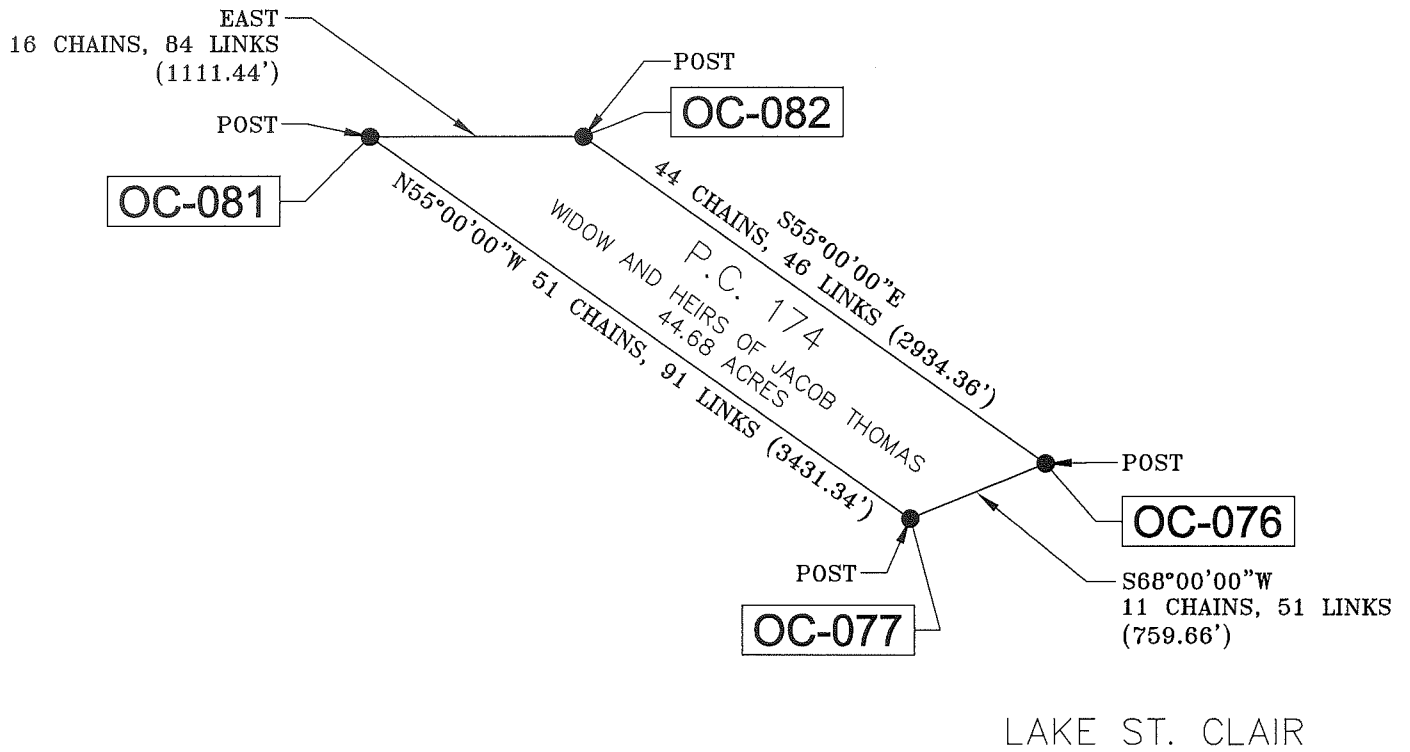
East 38.01' corner of steel sea-wall

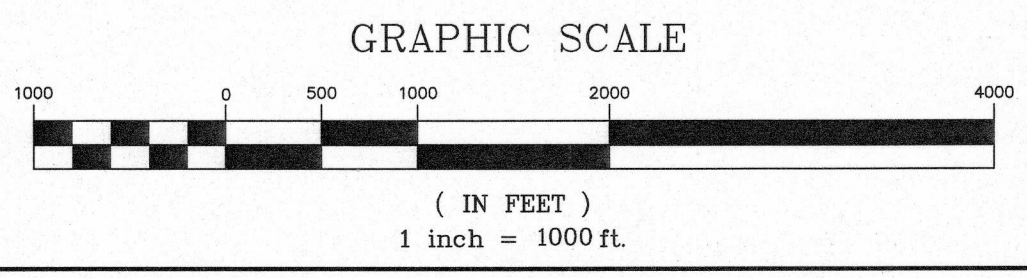
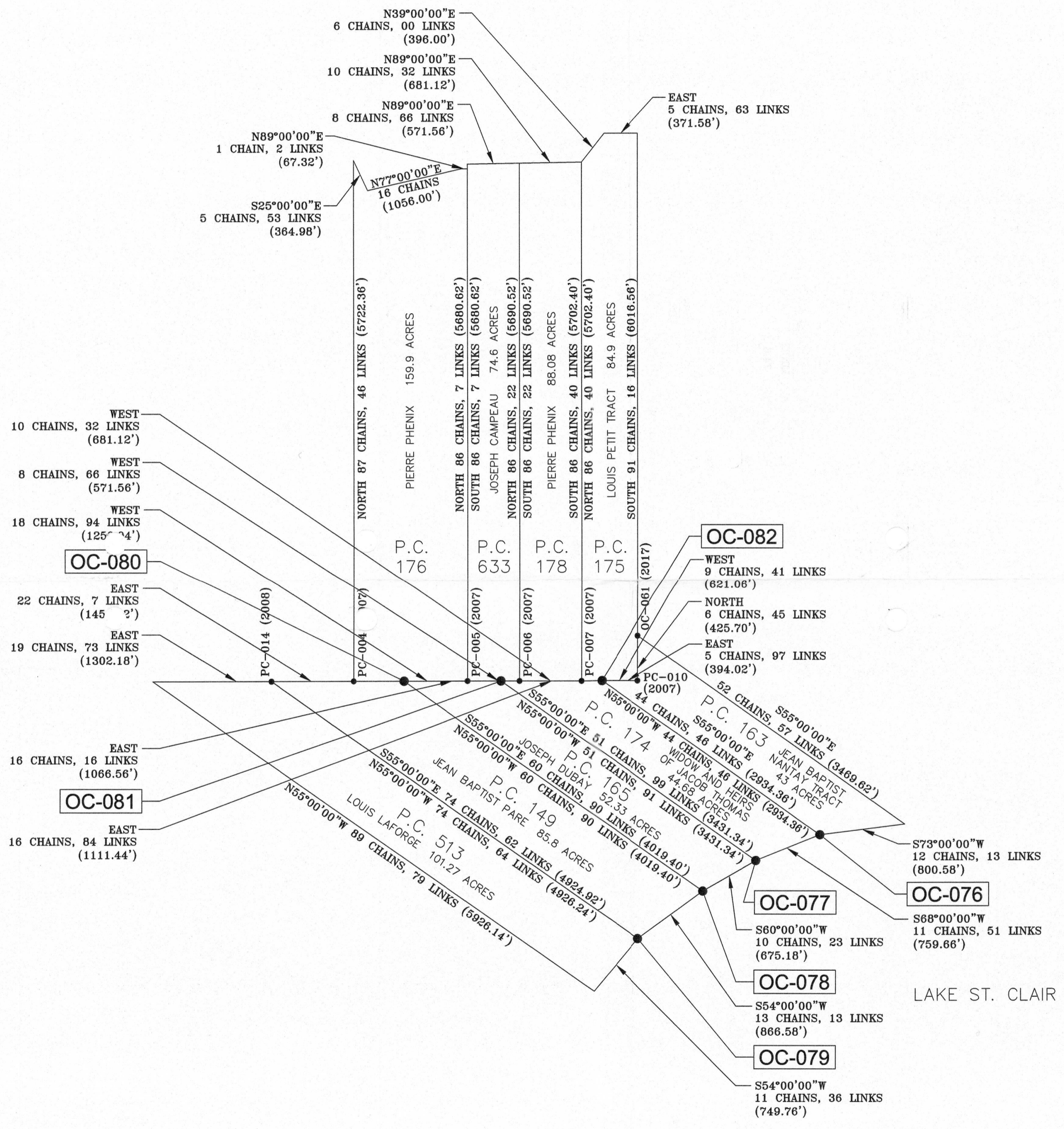
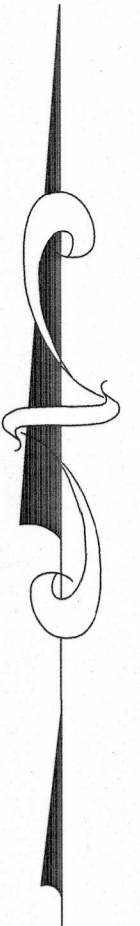
N.50°W. 71.71' set mag nail and Macomb County Witness Tag in South face of triple (18"x12"x12") maple

# SKETCH OF PRIVATE CLAIM 163



# SKETCH OF PRIVATE CLAIM 174





REV. BY	CHECKED BY	
REV. DATE	REV. INFO	
REV. #		

FILE TRACING: TWP. DRAWER	CHECKED BY: R.S.
DATE: 05-08-2018	DRAWING FILE NAME 18-102-OA.DWG
DRAWN BY: SK	SCALE: 1" = 1000'

SEAL

**Lehner Associates Inc.**

Engineering

17001 Nineteen Mile Road, Suite 3  
Clinton Township, MI 48038  
586-412-7050 phone 586-412-7114 fax

Surveying

[www.lehnerassociates.com](http://www.lehnerassociates.com)

© COPYRIGHT 2016

PROJECT NAME AND SHEET TITLE:

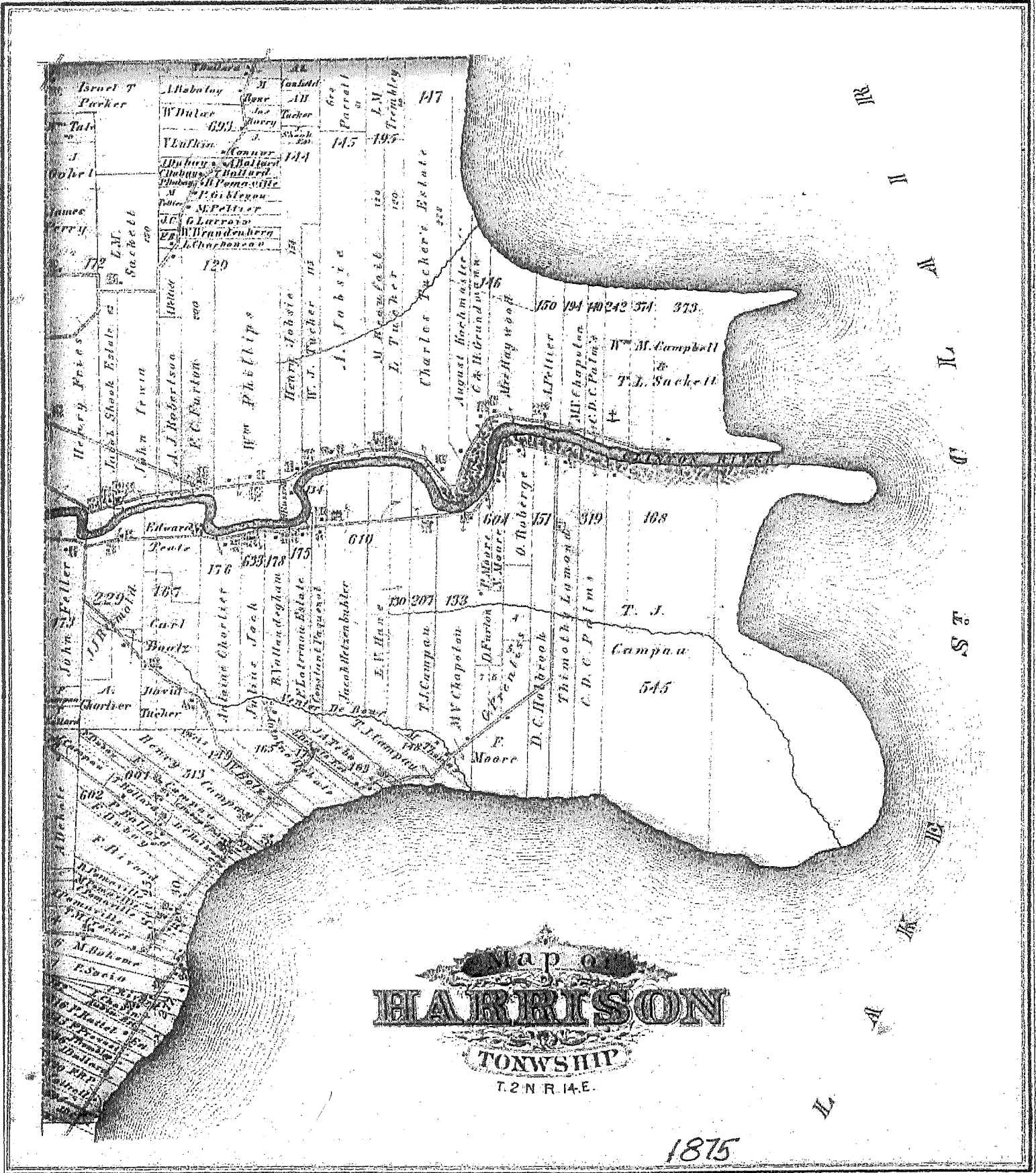
2018  
PRIVATE CLAIMS  
OVERVIEW

CLIENT INFO:  
MACOMB COUNTY  
REGISTER OF DEEDS  
120 NORTH MAIN STREET  
1ST FLOOR  
MT. CLEMENS, MI 48043  
(586)469-5175

PROJECT LOCATION:  
T.2N., R.14E.  
HARRISON TOWNSHIP,  
MACOMB COUNTY,  
MICHIGAN







Map of  
**HARRISON**  
 TOWNSHIP  
 T. 2 N. R. 14. E.

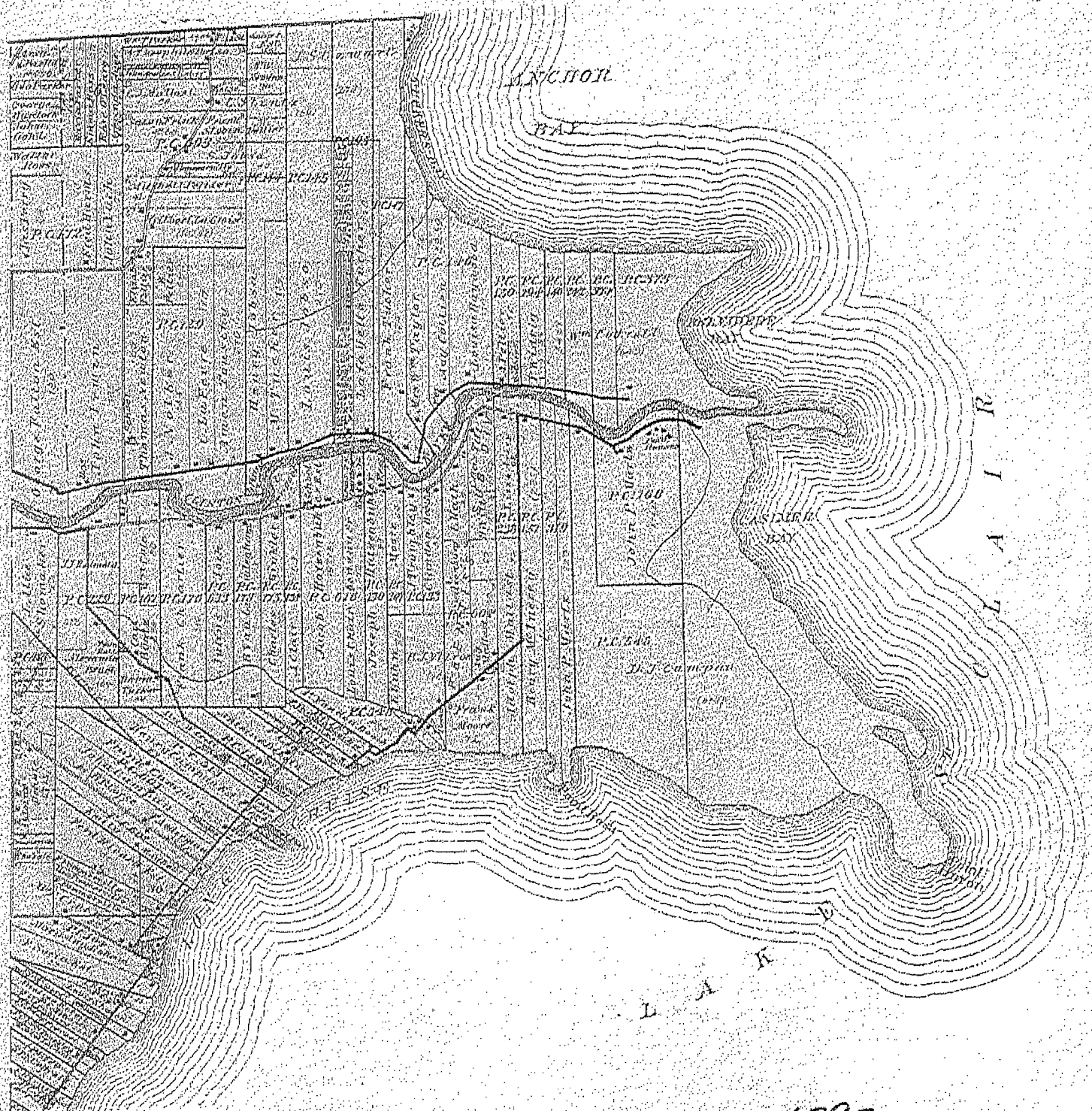
1875

# MAP OF HARRISON

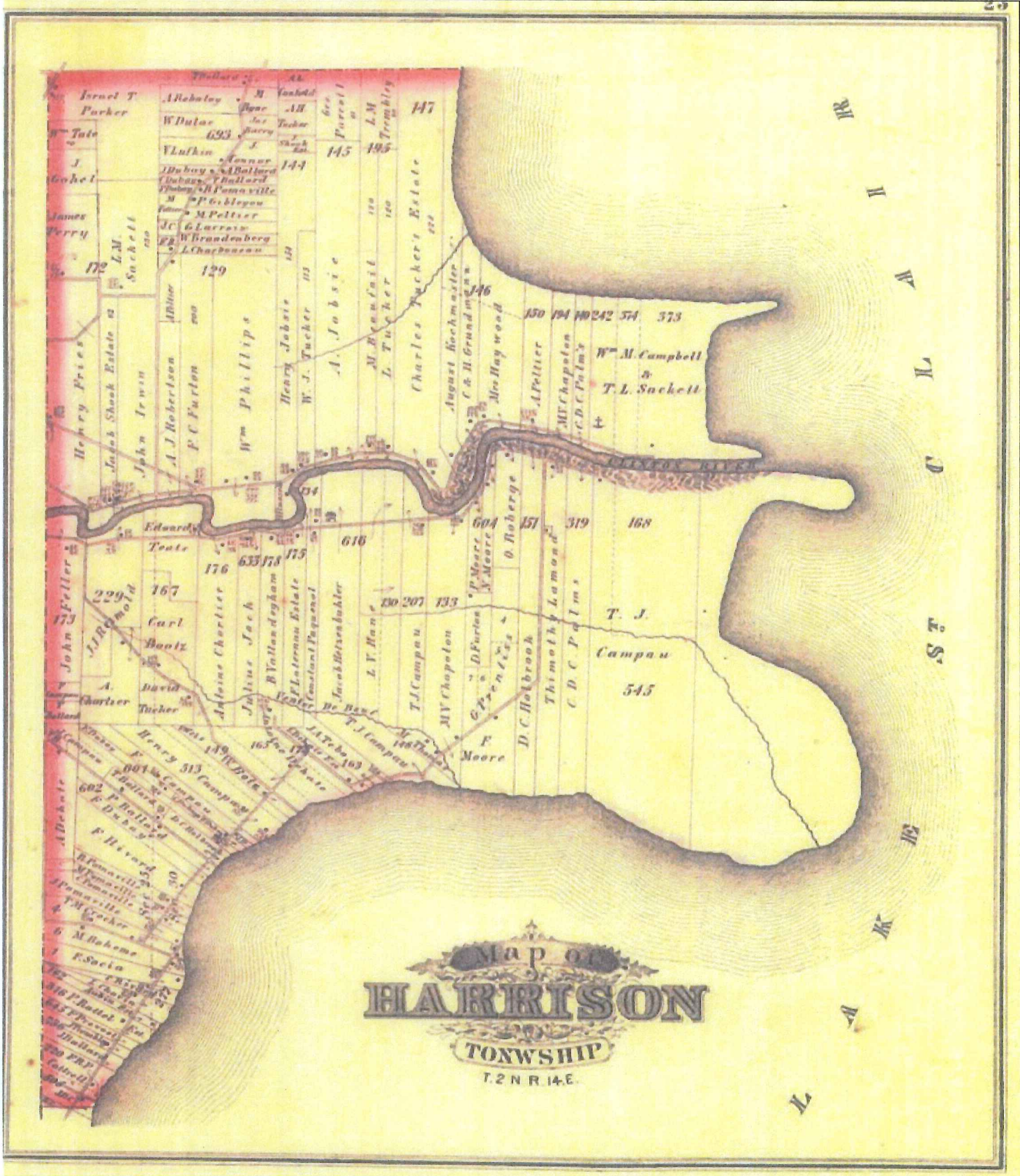
Township 2 North Range 14 East

Scale 2 Inches to one Mile

of the Division of Montgomery



1895

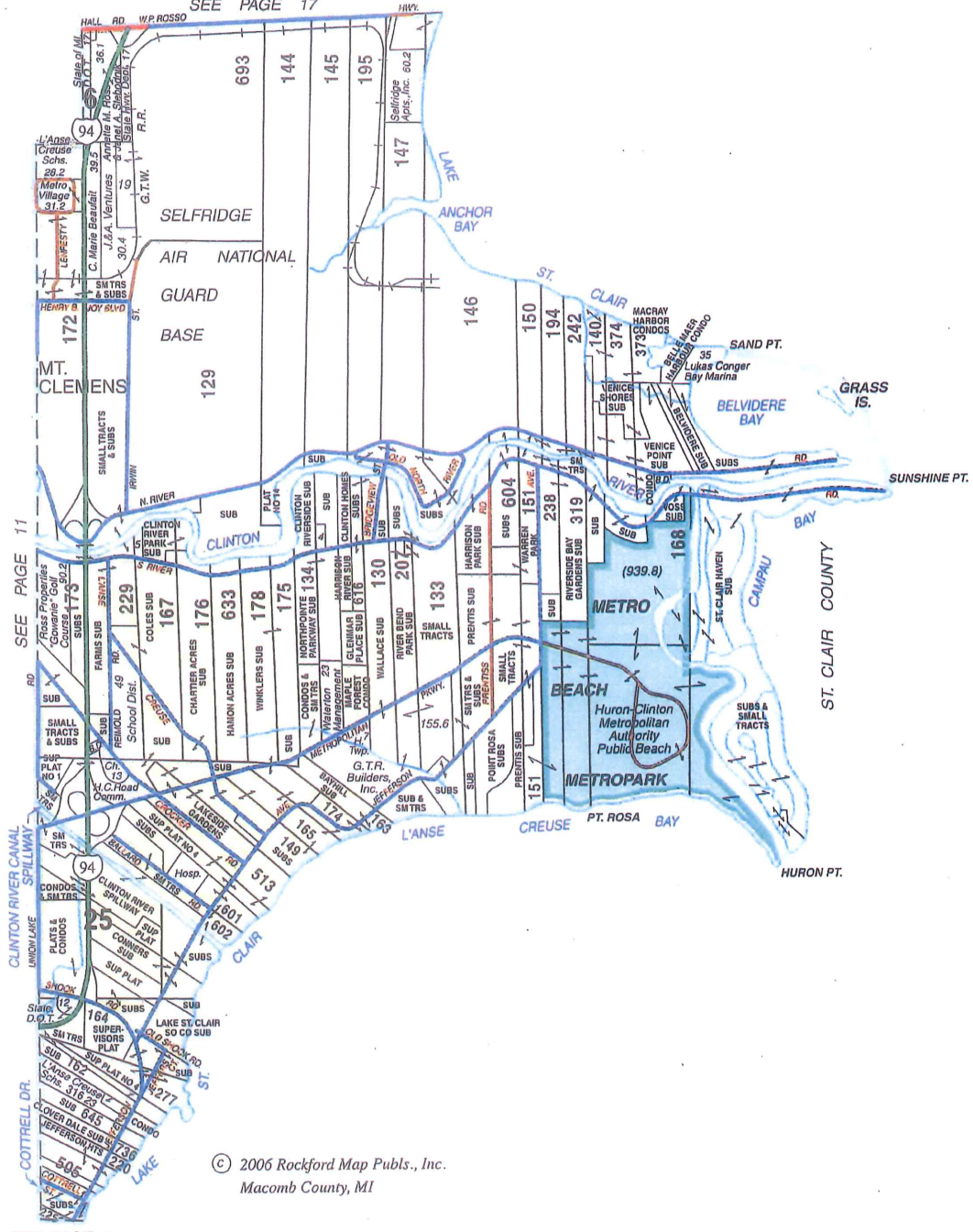


1916

# HARRISON

SEE PAGE 17

# T.2N.-R.14E.



SEE PAGE 11

SEE PAGE 9

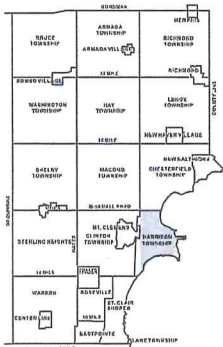
© 2006 Rockford Map Publs., Inc.  
Macomb County, MI

Reproduced with permission of Rockford Map Publishers, Inc.  
Rockford, Illinois

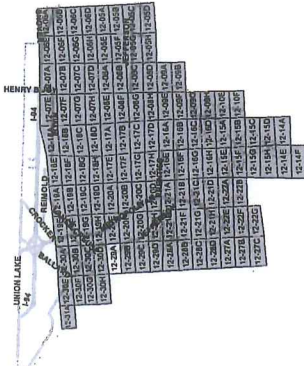


Date of Photography: Spring 2015  
 100 50 0 100 200 Feet

1:1,200



HARRISON TWP SHEET INDEX



DESCRIPTION OF PERMANENT REAL ESTATE INDEX NUMBER  
**13-19-302-018**

AREA NUMBER (Township/Range/Section/Block)	SUB AREA NUMBER (Sublot/Block/Section)	BLOCK NUMBER (Block/Section)	PARCEL NUMBER (Parcel/Block/Section)
---	---	---------------------------------	---

**Legend**

- Platted Area Boundary Line
- Property Line
- Property Split Line
- Property Combined Line
- Township Boundary Line
- Traverse Line
- Dimension Extent Marks
- Dimension Start Marks

**12-29A**

HARRISON TWP.

W. 1/2 N.W. 1/4 SEC. 29 T. 2N. R. 14E.

Source: Macomb County Department of Planning and Economic Development  
 - 2015 Digital Orthophotography Project  
 - Parcel Conversion Project

Note:  
 Digital Orthophotography horizontal positioning accuracy is 3 feet. Parcel boundary lines should be considered a graphical representation and not in any way a legal survey or engineering document. In general, the horizontal positioning and length accuracy is within 15 feet.

This map is intended for general planning purposes. Site specific evaluation should be verified by field inspection. This is a work in progress and may contain errors and omissions. Please report any potential revisions to (586)469-5265.



**GIS** MACOMB COUNTY  
 Planning and Economic  
 Development Department

Published: Aug 16 2017



Date of Photography: Spring 2015  
 100 50 0 100 200 Feet



HARRISON TWP SHEET INDEX

12-19H	12-19H	12-19H	12-19H	12-19H	12-19H
12-19H	12-19H	12-19H	12-19H	12-19H	12-19H
12-19H	12-19H	12-19H	12-19H	12-19H	12-19H
12-19H	12-19H	12-19H	12-19H	12-19H	12-19H
12-19H	12-19H	12-19H	12-19H	12-19H	12-19H
12-19H	12-19H	12-19H	12-19H	12-19H	12-19H
12-19H	12-19H	12-19H	12-19H	12-19H	12-19H
12-19H	12-19H	12-19H	12-19H	12-19H	12-19H
12-19H	12-19H	12-19H	12-19H	12-19H	12-19H
12-19H	12-19H	12-19H	12-19H	12-19H	12-19H

DESCRIPTION OF PERMANENT REAL ESTATE INDEX NUMBER  
**13-19-302-018**

AREA NUMBER	SUB AREA NUMBER	BLOCK NUMBER	PARCEL NUMBER
13-19-302-018			

- Legend**
- Platted Area Boundary Line
  - Property Line
  - Property Spill Line
  - Property Combined Line
  - Township Boundary Line
  - Traverse Line
  - Dimension Extent Marks
  - Dimension Start Marks

**12-19H**  
 HARRISON TWP.  
 E. 1/2 S.E. 1/4 SEC. 19 T. 2N. R. 14E.

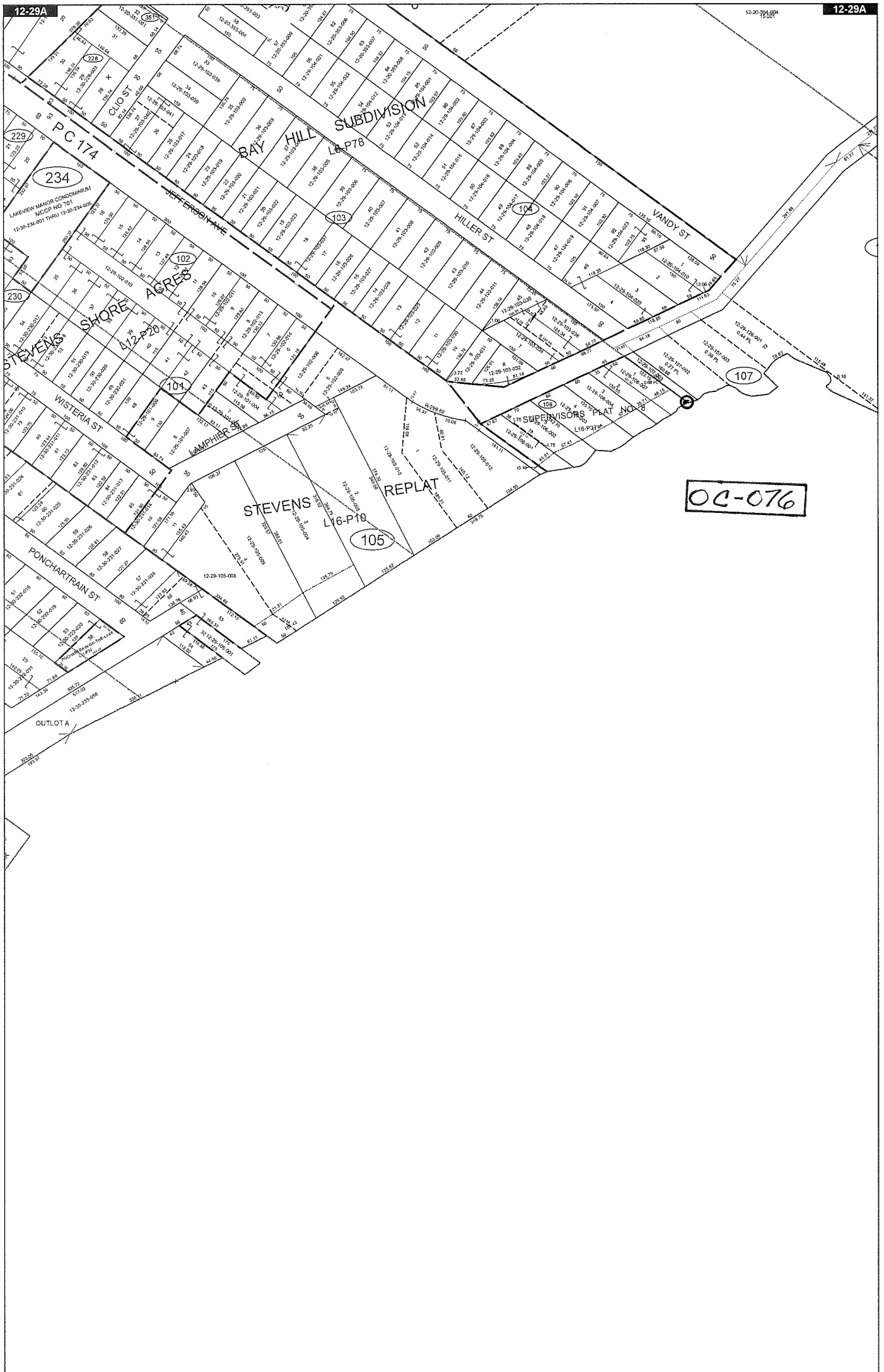
Source: Macomb County Department of Planning and Economic Development  
 - 2015 Digital Orthophoto Project  
 - Parcel Conversion Project

Note:  
 Digital Orthophoto horizontal positioning accuracy is 3 feet. Parcel boundary lines should be considered a graphical representation and not in any way a legal survey or engineering document. In general, the horizontal positioning and length accuracy is within 15 feet.

This map is intended for general planning purposes. Site specific evaluation should be verified by field inspection. This is a work in progress and may contain errors and omissions. Please report any potential revisions to (586)469-5285.



**GIS** MACOMB COUNTY  
 Planning and Economic  
 Development Department  
 Published: Jul 29 2016



HARRISON TWP SHEET INDEX

DESCRIPTION OF PERMANENT REAL ESTATE INDEX NUMBER

**13-19-302-018**

AREA NUMBER	SUB AREA NUMBER	BLOCK NUMBER	PARCEL NUMBER
13-19-302-018	1	1	1
13-19-302-018	1	1	2
13-19-302-018	1	1	3
13-19-302-018	1	1	4
13-19-302-018	1	1	5
13-19-302-018	1	1	6
13-19-302-018	1	1	7
13-19-302-018	1	1	8
13-19-302-018	1	1	9
13-19-302-018	1	1	10
13-19-302-018	1	1	11
13-19-302-018	1	1	12
13-19-302-018	1	1	13
13-19-302-018	1	1	14
13-19-302-018	1	1	15
13-19-302-018	1	1	16
13-19-302-018	1	1	17
13-19-302-018	1	1	18
13-19-302-018	1	1	19
13-19-302-018	1	1	20
13-19-302-018	1	1	21
13-19-302-018	1	1	22
13-19-302-018	1	1	23
13-19-302-018	1	1	24
13-19-302-018	1	1	25
13-19-302-018	1	1	26
13-19-302-018	1	1	27
13-19-302-018	1	1	28
13-19-302-018	1	1	29
13-19-302-018	1	1	30
13-19-302-018	1	1	31
13-19-302-018	1	1	32
13-19-302-018	1	1	33
13-19-302-018	1	1	34
13-19-302-018	1	1	35
13-19-302-018	1	1	36
13-19-302-018	1	1	37
13-19-302-018	1	1	38
13-19-302-018	1	1	39
13-19-302-018	1	1	40
13-19-302-018	1	1	41
13-19-302-018	1	1	42
13-19-302-018	1	1	43
13-19-302-018	1	1	44
13-19-302-018	1	1	45
13-19-302-018	1	1	46
13-19-302-018	1	1	47
13-19-302-018	1	1	48
13-19-302-018	1	1	49
13-19-302-018	1	1	50
13-19-302-018	1	1	51
13-19-302-018	1	1	52
13-19-302-018	1	1	53
13-19-302-018	1	1	54
13-19-302-018	1	1	55
13-19-302-018	1	1	56
13-19-302-018	1	1	57
13-19-302-018	1	1	58
13-19-302-018	1	1	59
13-19-302-018	1	1	60
13-19-302-018	1	1	61
13-19-302-018	1	1	62
13-19-302-018	1	1	63
13-19-302-018	1	1	64
13-19-302-018	1	1	65
13-19-302-018	1	1	66
13-19-302-018	1	1	67
13-19-302-018	1	1	68
13-19-302-018	1	1	69
13-19-302-018	1	1	70
13-19-302-018	1	1	71
13-19-302-018	1	1	72
13-19-302-018	1	1	73
13-19-302-018	1	1	74
13-19-302-018	1	1	75
13-19-302-018	1	1	76
13-19-302-018	1	1	77
13-19-302-018	1	1	78
13-19-302-018	1	1	79
13-19-302-018	1	1	80
13-19-302-018	1	1	81
13-19-302-018	1	1	82
13-19-302-018	1	1	83
13-19-302-018	1	1	84
13-19-302-018	1	1	85
13-19-302-018	1	1	86
13-19-302-018	1	1	87
13-19-302-018	1	1	88
13-19-302-018	1	1	89
13-19-302-018	1	1	90
13-19-302-018	1	1	91
13-19-302-018	1	1	92
13-19-302-018	1	1	93
13-19-302-018	1	1	94
13-19-302-018	1	1	95
13-19-302-018	1	1	96
13-19-302-018	1	1	97
13-19-302-018	1	1	98
13-19-302-018	1	1	99
13-19-302-018	1	1	100

**12-29A**

HARRISON TWP.  
W.1/2 N.W.1/4 SEC.29 T.2N. R.14E.

Source: Macomb County Department of Planning and Economic Development  
2015 Digital Orthophotography Project - Parcel Conversion Project

Note: Digital Orthophotography horizontal positioning accuracy is 3 feet. Parcel boundary lines should be considered a graphical representation and not in any way a legal survey or engineering document. In general, the horizontal positioning and length accuracy is within 15 feet.  
This map is intended for general planning purposes. Site specific evaluation should be verified by field inspection. This is a work in progress and may contain errors and omissions. Please report any potential revisions to (586)459-5285.

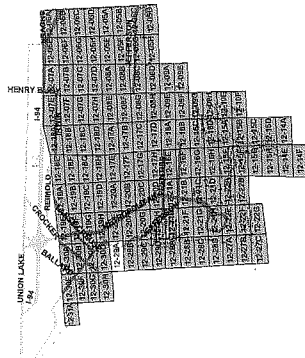
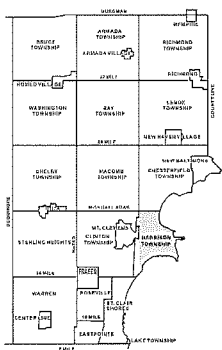
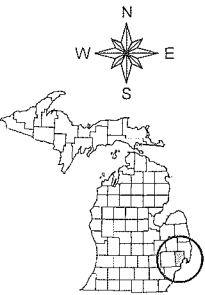
**Legend**

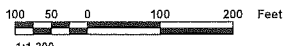
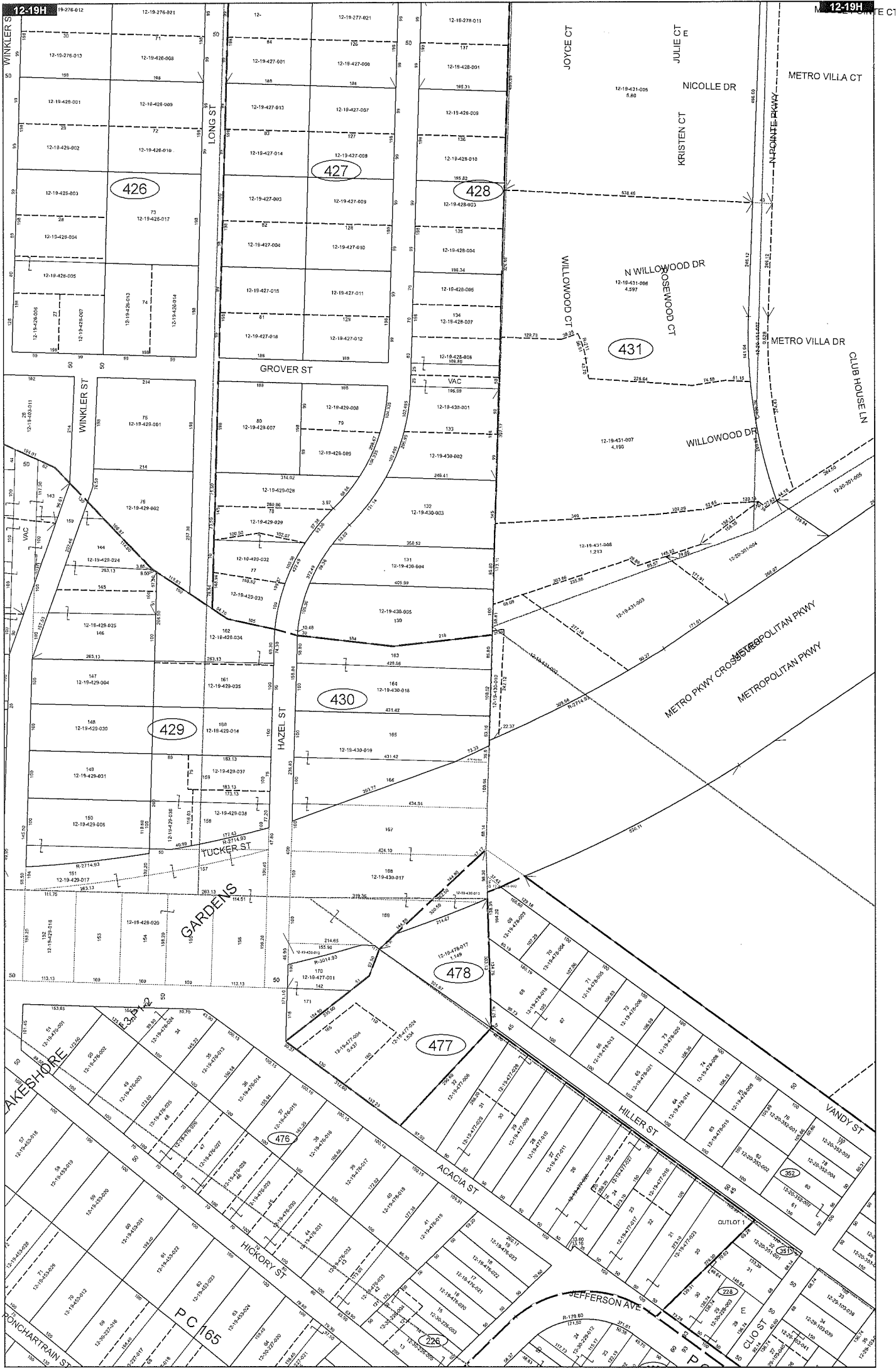
- Platted Area Boundary Line
- Property Line
- Property Split Line
- Property Combined Line
- Township Boundary Line
- Traverse Line
- Dimension Extent Marks
- Dimension Start Marks



**GIS** MACOMB COUNTY  
Planning and Economic  
Development Department

Published: Aug 16 2017





HARRISON TWP SHEET INDEX

DESCRIPTION OF PERMANENT REAL ESTATE INDEX NUMBER  
**13-19-302-018**

AREA NUMBER: 13-19-302-018  
 SUB AREA NUMBER: 018  
 BLOCK NUMBER: 018  
 PARCEL NUMBER: 018

**12-19H**

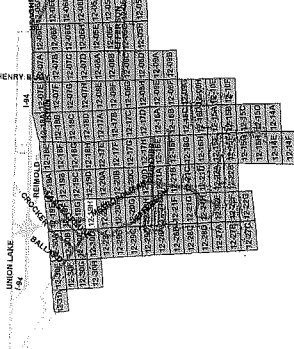
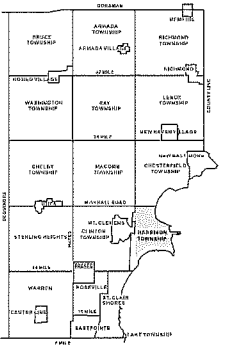
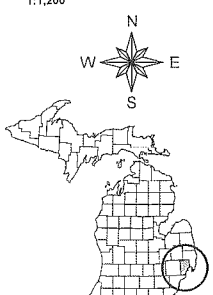
HARRISON TWP.  
 E.1/2 S.E.1/4 SEC.19 T.2N. R.14E.

Source: Macomb County Department of Planning and Economic Development  
 - 2008 Digital Orthophotography Project  
 - Parcel Conversion Project

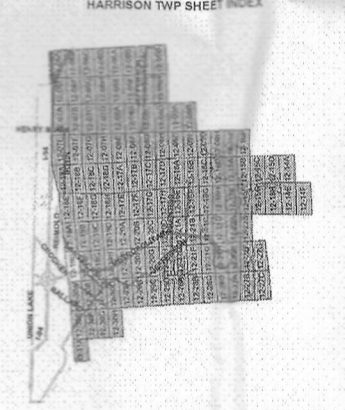
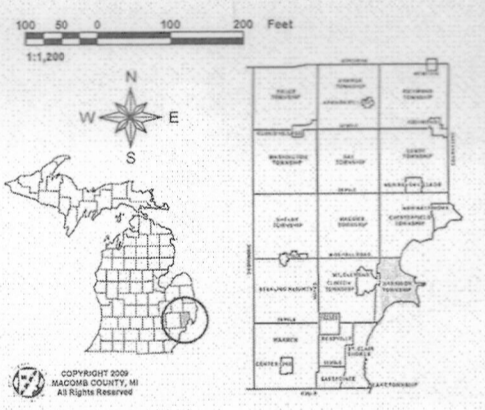
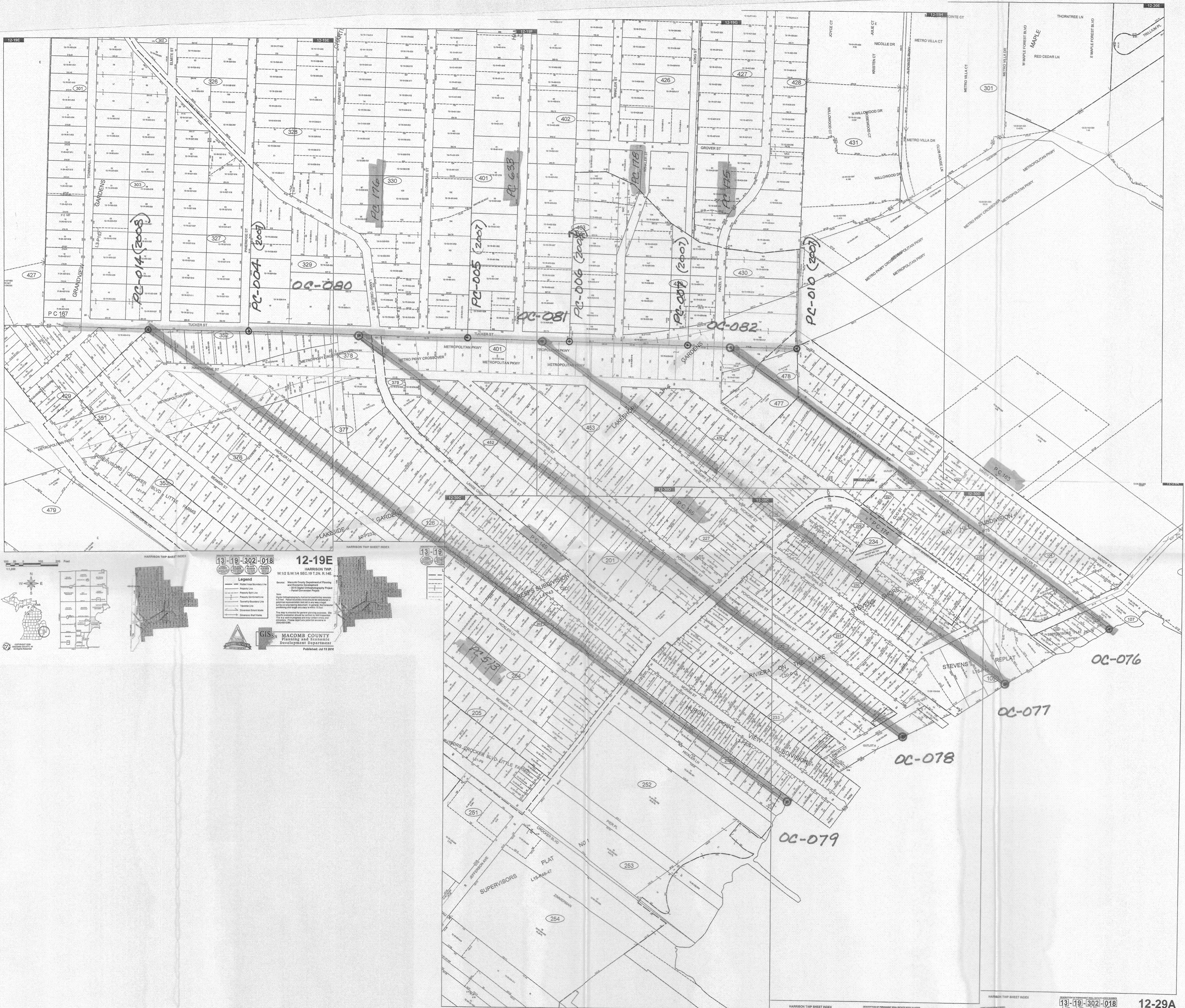
Note: Digital Orthophotography horizontal positioning accuracy is 3 feet. Parcel boundary lines should be considered a graphical representation and not in any way a legal survey or engineering document. In general, the horizontal positioning and length accuracy is within 15 feet.  
 This map is intended for general planning purposes. Site specific evaluation should be verified by field inspection. This is a work in progress and may contain errors and omissions. Please report any potential revisions to (588)469-5285.

**Legend**

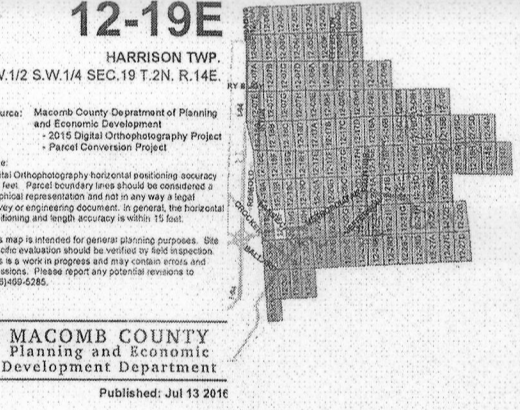
- Platted Area Boundary Line
- Property Line
- Property Split Line
- Property Combined Line
- Township Boundary Line
- Traverse Line
- Dimension Extent Marks
- Dimension Start Marks







**13-19-302-018**  
**12-19E**  
 HARRISON TWP.  
 W1/2 S1/4 SEC. 19 T. 2N. R. 14E.



**13-19-302-018**  
**12-30C**  
 HARRISON TWP.  
 W1/2 N.E. 1/4 SEC. 30 T. 2N. R. 14E.



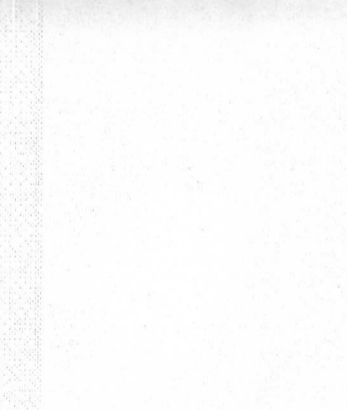
**13-19-302-018**  
**12-30D**  
 HARRISON TWP.  
 E. 1/2 N.E. 1/4 SEC. 30 T. 2N. R. 14E.



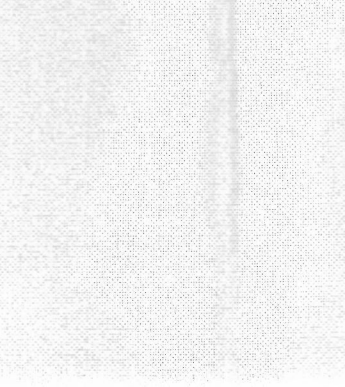
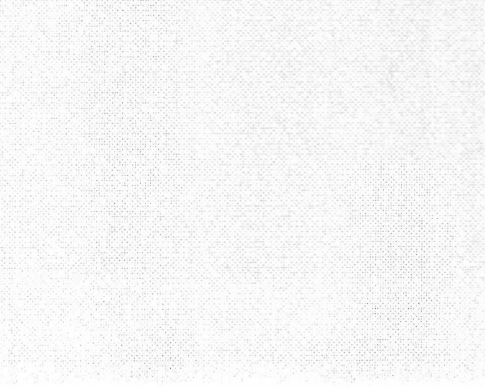
**13-19-302-018**  
**12-29A**  
 HARRISON TWP.  
 W1/2 N.W. 1/4 SEC. 29 T. 2N. R. 14E.



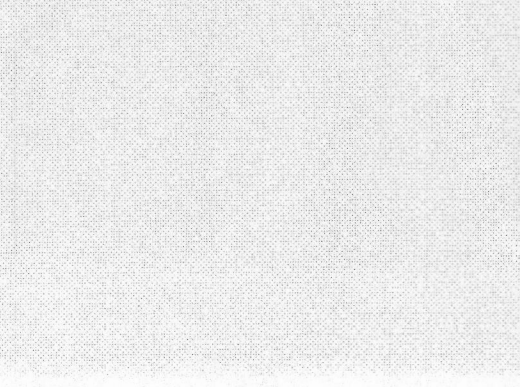
**13-19-302-018**  
**12-29A**  
 HARRISON TWP.  
 W1/2 N.W. 1/4 SEC. 29 T. 2N. R. 14E.



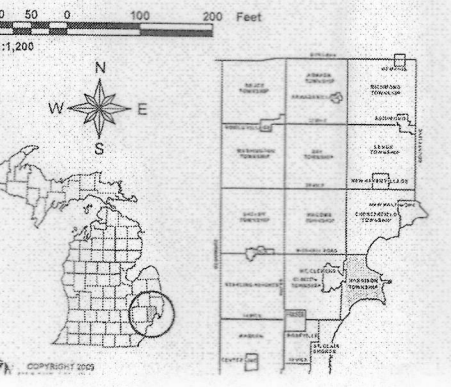
**13-19-302-018**  
**12-29A**  
 HARRISON TWP.  
 W1/2 N.W. 1/4 SEC. 29 T. 2N. R. 14E.



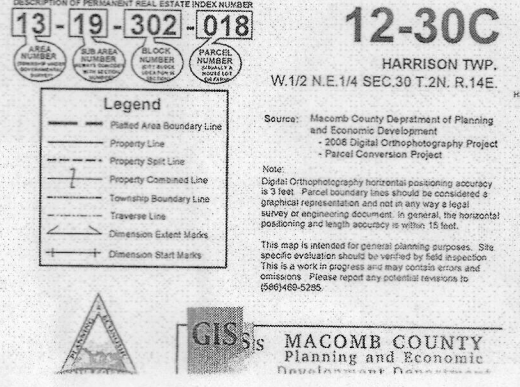
**13-19-302-018**  
**12-30C**  
 HARRISON TWP.  
 W1/2 N.E. 1/4 SEC. 30 T. 2N. R. 14E.



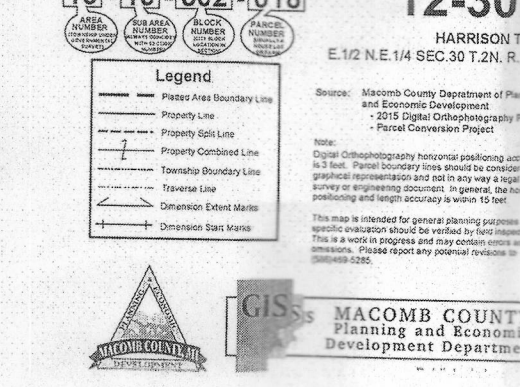
**13-19-302-018**  
**12-30D**  
 HARRISON TWP.  
 E. 1/2 N.E. 1/4 SEC. 30 T. 2N. R. 14E.



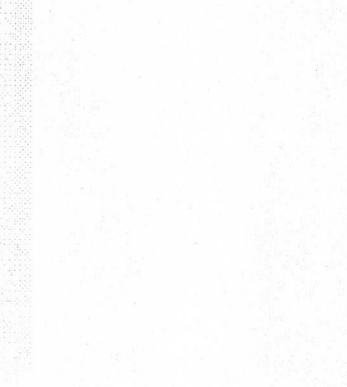
**13-19-302-018**  
**12-29A**  
 HARRISON TWP.  
 W1/2 N.W. 1/4 SEC. 29 T. 2N. R. 14E.



**13-19-302-018**  
**12-29A**  
 HARRISON TWP.  
 W1/2 N.W. 1/4 SEC. 29 T. 2N. R. 14E.



**13-19-302-018**  
**12-29A**  
 HARRISON TWP.  
 W1/2 N.W. 1/4 SEC. 29 T. 2N. R. 14E.



**13-19-302-018**  
**12-29A**  
 HARRISON TWP.  
 W1/2 N.W. 1/4 SEC. 29 T. 2N. R. 14E.



6-13-18  
RS ED

T. 24 N. R. 14 E.  
HARRISON TWP.

OC-076  
WITNESSES

OC-076

163-SW/174-SE - SW COR  
OF PC 163 COMMON W/SE  
COR OF PC 174, LOCATED ON  
BORDER OF LAKE ST. CLAIR

N. 55° W. 58.29 FT. CUT NOTCH  
IN SE FACE OF SAK. MAP.

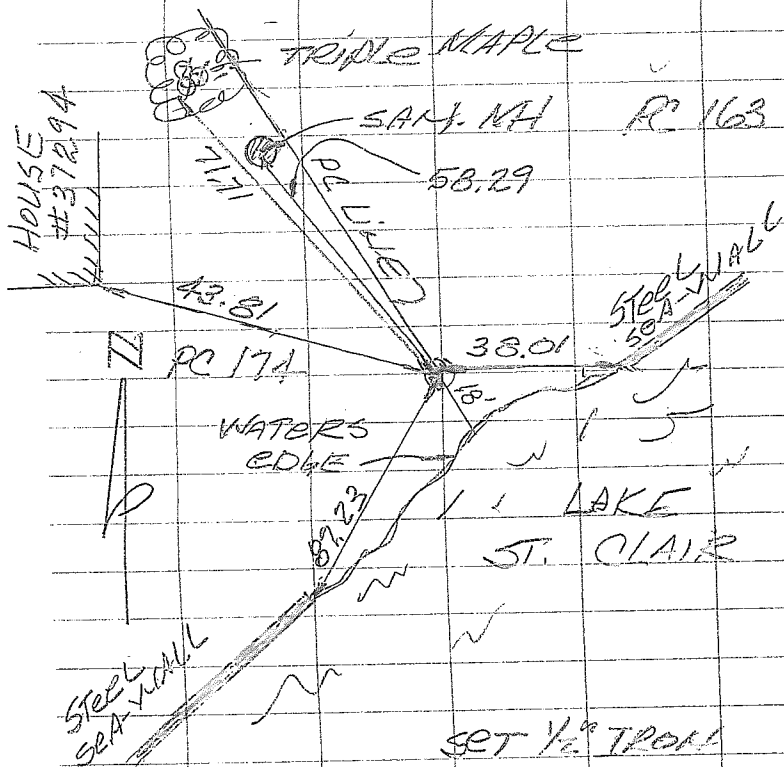
N. 75° W. 43.81 FT. N.E.  
COR. OF HOUSE # 37294

S. 30° W. 87.23 FT. COR. OF  
STEEL SEA-WALL

EAST 380 FT. COR. OF  
STEEL SEA-WALL.

N. 50° W. 76.71 FT. NAIL IN  
TAG IN TRIPLE 18" X 12" X 12"  
MAPLE

SOUTH EAST 18' TO WATERS  
EDGE



SET 1/2" TIRON

N. 462 "

Lake St. Clair

Description N. 163. Confirmed to Jean Baptist Nantay commencing at a post standing on the border of Lake St. Clair between this tract and a tract confirmed to the widow and heirs of Jacob Thomas deceased - thence north fifty five degrees west forty four chains - forty six links, to a post standing on the Rear line of a tract confirmed to Louis Petit on the South border of River Huron thence East five chains ninety seven links, to an Ash Tree thence north six chains forty five links, to an Ash Tree standing on the <sup>corner</sup> of a Bouée, ventre de bouef, and on the East line of said Louis Petits tract on River Huron. Thence south fifty five degrees East fifty two chains fifty seven links, to a post standing on the border of Lake St. Clair between this tract and a tract confirmed to Phillis Pel-tier, thence along the border of said Lake south seventy three degrees west twelve chains thirteen links, to the place of beginning, containing forty three acres.

Detroit July 18. 1810

Aaron Gentry Surveyor  
of private Claims.

No. 462

No. 163 Confirmed to  
Jean Bapt Nantay

LAKE ST. CLAIR

Description No. 163 Confirmed to Jean Baptist Nantay commencing at a post standing on the border of Lake St. Clair between this tract and a tract confirmed to the widow and heirs of Jacob Thomas deceased thence north fifty five degrees west forty four chains forty six links to a post standing on the rear line of a tract confirmed to Louis Pettit on the south border of River Huron thence east five chains ninety seven links to an ash tree thence north six chains forty five links to an ash tree standing on the border of a coulee(ventre de bouef), and on the east line of said Louis Pettits tract on River Huron thence south fifty five degrees east fifty two chains fifty seven links to a post standing on the border of Lake St. Clair between this tract and a tract confirmed to Phillis Peltier thence along the border of said Lake south seventy three degrees west twelve chains thirteen links to the place of beginning, containing forty three acres \_\_\_\_

Detroit July 18th, 1810

Aaron Greeley Surveyor  
of private claims

N<sup>o</sup>. 460.

Lake St. Clair

Description N<sup>o</sup>. 174 Confirmed to the widow and Heirs of Jacob Thomas -  
accused commencing at a post standing  
on the border of Lake St. Clair between  
this tract and a tract Confirmed to  
Joseph Dubay, thence north fifty five degrees  
west fifty one chains ninety nine links,  
to a post standing on the Near line of  
the Claims on the South side of River -  
Huron thence East sixteen chains ei-  
ghty four links, to a post the north west  
corner of a tract Confirmed to Jean  
Baptist Santay, thence south fifty  
five degrees East forty four chains forty  
six links, to a post standing on the bor-  
der of Lake St. Clair thence along the  
Border of said Lake - south sixty eight  
degrees west eleven chains fifty one  
links, to the place of beginning con-  
taining forty four acres, sixty three  
hundredths of an acre.

Detroit July 18. 1810

Asaron Greeley Surveyor  
of private Claims.

No. 460

No. 174 Confirmed to the  
widow and heirs of  
Jacob Thomas, deceased

LAKE ST. CLAIR

Description No. 174 Confirmed to the widow and heirs of Jacob Thomas deceased commencing at a post standing on the border of Lake St. Clair between this tract and a tract confirmed to Joseph Dubay thence north fifty five degrees west fifty one chains ninety nine links to a post standing on the rear line of the claims on the south side of River Huron thence east sixteen chains eighty four links to a post the north west corner of a tract confirmed to Jean Baptist Nantay thence south fifty five degrees east forty four chains forty six links, to a post standing on the border of Lake St. Clair thence along the border of said Lake south sixty eight degrees west eleven chains fifty one links to the place of beginning, containing forty four acres sixty three hundredths of an acre \_\_\_\_

Detroit July 18, 1810

Aaron Greeley Surveyor  
of private claims

N. 472. South Side of River Huron.

Description N. 175 Confirmed to Louis Petit commencing at a post standing on the border of River Huron between this tract and a tract Confirmed to Joseph Campseau; thence East five chains sixty three links thence south ninety one chains sixteen links to a Black Ash tree, thence west nine chains forty one links to a Black Ash tree the south East corner of a tract Confirmed to Pierre Phenix, thence north, Eighty six chains forty links, to a post standing on the border of River Huron thence along the border of said River down stream north thirty nine degrees East six chains to the place of beginning, containing Eighty four acres, and nine tenths of an acre.

Detroit July 18. 1810

Aaron Greeley Surveyor  
of private claims.

No. 472

No. 175 Confirmed to  
Louis Petit

SOUTH SIDE OF RIVER HURON

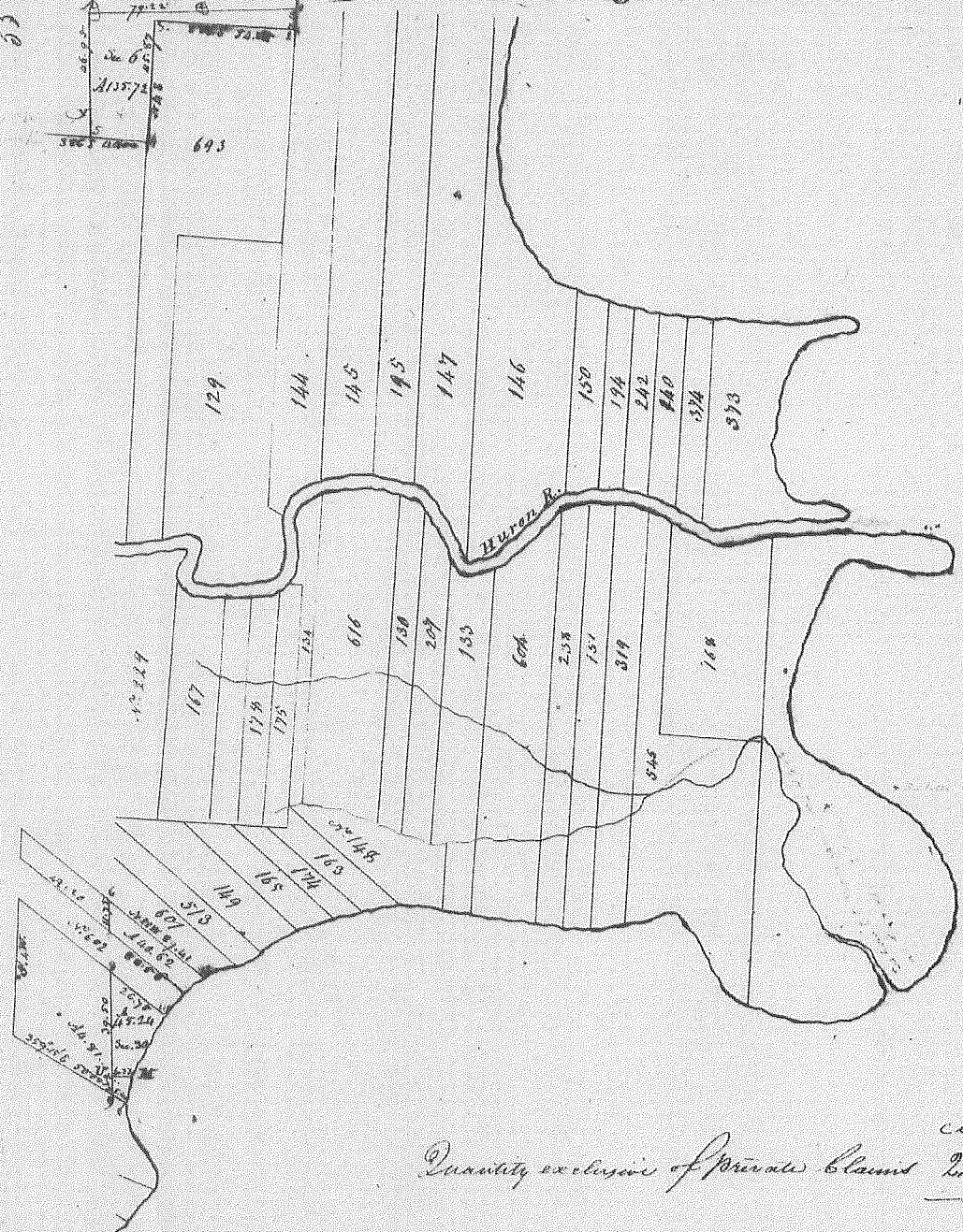
Description No. 175 Confirmed to Louis Petit commencing at a post standing on the border of River Huron between this tract and a tract confirmed to Joseph Campeau thence East five chains sixty three links thence south ninety one chains sixteen links to a black ash tree thence west nine chains forty one links to a black ash tree the southeast corner of a tract confirmed to Piere Phenix thence north eighty six chains forty links to a post standing on the border of River Huron thence along the border of said river down stream north thirty nine degrees east six chains to the place of beginning, containing eighty four acres and nine tenths of an acre \_\_\_\_\_

Detroit July 18, 1810

Aaron Greeley Surveyor  
of private claims



Township N: II North, Range N: XIV East of the Mer (Mich. Ter)



L. S. C. L. A. I. R.

Quantity exclusive of Private Claims <sup>Army sec</sup> 226-39  
3

A true copy from the Original on file in this Office

Surveyor General's Office }  
 July 20 1818 } 20, 14 E HARRISON

Edward  
 Surveyor

# LAKE SHORE GARDENS

A SUBDIVISION OF PART OF PRIVATE CLAIMS 163, 174, 165, 149, 175 & 178

SHEET NO. 927

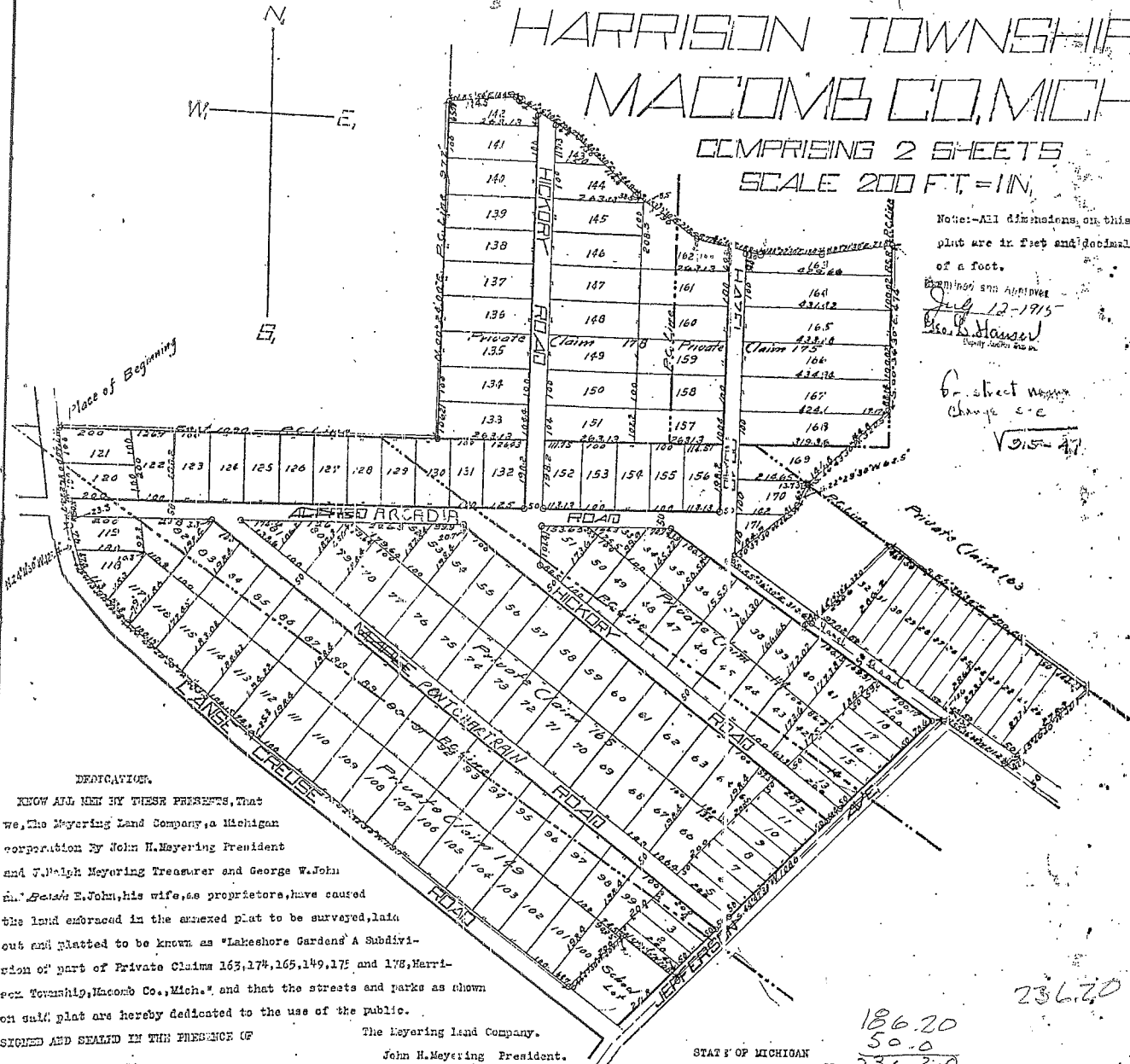
## HARRISON TOWNSHIP MACOMB CO., MICH.

COMPRISING 2 SHEETS  
SCALE 200 FT. = 1 IN.

Note: All dimensions on this plat are in feet and decimals of a foot.

Examined and Approved  
July 12-1915  
Geo. S. Hawley  
Notary Public

6. street width  
change c.c.  
V. 15-47



**DEDICATION.**

KNOW ALL MEN BY THESE PRESENTS, that we, The Meyerling Land Company, a Michigan corporation by John H. Meyerling President and J. Ralph Meyerling Treasurer and George W. John and J. Bessie M. John, his wife, as proprietors, have caused the land embraced in the annexed plat to be surveyed, laid out and platted to be known as "Lakeshore Gardens" A Subdivision of part of Private Claims 163, 174, 165, 149, 175 and 178, Harrison Township, Macomb Co., Mich. and that the streets and parks as shown on said plat are hereby dedicated to the use of the public.

SIGNED AND SEALED IN THE PRESENCE OF

The Meyerling Land Company.  
John H. Meyerling President.  
J. Ralph Meyerling Treasurer.  
George W. John (L.S.)  
Bessie M. John (L.S.)

..... F. L. Irwin .....  
..... Notary Public, Macomb Co., Mich. ....

STATES OF MICHIGAN  
County of Macomb ss. On this 20th day of April A.D. 1915,  
before me, a Notary Public in and for said county, personally came the above named George W. John and Bessie M. John, his wife, known to me to be the persons who executed the above dedication, and acknowledged the same to be their free act and deed.  
Jno. Wm. Irwin  
Notary Public, Macomb Co., Mich.  
My Commission expires December 29th 1918.

STATE OF MICHIGAN ss. On this 20th day of April A.D. 1915, before me, a Notary Public in and for said county appeared John H. Meyerling and J. Ralph Meyerling, to me personally known, who being each by me duly sworn did say that they are the President and Treasurer respectively of The Meyerling Land Company, a Michigan corporation, and that the seal affixed to said instrument is the corporate seal of said corporation, and that said instrument was signed and sealed in behalf of said corporation by authority of its Board of Directors and the said John H. Meyerling President and J. Ralph Meyerling Treasurer acknowledged said instrument to be the free act and deed of said corporation.

Jno. Wm. Irwin  
Notary Public, Macomb Co., Mich.

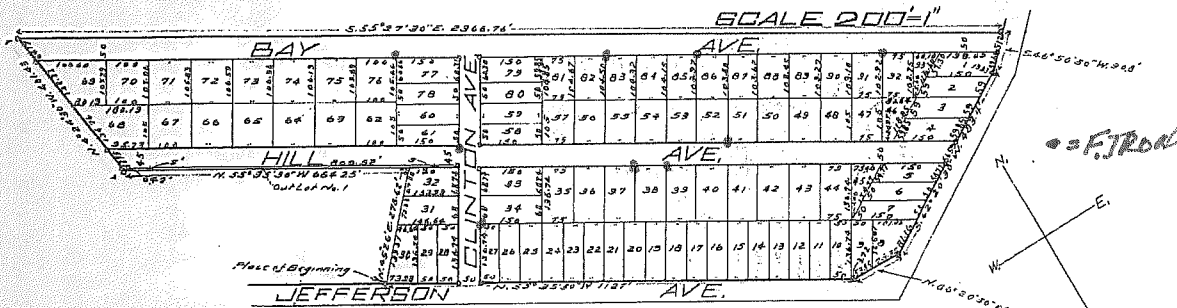
My Commission expires December 29th 1918.

186.20  
50.0  
236.20  
23rd day of April 1915  
Geo. S. Hawley  
Notary Public  
Filed in Auditor General's Dep't  
July 14, 1915  
Geo. S. Hawley  
Notary Public

July 23-1923  
J. W. H. H. H. H. H.

L. 6  
P. 78  
81 d

# "BAY HILL SUBDIVISION" OF PART OF PRIVATE CLAIMS NOS. 163 AND 174 T. 2 N. R. 14 E. MACOMB COUNTY MICHIGAN



### DEDICATION

KNOW ALL MEN BY THESE PRESENTS, That I, Peter F. Vandenschocke ( a Bachelor ), have caused the land embraced in the annexed plat to be surveyed laid out and platted, to be known as "BAY HILL SUBDIVISION" OF PART OF PRIVATE CLAIM NOS. 163 AND 174 T. 2 N. R. 14 E. MACOMB COUNTY MICHIGAN and that the streets as shown on said plat are hereby dedicated to the use of the public.

Signed and Sealed in Presence of

*[Signature]* } *Peter F. Vandenschocke* (L.S.)

Note: All dimensions on this plat are in feet and decimals thereof.

### CERTIFICATE OF COUNTY PLATTING BOARD

This plat was approved on the 1st day of June 1923

*W. E. Reid* Judge of Probate  
*Walter H. Giffens* County Clerk  
*James B. Gillett* County Treasurer

STATE OF MICHIGAN  
County of Macomb SS.

On this 26th day of May 1923 before me, a Notary Public in and for said county, personally came the above named Peter F. Vandenschocke, known to me to be the person who executed the above dedication, and acknowledged the same to be his free act and deed.

Notary Public Macomb County Michigan.

My Commission expires January 3rd, 1927.

### DESCRIPTION

The land embraced in the annexed plat of "BAY HILL SUBDIVISION" OF PART OF PRIVATE CLAIMS NOS. 163 and 174 T. 2 N. R. 14 E. MACOMB COUNTY MICHIGAN is described as follows, to wit:-

Beginning on the northeasterly side line of Jefferson Avenue where the same is intersected by the southeasterly side line of lot No. 20 of Lakeshore Gardens Subdivision thence N. 45° 26' 00" E. 278.62 feet; thence N. 55° 35' 30" W. 624.25 feet; thence N. 4° 24' 30" W. 401.43 feet; thence S. 55° 27' 30" E. 2356.76 feet to the northwesterly side line of Jefferson Avenue; thence S. 46° 56' 30" W. 90.8 feet; thence S. 62° 20' 50" W. 423.4 feet; thence N. 26° 20' 50" W. 127.2 feet; thence N. 55° 35' 30" W. 1127 feet to the place of beginning. All the above described lands are in Private Claims No's. 163 and 174 T. 2 N. R. 14 E. Macomb County Michigan.

### ENGINEER'S CERTIFICATE

I hereby certify that the plat hereon delineated is a correct one, and that permanent monuments, consisting of 1" Iron gas pipe 15" long have been planted at all points marked thus (o) as thereon shown at all angles in the boundaries of the land platted and at all intersections of streets.

Registered Civil Engineer

### COUNTY TREASURER'S CERTIFICATE RELATING TO TAXES

Office of County Treasurer Macomb County Michigan.

I hereby certify, that there are no tax liens or titles held by the State on the lands described on the annexed plat, and that there are no tax liens or titles held by individuals on said lands for the five years preceding the 26th day of May 1923 and that the taxes for said period of five years have been paid, as shown by the records of this office.

*James B. Gillett*  
County Treasurer.

### CERTIFICATE OF TOWNSHIP BOARD

This plat was approved by the Township Board of the Township of Harrison, Macomb County, Michigan, at a meeting held

A. D. 1923.

Township Clerk

REGISTER'S OFFICE  
COUNTY OF MACOMB

Filed for Record this 27th day of July A. D. 1923 at 10.00 o'clock A. M. and recorded in Liber 6 of Plat 1 on page 78  
*Hugh C. Whiting* Register