

INDEX
PC-052
NORTHEAST CORNER P.C. 238
COMMON WITH THE
NORTHWEST CORNER P.C. 319 ON THE
SOUTH BANK OF THE CLINTON RIVER
(AKA RIVER HURON)
HARRISON TOWNSHIP,
T2N, R14E

SECTION 1:

1. Index
2. Before Pictures of Point and in Each Cardinal Direction
3. After Pictures of Point

SECTION 2:

1. LCRC
2. Surveyor's Report
3. Sketch of Private Claims (2 pages) (PC 238, PC 319)
4. Sketch of 2015 Private Claims Overview

SECTION 3:

1. 1818 Original Government Survey map (1 page)
2. 1875 Map of Harrison Township (1 page)
3. 1895 Map of Harrison Township (1 page)
4. 1916 Map of Harrison Township (1 page)
5. 2006 Map of Harrison Township (1 page)
6. 2012 Harrison Township Aerial Composite Maps (5 pages; 12-16B, 12-16F, 12-21B, 12-21F, 12-28B)
7. 2015 Field Notes with Corner Witnesses (1 page)
8. Undated Addressograph Department drawing (1 page)

SECTION 4:

- | | | | | |
|----|------|------------------------------|---------------------------|------------------------------|
| 1. | 1810 | Original Private Claim Notes | Aaron Greeley | (4 pages, 2 Orig, 2 Transc.) |
| 2. | 1916 | "Riverside-Bay Gardens" | E.B. Williams | L.3, P.23 |
| 3. | 1926 | "Warren Park Sub. No.1" | H.F. Cushing Reg.Surveyor | L.10, P.57 |
| 4. | 1934 | "S.P. #5" | Walter J. Lehner #123 | L.16, P.26 |

PC - 052

N.E. Corner of PC 238 common with a N.W
Corner of PC 319 on S. Bank of Clinton River

T.2N.,R.14E. Harrison Twp



PC - 052

N.E. Corner of PC 238 common with a N.W
Corner of PC 319 on S. Bank of Clinton River
T.2N.,R.14E. Harrison Twp

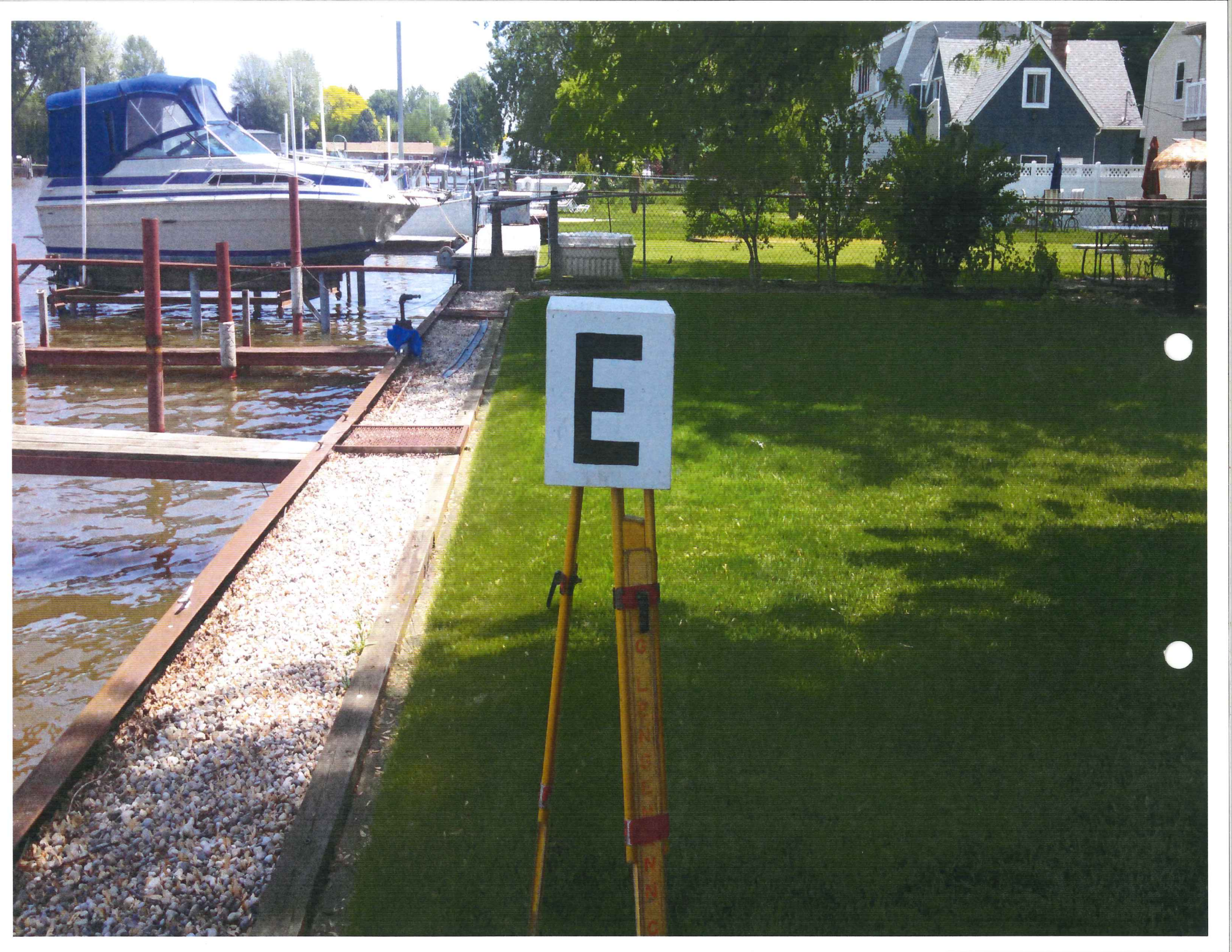






W





Land Corner Recordation Certificate
 Attachment B to 2015 Annual Grant Agreement
 T2N R14E CODE PC-052

PAGE 2 OF 2

Part B: Surveyor's Report on Perpetuation or Monumentation of Corner(s)

No evidence of the original post was found. I consider it an obliterated corner.
 I established the private claim line between Private Claim 238 and Private Claim 319 from found evidence in item 2, which defines Private Claim 238 to have a width of 577.28 feet (569.58' Private Claim Notes). Item No. 4 shows Private Claim Line 238/319 but does not dimension it. Item No.3 does not show Private Claim Line 238/319, however the proposed corner falls in the rear yard of Lot 280.
 I extended the established private claim line north to the south bank of the Clinton River and set a 1/2" steel rod. There are no lines of occupation, the corner falls in the back yard of House No. 30401 Manse Drive.

Distances:

PC-052 to Reference Monument for PC-057	Width of Private Claim 238
10,203.60' (154 Chains, 60 links Private Claim Notes)	569.58' (8 Chains 68 Links Private Claim Notes)
9,084'+/- to Lake St. Clair	577.28' from Item #2
7,624.12' (Measured 2015)	577.28' (Measured 2015)

Width of Private Claim 319
 889.68' (13 Chains 48 Links Private Claim Notes)
 890.28' (Measured 2015)

Part C: Field Evidence of Perpetuation or Monumentation of Corner(s)

I set a 4" diameter by 36" long concrete monument with a 1/2" steel rod with
 A 2 inch diameter aluminum cap stamped "MACOMB COUNTY MONUMENT MI ACT 345 30103 PC-052

Witnesses:

S80°W	48.26'	set Mag nail and Macomb County Witness tag in N. face of 24" Maple.
S5°E	76.20'	N.E. corner of house no. 30401 Manse
S35°E	62.67'	set Mag nail and Macomb County Witness tag in N. face of 30" Locust.
S75°E	63.39'	to west face of a 4' chain link fence anchor post
NORTH	6.57'	to north face of steel seawall

Date of Observation	Latitude	Longitude	Datum and Adjustment Year	Epoch Date
08/20/2015	42°35'47.69"	-82°48'25.36"	August 2011	2010

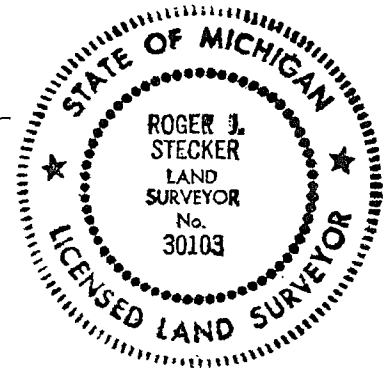
Method for coordinate determination: GPS Survey

Disclaimer on accuracy of values reported relative to their use: +/- 1 foot.

I, Roger J. Stecker, in a field survey on 06/04/2015, certify under the requirements of the State Survey and Remonumentation Act, 1990 PA 345, MCL 54.261 to 54.279, and the Corner Recordation Act, 1970 PA 74, MCL 54.201 to 54.210d, that the corner identified and described hereon has been perpetuated or monumented as described in Parts A, B, and C above, pursuant to the laws and rules of the State of Michigan.

Roger J. Stecker 12-4-2015
 Roger J. Stecker, P.S. Date

Professional Surveyor's License No.: 30103
 Lehner Associates, Inc.
 17001 19 Mile Rd., Suite 3
 Clinton Township, MI 48038



I, Martin C. Dunn, P.S., Macomb County Surveyor Representative, confirm that the corner identified and described hereon and perpetuated or monumented as described in Parts A, B, and C above was presented to and reviewed by the Peer Review Group on November 10, 2015 and is accepted for filing in the Macomb County Remonumentation Program.

Martin C. Dunn 12-8-2015
 Martin C. Dunn, P.S. Date

Professional Surveyor's License No.: 30081

SURVEYOR'S REPORT
PC-052
NORTHEAST CORNER P.C. 238
COMMON WITH THE
NORTHWEST CORNER P.C. 319 ON THE
SOUTH BANK OF THE CLINTON RIVER
(AKA RIVER HURON)
HARRISON TOWNSHIP,
T2N, R14E

GLO HISTORY:

Description of P.C. 238

Confirmed to Louis Chapoton Junior commencing at a post standing on the border of River Huron between this tract and a tract confirmed to Joseph Campeau thence south one hundred and fifty four chains sixty links to a post standing on the border of Lake St. Clair thence along the border of said lake west eight chains sixty three links, to a post the south east corner of a tract confirmed to Francois St. Obin thence north one hundred and fifty five chains six links to a post standing on the border of River Huron thence along the border of said river down stream south eighty eight degrees east six chains thirty five links thence south eighty three degrees east two chains thirty links to the place of beginning, containing one hundred and thirty four acres forty nine hundredths of an acre.

Detroit July 18, 1810

Aaron Greeley Surveyor
of private claims

Description of P.C. 319

Confirmed to Joseph Campeau commencing at a post standing on the border of River Huron, between this tract and a tract confirmed to the claimant, thence south one hundred and forty seven chains fifty two links to a post standing on the border of Lake St. Clair thence along the border of said lake west thirteen chains forty eight links to a post the southeast corner of a tract confirmed to Louis Chapoton Junior thence north one hundred and fifty four chains sixty links to a post standing on the border of River Huron thence along the border of said river down stream south eighty three degrees east six chains eighteen links thence south fifty nine degrees east seven chains fifty one links thence south twenty degrees east two chains sixty two links to the place of beginning, containing two hundred and five acres and nine tenths of an acre.

Detroit July 18, 1810

Aaron Greeley Surveyor
of private claims

EXISTING CONDITIONS:

No evidence of the original post was found. I consider it an obliterated corner.
I established the private claim line between Private Claim 238 and Private Claim 319 from found evidence in item 2, which defines Private Claim 238 to have a width of 577.28 feet (569.58' Private Claim Notes). Item No. 4 shows Private Claim Line 238/319 but does not dimension it. Item No.3 does not show Private Claim Line 238/319, however the proposed corner falls in the rear yard of Lot 280.
I extended the established private claim line north to the south bank of the Clinton River and set a ½" steel rod.
There are no lines of occupation, the corner falls in the back yard of House No. 30401 Manse Drive. I recommend to the Peer Group to accept the established position as the best evidence of the corner position.

RECORDED & UNRECORDED SURVEYS, & FIELD NOTES:

- | | | | | |
|----|------|---|----------------------------|-------------------------------|
| 1. | 1810 | Original Private Claim Notes | Aaron Greeley | (4 pages, 2 Orig., 2 Transc.) |
| | | Post | | |
| 2. | 1916 | "Riverside-Bay Gardens" | E.B. Williams Surveyor | L.3, P.23 |
| | | Shows PC line and dimensions line within the subdivision | | |
| 3. | 1926 | "Warren Park Sub. No. 1 | H.F. Cushing Reg. Surveyor | L.10, P.57 |
| | | Does not show PC line, however corner falls at the river on Lot 280 | | |
| 4. | 1934 | "S.P. #5" | Walter J. Lehner #123 | L.16, P.26 |
| | | Shows line but does not dimension | | |

DISTANCES:

PC-052 to Reference Monument for PC-057	Width of Private Claim 238
10,203.60' (154 Chains, 60 links Private Claim Notes)	569.58' (8 Chains 68 Links Private Claim Notes)
9,084'+/- to Lake St. Clair	577.28' from Item #2
7,624.12'(Measured 2015)	577.28' (Measured 2015)

Width of Private Claim 319
889.68' (13 Chains 48 Links Private Claim Notes)
890.28' (Measured 2015)

RECOMMENDATIONS:

I set a 4" diameter concrete monument, 36" long with a 1/2" iron rod having a 2" diameter aluminum cap stamped: Macomb County Monument, MI Act 345, 30103, PC-052.

WITNESSES: PC-052 CORNER

S80°W	48.26'	set Mag nail and Macomb County Witness tag in N. face of 24" Maple.
S5°E	76.20'	N.E. corner of house no. 30401 Manse
S35°E	62.67'	set Mag nail and Macomb County Witness tag in N. face of 30" Locust.
S75°E	63.39'	to west face of a 4' chain link fence anchor post
NORTH	6.57'	to north face of steel seawall

SKETCH OF PRIVATE CLAIM 238



RIVER HURON (NOW KNOWN AS CLINTON RIVER)

FLOW →

S83°00'00"E
2 CHAINS, 30 LINKS
(151.80')

S88°00'00"E
6 CHAINS, 35 LINKS
(419.10')

PC-051

PC-052

P.C.
238

NORTH 155 CHAINS, 6 LINKS (10,233.96')
LOUIS CHAPOTON, JUNIOR
SOUTH 154 CHAINS, 60 LINKS (10,203.60')

PC-056

PC-057

WEST
8 CHAINS, 63 LINKS
(569.58')

LAKE ST. CLAIR

GRAPHIC SCALE



(IN FEET)

1 inch = 1500 ft.

P.C. 238

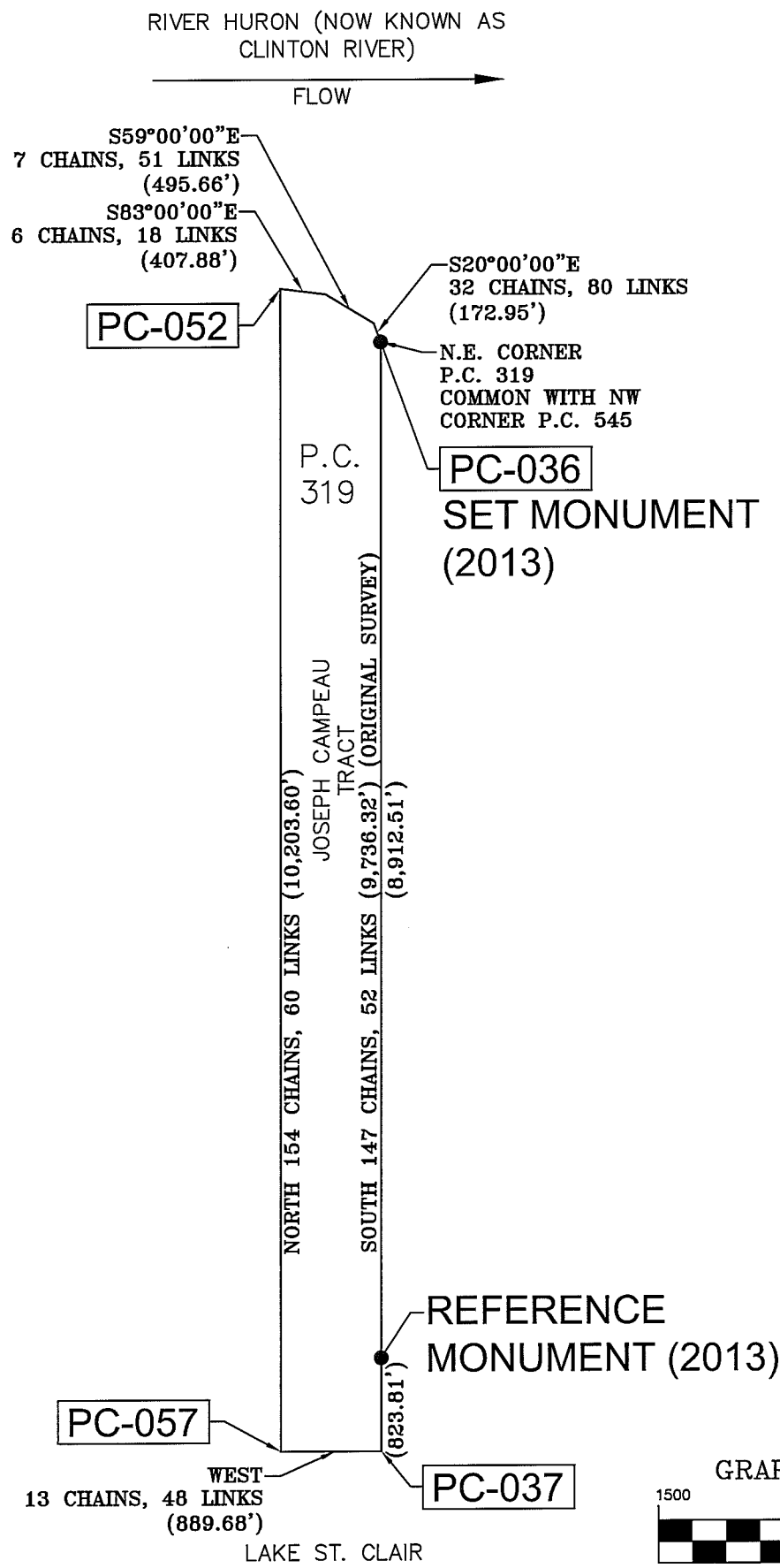
CONFIRMED TO LOUIS CHAPOTON, JUNIOR

COMMENCING AT A POST STANDING ON THE BORDER OF RIVER HURON, BETWEEN THIS TRACT AND A TRACT CONFIRMED TO JOSEPH CAMPEAU THENCE SOUTH ONE HUNDRED AND FIFTY FOUR CHAINS SIXTY LINKS TO A POST STANDING ON THE BORDER OF LAKE ST. CLAIR THENCE ALONG THE BORDER OF SAID LAKE WEST EIGHT CHAINS SIXTY THREE LINKS, TO A POST THE SOUTH EAST CORNER OF A TRACT CONFIRMED TO FRANCOIS ST. OBIN THENCE NORTH ONE HUNDRED AND FIFTY FIVE CHAINS SIX LINKS TO A POST STANDING ON THE BORDER OF RIVER HURON THENCE ALONG THE BORDER OF SAID RIVER DOWN STREAM SOUTH EIGHTY EIGHT DEGREES EAST SIX CHAINS THIRTY FIVE LINKS THENCE SOUTH EIGHTY THREE DEGREES EAST TWO CHAINS THIRTY LINKS TO THE PLACE OF BEGINNING, CONTAINING ONE HUNDRED AND THIRTY FOUR ACRES FORTY NINE HUNDREDTHS OF AN ACRE.

DETROIT JULY 18, 1810

AARON GREELEY SURVEYOR
OF PRIVATE CLAIMS

SKETCH OF PRIVATE CLAIM 319



P.C. 319

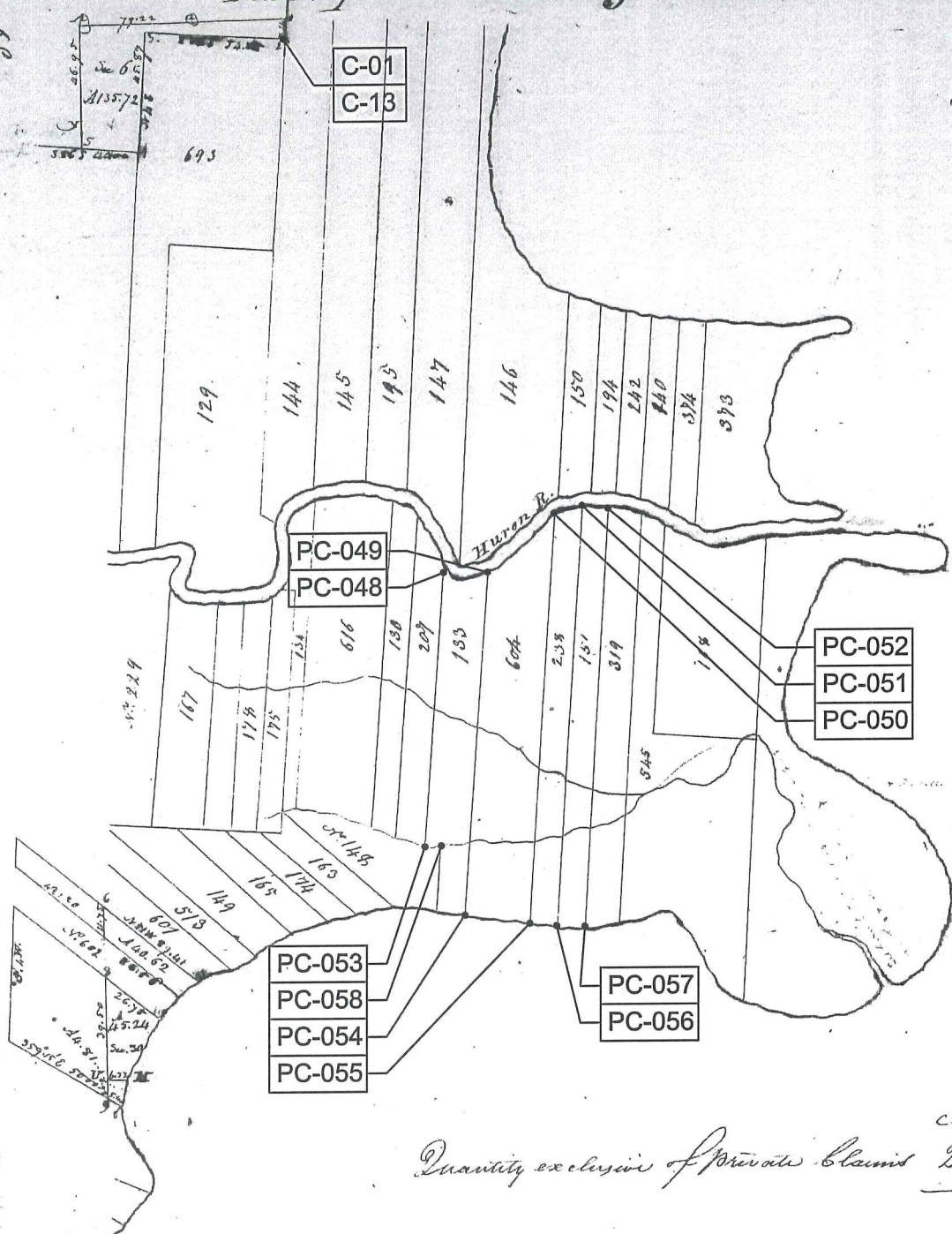
CONFIRMED TO JOSEPH CAMPEAU

COMMENCING AT A POST STANDING ON THE BORDER OF RIVER HURON, BETWEEN THIS TRACT AND A TRACT CONFIRMED TO THE CLAIMANT, THENCE SOUTH ONE HUNDRED AND FORTY SEVEN CHAINS FIFTY TWO LINKS TO A POST STANDING ON THE BORDER OF LAKE ST. CLAIR THENCE ALONG THE BORDER OF SAID LAKE WEST THIRTEEN CHAINS FORTY EIGHT LINKS TO A POST THE SOUTHEAST CORNER OF A TRACT CONFIRMED TO LOUIS CHAPETON JUNIOR THENCE NORTH ONE HUNDRED AND FIFTY FOUR CHAINS SIXTY LINKS TO A POST STANDING ON THE BORDER OF RIVER HURON THENCE ALONG THE BORDER OF SAID RIVER DOWN STREAM SOUTH EIGHTY THREE DEGREES EAST SIX CHAINS EIGHTEEN LINKS THENCE SOUTH FIFTY NINE DEGREES EAST SEVEN CHAINS FIFTY ONE LINKS THENCE SOUTH TWENTY DEGREES EAST TWO CHAINS SIXTY TWO LINKS TO THE PLACE OF BEGINNING, CONTAINING TWO HUNDRED AND FIVE ACRES AND NINE TENTHS OF AN ACRE.

DETROIT JULY 18, 1810

AARON GREELEY SURVEYOR
OF PRIVATE CLAIMS

Township N.° II North, Range N.° XIV East of the Mer. (Mich. Ter.)



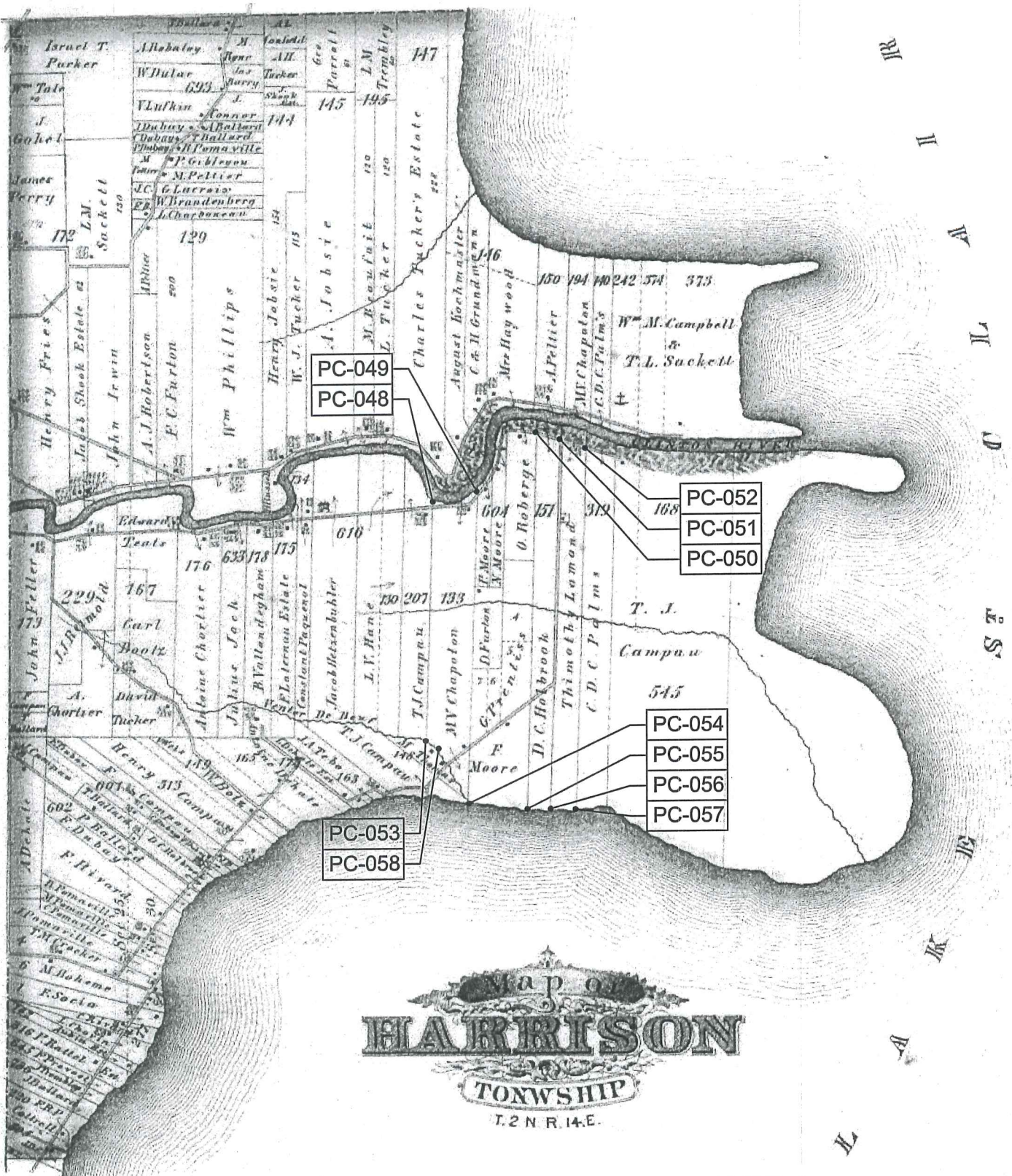
A. S. C. L. A. I. R.

Quantity exclusive of Private Claims ²²⁶⁻³⁹ 3

A true copy from the Original on file in this Office

Surveyor General's Office
 July 20 1819
 2N, 14E HARRISON

Edward
 Surveyor



PC-049
PC-048

PC-052
PC-051
PC-050

PC-054
PC-055
PC-056
PC-057

PC-053
PC-058

HARRISON
TOWNSHIP
T.2N.R.14E.

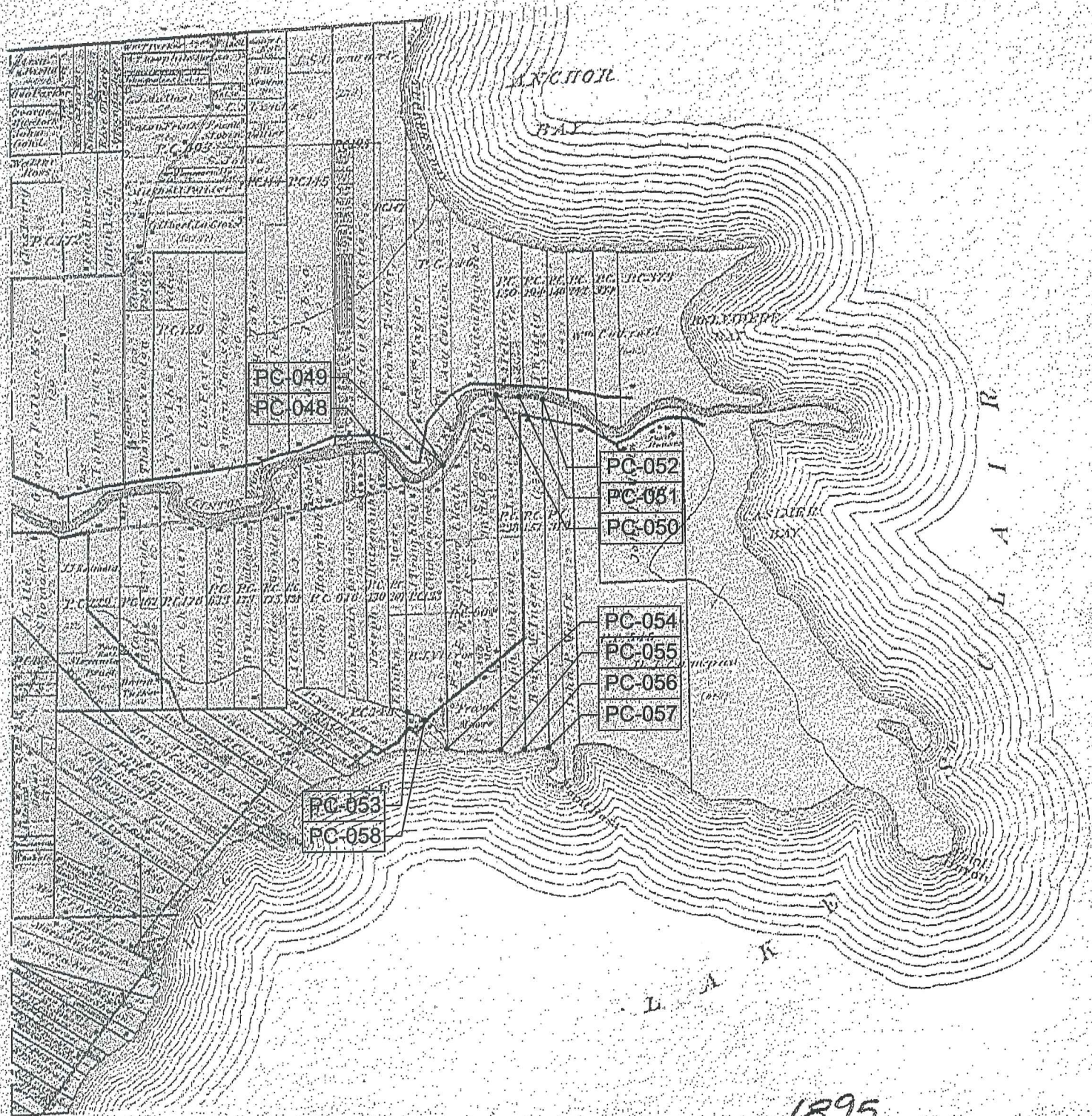
1875

MAP OF HARRISON

Township 2 North Range 14 East

Scale 2 Inches to one Mile

of the Division of Agriculture



1895

CHESTERFIELD TWP.

TWP.

ANCHOR BAY

ST. CLAIR LAKE

ST. CLAIR LAKE

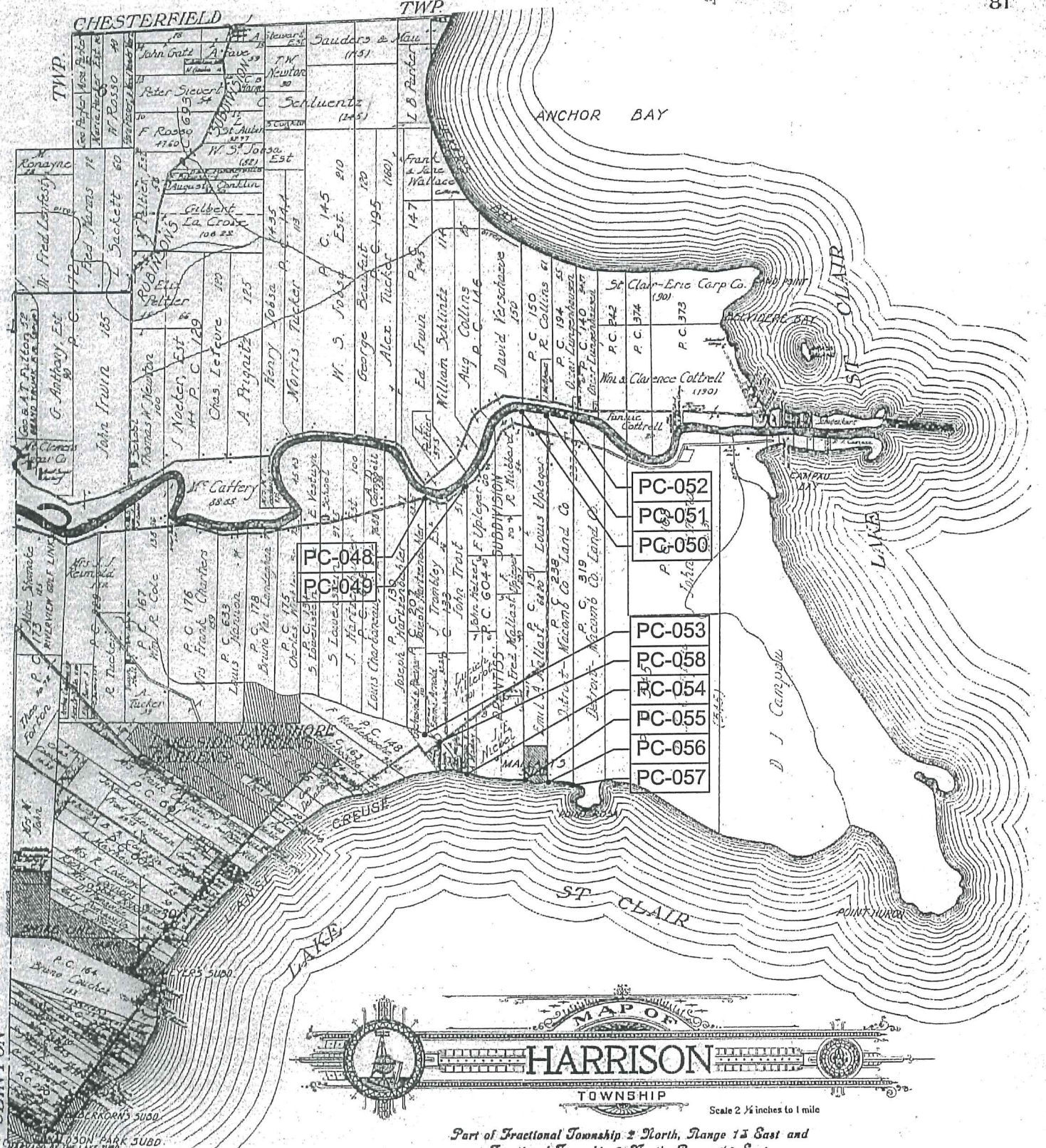
ST. CLAIR LAKE



Part of Fractional Township 2 North, Range 13 East and
Fractional Township 2 North, Range 14 East
of the Michigan Meridian

1916

Scanned by METCO



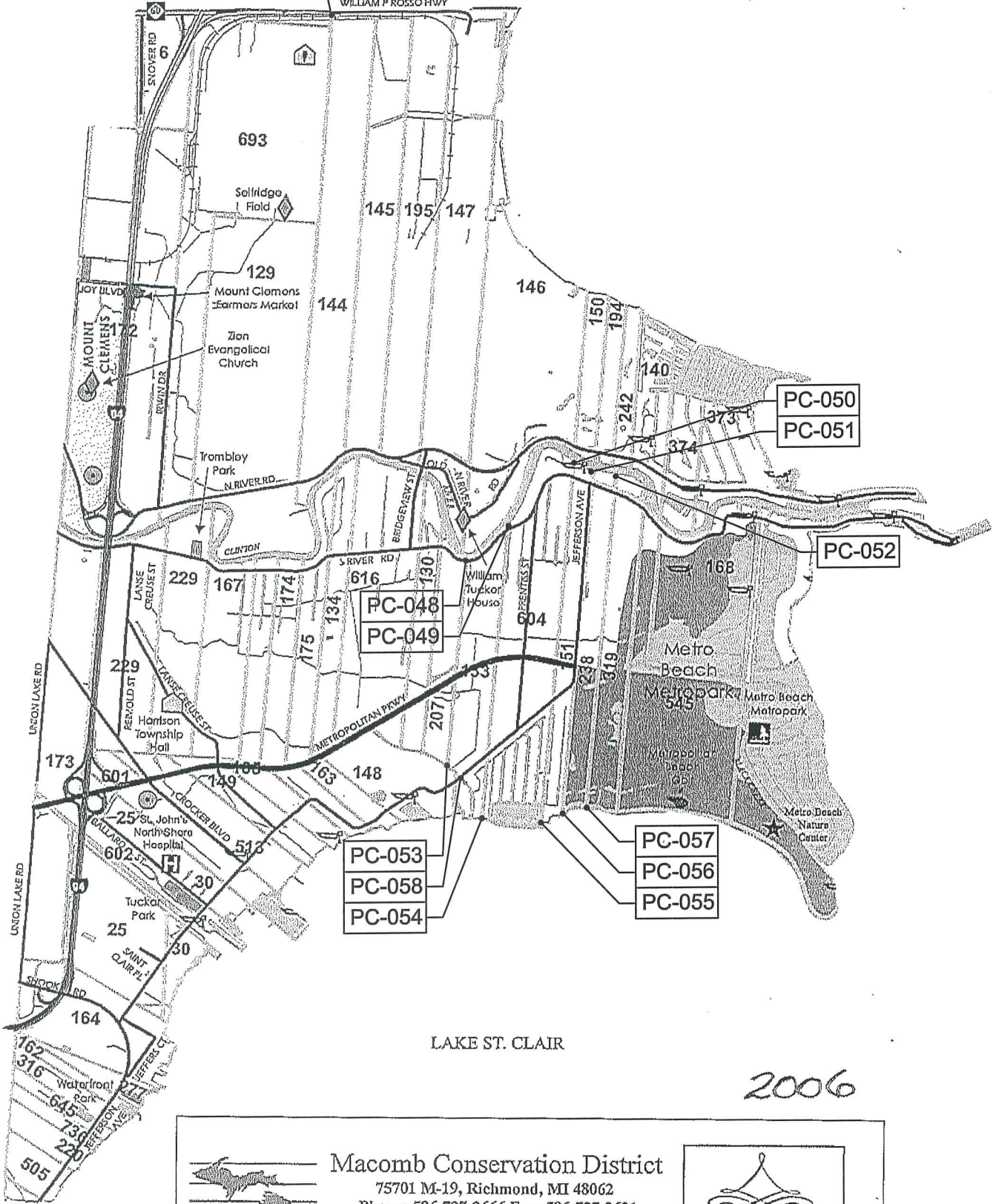
- PC-052
- PC-051
- PG-050
- PC-053
- PC-058
- PC-054
- PC-055
- PC-056
- PC-057



C-01
C-13 See CHESTERFIELD Page 31

WILLIAM P ROSSO HWY


See CLINTON Page 23




LAKE ST. CLAIR

LAKE ST. CLAIR

2006



Macomb Conservation District
75701 M-19, Richmond, MI 48062
Phone: 586-727-2666 Fax: 586-727-2621
E-mail: macombcd@klondyke.net
Website: www.macombcd.com



*Celebrating
55 Years of
Managing
Macomb County's
Natural Resources*

Assistance available for :

Tree Sales Forestry Native Plants
Conservation Education



Date of Photography: Spring 2012
 100 50 0 100 200 Feet
 1:1,200

HARRISON TWP SHEET INDEX

DESCRIPTION OF PERMANENT REAL ESTATE INDEX NUMBER
13-19-302-018

AREA NUMBER	SUB AREA NUMBER	BLOCK NUMBER	PARCEL NUMBER
13	19	302	018

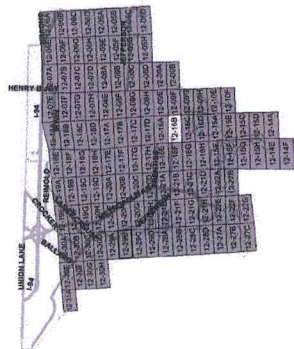
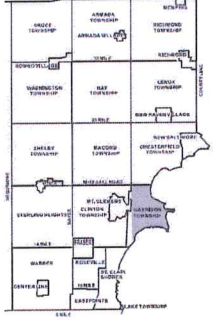
12-16B
 HARRISON TWP.
 E. 1/2 N.W. 1/4 SEC. 16 T.2N. R.14E.

Source: Macomb County Department of Planning and Economic Development
 - 2008 Digital Orthophotography Project
 - Parcel Conversion Project

Note:
 Digital Orthophotography horizontal positioning accuracy is 3 feet. Parcel boundary lines should be considered a graphical representation and not in any way a legal survey or engineering document. In general, the horizontal positioning and length accuracy is within 1/8 inch.
 This map is intended for general planning purposes. Site specific evaluation should be verified by field inspection. This is a work in progress and may contain errors and omissions. Please report any potential revisions to (588)469-5285.

Legend

- Platted Area Boundary Line
- Property Line
- Property Spilt Line
- Property Combined Line
- Township Boundary Line
- Traverse Line
- Dimension Extent Marks
- Dimension Start Marks



GIS MACOMB COUNTY
 Planning and Economic
 Development Department

Published: Nov 25 2014



Date of Photography: Spring 2012
 100 50 0 100 200 Feet
 11,200

HARRISON TWP SHEET INDEX

DESCRIPTION OF PERMANENT REAL ESTATE INDEX NUMBER

13-19-302-018

AREA NUMBER	TOWNSHIP NUMBER	BLOCK NUMBER	PARCEL NUMBER
13	19	302	018

12-16F

HARRISON TWP.
 E. 1/2 S.W. 1/4 SEC. 16 T.2N. R. 14E.

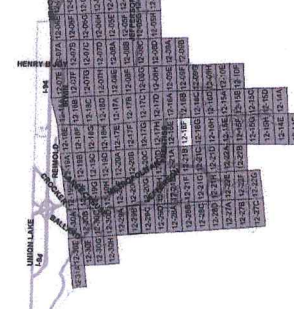
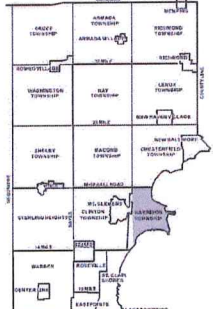
Source: Macomb County Department of Planning and Economic Development
 - 2008 Digital Orthophotography Project
 - Parcel Conversion Project

Note:
 Digital Orthophotography horizontal positioning accuracy is 3 feet. Parcel boundary lines should be considered a graphical representation and not in any way a legal survey or engineering document. In general, the horizontal positioning and length accuracy is within 15 feet.

This map is intended for general planning purposes. Site specific evaluation should be verified by field inspection. This is a work in progress and may contain errors and omissions. Please report any potential revisions to (586)468-5285.

Legend

- Plotted Area Boundary Line
- Property Line
- Property Split Line
- Property Combined Line
- Township Boundary Line
- Traverse Line
- Dimension Extent Marks
- Dimension Start Marks





Date of Photography: Spring 2012
 100 50 0 100 200 Feet
 1:1,200

HARRISON TWP SHEET INDEX

DESCRIPTION OF PERMANENT REAL ESTATE INDEX NUMBER
13-19-302-018

AREA NUMBER	SUB AREA NUMBER	BLOCK NUMBER	PARCEL NUMBER
13	19	302	018

12-21B
 HARRISON TWP.
 E. 1/2 N.W. 1/4 SEC. 21 T. 2N. R. 14E.

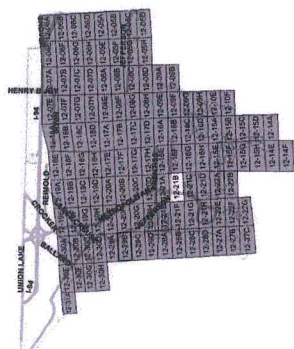
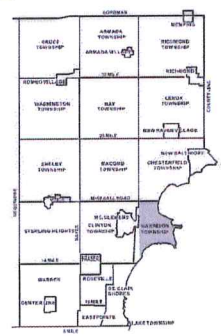
Source: Macomb County Department of Planning and Economic Development
 - 2008 Digital Orthophotography Project - Parcel Conversion Project

Note:
 Digital Orthophotography horizontal positioning accuracy is 3 feet. Parcel boundary lines should be considered a graphical representation and not in any way a legal survey or engineering document. In general, the horizontal positioning and length accuracy is within 15 feet.

This map is intended for general planning purposes. Site specific evaluation should be verified by field inspection. This is a work in progress and may contain errors and omissions. Please report any potential revisions to (586)469-5285.

Legend

- Platted Area Boundary Line
- Property Line
- Property Split Line
- Property Combined Line
- Township Boundary Line
- Traverse Line
- Dimension Extent Marks
- Dimension Start Marks



GIS MACOMB COUNTY
 Planning and Economic
 Development
 Published: Nov 25 2014

COPYRIGHT 2009
 MACOMB COUNTY, MI
 All Rights Reserved



Date of Photography: Spring 2012
 100 50 0 100 200 Feet

HARRISON TWP SHEET INDEX

DESCRIPTION OF PERMANENT REAL ESTATE INDEX NUMBER

13-19-302-018

AREA NUMBER	SUB AREA NUMBER	BLOCK NUMBER	PARCEL NUMBER
13-19-302-018			

12-21F

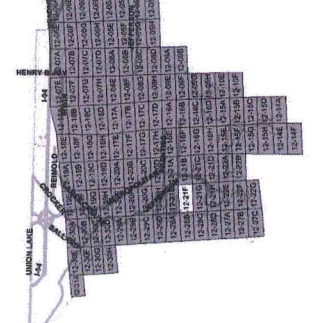
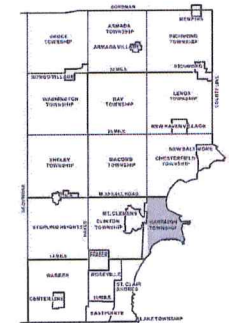
Previously part of 12-J
 HARRISON TWP.
 E. 1/2 S.W. 1/4 SEC. 21 T. 2N. R. 14E.

Source: Macomb County Department of Planning and Economic Development
 - 2008 Digital Orthophotography Project
 - Parcel Conversion Project

Note:
 Digital Orthophotography horizontal positioning accuracy is 3 feet. Parcel boundary lines should be considered a graphical representation and not in any way a legal survey or engineering document. In general, the horizontal positioning and length accuracy is within 1/8 foot.
 This map is intended for general planning purposes. Site specific evaluation should be verified by field inspection. This is a work in progress and may contain errors and omissions. Please report any potential revisions to (586)469-5295.

Legend

- Platted Area Boundary Line
- Property Line
- Property Split Line
- Property Combined Line
- Township Boundary Line
- Traverse Line
- Dimension Extent Marks
- Dimension Start Marks

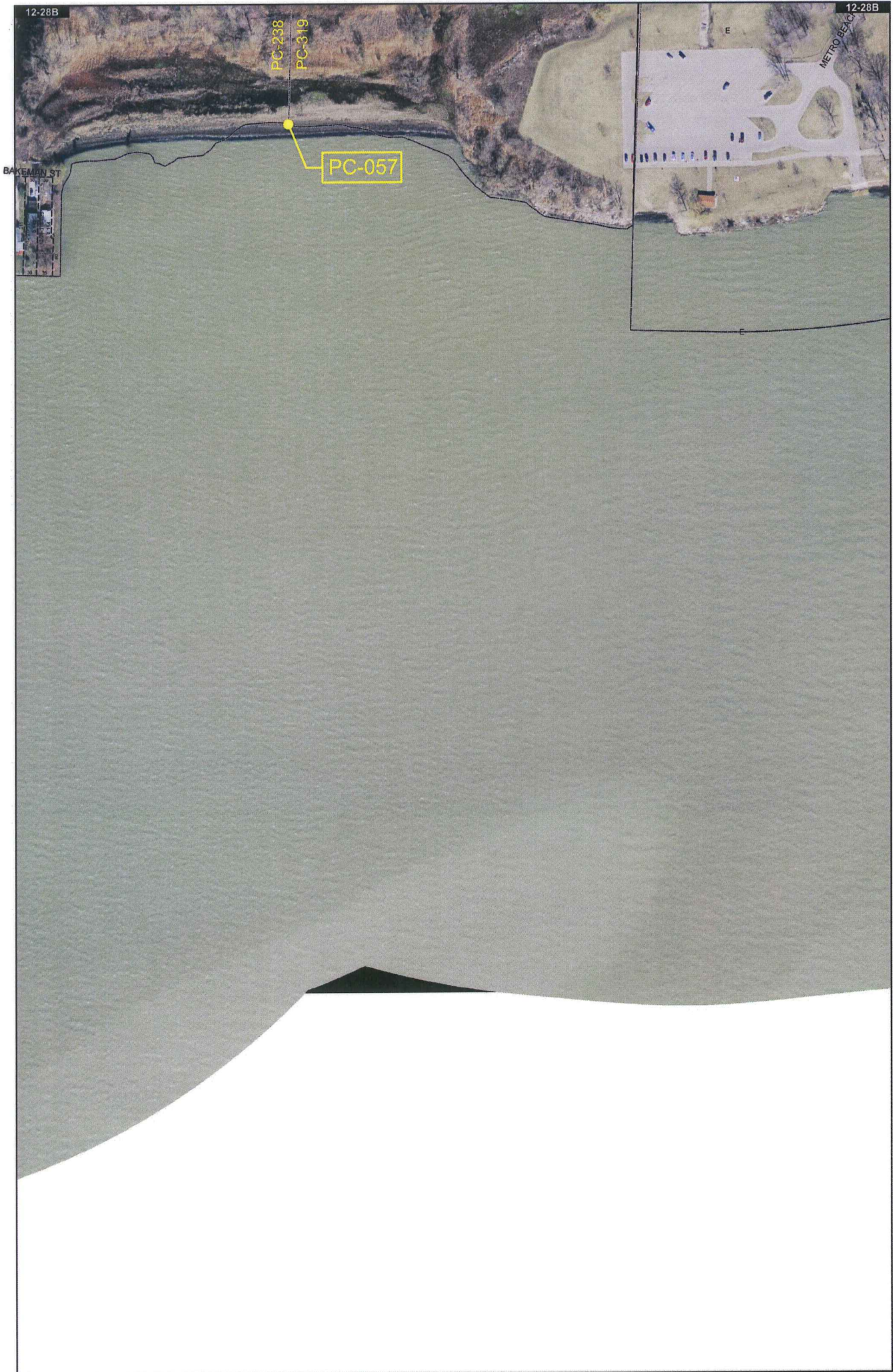


COPYRIGHT 2009
 MACOMB COUNTY, MI
 All Rights Reserved



GISs MACOMB COUNTY
 Planning and Economic
 Development Department

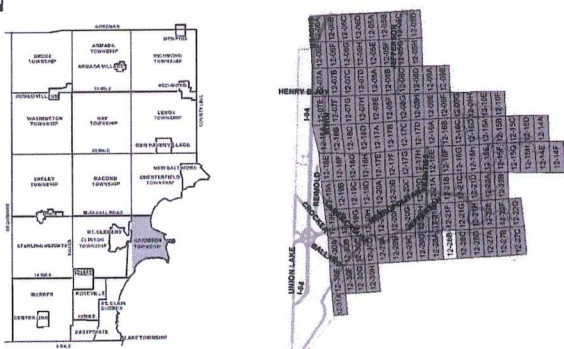
Published: Jul 16 2013



Date of Photography: Spring 2012
 100 50 0 100 200 Feet
 1:1,200



HARRISON TWP SHEET INDEX



DESCRIPTION OF PERMANENT REAL ESTATE INDEX NUMBER
13-19-302-018

AREA NUMBER 13-19-302-018	SUB AREA NUMBER 1800	BLOCK NUMBER 1800	PARCEL NUMBER 1800
------------------------------	-------------------------	----------------------	-----------------------

- Legend**
- Platted Area Boundary Line
 - Property Line
 - Property Split Line
 - Property Combined Line
 - Township Boundary Line
 - Traverse Line
 - Dimension Extent Marks
 - Dimension Start Marks

12-28B
 Previously part of 12P
 HARRISON TWP.
 E. 1/2 N.W. 1/4 SEC. 28 T. 2N. R. 14E.

Source: Macomb County Department of Planning and Economic Development
 - 2008 Digital Orthophotography Project
 - Parcel Conversion Project

Note:
 Digital Orthophotography horizontal positioning accuracy is 3 feet. Parcel boundary lines should be considered a graphical representation and not in any way a legal survey or engineering document. In general, the horizontal positioning and length accuracy is within 15 feet.

This map is intended for general planning purposes. Site specific evaluation should be verified by field inspection. This is a work in progress and may contain errors and omissions. Please report any potential revisions to (586)469-5295.



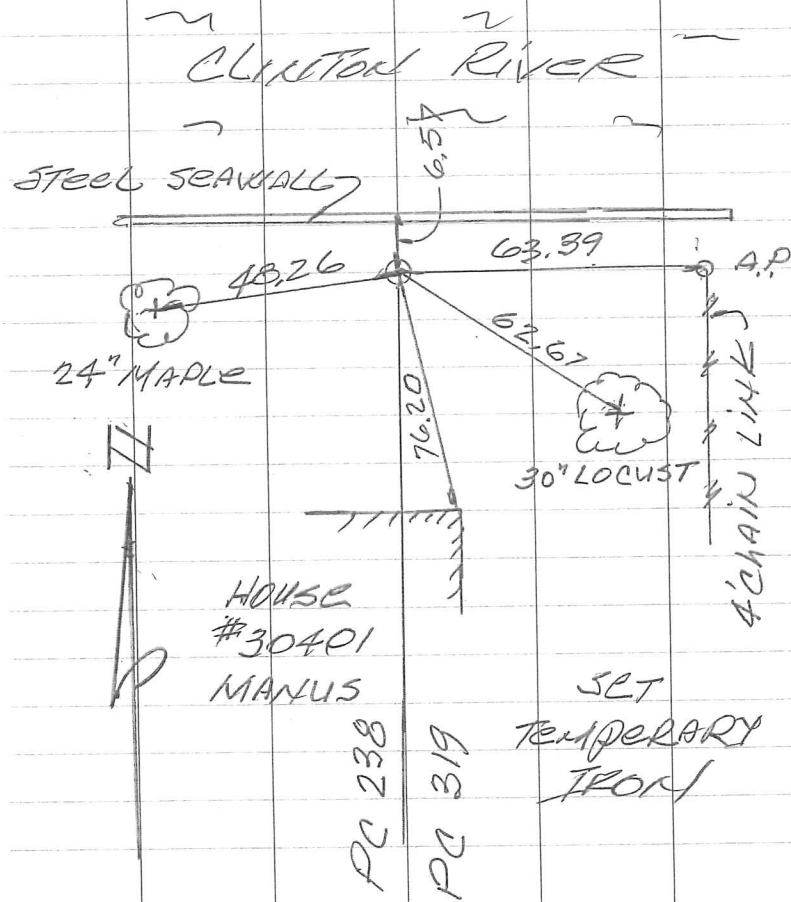
GIS MACOMB COUNTY
 Planning and Economic
 Development Department
 Published: Jun 06 2013

8-4-2015

PC-052

R5 BS

N.E. COR. OF PC 238 COMMON
WITH THE N.W. COR. OF
PC 319
T.2 N., R. 14 E. HARRISON TWP.



SET MONUMENT

PC-052

WITNESSES

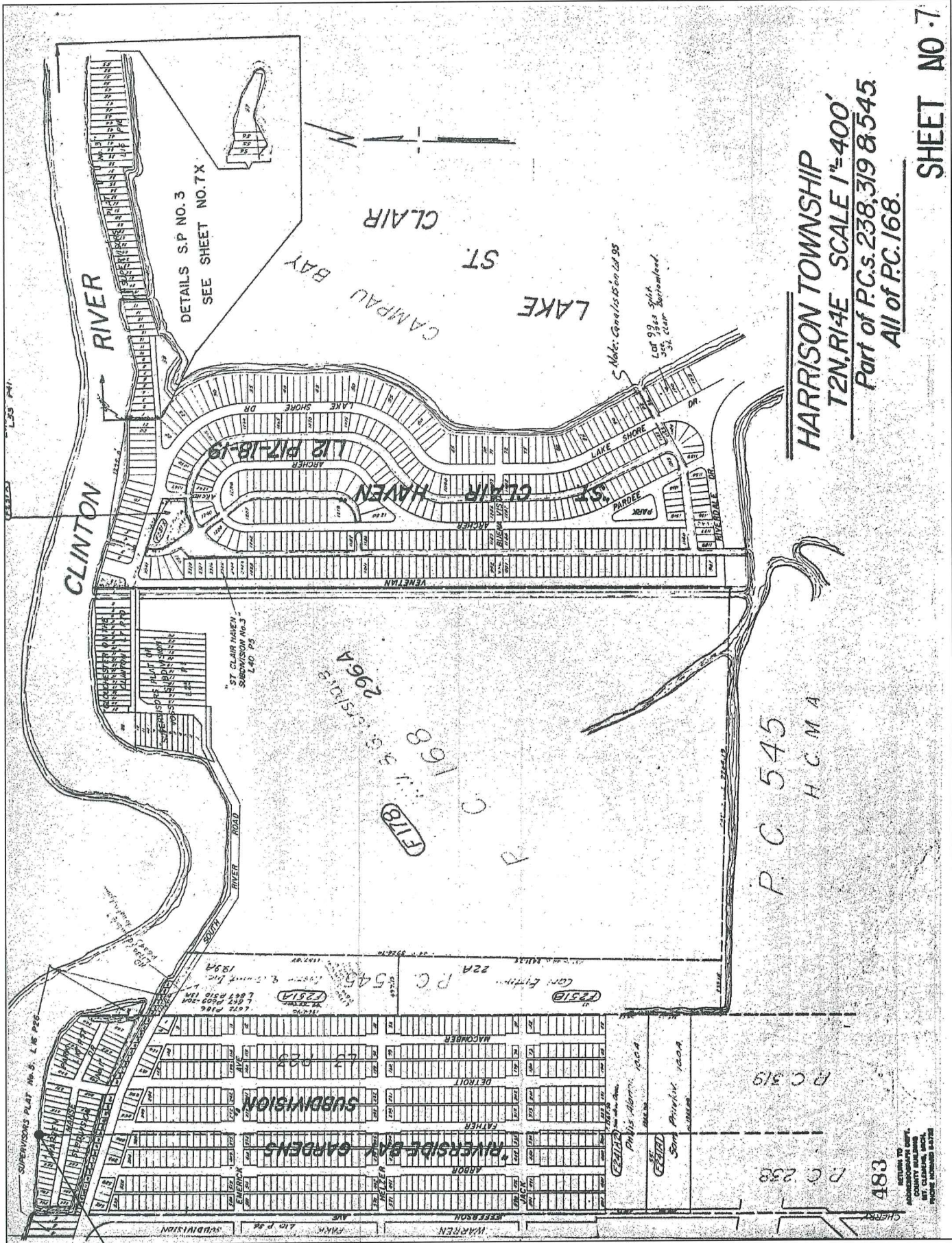
S. 80° W. 48.26 FT SET NAIL
& TAG IN NORTH FACE OF
24" MAPLE

S. 5° E. 76.20 FT. N.E. CORNER
OF HOUSE #30401 MANUS

S. 35° E. 62.67 FT. SET NAIL
& TAG IN NORTH FACE OF
30" LOCUST

S. 75° E. 63.39 FT. TO WEST
FACE OF A 4' CHAIN LINK
FENCE ANCHOR POST.

NORTH 6.57 FT. TO NORTH
FACE OF STEEL SEAWALL



PC-052

HARRISON TOWNSHIP
 T2N.R14E SCALE 1"=400'
 Part of P.C.s. 238, 319 & 545.
 All of P.C. 168.

SHEET NO. 7

P.C. 545
 H.C.M.A.

P.C. 319

P.C. 258

483

RETURN TO
 ARCHITECTURAL DEPT.
 ST. CLAIR HAVEN, ILL.
 PHONE NUMBER 6878

No. 455.

South Side River Run

Description No. 233. Confirmed to Louis Chiqueton Junior Commencing at a post standing on the border of River Huron between this tract and a tract Confirmed to Joseph Campeau, thence South one hundred and fifty four chains sixty links, to a post standing on the border of Lake St. Clair thence along the border of said Lake west eight chains sixty three links, to a post the southeast corner of a tract. Confirmed to Francis St. Obin, thence north one hundred and fifty five chains six links to a post standing on the border of River Huron thence along the border of said River down stream south eighty eight degrees east six chains thirty five links, thence south eighty three degrees east two chains thirty links, to the place of Beginning containing one hundred and thirty four acres forty nine hundredths of an acre.

Detroit July 18. 1810

Asaon Greeley Surveyor
of private Claims.

No. 405

No. 238 Confirmed to
Louis Chapeton, Junior

SOUTH SIDE OF RIVER HURON

Description No. 238 Confirmed to Louis Chapeton Junior
commencing at a post standing on the border of River Huron
between this tract and a tract confirmed to Joseph Campeau
thence south one hundred and fifty four chains sixty links to
a post standing on the border of Lake St. Clair thence along
the border of said lake west eight chains sixty three links, to
a post the south east corner of a tract confirmed to Francois
St. Obin thence north one hundred and fifty five chains six
links to a post standing on the border of River Huron thence
along the border of said river down stream south eighty eight
degrees east six chains thirty five links thence south eighty
three degrees east two chains thirty links to the place of
beginning, containing one hundred and thirty four acres forty
nine hundredths of an acre ____.

Detroit July 18, 1810 ____

Aaron Greeley Surveyor
of private claims

N^o 464 "

South side of River Huron

Description N^o 314 Confirmed to Joseph
Campeau Commencing at a post stand-
ing on the border of River Huron between
his tract and a tract Confirmed to the
Claimant thence south one hundred
and forty seven chains fifty two links, to
a post standing on the border of Lake
St. Clair thence along the border of said
Lake west thirteen chains forty eight
links, to a post the south east corner of
tract Confirmed to Louis Chapoton
Senior. thence north one hundred and
fifty four chains sixty links, to a post
standing on the Border of River Huron
thence along the border of said River down
stream south eighty three degrees East six
chains eighteen links thence south fifty nine
degrees East seven chains fifty one links,
thence south twenty degrees East two chains
sixty two links, to the place of beginning
Containing two hundred and five acres
and nine tenths of an acre.

Detroit July 18. 1810

Huron Greeley Surveyor
of private claims

No. 464

No. 319 Confirmed to
Joseph Campeau

SOUTH SIDE OF RIVER HURON

Description No. 319 Confirmed to Joseph Campeau commencing at a post standing on the border of River Huron, between this tract and a tract confirmed to the claimant, thence south one hundred and forty seven chains fifty two links to a post standing on the border of Lake St. Clair thence along the border of said lake west thirteen chains forty eight links to a post the southeast corner of a tract confirmed to Louis Chapoton Junior thence north one hundred and fifty four chains sixty links to a post standing on the border of River Huron thence along the border of said river down stream south eighty three degrees east six chains eighteen links thence south fifty nine degrees east seven chains fifty one links thence south twenty degrees east two chains sixty two links to the place of beginning ___ containing two hundred and five acres and nine tenths of an acre ___

Detroit July 18, 1810

Aaron Greeley Surveyor
of private claims

EX 9/12/26

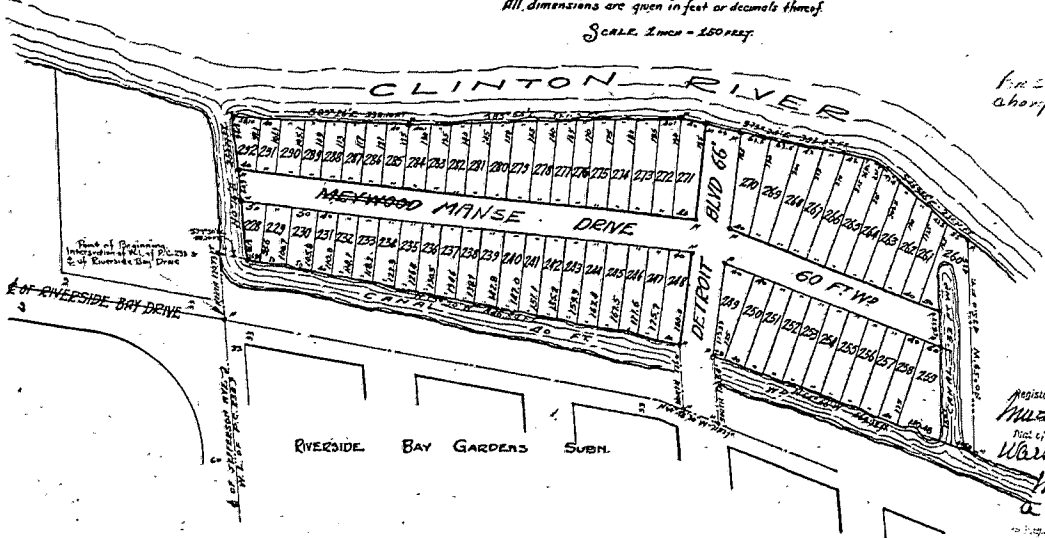
Examined and Approved
Mar 17 1926
J. L. Hurrell

WARREN PARK SUBDIVISION No. 1

OF PART OF
PRIVATE CLAIMS 238 & 319.

HARRISON TWP. MACOMB CO. MICHIGAN.

All dimensions are given in feet or decimals thereof.
SCALE 2 in. = 150 FEET



REGISTRATION
Mar 17 1926
J. L. Hurrell

I HEREBY
A TRUE
FOR
FOR
66666

Mar 17 1926
J. L. Hurrell

SURVEYOR'S CERTIFICATE

I hereby certify that the plat hereon delineated is a correct one, and that permanent monuments consisting of 1" x 15" pipes, set in concrete bases 4" in diameter and 48" in depth have been placed in the ground at all points marked thus (O) as shown thereon at all angles in the boundaries of the land platted, and at all intersections of streets with the boundaries of the plat.

.....
Registered Surveyor.

Register's Office
Mar 26 1926
Hugh E. Whiting

FILED IN RECORDS
Mar 28 1926
J. L. Hurrell

DEDICATION

KNOW ALL MEN BY THESE PRESENTS: that we, Warren J. Hopwood, a single man, Henry Meyering Jr. and Helen J. Meyering, his wife as proprietors and The Detroit-Macomb Land Co. a Michigan corporation by R. M. Richards, Vice-President and C. M. Burton, Secretary, as mortgagee, have caused the land embraced in the annexed plat to be surveyed, laid out and platted, to be known as WARREN PARK SUBDIVISION No. 1 of part of PRIVATE CLAIMS 238 & 319, Harrison Twp. Macomb Co. Michigan, and that the streets shown on said plat are hereby dedicated to the use of the public.

STONY AND SEALED IN PRESENCE OF
.....
.....

..... (L.S.)
..... (L.S.)
DETROIT-MACOMB LAND CO.
..... (L.S.) Vice-Pres.
..... (L.S.) Sec.

STATE OF MICHIGAN)
COUNTY OF WAYNE) SS:

On this... day of... 1926, before me, a Notary Public, personally came the above named Warren J. Hopwood, a single man, Henry Meyering Jr. and Helen J. Meyering, his wife, known to me to be the persons who executed the above dedication and acknowledged the same to be their free act and deed.

.....
Notary Public, in and for Wayne County, Michigan.

My commission expires Aug 5, 1927.

STATE OF MICHIGAN)
COUNTY OF WAYNE) SS:

On this... day of... 1926, before me, a Notary Public in and for said County, personally came the above named R. M. Richards and C. M. Burton, to me personally known, who being each by me duly sworn, did say that they are the Vice President and Secretary, respectively, of The Detroit-Macomb Land Co. a Michigan corporation, and that the seal affixed to said instrument is the corporate seal of said corporation, and the said Detroit-Macomb Land Co. a Michigan corporation, and that the seal affixed to said instrument is the corporate seal of said corporation, and the said R. M. Richards and C. M. Burton, instrument was signed and sealed in behalf of said corporation by authority of its Board of Directors, and the said R. M. Richards and C. M. Burton, acknowledged said instrument to be the free act and deed of said corporation.

.....
Notary Public, in and for Wayne County, Michigan.

CERTIFICATE OF TOWNSHIP BOARD

I hereby certify that this plat has been approved by the Township Board of the Township of Harrison at a session held... 1926
.....
Clerk.

DESCRIPTION

The land embraced in the annexed plat of Warren Park Subdivision No. 1 of part of Private Claims 238 & 319 Harrison Twp., Macomb Co. Michigan, is more particularly described as follows: beginning at a point distant S. 75° 50' E. 68.30 ft. and North 120.75 ft. from the intersection of Riverside Bay Drive and Jefferson Avenue center lines, thence N. 0° 15' E. 253.37 ft. to a point, thence S. 83° 28' E. 338.10 ft. to a point, thence S. 25° 54' E. 521.30 ft. to a point, thence S. 73° 34' E. 393.82 ft. to a point, thence S. 46° 48' E. 231.71 ft. to a point, thence S. 0° 58' W. 425 ft. to a point, thence N. 64° 55' W. 569.96 ft. to a point, thence South 130.54 ft. to the center line of Riverside Bay Drive, thence along the said center line N. 66° 48' 30" W. 71.83 ft. to a point, thence North 128.0 ft. to a point, thence N. 73° 50' W. 848.84 ft. to the place of beginning.

COUNTY TREASURER'S CERTIFICATE

This is to certify that the tax on the land or lands described in the annexed plat, and that the tax on the land described in the annexed plat, is due and payable to the County of Wayne, Michigan, for the year 1926, and that the same has been paid to the County Treasurer, Michigan, on this 15th day of March, 1926.
.....
County Treasurer.

SUPERVISOR'S PLAT No. 5

OF PARTS OF P.C.S. 151, 238, 319
& 545, HARRISON TOWNSHIP
MACOMB COUNTY, MICH.

SCALE 1"=100'

WALTER J. LEHNER
MT. CLEMENS MICH.

JEFFERSON AVE

RIVERSIDE BAY DRIVE

CANAL

PC-051

BLVD.

DETROIT

CLINTON RIVER

DEDICATION.

KNOW ALL MEN BY THESE PRESENTS, That I, Floyd W. Reese, Supervisor of the Township of Harrison Macomb County, Michigan, by virtue of authority in me vested by Section 51 Act 172 of P.A. 1929 having been duly authorized by the Township Board have caused the land embraced in the annexed plat to be surveyed, laid out and platted, to be known as SUPERVISOR'S PLAT NO. 5, of parts of P.C.S. 151, 238, 319, & 545 Harrison Township, Macomb County, Michigan, and that the streets as shown on said plat have been dedicated to the use of the public.

Witnesses,
Floyd W. Reese
Supervisor for Harrison Twp.
W. J. Kelly
Wm. J. Peterson

STATE OF MICHIGAN, } SS.
COUNTY OF MACOMB, }

On this first day of May A.D. 1933 before me a Notary Public in and for said County personally came the above named Floyd W. Reese, Supervisor of Harrison Twp., known to me to be the person who executed the above dedication and acknowledged the same to be his free act and deed as such Supervisor.

Carl A. John
Notary Public in and for
Macomb County.
My Commission expires March 1937

DESCRIPTION.

THE LAND EMBRACED IN THE ANNEXED PLAT OF SUPERVISOR'S PLAT NO. 5, of parts of P.C.S. 151, 238, 319, & 545 Harrison Township, Macomb County, Mich., is described as follows:

Beginning at the intersection of the northerly side line of Riverside Bay Drive, so called, and the easterly line of P.C. 151, and thence extending N.73°-24'W. 299.8 ft; thence N.1°-11'E. 351.80 ft; thence S.71°-47'-30"E. 308.24 ft. along the southerly bank of Clinton River; thence S.0°-12'W. 324.48 ft; thence S.75°-18'-30"E. 483.40 ft; thence S.75°-23'E. 432.43 ft; thence S.66°-37'E. 291.05 ft; thence S.64°-25'E. 124.23 ft; thence S.62°-30'E. 148.53 ft; thence S.54°-40'-30"E. 75.83 ft; thence N.0°-04'-30"E. 481.46 ft; thence S.13°-16'-30"E. 455.00 ft; thence N.60°-00'-30"W. 120.68 ft; thence S.0°-04'-30"W. 80.96 ft; thence S.63°-27'-15"E. 95.14 ft; thence S.58°-19'E. 100.00 ft; thence S.49°-33'-15"E. 111.78 ft; thence S.0°-04'-30"W. 25.0 ft; thence N.58°-19'W. 393.17 ft; thence N.62°-30'W. 146.71 ft; thence E.54°-25'W. 122.94 ft; thence N.68°-37'W. 268.25 ft; thence N.73°-23'W. 919.75 ft. to the place of beginning.

TOWNSHIP APPROVAL.

This plat was approved by the Township Board of the Township of Harrison at a meeting held May first, 1933.

Carl A. John
Township Clerk.

SURVEYOR'S CERTIFICATE.

I hereby certify that the plat hereon delineated is a correct one and that permanent metal monuments of not less than one inch in diameter and fifteen inches in length set in concrete base at least four inches in diameter and forty eight inches in depth have been placed at points marked thus (o) as shown on all angles in the boundaries of the land platted, and at all intersections of streets with the boundaries of the plat as shown on said plat.

Walter J. Lehner
REGISTERED CIVIL ENGINEER.

CERTIFICATE OF APPROVAL BY COUNTY BOARD

This plat was approved on the 15th day of November 1933

Andreas C. Wisley
Judge of Probate
James B. Groves
County Clerk
F. H. Kouchard
County Treasurer

Examined and Approved

December 14, 1934
Edith L. Lamborn
County Clerk

Resolution J-3746 P-232

Recorded for Record this
9th day of December 1933
in Book 16 of Plats
at Mt. Clemens, Mich.
Alvin E. Tinkler