

INDEX
PC-047
NORTHWEST CORNER P.C. 693
COMMON WITH A DEFLECTION POINT CONTROLLING A
SOUTH AND EAST LINE OF FRACTIONAL SECTION 6
HARRISON TOWNSHIP,
T2N, R14E

SECTION 1:

1. Index
2. Before Pictures of Point and in Each Cardinal Direction
3. After Pictures of Point

SECTION 2:

1. LCRC
2. Surveyor's Report
3. Sketch of Private Claims (2 pages) (PC 693, PC 172)
4. Sketch of 2014 Private Claims Overview

SECTION 3:

1. 1818 Original Government Survey map (1 page)
2. 1875 Map of Harrison Township (1 page)
3. 1895 Map of Harrison Township (1 page)
4. 1916 Map of Harrison Township (1 page)
5. 1979 MDOT M-59 Right of Way Map (1 page)
6. 2006 Map of Harrison Township (1 page)
7. 2004 Harrison Township Composite Maps (8 pages)
8. 2014 Field Notes with Corner Witnesses (3 pages)
9. Undated Selfridge Air Force Base Real Estate Map (1 page)
10. 2004 Boundary Survey S.A.N.G. Base, Metco Services Inc., Steven Dunn, P.S. #28408 (1 page)
11. Undated Addressograph Department drawing Sheets 12 and 13 (2 pages)

SECTION 4:

- | | | | | |
|----|------|--------------------------------------------------------------------------------------------------------------|----------------------------------------------------|---------------------------|
| 1. | 1810 | Original Private Claim Notes | Aaron Greeley | (4 pages) |
| 2. | 1869 | "Survey & Subdivision of PC 693" | L.Wesolowski, Surveyor | L.1, Pg.14 |
| 3. | 1926 | Plat of Partiton of Louis St. Aubin
Farm located in Lot 11 of the
"Survey and Subdivision of P.C. 693" | John W. Irwin, Civ.Eng. | L.222, Pg. 475 |
| 4. | 1928 | "C.H. Jobse's Little Farms Subd'n"
of N'ly part of Lot 7 Robertson's
Subd'n of P.C. 693 | Walter C. Wood,
Engineer-Surveyor | L.13, Pg.41 |
| 5. | 2003 | Boundary survey | Lehner Associates, Inc.
Robert L. Smith, #16052 | Unrecorded |
| 6. | 2005 | LCRC PC-001 | Steven Dunn #28408 | L. 16653,
P. 920 & 921 |
| 7. | 2008 | LCRC PC-016 | Steven Dunn #28408 | L. 19452,
P. 175 & 176 |

PC – 047

**N.W. Corner of PC 693 common with a
deflection point controlling a South and East
Line of Fractional Section 6.**

T.2N.,R.14E. Harrison Twp.

WITNESS MONUMENT #1

PC - 047

N.W. Corner of PC 693 common with a
deflection point controlling a South and East
Line of Fractional Section 6.

T.2N.,R.14E. Harrison Twp.



WITNESS MONUMENT #2

PC - 047

**N.W. Corner of PC 693 common with a
deflection point controlling a South and East
Line of Fractional Section 6.**

T.2N., R.14E. Harrison Twp.



WITNESS MONUMENT #3

PC - 047

**N.W. Corner of PC 693 common with a
deflection point controlling a South and East
Line of Fractional Section 6.**

T.2N.,R.14E. Harrison Twp.



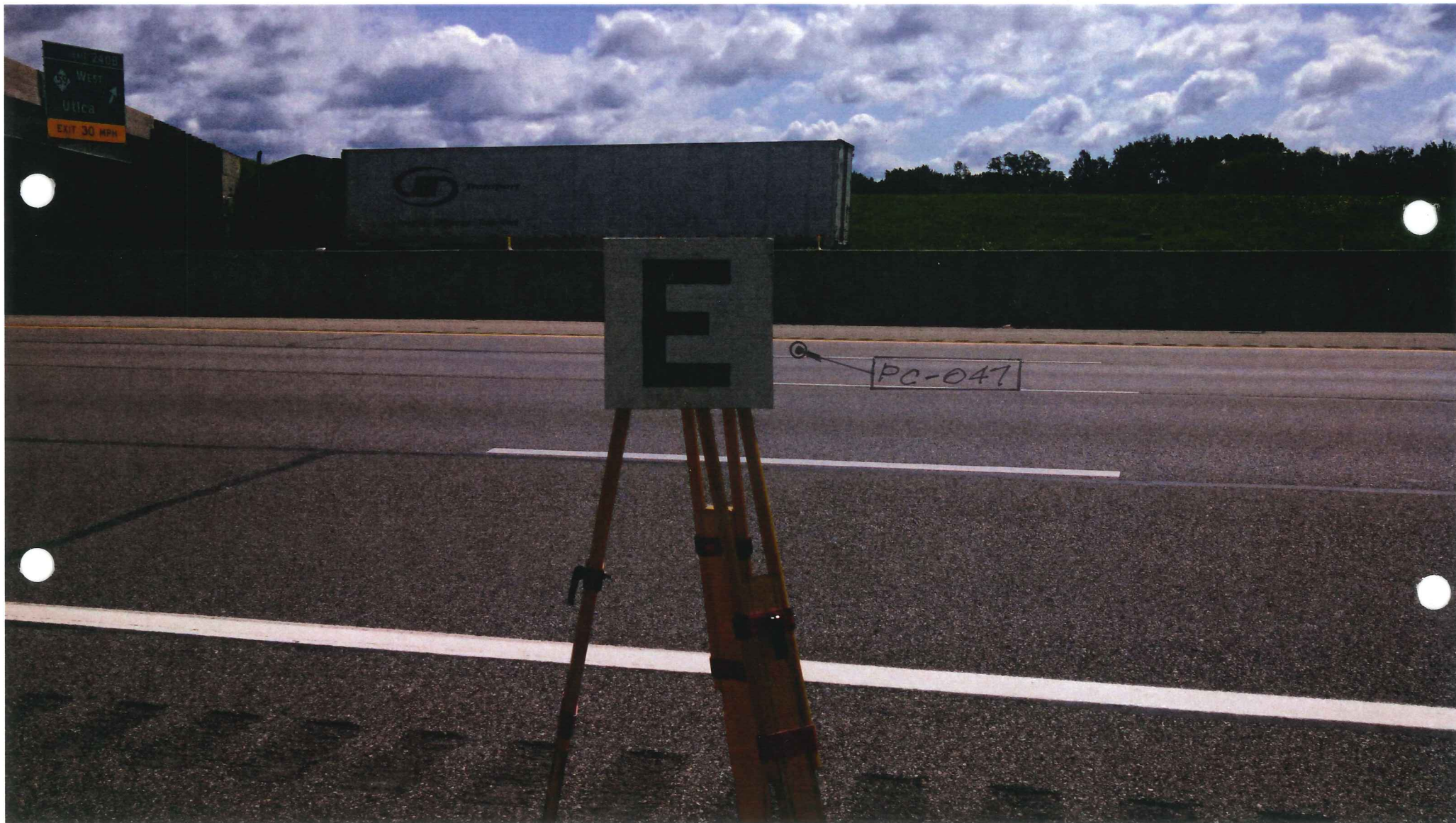
WITNESS MONUMENT #4
PC - 047

N.W. Corner of PC 693 common with a
deflection point controlling a South and East
Line of Fractional Section 6.

T.2N., R.14E. Harrison Twp.











LAND CORNER RECORDATION CERTIFICATE
Filing Requirement of Act 74, Mich. P.A. 1970

For corners in

<u>MACOMB</u> (County)	Located In: Harrison Township	Corner Code # <u>PC-047</u>
1. Public Land Survey	T <u>2N</u> R <u>14E</u>	<u>PC-047</u>
	T _____ R _____	_____
	T _____ R _____	_____
	T _____ R _____	_____
2. Property Controlling in Section	S _____ T _____ R _____	_____
	S _____ T _____ R _____	_____
3. Miscellaneous Property in Section	S _____ T _____ R _____	_____
	S _____ T _____ R _____	_____

4138513 PAGE 1 OF 3
 LIBER 23116 PAGE 479
 11/18/2014 09:13:52 A.M.
 MACOMB COUNTY, MI SEAL
 CARMELLA SABAUGH, REGISTER OF DEEDS

Register of Deeds Stamp & File Number

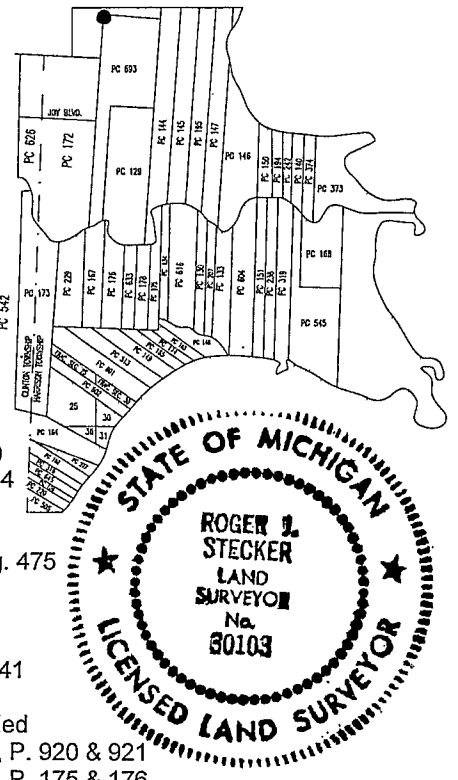
4. Lot No. _____, Recorded Plat _____
 5. Private Claims Northwest Corner of Private Claim 693 Common with a deflection point controlling a south and east line of Fractional Section 6.

I, ROGER J. STECKER, in a field survey on June 24, 2014 do hereby state that under requirements of P.A. 74, Michigan P.A. of 1970, the corner points mentioned in lines 1 and 2 above were in conformance with regulations and rules therefore as required in the current manual of survey instructions of the United States Department of the Interior, Bureau of Land Management or by a decree of a Court of Law and/or that the corner points mentioned in lines 3, 4 and 5 above were in conformance with the rules of the Michigan Board of Land Surveyors or by a Decree of a Court of Law; re-established, monumented, recovered, found as expressed below:

NOTE: Not more than 2 corners, all in the same town and range, may be recorded on this certificate.

A. Description of original monument and accessories and/or subsequent restoration:

- | | | | | |
|----|------|------------------------------------------------------------------------------------------------------|-----------------------------------|------------------------|
| 1. | 1810 | Original Private Claim Notes | Aaron Greeley | (4 pages) |
| 2. | 1869 | "Survey & Subdivision of PC 693" | L.Wesolowski, Surveyor | L.1, Pg.14 |
| 3. | 1926 | Plat of Partiton of Louis St. Aubin Farm located in Lot 11 of the "Survey & Subdivision of P.C. 693" | John W. Irwin, Civil Engineer | L.222, Pg. 475 |
| 4. | 1928 | "C.H. Jobse's Little Farms Subd'n" Of N'yly part of Lot 7 Robertson's Subd'n of P.C. 693 | Walter C. Wood, Engineer-Surveyor | L.13, Pd.41 |
| 5. | 2003 | Boundary survey | Lehner Associates, Inc. | Unrecorded |
| 6. | 2005 | LCRC PC-001 | Robert L. Smith, #16052 | L. 16653, P. 920 & 921 |
| 7. | 2008 | LCRC PC-016 | Steven Dunn #28408 | L. 19452, P. 175 & 176 |
| | | | Steven Dunn #28408 | |



B. Description of corner evidence found and/or method applied in restoring or reestablishing corner:
 No evidence of the original post was found. I consider it an obliterated corner.

No evidence of the original post or the common line between Private Claim line 693, the south line or east line of Fractional Section 6 were found. I established the corner by extending the east line of Private Claim 172 common with the west line of P.C. 693. The Northeast Corner of P.C. 172 was re-monumented and recorded by Steven Dunn in 2005 (PC-001), LCRC recorded in Liber 16653, Pages 920 and 921. I used the reference monument for the Southwest Corner of Private Claim 693, common with the Southeast Corner of Private Claim 172 to extend the west line of Private Claim 693 to the north. PC-016 reference monument was approved and recorded in 2008 LCRC recorded in Liber 19452, Page 175 and 176, also by Steven Dunn. I placed the corner at a record distance of 13,755.06 feet from the Southwest Corner of Private Claim 693 on the extension of the previously monumented line. The record distance was taken from the 1869 "Survey and Subdivision of P.C. 693" (Item #2 in Section "A"). Private Claim notes (Item #1 in Section "A") show a distance of 13,290.42 feet, 464.64 feet shorter. The Northwest Corner of P.C. 693 falls 3100.56 feet north of PC-001. The corner falls in the left lane of Westbound I-94. The corner was not set, but witnessed with 4 witness monuments detailed in Section "C" on Page 3.

Measurements Between Corners:
 See Page 2

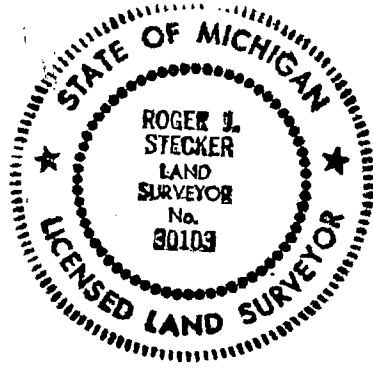
C. Description of monument for corner and accessories established to perpetuate locating the position of the corner:
 Position was not marked. See Sheet 3 for location of reference monuments and witnesses for the reference monuments.

Witnesses:
 See Page 3 for witnesses to reference monuments.

The selected location is accepted by me and is generally accepted by Professional Surveyors as the best available evidence of the position of the original corner.

Signed by Roger J. Stecker
 Surveyor's Michigan License No. 30103

Date OCT. 27, 2014



For corners in

<u>MACOMB</u> (County)	Located In: Harrison Township	Corner Code #
1. Public Land Survey	T <u>2N</u> R <u>14E</u>	<u>PC-047</u>
	T _____ R _____	_____
	T _____ R _____	_____
	T _____ R _____	_____
2. Property Controlling in Section	S _____ T _____ R _____	_____
	S _____ T _____ R _____	_____
3. Miscellaneous Property in Section	S _____ T _____ R _____	_____
	S _____ T _____ R _____	_____

ACCEPTED BY THE MACOMB COUNTY SURVEY PEER
GROUP AS THE OFFICIAL CORNER UNDER MICHIGAN
PUBLIC ACT 345 OF 1990 AT A MEETING HELD
ON 9-9-2014
Martin C. Dunn
MARTIN C. DUNN, P.S. CHAIRMAN

- 4. Lot No. _____, Recorded Plat _____
- 5. Private Claims Northwest Corner of Private Claim 693 Common with a deflection point controlling a south and east line of Fractional Section 6.

B. Measurements Between Corners:
(Continued from Page 1)

FROM NORTHWEST CORNER OF PRIVATE CLAIM 693 (PC-047)
TO NORTHEAST CORNER OF PRIVATE CLAIM 172 (PC-001)
3100.56' (Set Stecker #30103, 2014)

FROM NORTHWEST CORNER OF PRIVATE CLAIM 693 (PC-047)
TO SOUTHWEST CORNER OF PRIVATE CLAIM 693 (PC-016)
13,290.42' (201 Chains 37 Links Private Claim Notes)
13,755.06' (1869 Plat of "Survey and Subdivision of Private Claim 693")
13,755.06' (Set Stecker #30103, 2014)

FROM NORTHWEST CORNER OF PRIVATE CLAIM 693 (PC-047)
TO NORTHEAST CORNER OF PRIVATE CLAIM 693 (PC-046)
3531.00' (53 Chains 50 Links Private Claim Notes)
3633.96' (1869 Plat of "Survey and Subdivision of Private Claim 693")
3633.96' (Set Stecker #30103, 2014)

For corners in

MACOMB (County)	Located In: Harrison Township	Corner Code #
1. Public Land Survey	T <u>2N</u> R <u>14E</u>	<u>PC-047</u>
	T _____ R _____	_____
	T _____ R _____	_____
	T _____ R _____	_____
2. Property Controlling in Section	S _____ T _____ R _____	_____
	S _____ T _____ R _____	_____
3. Miscellaneous Property in Section	S _____ T _____ R _____	_____
	S _____ T _____ R _____	_____

4. Lot No. _____, Recorded Plat _____
 5. Private Claims Northwest Corner of Private Claim 693 Common with a deflection point controlling a south and east line of Fractional Section 6.

C. Description of monument for corner and accessories established to perpetuate locating the position of the corner:
 PC-047 Corner.

Witnesses-Reference Monuments: 4" diameter by 36" long concrete monument with a 1/2" iron rod w/2" diameter aluminum cap stamped "Macomb County Monument Act 345, WIT PC-047, 30103

Reference Monument No. 1

- S10°E 10.60' Cut "x" on north rim of MDOT manhole
- S85°E 10.60' Mag nail and Macomb County Witness tag on west edge of Hall Road off ramp
- N75°W 9.55' Mag nail and Macomb County Witness tag on I-94 asphalt shoulder
- N24°E 56.13' Buried 1/2" iron with blue witness cap 4' east of reflector post

Reference Monument No. 2

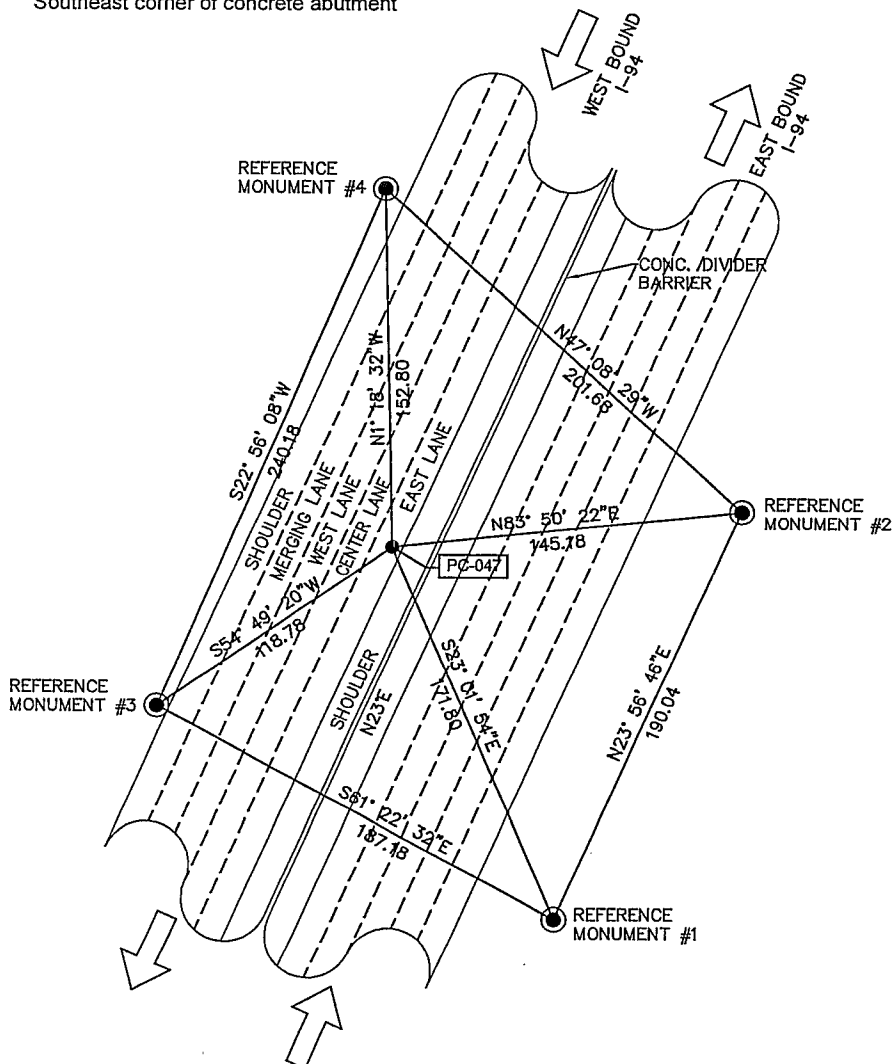
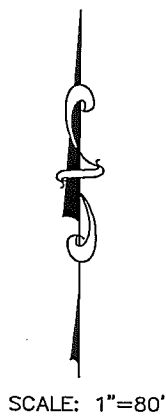
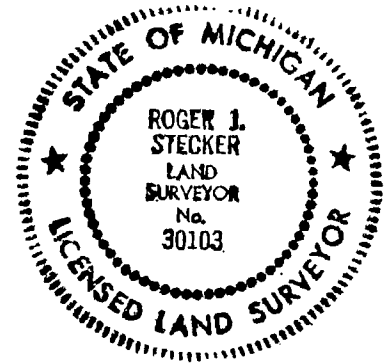
- N50°E 83.55' Southwest corner of concrete abutment
- N75°W 9.42' Mag nail and Macomb County Witness tag on I-94 asphalt shoulder
- S24°W 134.35' Buried 1/2" iron with blue witness cap 4' east of reflector post
- S85°E 21.95' Cut "x" on west rim of storm manhole

Reference Monument No. 3

- N45°E 25.70' Mag nail and Macomb County Witness tag on I-94 asphalt shoulder
- S45°E 26.20' Mag nail and Macomb County Witness tag on I-94 asphalt shoulder
- S25°W 23.75' Cut "x" on northeast rim of MDOT manhole
- NORTH 129.80' Southeast corner of concrete abutment

Reference Monument No. 4

- N15°E 14.73' Mag nail and Macomb County Witness tag on I-94 asphalt shoulder
- S35°E 22.03' Mag nail and Macomb County Witness tag on I-94 asphalt shoulder
- S40°W 40.80' Northeast corner of concrete abutment
- S15°W 21.95' Southeast corner of concrete abutment



SURVEYOR'S REPORT
PC-047
NORTHWEST CORNER P.C. 693
COMMON WITH A DEFLECTION POINT
CONTROLLING A SOUTH AND EAST LINE OF
FRACTIONAL SECTION 6
BEING THE EAST LINE OF P.C.172
HARRISON TOWNSHIP,
T2N, R14E

GLO HISTORY:

Description of P.C. 693

Commencing at a post standing on the north border of River Huron between this tract and a tract confirmed to John Askin, Junior, thence north two hundred and one chains thirty seven links to a post standing between this tract and unconceded lands, thence east fifty three chains fifty links to a post standing on the west line of a tract confirmed to John Tucker, thence south eighty four chains seven links to an elm tree the northeast corner of a tract confirmed to James Conner, thence west forty chains fifty links to a post the northwest corner of the said James Conner tract, thence south one hundred and ten chains sixty two links to a post standing on the north border of River Huron thence along the border of said river up stream south sixty four degrees west fourteen chains seven links to the place of beginning, containing six hundred acres.

Description of P.C. 172

Commencing at a Buttonwood Tree standing on the border of River Huron between this tract and a tract confirmed to Christian Clemans, thence north one hundred and fifty two chains fifteen links to a Black Ash Tree thence east thirty nine chains fifty links to a Black Ash Tree, thence south one hundred and fifty five chains fifty links to a post standing on the border of River Huron between this tract and unconceded land then thence along the border of said river up stream south fifty six degrees west twelve chains thence north eighty degrees west seven chains thence south sixty six degrees west eight chains, thence north seventy one degrees west four chains, thence north seventeen degrees east nine chains, thence north sixty seven degrees west three chains, thence north eighty eight degrees west eleven chains forty five links to the place of beginning, containing four hundred and nineteen acres and one hundredth of an acre.

EXISTING CONDITIONS:

No evidence of the original post or the common line between Private Claim line 693, the south line or east line of Fractional Section 6 were found. I established the corner by extending the east line of Private Claim 172 common with the west line of P.C. 693. The Northeast Corner of P.C. 172 was re-monumented and recorded by Steven Dunn in 2005 (PC-001), LCRC recorded in Liber 16653, Pages 920 and 921. I used the reference monument for the Southwest Corner of Private Claim 693, common with the Southeast Corner of Private Claim 172 to extend the west line of Private Claim 693.

PC-016 reference monument was approved and recorded in 2008 LCRC recorded in Liber 19452, Page 175 and 176, also by Steven Dunn. I placed the corner at a record distance of 13,755.06 feet from the Southwest Corner of Private Claim 693 on the extension of the previously monumented line. The record distance was taken from the 1869 "Survey and Subdivision of P.C. 693" (Item #2 in Section "A"). Private Claim notes (Item #1 in Section "A") show a distance of 13,290.42 feet, 464.64 feet shorter. The Northwest Corner of P.C. 693 falls 3100.56 feet north of PC-001. The corner falls in the left lane of West I-94. The corner was not set, but witnessed with 4 witness monuments detailed in Section "C" of the LCRC.

I recommend to the Peer Group to accept the established position of PC-047 as the best evidence of the corner position.

RECORDED & UNRECORDED SURVEYS, & FIELD NOTES:

1.	1810	Original Private Claim Notes	Aaron Greeley	(4 pages)
2.	1869	“Survey & Subdivision of PC 693”	L.Wesolowski, Surveyor	L.1, Pg.14
3.	1926	Plat of Partiton of Louis St. Aubin Farm located in Lot 11 of the “Survey and Subdivision of P.C. 693”	John W. Irwin, Civ.Eng.	L.222, Pg. 475
4.	1928	“C.H. Jobse’s Little Farms Subd’n” of N’yly part of Lot 7 Robertson’s Subd’n of P.C. 693	Walter C. Wood, Engineer-Surveyor	L.13, Pg.41
5.	2003	Boundary survey	Lehner Associates, Inc. Robert L. Smith, #16052	Unrecorded
6.	2005	LCRC PC-001	Steven Dunn #28408	L. 16653, P. 920 & 921
7.	2008	LCRC PC-016	Steven Dunn #28408	L. 19452, P. 175 & 176

MEASUREMENTS BETWEEN CORNERS:

FROM NORTHWEST CORNER OF PRIVATE CLAIM 693 (PC-047)
TO NORTHEAST CORNER OF PRIVATE CLAIM 172 (PC-001)
3100.56’ (Set Stecker #30103, 2014)

FROM NORTHWEST CORNER OF PRIVATE CLAIM 693 (PC-047)
TO SOUTHWEST CORNER OF PRIVATE CLAIM 693 (PC-016)
13,290.42’ (201 Chains 37 Links Private Claim Notes)
13,755.06’ (1869 Plat of “Survey and Subdivision of Private Claim 693”)
13,755.06’ (Set Stecker #30103, 2014)

FROM NORTHWEST CORNER OF PRIVATE CLAIM 693 (PC-047)
TO NORTHEAST CORNER OF PRIVATE CLAIM 693 (PC-046)
3531.00’ (53 Chains 50 Links Private Claim Notes)
3633.96’ (1869 Plat of “Survey and Subdivision of Private Claim 693”)
3633.96’ (Set Stecker #30103, 2014)

RECOMMENDATIONS:

The corner was not set, but witnessed with 4 witness monuments detailed in Section “C” of the LCRC.

WITNESSES: PC-047 CORNER

Witnesses-Reference Monuments: 4” diameter by 36” long concrete monument with a ½” iron rod w/2” diameter aluminum cap stamped “Macomb County Monument Act 345, WIT PC-047, 30103

Reference Monument No. 1

S10°E	10.60’	Cut “x” on north rim of MDOT manhole
S85°E	10.60’	Mag nail and Macomb County Witness tag on west edge of Hall Road off ramp
N75°W	9.55’	Mag nail and Macomb County Witness tag on I-94 asphalt shoulder
N24°E	56.13’	Buried 1/2” iron with blue witness cap 4’ east of reflector post

Reference Monument No. 2

N50°E	83.55’	Southwest corner of concrete abutment
N75°W	9.42’	Mag nail and Macomb County Witness tag on I-94 asphalt shoulder
S24°W	134.35’	Buried 1/2” iron with blue witness cap 4’ east of reflector post
S85°E	21.95’	Cut “x” on west rim of storm manhole

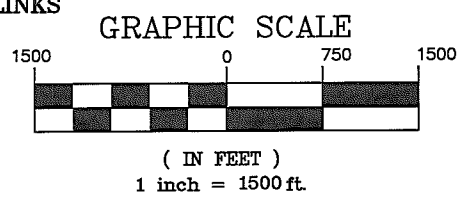
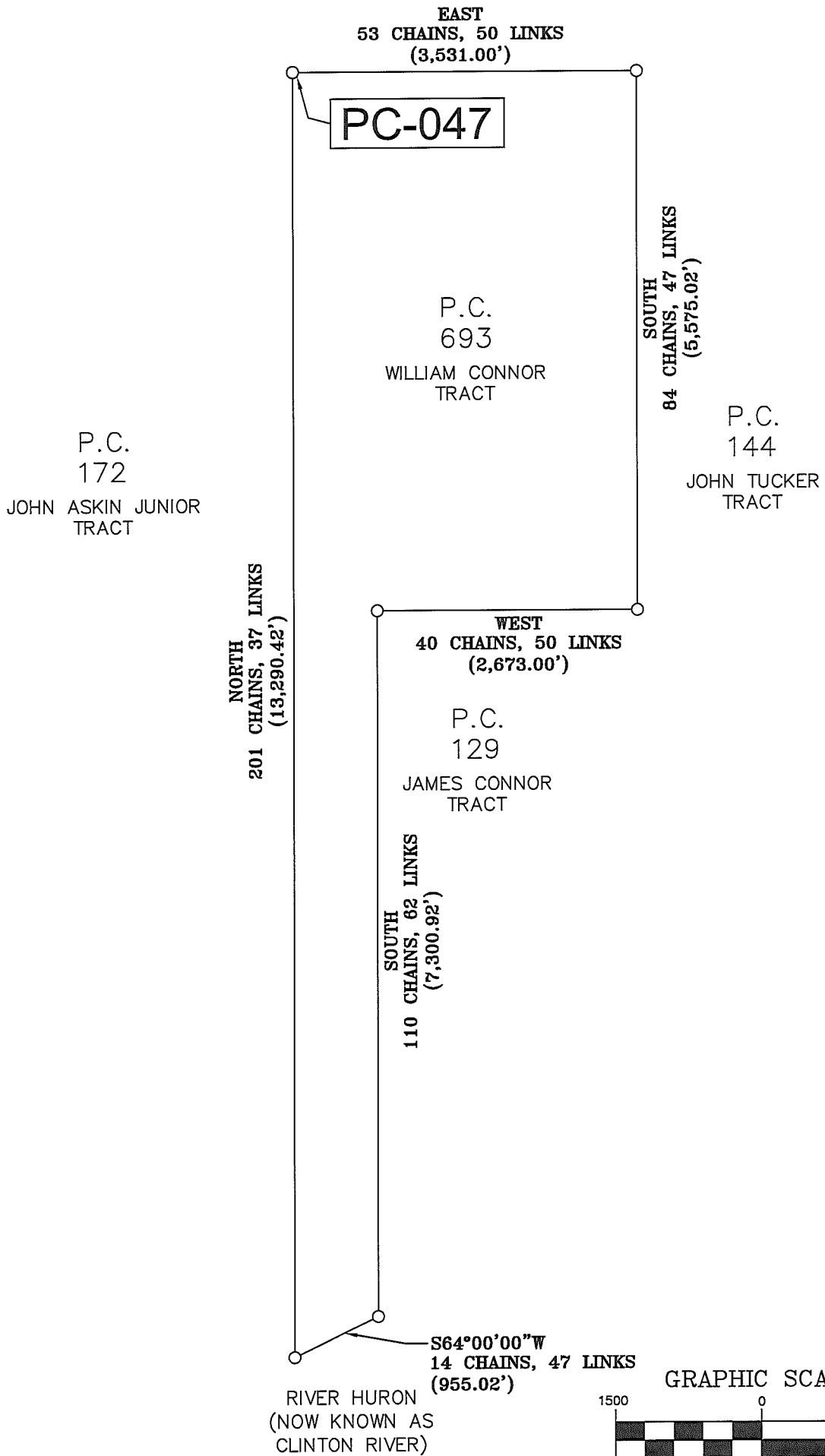
Reference Monument No. 3

N45°E	25.70’	Mag nail and Macomb County Witness tag on I-94 asphalt shoulder
S45°E	26.20’	Mag nail and Macomb County Witness tag on I-94 asphalt shoulder
S25°W	23.75’	Cut “x” on northeast rim of MDOT manhole
NORTH	129.80’	Southeast corner of concrete abutment

Reference Monument No. 4

N15°E	14.73’	Mag nail and Macomb County Witness tag on I-94 asphalt shoulder
S35°E	22.03’	Mag nail and Macomb County Witness tag on I-94 asphalt shoulder
S40°W	40.80’	Northeast corner of concrete abutment
S15°W	21.95’	Southeast corner of concrete abutment

SKETCH OF PRIVATE CLAIM 693



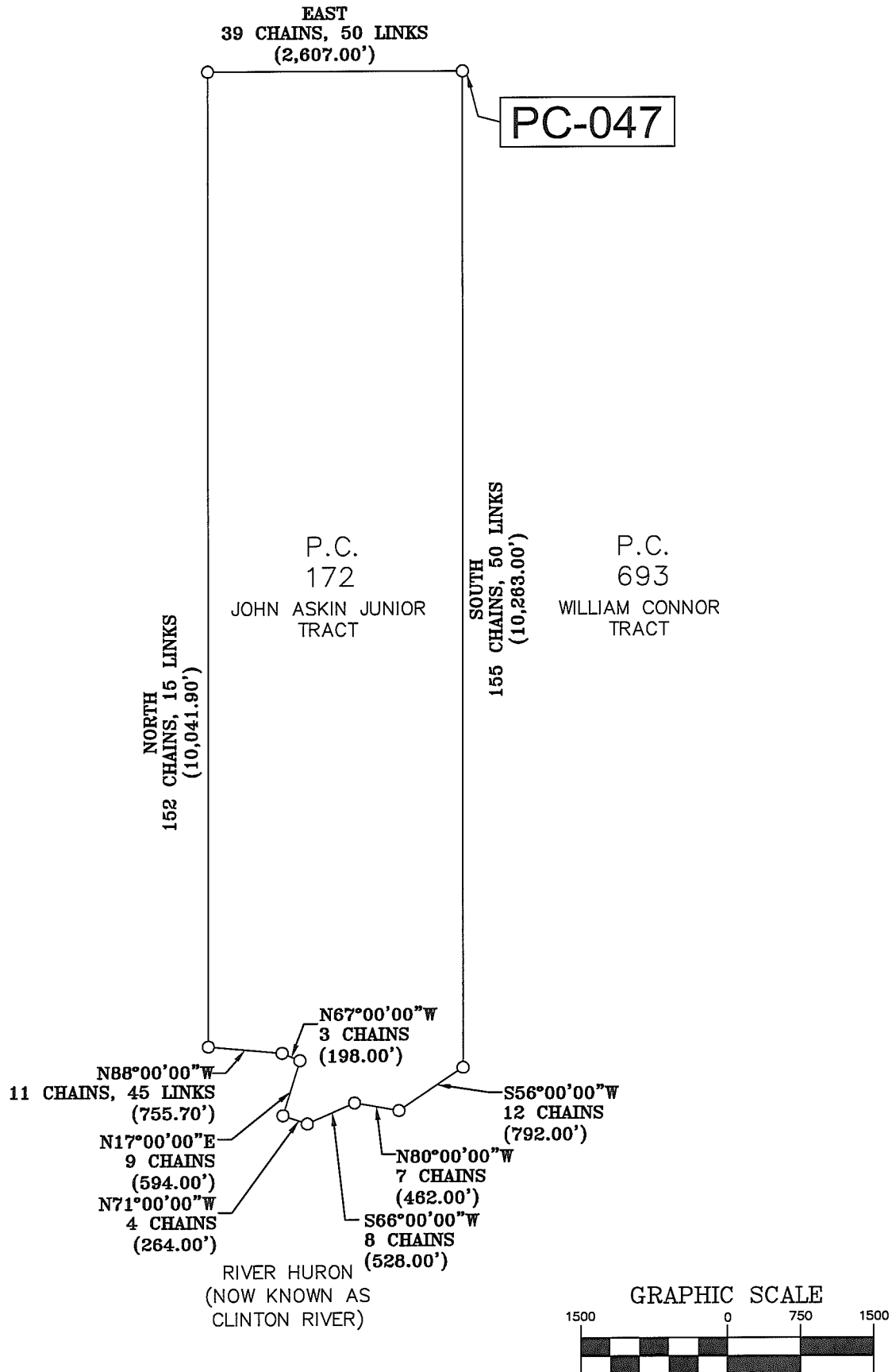
P.C. 693
 Confirmed to William Connor

Commencing at a post standing on the north border of the River Huron between this tract and a tract confirmed to John Askin Junior, thence north two hundred and one chain thirty seven links to a post standing between this tract and unconceded lands, thence east fifty three chains fifty links to a post standing on the west line of a tract confirmed John Tucker, thence south eighty four chains forty seven links to an elm tree the northeast corner of a tract conformed to James Connor, thence west forty chains fifty links to a post the northwest corner if the said James Connor tract, thence south one hundred ten chains sixty two links to a post standing on the north border of River Huron thence along the border of said river up stream south sixty four degrees west fourteen chains forty seven links to the place of beginning, containing six hundred acres.

Detroit October 23, 1810

Aaron Greeley Surveyor
 of private claims

SKETCH OF PRIVATE CLAIM 172

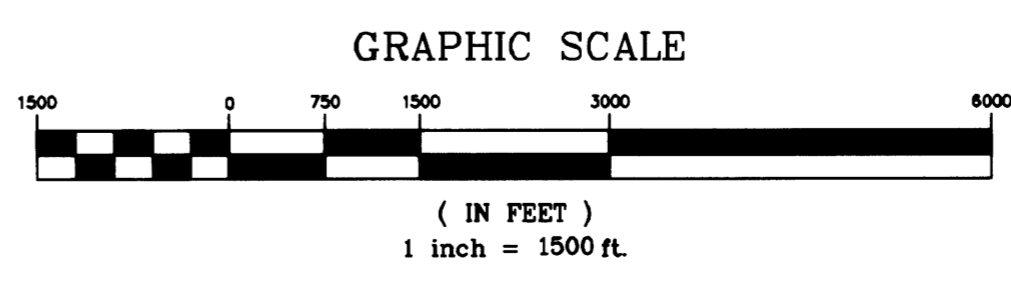
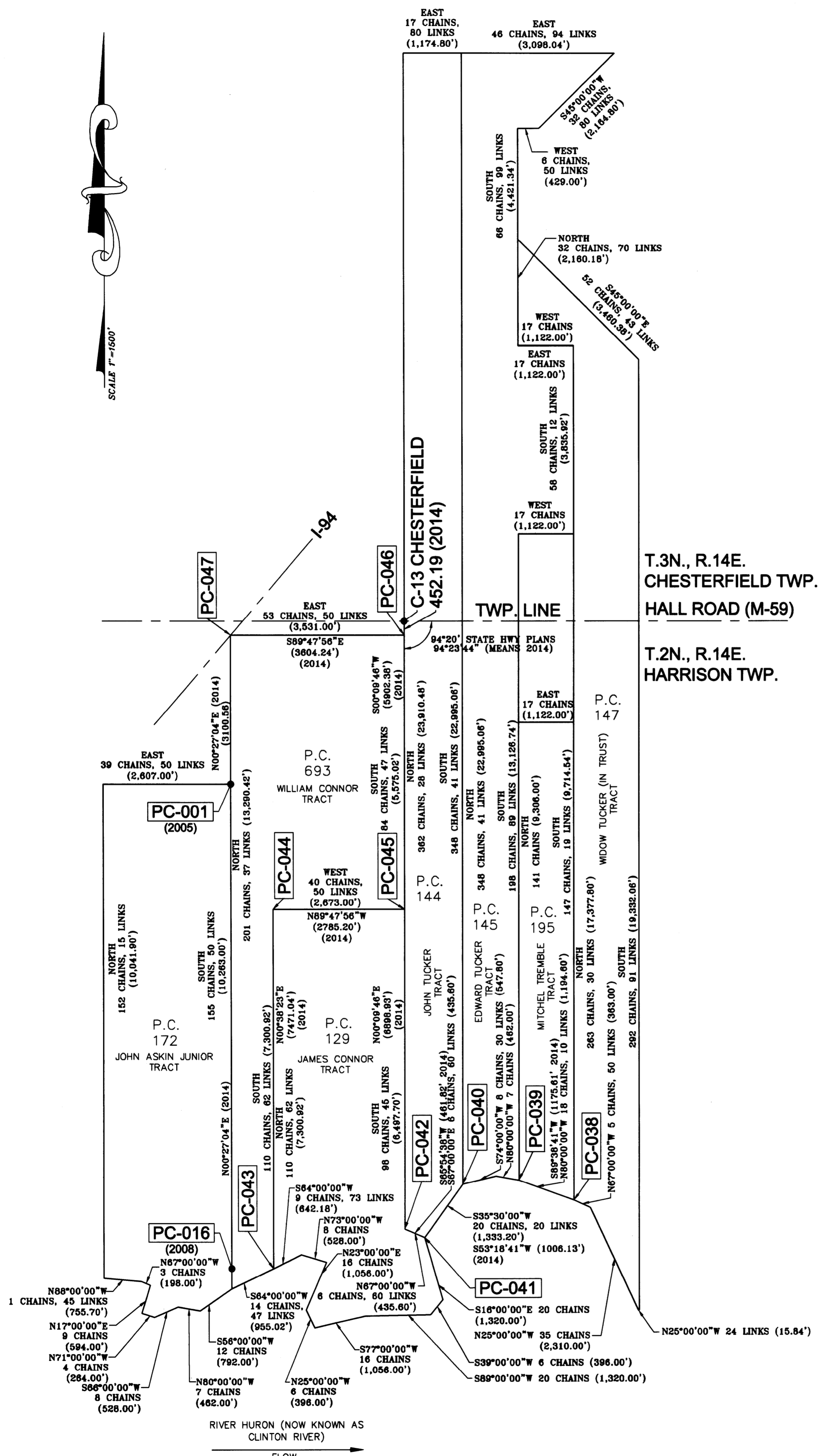


P.C. 172
Confirmed to John Askin Junior

Commencing at a Buttonwood Tree standing on the border of River Huron between this tract and a tract confirmed to Christian Clemans, thence north one hundred and fifty two chains fifteen links to a Black Ash Tree thence east thirty nine chains fifty links to a Black Ash Tree, thence south one hundred and fifty five chains fifty links to a post standing on the border of River Huron between this tract and unconceded land then thence along the border of said river up stream south fifty six degrees west twelve chains thence north eighty degrees west seven chains thence south sixty six degrees west eight chains, thence north seventy one degrees west four chains, thence north seventeen degrees east nine chains, thence north sixty seven degrees west three chains, thence north eighty eight degrees west eleven chains forty five links to the place of beginning, containing four hundred and nineteen acres and one hundredth of an acre.

Detroit July 14, 1810

Aaron Greeley Surveyor
of private claims



REV. #	REV. DATE	REV. INFO	CHECKED BY
1	11-20-14	CORRECTIONS PER MACOMB COUNTY REVIEW	R.S.

FILE TRACING: TWP. DRAWER	CHECKED BY: R.S.
DATE: 07-14-14	DRAWING FILE NAME 14-089-OA.DWG
DRAWN BY: R.P.	SCALE: 1" = 1500'

SEAL



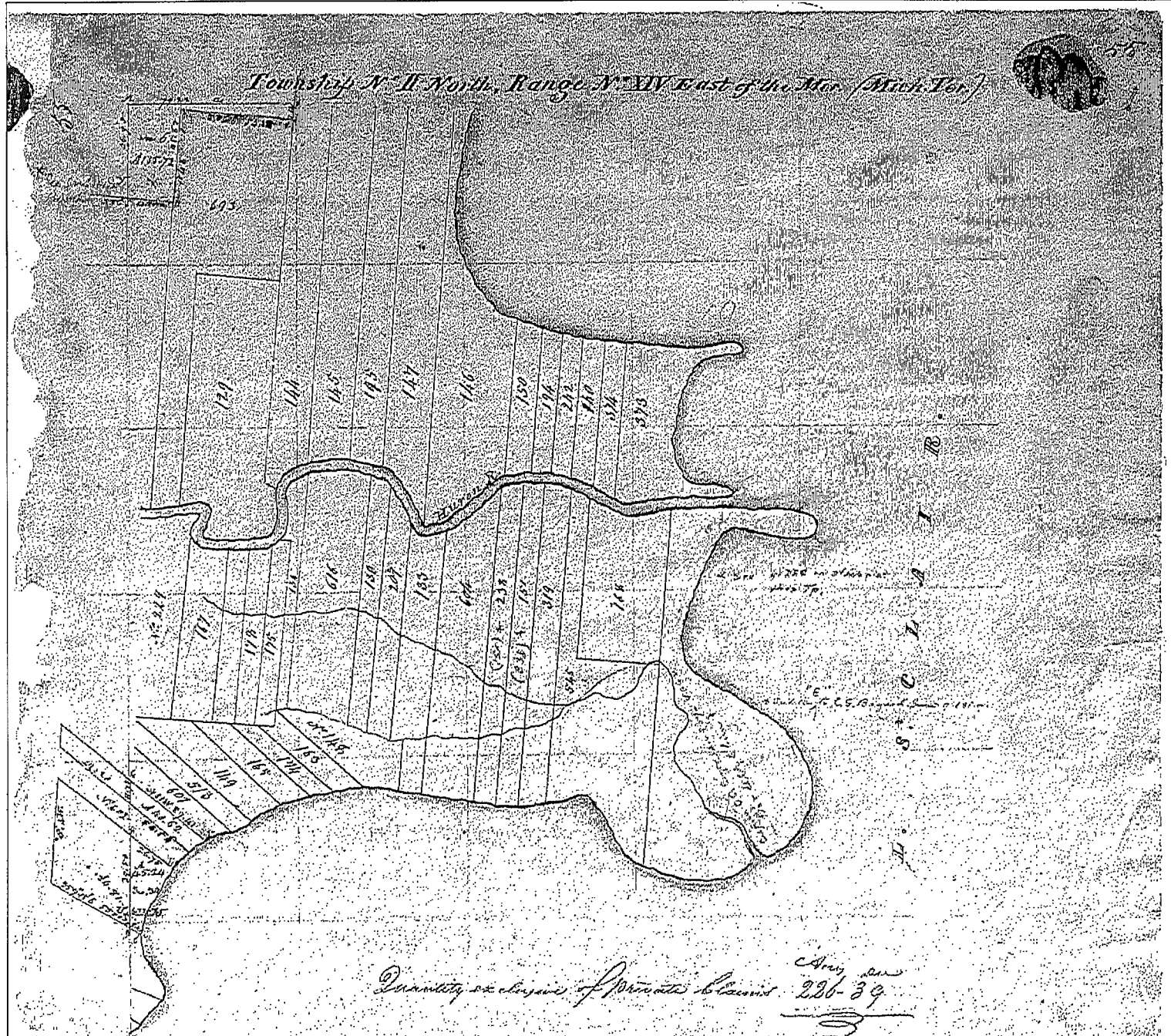
LehnerFindlan Associates
 Architecture
 Engineering
 17001 Nineteen Mile Road, Suite 3
 Clinton Township, MI 48038
 586-412-7050 phone 586-412-7114 fax

Surveying
 Planning
www.lehnerfindlan.com

© COPYRIGHT 2011
 PROJECT NAME AND SHEET TITLE:
2014 PRIVATE CLAIMS OVERVIEW

CLIENT INFO:
 MACOMB COUNTY REGISTER OF DEEDS
 32 MARKET STREET
 MT. CLEMENS, MI 48043
 (586)469-5175
 PROJECT LOCATION:
 T.2N., R.14E.
 HARRISON TOWNSHIP,
 MACOMB COUNTY,
 MICHIGAN

Township N. 2 North, Range N. 14 East of the Mer. (Mich. Ter.)



Quantity of claims of Private Account 226-39
 May 20 1878

A true copy from the Original on file in this Office

Surveyor General's Office
 July 20 - 1878

Richard J. ...
 Surveyor General

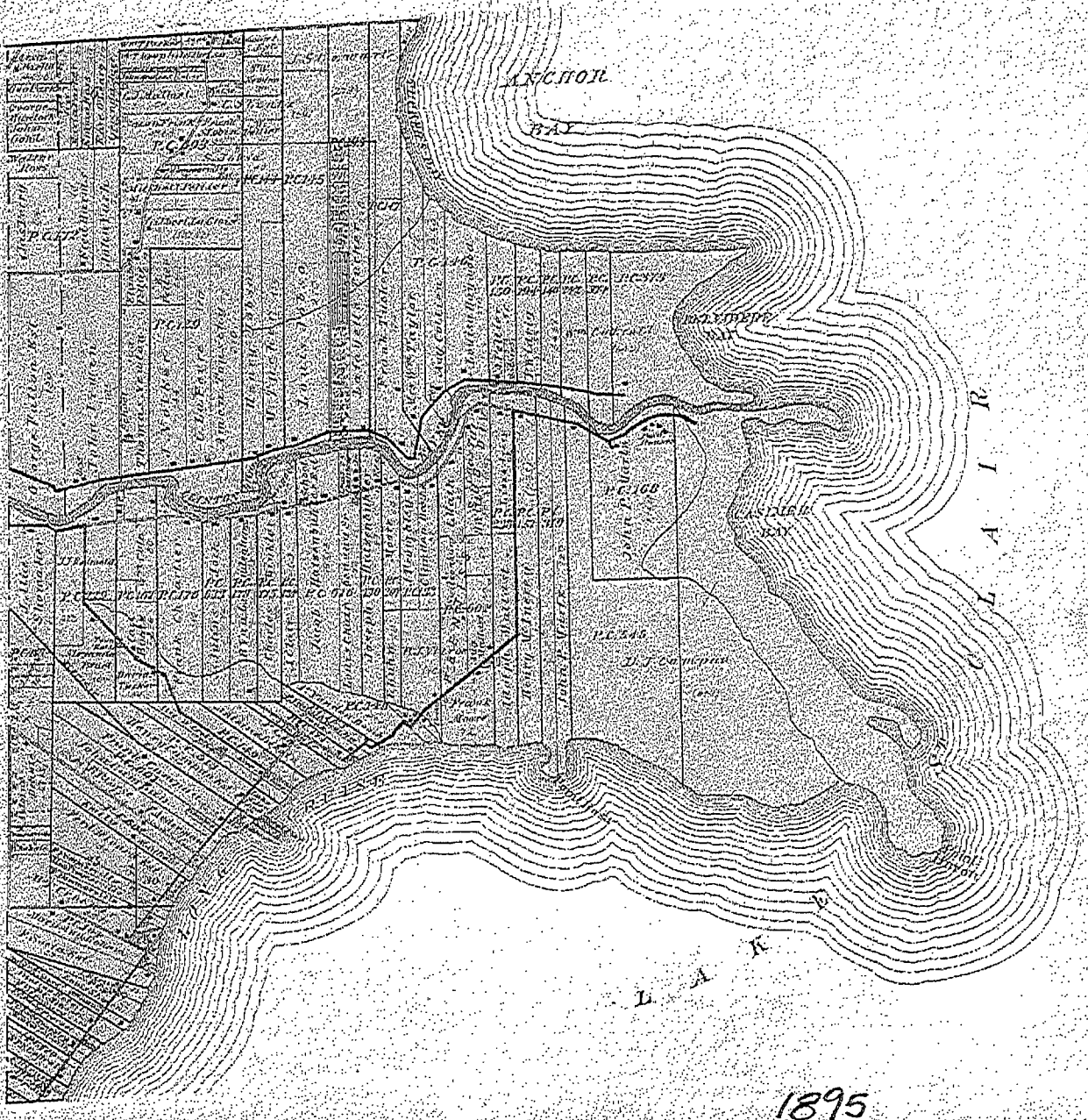
POOR COPY

MAP OF HARRISON

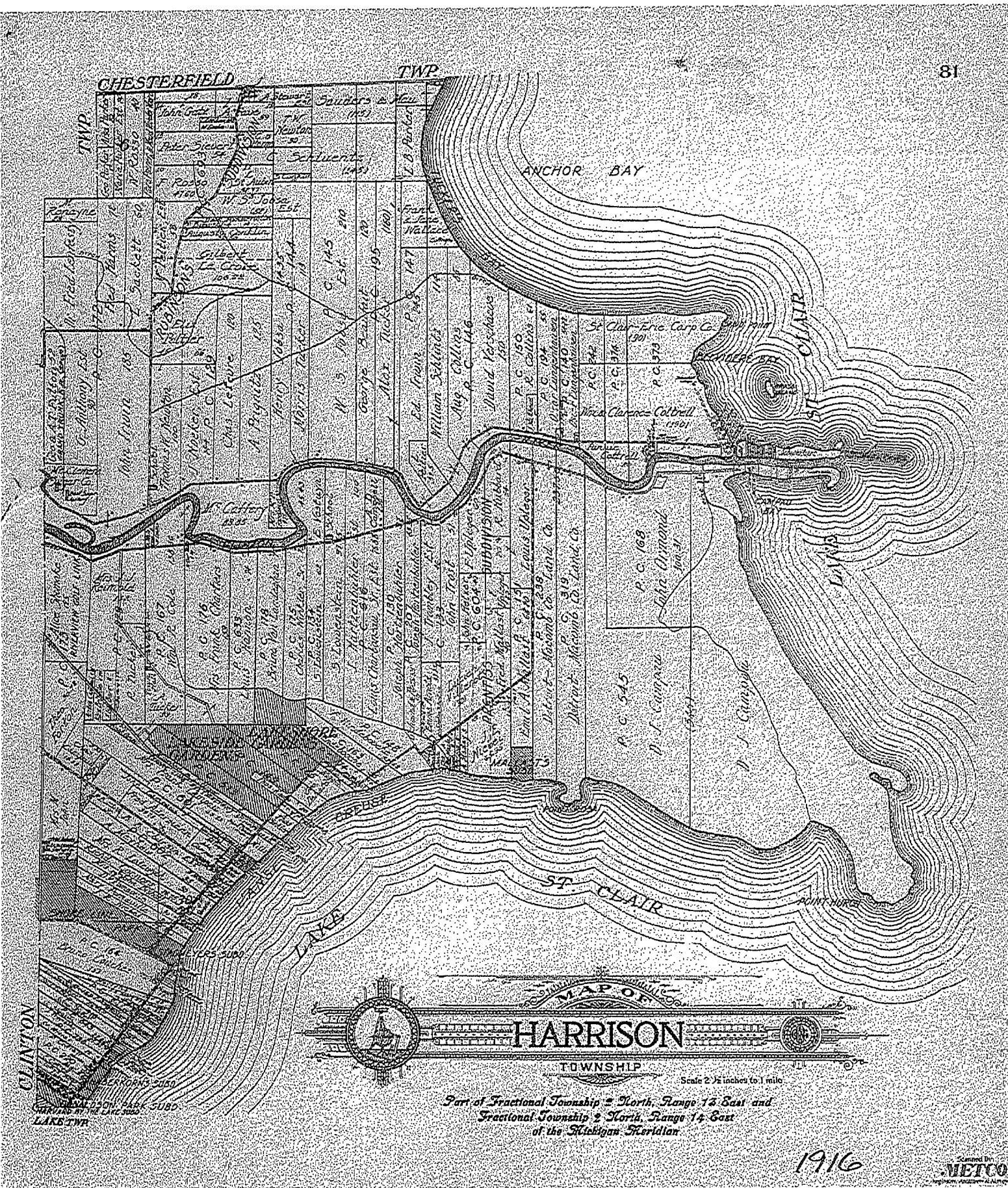
Township 2 North Range 14 East

Scale 2 Inches to one Mile.

of the Section of Montgomery



1895



CHESTERFIELD

TWP

ANCHOR BAY

CLINTON

HARRISON

TOWNSHIP

Scale 2 1/2 inches to 1 mile

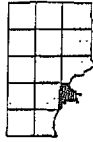
Part of Fractional Township 2 North, Range 13 East and Fractional Township 2 North, Range 14 East of the Michigan Meridian

1916

NETCO

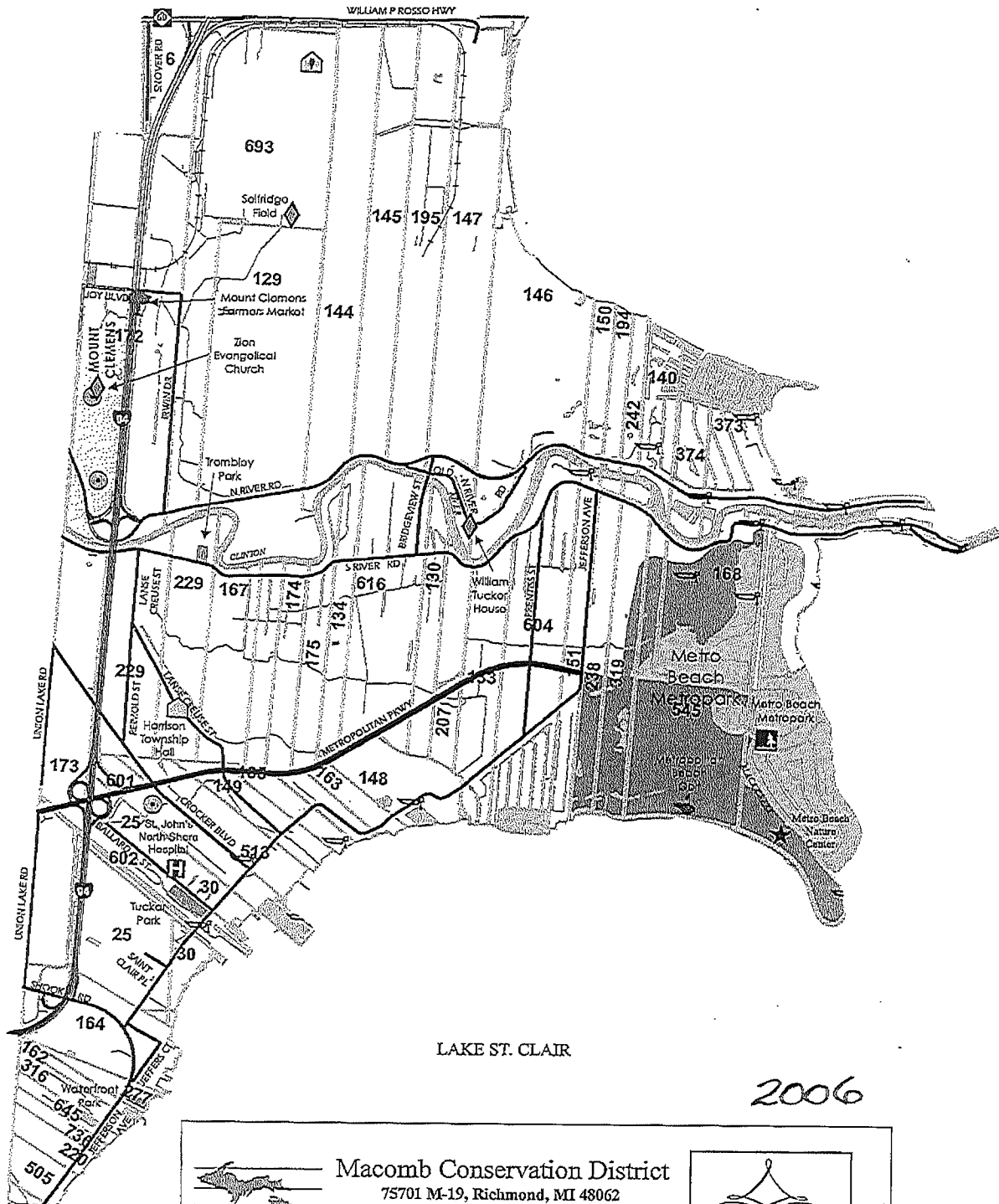
HARRISON

T. 2N. - R. 14E.



See CHESTERFIELD Page 31

See CLINTON Page 23

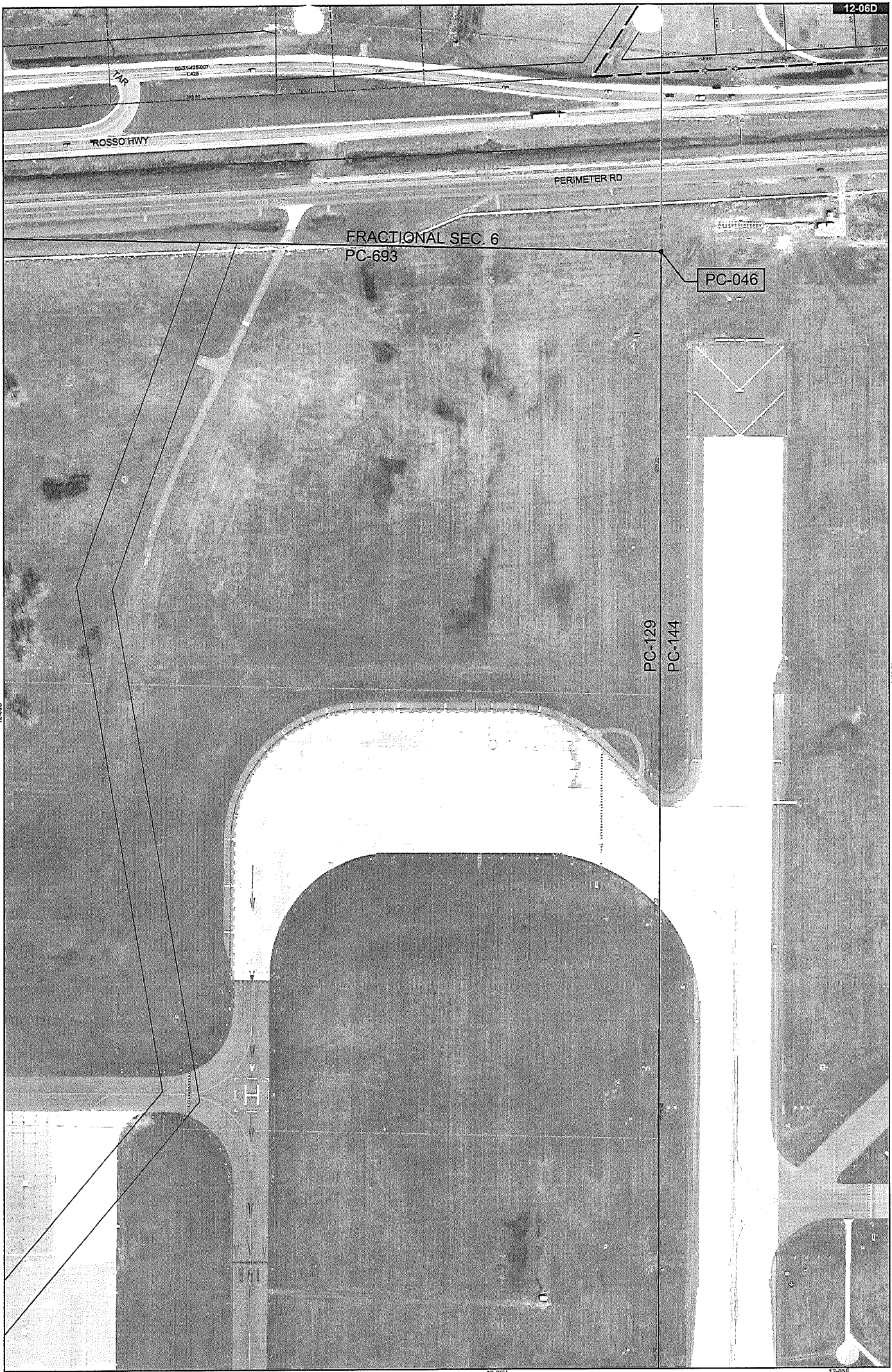


LAKE ST. CLAIR

LAKE ST. CLAIR

2006

	<p>Macomb Conservation District 75701 M-19, Richmond, MI 48062 Phone: 586-727-2666 Fax: 586-727-2621 E-mail: macombcd@klondyke.net Website: www.macombcd.com</p>	<p><i>Celebrating 55 Years of Managing Macomb County's Natural Resources</i></p>
<p>Assistance available for : Tree Sales Forestry Native Plants Conservation Education</p>		

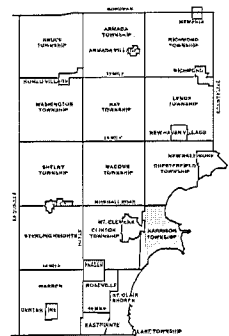


12-06C

12-06E

Date of Photography: April 2004
100 50 0 100 200 Feet

1:1,200



HARRISON TWP SHEET INDEX

12-07A	12-07B	12-07C	12-07D	12-07E	12-07F	12-07G	12-07H	12-07I	12-07J	12-07K	12-07L	12-07M	12-07N	12-07O	12-07P	12-07Q	12-07R	12-07S	12-07T	12-07U	12-07V	12-07W	12-07X	12-07Y	12-07Z
12-08A	12-08B	12-08C	12-08D	12-08E	12-08F	12-08G	12-08H	12-08I	12-08J	12-08K	12-08L	12-08M	12-08N	12-08O	12-08P	12-08Q	12-08R	12-08S	12-08T	12-08U	12-08V	12-08W	12-08X	12-08Y	12-08Z
12-09A	12-09B	12-09C	12-09D	12-09E	12-09F	12-09G	12-09H	12-09I	12-09J	12-09K	12-09L	12-09M	12-09N	12-09O	12-09P	12-09Q	12-09R	12-09S	12-09T	12-09U	12-09V	12-09W	12-09X	12-09Y	12-09Z
12-10A	12-10B	12-10C	12-10D	12-10E	12-10F	12-10G	12-10H	12-10I	12-10J	12-10K	12-10L	12-10M	12-10N	12-10O	12-10P	12-10Q	12-10R	12-10S	12-10T	12-10U	12-10V	12-10W	12-10X	12-10Y	12-10Z
12-11A	12-11B	12-11C	12-11D	12-11E	12-11F	12-11G	12-11H	12-11I	12-11J	12-11K	12-11L	12-11M	12-11N	12-11O	12-11P	12-11Q	12-11R	12-11S	12-11T	12-11U	12-11V	12-11W	12-11X	12-11Y	12-11Z
12-12A	12-12B	12-12C	12-12D	12-12E	12-12F	12-12G	12-12H	12-12I	12-12J	12-12K	12-12L	12-12M	12-12N	12-12O	12-12P	12-12Q	12-12R	12-12S	12-12T	12-12U	12-12V	12-12W	12-12X	12-12Y	12-12Z
12-13A	12-13B	12-13C	12-13D	12-13E	12-13F	12-13G	12-13H	12-13I	12-13J	12-13K	12-13L	12-13M	12-13N	12-13O	12-13P	12-13Q	12-13R	12-13S	12-13T	12-13U	12-13V	12-13W	12-13X	12-13Y	12-13Z
12-14A	12-14B	12-14C	12-14D	12-14E	12-14F	12-14G	12-14H	12-14I	12-14J	12-14K	12-14L	12-14M	12-14N	12-14O	12-14P	12-14Q	12-14R	12-14S	12-14T	12-14U	12-14V	12-14W	12-14X	12-14Y	12-14Z
12-15A	12-15B	12-15C	12-15D	12-15E	12-15F	12-15G	12-15H	12-15I	12-15J	12-15K	12-15L	12-15M	12-15N	12-15O	12-15P	12-15Q	12-15R	12-15S	12-15T	12-15U	12-15V	12-15W	12-15X	12-15Y	12-15Z
12-16A	12-16B	12-16C	12-16D	12-16E	12-16F	12-16G	12-16H	12-16I	12-16J	12-16K	12-16L	12-16M	12-16N	12-16O	12-16P	12-16Q	12-16R	12-16S	12-16T	12-16U	12-16V	12-16W	12-16X	12-16Y	12-16Z
12-17A	12-17B	12-17C	12-17D	12-17E	12-17F	12-17G	12-17H	12-17I	12-17J	12-17K	12-17L	12-17M	12-17N	12-17O	12-17P	12-17Q	12-17R	12-17S	12-17T	12-17U	12-17V	12-17W	12-17X	12-17Y	12-17Z
12-18A	12-18B	12-18C	12-18D	12-18E	12-18F	12-18G	12-18H	12-18I	12-18J	12-18K	12-18L	12-18M	12-18N	12-18O	12-18P	12-18Q	12-18R	12-18S	12-18T	12-18U	12-18V	12-18W	12-18X	12-18Y	12-18Z
12-19A	12-19B	12-19C	12-19D	12-19E	12-19F	12-19G	12-19H	12-19I	12-19J	12-19K	12-19L	12-19M	12-19N	12-19O	12-19P	12-19Q	12-19R	12-19S	12-19T	12-19U	12-19V	12-19W	12-19X	12-19Y	12-19Z

DESCRIPTION OF PERMANENT REAL ESTATE INDEX NUMBER

13-19-302-018

AREA NUMBER	SUB AREA NUMBER	BLOCK NUMBER	PARCEL NUMBER
13	19	302	018

Legend

- Plotted Area Boundary Line
- Property Line
- Property Split Line
- Property Combined Line
- Township Boundary Line
- Traverse Line
- Dimension Extent Marks
- Dimension Start Marks

12-06D

1/2 N.E. 1/4 SEC. 6 T.2N. R.14E.

Source: Macomb County Department of Planning and Economic Development
- 2004 Digital Orthophotography Project
- Parcel Conversion Project

Note: Digital Orthophotography horizontal positioning accuracy is 3 feet. Parcel boundary lines should be considered a graphical representation and not in any way a legal survey or engineering document. In general, the horizontal positioning and length accuracy is within 15 feet. This map is intended for general planning purposes. Site specific evaluation should be verified by field inspection. This is a work in progress and may contain errors and omissions. Please report any potential revisions to (588)468-5265.

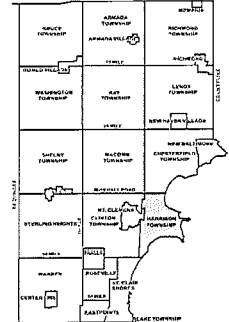
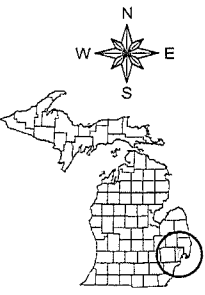


GIS MACOMB COUNTY Planning and Economic Development Department

12-06C



Date of Photography: April 2004
100 50 0 100 200 Feet
1:1,200



HARRISON TWP SHEET INDEX

12-06A	12-06B	12-06C	12-06D	12-06E	12-06F	12-06G	12-06H	12-06I	12-06J	12-06K	12-06L	12-06M	12-06N	12-06O	12-06P	12-06Q	12-06R	12-06S	12-06T	12-06U	12-06V	12-06W	12-06X	12-06Y	12-06Z
--------	--------	--------	--------	--------	--------	--------	--------	--------	--------	--------	--------	--------	--------	--------	--------	--------	--------	--------	--------	--------	--------	--------	--------	--------	--------

DESCRIPTION OF PERMANENT REAL ESTATE INDEX NUMBER

13-19-302-018

AREA NUMBER (includes undivided interest)
SUB AREA NUMBER (includes undivided interest)
BLOCK NUMBER (includes undivided interest)
PARCEL NUMBER (includes undivided interest)

Legend

- Plotted Area Boundary Line
- Property Line
- Property Split Line
- Property Combined Line
- Township Boundary Line
- Transverse Boundary Line
- Dimension Extent Marks
- Dimension Start Marks

12-06C
Previously part of 12-A
HARRISON TWP.
W. 1/2 N.E. 1/4 SEC. 6 T. 2N. R. 14E.

Source: Macomb County Department of Planning and Economic Development
- 2004 Digital Orthophotography Project
- Parcel Conversion Project

Note: Digital Orthophotography horizontal positioning accuracy is 3 feet. Parcel boundary lines should be considered a graphical representation and not in any way a legal survey or engineering document. In general, the horizontal positioning and length accuracy is within 15 feet.

This map is intended for general planning purposes. Site specific evaluation should be verified by field inspection. This is a work in progress and may contain errors and omissions. Please report any potential revisions to (586)459-5265.

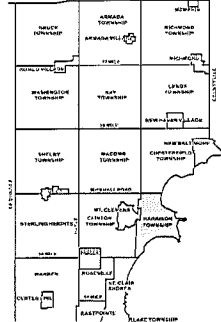


GIS MACOMB COUNTY
Planning and Economic
Development Department

Published: Aug 30, 2005

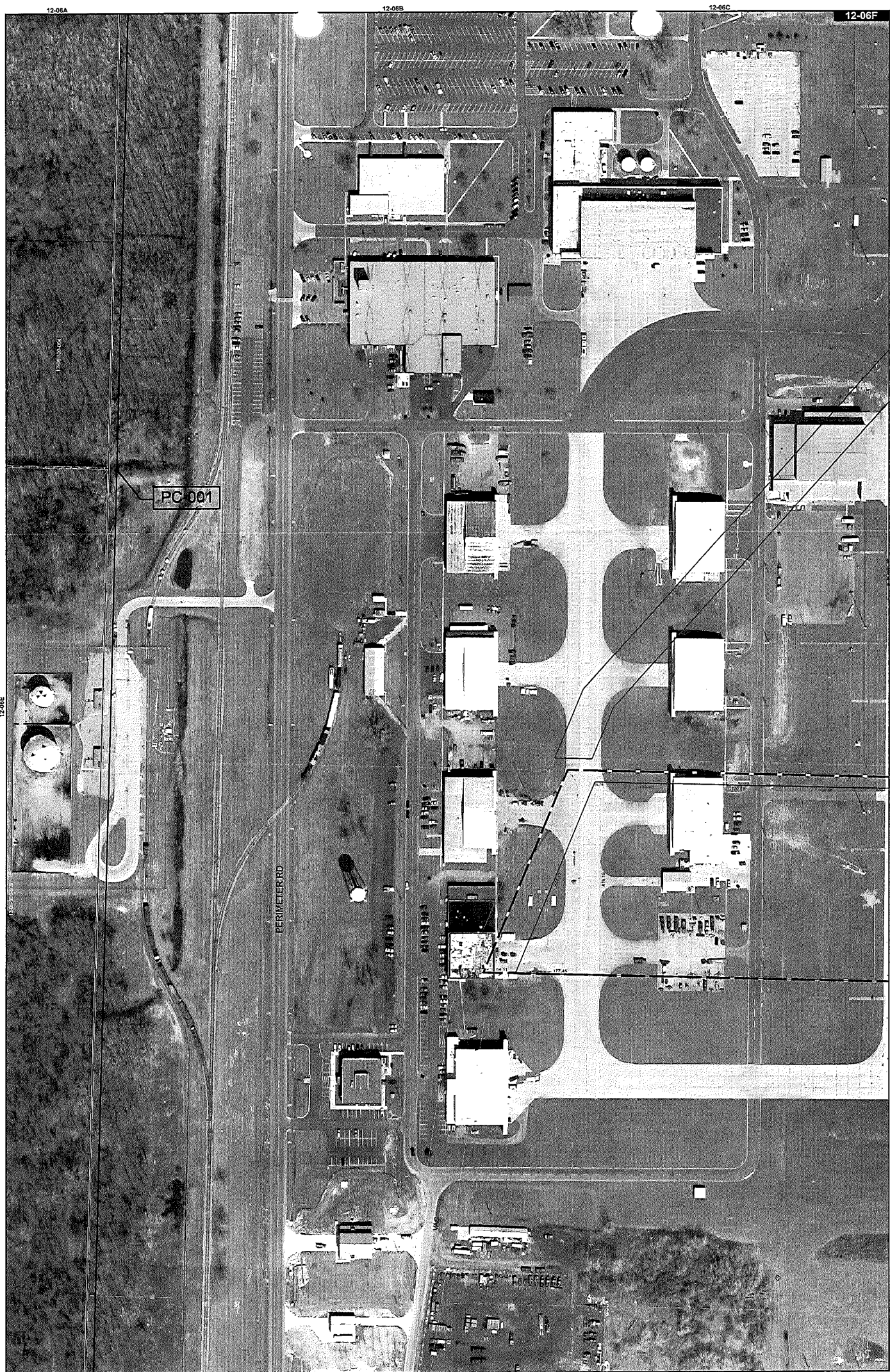


Date of Photography: April 2004
 100 50 0 100 200 Feet
 1:1,200

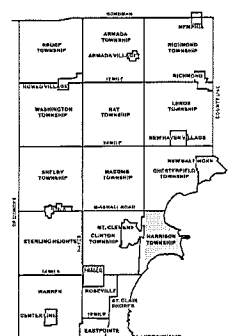
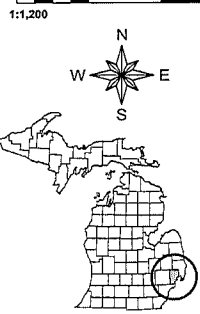


HARRISON TWP SHEET INDEX

12-06A	12-06B	12-06C	12-06D	12-06E	12-06F	12-06G	12-06H	12-06I	12-06J	12-06K	12-06L	12-06M	12-06N	12-06O	12-06P	12-06Q	12-06R	12-06S	12-06T	12-06U	12-06V	12-06W	12-06X	12-06Y	12-06Z
12-06AA	12-06AB	12-06AC	12-06AD	12-06AE	12-06AF	12-06AG	12-06AH	12-06AI	12-06AJ	12-06AK	12-06AL	12-06AM	12-06AN	12-06AO	12-06AP	12-06AQ	12-06AR	12-06AS	12-06AT	12-06AU	12-06AV	12-06AW	12-06AX	12-06AY	12-06AZ
12-06BA	12-06BB	12-06BC	12-06BD	12-06BE	12-06BF	12-06BG	12-06BH	12-06BI	12-06BJ	12-06BK	12-06BL	12-06BM	12-06BN	12-06BO	12-06BP	12-06BQ	12-06BR	12-06BS	12-06BT	12-06BU	12-06BV	12-06BW	12-06BX	12-06BY	12-06BZ
12-06CA	12-06CB	12-06CC	12-06CD	12-06CE	12-06CF	12-06CG	12-06CH	12-06CI	12-06CJ	12-06CK	12-06CL	12-06CM	12-06CN	12-06CO	12-06CP	12-06CQ	12-06CR	12-06CS	12-06CT	12-06CU	12-06CV	12-06CW	12-06CX	12-06CY	12-06CZ
12-06DA	12-06DB	12-06DC	12-06DD	12-06DE	12-06DF	12-06DG	12-06DH	12-06DI	12-06DJ	12-06DK	12-06DL	12-06DM	12-06DN	12-06DO	12-06DP	12-06DQ	12-06DR	12-06DS	12-06DT	12-06DU	12-06DV	12-06DW	12-06DX	12-06DY	12-06DZ
12-06EA	12-06EB	12-06EC	12-06ED	12-06EE	12-06EF	12-06EG	12-06EH	12-06EI	12-06EJ	12-06EK	12-06EL	12-06EM	12-06EN	12-06EO	12-06EP	12-06EQ	12-06ER	12-06ES	12-06ET	12-06EU	12-06EV	12-06EW	12-06EX	12-06EY	12-06EZ
12-06FA	12-06FB	12-06FC	12-06FD	12-06FE	12-06FF	12-06FG	12-06FH	12-06FI	12-06FJ	12-06FK	12-06FL	12-06FM	12-06FN	12-06FO	12-06FP	12-06FQ	12-06FR	12-06FS	12-06FT	12-06FU	12-06FV	12-06FW	12-06FX	12-06FY	12-06FZ
12-06GA	12-06GB	12-06GC	12-06GD	12-06GE	12-06GF	12-06GG	12-06GH	12-06GI	12-06GJ	12-06GK	12-06GL	12-06GM	12-06GN	12-06GO	12-06GP	12-06GQ	12-06GR	12-06GS	12-06GT	12-06GU	12-06GV	12-06GW	12-06GX	12-06GY	12-06GZ
12-06HA	12-06HB	12-06HC	12-06HD	12-06HE	12-06HF	12-06HG	12-06HH	12-06HI	12-06HJ	12-06HK	12-06HL	12-06HM	12-06HN	12-06HO	12-06HP	12-06HQ	12-06HR	12-06HS	12-06HT	12-06HU	12-06HV	12-06HW	12-06HX	12-06HY	12-06HZ
12-06IA	12-06IB	12-06IC	12-06ID	12-06IE	12-06IF	12-06IG	12-06IH	12-06II	12-06IJ	12-06IK	12-06IL	12-06IM	12-06IN	12-06IO	12-06IP	12-06IQ	12-06IR	12-06IS	12-06IT	12-06IU	12-06IV	12-06IW	12-06IX	12-06IY	12-06IZ
12-06JA	12-06JB	12-06JC	12-06JD	12-06JE	12-06JF	12-06JG	12-06JH	12-06JI	12-06JJ	12-06JK	12-06JL	12-06JM	12-06JN	12-06JO	12-06JP	12-06JQ	12-06JR	12-06JS	12-06JT	12-06JU	12-06JV	12-06JW	12-06JX	12-06JY	12-06JZ
12-06KA	12-06KB	12-06KC	12-06KD	12-06KE	12-06KF	12-06KG	12-06KH	12-06KI	12-06KJ	12-06KL	12-06KM	12-06KN	12-06KO	12-06KP	12-06KQ	12-06KR	12-06KS	12-06KT	12-06KU	12-06KV	12-06KW	12-06KX	12-06KY	12-06KZ	
12-06LA	12-06LB	12-06LC	12-06LD	12-06LE	12-06LF	12-06LG	12-06LH	12-06LI	12-06LJ	12-06LK	12-06LM	12-06LN	12-06LO	12-06LP	12-06LQ	12-06LR	12-06LS	12-06LT	12-06LU	12-06LV	12-06LW	12-06LX	12-06LY	12-06LZ	
12-06MA	12-06MB	12-06MC	12-06MD	12-06ME	12-06MF	12-06MG	12-06MH	12-06MI	12-06MJ	12-06MK	12-06ML	12-06MN	12-06MO	12-06MP	12-06MQ	12-06MR	12-06MS	12-06MT	12-06MU	12-06MV	12-06MW	12-06MX	12-06MY	12-06MZ	
12-06NA	12-06NB	12-06NC	12-06ND	12-06NE	12-06NF	12-06NG	12-06NH	12-06NI	12-06NJ	12-06NK	12-06NL	12-06NM	12-06NN	12-06NO	12-06NP	12-06NQ	12-06NR	12-06NS	12-06NT	12-06NU	12-06NV	12-06NW	12-06NX	12-06NY	12-06NZ
12-06OA	12-06OB	12-06OC	12-06OD	12-06OE	12-06OF	12-06OG	12-06OH	12-06OI	12-06OJ	12-06OK	12-06OL	12-06OM	12-06ON	12-06OO	12-06OP	12-06OQ	12-06OR	12-06OS	12-06OT	12-06OU	12-06OV	12-06OW	12-06OX	12-06OY	12-06OZ
12-06PA	12-06PB	12-06PC	12-06PD	12-06PE	12-06PF	12-06PG	12-06PH	12-06PI	12-06PJ	12-06PK	12-06PL	12-06PM	12-06PN	12-06PO	12-06PP	12-06PQ	12-06PR	12-06PS	12-06PT	12-06PU	12-06PV	12-06PW	12-06PX	12-06PY	12-06PZ
12-06QA	12-06QB	12-06QC	12-06QD	12-06QE	12-06QF	12-06QG	12-06QH	12-06QI	12-06QJ	12-06QK	12-06QL	12-06QM	12-06QN	12-06QO	12-06QP	12-06QQ	12-06QR	12-06QS	12-06QT	12-06QU	12-06QV	12-06QW	12-06QX	12-06QY	12-06QZ
12-06RA	12-06RB	12-06RC	12-06RD	12-06RE	12-06RF	12-06RG	12-06RH	12-06RI	12-06RJ	12-06RK	12-06RL	12-06RM	12-06RN	12-06RO	12-06RP	12-06RQ	12-06RR	12-06RS	12-06RT	12-06RU	12-06RV	12-06RW	12-06RX	12-06RY	12-06RZ
12-06SA	12-06SB	12-06SC	12-06SD	12-06SE	12-06SF	12-06SG	12-06SH	12-06SI	12-06SJ	12-06SK	12-06SL	12-06SM	12-06SN	12-06SO</											



Date of Photography: April 2004
 100 50 0 100 200 Feet



HARRISON TWP SHEET INDEX

12-05A	12-05B	12-05C	12-05D	12-05E	12-05F	12-05G	12-05H	12-05I	12-05J	12-05K	12-05L	12-05M	12-05N	12-05O	12-05P	12-05Q	12-05R	12-05S	12-05T	12-05U	12-05V	12-05W	12-05X	12-05Y	12-05Z
12-06A	12-06B	12-06C	12-06D	12-06E	12-06F	12-06G	12-06H	12-06I	12-06J	12-06K	12-06L	12-06M	12-06N	12-06O	12-06P	12-06Q	12-06R	12-06S	12-06T	12-06U	12-06V	12-06W	12-06X	12-06Y	12-06Z
12-07A	12-07B	12-07C	12-07D	12-07E	12-07F	12-07G	12-07H	12-07I	12-07J	12-07K	12-07L	12-07M	12-07N	12-07O	12-07P	12-07Q	12-07R	12-07S	12-07T	12-07U	12-07V	12-07W	12-07X	12-07Y	12-07Z

DESCRIPTION OF PERMANENT REAL ESTATE INDEX NUMBER

13-19-302-018

AREA NUMBER 13-19-302-018	TWP AREA NUMBER 19-302-018	BLOCK NUMBER 018	PARCEL NUMBER 018
------------------------------	-------------------------------	---------------------	----------------------

- Legend**
- Plotted Area Boundary Line
 - Property Line
 - Property Split Line
 - Property Combined Line
 - Township Boundary Line
 - Traverse Line
 - Dimension Extent Marks
 - Dimension Start Marks

12-06F

Previously part of 12-A
 HARRISON TWP.
 E. 1/2 S.W. 1/4 SEC. 6 T.2N. R.14E.

Source: Macomb County Department of Planning and Economic Development
 - 2004 Digital Orthophotography Project
 - Parcel Conversion Project

Note:
 Digital Orthophotography horizontal positioning accuracy is 3 feet. Parcel boundary lines should be considered a graphical representation and not in any way a legal survey or engineering document. In general, the horizontal positioning and length accuracy is within 15 feet.

This map is intended for general planning purposes. Site specific evaluation should be verified by field inspection. This is a work in progress and may contain errors and omissions. Please report any potential revisions to (586)469-5265.



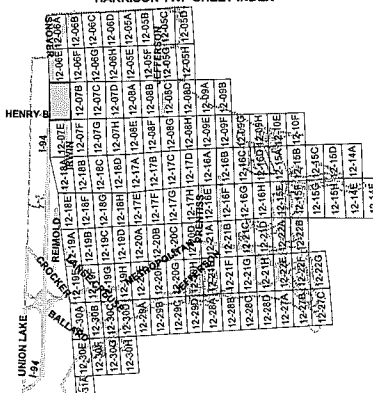
GIS MACOMB COUNTY
 Planning and Economic
 Development Department

Published: Aug 30, 2005



Date of Photography: April 2004
 100 50 0 100 200 Feet
 1:1,200

HARRISON TWP SHEET INDEX



DESCRIPTION OF PERMANENT REAL ESTATE INDEX NUMBER

13-19-302-018

AREA NUMBER: 13-19-302-018
 SUB AREA NUMBER: 018
 BLOCK NUMBER: 302
 PARCEL NUMBER: 018

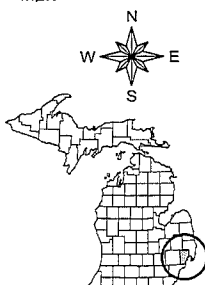
- Legend**
- Platted Area Boundary Line
 - Property Line
 - Property Split Line
 - Property Combined Line
 - Township Boundary Line
 - Transverse Line
 - Dimension Extent Marks
 - Dimension Start Marks

12-07A

HARRISON TWP.
 W.1/2 N.W.1/4 SEC.7 T.2N. R.14E.

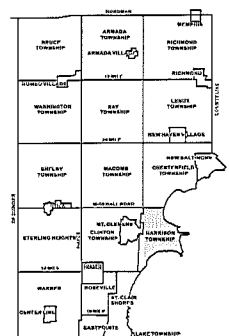
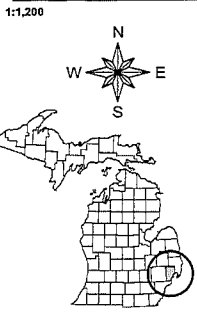
Source: Macomb County Department of Planning and Economic Development
 - 2004 Digital Orthophotography Project
 - Pinpoint Conversion Project

Note:
 Digital Orthophotography horizontal positioning accuracy is 3 feet. Parcel boundary lines should be considered a graphical representation and not in any way a legal survey or engineering document. In general, the horizontal positioning and length accuracy is within 15 feet.
 This map is intended for general planning purposes. Site specific evaluation should be verified by field inspection. This is a work in progress and may contain errors and omissions. Please report any potential revisions to (508)469-5005.





Date of Photography: April 2004
 100 50 0 100 200 Feet



HARRISON TWP SHEET INDEX

12-07A	12-07B	12-07C	12-07D	12-07E	12-07F	12-07G	12-07H	12-07I	12-07J	12-07K	12-07L	12-07M	12-07N	12-07O	12-07P	12-07Q	12-07R	12-07S	12-07T	12-07U	12-07V	12-07W	12-07X	12-07Y	12-07Z
12-07A	12-07B	12-07C	12-07D	12-07E	12-07F	12-07G	12-07H	12-07I	12-07J	12-07K	12-07L	12-07M	12-07N	12-07O	12-07P	12-07Q	12-07R	12-07S	12-07T	12-07U	12-07V	12-07W	12-07X	12-07Y	12-07Z

DESCRIPTION OF PERMANENT REAL ESTATE INDEX NUMBER

13-19-302-018

AREA NUMBER (Platted Area)	GIS AREA NUMBER (GIS Parcel)	BLOCK NUMBER (Block)	PARCEL NUMBER (Parcel)
13	19	302	018

Legend

- Platted Area Boundary Line
- Property Line
- Property Split Line
- Property Combined Line
- Township Boundary Line
- Traverse Line
- Dimension Extent Marks
- Dimension Start Marks

12-07E

HARRISON TWP.
 W.1/2 S.W.1/4 SEC.7 T.2N. R.14E.

Source: Macomb County Department of Planning and Economic Development
 - 2004 Digital Orthophotography Project
 - Parcel Conversion Project

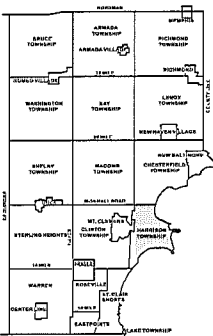
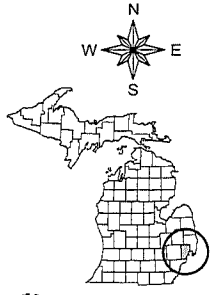
Note:
 Digital Orthophotography horizontal positioning accuracy is 3 feet. Parcel boundary lines should be considered a graphical representation and not in any way a legal survey or engineering document. In general, the horizontal positioning and length accuracy is within 15 foot.

This map is intended for general planning purposes. Site specific evaluation should be verified by field inspection. This is a work in progress and may contain errors and omissions. Please report any potential revisions to (586)469-5265.





Date of Photography: April 2004
 100 50 0 100 200 Feet
 1:1,200



HARRISON TWP SHEET INDEX

12-07E	12-07F	12-07G	12-07H	12-07I	12-07J	12-07K	12-07L	12-07M	12-07N	12-07O	12-07P	12-07Q	12-07R	12-07S	12-07T	12-07U	12-07V	12-07W	12-07X	12-07Y	12-07Z
12-08E	12-08F	12-08G	12-08H	12-08I	12-08J	12-08K	12-08L	12-08M	12-08N	12-08O	12-08P	12-08Q	12-08R	12-08S	12-08T	12-08U	12-08V	12-08W	12-08X	12-08Y	12-08Z
12-09E	12-09F	12-09G	12-09H	12-09I	12-09J	12-09K	12-09L	12-09M	12-09N	12-09O	12-09P	12-09Q	12-09R	12-09S	12-09T	12-09U	12-09V	12-09W	12-09X	12-09Y	12-09Z
12-10E	12-10F	12-10G	12-10H	12-10I	12-10J	12-10K	12-10L	12-10M	12-10N	12-10O	12-10P	12-10Q	12-10R	12-10S	12-10T	12-10U	12-10V	12-10W	12-10X	12-10Y	12-10Z
12-11E	12-11F	12-11G	12-11H	12-11I	12-11J	12-11K	12-11L	12-11M	12-11N	12-11O	12-11P	12-11Q	12-11R	12-11S	12-11T	12-11U	12-11V	12-11W	12-11X	12-11Y	12-11Z
12-12E	12-12F	12-12G	12-12H	12-12I	12-12J	12-12K	12-12L	12-12M	12-12N	12-12O	12-12P	12-12Q	12-12R	12-12S	12-12T	12-12U	12-12V	12-12W	12-12X	12-12Y	12-12Z
12-13E	12-13F	12-13G	12-13H	12-13I	12-13J	12-13K	12-13L	12-13M	12-13N	12-13O	12-13P	12-13Q	12-13R	12-13S	12-13T	12-13U	12-13V	12-13W	12-13X	12-13Y	12-13Z
12-14E	12-14F	12-14G	12-14H	12-14I	12-14J	12-14K	12-14L	12-14M	12-14N	12-14O	12-14P	12-14Q	12-14R	12-14S	12-14T	12-14U	12-14V	12-14W	12-14X	12-14Y	12-14Z
12-15E	12-15F	12-15G	12-15H	12-15I	12-15J	12-15K	12-15L	12-15M	12-15N	12-15O	12-15P	12-15Q	12-15R	12-15S	12-15T	12-15U	12-15V	12-15W	12-15X	12-15Y	12-15Z
12-16E	12-16F	12-16G	12-16H	12-16I	12-16J	12-16K	12-16L	12-16M	12-16N	12-16O	12-16P	12-16Q	12-16R	12-16S	12-16T	12-16U	12-16V	12-16W	12-16X	12-16Y	12-16Z
12-17E	12-17F	12-17G	12-17H	12-17I	12-17J	12-17K	12-17L	12-17M	12-17N	12-17O	12-17P	12-17Q	12-17R	12-17S	12-17T	12-17U	12-17V	12-17W	12-17X	12-17Y	12-17Z
12-18E	12-18F	12-18G	12-18H	12-18I	12-18J	12-18K	12-18L	12-18M	12-18N	12-18O	12-18P	12-18Q	12-18R	12-18S	12-18T	12-18U	12-18V	12-18W	12-18X	12-18Y	12-18Z

DESCRIPTION OF PERMANENT REAL ESTATE INDEX NUMBER

13-19-302-018

AREA NUMBER	SUB AREA NUMBER	BLOCK NUMBER	PARCEL NUMBER
13-19-302-018			

- Legend**
- Platted Area Boundary Line
 - Property Line
 - Property Split Line
 - Property Combined Line
 - Township Boundary Line
 - Traverse Line
 - Dimension Extent Marks
 - Dimension Start Marks

12-18A

HARRISON TWP.
 W.1/2 N.W.1/4 SEC.18 T.2N. R.14E.

Source: Macomb County Department of Planning and Economic Development
 - 2004 Digital Orthophotography Project
 - Parcel Conversion Project

Note:
 Digital Orthophotography horizontal positioning accuracy is 3 feet. Parcel boundary lines should be considered a graphical representation and not in any way a legal survey or engineering document. In general, the horizontal positioning and length accuracy is within 15 feet.

This map is intended for general planning purposes. Site specific evaluation should be verified by field inspection. This is a work in progress and may contain errors and omissions. Please report any potential revisions to (586) 468-5255.

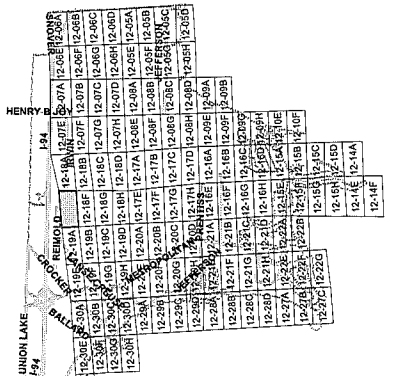


GIS MACOMB COUNTY
 Planning and Economic
 Development Department



Date of Photography: April 2004
 100 50 0 100 200 Feet
 1:1,200

HARRISON TWP SHEET INDEX



DESCRIPTION OF PERMANENT REAL ESTATE INDEX NUMBER

13-19-302-018

- Platted Area Boundary Line
- Property Line
- Property Split Line
- Property Boundary Line
- Township Boundary Line
- Traverso Line
- Dimension Extent Marks
- Dimension Start Marks

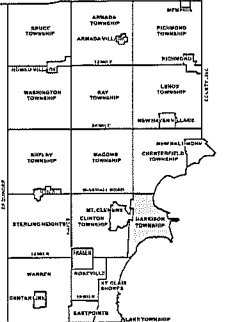
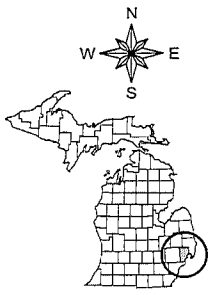
12-18E

HARRISON TWP.
 W. 1/2 S.W. 1/4 SEC. 18 T. 2N. R. 14E.

Source: Macomb County Department of Planning and Economic Development
 - 2004 Digital Orthophotography Project
 - Parcel Conversion Project

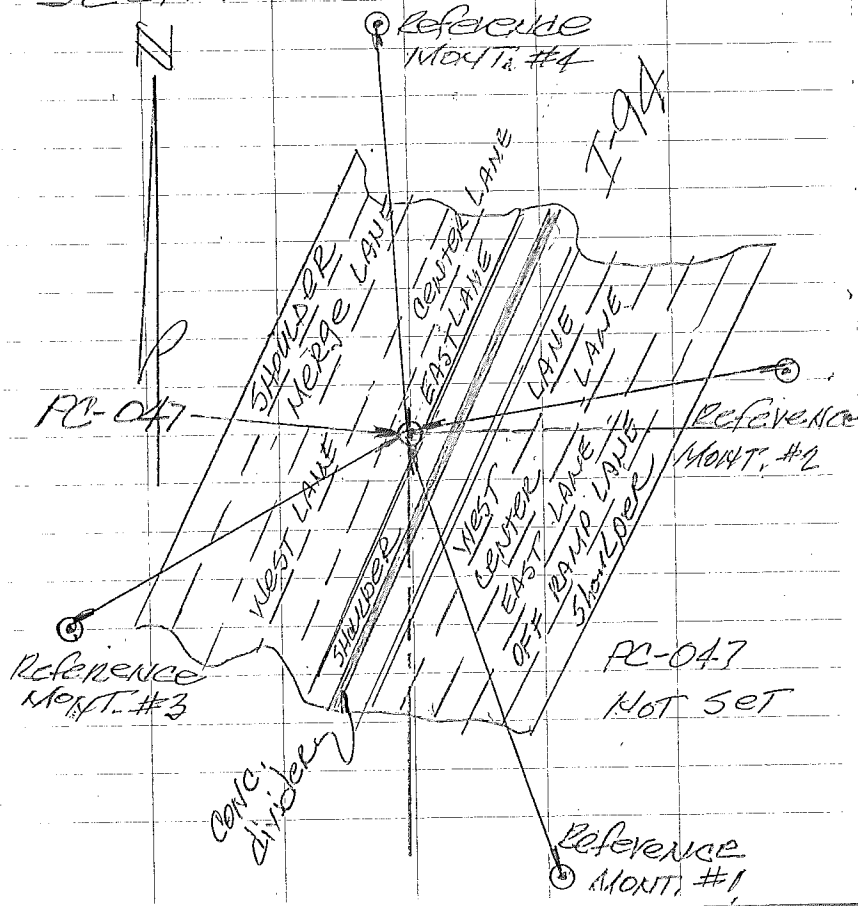
Note:
 Digital Orthophotography horizontal positioning accuracy is 3 feet. Parcel boundary lines should be considered a graphical representation and not in any way a legal survey or engineering document. In general, the horizontal positioning and length accuracy is within 10 feet.

This map is intended for general planning purposes. Site specific evaluation should be verified by field inspection. This is a work in progress and may contain errors and omissions. Please report any potential revisions to (586)469-5255.



8-14-2014 PC-047
RS BS

N.W. corner of PC 693
common with a deflection
POINT CONTROLLING A SOUTH
AND EAST LINE OF FRACTIONAL
SECTION 6



Set 4 Reference
MONUMENTS

PC-047 TO Reference
MONUMENT #1

S. 23° 01' 54" E. 171.80 FT.

PC-047 TO Reference
MONUMENT #2

N. 83° 50' 72" E. 145.18 FT.

PC-047 TO Reference
MONUMENT #3

S. 51° 49' 20" W. 118.76 FT.

PC-047 TO Reference
MONUMENT #4

N. 1° 18' 32" W. 152.80 FT.

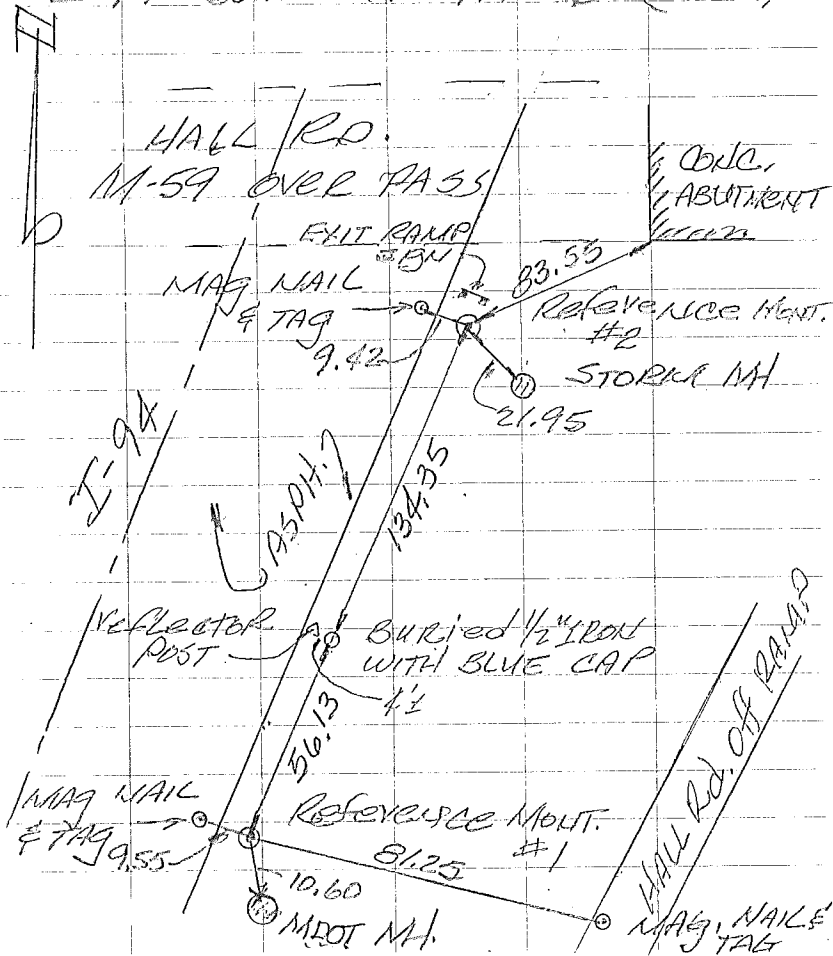
8-14-2014

RS BS

PC-047

WITNESSES TO REFERENCE MONUMENTS

REFERENCE MONTS. NO. 1 & NO. 2 CONC. MONUMENTS EAST SIDE OF I-94 SOUTH OF HALL RD. (M-59)



Reference Mount. No. 1

$S. 10^\circ E. 10.60$ ft. CUT "X" ON NORTH RIM OF STORM MH

$S. 85^\circ E. 81.25$ ft. ~~3/4~~ MAG NAIL AND TAG ON WEST EDGE OF HALL RD. OFF RAMP

$N. 75^\circ W. 9.55$ ft. MAG NAIL & TAG ON I-94 ASPH. SHOULDER

$N. 24^\circ E. 56.13$ ft. buried $\frac{1}{2}$ " IRON WITH BLUE WITNESS CAP 4' EAST OF REFLECTOR POST

Reference Mount. No. 2

$N. 50^\circ E. 83.55$ ft. S.W. CORNER OF CONC. ABUTMENT

$N. 75^\circ W. 9.42$ ft. MAG NAIL & TAG ON I-94 ASPH. SHOULDER

$S. 24^\circ W. 134.35$ ft. buried $\frac{1}{2}$ " IRON WITH BLUE WITNESS CAP 4' EAST OF REFLECTOR POST.

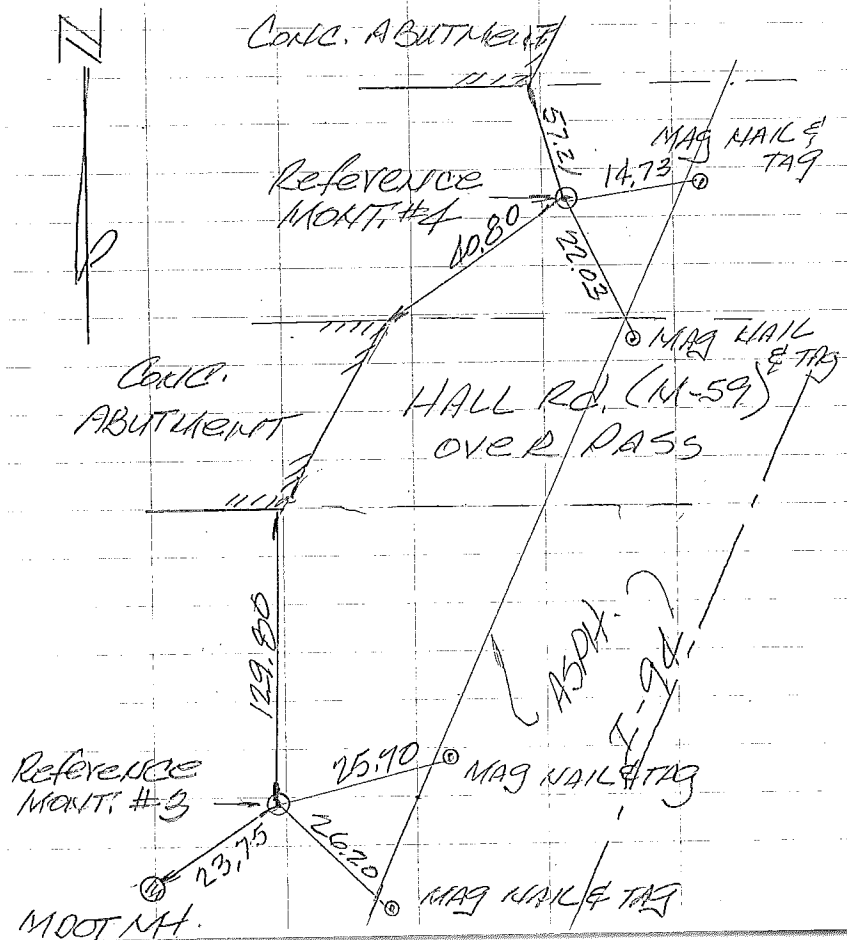
$S. 85^\circ E. 21.95$ ft. CUT "X" IN WEST RIM OF STORM MH

8-14-2014

RSBS PC-047

WITNESSES TO REFERENCE MONUMENTS

Reference MONTS. No. 3 & No. 4 CONC. MONUMENTS WEST SIDE OF I-94 SOUTH OF HALL RD. (M-59)

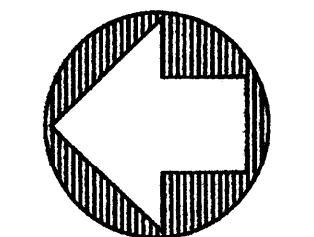
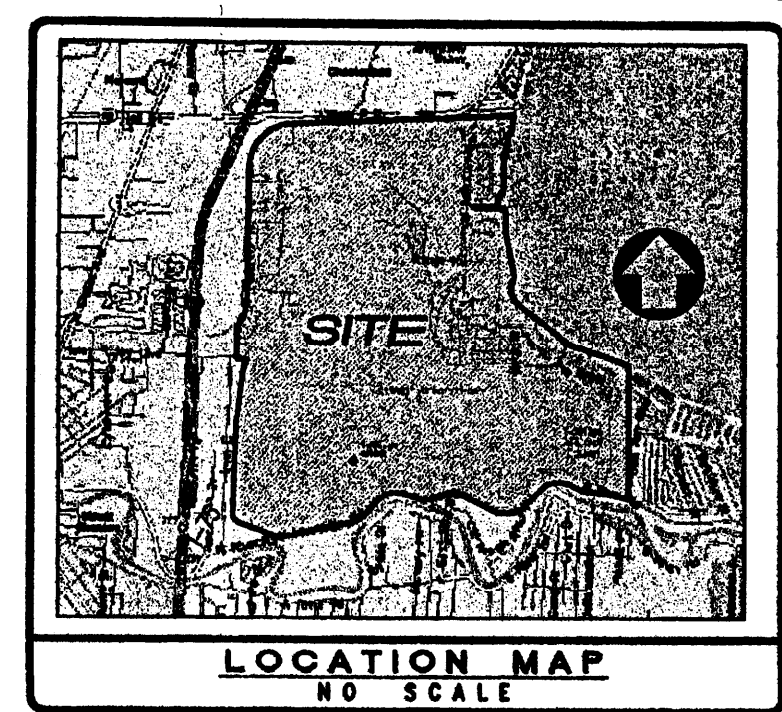


Reference MonT. No. 3

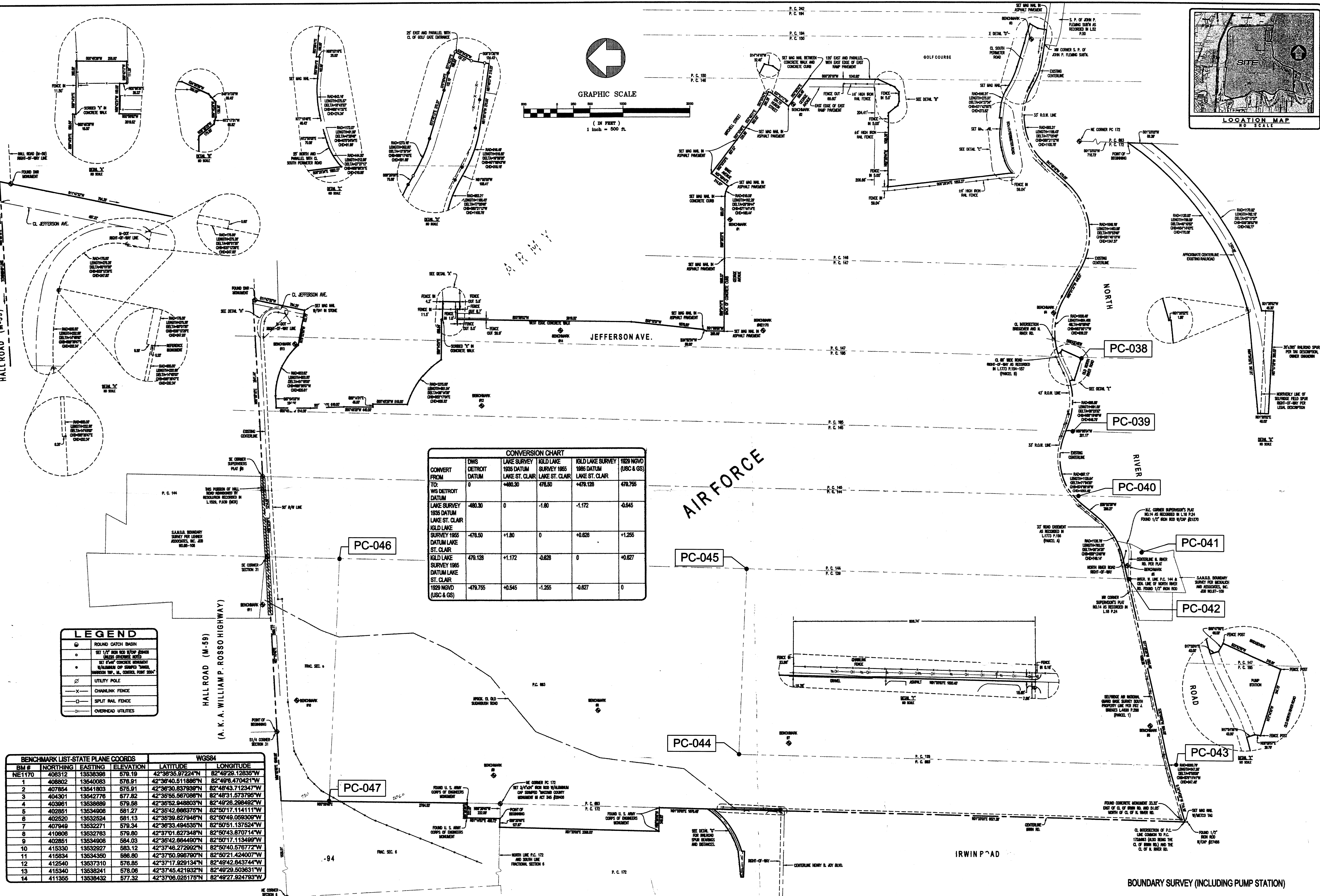
N. 45° E. 25.70 FT. MAG NAIL & TAG ON I-94 ASPH. SHOULDER
 S. 45° E. 26.20 FT. MAG NAIL & TAG ON I-94 ASPH. SHOULDER
 S. 25° W. 23.75 FT. CUT "X" ON N.E. RIM OF M.I.D.O.T. MH NORTH 129.80 FT. S.E. CORNER OF CONC. ABUTMENT

Reference MonT. No. 4

N. 15° E. 14.73 FT. MAG NAIL & TAG ON I-94 ASPH. SHOULDER
 S. 35° E. 22.03 FT. MAG NAIL & TAG ON I-94 ASPH. SHOULDER
 S. 140° W. 290.80 FT. N.E. CORNER OF CONC. ABUTMENT
 S. 15° W. 57.21 FT. S.E. CORNER OF CONC. ABUTMENT



GRAPHIC SCALE
(IN FEET)
1 inch = 500 ft.



CONVERSION CHART					
CONVERT FROM	DWS DETROIT DATUM	LAKE SURVEY 1935 DATUM LAKE ST. CLAIR	IGLD LAKE SURVEY 1985 LAKE ST. CLAIR	IGLD LAKE SURVEY 1986 DATUM LAKE ST. CLAIR	1929 NGVD (USC & GS)
TO:	WS DETROIT DATUM	+480.30	-1.80	+478.50	-0.545
LAKE SURVEY 1935 DATUM LAKE ST. CLAIR	-480.30	0	-1.80	-1.172	-0.545
IGLD LAKE SURVEY 1985 DATUM LAKE ST. CLAIR	-478.50	+1.80	0	+0.628	+1.255
IGLD LAKE SURVEY 1986 DATUM LAKE ST. CLAIR	-478.50	+1.172	-0.628	0	+0.627
1929 NGVD (USC & GS)	-478.755	+0.545	-1.255	-0.627	0

LEGEND	
	ROUND CATCH BASIN
	SET 1/2\"/>
	SET 3/4\"/>
	SET 1\"/>
	SET 1 1/2\"/>
	SET 2\"/>
	SET 3\"/>
	SET 4\"/>
	SET 6\"/>
	SET 8\"/>
	SET 12\"/>
	SET 18\"/>
	SET 24\"/>
	SET 36\"/>
	SET 48\"/>
	SET 72\"/>
	SET 96\"/>
	SET 144\"/>
	SET 192\"/>
	SET 288\"/>
	SET 384\"/>
	SET 576\"/>
	SET 768\"/>
	SET 1152\"/>
	SET 1536\"/>
	SET 2304\"/>
	SET 3168\"/>
	SET 4032\"/>
	SET 5808\"/>
	SET 7680\"/>
	SET 10240\"/>
	SET 13824\"/>
	SET 18432\"/>
	SET 24096\"/>
	SET 31776\"/>
	SET 41664\"/>
	SET 54912\"/>
	SET 71616\"/>
	SET 91872\"/>
	SET 115808\"/>
	SET 143424\"/>
	SET 174720\"/>
	SET 210704\"/>
	SET 251376\"/>
	SET 296736\"/>
	SET 346784\"/>
	SET 401520\"/>
	SET 460944\"/>
	SET 525056\"/>
	SET 593856\"/>
	SET 667344\"/>
	SET 745520\"/>
	SET 828384\"/>
	SET 915936\"/>
	SET 1008176\"/>
	SET 1106208\"/>
	SET 1214528\"/>
	SET 1333128\"/>
	SET 1461912\"/>
	SET 1600880\"/>
	SET 1750032\"/>
	SET 1909368\"/>
	SET 2078888\"/>
	SET 2258592\"/>
	SET 2448480\"/>
	SET 2648544\"/>
	SET 2858784\"/>
	SET 3079192\"/>
	SET 3309768\"/>
	SET 3550512\"/>
	SET 3801424\"/>
	SET 4062504\"/>
	SET 4333752\"/>
	SET 4615168\"/>
	SET 4906752\"/>
	SET 5208504\"/>
	SET 5520416\"/>
	SET 5842488\"/>
	SET 6174720\"/>
	SET 6517112\"/>
	SET 6869664\"/>
	SET 7232376\"/>
	SET 7605248\"/>
	SET 7988272\"/>
	SET 8381448\"/>
	SET 8784768\"/>
	SET 9198232\"/>
	SET 9621840\"/>
	SET 10056592\"/>
	SET 10503488\"/>
	SET 10962528\"/>
	SET 11433712\"/>
	SET 11916048\"/>
	SET 12409536\"/>
	SET 12914176\"/>
	SET 13429968\"/>
	SET 13956912\"/>
	SET 14494912\"/>
	SET 15043968\"/>
	SET 15604080\"/>
	SET 16175248\"/>
	SET 16757472\"/>
	SET 17350752\"/>
	SET 17955088\"/>
	SET 18570480\"/>
	SET 19196928\"/>
	SET 19834432\"/>
	SET 20482992\"/>
	SET 21142608\"/>
	SET 21813280\"/>
	SET 22495008\"/>
	SET 23187792\"/>
	SET 23891632\"/>
	SET 24606528\"/>
	SET 25332472\"/>
	SET 26069464\"/>
	SET 26817504\"/>
	SET 27576592\"/>
	SET 28346728\"/>
	SET 29127912\"/>
	SET 29919144\"/>
	SET 30720424\"/>
	SET 31531752\"/>
	SET 32353128\"/>
	SET 33184552\"/>
	SET 34026024\"/>
	SET 34877544\"/>
	SET 35739112\"/>
	SET 36610728\"/>
	SET 37492392\"/>
	SET 38384104\"/>
	SET 39285864\"/>
	SET 40197672\"/>
	SET 41119528\"/>
	SET 42051440\"/>
	SET 42993408\"/>
	SET 43945432\"/>
	SET 44907512\"/>
	SET 45879648\"/>
	SET 46861840\"/>
	SET 47854088\"/>
	SET 48856392\"/>
	SET 49868752\"/>
	SET 50891168\"/>
	SET 51923640\"/>
	SET 52966168\"/>
	SET 54018752\"/>
	SET 55081392\"/>
	SET 56154088\"/>
	SET 57236840\"/>
	SET 58329648\"/>
	SET 59432512\"/>
	SET 60545432\"/>
	SET 61668408\"/>
	SET 62801440\"/>
	SET 63944528\"/>
	SET 65097672\"/>
	SET 66260872\"/>
	SET 67434128\"/>
	SET 68617440\"/>
	SET 69810808\"/>
	SET 71014232\"/>
	SET 72227712\"/>
	SET 73451248\"/>
	SET 74684840\"/>
	SET 75928488\"/>
	SET 77182192\"/>
	SET 78445952\"/>
	SET 79719768\"/>
	SET 81003640\"/>
	SET 82297568\"/>
	SET 83601552\"/>
	SET 84915592\"/>
	SET 86239688\"/>
	SET 87573840\"/>
	SET 88917952\"/>
	SET 90272024\"/>
	SET 91636056\"/>
	SET 93010048\"/>
	SET 94394000\"/>
	SET 95787912\"/>
	SET 97191784\"/>
	SET 98605616\"/>
	SET 100029488\"/>
	SET 101462800\"/>
	SET 102956112\"/>
	SET 104499424\"/>
	SET 106062736\"/>
	SET 107646048\"/>
	SET 109249360\"/>
	SET 110872672\"/>
	SET 112515984\"/>
	SET 114179296\"/>
	SET 115862608\"/>
	SET 117565920\"/>
	SET 119289232\"/>
	SET 121032544\"/>
	SET 122795856\"/>
	SET 124579168\"/>
	SET 126382480\"/>
	SET 128205792\"/>
	SET 130049104\"/>
	SET 131912416\"/>
	SET 133795728\"/>
	SET 135699040\"/>
	SET 137622352\"/>
	SET 139565664\"/>
	SET 141528976\"/>
	SET 143512288\"/>
	SET 145515600\"/>
	SET 147538912\"/>
	SET 149582224\"/>
	SET 151645536\"/>
	SET 153728848\"/>
	SET 155832160\"/>
	SET 157955472\"/>
	SET 160098784\"/>
	SET 162262096\"/>
	SET 164445408\"/>
	SET 166648720\"/>
	SET 168872032\"/>
	SET 171115344\"/>
	SET 173378656\"/>
	SET 175661968\"/>
	SET 177965280\"/>
	SET 180288592\"/>
	SET 182631904\"/>
	SET 185095216\"/>
	SET 187578528\"/>
	SET 190081840\"/>
	SET 192605152\"/>
	SET 195148464\"/>
	SET 197711776\"/>
	SET 200295088\"/>
	SET 202898400\"/>
	SET 205521712\"/>
	SET 208165024\"/>
	SET 210828336\"/>
	SET 213511648\"/>
	SET 216214960\"/>
	SET 218938272\"/>
	SET 221681584\"/>
	SET 224444896\"/>
	SET 227228208\"/>
	SET 230031520\"/>
	SET 232854832\"/>
	SET 235698144\"/>
	SET 238561456\"/>
	SET 241444768\"/>
	SET 244348080\"/>
	SET 247271392\"/>
	SET 250214704\"/>
	SET 253178016\"/>
	SET 256161328\"/>
	SET 259164640\"/>
	SET 262187952\"/>
	SET 265231264\"/>
	SET 268294576\"/>
	SET 271377888\"/>
	SET 274481200\"/>
	SET 277604512\"/>
	SET 280747824\"/>
	SET 283911136\"/>

SECTION 31 CHESTERFIELD TWP

FRL SEC 1
CLINTON TWP

C.N.M. Co. 172

PC-047

PC-046

P. C. 693

PC-001 REMON
2005

SELFRIEDGE FIELD

PC-044

PC-045

P. C. 123

HARRISON TOWNSHIP
T2N, R14E, P. Cs. 172 & 693
Frl. Sec 6

SCALE 1"=400'

This line is called "Wisconsin" or "Zell" (See Expressway (M14)
in reference to (F157B) which also is a State Prop.

N^o. 571. North Side of River Huron.

Description. N^o. 698 Confirmed to William Connor commencing at a post standing on the North border of River Huron between this tract and a tract confirmed to John Skin Junior; thence North two hundred and one chains thirty seven links, to a post standing between this tract and unoccupied lands, thence East fifty three chains fifty links, to a post standing on the West line of a tract confirmed to John Sucker. Thence South eighty four chains forty seven links, to an Elm tree the North east Corner of a tract confirmed to James Connor, thence West forty chains fifty links, to a post the North west Corner of said James Connor's tract. Thence South one hundred and ten chains fifty two links, to a post standing on the North border of River Huron thence along the border of said River up Stream South Sixty four degrees West fourteen chains forty seven links, to the place of beginning, containing Six hundred acres.

Detroit Oct 23^d. 1810

Aaron Greeley Surveyor
of private Claims.

No. 571

No. 693 Confirmed to
William Conner

NORTH SIDE OF RIVER HURON

Description No. 693 Confirmed to William Conner commencing at a post standing on the north border of River Huron between this tract and a tract confirmed to John Askin, Junr, thence north two hundred and one chains thirty seven links to a post standing between this tract and unconceded lands, thence east fifty three chains fifty links to a post standing on the west line of a tract confirmed to John Tucker, thence south eighty four chains forty seven links to an elm tree the northeast corner of a tract confirmed to James Conner, thence west forty chains fifty links to a post the northwest corner of the said James Conner tract, thence south one hundred and ten chains sixty two links to a post standing on the north border of River Huron thence along the border of said river up stream south sixty four degrees west fourteen chains forty seven links to the place of beginning, containing six hundred acres —

Detroit 23d, Oct. 1810.

Aaron Greeley Surveyor
of private claims

N^o 490. North Side of River Huron
Description N^o 172. Confirmed to
John Astlin Junior commencing at a
Butternut tree standing on the border
of River Huron between this tract and
a tract. Confirmed to Christian Gleason
Thence north one hundred and fifty two
chains fifteen links to a Black ash tree
Thence East thirty nine chains fifty links
to a Black ash tree; thence south one
hundred and fifty five chains fifty links
to a post standing on the border of
River Huron between this tract and
unconceded land, thence along the
border of said River up stream North
fifty six degrees west twelve chains, thence
north Eighty — degrees west seven chains
Thence South Sixty six degrees west eight
chains, thence north seventy one degree
west four chains, thence north seventeen
degrees East nine chains, thence north
Sixty seven degrees west three chains,
Thence north Eighty eight degrees west
Eleven chains forty five links, to the place
of beginning containing four hundred
and nineteen acres and one hundred
sixths of an acre.

Detroit July 14, 1810

Samuel G. Coley Surveyor
of private Claims.

No. 490

No. 172 Confirmed to
John Askin, Junr.

NORTH SIDE OF RIVER HURON

Description No. 172 Confirmed to John Askin Junior commencing at a Buttonwood Tree standing on the border of River Huron between this tract and a tract confirmed to Christian Clemans, thence north one hundred and fifty two chains fifteen links to a Black Ash Tree thence east thirty nine chains fifty links to a Black Ash Tree, thence south one hundred and fifty five chains fifty links to a post standing on the border of River Huron between this tract and unconceded land thence along the border of said river up stream south fifty six degrees west twelve chains thence north eighty degrees west seven chains thence south sixty six degrees west eight chains, thence north seventy one degrees west four chains, thence north seventeen degrees east nine chains, thence north sixty seven degrees west three chains, thence north eighty eight degrees west eleven chains forty five links to the place of beginning, containing four hundred and nineteen acres and one hundredths of an acre, _____

Detroit July 14, 1810

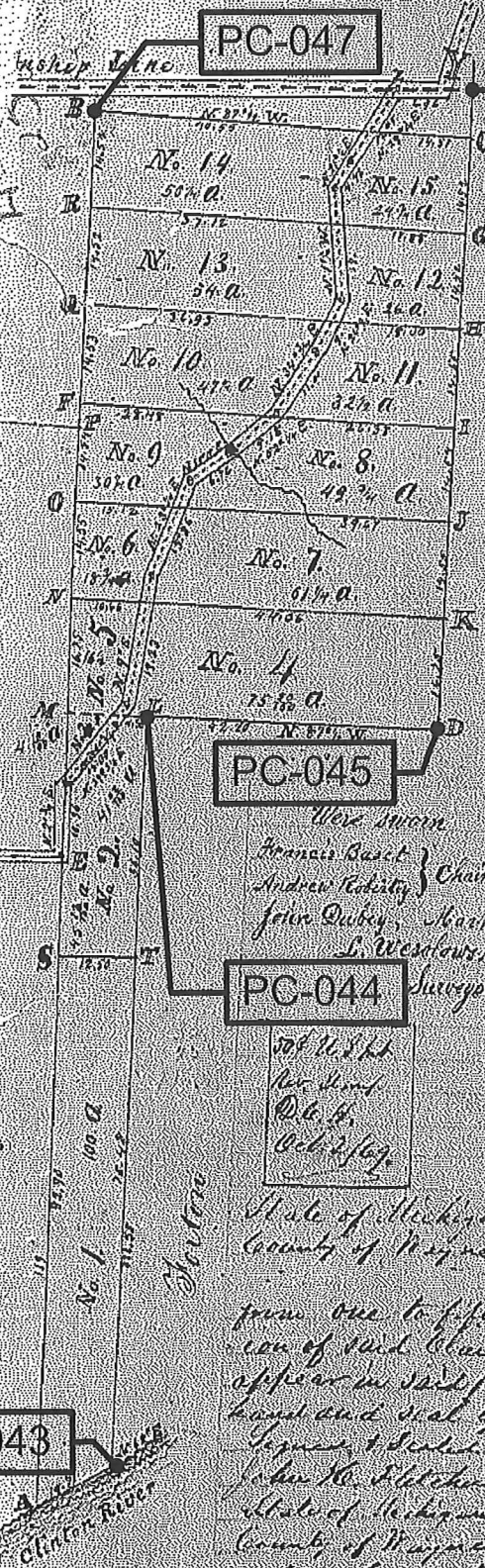
Aaron Greeley Surveyor
of private claims

Recorded for Record this 5th day of October A.D. 1869 at 10 o'clock A.M.

A. M. Keller, Register

SURVEY and SUBDIVISION of P. C. 693. T. 2. N. R. 14. E

Subdivided, September, 28th, 29th, and 30th, 1869. Name of compass 1 1/2° E. - Scale, 20 chains to 1 inch



Jucker's

- Witness to the corners
- At A. Post on the border of Clinton River
- B Beach 8 inches S 88° W 10 links distant to Survey 6 inches N 42° E to 18 links distant
- C Elm 11 " corner original
- D Black Ash 20 " S 68° W 26 " to 20 inches S 42° E 28 links distant
- E Beach 18 inches " S 80° E 45 links distant to beach 14 inches S 59° W 76 1/2 links
- F Black Ash 20 inches " S 57 1/2° E 25 1/2 links distant to beach 16 inches S 55 1/2° W 42 links distant
- G Black Ash 8 inches at 70° W 15 links distant Beach 6 inches N 45° E 41 links distant
- H Beach 12 inches at 61° E 16 links distant Beach 6 inches S 52° E 13 1/2 links distant
- I Elm 6 inches diameter the corner
- J Black Ash 10 " " " "
- K Elm 16 inches the corner
- L Beach 12 " " S 21° W 12 1/2 links distant Survey 8 inches S 59° W 45 links distant
- M Black Oak 14 " " S 65° W 25 " " Survey 5 " S 20° W 14 " " Hickory 12 inches diameter S 59° E 44 " " "
- N Black Ash 9 inches the corner
- O Beach 10 inches at 77° W 22 links distant Survey 19 inches S 84° E 31 1/2 links distant
- P
- Q Maple 18 inches diameter corner
- R Elm 12 " " S 84° W 22 links distant Survey 10 inches N 45° E 18 1/2 links distant
- S White Ash 24 " " S 67° W 26 1/2 links distant Survey 13 inches S 48° E 50
- T Elm 10 inches S 29 1/2° W 46 1/2 links distant Beach 10 inches S 44° E 23 1/2 links distant

Survey of Road from C. to D. on the Plat. Set Beach 18 inches diam S 80° E 45 links distant to Beach 14 inches S 59° W 76 1/2 links -
 Thence N 27 1/2° E 10.96 to beach 4 inches in diameter, Thence N 59 1/2° E 18.00 to a stake, Thence N 9° E 19.25 to a stake,
 Thence N 25 1/2° E 15.86 to stake, Thence North S 1° W 6.76 to beach 10 inches, Thence N 52° E 9.18 to beach 4 inches
 Thence N 34 1/2° E 11.10 to stake, Thence N 26 1/2° E 9.00 to stake, Thence N 18 1/2° W 7.00 to stake, Thence N 21 1/2° E 4.62 to
 stake, Thence N 24 1/2° E 12.95 to stake on the Town line from which a Beach 5 inches in diameter bears S 29° E
 53 links distant and a beach 18 inches diam bears N 36 1/2° W 79 links distant, Thence along the same Town line N 88° E 6.76
 to a White Birch 20 inches in diameter standing on the corner of Road to West Baltimore Surveyed March 6, 1850
 September 29, 1869 when the N 29 1/2° E 12.95 actually found by measurement 12.85 chains
 E. Wasilowski Surveyor

Witness sworn
 Francis Basit } Chainmen
 Andrew Reddy }
 John Quibby }
 Mark }
 L. Westowski }
 Surveyor

Witness
 J. H. S. H. }
 W. H. }
 R. L. }
 Oct 1/69 }

State of Michigan }
 County of Wayne }
 I, Nathan J. Robertson of said county, do hereby declare that I have subdivided the parcel of land in Macomb County
 Michigan known as Parcel A. and bounded & partly shown (693) of which a plat and subdivision is hereto
 annexed by hereby declare that I have subdivided the same into lots & have caused said lots to be numbered
 from one to fifteen inclusive and as the same are marked on said plat, and the map and plat hereto annexed is said subdivision
 of said claim, as also the survey & remarks as to corners, distances, bearings, trees & monuments as the same are made and
 signed and sealed by my attorney duly appointed in writing this second day of October 1869
 I, Nathan J. Robertson
 John H. Blitcher, Charles S. H. Blitcher }

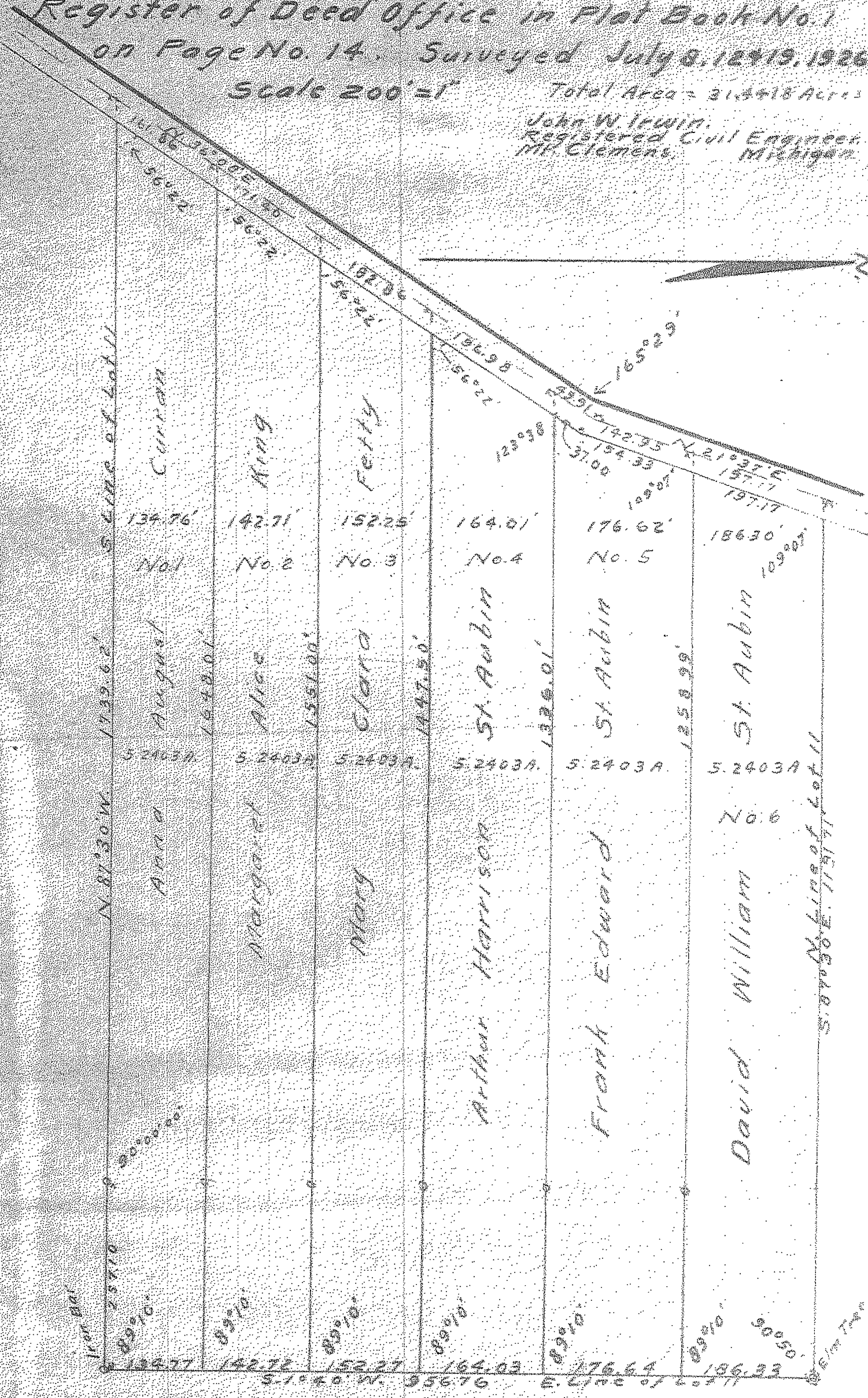
State of Michigan }
 County of Wayne }
 On the 2nd October 1869 personally appeared before me the undersigned the above named Nathan J. Robertson
 and acknowledged the same to be the free act & deed of said Nathan J. Robertson
 I, Nathan J. Robertson
 Charles S. H. Blitcher }

PC-043



Plat of Partition of
 Louis St. Aubin Farm Located in Lot No. 11
 of the Subdivision of F.C. No. 693, T.2N.R.14E.
 According to Plat of Record in the Macomb Co
 Register of Deed Office in Plat Book No. 1
 on Page No. 14. Surveyed July 8, 12 & 19, 1926
 Scale 200' = 1" Total Area = 31.3618 Acres

John W. Irwin,
 Registered Civil Engineer,
 Mt. Clemens, Michigan.



L-222-pp. 475

3

MAY 05 2005

LAND CORNER RECORDATION CERTIFICATE
Filing Requirement of Act 74, Mich. P.A. 1970

5078459 SECTION

For corners in

MACOMB (County)

Located In: Harrison

Corner Code #

LIBER 14653 PAGE 920



05/03/2005 09:33:45 A.M.
MACOMB COUNTY, MI SEAL
CARRELLA SABAUGH, REGISTER OF DEEDS

Register of Deeds Stamp & File Number

- 1. Public Land Survey T 2N. R 14E. #001
2. Property Controlling in Section S T R
3. Miscellaneous Property in Sec. S T R

- 4. Lot No.
5. Private Claims Northeast corner of Private Claim 172

I, Steven E. Dunn, in a field survey on October 26, 2004, do hereby certify that under requirements of P.A. 74, Michigan P.A. of 1970, the corner points mentioned in lines 1 and 2 above were in conformance with regulations and rules therefore as required in the current manual of survey instructions of the United States Department of the Interior, Bureau of Land Management or by a decree of a Court of Law and /or that the corner points mentioned in lines 3, 4 and 5 above were in conformance with the rules of the Michigan Board of Land Surveyors or by a Decree of a Court of Law; established, re-established, monumented, re-monumented, recovered, found as expressed below:

Grid table with columns A-L and rows 2-13. Contains numerical data for survey points.

NOTE: Not more than 2 corners, all in the same town and range, may be recorded on this certificate.

A. Description of original monument and accessories and/or subsequent restoration:

GLO Post. No evidence of original corner found. Original survey performed by William Preston - 1816

PLATS:

- N/A Survey and Subdivision of PC 693
L. 21, P. 3 North Gratiot Heights Sub.
L. 42, P. 26 "Jet-View"
L. 53, P. 39 Sugar Bush Subdivision
L. 55, P. 34 Sugar Bush Subdivision No. 2
L. 58, P. 4 Sugar Bush Subdivision No. 3
L. 65, P. 3 & 4 Assessor's Plat No. 1
L. 65, P. 5 & 6 Assessor's Plat No. 2
L. 65, P. 47 & 48 Macomb Industrial Center Subdivision
L. 89, P. 31-34 Maplehurst Subdivision
L. 92, P. 47-50 East Pointe Industrial Subdivision



- September 30, 1869
July 17, 1941
September 19, 1958
August 4, 1964
September 28, 1965
September 26, 1967
April 2, 1974
May 10, 1974
October 18, 1974
December 13, 1989
December 13, 1990

(continued on back)

B. Description of corner evidence found and/or method applied in restoring or reestablishing corner:

Northeast corner of Private Claim No. 172. I found a 1/2" iron rod w/cap #16052 and a 1/2" iron rod in the general area of the corner.

I established the north-south location of the corner using found U. S. Army Corps of Engineers monuments found north and south of the corner and on line with a found 1/2" iron rod w/cap #27486 at the northeast corner of Lot No. 26 of "Assessor's Plat No. 2" and a found U. S. Army Corps of Engineers monument at the southeast corner of Parcel 12-06-300-009 extended north then verified the location by comparing field measurements with record measurements.

FIELD MEASUREMENTS AND RECORD MEASUREMENTS (see back):

C. Description of monument for corner and accessories established to perpetuate locating the position of the corner: Northeast corner of Private Claim No. 172.

I set a 3/4" x 24" iron rod with an aluminum cap stamped "Macomb County Monument-Mi. Act 345 #28408".

WITNESSES:

- South 0.62' Found 1/2" iron rod w/cap #16052.
West 4.03' Found 1/2" iron rod.
N.70°E. 8.70' Set Mag nail w/Macomb County Witness Tag in southeast root of twin 19" Poplar.
N.20°E. 17.00' Set Mag nail w/Macomb County Witness Tag in west face of 13" Poplar.
N.30°W. 19.04' Set Mag nail w/Macomb County Witness Tag in east face of 6" Poplar.
S.80°W. 6.12' Set Mag nail w/Macomb County Witness Tag in north face of 13" Poplar.

ACCEPTED BY THE MACOMB COUNTY SURVEY PROFESSIONAL SURVEYORS GROUP AS THE OFFICIAL CORNER UNDER MICHIGAN PUBLIC ACT 345 OF 1990 AT A MEETING HELD ON 4/12/05

MARTIN C. DUNN, P.S. CHAIRMAN

THE SELECTED LOCATION IS ACCEPTED BY ME AND IS GENERALLY ACCEPTED BY PROFESSIONAL SURVEYORS AS THE BEST AVAILABLE EVIDENCE OF THE POSITION OF THE ORIGINAL CORNER.

Signed by Steven E. Dunn
Surveyor's Michigan License No. 28408

Date April 15, 2005

For corners in

Liber 016653 Page 00921

MACOMB

(County)

Located In:
Harrison

Corner Code #

**SURVEY &
REMONUMENTATION**

1. Public Land Survey T 2N, R 14E
5. Private Claims Northeast corner of Private Claim 172

MAY 05 2005

A. Description of original monument and accessories and/or subsequent restoration:

SECTION

GLO Post. No evidence of original corner found. Original survey performed by William Preston – 1816

CERTIFICATE OF SURVEY:

L. 2336, P. 441-442 William E. Soderberg, #17635

L. 5831, P. 329-330 Donald H. King, #30085

L. 16297, Steven E. Dunn, #28408

P. 729-744

Set 3/4" x 24" iron rod
w/aluminum cap stamped

"Macomb County Monument Mi. Act 345
#28408"

October 20, 1972

April 30, 1993

January 18, 2005

B. Description of corner evidence found and/or method applied in restoring or reestablishing corner:

Northeast corner of Private Claim No. 172. I found a 1/2" iron rod w/cap #16052 and a 1/2" iron rod in the general area of the corner.

I established the north-south location of the corner using found U. S. Army Corps of Engineers monuments found north and south of the corner and on line with a found 1/2" iron rod w/cap #27486 at the northeast corner of Lot No. 26 of "Assessor's Plat No. 2" and a found U. S. Army Corps of Engineers monument at the southeast corner of Parcel 12-06-300-009 extended north then verified the location by comparing field measurements with record measurements.

FIELD MEASUREMENTS AND RECORD MEASUREMENTS:

NE Corner PC 172 north to a found U. S. Army Corps of Engineers Monument:

490.00' – Record.

490.00' – Field.

NE Corner PC 172 south to a found U. S. Army Corps of Engineers Monument:

2400.00' – Record.

2399.92' – Field.

NE Corner PC 172 south to a found 1/2" iron rod w/cap #27486 at the northeast corner of Lot No. 26 of "Assessor's Plat No. 2":

10,326.56' – Record.

10,326.35' – Field.

NE Corner PC 172 south to a found PK nail at the intersection of the centerline of Joy Road and the easterly line of Private Claim 172:

4271.18' – Record.

4270.37' – Field. Found PK nail falls 0 08' east of the east line of Private Claim 172.

Found concrete monument at the northeast corner of Lot No. 41 of "Jet-View" to the east line of Private Claim 172:

43.00' – Record.

42.98' – Field.

REC'D. MACOMB CO AUG 12 2008

400 p.m.

LAND CORNER RECORDATION CERTIFICATE
Filing Requirement of Act 74, Mich. P.A. 1970

For corners in

MACOMB
(County)

Located In:
Harrison Twp.

Corner Code #

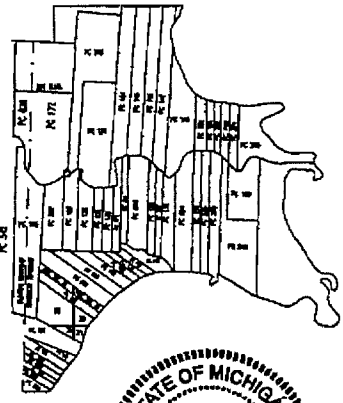
8095118
LIBER 19452 PAGE 175
08/15/2008 08:40:43 A.M.
MACOMB COUNTY, MI SEAL
CARHELLA SABAUGH, REGISTER OF DEEDS

- 1. Public Land Survey T 02N, R14E. PC-016
T R Reference
- 2. Property Controlling S T R Monument
in Section S T R
- 3. Miscellaneous S T R
Property in Sec. S T R

Register of Deeds Stamp & File Number

- 4. Lot No. _____, Recorded Plat _____
- 5. Private Claims Reference Monument to the Southeast Corner Private Claim 172 and to the Southwest Corner of Private Claim 693 @ the northerly border of the Clinton River (a.k.a. River Huron).

I, Steven E. Dunn, in a field survey on May 1, 2008, do hereby certify that under requirements of P.A. 74, Michigan P.A. of 1970, the corner points mentioned in lines 1 and 2 above were in conformance with regulations and rules therefore as required in the current manual of survey instructions of the United States Department of the Interior, Bureau of Land Management or by a decree of a Court of Law and/or that the corner points mentioned in lines 3, 4 and 5 above were in conformance with the rules of the Michigan Board of Land Surveyors or by a Decree of a Court of Law, established, re-established, monumented, re-monumented, recovered, found as expressed below:



NOTE: Not more than 2 corners, all in the same town and range, may be recorded on this certificate.



- A. Description of original monument and accessories and/or subsequent restoration:
1810 Post GLO, Survey performed by Aaron Greeley
1869 Post Survey and Subdivision of P.C. 693, L. 1, P. 14
1958 Conc. Monument "Jet View", Subdivision, L. 42, P. 26



(continued on back)

B. Description of corner evidence found and/or method applied in restoring or reestablishing corner:
PC 016 Reference Monument to the Southwest Corner of Private Claim 693 and to the Southeast Corner of Private Claim 172 at the border of the Clinton River (a.k.a. River Huron). Found no evidence of an existing corner. Did not set the actual corner as it falls near the existing north bank of the Clinton River in the rear yard of a residential area. Using found monumentation, I established a reference corner on the line common with Private Claim 693 and Private Claim 172 at the centerline intersection of North River Road and Irwin Road and set a Mag nail.

FIELD MEASUREMENTS AND RECORD MEASUREMENTS (see back):

C. Description of monument for corner and accessories established to perpetuate locating the position of the corner:
PC 016 Reference Monument to the Southwest Corner of Private Claim 693 and to the Southeast Corner of Private Claim 172 at the border of the Clinton River (a.k.a. River Huron), on the line common with Private Claim 693 and Private Claim 172. Set a Mag nail.

I replaced the Mag nail with a 3/4" X 36" steel rod with an aluminum cap stamped "Macomb County Monument MI Act 345 1990 MCL, REF MON, 28408, PC 016" in a new monument box in asphalt pavement. Corner falls at the centerline of pavement intersection of North River Road east-west and Irwin Road north.

WITNESSES:

- N.60°W. 61.35' Set Mag nail w/MCR witness tag in northeast face of 36" Oak.
- N.45°E. 59.20' Set Mag nail w/MCR witness tag in northwest face of utility pole.
- S.80°E. 29.80' Set Mag nail w/MCR witness tag in northwest face of utility pole.
- S.30°W. 36.70' Set punch mark in east rim of manhole, Department of Water Supply.
- S.02°W. ±380' North Bank of the Clinton River.
- S.02°W. ±118' Corner location per indexed measurement of GLO record.

THE SELECTED LOCATION IS ACCEPTED BY ME AND IS GENERALLY ACCEPTED BY PROFESSIONAL SURVEYORS AS THE BEST AVAILABLE EVIDENCE OF THE POSITION OF THE ORIGINAL CORNER

ACCEPTED BY THE MACOMB COUNTY SURVEY PEER GROUP AS THE OFFICIAL CORNER UNDER MICHIGAN PUBLIC ACT 345 OF 1990 AT A MEETING HELD ON 7-15-08
Martin C. Dunn
MARTIN C. DUNN, P.S. CHAIRMAN

Signed by Steven E. Dunn Date August 11, 2008
Surveyor's Michigan License No. 28408

For corners in

<u>MACOMB</u> <small>(County)</small>	Located In: <small>Huron Twp.</small>	Corner Code #
1. Public Land Survey	T <u>02N</u> , R <u>14E</u>	<u>PC-016</u>
	T ___ R ___	<u>Reference</u>
2. Property Controlling in Section	S ___ T ___ R ___	<u>Monument</u>
	S ___ T ___ R ___	_____

5. Private Claims Claims Reference Monument to the Southeast Corner Private Claim 172 and to the Southwest Corner of Private Claim 693 @ the northerly border of the Clinton River (a.k.a. River Huron).

A. Description of original monument and accessories and/or subsequent restoration:

- 1964 N&S PC line Sugar Bush Subdivision, L. 53, P. 39
- 1965 N&S PC line Sugar Bush Subdivision No. 2, L. 55, P. 34
- 1967 N&S PC line Sugar Bush Subdivision No. 3, L. 58, P. 4
- 1974 N&S PC line Assessor's Plat No 2, L. 65, P. 5 & 6
- 2005 Mag nail w/Metco Tag Certificate of Survey, Steven E. Dunn, #28408, L. 16297, P. 729-744
- 2008 Mag nail w/Metco Tag Certificate of Survey, Steven E. Dunn, #28408, L. 19128, P. 138-150

B. Description of corner evidence found and/or method applied in restoring or reestablishing corner:

PC 016 Reference Monument to the Southwest Corner of Private Claim 693 and to the Southeast Corner of Private Claim 172 at the border of the Clinton River (a.k.a. River Huron). Found no evidence of an existing corner. Did not set the actual corner as it falls near the existing north bank of the Clinton River in the rear yard of a residential area. Using found monumentation, I established a reference corner on the line common with Private Claim 693 and Private Claim 172 at the centerline intersection of North River Road and Irwin Road and set a Mag nail.

FIELD MEASUREMENTS AND RECORD MEASUREMENTS:

- PC 016 to PC 001 (Northeast Corner of Private Claim 172):**
- 10,263.00' - Record, GLO (155 chains, 50 links).
- 10,589.16' - Indexed GLO measurement with north line of Private Claim 172.
- 10,326.56' - Record, Plats.
- 10,326.35' - Field, 2008 Remon.