

INDEX
PC-045
NORTHEAST CORNER P.C. 129
COMMON WITH A DEFLECTION POINT CONTROLLING A
SOUTH AND EAST LINE OF P.C. 693, ALSO BEING ON THE
WESTERLY LINE OF P.C. 144
HARRISON TOWNSHIP,
T2N, R14E

SECTION 1:

1. Index
2. Before Pictures of Point and in Each Cardinal Direction
3. After Pictures of Point

SECTION 2:

1. LCRC
2. Surveyor's Report
3. Sketch of Private Claims (3 pages) (PC 129, PC 693, PC 144)
4. Sketch of 2014 Private Claims Overview

SECTION 3:

1. 1818 Original Government Survey map (1 page)
2. 1875 Map of Harrison Township (1 page)
3. 1895 Map of Harrison Township (1 page)
4. 1916 Map of Harrison Township (1 page)
5. 2006 Map of Harrison Township (1 page)
6. 2004 Harrison Township Composite Maps (5 pages)
7. 2014 Field Notes with Corner Witnesses (1 page)
8. Undated Selfridge Air Force Base Real Estate Map (1 page)
9. 2004 Boundary Survey S.A.N.G. Base, Metco Services Inc., Steven Dunn, P.S. #28408 (1 page)
10. Undated Addressograph Department drawing Sheets 12 and 13 (2 pages)

SECTION 4:

- | | | | | |
|----|------|--|--------------------------------------|----------------|
| 1. | 1810 | Original Private Claim Notes | Aaron Greeley | (6 pages) |
| 2. | 1869 | "Survey & Subdivision of PC 693" | L. Wesolowski, Surveyor | L.1, Pg.14 |
| 3. | 1926 | Plat of Partiton of Louis St. Aubin
Farm located in Lot 11 of the
"Survey and Subdivision of P.C. 693" | John W. Irwin, Civ.Eng. | L.222, Pg. 475 |
| 4. | 1928 | "C.H. Jobse's Little Farms Subd'n"
of N'yly part of Lot 7 Robertson's
Subd'n of P.C. 693 | Walter C. Wood,
Engineer-Surveyor | L.13, Pg.41 |
| 5. | 1937 | "S.P. of Jobse Acres" | Burt W. Howey
Civil Engineer | L.18, Pg.20 |

PC - 045

N.E. Corner of PC 129 common with a
deflection point controlling a South and East
Line of PC 693 also being on the Westerly Line
of PC 144

T.2N.,R.14E. Harrison Twp.

MONROE COUNTY MONUMENT MFG.
PC - 045
30103
1948





PC - 045

**N.E. Corner of PC 129 common with a
deflection point controlling a South and East
Line of PC 693 also being on the Westerly Line
of PC 144**

T.2N.,R.14E. Harrison Twp.









LAND CORNER RECORDATION CERTIFICATE
Filing Requirement of Act 74, Mich. P.A. 1970

For corners in

Table with columns: MACOMB (County), Located In: Harrison Township, Corner Code #. Rows include Public Land Survey, Property Controlling in Section, and Miscellaneous Property in Section.

CORRECTING A PREVIOUSLY RECORDED DOCUMENT L. 23116, P. 475 TO CORRECT RESEARCH DATE

4147451 PAGE 1 OF 2
LIBER 23151 PAGE 566
12/10/2014 08:24:21 A.M.
MACOMB COUNTY, MI
CARMELLA SABAUGH, REGISTER OF DEEDS

Register of Deeds Stamp & File Number

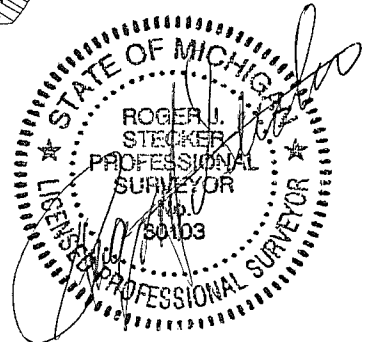
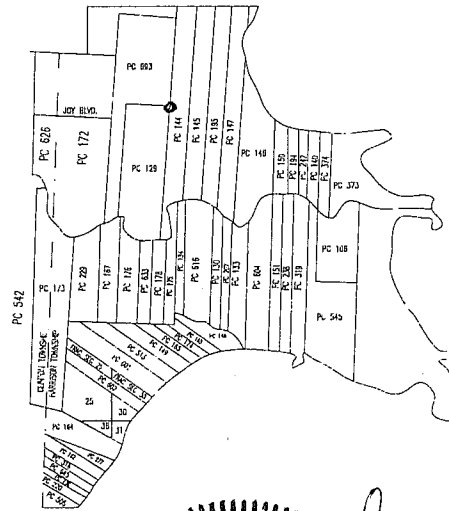
- 4. Lot No. , Recorded Plat
5. Private Claims Northeast Corner of Private Claim 129 Common with a deflection point controlling a south and east line of Private Claim 693, also being the westerly line of Private Claim 144

I, ROGER J. STECKER, in a field survey on August 14, 2014 do hereby state that under requirements of P.A. 74, Michigan P.A. of 1970, the corner points mentioned in lines 1 and 2 above were in conformance with regulations and rules therefore as required in the current manual of survey instructions of the United States Department of the Interior, Bureau of Land Management or by a decree of a Court of Law and/or that the corner points mentioned in lines 3, 4 and 5 above were in conformance with the rules of the Michigan Board of Land Surveyors or by a Decree of a Court of Law; re-established, monumented, recovered, found as expressed below:

NOTE: Not more than 2 corners, all in the same town and range, may be recorded on this certificate.

A. Description of original monument and accessories and/or subsequent restoration:

- 1. 1810 Original Private Claim Notes Aaron Greeley (6 pages)
2. 1869 "Survey & Subdivision of PC 693" L.Wesolowski, Surveyor L.1, Pg.14
3. 1926 Plat of Partiton of Louis St. Aubin Farm located in Lot 11 of the Plat of "Survey and Subdivision of P.C. 693" John W. Irwin, Civ.Eng. L.222, Pg. 475
4. 1928 "C.H. Jobse's Little Farms Subd'n" of N'y part of Lot 7 Robertson's Subd'n of P.C. 693 Walter C. Wood, Engineer-Surveyor L.13, Pg.41
5. 1937 "S.P. of Jobse Acres" Burt W. Howey Civil Engineer L.18, Pg.20



B. Description of corner evidence found and/or method applied in restoring or reestablishing corner: No evidence of the original Elm tree was found. I consider it an obliterated corner.

No evidence of the original Elm tree or the common line between Private Claims 693 and 144 were found at the described location. I established the Northeast Corner of Private Claim 129 common with a deflection point controlling a south and east line of Private Claim 693, also being on the westerly line of Private Claim 144 at a record distance from the Northeast Corner of Private Claim 693 using the "Survey and Subdivision of P.C. 693", Item 2 in Section A. The west line of Private Claim 144 common with the east line of Private Claims 693 and 129 was established on a straight line between previously established PC-046 (Northeast Corner of Private Claim 693 common with a deflection point controlling a south and east line of Fractional Section 6, also being on the westerly line of Private Claim 144) and PC-042 (Southwest Corner of Private Claim 144 common with a deflection point in the easterly line of Private claim 129). The point falls in a grass field west of the runway at Selfridge ANG Base. The location was marked by a temporary nail. There are no lines of occupation.

Measurements Between Corners: See page 2 for measurements.

C. Description of monument for corner and accessories established to perpetuate locating the position of the corner: I replaced the temporary nail with a 4" diameter by 36" long concrete monument with a 1/2" iron rod w/2" diameter aluminum cap stamped "Macomb County Monument Act #345, PS#30103 PC-045"

Witnesses:

- S45°W 113.91' N.E. corner of a 2'x2' metal box with a multi-bang animal scare gun.
S10°E 237.88' N.E. corner of a metal sign with the number 4, meaning 4,000 feet along the runway.
S50°E 161.15' Runway light #148.
N45°E 120.48' Runway light #146.

The selected location is accepted by me and is generally accepted by Professional Surveyors as the best available evidence of the position of the original corner.

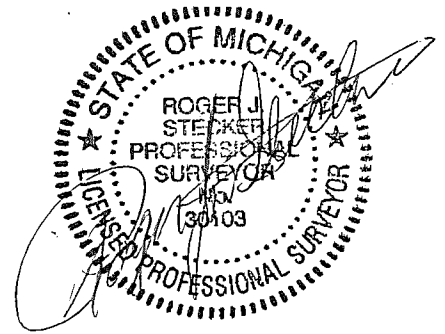
Signed by [Signature] Date 12-4-2014
Surveyor's Michigan License No. 30103

ACCEPTED BY THE MACOMB COUNTY SURVEY PEER GROUP AS THE OFFICIAL CORNER UNDER MICHIGAN PUBLIC ACT 345 OF 1990 AT A MEETING HELD IN 9-9-2014
MARTIN C. DIANN, P.S. CHAIRMAN

PAGE 2

For corners in

<u>MACOMB</u> (County)	Located In: Harrison Township	Corner Code #
1. Public Land Survey	T <u>2N</u> R <u>14E</u>	<u>PC-045</u>
	T _____ R _____	_____
	T _____ R _____	_____
	T _____ R _____	_____
2. Property Controlling in Section	S _____ T _____ R _____	_____
	S _____ T _____ R _____	_____
3. Miscellaneous Property in Section	S _____ T _____ R _____	_____
	S _____ T _____ R _____	_____



4. Lot No. _____, Recorded Plat _____
5. Private Claims Northeast Corner of Private Claim 129 Common with a deflection point controlling a south and east line of Private Claim 693, also being the westerly line of Private Claim 144

B. Measurements Between Corners:
(Continued from Page 1)

FROM NORTHEAST CORNER OF PRIVATE CLAIM 129 (PC-045)
TO NORTHWEST CORNER OF PRIVATE CLAIM 129 (PC-044)
 2673.00' (40 Chains 50 Links Private Claim Notes)
 2785.20' (42.2 Chains 1869 Plat of "Survey and Subdivision of Private Claim 693")
 2785.20' (Set Stecker #30103, 2014)

FROM NORTHEAST CORNER OF PRIVATE CLAIM 129 (PC-045)
TO NORTHEAST CORNER OF PRIVATE CLAIM 693 (PC-046)
 5575.02' (84 Chains 47 Links Private Claim Notes)
 5902.38' (89.43 Chains 1869 Plat of "Survey and Subdivision of Private Claim 693")
 5902.38' (Set Stecker #30103, 2014)

FROM NORTHEAST CORNER OF PRIVATE CLAIM 129 (PC-045)
TO SOUTHWEST CORNER OF PRIVATE CLAIM 144 (PC-042)
 6497.70' (98 Chains 45 Links Private Claim Notes)
 6898.93' (Measured Stecker #30103, 2014)

SURVEYOR'S REPORT
PC-045
NORTHEAST CORNER P.C. 129
COMMON WITH DEFLECTION POINT CONTROLLING
A SOUTH AND EAST LINE OF P.C. 693,
ALSO BEING THE WESTERLY LINE OF P.C. 144
HARRISON TOWNSHIP,
T2N, R14E

GLO HISTORY:

Description of P.C. 693

Commencing at a post standing on the north border of River Huron between this tract and a tract confirmed to John Askin, Junior, thence north two hundred and one chains thirty seven links to a post standing between this tract and unconceded lands, thence east fifty three chains fifty links to a post standing on the west line of a tract confirmed to John Tucker, thence south eighty four chains seven links to an elm tree the northeast corner of a tract confirmed to James Conner, thence west forty chains fifty links to a post the northwest corner of the said James Conner tract, thence south one hundred and ten chains sixty two links to a post standing on the north border of River Huron thence along the border of said river up stream south sixty four degrees west fourteen chains seven links to the place of beginning, containing six hundred acres.

Description of P.C. 144

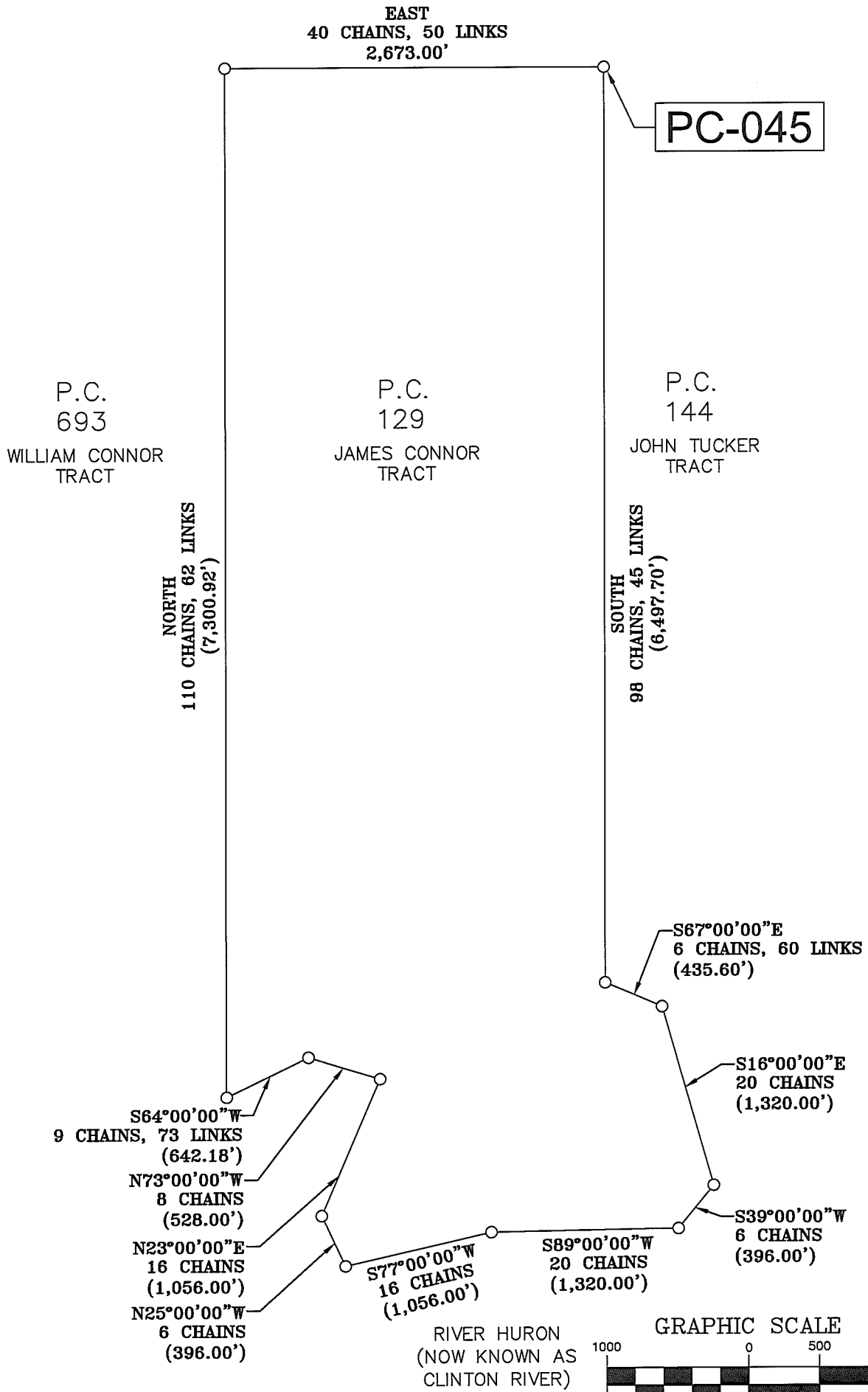
Commencing at an oak tree standing on the border of River Huron between this tract and a tract confirmed to James Connor thence north sixty seven degrees west six chains sixty links to a swamp oak tree thence north three hundred and sixty two chains twenty eight links to a post, thence east seventeen chains eighty links, to a post the north west corner of a tract confirmed to Edward Tucker, thence south three hundred and forty eight chains forty one links, to a post standing on the border of River Huron, thence along the border of said River up stream south thirty five degrees thirty minutes west twenty chains twenty links, to the place of beginning, containing six hundred and thirty nine acres.

EXISTING CONDITIONS:

No evidence of the original Elm tree or the common line between Private Claims 693 and 144 were found at the described location. I established the Northeast Corner of Private Claim 129 common with a deflection point controlling a south and east line of Private Claim 693, also being on the westerly line of Private Claim 144 at a record distance from the Northeast Corner of Private Claim 693 using the "Survey and Subdivision of P.C. 693", Item 2 in Section A. The west line of Private Claim 144 common with the east line of Private Claims 693 and 129 was established on a straight line between previously established PC-046 (Northeast Corner of Private Claim 693 common with a deflection point controlling a south and east line of Fractional Section 6, also being on the westerly line of Private Claim 144) and PC-042 (Southwest Corner of Private Claim 144 common with a deflection point in the easterly line of Private claim 129). The point falls in a grass field west of the runway at Selfridge ANG Base. The location was marked by a temporary nail. There are no lines of occupation.

I recommend to the Peer Group to accept the established position of PC-045 as the best evidence of the corner position.

SKETCH OF PRIVATE CLAIM 129



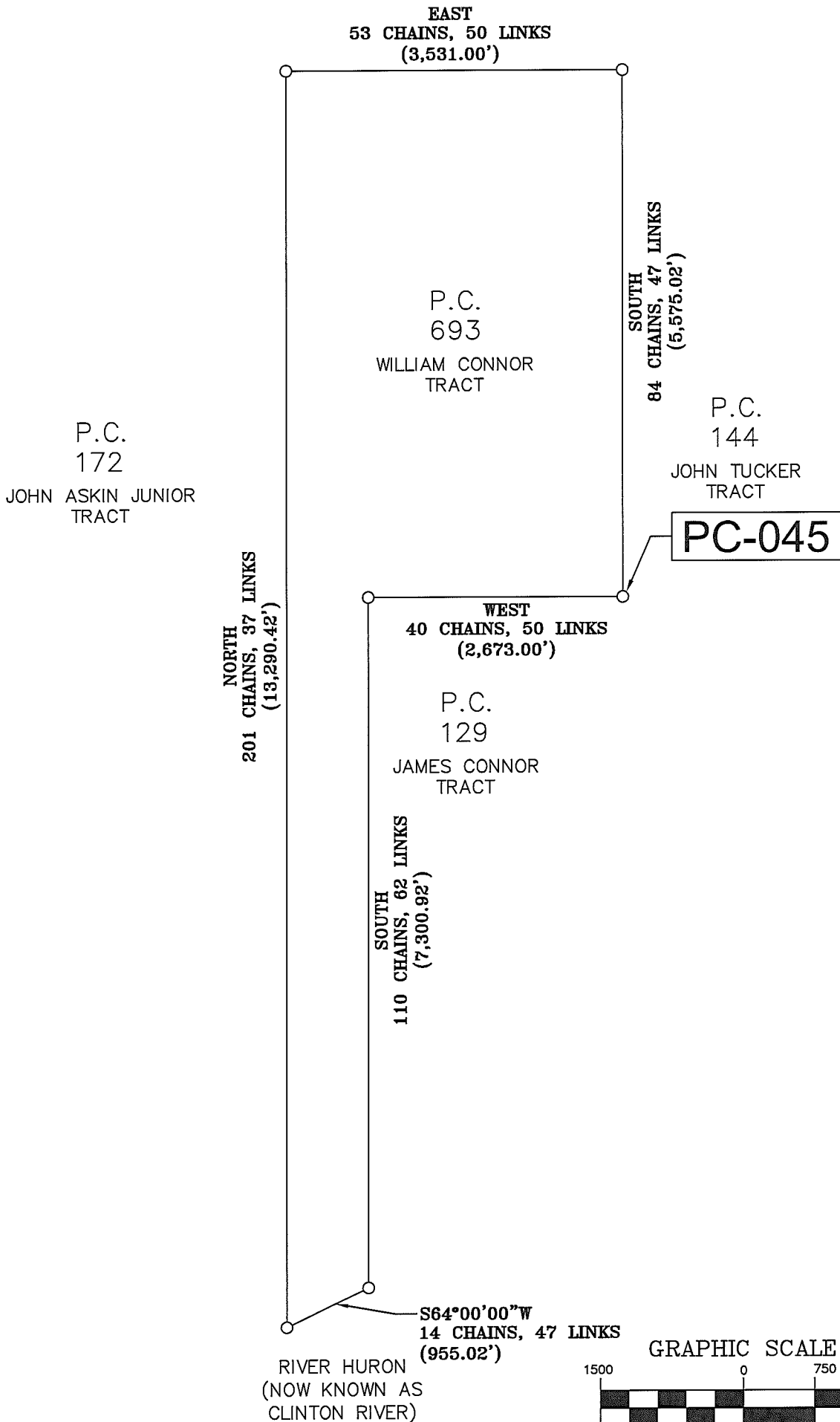
P.C. 129
Confirmed to James Connor

Commencing at a post standing on the border of the River Huron between this tract and a tract of unconceded land, thence north one hundred and ten chains sixty two links, to a post thence east forty chains fifty links to an Elm Tree standing in the west line of a tract confirmed to John Tucker, thence South ninety eight chains forty five links, to an Swamp Oak Tree thence south sixty seven degrees east six chains sixty links to an oak tree standing on the border of River Huron thence along the border of said River up stream south sixteen degrees east twenty chains, thence south thirty nine degrees west six chains, thence south eighty nine degrees west twenty chains, thence south seventy seven degrees west sixteen chains, thence north twenty five degrees west six chains, thence north twenty three degrees east sixteen chains thence north seventy three degrees west eight chains, thence south sixty four degrees west nine chains seventy three links to the place of beginning, containing five hundred and ten acres.

Detroit July 14, 1810

Aaron Greeley Surveyor
of private claims

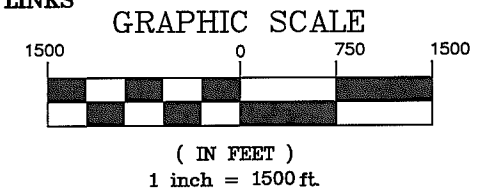
SKETCH OF PRIVATE CLAIM 693



P.C. 693
Confirmed to William Connor

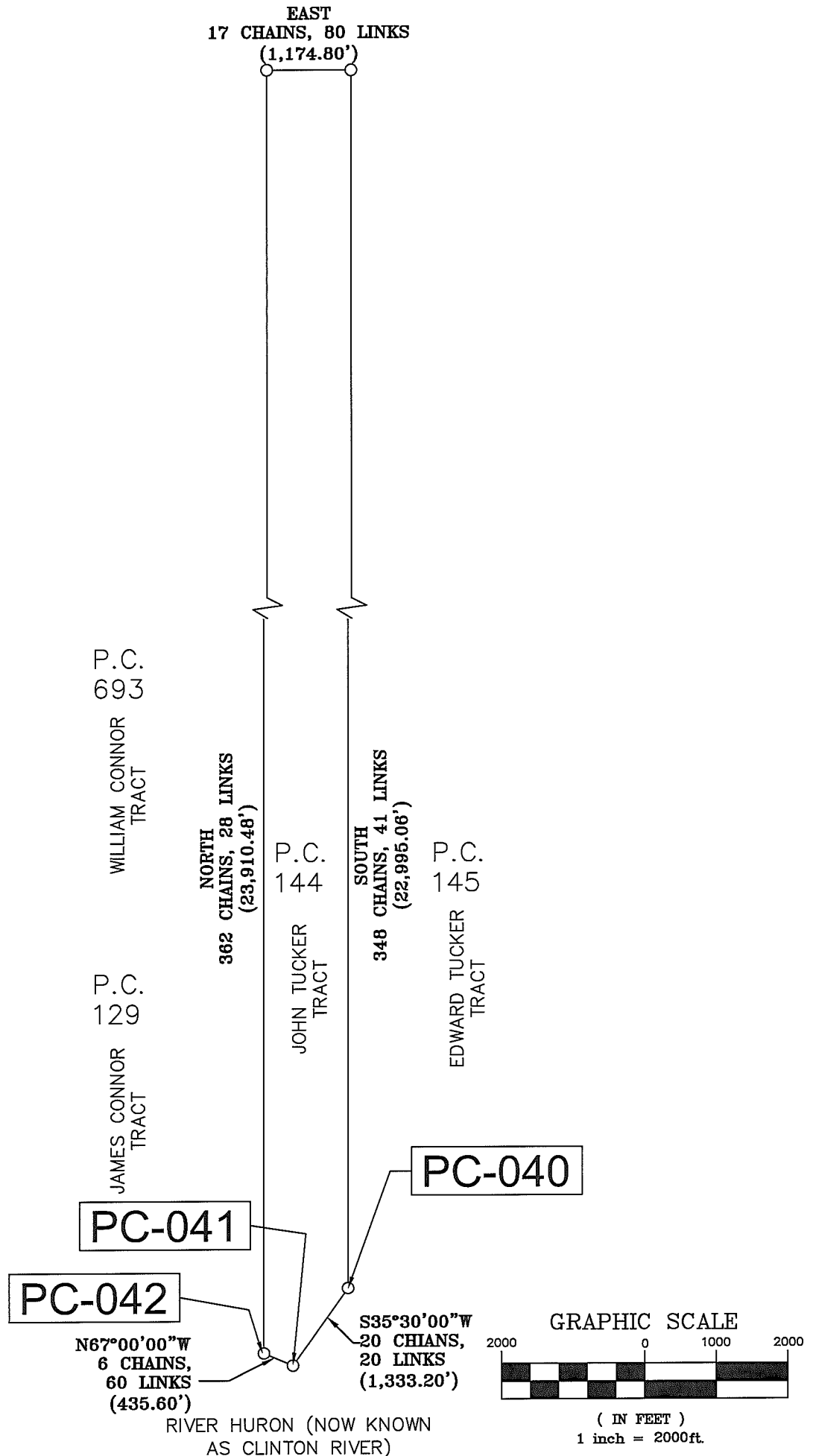
Commencing at a post standing on the north border of the River Huron between this tract and a tract confirmed to John Askin Junior, thence north two hundred and one chain thirty seven links to a post standing between this tract and unconceded lands, thence east fifty three chains fifty links to a post standing on the west line of a tract confirmed John Tucker, thence south eighty four chains forty seven links to an elm tree the northeast corner of a tract conformed to James Connor, thence west forty chains fifty links to a post the northwest corner if the said James Connor tract, thence south one hundred ten chains sixty two links to a post standing on the north border of River Huron thence along the border of said river up stream south sixty four degrees west fourteen chains forty seven links to the place of beginning, containing six hundred acres.

Detroit October 23, 1810



Aaron Greeley Surveyor
of private claims

SKETCH OF PRIVATE CLAIM 144

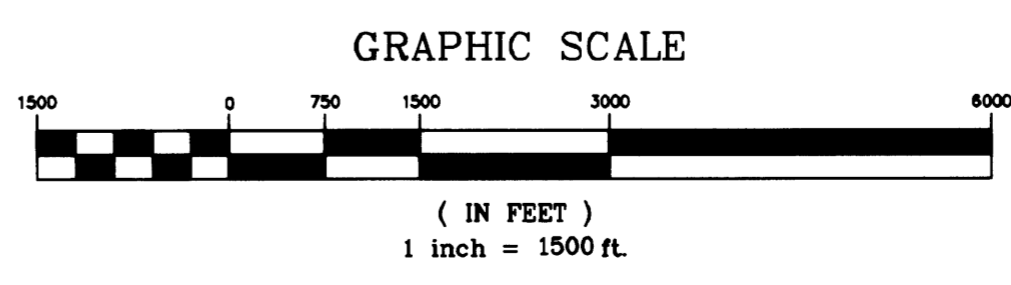
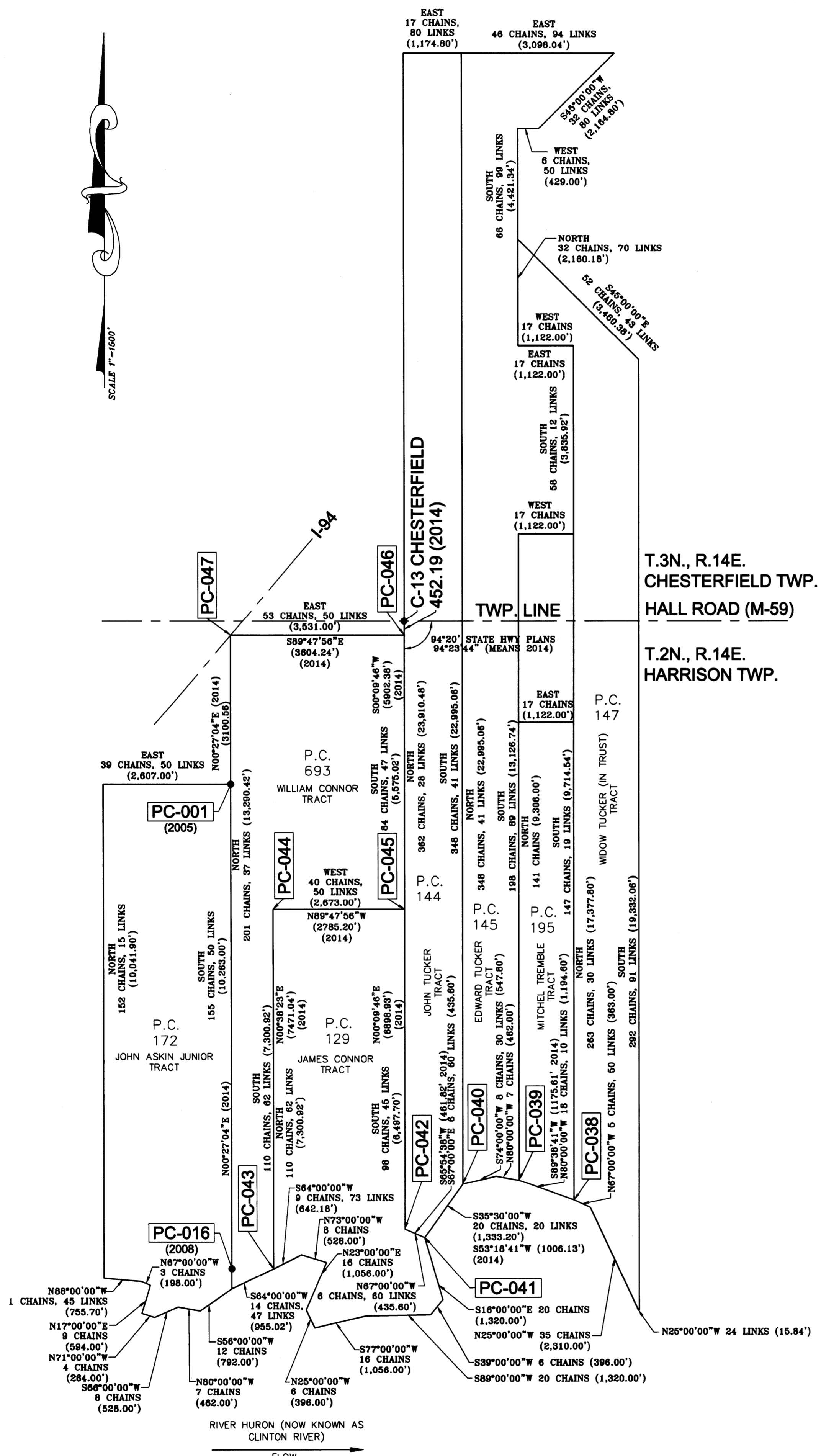


P.C. 144
Confirmed to John Tucker

Commencing at an oak tree standing on the border of River Huron between this tract and a tract confirmed to James Connor thence north sixty seven degrees west six chains sixty links to a swamp oak tree thence north three hundred and sixty two chains twenty eight links to a post, thence east seventeen chains eighty links, to a post the north west corner of a tract confirmed to Edward Tucker, thence south three hundred and forty eight chains forty one links, to a post standing on the border of River Huron, thence along the border of said River up stream south thirty five degrees thirty minutes west twenty chains twenty links, to the place of beginning, containing six hundred and thirty nine acres.

Detroit July 14, 1810

Aaron Greeley Surveyor
of private claims



REV. #	REV. DATE	REV. INFO	CHECKED BY
1	11-20-14	CORRECTIONS PER MACOMB COUNTY REVIEW	R.S.

FILE TRACING:	CHECKED BY:
TWP. DRAWER	R.S.
DATE:	DRAWING FILE NAME
07-14-14	14-089-OA.DWG
DRAWN BY:	SCALE:
R.P.	1" = 1500'

SEAL



Architecture
Engineering

17001 Nineteen Mile Road, Suite 3
Clinton Township, MI 48038
586-412-7050 phone 586-412-7114 fax

Surveying
Planning

www.lehnerfindlan.com

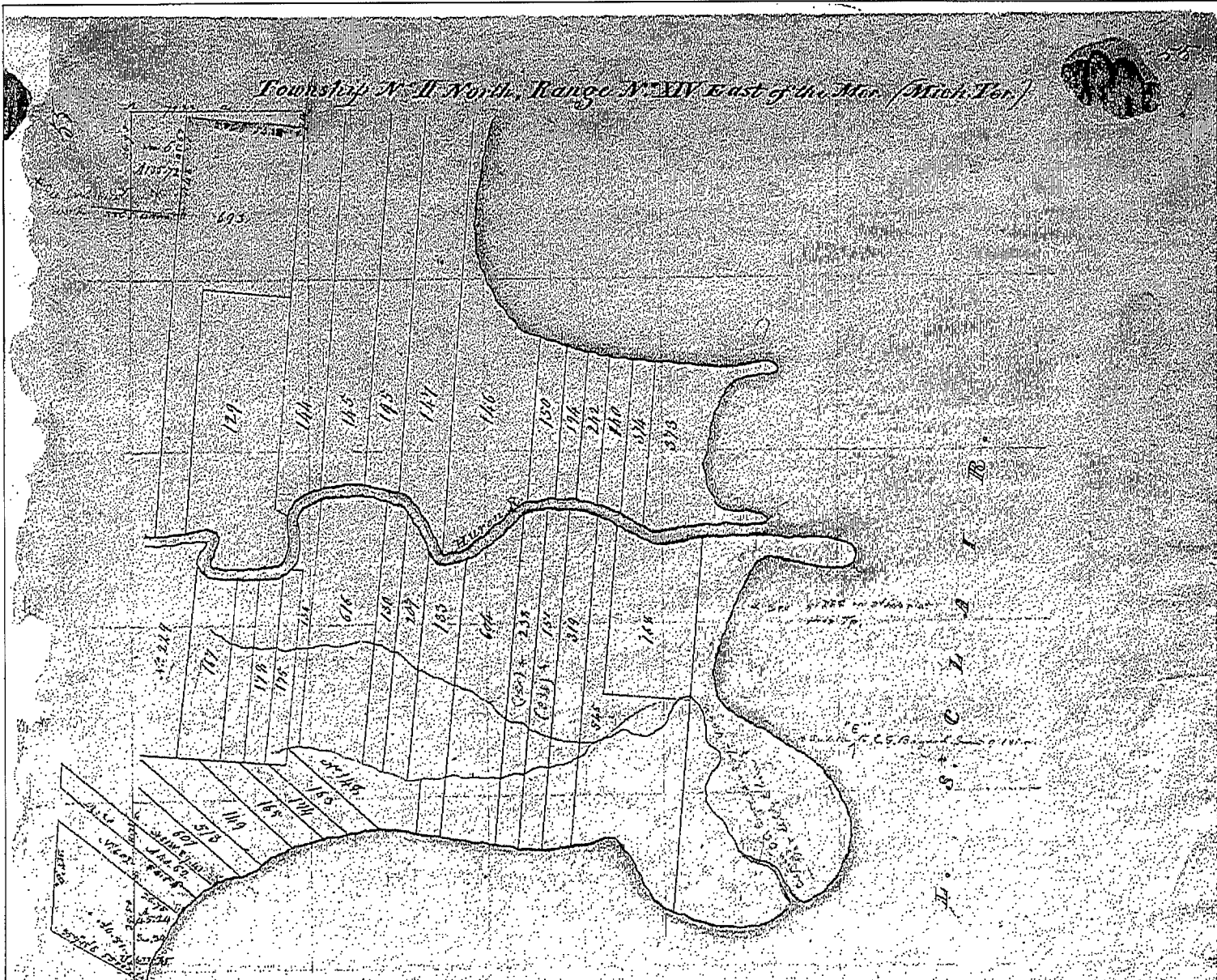
© COPYRIGHT 2011
PROJECT NAME AND SHEET TITLE:

2014
PRIVATE CLAIMS
OVERVIEW

CLIENT INFO:
MACOMB COUNTY
REGISTER OF DEEDS
32 MARKET STREET
MT. CLEMENS, MI 48043
(586)469-5175

PROJECT LOCATION:
T.2N., R.14E.
HARRISON TOWNSHIP,
MACOMB COUNTY,
MICHIGAN

Township N. II North, Range N. XIV East of the Mer. (Mich. Ter.)



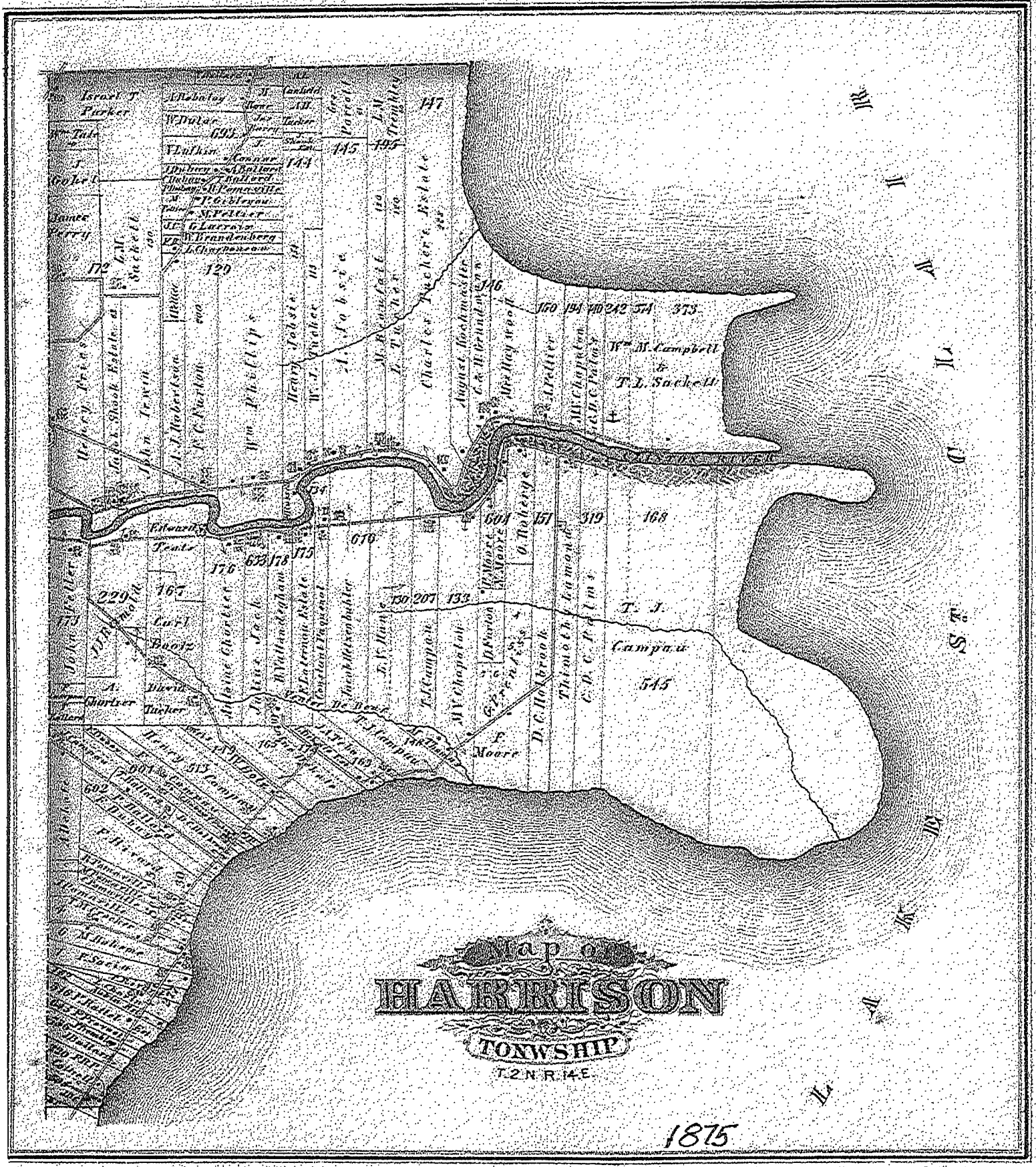
Quantity of claims of *Private Claims* 226-39
Chas. J. ...

A true copy from the Original on file in this Office

Surveyor General's Office
July 20 - 1918

Charles J. ...
Surveyor General

POOR COPY

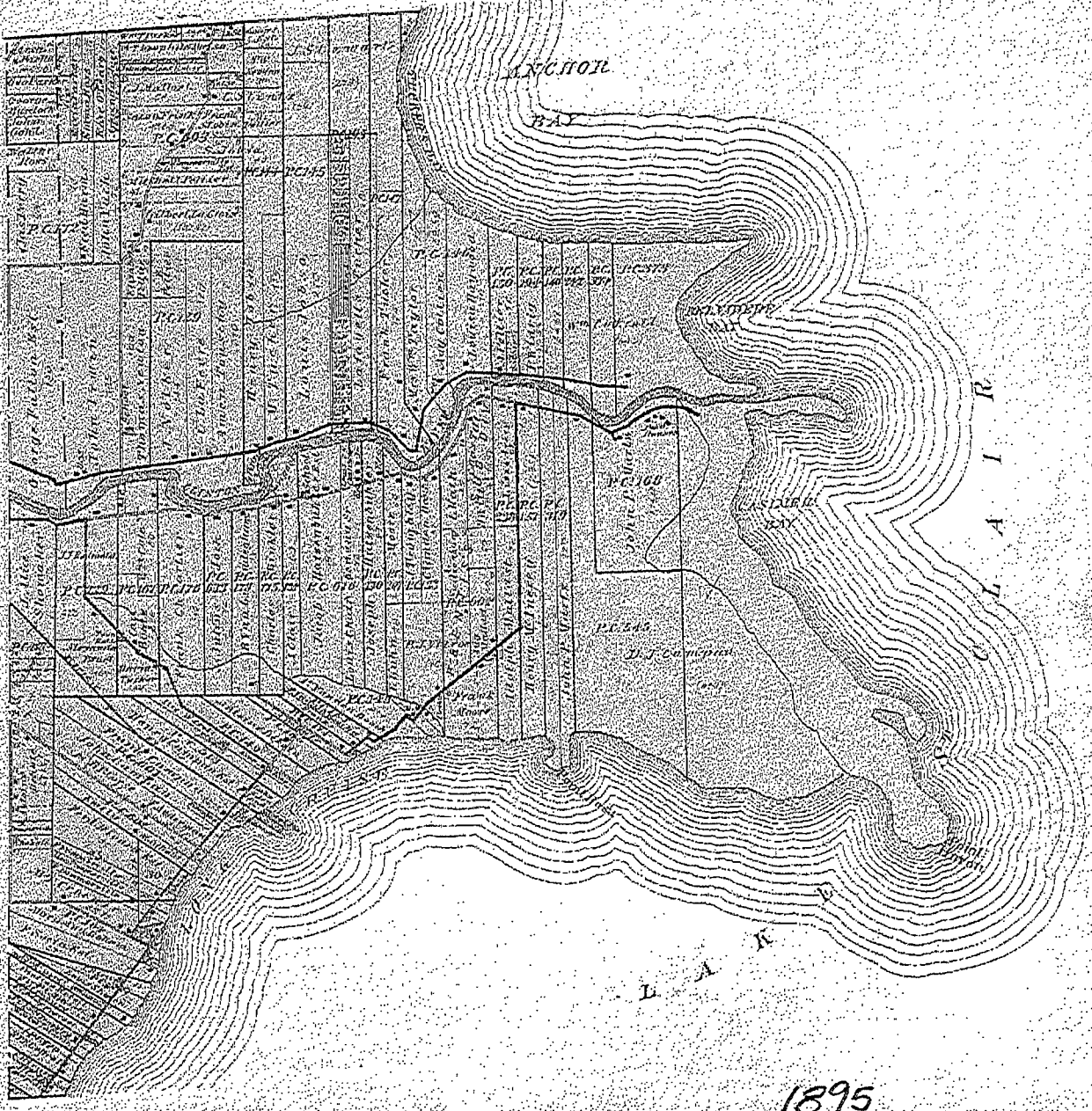


MAP OF HARRISON

Township 2 North Range 14 East

Scale 2 Inches to one Mile.

of the State of Missouri



1895

CHESTERFIELD TWP



HARRISON

 TOWNSHIP

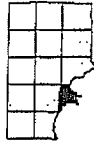
Scale 2 1/2 inches to 1 mile

Part of Fractional Township 2 North, Range 14 East and
 Fractional Township 2 North, Range 14 East
 of the Michigan Meridian

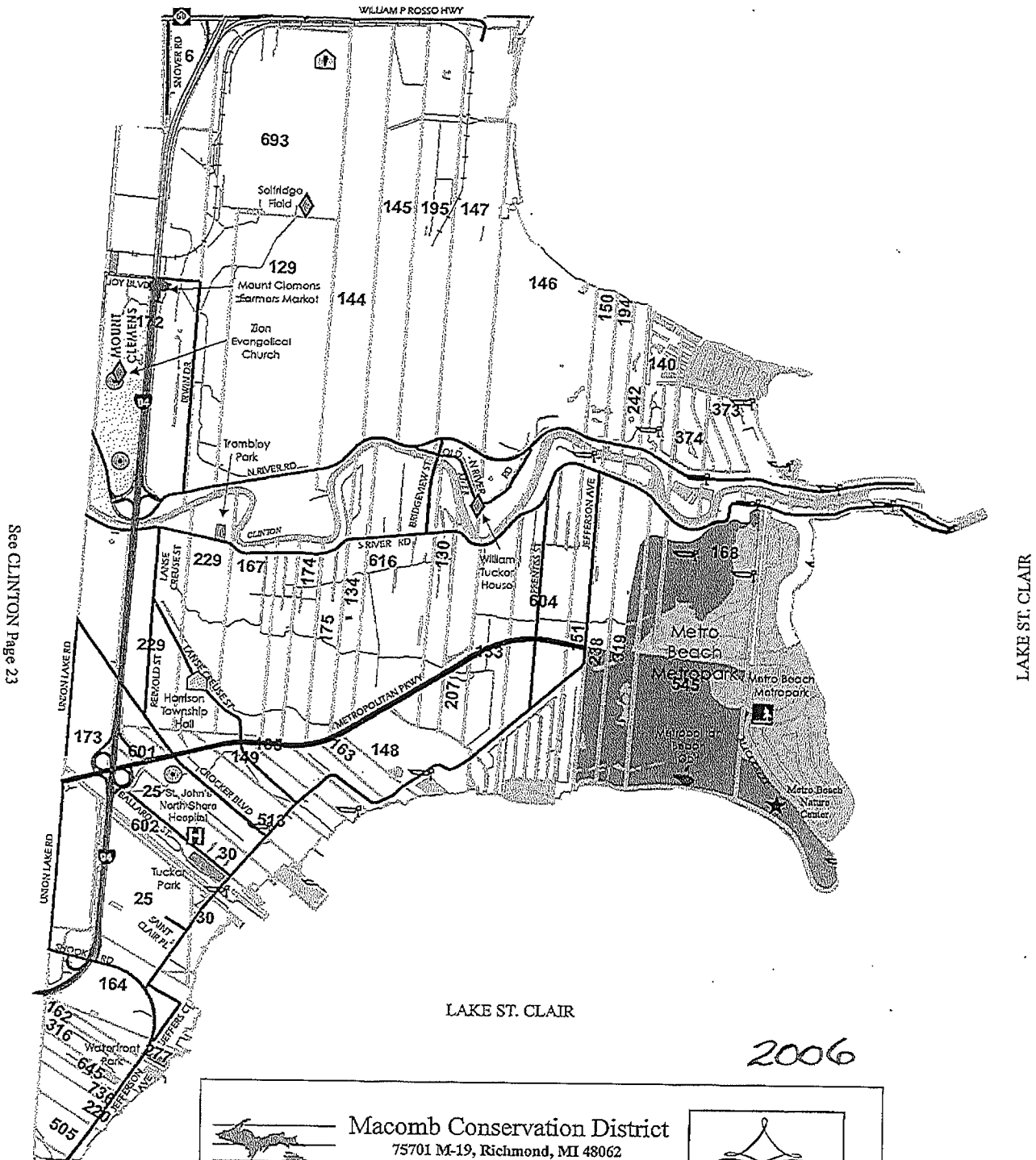
1916

HARRISON

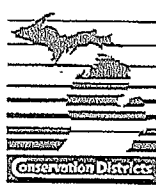
T. 2N. - R. 14E.




See CHESTERFIELD Page 31



See CLINTON Page 23



Macomb Conservation District
 75701 M-19, Richmond, MI 48062
 Phone: 586-727-2666 Fax: 586-727-2621
 E-mail: macombcd@klondyke.net
 Website: www.macombcd.com

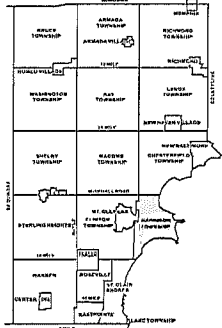
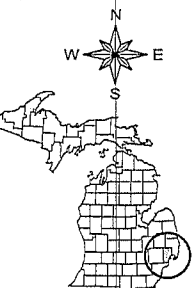


*Celebrating
 55 Years of
 Managing
 Macomb County's
 Natural Resources*

Assistance available for :
 Tree Sales Forestry Native Plants
 Conservation Education



Date of Photography: April 2004
 100 50 0 100 200 Feet
 1:1,200



HARRISON TWP SHEET INDEX

12-07A	12-07B	12-07C	12-07D	12-07E	12-07F	12-07G	12-07H	12-07I	12-07J	12-07K	12-07L	12-07M	12-07N	12-07O	12-07P	12-07Q	12-07R	12-07S	12-07T	12-07U	12-07V	12-07W	12-07X	12-07Y	12-07Z
12-07A	12-07B	12-07C	12-07D	12-07E	12-07F	12-07G	12-07H	12-07I	12-07J	12-07K	12-07L	12-07M	12-07N	12-07O	12-07P	12-07Q	12-07R	12-07S	12-07T	12-07U	12-07V	12-07W	12-07X	12-07Y	12-07Z

DESCRIPTION OF PERMANENT REAL ESTATE INDEX NUMBER

13	-19	-302	-018
AREA NUMBER	SUB AREA NUMBER	BLOCK NUMBER	PARCEL NUMBER

- Legend**
- Platted Area Boundary Line
 - Property Line
 - Property Split Line
 - Property Combined Line
 - Township Boundary Line
 - Traverse Line
 - Dimension Extent Marks
 - Dimension Start Marks

12-07B

Previously part of 12-A
 HARRISON TWP.
 E. 1/2 N.W. 1/4 SEC. 7 T. 2N. R. 14E.

Source: Macomb County Department of Planning and Economic Development
 - 2004 Digital Orthophotography Project
 - Parcel Conversion Project

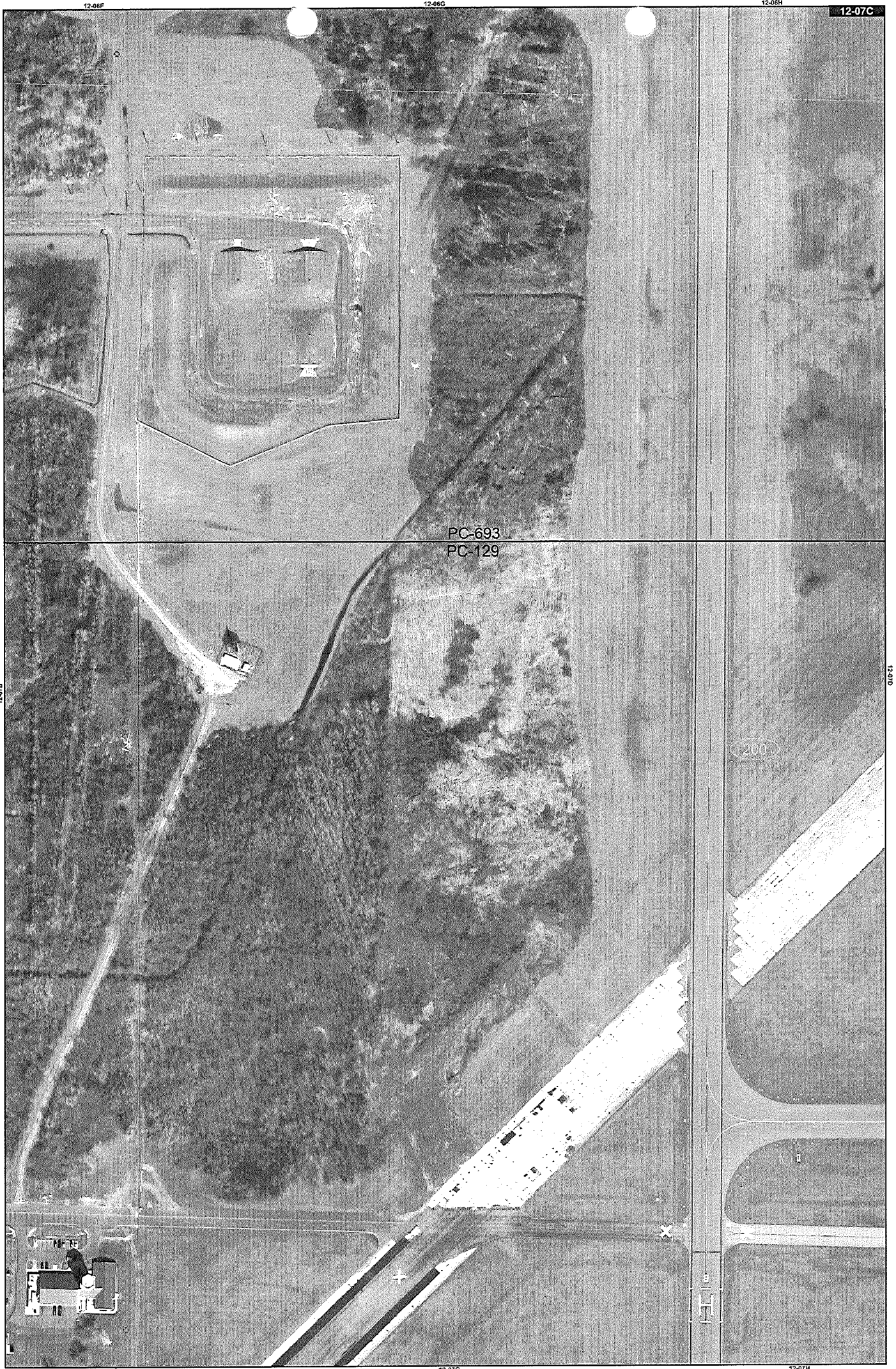
Note:
 Digital Orthophotography horizontal positioning accuracy is 3 feet. Parcel boundary lines should be considered a graphical representation and not in any way a legal survey or engineering document. In general, the horizontal positioning and length accuracy is within 15 feet.

This map is intended for general planning purposes. Site specific evaluation should be verified by field inspection. This is a work in progress and may contain errors and omissions. Please report any potential revisions to (588)469-3265.

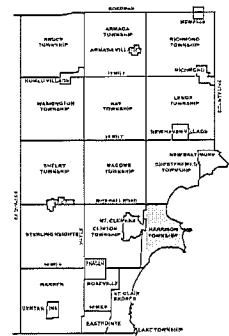


GIS MACOMB COUNTY
 Planning and Economic
 Development Department

Published: Aug 30, 2005



Date of Photography: April 2004
 100 50 0 100 200 Feet
 1:1,200



HARRISON TWP SHEET INDEX

AREA NUMBER	SUB AREA NUMBER	BLOCK NUMBER	PARCEL NUMBER
12-07A	12-07A	12-07A	12-07A
12-07B	12-07B	12-07B	12-07B
12-07C	12-07C	12-07C	12-07C
12-07D	12-07D	12-07D	12-07D
12-07E	12-07E	12-07E	12-07E
12-07F	12-07F	12-07F	12-07F
12-07G	12-07G	12-07G	12-07G
12-07H	12-07H	12-07H	12-07H
12-07I	12-07I	12-07I	12-07I
12-07J	12-07J	12-07J	12-07J
12-07K	12-07K	12-07K	12-07K
12-07L	12-07L	12-07L	12-07L
12-07M	12-07M	12-07M	12-07M
12-07N	12-07N	12-07N	12-07N
12-07O	12-07O	12-07O	12-07O
12-07P	12-07P	12-07P	12-07P
12-07Q	12-07Q	12-07Q	12-07Q
12-07R	12-07R	12-07R	12-07R
12-07S	12-07S	12-07S	12-07S
12-07T	12-07T	12-07T	12-07T
12-07U	12-07U	12-07U	12-07U
12-07V	12-07V	12-07V	12-07V
12-07W	12-07W	12-07W	12-07W
12-07X	12-07X	12-07X	12-07X
12-07Y	12-07Y	12-07Y	12-07Y
12-07Z	12-07Z	12-07Z	12-07Z

DESCRIPTION OF PERMANENT REAL ESTATE INDEX NUMBER
13-19-302-018

Legend

- Platted Area Boundary Line
- Property Line
- Property Split Line
- Property Combined Line
- Township Boundary Line
- Traverse Line
- Dimension Extent Marks
- Dimension Start Marks

12-07C

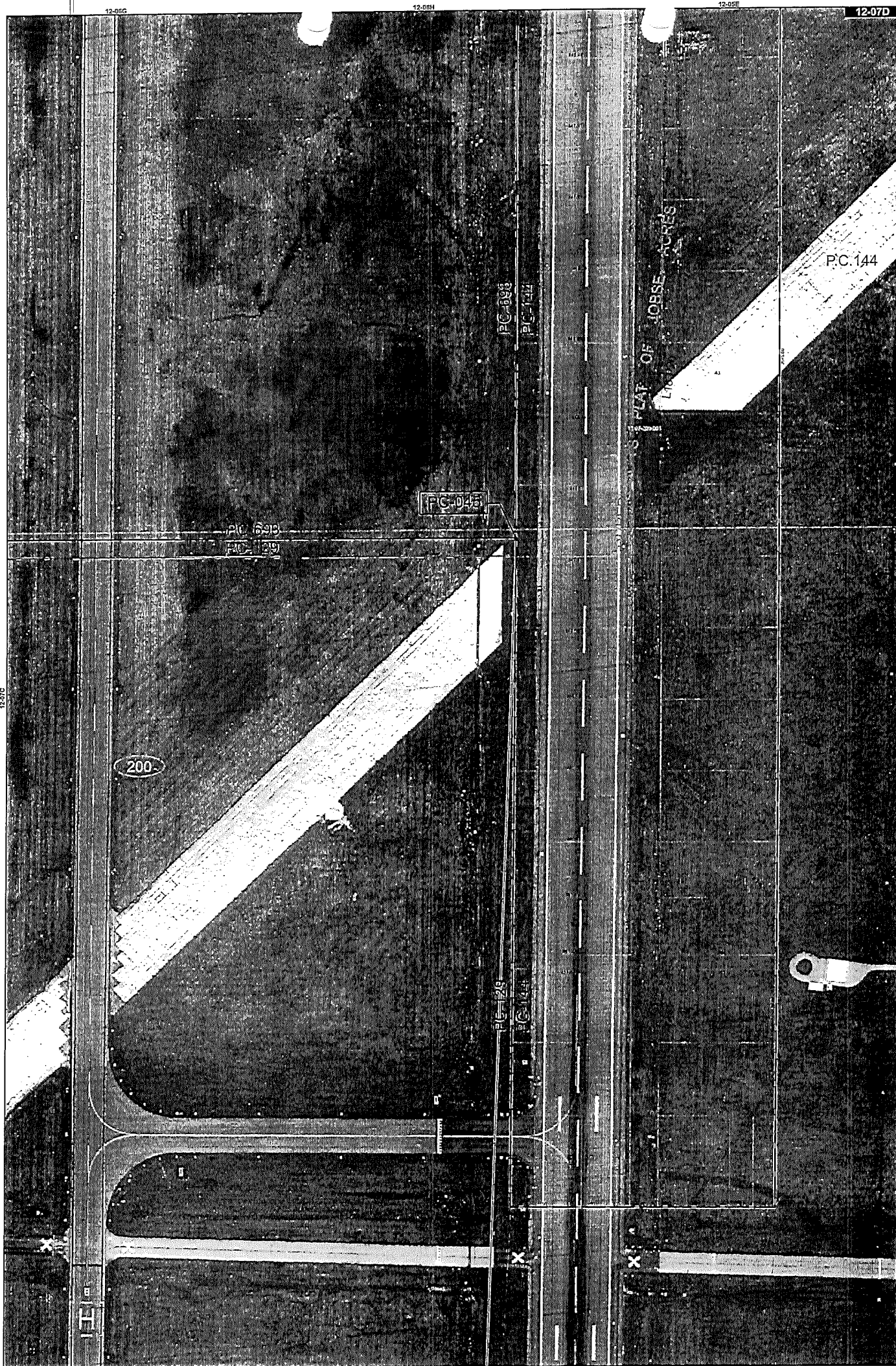
Previously part of 13A
HARRISON TWP.
 W.1/2 N.E.1/4 SEC.7 T.2N. R.14E.

Source: Macomb County Department of Planning and Economic Development
 - 2004 Digital Orthophotography Project
 - Parcel Conversion Project

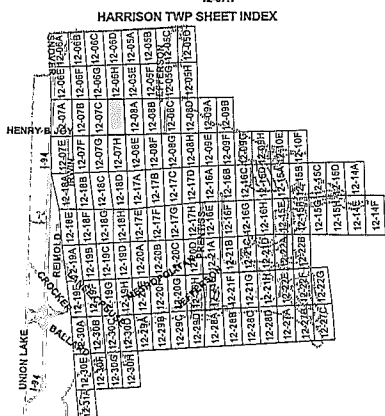
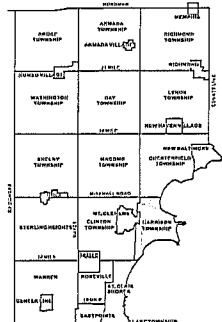
Note:
 Digital Orthophotography horizontal positioning accuracy is 3 feet. Parcel boundary lines should be considered a graphical representation and not in any way a legal survey or engineering document. In general, the horizontal positioning and length accuracy is within 15 feet.
 This map is intended for general planning purposes. Site specific evaluation should be verified by field inspection. This is a work in progress and may contain errors and omissions. Please report any potential revisions to 586-468-5265.



GIS MACOMB COUNTY
 Planning and Economic
 Development Department



Date of Photography: April 2004
 100 50 0 100 200 Feet
 1:1,200



DESCRIPTION OF PERMANENT REAL ESTATE INDEX NUMBER
13-19-302-018

Legend

- Platted Area Boundary Line
- Property Line
- Property Split Line
- Township Boundary Line
- Traverse Line
- Dimension Extent Marks
- Dimension Start Marks

12-07D
 Previously part of 12-04
 HARRISON TWP.
 E. 1/2 N.E. 1/4 SEC. 7 T. 2N. R. 14E.

Source: Macomb County Department of Planning and Economic Development
 - 2004 Digital Orthophotography Project
 - Parcel Conversion Project

Note:
 Digital Orthophotography horizontal positioning accuracy is 3 feet. Parcel boundary lines should be considered a graphical representation and not in any way a legal survey or engineering document. In general, the horizontal positioning and height accuracy is within 15 feet.
 This map is intended for general planning purposes. Site specific evaluation should be verified by field inspection. This is a work in progress and may contain errors and omissions. Please report any potential revisions to (586)469-5285.

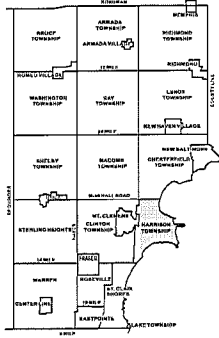
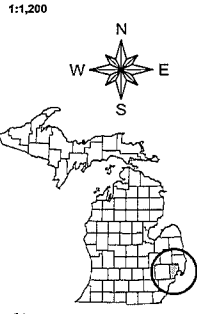


MACOMB COUNTY
 Planning and Economic
 Development Department

Published: Aug 30, 2005



Date of Photography: April 2004
 100 50 0 100 200 Feet



HARRISON TWP SHEET INDEX

12-06A	12-06B	12-06C	12-06D	12-06E	12-06F	12-06G	12-06H	12-06I	12-06J	12-06K	12-06L	12-06M	12-06N	12-06O	12-06P	12-06Q	12-06R	12-06S	12-06T	12-06U	12-06V	12-06W	12-06X	12-06Y	12-06Z
--------	--------	--------	--------	--------	--------	--------	--------	--------	--------	--------	--------	--------	--------	--------	--------	--------	--------	--------	--------	--------	--------	--------	--------	--------	--------

DESCRIPTION OF PERMANENT REAL ESTATE INDEX NUMBER

13-19-302-018

AREA NUMBER	SUB AREA NUMBER	BLOCK NUMBER	PARCEL NUMBER
13-19-302-018	13-19-302-018	13-19-302-018	13-19-302-018

- Legend**
- Platted Area Boundary Line
 - Property Line
 - Property Split Line
 - Property Combined Line
 - Township Boundary Line
 - Traverse Line
 - Dimension Extent Marks
 - Dimension Start Marks

12-06H
 HARRISON TWP.
 E. 1/2 S.E. 1/4 SEC. 6 T. 2N. R. 14E.

Source: Macomb County Department of Planning and Economic Development
 - 2004 Digital Orthophotography Project
 - Parcel Conversion Project

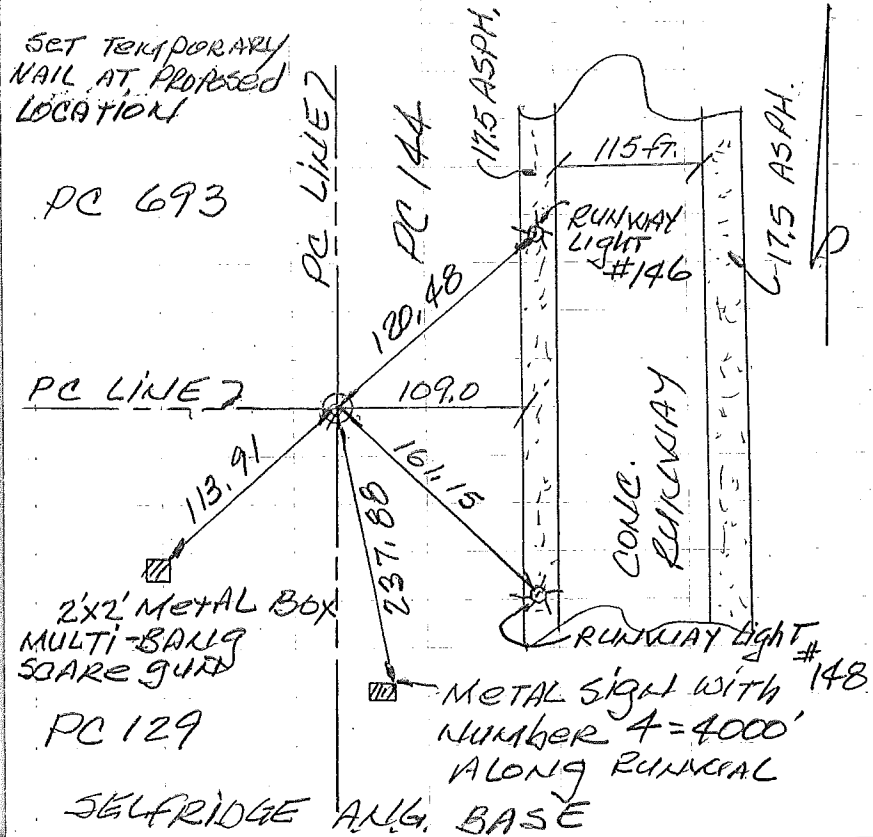
Note:
 Digital Orthophotography horizontal positioning accuracy is 3 feet. Parcel boundary lines should be considered a graphical representation and not in any way a legal survey or engineering document. In general, the horizontal positioning and length accuracy is within 15 feet.
 This map is intended for general planning purposes. Site specific evaluation should be verified by field inspection. This is a work in progress and may contain errors and omissions. Please report any potential revisions to (586)468-5265.



GIS MACOMB COUNTY
 Planning and Economic
 Development Department

9-18-2014 PC-045
RS BS

N.E. CORNER of PC 129
COMMON with a deflection
PT. CONTROLLING A SOUTH AND
EAST LINE of PC 693 ALSO
being on the WESTERLY
LINE of PC 144



SET MONUMENT
PC-045

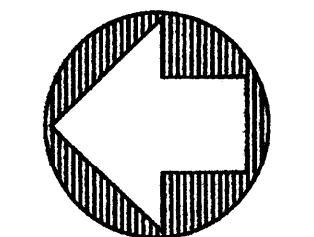
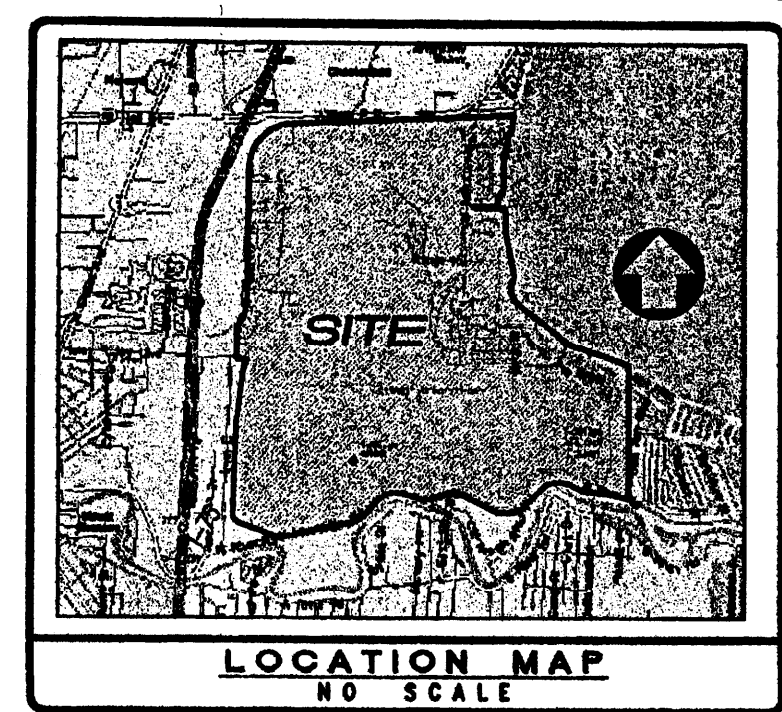
WITNESSES

S. 45° W. 113.91 FT. TO THE
N.E. CORNER of A 2'x2' METAL
BOX WITH A MULTI-BANG
ANIMAL SCARE GUN

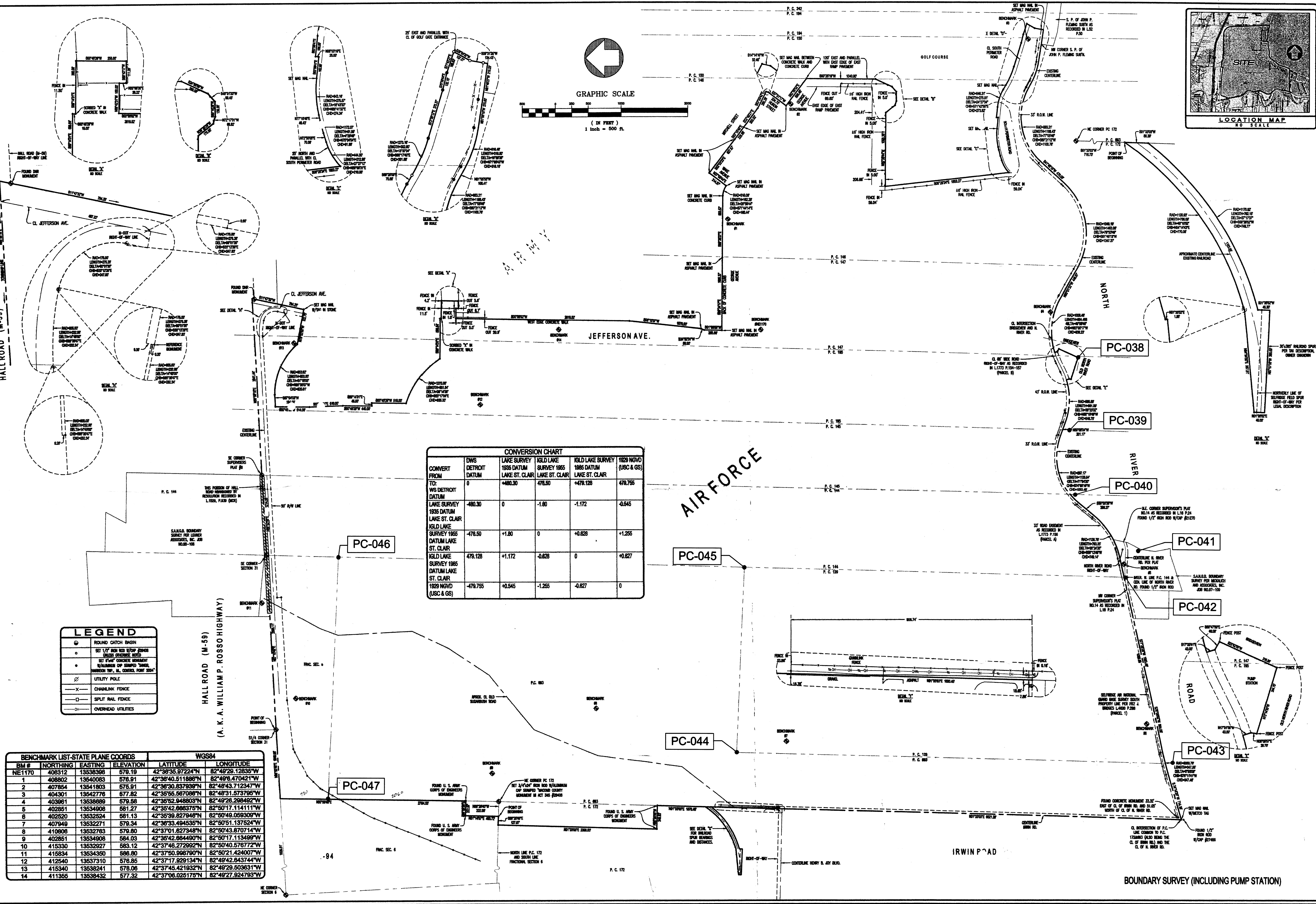
S. 10° E. 237.88 FT. TO THE
N.E. CORNER of A METAL
SIGN WITH THE NUMBER 4
MEANING 4,000 FT. ALONG THE
RUNWAY

S. 50° E. 161.15 FT. TO RUNWAY
LIGHT #148

N. 45° E. 120.48 FT. TO RUNWAY
LIGHT #146



GRAPHIC SCALE
(IN FEET)
1 inch = 500 ft.

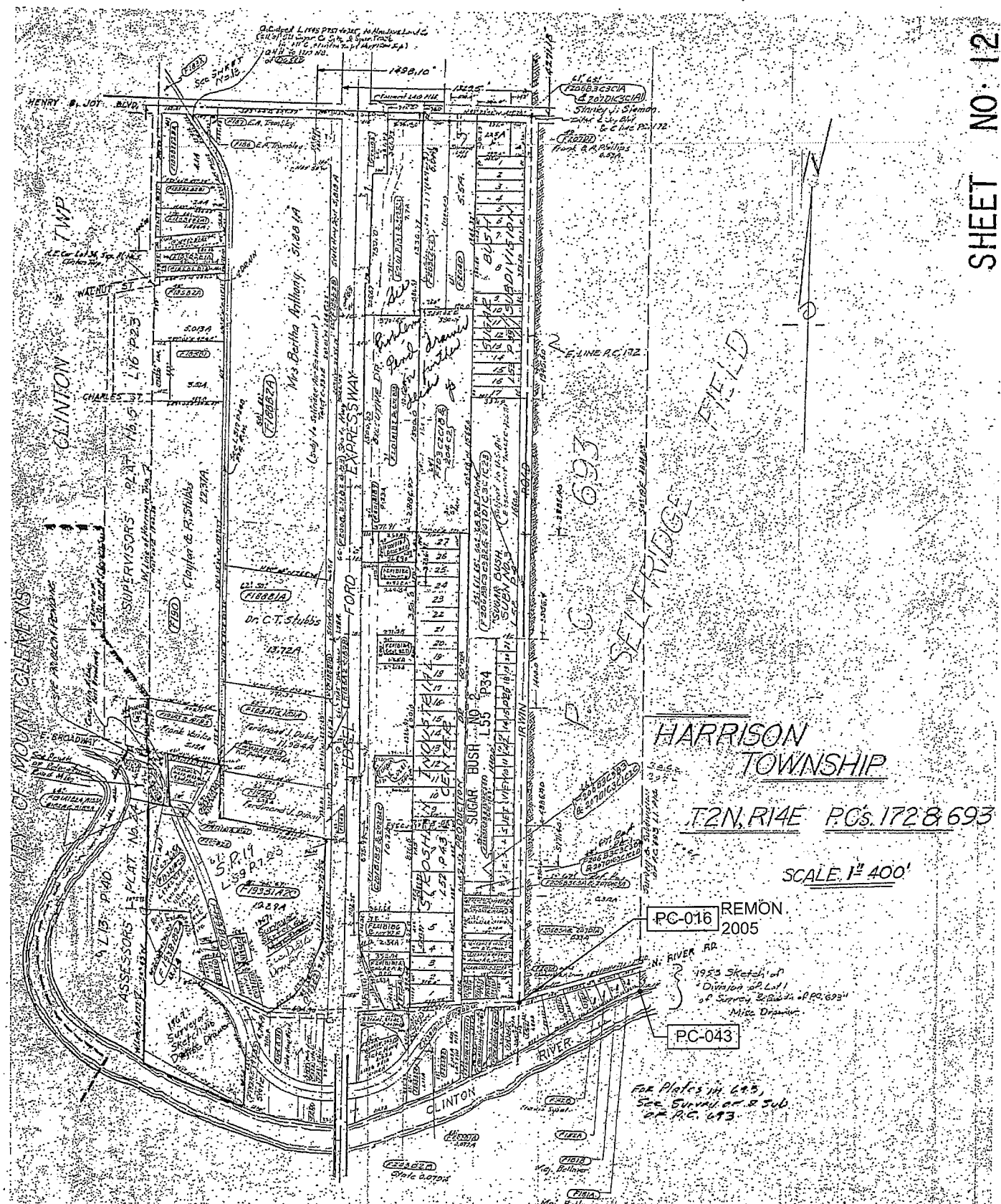


CONVERSION CHART					
CONVERT FROM	DWS DETROIT DATUM	LAKE SURVEY 1935 DATUM LAKE ST. CLAIR	IGLD LAKE SURVEY 1985 LAKE ST. CLAIR	IGLD LAKE SURVEY 1985 DATUM LAKE ST. CLAIR	1929 NGVD (USC & GS)
TO:	WS DETROIT DATUM	+480.30	-1.00	-1.172	-0.545
LAKE SURVEY 1935 DATUM LAKE ST. CLAIR	-480.30	0	-1.00	-1.172	-0.545
IGLD LAKE SURVEY 1985 DATUM LAKE ST. CLAIR	-478.50	+1.80	0	+0.828	+1.255
IGLD LAKE SURVEY 1985 DATUM LAKE ST. CLAIR	-478.50	+1.80	0	+0.828	+1.255
1929 NGVD (USC & GS)	-478.755	+0.545	-1.255	-0.827	0

LEGEND	
	ROUND CATCH BASIN
	SET 1/2\"/>
	SET 3/4\"/>
	SET 1\"/>
	UTILITY POLE
	CHAINLINK FENCE
	SPLIT RAIL FENCE
	OVERHEAD UTILITIES

BENCHMARK LIST-STATE PLANE COORDS					WGS84	
BM #	NORTHING	EASTING	ELEVATION	LATITUDE	LONGITUDE	
NE1170	408312	13638308	579.19	42°36'35.97224\"/>	82°49'29.12835\"/>	
1	408802	13640083	576.91	42°36'40.511888\"/>	82°49'6.470421\"/>	
2	407854	13641803	576.91	42°36'30.837938\"/>	82°48'43.712347\"/>	
3	404301	13642776	577.82	42°36'55.587088\"/>	82°48'31.573795\"/>	
4	403961	13638889	579.58	42°36'52.948803\"/>	82°48'28.298492\"/>	
5	402851	13634908	581.27	42°35'42.866375\"/>	82°50'17.114111\"/>	
6	402520	13632524	581.13	42°35'39.827946\"/>	82°50'49.059306\"/>	
7	407949	13632271	578.34	42°36'33.494535\"/>	82°50'51.137524\"/>	
8	410808	13632783	579.80	42°37'01.827348\"/>	82°50'43.870714\"/>	
9	402851	13634908	584.03	42°35'42.864490\"/>	82°50'17.113499\"/>	
10	415330	13632927	583.12	42°37'46.272992\"/>	82°50'40.576772\"/>	
11	415834	13634360	586.80	42°37'50.998790\"/>	82°50'21.424007\"/>	
12	412540	13637310	578.85	42°37'17.929134\"/>	82°49'42.643744\"/>	
13	415340	13638241	578.06	42°37'45.421932\"/>	82°49'29.503631\"/>	
14	411355	13638432	577.32	42°37'06.025178\"/>	82°49'27.924793\"/>	

DATE 05/11/04	REVISOR	DATE 02/14/05	BY CSD	DRAWN BY: CSD	 22804 STEPHENS WARREN, MI 48090 TEL: (800) 785-5770 • FAX (800) 785-5774 HTTP: www.metcoinc.com		S. A. N. G. BASE BOUNDARY SURVEY	CLIENT: S. A. N. G. BASE	JOB NUMBER 03-132
SCALE 1" = 500'	ADDED WGS84 COORDINATES								SHEET NUMBER 1 OF 3



HARRISON TOWNSHIP

T.2N, R.14E P.C.s. 172 & 693

SCALE 1" = 400'

PC-016 REMON 2005

PC-043

For Plats in 693, See Survey of 2540 of P.C. 693.

P. C. 144

SECTION 31 CHESTERFIELD TWP

FRL SEC 1
OF CLINTON TWP

PC-047

PC-046

P. C. 693

PC-001 REMON
2005

SELFRIEDGE FIELD

PC-044

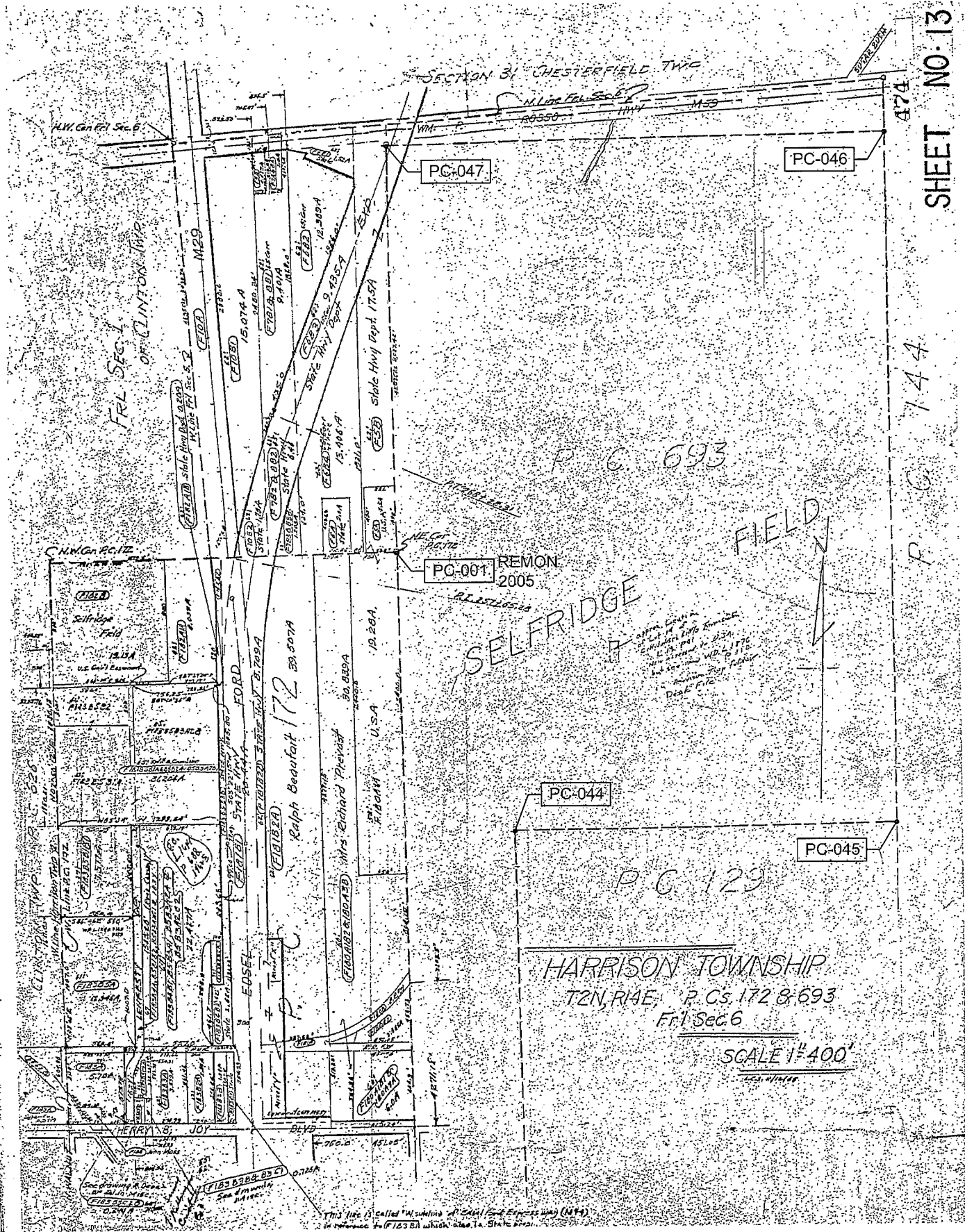
PC-045

P. C. 123

HARRISON TOWNSHIP
T2N, R14E, P. Cs. 172 & 693
Frl Sec 6

SCALE 1"=400'

This line is called "Mainline of Canal State Expressway" (NY 19)
in reference to (1728) which also is a State Road.



N. 489ⁿ North Side of River Huron

Description No 129 Confirmed to
James Connor Commencing at a post
standing on the border of River Huron
between this tract and a tract of un-
conceded land, thence north one hun-
-dred and ten chains fifty two links
to a post thence East sixty chains fifty
links, to an Elm Tree standing on the
west line of a tract confirmed to John
Fucker, thence South ninety eight chains
forty five links, to a Swamp Oak Tree
thence South fifty seven degrees East six
chains, fifty links, to an oak tree
standing on the border of River Huron
thence along the border of said River up
stream South fifteen degrees East twenty
chains thence South thirty nine degrees
west six chains, thence South eighty nine
degrees west twenty chains, thence South
seventy seven degrees west fifteen chains
thence north twenty five degrees west
six chains, thence North twenty three
degrees East fifteen chains, thence north
seventy three degrees west eight chains,
thence South sixty four degrees west nine
chains seventy three links, to the place of
beginning, containing five hundred
and ten acres.

Detroit July 14. 1810

Samuel Griceley Surveyor
of private Claims.

No. 489

No. 129 Confirmed to
James Connor

NORTH SIDE OF RIVER HURON

Description No. 129 Confirmed to James Connor commencing at a post standing on the border of River Huron between this tract and a tract of unconceded land, thence north one hundred and ten chains sixty two links, to a post thence east forty chains fifty links to an Elm Tree standing on the west line of a tract confirmed to John Tucker, thence South ninety eight chains forty five links, to an Swamp Oak Tree thence south sixty seven degrees east six chains sixty links to an oak tree standing on the border of River Huron thence along the border of said River up stream south sixteen degrees east twenty chains, thence south thirty nine degrees west six chains, thence south eighty nine degrees west twenty chains, thence south seventy seven degrees west sixteen chains, thence north twenty five degrees west six chains, thence north twenty three degrees east sixteen chains thence north seventy three degrees west eight chains, thence south sixty four degrees west nine chains seventy three links to the place of beginning, containing five hundred and ten acres _____

Detroit July 14, 1810

Aaron Greeley Surveyor
of private claims

N^o. 571. North Side of River Huron.

Description. N^o. 698 Conformed to
William Connor commencing at a post
standing on the North border of River Huron
between this tract and a tract Conformed
to John Helm Junior; thence North
two hundred and one chains thirty
seven links, to a post standing between
this tract and unconceded lands, thence
East fifty three chains fifty links; to a post
standing on the West line of a tract Con-
formed to John Sucker. Thence South
Eighty four chains forty seven links, to
an Elm tree the North east Corner of a
tract Conformed to James Connor, thence
West forty chains fifty links, to a post
the North west Corner of said James
Connor's tract. Thence South one hundred
and ten chains fifty two links, to a
post standing on the North border of
River Huron thence along the border
of said River up stream South Six-
ty four degrees West fourteen chains forty
seven links, to the place of beginning,
Containing Six hundred acres.

Detroit Oct 23^d 1810

Aaron Greeley Surveyor
of private Claims.

No. 571

No. 693 Confirmed to
William Conner

NORTH SIDE OF RIVER HURON

Description No. 693 Confirmed to William Conner commencing at a post standing on the north border of River Huron between this tract and a tract confirmed to John Askin, Junr, thence north two hundred and one chains thirty seven links to a post standing between this tract and unconceded lands, thence east fifty three chains fifty links to a post standing on the west line of a tract confirmed to John Tacker, thence south eighty four chains forty seven links to an elm tree the northeast corner of a tract confirmed to James Conner, thence west forty chains fifty links to a post the northwest corner of the said James Conner tract, thence south one hundred and ten chains sixty two links to a post standing on the north border of River Huron thence along the border of said river up stream south sixty four degrees west fourteen chains forty seven links to the place of beginning, containing six hundred acres —

Detroit 23d, Oct. 1810.

Jaron Greeley Surveyor
of private claims

441

North Side of River Huron.

13

N^o 4870 North Side of River Huron.
Section 13 14 & Confirmed to John
Stucker commencing at an oak tree -
standing on the border of River Huron -
between his tract and a tract Confirmed
to James Connor. Thence north thirty
seven degrees west Six chains fifty links,
to a Slender Oak Tree Thence south three
hundred and fifty two chains seventy
eight links to a post. Thence East -
Over sixteen chains eighty links to a post.
The North west Corner of a tract Con-
firmed to Edward Stucker. Thence South -
three hundred and forty eight chains -
forty one links to a post standing on
the border of River Huron. thence along
the border of said River up stream -
South thirty five degrees thirty minutes
west twenty chains twenty links to the
place of beginning containing Six hun-
dred and thirty nine acres. -

Detroit July 14. 1810 -

Aaron Gocceley Surveyor
of private Claims.

144

No. 487

No. 144 Confirmed to
John Tucker

NORTH SIDE OF RIVER HURON

Description No. 144 Confirmed to John Tucker commencing at an oak tree standing on the border of River Huron between this tract and a tract confirmed to James Connor thence north sixty seven degrees west six chains sixty links to a swamp oak tree thence north three hundred and sixty two chains twenty eight links to a post, thence east seventeen chains eighty links, to a post the north west corner of a tract confirmed to Edward Tucker, thence south three hundred and forty eight chains forty one links, to a post standing on on the border of River Huron, thence along the border of said River up stream south thirty five degrees thirty minutes west twenty chains twenty___ links, to the place of beginning, containing six hundred and thirty nine acres _____

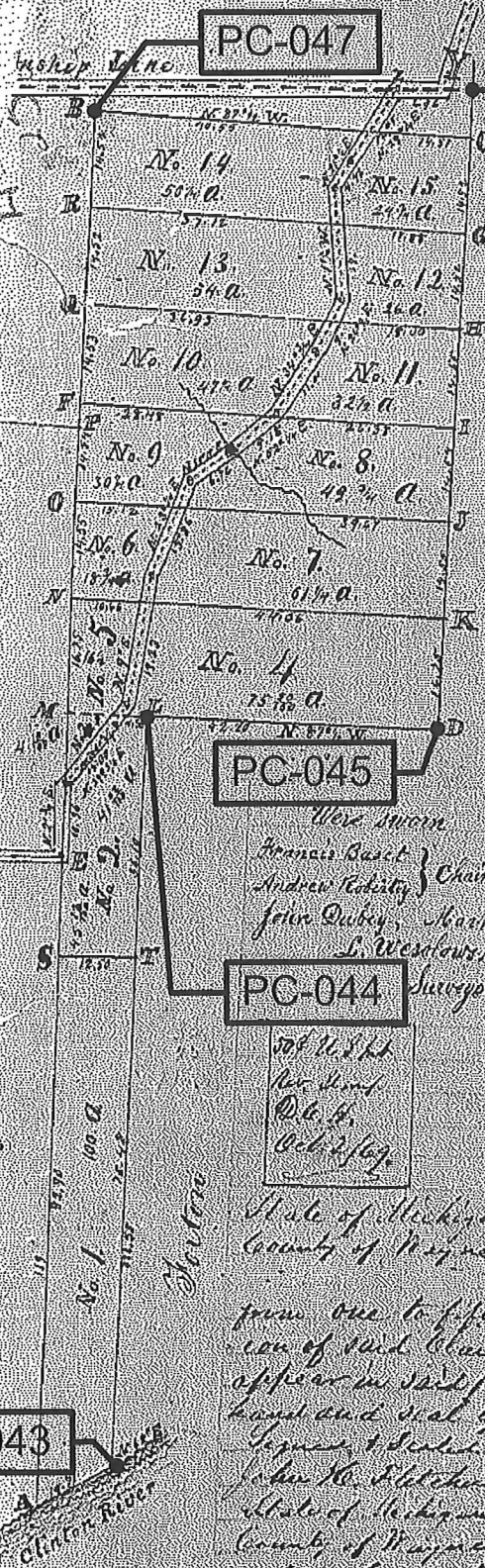
Detroit July 14, 1810

Haron Greeley Surveyor
of private claims

Recorded for Record this 5th day of October A.D. 1869 at 10 o'clock A.M. A.M. Keller, Register

SURVEY and SUBDIVISION of P.C. 693. T. 2. N. R. 14. E

Subdivided, September, 28th, 29th, and 30th, 1869. Name of compass 1 1/2° E. - Scale, 20 chains to 1 inch



- Witness to the corners
- At A. Post on the border of Clinton River
- B Beach 8 inches S 88° W 10 links distant to Survey 6 inches N 42° E 6 1/2 links distant
- C Elm 11 corner original
- D Black Ash 20 " S 68° W 26 " - 20 inches S 42° E 28 links distant
- E Beach 18 inches " S 80° E 45 links distant to beach 14 inches S 59° W 76 1/2 links
- F Black Ash 20 inches " S 57 1/2° E 25 1/2 links distant to beach 16 inches S 55 1/2° W 42 links distant
- G Black Ash 8 inches at 70° W 15 links distant Beach 6 inches N 45° E 41 links distant
- H Beach 12 inches at 61° E 16 links distant Beach 6 inches S 52° E 13 1/2 links distant
- I Elm 6 inches diameter the corner
- J Black Ash 10 " " " "
- K Elm 16 inches the corner
- L Beach 12 " " S 21° W 12 1/2 links distant Survey 8 inches S 59° W 45 links distant
- M Black Oak 14 " " S 65° W 25 " " Survey 5 " S 20° W 14 " " Hickory 12 inches diameter S 59° E 44 " " "
- N Black Ash 9 inches the corner
- O Beach 10 inches at 77° W 22 links distant Survey 19 inches S 84° E 31 1/2 links distant
- P
- Q Maple 18 inches diameter corner
- R Elm 12 " " S 84° W 22 links distant Survey 10 inches N 45° E 18 1/2 links distant
- S White Ash 24 " " S 67° W 26 1/2 links distant Survey 13 inches S 48° E 50
- T Elm 10 inches S 29 1/2° W 46 1/2 links distant Black Ash 12 inches S 44° E 23 1/2 links distant

Survey of Road from lot 4 to 7 on the West. At A Beach 18 inches diameter S 80° E 45 links distant to Beach 14 inches S 59° W 76 1/2 links -
 Thence N 27 1/2° E 10 1/2 to beach 4 inches in diameter, Thence N 59 1/2° E 18 to top stake, Thence N 9° E 19 1/2 to Passer's
 Stake, Thence N 25 1/2° E 15 1/2 to stake, Thence North S 1° W 6 1/2 to beach 10 inches, Thence N 52° E 9 1/2 to beach 4 inches
 Stake, Thence N 54 1/2° E 11 1/2 to stake, Thence N 26 1/2° E 9 1/2 to stake, Thence N 18 1/2° W 7 1/2 to stake, Thence N 21 1/2° E 4 1/2 to
 5 1/2 links distant to a beach 18 inches in diameter, Thence along the way 1 1/2 links N 88° E 1/2
 to a White Birch 20 inches in diameter standing on the corner of Road to West Baltimore. Surveyed March 6, 1850
 September 29, 1869 when the N 29 1/2° E 12 1/2 actually found by measurement 12 1/2 chains
 E. Wasilowski Surveyor

State of Michigan, I, Arthur J. Robertson of Ingham County, do hereby certify that I am the proprietor & owner of that parcel of land in Macomb County
 County of Ingham Michigan known as Parcel 693, and do hereby certify that I have subdivided the same into lots & have caused said lots to be numbered
 from one to fifteen inclusive and as the same are marked on said plat, and the Map and plat hereto annexed is said subdivision
 map of said claim, as also the survey & remarks as to corners, distances, bearings, trees & monuments as the same are made and
 signed and sealed by my attorney duly appointed in writing this second day of October 1869
 Arthur J. Robertson
 John H. Blitcher, Charles S. Halsey

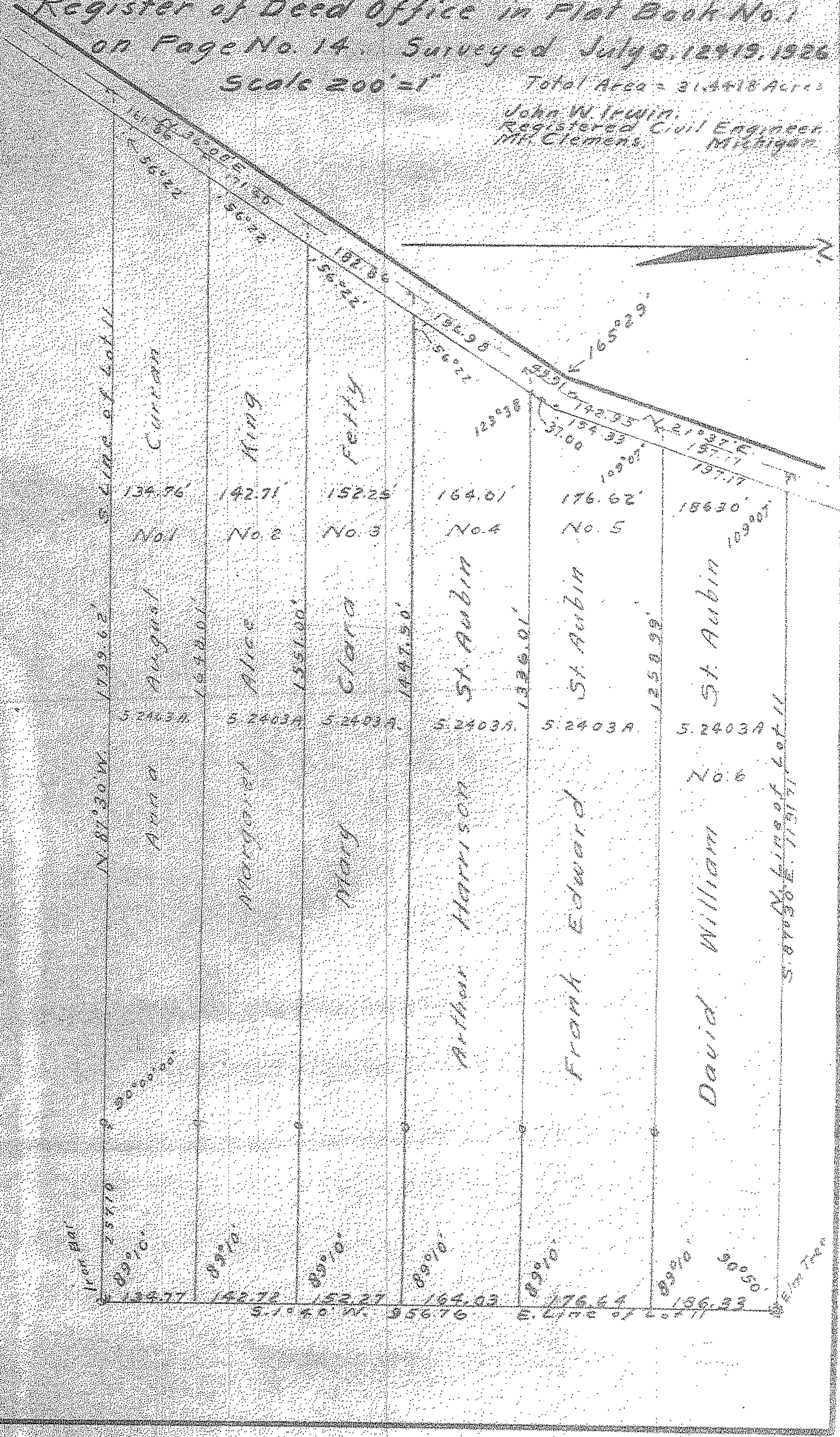
State of Michigan, On the 2nd October 1869 personally appeared before me the undersigned the above named Arthur J. Robertson
 County of Ingham Michigan and he acknowledged the same to be the free act & deed of said Arthur J. Robertson
 Arthur J. Robertson
 Charles S. Halsey

PC-043

1-222-19.475

Plot of Partition of
 Louis St. Aubin Farm Located in Lot No. 11
 of the Subdivision of P.C. No. 693, T2N R.14E.
 According to Plot of Record in the Macomb Co
 Register of Deed Office in Plat Book No. 1
 on Page No. 14. Surveyed July 8, 12 1919, 1926
 Scale 200' = 1" Total Area = 31.4618 Acres

John W. Irwin,
 Registered Civil Engineer,
 Mt. Clemens, Michigan.



3

"C.H. JOBSE'S LITTLE FARMS SUBDN."

June 25-1929
L. S. K. House

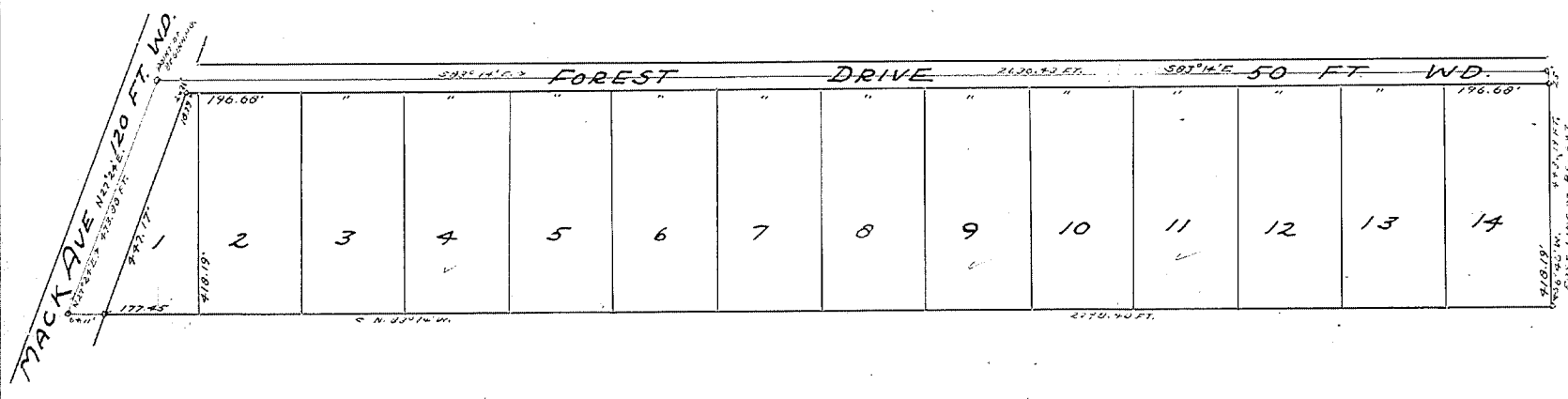
OF NLY PART OF LOT 7 ROBERTSON'S SUBDN OF P.C. 693 T. 2 N. R. 14 E.

HARRISON TWP. MACOMB CO., MICH.

Scale = 200 ft per inch.



WALTER C. WOOD,
REG. CIVIL ENGINEER,
657-54 EQUITY BLDG,
DETROIT MICH.



DESCRIPTION

The land embraced in the annexed plat of C.H. Jobse's Little Farms Subdn is described as follows: Beginning at the intersection of Mack Ave. & Forest Drive in Nly part of Lot 7 of Robertson's Subdn of P.C. 693 T. 2 N. R. 14 E. Harrison Twp. Macomb Co. Mich.; thence S 83° 14' E. 2670.45 ft.; thence S 6° 46' W. 473.15 ft. along East line of P.C. 693; thence N 83° 14' W. 2770.45 ft.; thence N 27° 25' E. 427.00 ft. to the point of beginning.

I HEREBY CERTIFY THAT THE PLAT HEREON DELINEATED IS A CORRECT ONE, AND THAT PERMANENT MONUMENTS CONSISTING OF 2" BY 1/2" PIPES, SET IN CONCRETE BASES 7" IN DIAMETER AND 18" IN DEPTH, HAVE BEEN PLACED IN THE GROUND AT ALL POINTS MARKED THUS (M) AS SHOWN THEREON AT ALL ANGLES IN THE BOUNDARIES OF THE LAND PLATTED, AND AT ALL INTERSECTIONS OF STREETS, WITH THE BOUNDARIES OF THE PLAT.

Walter C. Wood,
REG. CIVIL ENGINEER-SURVEYOR.

Witness my hand and seal this 1st day of Feb 1928
C. H. Jobse a bachelor
Herbert D. Dampf
Notary Public
Ang 5, 1929

Witness my hand and seal this 11th day of Feb 1928
a bachelor
C. H. Jobse
Notary Public
Ang 5, 1929

L. S.
L. S.
L. S.
L. S.

Harrison
February 19 1928
C. H. Jobse
Clur.

Feb. 11 28 James C. Gillett

Dec 28-1928
Charles H. Hammond
Walter D. Steffens
James C. Gillett

Bank of Michigan Corporation
C. H. Jobse Little Farms Subdn of Nly part of Lot 7 of Robertson's Subdn of P.C. 693 T. 2 N. R. 14 E. Harrison Twp. Macomb Co. Mich.

Alexander John (L.S.)
Francis Little Farms Subdn of Nly part of Lot 7 of Robertson's Subdn of P.C. 693 T. 2 N. R. 14 E. Harrison Twp. Macomb Co. Mich.



On this 11th day of December 1928 before me, a Notary Public in and for said County, personally came the above named...
To me personally known, who being sworn, did say that they are the President and Secretary, Treasurer, respectively of the...
a Michigan corporation, and that the seal affixed to said instrument is the corporate seal of said corporation, and the said instrument was signed and sealed on behalf of said corporation by authority of its Board of Directors, and the said...
acknowledged said instrument to be the free act and deed of said corporation.

Donatby A. Posner
Notary Public, in and for Wayne Co. Michigan
My commission expires Feb. 20, 1931

option
holders

- Alexander John (L.S.)
- Francis Little Farms (L.S.)
- Edward J. Hill (L.S.)
- Elizabeth Schofield (L.S.)
- Rosa Verdis (L.S.)
- J. P. Gillett (L.S.)
- Margaret J. Gillett (L.S.)
- Frank Biewski (L.S.)
- Robert Biewski (L.S.)
- Russell E. LeFard (L.S.)
- Betty Walters (L.S.)
- Charles Walters (L.S.)

REGISTER'S OFFICE
County of Macomb
Received for Record this
of JAN 28 1929 A.D. 1929 at
9:00 o'clock A.M. and recorded
in Liber 13 of Plate
on Page 41
Hugh C. Whiting

L. 13
P. 41

4

See Robertson's Subdn of P.C. 693 T. 2 N. R. 14 E. Page 529

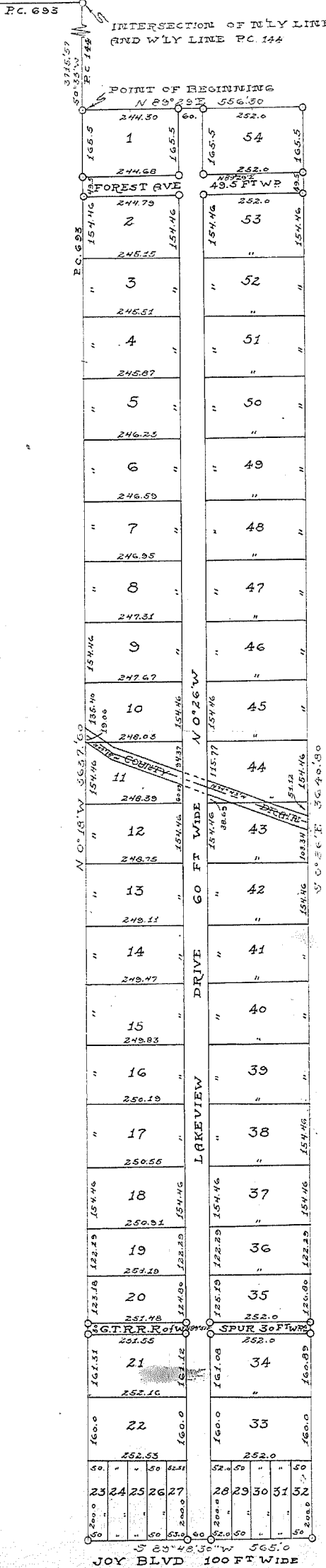
"SUPERVISORS PLAT OF JOBSE ACRES"

PART OF P.C. 144, T2N, R14E,
HARRISON TOWNSHIP, MACOMB COUNTY, MICHIGAN.

6511

Scale - 1 Inch = 200 Feet.

NOTE: All dimensions hereon are in feet and decimals thereof.



DEDICATION

KNOW ALL MEN BY THESE PRESENTS, That I, Floyd W. Ross Supervisor of the Township of Harrison, Macomb County, State of Michigan, by virtue of authority in me vested by Section 51, Act 172, of 1929, having been duly authorized by the Township Board, have caused the land described in the annexed plat to be surveyed, laid out and platted, to be known as "SUPERVISORS PLAT OF JOBSE ACRES" part of P.C. 144, T2N, R14E, Harrison Township, Macomb County, Michigan, and that the streets and alleys as shown on said plat are now being used for such purposes.

Witnesses:
Carl H. Joke
William H. Brandenburg
Floyd W. Ross
 Supervisor of the Township of Harrison.

ACKNOWLEDGMENT

STATE OF MICHIGAN, } ss
 County of Macomb } ss

On this 1st day of July A. D. 1937, before me, a Notary Public in and for said County, personally came the above named Supervisor of the Township of Harrison, known to me to be the person who executed the above dedication, and acknowledged the same to be his free act and deed as such Supervisor.

My Commission Expires: March 6, 1937 Carl H. Joke
 Notary Public in and for Macomb County.

DESCRIPTION OF LAND PLATTED

The land embraced in the annexed plat of "SUPERVISORS PLAT OF JOBSE ACRES," part of P.C. 144, T2N, R14E, Harrison Township, Macomb County, Michigan, is described as follows: beginning at a point 3715.57 ft. S 0°33'W of the intersection of the W'ly line of P.C. 144 with the N'ly line of P.C. 693; thence N 89°29'E 556.3 ft; thence S 0°26'E 3640.8 ft; thence S 89°48'30" W 565 ft; thence N 0°16'W 3637.6 ft. to the point of beginning.

SURVEYOR'S CERTIFICATE

I hereby certify that the plat hereon delineated is a correct one and that permanent metal monuments of not less than one inch in diameter and fifteen inches in length set in a concrete base at least four inches in diameter and forty-eight inches in depth have been placed at points marked thus: "o", as thereon shown at all angles in the boundaries of the land platted, at all the intersections of streets, intersections of alleys, or of streets and alleys, and at the intersections of streets and alleys with the boundaries of the plat as shown on said plat.

Paul W. Hanson
 Registered Civil Engineer.

CERTIFICATE OF MUNICIPAL APPROVAL

This plat was approved by the Township Board of the Township of Harrison at a meeting held July 1 A. D. 1937.

Carl H. Joke
 Township Clerk.

CERTIFICATE OF APPROVAL BY COUNTY BOARD

This plat was approved on the 24th day of February 1937.

Ray A. Collins
 Judge of Probate.
Nelson Gott
 County Clerk.
Carl B. Brandenburg
 County Treasurer.

Examined and Approved
5/3/37
Jameck J. Garrison
 Deput. Auditor General

REGISTER'S OFFICE,
 County of Macomb)

Received for Record this _____ day
 of MAY 1937 A.D. 1937
9:30 o'clock A.M. and Registered
 in Liber 18 of Plats
 on Page 20
Viola Mayette Deputy Register

L. 18
 08 d
 See Resolution for Change of Street Name: See Letter 563 of Sec'ds. - Page 527

5