

INDEX
PC-044
NORTHWEST CORNER P.C. 129
COMMON WITH A DEFLECTION POINT CONTROLLING A
SOUTH AND EAST LINE OF P.C. 693
HARRISON TOWNSHIP,
T2N, R14E

SECTION 1:

1. Index
2. Before Pictures of Point and in Each Cardinal Direction
3. After Pictures of Point

SECTION 2:

1. LCRC
2. Surveyor's Report
3. Sketch of Private Claims (2 pages) (PC 129, PC 693)
4. Sketch of 2014 Private Claims Overview

SECTION 3:

1. 1818 Original Government Survey map (1 page)
2. 1875 Map of Harrison Township (1 page)
3. 1895 Map of Harrison Township (1 page)
4. 1916 Map of Harrison Township (1 page)
5. 2006 Map of Harrison Township (1 page)
6. 2004 Harrison Township Composite Maps (6 pages)
7. 2014 Field Notes with Corner Witnesses (1 page)
8. Undated Selfridge Air Force Base Real Estate Map (1 page)
9. 2004 Boundary Survey S.A.N.G. Base, Metco Services Inc., Steven Dunn, P.S. #28408 (1 page)
10. Undated Addressograph Department drawing Sheets 12 and 13 (2 pages)

SECTION 4:

- | | | | | |
|----|------|--------------------------------------------------------------------------------------------------------------|--------------------------------------|----------------|
| 1. | 1810 | Original Private Claim Notes | Aaron Greeley | (4 pages) |
| 2. | 1869 | Survey & Subdivision of PC 693 | L.Wesolowski, Surveyor | L.1, Pg.14 |
| 3. | 1926 | Plat of Partiton of Louis St. Aubin
Farm located in Lot 11 of the
"Survey and Subdivision of P.C. 693" | John W. Irwin, Civ.Eng. | L.222, Pg. 475 |
| 4. | 1928 | "C.H. Jobse's Little Farms Subd'n"
of N'ly part of Lot 7 Robertson's
Subd'n of P.C. 693 | Walter C. Wood,
Engineer-Surveyor | L.13, Pg.41 |
| 5. | 1937 | "S.P. of Jobse Acres" | Burt W. Howey
Civil Engineer | L.18, Pg.20 |



PC - 044

**N.W. Corner of PC 129 common with a
deflection point controlling a South and East
Line of PC 693**

T.2N.,R.14E. Harrison Twp.



PC - 044

**N.W. Corner of PC 129 common with a
deflection point controlling a South and East
Line of PC 693**

T.2N.,R.14E. Harrison Twp.









LAND CORNER RECORDATION CERTIFICATE
Filing Requirement of Act 74, Mich. P.A. 1970

For corners in

<u>MACOMB</u> (County)	Located In: Harrison Township	Corner Code # <u>PC-044</u>
1. Public Land Survey	T <u>2N</u> R <u>14E</u>	<u>PC-044</u>
	T _____ R _____	_____
	T _____ R _____	_____
	T _____ R _____	_____
2. Property Controlling in Section	S _____ T _____ R _____	_____
	S _____ T _____ R _____	_____
3. Miscellaneous Property in Section	S _____ T _____ R _____	_____
	S _____ T _____ R _____	_____

4138510 PAGE 1 OF 2
 LIBER 23116 PAGE 473
 11/18/2014 09:13:52 A.M.
 MACOMB COUNTY, MI SEAL
 CARMELLA SABAUGH, REGISTER OF DEEDS

Register of Deeds Stamp & File Number

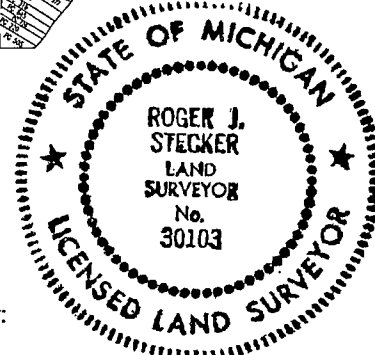
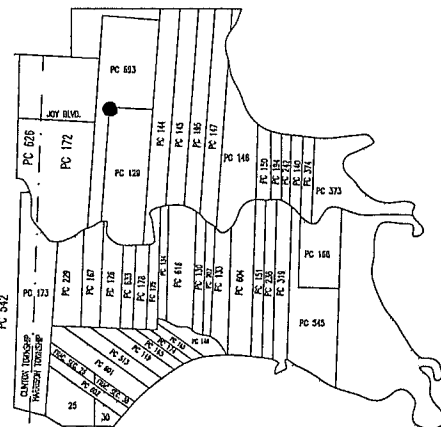
4. Lot No. _____, Recorded Plat _____
 5. Private Claims Northwest Corner of Private Claim 129 Common with a deflection point controlling a south and east line of Private Claim 693

I, ROGER J. STECKER, in a field survey on August 14, 2014 do hereby state that under requirements of P.A. 74, Michigan P.A. of 1970, the corner points mentioned in lines 1 and 2 above were in conformance with regulations and rules therefore as required in the current manual of survey instructions of the United States Department of the Interior, Bureau of Land Management or by a decree of a Court of Law and/or that the corner points mentioned in lines 3, 4 and 5 above were in conformance with the rules of the Michigan Board of Land Surveyors or by a Decree of a Court of Law; re-established, monumented, recovered, found as expressed below:

NOTE: Not more than 2 corners, all in the same town and range, may be recorded on this certificate.

A. Description of original monument and accessories and/or subsequent restoration:

- | | | |
|----------------------------------------------------------------------------------------------------------------|-----------------------------------|----------------|
| 1. 1810 Original Private Claim Notes | Aaron Greeley | (4 pages) |
| 2. 1869 "Survey & Subdivision of PC 693" | L.Wesolowski, Surveyor | L.1, Pg.14 |
| 3. 1926 Plat of Partiton of Louis St. Aubin Farm located in Lot 11 of the "Survey and Subdivision of P.C. 693" | John W. Irwin, Civ.Eng. | L.222, Pg. 475 |
| 4. 1928 "C.H. Jobse's Little Farms Subd'n" of N'y part of Lot 7 Robertson's Subd'n of P.C. 693 | Walter C. Wood, Engineer-Surveyor | L.13, Pg.41 |
| 5. 1937 "S.P. of Jobse Acres" | Burt W. Howey Civil Engineer | L.18, Pg.20 |



B. Description of corner evidence found and/or method applied in restoring or reestablishing corner:
 No evidence of the original post was found. I consider it an obliterated corner.

No evidence of the original post or the common line between Private Claim 693 and Private Claim 129 were found at the described location. I established the Northwest Corner of Private Claim 129 common with a deflection point controlling a south and east line of Private Claim 693 at a record distance and parallel direction from the Northeast Corner of Private Claim 129 based on the plat of "Survey and Subdivision of P.C. 693". The point falls in the center of a 19 foot wide asphalt drive north of a park on Selfridge ANG Base. There are no lines of occupation. The point is marked with a temporary mag nail.

Measurements Between Corners:
FROM NORTHWEST CORNER OF PRIVATE CLAIM 129 (PC-044)
TO SOUTHWEST CORNER OF PRIVATE CLAIM 129 (PC-043)
 7300.92' (110 Chains 62 Links Private Claim Notes)
 7364.28' (111.58 Chains 1869 Plat of "Survey and Subdivision of Private Claim 693")
 7471.04' (Measured Stecker #30103, 2014)
 (continued on sheet 2)

ACCEPTED BY THE MACOMB COUNTY SURVEY PEER GROUP AS THE OFFICIAL CORNER UNDER MICHIGAN PUBLIC ACT 345 OF 1990 AT A MEETING HELD ON 9-9-2014
Martin C. Dunn
MARTIN C. DUNN, P.S. CHAIRMAN

C. Description of monument for corner and accessories established to perpetuate locating the position of the corner:
 I replaced the temporary mag nail with a 3/4" diameter by 24" long iron bar w/2" diameter aluminum cap stamped "Macomb County Monument, MI Act 345, 30103, PC-044"

Witnesses:

- | | | |
|-------|---------|----------------------------------------------------------------------|
| N10°W | 43.37' | Mag nail and Macomb County Witness Tag in east face of a 12" Poplar |
| S15°W | 55.65' | Mag nail and Macomb County Witness Tag in east face of a 48" Poplar |
| S25°E | 123.43' | Mag nail and Macomb County Witness Tag in north face of a 36" Maple |
| N85°E | 153.97' | Mag nail and Macomb County Witness Tag in south face of a 20" Poplar |

The selected location is accepted by me and is generally accepted by Professional Surveyors as the best available evidence of the position of the original corner.

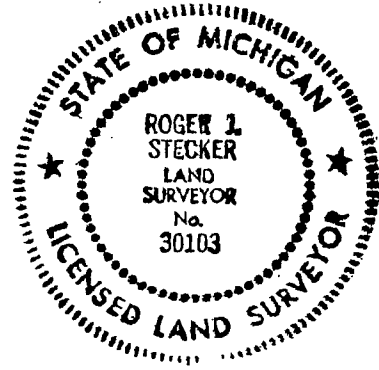
Signed by Roger J. Stecker
 Surveyor's Michigan License No. 30103

Date OCT. 27, 2014

PAGE 2

For corners in

<u>MACOMB</u> (County)	Located In: Harrison Township	Corner Code #
1. Public Land Survey	T <u>2N</u> R <u>14E</u>	<u>PC-044</u>
	T _____ R _____	_____
	T _____ R _____	_____
	T _____ R _____	_____
2. Property Controlling in Section	S _____ T _____ R _____	_____
	S _____ T _____ R _____	_____
3. Miscellaneous Property in Section	S _____ T _____ R _____	_____
	S _____ T _____ R _____	_____



- 4. Lot No. _____, Recorded Plat _____
- 5. Private Claims Northwest Corner of Private Claim 129 Common with a deflection point controlling a south and east line of Private Claim 693

B. Measurements Between Corners:
(Continued from Page 1)

FROM NORTHWEST CORNER OF PRIVATE CLAIM 129 (PC-044)
TO NORTHEAST CORNER OF PRIVATE CLAIM 129 (PC-045)
 2673.00' (40 Chains 50 Links Private Claim Notes)
 2785.20' (42.20 Chains 1869 Plat of "Survey and Subdivision of Private Claim 693")
 2785.20' (Set Stecker #30103, 2014)

SURVEYOR'S REPORT
PC-044
NORTHWEST CORNER P.C. 129
COMMON WITH DEFLECTION POINT CONTROLLING
A SOUTH AND EAST LINE OF P.C. 693
HARRISON TOWNSHIP,
T2N, R14E

GLO HISTORY:

Description of P.C. 129

Commencing at a post standing on the border of the River Huron between this tract and a tract of unceded land, thence north one hundred and ten chains sixty two links, to a post thence east forty chains fifty links to an Elm Tree standing in the west line of a tract confirmed to John Tucker, thence South ninety eight chains forty five links, to an Swamp Oak Tree thence south sixty seven degrees east six chains sixty links to an oak tree standing on the border of River Huron thence along the border of said River up stream south sixteen degrees east twenty chains, thence south thirty nine degrees west six chains, thence south eighty nine degrees west twenty chains, thence south seventy seven degrees west sixteen chains, thence north twenty five degrees west six chains, thence north twenty three degrees east sixteen chains thence north seventy three degrees west eight chains, thence south sixty four degrees west nine chains seventy three links to the place of beginning, containing five hundred and ten acres.

Description of P.C. 693

Commencing at a post standing on the north border of River Huron between this tract and a tract confirmed to John Askin, Junior, thence north two hundred and one chains thirty seven links to a post standing between this tract and unceded lands, thence east fifty three chains fifty links to a post standing on the west line of a tract confirmed to John Tucker, thence south eighty four chains seven links to an elm tree the northeast corner of a tract confirmed to James Conner, thence west forty chains fifty links to a post the northwest corner of the said James Conner tract, thence south one hundred and ten chains sixty two links to a post standing on the north border of River Huron thence along the border of said river up stream south sixty four degrees west fourteen chains seven links to the place of beginning, containing six hundred acres.

EXISTING CONDITIONS:

No evidence of the original post or the common line between Private Claim 693 and Private Claim 129 were found at the described location. I established the Northwest Corner of Private Claim 129 common with a deflection point controlling a south and east line of Private Claim 693 at a record distance and parallel direction from the Northeast Corner of Private Claim 129 based on the plat of "Survey and Subdivision of P.C. 693". The point falls in the center of a 19 foot wide asphalt drive north of a park on Selfridge ANG Base. There are no lines of occupation. The point is marked with a temporary mag nail.

I recommend to the Peer Group to accept the established position of PC-044 as the best evidence of the corner position.

RECORDED & UNRECORDED SURVEYS, & FIELD NOTES:

- | | | | | |
|----|------|--------------------------------------------------------------------------------------------------------------|--------------------------------------|----------------|
| 1. | 1810 | Original Private Claim Notes | Aaron Greeley | (4 pages) |
| 2. | 1869 | Survey & Subdivision of PC 693 | L. Wesolowski, Surveyor | L.1, Pg.14 |
| 3. | 1926 | Plat of Partiton of Louis St. Aubin
Farm located in Lot 11 of the
"Survey and Subdivision of P.C. 693" | John W. Irwin, Civ.Eng. | L.222, Pg. 475 |
| 4. | 1928 | "C.H. Jobse's Little Farms Subd'n"
of N'ly part of Lot 7 Robertson's
Subd'n of P.C. 693 | Walter C. Wood,
Engineer-Surveyor | L.13, Pg.41 |
| 5. | 1937 | "S.P. of Jobse Acres" | Burt W. Howey
Civil Engineer | L.18, Pg.20 |

MEASUREMENTS BETWEEN CORNERS:

FROM NORTHWEST CORNER OF PRIVATE CLAIM 129 (PC-044)

TO SOUTHWEST CORNER OF PRIVATE CLAIM 129 (PC-043)

7300.92' (110 Chains 62 Links Private Claim Notes)

7364.28' (111.58 Chains 1869 Plat of "Survey and Subdivision of P.C. 693")

7473.36' (Measured Stecker #30103, 2014)

FROM NORTHWEST CORNER OF PRIVATE CLAIM 129 (PC-044)

TO NORTHEAST CORNER OF PRIVATE CLAIM 129 (PC-045)

2673.00' (40 Chains 50 Links Private Claim Notes)

2785.20' (42.20 Chains 1869 Plat of "Survey and Subdivision of P.C. 693")

2785.20' (Set Stecker #30103, 2014)

RECOMMENDATIONS:

I replace the temporary mag nail with a 3/4" diameter by 24" long iron bar w/2" diameter aluminum cap stamped "Macomb County Monument, MI Act 345, 30103, PC-044"

WITNESSES: PC-044 CORNER

- | | | |
|-------|---------|----------------------------------------------------------------------|
| N10°W | 43.37' | Mag nail and Macomb County Witness Tag in east face of a 12" Poplar |
| S15°W | 55.65' | Mag nail and Macomb County Witness Tag in east face of a 48" Poplar |
| S25°E | 123.43' | Mag nail and Macomb County Witness Tag in north face of a 36" Maple |
| N85°E | 153.97' | Mag nail and Macomb County Witness Tag in south face of a 20" Poplar |

SKETCH OF PRIVATE CLAIM 129



PC-044

**EAST
40 CHAINS, 50 LINKS
2,673.00'**

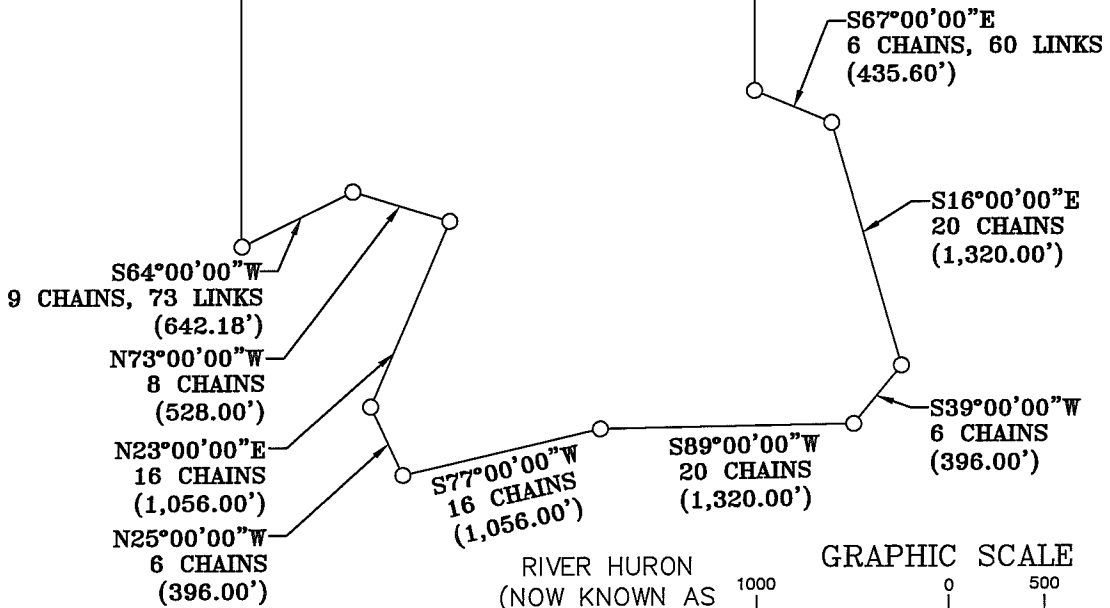
**P.C.
693
WILLIAM CONNOR
TRACT**

**P.C.
129
JAMES CONNOR
TRACT**

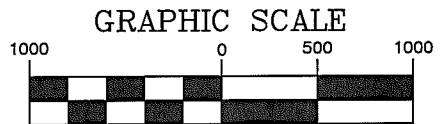
**P.C.
144
JOHN TUCKER
TRACT**

**NORTH
110 CHAINS, 62 LINKS
(7,300.92')**

**SOUTH
98 CHAINS, 45 LINKS
(6,497.70')**



**RIVER HURON
(NOW KNOWN AS
CLINTON RIVER)**



**(IN FEET)
1 inch = 1000 ft.**

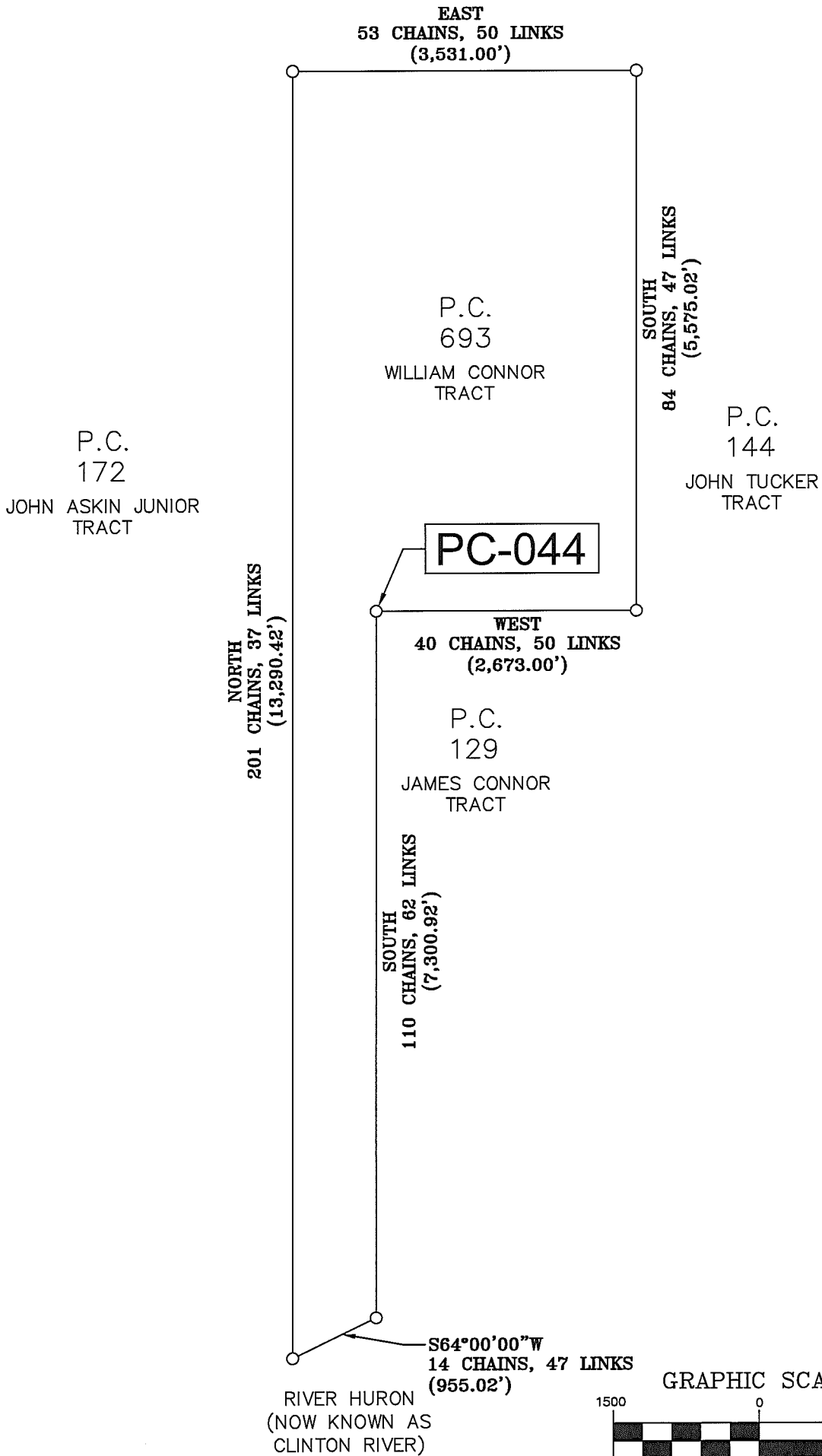
**P.C. 129
Confirmed to James Connor**

Commencing at a post standing on the border of the River Huron between this tract and a tract of unconceded land, thence north one hundred and ten chains sixty two links, to a post thence east forty chains fifty links to an Elm Tree standing in the west line of a tract confirmed to John Tucker, thence South ninety eight chains forty five links, to an Swamp Oak Tree thence south sixty seven degrees east six chains sixty links to an oak tree standing on the border of River Huron thence along the border of said River up stream south sixteen degrees east twenty chains, thence south thirty nine degrees west six chains, thence south eighty nine degrees west twenty chains, thence south seventy seven degrees west sixteen chains, thence north twenty five degrees west six chains, thence north twenty three degrees east sixteen chains thence north seventy three degrees west eight chains, thence south sixty four degrees west nine chains seventy three links to the place of beginning, containing five hundred and ten acres.

Detroit July 14, 1810

Aaron Greeley Surveyor
of private claims

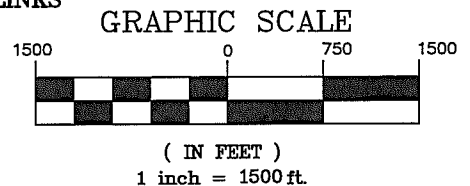
SKETCH OF PRIVATE CLAIM 693



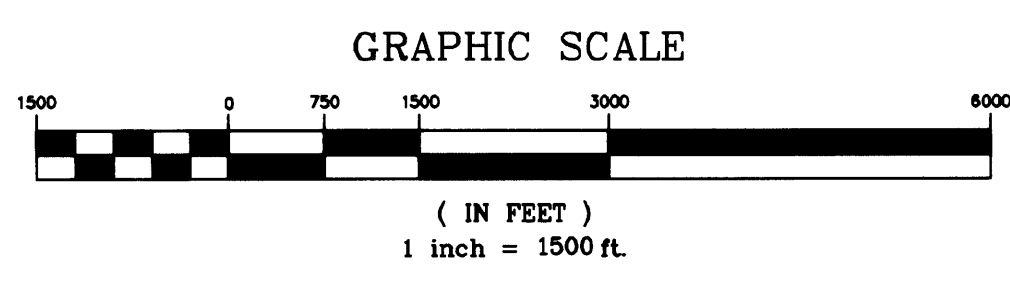
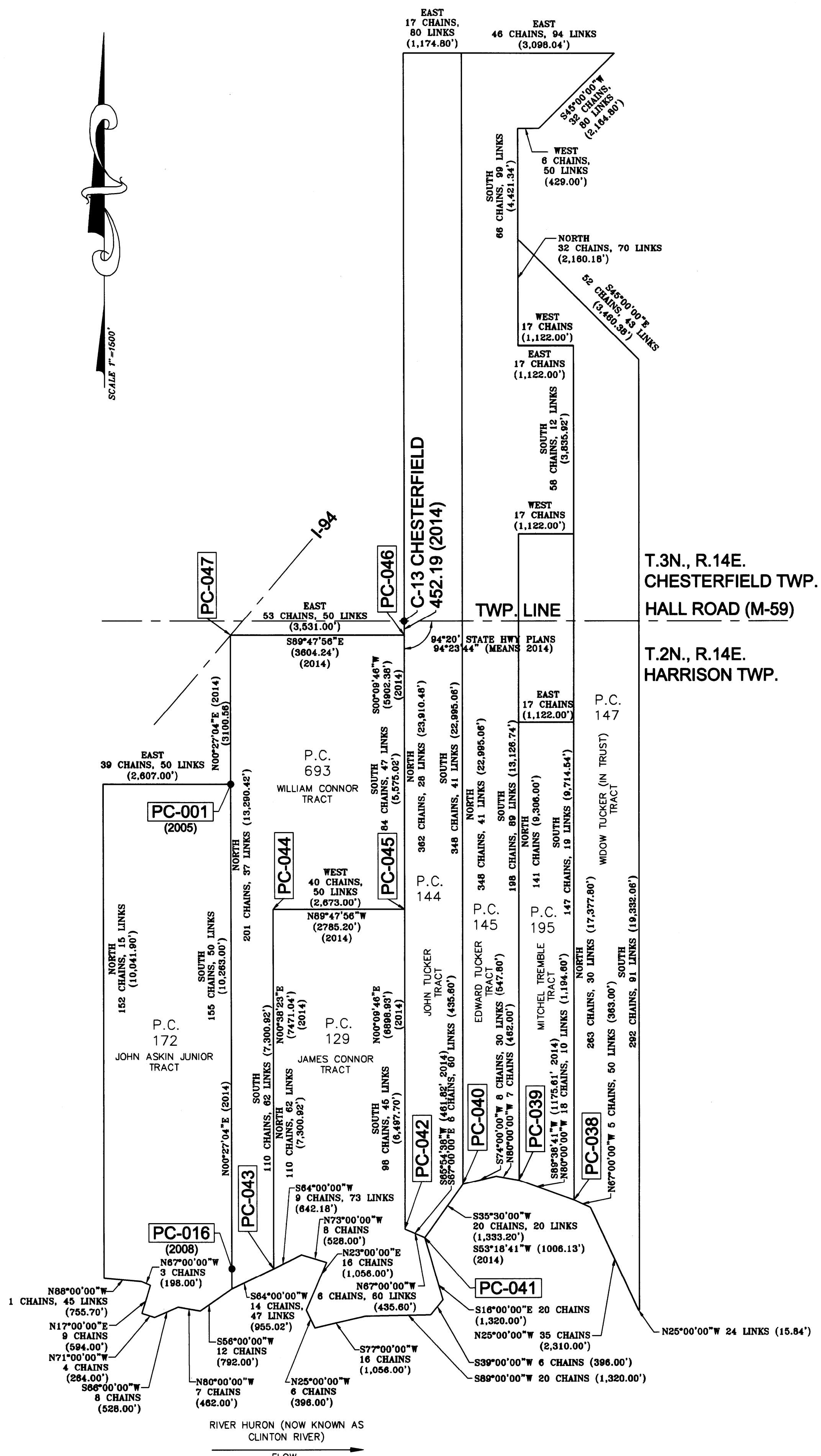
P.C. 693
Confirmed to William Connor

Commencing at a post standing on the north border of the River Huron between this tract and a tract confirmed to John Askin Junior, thence north two hundred and one chain thirty seven links to a post standing between this tract and unconceded lands, thence east fifty three chains fifty links to a post standing on the west line of a tract confirmed John Tucker, thence south eighty four chains forty seven links to an elm tree the northeast corner of a tract conformed to James Connor, thence west forty chains fifty links to a post the northwest corner if the said James Connor tract, thence south one hundred ten chains sixty two links to a post standing on the north border of River Huron thence along the border of said river up stream south sixty four degrees west fourteen chains forty seven links to the place of beginning, containing six hundred acres.

Detroit October 23, 1810



Aaron Greeley Surveyor
of private claims



REV. #	REV. DATE	REV. INFO	CHECKED BY
1	11-20-14	CORRECTIONS PER MACOMB COUNTY REVIEW	R.S.

FILE TRACING:	CHECKED BY:
TWP. DRAWER	R.S.
DATE:	DRAWING FILE NAME
07-14-14	14-089-OA.DWG
DRAWN BY:	SCALE:
R.P.	1" = 1500'

SEAL



LehnerFindlan Associates

Architecture
Engineering

17001 Nineteen Mile Road, Suite 3
Clinton Township, MI 48038
586-412-7050 phone 586-412-7114 fax

Surveying
Planning

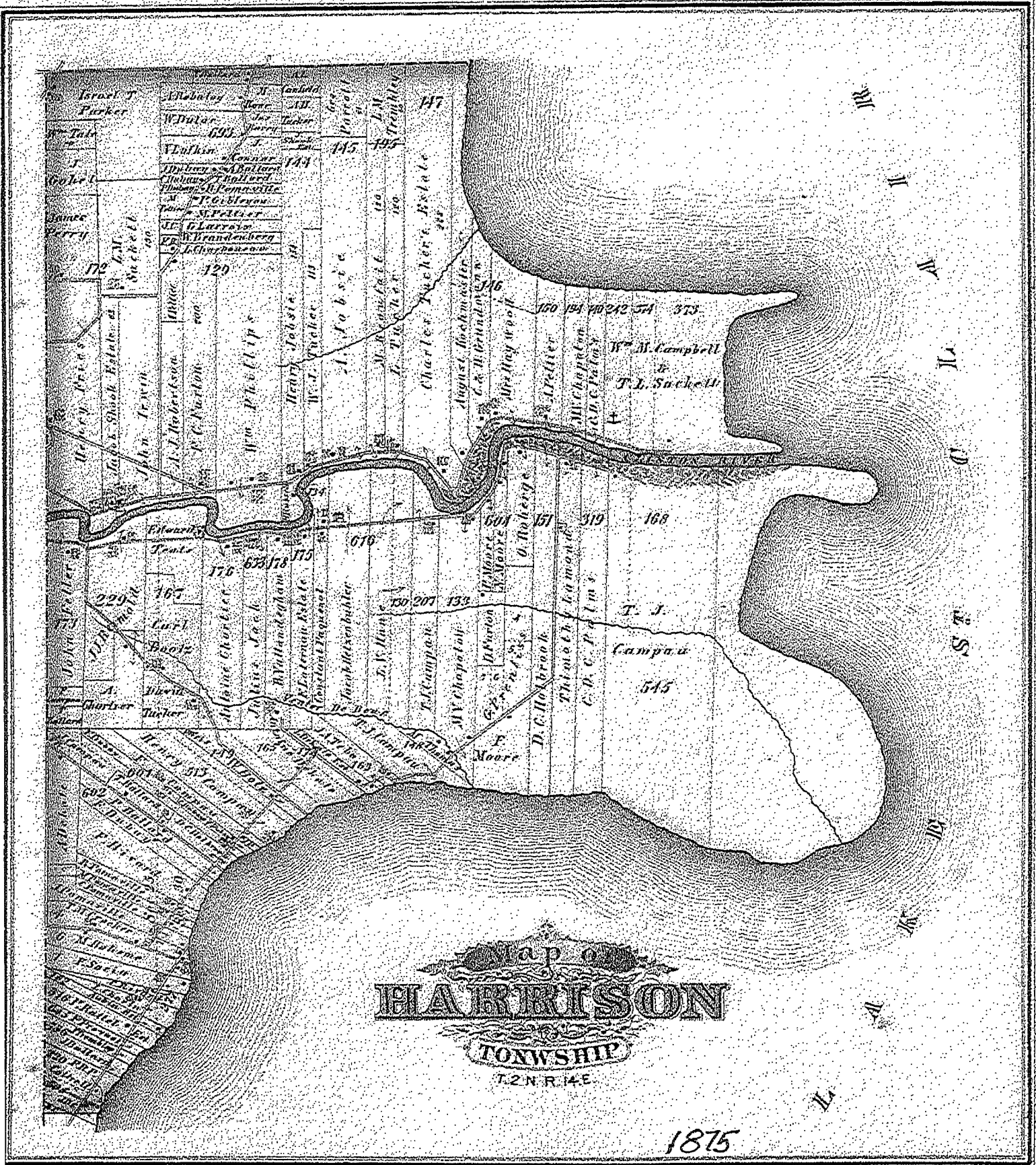
www.lehnerfindlan.com

© COPYRIGHT 2011
PROJECT NAME AND SHEET TITLE:

2014 PRIVATE CLAIMS OVERVIEW

CLIENT INFO:
MACOMB COUNTY REGISTER OF DEEDS
32 MARKET STREET
MT. CLEMENS, MI 48043
(586)469-5175

PROJECT LOCATION:
T.2N., R.14E.
HARRISON TOWNSHIP,
MACOMB COUNTY,
MICHIGAN



HARRISON
TOWNSHIP

T. 2 N. R. 14 E.

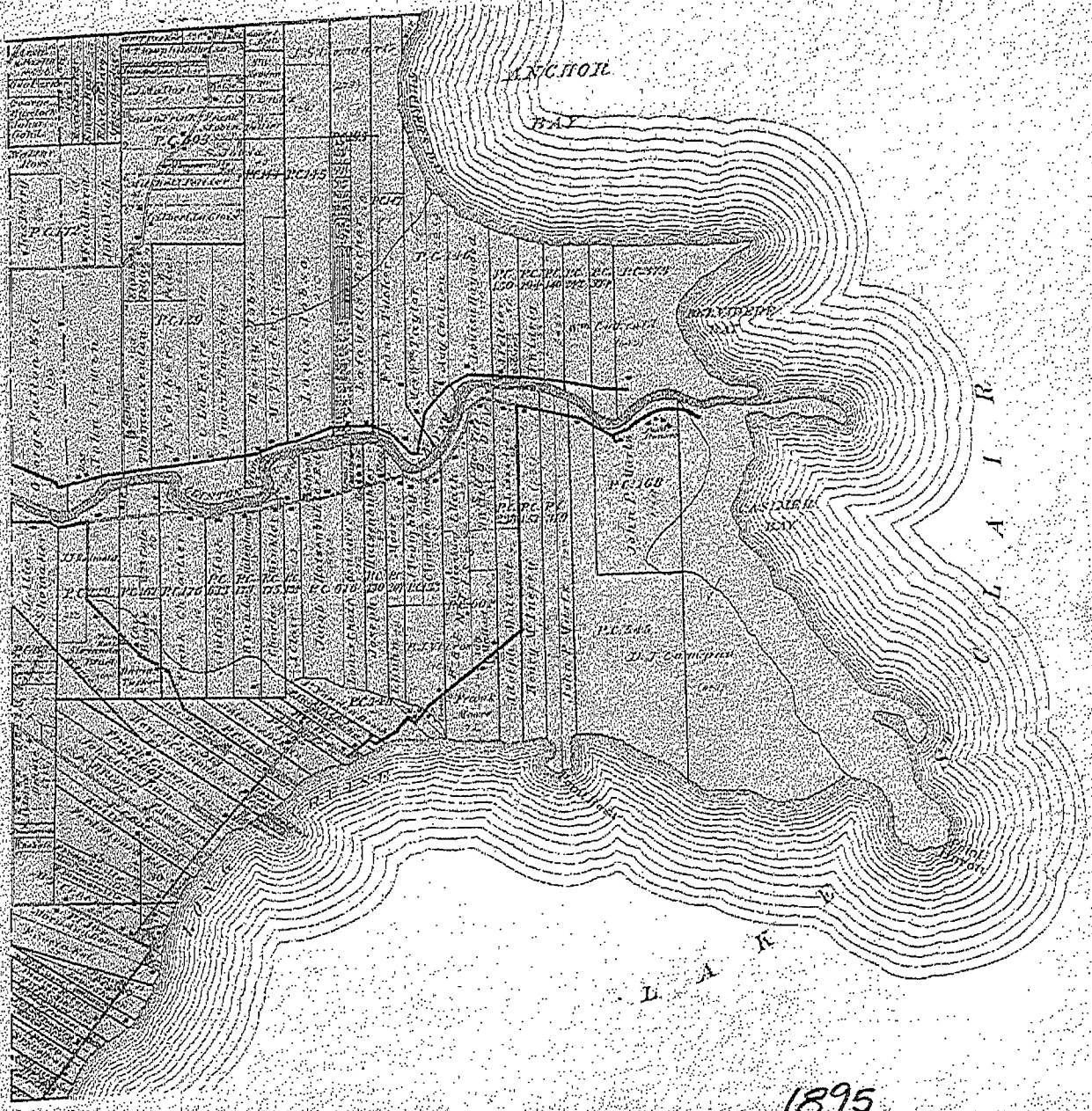
1875

MAP OF HARRISON

Township 2 North Range 14 East

Scale 2 Inches to one Mile.

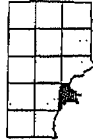
of the Section of Mortgage



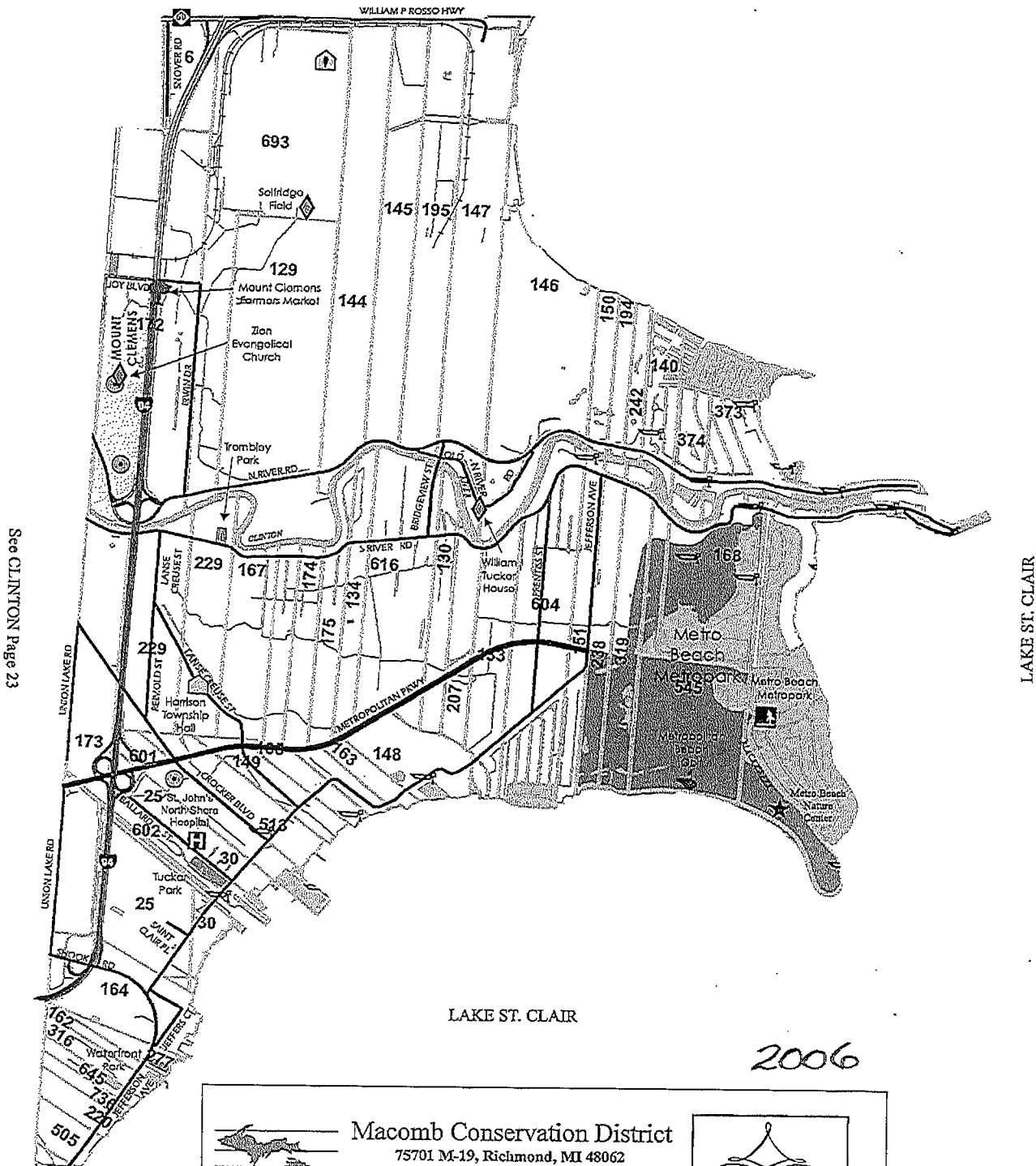
1895

HARRISON

T. 2N. - R. 14E.



See CHESTERFIELD Page 31




See CLINTON Page 23


LAKE ST. CLAIR

LAKE ST. CLAIR

2006

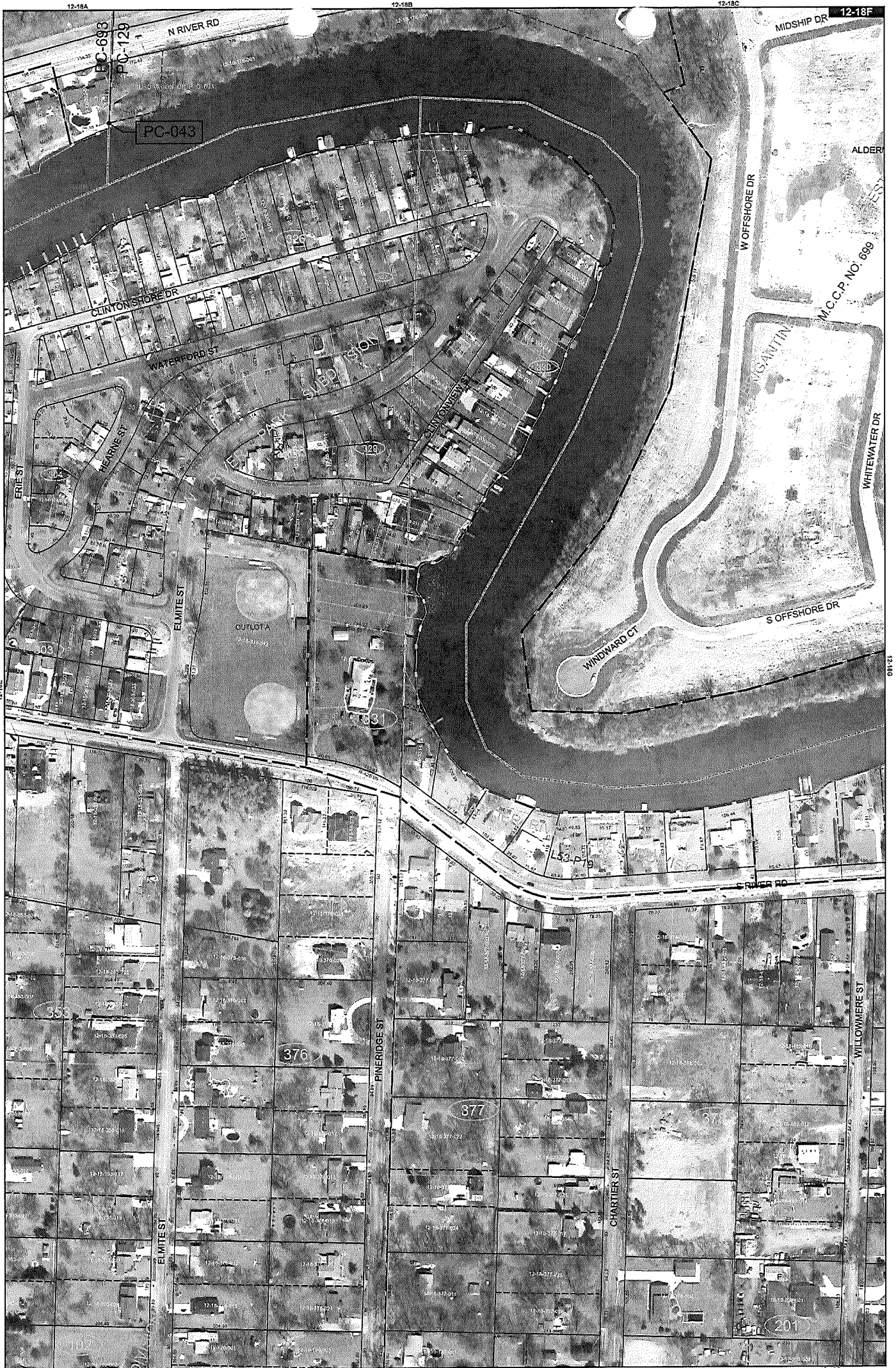


Macomb Conservation District
75701 M-19, Richmond, MI 48062
Phone: 586-727-2666 Fax: 586-727-2621
E-mail: macombcd@klondyke.net
Website: www.macombcd.com

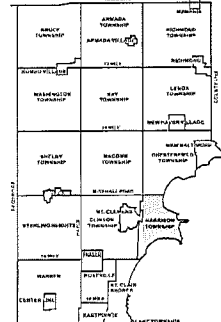


*Celebrating
55 Years of
Managing
Macomb County's
Natural Resources*

Assistance available for :
Tree Sales Forestry Native Plants
Conservation Education



Date of Photography: April 2004
 100 50 0 100 200 Feet
 1:1,200



HARRISON TWP SHEET INDEX

12-18A	12-18B	12-18C	12-18D	12-18E	12-18F
12-19A	12-19B	12-19C	12-19D	12-19E	12-19F
12-20A	12-20B	12-20C	12-20D	12-20E	12-20F
12-21A	12-21B	12-21C	12-21D	12-21E	12-21F
12-22A	12-22B	12-22C	12-22D	12-22E	12-22F
12-23A	12-23B	12-23C	12-23D	12-23E	12-23F
12-24A	12-24B	12-24C	12-24D	12-24E	12-24F
12-25A	12-25B	12-25C	12-25D	12-25E	12-25F
12-26A	12-26B	12-26C	12-26D	12-26E	12-26F
12-27A	12-27B	12-27C	12-27D	12-27E	12-27F
12-28A	12-28B	12-28C	12-28D	12-28E	12-28F
12-29A	12-29B	12-29C	12-29D	12-29E	12-29F
12-30A	12-30B	12-30C	12-30D	12-30E	12-30F

DESCRIPTION OF PERMANENT REAL ESTATE INDEX NUMBER

13-19-302-018

AREA NUMBER	SUB AREA NUMBER	BLOCK NUMBER	PARCEL NUMBER
13-19-302-018	13-19-302-018	13-19-302-018	13-19-302-018

Legend

- Platted Area Boundary Line
- Property Line
- Property Split Line
- Property Combined Line
- Township Boundary Line
- Traverse Line
- Dimension Extent Marks
- Dimension Start Marks

12-18F

HARRISON TWP.
 E. 1/2 S.W. 1/4 SEC. 18 T. 2N. R. 14E.

Source: Macomb County Department of Planning and Economic Development
 - 2004 Digital Orthophotography Project
 - Parcel Conversion Project

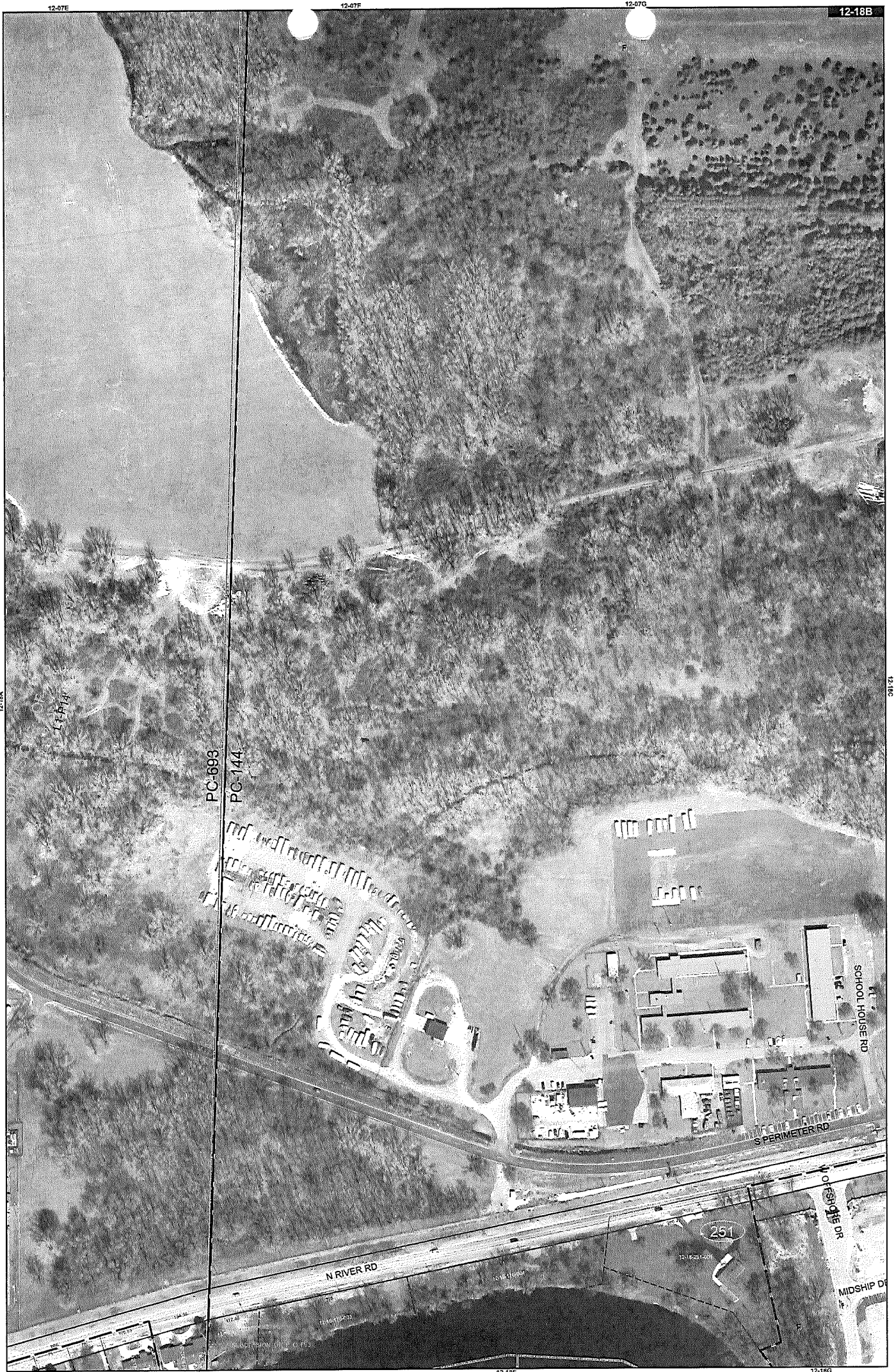
Note:
 Digital Orthophotography horizontal positioning accuracy is 3 feet. Parcel boundary lines should be considered a graphical representation and not in any way a legal survey or engineering document. In general, the horizontal positioning and length accuracy is within 15 feet.

This map is intended for general planning purposes. Site specific evaluation should be verified by field inspection. This is a work in progress and may contain errors and omissions. Please report any potential revisions to (586)408-5265.

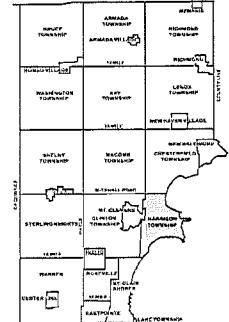


GIS MACOMB COUNTY
 Planning and Economic
 Development Department

Published: Mar 20, 2006



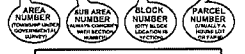
Date of Photography: April 2004
 100 50 0 100 200 Feet
 1:1,200



HARRISON TWP SHEET INDEX

12-18A	12-18B	12-18C	12-18D	12-18E	12-18F	12-18G	12-18H
12-18I	12-18J	12-18K	12-18L	12-18M	12-18N	12-18O	12-18P
12-18Q	12-18R	12-18S	12-18T	12-18U	12-18V	12-18W	12-18X
12-18Y	12-18Z	12-18AA	12-18AB	12-18AC	12-18AD	12-18AE	12-18AF
12-18AG	12-18AH	12-18AI	12-18AJ	12-18AK	12-18AL	12-18AM	12-18AN
12-18AO	12-18AP	12-18AQ	12-18AR	12-18AS	12-18AT	12-18AU	12-18AV
12-18AW	12-18AX	12-18AY	12-18AZ	12-18BA	12-18BB	12-18BC	12-18BD
12-18BE	12-18BF	12-18BG	12-18BH	12-18BI	12-18BJ	12-18BK	12-18BL
12-18BM	12-18BN	12-18BO	12-18BP	12-18BQ	12-18BR	12-18BS	12-18BT
12-18BU	12-18BV	12-18BW	12-18BX	12-18BY	12-18BZ	12-18CA	12-18CB
12-18CC	12-18CD	12-18CE	12-18CF	12-18CG	12-18CH	12-18CI	12-18CJ
12-18CK	12-18CL	12-18CM	12-18CN	12-18CO	12-18CP	12-18CQ	12-18CR
12-18CS	12-18CT	12-18CU	12-18CV	12-18CW	12-18CX	12-18CY	12-18CZ
12-18DA	12-18DB	12-18DC	12-18DD	12-18DE	12-18DF	12-18DG	12-18DH
12-18DI	12-18DJ	12-18DK	12-18DL	12-18DM	12-18DN	12-18DO	12-18DP
12-18DQ	12-18DR	12-18DS	12-18DT	12-18DU	12-18DV	12-18DW	12-18DX
12-18DY	12-18DZ	12-18EA	12-18EB	12-18EC	12-18ED	12-18EE	12-18EF
12-18EG	12-18EH	12-18EI	12-18EJ	12-18EK	12-18EL	12-18EM	12-18EN
12-18EO	12-18EP	12-18EQ	12-18ER	12-18ES	12-18ET	12-18EU	12-18EV
12-18EW	12-18EX	12-18EY	12-18EZ	12-18FA	12-18FB	12-18FC	12-18FD
12-18FE	12-18FF	12-18FG	12-18FH	12-18FI	12-18FJ	12-18FK	12-18FL
12-18FM	12-18FN	12-18FO	12-18FP	12-18FQ	12-18FR	12-18FS	12-18FT
12-18FU	12-18FV	12-18FW	12-18FX	12-18FY	12-18FZ	12-18GA	12-18GB
12-18GC	12-18GD	12-18GE	12-18GF	12-18GG	12-18GH	12-18GI	12-18GJ
12-18GK	12-18GL	12-18GM	12-18GN	12-18GO	12-18GP	12-18GQ	12-18GR
12-18GS	12-18GT	12-18GU	12-18GV	12-18GW	12-18GX	12-18GY	12-18GZ
12-18HA	12-18HB	12-18HC	12-18HD	12-18HE	12-18HF	12-18HG	12-18HH
12-18HI	12-18HJ	12-18HK	12-18HL	12-18HM	12-18HN	12-18HO	12-18HP
12-18HQ	12-18HR	12-18HS	12-18HT	12-18HU	12-18HV	12-18HW	12-18HX
12-18HY	12-18HZ	12-18IA	12-18IB	12-18IC	12-18ID	12-18IE	12-18IF
12-18IG	12-18IH	12-18II	12-18IJ	12-18IK	12-18IL	12-18IM	12-18IN
12-18IO	12-18IP	12-18IQ	12-18IR	12-18IS	12-18IT	12-18IU	12-18IV
12-18IW	12-18IX	12-18IY	12-18IZ	12-18JA	12-18JB	12-18JC	12-18JD
12-18JE	12-18JF	12-18JG	12-18JH	12-18JI	12-18JJ	12-18JK	12-18JL
12-18JM	12-18JN	12-18JO	12-18JP	12-18JQ	12-18JR	12-18JS	12-18JT
12-18JU	12-18JV	12-18JW	12-18JX	12-18JY	12-18JZ	12-18KA	12-18KB
12-18KC	12-18KD	12-18KE	12-18KF	12-18KG	12-18KH	12-18KI	12-18KJ
12-18KK	12-18KL	12-18KM	12-18KN	12-18KO	12-18KP	12-18KQ	12-18KR
12-18KS	12-18KT	12-18KU	12-18KV	12-18KW	12-18KX	12-18KY	12-18KZ
12-18LA	12-18LB	12-18LC	12-18LD	12-18LE	12-18LF	12-18LG	12-18LH
12-18LI	12-18LJ	12-18LK	12-18LL	12-18LM	12-18LN	12-18LO	12-18LP
12-18LQ	12-18LR	12-18LS	12-18LT	12-18LU	12-18LV	12-18LW	12-18LX
12-18LY	12-18LZ	12-18MA	12-18MB	12-18MC	12-18MD	12-18ME	12-18MF
12-18MG	12-18MH	12-18MI	12-18MJ	12-18MK	12-18ML	12-18MN	12-18MO
12-18MP	12-18MQ	12-18MR	12-18MS	12-18MT	12-18MU	12-18MV	12-18MW
12-18MX	12-18MY	12-18MZ	12-18NA	12-18NB	12-18NC	12-18ND	12-18NE
12-18NF	12-18NG	12-18NH	12-18NI	12-18NJ	12-18NK	12-18NL	12-18NM
12-18NO	12-18NP	12-18NQ	12-18NR	12-18NS	12-18NT	12-18NU	12-18NV
12-18NW	12-18NX	12-18NY	12-18NZ	12-18OA	12-18OB	12-18OC	12-18OD
12-18OE	12-18OF	12-18OG	12-18OH	12-18OI	12-18OJ	12-18OK	12-18OL
12-18OM	12-18ON	12-18OO	12-18OP	12-18OQ	12-18OR	12-18OS	12-18OT
12-18OU	12-18OV	12-18OW	12-18OX	12-18OY	12-18OZ	12-18PA	12-18PB
12-18PC	12-18PD	12-18PE	12-18PF	12-18PG	12-18PH	12-18PI	12-18PJ
12-18PK	12-18PL	12-18PM	12-18PN	12-18PO	12-18PP	12-18PQ	12-18PR
12-18PS	12-18PT	12-18PU	12-18PV	12-18PW	12-18PX	12-18PY	12-18PZ
12-18QA	12-18QB	12-18QC	12-18QD	12-18QE	12-18QF	12-18QG	12-18QH
12-18QI	12-18QJ	12-18QK	12-18QL	12-18QM	12-18QN	12-18QO	12-18QP
12-18QQ	12-18QR	12-18QS	12-18QT	12-18QU	12-18QV	12-18QW	12-18QX
12-18QY	12-18QZ	12-18RA	12-18RB	12-18RC	12-18RD	12-18RE	12-18RF
12-18RG	12-18RH	12-18RI	12-18RJ	12-18RK	12-18RL	12-18RM	12-18RN
12-18RO	12-18RP	12-18RQ	12-18RR	12-18RS	12-18RT	12-18RU	12-18RV
12-18RW	12-18RX	12-18RY	12-18RZ	12-18SA	12-18SB	12-18SC	12-18SD
12-18SE	12-18SF	12-18SG	12-18SH	12-18SI	12-18SJ	12-18SK	12-18SL
12-18SM	12-18SN	12-18SO	12-18SP	12-18SQ	12-18SR	12-18SS	12-18ST
12-18SU	12-18SV	12-18SW	12-18SX	12-18SY	12-18SZ	12-18TA	12-18TB
12-18TC	12-18TD	12-18TE	12-18TF	12-18TG	12-18TH	12-18TI	12-18TJ
12-18TK	12-18TL	12-18TM	12-18TN	12-18TO	12-18TP	12-18TQ	12-18TR
12-18TS	12-18TT	12-18TU	12-18TV	12-18TW	12-18TX	12-18TY	12-18TZ
12-18UA	12-18UB	12-18UC	12-18UD	12-18UE	12-18UF	12-18UG	12-18UH
12-18UI	12-18UJ	12-18UK	12-18UL	12-18UM	12-18UN	12-18UO	12-18UP
12-18UQ	12-18UR	12-18US	12-18UT	12-18UU	12-18UV	12-18UW	12-18UX
12-18UY	12-18UZ	12-18VA	12-18VB	12-18VC	12-18VD	12-18VE	12-18VF
12-18VG	12-18VH	12-18VI	12-18VJ	12-18VK	12-18VL	12-18VM	12-18VN
12-18VO	12-18VP	12-18VQ	12-18VR	12-18VS	12-18VT	12-18VU	12-18VV
12-18VW	12-18VX	12-18VY	12-18VZ	12-18WA	12-18WB	12-18WC	12-18WD
12-18WE	12-18WF	12-18WG	12-18WH	12-18WI	12-18WJ	12-18WK	12-18WL
12-18WM	12-18WN	12-18WO	12-18WP	12-18WQ	12-18WR	12-18WS	12-18WT
12-18WU	12-18WV	12-18WW	12-18WX	12-18WY	12-18WZ	12-18XA	12-18XB
12-18XC	12-18XD	12-18XE	12-18XF	12-18XG	12-18XH	12-18XI	12-18XJ
12-18XK	12-18XL	12-18XM	12-18XN	12-18XO	12-18XP	12-18XQ	12-18XR
12-18XS	12-18XT	12-18XU	12-18XV	12-18XW	12-18XZ	12-18YA	12-18YB
12-18YC	12-18YD	12-18YE	12-18YF	12-18YG	12-18YH	12-18YI	12-18YJ
12-18YK	12-18YL	12-18YM	12-18YN	12-18YO	12-18YP	12-18YQ	12-18YR
12-18YS	12-18YT	12-18YU	12-18YV	12-18YW	12-18YZ	12-18ZA	12-18ZB
12-18ZC	12-18ZD	12-18ZE	12-18ZF	12-18ZG	12-18ZH	12-18ZI	12-18ZJ
12-18ZK	12-18ZL	12-18ZM	12-18ZN	12-18ZO	12-18ZP	12-18ZQ	12-18ZR
12-18ZS	12-18ZT	12-18ZU	12-18ZV	12-18ZW	12-18ZX	12-18ZY	12-18ZZ

DESCRIPTION OF PERMANENT REAL ESTATE INDEX NUMBER
13-19-302-018



- Legend**
- Platted Area Boundary Line
 - Property Line
 - Property Split Line
 - Property Combined Line
 - Township Boundary Line
 - Traverse Line
 - Dimension Extent Marks
 - Dimension Start Marks

12-18B

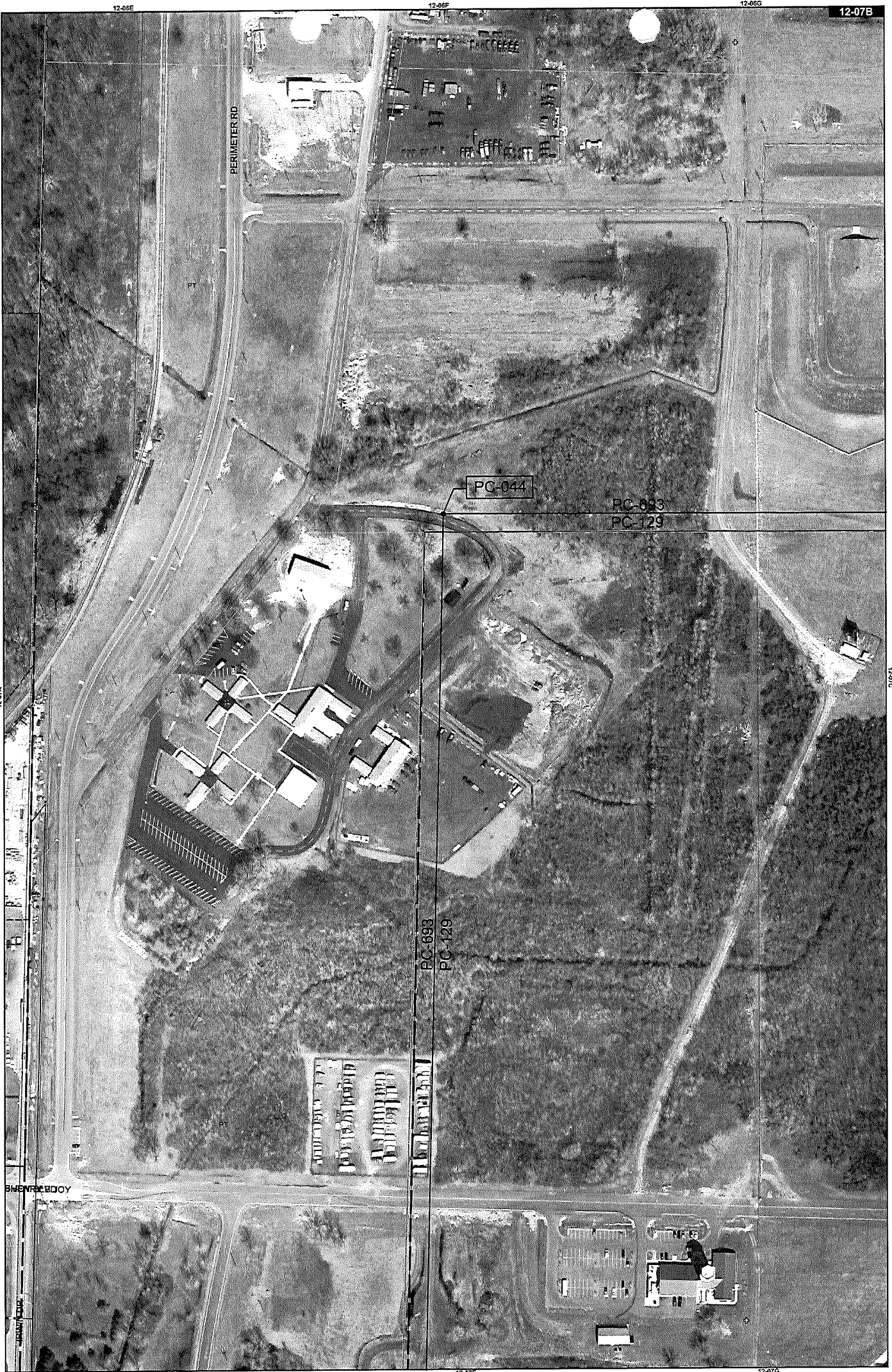
HARRISON TWP.
 E.1/2 N.W.1/4 SEC.18 T.2N. R.14E.

Source: Macomb County Department of Planning and Economic Development
 - 2004 Digital Orthophotography Project
 - Parcel Conversion Project

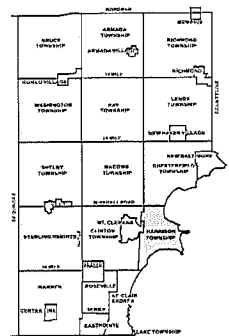
Note:
 Digital Orthophotography horizontal positioning accuracy is 3 feet. Parcel boundary lines should be considered a graphical representation and not in any way a legal survey or engineering document. In general, the horizontal positioning and length accuracy is within 15 feet.

This map is intended for general planning purposes. Site specific evaluation should be verified by field inspection. This is a work in progress and may contain errors and omissions. Please report any potential revisions to (586)469-5285.





Date of Photography: April 2004
 100 50 0 100 200 Feet
 1:1,200



HARRISON TWP SHEET INDEX

12-07A	12-07B	12-07C	12-07D	12-07E	12-07F	12-07G
12-07H	12-07I	12-07J	12-07K	12-07L	12-07M	12-07N
12-07O	12-07P	12-07Q	12-07R	12-07S	12-07T	12-07U
12-07V	12-07W	12-07X	12-07Y	12-07Z	12-07AA	12-07AB
12-07AC	12-07AD	12-07AE	12-07AF	12-07AG	12-07AH	12-07AI
12-07AJ	12-07AK	12-07AL	12-07AM	12-07AN	12-07AO	12-07AP
12-07AQ	12-07AR	12-07AS	12-07AT	12-07AU	12-07AV	12-07AW
12-07AX	12-07AY	12-07AZ	12-07BA	12-07BB	12-07BC	12-07BD
12-07BE	12-07BF	12-07BG	12-07BH	12-07BI	12-07BJ	12-07BK
12-07BL	12-07BM	12-07BN	12-07BO	12-07BP	12-07BQ	12-07BR
12-07BS	12-07BT	12-07BU	12-07BV	12-07BW	12-07BX	12-07BY
12-07BZ	12-07CA	12-07CB	12-07CC	12-07CD	12-07CE	12-07CF
12-07CG	12-07CH	12-07CI	12-07CJ	12-07CK	12-07CL	12-07CM
12-07CN	12-07CO	12-07CP	12-07CQ	12-07CR	12-07CS	12-07CT
12-07CU	12-07CV	12-07CW	12-07CX	12-07CY	12-07CZ	12-07DA
12-07DB	12-07DC	12-07DD	12-07DE	12-07DF	12-07DG	12-07DH
12-07DI	12-07DJ	12-07DK	12-07DL	12-07DM	12-07DN	12-07DO
12-07DP	12-07DQ	12-07DR	12-07DS	12-07DT	12-07DU	12-07DV
12-07DW	12-07DX	12-07DY	12-07DZ	12-07EA	12-07EB	12-07EC
12-07ED	12-07EE	12-07EF	12-07EG	12-07EH	12-07EI	12-07EJ
12-07EK	12-07EL	12-07EM	12-07EN	12-07EO	12-07EP	12-07EQ
12-07ER	12-07ES	12-07ET	12-07EU	12-07EV	12-07EW	12-07EX
12-07EY	12-07EZ	12-07FA	12-07FB	12-07FC	12-07FD	12-07FE
12-07FF	12-07FG	12-07FH	12-07FI	12-07FJ	12-07FK	12-07FL
12-07FM	12-07FN	12-07FO	12-07FP	12-07FQ	12-07FR	12-07FS
12-07FT	12-07FU	12-07FV	12-07FW	12-07FX	12-07FY	12-07FZ
12-07GA	12-07GB	12-07GC	12-07GD	12-07GE	12-07GF	12-07GG
12-07GH	12-07GI	12-07GJ	12-07GK	12-07GL	12-07GM	12-07GN
12-07GO	12-07GP	12-07GQ	12-07GR	12-07GS	12-07GT	12-07GU
12-07GV	12-07GW	12-07GX	12-07GY	12-07GZ	12-07HA	12-07HB
12-07HC	12-07HD	12-07HE	12-07HF	12-07HG	12-07HH	12-07HI
12-07HJ	12-07HK	12-07HL	12-07HM	12-07HN	12-07HO	12-07HP
12-07HQ	12-07HR	12-07HS	12-07HT	12-07HU	12-07HV	12-07HW
12-07HX	12-07HY	12-07HZ	12-07IA	12-07IB	12-07IC	12-07ID
12-07IE	12-07IF	12-07IG	12-07IH	12-07II	12-07IJ	12-07IK
12-07IL	12-07IM	12-07IN	12-07IO	12-07IP	12-07IQ	12-07IR
12-07IS	12-07IT	12-07IU	12-07IV	12-07IW	12-07IX	12-07IY
12-07IZ	12-07JA	12-07JB	12-07JC	12-07JD	12-07JE	12-07JF
12-07JG	12-07JH	12-07JI	12-07JJ	12-07JK	12-07JL	12-07JM
12-07JN	12-07JO	12-07JP	12-07JQ	12-07JR	12-07JS	12-07JT
12-07JU	12-07JV	12-07JW	12-07JX	12-07JY	12-07JZ	12-07KA
12-07KB	12-07KC	12-07KD	12-07KE	12-07KF	12-07KG	12-07KH
12-07KI	12-07KJ	12-07KK	12-07KL	12-07KM	12-07KN	12-07KO
12-07KP	12-07KQ	12-07KR	12-07KS	12-07KT	12-07KU	12-07KV
12-07KW	12-07KX	12-07KY	12-07KZ	12-07LA	12-07LB	12-07LC
12-07LD	12-07LE	12-07LF	12-07LG	12-07LH	12-07LI	12-07LJ
12-07LK	12-07LL	12-07LM	12-07LN	12-07LO	12-07LP	12-07LQ
12-07LR	12-07LS	12-07LT	12-07LU	12-07LV	12-07LW	12-07LX
12-07LY	12-07LZ	12-07MA	12-07MB	12-07MC	12-07MD	12-07ME
12-07MF	12-07MG	12-07MH	12-07MI	12-07MJ	12-07MK	12-07ML
12-07MN	12-07MO	12-07MP	12-07MQ	12-07MR	12-07MS	12-07MT
12-07MU	12-07MV	12-07MW	12-07MX	12-07MY	12-07MZ	12-07NA
12-07NB	12-07NC	12-07ND	12-07NE	12-07NF	12-07NG	12-07NH
12-07NI	12-07NJ	12-07NK	12-07NL	12-07NM	12-07NO	12-07NP
12-07NQ	12-07NR	12-07NS	12-07NT	12-07NU	12-07NV	12-07NW
12-07NX	12-07NY	12-07NZ	12-07OA	12-07OB	12-07OC	12-07OD
12-07OE	12-07OF	12-07OG	12-07OH	12-07OI	12-07OJ	12-07OK
12-07OL	12-07OM	12-07ON	12-07OO	12-07OP	12-07OQ	12-07OR
12-07OS	12-07OT	12-07OU	12-07OV	12-07OW	12-07OX	12-07OY
12-07OZ	12-07PA	12-07PB	12-07PC	12-07PD	12-07PE	12-07PF
12-07PG	12-07PH	12-07PI	12-07PJ	12-07PK	12-07PL	12-07PM
12-07PN	12-07PO	12-07PP	12-07PQ	12-07PR	12-07PS	12-07PT
12-07PU	12-07PV	12-07PW	12-07PX	12-07PY	12-07PZ	12-07QA
12-07QB	12-07QC	12-07QD	12-07QE	12-07QF	12-07QG	12-07QH
12-07QI	12-07QJ	12-07QK	12-07QL	12-07QM	12-07QN	12-07QO
12-07QP	12-07QQ	12-07QR	12-07QS	12-07QT	12-07QU	12-07QV
12-07QW	12-07QX	12-07QY	12-07QZ	12-07RA	12-07RB	12-07RC
12-07RD	12-07RE	12-07RF	12-07RG	12-07RH	12-07RI	12-07RJ
12-07RK	12-07RL	12-07RM	12-07RN	12-07RO	12-07RP	12-07RQ
12-07RR	12-07RS	12-07RT	12-07RU	12-07RV	12-07RW	12-07RX
12-07RY	12-07RZ	12-07SA	12-07SB	12-07SC	12-07SD	12-07SE
12-07SF	12-07SG	12-07SH	12-07SI	12-07SJ	12-07SK	12-07SL
12-07SM	12-07SN	12-07SO	12-07SP	12-07SQ	12-07SR	12-07SS
12-07ST	12-07SU	12-07SV	12-07SW	12-07SX	12-07SY	12-07SZ
12-07TA	12-07TB	12-07TC	12-07TD	12-07TE	12-07TF	12-07TG
12-07TH	12-07TI	12-07TJ	12-07TK	12-07TL	12-07TM	12-07TN
12-07TO	12-07TP	12-07TQ	12-07TR	12-07TS	12-07TT	12-07TU
12-07TV	12-07TV	12-07TV	12-07TV	12-07TV	12-07TV	12-07TV

DESCRIPTION OF PERMANENT REAL ESTATE INDEX NUMBER

13-19-302-018

AREA NUMBER	SUB AREA NUMBER	BLOCK NUMBER	PARCEL NUMBER
13-19-302-018	13-19-302-018	13-19-302-018	13-19-302-018

Legend

- Platted Area Boundary Line
- Property Line
- Property Split Line
- Property Combined Line
- Township Boundary Line
- Traverse Line
- Dimension Extent Marks
- Dimension Start Marks

12-07B
 Harrison Twp.
 E 1/2 N.W. 1/4 SEC. 7 T. 2N. R. 14E.

Source: Macomb County Department of Planning and Economic Development
 - 2004 Digital Orthophotography Project
 - Parcel Conversion Project

Note: Digital Orthophotography horizontal positioning accuracy is 3 feet. Parcel boundary lines should be considered a graphical representation and not in any way a legal survey or engineering document. In general, the horizontal positioning and length accuracy is within 1/8 inch.

This map is intended for general planning purposes. Site specific evaluation should be verified by field inspection. This is a work in progress and may contain errors and omissions. Please report any potential revisions to (586)469-5265.

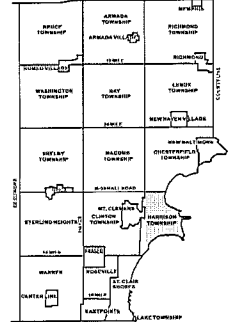
GIS MACOMB COUNTY
 Planning and Economic
 Development Department

Published: Aug 30, 2005





Date of Photography: April 2004
 100 50 0 100 200 Feet
 1:1,200



HARRISON TWP SHEET INDEX

12-07A	12-07B	12-07C	12-07D	12-07E	12-07F	12-07G	12-07H	12-07I	12-07J	12-07K	12-07L	12-07M	12-07N	12-07O	12-07P	12-07Q	12-07R	12-07S	12-07T	12-07U	12-07V	12-07W	12-07X	12-07Y	12-07Z
12-07A	12-07B	12-07C	12-07D	12-07E	12-07F	12-07G	12-07H	12-07I	12-07J	12-07K	12-07L	12-07M	12-07N	12-07O	12-07P	12-07Q	12-07R	12-07S	12-07T	12-07U	12-07V	12-07W	12-07X	12-07Y	12-07Z

DESCRIPTION OF PERMANENT REAL ESTATE INDEX NUMBER
13-19-302-018

AREA NUMBER	SUB AREA NUMBER	BLOCK NUMBER	PARCEL NUMBER
13-19-302-018	13-19-302-018	13-19-302-018	13-19-302-018

- Legend**
- Platted Area Boundary Line
 - Property Line
 - Property Split Line
 - Property Combined Line
 - Township Boundary Line
 - Traverse Line
 - Dimension Extent Marks
 - Dimension Start Marks

12-07C
 Portion of part of 12-4
 HARRISON TWP.
 W. 1/2 N.E. 1/4 SEC. 7 T.2N. R.14E.

Source: Macomb County Department of Planning and Economic Development
 - 2004 Digital Orthophotography Project
 - Parcel Conversion Project

Note:
 Digital Orthophotography horizontal positioning accuracy is 3 feet. Parcel boundary lines should be considered a graphical representation and not in any way a legal survey or engineering document. In general, the horizontal positioning and length accuracy is within 15 feet.

This map is intended for general planning purposes. Site specific evaluation should be verified by field inspection. This is a work in progress and may contain errors and omissions. Please report any potential revisions to (586)468-5265.



GIS MACOMB COUNTY
 Planning and Economic
 Development Department

Published: Aug 30, 2005

9-16-2014 PC-044
RS BS

N.W. CORNER of PC-129
COMMON WITH A DEFLECTION
PT. CONTROLLING A SOUTH
AND EAST LINE of PC 693

SELFRIEDGE
A.L.C. BASE

12" POPLAR

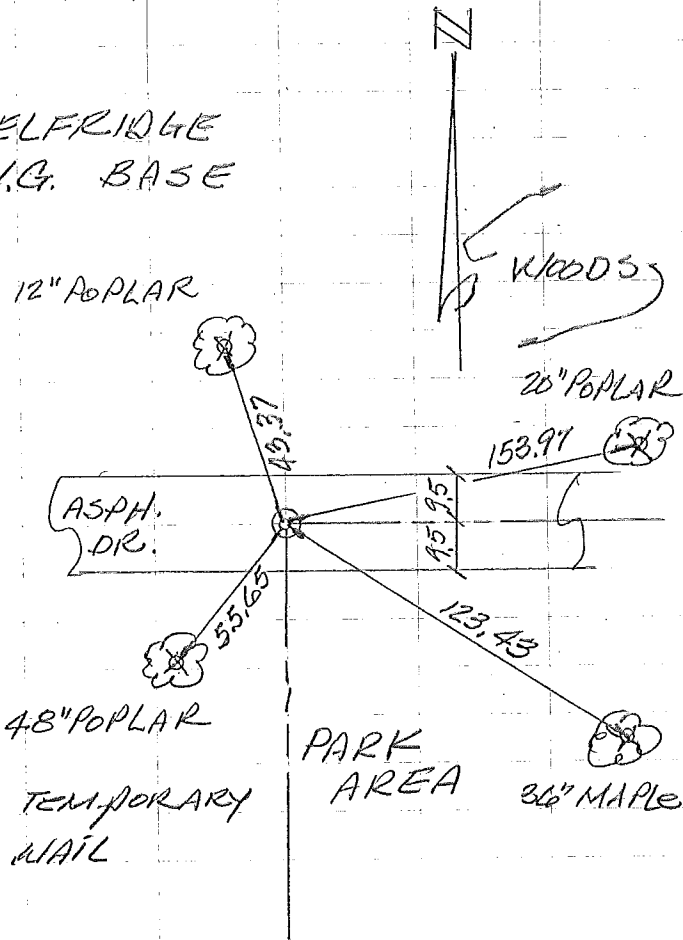
ASPH.
DR.

48" POPLAR

SET TEMPORARY
MAG NAIL

PARK
AREA

36" MAPLE



SET 3/4" X 24" IRON WITH
2" ALUMINUM CAP
PC-044

WITNESSES

N. 10° W. 43.37 FT. SET NAIL
& TAG IN EAST FACE OF A
12" POPLAR

S. 15° W. 55.65 FT. SET NAIL
& TAG IN EAST FACE OF A
48" POPLAR

S. 25° E. 123.43 FT. SET NAIL
& TAG IN NORTH FACE OF
A 36" MAPLE

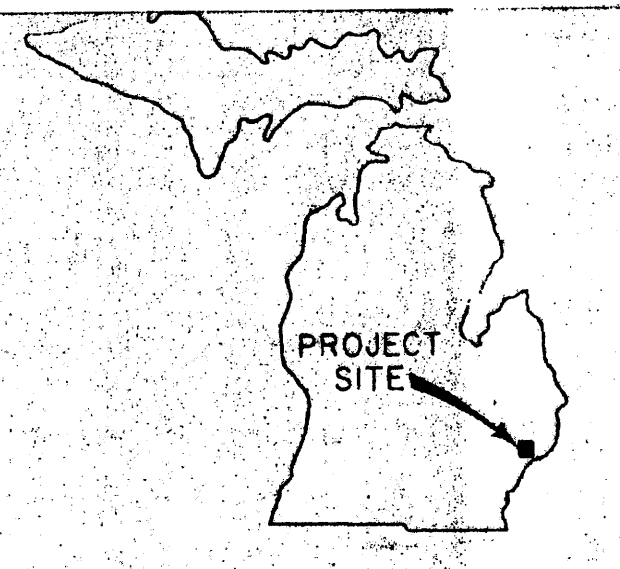
N. 85° E. 153.97 FT. SET NAIL
& TAG IN SOUTH FACE OF
A 20" POPLAR

2 MILES EAST OF MT. CLEMENS
 23 MILES NE OF DETROIT
 USING COMMAND _____
 JOINT USE WITH _____

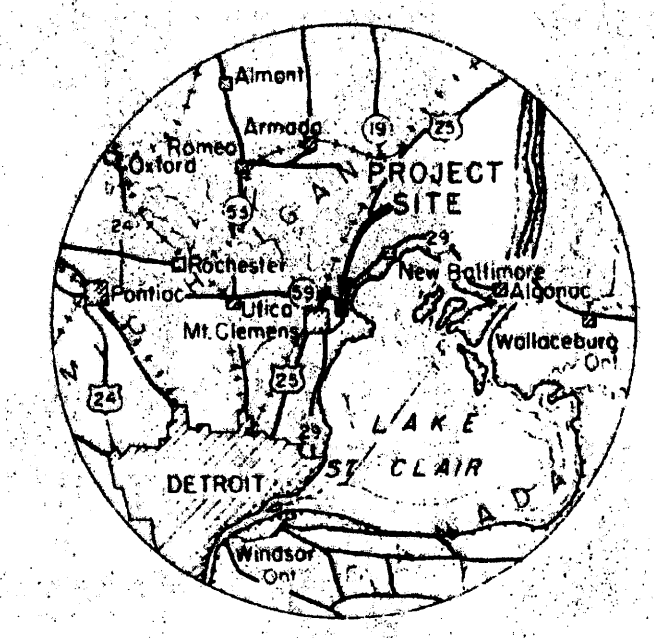
LAND AREA (PRESENT)
 ACRES FEE _____ 3089.76
 ACRES DONATED _____
 ACRES PUBLIC DOMAIN _____
 ACRES LEASED _____ .27
 ACRES EASEMENT _____ 372.74
 ACRES LESSER INTEREST (NO. LIC.) 35

DISPOSALS
 ACRES SOLD _____
 ACRES TRANSFERRED _____
 ACRES EXCHANGED _____
 ACRES OTHERWISE _____

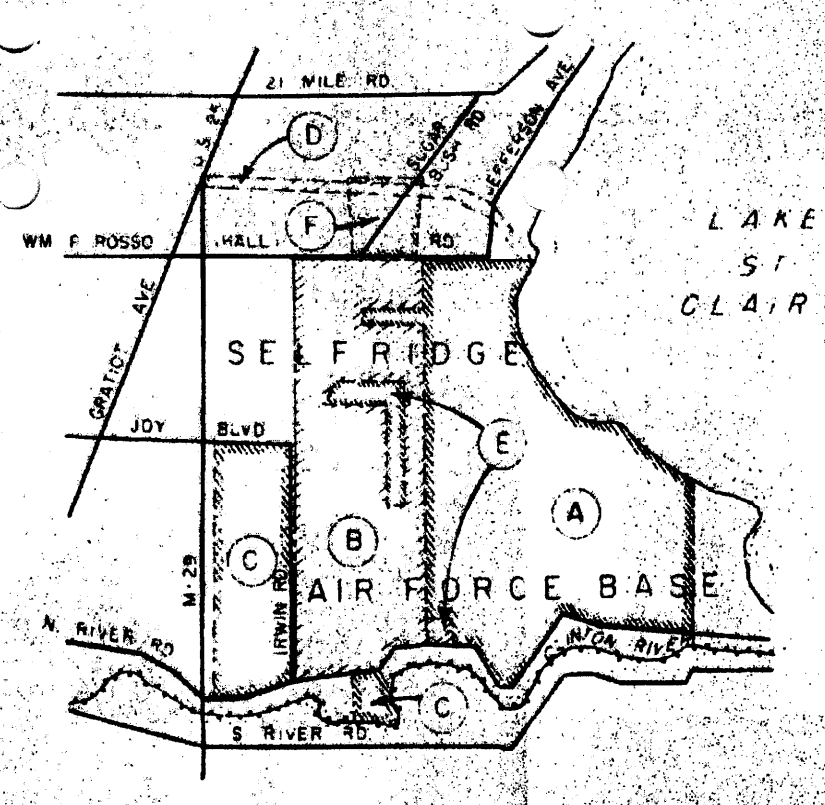
LEGEND
 RESERVATION BOUNDARY _____
 EASEMENT BOUNDARY _____
 STATE LINE _____
 COUNTY LINE _____
 CITY, VILLAGE _____
 CEMETERY, SMALL PARK, ETC. _____
 TOWNSHIP LINE _____
 SECTION LINE _____
 DISPOSAL _____
 PRIVATE CLAIM _____
 TRACT NUMBER _____



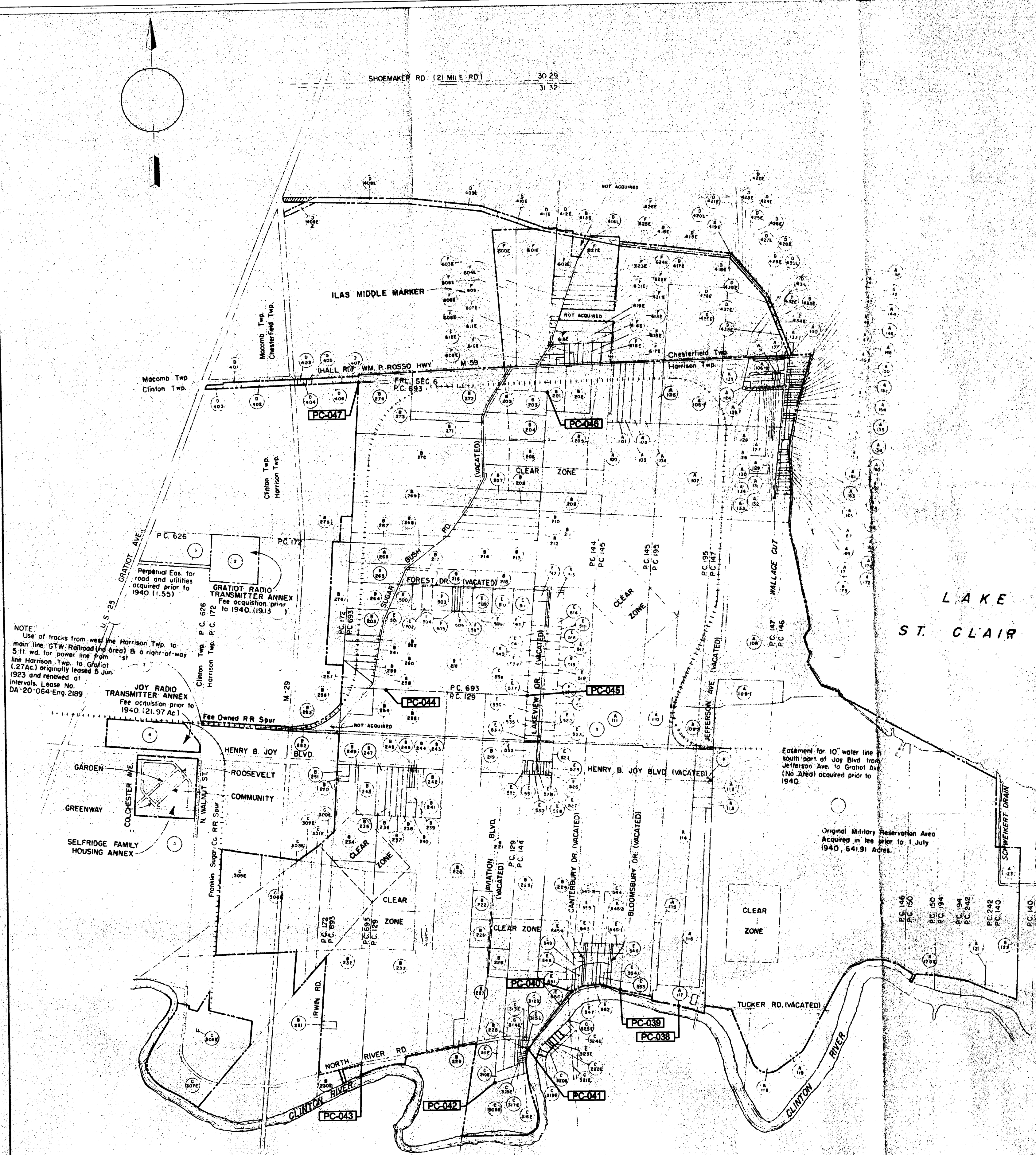
STATE INDEX



VICINITY MAP



TRACT NO. INDEX



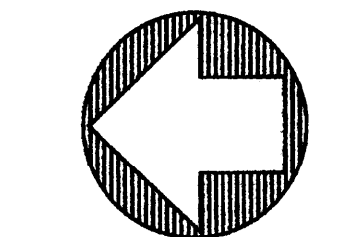
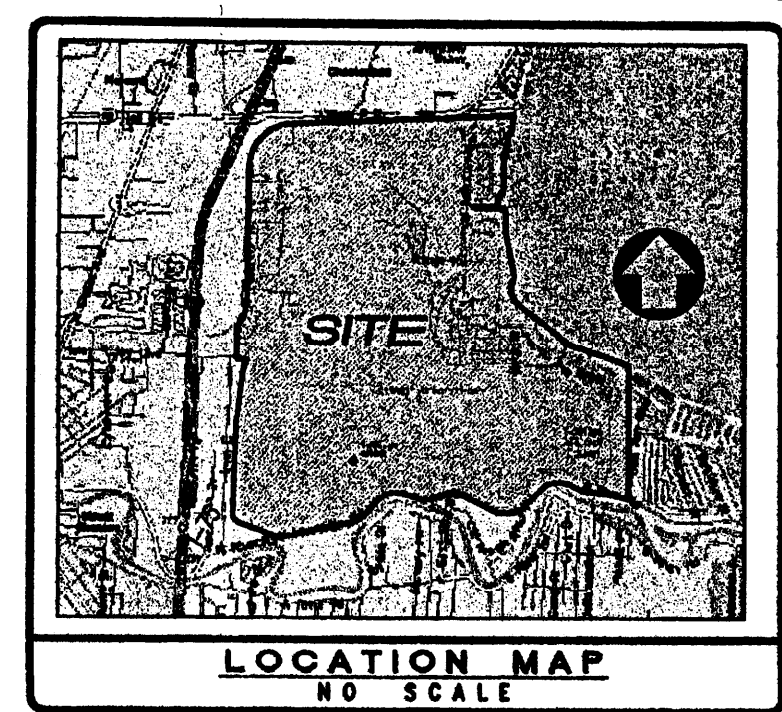
NOTE:
 Use of tracks from west of Harrison Twp. to main line G.W. Railroad (Area) B a right-of-way 5.11 wd. for power line from Harrison Twp. to Gratiot (27Ac) originally leased 5 Jun 1923 and renewed at intervals. Lease No. DA-20-064-Eng 2189
 JOY RADIO TRANSMITTER ANNEX Fee acquisition prior to 1940 (21.97 Ac)
 GRATIOT RADIO TRANSMITTER ANNEX Fee acquisition prior to 1940 (19.13)

Entitlement for 10" water line south part of Joy Blvd from Jefferson Ave. to Gratiot Ave. (16.48 Ac) acquired prior to 1940.

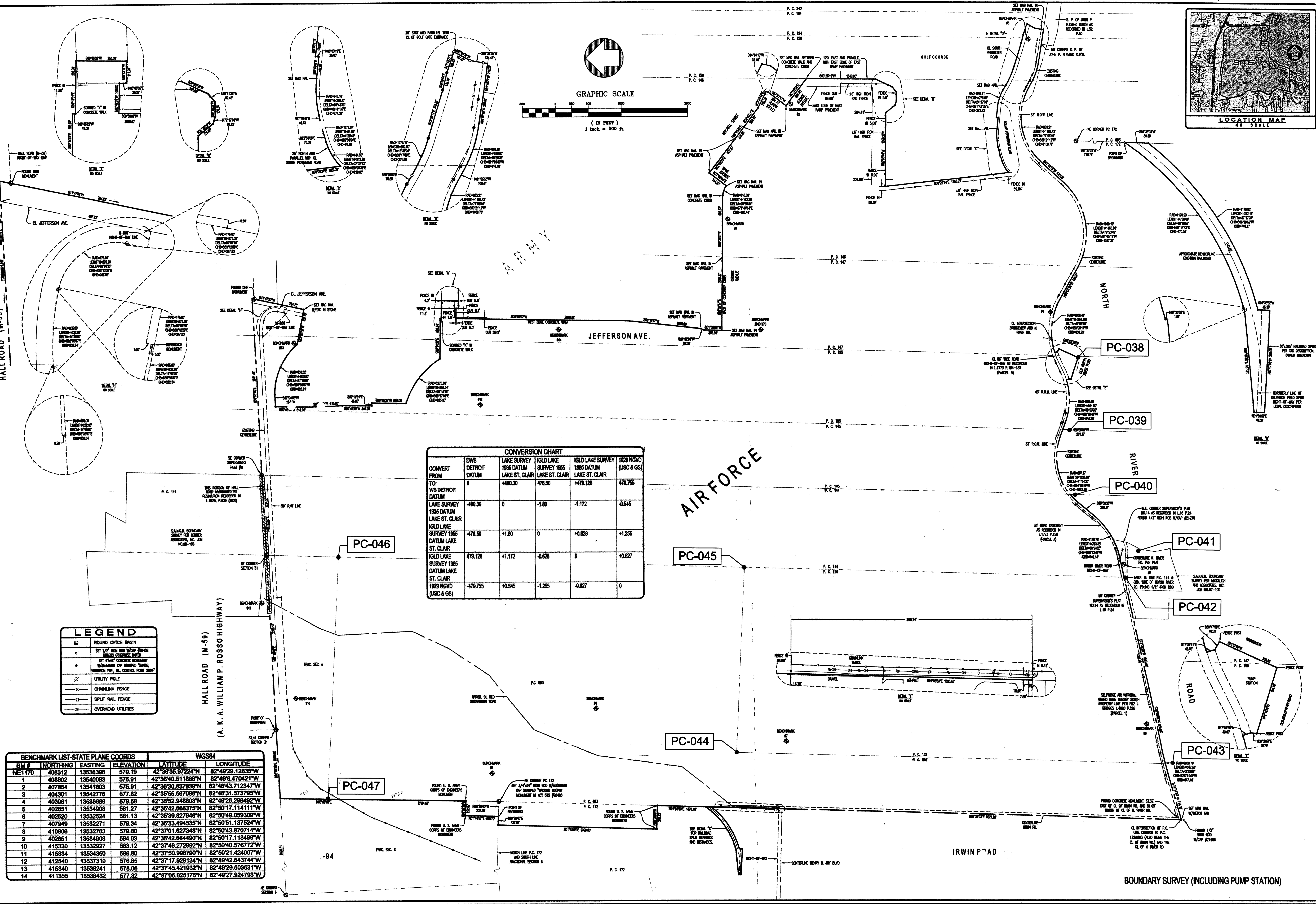
Original Military Reservation Area Acquired in fee prior to 1 July 1940, 64191 Acres.

SELFRIDGE FAMILY HOUSING - PERM. INSTL. NO. - 1475
 GRATIOT TRANSMITTER - PERM. INSTL. NO. - 1477
 JOY RADIO TRANSMITTER - PERM. INSTL. NO. - 1478
 ILAS MIDDLE MARKER - PERM. INSTL. NO. - 4624

NO.	DATE	DESCRIPTION	BY
DEPARTMENT OF THE AIR FORCE AIR DEFENSE COMMAND DIRECTORATE OF INSTALLATIONS			
SELFRIDGE AIR FORCE BASE, MICHIGAN			
REAL ESTATE MAP			
SELFRIDGE		AIR FORCE BASE	
Permit Instl. No. 1480		M.T. CLEMENS, MICHIGAN	
TRACTS			
SUBMITTED		RECOMMENDED	
		APPROVED	



GRAPHIC SCALE
(IN FEET)
1 inch = 500 ft.

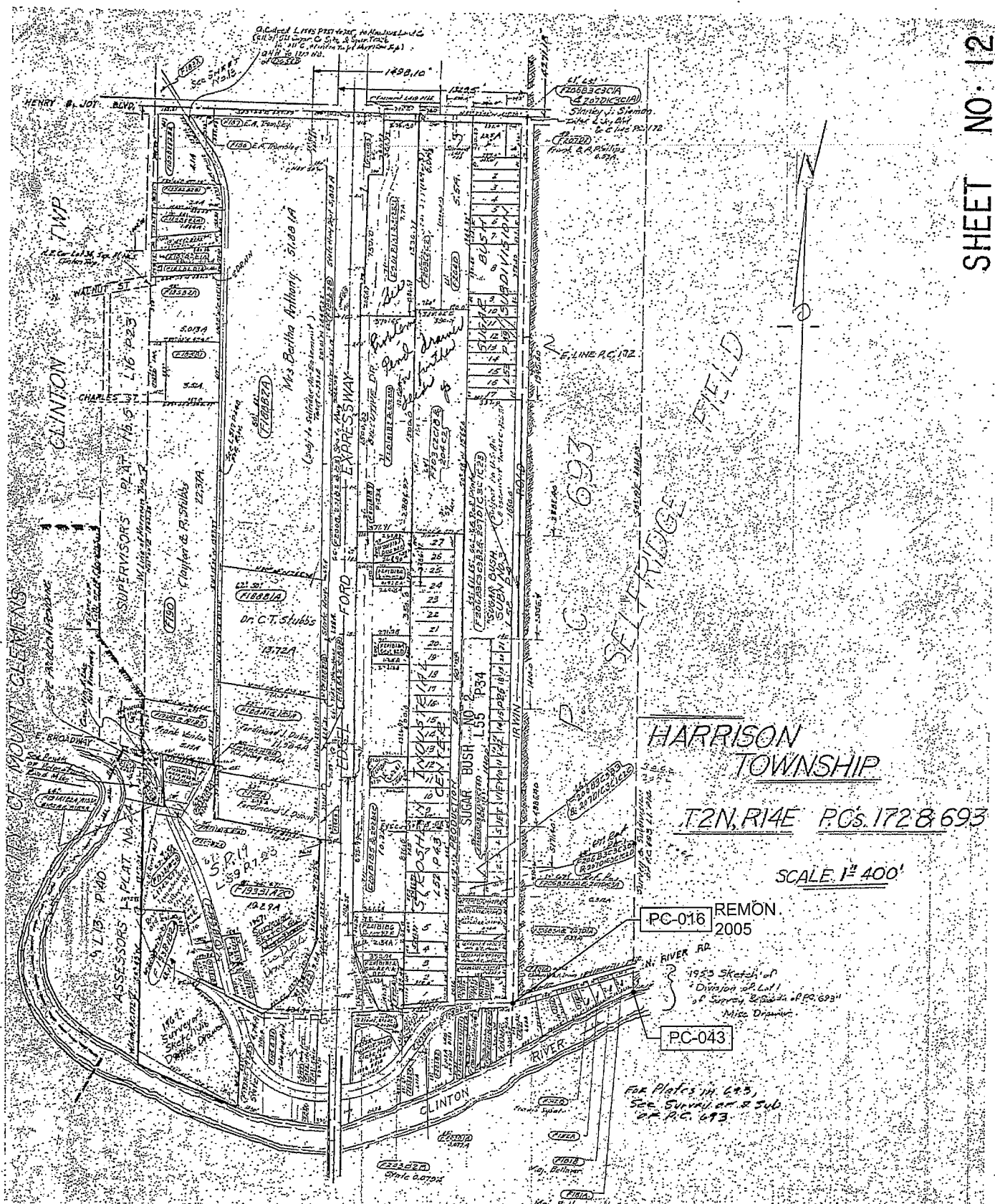


CONVERSION CHART					
CONVERT FROM	DWS DETROIT DATUM	LAKE SURVEY 1935 DATUM LAKE ST. CLAIR	IGLD LAKE SURVEY 1985 LAKE ST. CLAIR	IGLD LAKE SURVEY 1985 DATUM LAKE ST. CLAIR	1929 NGVD (USC & GS)
TO:	WS DETROIT DATUM	+480.30	478.50	+479.128	479.755
LAKE SURVEY 1935 DATUM LAKE ST. CLAIR	-480.30	0	-1.80	-1.172	-0.545
IGLD LAKE SURVEY 1985 DATUM LAKE ST. CLAIR	-478.50	+1.80	0	+0.628	+1.255
IGLD LAKE SURVEY 1985 DATUM LAKE ST. CLAIR	479.128	+1.172	-0.628	0	+0.627
1929 NGVD (USC & GS)	-479.755	+0.545	-1.255	-0.627	0

LEGEND	
	ROUND CATCH BASIN
	SET 1/2\"/>
	SET 3/4\"/>
	SET 1\"/>
	UTILITY POLE
	CHAINLINK FENCE
	SPLIT RAIL FENCE
	OVERHEAD UTILITIES

BENCHMARK LIST-STATE PLANE COORDS			WGS84		
BM #	NORTHING	EASTING	ELEVATION	LATITUDE	LONGITUDE
NE1170	408312	13638368	579.19	42°36'35.97224\"/>	82°49'29.12835\"/>
1	408802	13640083	576.91	42°36'40.511888\"/>	82°49'26.470421\"/>
2	407854	13641803	576.91	42°36'30.837938\"/>	82°48'43.712347\"/>
3	404301	13642776	577.82	42°36'55.587088\"/>	82°48'31.573795\"/>
4	403961	13638889	579.58	42°36'52.948803\"/>	82°48'28.298492\"/>
5	402851	13634908	581.27	42°35'42.866375\"/>	82°50'17.114111\"/>
6	402520	13632524	581.13	42°35'39.827946\"/>	82°50'49.059306\"/>
7	407949	13632271	578.34	42°36'33.494535\"/>	82°50'51.137524\"/>
8	410808	13632783	579.80	42°37'01.827348\"/>	82°50'43.870714\"/>
9	402851	13634908	584.03	42°35'42.864490\"/>	82°50'17.113499\"/>
10	415330	13632927	583.12	42°37'46.272992\"/>	82°50'40.576772\"/>
11	415834	13634360	586.80	42°37'50.998790\"/>	82°50'21.424007\"/>
12	412540	13637310	578.85	42°37'17.929134\"/>	82°49'42.643744\"/>
13	415340	13638241	578.06	42°37'45.421932\"/>	82°49'29.503631\"/>
14	411355	13638432	577.32	42°37'06.025178\"/>	82°49'27.924793\"/>

DATE 05/11/04	REVISOR	DATE 02/14/05	BY CSD	DRAWN BY: CSD	 S. A. N. G. BASE 22804 STEPHENS WARREN, MI 48090 TEL. - (800) 785-5770 • FAX (800) 785-5774 HTTP: www.metcoinc.com	 BOUNDARY SURVEY CLIENT: S. A. N. G. BASE	JOB NUMBER 03-132	
SCALE 1" = 500'	ADDED WGS84 COORDINATES						SHEET NUMBER 1 OF 3	



HARRISON TOWNSHIP

T.2N, R.14E P.C.s. 172 & 693

SCALE 1" = 400'

PC-016 REMON 2005

PC-043

For Plates in 693, See Survey of P.C.s. 172 & 693 of P.C. 693.

P.C. 144

P.C. 693

P.C. 129

SECTION 31 CHESTERFIELD TWP

FRL SEC. 1 OF CLINTON TWP

PC-047

PC-046

PC-001 REMON 2005

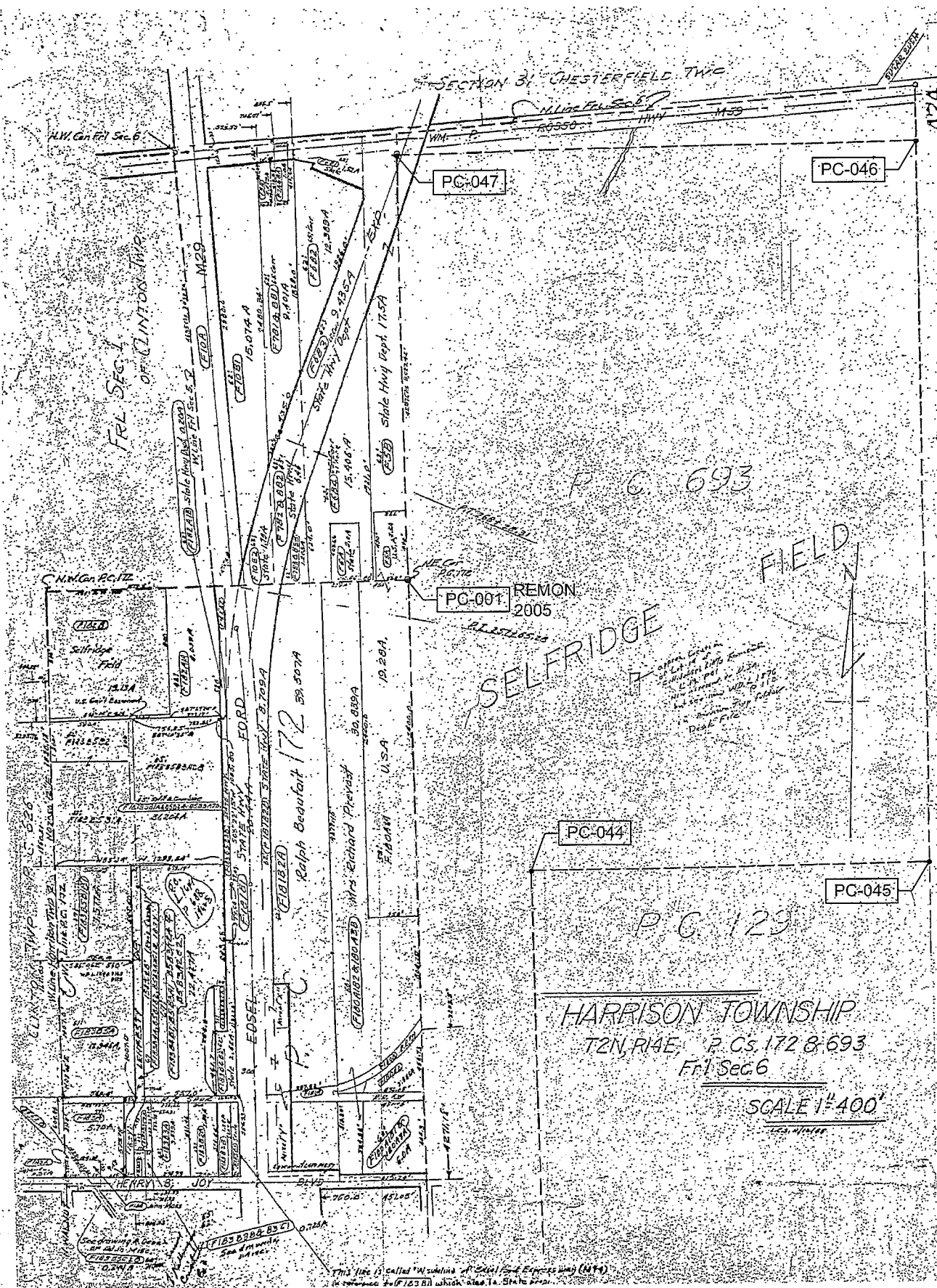
PC-044

PC-045

SELFREDGE FIELD

HARRISON TOWNSHIP
T2N, R14E, P.Cs. 172 & 693
Frl Sec 6

SCALE 1"=400'



This line is called 'N. Subline of Capital Road Express Way (M14)' in reference to (F1238) which also lies to the State of...

N^o. 489th North Side of River Huron.

Description No 129 Confirmed to James Connor commencing at a post standing on the border of River Huron between this tract and a tract of un-conceded land, thence north one hundred and ten chains fifty two links to a post thence East sixty chains fifty links, to an Elm Tree standing on the west line of a tract confirmed to John Tucker, thence South ninety eight chains forty five links, to a Swamp Oak Tree thence South sixty seven degrees East six chains, fifty links, to an oak Tree standing on the border of River Huron thence along the border of said River up stream South sixteen degrees East twenty chains thence South thirty nine degrees west six chains, thence South eighty nine degrees west twenty chains, thence South seventy seven degrees west fifteen chains thence north twenty five degrees west six chains, thence North twenty three degrees East fifteen chains, thence North seventy three degrees west eight chains, thence South fifty four degrees west nine chains seventy three links, to the place of beginning, containing five hundred and ten acres.

Detroit July 14. 1810

Harvee G. G. Surveyor
of private Claims.

No. 489

No. 129 Confirmed to
James Connor

NORTH SIDE OF RIVER HURON

Descriptor No. 129 Confirmed to James Connor commencing at a post standing on the border of River Huron between this tract and a tract of unconceded land, thence north one hundred and ten chains sixty two links, to a post thence east forty chains fifty links to an Elm Tree standing on the west line of a tract confirmed to John Tucker, thence South ninety eight chains forty five links, to an Swamp Oak Tree thence south sixty seven degrees east six chains sixty links to an oak tree standing on the border of River Huron thence along the border of said River up stream south sixteen degrees east twenty chains, thence south thirty nine degrees west six chains, thence south eighty nine degrees west twenty chains, thence south seventy seven degrees west sixteen chains, thence north twenty five degrees west six chains, thence north twenty three degrees east sixteen chains thence north seventy three degrees west eight chains, thence south sixty four degrees west nine chains seventy three links to the place of beginning, containing five hundred and ten acres _____

Detroit July 14, 1810

Aaron Greeley Surveyor
of private claims

N^o. 571. North Side of River Huron.

Description. N^o. 698 Confirmed to William Connor commencing at a post standing on the North border of River Huron between this tract and a tract beginning at John Ashin Junior; thence North two hundred and one chains thirty seven links, to a post standing between this tract and unconnected lands, thence East fifty three chains fifty links, to a post standing on the West line of a tract confirmed to John Sucker. Thence South eighty four chains forty seven links, to an Elm tree the North east corner of a tract confirmed to James Connor, thence West forty chains fifty links, to a post the North west corner of said James Connor's tract. Thence South one hundred and ten chains sixty two links, to a post standing on the North border of River Huron thence along the border of said River up Stream South Sixty four degrees West fourteen chains forty seven links, to the place of beginning, containing Six hundred acres.

Detroit Oct 23^d 1810

Asaon Greeley Surveyor
of private Claims.

No. 571

No. 693 Confirmed to
William Conner

NORTH SIDE OF RIVER HURON

Description No. 693 Confirmed to William Conner commencing at a post standing on the north border of River Huron between this tract and a tract confirmed to John Askin, Junr, thence north two hundred and one chains thirty seven links to a post standing between this tract and unconceded lands, thence east fifty three chains fifty links to a post standing on the west line of a tract confirmed to John Tucker, thence south eighty four chains forty seven links to an elm tree the northeast corner of a tract confirmed to James Conner, thence west forty chains fifty links to a post the northwest corner of the said James Conner tract, thence south one hundred and ten chains sixty two links to a post standing on the north border of River Huron thence along the border of said river up stream south sixty four degrees west fourteen chains forty seven links to the place of beginning, containing six hundred acres ____

Detroit 23d, Oct. 1810.

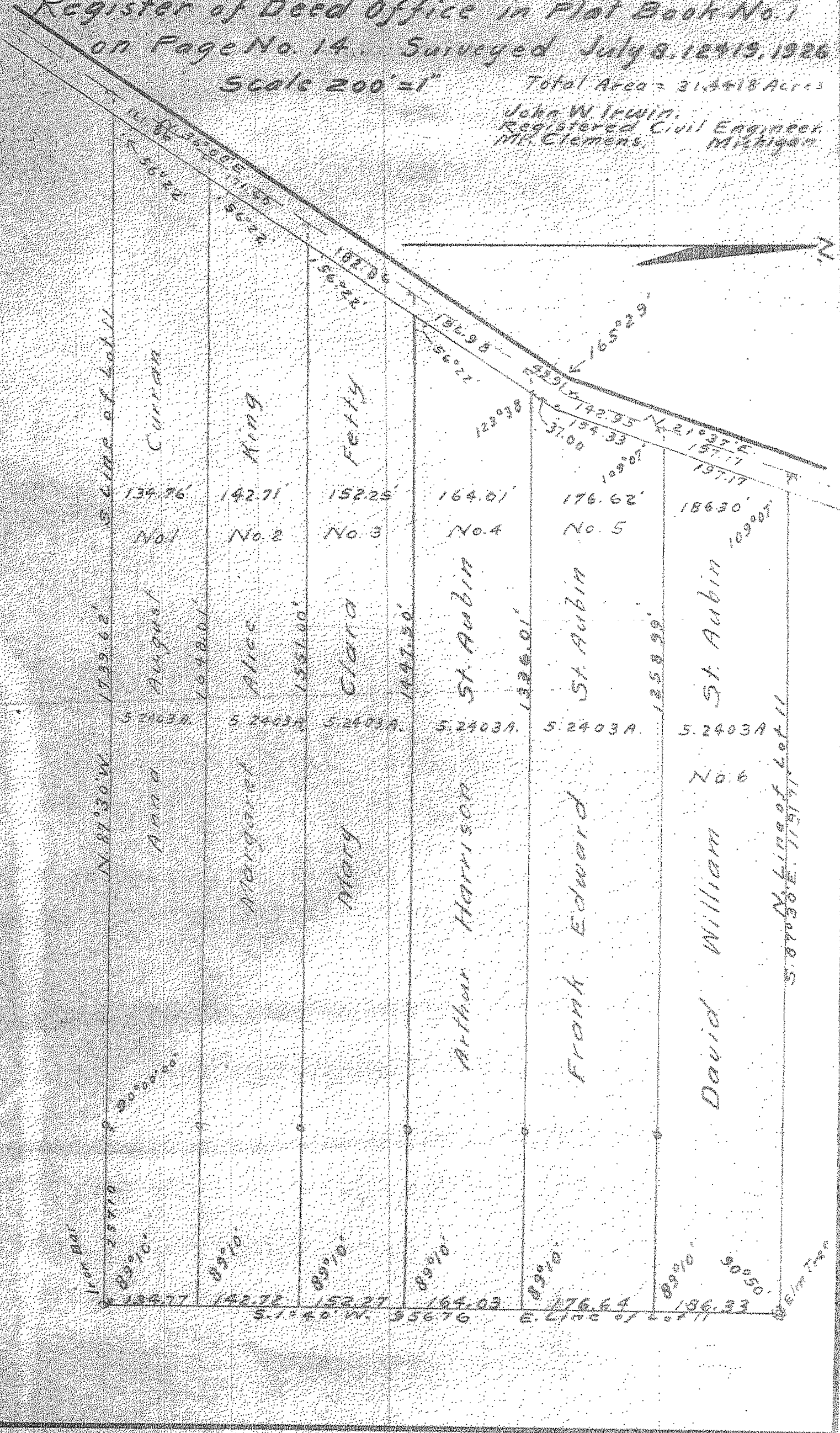
Jaron Greeley Surveyor
of private claims

1-222-pp. 475

Plot of Partition of
 Louis St. Aubin Farm Located in Lot No. 11
 of the Subdivision of P.C. No. 693, T.2N.R.14E.
 According to Plot of Record in the Macomb Co.
 Register of Deed Office in Plat Book No. 1
 on Page No. 14. Surveyed July 8, 12 & 19, 1926
 Scale 200' = 1" Total Area = 31.4418 Acres

John W. Irwin,
 Registered Civil Engineer,
 Mt. Clemens, Michigan.

3



"C.H. JOBSE'S LITTLE FARMS SUBDN."

Jan 25-1929
R. Stone

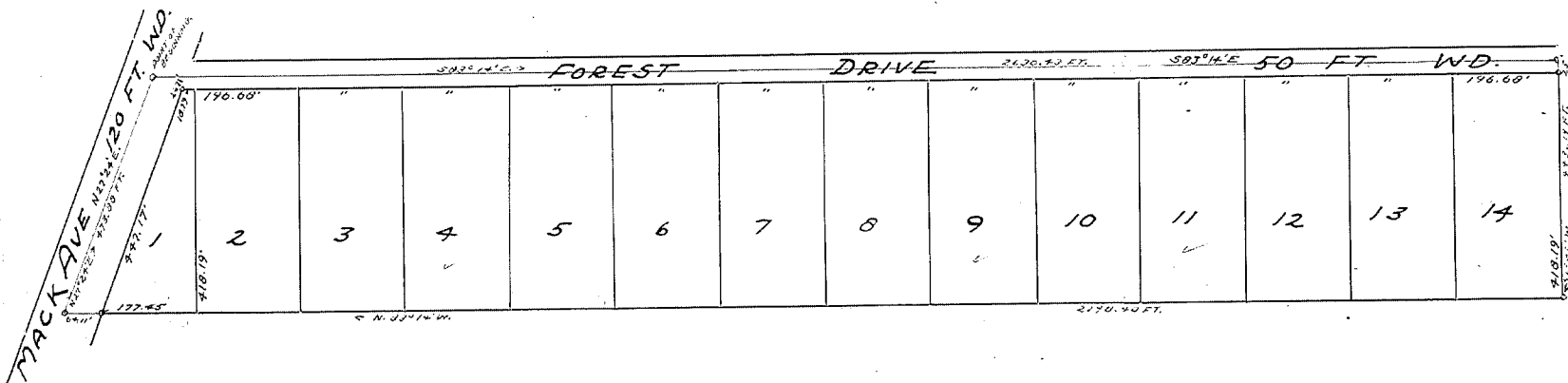
OF NLY PART OF LOT 7 ROBERTSON'S SUBDN OF P.C. 693 T. 2 N. R. 14 E.

HARRISON TWP. MACOMB CO., MICH.

Scale = 200 ft per inch.



WALTER C. WOOD,
REG. CIVIL ENGINEER
651-54 EQUITY BLDG.
DETROIT 17, MICH.



DESCRIPTION

The land embraced in the annexed plat of C.H. Jobse's Little Farms Subdn is described as follows, beginning at the intersection of Mack Ave. & Forest Drive in the part of Lot 7 of Robertson's Subdn of P.C. 693 T. 2 N. R. 14 E. Harrison Twp. Macomb Co. Mich.; thence S 83° 14' E. 2030.45 ft.; thence S 6° 46' W. 443.11 ft. along East line of P.C. 693; thence N 03° 14' W. 2700.10 ft.; thence N 27° 25' E. 207.00 ft. to the point of beginning.

Witness my hand and seal this 1st day of Feb 1928
 Charles H. Jobse a bachelor
 Notary Public
 Harrison, Mich.
 Aug 5, 1929

Witness my hand and seal this 11th day of Feb 1928
 Charles H. Jobse
 Notary Public
 Harrison, Mich.
 Feb 11 28 James C. Gillett

I HEREBY CERTIFY THAT THE PLAT HEREON DELINEATED IS A CORRECT ONE, AND THAT PERMANENT MONUMENTS CONSISTING OF 1" BY 1/2" PIPES, SET IN CONCRETE BASES 4" IN DIAMETER AND 10" IN DEPTH, HAVE BEEN PLACED IN THE GROUND AT ALL POINTS MARKED THEREON AS SHOWN THEREON AT ALL ANGLES IN THE BOUNDARIES OF THE LAND PLATTED, AND AT ALL INTERSECTIONS OF STREETS, WITH THE BOUNDARIES OF THE PLAT.

Walter C. Wood,
REG. CIVIL ENGINEER - SURVEYOR.

Bank of Michigan Corporation
 Charles H. Jobse
 C.H. Jobse's Little Farms Subdn of the part of Lot 7 of Robertson's Subdn of P.C. 693 T. 2 N. R. 14 E. Harrison Twp. Macomb Co. Mich.

Alexander John (LS)
 George Louis (LS)
 Edward J. Hill (LS)
 Elizabeth Schofield (LS)
 Rosa Verdy (LS)
 J. P. Gillette (LS)
 Margaret J. Gillette (LS)
 Frank Biewski (LS)
 Gretchen Biewski (LS)
 Russell E. LeFard (LS)
 Betty Walters (LS)
 Charles Walters (LS)

Feb 11 28 James C. Gillett
 Charles H. Jobse
 Walter Steffens
 James C. Gillett
 Dec 28-1928

STATE OF MICHIGAN }
 COUNTY OF WASHTENAW }
 On this 11th day of December 1928 before me, a Notary Public in and for said County, personally came the above named Charles H. Jobse and J. P. Gillette, to me personally known, who being each by me duly sworn, did say that they are the President and Secretary, respectively, of the Michigan Corporation, and that the seal affixed to said instrument is the corporate seal of said corporation, and the said instrument was signed and sealed in behalf of said corporation by authority of its Board of Directors, and the said Charles H. Jobse, President, and J. P. Gillette, Secretary, acknowledged said instrument to be the free act and deed of said corporation.
 Donnelly A. Posner
 Notary Public, in and for Wayne Co. Michigan
 My commission expires Feb. 20, 1931.

REGISTER'S OFFICE
 County of Macomb
 Received for Record this
 of JAN 29 1929 A.D. 1929 at
 9:00 o'clock P.M. and recorded
 in Liber 13 of Plate
 on Page 41
 Hugh C. Whiting

L. 13
 P. 41

4

See Declaration for Change of Name of said Corporation in Lib. 563 Page 527

"SUPERVISORS PLAT OF JOBSE ACRES"

PART OF P.C. 144, T 2 N, R 14 E,
HARRISON TOWNSHIP, MACOMB COUNTY, MICHIGAN.

6511

Scale: 1 Inch = 200 Feet.

PC. 693
INTERSECTION OF N'LY LINE PC. 693
AND W'LY LINE PC. 144

NOTE: All dimensions hereon are in feet and decimals thereof.

DEDICATION

KNOW ALL MEN BY THESE PRESENTS, That I, Floyd W. Ross Supervisor of the Township of Harrison, Macomb County, State of Michigan, by virtue of authority in me vested by Section 51, Act 172, of 1929, having been duly authorized by the Township Board, have caused the land described in the annexed plat to be surveyed, laid out and platted, to be known as "SUPERVISORS PLAT OF JOBSE ACRES" part of P.C. 144, T2N, R14E, Harrison Township, Macomb County, Michigan, and that the streets and alleys as shown on said plat are now being used for such purposes.

Witnesses:

Carl H. Jobe
William H. Brandenburg

Floyd W. Ross
Supervisor of the Township of Harrison.

ACKNOWLEDGMENT

STATE OF MICHIGAN, } ss
County of Macomb }

On this 1st day of July, A. D. 1937, before me, a Notary Public in and for said County, personally came the above named Supervisor of the Township of Harrison, known to me to be the person who executed the above dedication, and acknowledged the same to be his free act and deed as such Supervisor.

My Commission Expires: March 6, 1937 Carl H. Jobe
Notary Public in and for Macomb County.

DESCRIPTION OF LAND PLATTED

The land embraced in the annexed plat of "SUPERVISORS PLAT OF JOBSE ACRES," part of P.C. 144, T2N, R14E, Harrison Township, Macomb County, Michigan, is described as follows: beginning at a point 3715.57 ft. S 0°33'W of the intersection of the W'ly line of P.C. 144 with the N'ly line of P.C. 693; thence N 89°29'E 556.3 ft; thence S 0°26'E 3640.8 ft; thence S 89°48'30" W 565 ft; thence N 0°18'W 3637.6 ft. to the point of beginning.

SURVEYOR'S CERTIFICATE

I hereby certify that the plat hereon delineated is a correct one and that permanent metal monuments of not less than one inch in diameter and fifteen inches in length set in a concrete base at least four inches in diameter and forty-eight inches in depth have been placed at points marked thus: "c", as thereon shown at all angles in the boundaries of the land platted, at all the intersections of streets, intersections of alleys, or of streets and alleys, and at the intersections of streets and alleys with the boundaries of the plat as shown on said plat.

Burt W. Hawkey
Registered Civil Engineer.

CERTIFICATE OF MUNICIPAL APPROVAL

This plat was approved by the Township Board of the Township of Harrison at a meeting held July 1, A. D. 1937.

Carl H. Jobe
Township Clerk.

CERTIFICATE OF APPROVAL BY COUNTY BOARD

This plat was approved on the 24th day of February, 1937.

Ray A. Collins
Judge of Probate.
Nelson Jett
County Clerk.
Carl B. Brandenburg
County Treasurer.

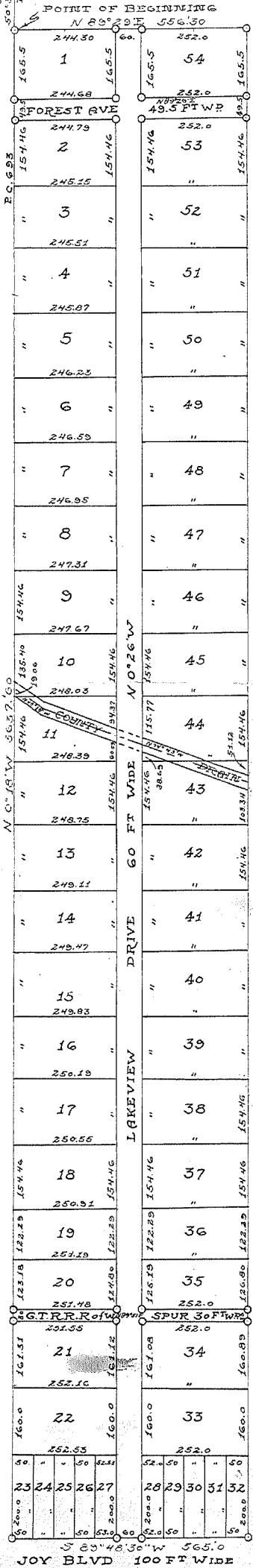
Examined and Approved

5/3/37
James G. Jamison
Deputy Auditor General

REGISTER'S OFFICE,
County of Macomb, Mich.

Received for Record this 6th day
of MAY 1937, A.D. 1937
at 9:30 o'clock A.M. and Registered
in Liber 16 of Plats
on Page 20

Viola Mayette, Deputy



L. 18
P. 80

5

See Resolution for Change of Street Name: See Lib 563 of Records - Page 527