

# INDEX

## SOUTHWEST CORNER P.C. 242 OTHER CODE: PC-028 HARRISON TOWNSHIP, T2N, R14E

### SECTION 1:

1. Index
2. Before Pictures of Point and in each cardinal direction
3. After Pictures of Point

### SECTION 2:

1. LCRC
2. Surveyor's Dossier Report
3. Overall Sketch
4. P.C. Sketch

### SECTION 3:

1. Original Private Claim Notes (2 pages)
2. Field Notes (1 page)
3. 1819 Map of Harrison Township from GLO (1 page)
4. Map of Harrison Township (1 page)
5. 1916 Map of Harrison Township (1 page)
6. 2006 Map of Harrison Township (1 page)
7. Harrison Township Composite Map (1 page)

### SECTION 4:

Belvidere Subdivision	Plat	L.6, P.66 (1 page)
Venice Shores Subdivision	Plat	L.33, P.44, (2 pages)
Venice Shores Subdivision No. 1	Plat	L.34, P.31 (2 pages)
Venice Shores Subdivision No. 2	Plat	L.39, P.46 (2 pages)
Venice Shores Subdivision No. 3	Plat	L.41, P.49 (2 pages)
Supervisor's Plat of John P. Fleming Sub'n	Plat	L.52, P.50 (1 page)
Steven E. Dunn	Cert. of Survey	L.20371, P.411 (13 pages)






REFERENCE FOR  
PC-028

MACOMB CO.  
HARRISON TWP.



A photograph showing a gravel surface next to a yellow-painted curb. A white rectangular sign with handwritten text is placed on the gravel. Below the sign is a circular red marker. Two white circular marks are visible on the right side of the gravel area.

PC-028  
HARRISON  
TWP.



















LAND CORNER RECORDATION CERTIFICATE
Filing Requirement of Act 74, Mich. P.A. 1970

For corners in

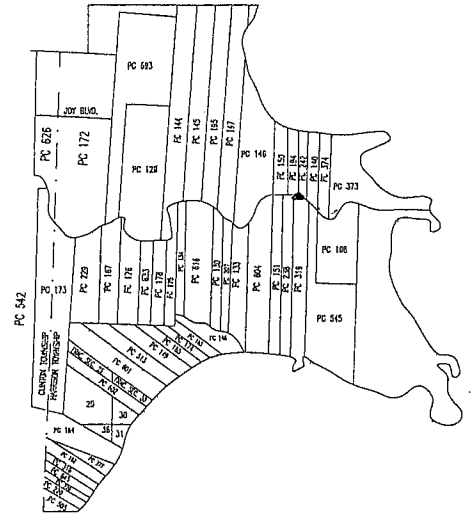
MACOMB (County) Located In: Harrison Township Corner Code #
1. Public Land Survey T 2N R 14E PC-028
2. Property Controlling in Section S T R
3. Miscellaneous Property in Section S T R

2156199 PAGE 1 OF 2
LIBER 21700 PAGE 191
11/09/2012 03:30:27 P.M.
MACOMB COUNTY, MI SEAL
CARMELLA SABAUGH, REGISTER OF DEEDS

Register of Deeds Stamp & File Number

- 4. Lot No. , Recorded Plat
5. Private Claims Southwest Corner of Private Claim 242 Common with Southeast Corner of Private Claim 194

I, ROBERT R. DROUILLARD, JR., in a field survey on May 29, 2012, do hereby state that under requirements of P.A. 74, Michigan P.A. of 1970, the corner points mentioned in lines 1 and 2 above were in conformance with regulations and rules therefore as required in the current manual of survey instructions of the United States Department of the Interior, Bureau of Land Management or by a decree of a Court of Law and/or that the corner points mentioned in lines 3, 4 and 5 above were in conformance with the rules of the Michigan Board of Land Surveyors or by a Decree of a Court of Law; re-established, monumented, recovered, found as expressed below:



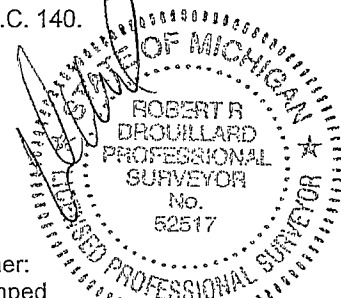
NOTE: Not more than 2 corners, all in the same town and range, may be recorded on this certificate.

- A. Description of original monument and accessories and/or subsequent restoration:
\*Post set by Aaron Greeley according to Private Claim Notes, not found\*

Table with 4 columns: Line number, Year, Description, and Surveyor/Reference. Includes entries for 1810 (Private claim notes), 1923 (Belvidere Subdivision), 1955 (Venice Shores Subdivision), 1957 (Venice Shores Subdivision No.2), 1958 (Venice Shores Subdivision No.3), 1964 (S. P. Plat of John P. Fleming Sub'n), and 2010 (Certificate of Survey).

- B. Description of corner evidence found and/or method applied in restoring or reestablishing corner:
No physical evidence of the original post was found at the location described in the Aaron Greeley original survey notes. I established the location of the P.C. reference iron in new monument box using distances and existing evidence found in recorded plats of Belvidere Subdivision, Venice Shores Subdivision, Venice Shores Subdivisions Nos.1, 2 & 3, Supervisor's Plat of John P. Fleming Subdivision and a Certificate of Survey by Steven E. Dunn. The West line of Private Claim 242 was set at a record distance of 555.42 feet west of the line common to P.C. 242 and P.C. 140.

FROM SOUTHWEST CORNER PC 242 (PC-028) TO NORTHWEST CORNER PC 242 (PC-030)
4299.90 (65 Chains 15 Links Private Claim Notes - Original Survey)
4120.67' REF PC-028 (reference monument set in the centerline of North River Road) to REF PC-030 (measured Drouillard #52517, 2012)
168.55' from REF PC-028 to PC-028 Corner
214' ± from REF PC-028 to the North bank of The Clinton River



- C. Description of monument for corner and accessories established to perpetuate locating the position of the corner:
Reference Corner to PC-028 I installed a 3/4" diameter x 24" long iron rod with a 2" diameter aluminum cap stamped "Macomb County Monument, MI Act #345, #52517, "REF PC-028" in a new monument box.

Witnesses:

Table with 4 columns: Bearing, Distance, and Description. Includes bearings like N85°W, N80°W, N75°E, S45°E, S15°E, S10°W and descriptions such as 'To top center of fire hydrant', 'Set nail and Macomb County Witness tag in North face of utility pole.', etc.

The selected location is accepted by me and is generally accepted by Professional Surveyors as the best available evidence of the position of the original corner.

Signed by [Signature]
Surveyor's Michigan License No. 52517

Date 11/2/12

FORM APPROVED BY MICHIGAN STATE BOARD OF PROFESSIONAL SURVEYORS, JAN. 28, 1971
REVISED MAY 14, 1975
REVISED JAN., 1983
REVISED OCT., 1995

ACCEPTED BY THE MACOMB COUNTY SURVEY PEER GROUP AS THE OFFICIAL CORNER UNDER MICHIGAN PUBLIC ACT 345 OF 1990 AT A MEETING HELD ON 7-24-2012
MARTIN C. DUNN, P.S. CHAIRMAN



# SKETCH OF PRIVATE CLAIM 242

LAKE ST. CLAIR

Liber 21700 Page 192

PC-030  
NW. CORNER  
P.C.242 COMMON  
WITH N.E. CORNER  
P.C. 194 AND  
SEA WALL

REF. MONUMENT  
N.W. CORNER  
P.C.242 COMMON  
WITH N.E. CORNER  
P.C. 194

PC-029  
N.E. CORNER  
P.C.242 COMMON  
WITH N.W. CORNER  
P.C. 140

REF. MONUMENT  
N.E. CORNER  
P.C. 242 COMMON  
WITH N.W. CORNER  
P.C. 140

555.42'

RECORD &  
USED

P.C.  
242

MITCHEL TREMBLE TRACT

JOSEPH ROBERTJEAN TRACT

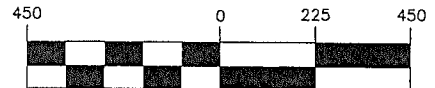
4120.67' REF. MONT. TO REF. MONT. (DROUILLARD 2012)

NORTH 65 CHAINS, 15 LINKS (4299.90')

SOUTH 63 CHAINS, 77 LINKS (4208.82')

4059.76' REF. MONT. TO REF. MONT. (DROUILLARD 2012)

GRAPHIC SCALE



( IN FEET )

1 inch = 450 ft.

REF. MONUMENT  
S.W. CORNER  
P.C.242 COMMON  
WITH S.E. CORNER  
P.C. 194

PC-028  
S.W. CORNER  
P.C.242 COMMON  
WITH S.E. CORNER  
P.C. 194

REF. MONUMENT  
S.E. CORNER  
P.C.242 COMMON  
WITH S.W. CORNER  
P.C. 140

PC-018  
S.E. CORNER  
P.C.242 COMMON  
WITH S.W. CORNER  
P.C. 140

168.55'  
TO P.C.  
CORNER

214'± TO  
RIVER BANK

130'  
TO  
RIVER BANK

226'± TO  
RIVER BANK

N83°W 8 CHAINS, 48 LINKS (562.98')

RIVER HURON

P.C. 242

Confirmed to: Robert Robertjean

Commencing at a post standing on the border of River Huron between this tract and a tract confirmed to Mitchel Tremble thence North Sixty Five Chains Fifteen Links (4299.90 feet) to a post standing on the border of Lake St. Clair thence along the border of said Lake South Seventy Three Degrees East Eight Chains Eighty Links (550.80 feet) to a post the boundary between this tract and a tract confirmed to Joseph Robertjean thence South Sixty Three Chains Seventy Seven Links (4208.82 feet) to a post standing on the border of River Huron thence along the border of said River up stream North Eighty Three Degrees West Eight Chains Forty Eight Links (559.68 feet) to the place of beginning, containing fifty four acres twenty seven hundreds of an acre

Detroit July 14th, 1810

Aaron Greeley Surveyor  
of Private Claims



**DOSSIER**  
**SOUTHWEST CORNER P.C. 242**  
**OTHER CODE: PC-028**  
**HARRISON TOWNSHIP,**  
**T2N, R14E**

**GLO HISTORY:**

Private Claim survey performed by Aaron Greeley on July 14, 1810. Commencing on the north border of River Huron between this tract and a tract confirmed to Mitchel Tremble thence north sixty five chains fifteen links to a post standing on the border of Lake St. Clair thence along the border of said lake south seventy three degrees east eight chains eighty links to a post the boundary between this tract and a tract confirmed to Joseph Robertjean thence south sixty three chains seventy seven links to a post standing on the border of River Huron thence along the border of said river up stream north eighty three degrees west eight chains forty eight links to the place of beginning, containing fifty four acres and twenty seven hundredths of an acre. Description No. 242 Confirmed to Robert Robertjean.

**EXISTING CONDITIONS:**

No physical evidence of original post found at above described location. The reference iron in new monument box position was established using found evidence from the following plats: "Belvidere Subdivision" as recorded in liber 6 of plats, page 66, Macomb County Records, "Venice Shores Subdivision" as recorded in liber 33 of plats, page 44, Macomb County Records, "Venice Shores Subdivision No.1" as recorded in liber 34 of plats, page 31, Macomb County Records, "Venice Shores Subdivision No.2" as recorded in liber 39 of plats, page 46, Macomb County Records, "Venice Shores Subdivision No.3" as recorded in liber 41 of plats, page 49, Macomb County Records, "Supervisor's Plat of John P. Fleming Subdivision" as recorded in liber 52 of plats, page 50, Macomb County Records and a Certificate of Survey by Steven E. Dunn, P.S. #28408 as recorded in liber 20371, page 411, Macomb County Records.

**RECORDED & UNRECORDED SURVEYS, & FIELD NOTES:**

1. Aaron Greeley	Copy of Original Survey	Post sighted in notes (2 pages)
2. Belvidere Subdivision	Plat	L.6, P.66
3. Venice Shores Subdivision	Plat	L.33, P.44-46, (3 pages)
4. Venice Shores Subdivision No.1	Plat	L.34, P.31-33 (3 pages)
5. Venice Shores Subdivision No.2	Plat	L.39, P.46, 47 (2 pages)
6. Venice Shores Subdivision No.3	Plat	L.41, P.49, 50 (2 pages)
7. S.P. Plat of John P. Fleming Sub'n	Plat	L.52, P. 50 (1 page)
8. Steven E. Dunn, P.S. # 28408	Cert. of Survey	L.20371, P.411-423 (13 pages)

**FIELD MEASUREMENTS BETWEEN CORNERS:**

FROM CORNER FOR SOUTHWEST PC 242 (PC-028) TO NORTHWEST CORNER PC 242 (PC-030)  
4299.90 (65 Chains 15 Links Private Claim Notes).  
4120.67' plus 214'± to the North bank of the Clinton River (measured Drouillard #52517, 2012) to a reference iron set in new monument box set in the centerline of North River Road.  
4355'± to the north bank of the Clinton River



**RECOMMENDATIONS:**

Replace a mag nail with a 3/4" diameter x 24" long iron rod with a 2" diameter aluminum cap stamped "Macomb County Monument, MI Act #345, #52517, "PC-028" in a new monument box.

**WITNESSES: PC-028CORNER**

- |       |         |   |
|-------|---------|---|
| N85°W | 219.70' | To top center of fire hydrant.  |
| N80°W | 172.20' | Set nail and Macomb County Witness tag in North face of utility pole.     |
| N75°E | 79.33'  | Set nail and Macomb County Witness tag in North face of utility pole.     |
| S45°E | 82.01'  | Set nail and Macomb County Witness tag in Northeast face of utility pole. |
| S15°E | 68.50'  | Set nail and Macomb County Witness tag in East face of 48" Maple tree.    |
| S10°W | 59.03'  | Set nail and Macomb County Witness tag in East face of 24" Maple tree.    |







N. 481. North side of River Huron  
Description N. 242, Confirmed to.

Robert Robertjean, commencing on the  
North border of River Huron between this  
tract and a tract confirmed to Michel  
Tremblé, thence north sixty five chains fif-  
teen links, to a post standing on the border  
of Lake St. Clair, thence along the border  
of said Lake south seventy three degrees  
East eight chains eighty links, to a post -  
the boundary between this tract and  
a tract confirmed to Joseph Robertjean  
thence south sixty three chains seventy  
seven links, to a post standing on the  
border of River Huron, thence along the  
border of said River up stream north  
eighty three degrees west eight chains -  
forty eight links, to the place of beginn-  
ing, containing fifty four acres twenty  
seven hundredths of an acre. —

Detroit July 14. 1810

Aaron Greeley Surveyor  
of private Claims.

242



No. 481

No. 242 Confirmed to  
Robert Robertjean

NORTH SIDE OF RIVER HURON

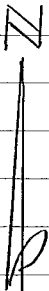
Description No. 242 Confirmed to Robert Robertjean commencing on the north border of River Huron between this tract and a tract confirmed to Mitchel Tremble thence north sixty five chains fifteen links to a post standing on the border of Lake St. Clair thence along the border of said Lake south seventy three degrees east eight chains eighty links to a post the boundary between this tract and a tract confirmed to Joseph Robertjean thence south sixty three chains seventy seven links to a post standing on the border of River Huron thence along the border of said river up stream north eighty three degrees west eight chains forty eight links to the place of beginning, containing fifty four acres twenty seven hundredths of an acre\_\_

Detroit July 14, 1810

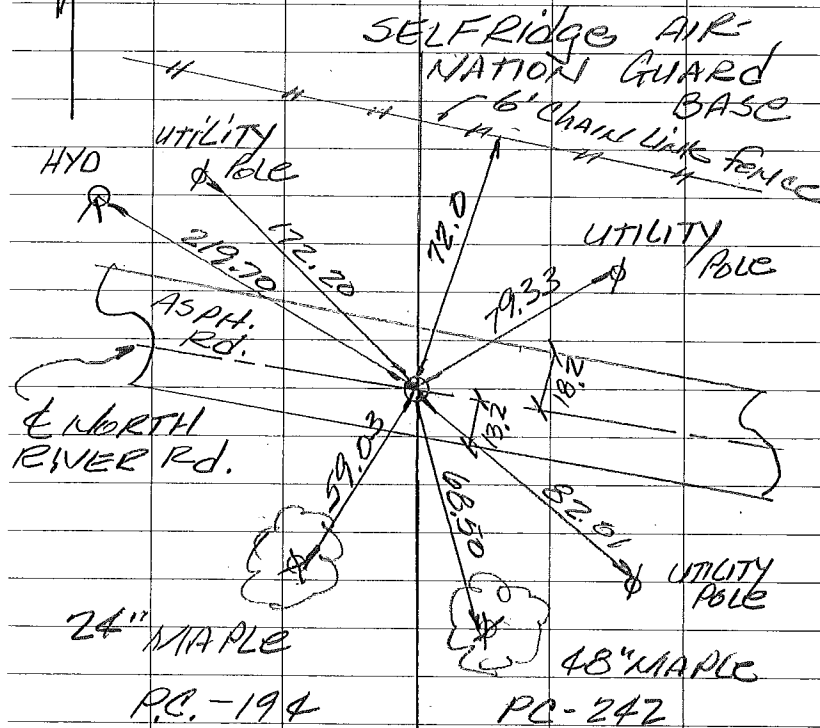
Aaron Greeley Surveyor  
of private claims



5-29-2012 PC-028  
 R5 B5



S.W. CORNER OF  
 PRIVATE CLAIM 242 &  
 S.E. CORNER OF PRIVATE  
 CLAIM 194



SET MAG NAIL  
 AT PROPOSED  
 LOCATION

SET REFERENCE IRON  
 IN NEW MOUNT. BOX W/  
 3/4" X 24" IRON W/CAP

WITNESS

N. 85° W. 219.70 FT. TO TOP  
 CENTER OF HYD.

N. 80° W. 172.20 FT. SET  
 NAIL & TAG IN N.F. OF  
 UTILITY POLE

N. 75° E. 79.33 FT. SET NAIL  
 & TAG IN N.F. OF UTILITY  
 POLE

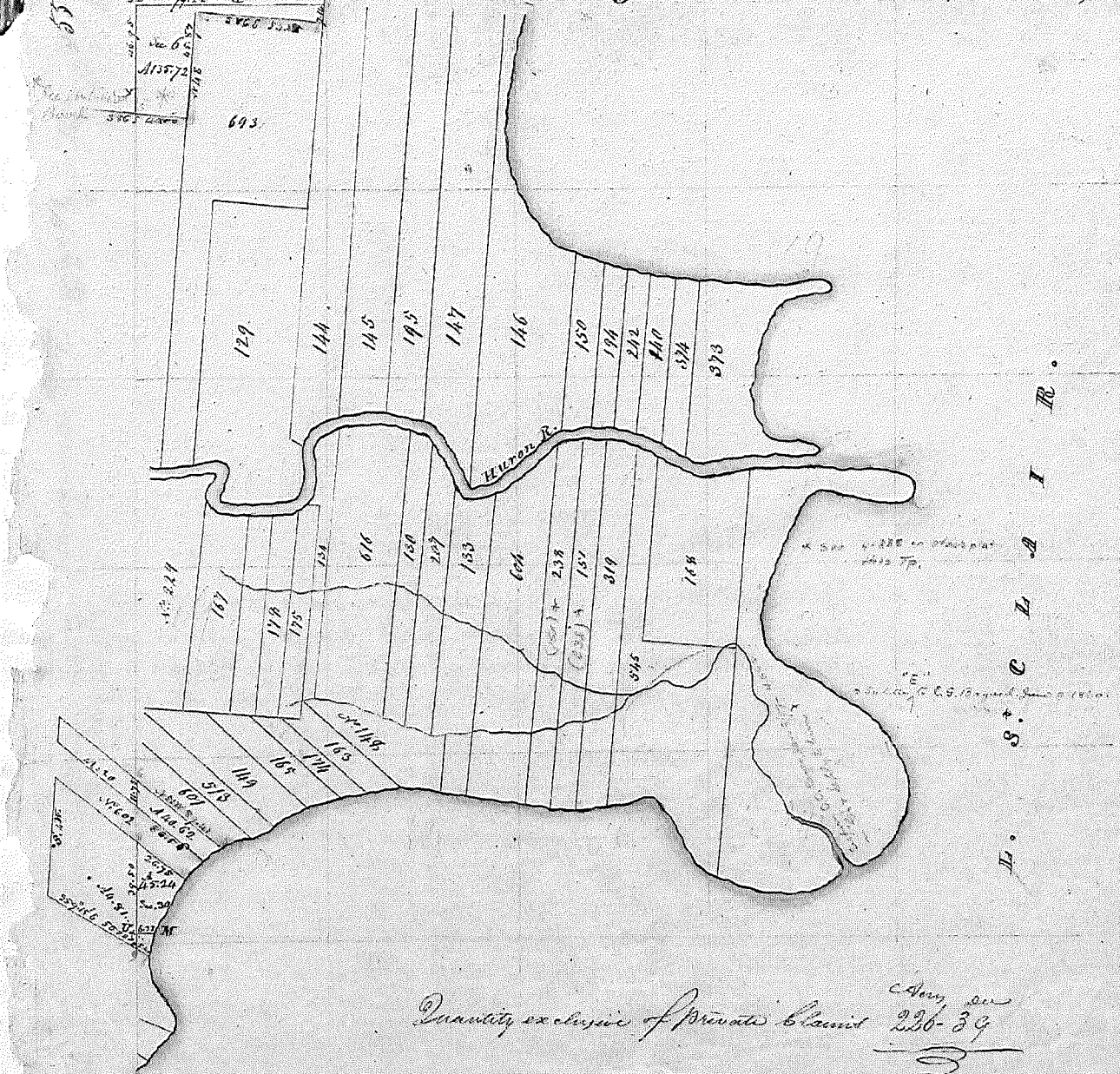
S. 45° E. 82.01 FT. SET NAIL  
 & TAG IN N.E. FACE OF  
 UTILITY POLE

S. 15° E. 68.50 FT. SET NAIL  
 & TAG IN W. FACE OF  
 48" MAPLE.

S. 10° W. 59.03 FT. SET  
 NAIL & TAG IN E. FACE  
 OF 24" MAPLE



Township N. II North, Range N. XIV East of the Mer. (Mich. Ter.)



D. S. C. L. A. I. R.

Quantity exclusive of Private Claim 236-39

A true copy from the Original on file in this Office

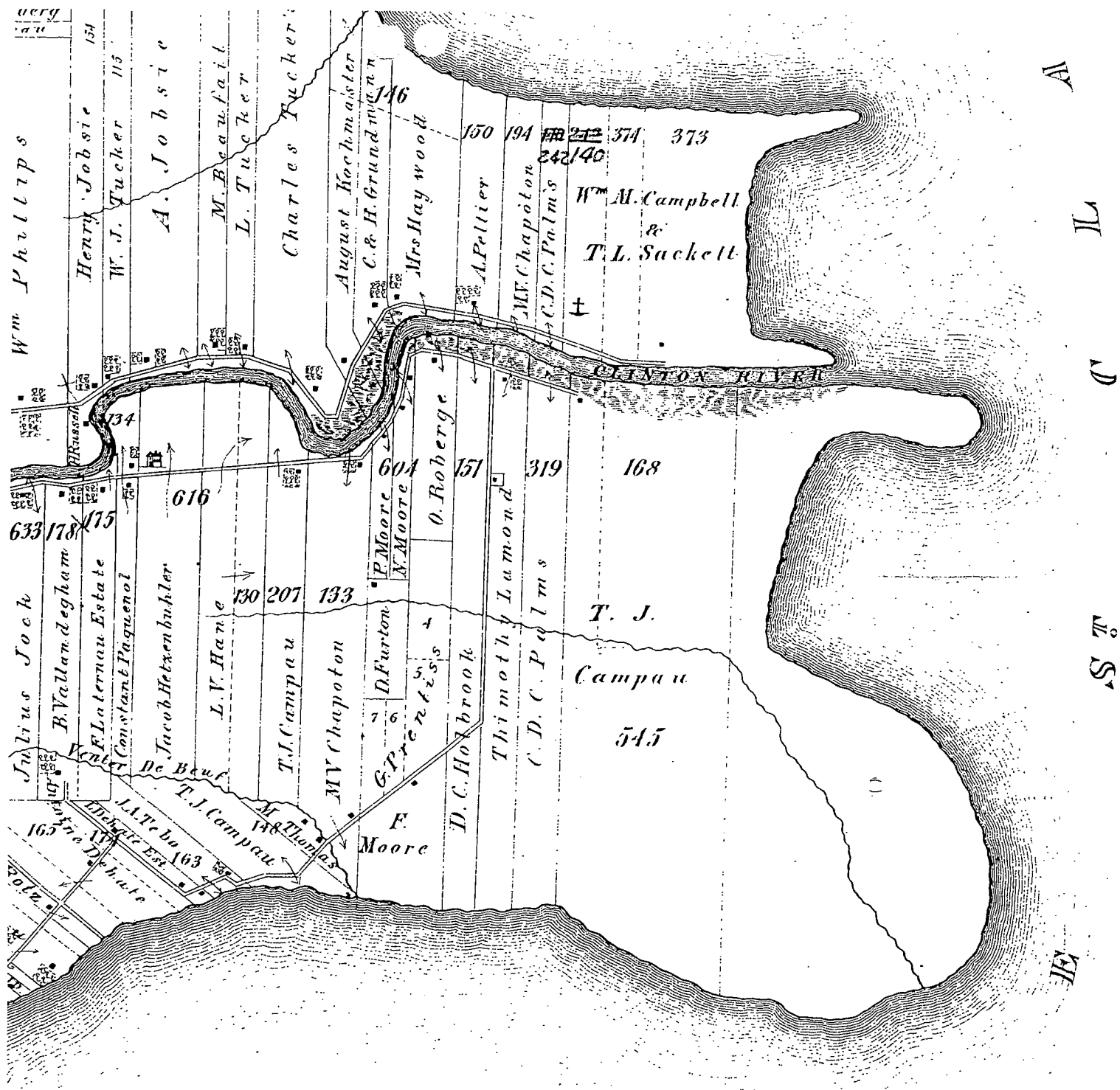
Surveyor General's Office  
July 20 1815

Richard Telfer  
Surveyor General

POOR COPY

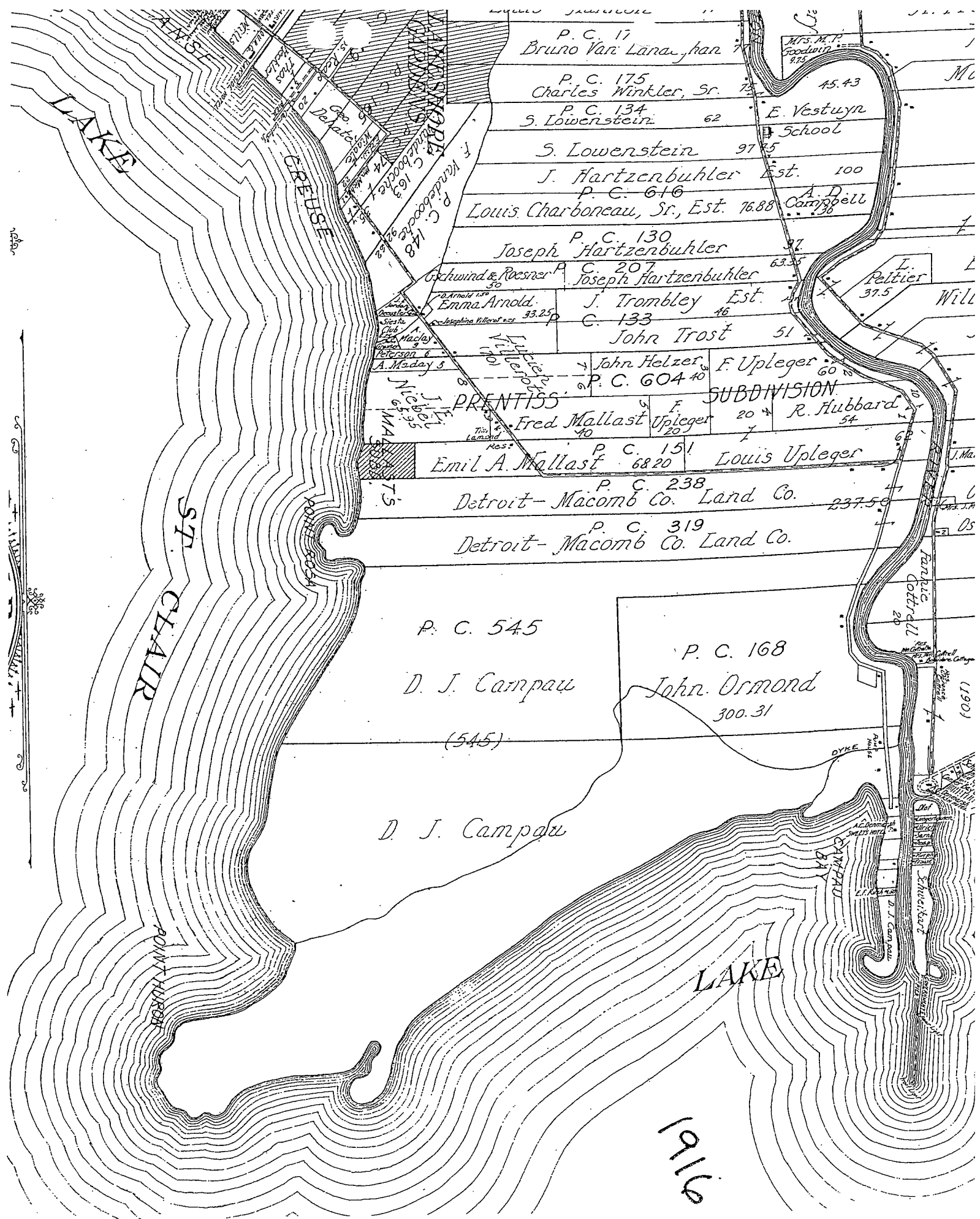
3





  
**Map of**  
**HARRISON**  
**TONWSHIP**  
 T. 2 N. R. 14. E.





P. C. 17  
Bruno Van Lanuighan

Mrs. M.P. Goodwin  
875

P. C. 175  
Charles Winkler, Sr.

45.43

P. C. 134  
S. Lowenstein

E. Vestuyn  
School

S. Lowenstein 97.75

J. Hartzenbuhler Est. 100

P. C. 616

Louis Charboneau, Sr., Est. 76.88  
Campbell

P. C. 130  
Joseph Hartzenbuhler

Schwind & Poesner  
P. C. 207  
Joseph Hartzenbuhler

L. Peltier  
37.5

Emma Arnold  
P. C. 133  
John Trost

John Helzer  
P. C. 604.40

F. Upleger  
60

PRENTISS

SUBDIVISION

Fred Mallast  
P. C. 151  
Emil A. Mallast

R. Hubbard  
54

P. C. 238  
Detroit-Macomb Co. Land Co.  
237.50

P. C. 319  
Detroit-Macomb Co. Land Co.

P. C. 545

D. J. Campau

(545)

P. C. 168

John Ormond

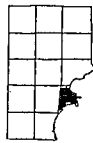
300.31

D. J. Campau

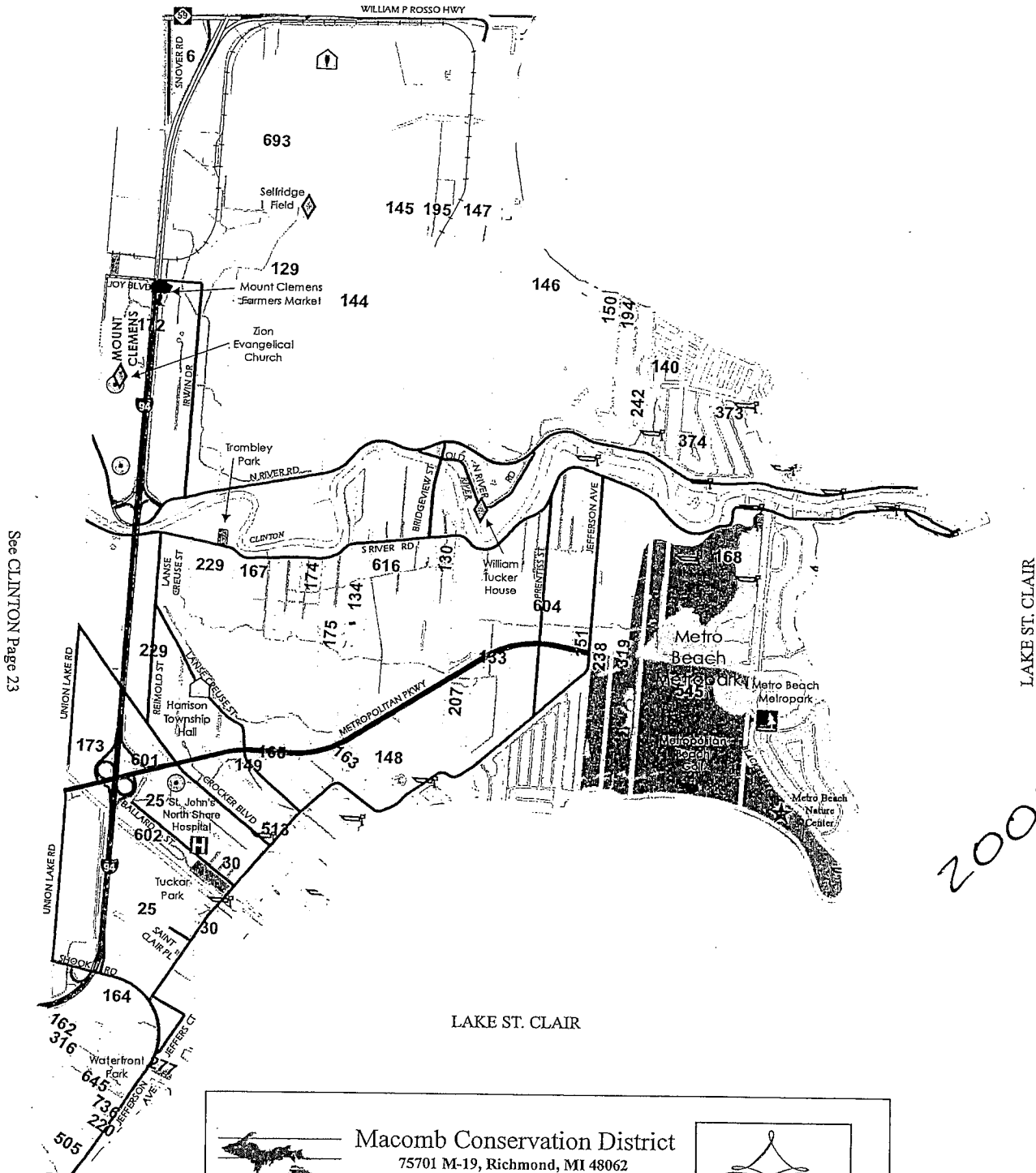
LAKE

1916

5



See CHESTERFIELD Page 31

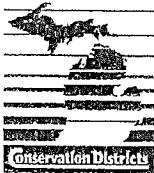


See CLINTON Page 23

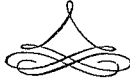
LAKE ST. CLAIR

LAKE ST. CLAIR

2006



**Macomb Conservation District**  
 75701 M-19, Richmond, MI 48062  
 Phone: 586-727-2666 Fax: 586-727-2621  
 E-mail: [macombcd@klondyke.net](mailto:macombcd@klondyke.net)  
 Website: [www.macombcd.com](http://www.macombcd.com)

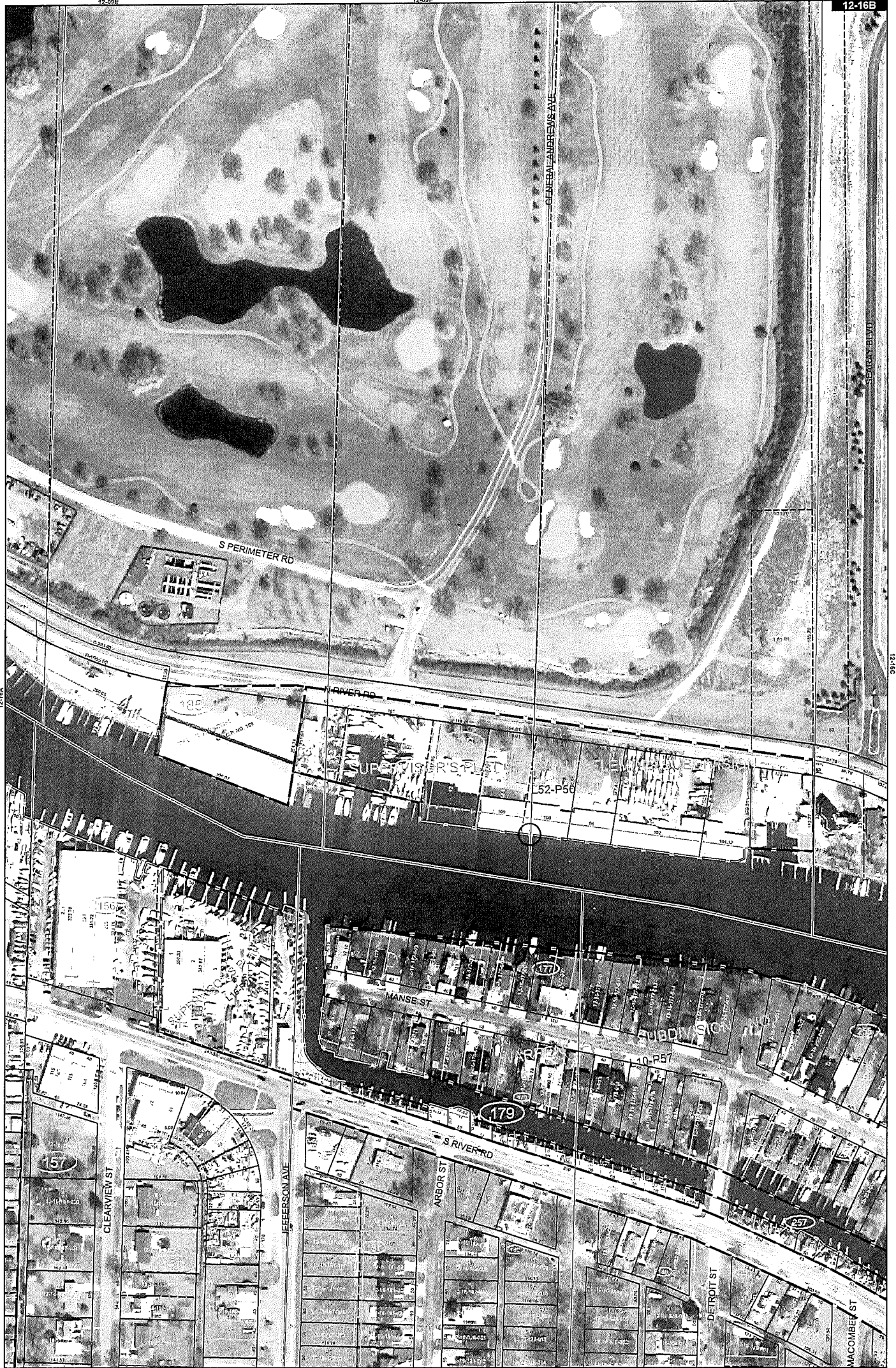


*Celebrating  
 55 Years of  
 Managing  
 Macomb County's  
 Natural Resources*

Assistance available for :  
 Tree Sales      Forestry      Native Plants  
 Conservation      Education

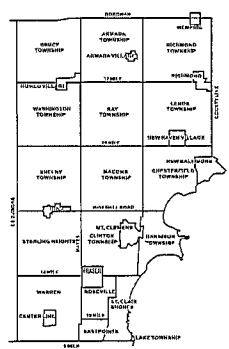
6





Date of Photography: April 2004  
 100 50 0 100 200 Feet

1:1,200



HARRISON TWP SHEET INDEX

12-09E	12-09F	12-09G	12-09H	12-09I	12-09J	12-09K	12-09L	12-09M	12-09N	12-09O	12-09P	12-09Q	12-09R	12-09S	12-09T	12-09U	12-09V	12-09W	12-09X	12-09Y	12-09Z	
12-09E	12-09F	12-09G	12-09H	12-09I	12-09J	12-09K	12-09L	12-09M	12-09N	12-09O	12-09P	12-09Q	12-09R	12-09S	12-09T	12-09U	12-09V	12-09W	12-09X	12-09Y	12-09Z	12-09A

DESCRIPTION OF PERMANENT REAL ESTATE INDEX NUMBER

**13-19-302-018**

AREA NUMBER	AREA NUMBER	PARCEL NUMBER	PARCEL NUMBER
13-19-302-018	13-19-302-018	13-19-302-018	13-19-302-018

- Legend**
- Platted Area Boundary Line
  - Property Line
  - Property Spill Line
  - Property Combined Line
  - Township Boundary Line
  - Traverse Line
  - Dimension Extent Marks
  - Dimension Start Marks

**12-16B**

HARRISON TWP.  
 E.1/2 N.W.1/4 SEC.16 T.2N. R.14E.

Source: Macomb County Department of Planning and Economic Development  
 - 2004 Digital Orthophotography Project  
 - Parcel Conversion Project

Note:  
 Digital Orthophotography horizontal positioning accuracy is 3 feet. Parcel boundary lines should be considered a graphical representation and not in any way a legal survey or engineering document. In general, the horizontal positioning and length accuracy is within 15 feet.

This map is intended for general planning purposes. Site specific evaluation should be verified by field inspection. This is a work in progress and may contain errors and omissions. Please report any potential revisions to (588)469-5285.

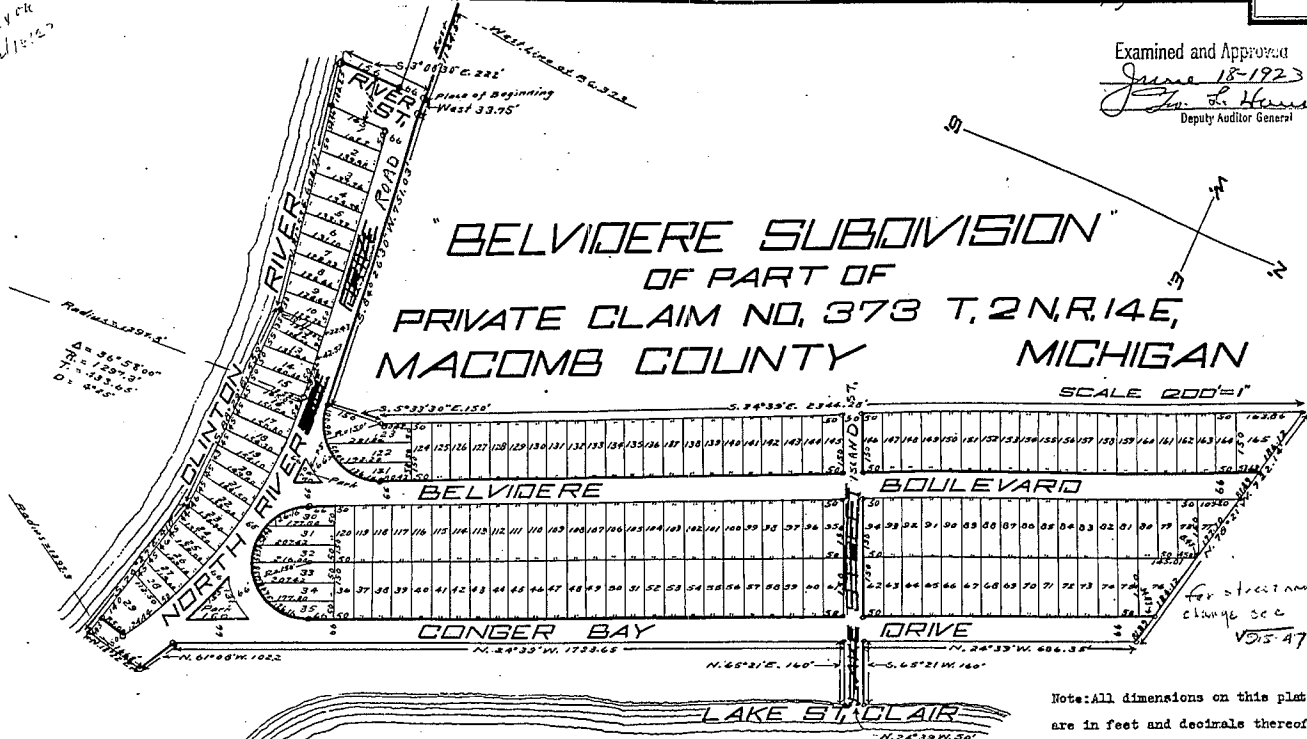
**GIS** MACOMB COUNTY  
 Planning and Economic  
 Development Department



Copy

Examined and Approved  
June 18-1923  
J. L. Hurrell  
Deputy Auditor General

# "BELVIDERE SUBDIVISION" OF PART OF PRIVATE CLAIM NO. 373 T. 2 N. R. 14 E, MACOMB COUNTY MICHIGAN



Note: All dimensions on this plat are in feet and decimals thereof.

KNOW ALL MEN BY THESE PRESENTS, That we William C. Cottrell and Fannie A. Cottrell his wife, and Clarence Cottrell (unmarried) and William A. Mickel and Augusta Mickel his wife, and John N. Tucker (a widower) as proprietors have caused the land embraced in the annexed plat to be surveyed, laid out and platted, to be known as "BELVIDERE SUBDIVISION" OF PART OF PRIVATE CLAIM NO. 373 T. 2 N. R. 14 E. MACOMB COUNTY MICHIGAN and that the streets and parks as shown on said plat are hereby dedicated to the use of the public.

Signed and Sealed in Presence of  
J. M. J. J. J.  
Geo. S. Bankers

William C. Cottrell (L.S.)  
Fannie A. Cottrell (L.S.)  
Clarence Cottrell (L.S.)  
William A. Mickel (L.S.)  
Augusta Mickel (L.S.)  
John N. Tucker (L.S.)

STATE OF MICHIGAN } ss.  
County of Macomb }

On this 24th day of May 1923 before me, a Notary Public in and for said county, personally came the above named William C. Cottrell and Fannie A. Cottrell his wife, and Clarence Cottrell (unmarried) and William A. Mickel and Augusta Mickel his wife, and John N. Tucker (a widower), known to me to be the persons who executed the above dedication, and acknowledged the same to be their free act and deed.

J. M. J. J. J.  
Notary Public Macomb Co. Mich.

DESCRIPTION  
The land embraced in the annexed plat of "BELVIDERE SUBDIVISION" OF PART OF PRIVATE CLAIM NO. 373 T. 2 N. R. 14 E. MACOMB COUNTY MICHIGAN is described as follows:- Beginning on the north side line of North Riverside Drive at a point 1124.5 feet east from where said north side line of North Riverside Drive is intersected by the west line of private claim No. 373; thence S. 3° 08' 30" E. a distance of 222 feet to the shore line of the Clinton River; thence N. 81° 53' E. 608.71 feet; thence S. 88° 29' E. 559 feet; thence S. 76° 27' E. 410 feet; thence N. 12° 22' E. 166.8 feet; thence E. 61° 08' W. 102.2 feet; thence N. 24° 39' W. 1723.65 feet; thence N. 65° 21' E. 160 feet; thence N. 24° 39' W. 50 feet; thence S. 65° 21' W. 160 feet; thence N. 24° 39' W. 686.35 feet; thence N. 78° 21' W. 722.14 feet; thence S. 24° 39' E. 2344.28 feet; thence S. 5° 35' 30" E. 150 feet; thence S. 84° 26' 30" W. 751.03 feet; thence west 33.75 feet to the place of beginning. All the above described lands are in private claim No. 373 T. 2 N. R. 14 E. Macomb County Michigan.

I hereby certify that the plat hereon delineated is a correct one, and that permanent monuments, consisting of iron gas pipe 15 inches long have been planted at all points marked thus (o) as thereon shown at all angles in the boundaries of the land platted and at all intersections of streets.

J. M. J. J. J.  
Registered Civil Engineer

### COUNTY TREASURER'S CERTIFICATE RELATING TO TAXES

Office of County Treasurer Macomb County Michigan May 27-1923  
I hereby certify, that there are no tax liens or titles held by the State on the lands described on the annexed plat, and that there are no tax liens or titles held by individuals on said lands for the five years preceding the 24th day of May A.D. 1923 and that the taxes for said period of five years have been paid, as shown by the records of this office.

James C. Gillett, County Treasurer

### CERTIFICATE OF TOWNSHIP BOARD

This plat was approved by the Township Board of the Township of Harrison Macomb County Michigan, at a meeting held May 28 A.D. 1923.

Carl H. Jones, Clerk

### CERTIFICATE OF COUNTY PLATTING BOARD

This plat was approved on the 25th day of May 1923

Neil E. King, Judge of Probate  
Walter B. Stephens, County Clerk  
James C. Gillett, County Treasurer

Register's Office  
Macomb County, Mich.  
Plat of Belvidere Subd.  
was recorded this 17 day of June 1923 at 10 o'clock A.M. in Book 6 of Plats

Hugh C. Voluting  
Deputy Auditor General

FILED IN AUDITOR GENERAL'S DEPT.  
June 20-1923  
J. L. Hurrell  
Deputy Auditor General



SEP 23 1955

COPY

36813

SHEET 1 OF 2 SHEETS

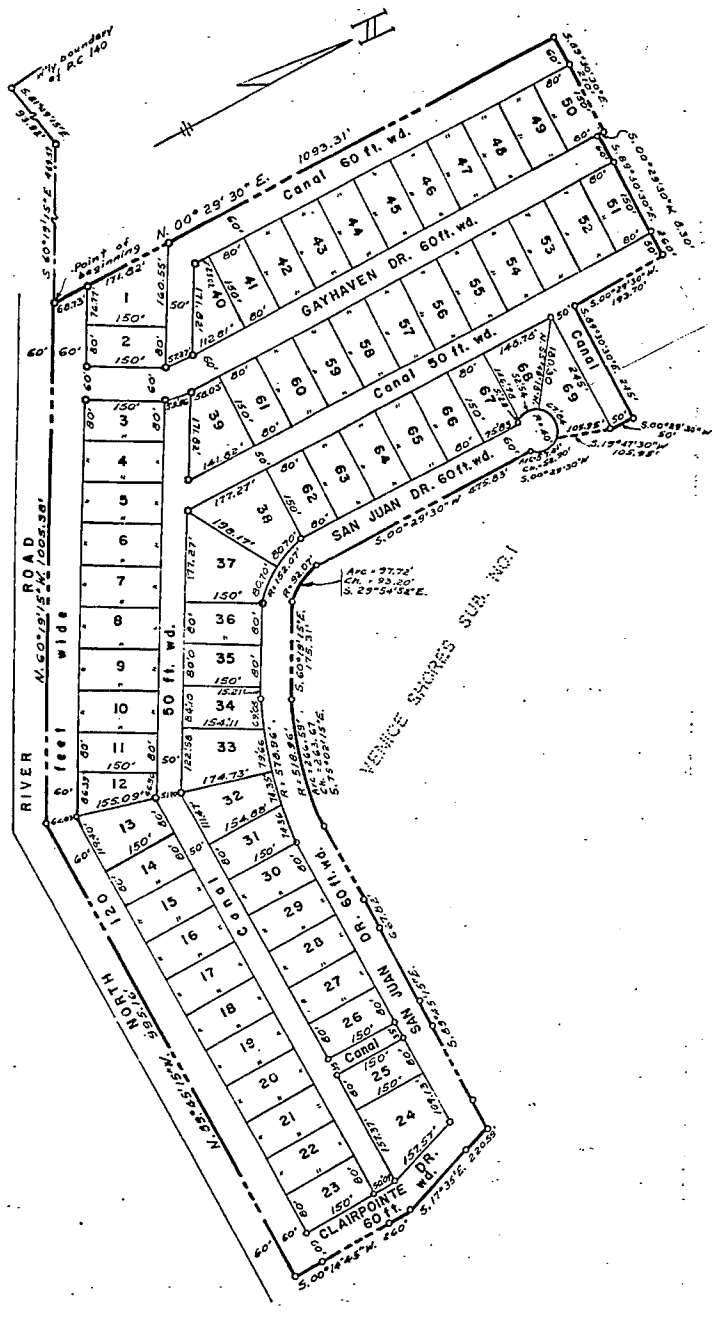
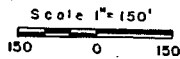
# " VENICE SHORES SUBDIVISION "

PART OF P.C.s 140, 373 and 374 T.2 N., R.14 E.  
HARRISON TWP.  
MACOMB CO. MICHIGAN

Note: All dimensions are in feet and decimals thereof.

Note: All curvilinear dimensions are shown as arc lengths

Walter J. Lehner & Sons  
Reg. Civil Engineers & Surveyors  
Mt. Clemens, Michigan



SEP 23 1955

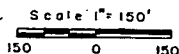
# " VENICE SHORES SUBDIVISION "

PART OF P.C.s 140, 373 and 374 T.2 N., R.14 E.  
HARRISON TWP.  
MACOMB CO. MICHIGAN

Note: All dimensions are in feet and decimals thereof.

Note: All curvilinear dimensions are shown as arc lengths

Walter J. Lehner & Sons  
Reg. Civil Engineers & Surveyors  
Mt. Clemens, Michigan



### DEDICATION

KNOW ALL MEN BY THESE PRESENTS, That we Venice Shores Development Co., a Michigan Corporation, by Stanley Krause, President, and Carl Siegel, Secretary, as proprietor, and Fannie A. Cottrell, a widow, Clarence Cottrell and Fannie Cottrell, his wife, vendors under land contract, have caused the land embraced in the annexed plat to be surveyed, laid out and platted to be known as "Venice Shores Subdivision" Part of P.C.s 140, 373, and 374, T. 2 N., R. 14 E., Harrison Twp., Macomb Co., Michigan, and that the streets as shown on said plat are hereby dedicated to the use of the public, and that the private easements shown on said plat are hereby reserved for the use of the Public Utilities, or for the use of specific utilities as thereon noted, subject to the regulation and control of the use thereof by the local governmental authorities, and that no permanent structures are to be erected within the lines of said easements.

Signed and Sealed in the Presence of:

Evan Neubert  
EVAN NEUBERT  
Morris Aaron  
MORRIS ARON

VENICE SHORES DEVELOPMENT CO.

Stanley S. Krause  
Stanley Krause, President  
Carl Siegel  
Carl Siegel, Secretary

Fitz J. Bridges  
FITZ J. BRIDGES  
Chas. F. Graulich Jr.  
CHAS. F. GRAULICH JR.

Fannie A. Cottrell (U.S.)  
Fannie A. Cottrell  
Clarence Cottrell (U.S.)  
Clarence Cottrell  
Fannie Cottrell (U.S.)  
Fannie Cottrell

STATE OF MICHIGAN ) ss.

COUNTY OF MACOMB  
On this 21 day of July, A.D., 1955, before me, a Notary Public in and for said county appeared Stanley Krause and Carl Siegel to me personally known, who being each by me duly sworn did say that they are the President and Secretary respectively of the Venice Shores Development Co., a Michigan Corporation, and that the seal affixed to said instrument is the corporate seal of said corporation and that said instrument was signed and sealed in behalf of said corporation by authority of its Board of Directors and the said Stanley Krause and Carl Siegel acknowledged said instrument to be the free act and deed of said corporation.

My Commission expires: 2 March 1956

Fitz J. Bridges  
FITZ J. BRIDGES  
Notary Public, Macomb Co., Mich.

STATE OF MICHIGAN ) ss.

COUNTY OF MACOMB  
On this 21 day of July, A.D., 1955, before me, a Notary Public in and for said county, personally came the above named Fannie A. Cottrell, widow, Clarence Cottrell and Fannie Cottrell, his wife, known to me to be the persons who executed the above dedication and acknowledged the same to be their free act and deed.

My Commission expires: 2 March 1956

Fitz J. Bridges  
FITZ J. BRIDGES  
Notary Public, Macomb Co., Mich.

### DESCRIPTION OF LAND PLATTED

The land embraced in the annexed plat of "Venice Shores Subdivision", Part of P.C.s 140, 373, and 374, T. 2 N., R. 14 E., Harrison Twp., Macomb Co., Michigan, is described as follows: Commencing at the intersection of West line of P.C. 140 and the Centerline of North River Road; thence S. 81°-49'-15"E. 93.92 feet, thence S. 60°-19'-15"E. 469.57 feet following the centerline of the said North River Road to the point of beginning, thence N. 00°-29'-30"E. 1093.31 feet, thence S. 89°-30'-30"E. 210 feet, thence S. 00°-29'-30"W. 8.30 feet, thence S. 89°-30'-30"E. 260 feet, thence S. 00°-29'-30"W. 193.70 feet, thence S. 89°-30'-30"E. 245.0 feet, thence S. 00°-29'-30"W. 50 feet, thence S. 19°-47'-30"W. 105.95 feet, thence on a curve (R = 40.0 feet) concave to the West, and whose long chord bears S. 00°-29'-30"W. 52.90 feet, thence S. 00°-29'-30"W. 475.83 feet, thence on a curve (R = 92.07 feet) concave to the East and whose long chord bears S. 29°-54'-52"E. 93.20 feet, thence S. 60°-19'-15"E. 175.31 feet, thence on a curve (R = 518.96 feet) concave to the East whose long chord bears S. 75°-02'-15"E. 263.67 feet, thence S. 89°-45'-15"E. 667.82 feet, thence S. 17°-35'E. 220.59 feet, thence S. 00°-14'-45"W. 260 feet, thence N. 89°-45'-15"W. 995.16 feet, thence N. 60°-19'-15"W. 1005.38 feet to the point of beginning.

### SURVEYORS CERTIFICATE

I hereby certify that the plat hereon delineated is a correct one and that permanent metal monuments consisting of bars not less than one-half inch in diameter and 36 inches in length, encased in a concrete cylinder at least 4 inches in diameter and 36 inches in depth have been placed at points marked thus (O) as thereon shown at all angles in the boundaries of the land platted, at all the intersections of the lines of streets, and at the intersections of the lines of streets with the boundaries of the plat as shown on said plat.

Fitz J. Bridges  
FITZ J. BRIDGES  
Registered Land Surveyor  
No. 5779

### CERTIFICATE OF APPROVAL BY BOARD OF COUNTY ROAD COMMISSIONERS

This plat has been examined and was approved on the 20th day of July, 1955, by the Macomb County Board of Road Commissioners.

Ray Bernard Wm. E. Malow  
Ray Bernard, Chairman Wm. E. Malow, Member  
Ernest W. McCollom  
Ernest W. McCollom, Member

### CERTIFICATE OF MUNICIPAL APPROVAL

This plat was approved by the Township Board of the Township of Harrison at a meeting held July 11, 1955.

Howard M. Phillips  
HOWARD M. PHILLIPS  
Clerk

### CERTIFICATE OF APPROVAL BY COUNTY BOARD

This plat was approved on the 22 day of August, 1955, by the Macomb County Plat Board.

Aaron Burr  
Aaron Burr, Register of Deeds  
Edward W. Whalen  
Edward W. Whalen, County Treasurer  
Albert A. Wagner  
Albert A. Wagner, County Clerk  
Frank E. Lohr  
Frank E. Lohr, Drain Commissioner

### COPY

Register's Office  
Macomb County, Mich.  
Plat of Venice Shores Subdivision  
Harrison Township  
was Recorded this 23rd day of September, A.D., 1955 at 4:02 o'clock P.M. in Liber 33 of Plats  
44 pages 46 of 45  
Aaron Burr  
Notary of Book

I hereby certify this copy is a true copy of map or plat forwarded the Registered Deeds recording.  
Date September 23, 1955  
Filed in Auditor General's Dept.  
Date October 20, 1955  
Examined and approved  
Date September 23, 1955  
Victor Parnowski  
Victor Parnowski, Auditor General  
D. L. Newberry  
D. L. Newberry, Plat Examiner

THIS IS TO CERTIFY THAT ACCORDING TO THE COUNTY TREASURER'S RECORDS THERE ARE NO TAX DUES ON THIS PROPERTY AND THAT TAXES ARE PAID FOR FIVE YEARS PREVIOUS TO DATE OF THIS INSTRUMENT  
REGISTERED AS TO STATE TAXES 14504 DATE 8-17-55  
PLAT NO. 36813-374-214  
STATE COLLECTING OFFICE  
LYNN WHELAN, MACOMB COUNTY TREASURER, P.M.  
C. Hudson



URA 056527580

36813  
37664

B798539

RESOLUTION CHANGING NAME  
OF GAYHAVEN DRIVE TO BAYHAVEN DRIVE

A regular meeting of the Township Board of the Charter Township of Harrison, Macomb County, Michigan, held the 26th day of October, 1992, at the Rosso Memorial Hall, 38255 L'Anse Creuse, in said Township, at 7:30 o'clock p.m.

PRESENT: Miller, Lyon, Siefert, Glasgow, Huth, Kennard and Weeks

EXCUSED: None

The following preamble and resolution were introduced by Huth and supported by Weeks.

WHEREAS, the Charter Township of Harrison has received a Petition signed by over seventy five (75%) percent of the residents on Gayhaven Drive, requesting that the Township change the name of Gayhaven Drive to Bayhaven Drive, and

WHEREAS, MCL 560.256 allows a municipality to change by Resolution of the Township Board the name of a street within its boundaries;

NOW THEREFORE, BE IT RESOLVED:

That the name of Gayhaven Drive be changed to Bayhaven Drive.

BE IT FURTHER RESOLVED that the name of the Plat or Plats affected are Venice Shores Subdivision and Venice Shores Subdivision No. 1.

BE IT FURTHER RESOLVED that the Clerk shall within thirty (30) days record a copy of this Resolution with the Macomb County Register of Deeds, and shall further forward a copy thereof to the State Treasurer.

URA 056527581

36813  
37664

BE IT FURTHER RESOLVED that in accordance with the provisions of MCL 560.256, said name change shall be effective upon recording of this Resolution as set forth above.

AYES: Huth, Weeks, Kennard, Siefert

NAYS: Lyon, Miller

EXCUSED: Glasgow

RESOLUTION DECLARED ADOPTED.

*Kathleen M. Lyon*  
KATHLEEN M. LYON, Clerk  
CHARTER TOWNSHIP OF HARRISON

When recorded, return to  
KATHLEEN M. LYON, CLERK  
CHARTER TOWNSHIP OF HARRISON  
38151 L'ANSE CREUSE ROAD  
HARRISON TOWNSHIP, MICHIGAN 48045

RECORDED IN MACOMB COUNTY  
RECORDS AT: 10.50A  
NOV 19 1992

*Edna J. Hill*  
CLERK, REGISTER OF DEEDS  
MACOMB COUNTY, MICHIGAN

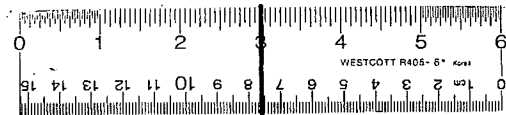
URA 056527582

36813  
37664

CERTIFICATION

I, KATHLEEN M. LYON, Clerk, do hereby certify that the foregoing is a true and complete copy of a Resolution adopted by the Township Board of the Charter Township of Harrison, County of Macomb, Michigan, at a Regular Meeting held on Monday, October 26, 1992, and that said meeting was conducted and public notice of said meeting was given pursuant to and in full compliance with the Open Meetings Act, being Act 267, Public Acts of Michigan, 1976, and that the minutes of said meeting were kept and will be or have been made available as required by said Act.

*Kathleen M. Lyon*  
KATHLEEN M. LYON, Clerk  
CHARTER TOWNSHIP OF HARRISON



16 X

DEC 14 1956

COPY

37664

# "VENICE SHORES SUBDIVISION NO. 1"

PART OF P.C.s 140, 373 and 374 T.2 N., R.14 E.  
HARRISON TWP.  
MACOMB CO. MICHIGAN

**DEDICATION**

KNOW ALL MEN BY THESE PRESENTS, THAT WE, VENICE SHORES DEVELOPMENT CO., INC., A MICHIGAN CORPORATION BY N. A. NICHOLSON, PRESIDENT, AND M. AARON, SECRETARY, VENDERS UNDER LAND CONTRACT, AND FANNIE A. COTTRELL, A WIDOW, AND CLARENCE COTTRELL AND FANNIE COTTRELL, HIS WIFE, AS PROPRIETORS, HAVE CAUSED THE LAND ENBRACED IN THE ANNEXED PLAT TO BE SURVEYED, LAID OUT, AND PLATTED TO BE KNOWN AS "VENICE SHORES SUBDIVISION NO. 1", PART OF P.C.'s 140, 373 AND 374, T. 2 N., R. 14 E., HARRISON TWP., MACOMB CO., MICHIGAN, AND THAT THE STREETS AS SHOWN SHOWN ON SAID PLAT ARE HEREBY DEDICATED TO THE USE OF THE PUBLIC, AND THAT THE PRIVATE EASEMENTS OF SPECIFIC UTILITIES ARE HEREBY RESERVED FOR THE USE OF THE PUBLIC UTILITIES, OR FOR THE USE THEREOF BY THE LOCAL GOVERNMENTAL AUTHORITIES, AND THAT NO PERMANENT STRUCTURES ARE TO BE CRECTED WITHIN THE LINES OF SAID EASEMENTS.

Walter J. Lehner & Sons  
Reg. Civil Eng. & Surveyors  
Mt. Clemens, Michigan

**SURVEYOR'S CERTIFICATE**

I HEREBY CERTIFY THAT THE PLAT HEREON DELINEATED IS A CORRECT ONE AND THAT PERMANENT METAL MONUMENTS CONSISTING OF BARS NOT LESS THAN ONE-HALF INCH IN DIAMETER AND 36 INCHES IN LENGTH, ENGRAVED IN A CONCRETE CYLINDER AT LEAST 4 INCHES IN DIAMETER AND 36 INCHES IN DEPTH HAVE BEEN PLACED AT POINTS MARKED THUS (O) AS THEREON SHOWN AT ALL ANGLES IN THE BOUNDARIES OF THE LAND PLATTED, AT ALL THE INTERSECTIONS OF THE LINES OF STREETS AND AT THE INTERSECTIONS OF THE LINES OF STREETS WITH THE BOUNDARIES OF THE PLAT AS SHOWN ON SAID PLAT.

**SIGNED AND SEALED IN THE PRESENCE OF**

Duncan K. Allan Jr.  
DUNCAN K. ALLAN JR.  
Paul G. Ganzenwoder  
PAUL G. GANZENWODER  
Ellis Mavis  
ELLIS MAVIS  
Stanley J. Palmer  
STANLEY J. PALMER

VENICE SHORES DEVELOPMENT CO., INC.  
N. A. Nicholson  
N. A. NICHOLSON, PRESIDENT  
M. Aaron  
M. AARON, SECRETARY  
Fannie A. Cottrell  
FANNIE A. COTTRELL  
Clarence Cottrell  
CLARENCE COTTRELL  
Fannie Cottrell  
FANNIE COTTRELL

Walter J. Lehner  
WALTER J. LEHNER  
REGISTERED LAND SURVEYOR  
No. 5779

**CERTIFICATE OF APPROVAL BY MACOMB COUNTY BOARD OF ROAD COMMISSIONERS**

THIS PLAT WAS EXAMINED AND WAS APPROVED ON THE 30th DAY OF Sept, 1956, BY THE MACOMB COUNTY PLAT BOARD.

Ray Cornwell  
RAY CORNWELL, CHAIRMAN  
William E. Malow  
WILLIAM E. MALOW, MEMBER  
Ernest W. McCallum  
ERNEST W. MCCALLUM, MEMBER

**DESCRIPTION OF LAND PLATTED**

THE LAND ENBRACED IN THE ANNEXED PLAT OF "VENICE SHORES SUBDIVISION NO. 1", PART OF P.C.s 140, 373 AND 374, T. 2 N., R. 14 E., HARRISON TWP., MACOMB CO., MICHIGAN, IS DESCRIBED AS FOLLOWS: COMMENCING AT THE INTERSECTION OF THE WEST LINE OF P.C. 140 AND CENTER LINE OF NORTH RIVER ROAD; THENCE S. 81° 49' 15" E. 93.92 FEET; THENCE S. 60° 19' 15" E. 469.57 FEET TO THE POINT OF BEGINNING, AND THENCE EXTENDING N. 00° 29' 30" E. 1093.31 FEET TO THE POINT OF BEGINNING, AND THENCE EXTENDING N. 00° 29' 30" E. 982.36 FEET; THENCE N. 87° 35' 30" E. 420.54 FEET; THENCE S. 78° 34' 40" E. 468.50 FEET; THENCE S. 00° 29' 30" W. 399.63 FEET; THENCE ON A CURVE RADIUS 560 FEET CONVEX TO THE EAST WHOSE LONG CHORD BEARS S. 11° 52' 42" E. 239.94 FEET; THENCE S. 24° 14' 55" E. 1532.04 FEET; THENCE N. 89° 45' 15" W. 437.06 FEET; THENCE ON A CURVE RADIUS 518.96 FEET CONVEX TO THE NORTHEAST WHOSE LONG CHORD BEARS N. 15° 02' 19" W. 263.07 FEET; THENCE N. 60° 19' 15" W. 175.31 FEET; THENCE ON A CURVE RADIUS 92.07 FEET CONVEX TO THE EAST WHOSE LONG CHORD BEARS N. 25° 54' 52" W. 93.20 FEET; THENCE N. 00° 29' 30" E. 475.83 FEET; THENCE ON A CURVE RADIUS 40 FEET CONCAVE TO THE EAST WHOSE LONG CHORD BEARS N. 00° 29' 30" E. 52.90 FEET; THENCE N. 19° 47' 30" E. 105.95 FEET; THENCE N. 00° 29' 30" E. 50 FEET; THENCE N. 89° 30' 30" W. 245 FEET; THENCE N. 00° 29' 30" E. 193.70 FEET; THENCE N. 89° 30' 30" W. 260.0 FEET; THENCE N. 00° 29' 30" E. 8.30 FEET; THENCE N. 89° 30' 30" W. 210.0 FEET TO THE POINT OF BEGINNING, COMPRISING LOTS 70 THROUGH 154 INCLUSIVE.

**ACKNOWLEDGMENT**

STATE OF MICHIGAN } ss.  
COUNTY OF Macomb }  
ON THIS 24th DAY OF September, A.D., 1956, BEFORE ME A NOTARY PUBLIC IN AND FOR SAID COUNTY APPEARED N. A. NICHOLSON AND M. AARON TO ME PERSONALLY WHO BEING EACH BY ME DULY SWORN DID SAY THAT THEY ARE THE PRESIDENT AND SECRETARY RESPECTIVELY OF THE VENICE SHORES DEVELOPMENT CO., INC., A MICHIGAN CORPORATION, AND THAT SAID INSTRUMENT WAS SIGNED IN BEHALF OF SAID CORPORATION BY AUTHORITY OF ITS BOARD OF DIRECTORS AND THE SAID N. A. NICHOLSON AND M. AARON ACKNOWLEDGED SAID INSTRUMENT TO BE THE FREE ACT AND DEED OF SAID CORPORATION. CORPORATION HAS NO CORPORATE SEAL.

**STATE OF MICHIGAN, COUNTY OF Macomb**

ON THIS 24th DAY OF Sept, 1956, BEFORE ME, A NOTARY PUBLIC IN AND FOR SAID COUNTY, PERSONALLY CAME THE ABOVE NAMED FANNIE A. COTTRELL, A WIDOW, CLARENCE COTTRELL AND FANNIE COTTRELL, HIS WIFE KNOWN TO ME TO BE THE PERSONS WHO EXECUTED THE ABOVE DEDICATION, AND ACKNOWLEDGED THE SAME TO BE THEIR FREE ACT AND DEED.

My Commission Expires 2 MAR 1956  
Walter J. Lehner  
WALTER J. LEHNER  
NOTARY PUBLIC Macomb Co., Mich.

**CERTIFICATE OF MUNICIPAL APPROVAL**

THIS PLAT WAS APPROVED BY THE TOWNSHIP BOARD OF THE TOWNSHIP OF HARRISON AT A MEETING HELD 28th DAY OF Sept, 1956.  
Howard S. Phillips  
HOWARD S. PHILLIPS, CLERK

**CERTIFICATE OF APPROVAL BY COUNTY BOARD**

THIS PLAT WAS APPROVED ON THE 4th DAY OF Oct, 1956, BY THE Macomb COUNTY PLAT BOARD.  
James Burr  
JAMES BURR, REGISTER OF DEEDS  
Albert A. Wagner  
ALBERT A. WAGNER, COUNTY CLERK  
Frank E. Lohr  
FRANK E. LOHR, DRAIN COMMISSIONER

**COPY**

Register's Office  
Macomb County  
Plat of \_\_\_\_\_  
was recorded this \_\_\_\_\_ day of \_\_\_\_\_ A.D., 1956 at \_\_\_\_\_ M. in Lib. \_\_\_\_\_ of \_\_\_\_\_  
Page 3143

I hereby certify this copy is a true copy of map or plat forwarded the Register/Deeds/Recording Dept.  
Date December 14, 1956  
Filed in Auditor General's Dept. \_\_\_\_\_, 1956  
Examined and approved  
Date December 14, 1956  
Walter J. Lehner  
Auditor General

**COPY**

Register's Office  
Macomb County  
Plat of \_\_\_\_\_  
was recorded this \_\_\_\_\_ day of \_\_\_\_\_ A.D., 1956 at \_\_\_\_\_ M. in Lib. \_\_\_\_\_ of \_\_\_\_\_  
Page 3143

I hereby certify this copy is a true copy of map or plat forwarded the Register/Deeds/Recording Dept.  
Date Dec 14, 1956  
Filed in Auditor General's Dept. \_\_\_\_\_, 1956  
Examined and approved  
Date Dec 14, 1956  
Walter J. Lehner  
Auditor General

THIS IS TO CERTIFY THAT ACCORDING TO THE COUNTY TREASURER'S RECORDS THERE ARE NO TAX LIES ON THIS PROPERTY AND THAT TAXES ARE PAID FOR FIVE YEARS PREVIOUS TO DATE OF THIS INSTRUMENT.  
COUNTY OF MACOMB NO. 17283 DATE 9-22-56  
THIS CERTIFICATE DOES NOT APPLY TO TAXES, IF ANY, NOW IN POSSESSION OF COLLECTOR BY TOWNSHIP, CITY OR VILLAGE COLLECTING OFFICERS.  
Lynn Whalen, MACOMB COUNTY TREASURER, PER C. Nelson



DEC 14 1955

COPY

37664

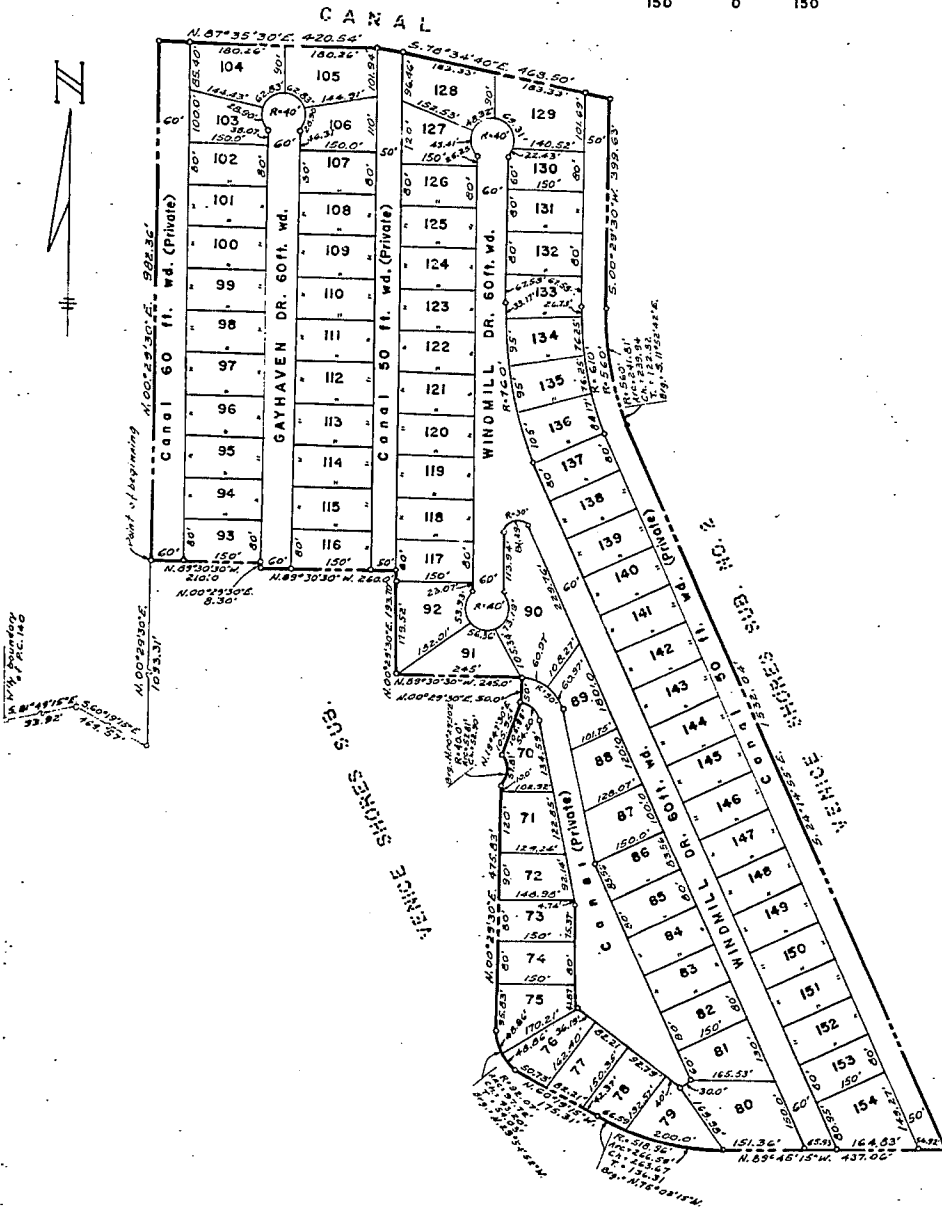
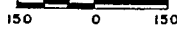
# "VENICE SHORES SUBDIVISION NO. 1"

PART OF P.C.s 140, 373 and 374 T.2 N., R.14 E.  
HARRISON TWP.

MACOMB CO. MICHIGAN

NOTE: All dimension are in feet  
and decimals thereof.  
All curvilinear dimensions  
are shown as arc lengths.  
Scale: 1" = 150'

Walter J. Lehner & Sons  
Reg. Civil Eng. & Surveyors  
Mt. Clemens, Michigan



LIBER 05652N580

B798539

36813  
37664

RESOLUTION CHANGING NAME  
OF GAYHAVEN DRIVE TO BAYHAVEN DRIVE

A regular meeting of the Township Board of the Charter Township of Harrison, Macomb County, Michigan, held the 26th day of October, 1992, at the Rosso Memorial Hall, 38255 L'Anse Creuse, in said Township, at 7:30 o'clock p.m.

PRESENT: Miller, Lyon, Siefert, Glasgow, Huth, Kennard and Weeks  
EXCUSED: None

The following preamble and resolution were introduced by Huth and supported by Weeks.

WHEREAS, the Charter Township of Harrison has received a Petition signed by over seventy five (75%) percent of the residents on Gayhaven Drive, requesting that the Township change the name of Gayhaven Drive to Bayhaven Drive, and

WHEREAS, MCL 560.256 allows a municipality to change by Resolution of the Township Board the name of a street within its boundaries;

NOW THEREFORE, BE IT RESOLVED:

That the name of Gayhaven Drive be changed to Bayhaven Drive.

BE IT FURTHER RESOLVED that the name of the Plat or Plats affected are Venice Shores Subdivision and Venice Shores Subdivision No. 1.

BE IT FURTHER RESOLVED that the Clerk shall within thirty (30) days record a copy of this Resolution with the Macomb County Register of Deeds, and shall further forward a copy thereof to the State Treasurer.

-1-

LIBER 05652N581

BE IT FURTHER RESOLVED that in accordance with the provisions of MCL 560.256, said name change shall be effective upon recording of this Resolution as set forth above.

AYES: Huth, Weeks, Kennard, Siefert

NAYS: Lyon, Miller

EXCUSED: Glasgow

RESOLUTION DECLARED ADOPTED.

*Kathleen M. Lyon*  
KATHLEEN M. LYON, CLERK  
CHARTER TOWNSHIP OF HARRISON

When recorded, return to  
KATHLEEN M. LYON, CLERK  
CHARTER TOWNSHIP OF HARRISON  
38151 L'ANSE CREUSE ROAD  
HARRISON TOWNSHIP, MICHIGAN 48045

RECORDED IN MACOMB COUNTY  
RECORDS AT: 10:50A M.  
NOV 19 1992

*[Signature]*  
CLERK - REGISTER OF DEEDS  
MACOMB COUNTY, MICHIGAN

-2-

LIBER 05652N582

CERTIFICATION

I, KATHLEEN M. LYON, Clerk, do hereby certify that the foregoing is a true and complete copy of a Resolution adopted by the Township Board of the Charter Township of Harrison, County of Macomb, Michigan, at a Regular Meeting held on Monday, October 26, 1992, and that said meeting was conducted and public notice of said meeting was given pursuant to and in full compliance with the Open Meetings Act, being Act 267, Public Acts of Michigan, 1976, and that the minutes of said meeting were kept and will be or have been made available as required by said Act.

*Kathleen M. Lyon*  
KATHLEEN M. LYON, CLERK  
CHARTER TOWNSHIP OF HARRISON

36813  
37664

-3-



16 X





391187

# "VENICE SHORES SUBDIVISION NO.2"

PART OF P.C. 373 T. 2 N., R. 14 E.  
HARRISON TWP.  
MACOMB CO. MICHIGAN

Walter J. Lehner & Sons  
Reg. Civil Eng. & Surveyors  
Mt. Clemens, Michigan

### DEDICATION

KNOW ALL MEN BY THESE PRESENTS, THAT WE, VENICE SHORES DEVELOPMENT CO., INC., A MICHIGAN CORPORATION BY N. A. NICHOLSON, PRESIDENT, AND N. AARON, SECRETARY, VENDEES UNDER LAND CONTRACT, AND FANNIE A. COTTRELL, A WIDOW, AND CLARENCE COTTRELL, A WIDOWER, AS PROPRIETORS, HAVE CAUSED THE LAND EMBRACED IN THE ANNEXED PLAT TO BE SURVEYED, LAID OUT AND PLATTED TO BE KNOWN AS "VENICE SHORES SUBDIVISION NO. 2", PART OF P.C. 373 T. 2 N., R. 14 E., HARRISON TWP., MACOMB CO., MICHIGAN, AND THAT THE STREETS AS SHOWN ON SAID PLAT ARE HEREBY DEDICATED TO THE USE OF THE PUBLIC, AND THAT THE PRIVATE EASEMENTS SHOWN ON SAID PLAT ARE HEREBY RESERVED FOR THE USE OF THE PUBLIC UTILITIES, OR FOR THE USE OF SPECIFIC UTILITIES AS THEREON NOTED, SUBJECT TO THE REGULATION AND CONTROL OF THE USE THEREOF BY THE LOCAL GOVERNMENTAL AUTHORITIES, AND THAT NO PERMANENT STRUCTURES ARE TO BE ERRECTED WITHIN THE LINES OF SAID EASEMENTS.

SIGNED AND SEALED IN THE PRESENCE OF

Ellis H. Mavis  
ELLIS H. MAVIS  
DUNCAN K. ALLAN, JR.  
DUNCAN K. ALLAN, JR.  
RONALD KENDRICK  
RONALD KENDRICK  
JAMES R. SHANNON  
JAMES R. SHANNON

VENICE SHORES DEVELOPMENT CO., INC.

N. A. Nicholson  
N. A. NICHOLSON, PRESIDENT  
N. Aaron  
N. AARON, SECRETARY  
Fannie A. Cottrell  
FANNIE A. COTTRELL  
Clarence Cottrell  
CLARENCE COTTRELL

### ACKNOWLEDGMENT

STATE OF MICHIGAN, ) ss.  
COUNTY OF Macomb

ON THIS 11th DAY OF July, 1957, BEFORE ME, A NOTARY PUBLIC IN AND FOR SAID COUNTY, PERSONALLY CAME THE ABOVE NAMED FANNIE A. COTTRELL, A WIDOW, CLARENCE COTTRELL, A WIDOWER, KNOWN TO ME TO BE THE PERSONS WHO EXECUTED THE ABOVE DEDICATION, AND ACKNOWLEDGED THE SAME TO BE THEIR FREE ACT AND DEED.

MY COMMISSION EXPIRES April 19, 1959 Marion E. Harris  
MARION E. HARRIS  
NOTARY PUBLIC Macomb Co., MICH

### CERTIFICATE OF MUNICIPAL APPROVAL

THIS PLAT WAS APPROVED BY THE TOWNSHIP BOARD OF THE TOWNSHIP OF HARRISON AT A MEETING HELD August 13, 1957

Howard W. Phillips  
HOWARD W. PHILLIPS, CLERK

### CERTIFICATE OF APPROVAL BY COUNTY BOARD

THIS PLAT WAS APPROVED ON THE 19th DAY OF August, 1957, BY THE COUNTY PLAT BOARD.

Frank E. Lohr  
FRANK E. LOHR, COUNTY TREASURER  
Frank E. Lohr  
FRANK E. LOHR, DRAIN COMMISSIONER

Albert A. Wagner  
ALBERT A. WAGNER, REGISTER OF DEEDS  
Albert A. Wagner  
ALBERT A. WAGNER, COUNTY CLERK

### ACKNOWLEDGMENT

STATE OF MICHIGAN ) ss.  
COUNTY OF Macomb

ON THIS 22nd DAY OF July, A.D., 1957, BEFORE ME: A NOTARY PUBLIC IN AND FOR SAID COUNTY, APPEARED N. A. NICHOLSON AND N. AARON TO ME PERSONALLY KNOWN, WHO BEING EACH BY ME DULY SWORN DID SAY THAT THEY ARE THE PRESIDENT AND SECRETARY RESPECTIVELY OF THE VENICE SHORES DEVELOPMENT CO., INC., A MICHIGAN CORPORATION, AND THAT SAID INSTRUMENT WAS SIGNED IN BEHALF OF SAID CORPORATION BY AUTHORITY OF ITS BOARD OF DIRECTORS AND THE SAID N. A. NICHOLSON AND N. AARON ACKNOWLEDGED SAID INSTRUMENT TO BE THE FREE ACT AND DEED OF SAID CORPORATION. CORPORATION HAS NO CORPORATE SEAL.

MY COMMISSION EXPIRES April 19, 1957 Marion E. Harris  
MARION E. HARRIS  
NOTARY PUBLIC Macomb Co.

THIS IS TO CERTIFY THAT ACCORDING TO THE COUNTY PLAT BOARD AND THE REGISTER OF DEEDS ON THIS PROPERTY HAS BEEN RECORDED AND THE SAME IS VALID FROM DATE OF THIS INSTRUMENT.  
No. 7686 Lynn Whalen, REGISTER OF DEEDS  
DATE 7/22/57 M. ALLEN



# "VENICE SHORES SUBDIVISION NO. 3"

PART OF P.C. 373 T. 2 N., R. 14 E.

HARRISON TWP.

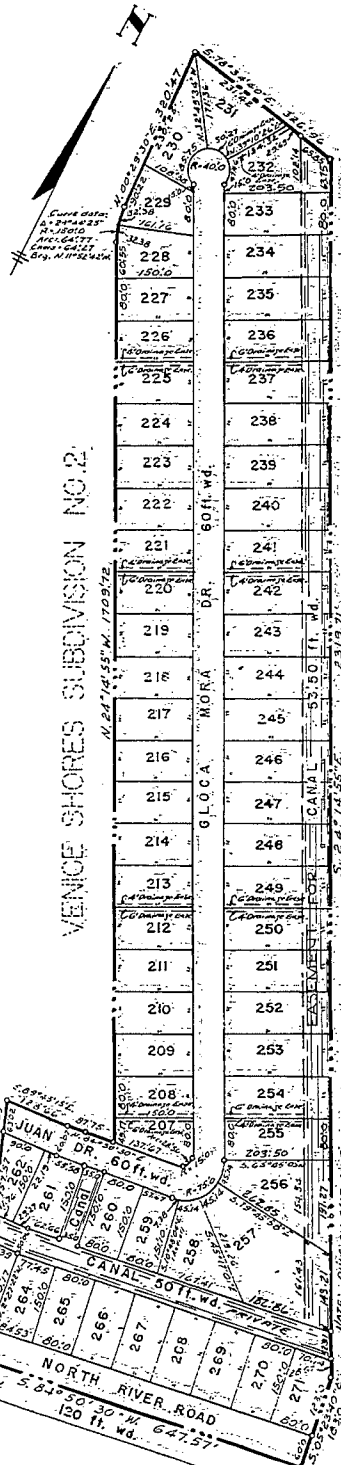
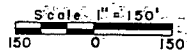
MACOMB CO.

MICHIGAN

NOTE: All dimension are in feet and decimals thereof.

Note: All curvilinear dimensions are shown as arc lengths.

Lehner - Bridges, Inc.,  
Reg. Civil Eng. & Surveyors  
Mt. Clemens, Michigan



### DESCRIPTION OF LAND PLATTED

THE LAND ENBRACED IN THE ANNEXED PLAT OF "VENICE SHORES SUBDIVISION NO. 3", PART OF P.C. 373, T. 2 N., R. 14 E., HARRISON TWP., MACOMB CO., MICHIGAN, IS DESCRIBED AS FOLLOWS: COMMENCING AT THE INTERSECTION OF THE WEST LINE OF P.C. # 140 AND THE CENTERLINE OF NORTH RIVER ROAD; THENCE S. 81° 49' 15" E. 93.92 FEET; THENCE S. 60° 19' 15" E. 1474.95 FEET; THENCE S. 89° 45' 15" E. 995.16 FEET TO THE POINT OF BEGINNING; AND THENCE EXTENDING N. 0° 14' 45" E. 260.0 FEET; THENCE N. 17° 35' W. 220.59 FEET; THENCE S. 69° 45' 15" E. 128.66 FEET; THENCE N. 84° 50' 30" E. 87.75 FEET; THENCE N. 24° 14' 55" W. 1109.72 FEET; THENCE ON A CURVE RADIUS 150 FEET CONCAVE TO THE EAST WHOSE LONG CHORD BEARS N. 11° 52' 42" E. 64.27 FEET; THENCE N. 00° 29' 30" E. 320.47 FEET; THENCE S. 78° 34' 40" E. 326.96 FEET; THENCE S. 24° 14' 55" E. 2319.71 FEET; THENCE S. 05° 23' 40" E. 183.0 FEET; THENCE S. 84° 50' 30" W. 647.57 FEET; THENCE N. 89° 45' 15" W. 83.30 FEET TO THE POINT OF BEGINNING, CONTAINING LOTS 207 THROUGH 271 INCLUSIVE.

### SURVEYOR'S CERTIFICATE

I HEREBY CERTIFY THAT THE PLAT HEREON DELINEATED IS A CORRECT ONE AND THAT PERMANENT METAL MONUMENTS CONSISTING OF BARS NOT LESS THAN ONE-HALF INCH IN DIAMETER AND 36 INCHES IN LENGTH, ENCASED IN A CONCRETE CYLINDER AT LEAST 4 INCHES IN DIAMETER AND 36 INCHES IN DEPTH HAVE BEEN PLACED AT POINTS MARKED THIS (O) AS THEREBY SHOWN AT ALL ANGLES IN THE BOUNDARIES OF THE LAND PLATTED, AT ALL THE INTERSECTIONS OF THE LINES OF STREETS, AND AT THE INTERSECTIONS OF THE LINES OF STREETS WITH THE BOUNDARIES OF THE PLAT AS SHOWN ON SAID PLAT.

FITZ J. BRIDGES  
REGISTERED LAND SURVEYOR  
NO. 5779

### CERTIFICATE OF APPROVAL BY BOARD OF DUTY ROAD COMMISSIONERS

THIS PLAT HAS BEEN EXAMINED AND WAS APPROVED ON THE 16th DAY OF June, 1957, BY THE COUNTY BOARD OF ROAD COMMISSIONERS.

*Lawrence DeWitt*  
Lawrence DeWitt

*Robert J. ...*  
ROBERT J. ...  
CHAIRMAN  
*Ernest W. ...*  
Ernest W. ...

VENICE SHORES SUBDIVISION NO. 2

BELVIDERE SUBDIVISION

OTTO MICHIGAN

THIS IS IN FULL PAYMENT OF THE ...

NOTE: ON EAST SIDE OF CANAL ENCLOSURE ...

" VENICE SHORES SUBDIVISION NO. 3 "

PART OF P.C. 373 T. 2 N., R. 14 E.  
HARRISON TWP.  
MACOMB CO. MICHIGAN

DEDICATION

KNOW ALL MEN BY THESE PRESENTS, THAT WE, VENICE SHORES DEVELOPMENT CO., INC., A MICHIGAN CORPORATION BY N. A. NICHOLSON, PRESIDENT, AND MORRIS AARON, SECRETARY, LAND CONTRACT VENDEES, AND N. A. NICHOLSON AND LEONIA NICHOLSON, HIS WIFE, AND MORRIS AARON AND BERTHA AARON, HIS WIFE, AS PROPRIETORS, HAVE CAUSED THE LAND EMBRACED IN THE ANNEXED PLAT TO BE SURVEYED, LAID OUT AND PLATTED TO BE KNOWN AS "VENICE SHORES SUBDIVISION NO. 3", PART OF P.C. 373, T. 2 N., R. 14 E., HARRISON TWP., MACOMB CO., MICHIGAN, AND THAT THE STREETS AS SHOWN ON SAID PLAT ARE HEREBY DEDICATED TO THE USE OF THE PUBLIC, AND THAT THE PRIVATE EASEMENTS SHOWN ON SAID PLAT ARE HEREBY RESERVED FOR THE USE OF THE PUBLIC UTILITIES, OR FOR THE USE OF SPECIFIC UTILITIES AS THEREON NOTED, SUBJECT TO THE REGULATION AND CONTROL OF THE USE THEREOF BY THE LOCAL GOVERNMENTAL AUTHORITIES, AND THAT NO PERMANENT STRUCTURES ARE TO BE ERRECTED WITHIN THE LINES OF SAID EASEMENTS. *CANCEL AS SHOWN ON PLAT RESERVING USE OF LOT OWNERS*

SIGNED AND SEALED IN THE PRESENCE OF

JAMES K. SHARROD  
LEONIA K. HILLARS

VENICE SHORES DEVELOPMENT CO., INC.

N. A. NICHOLSON, PRESIDENT

MORRIS AARON, SECRETARY

N. A. NICHOLSON

LEONIA NICHOLSON

MORRIS AARON

BERTHA AARON

Lehner - Bridges, Inc.,  
Reg. Civil Eng. & Surveyors  
Mt. Clemens, Michigan

ACKNOWLEDGMENT

STATE OF MICHIGAN ) ss.  
COUNTY OF \_\_\_\_\_ )

ON THIS \_\_\_\_\_ DAY OF \_\_\_\_\_ 19\_\_\_\_, BEFORE ME, A NOTARY PUBLIC IN AND FOR SAID COUNTY, PERSONALLY CAME THE ABOVE NAMED FANNIE A. COTTRELL, A WIDOW, CLARENCE COTTRELL AND FANNIE COTTRELL, HIS WIFE KNOWN TO ME TO BE THE PERSONS WHO EXECUTED THE ABOVE DEDICATION, AND ACKNOWLEDGED THE SAME TO BE THEIR FREE ACT AND DEED.

MY COMMISSION EXPIRES \_\_\_\_\_

NOTARY PUBLIC \_\_\_\_\_ CO., MICHIGAN

CERTIFICATE OF MUNICIPAL APPROVAL

THIS PLAT WAS APPROVED BY THE TOWNSHIP BOARD OF THE TOWNSHIP OF HARRISON AT A MEETING HELD 11:15 AM May 12, 1958

Howard W. Phillips  
HOWARD W. PHILLIPS, CLERK

CERTIFICATE OF APPROVAL BY COUNTY BOARD

THIS PLAT WAS APPROVED ON THE 23rd DAY OF June, 1958, BY THE Macomb COUNTY PLAT BOARD.

James R. Burr  
JAMES R. BURR, REGISTER OF DEEDS  
Albert A. Wagner  
ALBERT A. WAGNER, COUNTY CLERK  
John Shalen  
JOHN SHALEN, COUNTY TREASURER  
Frank L. Lohr  
FRANK L. LOHR, DRAIN COMMISSIONER

ACKNOWLEDGMENT

STATE OF MICHIGAN ) ss.  
COUNTY OF \_\_\_\_\_ )

ON THIS \_\_\_\_\_ DAY OF \_\_\_\_\_ A.D., 19\_\_\_\_, BEFORE ME A NOTARY PUBLIC IN AND FOR SAID COUNTY APPEARED N. A. NICHOLSON AND MORRIS AARON, TO ME PERSONALLY KNOWN, WHO BEING EACH BY ME DULY SHOWN DID SAY THAT THEY ARE THE PRESIDENT AND SECRETARY RESPECTIVELY OF THE "VENICE SHORES DEVELOPMENT CO., INC.", A MICHIGAN CORPORATION, AND THAT SAID INSTRUMENT WAS SIGNED IN BEHALF OF SAID CORPORATION BY AUTHORITY OF ITS BOARD OF DIRECTORS AND THE SAID N. A. NICHOLSON AND MORRIS AARON ACKNOWLEDGED SAID INSTRUMENT TO BE THE FREE ACT AND DEED OF SAID CORPORATION, CORPORATION HAS NO CORPORATE SEAL.

MY COMMISSION EXPIRES June 19, 1959

Marion E. Harelis  
MARION E. HARELIS

NOTARY PUBLIC \_\_\_\_\_ CO.

ACKNOWLEDGMENT

STATE OF MICHIGAN ) ss.  
COUNTY OF \_\_\_\_\_ )

ON THIS 23rd DAY OF June, 1958, BEFORE ME A NOTARY PUBLIC IN AND FOR SAID COUNTY, PERSONALLY CAME THE ABOVE NAMED N. A. NICHOLSON AND LEONIA NICHOLSON, HIS WIFE, AND MORRIS AARON AND BERTHA AARON, HIS WIFE, KNOWN TO ME TO BE THE PERSONS WHO EXECUTED THE ABOVE DEDICATION, AND ACKNOWLEDGED THE SAME TO BE THEIR FREE ACT AND DEED.

My Commission expires: June 19, 1959

Marion E. Harelis  
MARION E. HARELIS

Notary Public, \_\_\_\_\_ County, Michigan.

RECORDED IN THE REGISTER OF DEEDS OFFICE  
FILED IN AUGUST 1958  
SEARCHED  
INDEXED  
SERIALIZED  
MAY 12 1958  
HARRISON TWP. CLERK

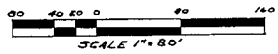
Otto Andrews (Clerk)

COPY

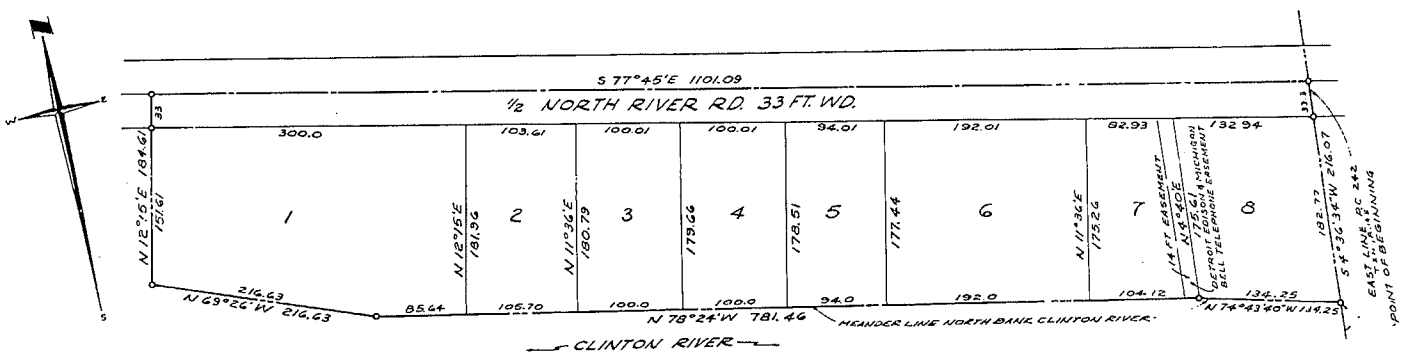
# SUPERVISOR'S PLAT OF JOHN P. FLEMING SUB'N

## PART OF PRIVATE CLAIMS 194 & 242, T.2N., R.14E., HARRISON TOWNSHIP, MACOMB COUNTY, MICHIGAN

NOTE: All dimensions are in feet and decimals thereof.



FITZ J. BRIDGES  
REG. CIVIL ENGR & SURVEYOR  
MT. CLEMENS, MICHIGAN



### DEDICATION

KNOW ALL MEN BY THESE PRESENTS, that I, Ralph E. Beaufait, Supervisor of Harrison Township, Macomb County, State of Michigan, by virtue of authority in me vested by Section 51, Act 172, of 1929, having been duly authorized by the Township Board have caused the land described in the annexed plat to be surveyed, laid out and platted, to be known as Supervisor's Plat of John P. Fleming Sub'n, part of Private Claim's 194 & 242, T.2N., R.14E., Harrison Township, Macomb County, Michigan, and that the streets and alleys as shown on said plat are now being used for such purposes, and that the plat conforms with the requirements of Section 51, Act 172, of Public Acts of 1929, as amended.

Witnesses:

ALDISIUS TROMBLEY  
ARNOLD F. ROSE  
Ralph E. Beaufait  
Supervisor of the  
Township of Harrison

### ACKNOWLEDGEMENT

STATE OF MICHIGAN)  
County of Macomb)

On this 12th day of January A.D. 1964, before me, Alvisius Trombley, a Notary Public in and for said County, personally came the above named Ralph E. Beaufait Supervisor of Harrison Township known to me to be the person who executed the above dedication and acknowledged the same to be his free act and deed as such supervisor.

Alvisius Trombley  
Notary Public Macomb Co., Mich.

My Commission  
expires: 7-21-67

### CERTIFICATION OF MUNICIPAL APPROVAL

This plat was approved by the Township Board of Harrison Township at a meeting held on \_\_\_\_\_ day of \_\_\_\_\_ A.D. 1964. The foregoing plat as approved complies with the provisions of Sec. 19a of the plat act as added by Act 150 of Public Acts of 1961.

Richard W. Munroe, Clerk

### CERTIFICATE OF APPROVAL BY THE COUNTY BOARD

This Plat was approved on the 22nd day of JANUARY 1964 by the Macomb County Plat Board.

Arthur J. Miller County Clerk  
Lynn Whalen County Treasurer  
Thomas S. Welsh Drain Commissioner

### DESCRIPTION OF LAND PLATTED

The land embraced in the annexed plat of Supervisor's Plat of John P. Fleming Sub'n, part of Private Claim's 194 & 242, T.2N., R.14E., Harrison Township, Macomb County, Michigan, is described as follows:

Beginning at the intersection of the East line of P. C. 242 and the North Bank of the Clinton River, thence along a meander line on the North Bank of the Clinton River the following bearings and distances N. 74°43'40" W. 134.25 ft., and N. 78°24' W. 781.46 ft., and N. 69°26' W. 216.63 ft., the intent being to convey to the channel bank of the Clinton River, thence N. 12°15' E. 184.61 ft., to the center line of North River Road, thence S. 77°45' E. 1101.09 ft., along the center line of North River Road to the East line of P. C. 242, thence S. 4°36'34" W. 216.07 ft., along the East line of P. C. 242 to the point of beginning and containing Lots 1 thru 8 inclusive.

### SURVEYOR'S CERTIFICATE

I hereby certify the plat hereon delineated is a correct one and that permanent metal monuments consisting of bars not less than one-half inch in diameter and 36 inches in length, encased in a concrete cylinder at least 4 inches in diameter and 36 inches in depth have been placed at points marked thus (o) as thereon shown at all angles in the boundaries of the land platted, at all the intersections of the lines of streets, and at the intersections of the lines of streets with the boundaries of the plat as shown on said plat.

Fitz J. Bridges  
Registered Land Surveyor  
No. 5779

### CERTIFICATE OF APPROVAL BY THE BOARD OF COUNTY ROAD COMMISSIONERS

This Plat has been examined and was approved on the \_\_\_\_\_ day of \_\_\_\_\_ 1964 by the Macomb County Board of Road Commissioners.

Ernest W. McCullum  
Vice-Chairman  
Lawrence Gehmke  
Member