

INDEX

SOUTHWEST CORNER P.C. 373 OTHER CODE: PC-024 HARRISON TOWNSHIP, T2N, R14E

SECTION 1:

1. Index
2. Before Pictures of Point and in each cardinal direction of corner
3. Before Pictures of Point and in each cardinal direction of reference monument
4. After Pictures of Point
5. After Pictures of Reference Point

SECTION 2:

1. LCRC
2. Surveyor's Dossier Report
3. Sketch

SECTION 3:

1. Original Private Claim Notes (2 pages)
2. Field Notes (2 pages)
3. 1819 Map of Harrison Township from GLO (1 page)
4. Map of Harrison Township (1 page)
5. 1916 Map of Harrison Township (1 page)
6. 2006 Map of Harrison Township (1 page)
7. Harrison Township Composite Map (1 pages)


SECTION 4:

Belvidere Subdivision	Plat	L.6, P.66, (1 page)
Venice Shores Subdivision	Plat	L.33, P.44 (3 pages)
Venice Shores Subdivision No. 1	Plat	L.34, P.31 (3 pages)
Venice Shores Subdivision No. 2	Plat	L.39, P.46 (2 pages)
Venice Shores Subdivision No. 3	Plat	L.41, P.49 (2 pages)
Walter J. Lehner, C.E.	Sketch of Survey	Unrecorded

A photograph of an archaeological site. The foreground is filled with a variety of rocks and stones of different sizes and colors, including grey, brown, and white. In the background, a dark, circular feature is visible, possibly a well or a pit. To the right, a wooden structure with vertical planks is partially visible. A handwritten label is placed in the lower center of the image.

PC-024

MACOMB CO.
HARRISON TWP.



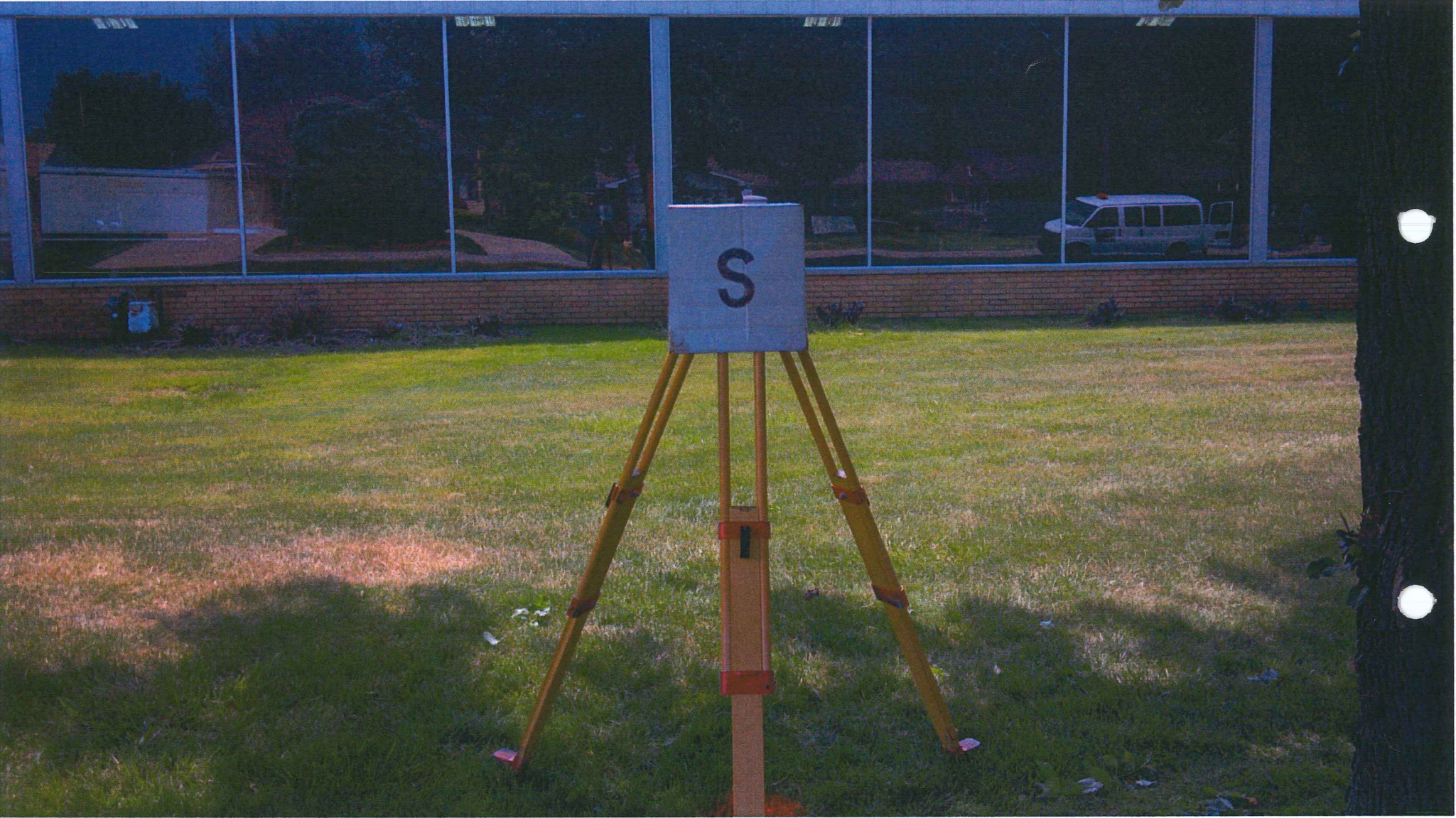
PC-024
HARRISON
TWP.

PC-024
REFERENCE
HARRISON
TWP.



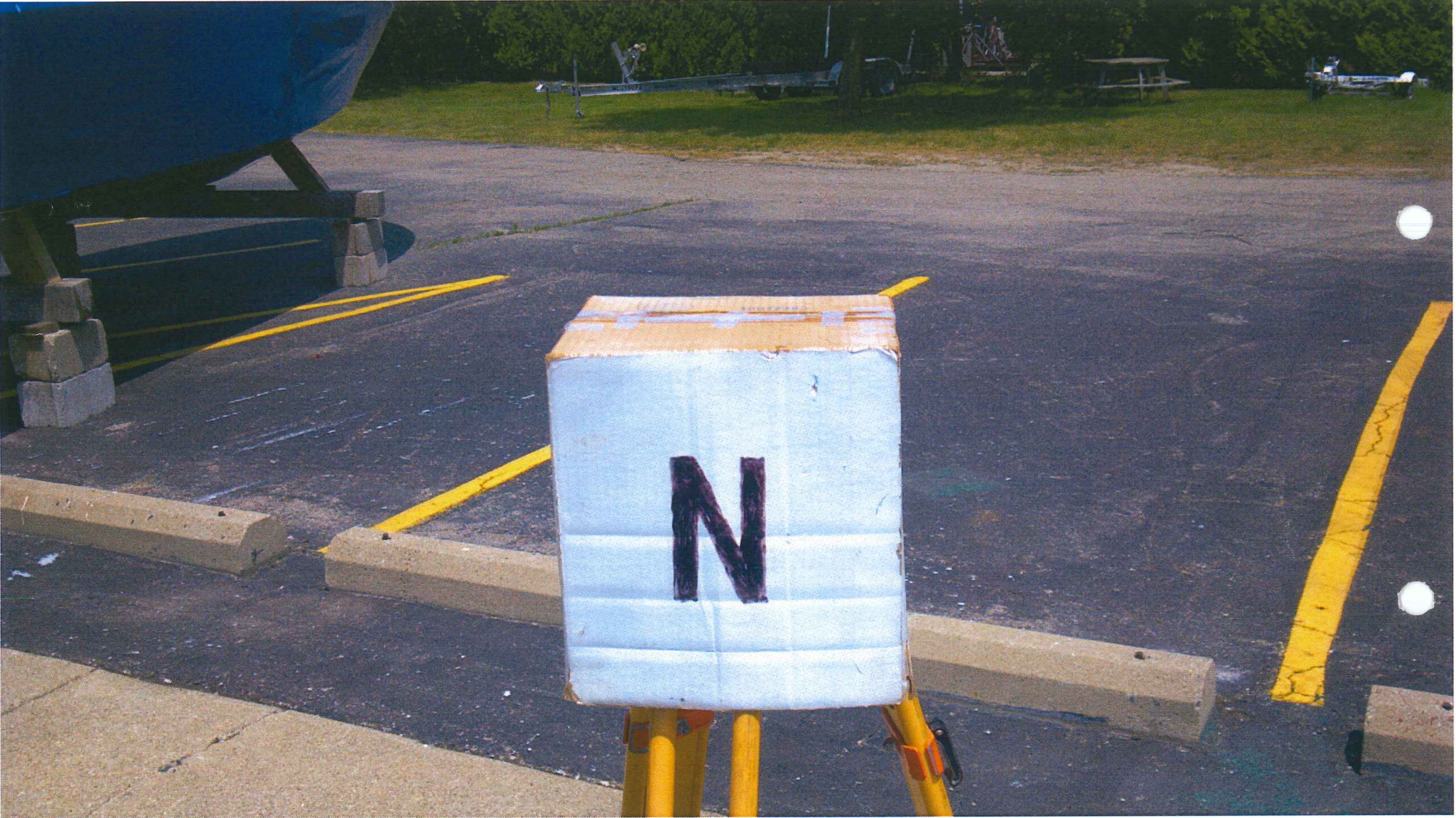
















LAND CORNER RECORDATION CERTIFICATE
Filing Requirement of Act 74, Mich. P.A. 1970

For corners in

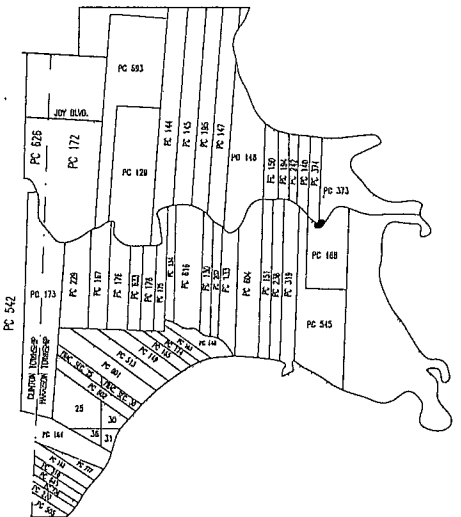
MACOMB (County)	Located In: Harrison Township	Corner Code #
1. Public Land Survey	T <u>2N</u> R <u>14E</u>	<u>PC-024</u>
	T _____ R _____	_____
	T _____ R _____	_____
	T _____ R _____	_____
2. Property Controlling in Section	S _____ T _____ R _____	_____
	S _____ T _____ R _____	_____
3. Miscellaneous Property in Section	S _____ T _____ R _____	_____
	S _____ T _____ R _____	_____

2156195 PAGE 1 OF 2
 LIBER 21700 PAGE 183
 11/09/2012 03:30:27 P.M.
 MACOMB COUNTY, MI
 CARMELLA SABAUGH, REGISTER OF DEEDS

Register of Deeds Stamp & File Number

4. Lot No. _____, Recorded Plat _____
 5. Private Claims Southwest Corner of Private Claim 373 Common with
Southeast Corner of Private Claim 374

I, ROBERT R. DROUILLARD, JR., in a field survey on May 29, 2012, do hereby state that under requirements of P.A. 74, Michigan P.A. of 1970, the corner points mentioned in lines 1 and 2 above were in conformance with regulations and rules therefore as required in the current manual of survey instructions of the United States Department of the Interior, Bureau of Land Management or by a decree of a Court of Law and/or that the corner points mentioned in lines 3, 4 and 5 above were in conformance with the rules of the Michigan Board of Land Surveyors or by a Decree of a Court of Law; re-established, monumented, recovered, found as expressed below:



NOTE: Not more than 2 corners, all in the same town and range, may be recorded on this certificate.

- A. Description of original monument and accessories and/or subsequent restoration:
 Post set by Aaron Greeley according to Private Claim Notes, not found

1	1810	Private claim notes	Aaron Greeley	
2	1923	Belvidere Subdivision	James Wm. Irwin	N/A L.6, P.66
3	1955	Venice Shores Subdivision	Fitz J. Bridges	#5779 L.33, P.44-46
4	1955	Venice Shores Subdivision No.1	Fitz J. Bridges	#5779 L.34, P.31-33
5	1957	Venice Shores Subdivision No.2	Fitz J. Bridges	#5779 L.39, P.46-47
6	1958	Venice Shores Subdivision No.3	Fitz J. Bridges	#5779 L.41, P.49-50
7	No Date	Sketch of Survey	Walter J. Lehner	N/A Unrecorded

- B. Description of corner evidence found and/or method applied in restoring or reestablishing corner:

No physical evidence of the original post was found at the location described in the Aaron Greeley original survey notes. I established the location of the P.C. monument using distances and existing evidence found in recorded plat of Belvidere Subdivision and in an unrecorded Sketch of Survey by Walter J. Lehner. After establishing the point described as West line of P.C. 373 in the "Belvidere Subdivision" and described as East line of P.C. 374 on the Sketch of Survey by Walter J. Lehner, a line was projected in a north and south direction parallel with the line common to P.C. 140 and P.C. 242 previously established. Said line was projected south to the bank of the Clinton River and north to the bank of Lake St. Clair. The reference monument was placed 5.71 feet north of the south terminus of the line at the Clinton River.

FROM SOUTHWEST CORNER PC 373 (PC-024) TO NORTHWEST CORNER PC 373 (PC-025)
 5148.00' (78 Chains Private Claim Notes – Original Survey)
 5149.68' REF PC-024 to REF PC-025 (measured Drouillard #52517, 2012)
 5.71' from REF PC-024 to notch on seawall (PC-024 Corner, bank of river)

- C. Description of monument for corner and accessories established to perpetuate locating the position of the corner:

Reference Corner to PC-024 I installed a 4" diameter concrete monument, 36" long with a 1/2" iron rod having a 2" diameter aluminum cap stamped "Macomb County Monument, MI Act #345, #52517, "REF PC-024".

Witnesses:

North	75.38'	Set nail and Macomb County Witness tag in West face of 12" Maple tree.
N70°W	13.74'	To the face of steel light pole
N75°W	26.20'	To the outside corner of bend in seawall
S75°E	19.11'	To the face of a steel light pole.
S15°W	5.17'	To outside of steel seawall.

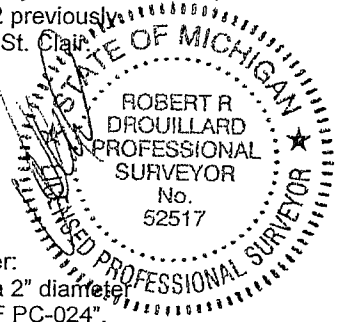
The selected location is accepted by me and is generally accepted by Professional Surveyors as the best available evidence of the position of the original corner.

Signed by [Signature]
 Surveyor's Michigan License No. 52517

Date 11/2/12

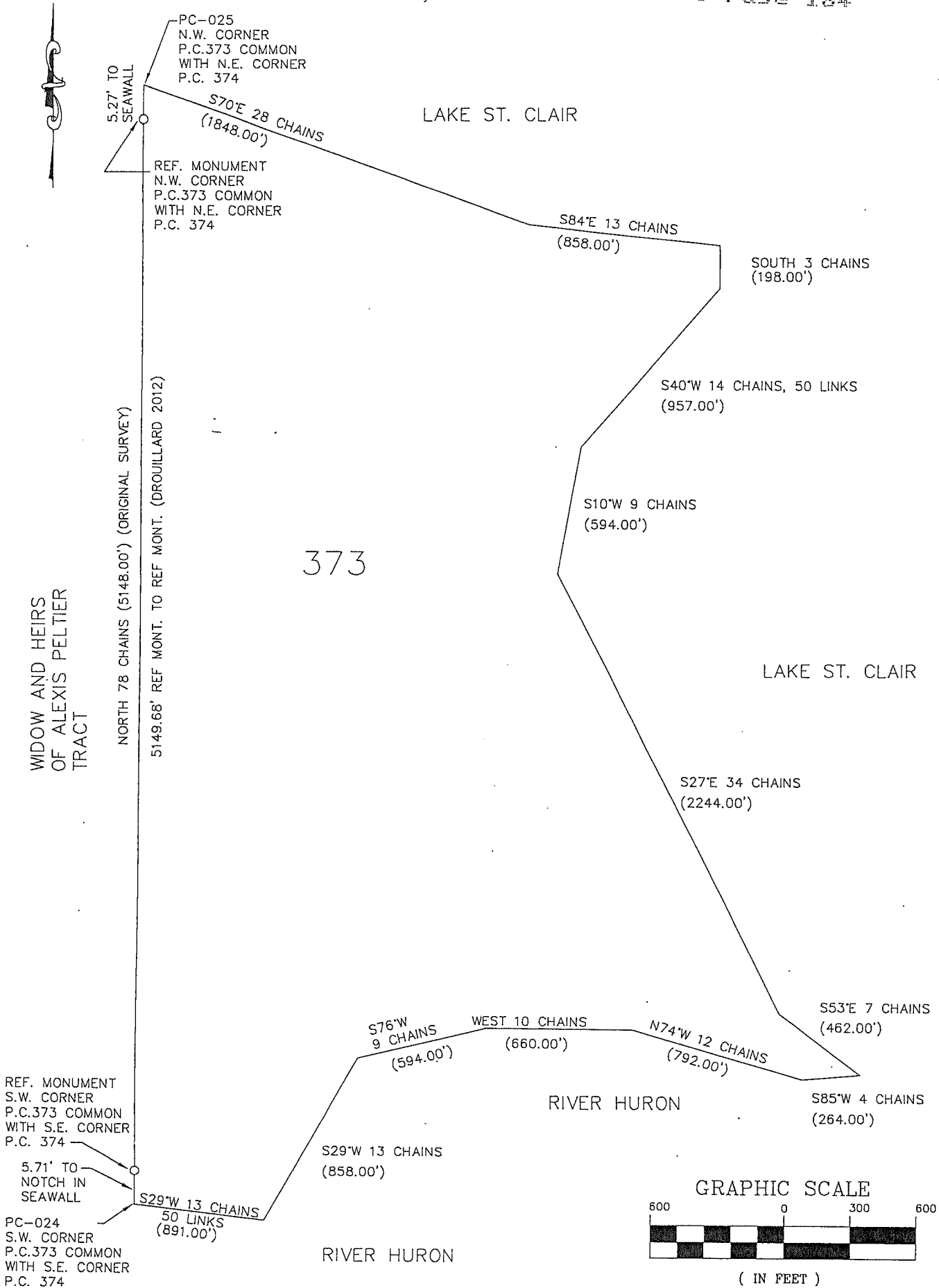
FORM APPROVED BY MICHIGAN STATE BOARD OF PROFESSIONAL SURVEYORS, JAN. 28, 1971
 REVISED MAY 14, 1975
 REVISED JAN., 1983
 REVISED OCT., 1995

ACCEPTED BY THE MACOMB COUNTY SURVEY PEER GROUP AS THE OFFICIAL CORNER UNDER MICHIGAN PUBLIC ACT 345 OF 1990 AT A MEETING HELD ON 7-24-2012
[Signature]
 MARTIN G. DUNN, P.S. CHAIRMAN



SKETCH OF PRIVATE CLAIM 373

Liber 21700 Page 184



REF. MONUMENT
S.W. CORNER
P.C.373 COMMON
WITH S.E. CORNER
P.C. 374

5.71' TO
NOTCH IN
SEAWALL

PC-024
S.W. CORNER
P.C.373 COMMON
WITH S.E. CORNER
P.C. 374

P.C. 373
Confirmed to: Ignace Morass

Commencing at a post standing on the North border of River Huron between this tract and a tract confirmed to the Widow and Heirs of Alexis Peltier deceased thence North Seventy Eight Chains (5148.00 feet) to a post standing on the border of Lake St. Clair thence along the border of said Lake South Seventy Degrees East Twenty Eight Chains (1848.00 feet), thence South Eighty Four Degrees East Thirteen Chains (858.00 feet), thence South Three Chains (198.00 feet), thence South Forty Degrees West Fourteen Chains Fifty Links, thence South Ten Degrees West Nine Chains (594.00 feet) thence South Twenty Seven Degrees East Thirty Four Chains (2244.00 feet), thence South Fifty Three Degrees East Seven Chains (462.00 feet) to the border of River Huron at its confluence with Lake St. Clair, thence along the border of said River up stream South Eighty Five Degrees West Four Chains (264.00 feet) thence North Seventy Four Degrees West Twelve Chains (792.00 feet), thence West Ten Chains (660.00 feet), thence South Seventy Six Degrees West Nine Chains (594.00 feet), thence South Twenty Nine Degrees West Thirteen Chains (858.00 feet), thence West Eighty Five Chains Fifty Links (5643.00 feet) to the place of beginning, containing two hundred and eight acres eighty seven hundredths of an acre.

Detroit July 14th, 1810

Aaron Greeley Surveyor
of Private Claims

DOSSIER
SOUTHWEST CORNER P.C. 373
OTHER CODE: PC-024
HARRISON TOWNSHIP,
T2N, R14E

GLO HISTORY:

Private Claim survey performed by Aaron Greeley on July 14, 1810. Commencing at a post standing on the north border of River Huron between this tract and a tract confirmed to the widow and heirs of Alexis Peltier deceased thence north seventy eight chains to a post standing on the border of Lake St. Clair thence along the border of said lake south seventy degrees east twenty eight chains, thence south eighty four degrees east thirteen chains, thence south three chains, thence south forty degrees west fourteen chains fifty links, thence south ten degrees west nine chains thence south twenty seven degrees east thirty four chains, thence south fifty three degrees east seven chains to the border of River Huron at its confluence with Lake St. Clair, thence along the border of said river up stream south eighty five degrees west four chains, thence north seventy four degrees west twelve chains, thence west ten chains, thence south seventy six degrees west nine chains, thence south twenty nine degrees west thirteen chains, thence west eight chains fifty links to the place of beginning, containing two hundred and eight acres eighty seven hundredths of an acre. Description No. 373 Confirmed to Ignace Morass.

EXISTING CONDITIONS:

No physical evidence of original post found at above described location. The reference monument position was established using found evidence from the following plats: "Belvidere Subdivision" as recorded in liber 6 of plats, page 66, Macomb County Records, "Venice Shores Subdivision" as recorded in liber 33 of plats, page 44, Macomb County Records, "Venice Shores Subdivision No.1" as recorded in liber 34 of plats, page 31, Macomb County Records, "Venice Shores Subdivision No.2" as recorded in liber 39 of plats, page 46, Macomb County Records, "Venice Shores Subdivision No.3" as recorded in liber 41 of plats, page 49, Macomb County Records and an unrecorded Sketch of Survey by Walter J. Lehner, C.E.

RECORDED & UNRECORDED SURVEYS, & FIELD NOTES:

1. Aaron Greeley	Copy of Original Survey	Post sighted in notes (2 pages)
2. Belvidere Subdivision	Plat	L.6, P.66
3. Venice Shores Subdivision	Plat	L.33, P.44-46, (3 pages)
4. Venice Shores Subdivision No.1	Plat	L.34, P.31-33 (3 pages)
5. Venice Shores Subdivision No.2	Plat	L.39, P.46, 47 (2 pages)
6. Venice Shores Subdivision No.3	Plat	L.41, P.49, 50 (2 pages)
7. Walter J. Lehner, C.E.	Sketch of Survey	Unrecorded

FIELD MEASUREMENTS BETWEEN CORNERS:

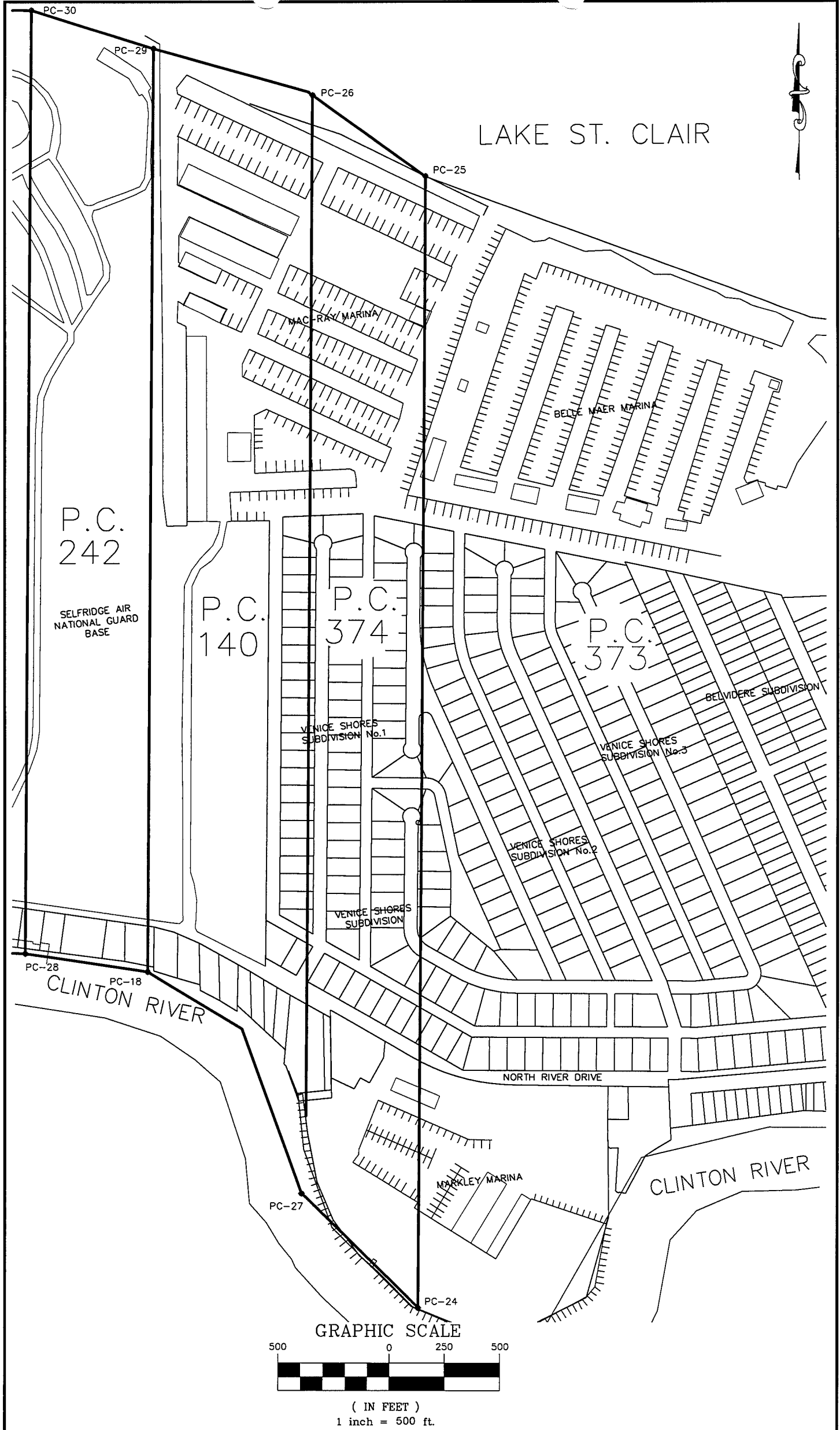
FROM CORNER FOR SOUTHWEST PC 373 (PC-024) TO NORTHWEST CORNER PC 373 (PC-025)
5148.00' (78 Chains Private Claim Notes)
5144.58' (measured Drouillard #52517, 2012)

RECOMMENDATIONS:

Replace 1/2" diameter iron rod and cap with a 4" diameter concrete monument, 36" long with a 1/2" iron rod having a 2" diameter aluminum cap stamped "Macomb County Monument, MI Act #345, #52517, "PC-024".

WITNESSES: PC-024 CORNER

North	75.38'	Set nail and Macomb County Witness tag in West face of 12" Maple tree.
N70°W	13.74'	To the face of a steel light pole.
N75°W	26.20'	To the outside corner of bend in seawall.
S15°W	26.20'	To the face of a steel light pole



N^o. 478. North side of River Huron.

Description N^o. 373 Confirmed to
Synace Morap, commencing at a post-
standing on the north border of River
Huron between this tract and a tract
Confirmed to the widow and heirs of Alexis
Peltier deceased. thence north seventy eight
chains, to a post standing on the border
of Lake St. Clair, thence along the border
of said Lake south seventy degrees east
twenty eight chains, thence south eighty
four degrees east thirteen chains, thence
south three chains, thence south forty de-
grees west fourteen chains fifty links, -
thence south ten degrees west nine chains,
thence south twenty seven degrees east
thirty four chains, thence south fifty three
degrees east seven chains, to the border of
River Huron at its confluence with
Lake St. Clair, thence along the border
of said River up stream south eighty
five degrees west four chains, thence -
north seventy four degrees west twelve
chains, thence west ten chains, thence
south seventy six degrees west nine chains
thence south twenty nine degrees west
thirteen chains, thence west eight ch-
ains fifty links, to the place of begin-
ning containing two hundred and
eight acres eighty seven hundredths of
an acre. -

Detroit July 14. 1810

Harmon Gageley Surveyor
of private Claims.

No. 478

No. 373 Confirmed to
Ignace Morass

NORTH SIDE OF RIVER HURON

Description No. 373 Confirmed to Ignace Morass commencing at a post standing on the north border of River Huron between this tract and a tract confirmed to the widow and heirs of Alexis Peltier deceased thence north seventy eight chains to a post standing on the border of Lake St. Clair thence along the border of said lake south seventy degrees east twenty eight chains, thence south eighty four degrees east thirteen chains, thence south three chains, thence south forty degrees west fourteen chains fifty links, thence south ten degrees west nine chains thence south twenty seven degrees east thirty four chains, thence south fifty three degrees east seven chains to the border of River Huron at its confluence with Lake St. Clair, thence along the border of said river up stream south eighty five degrees west four chains, thence north seventy four degrees west twelve chains, thence west ten chains, thence south seventy six degrees west nine chains, thence south twenty nine degrees west thirteen chains, thence west eight chains fifty links to the place of beginning, containing two hundred and eight acres eighty seven hundredths of an acre _____

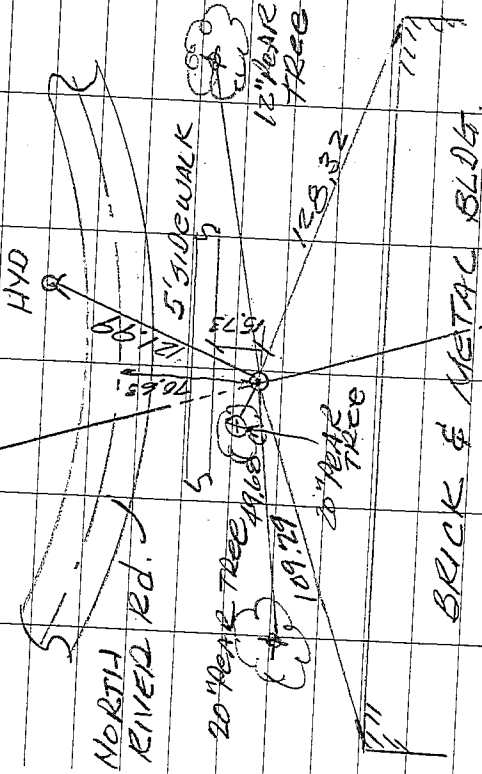
Detroit July 14, 1810

Aaron Greeley Surveyor
of private claims

5-25-2012
R.S.B.S

REFERENCE POINT
FOR P.C. LINE
BETWEEN PC-024 &
PC-025

PRIVATE CLAIM LINE



MARKLEY
MARINA

SET TEMPORARY
1/2" IRON AT
PROPOSED LOCATION

SET REFERENCE POINT FOR
PRIVATE CLAIM LINE BETWEEN
PC-024 & PC-025.

WITNESS
SET NAIL NAILS & MAGNOLIA
CO. WITNESS TAGS.

WEST 49.68 FT. SET NAIL &
TAG IN NORTH FACE OF
20" BRADFORD PEAR
N. 45° W. 49.19 FT. SET NAIL &
TAG IN EAST FACE OF 20"
BRADFORD PEAR

S. 80° W. 109.29 FT. N.W. COR
OF BRICK BLDG.

S. 80° E 128.32 FT TO N.E.
COR. OF METAL BLDG.

EAST 120.29 FT. SET NAIL
& TAG IN NORTH FACE OF

12" BRADFORD PEAR
N. 10° E 121.99 FT. TO TOP
CENTER OF FIRE HYD.

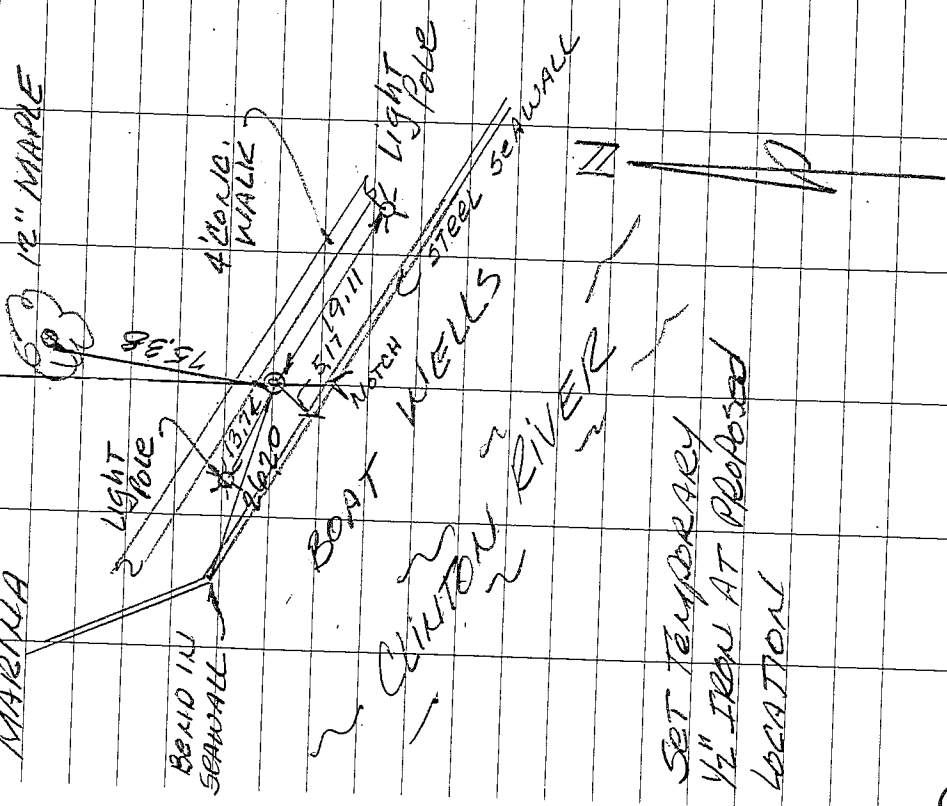
5-29-2012
RS BS

PC-024

SW. CORNER OF PRIVATE
CLAIM 373 & S.E. CORNER
PRIVATE CLAIM 374

MARKLEY
MARINA

6" 12" MAPLE



SET TEMPORARY
1/2" IRON AT PROPOSED
LOCATION

SET WITNESS POINT FOR
PC-024

WITNESS

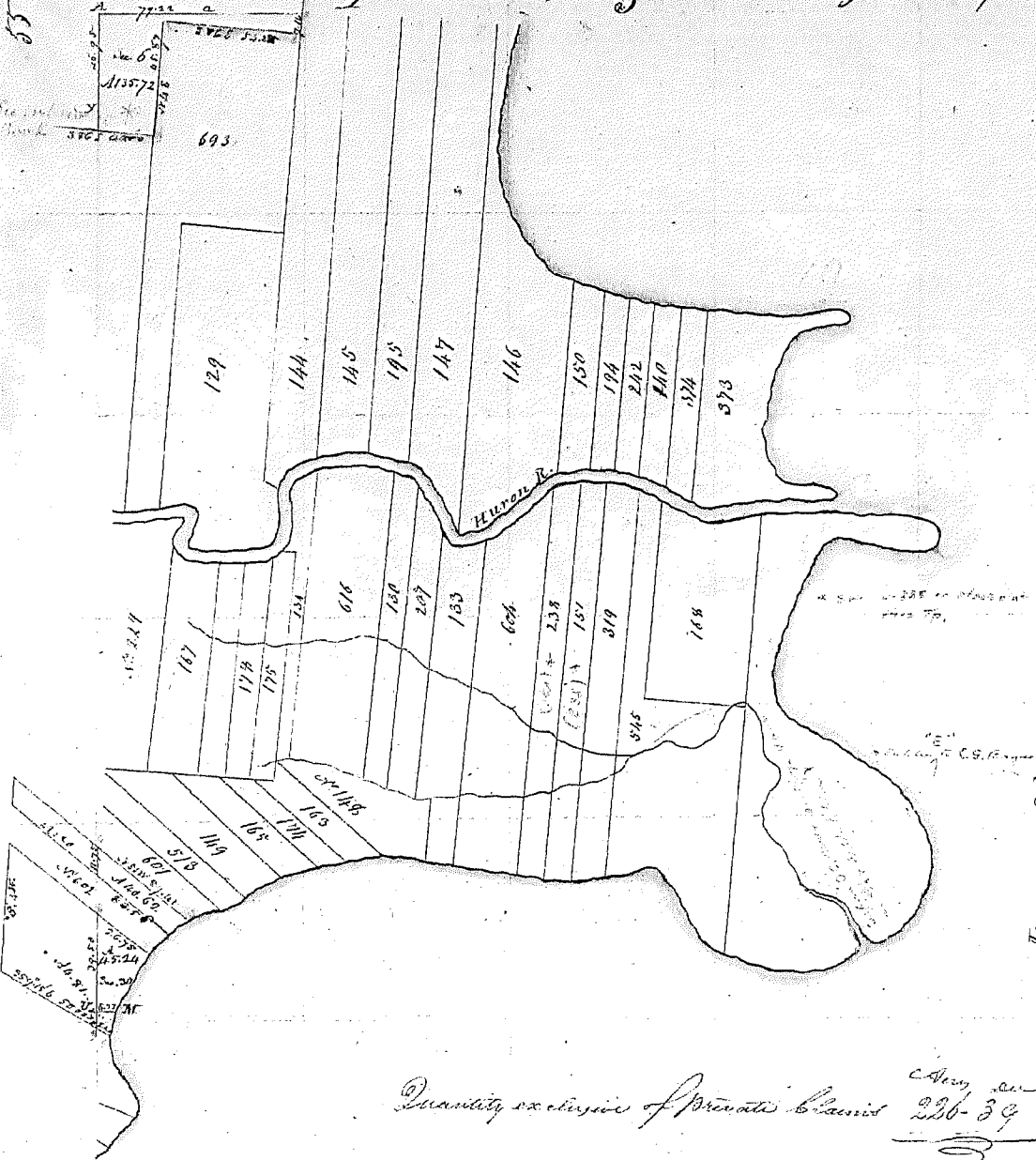
SET NAG NAILS & WADCOMB
CO. WITNESS TAGS

NORTH 75.38 FT. SET NAIL & TAG
 IN WEST FACE OF 12" MAPLE
 N. 70° W. 13.72 FT. TO THE
 FACE OF A STEEL LIGHT POLE
 N. 75° W. 26.20 FT. TO THE
 OUTSIDE CORNER OF BEND
 IN STEEL SEAWALL
 S. 150° W. 5.17 FT. TO OUTSIDE
 OF STEEL SEAWALL
 S. 75° E 19.11 FT. TO THE
 FACE OF A STEEL LIGHT POLE

Township N. II North, Range N. XIV East of the Mer. (Mich. Ter.)

83

55



D. S. C. L. A. I. R.

Quantity exclusive of Private Claims 236-39

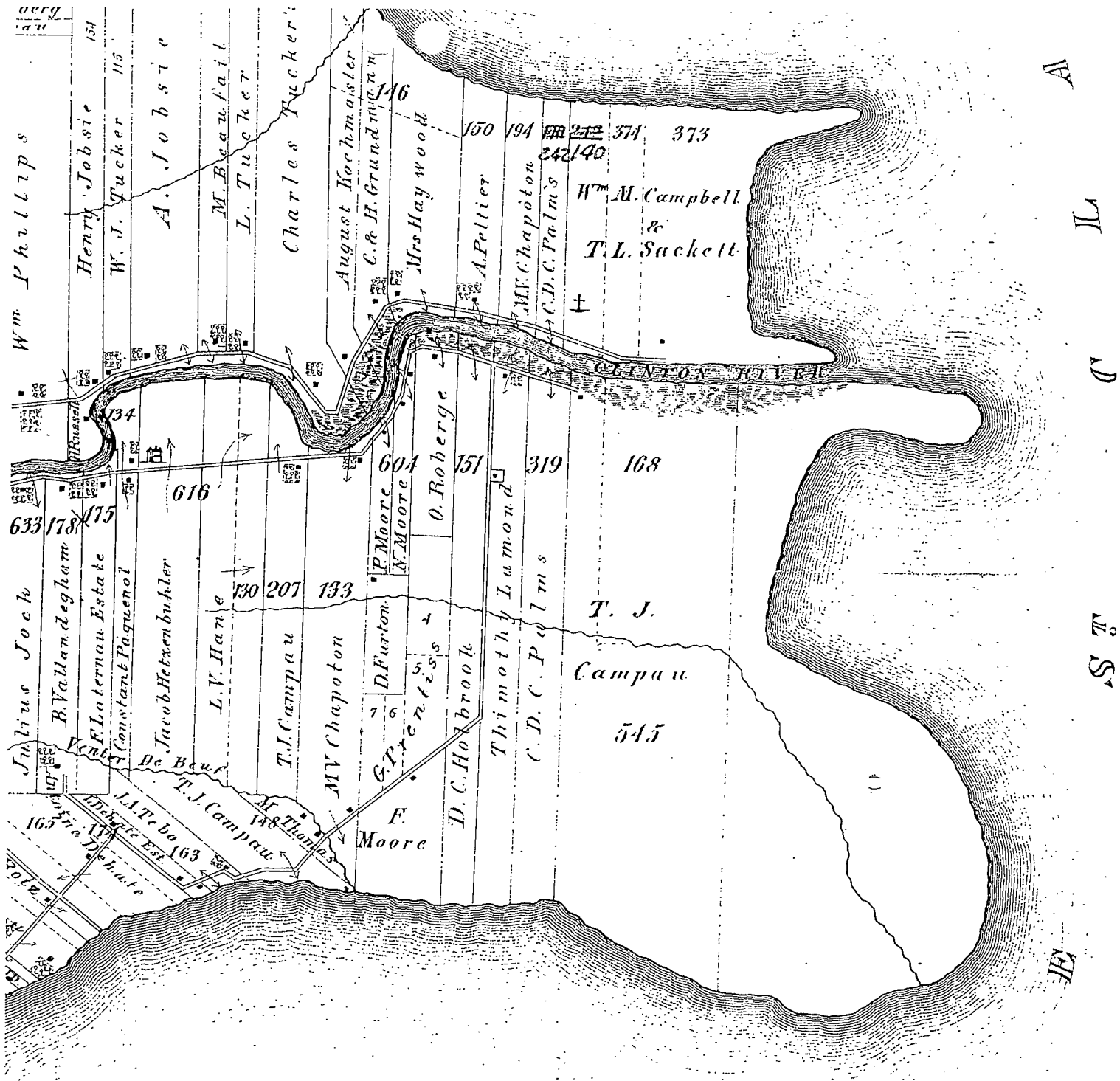
Chas. W. Allen

It has been copied from the Original on file in this Office

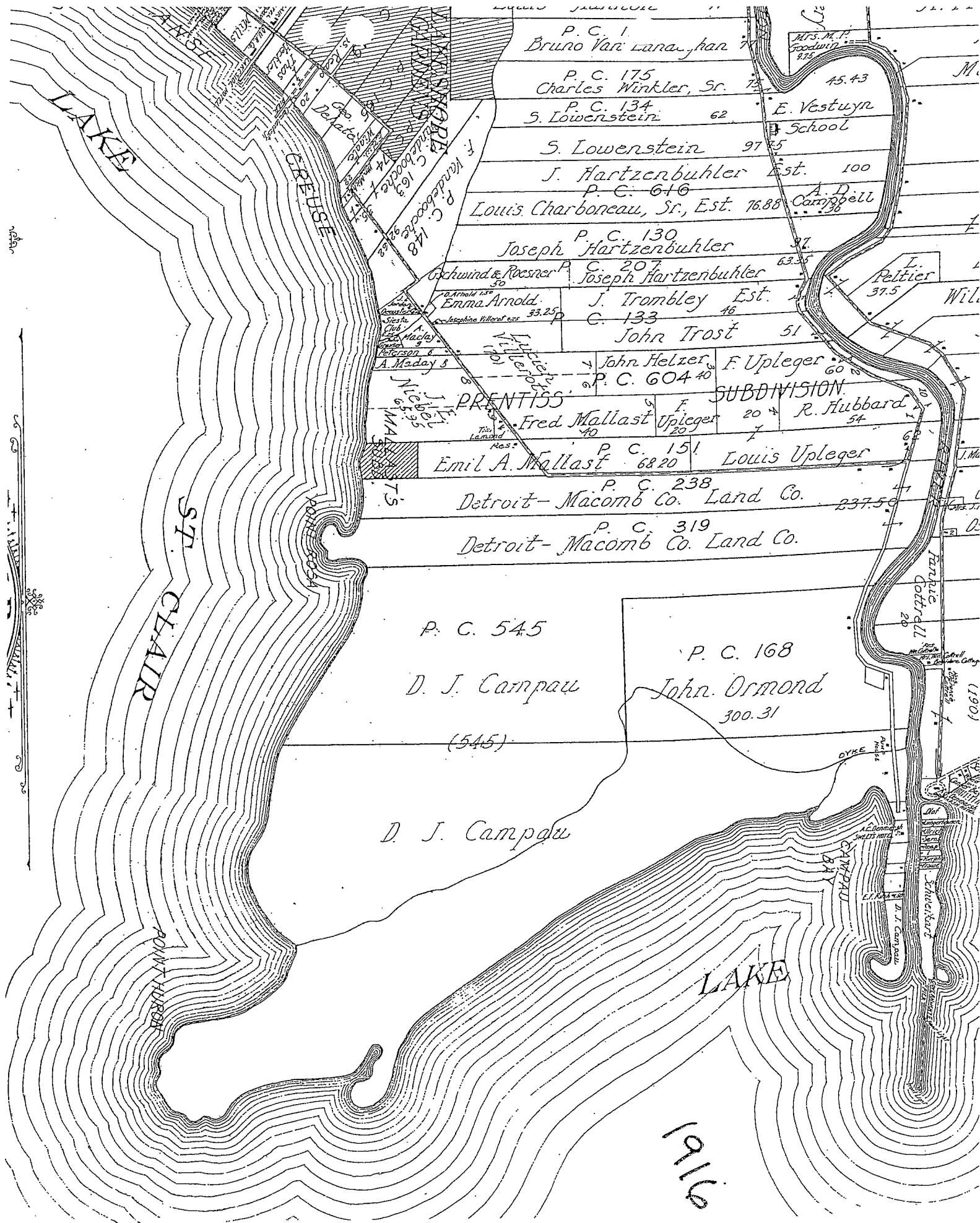
Commissioner General's Office
 July 20 - 1913

Edward Tiffin
 Commissioner General

POOR COPY

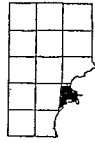


(4)



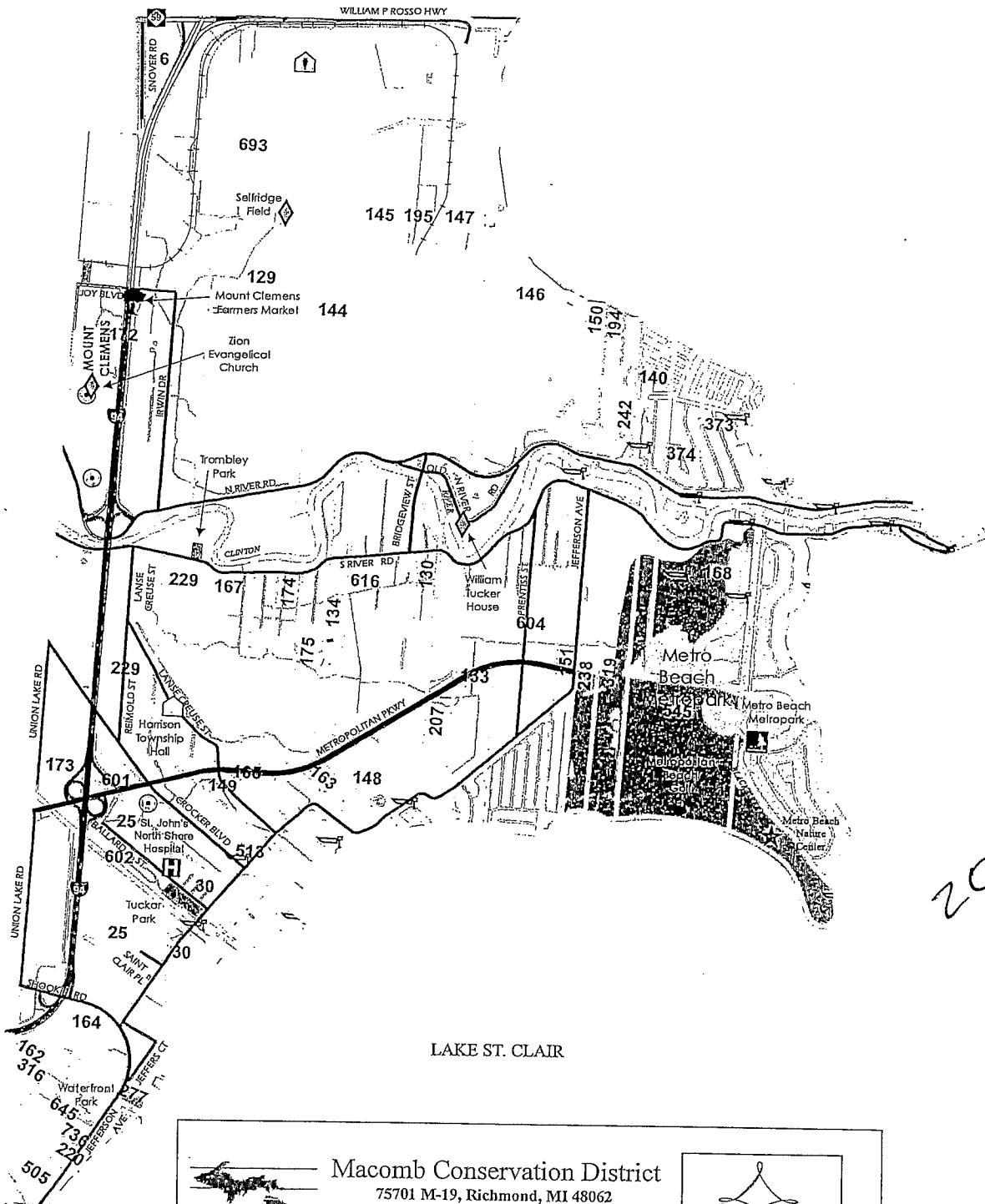
HARRISON

T. 2N. - R. 14E.



See CHESTERFIELD Page 31


See CLINTON Page 23



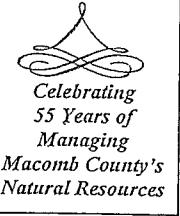
LAKE ST. CLAIR

LAKE ST. CLAIR

2006



Macomb Conservation District
 75701 M-19, Richmond, MI 48062
 Phone: 586-727-2666 Fax: 586-727-2621
 E-mail: macombcd@klondyke.net
 Website: www.macombcd.com



*Celebrating
 55 Years of
 Managing
 Macomb County's
 Natural Resources*

Assistance available for:

Tree Sales Forestry Native Plants
 Conservation Education

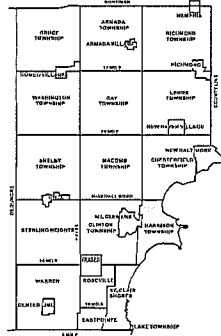
Copyright Macomb Conservation District; Macomb County Planning & Economic Development Department

6



PC 168

Date of Photography: April 2004
 100 50 0 100 200 Feet
 1:1,200



HARRISON TWP SHEET INDEX

12-16A	12-16B	12-16C	12-16D	12-16E	12-16F	12-16G	12-16H
12-16I	12-16J	12-16K	12-16L	12-16M	12-16N	12-16O	12-16P
12-16Q	12-16R	12-16S	12-16T	12-16U	12-16V	12-16W	12-16X
12-16Y	12-16Z	12-16AA	12-16AB	12-16AC	12-16AD	12-16AE	12-16AF
12-16AG	12-16AH	12-16AI	12-16AJ	12-16AK	12-16AL	12-16AM	12-16AN
12-16AO	12-16AP	12-16AQ	12-16AR	12-16AS	12-16AT	12-16AU	12-16AV
12-16AW	12-16AX	12-16AY	12-16AZ	12-16BA	12-16BB	12-16BC	12-16BD
12-16BE	12-16BF	12-16BG	12-16BH	12-16BI	12-16BJ	12-16BK	12-16BL
12-16BM	12-16BN	12-16BO	12-16BP	12-16BQ	12-16BR	12-16BS	12-16BT
12-16BU	12-16BV	12-16BW	12-16BX	12-16BY	12-16BZ	12-16CA	12-16CB
12-16CC	12-16CD	12-16CE	12-16CF	12-16CG	12-16CH	12-16CI	12-16CJ
12-16CK	12-16CL	12-16CM	12-16CN	12-16CO	12-16CP	12-16CQ	12-16CR
12-16CS	12-16CT	12-16CU	12-16CV	12-16CW	12-16CX	12-16CY	12-16CZ
12-16DA	12-16DB	12-16DC	12-16DD	12-16DE	12-16DF	12-16DG	12-16DH
12-16DI	12-16DJ	12-16DK	12-16DL	12-16DM	12-16DN	12-16DO	12-16DP
12-16DQ	12-16DR	12-16DS	12-16DT	12-16DU	12-16DV	12-16DW	12-16DX
12-16DY	12-16DZ	12-16EA	12-16EB	12-16EC	12-16ED	12-16EE	12-16EF
12-16EG	12-16EH	12-16EI	12-16EJ	12-16EK	12-16EL	12-16EM	12-16EN
12-16EO	12-16EP	12-16EQ	12-16ER	12-16ES	12-16ET	12-16EU	12-16EV
12-16EW	12-16EX	12-16EY	12-16EZ	12-16FA	12-16FB	12-16FC	12-16FD
12-16FE	12-16FF	12-16FG	12-16FH	12-16FI	12-16FJ	12-16FK	12-16FL
12-16FM	12-16FN	12-16FO	12-16FP	12-16FQ	12-16FR	12-16FS	12-16FT
12-16FU	12-16FV	12-16FW	12-16FX	12-16FY	12-16FZ	12-16GA	12-16GB
12-16GC	12-16GD	12-16GE	12-16GF	12-16GG	12-16GH	12-16GI	12-16GJ
12-16GK	12-16GL	12-16GM	12-16GN	12-16GO	12-16GP	12-16GQ	12-16GR
12-16GS	12-16GT	12-16GU	12-16GV	12-16GW	12-16GX	12-16GY	12-16GZ
12-16HA	12-16HB	12-16HC	12-16HD	12-16HE	12-16HF	12-16HG	12-16HH
12-16HI	12-16HJ	12-16HK	12-16HL	12-16HM	12-16HN	12-16HO	12-16HP
12-16HQ	12-16HR	12-16HS	12-16HT	12-16HU	12-16HV	12-16HW	12-16HX
12-16HY	12-16HZ	12-16IA	12-16IB	12-16IC	12-16ID	12-16IE	12-16IF
12-16IG	12-16IH	12-16II	12-16IJ	12-16IK	12-16IL	12-16IM	12-16IN
12-16IO	12-16IP	12-16IQ	12-16IR	12-16IS	12-16IT	12-16IU	12-16IV
12-16IW	12-16IX	12-16IY	12-16IZ	12-16JA	12-16JB	12-16JC	12-16JD
12-16JE	12-16JF	12-16JG	12-16JH	12-16JI	12-16JJ	12-16JK	12-16JL
12-16JM	12-16JN	12-16JO	12-16JP	12-16JQ	12-16JR	12-16JS	12-16JT
12-16JU	12-16JV	12-16JW	12-16JX	12-16JY	12-16JZ	12-16KA	12-16KB
12-16KC	12-16KD	12-16KE	12-16KF	12-16KG	12-16KH	12-16KI	12-16KJ
12-16KK	12-16KL	12-16KM	12-16KN	12-16KO	12-16KP	12-16KQ	12-16KR
12-16KS	12-16KT	12-16KU	12-16KV	12-16KW	12-16KX	12-16KY	12-16KZ
12-16LA	12-16LB	12-16LC	12-16LD	12-16LE	12-16LF	12-16LG	12-16LH
12-16LI	12-16LJ	12-16LK	12-16LL	12-16LM	12-16LN	12-16LO	12-16LP
12-16LQ	12-16LR	12-16LS	12-16LT	12-16LU	12-16LV	12-16LW	12-16LX
12-16LY	12-16LZ	12-16MA	12-16MB	12-16MC	12-16MD	12-16ME	12-16MF
12-16MG	12-16MH	12-16MI	12-16MJ	12-16MK	12-16ML	12-16MN	12-16MO
12-16MP	12-16MQ	12-16MR	12-16MS	12-16MT	12-16MU	12-16MV	12-16MW
12-16MX	12-16MY	12-16MZ	12-16NA	12-16NB	12-16NC	12-16ND	12-16NE
12-16NF	12-16NG	12-16NH	12-16NI	12-16NJ	12-16NK	12-16NL	12-16NN
12-16NO	12-16NP	12-16NQ	12-16NR	12-16NS	12-16NT	12-16NU	12-16NV
12-16NW	12-16NX	12-16NY	12-16NZ	12-16OA	12-16OB	12-16OC	12-16OD
12-16OE	12-16OF	12-16OG	12-16OH	12-16OI	12-16OJ	12-16OK	12-16OL
12-16OM	12-16ON	12-16OO	12-16OP	12-16OQ	12-16OR	12-16OS	12-16OT
12-16OU	12-16OV	12-16OW	12-16OX	12-16OY	12-16OZ	12-16PA	12-16PB
12-16PC	12-16PD	12-16PE	12-16PF	12-16PG	12-16PH	12-16PI	12-16PJ
12-16PK	12-16PL	12-16PM	12-16PN	12-16PO	12-16PP	12-16PQ	12-16PR
12-16PS	12-16PT	12-16PU	12-16PV	12-16PW	12-16PX	12-16PY	12-16PZ
12-16QA	12-16QB	12-16QC	12-16QD	12-16QE	12-16QF	12-16QG	12-16QH
12-16QI	12-16QJ	12-16QK	12-16QL	12-16QM	12-16QN	12-16QO	12-16QP
12-16QQ	12-16QR	12-16QS	12-16QT	12-16QU	12-16QV	12-16QW	12-16QX
12-16QY	12-16QZ	12-16RA	12-16RB	12-16RC	12-16RD	12-16RE	12-16RF
12-16RG	12-16RH	12-16RI	12-16RJ	12-16RK	12-16RL	12-16RM	12-16RN
12-16RO	12-16RP	12-16RQ	12-16RR	12-16RS	12-16RT	12-16RU	12-16RV
12-16RW	12-16RX	12-16RY	12-16RZ	12-16SA	12-16SB	12-16SC	12-16SD
12-16SE	12-16SF	12-16SG	12-16SH	12-16SI	12-16SJ	12-16SK	12-16SL
12-16SM	12-16SN	12-16SO	12-16SP	12-16SQ	12-16SR	12-16SS	12-16ST
12-16SU	12-16SV	12-16SW	12-16SX	12-16SY	12-16SZ	12-16TA	12-16TB
12-16TC	12-16TD	12-16TE	12-16TF	12-16TG	12-16TH	12-16TI	12-16TJ
12-16TK	12-16TL	12-16TM	12-16TN	12-16TO	12-16TP	12-16TQ	12-16TR
12-16TS	12-16TT	12-16TU	12-16TV	12-16TW	12-16TX	12-16TY	12-16TZ
12-16UA	12-16UB	12-16UC	12-16UD	12-16UE	12-16UF	12-16UG	12-16UH
12-16UI	12-16UJ	12-16UK	12-16UL	12-16UM	12-16UN	12-16UO	12-16UP
12-16UQ	12-16UR	12-16US	12-16UT	12-16UU	12-16UV	12-16UW	12-16UX
12-16UY	12-16UZ	12-16VA	12-16VB	12-16VC	12-16VD	12-16VE	12-16VF
12-16VG	12-16VH	12-16VI	12-16VJ	12-16VK	12-16VL	12-16VM	12-16VN
12-16VO	12-16VP	12-16VQ	12-16VR	12-16VS	12-16VT	12-16VU	12-16VV
12-16VW	12-16VX	12-16VY	12-16VZ	12-16WA	12-16WB	12-16WC	12-16WD
12-16WE	12-16WF	12-16WG	12-16WH	12-16WI	12-16WJ	12-16WK	12-16WL
12-16WM	12-16WN	12-16WO	12-16WP	12-16WQ	12-16WR	12-16WS	12-16WT
12-16WU	12-16WV	12-16WW	12-16WX	12-16WY	12-16WZ	12-16XA	12-16XB
12-16XC	12-16XD	12-16XE	12-16XF	12-16XG	12-16XH	12-16XI	12-16XJ
12-16XK	12-16XL	12-16XM	12-16XN	12-16XO	12-16XP	12-16XQ	12-16XR
12-16XS	12-16XT	12-16XU	12-16XV	12-16XW	12-16XZ	12-16YA	12-16YB
12-16YC	12-16YD	12-16YE	12-16YF	12-16YG	12-16YH	12-16YI	12-16YJ
12-16YK	12-16YL	12-16YM	12-16YN	12-16YO	12-16YP	12-16YQ	12-16YR
12-16YS	12-16YT	12-16YU	12-16YV	12-16YW	12-16YZ	12-16ZA	12-16ZB
12-16ZC	12-16ZD	12-16ZE	12-16ZF	12-16ZG	12-16ZH	12-16ZI	12-16ZJ
12-16ZK	12-16ZL	12-16ZM	12-16ZN	12-16ZO	12-16ZP	12-16ZQ	12-16ZR
12-16ZS	12-16ZT	12-16ZU	12-16ZV	12-16ZW	12-16ZX	12-16ZY	12-16ZZ

DESCRIPTION OF PERMANENT REAL ESTATE INDEX NUMBER

13-19-302-018

- Platted Area Boundary Line
- Property Line
- Property Split Line
- Property Combined Line
- Township Boundary Line
- Traverse Line
- Dimension Extent Marks
- Dimension Start Marks

12-16H

HARRISON TWP.
 E. 1/2 S.E. 1/4 SEC. 16 T.2N. R.14E.

Source: Macomb County Department of Planning and Economic Development
 - 2004 Digital Orthophotography Project - Parcel Conversion Project
 Note: Digital Orthophotography horizontal positioning accuracy is 3 feet. Parcel boundary lines should be considered a graphical representation and not in any way a legal survey or engineering document. In general, the horizontal positioning and length accuracy is within 15 feet.
 This map is intended for general planning purposes. Site specific evaluation should be verified by field inspection. This is a work in progress and may contain errors and omissions. Please report any potential revisions to (586) 468-5265.



GIS MACOMB COUNTY
 Planning and Economic
 Development Department

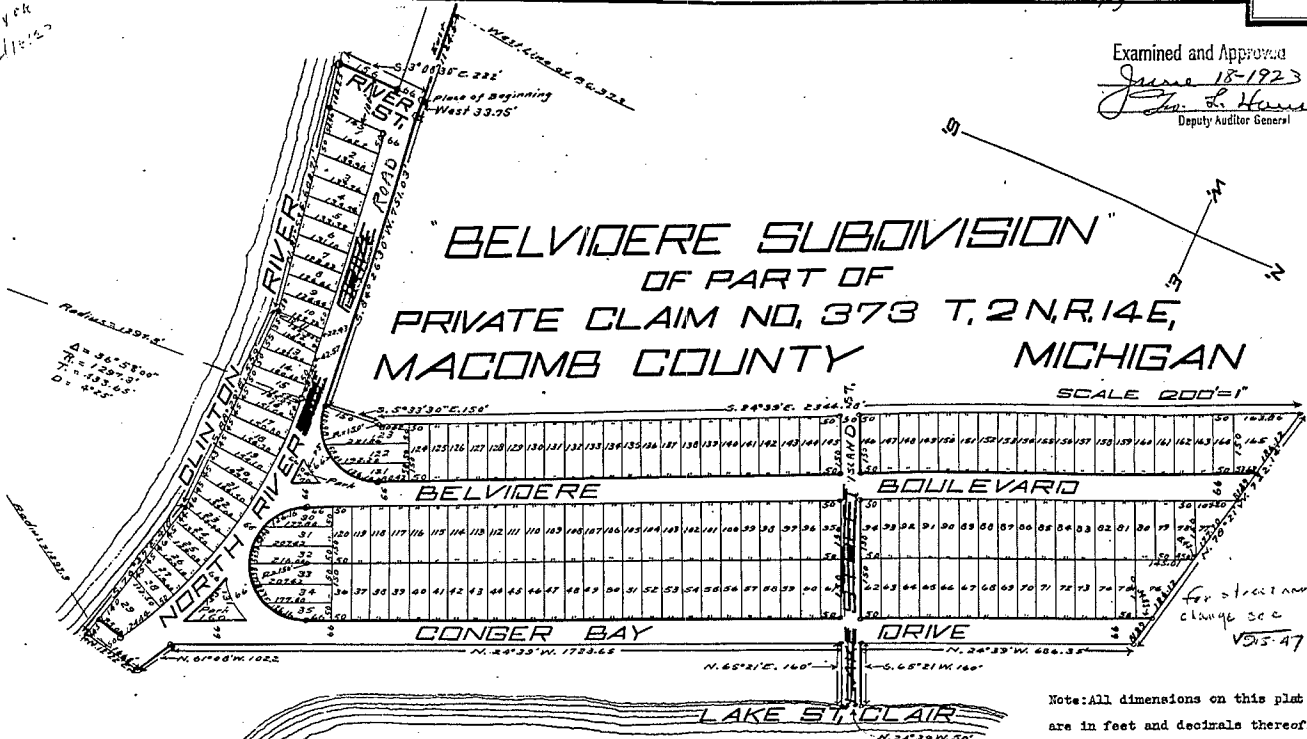
Published: Aug 30, 2005

7

Copy

Examined and Approved
June 18-1923
John L. Harvey
Deputy Auditor General

BELVIDERE SUBDIVISION OF PART OF PRIVATE CLAIM NO. 373 T. 2 N. R. 14 E, MACOMB COUNTY MICHIGAN



Note: All dimensions on this plat are in feet and decimals thereof.

KNOW ALL MEN BY THESE PRESENTS, that we William G. Cottrell and Fannie A. Cottrell his wife, and Clarence Cottrell (unmarried) and William A. Mickel and Augusta Mickel his wife, and John M. Tucker (a widower) as proprietors have caused the land embraced in the annexed plat to be surveyed, laid out and platted, to be known as "BELVIDERE SUBDIVISION" OF PART OF PRIVATE CLAIM NO. 373 T. 2 N. R. 14 E. MACOMB COUNTY MICHIGAN and that the streets and parks as shown on said plat are hereby dedicated to the use of the public.

Signed and Sealed in Presence of
Jas. M. Irwin
Geo. H. Bankers

William G. Cottrell (L.S.)
Fannie A. Cottrell (L.S.)
Clarence Cottrell (L.S.)
William A. Mickel (L.S.)
Augusta Mickel (L.S.)
John M. Tucker (L.S.)

STATE OF MICHIGAN } ss.
County of Macomb }

On this 24th day of May 1923 before me, a Notary Public in and for said county, personally came the above named William G. Cottrell and Fannie A. Cottrell his wife, and Clarence Cottrell (unmarried) and William A. Mickel and Augusta Mickel his wife, and John M. Tucker (a widower), known to me to be the persons who executed the above dedication, and acknowledged the same to be their free act and deed.

Jas. M. Irwin
Notary Public Macomb Co. Mich.

My Commission expires January 3rd, 1927.

DESCRIPTION

The land embraced in the annexed plat of "BELVIDERE SUBDIVISION" OF PART OF PRIVATE CLAIM NO. 373 T. 2 N. R. 14 E. MACOMB COUNTY MICHIGAN is described as follows: Beginning on the north side line of North Riverside Drive at a point 1124.5 feet east from where said north side line of North Riverside Drive is intersected by the west line of private claim No. 373; thence S. 3°08'30"E. a distance of 222 feet to the shore line of the Clinton River; thence N. 81°53'E. 608.71 feet; thence S. 88°29'E. 559 feet; thence S. 76°27'E. 410 feet; thence N. 12°22'E. 166.8 feet; thence S. 61°08'W. 102.2 feet; thence N. 24°39'W. 1723.65 feet; thence N. 65°21'E. 160 feet; thence N. 24°29'W. 50 feet; thence S. 65°21'W. 160 feet; thence N. 24°39'W. 686.35 feet; thence N. 78°21'W. 722.14 feet; thence S. 24°39'E. 2344.28 feet; thence S. 5°33'30"E. 150 feet; thence S. 84°26'30"W. 751.03 feet; thence west 37.75 feet to the place of beginning. All the above described lands are in private claim No. 373 T. 2 N. R. 14 E. Macomb County Michigan.

I hereby certify that the plat hereon delineated is a correct one, and that permanent monuments, consisting of iron gas pipe 1 1/2 inches long have been planted at all points marked thus (o) as thereon shown at all angles in the boundaries of the land platted and at all intersections of streets.

Jas. M. Irwin
Registered Civil Engineer

COUNTY TREASURER'S CERTIFICATE RELATING TO TAXES

Office of County Treasurer Macomb County Michigan May 27-1923
I hereby certify, that there are no tax liens or titles held by the State on the lands described on the annexed plat, and that there are no tax liens or titles held by individuals on said lands for the five years preceding the 24th day of May A.D. 1923 and that the taxes for said period of five years have been paid, as shown by the records of this office.

James C. Gillett
County Treasurer

CERTIFICATE OF TOWNSHIP BOARD

This plat was approved by the Township Board of the Township of Harrison Macomb County Michigan, at a meeting held May 28 A.D. 1923.

Carl H. Jones
Clerk

CERTIFICATE OF COUNTY PLATTING BOARD

This plat was approved on the 25th day of May 1923

Neil E. Reed
Halter B. Stephens
Jas. C. Gillett
Judge of Probate
County Clerk
County Treasurer

Register's Office
Macomb County

Plat of Belvidere Subdivision
Recorded this 19 day of June 1923 at 10 o'clock
A.M.

Hugh C. Volting
Register of Deeds

I HEREBY CERTIFY THAT THIS IS A TRUE COPY OF THE ORIGINAL PLAT FORWARDED TO THE REGISTER OF DEEDS FOR RECORDING.
FORWARDED June 18-1923
John L. Harvey
DEPUTY AUDITOR GENERAL

FILED IN AUDITOR GENERAL'S DEPT.
June 20-1923
John L. Harvey
AUDITOR GENERAL

SEP 23 1965

" VENICE SHORES SUBDIVISION "

PART OF P.C.s 140, 373 and 374 T.2 N., R.14 E.

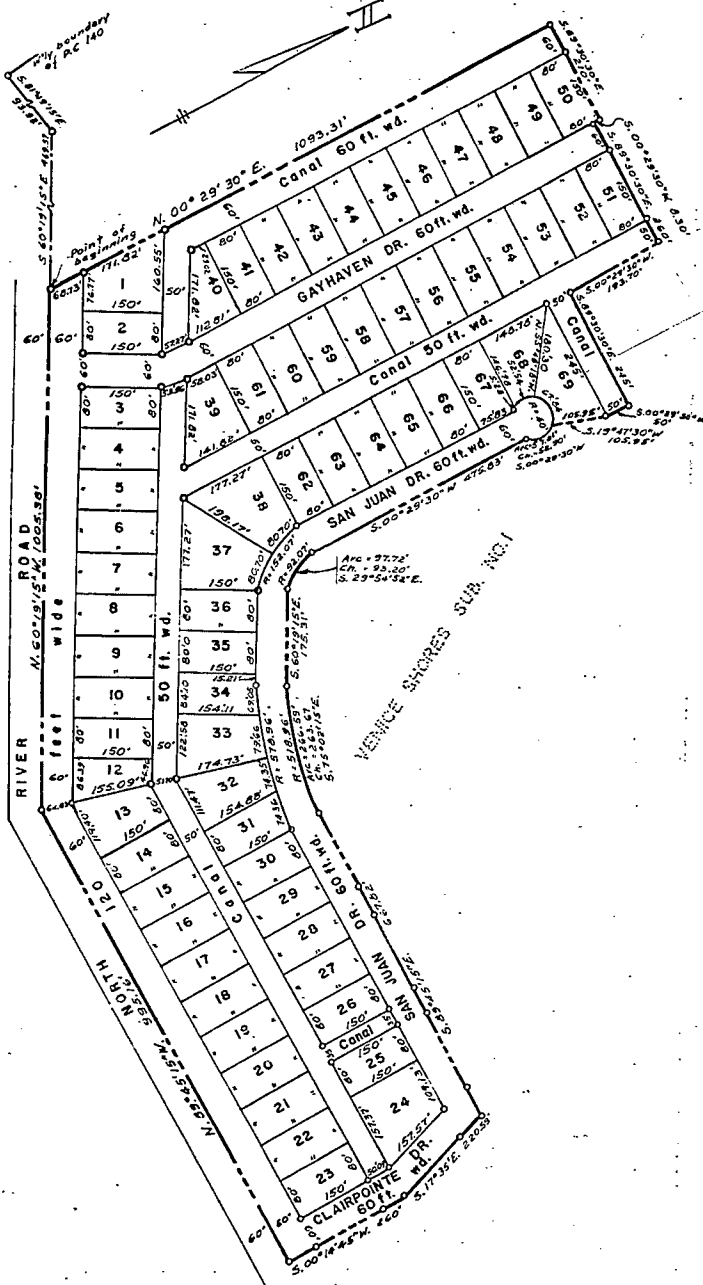
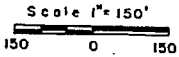
HARRISON TWP.

MAGOMB CO. MICHIGAN

Note: All dimensions are in feet and decimals thereof.

Note: All curvilinear dimensions are shown as arc lengths

Walter J. Lehner & Sons
Reg. Civil Engineers & Surveyors
Mt. Clemens, Michigan



SEP 23 1955

COPY

36813

SHEET 2 OF 2 SHEETS

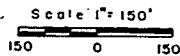
" VENICE SHORES SUBDIVISION "

PART OF P.C.s 140, 373 and 374 T.2 N., R.14 E.
HARRISON TWP.
MACOMB CO. MICHIGAN

Note: All dimensions are in feet and decimals thereof.

Note: All curvilinear dimensions are shown as arc lengths

Walter J. Lehner & Sons
Reg. Civil Engineers & Surveyors
Mt. Clemens, Michigan



DEDICATION

KNOW ALL MEN BY THESE PRESENTS, That we Venice Shores Development Co., a Michigan Corporation, by Stanley Krause, President, and Carl Siegel, Secretary, as proprietor, and Fannie A. Cottrell, a widow, Clarence Cottrell and Fannie Cottrell, his wife, vendees under land contract, have caused the land embraced in the annexed plat to be surveyed, laid out and platted to be known as "Venice Shores Subdivision" Part of P.C.s 140, 373, and 374, T. 2 N., R. 14 E., Harrison Twp., Macomb Co., Michigan, and that the private easements shown on said plat are hereby dedicated to the use of the public, and that the streets as shown on said plat are hereby reserved for the use of the Public Utilities, or for the use of specific utilities as thereon noted, subject to the regulation and control of the use thereof by the local governmental authorities, and that no permanent structures are to be erected within the lines of said easements.

Signed and Sealed in the Presence of:

Edna Neubert
EVA NEUBERT
Morris Aaron
MORRIS AARON

VENICE SHORES DEVELOPMENT CO

Stanley Krause
Stanley Krause, President
Carl Siegel
Carl Siegel, Secretary

Fitz J. Bridger
FITZ J. BRIDGER
Chas. F. Granlich Jr.
CHAS. F. GRANLICH JR.

Fannie A. Cottrell (L.S.)
Fannie A. Cottrell
Clarence Cottrell (L.S.)
Clarence Cottrell
Fannie Cottrell (L.S.)
Fannie Cottrell

STATE OF MICHIGAN) ss.

COUNTY OF Macomb
On this 21 day of July, A.D., 1955, before me, a Notary Public in and for said county appeared Stanley Krause and Carl Siegel to me personally known, who being each by me duly sworn did say that they are the President and Secretary respectively of the Venice Shores Development Co., a Michigan Corporation, and that the seal affixed to said instrument is the corporate seal of said corporation and that said instrument was signed and sealed in behalf of said corporation by authority of its Board of Directors and the said Stanley Krause and Carl Siegel acknowledged said instrument to be the free act and deed of said corporation.

My Commission expires: 2 March 1957

Fitz J. Bridger
FITZ J. BRIDGER
Notary Public, Macomb Co., Mich.

STATE OF MICHIGAN) ss.

COUNTY OF Macomb
On this 21 day of July, A.D., 1955, before me, a Notary Public in and for said county, personally came the above named Fannie A. Cottrell, widow, Clarence Cottrell and Fannie Cottrell, his wife, known to me to be the persons who executed the above dedication, and acknowledged the same to be their free act and deed.

My Commission expires: 2 MARCH 1957

Fitz J. Bridger
FITZ J. BRIDGER
Notary Public, Macomb Co., Mich.

DESCRIPTION OF LAND PLATTED

The land embraced in the annexed plat of "Venice Shores Subdivision", Part of P. C. s 140, 373, and 374, T. 2 N., R. 14 E., Harrison Twp., Macomb Co., Michigan, is described as follows: Commencing at the intersection of West line of P. C. 140 and the Centerline of North River Road; thence S. 81°-49'-15"E. 93.92 feet, thence S. 60°-19'-15"E. 469.57 feet following the centerline of the said North River Road to the point of beginning, thence N. 00°-29'-30"E. 1093.31 feet, thence S. 89°-30'-30"E. 210 feet, thence S. 00°-29'-30"W. 8.30 feet, thence S. 89°-30'-30"E. 260 feet, thence S. 00°-29'-30"W. 193.70 feet, thence S. 89°-30'-30"E. 245.0 feet, thence S. 00°-29'-30"W. 50 feet, thence S. 19°-47'-30"W. 105.95 feet, thence on a curve (R = 40.0 feet) concave to the West, and whose long chord bears S. 00°-29'-30"W. 52.90 feet, thence S. 00°-29'-30"W. 475.83 feet, thence on a curve (R = 92.07 feet) concave to the East and whose long chord bears S. 29°-54'-52"E. 93.20 feet, thence S. 60°-19'-15"E. 175.31 feet, thence on a curve (R = 518.96 feet) concave to the East whose long chord bears S. 75°-02'-15"E. 263.67 feet, thence S. 89°-45'-15"E. 667.82 feet, thence S. 17°-35'E. 220.59 feet, thence S. 00°-14'-45"W. 260 feet, thence N. 89°-45'-15"W. 995.16 feet, thence N. 60°-19'-15"W. 1005.38 feet to the point of beginning.

SURVEYORS CERTIFICATE

I hereby certify that the plat hereon delineated is a correct one and that permanent metal monuments consisting of bars not less than one-half inch in diameter and 36 inches in length, encased in a concrete cylinder at least 4 inches in diameter and 36 inches in depth have been placed at points marked thus (O) as thereon shown at all angles in the boundaries of the land platted, at all the intersections of the lines of streets, and at the intersections of the lines of streets with the boundaries of the plat as shown on said plat.

Fitz J. Bridger
Fitz J. Bridger
Registered Land Surveyor
No. 5779

CERTIFICATE OF APPROVAL BY BOARD OF COUNTY ROAD COMMISSIONERS

This plat has been examined and was approved on the 20th day of July, 1955, by the Macomb County Board of Road Commissioners.

Ray Arnold Wm. E. Malow Ernest W. McCollom
Ray Arnold, Chairman Wm. E. Malow, Member Ernest W. McCollom, Member

CERTIFICATE OF MUNICIPAL APPROVAL

This plat was approved by the Township Board of the Township of Harrison at a meeting held July 11, 1955.

Howard M. Phillips
HOWARD M. PHILLIPS, Clerk

CERTIFICATE OF APPROVAL BY COUNTY BOARD

This plat was approved on the 21 day of Sept, 1955, by the Macomb County Board.

Aaron Burr Albert A. Wagner
Aaron Burr, Register of Deeds Albert A. Wagner, County Clerk
Frank E. Lohr
Frank E. Lohr, Drain Commissioner

COPY

Register's Office
Macomb County, ss.
Plat of Venice Shores Subdivision
Harrison-Twp., Michigan
was Recorded this 23rd day of September, A.D., 1955 at 10:02 o'clock
P. M. in Liber 33 of Plats
44 Page 42 of 45
Aaron Burr
Register of Deeds

I hereby certify this copy is a true copy of map or plat forwarded the Registered Deeds recording
Date September 23, 1955
Filed in Auditor General's Dept.
Date October 20, 1955
Examined and approved
Date September 23, 1955
Vincent J. Perkowski
Auditor General
D. L. Newberry
Plat Examiner

THIS IS TO CERTIFY THAT ACCORDING TO THE COUNTY TREASURER'S RECORDS THERE ARE NO TAXES ON SAID PROPERTY AND THAT TAXES ARE PAID FOR FIVE YEARS PREVIOUS TO DATE OF THIS INSTRUMENT
JULY 24 1955
REGISTERED AS PLAT NO. 14547 DATE 8-17-55
THIS CERTIFICATE IS NOT VALID UNLESS IT IS FILED IN PROCEEDS OF COLLECTION BY TOWNSHIP, COUNTY OR STATE COLLECTING OFFICE
Lynn Whipple, MACOMB COUNTY TREASURER, P.C.

UHA 056521580

11798539

36813
37664

RESOLUTION CHANGING NAME
OF GAYHAVEN DRIVE TO BAYHAVEN DRIVE

A regular meeting of the Township Board of the Charter Township of Harrison, Macomb County, Michigan, held the 26th day of October, 1992, at the Rosgo Memorial Ball, 38255 L'Anse Creuse, in said Township, at 7:30 o'clock p.m.

PRESENT: Miller, Lyon, Siefert, Glasgow, Ruth, Kennard and Weeks

EXCUSED: None

The following preamble and resolution were introduced by Ruth and supported by Weeks.

WHEREAS, the Charter Township of Harrison has received a Petition signed by over seventy five (75%) percent of the residents on Gayhaven Drive, requesting that the Township change the name of Gayhaven Drive to Bayhaven Drive, and

WHEREAS, MCL 560.256 allows a municipality to change by Resolution of the Township Board the name of a street within its boundaries;

NOW THEREFORE, BE IT RESOLVED:

That the name of Gayhaven Drive be changed to Bayhaven Drive.

BE IT FURTHER RESOLVED that the name of the Plat of Plats affected are Venice Shores Subdivision and Venice Shores Subdivision No. 1.

BE IT FURTHER RESOLVED that the Clerk shall within thirty (30) days record a copy of this Resolution with the Macomb County Register of Deeds, and shall further forward a copy thereof to the State Treasurer.

UHA 056521581

36813
37664

BE IT FURTHER RESOLVED that in accordance with the provisions of MCL 560.256, said name change shall be effective upon recording of this Resolution as set forth above.

AYES: Ruth, Weeks, Kennard, Siefert

NAYS: Lyon, Miller

EXCUSED: Glasgow

RESOLUTION DECLARED ADOPTED.

Kathleen M. Lyon
KATHLEEN M. LYON, CLERK
CHARTER TOWNSHIP OF HARRISON

When recorded, return to
KATHLEEN M. LYON, CLERK
CHARTER TOWNSHIP OF HARRISON
38151 L'ANSE CREUSE ROAD
HARRISON TOWNSHIP, MICHIGAN 48045

RECORDED IN MACOMB COUNTY
RECORDS AT: 10.50A

NOV 19 1992

[Signature]
CLERK, REGISTER OF DEEDS
MACOMB COUNTY, MICHIGAN

UHA 056521582

36813
37664

CERTIFICATION

I, KATHLEEN M. LYON, Clerk, do hereby certify that the foregoing is a true and complete copy of a Resolution adopted by the Township Board of the Charter Township of Harrison, County of Macomb, Michigan, at a Regular Meeting held on Monday, October 26, 1992, and that said meeting was conducted and public notice of said meeting was given pursuant to and in full compliance with the Open Meetings Act, being Act 267, Public Acts of Michigan, 1976, and that the minutes of said meeting were kept and will be or have been made available as required by said Act.

Kathleen M. Lyon
KATHLEEN M. LYON, CLERK
CHARTER TOWNSHIP OF HARRISON



16 X

DEC 14 1956

COPY

37664

"VENICE SHORES SUBDIVISION NO. 1"

PART OF P.C.s 140, 373 and 374 T.2 N., R.14 E.
HARRISON TWP.
MACOMB CO. MICHIGAN

DEDICATION

KNOW ALL MEN BY THESE PRESENTS, THAT WE, VENICE SHORES DEVELOPMENT CO., INC., A MICHIGAN CORPORATION BY N. A. NICHOLSON, PRESIDENT, AND U. ARON, SECRETARY, VENDEES UNDER LAND CONTRACT, AND FANNIE A. COTTRELL, A WIDOW, AND CLARENCE COTTRELL AND FANNIE COTTRELL, HIS WIFE, AND PLATTED TO BE KNOWN AS "VENICE SHORES SUBDIVISION NO. 1", PART OF P.C.'s 140, 373 AND 374, T. 2 N., R. 14 E., HARRISON TWP., MACOMB CO., MICHIGAN, AND THAT THE STREETS AS SHOWN ON SAID PLAT ARE HEREBY DEDICATED TO THE USE OF THE PUBLIC AND THAT THE PRIVATE EASEMENTS OF SAID PLAT ARE HEREBY RESERVED FOR THE USE OF THE PUBLIC UTILITIES, ON FOR THE USE THEREOF BY THE LOCAL GOVERNMENTAL AUTHORITIES, AND THAT NO PERMANENT STRUCTURES ARE TO BE CREATED WITHIN THE LINES OF SAID EASEMENTS.

Walter J. Lehner & Sons
Reg. Civil Eng. & Surveyors
Mt. Clemens, Michigan

SURVEYOR'S CERTIFICATE

I HEREBY CERTIFY THAT THE PLAT HEREON DELINEATED IS A CORRECT ONE AND THAT PERMANENT METAL MONUMENTS CONSISTING OF BARS NOT LESS THAN ONE-HALF INCH IN DIAMETER AND 36 INCHES IN LENGTH, ENGAGED IN A CONCRETE CYLINDER AT LEAST 4 INCHES IN DIAMETER AND 36 INCHES IN DEPTH HAVE BEEN PLACED AT POINTS MARKED THUS (O) AS THEREON SHOWN AT ALL ANGLES IN THE BOUNDARIES OF THE LAND PLATTED, AT ALL THE INTERSECTIONS OF THE LINES OF STREETS AND AT THE INTERSECTIONS OF THE LINES OF STREETS WITH THE BOUNDARIES OF THE PLAT AS SHOWN ON SAID PLAT.

John Bridges
FATS J. BRIDGES
REGISTERED LAND SURVEYOR
No. 5779

Signed and Sealed in the Presence of

Duncan K. Allan Jr.
DUNCAN K. ALLAN JR.
Paul G. Ganzenhoger
PAUL G. GANZENHOGGER
Ellis Mavis
ELLIS MAVIS
Stanley B. Palmer
STANLEY B. PALMER

VENICE SHORES DEVELOPMENT CO., INC.

N. A. Nicholson
N. A. NICHOLSON, PRESIDENT
U. Aron
U. ARON, SECRETARY
Fannie A. Cottrell
FANNIE A. COTTRELL
Clarence Cottrell
CLARENCE COTTRELL
Fannie Cottrell
FANNIE COTTRELL

CERTIFICATE OF APPROVAL BY COUNTY BOARD OF ROAD COMMISSIONERS

THIS PLAT WAS EXAMINED AND WAS APPROVED ON THE 30th DAY OF April, 1956, BY THE MACOMB COUNTY PLAT BOARD.

Ray C. Brown
RAY C. BROWN, CHAIRMAN
William E. Malow
WILLIAM E. MALOW, MEMBER
Ernest W. Woodlawn
ERNEST W. WOODLAWN, MEMBER

DESCRIPTION OF LAND PLATTED

THE LAND EMBRACED IN THE ANNEXED PLAT OF "VENICE SHORES SUBDIVISION NO. 1", PART OF P.C.s 140, 373 and 374, T. 2 N., R. 14 E., HARRISON TWP., MACOMB CO., MICHIGAN, IS DESCRIBED AS FOLLOWS: COMMENCING AT THE INTERSECTION OF THE WEST LINE OF P.C. 140 AND CENTER LINE OF NORTH RIVER ROAD; THENCE S. 81° 49' 15" E. 93.92 FEET; THENCE S. 60° 19' 15" E. 469.57 FEET FOLLOWING THE CENTER LINE OF THE SAID NORTH RIVER ROAD; THENCE N. 00° 29' 30" E. 1093.31 FEET TO THE POINT OF BEGINNING, AND THENCE EXTENDING N. 00° 29' 30" E. 982.36 FEET; THENCE N. 89° 35' 30" E. 420.54 FEET; THENCE S. 78° 34' 40" E. 468.50 FEET; THENCE S. 00° 29' 30" W. 399.63 FEET; THENCE ON A CURVE RADIUS 550 FEET CONVEX TO THE EAST WHOSE LONG CHORD BEARS S. 11° 52' 42" E. 239.94 FEET; THENCE S. 24° 14' 55" E. 1532.04 FEET; THENCE N. 89° 45' 15" W. 437.06 FEET; THENCE ON A CURVE RADIUS 518.96 FEET CONVEX TO THE NORTHEAST WHOSE LONG CHORD BEARS N. 75° 02' 15" W. 263.67 FEET; THENCE N. 60° 19' 15" W. 175.31 FEET; THENCE ON A CURVE RADIUS 92.07 FEET CONVEX TO THE EAST WHOSE LONG CHORD BEARS N. 29° 54' 52" W. 93.20 FEET; THENCE N. 00° 29' 30" E. 475.83 FEET; THENCE ON A CURVE RADIUS 40 FEET CONVEX TO THE EAST WHOSE LONG CHORD BEARS N. 00° 29' 30" E. 52.90 FEET; THENCE N. 19° 47' 30" E. 105.95 FEET; THENCE N. 00° 29' 30" E. 50 FEET; THENCE N. 89° 30' 30" W. 245 FEET; THENCE N. 00° 29' 30" E. 193.70 FEET; THENCE N. 89° 30' 30" W. 260.0 FEET; THENCE N. 00° 29' 30" E. 8.30 FEET; THENCE N. 89° 30' 30" W. 210.0 FEET TO THE POINT OF BEGINNING, COMPRISING LOTS 7 THROUGH 154 INCLUSIVE.

ACKNOWLEDGMENT

STATE OF MICHIGAN) ss.
County of Macomb

On this 20th day of Sept, 1956, before me, a Notary Public in and for said County, personally came the above named FANNIE A. COTTRELL, a widow, CLARENCE COTTRELL and FANNIE COTTRELL, his wife known to me to be the persons who executed the above dedication, and acknowledged the same to be their free act and deed.

My Commission Expires 2 MAR 1956
John J. Bridges
JOHN J. BRIDGES
Notary Public Macomb Co., Mich.

ACKNOWLEDGMENT

STATE OF MICHIGAN) ss.
County of Macomb

On this 20th day of September, A.D., 1956, before me a Notary Public in and for said County appeared N. A. NICHOLSON and U. ARON to me personally known, who being each by me duly sworn did say that they are the President and Secretary respectively of the VENICE SHORES DEVELOPMENT CO., INC., a Michigan Corporation, and that said instrument was signed in behalf of said corporation by authority of its Board of Directors and the said N. A. NICHOLSON and U. ARON acknowledged said instrument to be the free act and deed of said corporation. Corporation has no corporate seal.

My Commission Expires April 19, 1959
Linn E. Peleski
LINN E. PELESKI
Notary Public Macomb Co., Michigan

CERTIFICATE OF MUNICIPAL APPROVAL

THIS PLAT WAS APPROVED BY THE TOWNSHIP BOARD OF THE TOWNSHIP OF HARRISON AT A MEETING HELD Sept 13, 1956

Howard W. Phillips
HOWARD W. PHILLIPS, CLERK

CERTIFICATE OF APPROVAL BY COUNTY BOARD

THIS PLAT WAS APPROVED ON THE 4th DAY OF Oct, 1956, BY THE Macomb COUNTY PLAT BOARD.

James Burr
JAMES BURR, REGISTER OF DEEDS
Albert A. Wagner
ALBERT A. WAGNER, COUNTY CLERK
Frank E. Lohr
FRANK E. LOHR, DRAIN COMMISSIONER

COPY
Register's Office
Macomb County

Plat of _____
was recorded this _____ of _____
A.D., 1956 at _____
M. In Liber _____ of _____
Page _____

I hereby certify this copy is a true copy of map or plat forwarded the Registrar/Deeds for recording.
Date December 14, 1956
Filed in Auditor General's Dept. _____
Date 1956
Examined and approved
Date December 16, 1956
Vlad Jurgenski
Vlad Jurgenski
Auditor General

COPY
Frank E. Lohr
FRANK E. LOHR, DRAIN COMMISSIONER
James Burr
JAMES BURR, REGISTER OF DEEDS
Albert A. Wagner
ALBERT A. WAGNER, COUNTY CLERK
Date Dec 14, 1956
Filed in Auditor General's Dept. _____
Date 1956
Examined and approved
Date Dec 14, 1956
Vlad Jurgenski
Vlad Jurgenski
Auditor General

I hereby certify this copy is a true copy of map or plat forwarded the Registrar/Deeds for recording.
Date Dec 14, 1956
Filed in Auditor General's Dept. _____
Date 1956
Examined and approved
Date Dec 14, 1956
Vlad Jurgenski
Vlad Jurgenski
Auditor General

NOTE TO CERTIFY THAT ACCORDING TO THE COUNTY TREASURER'S RECORDS THERE ARE NO TAX DUES ON THIS PROPERTY AND THAT TAXES ARE PAID FOR FIVE YEARS PREVIOUS TO DATE OF THIS INSTRUMENT.
CERTIFIED TO BE TRUE AND CORRECT BY THE COUNTY TREASURER.
Lynn Whalen, Macomb County Treasurer, Per *L. Whalen*

DEC 14 1955

COPY

37664

"VENICE SHORES SUBDIVISION NO. 1"

PART OF P.C.s 140, 373 and 374 T.2 N., R.14 E.

HARRISON TWP.

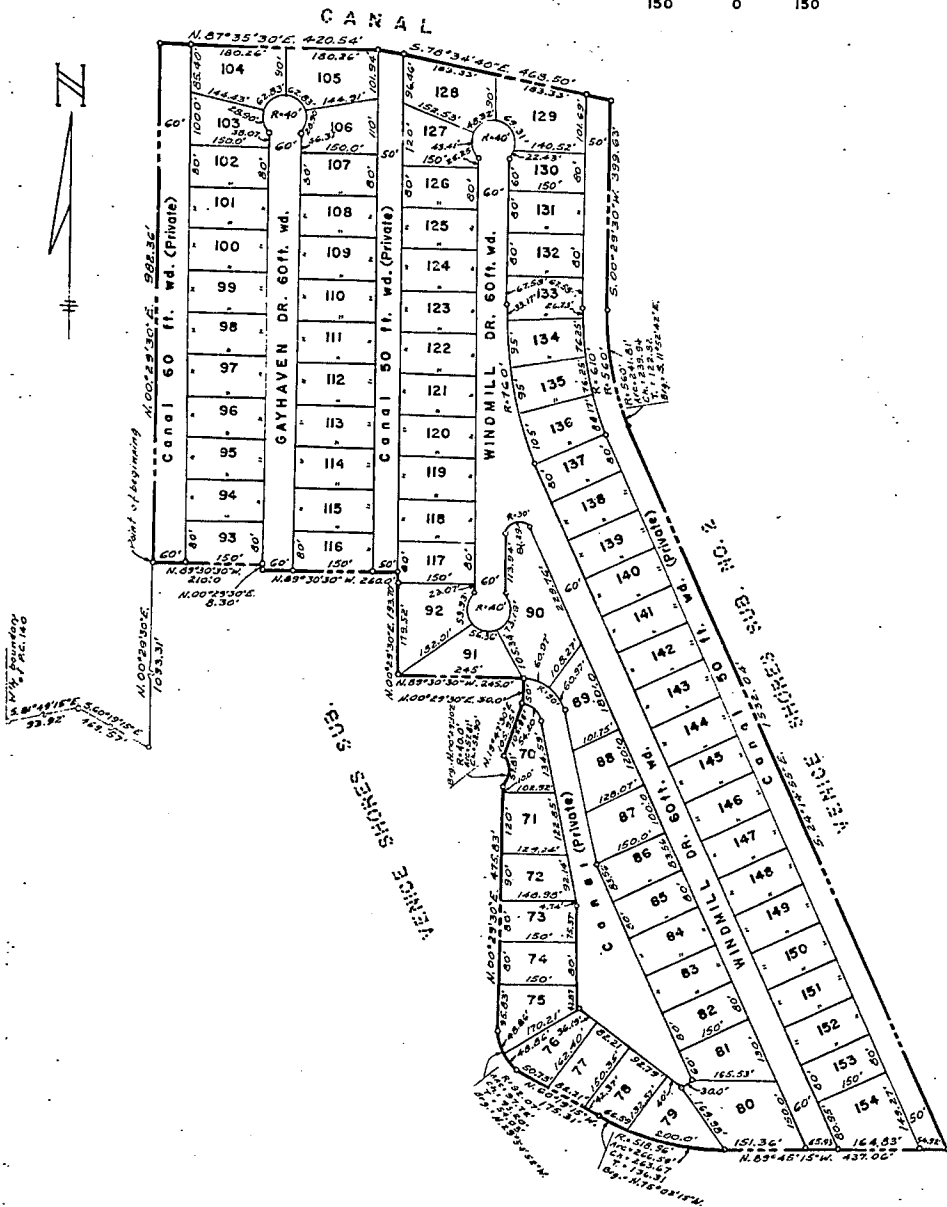
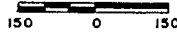
MACOMB CO.

MICHIGAN

NOTE: All dimension are in feet and decimals thereof. All curvilinear dimensions are shown as arc lengths.

Scale: 1" = 150'

Walter J. Lehner & Sons
Reg. Civil Eng. & Surveyors
Mt. Clemens, Michigan



36813
37664

URA 05652N580

1798539

RESOLUTION CHANGING NAME
OF GAYHAVEN DRIVE TO BAYHAVEN DRIVE

A regular meeting of the Township Board of the Charter Township of Harrison, Macomb County, Michigan, held the 26th day of October, 1992, at the Roso Memorial Hall, 38255 L'Anse Creuse, in said Township, at 7:30 o'clock p.m.

PRESENT: Miller, Lyon, Siefert, Glasgow, Huth, Kennard and Weeks
EXCUSED: None

The following preamble and resolution were introduced by Huth and supported by Weeks.

WHEREAS, the Charter Township of Harrison has received a Petition signed by over seventy five (75%) percent of the residents on Gayhaven Drive, requesting that the Township change the name of Gayhaven Drive to Bayhaven Drive, and

WHEREAS, MCL 560.256 allows a municipality to change by Resolution of the Township Board the name of a street within its boundaries;

NOW THEREFORE, BE IT RESOLVED: That the name of Gayhaven Drive be changed to Bayhaven Drive.

BE IT FURTHER RESOLVED that the name of the Plat or Plats affected are Venice Shores Subdivision and Venice Shores Subdivision No. 1.

BE IT FURTHER RESOLVED that the Clerk shall within thirty (30) days record a copy of this Resolution with the Macomb County Register of Deeds, and shall further forward a copy thereof to the State Treasurer.

117

36813
37664

URA 05652N581

BE IT FURTHER RESOLVED that in accordance with the provisions of MCL 560.256, said name change shall be effective upon recording of this Resolution as set forth above.

AYES: Huth, Weeks, Kennard, Siefert

NAYS: Lyon, Miller

EXCUSED: Glasgow

RESOLUTION DECLARED ADOPTED.

Kathleen M. Lyon
KATHLEEN M. LYON, CLERK
CHARTER TOWNSHIP OF HARRISON

When recorded, return to
KATHLEEN M. LYON, CLERK
CHARTER TOWNSHIP OF HARRISON
38151 L'ANSE CREUSE ROAD
HARRISON TOWNSHIP, MICHIGAN 48045

RECORDED IN MACOMB COUNTY
RECORDS AT 10:50 AM

NOV 19 1992

Kathleen M. Lyon
KATHLEEN M. LYON, CLERK
CHARTER TOWNSHIP OF HARRISON

36813
37664

URA 05652N582

CERTIFICATION

I, KATHLEEN M. LYON, Clerk, do hereby certify that the foregoing is a true and complete copy of a Resolution adopted by the Township Board of the Charter Township of Harrison, County of Macomb, Michigan, at a Regular Meeting held on Monday, October 26, 1992, and that said meeting was conducted and public notice of said meeting was given pursuant to and in full compliance with the Open Meetings Act, being Act 267, Public Acts of Michigan, 1976, and that the minutes of said meeting were kept and will be or have been made available as required by said Act.

Kathleen M. Lyon
KATHLEEN M. LYON, CLERK
CHARTER TOWNSHIP OF HARRISON



16 X

COPY

39787

"VENICE SHORES SUBDIVISION NO. 2"

PART OF P.C. 373 T. 2 N., R. 14 E.
HARRISON TWP.
MACOMB CO. MICHIGAN

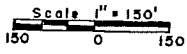
NOTE: All dimension are in feet
and decimals thereof.

Note: All curvilinear dimensions
are shown as arc lengths.

Walter J. Lehner & Sons
Reg. Civil Eng. & Surveyors
Mt. Clemens, Michigan

Original's Office
Walter J. Lehner & Sons
Recorded this *27th* day of *July*
1957
A.D. 1957
By *Walter J. Lehner & Sons*
Surveyors
ORIGINAL ON FILE

I hereby certify this copy is a true copy of map as per file and the Register of deeds for recording.
Date *August 26 1957*
FILED IN REGISTER GENERAL'S OFFICE
By *Walter J. Lehner & Sons*
Surveyors
Examined and approved:
Date *August 26 1957*
Frank J. ...
By *Bob ...*



DESCRIPTION OF LAND PLATTED

THE LAND EMBRACED IN THE ANNEXED PLAT OF "VENICE SHORES SUBDIVISION NO. 2", PART OF P.C. 373 T. 2 N., R. 14 E., HARRISON TWP., MACOMB CO., MICHIGAN, IS DESCRIBED AS FOLLOWS:
COMMENCING AT THE INTERSECTION OF THE WEST LINE OF P.C. # 140 AND CENTER LINE OF NORTH RIVER ROAD, THENCE S. 81° 49' 15" E. 93.92 FEET; THENCE S. 80° 19' 15" E. 469.37 FEET FOLLOWING THE CENTER LINE OF THE SAID NORTH RIVER ROAD; THENCE N. 00° 29' 30" E. 2075.01 FEET; THENCE N. 87° 35' 30" E. 420.54 FEET; THENCE S. 78° 34' 40" E. 468.50 FEET TO THE POINT OF BEGINNING; THENCE EXTENDING S. 78° 34' 40" E. 417.58 FEET; THENCE S. 00° 29' 30" W. 320.47 FEET; THENCE ON A CURVE RADIUS 150 FEET CONVEX TO THE EAST WHOSE LONG CHORD BEARS S. 11° 52' 42" E. 64.27 FEET; THENCE S. 24° 14' 55" E. 1709.72 FEET; THENCE S. 84° 50' 30" W. 87.75 FEET; THENCE N. 89° 45' 15" W. 359.42 FEET; THENCE N. 24° 14' 55" W. 1532.04 FEET; THENCE ON A CURVE RADIUS 500 FEET CONVEX TO THE EAST WHOSE LONG CHORD BEARS N. 11° 52' 42" W. 239.94 FEET; THENCE N. 00° 29' 30" E. 399.63 FEET TO THE POINT OF BEGINNING, CONTAINING LOTS 155 THROUGH 206 INCLUSIVE.

SURVEYOR'S CERTIFICATE

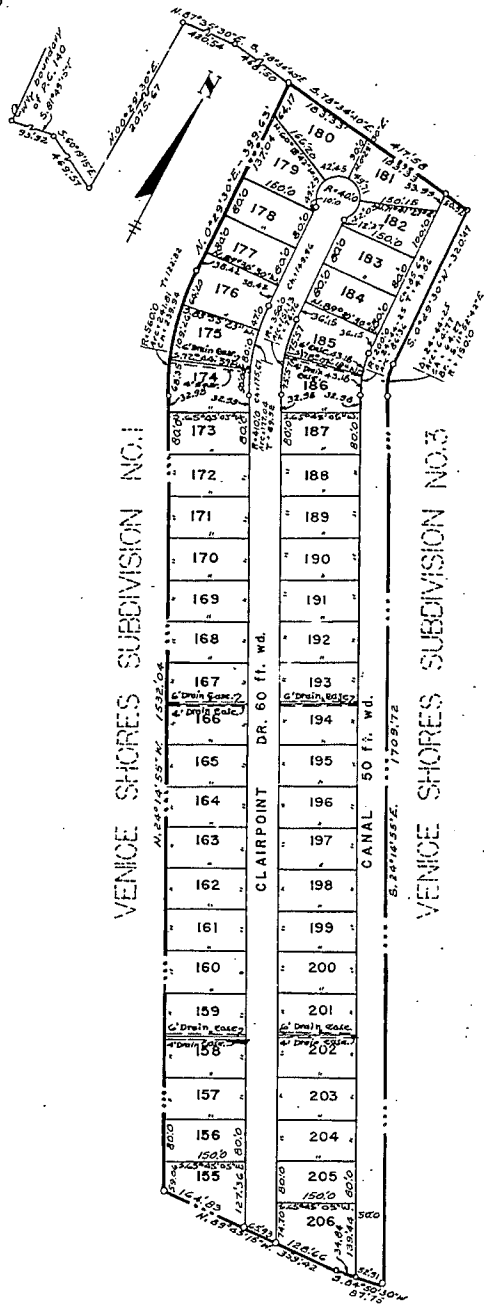
I HEREBY CERTIFY THAT THE PLAT HEREON DELINEATED IS A CORRECT ONE AND THAT PERMANENT METAL MONUMENTS CONSISTING OF BARS NOT LESS THAN ONE-HALF INCH IN DIAMETER AND 36 INCHES IN LENGTH, ENGRAVED IN A CONCRETE CYLINDER AT LEAST 4 INCHES IN DIAMETER AND 36 INCHES IN DEPTH HAVE BEEN PLACED AT POINTS MARKED THUS (O) AS THEREON SHOWN AT ALL ANGLES IN THE BOUNDARIES OF THE LAND PLATTED, AT ALL THE INTERSECTIONS OF THE LINES OF STREETS AND AT THE INTERSECTIONS OF THE LINES OF STREETS WITH THE BOUNDARIES OF THE PLAT AS SHOWN ON SAID PLAT.

John ...
FITZ J. ...
REGISTERED LAND SURVEYOR
No. 5779

CERTIFICATE OF APPROVAL BY BOARD OF COUNTY ROAD COMMISSIONERS

THIS PLAT HAS BEEN EXAMINED AND WAS APPROVED ON THE *27th* DAY OF *July*, 1957 BY THE *Macomb* COUNTY BOARD OF ROAD COMMISSIONERS.

Ray ...
ROY ... CHAIRMAN
Lawrence ...
LAWRENCE ... MEMBER
Ernest W. McCollon
ERNEST W. MCCOLLON, MEMBER



" VENICE SHORES SUBDIVISION NO.2 "
 PART OF P.C. 373 T. 2 N., R. 14 E.
 HARRISON TWP.
 MACOMB CO. MICHIGAN

Walter J. Lehner & Sons
 Reg. Civil Eng. & Surveyors
 Mt. Clemens, Michigan

DEDICATION

KNOW ALL MEN BY THESE PRESENTS, THAT WE, VENICE SHORES DEVELOPMENT CO., INC., A MICHIGAN CORPORATION BY N. A. NICHOLSON, PRESIDENT, AND M. AARON, SECRETARY, VENDEES UNDER LAND CONTRACT, AND FANNIE A. COTTRELL, A WIDOW, AND CLARENCE COTTRELL, A WIDOWER, AS PROPRIETORS, HAVE CAUSED THE LAND EMBRACED IN THE ANNEXED PLAT TO BE SURVEYED, LAID OUT AND PLATTED TO BE KNOWN AS "VENICE SHORES SUBDIVISION NO. 2", PART OF P.C. 373 T. 2 N., R. 14 E., HARRISON TWP., MACOMB CO., MICHIGAN, AND THAT THE STREETS AS SHOWN ON SAID PLAT ARE HEREBY DEDICATED TO THE USE OF THE PUBLIC, AND THAT THE PRIVATE EASEMENTS SHOWN ON SAID PLAT ARE HEREBY RESERVED FOR THE USE OF THE PUBLIC UTILITIES, OR FOR THE USE OF SPECIFIC UTILITIES AS THEREON NOTED, SUBJECT TO THE REGULATION AND CONTROL OF THE USE THEREOF BY THE LOCAL GOVERNMENTAL AUTHORITIES, AND THAT NO PERMANENT STRUCTURES ARE TO BE ERECTED WITHIN THE LINES OF SAID EASEMENTS.

SIGNED AND SEALED IN THE PRESENCE OF
Ellis H. Mavis
 ELLIS H. MAVIS
Duncan K. Allan, Jr.
 DUNCAN K. ALLAN, JR.
Ronald Kendrick
 RONALD KENDRICK
James R. Shannon
 JAMES R. SHANNON

VENICE SHORES DEVELOPMENT CO., INC.
N. A. Nicholson
 N. A. NICHOLSON, PRESIDENT
M. Aaron
 M. AARON, SECRETARY
Fannie A. Cottrell
 FANNIE A. COTTRELL
Clarence Cottrell
 CLARENCE COTTRELL

ACKNOWLEDGMENT

STATE OF MICHIGAN,) ss.
 COUNTY OF Macomb

ON THIS 22nd DAY OF July, 1957, BEFORE ME, A NOTARY PUBLIC IN AND FOR SAID COUNTY, PERSONALLY CAME THE ABOVE NAMED FANNIE A. COTTRELL, A WIDOW, CLARENCE COTTRELL, A WIDOWER, KNOWN TO ME TO BE THE PERSONS WHO EXECUTED THE ABOVE DEDICATION, AND ACKNOWLEDGED THE SAME TO BE THEIR FREE ACT AND DEED.

MY COMMISSION EXPIRES April 19, 1959 Marion E. Harris
 MARION E. HARRIS
 NOTARY PUBLIC Macomb Co., Mich

CERTIFICATE OF MUNICIPAL APPROVAL

THIS PLAT WAS APPROVED BY THE TOWNSHIP BOARD OF THE TOWNSHIP OF HARRISON AT A MEETING HELD August 13, 1957

Howard W. Phillips
 HOWARD W. PHILLIPS, CLERK

CERTIFICATE OF APPROVAL BY COUNTY BOARD

THIS PLAT WAS APPROVED ON THE 19th DAY OF August, 1957, BY THE COUNTY PLAT BOARD.

Frank E. Lohr
 FRANK E. LOHR, COUNTY TREASURER
Albert A. Wagner
 ALBERT A. WAGNER, COUNTY CLERK

Alfred Burr
 ALFRED BURR, REGISTER OF DEEDS
Albert A. Wagner
 ALBERT A. WAGNER, COUNTY CLERK

ACKNOWLEDGMENT

STATE OF MICHIGAN) ss.
 COUNTY OF Macomb

ON THIS 22nd DAY OF July A.D., 1957, BEFORE ME, A NOTARY PUBLIC IN AND FOR SAID COUNTY APPEARED N. A. NICHOLSON AND M. AARON TO ME PERSONALLY KNOWN, WHO BEING EACH BY ME DULY SWORN DID SAY THAT THEY ARE THE PRESIDENT AND SECRETARY RESPECTIVELY OF THE VENICE SHORES DEVELOPMENT CO., INC., A MICHIGAN CORPORATION, AND THAT SAID INSTRUMENT WAS SIGNED IN BEHALF OF SAID CORPORATION BY AUTHORITY OF ITS BOARD OF DIRECTORS AND THE SAID N. A. NICHOLSON AND M. AARON ACKNOWLEDGED SAID INSTRUMENT TO BE THE FREE ACT AND DEED OF SAID CORPORATION. CORPORATION HAS NO CORPORATE SEAL.

MY COMMISSION EXPIRES April 19, 1957 Marion E. Harris
 MARION E. HARRIS
 NOTARY PUBLIC Macomb Co.

THIS IS TO CERTIFY THAT ACCORDING TO THE COUNTY RECORDS THE ABOVE NAMED LINES ON THIS PROPERTY ARE THE SAME AS SHOWN ON THE PLAT OF THIS DATE.
7.22.57 Lynn Whalen, MICHIGAN COUNTY TREASURER
7/22/57 M. ALLEN

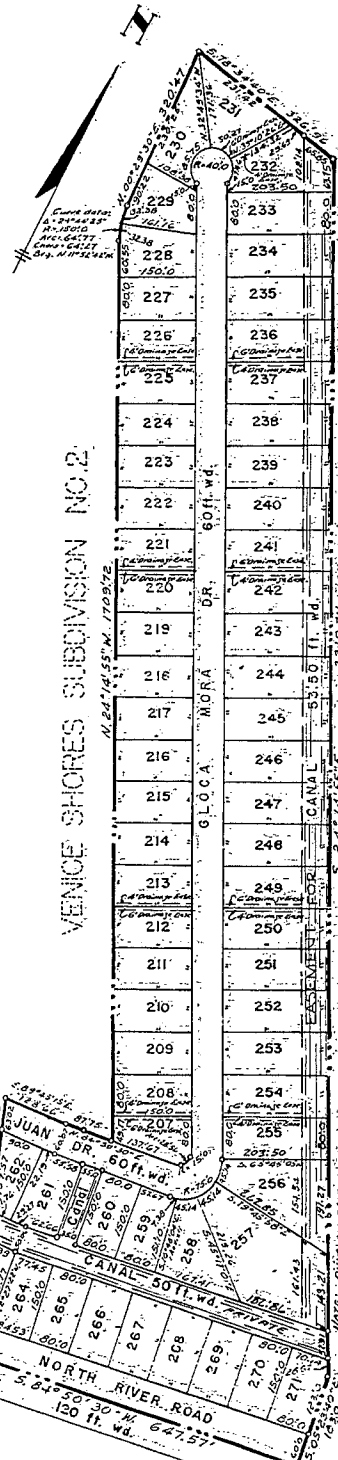
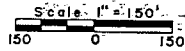
"VENICE SHORES SUBDIVISION NO. 3"

PART OF P.C. 373 T. 2 N., R. 14 E.
HARRISON TWP.
MACOMB CO. MICHIGAN

NOTE: All dimensions are in feet and decimals thereof.

Note: All curvilinear dimensions are shown as arc lengths.

Lehner - Bridges, Inc.,
Reg. Civil Eng. & Surveyors
Mt. Clemens, Michigan



DESCRIPTION OF LAND PLATTED

THE LAND embraced in the annexed plat of "VENICE SHORES SUBDIVISION No. 3", PART OF P.C. 373, T. 2 N., R. 14 E., HARRISON TWP., MACOMB CO., MICHIGAN, IS DESCRIBED AS FOLLOWS: COMMENCING AT THE INTERSECTION OF THE WEST LINE OF P.C. # 140 AND THE CENTERLINE OF NORTH RIVER ROAD; THENCE S. 81° 49' 15" E. 93.92 FEET; THENCE S. 60° 19' 15" E. 1474.95 FEET; THENCE S. 89° 45' 15" E. 995.16 FEET TO THE POINT OF BEGINNING; AND THENCE EXTENDING N. 0° 14' 45" E. 260.0 FEET; THENCE N. 17° 25' W. 220.59 FEET; THENCE S. 89° 45' 15" E. 128.66 FEET; THENCE N. 84° 50' 30" E. 87.75 FEET; THENCE N. 24° 14' 55" W. 1709.72 FEET; THENCE ON A CURVE RADIUS 150 FEET CONCAVE TO THE EAST WHOSE LONG CHORD BEARS N. 11° 52' 42" W. 64.27 FEET; THENCE N. 0° 29' 30" E. 320.47 FEET; THENCE S. 78° 34' 40" E. 326.96 FEET; THENCE S. 26° 14' 55" E. 2319.71 FEET; THENCE S. 05° 23' 40" E. 183.0 FEET; THENCE S. 84° 50' 30" W. 647.57 FEET; THENCE N. 89° 45' 15" W. 83.30 FEET TO THE POINT OF BEGINNING, CONTAINING LOTS 207 THROUGH 271 INCLUSIVE.

SURVEYOR'S CERTIFICATE

I HEREBY CERTIFY THAT THE PLAT HEREON DELINEATED IS A CORRECT ONE AND THAT PERMANENT METAL MONUMENTS CONSISTING OF BARS NOT LESS THAN ONE-HALF INCH IN DIAMETER AND 36 INCHES IN LENGTH, ENCASED IN A CONCRETE CYLINDER AT LEAST 4 INCHES IN DIAMETER AND 36 INCHES IN DEPTH HAVE BEEN PLACED AT POINTS MARKED THUS (O) AS THEREBY SHOWN AT ALL ANGLES IN THE BOUNDARIES OF THE LAND PLATTED, AT ALL THE INTERSECTIONS OF THE LINES OF STREETS AND AT THE INTERSECTIONS OF THE LINES OF STREETS WITH THE BOUNDARIES OF THE PLAT AS SHOWN ON SAID PLAT.

FITZ J. BRIDGES
REGISTERED LAND SURVEYOR
No. 5779

CERTIFICATE OF APPROVAL BY BOARD OF COUNTY ROAD COMMISSIONERS

THIS PLAT HAS BEEN EXAMINED AND WAS APPROVED ON THE 11th DAY OF June, 1958, BY THE BOARD OF COUNTY ROAD COMMISSIONERS.

Lawrence Delmonico
Lawrence Delmonico

Robert L. McCollum
Robert L. McCollum

VENICE SHORES SUBDIVISION NO. 2

BELVIDERE SUBDIVISION

COPY, APPROVED

"VENICE SHORES SUBDIVISION NO. 3"

PART OF P.C. 373 T. 2 N., R. 14 E.

HARRISON TWP.

MACOMB CO.

MICHIGAN

DEDICATION

KNOW ALL MEN BY THESE PRESENTS, THAT WE, VENICE SHORES DEVELOPMENT CO., INC., A MICHIGAN CORPORATION BY N. A. NICHOLSON, PRESIDENT, AND MORRIS AARON, SECRETARY, LAND CONTRACT VENDEES, AND N. A. NICHOLSON AND LEONIA NICHOLSON, HIS WIFE, AND MORRIS AARON AND BERTHA AARON, HIS WIFE, AS PROPRIETORS, HAVE CAUSED THE LAND EMBRACED IN THE ANNEXED PLAT TO BE SURVEYED, LAID OUT AND PLATTED TO BE KNOWN AS "VENICE SHORES SUBDIVISION NO. 3", PART OF P.C. 373, T. 2 N., R. 14 E., HARRISON TWP., MACOMB CO., MICHIGAN, AND THAT THE STREETS AS SHOWN ON SAID PLAT ARE HEREBY DEDICATED TO THE USE OF THE PUBLIC, AND THAT THE PRIVATE EASEMENTS SHOWN ON SAID PLAT ARE HEREBY RESERVED FOR THE USE OF THE PUBLIC UTILITIES, OR FOR THE USE OF SPECIFIC UTILITIES AS THEREON NOTED, SUBJECT TO THE REGULATION AND CONTROL OF THE USE THEREOF BY THE LOCAL GOVERNMENTAL AUTHORITIES, AND THAT NO PERMANENT STRUCTURES ARE TO BE ERRECTED WITHIN THE LINES OF SAID EASEMENTS: ~~CONVEY AS SHOWN ON PLAT DEDICATED TO USE OF PROPRIETORS~~

SIGNED AND SEALED IN THE PRESENCE OF

James K. Shannon
Leonia Nicholson
Morris Aaron

VENICE SHORES DEVELOPMENT CO., INC.

N. A. Nicholson, PRESIDENT
Morris Aaron, SECRETARY

N. A. Nicholson

Leonia Nicholson
Morris Aaron

ACKNOWLEDGMENT Bertha Aaron

STATE OF MICHIGAN) 1958

COUNTY OF MACOMB

ON THIS 22nd DAY OF June, A.D., 1958, BEFORE ME A NOTARY PUBLIC IN AND FOR SAID COUNTY APPEARED N. A. NICHOLSON AND MORRIS AARON TO ME PERSONALLY KNOWN, WHO BEING EACH BY ME DULY SWORN DID SAY THAT THEY ARE THE PRESIDENT AND SECRETARY RESPECTIVELY OF THE VENICE SHORES DEVELOPMENT CO., INC., A MICHIGAN CORPORATION, AND THAT SAID INSTRUMENT WAS SIGNED IN BEHALF OF SAID CORPORATION BY AUTHORITY OF ITS BOARD OF DIRECTORS AND THE SAID N. A. NICHOLSON AND MORRIS AARON ACKNOWLEDGED SAID INSTRUMENT TO BE THE FREE ACT AND DEED OF SAID CORPORATION, CORPORATION HAS NO CORPORATE DEED.

MY COMMISSION EXPIRES June 19, 1959

Marion E. Harris
 (MARION E. HARRIS)

NOTARY PUBLIC, Macomb Co.

ACKNOWLEDGMENT

STATE OF MICHIGAN) 1958

County of Macomb

On this 22nd day of June, 1958, before me a Notary Public in and for said county, personally came the above named N. A. Nicholson and Leonia Nicholson, his wife, and Morris Aaron and Bertha Aaron, his wife, known to me to be the persons who executed the above dedication, and acknowledged the same to be their free act and deed.

My Commission expires: June 19, 1959

Marion E. Harris
 (MARION E. HARRIS)
 Notary Public, Macomb County, Michigan.

Lehner - Bridges, Inc.,
 Reg. Civil Eng. & Surveyors
 Mt. Clemens, Michigan

ACKNOWLEDGMENT

STATE OF MICHIGAN) 1958

COUNTY OF

ON THIS 22nd DAY OF June, 1958, BEFORE ME, A NOTARY PUBLIC IN AND FOR SAID COUNTY, PERSONALLY CAME THE ABOVE NAMED FANNIE A. COTTRELL, A WIDOW, CLARENCE COTTRELL, AND FANNIE COTTRELL, HIS WIFE KNOWN TO ME TO BE THE PERSONS WHO EXECUTED THE ABOVE DEDICATION, AND ACKNOWLEDGED THE SAME TO BE THEIR FREE ACT AND DEED.

MY COMMISSION EXPIRES

NOTARY PUBLIC

CERTIFICATE OF MUNICIPAL APPROVAL

THIS PLAT WAS APPROVED BY THE TOWNSHIP BOARD OF THE TOWNSHIP OF HARRISON AT A MEETING HELD Monday May 12, 1958

Howard W. Phillips
 HOWARD W. PHILLIPS, CLERK

CERTIFICATE OF APPROVAL BY COUNTY BOARD

THIS PLAT WAS APPROVED ON THE 23rd DAY OF June, 1958, BY THE Macomb COUNTY PLAT BOARD.

Arden Burr, REGISTER OF DEEDS
Albert A. Wagner, COUNTY CLERK
John Shalen, COUNTY TREASURER
Frank L. Lohr, DRAIN COMMISSIONER

Otto Andrews (Clerk)

