

INDEX

SOUTHEAST CORNER P.C. 168 OTHER CODE: PC-022 HARRISON TOWNSHIP, T2N, R14E

SECTION 1:

1. Index
2. Before Pictures of Point and in each cardinal direction
3. After Pictures of Point

SECTION 2:

1. LCRC
2. Surveyor's Dossier Report
3. Sketch

SECTION 3:

1. Original Private Claim Notes (2 pages)
2. Field Notes (1 page)
3. 1819 Map of Harrison Township from GLO (1 page)
4. Map of Harrison Township (1 page)
5. 1916 Map of Harrison Township (1 page)
6. 2006 Map of Harrison Township (1 page)
7. Harrison Township Composite Map (1 page)

SECTION 4:

- | | | |
|-------------------------------------|------------------|-----------------------|
| 1. Claud Postiff | Sketch of Survey | No Corner Information |
| 2. Huron Metro Authority | Field Notes | No Corner Information |
| 3. St. Clair Haven Subdivision | Plat | No Corner Information |
| 4. St. Clair Haven Subdivision No.1 | Plat | No Corner Information |

LAND CORNER RECORDATION CERTIFICATE Filing Requirement of Act 74, Mich. P.A. 1970

For corners in

<u>MACOMB</u> (County)	Located In: Harrison Township	Corner Code #
1. Public Land Survey	T <u>2N</u> R <u>14E</u>	<u>PC-022</u>
	T _____ R _____	_____
	T _____ R _____	_____
	T _____ R _____	_____
2. Property Controlling in Section	S _____ T _____ R _____	_____
	S _____ T _____ R _____	_____
3. Miscellaneous Property in Section	S _____ T _____ R _____	_____
	S _____ T _____ R _____	_____

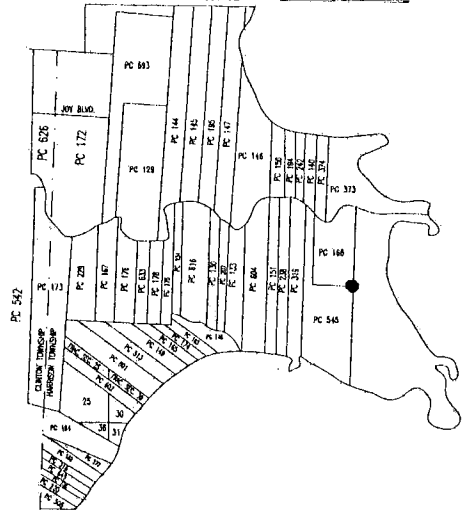
1219983
 LIBER 20966 PAGE 204
 General Index Date 11/02/2011 08:25:49 A.M.
 MACOMB COUNTY, MI SEAL
 CARMELLA SABAUGH, REGISTER OF DEEDS

Register of Deeds Stamp & File Number

4. Lot No. _____, Recorded Plat _____
 5. Private Claims Southeast Corner of Private Claim 168

I, ROBERT R. DROUILLARD, JR., in a field survey on June 16, 2011, do hereby state that under requirements of P.A. 74, Michigan P.A. of 1970, the corner points mentioned in lines 1 and 2 above were in conformance with regulations and rules therefore as required in the current manual of survey instructions of the United States Department of the Interior, Bureau of Land Management or by a decree of a Court of Law and/or that the corner points mentioned in lines 3, 4 and 5 above were in conformance with the rules of the Michigan Board of Land Surveyors or by a Decree of a Court of Law; re-established, monumented, recovered, found as expressed below:

NOTE: Not more than 2 corners, all in the same town and range, may be recorded on this certificate.



A. Description of original monument and accessories and/or subsequent restoration:
 Post set by Aaron Greeley according to Private Claim Notes, not found

1	1810	Private claim notes	Aaron Greeley
2	1926	St. Clair Haven Subdivision	Claud Postiff N/A L.12, P.17-19
3	1927	St. Clair Haven Subdivision No.1	Claud Postiff N/A L.12, P.43-45
4	1926	Sketch of Survey	Claud Postiff N/A L.249, P.303
5		Field Notes	Huron-Clinton Metropolitan Authority

B. Description of corner evidence found and/or method applied in restoring or reestablishing corner:
 I established the Location of the P.C. corner using distances and existing evidence found in recorded plats of St. Clair Haven and St. Clair Haven No.1 and field notes provided by the Huron-Clinton Metropolitan Authority and recorded sketch of survey by Claud Postiff. The corner set falls in the center of a row of mature trees, that run North & South.

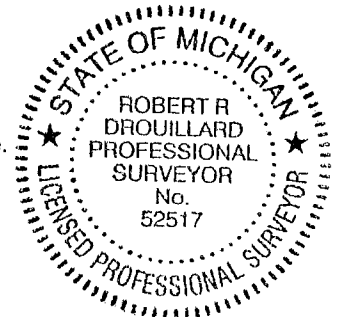
FROM SOUTHEAST CORNER PC 168 (PC-022) TO NORTHEAST CORNER PC 168 (PC-021)
 4651.68' (70 Chains 48 Links Private Claim Notes)
 4724.99' (St. Clair Haven Plat 1926)
 4724.99' (measured Drouillard #52517, 2011)

FROM SOUTHEAST CORNER PC 168 (PC-022) TO SOUTHWEST CORNER PC 168 (PC-023)
 2688.84' (40 Chains 74 Links Private Claim Notes)
 2684.02' (Huron Metro Authority)
 2684.72' (measured Drouillard #52517, 2011)

C. Description of monument for corner and accessories established to perpetuate locating the position of the corner:
 No. 22 I Replaced 1/2" iron and cap with a 4" diameter concrete monument, 36" long with a 1/2" iron rod having a 2" diameter aluminum cap stamped "Macomb County Monument, MI Act #345, #52517, "PC-022".

Witnesses:

South	26.41'	Set nail and Macomb County Witness tag in East face of 12" Chestnut Tree.
North	2.52'	Set nail and Macomb County Witness tag in Southeast face of 36" Maple Tree.
N85°E	98.77'	Set nail and Macomb County Witness tag in North face of utility pole.
S45°E	24.06'	To the Northwest corner of house #38695.



The selected location is accepted by me and is generally accepted by Professional Surveyors as the best available evidence of the position of the original corner.

Signed by [Signature]
 Surveyor's Michigan License No. 52517

Date OCT. 13, 2011

FORM APPROVED BY MICHIGAN STATE BOARD OF PROFESSIONAL SURVEYORS, JAN. 28, 1971
 REVISED MAY 14, 1975
 REVISED JAN., 1983
 REVISED OCT., 1995

ACCEPTED BY THE MACOMB COUNTY SURVEY PEER GROUP AS THE OFFICIAL CORNER UNDER MICHIGAN PUBLIC ACT 345 OF 1990 AT A MEETING HELD ON 9-13-2011
[Signature]
 MACOMB COUNTY SURVEY PEER CHAIRMAN

DOSSIER
SOUTHEAST CORNER P.C. 168
OTHER CODE: PC-022
HARRISON TOWNSHIP,
T2N, R14E

PRIVATE CLAIM HISTORY:

Private Claim survey performed by Aaron Greeley on July 18, 1810. Commencing at a post standing on the border of River Huron between this tract and unconceded land thence south seventy chains forty eight links to a post thence west forty chains 74 links to a post thence North 62 chains to a post standing on the border of River Huron between this tract and a tract confirmed to Joseph Campeau thence along the border of said river down stream south forty six degrees east seven chains thirty links thence east eight chains fifty links, thence north twenty nine degrees east thirteen chains, thence north seventy six degrees east 9 chain thence east eleven chains ninety five links to the place of beginning, containing three hundred and ten acres thirty one hundredths of an acre. Description No. 168, confirmed to Louis Campeau.

EXISTING CONDITIONS:

No physical evidence of original post was found at above described location. The corner was established using found evidence from a Sketch of Survey for P.C. 545, performed by Claud Postiff and recored in liber 249, page 303, the Westerly Line of "St. Clair Haven Subdivision" as recorded in liber 12 of plats, page 17, Macomb County Records and the Westerly Line of "St. Clair Haven Subdivision No.1" as recorded in liber 12 of plats, page 43-45, Macomb County Records, and survey notes, sketch provided by the Huron-Clinton Metropolitan Authority.

RECORDED & UNRECORDED SURVEYS, & FIELD NOTES:

- | | | |
|---|--|-----------------------|
| 1. Aaron Greeley | Copy of Original Survey | Post sighted in notes |
| 2. Claud Postiff | Sketch of Survey
(reference L.249, P.303) | No Corner Information |
| 3. Huron-Clinton Metropolitan Authority | Field Notes | No Corner Information |
| 4. St. Clair Haven Subdivision | Plat
(reference L.12, P.17) | No Corner Information |
| 5. St. Clair Haven Subdivision No.1 | Plat
(reference L.12, P.43-45) | No Corner Information |

FIELD MEASUREMENTS BETWEEN CORNERS:

FROM SOUTHEAST PC CORNER 168 (PC-022) TO NORTHEAST PC CORNER 168 (PC-021)
4651.68' (70 Chains 48 Links Private Claim)
4724.99' (St. Clair Haven Plat 1926)
4724.99' (measured Drouillard#52517, 2011)

FROM SOUTHEAST PC CORNER 168 (PC-022) TO SOUTHWEST PC CORNER 168 (PC-023)
2688.84' (40 Chains 74 Links Private Claim)
2684.02' (Huron Metro Authority)
2684.72' (measured Drouillard #52517, 2011)

RECOMMENDATIONS:

Replace 1/2" iron and cap with a 4" diameter concrete monument, 36" long with a 1/2" iron rod having a 2" diameter aluminum cap stamped "Macomb County Monument, MI Act #345, #52517, "PC-022".

WITNESSES:

South	26.41'	Set nail and Macomb County Witness tag in East face of 12" Chestnut Tree.
North	2.52'	Set nail and Macomb County Witness tag in Southeast face of 36" Maple Tree.
N85°E	98.77'	Set nail and Macomb County Witness tag in North face of utility pole.
S45°E	24.06'	To the Northwest corner of house #38695.

NORTH LINE OF PRIVATE CLAIM 168

CORNER FALLS IN RIVER

CLINTON RIVER N.E. CORNER OF PRIVATE CLAIM 168
11 CHAINS 95 LINKS (P.C. NOTES) SET MARKER

CORNER FALLS IN RIVER

9 CHAINS (P.C. NOTES)
N76°00'00"E
594.00'

788.94'(C) 788.70'(R)
GLOUCESTER-ON-THE-CLINTON SUBDIVISION

N.W. CORNER OF PRIVATE CLAIM 168
FALLS IN RIVER

7 CHAINS 30 LINKS (P.C. NOTES)
S46°00'00"E
481.80'

CORNER FALLS IN RIVER

13 CHAINS (P.C. NOTES)
N32°00'00"E
838.00'

9 CHAINS (P.C. NOTES)
N90°00'00"E
561.00'

CLINTON RIVER

SOUTH RIVER DRIVE

CONTROL POINT

RIVERSIDE-BAY GARDENS SUBDIVISION

RITA LOZON
PARCEL
17-12-16-405-040

NORTH 3970.47' TO CONTROL MONUMENT, JUNE 2011 (LEHNER ASSOC.)
62 CHAINS (4082.00' P.C. NOTES)

WEST LINE OF PRIVATE CLAIM 168

PRIVATE CLAIM 168

EAST LINE OF PRIVATE CLAIM 168

70 CHAINS 48 LINKS (4651.68' P.C. NOTES)
4724.99' (ST. CLAIR HAVEN PLAT)
SOUTH 4724.99' R&S, JUNE 2011 (LEHNER ASSOC.)

VENETIAN DRIVE 60 FEET WIDE

ST. CLAIR HAVEN SUBDIVISION

SOUTH LINE OF PRIVATE CLAIM 168

40 CHAINS 74 LINKS (2688.84' P.C. NOTES)
2684.02' (HURON METROPOLITAN AUTHORITY NOTES)
WEST 2684.72'(M) JUNE 2011 (LEHNER ASSOC.)

FALLS IN RIVER

S.W. CORNER OF PRIVATE CLAIM 168

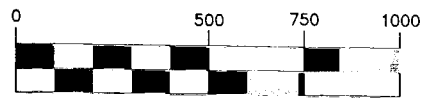
BLACK RIVER

SET MONUMENT 1
S.E. CORNER OF PRIVATE CLAIM 168

CONTROL POINT

CONTROL POINT

ST. CLAIR HAVEN No. 1 (VACATED)
HURON-CLINTON METROPOLITAN AUTHORITY
"HURON METRO BEACH"



(IN FEET)
1 inch = 500 ft.

No. 407

No. 168 Confirmed to
Louis Campeau

SOUTH SIDE OF RIVER HURON

Description No. 168 Confirmed to Louis Campeau commencing at a post standing on the border of River Huron between this tract and unconceded land thence south seventy chains forty eight links to a post thence west forty chains seventy four links to a post thence north sixty two chains to a post standing on the border of River Huron between this tract and a tract confirmed to Joseph Campeau thence along the border of said river down stream south forty six degrees east seven chains thirty links thence east eight chains fifty links, thence north twenty nine degrees east thirteen chains, thence north seventy six degrees east nine chains , thence east eleven chains ninety five links to the place of beginning, containing three hundred and ten acres thirty one hundredths of an acre.

Detroit July 18, 1810

Aaron Greeley Surveyor
of private claims

①

N^o. 407.

South Side of River Huron.

Description - N^o. 168 Confirmed to Louis Campeau, Commencing at a post standing on the border of River Huron between this tract and a tract of unconceded land thence South Seventy chains forty eight links, to a post thence west forty chains Seventy four links, to a post thence north sixty two chains, to a post standing on the border of River Huron between this tract and a Tract Confirmed to Joseph Campeau; thence along the border of said River down stream - south forty six degrees East seven chains thirty links, thence East eight chains fifty links thence north twenty nine degrees East thirteen chains, thence north seventy six degrees East nine chains, thence East Eleven chains ninety five links, to the place of beginning containing three hundred and ten acres thirty one hundredths of an acre.

Detroit July 18. 1810

168

(1)

6-17-2011

RS BS

S.E. CORNER

CF P.C. #168

VEGETATION

SWAMP

STEEL SEAWALL

RIVER VIEW

DE. 60' W/A

N.W. COR. LOT 960
36" MARK 98.77
2.52

SET IRON UTILITY
& CAP POLE

12" CHEST NUT

HOUSE #38695

STEEL SEAWALL

BLACK RIVER

SET 1/2" IRON & CAP

SET IRON FALLS IN THE CENTER
OF A ROW OF MATURE TREES
RANING NORTH & SOUTH.

SOUTHEAST CORNER OF
P.C. 168 HARRISON TRAP.
MALCOLM & Co.

WITNESS

SET 1/2" IRON NAILS & MALCOLM &
Co. WITNESS TAGS.

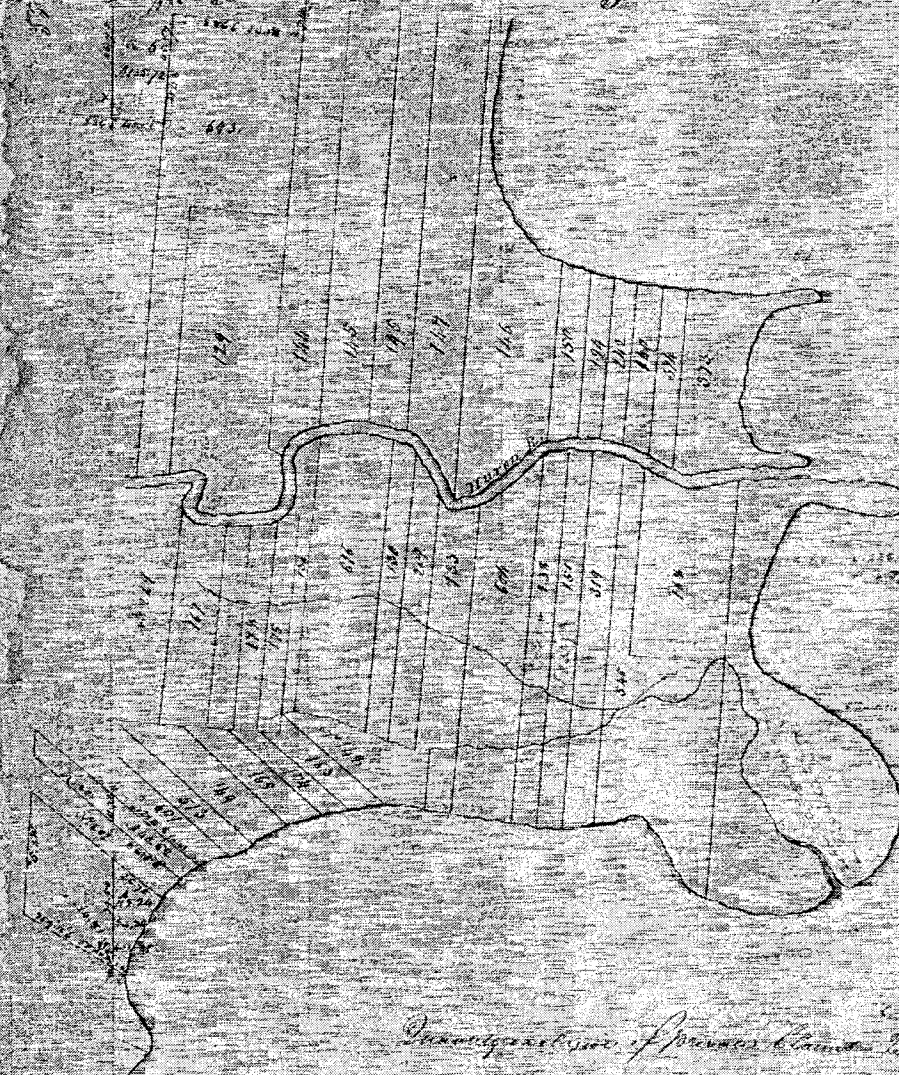
SOUTH 26.41 FT. SET NAIL &
TAG IN EAST FACE OF
12" CHEST NUT.

NORTH 2.52 FT SET NAIL &
TAG IN S.E. FACE OF 36" MARK.
N. 85° E. 98.77 FT. SET NAIL
& TAG IN NORTH FACE OF
A UTILITY POLE.

S. 45° E. 24.06 FT. TO THE
NORTHWEST CORNER OF
HOUSE #38695

Township N. 11 North, Range N. 14 West of the Mer. (Mich. 1837)

11



S. 11 N. 14 W.

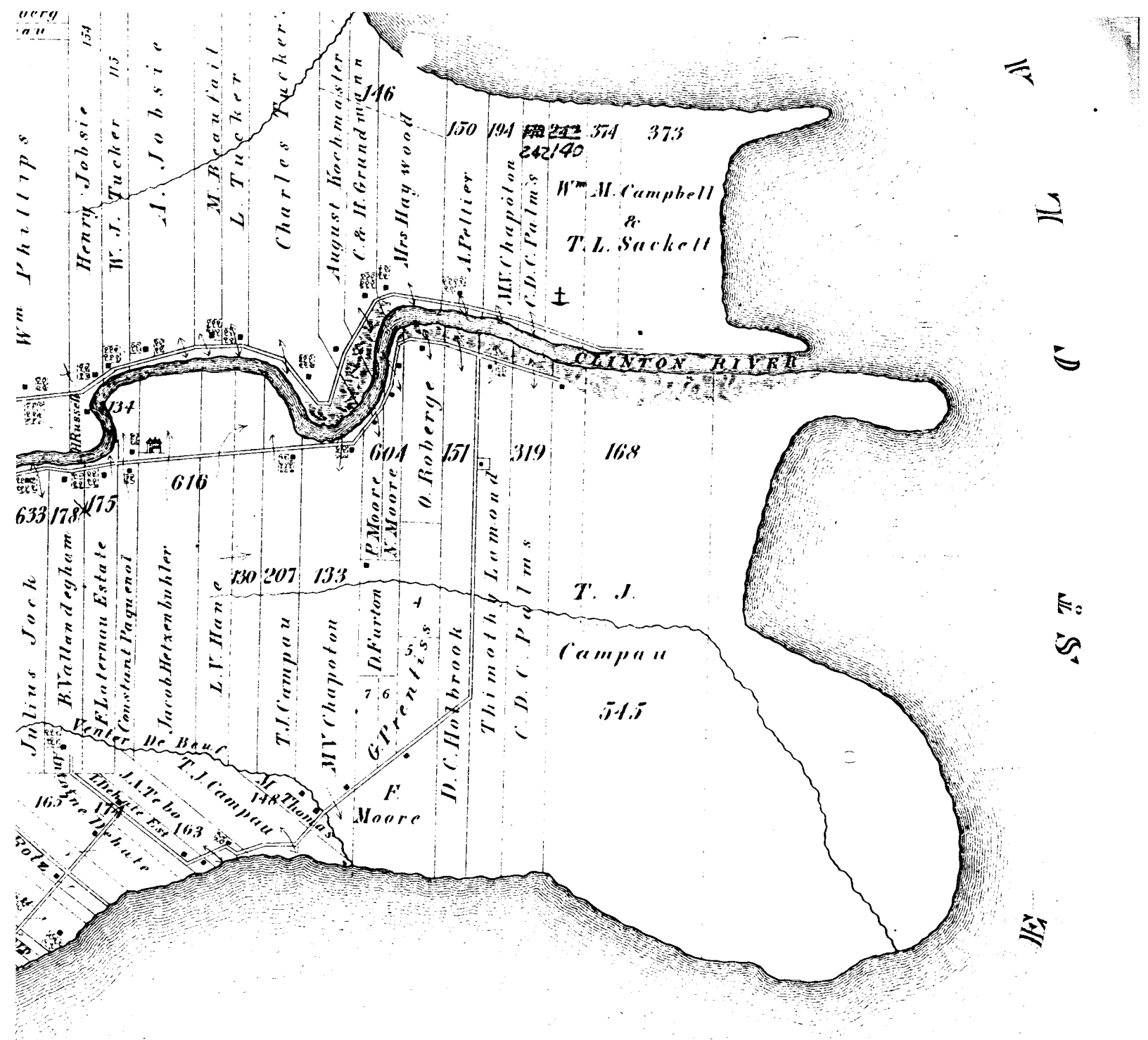
Transcribed from original in the office

Chicago General Office

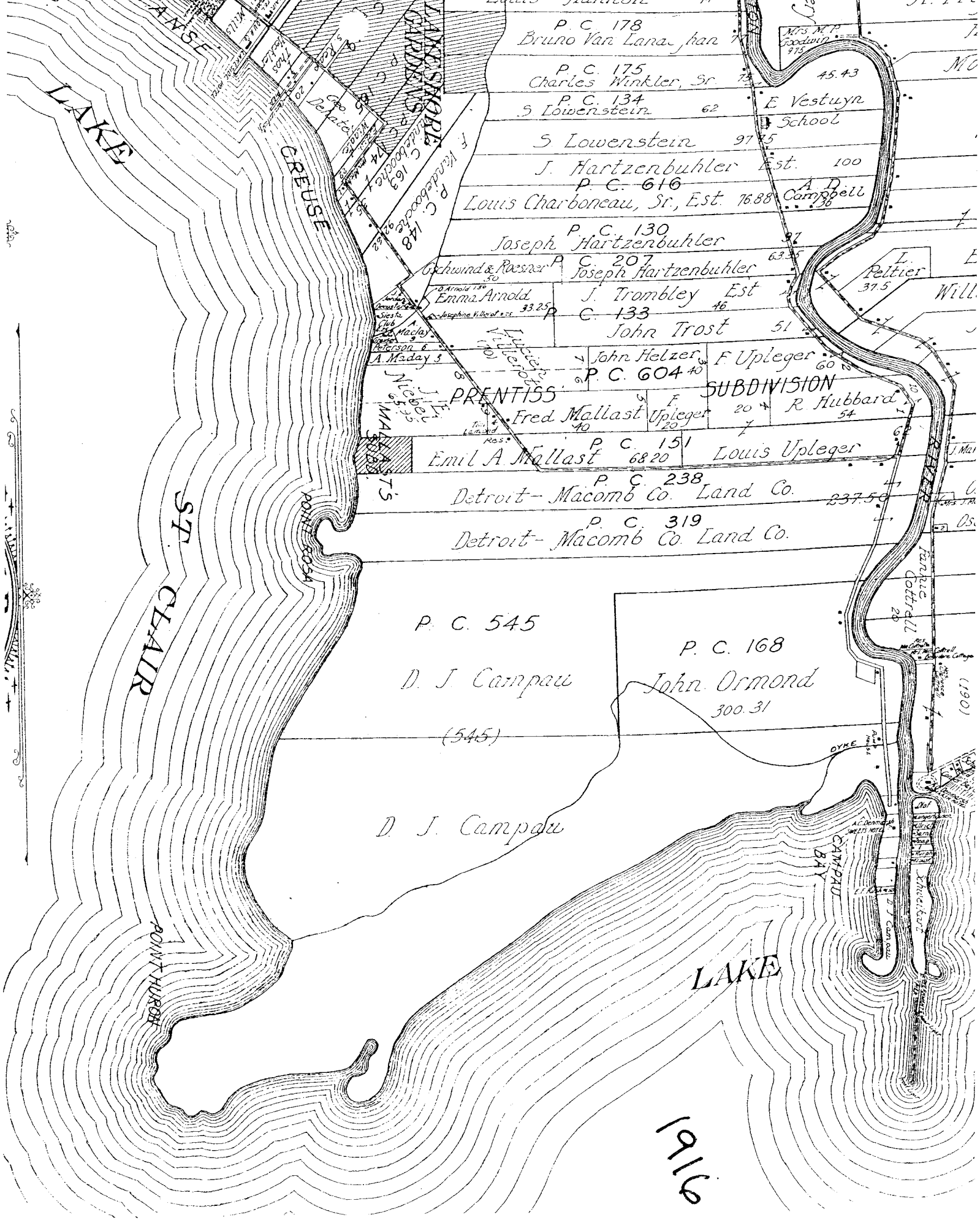
1870

Chicago General Office

1870 COPY



Map of
THE A. BRUCE & SONS
 TONWSHIP
 T. 2 N. R. 14 E.



Louis Hannon 74
P. C. 178
Bruno Van Lanu, Jan

P. C. 175
Charles Winkler, Sr. 72 45.43
P. C. 134
S Lowenstein 62 E Vestuyn

S Lowenstein 97.5
J. Hartzenbuhler Est. 100
P. C. 616
Louis Charboneau, Sr., Est. 76.88 Campbell

P. C. 130
Joseph Hartzenbuhler 91
P. C. 207
Joseph Hartzenbuhler 63.5

J. Trombley Est 46
C. 133
John Trost 51

John Helzer, F Upleger 60
P. C. 604 40
Fred Mallast Upleger 20
R Hubbard 54

P. C. 151
Emil A Mallast 6820
Louis Upleger

P. C. 238
Detroit-Macomb Co. Land Co. 237.50

P. C. 319
Detroit-Macomb Co. Land Co.

P. C. 545

D. J. Campau

(545)

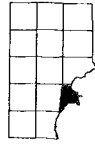
D. J. Campau

P. C. 168

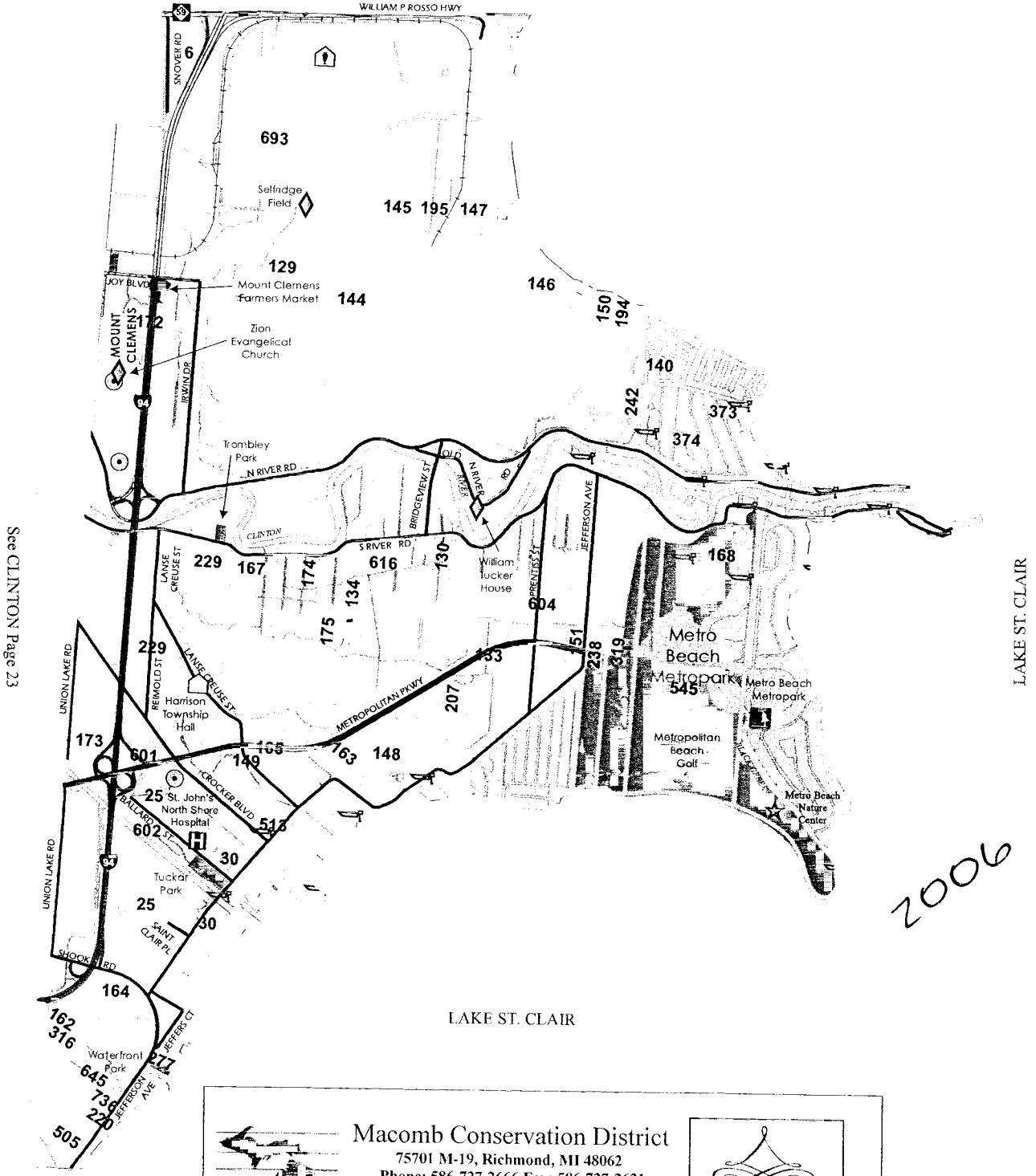
John Ormond

300.31

1916




See CHESTERFIELD Page 31



See CLINTON Page 23


2006



Macomb Conservation District
75701 M-19, Richmond, MI 48062
Phone: 586-727-2666 Fax: 586-727-2621
E-mail: macombcd@klondyke.net
Website: www.macombcd.com

Assistance available for :

Tree Sales	Forestry	Native Plants
Conservation	Education	

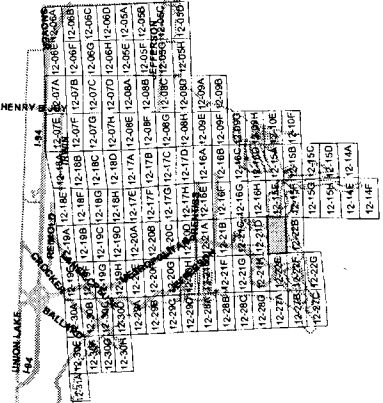
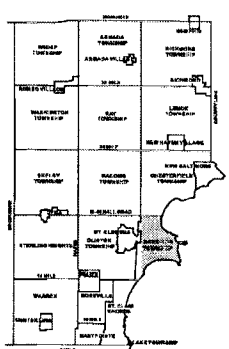


*Celebrating
55 Years of
Managing
Macomb County's
Natural Resources*



Date of Photography: April 2004
 100 50 0 100 200 Feet
 1:1,200

HARRISON TWP SHEET INDEX



DESCRIPTION OF PERMANENT REAL ESTATE INDEX NUMBER
13-19-302-018

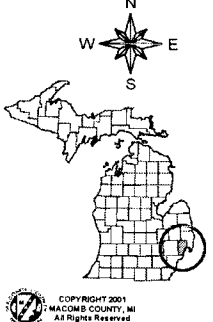
- Legend**
- Platted Area Boundary Line
 - Property Line
 - Property Split Line
 - Property Combined Line
 - Township Boundary Line
 - Traverse Line
 - Dimension Extent Marks
 - Dimension Start Marks

12-22A
 HARRISON TWP.
 W. 1/2 N.W. 1/4 SEC. 22 T. 2N. R. 14E.

Source: Macomb County Department of Planning and Economic Development
 - 2004 Digital Orthophotography Project - Parcel Conversion Project

Note:
 Digital Orthophotography horizontal positioning accuracy is 3 feet. Parcel boundary lines should be considered a graphical representation and not in any way a legal survey or engineering document. In general, the horizontal positioning and length accuracy is within 15 feet.

This map is intended for general planning purposes. Site specific evaluation should be verified by field inspection. This is a work in progress and may contain errors and omissions. Please report any potential revisions to (586)469-5295.



COPYRIGHT 2001
 MACOMB COUNTY, MI
 All Rights Reserved



MACOMB COUNTY
 Planning and Economic
 Development Department

Published: Aug 30, 2005

See Resolution to vacate Part of Private Claim 545 Page 446

See Resolution to vacate Part of S. River Road
See Resolution to vacate Part of S. River Road
See Resolution to vacate Part of S. River Road

3 SHEETS
SHEET NO. 1

DEC 24 1926
J. P. Hurler

ST. CLAIR HAVEN

A SUBDIVISION
OF PART OF PRIVATE CLAIM 545.

Harrison Township,
Michigan.

Macomb County,

Sub. of P. 1

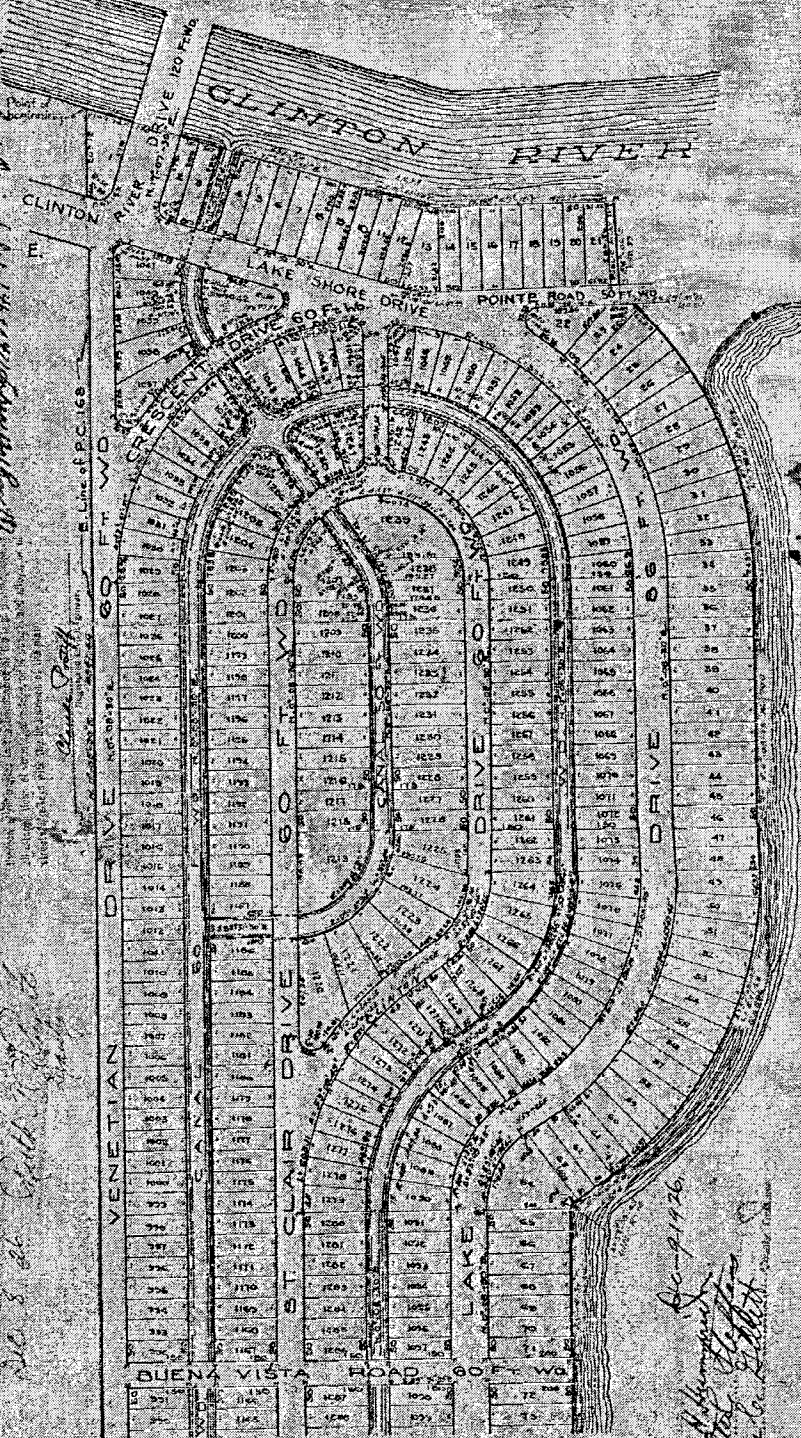
SEP 20 1927

MADE IN U.S.A.
REGISTERED TRADE MARK
100% PURE LINOLINUM

POSTOFFICE AND TELEGRAPH
OFFICE
MACOMB COUNTY, MICHIGAN
ST. CLAIR, MICHIGAN

Note: All distances are given in feet or decimals thereof

SCALE 1 INCH = 200 FEET



Know all men by these Presents that we

The Liberty Trust Co

A Michigan Corporation by *W. H. Thomas* Vice President
and *W. Z. Campbell* Secretary
do hereby certify that the plat hereunto annexed and
intended to be known as *St. Clair Haven*
a Subdivision of Part of Private Claim
545, Harrison Township, Macomb County,
Michigan,
and that the same and all that is shown on said plat are hereby
declared to be the true and correct plat of the same.
Signed & sealed in the presence of

W. H. Thomas
W. Z. Campbell

State of Michigan }
County of Macomb }
On this 1st day of Dec A.D. 1926

before me the undersigned a Notary Public in and for said County
knowing each of the said parties and that they are the President
and Secretary respectively of

Liberty Trust Company

Michigan Corporation and that the said plat is said plat is said
to be a true and correct plat of the same and that the same is
declared to be the true and correct plat of the same by a Board of
Deputies and the said *W. H. Thomas* and
W. Z. Campbell

do hereby certify that the same and all that is shown on said plat are hereby
declared to be the true and correct plat of the same.

Clara Thomas Notary Public, My Comm. Expires
May 13 1930

Witness my hand and the seal of said County at Macomb
Michigan this 1st day of Dec 1926

W. Z. Campbell Land Company

Witness my hand and the seal of said County at Macomb
Michigan this 1st day of Dec 1926

W. H. Thomas and
W. Z. Campbell

do hereby certify that the same and all that is shown on said plat are hereby
declared to be the true and correct plat of the same.

W. H. Thomas and
W. Z. Campbell

do hereby certify that the same and all that is shown on said plat are hereby
declared to be the true and correct plat of the same.

W. H. Thomas and
W. Z. Campbell

do hereby certify that the same and all that is shown on said plat are hereby
declared to be the true and correct plat of the same.

W. H. Thomas and
W. Z. Campbell

do hereby certify that the same and all that is shown on said plat are hereby
declared to be the true and correct plat of the same.

W. H. Thomas and
W. Z. Campbell

do hereby certify that the same and all that is shown on said plat are hereby
declared to be the true and correct plat of the same.

W. H. Thomas and
W. Z. Campbell

do hereby certify that the same and all that is shown on said plat are hereby
declared to be the true and correct plat of the same.

W. H. Thomas and
W. Z. Campbell

do hereby certify that the same and all that is shown on said plat are hereby
declared to be the true and correct plat of the same.

W. H. Thomas and
W. Z. Campbell

do hereby certify that the same and all that is shown on said plat are hereby
declared to be the true and correct plat of the same.

W. H. Thomas and
W. Z. Campbell

do hereby certify that the same and all that is shown on said plat are hereby
declared to be the true and correct plat of the same.

W. H. Thomas and
W. Z. Campbell

do hereby certify that the same and all that is shown on said plat are hereby
declared to be the true and correct plat of the same.

W. H. Thomas and
W. Z. Campbell

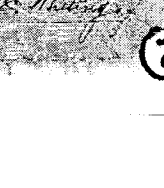
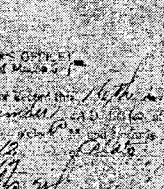
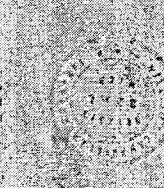
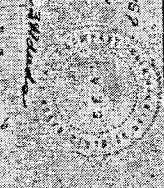
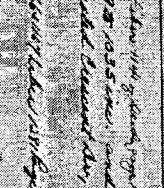
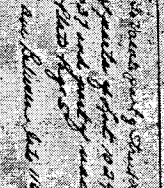
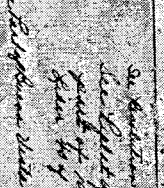
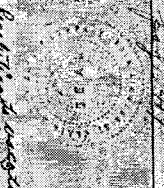
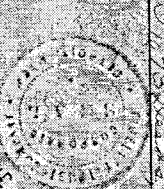
do hereby certify that the same and all that is shown on said plat are hereby
declared to be the true and correct plat of the same.

W. H. Thomas and
W. Z. Campbell

do hereby certify that the same and all that is shown on said plat are hereby
declared to be the true and correct plat of the same.

W. H. Thomas and
W. Z. Campbell

do hereby certify that the same and all that is shown on said plat are hereby
declared to be the true and correct plat of the same.



See Resolution of Nov 9th page 557 of Dist
See Resolution of Nov 9th page 557 of Dist
See Resolution of Nov 9th page 557 of Dist

See Resolution of Nov 9th page 557 of Dist
See Resolution of Nov 9th page 557 of Dist
See Resolution of Nov 9th page 557 of Dist

See Resolution of Nov 9th page 557 of Dist
See Resolution of Nov 9th page 557 of Dist
See Resolution of Nov 9th page 557 of Dist

See Resolution of Nov 9th page 557 of Dist
See Resolution of Nov 9th page 557 of Dist
See Resolution of Nov 9th page 557 of Dist

See Resolution of Nov 9th page 557 of Dist
See Resolution of Nov 9th page 557 of Dist
See Resolution of Nov 9th page 557 of Dist

See Resolution of Nov 9th page 557 of Dist
See Resolution of Nov 9th page 557 of Dist
See Resolution of Nov 9th page 557 of Dist

See Resolution of Nov 9th page 557 of Dist
See Resolution of Nov 9th page 557 of Dist
See Resolution of Nov 9th page 557 of Dist

See Resolution of Nov 9th page 557 of Dist
See Resolution of Nov 9th page 557 of Dist
See Resolution of Nov 9th page 557 of Dist

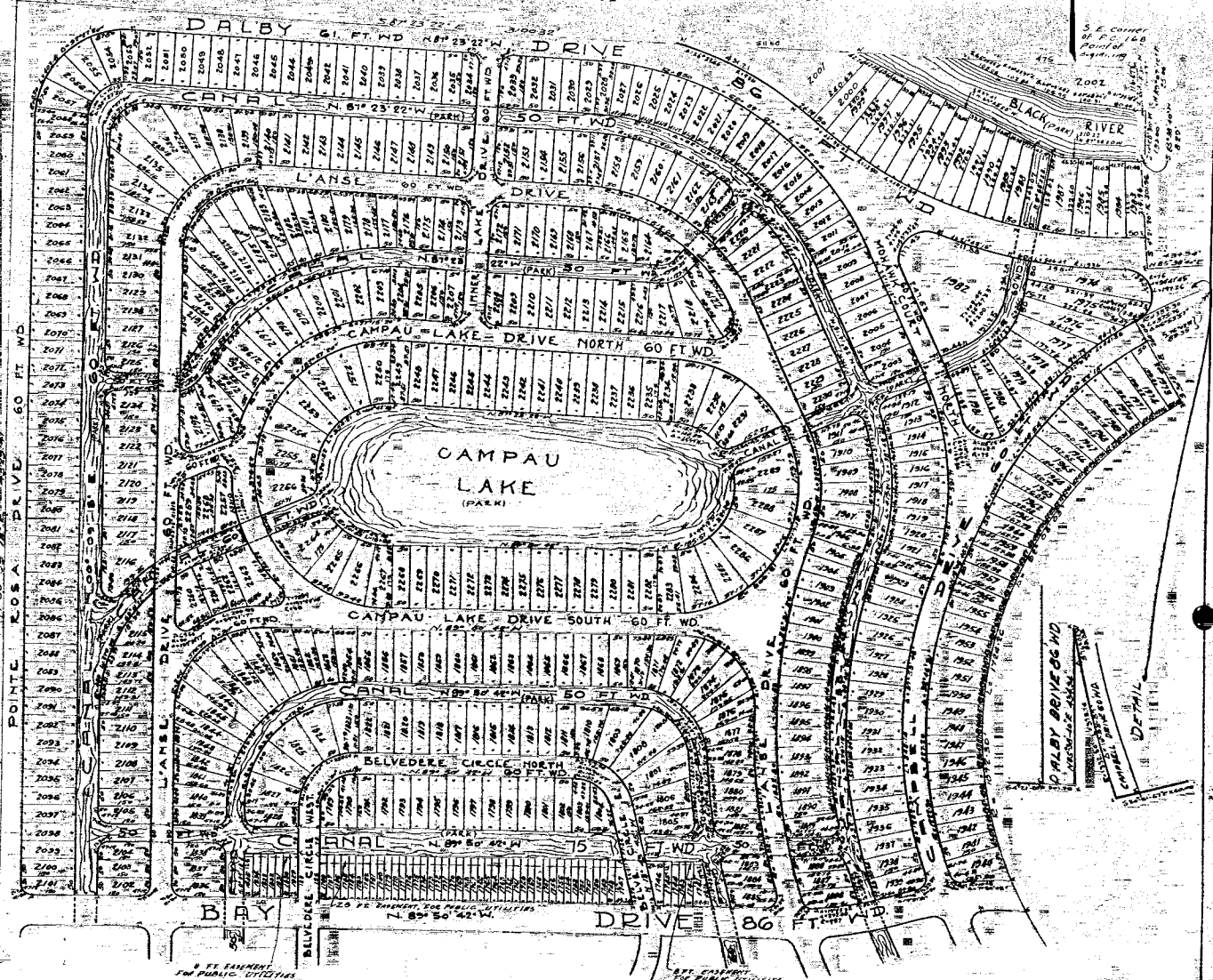
See Resolution of Nov 9th page 557 of Dist
See Resolution of Nov 9th page 557 of Dist
See Resolution of Nov 9th page 557 of Dist

SHEET NO. 1
"ST CLAIR HAVEN NO. 1"
 A SUBDIVISION OF PART OF PRIVATE CLAIM 545
 HARRISON TWP. Macomb Co., Michigan

SCALE 1/4" = 100 FEET

CLAUDE POSTIFF
 CIVIL ENGINEER, REG.
 1052 AMERICAN STATE BANK
 DETROIT, MICH. 48226

Note: All distances are given in feet and decim's thereof.



Know all men by these Presents, That we
 The William Z. Campbell Land Co.,
 a Michigan Corporation by Fred M. Dalby, President,
 William Z. Campbell, Secretary as proprietor, have
 caused the land embraced in the annexed plat to be surveyed, laid
 out and platted to be known as "St. Clair Haven No. 1",
 a subdivision of part of private claim 545,
 Harrison Township, Macomb Co., Michigan,
 and that the streets and alleys shown on said plat are hereby
 dedicated to the use of the public.
 Signed & Sealed in the Presence of
 James C. Blaine, Notary Public
 Oliver Hanson, Organizing Agent

State of Michigan
 County of Wayne
 On this 25th day of August, A.D. 1927
 before me the undersigned a Notary Public in and for said County
 appeared Fred M. Dalby and Wm. Z. Campbell
 to me personally known, who
 being each by me duly sworn did say that they are the President
 and Secretary respectively of the
 William Z. Campbell Land Co., a
 Michigan Corporation, and that the seal affixed to said instrument is
 the Seal of said corporation and that said instrument was signed and
 sealed in behalf of said corporation by authority of its Board of
 Directors and the said
 Fred M. Dalby and Wm. Z. Campbell
 acknowledged said instrument to be the free act and deed of said
 corporation.
 James C. Blaine, Notary Public, Organizing Agent
 My Commission expires June 21, 1931

Know all men by these Presents, That we
 Fidelity Trust Co.,
 a Michigan Corporation by R. W. Thomas, Vice-President,
 and F. M. Armstrong, Secretary as proprietors, have
 caused the land embraced in the annexed plat to be surveyed, laid
 out and platted to be known as "St. Clair Haven No. 1",
 a subdivision of part of private claim
 545, Harrison Township, Macomb Co., Michigan,
 and that the streets and alleys shown on said plat are hereby
 dedicated to the use of the public.
 Signed & Sealed in the Presence of
 R. W. Thomas, Vice-President
 F. M. Armstrong, Secretary

State of Michigan
 County of Wayne
 On this 28th day of August, A.D. 1927
 before me the undersigned a Notary Public in and for said County
 appeared R. W. Thomas and
 F. M. Armstrong
 to me personally known, who
 being each by me duly sworn did say that they are the President
 and Secretary respectively of the
 Fidelity Trust Co., a
 Michigan Corporation, and that the seal affixed to said instrument is
 the Seal of said corporation and that said instrument was signed and
 sealed in behalf of said corporation by authority of its Board of
 Directors and the said R. W. Thomas
 and F. M. Armstrong
 acknowledged said instrument to be the free act and deed of said
 corporation.
 Claude Postiff, Notary Public
 My Commission expires May 19, 1931

REGISTERS OFFICE
 County of Macomb

Received for Record this 25th day
 of August, A.D. 1927, at
 1:25 P.M. Checked and Recorded
 in 17-12-12

CLAUDE POSTIFF
 CIVIL ENGINEER, REG.
 1052 AMERICAN STATE BANK
 DETROIT, MICH. 48226

3 SHEETS
SHEET NO 2

ST CLAIR HAVEN NO 1A-254B

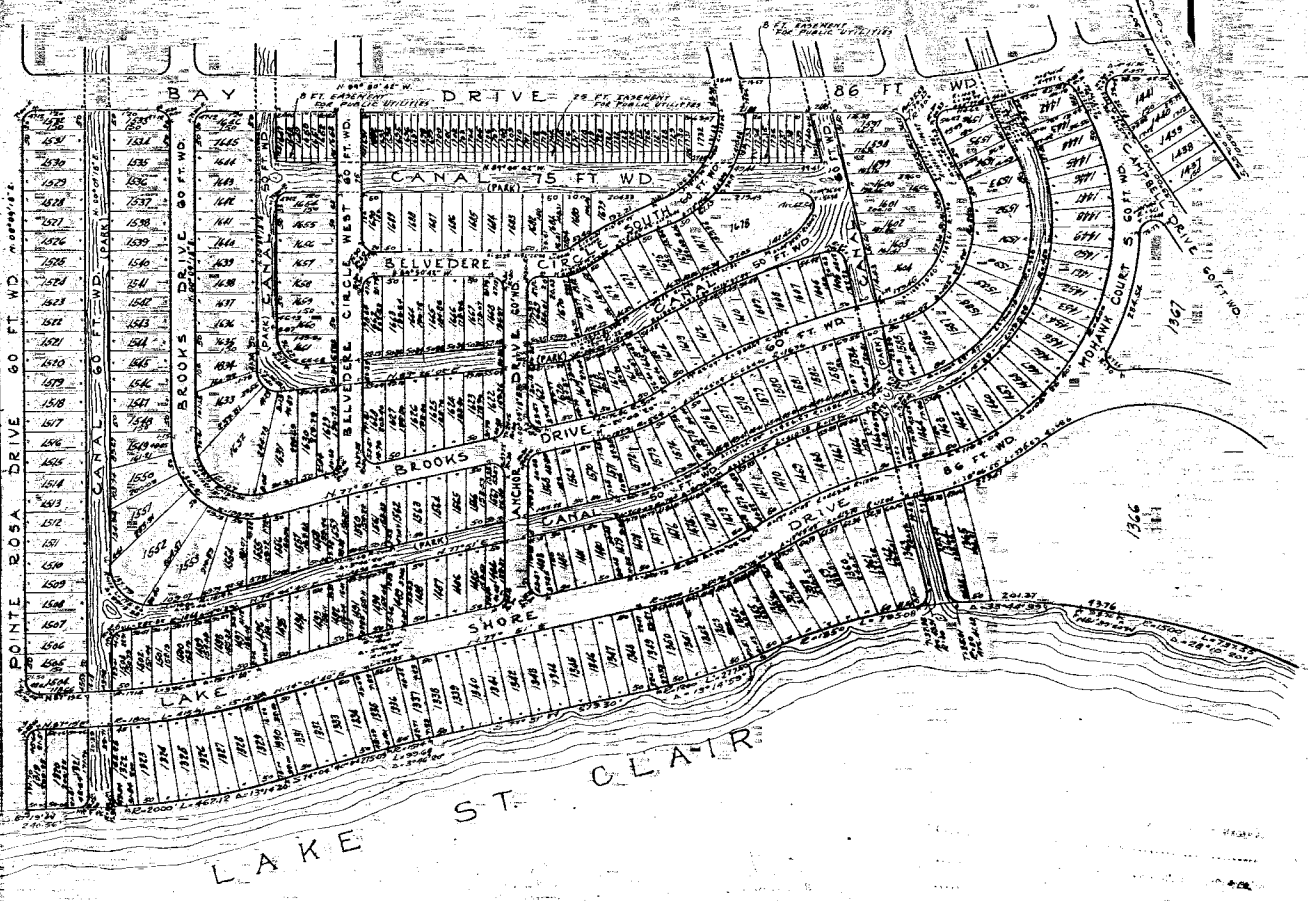
A SUBDIVISION OF PART OF PRIVATE CLAIM 545
Harrison Twp. Macomb Co.
Michigan

254 B

SCALE: 1"=100 FEET

CLAUDE POSTOFF
CIVIL ENGINEER
1007 PLYMOUTH STREET
DETROIT MI 48221

Note: All distances are given in feet and decim's thereof



Sept. 2, 1927
Claude Postoff
Deputy

Depositing of Plat Hatched.
No Land embraced in the original Plat of St. Clair Haven No. 1
A subdivision of part of Private Claim 545
Harrison Twp. Macomb County, Michigan
is described as follows: Beginning at a point and point being the S.E. Corner of P.C. 545, Harrison Twp., Macomb County, Mich. Thence
S 00° 00' 00" W 100.00 ft. to a point; thence N 89° 01' 02" E 25.00 ft. to a point; thence S 60° 12' 30" W 123.00 ft. to a point;
thence S 76° 02' 00" W 82.00 ft. to a point; thence S 44° 01' 20" E 90.00 ft. to a point; thence N 85° 28' 40" E 42.00 ft. to a point;
thence S 76° 02' 00" W 82.00 ft. to a point of curve, thence following a curve of radius 1332.30 ft., 81° 16' 00" (whose forward
tangent is S 76° 02' 00" W 82.00 ft. & whose rear tangent is S 58° 08' 00" W 80.00 ft.) to a point; thence S 30° 00' 00" E 100.00 ft.
to a point of curve, thence following a curve of radius 1072.30 ft., 78° 26' 00" (whose forward tangent is S 30° 00' 00" E 100.00 ft. &
whose rear tangent is S 35° 00' 00" E 110.00 ft.) to a point; thence S 93° 00' 00" E 100.00 ft. to a point; thence
S 40° 00' 00" E 42.00 ft. to a point of curve, thence following a curve of radius 300 ft., 217.30 ft. (whose forward tangent
is S 40° 00' 00" E 42.00 ft. & whose rear tangent is S 2° 31' 50" N 120.00 ft.) to a point; thence S 87° 01' 30" W 80.00 ft. to a point;
thence S 62° 00' 00" E 82.00 ft. to a point of curve, thence following a curve of radius 850 ft., 183.87 ft. (whose forward
tangent is S 62° 00' 00" E 82.00 ft. & whose rear tangent is S 81° 00' 00" E 90.00 ft.) to a point; thence S 20° 00' 00" E 100.00 ft. to
a point of curve, thence following a curve of radius 548 ft., 344.44 ft. (whose forward tangent is S 20° 00' 00" E 100.00 ft. &
whose rear tangent is S 71° 31' 00" E 110.00 ft.) to a point; thence S 20° 00' 00" E 100.00 ft. to a point of curve, thence
following a curve of radius 740 ft., 465.00 ft. (whose forward tangent is S 20° 00' 00" E 100.00 ft. & whose rear
tangent is N 69° 00' 00" W 285.00 ft.) to a point; thence N 88° 00' 00" W 285.00 ft. to a point of curve, thence following
a curve of radius 100.00 ft., 83.12 ft. (whose forward tangent is N 88° 00' 00" W 285.00 ft. & whose rear tangent is N 69° 00' 00" W
285.00 ft.) to a point; thence N 69° 00' 00" W 285.00 ft. to a point of curve, thence following a curve of radius
1200 ft., 80.87 ft. (whose forward tangent is N 69° 00' 00" W 285.00 ft. & whose rear tangent is N 63° 00' 00" W 170.00 ft.) to a
point of reverse curve, thence following a curve of radius 400 ft., 287.06 ft. (whose forward tangent is N 63° 00' 00" W
170.00 ft. & whose rear tangent is N 61° 00' 00" W 316.30 ft.) to a point; thence N 61° 00' 00" W 316.30 ft. to a point of
curve, thence following a curve of radius 1350 ft., 733.00 ft. (whose forward tangent is N 61° 00' 00" W 316.30 ft. &
whose rear tangent is S 61° 00' 00" N 409.45 ft.) to a point of reverse curve, thence following a curve of radius
1200 ft., 217.30 ft. (whose forward tangent is S 61° 00' 00" N 409.45 ft. & whose rear tangent is S 77° 00' 00" W 130.57 ft.) to a
point; thence S 77° 00' 00" W 130.57 ft. to a point of curve, thence following a curve of radius 1500 ft., 150.00 ft.
(whose forward tangent is S 77° 00' 00" W 130.57 ft. & whose rear tangent is S 74° 00' 00" W 43.20 ft.) to a point;
thence S 74° 00' 00" W 43.20 ft. to a point of curve, thence following a curve of radius 300 ft., 42.00 ft. (whose
forward tangent is S 74° 00' 00" W 43.20 ft. & whose rear tangent is S 80° 00' 00" W 282.10 ft.) to a point; thence
S 80° 00' 00" W 282.10 ft. to a point on the W. Line of P.C. 645; thence N 60° 00' 00" E 422.00 ft. along the W. Line
of P.C. 645, to a point; thence S 87° 00' 00" E 200.00 ft. to the Point of Beginning.

I hereby certify that the plat herein delineated is a correct one,
and that the same is a true and correct copy of the original plat
in my possession, and that the same is a true and correct copy
of the original plat in the possession of the parties, and that
at all intersections of streets, of alleys, or of streets and alleys, or of
streets or alleys with the boundaries of the plat.

Claude Postoff
Registered Civil Engineer

REGISTER'S OFFICE
County of Macomb
Received for Record this 27th day
of Sept. AD. 1927
at _____ and Recorded

Township of Harrison
County of Macomb
August 27, 1927
Carl H. Jones

3

"ST CLAIR HAVEN NO. 1"

A SUBDIVISION OF PART OF PRIVATE CLAIM 545

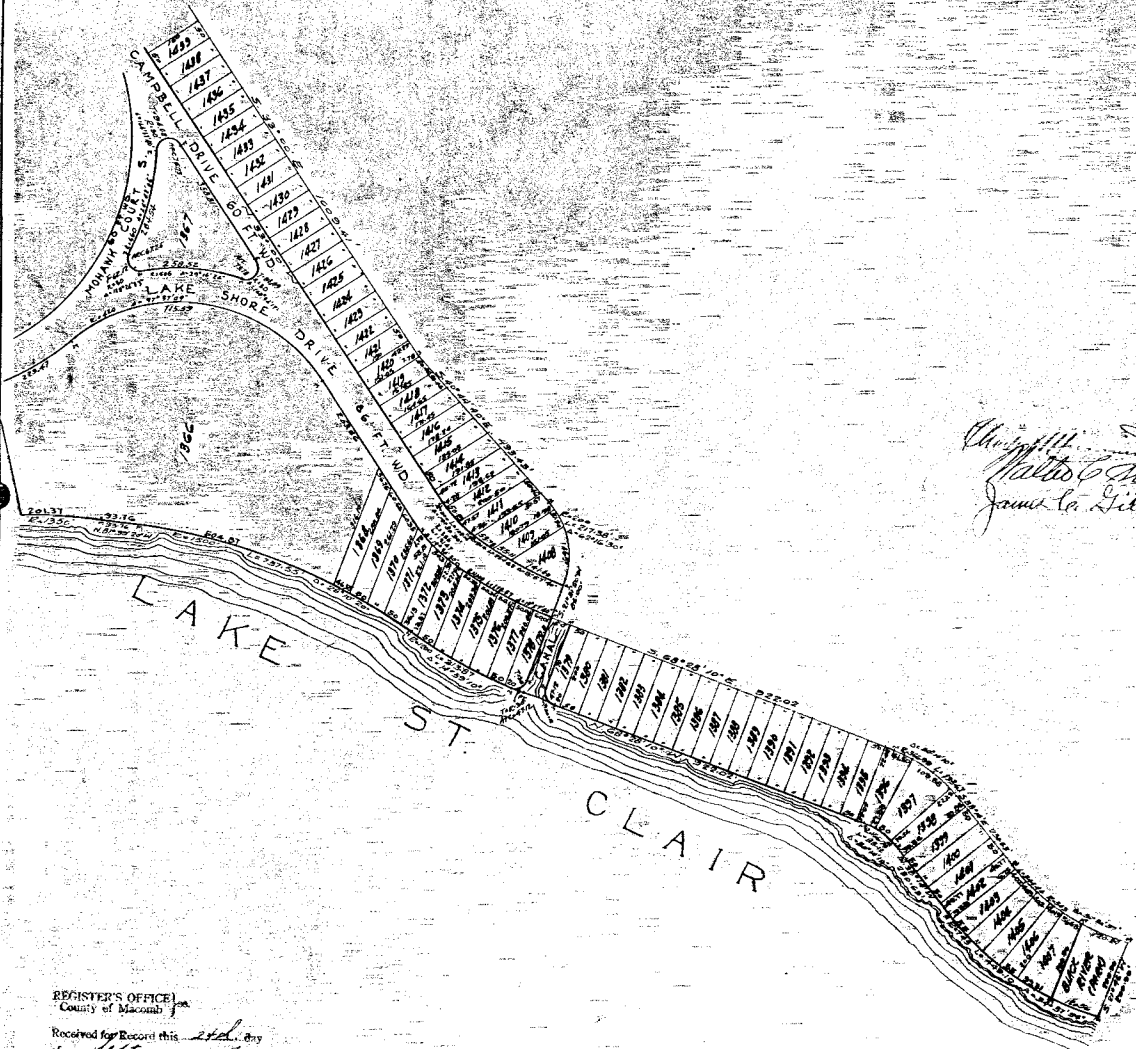
Harrison Twp. Macomb Co.
Michigan

7825

SCALE: 1 inch = 200 FEET

CLAUDE POSTIFF
CIVIL ENGINEER REG.
1001 AMERICAN STATE BANK
DETROIT, MICH.

Note: All distances are given in feet and decimals thereof



Checked by
Walter C. Gillett
James C. Gillett

REGISTER'S OFFICE
 County of Macomb

Received for Record this *27th* day
 of *Sept* A. D. 19*17*
 at *1:45* o'clock P. M. and Recorded
 in Liber *100* of *Plate*
 on Page *45*

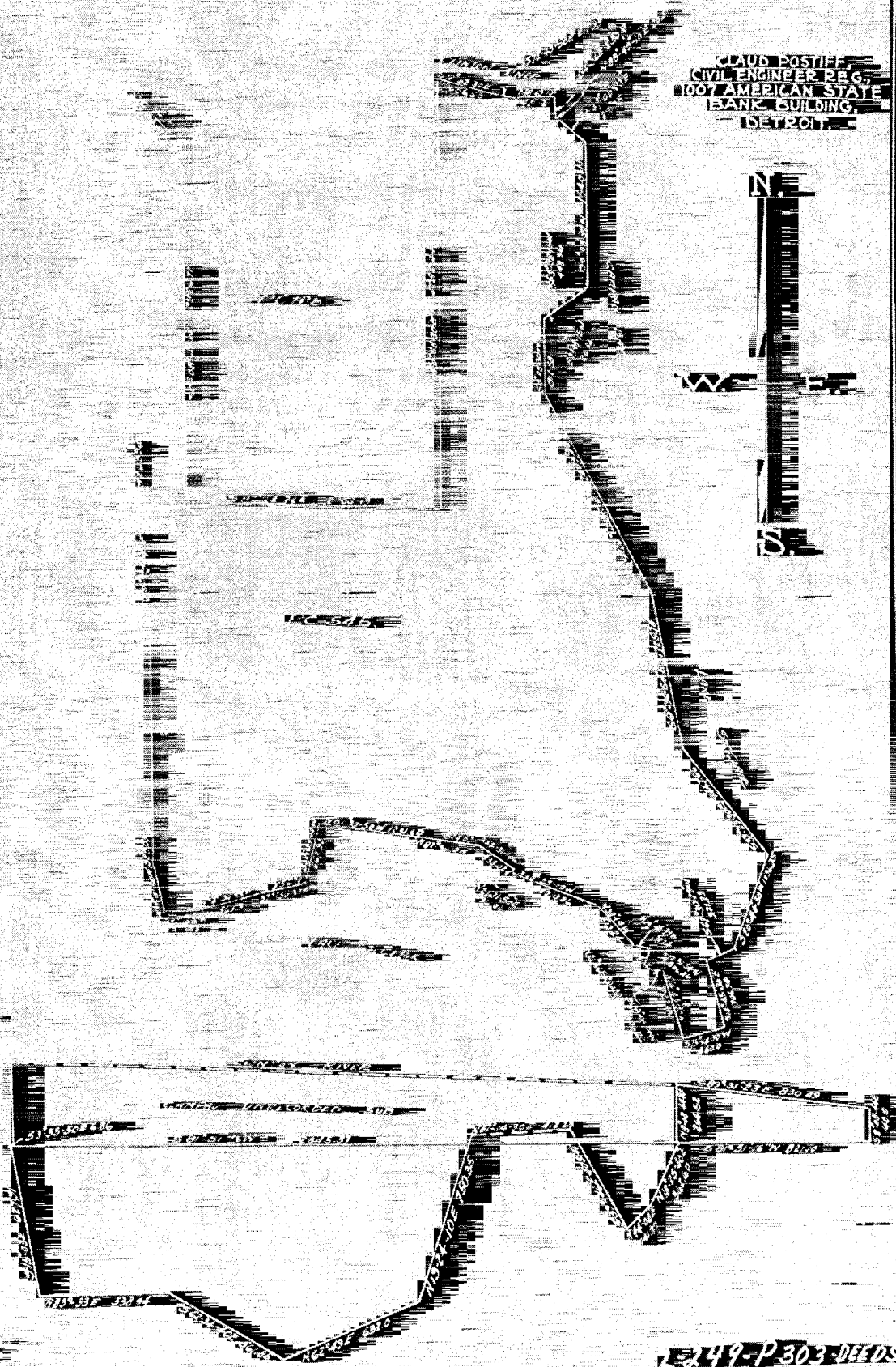
Walter C. Gillett, Register

INDEX
INDEX



SKETCH OF SURVEY
PRIVATE CLAIM 545
HARRISON TWP. MACOMB CO. MICH.
No Scale

CLAUDE BOSTER
CIVIL ENGINEER REG.
1100 AMERICAN STATE
BANK BUILDING
DETROIT

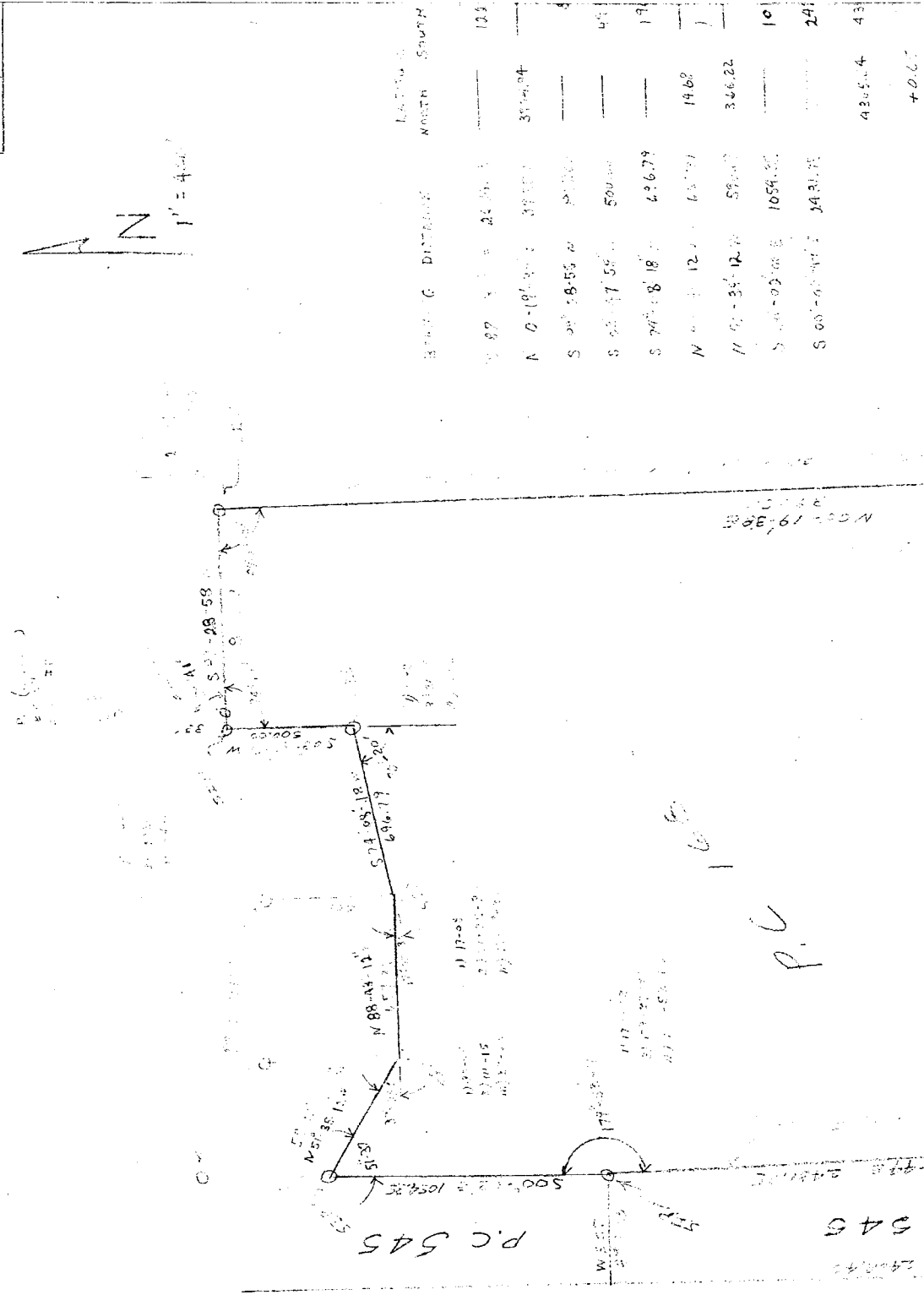
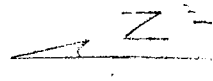


L 249-P 303 DEEDS

249-P 303 DEEDS

4

HURON CLINTC
STATE COUNTY
MICH.

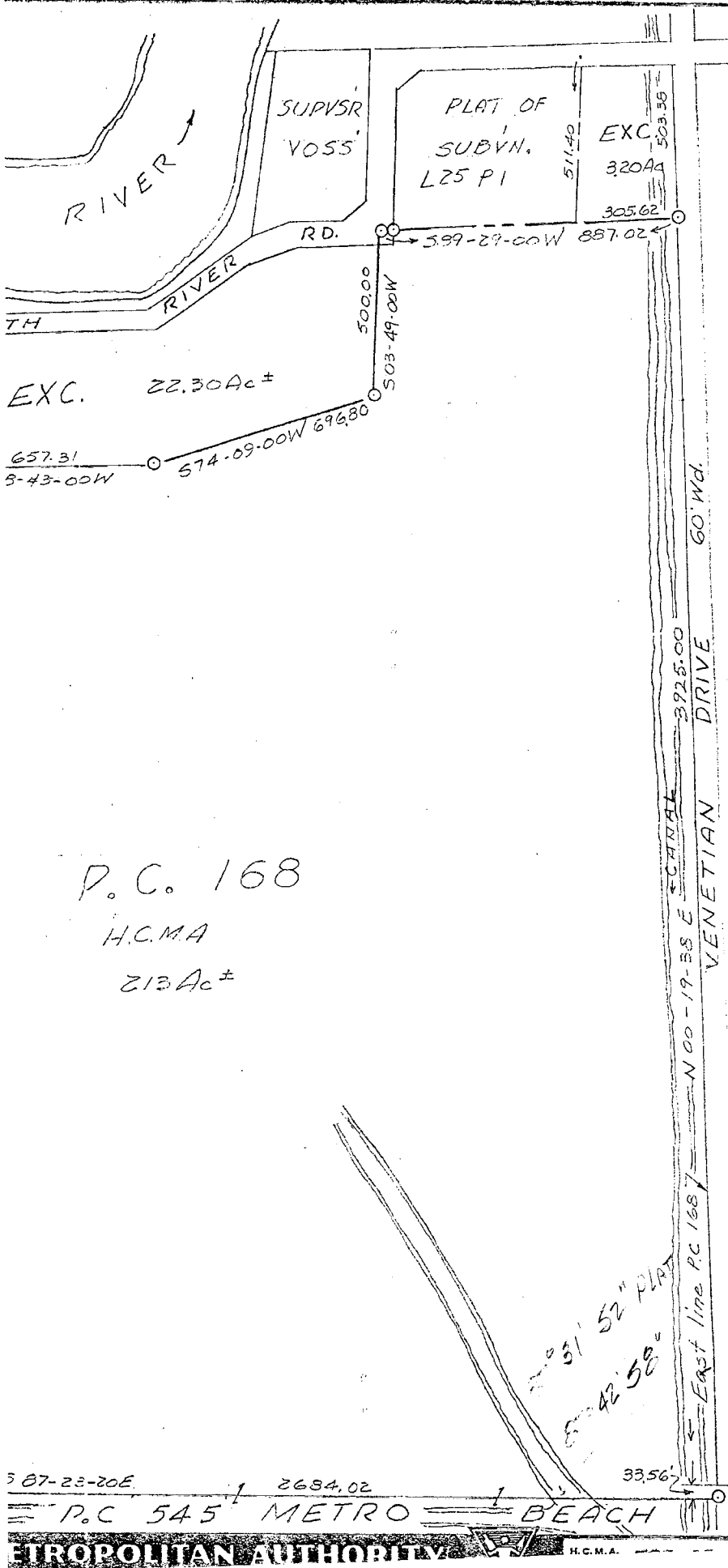


1) 51-30
2) 54-51
3) 51-27

1) 51-30 SET ACROSS TO BE
MARKED WITH 2" DIA. IRON
PIPE. FOUND POINTS. THE EAST
BOUNDARY IS TO BE MARKED
WITH 2" DIA. IRON PIPE. FOUND
POINTS. THE WEST BOUNDARY IS
TO BE MARKED WITH 2"
DIA. IRON PIPE. FOUND
POINTS. THE SOUTH BOUNDARY IS TO
BE MARKED WITH 2" DIA. IRON
PIPE. FOUND POINTS. FOUND
POINTS. FOUND POINTS.
5 P.M. 2/2/75

Bearing	Distance	North	South
S 87° 3' 1" E	45.00	---	100
N 0°-00'-00" W	100.00	35.00	---
S 00°-00'-00" W	100.00	---	40
S 70°-18'-18" W	100.00	---	19
N 00°-12'-12" W	100.00	14.68	---
N 00°-35'-12" W	100.00	3.66	---
S 00°-03'-00" E	100.00	---	10
S 00°-00'-00" W	100.00	---	24
		4865.4	43
			40.67

(5)



P.C. 168
 H.C.M.A.
 213Ac ±

"ST. CLAIR... HAVEN"
 SUB. " L 12 P 17-19



Scale: 1" = 300'

SKETCH OF PARCEL #16
 "VERSHAVE PARCE
 TZN, R14E, HARRISON
 TWP, MACOMB CO, MI.

(5)