

INDEX

NORTHWEST CORNER P.C. 168 OTHER CODE: PC-020 HARRISON TOWNSHIP, T2N, R14E

SECTION 1:

1. Index
2. Before Pictures of Point and in each cardinal direction
3. After Pictures of Point

SECTION 2:

1. LCRC
2. Surveyor's Dossier Report
3. Sketch

SECTION 3:

1. Original Private Claim Notes (2 pages)
2. Field Notes (1 page)
3. 1819 Map of Harrison Township from GLO (1 page)
4. Map of Harrison Township (1 page)
5. 1916 Map of Harrison Township (1 page)
6. 2006 Map of Harrison Township (1 page)
9. Harrison Township Composite Map (1 page)

SECTION 4:

- | | | |
|---|------------------|-----------------------|
| 1. Claud Postiff | Sketch of Survey | L.249, P.303 (1 page) |
| 2. Huron Metro Authority | Field Notes | Not recorded |
| 3. Riverside-Bay Gardens Subdivision | Plat | L.3, P.23, (1 page) |
| 4. Legal Description of Parcel 17-12-16-405-040 | | Tax Description |

LAND CORNER RECORDATION CERTIFICATE
Filing Requirement of Act 74, Mich. P.A. 1970

For corners in

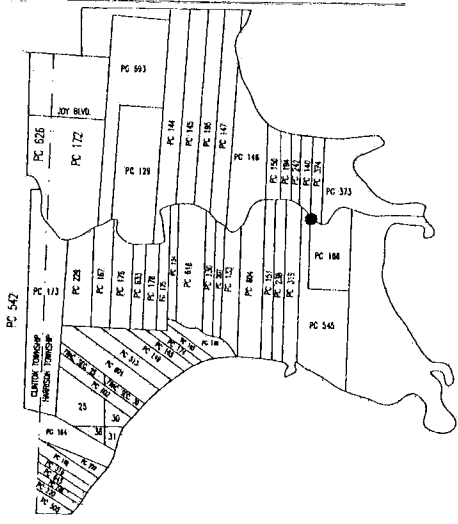
<u>MACOMB</u> (County)	Located In: Harrison Township	Corner Code #
1. Public Land Survey	T <u>2N</u> R <u>14E</u>	<u>PC-020</u>
	T _____ R _____	_____
	T _____ R _____	_____
	T _____ R _____	_____
2. Property Controlling in Section	S _____ T _____	_____
	S _____ T _____	_____
3. Miscellaneous Property in Section	S _____ T _____	_____
	S _____ T _____	_____

1219981
 LIBER 20966 PAGE 202
 General Index Date 11/02/2011 08:25:49 A.M.
 MACOMB COUNTY, MI SEAL
 CARNELLA SABAUGH, REGISTER OF DEEDS

Register of Deeds Stamp & File Number

4. Lot No. _____, Recorded Plat _____
 5. Private Claims Northwest Corner of Private Claim 168

I, ROBERT R. DROUILLARD, JR., in a field survey on June 16, 2011, do hereby state that under requirements of P.A. 74, Michigan P.A. of 1970, the corner points mentioned in lines 1 and 2 above were in conformance with regulations and rules therefore as required in the current manual of survey instructions of the United States Department of the Interior, Bureau of Land Management or by a decree of a Court of Law and/or that the corner points mentioned in lines 3, 4 and 5 above were in conformance with the rules of the Michigan Board of Land Surveyors or by a Decree of a Court of Law; re-established, monumented, recovered, found as expressed below:



NOTE: Not more than 2 corners, all in the same town and range, may be recorded on this certificate.

A. Description of original monument and accessories and/or subsequent restoration:

- *Post set by Aaron Greeley according to Private Claim Notes, not found*
- 1. 1810 Private claim notes Aaron Greeley
- 2. 1916 Riverside -Bay Gardens Subdivision L.3, P.23
- 3. 1926 Sketch of Survey Claud Postiff L.249, P.303
- 4. Survey Notes Huron Metro Authority
- 5. Legal Description of Parcel # 17-12-16-405-04

B. Description of corner evidence found and/or method applied in restoring or reestablishing corner:

Original corner falls within the Clinton River waterway therefore no corner found; I established the location of the corner using evidence found in the above referenced plat, sketch of survey, survey notes and legal description.

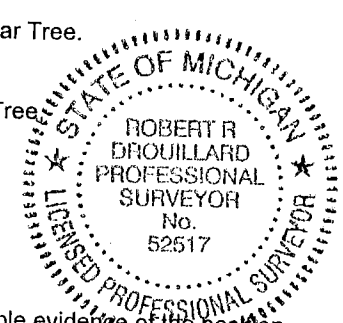
CONTROLLING CORNER FOR NORTHWEST CORNER PC 168 (PC-020) to the SOUTHWEST CORNER OF PC 168 (PC-023)
 4092.00' (62 Chains Private Claim Notes)
 3970.47' (measured Drouillard #52517 2011) to controlling monument set on South Bank of the Clinton River

C. Description of monument for corner and accessories established to perpetuate locating the position of the corner:

PC-020 I Replaced 1/2" iron and cap with a reference monument which falls on top center of a 12 foot wide by 3 foot high earth berm, 8 feet South of the edge of the Clinton River and 25 feet North of the centerline of South Clinton River Road. The reference monument corner is a 4" diameter concrete monument, 36" long with a 1/2" iron rod having a 2" diameter aluminum cap stamped "Macomb County Monument, MI Act #345, #52517, "REF. MON. PC-020".

Witnesses:

- | | | |
|-------|---------|---|
| S45°E | 162.44' | Set nail and Macomb County Witness Tag in S.W. face of 24" Poplar Tree. |
| S05°E | 278.20' | Set nail and Macomb County Witness Tag in W. face of utility pole. |
| S25°W | 49.44' | To top center of fire hydrant. |
| N80°W | 167.31' | Set nail and Macomb County Witness Tag in S. face of 8" Sumac Tree. |



The selected location is accepted by me and is generally accepted by Professional Surveyors as the best available evidence of the position of the original corner.

Signed by Robert R. Drouillard
 Surveyor's Michigan License No. 52517

Date OCT. 12, 2011

FORM APPROVED BY MICHIGAN STATE BOARD OF PROFESSIONAL SURVEYORS, JAN. 28, 1971
 REVISED MAY 14, 1975
 REVISED JAN., 1983
 REVISED OCT., 1995

ACCEPTED BY THE MACOMB COUNTY SURVEY PEER GROUP AS THE OFFICIAL CORNER UNDER MICHIGAN PUBLIC ACT 345 OF 1990 AT A MEETING HELD ON 8-23-2011
Martin C. Dunn
 MARTIN C. DUNN, P.S. CHAIRMAN

**DOSSIER
NORTHWEST CORNER P.C. 168
OTHER CODE: PC-020
HARRISON TOWNSHIP,
T2N, R14E**

PRIVATE CLAIM HISTORY:

Private claim survey performed by Aaron Greeley on July 18, 1810. Commencing at a post standing on the border of River Huron between this tract and unconceded land thence south seventy chains forty eight links to a post thence west forty chains 74 links to a post thence North 62 chains to a post standing on the border of River Huron between this tract and a tract confirmed to Joseph Campeau thence along the border of said river down stream south forty six degrees east seven chains thirty links thence east eight chains fifty links, thence north twenty nine degrees east thirteen chains, thence north seventy six degrees east 9 chain thence east eleven chains ninety five links to the place of beginning, containing three hundred and ten acres thirty one hundredths of an acre. Description No. 168, confirmed to Louis Campeau.

EXISTING CONDITIONS:

No physical evidence of original post found at above described location. The missing corner was established using found evidence from a Sketch of Survey for P.C. 545, preformed by Claud Postiff and recored in liber 249, page 303 and from evidence found in "Riverside-Bay Gardens Subdivision" Plat as recorded in liber 3 of plats, page 23, Macomb County Records, and by survey provided by the Huron-Clinton Metropolitan Authority, also legal description of parcel number 17-12-16-405-040.

RECORDED & UNRECORDED SURVEYS, & FIELD NOTES:

- | | | |
|---|--|-----------------------|
| 1. Aaron Greeley | Copy of Original Survey | Post sighted in notes |
| 2. Claud Postiff | Sketch of Survey
(reference L.249, P.303) | No Corner Information |
| 3. Huron Metro Authority | Field Notes | No Corner Information |
| 4. Riverside-Bay Gardens Subdivision | Plat | L.3, P.23, (1 page) |
| 5. Legal Description of Parcel 17-12-16-405-040 | | Tax Description |

FIELD MEASUREMENTS BETWEEN CORNERS:

CONTROLLING CORNER FOR NORTHWEST CORNER PC 168 (PC-020) TO SOUTHWEST CORNER PC 168 (PC-023)
4092.00' (62 Chains Private Claim Notes)
3970.47' (measured Drouillard #52517 2011) to controlling monument set on South Bank of the Clinton River

RECOMMENDATIONS:

Replace ½" iron and cap with a controlling 4" diameter concrete monument, 36" long with a ½" iron rod having a 2" diameter aluminum cap stamped "Macomb County Monument, MI Act #345, #52517, "PC-020".

WITNESSES:

- | | | |
|-------|---------|---|
| S45°E | 162.44' | Set nail and Macomb County Witness tag in S.W. face of 24" Poplar Tree. |
| S05°E | 278.20' | Set nail and Macomb County Witness tag in W. face of utility pole. |
| S25°W | 49.44' | To top center of fire hydrant. |
| N80°W | 167.31' | Set nail and Macomb County Witness tag in S. face of 8" Sumac Tree. |

NORTH LINE OF PRIVATE CLAIM 168

CORNER FALLS IN RIVER

CLINTON RIVER N.E. CORNER OF PRIVATE CLAIM 168
11 CHAINS 95 LINKS (P.C. NOTES) SET MARKER

CORNER FALLS IN RIVER

9 CHAINS (P.C. NOTES)
N76°00'00"E
594.00'

N90°00'00"E
788.94'(C) 788.70'(R)

GLOUCESTER-ON-THE-CLINTON SUBDIVISION

N.W. CORNER OF PRIVATE CLAIM 168
FALLS IN RIVER

7 CHAINS 30 LINKS (P.C. NOTES)
S46°00'00"E
481.80'

CORNER FALLS IN RIVER

13 CHAINS (P.C. NOTES)
N23°00'00"E
538.00'

9 CHAINS (P.C. NOTES)
N90°00'00"E
561.00'

CLINTON RIVER

SOUTH RIVER DRIVE

CONTROL POINT

RIVERSIDE-BAY GARDENS SUBDIVISION

RITA LOZON
PARCEL
17-12-16-405-040

NORTH 3970.47' TO CONTROL MONUMENT JUNE 2011 (LEHNER ASSOC.)
62 CHAINS (4092.00' P.C. NOTES)

WEST LINE OF PRIVATE CLAIM 168

PRIVATE CLAIM 168

EAST LINE OF PRIVATE CLAIM 168

70 CHAINS 48 LINKS (4651.68' P.C. NOTES)
4724.99' (ST. CLAIR HAVEN PLAT)
SOUTH 4724.99' R&S JUNE 2011 (LEHNER ASSOC.)

VENETIAN DRIVE 60 FEET WIDE

ST. CLAIR HAVEN SUBDIVISION

SOUTH LINE OF PRIVATE CLAIM 168

40 CHAINS 74 LINKS (2688.84' P.C. NOTES)
2684.02' (HURON METROPOLITAN AUTHORITY NOTES)
WEST 2684.72'(M) JUNE 2011 (LEHNER ASSOC.)

FALLS IN RIVER

S.W. CORNER OF PRIVATE CLAIM 168

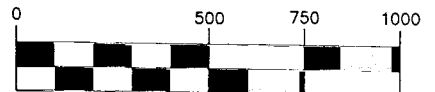
BLACK RIVER

SET MONUMENT 1
S.E. CORNER OF PRIVATE CLAIM 168

CONTROL POINT

CONTROL POINT

ST. CLAIR HAVEN No. 1 (VACATED)
HURON-CLINTON METROPOLITAN AUTHORITY
"HURON METRO BEACH"



(IN FEET)

1 inch = 500 ft.

N^o 407.

South Side of River Huron.

Description - N^o 168 Confirmed to Louis Campeau, Commencing at a post standing on the border of River Huron between this tract and a tract of unconceded land thence South Seventy chains forty eight links, to a post thence west forty chains Seventy four links, to a post thence north fifty two chains, to a post standing on the border of River Huron between this tract and a tract Confirmed to Joseph Campeau, thence along the border of said River down stream - south forty six degrees East seven chains thirty links, thence East eight chains fifty links thence north twenty nine degrees East thirteen chains, thence north seventy six degrees East nine chains, thence East Eleven chains ninety five links, to the place of beginning containing three hundred and ten acres thirty one hundredths of an acre.

Detroit July 18. 1810

168

①

No. 407

No. 168 Confirmed to
Louis Campeau

SOUTH SIDE OF RIVER HURON

Description No. 168 Confirmed to Louis Campeau commencing at a post standing on the border of River Huron between this tract and unconceded land thence south seventy chains forty eight links to a post thence west forty chains seventy four links to a post thence north sixty two chains to a post standing on the border of River Huron between this tract and a tract confirmed to Joseph Campeau thence along the border of said river down stream south forty six degrees east seven chains thirty links thence east eight chains fifty links, thence north twenty nine degrees east thirteen chains, thence north seventy six degrees east nine chains, thence east eleven chains ninety five links to the place of beginning, containing three hundred and ten acres thirty one hundredths of an acre.

Detroit July 18, 1810

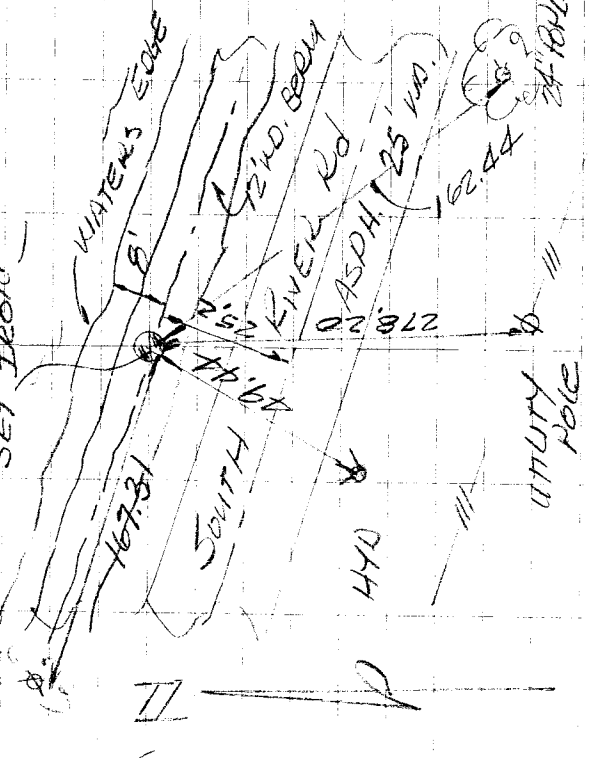
Aaron Greeley Surveyor
of private claims

6-16-2011

R5 R5

N.W. COR. P.C. 168
#20

CLINTON RIVER
8" SUMMACK
SET IRON



SET 1/2" IRON & CAP

SET IRON FALLS ON TOP CENTER OF A 12W. 3' HIGH EARTH BERM, 8 FT FROM WATERS EDGE & 25.2 FT NORTH OF THE E OF SOUTH RIVER RD.

NORTHWEST CORNER OF
P.C. 168, HARRISON TWP.
MADONB CO.

WITNESS

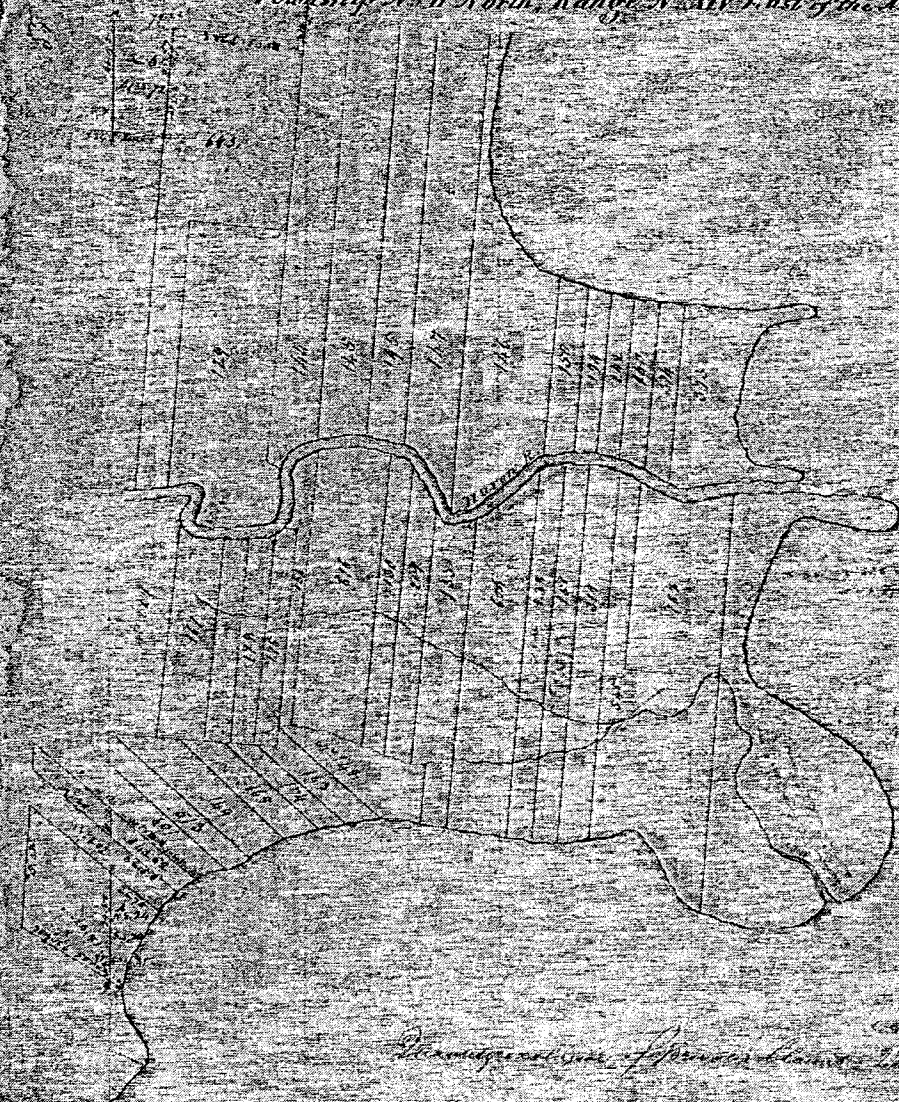
SET 1/2" IRON NAILS & MADONB
CO. WITNESS TAGS.

S. 45° E. 162.44 FT. SET NAIL
& TAG IN S.W. FACE OF
24" ASPHALT.

S. 5° E. 278.20 FT. SET NAIL
& TAG IN WEST FACE OF
UTILITY POLE

S. 25° W. 49.44 FT. TOP
CENTER OF A FIRE HYD.
N. 80° W. 167.31 FT. SET NAIL
& TAG IN SOUTH FACE OF
8" SUMMACK.

Township N^o 11 North, Range N^o 11 West of the 11th Meridian (Mich. Sta.)



1
2
3
4
5
6
7
8
9
10
11
12
13
14
15
16
17
18
19
20
21
22
23
24
25
26
27
28
29
30
31
32
33
34
35
36
37
38
39
40
41
42
43
44
45
46
47
48
49
50
51
52
53
54
55
56
57
58
59
60
61
62
63
64
65
66
67
68
69
70
71
72
73
74
75
76
77
78
79
80
81
82
83
84
85
86
87
88
89
90
91
92
93
94
95
96
97
98
99
100

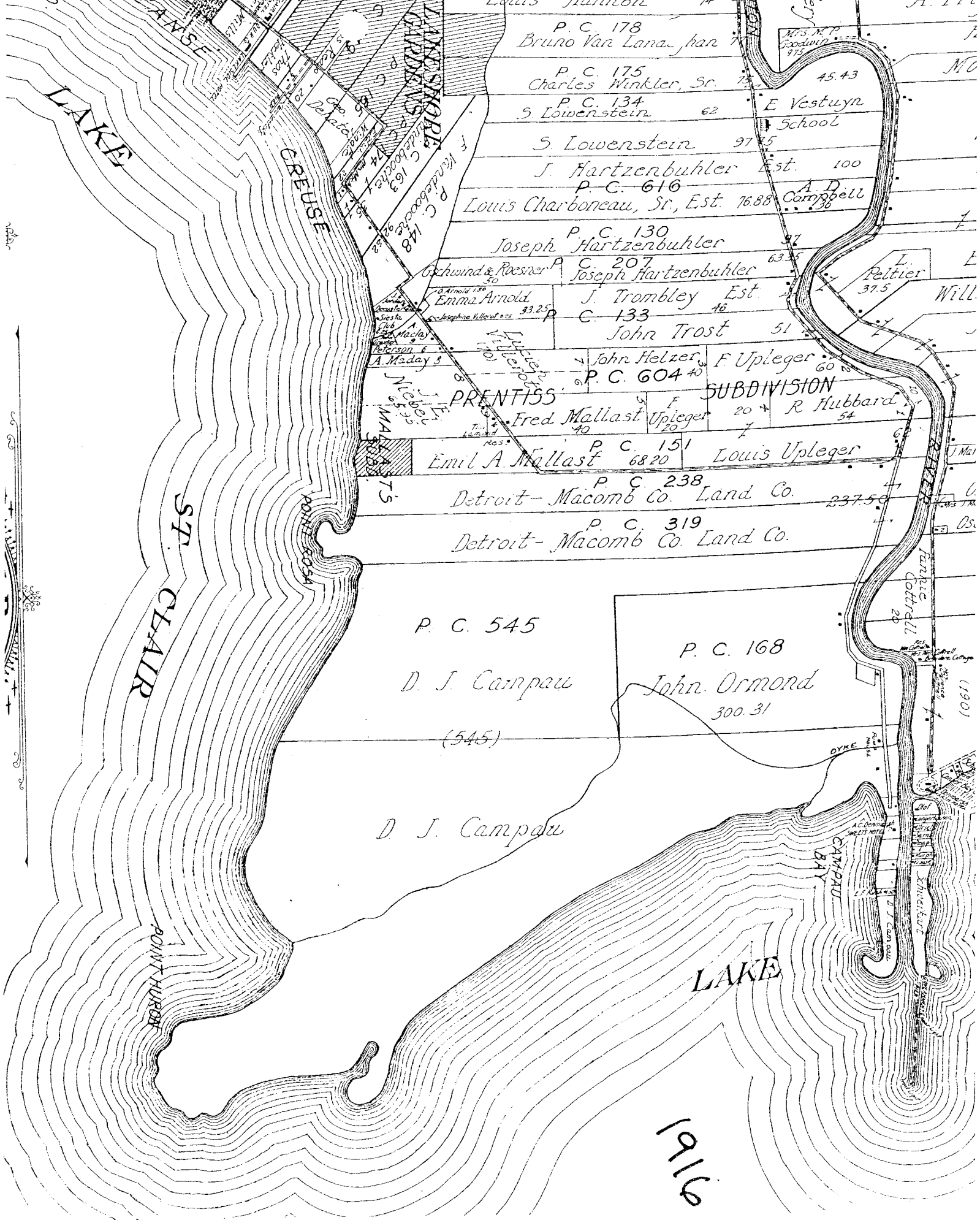
Handwritten text, possibly a name or title, in cursive script.

Handwritten text, possibly a name or title, in cursive script.

Handwritten text, possibly a name or title, in cursive script.

Handwritten text, possibly a name or title, in cursive script.

1850



Louis Hannon 74
 P. C. 178
 Bruno Van Lana, Jan 74
 P. C. 175
 Charles Winkler, Sr. 74
 P. C. 134
 S. Lowenstein 62
 E. Vestuyn
 School
 S. Lowenstein 97.5
 J. Hartzenbuhler Est. 100
 P. C. 616
 Louis Charboneau, Sr., Est. 76.88
 A. D. Campbell
 P. C. 130
 Joseph Hartzenbuhler 97
 P. C. 207
 Joseph Hartzenbuhler 63.5
 L. Peltier
 37.5
 Will.
 J. Arnold 138
 Emma Arnold
 P. C. 133
 J. Trombley Est. 46
 John Trost 51
 John Helzer
 P. C. 604 40
 F. Upleger 60
 Fred Mallast Upleger 20
 R. Hubbard 54
 P. C. 151
 Emil A. Mallast 68.20
 Louis Upleger
 P. C. 238
 Detroit-Macomb Co. Land Co. 237.50
 P. C. 319
 Detroit-Macomb Co. Land Co.

P. C. 545

D. J. Campau

(545)

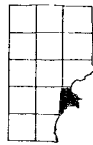
D. J. Campau

P. C. 168

John Ormond

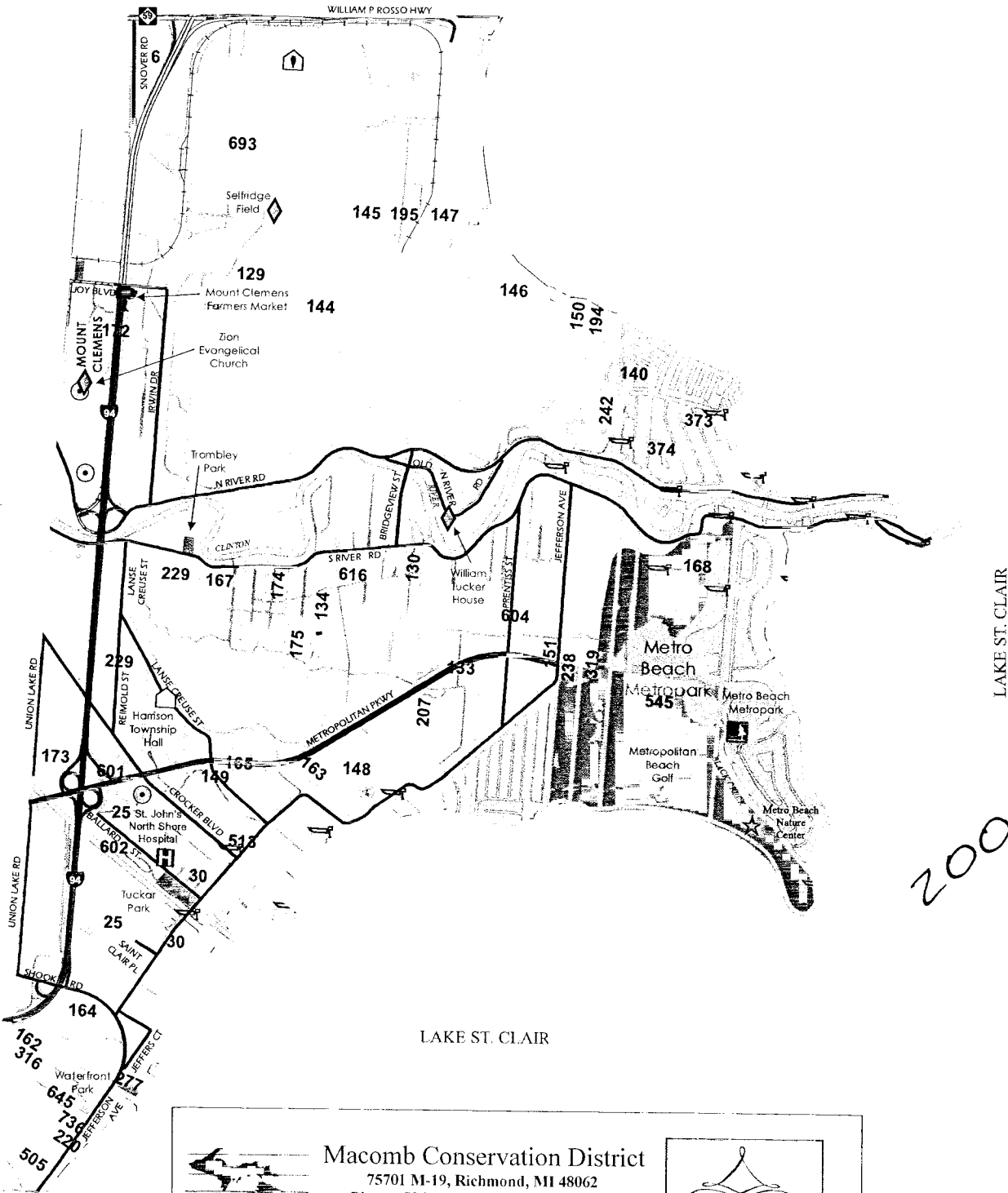
300.31

1916




See CHESTERFIELD Page 31


See CLINTON Page 23



2006



Macomb Conservation District
 75701 M-19, Richmond, MI 48062
 Phone: 586-727-2666 Fax: 586-727-2621
 E-mail: macombcd@klondyke.net
 Website: www.macombcd.com



*Celebrating
 55 Years of
 Managing
 Macomb County's
 Natural Resources*

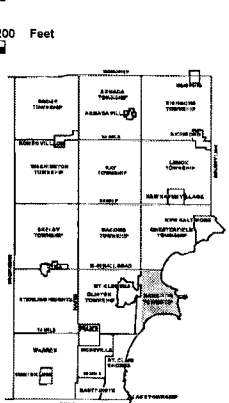
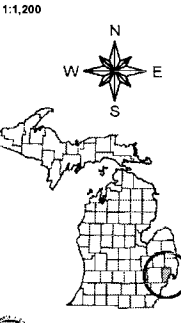
Assistance available for :
 Tree Sales Forestry Native Plants
 Conservation Education

N.W. Coe P.C. 168

20



Date of Photography: April 2004
100 50 0 100 200 Feet



HARRISON TWP SHEET INDEX

12-198	12-199	12-200	12-201	12-202	12-203	12-204	12-205	12-206	12-207	12-208	12-209	12-210	12-211	12-212	12-213	12-214	12-215	12-216	12-217	12-218	12-219	12-220	12-221	12-222	12-223	12-224	12-225	12-226	12-227	12-228	12-229	12-230	12-231	12-232	12-233	12-234	12-235	12-236	12-237	12-238	12-239	12-240	12-241	12-242	12-243	12-244	12-245	12-246	12-247	12-248	12-249	12-250	12-251	12-252	12-253	12-254	12-255	12-256	12-257	12-258	12-259	12-260	12-261	12-262	12-263	12-264	12-265	12-266	12-267	12-268	12-269	12-270	12-271	12-272	12-273	12-274	12-275	12-276	12-277	12-278	12-279	12-280	12-281	12-282	12-283	12-284	12-285	12-286	12-287	12-288	12-289	12-290	12-291	12-292	12-293	12-294	12-295	12-296	12-297	12-298	12-299	12-300	12-301	12-302	12-303	12-304	12-305	12-306	12-307	12-308	12-309	12-310	12-311	12-312	12-313	12-314	12-315	12-316	12-317	12-318	12-319	12-320	12-321	12-322	12-323	12-324	12-325	12-326	12-327	12-328	12-329	12-330	12-331	12-332	12-333	12-334	12-335	12-336	12-337	12-338	12-339	12-340	12-341	12-342	12-343	12-344	12-345	12-346	12-347	12-348	12-349	12-350	12-351	12-352	12-353	12-354	12-355	12-356	12-357	12-358	12-359	12-360	12-361	12-362	12-363	12-364	12-365	12-366	12-367	12-368	12-369	12-370	12-371	12-372	12-373	12-374	12-375	12-376	12-377	12-378	12-379	12-380	12-381	12-382	12-383	12-384	12-385	12-386	12-387	12-388	12-389	12-390	12-391	12-392	12-393	12-394	12-395	12-396	12-397	12-398	12-399	12-400	12-401	12-402	12-403	12-404	12-405	12-406	12-407	12-408	12-409	12-410	12-411	12-412	12-413	12-414	12-415	12-416	12-417	12-418	12-419	12-420	12-421	12-422	12-423	12-424	12-425	12-426	12-427	12-428	12-429	12-430	12-431	12-432	12-433	12-434	12-435	12-436	12-437	12-438	12-439	12-440	12-441	12-442	12-443	12-444	12-445	12-446	12-447	12-448	12-449	12-450	12-451	12-452	12-453	12-454	12-455	12-456	12-457	12-458	12-459	12-460	12-461	12-462	12-463	12-464	12-465	12-466	12-467	12-468	12-469	12-470	12-471	12-472	12-473	12-474	12-475	12-476	12-477	12-478	12-479	12-480	12-481	12-482	12-483	12-484	12-485	12-486	12-487	12-488	12-489	12-490	12-491	12-492	12-493	12-494	12-495	12-496	12-497	12-498	12-499	12-500
--------	--------	--------	--------	--------	--------	--------	--------	--------	--------	--------	--------	--------	--------	--------	--------	--------	--------	--------	--------	--------	--------	--------	--------	--------	--------	--------	--------	--------	--------	--------	--------	--------	--------	--------	--------	--------	--------	--------	--------	--------	--------	--------	--------	--------	--------	--------	--------	--------	--------	--------	--------	--------	--------	--------	--------	--------	--------	--------	--------	--------	--------	--------	--------	--------	--------	--------	--------	--------	--------	--------	--------	--------	--------	--------	--------	--------	--------	--------	--------	--------	--------	--------	--------	--------	--------	--------	--------	--------	--------	--------	--------	--------	--------	--------	--------	--------	--------	--------	--------	--------	--------	--------	--------	--------	--------	--------	--------	--------	--------	--------	--------	--------	--------	--------	--------	--------	--------	--------	--------	--------	--------	--------	--------	--------	--------	--------	--------	--------	--------	--------	--------	--------	--------	--------	--------	--------	--------	--------	--------	--------	--------	--------	--------	--------	--------	--------	--------	--------	--------	--------	--------	--------	--------	--------	--------	--------	--------	--------	--------	--------	--------	--------	--------	--------	--------	--------	--------	--------	--------	--------	--------	--------	--------	--------	--------	--------	--------	--------	--------	--------	--------	--------	--------	--------	--------	--------	--------	--------	--------	--------	--------	--------	--------	--------	--------	--------	--------	--------	--------	--------	--------	--------	--------	--------	--------	--------	--------	--------	--------	--------	--------	--------	--------	--------	--------	--------	--------	--------	--------	--------	--------	--------	--------	--------	--------	--------	--------	--------	--------	--------	--------	--------	--------	--------	--------	--------	--------	--------	--------	--------	--------	--------	--------	--------	--------	--------	--------	--------	--------	--------	--------	--------	--------	--------	--------	--------	--------	--------	--------	--------	--------	--------	--------	--------	--------	--------	--------	--------	--------	--------	--------	--------	--------	--------	--------	--------	--------	--------	--------	--------	--------	--------	--------	--------	--------	--------	--------	--------	--------	--------	--------	--------	--------	--------	--------	--------	--------	--------	--------	--------	--------	--------

DESCRIPTION OF PERMANENT REAL ESTATE INDEX NUMBER

13-19-302-018

13 - TOWNSHIP NUMBER
19 - RANGE NUMBER
302 - SECTION NUMBER
018 - QUARTER NUMBER

Legend

- Platted Area Boundary Line
- Property Line
- Property Split Line
- Property Combined Line
- Township Boundary Line
- Traverse Line
- Dimension Extent Marks
- Dimension Start Marks

12-16G

HARRISON TWP.
W.1/2 S.E.1/4 SEC.16 T.2N. R.14E.

Source: Macomb County Department of Planning and Economic Development
- 2004 Digital Orthophotography Project - Parcel Conversion Project

Note:
Digital Orthophotography horizontal positioning accuracy is 3 feet. Parcel boundary lines should be considered a graphical representation and not in any way a legal survey or engineering document. In general, the horizontal positioning and length accuracy is within 1/8 inch.

This map is intended for general planning purposes. Site specific evaluation should be verified by field inspection. This is a work in progress and may contain errors and omissions. Please report any potential revisions to (586)469-5295.



GIS MACOMB COUNTY
Planning and Economic
Development Department

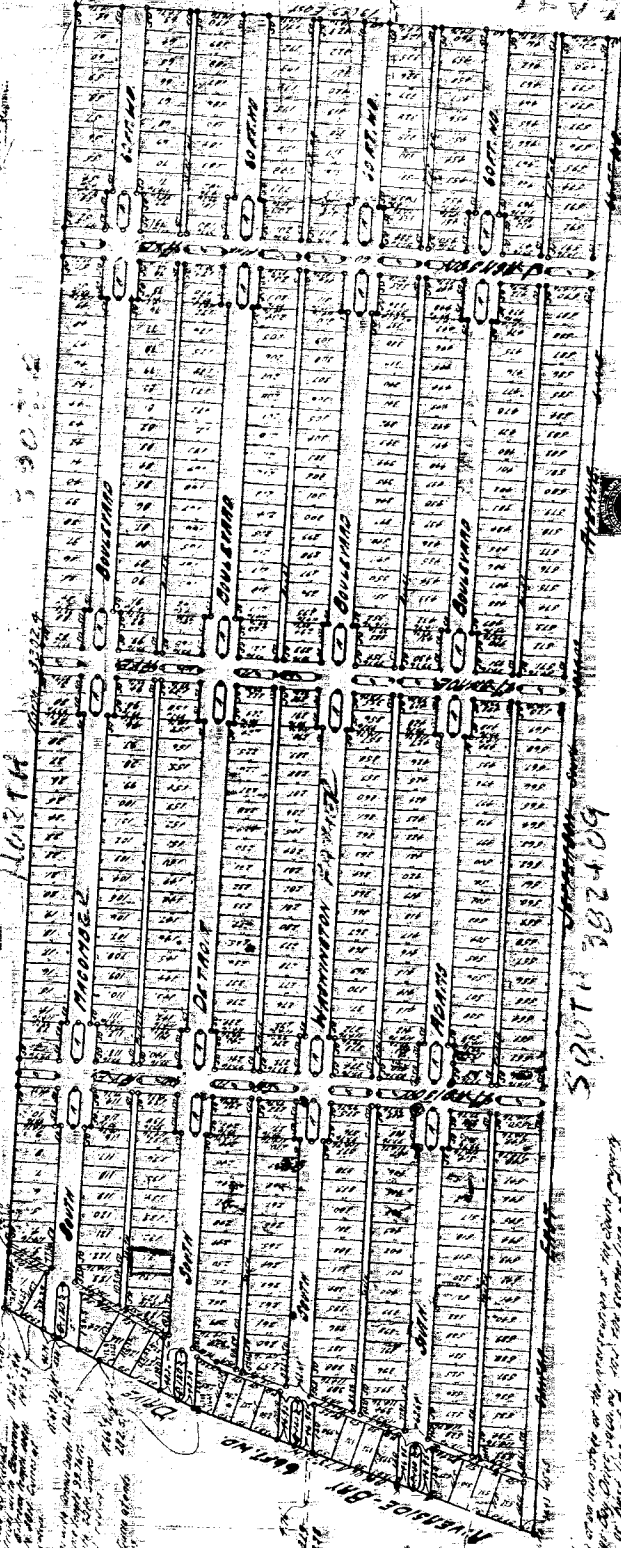
Published: Aug 30, 2005

2

RIVERSIDE-BAY CARDENS SUBDIVISION

OF A PART OF PRIVATE CLAIMS 238 AND 313
HARRISON TWP. MACOMB CO. MICH.
SCALE 1 IN = 200 FT.

All corners given in feet and inches



A-252/19
A-252

5025
5026
5027
5028
5029

5030
5031
5032
5033
5034

5035
5036
5037
5038
5039

5040
5041
5042
5043
5044

5045
5046
5047
5048
5049

5050
5051
5052
5053
5054

5055
5056
5057
5058
5059

5060
5061
5062
5063
5064

5065
5066
5067
5068
5069

5070
5071
5072
5073
5074

5075
5076
5077
5078
5079

5080
5081
5082
5083
5084

5085
5086
5087
5088
5089

5090
5091
5092
5093
5094

5095
5096
5097
5098
5099

5100
5101
5102
5103
5104

5105
5106
5107
5108
5109

5110
5111
5112
5113
5114

5115
5116
5117
5118
5119

5120
5121
5122
5123
5124

5125
5126
5127
5128
5129

5130
5131
5132
5133
5134

5135
5136
5137
5138
5139

5140
5141
5142
5143
5144

5145
5146
5147
5148
5149

5150
5151
5152
5153
5154

5155
5156
5157
5158
5159

5160
5161
5162
5163
5164

5165
5166
5167
5168
5169

5170
5171
5172
5173
5174

5175
5176
5177
5178
5179

5180
5181
5182
5183
5184

5185
5186
5187
5188
5189

5190
5191
5192
5193
5194

5195
5196
5197
5198
5199

5200
5201
5202
5203
5204

5205
5206
5207
5208
5209

5210
5211
5212
5213
5214

5215
5216
5217
5218
5219

5220
5221
5222
5223
5224

5225
5226
5227
5228
5229

5230
5231
5232
5233
5234

5235
5236
5237
5238
5239

5240
5241
5242
5243
5244

5245
5246
5247
5248
5249

5250
5251
5252
5253
5254

5255
5256
5257
5258
5259

5260
5261
5262
5263
5264

5265
5266
5267
5268
5269

5270
5271
5272
5273
5274

5275
5276
5277
5278
5279

5280
5281
5282
5283
5284

5285
5286
5287
5288
5289

5290
5291
5292
5293
5294

5295
5296
5297
5298
5299

5300
5301
5302
5303
5304

5305
5306
5307
5308
5309

5310
5311
5312
5313
5314

5315
5316
5317
5318
5319

5320
5321
5322
5323
5324

5325
5326
5327
5328
5329

5330
5331
5332
5333
5334

5335
5336
5337
5338
5339

5340
5341
5342
5343
5344

5345
5346
5347
5348
5349

5350
5351
5352
5353
5354

5355
5356
5357
5358
5359

5360
5361
5362
5363
5364

5365
5366
5367
5368
5369

5370
5371
5372
5373
5374

5375
5376
5377
5378
5379

5380
5381
5382
5383
5384

5385
5386
5387
5388
5389

5390
5391
5392
5393
5394

5395
5396
5397
5398
5399

5400
5401
5402
5403
5404

5405
5406
5407
5408
5409

5410
5411
5412
5413
5414

5415
5416
5417
5418
5419

5420
5421
5422
5423
5424

5425
5426
5427
5428
5429

5430
5431
5432
5433
5434

5435
5436
5437
5438
5439

5440
5441
5442
5443
5444

5445
5446
5447
5448
5449

5450
5451
5452
5453
5454

5455
5456
5457
5458
5459

5460
5461
5462
5463
5464

5465
5466
5467
5468
5469

5470
5471
5472
5473
5474

5475
5476
5477
5478
5479

5480
5481
5482
5483
5484

5485
5486
5487
5488
5489

5490
5491
5492
5493
5494

5495
5496
5497
5498
5499

5500
5501
5502
5503
5504

5505
5506
5507
5508
5509

5510
5511
5512
5513
5514

5515
5516
5517
5518
5519

5520
5521
5522
5523
5524

5525
5526
5527
5528
5529

5530
5531
5532
5533
5534

5535
5536
5537
5538
5539

5540
5541
5542
5543
5544

5545
5546
5547
5548
5549

5550
5551
5552
5553
5554

5555
5556
5557
5558
5559

5560
5561
5562
5563
5564

5565
5566
5567
5568
5569

5570
5571
5572
5573
5574

5575
5576
5577
5578
5579

5580
5581
5582
5583
5584

5585
5586
5587
5588
5589

5590
5591
5592
5593
5594

5595
5596
5597
5598
5599

5600
5601
5602
5603
5604

5605
5606
5607
5608
5609

5610
5611
5612
5613
5614

5615
5616
5617
5618
5619

5620
5621
5622
5623
5624

5625
5626
5627
5628
5629

5630
5631
5632
5633
5634

5635
5636
5637
5638
5639

5640
5641
5642
5643
5644

5645
5646
5647
5648
5649

5650
5651
5652
5653
5654

5655
5656
5657
5658
5659

5660
5661
5662
5663
5664

5665
5666
5667
5668
5669

5670
5671
5672
5673
5674

5675
5676
5677
5678
5679

5680
5681
5682
5683
5684

5685
5686
5687
5688
5689

5690
5691
5692
5693
5694

5695
5696
5697
5698
5699

5700
5701
5702
5703
5704

5705
5706
5707
5708
5709

5710
5711
5712
5713
5714

5715
5716
5717
5718
5719

5720
5721
5722
5723
5724

5725
5726
5727
5728
5729

5730
5731
5732
5733
5734

5735
5736
5737
5738
5739

5740
5741
5742
5743
5744

5745
5746
5747
5748
5749

5750
5751
5752
5753
5754

5755
5756
5757
5758
5759

5760
5761
5762
5763
5764

5765
5766
5767
5768
5769

5770
5771
5772
5773
5774

5775
5776
5777
5778
5779

5780
5781
5782
5783
5784

5785
5786
5787
5788
5789

5790
5791
5792
5793
5794

5795
5796
5797
5798
5799

5800
5801
5802
5803
5804

5805
5806
5807
5808
5809

5810
5811
5812
5813
5814

5815
5816
5817
5818
5819

5820
5821
5822
5823
5824

5825
5826
5827
5828
5829

5830
5831
5832
5833
5834

5835
5836
5837
5838
5839

5840
5841
5842
5843
5844

5845
5846
5847
5848
5849

5850
5851
5852
5853
5854

5855
5856
5857
5858
5859

5860
5861
5862
5863
5864

5865
5866
5867
5868
5869

5870
5871
5872
5873
5874

5875
5876
5877
5878
5879

5880
5881
5882
5883
5884

5885
5886
5887
5888
5889

5890
5891
5892
5893
5894

5895
5896
5897
5898
5899

5900
5901
5902
5903
5904

5905
5906
5907
5908
5909

5910
5911
5912
5913
5914

5915
5916
5917
5918
5919

5920
5921
5922
5923
5924

5925
5926
5927
5928
5929

5930
5931
5932
5933
5934

5935
5936
5937
5938
5939

5940
5941
5942
5943
5944

5945
5946
5947
5948
5949

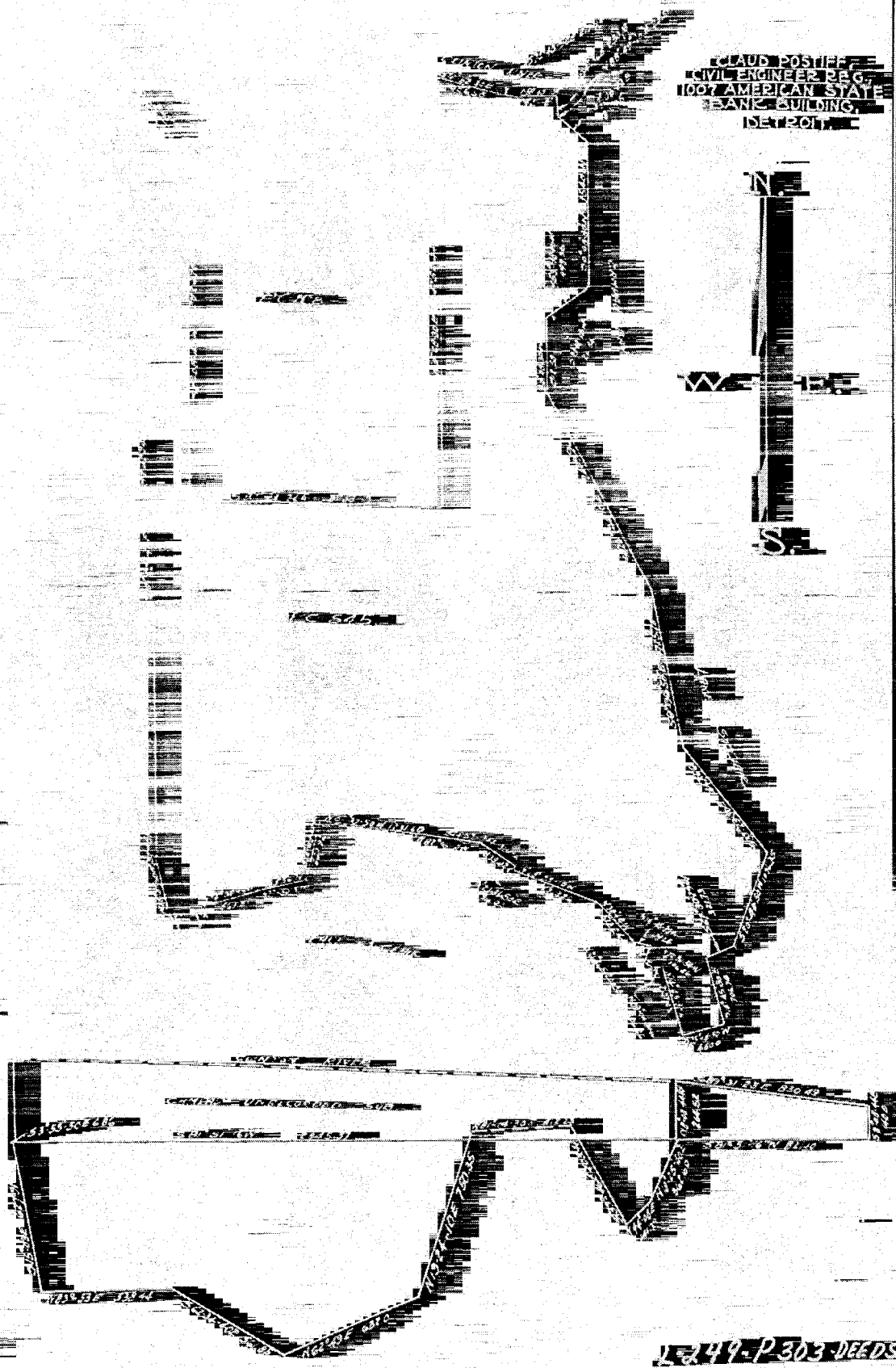
5950
5951
5952
5953
5954

5955
5956
5957
5958
5959

SKETCH OF SURVAY
PRIVATE CLAIM 545
HARRISON TWP, MACOMB CO, MICH

No 500

EDWARD DOSTER
CIVIL ENGINEER REG.
1107 AMERICAN STATE
BANK BUILDING,
DETROIT, MICH



249-303 DEEDS

249-P 303 DEEDS

3

General Property Information

[Back to Non-Printer Friendly Version] [Send To Printer]

Parcel: 17-12-16-405-040 **Data Current As Of:** 9:06 PM 6/14/2011

2011 values are tentative

Property Address [collapse]
HARRISON TOWNSHIP, MI 48045

Owner Information [collapse]	
LOZON, RITA 16482 SARJAY DR CLINTON TOWNSHIP, MI 48035	Unit: 01

Taxpayer Information [collapse]
SEE OWNER INFORMATION

General Information for Tax Year 2011 [collapse]			
Property Class:	42	Assessed Value:	\$136,870
School District:	17 - L'ANSE CREUSE	Taxable Value:	\$490
State Equalized Value:	\$136,870	Map #	0001 0480 01
USER NUM IDX	0	Date of Last Name Chg:	02/28/2009
		Date Filed:	
		Notes:	N/A

Principal Residence Exemption	May 1st	Final
2010	0.0000 %	0.0000 %

Previous Year Info	MBOR Assessed	Final S.E.V.	Final Taxable
2010	\$500	\$500	\$490
2009	\$500	\$500	\$500

Land Information [collapse]			
	Frontage		Depth
Lot 1:	0.00 Ft.		0.00 Ft.
Lot 2:	0.00 Ft.		0.00 Ft.
Lot 3:	0.00 Ft.		0.00 Ft.
Total Frontage:	0.00 Ft.	Average Depth:	0.00 Ft.

Total Acreage:	19.67
Zoning Code:	RA1
Land Value:	\$273,731
Land Improvements:	\$0
Renaissance Zone:	NO
Renaissance Zone Expiration Date:	

Mortgage Code:	
Lot Dimensions/Comments:	

Legal Information for 17-12-16-405-040 [collapse]
--

5

DESCRIBED PROPERTY F251A BEG AT NE COR LOT 1 RIVERSIDE BAY GARDENS SUB; TH DUE N 36.70 FT; TH 254.34 FT ALG A CURVE TO R RAD=1000 FT & L/CH BEARS S50*35'40"E 253.65 FT & S43* 18'30"E 250 FT & 179.55 FT ALG A CURVE TO L RAD=2000 FT & L/CH BEARS S45*52'49"E 179.49 FT ALG C/L S RIVER RD; TH S0*02'E 1497.87 FT ALG E LINE PC 545; TH W 497.13 FT; TH DUE NORTH 1930.48 FT ALG E LINE OF RIVERSIDE BAY GARDENS SUB TO POB; EXC N'LY 33 FT FOR S RIVER RD R/W. 19.382 A EXCL THE W50' OF THE PREVIOUS DESCRIBED PARCEL WHICH LIES ADJ TO LOTS 1,2,3, & N 40' OF LOT 4 ACCORDING TO THE PLAT THEREOF AS RECORDED IN LIBER 3, PAGE 23 OF PLATS, MACOMB COUNTY RECORDS. SPLIT ON 02/28/2009 FROM 17-12-16-405-022;

Land Divison Act Information

[collapse]

Date of Last Split/Combine:	02/28/2009	Number of Splits Left:	0
Date Form Filed:		Unallocated Div.s of Parent:	0
Date Created:	02/28/2009	Unallocated Div.s Transferred:	0
Acreage of Parent:	0.00	Rights Were Transferred?	NO
Split Number:	92	Courtesy Split?	NO
		Parent Parcel:	17-12-16-405-022

Sales Information

0 sale record(s) found.

Sale Date	Sale Price	Instrument	Grantor	Grantee	Terms Of Sale	Liber/Page
-----------	------------	------------	---------	---------	---------------	------------

****Disclaimer:** BS&A Software provides this Web Site as a way for municipalities to display information online and is not responsible for the content or accuracy of the data herein. This data is provided for reference only and WITHOUT WARRANTY of any kind, expressed or inferred. Please contact your local municipality if you believe there are errors in the data.
[Privacy Policy](#)

5