

REC'D. MACOMB CO. AUG 12 2008 4:00 p.m.

REC'D. MACOMB CO. SEP 26 2008 11:00 a.m.



LAND CORNER RECORDATION CERTIFICATE
Filing Requirement of Act 74, Mich. P.A. 1970

For corners in

MACOMB (County) Located In: Harrison Twp. & Clinton Twp. Corner Code # PC-013 Reference Monument

1. Public Land Survey T 02N. R14E. PC-013 Reference Monument
2. Property Controlling in Section S T R Monument
3. Miscellaneous Property in Sec. S T R
4. Lot No. , Recorded Plat
5. Private Claims Reference Monument to the Southwest Corner Private Claim 172 and to the Southeast Corner Private Claim 626. Town 2 North, Range 13 East, Clinton Township @ the border of the Clinton River (a.k.a. River Huron).

I, Steven E. Dunn, in a field survey on January 9, 2008, do hereby certify that under requirements of P.A. 74, Michigan P.A. of 1970, the corner points mentioned in lines 1 and 2 above were in conformance with regulations and rules therefore as required in the current manual of survey instructions of the United States Department of the Interior, Bureau of Land Management or by a decree of a Court of Law and/or that the corner points mentioned in lines 3, 4 and 5 above were in conformance with the rules of the Michigan Board of Land Surveyors or by a Decree of a Court of Law, established, re-established, monumented, re-monumented, recovered, found as expressed below:

NOTE: Not more than 2 corners, all in the same town and range, may be recorded on this certificate.



A. Description of original monument and accessories and/or subsequent restoration:

1810 Butterwood GLO Original survey performed by Aaron Greeley,
1921 N&S PC Line L. 5, P. 32, "Ascot Park Subdivision"

(continued on back)

B. Description of corner evidence found and/or method applied in restoring or reestablishing corner:
PC 013 Reference Monument to the Southwest Corner Private Claim 172 and to the Southeast Corner Private Claim 626, Town 2 North, Range 13 East, Clinton Township @ the border of the Clinton River (a.k.a. Huron River). Found 3/4" steel rod. Did not set the actual corner as using found monumentation and retracing the GLO notes for Private Claims the corner falls 683.38' north of the found 3/4" steel rod and +/- 710' north of the existing top of north bank of the Clinton River (a.k.a. River Huron). I verified the location by comparing field measurements with record measurements.

FIELD MEASUREMENTS AND RECORD MEASUREMENTS (see back):

C. Description of monument for corner and accessories established to perpetuate locating the position of the corner:
PC 013 Reference Monument to the Southwest Corner Private Claim 172 and to the Southeast Corner Private Claim 626, Town 2 North, Range 13 East, Clinton Township @ the border of the Clinton River (a.k.a. River Huron). Found 3/4" steel rod

I replaced the found 3/4" steel rod with a 4" X 36" concrete monument with an aluminum cap stamped "Macomb County Monument Mi Act 345 1990 MCL, 28408, REF MON, PC 013, PC-002"

WITNESSES:

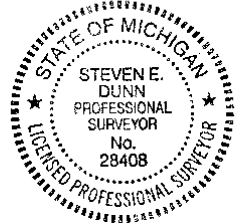
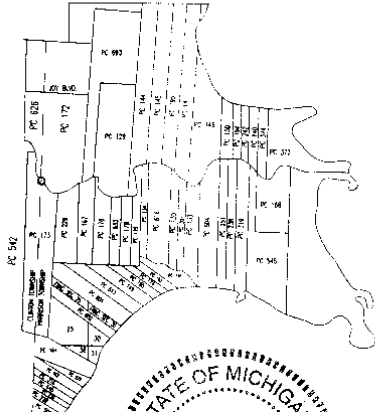
N.14°W. 8.70' Found small Mag nail w/plastic Metco tag in east face of 18" Ash. (8.70'-Record, LCRC and Field Notes).
N.20°E. 22.18' Set Mag nail w/MCR witness tag in west face of 4" Poplar.
S.68°E. 10.31' Set Mag nail w/MCR witness tag in south face of 12" Poplar.
N.82°W. 21.68' Found small Mag nail w/Metco tag on top of 12" stump.
N.84°W. 66.30' Corner of seawall.
S.45°W. 4.00' Set 1/2" steel rod w/Metco Control cap.
S.07°W. +/- 25' Water's edge.

THE SELECTED LOCATION IS ACCEPTED BY ME AND IS GENERALLY ACCEPTED BY PROFESSIONAL SURVEYORS AS THE BEST AVAILABLE EVIDENCE OF THE POSITION OF THE ORIGINAL CORNER.

ACCEPTED BY THE MACOMB COUNTY SURVEY PEER GROUP AS THE OFFICIAL CORNER UNDER MICHIGAN PUBLIC ACT 345 OF 1990 AT A MEETING HELD ON 6-3-08

Signed by Steven E. Dunn, Martin C. Dunn, P.S. CHAIRMAN August 11, 2008
Surveyor's Michigan License No. 28408

8095115 LIBER 19452 PAGE 169 08/15/2008 02:40:43 A.M. MACOMB COUNTY, MI SEAL CARMELLA SABAUGH, REGISTER OF DEEDS
8110079 LIBER 19502 PAGE 765 09/26/2008 02:47:24 P.M. MACOMB COUNTY, MI SEAL CARMELLA SABAUGH, REGISTER OF DEEDS



* DOCUMENT BEING RECORDED TO CORRECT OTHER CODE FROM PC 002 TO PC 003.

For corners in

MACOMB

(County)

Located In:
Harrison Twp.
& Clinton Twp.

Corner Code #

1. Public Land Survey

T 02N, R 14E,

PC-013

T ___ R ___

Reference

2. Property Controlling

S ___ T ___ R ___

Monument

5. Private Claims Reference Monument to the Southwest Corner Private Claim 172 and to the Southeast Corner Private Claim 626, Town 2 North, Range 13 East, Clinton Township @ the border of the Clinton River (a.k.a. River Huron).

A. Description of original monument and accessories and/or subsequent restoration:

- 1928 N&S PC Line L. 13, P. 40, Assessors Plat No. 24
- 1934 N&S PC Line L. 16, P. 23, Supervisors Plat No. 5
- 1968 N&S PC Line L. 59, P. 7 & 8, Supervisor's Plat No. 19
- 1972 N&S PC Line Certificate of Survey, unrecorded, Charles G. Melching, #14767, corner not located on survey.
- 1974 N&S PC Line Certificate of Survey, unrecorded, William E. Soderberg, #17635, corner not located on survey.
- 1990 NW PC Cor L. 92, P. 47-50, East Pointe Industrial Subdivision
- 1996 3/4" iron rod Field Notes, Metco Services, Found 1 matching witness tie
- 1996 3/4" iron rod L. 7245, P. 444, LCRC, Martin C. Dunn, #30081, Found 1 matching witness tie
- 2004 N Line of PC 172 L. 157, P. 16 & 17, Amended Plat of Lot 9 of East Pointe Industrial Subdivision

B. Description of corner evidence found and/or method applied in restoring or reestablishing corner:

PC 013 Reference Monument to the Southwest Corner Private Claim 172 and to the Southeast Corner Private Claim 626, Town 2 North, Range 13 East, Clinton Township @ the border of the Clinton River (a.k.a. River Huron). Found 3/4" steel rod.

FIELD MEASUREMENTS AND RECORD MEASUREMENTS:

PC 013 to PC 012 (being the northwest corner of Private Claim 172):

10,041.90' - Record, GLO (152 chains, 15 links).

10,725.28' - Field. 2008 Remon.

PC 013 to found 3/4" steel rod at the intersection of the north right-of-way line of North River Road and the line common with PC 172 and PC 626:

2114.58' - Field. 2008 Remon.

LCRC, L. 7245, P. 444 - Martin C. Dunn, #30081:

Found 3/4" iron rod.

N. 15°W. 8.70' Set PK nail w/tag in east face of a 20" Ash. (8.70'-Field, 2008 Remon).

Field Notes, Metco Services - Martin C. Dunn, #30081

Found 3/4" iron rod.

Az. 345° 8.70' Set PK nail w/tag in east face of a 20" Ash. (8.70'-Field, 2008 Remon).

REC'D. MACOMB CO. AUG 12 2008
REC'D. MACOMB CO. SEP 26 2008

4000.00
11/20/08



LAND CORNER RECORDATION CERTIFICATE
Filing Requirement of Act 74, Mich. P.A. 1970

For corners in

MACOMB
(County)

Located In:
Clinton Twp.
& Harrison Twp.

Corner Code #

MCR
003

8095125
LIBER 19452 PAGE 133
08/15/2008 08:41:24 A.M.
MACOMB COUNTY, MI SEAL
CARMELLA SABAUGH, REGISTER OF DEEDS

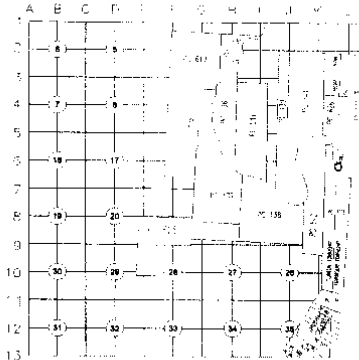
- 1. Public Land Survey T 02N, R13E, PC-002
T R Reference
- 2. Property Controlling S T R
in Section S T R Monument
- 3. Miscellaneous S T R
Property in Sec. S T R

8110080
LIBER 19502 PAGE 767
09/26/2008 02:47:47 P.M.
MACOMB COUNTY, MI SEAL
CARMELLA SABAUGH, REGISTER OF DEEDS

4. Lot No. _____, Recorded Plat _____
5. Private Claims Reference Monument to the Southeast Corner Private Claim 626 and to the Southwest Corner Private Claim 172, Town 2 North, Range 14 East, Harrison Township @ the border of the Clinton River (a.k.a. River Huron).

I, Steven E. Dunn, in a field survey on January 9, 2008, do hereby certify that under requirements of P.A. 74, Michigan P.A. of 1970, the corner points mentioned in lines 1 and 2 above were in conformance with regulations and rules therefore as required in the current manual of survey instructions of the United States Department of the Interior, Bureau of Land Management or by a decree of a Court of Law and /or that the corner points mentioned in lines 3, 4 and 5 above were in conformance with the rules of the Michigan Board of Land Surveyors or by a Decree of a Court of Law, established, re-established, monumented, re-monumented, recovered, found as expressed below:

NOTE: Not more than 2 corners, all in the same town and range, may be recorded on this certificate.



A. Description of original monument and accessories and/or subsequent restoration:

- 1810 Butterwood Tree GLO Original survey performed by Aaron Greeley,
- 1921 N&S PC Line L. 5, P. 32, "Ascot Park Subdivision"
- 1928 N&S PC Line L. 13, P. 40, Assessors Plat No. 24
- 1934 N&S PC Line L. 16, P. 23, Supervisors Plat No. 5
- 1968 N&S PC Line L. 59, P. 7 & 8, Supervisor's Plat No. 19

(continued on back)



B. Description of corner evidence found and/or method applied in restoring or reestablishing corner:
PC-002 Reference Monument to the Southeast Corner Private Claim 626 and to the Southwest Corner Private Claim 172, Town 2 North, Range 14 East, Harrison Township @ the border of the Clinton River (a.k.a. River Huron). Found 3/4" steel rod. Did not set the actual corner as using found monumentation and retracing the GLO notes for Private Claims the corner falls 683.38' north of the found 3/4" steel rod and ± 710' north of the existing top of north bank of the Clinton River (a.k.a. River Huron). I verified the location by comparing field measurements with record measurements.

FIELD MEASUREMENTS AND RECORD MEASUREMENTS (see back):

C. Description of monument for corner and accessories established to perpetuate locating the position of the corner:
PC-002 Reference Monument to the Southeast Corner Private Claim 626 and to the Southwest Corner Private Claim 172, Town 2 North, Range 14 East, Harrison Township @ the border of the Clinton River (a.k.a. River Huron). Found 3/4" steel rod.

I replaced the found 3/4" steel rod with a 4" X 36" concrete monument with an aluminum cap stamped "Macomb County Monument Mi Act 345 1990 MCL, 28408, REF MON, PC 013, PC-002"

WITNESSES:

- N.14°W. 8.70' Found small Mag nail w/plastic Metco tag in east face of 18" Ash. (8.70'-Record, LCRC and Field Notes).
- N.20°E. 22.18' Set Mag nail w/MCR witness tag in west face of 4" tree.
- S.68°E. 10.31' Set Mag nail w/MCR witness tag in south face of 12" tree.
- N.82°W. 21.68' Found small Mag nail w/Metco tag on top of 12" stump.
- N.84°W. 66.30' Corner of seawall.
- S.45°W. 4.00' Set 1/2" steel rod w/Metco Control Cap.
- S.07°W. ± 25' Water's edge.

THE SELECTED LOCATION IS ACCEPTED BY ME AND IS GENERALLY ACCEPTED BY PROFESSIONAL SURVEYORS AS THE BEST AVAILABLE EVIDENCE OF THE POSITION OF THE ORIGINAL CORNER.

ACCEPTED BY THE MACOMB COUNTY SURVEY PEER GROUP AS THE OFFICIAL CORNER UNDER MICHIGAN PUBLIC ACT 345 OF 1990 AT A MEETING HELD ON 6-3-08
Martin C. Dunn
MARTIN C. DUNN, P.S. CHAIRMAN

Signed by Steven E. Dunn Date August 8, 2008
Surveyor's Michigan License No. 28408

P.F. DOCUMENT BEING RECORDED TO CORRECT OTHER CASE PC002 TO PC003 AND PC001 TO PC004.

MACOMB COUNTY
INDEX OF SUPPORTING DOCUMENTATION FOR

Town 2 North, Range 14 East

Harrison Township and Clinton Township

Corner Code: PC-013 Reference Monument, Southwest corner Private Claim 172 common with the Southeast corner of Private Claim 626, Town 2 North, Range 13 East, @ the northerly border of the Clinton River.

Section One:

- A. Index
- B. Pictures
 - 1. Before Pictures (3) – January 7, 2008
 - 2. After Picture – August 7, 2008

Section Two:

- A. Preliminary LCRC
- B. Surveyor's Report – April 28, 2008

Section Three:

- A. Field Notes (2)
 - 1. January 7, 2008
 - 2. July 24, 1996 – Metco Services
- B. Legal Description – N/A
- C. Tax Description – N/A
- D. Sketches – Field Measurement and Record Measurement Comparisons April 28, 2008
- E. Maps (6) – Macomb County Atlas
Harrison Township – 1875, 1895 and 1916
Clinton Township – 1875, 1895 and 1916
- F. Macomb County Composite Maps (7) – Date of photography April, 2004
11-01H, 11-12D & H, 11-13C, D, F and G

Section Four:

- A. Copies of original government notes (5)
 - Private Claim 172 (3) – Butterwood. Original Survey performed by Aaron Greeley
July 18, 1810
 - Private Claim 626 (2) – Butterwood. Original Survey performed by Aaron Greeley
July 14, 1810
- B. Recorded LCRC's
 - 1. L. 7245, P. 444 – Martin C. Dunn, #30081, Found 3/4" iron rod November 14, 1996
- C. Recorded and unrecorded surveys
 - 1. Plat of Survey, Charles G. Melching, #14767 May, 1972
 - 2. Certificate of Survey, William E. Soderberg #17635, December 2, 1974
- D. Copies of all items listed in "Part A" of LCRC.
 - 1. Plats:
 - a. L. 5, P. 32 "Ascot Park Subdivision" April 26, 1921
 - b. L. 13, P. 40 Assessors Plat No. 24 November 22, 1928
 - c. L. 16, P. 23 Supervisors Plat No. 5 January 10, 1934
 - d. L. 59, P. 7 & 8 Supervisor's Plat No. 19 July 14, 1968
 - e. L. 92, P. 47-50 East Pointe Industrial Subdivision December 13, 1992
 - f. L. 157, P. 16 & 17 Amended Plat of Lot 9 of East Point
Industrial Subdivision August 3, 2004

Survey Report
PC-013
T.2N., R.14E., Harrison Twp.

Letters asking for unrecorded information were sent to:

AEW, Inc. – Shelby Twp.
Fenn & Associates, Inc. – Shelby Twp.
GWE – Rochester Hills
Kennedy Surveying, Inc. - Oxford
Lehner Associates, Inc. – Clinton Twp.
GLA Surveyor – Plymouth
Professional Engineering Assoc. Inc. – Troy
R. J. Donnelly & Associates Inc. – Troy
George Jerome & Company – Roseville
King Surveying, Inc. – Armada
Michigan Surveying Inc. – Livonia
David C. Adams & Son – Redford
Urban Land Consultants – Shelby Township

CORNER: Reference Monument, Southwest Corner of Private Claim 172, common with the Southeast Corner of Private Claim 626, Clinton Township, Town 2 North, Range 13 East @ the northerly border of the Clinton River. Found a ¼" steel rod ± 25' north of the bank of the Clinton River.

OBSERVATIONS: The found ¼" steel rod appears to be on the Private Claim line as monumented from there north to a found ¼" steel rod at the intersection of the north right-of-way line of North River Road and the line common with Private Claim 626 and Private Claim 172. Three additional found steel rods are 0.63' or less of being on the same line.

Found steel rod also matches 1 witness tie on field notes from Metco Services and a recorded LCRC, Martin C. Dunn, #30081, from 1996. N15°W. 8.70', Set PK nail w/tag in east face of 20" Ash (8.70' – Field).

PC 013 to a found ¼" steel rod at the intersection of the north right-of-way line of North River Road and the line common with Private Claim 626 and Private Claim 172 field measures 2114.58'.

RECOMMENDATION: My recommendation to the Peer Review Board is to accept the found ¼" steel rod as the proper location for a reference monument.
Respectfully submitted,

Steven E Dunn, PS #28408

April 28, 2008

TG
AS

34

CLINTON TWP.
MACOMB CO

	DESC
1340	FD 3/4" I.R.
1341	SET 1/2" I.R. WITH CONCRETE PT CAP
1342	SET MAG OF FACE OF WALK IN ASPH
1343	FD 1/2" I.R. ON FENCE LINE
1344	FD 1/2" I.R.
1345	FD 3/4" I.R.
1346	FD 1/2" I.R. #45

AD1346	
BS1341	0-00-00 117-990
FS1340A	57-50-40 8-703 FD SMALL MAG WALL
1340B	91-52-16 22-178 SET MAG WALL & MCR
1340C	183-42-47 10-131 SET MAG WALL & MCR
1340D	349-23-32 21-168 FD SMALL MAG WALL & MCR
1340E	347-26-24 66-303 CORNER OF SEAWALL
1340F	258-04-54 25-059 WALK'S EDGE
1341	359-59-55 117-991 CHECK - 1N

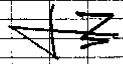
JAW 9, 2008

CPS FILE 08100TG09 JAN 08

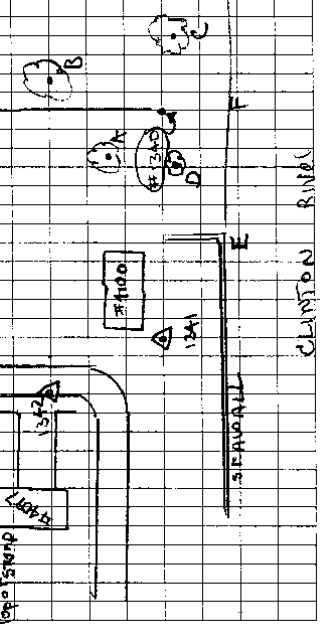
S.W. OF TRAILER #4100
EDGE OF DRIVE #4097

DATA FILE 09 JAN 08 TG

PLASTIC METCO WASHING DOLL FLASH OF 18" TYP
TOP AND W. SIDE OF TYP
ON SIDE OF 12" TYP
METCO
ANTTOP STOP



729 J
727 J
728 J



CLINTON PCC001, 002, PCC002 HARRISON PCC012, 013, PCC001 4-28-08

SOUTH 1/4 COR. 2295.83' N. 2295.70' E. SE COR.
FRAC. SEC. 1 0.36' SOUTH FRAC. SEC. 1
FD. 3/4" Rod w/ CAP 30103 PCC001 PCC012 FD. CONC. MON.
1009.81' N. 1009.85' E. 1286.03' N. 1285.85' E.

90°05'30" E.
30°04'09" N.
PC 626

TOWNSHIP LINE
89°54'30" E.
89°58'04" N.
PC 172

TOWNSHIP

TOWNSHIP

1347 - 1348
1411 - 1437

HENRY B. JOY PCC002 PCC001 2668.35' N.

90°03'55" N.

CLINTON

HARRISON

10725.28' N.

2114.58' N. H394.82' N. H393.20' E.

N. RIVER

FD. 3/4" ST. ROD

LEWIN ROAD

PCC002 PCC013
FD. 3/4" ST. ROD

CLINTON RIVER



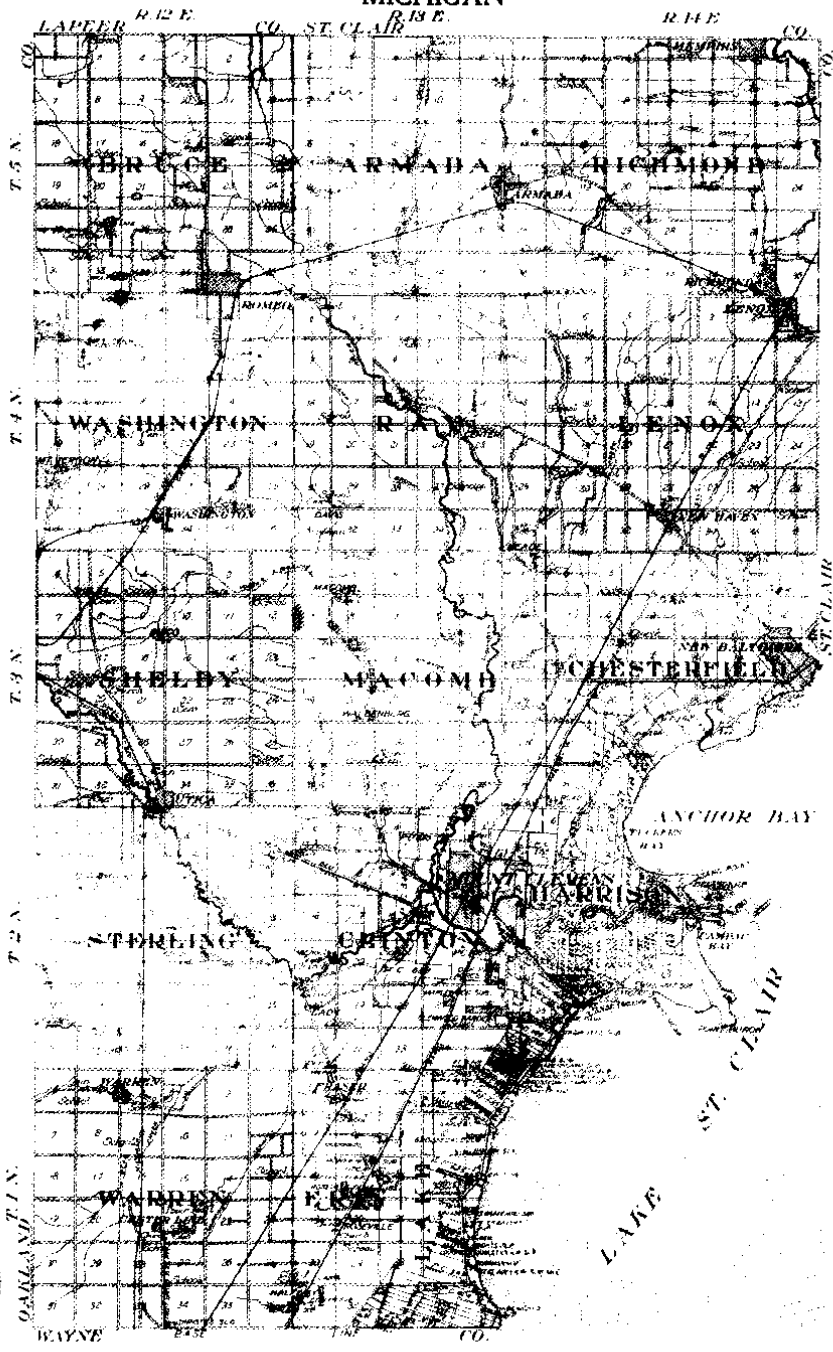
OUTLINE MAP OF
MACOMB COUNTY

MICHIGAN

Scale 1/8 inch to 1 mile

7

Copyright 1911 by Geo. A. Co.



Scanned By:
METCO
Engineers, Architects & Surveyors




MAP OF
HARRISON
 TOWNSHIP

Scale 2 1/2 inches to 1 mile

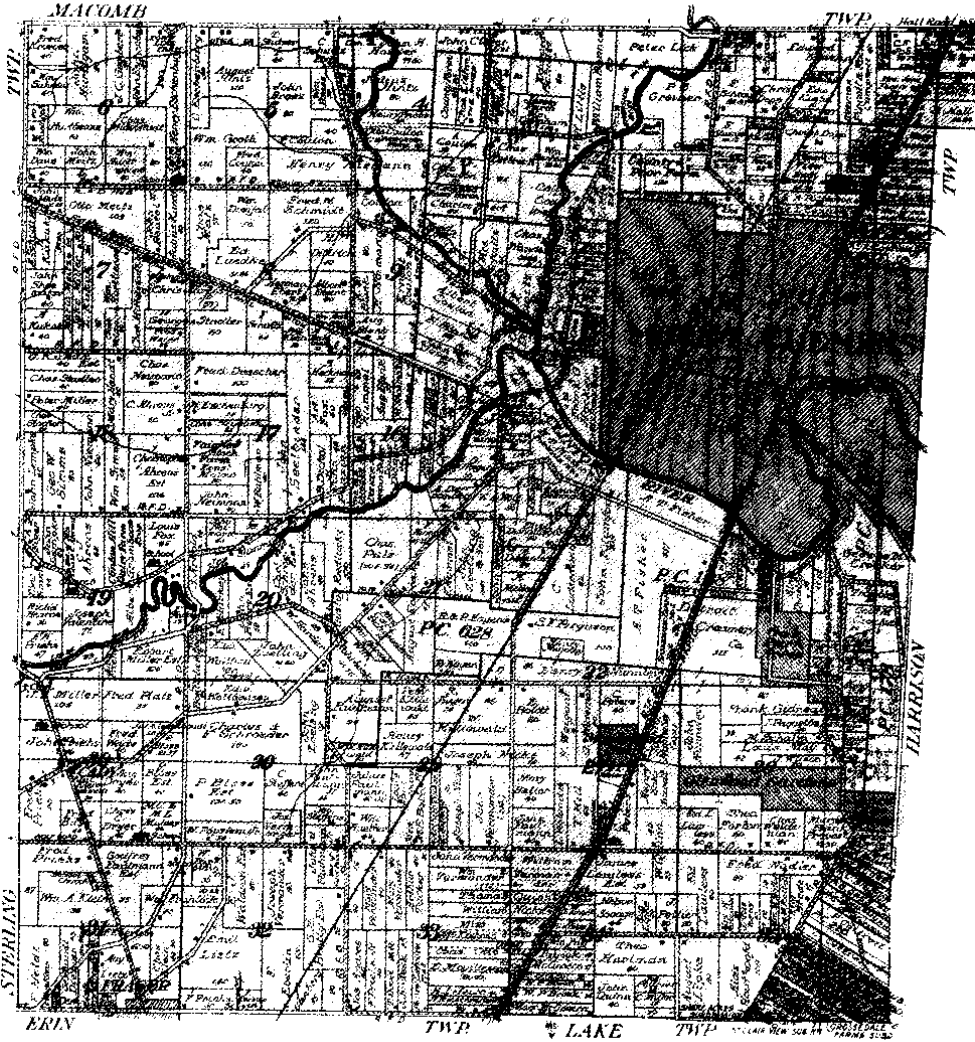
Part of Fractional Township 2 North, Range 13 East and
 Fractional Township 2 North, Range 14 East
 of the Michigan Meridian

Made by
METCO
 Map and Book Co.

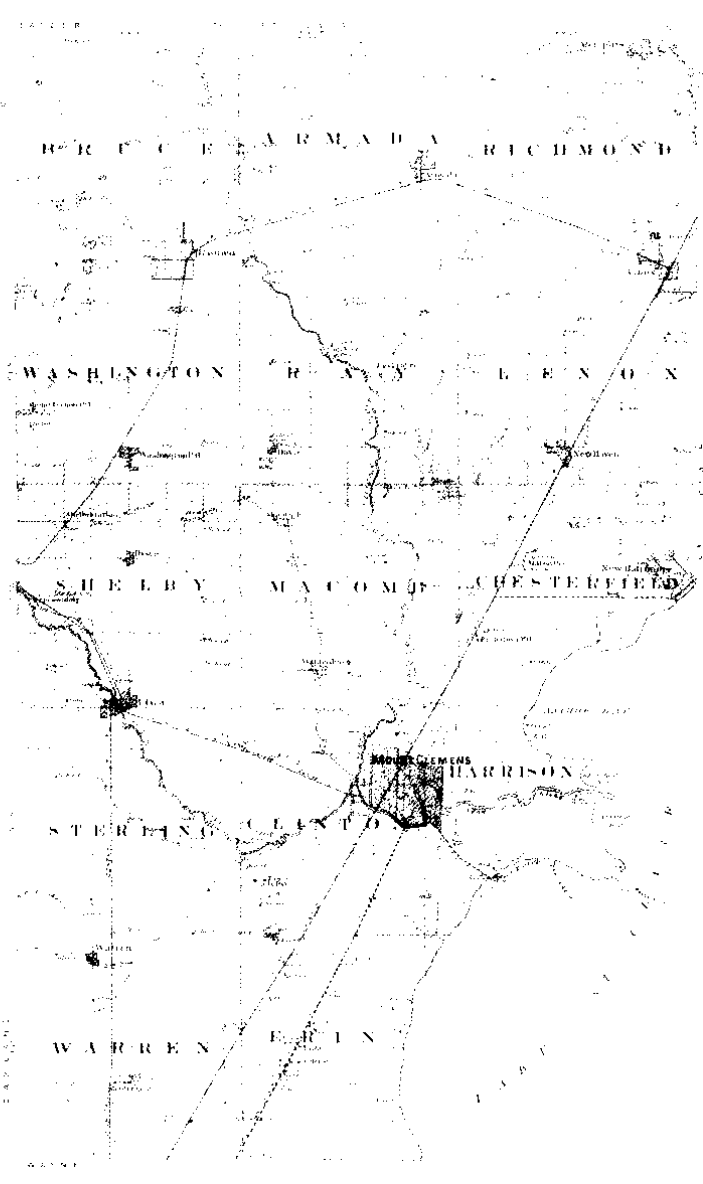
MAP OF
CLINTON
TOWNSHIP

Fractional Township 2 North, Range 13 East of the Michigan Meridian

Scale 2 inches to a mile



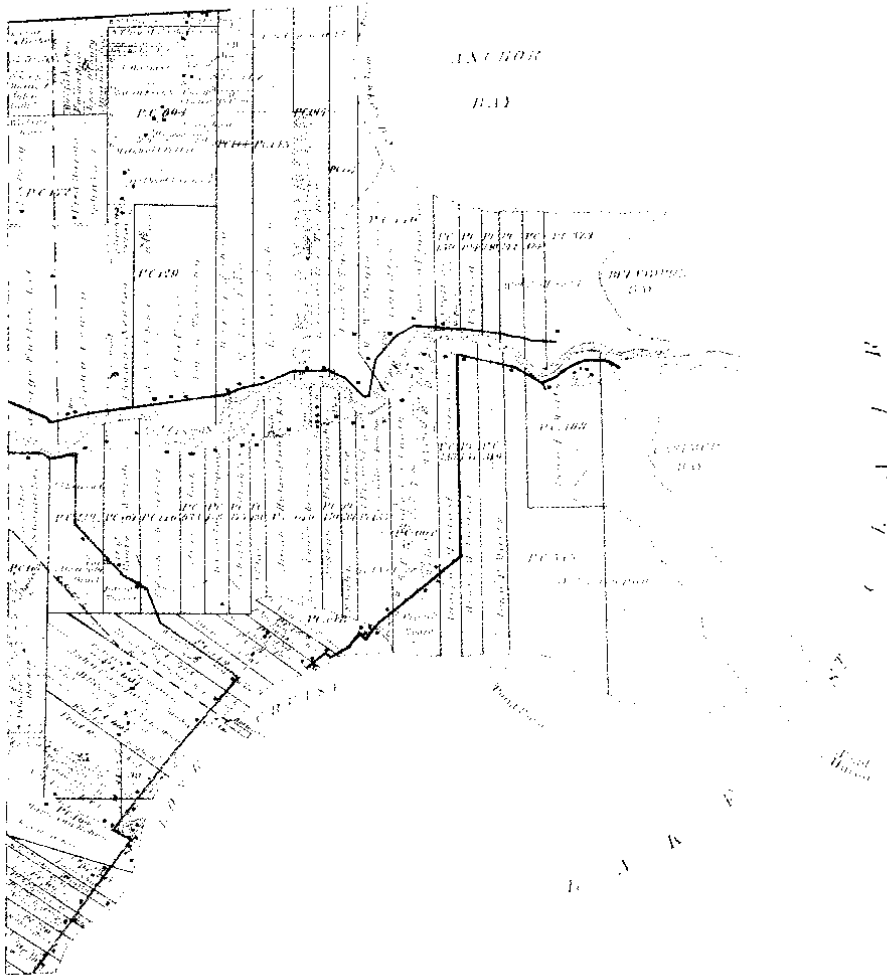
OUTLINE MAP
OF
MACOMB COUNTY MICHIGAN



Scanned By
METCO
Engineers, Architects & Surveyors

MAP OF HARRISON

Township 2 North Range 11 East

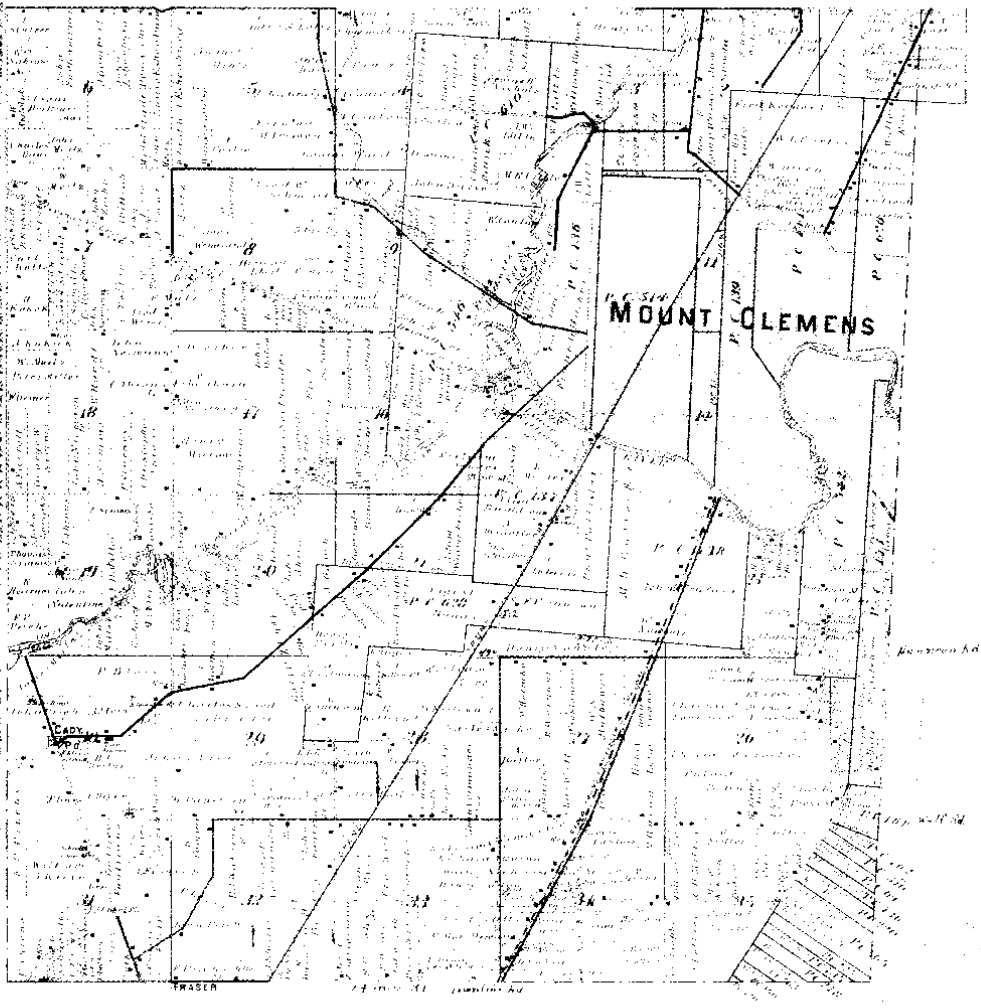


MAP OF CLINTON

Township 2 North Range 13 East

Scale 1 inch to one mile

Copyright 1900



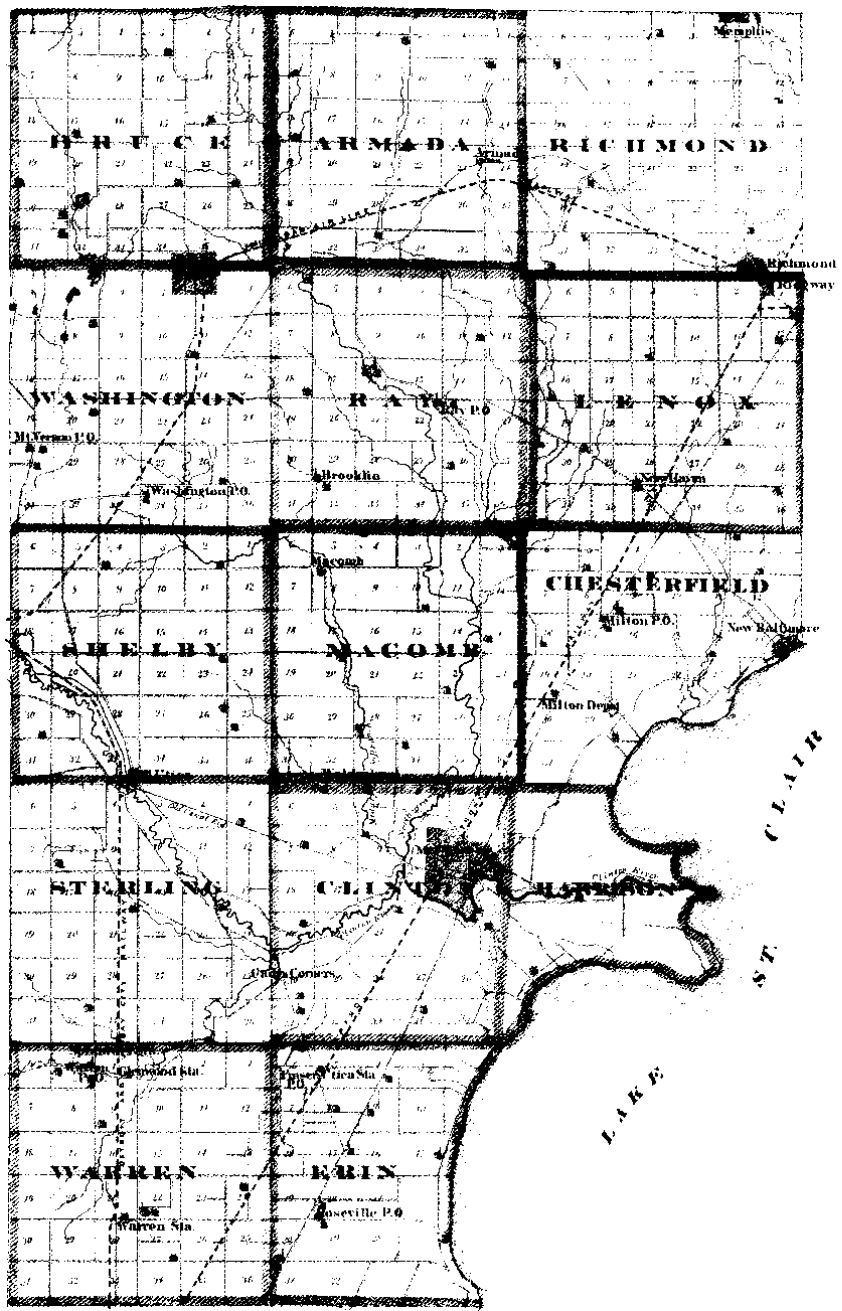
WARREN CO.

PLATON

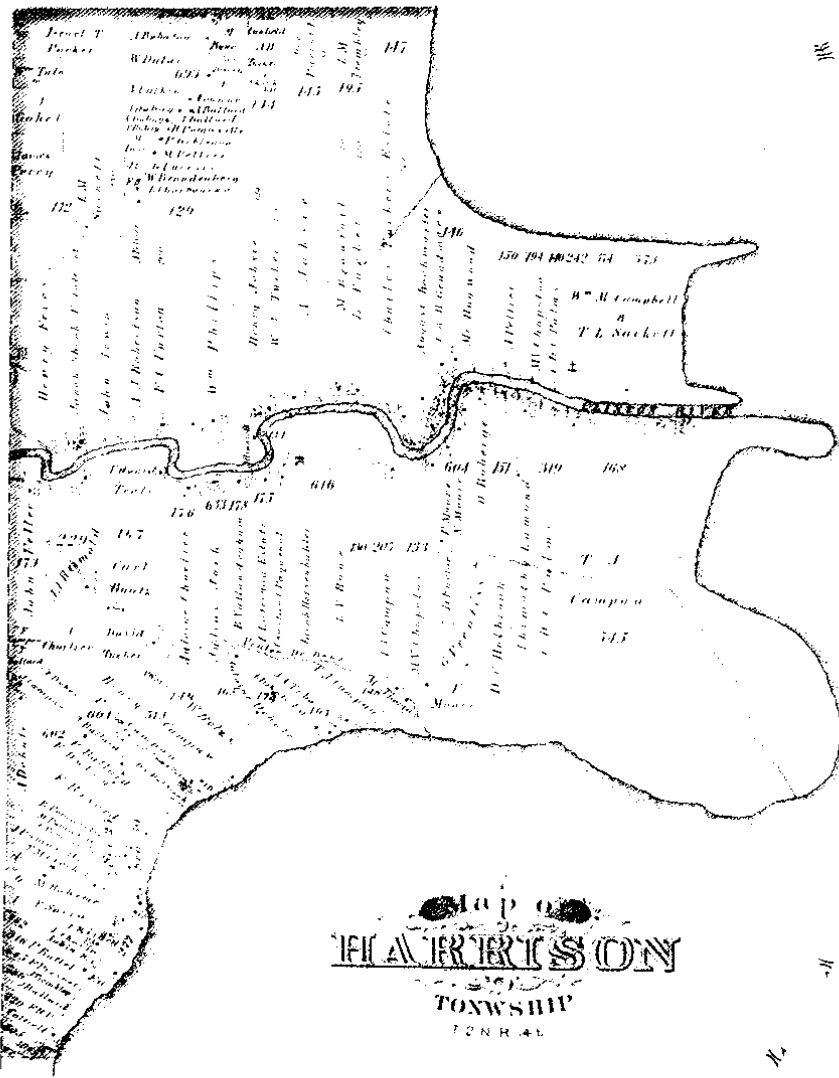
1873

COMPILED & DRAWN BY OLIVER H. WELDON, C.E.

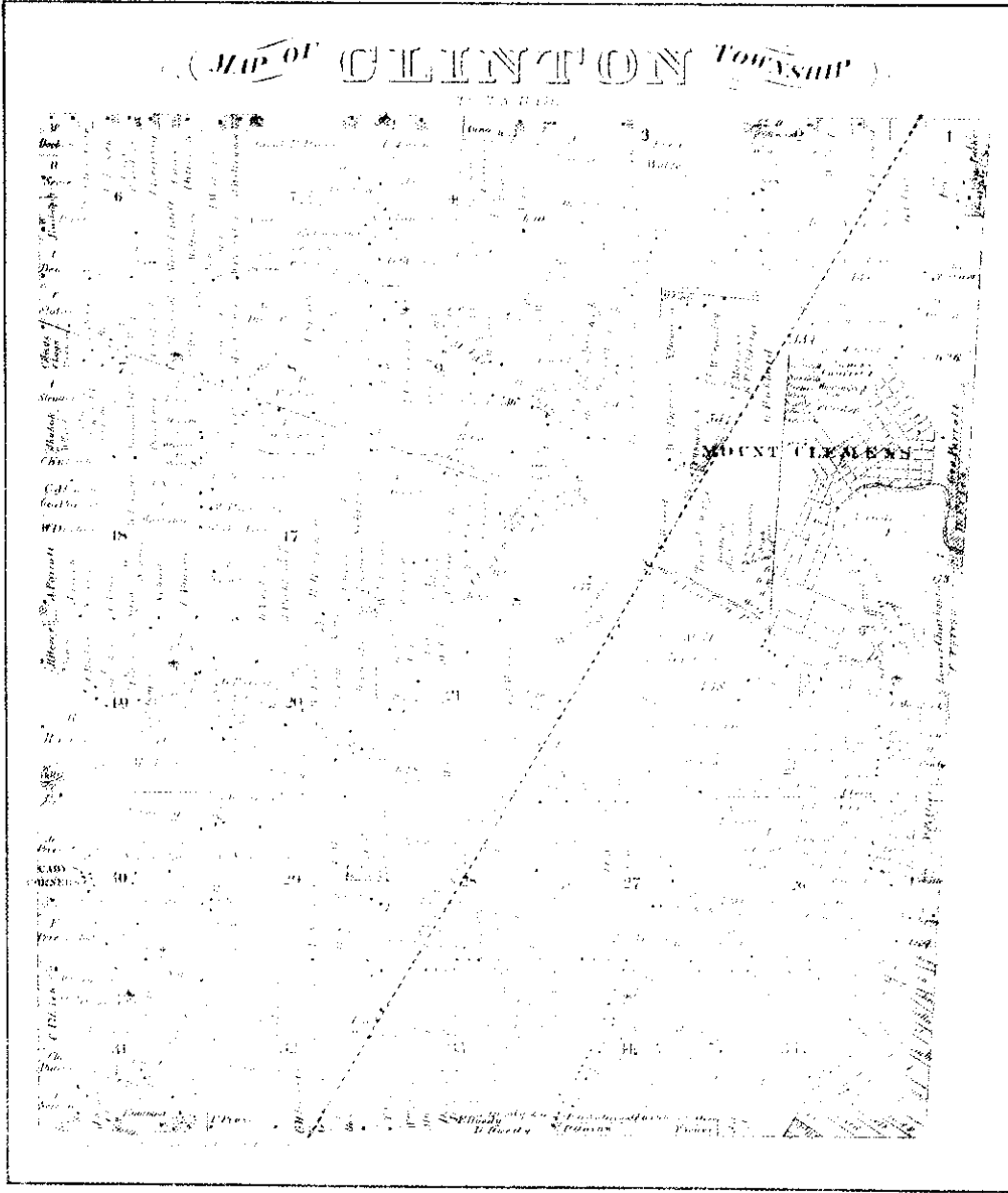
SCALE 2 MILES TO AN INCH



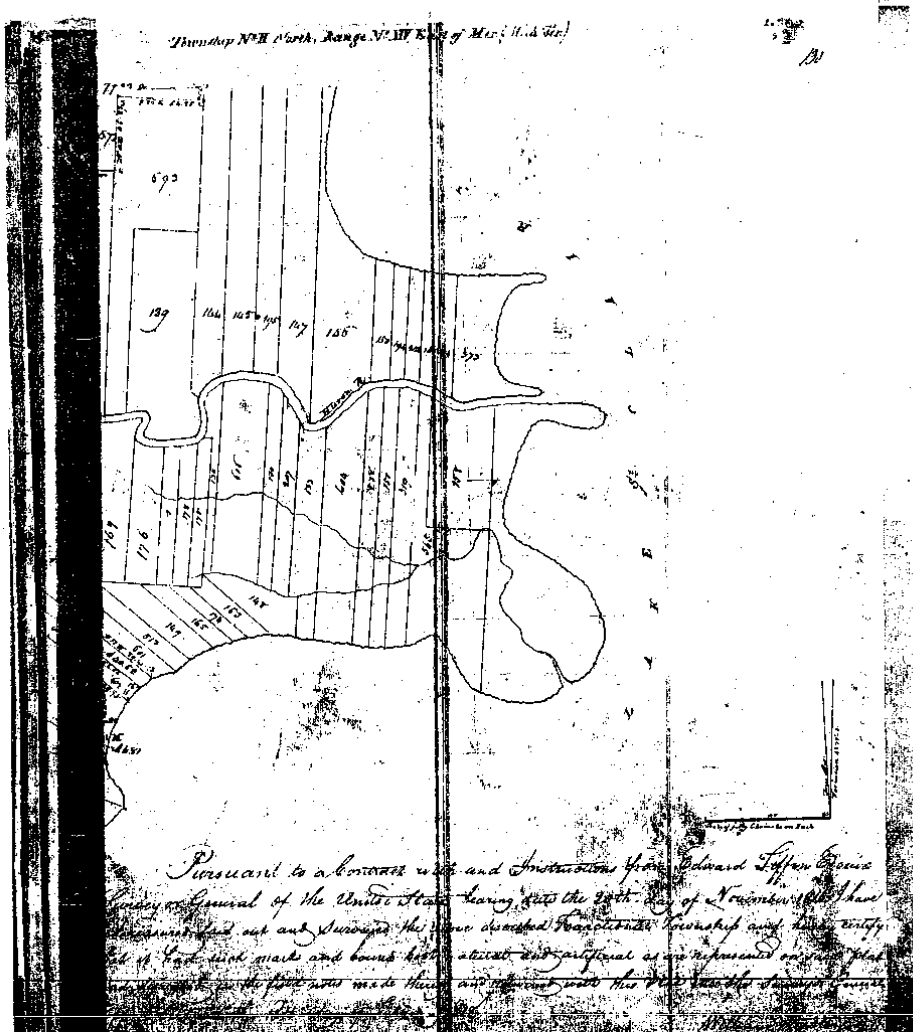
NETCO
Faint text below the logo



Map of
FLAVER'S CREEK
 TOWNSHIP
 TONR. 41



METCO



Management, Engineering & Technical Consultants

12504 Stephens Warren, MI 48089 (586) 755-5770 Fax (586) 755-5774

North Side of River Huron

Chains fifteen links to a Buttonwood tree standing on the border of said River from thence along the border of said River up Stream north Eighty eight degrees west seven chains, thence north forty one degrees west six chains, thence north three chains, thence north twenty four degrees east seventeen chains, thence north forty one degrees west seven chains, thence north eighty one degrees thirty minutes west eighteen chains to the place of beginning containing three hundred and fifty one acres and one tenth of an acre.

Detroit July 14 1810

Harou G. G. Surveyor of Private Claims.

North

west four or
degrees
Eighty seven
thence
Seven chains
of beginning
and
with
Detroit

N. 571

Description
William G. G.
standing on
between the
ed to John
two hundred
seven links
the tract is
East forty
standing on
ferred to
Eighty four
and Seven
tract
West forty
the North
Common
and less
post
River
of said
ty four
Seven links

N. 440. North Side of River Huron

Description N. 172. Confirmed to John Astin Junior commencing at a Buttonwood tree standing on the border of River Huron between this tract and a tract confirmed to Christian Glessan thence north one hundred and fifty two chains fifteen links to a Black ash tree thence east thirty nine chains fifty links to a Black ash tree thence south one hundred and fifty five chains fifty links to a post standing on the border of River Huron between this tract and unreserved land, thence along the border of said River up Stream north fifty six degrees west twelve chains, thence north Eighty degrees west seven chains thence north Sixty six degrees west eight chains, thence north seventy one degree

1 - 1 8457
North Side of River Huron

420

west four chains, thence north eleven and a half degrees east nine chains, thence north fifty seven degrees west three chains, thence north eighty eight degrees west eleven chains forty five links, to the place of beginning, containing four hundred and one acres and one hundred and one thirds of an acre.

Detroit July 14, 1810

James G. Greenleaf Surveyor of public Claims.

No. 571. North Side of River Huron. Description. No. 698 Confirmed to William Connor commencing at a post standing on the North border of River Huron between this tract and a tract conveyed to John Ashlin Junior, thence north two hundred and one chains thirty seven links, to a post standing between this tract and unlocated lands, thence East fifty three chains fifty links, to a post standing on the west line of a tract conveyed to John Sucker, thence south eighty four chains forty seven links, to an Elm tree the North east corner of a tract conveyed to James Connor, thence West forty chains fifty links, to a post the North west corner of said James Connor tract, thence South one hundred and ten chains eighty two links, to a post standing on the North border of River Huron, thence along the border of said River up stream South sixty four degrees East four hundred and forty seven links, to the place of beginning.

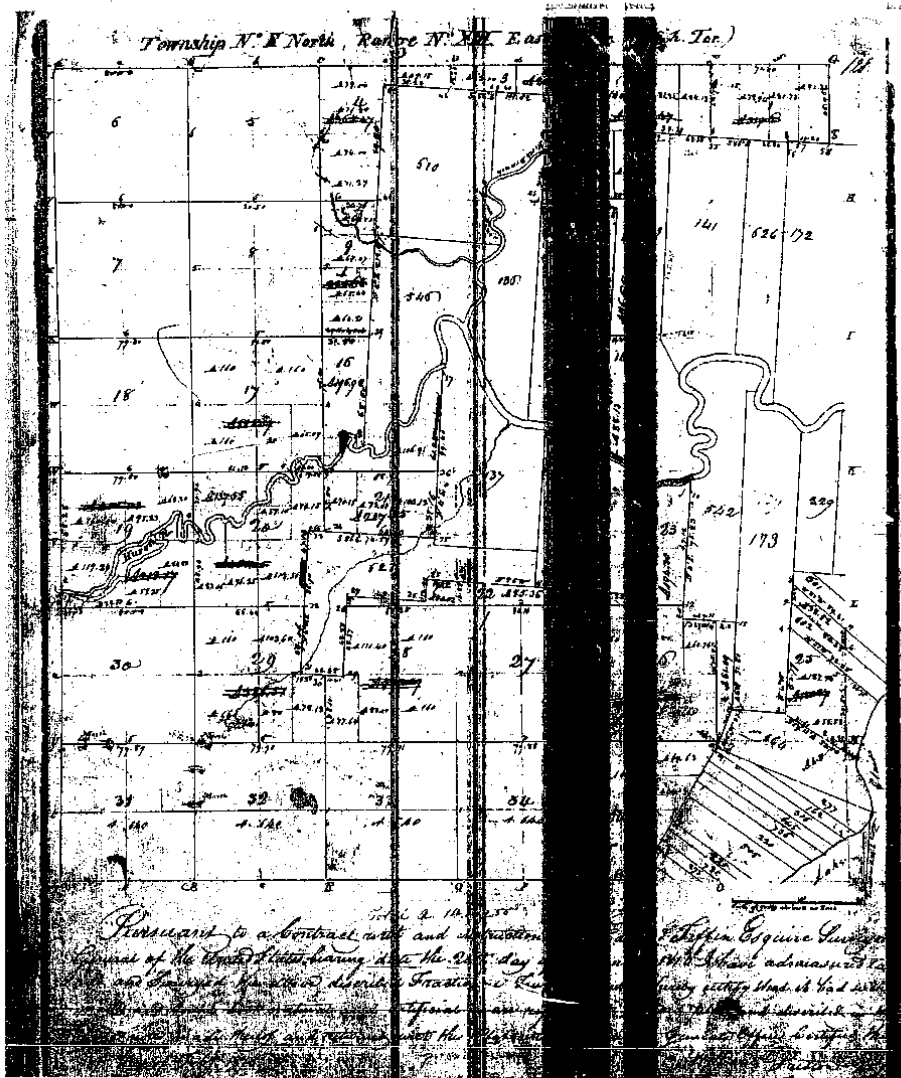
Huron

Billon wood
er of River Huron
of said River
the segment
forty one deg
north three
y four degrees
north forty
ms, thence
ly minutes
place of begin
and
with four ac

Surveyor
Claims

Huron
confirmed to
commencing at a
on the border
is tract and
James Glesman
and fifty two
Black ash tree
in fifty links
south one
in fifty link
border of
act and
long the
North
chains, thence
seven chains
west eight
y one degree

METCO



Management, Engineering & Technical Consultants

12504 Stephens Warren, MI 48089 (586) 755-5770 Fax (586) 755-5774

No. 491

No. 626 Confirmed to
Christian Clemans

NORTH SIDE OF RIVER HURON

Description No. 626 Confirmed to Christian Clemans commencing at a post standing on the border of River Huron between this tract and a tract confirmed to the claimant thence north one hundred and twenty six chains twenty three links to a post thence east twenty six chains forty one links to a post the northwest corner of a tract confirmed to John Askin Junior thence south one hundred and fifty two chains fifteen links to a buttonwood tree standing on the border of River Huron thence along the border of said river up stream north eighty eight degrees west seven chains thence north forty one degrees west six chains thence north north three chains thence north twenty four degrees east seventeen chains thence north forty one degrees west seven chains thence south eighty one degrees thirty minutes west eighteen chains to the place of beginning, containing three hundred and fifty one acres and one tenth of an acre ____

Detroit July 14th, 1810

Aaron Greeley Surveyor
of private claims

PC013
HARRISON

LAND CORNER RECORDATION CERTIFICATE
Filing Requirement of Act 74, Mich. P.A. 1970

For corners in

MACOMB	Located In:	Corner Code #
(County)	MT. CLEMENS	PC 172
1. Public Land Survey	T R	
	T R	
	T R	
	T R	
2. Property Controlling in Section	S T R	
	S T R	
3. Miscellaneous Property in Sec.	S T R	
	S T R	

Register of Deeds Stamp & File Number

4. Lot No. _____, Recorded Plat _____
 5. Private Claims INTERSECTION OF THE WEST LINE OF P.C. 172 T.2N. R.11E, AND THE NORTH TOP OF BANK OF THE CLINTON RIVER

	A	B	C	D	E	F	G	H	I	J	K	L	M
2	6	8	9	10	11	12							
3													
4	7	0	1	10	11	12							
5													
6	15	17	18	19	14	15							
7													
8	19	20	21	22	23	24							
9													
10	20	20	28	27	28	25							
11													
12	31	32	33	34	35	38							
13													

PC 172

I, MARTIN C. DUNN, in a field survey on JULY 24, 19 96, do hereby certify that under requirements of P.A. 74, Michigan P.A. of 1970, the corner points mentioned in lines 1 and 2 above were in conformance with regulations and rules therefore as required in the current manual of survey instructions of the United States Department of the Interior, Bureau of Land Management or by a decree of a Court of Law and for that the corner points mentioned in lines 3, 4 and 5 above were in conformance with the rules of the Michigan Board of Land Surveyors or by a Decree of a Court of Law; established, re-established, monumented, re-monumented, recovered, found as expressed below:

NOTE: Not more than 2 corners, all in the same town and range, may be recorded on this certificate.

A. Description of original monument and accessories and/or subsequent restoration:
 NONE

B. Description of corner evidence found and/or method applied in restoring or reestablishing corner:
 SUPERVISOR'S FLAT NO. 19 L. 59, P. 7 & 8
 FOUND 3/4" IRON ROD
 VERIFIED WITH FOUND IRONS ON WEST SUBDIVISION LINE.

C0438571 LIBER:07245 PAGE:444 09:34A 11/14/1996
 CARMELLA SABAUGH-MACOMB COUNTY, MI REG/DEEDS

C. Description of monument for corner and accessories established to perpetuate locating the position of the corner:
 FOUND 3/4" IRON ROD AT TOP OF BANK, 475 FEET NORTH OF CENTERLINE OF THE CLINTON RIVER

- WITNESSES
1. S.70° 10.00' SET PK NAIL W/TAG IN SW FACE OF A 6" ASH.
 2. DUE SOUTH 12.40' FOUND 3" PIPE IN WATER.
 3. DUE WEST 21.35' SET PK NAIL W/TAG IN NORTH FACE OF A 10" ASH.
 4. N.18°W. 8.70' SET PK NAIL W/TAG IN EAST FACE OF A 20" ASH.



Signed by Martin C. Dunn Date Sept. 24, 1996
 Surveyor's Michigan License No. 30081

DESCRIPTION

A parcel of land in and being a part of P.C. 172, T.2N., R.14E., Harrison Township, Macomb County, Michigan and being more particularly described as follows:

ReRod Set

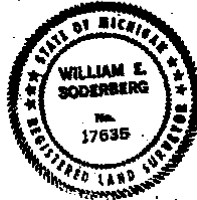
Beginning at a point on the North line of P.C. 172, S. 86° 39' 30" E. (S. 86° 36' E. Record) 926.0 feet from the Northwest corner of P.C. 172; thence S. 3° 15' W. (S. 3° 05' W. Record) 930.0 feet; thence S. 86° 39' 30" E. (S. 86° 22' E. Record) 380.0 feet; thence N. 2° 34' 18" E. (N. 2° 51' 48" E. Record) 520.0 feet; thence N. 00° 19' 18" E. 386.70 feet to the North line of P.C. 172; thence N. 86° 39' 30" W. (N. 86° 36' W. Record) 353.60 feet along the North line of P.C. 172 to the Point of Beginning and containing 7.802 Acres. Subject to Easements of Record.

Together with the following easement for ingress and egress; beginning at a point on the West line of P.C. 172 S. 3° 15' W. 594.92 feet; thence S. 3° 15' W. (S. 3° 05' W. Record) 305.08 feet along the West line of P.C. 172; thence S. 86° 39' 20" E. (S. 86° 36' E. Record) 926.0 feet; thence S. 3° 15' W. (S. 3° 05' W. Record) 30.0 feet; thence N. 86° 39' 30" W. (N. 86° 36' W. Record) 946.0 feet; thence N. 3° 15' W. (N. 3° 05' W. Record) 285.20 feet to the South line of Barbret Court; thence N. 86° 19' W. 1341.39 feet along the South line of Barbret Court to the Easterly line of Gratiot Avenue; thence N. 21° 40' 10" W. 52.56 feet (N. 21° 41' E. 52.66 Record) along said line to the North line of Barbret Court; thence S. 86° 19' E. 1344.79 feet along said line to the Point of Beginning.

SURVEYOR'S CERTIFICATE: I hereby certify that I have surveyed and mapped the land above platted and/or described on 27. November, 1974 and that the ratio of closure on the unadjusted field observations of such survey was 1:5,000 and that all of the requirements of P.A. 132, 1970, have been complied with.

ANDERSON, ECKSTEIN AND WESTRICK, INC.

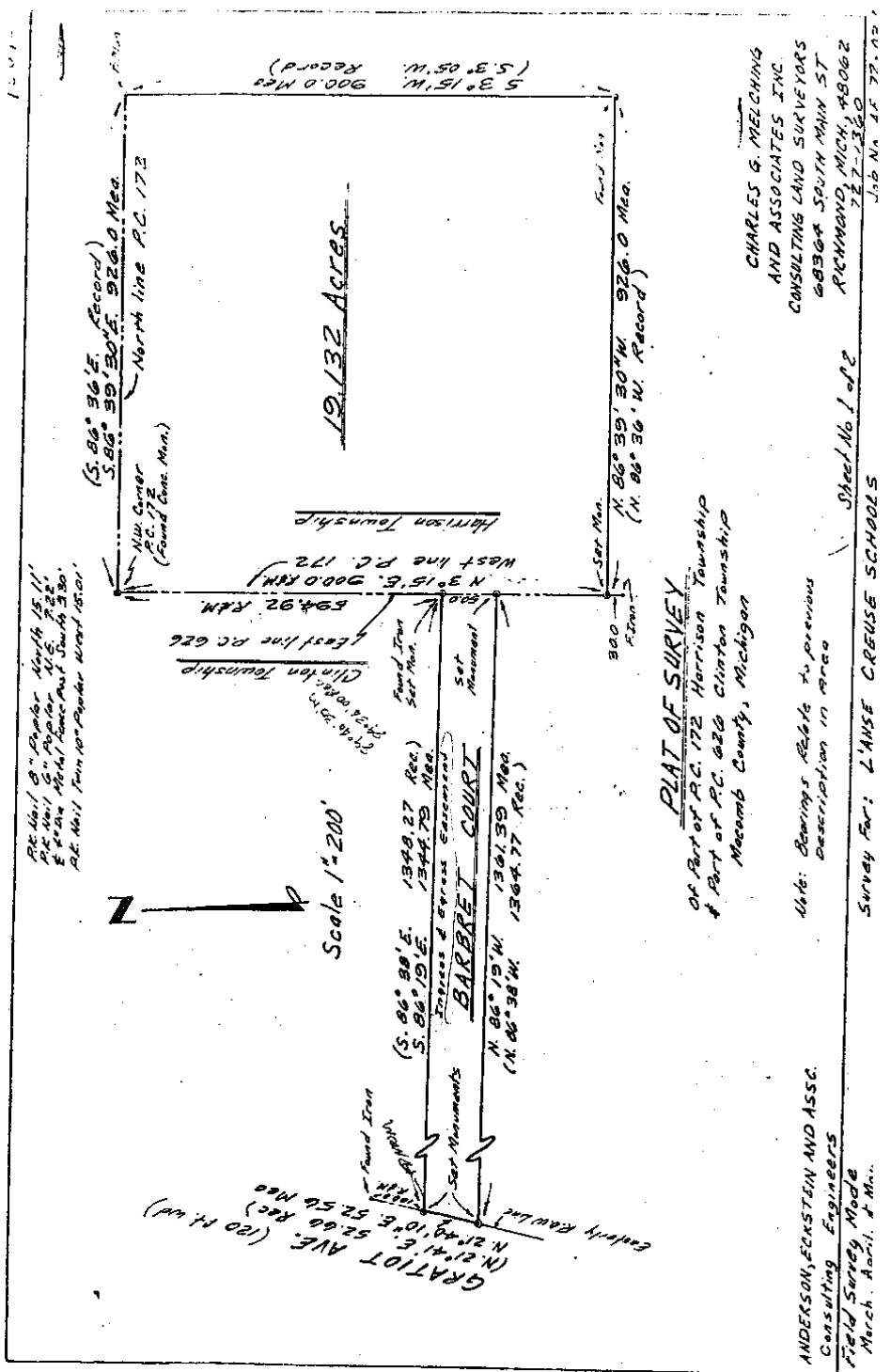
William E. Soderberg
William E. Soderberg, R.L.S. No. 17635
42800 Garfield Road
Mount Clemens, Michigan, 48043



WITNESSES:

NW Corner P.C. 172
Set ReRod from previous survey in area

Back Curb South 24.20
Center Storm Manhole S.W. 20.82
Center Gatewell W.S.W. 53.13



Plat No. 8 - Paper North 15.11'
 Pl. No. 1 - Paper North 15.11'
 E.P. No. 1864 - Same as Pl. No. 8
 A.C. No. 1 - Same as Pl. No. 8

Plat No. 1 - Paper North 15.11'
 Pl. No. 1 - Paper North 15.11'
 E.P. No. 1864 - Same as Pl. No. 8
 A.C. No. 1 - Same as Pl. No. 8

Plat No. 1 - Paper North 15.11'
 Pl. No. 1 - Paper North 15.11'
 E.P. No. 1864 - Same as Pl. No. 8
 A.C. No. 1 - Same as Pl. No. 8

Plat No. 1 - Paper North 15.11'
 Pl. No. 1 - Paper North 15.11'
 E.P. No. 1864 - Same as Pl. No. 8
 A.C. No. 1 - Same as Pl. No. 8

Plat No. 1 - Paper North 15.11'
 Pl. No. 1 - Paper North 15.11'
 E.P. No. 1864 - Same as Pl. No. 8
 A.C. No. 1 - Same as Pl. No. 8

Plat No. 1 - Paper North 15.11'
 Pl. No. 1 - Paper North 15.11'
 E.P. No. 1864 - Same as Pl. No. 8
 A.C. No. 1 - Same as Pl. No. 8

Plat No. 1 - Paper North 15.11'
 Pl. No. 1 - Paper North 15.11'
 E.P. No. 1864 - Same as Pl. No. 8
 A.C. No. 1 - Same as Pl. No. 8

Plat No. 1 - Paper North 15.11'
 Pl. No. 1 - Paper North 15.11'
 E.P. No. 1864 - Same as Pl. No. 8
 A.C. No. 1 - Same as Pl. No. 8

Plat No. 1 - Paper North 15.11'
 Pl. No. 1 - Paper North 15.11'
 E.P. No. 1864 - Same as Pl. No. 8
 A.C. No. 1 - Same as Pl. No. 8

Plat No. 1 - Paper North 15.11'
 Pl. No. 1 - Paper North 15.11'
 E.P. No. 1864 - Same as Pl. No. 8
 A.C. No. 1 - Same as Pl. No. 8

Plat No. 1 - Paper North 15.11'
 Pl. No. 1 - Paper North 15.11'
 E.P. No. 1864 - Same as Pl. No. 8
 A.C. No. 1 - Same as Pl. No. 8

Plat No. 1 - Paper North 15.11'
 Pl. No. 1 - Paper North 15.11'
 E.P. No. 1864 - Same as Pl. No. 8
 A.C. No. 1 - Same as Pl. No. 8

Plat No. 1 - Paper North 15.11'
 Pl. No. 1 - Paper North 15.11'
 E.P. No. 1864 - Same as Pl. No. 8
 A.C. No. 1 - Same as Pl. No. 8

Plat No. 1 - Paper North 15.11'
 Pl. No. 1 - Paper North 15.11'
 E.P. No. 1864 - Same as Pl. No. 8
 A.C. No. 1 - Same as Pl. No. 8

Plat No. 1 - Paper North 15.11'
 Pl. No. 1 - Paper North 15.11'
 E.P. No. 1864 - Same as Pl. No. 8
 A.C. No. 1 - Same as Pl. No. 8

Plat No. 1 - Paper North 15.11'
 Pl. No. 1 - Paper North 15.11'
 E.P. No. 1864 - Same as Pl. No. 8
 A.C. No. 1 - Same as Pl. No. 8

Plat No. 1 - Paper North 15.11'
 Pl. No. 1 - Paper North 15.11'
 E.P. No. 1864 - Same as Pl. No. 8
 A.C. No. 1 - Same as Pl. No. 8

Plat No. 1 - Paper North 15.11'
 Pl. No. 1 - Paper North 15.11'
 E.P. No. 1864 - Same as Pl. No. 8
 A.C. No. 1 - Same as Pl. No. 8

PLAT OF SURVEY
 OF Part of P.C. 172 Harrison Township
 & Part of P.C. 626 Clinton Township
 Macomb County, Michigan

CHARLES G. MELCHING
 AND ASSOCIATES INC.
 CONSULTING LAND SURVEYORS
 6830 S. SOUTH MAIN ST.
 RICHMOND, MICH. 48062
 TEL. 767-1360
 Job No. 17 77.02

Use: Bearings Refer to previous
 Description in Area

Survey For: LANSE CREUSE SCHOOLS

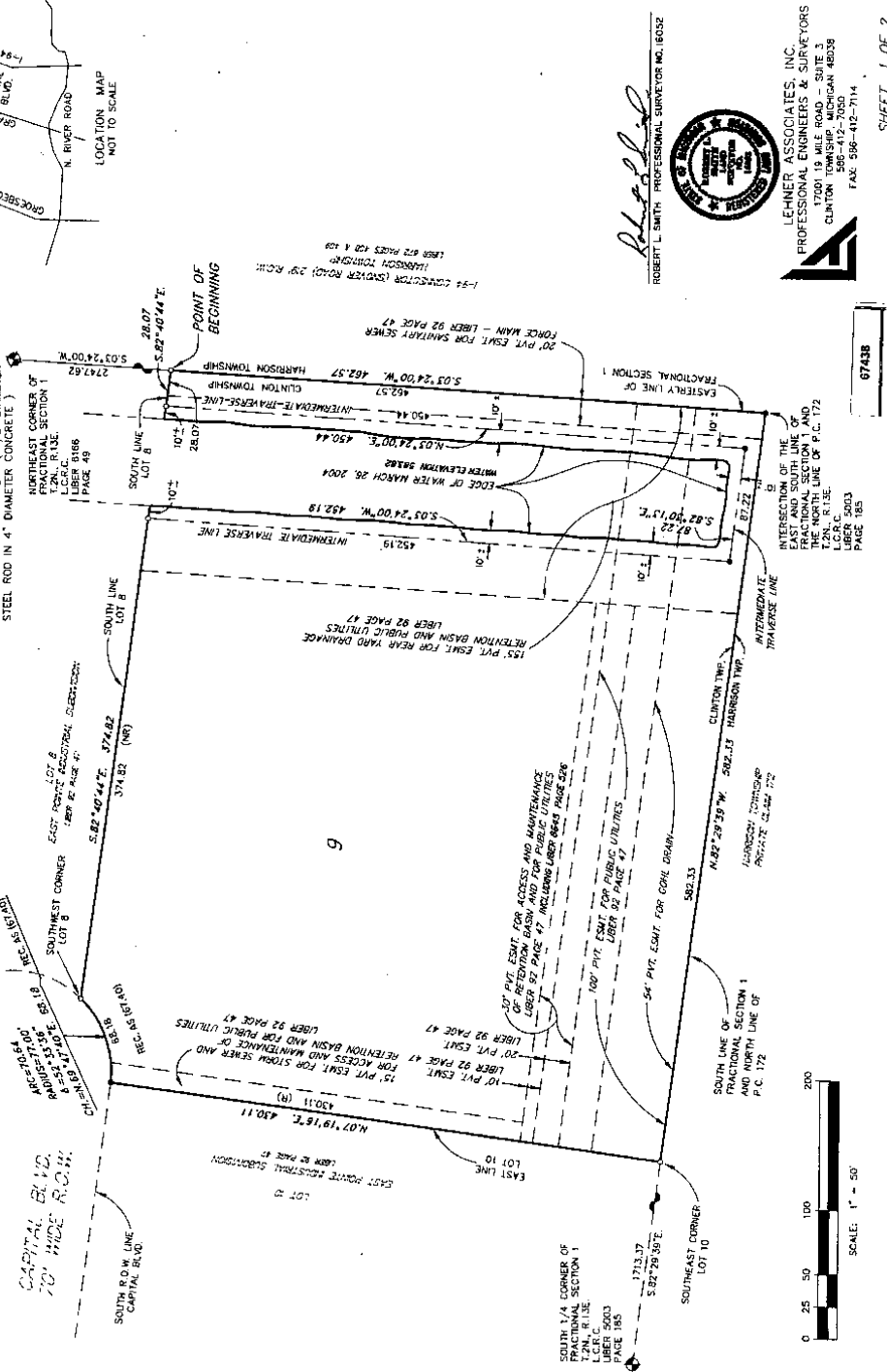
Sheet No. 1 of 2

ANDERSON, ECKSTEIN AND ASSC.
 Consulting Engineers
 Field Survey Made
 March, April, & May.

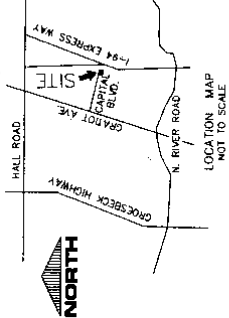
AMENDED PLAT OF LOT 9 OF
EAST POINTE INDUSTRIAL SUBDIVISION
 A SUBDIVISION OF PART OF EAST 1/2 & WEST 1/2 OF
 FRACTIONAL SECTION 1, T.2N., R.13E.,
 CLINTON TOWNSHIP, MACOMB COUNTY, MICHIGAN



LEGEND
 ALL DIMENSIONS ARE SHOWN IN FEET.
 ALL CURVILINEAR DIMENSIONS ARE SHOWN
 ALONG THE CHORD.
 DIMENSIONS WITH "INDICATES 1/4" DIAMETER
 DIMENSIONS WITH "S" INDICATES 1/2" DIAMETER
 CONCRETE MONUMENT HAS BEEN SET.
 (R) INDICATES RADIAL LOT LINES.
 BEARING INDICATES NON-RADIAL LOT LINES.
 OF EAST POINTE INDUSTRIAL SUBDIVISION
 RECORDED IN LIBER 92 PAGE 47
 DENOTES FOUND MONUMENT (1/2" DIAMETER
 STEEL ROD IN 4" DIAMETER CONCRETE)



LIBER PAGE



ROBERT L. SMITH - PROFESSIONAL SURVEYOR NO. 16032
 LEHNER ASSOCIATES, INC.
 PROFESSIONAL ENGINEERS & SURVEYORS
 17001 19 MILE ROAD - SUITE 3
 CLINTON TOWNSHIP - MACOMB COUNTY
 MICHIGAN 48039
 FAX: 586-412-3114

SHEET 1 OF 2

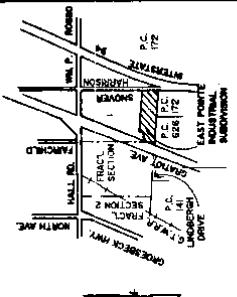
67438

8-3-2004
 4-157, P.16-17

EAST POINTE INDUSTRIAL SUBDIVISION
 A SUBDIVISION OF PART 1/2 8 WEST 1/2 OF
 FRACTIONAL SECTION 1, T.2N., R.13E., CLINTON TOWNSHIP,
 MACOMB CO., MICHIGAN

CURVE DATA

CURVE #	LENGTH	AREA	CHORD	DELTA
1	352.00	15,531	352.00	90°00'00"
2	385.00	17,735	385.00	90°00'00"
3	385.00	17,735	385.00	90°00'00"
4	385.00	17,735	385.00	90°00'00"
5	385.00	17,735	385.00	90°00'00"
6	385.00	17,735	385.00	90°00'00"
7	385.00	17,735	385.00	90°00'00"
8	385.00	17,735	385.00	90°00'00"
9	385.00	17,735	385.00	90°00'00"

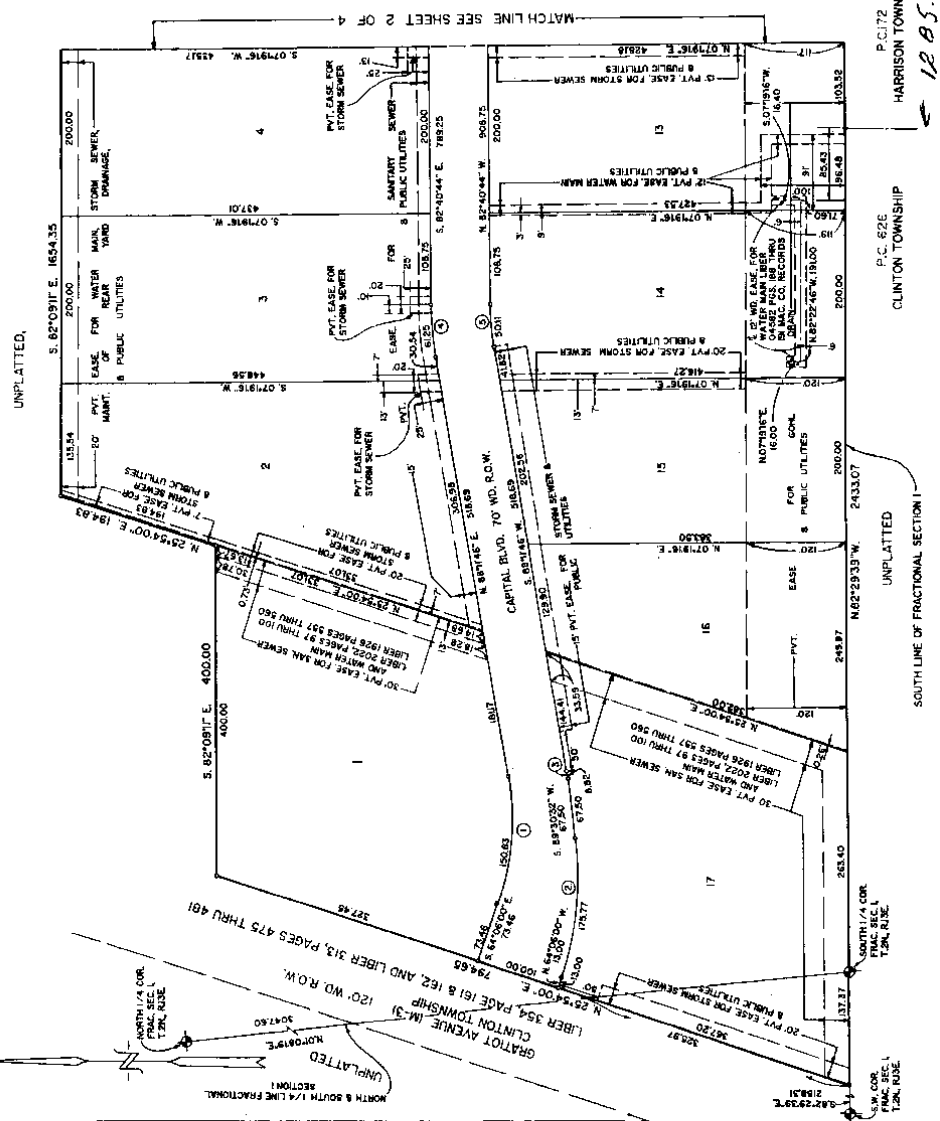


CERTIFIED TRUE COPY OF
 THIS INSTRUMENT
 BY DEPARTMENT OF TREASURER
 of Michigan
 State of Michigan
 Department of Treasury
 Lansing, Michigan

LEGEND
 ALL DIMENSIONS ARE SHOWN IN FEET
 UNLESS OTHERWISE SHOWN
 ALONG THE CHORD.
 THE SYMBOL "Ø" INDICATES A 4" DIAMETER
 36" LONG W/ 1/2" IRON ROD CENTER CONCRETE
 MONUMENT.
 ALL LOT ANGLES ARE IN LONG 1/2" IRONS.
 Ø INDICATES RADIAL LOT LINES.
 Ø INDICATES NOT RADIAL LOT LINES.
 BEARINGS BASED ON THE WESTERLY LINE OF
 NORTH GRATTOT HEIGHTS SUB. AS RECORDED IN
 LIBER 21 PAGE 52. MAKE CONNECTION TO
 GRATTOT AVENUE (M-31) FROM LOTS 1 AND 17
 AND THAT THERE SHALL BE NO DIRECT VEHICULAR
 ACCESS TO THE L-94 CONNECTOR (OVER ROAD)
 FROM LOTS 8 AND 9.



ROBERT L. SMITH



061220

SHEET 1 OF 4

12-13-1997

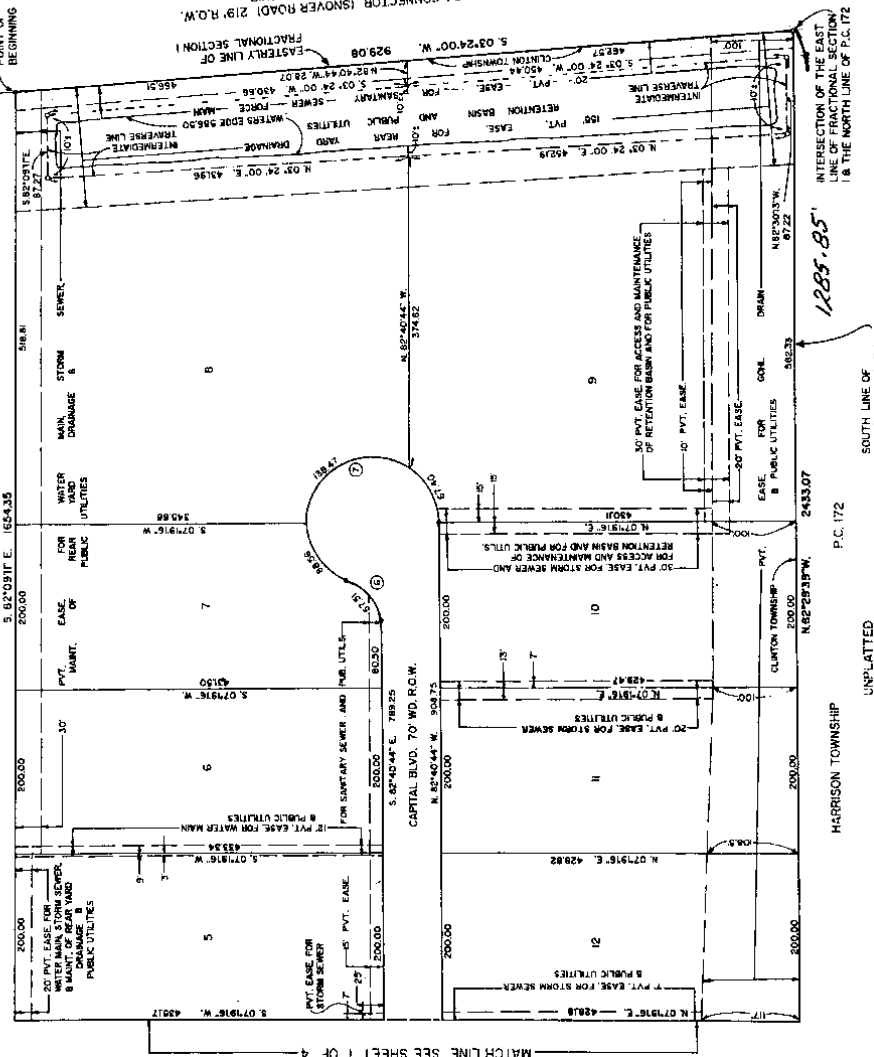
12-85-85

1. 92, P. 47-50

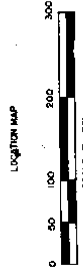
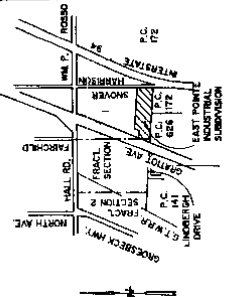
EAST POINTE INDUSTRIAL SUBDIVISION
 A SUBDIVISION OF PART OF EAST 1/2 & WEST 1/2 OF
 FRACTIONAL SECTION 1, T.2N., R.13E., CLINTON TOWNSHIP,
 MACOMB CO., MICHIGAN

CURVE #	RADIUS	ARC	LONG CHORD	CHORD BEG.	DELTA
1	50.00	6.27	5.87	57.9	70°23'4"
2	27.00	3.58	3.27	33.9	35°11'50"

UNPLATTED



SHEET 2 OF 4



LIBER 672, PAGES 408 & 409
 HARRISON TOWNSHIP
 194 CONNECTOR (SNOVER ROAD) 219' R.O.W.
 FRACTIONAL SECTION 1

LEGEND
 ALL DIMENSIONS ARE SHOWN IN FEET.
 ALL CURVILINEAR DIMENSIONS ARE SHOWN
 ALONG THE CHORD.
 THE SHOWN 3" DIA. 4" DIA. 4" DIA. 4" DIA.
 1/2" LONG W/ 1/2" IRON ROD CENTER CONCRETE
 MONUMENT.
 ALL LOT MARKERS ARE 18" LONG 1/2" IRONS.
 (R) INDICATES RADIAL LOT LINES.
 (W) INDICATES WESTERLY LOT LINES.
 (E) INDICATES EASTERLY LOT LINES.
 (N) INDICATES NORTH LOT LINES.
 (S) INDICATES SOUTH LOT LINES.
 THERE SHALL BE NO DIRECT VEHICULAR ACCESS
 TO GRADY AVENUE (W/3) FROM LOTS 8 AND 9.
 THERE SHALL BE NO DIRECT VEHICULAR
 ACCESS TO THE 194 CONNECTOR (SNOVER ROAD)
 FROM LOTS 8 AND 9.



Robert L. Smith
 ROBERT L. SMITH
 REGISTERED PROFESSIONAL ENGINEER
 MICHIGAN
 10500

061220

EAST POINTE INDUSTRIAL SUBDIVISION
 A SUBDIVISION OF PART OF EAST 1/2 & WEST 1/2 OF
 FRACTIONAL SECTION 1, T.2N., R.13E., CLINTON TOWNSHIP,
 MACOMB CO., MICHIGAN

SURVEYOR'S CERTIFICATE

I, Robert L. Smith, Surveyor, Certify:
 That I have surveyed, divided and mapped the land shown on this plat,
 described as follows:

EAST POINTE INDUSTRIAL SUBDIVISION

A subdivision of part of East 1/2 and West 1/2 of Fractional Section 1, T.2N., R.13E.,
 Clinton Township, Macomb County, Michigan and being more particularly described

as follows:
 Beginning at a point 2283.11 ft. S. 01°-24'-00"W. along the East line of
 Fractional Section 1 from the northeast corner of said Fractional Section 1, thence
 extending along said East line S. 01°-24'-00"W. 829.08 ft. to a point on the East line of
 Fractional Section 1, thence to the latterly Right of Way line W. 25°-54'-00"E.
 120 ft. to a point on the latterly Right of Way line W. 25°-54'-00"E.
 24.65 ft. to a point on the latterly Right of Way line W. 25°-54'-00"E.
 1.82-00°-11'W. 1624.28 ft. to the point of beginning and containing 44.263
 acres of land also containing 17 lots numbered 1 thru 17 inclusive.

That I have made such survey, land division and plat by the direction of the
 owners of such land.
 That such plat is a correct representation of all the exterior boundaries of
 the land surveyed and the subdivision of it.
 That the required monuments and lot markers have been located in the ground
 so that the boundaries and lot markers can be located and identified.
 That the accuracy of the survey is within the limits required by Section 126 of
 the Act.
 That the bearings shown on the plat are expressed as required by Section 126
 (1) of the Act and as explained in the Legend.

AUGUST 11, 1989

LEWIS ASSOCIATES, INC.
 2200 WASHINGTON PRESENT
 FT. CLEMENS, MICHIGAN 48063

Robert L. Smith
 ROBERT L. SMITH
 SURVEYOR
 SECRETARY LEWIS ASSOCIATES, INC.



PROPRIETOR'S CERTIFICATE

I, S. J. Newberry, Inc., a corporation duly organized and existing under
 the laws of the State of Michigan, the name of which is shown on the plat,
 do hereby certify that the land shown on the plat was surveyed, divided and
 A. Blatt, executive vice president, as proprietor, who caused the land
 to be surveyed, divided and dedicated as represented on this plat.
 The plat is a true and correct representation of the land and the plat
 statements are private easements and that all other easements are for the
 uses shown on the plat, and that there shall be no direct vehicular access
 to the land shown on the plat from the latterly Right of Way line of
 Fractional Section 1, T.2N., R.13E., Clinton Township, Macomb County,
 Michigan, to the land shown on the plat, except as shown on the plat and
 that the plat includes all land to the waters edge of the retention basin, and that lots
 2 & 9 extend to the water edge.
 S. J. NEWBERRY, INC.
 P. O. BOX 220
 FRASER, MICHIGAN 48066

WITNESSES:

Thomas J. Newberry
 Thomas J. Newberry
 President

L. W. Blatt
 L. W. Blatt
 Executive Vice President

ACKNOWLEDGEMENT

STATE OF MICHIGAN, S.S.
 MACOMB COUNTY

Personally came before me this 11th day of August
 1989, Thomas J. Newberry, President and L. W. Blatt, Executive Vice
 President of S. J. Newberry, Inc., a corporation duly organized and
 existing under the laws of the State of Michigan, and to me known to be such president and
 executive vice president of said corporation, and acknowledged that they
 executed the foregoing instrument and that they are the authorized officers of
 said corporation, by its authority.

NOTARY PUBLIC, State of Michigan, Macomb County, Michigan

MY COMMISSION EXPIRES 1-17-92



Robert L. Smith
 ROBERT L. SMITH

06/03/89

EAST POINTE INDUSTRIAL SUBDIVISION
A SUBDIVISION OF PART OF EAST 1/2 8 WEST 1/2 OF
FRACTIONAL SECTION 1, T.2N., R.13E., CLINTON TOWNSHIP,
MACOMB CO., MICHIGAN

COUNTY TREASURER'S CERTIFICATE

The records in my office show no unpaid taxes or special assessments for
this subdivision, including the lands
included in this plat.

Robert L. Smith
TREASURER COUNTY OF MACOMB

CERTIFICATE OF MUNICIPAL APPROVAL

I certify that this plat was approved by the Township Board of the Township of
Clinton on 21 NOV 1980 and was reviewed and found
to be in compliance with ACT 206, P.A. of 1967 and that the public sewer and
public water services have been installed and are ready for use within this
plat.

and that surety is posted for one year to insure the
placement of monuments and lot markers.

Robert L. Smith
DEPUTY TOWNSHIP CLERK

COUNTY BOARD COMMISSIONER'S CERTIFICATE

Approved on 21 NOV 1980, as complying with Section 19a of Act 206,
as amended, and the public utility rules and regulations published by Act 206
in the County of Macomb.

Robert L. Smith
BOB S. WELSH, COMMISSIONER OF PUBLIC
WORKS

MICHIGAN DEPARTMENT OF TRANSPORTATION
APPROVED ON 21 NOV 1980 AS COMPLYING WITH ACT 206, P.A. OF 1967 AND
THE PUBLISHED RULES AND REGULATIONS OF THE DEPARTMENT OF
TRANSPORTATION.

MICHIGAN DEPARTMENT OF TRANSPORTATION

James R. Tate
JAMES R. TATE, DIRECTOR

CERTIFICATE OF COUNTY ROAD COMMISSIONER'S

Approved on 21 NOV 1980, as complying with Section 19b of Act
206, P.A. of 1967 and the applicable published rules and regulations of the
Board of Road Commissioners of Macomb County.

Robert L. Smith
ROBERT L. SMITH, VICE-CHAIRPERSON
MIKE J. QUENT, COMMISSIONER

COUNTY PLAT BOND CERTIFICATE

This plat has been reviewed and is approved by the Macomb County Plat
Board on 21 NOV 1980 as being in compliance with the rules and regulations
and regulations.

Robert L. Smith
BOB E. WOODRICK,
COUNTY TREASURER

Edna Weiler
EDNA WEILER, CLERK, REGISTER OF DEEDS

RECORDING CERTIFICATE

STATE OF MICHIGAN
MACOMB COUNTY

This plat was prepared for record on the 15 day of Nov, 1980
at 11:00 and recorded in Liber 13 of plats on NOV 21 1980
at 11:00.

Robert L. Smith
ROBERT L. SMITH, REGISTER OF
DEEDS



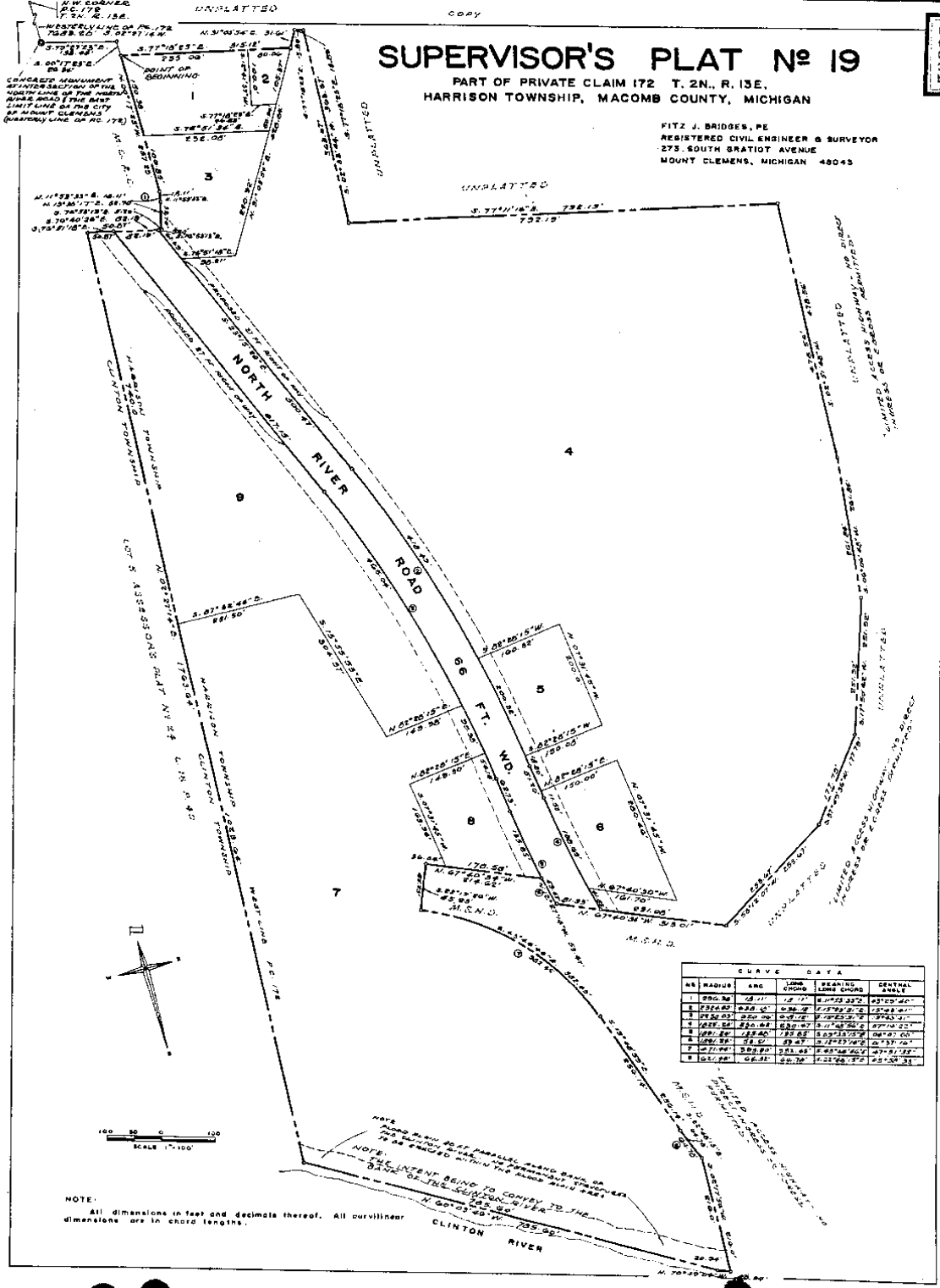
Robert L. Smith
ROBERT L. SMITH

SUPERVISOR'S PLAT No 19

PART OF PRIVATE CLAIM 172 T. 2N., R. 13E.
HARRISON TOWNSHIP, MACOMB COUNTY, MICHIGAN

FITZ J. BRIDGES, P.E.
REGISTERED CIVIL ENGINEER & SURVEYOR
275 SOUTH GRATIOT AVENUE
MOUNT CLEMENS, MICHIGAN 48043

50279



NO.	RADIUS	ANG.	LONG. CHORD	BEARING LONG. CHORD	CENTRAL ANGLE
1	250.00	45.17	175.17	S. 45.17° E. 175.17	90.34
2	250.00	45.17	175.17	S. 45.17° E. 175.17	90.34
3	250.00	45.17	175.17	S. 45.17° E. 175.17	90.34
4	250.00	45.17	175.17	S. 45.17° E. 175.17	90.34
5	250.00	45.17	175.17	S. 45.17° E. 175.17	90.34
6	250.00	45.17	175.17	S. 45.17° E. 175.17	90.34
7	250.00	45.17	175.17	S. 45.17° E. 175.17	90.34
8	250.00	45.17	175.17	S. 45.17° E. 175.17	90.34
9	250.00	45.17	175.17	S. 45.17° E. 175.17	90.34

A. S. J. P. 7-8 6-14-1968

copy

SUPERVISOR'S PLAT No 19

PART OF PRIVATE CLAIM 172 T. 2N., R. 13E.,
HARRISON TOWNSHIP, MACOMB COUNTY, MICHIGAN

FITZ J. BRIDGES REG. CIVIL ENGINEER & SURVEYOR MOUNT CLEMENS, MICHIGAN

DESCRIPTION

The land embraced in the annexed plat of Supervisor's Plat No. 19 part of Private Claim 172 T. 2N., R. 13E., Harrison Township, Macomb County, Michigan and being more particularly described as follows:

Commencing at the N. W. corner of P. C. 172; thence S. 02°27'14"W. 7683.20 ft. along the Westerly line of P. C. 172 to a monument at the intersection of the North line of the North River Road and East limit line City of Mount Clemens (Westerly line of P. C. 172); thence S. 75°27'23"E. 138.45 ft.; thence S. 00°17'23"E. 26.34 ft. to the point of beginning; thence S. 77°16'23"E. 315.12 ft.; thence N. 51°03'54"W. 51.41 ft.; thence S. 77°18'23"E. 13.89 ft.; thence S. 02°33'44"W. 363.67 ft.; thence S. 77°11'16"E. 792.19 ft.; thence S. 02°51'14"W. 478.56 ft.; thence S. 06°06'48"W. 261.84 ft.; thence S. 17°50'42"W. 251.92 ft.; thence S. 37°49'56"W. 177.79 ft.; thence S. 58°12'02"W. 253.67 ft.; thence N. 67°40'34"W. 313.81 ft.; thence along a curve to the left (C) radius 1891.24 ft., central angle 1°37'16" whose long chord bears N. 12°27'14"W. 53.47 ft.; thence N. 67°40'34"W. 214.53 ft.; thence S. 22°19'26"W. 85.23 ft.; thence along a curve to the right (C) radius 471.44 ft., central angle 47°51'38" whose long chord bears S. 43°44'46"E. 392.45 ft.; thence S. 19°48'59"E. 256.14 ft.; thence along a curve to the left (C) radius 681.44 ft., central angle 5°58'33" whose long chord bears S. 22°48'15"E. 64.78 ft.; thence S. 02°17'54"W. 216.0 ft.; thence N. 70°40'04"W. 20.94 ft.; thence N. 60°03'46"W. 789.40 ft.; thence N. 02°27'14"E. 1763.64 ft.; thence S. 76°51'18"E. 50.87 ft.; thence S. 76°40'26"E. 62.39 ft.; thence S. 76°53'13"E. 5.20 ft.; thence N. 13°38'17"E. 52.70 ft.; thence along a curve to the left (C) radius 296.98 ft., central angle 3°29'40" whose long chord bears N. 11°53'53"E. 16.11 ft.; thence N. 00°17'23"W. 257.23 ft. to the point of beginning. Containing lots 1 through 9 inclusive.

DEDICATION

KNOW ALL MEN BY THESE PRESENTS, that I, Ralph E. Beaufait, Supervisor of the Township of Harrison of Macomb County, State of Michigan, by virtue of authority in me vested by Section 51, Act 172, of 1929, having been duly authorized by the Township Board have caused the land described in the annexed plat to be surveyed, laid out and platted, to be known as, Supervisor's Plat No. 19, part of Private Claim 172, T. 2N., R. 13E., Harrison Township, Macomb County, Michigan and that the streets and easement as shown on said plat are now being used for such purposes, and that the plat conforms with the requirements of Section 51, Act 172, of Public Acts of 1929, as amended.

Signed and Sealed in the presence of:
Ralph E. Beaufait
Ralph E. Beaufait, Supervisor
Township of Harrison
38151 L'Anse Creuse
Mount Clemens, Michigan 48043

ACKNOWLEDGEMENT

State of Michigan }
County of Macomb }

On this 27th day of November, 1967, before me a Notary Public in and for said County, personally came the above named, Ralph E. Beaufait, Supervisor of the Township of Harrison known to me to be the person who executed the above dedication and acknowledged the same to be his free act and deed as such Supervisor.

My commission expires 10-10-71

Richard W. Munroe
Richard W. Munroe, Notary Public, Macomb County, Michigan

CERTIFICATE OF MUNICIPAL APPROVAL

This Plat was approved by the Township Board of the Township of Harrison at a meeting held 27th day of November, 1967 and complies with Section 19A and the width of lots is in compliance with requirements of Section 30, Act 172, of 1929, as amended.

Richard W. Munroe
Richard W. Munroe, Clerk

CERTIFICATE OF APPROVAL BY THE BOARD OF COUNTY ROAD COMMISSIONERS

This Plat has been examined and was approved on the 3 day of October, A. D. 1967 by the Macomb County Board of Road Commissioners.

Lawrence Ohmske
Lawrence Ohmske, Chairman

Keith Bovenschen
Keith Bovenschen, Vice Chairman

Ernest W. McCollom, Member

CERTIFICATE OF APPROVAL BY THE COUNTY BOARD

This Plat was approved on the 27th day of November, A. D. 1967 by the Macomb County Board of Road Commissioners.

Ernest W. McCollom
Ernest W. McCollom, Chairman

Edna Miller
Edna Miller, County Clerk

Lynn Whalen
Lynn Whalen, County Treasurer
Thomas S. Habel
Thomas S. Habel, Chairman
Thomas S. Walsh
Thomas S. Walsh, Deputy Chairman

SURVEYOR'S CERTIFICATE

I hereby certify the plat hereon delineated is a correct one and that permanent metal monuments consisting of bars not less than one-half inch in diameter and 36 inches in length, encased in a concrete cylinder at least 4 inches in diameter and 36 inches in depth have been placed at points marked thus (O) as thereon shown at all angles in the boundaries of the land platted, as all the intersections of the lines of streets, and at the intersections of the lines of streets with the boundaries of the plat as shown on said plat.

Prepared and Drafted by:

Fitz J. Bridges
Fitz J. Bridges, D. P.
Registered Land Surveyor No. 5774
273 South Gratiot Avenue
Mount Clemens, Michigan 48043

Fitz J. Bridges
Fitz J. Bridges, D. P.
Registered Land Surveyor No. 5774
273 South Gratiot Avenue
Mount Clemens, Michigan 48043

APPROVED *Fitz J. Bridges*

MICHIGAN BOARD OF SURVEYING AND MAPPING
MEMBER E. STANLEY
State Highway 100, East Lansing, Michigan

COPY

Register's Office
The County Clerk
Ralph E. Beaufait
1967
1968
1969
1970
1971
1972
1973
1974
1975
1976
1977
1978
1979
1980
1981
1982
1983
1984
1985
1986
1987
1988
1989
1990
1991
1992
1993
1994
1995
1996
1997
1998
1999
2000
2001
2002
2003
2004
2005
2006
2007
2008
2009
2010
2011
2012
2013
2014
2015
2016
2017
2018
2019
2020
2021
2022
2023
2024
2025

I hereby certify this copy is a true and correct copy of the original as filed in my office.
Fitz J. Bridges, D. P.
Registered Land Surveyor No. 5774
273 South Gratiot Avenue
Mount Clemens, Michigan 48043

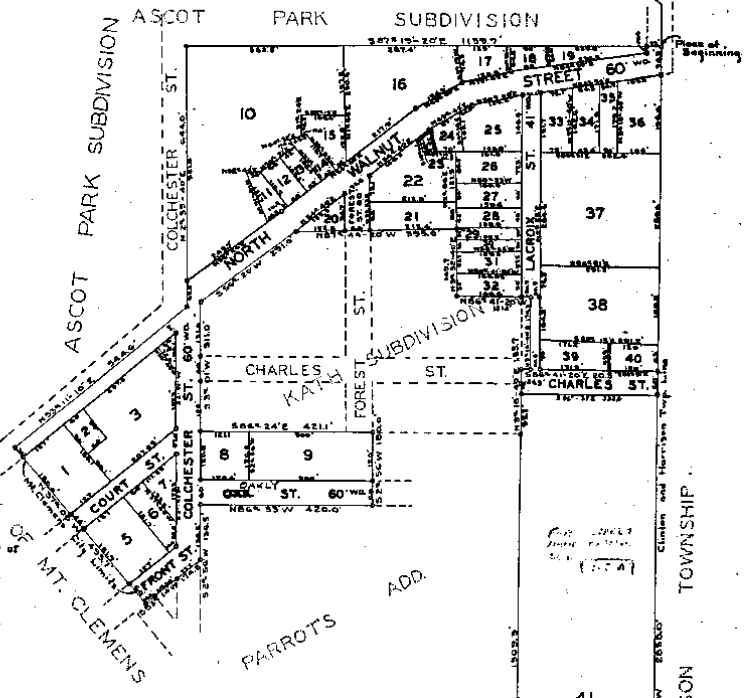
26085

SUPERVISORS PLAT NO. 5.

PART OF P. C. 626 T. 2. N. R. 13 E.
CLINTON TOWNSHIP
MACOMB CO. MICHIGAN.
SCALE 1"=150'

Examined and
Jan 9 1904
J. B. Howell
Notary Public

Division of
Henry R. English
and Clinton's
Harrison Top
Line



Supervisor
Jan 9 1904
J. B. Howell
Notary Public

Supervisor
Jan 17 1904
J. B. Howell
Notary Public

CERTIFICATES OF APPROVAL BY THE COUNTY BOARD
This plat was approved on the 27th day of December 1903
J. B. Howell JUDGE OF PROBATE
Anna B. Howell COUNTY CLERK
J. B. Howell COUNTY TREASURER

Dedication.
KNOW ALL MEN BY THESE PRESENTS, that I, Otto Sherbank Supervisor of Clinton Township, Macomb County, State of Michigan, by virtue of authority in me vested by Section 51, Act 172, of 1920, having been duly authorized by the Township Board have caused the land described in the annexed plat to be surveyed, laid out and granted to be known as Supervisors Plat No. 5 of part of P. C. 626, and that the streets and alleys as shown on said plat are now being used for such purposes.

Description of land platted
The land embraced in the annexed plat of Supervisors Plat No. 5 part of P. C. 626 Clinton Township Macomb County Michigan is described as follows:-
Commencing at the intersection of Henry B. Joy Road and the Clinton Harrison Township line, thence S 30° 13' 40" W 1150.0 feet along the township line to the place of beginning, thence S 20° 12' 40" W 5050.0 feet along the township line, thence S 89° 00' 30" W 515.0 feet along the Mt. Clemens City line, thence N 87° 41' 00" W 1809.3 feet along the east boundary of Parrots Add, thence S 3° 15' 40" W 150.1 feet along the east boundary of Kath Subdivision, thence S 66° 41' 30" E 205 feet along the south boundary of Kath Subdivision, thence N 20° 12' 40" E 174.3 feet along the east boundary of Kath Subdivision, thence S 84° 41' 20" E 182.1 feet along the north boundary of Kath Sub, thence N 3° 32' 40" E 160.7 feet along the east boundary of Kath Subdivision, thence N 69° 44' 30" W 1150.0 feet along the township boundary of Kath Subdivision, thence S 66° 40' W 5050.0 feet along Kath Subdivision and south side of Forest Street, thence S 20° 12' 40" W 1150.0 feet along the east side of Colchester Street thence S 84° 41' 20" E 182.1 feet along the Kath Subdivision, thence S 66° 41' 30" E 205 feet along Parrots Addition, thence N 66° 33' W 430.0 feet along Parrots Addition and south side of Oak Street, thence S 69° 50' W 126.5 feet along Parrots Addition and east side of Colchester Street, thence N 33° 14' W 174.3 feet along Parrots Addition and south side of Forest Street, thence S 37° 00' W 495.0 feet along the Mt. Clemens City line, thence N 83° 11' 10" E 84.3 feet along the eastern line of North Talmage, thence N 84° 05' 40" E 644.0 feet along the east side of Colchester Street, thence S 87° 13' 20" E 1150.7 along the south line of Ascot Park Subdivision to the point of beginning.

Witness:
J. B. Howell
Supervisor of Clinton Twp.

Acknowledgment.
STATE OF MICHIGAN)
COUNTY OF MACOMB)
On this 27th day of December A. D. 1903 before me, a Notary Public in and for said county, personally came the above named Otto Sherbank Supervisor of Clinton Township known to me to be the person who executed the above dedication, and acknowledged the same to be his free act and deed as such Supervisor.
Notary Public in and for _____ County.
My Commission expires _____

SUPERVISOR'S CERTIFICATE.
I hereby certify that the plat hereto delineated in a correct and true manner and that permanent metal monuments of not less than one inch in diameter and fifteen inches in length set in concrete bases at least four inches in diameter and forty-eight inches in depth have been placed at points marked thereon as shown on said plat, at all the intersections of streets, intersections of alleys, or of streets and alleys, and at the intersections of streets and alleys with the boundaries of the plat as shown on said plat.

TOWNSHIP APPROVAL.
This plat was approved by the Township Board of the Township of Clinton at a meeting held _____
Township Clerk

1-10-1934

FILED IN RECORD DEPT.
MAY 23 1928
Wm. L. Hawley
Notary Public
MAY 21 1928
Geo. H. Reynolds
Notary Public

ASSESSORS PLAT NO. 24

OF THE CITY OF
MT. CLEMENS, MACOMB CO., MICHIGAN.

SCALE - 1"=100'

Total- All dimensions hereon are in feet and decimals thereof.

DEDICATION

KNOW ALL MEN BY THESE PRESENTS, That I, Geo. H. Reynolds, Assessor of the City of Mt. Clemens Macomb County Michigan, by virtue of authority in me vested by section 3550, Compiled Laws of 1918 as amended, having been duly authorized by the City Commission, have caused the land described in the annexed plat to be surveyed, laid out and plotted to be known as Assessors Plat No. 24 of the City of Mt. Clemens Macomb County Michigan, and that the streets and alleys as shown on said plat are hereby dedicated to the use of the public.

Joseph F. Matthews
Maria Brundenburg

Geo. H. Reynolds, Assessor of the City of Mt. Clemens Macomb County Michigan.

COPY
Assessors Plat No. 24
MAY 23 1928
Wm. L. Hawley
Notary Public
Geo. H. Reynolds
Notary Public

ACKNOWLEDGMENT

STATE OF MICHIGAN | ss
COUNTY OF MACOMB |
On this 16 day of May, A.D. 1928 before me a Notary Public in and for said County, personally came the above named Geo. H. Reynolds, Assessor of the City of Mt. Clemens, known to be the person who executed the above dedication and acknowledged the same to be his free act and deed as such Assessor. My Commission expires July 1st 1928.

Wm. L. Hawley
Notary Public in and for said County

DESCRIPTION

The land addressed in the annexed plat of Assessors Plat No. 24 of the City of Mt. Clemens Macomb County Michigan, is described as follows:-
Beginning at the intersection of the N 1/4 line of East Broadway with the Clinton-Harrison Twp. line. Thence E 24°42'2", 267.8 ft. Thence E 87°00'7", 613.8 ft. Thence E 85°09'2", 51.8 ft. Thence E 85°29'2", 500.0 ft. Thence S 1°00'17", 204.4 ft. Thence S 40°18'0", 737.8 ft. Thence S 7°20'2", 110.3 ft. Thence S 85°25'2", 108.0 ft. Thence S 78°22'2", 112.2 ft. Thence S 74°04'4", 120.3 ft. Thence S 69°11'2", 61.3 ft. Thence S 48°44'2", 122.0 ft. Thence S 0°42'2", 204.6 ft. Thence S 31°31'2", 505.4 ft. Thence S 25°42'2", 412.4 ft. Thence S 18°51'2", 378.7 ft. Thence S 44°10'2", 222.8 ft. Thence S 58°19'2", 417.4 ft. Thence E 1°49'2", 127.2 ft. to place of begin.

ENGINEERS CERTIFICATE

I hereby certify that the plat hereon delineated is a correct one and that permanent metal monuments not less than one inch in diameter and fifteen inches in length set in a concrete base at least four inches in diameter and forty-eight inches in depth have been placed at points marked thus 0 as shown at all angles in the boundaries of the land plotted, at all intersections of streets, intersections of alleys or of streets and alleys and at the intersections of streets and alleys with the boundaries of the plat as shown on said plat.

Wm. L. Hawley
Registered Civil Engineer.

CERTIFICATE OF MUNICIPAL APPROVAL

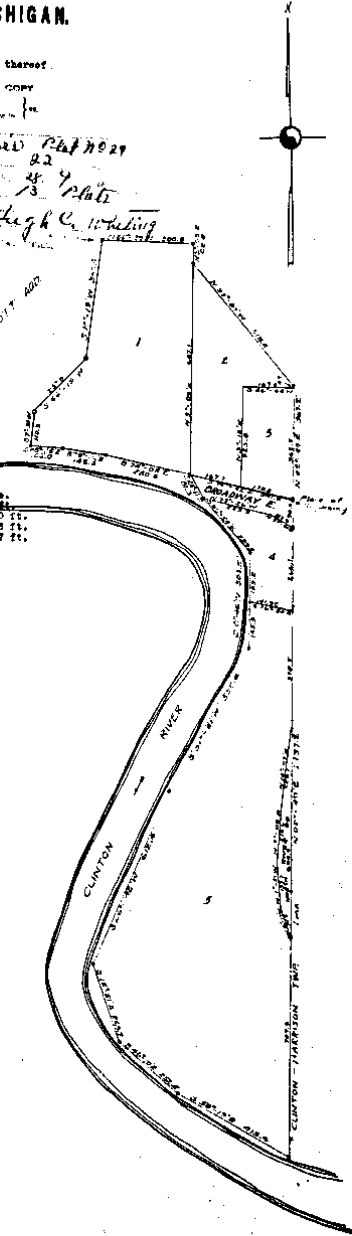
This plat was approved by the City Commission of the City of Mt. Clemens Macomb County Michigan, at a meeting held May 21 1928 at 10:00 a.m.

Wm. L. Hawley, City Clerk

CERTIFICATE OF APPROVAL BY THE COUNTY JUDGE

This plat was approved on the 16 day of May 1928.

Charles H. Reynolds, Judge of Probate
Wm. L. Hawley, County Clerk
James G. Brown, County Treasurer



11-22-1928
11-22-1928

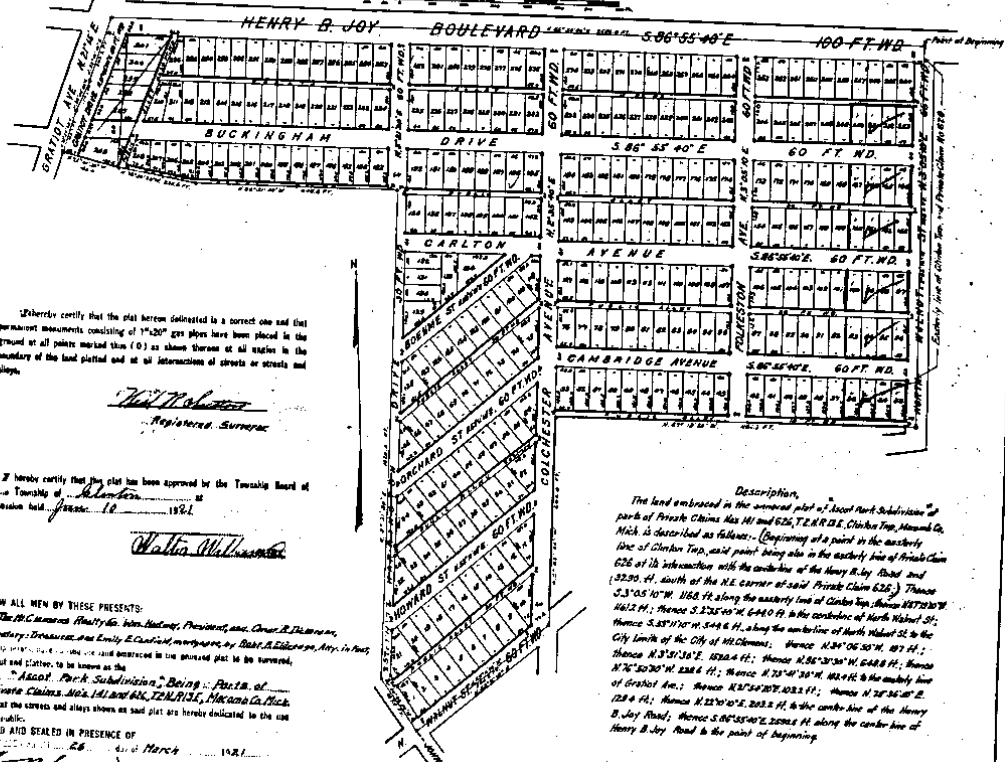
ASCOT PARK SUBDIVISION

Being parts of Private Claims Nos 141 and 626, T2NR3E,
Clinton Twp. Macomb Co.,
MICHIGAN

Scale 200 Feet = 1 Inch.

Examined and Approved
Chas. J. Williams
Deputy Auditor General

17465



I hereby certify that the plat herein delineated is a correct one and that permanent monuments consisting of 1\"/>

Walter Williams
Registered Surveyor

I hereby certify that this plat has been approved by the Township Board of the Township of Clinton, Michigan, on this 10th day of March, 1921.

Walter Williams

KNOW ALL MEN BY THESE PRESENTS:

The Michigan Realty Co., John H. Williams, President, and Oscar B. Williams, Secretary, Deceased, and Emily E. Canfield, Mortgagee, by their Attorney, Robert F. Eldredge, do hereby certify that the land embraced in the above plat is the several, full and undivided lots of the said plat to be known as the "Ascot Park Subdivision," being a part of Private Claims Nos. 141 and 626, T2NR3E, Macomb Co., Mich., and that the streets and alleys shown on said plat are hereby dedicated to the use of the public.

SIGNED AND SEALED IN PRESENCE OF
The Michigan Realty Co.
John H. Williams
Oscar B. Williams
Emily E. Canfield
Robert F. Eldredge

COPY
Recorder's Office
Macomb County, Mich.

I HEREBY CERTIFY THAT THIS COPY IS A TRUE COPY OF THE ORIGINAL PLAT FOR RECORDATION.
GOSWARD *Chas. J. Williams*
DEPUTY AUDITOR GENERAL

FILED IN AUDITOR GENERAL'S DEPT.
April 27-1921
Chas. J. Williams
DEPUTY AUDITOR GENERAL

STATE OF MICHIGAN) S.S.
COUNTY OF MACOMB) ss.
I, the undersigned, Notary Public in and for said county, personally know the above named John H. Williams and Oscar B. Williams, who being each by me duly sworn did say that they are the President and Secretary, respectively of the Michigan Realty Co., a Michigan Corporation and that the seal affixed to said instrument is the corporate seal of said corporation and that the will instrument was signed and sealed in behalf of said corporation by authority of its Board of Directors and the said John H. Williams and Oscar B. Williams, who acknowledged said instrument to be the free act and deed of said corporation.
John H. Williams
Notary Public in and for Macomb County, Michigan.
My commission expires Feb. 11, 1922.

Description.
The land embraced in the several plots of Ascot Park Subdivision of parts of Private Claims Nos 141 and 626, T2NR3E, Clinton Twp., Macomb Co., Mich. is described as follows: (Beginning at a point in the westerly line of Clinton Twp., said point being also in the westerly line of Private Claim 626 of Clinton Twp. in the intersection with the centerline of the Henry B. Joy Road and 32.25 ft. south of the N.E. corner of said Private Claim 626.) Thence S. 3° 05' 10\"/>

Robert F. Eldredge
Attorney at Law
James B. Eldredge
Notary Public

STATE OF MICHIGAN) S.S.
COUNTY OF MACOMB) ss.

ON THIS 27th DAY of April 1921 BEFORE ME A NOTARY PUBLIC IN AND FOR SAID COUNTY, PERSONALLY APPEARED ROBERT F. ELDRIDGE TO ME PERSONALLY KNOWN, WHO BEING BY ME DULY SWORN DID SAY THAT HE WAS ATTORNEY IN FACT FOR EMILY E. CANFIELD, MORTGAGEE AND ACKNOWLEDGED SIGNATURE OF SAID INSTRUMENT OF DEED OF SAID EMILY E. CANFIELD, ACTING THROUGH HIM, HER ATTORNEY IN FACT.

Robert F. Eldredge
NOTARY PUBLIC IN AND FOR MACOMB COUNTY, MICHIGAN.

MY COMMISSION EXPIRES March 22, 1925

NOTE: All dimensions on this plat are given in feet and decimals thereof.

H-26-1921
K.S.P. 92

CHARLES KATHS SUBDIV
 OF PART OF P.C. 626
 CLINTON TWP. MACOMB CO., MICH.

Scale = 50 feet per inch

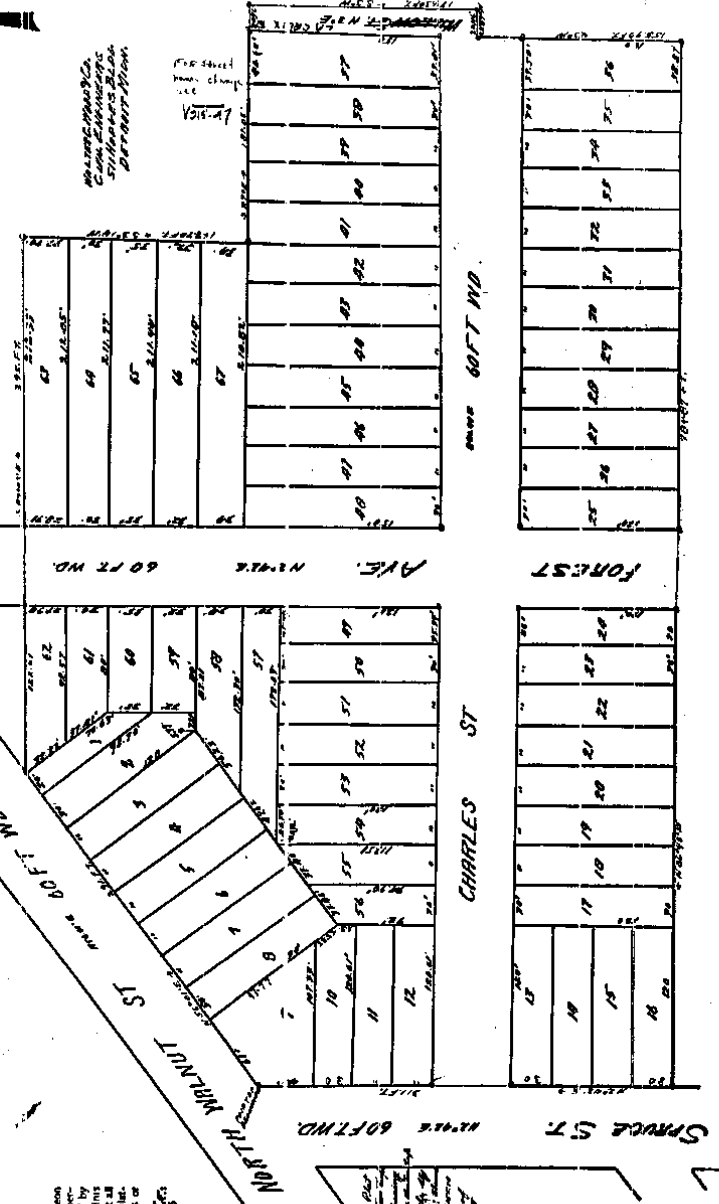
Map made by
 Charles Kath
 Surveyor
 1917

I hereby certify that the plat herein defined is a correct one, and that the 16' iron pins have been set at the marked points (3) as shown shown at all angles in the boundaries of the land plat, and at all intersections of streets or streets and lots.

W. H. HARRIS, Co. Surveyors

I certify that the plat herein defined is a correct one, and that the 16' iron pins have been set at the marked points (3) as shown shown at all angles in the boundaries of the land plat, and at all intersections of streets or streets and lots.

W. H. HARRIS, Co. Surveyors



9322

5-19-1917

I hereby certify that the plat herein defined is a correct one, and that the 16' iron pins have been set at the marked points (3) as shown shown at all angles in the boundaries of the land plat, and at all intersections of streets or streets and lots.

W. H. HARRIS, Co. Surveyors

DESCRIPTION:
 The land herein shown is a portion of the land shown in the plat of Charles Kath, dated 1917, and is situated in the Township of Clinton, County of Macomb, State of Michigan.

FILED IN OFFICE SURVEYOR'S OFFICE
 5-19-1917
 COUNTY SURVEYOR

5540

9229



Scale 150ft-1-inch

Dedication
 Know all Men by these presents that I, *Samuel E. Parrott*, of the County of Macomb, State of Michigan, do hereby certify that the above described land is the property of the City of Mt. Clemens, Michigan, and that the same is dedicated to the use of said public.

Witness my hand and seal of office this 19th day of February, 1904.

Samuel E. Parrott
 Mayor of Mt. Clemens, Michigan

State of Michigan
 County of Macomb } ss. *Edmund W. Swain*
 I, the undersigned, Clerk of the County of Macomb, do hereby certify that the above described land is the property of the City of Mt. Clemens, Michigan, and that the same is dedicated to the use of said public.

Description
 The land described in the foregoing plat is situated in the City of Mt. Clemens, Michigan, and is bounded on the north by the street known as Euclid Street, on the east by the street known as Front Street, on the south by the street known as ... and on the west by the street known as ...

Surveyor's Certificate
 I hereby certify that the above described land is a correct and true copy of the original map and plan of the same, as shown to me by the City of Mt. Clemens, Michigan, and that the same is dedicated to the use of said public.

Edmund W. Swain
 Civil Engineer

State of Michigan
 County of Macomb } ss. *Edmund W. Swain*
 I, the undersigned, Clerk of the County of Macomb, do hereby certify that the above described land is the property of the City of Mt. Clemens, Michigan, and that the same is dedicated to the use of said public.

State of Michigan
 County of Macomb } ss. *Edmund W. Swain*
 I, the undersigned, Clerk of the County of Macomb, do hereby certify that the above described land is the property of the City of Mt. Clemens, Michigan, and that the same is dedicated to the use of said public.

1.21.1904

7-19-1904

RECEIVED AND FILED IN AUDITOR GENERAL'S OFFICE

REGISTERED IN
 CLERK'S OFFICE
 COUNTY OF MACOMB, MICHIGAN
 MARCH 20 1904

for deed name changes see V515-47