

**MACOMB COUNTY 2018 REMONUMENTATION GRANT  
PROGRAM FOR CITY OF MT. CLEMENS  
OC-067**

**Section One**

Index

Pictures in the four cardinal directions; found monumentation and after setting the required monumentation.

**Section Two**

Surveyor's Report

Land Corner Recordation Certificate

**Section Three**

1-4. Field Notes

5. GLO Map Clinton Township

6. GLO Map Clinton Township 1818

7-8 GLO Map Clinton Township – 1818 (2 pages)

9. Map of Clinton Township – 1875

10-11. Map of City of Mt. Clemens – 1875 (2 pages)

12. Map of Clinton Township – 1895

13. Map of the west part City of Mt. Clemens – 1895

14. Map of Clinton Township - 1916

15-18. Map of City of Mt. Clemens – 1916 (4 pages)

19. Map of City of Mt. Clemens 2006

20. Macomb County Composite Map 11-13A

21. Macomb County Composite Map 11-13B

22. Macomb County Composite Map 11-13C

**Section Four**

1. 1810-Aaron Greeley Surveyor of Private Claims 173, Pages one, two, three and four of four

2. 1810-Aaron Greeley Surveyor of Private Claims 542, Pages one, two, three, four and five of five

3. 1881-"DON M. DICKINSON'S ADDITION TO THE CITY OF MT. CLEMENS", L. 2 of Plats, Page 16,  
Sheet one of one

4. 1897-"SUBDIVISION OF OUTLOT 3 OF DON M. DICKINSON'S TO THE CITY OF MT. CLEMENS", L. 2  
of Plats, Page 53, Sheet one of one

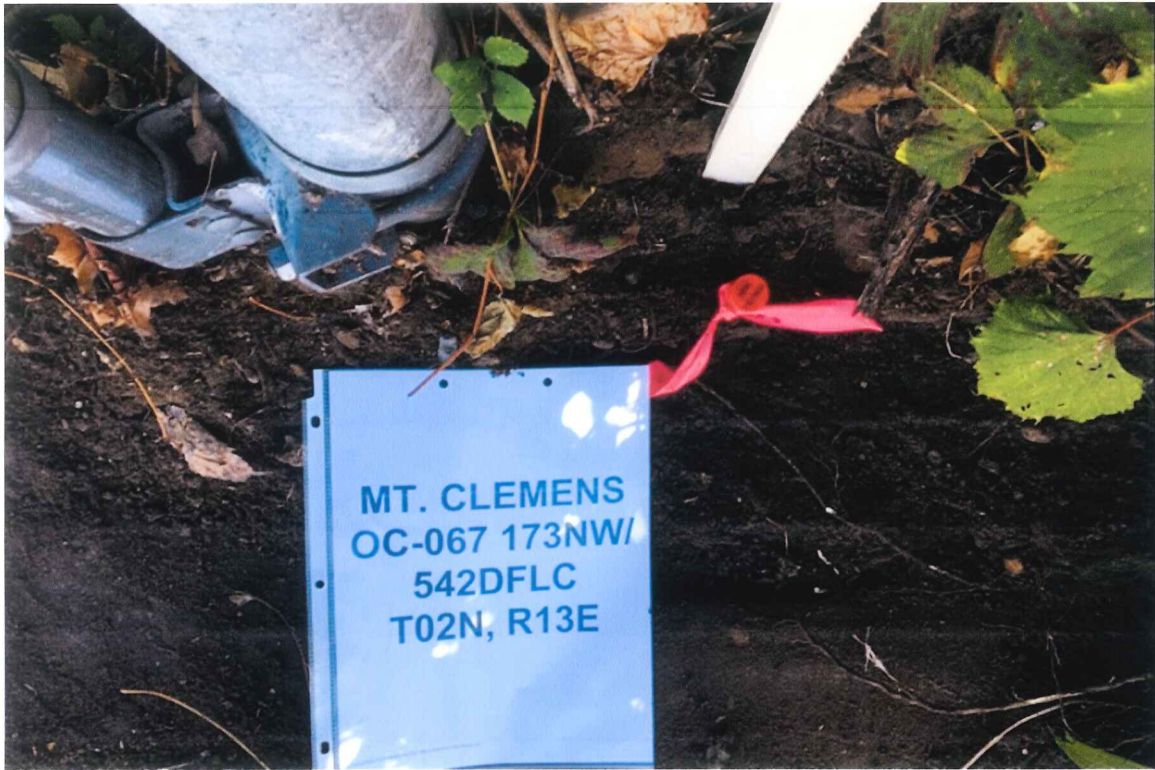
5. 1929-"ASSESSOR'S PLAT NO. 27", L. 13 of Plats, Page 46, Sheets one of one

6. 1929-"ASSESSOR'S PLAT NO. 28", L. 14 of Plats, Page 4, Sheets one of one

7. 2018-Land Corner Recordation Certificate, Liber 25463, Pages 767-768, Pages one and two of two



MT. CLEMENS  
OC-067 173NW/  
542DFLC  
T02N, R13E



MT. CLEMENS  
OC-067 173NW/  
542DFLC  
T02N, R13E









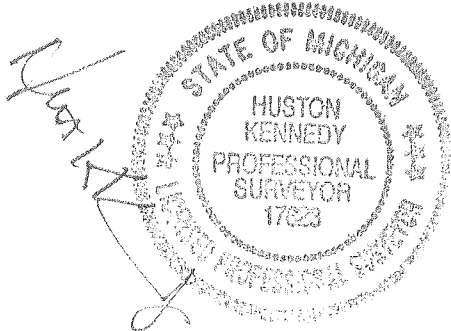
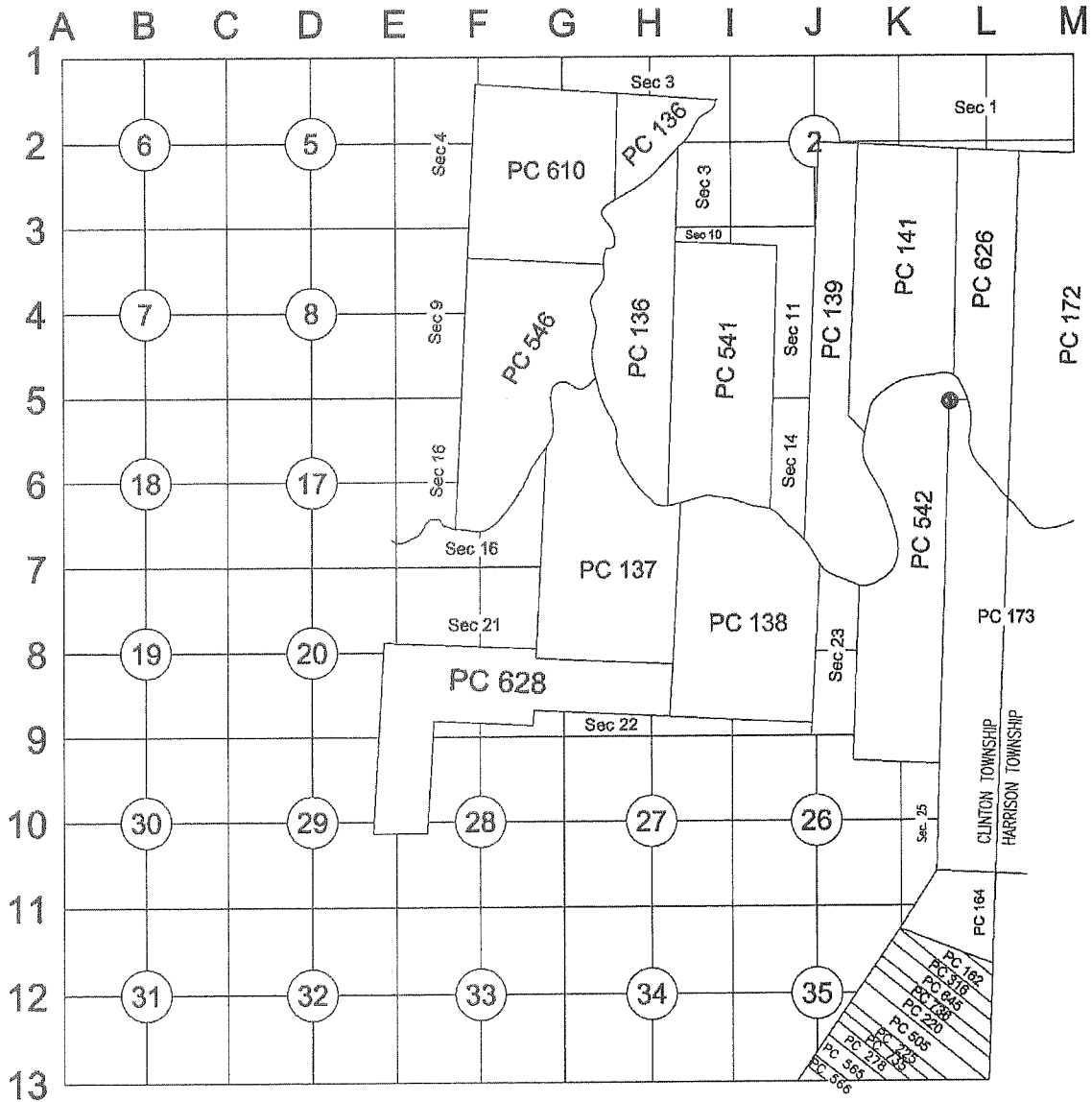
**Land Corner Recordation Certificate**  
**2018 Annual Grant Agreement**  
Authority: MICH. 1970 PA 74, MCL 54.205

Surveyor's Name: Huston K. Kennedy  
For Corner(s) in: Macomb County

Field Survey Date: August 30, 2018  
Municipality: City of Mt. Clemens

Corner Type	Section Private Claim	Survey Township	Corner Code	Other Code
Original Public Land Survey Corner	PC. <u>173/542</u>	T <u>02</u> N R <u>13</u> E	<u>173NW/542DFLC</u>	<u>OC-067</u>

**Other Code Corner Description:** Northwest corner of Private Claim 173 common with a deflection corner controlling a southerly line and an easterly line of Private Claim 542



4+

C



**Part A: Corner History:**

- 1.) 1810--Aaron Greeley, Survey of Private Claim 173
- 2.) 1810-Aaron Greeley, Survey of Private Claim 542
- 3.) 1881-"DON M. DICKINSON'S ADDITION TO THE CITY OF MT. CLEMENS", Liber 2 of Plats, page 16. Depicts the line common to Private Claims 172542, also the deflection corner
- 4.) 1897-"SUBDIVISION OF OUTLOT 3 OF DON M. DICKINSON'S TO THE CITY OF MT. CLEMENS", Liber 2 of Plats, page 3
- 5.) 1929-"ASSESSOR'S PLAT NO. 27", Liber 13 of Plats, page 46
- 6.) 1929-"ASSESSOR'S PLAT NO. 28", Liber 14 of Plats, page 4
- 7.) 2018-Dunn, PS #28408; LCRC Liber 25463, pages 767-768 - He found a 4" x 46" concrete monument with a 2-1/2" diameter aluminum disk stamped "MACOMB COUNTY MONUMENT MI ACT 345 CAA 49376 PC-036" with 4 of 4 matching accessories. (PC-036)

**Part B: Surveyor's Report on Perpetuation, Restoration, Reestablishment or Monumentation of Corner:**

This corner has not been perpetuated and the temporary corner falls 0.7' west of the back of the sidewalk extending to the south and 0.7' south of a 3" diameter steel fence corner with 6' chain link fence extending to the north and east.

The plat of "DON. M. DICKINSON'S", depicts the line common to Private Claims 173 & 542, and the deflection corner. The south line of Outlot 2 represents the East-West segment, while the east line of Avery Street represents the North-South segment of the line common to Private Claims 173 & 542. The corner was recovered by projecting a line east from the northeast corner of Lot 32, Block 8 thru the found monumentation on the north line of Block 11, (south line of Michigan Avenue) 960.00 feet. The deflection corner (OC-067) falls 445.33 feet west of OC-066.

**RECORDED, UNRECORDED AND FIELD MEASUREMENTS BETWEEN ADJACENT CORNERS**

**OC-066 to OC-067**

A. Greeley, Surveyor of Private Claims = 6 chains 48 links = 427.68 Ft.  
S87°00'00" E 445.33 Ft. + 33.00 Ft. = 475.33 Ft. (mea. 2018)

**Part C: Field Evidence of Perpetuation or Monumentation of Corner:**

OC-067 I set a 4" diameter x 36" long concrete monument with a 1/2" iron rod with a 2" diameter aluminum cap stamped "Macomb County Monument, MI Act #345, PS #17623" (OC-067)

**Accessories:**

- N05°W 47.05' Set Mag Nail w/washer stamped "Macomb County Witness Tag" West face power pole
- N85°W 12.28' Set Mag Nail w/washer stamped "Macomb County Witness Tag" South face power pole
- S05°W 115.90' Set Mag Nail w/washer stamped "Macomb County Witness Tag" NW face power pole
- N40°E 0.80' Cut "x" west face 4" steel gate post

I, Huston K. Kennedy, P.S., in a field survey on August 30, 2018 certify under the requirements of the State Survey and Remonumentation Act, 1990 PA 345, MCL 54.261 to 54.279, and the Corner Recordation Act, 1970 PA 74, MCL 54.201 to 54.210d, that the corner identified and described hereon has been perpetuated or monumented as described in Parts A, B, and C above, pursuant to the laws and rules of the State of Michigan.

  
Huston K. Kennedy, P.S.

October 3, 2018

Date

Professional Surveyor's License No.:17623

Prepared By:  
Huston K. Kennedy, PS  
105 North Washington Street  
Oxford, Michigan 48371

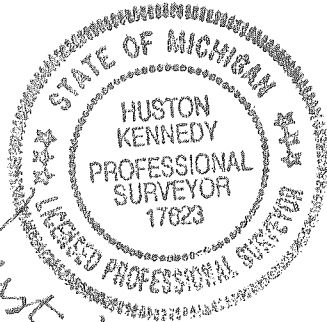
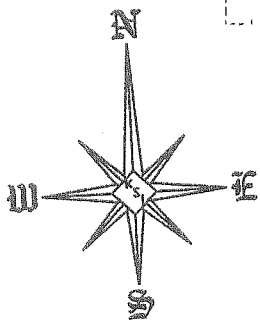
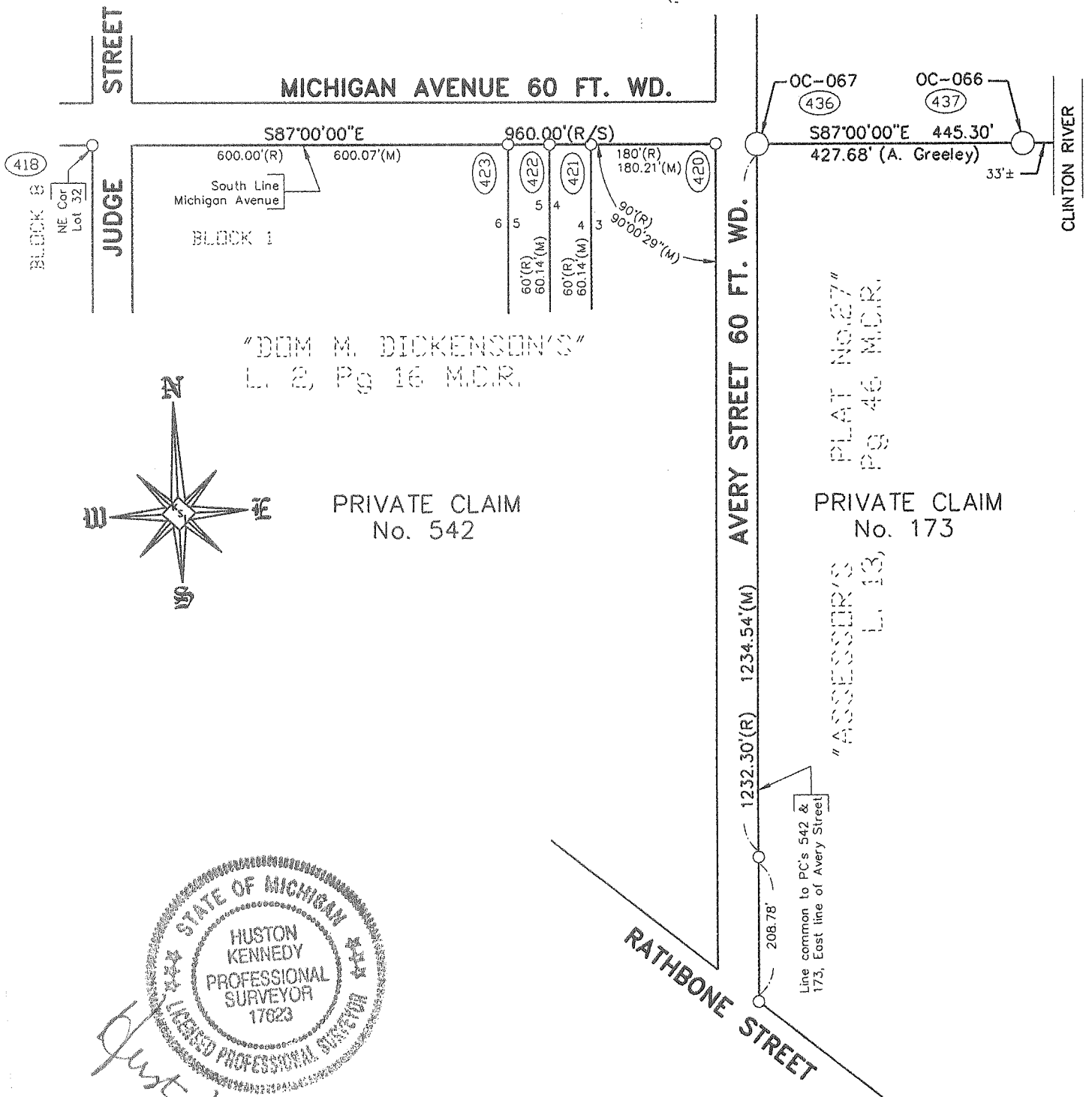






# SKETCH OF CORNER LOCATION

"ASSESSOR'S PLAT No. 28"  
L. 14, Pg 44 M.C.R.



*Just K.A.*

OC-066 & OC-067  
T02N, R13E  
CITY OF MT. CLEMENS  
Scale: 1" = 200'

Land Corner Recordation Certificate  
T 02 N R 13 E Code OC-067  
Page 4 of 4

**2018  
MACOMB COUNTY REMONUMENTATION  
GRANT PROGRAM FOR  
CITY OF MT. CLEMENS  
Research Dossier  
OC-067**

Prepared by:  
Kennedy Surveying, Inc.  
105 North Washington Street  
Oxford, Michigan 48371



# Sources of Information Researched For Macomb County 2018 Remonumentation Grant Program for City of Mt. Clemens

- 1) GLO NotesC
- 2) Act 74 Recorded LCRC
- 3) Act 132 Recorded Surveys
- 4) Personal History and Records
- 5) LCRC's and Surveys
- 6) Letters to the Following, Requesting Unrecorded information

- a) Anderson, Eckstein & Westrick
- b) BMJ Engineers & Surveyors
- c) Community Engineering & Surveying
- d) David Little Land Surveyor
- e) Fenn & Associates Surveying, Inc.
- f) George Jerome & Company
- g) Grant Ward Surveyors
- h) Great Lakes Geomatics
- i) James Land Surveying
- j) Kem-Tec & Associates
- k) Kieft Engineering, Inc.
- l) Lehner Associates, Inc.
- m) Milletics & Associates
- n) R. A. Duthler Land Surveyor, LLC
- o) Reichert Surveying
- p) R. J. Donnelly & Associates
- q) Road Commission for Macomb County
- r) Rowe Professional Services
- s) Spalding, DeDecker & Associates
- t) Urban Land Consultants, LLC

# **OC-067 TOWN 02 NORTH, RANGE 13 EAST, CITY OF MT. CLEMENS**

## **GLO NOTES**

The corner was not monumented during the original government survey.

## **EXISTING FIELD CONDITIONS**

This corner has not been perpetuated and the temporary corner falls 0.7' west of the back of the sidewalk extending to the south and 0.7' south of a 3" diameter steel fence corner with 6' chain link fence extending to the north and east.

## **RECORDED AND UNRECORDED INFORMATION USED TO RECOVER AND VERIFY THE LOCATION OF OC-067**

July 18, 1810 – Aaron Greeley, Surveyor of Private Claim No. 173

July 18, 1810 – Aaron Greeley, Surveyor of Private Claim No. 542

May 6, 1881 – Plan showing "DON M. DICKINSON'S ADDITION TO THE CITY OF MT. CLEMENS" Liber 2 of Plats on page 16 of Macomb County Records. Depicts the line common to Private Claims 172 & 542, also the deflection corner.

December 28, 1897 – "SUBDIVISION OF OUTLOT 3 OF DON M. DICKINSON'S TO THE CITY OF MT. CLEMENS", Liber 2 of Plats on page 3 of Macomb County Records.

March 26, 1929 – "ASSESSOR'S PLAT NO. 27", Liber 13 of Plats on page 46 of Macomb County Records.

April 20, 1929 – "ASSESSOR'S PLAT NO. 28", Liber 14 of Plats on page 4 of Macomb County Records.

July 12, 2018 – Steven E. Dunn, PS #28408 recorded an LCRC in Liber 25463, pages 767 -768 of Macomb County Records. He found a 4" x 36" concrete monument with a 2-1/2" diameter aluminum disk stamped "MACOMB COUNTY MONUMENT MI ACT 345 CAA 49376 PC-036" with 4 of 4 matching accessories.

## **WITNESSES:**

N10°E 3.66' R&M Found MAG nail with MCR washer in west face 5' tall block wall

S40°E 0.45' R&M SW corner of 5' tall block wall

Due East 15.21' Found MAG nail with M.C.R. washer in west face 4" Poplar

N40°W 8.98' Found MAG nail with M.C.R. washer in NE face 4" Poplar

## **RECORDED, UNRECORDED AND FIELD MEASUREMENTS BETWEEN ADJACENT CORNERS**

### **OC-067 to OC-066**


A. Greeley, Surveyor of Private Claims = 6 chains or 48 links = 427.68 Ft.

S87°00'00" E 445.33 Ft.+ 33.00 Ft. = 475.33 Ft. (mea. 2018)



**SURVEYOR'S RECOMMENDATION**

The plat of "DON. M. DICKINSON'S", depicts the line common to Private Claims 173 & 542, and the deflection corner. The south line of Outlot 2 represents the East-West segment, while the east line of Avery Street represents the North-South segment of the line common to Private Claims 173 & 542. The corner was recovered by projecting a line east from the northeast corner of Lot 32, Block 8 thru the found monumentation on the north line of Block 11, (south line of Michigan Avenue) 960.00 feet. The deflection corner (OC-067) falls 445.33 feet west of OC-066. I therefore, recommend to the Macomb County Peer Group that they accept this location as the best evidence of OC-067 to be perpetuated.

  
Huston K. Kennedy, PS  
Kennedy Surveying, Inc.

2018

MACOMB COUNTY REMONUMENTATION  
GRANT PROGRAM CITY MT. CLEMENS

OC-067

Δ	Pt	418	To	Pt	424		419-424	W. Face
424		178-55-50				HR	37.65	4" Edge
425		100-46-10				HR	196.37	

Δ	Pt	418	To	Pt	426	HLX	419-426	Set
1		130-10-55				(m)	121.48	60
2		260-21-55						TRAV
m		130-10-58						Pt

Δ	Pt	418	To	Pt	427	HLX	419-427	Fd
1		93-22-30				(m)	599.23	1"
2		186-45-00						P/PE
m		93-22-30						

Δ	Pt	418	To	Pt	428	HLX	419-428	Fd
1		93-33-00				(m)	599.56	1"
2		187-06-00						PIPE
m		93-33-00						

Δ	Pt	418	To	Pt	429	HLX	419-429	Fd
1		93-15-50				(m)	650.26	1/2"
2		186-31-30						F/R
m		93-15-45						CONC

						X	419-418	Fd
						(m)	922.45	1/2" F/R

Δ	Pt	418	To	Pt	420	HRX	419-420	Fd
1		02-00-15				(m)	21.87	1/2"
2		04-00-30						P/PE
m		02-00-15						BENT

Δ	Pt	418	To	Pt	421	HLX	419-421	Fd
1		00-00-20				(m)	202.11	1/2"
2		00-00-40						C/E
m		00-00-20						M/EZ
								17641

Δ	Pt	418	To	Pt	422	HLX	419-422	Fd
1		00-00-15				(m)	262.24	1/2"
2		00-00-30						C/E
m		00-00-15						M/EZ
								17641

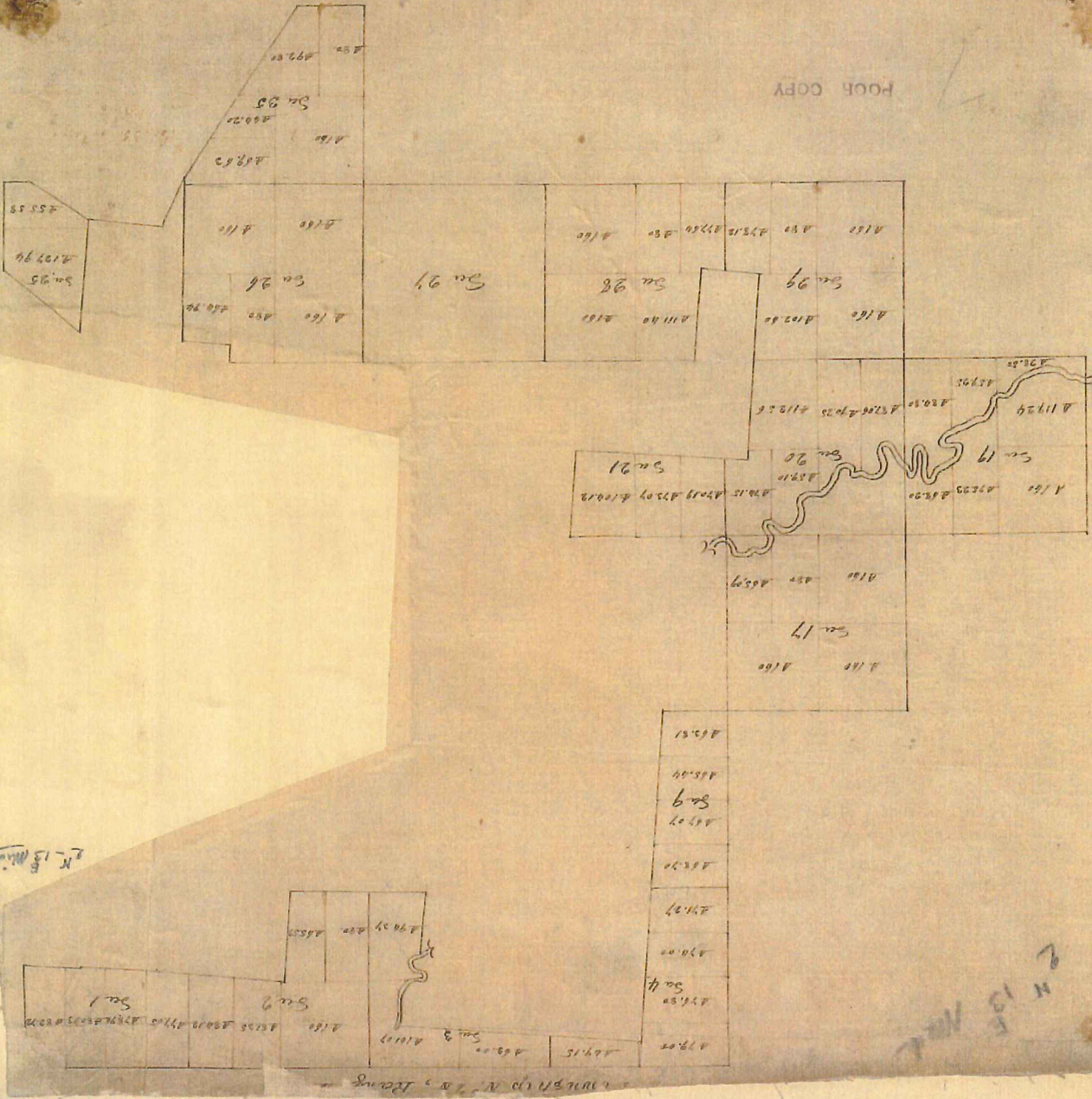
Δ	Pt	418	To	Pt	423	HR	419-423	Fd
1		00-03-15				(m)	322.38	1/2"
2		00-06-30						F/R
m		00-03-15						





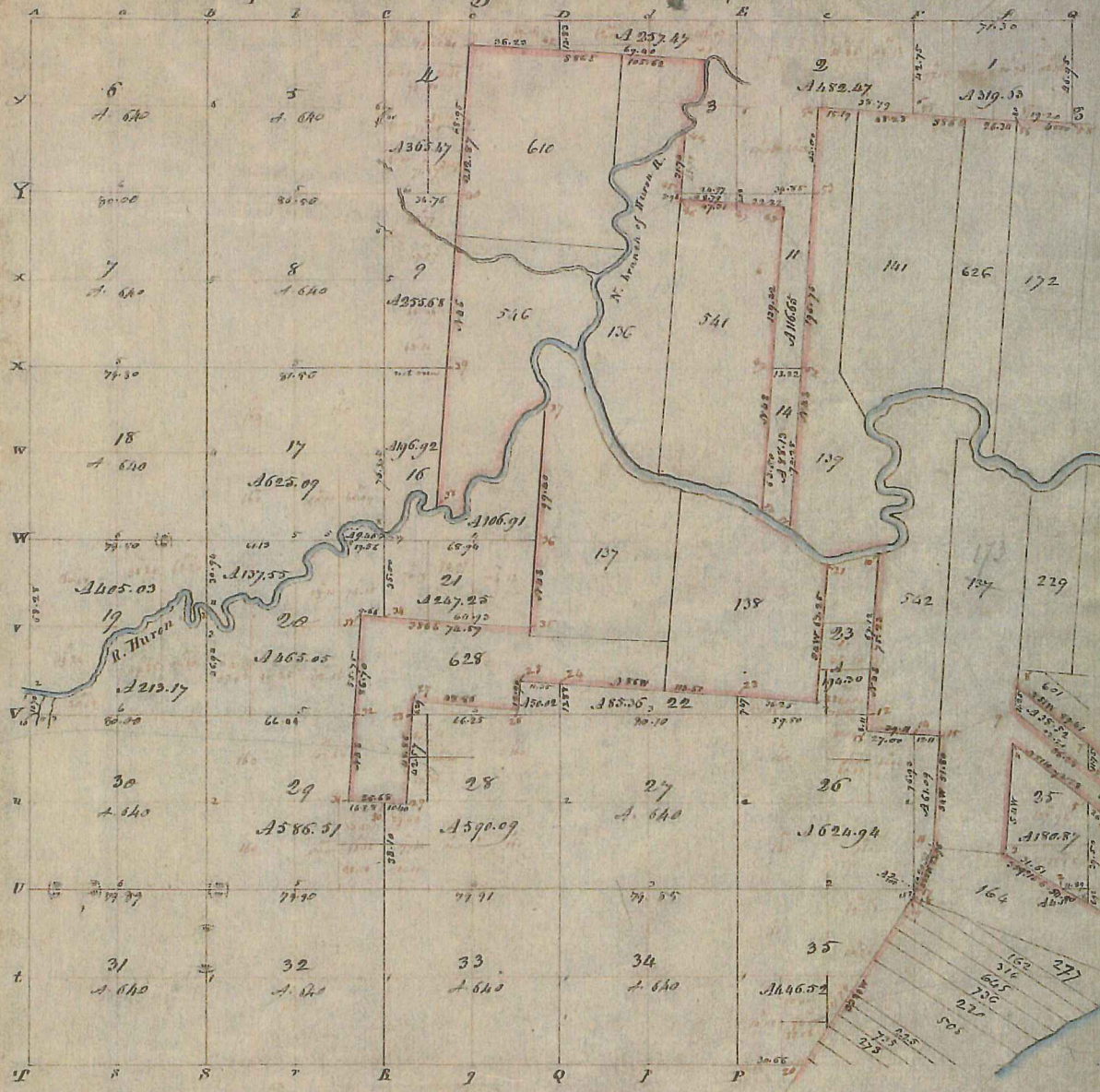


FOOH COPY





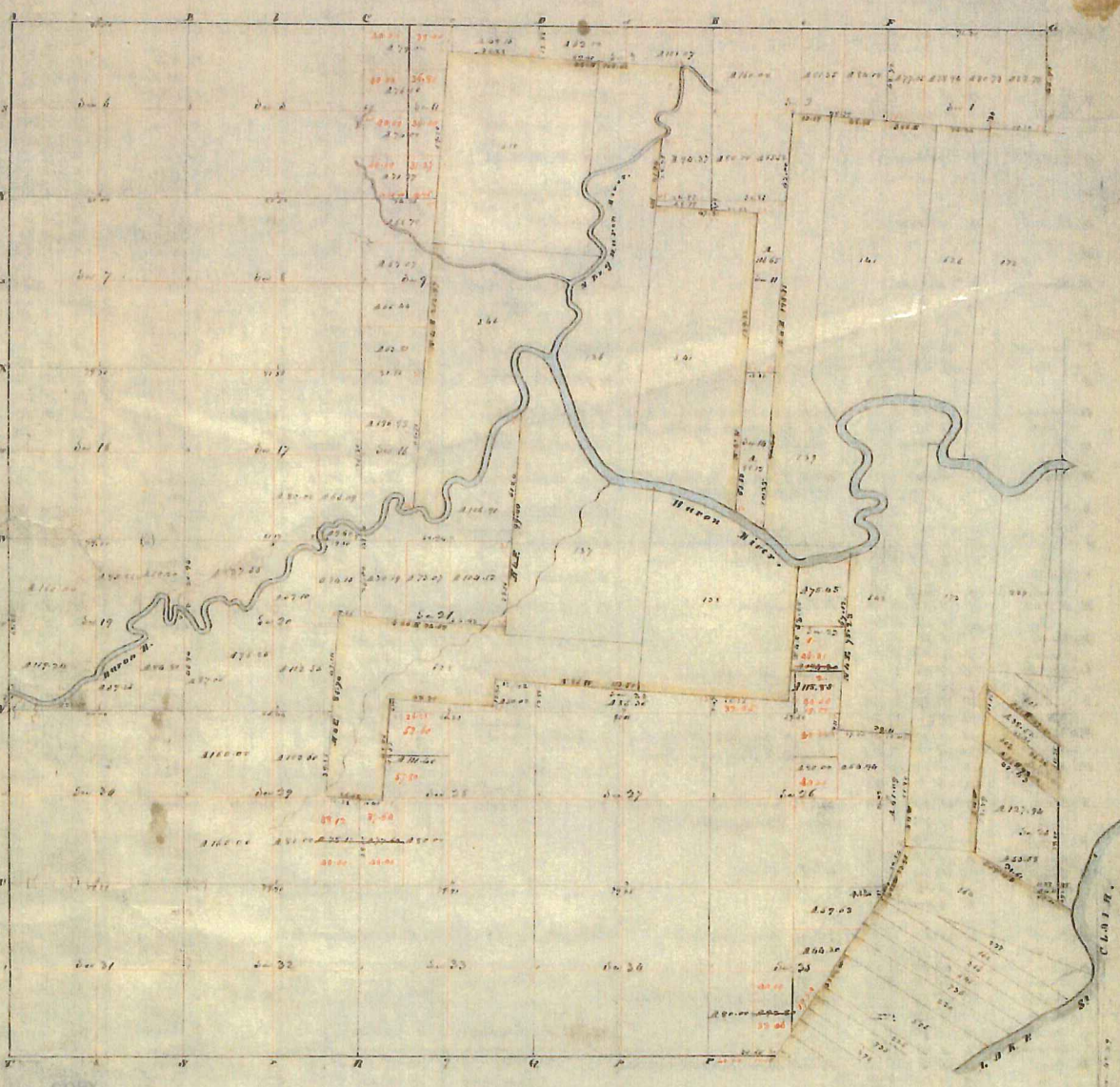
Township N. 11 North, Range N. XIII East of Mer. (Mich. Ter.)



A true copy from the Original on file in this Office Aced Dec  
 Quantity exclusive of Private Claim 14, 202, 99  
 Surveyor General's Office }  
 1857 20<sup>th</sup> 1815 }

Edwards H. H. H.  
 Surveyor General





Township N: 11 North, Range N: 13 East of Mer. (Mich. Ter.)

surveyed by Wm. Priston. 1857

Description of the soil on the interior sectional lines

Section	Locality & Quality	Section	Locality & Quality
1	Wet boggy ground. Black. Ash. Spruce. Spruce	29	Low / dry. Black. Ash. Spruce. Spruce
2	Low / dry. Black. Ash. Spruce. Spruce	30	Same
3	Same (hard dry)	31	Same
4	Same	32	Same
5	Wet boggy ground. Black. Ash. Spruce. Spruce	33	Same
6	Same	34	Same
7	Low / dry. Black. Ash. Spruce. Spruce	35	Same
8	Same	36	Same
9	Same	37	Same
10	Same	38	Same
11	Same	39	Same
12	Same	40	Same
13	Same	41	Same
14	Same	42	Same
15	Same	43	Same
16	Same	44	Same
17	Same	45	Same
18	Same	46	Same
19	Same	47	Same
20	Same	48	Same
21	Same	49	Same
22	Same	50	Same
23	Same	51	Same
24	Same	52	Same
25	Same	53	Same
26	Same	54	Same
27	Same	55	Same
28	Same	56	Same
29	Same	57	Same
30	Same	58	Same
31	Same	59	Same
32	Same	60	Same
33	Same	61	Same
34	Same	62	Same
35	Same	63	Same
36	Same	64	Same
37	Same	65	Same
38	Same	66	Same
39	Same	67	Same
40	Same	68	Same
41	Same	69	Same
42	Same	70	Same
43	Same	71	Same
44	Same	72	Same
45	Same	73	Same
46	Same	74	Same
47	Same	75	Same
48	Same	76	Same
49	Same	77	Same
50	Same	78	Same
51	Same	79	Same
52	Same	80	Same

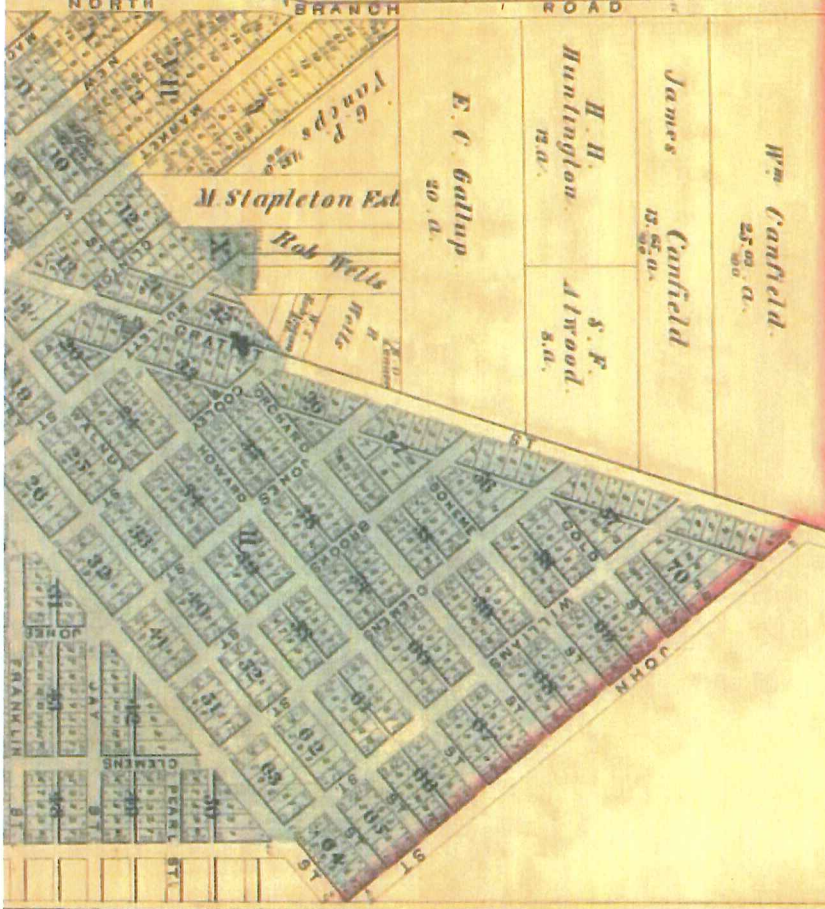
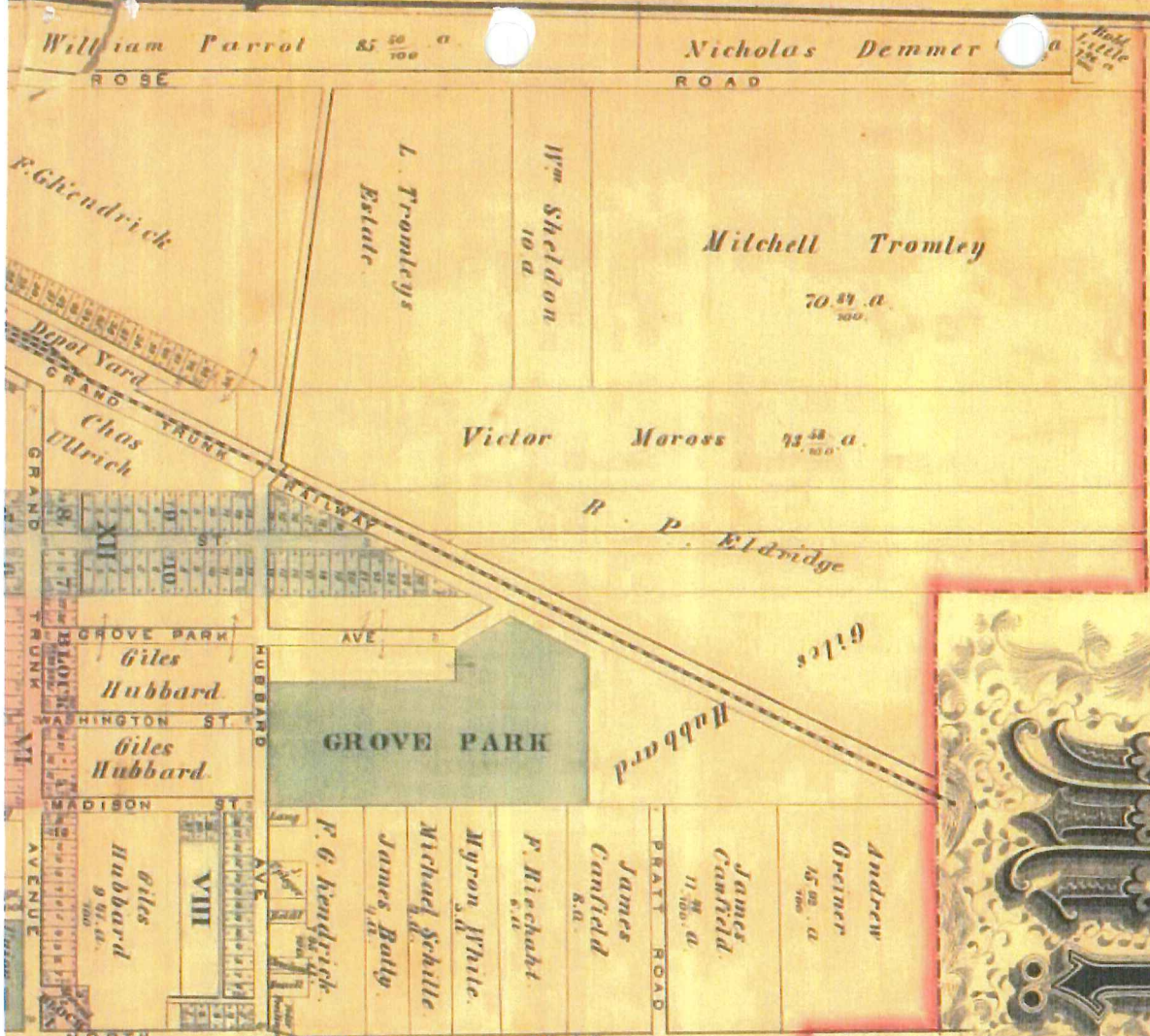










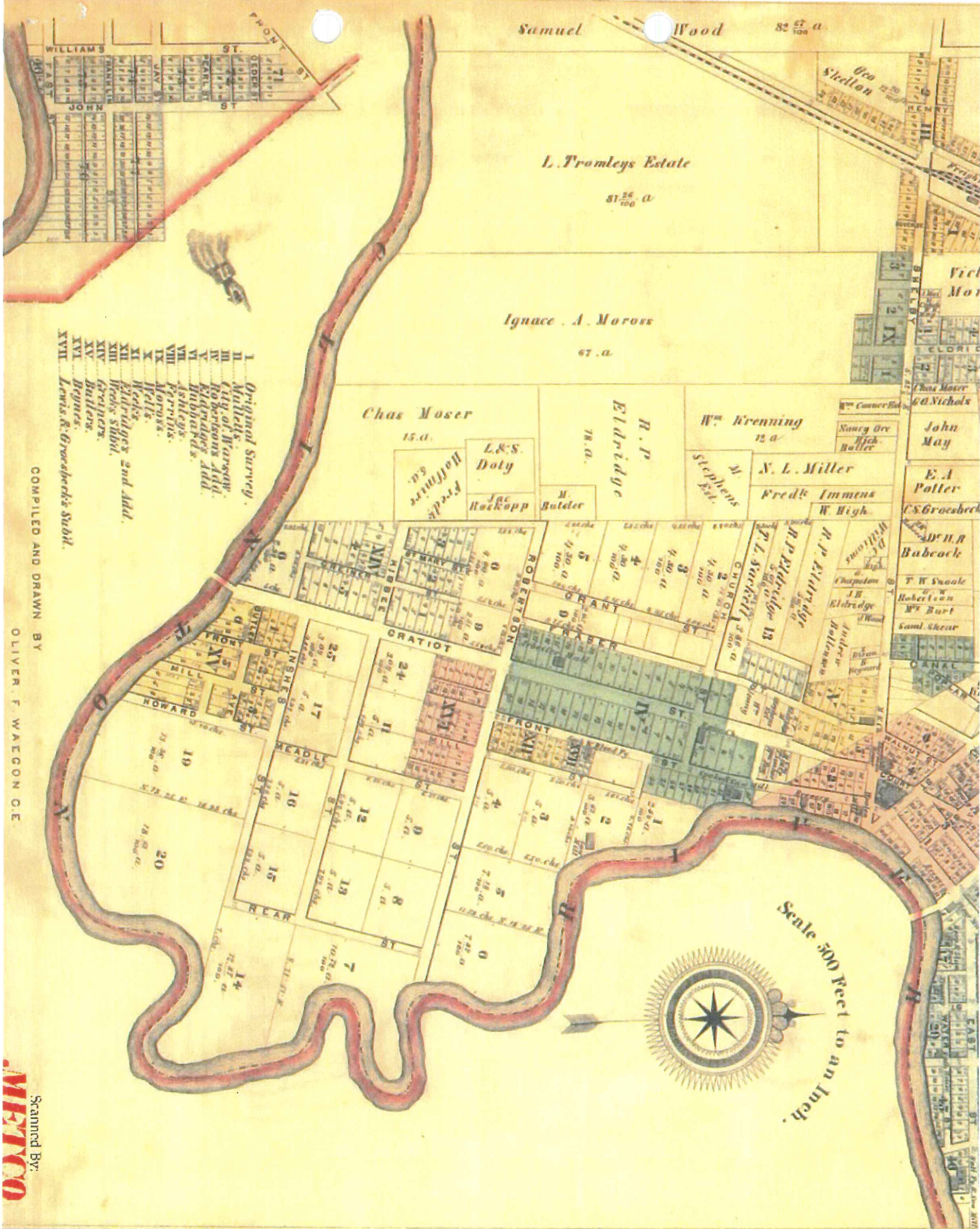


# McKenzie

MACOMB COUNTY, MICHIGAN  
1875

1875





Samuel Wood 82 <sup>57</sup>/<sub>100</sub> a

L. Tromleys Estate

81 <sup>26</sup>/<sub>100</sub> a

Ignace A. Moross

67 a

Chas Moser

15 a

R. P. Eldridge

W. Krenning

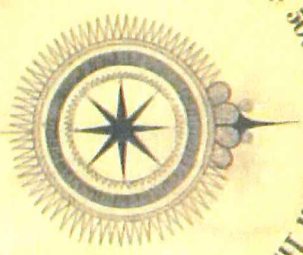
12 a

N. L. Miller

Fred Immens

- I Original Survey.
- II Milllets.
- III City of Warsaw.
- IV Robertsons Add.
- V Eldridges Add.
- VI Hubbards.
- VII Ashleys.
- VIII Perovits.
- IX Moross.
- X Wells.
- XI Keadles.
- XII Eldridges 2nd Add.
- XIII Woods Subd.
- XIV Carpenters.
- XV Builders.
- XVI Bagners.
- XVII Lewis & Grosbeck's Subd.

COMPILED AND DRAWN BY  
OLIVER F. WAEGON C.E.



Scale 500 Feet to an Inch.

Scanned By:  
**MEYCO**

1875

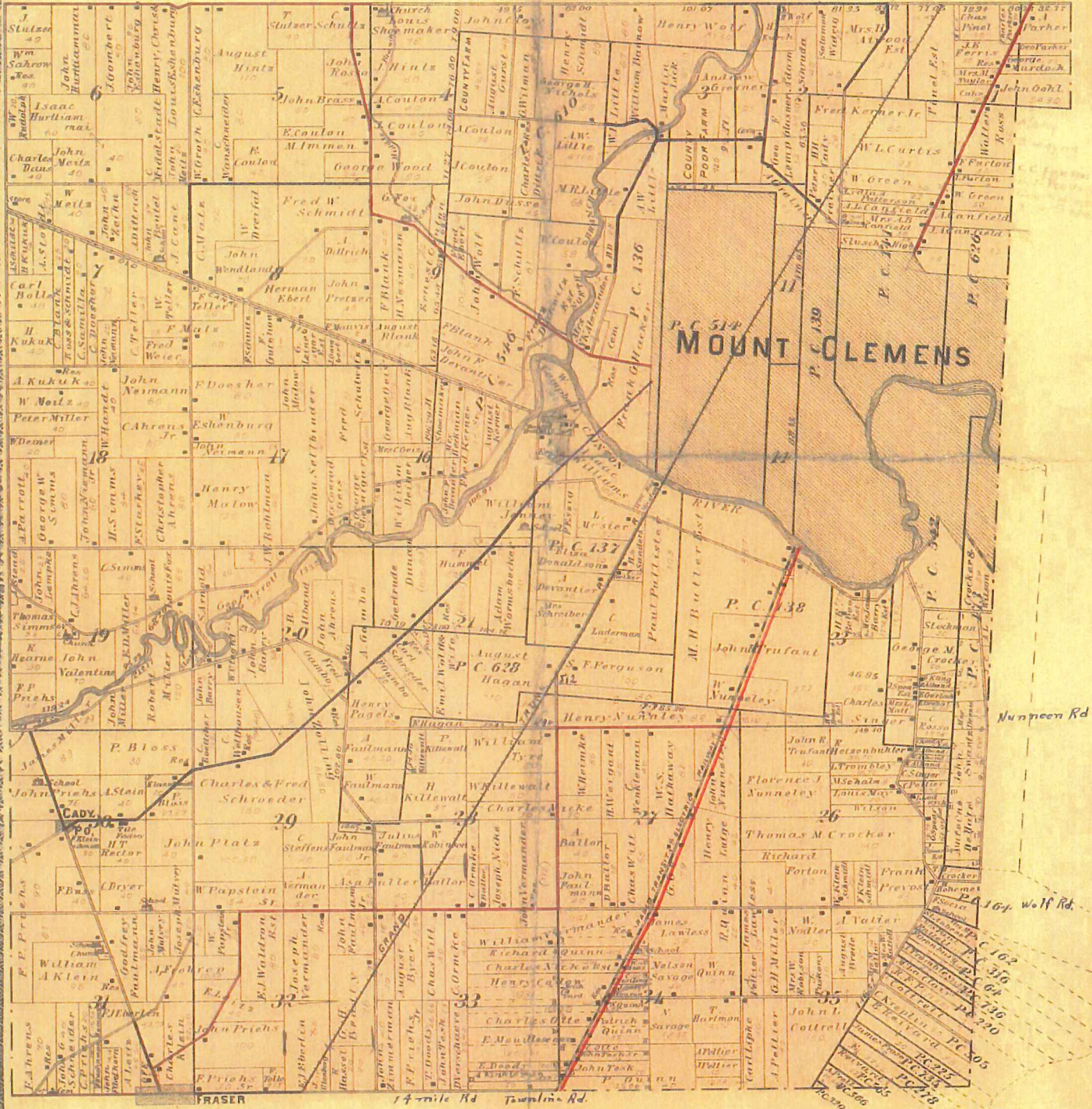


# CLINTON

Township 2 North Range 13 East

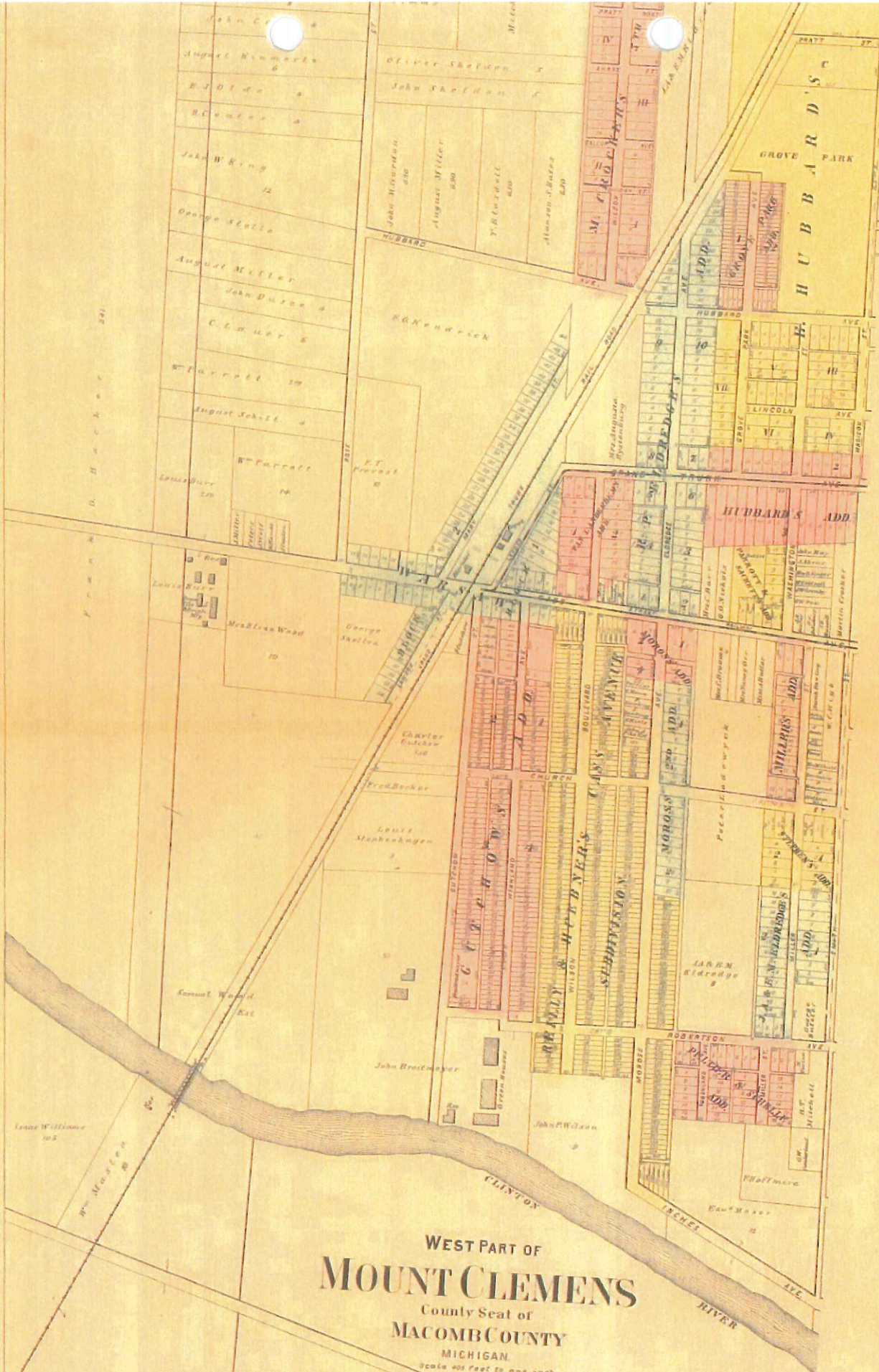
Scale 2 Inches to one Mile.

of the Meridian of Michigan



1895

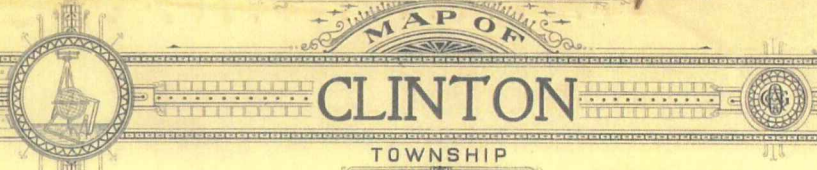




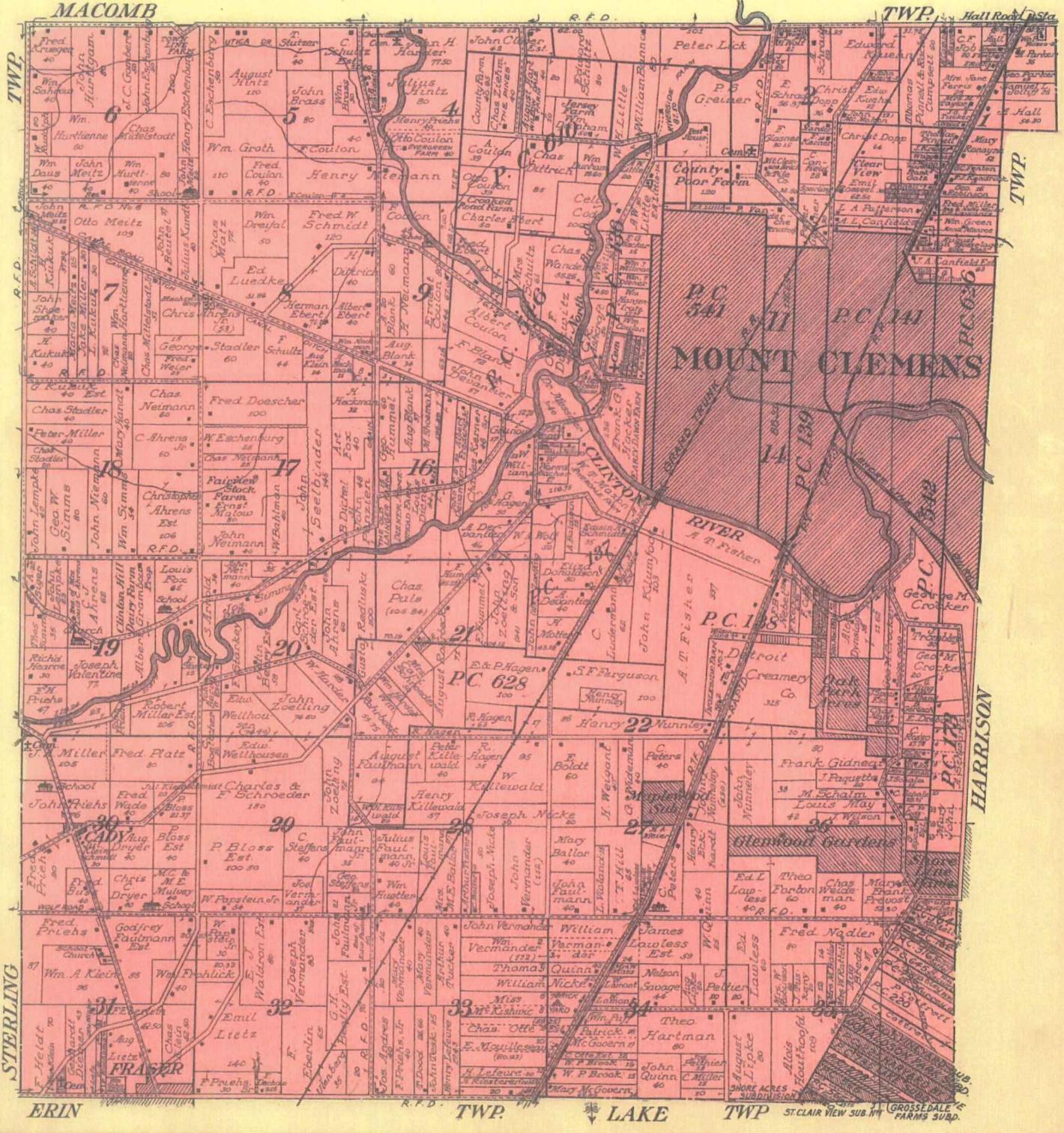
WEST PART OF  
**MOUNT CLEMENS**  
 County Seat of  
**MACOMB COUNTY**  
 MICHIGAN  
 Scale 400 feet to one inch

1895




  
**MAP OF**  
**CLINTON**  
**TOWNSHIP**  
 Scale 2 inches to 1 mile

Fractional Township 2 North, Range 13 East of the Michigan Meridian



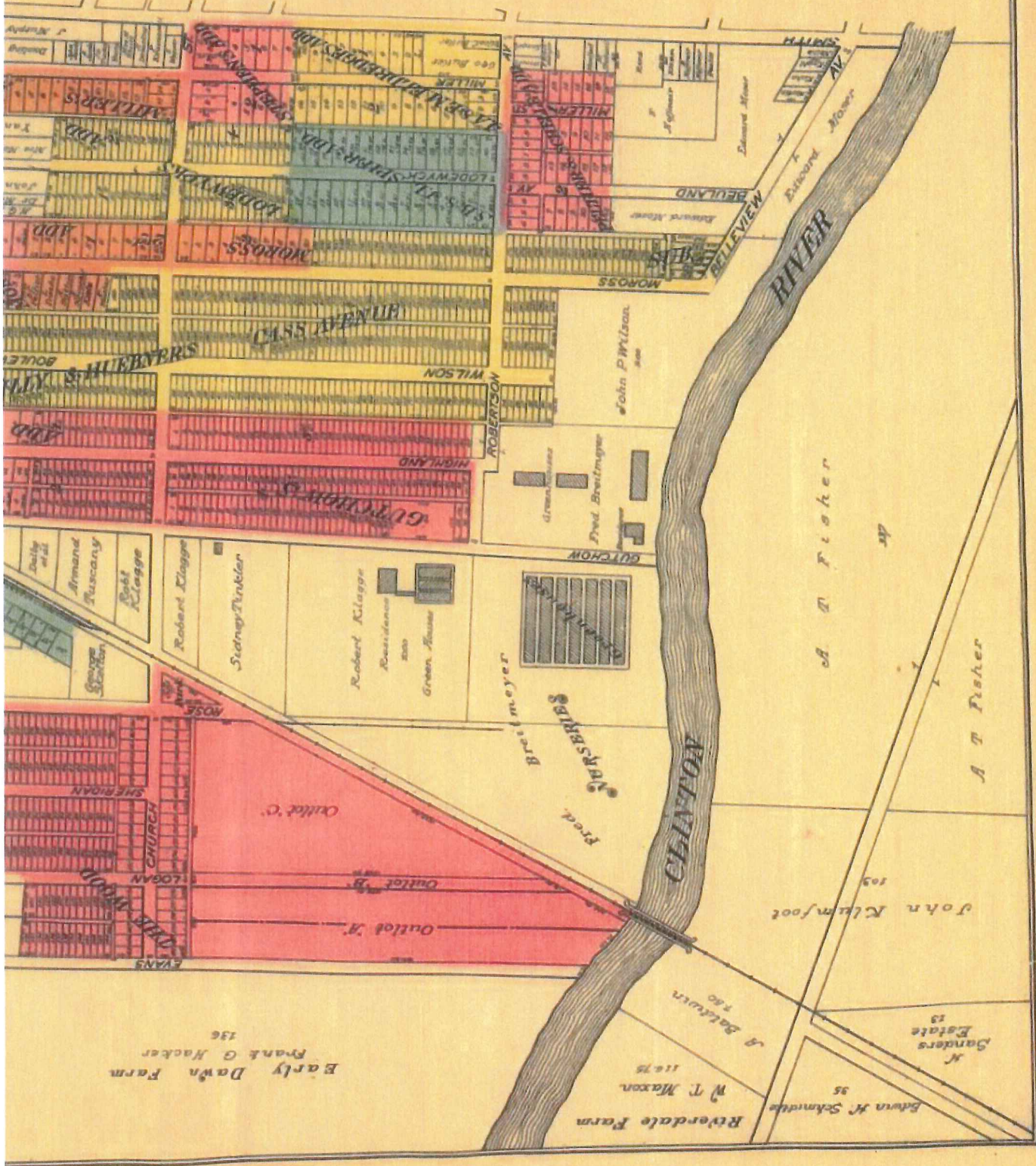
1916







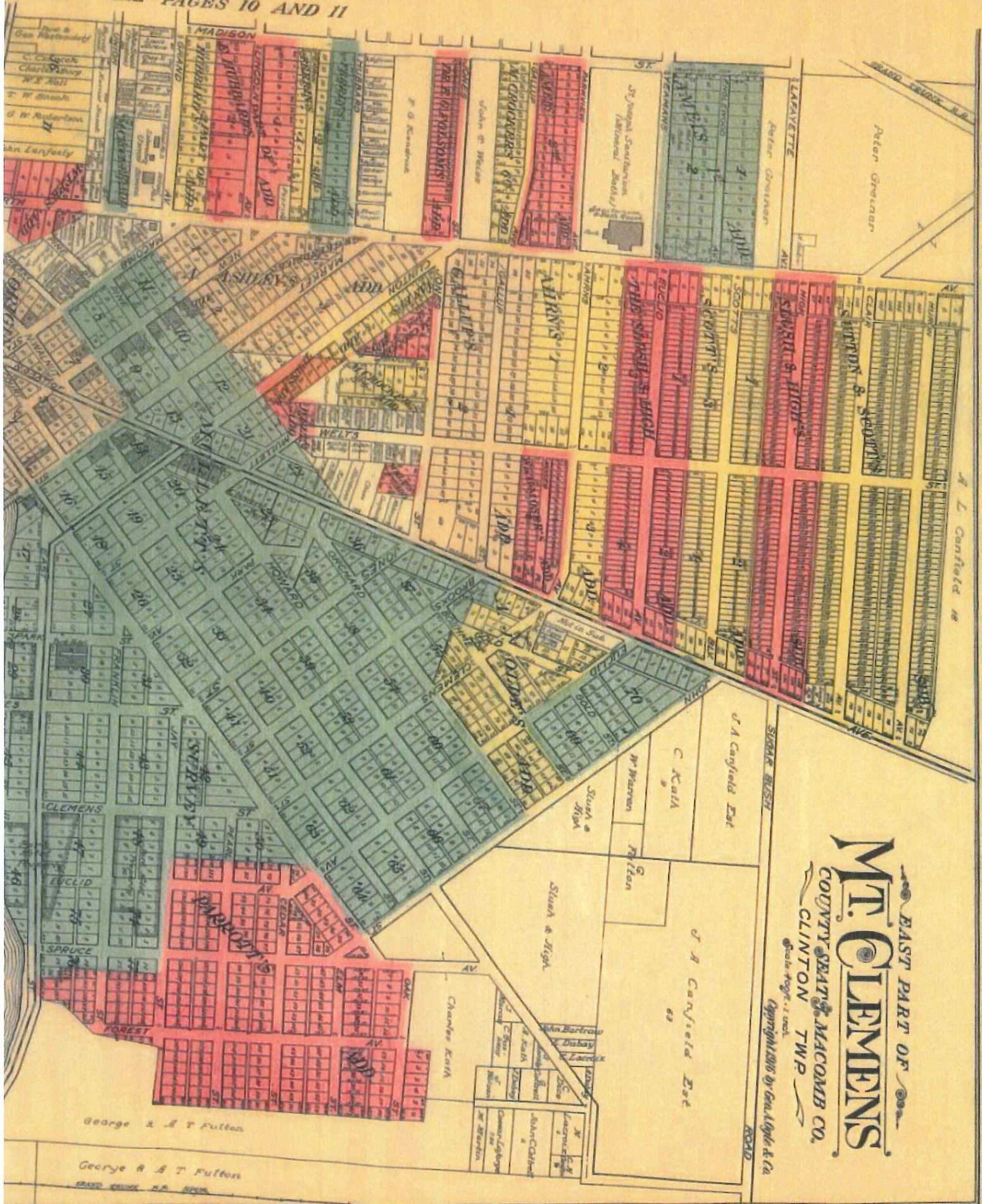
FOR EAST PART OF MT CL



4191  
 10



CLEMENS SEE PAGES 10 AND 11



EAST PART OF  
**MT. CLEMENS**  
 COUNTY SEATT & MACOMB CO.  
 CLINTON TWP

Copyright 1916 by Geo. Lytle & Co.  
 Scale 1/8" = 1' = 1" = 1'

1914 (17)



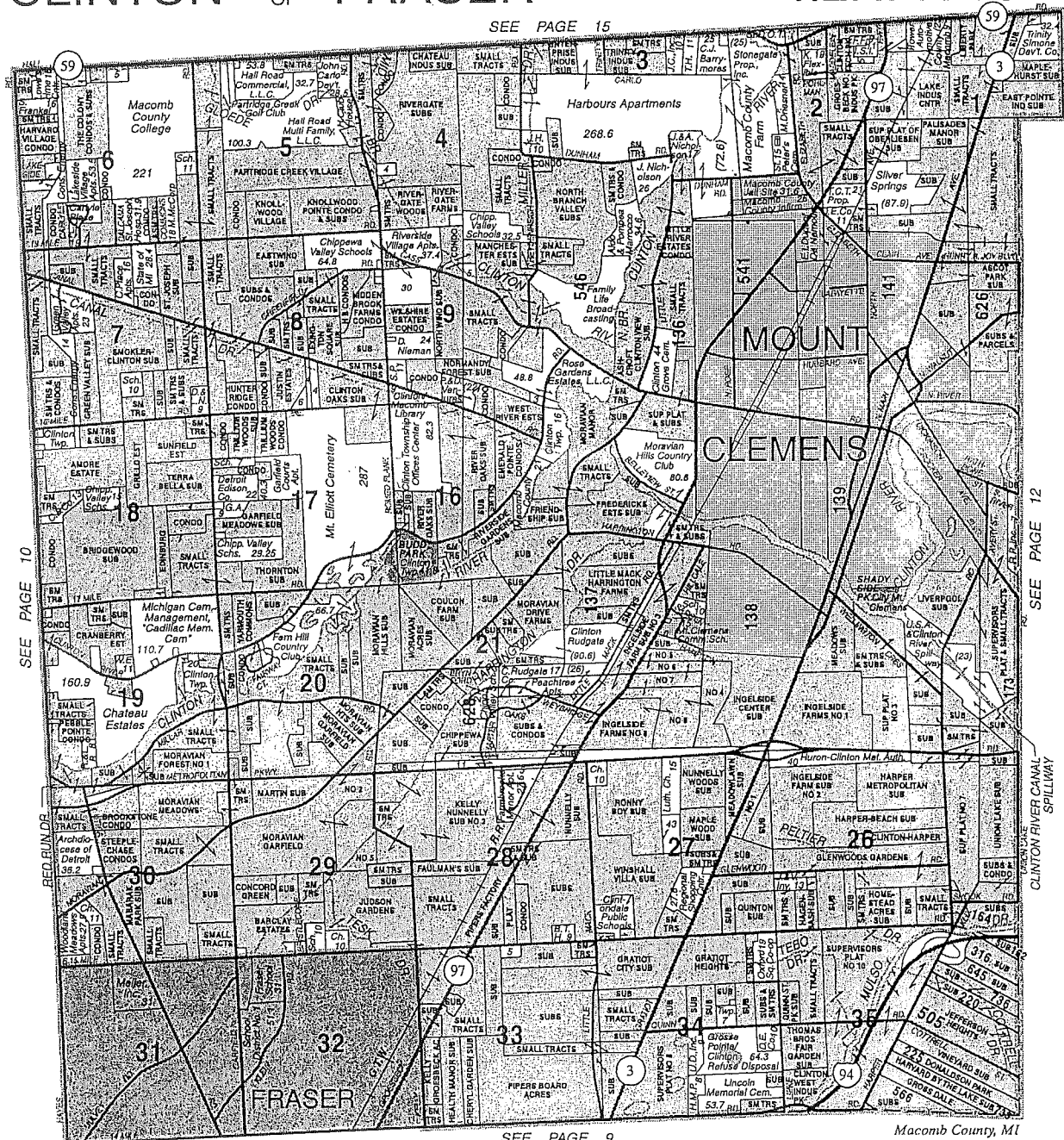




# CLINTON - CITY OF FRASER

T.2N.-R.13E.

SEE PAGE 15



© 2006 Rockford Map Publs., Inc.

SEE PAGE 9

Macomb County, MI



## BOSS ENGINEERING

engineers • surveyors • planners • landscape architects

3121 EAST GRAND RIVER • HOWELL, MI 48843 • (517) 546-4836

24435 HALSTED • FARMINGTON HILLS, MI 48335 • (248) 626-2677

www.bosseng.com

- Residential Subdivisions
- Commercial Developments
- Planned Unit Developments

- Wastewater Treatment Plants
- Septic System Design
- Construction Staking

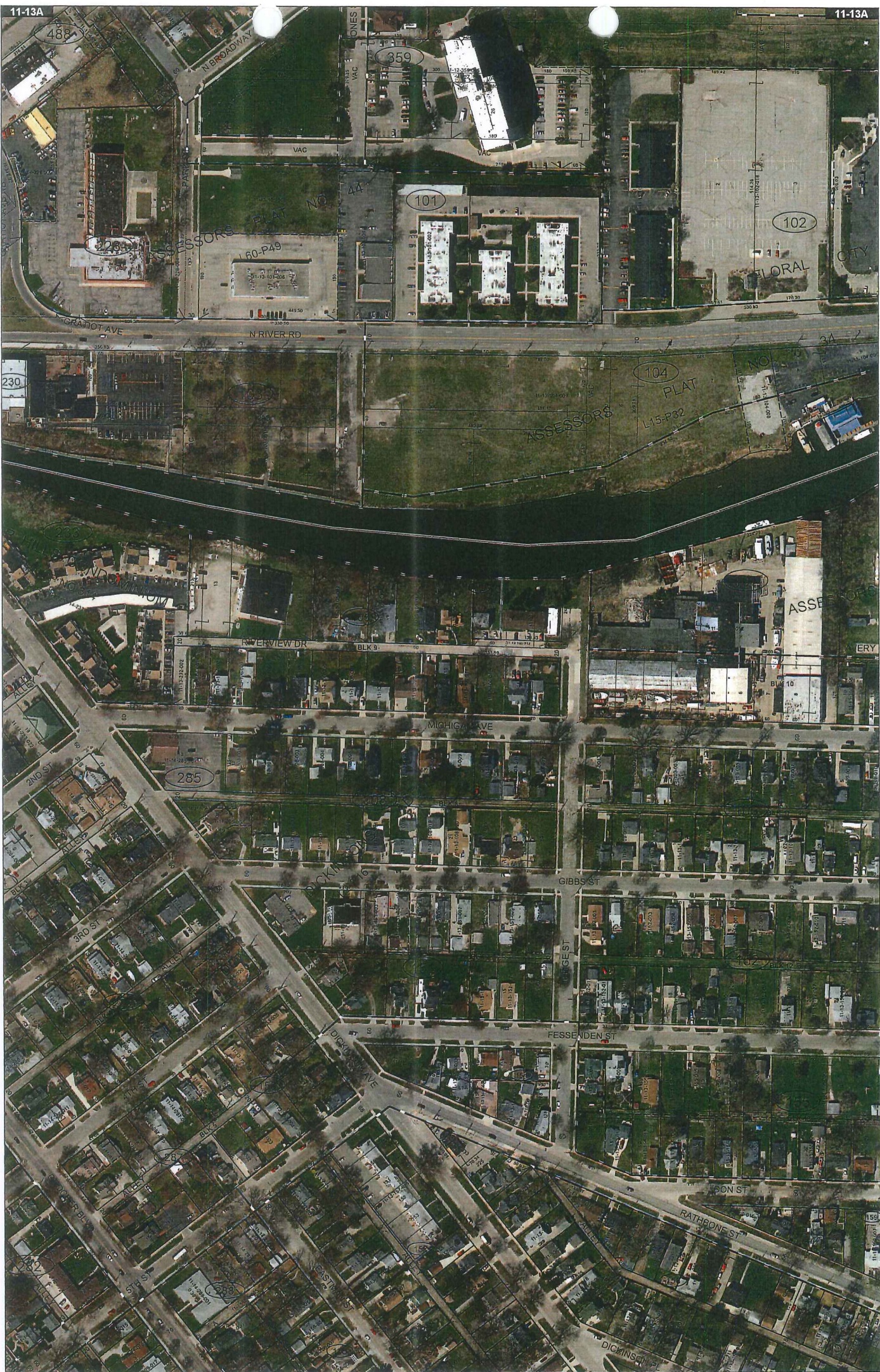
- Land Divisions
- Boundary and Lot Surveys
- Topographical Surveys
- ALTA Surveys



2006

19





Date of Photography: Spring 2015  
 100 50 0 100 200 Feet

CLINTON TWP SHEET INDEX

DESCRIPTION OF PERMANENT REAL ESTATE INDEX NUMBER  
**13-19-302-018**

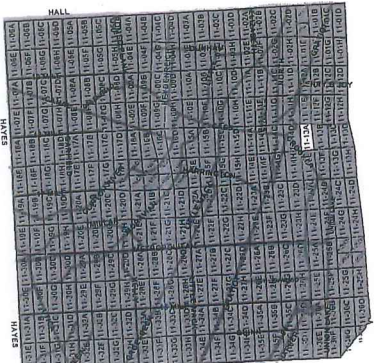
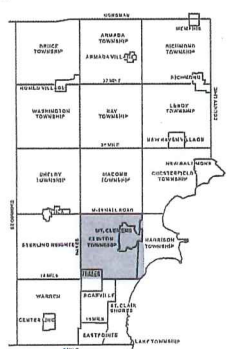
**11-13A**

MT. CLEMENS

W.1/2 N.W.1/4 SEC.13 T.2N. R.13E.

Source: Macomb County Department of Planning and Economic Development  
 - 2015 Digital Orthophotography Project  
 - Parcel Conversion Project

Note:  
 Digital Orthophotography horizontal positioning accuracy is 3 feet. Parcel boundary lines should be considered a graphical representation and not in any way a legal survey or engineering document. In general, the horizontal positioning and length accuracy is within 15 feet.  
 This map is intended for general planning purposes. Site specific evaluation should be verified by field inspection. This is a work in progress and may contain errors and omissions. Please report any potential revisions to (586)469-5285.



**Legend**

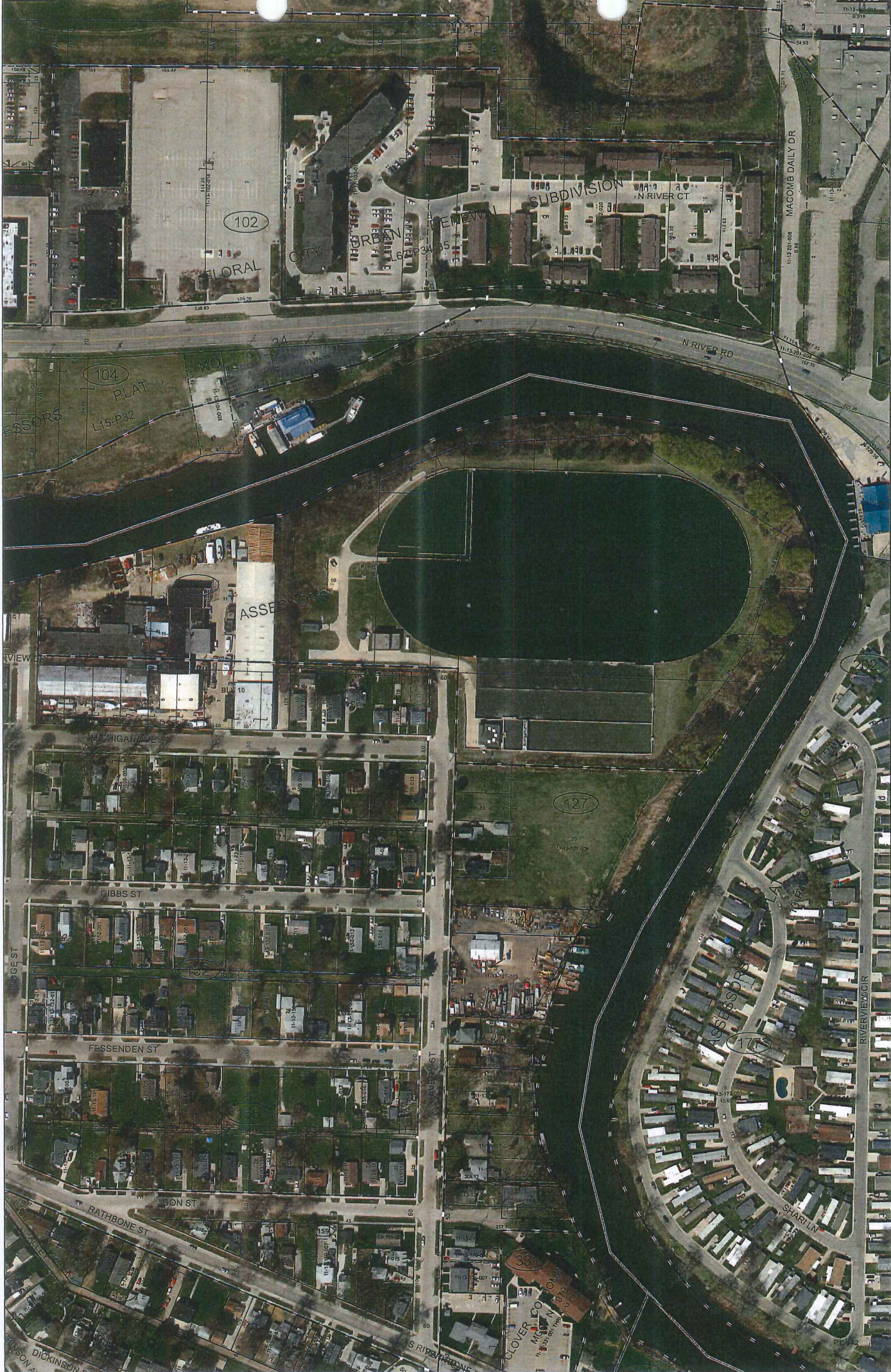
- Platted Area Boundary Line
- Property Line
- Property Split Line
- Property Combined Line
- Township Boundary Line
- Traverse Line
- Dimension Extent Marks
- Dimension Start Marks



**GIS** MACOMB COUNTY  
 Planning and Economic  
 Development Department

Published: Aug 15 2016



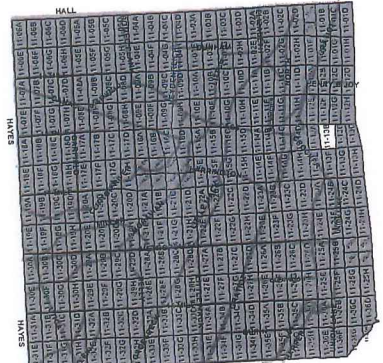


Date of Photography: Spring 2015  
 100 50 0 100 200 Feet

CLINTON TWP SHEET INDEX

DESCRIPTION OF PERMANENT REAL ESTATE INDEX NUMBER  
**13-19-302-018**

**11-13B**



AYER NUMBER  
 BLDG. NUMBER  
 BLOCK NUMBER  
 PARCEL NUMBER

**Legend**

- Platted Area Boundary Line
- Property Line
- Property Split Line
- Property Combined Line
- Township Boundary Line
- Traverse Line
- Dimension Extent Marks
- Dimension Start Marks

HARRISON TWP.  
 E. 1/2 N.W. 1/4 SEC. 13 T.2N. R.13E.

Source: Macomb County Department of Planning and Economic Development  
 - 2015 Digital Orthophotography Project  
 - Parcel Conversion Project

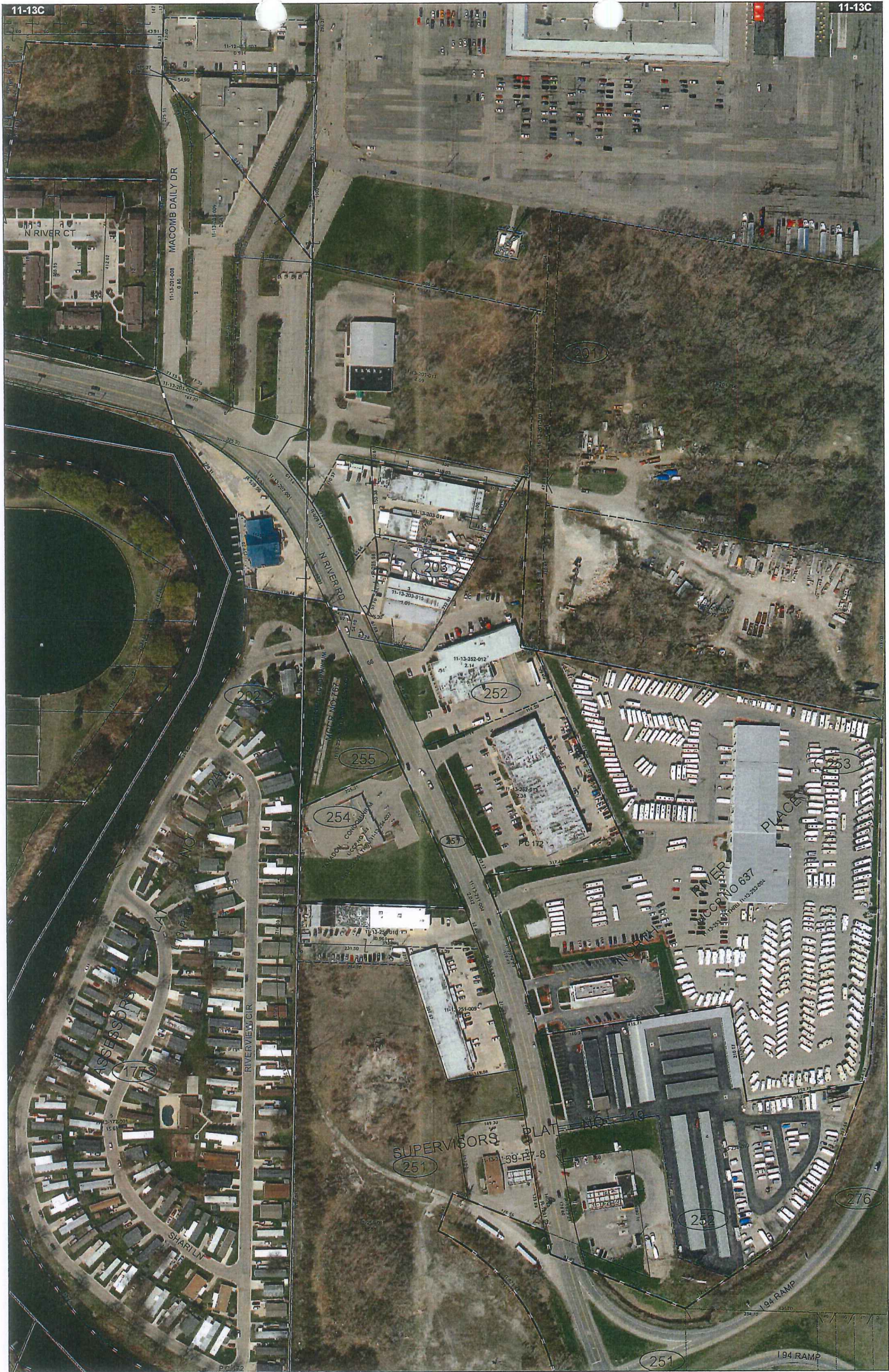
Note:  
 Digital Orthophotography horizontal positioning accuracy is 3 feet. Parcel boundary lines should be considered a graphical representation and not in any way a legal survey or engineering document. In general, the horizontal positioning and length accuracy is within 1/8 inch.

This map is intended for general planning purposes. Site specific evaluation should be verified by field inspection. This is a work in progress and may contain errors and omissions. Please report any potential revisions to (586)469-5285.



GIS MACOMB COUNTY  
 Planning and Economic  
 Development Department





Date of Photography: Spring 2015  
 100 50 0 100 200 Feet  
 11:200

CLINTON TWP SHEET INDEX

DESCRIPTION OF PERMANENT REAL ESTATE INDEX NUMBER  
**13-19-302-018**

**11-13C**

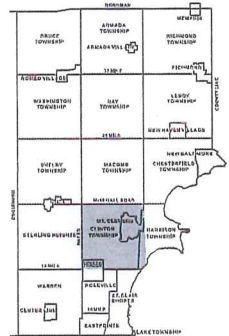
HARRISON TWP.  
 W.1/2 N.E.1/4 SEC.13 T.2N. R.13E.

Source: Macomb County Department of Planning and Economic Development  
 - 2015 Digital Orthophotography Project  
 - Parcel Conversion Project

Note:  
 Digital Orthophotography horizontal positioning accuracy is 3 feet. Parcel boundary lines should be considered a graphical representation and not in any way a legal survey or engineering document. In general, the horizontal positioning and length accuracy is within 15 feet.  
 This map is intended for general planning purposes. Site specific evaluation should be verified by field inspection. This is a work in progress and may contain errors and omissions. Please report any potential revisions to (588)459-5255.

**Legend**

- Platted Area Boundary Line
- Property Line
- Property Split Line
- Property Combined Line
- Township Boundary Line
- Traverse Line
- Dimension Extent Marks
- Dimension Start Marks



130100	130101	130102	130103	130104	130105	130106	130107	130108	130109	130110	130111	130112	130113	130114	130115	130116	130117	130118	130119	130120	130121	130122	130123	130124	130125	130126	130127	130128	130129	130130	130131	130132	130133	130134	130135	130136	130137	130138	130139	130140	130141	130142	130143	130144	130145	130146	130147	130148	130149	130150	130151	130152	130153	130154	130155	130156	130157	130158	130159	130160	130161	130162	130163	130164	130165	130166	130167	130168	130169	130170	130171	130172	130173	130174	130175	130176	130177	130178	130179	130180	130181	130182	130183	130184	130185	130186	130187	130188	130189	130190	130191	130192	130193	130194	130195	130196	130197	130198	130199	130200	130201	130202	130203	130204	130205	130206	130207	130208	130209	130210	130211	130212	130213	130214	130215	130216	130217	130218	130219	130220	130221	130222	130223	130224	130225	130226	130227	130228	130229	130230	130231	130232	130233	130234	130235	130236	130237	130238	130239	130240	130241	130242	130243	130244	130245	130246	130247	130248	130249	130250	130251	130252	130253	130254	130255	130256	130257	130258	130259	130260	130261	130262	130263	130264	130265	130266	130267	130268	130269	130270	130271	130272	130273	130274	130275	130276	130277	130278	130279	130280	130281	130282	130283	130284	130285	130286	130287	130288	130289	130290	130291	130292	130293	130294	130295	130296	130297	130298	130299	130300	130301	130302	130303	130304	130305	130306	130307	130308	130309	130310	130311	130312	130313	130314	130315	130316	130317	130318	130319	130320	130321	130322	130323	130324	130325	130326	130327	130328	130329	130330	130331	130332	130333	130334	130335	130336	130337	130338	130339	130340	130341	130342	130343	130344	130345	130346	130347	130348	130349	130350	130351	130352	130353	130354	130355	130356	130357	130358	130359	130360	130361	130362	130363	130364	130365	130366	130367	130368	130369	130370	130371	130372	130373	130374	130375	130376	130377	130378	130379	130380	130381	130382	130383	130384	130385	130386	130387	130388	130389	130390	130391	130392	130393	130394	130395	130396	130397	130398	130399	130400	130401	130402	130403	130404	130405	130406	130407	130408	130409	130410	130411	130412	130413	130414	130415	130416	130417	130418	130419	130420	130421	130422	130423	130424	130425	130426	130427	130428	130429	130430	130431	130432	130433	130434	130435	130436	130437	130438	130439	130440	130441	130442	130443	130444	130445	130446	130447	130448	130449	130450	130451	130452	130453	130454	130455	130456	130457	130458	130459	130460	130461	130462	130463	130464	130465	130466	130467	130468	130469	130470	130471	130472	130473	130474	130475	130476	130477	130478	130479	130480	130481	130482	130483	130484	130485	130486	130487	130488	130489	130490	130491	130492	130493	130494	130495	130496	130497	130498	130499	130500	130501	130502	130503	130504	130505	130506	130507	130508	130509	130510	130511	130512	130513	130514	130515	130516	130517	130518	130519	130520	130521	130522	130523	130524	130525	130526	130527	130528	130529	130530	130531	130532	130533	130534	130535	130536	130537	130538	130539	130540	130541	130542	130543	130544	130545	130546	130547	130548	130549	130550	130551	130552	130553	130554	130555	130556	130557	130558	130559	130560	130561	130562	130563	130564	130565	130566	130567	130568	130569	130570	130571	130572	130573	130574	130575	130576	130577	130578	130579	130580	130581	130582	130583	130584	130585	130586	130587	130588	130589	130590	130591	130592	130593	130594	130595	130596	130597	130598	130599	130600	130601	130602	130603	130604	130605	130606	130607	130608	130609	130610	130611	130612	130613	130614	130615	130616	130617	130618	130619	130620	130621	130622	130623	130624	130625	130626	130627	130628	130629	130630	130631	130632	130633	130634	130635	130636	130637	130638	130639	130640	130641	130642	130643	130644	130645	130646	130647	130648	130649	130650	130651	130652	130653	130654	130655	130656	130657	130658	130659	130660	130661	130662	130663	130664	130665	130666	130667	130668	130669	130670	130671	130672	130673	130674	130675	130676	130677	130678	130679	130680	130681	130682	130683	130684	130685	130686	130687	130688	130689	130690	130691	130692	130693	130694	130695	130696	130697	130698	130699	130700	130701	130702	130703	130704	130705	130706	130707	130708	130709	130710	130711	130712	130713	130714	130715	130716	130717	130718	130719	130720	130721	130722	130723	130724	130725	130726	130727	130728	130729	130730	130731	130732	130733	130734	130735	130736	130737	130738	130739	130740	130741	130742	130743	130744	130745	130746	130747	130748	130749	130750	130751	130752	130753	130754	130755	130756	130757	130758	130759	130760	130761	130762	130763	130764	130765	130766	130767	130768	130769	130770	130771	130772	130773	130774	130775	130776	130777	130778	130779	130780	130781	130782	130783	130784	130785	130786	130787	130788	130789	130790	130791	130792	130793	130794	130795	130796	130797	130798	130799	130800	130801	130802	130803	130804	130805	130806	130807	130808	130809	130810	130811	130812	130813	130814	130815	130816	130817	130818	130819	130820	130821	130822	130823	130824	130825	130826	130827	130828	130829	130830	130831	130832	130833	130834	130835	130836	130837	130838	130839	130840	130841	130842	130843	130844	130845	130846	130847	130848	130849	130850	130851	130852	130853	130854	130855	130856	130857	130858	130859	130860	130861	130862	130863	130864	130865	130866	130867	130868	130869	130870	130871	130872	130873	130874	130875	130876	130877	130878	130879	130880	130881	130882	130883	130884	130885	130886	130887	130888	130889	130890	130891	130892	130893	130894	130895	130896	130897	130898	130899	130900	130901	130902	130903	130904	130905	130906	130907	130908	130909	130910	130911	130912	130913	130914	130915	130916	130917	130918	130919	130920	130921	130922	130923	130924	130925	130926	130927	130928	130929	130930	130931	130932	130933	130934	130935	130936	130937	130938	130939	130940	130941	130942	130943	130944	130945	130946	130947	130948	130949	130950	130951	130952	130953	130954	130955	130956	130957	130958	130959	130960	130961	130962	130963	130964	130965	130966	130967	130968	130969	130970	130971	130972	130973	130974	130975	130976	130977	130978	130979	130980	130981	130982	130983	130984	130985	130986	130987	130988	130989	130990	130991	130992	130993	130994	130995	130996	130997	130998	130999	131000	131001	131002	131003	131004	131005	131006	131007	131008	131009	131010	131011	131012	131013	131014	131015	131016	131017	131018	131019	131020	131021	131022	131023	131024	131025	131026	131027	131028	131029	131030	131031	131032	131033	131034	131035	131036	131037	131038	131039	131040	131041	131042	131043	131044	131045	131046	131047	131048	131049	131050	131051	131052	131053	131054	131055	131056	131057	131058	131059	131060	131061	131062	131063	131064	131065	131066	131067	131068	131069	131070	131071	131072	131073	131074	131075	131076	131077	131078	131079	131080	131081	131082	131083	131084	131085	131086	131087	131088	131089	131090	131091	131092	131093	131094	131095	131096	131097	131098	131099	131100	131101	131102	131103	131104	131105	131106	131107	131108	131109	131110	131111	131112	131113	131114	131115	131116	131117	131118	131119	131120	131121	131122	131123	131124	131125	13112
--------	--------	--------	--------	--------	--------	--------	--------	--------	--------	--------	--------	--------	--------	--------	--------	--------	--------	--------	--------	--------	--------	--------	--------	--------	--------	--------	--------	--------	--------	--------	--------	--------	--------	--------	--------	--------	--------	--------	--------	--------	--------	--------	--------	--------	--------	--------	--------	--------	--------	--------	--------	--------	--------	--------	--------	--------	--------	--------	--------	--------	--------	--------	--------	--------	--------	--------	--------	--------	--------	--------	--------	--------	--------	--------	--------	--------	--------	--------	--------	--------	--------	--------	--------	--------	--------	--------	--------	--------	--------	--------	--------	--------	--------	--------	--------	--------	--------	--------	--------	--------	--------	--------	--------	--------	--------	--------	--------	--------	--------	--------	--------	--------	--------	--------	--------	--------	--------	--------	--------	--------	--------	--------	--------	--------	--------	--------	--------	--------	--------	--------	--------	--------	--------	--------	--------	--------	--------	--------	--------	--------	--------	--------	--------	--------	--------	--------	--------	--------	--------	--------	--------	--------	--------	--------	--------	--------	--------	--------	--------	--------	--------	--------	--------	--------	--------	--------	--------	--------	--------	--------	--------	--------	--------	--------	--------	--------	--------	--------	--------	--------	--------	--------	--------	--------	--------	--------	--------	--------	--------	--------	--------	--------	--------	--------	--------	--------	--------	--------	--------	--------	--------	--------	--------	--------	--------	--------	--------	--------	--------	--------	--------	--------	--------	--------	--------	--------	--------	--------	--------	--------	--------	--------	--------	--------	--------	--------	--------	--------	--------	--------	--------	--------	--------	--------	--------	--------	--------	--------	--------	--------	--------	--------	--------	--------	--------	--------	--------	--------	--------	--------	--------	--------	--------	--------	--------	--------	--------	--------	--------	--------	--------	--------	--------	--------	--------	--------	--------	--------	--------	--------	--------	--------	--------	--------	--------	--------	--------	--------	--------	--------	--------	--------	--------	--------	--------	--------	--------	--------	--------	--------	--------	--------	--------	--------	--------	--------	--------	--------	--------	--------	--------	--------	--------	--------	--------	--------	--------	--------	--------	--------	--------	--------	--------	--------	--------	--------	--------	--------	--------	--------	--------	--------	--------	--------	--------	--------	--------	--------	--------	--------	--------	--------	--------	--------	--------	--------	--------	--------	--------	--------	--------	--------	--------	--------	--------	--------	--------	--------	--------	--------	--------	--------	--------	--------	--------	--------	--------	--------	--------	--------	--------	--------	--------	--------	--------	--------	--------	--------	--------	--------	--------	--------	--------	--------	--------	--------	--------	--------	--------	--------	--------	--------	--------	--------	--------	--------	--------	--------	--------	--------	--------	--------	--------	--------	--------	--------	--------	--------	--------	--------	--------	--------	--------	--------	--------	--------	--------	--------	--------	--------	--------	--------	--------	--------	--------	--------	--------	--------	--------	--------	--------	--------	--------	--------	--------	--------	--------	--------	--------	--------	--------	--------	--------	--------	--------	--------	--------	--------	--------	--------	--------	--------	--------	--------	--------	--------	--------	--------	--------	--------	--------	--------	--------	--------	--------	--------	--------	--------	--------	--------	--------	--------	--------	--------	--------	--------	--------	--------	--------	--------	--------	--------	--------	--------	--------	--------	--------	--------	--------	--------	--------	--------	--------	--------	--------	--------	--------	--------	--------	--------	--------	--------	--------	--------	--------	--------	--------	--------	--------	--------	--------	--------	--------	--------	--------	--------	--------	--------	--------	--------	--------	--------	--------	--------	--------	--------	--------	--------	--------	--------	--------	--------	--------	--------	--------	--------	--------	--------	--------	--------	--------	--------	--------	--------	--------	--------	--------	--------	--------	--------	--------	--------	--------	--------	--------	--------	--------	--------	--------	--------	--------	--------	--------	--------	--------	--------	--------	--------	--------	--------	--------	--------	--------	--------	--------	--------	--------	--------	--------	--------	--------	--------	--------	--------	--------	--------	--------	--------	--------	--------	--------	--------	--------	--------	--------	--------	--------	--------	--------	--------	--------	--------	--------	--------	--------	--------	--------	--------	--------	--------	--------	--------	--------	--------	--------	--------	--------	--------	--------	--------	--------	--------	--------	--------	--------	--------	--------	--------	--------	--------	--------	--------	--------	--------	--------	--------	--------	--------	--------	--------	--------	--------	--------	--------	--------	--------	--------	--------	--------	--------	--------	--------	--------	--------	--------	--------	--------	--------	--------	--------	--------	--------	--------	--------	--------	--------	--------	--------	--------	--------	--------	--------	--------	--------	--------	--------	--------	--------	--------	--------	--------	--------	--------	--------	--------	--------	--------	--------	--------	--------	--------	--------	--------	--------	--------	--------	--------	--------	--------	--------	--------	--------	--------	--------	--------	--------	--------	--------	--------	--------	--------	--------	--------	--------	--------	--------	--------	--------	--------	--------	--------	--------	--------	--------	--------	--------	--------	--------	--------	--------	--------	--------	--------	--------	--------	--------	--------	--------	--------	--------	--------	--------	--------	--------	--------	--------	--------	--------	--------	--------	--------	--------	--------	--------	--------	--------	--------	--------	--------	--------	--------	--------	--------	--------	--------	--------	--------	--------	--------	--------	--------	--------	--------	--------	--------	--------	--------	--------	--------	--------	--------	--------	--------	--------	--------	--------	--------	--------	--------	--------	--------	--------	--------	--------	--------	--------	--------	--------	--------	--------	--------	--------	--------	--------	--------	--------	--------	--------	--------	--------	--------	--------	--------	--------	--------	--------	--------	--------	--------	--------	--------	--------	--------	--------	--------	--------	--------	--------	--------	--------	--------	--------	--------	--------	--------	--------	--------	--------	--------	--------	--------	--------	--------	--------	--------	--------	--------	--------	--------	--------	--------	--------	--------	--------	--------	--------	--------	--------	--------	--------	--------	--------	--------	--------	--------	--------	--------	--------	--------	--------	--------	--------	--------	--------	--------	--------	--------	--------	--------	--------	--------	--------	--------	--------	--------	--------	--------	--------	--------	--------	--------	--------	--------	--------	--------	--------	--------	--------	--------	--------	--------	--------	--------	--------	--------	--------	--------	--------	--------	--------	--------	--------	--------	--------	--------	--------	--------	--------	--------	--------	--------	--------	--------	--------	--------	--------	--------	--------	--------	--------	--------	--------	--------	--------	--------	--------	--------	--------	--------	--------	--------	--------	--------	--------	--------	--------	--------	--------	--------	--------	--------	--------	--------	--------	--------	--------	--------	--------	--------	--------	--------	--------	--------	--------	--------	--------	--------	--------	--------	--------	--------	--------	--------	--------	--------	--------	--------	--------	--------	--------	--------	--------	--------	--------	--------	--------	--------	--------	--------	--------	--------	--------	--------	--------	--------	--------	--------	--------	--------	--------	--------	--------	--------	--------	--------	--------	--------	--------	--------	--------	--------	--------	--------	--------	--------	--------	--------	--------	--------	--------	--------	--------	--------	--------	--------	--------	--------	--------	--------	--------	--------	--------	--------	--------	--------	-------



No. 501

No. 173 Confirmed to  
James Abbott

SOUTH SIDE OF RIVER HURON

Description No. 173 Confirmed to James Abbott commencing at a post standing on the border of River Huron between this tract and a tract confirmed to Joseph Robertjean thence south one hundred and sixty two chains eighty three links to a post thence west thirty three chains eighteen links to a post the northwest corner of a tract confirmed to Joseph Sansfacon on Lake St. Clair, thence north one hundred and eighty eight chains forty links to an Elm Tree, thence east six chains forty eight links to a Buttonwood Tree standing on the border of River Huron between this tract and a tract confirmed to Christian Clemans, thence along the border of said River down stream south twenty six degrees west eight chains forty links thence south three chains thence south forty one degrees east six chains, thence south eighty eight degrees east eighteen chains forty five links thence south sixty seven degrees east three chains thence south seventeen degrees west nine chains thence south seventy one degrees east four chains thence north sixty six degrees east four chains forty nine links to the place of beginning, containing five hundred and seventy seven acres ninety four hundredths of an acre \_\_\_\_\_

Detroit, July 18, 1810

Aaron Greeley Surveyor  
of private claims

N<sup>o</sup> 501

South Side of River Huron

Description N<sup>o</sup> 143 confirmed to James Abbott commencing at a post standing on the border of River Huron between this tract and a tract confirmed to Joseph Roboultjean thence South one hundred and sixty two chains eighty three links, to a post thence West thirty three chains Eighteen links, to a post the south west corner of a tract confirmed to Joseph Jansfagon on Lake St Clair thence north one hundred and eighty eight chains forty links, to an Elm Tree thence East Six chains forty eight links, to a Post on west side standing on the border of River Huron between this tract and a tract confirmed to Christian Clement thence along the border of said River down stream South twenty six degrees west eight chains forty links thence South three chains thence South forty one degrees East Six chains thence South Eighty eight degrees East Eighteen chains forty five links, thence South sixty seven degrees East three chains, thence South seven teen degrees west nine chains thence South twenty one degrees East four chains, thence north Sixty Six degrees East four chains forty nine links, to the place of beginning containing five hundred and sixty seven Acres ninety four hundredths of an Acre

Dated July 18. 1810

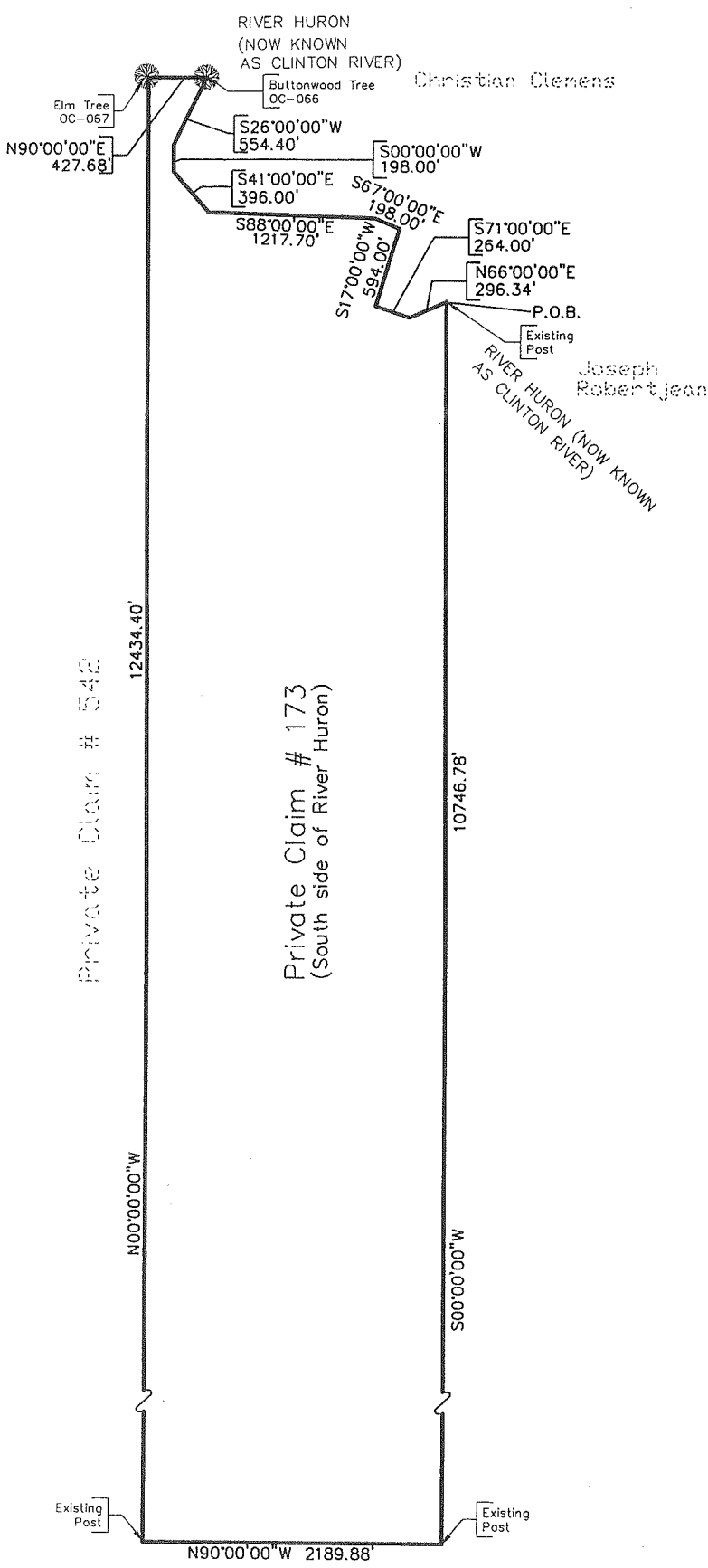
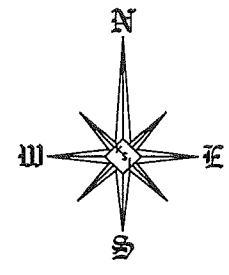
Aaron Gulley Surveyor  
of private Claims

Recor de d  
No 178 Cuyome amb

Junio 24 1805



SKETCH OF PRIVATE CLAIM #173



No. 504

No. 542 Confirmed to  
Christian Clemans

SOUTH SIDE OF RIVER HURON

Description No. 542 Confirmed to Christian Clemans commencing at a butter nut tree standing on the border of River Huron between this tract and a tract and a tract of unconced land thence south eighty three chains fifty nine links to a post thence east thirty four chains to a post standing on the west line of a tract confirmed to James Abbott thence north one hundred and forty eight chains forty links to an elm tree thence east six chains forty eight links to a buttonwood tree standing on the border of River Huron between this tract and a tract confirmed to James Abbott, thence along the border of said river up stream north twenty six degrees east eight chains sixty links thence north forty one degrees west seven chains thence south eighty one degrees thirty minutes west eighteen chains thence south seventy five degrees west seven chains thence north eighty five degrees west nineteen chains thence south forty degrees west eleven chains thence south twelve degrees west eleven chains fifty links thence south twenty eight degrees east seven chains thence south twelve degrees east ten chains thence south seventy nine degrees east twelve chains thence south twelve degrees east three chains thence south seven degrees west ten chains thence south fifty degrees west three chains thence north eighty five degrees east eight chains thence south thirteen degrees east four chains thence south seventy three degrees thirty minutes west eleven chains thence



-2- No. 542

south five degrees east four chains thence south sixty six degrees  
east seven chains thence south eight degrees east thirteen chains,  
thence south seventy eight degrees west three chains, thence north  
forty eight degrees west six chains fifty one links to the place of  
beginning, containing six hundred and fifteen acres and nine tenths  
of an acre \_\_\_\_

Detroit July 18, 1810

Aaron Greeley Surveyor  
of private claims

Commence at a Butler well See Standing on the  
 bordering River Huron between this tract and a tract  
 and a part of uncessed land thence South, eighty  
 three chains fifty one links, to a post, thence East  
 thirty four chains, to a post Standing on the west line  
 of a tract belonging to James Abbott thence North  
 one hundred and forty eight chains, forty links,  
 to an Elm Tree, thence East six chains, forty eight  
 links, to a Butler well See Standing on the border  
 of River Huron between this tract and a tract belong  
 ing to James Abbott thence along the bordering  
 said River up the same north twenty six degrees  
 East eight chains Sixty links, thence north forty  
 one degrees west, four chains, thence South eighty  
 one degrees thirty minutes west, thirteen chains,  
 thence South seventy five degrees west, seven chains,  
 thence north eighty five degrees west, thirteen  
 chains, thence South forty degrees west, eleven  
 chains, thence South twelve degrees west, eleven  
 chains fifty links, thence South twenty eight  
 degrees East seven chains, thence South twelve  
 degrees East ten chains, thence South Seventy  
 one degrees East twelve chains, thence South  
 twelve degrees East three chains, thence South Seven  
 degrees West ten chains, thence South fifty degrees  
 west three chains, thence north eighty five degrees  
 East eight chains, thence South thirteen degrees  
 West four chains, thence South Seventy five degrees  
 thirty minutes west, eleven chains, thence South five  
 degrees East four chains, thence South Sixty six degrees  
 East seven chains, thence South Eight degrees East  
 thirteen chains, thence South Seventy eight degrees  
 west three chains, thence north forty eight degrees west,  
 six chains fifty one links to the place of beginning,  
 containing six hundred and fifteen acres & nine tenths  
 of an acre. —

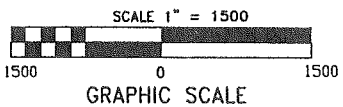
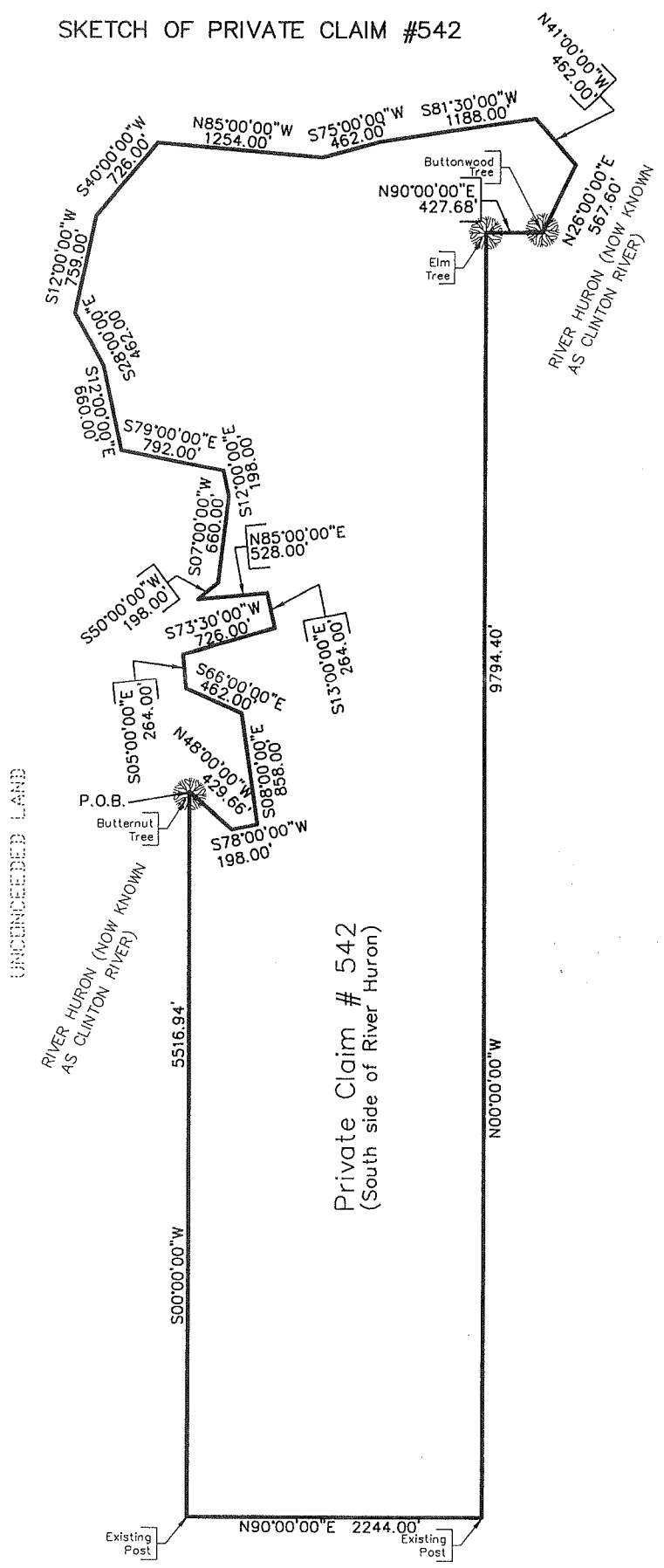
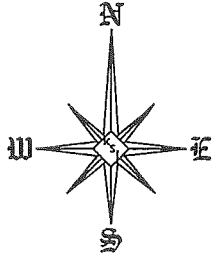
Detroit July 18-1810

Aaron Gulley Surveyor  
of Private Claims —



Recorded  
#542 confirmed  
to Christian Hansen

SKETCH OF PRIVATE CLAIM #542





PLAN SHOWING **JON M. DICKINSON'S ADDITION TO THE CITY OF MOUNT CLEMENS**

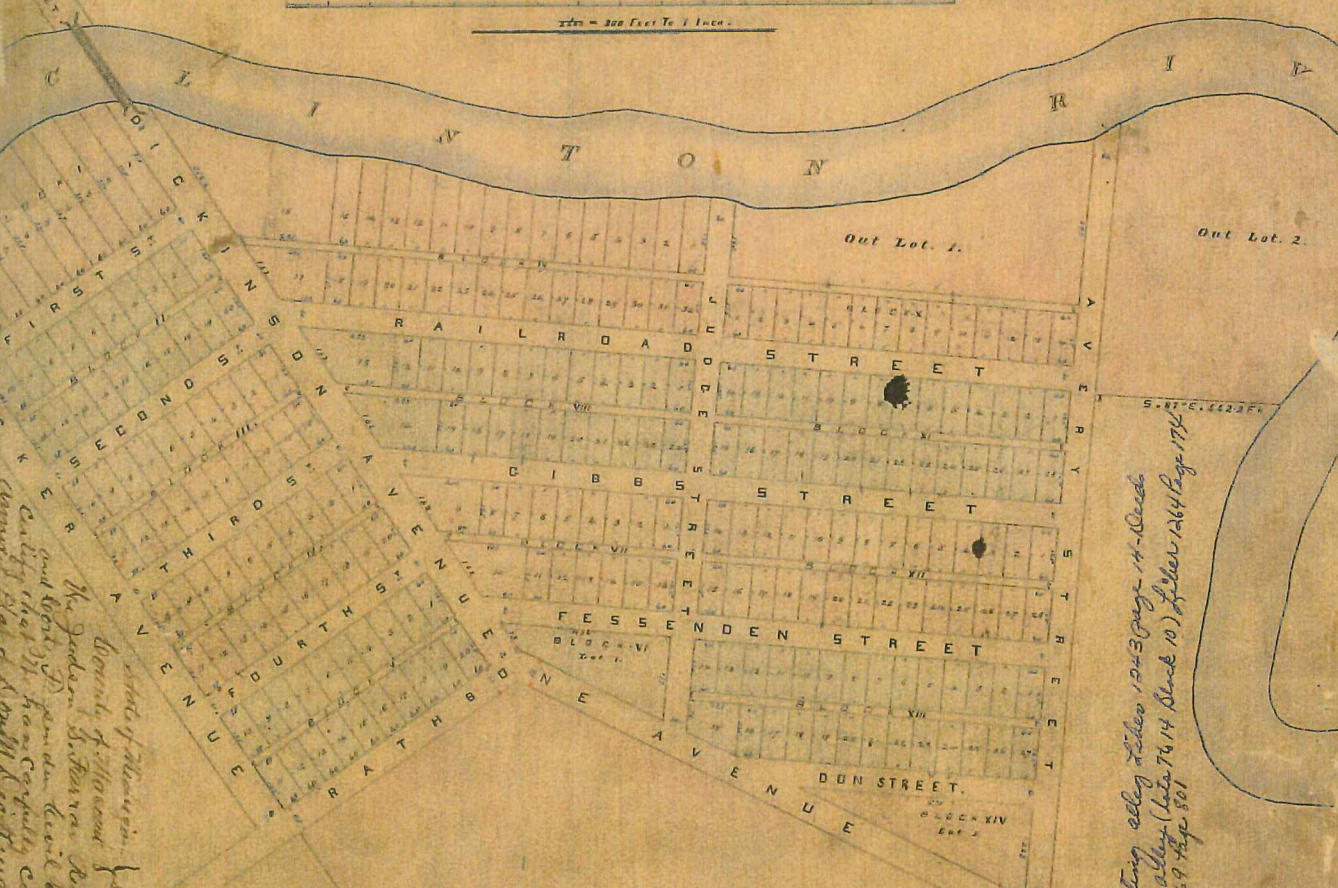
MACOMB COUNTY-MICHIGAN.

U.S.

Scale.

1" = 300 Feet To 1 Inch.

L. D. P. 16



*State of Michigan  
County of Wayne  
Jon M. Dickinson, Plaintiff  
vs.  
The Jackson, St. Lawrence, Detroit & Toledo  
Carrington, Inc., Defendant  
The City of Mount Clemens, Defendant  
The Board of Public Works, Defendant  
The Board of Health, Defendant  
The Board of Education, Defendant  
The Board of Fire Commissioners, Defendant  
The Board of Police Commissioners, Defendant  
The Board of Public Safety, Defendant  
The Board of Public Works, Defendant  
The Board of Health, Defendant  
The Board of Education, Defendant  
The Board of Fire Commissioners, Defendant  
The Board of Police Commissioners, Defendant  
The Board of Public Safety, Defendant*

State of Michigan }  
County of Wayne }  
On this sixth day of May One Thousand Eight  
hundred and eighty one personally came  
before me a Notary Public in and for Wayne  
County, Michigan, Don M. Dickinson, proprietor  
of Don M. Dickinson's addition to the City of  
Mount Clemens here written and Certified  
to me by the surveyor making said  
plat who having first solemnly depared the  
description hereunder written, severally  
acknowledged the same and the said plat  
and all of the same to be their free act and  
deed  
Geo. O. Berlin  
Notary Public  
Wayne County  
Michigan

Description.

Don M. Dickinson's addition to the City of Mt. Clemens is situated in the Township of Clinton, Macomb  
County, Michigan (which being known as Town number two one in range number thirteen East), on Block  
number 542, and is bounded and described as follows, to-wit:—  
Beginning at a point on the right bank of the Clinton River where the easterly bend of Macomb Street  
in said City of Mt. Clemens produced intersects said right bank, running thence, South thirty five  
degrees and twenty four minutes East, four thousand four hundred and ninety five feet and ten  
inches of a foot, thence North four degrees and thirty minutes East three thousand three hundred and  
thirty five feet and ten inches of a foot, thence East four hundred and fifty two feet and ten inches of a foot to  
the corner of the said plat, thence South thirty five degrees and twenty four minutes East three thousand  
three hundred and thirty five feet and ten inches of a foot to the place of beginning as aforesaid and plat  
of the said plat, and the said plat is hereby acknowledged by the said Don M. Dickinson and  
Geo. O. Berlin  
Don M. Dickinson  
Geo. O. Berlin

*See Resolution Enacting city rules 1943 page 14-15  
See Resolution to make alley (lots 76, 74, 72, 70) after 1944 page 17  
Resolution after 1769 page 801*

*See Resolution after 1763 p. 801*

Surveyors Certificate.  
I certify that I accepted for Don M. Dickinson in the month of April 1881 Don M. Dickinson's addition to the City of Mt. Clemens as particularly set forth on the above plat.  
G. H. Johnson  
City of Detroit



# SUBDIVISION OF OUTLOT 3.

OF DON M. DICKINSON'S ADDITION TO THE

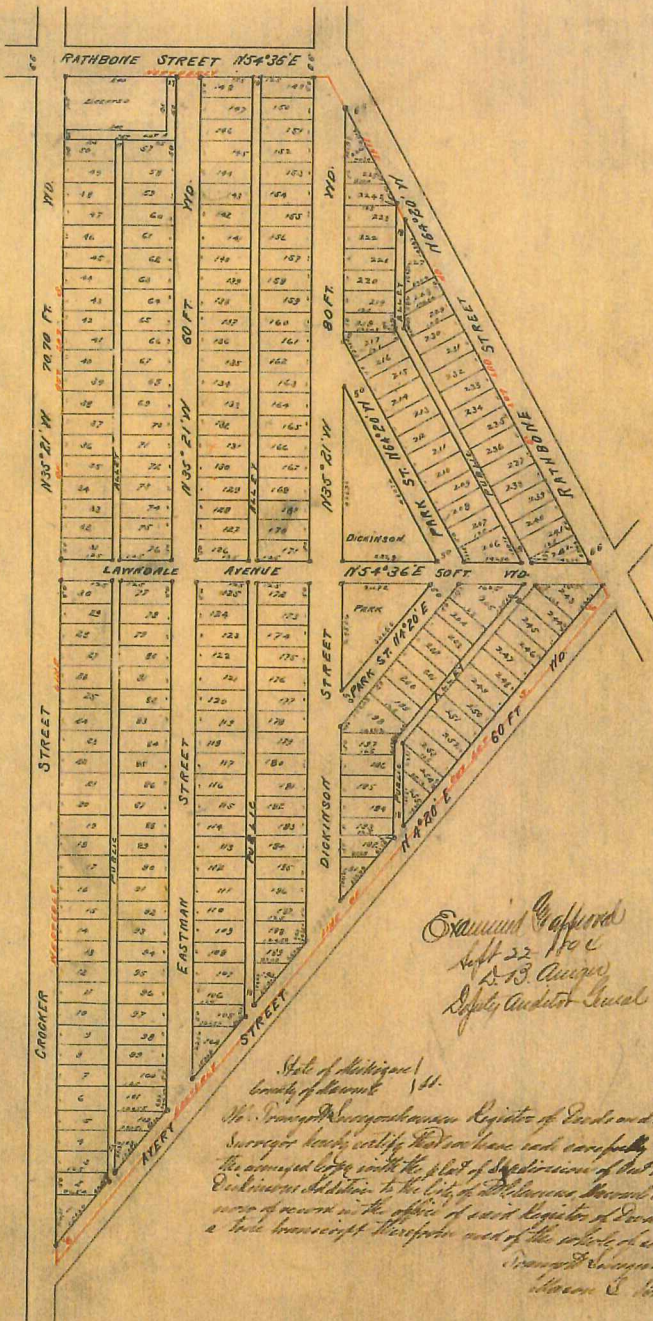
## CITY OF MT. CLEMENS MACOMB CO.,

### Michigan

Scale 1/2" = 100' 0"

L. 91.  
P. 53

Map of Section 6  
25 and 26 Macomb Co.  
Detroit 1887



I hereby verify that the above Plat is correct, and that Monuments consisting of Oak Stakes 1 1/2 inches square and 15 inches long have been placed in the Ground at all angles in the Boundaries, and at the intersection of all Streets or Streets and Alleys, as shown on said plat by O.  
 Witness my hand and Seal this 21<sup>st</sup> day of July 1887.  
 Mayor and Surgeon.

KNOW ALL MEN BY THESE PRESENTS, that We  
 Don M. Dickinson and Frances  
 L. Dickinson (his wife)  
 Have caused the plat containing the subdivision of Outlot 3 of Don M. Dickinson's Addition to the City of Mt. Clemens, Michigan, and that the Streets and Alleys shown on said plat are hereby dedicated to the use of the public.  
 Witness our hands and seals this 21<sup>st</sup> day of July  
 A. D. Eighteen Hundred and Ninety four  
 In presence of  
 James Hallen, Notary Public  
 Francis L. Dickinson

Examined and  
 Subscribed  
 Deputy Auditor General

STATE OF MICHIGAN,  
 COUNTY of Wayne.  
 On this 21<sup>st</sup> day of August 1887  
 I, a Notary Public in and for said county, personally appeared the above named Don M. Dickinson and Frances L. Dickinson (his wife) known to me to be the same persons who executed the above declaration, and who acknowledged the same to be their act and deed.  
 James Hallen, Notary Public  
 Wayne County, Michigan.

State of Michigan,  
 County of Macomb.  
 I, J. W. Thompson, Registrar of Deeds and Mason & Mason  
 Surveyor, do hereby certify that on June 22<sup>nd</sup> 1887 I compared  
 the original copy with the plat of subdivision of Outlot 3 of Don M.  
 Dickinson's Addition to the City of Mt. Clemens, Macomb County, Michigan  
 now of record in the office of said Registrar of Deeds and that it is  
 a true transcript therefore and of the record of said record.  
 J. W. Thompson, Registrar of Deeds  
 Mason & Mason, Surveyor.



24928

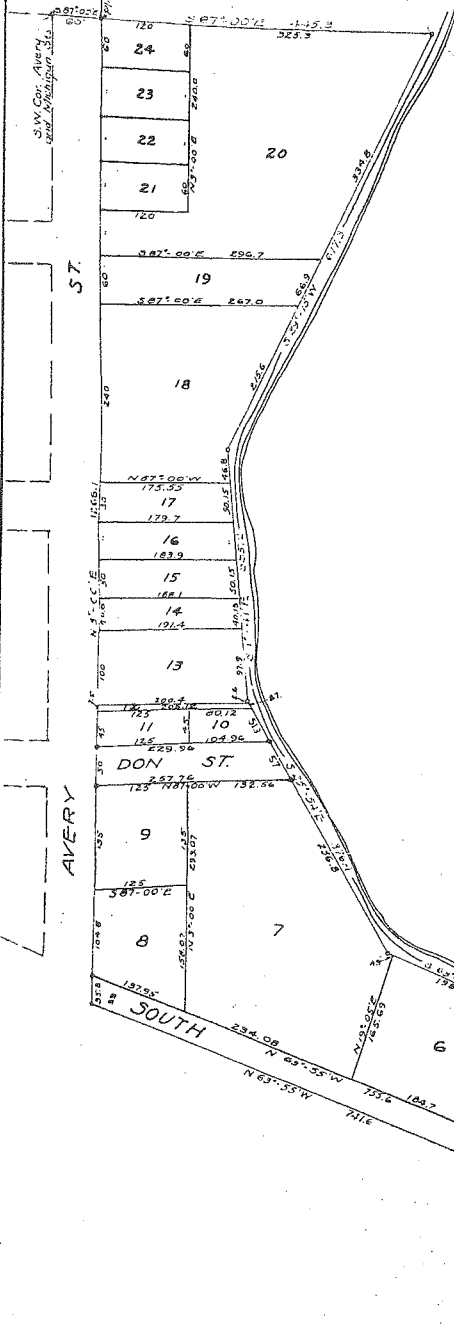
# ASSESSORS PLAT NO. 27

## OF THE CITY OF MT. CLEMENS, MACOMB CO., MICHIGAN.

SCALE 1"=100'

Note: - All dimensions hereon are in feet and decimals thereof.

Applicant's Office  
 Macomb County, Michigan  
 Assessor's Plat No. 27  
 Mar 27 1929  
 Hugh B. Wallace  
 Mar 27 1929  
 Geo L. Gammell



**DEDICATION**

BEFORE ALL MEN BY THESE PRESENTS, that I, Geo. H. Miller Assessor of the City of Mt. Clemens Macomb County Michigan, by virtue of authority in me vested by section 3350 Compiled Laws of 1915 as amended having been duly authorized by the City Commission, have caused the land described in the annexed plat to be surveyed, laid out and platted to be known as ASSESSORS PLAT NO. 27 of the City of Mt. Clemens Macomb County Michigan, and that the streets and alleys as shown on said plat are hereby dedicated to the use of the Public.

Witnesses:-  
Joseph H. Matchum  
Ed. D. ...  
Geo. H. Miller Assessor of the City of Mt. Clemens Macomb County Mich.

**ACKNOWLEDGMENT**

STATE OF MICHIGAN ) SS  
 COUNTY OF MACOMB )  
 On this 17th day of March A.D. 1929 (before me a Notary Public in and for said County, personally came the above named Assessor Geo. H. Miller of the City of Mt. Clemens, known to be the person who executed the above dedication and acknowledged the same to be his free act and deed as such Assessor.  
 My Commission expires Apr. 11 1932

U. D. ...  
 Notary Public in and for said County

**DESCRIPTION**

The land embraced in the annexed plat of ASSESSORS PLAT NO. 27 of the City of Mt. Clemens Macomb County Michigan, is described as follows:-  
 Beginning at a point S 87° 00' E, 50.0 ft. from the S.W. corner of Michigan and Avery Sts., Thence S 77° 00' E, 445.3 ft. Thence S 23° 15' W, 617.3 ft. Thence S 141° 5', 375.2 ft. Thence S 25° 54' E, 375.4 ft. Thence S 63° 15' E, 310.0 ft. Thence S 57° 57' E, 170.5 ft. Thence S 55° 57' E, 249.5 ft. Thence S 2° 43' W, 176.8 ft. Thence N 63° 21' W, 343.4 ft. Thence N 52° 55' W, 741.6 ft. Thence N 3° 00' E, 1266.1 ft. to place of beginning.

**ENGINEERS CERTIFICATE**

I hereby certify that the plat hereon delineated is a correct one and that permanent metal monuments not less than one inch in diameter and fifteen inches in length set in a concrete base at least four inches in diameter and forty-eight inches in depth have been placed at points marked thus on as shown at all angles in the boundaries of the land platted at all intersections of streets, intersections of alleys or of streets and alleys and at the intersections of streets and alleys with the boundaries of the plat as shown on said plat.

Paul W. ...  
 Registered Civil Engineer

**CERTIFICATE OF MUNICIPAL APPROVAL**

This plat was approved by the City Commission of the City of Mt. Clemens Macomb County Michigan, at a meeting held March 14, 1929

U. D. ... City Clerk

**CERTIFICATE OF APPROVAL BY THE COUNTY BOARD**

This plat was approved on the 13th day of March 1929.

Charles H. ... Judge of Probate  
Joseph H. ... County Clerk  
William M. ... County Treasurer



# ASSESSORS PLAT NO. 28

A SUBDIVISION OF OUTLOTS 1, 2 & 3 OF DON M. DICKINSON'S ADD  
OF THE CITY OF  
MT. CLEMENS, MACOMB CO., MICHIGAN.

Examined and Approved  
April 18-1929  
C. R. Howell

SCALE 1"=100'

Note:-- All dimensions hereon are in feet and decimals thereof.

### DEDICATION

KNOW ALL MEN BY THESE PRESENTS, That I Joseph H. Miller Assessor of the City of Mt Clemens Macomb County Michigan, by virtue of authority in me vested by Section 2260, Compiled Laws of 1915, as amended, having been duly authorized by the City Commission, have caused the land described in the annexed plat to be surveyed, laid out and platted to be known as ASSESSORS PLAT NO. 28 of the city of Mt Clemens Macomb County Michigan, and that the streets and alleys as shown on said plat are hereby dedicated to the use of the public.

Witnesses:-  
Joseph H. Miller  
Assessor of the City of Mt Clemens  
Macomb County Michigan.

### ACKNOWLEDGMENT

STATE OF MICHIGAN )  
COUNTY OF MACOMB ) SS  
On this 12th day of March A.D. 1929, before me a Notary Public in and for said County, personally came the above named Joseph H. Miller Assessor of the City of Mt Clemens, known to be the person who executed the above dedication and acknowledged the same to be his free act and deed as such Assessor.  
My Commission expires Apr 11, 1932  
Joseph H. Miller  
Notary Public in and for said County

### DESCRIPTION

The land embraced in the annexed plat of ASSESSORS PLAT NO. 28 of the City of Mt Clemens Macomb County Michigan, is described as follows:-  
Beginning at a point S 87° 00' E., 50.0 ft. from the S.W. corner of Michigan and Avery Sts. Thence N 3° 00' E., 205.0 ft. Thence N 87° 00' W., 200.0 ft. Thence N 3° 00' E., 131.8 ft. Thence N 74° 15' E., 477.5 ft. Thence N 59° 44' E., 484.2 ft. Thence N 88° 18' E., 345.9 ft. Thence S 69° 24' E., 280.4 ft. Thence S 41° 00' E., 182.4 ft. Thence S 17° 50' W., 256.7 ft. Thence S 35° 27' W., 200.2 ft. Thence S 79° 15' W., 16.1 ft. Thence N 87° 00' W., 445.2 ft to place of beginning. Being O.L. 1 & 2 of Don M. Dickinson's Add to the City of Mt Clemens.

### ENGINEER'S CERTIFICATE

I hereby certify that the plat hereon delineated is a correct one and that permanent metal monuments not less than one inch in diameter and fifteen inches in length set in a concrete base at least four inches in diameter and forty-eight inches in depth have been placed at points marked thus o as shown at all angles in the boundaries of the land platted at all intersections of streets, intersections of alleys or of streets and alleys and at the intersections of streets and alleys with the boundaries of the plat as shown on said plat.

Lawton H. Harvey  
Registered Civil Engineer

### CERTIFICATE OF MUNICIPAL APPROVAL

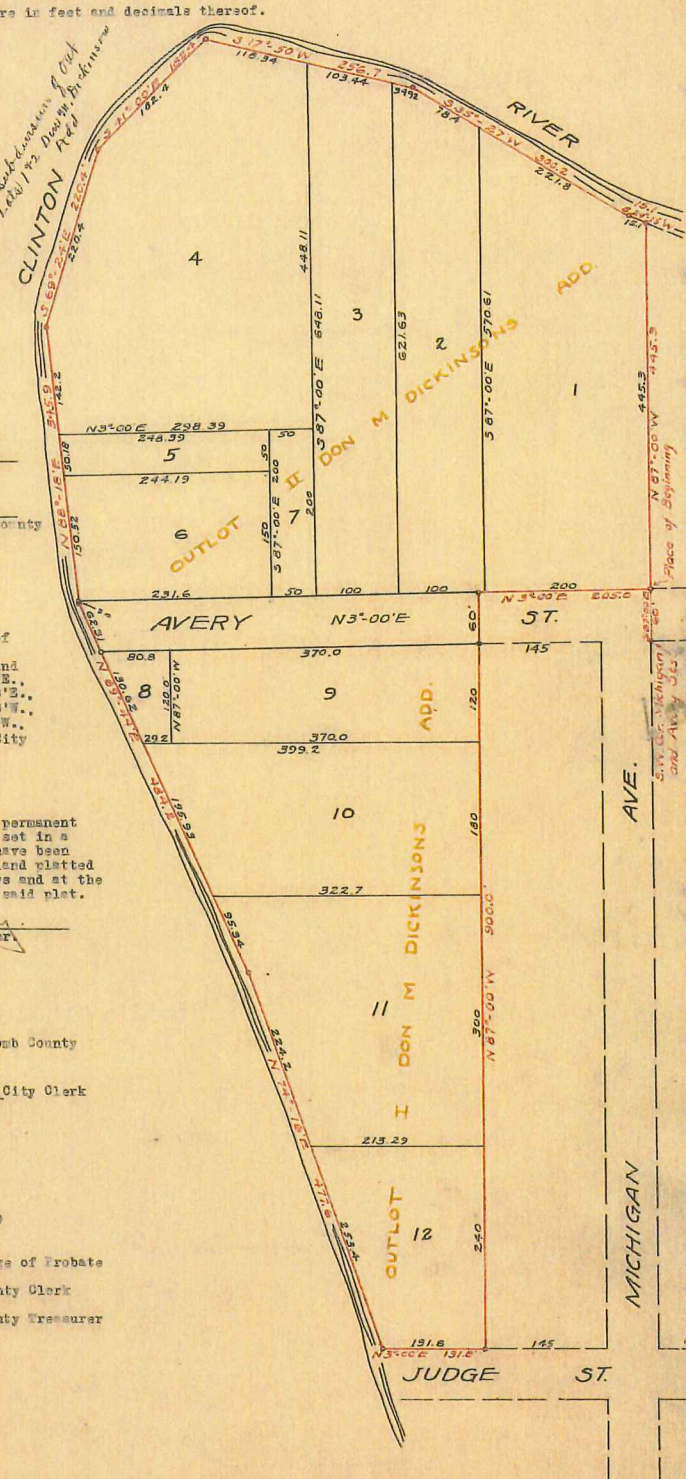
This plat was approved by the City Commission of the City of Mt Clemens Macomb County Michigan, at a meeting held Mar 12, 1929  
Joseph H. Miller City Clerk

### CERTIFICATE OF APPROVAL BY THE COUNTY BOARD

This plat was approved on the 13th day of March 1929  
Charles H. Hummel Judge of Probate  
Joseph H. Miller County Clerk  
William M. King County Treasurer

REGISTER'S OFFICE  
County of Macomb

Received for Record this 20th day  
of April A.D. 1929 - at  
9.00 o'clock A.M. and Recorded  
in Liber 111 of Plats  
on Page 11  
Joseph H. Miller



See Resolution to create Alley (Photo 8/10/1929 pg 11) before 1929 Page 174





**Part B: Surveyor's Report on Perpetuation, Restoration, Reestablishment or Monumentation of Corner: Southeast Corner Private Claim 542**

Refer to: 12-11-2014 LCRC for Remonumentation Corner by Christopher A. Asiala, PS #49376 PC-036 recorded in L. 23153 of Deeds on P. 929 – 931. Placed a new 4"X36" concrete monument with a 2" aluminum cap stamped "MACOMB COUNTY MONUMENT MI ACT 345 CAA 49376 PC-036" with 4 accessories.

**Part C: Field Evidence of Perpetuation or Monumentation of Corner: Southeast Corner Private Claim 542**

5-07-2018 Found a 4"X36" concrete monument with a 2-1/2" diameter aluminum disk stamped "MACOMB COUNTY MONUMENT MI ACT 345 CAA 49376 PC-036" with 4 of 4 matching accessories.

**Accessories:**

N10°E 3.66' R&M Found MAG nail with MCR washer in West face 5' tall block wall  
 S40°E 0.45' R&M SW corner of 5' tall block wall  
 Due East 15.21' R&M Found MAG nail with MCR washer in West face 4" Poplar  
 N40°W 8.98' R&M Found MAG nail with MCR washer in NE face 4" Poplar

Date of Observation	Latitude	Longitude	Datum and Adjustment Year	Epoch Date
7-May-18	N 42D34'06.13217"	W 82D52'02.94233"	NAD83 (2011)	2010

Method for Latitude-Longitude determination: NGS OPUS-RS Solution

State Plane Coordinates in international feet: N-392938.15', E-13527168.29'  
 Standard Deviation: 0.08' N, 0.01' W  
 Zone: South  
 Combined Factor: 0.99989939  
 NGSPID: AB5952  
 Survey Method: MC GPS  
 Orthometric Height: 588.42'  
 Elev. Datum: NAVD88

I, Steven E. Dunn, P.S., in a field survey on May 7, 2018, certify under the requirements of the State Survey and Remonumentation Act, 1990 PA 345, MCL 54.261 to 54.279, and the Corner Recordation Act, 1970 PA 74, MCL 54.201 to 54.210d, that the corner identified and described hereon has been perpetuated or monumented as described in Parts A, B, and C above, pursuant to the laws and rules of the State of Michigan.

Steven E. Dunn May 16, 2018  
 Steven E. Dunn, P.S. Date

Professional Surveyor's License No.: 28408

Prepared By:  
 Steven E. Dunn, P.S.  
 Great Lakes Geomatics, LLC  
 76 S. Main Street  
 Mt. Clemens, Mi. 48043



I, Martin C. Dunn, P.S., Macomb County Surveyor Representative, have reviewed the corner perpetuated in parts A, B and C above for the purpose of publishing its Michigan State Plane Coordinate values and relative data and is accepted for filing in the Macomb County Remonumentation Program.

Martin C. Dunn 6-19-2018  
 Martin C. Dunn, P.S. Date

Macomb County Surveyor Representative  
 License No. 30081