

MACOMB COUNTY 2018 REMONUMENTATION GRANT PROGRAM FOR CITY OF MT. CLEMENS OC-066

Section One

Index

Pictures in the four cardinal directions; found monumentation and after setting the required monumentation.

Section Two

Surveyor's Report

Land Corner Recordation Certificate

Section Three

1-4 Field Notes

5. GLO Map Clinton Township

6. GLO Map Clinton Township - 1818

7-8. GLO Map Clinton Township – 1818 (2 pages)

9. Map of Clinton Township – 1875

10-11. Map of City of Mt. Clemens – 1875 (2 pages)

12. Map of Clinton Township – 1895

13. Map of City of Mt. Clemens – 1895

14. Map of Clinton Township – 1916

15-18. Map of City of Mt. Clemens – 1916 (4 pages)

19. Map of City of Mt. Clemens 2006

20. Macomb County Composite Map 11-13A

21. Macomb County Composite Map 11-13B

22. Macomb County Composite Map 11-13C

Section Four

1. 1810-Aaron Greeley Surveyor of Private Claims 173, Pages one, two, three and four of four

2. 1810-Aaron Greeley Surveyor of Private Claims 542, Pages one, two, three and four of four

3. 1881-"DON M. DICKINSON'S ADDITION TO THE CITY OF MT. CLEMENS", L. 2 of Plats, Page 16,
Sheet one of one

4. 1897-"SUBDIVISION OF OUTLOT 3 OF DON M. DICKINSON'S TO THE CITY OF MT. CLEMENS", L. 2
of Plats, Page 53, Sheet one of one

5. 1929-"ASSESSOR'S PLAT NO. 27", L. 13 of Plats, Page 46, Sheets one of one

6. 1929-"ASSESSOR'S PLAT NO. 28", L. 14 of Plats, Page 4, Sheets one of one

7. 2014-Land Corner Recordation Certificate, Liber 23153, Pages 929-931, Pages one, two and three of three



**MT. CLEMENS
OC-066 173/
542-INT
T02N, R13E**

ACT #345
OC-066
173/542-INT
MACOMB COUNTY
MI. INT
17623



MT. CLEMENS
OC-066 173/
542-INT
T02N, R13E





MT. CLEMENS
OC-066 173/
542-INT
T02N, R13E





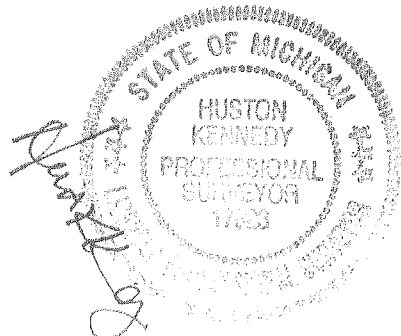
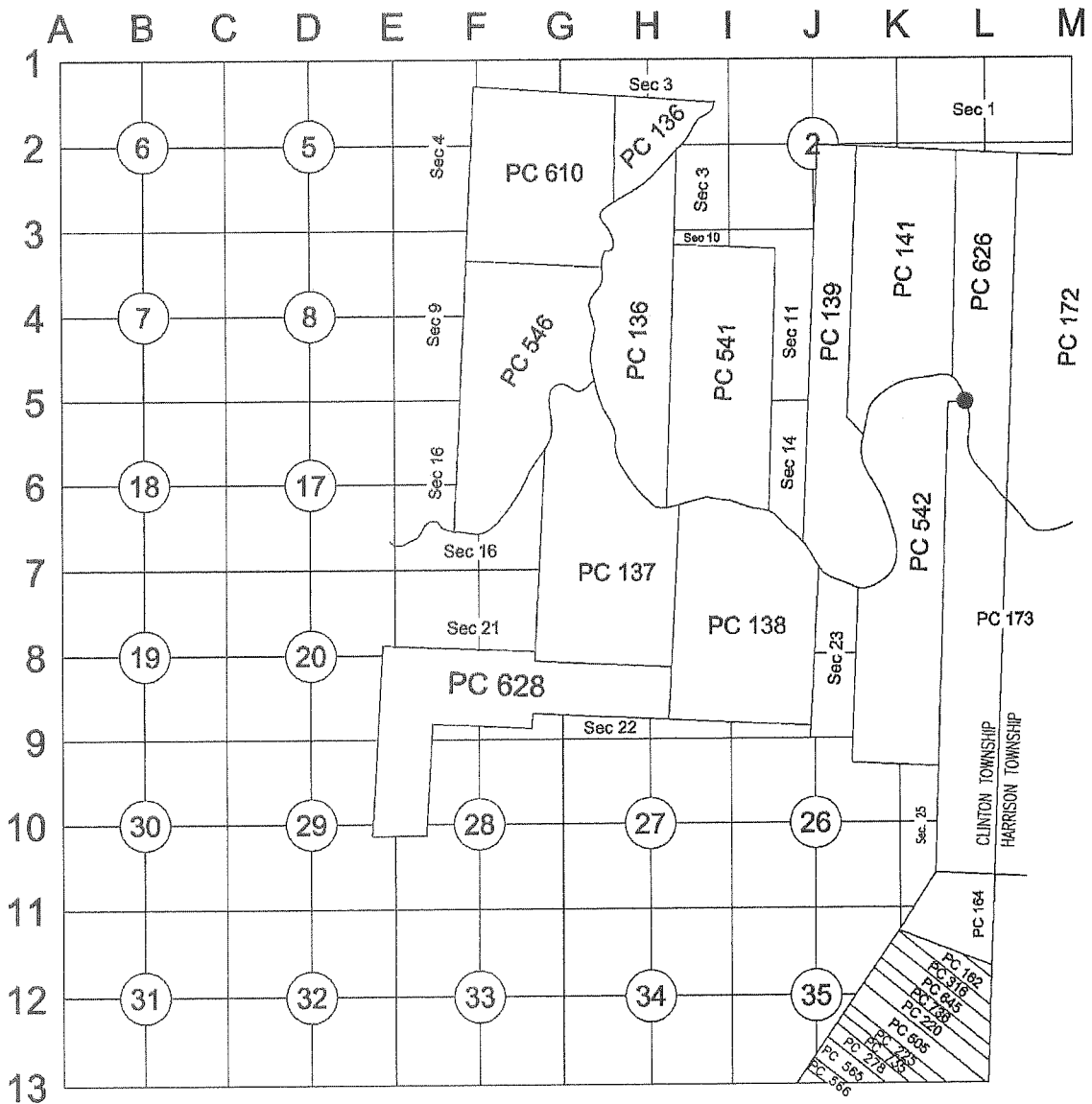
Land Corner Recordation Certificate
2018 Annual Grant Agreement
Authority: MICH. 1970 PA 74, MCL 54.205

Surveyor's Name: Huston K. Kennedy
For Corner(s) in: Macomb County

Field Survey Date: August 30, 2018
Municipality: City of Mt. Clemens

Corner Type	Section Private Claim	Survey Township	Corner Code	Other Code
Original Public Land Survey Corner	PC. 173/542	T 02 N R 13 E	173/542INT	OC-066

Other Code Corner Description: Intersection corner of the west border of the Clinton River (formerly River Huron) with a Southerly line of Private Claim 542 common with a Northerly line of Private Claim 173



4+

C

Part A: Corner History:

- 1.) 1810-Aaron Greeley, Survey of Private Claim 173
- 2.) 1810-Aaron Greeley, Survey of Private Claim 542
- 3.) 1881-"DON M. DICKINSON'S ADDITION TO THE CITY OF MT. CLEMENS", Liber 2 of Plats, page 16. Depicts the line common to Private Claims 172 and 542, also the deflection corner
- 4.) 1897-"SUBDIVISION OF OUTLOT 3 OF DON M. DICKINSON'S TO THE CITY OF MT. CLEMENS", Liber 2 of Plats, page 3
- 5.) 1929-"ASSESSOR'S PLAT NO. 27", Liber 13 of Plats, page 46
- 6.) 1929-"ASSESSOR'S PLAT NO. 28", Liber 14 of Plats, page 4
- 7.) 2014-Asiala, PS #49376; LCRC Liber 23153, pages 929-931 – He set a 4"x36" concrete monument with a 2" aluminum cap stamped "Macomb County Monument MI Act 345 CAA 49376". (Southeast corner Private Claim 542)

Part B: Surveyor's Report on Perpetuation, Restoration, Reestablishment or Monumentation of Corner:

The corner falls 0.2' south of a 6 foot chain link fence extending to the east and west, also 33 feet west of the Clinton River (River Huron).

The plat of "DON. M. DICKINSON'S", depicts the line common to Private Claims 173 & 542, the deflection corner. The south line of Outlot 2 represents the East-West segment of the line common to Private Claims 173 & 542, while the east line of Avery Street represents the North-South segment of the line common to Private Claims 173 & 542. The corner was recovered using the found monumentation on the north line of Block 11 of said "DON M. DICKINSON'S (south line of Michigan Avenue) and the west line of "ASSESSOR'S PLAT NO. 27" (east line of Avery Street). The corner was set on the projection south line of Michigan Avenue from the northeast corner of Lot 32, Block 8 thru deflection corner 445.30 feet.

RECORDED, UNRECORDED AND FIELD MEASUREMENTS BETWEEN ADJACENT CORNERS

OC-066 to OC-067

A. Greeley, Surveyor of Private Claims = 6 chains 48 links = 427.68 Ft.
S87°00'00" E 445.33 Ft.+ 33.00 Ft. = 475.33 Ft. (mea. 2018)

Part C: Field Evidence of Perpetuation or Monumentation of Corner:

OC-066 I set a 4" diameter x 36" long concrete monument with a 1/2" iron rod with a 2" diameter aluminum cap stamped "Macomb County Monument, MI Act #345, PS #17623" (OC-066)

Accessories:

- Due North 19.94' Set Mag Nail w/washer stamped "Macomb County Witness Tag" East face 10" Walnut
- N85°W 12.44' Set Mag Nail w/washer stamped "Macomb County Witness Tag" South face power pole
- Due East 18.72' Cut "x" in 3" diameter fence post south face
- S45°E 18.11' Set a 1/2" x 18" iron rod w/blue plastic cap stamped "MC REMON WIT POINT"
- East 33'± to the west bank of the Clinton River

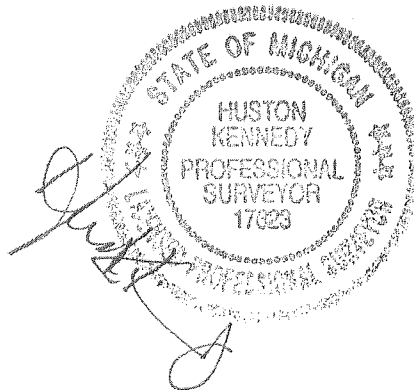
I, Huston K. Kennedy, P.S., in a field survey on August 30, 2018 certify under the requirements of the State Survey and Remonumentation Act, 1990 PA 345, MCL 54.261 to 54.279, and the Corner Recordation Act, 1970 PA 74, MCL 54.201 to 54.210d, that the corner identified and described hereon has been perpetuated or monumented as described in Parts A, B, and C above, pursuant to the laws and rules of the State of Michigan.


Huston K. Kennedy, P.S.

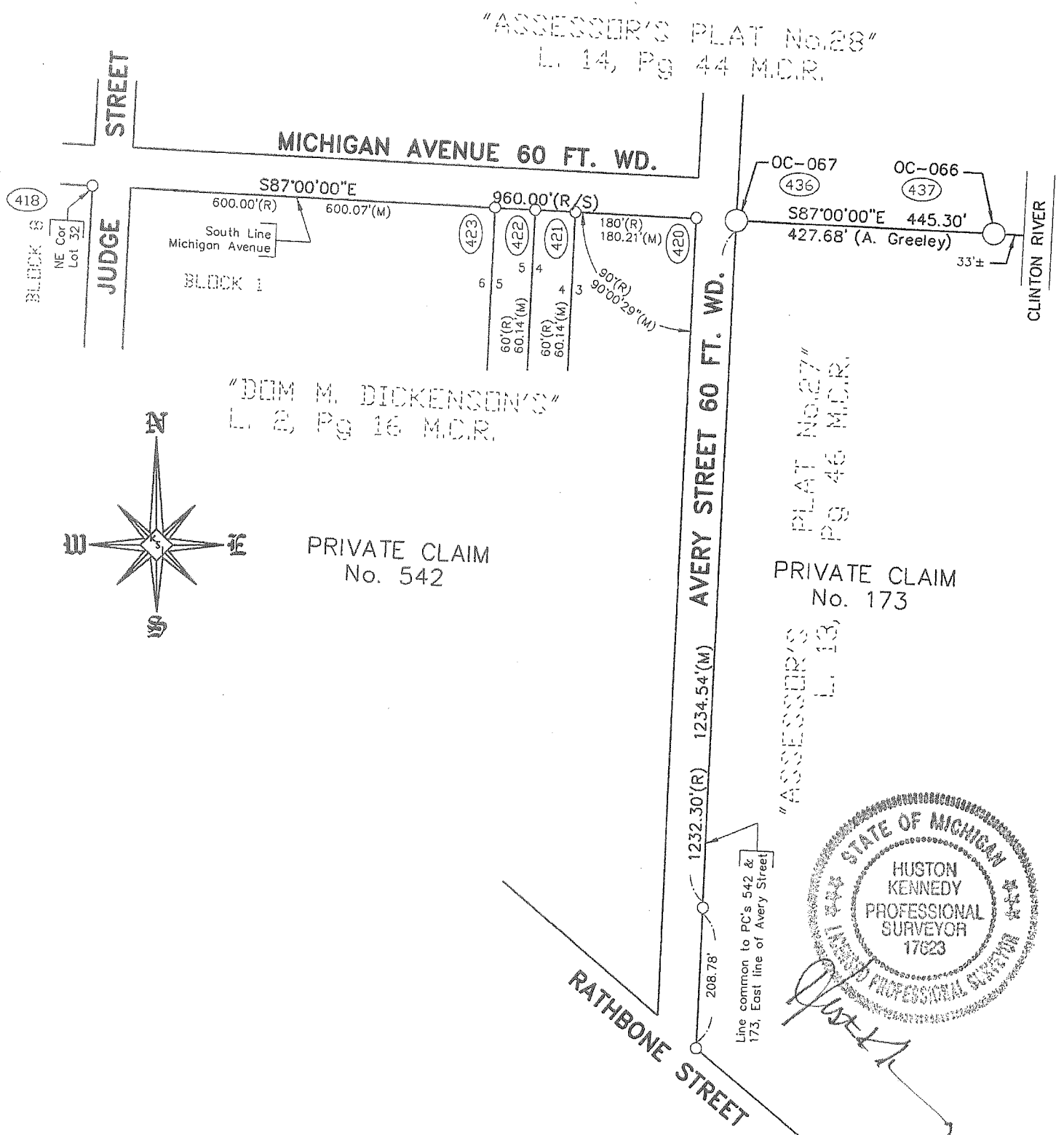
October 11, 2018
Date

Professional Surveyor's License No.:17623

Prepared By:
Huston K. Kennedy, PS
105 North Washington Street
Oxford, Michigan 48371



SKETCH OF CORNER LOCATION



OC-066 & OC-067
 T02N,R13E
 CITY OF MT. CLEMENS
 Scale: 1" = 200'

Land Corner Recordation Certificate
 T 02 N R 13 E Code OC-066
 Page 4 of 4

**2018
MACOMB COUNTY REMONUMENTATION
GRANT PROGRAM FOR
CITY OF MT. CLEMENS
Research Dossier
OC-066**

Prepared by:
Kennedy Surveying, Inc.
105 North Washington Street
Oxford, Michigan 48371

Sources of Information Researched For Macomb County 2018 Remonumentation Grant Program for City of Mt. Clemens

- 1) GLO NotesC
- 2) Act 74 Recorded LCRC
- 3) Act 132 Recorded Surveys
- 4) Personal History and Records
- 5) LCRC's and Surveys
- 6) Letters to the Following, Requesting Unrecorded information

- a) Anderson, Eckstein & Westrick
- b) BMJ Engineers & Surveyors
- c) Community Engineering & Surveying
- d) David Little Land Surveyor
- e) Fenn & Associates Surveying, Inc.
- f). George Jerome & Company
- g) Grant Ward Surveyors
- h) Great Lakes Geomatics
- i) James Land Surveying
- j) Kem-Tec & Associates
- k) Kieft Engineering, Inc.
- l) Lehner Associates, Inc.
- m).Milletics & Associates
- n) R. A. Duthler Land Surveyor, LLC
- o) Reichert Surveying
- p) R. J. Donnelly & Associates
- q) Road Commission for Macomb County
- r) Rowe Professional Services
- s) Spalding, DeDecker & Associates
- t) Urban Land Consultants, LLC

OC-066 TOWN 02 NORTH, RANGE 13 EAST, CITY OF MT. CLEMENS

GLO NOTES

The corner was not monumented during the original government survey.

EXISTING FIELD CONDITIONS

This corner has not been perpetuated and the temporary corner falls 0.2' south of a 6 foot chain link fence extending to the east and west, also 33 feet west of the Clinton River (River Huron).

RECORDED AND UNRECORDED INFORMATION USED TO RECOVER AND VERIFY THE LOCATION OF OC-066

July 18, 1810 – Aaron Greeley, Surveyor of Private Claim No. 173

July 18, 1810 – Aaron Greeley, Surveyor of Private Claim No. 542

May 6, 1881 – Plan showing "DON M. DICKINSON'S ADDITION TO THE CITY OF MT. CLEMENS" Liber 2 of Plats on page 16 of Macomb County Records. Depicts the line common to Private Claims 172 & 542, also the deflection corner.

December 28, 1897 – "SUBDIVISION OF OUTLOT 3 OF DON M. DICKINSON'S TO THE CITY OF MT. CLEMENS", Liber 2 of Plats on page 3 of Macomb County Records.

March 26, 1929 – "ASSESSOR'S PLAT NO. 27", Liber 13 of Plats on page 46 of Macomb County Records.

April 20, 1929 – "ASSESSOR'S PLAT NO. 28", Liber 14 of Plats on page 4 of Macomb County Records.

December 11, 2014 – Christopher A. Asiala, PS #49376 recorded a LCRC in Liber 23153, pages 929-931 of Macomb County Records. He set a 4" x 36" concrete monument with a 2" aluminum cap stamped "Macomb County Monument MI Act 345 CAA 49376". (Southeast corner of Private Claim 542).

WITNESSES:

N10°E 3.66' Set MAG nail with M.C.R. washer in west face 5" tall block wall

S40°E 0.45' SW corner of 5' tall block wall

Due South 15.21' Set MAG nail with M.C.R. washer in west face 4" Poplar

N40°W 8.98' Set MAG nail with M.C.R. washer in NE face 4" Poplar

RECORDED, UNRECORDED AND FIELD MEASUREMENTS BETWEEN ADJACENT CORNERS

OC-066 to OC-067

A. Greeley, Surveyor of Private Claims = 6 chains or 48 links = 427.68 Ft.

S87°00'00" E 445.33 Ft. + 33.00 Ft. = 475.33 Ft. (mea. 2018)

SURVEYOR'S RECOMMENDATION

The plat of "DON. M. DICKINSON'S", depicts the line common to Private Claims 173 & 542, the deflection corner. The south line of Outlot 2 represents the East-West segment of the line common to Private Claims 173 & 542, while the east line of Avery Street represents the North-South segment of the line common to Private Claims 173 & 542. The corner was recovered using the found monumentation on the north line of Block 11 of said "DON M. DICKINSON'S (south line of Michigan Avenue) and the west line of "ASSESSOR'S PLAT NO. 27" (east line of Avery Street). The corner was set on the projection south line of Michigan Avenue from the northeast corner of Lot 32, Block 8 thru deflection corner 445.30 feet. I therefore, recommend to the Macomb County Peer Group that they accept this location as the best evidence of OC-066 to be perpetuated.


Huston K. Kennedy, PS
Kennedy Surveying, Inc.

2018
MACOMB COUNTY REMONUMENTATION
GRANT PROGRAM CITY MT. CLEMENS
OC-066

Δ	Pt	418 To	Pt 424		419-424	W. Face
424		178-55-50		HR	37.65	4" Face
425		100-46-10		HR	196.37	

Δ	Pt	418 To	Pt 426	HLX	419-426	Set
1		130-10-55		(m)	121.48	60
2		260-21-55				TRAV
m		130-10-58				Pt

Δ	Pt	418 To	Pt 427	HLX	419-427	FD
1		93-22-30		(m)	599.23	1"
2		186-45-00				PIPE
m		93-22-30				

Δ	Pt	418 To	Pt 428	HLX	419-428	FD
1		93-33-00		(m)	599.56	1"
2		187-06-00				PIPE
m		93-33-00				

Δ	Pt	418 To	Pt 429	HLX	419-429	FD
1		93-15-50		(m)	650.26	1/2"
2		186-31-30				PIPE
m		93-15-45				" conc

X		419-418	FD
(m)		922.45	1/2" IR

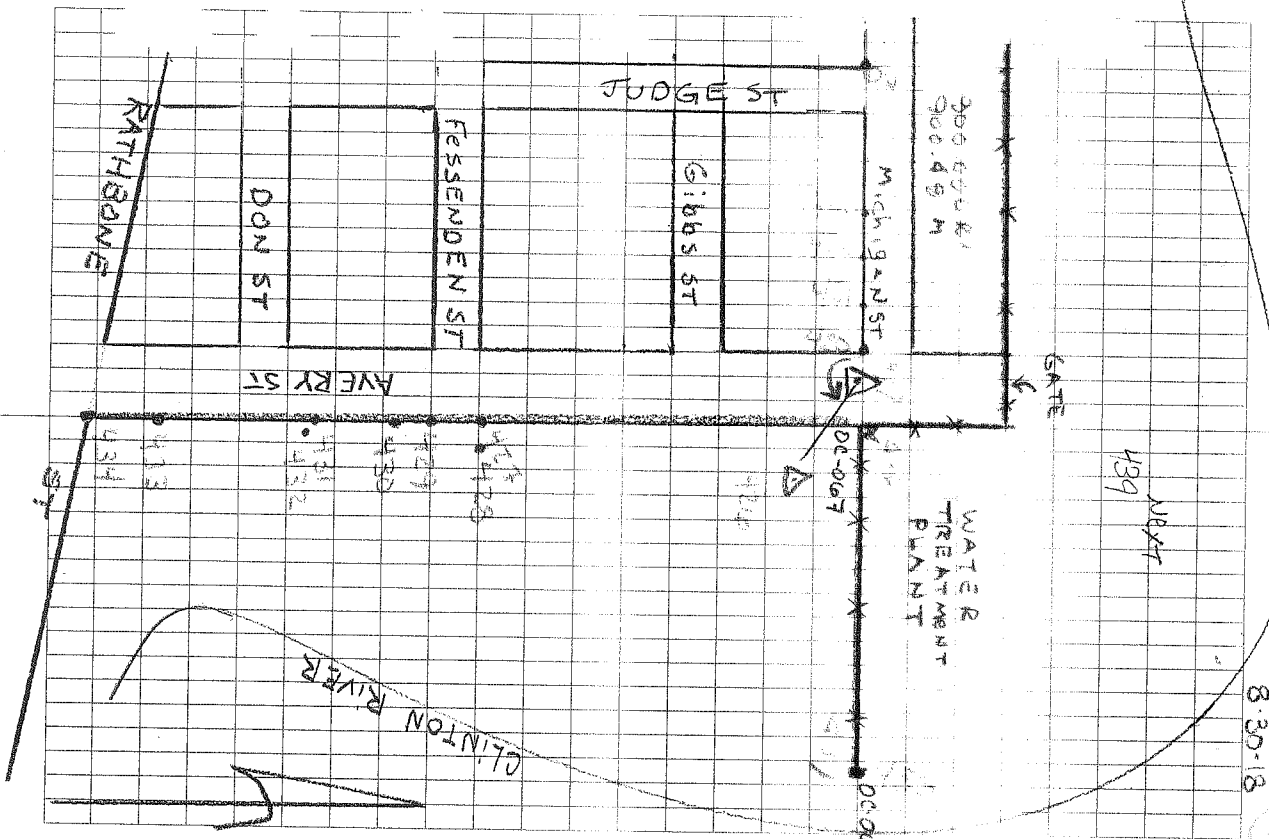
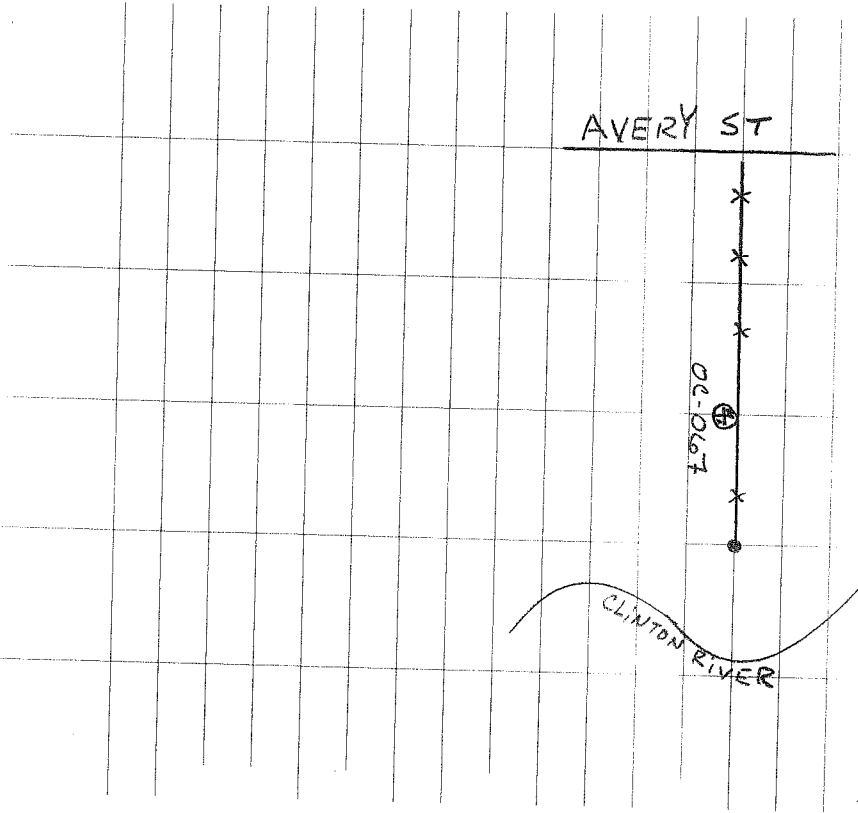
Δ	Pt	418 To	Pt 420	HLX	419-420	FD
1		02-00-15		(m)	21.87	1/2"
2		04-00-30				PIPE
m		02-00-15				BENT

Δ	Pt	418 To	Pt 421	HLX	419-421	FD
1		00-00-20		(m)	202.11	1/2"
2		00-00-40				PIPE
m		00-00-20				17641

Δ	Pt	418 To	Pt 422	HLX	419-422	FD
1		00-00-15		(m)	262.24	1/2"
2		00-00-30				PIPE
m		00-00-15				MEZ 17641

Δ	Pt	418 To	Pt 423	HLX	419-423	FD
1		00-03-15		(m)	322.38	1/2"
2		00-06-30				PIPE
m		00-03-15				

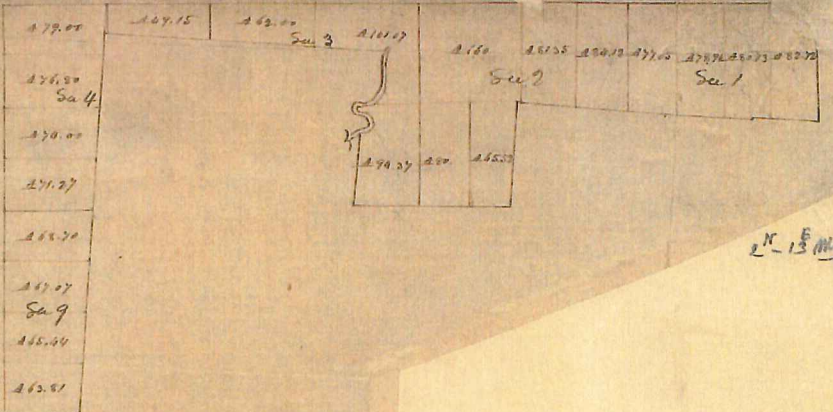
Set 1/2" CI#17623 18" Long 0.20 South
 OF 6'ft Chainlink Fence extending E+W
 ALSO 33 FT WEST OF CLINTON RIVER



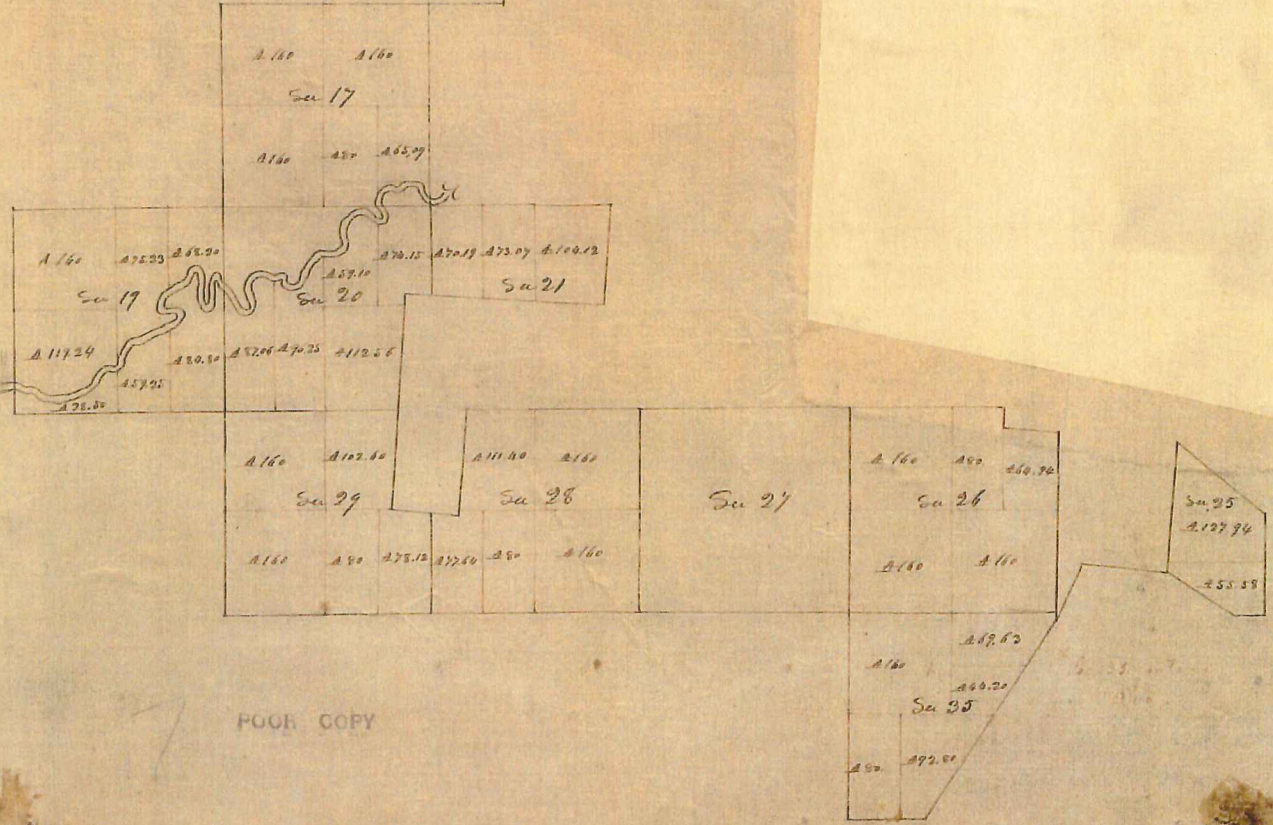
TALK 4
 8.30-18

24 13 E
11/14

1000 5/11/10 N 2 N, King

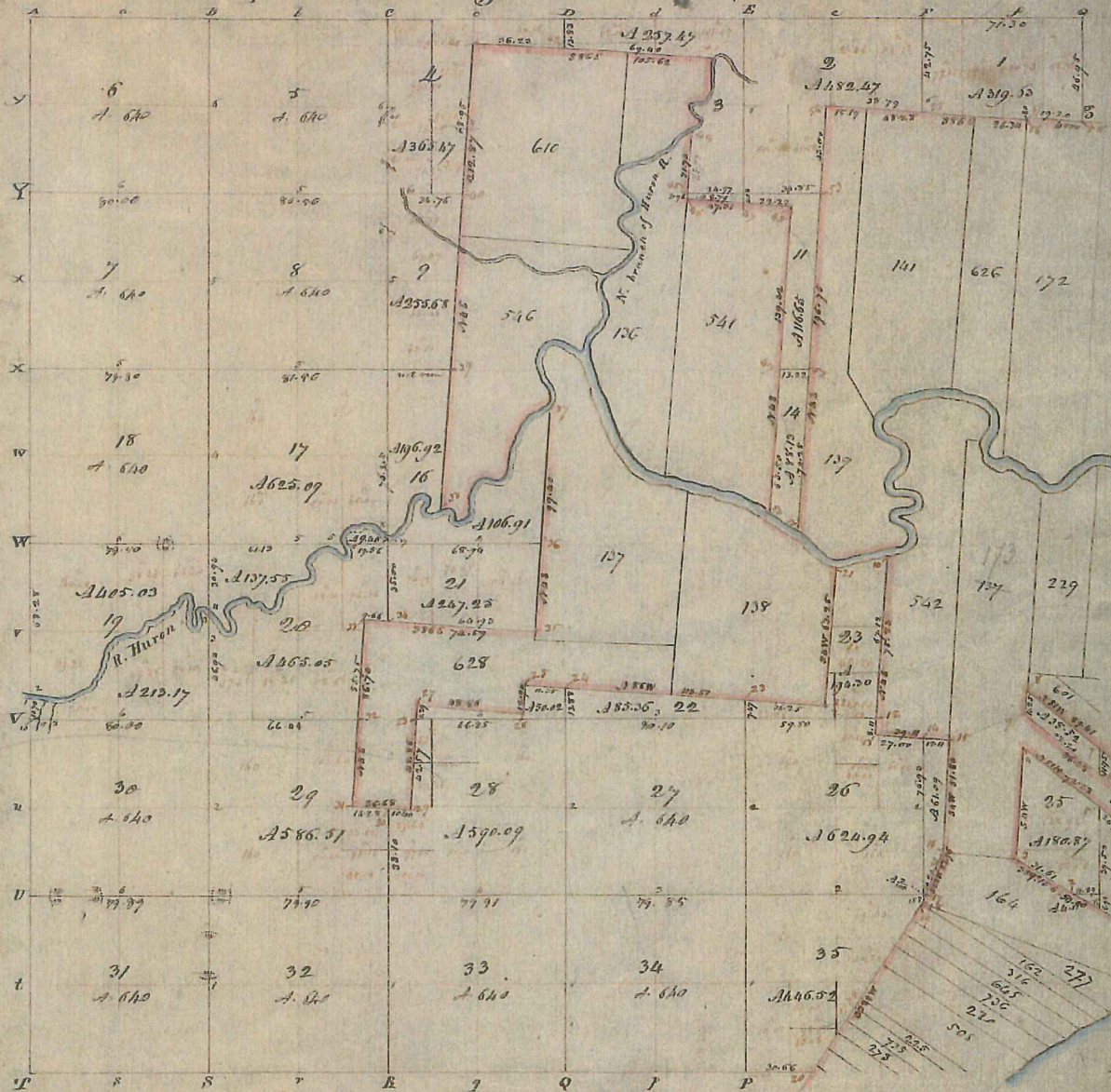


24 13 E
11/14



FOUR COPY

Township N. 11 North, Range N. 13 East of Mer. (Mich. Ter.)



A true copy from the Original on file in the Office of the
 Deputy Recorder of Private Claims
 Michigan General Office
 14. 202, 99
 3
 1884 20th 1918

Edw. J. H. H. H.
 Deputy Recorder

POOR COPY

Section	Corner	Material	Year	County	Section	Corner	Material	Year	County
1	W. Oak	5	1860	W. Va.	1	W. Oak	5	1860	W. Va.
2	B. Oak	3	1860	W. Va.	2	B. Oak	3	1860	W. Va.
3	Corner of Maple & Elm			W. Va.	3	Corner of Maple & Elm			W. Va.
4	Sycamore	1	1860	W. Va.	4	Sycamore	1	1860	W. Va.
5	W. Oak	15	1860	W. Va.	5	W. Oak	15	1860	W. Va.
6	W. Oak	5	1860	W. Va.	6	W. Oak	5	1860	W. Va.
7	W. Oak	3	1860	W. Va.	7	W. Oak	3	1860	W. Va.
8	W. Oak	15	1860	W. Va.	8	W. Oak	15	1860	W. Va.
9	W. Oak	15	1860	W. Va.	9	W. Oak	15	1860	W. Va.
10	W. Oak	15	1860	W. Va.	10	W. Oak	15	1860	W. Va.
11	W. Oak	15	1860	W. Va.	11	W. Oak	15	1860	W. Va.
12	W. Oak	15	1860	W. Va.	12	W. Oak	15	1860	W. Va.
13	W. Oak	15	1860	W. Va.	13	W. Oak	15	1860	W. Va.
14	W. Oak	15	1860	W. Va.	14	W. Oak	15	1860	W. Va.
15	W. Oak	15	1860	W. Va.	15	W. Oak	15	1860	W. Va.
16	W. Oak	15	1860	W. Va.	16	W. Oak	15	1860	W. Va.
17	W. Oak	15	1860	W. Va.	17	W. Oak	15	1860	W. Va.
18	W. Oak	15	1860	W. Va.	18	W. Oak	15	1860	W. Va.
19	W. Oak	15	1860	W. Va.	19	W. Oak	15	1860	W. Va.
20	W. Oak	15	1860	W. Va.	20	W. Oak	15	1860	W. Va.
21	W. Oak	15	1860	W. Va.	21	W. Oak	15	1860	W. Va.
22	W. Oak	15	1860	W. Va.	22	W. Oak	15	1860	W. Va.
23	W. Oak	15	1860	W. Va.	23	W. Oak	15	1860	W. Va.
24	W. Oak	15	1860	W. Va.	24	W. Oak	15	1860	W. Va.
25	W. Oak	15	1860	W. Va.	25	W. Oak	15	1860	W. Va.
26	W. Oak	15	1860	W. Va.	26	W. Oak	15	1860	W. Va.
27	W. Oak	15	1860	W. Va.	27	W. Oak	15	1860	W. Va.
28	W. Oak	15	1860	W. Va.	28	W. Oak	15	1860	W. Va.
29	W. Oak	15	1860	W. Va.	29	W. Oak	15	1860	W. Va.
30	W. Oak	15	1860	W. Va.	30	W. Oak	15	1860	W. Va.
31	W. Oak	15	1860	W. Va.	31	W. Oak	15	1860	W. Va.
32	W. Oak	15	1860	W. Va.	32	W. Oak	15	1860	W. Va.
33	W. Oak	15	1860	W. Va.	33	W. Oak	15	1860	W. Va.
34	W. Oak	15	1860	W. Va.	34	W. Oak	15	1860	W. Va.
35	W. Oak	15	1860	W. Va.	35	W. Oak	15	1860	W. Va.
36	W. Oak	15	1860	W. Va.	36	W. Oak	15	1860	W. Va.
37	W. Oak	15	1860	W. Va.	37	W. Oak	15	1860	W. Va.
38	W. Oak	15	1860	W. Va.	38	W. Oak	15	1860	W. Va.
39	W. Oak	15	1860	W. Va.	39	W. Oak	15	1860	W. Va.
40	W. Oak	15	1860	W. Va.	40	W. Oak	15	1860	W. Va.
41	W. Oak	15	1860	W. Va.	41	W. Oak	15	1860	W. Va.
42	W. Oak	15	1860	W. Va.	42	W. Oak	15	1860	W. Va.
43	W. Oak	15	1860	W. Va.	43	W. Oak	15	1860	W. Va.
44	W. Oak	15	1860	W. Va.	44	W. Oak	15	1860	W. Va.
45	W. Oak	15	1860	W. Va.	45	W. Oak	15	1860	W. Va.
46	W. Oak	15	1860	W. Va.	46	W. Oak	15	1860	W. Va.
47	W. Oak	15	1860	W. Va.	47	W. Oak	15	1860	W. Va.
48	W. Oak	15	1860	W. Va.	48	W. Oak	15	1860	W. Va.
49	W. Oak	15	1860	W. Va.	49	W. Oak	15	1860	W. Va.
50	W. Oak	15	1860	W. Va.	50	W. Oak	15	1860	W. Va.

W. Va. Del. State land

Anterior Quarter section Corners

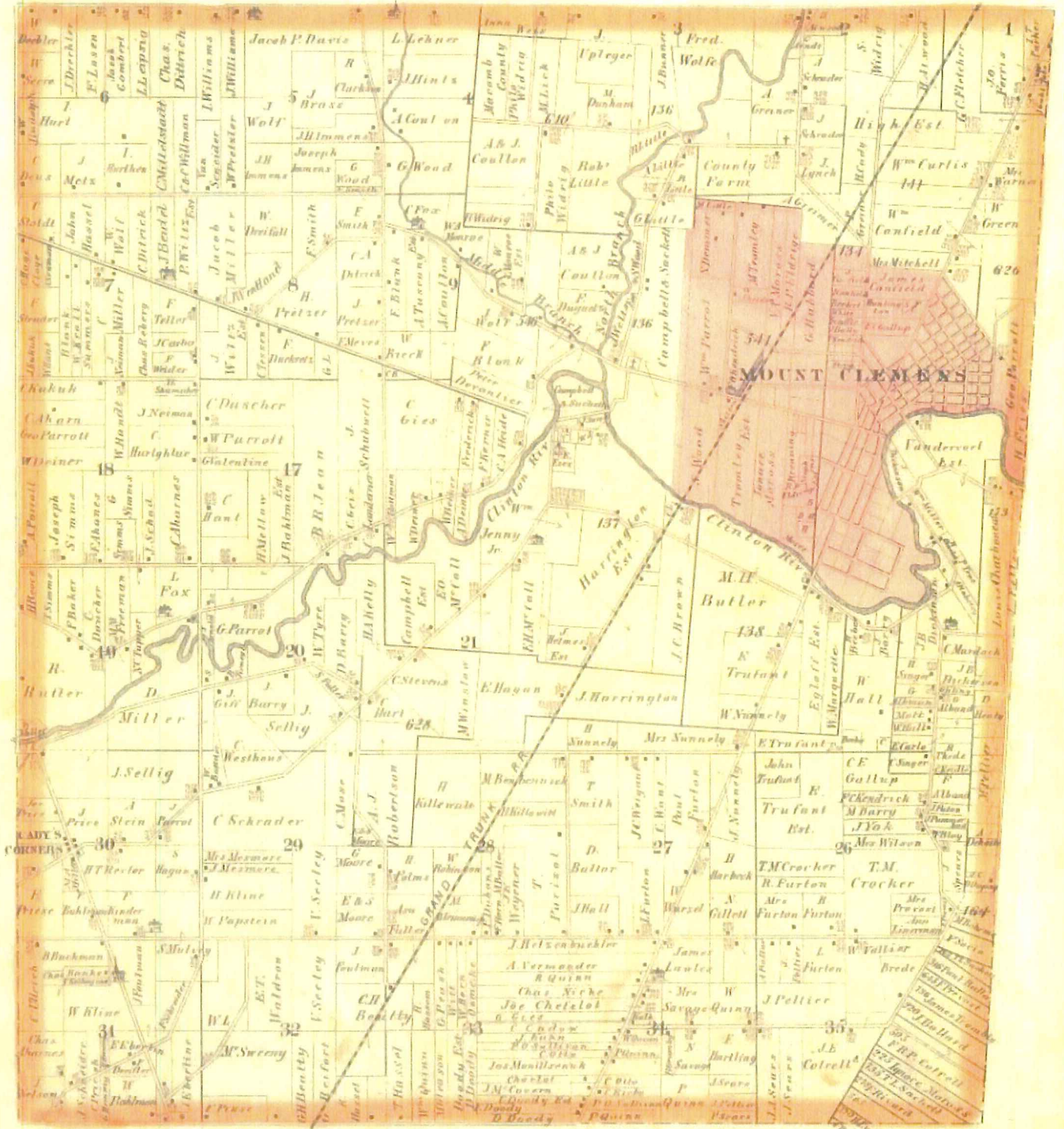
Corners on Huron River.

1	W. Oak	10	1860	W. Va.
2	Sycamore	20	1860	W. Va.
3	W. Oak	5	1860	W. Va.
4	W. Oak	20	1860	W. Va.
5	W. Oak	15	1860	W. Va.
6	W. Oak	5	1860	W. Va.
7	W. Oak	7	1860	W. Va.
8	W. Oak	10	1860	W. Va.
9	W. Oak	15	1860	W. Va.
10	W. Oak	15	1860	W. Va.

1	W. Oak	5	1860	W. Va.
2	W. Oak	10	1860	W. Va.
3	W. Oak	5	1860	W. Va.
4	W. Oak	20	1860	W. Va.
5	W. Oak	15	1860	W. Va.
6	W. Oak	5	1860	W. Va.
7	W. Oak	14	1860	W. Va.
8	W. Oak	6	1860	W. Va.
9	W. Oak	32	1860	W. Va.
10	W. Oak	6	1860	W. Va.
11	W. Oak	7	1860	W. Va.
12	W. Oak	15	1860	W. Va.
13	W. Oak	5	1860	W. Va.
14	W. Oak	12	1860	W. Va.
15	W. Oak	5	1860	W. Va.
16	W. Oak	14	1860	W. Va.
17	W. Oak	12	1860	W. Va.
18	W. Oak	14	1860	W. Va.
19	W. Oak	15	1860	W. Va.
20	W. Oak	15	1860	W. Va.
21	W. Oak	15	1860	W. Va.
22	W. Oak	15	1860	W. Va.
23	W. Oak	15	1860	W. Va.
24	W. Oak	15	1860	W. Va.
25	W. Oak	15	1860	W. Va.
26	W. Oak	15	1860	W. Va.
27	W. Oak	15	1860	W. Va.
28	W. Oak	15	1860	W. Va.
29	W. Oak	15	1860	W. Va.
30	W. Oak	15	1860	W. Va.
31	W. Oak	15	1860	W. Va.
32	W. Oak	15	1860	W. Va.
33	W. Oak	15	1860	W. Va.
34	W. Oak	15	1860	W. Va.
35	W. Oak	15	1860	W. Va.
36	W. Oak	15	1860	W. Va.
37	W. Oak	15	1860	W. Va.
38	W. Oak	15	1860	W. Va.
39	W. Oak	15	1860	W. Va.
40	W. Oak	15	1860	W. Va.
41	W. Oak	15	1860	W. Va.
42	W. Oak	15	1860	W. Va.
43	W. Oak	15	1860	W. Va.
44	W. Oak	15	1860	W. Va.
45	W. Oak	15	1860	W. Va.
46	W. Oak	15	1860	W. Va.
47	W. Oak	15	1860	W. Va.
48	W. Oak	15	1860	W. Va.
49	W. Oak	15	1860	W. Va.
50	W. Oak	15	1860	W. Va.

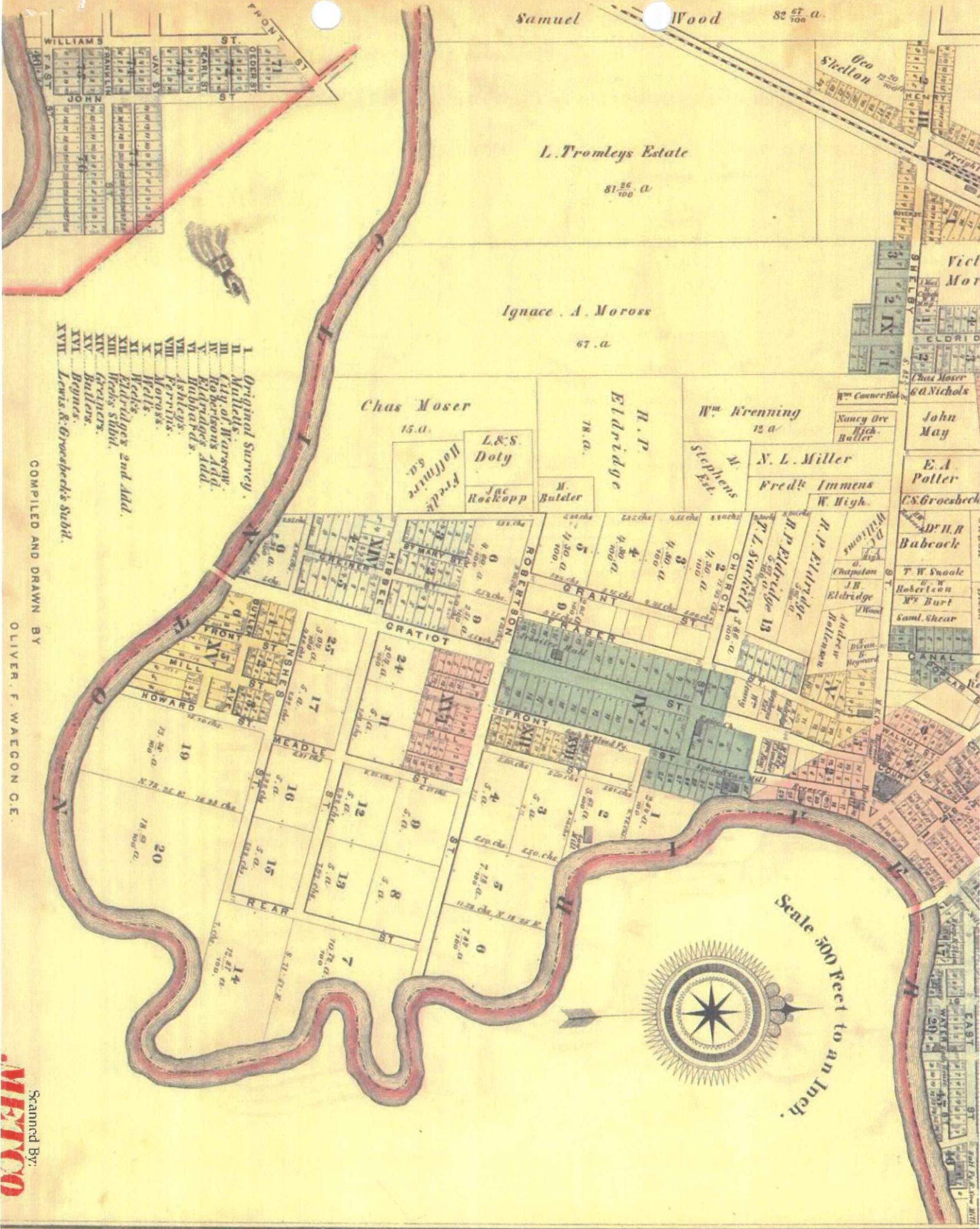
MAP OF CLINTON TOWNSHIP

TP 2 N R 13E



Drawn and Compiled by O.B. Crane

1875



Samuel Wood 82 ⁶⁷/₁₀₀ a.

L. Tromleys Estate
81 ²⁶/₁₀₀ a.

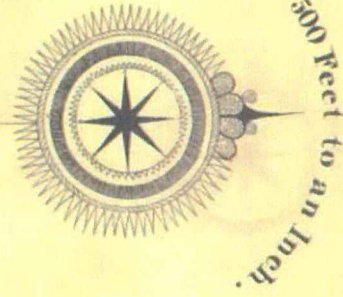
Ignace A. Moross
67 a.

Chas Moser
15 a.

W^m Krenning
12 a.

- I Original Survey.
- II Malletts
- III City of Warsaw
- IV Robertsons Add.
- V Eldridges Add.
- VI Hubberds
- VII Ashleys
- VIII Perrinis
- IX Moross
- X Wells
- XI Eldridges 2nd Add.
- XII Wells
- XIII Ferriners
- XIV Ferriners
- XV Bullers
- XVI Begins
- XVII Lewis & Groesbeck's Subd.

COMPILED AND DRAWN BY
OLIVER F. WAGGON C.E.



Scanned By:
METCO

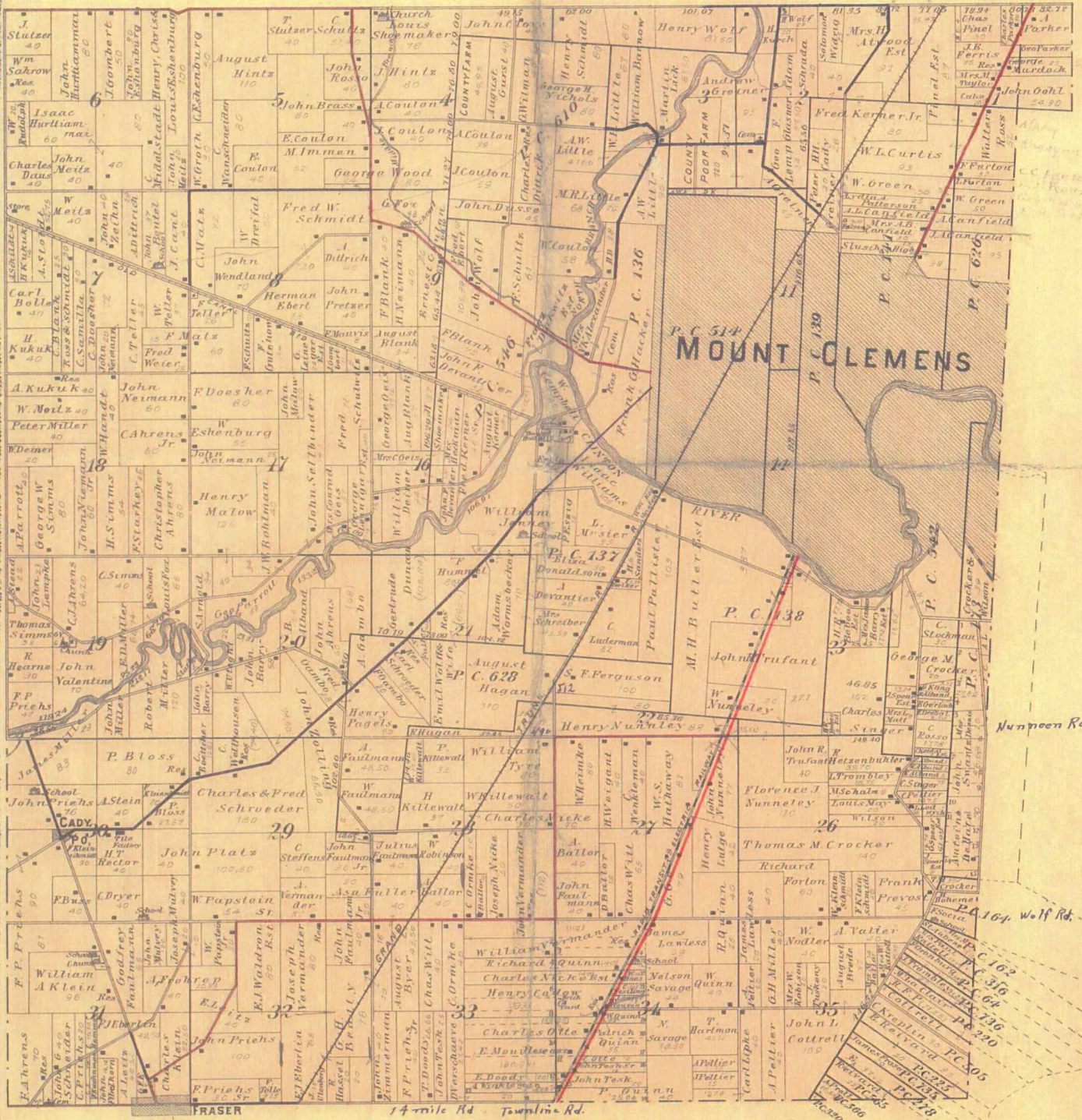
1875 11

MAP OF CLINTON


Township 2 North Range 13 East

Scale 2 Inches to one Mile.

of the Meridian of Michigan



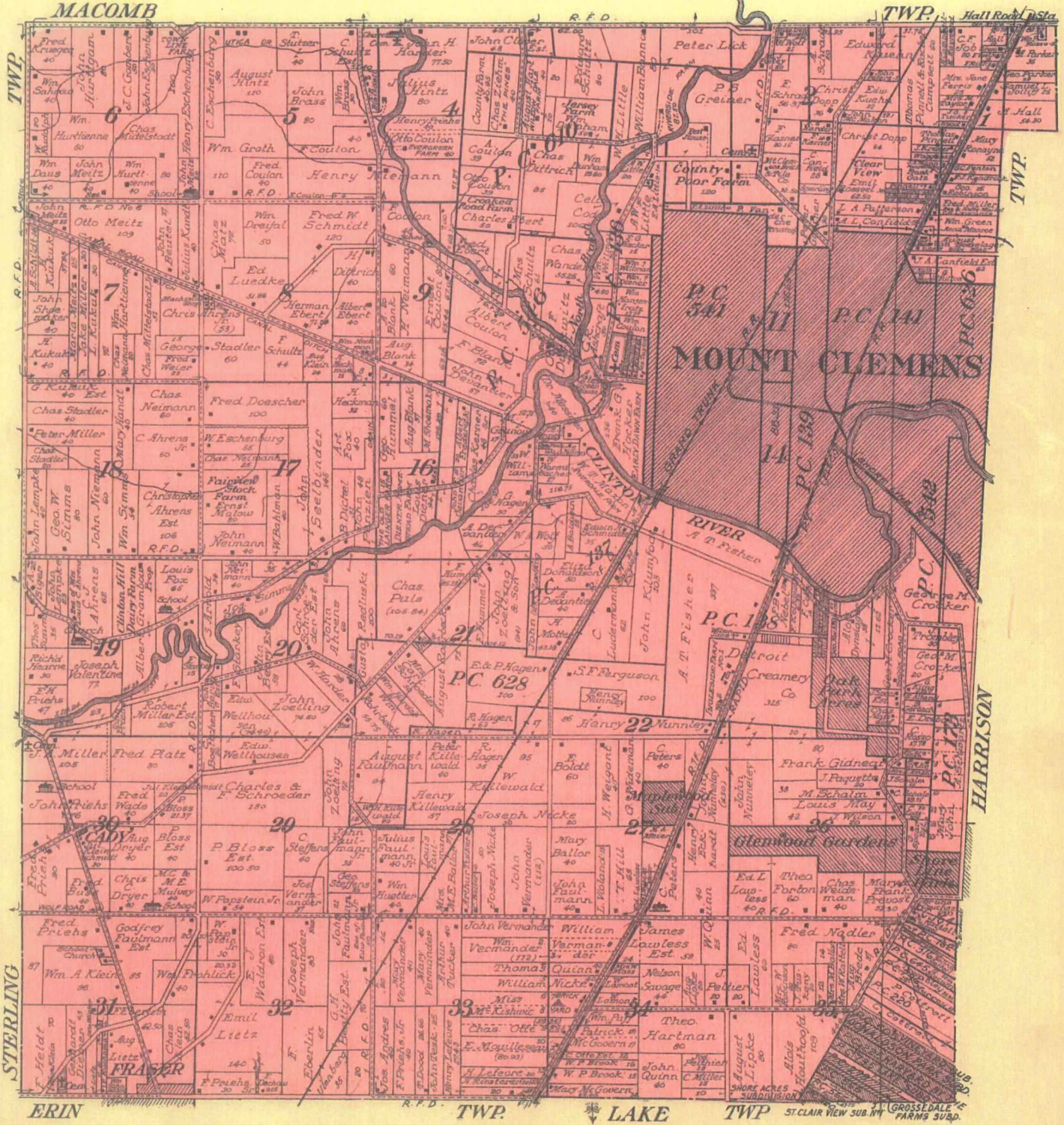
1895



MAP OF
CLINTON
TOWNSHIP

Scale 2 inches to 1 mile

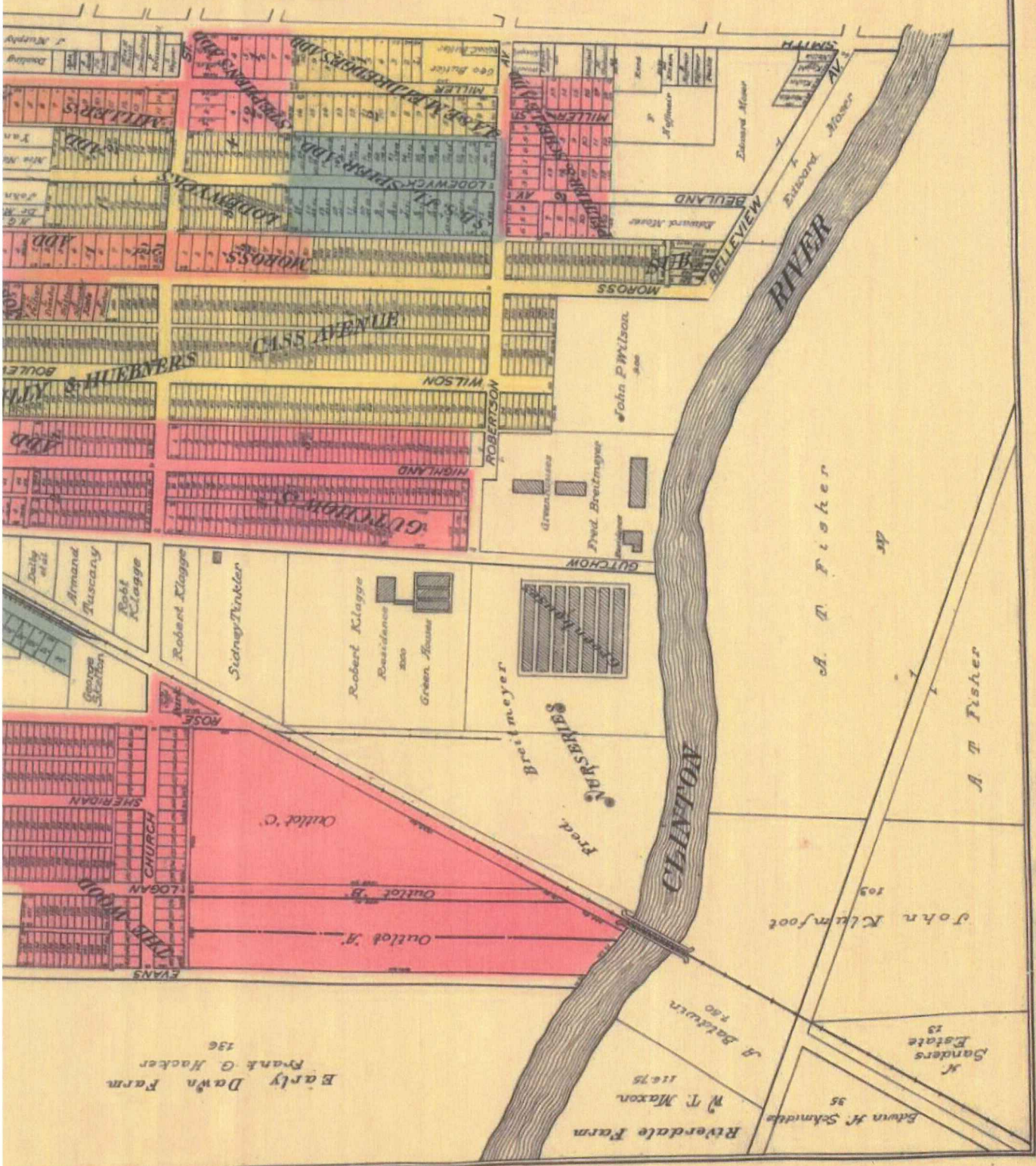
Fractional Township 2 North, Range 13 East of the Michigan Meridian



1916 14

ST. CLAIR VIEW SUB. 114 GROSSEDALE FARMS SUBD.

FOR EAST PART OF MT CL

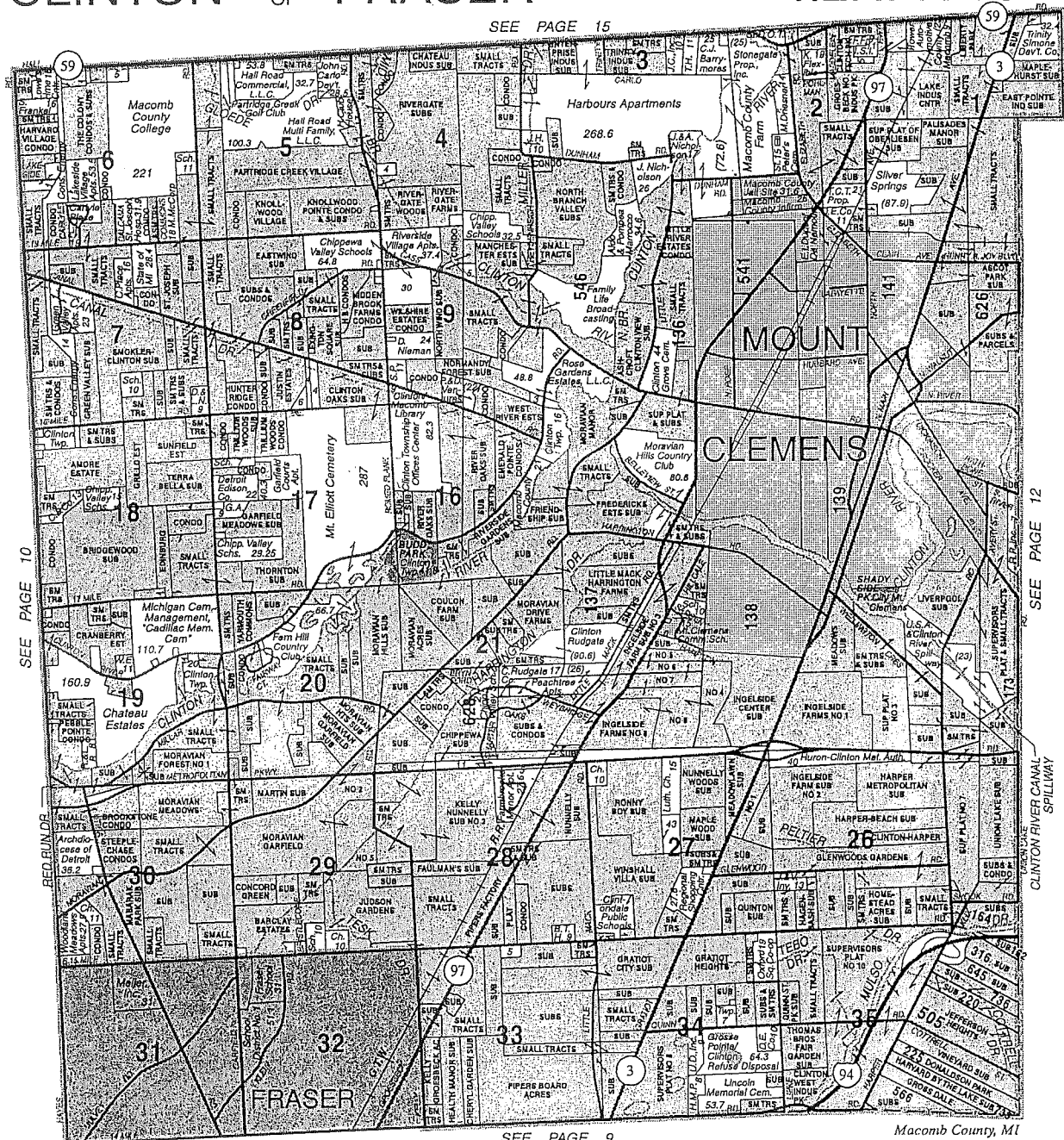


914161

CLINTON - CITY OF FRASER

T.2N.-R.13E.

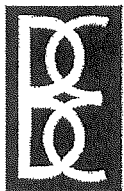
SEE PAGE 15



© 2006 Rockford Map Publs., Inc.

SEE PAGE 9

Macomb County, MI



BOSS ENGINEERING

engineers • surveyors • planners • landscape architects

3121 EAST GRAND RIVER • HOWELL, MI 48843 • (517) 546-4836

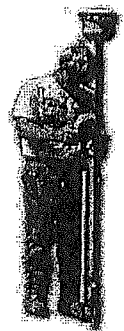
24435 HALSTED • FARMINGTON HILLS, MI 48335 • (248) 626-2677

www.bosseng.com

- Residential Subdivisions
- Commercial Developments
- Planned Unit Developments

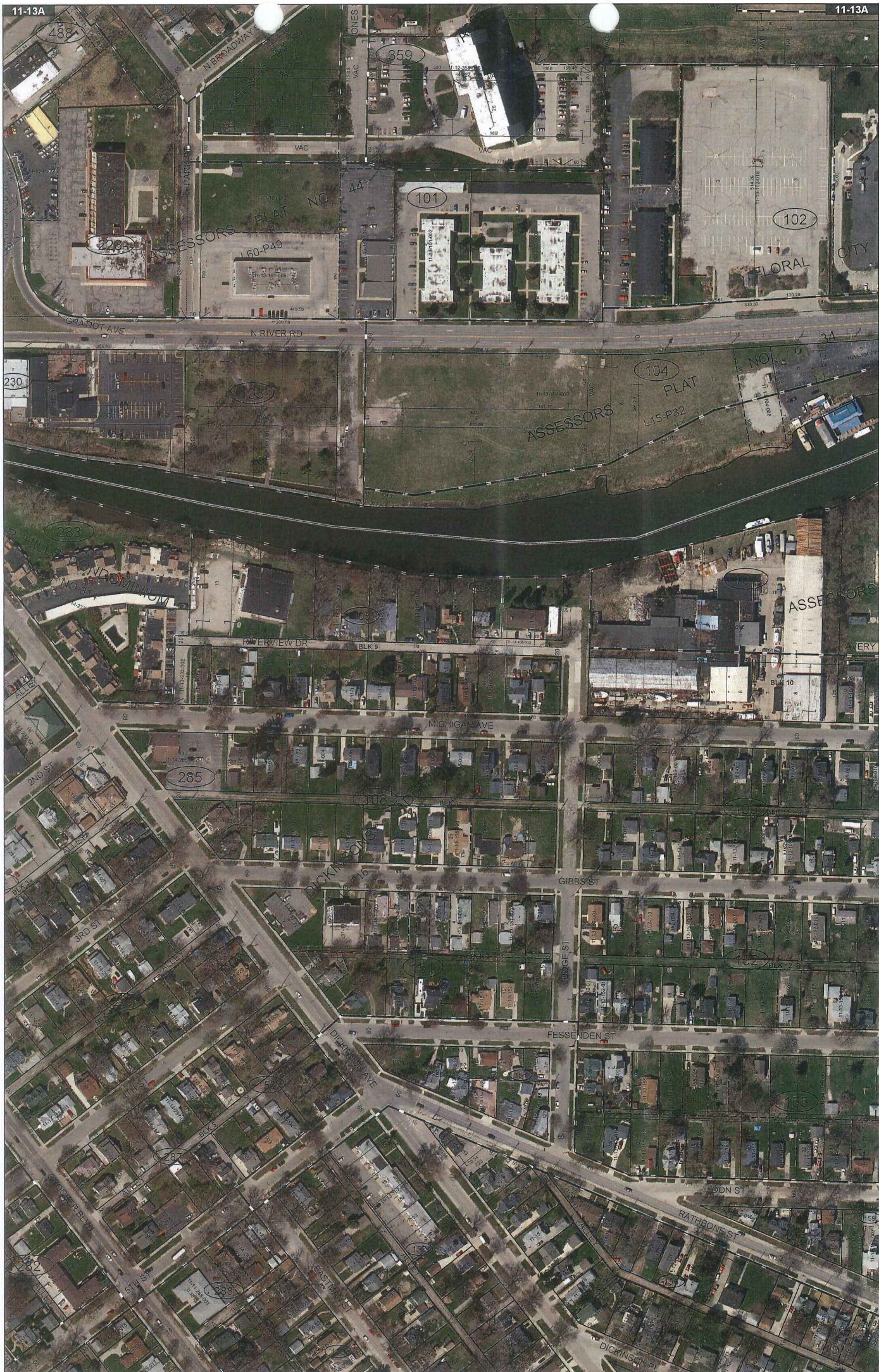
- Wastewater Treatment Plants
- Septic System Design
- Construction Staking

- Land Divisions
- Boundary and Lot Surveys
- Topographical Surveys
- ALTA Surveys

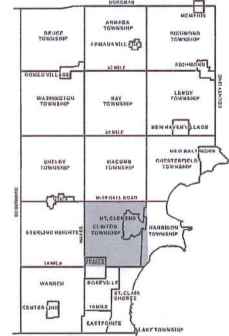


2006

19



Date of Photography: Spring 2015
 100 50 0 100 200 Feet
 1:1,200



SEAWH	HALL
11-1301	11-1302
11-1303	11-1304
11-1305	11-1306
11-1307	11-1308
11-1309	11-1310
11-1311	11-1312
11-1313	11-1314
11-1315	11-1316
11-1317	11-1318
11-1319	11-1320
11-1321	11-1322
11-1323	11-1324
11-1325	11-1326
11-1327	11-1328
11-1329	11-1330
11-1331	11-1332
11-1333	11-1334
11-1335	11-1336
11-1337	11-1338
11-1339	11-1340
11-1341	11-1342
11-1343	11-1344
11-1345	11-1346
11-1347	11-1348
11-1349	11-1350
11-1351	11-1352
11-1353	11-1354
11-1355	11-1356
11-1357	11-1358
11-1359	11-1360
11-1361	11-1362
11-1363	11-1364
11-1365	11-1366
11-1367	11-1368
11-1369	11-1370
11-1371	11-1372
11-1373	11-1374
11-1375	11-1376
11-1377	11-1378
11-1379	11-1380
11-1381	11-1382
11-1383	11-1384
11-1385	11-1386
11-1387	11-1388
11-1389	11-1390
11-1391	11-1392
11-1393	11-1394
11-1395	11-1396
11-1397	11-1398
11-1399	11-1400
11-1401	11-1402
11-1403	11-1404
11-1405	11-1406
11-1407	11-1408
11-1409	11-1410
11-1411	11-1412
11-1413	11-1414
11-1415	11-1416
11-1417	11-1418
11-1419	11-1420
11-1421	11-1422
11-1423	11-1424
11-1425	11-1426
11-1427	11-1428
11-1429	11-1430
11-1431	11-1432
11-1433	11-1434
11-1435	11-1436
11-1437	11-1438
11-1439	11-1440
11-1441	11-1442
11-1443	11-1444
11-1445	11-1446
11-1447	11-1448
11-1449	11-1450
11-1451	11-1452
11-1453	11-1454
11-1455	11-1456
11-1457	11-1458
11-1459	11-1460
11-1461	11-1462
11-1463	11-1464
11-1465	11-1466
11-1467	11-1468
11-1469	11-1470
11-1471	11-1472
11-1473	11-1474
11-1475	11-1476
11-1477	11-1478
11-1479	11-1480
11-1481	11-1482
11-1483	11-1484
11-1485	11-1486
11-1487	11-1488
11-1489	11-1490
11-1491	11-1492
11-1493	11-1494
11-1495	11-1496
11-1497	11-1498
11-1499	11-1500

CLINTON TWP SHEET INDEX

DESCRIPTION OF PERMANENT REAL ESTATE INDEX NUMBER
13-19-302-018

Legend

- Platted Area Boundary Line
- Property Line
- Property Split Line
- Property Combined Line
- Township Boundary Line
- Traverse Line
- Dimension Extent Marks
- Dimension Start Marks

11-13A
 MT. CLEMENS

W.1/2 N.W.1/4 SEC.13 T.2N. R.13E.

Source: Macomb County Department of Planning and Economic Development
 - 2015 Digital Orthophotography Project
 - Parcel Conversion Project

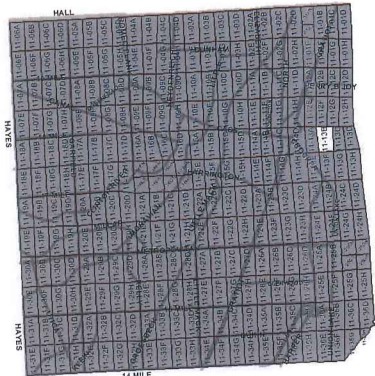
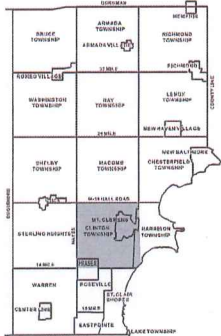
Note:
 Digital Orthophotography horizontal positioning accuracy is 3 feet. Parcel boundary lines should be considered a graphical representation and not in any way a legal survey or engineering document. In general, the horizontal positioning and length accuracy is within 15 feet.

This map is intended for general planning purposes. Site specific evaluation should be verified by field inspection. This is a work in progress and may contain errors and omissions. Please report any potential revisions to (586)469-5285.





Date of Photography: Spring 2015
 100 50 0 100 200 Feet
 1:1,200



CLINTON TWP SHEET INDEX

DESCRIPTION OF PERMANENT REAL ESTATE INDEX NUMBER

13-19-302-018

AREA NUMBER: 13
 BLOCK NUMBER: 19
 LOT NUMBER: 302
 PARCEL NUMBER: 018

- Legend**
- Platted Area Boundary Line
 - Property Line
 - - - Property Split Line
 - - - Property Combined Line
 - - - Township Boundary Line
 - - - Traverse Line
 - Dimension Extent Marks
 - Dimension Start Marks

11-13B

HARRISON TWP.
 E. 1/2 N.W. 1/4 SEC. 13 T.2N. R.13E.

Source: Macomb County Department of Planning and Economic Development
 - 2015 Digital Orthophotography Project
 - Parcel Conversion Project

Note: Digital Orthophotography horizontal positioning accuracy is ± 3 feet. Parcel boundary lines should be considered a graphical representation and not in any way a legal survey or engineering document. In general, the horizontal positioning and length accuracy is within 15 feet.

This map is intended for general planning purposes. Site specific evaluation should be verified by field inspection. This is a work in progress and may contain errors and omissions. Please report any potential revisions to (586) 469-5285.



No. 501

No. 173 Confirmed to
James Abbott

SOUTH SIDE OF RIVER HURON

Description No. 173 Confirmed to James Abbott commencing at a post standing on the border of River Huron between this tract and a tract confirmed to Joseph Robertjean thence south one hundred and sixty two chains eighty three links to a post thence west thirty three chains eighteen links to a post the northwest corner of a tract confirmed to Joseph Sansfacon on Lake St. Clair, thence north one hundred and eighty eight chains forty links to an Elm Tree, thence east six chains forty eight links to a Buttonwood Tree standing on the border of River Huron between this tract and a tract confirmed to Christian Clemans, thence along the border of said River down stream south twenty six degrees west eight chains forty links thence south three chains thence south forty one degrees east six chains, thence south eighty eight degrees east eighteen chains forty five links thence south sixty seven degrees east three chains thence south seventeen degrees west nine chains thence south seventy one degrees east four chains thence north sixty six degrees east four chains forty nine links to the place of beginning, containing five hundred and seventy seven acres ninety four hundredths of an acre _____

Detroit, July 18, 1810

Aaron Greeley Surveyor
of private claims

N^o 301

South Side of River Huron

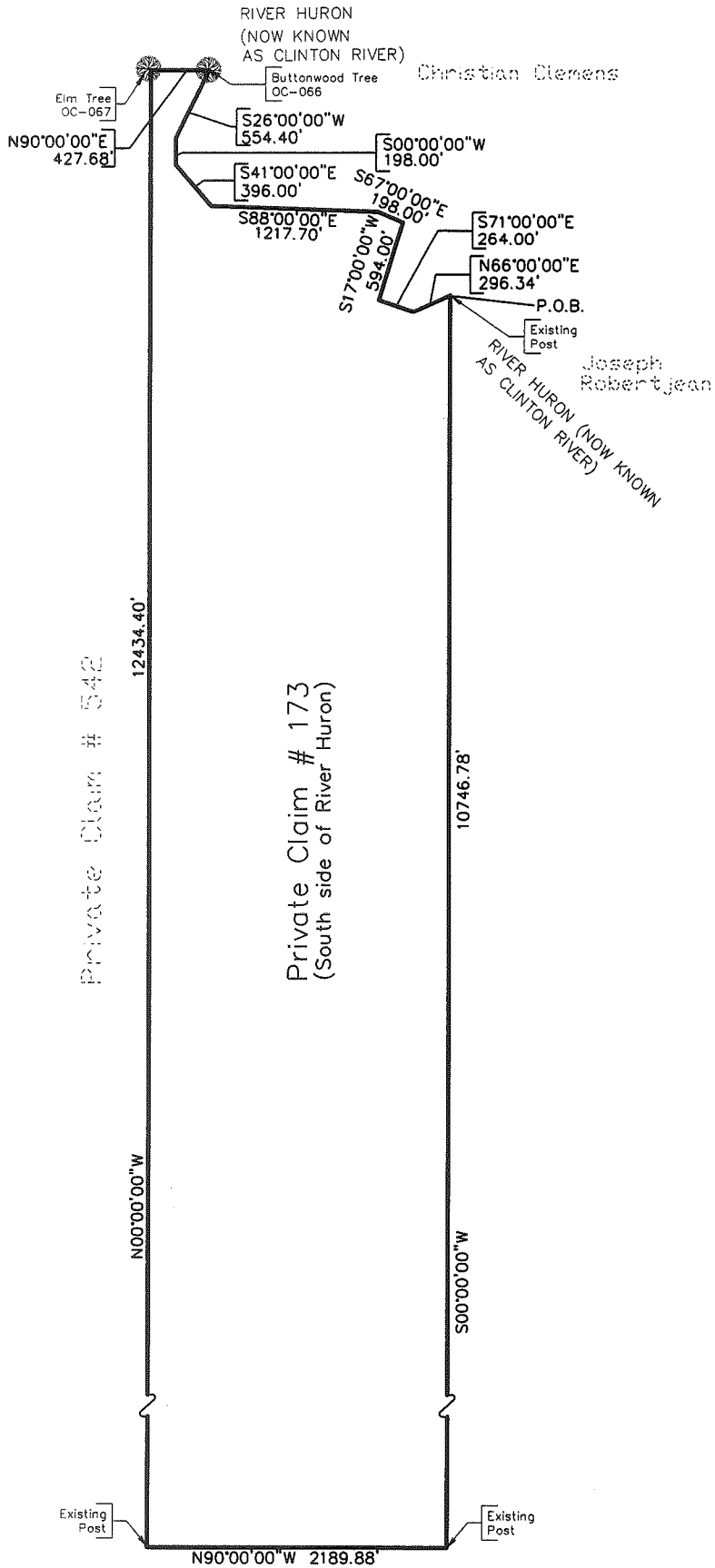
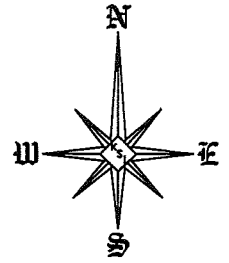
Description N^o 173 confirmed to James Abbott
commencing at a post standing on the border
of River Huron between this tract and a tract
confirmed to Joseph Robinson thence South
one hundred and sixty two chains eighty three
links to a post thence West thirty three chains
eighteen links to a post the North west
corner of a tract confirmed to Joseph
Sausageon on Lake St Clair thence north
one hundred and eighty eight chains forty
links to an Iron Tree thence East Six
chains forty eight links to a post on west
side standing on the border of River Huron
between this tract and a tract confirmed
to Christian Blinn thence along the border
of said River down stream South twenty
six degrees west eight chains forty links
thence South three chains thence South
forty one degrees East Six chains thence
South Eighty eight degrees East Eighteen
chains forty five links thence South sixty
seven degrees East three chains thence
South seven degrees west nine chains
thence South seventy one degrees East
four chains thence north Sixty Six degrees
East four chains forty nine links to the
place of beginning containing five hun-
dred and twenty seven Acres ninety
four hundredths of an Acre

Dated July 18. 1810

Aaron Gulley Surveyor
of private Claims

Recorded
No. 178
James H. [unclear]

SKETCH OF PRIVATE CLAIM #173



No. 504

No. 542 Confirmed to
Christian Clemans

SOUTH SIDE OF RIVER HURON

Description No. 542 Confirmed to Christian Clerans commencing at a butter nut tree standing on the border of River Huron between this tract and a tract and a tract of unconced land thence south eighty three chains fifty nine links to a post thence east thirty four chains to a post standing on the west line of a tract confirmed to James Abbott thence north one hundred and forty eight chains forty links to an elm tree thence east six chains forty eight links to a buttonwood tree standing on the border of River Huron between this tract and a tract confirmed to James Abbott, thence along the border of said river up stream north twenty six degrees east eight chains sixty links thence north forty one degrees west seven chains thence south eighty one degrees thirty minutes west eighteen chains thence south seventy five degrees west seven chains thence north eighty five degrees west nineteen chains thence south forty degrees west eleven chains thence south twelve degrees west eleven chains fifty links thence south twenty eight degrees east seven chains thence south twelve degrees east ten chains thence south seventy nine degrees east twelve chains thence south twelve degrees east three chains thence south seven degrees west ten chains thence south fifty degrees west three chains thence north eighty five degrees east eight chains thence south thirteen degrees east four chains thence south seventy three degrees thirty minutes west eleven chains thence

-2- No. 542

south five degrees east four chains thence south sixty six degrees
east seven chains thence south eight degrees east thirteen chains,
thence south seventy eight degrees west three chains, thence north
forty eight degrees west six chains fifty one links to the place of
beginning, containing six hundred and fifteen acres and nine tenths
of an acre _____

Detroit July 18, 1810

Aaron Greeley Surveyor
of private claims

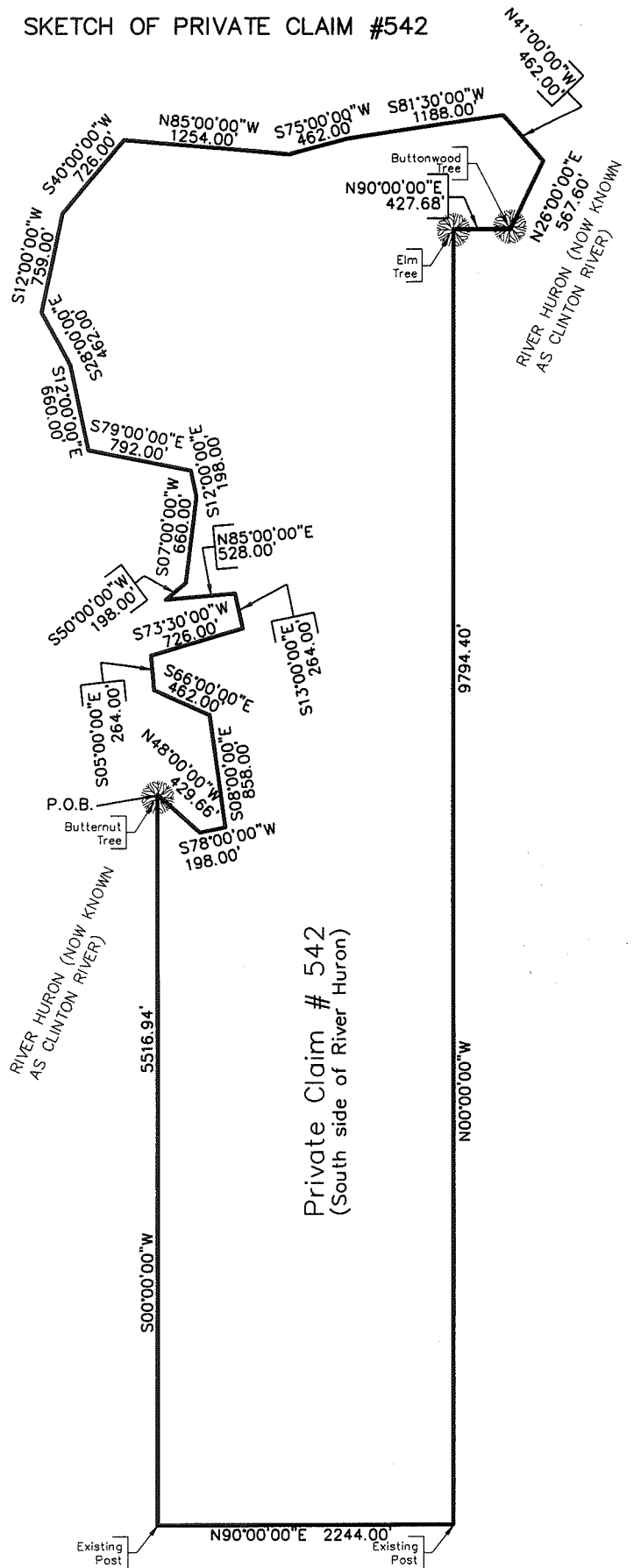
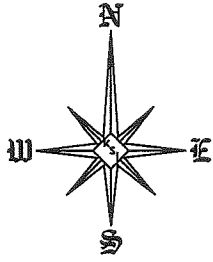
On the 11th of July 1810 I accompanied Christian Clemens
 in a party of 12 men to the place called the
 landing near Hudson between the fort and a tract
 of land purchased from the Indians. Thence South, eighty
 three chains fifty one links to a post, thence East
 thirty four chains to a post standing on the west line
 of the tract purchased by James Abbott Thence North
 one hundred and forty eight chains, feet, links,
 to an Elm tree, thence East six chains, feet, eight
 links to a Button wood tree standing on the border
 of the Hudson between the fort and a tract con-
 tained by James Abbott thence along the border
 of a piece of ground north twenty five degrees
 East eight chains six links, thence North forty
 one degrees and one half chain, thence South eighty
 one degrees thirty one minutes west 81 chains, thence
 South seventy four degrees, eight minutes, ten seconds
 thence North eighty one degrees west thirteen
 chains, thence North forty degrees west eleven
 chains, thence South twelve degrees west 81 ma-
 gons fifty links, thence South twenty eight
 degrees East seven chains, thence South twelve
 degrees East ten chains, thence South seventy
 one degrees East twelve chains, thence South
 twenty degrees East three chains, thence South seven
 degrees West six chains, thence South fifty degrees
 west three chains, thence North eighty one degrees
 East eight chains, thence South thirteen degrees
 East four chains, thence South seventy four degrees
 thirty minutes west 81 chains, thence South four
 degrees East four chains, thence South fifty six degrees
 East seven chains, thence South eight degrees East
 thirteen chains, thence South seventy eight degrees
 west three chains, thence North forty eight degrees
 west six chains, fifty one links to the place of landing
 containing 100 acres and fifteen rods and nine tenths
 of an acre.

Detroit July 18-1810

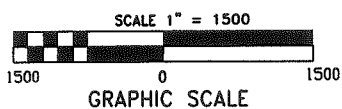
Asaon Gully Surveyor
of private claims-

Revised
19542 confirmed
to Houston 10/10/54

SKETCH OF PRIVATE CLAIM #542



Private Claim # 542
(South side of River Huron)



PLAN SHOWING DON M. DICKINSON'S ADDITION TO THE CITY OF
MOUNT CLEMENS

MACOMB COUNTY-MICHIGAN.

U.S.

Scale.

1" = 300 Feet To 1 Inch.

L. 2.
P. 16

See Resolution No. 1, 1861, 14, 15, 16, 17, 18, 19, 20, 21, 22, 23, 24, 25, 26, 27, 28, 29, 30, 31, 32, 33, 34, 35, 36, 37, 38, 39, 40, 41, 42, 43, 44, 45, 46, 47, 48, 49, 50, 51, 52, 53, 54, 55, 56, 57, 58, 59, 60, 61, 62, 63, 64, 65, 66, 67, 68, 69, 70, 71, 72, 73, 74, 75, 76, 77, 78, 79, 80, 81, 82, 83, 84, 85, 86, 87, 88, 89, 90, 91, 92, 93, 94, 95, 96, 97, 98, 99, 100, 101, 102, 103, 104, 105, 106, 107, 108, 109, 110, 111, 112, 113, 114, 115, 116, 117, 118, 119, 120, 121, 122, 123, 124, 125, 126, 127, 128, 129, 130, 131, 132, 133, 134, 135, 136, 137, 138, 139, 140, 141, 142, 143, 144, 145, 146, 147, 148, 149, 150, 151, 152, 153, 154, 155, 156, 157, 158, 159, 160, 161, 162, 163, 164, 165, 166, 167, 168, 169, 170, 171, 172, 173, 174, 175, 176, 177, 178, 179, 180, 181, 182, 183, 184, 185, 186, 187, 188, 189, 190, 191, 192, 193, 194, 195, 196, 197, 198, 199, 200, 201, 202, 203, 204, 205, 206, 207, 208, 209, 210, 211, 212, 213, 214, 215, 216, 217, 218, 219, 220, 221, 222, 223, 224, 225, 226, 227, 228, 229, 230, 231, 232, 233, 234, 235, 236, 237, 238, 239, 240, 241, 242, 243, 244, 245, 246, 247, 248, 249, 250, 251, 252, 253, 254, 255, 256, 257, 258, 259, 260, 261, 262, 263, 264, 265, 266, 267, 268, 269, 270, 271, 272, 273, 274, 275, 276, 277, 278, 279, 280, 281, 282, 283, 284, 285, 286, 287, 288, 289, 290, 291, 292, 293, 294, 295, 296, 297, 298, 299, 300, 301, 302, 303, 304, 305, 306, 307, 308, 309, 310, 311, 312, 313, 314, 315, 316, 317, 318, 319, 320, 321, 322, 323, 324, 325, 326, 327, 328, 329, 330, 331, 332, 333, 334, 335, 336, 337, 338, 339, 340, 341, 342, 343, 344, 345, 346, 347, 348, 349, 350, 351, 352, 353, 354, 355, 356, 357, 358, 359, 360, 361, 362, 363, 364, 365, 366, 367, 368, 369, 370, 371, 372, 373, 374, 375, 376, 377, 378, 379, 380, 381, 382, 383, 384, 385, 386, 387, 388, 389, 390, 391, 392, 393, 394, 395, 396, 397, 398, 399, 400, 401, 402, 403, 404, 405, 406, 407, 408, 409, 410, 411, 412, 413, 414, 415, 416, 417, 418, 419, 420, 421, 422, 423, 424, 425, 426, 427, 428, 429, 430, 431, 432, 433, 434, 435, 436, 437, 438, 439, 440, 441, 442, 443, 444, 445, 446, 447, 448, 449, 450, 451, 452, 453, 454, 455, 456, 457, 458, 459, 460, 461, 462, 463, 464, 465, 466, 467, 468, 469, 470, 471, 472, 473, 474, 475, 476, 477, 478, 479, 480, 481, 482, 483, 484, 485, 486, 487, 488, 489, 490, 491, 492, 493, 494, 495, 496, 497, 498, 499, 500, 501, 502, 503, 504, 505, 506, 507, 508, 509, 510, 511, 512, 513, 514, 515, 516, 517, 518, 519, 520, 521, 522, 523, 524, 525, 526, 527, 528, 529, 530, 531, 532, 533, 534, 535, 536, 537, 538, 539, 540, 541, 542, 543, 544, 545, 546, 547, 548, 549, 550, 551, 552, 553, 554, 555, 556, 557, 558, 559, 560, 561, 562, 563, 564, 565, 566, 567, 568, 569, 570, 571, 572, 573, 574, 575, 576, 577, 578, 579, 580, 581, 582, 583, 584, 585, 586, 587, 588, 589, 590, 591, 592, 593, 594, 595, 596, 597, 598, 599, 600, 601, 602, 603, 604, 605, 606, 607, 608, 609, 610, 611, 612, 613, 614, 615, 616, 617, 618, 619, 620, 621, 622, 623, 624, 625, 626, 627, 628, 629, 630, 631, 632, 633, 634, 635, 636, 637, 638, 639, 640, 641, 642, 643, 644, 645, 646, 647, 648, 649, 650, 651, 652, 653, 654, 655, 656, 657, 658, 659, 660, 661, 662, 663, 664, 665, 666, 667, 668, 669, 670, 671, 672, 673, 674, 675, 676, 677, 678, 679, 680, 681, 682, 683, 684, 685, 686, 687, 688, 689, 690, 691, 692, 693, 694, 695, 696, 697, 698, 699, 700, 701, 702, 703, 704, 705, 706, 707, 708, 709, 710, 711, 712, 713, 714, 715, 716, 717, 718, 719, 720, 721, 722, 723, 724, 725, 726, 727, 728, 729, 730, 731, 732, 733, 734, 735, 736, 737, 738, 739, 740, 741, 742, 743, 744, 745, 746, 747, 748, 749, 750, 751, 752, 753, 754, 755, 756, 757, 758, 759, 760, 761, 762, 763, 764, 765, 766, 767, 768, 769, 770, 771, 772, 773, 774, 775, 776, 777, 778, 779, 780, 781, 782, 783, 784, 785, 786, 787, 788, 789, 790, 791, 792, 793, 794, 795, 796, 797, 798, 799, 800, 801, 802, 803, 804, 805, 806, 807, 808, 809, 810, 811, 812, 813, 814, 815, 816, 817, 818, 819, 820, 821, 822, 823, 824, 825, 826, 827, 828, 829, 830, 831, 832, 833, 834, 835, 836, 837, 838, 839, 840, 841, 842, 843, 844, 845, 846, 847, 848, 849, 850, 851, 852, 853, 854, 855, 856, 857, 858, 859, 860, 861, 862, 863, 864, 865, 866, 867, 868, 869, 870, 871, 872, 873, 874, 875, 876, 877, 878, 879, 880, 881, 882, 883, 884, 885, 886, 887, 888, 889, 890, 891, 892, 893, 894, 895, 896, 897, 898, 899, 900, 901, 902, 903, 904, 905, 906, 907, 908, 909, 910, 911, 912, 913, 914, 915, 916, 917, 918, 919, 920, 921, 922, 923, 924, 925, 926, 927, 928, 929, 930, 931, 932, 933, 934, 935, 936, 937, 938, 939, 940, 941, 942, 943, 944, 945, 946, 947, 948, 949, 950, 951, 952, 953, 954, 955, 956, 957, 958, 959, 960, 961, 962, 963, 964, 965, 966, 967, 968, 969, 970, 971, 972, 973, 974, 975, 976, 977, 978, 979, 980, 981, 982, 983, 984, 985, 986, 987, 988, 989, 990, 991, 992, 993, 994, 995, 996, 997, 998, 999, 1000.

State of Michigan }
 County of Wayne } S.S.
 On this sixth day of May one thousand eight hundred and eighty one personally came before me a Notary Public in and for Wayne County Michigan, Don M. Dickinson, proprietor of Don M. Dickinson's addition to the City of Mount Clemens herein written and Cortis J. Deussen the surveyor making said plat who having first severally signed the description hereunder written, severally acknowledged the same and the said plat and all of the same to be their free act and deed.

Geo. O'Brien
 Notary Public
 Wayne County
 Michigan

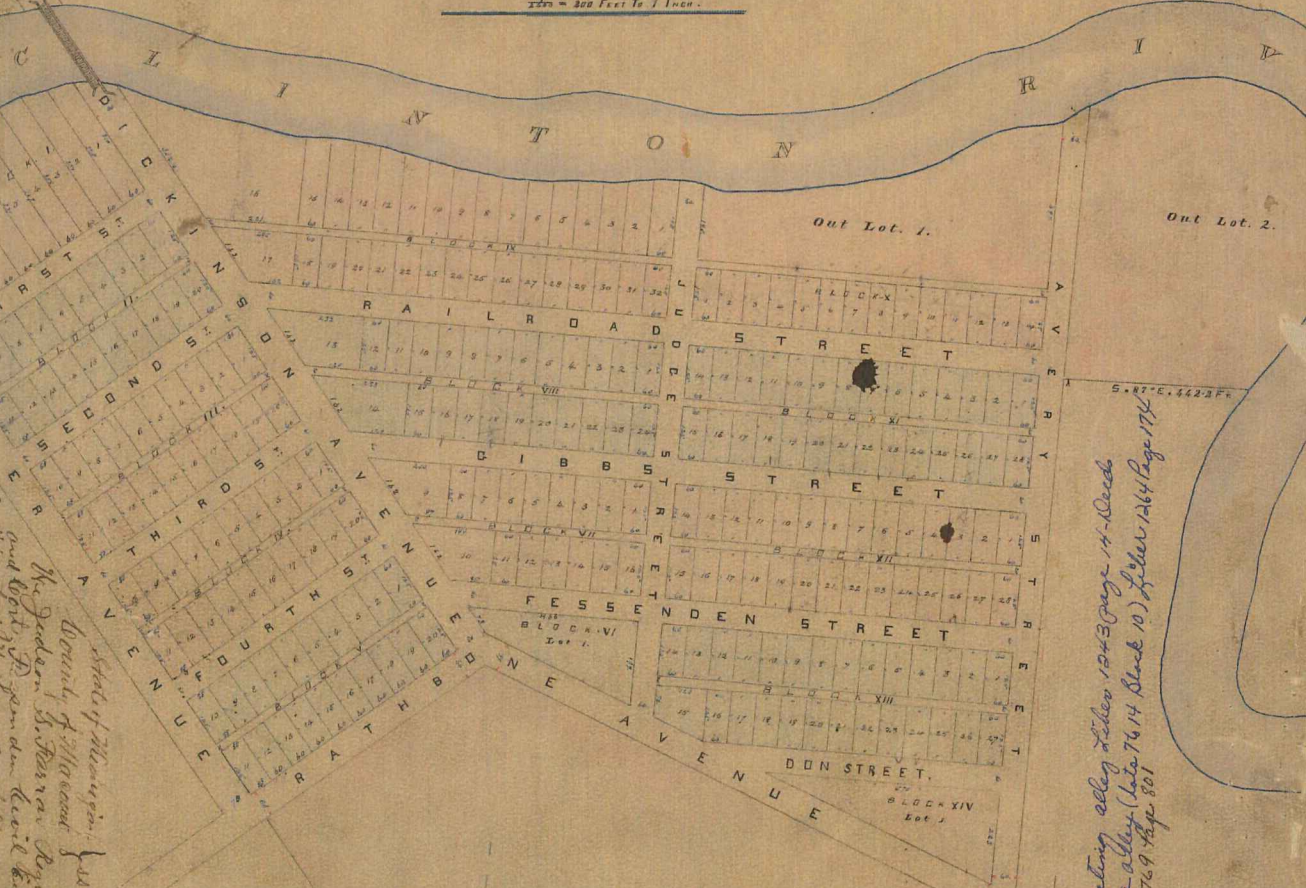
Description.

Don M. Dickinson's Addition to the City of Mt. Clemens is situated in the Township of Clinton, Macomb County, Michigan (it being known as Town number two 1882 in Range number thirteen East), on Private Land Claim Number 542, and is bounded and described as follows, to-wit:—

Beginning at a point on the right bank of the Clinton River where the easterly limit of Macomb Street in said City of Mt. Clemens, produced, intersects said right-bank; running thence East thirty five degrees and twenty four minutes East, four hundred four hundred and ninety three feet and twenty eight hundredths of a foot; thence North four degrees and thirteen minutes East three thousand three hundred and thirty five feet; thence South thirty seven degrees East four hundred and forty two feet and two tenths of a foot to the right bank of the said river; thence South to the place of beginning, as surveyed and plotted by C. Deussen and Geo. O'Brien.

Don M. Dickinson
 C. Deussen

See Resolution No. 1, 1861, 14, 15, 16, 17, 18, 19, 20, 21, 22, 23, 24, 25, 26, 27, 28, 29, 30, 31, 32, 33, 34, 35, 36, 37, 38, 39, 40, 41, 42, 43, 44, 45, 46, 47, 48, 49, 50, 51, 52, 53, 54, 55, 56, 57, 58, 59, 60, 61, 62, 63, 64, 65, 66, 67, 68, 69, 70, 71, 72, 73, 74, 75, 76, 77, 78, 79, 80, 81, 82, 83, 84, 85, 86, 87, 88, 89, 90, 91, 92, 93, 94, 95, 96, 97, 98, 99, 100.



See Resolution No. 1, 1861, 14, 15, 16, 17, 18, 19, 20, 21, 22, 23, 24, 25, 26, 27, 28, 29, 30, 31, 32, 33, 34, 35, 36, 37, 38, 39, 40, 41, 42, 43, 44, 45, 46, 47, 48, 49, 50, 51, 52, 53, 54, 55, 56, 57, 58, 59, 60, 61, 62, 63, 64, 65, 66, 67, 68, 69, 70, 71, 72, 73, 74, 75, 76, 77, 78, 79, 80, 81, 82, 83, 84, 85, 86, 87, 88, 89, 90, 91, 92, 93, 94, 95, 96, 97, 98, 99, 100.

See Resolution No. 1, 1861, 14, 15, 16, 17, 18, 19, 20, 21, 22, 23, 24, 25, 26, 27, 28, 29, 30, 31, 32, 33, 34, 35, 36, 37, 38, 39, 40, 41, 42, 43, 44, 45, 46, 47, 48, 49, 50, 51, 52, 53, 54, 55, 56, 57, 58, 59, 60, 61, 62, 63, 64, 65, 66, 67, 68, 69, 70, 71, 72, 73, 74, 75, 76, 77, 78, 79, 80, 81, 82, 83, 84, 85, 86, 87, 88, 89, 90, 91, 92, 93, 94, 95, 96, 97, 98, 99, 100.

Surveyors Certificate.
 I certify that I surveyed for Don M. Dickinson in the month of April 1881 "Don M. Dickinson's addition to the City of Mt. Clemens" as particularly set forth on the above plat.

C. Deussen
 Geo. O'Brien

SUBDIVISION OF OUTLOT 3.

OF DON M. DICKINSON'S ADDITION TO THE

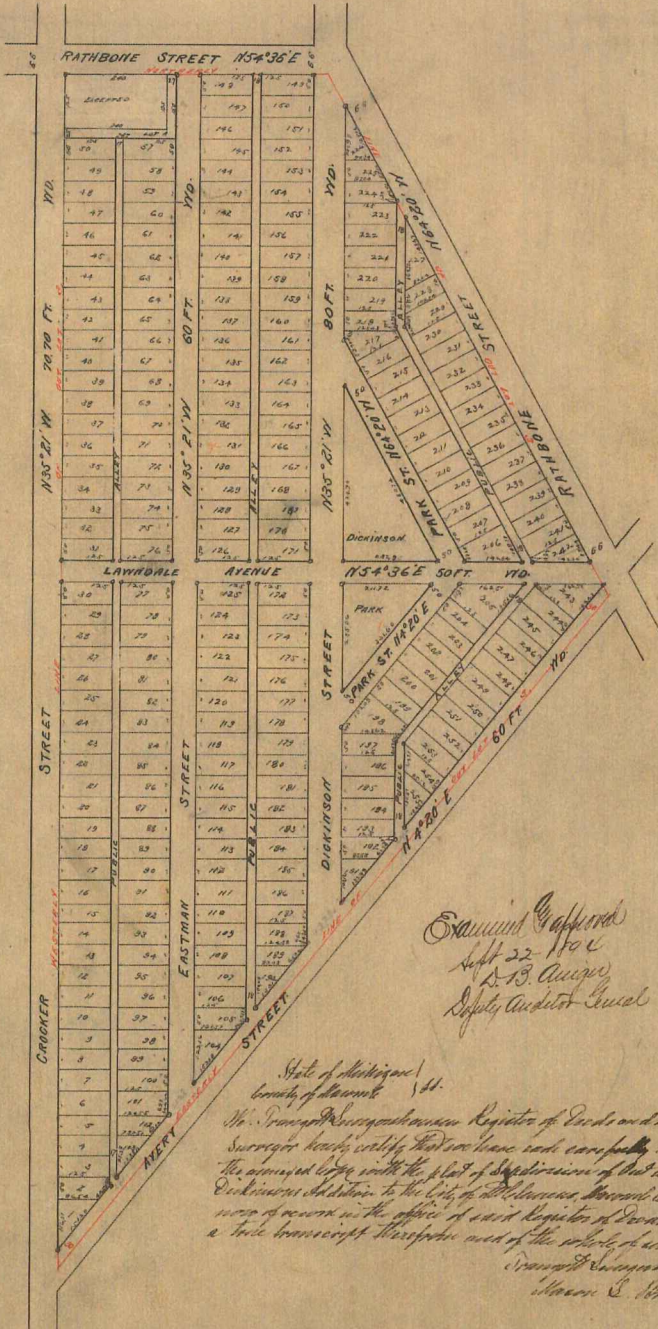
CITY OF MT. CLEMENS MACOMB CO.,

Michigan

Scale 1/4" = 100 feet

L. 9.
P. 58

Map of Section 6
22-24 Adams St
Detroit 4111



I hereby certify that the above Plat is correct, and that Monuments consisting of Oak Stakes 1/4 inch square and 15 inches long have been placed in the Ground at all angles in the Boundaries, and at the intersection of all Streets or Streets and Alleys, as shown on plat by O.

Dated, July 25th 1894.
Mason L. Gunn
Register and Surveor.

KNOW ALL MEN BY THESE PRESENTS, that We Don M. Dickinson and Frances L. Dickinson (his wife) Have caused the land embraced in the above plat to be surveyed and out and platted, to be known as a SUBDIVISION OF OUT LOT 3 OF DON M. DICKINSON'S ADDITION TO THE CITY OF MTCLEMENS MACOMB CO., MICHIGAN, and that the Streets and Alleys shown on said plat are hereby dedicated to the use of the public. Witness our hands and seals this the 31st day of July A. D. Eighteen hundred and ninety four
In presence of
James Hallen, Nicholas Fleming, Henry Dickson, James L. Whitman

Examined and found correct
Sept 22 1904
L. B. Cooper
Deputy Auditor General

STATE OF MICHIGAN, ss.
COUNTY OF Wayne.
On this, the 21st day of August 1894 before me, a Notary Public in and for said county, personally appeared the above named Don M. Dickinson and Frances L. Dickinson (his wife) known to me to be the same persons who executed the above dedication, and who acknowledged the same to be their free act and deed.
James Hallen, Notary Public.
Wayne County, Michigan.

State of Michigan,
County of Macomb.
I, M. Francis Dwyer, Register of Deeds and Mason E. Brown, Surveor, do hereby certify that we have each carefully compared the annexed copy with the plat of Subdivision of Outlot 3 of Don M. Dickinson's Addition to the City of Mt. Clemens, Macomb County, Michigan, and we are of the opinion that the same is a true and correct copy of the original record.
M. Francis Dwyer, Register of Deeds.
Mason E. Brown, Surveor.

28
11
2
3
James L. Whitman

24928

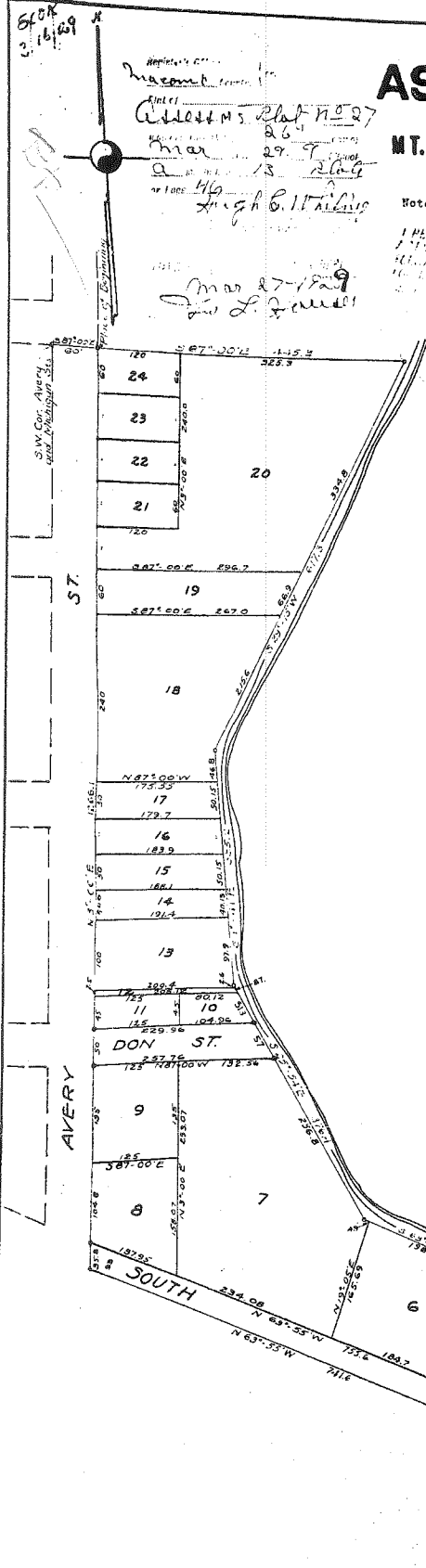
Map 1
J. L. Haller
Notary Public, Michigan

ASSESSORS PLAT NO. 27

OF THE CITY OF MT. CLEMENS, MACOMB CO., MICHIGAN.

SCALE 1"=100'

Note: - All dimensions hereon are in feet and decimals thereof.



DEDICATION

BEFORE ALL MEN BY THESE PRESENTS, that I, Joseph H. Matthews Assessor of the City of Mt. Clemens Macomb County Michigan, by virtue of authority in me vested by section 2750 Corralled Laws of 1915, as amended having been duly authorized by the City Commission, have caused the Land described in the annexed plat to be surveyed, laid out and platted to be known as ASSESSORS PLAT NO. 27 of the City of Mt. Clemens Macomb County Michigan, and that the streets and alleys as shown on said plat are hereby dedicated to the use of the Public.

Joseph H. Matthews
Assessor of the City of Mt. Clemens
Macomb County Mich.

ACKNOWLEDGMENT

STATE OF MICHIGAN } ss
COUNTY OF MACOMB }

On this 17th day of March A.D. 1929, before me, Notary Public in and for said County, personally came the above named Assessor Joseph H. Matthews of the City of Mt. Clemens, known to be the person who executed the above dedication and acknowledged the same to be his free act and deed as such Assessor.

My Commission expires Apr. 11, 1932

W. D. Deane
Notary Public in and for said County

DESCRIPTION

The land embraced in the annexed plat of ASSESSORS PLAT NO. 27 of the City of Mt. Clemens Macomb County Michigan, is described as follows:-

Beginning at a point S 87° 00' E, 60.0 ft. from the S.W. corner of Michigan and Avery Sts. Thence S 87° 00' E, 445.3 ft. Thence S 29° 15' E, 417.3 ft. Thence S 1° 41' E, 375.2 ft. Thence S 25° 54' E, 376.4 ft. Thence S 63° 18' E, 310.0 ft. Thence S 67° 57' E, 128.5 ft. Thence S 52° 57' E, 249.5 ft. Thence S 2° 43' W, 176.8 ft. Thence N 63° 31' W, 243.4 ft. Thence N 62° 55' W, 741.5 ft. Thence N 3° 00' E, 1250.1 ft. to place of beginning.

ENGINEERS CERTIFICATE

I hereby certify that the plat hereon delineated is a correct one and that permanent metal monuments not less than one inch in diameter and fifteen inches in length set in a concrete base at least four inches in diameter and forty-eight inches in depth have been placed at points marked thus as shown at all angles in the boundaries of the land platted at all intersections of streets intersections of alleys or of streets and alleys and at the intersections of streets and alleys with the boundaries of the plat as shown on said plat.

Paul W. Heston
Registered Civil Engineer

CERTIFICATE OF MUNICIPAL APPROVAL

This plat was approved by the City Commission of the City of Mt. Clemens Macomb County Michigan, at a meeting held March 17, 1929

W. D. Deane City Clerk

CERTIFICATE OF APPROVAL BY THE COUNTY BOARD

This plat was approved on the 13th day of March 1929.

Charles H. Hammick Judge of Probate
Joseph B. Hastings County Clerk
William McManus County Treasurer

ASSESSORS PLAT NO. 28

2802

Examined and Approved

April 18-1929

J. L. Howell
County Auditor of Macomb

A SUBDIVISION OF OUTLOTS 1 & 2, DON M. DICKINSONS ADD
OF THE CITY OF

MT. CLEMENS, MACOMB CO., MICHIGAN.

SCALE 1"=100'

Note:- All dimensions hereon are in feet and decimals thereof.

DEDICATION

KNOW ALL MEN BY THESE PRESENTS, That I Joseph H. Miller Assessor of the City of Mt Clemens Macomb County Michigan, by virtue of authority in me vested by Section 2250, Compiled Laws of 1915, as amended, having been duly authorized by the City Commission, have caused the land described in the annexed plat to be surveyed, laid out and platted to be known as ASSESSORS PLAT NO. 28 of the city of Mt Clemens Macomb County Michigan, and that the streets and alleys as shown on said plat are hereby dedicated to the use of the public.

Joseph H. Miller
Assessor of the City of Mt Clemens
Macomb County Michigan.

Joseph H. Miller
Assessor of the City of Mt Clemens
Macomb County Michigan.

ACKNOWLEDGEMENT

STATE OF MICHIGAN
COUNTY OF MACOMB

On this 11th day of March A.D. 1929, before me a Notary Public in and for said County, personally came the above named Joseph H. Miller Assessor of the City of Mt Clemens, known to be the person who executed the above dedication and acknowledged the same to be his free act and deed as such Assessor.
My Commission expires Apr 11, 1937

Joseph H. Miller
Notary Public in and for said County

DESCRIPTION

The land embraced in the annexed plat of ASSESSORS PLAT NO. 28 of the City of Mt Clemens Macomb County Michigan, is described as follows:-
Beginning at a point S 87° 00' E., 60.0 ft. from the S.W. corner of Michigan and Avery Sts. Thence N 3° 00' E., 205.0 ft. Thence N 87° 00' W., 900.0 ft. Thence N 3° 00' E., 121.8 ft. Thence N 74° 16' E., 477.6 ft. Thence N 69° 44' E., 484.2 ft. Thence N 88° 18' E., 345.9 ft. Thence S 69° 24' E., 220.4 ft. Thence S 41° 00' E., 182.4 ft. Thence S 17° 50' W., 255.7 ft. Thence S 35° 27' W., 300.2 ft. Thence S 29° 15' W., 15.1 ft. Thence N 87° 00' W., 445.2 ft to place of beginning. Being O.L.1 & 2 of Don M. Dickinsons Add to the City of Mt Clemens.

ENGINEERS CERTIFICATE

I hereby certify that the plat hereon delineated is a correct one and that permanent metal monuments not less than one inch in diameter and fifteen inches in length set in a concrete base at least four inches in diameter and forty-eight inches in depth have been placed at points marked thus o as shown at all angles in the boundaries of the land platted at all intersections of streets, intersections of alleys or of streets and alleys and at the intersections of streets and alleys with the boundaries of the plat as shown on said plat.

August W. Hanson
Registered Civil Engineer

CERTIFICATE OF MUNICIPAL APPROVAL

This plat was approved by the City Commission of the City of Mt Clemens Macomb County Michigan, at a meeting held Mar 12, 1929

Joseph H. Miller City Clerk

CERTIFICATE OF APPROVAL BY THE COUNTY BOARD

This plat was approved on the 13th day of March 1929

Paul M. Hummel Judge of Probate
Isaac A. Hartung County Clerk
William M. House County Treasurer

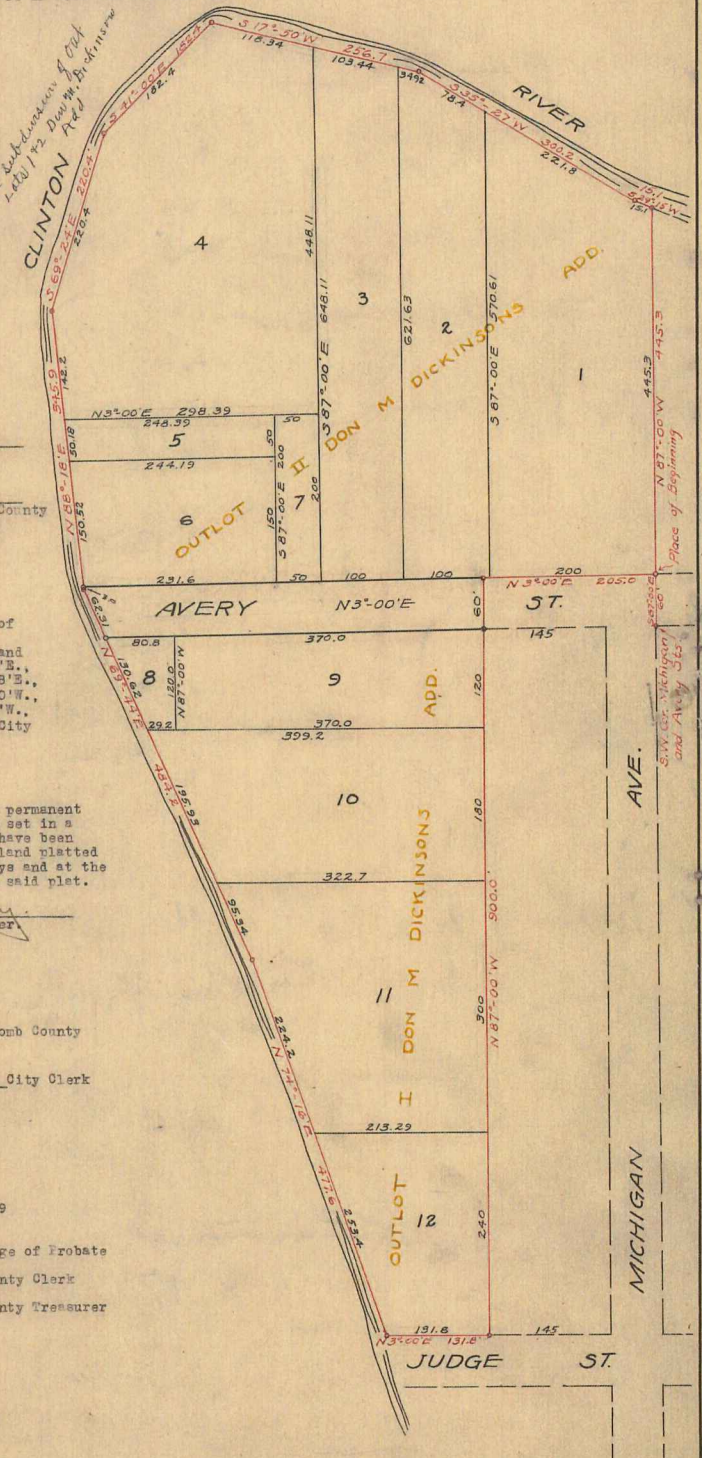
REGISTERS OFFICE
County of Macomb

Received for Record this 21st day
of April A.D. 1929 at
9.00 o'clock A.M. and Recorded
in Liber 14 of Plats
on Page 211

Joseph H. Miller Registrar

L. 14
P. 4

See Book of Town & street plat for Avery St. & Michigan St. 8/10/1927 Page 174



REC'D MACOMB CO *14DEC11AM0856

LAND CORNER RECORDATION CERTIFICATE
Filing Requirement of Act 74, Mich. P.A. 1970

For corners in

<u>Macomb</u>	Located in: <u>Clinton Twp.</u> Corner Code #		
(County)			
1. Public Land Survey	T <u>2N</u>	R <u>13E</u>	PC- <u>036</u>
	T _____	R _____	_____
	T _____	R _____	_____
	T _____	R _____	_____
2. Property Controlling in Section	S _____	T _____	R _____
	S _____	T _____	R _____
3. Miscellaneous Property in Sec.	S _____	T _____	R _____
	S _____	T _____	R _____

Remon order Code 036
4148117 PAGE 1 OF 3
LIBER 23153 PAGE 929
12/11/2014 10:30:34 A.M.
MACOMB COUNTY, MI
CARNELLA SABAUGH, REGISTER OF DEEDS
SEAL

RECEIVED
DEC 16 2014
Office of Registers of Deeds Stamp & File Number
Remonumentation

4. Lot No. _____, Recorded Plat _____
5. Private Claims Southeast corner of Private Claim 542

I, Christopher A. Asiala, in a field survey on Aug. 26, 2014 do hereby state that under requirements of P.A. 74, Michigan P.A. of 1970, the corner points mentioned in lines 1 and 2 above were in conformance with regulations and rules therefore as required in the current manual of survey instructions of the United States Department of the Interior, Bureau of Land Management or be a decree of a Court of Law and/or that the corner points mentioned in lines 3, 4 and 5 above were in conformance with the rules of the Michigan Board of Land Surveyors or by a Decree of a Court of Law, established, re-established, monumented, recovered, found as expressed below:

NOTE: Not more than 2 corners, all in the same town and range, may be recorded on this certificate.

A. Description of original monument and accessories and/or subsequent restoration:

See page 2 of 3 for list of supporting documentation.

B. Description of corner evidence found and/or method applied in restoring or reestablishing corner:

The corner is described in the Private Claim notes as a "Post". Nothing was found at the corner's position South of Metropolitan Parkway and east of Harper Avenue. There is physical occupation within the immediate vicinity to the north and south. The corner falls approximately 1,100' east of Harper Avenue and approximately 200' south of Metro Parkway.

Supervisor's Plat No.7's east line defines the west line of Private Claim 173 and east line of Private Claim 542 but only depicts the Southeast corner of Private Claim 542 and south line of Private Claim 542. I found several irons, pipes and fence corners along the east line of said Supervisor's Plat No. 7, which I used to establish the east-west position of the Private Claim line.

The south line of Private Claim 542 is shown on Supervisor's Plat No.3. The southwest corner of Private Claim 542 is being remonumented concurrently as PC-034 in 2014. I extended the south line of Supervisor's Plat No. 3 and intersected the east line of Supervisor's Plat No. 7 to reestablish the PC-036.

c. Description of monument for corner and accessories established to perpetuate locating the position of the corner:

I placed a new 4"x36" concrete monument with a 2" aluminum cap stamped "MACOMB COUNTY MONUMENT MI ACT 345 CAA 49376 PC-036". Witness ties are as follows:

- N10°E 3.66' Set MAG nail with M.C.R. washer in west face 5' tall block wall.
- S40°E 0.45' SW corner of 5' tall block wall.
- DUE S 15.21' Set MAG nail with M.C.R. washer in west face 4" Poplar.
- N40°W 8.98' Set MAG nail with M.C.R. washer in NE face 4" Poplar.

The selected location is accepted by me and generally accepted by professional surveyors as the best available evidence of the position of the original corner.

Signed by [Signature]
Surveyor's Michigan License No. 49376

Date 12-8-14



ACCEPTED BY THE MACOMB COUNTY SURVEY PEER GROUP AS THE OFFICIAL CORNER UNDER MICHIGAN PUBLIC ACT 345 OF 1980 AT A MEETING HELD ON 10-7-2014
[Signature]
MARTIN C. DUNN, P.S. CHAIRMAN

FORM APPROVED BY MICHIGAN STATE BOARD OF PROFESSIONAL SURVEYORS, JAN 28, 1971
REVISED MAY 14, 1975, REVISED JAN, 1983, REVISED OCT., 1995

PC-036, CLINTON TWP, T-02-N, R-13-E

Liber 23153 Page 930

Section A:

A. Description of original monument and accessories and/or subsequent restoration:

<u>ITEM & DATE</u>	<u>ITEM DESCRIPTION</u>	<u>SURVEYOR</u>	<u>LICENSE</u>	<u>SOURCE</u>
(1) 1810	Private Claim Notes	A. Greeley		
(2) 1818	GLO Notes	J. Fletcher		
(3) 1818	GLO plats	W. Preston		
(4) 1875	1875 Atlas			County Records
(5) 1895	1895 Atlas			County Records
(6) 1916	1916 Atlas			County Records
(7) 1920s	Map of PC542			County Records
(8) 1920s	Map of Sec 32			County Records
(9) 1920s	Map of PC173			County Records
(10) 1881	Don M Dickinson's Add			L2, P16
(11) 1894	Sub of OL3 of Don M Dickinson's Add	M. Brown		L2, P53
(12) 1918	Union Lake Sub	John W Irvine		L3, P145
(13) 1925	Charbeneau's Gardens	John W Irvine		L8, P71
(14) 1925	Francis Harper Drive Sub	J McMahon	4018	L10, P28
(15) 1926	Liverpool Sub	HR Omara		
(16) 1926	Rosecroft Shores	HR Omara		L11, P5-6
(17) 1929	AP No27	Burt Howey?		L13, P46
(18) 1929	AP No28	Burt Howey?		L14, P4
(19) 1929	AP No29	Burt Howey?		L14, P5
(20) 1932	Supervisor's Plat No2	W Lehner	123	L16, P8
(21) 1937	Supervisors Plat No7	Burt Howey?		L18, P49
(22) 1955	Gruner Sub	JD Lehner	5787	L34, P1
(23) 1956	Asbury Park Sub No2	HS Fuller	1645	L35, P24
(24) 1959	Taubitz Manor	Richard Postiff		L45, P39
(25) 1960	Jefferson Villa Sub No2	VB Spaulding		L47, P31
(26) 1978	MDOT ROW P130			
(27) 1978	MDOT ROW P131			
(28) 1994	Union Lake Meadows	D. Pawlaczyk	17632	L105, P39

RECEIVED

DEC 16 2014

Office of Land Survey &
Remonumentation*see next page for sketch:

Liber 23153 Page 931

RECEIVED

DEC 16 2014

Office of Land Survey & Remonumentation

FRACTIONAL SECTION 23

PRIVATE CLAIM 542

CLAIM 173

SUPERVISOR'S

PLAT NO.3

PCC-033
INTERSECTION OF W. LINE
PC 542 WITH SECTION LINE
COMMON TO SECTIONS 23 & 26
#1118 SET MON 14.90' SOUTH
OF FCI 30103

PCC-033 TO J-09
1,327.83' MEAS
1,287.00' GLO (19.50ch)

METROPOLITAN PARKWAY

HARPER AVENUE

PC-034
SOUTHWEST CORNER
OF PC 542
#1117 SET IRON IN
PARKING LOT

S 88° 04' 18" E
2,303.06' MEASURED 2014
2,244.00' PC NOTES (34ch)

PC-036
SOUTHEAST
CORNER
OF PC 542
#1132 SET MON

HARPER - METROPOLITAN PARKWAY SUB

PCC-035
INTERSECTION OF S. LINE
PC 542 WITH SECTION LINE
COMMON TO SECTIONS
25 & 26
#1133 SET IRON IN
PARKING LOT

799.28' PER GLO
12.11 CHAINS

PRIVATE

FRACTIONAL SECTION 26

PCC-035 TO K-10
2121.72' MEAS
2437.38' GLO (186.99ch)

FRACTIONAL SECTION 25

PC-038 TO PC-037
3465.39' MEAS



SCALE: 1" = 500'



K-10

DEFLECTION POINT

C:\Users\jwebster\Documents\2014\03\20140320\20140320.dwg



28 W. Adams Street
Suite 1200
Detroit, MI 48226
p (313) 962-4442
f (313) 962-5068
www.giffelswebster.com

Executive: JHR
Manager: CAA
Designer: CAA
Quality Control:
Sector: T-02-N R-13-E

PCC-033, PC-034
PCC-035, PC-036
CLINTON TOWNSHIP

DATE	ISSUE

Date: 12-03-2014
Scale: 1"=500'
Sheet: 3 OF 3
Project: 13784.05

Copyright © 2014 Giffels Webster, Inc. All rights reserved. No part of this publication may be reproduced without the prior written permission of Giffels Webster, Inc.