

MACOMB COUNTY 2018 REMONUMENTATION GRANT PROGRAM FOR CITY OF MT. CLEMENS OC-065

Section One

Index

Pictures in the four cardinal directions; found monumentation and after setting the required monumentation.

Section Two

Surveyor's Report

Land Corner Recordation Certificate

Section Three

1-2 Field Notes

3. GLO Map Clinton Township

4-5. GLO Map Clinton Township – 1817 (2 pages)

6. GLO Map Clinton Township – 1818

7. Map of Clinton Township – 1875

8-9. Map of City of Mt. Clemens – 1875 (2 pages)

10. Map of Clinton Township – 1895

11. Map of City of Mt. Clemens – 1895

12. Map of Clinton Township – 1916

13-16. Map of City of Mt. Clemens – 1916 (4 pages)

17. Map of City of Mt. Clemens 2006

18. Macomb County Composite Map 11-12A

19. Macomb County Composite Map 11-12B

Section Four

1. 1810-Aaron Greeley Surveyor of Private Claims 141, Pages one, two, three and four of four

2. 1810-Aaron Greeley Surveyor of Private Claims 626, Pages one, two, three and four of four

3. 1921-"ASCOT PARK SUBDIVISION", Liber 5 of Plats, page 32, Sheet one of one

4. 1924-"SLUSH AND HIGH SUBDIVISION NO. 1", Liber 8 of Plats, page 50, Sheet one of one

5. 1926-"GRATIOT COURT SUBDIVISION", Liber 10 of Plats, page 45, Sheet one of one

6. 1930-"PALISADES MANOR SUBDIVISION", Liber 14 of Plats, page 35, Sheet one of one

7. 1970-"ASSESSOR'S PLAT NO. 44", Liber 60, page 49, Sheet one of one

8. 1973-"FLORAL CITY URBAN RENEWAL SUBDIVISION", Liber 63 of Plats, pages 34-35, Sheets one and two of two

MT. CLEMENS
OC-065 141-
SE/626-SW
T02N, R13E





**MT. CLEMENS
OC-065 141-
SE/626-SW
T02N, R13E**

© 2005 Staples Inc. All rights reserved. Staples.com





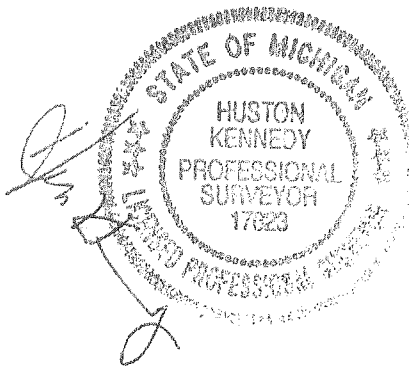
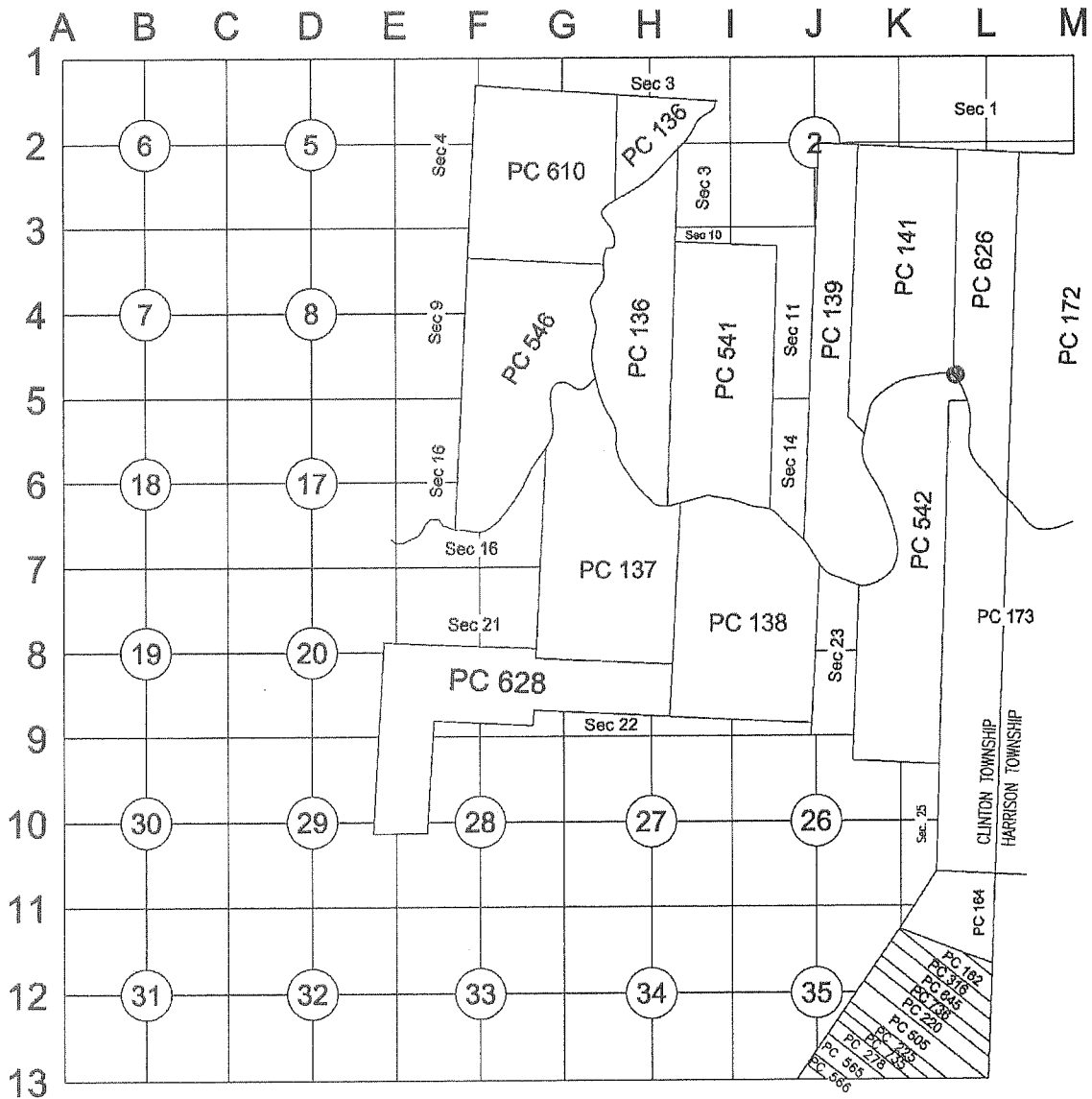
Land Corner Recordation Certificate
2018 Annual Grant Agreement
Authority: MICH. 1970 PA 74, MCL 54.205

Surveyor's Name: Huston K. Kennedy
For Corner(s) in: Macomb County

Field Survey Date: October 26, 2018
Municipality: City of Mt. Clemens

Corner Type	Section Private Claim	Survey Township	Corner Code	Other Code
Original Public Land Survey Corner	PC. 141/626	T 02 N R 13 E	141-SE/626-SW	OC-065

Other Code Corner Description: Southeast corner of Private Claim 141 common with the Southwest corner of Private Claim 626 on the border of the Clinton River (formerly Huron River)



x4

C

Part A: Corner History:

- 1.) 1810—Aaron Greeley, Survey of Private Claim 141
- 2.) 1810—Aaron Greeley, Survey of Private Claim 626
- 3.) 1921—"ASCOT PARK SUBDIVISION", Liber 5 of Plats, page 32
- 4.) 1924—"SLUSH AND HIGH SUBDIVISION NO. 1", Liber 8 of Plats, page 50
- 5.) 1926—"GRATIOT COURT SUBDIVISION", Liber 10 of Plats, page 45
- 6.) 1930—"PALISADES MANOR SUBDIVISION", Liber 14 of Plats, page 35
- 7.) 1970—"ASSESSOR'S PLAT NO. 44", Liber 60, page 49
- 8.) 1973—"FLORAL CITY URBAN RENEWAL SUBDIVISION", Liber 63, pages 34-35

Part B: Surveyor's Report on Perpetuation, Restoration, Reestablishment or Monumentation of Corner:

METHOD USED TO RECOVER OC-065 141-SE/626-SW

The post standing on the border of the River Huron per Aaron Greeley, Surveyor of private claim notes have been destroyed and the location was not perpetuated. The plat of "PALISADES MANOR SUBDIVISION" depicts the common and corner line between Private Claims 141 and 626. The caption for the plat of "ASCOT PARK SUBDIVISION" states "being part of Private Claims 141 and 626, but does not depict the common line between the claims. The caption for the plats of "SLUSH AND HIGH SUBDIVISION NO. 1" and "GRATIOT COURT SUBDIVISION" states "part of Private Claim 141" and the caption for plats "FLORAL CITY URBAN RENEWAL SUBDIVISION" and "ASSESSOR'S PLAT NO. 44", states "part of Private Claim 626".

The west line of Private Claim 141 and the east line of Private Claim 626 are virtually parallel lines. The following calculations were used to determine the direction of the line common to Private Claims 141 and 626 at the north bank of the Clinton River. I used the ratio of the measured distance of the north line of Private Claim 141 to the total measured distance of the north line of Private Claims 141 and 626, the perpendicular distance between the west line of Private Claim 141 and the east line of Private Claim 626 to set the corner on the north bank of the river.

The corner as set falls 23 feet ± north of the north bank of the Clinton River and 2.50 feet north of a 6" ± concrete ribbon extending to the east and west of MacArthur Park, south of the Holiday Garden Apartments building #175, east 440 feet ± of Jones Road and 322 feet ± south of North River Road. The location of this line will have the following plats in both Private Claims 141 and 626 "SLUSH AND HIGH SUBDIVISION NO. 1", "GRATIOT COURT SUBDIVISION" AND "ASSESSOR'S PLAT NO. 44". I therefore recommend to the Macomb County Peer Group that they accept the location as the best evidence for OC-065 to be perpetuated.

RECORDED, UNRECORDED AND FIELD MEASUREMENTS BETWEEN ADJACENT CORNERS

OC-061 to OC-065

A. Greeley 126 chains or 23 links = 8831.18 Ft.
 S01°26'57" W 8849.04 Ft. (mea. 2018)

Part C: Field Evidence of Perpetuation or Monumentation of Corner:

OC-065 I set a 4" diameter x 36" long concrete monument with a ½" iron rod with a 2" diameter aluminum cap stamped "Macomb County Monument, MI Act #345, PS #17623" (OC-065)

Accessories:

- S75°W 46.32' Set a ½" x 18" iron rod w/blue plastic cap stamped "MC REMON WIT POINT" 6" north of 6" concrete wall
- N41°W 67.24' Set a ½" x 18" iron rod w/blue plastic cap stamped "MC REMON WIT POINT" in grass area
- N25°E 70.38' Set a ½" x 18" iron rod w/blue plastic cap stamped "MC REMON WIT POINT" in grass area
- N81°E 40.98' Set a ½" x 18" iron rod w/blue plastic cap stamped "MC REMON WIT POINT" 6" north of 6" concrete wall

I, Huston K. Kennedy, P.S., in a field survey on October 26, 2018 certify under the requirements of the State Survey and Remonumentation Act, 1990 PA 345, MCL 54.261 to 54.279, and the Corner Recordation Act, 1970 PA 74, MCL 54.201 to 54.210d, that the corner identified and described hereon has been perpetuated or monumented as described in Parts A, B, and C above, pursuant to the laws and rules of the State of Michigan.

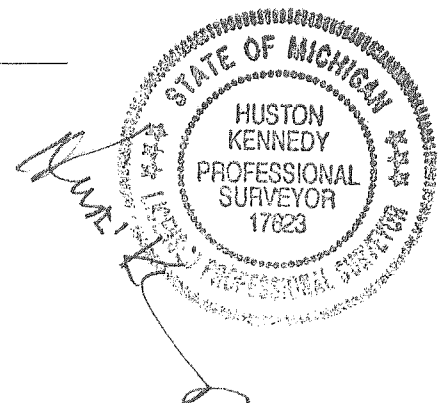

 Huston K. Kennedy, P.S.

November 6, 2018

Date

Professional Surveyor's License No.:17623

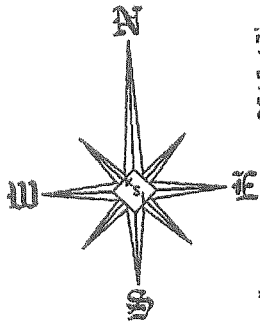
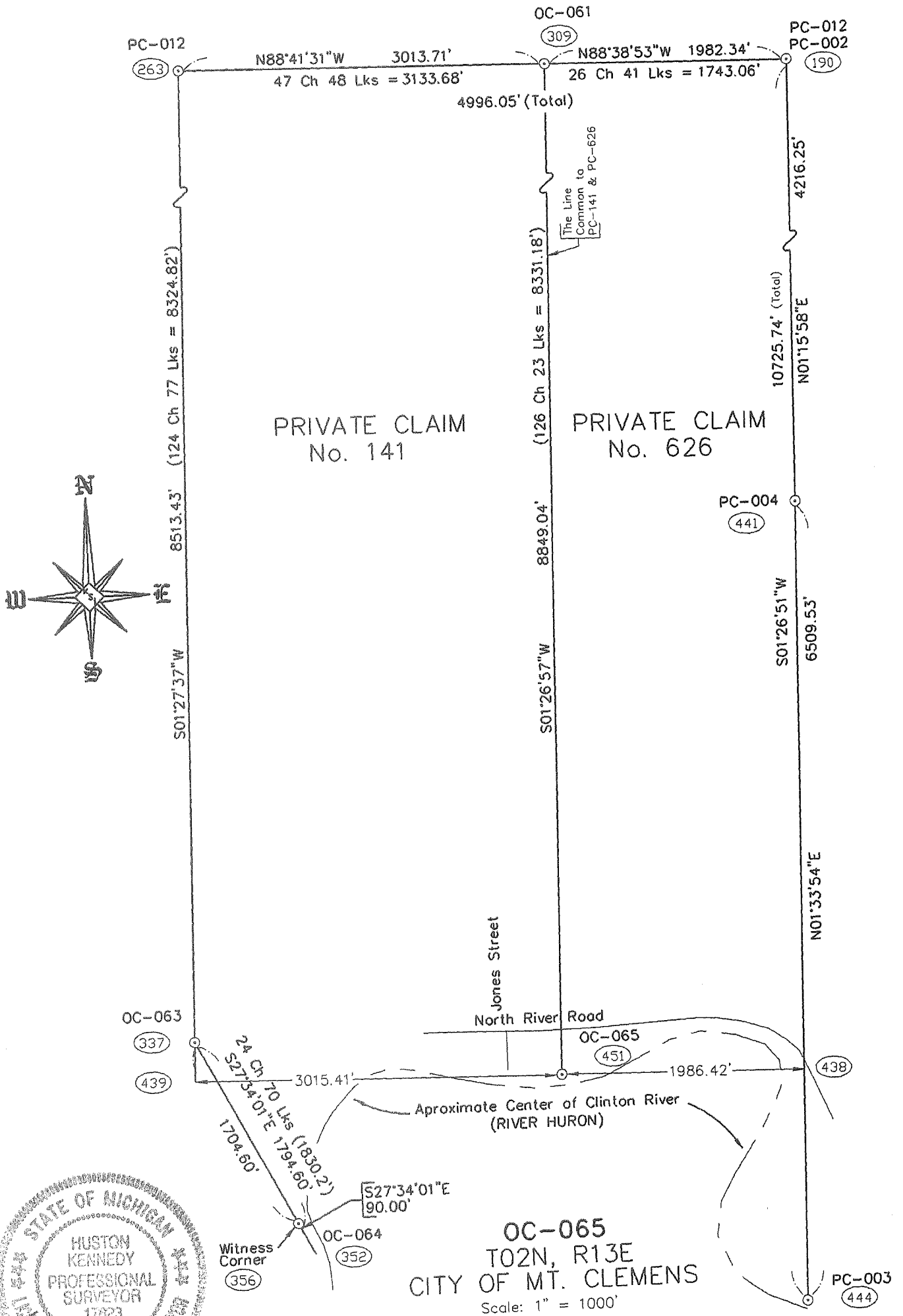
Prepared By:
 Huston K. Kennedy, PS
 105 North Washington Street
 Oxford, Michigan 48371



Land Corner Recordation Certificate

T 02 N R 13 E Code OC-065

SKETCH OF CORNER LOCATION



OC-065
T02N, R13E
CITY OF MT. CLEMENS
Scale: 1" = 1000'

Land Corner Recordation Certificate
T 02 N R 13 E Code OC-065
Page 4 of 4

**2018
MACOMB COUNTY REMONUMENTATION
GRANT PROGRAM FOR
CITY OF MT. CLEMENS
Research Dossier
OC-065**

Prepared by:
Kennedy Surveying, Inc.
105 North Washington Street
Oxford, Michigan 48371

**Sources of Information Researched
For Macomb County 2018 Remonumentation Grant Program
for City of Mt. Clemens**

- 1) GLO NotesC
- 2) Act 74 Recorded LCRC
- 3) Act 132 Recorded Surveys
- 4) Personal History and Records
- 5) LCRC's and Surveys
- 6) Letters to the Following, Requesting Unrecorded information

- a) Anderson, Eckstein & Westrick
- b) BMJ Engineers & Surveyors
- c) Community Engineering & Surveying
- d) David Little Land Surveyor
- e) Fenn & Associates Surveying, Inc.
- f). George Jerome & Company
- g) Grant Ward Surveyors
- h) Great Lakes Geomatics
- i) James Land Surveying
- j) Kem-Tec & Associates
- k) Kieft Engineering, Inc.
- l) Lehner Associates, Inc.
- m).Milletics & Associates
- n) R. A. Duthler Land Surveyor, LLC
- o) Reichert Surveying
- p) R. J. Donnelly & Assciates
- q) Road Commission for Macomb County
- r) Rowe Professional Services
- s) Spalding, DeDecker & Associates
- t) Urban Land Consultants, LLC

OC-065 TOWN 02 NORTH, RANGE 13 EAST, CITY OF MT. CLEMENS

GLO NOTES

Aaron Greeley, Surveyor of private claims; post standing on the border River Huron.

RECORDED AND UNRECORDED INFORMATION USED TO RECOVER AND VERIFY THE LOCATION OF OC-065

July 18, 1810 – Aaron Greeley, Surveyor of Private Claim No. 141

July 18, 1810 – Aaron Greeley, Surveyor of Private Claim No. 626

April 26, 1921 – “ASCOT PARK SUBDIVISION”, Liber 5 of Plats, on page 32 of Macomb County Records.

December 17, 1924 – “SLUSH AND HIGH SUBDIVISION NO. 1”, Liber 8 of Plats, on page 50 of Macomb County Records.

January 16, 1926 – “GRATIOT COURT SUBDIVISION”, Liber 10 of Plats, on page 45 of Macomb County Records.

April 25, 1930 – “PALISADES MANOR SUBDIVISION”, Liber 14 of Plats, on page 35 of Macomb County Records.

June 4, 1970 – “ASSESSOR’S PLAT NO. 44”, Liber 60 of Plats, on page 49 of Macomb County Records.

January 30, 1973 – “FLORAL CITY URBAN RENEWAL SUBDIVISION”, Liber 63 of Plats, on pages 34-35 of Macomb County Records.

METHOD USED TO RECOVER OC-065 141-SE/626-SW

The post standing on the border of the River Huron per Aaron Greeley, Surveyor of private claim notes have been destroyed and the location was not perpetuated. The plat of “PALISADES MANOR SUBDIVISION” depicts the common and corner line between Private Claims 141 and 626. The caption for the plat of “ASCOT PARK SUBDIVISION” states “being part of Private Claims 141 and 626, but does not depict the common line between the claims. The caption for the plats of “SLUSH AND HIGH SUBDIVISION NO. 1” and “GRATIOT COURT SUBDIVISION” states “part of Private Claim 141” and the caption for plats “FLORAL CITY URBAN RENEWAL SUBDIVISION” and “ASSESSOR’S PLAT NO. 44”, states “part of Private Claim 626”.

The west line of Private Claim 141 and the east line of Private Claim 626 are virtually parallel lines. The following calculations were used to determine the direction of the line common to Private Claims 141 and 626 at the north bank of the Clinton River. I used the ratio of the measured distance of the north line of Private Claim 141 to the total measured distance of the north line of Private Claims 141 and 626 and the perpendicular distance between the west line of Private Claim 141 and the east line of Private Claim 626 to set the corner on the north bank of the river.

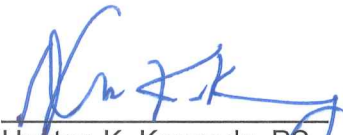
The corner as set falls 23 feet \pm north of the north bank of the Clinton River and 2.50 feet north of a 6” \pm concrete ribbon extending to the east and west of MacArthur Park, south of the Holiday Garden Apartments building #175, 440 feet \pm east of Jones Road and 322 feet \pm south of North River Road. The location of this line will have the following plats in both Private Claims 141 and 626 “SLUSH AND HIGH SUBDIVISION NO. 1”, “GRATIOT COURT SUBDIVISION” AND “ASSESSOR’S PLAT NO. 44”. I therefore recommend to the Macomb County Peer Group that they accept the location as the best evidence for OC-065 to be perpetuated.

(Revised 11/08/18)

RECORDED, UNRECORDED AND FIELD MEASUREMENTS BETWEEN ADJACENT CORNERS

OC-061 to OC-065

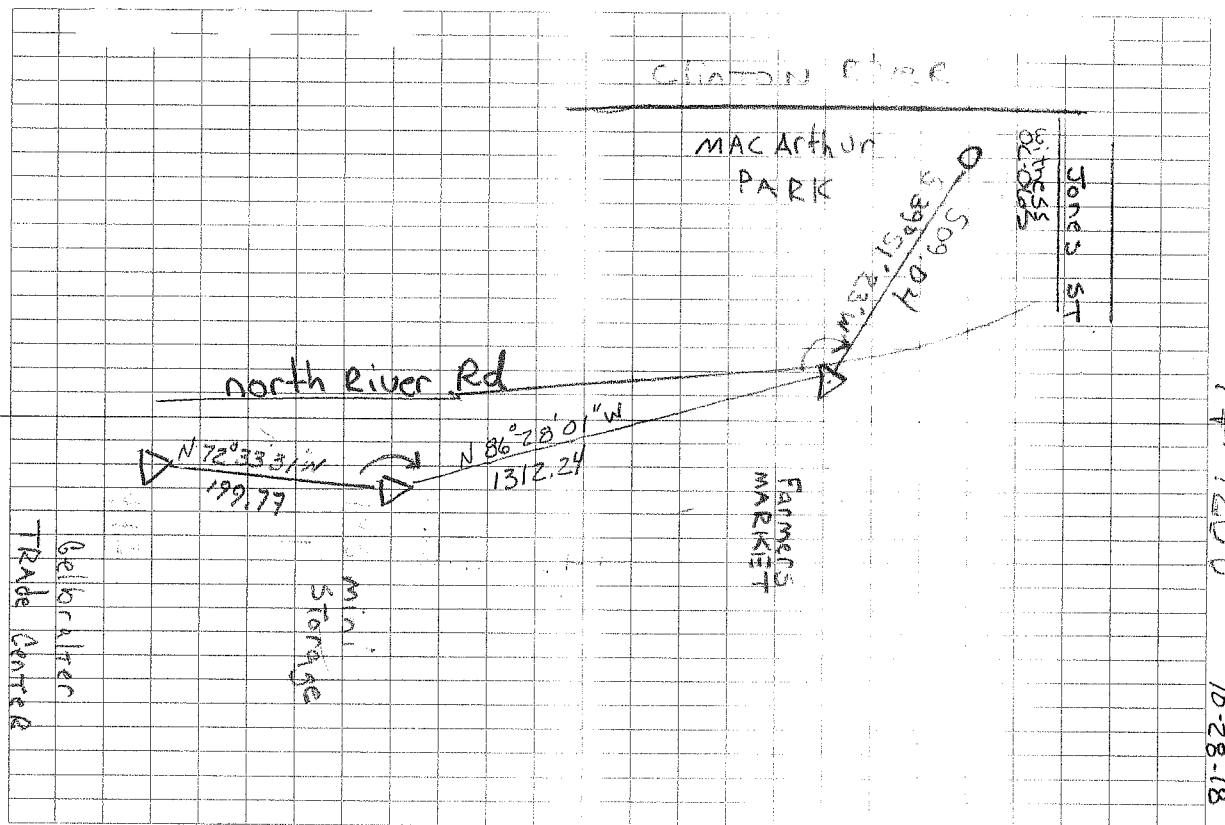
A. Greeley 126 chains or 23 links = 8831.18 Ft.
S01°26'57" W 8849.04 Ft. (mea. 2018)



Huston K. Kennedy, PS
Kennedy Surveying, Inc.

2018
MACOMB COUNTY REMONUMENTATION
GRANT PROGRAM CLINTON TOWNSHIP
OC-065

14-7206 T6 HK 10-28-18

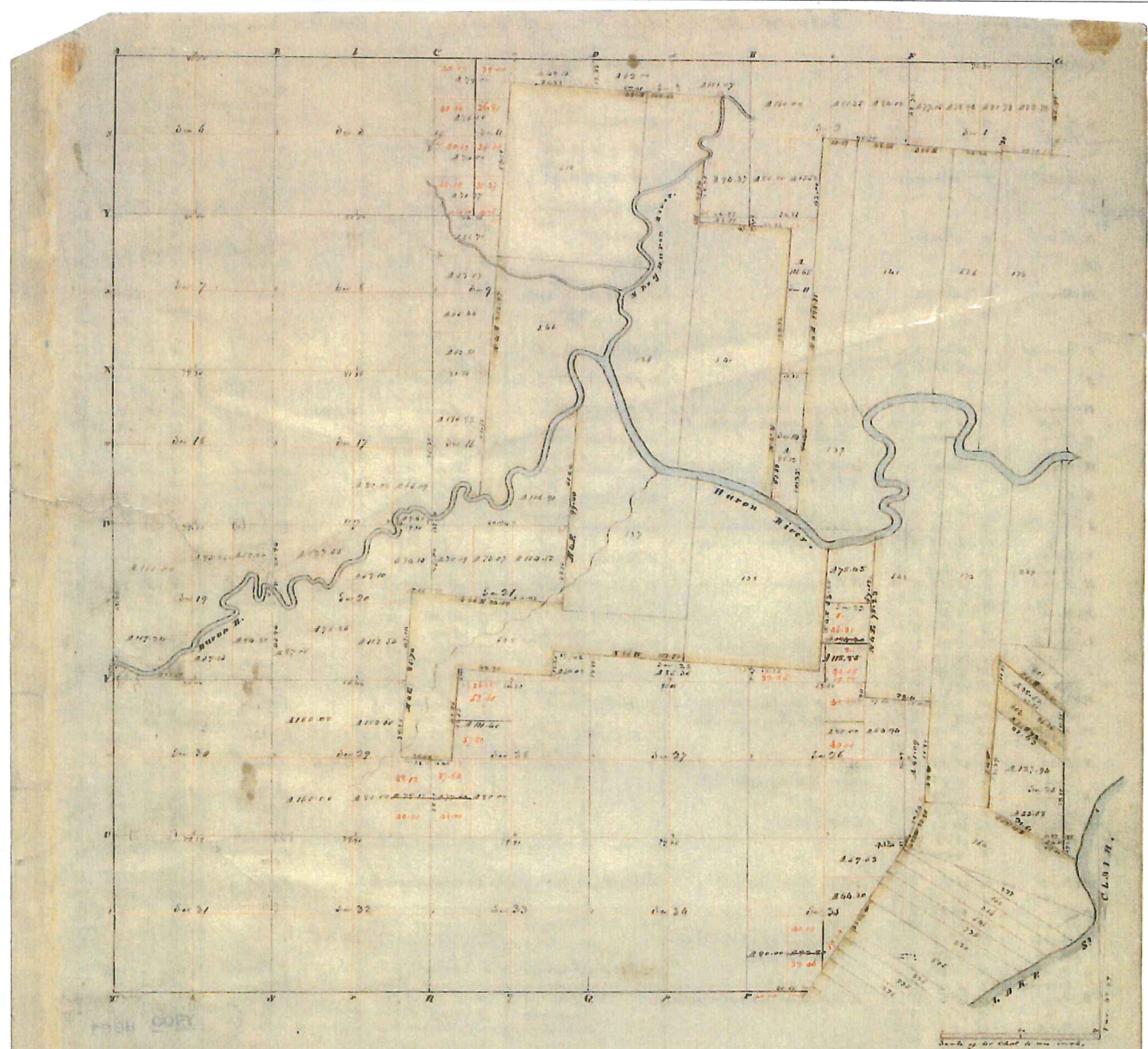


	443.442	CK
	199.77	BS
	(m) 199.55	

1	PT 442 TO PT 450 (HR)	443.450	Set
	166.05.35	1312.24	BS
2	332.11.00		TRAV
	46.05.30		PT

1	PT 443 TO PT 451 (HR)	450.451	Set
	126.19.24	(L) 509.04	Temp
	126.19.25	(m) 509.04	PT
2	252.38.45		1/2" dia
	126.19.23		TRAV

1	PT 450 TO PT 452	451.452	
452	144.03.10	HL	46.32
453	81.27.00	HL	67.24
454	14.14.50	HL	70.38
455	41.36.15	HR	40.98



Township N: II North, Range N: XIII East of Mer. (Mich. Ter.)

surveyed by W^m Preston. 1847

Description of the soil on the interior sectional lines

Section	Quality 1 ^o	Section	Quality 2 ^o
5	1/2 dry sandy loam, 1/2 black, with lign. & shells	29	2 ^o sand & clay loam, 1/2 black, 1/2 lign.
6	1/2 sand, 1/2 clay, black, sand, blue, lign.	30	1 ^o same
7	1 ^o same (hard clay)	31	2 ^o 1/2 of the same, same
7	1 ^o same	32	1 ^o 1/2 same, 1/2 with great black, blue, black, blue
11	1/2 dry, 1/2 sand, black, sand, lign. lign. blue, black	33	1 ^o sand, 1/2 clay, 1/2 black, 1/2 lign. & lign.
11	1 ^o same	34	1 ^o 1/2 sand, 1/2 black
17	1/2 sand, 1/2 clay, 1/2 black, 1/2 lign. & lign.	35	1 ^o same
17	1 ^o same	36	1 ^o same
23	1/2 sand, 1/2 clay, 1/2 black, 1/2 lign. & lign.	37	1 ^o same with sand, lign., & lign. good land
23	1 ^o same	38	1 ^o same
29	1/2 sand, 1/2 clay, 1/2 black, 1/2 lign. & lign.	39	1 ^o same
29	1 ^o same	40	1 ^o same
35	1/2 sand, 1/2 clay, 1/2 black, 1/2 lign. & lign.	41	1 ^o same
35	1 ^o same	42	1 ^o same
41	1/2 sand, 1/2 clay, 1/2 black, 1/2 lign. & lign.	43	1 ^o same
41	1 ^o same	44	1 ^o same
47	1/2 sand, 1/2 clay, 1/2 black, 1/2 lign. & lign.	45	1 ^o same
47	1 ^o same	46	1 ^o same
53	1/2 sand, 1/2 clay, 1/2 black, 1/2 lign. & lign.	47	1 ^o same
53	1 ^o same	48	1 ^o same
59	1/2 sand, 1/2 clay, 1/2 black, 1/2 lign. & lign.	49	1 ^o same
59	1 ^o same	50	1 ^o same

Section	Quantity of the wood	Species	Dimensions	Value
A	W Oak 5	Corn	5.6.7.8	8
B	B. Ash 3	Corn	7.8.17.18	17
C	Birch 18	Do	8.9.16.17	18
D	Elm 18	Do	29.30.31.32	18
E	W. Ash 20	Do	19.20.29.30	18
F	Birch 9	Do	21.27.32.33	6
G	W. Ash 12	Do	16.17.20.21	24
H	Birch 22	Do	37.21.32.33	16
I	W. Ash 18	Do	21.22.23.24	6
J	W. Ash 20	Do	26.27.28.29	18
K	Birch 11	Do	32.23.26.27	19
L	Birch 10	Do	25.26.27.28	10
M	Birch 8	Do		
N	W. Ash 18	Do		
O	W. Ash 18	Do		
P	Elm 18	Do		
Q	Sycamore 40	Do		
R	Hickory 7	Do		
S	Hornbeam 3	Do		
T	Hillow 8	Do		
U	Corn 13	Do		
V	W. Oak 36	Do		
W	Post in Swamp	Do		
X	B. Ash 18	Do		
Y	Birch 8	Do		
Z	Small Birch	Do		
AA	Lynn 16	Do		
AB	W. Oak 6	Do		
AC	Lynn 8	Do		
AD	Post in Swamp	Do		
AE	Sugar 8	Do		
AF	Hickory 18	Do		
AG	W. Oak 11	Do		
AH	Elm 8	Do		
AI	Elm 16	Do		
AJ	Hickory 8	Do		
AK	Poplar 8	Do		

Anterior Quarter section Corners

2	W Oak	8	Corn
3	Birch	10	Corn
4	Hornbeam	6	Corn
5	Birch	24	Do
6	Lynn	11	Corn
7	W Oak	5	Corn
8	Hickory	16	Corn
9	Hornbeam	6	Corn
10	Sapropes	22	Corn
11	Elm	6	Corn
12	Boxwood	7	Corn
13	Lynn	12	Do
14	W. Oak	8	Do
15	W. Oak	7	Do
16	W. Oak	5	Corn
17	Lynn	11	Do
18	Elm	8	Do
19	Hornbeam	5	Corn
20	Hickory	7	Do
21	Elm	20	Do
22	Sugar	8	Do
23	W. Oak	26	Do
24	W. Oak	30	Do
25	Sycamore	4	Corn
26	W. Oak	28	Do
27	Sugar	8	Do
28	B. Ash	14	Corn
29	W. Oak	6	Do
30	W. Oak	2	Do
31	B. Ash	36	Corn
32	B. Ash	4	Corn
33	W. Oak	26	Do
34	W. Oak	30	Do
35	Sycamore	4	Corn
36	W. Oak	28	Do
37	Sugar	8	Do
38	B. Ash	8	Do
39	B. Ash	8	Do
40	Sugar	5	Do
41	B. Ash	14	Corn
42	W. Oak	6	Do
43	W. Oak	2	Do
44	B. Ash	36	Corn
45	B. Ash	4	Corn
46	W. Oak	26	Do
47	W. Oak	30	Do
48	Sycamore	4	Corn
49	W. Oak	28	Do
50	Sugar	8	Do
51	B. Ash	14	Corn
52	W. Oak	6	Do
53	W. Oak	2	Do
54	B. Ash	36	Corn
55	B. Ash	4	Corn
56	W. Oak	26	Do
57	W. Oak	30	Do
58	Sycamore	4	Corn
59	W. Oak	28	Do
60	Sugar	8	Do
61	B. Ash	14	Corn
62	W. Oak	6	Do
63	W. Oak	2	Do
64	B. Ash	36	Corn
65	B. Ash	4	Corn
66	W. Oak	26	Do
67	W. Oak	30	Do
68	Sycamore	4	Corn
69	W. Oak	28	Do
70	Sugar	8	Do
71	B. Ash	14	Corn
72	W. Oak	6	Do
73	W. Oak	2	Do
74	B. Ash	36	Corn
75	B. Ash	4	Corn
76	W. Oak	26	Do
77	W. Oak	30	Do
78	Sycamore	4	Corn
79	W. Oak	28	Do
80	Sugar	8	Do
81	B. Ash	14	Corn
82	W. Oak	6	Do
83	W. Oak	2	Do
84	B. Ash	36	Corn
85	B. Ash	4	Corn
86	W. Oak	26	Do
87	W. Oak	30	Do
88	Sycamore	4	Corn
89	W. Oak	28	Do
90	Sugar	8	Do
91	B. Ash	14	Corn
92	W. Oak	6	Do
93	W. Oak	2	Do
94	B. Ash	36	Corn
95	B. Ash	4	Corn
96	W. Oak	26	Do
97	W. Oak	30	Do
98	Sycamore	4	Corn
99	W. Oak	28	Do
100	Sugar	8	Do

Corners on Hudson River.

1	Birch	10	5.6.2	70
2	Sycamore	30	5.6.2	46
3	Hickory	8		
4	W. Oak	26	5.6.2	67
5	B. Ash	18	7.6.3	48
6	Alfalfa	8		
7	B. Ash	7		
8	Birch	16	7.7.0	19
9	Do	10	5.5.2	30
10	Sapropes	12	5.4.3	10
11	Elm	16	7.7.1	20

Township N. 11 North, Range N. XIII East of Mer. (Mich. Ter.)



A true Copy from the Original on file in this Office dated Dec
 14, 202, 99
 Surveyor General's Office
 Feb 20th 1818

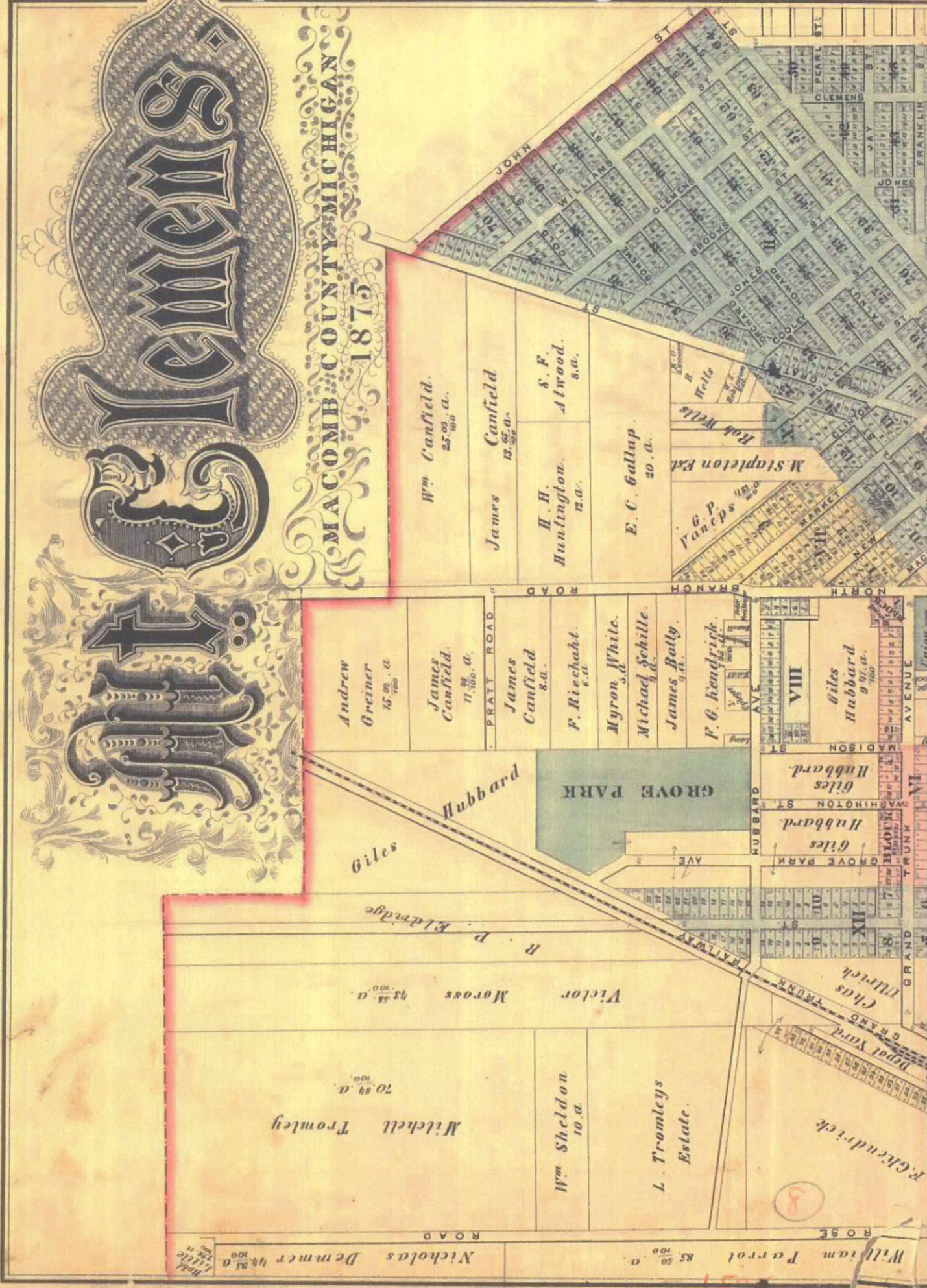
Edward Tiffin
 Surveyor General

POOR COPY

Atlas

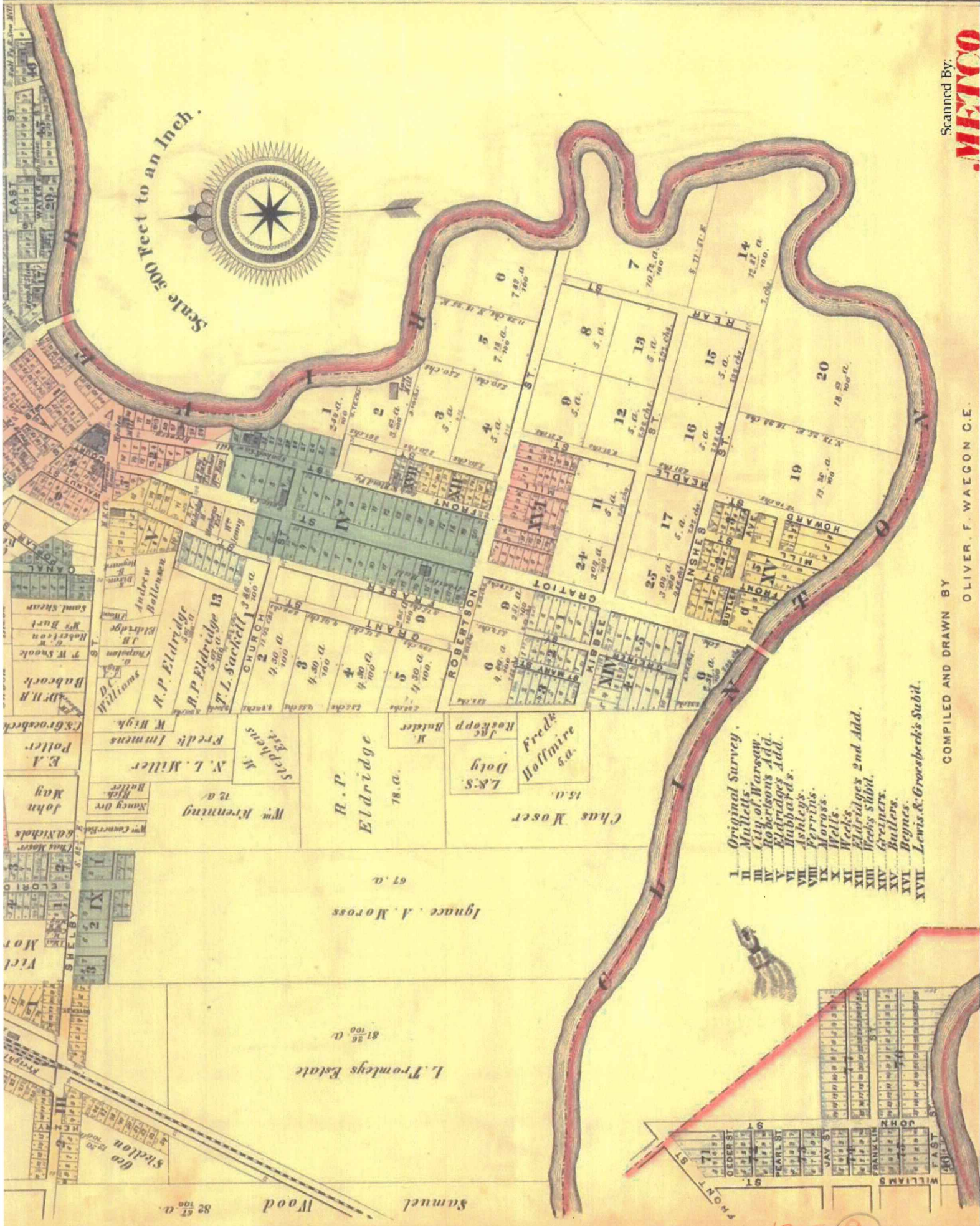
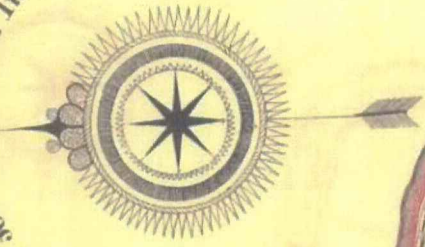
MACOMB COUNTY MICHIGAN 1875

Scanned by:
METCO
Engineers, Architects & Surveyors



5181

Scale 300 feet to an Inch.

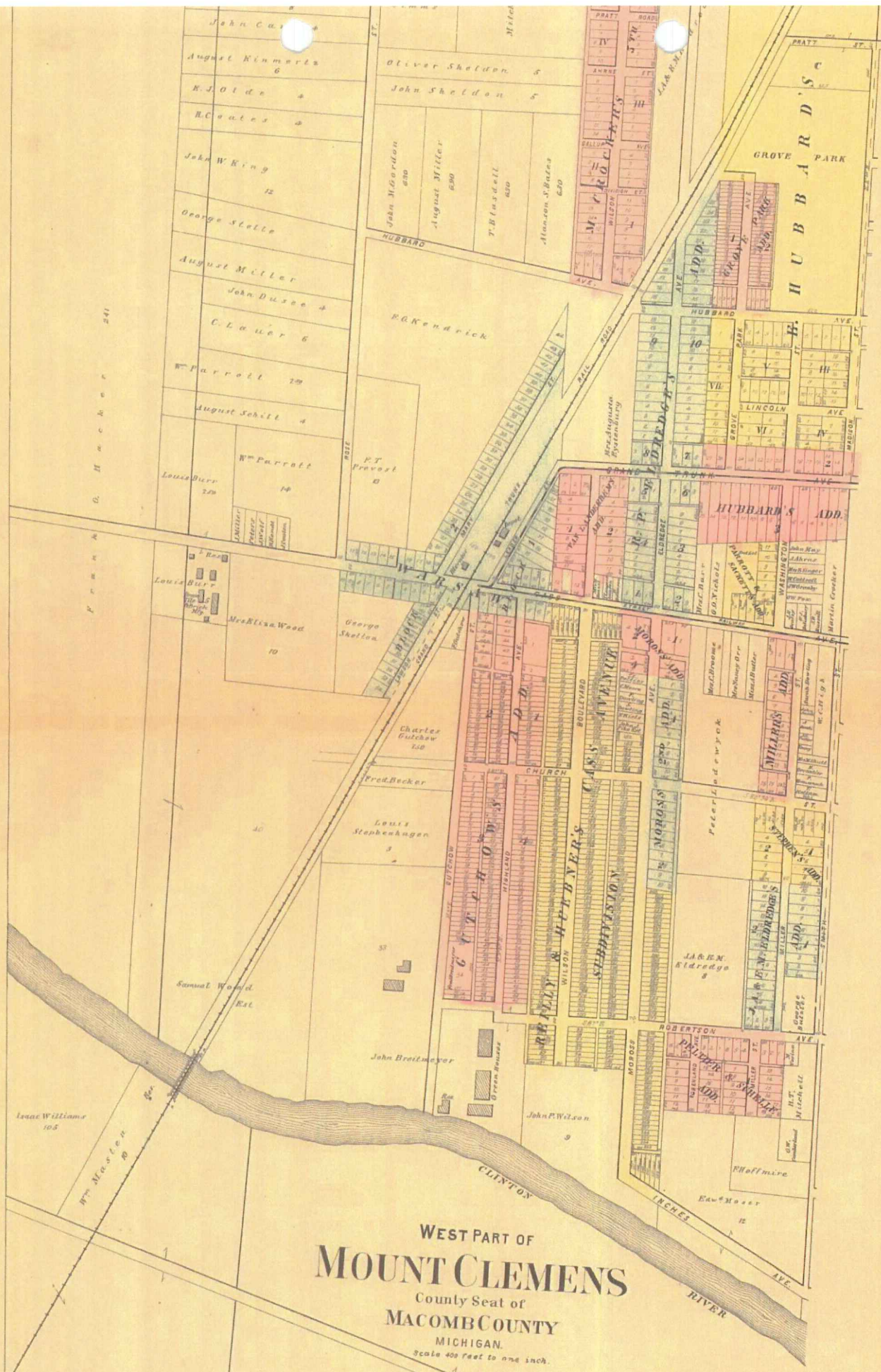


- I Original Survey.
- II Mulletts.
- III City of Warsaw.
- IV Robinsons Add.
- V Eldridges Add.
- VI Hubbards.
- VII Ashleys.
- VIII Ferrins.
- IX Moross.
- X Wells.
- XI Weeks.
- XII Eldridges 2nd Add.
- XIII Weeks Subd.
- XIV Greeners.
- XV Bullers.
- XVI Bygnes.
- XVII Lewis & Groosbecks Subd.

COMPILED AND DRAWN BY OLIVER F. WAEGON C.E.

Scanned By: METCO

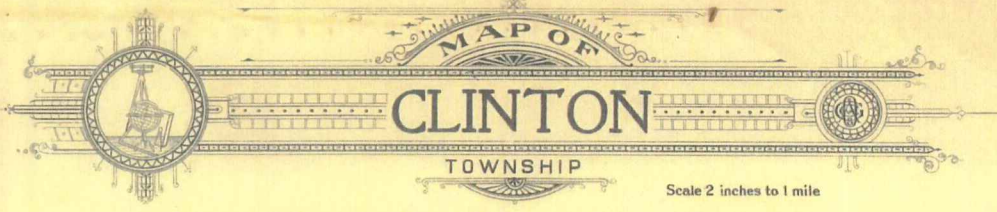
1875 9



WEST PART OF
MOUNT CLEMENS
 County Seat of
MACOMB COUNTY
 MICHIGAN.

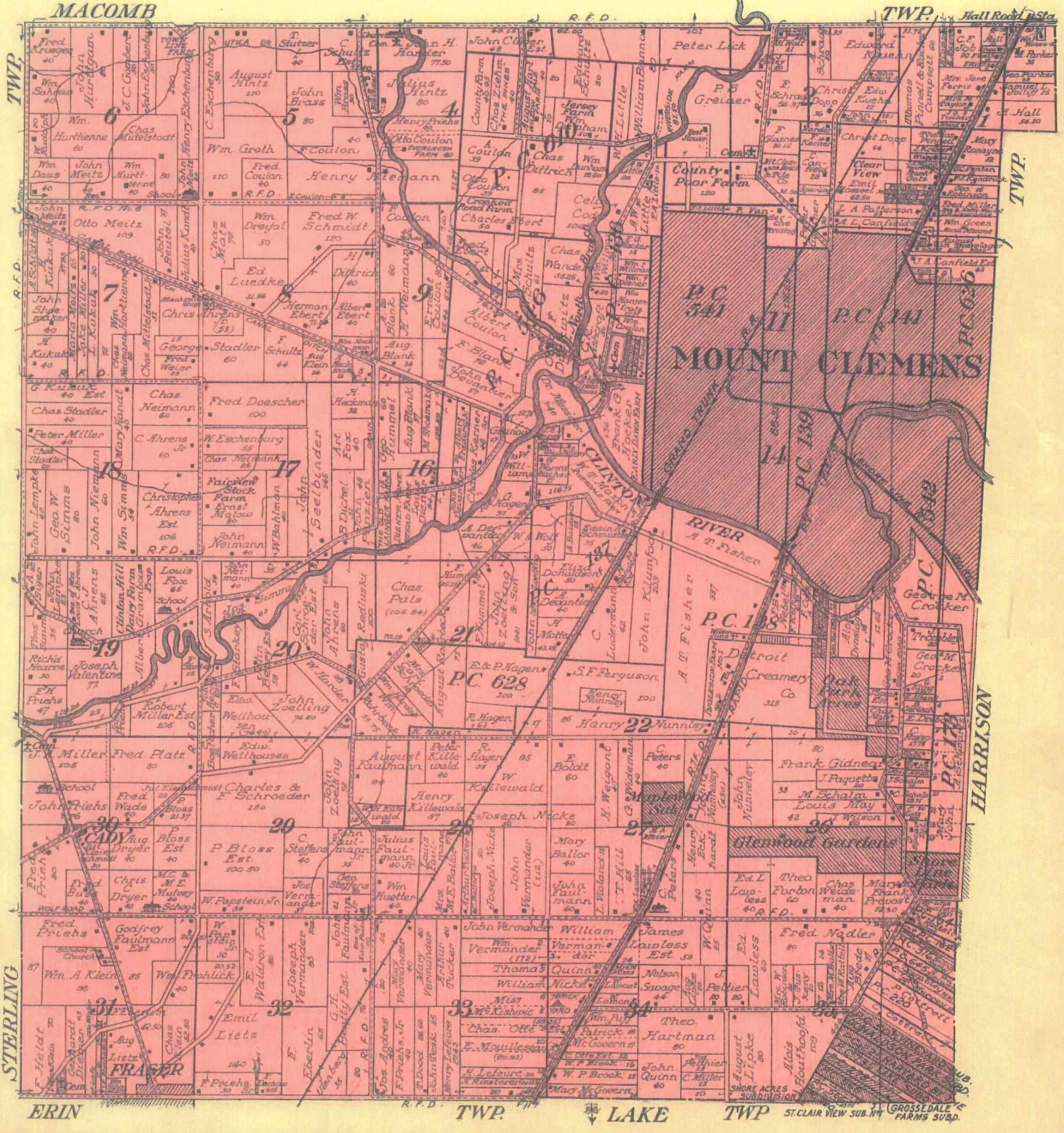
Scale 400 feet to one inch.

1895 (11)



MAP OF
CLINTON
TOWNSHIP
 Scale 2 inches to 1 mile

Fractional Township 2 North, Range 13 East of the Michigan Meridian



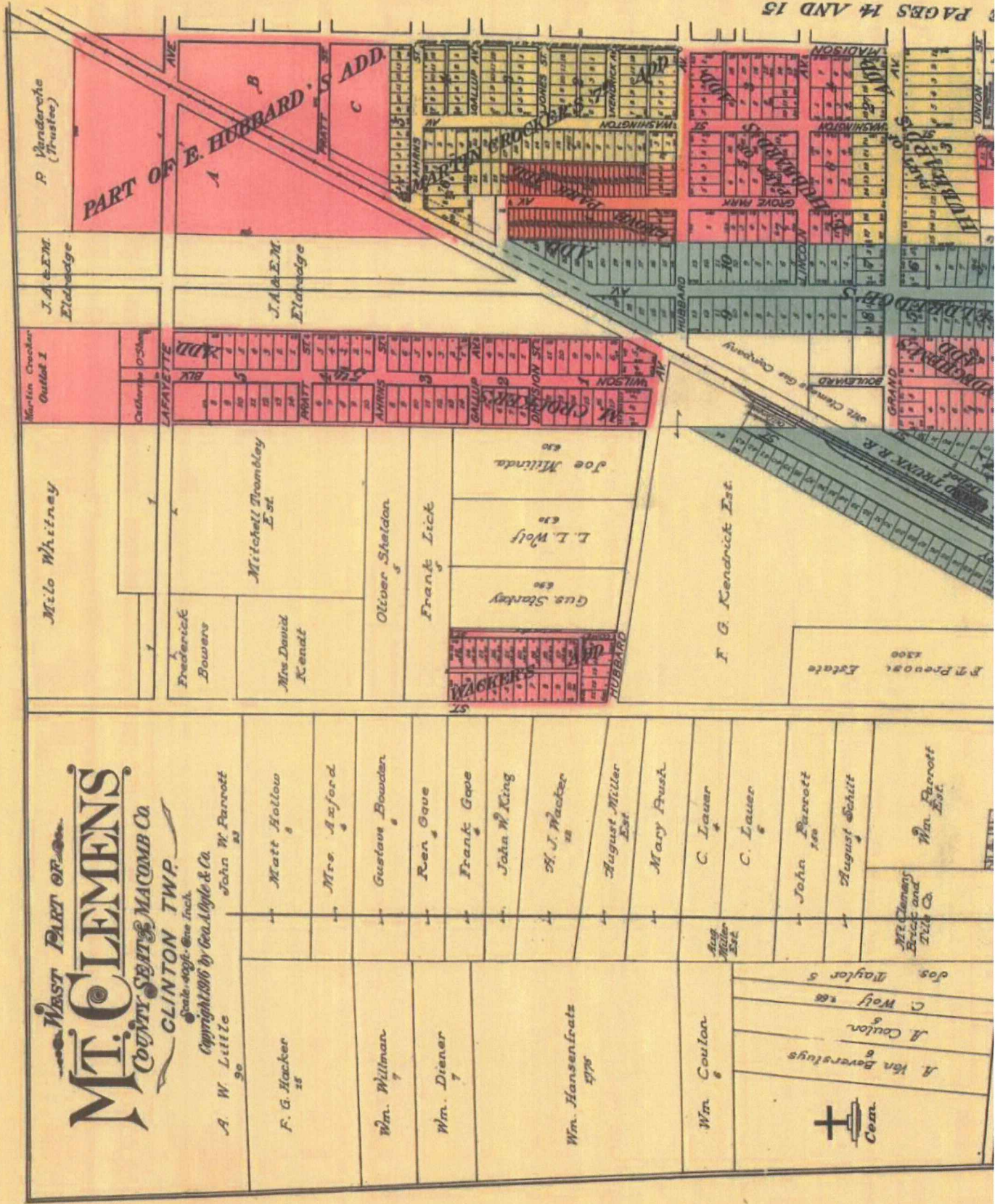
1914

12

Scanned By:

METCO

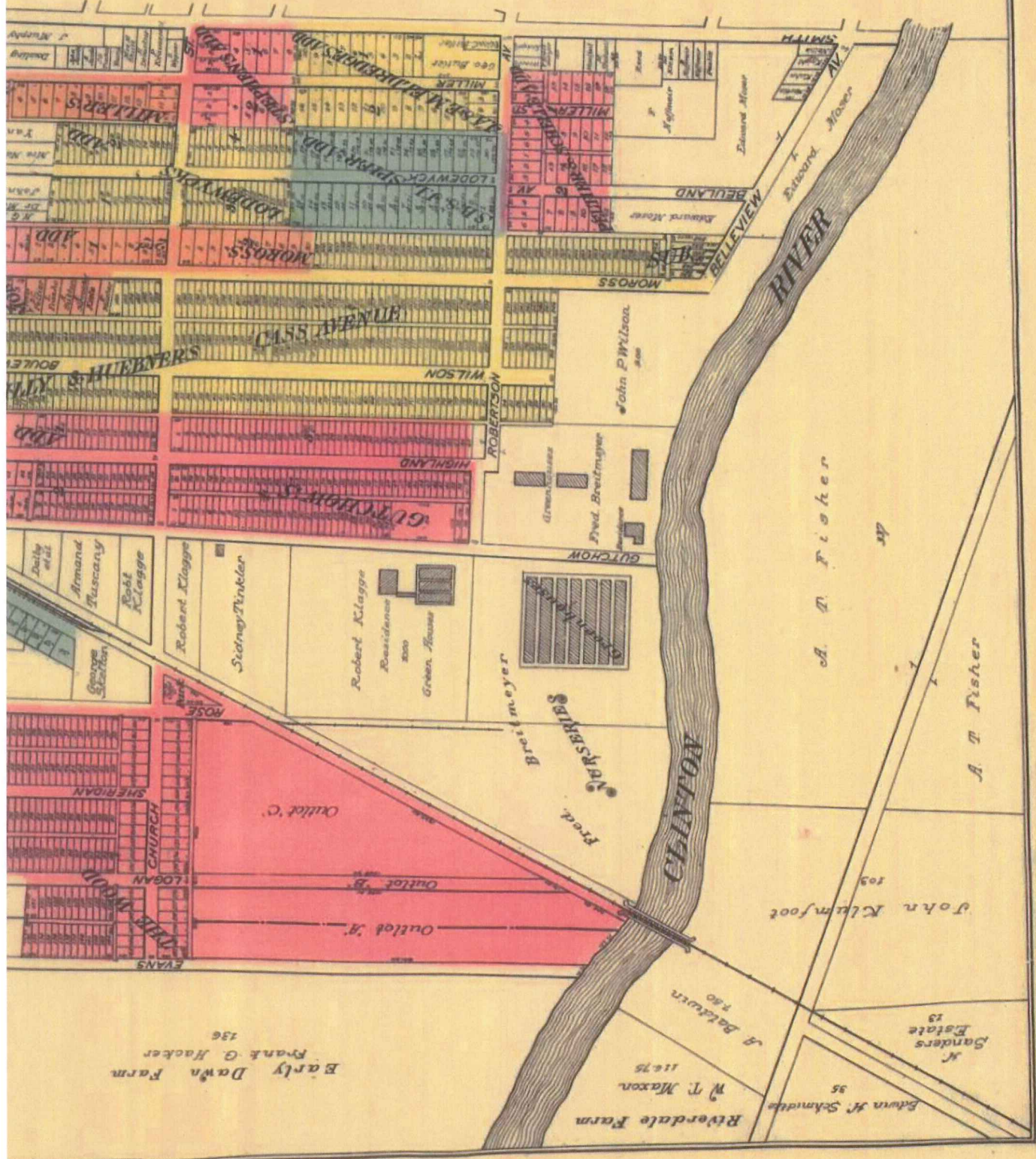
Engineers, Architects & Surveyors



WEST PART OF
M.T. CLEMENS
 COUNTY SEITE & MACOMB CO
 CLINTON TWP
 Scale - 400ft. = One Inch
 Copyright 1906 by Geo. A. Hyde & Co.
 John W. Percott
 A. W. Little

1914 (13)

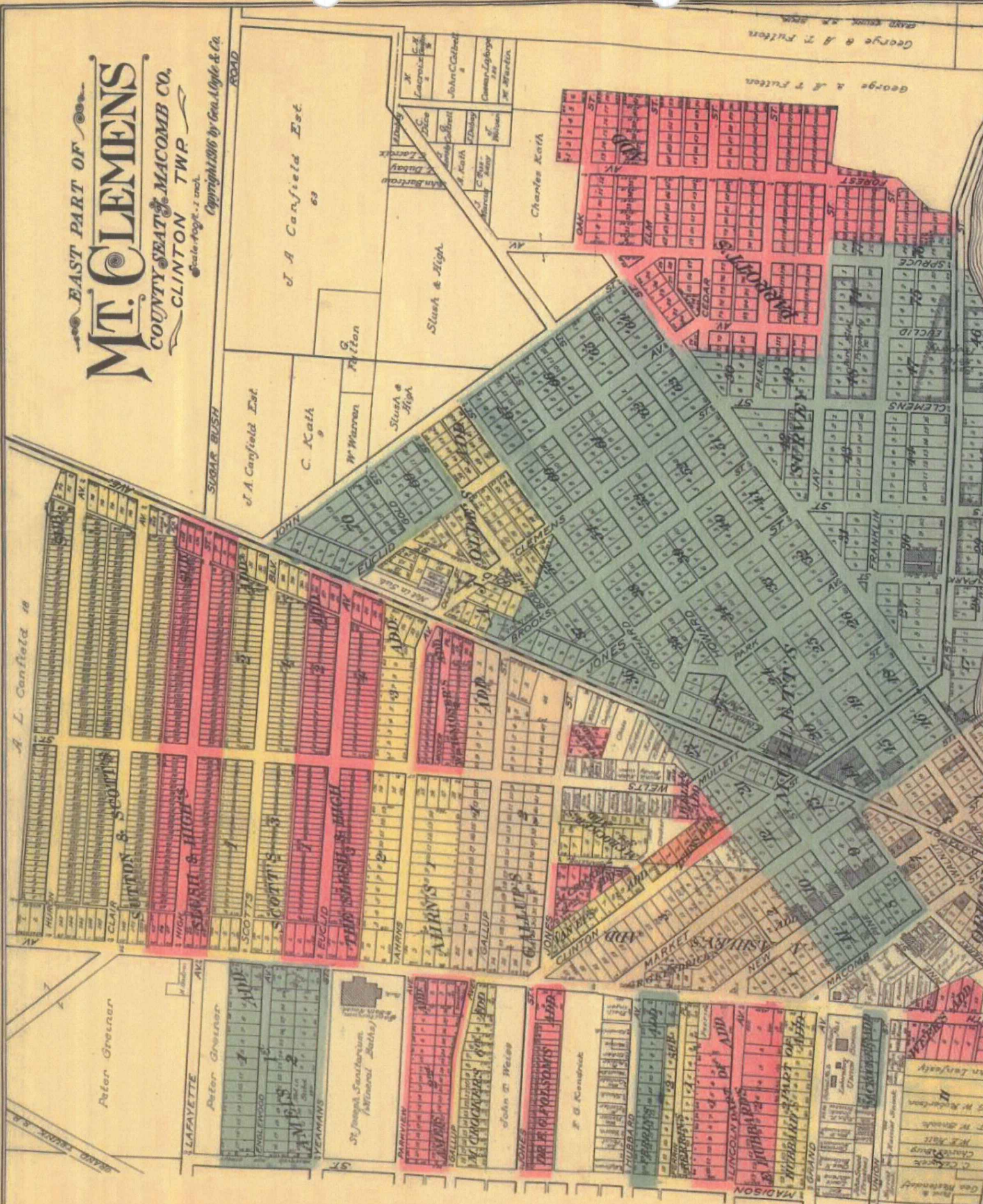
FOR EAST PART OF M1 CT



411
 1916

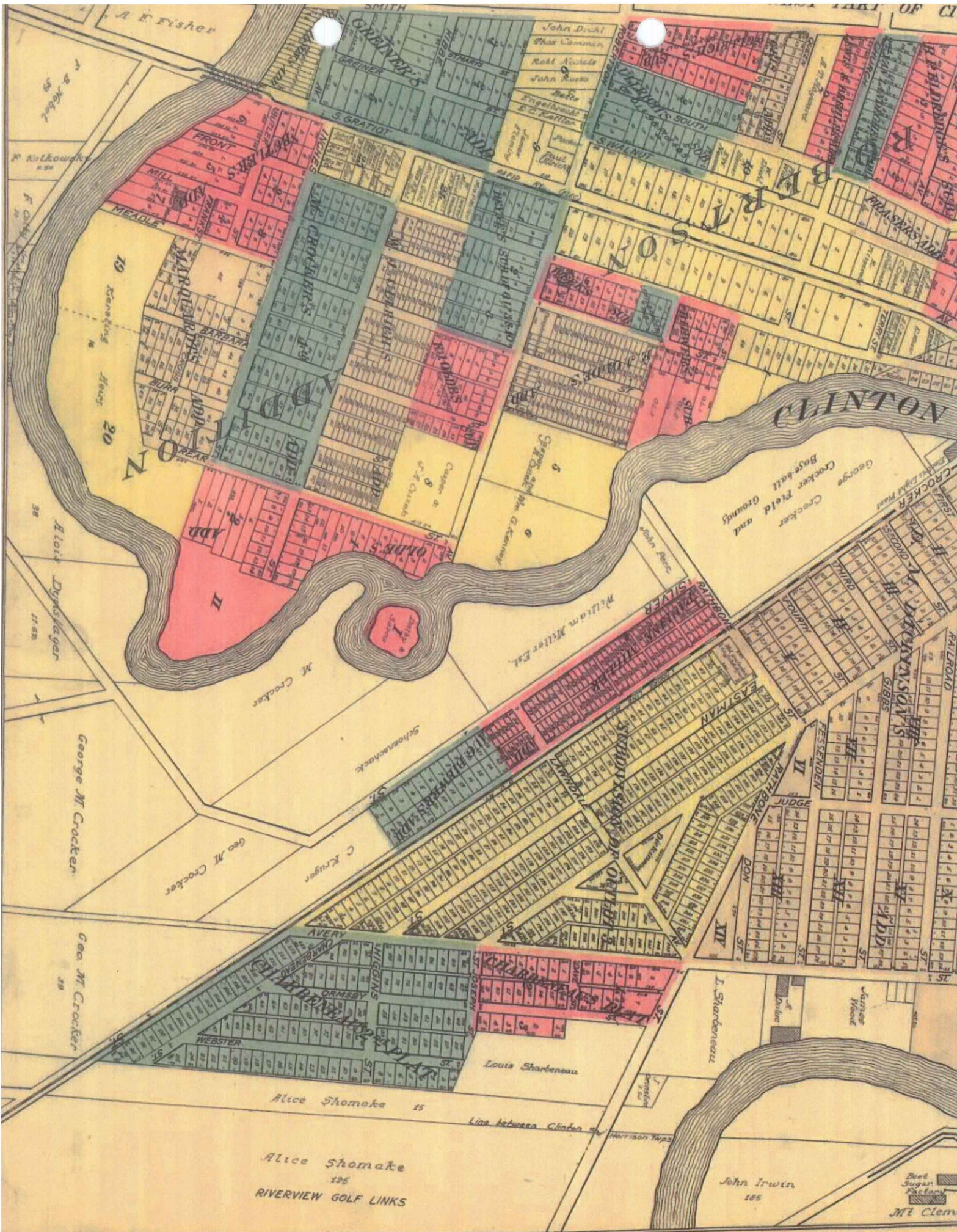
EAST PART OF MT. CLEMENS COUNTY SEAT OF MACOMB CO. CLINTON TWP

Scale 1/8" = 100 ft.
Copyright 1916 by Geo. A. Oyle & Co.



MT. CLEMENS SEE PAGES 10 AND 11

4161 (15)



A. E. Fisher

N. Kulkowski

FRONT

MEADLE

MILL

BARBARA

BURN

REAR

20

ADD

II

George M. Crocker

Geo. M. Crocker

Geo. M. Crocker

Geo. M. Crocker

Geo. M. Crocker

Geo. M. Crocker

Geo. M. Crocker

Geo. M. Crocker

Geo. M. Crocker

Geo. M. Crocker

Geo. M. Crocker

Geo. M. Crocker

Geo. M. Crocker

Alice Shomake 15

Alice Shomake

126

RIVERVIEW GOLF LINKS

Louis Sharteneau

I. Sharteneau

John Irwin

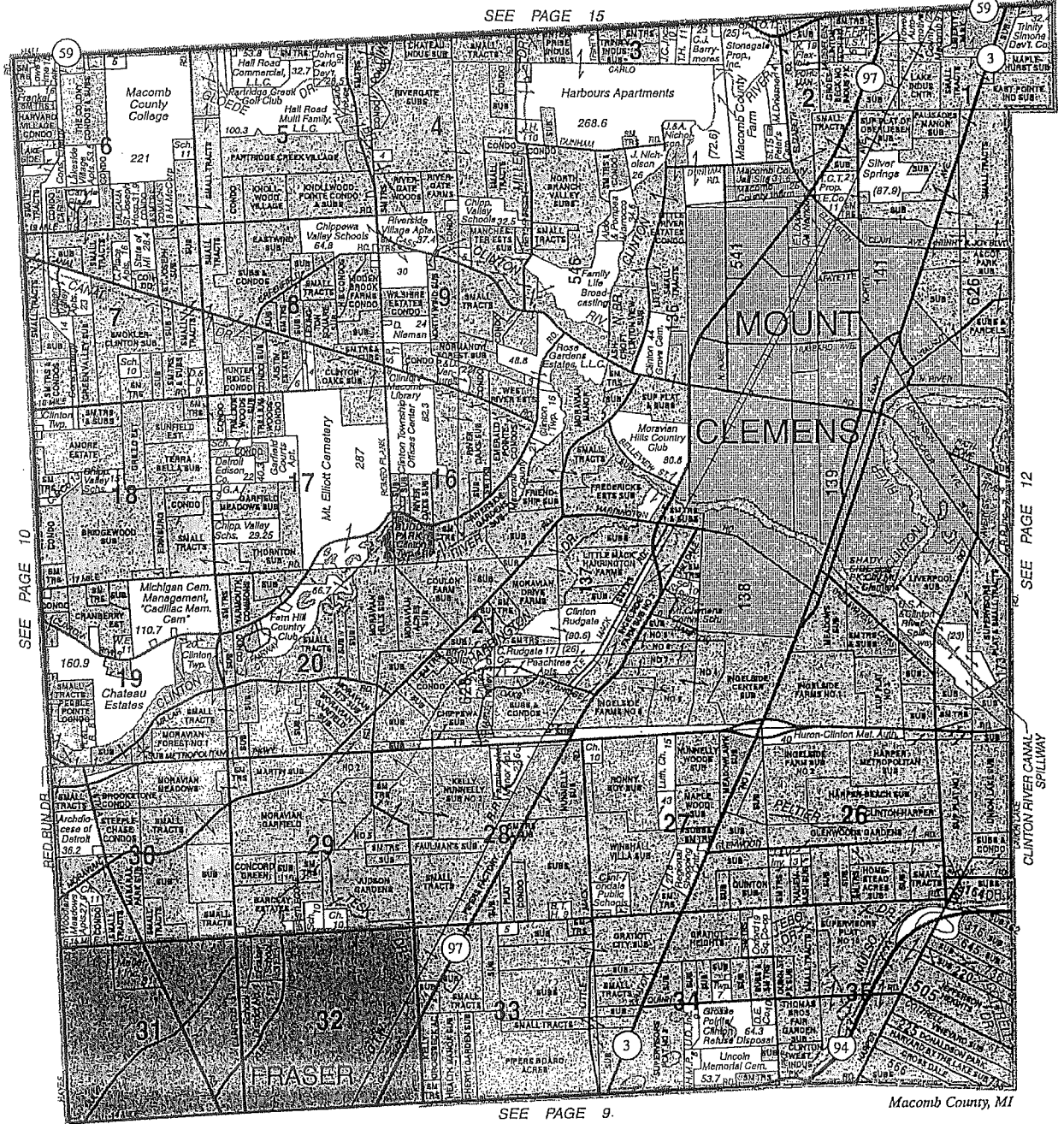
185

Beet Sugar Factory

J. E. Clem

1914 116

SEE PAGE 15



© 2006 Rockford Map Publs., Inc.



BOSS ENGINEERING

engineers • surveyors • planners • landscape architects

3121 EAST GRAND RIVER • HOWELL, MI 48843 • (517) 546-4836

24435 HALSTED • FARMINGTON HILLS, MI 48335 • (248) 626-2677

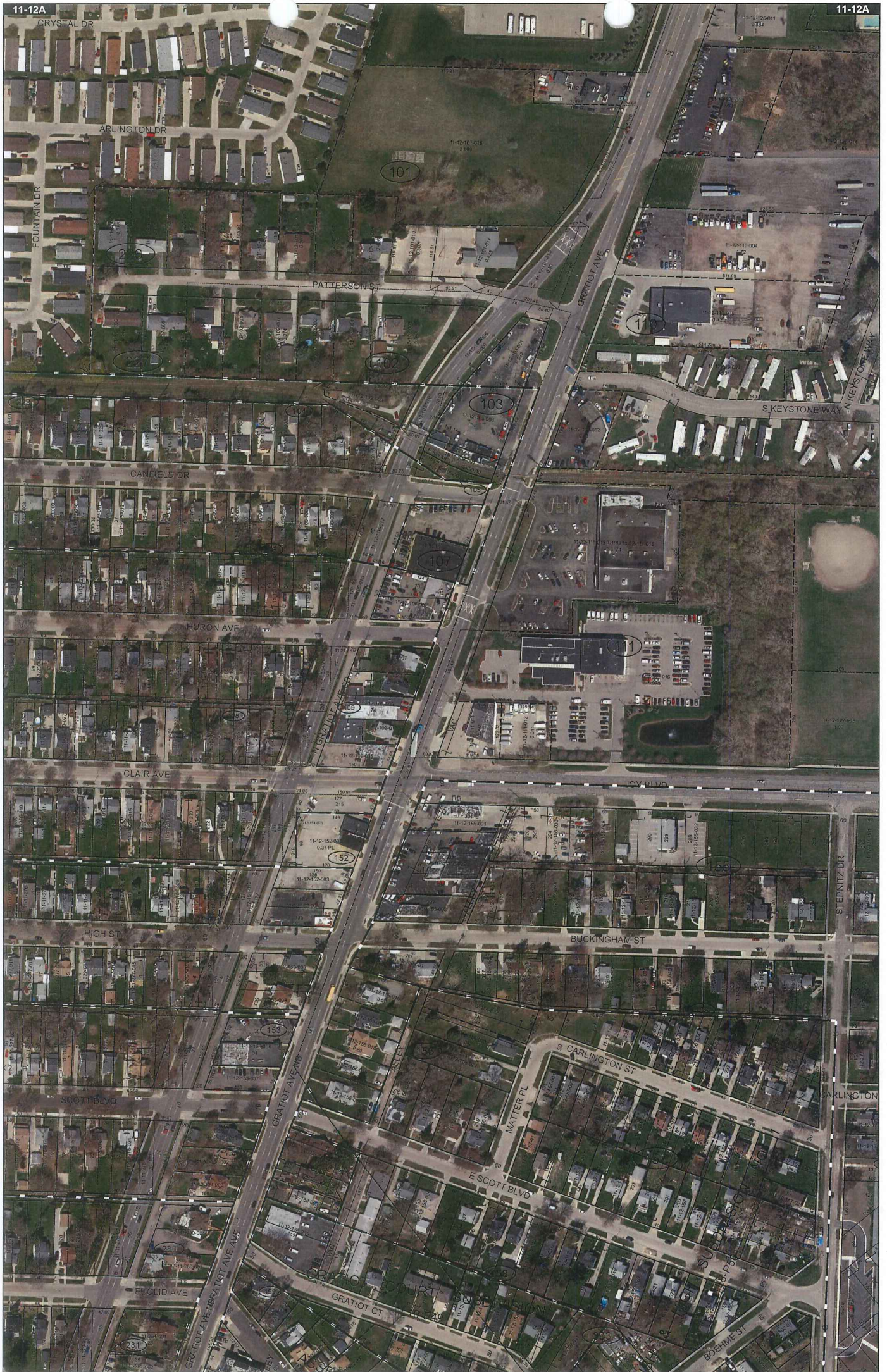
www.bosseng.com



- Residential Subdivisions
- Commercial Developments
- Planned Unit Developments

- Wastewater Treatment Plants
- Septic System Design
- Construction Staking

- Land Divisions
- Boundary and Lot Surveys
- Topographical Surveys
- ALTA Surveys

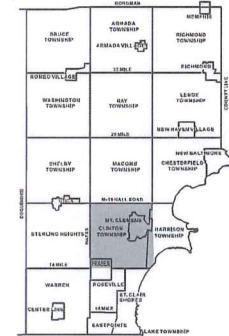


Date of Photography: Spring 2015
 100 50 0 100 200 Feet
 1:1,200

CLINTON TWP SHEET INDEX

DESCRIPTION OF PERMANENT REAL ESTATE INDEX NUMBER
13-19-302-018

11-12A
 MT. CLEMENS & CLINTON TWP.
 W. 1/2 N.W. 1/4 SEC. 12, T. 2N. R. 13E.



AREA NUMBER	SUB AREA NUMBER	ALCO NUMBER	PARCEL NUMBER
13-19-302-018	1	1	1
13-19-302-018	1	1	2
13-19-302-018	1	1	3
13-19-302-018	1	1	4
13-19-302-018	1	1	5
13-19-302-018	1	1	6
13-19-302-018	1	1	7
13-19-302-018	1	1	8
13-19-302-018	1	1	9
13-19-302-018	1	1	10
13-19-302-018	1	1	11
13-19-302-018	1	1	12
13-19-302-018	1	1	13
13-19-302-018	1	1	14
13-19-302-018	1	1	15
13-19-302-018	1	1	16
13-19-302-018	1	1	17
13-19-302-018	1	1	18
13-19-302-018	1	1	19
13-19-302-018	1	1	20
13-19-302-018	1	1	21
13-19-302-018	1	1	22
13-19-302-018	1	1	23
13-19-302-018	1	1	24
13-19-302-018	1	1	25
13-19-302-018	1	1	26
13-19-302-018	1	1	27
13-19-302-018	1	1	28
13-19-302-018	1	1	29
13-19-302-018	1	1	30
13-19-302-018	1	1	31
13-19-302-018	1	1	32
13-19-302-018	1	1	33
13-19-302-018	1	1	34
13-19-302-018	1	1	35
13-19-302-018	1	1	36
13-19-302-018	1	1	37
13-19-302-018	1	1	38
13-19-302-018	1	1	39
13-19-302-018	1	1	40
13-19-302-018	1	1	41
13-19-302-018	1	1	42
13-19-302-018	1	1	43
13-19-302-018	1	1	44
13-19-302-018	1	1	45
13-19-302-018	1	1	46
13-19-302-018	1	1	47
13-19-302-018	1	1	48
13-19-302-018	1	1	49
13-19-302-018	1	1	50
13-19-302-018	1	1	51
13-19-302-018	1	1	52
13-19-302-018	1	1	53
13-19-302-018	1	1	54
13-19-302-018	1	1	55
13-19-302-018	1	1	56
13-19-302-018	1	1	57
13-19-302-018	1	1	58
13-19-302-018	1	1	59
13-19-302-018	1	1	60
13-19-302-018	1	1	61
13-19-302-018	1	1	62
13-19-302-018	1	1	63
13-19-302-018	1	1	64
13-19-302-018	1	1	65
13-19-302-018	1	1	66
13-19-302-018	1	1	67
13-19-302-018	1	1	68
13-19-302-018	1	1	69
13-19-302-018	1	1	70
13-19-302-018	1	1	71
13-19-302-018	1	1	72
13-19-302-018	1	1	73
13-19-302-018	1	1	74
13-19-302-018	1	1	75
13-19-302-018	1	1	76
13-19-302-018	1	1	77
13-19-302-018	1	1	78
13-19-302-018	1	1	79
13-19-302-018	1	1	80
13-19-302-018	1	1	81
13-19-302-018	1	1	82
13-19-302-018	1	1	83
13-19-302-018	1	1	84
13-19-302-018	1	1	85
13-19-302-018	1	1	86
13-19-302-018	1	1	87
13-19-302-018	1	1	88
13-19-302-018	1	1	89
13-19-302-018	1	1	90
13-19-302-018	1	1	91
13-19-302-018	1	1	92
13-19-302-018	1	1	93
13-19-302-018	1	1	94
13-19-302-018	1	1	95
13-19-302-018	1	1	96
13-19-302-018	1	1	97
13-19-302-018	1	1	98
13-19-302-018	1	1	99
13-19-302-018	1	1	100

Legend

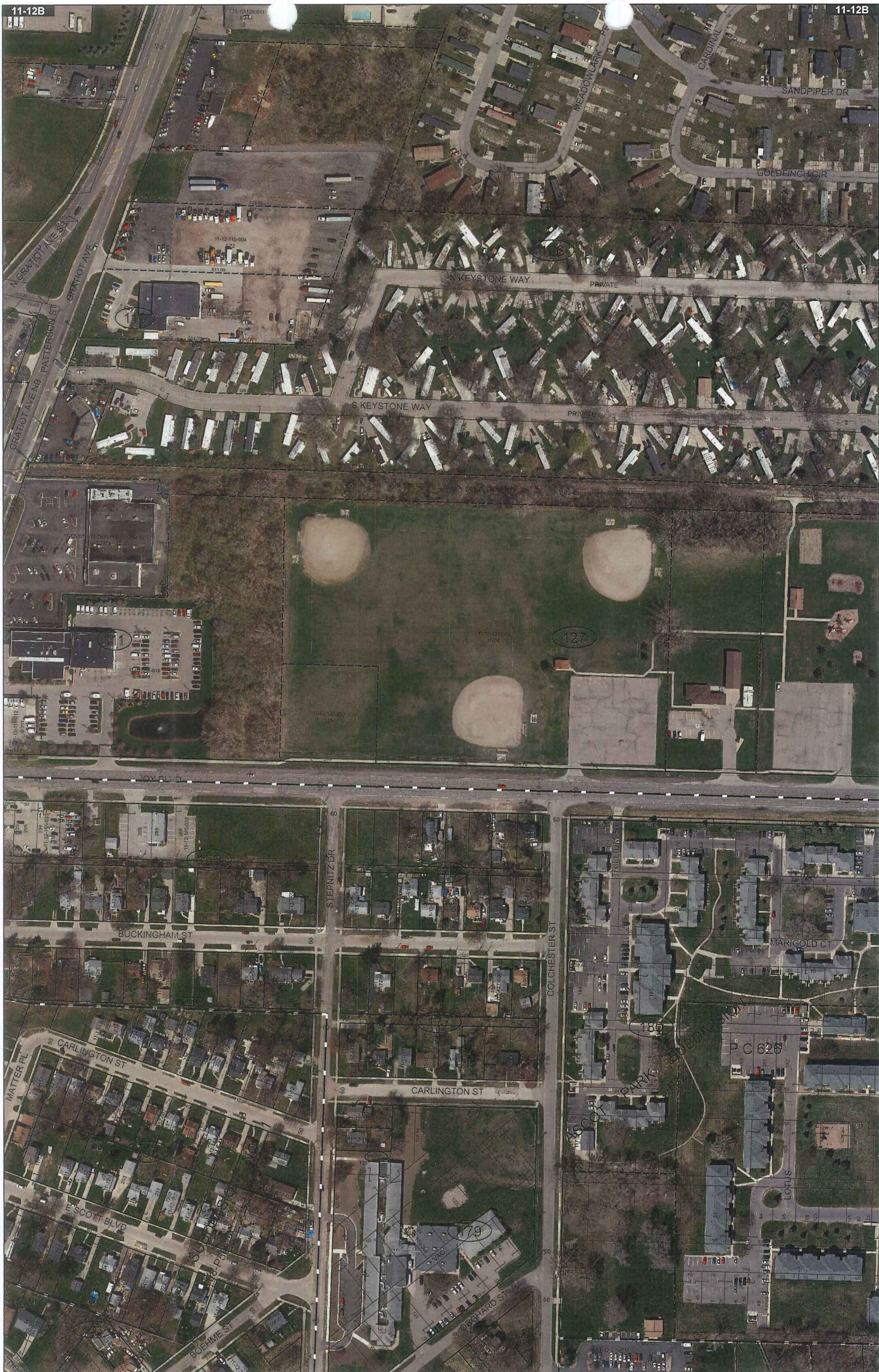
- Platted Area Boundary Line
- Property Line
- Property Split Line
- Property Combined Line
- Township Boundary Line
- Traverse Line
- Dimension Extent Marks
- Dimension Start Marks

Source: Macomb County Department of Planning and Economic Development
 - 2015 Digital Orthophoto Project
 - Parcel Conversion Project

Note:
 Digital Orthophotography horizontal positioning accuracy is 3 feet. Parcel boundary lines should be considered a graphical representation and not in any way a legal survey or engineering document. In general, the horizontal positioning and length accuracy is within 15 feet.

This map is intended for general planning purposes. Site specific evaluation should be verified by field inspection. This is a work in progress and may contain errors and omissions. Please report any potential revisions to (586)465-5285.





Date of Photography: Spring 2015
 100 50 0 100 200 Feet
 1:1,200

CLINTON TWP SHEET INDEX

DESCRIPTION OF PERMANENT REAL ESTATE INDEX NUMBER

13-19-302-018

AREA NUMBER 13-19-302-018	GRID AREA NUMBER 13-19-302-018	BLOCK NUMBER 13-19-302-018	PARCEL NUMBER 13-19-302-018
------------------------------	-----------------------------------	-------------------------------	--------------------------------

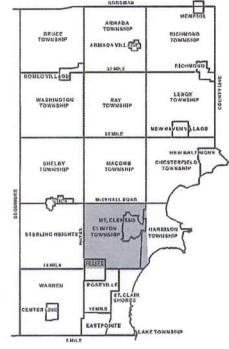
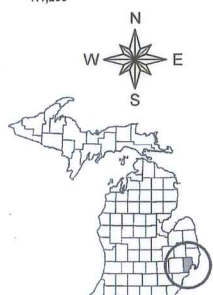
11-12B

HARRISON TWP.
 E. 1/2 N.W. 1/4 SEC. 12 T. 2N. R. 13E.

Source: Macomb County Department of Planning and Economic Development
 - 2015 Digital Orthophotography Project
 - Parcel Conversion Project

Note: Digital Orthophotography horizontal positioning accuracy is 3 feet. Parcel boundary lines should be considered a graphical representation and not in any way a legal survey or engineering document. In general, the horizontal positioning and length accuracy is within 15 feet.

This map is intended for general planning purposes. Site specific evaluation should be verified by field inspection. This is a work in progress and may contain errors and omissions. Please report any potential revisions to (586)462-5265.



13-19-302-018	13-19-302-019	13-19-302-020	13-19-302-021	13-19-302-022	13-19-302-023	13-19-302-024	13-19-302-025	13-19-302-026	13-19-302-027	13-19-302-028	13-19-302-029	13-19-302-030	13-19-302-031	13-19-302-032	13-19-302-033	13-19-302-034	13-19-302-035	13-19-302-036	13-19-302-037	13-19-302-038	13-19-302-039	13-19-302-040	13-19-302-041	13-19-302-042	13-19-302-043	13-19-302-044	13-19-302-045	13-19-302-046	13-19-302-047	13-19-302-048	13-19-302-049	13-19-302-050	13-19-302-051	13-19-302-052	13-19-302-053	13-19-302-054	13-19-302-055	13-19-302-056	13-19-302-057	13-19-302-058	13-19-302-059	13-19-302-060	13-19-302-061	13-19-302-062	13-19-302-063	13-19-302-064	13-19-302-065	13-19-302-066	13-19-302-067	13-19-302-068	13-19-302-069	13-19-302-070	13-19-302-071	13-19-302-072	13-19-302-073	13-19-302-074	13-19-302-075	13-19-302-076	13-19-302-077	13-19-302-078	13-19-302-079	13-19-302-080	13-19-302-081	13-19-302-082	13-19-302-083	13-19-302-084	13-19-302-085	13-19-302-086	13-19-302-087	13-19-302-088	13-19-302-089	13-19-302-090	13-19-302-091	13-19-302-092	13-19-302-093	13-19-302-094	13-19-302-095	13-19-302-096	13-19-302-097	13-19-302-098	13-19-302-099	13-19-302-100
---------------	---------------	---------------	---------------	---------------	---------------	---------------	---------------	---------------	---------------	---------------	---------------	---------------	---------------	---------------	---------------	---------------	---------------	---------------	---------------	---------------	---------------	---------------	---------------	---------------	---------------	---------------	---------------	---------------	---------------	---------------	---------------	---------------	---------------	---------------	---------------	---------------	---------------	---------------	---------------	---------------	---------------	---------------	---------------	---------------	---------------	---------------	---------------	---------------	---------------	---------------	---------------	---------------	---------------	---------------	---------------	---------------	---------------	---------------	---------------	---------------	---------------	---------------	---------------	---------------	---------------	---------------	---------------	---------------	---------------	---------------	---------------	---------------	---------------	---------------	---------------	---------------	---------------	---------------	---------------	---------------	---------------	---------------

Legend

- Platted Area Boundary Line
- Property Line
- Property Split Line
- Property Combined Line
- Township Boundary Line
- Traverse Line
- Dimension Extent Marks
- Dimension Start Marks

COPYRIGHT 2009
 MACOMB COUNTY, MI
 All Rights Reserved



GIS MACOMB COUNTY
 Planning and Economic
 Development Department

Published: Oct 05 2017



No. 492

No. 141 Confirmed to
Christian Clemans

NORTH SIDE OF RIVER HURON

Description No. 141 Confirmed to Christian Clemans commencing at a White Oak tree standing on the border of River Huron, between this tract and a tract confirmed to Henry Connor thence north thirty degrees west twenty four chains seventy links to a white oak tree, thence north one hundred and twenty four chains seventy seven links to a hickory tree thence east forty seven chains forty eight links to a post the northwest corner of a tract confirmed to the claimant thence south one hundred and twenty six chains twenty three links to a post standing on the border of River Huron, thence along the border of said river up stream, south seventy five degrees west seven chains, thence north eighty five degrees west nineteen chains thence south forty degrees west eleven chains thence south twelve degrees west eleven chains fifty links to the place of beginning, containing six hundred and twenty acres and eighty seven hundredths of an acre _____

Detroit July 14, 1810

Aaron Greeley Surveyor
of private claims

No 492

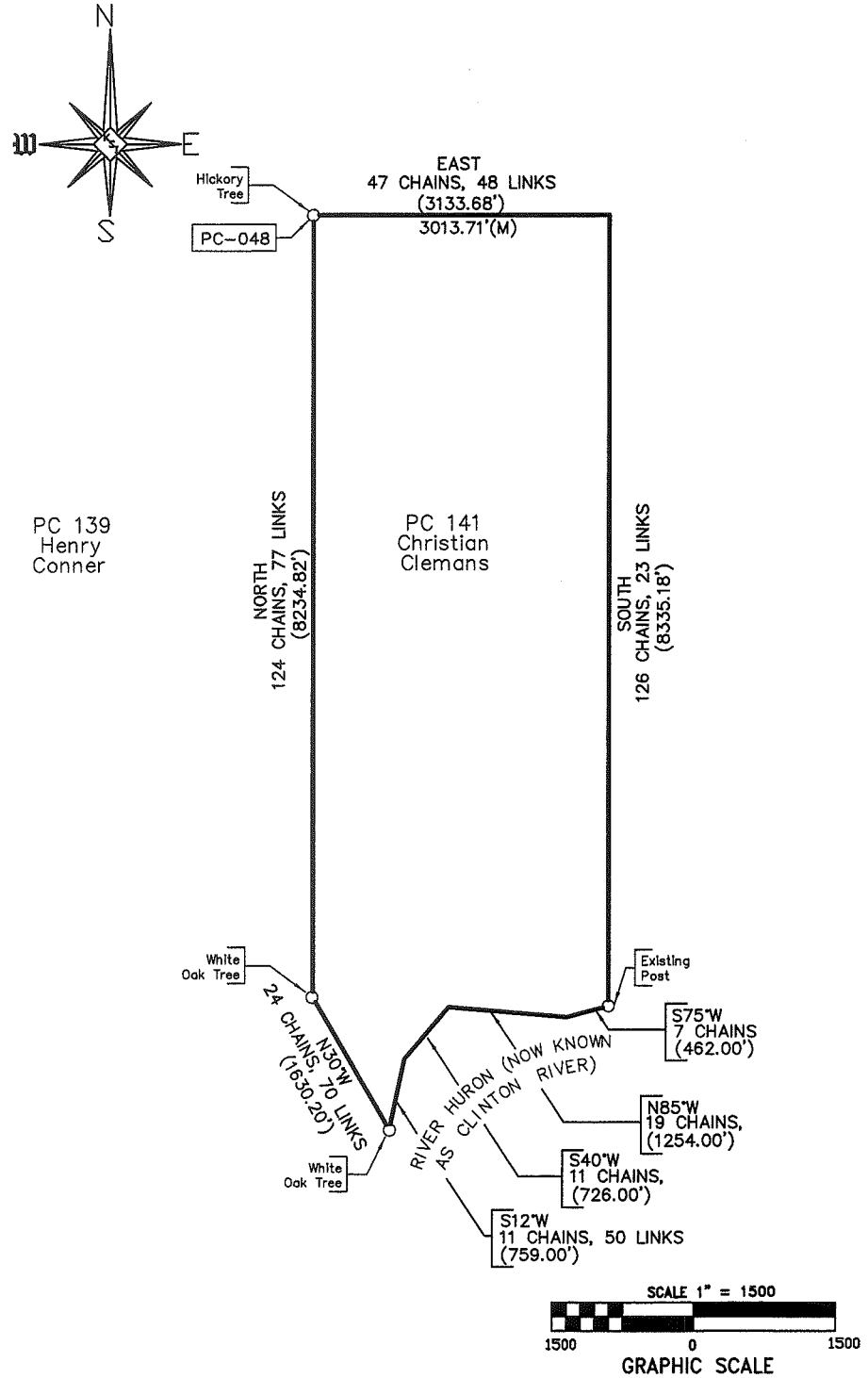
North Side, River Huron

Description No 141 Confirmed to Christian
 Glanans commencing at a White Oak Tree
 Standing on the border of River Huron, between
 this tract and a Tract confirmed to Henry
 Connor thence North thirty degrees west twenty
 four chains seventy links, to a White Oak
 Tree, thence north, one hundred and twenty
 four chains seventy seven links, to a Hickory
 Tree, thence East forty seven chains forty
 eight links, to a post the north west corner
 of a Tract confirmed to the Claimant thence
 South, one hundred and twenty six chains
 twenty three links to a post Standing on
 the border of River Huron, thence along the
 border of said River up Stream South seventy
 five degrees west seven chains, thence north
 eighty five degrees west, fifteen chains
 thence south forty degrees west eleven
 chains, thence South twelve degrees west
 eleven chains fifty links, to the place
 of beginning, containing Six hundred
 and twenty one Eighty seven hundredths
 of an acre

Detroit July 14, 1810

Aaron Gryley Surveyor
 of private Claims

Sketch Of Private Claim 141



P.C. 141 Confirmed to Christian Clemans

Description No. 141 Confirmed to Christian Clemans commencing at a White Oak tree standing on the border of River Huron, between this tract and a tract confirmed to Henry Connor thence north thirty degrees west twenty four chains seventy links to a white oak tree, thence north one hundred and twenty four chains seventy seven links to a hickory tree thence east forty seven chains forty eight links to a post the northwest corner of a tract confirmed to the claimant thence south one hundred and twenty six chains twenty three links to a post standing on the border of River Huron, thence along the border of said river up stream, south seventy five degrees west seven chains, thence north eighty five degrees west nineteen chains thence south forty degrees west eleven chains thence south twelve degrees west eleven chains fifty links to the place of beginning, containing six hundred and twenty acres and eighty seven hundredths of an acre.

Detroit July 14, 1810 Aaron Greeley Surveyor
of private claims

No. 491

No. 626 Confirmed to
Christian Clemans

NORTH SIDE OF RIVER HURON

Description No. 626 Confirmed to Christian Clemans commencing at a post standing on the border of River Huron between this tract and a tract confirmed to the claimant thence north one hundred and twenty six chains twenty three links to a post thence east twenty six chains forty one links to a post the northwest corner of a tract confirmed to John Askin Junior thence south one hundred and fifty two chains fifteen links to a buttonwood tree standing on the border of River Huron thence along the border of said river up stream north eighty eight degrees west seven chains thence north forty one degrees west six chains thence north north three chains thence north twenty four degrees east seventeen chains thence north forty one degrees west seven chains thence south eighty one degrees thirty minutes west eighteen chains to the place of beginning, containing three hundred and fifty one acres and one tenth of an acre —

Detroit July 14th, 1810

Aaron Greeley Surveyor
of private claims

14-7209
14.7

2

N^o 491

North Side of River Huron

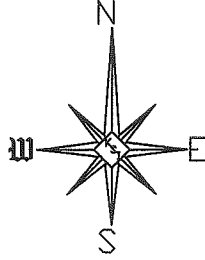
Description N^o 826 Confirmed to Christian
Clemans Commencing at a post Standing
on the border of River Huron between the
tract and a Tract confirmed to the claimant
thence north, one hundred and twenty six
chains twenty three links to a post thence
East ~~thence~~ sixty six chains forty one links to
a post the north west corner of a Tract con-
firmed to John Astin junior thence South
one hundred and fifty two chains fifteen
links to a Buton wood Tree Standing on the
border of River Huron thence along the
border of Said River up Stream north eighty
eight degrees west seven chains, thence north
forty one degrees west six chains, thence ~~north~~
north, three chains thence north twenty four degrees
east seventeen chains thence north forty
one degrees west seven chains, thence South
eighty one degrees thirty minutes west eight
teen chains, to the place of beginning
containing three hundred and fifty one
acres and one tenth of an acre

Detroit July 24th 1810

Aaron Gruley Surveyor
of private Claims

CP-828 *Comptroller*
To Charles E. Harris

SKETCH OF PRIVATE CLAIM 626



P.C. 626 CONFIRMED TO CHRISTIAN CLEMENS

Description No. 626 confirmed to Christian Clemens commencing at a post standing on the border of River Huron between this tract and a tract confirmed to the claimant, thence north one hundred and twenty six chains twenty three links to a post, thence east twenty six chains forty one links to a post the northwest corner of a tract confirmed to John Askin Junior thence south one hundred and fifty two chains fifteen links to a buttonwood tree standing on the border of River Huron thence along the border of said river up stream north eighty eight degrees west seven chains thence north forty one degrees west six chains thence north three chains thence north twenty four degrees east seventeen chains thence north forty one degrees west seven chains thence south eighty one degrees thirty minutes west eighteen chains to the place of beginning, containing three hundred and fifty acres and one tenth of an acre.

Detroit July 14, 1810
 Aaron Greeley Surveyor
 of Private Claims

Private Claim # 141

8331.18'

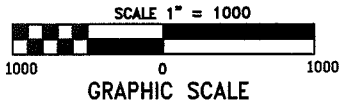
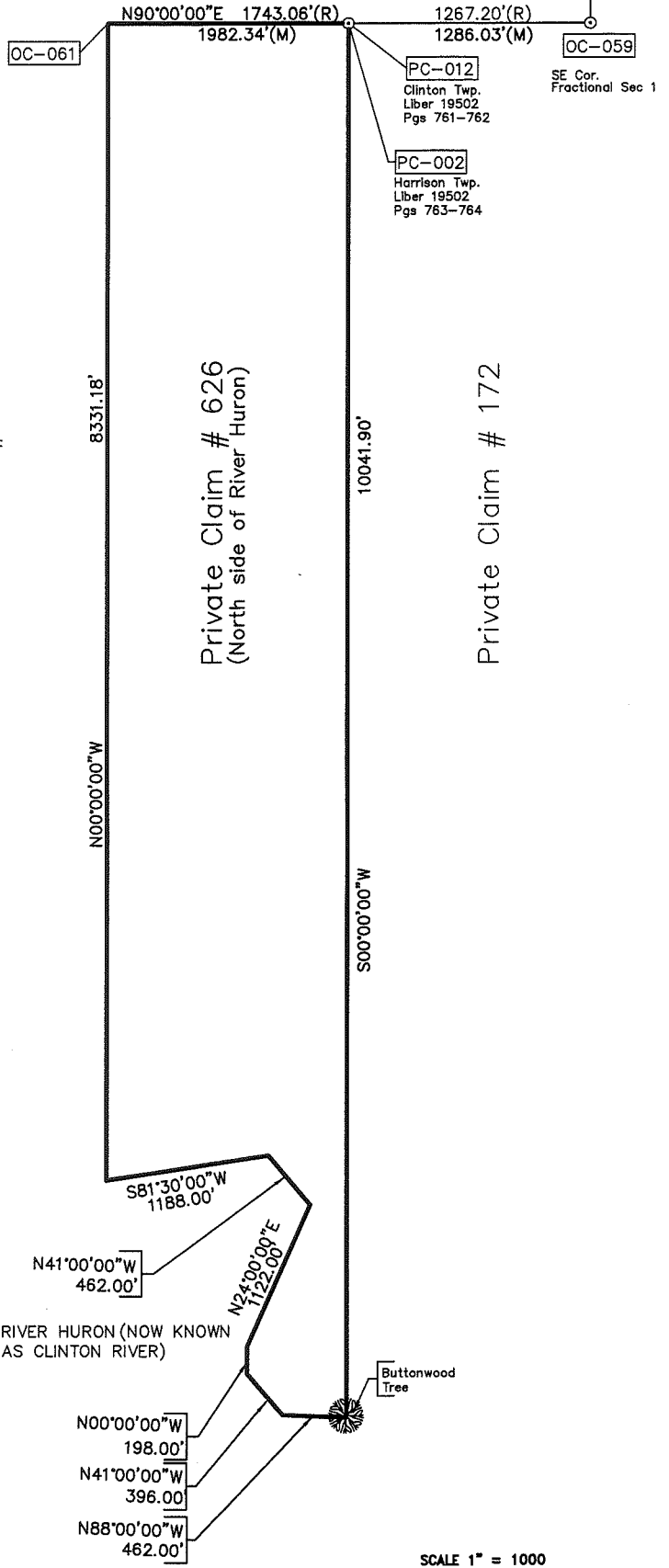
N00°00'00"W

Private Claim # 626
 (North side of River Huron)

10041.90'

S00°00'00"W

Private Claim # 172



See resolution to vacate road between 3, 301-300 & 296 etc. filed 3/11/1918
 See Court Order 3874 P-174

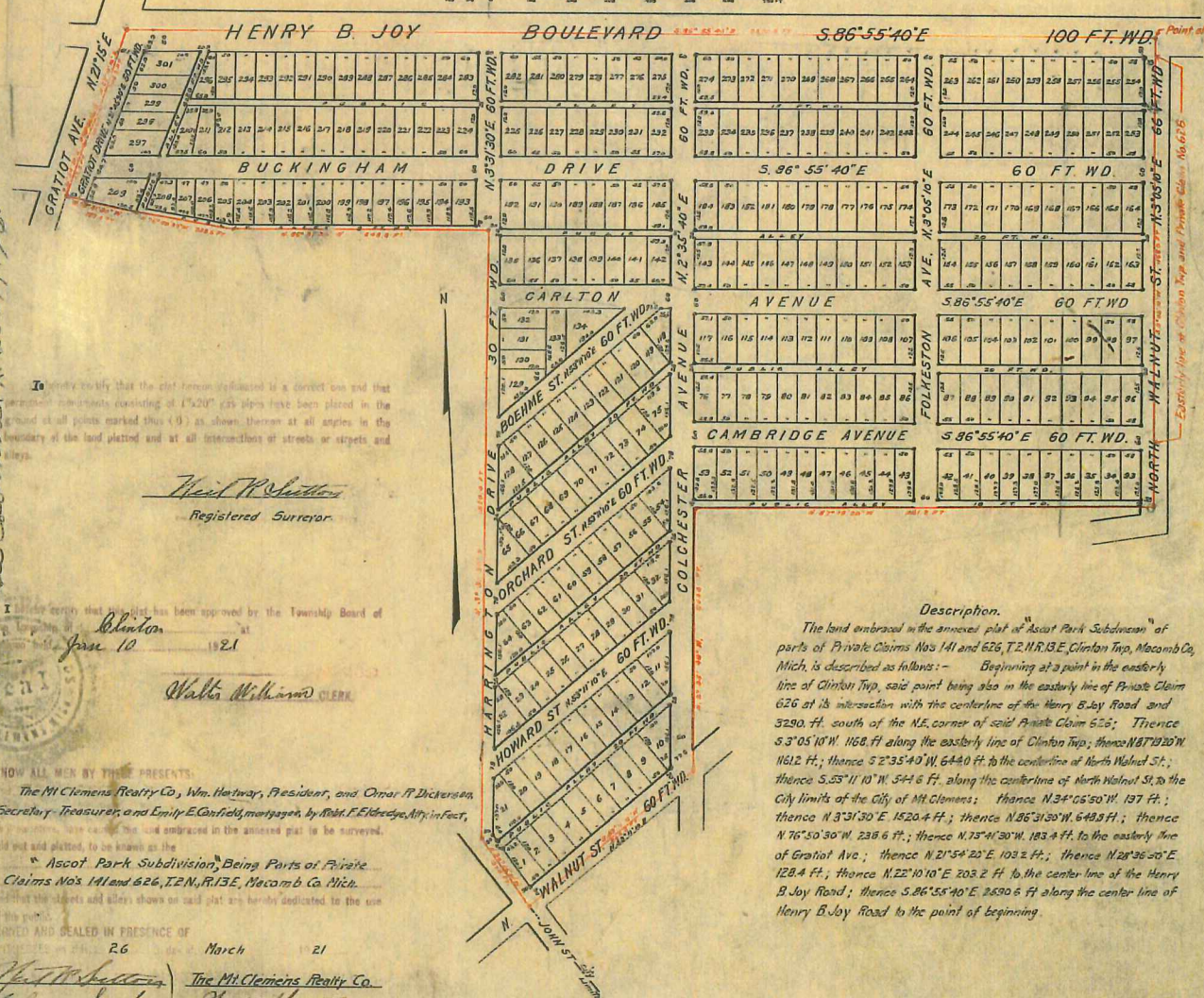
ASCOT PARK SUBDIVISION

Being parts of Private Claims Nos 141 and 626, T.2 N.13 E.

Clinton Twp. Macomb Co.,

MICHIGAN

Examined and Approved
 April 25, 1921
 J. H. ...
 County Auditor



I hereby certify that the plat herein contained is a correct one and that the same has been approved by the Township Board of Clinton Twp. at a public hearing held on the 12th day of March 1921.

Walter H. ...
 Registered Surveyor

Clinton Twp. at
 March 12, 1921

Walter Williams CLERK

Description.
 The land embraced in the annexed plat of Ascot Park Subdivision of parts of Private Claims Nos 141 and 626, T.2 N.13 E., Clinton Twp., Macomb Co., Mich. is described as follows:— Beginning at a point in the easterly line of Clinton Twp., said point being also in the easterly line of Private Claim 626 at its intersection with the centerline of the Henry B. Joy Road and 3290 ft. south of the N.E. corner of said Private Claim 626; Thence S. 3° 05' 10" W. 1168 ft. along the easterly line of Clinton Twp.; thence N. 87° 19' 20" W. 1612 ft.; thence S. 2° 35' 40" W. 6440 ft. to the centerline of North Walnut St.; thence S. 55° 11' 10" W. 544.6 ft. along the centerline of North Walnut St. to the City limits of the City of Mt. Clemens; thence N. 34° 05' 50" W. 197 ft.; thence N. 3° 31' 30" E. 1520.4 ft.; thence N. 85° 31' 30" W. 649.5 ft.; thence N. 76° 50' 30" W. 236.6 ft.; thence N. 75° 41' 30" W. 183.4 ft. to the easterly line of Gratiot Ave.; thence N. 21° 54' 22" E. 103.2 ft.; thence N. 28° 36' 50" E. 128.4 ft.; thence N. 22° 10' 10" E. 203.2 ft. to the center line of the Henry B. Joy Road; thence S. 86° 55' 40" E. 2890.6 ft. along the center line of Henry B. Joy Road to the point of beginning.

KNOW ALL MEN BY THESE PRESENTS:
 The Mt. Clemens Realty Co., Wm. Hartway, President, and Omar P. Dickerson, Secretary-Treasurer, and Emily E. Canfield, mortgagee, by *Robt. F. Eldredge*, Attorney-in-fact, do hereby certify that the land embraced in the annexed plat is to be surveyed, laid out and platted, to be known as the

Ascot Park Subdivision, Being Parts of Private Claims Nos 141 and 626, T.2 N.13 E., Macomb Co., Mich.

and that the streets and alleys shown on said plat are hereby dedicated to the use of the public.

WITNESSED AND SEALED IN PRESENCE OF
 March 21, 1921
Wm. Hartway PRES. L.S.
Emily E. Canfield MORTGAGEE L.S.
 by *Robt. F. Eldredge* Attorney-in-fact

REGISTRAR'S OFFICE
 COUNTY OF MACOMB
 Received for
 3-30-21
 in Law 5-
 March 31, 1921

Mar. 31, 1921 *James B. ...*

Part enclosed Plat...
 See Resolution for change of name...
 See Court Order 3874 P-174

STATE OF MICHIGAN)
 COUNTY OF MACOMB) S.S.
 On this 26th day of March 1921, before me a Notary Public in and for said County, personally appeared *Wm. Hartway* and *Omar P. Dickerson*, who being each by me duly sworn did say that they are the President and Secretary-Treasurer respectively of the *Mt. Clemens Realty Co.* a Michigan Corporation and that they had caused to be executed and acknowledged the foregoing instrument to be the true and correct act and deed of said Corporation and the said instrument was signed and sealed by said *Wm. Hartway* and *Omar P. Dickerson* in their capacity as President and Secretary-Treasurer of said Corporation, and that they are duly qualified Notary Public in and for said County, Michigan.

STATE OF MICHIGAN)
 COUNTY OF MACOMB) S.S.
 ON THIS 14th DAY OF April 1921 BEFORE ME A NOTARY PUBLIC IN AND FORESAID COUNTY, PERSONALLY APPEARED ROBERT F. ELDRIDGE TO ME PERSONALLY KNOWN, WHO BEING BY ME DILY SWORN DID SAY THAT HE WAS ATTORNEY IN FACT FOR EMILY E. CANFIELD MORTGAGEE AND ACKNOWLEDGED SIGNATURE OF SAID INSTRUMENT TO BE THE FREE ACT AND DEED OF SAID EMILY E. CANFIELD, ACTING THROUGH HIM HER ATTORNEY IN FACT.

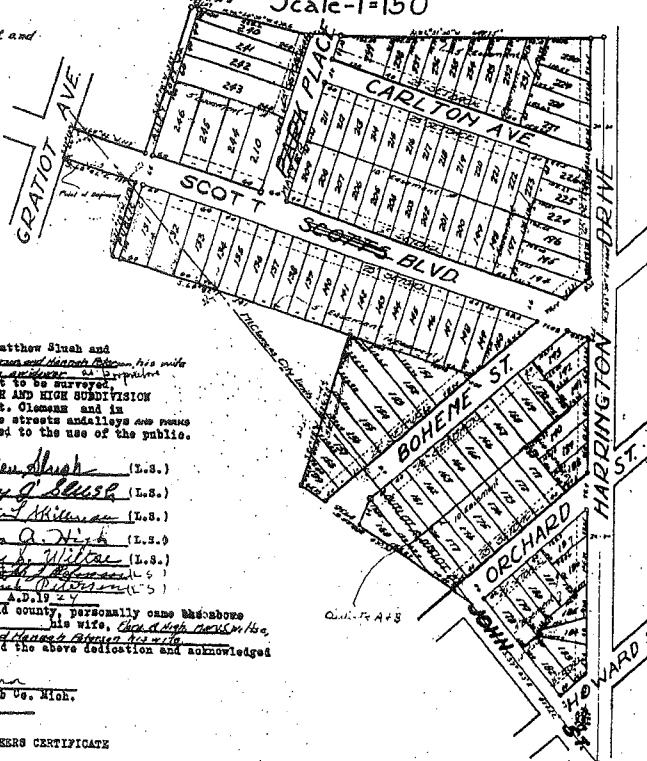
Frank G. ...
 NOTARY PUBLIC IN AND FOR
 MACOMB COUNTY, MICHIGAN

MY COMMISSION EXPIRES March 29, 1925

Slush and High Subd'n. No. 1

of Part of P.C. 141 in the city of Mt. Clemens and in Clinton Twp
Macomb Co., Mich.
Scale-1"=150'

Note: All dimensions hereon are in feet and
decimals thereof.



DEDICATION
KNOW ALL MEN BY THESE PRESENTS: That we Matthew Slush and
Mary J. Slush his wife, ~~Christophers J. Robinson and his wife~~
~~and their children~~ ~~and their children~~ ~~and their children~~
have caused the land embraced in the plat to be surveyed,
laid out and platted, to be known as "SLUSH AND HIGH SUBDIVISION
NO. 1" of part of P.C. 141 in the City of Mt. Clemens and in
Clinton Twp. Macomb Co., Mich. and that the streets and alleys are shown
as shown on said plat are hereby dedicated to the use of the public.

Signed and Sealed in Presence of
Matthew Slush (L.S.)
Mary J. Slush (L.S.)
Marion J. Miller (L.S.)
Oliver A. High (L.S.)
Witness by Walter J. Schuckert (L.S.)
John J. Schuckert (L.S.)

STATE OF MICHIGAN)
COUNTY OF MACOMB) SS.
On this 15 day of Sept
before me, a Notary Public in and for said county, personally came the above
named Matthew Slush and Mary J. Slush his wife, Christophers J. Robinson
and their children ~~and their children~~ ~~and their children~~
known to me to be the persons who executed the above dedication and acknowledged
the same to be their free act and deed.

My commission expires Sept 15 1927
Notary Public Macomb Co., Mich.

ENGINEER'S CERTIFICATE
I hereby certify that the plat hereon delineated is a correct one and that permanent monuments consisting of
22 iron gaspikes 18" long have been placed at all points marked there (o) as thereon shown at all angles in the
boundaries of the land platted and at all interangulations of streets or streets and alleys.

CERTIFICATE OF TOWNSHIP BOARD.
This plat was approved by the township board of the township of Clinton at a Special meeting held on the 5 day of November A.D. 1924
Walter J. Schuckert
Township Clerk.

CERTIFICATE OF MUNICIPAL BOARD
This plat was approved by the City Commission of the City of Mt. Clemens, Mich. at a Regular meeting held November 25 1924
Ed. D. ...
City Clerk.

DESCRIPTION
The land embraced in the annexed plat of SLUSH & HIGH SUBDIVISION NO. 1 of part of P.C. 141 in the City of Mt. Clemens and in Clinton Twp., Macomb Co., Mich.
is described as follows:
Beginning at a point on the E'ly line of Gratiot Ave. which is N 21 deg. 18' E a distance of 370.5 feet from the intersection of the N'ly line of Emerald Ave.
and the E'ly line of Gratiot Ave. in the City of Mt. Clemens, Macomb Co., Mich. Thence S 88 deg. 42' E a distance of 841 feet, Thence S 21 deg. 18' W a distance
of 159 feet, Thence S 55 deg. 42' E a distance of 236.75 feet, Thence S 55 deg. 42' E a distance of 450.35 feet, Thence N 76 deg. 30' 30" W a distance of 228.6 feet,
Thence N 75 deg. 41' 30" W a distance of 1590.4 feet, Thence N 84 deg. 21' 30" W a distance of 649.25 feet, Thence N 49 deg. 42' W a distance of 189 feet,
Thence S 21 deg. 18' W a distance of 65 feet to the point of beginning.

Recorded at Public 11 1924
Notary

This plat was approved by the County Board for Macomb
County, Mich. at a meeting held Dec 15 1924
Charles H. ...
County Clerk

Macomb
Slush & High Subd No 1
Dec 15-1924
Sec 18-1924
John J. Schuckert
Notary

ORDER OF VACATION
Plat of Slush & High Subd No 1
vacated by order of Circuit Court
Jan 11-1926
Docket 46-1924
(See Circuit Court Book for full text)

PALISADES MANOR SUBDIVISION

A PART OF THE N.W. 1/4 OF SEC. 1 & PART OF P.C. 141 & 626 T2N. R13E
CLINTON TWP.

MACOMB CO.

SCALE 1" = 200 FT.

April 24 1930 MICH.
John S. Fuller

KNOW ALL MEN by these presents that I, BELLE PHEL, as proprietor, and we, CHRISTIAN SCULZ and ELIZA SCULZ, his wife, WILL C. HARTWAY, and GRACE I. HARTWAY, his wife, CHARLES SCHROEDER, ANGELINE F. MCKEE, JOHN L. FOX, and KELLIE G. FOX, his wife, ROBERT DOPF and BERTHA DOPF, his wife, as vendees under land contract, have caused the land embraced in the

annexed plat to be surveyed, laid out and plotted to be known as PALISADES MANOR SUBDIVISION, A PART OF THE NORTHWEST QUARTER OF SEC. 1, & PART OF P.C. 141 & 626, TOWN TWO NORTH, RANGE THIRTEEN (13) EAST, CLINTON TOWNSHIP, MACOMB COUNTY, MICHIGAN,

and that the streets and alleys as shown on said plat are hereby dedicated to the use of the public.

Signed and sealed in Presence of

Robert A. Hodge (L.S.)
John S. Fuller (L.S.)
Grace I. Hartway (L.S.)
Charles Schroeder (L.S.)
Will C. Hartway (L.S.)
John R. Fox (L.S.)
John S. Fuller (L.S.)
Belle P. Fel (L.S.)

STATE OF MICHIGAN) ss
County of Macomb)

On this 24th day of January 1930 before me, a Notary Public in and for said county, personally came the above named Belle P. Fel, Christian Schulz & Eliza Schulte Harms, Will C. Hartway & Grace I. Hartway, Charles Schroeder, Angelina F. McKee, John L. Fox & Kellie G. Fox, Robert Dopf & Bertha Dopf appointed to me to be the persons who executed the above mentioned and acknowledged the same to be their free act and deed.

Robert A. Hodge
Notary Public Macomb Co., Mich
My Commission expires Nov. 12 1930

DESCRIPTION

The land embraced in the annexed plat of PALISADES MANOR SUBDIVISION, a part of the N.W. 1/4 of Sec. 1 and part of P.C. 141 & 626 T2N. R. 13 E., Clinton Twp., Macomb Co., Mich., is described as follows:

Beginning at the N.W. corner-post of Sec. 1, T2N. R13 E. Clinton Twp., Macomb Co., Mich., which is West a distance of 1566.0 ft. from the point of beginning, Thence East a distance of 324.0 ft. Thence S. 00 deg. 05' W. a distance of 1331.68 ft. Thence N. 87 deg. 21' W. a distance of 132.4 ft. Thence S. 00 deg. 02' W. a distance of 1620.74 ft. Thence S. 85 deg. 45' E. a distance of 1057.65 ft. Thence S. 22 deg. 44' E. a distance of 453.45 ft. Thence N. 85 deg. 28' W. a distance of 274.05 ft. Thence S. 22 deg. 44' E. a distance of 147.41 ft. Thence N. 85 deg. 28' W. a distance of 1246.60 ft. Thence N. 05 deg. 44' E. a distance of 561.30 ft. Thence N. 85 deg. 29' W. a distance of 365.75 ft. Thence N. 00 deg. 24' E. a distance of 1433.85 ft. Thence N. 29 deg. 10' E. a distance of 1647.77 ft. to the point of beginning, excepting a parcel of land described as commencing at the NW cor of P.C. 22 Thence S 00 deg. 15 W. a dist of 5 ft. Thence S 85 deg. 45 E a dist of 413.28 ft. to the point of beginning. Thence S 85 deg. 45 E a dist of 320.80 ft. Thence S 22 deg. 44 W a dist of 344.80 ft. Thence N 85 deg. 28 W a dist of 320.73 ft. Thence N 22 deg. 44 E a dist of 347.30 ft. to the point of beginning.

I hereby certify that the plat hereon delineated is a correct one and that permanent metal monuments of not less than one inch in diameter and fifteen inches in length set in concrete bases at least four inches in diameter and four feet in length in depth have been placed at points marked thus (o), as hereon shown at all angles in the boundaries of the land plotted, at all the intersections of streets, intersections of a street and alleys, or of streets and alleys, and at the intersections of streets and alleys with the boundaries of the plat as shown on said plat.

John S. Fuller
REGISTERED SURVEYOR

CERTIFICATE OF TOWNSHIP APPROVAL

This plat was approved by the Township Board of the Township of Clinton at a meeting held Jan 15 1930

John C. Madson
TOWNSHIP CLERK

REGISTER'S OFFICE
County of Macomb

Received for Record this 28th day of April A.D. 1930 at 9:30 o'clock A.M. and Recorded in Liber 111 of Plats on Page 35

August C. Whitney Register

COUNTY TREASURER'S CERTIFICATE

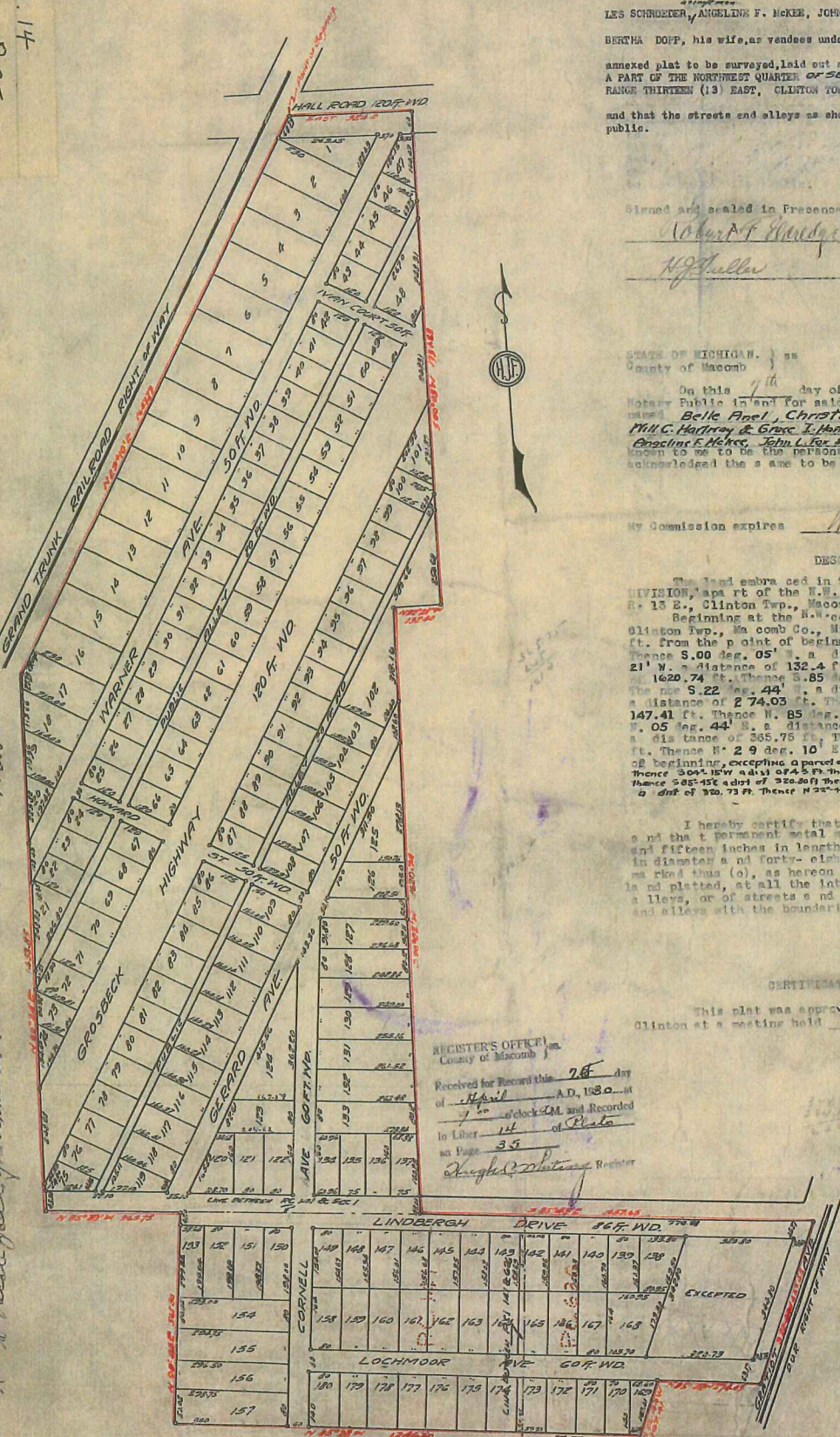
This is to Certify, That there are no Tax Liens or Taxes held by the State or any individual applicant, and that all Taxes or liens described in the annexed instrument have been paid FIVE YEARS prior to the date thereof, according to the records of this Office.

John S. Fuller
County Treasurer, Macomb County, Mich

This plat was approved by the County Board for Macomb County, Michigan, at a meeting held Jan 10 1930

Charles H. Beckman Chairman of Probate,
John S. Hartway County Clerk,
John S. Fuller County Treasurer.

L. 14
P. 35
681
See resolution for change of street name. The City of Clinton has changed the name of the street from P. 35 to P. 89.



Plat recorded Jan 15 1930 p. 35

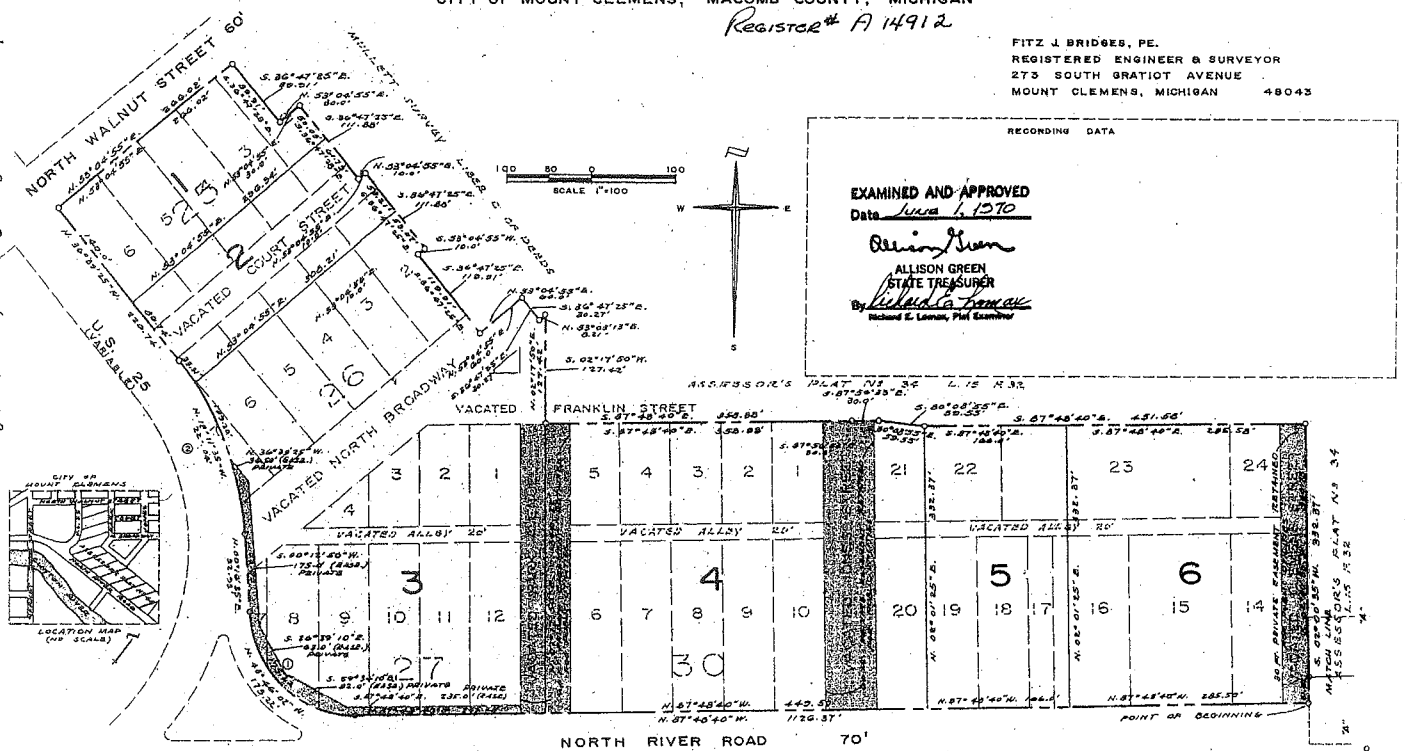
ASSESSOR'S PLAT N° 44

PART OF P.C. 626 T.2N., R.13E.
 A REPLAT OF PART OF MULLETT SURVEY AND ASSESSOR'S PLAT N° 34
 CITY OF MOUNT CLEMENS, MACOMB COUNTY, MICHIGAN

Register # A 14912

FITZ J. BRIDGES, PE.
 REGISTERED ENGINEER & SURVEYOR
 273 SOUTH GRATIOT AVENUE
 MOUNT CLEMENS, MICHIGAN 48043

See Reservation to Reestablish Park Avenue - Liber 2474 Page 772.



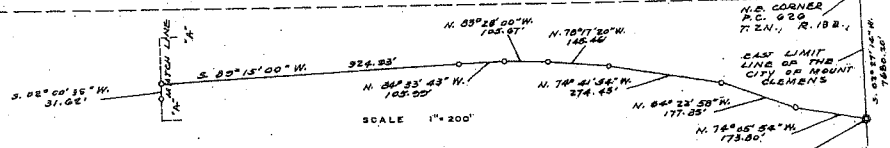
RECORDING DATA

EXAMINED AND APPROVED
 Date June 6, 1970

Allison Green
 ALLISON GREEN
 STATE TREASURER

Richard E. Lennay
 Richard E. Lennay, Plat Examiner

NO.	RADIUS	ARC	ANGLE	BEARING	CHORD	CHORD BEARING
1	120.00'	134.72'	175.22'	N. 87° 48' 40" W.	88.05'	88° 05' 13"
2	348.92'	788.32'	131.00'	N. 0° 16' 35" E.	36.56'	36° 56' 00"



SURVEYOR'S CERTIFICATE

I, Fitz J. Bridges, P.E., Registered Land Surveyor No. 5779, certify that I have surveyed, divided and mapped the land shown on this plat, described as follows: The land embraced in the annexed plat of Assessor's Plat No. 44, a replat of part of Mullett Survey and Assessor's Plat No. 34 of the City of Mount Clemens, Macomb County, Michigan. Commencing at the N.E. corner of P.C. 626 T. 2N., R. 13E., thence Southerly 7680.20 ft. along the Easterly line of P.C. 626 to a concrete monument at intersection of the North line of North River Road and the East limit line of the City of Mount Clemens; thence along the North line of North River Road as widened in 1963, N. 74° 05' 54" W. 173.80 ft.; thence N. 64° 22' 58" W. 177.35 ft.; thence N. 74° 41' 54" W. 274.45 ft.; thence N. 78° 17' 20" W. 145.46 ft.; thence N. 83° 28' 00" W. 105.67 ft.; thence N. 84° 33' 43" W. 105.99 ft.; thence S. 89° 15' 00" W. 924.93 ft.; thence S. 02° 01' 20" W. 31.52 ft. to the point of beginning said point being on the North line of North River Road, as established in Reported Assessor's Plat No. 34, Liber 10, Page 32, Macomb County Records; thence N. 87° 48' 40" W., 1126.37 ft.; thence along a curve to the right, radius 126.02 ft., central angle 88° 05' 15" whose long chord bears N. 43° 46' 02" W., 175.22 ft.; thence N. 0° 16' 35" E., 92.93 ft., thence along a curve to the left radius 348.92 ft., central angle 36° 56' 00" whose long chord bears N. 18° 11' 26" W., 221.04 ft.; thence N. 36° 39' 25" W., 226.74 ft.; thence N. 53° 04' 55" E., 266.02 ft.; thence S. 36° 47' 25" E., 89.91 ft.; thence N. 53° 04' 55" E., 30.0 ft.; thence S. 36° 47' 25" E., 111.88 ft.; thence N. 53° 04' 55" E., 10.0 ft.; thence S. 36° 47' 25" E., 111.88 ft.; thence S. 53° 04' 55" W., 10.0 ft.; thence S. 36° 47' 25" E., 119.91 ft.; thence N. 53° 04' 55" E., 60.0 ft.; thence S. 36° 47' 25" E., 30.27 ft.; thence N. 53° 03' 13" E., 8.21 ft.; thence S. 02° 17' 50" W., 127.42 ft.; thence S. 87° 48' 40" E., 358.88 ft.; thence S. 87° 56' 33" E., 30.0 ft.; thence S. 80° 08' 55" E., 59.55 ft.; thence S. 87° 48' 40" E., 451.58 ft.; thence S. 02° 00' 35" W., 300.75 ft. to the point of beginning and containing Lots 1 through 6 inclusive.

That I have made such survey, land-division and plat by the direction of the Assessor of the City of Mount Clemens on March 1, 1968
 That such plat is a correct representation of all the exterior boundaries of the land surveyed and the subdivision of it.
 That the required monuments and lot markers have been located in the ground.
 That the accuracy of survey is within the limits required by Section 126 of the act.
 That the bearings shown on the plat are expressed as required by Section 126 (3) of the act as explained in the legend.

PLAT LEGEND
 All dimensions are in feet
 All curvilinear dimensions are in chord length
 Bearings were established from recorded Assessor's Plat 34, Liber 10, Page 32
 The symbol "o" indicates a concrete monument.
 All markers are 1/2" iron pipes are 18" long.

ASSESSOR'S CERTIFICATE
 I, as Assessor, by virtue of the authority vested in Section 201 (2), Act 288 of P.A. of 1967, having been duly authorized by the City of Mount Clemens, Macomb County, State of Michigan have caused the land described in the annexed plat to be surveyed, laid out and platted, and certify that Assessor's Plat No. 44 conforms with Section 201 through 213 of Act 288 of P.A. of 1967.

Laura Maizon
 Witness LAURA MAIZON

Lester G. Jackson
 Lester G. Jackson, Assessor
 1 Crocker Boulevard
 Mount Clemens, Michigan 48043

ACKNOWLEDGMENT
 STATE OF MICHIGAN) ss.
 County of Macomb)
 On this 3rd day of December A.D. 1969, before me personally came the above named Lester G. Jackson, assessor of City of Mount Clemens, known to me to be the person who executed the above dedication, and acknowledged the same to be his free act and deed as such assessor.
 My Commission expires May 10, 1970 Notary Public Phyllis J. Reynolds
 In and for Macomb County. Phyllis J. Reynolds

Prepared and Drafted by:
 Fitz J. Bridges
 Consulting Engineer
 273 South Gratiot Avenue
 Mount Clemens, Michigan 48043

Fitz J. Bridges
 Fitz J. Bridges, P.E.
 Registered Land Surveyor #5779



CERTIFICATE OF DEPARTMENT OF STATE HIGHWAYS
 Approved on May 22, 1970 as conforming with existing right of way.
 MICHIGAN STATE HIGHWAY COMMISSION
Henrik E. Stajseth
 Henrik E. Stajseth
 State Highway Director

CERTIFICATE OF MUNICIPAL APPROVAL
 This plat was approved on 23 January, 1969, by the City Commission of Mount Clemens, as having been made and complying with the requirements of Section 201 and 209 (4) of P.A. 288 of 1967.

John A. Hahn
 John Hahn, Clerk

RECORDING CERTIFICATE
 STATE OF MICHIGAN) ss.
 County of MACOMB)
 This plat was received on the 4th day of June A.D. 1970 at 3:30 P.M., recorded in Liber 60 of Plats on Page 49.

Edna Miller
 Edna Miller, Clerk-Registrar of Deeds
 Deputy

L 60 P 49

7 5

FLORAL CITY URBAN RENEWAL SUBDIVISION

PART OF P.C. 626 T.2N., R.13E.,
CITY OF MOUNT CLEMENS, MACOMB COUNTY, MICHIGAN

REGISTER #A167488

FITZ J. BRIDGES, P.E.
REGISTERED ENGINEER & SURVEYOR
273 SOUTH GRATIOT AVENUE
MOUNT CLEMENS, MICHIGAN 48043

PROPRIETOR'S CERTIFICATE - CORPORATION

Kingswood Manor Inc., a Michigan corporation duly organized and existing under the laws of the State of Michigan by Leonard R. Bennett, President & Irving D. Bennett, Secretary, surveyed, divided, mapped and dedicated as represented on this plat and that the street and other facilities are for the use of the public; that the public utility easements are private easements and that all other easements are for the uses shown on the plat.

Witnesses:

Kingswood Manor Inc.
6414 East Seven Mile
Detroit, Michigan 48234

Geraldine Knapp
Geraldine Knapp
Phyllis J. Reynolds
Phyllis J. Reynolds
Geraldine Knapp
Geraldine Knapp
Phyllis J. Reynolds
Phyllis J. Reynolds

Leonard R. Bennett
Leonard R. Bennett, President

Irving D. Bennett
Irving D. Bennett, Secretary

CERTIFICATE OF MUNICIPAL APPROVAL

I certify that this plat was approved by the City Commission of Mount Clemens at a meeting held August 7, 1972 and was reviewed and found to be in compliance with Act 288, P.A. 1967. Adequate surety has been posted with the City Clerk for the placing of monuments and markers within a reasonable length of time, not to exceed one year from above date as required by Section 125 of the Acts. Adequate surety has been posted for storm drain. Sanitary Sewer and Water facilities are existing. Lots conform with Subdivision Control Ordinance and Zoning Ordinance.

Jeanne T. Nelson
Jeanne T. Nelson City Clerk

COUNTY PLAT BOARD CERTIFICATE

This plat has been reviewed and is approved by the Macomb County Plat Board on NOVEMBER 17, 1972 being in compliance with all of the provisions of Act 288, P.A. 1967, and the Plat Board's applicable rules and regulations.

Edna Miller
Edna Miller, Clerk-Register of Deeds

Adam E. Nowakowski
Adam E. Nowakowski, County-Treasurer

Stephen W. Dane
Stephen W. Dane, Chairman Board of Commissioners

CORPORATION ACKNOWLEDGEMENT

STATE OF MICHIGAN) s.s.
WAYNE County)

Personally came before me this 20TH day of NOVEMBER, 1972, Leonard R. Bennett, President, and Irving D. Bennett, Secretary of the above named corporation, to me known to be the persons who executed the foregoing instrument, and to me known to be such president and secretary of said corporation, and acknowledged that they executed the foregoing instrument as such officers as the free act deed of said corporation, by its authority.

Notary Public Raymond R. Craig MACOMB County, Michigan
My Commission Expires NOVEMBER 21, 1974 ACTING IN WAYNE COUNTY

RECORDING CERTIFICATE

STATE OF MICHIGAN) s.s.
County of MACOMB)

This plat was received on 30TH day of JANUARY A.D. 1973
at 4:00 P. M. recorded in Liber 63 of Plats on Pages 34 AND 35.

Raymond R. Craig
Raymond R. Craig, Deputy Register of Deeds

CITY TREASURER'S CERTIFICATE

The records in my office show no unpaid taxes of special assessments for the five years preceding 1971 involving lands included in this plat, in the City of Mount Clemens. 6-29-72

William N. Ringle
William N. Ringle, City Treasurer

COUNTY TREASURER'S CERTIFICATE

The records in my office show no unpaid taxes of special assessments for the five years preceding 1971 involving the lands included in this plat, in the County of Macomb.

Helen Paulus # 747 6-29-72 Adam E. Nowakowski
Helen Paulus, Clerk Adam E. Nowakowski, County-Treasurer

COUNTY DRAIN COMMISSION CERTIFICATE

Approved on 7-17-72 as complying with Section 192 of Act 288, P.A. 1967 and the applicable rules and regulations published by my office in the County of Macomb.

Thomas S. Welsh
Thomas S. Welsh, Drain Commissioner



L63 P35