

Land Corner Recordation Certificate
2018 Annual Grant Agreement
 Authority: MICH. 1970 PA 74, MCL 54.205

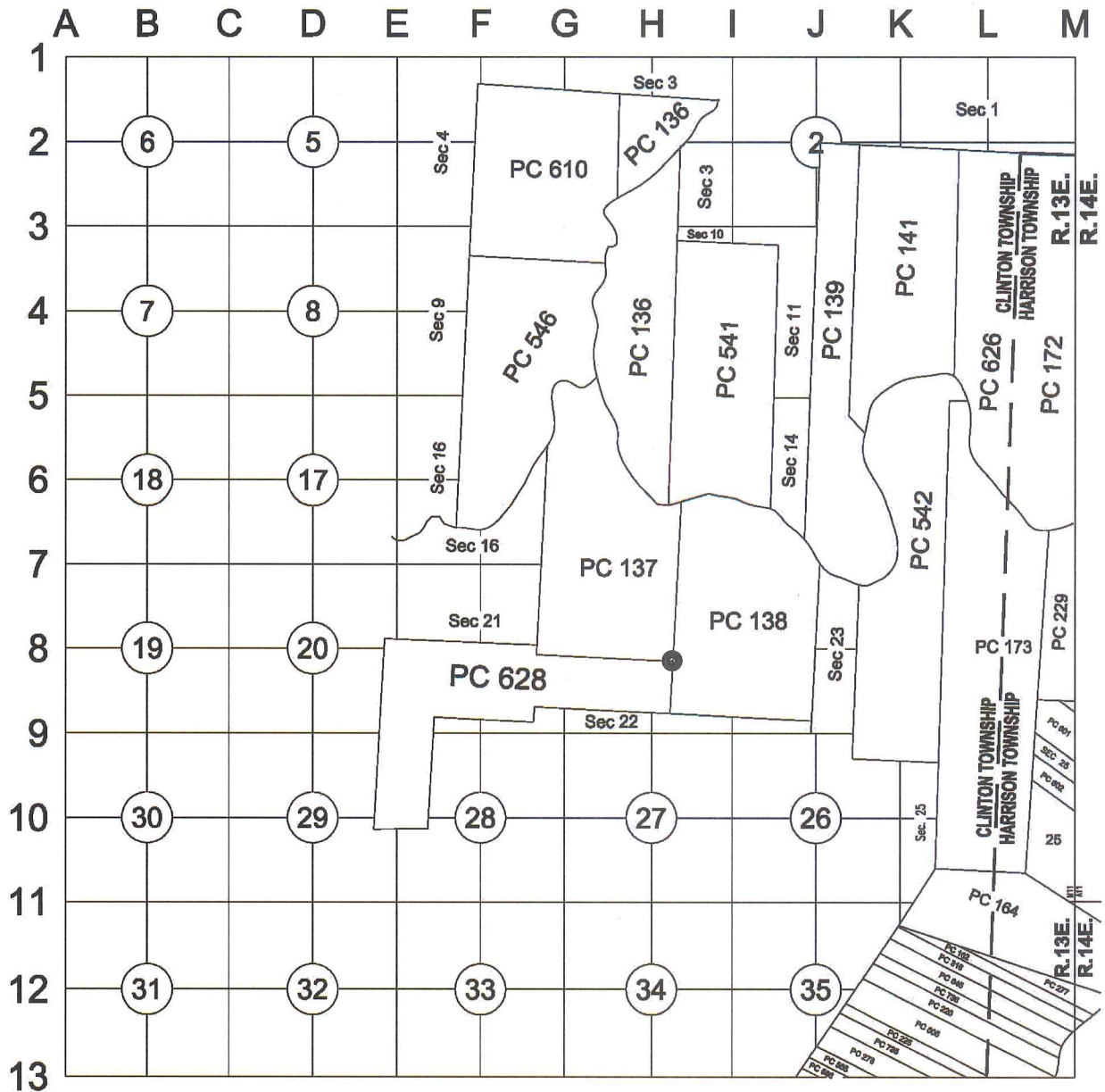
"LCRC BEING RECORDED FOR THE PURPOSE OF PUBLISHING MICHIGAN STATE PLANE COORDINATE DATA"

Surveyor's Name: Steven E. Dunn, P.S.
 For Corner(s) in: Macomb County

Field Survey Date: May 7, 2018
 Municipality: Clinton Township

Corner Type	Section Private Claim	Clinton Township	Corner Code	Other Code
Original Public Land Survey Corner	PC 137/138/628	T 02 N R 13 E		PC 029

Other Code Corner Description: Northeast corner of PC 628 Common with the Southeast corner of PC 137 on the West line of PC 138



Part A: Corner History: Northeast corner of PC 628 Common with the Southeast corner of PC 137 on the West line of PC 138. Set Post Original GLO Survey notes – 1810.

12-13-2013 LCRC for Remonumentation Corner by Christopher A. Asiala, PS #49376 PC 029 recorded in L. 22590 of Deeds on P. 114-116. Placed a new 3/4" X 24" iron rod with a 2" aluminum cap stamped "MACOMB COUNTY MONUMENT MI ACT 345 CAA 49376 PC-029" with 4 accessories in rear yard of house #21825 Ulrich Street. Peer Review Group Approval: November 12, 2013

2

C

Part B: Surveyor's Report on Perpetuation, Restoration, Reestablishment or Monumentation of Corner: Northeast corner of PC 628 Common with the Southeast corner of PC 137 on the West line of PC 138

Refer to: 12-13-2013 LCRC for Remonumentation Corner by Christopher A. Asiala, PS #49376 PC 029 recorded in L. 22590 of Deeds on P. 114-116. Placed a new 3/4" X 24" iron rod with a 2" aluminum cap stamped "MACOMB COUNTY MONUMENT MI ACT 345 CAA 49376 PC-029" with 4 accessories in rear yard of house #21825 Ulrich Street.

Part C: Field Evidence of Perpetuation or Monumentation of Corner: Northeast corner of PC 628 Common with the Southeast corner of PC 137 on the West line of PC 138

5-07-2018 Found a 3/4" X 24" iron rod with a 2" aluminum cap stamped "MACOMB COUNTY MONUMENT MI ACT 345 CAA 49376 PC-029" with 4 of 4 matching accessories in rear yard of house #21825 Ulrich Street. Occupied with GPS to obtain Geodetic Coordinate Data.

Accessories:

- N45°E 53.10' M Northwest corner of wood shed (53.07' R)
- S15°W 46.03' R&M Northwest corner of wood porch on house #21825 Ulrich
- Due West 64.04' M Found 1/2" X 18" iron with blue cap stamped "MC REMON WIT POINT" (64.06' R)
- N70°W 44.70' R&M Found MAG nail with MCR washer in NE face of 18" Oak

Date of Observation	Latitude	Longitude	Datum and Adjustment Year	Epoch Date
5-07-2018	N 42D34'32.84593"	W 82D53'54.86736"	NAD83 (2011)	2010

Method for Latitude-Longitude determination: NGS OPUS-RS Solution

State Plane Coordinates in international feet: N-395494.35', E-13518747.75'
 Standard Deviation: 0.05' N, 0.02' W
 Zone: South
 Combined Factor: 0.99989749
 NGSPID: NE1181
 Survey Method: MC GPS
 Orthometric Height: 613.31'
 Elev. Datum: NAVD88

I, Steven E. Dunn, P.S., in a field survey on May 7, 2018, certify under the requirements of the State Survey and Remonumentation Act, 1990 PA 345, MCL 54.261 to 54.279, and the Corner Recordation Act, 1970 PA 74, MCL 54.201 to 54.210d, that the corner identified and described hereon has been perpetuated or monumented as described in Parts A, B, and C above, pursuant to the laws and rules of the State of Michigan.

Steven E. Dunn May 16, 2018
 Steven E. Dunn, P.S. Date

Professional Surveyor's License No.: 28408
 Prepared By:
 Steven E. Dunn, P.S.
 Great Lakes Geomatics, LLC
 76 S. Main Street
 Mt. Clemens, Mi. 48043



I, Martin C. Dunn, P.S., Macomb County Surveyor Representative, have reviewed the corner perpetuated in parts A, B and C above for the purpose of publishing its Michigan State Plane Coordinate values and relative data and is accepted for filing in the Macomb County Remonumentation Program.

Martin C. Dunn 6-26-2018
 Martin C. Dunn, P.S. Date

Macomb County Surveyor Representative
 License No. 30081

MACOMB COUNTY
INDEX OF SUPPORTING DOCUMENTS FOR

PC-029

**NE CORNER OF PRIVATE CLAIM 628 LOCATED ON THE
WEST LINE OF PRIVATE CLAIM 138
CLINTON TOWNSHIP
T. 02 N., R. 13 E.**

SECTION 1

<u>ITEM & DATE</u>	<u>ITEM DESCRIPTION</u>
1) 2013	PHOTOS OF CORNER

SECTION 2

<u>ITEM & DATE</u>	<u>ITEM DESCRIPTION</u>
1) 2013	LCRC
2) 2013	SURVEYOR'S REPORT

SECTION 3

<u>ITEM & DATE</u>	<u>ITEM DESCRIPTION</u>
1) 2013	FIELD NOTES
2) 1995	PLAT MAP
3) 2009	COMPOSITE MAP WITH AERIAL IMAGE & TAX MAP

SECTION 4

<u>ITEM & DATE</u>	<u>ITEM DESCRIPTION</u>	<u>SURVEYOR</u>	<u>LICENSE</u>	<u>SOURCE</u>
(1) 1810	Private Claim Notes	A. Greeley		
(2) 1818	GLO plats	W. Preston		
(3) 1875	1875 Atlas			County Records
(4) 1895	1895 Atlas			County Records
(5) 1916	1916 Atlas			County Records
(6) 1920's	Map of P.C. 137			County Records
(7) 1920's	Map of P.C. 138			County Records
(8) 1948	Ingleside Farms Sub. No.4	WJ Lehner	#123	L24 P44
(9) 1950	Ingleside Farms Sub. No.5	WJ Lehner	#123	L25 P30
(10) 1950	Ingleside Farms Sub. No.7	WJ Lehner	#123	L25 P50
(11) 1950	Seminole Heights Sub. No.3	HJ Fuller		L26 P4
(12) 1952	Seminole Heights Sub. No.4	HJ Fuller		L26 P35
(13) 1952	Ingleside Farms Sub. No.9	WJ Lehner	#123	L27 P27
(14) 1955	Seminole School Subdivision	JD Lehner	#5787	L32 P25
(15) 1956	Addressograph map Sheet 24B			County Records
(16) 1980	Tax Maps			County Records

T-2-N, R-13-E, CLINTON TOWNSHIP

(Located east of Mulberry St. between Ulrich St. and Highview St.)

PC-029 NE Corner of PC628 on the W. Line of PC138



NORTH



East



SOUTH



WEST



LAND CORNER RECORDATION CERTIFICATE Filing Requirement of Act 74, Mich. P.A. 1970

For corners in

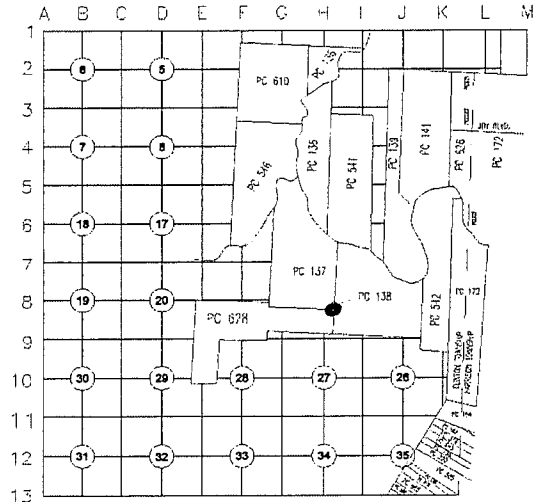
Macomb Located In: Clinton Twp. Corner Code # _____
(County)

1. Public Land Survey	T <u>2N</u> R <u>13E</u>	<u>PC-029</u>
	T _____ R _____	_____
	T _____ R _____	_____
	T _____ R _____	_____
2. Property Controlling in Section	S _____ T _____ R _____	_____
	S _____ T _____ R _____	_____
3. Miscellaneous Property in Sec.	S _____ T _____ R _____	_____
	S _____ T _____ R _____	_____

3182667 PAGE 1 OF 3
LIBER 22590 PAGE 114
12/13/2013 10:49:38 A.M.
MACOMB COUNTY, MI SEAL
CARMELLA SABAUGH, REGISTER OF DEEDS

Register of Deeds Stamp & File Number

4. Lot No. _____, Recorded Plat _____
5. Private Claims Northeast corner of PC 628 Common
with the Southeast corner of PC 137 on West line of PC 138



I, Christopher A. Asiala, in a field survey on Aug. 26, 2013 do hereby state that under requirements of P.A. 74, Michigan P.A. of 1970, the corner points mentioned in lines 1 and 2 above were in conformance with regulations and rules therefore as required in the current manual of survey instructions of the United States Department of the Interior, Bureau of Land Management or be a decree of a Court of Law and/or that the corner points mentioned in lines 3, 4 and 5 above were in conformance with the rules of the Michigan Board of Land Surveyors or by a Decree of a Court of Law; established, re-established, monumented, recovered, found as expressed below:

NOTE: Not more than 2 corners, all in the same town and range, may be recorded on this certificate.

A. Description of original monument and accessories and/or subsequent restoration:
See page 2 of 3 for list of supporting documentation.

B. Description of corner evidence found and/or method applied in restoring or reestablishing corner:

The corner is described in the Private Claim notes as a "Post"
Nothing was found at the northeast corner of Private Claim 628 common with the southeast corner of Private Claim 137 on the west line of PC 138. There is no field or record occupation of the Private Claim lines in the immediate vicinity to the North, South or West. The corner was reestablished on the west line of PC 138 (Common to the east lines of PCs 137 & PC 628) at the record GLO distance of 24.16 chains (1,594.56') from the southwest corner of PC 138 (being remonumented concurrently as PC-028).

The west line of PC 138 was reestablished by holding a found monument at the northwest corner of lot 1 of "Assessor's Plat No. 38" (at the southeast corner of Mulberry Street and Harrington) and a found monument at the southwest corner of lot 327 of "Seminole Heights Sub. No. 3". Both monuments were offset 30' to the west to establish the Private Claim line. Several other monuments and irons recovered along the east line of Mulberry Street match the line as established by the held monuments. The north end of this line at the south bank of the Clinton River is being remonumented concurrently as PC-031.

The corner falls within a rear yard area for house #21825 Ulrich Street approximately 65.00' east of the east edge of asphalt for Mulberry Street and approximately 220' north of the physical centerline of Ulrich street.

c. Description of monument for corner and accessories established to perpetuate locating the position of the corner:
Witness ties are to reference monument:

I placed a new 3/4" x 24" iron rod with with a 2" aluminum cap stamped "MACOMB COUNTY MONUMENT MI ACT 345 CAA 49376 PC-029" in the rear yard of house #21825 Ulrich Street

Witness ties are as follows:

- N45°E 53.07' Northwest corner of Wood shed.
- S15°W 46.03' Northwest corner of wood porch on house #21825 Ulrich.
- Due W 64.06' Set 1/2"x18" iron with blue cap stamped "MC REMON WIT POINT".
- N70°W 44.70' Set MAG nail with M.C.R. washer in NE of an 18" Oak tree.

The selected location is accepted by me and generally accepted by professional surveyors as the best available evidence of the position of the original corner.

Signed by [Signature]
Surveyor's Michigan License No. 49376

Date 12-10-13



FORM APPROVED BY MICHIGAN STATE BOARD OF PROFESSIONAL SURVEYORS, JAN. 28, 1971
REVISED MAY 14, 1975, REVISED JAN., 1983, REVISED OCT., 1995

ACCEPTED BY THE MACOMB COUNTY SURVEY PEER
GROUP AS THE OFFICIAL CORNER UNDER MICHIGAN
PUBLIC ACT 345 OF 1990 AT A MEETING HELD
ON 11-12-2013
[Signature]
MARTIN C. DUNN, P.S. CHAIRMAN

318

C

PC-029, CLINTON TWP, T-02-N, R-13-E

Section A:

Liber 22590 Page 115

A. Description of original monument and accessories and/or subsequent restoration:

<u>ITEM & DATE</u>	<u>ITEM DESCRIPTION</u>	<u>SURVEYOR</u>	<u>LICENSE</u>	<u>SOURCE</u>
(1) 1810	Private Claim Notes	A. Greeley		
(2) 1818	GLO plats	W. Preston		
(3) 1875	1875 Atlas			County Records
(4) 1895	1895 Atlas			County Records
(5) 1916	1916 Atlas			County Records
(6) 1920's	Map of P.C. 137			County Records
(7) 1920's	Map of P.C. 138			County Records
(8) 1948	Ingleside Farms Sub. No.4	WJ Lehner	#123	L24 P44
(9) 1950	Ingleside Farms Sub. No.5	WJ Lehner	#123	L25 P30
(10) 1950	Ingleside Farms Sub. No.7	WJ Lehner	#123	L25 P50
(11) 1950	Seminole Heights Sub. No.3	HJ Fuller		L26 P4
(12) 1952	Seminole Heights Sub. No.4	HJ Fuller		L26 P35
(13) 1952	Ingleside Farms Sub. No.9	WJ Lehner	#123	L27 P27
(14) 1955	Seminole School Subdivision	JD Lehner	#5787	L32 P25
(15) 1956	Addressograph map Sheet 24B			County Records
(16) 1980	Tax Maps			County Records

*see next page for sketch:

PC-031
 NORTHWEST CORNER OF PRIVATE CLAIM 138
 NORTHEAST CORNER OF PRIVATE CLAIM 137
 "BASSWOOD TREE STANDING ON THE
 BORDER OF RIVER HURON"

492 NW CORNER OF PC138
 AT CORNER OF WESTENDORF HEIGHTS SUB

CLINTON RIVER

MCLAREN
 HOSPITAL

WESTENDORF
 HEIGHTS SUB

834.71' M
 834.74' R

1580 FI

1572 FD MON HELD

HARRINGTON ROAD

1575 FD MON 30.11'E

1574 FI BENT 30.04'E

SEMINOLE HEIGHTS
 SUB NO. 1

1576 FD T-IRON 30.15'E

PRIVATE CLAIM 137

GROESBECK HIGHWAY

UNPLATTED

PC-029 TO PC-031
 4810.20'M
 4873.44' (73.84ch) PC notes

MULBERRY DRIVE

SEMINOLE HEIGHTS
 SUB NO. 4

1005 FI 29.67'E

1006 FI 30.28'W

SEMINOLE HEIGHTS SUB NO.3

PC-028 TO PC-031
 6404.76'M
 6468.00' (98ch) PC notes

1001 FI 30.82'W

1002 FI 30.67'W

1003 SQ MON AT SW CORNER
 OF SEMINOLE HEIGHTS SUB NO. (HELD)

1073 ESTABLISHED PC LINE 30' WEST FROM SQUARE MON

INGLESIDE FARMS SUB. NO. 5

PROPERTY LINE (PERCEIVED PC LINE)
 AS INDICATED BY RECORD DEEDS

PC-029
 NE CORNER OF PRIVATE CLAIM 628
 SE CORNER OF PRIVATE CLAIM 137
 LOCATED ON THE WEST LINE OF PRIVATE CLAIM 138
 9 CALCULATED CORNER POSITION

PC-029 TO PC-022
 4367.66'M
 4336.20' (65.70ch) PC notes

INGLESIDE FARMS SUB. NO. 6

PRIVATE CLAIM 628

INGLESIDE FARMS SUB. NO. 4

PRIVATE CLAIM 138

PC-028 TO PC-030
 4568.35'M
 4769.16' (72.26ch) PC notes

PC-028
 SOUTHEAST CORNER OF PRIVATE CLAIM 628
 SOUTHWEST CORNER OF PRIVATE CLAIM 137
 "POST"
 8 CALCULATED CORNER

PC-028 TO PC-026
 4,457.05' M
 4,336.20' (65.70ch) PC notes 9
 SUB. NO.

INTERSECTION OF LINE COMMON
 TO SECTIONS 22 & 23 WITH THE
 SOUTH LINE OF PRIVATE CLAIM 137
 198 CALCULATED CORNER

INGLESIDE FARMS

SECTION 22

INGLESIDE CENTER SUB NO. 1

NY131370013784-62-Macomb-2013-Cadef1378463.DWG

giffels webster
 Engineers Surveyors Planners
 Landscape Architects
 Environmental Specialists

28 W. Adams Street
 Sulle 1200
 Detroit, MI 48226
 p (313) 962-4442
 f (313) 962-5068
 www.giffelswebster.com

Executive:	JNR
Manager:	CAA
Designer:	CAA
Quality Control:	
Section:	T-02-N R-13-E

Developed For:
 PC-028, PC-029, & PC-031

DATE:	ISSUE:
Date	Issue

Date:	12-10-2013
Scale:	1"=600'
Sheet:	3 OF 3
Project:	13784.62

Copyright © 2013 Giffels Webster.
 No reproduction shall be made without the prior
 written consent of Giffels Webster.

Private Claim 138

The description for Private Claim commences at the NW corner at a "***Basswood Tree (PC-031) standing on the border of the River Huron***" (Clinton River). The description then proceeds south and runs in a counter-clockwise manner. The description does not close.

The first course of the description reads "***South 98 chains to a post***" (PC-028). This line has been perpetuated and occupied along its north portion for approximately 4000 feet by the following record items:

Seminole Hills Sub No. 1
Ingleside Farms Sub No. 3
Seminole Heights Sub No. 4
Assessor's Plat No. 38
Seminole School Sub
Westendorf Heights Sub

The Southerly stretch of this line has no current occupation or record evidence as to its exact location. The southerly portion of the line does cross Ingleside Farms Sub No. 4 and Ingleside Farms Sub No. 9, however neither of the plats reference or show the line.

The second course of the Private Claim description is "***East 72 chains twenty six links to a post***" (PC-030). This line is not currently occupied or monumented. There is no record evidence of this line subsequent to the original PC description and GLO survey. The line crosses the following plats but are not shown or depicted:

Ingleside Farms Sub
Ingleside Farms Sub No. 1
Ingleside Farms Sub No. 4
Ingleside Center Sub No. 1

The GLO section line common to sections 22 & 23 intersects the south line of the Private Claim 7.47 chains north of I-09 at a point "***36.25 chains west of east corner of lot No. 138...***"

The third course of the Private Claim description is "***North 70 chains 94 links to a post*** (not currently Remonumented) ***standing on the border of River Huron between this tract and unconceded land. Thence along the border of said River up stream...***" The southern portion of this line is not currently occupied or monumented. The south 1000 feet (approximate) crosses Ingleside Farms Sub and the south portion of Ingleside Farms Sub No. 1, but neither show or depict the line. The north stretch of the PC line (approximate 3200 feet) is occupied and monumented by the following items:

Supervisor's Plat No. 3
Ingleside Farms Sub No.1
Wellington Heights Condo
Knottingham Apartments
Acreage parcels

The fourth thru seventh described courses are along the border of said river upstream.

Private Claim 628

The description for Private Claim 628 commences at "***a post***" (PC-028) at the SW corner of Private Claim 138 and is described in a counter-clockwise direction. The first course reads "***Thence west 65 chains 70 links to a post***" (PC-026) This line is not currently occupied and there is no record evidence east of Little Mack. The line crosses both Ingleside Farms Sub No. 8 & 9, but neither show the line. The GLO section line common to sections 21 & 22 intersects this private claim line at Little Mack (PCC-027). Ingleside Farms Sub No. 3 shows the intersection point but does not explicitly name it.

West of Little Mack, there are several recorded documents that appear to follow the Private Claim line but do not explicitly name it, including Ingleside Farms Sub No. 3, Glenbrook Meadows Condominiums and Fox Chase Condominiums. Found monumentation and record evidence of this line would indicate that there would be at least two deflection points along the western portion of this Private Claim line. One deflection point being at the intersection of the GLO section line common to sections 21 & 22 (at Little Mack) and the other in the vicinity of the GTW railroad.

The second course of the Private Claim reads "***south 12 chains 14 links to a post***" (PC-025). There is no field or record evidence subsequent to the original surveys which show or define this line.

The third course of the description reads "***west 48 chains 86 links to a post***". This point was remonumented as PCC-023 in 2011). There is no monumentation or records defining this line near the east end. However the westerly portion is shown and defined by Chippewa Sub.

The private claim corners described in the fourth thru eighth course of the description have previously been remonumented as PC-013, PC-010, PC-009, PC-011, and PC-022.

The ninth course from PC-022 is described as "***east 65 chains 70 links to a post standing on the west line of the tract no. 138***" (PC-029). There is no current physical occupation or record evidence subsequent to the original survey which would define this line.

The tenth and final leg of the description reads "***south 24 chains 16 links to the place of beginning***" (PC-028). This line is common to the west line (first leg) of Private Claim 138 described above.

N:\13137001\13784.62\Macomb 2013\Cad1\1378463.DWG



giffels webster
 Engineers Surveyors Planners
 Landscape Architects
 Environmental Specialists

28 W. Adams Street
 Suite 1200
 Detroit, MI 48226
 p (313) 962-4442
 f (313) 962-5068
 www.giffelswebster.com

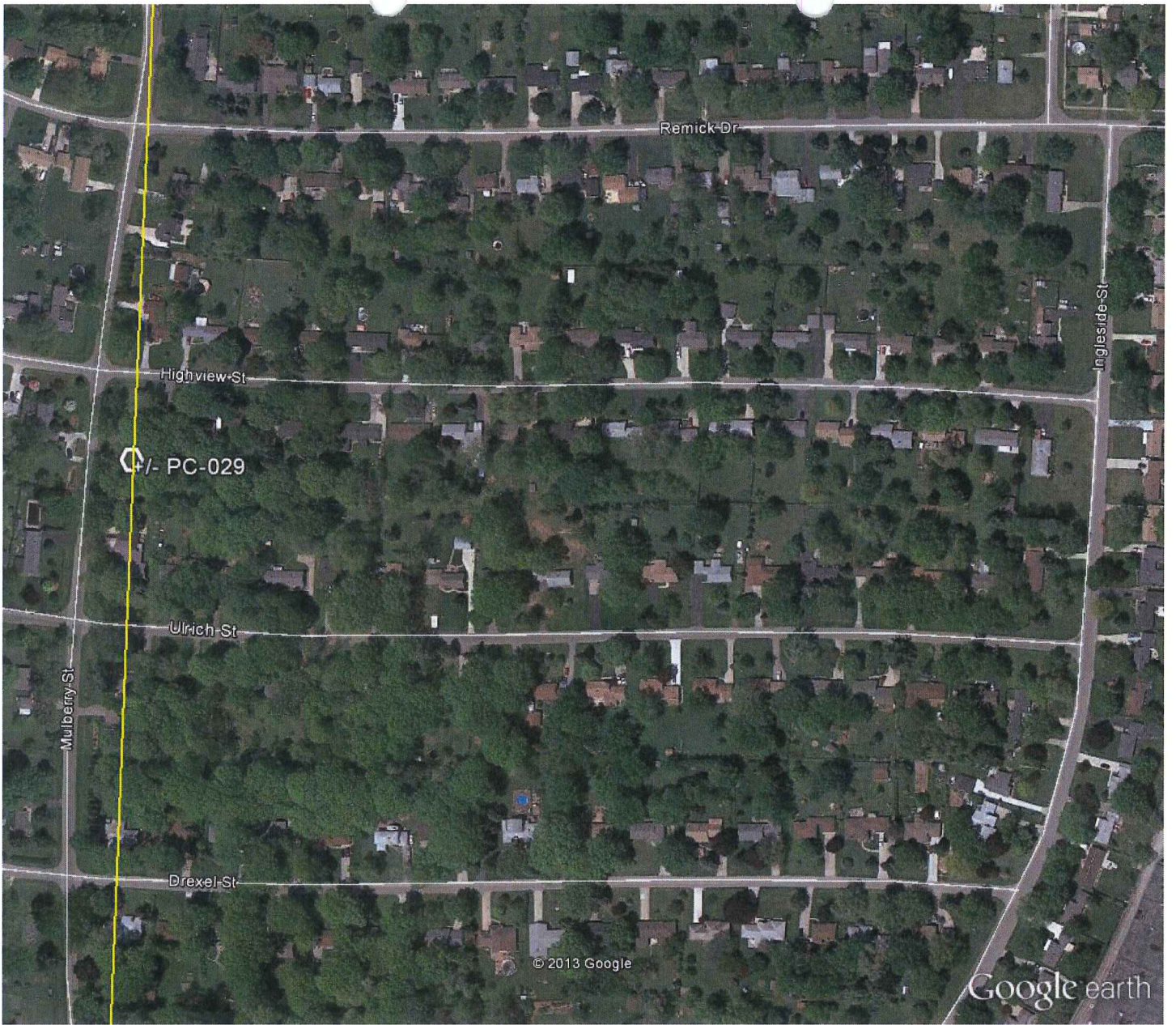
Executive: JNR
 Manager: CAA
 Designer: CAA
 Quality Control:
 Section: T-02-N R-13-E

Developed For:
 PC-028, PC-029, & PC-031

DATE:	ISSUE:
Date	Issue

Date: 12-10-2013
 Scale: 1"=600'
 Sheet: 3 OF 3
 Project: 13784.62

Copyright © 2013 Giffels Webster.
 No reproduction shall be made without the prior written consent of Giffels Webster.



Google earth

feet 1000
meters 300



SECTION CORNER WITNESS FIELD REPORT

DATE: 11-26-13 CREW: DA PF

WEATHER: 30° CLOUDY

TOWNSHIP: CLINTON

PRIVATE CLAIM/TTAT: NE PC628 on w. line PC138

TOWN 2N RANGE 13E

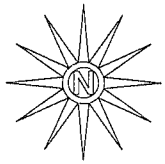
CORNER CODE/DESC: PC-029

DEPTH: 1" below Grade

	A	B	C	D	E	F	G	H	I	J	K	L	M
1													
2	6	5	4	3	2	1							
3													
4	7	8	9	10	11	12							
5													
6	18	17	16	15	14	13							
7													
8	19	20	21	22	23	24							
9													
10	30	29	28	27	26	25							
11													
12	31	32	33	34	35	36							
13													

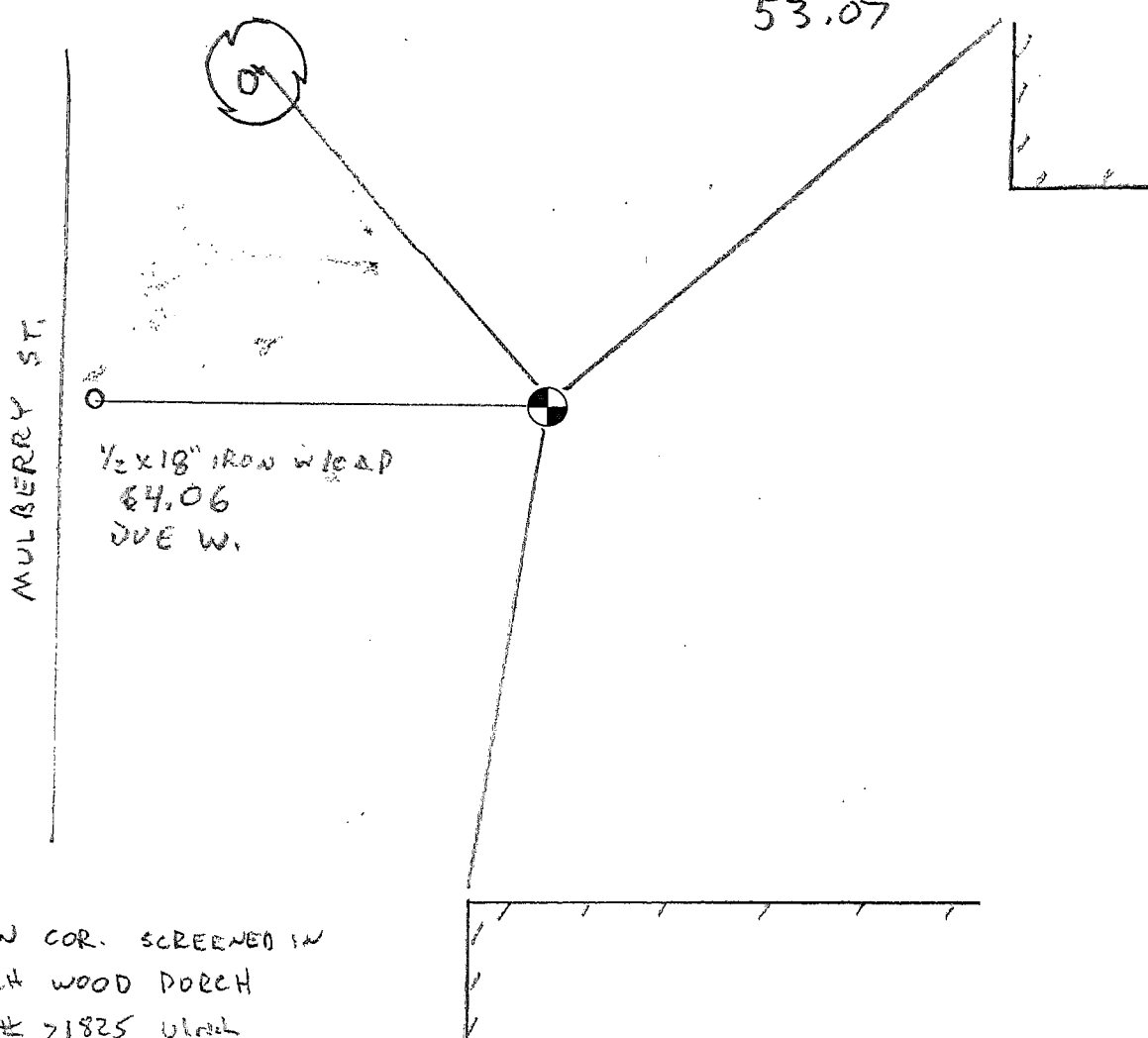
LOCATION OF CORNER IN BACKYARD OF House # 21825 Ulrich

WHAT WAS FOUND? FD NOTHING / SE w/ M.C.R. CAP



SET MAG NAIL w/MCR WASHER
NE FACE 18" OAK
N 70°W
44.70

NW COR. WOOD SHED
N 45°E
53.07



SECTION CORNER WITNESS FIELD REPORT

DATE: 10-28-13 CREW: DA

WEATHER: 45° PT CLOUDY

TOWNSHIP: CLINTON

PRIVATE CLAIM/TTAT: NE PC 628 on w. line PC 138

TOWN 2N RANGE 13E

CORNER CODE/DESC: REF MON FOR PC-029

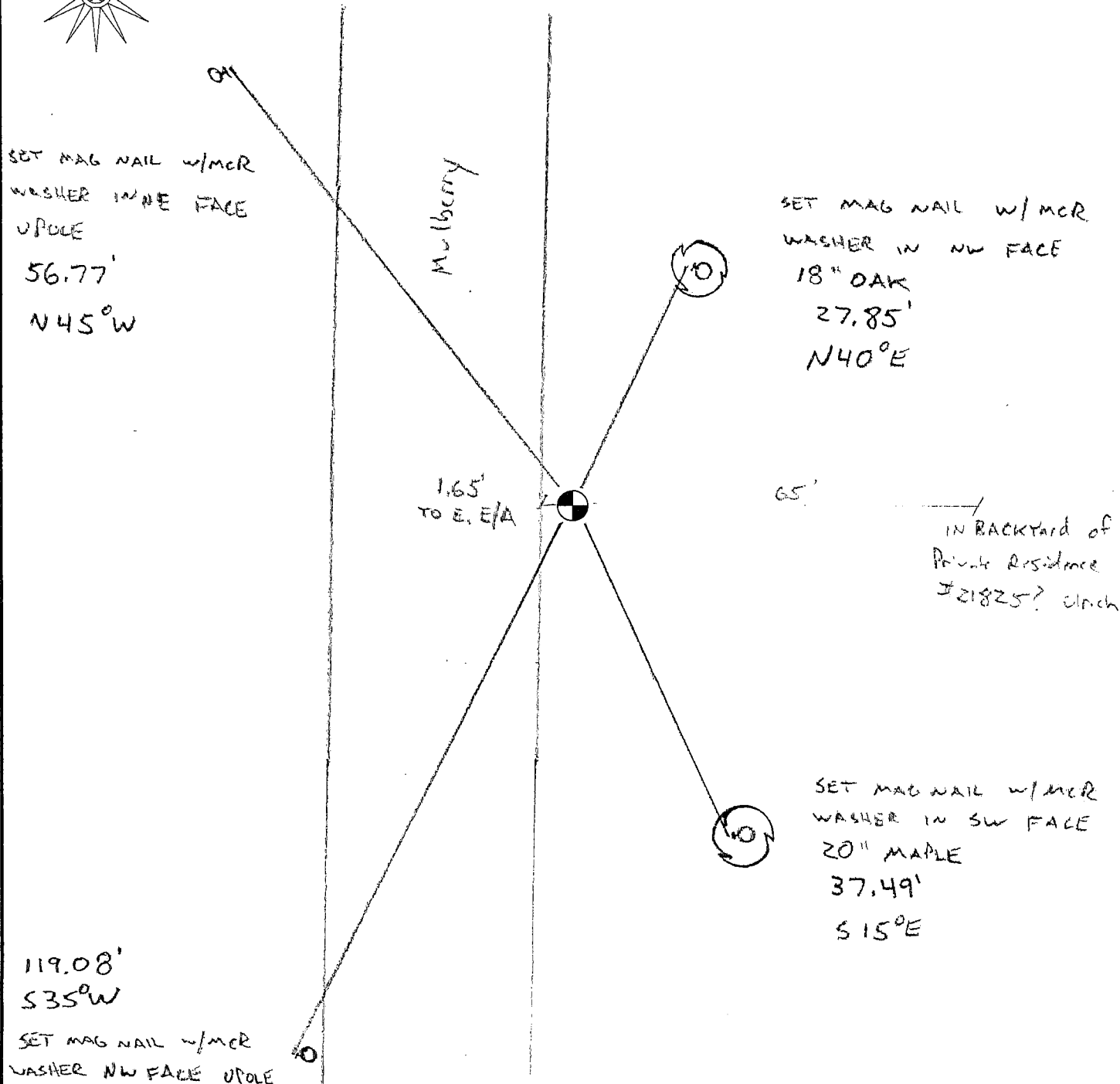
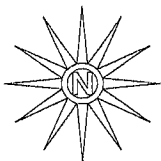
DEPTH: FLUSH

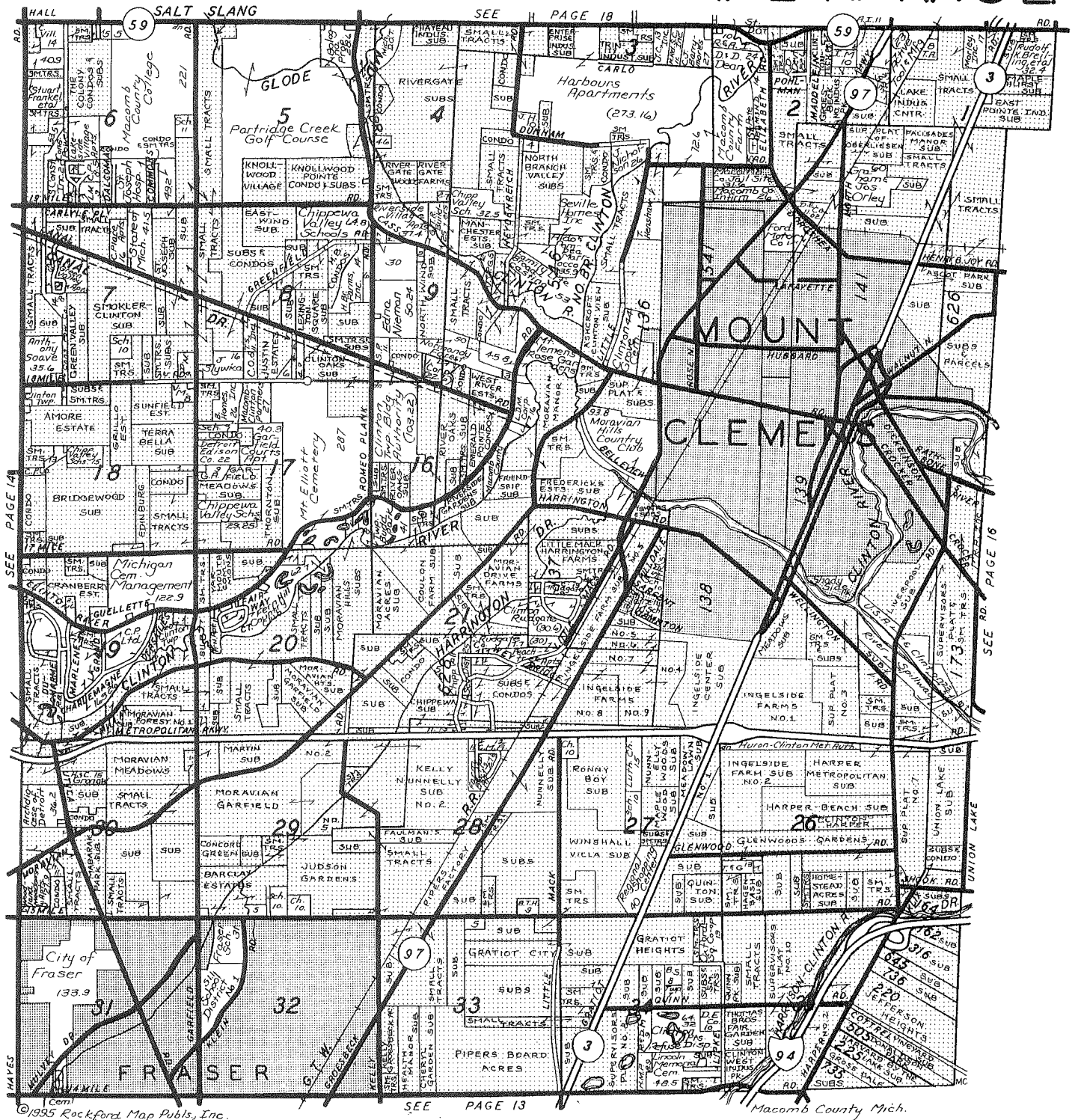
From PC-029 → PC#487 = 65.00

	A	B	C	D	E	F	G	H	I	J	K	L	M
1													
2	6	5	4	3	2	1							
3													
4	7	8	9	10	11	12							
5													
6	18	17	16	15	14	13							
7													
8	19	20	21	22	23	24							
9													
10	30	29	28	27	26	25							
11													
12	31	32	33	34	35	36							
13													

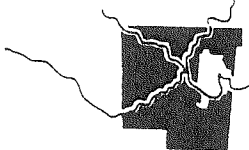
LOCATION OF CORNER E. SIDE MULBERRY Between
ULPICK AND HIGHVIEW

WHAT WAS FOUND? FD NOTHING / SE





Charter Township of Clinton



BOARD OF TRUSTEES

James R. Sinnamon
Supervisor
Dennis C. Tomlinson
Clerk
Robert H. Steiner
Treasurer
Robert J. Cannon
Trustee
Michael C. Contesti
Trustee
Ernest O. Hornung
Trustee
Nancy L. Dedenbach
Trustee

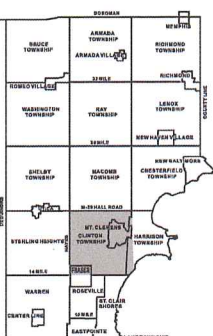
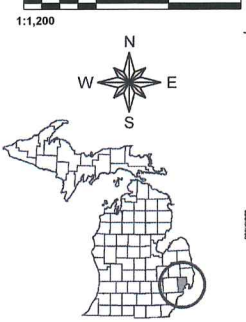
- ★ 1990 Population of 86,700, Largest Township in Michigan
- ★ Excellent Educational, Medical Recreational And Commercial Facilities
- ★ Economic Development Corporation; Development Incentives For New Industry.
- ★ Prime Industrial, Commercial and Residential Land Available

CIVIC CENTER ★ 40700 Romeo Plank Road ★ Clinton Township, Michigan 48038 ★ (810) 286-8000

1995



Date of Photography: Spring 2008
 100 50 0 100 200 Feet



CLINTON TWP SHEET INDEX

11-22A	11-22B	11-22C	11-22D	11-22E	11-22F	11-22G	11-22H	11-22I	11-22J	11-22K	11-22L	11-22M	11-22N	11-22O	11-22P	11-22Q	11-22R	11-22S	11-22T	11-22U	11-22V	11-22W	11-22X	11-22Y	11-22Z	

DESCRIPTION OF PERMANENT REAL ESTATE INDEX NUMBER

13-19-302-018

Legend

- Platted Area Boundary Line
- Property Line
- Property Split Line
- Property Combined Line
- Township Boundary Line
- Traverse Line
- Dimension Extent Marks
- Dimension Start Marks

11-22F

CLINTON TWP.
 E. 1/2 S.W. 1/4 SEC. 22 T. 2N. R. 13E.

Source: Macomb County Department of Planning and Economic Development
 - 2008 Digital Orthophotography Project
 - Parcel Conversion Project

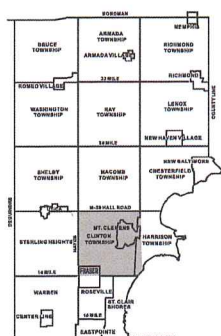
Note:
 Digital Orthophotography horizontal positioning accuracy is 3 feet. Parcel boundary lines should be considered a graphical representation and not in any way a legal survey or engineering document. In general, the horizontal positioning and length accuracy is within 15 feet.

This map is intended for general planning purposes. Site specific evaluation should be verified by field inspection. This is a work in progress and may contain errors and omissions. Please report any potential revisions to (586)469-5285.



Date of Photography: Spring 2008
 100 50 0 100 200 Feet

1:1,200



CLINTON TWP SHEET INDEX

11-22A	11-22B	11-22C	11-22D	11-22E	11-22F	11-22G	11-22H	11-22I	11-22J	11-22K	11-22L	11-22M	11-22N	11-22O	11-22P	11-22Q	11-22R	11-22S	11-22T	11-22U	11-22V	11-22W	11-22X	11-22Y	11-22Z
11-23A	11-23B	11-23C	11-23D	11-23E	11-23F	11-23G	11-23H	11-23I	11-23J	11-23K	11-23L	11-23M	11-23N	11-23O	11-23P	11-23Q	11-23R	11-23S	11-23T	11-23U	11-23V	11-23W	11-23X	11-23Y	11-23Z
11-24A	11-24B	11-24C	11-24D	11-24E	11-24F	11-24G	11-24H	11-24I	11-24J	11-24K	11-24L	11-24M	11-24N	11-24O	11-24P	11-24Q	11-24R	11-24S	11-24T	11-24U	11-24V	11-24W	11-24X	11-24Y	11-24Z
11-25A	11-25B	11-25C	11-25D	11-25E	11-25F	11-25G	11-25H	11-25I	11-25J	11-25K	11-25L	11-25M	11-25N	11-25O	11-25P	11-25Q	11-25R	11-25S	11-25T	11-25U	11-25V	11-25W	11-25X	11-25Y	11-25Z
11-26A	11-26B	11-26C	11-26D	11-26E	11-26F	11-26G	11-26H	11-26I	11-26J	11-26K	11-26L	11-26M	11-26N	11-26O	11-26P	11-26Q	11-26R	11-26S	11-26T	11-26U	11-26V	11-26W	11-26X	11-26Y	11-26Z
11-27A	11-27B	11-27C	11-27D	11-27E	11-27F	11-27G	11-27H	11-27I	11-27J	11-27K	11-27L	11-27M	11-27N	11-27O	11-27P	11-27Q	11-27R	11-27S	11-27T	11-27U	11-27V	11-27W	11-27X	11-27Y	11-27Z
11-28A	11-28B	11-28C	11-28D	11-28E	11-28F	11-28G	11-28H	11-28I	11-28J	11-28K	11-28L	11-28M	11-28N	11-28O	11-28P	11-28Q	11-28R	11-28S	11-28T	11-28U	11-28V	11-28W	11-28X	11-28Y	11-28Z
11-29A	11-29B	11-29C	11-29D	11-29E	11-29F	11-29G	11-29H	11-29I	11-29J	11-29K	11-29L	11-29M	11-29N	11-29O	11-29P	11-29Q	11-29R	11-29S	11-29T	11-29U	11-29V	11-29W	11-29X	11-29Y	11-29Z
11-30A	11-30B	11-30C	11-30D	11-30E	11-30F	11-30G	11-30H	11-30I	11-30J	11-30K	11-30L	11-30M	11-30N	11-30O	11-30P	11-30Q	11-30R	11-30S	11-30T	11-30U	11-30V	11-30W	11-30X	11-30Y	11-30Z

DESCRIPTION OF PERMANENT REAL ESTATE INDEX NUMBER

13-19-302-018

Legend

- Platted Area Boundary Line
- Property Line
- Property Split Line
- Property Combined Line
- Township Boundary Line
- Traverse Line
- Dimension Extent Marks
- Dimension Start Marks

11-22G

CLINTON TWP.
 W.1/2 S.E.1/4 SEC.22 T.2N. R.13E.

Source: Macomb County Department of Planning and Economic Development
 - 2008 Digital Orthophotography Project - Parcel Conversion Project

Note: Digital Orthophotography horizontal positioning accuracy is 3 feet. Parcel boundary lines should be considered a graphical representation and not in any way a legal survey or engineering document. In general, the horizontal positioning and length accuracy is within 15 feet.

This map is intended for general planning purposes. Site specific evaluation should be verified by field inspection. This is a work in progress and may contain errors and omissions. Please report any potential revisions to 686469-5285.



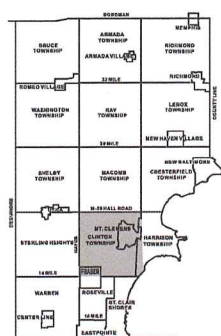
GISs **MACOMB COUNTY**
 Planning and Economic
 Development Department

Published: Jan 28, 2009



Date of Photography: Spring 2010
 100 50 0 100 200 Feet

1:1,200



CLINTON TWP SHEET INDEX

AREA NUMBER	BLOCK NUMBER	PARCEL NUMBER
13-19-302-018		
13-19-302-019		
13-19-302-020		
13-19-302-021		
13-19-302-022		
13-19-302-023		
13-19-302-024		
13-19-302-025		
13-19-302-026		
13-19-302-027		
13-19-302-028		
13-19-302-029		
13-19-302-030		
13-19-302-031		
13-19-302-032		
13-19-302-033		
13-19-302-034		
13-19-302-035		
13-19-302-036		
13-19-302-037		
13-19-302-038		
13-19-302-039		
13-19-302-040		
13-19-302-041		
13-19-302-042		
13-19-302-043		
13-19-302-044		
13-19-302-045		
13-19-302-046		
13-19-302-047		
13-19-302-048		
13-19-302-049		
13-19-302-050		
13-19-302-051		
13-19-302-052		
13-19-302-053		
13-19-302-054		
13-19-302-055		
13-19-302-056		
13-19-302-057		
13-19-302-058		
13-19-302-059		
13-19-302-060		
13-19-302-061		
13-19-302-062		
13-19-302-063		
13-19-302-064		
13-19-302-065		
13-19-302-066		
13-19-302-067		
13-19-302-068		
13-19-302-069		
13-19-302-070		
13-19-302-071		
13-19-302-072		
13-19-302-073		
13-19-302-074		
13-19-302-075		
13-19-302-076		
13-19-302-077		
13-19-302-078		
13-19-302-079		
13-19-302-080		
13-19-302-081		
13-19-302-082		
13-19-302-083		
13-19-302-084		
13-19-302-085		
13-19-302-086		
13-19-302-087		
13-19-302-088		
13-19-302-089		
13-19-302-090		
13-19-302-091		
13-19-302-092		
13-19-302-093		
13-19-302-094		
13-19-302-095		
13-19-302-096		
13-19-302-097		
13-19-302-098		
13-19-302-099		
13-19-302-100		

DESCRIPTION OF PERMANENT REAL ESTATE INDEX NUMBER

13-19-302-018

AREA NUMBER	BLOCK NUMBER	PARCEL NUMBER
13-19-302-018		
13-19-302-019		
13-19-302-020		
13-19-302-021		
13-19-302-022		
13-19-302-023		
13-19-302-024		
13-19-302-025		
13-19-302-026		
13-19-302-027		
13-19-302-028		
13-19-302-029		
13-19-302-030		
13-19-302-031		
13-19-302-032		
13-19-302-033		
13-19-302-034		
13-19-302-035		
13-19-302-036		
13-19-302-037		
13-19-302-038		
13-19-302-039		
13-19-302-040		
13-19-302-041		
13-19-302-042		
13-19-302-043		
13-19-302-044		
13-19-302-045		
13-19-302-046		
13-19-302-047		
13-19-302-048		
13-19-302-049		
13-19-302-050		
13-19-302-051		
13-19-302-052		
13-19-302-053		
13-19-302-054		
13-19-302-055		
13-19-302-056		
13-19-302-057		
13-19-302-058		
13-19-302-059		
13-19-302-060		
13-19-302-061		
13-19-302-062		
13-19-302-063		
13-19-302-064		
13-19-302-065		
13-19-302-066		
13-19-302-067		
13-19-302-068		
13-19-302-069		
13-19-302-070		
13-19-302-071		
13-19-302-072		
13-19-302-073		
13-19-302-074		
13-19-302-075		
13-19-302-076		
13-19-302-077		
13-19-302-078		
13-19-302-079		
13-19-302-080		
13-19-302-081		
13-19-302-082		
13-19-302-083		
13-19-302-084		
13-19-302-085		
13-19-302-086		
13-19-302-087		
13-19-302-088		
13-19-302-089		
13-19-302-090		
13-19-302-091		
13-19-302-092		
13-19-302-093		
13-19-302-094		
13-19-302-095		
13-19-302-096		
13-19-302-097		
13-19-302-098		
13-19-302-099		
13-19-302-100		

Legend

- Platted Area Boundary Line
- Property Line
- Property Split Line
- Property Combined Line
- Township Boundary Line
- Traverse Line
- Dimension Extent Marks
- Dimension Start Marks

11-22B

CLINTON TWP.
 E. 1/2 N.W. 1/4 SEC. 22 T. 2N. R. 13E.

Source: Macomb County Department of Planning and Economic Development
 - 2008 Digital Orthophotography Project
 - Parcel Conversion Project

Note:
 Digital Orthophotography horizontal positioning accuracy is 3 feet. Parcel boundary lines should be considered a graphical representation and not in any way a legal survey of engineering document. In general, the horizontal positioning and length accuracy is within 15 feet.

This map is intended for general planning purposes. Site specific evaluation should be verified by field inspection. This is a work in progress and may contain errors and omissions. Please report any potential revisions to (586)469-5285.



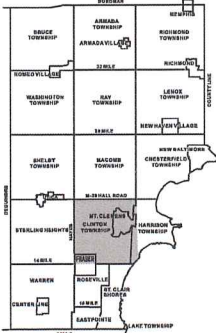
GISs **MACOMB COUNTY**
 Planning and Economic
 Development Department

Published: Nov 03, 2010



Date of Photography: Spring 2010
 100 50 0 100 200 Feet

1:1,200



CLINTON TWP SHEET INDEX

SE1/4	SW1/4	NE1/4	NW1/4
11-22-301-001	11-22-301-002	11-22-301-003	11-22-301-004
11-22-301-005	11-22-301-006	11-22-301-007	11-22-301-008
11-22-301-009	11-22-301-010	11-22-301-011	11-22-301-012
11-22-301-013	11-22-301-014	11-22-301-015	11-22-301-016
11-22-301-017	11-22-301-018	11-22-301-019	11-22-301-020
11-22-301-021	11-22-301-022	11-22-301-023	11-22-301-024
11-22-301-025	11-22-301-026	11-22-301-027	11-22-301-028
11-22-301-029	11-22-301-030	11-22-301-031	11-22-301-032
11-22-301-033	11-22-301-034	11-22-301-035	11-22-301-036
11-22-301-037	11-22-301-038	11-22-301-039	11-22-301-040
11-22-301-041	11-22-301-042	11-22-301-043	11-22-301-044
11-22-301-045	11-22-301-046	11-22-301-047	11-22-301-048
11-22-301-049	11-22-301-050	11-22-301-051	11-22-301-052
11-22-301-053	11-22-301-054	11-22-301-055	11-22-301-056
11-22-301-057	11-22-301-058	11-22-301-059	11-22-301-060
11-22-301-061	11-22-301-062	11-22-301-063	11-22-301-064
11-22-301-065	11-22-301-066	11-22-301-067	11-22-301-068
11-22-301-069	11-22-301-070	11-22-301-071	11-22-301-072
11-22-301-073	11-22-301-074	11-22-301-075	11-22-301-076
11-22-301-077	11-22-301-078	11-22-301-079	11-22-301-080
11-22-301-081	11-22-301-082	11-22-301-083	11-22-301-084
11-22-301-085	11-22-301-086	11-22-301-087	11-22-301-088
11-22-301-089	11-22-301-090	11-22-301-091	11-22-301-092
11-22-301-093	11-22-301-094	11-22-301-095	11-22-301-096
11-22-301-097	11-22-301-098	11-22-301-099	11-22-301-100

DESCRIPTION OF PERMANENT REAL ESTATE INDEX NUMBER

13-19-302-018

AREA NUMBER (MILWAUKEE COUNTY REVISION)	SUB AREA NUMBER (MILWAUKEE COUNTY REVISION)	BLOCK NUMBER (MILWAUKEE COUNTY REVISION)	PARCEL NUMBER (MILWAUKEE COUNTY REVISION)
---	---	--	---

Legend

- Platted Area Boundary Line
- Property Line
- Property Split Line
- Property Combined Line
- Township Boundary Line
- Traverse Line
- Dimension Extent Marks
- Dimension Start Marks

11-22C

MT. CLEMENS & CLINTON TWP.
 W.1/2 N.E.1/4 SEC.22 T.2N. R.13E.

Source: Macomb County Department of Planning and Economic Development
 - 2008 Digital Orthophotography Project - Parcel Conversion Project

Note: Digital Orthophotography horizontal positioning accuracy is 3 feet. Parcel boundary lines should be considered a graphical representation and not in any way a legal survey or engineering document. In general, the horizontal positioning and length accuracy is within 15 feet.

This map is intended for general planning purposes. Site specific evaluation should be verified by field inspection. This is a work in progress and may contain errors and omissions. Please report any potential revisions to (586)469-5265.



GISs MACOMB COUNTY
 Planning and Economic Development Department

Published: Nov 03, 2010

No. 498

No. 138 Confirmed to
the Widow & Heirs
of Richard Connor,
decd.

SOUTH SIDE OF RIVER HURON

Description No. 138 Confirmed to the widow and heirs of Richard Connor decd., commencing at a basswood tree standing on the border of River Huron between this tract and a tract confirmed to the claimants, thence south ninety eight chains to a post, thence east seventy two chains twenty six links to a post, thence north seventy chains ninety four links, to a post standing on the border of River Huron between this tract and unconceded land thence along the border of said River up stream north sixty one degrees west, thirteen chains, thence north forty five degrees west fourteen chains ninety four links, thence north sixty nine degrees west thirty eight chains, twenty four links, thence south eighty five degrees thirty minutes west fourteen chains sixty seven links, to the place of beginning, containing six hundred and forty acres _____

Detroit July 18, 1810

Aaron Greeley Surveyor
of private claims

No. 500

No. 137 Confirmed to
the widow and heirs of
Richard Connor, Deceased

SOUTH SIDE OF RIVER HURON

Description No. 137 Confirmed to the widow and heirs of Richard Connor deceased commencing at a post standing on the border of River Huron between this tract and a tract of unconceded land, thence south one hundred and four chains to a post thence east sixty five chains seventy links to a post standing on the west line of a tract confirmed to the claimants, thence north seventy three chains eighty four links, to a basswood tree standing on the border of River Huron thence along the border of said river up stream south eighty five degrees thirty minutes west nine chains sixty links, thence north forty nine degrees thirty minutes west twenty one chains sixty links, thence north sixty seven degrees west seventeen chains thence north thirty four degrees west nine chains thence north fourteen degrees west fifteen chains thence north six degrees west eleven chains fifty thence north sixty eight degrees west eighteen chains, thence south sixty eight degrees west six chains thence south twenty two degrees west four chains, thence south forty five degrees east thirteen chains, thence south twenty eight degrees thirty minutes east five chains thence south eight degrees west eleven chains fifty links to the place of beginning, containing six hundred and forty acres _____

Detroit July 18, 1810

Aaron Breeley Surveyor
of private claims

N^o. 499 " North Side of River Huron.

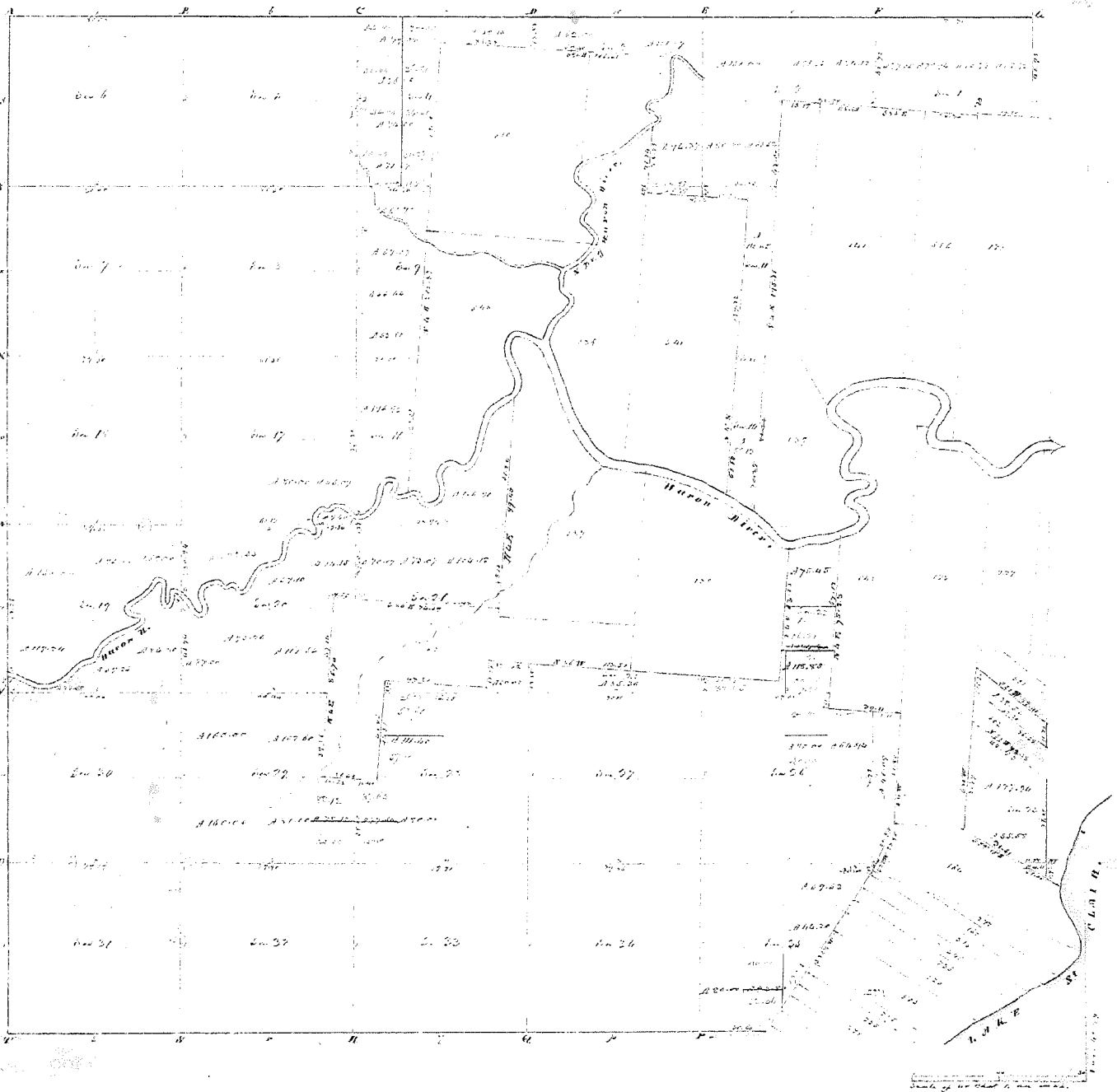
Description N^o. 628 Confirmed to the widow and heirs of Richard Connor used commencing at a post it being the south west corner of a tract N^o. 138, Confirmed to the Claimants thence west fifty five chains seventy links, to a post, thence south twelve chains fourteen links, to a post, thence west forty eight chains eighty six links, to a post, thence south forty eight chains eighty six links, to a post, thence west thirty one chains fourteen links to a

trunking asp. Bee; thence north ninety chains to an Ash Bee; thence east eighty chains to an Iron wood Bee; thence south four chains eighty four links, to a post; thence east sixty five chains seventy links, to a post standing on the west line of the tract N^o. 138, Confirmed to the Claimants, thence south twenty four chains sixteen links, to the place of beginning containing six hundred and forty acres. —

Detroit July 18. 1810

Aaron Gageley Surveyor
of private Claims.

678'



Township N: II north, Range N: XIII East of Mer. (Wind. Tree)

surveyed by W. P. Preston.

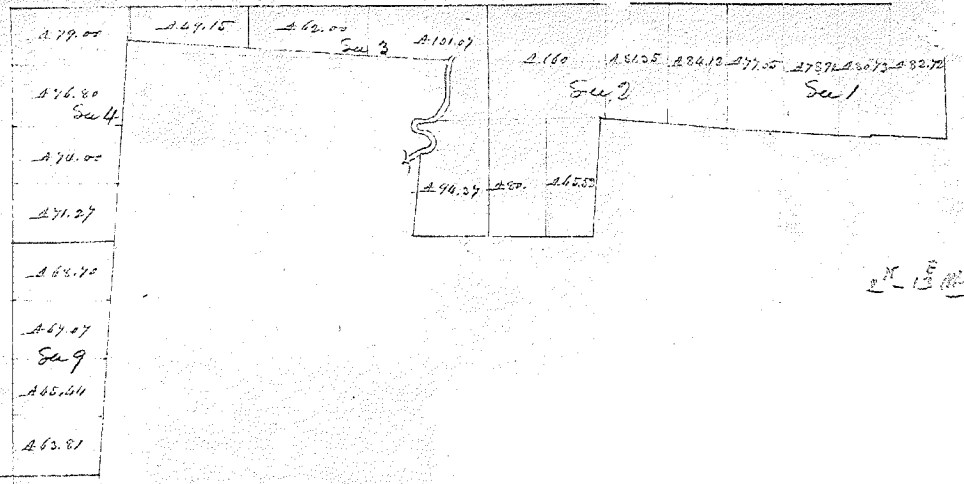
1871

Description of the soil on the interior sectional lines

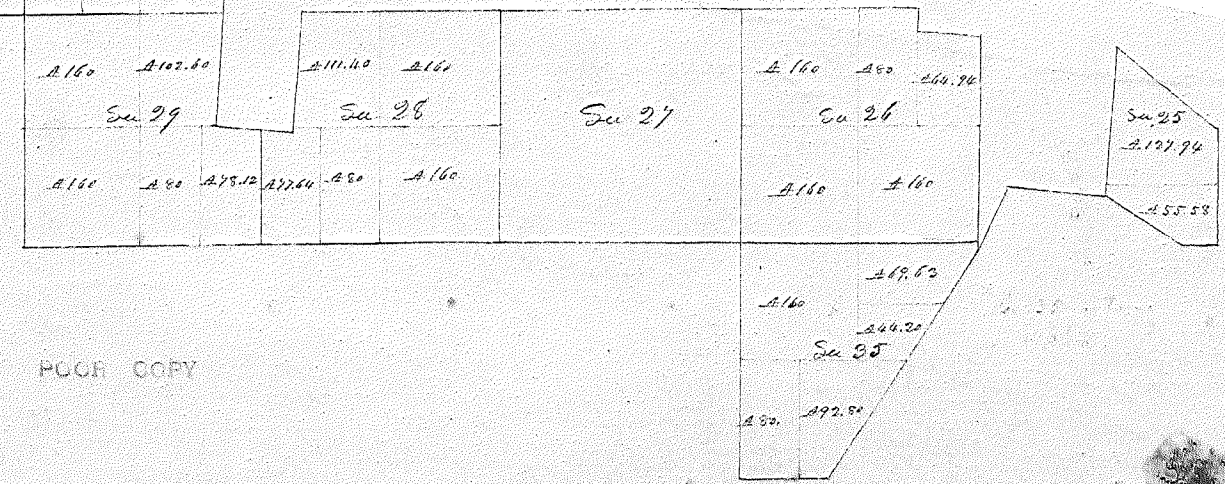
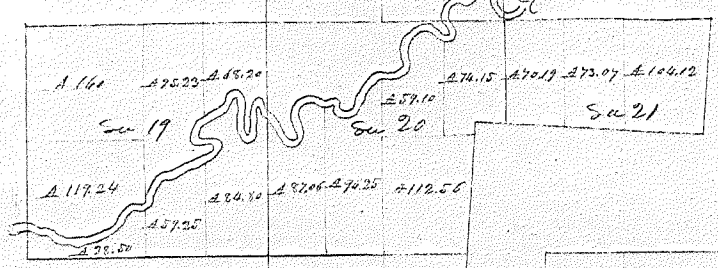
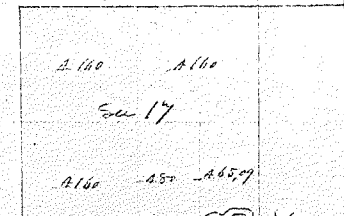
Section	Locality & Soil	Section	Locality & Soil
1	Black & red loam, black sand, loam, spongy	27	red & clay loam, black sand, loam
2	red & black loam, black sand, loam, spongy	28	same
3	same (partly clay)	29	of the blue loam
4	same	30	of the blue loam
5	black & red loam, black sand, loam, spongy	31	red, part clay, black sand, black loam, spongy
6	same	32	loam, black sand, black loam, spongy
7	black & red loam, black sand, loam, spongy	33	same
8	black & red loam, black sand, loam, spongy	34	same
9	same	35	same
10	black & red loam, black sand, loam, spongy	36	same
11	black & red loam, black sand, loam, spongy		
12	black & red loam, black sand, loam, spongy		
13	black & red loam, black sand, loam, spongy		
14	black & red loam, black sand, loam, spongy		
15	black & red loam, black sand, loam, spongy		
16	black & red loam, black sand, loam, spongy		
17	black & red loam, black sand, loam, spongy		
18	black & red loam, black sand, loam, spongy		
19	black & red loam, black sand, loam, spongy		
20	black & red loam, black sand, loam, spongy		
21	black & red loam, black sand, loam, spongy		
22	black & red loam, black sand, loam, spongy		
23	black & red loam, black sand, loam, spongy		
24	black & red loam, black sand, loam, spongy		
25	black & red loam, black sand, loam, spongy		
26	black & red loam, black sand, loam, spongy		
27	black & red loam, black sand, loam, spongy		
28	black & red loam, black sand, loam, spongy		
29	black & red loam, black sand, loam, spongy		
30	black & red loam, black sand, loam, spongy		
31	black & red loam, black sand, loam, spongy		
32	black & red loam, black sand, loam, spongy		
33	black & red loam, black sand, loam, spongy		
34	black & red loam, black sand, loam, spongy		
35	black & red loam, black sand, loam, spongy		
36	black & red loam, black sand, loam, spongy		

1706 pt 12 N 15, Range

N 15



N 15



PUGH COPY

Township N^o. 11 North, Range N^o. XIII East of Mer. (Mich. Ter.)

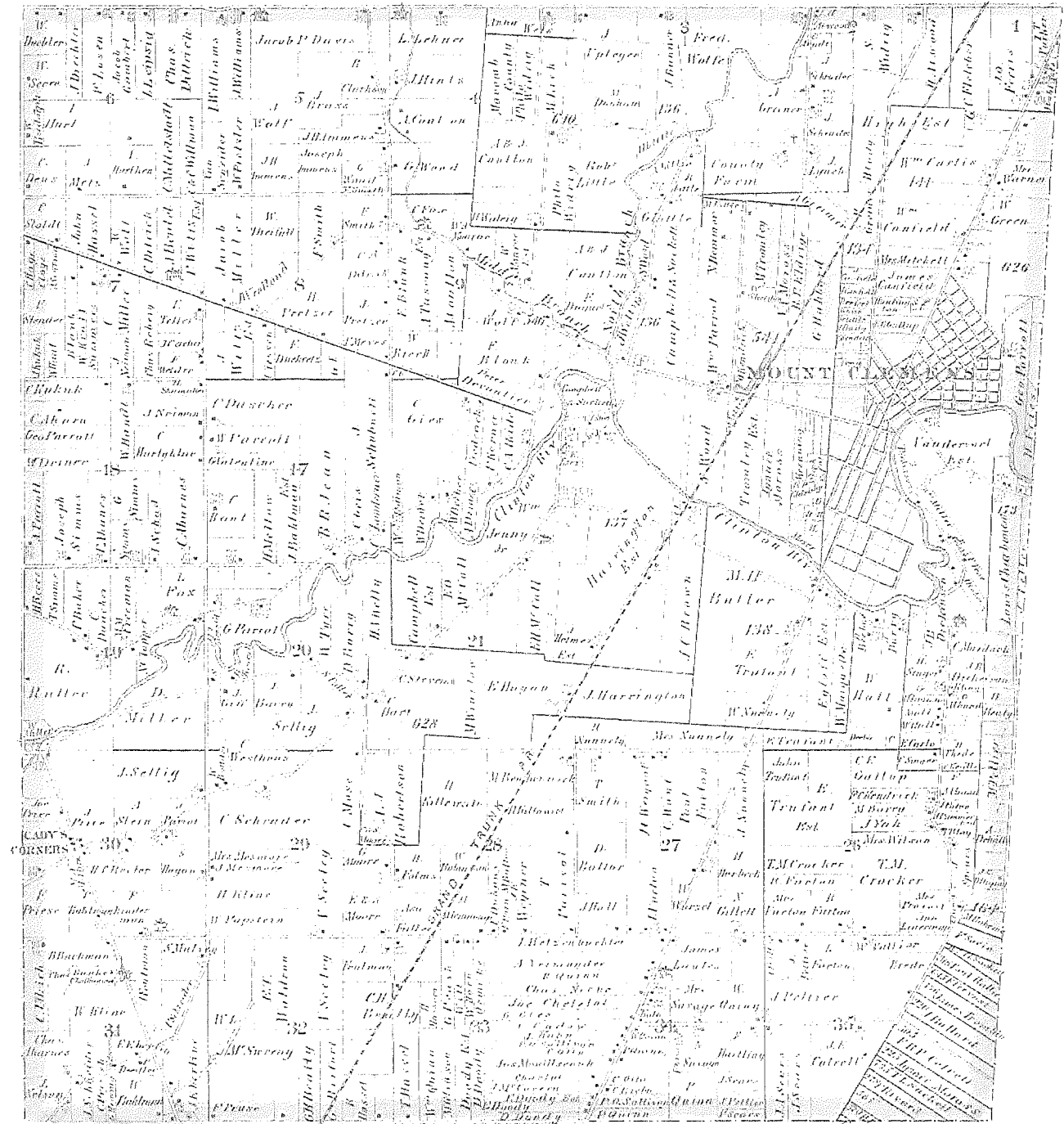


A true copy from the Original on file in this Office 4th Dec. 1899
 Quantity exclusive of private claim 14, 202, 99
 Surveyor General's Office
 Feb. 20th 1915

[Signature]
 Surveyor General

MAP OF CLINTON TOWNSHIP

T. 2 S. R. 1 E.



Drawn and Compiled by O.C. Craze

MAP OF CLINTON

Township 2 North Range 13 East

Scale 2 Inches to one Mile.

of the Meridian of Michigan



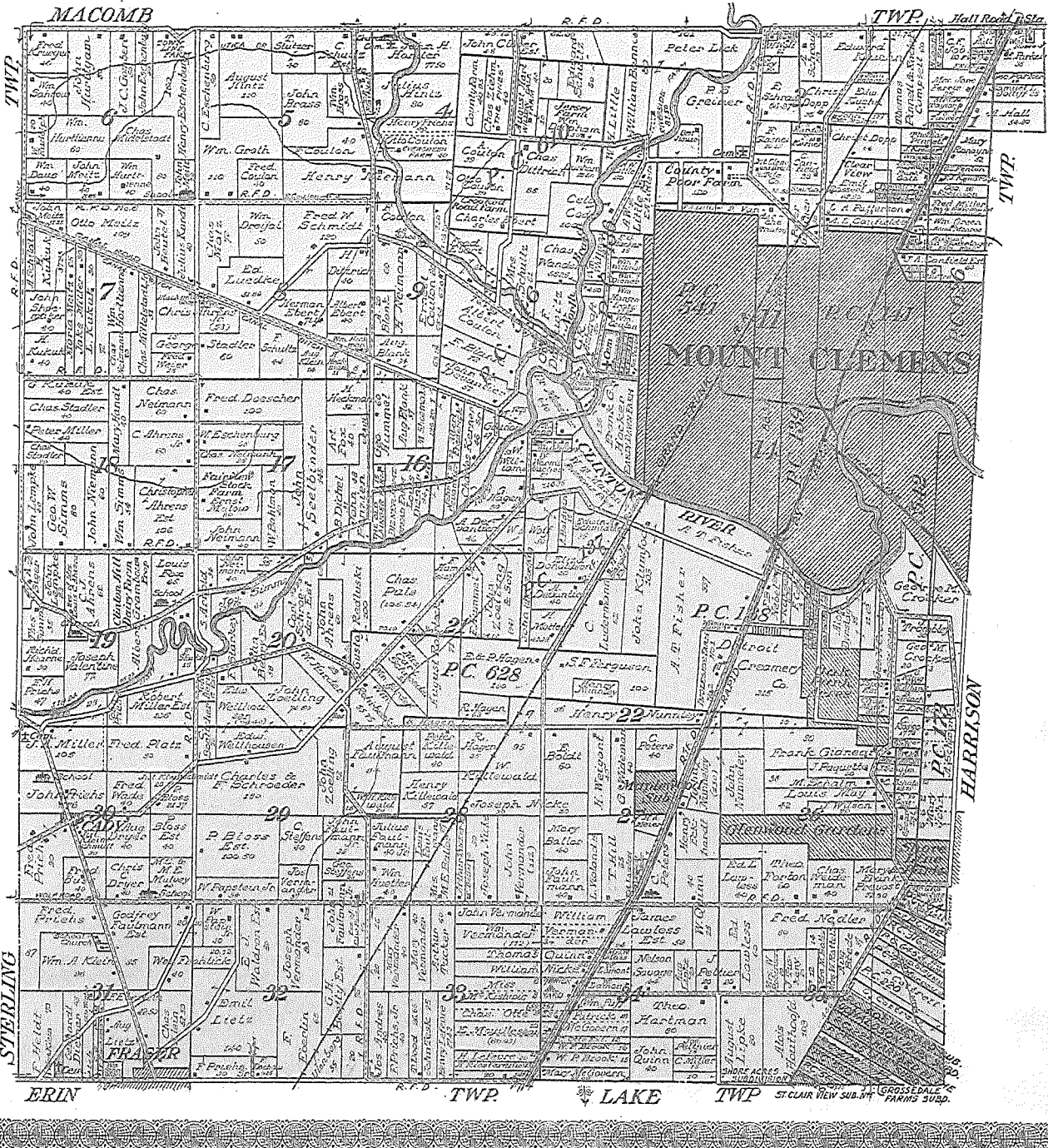
1895

4

MAP OF CLINTON TOWNSHIP

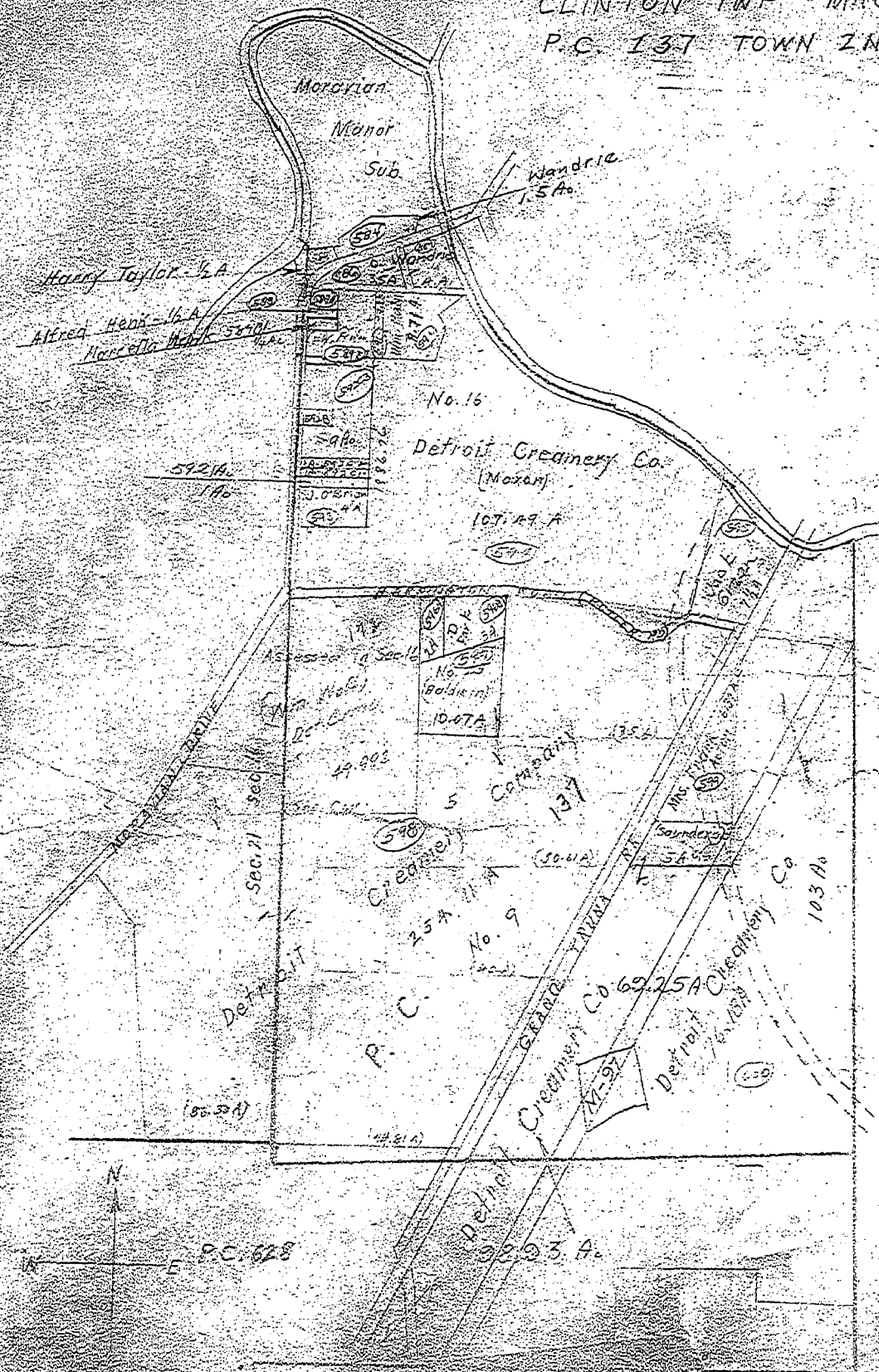
Scale 2 inches to 1 mile

Fractional Township 2 North, Range 15 East of the Michigan Meridian

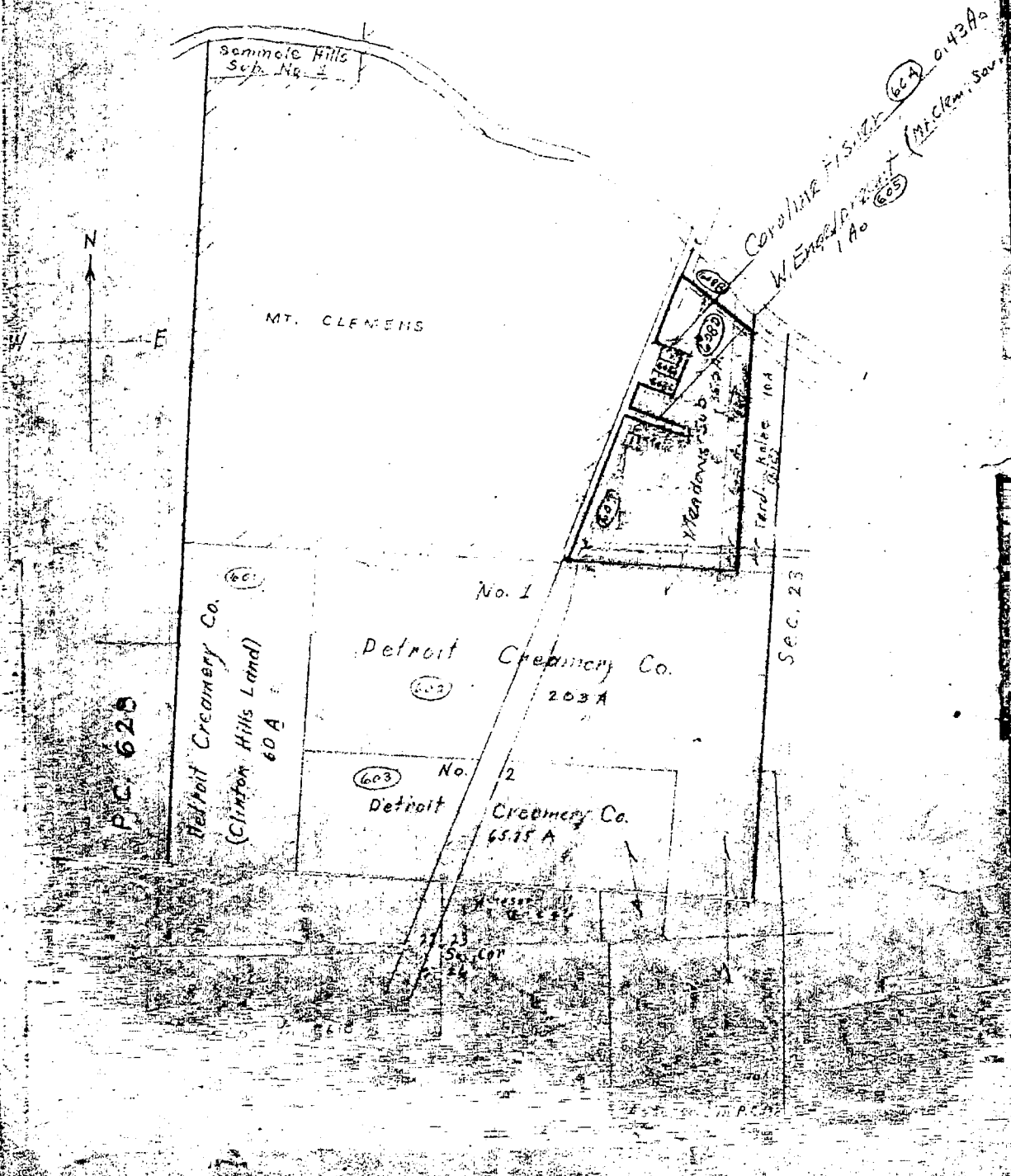


1916

CLINTON TWP - MACOMB CO
P.C. 137 TOWN 2N, R13E



CLINTON TOWNSHIP MACOMB COUNTY
P. C. 138 TOWN 2 N RANGE 13E

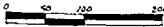


"INGLESIDE FARMS SUB. NO. 4"
 PART OF FRACTIONAL SECTION 22, AND
 PART OF PC'S 137, 138 & 628, T.2 N., R.13 E.
 CLINTON TWP, MACOMB CO., MICH.

Examined and Approved

Mayne Jewell Packer
 Deputy Auditor General

SCALE - 1 IN. = 200 FT.



I HEREBY CERTIFY THAT THIS COPY IS
 A TRUE COPY OF THE MAP OR PLAT
 FORWARDED THE REGISTER OF DEEDS
 FOR RECORDING.

WALTER J. LEHNER
 REG. CIVIL ENG.
 MT. CLEMENS MICH.

Note: All dimensions in feet
 and decimals thereof.

COMPARED
Mayne Jewell Packer
 Deputy Auditor General

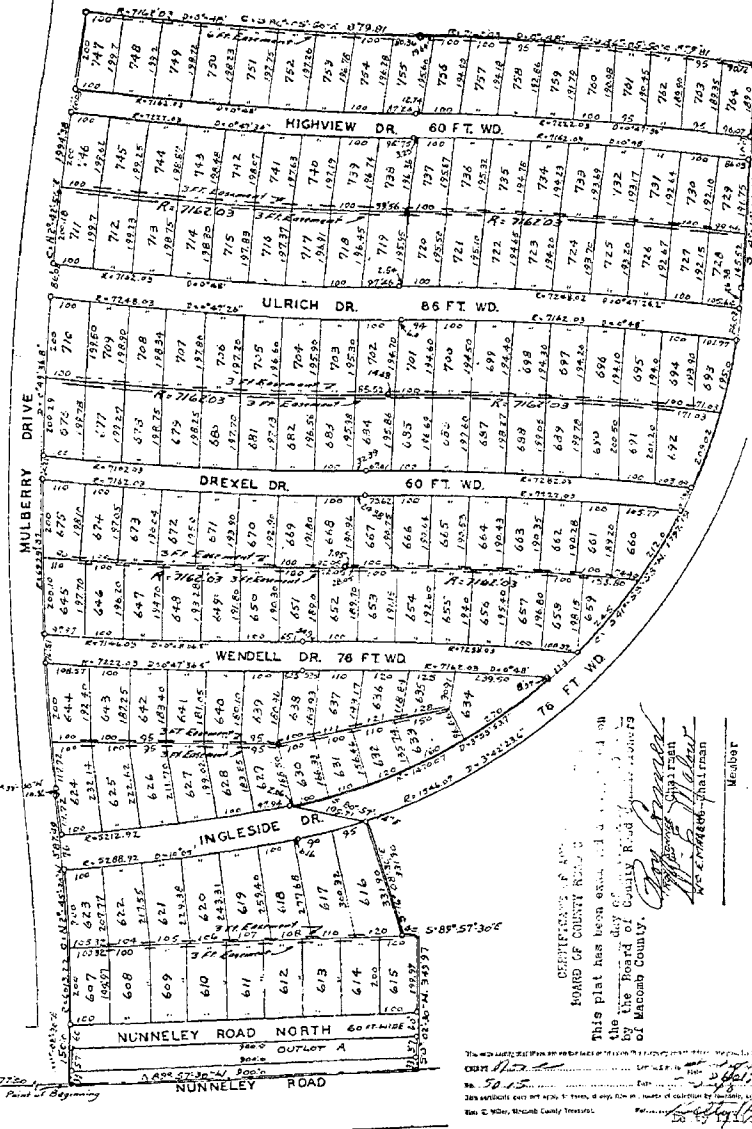
WHERE ALL PART OF THESE PREMISES, that we,
 the Ingleside Realty Co., a Ltd. Partnership,
 by Francis M. Phelps, a General Partner,
 as proprietors, have caused the land
 embraced in the annexed plat to be surveyed,
 laid out and platted to be known as "Ingleside
 Farms Sub. No. 4" Part of Fractional
 Section 22, and part of P. C.'s 137, 138 & 628,
 T. 2 N., R. 13 E., Clinton Twp., Macomb Co., Michigan,
 and that the streets as shown on
 said plat are hereby dedicated to the use of
 the public.

Witnesses
Francis M. Phelps General Partner
Frank C. Carlier Secretary

FRANK C. CARLIER
 Notary Public
 On this 30th day of August, 1948,
 before me, Frank C. Carlier, a Notary Public
 in and for said county, appeared Francis M.
 Phelps, the personal representative of the
 partnership of the Ingleside Realty Co., a Ltd. Partnership,
 and that he as authority to execute this
 instrument for the said Ingleside
 Realty Co.

Frank C. Carlier
 Notary Public in and
 for Macomb County

This commission expires 30th day of August 1951



DESCRIPTION OF THE EMBROIDERED

The land embraced in the annexed plat of
 Ingleside Farms Sub. No. 4, part of Fractional
 Section 22, and part of P. C.'s 137, 138 & 628,
 T. 2 N., R. 13 E., Clinton Twp., Macomb Co., Michigan, is
 described as follows:

Commencing at a point 697.56 ft.
 S. 88°-57'-36" E. of the S. 1/4 part of said
 Sec. 22, and thence southeasterly 10°-00'-30" E.
 450.0 ft.; thence along a curve [R=1215.32 ft.]
 southeasterly to the point of beginning
 southerly 138°-47'-30" E. and 100.00 ft. in
 length; thence S. 89°-57'-36" E. 100.00 ft.;
 thence along a curve [R=1215.32 ft.] southeasterly
 to the point of beginning 100.00 ft. in
 length; thence S. 88°-57'-36" E. 100.00 ft.;
 thence along a curve [R=1215.32 ft.] southeasterly
 to the point of beginning 100.00 ft. in
 length; thence S. 88°-57'-36" E. 100.00 ft.;
 thence along a curve [R=1215.32 ft.] southeasterly
 to the point of beginning 100.00 ft. in
 length; thence S. 88°-57'-36" E. 100.00 ft.;
 thence along a curve [R=1215.32 ft.] southeasterly
 to the point of beginning 100.00 ft. in
 length; thence S. 88°-57'-36" E. 100.00 ft.

STATEMENT OF AREA

I hereby certify that the plat heron delineated
 is a correct one and that permanent metal
 monuments consisting of pins not less than
 one half inch in diameter and 48 inch in
 length are located in a correct position at least
 at every corner and at the center points
 of every street shown thereon and that they
 have been tested at points shown thereon and
 are found to be in the true and correct
 position and that the intersections of streets
 are correctly shown on the plat as shown on
 said plat.

Walter J. Lehner,
 Registered Land Surveyor

This plat was approved by the Board of
 Commissioners of Macomb County, Michigan,
 on the 30th day of August, 1948.

Walter J. Lehner
 Registered Land Surveyor

WHERE ALL PART OF THESE PREMISES, that we the Industrial
 National Bank-Detroit, a United States Corporation, by
 Harry B. Lincoln, Vice-President, and W. T. Moran, President,
 as proprietors, have caused the land embraced
 in the annexed plat to be surveyed, laid out and platted
 to be known as "Ingleside Farms Sub. No. 4, Part of Fractional
 Section 22, and part of P. C.'s 137, 138 & 628,
 T. 2 N., R. 13 E., Clinton Twp., Macomb County, Michigan,
 and the lots as shown on said plat are hereby dedicated to
 the use of the public.

SEAL OF REGISTERED
 COUNTY OF MACOMB, MICH. SS
 On this 30th day of August, A.D.
 1948, before me, Hugh J. Maugh,
 a Notary Public in and for said
 County, appeared Harry B. Lincoln
 and W. T. Moran to us personally
 known, who being duly sworn did say
 that they are the Vice-Presidents
 and the President of the Industrial National Bank-Detroit
 and that they have the authority to
 execute the above instrument for the said
 Industrial National Bank-Detroit.

Industrial National Bank-Detroit
 Signed and sealed in the presence of
Walter J. Lehner Vice-President
Harry B. Lincoln President
W. T. Moran Vice-President

Hugh J. Maugh
 Notary Public
 My Commission expires 30th day of August, 1951.

COPY
 Registered Office
 Macomb County
 Plat of
 was Received this 30th day of
 August, A.D., 1948.
 on Page 41
 DEPUTY REGISTER

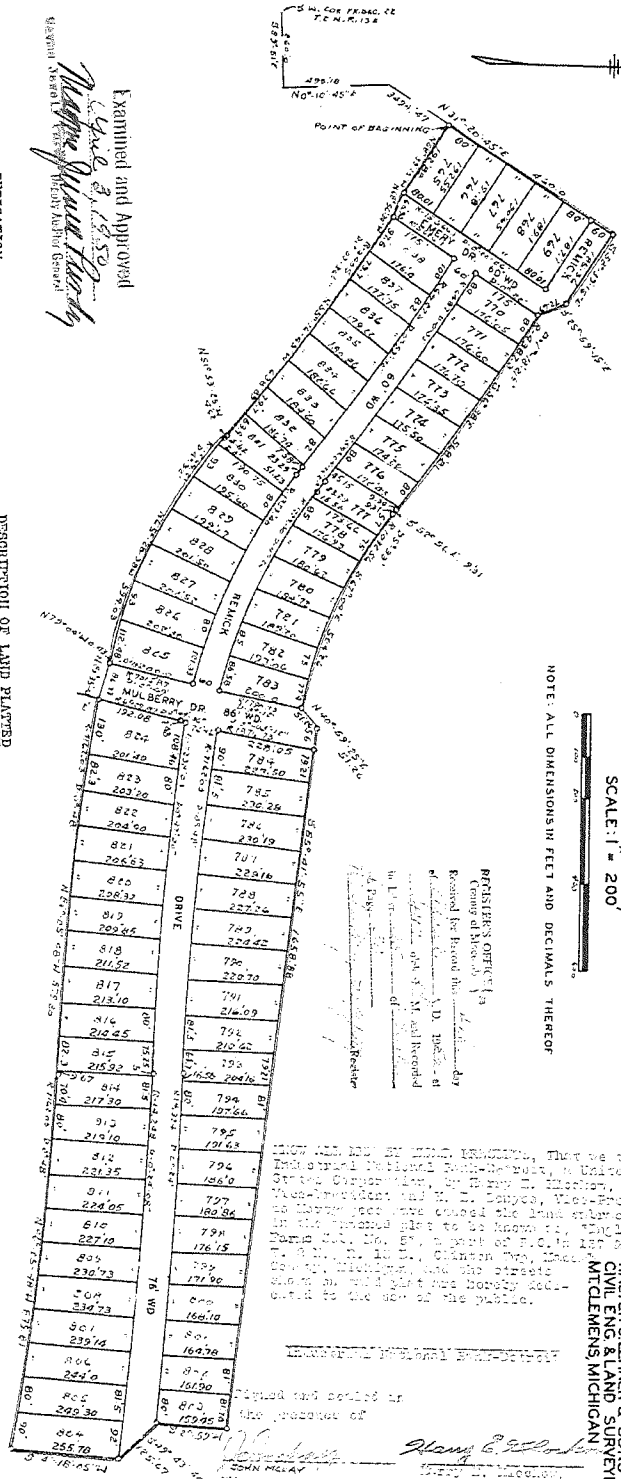
FILED IN AUDITOR GENERAL'S DEPT.
 DEPUTY AUDITOR GENERAL

"INGLESIDE FARMS SUB. NO. 5"

A PART OF PCS 137 & 138 T2N13E, CLINTON TWP, MACOMB COUNTY, MICHIGAN

SCALE: 1" = 200'

NOTE: ALL DIMENSIONS IN FEET AND DECIMALS THEREOF



Examined and Approved
Walter J. Lehner
 Surveyor
 Macomb County, Michigan

DEDICATION

KNOW ALL MEN BY THESE PRESENTS, That we, the Ingleside Realty Co., a Ltd. Partnership, by Francis H. Phelps, a general partner, as pro-prietors, have caused the land embraced in the annexed plat to be surveyed, laid out and plotted to be known as Ingleside Farms Sub. No. 5, a part of Town 13 North, Range 13 West, Macomb County, Michigan, and that the streets as shown on said plat are hereby dedicated to the use of the public.

INGLESIDE REALTY CO.

By *Francis H. Phelps*
 a general partner.

Witnesses:

John J. Johnson
 Clerk
 Macomb County, Michigan

STATE OF MICHIGAN)

SS.

On this 14th day of March, A. D., 1950, before me, a Notary Public in and for said County, appeared Francis H. Phelps to me personally known, who being duly sworn did say that he is a general partner of the Ingleside Realty Co., a Ltd. Partnership, and that he has authority to execute the above instrument for the said Ingleside Realty Co.

Walter J. Lehner
 Notary Public, in and for
 Macomb County, Michigan

DESCRIPTION OF LAND PLATED

The land embraced in the annexed plat of "Ingleside Farms Sub. No. 5", a part of P. C. 137 & 138, T. 13 N., R. 13 W., Clinton Township, Macomb County, Michigan, is described as follows:

Commencing at the S. E. corner of Fractional Lot 28, T. 13 N., R. 13 W., and thence extending S. 69°-01' E. 260.0 ft; thence N. 0°-10'-45" E. 493.18 ft; thence N. 31°-20'-45" E. 349.47 ft., to the point of beginning of this description; thence N. 31°-20'-45" E. 460.0 ft; thence S. 56°-39'-15" E. 180.20 ft; thence S. 29°-50'-15" E. 75.69 ft; thence along a curve (R. - 4387.3 ft.) concave to the S.W., and whose long chord bears S. 52°-56'-1" E. 9.31 ft; thence S. 68°-01' E. 103.88 ft.) concave to the N.E. and whose long chord bears S. 67°-04' E. a distance of 504.25 ft; thence N. 40°-59'-28" E. 61.26 ft; thence S. 65°-41'-55" E. 165.88 ft; thence S. 2°-39' E. 159.48 ft; thence S. 40°-43'-40" E. 125.67 ft; thence S. 6°-18'-05" W. 256.78 ft; thence along a curve (R. - 1103.05 ft.) concave to the South and whose long chord bears N. 68°-03'-38" W. a distance of 1296.01 ft; thence S. 68°-03'-38" W. a distance of 1296.01 ft; thence S. 68°-03'-38" W. a distance of 676.48 ft; thence N. 63°-45'-45" W. 88.33 ft; thence N. 72°-04' W. 0.43 ft; thence along a curve (R. - 1204.21 ft.) concave to the N. E. and whose long chord bears N. 68°-30'-38" W. a distance of 684.03 ft; thence N. 31°-20'-45" E. 462.16 ft; thence along a curve (R. - 1600 ft.) concave to the S.W. and whose long chord bears N. 31°-20'-45" E. a distance of 356.09 ft; thence N. 67°-55'-30" W. 60.84 ft; thence N. 65°-39'-15" E. 182.88 ft., to the point of beginning of this description.

SURVEYOR'S CERTIFICATE

I hereby certify that the plat herein delineated and the plat as shown on said plat, contains all the land and that the dimensions and bearings are correct and that the plat as shown on said plat, contains all the land and that the dimensions and bearings are correct and that the plat as shown on said plat, contains all the land and that the dimensions and bearings are correct.

Walter J. Johnson
 Registered Land Surveyor

CERTIFICATE OF COUNTY ROAD COMMISSIONERS

This plat was approved by the Township Board of the Township of Clinton, at a meeting held March 14, A. D., 1950.

Walter J. Johnson
 Township Clerk

CERTIFICATE OF APPROVAL BY COUNTY BOARD

This plat was approved on the 14 day of March, A. D., 1950.

Walter J. Johnson
 Register of Deeds
 Macomb County Clerk (Deputy Clerk)

John J. Johnson
 County Treasurer

CERTIFICATE OF APPROVAL

BY BOARD OF COUNTY ROAD COMMISSIONERS
 This plat has been examined and approved the 14 day of March, 1950, by the Board of County Road Commissioners of Macomb County.

Walter J. Johnson
 Chairman

John J. Johnson
 Vice-Chairman

Walter J. Johnson
 Secretary

ORIGINAL

"INGLESIDE FARMS SUB NO 7"

A PART OF PCS 137 & 628, T2NRI3E, CLINTON TWP, MACOMB COUNTY, MICHIGAN

SCALE 1" = 200'



WALTER JLEHNER & SONS.
CIVIL ENG & LAND SURVEYING
MT. CLEMENS MICHIGAN.

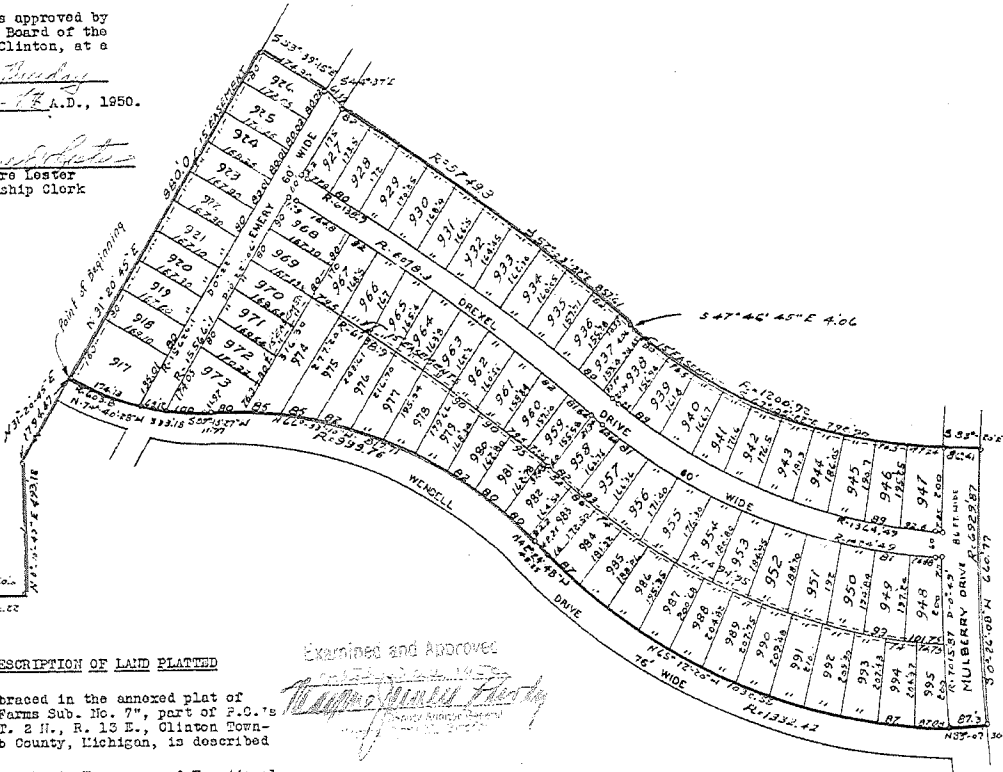
ALL DIMENSIONS ARE IN FEET AND DECIMALS THEREOF

CERTIFICATE

OF TOWNSHIP APPROVAL

This plat was approved by the Township Board of the Township of Clinton, at a meeting held Thursday August 17th A.D., 1950.

Elmore Loster
Elmore Loster
Township Clerk



DESCRIPTION OF LAND PLATTED

The land embraced in the annexed plat of "Ingleside Farms Sub. No. 7", part of P.C.'s 137 & 628, T. 2 N., R. 13 E., Clinton Township, Macomb County, Michigan, is described as follows:

Commencing at the S. W. corner of Fractional Section 22, T. 2 N., R. 13 E., and thence extending S. 89°-51' E. 250.0 ft.; thence E. 0°-10'-45" E. 493.18 ft.; thence N. 31°-20'-45" E. 1794.47 ft. to the point of beginning of this description; thence N. 31°-20'-45" E. 860.00 ft.; thence S. 58°-39'-15" E. 174.30 ft.; thence S. 44°-37' E. 61.39 ft.; thence along a curve (R.-5749.3 ft.) concave to the S. W. and whose long chord bears S. 52°-03'-22" E. and is 857.61 ft. in length; thence S. 47°-46'-45" E. 4.08 ft.; thence along a curve (R.-1200.92 ft.) concave to the N. E. and whose long chord bears S. 67°-03'-22" E. and is 722.90 ft. in length; thence S. 82°-20' E. 86.41 ft.; thence along a curve (R.-6229.87 ft.) concave to the East and whose long chord bears S. 0°-26'-08" W. and is 660.77 ft. in length; thence N. 83°-07'-30" W. 87.30 ft.; thence along a curve (R.-1332.42 ft.) concave to the N. E. and whose long chord bears N. 65°-12'-20" W. and is 1032.55 ft. in length; thence N. 42°-24'-48" W. 48.25 ft.; thence along a curve (R.-999.76 ft.) concave to the S. W. and whose long chord bears N. 66°-33'-10" W. and is 817.71 ft. in length; thence S. 69°-18'-27" W. 11.97 ft.; thence along a curve (R.-803.8') concave to the North and whose long chord bears N. 74°-40'-28" W. and is 333.18 ft. in length to the point of beginning.

SURVEYOR'S CERTIFICATE

I hereby certify, that the plat hereon delineated is a correct one and that permanent metal monuments consisting of bars not less than one half inch in diameter and 48 inches in length encased in a concrete cylinder at least 4 inches in diameter and 48 inches in length, have been placed at point marked thus (*) as thereon shown at all angles in the boundaries of the land platted, at all intersections of streets, and at the intersection of streets with the boundaries of the plat as shown on said plat.

Walter J. Lehner
Walter J. Lehner
Registered Land Surveyor
No. 123

DEDICATION

KNOW ALL MEN BY THESE PRESENTS, That we, the Ingleside Realty Co., a Ltd. Partnership, by Francis H. Phelps, a general partner, as proprietors, have caused the land embraced in the annexed plat to be surveyed, laid out and platted to be known as "Ingleside Farms Sub. No. 7", a part of P. C.'s 137 & 628, T. 2 N., R. 13 E., Clinton Township, Macomb County, Michigan, and that the streets as shown on said plat are hereby dedicated to the use of the public.

INGLESIDE REALTY CO.

By *Francis H. Phelps*
Francis H. Phelps
a general partner

WITNESSES:

Raymond Cullinan
Raymond Cullinan

Walter J. Lehner
Walter J. Lehner

STATE OF MICHIGAN
COUNTY OF WAYNE) SS.

On this 17th day of October, A.D., 1950, before me, a Notary Public, in and for said county, appeared Francis H. Phelps, to me personally known, who being duly sworn did say that he is a general partner of the Ingleside Realty Co., a Ltd. Partnership, and that he has authority to execute the above instrument for the said Ingleside Realty Co.

Walter J. Lehner
Walter J. Lehner
Notary Public, in and for
Wayne County, Michigan

My Commission expires 4/2-1951

CERTIFICATE OF APPROVAL BY COUNTY BOARD

This plat was approved on the 23rd day of October, A. D., 1950.

Viola Mayette
Deputy, Register of Deeds-Viola Mayette

Eunice L. Rose
Chief Deputy, County Clerk - Eunice L. Rose

Lynn Whalen
Lynn Whalen
County Treasurer

CERTIFICATE OF APPROVAL

BY BOARD OF COUNTY ROAD COMMISSIONERS

This plat has been examined and approved on the 17th day of October, A. D., 1950, by the Board of County Road Commissioners of Macomb County, Michigan.

Wm. E. Malow
Wm. E. Malow - Chairman

Raymond Cullinan
Raymond Cullinan - Vice-Chairman

Alfred Foerster
Alfred Foerster - Member

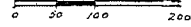
10-23-50
Part D 6002+743
10-23-50
W. J. Lehner

"SEMINOLE HEIGHTS SUB. NO. 3"

PART OF P.C. 138 T. 2 N. R. 13 E.

CITY OF MT. CLEMENS, MACOMB CO. MICH.

SCALE 1" = 100'



ALL DIMENSIONS HEREON ARE IN FEET AND DECIMALS THEREOF.

HARRY J. FULLER
REGISTERED CIVIL ENGINEER
MT. CLEMENS MICH

DEDICATION

KNOW ALL MEN BY THESE PRESENTS, that we
Macomb Building Company,
Michigan, corporation by Paul Litvin,
President, and Morris Litvin,
Secretary, as proprietor, have caused the land embraced in the annexed plat to be surveyed, laid out and platted to be known as
Seminole Heights Sub. No. 3
part of P. C. 138, T. 2 N. R. 13 E., City of Mt. Clemens,
Macomb County, Mich.,
and that the streets and alleys as shown on said plat are hereby dedicated to
the use of the public.

Signed and Sealed in
the Presence of
Macomb Building Company,
Paul Litvin, President
Morris Litvin, Secretary
Harry J. Fuller (Witness)
Elaine Jaques (Witness)

ACKNOWLEDGMENT

STATE OF MICHIGAN }
County of MACOMB } ss.
On this _____ day of _____ A.D. 19____, before
me _____ a Notary Public in and for
said county appeared Paul Litvin and Morris Litvin
to me personally known, who being each by me duly sworn did say that they are the
President and Secretary respectively of the Macomb Building Company,
Michigan, corporation,
and that the seal affixed to said instrument is the corporate seal of said corporation and
that said instrument was signed and sealed in behalf of said corporation by authority
of its Board of Directors and the said Paul Litvin and Morris
Litvin _____ acknowledged said
instrument to be the free act and deed of said corporation.

DESCRIPTION OF LAND PLATTED

The land embraced on the annexed plat of Seminole Heights
No. 3 part of P.C. 138, T. 2 N. R. 13 E., City of Mt. Clemens,
Macomb County, Michigan, is described as follows:

Commencing at the South 1/4 part of P. 30, Sec. 23 T. 2 N. R. 13 E., thence T 89 degrees 47' 40" W 2774.0 feet, thence S 22 degrees 54' 3" E 279.83 feet, thence S 25 degrees 45' 1" E 1922.87 feet, thence S 85 degrees 41' 2" E 332.29 feet, to the point of beginning, thence S 45 degrees 39' 1" E 565.50 feet, thence T 04 degrees 30' 3" E 1409.18 feet, thence S 35 degrees 47' 2" E 270.6 feet, thence S 04 degrees 17' 2" E 20 feet, thence S 45 degrees 45' 2" E 140 feet, thence S 04 degrees 17' 2" E 765.1 feet, thence S 22 degrees 47' 2" E 37.0 feet, thence S 21 degrees 45' 2" E 105 feet, thence S 64 degrees 55' 2" E 11.05 feet, thence S 17 degrees 15' 2" E 140 feet, thence S 68 degrees 37' 2" E 15.12 feet, thence S 21 degrees 29' 2" E 140 feet, thence S 70 degrees W 20.3 feet, thence S 17 degrees 15' 2" E 170.6 feet to the point of beginning.

MUNICIPAL APPROVAL

This plat was approved by the City Commission
of the City of Mt. Clemens,
at a meeting held _____
Frederick Soule (Clerk)

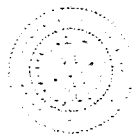
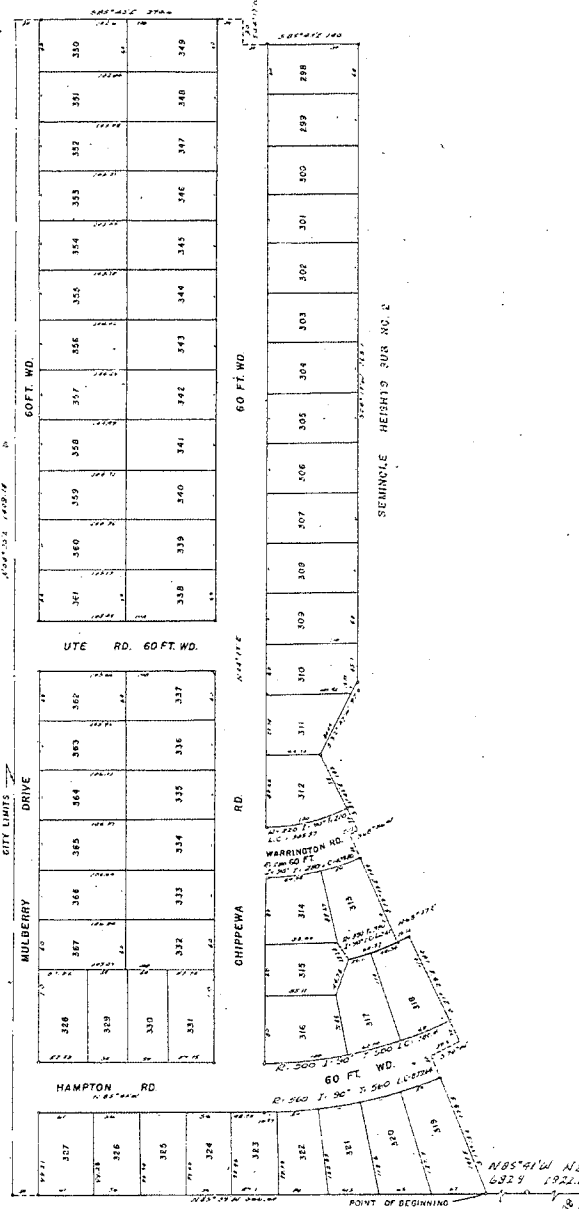
APPROVAL BY COUNTY BOARD

This plat was approved on the _____ day of _____
19____
Aaron Burr (County Treasurer)
Eunice L. Rose (County Clerk)
Lynn Whalen (County Treasurer)

SURVEYOR'S CERTIFICATE

I hereby certify that the plat hereon delivered is a correct one and that permanent metal monuments consisting of bars not less than one-half inch in diameter and 43 inches in length, or shorter bars of not less than one-half inch in diameter tapered over each other at least 4 inches with an overall length of not less than 48 inches, encased in a concrete cylinder of four 4 inches in diameter and 48 inches in depth have been placed at points marked thus (0) at the corners shown at all angles in the boundaries of the land platted, at all the intersections of streets, intersections of alleys, or of streets and alleys, and at the intersection of streets and alleys with the boundaries of the plat as shown on said plat.
Harry J. Fuller
Registered Land Surveyor

This is to certify that these monuments have been placed on the land as shown on the plat and that the same are in accordance with the provisions of the Act of the Legislature of the State of Michigan, approved March 27, 1906, and amended March 27, 1907, and March 27, 1908, and that the same are in accordance with the provisions of the Act of the Legislature of the State of Michigan, approved March 27, 1906, and amended March 27, 1907, and March 27, 1908, and that the same are in accordance with the provisions of the Act of the Legislature of the State of Michigan, approved March 27, 1906, and amended March 27, 1907, and March 27, 1908.



Examined and Approved
Thomas James Brady
County Auditor General



"SEMINOLE HEIGHTS SUB. NO. 4"

PART OF P.C. 138 T. 2 N. R. 13 E.

CITY OF MT. CLEMENS, MACOMB CO. MICH.

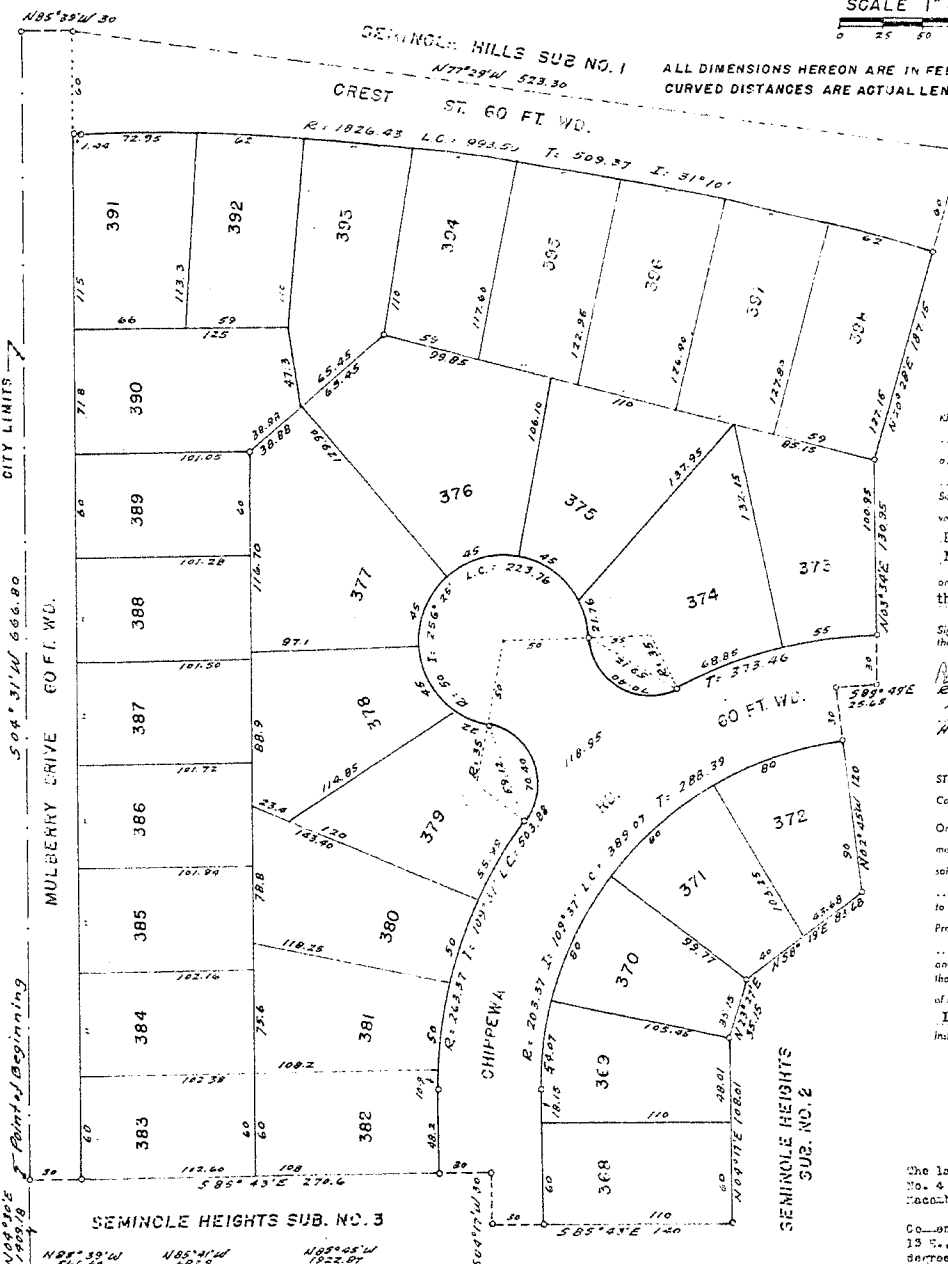
1001231

FEB 20 10 50 AM '52

SCALE 1" = 50'

ALL DIMENSIONS HEREON ARE IN FEET AND DECIMALS THEREOF.
CURVED DISTANCES ARE ACTUAL LENGTHS OF 4X.

HARRY J. FULLER
REGISTERED CIVIL ENGINEER
MT. CLEMENS MICH



DEDICATION

KNOW ALL MEN BY THESE PRESENTS, that we
Macomb Building Company,
 a Michigan corporation by Paul Litvin
 President, and Morris Litvin
 Secretary, as propleter, have caused the land embraced in the annexed plat to be surveyed, laid out and platted to be known as **Seminole Heights Sub. No. 4**
 part of P. C. 138, T. 2 N. R. 13 E., City of Mt. Clemens,
 Macomb County, Mich.,
 and that the streets and alleys as shown on said plat are hereby dedicated to
 the use of the public.

Signed and Sealed in
 the Presence of:
Macomb Building Company
Paul Litvin President
Morris Litvin Secretary
W. J. Fuller (Witness)
H. J. Fuller (Witness)

ACKNOWLEDGMENT

STATE OF MICHIGAN)
 County of MACOMB)
 On this 19th day of February, A.D. 1952, before
 me, Notary Public in and for
 said county appeared **Paul Litvin and Morris Litvin**
 to me personally known, who being each by an duly sworn affidavit that they are the
 President and Secretary respectively of the **Macomb Building Company**
 a Michigan corporation,
 and that the seal affixed to said instrument is the corporate seal of said corporation and
 that said instrument was signed and sealed in behalf of said corporation by authority
 of its Board of Directors and the said **Paul Litvin and Morris**
 Litvin acknowledged said
 instrument to be the free act and deed of said corporation.

Notary Public **Edwaine Jacques** County
 My Commission expires

DESCRIPTION OF LAND PLATED

The land embraced in the annexed plat of Seminole Heights
 No. 4 part of P.C. 138 T. 2 N. R. 13 E., City of Mt. Clemens,
 Macomb County, Michigan is described as follows:

Commencing at the south 1/4 part of Tran. Sec. 23 T. 2 N. R. 13 E.,
 thence N 89 degrees 47'40" E 2774.0 feet, thence T 23
 degrees 54' N 2279.88 feet, thence N 85 degrees 45' 1' 1023.07
 feet, thence N 95 degrees 41' 2' 682.3 feet, thence T 35 degrees
 39' 566.60 feet, thence T 04 degrees 29' N 1409.18 feet, to
 the point of beginning, thence S 85 degrees 43' 2' 270.6 feet,
 thence S 04 degrees 17' 30 feet, thence S 95 degrees 43' 2'
 140 feet, thence T 04 degrees 17' 3' 108.01 feet, thence T 23
 degrees 27' N 35.15 feet, thence T 58 degrees 19' 35.83 feet,
 thence T 02 degrees 45' 1' 120 feet, thence S 99 degrees 43' 2'
 25.65 feet, thence T 02 degrees 24' 3' 130.35 feet, thence T
 20 degrees 28' 3' 197.15 feet, thence T 77 degrees 29' 527.20
 feet, thence T 85 degrees 33' 3' 30 feet, thence S 04 degrees
 21' 7' 866.2 feet, to the point of beginning.

SURVEYOR'S CERTIFICATE

I hereby certify that the plat hereon delineated is a correct one and that permanent
 metal monuments consisting of bars not less than one-half inch in diameter and 48 inches
 in length, or shorter bars of not less than one-half inch in diameter lapped over each
 other at least 4 inches with an overall length of not less than 48 inches, encased in a
 concrete cylinder of at least 4 inches in diameter and 48 inches in depth have been placed
 at points marked thus (. . .) as thereon shown at all angles in the boundaries of the
 land platted, at all the intersections of streets, intersections of alleys, or of streets and
 alleys, and at the intersections of streets and alleys with the boundaries of the plat as
 shown on said plat.

Harry J. Fuller
 Registered Land Surveyor
 Harry J. Fuller

MUNICIPAL APPROVAL

This plat was approved by the City Commission
 of the City of Mt. Clemens
 at a meeting held on January 15, 1952
Frederick J. Jule (Clerk)

Examined and Approved
 January 18, 1952
Thompson
 County Auditor General

APPROVAL BY COUNTY BOARD

This plat was approved on the 19th day of
 February, 1952
Arnon Burr (County Register of Deeds)
Ribert A. Wagner (County Clerk)
Lynn Whalen (County Treasurer)
Frank C. Lohr County Drain Commissioner

REGISTER'S OFFICE

County of Macomb
 Received for Record this 18th day
 of January, A. D. 1952
 in Liber 26, Sheet 35
Thompson

THIS IS TO CERTIFY THAT THERE ARE NO TAX LIES OR DEBTS ON THIS PROPERTY AND THAT TAXES ARE PAID FOR
 THE PREVIOUS TO DATE OF THIS INSTRUMENT. CONTAINED AS TO *2-18-52*
 1952
Betty Jenett

Original

121089

Nov 10 2 10 PM '52

INGLESIDE FARMS SUB. NO. 9

A PART OF P.C. 628, FR. SEC. 22, T2N R13E, CLINTON TWP, MACOMB CO., MICH.

SCALE 1"=200'



NOTE: ALL DIMENSIONS IN FEET AND DECIMALS THEREOF

WALTER J. LEHNER & SONS
CIVIL ENG. & SURVEYING
MT. CLEMENS, MICHIGAN

SURVEYOR'S CERTIFICATE

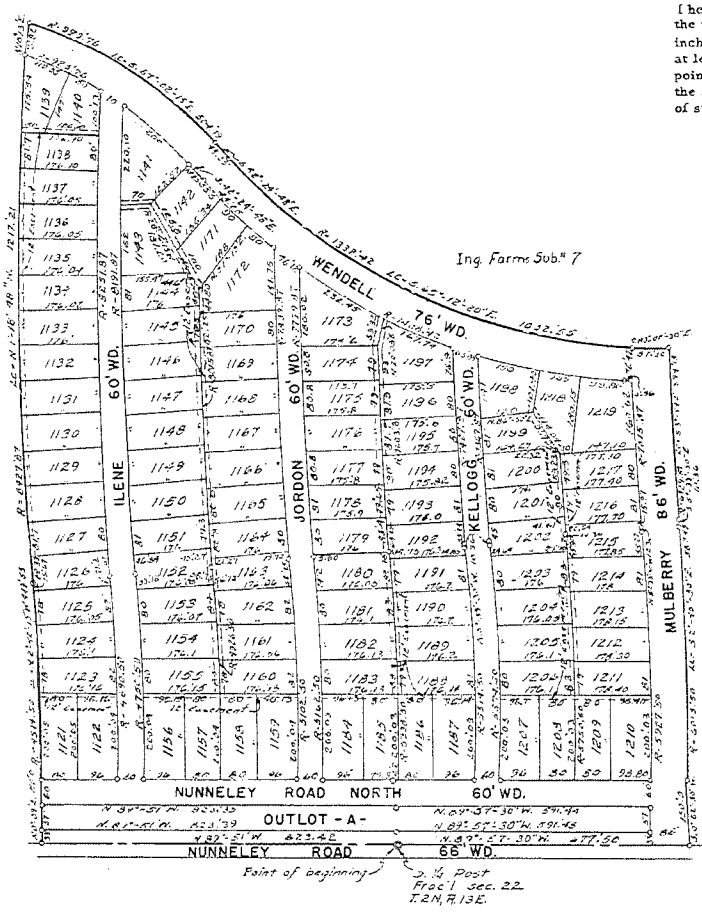
I hereby certify that the plat hereon delineated is a correct one and that the permanent metal monuments consisting of bars not less than one-half inch in diameter and 48 inches in length, encased in a concrete cylinder at least 4 inches in diameter and 48 inches in depth have been placed at points marked thus (o) as thereon shown at all angles in the boundaries of the land platted, at all the intersections of streets, and at the intersections of streets with the boundaries of the plat as shown on said plat.

Walter J. Lehner
Walter J. Lehner
Registered Land Surveyor
No. 123

CERTIFICATE OF MUNICIPAL APPROVAL

This plat was approved by the Township Board of the Township of Clinton at a meeting held Wednesday, October 15, 1952
Elmore E. Lester
Elmore E. Lester - Clerk

REGISTRAR'S OFFICE
County of Macomb
Received for Record this 16th day of October, A. D. 1952, at 2:16 o'clock P.M. and Recorded in Liber 27 of 1952 on Page 27
Frank E. Lohr



DEED 237
PAGE 27
See Memorandum of Association filed with the Clerk of the County of Macomb, Michigan, on October 15, 1952.

DEDICATION
KNOW ALL MEN BY THESE PRESENTS, That we, the Ingleside Realty Co., a Ltd. Partnership, by Francis H. Phelps, a general partner, as proprietors, have caused the land embraced in the annexed plat to be surveyed, laid out and platted to be known as "Ingleside Farms Sub. No. 9", a part of P. C. 628 and Fr. Sec. 22, T. 2 N., R. 13 E., Clinton Township, Macomb County, Michigan, and that the streets as shown on said plat are hereby dedicated to the use of the public.

Signed and Sealed in the Presence of:
Francis H. Phelps
Francis H. Phelps
a general partner

ACKNOWLEDGEMENT
STATE OF MICHIGAN)
) SS.
COUNTY OF WAYNE)
On this 5th day of September, A. D. 1952, before me, a Notary Public, in and for said county, appeared Francis H. Phelps, to me personally known, who being duly sworn did say that he is a general partner of the Ingleside Realty Co., a Ltd. Partnership, and that he has authority to execute the above instrument for the said Ingleside Realty Co.

My Commission expires: April 16, 1955
Walter J. Lehner
Notary Public, in and for said State of Michigan.

DESCRIPTION OF LAND PLATTED
The land embraced in the annexed plat of "Ingleside Farms Sub. No. 9", a part of P. C. 628 and Fr. Sec. 22, T. 2 N., R. 13 E., Clinton Township, Macomb County, Michigan, is described as follows:
Commencing at the South Quarter Post of Fractional Section 22 and thence extending N. 89°-51' W. 823.42 feet; thence N. 0°-09' E. 150.0 feet; thence along a curve (R = 4514.50) concave to the West and whose long chord 449.55 feet in length bears N. 2°-42'-15" W.; thence along a curve (R = 8427.87) concave to the East and whose long chord 1217.21 feet in length bears N. 1°-18'-48" W.; thence N. 10°-13' E. 76.82 feet; thence along a curve (R = 999.76) concave to the Southwest, and whose long chord 502.79 feet in length bears S. 57°-02'-15" E.; thence S. 42°-24'-48" E. 48.25 feet; thence along a curve (R = 1332.42) concave to the Northeast, and whose long chord 1032.55 feet in length bears S. 65°-12'-20" E.; thence S. 83°-07'-30" E. 87.30 feet; thence along a curve (R = 6929.87) concave to the East and whose long chord 394.18 feet in length bears S. 3°-54' E.; thence S. 5°-33'-30" E. 10.36 feet; thence along a curve (R = 6013.50) concave to the West, and whose long chord 587.49 feet in length bears S. 2°-45'-30" E.; thence S. 0°-02'-30" W. 150.0 feet; thence N. 89°-57'-30" W. 677.50 feet to the point of beginning.

CERTIFICATE OF APPROVAL BY COUNTY BOARD
This plat was approved on the 16 day of October, 1952, by the Macomb County Plat Board.
Aaron Burr Register of Deeds
Lynn Whalen County Treasurer
Albert A. Wagner County Clerk
Frank E. Lohr Drain Commissioner

CERTIFICATE OF APPROVAL BY BOARD OF COUNTY ROAD COMMISSIONERS
This plat has been examined and was approved on the 23rd day of Sept, 1952, by the Macomb County Board of Road Commissioners.
Ray Connor Road Chairman
Alfred Forster Road Commissioner
Wm. Malow Road Commissioner

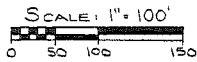
1952
L 27
P 27

COPY

SEMINOLE SCHOOL SUBDIVISION

A PART OF P.C. 137, T.2 N., R.13 E.,
CLINTON TWP., MACOMB CO., MICHIGAN.

224646



Note: All dimensions are in feet and decimals thereof.

WALTER J. LEHNER & SONS
REG. CIVIL ENGINEERING & SURVEYING
MT. CLEMENS, MICHIGAN.

EXAMINED AND APPROVED
Date APR 29 1955

Victor Tarasewski
CAUDRICH GENERALIST
Plat Emancipator

DESCRIPTION OF LAND PLATTED

The land embraced in the annexed plat of "Seminole School Subdivision", a Part of P.C. 137, T.2 N., R.13 E., Clinton Twp., Macomb Co., Michigan, is described as follows: Commencing at the Southwest corner of Fractional Section 22, T.2 N., R.13 E., and thence extending S. 89°-51'E. 260.0 feet, thence N. 0°-10'-45"E. 493.18 feet, thence N. 31°-20'-45"E. 3954.47 feet to the point of beginning of this description. Thence extending N. 31°-20'-45"E. 940.0 feet, thence S. 58°-39'-15"E. 159.10 feet, thence N. 69°-53'E. 96.21 feet, thence S. 31°-22'-15"W. 60.0 feet, thence Southwesterly along a curve (R = 15566.10 feet) concave to the East and whose long chord bears S. 29°-59'-20"W. and is 712.66 feet in length, thence Southerly along a curve (R = 15626.1 feet) concave to the West and whose long chord bears S. 28°-55'-40"W. and is 47.24 feet in length, thence Easterly along a curve (R = 3092.18 feet) concave to the South and whose long chord bears S. 56°-08'-30"E. and is 528.06 feet in length, thence S. 51°-14'-40"E. 7.25 feet, thence Easterly along a curve (R = 746.25 feet) concave to the North and whose long chord bears S. 68°-22'-30"E. 439.60 feet in length, thence S. 85°-30'-15"E. 30.0 feet, thence S. 4°-29'-45"W. 218.92 feet, thence S. 40°-59'-25"W. 51.26 feet, thence Westerly along a curve (R = 1032.56 feet) concave to the North and whose long chord bears N. 67°-04'W. 504.26 feet in length, thence N. 52°-56'W. 9.31 feet, thence along a curve (R = 4387.30 feet) concave to the South and whose long chord bears N. 56°-38'W. and is 568.81 feet in length, thence N. 25°-59'-15"W. 72.69 feet, thence N. 58°-39'-15"W. 185.36 feet to the point of beginning.

SURVEYOR'S CERTIFICATE

I hereby certify that the plat hereon delineated is a correct one and that permanent metal monuments consisting of bars not less than one-half inch in diameter and 36 inches in length, encased in a concrete cylinder at least 4 inches in diameter and 36 inches in depth have been placed at points marked thus (O) as thereon shown at all angles in the boundaries of the land platted, at all the intersections of the lines of streets, and at the intersections of the lines of streets with the boundaries of the plat as shown on said plat.

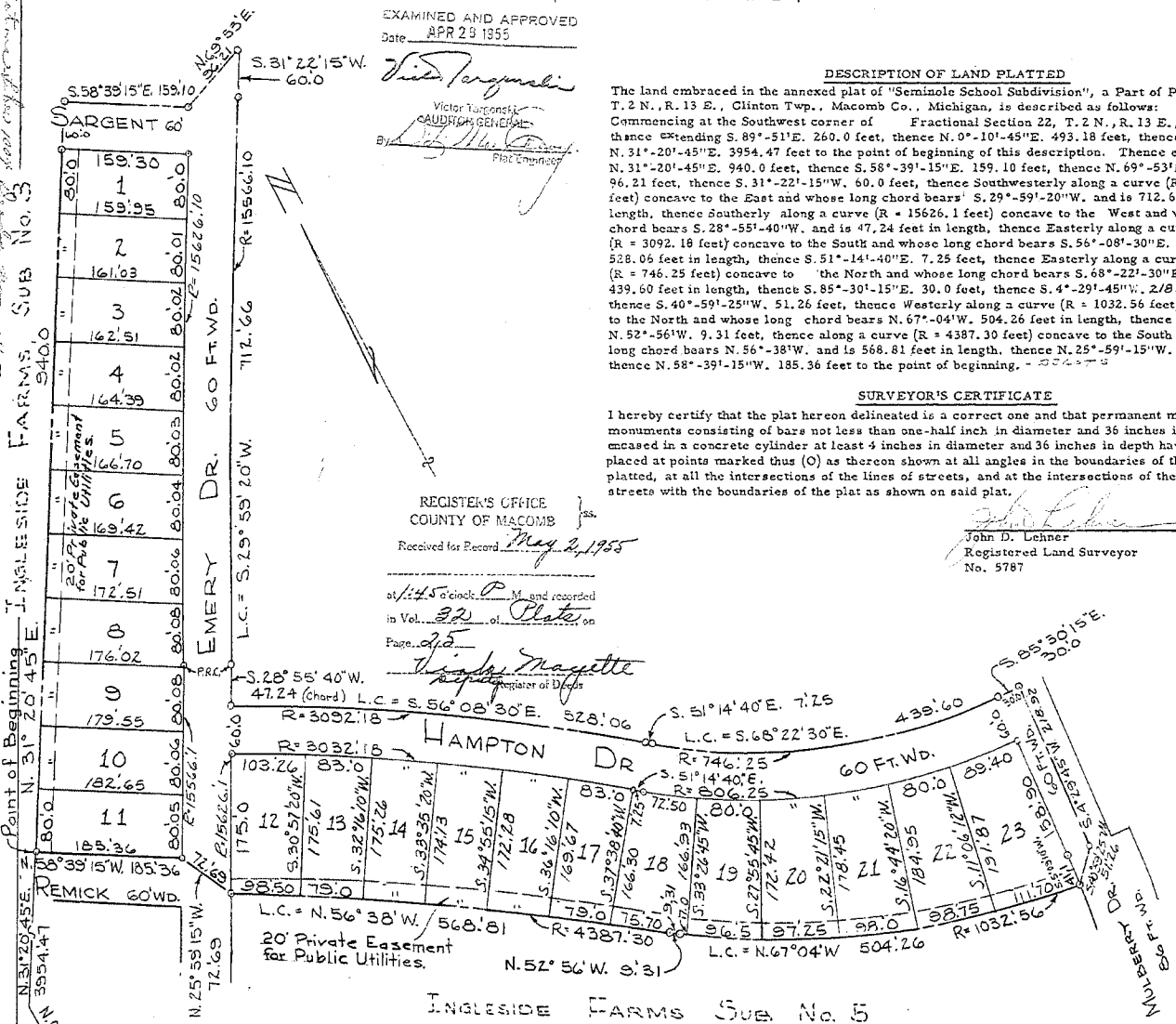
John D. Lehner
Registered Land Surveyor
No. 5787

REGISTER'S OFFICE
COUNTY OF MACOMB

Received for Record May 2, 1955

at 11:45 a.m. and recorded
in Vol. 321 of Plats, on
Page 275

Walter J. Lehner
Register of Deeds



INGLESIDE FARMS SUB No. 5

DEDICATION

KNOW ALL MEN BY THESE PRESENTS, That we, the Ingleside Realty Co., a Ltd. Partnership, by Francis H. Phelps, a general partner, as proprietors, have caused the land embraced in the annexed plat to be surveyed, laid out and platted to be known as "Seminole School Subdivision", a Part of P.C. 137, T.2 N., R.13 E., Clinton Twp., Macomb Co., Michigan, and that the streets as shown on said plat are hereby dedicated to the use of the public, and that the private easements shown on said plat are hereby reserved for the use of the Public Utilities, or for the use of specific utilities as thereon noted, subject to the regulation and control of the use thereof by the local governmental authorities, and that no permanent structures are to be erected within the lines of said easements.

Signed and Sealed in the Presence of: Ingleside Realty Company

Carl J. Spitzley
Fred H. Phelps

Francis H. Phelps,
a general partner

STATE OF MICHIGAN)
COUNTY OF MACOMB) ss.

On this 11th day of April, A.D., 1955, before me, a Notary Public, in and for said county, appeared Francis H. Phelps, to me personally known, who being duly sworn did say that he is a general partner of the Ingleside Realty Co., a Ltd. Partnership, and that he has authority to execute the above instrument for the said Ingleside Realty Co.

My Commission expires
2 MARCH 1952

Notary Public,
MACOMB County, Michigan

CERTIFICATE OF APPROVAL BY BOARD OF COUNTY ROAD COMMISSIONERS

This plat has been examined and was approved on the 20th day of April, 1955, by the Macomb County Board of Road Commissioners.

Roy Conner - Chairman
William E. Malow - Member
Ernest W. McCollom, Member

CERTIFICATE OF MUNICIPAL APPROVAL

This plat was approved by the Township Board of the Township of Clinton at a meeting held April 20, 1955.

Edward J. Ford - Clerk

CERTIFICATE OF APPROVAL BY COUNTY BOARD

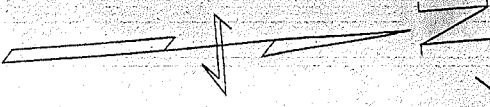
This plat was approved on the 22 day of April, 1955, by the Macomb County Plat Board.

Arnon Burr - Register of Deeds
Lynn Whalen - County Treasurer
Frank E. Lehr - Drain Commissioner

NOT TO BE VALID UNLESS APPLIED TO THE COUNTY TREASURER'S OFFICE AND THE FILING OF THE PROPERTY AND TAX MAPS FOR THE YEAR. Five years previous to date of this instrument.

3 Jan. 1955 - JRS

RETURN TO
ADDRESSGRAPHIC DEPT.
COUNTY BUILDING
MT. CLEMENS, MICH.
PHONE HOWARD 8672



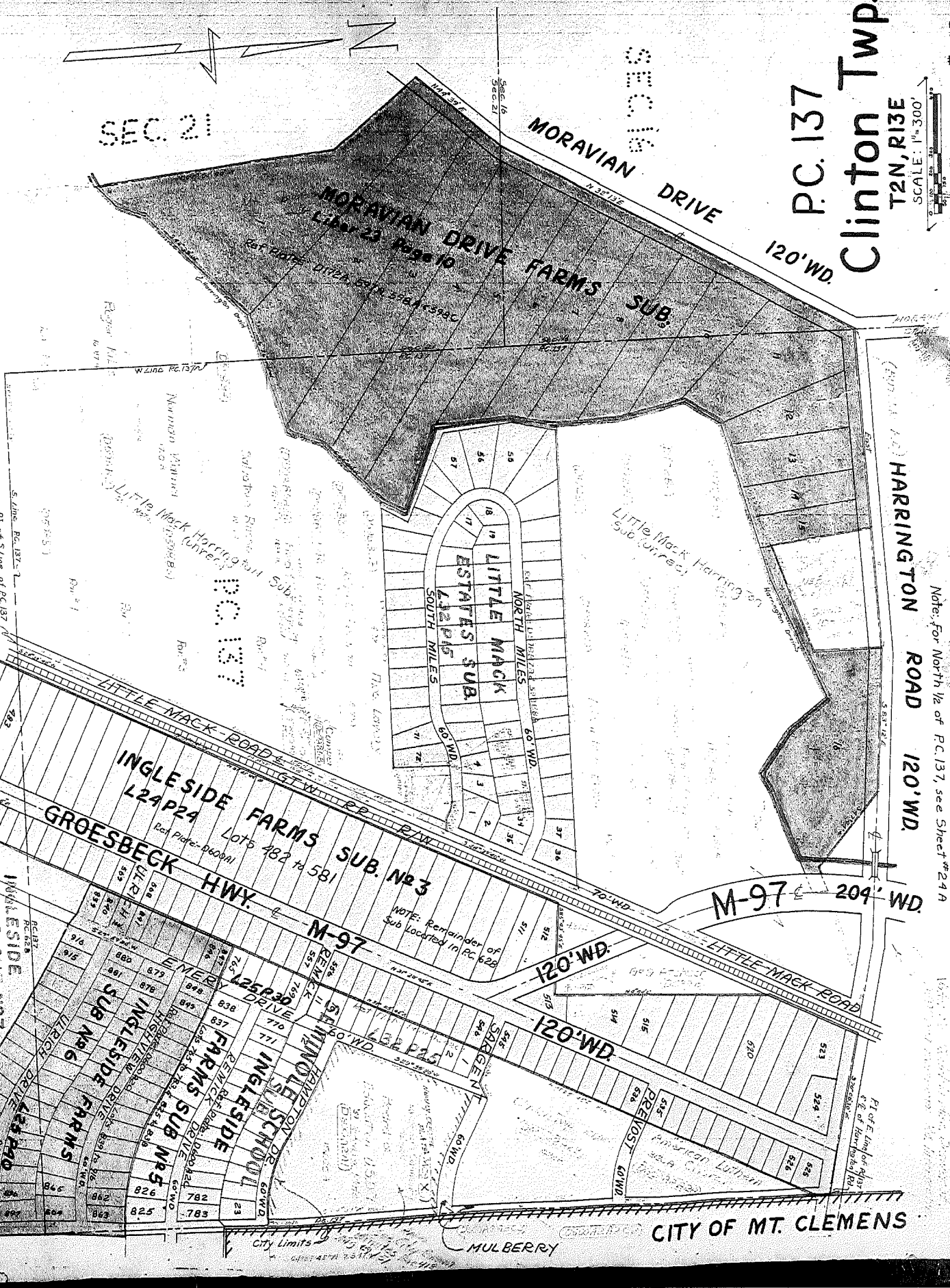
SEC. 21

SECTION 9
MORAVIAN DRIVE

P.C. 137
Clinton Twp.
T2N, R13E

SCALE: 1"=300'
SHEET # 24B

Notes:
1. See sketch in Misc. Drawer
2. See sketch in Misc. Drawer
3. See sketch in Misc. Drawer
4. See sketch in Misc. Drawer
5. See sketch in Misc. Drawer
6. See sketch in Misc. Drawer
7. See sketch in Misc. Drawer
8. See sketch in Misc. Drawer
9. See sketch in Misc. Drawer
10. See sketch in Misc. Drawer
11. See sketch in Misc. Drawer
12. See sketch in Misc. Drawer
13. See sketch in Misc. Drawer
14. See sketch in Misc. Drawer
15. See sketch in Misc. Drawer
16. See sketch in Misc. Drawer
17. See sketch in Misc. Drawer
18. See sketch in Misc. Drawer
19. See sketch in Misc. Drawer
20. See sketch in Misc. Drawer
21. See sketch in Misc. Drawer
22. See sketch in Misc. Drawer
23. See sketch in Misc. Drawer
24. See sketch in Misc. Drawer
25. See sketch in Misc. Drawer
26. See sketch in Misc. Drawer
27. See sketch in Misc. Drawer
28. See sketch in Misc. Drawer
29. See sketch in Misc. Drawer
30. See sketch in Misc. Drawer
31. See sketch in Misc. Drawer
32. See sketch in Misc. Drawer
33. See sketch in Misc. Drawer
34. See sketch in Misc. Drawer
35. See sketch in Misc. Drawer
36. See sketch in Misc. Drawer
37. See sketch in Misc. Drawer
38. See sketch in Misc. Drawer
39. See sketch in Misc. Drawer
40. See sketch in Misc. Drawer
41. See sketch in Misc. Drawer
42. See sketch in Misc. Drawer
43. See sketch in Misc. Drawer
44. See sketch in Misc. Drawer
45. See sketch in Misc. Drawer
46. See sketch in Misc. Drawer
47. See sketch in Misc. Drawer
48. See sketch in Misc. Drawer
49. See sketch in Misc. Drawer
50. See sketch in Misc. Drawer
51. See sketch in Misc. Drawer
52. See sketch in Misc. Drawer
53. See sketch in Misc. Drawer
54. See sketch in Misc. Drawer
55. See sketch in Misc. Drawer
56. See sketch in Misc. Drawer
57. See sketch in Misc. Drawer
58. See sketch in Misc. Drawer
59. See sketch in Misc. Drawer
60. See sketch in Misc. Drawer
61. See sketch in Misc. Drawer
62. See sketch in Misc. Drawer
63. See sketch in Misc. Drawer
64. See sketch in Misc. Drawer
65. See sketch in Misc. Drawer
66. See sketch in Misc. Drawer
67. See sketch in Misc. Drawer
68. See sketch in Misc. Drawer
69. See sketch in Misc. Drawer
70. See sketch in Misc. Drawer
71. See sketch in Misc. Drawer
72. See sketch in Misc. Drawer
73. See sketch in Misc. Drawer
74. See sketch in Misc. Drawer
75. See sketch in Misc. Drawer
76. See sketch in Misc. Drawer
77. See sketch in Misc. Drawer
78. See sketch in Misc. Drawer
79. See sketch in Misc. Drawer
80. See sketch in Misc. Drawer
81. See sketch in Misc. Drawer
82. See sketch in Misc. Drawer
83. See sketch in Misc. Drawer
84. See sketch in Misc. Drawer
85. See sketch in Misc. Drawer
86. See sketch in Misc. Drawer
87. See sketch in Misc. Drawer
88. See sketch in Misc. Drawer
89. See sketch in Misc. Drawer
90. See sketch in Misc. Drawer
91. See sketch in Misc. Drawer
92. See sketch in Misc. Drawer
93. See sketch in Misc. Drawer
94. See sketch in Misc. Drawer
95. See sketch in Misc. Drawer
96. See sketch in Misc. Drawer
97. See sketch in Misc. Drawer
98. See sketch in Misc. Drawer
99. See sketch in Misc. Drawer
100. See sketch in Misc. Drawer



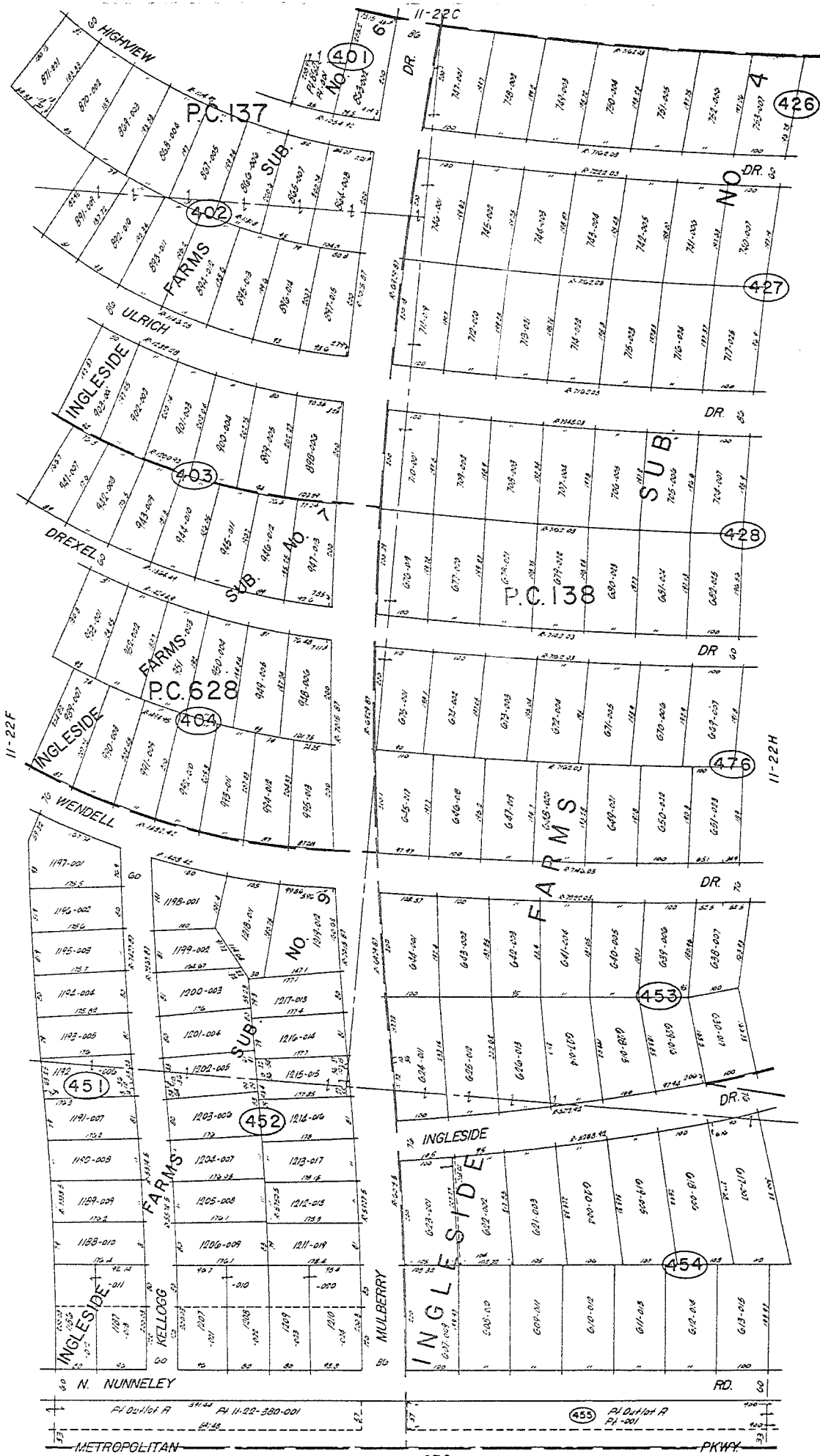
Note: For North 1/2 of P.C. 137, see Sheet # 24A

INGLESIDE FARMS SUB. NO. 7
L25 P20
Lot 5 P20
Part Plat. Diagram V-713A
Notes: See Sketch in Misc. Drawer

SHEET 24B

CITY OF MT. CLEMENS

82 28
15

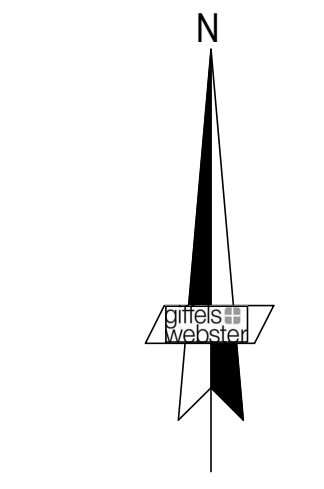
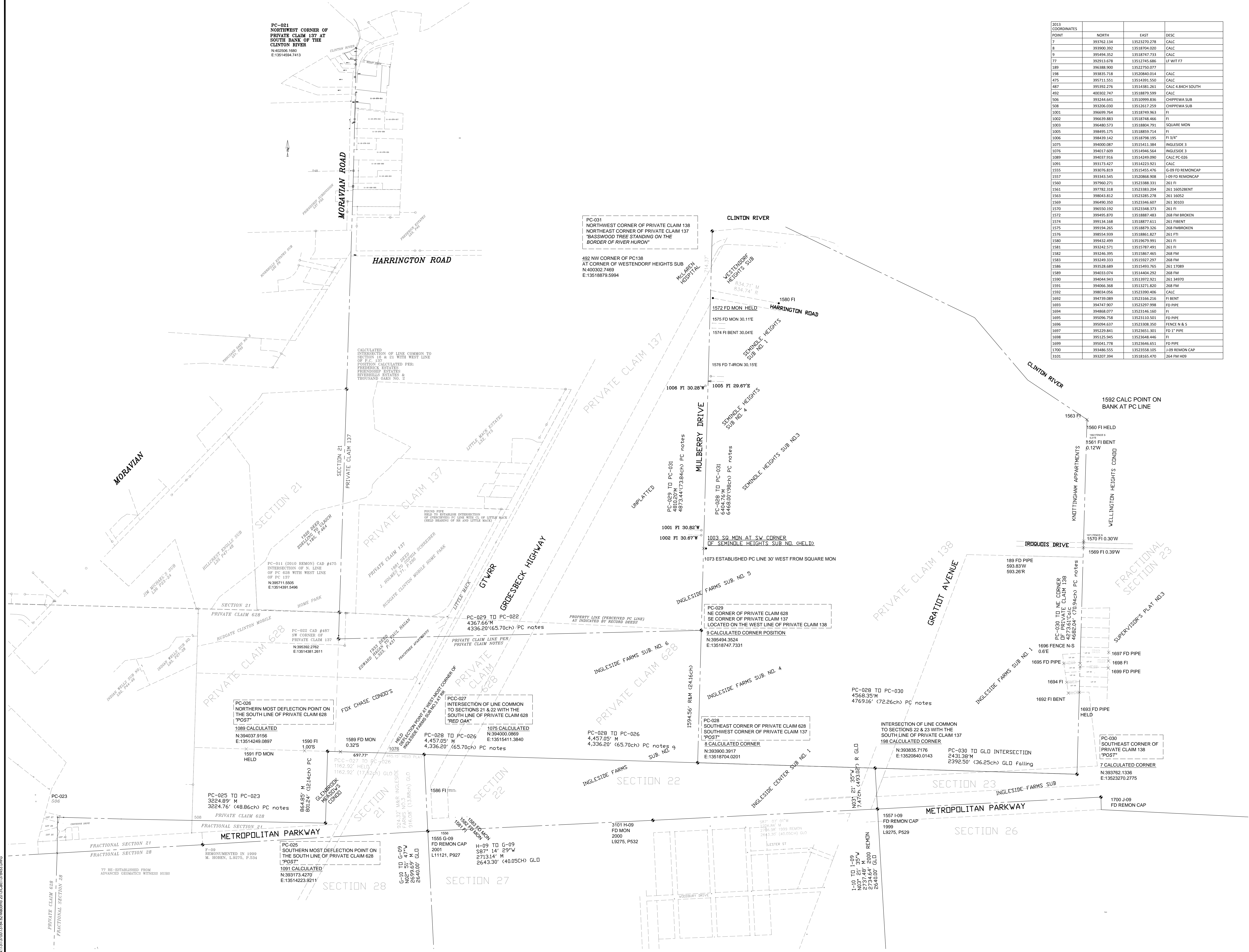


Copyright 1912
MACOMB COUNTY, MICHIGAN

SCALE: 1" = 100'
11-22G

CLINTON TWP.
W 1/2 S 21/4 SEC. 22 & PT. PC. 137, 138 & 628 T.2N. R.13E.

2013 COORDINATES POINT	NORTH	EAST	DESC
7	393762.134	13523270.278	CALC
8	393900.392	13518704.020	CALC
9	395484.352	13518747.733	CALC
77	392913.678	13512745.686	LF WIT F7
189	396388.900	13522750.077	
198	393835.718	13520840.014	CALC
475	395711.551	13514391.550	CALC
487	395392.276	13514381.261	CALC 4.84CH SOUTH
492	400302.747	13518879.599	CALC
506	393244.641	13510999.836	CHIPPEWA SUB
508	393206.030	13512617.259	CHIPPEWA SUB
1001	396499.764	13518749.963	FI
1003	396639.863	13518748.466	FI
1003	396480.573	13518804.791	SQUARE MON
1005	398495.175	13518859.714	FI
1006	398439.142	13518798.195	FI 3/4"
1075	394000.087	13515411.384	INGLESIDE 3
1076	394017.609	13514946.564	INGLESIDE 3
1089	394037.916	13514249.990	CALC PC-028
1091	393173.427	13514223.921	CALC
1555	393076.819	13515455.476	G-09 FD REMONCAP
1557	393343.545	13520868.908	I-09 FD REMONCAP
1560	397960.271	13523388.331	261 FI
1561	397782.318	13523383.204	261 16052BENT
1563	398043.812	13523285.278	261 16052
1569	396490.350	13523346.607	261 30103
1570	396550.192	13523348.373	261 FI
1572	399495.870	13518887.483	268 FM BROKEN
1574	399134.168	13518877.611	261 FIBENT
1575	399194.265	13518879.326	268 FMBROKEN
1576	398554.939	13518861.827	261 FTI
1580	399432.499	13519679.991	261 FI
1581	393242.571	13515787.491	261 FI
1582	393246.395	13515867.465	268 FM
1583	393249.333	13515927.297	268 FM
1586	393528.689	13515493.765	261 17089
1589	394033.074	13514404.292	268 FM
1590	394044.943	13519727.921	261 34970
1591	394066.368	13515271.820	268 FM
1592	398034.056	13523390.406	CALC
1692	394739.089	13523166.216	FI BENT
1693	394747.907	13523297.998	FD PIPE
1694	394868.077	13523146.160	FI
1695	395096.758	13523110.501	FD PIPE
1696	395094.637	13523308.350	FENCE N & S
1697	395229.841	13523651.801	FD 1" PIPE
1698	395125.945	13523648.446	FI
1699	395041.778	13523646.651	FD PIPE
1700	393486.555	13523558.105	J-09 REMON CAP
3101	393207.394	13518165.470	264 FM H09



DATE	ISSUE

Developed For:
MACOMB COUNTY REGISTER OF DEEDS
CLEMENS CENTER
32 MARKET STREET
MOUNT CLEMENS, MI 48043
586-469-6752
586-469-5130

2013 REMON WORKSHEET

CLINTON TWP
MACOMB COUNTY
MICHIGAN

Date:	12-10-13
Scale:	1"=400'
Sheet:	1
Project:	13784.62

N:\13\13700\13784_62\Macomb_2013\Gd\1378463.DWG