

MACOMB COUNTY
INDEX OF SUPPORTING DOCUMENTS FOR

PC-009
NORTHWEST CORNER OF PC 628
CLINTON TOWNSHIP
T. 02 N., R. 13 E.

SECTION 1

<u>ITEM & DATE</u>	<u>ITEM DESCRIPTION</u>
1) 2010	PHOTOS OF CORNER

SECTION 2

<u>ITEM & DATE</u>	<u>ITEM DESCRIPTION</u>
1) 2010	LCRC
2) 2010	SURVEYOR'S REPORT

SECTION 3

<u>ITEM & DATE</u>	<u>ITEM DESCRIPTION</u>
1) 2010	FIELD NOTES
2) 1995	PLAT MAP
3) 2009	COMPOSITE MAP WITH AERIAL IMAGE & TAX MAP

SECTION 4

<u>ITEM & DATE</u>	<u>ITEM DESCRIPTION</u>	<u>SURVEYOR</u>	<u>LICENSE</u>	<u>SOURCE</u>
(1)1810	Private Claim Notes	A. Greeley		
(2)1818	GLO Notes	J. Fletcher		
(3)1818	GLO Plat	J. Fletcher		
(4)1947	Moravian Heights Sub'n.	EL Pettingill		L24, P22
(5)1949	Moravian Garfield Sub No.3	JD Lehner	#5787	L25, P3
(6)1955	Rohrbeck Gardens Sub'n. No.1	JD Lehner	#5787	L32, P48
(7)1955	Jim Michael's Sub	KO Brink	#2429	L32, P50
(8)1955	Metropole Parkway Sub	JD Lehner	#5787	L34, P36-37
(9)1956	Hillcrest Knolls Sub	HJ Fuller	#1645	L35, P47-48
(10)1956	Moravian Hills Sub	JJ McMahon	#4018	L35, P50-51
(11)1956	Rosteck Sub'n.	KO Brink	#2429	L36, P6
(12)1956	Moravian Acres Sub	JJ McMahon	#4018	L36, P23-24
(13)1956	Moravian Hills No. 1 Sub'n.	KO Brink	#2429	L36, P34-35
(14)1956	Mt. Lebanon Sub	JD Lehner	#5787	L37, P27-28
(15)1975	Moravian Hills Sub No.2	GJ Landwehr	#10065	L66, P15-16
(16)1988	Am. Plat of Lot 31 of Villa Di Fiora No.2	WE Soderberg	#17635	L85, P41-42











PCC-009

Malton St

203 ft

© 2010 Google

© 2009 Google

Imagery Date: May 10, 2010

42°34'38.07" N 82°56'00.45" W elev 603 ft

Eye alt 1304 ft

LAND CORNER RECORDATION CERTIFICATE
Filing Requirement of Act 74, Mich. P.A. 1970

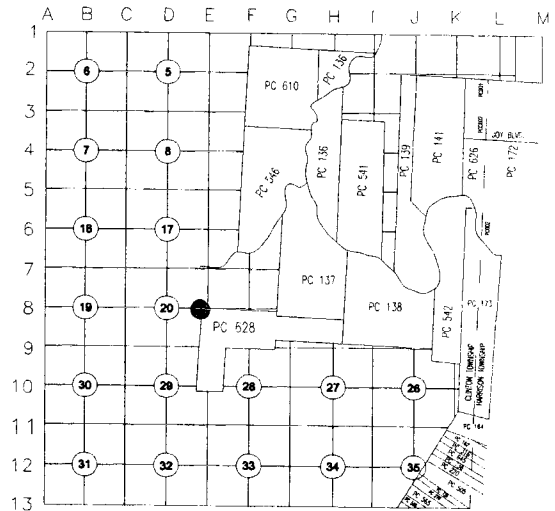
For corners in

Macomb (County) Located In: Clinton Twp. Corner Code #
1. Public Land Survey T 2N R 13E PC-009
2. Property Controlling in Section S T R
3. Miscellaneous Property in Sec. S T R

1113384
LIBER 20603 PAGE 355
02/08/2011 09:23:04 A.M.
MACOMB COUNTY, MI
CARMELLA SABAUGH, REGISTER OF DEEDS

Register of Deeds Stamp & File Number

4. Lot No. , Recorded Plat
5. Private Claims NW corner of Private Claim 628



I, Christopher A. Asiala, in a field survey on June 30, 2010 do hereby state that under requirements of P.A. 74, Michigan P.A. of 1970, the corner points mentioned in lines 1 and 2 above were in conformance with regulations and rules therefore as required in the current manual of survey instructions of the United States Department of the Interior, Bureau of Land Management or be a decree of a Court of Law and/or that the corner points mentioned in lines 3, 4 and 5 above were in conformance with the rules of the Michigan Board of Land Surveyors or by a Decree of a Court of Law; established, re-established, monumented, recovered, found as expressed below:

NOTE: Not more than 2 corners, all in the same town and range, may be recorded on this certificate.

A. Description of original monument and accessories and/or subsequent restoration:

** This LCRC is being recorded to correct LCRC recorded on 1/11/2011 in Liber 20570, Pages 255 & 256, which incorrectly states the field survey date of Aug 19, 2010. The field survey date above is now corrected to read June 30, 2010.

Table with 4 columns: Monument Description, Original Monument, Surveyor Name, and Reference. Includes entries for Ash Tree, Private Claim Notes, GLO Notes, GLO Plat, Moravian Heights Sub, etc.

B. Description of corner evidence found and/or method applied in restoring or reestablishing corner:

A Concrete monument was found at the south edge of a 12" Hickory at a deflection point on the east line of Rohrbeck Gardens Sub No.1. The corner is also the northwest corner of Rosteck Sub and the southwest corner of lot 179 of Moravian Hills No.1. None of these three plats refer to this position as the corner of PC 628.

Field measurements were observed between the following corners:

Table with 3 columns: Corner Pair, Measurement, and Date. Includes PC-009 to PCC-015, PC-009 to PCC-012, PC-009 to PC-010, and PC-009 to PC-010.

C. Description of monument for corner and accessories established to perpetuate locating the position of the corner:

I placed a 2" aluminum cap stamped "MACOMB COUNTY MONUMENT MI ACT 345 CAA 49376 PC-009" on the existing concrete monument. (see reverse for sketch)

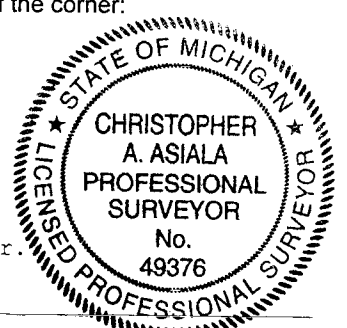
Witness ties are as follows:

- N30°W 140.61' Set MAG nail w/MCR washer in South face Utility Pole
N45°E 0.81' Set MAG nail w/MCR washer in South face of 12" Hickory
S25°E 23.19' Set MAG nail w/MCR washer in West face of 30" Maple
S45°W 73.36' Set MAG nail w/MCR washer in Northwest face Utility Pole

The selected location is accepted by me and generally accepted by professional surveyors as the best available evidence of the position of the original corner.

Signed by Chris Asiala
Surveyor's Michigan License No. 49376

Date 1-30-11



PC-009, CLINTON TWP, T-02-N, R-13-E
 NORTHWEST CORNER OF PRIVATE CLAIM NO. 628

Section A continued:

(14)1956
 (15)1975
 (16)1988

Mt. Lebanon Sub
 Moravian Hills Sub No.2
 Villa Di Fiora No.2

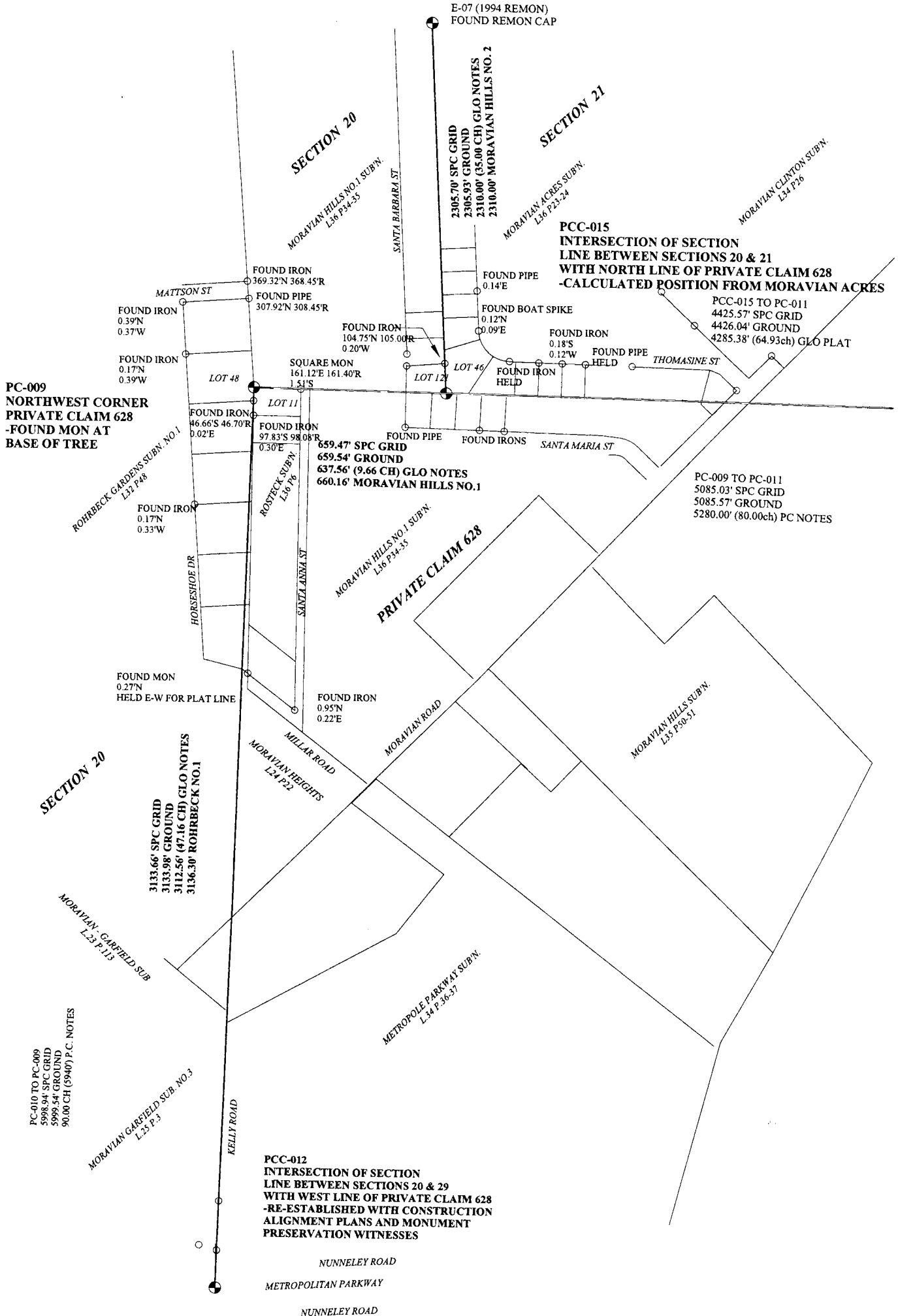
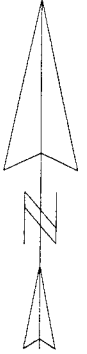
JD Lehner #5787 L37, P27-28
 GJ Landwehr #10065 L66, P15-16
 WE Soderberg #17635 L85, P41-42

*sketch not to scale:

ACCEPTED BY THE MACOMB COUNTY SURVEY PEEP
 GROUP AS THE OFFICIAL CORNER UNDER MICHIGAN
 PUBLIC ACT 345 OF 1990 AT A MEETING HELD
 ON 7-27-2010

Martin C. Dunn
 MARTIN C. DUNN, P.S. CHAIRMAN

Liber 20603 Page 356



PC 009 NORTHWEST CORNER OF PC 628

CLINTON TOWNSHIP

T. 02 N., R. 13 E.

Private Claim Notes

Surveyed by Aaron Greeley in 1810.

GLO Notes

Surveyed by Joseph Fletcher in 1817. While running North between sections 28 and 29

<u>ITEM & DATE</u>	<u>Evidence Description</u>	<u>ITEM DESCRIPTION</u>	<u>SURVEYOR</u>	<u>LICENSE</u>	<u>SOURCE</u>	<u>Witnesses / Explanation</u>
(1)1810		Private Claim Notes	A. Greeley			
(2)1818		GLO Notes	J. Fletcher			While running north between Sections 28 and 29 and through PC 628, he intersects the north line of PC 628 at 125.00 Chains and sets a post. The post is 9.66 Chains from the NW Corner of PC 628. He then continues north between Sections 20 and 21 and sets a post at 160 Chains for the corner of Sections 20, 21, 16, and 17. While running east between Sections 20 and 29, he intersects the west line of PC 628 at 66.44 Chains, South 47.16 Chains from the NW corner of PC 628.
(3)1818		GLO Plat	J. Fletcher			
(4)1947	East line of Fractional Section 20	Moravian Heights Sub'n.	EL Pettingill		L24, P22	Plat point of Commencement is from the SE corner of Frac. Section 20 and the first commencement line appears to run along the west line of PC 628, However the plat does not dimension or even show the line as it crosses the lots.
(5)1949	East line of Fractional Section 20	Moravian Garfield Sub No.3	JD Lehner	#5787	L25, P3	Plat point of Commencement is from the SE corner of Frac. Section 20 and the East line of the plat appears to be the East line of said Frac. Section 20.
(6)1955	East line of Fractional Section 20 & deflection point at the corner location.	Rohrbeck Gardens Sub'n. No.1	JD Lehner	#5787	L32, P48	Plat point of Commencement is from the SE corner of Frac. Section 20 and the first commencement line appears to run along the west line of PC 628. The East line of the Plat appears to be common with the West line of PC 628, however the plat does not expressly refer to it as such. The Plat does show a deflection point at the corner's location, which matches the position as found, however it does not expressly refer to this point as the corner of PC 628.

(7)1955	South line of Fractional Section 21	Jim Michael's Sub	KO Brink	#2429	L32, P50	The Plat's point of commencement is at the SW corner of Frac. Section 21 and the first commencement line appears to run along the north line of PC 628, but does not expressly refer to the line. The plat does show the north PC line thru the plat but does not show any definitive dimensions to it.
(8)1955	East line of Fractional Section 20	Metropole Parkway Sub	JD Lehner	#5787	L34, P36-37	The Plat's point of commencement is the SE corner of Frac. Section 20 and the west plat line appears to be common with the east line of said fractional section 20.
(9)1956	South line of Fractional Section 21	Hillcrest Knolls Sub	HJ Fuller	#1645	L35, P47-48	The Plat's point of commencement is at the SW corner of Frac. Section 21 and the first commencement line appears to run along the north line of PC 628, but does not expressly refer to the line. The plat does not show any definitive dimensions to the PC line.
(10)1956	North line of PC 628 at centerline of Moravian Drive	Moravian Hills Sub	JJ McMahon	#4018	L35, P50-51	The Plat's point of commencement is the intersection of the North line of PC 628 with the centerline of Moravian Drive. There are no other dimensions to the PC line or corner.
(11)1956	Plat incorrectly shows the east line of Section 20	Rosteck Sub'n.	KO Brink	#2429	L36, P6	This Plat's point of beginning is "intersection of north line of PC 628 & east line of Sec. 20. However, this point is shown at the centerline of Santa Anna St.. I believe this is incorrect, as I think the northwest corner of the plat is the true location of the NW corner of PC 628.
(12)1956	South line of Fractional Section 21 (north line of PC 628)	Moravian Acres Sub	JJ McMahon	#4018	L36, P23-24	Plat point of beginning is the SW corner of Frac. Section 21. The south line of the plat is shown as the S. line of Frac. Sec. 21 (N line of PC 628).
(13)1956	Plat incorrectly shows the location of the NW corner of PC 628	Moravian Hills No. 1 Sub'n.	KO Brink	#2429	L36, P34-35	The plat's point of beginning is "NW corner of PC 628". However, this point is shown at the centerline of Santa Anna St..
(14)1956		Mt. Lebanon Sub	JD Lehner	#5787	L37, P27-28	No reference to PC 628 lines. PC 628 line does not cross this plat.
(15)1975		Moravian Hills Sub No.2	GJ Landwehr	#10065	L66, P15-16	East line of sec 20 with dimension to SW corner of section 21, which is on the north line of PC 628
(16)1988		Am. Plat of Lot 31 of Villa Di Fiora No.2	WE Soderberg	#17635	L85, P41-42	Shows SE corner of Fractional Section 20

REMONUMENTATION FIELD REPORT

DATE: B-19-10 CREW: DA JB

WEATHER: 85 SUNNY

TOWNSHIP: CLINTON

TOWN 2N

RANGE 13E

CORNER CODE: _____

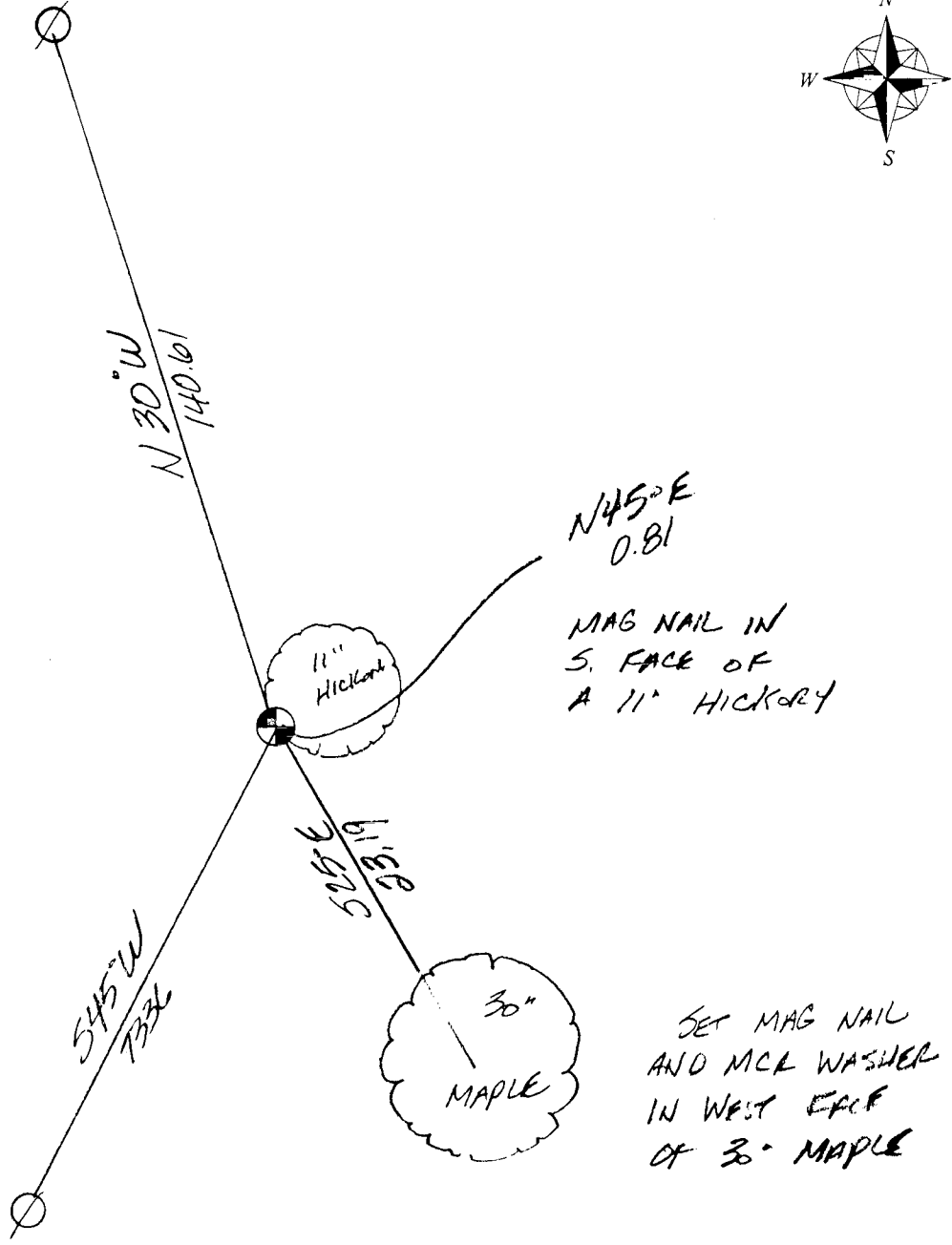
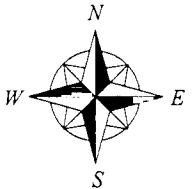
DEPTH: 4-0.30'

	A	B	C	D	E	F	G	H	I	J	K	L	M
1													
2	6	5		4		3		2		1			
3													
4	7		8		9		10		11		12		
5													
6	18		17		16		15		14		13		
7													
8	19		20		21		22		23		24		
9													
10	30		29		28		27		26		25		
11													
12	31		32		33		34		35		36		
13													

LOCATION OF CORNER PC-009

WHAT WAS FOUND? CONC MON @ THE BASE OF 11" HICKORY

MAG NAIL & MCL WASHER IN SOUTH FACE OF PP.



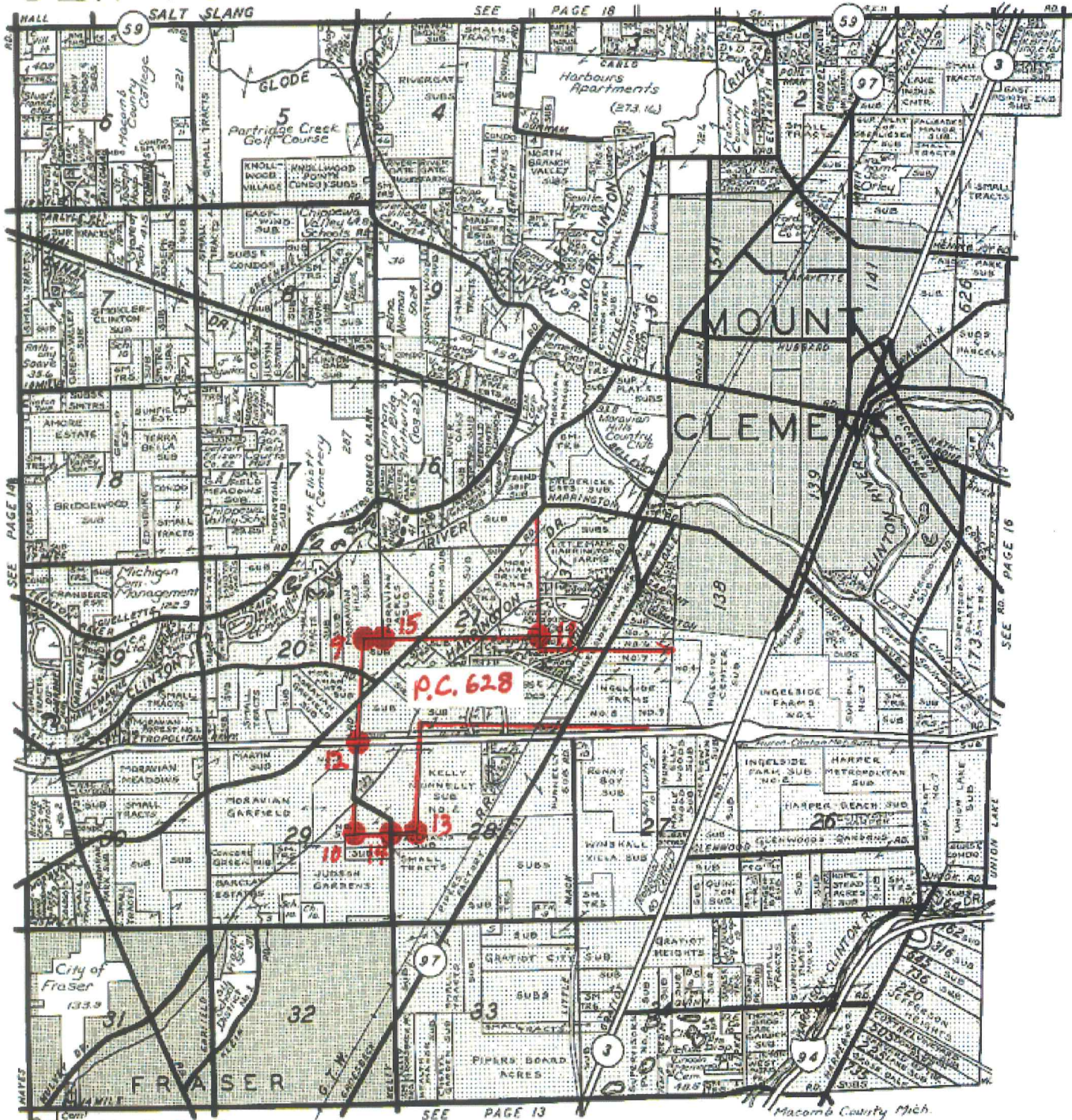
MAG NAIL + MCL WASHER IN NW FACE P.P.

N 45° E 0.81
MAG NAIL IN S. FACE OF A 11" HICKORY

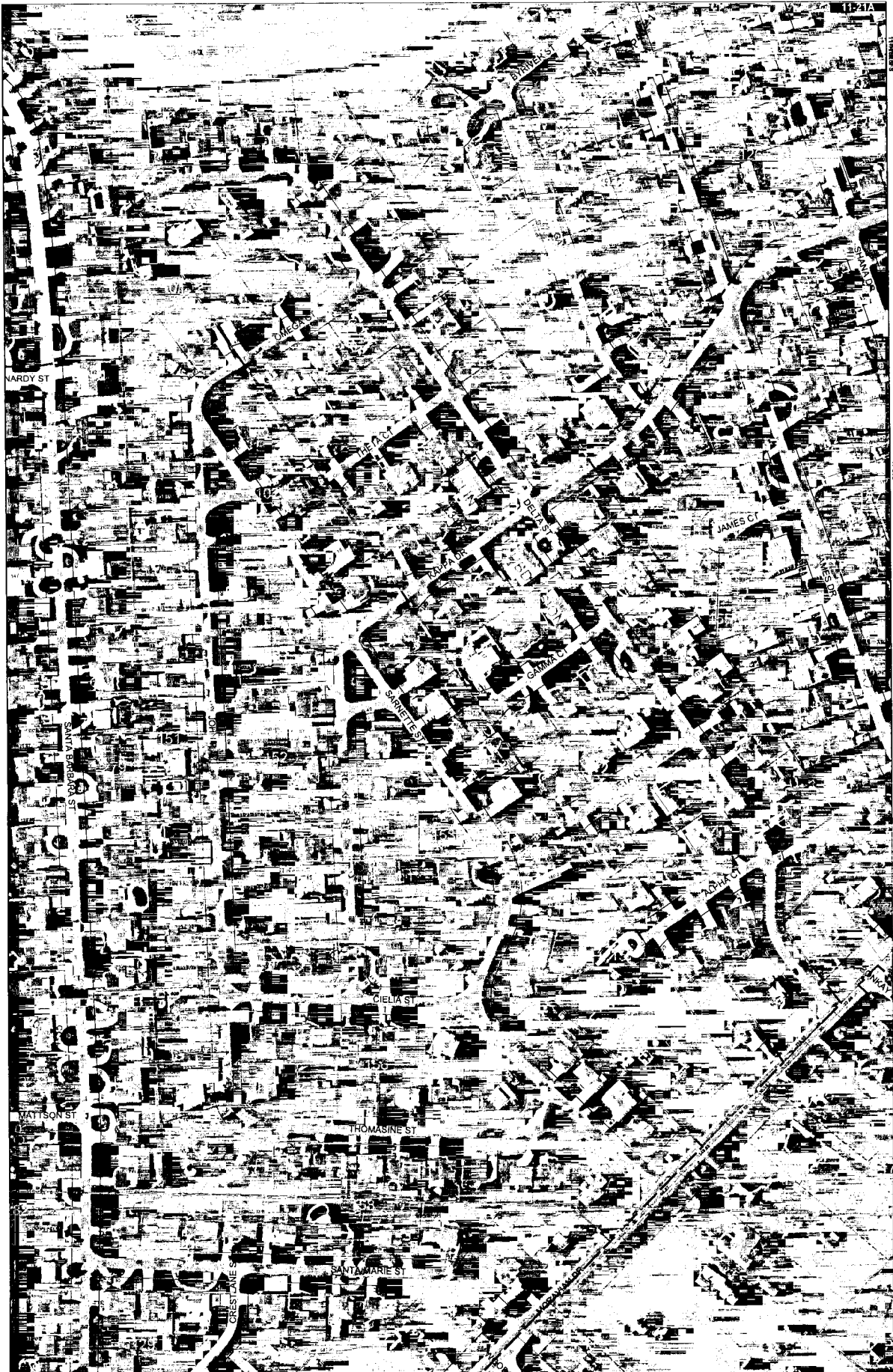
SET MAG NAIL AND MCL WASHER IN WEST FACE OF 30" MAPLE

CLINTON

T. 2 N.-R. 13 E

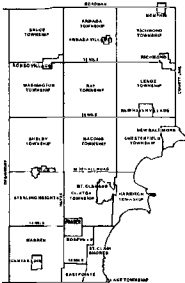
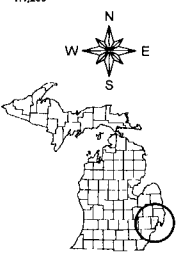


Reproduced with permission of Rockford Map Publishers, Inc.
Rockford, Illinois



Date of Photography: Spring 2008
 100 50 0 100 200 Feet
 1:1,200

CLINTON TWP SHEET INDEX



BLK	LOT	ACRES	OWNER	LEGAL DESCRIPTION
1	1	0.0000		
1	2	0.0000		
1	3	0.0000		
1	4	0.0000		
1	5	0.0000		
1	6	0.0000		
1	7	0.0000		
1	8	0.0000		
1	9	0.0000		
1	10	0.0000		
1	11	0.0000		
1	12	0.0000		
1	13	0.0000		
1	14	0.0000		
1	15	0.0000		
1	16	0.0000		
1	17	0.0000		
1	18	0.0000		
1	19	0.0000		
1	20	0.0000		
1	21	0.0000		
1	22	0.0000		
1	23	0.0000		
1	24	0.0000		
1	25	0.0000		
1	26	0.0000		
1	27	0.0000		
1	28	0.0000		
1	29	0.0000		
1	30	0.0000		
1	31	0.0000		
1	32	0.0000		
1	33	0.0000		
1	34	0.0000		
1	35	0.0000		
1	36	0.0000		
1	37	0.0000		
1	38	0.0000		
1	39	0.0000		
1	40	0.0000		
1	41	0.0000		
1	42	0.0000		
1	43	0.0000		
1	44	0.0000		
1	45	0.0000		
1	46	0.0000		
1	47	0.0000		
1	48	0.0000		
1	49	0.0000		
1	50	0.0000		
1	51	0.0000		
1	52	0.0000		
1	53	0.0000		
1	54	0.0000		
1	55	0.0000		
1	56	0.0000		
1	57	0.0000		
1	58	0.0000		
1	59	0.0000		
1	60	0.0000		
1	61	0.0000		
1	62	0.0000		
1	63	0.0000		
1	64	0.0000		
1	65	0.0000		
1	66	0.0000		
1	67	0.0000		
1	68	0.0000		
1	69	0.0000		
1	70	0.0000		
1	71	0.0000		
1	72	0.0000		
1	73	0.0000		
1	74	0.0000		
1	75	0.0000		
1	76	0.0000		
1	77	0.0000		
1	78	0.0000		
1	79	0.0000		
1	80	0.0000		
1	81	0.0000		
1	82	0.0000		
1	83	0.0000		
1	84	0.0000		
1	85	0.0000		
1	86	0.0000		
1	87	0.0000		
1	88	0.0000		
1	89	0.0000		
1	90	0.0000		
1	91	0.0000		
1	92	0.0000		
1	93	0.0000		
1	94	0.0000		
1	95	0.0000		
1	96	0.0000		
1	97	0.0000		
1	98	0.0000		
1	99	0.0000		
1	100	0.0000		

DESCRIPTION OF PERMANENT REAL ESTATE INDEX NUMBER
13-19-302-018

- Legend**
- Platted Area Boundary Line
 - Property Line
 - Property Split Line
 - Property Contained Line
 - Township Boundary Line
 - Traverse Line
 - Dimension Extent Marks
 - Dimension Start Marks

11-21A

CLINTON TWP.
 W.1/2 N.W.1/4 SEC 21 T.2N. R.13E.

Source: Macomb County Department of Planning and Economic Development
 ©2008 Digital Orthophotography Project Parcel Conversion Project

Note:
 Digital Orthophotography horizontal positioning accuracy is 3 feet. Parcel boundary lines should be considered a graphical representation and not in any way a legal survey or engineering document. In general, the horizontal positioning and length accuracy is within 15 feet.
 This map is intended for general planning purposes. Site specific evaluations should be verified by field inspection. This is a work in progress and may contain errors and omissions. Please report any potential revisions to (586)469-5285.



MACOMB COUNTY
 Planning and Economic
 Development Department

Published: Jan 28, 2009

No. 499

No. 628 Confirmed to the
widow and heirs of
Richard Connor, deceased

SOUTH SIDE OF RIVER HURON

Description No. 628 Confirmed to the widow and heirs of Richard Connor deceased commencing at a post it being the southwest corner of a tract No. 138 confirmed to the claimants thence west sixty five chains seventy links to a post thence south twelve chains fourteen links to a post thence west forty eight chains eighty six links to a post thence south forty eight chains eighty six links to a post thence west thirty one chains fourteen links to a quaking asp tree thence north ninety chains to an ash tree thence east eighty chains to an ironwood tree thence south four chains eighty four links to a post thence east sixty five chains seventy links to a post standing on the west line of the tract No. 138 confirmed to the claimants, thence south twenty four chains sixteen links to the place of beginning, containing six hundred and forty acres —

Detroit July 18, 1810

Aaron Greeley Surveyor
of private claims

T. 2 N. R. 13 E, Mer. Mich.

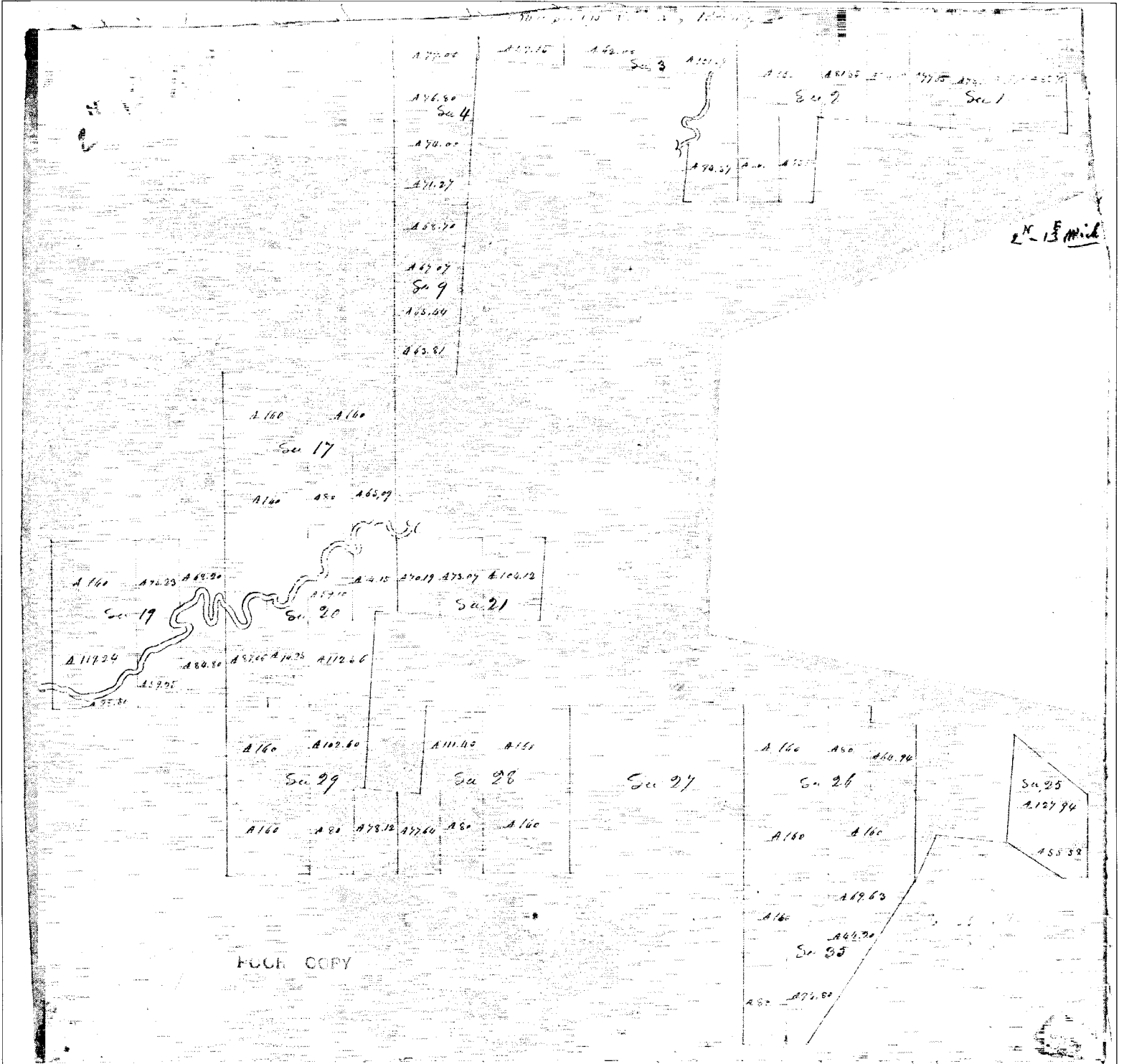
Clinton Twp.

	²⁴⁶ 245- 259	²⁴⁶ 245- 259	²⁴⁷ 245- 259	²⁴⁷ 245- 265	²⁴⁷ 255- 255-	²⁴⁷ 245- 245-	
250 6	250 5	253 4	256 3	256 2	258 1	259	
250	254	256	257	257			
250 7	251 8	254 9	10	257 11	12		
212	255-	256		2587			
248 18	252 17	255-16 263	15	14	13		
253	264	264					
248 19	20	263 21	266 22	268 23	24		
262	264	265-	267	2687			
248 30	261 29	263 28	265 27	267 26	268 25	276	
261	263	265-	267	268	268		
248 31	260 32	262 33	264 34	266 35	268 36	270	

243 Meanders Pass 244 244 270 7 277

Power 2 North Range 13 East

East 39.95	Connected between S 29 + 32 Set 14 Section front from which a Beech 24 in di bears N 6 E 41 links also a Beech 8 in di bears N 6 E 11 links dist at average distance on true line
79.90	To Section Corner
North 24.75 38.10	Between Sections 27 + 28 a Beech 15 in dia Intersected Private Claims 10.40 from the S. East Corner of Lot No 628 confirmed to R. Corner and made corner for 29 + 28 on a Beech 6 in di Continued
125.00	through the Claims and set front for fractional sections 20 + 21 from which a W Oak 24 in di bears S 84 W 14 links dist also a W Oak 30 in di bears S 13 W 26 links 766 from N.W. Corner of Lot No 628 Confirmed to R. Corner Land 2 nd rate Timber W Oak Red Oak &c
North 160.00 135.00	Between Sections 20 + 21 Set front for fractional sections 20, 21, 16, 17 from which a Sugar 24 in di bears N 71 W 41 links dist also a W Oak 30 in di bears S 72 W 61 links dist
North 1.37	Between Sections 16, 17 Intersected Cannon River and set front for fractional sections 16, 17 from a Beech 14 in di bears N 70 W 18 links also a Beech 10 in di bears S 58 3/4 links dist Land 2 nd rate Timber W Oak Red Oak &c





Township N: II South, Range N: XII East of Mer. (Mer. 100)

Surveyed by W.C. Preston 1871

Description of the soil on the interior sectional lines

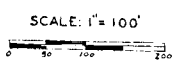
Section	Quality of Soil	Section	Quality of Soil
5	Shaly sandstone, black, soil, sugar, sugar	27	red, heavy sand, black, sugar, sugar
6	Shaly sandstone, black, soil, sugar, sugar	28	same
7	same (part dry)	29	red, heavy sand, black, sugar, sugar
7	same	30	red, heavy sand, black, sugar, sugar
11	shaly, red, black, soil, sugar, sugar	31	red, heavy sand, black, sugar, sugar
12	same	32	red, heavy sand, black, sugar, sugar
13	shaly, red, black, soil, sugar, sugar	33	red, heavy sand, black, sugar, sugar
14	same	34	red, heavy sand, black, sugar, sugar
15	shaly, red, black, soil, sugar, sugar	35	red, heavy sand, black, sugar, sugar
16	same	36	red, heavy sand, black, sugar, sugar
17	shaly, red, black, soil, sugar, sugar	37	red, heavy sand, black, sugar, sugar
18	same	38	red, heavy sand, black, sugar, sugar
19	shaly, red, black, soil, sugar, sugar	39	red, heavy sand, black, sugar, sugar
20	same	40	red, heavy sand, black, sugar, sugar
21	shaly, red, black, soil, sugar, sugar	41	red, heavy sand, black, sugar, sugar
22	same	42	red, heavy sand, black, sugar, sugar
23	shaly, red, black, soil, sugar, sugar	43	red, heavy sand, black, sugar, sugar
24	same	44	red, heavy sand, black, sugar, sugar
25	shaly, red, black, soil, sugar, sugar	45	red, heavy sand, black, sugar, sugar
26	same	46	red, heavy sand, black, sugar, sugar
27	shaly, red, black, soil, sugar, sugar	47	red, heavy sand, black, sugar, sugar
28	same	48	red, heavy sand, black, sugar, sugar
29	shaly, red, black, soil, sugar, sugar	49	red, heavy sand, black, sugar, sugar
30	same	50	red, heavy sand, black, sugar, sugar

Copy

31372

"MORAVIAN GARFIELD SUBDIVISION NO. 3"

PART OF FRACT ONAL SEC. 20, T.2N.,R.13 E,
CLINTON TWP, MACOMB CO,
MICHIGAN



WALTER J. LEHNER & SONS
LAND SURVEYORS
MT. CLEMENS, MICH.

Note: All dimensions are in feet and decimals thereof

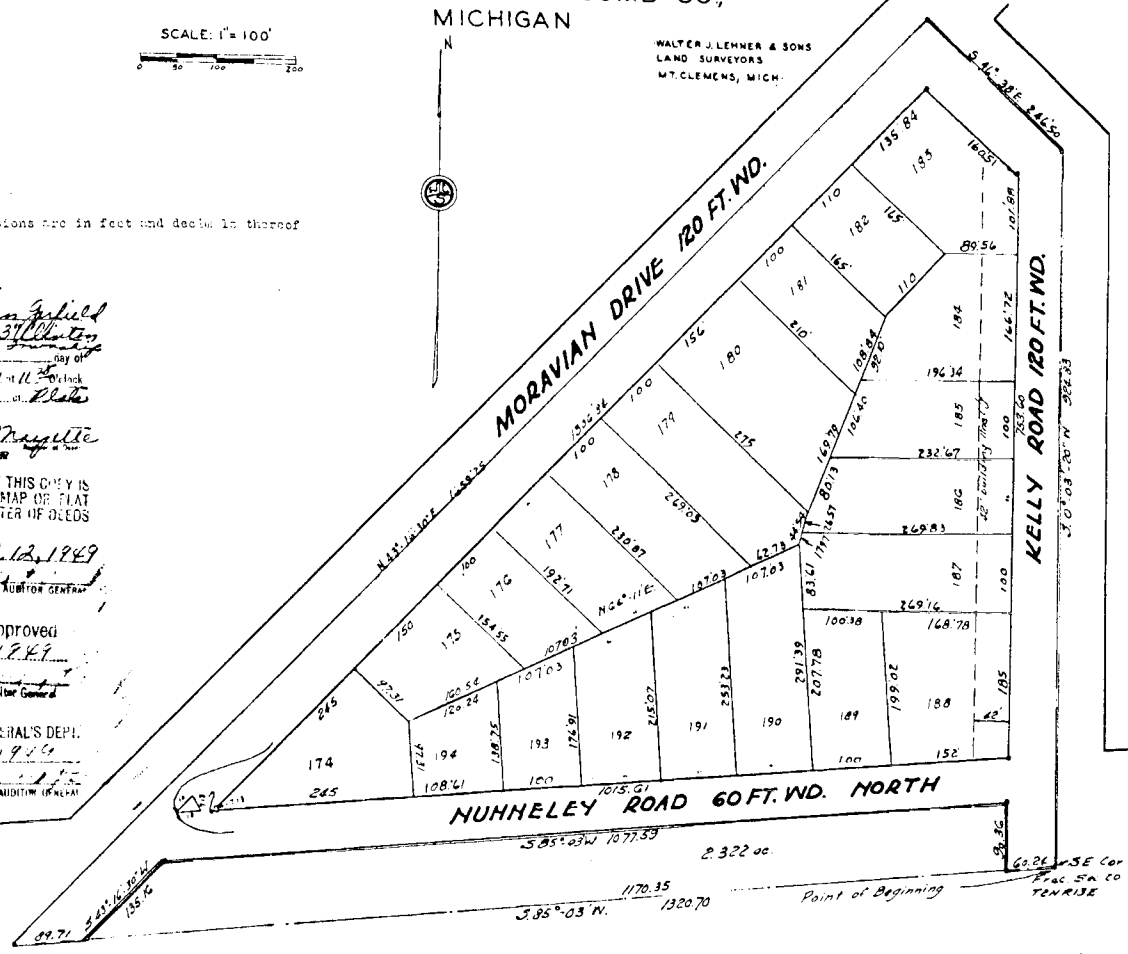
Recorder's Office
Macomb County
Part of Moravian Garfield
Subdivision No. 3
was Recorded this 13 day of
April A.D. 1949 at 11 o'clock
W.M. in Liber 25 of Plate
in Page 3
Dale Mayette
County Auditor General

I HEREBY CERTIFY THAT THIS COPY IS
A TRUE COPY OF THE MAP OR PLAT
FORWARDED TO THE REGISTER OF DEEDS
FOR RECORDING.

COMPALED April 12, 1949
Wayne County Deputy Auditor General

Examined and Approved
April 12, 1949
Wayne County Deputy Auditor General

FILED IN AUDITOR GENERAL'S DEPT.
April 14, 1949
Wayne County Deputy Auditor General



DEDICATION

KNOW ALL MEN BY THESE PRESENTS, That we, the Ingleside Realty Co., a Ltd. Partnership, by Francis H. Phelps, a general partner, as proprietors, have caused the land embraced in the annexed plat to be surveyed, laid out and platted to be known as "Moravian Garfield Subdivision No. 3", Part of Fractional Section 20, T. 2 N., R. 13 E., Clinton Twp., Macomb Co., Michigan, and that the streets as shown on said plat are hereby dedicated to the use of the public.

Ingleside Realty Co.
By *Francis H. Phelps*
Francis H. Phelps,
a general partner

Witnesses:
Frank O. Carlier
Frank O. Carlier

Frank J. Carlier
Frank J. Carlier

STATE OF MICHIGAN)
COUNTY OF MACOMB) SS.
On this 23rd day of March, A.D., 1949, before me, a Notary Public in and for said county, appeared Francis H. Phelps to me personally known, who being duly sworn did say that he is a general partner of the Ingleside Realty Co., a Ltd. Partnership, and that he has authority to execute the above instrument for the said Ingleside Realty Co.

Frank O. Carlier
Frank O. Carlier
Notary Public, in and for
Wayne County, Michigan
My commission expires June 1, 1951

DESCRIPTION OF LAND PLATED

The land embraced in the annexed plat of "Moravian Garfield Subdivision No. 3", part of Fractional Section 20, T. 2 N., R. 13 E., Clinton Twp., Macomb Co., Mich. is described as follows:

Commencing at the S. E. corner of said Fractional Section 20 and thence extending S. 85°-03' E. 60.24 ft; thence N. 0°-03'-20" E. 90.36 ft; thence S. 85°-03' E. 1077.59 ft; thence S. 45°-16'-30" W. 135.16 ft; thence S. 05°-03' E. 99.71 ft; thence N. 45°-16'-30" E. 1059.25 ft; thence S. 45°-20' E. 245.80 ft; thence S. 0°-03'-20" N. 624.03 ft. to the point of beginning.

NOTARY PUBLIC'S CERTIFICATE

I hereby certify that the plat hereon delineated is a correct one and that permanent metal monuments consisting of bars not less than one half inch in diameter and 48 inches in length crossed in a concrete cylinder at least 4 inches in diameter and 48 inches in length have been placed at points marked thus (*) as thereon shown at all angles in the boundaries of the land platted, at all intersections of streets and at the intersection of streets with the boundaries of the plat as shown on said plat.

Walter J. Lehner
Walter J. Lehner
Registered Land
Surveyor

CERTIFICATE OF TOWNSHIP APPROVAL

This plat was approved by the Township Board of the Township of Clinton at a meeting held March 14, 1949, A.D.

Alfred Foerster
Alfred S. Lester
Township Clerk

CERTIFICATE OF APPROVAL BY COUNTY BOARD

This plat was approved on the 27th day of April, A. D., 1949

Carroll Burr
Carroll Burr
Register of Deeds
Alfred Foerster
Alfred Foerster
County Clerk
Lynn Shallen
Lynn Shallen
County Treasurer

CERTIFICATE OF APPROVAL BY BOARD OF COUNTY ROAD COMMISSIONERS

This plat has been examined and approved the 29th day of March, 1949, by the Board of County Road Commissioners of Macomb County.

W. E. Malow
W. E. Malow - Chairman
Alfred Foerster
Alfred Foerster - Member

This plat was approved by the Board of County Road Commissioners of Macomb County on the 29th day of March, 1949.
1531
Rosemary Verrier
Rosemary Verrier

1949
L 25 P 3

5

408-435

JUN 20 1955

36538

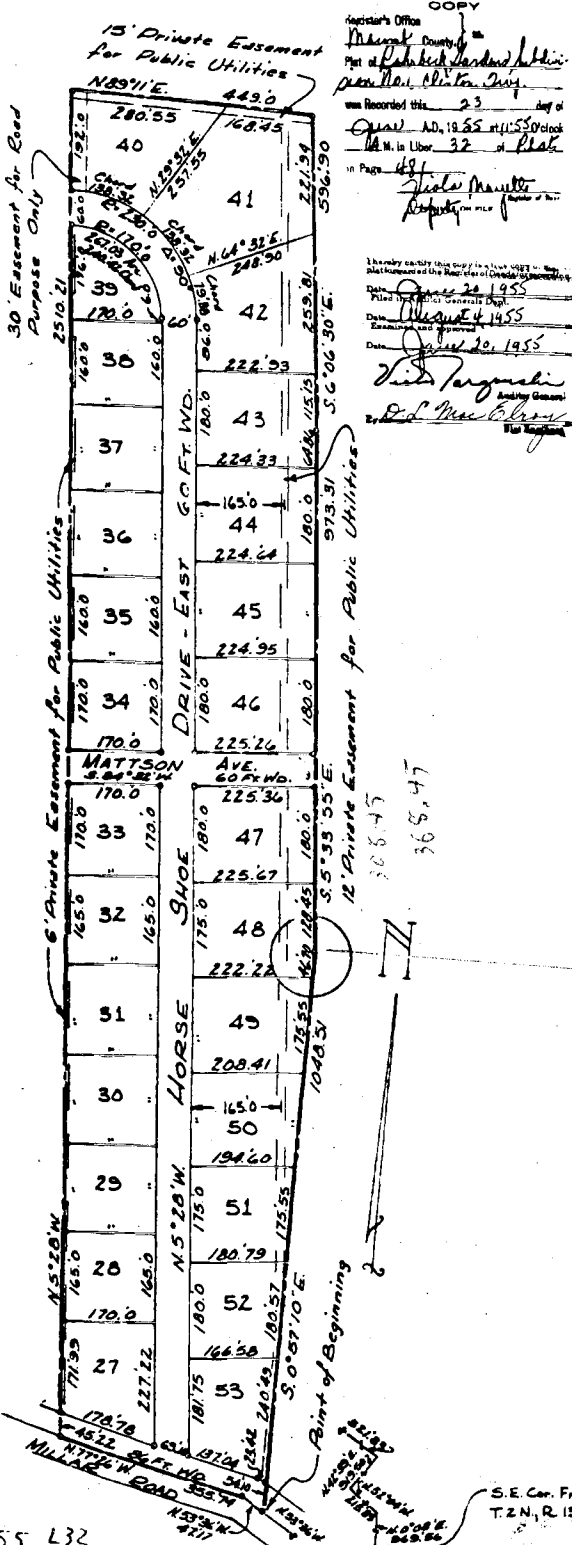
"ROHRBECK GARDENS SUBDIVISION NO. 1"

OF PART OF THE E. 1/2 SEC. 20, T. 2 N., R. 13 E.,
CLINTON TWP., MACOMB CO., MICHIGAN



Note: All dimensions are in feet and decimals thereof

Walter J. Lehner & Sons
Reg. Civil Eng. & Surveyors
Mt. Clemens, Michigan



COPY
Recorder's Office
Macomb County
Part of Rohrbeck Gardens Subdivision No. 1
was Recorded this 23 day of
April A.D. 1955
M. M. in Lib. 32
10 Page 487
State of Michigan
Notary Public
I hereby certify this copy is a true and correct copy of the original as the same is on file in the Recorder's Office of Macomb County, Michigan.
Date: April 24 1955
Filed by: [Signature]
Date: August 4 1955
Date: April 20 1955
[Signature]
Notary Public

DEDICATION
KNOW ALL MEN BY THESE PRESENTS, that we, Charles Rohrbeck and [Signature], his wife, as proprietors, have caused the land embraced in the annexed plat to be surveyed, laid out and platted to be known as "Rohrbeck Gardens Subdivision No. 1" of Part of the E. 1/2 Sec. 20, T. 2 N., R. 13 E., Clinton Twp., Macomb Co., Michigan, and that the streets as shown on said plat are hereby dedicated to the use of the public, and that the public utilities, or for the use of specific utilities as thereon noted, subject to the regulation and control of the use thereof by the local governmental authorities, and that no permanent structures are to be erected within the lines of said easements.
Witnesses:
[Signatures]
James R. Shannon
Charles Rohrbeck (L.S.)
Charles Rohrbeck - widower
[Signature] (L.S.)

STATE OF MICHIGAN)
COUNTY OF MACOMB) SS.
On this 9 day of March, 1955, before me, a Notary Public, in and for said county, personally came the above named Charles Rohrbeck and [Signature], as proprietors, known to me to be the persons who executed the above dedication, and acknowledged the same to be their free act and deed.
My Commission expires:
2 MAR 1956
[Signature]
Notary Public, Macomb County, Michigan

DESCRIPTION OF LAND PLATTED
The land embraced in the annexed plat of "Rohrbeck Gardens Subdivision No. 1" of Part of the E. 1/2 Sec. 20, T. 2 N., R. 13 E., Clinton Twp., Macomb Co., Michigan, is described as follows: Commencing at the Southeast corner of Fractional Section 20, T. 2 N., R. 13 E., and thence extending N. 0°-08'E. 969.56 feet, thence N. 52°-04'W. 215.83 feet, thence N. 42°-39'E. 919.50 feet, thence N. 53°-36'W. 521.83 feet to the point of beginning of this description; thence extending N. 53°-36'W. 47.17 feet, thence N. 77°-26'W. 355.74 feet, thence N. 5°-28'W. 2510.21 feet, thence N. 89°-11'W. 449.0 feet, thence S. 6°-06'-30"E. 596.90 feet, thence S. 3°-33'-55"E. 973.31 feet, thence S. 0°-57'-10"E. 1048.31 feet to the point of beginning.

CERTIFICATE OF APPROVAL BY BOARD OF COUNTY ROAD COMMISSIONERS
This plat has been examined and was approved on the 14 day of April, 1955, by the Macomb County Board of Road Commissioners.
[Signatures]
Ernest W. McCollom

CERTIFICATE OF MUNICIPAL APPROVAL
This plat was approved by the Township Board of the Township of Clinton at a meeting held on March 30, 1955.
[Signature]
Township Clerk

SURVEYOR'S CERTIFICATE
I hereby certify that the plat hereon delineated is a correct one and that permanent metal monuments consisting of bars not less than one-half inch in diameter and 36 inches in length, secured in a concrete cylinder at least 4 inches in diameter and 36 inches in depth have been placed at points marked thus (O) as thereon shown at all angles in the boundaries of the land platted, at all the intersections of the lines of streets, and at the intersections of the lines of streets with the boundaries of the plat as shown on said plat.
[Signature]
Registered Land Surveyor
No. 5787

CERTIFICATE OF APPROVAL BY COUNTY BOARD
This plat was approved on the 16th day of May, 1955, by the Macomb County Plat Board.
[Signatures]
County Treasurer
County Clerk
Drain Commissioner

THIS IS TO CERTIFY THAT ACCORDING TO THE COUNTY TREASURER'S RECORDS THERE ARE NO TAXES ON THIS PROPERTY AND THAT TAXES ARE PAID FOR FIVE YEARS PREVIOUS TO DATE OF THIS INSTRUMENT.
FILED IN THE OFFICE OF THE REGISTER OF DEEDS, COUNTY OF MACOMB, MICHIGAN, ON 3/12/55.
CERTIFIED AS TO THE DEDICATION OF THIS PLAT TO THE PUBLIC BY THE COUNTY OF MACOMB, MICHIGAN, ON 3/12/55.
THIS CERTIFICATE DOES NOT APPLY TO TAXES, IF ANY, DUE IN PRESENCE OF COLLECTION BY TOWNSHIP, CITY OR VILLAGE COLLECTING OFFICERS.
Lynn Whalen, MACOMB COUNTY TREASURER. M. Allen

6

1955 L32
P48

S.E. Cor. Fr. 1. Sec. 20
T. 2 N., R. 13 E.

JUN 24 1955

- COPY -

36536

JIM, MICHAEL'S SUB

A PART OF FRL SEC. 21 & P.C. 628 T2N R13E
CLINTON TWP, MACOMB CO, MICH.

Register's Office
Macomb County, Mich.
Map of Jim Michael's Sub
Clinton Twp.
was Recorded this 27 day of
June AD, 1955 at 3:35 O'clock
P.M. in Liber 37 of Plate
of Page 50
Table No. 1111
Deed No. 1111

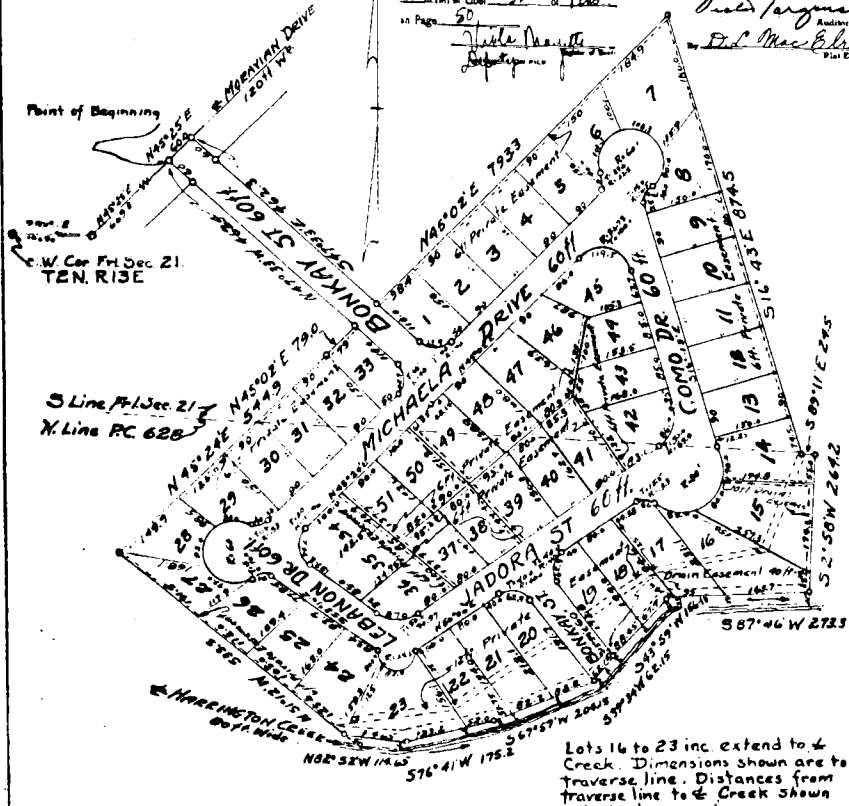
SCALE 1" = 120' (copy is a true copy of map as
filed in the Register's Office for recording.)

Date June 24 1955
Filed in the Public General's Dept.
Date June 24 1955
Examined and approved
Date June 24 1955

Victor Pergusch
Auditor General

Ed MacCollum
Plat Engineer

Note: All dimensions shown are in feet and decimal thereof. Lot dimensions on curves are arc lengths.



DEDICATION

KNOW ALL MEN BY THESE PRESENTS, that we, JAMES A. MICHAEL, a single man, JOSEPHINE B. MICHAEL and MARY S. MICHAEL, August ROHRBECK and ALWINE ROHRBECK, his wife as proprietors, have caused the land embraced in the annexed plat to be surveyed, laid out and platted, to be known as JIM MICHAEL'S SUB, A PART OF FRL. SEC. 21, & P.C. 628, T 2 N, R 13 E, CLINTON TWP., MACOMB CO., MICH.

and that the streets as shown on said plat are hereby dedicated to the use of the public and that private easements are for the sole use of public utilities and no permanent structures are to be erected thereon.

Signed and Sealed in the Presence of
Joseph Michael James A. Michael (Witness)
Josephine B. Michael Mary S. Michael (Witness)
August Rohrbek Alwine Rohrbek (Witness)
Peter S. Saigh (Witness)

ACKNOWLEDGMENT
August Rohrbek
Alwine Rohrbek (Wife)

STATE OF MICHIGAN
County of Macomb
On this First day of June, 1955 before me,
a Notary Public in and for said County, personally came the above named,
JAMES A. MICHAEL, a single man, JOSEPHINE B. MICHAEL, MARY S. MICHAEL, August ROHRBECK and ALWINE ROHRBECK, his wife
known to me to be the persons who executed the above dedication, and acknowledged the same to be their free act and deed.

Karl O. Brink
Notary Public, Macomb County
My Commission expires Sept. 12, 1956

SURVEYOR'S CERTIFICATE

I hereby certify that the plat hereto dedicated is a correct one, and that permanent monuments consisting of one inch or less in diameter and 36 inches in length, secured in concrete cylinders four inches in diameter and 36 inches in length, have been set at points marked that (0) as thereon shown at all angles in the boundaries of the land platted, at all intersections of the lines of streets and at intersections of the lines of streets with the boundaries of the plat.

Karl O. Brink
Karl O. Brink No. 2429
Registered Land Surveyor Registered Professional Engineer

DESCRIPTION OF LAND PLATTED

The land embraced in the annexed plat of JIM MICHAEL'S SUB, A PART OF FRL. SEC. 21 & P.C. 628, T 2 N, R 13 E, CLINTON TWP., MACOMB CO., MICH. is described as follows:

Commencing at the SW corner Frl. Sec. 21, T 2 N, R 13 E, Clinton Twp., Macomb Co., Mich.; thence S. 89° 11' E. 1029.0 ft.; thence N. 45° 25' E. 669.8 ft. along the center line of Moravian Drive to the Point of Beginning; thence N. 45° 25' E. 60.0 ft.; thence S. 47° 33' E. 462.3 ft.; thence N. 45° 08' E. 798.3 ft.; thence S. 16° 43' E. 874.5 ft.; thence S. 89° 11' E. 24.5 ft.; thence S. 2° 58' W. 264.2 ft. to a point, said point being N. 2° 58' E. of the center line of Harrington Creek (so called); thence upstream along the center line of said creek paralleling a traverse line on the Northernly bank on the following bearings and distances: S. 87° 46' W. 272.3 ft.; S. 43° 59' W. 156.15 ft.; S. 39° 34' W. 62.15 ft.; S. 87° 57' W. 204.15 ft.; S. 76° 41' W. 175.2 ft.; thence N. 82° 52' W. 114.65 ft. to a point; this point being N. 51° 12' W. 37.0 ft. from the center-line of said Harrington Creek; thence N. 51° 12' W. 635.5 ft.; thence N. 45° 24' E. 544.9 ft.; thence N. 45° 02' E. 79.0 ft.; thence N. 47° 33' W. 462.4 ft. to the Point of Beginning, consisting of 51 lots.

THIS IS TO CERTIFY THAT ACCORDING TO THE COUNTY TREASURER'S RECORDS THERE ARE NO TAX DUES ON THIS PROPERTY AND THAT TAXES ARE PAID FOR FIVE YEARS PREVIOUS TO DATE OF THIS INSTRUMENT.

REC'D BY 222 BSC SEC. 21 10091 DATE 6-21-55
THIS CERTIFICATE DOES NOT APPLY TO TAXES, IF ANY, NOW IN PROCESS OF COLLECTION BY TOWNSHIP, CITY OR LEGAL COLLECTOR'S OFFICE.

Lynn Whalen, MACOMB COUNTY TREASURER, PER M. Allen

APPROVAL BY BOARD OF COUNTY ROAD COMMISSIONERS

This plat has been approved and was approved on the 21st day of June, 1955, by the Macomb County Board of Road Commissioners.

Roy Conner (Chairman)
W. E. Yellow (Member)
W. C. Malloy (Member)
Ernest W. McCollum (Member)

MUNICIPAL APPROVAL

This plat was approved by the Clinton Township of the Clinton Township of Clinton on Wednesday, May 11, 1955 at a meeting held at the Township Office.

Edward J. Paulman Township Clerk

APPROVAL BY COUNTY PLAT BOARD

This plat was approved on the 23rd day of June, 1955, by the Macomb County Plat Board.

Aaron Burr (County Register of Deeds)
Albert A. Wagner (County Clerk)
Lynn Whalen (County Treasurer)
Frank E. Lohp (County Deeds Commissioner)

7

1955
L32 p 50

"METROPOLITAN PARKWAY SUB."
A Part of P.C. 628, T.2N., R.13 E.,
CLINTON TWP., MACOMB CO., MICHIGAN

37245

STATE OF MICHIGAN) S.S.
 COUNTY OF CLINTON)

DEDICATION
 KNOW ALL MEN BY THESE PRESENTS, That we Hillview Development Corporation, a Michigan Corporation, with offices at 1000 East Grand Avenue, Detroit, Michigan, do hereby dedicate to the public, and that the private easements shown on said plat are hereby reserved for the use of the Public Utilities, or for the use of specific utilities as thereon noted, subject to the regulation and control of the use thereon by the local governmental authorities, and that no permanent structures are to be erected within the lines of said easements.

Signed and Sealed in the Presence of:

Vincent J. Finnegan
 Vincent J. Finnegan
 Notary Public, Macomb County, Mich.
William Kohrbeck
 William Kohrbeck (I.S.)
Anna Kohrbeck
 Anna Kohrbeck (I.S.)
Gustav Reitz
 Gustav Reitz (I.S.)

ACKNOWLEDGEMENT
 STATE OF MICHIGAN) S.S.
 COUNTY OF CLINTON)
 On this 2nd day of October, A.D. 1955, before me a Notary Public in and for said county appeared Onfre Crapotta and John C. LaFata to me personally known, who being each by me duly sworn did say that they are the President and Secretary respectively of the Hillview Development Corporation, a Michigan Corporation, and that said instrument was signed in behalf of said corporation by authority of its Board of Directors and the said Onfre Crapotta and John C. LaFata acknowledged said instrument to be the free act and deed of said corporation. Corporation has no corporate seal.

My Commission expires: *June 2, 1956*
 Notary Public, Macomb County, Mich.

On this 2nd day of October, 1955 before me, a Notary Public in and for said county, personally came the above named William Kohrbeck and Anna Reitz, his wife, and Gustav Reitz, a married man; Mathilde Reitz, his wife, having released all of her dower interest in subject property by deed dated March 24, 1953, and recorded on March 31, 1953, Liber 898, Page 131, Deeds, Macomb County Records, known to me to be the persons who executed the above dedication, and acknowledged the same to be their free act and deed.

My Commission expires: *June 2, 1956*
 Notary Public, Macomb County, Mich.

SURVEYOR'S CERTIFICATE
 I hereby certify that the plat herein delineated is a correct one and that permanent metal monuments consisting of bars not less than one-half inch in diameter and 36 inches in length, encased in a concrete cylinder at least 4 inches in diameter and 36 inches in depth have been placed at points marked thus (O) as thereon shown at all angles in the boundaries of the land platted, at all the intersections of the lines of streets, and at the intersections of the lines of streets with the boundaries of the plat as shown on said plat.

John D. Lehner
 John D. Lehner
 Registered Land Surveyor
 No. 5161

CERTIFICATE OF APPROVAL BY BOARD OF COUNTY ROAD COMMISSIONERS
 This plat has been examined and was approved on the 2nd day of October, 1955 by the Macomb County Board of Road Commissioners.

Edward J. Altmann
 Edward J. Altmann - Clerk
Wm. E. Mellow
 Wm. E. Mellow - Member

CERTIFICATE OF MUNICIPAL APPROVAL
 This plat was approved by the Township Board of the township of Clinton at a meeting held on the 11th day of October, 1955.

CERTIFICATE OF APPROVAL BY COUNTY BOARD
 This plat was approved on the 11th day of October, 1955 by the Macomb County Board.

Albert A. Wagner
 Albert A. Wagner, County Clerk
Frank E. Toney
 Frank E. Toney, Drain Commissioner

DESCRIPTION OF LAND PLATTED

The land embraced in the annexed plat of "Metropolitan Parkway Sub.", A Part of P.C. 628, T.2 N., R.13 E., Clinton Twp., Macomb Co., Michigan, is described as follows: Commencing at a point 39.37 feet N. 0°-08'-40"E. of the Southeast cor. of T.1 Section 20, and thence S. 35°-03'-20"E. 112.16 feet, thence S. 54°-02'-30"E. 703.32 feet, thence Southeastarily along a curve concave to the Southwest (R = 168.0) whose long chord bears S. 35°-03'-20"E. 112.16 feet, thence Southeastarily along a curve concave to the Northeast (R = 91.56) whose long chord bears S. 34°-47'-55"E. 60.33 feet, thence S. 54°-02'-30"E. 703.32 feet, thence Southeastarily along a curve concave to the West (R = 231.63) whose long chord bears S. 20°-27'-E. 256.38 feet, thence S. 13°-08'-30"W. 471.87 feet, thence S. 85°-05'-40"W. 1407.76 feet to the point of beginning.

This plat includes lots 1 to 108 inclusive.

COPY

SHEET 1

1955

L 34 p 36-37

8

T.2N., R.13E.,
 Clinton Twp.

Walter J. Lehmer & Sons
 Walter J. Lehmer & Sons
 Civil Engineers & Surveyors
 Mt. Clemens, Michigan

John D. Lehner
 John D. Lehner
 Registered Land Surveyor
 No. 5161

CERTIFICATE OF APPROVAL BY COUNTY BOARD
 This plat was approved on the 11th day of October, 1955 by the Macomb County Board.

Albert A. Wagner
 Albert A. Wagner, County Clerk
Frank E. Toney
 Frank E. Toney, Drain Commissioner

DESCRIPTION OF LAND PLATTED

The land embraced in the annexed plat of "Metropolitan Parkway Sub.", A Part of P.C. 628, T.2 N., R.13 E., Clinton Twp., Macomb Co., Michigan, is described as follows: Commencing at a point 39.37 feet N. 0°-08'-40"E. of the Southeast cor. of T.1 Section 20, and thence S. 35°-03'-20"E. 112.16 feet, thence S. 54°-02'-30"E. 703.32 feet, thence Southeastarily along a curve concave to the Southwest (R = 168.0) whose long chord bears S. 35°-03'-20"E. 112.16 feet, thence Southeastarily along a curve concave to the Northeast (R = 91.56) whose long chord bears S. 34°-47'-55"E. 60.33 feet, thence S. 54°-02'-30"E. 703.32 feet, thence Southeastarily along a curve concave to the West (R = 231.63) whose long chord bears S. 20°-27'-E. 256.38 feet, thence S. 13°-08'-30"W. 471.87 feet, thence S. 85°-05'-40"W. 1407.76 feet to the point of beginning.

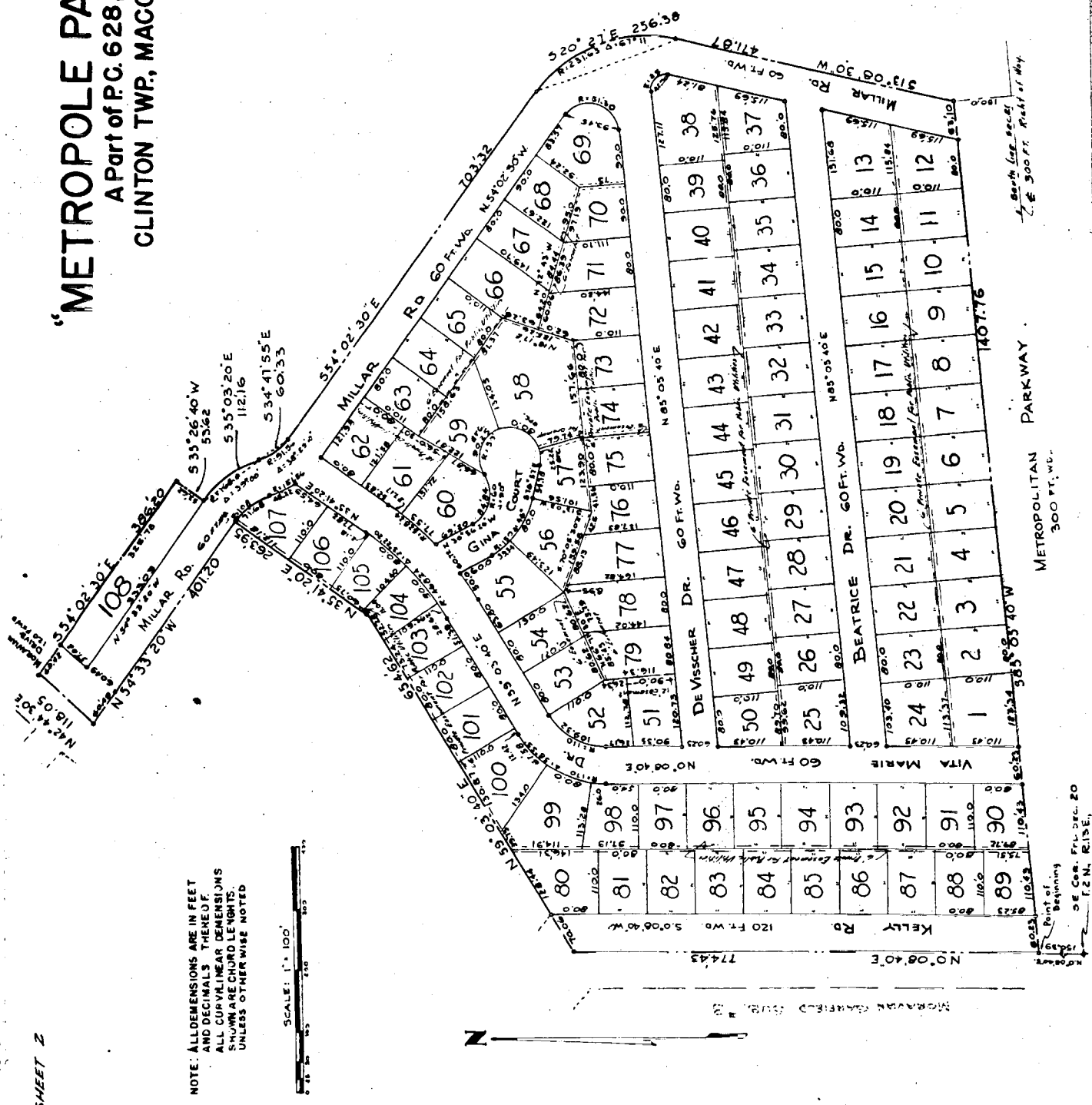
This plat includes lots 1 to 108 inclusive.

Copy 1

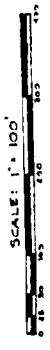
"METROPOLE PARKWAY SUB."
 A Part of P.C. 628, T.2N., R.13 E.,
 CLINTON TWP., MACOMB CO., MICHIGAN

WALTER J. LENNER & SONS
 REG. CIVIL ENG. & SURVEYORS
 M.T. CLEMENS, MICHIGAN

37245



NOTE: ALL DIMENSIONS ARE IN FEET
 AND DECIMALS THEREOF.
 ALL CURVILINEAR DIMENSIONS
 SHOWN ARE CHORD LENGTHS,
 UNLESS OTHERWISE NOTED



SHEET 2

Point of Beginning
 SE Cor. Full Dec. 20
 of E.N. R.13 E.,
 Clinton Twp.

PARKWAY
 METROPOLITAN
 300 FT. W.

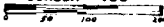
Point of Beginning
 SE 300 FT. Part of W. 1/4

APR 6 1956

"HILLCREST KNOLLS SUBDN."
PART OF FRL SEC. 21
CLINTON TWP MACOMB CO.
T 2N.R. 13 E. MICH.

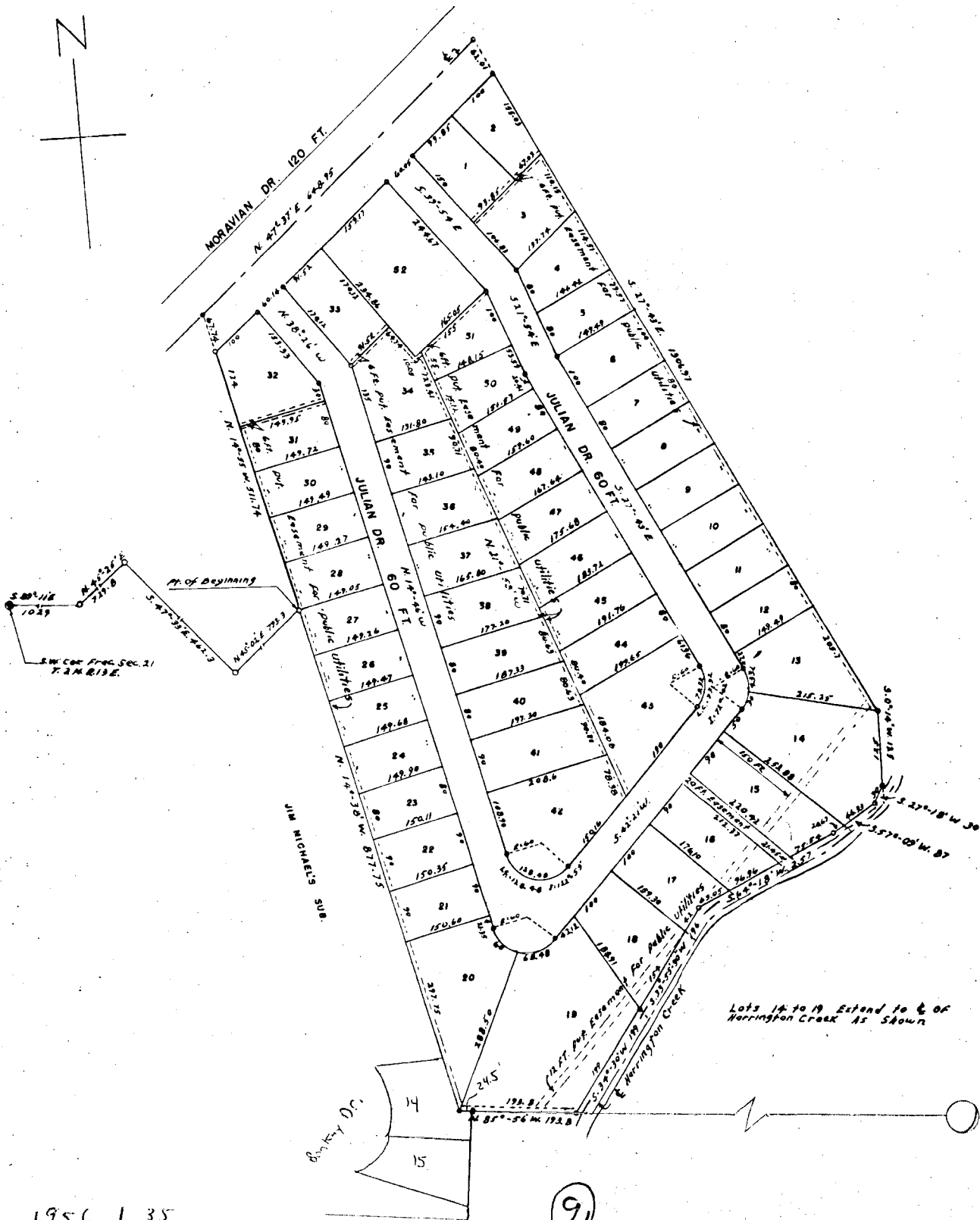
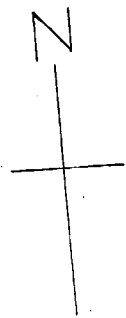
37607
SHEET 2 OF 2

NOTE: ALL MEASUREMENTS ARE IN FEET AND DECIMALS THEREOF.



ALL CURVE MEASUREMENTS ARE GIVEN ALONG THE ARC OF THE CURVE.

HARRY J. FULLER
REGISTERED CIVIL ENGINEER
MT. CLEMENS MICH.



APR 6 1958

"HILLCREST KNOLLS SUBD'N"
PART OF FRL. SEC. 21 T.2N.R.13E.
CLINTON TWP MACOMB CO. MICH.

SHEET 1 OF 2

37607

HARRY J. FULLER
REGISTERED CIVIL ENGINEER
BY CLEMENS MICH.

DEDICATION

KNOW ALL MEN BY THESE PRESENTS, That we Julius Emmanuel and Martha Emmanuel his wife, and Albert Diener a widower, as proprietors have caused the land embraced in the annexed plat to be surveyed, laid out and platted to be known as "HILLCREST KNOLLS SUBD'N," part of Section 21 T. 2 N.R. 13 E. Clinton Twp., Macomb Co., Michigan and that the streets as shown on said plat are hereby dedicated to the use of the public and that the easements as shown on said plat are hereby reserved for the use of public utilities and no permanent structures are to be erected within the lines of said easements. Execution of the use thereof is vested in the local governmental authority.

Signed and sealed in the presence of:

Ray A. Diener Julius Emmanuel
Walter J. Tanner Martha Emmanuel
Albert Diener Albert Diener

SURVEYOR'S CERTIFICATE

I hereby certify that the plat herein delineated is a correct one, and that permanent monuments consisting of iron rods at least one half inch in diameter and 36 inches in length, encased in concrete cylinders four inches in diameter and 36 inches in length, have been set at points marked there (a) as thereon shown at all angles in the boundaries of the land platted, at all intersections of streets and at intersections of streets with the boundaries of the plat.

Harry J. Fuller
HARRY J. FULLER - Registered Land Surveyor

APPROVAL BY COUNTY PLAT BOARD

This plat was approved on the 6th day of April, 1956 by the Macomb County Plat Board.

Jason Burr (County Register of Deeds)
Albert A. Wagner (County Clerk)
John Whalen (County Treasurer)
Frank Lohr (County Drain Commissioner)

ACKNOWLEDGEMENT

STATE OF MICHIGAN }
County of Macomb } ss.

On this 4th day of JANUARY, A.D. 1956 before me a Notary Public in and for said county appeared Julius Emmanuel and Martha Emmanuel his wife, and Albert Diener a widower, known to me to be the persons who executed the above dedication and acknowledged the same to be their free act and deed.

Charles L. Winn
Notary Public, MACOMB Co., Michigan
Acting in MACOMB COUNTY

My Commission expires APRIL 4, 1958

MUNICIPAL APPROVAL

This plat was approved by the Township Board of the Township of Clinton at a meeting held January 11, 1956

Edward Paulsen
Edward Paulsen (Clerk)

DESCRIPTION OF LAND PLATED

The land embraced in the annexed plat of "HILLCREST KNOLLS SUBD'N," of part of Section 21 T. 2 N.R. 13 E., Clinton Township, Macomb County, Michigan, is described as follows:

Commencing at the S.W. corner of Fractional Section 21 T. 2 N.R. 13 E., thence S 89° 11' 12" 1029 feet, thence S 45° 25' 18" 729.8 feet, thence S 47° 23' 18" 462.3 feet, thence N 45° 02' 18" 793.3 feet to the point of beginning, thence N 14° 51' 14" 511.74 feet, thence N 47° 37' 18" 646.95 feet, thence S 27° 43' 18" 1306.97 feet, thence S 0° 14' 18" 123 feet, thence S 27° 18' 18" 30 feet, thence S 57° 09' 48 feet, thence S 64° 18' 18" 257 feet, thence S 33° 55' 30" 196 feet, thence S 34° 30' 18" 199 feet, thence N 85° 34' 18" 193.6 feet, thence N 14° 38' 18" 877.75 feet to the point of beginning.

CERTIFICATE OF APPROVAL BY BOARD OF COUNTY ROAD COMMISSIONERS

This plat has been examined and approved on the 6th day of March, 1956 by the Board of County Road Commissioners of Macomb County.

Edward Paulsen
Chairman

Lawrence DeLoach
Vice-Chairman
Member

THIS IS TO CERTIFY THAT ACCORDING TO THE COUNTY TREASURER'S RECORDS THERE ARE NO TAX LIENS ON THIS PROPERTY AND THAT TAXES ARE PAID FOR FIVE YEARS PREVIOUS TO DATE OF THIS INSTRUMENT.
CERTIFIED AS TO: 72,273.22 VOL. 2664 DATE: 3-7-56
THIS CERTIFICATE DOES NOT APPLY TO TAXES, IF ANY, DUE IN PROCESS OF COLLECTION BY TOWNSHIP, CITY OR VILLAGE COLLECTING OFFICERS.
Lynn Whalen, MACOMB COUNTY TREASURER. PER: P. P. Ryan

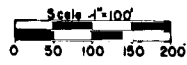
Recorder's Office
Macomb County
Part of Hilcrest Knolls Subd
Clinton Twp
was Recorded this 9th day of April, A.D. 1956 at 9 o'clock A.M. in Liber 35 of Plats
42, 428
Jason Burr
Recorder of Deeds

I hereby certify this copy is a true and correct plat as forwarded the Registrar of Deeds for recording.
Date: April 6, 1956
Filed in Recorder's General Dept.
Date: April 16, 1956
Examined by: [Signature]
Date: April 6, 1956
V. L. Ferguson
Registrar of Deeds
D. L. MacLachlan
Plat Examiner

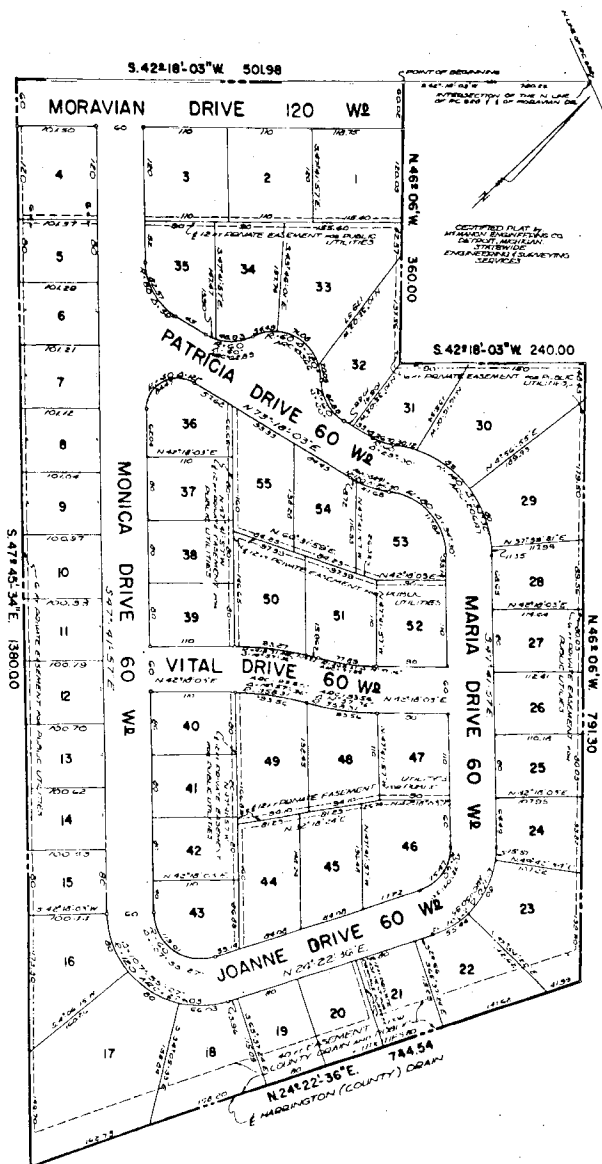
37606

MORAVIAN HILLS SUBDIVISION

OF PART OF P.C. 628, T.2N., R.13E.,
CLINTON TWP., MACOMB COUNTY, MICHIGAN.



NOTE: ALL DIMENSIONS ARE SHOWN IN FEET AND DECIMALS THEREOF.
ALL CURVILINEAR DIMENSIONS ARE SHOWN ALONG THE ARC.

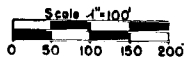


1956
~~1955~~ L 35 p 50-51

10

MORAVIAN HILLS SUBDIVISION

OF PART OF P.C. 628, T.2N., R.13E.,
CLINTON TWP., MACOMB COUNTY, MICHIGAN.



NOTE: ALL DIMENSIONS ARE SHOWN IN FEET AND DECIMALS THEREOF.
ALL CURVILINEAR DIMENSIONS ARE SHOWN ALONG THE ARC.

DEDICATION

KNOW ALL MEN BY THESE PRESENTS, That we, Hattie Schroeder, as proprietor, and Casimiro Dimaggio, Nick Abrignani, Joseph P. Ciaramitaro, Joseph Michaels, and Angelo Polizzi, as Contract Purchasers, have caused the land embraced in the attached plat to be surveyed, laid out, and platted to be known as Moravian Hills Subdivision of part of P. C. 628, T. 2 N., R. 13 E., Clinton Twp., Macomb County, Michigan, and that the streets as shown on said plat are hereby dedicated to the use of the public and that the private easements indicated on said plat are hereby reserved for the use of the public utilities subject to the regulation and control of the use thereof by the local governmental authorities, and that no permanent structures are to be erected within the lines of said easements.

Signed and Sealed in the Presence of:

Shirley Quinn
SHIRLEY QUINN (Witness)
Doris Frazho
DORIS FRAZHO (Witness)
John S. Carroll
JOHN S. CARROLL (Witness)
Albert J. Howard
ALBERT J. HOWARD (Witness)
John S. Carroll
JOHN S. CARROLL (Witness)
John S. Carroll
JOHN S. CARROLL (Witness)

Hattie Schroeder
Hattie Schroeder
Casimiro Di Maggio
Casimiro Dimaggio
Nick Abrignani
Nick Abrignani
Joseph P. Ciaramitaro
Joseph P. Ciaramitaro
Joseph Michaels
Joseph Michaels
Angelo Polizzi
Angelo Polizzi
Assunta Polizzi
ASSUNTA POLIZZI

DESCRIPTION OF LAND PLATTED

The land embraced in the annexed plat of Moravian Hills Subdivision of part of P. C. 628, T. 2 N., R. 13 E., Clinton Twp., Macomb County, Michigan, comprises Lots 1 thru 36, both inclusive, and is described as follows:

Beginning at a point in the centerline of Moravian Drive (120 feet wide) distant 780.22 feet measured South 42 degrees 18 minutes 03 seconds West from the intersection of the North line of P. C. 628 and centerline of Moravian Drive (120 feet wide); Thence continuing along said centerline of Moravian Drive, South 42 degrees 18 minutes 03 seconds West, a distance of 501.98 feet; Thence South 47 degrees 45 minutes 34 seconds East, a distance of 1380.00 feet to a point in the centerline of Harrington Drain; Thence North 24 degrees 22 minutes 36 seconds East along said centerline of Harrington Drain, a distance of 744.54 feet; Thence North 48 degrees 06 minutes West, a distance of 791.30 feet; Thence South 42 degrees 18 minutes 03 seconds West, a distance of 240.00 feet; Thence North 48 degrees 06 minutes West, a distance of 360.00 feet to the point of beginning.

CERTIFICATE OF APPROVAL BY BOARD OF COUNTY ROAD COMMISSIONERS

THIS plat has been examined and was approved on the 21st day of February, 1956, by the Macomb County Board of Road Commissioners.

Ernest McCullen Chairman
Roy Corner Roy Corner - Vice Chairman
Lawrence Oehms Lawrence Oehms - Member

APPROVAL BY COUNTY PLAT BOARD

This plat was approved on the 5th day of April, 1956, by the Macomb County Plat Board.

Aaron Burr
Aaron Burr (County Register of Deeds)
Albert A. Wagner
Albert A. Wagner (County Clerk)
Lynn Whalen
Lynn Whalen (County Treasurer)
Frank E. Lohr
Frank E. Lohr (County Drain Comm.)

ACKNOWLEDGEMENT

State of Michigan)
) s.s.
County of Macomb)

On this 5th day of April, 1956, before me a Notary Public in and for said County, appeared Hattie Schroeder, as proprietor, and Casimiro Di Maggio, Nick Abrignani, Joseph P. Ciaramitaro, Joseph Michaels, and Angelo Polizzi, as Contract Purchasers, known to me to be the persons who executed the above dedication and acknowledged the same to be their free act and deed.

John S. Carroll
JOHN S. CARROLL
Notary Public Macomb County
My Commission expires Nov. 1, 1957

SURVEYOR'S CERTIFICATE

I hereby certify that the plat hereon delineated is a correct one and that permanent monuments consisting of iron bars at least one-half inch in diameter and 36 inches in length, encased in concrete cylinders 4 inches in diameter and 36 inches in length have been set at points marked thus (O) as thereon shown at all angles in the boundaries of the land platted, at all angles in the streets, at all intersections of the lines of streets and at intersection of the lines of streets with the boundaries of the plat.

John F. McMillan
John F. McMillan
Reg. Land Surveyor #4018

MUNICIPAL APPROVAL

This plat was approved by the Township Board of the Township of Clinton at a meeting held April 2, 1956
Edward Faulman
Edward Faulman (Clerk)

THIS IS TO CERTIFY THAT ACCORDING TO THE COUNTY TREASURER'S RECORDS THERE ARE NO TAX LIENS ON THIS PROPERTY AND THAT TAXES ARE PAID FOR FIVE YEARS PREVIOUS TO DATE OF THIS INSTRUMENT.
CERTIFIED AS TO PAGE D 7266 NO 5401 DATE 4-4-56
CERTIFICATE COPIES MAY BE ORDERED BY MAIL FROM THE OFFICE OF THE COUNTY CLERK, CITY OF MACOMB, MICHIGAN.
LYNN WHALEN, MACOMB COUNTY TREASURER. PEA. 170350

REGISTER'S OFFICE
Macomb County
Plat 27 Moravian Hills Sub
Clinton Twp
was Recorded this 1st day of April, A.D. 1956, at 242 (Mch) P. M. in Liber 35 Plate
Page 504
Aaron Burr
ORIGINAL ON FILE

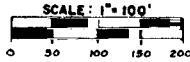
I have by this copy
plat recorded of the Register
Date April 6, 1956
File 1 of General Dept.
Date April 7, 1956
Exam no indexed
Do. April 6, 1956
David Ferguson
D. L. MacLachlan
D. L. MacLachlan
Reg. Recorder

MAY 29 1956

MORAVIAN ACRES SUBDIVISION

OF PART OF PRIVATE CLAIM 628 AND PART OF
FR'L. SECTION 21, T.2N., R.13E.,
CLINTON TOWNSHIP, MACOMB COUNTY, MICHIGAN.

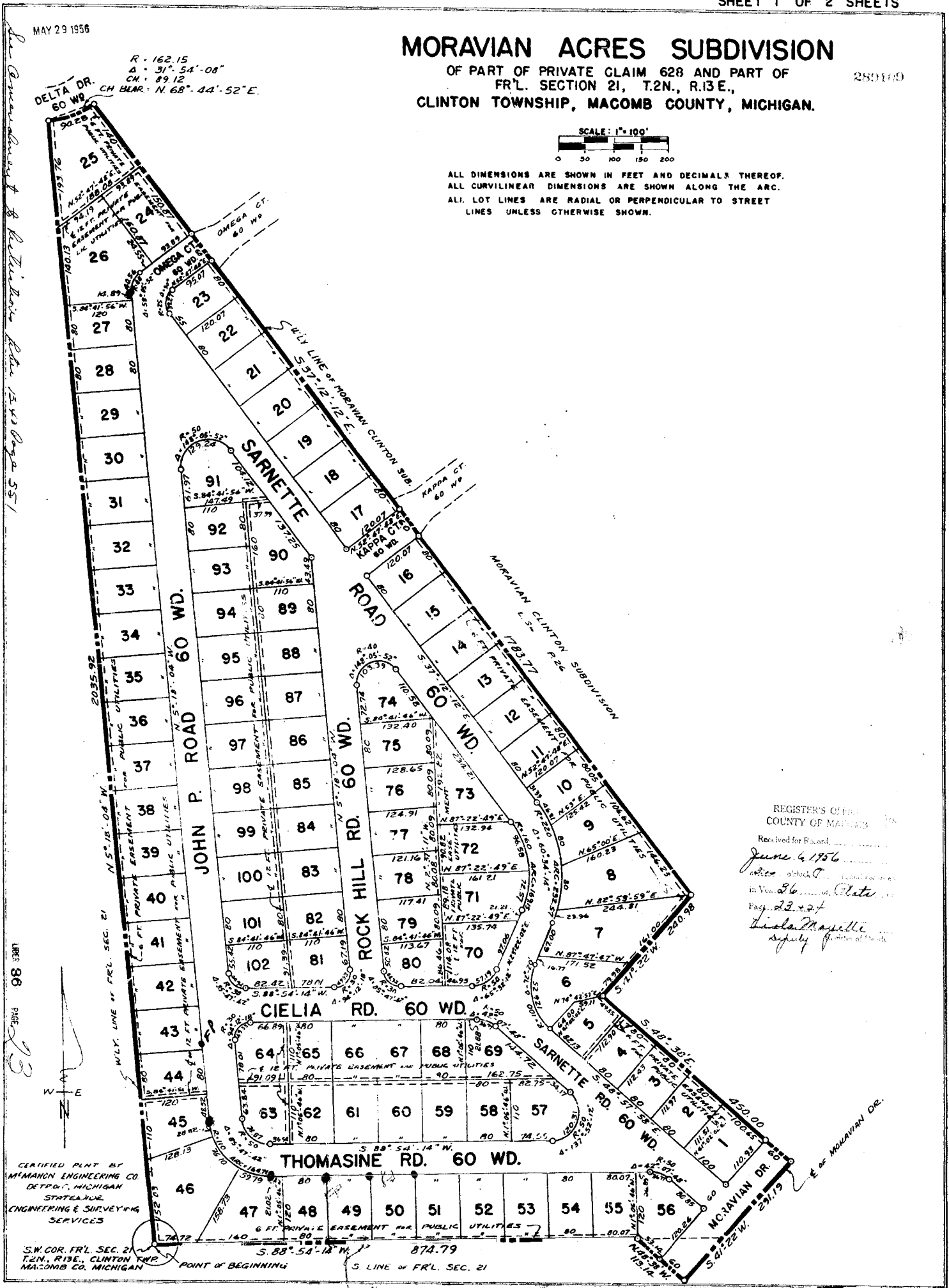
280109



ALL DIMENSIONS ARE SHOWN IN FEET AND DECIMALS THEREOF.
ALL CURVILINEAR DIMENSIONS ARE SHOWN ALONG THE ARC.
ALL LOT LINES ARE RADIAL OR PERPENDICULAR TO STREET
LINES UNLESS OTHERWISE SHOWN.

See General Map & Plat of this Subd. in 1954 Page 55
See Plat of this Subd. in 1954 Page 137

R = 162.15
A = 31° 54' 08"
CH = 89.12
CH BEAR = N 68° 44' 52" E



REGISTER'S OFFICE
COUNTY OF MACOMB
Received for Record
June 6 1956
in Vol. 26 of Plat
Page 23-24
Linda M. Masette
Deputy Register

PLAT 96

CERTIFIED PLANT BY
MIMMON ENGINEERING CO
DETROIT, MICHIGAN
STATE LICENSE
ENGINEERING & SURVEYING
SERVICES

S.W. COR. FR'L. SEC. 21
T.2N., R.13E., CLINTON TWP.
MACOMB CO., MICHIGAN

POINT OF BEGINNING

12

1956
L.36
P.23-24

289169

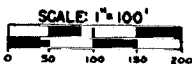
MORAVIAN ACRES SUBDIVISION

OF PART OF PRIVATE CLAIM 628 AND PART OF FR'L. SECTION 21, T.2N., R.13E., CLINTON TOWNSHIP, MACOMB COUNTY, MICHIGAN

EXAMINED AND APPROVED
Date MAY 29 1956

John Prizola
Notary Public

John Prizola
Plat Engineer



ALL DIMENSIONS ARE SHOWN IN FEET AND DECIMALS THEREOF.
ALL CURVILINEAR DIMENSIONS ARE SHOWN ALONG THE ARC.
ALL LOT LINES ARE RADIAL OR PERPENDICULAR TO STREET LINES UNLESS OTHERWISE SHOWN.

DEDICATION

KNOW ALL MEN BY THESE PRESENTS, That we, William Warner and Clara Warner, his wife, as proprietors, and John Prizola, Peter Tocco, Angelina Polizzi and Raffaelli Quasarano, witnesses, have caused the land embraced in the annexed plat to be surveyed, laid out, and platted to be known as Moravian Acres Subdivision of part of Private Claim 628 and part of fractional Section 21, T. 2 N., R. 13 E., Clinton Twp., Macomb County, Michigan, and that the streets as shown on said plat are hereby dedicated to the use of the public and that the private easements indicated on said plat are hereby reserved for the use of the public utilities, subject to the regulation and control of the use thereof by the local governmental authorities, and that no permanent structures are to be erected within the lines of said easements.

Signed and sealed in the Presence of:

Nicholas Canardo
NICHOLAS CANARDO (Witness)

William Warner
William Warner

Peter Cataldo
PETER CATALDO (Witness)

Clara Warner
Clara Warner, his wife

David Martin
DAVID MARTIN (Witness)

Herbert R. Dobbie
HERBERT R. DOBBIE (Witness)

John Prizola
John Prizola

Mary Wornberg
MARY WORNBERG (Witness)

Peter Tocco
Peter Tocco

Vito Perrino Jr.
VITO PERRINO JR. (Witness)

Charles Bonmarito
CHARLES BONMARITO (Witness)

Dora Schaeffer
DORA SCHAEFFER (Witness)

Angelina Polizzi
Angelina Polizzi

Sasha Perano
SASHA PERANO (Witness)

B. J. Becker
B. J. BECKER (Witness)

Raffaelli Quasarano
Raffaelli Quasarano

Sam Moceri
SAM MOCERI (Witness)

ACKNOWLEDGEMENT

State of Michigan)
County of Macomb) S.S.

On this 16th day of February 1956 before me
Peter Cataldo a Notary Public in and for said County, personally came the above named William Warner and Clara Warner, his wife, and John Prizola, Peter Tocco, Angelina Polizzi and Raffaelli Quasarano, known to me to be the persons who executed the above dedication and acknowledged the same to be their free act and deed.

Peter Cataldo
Notary Public
My Commission expires June 1, 1957

SURVEYOR'S CERTIFICATE

I hereby certify that the plat hereon delineated is a correct one and that permanent monuments consisting of iron bars at least one-half inch in diameter and 36 inches in length, encased in concrete cylinders 4 inches in diameter and 36 inches in length have been set at points marked thus (O) as thereon shown at all angles in the boundaries of the land platted, at all angles in the streets, at all intersections of the lines of streets and at intersection of the lines of streets with the boundaries of the plat.

John J. McMahon
John J. McMahon
Reg. Land Surveyor #4018

DESCRIPTION OF LAND PLATTED

The land embraced in the annexed plat of "Moravian Acres Subdivision of part of Private Claim 628 and part of fractional Section 21, T. 2 N., R. 13 E., Clinton Twp., Macomb County, Michigan" comprises Lots 1 thru 102, both inclusive, is described as follows:

Beginning at the Southwest corner of fractional Section 21, T. 2 N., R. 13 E., Thence North 5 degrees 18 minutes 04 seconds West along the Westerly line of fractional Section 21, a distance of 2035.92 feet to a point on a curve; Thence by a curve concave to the right whose radius is 162.15 feet (central angle of 31 degrees 54 minutes 08 seconds) a distance of 80.28 feet, chord bears North 88 degrees 44 minutes 53 seconds East, a distance of 89.13 feet and lies Northerly of said arc to a point in the Westerly line of Moravian Clinton Subdivision as recorded in Liber 34 Page 36 of plats; Thence South 37 degrees 12 minutes 12 seconds East along said Westerly line of said Moravian Clinton Subdivision, a distance of 1783.77 feet; Thence South 41 degrees 22 minutes West, a distance of 240.98 feet; Thence South 48 degrees 38 minutes East, a distance of 450.00 feet to a point in the centerline of Moravian Drive; Thence South 41 degrees 22 minutes West along said centerline of Moravian Drive, a distance of 291.19 feet; Thence North 48 degrees 38 minutes West, a distance of 119.14 feet to a point in the South line of fractional Section 21; Thence South 88 degrees 54 minutes 14 seconds West, along said South line of fractional Section 21, a distance of 874.79 feet to the point of beginning.

CERTIFICATE OF APPROVAL BY COUNTY BOARD

This plat was approved on the 24th day of May 1956, by the Macomb County Plat Board.

Aaron Burr (Register of Deeds)
Lynn Whalen (County Treasurer)
Albert A. Wagner (County Clerk)
Frank E. Lohr (Drain Comm.)

CERTIFICATE OF MUNICIPAL APPROVAL

This plat was approved by the Township Board of the Township of Clinton at a meeting held November 13 1955.

Edward G. Paulmann
Clerk

CERTIFICATE OF APPROVAL BY BOARD OF COUNTY ROAD COMMISSIONERS

This plat has been examined and was approved on the 16th day of March 1956, by the Macomb County Board of Road Commissioners.

Ernest W. McCollom - Member
Roy Conner - Chairman
Lawrence Oshko - Member

THIS IS TO CERTIFY THAT ALL FEES IN THE COUNTY TREASURY OF MACOMB COUNTY ARE PAID IN FULL ON THIS PROPERTY AND THIS TRACT ARE PAID FOR FIVE YEARS PREVIOUS TO DATE OF THIS INSTRUMENT.
RECORDED AS TO: Vol. 36 Page 223 DATE 2-24-56
THIS DEED IS THE PROPERTY OF THE COUNTY OF MACOMB AND IS NOT TO BE REPRODUCED OR COPIED IN ANY MANNER WITHOUT THE WRITTEN PERMISSION OF THE COUNTY CLERK.
Lynn Whalen, MACOMB COUNTY TREASURER, FOR McCollom
ALL OF DATED, SEC. 21
PART OF D 773, P. 628
252-17-50

REGISTER'S OFFICE
COUNTY OF MACOMB

Received for Record
June 6 1956
5:00 o'clock P.M. and recorded
in Vol. 36 of State, on
Page 223
Charles Magritte
Reg. of Deeds

See Amendment to Plat in Liber 34 Page 39 of Deeds

LIBER 36

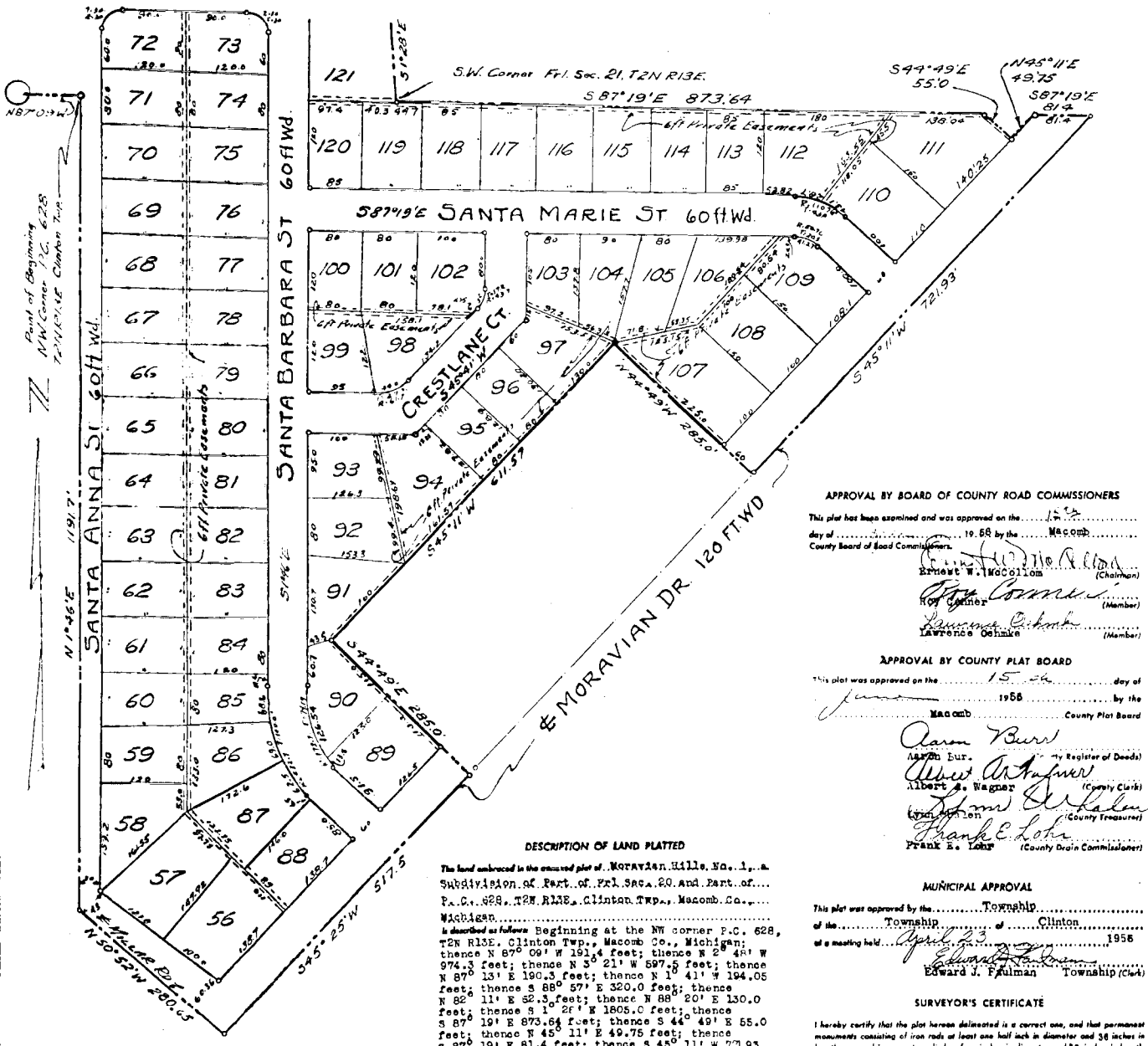
MORAVIAN HILLS NO. 1

A SUBDIVISION OF PART OF FRL. SEC. 20
AND PART OF P.C. 628 T2N R13E CLINTON TWP.
MACOMB CO. MICHIGAN

Note: All dimensions shown are in feet and decimal thereof.

SCALE 1 IN. = 100 FT.

SHEET 1 OF 2



APPROVAL BY BOARD OF COUNTY ROAD COMMISSIONERS
 This plat has been examined and was approved on the 15th day of June 1956 by the Macomb County Board of Road Commissioners.

Ernest W. McCollom (Chairman)
Lawrence Gehlke (Member)

APPROVAL BY COUNTY PLAT BOARD
 This plat was approved on the 15th day of June 1956 by the Macomb County Plat Board.

Aaron Burr (Register of Deeds)
Albert B. Wagner (County Clerk)
Frank E. Lohr (County Drain Commissioner)

DESCRIPTION OF LAND PLATTED

The land embraced in the enclosed plat of MORAVIAN HILLS, No. 1, a Subdivision of Part of Frl. Sec. 20 and Part of P.C. 628, T2N R13E, Clinton Twp., Macomb Co., Michigan is described as follows: Beginning at the NW corner P.C. 628, T2N R13E, Clinton Twp., Macomb Co., Michigan; thence N 87° 09' 11" W 151.4 feet; thence S 2° 45' 19" E 974.3 feet; thence N 5° 21' 1" W 597.5 feet; thence N 87° 13' 1" E 190.3 feet; thence N 1° 41' 1" W 194.05 feet; thence S 88° 57' E 320.0 feet; thence N 82° 11' E 52.3 feet; thence N 88° 20' E 130.0 feet; thence S 1° 28' E 1805.0 feet; thence S 87° 19' E 873.8 feet; thence S 44° 49' E 55.0 feet; thence N 45° 11' E 49.75 feet; thence S 87° 19' E 81.4 feet; thence S 45° 11' W 27.93 feet along the centerline of Moravian Drive (so called); thence N 44° 49' W 285.0 feet; thence S 45° 11' W 611.57 feet; thence S 44° 49' E 285.0 feet; thence S 45° 25' W 517.5 feet along centerline of Moravian Drive (so called); thence N 50° 32' W 200.65 feet along centerline of Millar Road (so called); thence N 1° 46' E 1191.7 feet to the Point of Beginning, consisting of 122 lots.

MUNICIPAL APPROVAL
 This plat was approved by the Clinton Township of the County of Macomb on the 15th day of June 1956 at a meeting held at the Clinton Township Office.

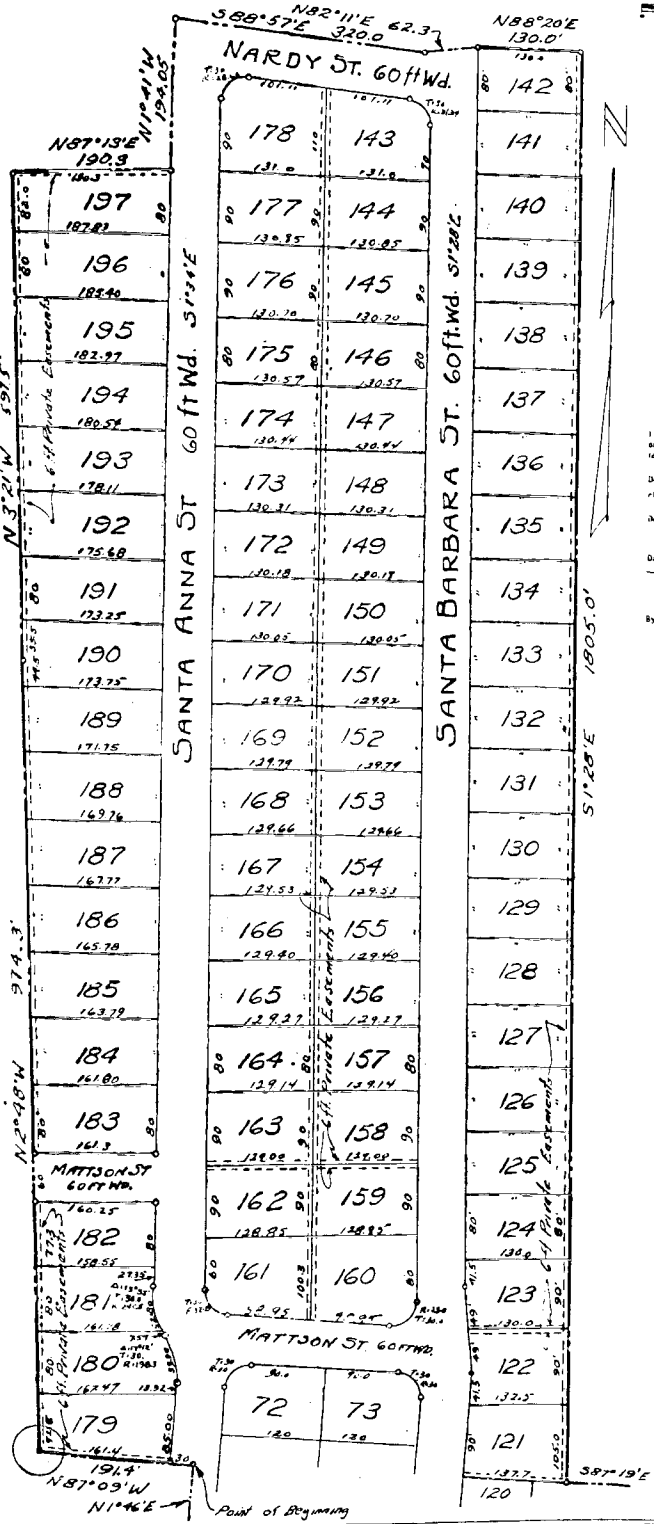
SURVEYOR'S CERTIFICATE
 I hereby certify that the plat herein delineated is a correct one, and that permanent monuments consisting of iron rods of at least one half inch in diameter and 36 inches in length, encased in concrete cylinders four inches in diameter and 36 inches in length, have been set on points marked thus (a) on thereon shown at all angles in the boundaries of the land platted, at all intersections of the lines of streets and at intersections of the lines of streets with the boundaries of the plat.

Nora J. Brincis (Registered Land Surveyor)
Edmund J. Faulman (Registered Professional Engineer)

JUN 22 1956

MORAVIAN HILLS NO. 1

A SUBDIVISION OF PART OF FRL. SEC. 20
AND PART OF P.C. 628 T2N, R13E. CLINTON TWP.
MACOMB CO. MICHIGAN SHEET 2 OF 2



SCALE 1 IN. = 100 FT.

COPY
Register's Office
Macomb County
Plat of *Moravian Hills No. 1*
Clinton Twp.
Was Rec. filed Jan 25 1956
June 22 1956
Plat No. 34-35
Map Page 34-35
Lester Bunn
Notary Public

FROM ALL MEN BY THESE PRESENTS, that we Henry Krause and Mary Krause, his wife, George Krause and Katherine Krause, his wife, Peter Vitale and Ida Vitale, his wife, Matthew Zerilli and Stella Zerilli, his wife, William Loricchio and Grace Loricchio, his wife, Joseph P. Ciaramitaro and Anne Ciaramitaro, his wife, Joseph Michael and Thelma Michaels, his wife, Ciaramitaro Brothers, a Michigan Co-partnership by Salvatore Ciaramitaro, Anthony Ciaramitaro, Gasper Ciaramitaro, William Ciaramitaro and Joseph P. Ciaramitaro, as proprietors, have caused the land embraced in the annexed plat to be surveyed, laid out and platted, to be known as Moravian Hills No. 1, a Subdivision of Part of P.L. Sec. 20 and part of P. C. 628, T2N R13E, Clinton Twp., Macomb Co., Michigan, and that the streets as shown on said plat are hereby dedicated to the use of the public and the private easements as shown are for the sole use of public utilities and no permanent structures are to be erected thereon.

Signed and sealed in the Presence of:

Henry Krause (L.S.)
MARY KRAUSE (L.S.)
MARY KRAUSE (L.S.)
GEORGE KRAUSE (L.S.)
KATHERINE M. KRAUSE (L.S.)
PETER VITALE (L.S.)
IDA VITALE (L.S.)
MATTHEW ZERILLI (L.S.)
STELLA ZERILLI (L.S.)
JOSEPH MICHAELS (L.S.)
THELMA MICHAELS (L.S.)
JOSEPH P. CIARAMITARO (L.S.)
ANNE CIARAMITARO (L.S.)
WILLIAM LORICCHIO (L.S.)
GRACE LORICCHIO (L.S.)
CIARAMITARO BROTHERS, A MICHIGAN CO-PARTNERSHIP BY SALVATORE CIARAMITARO, PARTNER (L.S.)
ANTHONY CIARAMITARO, PARTNER (L.S.)
GASPER CIARAMITARO, PARTNER (L.S.)
WILLIAM CIARAMITARO, PARTNER (L.S.)
JOSEPH P. CIARAMITARO, PARTNER (L.S.)

STATE OF MICHIGAN
County of Macomb

On this 20th day of APRIL, 1956, before me a Notary Public in and for said County, personally came the above named Henry Krause and Mary Krause, his wife, George Krause and Katherine Krause, his wife, Peter Vitale and Ida Vitale, his wife, Matthew Zerilli and Stella Zerilli, his wife, William Loricchio and Grace Loricchio, his wife, Joseph P. Ciaramitaro and Anne Ciaramitaro, his wife, Joseph Michael and Thelma Michaels, his wife and Ciaramitaro Brothers, a Michigan Co-partnership by Salvatore Ciaramitaro, Anthony Ciaramitaro, Gasper Ciaramitaro, William Ciaramitaro and Joseph P. Ciaramitaro, PARTNERS

known to me to be the persons who executed the above dedication, and acknowledged the same to be their free act and deed.

Albert J. Howard
Notary Public, Macomb County
My Commission expires Mar 25, 1958

Copy

Sheet 2 of 2

385

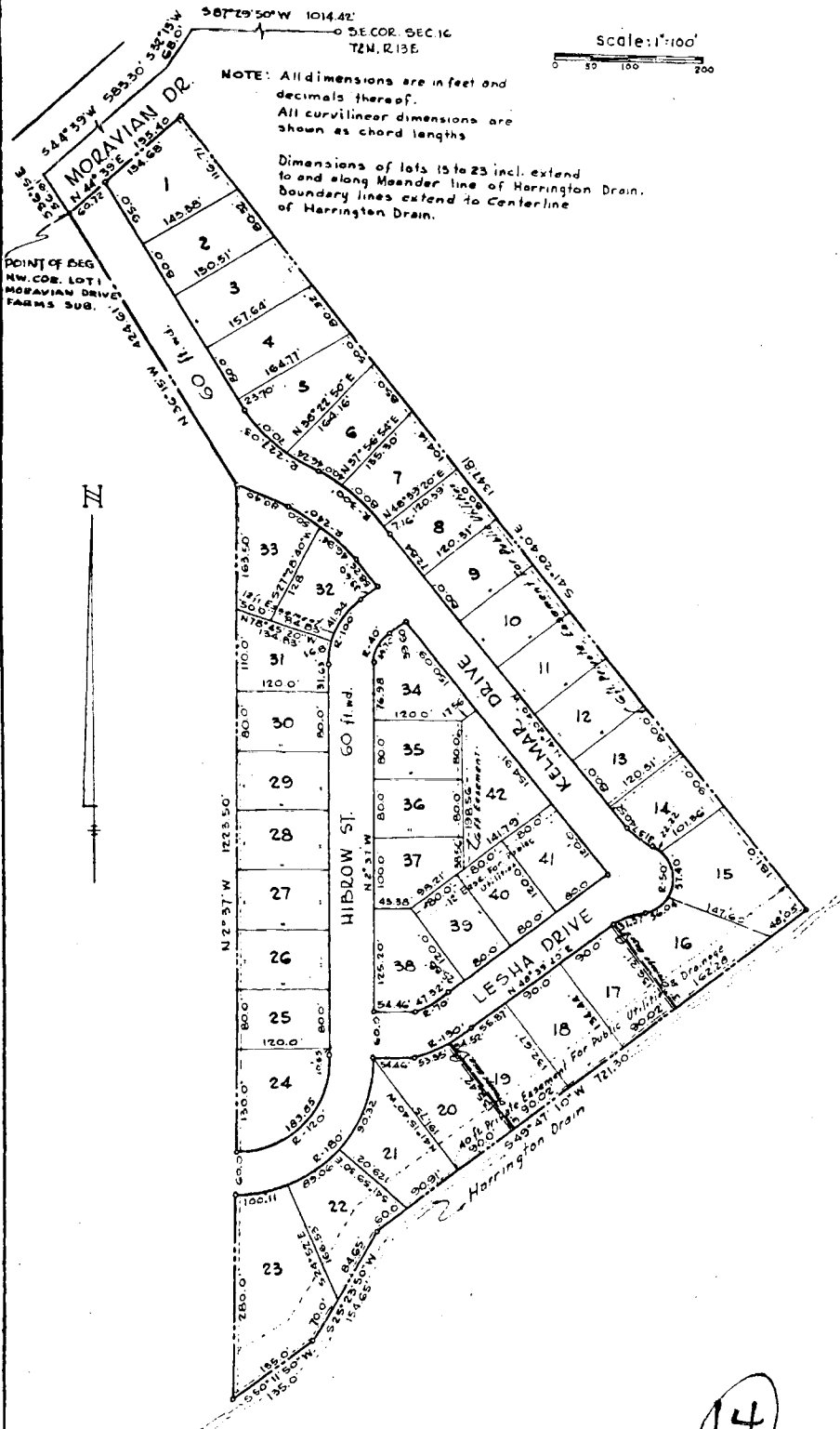
MT. LEBANON SUBDIVISION
 OF LOT 1 OF MORAVIAN DRIVE FARMS SUBDIV. OF PART OF FR'L. SECS.
 16 & 21 & PART OF P.C. 137 T.2N., R.13E.
 CLINTON TOWNSHIP MACOMB COUNTY MICHIGAN

Scale: 1"=100'
 0 50 100 200

Walter J. Lehner & Sons
 Reg. Civil Eng. & Surveyor
 Mt. Clemens, Michigan

NOTE: All dimensions are in feet and decimals thereof.
 All curvilinear dimensions are shown as chord lengths

Dimensions of lots 15 to 23 incl. extend to and along Meander line of Harrington Drain. Boundary lines extend to Centerline of Harrington Drain.



14

1956 L. 37

p. 27-28

54

MT. LEBANON SUBDIVISION

OF LOT 1 OF MORAVIAN DRIVE FARMS SUBDIV. OF PART OF FR'L. SECS.
16 & 21 & PART OF P.C. 137 T.2N., R.13E.
CLINTON TOWNSHIP MACOMB COUNTY MICHIGAN

Walter J. Lehner & Sons
Reg. Civil Eng. & Surveyor
Mt. Clemens, Michigan

DEDICATION

KNOW ALL MEN BY THESE PRESENTS, That we, John A. Baker and Gertrude K. Baker, his wife, as proprietors, and John J. Thomas and Geraldine Thomas, his wife, Anthony E. Lesha, a single man, Michael J. Thomas and Gene Thomas, his wife, and Martin M. Thomas and Esther E. Thomas, his wife, as vendees under land contract have caused the land embraced in the annexed plat to be surveyed, laid out and platted to be known as Mt. Lebanon Subdivision of Lot 1 of Moravian Drive Farms Subdiv. of part of Fr'l Secs. 16 & 21 & part of P.C. 137, T. 2 N., R. 13 E., Clinton Township, Macomb County, Michigan, and that the streets as shown on said plat are hereby dedicated to the use of the public, and that the private easements shown on said plat are hereby reserved for the use of the Public Utilities, or for the use of specific utilities as thereon noted, subject to the regulation and control of the use thereof by the local governmental authorities, and that no permanent structures are to be erected within the lines of said easements.

Signed in Presence of:

Marian Pedersen
Marian Pedersen
Edward J. Longfellow
Edward J. Longfellow
Robert R. Collins
Robert R. Collins
James O. Michael
James O. Michael
John J. Thomas
John J. Thomas
Frank Chan
Frank Chan
William J. Berkley
William J. Berkley
John J. Thomas
John J. Thomas
Walter C. Cassatt
Walter C. Cassatt

John A. Baker (L.S.)
John A. Baker
Gertrude K. Baker (L.S.)
Gertrude K. Baker
Anthony E. Lesha (L.S.)
Anthony E. Lesha
Michael J. Thomas (L.S.)
Michael J. Thomas
Gene Thomas (L.S.)
Gene Thomas
John J. Thomas (L.S.)
John J. Thomas
Geraldine Thomas (L.S.)
Geraldine Thomas
Martin M. Thomas (L.S.)
Martin M. Thomas
Esther E. Thomas (L.S.)
Esther E. Thomas

DESCRIPTION OF LAND PLATTED

The land embraced in the annexed plat of Mt. Lebanon Subdivision of Lot 1 of Moravian Drive Farms Subdiv. of part of Fr'l Secs. 16 & 21 & part of P.C. 137, T. 2 N., R. 13 E., Clinton Township, Macomb County, Michigan, is described as follows: Commencing at the Southeast corner of Fr'l, Section 16, T. 2 N., R. 13 E., thence S. 87°-29'-50" W., 1014.42 feet; thence S. 32°-13' W., 68.0 feet; thence S. 44°-39' W., 583.30 feet; thence S. 36°-15' E., 56.91 feet to the point of beginning of this description. Thence extending N. 44°-39' E., 195.40 feet; thence S. 41°-20'-40" E., 1347.81 feet; thence along a meander line on the Northwesterly bank of the Harrington Drain S. 49°-47'-10" W., 721.30 feet and S. 25°-23'-50" W., 154.65 feet and S. 50°-11'-50" W., 135.0 feet; thence leaving meander line N. 2°-37' W., 1223.50 feet; thence N. 36°-15' W., 424.61 feet to the point of beginning. This plat contains lots 1 to 42, inclusive.

SURVEYOR'S CERTIFICATE

I hereby certify that the plat hereon delineated is a correct one and that permanent metal monuments consisting of bars not less than one-half inch in diameter and 36 inches in length encased in a correte cylinder at least 4 inches in diameter and 36 inches in depth have been placed at points marked thus (O) as thereon shown at all angles in the boundaries of the land platted, at all the intersections of the lines of streets and at the intersections of the lines of streets with the boundaries of the plat as shown on said plat.

Walter J. Lehner
Walter J. Lehner
Registered Land Surveyor,
No. 5787.

CERTIFICATE OF APPROVAL BY BOARD OF COUNTY ROAD COMMISSIONERS

This plat has been examined

CERTIFICATE OF APPROVAL BY BOARD OF COUNTY ROAD COMMISSIONERS

This plat has been examined and was approved on the 14 day of August, 1956, by the Macomb County Board of Road Commissioners.

Ernest W. McCollom
Ernest W. McCollom-Chairman
Boy Conner
Boy Conner-Vice-Chairman
Lawrence Oebmke
Lawrence Oebmke-Member

CERTIFICATE OF MUNICIPAL APPROVAL

This plat was approved by the Township Board of the Township of Clinton at a meeting held

Edward J. Faulman
Edward J. Faulman-Clerk

CERTIFICATE OF APPROVAL BY COUNTY BOARD

This plat was approved on the 14 day of August, 1956, by the Macomb County Plat Board.

Agnes Guss
Agnes Guss-Register of Deeds
Lynn Whalen
Lynn Whalen-County Treasurer
Albert A. Wagner
Albert A. Wagner-County Clerk
Frank E. Lohr
Frank E. Lohr-County Drain Commissioner

THIS IS TO CERTIFY THAT ACCORDING TO THE COUNTY TREASURER'S RECORDS THERE ARE NO TAX LIENS ON THIS PROPERTY AND THAT TAXES PAID FOR FIVE YEARS PREVIOUS TO DATE OF THIS INSTRUMENT EXCEPT:

No. 1440 Lynn Whalen, MACOMB COUNTY TREASURER
DATE: 9.12.56 PER: R. Verrier

ACKNOWLEDGMENT
STATE OF MICHIGAN)
COUNTY OF Macomb) SS.

On this 14 day of August, 1956, before me, a Notary Public in and for said county, personally came the above named John A. Baker and Gertrude K. Baker, his wife, and Anthony E. Lesha, a single man, Michael J. Thomas and Gene Thomas, his wife, John J. Thomas and Geraldine Thomas, his wife, and Martin M. Thomas and Esther E. Thomas, his wife, known to me to be the persons who executed the above dedication and acknowledged the same to be their free act and deed.

My Commission expires: 1958
Donald E. Harris
Notary Public Macomb Co., Michigan.

COPY
Recorder's Office
Macomb County, Michigan
Plat of Mt. Lebanon Subdiv.
Clinton Township
was Recorded this 14 day of August
1956 A.D. 1956 at 10:00 o'clock
P.M. in Liber 27 of 1956
on Page 870
Walter J. Lehner
Surveyor
ORIGINAL ON FILE.

I hereby certify this copy is a true copy of map as filed in the Register of Deeds for Record.
Date Sept 14 1956
FILED BY AUDITOR GENERAL'S OFFICE.
Date Sept 14 1956
EXAMINED AND APPROVED
Date Sept 14 1956
Francis S. Reynolds
Auditor General
By W. J. Lehner
Notary Public

MORAVIAN HILLS SUBDIVISION No 2

SHEET 2 OF 2 SHEETS

OF PART OF THE NE. 1/4 OF SECTION 20
AND PART OF THE SE. 1/4 OF SECTION 17,
T.2N., R.13E., CLINTON TOWNSHIP,
MACOMB COUNTY, MICHIGAN.



PLAT LEGEND

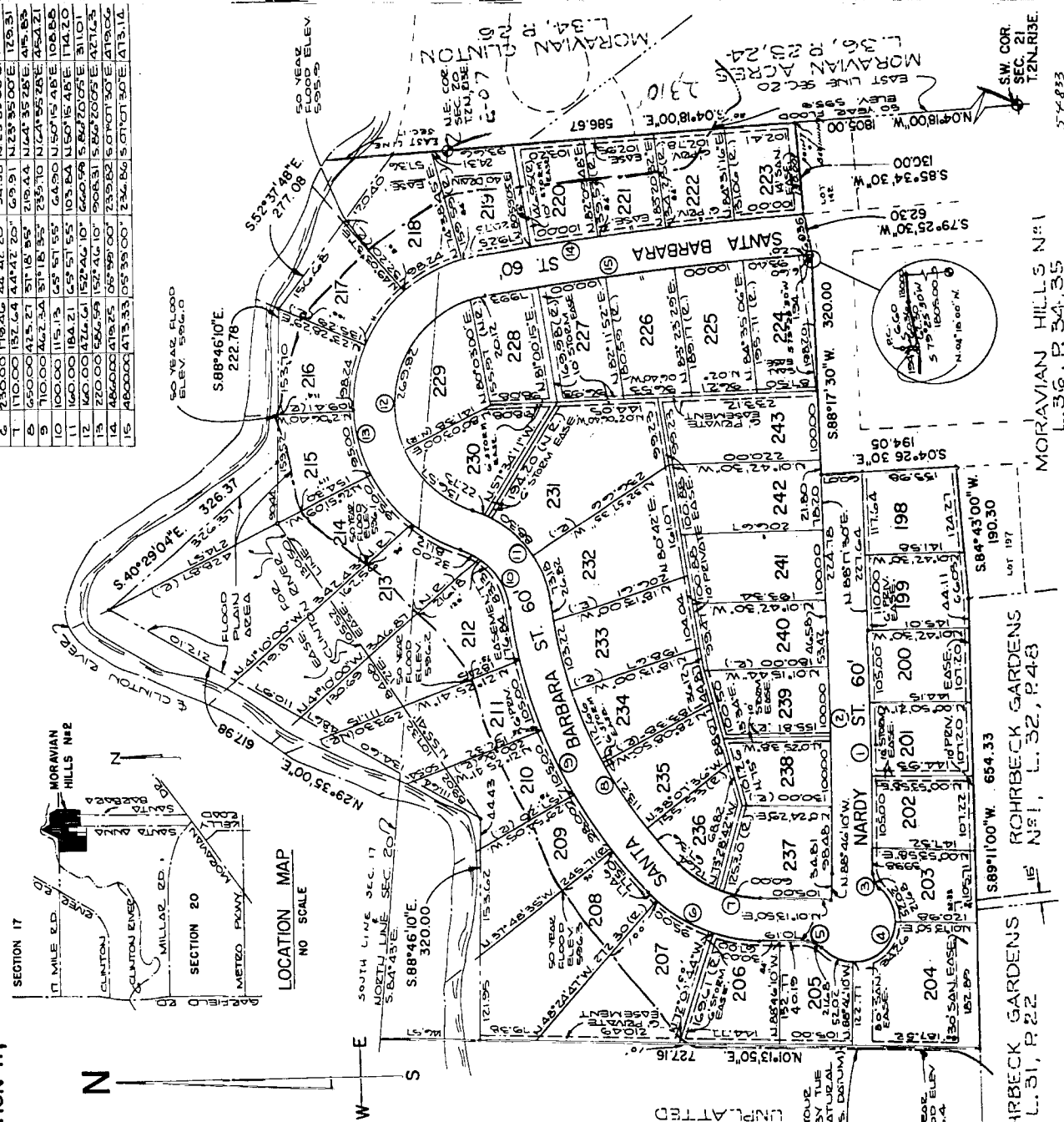
All Dimensions are given in feet.
All Curvilinear Dimensions are given along the arc.
Symbol "o" represents the location points of permanent concrete monuments.
Lot markers are 1/2" diameter by 18" long iron bars.
All Bearings are in relation to the Bearings of Moravian Hills Subdivision No. 1, as recorded in Liber 36 of Plats on pages 34 and 35 of the Macomb County Records.
R. denotes radial.

THIS PLAT IS SUBJECT TO RESTRICTIONS AS REQUIRED BY ACT 289 OF 1967, AS AMENDED ON CERTAIN LOTS WITH RESPECT TO THE REQUIREMENTS OF THE MICHIGAN DEPARTMENT OF NATURAL RESOURCES AND OF THE MICHIGAN DEPARTMENT OF LAND AND WATER. ANY RESTRICTIONS ARE RECORDED IN LIBER 259 PAGE 1691 OF RECORDS OF THIS COUNTY.



FLOOD PLAIN CONTOUR AS ESTABLISHED BY THE DEPARTMENT OF NATURAL RESOURCES (U.S.G.S. DATA)

PT	RADIUS	ARC	DELTA	TANGENT	CHD. BEARING	CHORD
1	622.00	54.98	02°44'20"	111.58	S89°45'40"W	355.84
2	622.00	54.98	02°44'20"	111.58	S89°45'40"W	355.84
3	25.00	21.48	03°10'45"	11.57	S64°23'25"W	21.00
4	25.00	21.48	03°10'45"	11.57	S64°23'25"W	21.00
5	25.00	21.48	03°10'45"	11.57	S64°23'25"W	21.00
6	25.00	21.48	03°10'45"	11.57	S64°23'25"W	21.00
7	110.00	19.46	04°42'20"	24.15	N12°35'00"E	174.94
8	110.00	19.46	04°42'20"	24.15	N12°35'00"E	174.94
9	110.00	19.46	04°42'20"	24.15	N12°35'00"E	174.94
10	110.00	19.46	04°42'20"	24.15	N12°35'00"E	174.94
11	100.00	18.42	05°18'55"	23.10	N12°45'28"E	165.21
12	100.00	18.42	05°18'55"	23.10	N12°45'28"E	165.21
13	100.00	18.42	05°18'55"	23.10	N12°45'28"E	165.21
14	100.00	18.42	05°18'55"	23.10	N12°45'28"E	165.21
15	480.00	41.33	05°35'00"	23.86	S107°30'E	479.66
16	480.00	41.33	05°35'00"	23.86	S107°30'E	479.66



SADDLE LANE
L. 61, P. 9, 10

ROHRBECK GARDENS
L. 51, P. 2, 22

ROHRBECK GARDENS
L. 51, L. 32, P. 4, 43

MORAVIAN HILLS No 1
L. 36, P. 34, 35

LIBER _____, PAGE _____

1975 L. 66 P. 15-16

15

MORAVIAN HILLS SUBDIVISION No 2

OF PART OF THE NE. 1/4 OF SECTION 20 AND PART OF THE SE. 1/4 OF SECTION 17, T.2N., R.13E., CLINTON TOWNSHIP,, MACOMB COUNTY, MICHIGAN.

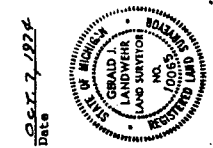
SURVEYOR'S CERTIFICATE

I, GERALD J. LANDWEHR, SURVEYOR, CERTIFY: That I have surveyed, divided, mapped the land shown on this plat described as follows: MORAVIAN HILLS SUBDIVISION No. 1, of part of the N.E. 1/4 of Section 20 and part of the S.E. 1/4 of Section 17, T. 2 N., R. 13 E., Clinton Township, Macomb County, Michigan, as shown on the attached plat, and that the public utility easements thereon are shown on the plat and that a portion of Clinton River lot lines for lots 204 thru 218 inclusive extend to the water's edge and lots 204 thru 222 inclusive shall include the proposed submerged lands designated within the easements as shown on said plat and the proposed submerged area of such lots shall be at all times subject to the corrective rights of the riparian owners and the paramount rights which the State of Michigan may have in these waters.

26.2 Acres of Land more or less, to the waters edge. Containing 46 lots numbered 198 thru 243 inclusive. That I have made such survey, land division, and plat by the direction of the owners of such land. That such plat is a correct representation of all the exterior boundaries of the land surveyed and the subdivision of it.

The required monuments and lot markers have been located in the ground or that survey has been deposited with the municipality, as required by Section 125 of the Act. That the accuracy of survey is within the limits required by Section 126 of the Act. That the bearings shown on the plat are expressed as required by Section 126 (3) of the Act and as explained in the legend.

MAYIS, LANDWEHR & ASSOCIATES, INC. 29400 Van Dyke Avenue Warren, Michigan 48093 Gerald J. Landwehr, R.L.S. Vice President and Secretary Michigan Reg. No. 10065



PROPRIETOR'S CERTIFICATE

J.J.R. INC., A Michigan Corporation, by John J. Ruggero, President, as proprietor, have caused the land to be surveyed, divided, mapped and dedicated as represented on this plat and that the streets are for the use of the public; that the public utility easements thereon are shown on the plat and that a portion of Clinton River lot lines for lots 204 thru 218 inclusive extend to the water's edge and lots 204 thru 222 inclusive shall include the proposed submerged lands designated within the easements as shown on said plat and the proposed submerged area of such lots shall be at all times subject to the corrective rights of the riparian owners and the paramount rights which the State of Michigan may have in these waters.

WITNESSES: J. J. R. INC., A Michigan Corporation 21340 15 Mile Michigan 48043 R.L. Clemens, Michigan 48043 John J. Ruggero, President

ACKNOWLEDGMENT

STATE OF MICHIGAN) SS COUNTY OF WAYNE) PERSONALLY came before me this 8th day of October, 1974, John J. Ruggero, President of the above named corporation, to whom known to be the person who executed the foregoing instrument and to me known to be such president of said corporation, and acknowledged that he executed the foregoing instrument as such officer as the free act and deed of said corporation, by its authority.

MY COMMISSION EXPIRES: Feb. 9, 1975 Richard C. Dineid, Notary Public Macomb County, Michigan

COUNTY TREASURER'S CERTIFICATE

The records in my office show no unpaid taxes of special assessment for the tract described in this plat, and involving the lands included in this plat.

Adam E. Nowakowski, Macomb County Treasurer. Marion E. White, Clerk. Certified true copy of Record of plat.

COUNTY DRAIN COMMISSIONER'S CERTIFICATE

Approved on 10/18/74 as complying with Section 192 of Act 288, P.A. 1967 and the applicable rules and regulations published by my office in the County of Macomb.

Thomas B. Walsh, Drain Commissioner

CERTIFICATE OF COUNTY ROAD COMMISSIONERS

Approved on Oct. 22, 1974 as complying with Section 183 of Act 288, P.A. 1967 and the applicable published rules and regulations of the Board of Road Commissioners of Macomb County.

Lawrence Oehmeke, Chairman Keith Bovenman, Vice-Chairman Joseph Perry, Commissioner

CERTIFICATE OF MUNICIPAL APPROVAL

I certify that this plat was approved by the Township Board of the Township of Clinton at a meeting held on Oct. 15, 1974 and was reviewed and found to be in compliance with Act 288, P.A. 1967. Surety has been posted for the placing of monuments and lot markers within one year of the above date. Minimum lot area required by Act 288, P.A. 1967 is 100 square feet. The above plat conforms with the legally adopted zoning and subdivision control ordinances of the Township of Clinton. Public sewer and water is available for connection.

Michael Rhoads, Township Clerk

COUNTY PLAT BOARD CERTIFICATE

This plat has been reviewed and is approved by the Macomb County Plat Board on Nov. 8, 1974, as being in compliance with all of the provisions of Act 288, P.A. 1967, and the Plat Board's applicable rules and regulations.

Edna M. Roccola, Chairman, Board of County Commissioners Edna Miller, County Clerk - Registrar of Deeds Adam E. Nowakowski, County Treasurer

RECORDING CERTIFICATE

STATE OF MICHIGAN) SS COUNTY OF MACOMB) This plat was received for record on the 3rd day of March, A.D., 1975, at 2:50 P.M., recorded in Liber 66 of plats on pages 15-16.

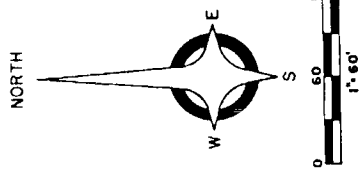
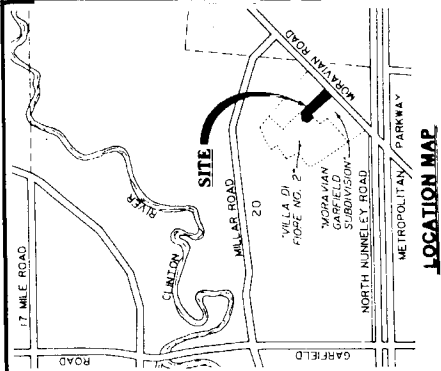
Raymond L. Craig, Registrar of Deeds

54833

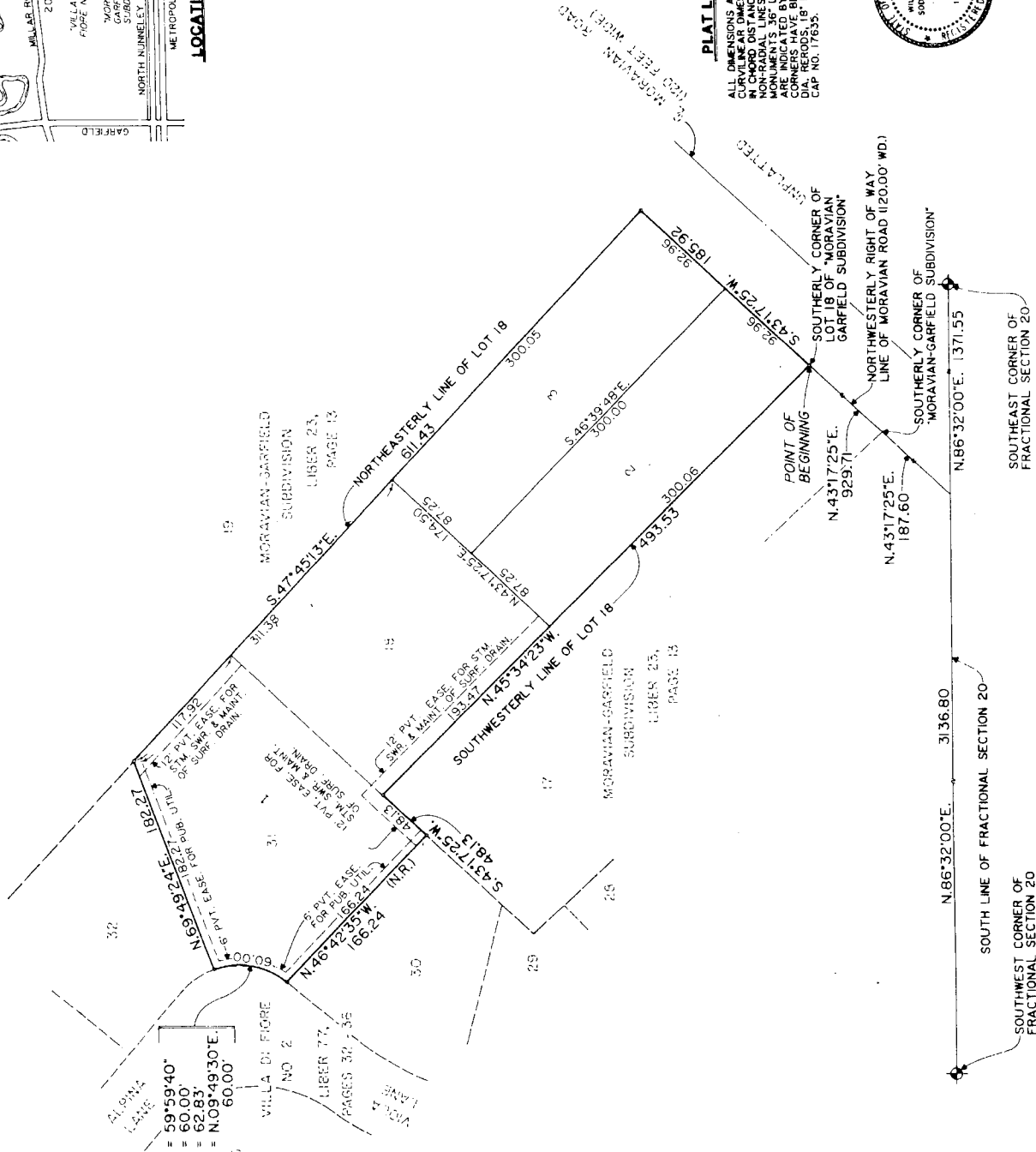
1975 LCC P.15-16

AMENDED PLAT OF LOT 31 OF VILLA DI FIORE NO. 2 & PART OF LOT 18 OF MORAVIAN GARFIELD SUBDIVISION

PART OF THE SOUTH HALF OF FRACTIONAL SECTION 20, TOWN 2 NORTH, RANGE 13 EAST, CLINTON TOWNSHIP, MACOMB COUNTY, MICHIGAN



$\Delta = 59^{\circ}59'40''$
 RAD = 60.00
 ARC = 62.83
 CHD = $N.09^{\circ}49'30''E.$
 60.00'



PLAT LEGEND
 ALL DIMENSIONS ARE IN FEET. ALL CURVILINEAR DIMENSIONS ARE SHOWN IN CHORD DISTANCES. (N.R.) DENOTES NON-RADIAL LINES. 4\"/>



60016

ANDERSON, ECKSTEIN AND WESTRICK INC.
 CIVIL ENGINEERS AND LAND SURVEYORS
 MOUNT CLEMENS, MICHIGAN 48044



1988 L 85 p 41-42

16

