

**MACOMB COUNTY 2010 REMONUMENTATION GRANT  
PROGRAM FOR CLINTON TOWNSHIP  
PC-008 Southeast corner of Private Claim #610 in common with  
the Northeast corner of Private Claim #546**

**Section One**

Index

Pictures in the four cardinal directions; the found monumentation and after setting the required monumentation.

**Section Two**

Surveyor's Report

Land Corner Recordation Certificate

**Section Three**

1-6. Field Notes

7. Map of Clinton Township – 1875

8. Map of Clinton Township – 1895

9. Map of Clinton Township – 1916

10. Map of Clinton Township - 2006

11-15 GLO Maps and Notes for Clinton Township

**Section Four**

1-2 GLO Notes

3. Unrecorded Survey and Plat of Private Claims for A. J. Robertson

4. Land Corner Recordation Certificate recorded in L. 05556, Page 102 (Reference Monument to the SE corner)

5. "NORTH BRANCH VALLEY SUBDIVISION NO. 6", recorded in L. 97, Pages 40 thru 47, Sheets one thru six of six

6. "NORTH BRANCH VALLEY SUBDIVISION NO. 7", recorded in L. 109, Pages 12 thru 22, Sheets one thru eleven of eleven

7. Sketch of the south line of Private Claim #610













LAND CORNER RECORDATION CERTIFICATE
Filing Requirement of Act 74, Mich. P.A. 1970

For corners in

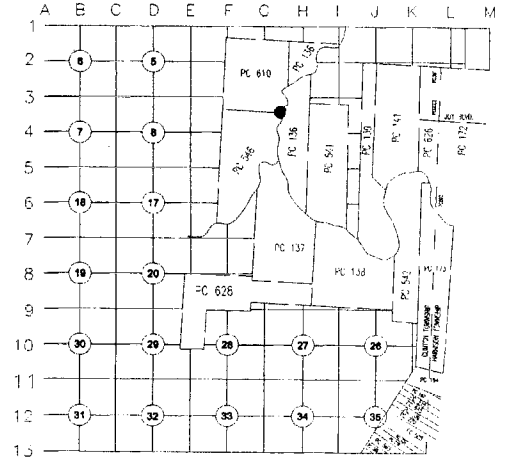
Table with columns: Macomb (County), Located In: Clinton Township, Corner Code. Rows include Public Land Survey, Property Controlling in Section, and Miscellaneous Property in Sec.

95780
LIBER 20381 PAGE 342
08/20/2010 01:53:32 P.M.
MACOMB COUNTY, MI SEAL
CARMELLA SABAUGH, REGISTER OF DEEDS

Register of Deeds Stamp & File Number

- 4. Lot No.
5. Private Claims PC-008 Southeast corner of Private Claim #610 in common with the Northeast corner of Private Claim #546

I, Huston K. Kennedy, in a field survey on July 7, 2010 do hereby state that under requirements of P.A. 74, Michigan P.A. of 1970, the corner points mentioned in lines 1 and 2 above were in conformance with regulations and rules therefore as required in the current manual of survey instructions of the United States Department of the Interior, Bureau of Land Management or by a decree of a Court of Law and/or that the corner points mentioned in lines 3, 4 and 5 above were in conformance with the rules of the Michigan Board of Land Surveyors or by a Decree of a Court of Law; established, re-established, monumented, recovered, found as expressed below:



NOTE: Not more than 2 corners, all in the same town and range, may be recorded on this certificate.



A. Description of original monument and accessories and/or subsequent restoration:

1810-Aaron Greeley, Surveyor of Private Claims, "commencing at a point standing on the west border of the north branch of the River Huron"

- 1.) 1867-Robertson; unrecorded Survey & Plat of Private Claims
2.) 1992-Smith, RLS; LCRC L. 5556, pg. 102 - Set a 4" concrete monument as reference to the southeast corner of PC #610, 4 of 4 witnesses recovered
3.) 1992-"NORTH BRANCH VALLEY SUBDIVISION NO. 6", L. 97, pgs. 40-47, cites the SE corner of PC #610, T2N, R13E, and Reference Monument recorded in Liber 05556, Page 102 of Macomb County Records
4.) 1995-"NORTH BRANCH VALLEY SUBDIVISION NO. 7", L. 109, pgs.12-22, cites the SE corner of PC #610, T2N, R13E, and Reference Monument recorded in Liber 05556, Page 102 of Macomb County Records

B. Description of corner evidence found and/or method applied in restoring or reestablishing corner:

2010-Kennedy Surveying, Inc. - Kennedy, PS #17623 - The post as described above has been obliterated. "NORTH BRANCH VALLEY SUBDIVISION NO. 6" recorded in Liber 97 of Plats, on pages 40-47 and "NORTH BRANCH VALLEY SUBDIVISION NO. 7", recorded in Liber 109 of Plats, on pages 12-22 of Macomb County Records, both cites that the Southeast corner of Private Claim #610 which fall 430' east of a reference monument with a LCRC recorded in Liber 05555, page 102 of Macomb County Records. The reference monument was recovered and its location validated with the accessories cited on the above mentioned LCRC. (cont. on back side of LCRC)

SEE SKETCH ON PAGE 3 OF 3

RECORDED, UNRECORDED AND FIELD MEASUREMENTS BETWEEN CORNERS (see back side LCRC)

C. Description of monument for corner and accessories established to perpetuate locating the position of the corner: PC-008 I set a 4" diameter concrete monument 36" long with a 1/2" iron rod w/2" diameter aluminum cap

- Monument, MI Act #345, PS #17623"
N03°E 11.33' Set Mag Nail w/Remon Washer West face 16" Elm
S50°E 15.45' Set Mag Nail w/Remon Washer NE face 9" Elm
S15°W 24.43' Set Mag Nail w/Remon Washer West face 12" Maple
S63°E 26.42' Set Mag Nail w/Remon Washer NW face 12" Maple

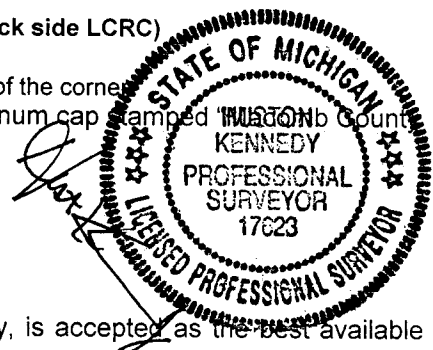
The selected location of a corner, although not established by an original government survey, is accepted as the best available evidence of the corner.

Signed by: [Signature] Date August 9, 2010

Surveyor's Michigan License No.: 17623

ACCEPTED BY THE MACOMB COUNTY SURVEY PEER GROUP AS THE OFFICIAL CORNER UNDER MICHIGAN PUBLIC ACT 345 OF 1990 AT A MEETING HELD ON 7-27-10

Martin C. Dunn, P.S. CHAIRMAN





**TOWN 2 NORTH, RANGE 13 EAST, CLINTON TOWNSHIP (PC-008)**  
Liber 020381 Page 00343

Section "B" cont.

The monumentation for the southeast corner of PC #610 as cited on the above mentioned plats was not recovered. The description for PC #610 as cited in the 1810 survey "commencing at a post standing on the west border of the north branch of the River Huron (aka Clinton River)". It is my opinion that the location of the channel for Clinton River has changed very little since the 1810 survey of PC #610. This is based upon a comparison of the Clinton River as cited on a Survey and Plat of PC #610 dated October 23, 1867 thru October 26, 1867 to a Macomb County Aerial Map based upon photography dated spring of 2008. The aerial used for this comparison is for the east ½ of the northwest ¼ of Section 10, T2N, R13E, Clinton Township (11-10B).

I established the southeast corner of PC #610 on a line from the southwest corner of PC #610 through the above mentioned reference monument easterly to a point 20' ± west of the top of the westerly bank of the Clinton River and 472' ± east of the location as cited on the above mentioned plats.

**RECORDED, UNRECORDED AND FIELD MEASUREMENTS BETWEEN CORNERS**

**PC-008 (SE cor. PC #610) to PC-007 (SW cor. PC #610)**

Aaron Greeley, July 18, 1810 description 74 chains 41 links or 4911.06 Ft.

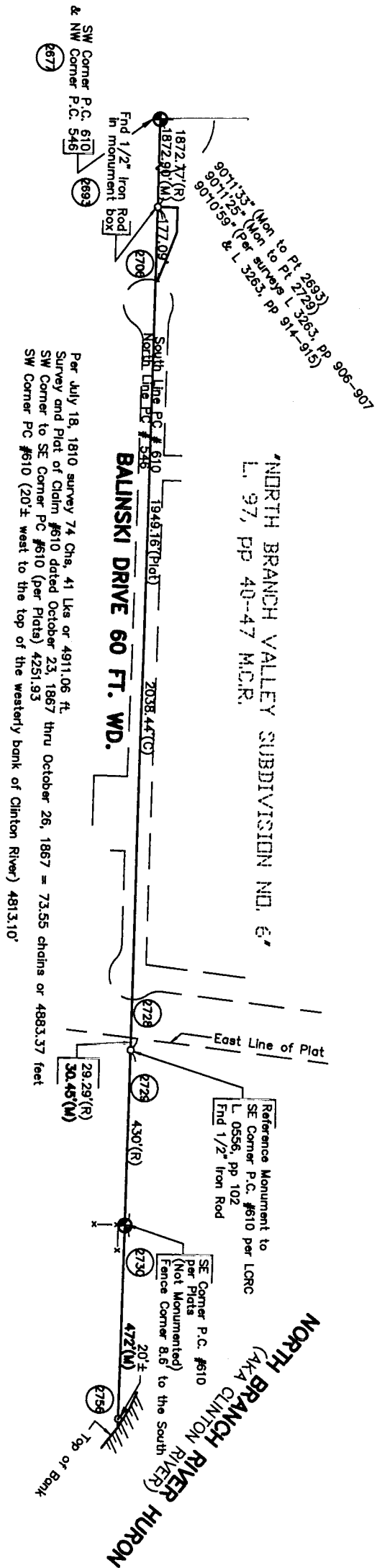
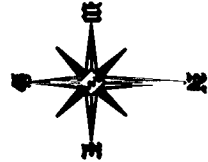
Survey and Plat of Claim #610 dated October 23, 1867 thru October 26, 1867 = 73.55 chains or 4883.37 Ft.

"NORTH BRANCH VALLEY SUBDIVISION NO. 6", and "NORTH BRANCH VALLEY SUBDIVISION NO. 7" = 4251.93 Ft. 4813.10 Ft. (mea. 2010)





TOWN 2 NORTH, RANGE 13 EAST, CLINTON TOWNSHIP (PC-008)



'NORTH BRANCH VALLEY SUBDIVISION NO. 6'  
L. 97, pp 40-47 M.C.R.

'BALINSKI DRIVE 60 FT. WD.'

'NORTH BRANCH VALLEY SUBDIVISION NO. 7'  
L. 109, pp 12-22 M.C.R.

(NOT TO SCALE)



NORTH BRANCH RIVER HURON  
(AKA CLINTON RIVER)



**2010**

**MACOMB COUNTY REMONUMENTATION  
GRANT PROGRAM FOR CLINTON TOWNSHIP**

**Research Dossier PC-008**

**Southeast corner of Private Claim #610 in common  
with the Northeast corner of Private Claim #546**

Prepared by:  
Kennedy Surveying, Inc.  
105 North Washington Street  
Oxford, Michigan 48371  
10-6660 (96-4013)



# Sources of Information Researched For Macomb County 2010 Remonumentation Grant Program For Private Claim #610

- 1) GLO Notes
- 2) Act 74 Recorded LCRC
- 3) Act 132 Recorded Surveys
- 4) Personal History and Records
- 5) Unrecorded LCRC's and Surveys
- 6) Letters to the Following, Requesting Unrecorded information
  - a) Anderson, Eckstein & Westrick
  - b) BMJ Engineers & Surveyors
  - c) David Little Land Surveyor
  - d) David P. Smith & Associates, Inc.
  - e) Williams & Gorinac Associates
  - f) Fenn & Associates Surveying, Inc.
  - g) George Jerome & Company
  - h) Heil Surveying, Inc.
  - i) James Land Surveying
  - j) Kem-Tec Surveying
  - k) King Surveying & Associates, Inc.
  - l) Lehner Associates, Inc.
  - m) Community Engineering
  - n) Metco Land Sea Corp.,
  - o) Metco-Dunn, Inc.
  - p) Milletics & Associates
  - q) R. J. Donnelly & Associates, Inc.
  - r) R. A. Duthler Land Surveyor LLC
  - s) Reichert Surveying
  - t) Road Commission for Macomb County
  - u) Rowe Incorporate
  - v) Spalding, DeDecker & Associates
  - w) Urban Land Consultants, L.L.C.

## GLO SURVEY HISTORY

Researching the government survey records for Macomb County shows that the south and east lines of Clinton Township were surveyed and the township was subdivided into sections with closing corners set on the north and west township lines by William Preston, D.S. in 1817-1818.

Private Claim (PC) No. 610, which falls within the boundaries of Clinton Township, were surveyed by Aaron Greeley, Surveyor of Private Claims on July 18, 1810 and confirmed to John Connor. The description cited "commencing at a post standing on the west border of the north branch of the River Huron".

### WITNESSES:

(No witnesses)

### EXISTING FIELD CONDITIONS

The post as described above has been obliterated. "NORTH BRANCH VALLEY SUBDIVISION NO. 6" recorded in Liber 97 of Plats, on pages 40-47 and "NORTH BRANCH VALLEY SUBDIVISION NO. 7", recorded in Liber 109 of Plats, on pages 12-22 of Macomb County Records, both cites that the Southeast corner of Private Claim #610 which fall 430' east of a reference monument with a LCRC recorded in Liber 05555, page 102 of Macomb County Records. The reference monument was recovered and its location validated with the accessories cited on the above mentioned LCRC.

The monumentation for the southeast corner of PC #610 as cited on the above mentioned plats was not recovered. The description for PC #610 as cited in the 1810 survey "commencing at a post standing on the west border of the north branch of the River Huron (aka Clinton River)". It is my opinion that the location of the channel for Clinton River has changed very little since the 1810 survey of PC #610. This is based upon a comparison of the Clinton River as cited on a Survey and Plat of PC #610 dated October 23, 1867 thru October 26, 1867 to a Macomb County Aerial Map based upon photography dated spring of 2008. The aerial used for this comparison is for the east ½ of the northwest ¼ of Section 10, T2N, R13E, Clinton Township (11-10B).

I established the southeast corner of PC #610 on a line from the southwest corner of PC #610 through the above mentioned reference monument easterly to a point 20' ± west of the top of the westerly bank of the Clinton River and 472' ± east of the location as cited on the above mentioned plats.

### RECORDED AND UNRECORDED LCRC'S AND CERTIFICATE OF SURVEYS

Researching the Macomb County Records for Land Corner Recordation Certificates (LCRC) and Certificate of Survey shows an unrecorded Survey and Plat of Private Claims dated October 22 thru October of 1867 for A. J. Robertson.

Robert L. Smith, RLS #16052 recorded a LCRC on September 3, 1992 in Liber 5556, page 102 of Macomb County Records. He set a 4" concrete monument as reference to the southeast corner of P.C. #610.

### WITNESSES:

- \*S20°E 156.11 Ft. cut "x" north rim catch basin (S20°W 155.95' mea.)
- \*N26°W 61.51 Ft. cut "x" east rim catch basin
- \*N07°W 129.92 Ft. cut "x" SE rim catch basin
- \*S80°E 397.15 Ft. PK and tag west face 36" Oak (mea. 397.08')

"NORTH BRANCH VALLEY SUBDIVISION NO. 6" as recorded in Liber 97 of Plats, on pages 40-47 and "NORTH BRANCH VALLEY SUBDIVISION NO. 7" as recorded in Liber 109 of Plats, on pages 12-22 of Macomb County Records cites the SE Corner of PC #610, T2N, R13E, and Reference Monument recorded in Liber 05556, page 102 of Macomb County Records.



**RECORDED, UNRECORDED AND FIELD MEASUREMENTS BETWEEN CORNERS**

**PC-008 (SE cor. PC #610) to PC-007 (SW cor. PC #610)**

Aaron Greeley, July 18, 1810 description 74 chains 41 links or 4911.06 Ft.

Survey and Plat of Claim #610 dated October 23, 1867 thru October 26, 1867 = 73.55 chains or 4883.37 Ft.

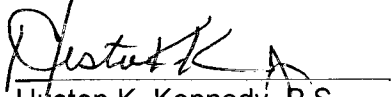
"NORTH BRANCH VALLEY SUBDIVISION NO. 6", and

"NORTH BRANCH VALLEY SUBDIVISION NO. 7" = 4251.93 Ft.

4813.10 Ft. (mea. 2010)

**SURVEYOR'S RECOMMENDATION**

The location of the southeast corner of PC #610 as cited on the above mentioned plats of "NORTH BRANCH VALLEY SUBDIVISION NO. 6" and "NORTH BRANCH VALLEY SUBDIVISION NO. 7" does not perpetuate the location as cited on Greeley's 1810 Survey "a post standing on the west border of the north branch of the River Huron. It is my opinion that the channel for the Clinton River has changed very little in the last 200 years based upon the comparison that is cited in the "EXISTING FIELD CONDITIONS". The corner was established on a line from the southwest corner of PC #610 through the above mentioned reference monument easterly to a point 20' ± west of the top of the westerly bank of the Clinton River. I set a 4" diameter concrete monument 36" long with a ½" iron rod w/2" diameter aluminum cap stamped "Macomb County Monument, MI Act #345, PS #17623" as of July 2, 2010. I therefore, recommend to the Macomb County Peer Group that they accept the 4" diameter concrete monument 36" long with a ½" iron rod w/2" diameter aluminum cap stamped "Macomb County Monument, MI Act #345, PS #17623" as established as the best evidence of the corner position to be perpetuated.



Huston K. Kennedy, P.S.

Kennedy, Surveying, Inc.

HKK/clh

\*Used to verify the location of the found (PC-008, SE cor. PC #610)

10-6540

Data File 96-4013

**2010  
MACOMB COUNTY  
REMONUMENTATION GRANT PROGRAM FOR  
PC-008 Southeast corner of Private Claim #610  
common with the Northeast corner of Private  
Claim #546**

**Pgs 1-17**

NATIONAL

PRINTING



264-26 (6810)	X 2641-262	243.33	Cont
X P 2642-PT 2688	(HR) 2641-2688	224.10	#600 TRAV P. 51
1 110-18-50			
2 220-37-35			
M 110-18-48			
X P 2642-PT 2689	(HR) 2641-2689	119.61	FB P. 51
1 70-39-20			
2 141-18-40			
M 70-39-20			
563-26-45E	0.26 (2757)		
X P 2641-PT 2690	(HR) 2688-2690	1867.67	TRAV P. 51
1 97-17-20			
2 194-34-50			
M 97-17-25			
X P 2688-PT 2691	(HR) X 2690-2691	168.64	FD Conc TRAV
1 60-48-30			51
2 121-37-10			
M 60-48-35			

X P 2641-PT 2742	(HR) 2689-2742	2753	
1 139-57-50		114.42	LOT 445
2 279-55-45			
M 139-55-43			
X P 2641-PT 2743	(HR) 2739-2743	2753 2722	
1 139-57-05		1414.48	LOTS
2 279-54-00		442-443	
M 139-57-00			
567-20-58LE OVS	(2722)	2754	
X P 2641-PT 2744	(HR) 2741-2744	1178.05	
1 148-12-05			
2 296-24-20			
M 148-12-10			
X P 2641-PT 2745	(HR) 2743-2745	2752	
1 135-13-50		26.28	
2 210-27-40			
M 135-13-50			
X P 2646-PT 2746	(HR) 2697-2746	17.65	TOP BANK
1 143-16-00-12.51			
NOTE 12.5			
X P 2696-PT 2747	(HR) 2699-2747	34.36	
1 177-11-50			
NOTE		-3.67	

Old Force Pt

2696-2697

31.64

178-07-45

AP 2642 BP 2697 (HR)

2696-2697 (HR)

2692-2692

266.12

1 72-05-10

2 144-10-30

P 72-05-15

AP 2642 BP 2693 (HR)

2693-2693

302.50

1 85-54-05

2 171-48-15

M 185-54-08

AP 2641 BP 2694 (HL)

2694-2694

219.21

1 69-44-45

2 139-29-30

M 129-44-45

5076-45-51E 3.00 (2727)

AP 2641 BP 2695 (HL)

2695-2695

78.17

1 33-41-10

2 67-22-25

M 33-41-13

AP 2641 BP 2696 (HR)

2696-2696

325.53

1 170-23-05

2 340-46-00

M 170-23-00

AP 2642 BP 2699 (HR)

2699-2699

463.29

1 176-29-15

2 352-58-30

M 176-29-15

AP 2642 BP 2700 (HL)

2700-2700

9.50

1 70-00-00

Witness to PCC SE COR (RC-006)

AP 2642 OCC PT 2695

SE 20°

X on CB 156

29-16-20 HR 155.95

97-31-00 HL 61.51

79-06-40 HL 129.69

28-34-20 HR 397.08

Tag 360AK

AP 2695 --- BS to 2642

129-16-20 HR 155.95

273

97-31-00 HL 61.51

2734

79-06-40 HL 129.69

2735

28-34-20 HR 397.08

2736

AP 2642 BP 2693 (HR)

2693-2693

302.50

1 85-54-05

2 171-48-15

M 185-54-08

AP 2641 BP 2694 (HL)

2694-2694

219.21

1 69-44-45

2 139-29-30

M 129-44-45

5076-45-51E 3.00 (2727)

AP 2641 BP 2695 (HL)

2695-2695

78.17

1 33-41-10

2 67-22-25

M 33-41-13

AP 2641 BP 2696 (HR)

2696-2696

325.53

1 170-23-05

2 340-46-00

M 170-23-00

AP 2642 BP 2699 (HR)

2699-2699

463.29

1 176-29-15

2 352-58-30

M 176-29-15

AP 2642 BP 2700 (HL)

2700-2700

9.50

1 70-00-00

Witness to PCC SE COR (RC-006)

AP 2642 OCC PT 2695

SE 20°

X on CB 156

29-16-20 HR 155.95

97-31-00 HL 61.51

79-06-40 HL 129.69

28-34-20 HR 397.08

Tag 360AK

AP 2695 --- BS to 2642

129-16-20 HR 155.95

273

97-31-00 HL 61.51

2734

79-06-40 HL 129.69

2735

28-34-20 HR 397.08

2736

AP 2642 BP 2693 (HR)

2693-2693

302.50

1 85-54-05

2 171-48-15

M 185-54-08

AP 2641 BP 2694 (HL)

2694-2694

219.21

1 69-44-45

2 139-29-30

M 129-44-45

5076-45-51E 3.00 (2727)

AP 2641 BP 2695 (HL)

2695-2695

78.17

1 33-41-10

2 67-22-25

M 33-41-13

AP 2641 BP 2696 (HR)

2696-2696

325.53

1 170-23-05

2 340-46-00

M 170-23-00

AP 2642 BP 2699 (HR)

2699-2699

463.29

1 176-29-15

2 352-58-30

M 176-29-15

AP 2642 BP 2700 (HL)

2700-2700

9.50

1 70-00-00

Witness to PCC SE COR (RC-006)

AP 2642 OCC PT 2695

SE 20°

X on CB 156

29-16-20 HR 155.95

97-31-00 HL 61.51

79-06-40 HL 129.69

28-34-20 HR 397.08

Tag 360AK

AP 2695 --- BS to 2642

129-16-20 HR 155.95

273

97-31-00 HL 61.51

2734

79-06-40 HL 129.69

2735

28-34-20 HR 397.08

2736

AP 2642 BP 2693 (HR)

2693-2693

302.50

1 85-54-05

2 171-48-15

M 185-54-08

AP 2641 BP 2694 (HL)

2694-2694

219.21

1 69-44-45

2 139-29-30

M 129-44-45

5076-45-51E 3.00 (2727)

AP 2641 BP 2695 (HL)

2695-2695

78.17

1 33-41-10

2 67-22-25

M 33-41-13

AP 2641 BP 2696 (HR)

2696-2696

325.53

1 170-23-05

2 340-46-00

M 170-23-00

AP 2642 BP 2699 (HR)

2699-2699

463.29

1 176-29-15

2 352-58-30

M 176-29-15

AP 2642 BP 2700 (HL)

2700-2700

9.50

1 70-00-00

Witness to PCC SE COR (RC-006)

AP 2642 OCC PT 2695

SE 20°

X on CB 156

29-16-20 HR 155.95

97-31-00 HL 61.51

79-06-40 HL 129.69

28-34-20 HR 397.08

Tag 360AK

AP 2695 --- BS to 2642

129-16-20 HR 155.95

273

97-31-00 HL 61.51

2734

79-06-40 HL 129.69

2735

28-34-20 HR 397.08

2736

AP 2642 BP 2693 (HR)

2693-2693

302.50

1 85-54-05

2 171-48-15

M 185-54-08

AP 2641 BP 2694 (HL)

2694-2694

219.21

1 69-44-45

2 139-29-30

M 129-44-45

5076-45-51E 3.00 (2727)

AP 2641 BP 2695 (HL)

2695-2695

78.17

1 33-41-10

2 67-22-25

M 33-41-13

AP 2641 BP 2696 (HR)

2696-2696

325.53

1 170-23-05

2 340-46-00

M 170-23-00

AP 2642 BP 2699 (HR)

2699-2699

463.29

1 176-29-15

2 352-58-30

M 176-29-15

AP 2642 BP 2700 (HL)

2700-2700

9.50

1 70-00-00

Witness to PCC SE COR (RC-006)

AP 2642 OCC PT 2695

SE 20°

X on CB 156

29-16-20 HR 155.95

~~X~~PT 2696 TO PT 2748 (HL) X2699-2748 TSP Bank  
 1 169-35-35 55.72  
 S O I W 8.05  
~~X~~ 159-45-40 87.51  
 S O I W 20.21  
~~X~~PT 2696 TO PT 2750 (HL) X2699-2750  
 1 46-37-00 33.18  
 N O I L E 26.00

XPT 2696 TO PT 2756 (HL) X2699-2756  
 1 164-29-19 42.21  
 2  
 M

2751  
~~X~~PT 2688 TO PT 2787 (HL) X2641-2787  
 1 133-07-10 68.21  
 2 26-6-14  
 M 2752  
~~X~~PT 2688 TO PT 2787 (HL) X2641-2787  
 1 13-57-35 112.29  
 2 227-55-15  
 M 113-57-38

2753  
~~X~~PT 2688 TO PT 2780 (HL) X2641-2780  
 1 122-33-45 173.20  
 2 245-07-25  
 M 122-33-43

X 2753  
~~X~~PT 2641 TO PT 2740 (HL) X2641-2740  
 1 140-02-15 481.52  
 2 286-04-35 LOT 520  
 M 140-02-18  
~~X~~PT 2641 TO PT 2741 (HL) X2641-2741  
 1 139-58-25 841.76  
 2 279-56-55 LOT 468  
 M 139-58-20

2751

2751

2752

2752

2753

2753

X 2753

X 2753

Reading in  
Cox

Reading in  
Cox

Reading in  
Cox  
Mech.





96-40E



2743

2742

2744 RE 100

D' 2741  
Harte

KdLmorgen  
2740

Balinski De.

2753

2752

2743 RE 100

2752

2751

44

2688

2757

2756

RE 2641

Bland De.

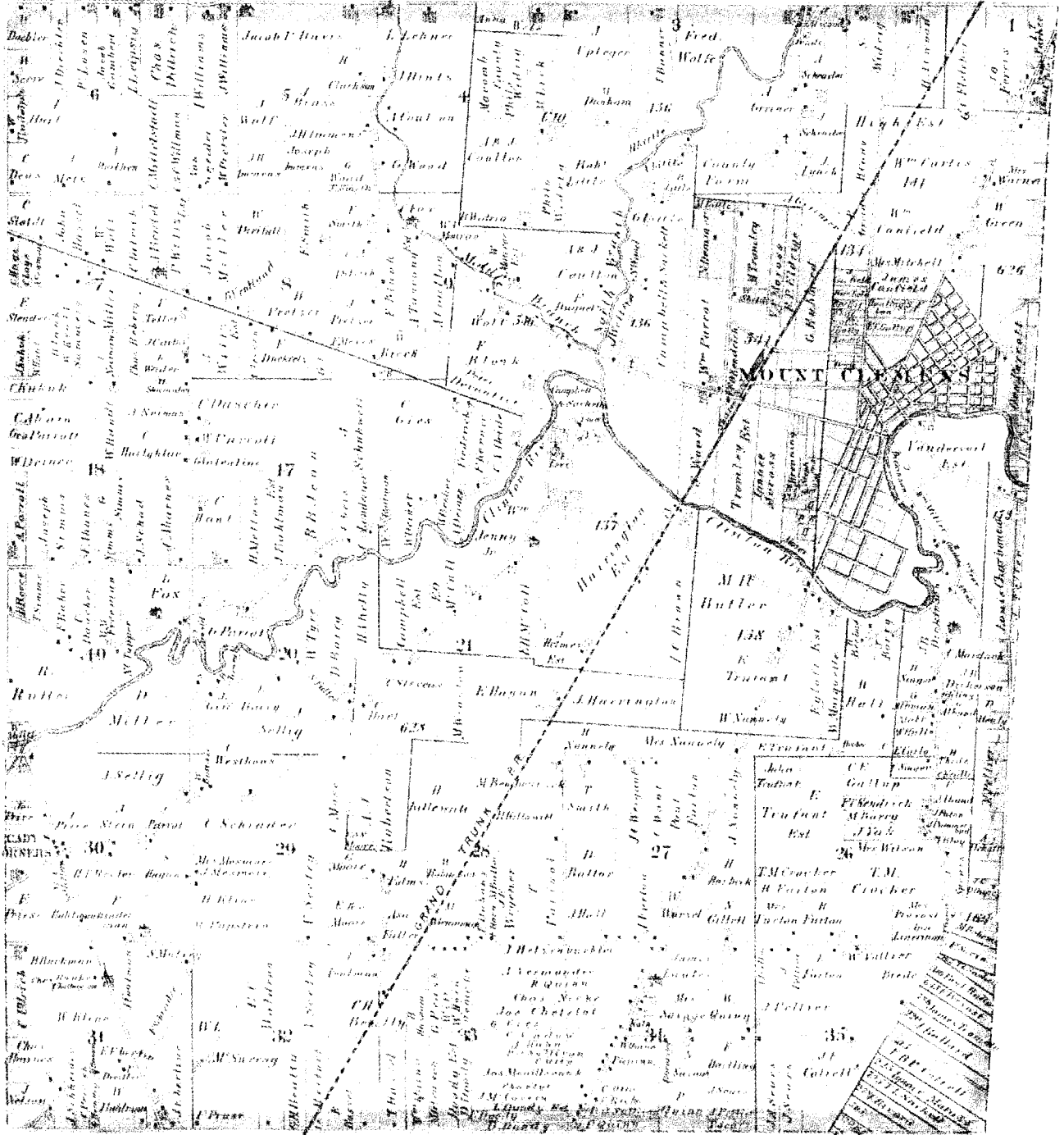
NO. 446

NATIONAL PRINTERFAST



# (MAP OF CLINTON TOWNSHIP)

TP 2 N R 11 E



Drawn and Compiled by O.E. Crane

Scanned By:  
**METCO**  
 Engineers, Architects & Surveyors

1575 (7)

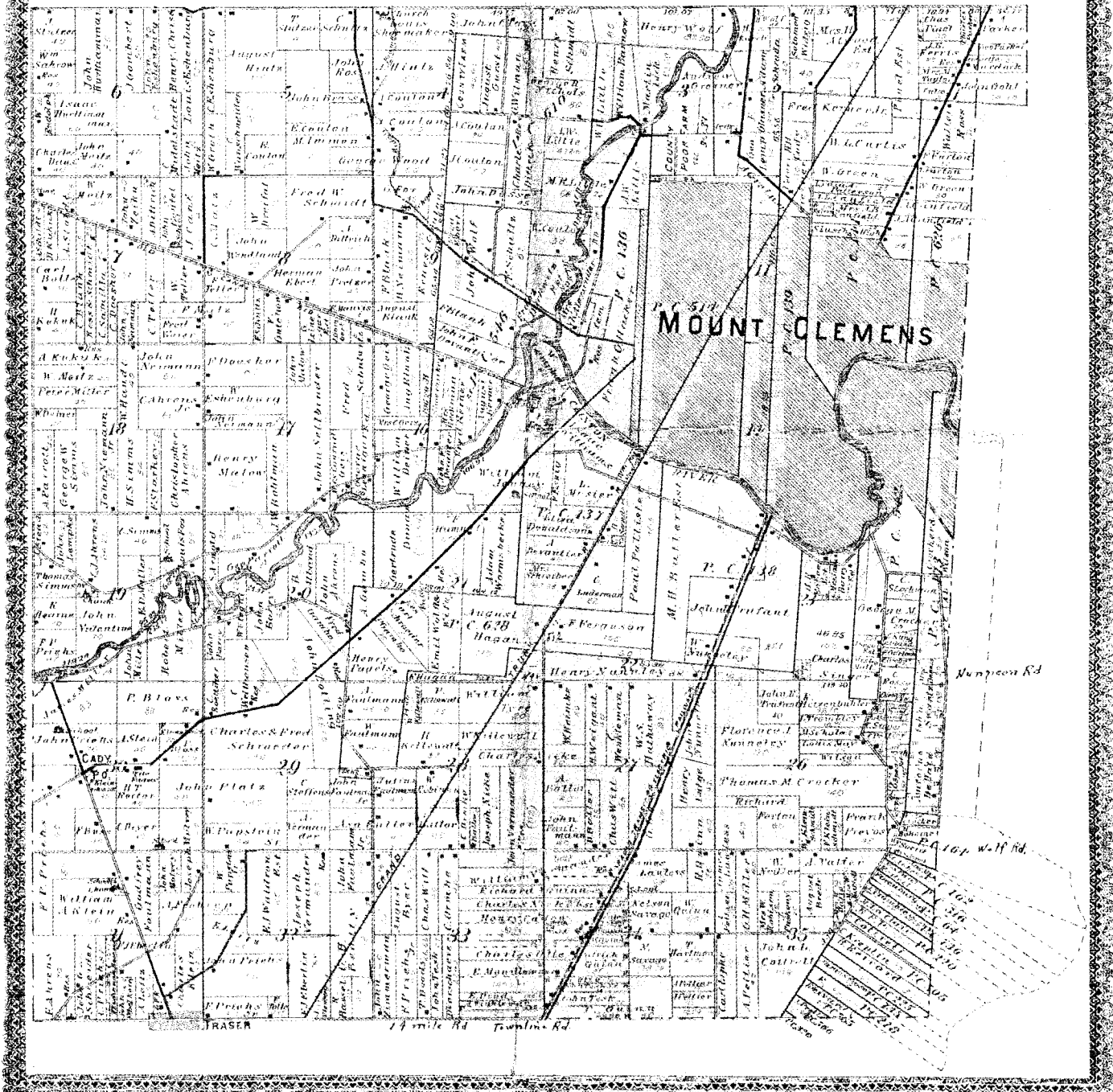


# MAP OF CLINTON

Township 2 North Range 13 East

Scale 2 inches to one Mile

of the Meridian of Michigan



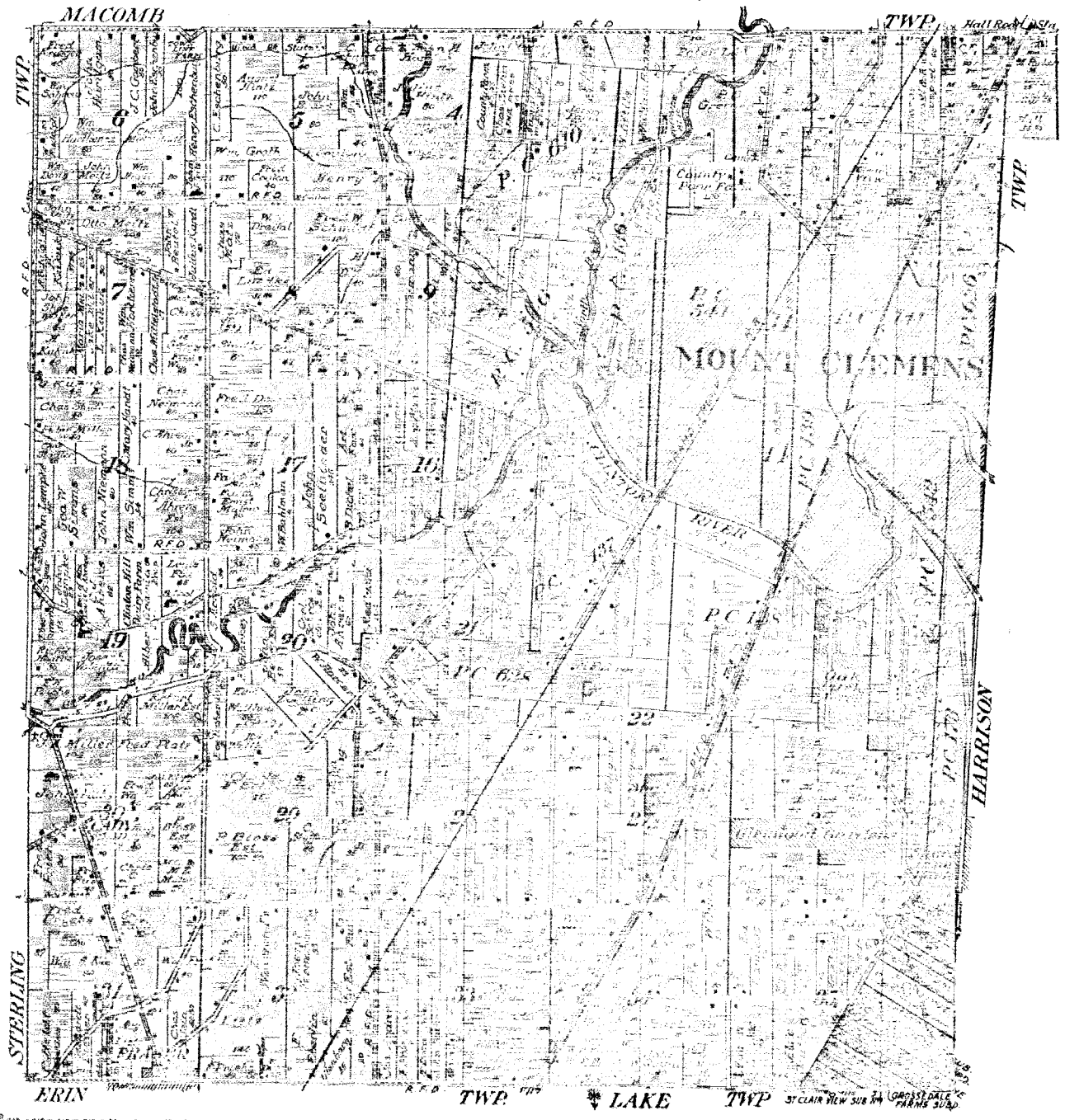
1895

4

MAP OF  
**CLINTON**  
 TOWNSHIP

Scale 2 inches to 1 mile

Fractional Township 2 North, Range 13 East of the Michigan Meridian



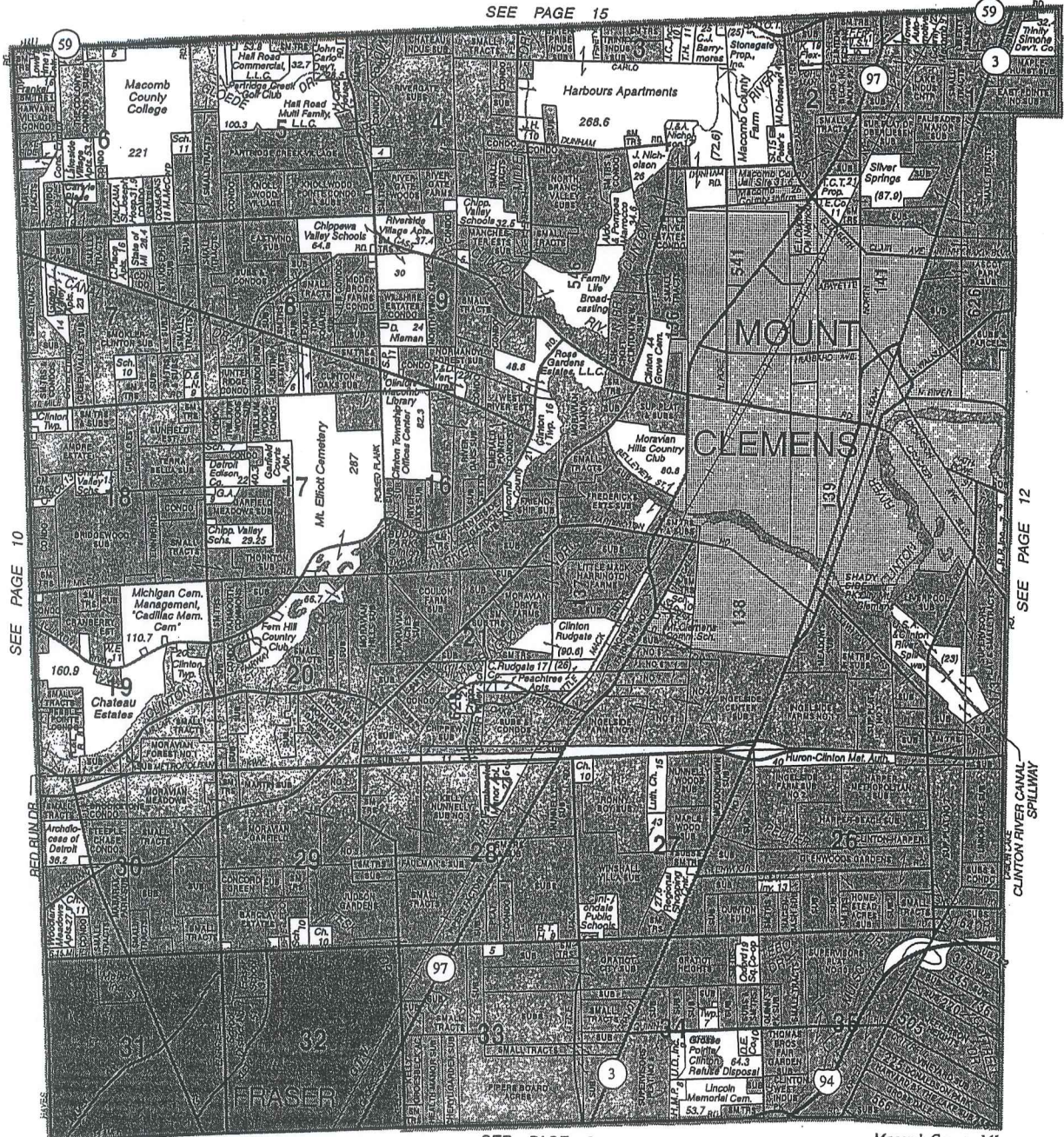
1916 (2)



# CLINTON - CITY OF FRASER

# T.2N.-R.13E.

SEE PAGE 15



SEE PAGE 10

SEE PAGE 12

SEE PAGE 9.

Macomb County, MI

© 2006 Rockford Map Publs., Inc.

Reproduced with permission of Rockford Map Publishers, Inc.  
Rockford, Illinois

2006

10



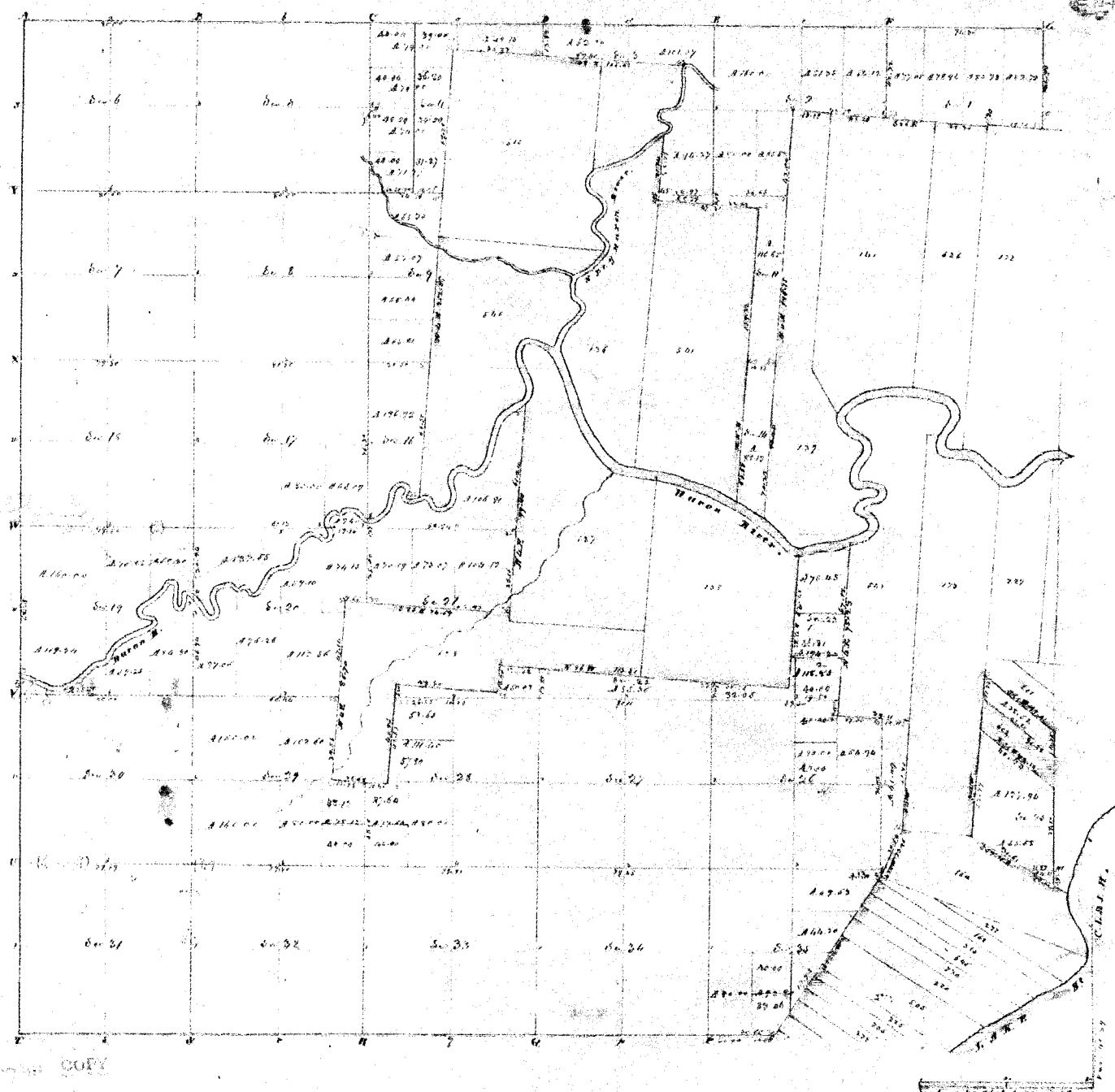
Township N. 2 North, Range N. 11 East of Mer. (Mich. Ter.)



A true copy from the original map in the Office of the Secy. of the Interior  
 Duly certified of private claim  
 Chicago, Illinois  
 Dec 14 20 99  
 3

*[Handwritten signature]*  
 Secy. of the Interior





Township N: 11 North, Range N: 11 East of Mer. (Wind. Tor)

surveyed by W. D. Preston

1871

Description of the soil on the interior sectional lines

Section	Quality of Soil	Section	Quality of Soil
5	1/2 lb. to 1/4 lb. per acre. 11 lb. to 1 lb. per acre.	29	1/2 lb. to 1/4 lb. per acre. 11 lb. to 1 lb. per acre.
6	1/2 lb. to 1/4 lb. per acre. 11 lb. to 1 lb. per acre.	30	1/2 lb. to 1/4 lb. per acre. 11 lb. to 1 lb. per acre.
7	1/2 lb. to 1/4 lb. per acre. 11 lb. to 1 lb. per acre.	31	1/2 lb. to 1/4 lb. per acre. 11 lb. to 1 lb. per acre.
8	1/2 lb. to 1/4 lb. per acre. 11 lb. to 1 lb. per acre.	32	1/2 lb. to 1/4 lb. per acre. 11 lb. to 1 lb. per acre.
9	1/2 lb. to 1/4 lb. per acre. 11 lb. to 1 lb. per acre.	33	1/2 lb. to 1/4 lb. per acre. 11 lb. to 1 lb. per acre.
10	1/2 lb. to 1/4 lb. per acre. 11 lb. to 1 lb. per acre.	34	1/2 lb. to 1/4 lb. per acre. 11 lb. to 1 lb. per acre.
11	1/2 lb. to 1/4 lb. per acre. 11 lb. to 1 lb. per acre.	35	1/2 lb. to 1/4 lb. per acre. 11 lb. to 1 lb. per acre.
12	1/2 lb. to 1/4 lb. per acre. 11 lb. to 1 lb. per acre.	36	1/2 lb. to 1/4 lb. per acre. 11 lb. to 1 lb. per acre.
13	1/2 lb. to 1/4 lb. per acre. 11 lb. to 1 lb. per acre.		
14	1/2 lb. to 1/4 lb. per acre. 11 lb. to 1 lb. per acre.		
15	1/2 lb. to 1/4 lb. per acre. 11 lb. to 1 lb. per acre.		
16	1/2 lb. to 1/4 lb. per acre. 11 lb. to 1 lb. per acre.		
17	1/2 lb. to 1/4 lb. per acre. 11 lb. to 1 lb. per acre.		
18	1/2 lb. to 1/4 lb. per acre. 11 lb. to 1 lb. per acre.		
19	1/2 lb. to 1/4 lb. per acre. 11 lb. to 1 lb. per acre.		
20	1/2 lb. to 1/4 lb. per acre. 11 lb. to 1 lb. per acre.		
21	1/2 lb. to 1/4 lb. per acre. 11 lb. to 1 lb. per acre.		
22	1/2 lb. to 1/4 lb. per acre. 11 lb. to 1 lb. per acre.		
23	1/2 lb. to 1/4 lb. per acre. 11 lb. to 1 lb. per acre.		
24	1/2 lb. to 1/4 lb. per acre. 11 lb. to 1 lb. per acre.		
25	1/2 lb. to 1/4 lb. per acre. 11 lb. to 1 lb. per acre.		
26	1/2 lb. to 1/4 lb. per acre. 11 lb. to 1 lb. per acre.		
27	1/2 lb. to 1/4 lb. per acre. 11 lb. to 1 lb. per acre.		
28	1/2 lb. to 1/4 lb. per acre. 11 lb. to 1 lb. per acre.		
29	1/2 lb. to 1/4 lb. per acre. 11 lb. to 1 lb. per acre.		
30	1/2 lb. to 1/4 lb. per acre. 11 lb. to 1 lb. per acre.		
31	1/2 lb. to 1/4 lb. per acre. 11 lb. to 1 lb. per acre.		
32	1/2 lb. to 1/4 lb. per acre. 11 lb. to 1 lb. per acre.		
33	1/2 lb. to 1/4 lb. per acre. 11 lb. to 1 lb. per acre.		
34	1/2 lb. to 1/4 lb. per acre. 11 lb. to 1 lb. per acre.		
35	1/2 lb. to 1/4 lb. per acre. 11 lb. to 1 lb. per acre.		
36	1/2 lb. to 1/4 lb. per acre. 11 lb. to 1 lb. per acre.		



Quality of the Soil				Sections				Quality of the Soil			
Section	Soil	Depth	Notes	Section	Soil	Depth	Notes	Section	Soil	Depth	Notes
1	W. Oak	5	Common	54	W. Oak	8	Common	1	W. Oak	18	Common
2	B. Oak	3	Common	55	W. Oak	8	Common	2	W. Oak	24	Common
3	Chick of Maple	Common		56	W. Oak	8	Common	3	W. Oak	24	Common
4	Greenwood	8	Common	57	W. Oak	8	Common	4	W. Oak	24	Common
5	B. Oak	18	5 85 E	58	W. Oak	8	Common	5	W. Oak	24	Common
6	W. Oak	6	7 55 W	59	W. Oak	8	Common	6	W. Oak	24	Common
7	W. Oak	3	Common	60	W. Oak	8	Common	7	W. Oak	24	Common
8	W. Oak	18	5 85 E	61	W. Oak	8	Common	8	W. Oak	24	Common
9	W. Oak	20	5 85 E	62	W. Oak	8	Common	9	W. Oak	24	Common
10	W. Oak	12	7 17 E	63	W. Oak	8	Common	10	W. Oak	24	Common
11	W. Oak	6	8 17 E	64	W. Oak	8	Common	11	W. Oak	24	Common
12	W. Oak	9	8 17 E	65	W. Oak	8	Common	12	W. Oak	24	Common
13	W. Oak	20	5 85 E	66	W. Oak	8	Common	13	W. Oak	24	Common
14	W. Oak	12	5 85 E	67	W. Oak	8	Common	14	W. Oak	24	Common
15	W. Oak	22	7 30 W	68	W. Oak	8	Common	15	W. Oak	24	Common
16	W. Oak	16	Common	69	W. Oak	8	Common	16	W. Oak	24	Common
17	W. Oak	18	7 65 E	70	W. Oak	8	Common	17	W. Oak	24	Common
18	W. Oak	20	5 77 W	71	W. Oak	8	Common	18	W. Oak	24	Common
19	W. Oak	11	5 53 E	72	W. Oak	8	Common	19	W. Oak	24	Common
20	W. Oak	10	Common	73	W. Oak	8	Common	20	W. Oak	24	Common
21	W. Oak	8	7 65 W	74	W. Oak	8	Common	21	W. Oak	24	Common
22	W. Oak	18	7 41 E	75	W. Oak	8	Common	22	W. Oak	24	Common
23	W. Oak	18	Common	76	W. Oak	8	Common	23	W. Oak	24	Common
24	W. Oak	60	Common	77	W. Oak	8	Common	24	W. Oak	24	Common
25	W. Oak	7	Common	78	W. Oak	8	Common	25	W. Oak	24	Common
26	W. Oak	3	Common	79	W. Oak	8	Common	26	W. Oak	24	Common
27	W. Oak	8	Common	80	W. Oak	8	Common	27	W. Oak	24	Common
28	W. Oak	12	5 11 W	81	W. Oak	8	Common	28	W. Oak	24	Common
29	W. Oak	25	7 31 W	82	W. Oak	8	Common	29	W. Oak	24	Common
30	W. Oak	10	Common	83	W. Oak	8	Common	30	W. Oak	24	Common
31	W. Oak	15	7 35 E	84	W. Oak	8	Common	31	W. Oak	24	Common
32	W. Oak	5	5 40 W	85	W. Oak	8	Common	32	W. Oak	24	Common
33	W. Oak	11	7 37 W	86	W. Oak	8	Common	33	W. Oak	24	Common
34	W. Oak	6	7 37 W	87	W. Oak	8	Common	34	W. Oak	24	Common
35	W. Oak	8	7 65 W	88	W. Oak	8	Common	35	W. Oak	24	Common
36	W. Oak	11	7 37 W	89	W. Oak	8	Common	36	W. Oak	24	Common
37	W. Oak	11	7 37 W	90	W. Oak	8	Common	37	W. Oak	24	Common
38	W. Oak	11	7 37 W	91	W. Oak	8	Common	38	W. Oak	24	Common
39	W. Oak	11	7 37 W	92	W. Oak	8	Common	39	W. Oak	24	Common
40	W. Oak	11	7 37 W	93	W. Oak	8	Common	40	W. Oak	24	Common
41	W. Oak	11	7 37 W	94	W. Oak	8	Common	41	W. Oak	24	Common
42	W. Oak	11	7 37 W	95	W. Oak	8	Common	42	W. Oak	24	Common
43	W. Oak	11	7 37 W	96	W. Oak	8	Common	43	W. Oak	24	Common
44	W. Oak	11	7 37 W	97	W. Oak	8	Common	44	W. Oak	24	Common
45	W. Oak	11	7 37 W	98	W. Oak	8	Common	45	W. Oak	24	Common
46	W. Oak	11	7 37 W	99	W. Oak	8	Common	46	W. Oak	24	Common
47	W. Oak	11	7 37 W	100	W. Oak	8	Common	47	W. Oak	24	Common

Anterior Quarter Section Common

1	W. Oak	8	Common
2	W. Oak	10	Common
3	W. Oak	6	Common
4	W. Oak	26	7 65 E
5	W. Oak	8	7 65 E
6	W. Oak	11	Common
7	W. Oak	8	Common
8	W. Oak	14	Common
9	W. Oak	6	Common
10	W. Oak	32	Common
11	W. Oak	6	Common
12	W. Oak	7	Common
13	W. Oak	12	7 65 W
14	W. Oak	12	7 65 W
15	W. Oak	12	7 65 W
16	W. Oak	12	7 65 W
17	W. Oak	12	7 65 W
18	W. Oak	12	7 65 W
19	W. Oak	12	7 65 W
20	W. Oak	12	7 65 W
21	W. Oak	12	7 65 W
22	W. Oak	12	7 65 W
23	W. Oak	12	7 65 W
24	W. Oak	12	7 65 W
25	W. Oak	12	7 65 W
26	W. Oak	12	7 65 W
27	W. Oak	12	7 65 W
28	W. Oak	12	7 65 W
29	W. Oak	12	7 65 W
30	W. Oak	12	7 65 W
31	W. Oak	12	7 65 W
32	W. Oak	12	7 65 W
33	W. Oak	12	7 65 W
34	W. Oak	12	7 65 W
35	W. Oak	12	7 65 W
36	W. Oak	12	7 65 W
37	W. Oak	12	7 65 W
38	W. Oak	12	7 65 W
39	W. Oak	12	7 65 W
40	W. Oak	12	7 65 W
41	W. Oak	12	7 65 W
42	W. Oak	12	7 65 W
43	W. Oak	12	7 65 W
44	W. Oak	12	7 65 W
45	W. Oak	12	7 65 W
46	W. Oak	12	7 65 W
47	W. Oak	12	7 65 W
48	W. Oak	12	7 65 W
49	W. Oak	12	7 65 W
50	W. Oak	12	7 65 W

Corners on Holeson River

1	W. Oak	10	5 85 E	70
2	W. Oak	30	5 62 E	60
3	W. Oak	8	Common	
4	W. Oak	26	7 65 E	67
5	W. Oak	18	7 65 W	68
6	W. Oak	8	Common	
7	W. Oak	7	Common	
8	W. Oak	14	7 70 W	19
9	W. Oak	10	5 85 E	39
10	W. Oak	12	5 55 W	10
11	W. Oak	16	7 51 W	30

SECTION 30  
TOWN OF KINGSTON



SECTION 30



North Side of River Huron

"02" North side of River Huron

Description No. 610 Confirmed to John Connor commencing at a post standing on the west border of the North Branch of River Huron between this tract and a tract Confirmed to Henry Connor, thence west seventy four chains forty one links, to a post the north west corner of said tract confirmed to Henry Connor, thence north Eighty nine chains <sup>thirteen</sup> links, to a post the boundary between this tract and unceded land, thence East Sixty Eight chains Eighty seven links, to a post the boundary between this tract & unceded land, thence north fifty four chains twenty eight links, to a Butter wood tree standing on the west border of the North branch of River Huron - between this tract and a tract Confirmed to James Connor, thence along the border of said branch down stream south Eighty four degrees west two chains, thence south fifty four degrees East eleven chains, thence south twenty seven degrees <sup>with</sup> eleven chains, thence south twenty eight degrees west six chains, thence south seventy nine degrees west twelve chains, thence south fifty nine degrees East twelve chains fifty links, thence south thirty degrees west five chains, to the place of beginning containing six hundred and forty acres.

Detroit July 18. 1810

Aaron Greeley Surveyor  
of Private Claims.

No. 502

No. 610 Confirmed to  
John Connor

NORTH BRANCH OF RIVER HURON

Description No. 610 Confirmed to John Connor commencing at a post standing on the west border of the north branch of River Huron between this tract and a tract confirmed to Henry Connor thence west seventy four chains forty one links to a post the northwest corner of said tract confirmed to Henry Connor thence north eighty nine chains nineteen links to a post the boundary between this tract & unceded land thence east sixty eight chains eighty seven links to a post the boundary between this tract and unceded land thence south fifty four chains twenty eight links to a buttonwood tree standing on the west border of the north branch of River Huron between this tract and a tract confirmed to James Connor thence along the border of said branch down stream south eighty four degrees west two chains thence south fifty four degrees east eleven chains thence south twenty seven degrees east eleven chains then south twenty eight degrees west six chains, then south seventy nine degrees west twelve chains, then south fifty nine degrees east twelve chains fifty links thence south thirty degrees west five chains to the place of beginning, containing six hundred and forty acres.

Detroit July 18, 1810

Aaron Greeley Surveyor  
of private claims

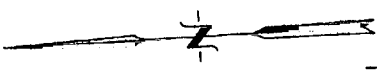
2





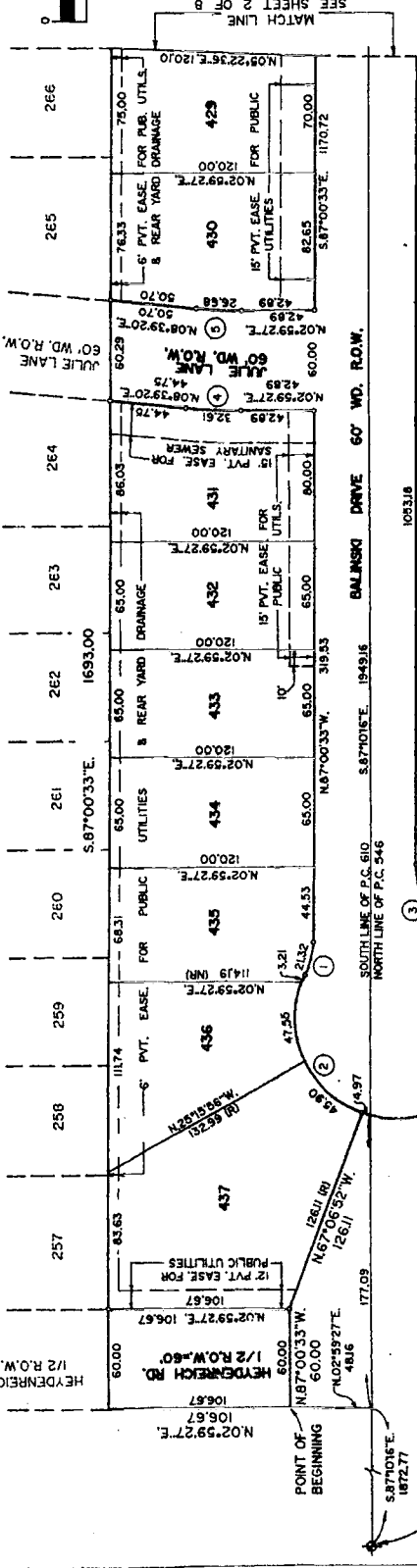
# NORTH BRANCH VALLEY SUBDIVISION NO. 6 PART OF P.C. 610 & P.C. 546, T.2N., R.13E., CLINTON TOWNSHIP, MACOMB COUNTY, MICHIGAN

**LEGEND**  
 ALL DIMENSIONS ARE SHOWN IN FEET.  
 ALL CURVILINEAR DIMENSIONS ARE SHOWN ALONG THE CHORD.  
 THE SYMBOL "Δ" INDICATES A 4" DIAMETER 36" LONG 1/2" STEEL ROD CENTER CONCRETE MONUMENT.  
 CONCRETE LOT MARKERS ARE 1/2" STEEL RODS AND ARE 18" LONG (NO. 10 CAPS).  
 (RT) INDICATES RADIAL LOT LINES.  
 (NR) INDICATES NOT RADIAL LOT LINES.  
 BEARINGS BASED ON THE EASTERLY LINE OF NORTH BRANCH VALLEY SUB. NO. 5 AS RECORDED IN LIBER 65, PAGES 37-41, INCLUSIVE, MACOMB COUNTY RECORDS. THERE SHALL BE NO DIRECT VEHICULAR ACCESS TO HEYDENREICH ROAD FROM LOT 437.



NORTH BRANCH VALLEY SUB. NO. 3  
LIBER 63, PAGES 7-10, INCL., M.C.R.

NORTH BRANCH VALLEY SUB. NO. 4  
LIBER 64, PAGES 10-11, M.C.R.



POINT OF BEGINNING  
 S.87°10'16"E 1872.77'  
 S.W. CORNER P.C. 610 T.2N., R.13E. & N.W. CORNER P.C. 546 T.2N., R.13E. L. 05556 P. 103 M.C.R.

UNPLATTED

RADIUS = 60.00  
 Δ = 166°50'38"  
 CH. BRG. = N.60°32'02"W.  
 CHORD = 119.21

RADIUS = 50.00  
 Δ = 56°56'39"  
 CH. BRG. = S.64°31'08"W.  
 CHORD = 47.67

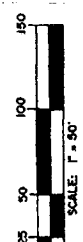
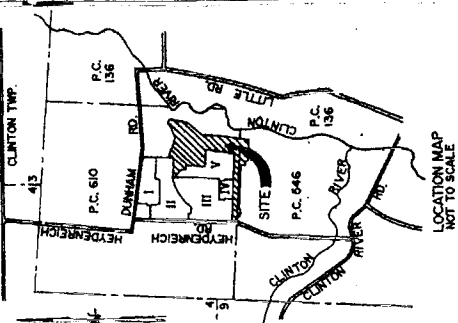
CURVE DATA				
CURVE #	RADIUS	ARC	LONG CHORD	DELTA
1	50.00	21.48	N.74°41'57"W. 21.32	24°37'12"
2	60.00	27.63	N.13°10'17"W. 30.86	26°33'30"
3	50.00	49.69	N.64°31'08"E. 47.67	56°56'39"
4	330.00	32.63	N.08°48'24"E. 32.61	05°39'33"
5	270.00	26.69	N.09°43'24"E. 26.68	05°39'33"

This plat is subject to easements as required by Act 225 of 1977, as amended by certain acts with respect to the requirements of the Michigan Department of Public Health, which are recorded in Liber 51662, Page 600-1664 of records of this county.

CERTIFIED TRUE COPY OF RECORDED PLAT BY DEPARTMENT OF COMMUNITY DEVELOPMENT

*Robert L. Smith*  
 ROBERT L. SMITH

November 13, 1992



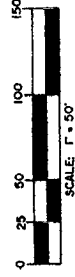
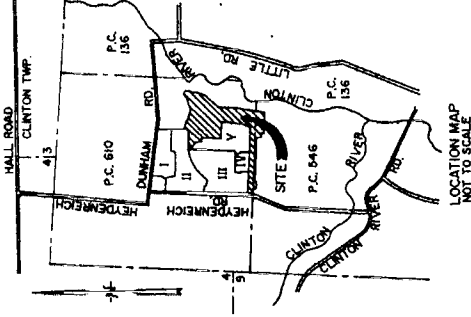
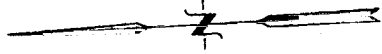
061937



# NORTH BRANCH VALLEY SUBDIVISION NO. 6 PART OF P.C. 610 & P.C. 546, T.2N., R.13E., CLINTON TOWNSHIP, MACOMB COUNTY, MICHIGAN

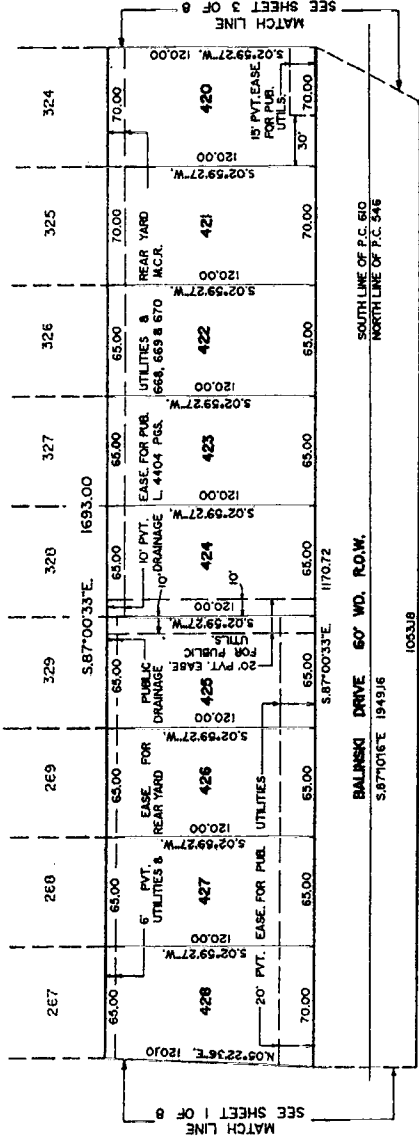
**LEGEND**

ALL DIMENSIONS ARE SHOWN IN FEET.  
ALL CURVILINEAR DIMENSIONS ARE SHOWN ALONG THE CHORD.  
THE SYMBOL "Ø" INDICATES A 4" DIAMETER 36" LONG W/1/2" STEEL ROD CENTER CONCRETE MONUMENT.  
ALL LOT MARKERS ARE 1/2" STEEL RODS AND ARE 18" LONG (NO ID. CAPS).  
(R) INDICATES RADIAL LOT LINES.  
(NR) INDICATES NOT RADIAL LOT LINES.  
BEARINGS BASED ON THE EASTERLY LINE OF NORTH BRANCH VALLEY SUB. NO. 5 AS RECORDED IN LIBER 85, PAGES 37-41, INCLUSIVE, MACOMB COUNTY RECORDS. THERE SHALL BE NO DIRECT VEHICULAR ACCESS TO HETDENREICH ROAD FROM LOT 437.



NORTH BRANCH VALLEY SUB. NO. 5  
LIBER 85, PAGES 37-40, INCL., M.C.R.

NORTH BRANCH VALLEY SUB. NO. 4  
LIBER 84, PAGES 10-11, M.C.R.



UNPLATTED

This plat is subject to restrictions as required by Act 269 of 1957, as amended. It contains lots with respect to the requirements of the Michigan Department of Natural Resources and for the Michigan Department of Public Health, which are recorded in Liber 216231, Page 530-544 or records of this county.

*Robert L. Smith*  
ROBERT L. SMITH

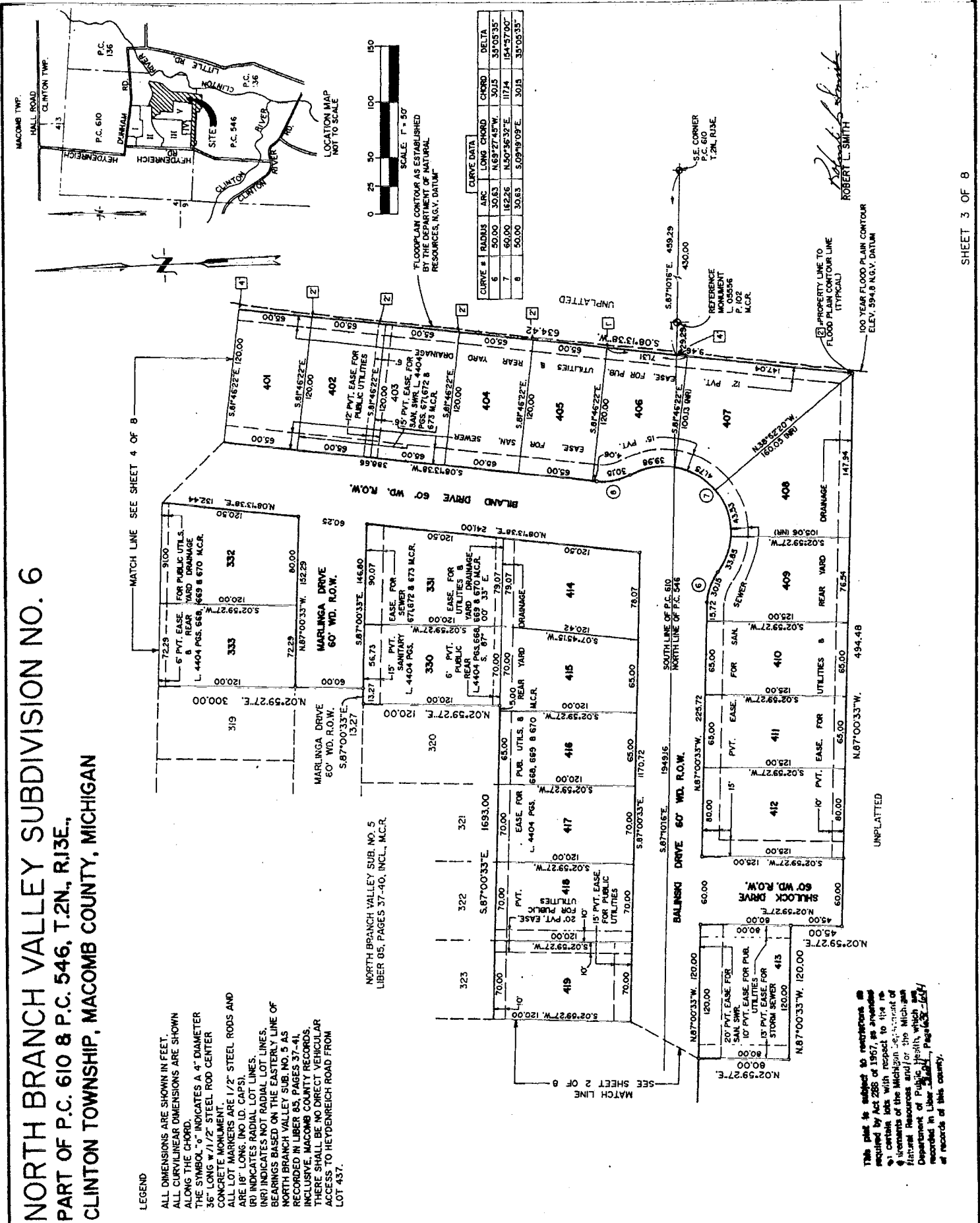
# NORTH BRANCH VALLEY SUBDIVISION NO. 6 PART OF P.C. 610 & P.C. 546, T.2N., R.13E., CLINTON TOWNSHIP, MACOMB COUNTY, MICHIGAN

## LEGEND

ALL DIMENSIONS ARE SHOWN IN FEET.  
ALL CURVILINEAR DIMENSIONS ARE SHOWN ALONG THE CHORD.  
THE SYMBOL "C" INDICATES A 4" DIAMETER 35' LONG x 1/2" STEEL ROD CENTER CONCRETE MONUMENT.  
ALL LOT MARKERS ARE 1/2" STEEL RODS AND ARE 18" LONG (NO I.D. CAPS).  
(N) INDICATES RADIAL LOT LINES.  
(R) INDICATES NOT RADIAL LOT LINES.  
BEARINGS BASED ON THE EASTERLY LINE OF NORTH BRANCH VALLEY SUB NO. 5, AS RECORDED IN LIBER 65, PAGES 37-41, INCLUSIVE, MACOMB COUNTY RECORDS. THERE SHALL BE NO DIRECT VEHICULAR ACCESS TO HEYDENREICH ROAD FROM LOT 437.

CURVE #	RADIUS	ARC	LONG	CHORD	CHORD	DELTA
6	50.00	30.83	N 63° 27' 45" W	30.15	34° 05' 34"	
7	60.00	16.28	N 50° 36' 33" E	17.14	184° 37' 00"	
8	50.00	30.83	S 09° 19' 03" E	30.15	35° 05' 35"	

FLOODPLAIN CONTOUR AS ESTABLISHED BY THE DEPARTMENT OF NATURAL RESOURCES, N.G.V. DATUM

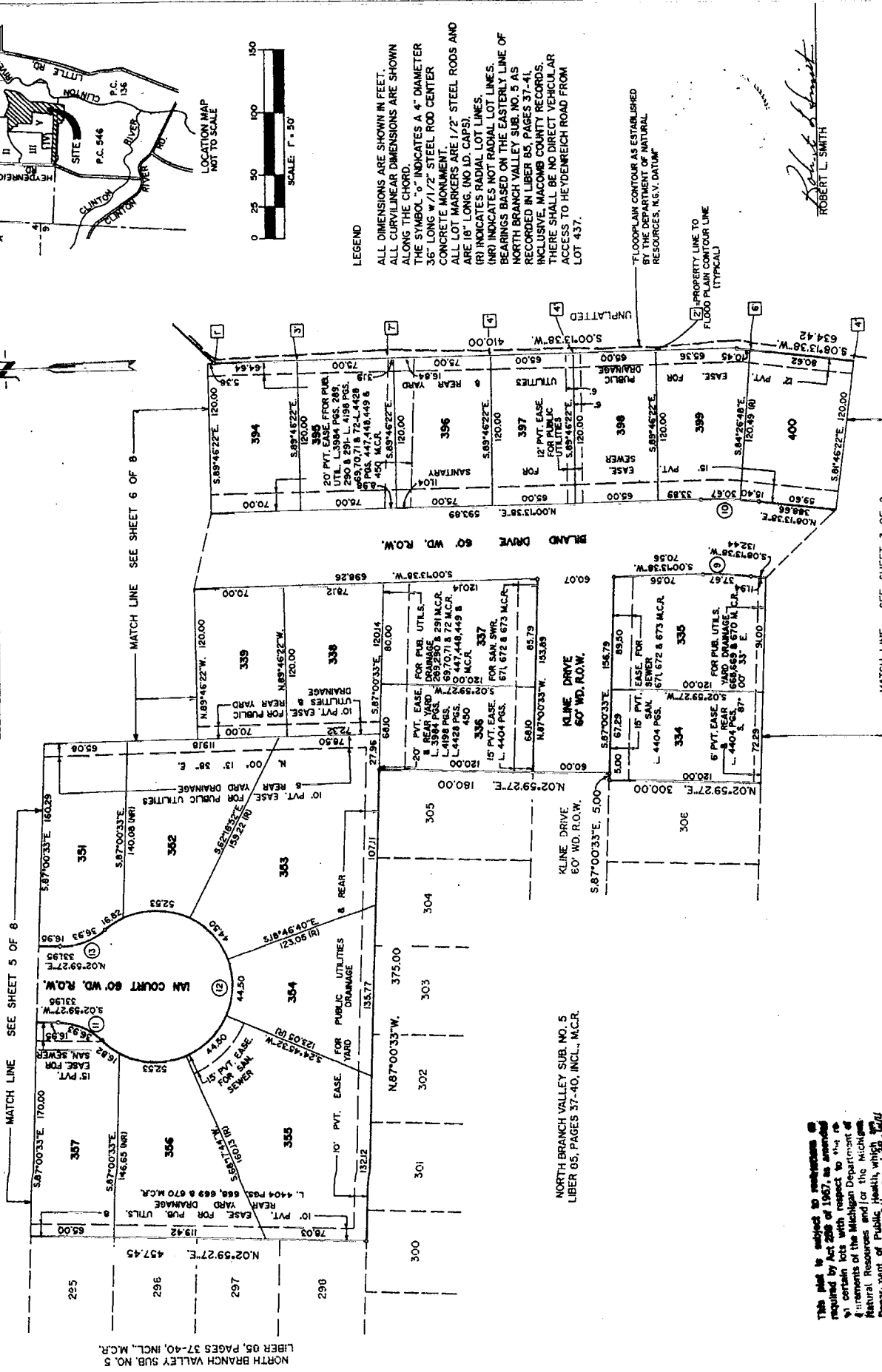


This plat is subject to restrictions required by Act 268 of 1967, as amended, which relate to the reclamation of the Michigan Department of Natural Resources and/or the Michigan Department of Public Health, which are recorded in Liber 100, Page 137-141 of records of this county.

ROBERT L. SMITH

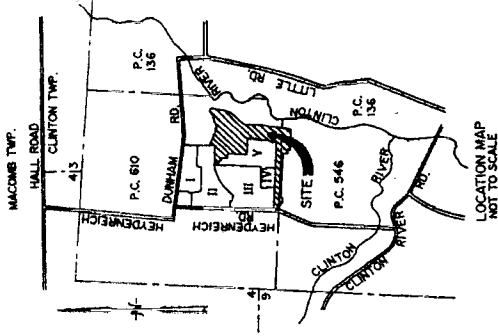
# NORTH BRANCH VALLEY SUBDIVISION NO. 6 PART OF P.C. 610 & P.C. 546, T.2N., R.13E., CLINTON TOWNSHIP, MACOMB COUNTY, MICHIGAN

CURVE DATA				
CURVE #	RADIUS	ARC LENGTH	CHORD	DELTA
9	270.00	37.70	80.41335'E	37.67
10	330.00	46.08	80.41335'E	46.04
11	50.00	37.82	5.24°39'42"W	36.93
12	60.00	27.927	5.87°00'33"E	26.6470'
13	50.00	37.82	5.87°40'48"E	36.93



NORTH BRANCH VALLEY SUB. NO. 5  
LIBER 05, PAGES 37-40, INCL. M.C.R.

This plan is subject to restrictions required by Act 206 of 1957, as amended, which require that certain lots with respect to the elements of the Michigan Department of Natural Resources and for the Michigan Department of Public Health, which are recorded in Liber 5123, Page 100, of the records of Macomb County.



**LEGEND**  
 ALL DIMENSIONS ARE SHOWN IN FEET.  
 ALL CURVILINEAR DIMENSIONS ARE SHOWN ALONG THE CHORD.  
 THE SYMBOL "R" INDICATES A 4" DIAMETER 36" LONG W/1/2" STEEL ROD CENTER CONCRETE MONUMENT.  
 ALL LOT MARKERS ARE 1/2" STEEL RODS AND ARE 18" LONG (NO I.D. CAPS).  
 (R) INDICATES RADIAL LOT LINES.  
 (NR) INDICATES NOT RADIAL LOT LINES.  
 BEARINGS BASED ON THE EASTERLY LINE OF NORTH BRANCH VALLEY SUB. NO. 5 AS RECORDED IN LIBER 05, PAGES 37-41, INCLUDE MACOMB COUNTY RECORDS. THERE SHALL BE NO DIRECT VEHICULAR ACCESS TO HEYDENEICH ROAD FROM LOT 437.

FLOOR PLAN CONTOUR AS ESTABLISHED BY THE DEPARTMENT OF NATURAL RESOURCES, M.S.V. DATUM

PROPERTY LINE TO FLOOD PLAIN CONTOUR LINE (TYPICAL)

*Robert L. Smith*  
 ROBERT L. SMITH

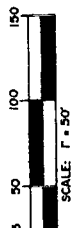
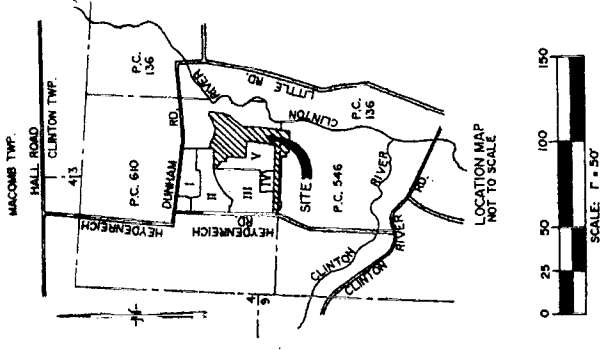
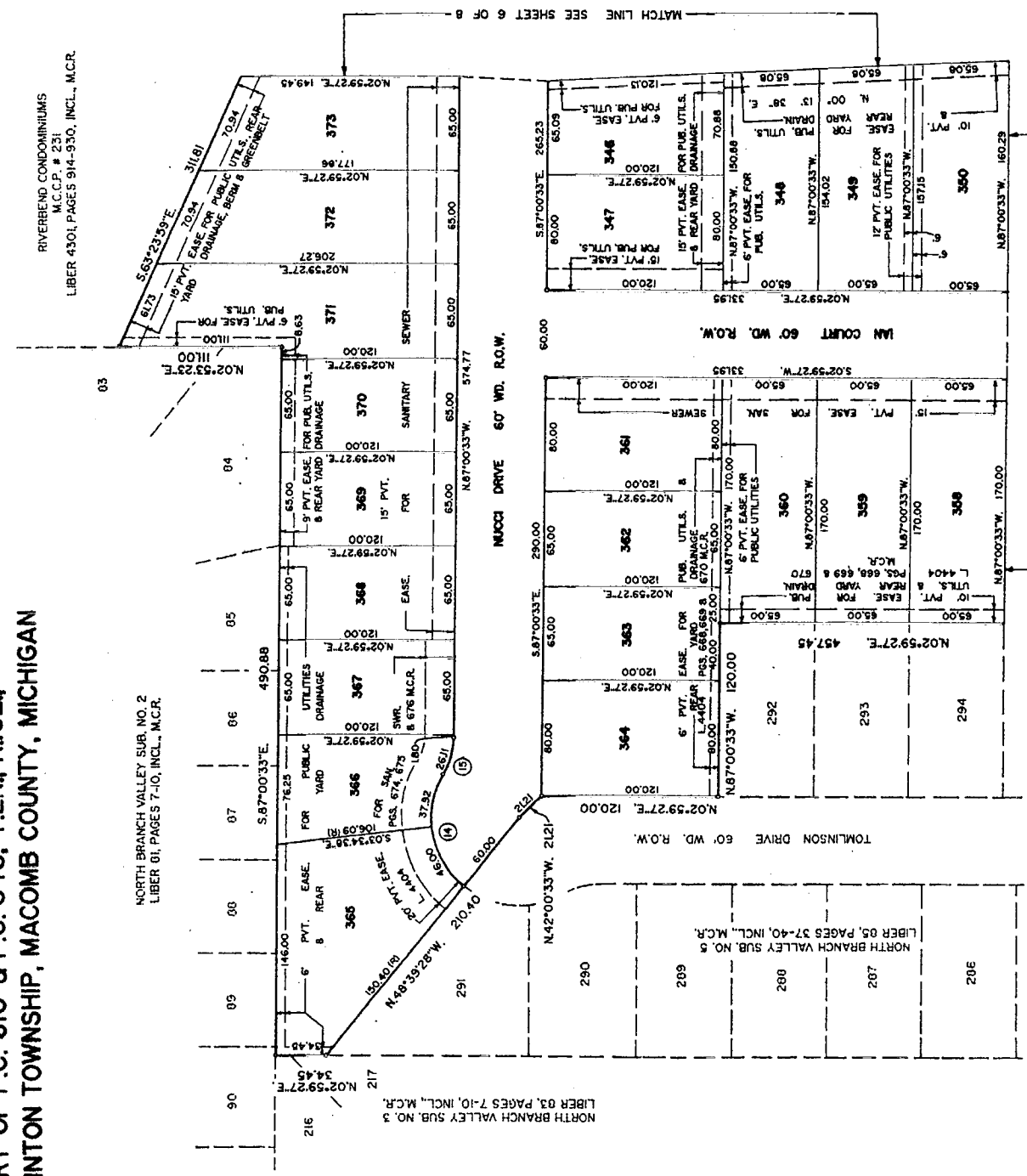
# NORTH BRANCH VALLEY SUBDIVISION NO. 6 PART OF P.C. 610 & P.C. 546, T.2N., R.13E., CLINTON TOWNSHIP, MACOMB COUNTY, MICHIGAN

CURVE DATA			
CURVE #	RADIUS	LONG CHORD	DELTA
14	60.00	83.79	N.82°18'00"E
15	30.00	26.42	S.77°32'22"E

RIVERBEND CONDOMINIUMS  
M.C.P. # 231  
LIBER 4301, PAGES 914-930, INCL., M.C.R.

NORTH BRANCH VALLEY SUB. NO. 2  
LIBER 01, PAGES 7-10, INCL., M.C.R.

LIBER 03, PAGES 7-10, INCL., M.C.R.



**LEGEND**  
 ALL DIMENSIONS ARE SHOWN IN FEET.  
 ALL CURVILINEAR DIMENSIONS ARE SHOWN ALONG THE CHORD.  
 THE SYMBOL "Ø" INDICATES A 4" DIAMETER 36" LONG W/1/2" STEEL ROD CENTER CONCRETE MONUMENT.  
 ALL LOT MARKERS ARE 1/2" STEEL RODS AND ARE 18" LONG (NO ID. CAPS).  
 (R) INDICATES RADIAL LOT LINES.  
 (NR) INDICATES NOT RADIAL LOT LINES.  
 BEARINGS BASED ON THE EASTERLY LINE OF NORTH BRANCH VALLEY SUB. NO. 5 AS RECORDED IN LIBER 85, PAGES 37-41, INCLUSIVE, MACOMB COUNTY RECORDS. THERE SHALL BE NO DIRECT VEHICULAR ACCESS TO HEYDENREICH ROAD FROM LOT 437.

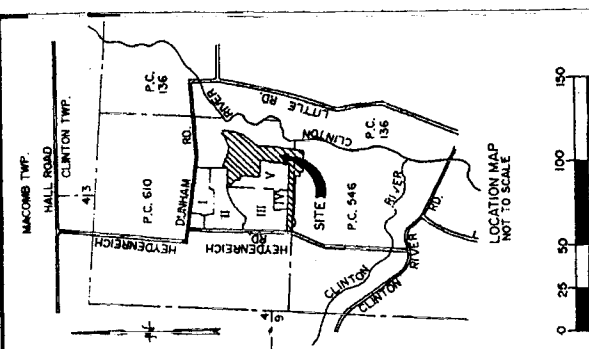
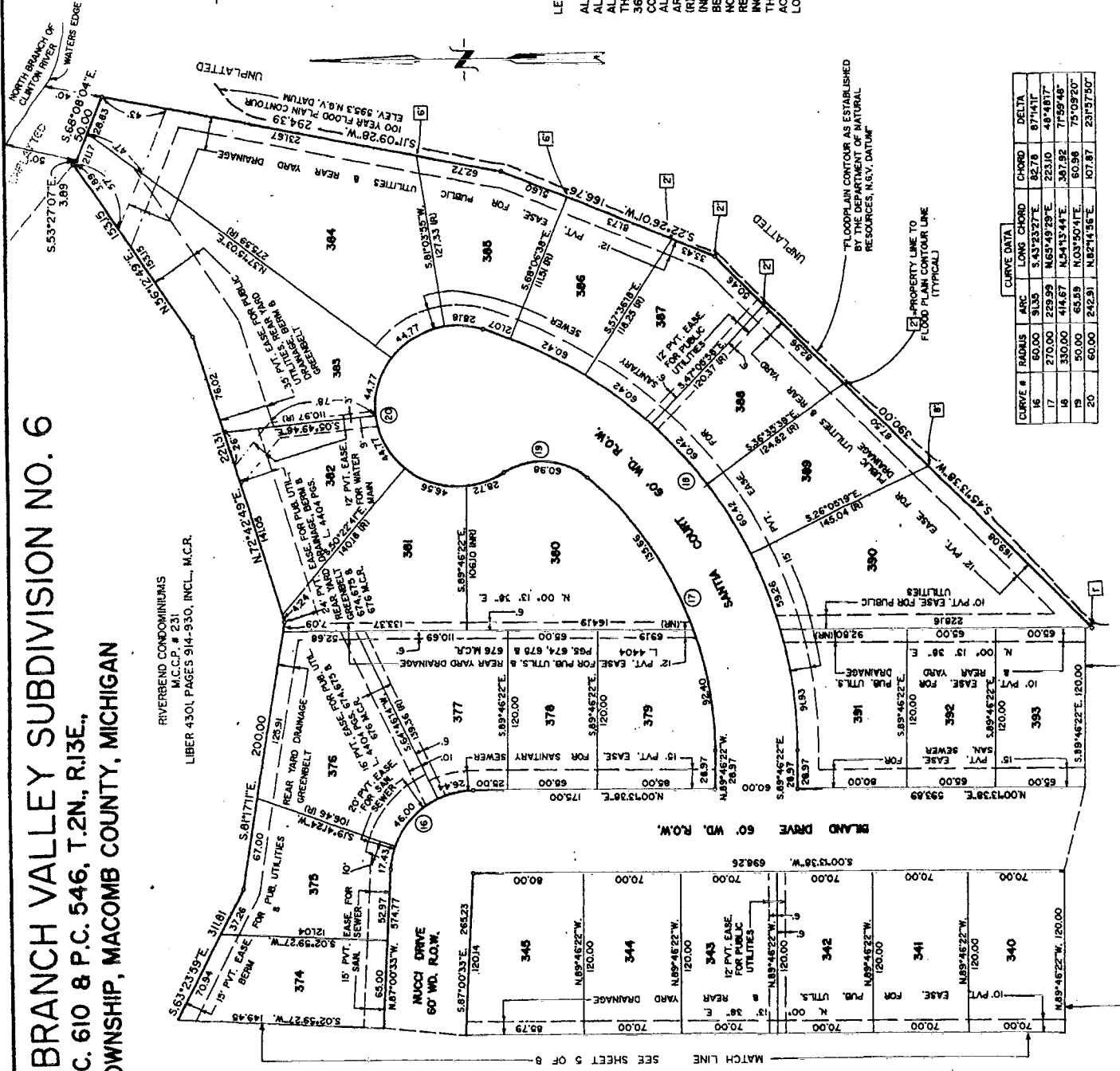


*Robert L. Smith*  
 ROBERT L. SMITH

This plat is subject to restrictions as required by Act 206 of 1907, as amended, and certain lots with respect to the re-division of the Michigan Department of Natural Resources and for the Michigan Department of Public Health, which are recorded in Liber 52421, Page 257-261, records of this county.

# NORTH BRANCH VALLEY SUBDIVISION NO. 6 PART OF P.C. 610 & P.C. 546, T.2N., R.13E., CLINTON TOWNSHIP, MACOMB COUNTY, MICHIGAN

RIVERBEND CONDOMINIUMS  
M.C.P. # 231  
LIBER 4301, PAGES 914-930, INCL., M.C.R.



**LEGEND**  
 ALL DIMENSIONS ARE SHOWN IN FEET.  
 ALL CURVILINEAR DIMENSIONS ARE SHOWN ALONG THE CHORD.  
 THE SYMBOL "R" INDICATES A 4" DIAMETER 36" LONG 1/2" STEEL ROD CENTER CONCRETE MARKERS ARE 1/2" STEEL RODS AND ARE 16" LONG, IN O.D. CAPS.  
 (R) INDICATES RADIAL LOT LINES.  
 BEARINGS BASED ON THE EASTERLY LINE OF NORTH BRANCH VALLEY SUB. NO. 5 AS RECORDED IN LIBER 85, PAGES 37-41, INCLUSIVE, MACOMB COUNTY RECORDS. THERE SHALL BE NO DIRECT VEHICULAR ACCESS TO HEYDENREICH ROAD FROM LOT 437.



*Robert L. Smith*  
 ROBERT L. SMITH

THIS PLAN IS SUBJECT TO REVISIONS AS AUTHORIZED BY ACT 206 OF 1967, AS AMENDED, AND TO THE EXTENT OF ANY CONFLICTS WITH RESPECT TO THE RIGHTS OF THE PUBLIC IN THE NATIONAL REVENUE AND FOR THE MICHIGAN DEPARTMENT OF PUBLIC SAFETY, WHICH IS SUPERSEDED BY LIBER 5462, PAGE 1023, 1074 OF RECORD OF THIS COUNTY.

CURVE #	RADIUS	ARC	LONG CHORD	CHORD DELTA
16	60.00	30.35	3.4323277°E	82.76
17	270.00	279.99	N.65°49'59"E	253.10
18	330.00	414.67	N.54°13'44"E	307.92
19	50.00	65.85	N.03°50'41"E	60.98
20	60.00	242.91	N.82°41'55"E	107.87

MATCH LINE SEE SHEET 5 OF 8





**NORTH BRANCH VALLEY SUBDIVISION NO. 6  
PART OF P.C. 610 & P.C. 546, T.2N., R.13E.,  
CLINTON TOWNSHIP, MACOMB COUNTY, MICHIGAN**

**COUNTY TREASURER'S CERTIFICATE**

The records in my office show no unpaid taxes or special assessments for the five (5) years preceding 11/1/67 involving the lands included in this plat.

WILLIAM J. WOODS  
MACOMB COUNTY TREASURER'S OFFICE  
MILLIE WOODS, DUP.

**COUNTY DRAIN COMMISSIONER'S CERTIFICATE**

Approved on 4/4/68 as complying with Section 192 of Act 288, P.A. 1967, and the applicable rules and regulations published by my office in the County of Macomb.

THOMAS S. WELSH, MACOMB COUNTY DRAIN COMMISSIONER

**CERTIFICATE OF COUNTY ROAD COMMISSIONER'S**  
Approved on 11/1/67 as complying with Section 183 of Act 288, P.A. 1967 and the applicable rules and regulations of the Board of Road Commissioners of Macomb County.

JOHN J. KOCOLA, VICE  
MARY LOUISE DAVEN, CHAIRPERSON  
THOMAS S. WELSH, COMMISSIONER

**CERTIFICATE OF MUNICIPAL APPROVAL**

I certify that this plat was approved by the Board of Trustees of the Township of Clinton at a meeting held on 11/1/67 and was reviewed and found to be in compliance with Act 288, P.A. 1967. That the lots conform with the legally adopted Zoning Subdivision Control Ordinance of the Township, and valves the minimum lot sizes in Section 186, also that adequate surety has been deposited with the Township Clerk for the placing of monuments and lot markers within a reasonable length of time, not to exceed one (1) year, and that the same shall be placed and secured as provided for in the installation of the public sewer and public water services.

DERNIS C. TONLISON, TOWNSHIP CLERK

**COUNTY PLAT BOARD CERTIFICATE**

This plat has been reviewed and is approved by the Macomb County Plat Board on 11/1/67, and being in compliance with all the provisions of Act 288, P.A. 1967, and the Plat Board's rules and regulations.

PATRICK J. JOHNSON, CHAIRPERSON  
EDNA MILLER, CLERK  
ADAM E. ROMANOWSKI, MACOMB COUNTY TREASURER

**RECORDING CERTIFICATE**

STATE OF MICHIGAN )  
COUNTY OF MACOMB ) s.s.

This plat was received for record on the 28th day of November, 1967, at 2:50 P.M. and recorded in Liber 40-471 of Plats on Page(s) 40-471.

PHILIP O. KRZYWO, DEPUTY REGISTER OF DEEDS



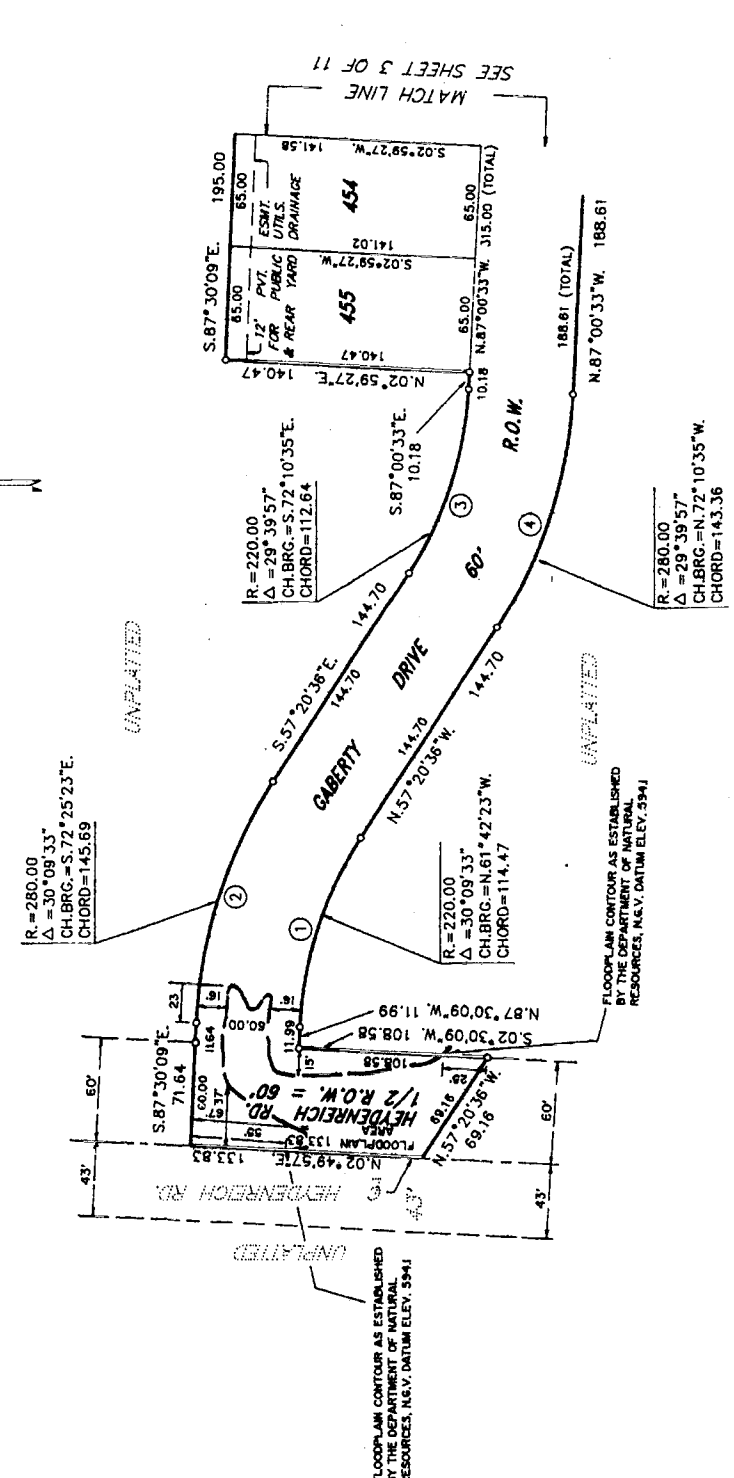
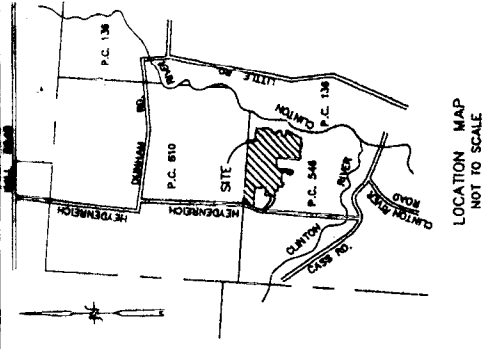
ROBERT C. SMITH  
REGISTER OF DEEDS



# NORTH BRANCH VALLEY SUB. NO. 7 PART OF P.C. 546 & P.C. 610, T.2N., R.13E., CLINTON TOWNSHIP, MACOMB COUNTY, MICHIGAN

CURVE #	RADIUS	ARC	LONG	CHORD	CHORD	DELTA
1	220.00	115.80	S.72°25'23"E.	114.47	30°09'33"	
2	280.00	147.38	N.72°25'23"W.	145.69	30°09'33"	
3	220.00	113.91	N.72°10'35"E.	112.64	29°39'57"	
4	280.00	144.97	S.72°10'35"E.	143.36	29°39'57"	

**LEGEND**  
 ALL DIMENSIONS ARE SHOWN IN FEET  
 ALL CURVILINEAR DIMENSIONS ARE SHOWN  
 ALONG THE CHORD.  
 THE SYMBOL  $\odot$  INDICATES A 4" DIAMETER  
 36" LONG  $\frac{1}{2}$ " STEEL ROD CENTER  
 CONCRETE MONUMENT.  
 ALL LOT MARKERS ARE  $\frac{1}{2}$ " STEEL RODS AND  
 ARE 18" LONG. (NO I.D. CAPS)  
 (R) INDICATES RADIAL LOT LINES.  
 (NF) INDICATES NOT RADIAL LOT LINES.  
 BEARINGS BASED ON THE S.V. LINE OF  
 NORTH BRANCH VALLEY SUB. NO. 6 AS  
 RECORDED IN LIBER 97, PAGES 40-47,  
 INCLUSIVE, MACOMB COUNTY RECORDS.  
 THERE SHALL BE NO DIRECT VEHICULAR ACCESS  
 TO HEYDENREICH ROAD FROM LOTS 438, AND 439.  
 $\bullet$  - FOUND MONUMENT  $\frac{1}{2}$ " STEEL ROD IN 4" DIA. CONC.



*Robert L. Smith*  
 ROBERT L. SMITH  
 PROFESSIONAL SURVEYOR NO. 16052

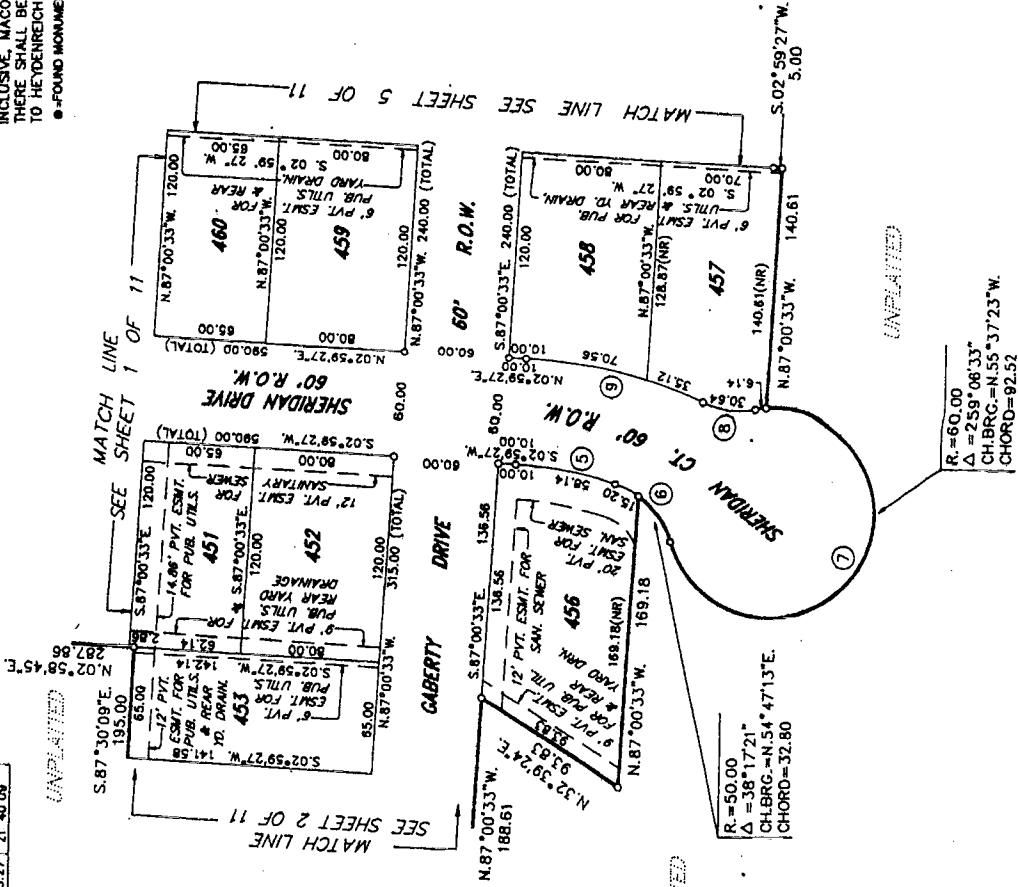


# NORTH BRANCH VALLEY SUB. NO. 7 PART OF P.C. 546 & P.C. 610, T.2N., R.13E., CLINTON TOWNSHIP, MACOMB COUNTY, MICHIGAN

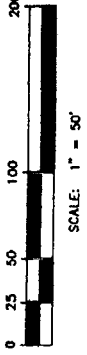
CURVE #	RADIUS	ARC	LONG	CHORD	DELTA
5	220.00	58.31	S.10°35'03"W.	58.14	15°11'13"
6	50.00	48.67	S.45°03'55"W.	46.77	55°46'30"
7	60.00	277.46	S.59°33'06"E.	88.49	284°58'42"
8	50.00	31.15	N.08°44'53"E.	30.84	35°41'24"
9	280.00	105.90	N.13°49'31"E.	105.27	21°40'08"

### LEGEND

ALL DIMENSIONS ARE SHOWN IN FEET.  
ALL CURVILINEAR DIMENSIONS ARE SHOWN ALONG THE CHORD.  
THE SYMBOL "O" INDICATES A 4" DIAMETER 3/8" LONG 1/2" STEEL ROD CENTER CONCRETE MONUMENT.  
ALL LOT MARKERS ARE 1/2" STEEL RODS AND ARE 18" LONG (NO I.D. CAPS).  
(R) INDICATES RADIAL LOT LINES.  
(NR) INDICATES NOT RADIAL LOT LINES.  
BEARINGS BASED ON THE S.T.Y. LINE OF NORTH BRANCH VALLEY SUB. NO. 6 AS RECORDED IN LIBER 97, PAGES 40-47, INCLUDING MACOMB COUNTY RECORDS. THERE SHALL BE NO DIRECT VEHICULAR ACCESS TO HEYDENREICH ROAD FROM LOTS 438, AND 439.  
● FOUND MONUMENT 1/2" STEEL ROD IN 4" DIA. CONC.



LOCATION MAP  
NOT TO SCALE



*Robert L. Smith*  
ROBERT L. SMITH  
PROFESSIONAL SURVEYOR NO. 16052



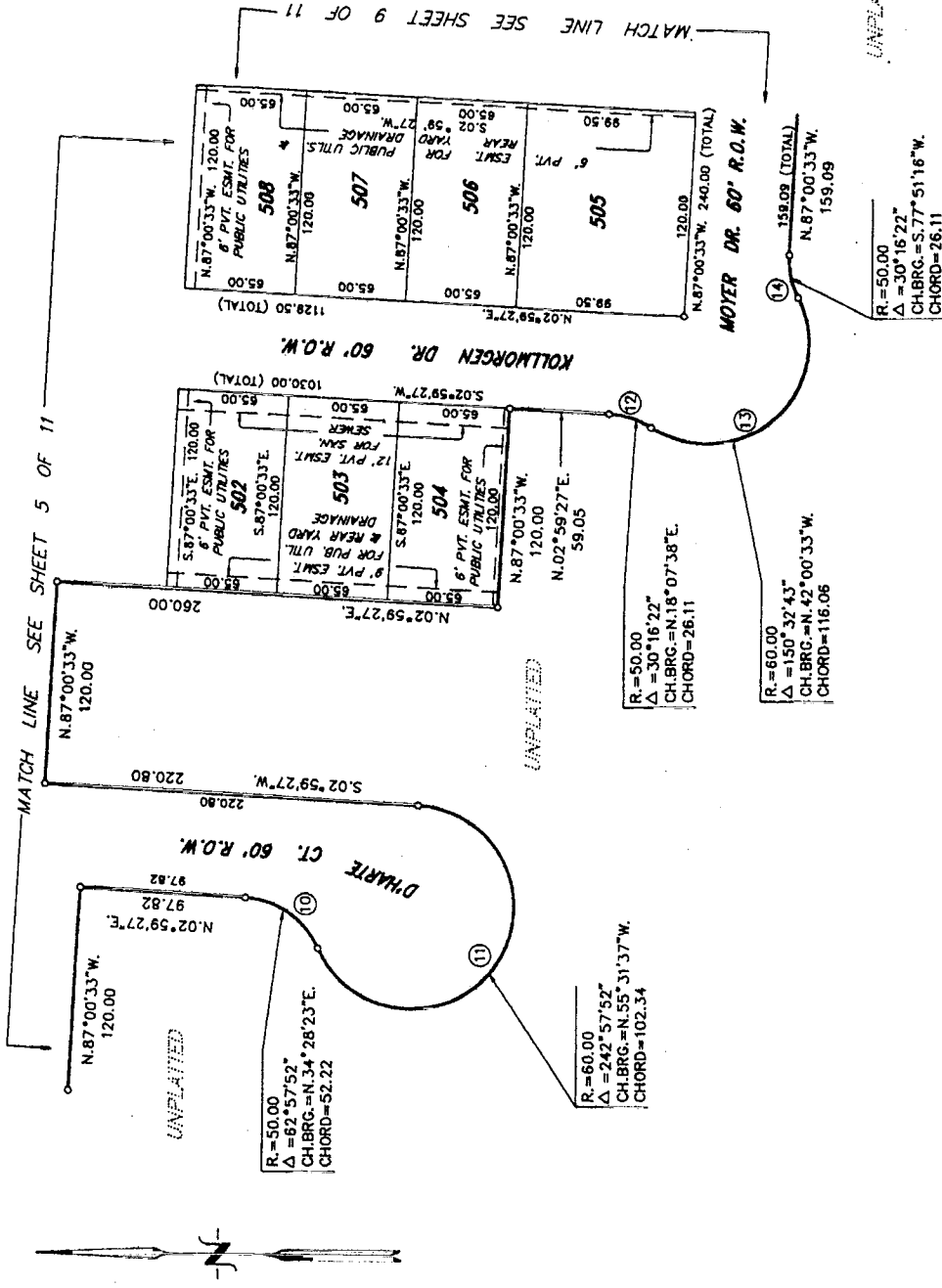
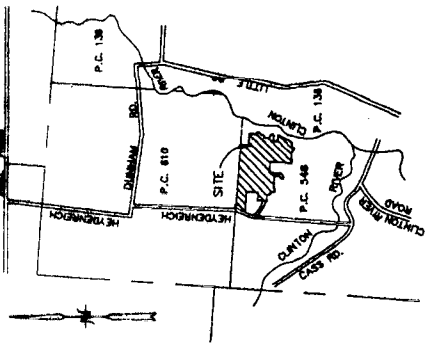
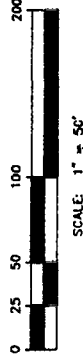
# NORTH BRANCH VALLEY SUB. NO. 7 PART OF P.C. 546 & P.C. 610, T.2N., R.13E., CLINTON TOWNSHIP, MACOMB COUNTY, MICHIGAN

CURVE #	RADIUS	ARC	LONG	CHORD	DELTA
10	50.00	54.95	S.34°28'23"W.	52.22	62°57'52"
11	80.00	254.43	S.55°31'37"E.	102.34	242°57'52"
12	50.00	28.42	S.18°20'38"W.	28.11	30°16'22"
13	80.00	157.85	S.42°00'33"E.	118.06	150°32'43"
14	50.00	28.42	N.77°51'18"E.	26.11	30°16'22"

**LEGEND**

ALL DIMENSIONS ARE SHOWN IN FEET.  
ALL CURVILINEAR DIMENSIONS ARE SHOWN ALONG THE CHORD.  
THE SYMBOL "o" INDICATES A 4" DIAMETER 3/8" LONG W/1/2" STEEL ROD CENTER CONCRETE MONUMENT.  
ALL LOT MARKERS ARE 1/2" STEEL RODS AND ARE 18" LONG. (NO I.D. GAPS)  
(R) INDICATES RADIAL LOT LINES.  
(NR) INDICATES NOT RADIAL LOT LINES. BEARINGS BASED ON THE S'LY. LINE OF NORTH BRANCH VALLEY SUB. NO. 6 AS RECORDED IN LIBER 97, PAGES 40-47, INCLUSIVE, MACOMB COUNTY RECORDS. THERE SHALL BE NO DIRECT VEHICULAR ACCESS TO HEYDENREICH ROAD FROM LOTS 438, AND 439.  
o-FOUND MONUMENT 1/2" STEEL ROD IN 4" DIA. CONC.

LOCATION MAP  
NOT TO SCALE



UNPLATED

*Robert L. Smith*  
ROBERT L. SMITH  
PROFESSIONAL SURVEYOR NO. 16052









# NORTH BRANCH VALLEY SUB. NO. 7

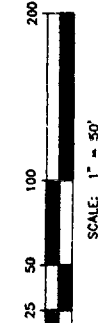
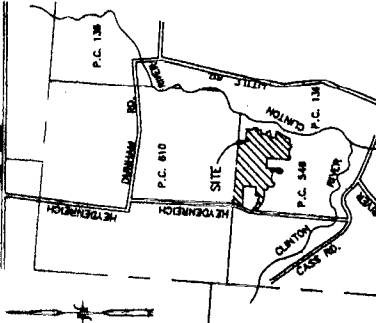
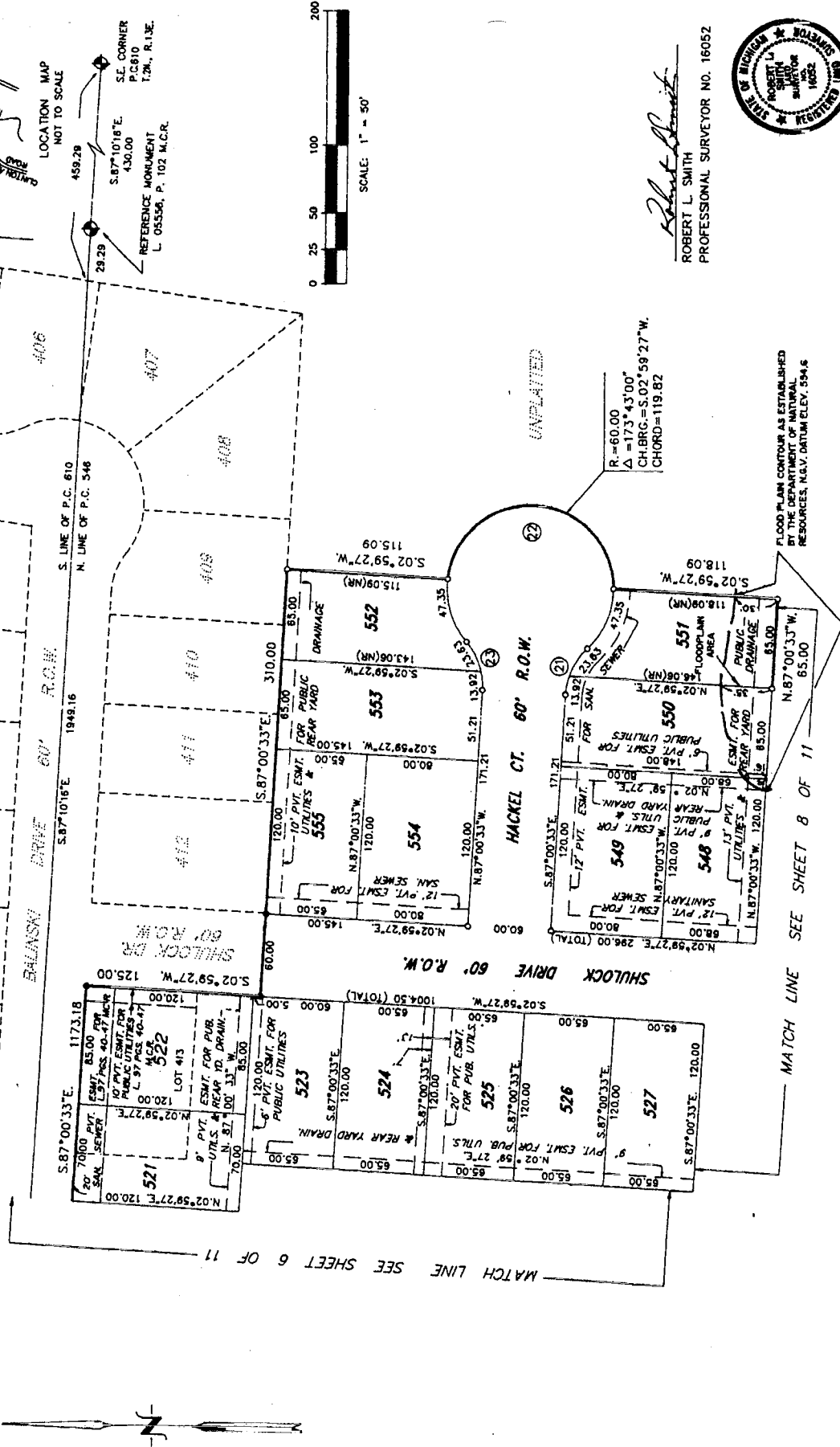
## PART OF P.C. 546 & P.C. 610, T.2N., R.13E.,

### CLINTON TOWNSHIP, MACOMB COUNTY, MICHIGAN

CURVE DATA				
CURVE #	RADIUS	ARC	LONG CHORD	DELTA
21	50.00	37.82	5.85° 20' 18"E	36.93
22	60.00	279.27	N.02° 59' 27"E	87.27
23	50.00	37.82	S.71° 19' 12"W	36.93

NORTH BRANCH VALLEY  
SUB. NO. 6  
L.97, P.40-47, #C.R.

**LEGEND**  
ALL DIMENSIONS ARE SHOWN IN FEET.  
ALL CURVILINEAR DIMENSIONS ARE SHOWN ALONG THE CHORD.  
THE SYMBOL "Ø" INDICATES A 4" DIAMETER 36" LONG 1/2" STEEL ROD CENTER CONCRETE MONUMENT.  
ALL LOT MARKERS ARE 1/2" STEEL RODS AND ARE 18" LONG (NO I.D. CAPS).  
(R) INDICATES RADIAL LOT LINES.  
(NR) INDICATES NOT RADIAL LOT LINES.  
BEARINGS BASED ON THE S.V. LINE OF NORTH BRANCH VALLEY SUB. NO. 6 AS RECORDED IN LIBER 87 PAGES 46-47, INCLUSIVE, MACOMB COUNTY RECORDS. THESE SHALL BE NO DIRECT VEHICULAR ACCESS TO HETZDORFER ROAD FROM LOTS 436, AND 439.  
Ø FOUND MONUMENT 1/2" STEEL ROD IN 4" DIA. CONC.



UNPLATTED  
R=60.00  
Δ=173°43'00"  
CH.BRG.=S.02°59'27"W  
CHORD=119.82

FLOOD PLAIN CONTOUR AS ESTABLISHED BY THE DEPARTMENT OF NATURAL RESOURCES, P.L.V. DATUM ELEV. 594.6

MATCH LINE SEE SHEET 8 OF 11

MATCH LINE SEE SHEET 6 OF 11

*Robert L. Smith*  
ROBERT L. SMITH  
PROFESSIONAL SURVEYOR NO. 16052







**NORTH BRANCH VALLEY SUB. NO. 7  
PART OF P.C. 546 & P.C. 610, T.2N., R.13E.,  
CLINTON TOWNSHIP, MACOMB COUNTY, MICHIGAN**

COUNTY TREASURER'S CERTIFICATE

THE RECORDS IN MY OFFICE SHOW NO UNPAID TAXES OR SPECIAL ASSESSMENTS FOR THE FIVE (5) YEARS PRECEDING AUGUST 1, 1994, INVOLVING THE LANDS INCLUDED IN THIS PLAT.

Rose Barkatt  
MACOMB COUNTY TREASURER'S OFFICE  
ROSE BARKATT DEPUTY TREASURER

COUNTY DRAIN COMMISSIONER'S CERTIFICATE

APPROVED ON August 12, 19 94, AS COMPLYING WITH SECTION 182 OF ACT 288, P.A. 1987, AND THE APPLICABLE RULES AND REGULATIONS PUBLISHED BY MY OFFICE IN THE COUNTY OF MACOMB.

Jennette Schultz, Deputy  
JENNETTE SCHULTZ, DEPUTY MACOMB COUNTY DRAIN COMMISSIONER

CERTIFICATE OF COUNTY ROAD COMMISSIONERS

APPROVED ON Aug 30th, 19 94, AS COMPLYING WITH SECTION 183 OF ACT 288, P.A. 1987 AND THE APPLICABLE PUBLISHED RULES AND REGULATIONS OF THE BOARD OF ROAD COMMISSIONERS OF MACOMB COUNTY.

John Broccoli  
JOHN BROCCOLA, CHAIRMAN

Mary Louise Diner  
MARY LOUISE DINER, VICE-CHAIRMAN

Thomas S. Welsh  
THOMAS S. WELSH, COMMISSIONER

CERTIFICATE OF MUNICIPAL APPROVAL

I CERTIFY THAT THIS PLAT WAS APPROVED BY THE BOARD OF TRUSTEES OF THE TOWNSHIP OF CLINTON, AT A MEETING HELD ON DECEMBER 12, 1994, AND WAS REVIEWED AND FOUND TO BE IN COMPLIANCE WITH ACT 288, P.A. OF 1987, THAT THE LOTS CONFORM WITH THE LEGALLY ADOPTED ZONING SUBDIVISION CONTROL ORDINANCE OF THE TOWNSHIP, AND WAIVE THE MINIMUM LOT SIZES IN SECTION 186, ALSO THAT ADEQUATE SURETY HAS BEEN DEPOSITED WITH THE TOWNSHIP CLERK FOR THE PLACING OF MONUMENTS AND LOT MARKERS WITHIN A REASONABLE LENGTH OF TIME, NOT TO EXCEED ONE (1) YEAR FROM THE ABOVE DATE, AND THAT ADEQUATE SURETY HAS BEEN DEPOSITED FOR INSTALLATION OF THE PUBLIC SEWER AND PUBLIC WATER SERVICES.

Dennis C. Tomlinson  
DENNIS C. TOMLINSON, CLERK

COUNTY PLAT BOARD CERTIFICATE

THIS PLAT HAS BEEN REVIEWED AND IS APPROVED BY THE MACOMB COUNTY PLAT BOARD ON December 12, 1994, AS BEING IN COMPLIANCE WITH ALL OF THE PROVISIONS OF ACT 288, P.A. 1987, AND THE PLAT BOARD'S APPLICABLE RULES AND REGULATIONS.

Mark A. Steenberg  
MARK A. STEENBERG, CHAIRMAN OF THE COUNTY BOARD OF COMMISSIONERS

Carmella Sabough  
CARMELLA SABOUGH, CLERK - REGISTER OF DEEDS

Candice S. Miller  
CANDICE S. MILLER, MACOMB COUNTY TREASURER

RECORDING CERTIFICATE

STATE OF MICHIGAN )  
COUNTY OF MACOMB )

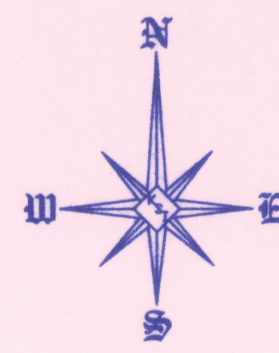
THIS PLAT WAS RECEIVED FOR RECORD ON THE 3rd DAY OF April, 19 94, AT 8:50 A.M., AND RECORDED IN LIBER 109 OF PLATS ON PAGE(S) 12-22.

Carmella Sabough  
CARMELLA SABOUGH, CLERK-REGISTER OF DEEDS

Robert L. Smith  
ROBERT L. SMITH







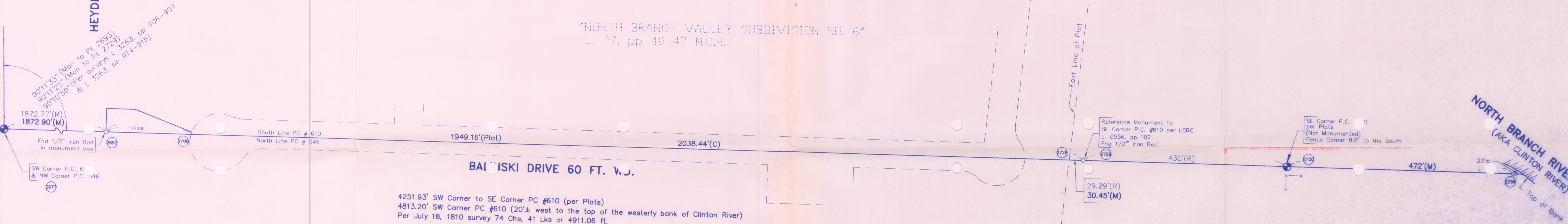
HEYDENREICH ROAD

"NORTH BRANCH VALLEY SUBDIVISION NO. 6"  
L. 97, pp 40-47 M.C.R.

BALISKI DRIVE 60 FT. W.J.

"NORTH BRANCH VALLEY SUBDIVISION NO. 7"  
L. 109, pp 12-22 M.C.R.

NORTH BRANCH RIVER HURON  
(AKA CLINTON RIVER)  
Top of Bank



90°11'23" (Mon to Pt 2693)  
90°17'25" (Mon to Pt 2729)  
90°10'59" (Per surveys L 3263, pp 906-907 & L 3263, pp 914-915)

1872.77'(R)  
1872.90'(M)

Find 1/2" Iron Rod in monument box

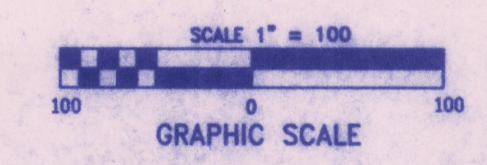
SW Corner P.C. 6  
& NW Corner P.C. 546

4251.93' SW Corner to SE Corner PC #610 (per Plats)  
4813.20' SW Corner PC #610 (20'± west to the top of the westerly bank of Clinton River)  
Per July 18, 1810 survey 74 Chs, 41 Lks or 4911.06 ft.

Reference Monument to  
SE Corner P.C. #610 per LCRC  
L. 0556, pp 102  
End 1/2" Iron Rod

29.29'(R)  
30.45'(M)

SE Corner P.C. 0  
per Plats  
(Not Monumented)  
Fence Corner 8.6' to the South



No.	By	Chk	Description	DATE
REVISIONS				
Sketch of South Line of PC #610				
<b>MACOMB COUNTY REMONUMENTATION 2010 GRANT PROGRAM FOR PC #610</b>				
KENNEDY SURVEYING, INC. 105 N. Washington St. Oxford, Michigan 48371				
Fax: (248) 628-7191 Phone: (248) 628-4241				
Drawn By:	DKS	Date:	7/02/2010	Scale: 1" = 100'
Chk'd	HKK	Drawing No.	10-ClintonTwp-PC008	Job No.
			10-ClintonTwp	Sheet No. 1