

**MACOMB COUNTY 2010 REMONUMENTATION GRANT
PROGRAM FOR CLINTON TOWNSHIP
PC-005 Northwest corner of Private Claim #610**

Section One

Index

Pictures in the four cardinal directions; the found monumentation and after setting the required monumentation.

Section Two

Surveyor's Report

Land Corner Recordation Certificate

Section Three

1-3. Field Notes

4. Map of Clinton Township – 1875

5. Map of Clinton Township – 1895

6. Map of Clinton Township – 1916

7. Map of Clinton Township - 2006

8-13. GLO Map

14. Macomb County Composite Map 11-04C

15. Macomb County Composite Map 11-04D

Section Four

1-2. GLO Notes

3. Unrecorded Certificate of Survey prepared by William E. Soderberg, RLS #17635, Page one and two of two

4. Unrecorded Certificate of Survey prepared by William E. Soderberg, RLS #17635, Page one of two

5. Unrecorded Certificate of Survey prepared by William E. Soderberg, RLS #17635, Page one of two

6. Certificate of Survey recorded in L. 3184, Pages 659-660, Page one and two of two

7. Certificate of Survey recorded in L. 3213, Pages 411-412

8. Certificate of Survey recorded in L. 3263, Pages 906-907

9. Certificate of Survey recorded in L. 3263, Pages 908-909

10. Certificate of Survey recorded in L. 3263, Pages 910-911

11. Certificate of Survey recorded in L. 3263, Pages 912-913

12. "RIVERGATE SUBDIVISION NO. 3" recorded in L. 80, Pages 1-4, Sheets one thru four of four

13. "RIVERGATE SUBDIVISION NO. 4" recorded in L.80, Pages 28-31, Sheets one thru four of four



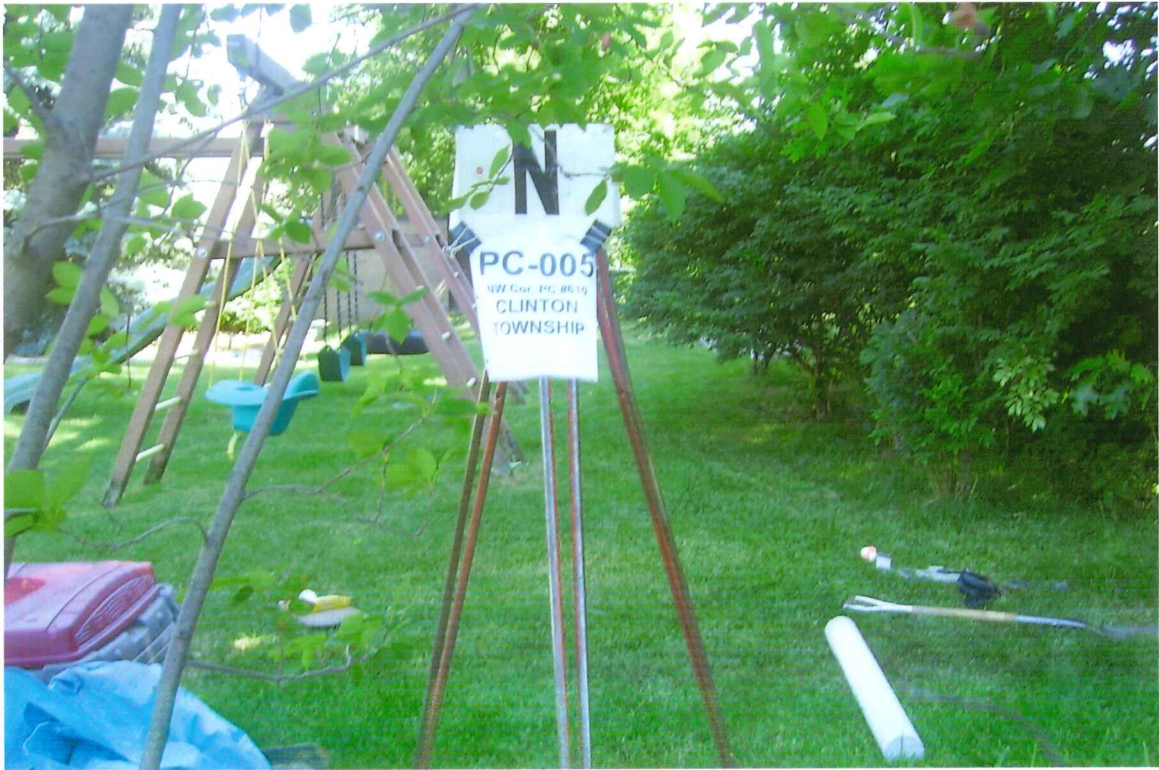
AFTER



BEFORE









LAND CORNER RECORDATION CERTIFICATE
Filing Requirement of Act 74, Mich. P.A. 1970

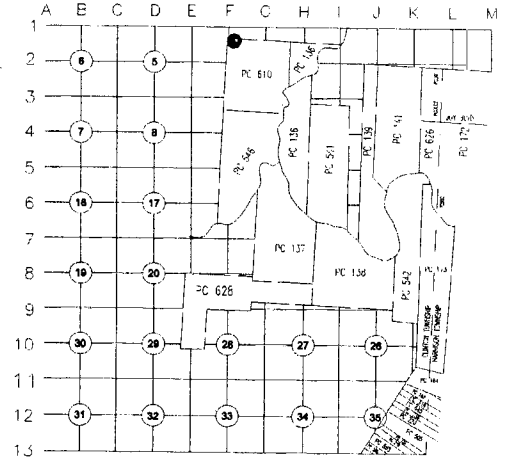
Table with columns: For corners in Macomb (County), Located In: Clinton Township, Corner Code. Rows include Public Land Survey, Property Controlling in Section, and Miscellaneous Property in Sec.

87773
LIBER 20352 PAGE 188
07/28/2010 10:25:14 A.M.
MACOMB COUNTY, MI SEAL
CARNELLA SABAUGH, REGISTER OF DEEDS

Register of Deeds Stamp & File Number

4. Lot No. Recorded Plat
5. Private Claims PC-005 Northwest corner of Private Claim #610

I, Huston K. Kennedy, in a field survey on June 18, 2010 do hereby state that under requirements of P.A. 74, Michigan P.A. of 1970, the corner points mentioned in lines 1 and 2 above were in conformance with regulations and rules therefore as required in the current manual of survey instructions of the United States Department of the Interior, Bureau of Land Management or by a decree of a Court of Law and/or that the corner points mentioned in lines 3, 4 and 5 above were in conformance with the rules of the Michigan Board of Land Surveyors or by a Decree of a Court of Law; established, re-established, monumented, recovered, found as expressed below:



NOTE: Not more than 2 corners, all in the same town and range, may be recorded on this certificate.

A. Description of original monument and accessories and/or subsequent restoration:

- 1810 - Aaron Greely, Surveyor of Private Claims, "to a post the boundary between this tract and unconceded land"
1.) 1978-Soderberg, RLS #17635; unrecorded Certificate of Survey - Fnd 1/2" re-rod, no witnesses
2.) 1978-Soderberg, RLS #17635; unrecorded Certificate of Survey - Fnd a 1/2" iron, no witnesses
3.) 1978-Soderberg, RLS #17635; unrecorded Certificate of Survey - Fnd a 1/2" re-rod, (0 of 4 witnesses recovered)
4.) Avendt, Jr., RLS #16043; Certificate of Survey L. 3184, Pgs. 659-660 - Object found not stated, no witnesses
5.) 1980-Soderberg, RLS #17635; Certificate of Survey L. 3213, Pgs. 411-412 - Fnd an iron, no witnesses

(cont. on back side of LCRC)

B. Description of corner evidence found and/or method applied in restoring or reestablishing corner:

2010-Kennedy Surveying, Inc. - Kennedy, PS #17623 - Fnd a 4" diameter concrete monument with a 1/2" iron rod 0.3' above the ground that falls on the north side of an 8" x 8" wooden timber landscaped area.

The found monumentation in Plats #10 and #11 along with the measured distance between the northwest and southwest corner of Private Claim #610 were used to recover and verify the location of the found 4" diameter concrete monument with a 1/2" iron rod.

I accepted the found 4" diameter concrete monument with a 1/2" iron rod as the best evidence of the corner position to be perpetuated.

RECORDED, UNRECORDED AND FIELD MEASUREMENTS BETWEEN CORNERS (see back side LCRC)

C. Description of monument for corner and accessories established to perpetuate locating the position of the corner:

- PC-005 I replaced the found 4" diameter concrete monument with a 1/2" iron rod with a 4" diameter concrete monument with a 1/2" iron rod 36" long w/2" diameter aluminum cap stamped "Macomb County Monument, MI Act #345, PS #17623"
N04°W 56.08' Set Mag Nail w/Remon Washer West face power pole
S07°W 39.60' NW corner of house #20053
N67°E 19.35' Set Mag Nail w/Remon Washer North face 24" Ash
S17°W 15.97' chiseled "x" center of storm sewer casting
S48°W 33.33' NE corner of house #20025

The selected location of a corner, although not established by an original government survey, is accepted as the best available evidence of the corner.

Signed by: [Signature] Date July 7, 2010
Surveyor's Michigan License No.: 17623



ACCEPTED BY THE MACOMB COUNTY SURVEY PEER GROUP AS THE OFFICIAL CORNER UNDER MICHIGAN PUBLIC ACT 345 OF 1990 AT A MEETING HELD ON 7-6-10
MARTIN C. DUNN, P.S. CHAIRMAN

TOWN 2 NORTH, RANGE 13 EAST, CLINTON TOWNSHIP (PC-005)

Section "A" cont.

- 6.) 1980-Soderberg, RLS #17635; Certificate of Survey L. 3263, pgs. 906-907 – Fnd an iron, no witnesses
- 7.) 1980-Soderberg, RLS #17635; Certificate of Survey L. 3263, pgs. 908-909 – Cites the north line of Private Claim #610
- 8.) 1980- Soderberg, RLS #17635; Certificate of Survey L. 3263, pgs. 910-911 – Object found not stated, no witnesses
- 9.) 1980- Soderberg, RLS #17635; Certificate of Survey L. 3263, pgs. 912-913 – Fnd an iron, no witnesses
- 10.) 1986-"RIVERGATE SUBDIVISION NO. 3", L. 80, pgs. 1-4, cites the northwest corner of Private Claim #610 and the north and west lines of Private Claim #610
- 11.) 1986-RIVERGATE SUBDIVISION NO. 4", L. 80, pgs. 28-31, cites the northwest corner of Private Claim #610 and the north and west lines of Private Claim #610

Section "B" cont.

RECORDED, UNRECORDED AND FIELD MEASUREMENTS BETWEEN CORNERS

PC-005 (NW cor. PC #610) to PC-006 (NE cor. of PC #610)

Aaron Greeley, July 8, 1810 description 68 chains, 87 links = 4545.42 Ft.
4361.33 Ft. (mea. 2010)

PC-005 (NW cor. PC #610) to PC-007 (SW cor. of PC #610)

Aaron Greeley, July 8, 1810 description 89 chains 19 links = 5886.54 Ft.
Certificate of Survey's recorded in Liber 3213, pages 411-412, Liber 3263, pages 906-907, Liber 3263, pages 908-909 and Liber 3283, pages 912-913 = 5364.96 Ft.
5365.08 Ft. (mea. 2010)



2010

**MACOMB COUNTY REMONUMENTATION
GRANT PROGRAM FOR CLINTON TOWNSHIP**

**Research Dossier PC-005
Northwest corner of Private Claim #610**

Prepared by:
Kennedy Surveying, Inc.
105 North Washington Street
Oxford, Michigan 48371
10-6660 (96-4013)

Sources of Information Researched For Macomb County 2010 Remonumentation Grant Program For Private Claim #610

- 1) GLO Notes
- 2) Act 74 Recorded LCRC
- 3) Act 132 Recorded Surveys
- 4) Personal History and Records
- 5) Unrecorded LCRC's and Surveys
- 6) Letters to the Following, Requesting Unrecorded information

- a) Anderson, Eckstein & Westrick
- b) BMJ Engineers & Surveyors
- c) David Little Land Surveyor
- d) David P. Smith & Associates, Inc.
- e) Williams & Gorinac Associates
- f) Fenn & Associates Surveying, Inc.
- g) George Jerome & Company
- h) Heil Surveying, Inc.
- i) James Land Surveying
- j) Kem-Tec Surveying
- k) King Surveying & Associates, Inc.
- l) Lehner Associates, Inc.
- m) Community Engineering
- n) Metco Land Sea Corp.,
- o) Metco-Dunn, Inc.
- p) Milletics & Associates
- q) R. J. Donnelly & Associates, Inc.
- r) R. A. Duthler Land Surveyor LLC
- s) Reichert Surveying
- t) Road Commission for Macomb County
- u) Rowe Incorporate
- v) Spalding, DeDecker & Associates
- w) Urban Land Consultants, L.L.C.

GLO SURVEY HISTORY

Researching the government survey records for Macomb County shows that the south and east lines of Clinton Township were surveyed and the township was subdivided into sections with closing corners set on the north and west township lines by William Preston, D.S. in 1817-1818.

Private Claim (PC) No. 610, which falls within the boundaries of Clinton Township, which was surveyed by Aaron Greeley, Surveyor of Private Claims on July 18, 1810 and confirmed to John Connor. The description cites "to a post, the boundary between this tract and unconceded land"

WITNESSES: (No witnesses)

EXISTING FIELD CONDITIONS

The above described post has been obliterated. The corner has been perpetuated with a 4" diameter concrete monument with a ½" iron rod 0.3' above the ground that falls on the north side of an 8" x 8" wooden timber landscaped area.

RECORDED AND UNRECORDED LCRC'S AND CERTIFICATE OF SURVEYS

Researching the Macomb County Records for Land Corner Recordation Certificates (LCRC) and Certificate of Survey shows William E. Soderberg, RLS #17635 prepared a unrecorded Certificate of Survey on July of 1978. He found a ½" re-rod, no witnesses.

William E. Soderberg, RLS #17635 prepared a unrecorded Certificate of Survey on July of 1978. He found a ½" iron, no witnesses.

William E. Soderberg, RLS #17635 prepared a unrecorded Certificate of Survey on July of 1978. He found a ½" re-rod.

WITNESSES:

PK nail in 6" tree, north 11.23 Ft. (gone)
PK nail in 14" tree, NE 9.52 Ft. (gone)
PK nail in 6" tree, south 25.95 Ft. (gone)
PK nail in fence post, east 1.23 Ft. (gone)

George J. Avendt, Jr., RLS #16034 recorded a Certificate of Survey on in Liber 3184, pages 659-660 of Macomb County Records. Object found not stated, no witnesses.

William E. Soderberg, RLS #17635 recorded a Certificate of Survey on February 29, 1980 in Liber 3213, pages 411-412 of Macomb County Records. He found an iron, no witnesses.

William E. Soderberg, RLS #17635 recorded a Certificate of Survey on September 3, 1980 in Liber 3263, pages 906-907 of Macomb County Records. He found an iron, no witnesses.

William E. Soderberg, RLS #17635 recorded a Certificate of Survey on September 3, 1980 in Liber 3263, pages 908-909 of Macomb County Records. Cites the north line of Private Claim #610.

(Revised 07/07/2010)

William E. Soderberg, RLS #17635 recorded a Certificate of Survey on September 3, 1980 in Liber 3263, pages 910-911 of Macomb County Records. Object found not stated, no witnesses.

William E. Soderberg, RLS #17635 recorded a Certificate of Survey on September 3, 1980 in Liber 3263, pages 912-913 of Macomb County Records. He found an iron, no witnesses.

"RIVERGATE SUBDIVISION NO. 3" as recorded in Liber 80 of Plats, on pages 1 thru 4 and "RIVERGATE SUBDIVISION NO. 4" recorded in Liber 80 of Plats, on pages 28 thru 31 of Macomb County Records. cites the Northwest corner of Private Claim #610 and the North and West lines of Private Claim #610.

RECORDED, UNRECORDED AND FIELD MEASUREMENTS BETWEEN CORNERS

PC-005 (NW cor. PC #610) to PC-006 (NE cor. of PC #610)

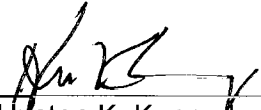
Aaron Greeley, July 8, 1810 description 68 chains, 87 links = 4545.42 Ft.
4361.33 Ft. (mea. 2010)

PC-005 (NW cor. PC #610) to PC-007 (SW cor. of PC #610)

Aaron Greeley, July 8, 1810 description 89 chains 19 links = 5886.54 Ft.
Certificate of Survey's recorded in Liber 3213, pages 411-412, Liber 3263, pages 906-907, Liber 3263, pages 908-909 and Liber 3283, pages 912-913 = 5364.96 Ft.
5365.08 Ft. (mea. 2010)

SURVEYOR'S RECOMMENDATION

The found monumentation in said "RIVERGATE SUBDIVISION NO. 3" and the measured distance at the northwest corner and the southwest corner of Private Claim #610 were used to verify the location of the found 4" diameter concrete monument with a 1/2" iron rod as of June 10, 2010. I therefore, recommend to the Macomb County Peer Group that they accept the 4" diameter concrete monument with a 1/2" iron rod as found as the best evidence of the corner position to be perpetuated.



Huston K. Kennedy, P.S.
Kennedy, Surveying, Inc.

HKK/clh

10-6660

Data File 96-4013

**2010
MACOMB COUNTY
REMONUMENTATION GRANT PROGRAM FOR
PC-005 Northwest corner of Private Claim #610**

Pgs. 1-7

510 248

NATIONAL PRINTFAST

700.604 (6E1A) X 2637-2638
700.69 (Grunn) 700.67

PT 2638 TO PT 2668 (HL) Filing
1 87-55-15 X 2637-2668
2 175-50-20 133.50
M 87-55-10

PT 2638 TO PT 2669 (HL) Filing
1 95-32-00 132.28
2 191-04-00
M 95-32-00 10065

PT 2638 TO PT 2670 (HL) Filing
1 90-06-20 187.53
2 180-12-40
M 90-06-20

PT 2637 TO PT 2671 (HL) Filing
1 170-32-10 178.20
2 341-04-20
M 170-32-10

PT 2638 TO PT 2672 (HL) Filing
1 84-33-00 185.80
2 169-06-00
M 84-33-00 30002

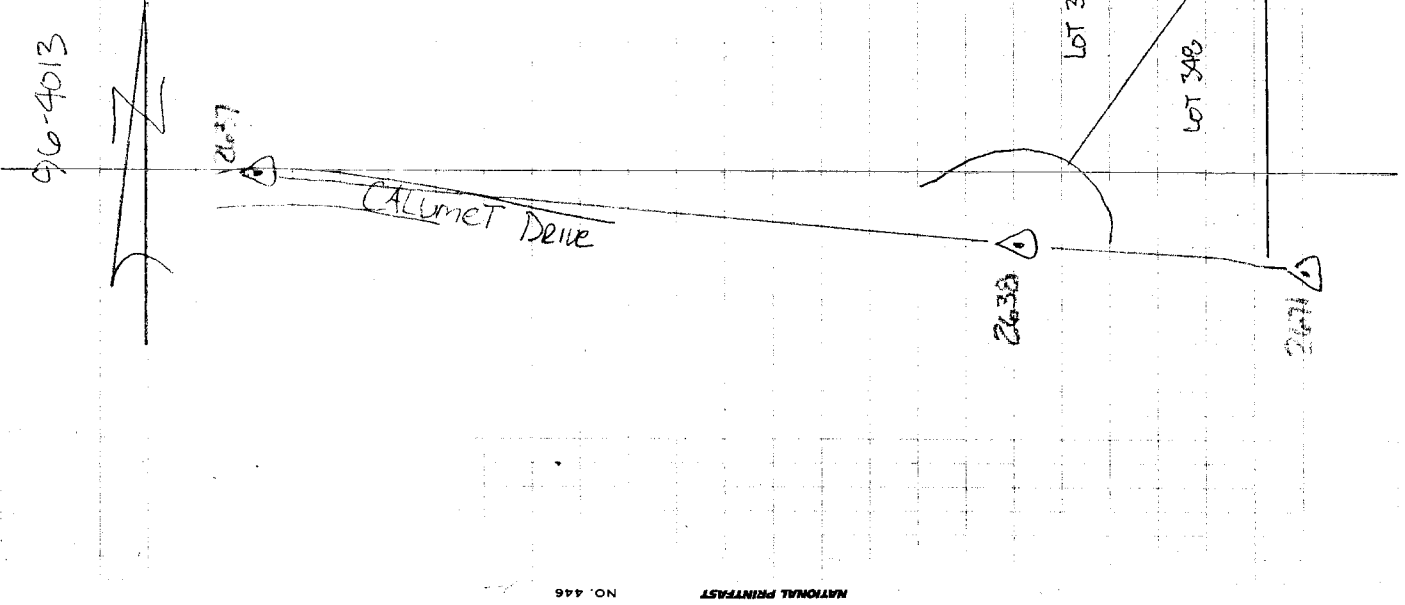
PT 2638 TO PT 2673 (HL) Filing
1 84-09-55 185.96
2 168-20-00
M 84-10-00 20002

PT 2637 TO PT 2713 (HL) Filing
1 92-53-15 385.77
2 185-46-40
M 92-53-20

PT 2638 TO PT 2714 (HL) Filing
1 82-24-35 637.49
2 164-49-05
M 82-24-33

PT 2713 TO PT 2715 (HL) Filing
1 98-35-50 131.89
2 197-11-40
M 98-35-50

916-4013 (7)

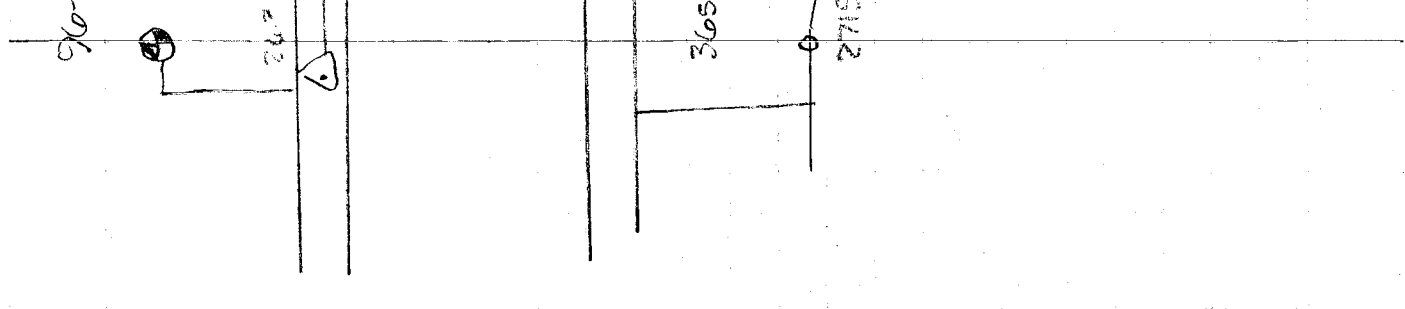


NATIONAL PRINTFAST NO. 446

916-4013 (5)

612110
KXST

NW COR.

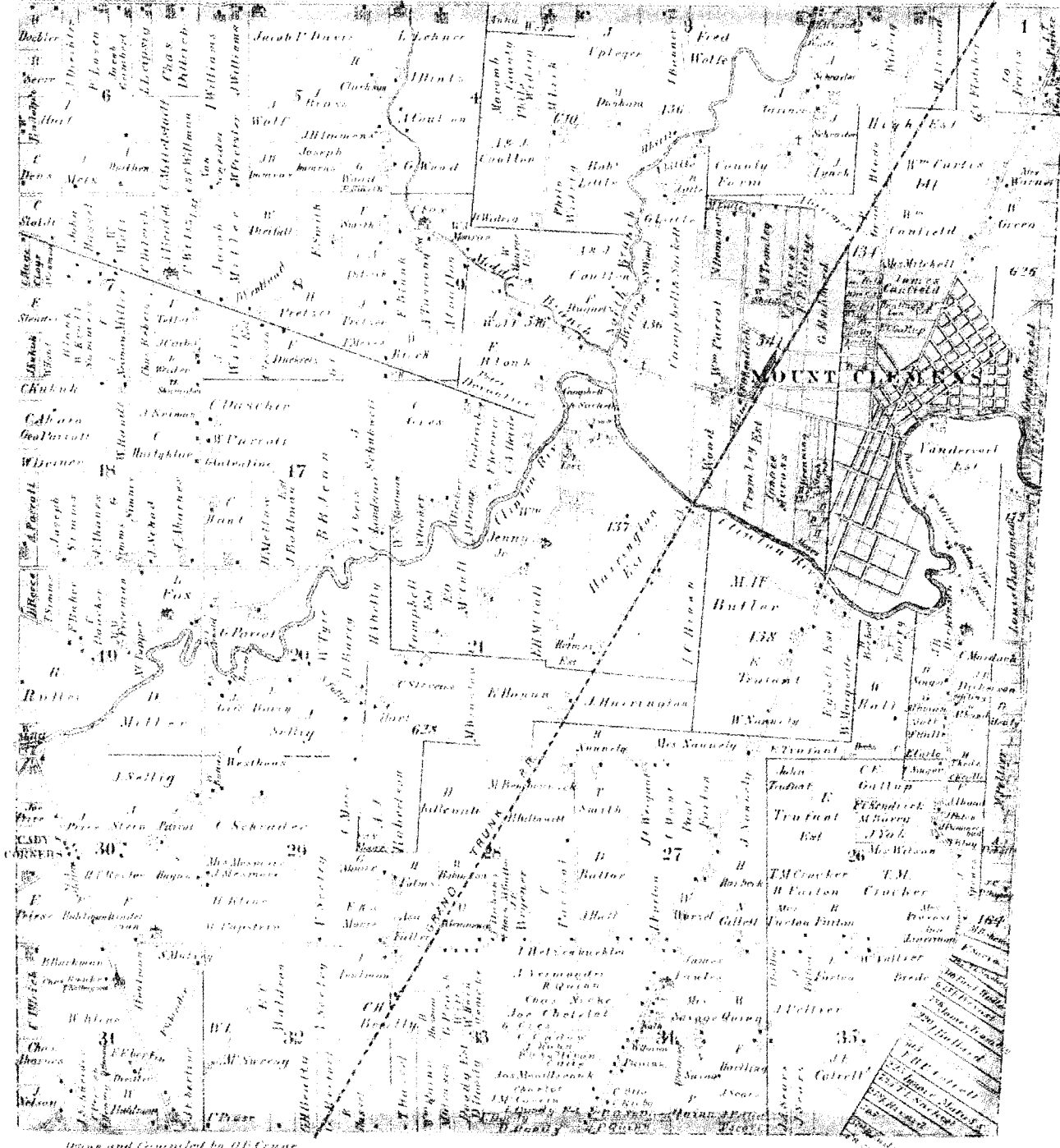


NATIONAL PRINTFAST NO. 446

(2)

(MAP OF CLINTON TOWNSHIP)

T. 2 N. R. 1 E.



Scanned By:
METCO
Engineers, Architects & Surveyors

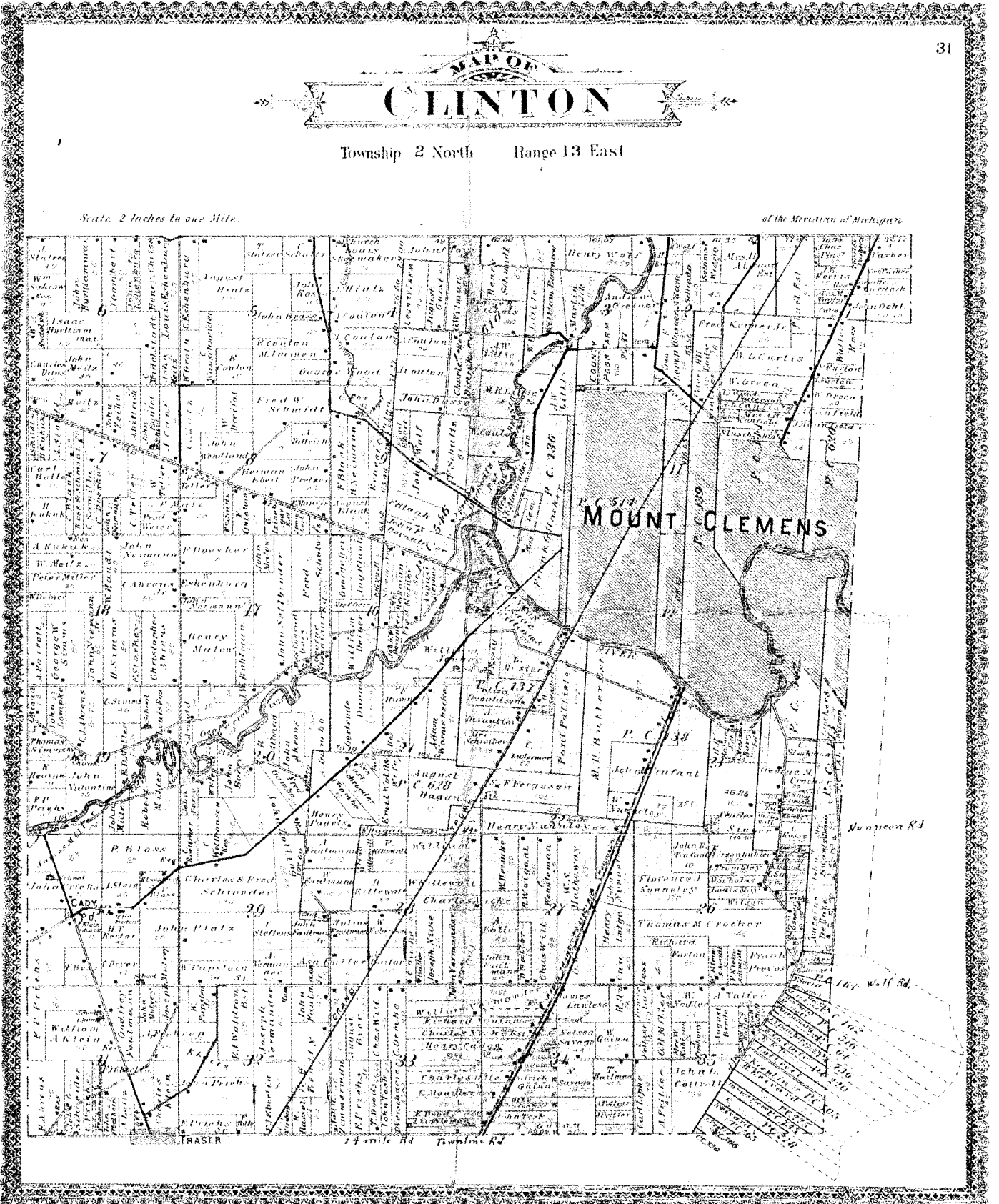
④ 1975

MAP OF CLINTON

Township 2 North Range 13 East

Scale 2 inches to one Mile.

of the Meridian of Michigan

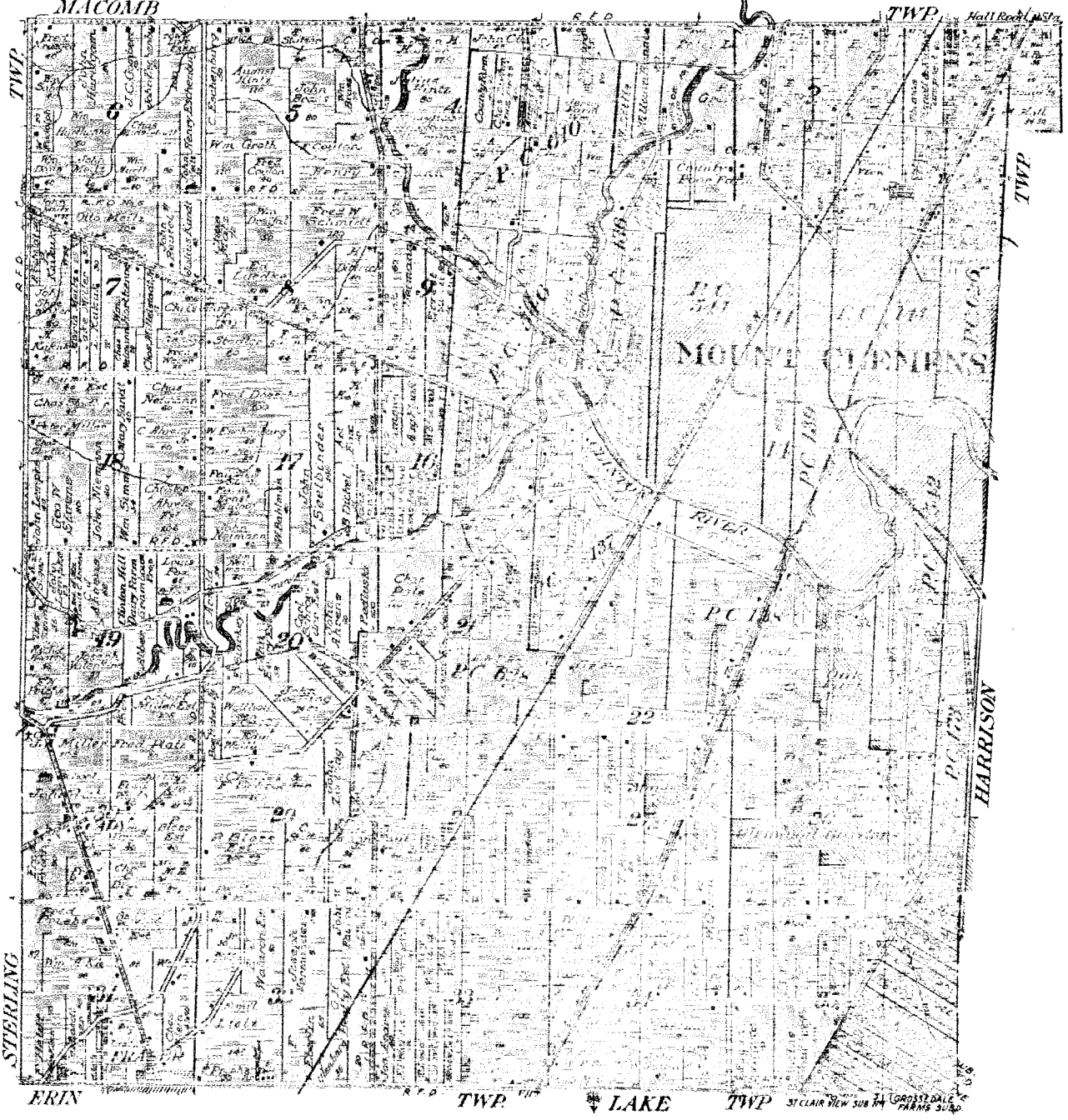


1895

MAP OF
CLINTON
 TOWNSHIP

Scale 2 inches to 1 mile

Fractional Township 2 North, Range 13 East of the Michigan Meridian

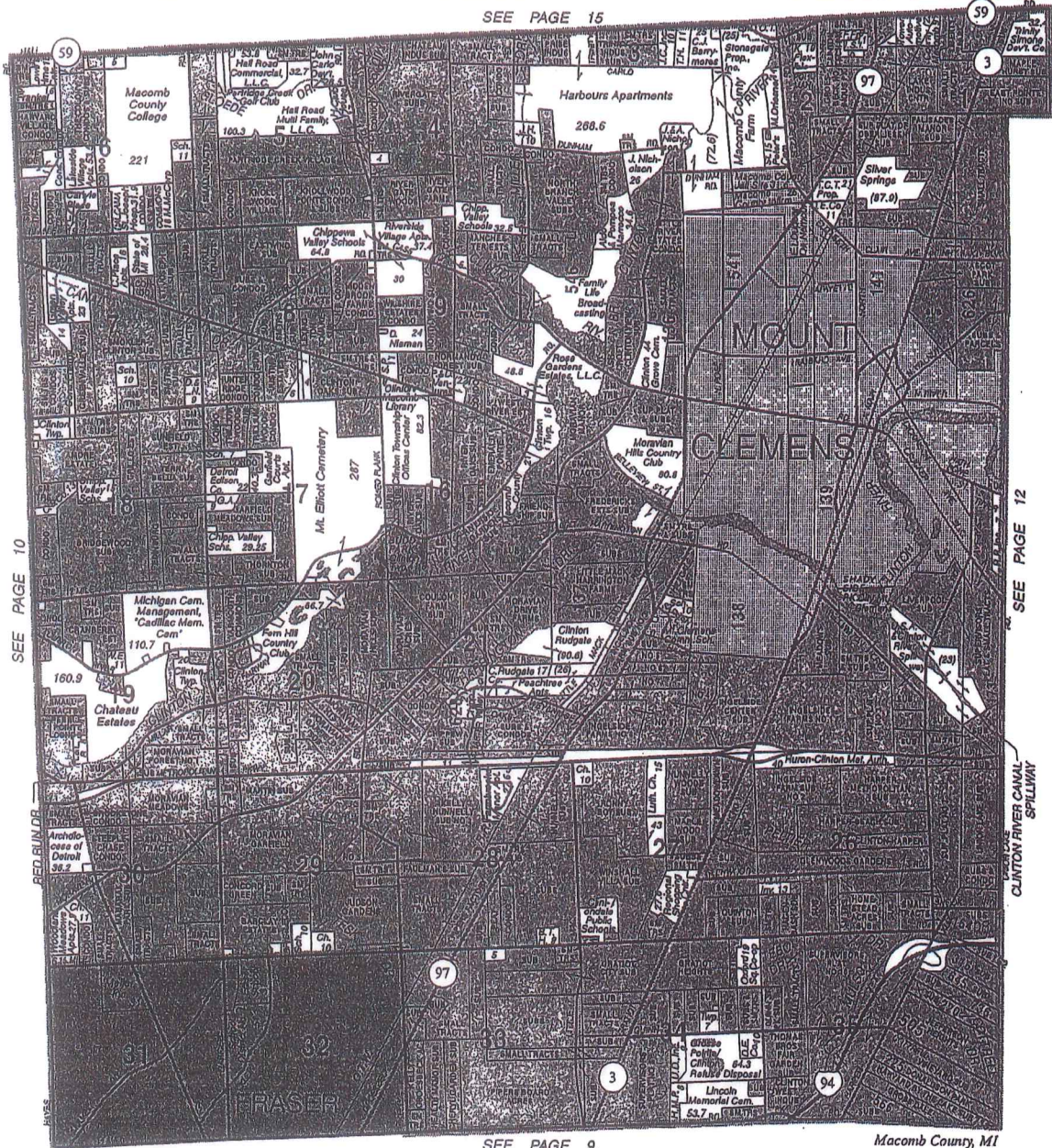


7
 1716

CLINTON - CITY OF FRASER

T.2N.-R.13E.

SEE PAGE 15



© 2006 Rockford Map Pubs., Inc.

Macomb County, MI

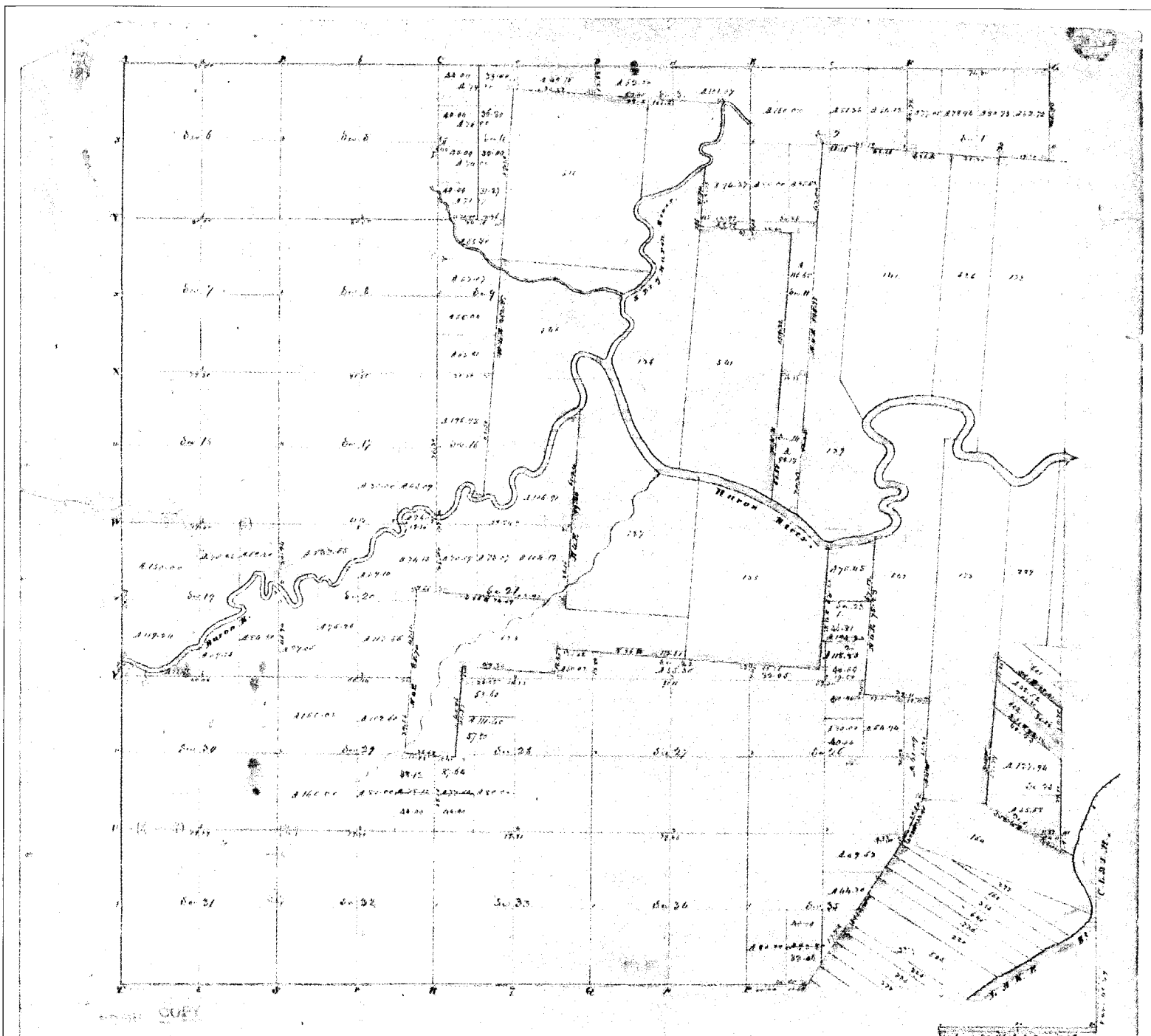
7
2006

Township N. 11 North, Range N. 111 East of Mer. (Mich. Terr)



Quantity and value of private lands
14. 202. 99
1877

Edward W. ...



Township N: 11 North, Range N: 10 East of Mer. (Wind. 100)

surveyed by W. B. Preston

1871

Description of the soil on the interior sectional lines

Section	Quality of Soil	Section	Quality of Soil
1-5	Lightly sandy, black, bl. loam, bl. clay	29-30	Light dry loam - black, dark, loam
6-8	Light, with black, bl. loam, bl. clay	31-32	Same
9-11	Same (part dry)	33-34	Light bl. loam
12-14	Same	35-36	Light bl. loam, with black, bl. clay, bl. clay
15-17	Lightly sandy, black, bl. loam, bl. clay	37-38	Light, bl. loam, black, bl. clay, bl. clay
18-19	Same	39-40	Light, bl. loam
20-22	Light, bl. loam, black, bl. clay, bl. clay	41-42	Same
23-25	Light, bl. loam, black, bl. clay, bl. clay	43-44	Same
26-28	Light, bl. loam, black, bl. clay, bl. clay	45-46	Same
29-31	Light, bl. loam, black, bl. clay, bl. clay	47-48	Same
32	Light, bl. loam, black, bl. clay, bl. clay	49-50	Same
		51-52	Light, bl. loam, black, bl. clay, bl. clay
		53-54	Same
		55-56	Same
		57-58	Same
		59-60	Same
		61-62	Same
		63-64	Same
		65-66	Same
		67-68	Same
		69-70	Same
		71-72	Same
		73-74	Same
		75-76	Same
		77-78	Same
		79-80	Same

Full page N. 1/4, 1888

2 N 1/4

2 N 1/4

A 77.00
A 76.50
A 74.00
A 71.27
A 68.70
A 67.07
A 65.00
A 63.81

A 69.15
A 62.00

A 160
A 155
A 150
A 145
A 140
A 135
A 130
A 125
A 120
A 115
A 110
A 105
A 100
A 95
A 90
A 85
A 80
A 75
A 70
A 65
A 60
A 55
A 50
A 45
A 40
A 35
A 30
A 25
A 20
A 15
A 10
A 5
A 0



A 160
A 150
A 140
A 130
A 120
A 110
A 100
A 90
A 80
A 70
A 60
A 50
A 40
A 30
A 20
A 10
A 0



A 160
A 150
A 140
A 130
A 120
A 110
A 100
A 90
A 80
A 70
A 60
A 50
A 40
A 30
A 20
A 10
A 0

A 160
A 150
A 140
A 130
A 120
A 110
A 100
A 90
A 80
A 70
A 60
A 50
A 40
A 30
A 20
A 10
A 0

A 160
A 150
A 140
A 130
A 120
A 110
A 100
A 90
A 80
A 70
A 60
A 50
A 40
A 30
A 20
A 10
A 0

POGE COPY

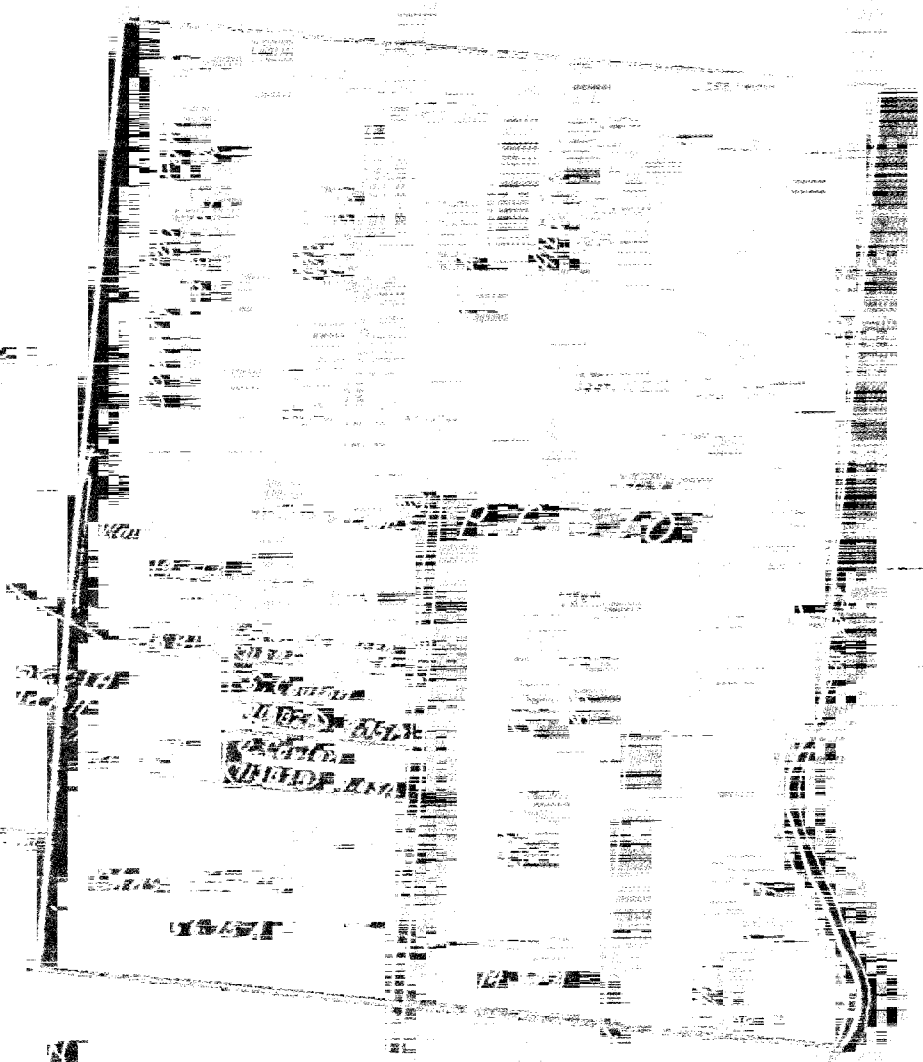
Section	Quantity	Price per Unit	Total	Quality of the Soil
1 H Oak	5 Corn			
2 B. H.	3 Corn			
3 Circle of Maple	Corn			
4 Spruce	3 Corn			
5 Bush	18 5 50 E	7		
6 Round	6 5 50 W	30		
7 Elm	18 5 40 W	35		
8 H. H.	20 5 30 E	35		
9 Round	12 5 40 W	50		
10 Round	6 E Oak	9		
11 Spruce	9 5	16		
12 Round	50 5 45 W	9		
13 Round	18 5 45 E	11		
14 Elm	23 5 30 W	40		
15 Round	16 Corn			
16 Hickory	4 Corn			20 W Not 3 Oak land
17 Spruce	18 5 60 E	30		
18 Do	20 5 70 W	30		
19 Round	11 5 50 E	17		
20 Round	10 Corn			
21 Round	8 5 45 W	11		
22 Do	18 5 41 E	14		
23 Elm	18 Corn			
24 Spruce	40 Corn			
25 Hickory	7 Corn			
26 Round	3 Corn			
27 Willow	8 Corn			
28 Spruce	12 5 40 W	17		
29 H Oak	35 5 30 W	41		
30 Post	5 Sward			
31 B. H.	15 5 30 E	18		
32 Round	8 5 40 W	14		
33 Small Round	Corn			
34 Spruce	11 5 50 W	29		
35 H Oak	6 5 40 W	23		
36 Spruce	8 5 50 W	10		
37 Med Sward	50 lbs			
38 Spruce	5 5 75 W	14		
39 Hickory	10 5 30 W	10		
40 H Oak	11 5 20 W	20		
41 Elm	5 5 20 W	11		
42 Elm	14 5 10 E	17		
43 Hickory	8 5 70 W	17		
44 Maple	8 5 30 W	13		
Corners on Nelson River.				
1 Round	10 5 6 E	70		
2 Spruce	30 5 62 E	40		
3 Hickory	1 Corn			
4 H Oak	20 5 57 E	57		
5 H Oak	18 5 65 W	48		
6 H Oak	7 Corn			
7 Round	14 5 70 W	17		
8 Do	10 5 5 E	37		
9 Sapropel	19 5 53 W	10		
10 Elm	16 5 51 W	30		

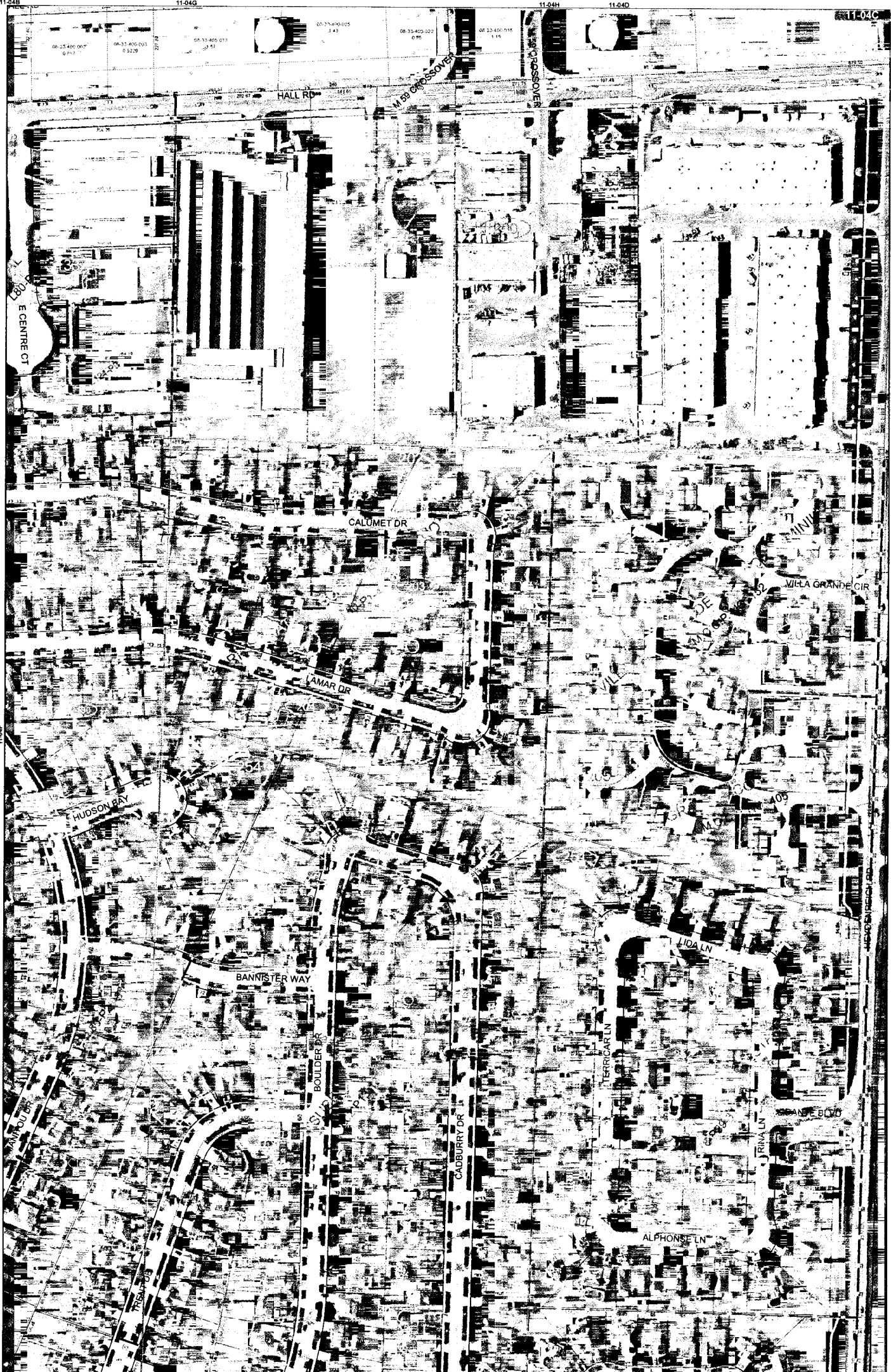
Anterior Quarter Section Corners

1 1/2 1/2	1/2 H Oak	8 Corn		
2	1/2 Round	10 Corn		
3	1/2 Spruce	8 Corn		
4	1/2 Round	24 5 7 E	47	
5	1/2 Do	3 5 5 E	41	
6	1/2 Spruce	11 Corn		
7 1/2	2 H Oak	5 Corn		
8	1/2 Hickory	14 Corn		
9	1/2 Round	6 Corn		
10	1/2 Sapropel	32 Corn		
11	1/2 Elm	6 Corn		
12 W	1/2 Spruce	7 Corn		
13	1/2 Spruce	19 5 40 W	14	
14	1/2 Round	1 5 40 W	26	
15	1/2 Do	12 5 4 W	10	
16	1/2 H Oak	7 5 20 E	8	
17	1/2 H Oak	7 Corn		
18	1/2 Spruce	19 5 40 E	18	
19	1/2 Elm	8 5 35 E	10	
20	1/2 Round	5 Corn		
21	1/2 Hickory	7 5 30 E	17	
22	1/2 Elm	30 5 15 E	30	
23	1/2 Spruce	9 Corn		
24	1/2 Spruce	26 5 5 E	31	
25	1/2 Spruce	3 Corn		
26 B	1/2 Spruce	16 Corn		
27	1/2 B. H.	15 Corn		
28	1/2 Round	10 5 20 W	20	
29	1/2 Do	8 5 10 E	21	
30 B	1/2 B. H.	14 Corn		
31	1/2 Do	6 Corn		
32 C	1/2 B. H.	6 Corn		
33	1/2 Round	6 5 4 W	9	
34	1/2 Elm	12 5 15 E	17	
35	1/2 B. H.	21 5 15 W	12	
36	1/2 Round	10 5 15 E	11	
37	1/2 Round	3 Corn		
38	1/2 Round	11 5 50 E	35	
39	1/2 Do	10 5 50 W	28	
40	1/2 B. H.	10 5 25 W	23	
41	1/2 Spruce	10 5 25 W	11	
42	1/2 Hickory	18 Corn		
43	1/2 Spruce	1 5 20 W	14	
44	1/2 Do	12 5 10 W	35	
45	1/2 Spruce	11 5 10 W	21	
46	1/2 Elm	11 5 10 E	21	

1 B. H.	18 5 61 W	78	
2 Do	24 5 81 E	80	
3 Do	35 5 46 E	40	
4 Maple	32 Corn		
5 Round	26 5 70 W	7	
6 Do	16 5 37 E	12	
7 Spruce	18 Corn		
8 Round	13 5 40 E	20	
9 H Oak	26 5 30 W	37	
10 H Oak	18 5 30 E	18	
11 Round	13 5 32 E	18	
12 Round	8 Corn		
13 Round	16 5 61 E	16	
14 Spruce	20 5 38 E	30	
15 Spruce	14 Corn		
16 Maple	8 5 20 W	12	
17 H Oak	28 5 50 E	20	
18 B. H.	11 5 25 W	19	
19 Round	7 5 54 E	17	
20 Round	17 Corn		
21 Round	10 5 50 E	18	
22 Round	7 5 50 E	6	
23 Do	16 5 9 E	15	
24 Round	20 5 50 E	17	
25 Spruce	12 5 50 W	21	
26 B. H.	13 5 52 E	10	
27 H Oak	16 5 70 E	20	
28 Round	10 5 37 E	6	
29 Round	7 Corn		
30 Round	36 Corn		
31 Elm	20 5 70 W	27	
32 H Oak	11 5 30 W	18	
33 Round	16 5 16 E	5	
34 Spruce	5 5 19 W	22	
35 Hickory	8 Corn		
36 H Oak	13 Corn		
37 Round	12 5 57 E	3	
38 Sapropel	10 5 42 E	13	
39 Round	8 Corn		
40 H Oak	8 5 50 W	8	
41 Do	30 5 50 W	12	
42 H Oak	36 Spruce		
43 B. H.	6 Corn		
44 B. H.	36 Spruce		
45 B. H.	4 Corn		
46 H Oak	30 5 60 W	16	
47 Do	30 5 15 W	36	
48 Spruce	5 Corn		
49 H Oak	20 5 60 W	41	
50 Spruce	8 5 60 W	30	
51 Round	8 5 20 W	11	
52 Round	11 Corn		
53 Round	17 5 30 E	17	
54 Round	30 5 15 E	30	
55 Round	9 Corn		
56 Round	26 5 5 E	31	
57 Round	14 Corn		
58 Round	15 Corn		
59 Round	10 5 20 W	20	
60 Round	8 5 10 E	21	
61 Elm	8 Corn		
62 Round	16 5 50 E	40	
63 Do	18 5 20 E	38	
64 Round	20 5 16 E	20	
65 B. H.	8 5 80 W	14	
66 Round	24 5 10 E	6	
67 Round	19 5 20 E	5	
68 Round	11 Corn		
69 Round	8 Corn		
70 Round	10 5 15 W	31	
71 Round	10 5 52 W	22	
72 Spruce	7 Corn		
73 Round	8 5 30 W	30	
74 B Oak	22 5 40 E	22	
75 H Oak	30 5 30 W	23	
76 Elm	32 5 40 W	25	
77 Spruce	10 5 15 E	7	
78 Round	8 Corn		

210 1510



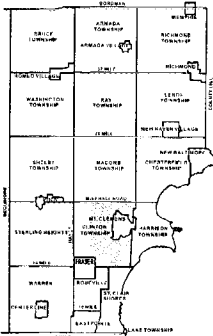
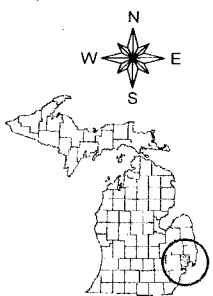


Date of Photography: Spring 2008
 100 50 0 100 200 Feet
 1:1,200

CLINTON TWP SHEET INDEX

DESCRIPTION OF PERMANENT REAL ESTATE INDEX NUMBER
13-19-302-018
 AREA NUMBER: 13
 SUB AREA NUMBER: 19
 BLOCK NUMBER: 302
 PARCEL NUMBER: 018

11-04C
 CLINTON TWP.
 W. 1/2 N.E. 1/4 SEC. 4 T. 2N. R. 13E.



SECTION	1	2	3	4	5	6	7	8	9	10	11	12
1	13-19-302-018	13-19-302-019	13-19-302-020	13-19-302-021	13-19-302-022	13-19-302-023	13-19-302-024	13-19-302-025	13-19-302-026	13-19-302-027	13-19-302-028	13-19-302-029
2	13-19-302-030	13-19-302-031	13-19-302-032	13-19-302-033	13-19-302-034	13-19-302-035	13-19-302-036	13-19-302-037	13-19-302-038	13-19-302-039	13-19-302-040	13-19-302-041
3	13-19-302-042	13-19-302-043	13-19-302-044	13-19-302-045	13-19-302-046	13-19-302-047	13-19-302-048	13-19-302-049	13-19-302-050	13-19-302-051	13-19-302-052	13-19-302-053
4	13-19-302-054	13-19-302-055	13-19-302-056	13-19-302-057	13-19-302-058	13-19-302-059	13-19-302-060	13-19-302-061	13-19-302-062	13-19-302-063	13-19-302-064	13-19-302-065
5	13-19-302-066	13-19-302-067	13-19-302-068	13-19-302-069	13-19-302-070	13-19-302-071	13-19-302-072	13-19-302-073	13-19-302-074	13-19-302-075	13-19-302-076	13-19-302-077
6	13-19-302-078	13-19-302-079	13-19-302-080	13-19-302-081	13-19-302-082	13-19-302-083	13-19-302-084	13-19-302-085	13-19-302-086	13-19-302-087	13-19-302-088	13-19-302-089
7	13-19-302-090	13-19-302-091	13-19-302-092	13-19-302-093	13-19-302-094	13-19-302-095	13-19-302-096	13-19-302-097	13-19-302-098	13-19-302-099	13-19-302-100	13-19-302-101
8	13-19-302-102	13-19-302-103	13-19-302-104	13-19-302-105	13-19-302-106	13-19-302-107	13-19-302-108	13-19-302-109	13-19-302-110	13-19-302-111	13-19-302-112	13-19-302-113
9	13-19-302-114	13-19-302-115	13-19-302-116	13-19-302-117	13-19-302-118	13-19-302-119	13-19-302-120	13-19-302-121	13-19-302-122	13-19-302-123	13-19-302-124	13-19-302-125
10	13-19-302-126	13-19-302-127	13-19-302-128	13-19-302-129	13-19-302-130	13-19-302-131	13-19-302-132	13-19-302-133	13-19-302-134	13-19-302-135	13-19-302-136	13-19-302-137
11	13-19-302-138	13-19-302-139	13-19-302-140	13-19-302-141	13-19-302-142	13-19-302-143	13-19-302-144	13-19-302-145	13-19-302-146	13-19-302-147	13-19-302-148	13-19-302-149
12	13-19-302-150	13-19-302-151	13-19-302-152	13-19-302-153	13-19-302-154	13-19-302-155	13-19-302-156	13-19-302-157	13-19-302-158	13-19-302-159	13-19-302-160	13-19-302-161

Legend

- Platted Area Boundary Line
- Property Line
- Property Split Line
- Property Combined Line
- Township Boundary Line
- Traverse Line
- Dimension Extent Marks
- Dimension Start Marks

Source: Macomb County Department of Planning and Economic Development
 - 2008 Digital Orthophotography Project
 - Parcel Conversion Project

Note: Digital Orthophotography horizontal positioning accuracy is 3 feet. Parcel boundary lines should be considered a graphical representation and not in any way a legal survey or engineering document. In general, the horizontal positioning and length accuracy is within 15 feet.

This map is intended for general planning purposes. Site specific evaluation should be verified by field inspection. This is a work in progress and may contain errors and omissions. Please report any potential revisions to (586)469-5265.

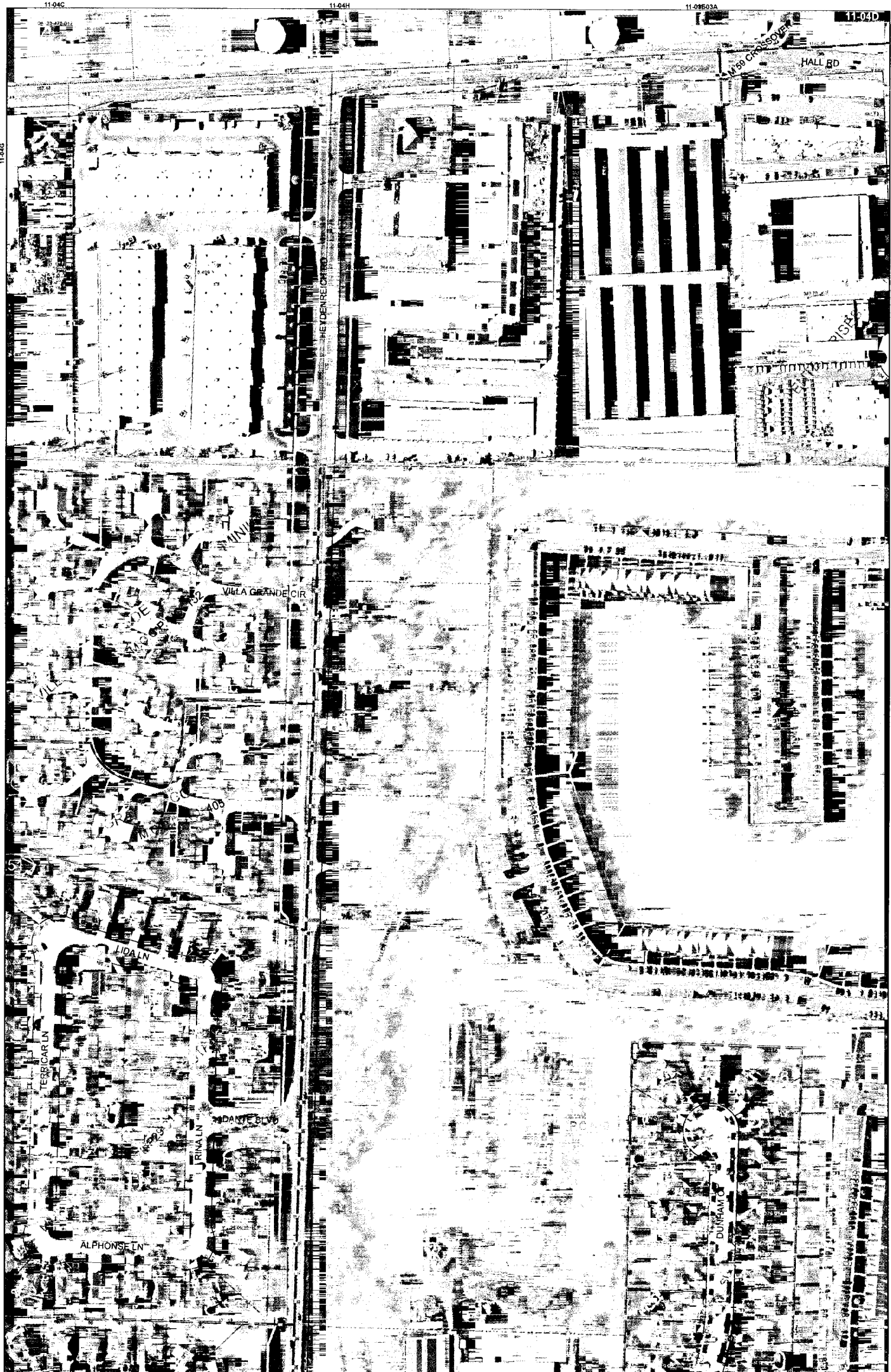
COPYRIGHT 2009
 MACOMB COUNTY MI
 All Rights Reserved



MACOMB COUNTY
 Planning and Economic
 Development Department

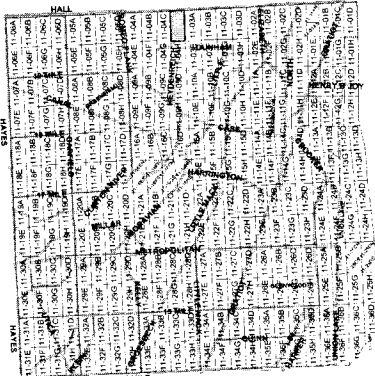
14

Published: Jan 28, 2009



Date of Photography: Spring 2008
 100 50 0 100 200 Feet
 1:1,200

CLINTON TWP SHEET INDEX



DESCRIPTION OF PERMANENT REAL ESTATE INDEX NUMBER
13-19-302-018

AREA NUMBER	SUB AREA NUMBER	BLOCK NUMBER	PARCEL NUMBER
13	19	302	018

- Legend**
- Platted Area Boundary Line
 - Property Line
 - Property Split Line
 - Property Combined Line
 - Township Boundary Line
 - Traverse Line
 - Dimension Extent Marks
 - Dimension Start Marks

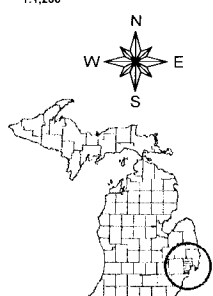
11-04D

CLINTON TWP.
 E 1/2 N.E. 1/4 SEC. 4 T. 2N. R. 13E.

Source: Macomb County Department of Planning and Economic Development
 - 2008 Digital Orthophotography Project
 - Parcel Conversion Project

Note:
 Digital Orthophotography horizontal positioning accuracy is 3 feet. Parcel boundary lines should be considered a graphical representation and not in any way a legal survey or engineering document. In general the horizontal positioning and length accuracy is within 15 feet.

This map is intended for general planning purposes. Site specific evaluation should be verified by field inspection. This is a work in progress and may contain errors and omissions. Please report any potential revisions to (586)469-5285.



COPYRIGHT 2009
 MACOMB COUNTY, MI
 All Rights Reserved



GIS MACOMB COUNTY
 Planning and Economic
 Development Department

North Side of River Huron

1802, North side of River Huron

Description No. 610 Confirmed to John Connor commencing at a post standing on the west border of the North Branch of River Huron between this tract and a tract Confirmed to Henry Connor, thence west seventy four chains forty one links, to a post the north west corner of said tract confirmed to Henry Connor, thence north eighty nine chains sixteen links, to a post the boundary between this tract and unceded land. Thence East Sixty Eight chains eighty seven links, to a post the boundary between this tract & unceded land, thence north fifty four chains twenty eight links, to a Butter wood tree standing on the west border of the North branch of River Huron - between this tract and a tract Confirmed to James Connor, thence along the border of said branch down stream south eighty four degrees west two chains, thence south fifty four degrees East eleven chains, thence south twenty seven degrees ^{with} eleven chains, thence south twenty eight degrees west six chains, thence south seventy nine degrees west twelve chains, thence south fifty nine degrees East twelve chains fifty links, thence south thirty degrees west five chains, to the place of beginning containing six hundred and forty acres.

Detroit July 18. 1810

Aaron Greeley Surveyor
of Private Claims.

No. 502

No. 610 Confirmed to
John Connor

NORTH BRANCH OF RIVER HURON

Description No. 610 Confirmed to John Connor commencing at a post standing on the west border of the north branch of River Huron between this tract and a tract confirmed to Henry Connor thence west seventy four chains forty one links to a post the northwest corner of said tract confirmed to Henry Connor thence north eighty nine chains nineteen links to a post the boundary between this tract & unceded land thence east sixty eight chains eighty seven links to a post the boundary between this tract and unceded land thence south fifty four chains twenty eight links to a buttonwood tree standing on the west border of the north branch of River Huron between this tract and a tract confirmed to James Connor thence along the border of said branch down stream south eighty four degrees west two chains thence south fifty four degrees east eleven chains thence south twenty seven degrees east eleven chains then south twenty eight degrees west six chains, then south seventy nine degrees west twelve chains, then south fifty nine degrees east twelve chains fifty links thence south thirty degrees west five chains to the place of beginning, containing six hundred and forty acres.

Detroit July 18, 1810

Aaron Creeley Surveyor
of private claims

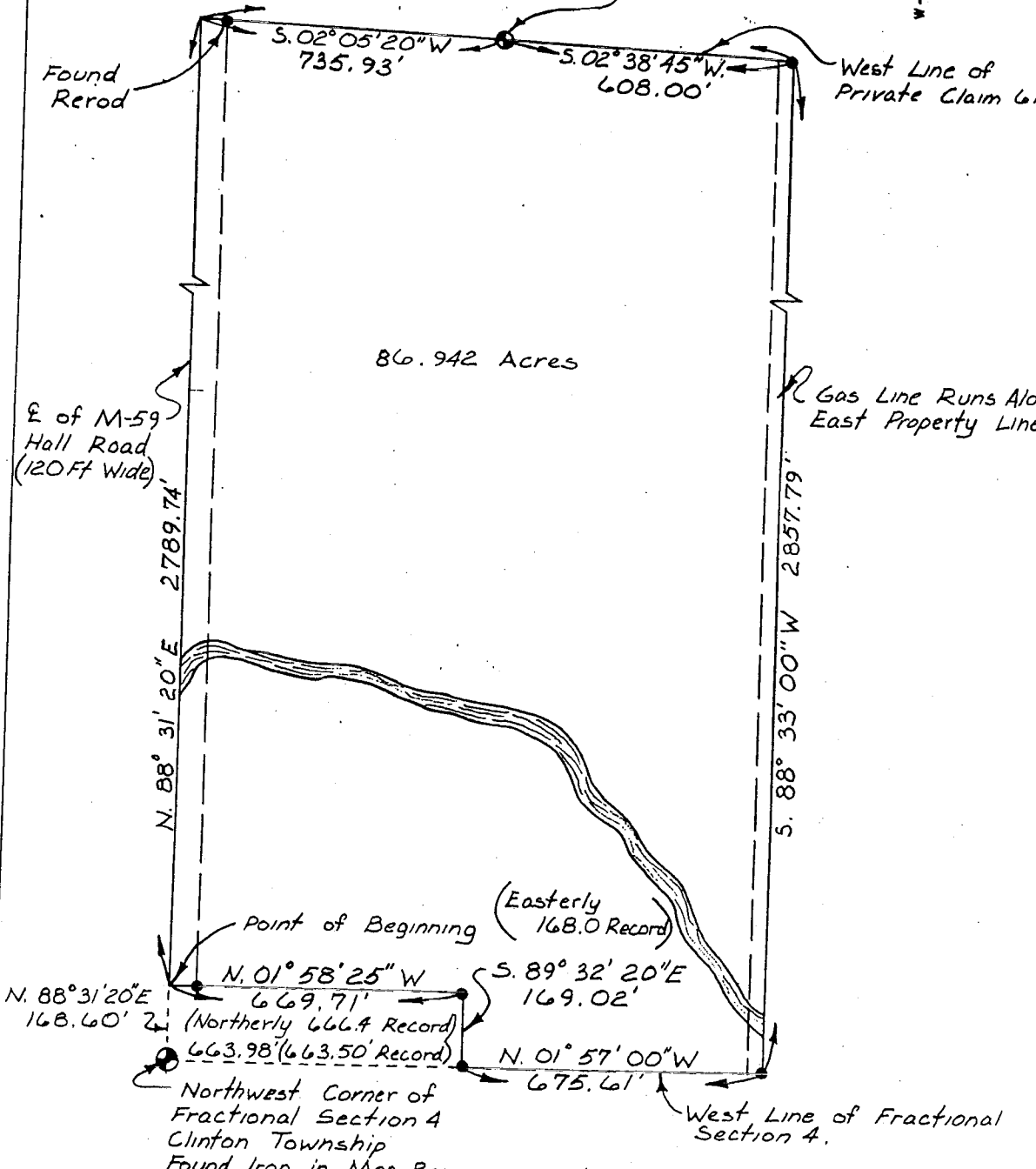
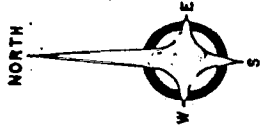
ANDERSON, ECKSTEIN & WESTRICK, INC.
42800 GARFIELD ROAD
MT. CLEMENS, MICH. 48044

Certificate of Survey

Part of North Half Fractional Section 4,
T. 2N, R. 13E Clinton Township
Macomb County, Michigan
Northwest Corner Private
Claim 610, Clinton Township
Found 1/2" Rerod

PHONE NUMBER
(313) 286-1234

" INDICATES
" SET IRON"



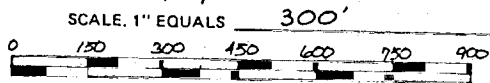
Sheet 1 of 2

A.E.W. # 18028

CERTIFIED TO JOHN BOLL
ADDRESS 22525 HALL ROAD
CITY & STATE Mt. CLEMENS, MICHIGAN
DATE DRAWN 10/2/78

I hereby certify that I have surveyed and mapped the land above and/or described on JULY 19 78 and that the ratio of closure on the unadjusted field observations of such survey was 1/ 26200 and that all of the requirements of Public Act 132, of 1970 have been complied with.

Bearings shown on this survey were determined as follows.
SOLAR OBSERVATION



WILLIAM E. SODERBERG #17635 REGISTERED LAND SURVEYOR

No-12

Drawn By: JAS.

AEW NO. 18028-1
OCTOBER 2, 1978

PART OF THE NORTH HALF OF FRACTIONAL SECTION 4, TOWN 2 NORTH,
RANGE 13 EAST, CLINTON TOWNSHIP, MACOMB COUNTY, MICHIGAN AND
BEING MORE PARTICULARLY DESCRIBED AS:

BEGINNING AT A POINT ON THE CENTERLINE OF HALL ROAD (M-59
120.00 FEET WIDE) N. 88° 31' 20" E. 168.60 FEET FROM THE
NORTHWEST CORNER OF FRACTIONAL SECTION 4; THENCE CONTINUING
ALONG THE CENTERLINE OF SAID HALL ROAD, N. 88° 31' 20" E.
2789.74 FEET; THENCE S. 02° 05' 20" W. 735.93 FEET TO THE
NORTHWEST CORNER OF PRIVATE CLAIM 610; THENCE S. 02° 38' 45" W.
608.00 FEET ALONG THE WEST LINE OF PRIVATE CLAIM 610; THENCE
S. 88° 33' 00" W. 2857.79 FEET TO THE WEST LINE OF FRACTIONAL
SECTION 4; THENCE N. 01° 57' 00" W. 675.61 FEET ALONG THE
WEST LINE OF FRACTIONAL SECTION 4; THENCE S. 89° 32' 20"
169.02 FEET (EASTERLY 168.00 FEET RECORD); THENCE N. 01° 58' 25" W.
669.71 FEET (NORTHERLY 666.4 FEET RECORD) TO THE POINT OF
BEGINNING AND CONTAINING 86.942 ACRES.

SUBJECT TO ANY AND ALL EASEMENTS AND RIGHT-OF-WAYS OF RECORD.

ANDERSON, ECKSTEIN & WESTRICK, INC.

WILLIAM E. SODERBERG, R.L.S. #17635
42800 GARFIELD ROAD
MOUNT CLEMENS, MICHIGAN 48044
(313) 286-1234
GM

ANDERSON, ECKSTEIN & WESTRICK, INC.
42800 GARFIELD ROAD
MT. CLEMENS, MICH. 48044

Certificate of Survey

PHONE NUMBER
(313) 286-1234

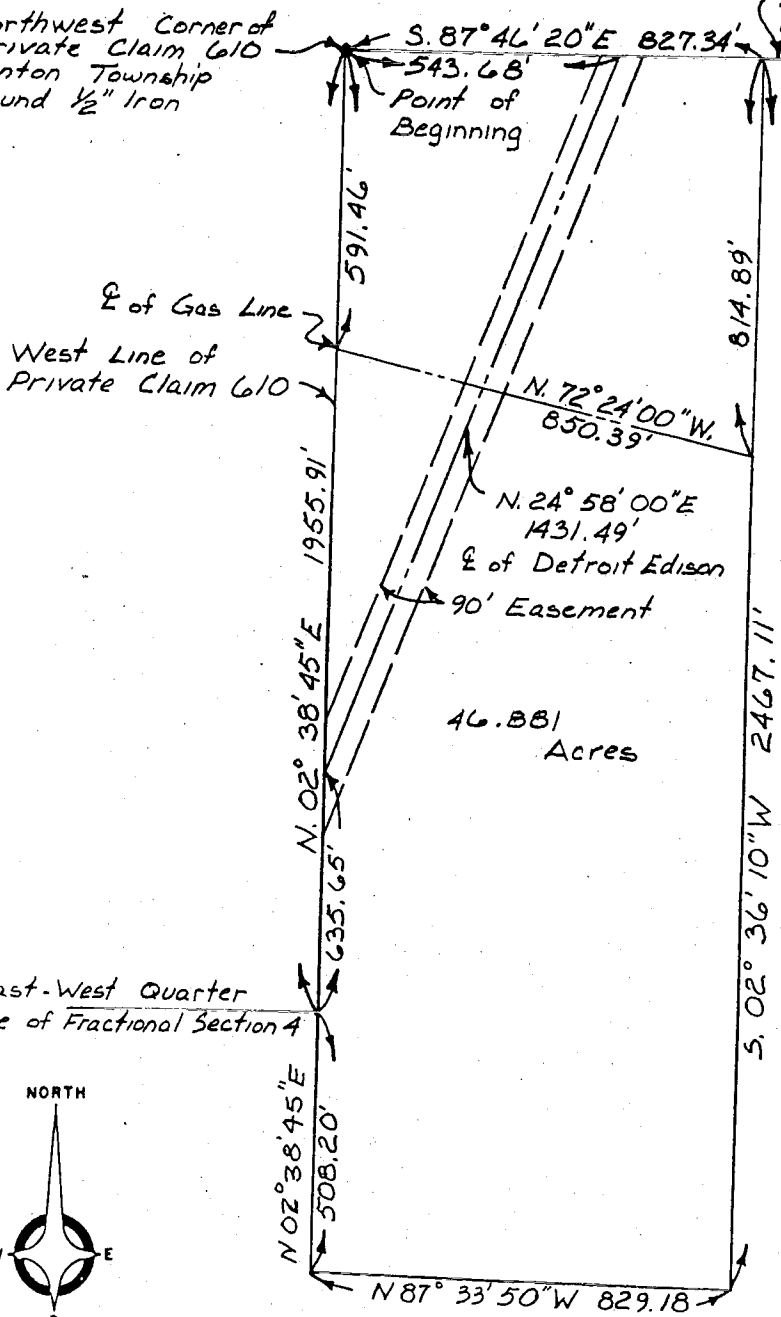
Part of Private Claim 610, T.2N. R.13E,
Clinton Township, Macomb County,
Michigan.

"•" INDICATES
"SET IRON"

Northwest Corner of
Private Claim 610
Clinton Township
Found 1/2" Iron

North Line of Private
Claim 610

Northeast
Corner of Priv
Claim 610, Fou
Iron



East-West Quarter
Line of Fractional Section 4



Sheet 1 of 2

AEW #18028

CERTIFIED TO **JOHN BOLL**
 ADDRESS **22525 HALL ROAD**
 CITY & STATE **MT. CLEMENS, MICHIGAN**
 DATE DRAWN **10/2/78**

SCALE: 1" EQUALS **100'**
 0 50 100 150 200 250 300

I hereby certify that I have surveyed and mapped the land
 above and/or described on JULY 19 78
 and that the ratio of closure on the unadjusted field observations
 of such survey was 1/26200 and that all of the re-
 quirements of Public Act 132, of 1970 have been complied with.

Bearings shown on this survey were determined as follows.
SOLAR OBSERVATION

WILLIAM E. SODERBERG #17635 REGISTERED LAND SURVEYOR

110-D

Drawn By JAS

Certificate of Survey

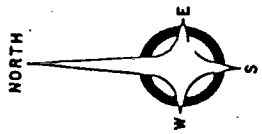
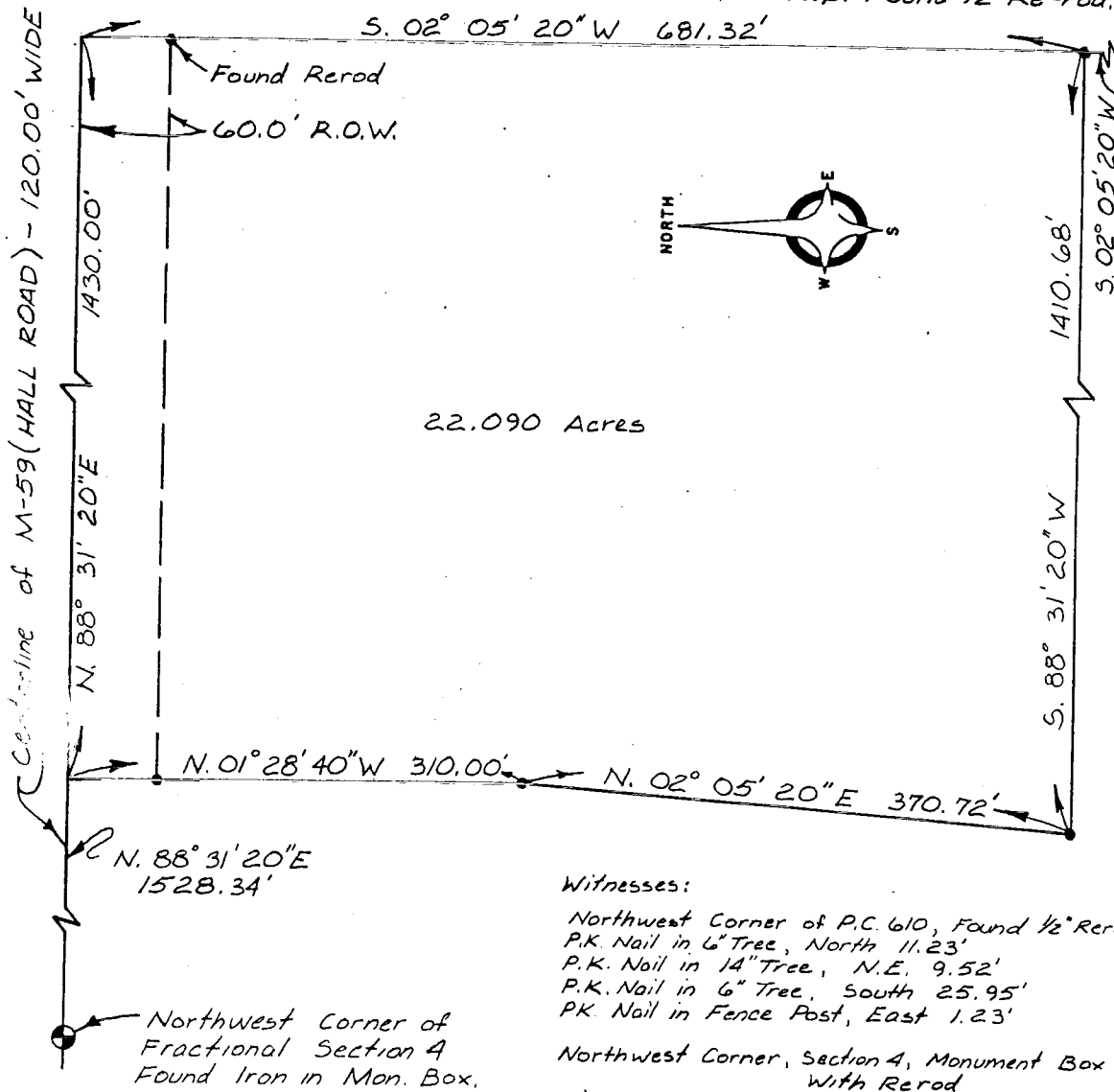
ANDERSON, ECKSTEIN & WESTRICK, INC.
42800 GARFIELD ROAD
MT. CLEMENS, MICH. 48044

PHONE NUMBER
(313) 286-1234

Part of the North Half of
Fractional Section 4, T2N, R13E
Clinton Township, Macomb County Michigan

• - INDICATES
"Set Iron"

Northwest Corner of
Private Claim 610, Clinton
Twp. Found 1/2" Re-rod.

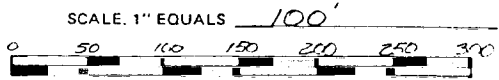


Witnesses:
 Northwest Corner of P.C. 610, Found 1/2" Re-rod
 P.K. Nail in 6" Tree, North 11.23'
 P.K. Nail in 14" Tree, N.E. 9.52'
 P.K. Nail in 6" Tree, South 25.95'
 P.K. Nail in Fence Post, East 1.23'
 Northwest Corner, Section 4, Monument Box
 With Re-rod
 Sign, N.E. 30.35'
 P.K. Nail in D.E. Pole, North 58.74'
 P.K. Nail in D.E. Pole, S.W. 63.56'
 P.K. Nail in 12" Tree, S.E. 88.04'

Sheet 1 of 2

AEW # 18028

CERTIFIED TO JOHN BOLL
 ADDRESS 22525 HALL ROAD
 CITY & STATE MT. CLEMENS, MICHIGAN
 DATE DRAWN 10/3/78



I hereby certify that I have surveyed and mapped the land above and/or described on JULY 19 78 and that the ratio of closure on the unadjusted field observations of such survey was 1/26200 and that all of the requirements of Public Act 132, of 1970 have been complied with.
 Bearings shown on this survey were determined as follows.
SOLAR OBSERVATION

WILLIAM E. SODERBERG #17635 REGISTERED LAND SURVEYOR

NO-P

Drawn By JAS.

2



CERTIFICATE of SURVEY

184 659

1624155

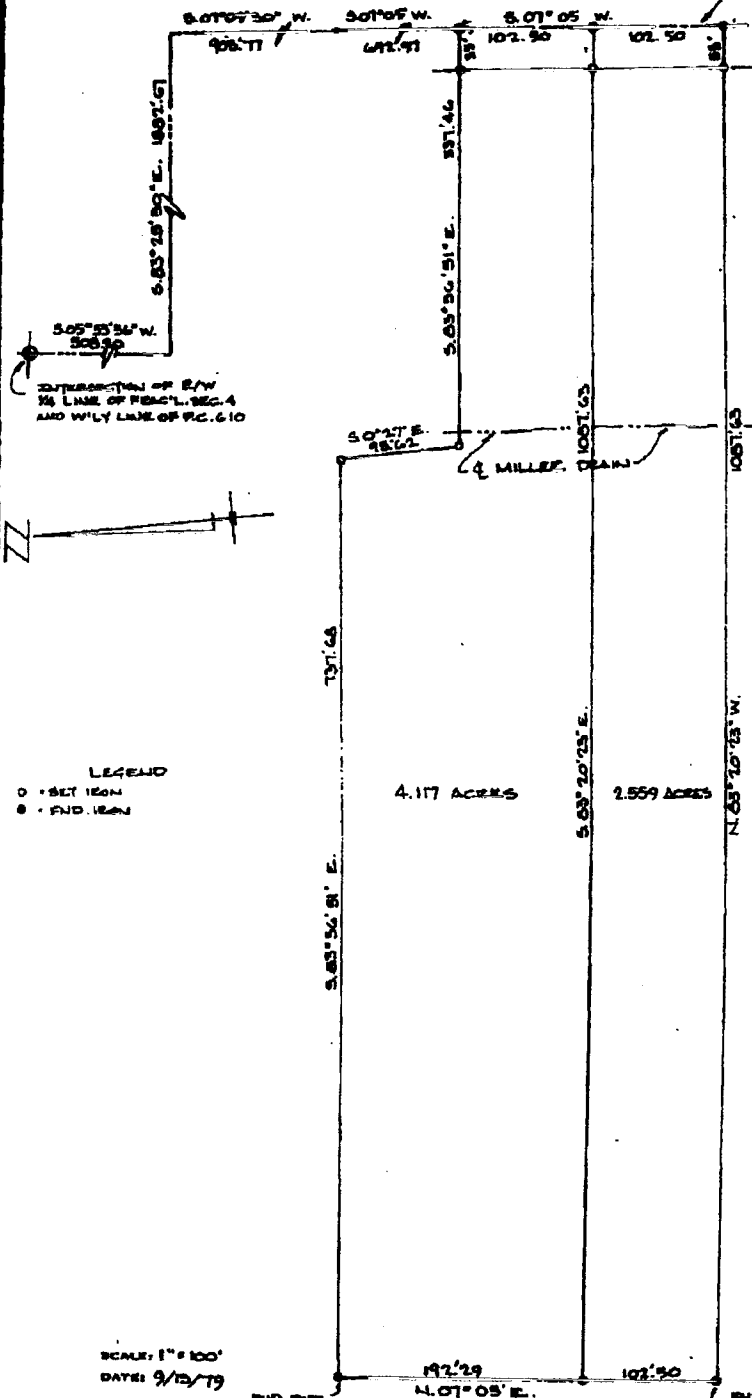
E HEYDENREICH E.D.

RECORDED IN MACOMB COUNTY
RECORDS AT: 8:30 A.M.
NOV 26 1979

Edna White
CLERK - REGISTER OF DEEDS
MACOMB COUNTY, MICHIGAN

I, GEORGE J. AVENDT JR., a Registered Surveyor in the State of Michigan, hereby certify that I have surveyed the parcel (s) of land described and delineated hereon that said plat is a true representation of the survey as performed by me, and that there are no encroachments other than as shown hereon; that said survey was performed with an error of closure no greater than 1 in 5000; and that I have fully complied with the requirements of Section 13, Act #132, P.A. 1970.

George J. Avendt Jr.



SCALE: 1" = 100'
DATE: 9/12/79

FWD. PIPE
SET 18004

FWD. PIPE
SET 18005

Return to: → LEHNER ASSOCIATES, INCORPORATED
ENGINEERS & SURVEYORS
2300 WELLINGTON CRESCENT
MT. CLEMENS MICHIGAN
(313) 463-4594

79-612 CRITICAL REAL ESTATE
SHEET 1 OF 2 SHEETS

580

3184 ()

Description of 4.117 Acres

A parcel of land located in and being a part of P.C. 610, T. 2 N., R. 13 E., Clinton Township, Macomb County, Michigan, and being more particularly described as follows:

Commencing at a point 508.20 ft. S. 05°-53'-36" W., 1882.67 ft. S. 83°-25'-30" E., 905.77 ft. S. 07°-09'-30" W. and 692.97 ft. S. 07°-05' W. from the intersection of the East/West 1/4 line of Fractional Section 4 and the Westerly line of P.C. 610, and thence extending S. 07°-05' W. 102.50 ft. along the centerline of Heydenreich Road, thence N. 83°-20'-23" W. 1087.63 ft., thence N. 07°-05' W. 192.29 ft., thence S. 83°-36'-51" E. 737.68 ft., thence S. 00°-27' E. 95.62 ft., thence S. 83°-36'-51" E. 337.46 ft. to the point of beginning and containing 4.117 acres of land.

Reserving easements of record.

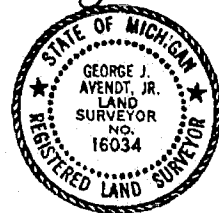
Description of 2.559 Acres

A parcel of land located in and being a part of P.C. 610, T. 2 N., R. 13 E., Clinton Township, Macomb County, Michigan, and being more particularly described as follows:

Commencing at a point 508.20 ft. S. 05°-53'-36" W. 1882.67 ft. S. 83°-25'-30" E., 905.77 ft. S. 07°-09'-30" W. and 795.47 ft. S. 07°-05' W. from the intersection of the East/West 1/4 line of Fractional Section 4 and the Westerly line of P.C. 610, and thence extending S. 07°-05' W. 102.50 ft. along the centerline of Heydenreich Road, thence N. 83°-20'-23" W. 1087.63 ft., thence N. 07°-05' W. 102.50 ft., thence S. 83°-20'-23" E. 1087.63 ft. to the point of beginning and containing 2.559 acres of land.

Reserving easements of record.

George J. Avendt Jr.



DATE: 9/8/79

LEWIS & CLARK ENGINEERS & ARCHITECTS
1000 W. LANSING
ANN ARBOR, MICHIGAN
(313) 463-4594

16

3213

LIBER 321, PAGE 411

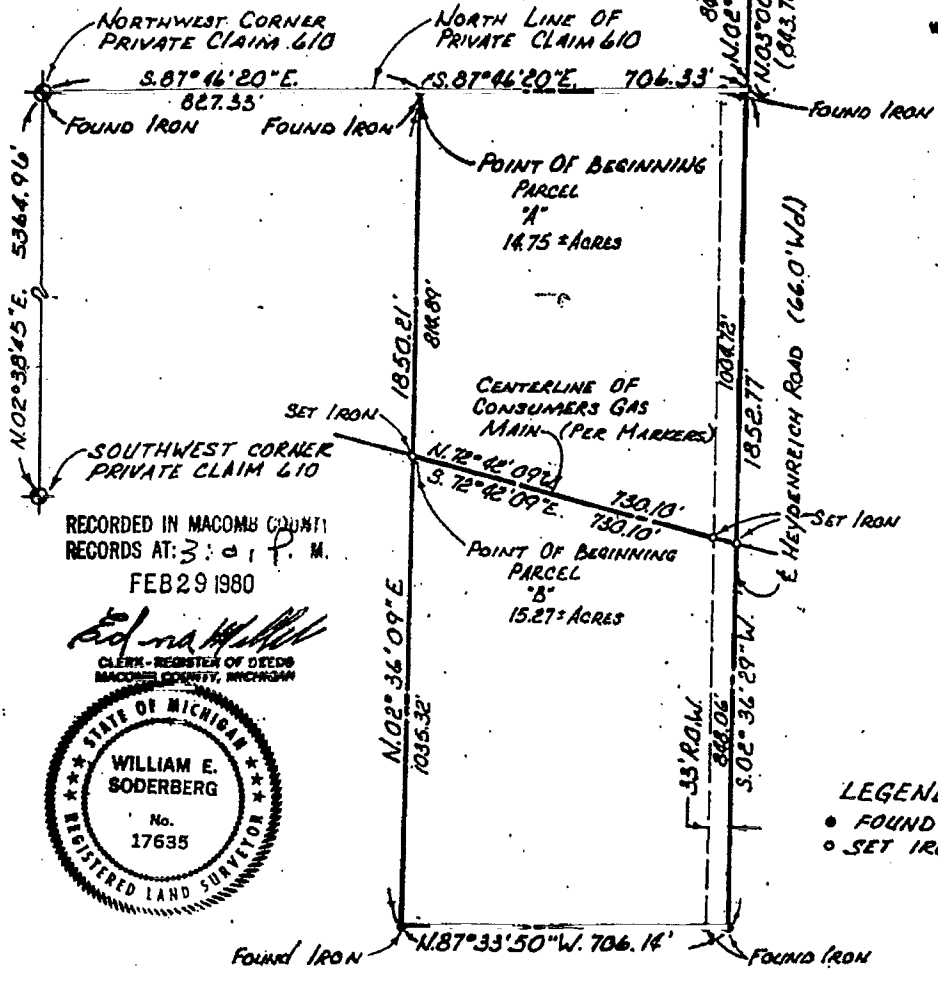
Certificate of Survey A639393

ANDERSON, ECKSTEIN & WESTRICK, INC.
42999 GARFIELD ROAD
MT. CLEMENS, MICH. 48844

PHONE NUMBER
(313) 299-1234

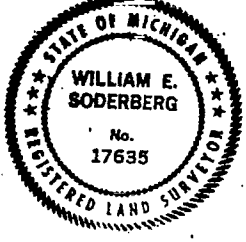
E HALL ROAD

NORTH



RECORDED IN MACOMB COUNTY
RECORDS AT: 3:01 P. M.
FEB 29 1980

Edna Hill
CLERK - REGISTER OF DEEDS
MACOMB COUNTY, MICHIGAN



LEGEND
● FOUND IRON
○ SET IRON

FOR DESCRIPTION SEE ATTACHED SHEET

PART OF PRIVATE CLAIM 610, TOWN 2 NORTH,
RANGE 13 EAST, CLINTON TOWNSHIP, MACOMB CO. MI

CERTIFIED TO *ALDO MARROCCO*
 ADDRESS *36358 GARFIELD - SUITE 10*
 CITY & STATE *FRASER MICHIGAN 48026*
 TOWNSHIP *CLINTON*
 SECTION *PRIVATE CLAIM 610*
 COUNTY *MACOMB*

SCALE 1" EQUALS *300*
 300 150 0 150 300 450 600

AEW NO. 20005 DRAWN BY: *PAK*

I hereby certify that I have surveyed and mapped the land above and/or described on FEBRUARY 15, 1980, and that the ratio of closure on the unadjusted field observations of such survey was 1/83,700 and that all of the requirements of Public Act 132, of 1970 have been complied with.

Bearings shown on this survey were determined as follows:
SOLAR OBSERVATION

William E. Soderberg
 WILLIAM E. SODERBERG #17635 REGISTERED LAND SURVEYOR

Certificate of Survey

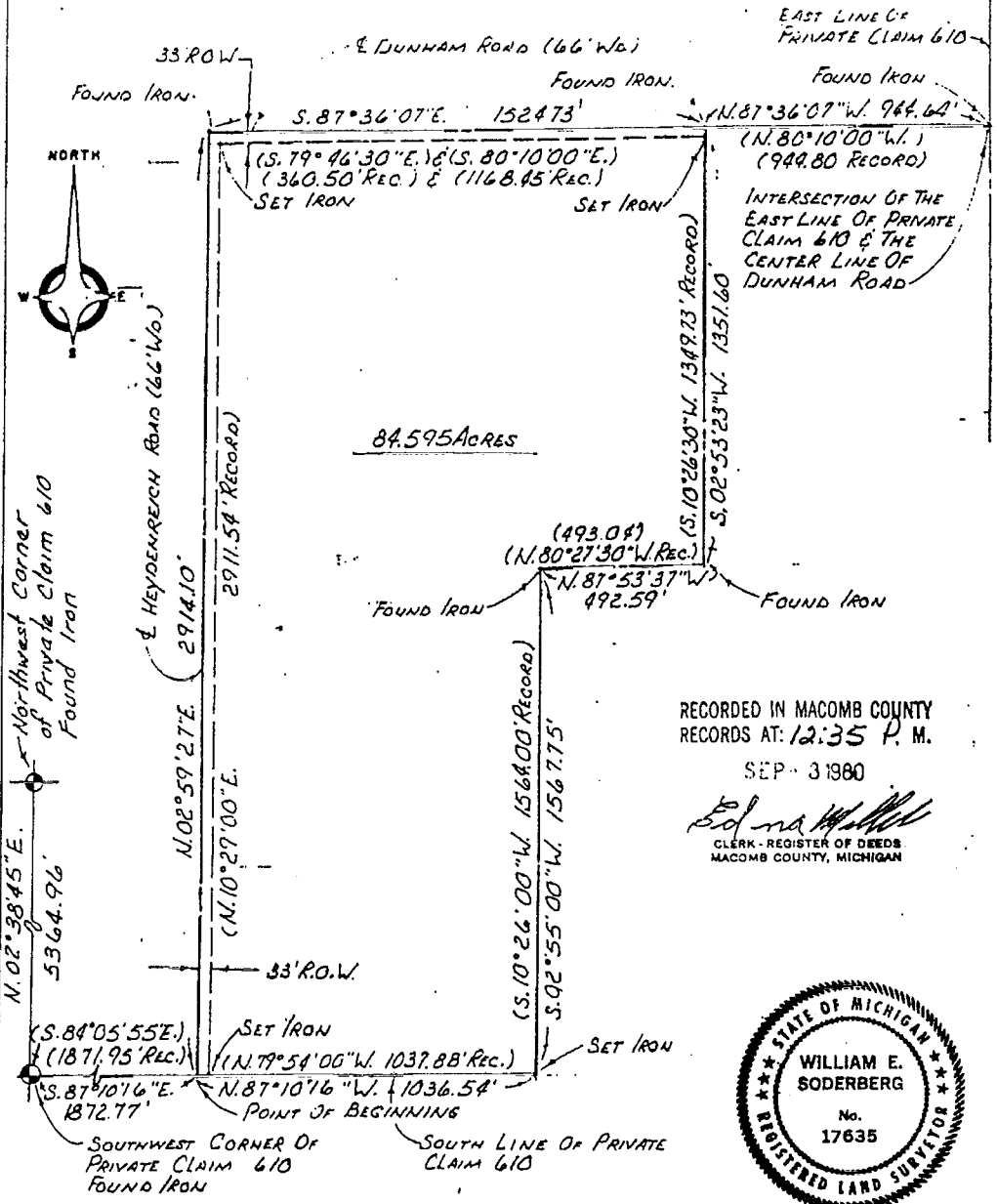
LIBER 3263

PAGE 906

PHONE NUMBER (313) 286-1234

ANDERSON, ECKSTEIN & WESTRICK, INC.
42800 GARFIELD ROAD
MT. CLEMENS, MICH. 48044

A666641

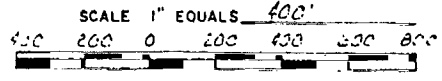


Sheet 1 of 2

Revised 1-16-80

CERTIFIED TO ALDO MARROCCO
ADDRESS 36358 GARFIELD - SUITE 10
CITY & STATE FRASER, MICHIGAN, 48026
TOWNSHIP CLINTON
SECTION PRIVATE CLAIM 613
COUNTY MACOMB

AEW NO. 19212 DRAWN BY: P.A.A.
I hereby certify that I have surveyed and mapped the land
above and/or described on OCTOBER 7 19 79
and that the ratio of closure on the unadjusted field observations
of such survey was 1/83,700 and that all of the re-
quirements of Public Act 132, of 1970 have been complied with.
Bearings shown on this survey were determined as follows:
SOLAR OBSERVATION



William E. Soderberg
WILLIAM E. SODERBERG #17635 REGISTERED LAND SURVEYOR

588

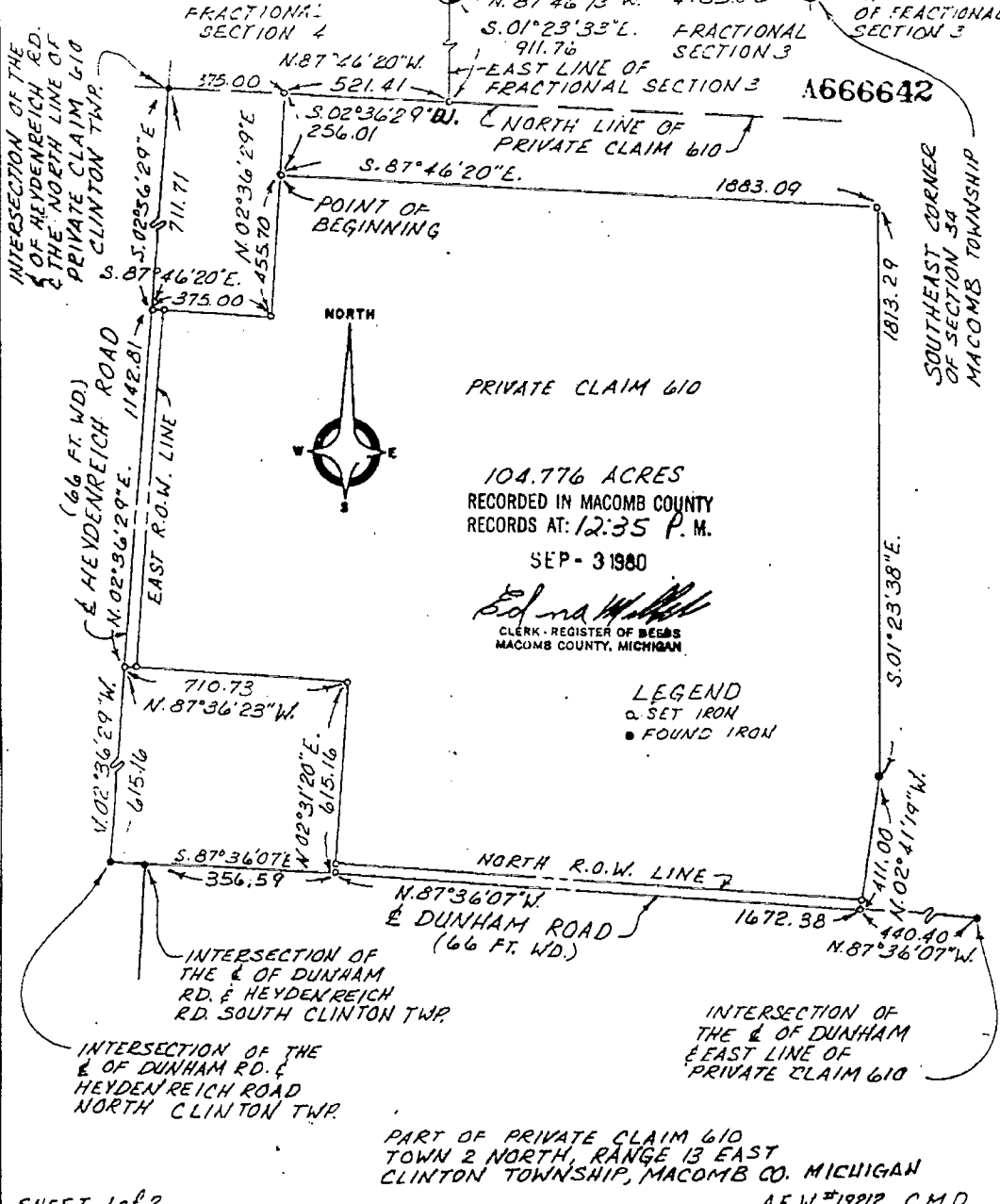
8

Certificate of Survey

ANDERSON, ECKSTEIN & WESTRICK, INC.
42800 GARFIELD ROAD
MT. CLEMENS, MICH. 48044

HALL ROAD

PHONE NUMBER
(313) 286-1234



104.776 ACRES
RECORDED IN MACOMB COUNTY
RECORDS AT: 12:35 P. M.
SEP - 3 1980

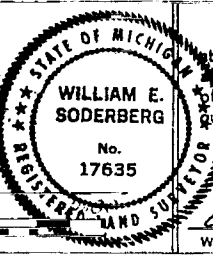
Edna Walker
CLERK - REGISTER OF DEEDS
MACOMB COUNTY, MICHIGAN

LEGEND
○ SET IRON
● FOUND IRON

PART OF PRIVATE CLAIM 610
TOWN 2 NORTH, RANGE 13 EAST
CLINTON TOWNSHIP, MACOMB CO. MICHIGAN
A.E.W. #19212 C.M.D.

SHEET 1 of 2

CERTIFIED TO CHATEAU
ADDRESS 22525 HALL ROAD
CITY & STATE MT. CLEMENS MICHIGAN
DATE DRAWN 1-18-80



I hereby certify that I have surveyed and mapped the land above and/or described on 12-12-1979 and that the ratio of closure on the unadjusted field observations of such survey was 1/32,350 and that all of the requirements of Public Act 132, of 1970 have been complied with. Bearings shown on this survey were determined as follows: SOLAR OBSERVATIONS

William E. Soderberg
WILLIAM E. SODERBERG #17635 REGISTERED LAND SURVEYOR

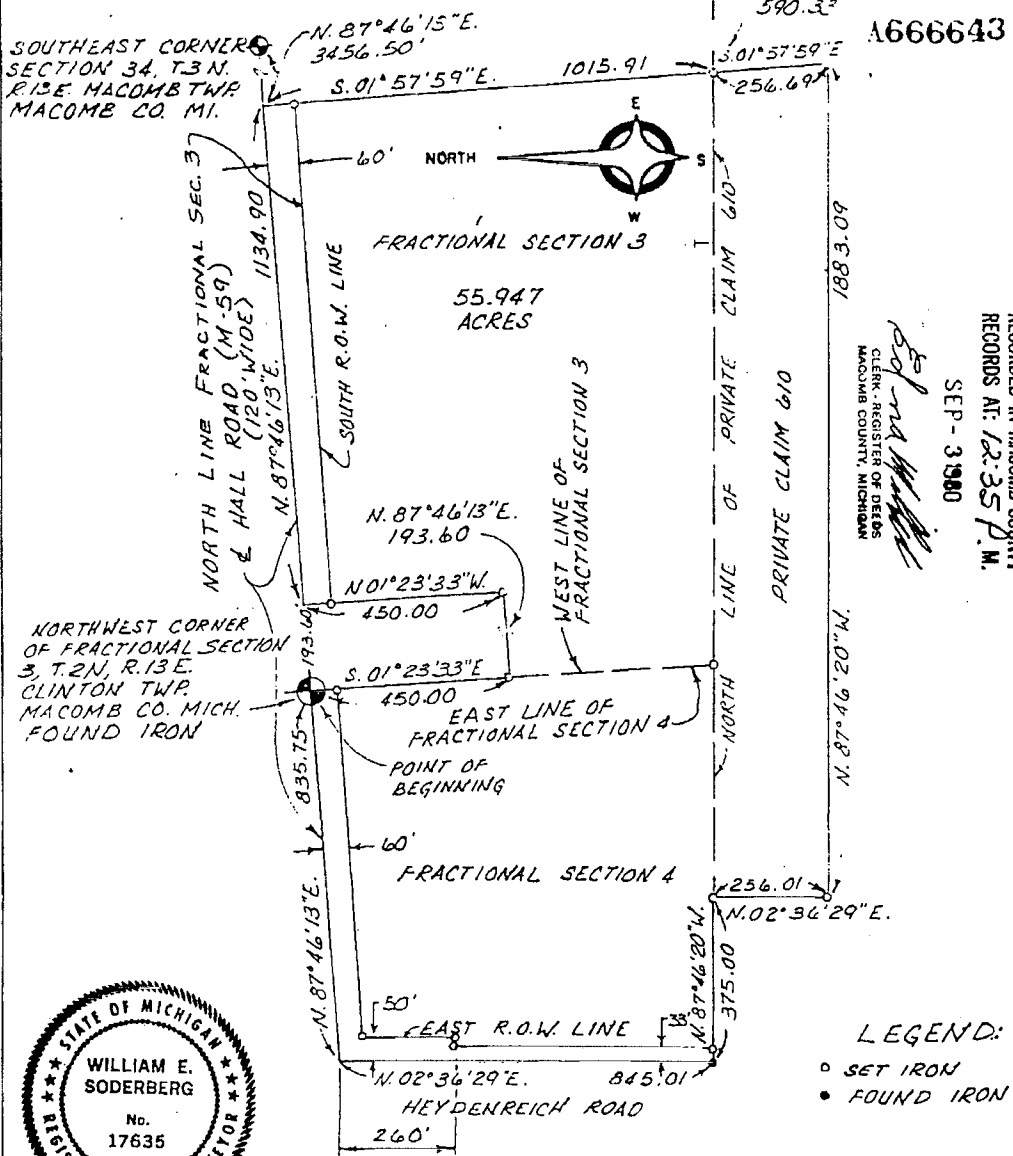
SCALE 1" EQUALS 200'

500

NO-D

Certificate of Survey
 ANDERSON, ECKSTEIN & WESTRICK, INC. PART OF FRACTIONAL SECTIONS
 3 & 4 AND PRIVATE CLAIM 610,
 T. 2 N., R. 13 E. CLINTON TWP.
 MACOMB CO. MICHIGAN

PHONE NUMBER
 (313) 286-1234
 NORTHEAST CORNER
 OF PRIVATE CLAIM
 610, CLINTON TWP.



A666643
 1883.09
 1983.09
 RECORDED IN MACOMB COUNTY
 RECORDS AT: 12:35 P.M.
 SEP - 3 1980
 Clerk - Register of Deeds
 MACOMB COUNTY, MICHIGAN



LEGEND:
 ○ SET IRON
 ● FOUND IRON

DESCRIPTION SEE SHEET NO 2
 SHEET 1 of 2
 C.M.D. A.E.W #19212

CERTIFIED TO CHATEAU
 ADDRESS 22525 HALL ROAD
 CITY & STATE MOUNT CLEMENS MI
 DATE DRAWN 1-18-60
 SCALE 1" EQUALS 300'
 0 150 300 450 600 900

I hereby certify that I have surveyed and mapped the land above and/or described on 12-12-19 79 and that the ratio of closure on the unadjusted field observations of such survey was 1/32,350 and that all of the requirements of Public Act 132, of 1970 have been complied with. Bearings shown on this survey were determined as follows. SOLAR OBSERVATIONS
 William E. Soderberg
 WILLIAM E. SODERBERG #17635 REGISTERED LAND SURVEYOR

500

NO-D



ANDERSON, ECKSTEIN & WESTRICK, INC.
42800 GARFIELD ROAD
MT. CLEMENS, MICH. 48044

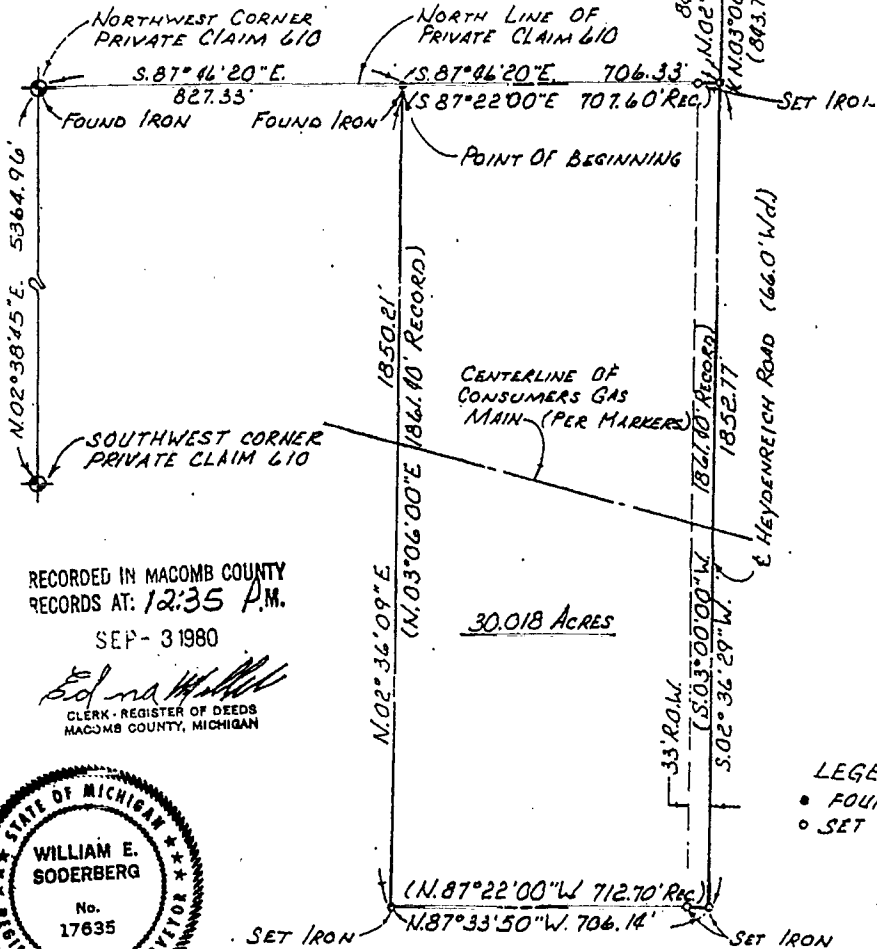
Certificate of Survey

LIBER 3263 PAGE 912

PHONE NUMBER
(313) 286-1234

(E. HALL ROAD

A666644



RECORDED IN MACOMB COUNTY
RECORDS AT: 12:35 P.M.
SEP - 3 1980

Edna W. Soderberg
CLERK - REGISTER OF DEEDS
MACOMB COUNTY, MICHIGAN



LEGEND
● FOUND IRON
○ SET IRON

FOR DESCRIPTION SEE ATTACHED SHEET
PART OF PRIVATE CLAIM 610, TOWN 2 NORTH,
RANGE 13 EAST, CLINTON TOWNSHIP, MACOMB CO. MI

CERTIFIED TO ALDO MARROCCO
ADDRESS 3635B GARFIELD - SUITE 10
CITY & STATE FRASER MICHIGAN 48026
TOWNSHIP CLINTON
SECTION PRIVATE CLAIM 610
COUNTY MACOMB

AEW NO. 19212 DRAWN BY: P.A.A.

I hereby certify that I have surveyed and mapped the land above and/or described on OCTOBER 1 19 79 and that the ratio of closure on the unadjusted field observations of such survey was 1/83.700 and that all of the requirements of Public Act 132, of 1970 have been complied with. Bearings shown on this survey were determined as follows:
SOLAR OBSERVATION

SCALE 1" EQUALS 50.0
300 150 0 150 300 450 600

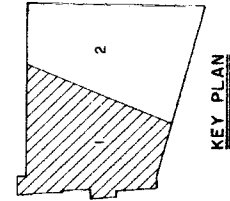
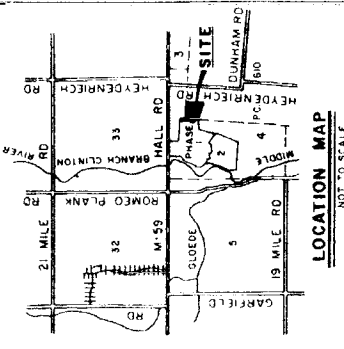
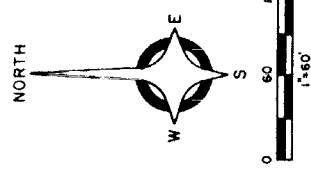
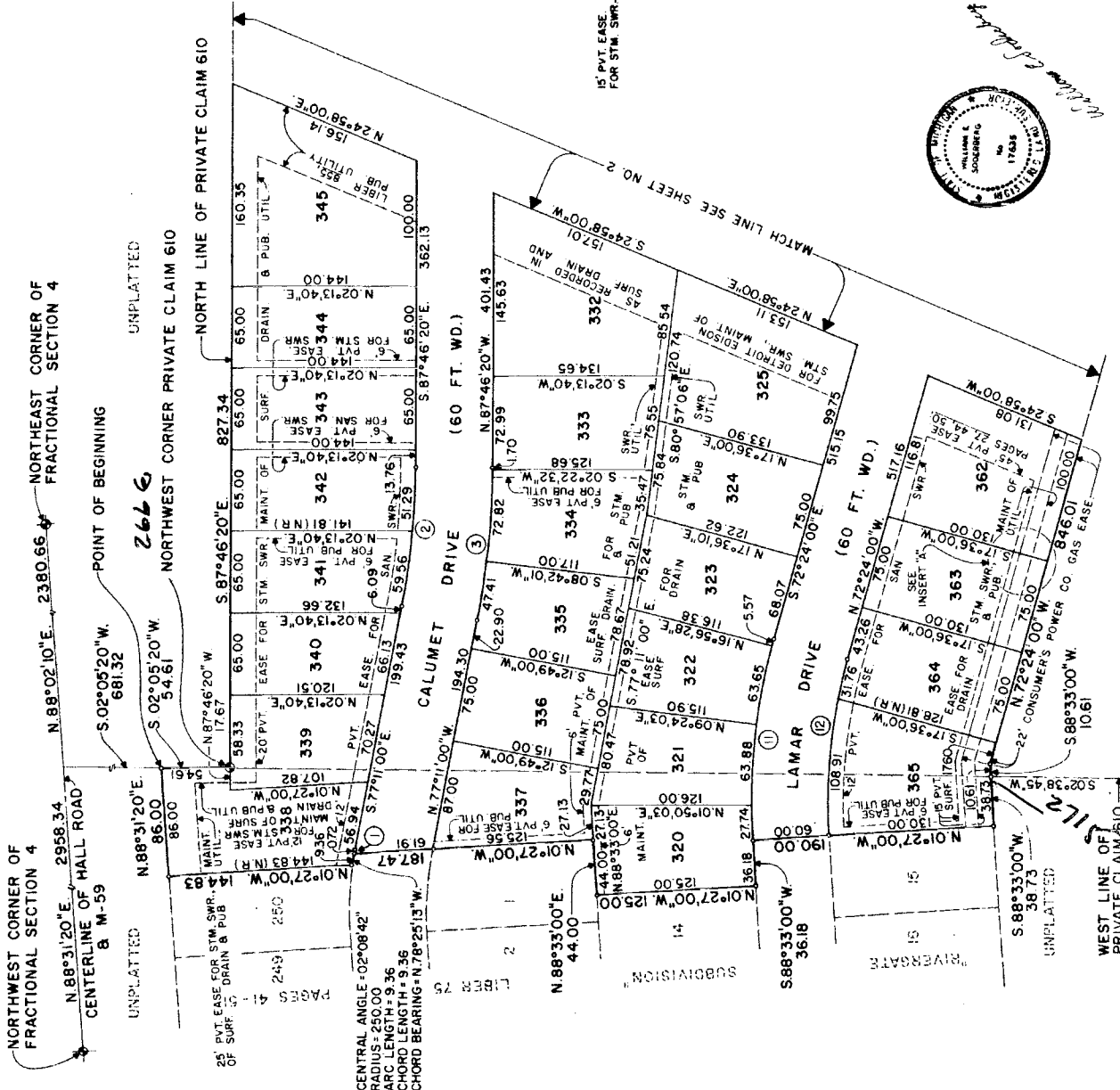
William E. Soderberg
WILLIAM E. SODERBERG #17635 REGISTERED LAND SURVEYOR

588



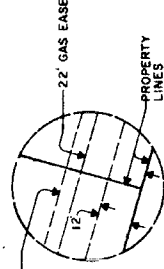
RIVERGATE SUBDIVISION NO. 3

PART OF PRIVATE CLAIM 610 AND PART OF THE NORTH HALF OF FRACTIONAL SECTION 4, TOWN 2 NORTH, RANGE 13 EAST, CLINTON TOWNSHIP, MACOMB COUNTY, MICHIGAN



PLAT LEGEND

ALL DIMENSIONS ARE IN FEET.
 ALL CURVILINEAR DIMENSIONS ARE SHOWN IN CHORD DISTANCES.
 (P.K.) DENOTES NON-RADIAL LINES.
 2' CLEAR ARE INDICATED BY "2"
 ALL LOT CORNERS HAVE BEEN MARKED BY 1/2" REDDS, 18" LONG WITH PLASTIC CAP NO. 17635.



CURVE DATA

NO.	DELTA	RADIUS	ARC	CHORD	BEARING
1	00° 09' 52"	250.00	0.72	S. 77° 15' 56"E.	
2	10° 35' 20"	600.00	110.89	S. 82° 28' 40"E.	
3	10° 35' 20"	660.00	121.98	S. 82° 28' 40"E.	
11	19° 03' 00"	484.03	160.93	S. 81° 55' 30"E.	
12	19° 03' 00"	424.03	140.98	S. 81° 55' 30"E.	



ANDERSON ECKSTEIN AND WESTRICK INC.
 CIVIL ENGINEERS AND LAND SURVEYORS
 MOUNT CLEMENS, MICHIGAN 48044

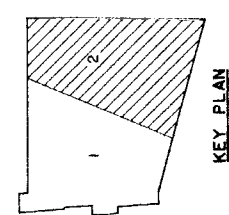
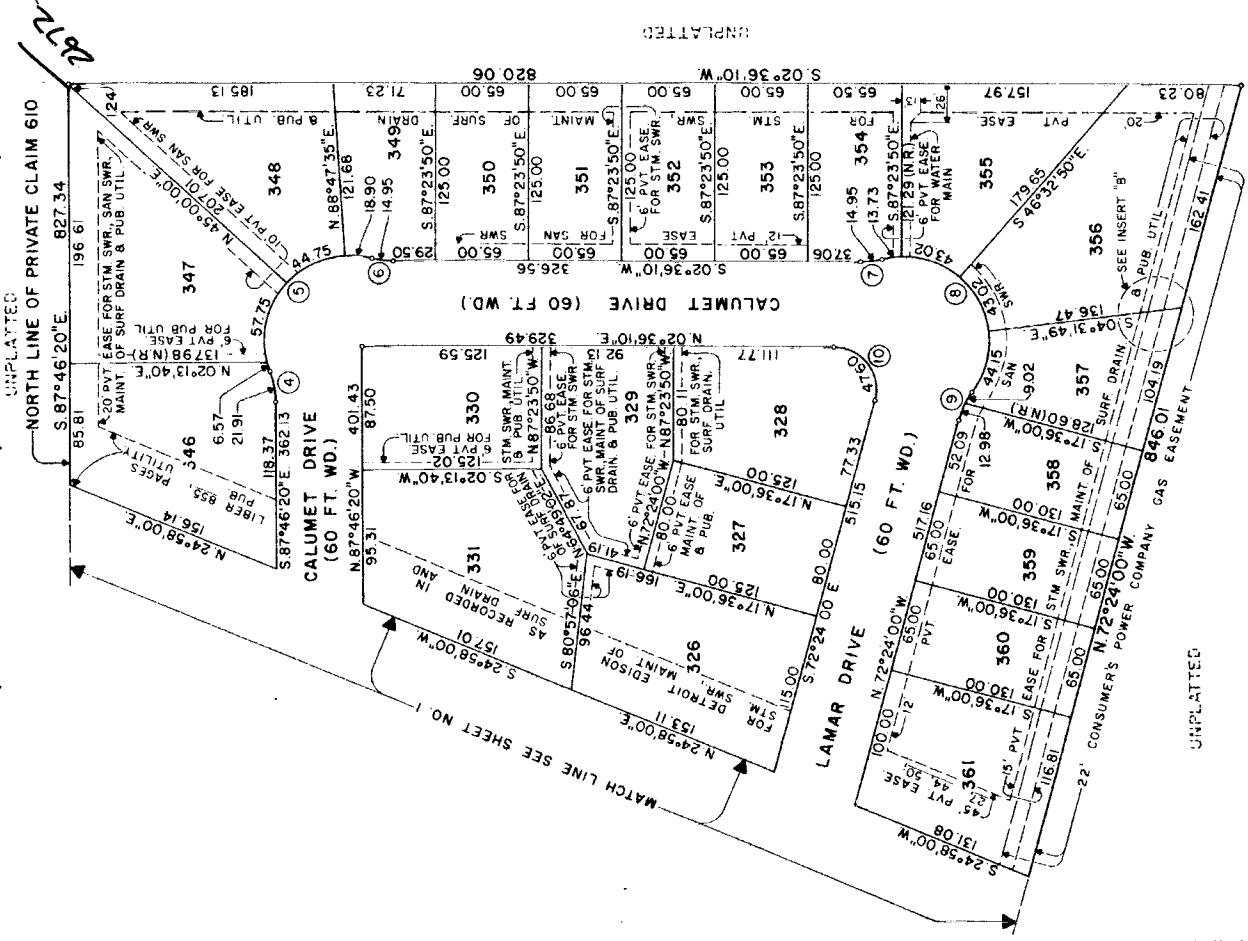
59084

SHEET 1 OF 4

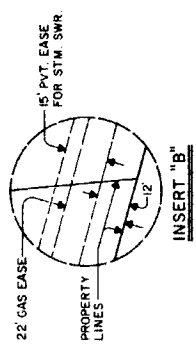
12

RIVERGATE SUBDIVISION NO. 3

PART OF PRIVATE CLAIM 610 AND PART OF THE NORTH HALF OF FRACTIONAL SECTION 4, TOWN 2 NORTH, RANGE 13 EAST, CLINTON TOWNSHIP, MACOMB COUNTY, MICHIGAN

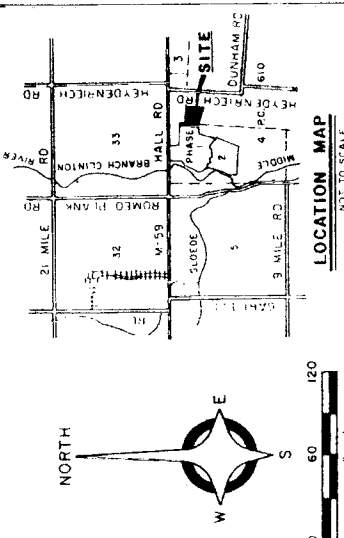


KEY PLAN



PLAT LEGEND
 ALL DIMENSIONS ARE IN FEET.
 ALL CURVILINEAR DIMENSIONS ARE SHOWN IN CHORD DISTANCES.
 (N. R.) DENOTES NON-RADIAL LINES.
 4. CONCRETE MONUMENTS 36" LONG WITH 1/2" REBAR ARE INDICATED BY "6".
 ALL MONUMENTS ARE GREEN UNLESS INDICATED BY "1/2" REBAR. 18" LONG W/1/4" PLASTIC CAP NO. 17635.

BEARINGS ARE RELATED TO "RIVERGATE SUBDIVISION" AS RECORDED IN LIBER 75 OF PLATS, PAGES 41 THRU 51, INCLUSIVE, MACOMB COUNTY RECORDS.



LOCATION MAP
 NOT TO SCALE

CURVE DATA

NO.	DELTA	RADIUS	ARC	CHORD	BEARING
4	21° 02' 22"	60.00	22.03	21.91	N. 81° 42' 29"E.
5	125° 43' 32"	60.00	131.66	106.79	S. 45° 56' 56"E.
6	14° 18' 40"	60.00	14.99	14.95	S. 09° 45' 30"W.
7	14° 18' 40"	60.00	14.99	14.95	S. 04° 33' 10"E.
8	140° 20' 52"	60.00	146.97	112.89	S. 58° 27' 58"W.
9	21° 02' 22"	60.00	22.03	21.91	N. 61° 52' 49"W.
10	104° 59' 50"	30.00	54.98	47.60	N. 55° 06' 05"E.



RIVERGATE SUBDIVISION NO. 3

PART OF PRIVATE CLAIM 610 AND PART OF THE NORTH HALF OF FRACTIONAL SECTION 4,
TOWN 2 NORTH, RANGE 13 EAST, CLINTON TOWNSHIP, MACOMB COUNTY, MICHIGAN

SURVEYOR'S CERTIFICATE

I, WILLIAM E. SODERBERG, SURVEYOR, CERTIFY:

THAT I HAVE SURVEYED, DIVIDED AND MAPPED THE LAND ON THIS PLAT DESCRIBED AS FOLLOWS: "RIVERGATE SUBDIVISION NO. 3" BEING PART OF PRIVATE CLAIM 610 AND PART OF THE NORTH HALF OF FRACTIONAL SECTION 4, TOWN 2 NORTH, RANGE 13 EAST, CLINTON TOWNSHIP, MACOMB COUNTY, MICHIGAN AND BEING DESCRIBED AS:

COMMENCING AT THE NORTHWEST CORNER OF FRACTIONAL SECTION 4; THENCE NORTH 88 DEGREES 31 MINUTES 20 SECONDS EAST 2958.34 FEET ALONG THE CENTERLINE OF HALL ROAD (M-59); THENCE SOUTH 02 DEGREES 08 MINUTES 28 SECONDS WEST 681.32 FEET TO THE POINT OF BEGINNING; THENCE SOUTH 81 DEGREES 05 MINUTES 05 SECONDS WEST 87.50 FEET TO THE NORTHWEST CORNER OF PRIVATE CLAIM 610; THENCE SOUTH 81 DEGREES 46 MINUTES 20 SECONDS EAST 827.34 FEET ALONG THE NORTH LINE OF PRIVATE CLAIM 610; THENCE SOUTH 02 DEGREES 36 MINUTES 10 SECONDS WEST 820.06 FEET; THENCE NORTH 72 DEGREES 24 MINUTES 00 SECONDS WEST 846.01 FEET; THENCE SOUTH 88 DEGREES 33 MINUTES 00 SECONDS WEST 10.61 FEET TO THE WEST LINE OF PRIVATE CLAIM 610; THENCE CONTINUING SOUTH 88 DEGREES 33 MINUTES 00 SECONDS WEST 38.73 FEET TO THE BOUNDARY OF RIVERGATE SUBDIVISION AS RECORDED IN LIBER 75 OF PLATS, PAGES 41 THRU 51, INCLUSIVE; THENCE ALONG THE EASTERLY BOUNDARY OF RIVERGATE SUBDIVISION THE FOLLOWING COURSES: ONE BEARING NORTH 88 DEGREES 31 MINUTES 30 SECONDS WEST 87.50 FEET; ONE BEARING NORTH 88 DEGREES 31 MINUTES 00 SECONDS WEST 33 DEGREES 31 MINUTES 01 DEGREES 37 MINUTES 00 SECONDS WEST 125.00 FEET; ONE BEARING NORTH 88 DEGREES 31 MINUTES 00 SECONDS EAST 44.00 FEET, NORTH 01 DEGREE 27 MINUTES 00 SECONDS WEST 187.47 FEET; WESTERLY ALONG A NONTANGENT CURVE CONCAVE TO THE SOUTH HAVING A CENTRAL ANGLE OF 02 DEGREES 08 MINUTES 42 SECONDS, A RADIUS OF 250.00 FEET, AN ARC DISTANCE OF 9.36 FEET AND WHOSE LONG CHORD IS NORTH 78 DEGREES 25 MINUTES 13 SECONDS WEST 9.36 FEET; THENCE NORTH 01 DEGREE 27 MINUTES 00 SECONDS WEST 144.83 FEET; NORTH 88 DEGREES 31 MINUTES 20 SECONDS EAST 860.00 FEET TO THE POINT OF BEGINNING CONTAINING 14.433 ACRES, MORE OR LESS AND 46 LOTS, NUMBERED 325 THRU 365, INCLUSIVE.

THAT I HAVE MADE SUCH SURVEY, LAND DIVISION AND PLAT BY THE DIRECTION OF THE DIRECTION OF THE OWNERS OF SUCH LAND.

THAT SUCH PLAT IS A CORRECT REPRESENTATION OF ALL THE EXTERIOR BOUNDARIES OF THE LAND SURVEYED AND THE SUBDIVISION OF IT.

THAT THE REQUIRED MONUMENTS AND LOT MARKERS HAVE BEEN LOCATED IN THE GROUND OR THAT SURETY HAS BEEN DEPOSITED WITH THE MUNICIPALITY, AS REQUIRED BY SECTION 125 OF THE ACT.

THAT THE ACCURACY OF THE SURVEY IS WITHIN THE LIMITS REQUIRED BY SECTION 126 OF THE ACT.

THAT THE BEARINGS SHOWN ON THE PLAT ARE EXPRESSED AS REQUIRED BY SECTION 126 (3) OF THE ACT AND AS EXPLAINED IN THE LEGEND.

ANDERSON, ECKSTEIN, AND WESTRICK, INC.

William E. Soderberg
WILLIAM E. SODERBERG, R.L.S. 17635
TREASURER
42800 GARFIELD ROAD
MOUNT CLEMENS, MICHIGAN 48044
(313) 286-1234

AUG 23, 1985
DATE



PROPRIETOR'S CERTIFICATE - CO-PARTNERSHIP

WE AS PROPRIETORS CERTIFY THAT WE CAUSED THE LAND EMBRACED IN THIS PLAT TO BE SURVEYED, DIVIDED, MAPPED AND DEDICATED AS REPRESENTED ON THIS PLAT AND THAT THE STREETS ARE FOR THE USE OF THE PUBLIC; THAT THE PUBLIC UTILITY EASEMENTS ARE PRIVATE EASEMENTS AND THAT ALL OTHER EASEMENTS ARE FOR THE USES SHOWN ON THE PLAT.

FILE NO. 85-2863 MACOMB COUNTY RECORDS
FILED MAY 1, 1985

RIVERGATE
A REGISTERED MICHIGAN CO-PARTNERSHIP
19500 HALL ROAD
MOUNT CLEMENS, MICHIGAN 48044

WITNESS

Jane L. Jones
JANE L. JONES, CO-PARTNER

Michael J. McKat
MICHAEL J. MCKAT, CO-PARTNER

John A. Bolla
JOHN A. BOLLA, CO-PARTNER
Charles G. Kellogg
CHARLES G. KELLOGG, CO-PARTNER

ACKNOWLEDGEMENT - CO-PARTNERSHIP

STATE OF MICHIGAN)
MACOMB COUNTY)

PERSONALLY CAME BEFORE ME THIS 30TH DAY OF AUGUST 1985, JOHN A. BOLLA, CO-PARTNER, AND CHARLES G. KELLOGG, CO-PARTNER OF THE ABOVE NAMED CO-PARTNERSHIP, TO ME KNOWN TO BE THE PERSONS WHO EXECUTED THE FOREGOING INSTRUMENT; AND TO ME KNOWN TO BE SUCH CO-PARTNERS OF SAID CO-PARTNERSHIP AND ACKNOWLEDGE THAT THEY EXECUTED THE FOREGOING INSTRUMENT AS SUCH CO-PARTNERS AS THE FREE ACT AND DEED OF SAID CO-PARTNERSHIP.

NOTARY PUBLIC, *Jane L. Jones* MACOMB COUNTY
MY COMMISSION EXPIRES NOVEMBER 15, 1987

RIVERGATE SUBDIVISION NO. 3

PART OF PRIVATE CLAIM 610 AND PART OF THE NORTH HALF OF FRACTIONAL SECTION 4,
TOWN 2 NORTH, RANGE 13 EAST, CLINTON TOWNSHIP, MACOMB COUNTY, MICHIGAN

CERTIFIED TRUE COPY OF
RECORDED PLAT
BY DEPARTMENT OF COMMERCIAL
BY Richard E. D'Amico
Richard E. D'Amico, L.S.
Michigan Notary Public
Date March 11, 1986

CERTIFICATE OF MUNICIPAL APPROVAL

I CERTIFY THAT THIS PLAT WAS APPROVED BY THE TOWNSHIP BOARD OF THE TOWNSHIP OF CLINTON AT A MEETING HELD AT CLINTON, MICHIGAN, ON 12 1985 AND WAS REVIEWED AND FOUND TO BE IN COMPLIANCE WITH ACT 288, P.A. 1967, ALSO ADEQUATE MARKERS WITHIN A REASONABLE LENGTH OF TIME, NOT TO EXCEED ONE YEAR FROM THE ABOVE DATE. MINIMUM LOT WIDTH AND AREA REQUIRED BY SECTION 186 (D) ACT 288 OF P.A. 1967 HAS BEEN MAILED AND CONFORMS WITH THE LEGALLY ADOPTED ZONING AND SUBDIVISION CONTROL ORDINANCES OF CLINTON TOWNSHIP. SURETY HAS BEEN POSTED TO INSURE THE INSTALLATION OF PUBLIC SEWER AND PUBLIC WATER SERVICE.

Dennis C. Tomlinson
DENNIS C. TOMLINSON, CLERK

COUNTY TREASURER'S CERTIFICATE

THE RECORDS IN MY OFFICE SHOW NO UNPAID TAXES OR SPECIAL ASSESSMENTS FOR THE FIVE YEARS PRECEDING September 1, 1985 INVOLVING THE LANDS INCLUDED IN THIS PLAT.

Marilyn Brunoch
MARILYN BRUNOCH, DEPUTY COUNTY TREASURER
MACOMB COUNTY

COUNTY DRAIN COMMISSIONER'S CERTIFICATE

APPROVED ON 9/19/85 AS COMPLYING WITH SECTION 192 OF ACT 288, P.A. 1967 AND THE APPLICABLE RULES AND REGULATIONS PUBLISHED BY MY OFFICE IN THE COUNTY OF MACOMB.

Thomas S. Welsh
THOMAS S. WELSH, DRAIN COMMISSIONER
MACOMB COUNTY

COUNTY PLAT BOARD CERTIFICATE

THIS PLAT HAS BEEN REVIEWED AND IS APPROVED BY THE MACOMB COUNTY PLAT BOARD ON Nov. 26, 1985 AS BEING IN COMPLIANCE WITH ALL OF THE PROVISIONS OF ACT 288, P.A. 1967, AND THE PLAT BOARD'S APPLICABLE RULES AND REGULATIONS.

Edna Miller
EDNA MILLER, CLERK-REGISTER OF DEEDS
Walter Frankluk
WALTER FRANKLUK, CHAIRMAN
BOARD OF COUNTY COMMISSIONERS
Adam E. Nowakowski
ADAM E. NOWAKOWSKI, COUNTY TREASURER

RECORDING CERTIFICATE

STATE OF MICHIGAN } S.S.
COUNTY OF MACOMB }

THIS PLAT WAS RECEIVED FOR RECORDING ON THE 7th DAY OF January 1986 AND IS RECORDED AT 11:15 A.M. O'CLOCK AND IS RECORDED IN 12 344 OF PLAT BOOKS ON PAGES 12 344.

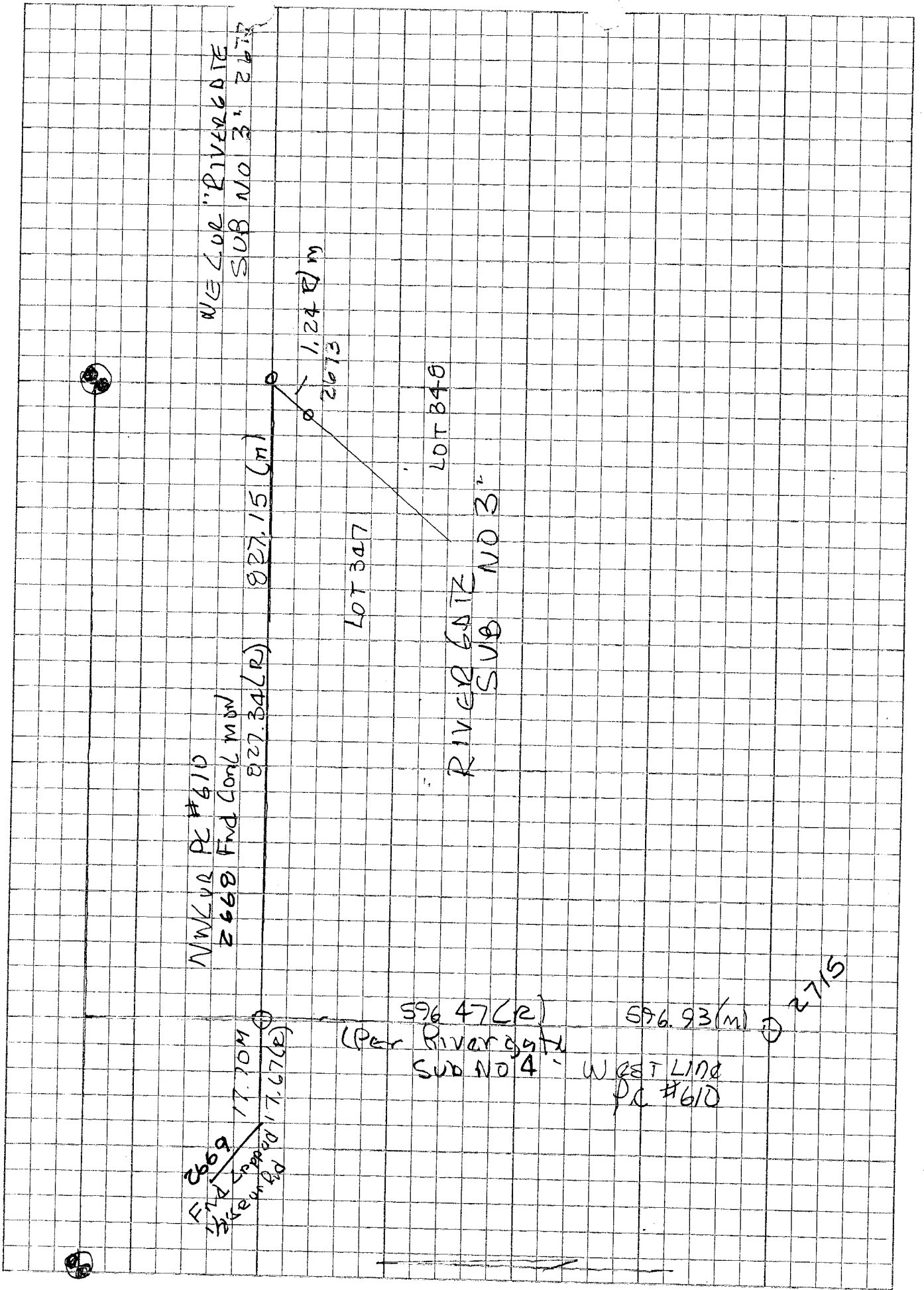
Edna Miller
EDNA MILLER, CLERK-REGISTER OF DEEDS

CERTIFICATE OF COUNTY ROAD COMMISSIONERS

APPROVED ON 11-22-85 AS COMPLYING WITH SECTION 183 OF ACT 288, P.A. 1967 AND THE APPLICABLE PUBLISHED RULES AND REGULATIONS OF THE BOARD OF ROAD COMMISSIONERS OF MACOMB COUNTY.

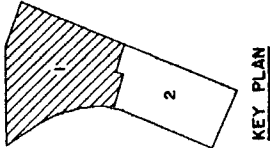
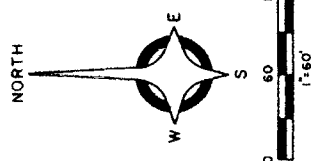
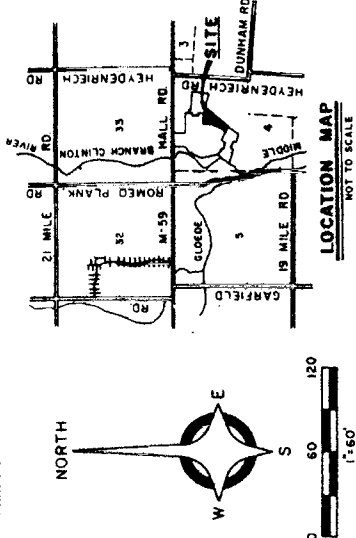
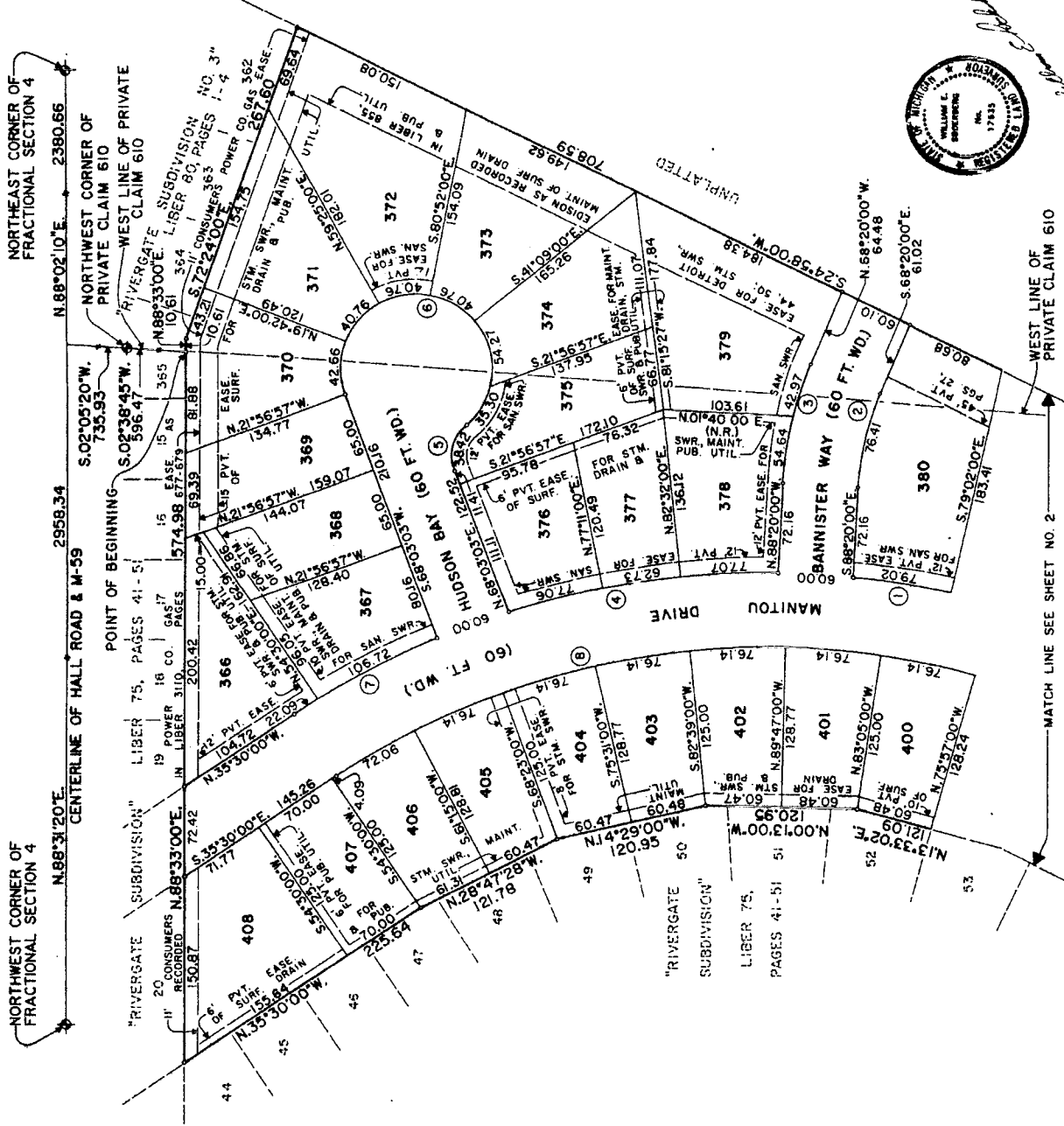
Matthew J. Gaherty
MATTHEW J. GAHERTY, CHAIRMAN
John J. Zaccaro
JOHN J. ZACCARO, VICE-CHAIRMAN
Mary Louise Daner
MARY LOUISE DANER, COMMISSIONER





RIVERGATE SUBDIVISION NO. 4

PART OF PRIVATE CLAIM 610 AND PART OF FRACTIONAL SECTION 4, TOWN 2 NORTH, RANGE 13 EAST, CLINTON TOWNSHIP, MACOMB COUNTY, MICHIGAN



PLAT LEGEND
 ALL DIMENSIONS ARE IN FEET.
 ALL CURVILINEAR DIMENSIONS ARE SHOWN IN CHORD DISTANCES.
 (IN R.) DENOTES NON-RADIAL LINES.
 4" CONCRETE MONUMENTS 36" LONG WITH 1/2" REBAR ARE INDICATED BY "•".
 ALL LOT CORNERS HAVE BEEN MARKED BY 1/2" REBARS 18" LONG WITH PLASTIC CAP NO. 17835.

BEARINGS ARE RELATED TO "RIVERGATE SUBDIVISION" AS RECORDED IN LIBER 75 OF PLATS, PAGES 41 THRU 51, INCLUSIVE, MACOMB COUNTY RECORDS.

NO.	DELTA	RADIUS	ARC	CHORD	BEARING
1.	20° 44' 29"	672.00	243.27	241.94	N. 14° 35' 46" E.
2.	20° 00' 00"	280.00	76.79	76.41	S. 78° 20' 00" E.
3.	20° 00' 00"	280.00	97.74	97.24	N. 78° 20' 00" W.
4.	18° 29' 55"	672.00	216.96	216.02	N. 10° 08' 29" W.
5.	68° 47' 43"	34.00	40.82	38.42	S. 77° 33' 06" E.
6.	248° 47' 42"	60.00	260.54	99.02	N. 12° 26' 54" E.
7.	10° 59' 32"	672.00	128.92	128.72	N. 30° 00' 14" W.
8.	60° 28' 00"	612.00	645.87	616.31	S. 5° 16' 00" E.



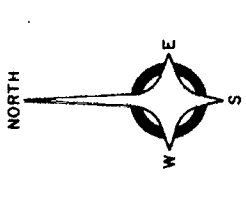
ANDERSON, ECKSTEIN, AND WESTRICK, INC.
 CIVIL ENGINEERS AND LAND SURVEYORS
 MOUNT CLEMENS, MICHIGAN 48044

59122

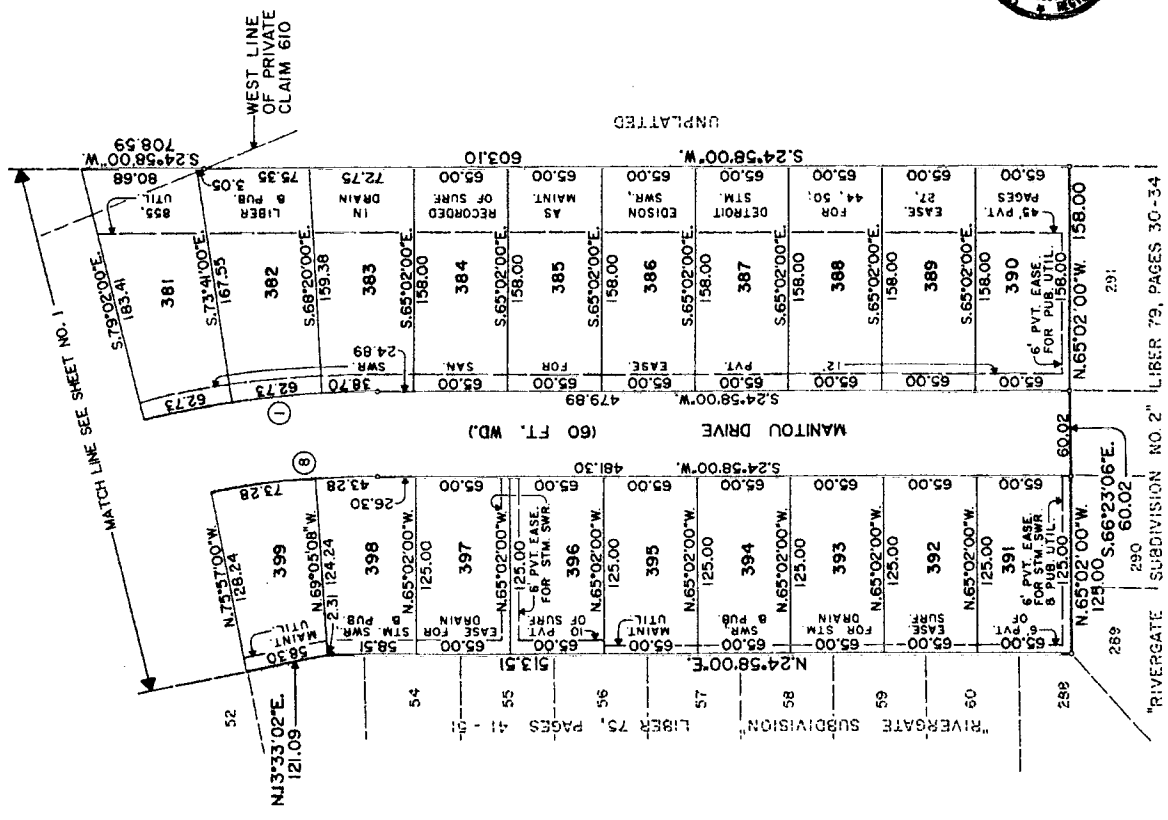
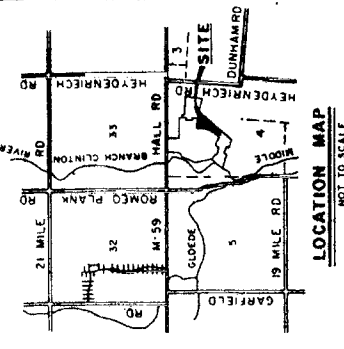
13

RIVERGATE SUBDIVISION NO. 4

PART OF PRIVATE CLAIM 610 AND PART OF FRACTIONAL SECTION 4, TOWN 2 NORTH, RANGE 13 EAST, CLINTON TOWNSHIP, MACOMB COUNTY, MICHIGAN



PLAT LEGEND
 ALL DIMENSIONS ARE IN FEET
 ALL CURVILINEAR DIMENSIONS ARE SHOWN
 IN CHORD DISTANCES.
 (N.R.) DENOTES NON-RADIAL LINES.
 4" CONCRETE MONUMENTS 36" LONG WITH
 1/2" REBAR ARE INDICATED BY "•"
 ALL LOT CORNERS HAVE BEEN MARKED BY
 1/2" REBARS, 18" LONG WITH PLASTIC
 CAP NO. 17635.
 READINGS ARE RELATED TO "RIVERGATE
 SUBDIVISION" AS RECORDED IN LIBER 75
 OF PLATS, PAGES 41 THRU 51, INCLUSIVE,
 MACOMB COUNTY RECORDS.



CURVE DATA				
NO.	DEG/TA	RADIUS	ARC	BEARING
1.	20° 44' 29"	672.00	243.27	N. 14° 35' 46" E.
6.	60° 28' 00"	612.00	645.87	S. 05° 16' 00" E.



ANDERSON, ECKSTEIN, AND WESTRICK INC.
 CIVIL ENGINEERS AND LAND SURVEYORS
 MOUNT CLEMENS, MICHIGAN 48044

RIVERGATE SUBDIVISION NO. 4

PART OF PRIVATE CLAIM 610 AND PART OF FRACTIONAL SECTION 4, TOWN
J2 NORTH, RANGE 13 EAST, CLINTON TOWNSHIP, MACOMB COUNTY, MICHIGAN

SURVEYOR'S CERTIFICATE

I, WILLIAM E. SODERBERG, SURVEYOR, CERTIFY:

THAT I HAVE SURVEYED, DIVIDED AND MAPPED THE LAND ON THIS PLAT DESCRIBED AS FOLLOWS: "RIVERGATE SUBDIVISION NO. 4" BEING PART OF PRIVATE CLAIM 610 AND FRACTIONAL SECTION 4, TOWN 2 NORTH, RANGE 13 EAST, CLINTON TOWNSHIP, MACOMB COUNTY, MICHIGAN AND BEING DESCRIBED AS:

COMMENCING AT THE NORTHWEST CORNER OF FRACTIONAL SECTION 4; THENCE NORTH 88 DEGREES 31 MINUTES 00 SECONDS EAST 212.72 FEET ALONG THE CENTERLINE OF HIGHWAY 10 (10 FEET WIDE) TO THE POINT OF BEGINNING; THENCE NORTH 02 DEGREES 50 SECONDS WEST 735.93 FEET TO THE NORTHWEST CORNER OF PRIVATE CLAIM 610; THENCE SOUTH 02 DEGREES 38 MINUTES 45 SECONDS WEST 596.47 FEET ALONG THE WEST LINE OF PRIVATE CLAIM 610 TO THE POINT OF BEGINNING, SAID POINT BEING ON THE BOUNDARY LINE OF RIVERGATE SUBDIVISION NO. 3 AS RECORDED IN LIBER 80 OF PLATS, PAGES 1 THRU 4, INCLUSIVE; THENCE NORTH 86 DEGREES 33 MINUTES 00 SECONDS EAST 10.61 FEET ALONG THE BOUNDARY LINE OF RIVERGATE SUBDIVISION NO. 3; THENCE SOUTH 72 DEGREES 24 MINUTES 00 SECONDS EAST 267.60 FEET ALONG THE BOUNDARY LINE OF RIVERGATE SUBDIVISION NO. 3; THENCE SOUTH 24 DEGREES 36 MINUTES 00 SECONDS WEST 708.59 FEET ALONG THE BOUNDARY LINE OF RIVERGATE SUBDIVISION NO. 3; THENCE SOUTH 63 DEGREES 55 MINUTES 00 SECONDS WEST 643.11 FEET TO THE BOUNDARY LINE OF RIVERGATE SUBDIVISION NO. 2 AS RECORDED IN LIBER 79 OF PLATS, PAGES 30 THRU 34, INCLUSIVE; THENCE NORTH 65 DEGREES 02 MINUTES 00 SECONDS WEST 158.00 FEET ALONG THE BOUNDARY LINE OF RIVERGATE SUBDIVISION NO. 2; THENCE NORTH 66 DEGREES 23 MINUTES 06 SECONDS WEST 60.02 FEET ALONG THE BOUNDARY LINE OF RIVERGATE SUBDIVISION NO. 2; THENCE NORTH 65 DEGREES 02 MINUTES 00 SECONDS WEST 125.00 FEET ALONG THE BOUNDARY LINE OF RIVERGATE SUBDIVISION NO. 2; THENCE NORTH 24 DEGREES 36 MINUTES 00 SECONDS EAST 513.51 FEET ALONG THE BOUNDARY LINE OF RIVERGATE SUBDIVISION NO. 2 AND RIVERGATE SUBDIVISION NO. 15 AS RECORDED IN LIBER 79 OF PLATS, PAGES 30 THRU 34, INCLUSIVE; THENCE NORTH 33 DEGREES 11 MINUTES 02 SECONDS EAST 121.09 FEET ALONG THE BOUNDARY LINE OF RIVERGATE SUBDIVISION; THENCE NORTH 00 DEGREES 13 MINUTES 00 SECONDS WEST 120.95 FEET ALONG THE BOUNDARY LINE OF RIVERGATE SUBDIVISION; THENCE NORTH 14 DEGREES 29 MINUTES 00 SECONDS WEST 120.95 FEET ALONG THE BOUNDARY LINE OF RIVERGATE SUBDIVISION; THENCE NORTH 28 DEGREES 47 MINUTES 14 SECONDS WEST 121.78 FEET ALONG THE BOUNDARY LINE OF RIVERGATE SUBDIVISION; THENCE NORTH 35 DEGREES 30 MINUTES 00 SECONDS WEST 225.64 FEET ALONG THE BOUNDARY LINE OF RIVERGATE SUBDIVISION; THENCE NORTH 86 DEGREES 33 MINUTES 00 SECONDS EAST 574.98 FEET ALONG THE BOUNDARY LINE OF RIVERGATE SUBDIVISION AND RIVERGATE SUBDIVISION NO. 5 TO THE POINT OF BEGINNING, CONTAINING 43 LOTS, NUMBERED 366 THRU 406, INCLUSIVE AND 12.8968 ACRES MORE OR LESS.

THAT I HAVE MADE SUCH SURVEY, LAND DIVISION AND PLAT BY THE DIRECTION OF THE OWNERS OF SUCH LAND.

THAT SUCH PLAT IS A CORRECT REPRESENTATION OF ALL THE EXTERIOR BOUNDARIES OF THE LAND SURVEYED AND THE SUBDIVISION OF IT.

THAT THE REQUIRED MONUMENTS AND LOT MARKERS HAVE BEEN LOCATED IN THE GROUNDS ON EACH LOT AND HAVE BEEN DEPOSITED WITH THE MUNICIPALITY, AS REQUIRED BY SECTION 125 OF THE ACT.

THAT THE ACCURACY OF THE SURVEY IS WITHIN THE LIMITS REQUIRED BY SECTION 126 OF THE ACT.

THAT THE BEARINGS SHOWN ON THE PLAT ARE EXPRESSED AS REQUIRED BY SECTION 126 (3) OF THE ACT AND AS EXPLAINED IN THE LEGEND.

ANDERSON, ECKSTEIN AND WESTRICK, INC.

William E. Soderberg
WILLIAM E. SODERBERG, R.L.S., #17635 DATE JANUARY 28, 1986
42800 GARFIELD ROAD
MOUNT CLEMENS, MICHIGAN 48044
(313) 286-1234

PROPRIETOR'S CERTIFICATE - CO-PARTNERSHIP

WE AS PROPRIETORS CERTIFY THAT WE CAUSED THE LAND EMBRACED IN THIS PLAT TO BE SURVEYED, DIVIDED, MAPPED AND DEPOSITED AS REPRESENTED ON THIS PLAT AND THAT THE STREETS ARE OPEN TO THE PUBLIC. THAT THE PUBLIC UTILITY EASEMENTS ARE IN FULL FORCE AND EFFECT AND THAT ALL OTHER EASEMENTS ARE FOR THE USES SHOWN ON THE PLAT.

FILE NO. 84-2863 MACOMB COUNTY RECORDS
FILED MAY 1, 1986

RIVERGATE
A REGISTERED MICHIGAN CO-PARTNERSHIP
19500 HALL ROAD
MOUNT CLEMENS, MICHIGAN 48044

WITNESS

Janice L. Rumpf
JANICE L. RUMPF
Michael J. McKay
MICHAEL J. MCKAY

John A. Boll
JOHN A. BOLL, CO-PARTNER
Charles G. Kellogg
CHARLES G. KELLOGG, CO-PARTNER

ACKNOWLEDGEMENT - CO-PARTNERSHIP

STATE OF MICHIGAN) S.S.
MACOMB COUNTY)

PERSONALLY CAME BEFORE ME THIS 28th DAY OF JANUARY 1986, JOHN A. BOLL, CO-PARTNER, AND CHARLES G. KELLOGG, CO-PARTNER OF THE ABOVE NAMED CO-PARTNERSHIP, TO ME KNOWN TO BE THE PERSONS WHO EXECUTED THE FOREGOING INSTRUMENT; AND TO ME KNOWN THAT THEY ARE THE CO-PARTNERS OF SAID CO-PARTNERSHIP AND TO ME KNOWN THAT THEY EXECUTED THE FOREGOING INSTRUMENT AS SUCH CO-PARTNERS AS THE FREE ACT AND DEED OF SAID CO-PARTNERSHIP.

NOTARY PUBLIC, *Eileen Whitte Larsen* Macomb COUNTY
MY COMMISSION EXPIRES NOV. 15, 1986



RIVERGATE SUBDIVISION NO. 4

PART OF PRIVATE CLAIM 610 AND PART OF FRACTIONAL SECTION 4, TOWN
2 NORTH, RANGE 13 EAST, CLINTON TOWNSHIP, MACOMB COUNTY, MICHIGAN

CERTIFIED TRUE COPY OF
RECORDED PLAT
BY DEPARTMENT OF COMMERCE

By Richard E. Lamm
Manager, Plat Section

Date _____

COUNTY TREASURER'S CERTIFICATE

THE RECORDS IN MY OFFICE SHOW NO UNPAID TAXES OR SPECIAL ASSESSMENTS FOR THE FIVE YEARS PRECEDING May 23, 1966 INVOLVING THE LANDS INCLUDED IN THIS PLAT.

Rosemary Bernier
ROSEMARY BERNIER, DEPUTY COUNTY TREASURER
MACOMB COUNTY

CERTIFICATE OF MUNICIPAL APPROVAL

I CERTIFY THAT THIS PLAT WAS APPROVED BY THE TOWNSHIP BOARD OF THE TOWNSHIP OF CLINTON AT A MEETING HELD MAY 12, 1966 AND WAS REVIEWED AND FOUND TO BE IN COMPLIANCE WITH ACT 288, P.A. 1967, AND ALSO ADEQUATE SURVEY HAS BEEN DEPOSITED WITH THE CLERK FOR THE PLACING OF MONUMENTS AND MARKERS WITHIN A REASONABLE LENGTH OF TIME, NOT TO EXCEED ONE YEAR FROM THE ABOVE DATE. MINIMUM LOT WIDTH AND AREA REQUIRED BY SECTION 186 (D) ACT 288 OF P.A. 1967 HAS BEEN MAINTAINED AND THE PLAT IS THE LEGALLY ADOPTED ZONING AND SUBDIVISION MAPS OF CLINTON TOWNSHIP AND PUBLIC SEWER SERVICES HAVE BEEN INSTALLED AND ARE READY FOR CONNECTION.

Dennis C. Tomlinson
DENNIS C. TOMLINSON

COUNTY DRAIN COMMISSIONER'S CERTIFICATE

APPROVED ON 2/12/66 AS COMPLYING WITH SECTION 192 OF ACT 288, P.A. 1967 AND THE APPLICABLE RULES AND REGULATIONS PUBLISHED BY MY OFFICE IN THE COUNTY OF MACOMB.

Thomas S. Welsch
THOMAS S. WELSCH, DRAIN COMMISSIONER
MACOMB COUNTY

COUNTY PLAT BOARD CERTIFICATE

THIS PLAT HAS BEEN REVIEWED AND IS APPROVED BY THE MACOMB COUNTY PLAT BOARD ON MAY 23, 1966 AS BEING IN COMPLIANCE WITH ALL OF THE PROVISIONS OF ACT 288, P.A. 1967, AND THE PLAT BOARD'S APPLICABLE RULES AND REGULATIONS.

Edna Miller
EDNA MILLER, CLERK-REGISTER OF DEEDS

William E. Eckstein
CHAIRMAN
BOARD OF COUNTY COMMISSIONERS

Adam E. Nowakowski
ADAM E. NOWAKOWSKI, COUNTY TREASURER

CERTIFICATE OF COUNTY ROAD COMMISSIONERS

APPROVED ON April 29, 1966 AS COMPLYING WITH SECTION 183 OF ACT 288, P.A. 1967 AND THE APPLICABLE PUBLISHED RULES AND REGULATIONS OF THE BOARD OF ROAD COMMISSIONERS OF MACOMB COUNTY.

Matthew J. Gaherty
MATTHEW J. GAHERTY, CHAIRMAN

John A. Roccola
JOHN A. ROCCOLA, VICE-CHAIRMAN

Mary Louise Damer
MARY LOUISE DAMER, COMMISSIONER

RECORDING CERTIFICATE

STATE OF MICHIGAN } S.S.
COUNTY OF MACOMB }

THIS PLAT WAS RECEIVED FOR RECORDING ON THE _____ DAY OF _____ A.D., 19____ AT _____ O'CLOCK AND IS RECORDED IN LIBER _____ OF PLAT BOOKS ON PAGES _____

Edna Miller, CLERK-REGISTER OF DEEDS

