

ANDERSON, ECKSTEIN AND WESTRICK, INC.

51301 Schoenherr Road, Shelby Township, Michigan 48315
Civil Engineers • Surveyors • Architects 586-726-1234

2012 Remonumentation

Corner: PCC-027: Intersection of the west line of Section 15 with the southerly line of PC 625.

Index

- I. Section 1
 - A. Index
 - B. Composite
 - C. Photographs

- II. Section 2
 - A. LCRC
 - B. Surveyor's Report

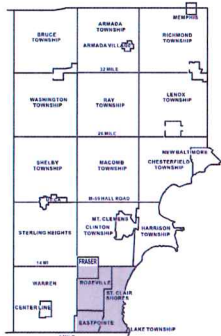
- III. Section 3
 - A. Field Notes
 - 1. Corner Witnesses
 - 2. GPS Notes
 - 3. Sketch

- IV. Section 4
 - A. GLO Notes and Plats
 - 1. 1810 Private Claim Description – Greeley
 - 2. 1810 Private Claim Notes - Greeley
 - 3. 1817 Township Plat – Preston
 - 4. 1817 GLO Notes
 - 5. 1895 Atlas
 - 6. 1930 Assessor's Plat No. 24

 - B. Original Corner LCRC's
 - 1. G-05 L:6862 P:831
 - 2. G-06 L:6862 P:832
 - 3. PC-023 L:21034 P:779
 - 4. PC-026 L:21051 P:850



100 50 0 100 200 Feet
1:1,200



SOUTH EAST SHEET INDEX

RANGE	TOWNSHIP	SHEET NUMBER
14 MILE	BRUCE	14076
14 MILE	BRUCE	14077
14 MILE	BRUCE	14078
14 MILE	BRUCE	14079
14 MILE	BRUCE	14080
14 MILE	BRUCE	14081
14 MILE	BRUCE	14082
14 MILE	BRUCE	14083
14 MILE	BRUCE	14084
14 MILE	BRUCE	14085
14 MILE	BRUCE	14086
14 MILE	BRUCE	14087
14 MILE	BRUCE	14088
14 MILE	BRUCE	14089
14 MILE	BRUCE	14090
14 MILE	BRUCE	14091
14 MILE	BRUCE	14092
14 MILE	BRUCE	14093
14 MILE	BRUCE	14094
14 MILE	BRUCE	14095
14 MILE	BRUCE	14096
14 MILE	BRUCE	14097
14 MILE	BRUCE	14098
14 MILE	BRUCE	14099
14 MILE	BRUCE	14100
14 MILE	BRUCE	14101
14 MILE	BRUCE	14102
14 MILE	BRUCE	14103
14 MILE	BRUCE	14104
14 MILE	BRUCE	14105
14 MILE	BRUCE	14106
14 MILE	BRUCE	14107
14 MILE	BRUCE	14108
14 MILE	BRUCE	14109
14 MILE	BRUCE	14110
14 MILE	BRUCE	14111
14 MILE	BRUCE	14112
14 MILE	BRUCE	14113
14 MILE	BRUCE	14114
14 MILE	BRUCE	14115
14 MILE	BRUCE	14116
14 MILE	BRUCE	14117
14 MILE	BRUCE	14118
14 MILE	BRUCE	14119
14 MILE	BRUCE	14120
14 MILE	BRUCE	14121
14 MILE	BRUCE	14122
14 MILE	BRUCE	14123
14 MILE	BRUCE	14124
14 MILE	BRUCE	14125
14 MILE	BRUCE	14126
14 MILE	BRUCE	14127
14 MILE	BRUCE	14128
14 MILE	BRUCE	14129
14 MILE	BRUCE	14130
14 MILE	BRUCE	14131
14 MILE	BRUCE	14132
14 MILE	BRUCE	14133
14 MILE	BRUCE	14134
14 MILE	BRUCE	14135
14 MILE	BRUCE	14136
14 MILE	BRUCE	14137
14 MILE	BRUCE	14138
14 MILE	BRUCE	14139
14 MILE	BRUCE	14140
14 MILE	BRUCE	14141
14 MILE	BRUCE	14142
14 MILE	BRUCE	14143
14 MILE	BRUCE	14144
14 MILE	BRUCE	14145
14 MILE	BRUCE	14146
14 MILE	BRUCE	14147
14 MILE	BRUCE	14148
14 MILE	BRUCE	14149
14 MILE	BRUCE	14150
14 MILE	BRUCE	14151
14 MILE	BRUCE	14152
14 MILE	BRUCE	14153
14 MILE	BRUCE	14154
14 MILE	BRUCE	14155
14 MILE	BRUCE	14156
14 MILE	BRUCE	14157
14 MILE	BRUCE	14158
14 MILE	BRUCE	14159
14 MILE	BRUCE	14160
14 MILE	BRUCE	14161
14 MILE	BRUCE	14162
14 MILE	BRUCE	14163
14 MILE	BRUCE	14164
14 MILE	BRUCE	14165
14 MILE	BRUCE	14166
14 MILE	BRUCE	14167
14 MILE	BRUCE	14168
14 MILE	BRUCE	14169
14 MILE	BRUCE	14170
14 MILE	BRUCE	14171
14 MILE	BRUCE	14172
14 MILE	BRUCE	14173
14 MILE	BRUCE	14174
14 MILE	BRUCE	14175
14 MILE	BRUCE	14176
14 MILE	BRUCE	14177
14 MILE	BRUCE	14178
14 MILE	BRUCE	14179
14 MILE	BRUCE	14180
14 MILE	BRUCE	14181
14 MILE	BRUCE	14182
14 MILE	BRUCE	14183
14 MILE	BRUCE	14184
14 MILE	BRUCE	14185
14 MILE	BRUCE	14186
14 MILE	BRUCE	14187
14 MILE	BRUCE	14188
14 MILE	BRUCE	14189
14 MILE	BRUCE	14190
14 MILE	BRUCE	14191
14 MILE	BRUCE	14192
14 MILE	BRUCE	14193
14 MILE	BRUCE	14194
14 MILE	BRUCE	14195
14 MILE	BRUCE	14196
14 MILE	BRUCE	14197
14 MILE	BRUCE	14198
14 MILE	BRUCE	14199
14 MILE	BRUCE	14200
14 MILE	BRUCE	14201
14 MILE	BRUCE	14202
14 MILE	BRUCE	14203
14 MILE	BRUCE	14204
14 MILE	BRUCE	14205
14 MILE	BRUCE	14206
14 MILE	BRUCE	14207
14 MILE	BRUCE	14208
14 MILE	BRUCE	14209
14 MILE	BRUCE	14210
14 MILE	BRUCE	14211
14 MILE	BRUCE	14212
14 MILE	BRUCE	14213
14 MILE	BRUCE	14214
14 MILE	BRUCE	14215
14 MILE	BRUCE	14216
14 MILE	BRUCE	14217
14 MILE	BRUCE	14218
14 MILE	BRUCE	14219
14 MILE	BRUCE	14220
14 MILE	BRUCE	14221
14 MILE	BRUCE	14222
14 MILE	BRUCE	14223
14 MILE	BRUCE	14224
14 MILE	BRUCE	14225
14 MILE	BRUCE	14226
14 MILE	BRUCE	14227
14 MILE	BRUCE	14228
14 MILE	BRUCE	14229
14 MILE	BRUCE	14230
14 MILE	BRUCE	14231
14 MILE	BRUCE	14232
14 MILE	BRUCE	14233
14 MILE	BRUCE	14234
14 MILE	BRUCE	14235
14 MILE	BRUCE	14236
14 MILE	BRUCE	14237
14 MILE	BRUCE	14238
14 MILE	BRUCE	14239
14 MILE	BRUCE	14240
14 MILE	BRUCE	14241
14 MILE	BRUCE	14242
14 MILE	BRUCE	14243
14 MILE	BRUCE	14244
14 MILE	BRUCE	14245
14 MILE	BRUCE	14246
14 MILE	BRUCE	14247
14 MILE	BRUCE	14248
14 MILE	BRUCE	14249
14 MILE	BRUCE	14250
14 MILE	BRUCE	14251
14 MILE	BRUCE	14252
14 MILE	BRUCE	14253
14 MILE	BRUCE	14254
14 MILE	BRUCE	14255
14 MILE	BRUCE	14256
14 MILE	BRUCE	14257
14 MILE	BRUCE	14258
14 MILE	BRUCE	14259
14 MILE	BRUCE	14260
14 MILE	BRUCE	14261
14 MILE	BRUCE	14262
14 MILE	BRUCE	14263
14 MILE	BRUCE	14264
14 MILE	BRUCE	14265
14 MILE	BRUCE	14266
14 MILE	BRUCE	14267
14 MILE	BRUCE	14268
14 MILE	BRUCE	14269
14 MILE	BRUCE	14270
14 MILE	BRUCE	14271
14 MILE	BRUCE	14272
14 MILE	BRUCE	14273
14 MILE	BRUCE	14274
14 MILE	BRUCE	14275
14 MILE	BRUCE	14276
14 MILE	BRUCE	14277
14 MILE	BRUCE	14278
14 MILE	BRUCE	14279
14 MILE	BRUCE	14280
14 MILE	BRUCE	14281
14 MILE	BRUCE	14282
14 MILE	BRUCE	14283
14 MILE	BRUCE	14284
14 MILE	BRUCE	14285
14 MILE	BRUCE	14286
14 MILE	BRUCE	14287
14 MILE	BRUCE	14288
14 MILE	BRUCE	14289
14 MILE	BRUCE	14290
14 MILE	BRUCE	14291
14 MILE	BRUCE	14292
14 MILE	BRUCE	14293
14 MILE	BRUCE	14294
14 MILE	BRUCE	14295
14 MILE	BRUCE	14296
14 MILE	BRUCE	14297
14 MILE	BRUCE	14298
14 MILE	BRUCE	14299
14 MILE	BRUCE	14300

DESCRIPTION OF PERMANENT REAL ESTATE INDEX NUMBER

13-19-302-018
AREA NUMBER (SUBDIVISION)
AREA NUMBER (BLOCK)
AREA NUMBER (PARCEL)

- Legend**
- Platted Area Boundary Line
 - Property Line
 - Property Split Line
 - Property Combined Line
 - Property Easement Line
 - Traverse Line
 - Dimension Extent Marks
 - Dimension Start Marks

14-16D

ST. CLAIR SHORES
E.1/2 N.E. 1/4 SEC. 16 T. 1N. R. 13E.

Source: Macomb County Department of Planning and Economic Development
- 2004 Digital Orthophotography Project
- Parcel Conversion Project

Note: Digital Orthophotography horizontal positioning accuracy is 3 feet. Parcel boundary lines should be considered a graphical representation and not in any way a legal survey or engineering document. In general, the horizontal positioning and length accuracy is within 15 feet.

This map is intended for general planning purposes. Site specific evaluation should be verified by field inspection. This is a work in progress and may contain errors and omissions. Please report any potential revisions to (586)469-5265.



GISs MACOMB COUNTY
Planning and Economic
Development Department
Published: Dec 13, 2004

Copyright 2001 Macomb County, MI All Rights Reserved

MACOMB COUNTY MONUMENT
REF PT
PGC 027
PS 24990
#345
ACT #345
SD 02692





PCC-027



PCC-027



PCC-027



PCG-027



PCC-027



E

PCC-027



PCC-027



PCC-027



153

W

PCC-027



Carmella Sabaugh

Macomb County
Clerk/Register of Deeds

Todd Schmitz
Deputy Clerk

Craig A. Jones
Deputy Register of Deeds

REMONUMENTATION PROGRAM

Martin C. Dunn, P.S., Surveyor Representative
Office: 586-469-7916 ♦ Cellular: 810-217-7275
martin.dunn@macombgov.org

December 12, 2013

COPY

Mr. Christopher Beland, P.S. Director
LARA/Bureau of Construction Codes
Office of Land Survey & Remonumentation
P.O. Box 30254
Lansing, MI 48909

RE: Assigned Corners; Grant Year 2012; T1N.R13E: Other Codes PCC-027 and PCC-028

Mr. Beland,

The Macomb County Peer Group has reviewed the LCRCs for corners T1N.R13E: Other Codes PCC-027 and PCC-028 per your email dated June 10, 2013. The peer group agrees that the location of the monuments in the center line of Little Mack Road does not create an unsafe condition and therefore, the requirement of setting at least four reference monuments as required by Act 74, 1970 will not be necessary.

The city of St. Clair Shores had requested that the surveyor not set the required monuments and monument boxes in the center line of Little Mack Road. The road had been recently repaved with a new construction technique and they were afraid placing the monuments and boxes would damage the pavement.

You also commented that, "In addition, we were unable to discern any related angular and linear measurements between the reference monuments and the corner." The contracted surveyor, Mr. Craig Amey, P.S. has addressed this issue and has submitted new LCRCs to add angular and linear measurements between the reference monuments and the corner. Mr. Amey performed this work at no additional cost to the Remonumentation Program.

Clerk's Office
40 N. Main St.
Mount Clemens, MI 48043
586-469-5120
Fax: 586-783-8184

<http://www.macombcountymi.gov/clerksoffice>
clerksoffice@macombcountymi.gov

Fax-on-Demand
Michigan: 1-888-99-CLERK
Out-of-State: 310-575-5035

Register of Deeds
32 Market Street
Mount Clemens, MI 48043
586-469-5175
Fax: 586-469-5130

<http://www.macombcountymi.gov/registerdeeds>
registerdeeds@macombcountymi.gov

COPY

Mr. Christopher Beland, P.S. Director

RE: Assigned Corners; Grant Year 2012; T1N.R13E: Other Codes PCC-027 and PCC-028

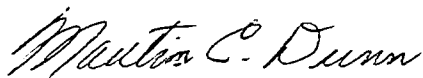
December 12, 2013

Page Two

Enclosed are copies of the latest recorded LCRCs, along with a sketch of the location. This documentation has been included in their respective dossiers. Additionally, this most recent data has been entered into the State Index System.

The Macomb County Peer Group hopes that the LCRC revisions meet with your approval. Please contact the Remonumentation office if you have any questions or comments regarding this matter.

Sincerely,



Martin C. Dunn, P.S.

Macomb County Surveyor Representative

Enclosure

MCD/mj

cc: Craig A. Jones, Grant Administrator

Craig P. Amey, P.S.



COPY
Martin.Dunn@macombgov.org

Macomb County's 2012 Remonumentation Completion Report

Beland, Christopher (LARA) <BelandC@michigan.gov>
To: "martin.dunn@macombgov.org" <martin.dunn@macombgov.org>

Mon, Jun 10, 2013 at 4:53 PM

While reviewing the 2012 LCRC documents it was identified that, the attached LCRC's note the use of reference monuments to perpetuate the corners.

Please be advised, the LCRC's indicate only two reference monuments were placed, Section 7 of the Corner Recordation Act, 1970 PA 74, "...states the surveyor may install at least 4 reference monuments interrelated and visible with the corner location and each other by angular and linear measurements." In addition, we were unable to discern any related angular and linear measurements between the reference monuments and the corner. We will be filing the LCRC's as submitted; however, only placing two reference monuments and not providing the interrelated measurements, the surveyor may be a violation of the Corner Recordation Act, 1970 PA 74.

Thank you

Chris Beland, Director

Office of Land Survey & Remonumentation

Department of Licensing and Regulatory Affairs

"Customer Driven. Business Minded."

 **2012 Macomb.pdf**
360K

Martin Dunn <martin.dunn@macombgov.org>
To: Craig Amey <camey@aewinc.com>

Tue, Jun 11, 2013 at 8:44 AM

FYI

[Quoted text hidden]

—
Thank you,

Martin C. Dunn, P.S., Remonumentation Surveyor/Representative
Macomb County Register of Deeds
10 North Main Street, 2nd Floor
Mount Clemens, MI 48043
Phone: (586) 469-6752; Fax: (586) 469-5130
E-mail: martin.dunn@macombgov.org
Web: www.macombcountymi.gov/clerksoffice

COPY

PRIVACY NOTICE: This message is intended only for the individual or entity to which it is addressed. It may contain privileged, confidential information, which is exempt from disclosure under applicable laws. If you are not the intended recipient, please note that you are strictly prohibited from disseminating or distributing this information (other than to the intended recipient) or copying this information. If you have received this communication in error, please notify me immediately by the email address or telephone number listed above. Thank you.

Martin Dunn <martin.dunn@macombgov.org>
To: "Beland, Christopher (LARA)" <BelandC@michigan.gov>

Tue, Jun 11, 2013 at 9:05 AM

Good Morning Chris,

We will review your comments at our next Peer Group meeting. I will let you know what the action of the group wants to take.

Thanks,
Marty

On Mon, Jun 10, 2013 at 4:53 PM, Beland, Christopher (LARA) <BelandC@michigan.gov> wrote:
[Quoted text hidden]

—
Thank you,

Martin C. Dunn, P.S., Remonumentation Surveyor/Representative
Macomb County Register of Deeds
10 North Main Street, 2nd Floor
Mount Clemens, MI 48043
Phone: (586) 469-6752; Fax: (586) 469-5130
E-mail: martin.dunn@macombgov.org
Web: www.macombcountymi.gov/clerksoffice

PRIVACY NOTICE: This message is intended only for the individual or entity to which it is addressed. It may contain privileged, confidential information, which is exempt from disclosure under applicable laws. If you are not the intended recipient, please note that you are strictly prohibited from disseminating or distributing this information (other than to the intended recipient) or copying this information. If you have received this communication in error, please notify me immediately by the email address or telephone number listed above. Thank you.

LAND CORNER RECORDATION CERTIFICATE
Filing Requirement of Act 74, Mich. P.A. 1970 as Amended

For corners in

Macomb
(County)

Located In:
City of St. Clair Shores

Corner Code #
PCC 027

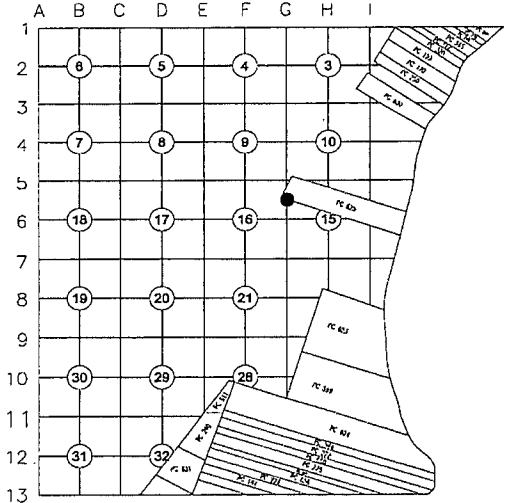
- | | | | | | |
|------------------------------------|---|-----------|---|------------|-------|
| 1. Public Land Survey | T | <u>1N</u> | R | <u>13E</u> | _____ |
| | T | _____ | R | _____ | _____ |
| | T | _____ | R | _____ | _____ |
| | T | _____ | R | _____ | _____ |
| | T | _____ | R | _____ | _____ |
| 2. Property Controlling In Section | S | _____ | T | _____ | _____ |
| | s | _____ | T | _____ | _____ |
| 3. Miscellaneous Property in Sec. | S | _____ | T | _____ | _____ |
| | S | _____ | T | _____ | _____ |

3177217 PAGE 1 OF 2
 LIBER 22568 PAGE 800
 12/03/2013 03:19:43 P.M.
 MACOMB COUNTY, MI SEAL
 CARMELLA SABAUGH, REGISTER OF DEEDS

Register of Deeds Stamp & File Number

4. Lot No. _____, Recorded Plat
 5. Private Claims Intersection of the West line of Section 15 with the Southerly line of PC 625

I, Craig P. Amey, in a field survey on July 12, 2012 do hereby state that under requirements of P.A. 74, Michigan P.A. of 1970, the corner points mentioned in lines 1 and 2 above were in conformance with regulations and rules therefore as required in the current manual of survey instructions of the United States Department of the Interior, Bureau of Land Management or by a decree of a Court of Law and /or that the corner points mentioned in lines 3, 4 and 5 above were in conformance with the rules of the Michigan Board of Land Surveyors or by a Decree of a Court of Law; established, re-established, monumented, recovered, found as expressed below:



NOTE: Not more than 2 corners, all in the same town and range, may be recorded on this certificate.

A. Description of original monument and accessories and/or subsequent restoration:

Item	Date	L	P	Document	Name	#	Cor. Desc.
1	1810	--	--	Private Claim Description	Greeley	---	Post
2	1810	--	--	Private Claim Notes	Greeley	---	Post
3	1817	--	--	Township Plat	Preston	---	Not Indicated
4	1817	--	--	GLO Notes	Preston	---	Not Indicated
5	1895	--	--	Atlas	--	--	Not Indicated
6	1930	15	6	Assessor's Plat No. 24	Lehner	123	Not Indicated

B. Description of corner evidence found and/or method applied in restoring or reestablishing corner:

PC-027 is the intersection of the west line of Section 15 with the southerly line of PC 625. A research of the public records and a request sent to all area surveyors provided no recorded surveys that reference this corner. To locate the position, I intersected the south line of PC 625 as approved by the Macomb County Peer Review group in 2011 and monumented by corners recorded in Liber 21051, Page 850 MCR and Liber 21034, Page 779, MCR, with the west line of section 15 as defined the northwest corner of section 15, as recorded in Liber 6862, Page 831, MCR, and the west quarter corner of Section 15 as recorded in Liber 6862, Page 832 MCR. The corner location is in the center of Little Mack Avenue, concrete surface, and is located approximately 0.14' west of the centerline. No monumentation could be set at the corner location. The Road Commission of Macomb County has recently resurfaced the road with a new process, and coring the road for a monument box may cause problems with the new process. Therefore, reference monuments were set (and witnessed) on the south line of PC 625 at the westerly right of way line of Little Mack and in the easterly right of way line of Little Mack (could not set at 60' ROW due to tree).

Distance Comparisons	GLO	AEW	Diff
PCC 027 to Swly cor of PC 625 (PC-023)	5.96 ch. (393.36')	408.29'	14.93'
PCC 027 to PCC 028	17.77 ch. (1172.82')	1227.80'	54.98'
PCC 027 to west quarter post of Section 15	17.99 ch. (1187.34')	1268.96'	81.62'

C. Description of monument for corner and accessories established to perpetuate locating the position of the corner:

PCC-027 corner location established and witnessed, but no monumentation set at this corner.

- Az 3° 202.11' Set a chiseled "X" in south rim of a sanitary sewer manhole.
- Az 111° 38.82' Set a chiseled "X" in north rim of a storm sewer manhole at house #28834 Little Mack Ave.
- Az 226° 66.14' Set a chiseled "X" in northeast rim of a gate well and valve at house #28811 Little Mack Ave.
- Az 285° 58.17' Set a chiseled "X" in east rim of a gate well and valve in the sidewalk at house #28837.

(Witnesses continued on back)



THE SELECTED LOCATION IS ACCEPTED BY ME AND IS GENERALLY ACCEPTED BY PROFESSIONAL SURVEYORS AS THE BEST AVAILABLE EVIDENCE OF THE POSITION OF THIS CORNER.

Signed by Craig P. Amey
 Surveyor's Michigan License No. 34970

Date Nov 18, 2013

LAND CORNER RECORDATION CERTIFICATE
Filing Requirement of Act 74, Mich. P.A. 1970 as Amended

For corners in

<u>Macomb</u> (County)	Located In: City of St. Clair Shores	Corner Code # PCC 027
1. Public Land Survey	T <u>1N</u> R <u>13E</u>	_____
	T _____ R _____	_____
	T _____ R _____	_____
	T _____ R _____	_____
2. Property Controlling In Section	S _____ T _____ R _____	_____
	s _____ T _____ R _____	_____
3. Miscellaneous Property in Sec.	S _____ T _____ R _____	_____
	S _____ T _____ R _____	_____

**Register of Deeds Stamp & File
Number**

C. Description of monument for corner and accessories established to perpetuate locating the position of the corner: (Cont.)

Set a 1/2" x 3' re-rod encased in 4" diam concrete monument with a remonumentation cap stamped "REF. PT., PCC-027, PS 34970 at the intersection of the west right of way line of Little Mack and the southerly line of PC 625.

- Witnesses to reference monument set at the intersection of the south line of PC 625 and the west right of way line of Little Mack Ave:
- Az 15° 81.74' Set a CST nail in west face utility pole with light on west side of Little Mack Ave. at the north property line of house #28837.
 - Az 180° 17.30' Set a chiseled "X" on the southeast corner of a storm sewer road basin at the northwest corner of Gaffke and Little Mack Ave.
 - Az 120° 5.74' Set a Chiseled "X" on the east rim of Gate Valve and Well in the sidewalk, at the northwest corner of Gaffke and Little Mack Ave. at house #28837.
 - Az 270° 9.07' Centerline of 2" steel fence post, second fence post from easterly end of fence.
 - Az 117° 63.69' Calculated position of PCC-027 (Could not set monument at this location due to overlay pavement construction)

Set a 1/2" x 3' re-rod encased in 4" diameter concrete monument with a remonumentation cap stamped "REF. PT., PCC-027, PS 34970" in the easterly right of way of Little Mack Ave. on the south line of PC 625

- Witnesses to reference monument set at the intersection of the south line of PC 625 and the east right of way line of Little Mack Ave
- Az 0° 32.90' Centerline light pole on the east side Little Mack Ave. at house #28834.
 - Az 120° 19.40' Set a CST nail in south face of 21" Oak on east side Little Mack Ave. at the south property line of house #28834.
 - Az 185° 147.40' Centerline light pole on the east side of Little Mack Ave. at house #28808.
 - Az 275° 7.70' Set a chiseled "X" on north rim of a storm sewer manhole on the east side of Little Mack Ave. on the south side of drive to house #28834.
 - Az 287° 45.95' Calculated position of PCC-027 (Could not set monument at this location due to overlay pavement construction)

ACCEPTED BY THE MACOMB COUNTY SURVEY PEER
GROUP AS THE OFFICIAL CORNER UNDER MICHIGAN
PUBLIC ACT 345 OF 1990 AT A MEETING HELD
ON 8-7-2012
Martin C. Dunn
MARTIN C. DUNN, P.S. CHAIRMAN



Todd Schmitz
Deputy Clerk

Carmella Sabaugh

Macomb County
Clerk/Register of Deeds

Betty A. Oleksik
Deputy Register of Deeds

REMONUMENTATION PROGRAM
MARTIN C. DUNN, SURVEYOR REPRESENTATIVE
OFFICE: 586-469-7916 ♦ CELLULAR: 810-217-7275

December 14, 2012

Nancy Johnston
LARA/Bureau of Construction Codes
Office of Land Survey & Remonumentation
P.O. Box 30254
Lansing, MI 48909

Dear Ms. Johnston,

Please find enclosed, recorded copies of the following Land Corner Recordation Certificates assigned in the 2012 Grant Year:

T5N/R13E: A03.

T3N/R14E: Other Codes: PCC-045, PCC-046, PC-047, PCC-048, PCC-049, PC-050.

T1N/R13E: Other Codes: PCC-027, PCC-028, PCC-029, PCC-030.

The above referenced Land Corners and Land Corner Recordation Certificates have been entered into the State Corner Index System. Please contact the Remonumentation office at (586) 469-7916 if you have any questions. Thank you.

Sincerely,

Betty A. Oleksik
Macomb County Grant Administrator

Enclosure

BAO/mj

cc: Martin C. Dunn, P.S.

Clerk's Office
40 N. Main St.
Mount Clemens, MI 48043
586-469-5120
Fax: 586-783-8184

<http://www.macombcountymi.gov/clerksoffice>
clerksoffice@macombcountymi.gov

Fax-on-Demand
Michigan: 1-888-99-CLERK
Out-of-State: 310-575-5035

Register of Deeds
10 N. Main St.
Mount Clemens, MI 48043
586-469-5175
Fax: 586-469-5130
<http://www.macombcountymi.gov/registerdeeds>
registerdeeds@macombcountymi.gov

LAND CORNER RECORDATION CERTIFICATE
Filing Requirement of Act 74, Mich. P.A. 1970 as Amended

For corners in

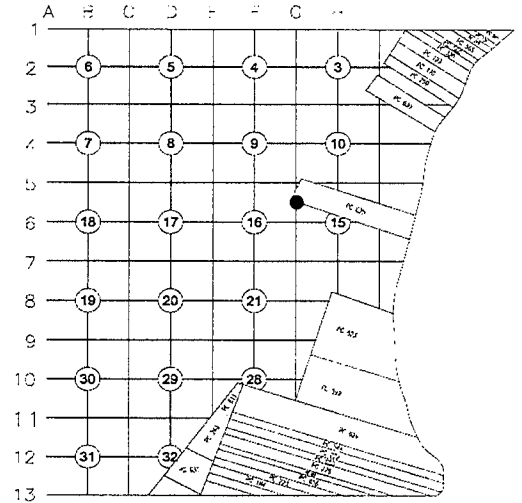
<u>Macomb</u> (County)	Located In: City of St. Clair Shores	Corner Code # PCC 027
1. Public Land Survey	T 1N R 13E	_____
	T _____ R _____	_____
	T _____ R _____	_____
	T _____ R _____	_____
2. Property Controlling In Section	S _____ T _____ R _____	_____
	s _____ T _____ R _____	_____
3. Miscellaneous Property in Sec.	S _____ T _____ R _____	_____
	S _____ T _____ R _____	_____

2175898 PAGE 1 OF 2
 LIBER 21777 PAGE 131
 12/13/2012 09:52:07 A.M.
 MACOMB COUNTY, MI SEAL
 CARNELLA SABAUGH, REGISTER OF DEEDS

Register of Deeds Stamp & File Number

4. Lot No. _____, Recorded Plat
 5. Private Claims Intersection of the West line of Section 15 with the Southerly line of PC 625

I, Craig P. Amey, in a field survey on July 12, 2012 do hereby state that under requirements of P.A. 74, Michigan P.A. of 1970, the corner points mentioned in lines 1 and 2 above were in conformance with regulations and rules therefore as required in the current manual of survey instructions of the United States Department of the Interior, Bureau of Land Management or by a decree of a Court of Law and /or that the corner points mentioned in lines 3, 4 and 5 above were in conformance with the rules of the Michigan Board of Land Surveyors or by a Decree of a Court of Law; established, re-established, monumented, recovered, found as expressed below:



NOTE: Not more than 2 corners, all in the same town and range, may be recorded on this certificate.

A. Description of original monument and accessories and/or subsequent restoration:

Item	Date	L	P	Document	Name	#	Cor. Desc.
1	1810	--	--	Private Claim Description	Greeley	---	Post
2	1810	--	--	Private Claim Notes	Greeley	---	Post
3	1817	--	--	Township Plat	Preston	---	Not Indicated
4	1817	--	--	GLO Notes	Preston	---	Not Indicated

B. Description of corner evidence found and/or method applied in restoring or reestablishing corner:

PC-027 is the intersection of the west line of Section 15 with the southerly line of PC 625. A research of the public records and a request sent to all area surveyors provided no recorded surveys that reference this corner. To locate the position, I intersected the south line of PC 625 as approved by the Macomb County Peer Review group in 2011 and monumented by corners recorded in Liber 21051, Page 850 MCR and Liber 21034, Page 779, MCR, with the west line of section 15 as defined the northwest corner of section 15, as recorded in Liber 6862, Page 831, MCR, and the west quarter corner of Section 15 as recorded in Liber 6862, Page 832 MCR. The corner location is in the center of Little Mack Avenue, concrete surface, and is located approximately 0.14' west of the centerline. No monumentation could be set at the corner location. The Road Commission of Macomb County has recently resurfaced the road with a new process, and coring the road for a monument box may cause problems with the new process. Therefore, reference monuments were set (and witnessed) on the south line of PC 625 at the easterly and westerly right of way lines of Little Mack.

Distance Comparisons	GLO	AEW	Diff
PCC 027 to Swly cor of PC 625 (PC-023)	5.96 ch. (393.36')	408.29'	14.93'
PCC 027 to PCC 028	17.77 ch. (1172.82')	1227.80'	54.98'
PCC 027 to west quarter post of Section 15	17.99 ch. (1187.34')	1268.96'	81.62'

C. Description of monument for corner and accessories established to perpetuate locating the position of the corner:
 PCC-027 corner location established and witnessed, but no monumentation set at this corner.

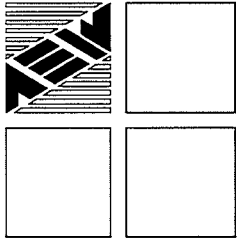
- Az 3° 202.11' Set a chiseled "X" in south rim of a sanitary sewer manhole.
- Az 111° 38.82' Set a chiseled "X" in north rim of a storm sewer manhole at house #28834 Little Mack Ave.
- Az 226° 66.14' Set a chiseled "X" in northeast rim of a gate well and valve at house #28811 Little Mack Ave.
- Az 285° 58.17' Set a chiseled "X" in east rim of a gate well and valve in the sidewalk at house #28837.

(Witnesses continued on back)



THE SELECTED LOCATION IS ACCEPTED BY ME AND IS GENERALLY ACCEPTED BY PROFESSIONAL SURVEYORS AS THE BEST AVAILABLE EVIDENCE OF THE POSITION OF THIS CORNER.

Signed by Craig P. Amey Date 12-04-12
 Surveyor's Michigan License No. 34970



ANDERSON, ECKSTEIN AND WESTRICK, INC.

51301 Schoenherr Road, Shelby Township, Michigan 48315

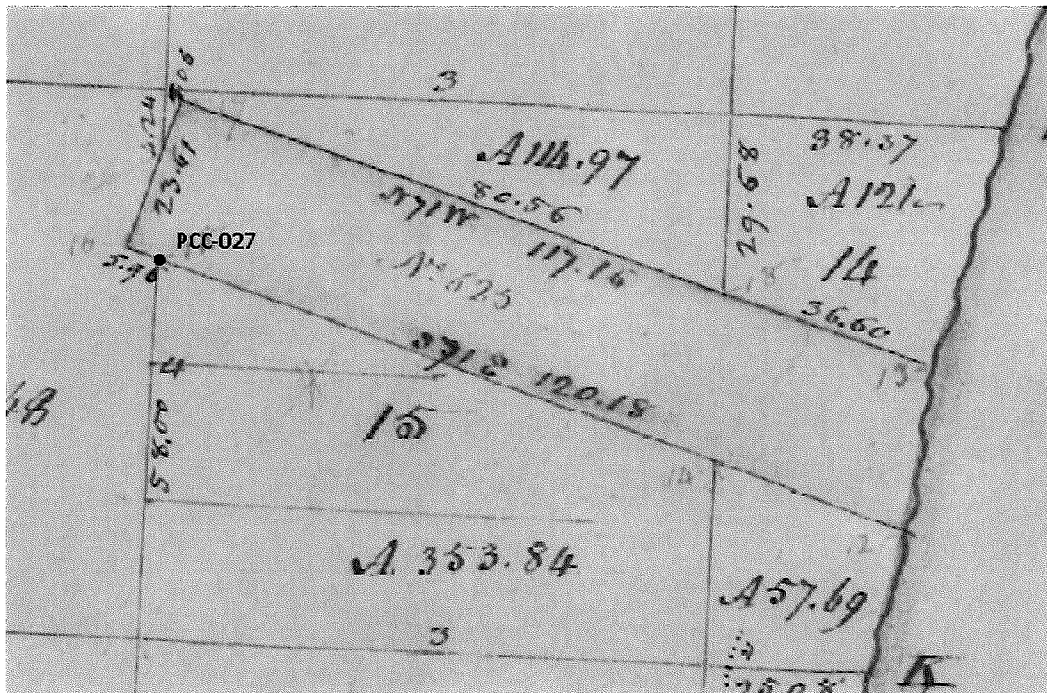
Civil Engineers • Surveyors • Architects 586-726-1234

2012 Remonumentation

Corner: PCC-027 Intersection of the west line of Section 15 with the southerly line of PC 625

Surveyor's Report

PCC-027 is the Intersection of the west line of Section 15 with the southerly line of PC 625. In 1817, William Preston, D.S. was contracted to subdivide section 15. PC 625 lies diagonally across Section 15 in a northwest/southeast orientation, extending from the northwesterly corner of Section 15 to Lake St. Clair. Although Preston does not call out the intersection of the west line of section 15 with the southerly line of PC 625 when he originally ran the west line of section 15, the GLO notes do include additional entries defining this position. We have been contracted by Macomb County to locate and, if necessary, remonument this position.



PC-027 is the intersection of the west line of Section 15 with the southerly line of PC 625. A research of the public records and a request sent to all area surveyors provided no recorded surveys that reference this corner. To locate the position, I intersected the south line of PC 625 as approved by the Macomb County Peer Review group in 2011 and monumented by corners recorded in Liber 21051, Page 850 MCR and Liber 21034, Page 779, MCR, with the west line of section 15 as defined by the northwest corner of section 15, as recorded in Liber 6862, Page 831, MCR, and the west quarter corner of Section 15 as recorded in Liber 6862, Page 832 MCR. The corner location is in the center of Little Mack Avenue, a concrete surface, and is located approximately 0.14' west of the centerline.

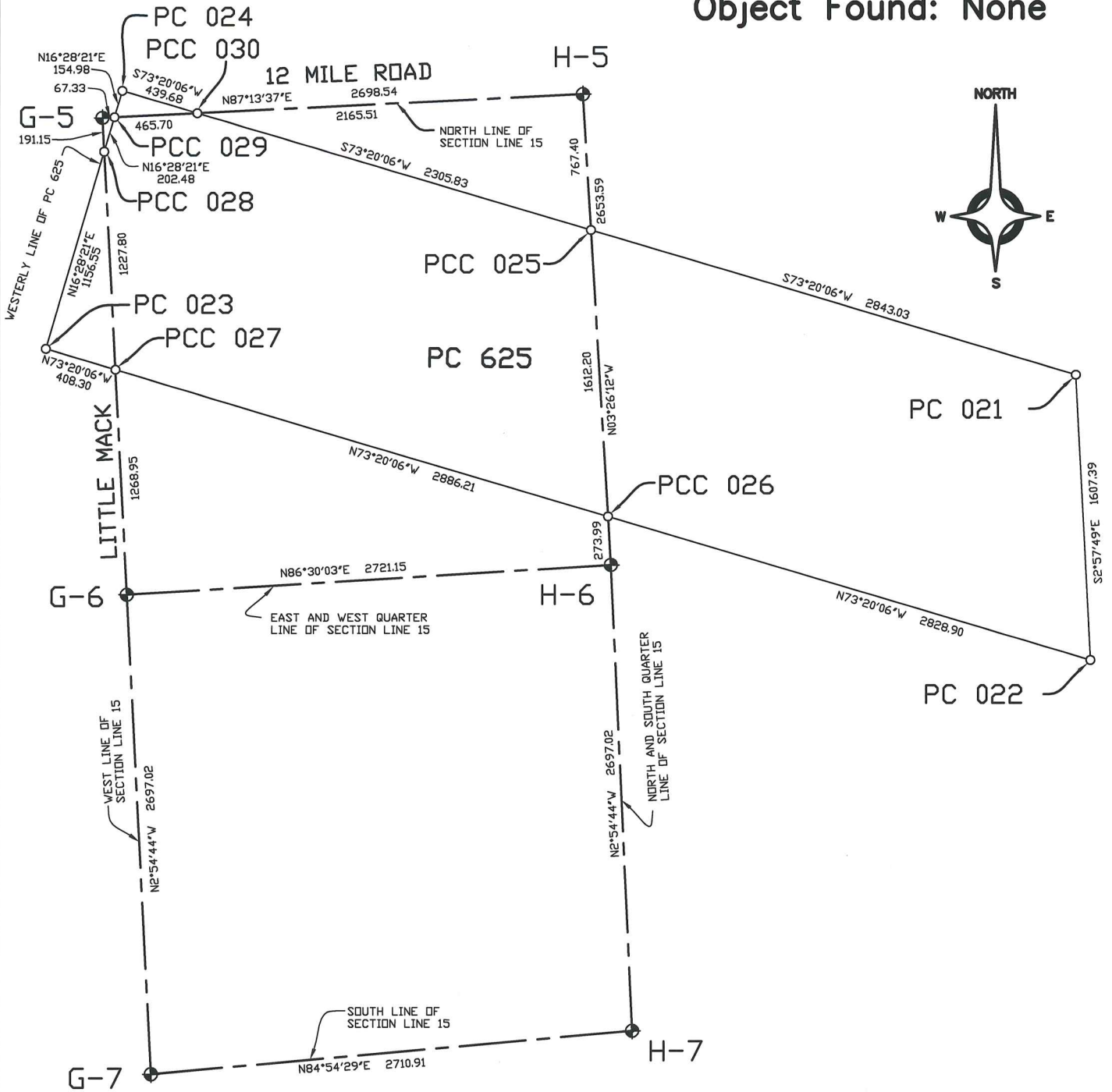
I believe that the method described above has determined the best location of the Intersection of the west line of Section 15 with the southerly line of PC 625.

Respectfully Submitted,

Craig P. Amey, PS

2-B

Private Claim: PC-625
 Town: 01N
 Range: 13E
 Object Found: None



REVISED 10-24-13



**ANDERSON, ECKSTEIN
 AND WESTRICK, INC.**
 Civil Engineers • Surveyors • Architects
 51301 Schoenherr Road, Shelby Township, Michigan 48315
 Phone 586•726•1234 Fax 586•726•8780

PROJECT

**Macomb Co.
 Remon
 2012**

DATE

12/12

DRAWN BY

JJG

CHECKED BY

CPA

PROJECT NO.

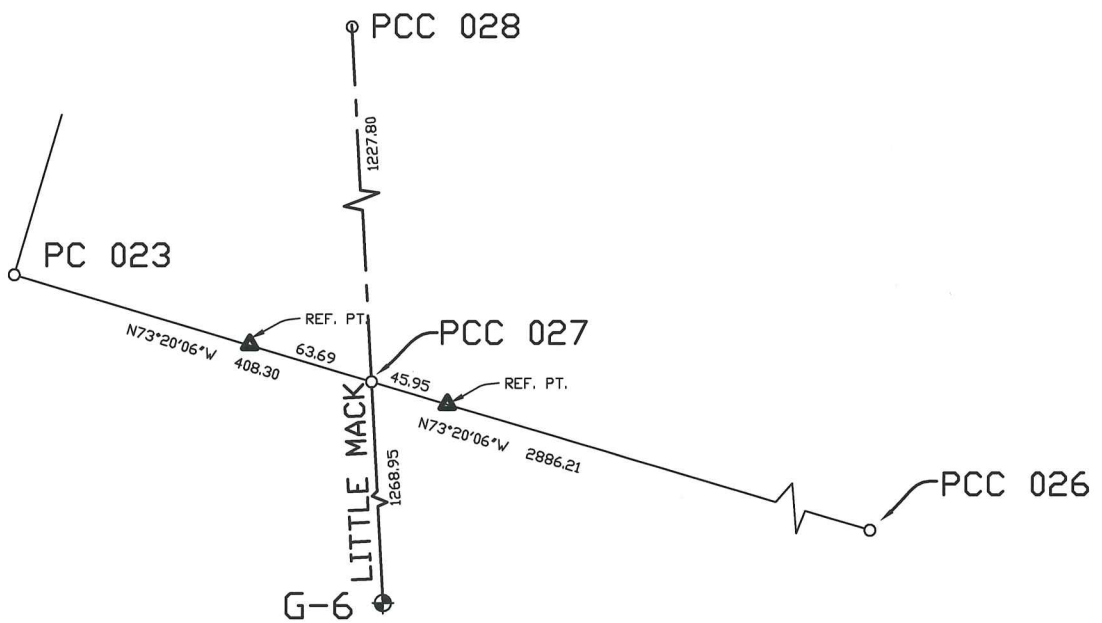
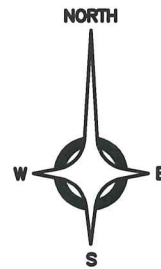
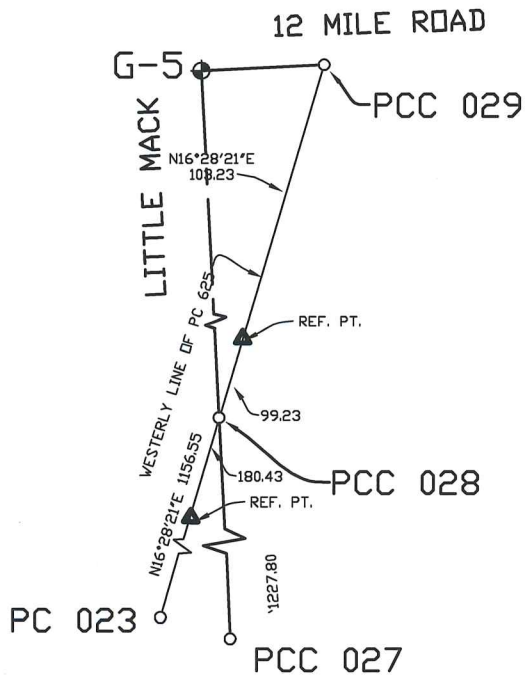
0223-0036

SHEET No.

PC-625

Reference Points

Private Claim: PC-625
 Town: 01N
 Range: 13E



REVISED 10-24-13



**ANDERSON, ECKSTEIN
 AND WESTRICK, INC.**
 Civil Engineers • Surveyors • Architects
 51301 Schoenherr Road, Shelby Township, Michigan 48315
 Phone 586•726•1234 Fax 586•726•8780

PROJECT

**Macomb Co.
 Remon
 2012**

DATE

12/12

DRAWN BY

JJG

CHECKED BY

CPA

PROJECT NO.

0223-0036

SHEET No.

PC-625

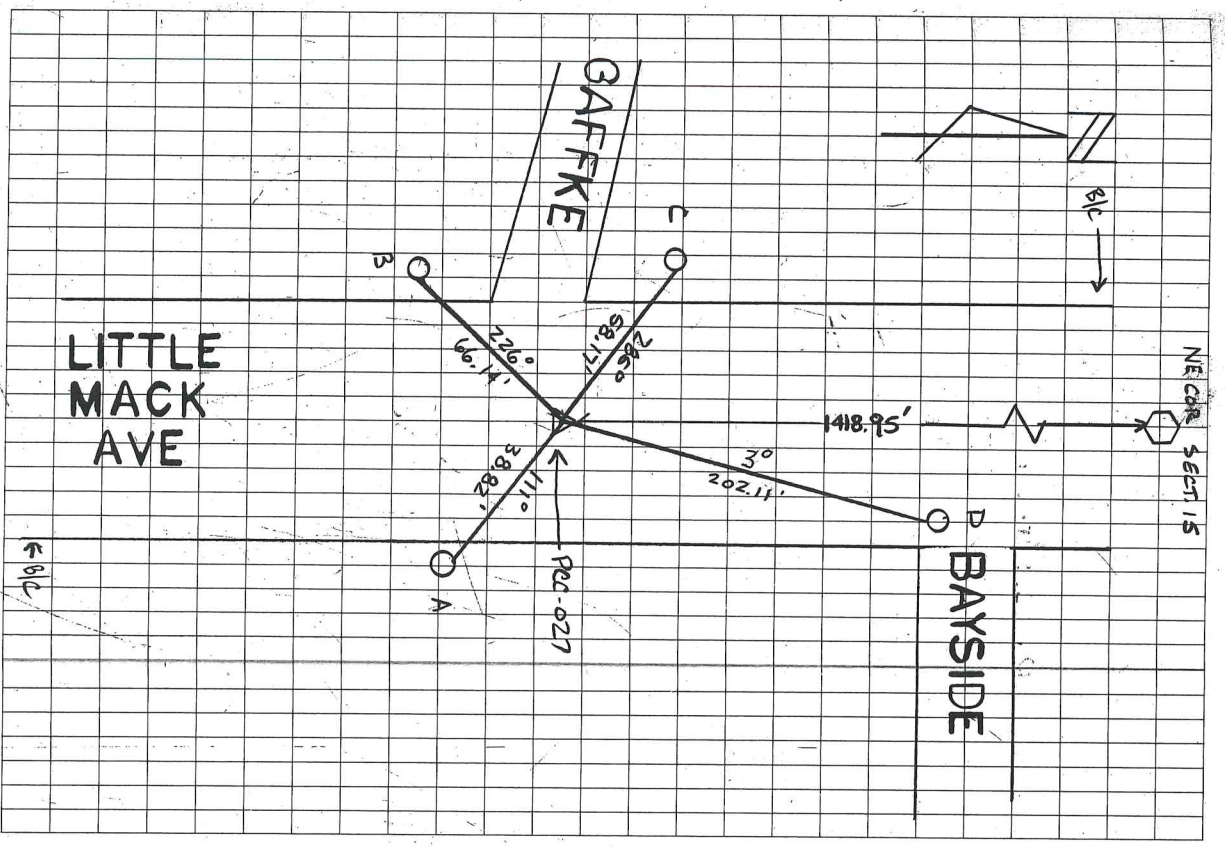
0225-0036
7-11-12
MAT

3005

2012 RETURN

3005 29

P#	RC-027	WITNESSES #	IS3
10153A	CHIS "X" ON N. RIM OF STM MH		
AZ: 111°	ON EAST SIDE LITTLE MACK AVE,		
DIST: 38.82'	ON S. SIDE OF DRIVE TO # 28834		
10153B	CHIS "X" ON NE RIM OF GYM ON		
AZ: 226°	WEST SIDE LITTLE MACK AVE @ SW		
DIST: 66.14'	COR OF GAFFKE & LITTLE MACK AVE AT		
	# 28811		
10153C	CHIS "X" OF EAST RIM OF GYM IN		
AZ: 285°	SIDEWALK @ NW COR OF GAFFKE 3.		
DIST: 58.17'	LITTLE MACK AVE, @ HSB # 28837		
10153D	CHIS "X" OF S. RIM OF SAN. MH		
AZ: 3°	IN E. 1/4 NORTH BOUND LANE OF		
DIST: 202.11	LITTLE MACK, 30' +/- SOUTH OF E		
	BAYSIDE EXTENDED		
- EXACT LOCATION OF PCC-027 CALLS 0.14' WEST OF E LITTLE MACK AVE.			



3-A

No. 87

No. 625 Confirmed to
Pierre Duchesne

LAKE ST. CLAIR

Description No. 625 Confirmed to Piere Duchane commencing at a post standing on the border of Lake St. Clair between this tract and unceded land thence north seventy five degrees west one hundred and nineteen chains sixty four links to a post thence north fifteen degrees east twenty three chains to a post thence south seventy five degrees east one hundred and sixteen chains to a post standing on the border of Lake St. Clair between this tract and a tract of unceded lands, thence along the border of said lake south six degrees west twenty three chains twenty eight links to the place of beginning, containing two hundred and seventy acres and ninety eight hundredths of an acre,

Detroit Jany 4th, 1810

Aaron Greeley Surveyor
of private claims

4-A-1

N. 87.

Lake St. Clair

Description N. 625 confirmed to Ben
Dun: ane, commencing at a post stand-
ing on the border of Lake St. Clair between
this tract and unconceded land, thence
north seventy five degrees west one hundred
and nineteen chains sixty four links
to a post thence north fifteen degrees east
twenty three chains to a post thence south
seventy five degrees east one hundred and
sixteen chains, to a post standing on
the border of Lake St. Clair between this
tract and a tract of unconceded lands,
thence along the border of said lake
south six degrees west twenty three chains
twenty eight links, to the place of begin-
ning containing two hundred and sev-
enty acres, and ninety eight hundred
ths of an acre.

Detroit January 4 1810

Aaron Greeley Surveyor
of private Claims.

625

Form 1 North Range 13 East

East Corrected between 4+7

40.07 Made 1/4 Section corner on a Crackony
24 in dia

80.14 To Section corner

South Between Sections 9+10

40.00 made half mile corner on a
B. Ash 6 in dia

72.00 a B. Ash 18 ins

80.00 Set post for Section 9, 10, 16, 15 from
which a B. Ash 8 in dia bears S15 W
10 links also a B. Ash 10 in dia bears
N 85 E 11 links dist

1st half mile level and dry 2nd part
^{last half mile part dry 2nd part}
Timber W. Oak Poplar B. Ash Elm
Sugar B. Ash + Undergrowth Spice
Beech

West On Randoms between S 9+16

40.00 Set temporary half mile post

80.00 Intersected West boundary at the corner

Level level and dry good 2nd part

Level level Timber W. Oak B. Ash

Elm Sugar Poplar + Undergrowth

Spice Lyrus +

East Corrected between 9+16

40.00 Set 1/4 Section post from which
a Sugar 24 inches bears S52 E 20 lin

also a Beech 12 in dia bears S32 W

12 links dia

80.00 To Section corner

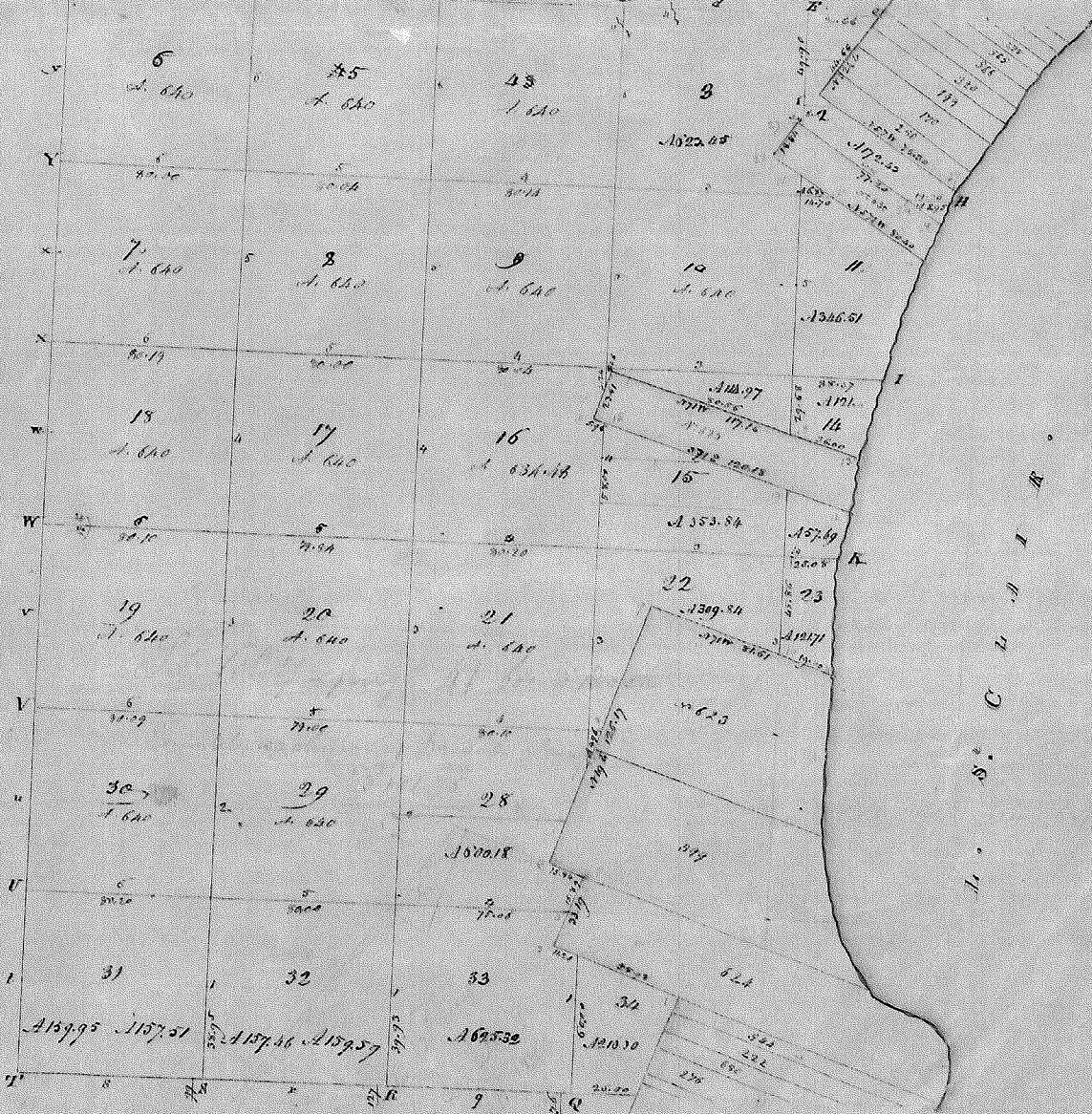
South Between Sections 16+15

* 22.85 an Elm 14 in dia

Township N^o. 1 North, Range N^o. 11th East of Mer. (Mich. Ter.)

31

31



A true & correct copy from the original on file in the office

Surveyor General's Office
Feb 22 - 1889

Surveyor General

4-A-3

1818

Town 1 North Range 13 East

- 40.00 Made half mile corner on
a W. Oak 6 in di
- 41.17 a B. Ash 16 in di
- 80.00 Set post for Section 16, 15, 22, 21
from which a B. Oak 14 in di bears
S. 5. E 11 lin also a B. Ash 16 in di
bears N 30 W 25 links
1st half mile level and set 2^d pole
last half mile same
Timber B. Ash Beech Elm Lymn
& Undergrowth Lymn B. Ash &c
- * 1.24 Ent private claim No 625 Confirmed
to Purse Duchesne 50.6.
South of the N.W. Cor. thereof
Made cor. for frac sects 15 & 16 on an
Ash 8 in diam East
- 22.01 Left the claim 5.76 from the S.W. Cor.
thereof Made Cor for frac. sec 15 & 16
on B. Ash 14 in diam
- ↳ This claim was not observed
in running the section when the first
notes were made

West On Randon between S. 16 & 21
40.00 Set temporary half mile post
80.20 Ent. West boundary 15 links South
of corner Land level Part dry 2^d pole
Timber B. Ash Beech Sugar Lymn
Undergrowth Spice &c

East Cor^d between 16 & 21
40.10 Made 1/4 section corner on a
B. Ash 7 in dia at average distance
from line

Town 1. Tntle Range 13 East.

80.00 Set post for sections 10, 11 - 14, 15
from which a Beech 14 in di bears N
23 & 8 links also a Beech 6 in di
bears N 65 W 6 links dist
first half mile good 2nd rate
last half mile same
Timber W. Oak Beech Sugar &
Undergrowth spice

West On Roadway between S. 10 + 15

40.00 Set temp. half mile pt

80.04 Ent^d West boundary at the corner
Level level Part^d dry 2nd rate
Timber Beech Elm &c

East Corrected between 10 + 15

40.02 Made 14 section corner on a Beech
4 in di at average distance

80.04 To section corner

East Between sections 11 + 14

38.37 Inter^d Lake St Clair and
Set post for fractional sections 11 + 14
from which a Sycamore 18 in di
bears N 37 & 53 links also a
Maple 12 in bears S 47 W 45
links dist Town part dry 2nd rate
Timber Beech B. Ash Elm &c

South Between sections 14 + 15

5.00 a B. Ash 18 in di

29.68 Inter^d Prop^t claim 80.56 from
N.W. corner of Lot No. 6.25 and
made corner on an iron rod 4 in
dia for frac sect 14 + 15 = 52.60 left

Town 1. North Range 13 East

- 80.00 Set post for sections 10, 11 - 14, 15
from which a Beech 14 in di bears N
23 & 8 links also a Beech 6 in di
bears N 65 W 6 links dist
first half mile good 2nd rate
last half mile same
Timber W. Oak Beech Sugar &
Undergrowth spruce
- West On Random between S. 10 + 15
40.00 Set temp half mile pt
80.04 Ent^d West boundary at the corner
Level level Part dry 2nd rate
Timber Beech Elm &c
- East Corrected between 10 + 15
40.02 Made 14 section corner on a Beech
4 in di at average distance
80.04 To section corner
- East Between sections 11 + 14
38.37 Inter^d Lake St Clair and
Set post for fractional sections 11 + 14
from which a Sycamore 18 in di
bears N 37 & 53 links also a
Maple 12 in bears S 47 W 45
links dist Town post dry 2nd rate
Timber Beech B. Ash Elm &c
- South Between sections 14 + 15
5.00 a B. Ash 18 in di
29.68 Inter^d Priv^t Claim 80.56 from
N.W. corner of Lot No 6.25 and
Made corner on an Iron rod 4 in
dia for grad sect 14 + 15 = 52.60 left

See Restrictions, Liber 1031 page 389 (Part of Plat 27)

SHEET 1 OF 2

July 5-1930
Geo. L. Loring

ASSESSORS PLAT N^o 24

OF PARTS OF NE. FRL 1/4 SEC. 16, FRL SEC. 15 & P.C. 625 T.14R.13E.

VILLAGE OF ST CLAIR SHORES MACOMB CO. MICH

SCALE 1" = 200'

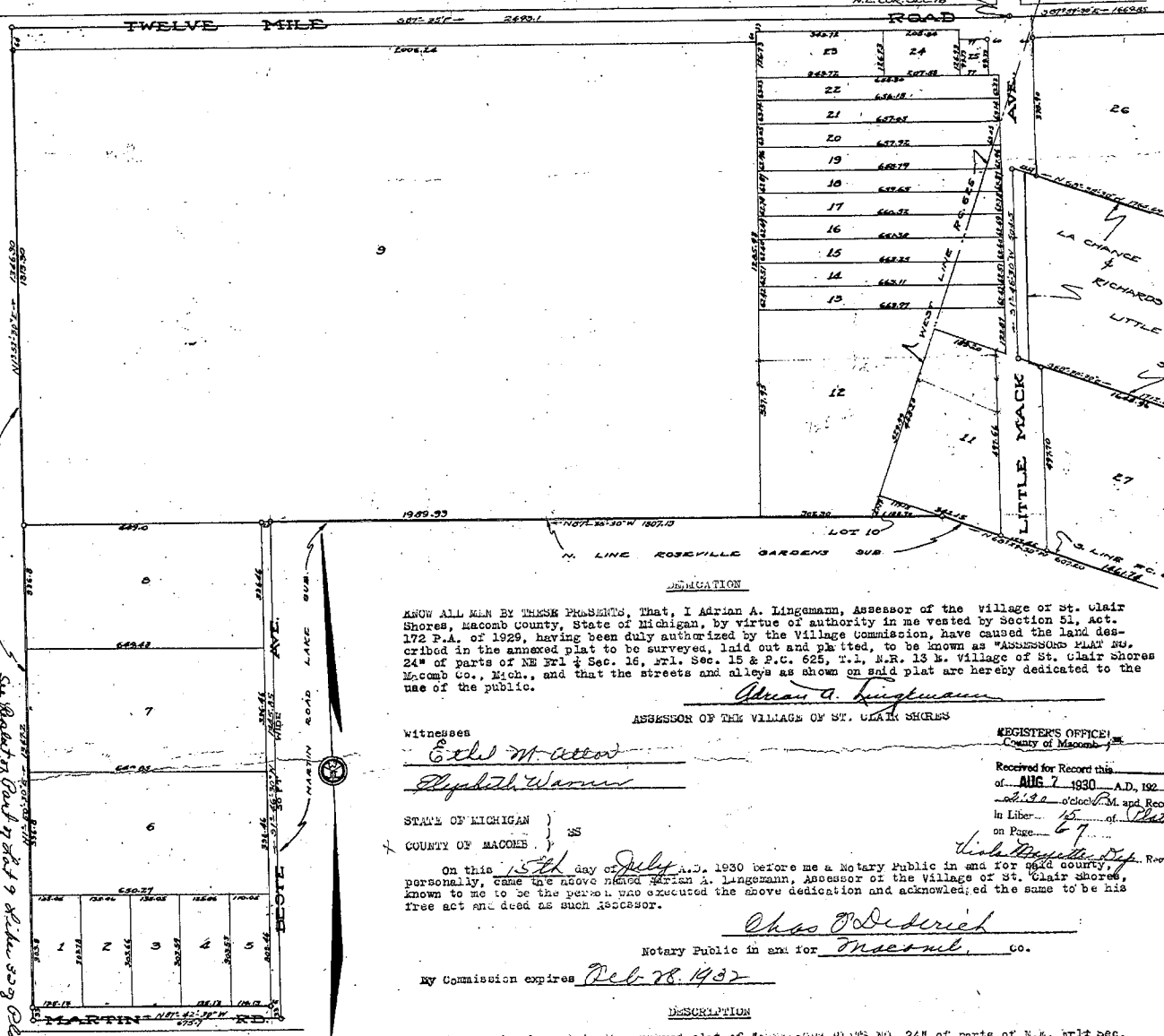
WALTER J. LEMNER REC. C.E.
ST. CLEMENS MICH.

P. 6
L. 15

523

See Plat 27 Liber 1031 page 389
See Plat 28 Liber 1031 page 390
See Plat 29 Liber 1031 page 391
See Plat 30 Liber 1031 page 392
See Plat 31 Liber 1031 page 393
See Plat 32 Liber 1031 page 394
See Plat 33 Liber 1031 page 395
See Plat 34 Liber 1031 page 396
See Plat 35 Liber 1031 page 397
See Plat 36 Liber 1031 page 398
See Plat 37 Liber 1031 page 399
See Plat 38 Liber 1031 page 400
See Plat 39 Liber 1031 page 401
See Plat 40 Liber 1031 page 402
See Plat 41 Liber 1031 page 403
See Plat 42 Liber 1031 page 404
See Plat 43 Liber 1031 page 405
See Plat 44 Liber 1031 page 406
See Plat 45 Liber 1031 page 407
See Plat 46 Liber 1031 page 408
See Plat 47 Liber 1031 page 409
See Plat 48 Liber 1031 page 410
See Plat 49 Liber 1031 page 411
See Plat 50 Liber 1031 page 412
See Plat 51 Liber 1031 page 413
See Plat 52 Liber 1031 page 414
See Plat 53 Liber 1031 page 415
See Plat 54 Liber 1031 page 416
See Plat 55 Liber 1031 page 417
See Plat 56 Liber 1031 page 418
See Plat 57 Liber 1031 page 419
See Plat 58 Liber 1031 page 420
See Plat 59 Liber 1031 page 421
See Plat 60 Liber 1031 page 422
See Plat 61 Liber 1031 page 423
See Plat 62 Liber 1031 page 424
See Plat 63 Liber 1031 page 425
See Plat 64 Liber 1031 page 426
See Plat 65 Liber 1031 page 427
See Plat 66 Liber 1031 page 428
See Plat 67 Liber 1031 page 429
See Plat 68 Liber 1031 page 430
See Plat 69 Liber 1031 page 431
See Plat 70 Liber 1031 page 432
See Plat 71 Liber 1031 page 433
See Plat 72 Liber 1031 page 434
See Plat 73 Liber 1031 page 435
See Plat 74 Liber 1031 page 436
See Plat 75 Liber 1031 page 437
See Plat 76 Liber 1031 page 438
See Plat 77 Liber 1031 page 439
See Plat 78 Liber 1031 page 440
See Plat 79 Liber 1031 page 441
See Plat 80 Liber 1031 page 442
See Plat 81 Liber 1031 page 443
See Plat 82 Liber 1031 page 444
See Plat 83 Liber 1031 page 445
See Plat 84 Liber 1031 page 446
See Plat 85 Liber 1031 page 447
See Plat 86 Liber 1031 page 448
See Plat 87 Liber 1031 page 449
See Plat 88 Liber 1031 page 450
See Plat 89 Liber 1031 page 451
See Plat 90 Liber 1031 page 452
See Plat 91 Liber 1031 page 453
See Plat 92 Liber 1031 page 454
See Plat 93 Liber 1031 page 455
See Plat 94 Liber 1031 page 456
See Plat 95 Liber 1031 page 457
See Plat 96 Liber 1031 page 458
See Plat 97 Liber 1031 page 459
See Plat 98 Liber 1031 page 460
See Plat 99 Liber 1031 page 461
See Plat 100 Liber 1031 page 462

See Plat 27 Liber 1031 page 389
See Plat 28 Liber 1031 page 390
See Plat 29 Liber 1031 page 391
See Plat 30 Liber 1031 page 392
See Plat 31 Liber 1031 page 393
See Plat 32 Liber 1031 page 394
See Plat 33 Liber 1031 page 395
See Plat 34 Liber 1031 page 396
See Plat 35 Liber 1031 page 397
See Plat 36 Liber 1031 page 398
See Plat 37 Liber 1031 page 399
See Plat 38 Liber 1031 page 400
See Plat 39 Liber 1031 page 401
See Plat 40 Liber 1031 page 402
See Plat 41 Liber 1031 page 403
See Plat 42 Liber 1031 page 404
See Plat 43 Liber 1031 page 405
See Plat 44 Liber 1031 page 406
See Plat 45 Liber 1031 page 407
See Plat 46 Liber 1031 page 408
See Plat 47 Liber 1031 page 409
See Plat 48 Liber 1031 page 410
See Plat 49 Liber 1031 page 411
See Plat 50 Liber 1031 page 412
See Plat 51 Liber 1031 page 413
See Plat 52 Liber 1031 page 414
See Plat 53 Liber 1031 page 415
See Plat 54 Liber 1031 page 416
See Plat 55 Liber 1031 page 417
See Plat 56 Liber 1031 page 418
See Plat 57 Liber 1031 page 419
See Plat 58 Liber 1031 page 420
See Plat 59 Liber 1031 page 421
See Plat 60 Liber 1031 page 422
See Plat 61 Liber 1031 page 423
See Plat 62 Liber 1031 page 424
See Plat 63 Liber 1031 page 425
See Plat 64 Liber 1031 page 426
See Plat 65 Liber 1031 page 427
See Plat 66 Liber 1031 page 428
See Plat 67 Liber 1031 page 429
See Plat 68 Liber 1031 page 430
See Plat 69 Liber 1031 page 431
See Plat 70 Liber 1031 page 432
See Plat 71 Liber 1031 page 433
See Plat 72 Liber 1031 page 434
See Plat 73 Liber 1031 page 435
See Plat 74 Liber 1031 page 436
See Plat 75 Liber 1031 page 437
See Plat 76 Liber 1031 page 438
See Plat 77 Liber 1031 page 439
See Plat 78 Liber 1031 page 440
See Plat 79 Liber 1031 page 441
See Plat 80 Liber 1031 page 442
See Plat 81 Liber 1031 page 443
See Plat 82 Liber 1031 page 444
See Plat 83 Liber 1031 page 445
See Plat 84 Liber 1031 page 446
See Plat 85 Liber 1031 page 447
See Plat 86 Liber 1031 page 448
See Plat 87 Liber 1031 page 449
See Plat 88 Liber 1031 page 450
See Plat 89 Liber 1031 page 451
See Plat 90 Liber 1031 page 452
See Plat 91 Liber 1031 page 453
See Plat 92 Liber 1031 page 454
See Plat 93 Liber 1031 page 455
See Plat 94 Liber 1031 page 456
See Plat 95 Liber 1031 page 457
See Plat 96 Liber 1031 page 458
See Plat 97 Liber 1031 page 459
See Plat 98 Liber 1031 page 460
See Plat 99 Liber 1031 page 461
See Plat 100 Liber 1031 page 462



KNOW ALL MEN BY THESE PRESENTS, That, I Adrian A. Lingenam, Assessor of the village of St. Clair Shores, Macomb County, State of Michigan, by virtue of authority in me vested by Section 51, Act 172 P.A. of 1929, having been duly authorized by the Village Commission, have caused the land described in the annexed plat to be surveyed, laid out and platted, to be known as "ASSESSORS PLAT NO. 24" of parts of NE Frl 1/4 Sec. 16, Frl. Sec. 15 & P.C. 625, T.14, R.13 E. Village of St. Clair Shores Macomb Co., Mich., and that the streets and alleys as shown on said plat are hereby dedicated to the use of the public.

Adrian A. Lingenam
ASSESSOR OF THE VILLAGE OF ST. CLAIR SHORES

Witnesses
Ethel M. Allen
Elizabeth Warner

STATE OF MICHIGAN } SS
COUNTY OF MACOMB }

On this 15th day of July, A.D. 1930 before me a Notary Public in and for said county, personally, came the above named Adrian A. Lingenam, Assessor of the Village of St. Clair Shores, known to me to be the person who executed the above dedication and acknowledged the same to be his free act and deed as such assessor.

Chas. J. Dedering
Notary Public in and for Macomb, Co.

My Commission expires Feb. 28. 1932

REGISTERS OFFICE
County of Macomb
Received for Record this _____ day
of AUG 7 1930 A.D. 1930 at
2:12 o'clock P.M. and Recorded
in Liber 15 of Plats
on Page 67

DESCRIPTION
The land embraced in the annexed plat of "ASSESSORS PLATS NO. 24" of parts of N.E. Frl. Sec. 16, Frl. Sec. 15, and P.C. 625, T.14, R.13 E. Village of St. Clair Shores, Macomb Co., Mich., and described as follows:

Beginning at the N.E. corner of Sec. 15, thence S. 87°59'30" E. 1669.85 ft., thence S. 2°12'30" W. 1002.55 ft., thence N. 68°38'30" W. 1764.69 ft., thence S. 1°48'30" W. 504.50 ft., thence S. 68°50'30" E. 1712.65 ft., thence S. 23°37'30" E. 465.25 ft., thence S. 68°36'30" E. 1735.22 ft., thence S. 2°19'20" W. 145.60 ft., thence N. 88°45'30" W. 350.97 ft., thence N. 88°40'30" W. 1109.78 ft., thence S. 2°04' W. 2640.82 ft., thence S. 89°41'30" W. 1027.43 ft., thence N. 1°48'30" E. 2670.08 ft., thence N. 68°40'30" W. 215.52 ft., thence N. 1°51'30" E. 1135.02 ft., thence N. 68°29'30" W. 609.20 ft., thence N. 87°35'30" W. 1807.13 ft., thence S. 1°46'30" E. 1345.85 ft., thence N. 87°42'30" W. 675.7 ft., thence N. 1°50'30" E. 1347.2 ft., thence N. 1°52'30" E. 1346.50 ft., thence S. 87°35' E. 2693.1 ft., to the point of beginning. Excepting the following described parcel, beginning at a point on the E. and W. line of Sec. 15, 173.22 ft. S. 88°45'30" E. of the intersection of the E. and W. line of S.C. 15, and the centerline of Harper Ave., thence N. 2°08'30" E. 208.62 ft., thence S. 68°36'30" E. 135.8 ft., thence S. 2°19'20" W. 161.61 ft., thence N. 68°45'30" W. 127.75 ft., to the point of beginning.

SURVYORS CERTIFICATE

I hereby certify that the plat hereto delineated is a correct one and that permanent metal monuments of not less than one inch in diameter and fifteen inches in length set in a concrete base at least four inches in diameter and forty eight inches in depth have been placed at points marked thus "o" as thereon shown at all angles in the boundaries of the land platted at all intersections of streets, intersections of alleys or of streets and alleys, and at the intersection of streets and alleys with the boundaries of the plat as shown on said plat.

Walter J. Lemner
REGISTERED CIVIL ENGINEER

This plat was approved by the Village Commission of the Village of St. Clair Shores at a meeting held July 15 1930
This plat was approved by the County Board of Macomb
County, Michigan, at a meeting held July 25 1930.

Charles H. Lingenam Justice of Probate
John G. Anderson Deputy County Clerk
William J. Lingenam County Treasurer

Chas. J. Dedering
Clerk

1895

MAP OF
ERIN

Township 1 North Range 13 East

Scale 2 inches to one Mile

of the Meridian of Michigan



4-A-5

See Declaration of Restrictions - Liber 1237 pg 289 (Part of Lt. 27)

SHEET 2 OF 2

ASSESSORS PLAT N^o 24

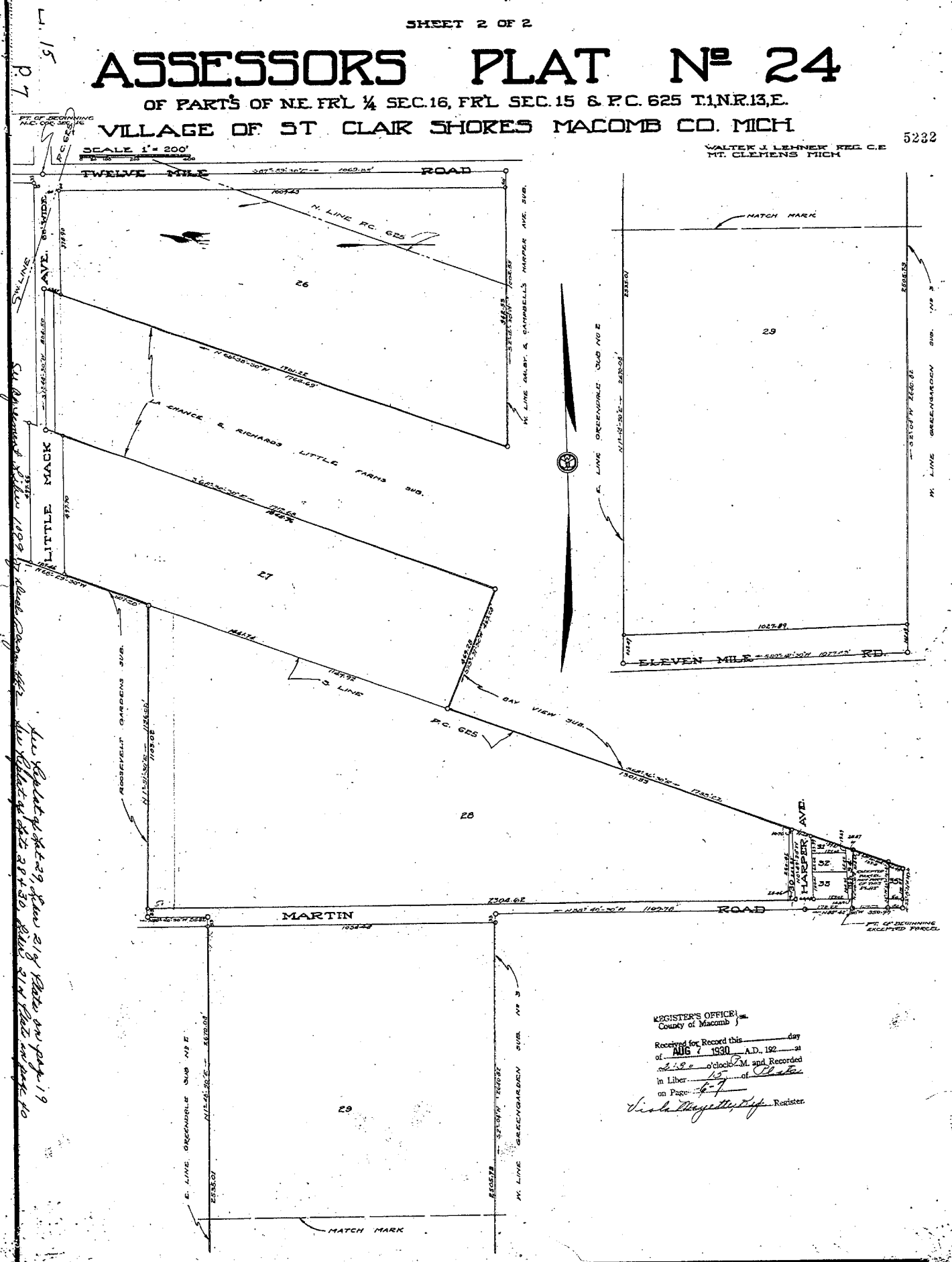
OF PARTS OF NE. FRL 1/4 SEC. 16, FRL SEC. 15 & P.C. 625 T.1.N.R.13.E.

VILLAGE OF ST CLAIR SHORES MACOMB CO. MICH

5232

WALTER J. LEHNER REG. C.E.
MT. CLEMENS MICH

SCALE 1" = 200'



See Plat of 84-29, from 219 Plate on page 19
See Plat of 85-30, from 219 Plate on page 19
See Plat of 85-31, from 219 Plate on page 19

REGISTER'S OFFICE
County of Macomb

Received for Record this _____ day
of AUG 7 1930 A.D. 192_ at
2:30 o'clock P.M. and Recorded
in Liber 15 of Plats
on Page 47

Viola Mayfield Register

PT. OF BEGINNING EXCEPTED PARCEL

**SURVEY &
REMONUMENTATION**

APR 29 1996

COMMISSION LAND CORNER RECORDATION CERTIFICATE
Filing Requirement of Act 74, Mich. P.A. 1970

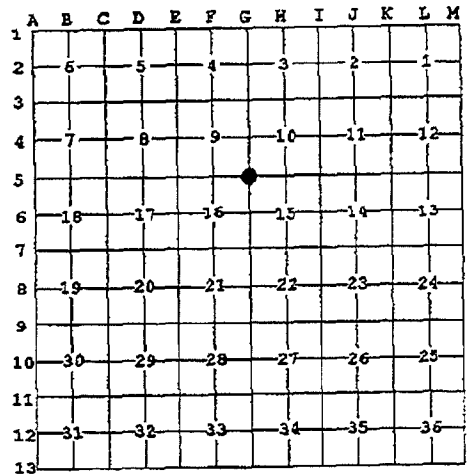
For corners in

<u>Macomb</u> (County)		Located in:	Corner Code #G5
		Erin/Lake Township	
1. Public Land Survey	T <u>1N</u> R <u>13E</u>	<u>G5</u>	
	T _____ R _____	_____	
	T _____ R _____	_____	
	T _____ R _____	_____	
2. Property Controlling in Section	S _____ T _____	_____	
	S _____ T _____	_____	
3. Miscellaneous Property in Sec.	S _____ T _____	_____	
	S _____ T _____	_____	
4. Lot No. _____ , Recorded Plat _____			
5. Private Claims _____			

Register of Deeds Stamp & File Number

I, Craig P. Arney, in a field survey on August 8, 1995 do hereby certify that under requirements of P.A. 74, Michigan P.A. of 1970, the corner points mentioned in lines 1 and 2 above were in conformance with regulations and rules therefore as required in the current manual of survey instructions of the United States Department of the Interior, Bureau of Land Management or by a decree of a Court of Law and /or that the corner points mentioned in lines 3, 4 and 5 above were in conformance with the rules of the Michigan Board of Land Surveyors or by a Decree of a Court of Law; established, re-established, monumented, re-monumented, recovered, found as expressed below:

NOTE: Not more than 4 corners, all in the same town and range, may be recorded on this certificate.



A. Description of original monument and accessories and/or subsequent restoration:

1818 GLO William Preston No witnesses remain

B. Description of corner evidence found and/or method applied in restoring or reestablishing corner:

No evidence of the corner was found. Due to the widening of 12 Mile Road and Little Mack Road, there was no existing monumentation in subdivisions adjacent to the corner. "Mack Avenue Farms No. 2" is located in the northwest quadrant of this corner, and it has interior roads from which the corner could be reestablished. Irons found at the intersections of Harding, Coolidge, Congress and Washington fit the centerline of the roads. Irons found at the intersection of Harding, Coolidge, Congress and 12 Mile also fit the centerline of the roads. The south line of section 9 was established by extending the centerlines of Harding, Coolidge and Congress record distance to the section line. The centerline of Washington was extended to the east establishing the east line of section 9. Record distance along the south line of section 9 fit the existing centerline of Little Mack. This position is also within 0.12' of the record distance to Washington (1332.50R 1332.38R).

N 2683.22 East quarter post of section 9 (G4) (GLO = 40ch)
S 2688.21 East quarter post of section 16 (G6) (GLO = 40 ch)

C. Description of monument for corner and accessories established to perpetuate locating the position of the corner:

SET A 3/4" X 24" IRON WITH MCR CAP #34970 IN A NEW MONUMENT BOX
 150° 72.48 Set PK and Tag #17365 in the southwest face of a utility pole
 228° 68.32 Set PK and Tag #17365 in the northwest face of a utility pole
 314° 75.72 Set PK and Tag #17365 in the southwest face of a utility pole
 43° 60.62 Set PK and Tag #17365 in the northwest face of a utility pole

The selected location is accepted by me and is generally accepted by professional surveyors as the best available evidence of the position of the original corner.

ACCEPTED BY THE MACOMB COUNTY SURVEY PEER GROUP AS THE OFFICIAL CORNER UNDER MICHIGAN PUBLIC ACT 345 OF 1990 AT A MEETING HELD ON 8-15-95
William E. Soderberg
 WILLIAM E. SODERBERG, P.S., CHAIRMAN



Signed by C. Arney Date 12-15-95
 Surveyor's Michigan License No. 34970

FORM APPROVED BY MICHIGAN STATE BOARD OF LAND SURVEYORS, JAN. 28, 1971
 REVISED MAY 14, 1976
 REVISED JAN. 1963

4-B-1

SURVEY & REMONUMENTATION

APR 29 1996

COMMISSION LAND CORNER RECORDATION CERTIFICATE
 Filing Requirement of Act 74, Mich. P.A. 1970

For corners in

Macomb Located In: Erin Lake Township Corner Code #G6
 (County)

1. Public Land Survey T 1N R 13E G6
 T R
 T R
 T R
 T R

2. Property Controlling in Section S T R
 S T R
 S T R
 S T R

3. Miscellaneous Property in Sec. S T R
 S T R

4. Lot No. , Recorded Plat
 5. Private Claims

Register of Deeds Stamp & File Number

	A	B	C	D	E	F	G	H	I	J	K	L	M
1													
2	6	5	4	3	2	1							
3													
4	7	8	9	10	11	12							
5													
6	16	17	16	15	14	13							
7													
8	19	20	21	22	23	24							
9													
10	30	29	28	27	26	25							
11													
12	31	32	33	34	35	36							
13													

I, Craig P. Amey, in a field survey on August 7, 1995 do hereby certify that under requirements of P.A. 74, Michigan P.A. of 1970, the corner points mentioned in lines 1 and 2 above were in conformance with regulations and rules therefore as required in the current manual of survey instructions of the United States Department of the Interior, Bureau of Land Management or by a decree of a Court of Law and/or that the corner points mentioned in lines 3, 4 and 5 above were in conformance with the rules of the Michigan Board of Land Surveyors or by a Decree of a Court of Law; established, re-established, monumented, re-monumented, recovered, found as expressed below:

NOTE: Not more than 4 corners, all in the same town and range, may be recorded on this certificate.

A. Description of original monument and accessories and/or subsequent restoration:

1818 GLO
 1994 Cert. of Survey

William Preston
 Shelby W. Money #30092

No witnesses remain
 Found chiseled "X" in concrete and replaced with 1/2" iron and cap #17635

B. Description of corner evidence found and/or method applied in restoring or reestablishing corner:

Found iron with cap #17635 in the centerline of 13 Mile Road (concrete)
 This corner verified by:

Witnesses from Cert. of Survey, Shelby W. Money
 30° 99.21 Southwest corner of a house
 315° 119.45 Southeast corner of a house

S 2697.24 Southeast corner of section 16 (G7) (GLO = 40ch)
 N 2688.21 Northeast corner of section 16 (G5) (GLO = 40ch)

C. Description of monument for corner and accessories established to perpetuate locating the position of the corner:

REPLACED IRON WITH 3/4" X 24" IRON WITH MCR CAP #34970 IN A NEW MONUMENT BOX
 27° 65.35 Concrete monument
 156° 38.61 Set PK and MCR tag in W face of a utility pole
 222° 88.58 Chiseled "X" on the E side of a manhole rim
 313° 74.01 Set PK and MCR tag in the SW face of a utility pole

The selected location is accepted by me and is generally accepted by professional surveyors as the best available evidence of the position of the original corner.

ACCEPTED BY THE MACOMB COUNTY SURVEY PEER GROUP AS THE OFFICIAL CORNER UNDER MICHIGAN PUBLIC ACT 345 OF 1990 AT A MEETING HELD ON 8-15-95
William E. Soderberg
 WILLIAM E. SODERBERG, P.S., CHAIRMAN



Signed by Craig P. Amey
 Surveyor's Michigan License No. 34970

Date 12-15-95

FORM APPROVED BY MICHIGAN STATE BOARD OF LAND SURVEYORS, JAN. 28, 1971
 REVISED MAY 14, 1975
 REVISED JAN., 1985

C0292273 LIBER:06862 PAGE:832 11:11A 12/21/1995
 CARMELLA SABAUGH-MACOMB COUNTY, MI REG/DEEDS

4-B-2

LAND CORNER RECORDATION CERTIFICATE
 Filing Requirement of Act 74, Mich. P.A. 1970 as Amended

For corners in

<u>Macomb</u> (County)	Located In: City of St. Clair Shores	Corner Code # PC 023
1. Public Land Survey	T 1N R 13E	_____
	T _____ R _____	_____
	T _____ R _____	_____
	T _____ R _____	_____
2. Property Controlling In Section	S _____ T _____ R _____	_____
	s _____ T _____ R _____	_____
3. Miscellaneous Property in Sec.	S _____ T _____ R _____	_____
	S _____ T _____ R _____	_____

1237200
 LIBER 21034 PAGE 779
 12/15/2011 09:05:49 A.M.
 MACOMB COUNTY, MI
 CARMELLA SABAUGH, REGISTER OF DEEDS

Register of Deeds Stamp & File Number

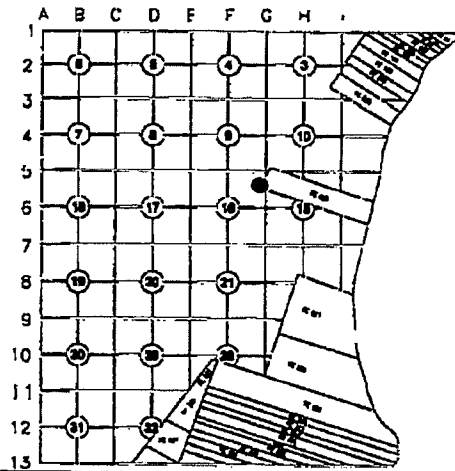
4. Lot No. _____, Recorded Plat
 5. Private Claims Southwest Corner of PC 625

I, Craig P. Amey, in a field survey on July 30, 2011 do hereby state that under requirements of P.A. 74, Michigan P.A. of 1970, the corner points mentioned in lines 1 and 2 above were in conformance with regulations and rules therefore as required in the current manual of survey instructions of the United States Department of the Interior, Bureau of Land Management or by a decree of a Court of Law and /or that the corner points mentioned in lines 3, 4 and 5 above were in conformance with the rules of the Michigan Board of Land Surveyors or by a Decree of a Court of Law; established, re-established, monumented, recovered, found as expressed below:

NOTE: Not more than 2 corners, all in the same town and range, may be recorded on this certificate.

A. Description of original monument and accessories and/or subsequent restoration:

Item	Date	L	P	Document	Name	#	Cor. Desc.
1	1810	--	--	Private Claim Description	Greeley	---	Post
2	1810	--	--	Private Claim Notes	Greeley	---	Post
3	1817	--	--	Township Plat	Preston	---	Not Indicated
4	1924	7	50	Roseville Gardens Subdivision	Lehner	123	Not Indicated
5	1932	15	6	Assessors Plat No 24	Lehner	123	Not Indicated
6	1955	32	49	Assessors Plat No. 60	Bridges	5779	Not Indicated
7	1958	38	23	Assessors Plat No. 61	Lehner	123	Not Indicated
8	2011	--	--	MCPEDD Tax Map	---	---	---



B. Description of corner evidence found and/or method applied in restoring or reestablishing corner:

PC-023 is the southwest corner of Private Claim 625 (PC 625). On January 4th, 1810, Aaron Greeley, "Surveyor of Private Claims", filed a description of his survey of PC625. In his description, he references this corner by citing "to a post".

A research of the public records and a request sent to all area surveyors provided no recorded surveys that reference this corner. A number of recorded plats depict the southerly and westerly lines of PC 625, but only one plat depicts the southwest corner of PC 625. Assessors Plat No. 24, as recorded in Liber 15 of plats, Page 6, Macomb County Records (Figure 1), shows the intersection of the "West Line of PC 625" and the "S. Line of PC 625". Additionally, precise dimensions are shown from corners within the plat to the southwest corner of PC625. In my opinion, this is the best recorded evidence of the corner. (Cont. on back).

C. Description of monument for corner and accessories established to perpetuate locating the position of the corner:

Set a 4" x 36" concrete monument with embedded aluminum cap, stamped "MACOMB COUNTY MONUMENT MI ACT 345", "PC-023 REF. PT.", "34970" set in grass of house #20701 Gaffke Street.

- Az 90° 18.24' Sw corner of garage #20701 Gaffke Street
- Az 142° 42.13' Set a chiseled "X" in north rim of sanitary sewer manhole.
- Az 210° 37.50' Set CST nail w/tag #34970 in southeast face of utility pole on north side of Gaffke Street.
- Az 350° 7.79' Fence post at "T" intersection of three 4' high chain link fences.
- Az 300° 5.00' Fence post at Swly corner of PC 625(PC-023)



THE SELECTED LOCATION IS ACCEPTED BY ME AND IS GENERALLY ACCEPTED BY PROFESSIONAL SURVEYORS AS THE BEST AVAILABLE EVIDENCE OF THE POSITION OF THIS CORNER.

Signed by Craig P. Amey
 Surveyor's Michigan License No. 34970

Date Dec 09, 2011

For corners in

Macomb Located In: Corner Code #
(County) City of St. Clair Shores PC 023

- 1. Public Land Survey T 1N R 13E _____
T _____ R _____
T _____ R _____
T _____ R _____
- 2. Property Controlling S _____ T _____ R _____
In Section s _____ T _____ R _____
- 3. Miscellaneous S _____ T _____ R _____
Property in Sec. S _____ T _____ R _____
- 4. Lot No. _____, Recorded Plat
- 5. Private Claims Southwest Corner of PC 625

ACCEPTED BY THE MACOMB COUNTY SURVEY PEER GROUP AS THE OFFICIAL CORNER UNDER MICHIGAN PUBLIC ACT 345 OF 1990 AT A MEETING HELD ON 11-2-2011
Martin C. Dunn
MARTIN C. DUNN, P.S. CHAIRMAN

B. Description of corner evidence found and/or method applied in restoring or reestablishing corner:

(Cont. from front) To locate this position in the field, we found monumentation in Assessors Plat 60, as recorded in Liber 32 of Plats, Page 49, Macomb County Records (Figure 2). The southeast corner of Assessors Plat No 60 is coincident with the lot lines in Assessors Plat No. 24 that define the location of the corner. We were able to find enough monumentation in Assessors Plat No 60 to establish the common lot lines between the two plats. Then we mathematically calculated the corner position from the dimensions as depicted on Assessors Plat No. 24.

The corner falls in the concrete base of a fence post to a four feet high chain link fence. An alternative position to set the concrete monument was at the intersection of the south line of PC 625, and the north line of Gaffke Street. Since that location falls in the middle of a concrete driveway, we opted to set the concrete monument in the grass at a point 5.00 feet southeasterly from the corner along the south line of PC 625.

Distance Comparisons	GLO	AEW	Diff
Nwly cor of PC 625 (PC-024) to Swly cor of PC 625 (PC-023)	23.00ch (1518.00')	1514.10'	3.90'
Swly cor of PC 625 (PC-023) to Sely cor of PC 625 (PC-022)	116.00ch (7656.00')	7506' to water's edge.	150'

4-B-3

CORRECTIVE LAND CORNER RECORDATION CERTIFICATE
Filling Requirement of Act 74, Mich. P.A. 1970 as Amended

For corners in

LCRC is being recorded to correct "PC-026" to "PCC-026" in Section C. LCRC previously recorded on 12/15/2011 in Liber 21034, Pages 785-786.

<u>Macomb</u> (County)	Located In: City of St. Clair Shores	Corner Code # PCC-026
1. Public Land Survey	T 1N R 13E	_____
	T _____ R _____	_____
	T _____ R _____	_____
	T _____ R _____	_____
2. Property Controlling In Section	S _____ T _____ R _____	_____
	s _____ T _____ R _____	_____
3. Miscellaneous Property in Sec.	S _____ T _____ R _____	_____
	S _____ T _____ R _____	_____

1241340
LIBER 21051 PAGE 850
 12/29/2011 08:29:44 A.M.
 MACOMB COUNTY, MI SEAL
 CARMELLA SABAUGH, REGISTER OF DEEDS

Register of Deeds Stamp & File Number

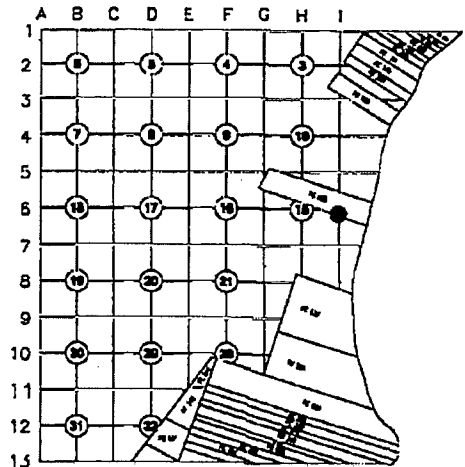
4. Lot No. _____, Recorded Plat
 5. Private Claims Intersection of the Line Between Fractional Section 14 and 15 with the Southerly Line of Private Claim 625

I, Craig P. Amey, in a field survey on July 30, 2011 do hereby state that under requirements of P.A. 74, Michigan P.A. of 1970, the corner points mentioned in lines 1 and 2 above were in conformance with regulations and rules therefore as required in the current manual of survey instructions of the United States Department of the Interior, Bureau of Land Management or by a decree of a Court of Law and /or that the corner points mentioned in lines 3, 4 and 5 above were in conformance with the rules of the Michigan Board of Land Surveyors or by a Decree of a Court of Law; established, re-established, monumented, recovered, found as expressed below:

NOTE: Not more than 2 corners, all in the same town and range, may be recorded on this certificate.

A. Description of original monument and accessories and/or subsequent restoration:

Item	Date	L	P	Document	Name	#	Cor. Desc.
1	1810	-	-	Private Claim Description	Greeley	---	Post
2	1810	-	-	Private Claim Notes	Greeley	---	Post
3	1817	-	-	Township Plat	Preston	---	Not Indicated
4	1920	2	104	Bay View Subdivision	Jerome	2	Not Indicated



B. Description of corner evidence found and/or method applied in restoring or reestablishing corner:

PCC-026 is the intersection of the line between Fractional Section 14 and 15 with the southerly line of Private Claim 625 (PC 625).

In Aaron Greeley's description of Private Claim 625, dated January 4th, 1810, there is no reference to a section line. Since the township would not be subdivided until 1818, Greeley's description could not contain a reference to the section line.

A research of the public records and a request sent to all area surveyors provided no recorded surveys that reference this corner. We did find one plat Bay View Subdivision, as recorded in Liber 2 of Plats, Page 104, Macomb County Records that defines the southerly line of PC 625. (Continued on back)

C. Description of monument for corner and accessories established to perpetuate locating the position of the corner:

Set a 4" x 36" concrete monument with embedded aluminum cap, stamped "MACOMB COUNTY MONUMENT MI ACT 345", "PCC-026", "34970" in a 4' chain link fence running northwest and southeast in the rear of house #22505 Gordon Street.

- Az 65° 28.15' Set CST nail w/tag #34970 in east face of 6" pine
- Az 115° 29.46' 2" fence post at the intersection of a 4' chain link fence of rear property line #22505 Gordon and a 4' chain link fence on the easterly property line to house #22500 Martin Rd.
- Az 195° 130.00' Northeast corner of block foundation of house #22505 Gordon.
- Az 250° 28.83' Set CST nail w/tag #34970 in west face of multi 8" Mulberry
- Az 290° 28.67' 2" fence post at the intersection of a 4' chain link fence of rear Property #22505 Gordon and the 4' chain link fence on the westerly property line #22500 Martin Rd.



THE SELECTED LOCATION IS ACCEPTED BY ME AND IS GENERALLY ACCEPTED BY PROFESSIONAL SURVEYORS AS THE BEST AVAILABLE EVIDENCE OF THE POSITION OF THIS CORNER.

Signed by [Signature] Date Dec 28, 2011
 Surveyor's Michigan License No. 34970

ACCEPTED BY THE MACOMB COUNTY SURVEY PEER GROUP AS THE OFFICIAL CORNER UNDER MICHIGAN PUBLIC ACT 345 OF 1990 AT A MEETING HELD ON 11-2-2011

[Signature]
 MARTIN G. DUNN, P.S. CHAIRMAN

APPROVED BY MICHIGAN STATE BOARD OF PROFESSIONAL SURVEYORS, JAN. 28, 1971
 Revised May 14, 1975
 Revised Jan., 1983
 Revised Oct., 1995

LAND CORNER RECORDATION CERTIFICATE
Filing Requirement of Act 74, Mich. P.A. 1970 as Amended

For corners in

Macomb
(County)

Located In:
City of St. Clair Shores

Corner Code #
PCC-026

Liber 21051 Page 851

- | | | | | | |
|------------------------------------|---|-------|---|-------|-------|
| 1. Public Land Survey | T | 1N | R | 13E | _____ |
| | T | _____ | R | _____ | _____ |
| | T | _____ | R | _____ | _____ |
| | T | _____ | R | _____ | _____ |
| 2. Property Controlling In Section | S | _____ | T | _____ | _____ |
| | s | _____ | T | _____ | _____ |
| 3. Miscellaneous Property in Sec. | S | _____ | T | _____ | _____ |
| | S | _____ | T | _____ | _____ |

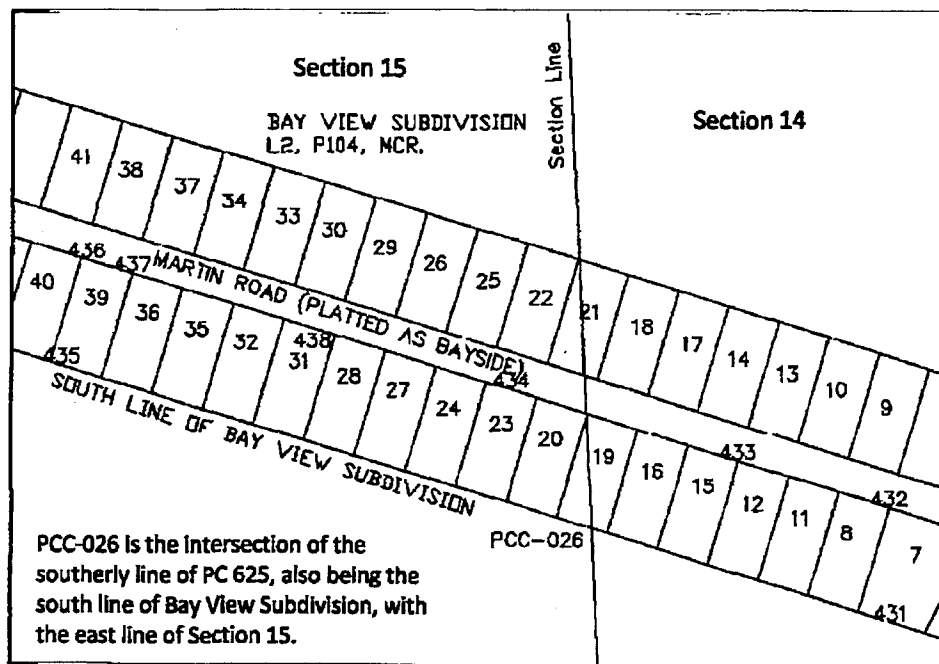
4. Lot No. _____, Recorded Plat

5. Private Claims Intersection of the Line Between Fractional Section 14 and 15 with the Southerly Line of Private Claim 625

Section B continued:

To reestablish the position of PCC-026, we located monumentation in the subdivision. We were able to find enough monumentation to determine the south line of the subdivision, which is also the south line of PC 625. By intersecting the south line of PC 625 with the section line, we reestablished the position of PCC-026. (Please see attached sketch and table attached to this report.)

To confirm our position, we compared our dimension from PCC-026 to the southeast corner of section 15. Our measured distance is 1812.36 feet. Preston's survey notes indicate a distance of 27.40 chains, or 1808.40 feet. As described in my "Analysis of Original Surveyor Errors of Private Claim 625 and Section 15, Town 1 North, Range 13 East", which is submitted along with this report, a taping index must be applied to Preston's distance. Preston's adjusted distance is 1843.81 feet, which is a difference of 31.45 feet.



Pt	Desc	Offset Dist	Offset from
431	Iron #19387 at fence corner	0.09 S	Property line
432	Iron	0.00	ROW
433	Iron #17641	0.07 N	ROW
434	T Iron	0.67 N	ROW
435	1/2" Pipe in 1" pipe	0.51 N	Property line
436	Iron with unreadable cap	0.00	ROW
437	Iron	0.03 S	ROW
438	Pipe	0.11 N	ROW

Distance Comparisons	GLO	Adjusted	AEW	Diff
Nly line of PC 625 (PCC-025) to sly line of PC 625 along section line (PCC-026)	22.92 (1512.72)	1542.34	1607.51	65.17
Sly line of PC 625 (PCC-026) to SE corner of sec. 15	27.40 (1808.40')	1843.81	1812.36	31.45

4-B-4