

ANDERSON, ECKSTEIN AND WESTRICK, INC.

51301 Schoenherr Road, Shelby Township, Michigan 48315

Civil Engineers • Surveyors • Architects 586-726-1234

2010 Remonumentation

Corner: PC-014

Index

- I. Section 1
 - A. Index
 - B. Photographs

- II. Section 2
 - A. LCRC
 - B. Surveyor's Report

- III. Section 3
 - A. Field Notes
 - 1. Corner Witnesses
 - 2. GPS Notes
 - 3. Sketch
 - B. Composites
 - 1. 14-32F

- IV. Section 4
 - A. GLO Notes and Plats
 - 1. 1817 Township Plat
 - 2. 1818 Township Plat
 - 3. Private Claim Corners
 - 4. Additional Donation 1823
 - 5. 1916 Atlas
 - 6. Obenauer-Barber-Lang Co's Ridgemont Park No.1
 - 7. Assessor's Plat of Stickers Small Farms Sub'n

2010 Remonumentation
Corner Photographs
PC - 014

No evidence of corner existed,
so no "Before" photographs
are included.

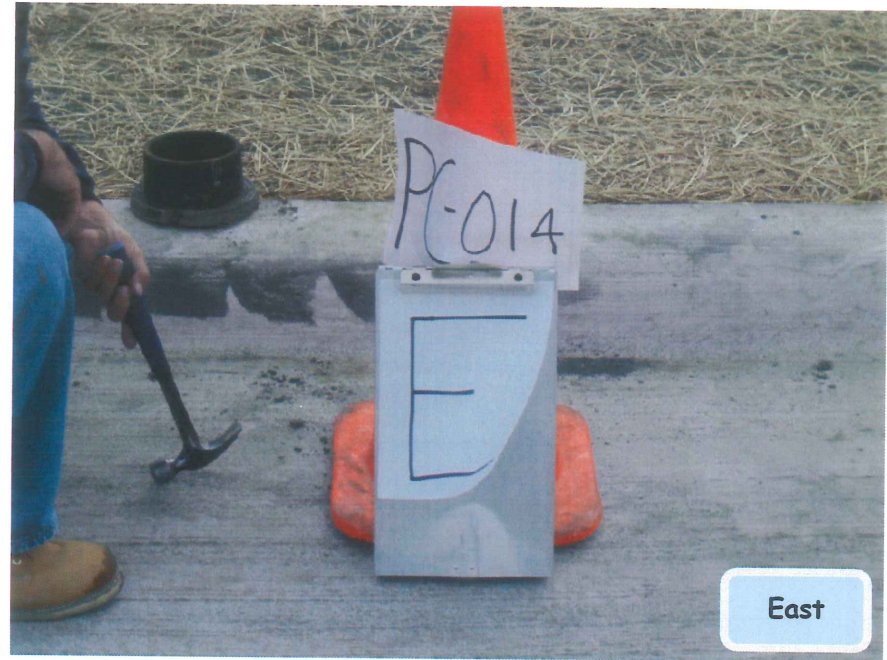
Before



After



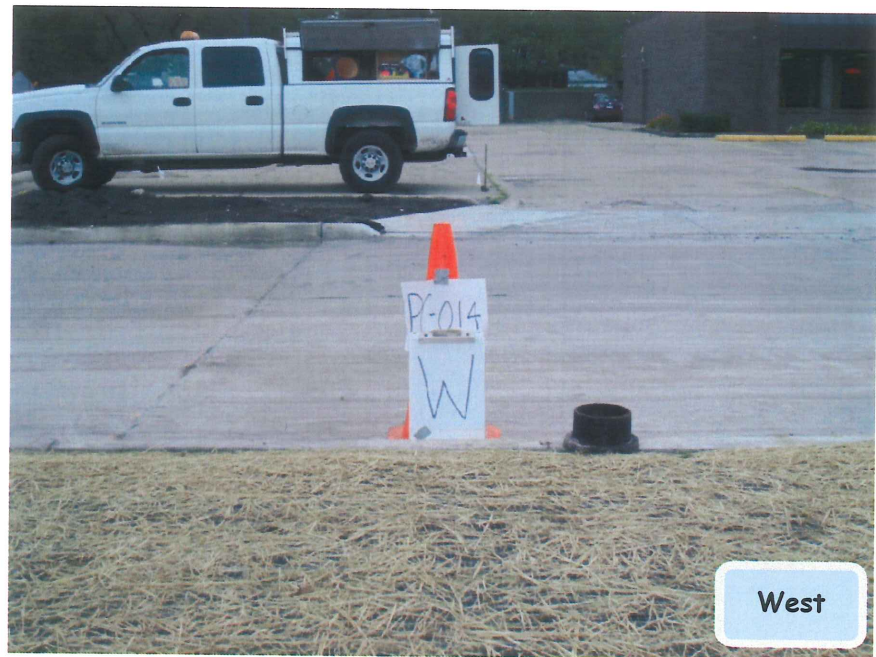
North



East



South



West

LAND CORNER RECORDATION CERTIFICATE
Filing Requirement of Act 74, Mich. P.A. 1970 as Amended

For corners in

Macomb (County)	Located In: City of Eastpointe	Corner Code #
1. Public Land Survey	T 1N R 13E	PC 014
	T R	
	T R	
	T R	
2. Property Controlling In Section	S T R	
	S T R	
3. Miscellaneous Property in Sec.	S T R	
	S T R	

137548
 LIBER 20541 PAGE 747
 12/16/2010 09:00:49 A.M.
 MACOMB COUNTY, MI
 CARMELLA SABAUGH, REGISTER OF DEEDS

SEAL
 REGISTER OF DEEDS
 Register of Deeds Stamp & File Number

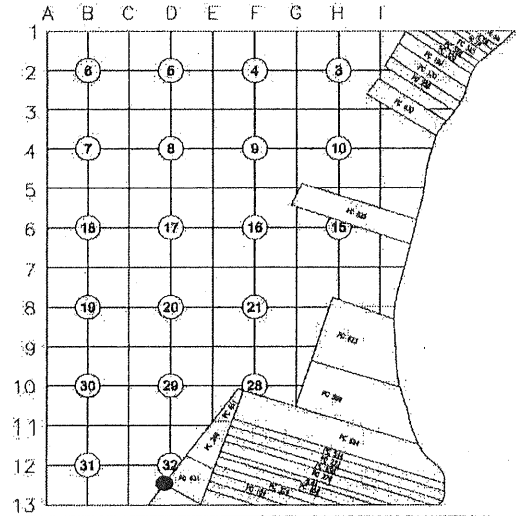
4. Lot No. _____, Recorded Plat
 5. Private Claims Northwest corner of Private Claim FF also being the southwest corner of Private Claim 631

I, Craig P. Amey, in a field survey on June 24, 2010 do hereby state that under requirements of P.A. 74, Michigan P.A. of 1970, the corner points mentioned in lines 1 and 2 above were in conformance with regulations and rules therefore as required in the current manual of survey instructions of the United States Department of the Interior, Bureau of Land Management or by a decree of a Court of Law and /or that the corner points mentioned in lines 3, 4 and 5 above were in conformance with the rules of the Michigan Board of Land Surveyors or by a Decree of a Court of Law; established, re-established, monumented, recovered, found as expressed below:

NOTE: Not more than 2 corners, all in the same town and range, may be recorded on this certificate.

A. Description of original monument and accessories and/or subsequent restoration:

Item	Date	L	P	Document	Name	#	Cor. Desc.
1	1817	--	--	Township Plat	William Preston	--	Not Stated
2	1828	--	--	Private Claim Notes	John Mullett	--	Post
3	1926	10	53	Ridgmont Park No. 1	Walter J. Lehner	123	Conc. Monument
4	1941	20	37	AP of Striker's Small Farms	Vernon Wilson	3032	Conc. Monument



B. Description of corner evidence found and/or method applied in restoring or reestablishing corner:

The calculated corner position falls in the centerline median (grass) of Kelly Road. No existing monumentation was located at this position. To determine the position of the corner, monumentation was located within the above reference subdivisions (items #3, #4). The monumentation was used to reestablish the position of each subdivision. The corner position of PC 014 was set at the intersection of the common line of the two subdivisions and the west line of the Private Claims as defined by corners previously approved by Macomb County Remonumentation. (See sketch on back)

Distances:

PC 014 to Int. of S line of Erin Twp and W line of PC FF	1549.40 (Item #3)	1549.59 (Meas.)
PC 014 to PCC 005	2442.00 (37ch GLO)	2457.70 (plats)
		2456.40 (Meas.)

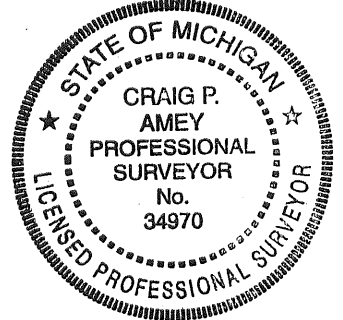
ACCEPTED BY THE MACOMB COUNTY SURVEY PEER GROUP AS THE OFFICIAL CORNER UNDER MICHIGAN PUBLIC ACT 345 OF 1990 AT A MEETING HELD ON 8-24-10

 MARTIN C. DUNN, P.S. CHAIRMAN

C. Description of monument for corner and accessories established to perpetuate locating the position of the corner:

I set a 2" aluminum cap stamped "MACOMB COUNTY MONUMENT MI ACT 345 1990 MCL PC 014 PS 34970" on a concrete monument in the grassy median of Kelly Road.

Az 55°	62.32	Set CST Nail and Remon Tag in the north face of an 10" locust in Kelly Median
Az 135°	7.51	Set 1/2" iron with red cap stamped "AEW TRAVERSE" in median, 3' east of back of curb, 45' north of the centerline of Sprenger
Az 205°	107.77	Set CST Nail and Remon Tag in the east face of an 12" locust in Kelly Median
Az 270°	54.39	Set chiseled "X" in south corner of a road catch basin rim at northwest corner of Kelly & Sprenger
Az 355°	55.24	Set CST Nail and Remon Tag in the west face of utility pole with light on the west side of Kelly



THE SELECTED LOCATION IS ACCEPTED BY ME AND IS GENERALLY ACCEPTED BY PROFESSIONAL SURVEYORS AS THE BEST AVAILABLE EVIDENCE OF THE POSITION OF THIS CORNER.

Signed by _____
 Surveyor's Michigan License No. 34970

Date 12-09-10

LAND CORNER RECORDATION CERTIFICATE
Filing Requirement of Act 74, Mich. P.A. 1970 as Amended

For corners in

Macomb
 (County)

Located In:
 City of Eastpointe

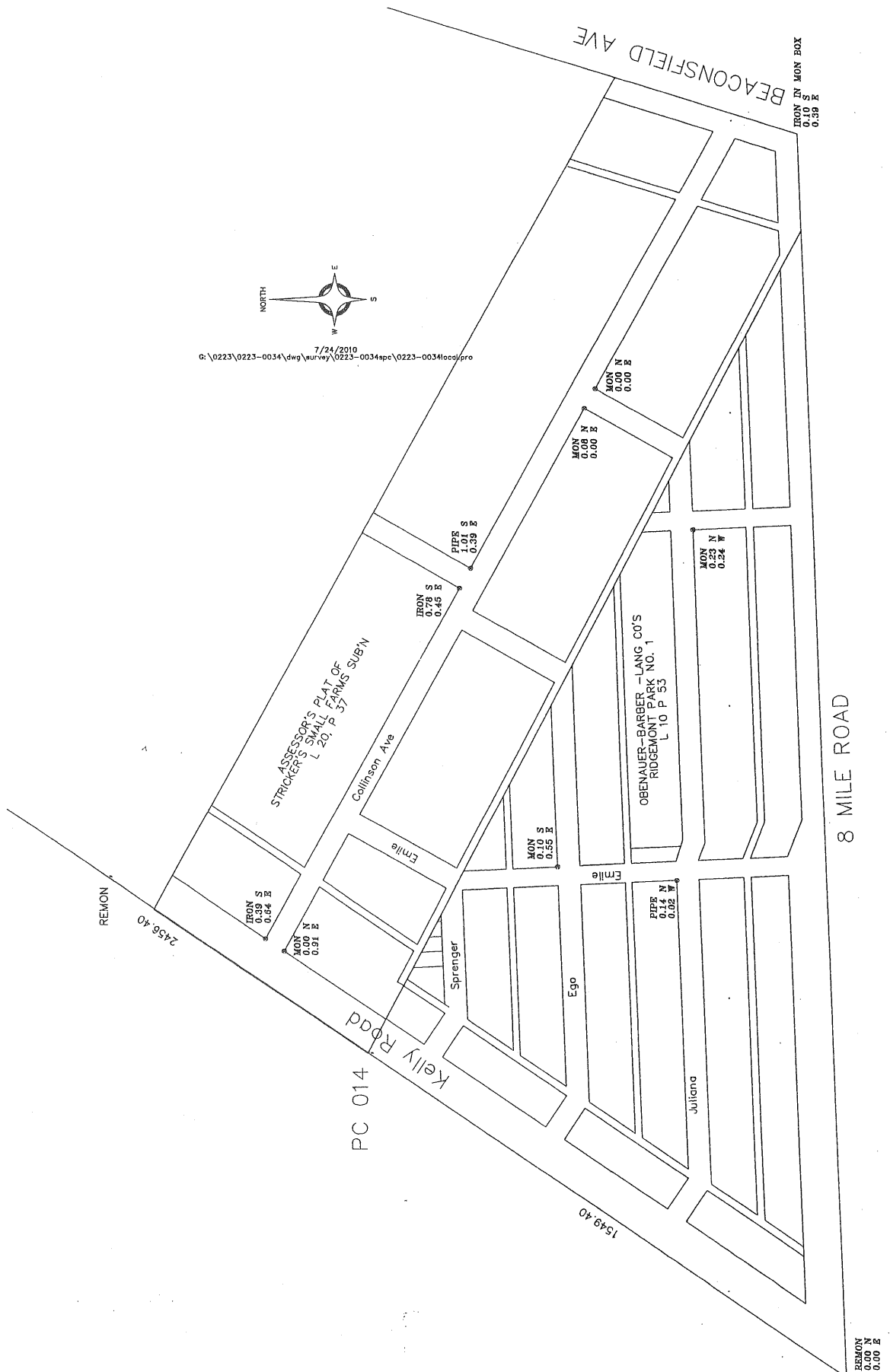
Corner Code #

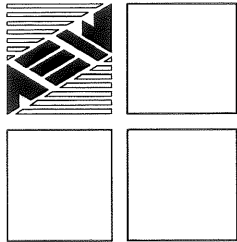
Liber 020541 Page 00748

1. Public Land Survey	T	1N	R	13E	PC 014
	T		R		
	T		R		
	T		R		
2. Property Controlling In Section	S		T	R	
	s		T	R	
3. Miscellaneous	S		T	R	
Property in Sec.	S		T	R	

4. Lot No. _____, Recorded Plat

5. Private Claims Northwest corner of Private Claim FF also being the southwest corner of Private Claim 631





ANDERSON, ECKSTEIN AND WESTRICK, INC.

51301 Schoenherr Road, Shelby Township, Michigan 48315

Civil Engineers • Surveyors • Architects 586-726-1234

2010 Remonumentation

Corner: PC 014

In 2010, we were contracted by Macomb County to remonument PC 014 which is the northwesterly corner of Private Claim FF, which is common with the southwest corner of Private Claim 631, pursuant to ACT 345 of 1990.

In early February, I solicited information from area surveyors. None of the surveyors contacted had any unrecorded information pertinent to this corner. I also researched the public records. No surveys were recorded that reference this corner. I did find two plats that referenced the corner. The plats are:

Obenauer-Barber-Laing Co's Ridgemont Park No. 1, L 10, P 53.
Assessor's Plat of Stricker's Small Farms Sub'n, L 20, P 37

Using the plats as a reference, the corner location was investigated, and no monumentation or accessories were located. I believe the corner to be an obliterated corner.

To reestablish the corner, I looked for monumentation in the interior of the two subdivisions. Due to past experience, I have found interior monumentation to be the best evidence of the subdivision. I was able to locate sufficient monumentation to reestablish the two subdivisions. I then extended the common line between the two subdivisions to the intersection of the westerly line of Private Claim FF and Private Claim 631, as previously monumented.

I then compared the measured distances against the record distances and found the following:

Distances:

Distances:

PC 014 to PC	PC 014 to PC ??
1549.40 (Item #3)	2442.00 (37ch GLO)
1549.59 (Meas.)	2457.70 (plats)
	2456.40 (Meas.)

I believe that the method described above has determined the best location of the northwesterly corner of Private Claim FF (PC 014).

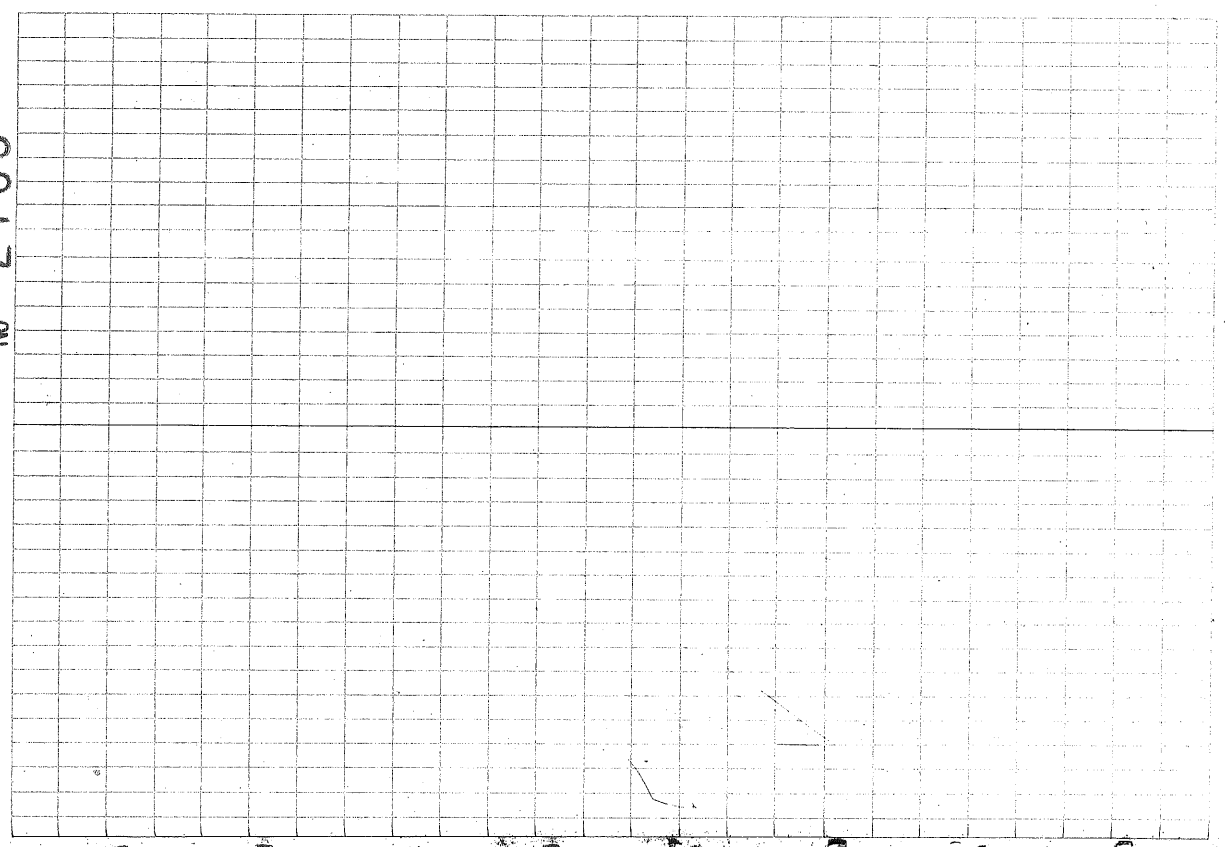
Respectfully Submitted,

Craig P. Amey, PS

07-14-70
223-0034
CPA

PT*	DESC	2010	REMARK
			43" 2230034 CPAE "
219	F 1/2" PIPE SE COR OAK & RAVEN		
220	B/C OAK, S SIDE		
221	B/C OAK, S SIDE		
222	B/C OAK, N SIDE		
223	B/C OAK, S SIDE		
224	F 1" PIPE SE COR OAK & MARINE		
225	B/C OAK, N SIDE		
226	F 1" PIPE NE COR OAK & MARINE		
227	F 1" PIPE NW COR OAK & MARINE		
228	F 1" PIPE NW COR OAK & MARINE		
229	F 3/4" PIPE SE COR OAK & PETERSBURG		
230	B/C OAK, S SIDE		
231	B/C OAK, N SIDE		
232	F 3/4" PIPE NE COR OAK & PETERSBURG		
233	FM SW COR JULIANNA & COLLINSON		
234	F 1" PIPE SE COR JULIANNA & COLLINSON		
235	FENCE POST		
236	FI W/CAP 4 16034 NW COR COLLINSON & RAVEN		
237	FP 3/4" PIPE NE COR COLLINSON & RAVEN		
238	FP NW COR EMILE & JULIANA		
239	FP NE COR EMILE & EMILE		
240	FM SW COR ROSALIND & JULIANA		
241	FM SE COR KELLY & COLLINSON		
242	FI NE COR KELLY & COLLINSON		

W-I-N-T



Sec 29

Sec 28

A 66.12

A 70.47
25.77
59.55
64.70
S 71° E

43.11

611

50.00

64.84

A 99.88

35.04

PC 017

PC 015
574.86 (8.71 GLO)
563.87 (Plats)
563.96 (Meas 2010)

PC 016
676.86 (5.71 GLO)
373.33 (Meas 2010)

PC 018
754.38 (11.43 GLO)
747.38 (Meas 2010)

PC 019
2442.00 (37.00 GLO)
2449.86 (Plats)
2449.38 (Meas 2010)

PC 020

Sec 32

47.54

A 142.66

PC 014

N 35° 45' E
2442.00 (37.00 GLO)
2457.70 (Plats)
2456.40 (Meas 2010)

A 159.59

240

2442.00 (37.00 GLO)
2449.86 (Plats)
2449.38 (Meas 2010)

39.93

21.50

13.38

Sec 33

PC 276

PC 657

A 161.71

A 161.71

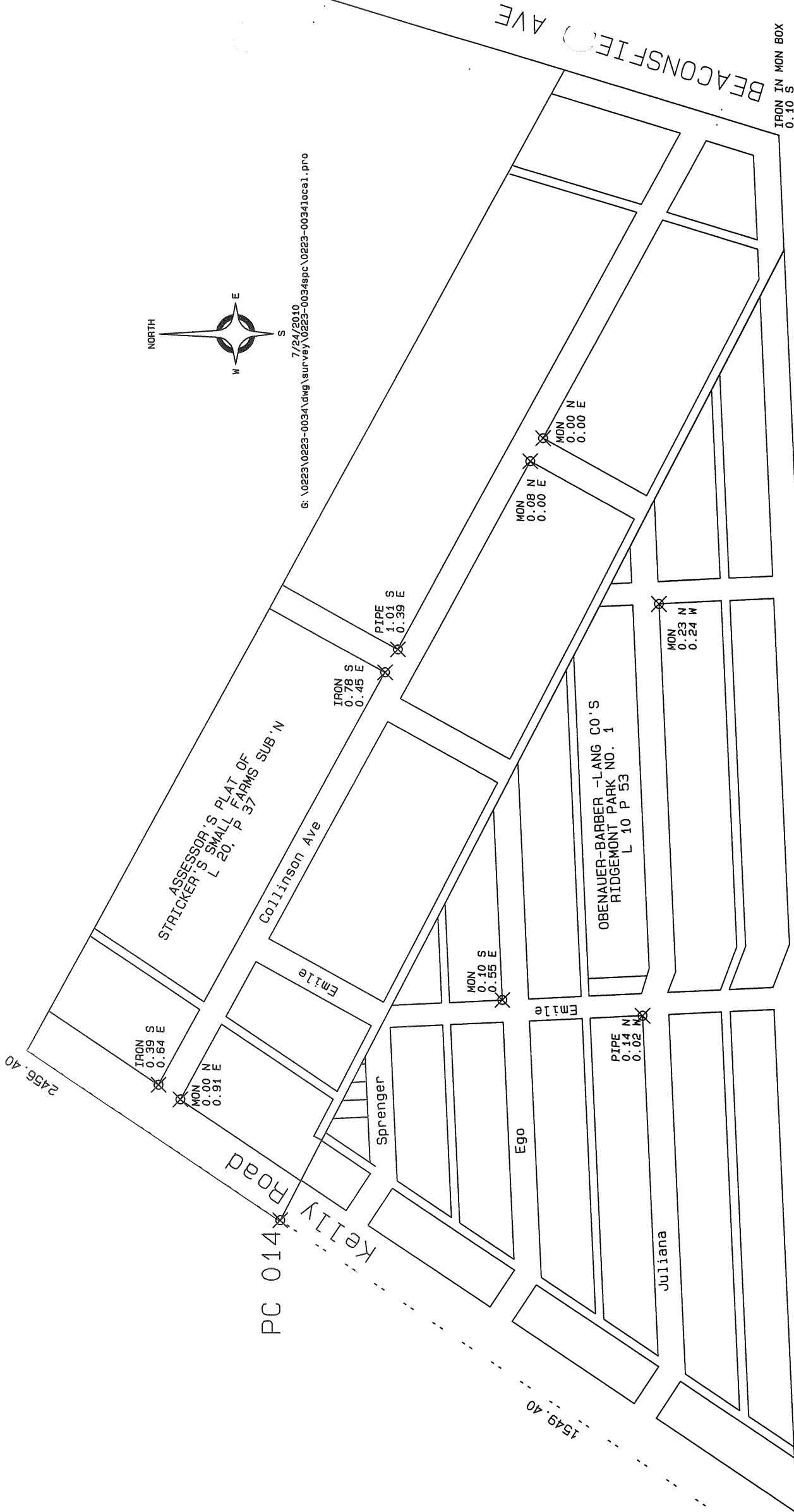
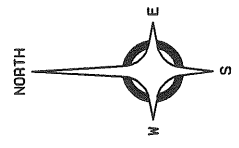
3-3-1

ip N^o 1 North , Range N^o

BEACONSFIELD AVE

IRON IN MON BOX
0.10 S
0.39 E

7/24/2010
G:\0223\0223-0034\dwg\survey\0223-0034spc\0223-0034local.pro



STRICKER'S PLAT OF
ASSASSOR'S SMALL FARMS SUB 'N
L 20, P 37

Collinson Ave

OBENAUER-BARBER - LANG CO'S
RIDGEMONT PARK NO. 1
L 10 P 53

8 MILE ROAD

REMON

2456.40

IRON
0.39 S
0.64 E

MON
0.00 N
0.91 E

PC 014 Kelly Road

Sprenger

Ego

Juliana

MON
0.10 S
0.55 E

PIPE
0.14 N
0.02 E

MON
0.23 N
0.24 W

MON
0.08 N
0.00 E

MON
0.00 N
0.00 E

IRON
0.78 S
0.45 E

PIPE
1.01 S
0.39 E

REMON
0.00 N
0.00 E

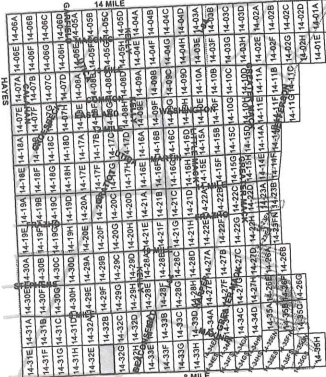
1549.40

3-3-2



Date of Photography: April 2004
 100 50 0 100 200 Feet
 1:1,200

SOUTH EAST SHEET INDEX



DESCRIPTION OF PERMANENT REAL ESTATE INDEX NUMBER
13-19-302-018



Legend

- Platted Area Boundary Line
- Property Line
- Property Split Line
- Property Combined Line
- Township Boundary Line
- Traverse Line
- | Dimension Extent Marks
- | Dimension Start Marks

14-32F

EASTPOINTE
 E.1/2 S.W.1/4 SEC.32 T.1N. R.13E.

Source: Macomb County Department of Planning and Economic Development
 - 2004 Digital Orthophotography Project
 - Parcel Conversion Project

Note: Digital Orthophotography horizontal positioning accuracy is 3 feet. Parcel boundary lines should be considered a graphical representation and not in any way a legal survey or engineering document. In general, the horizontal positioning and length accuracy is within 15 feet.

This map is intended for general planning purposes. Site specific evaluation should be verified by field inspection. This is a work in progress and may contain errors and omissions. Please report any potential revisions to (566)469-5285.

3-B-1



GIS MACOMB COUNTY
 Planning and Economic
 Development Department

Published: Jun 18, 2007

Township N^o. 1 North, Range N^o. Xth East of Mer. (Mich. Ter.)



A true Copy from the Original on file in this Office

Surveyor General's Office
 Feb 20 - 1854

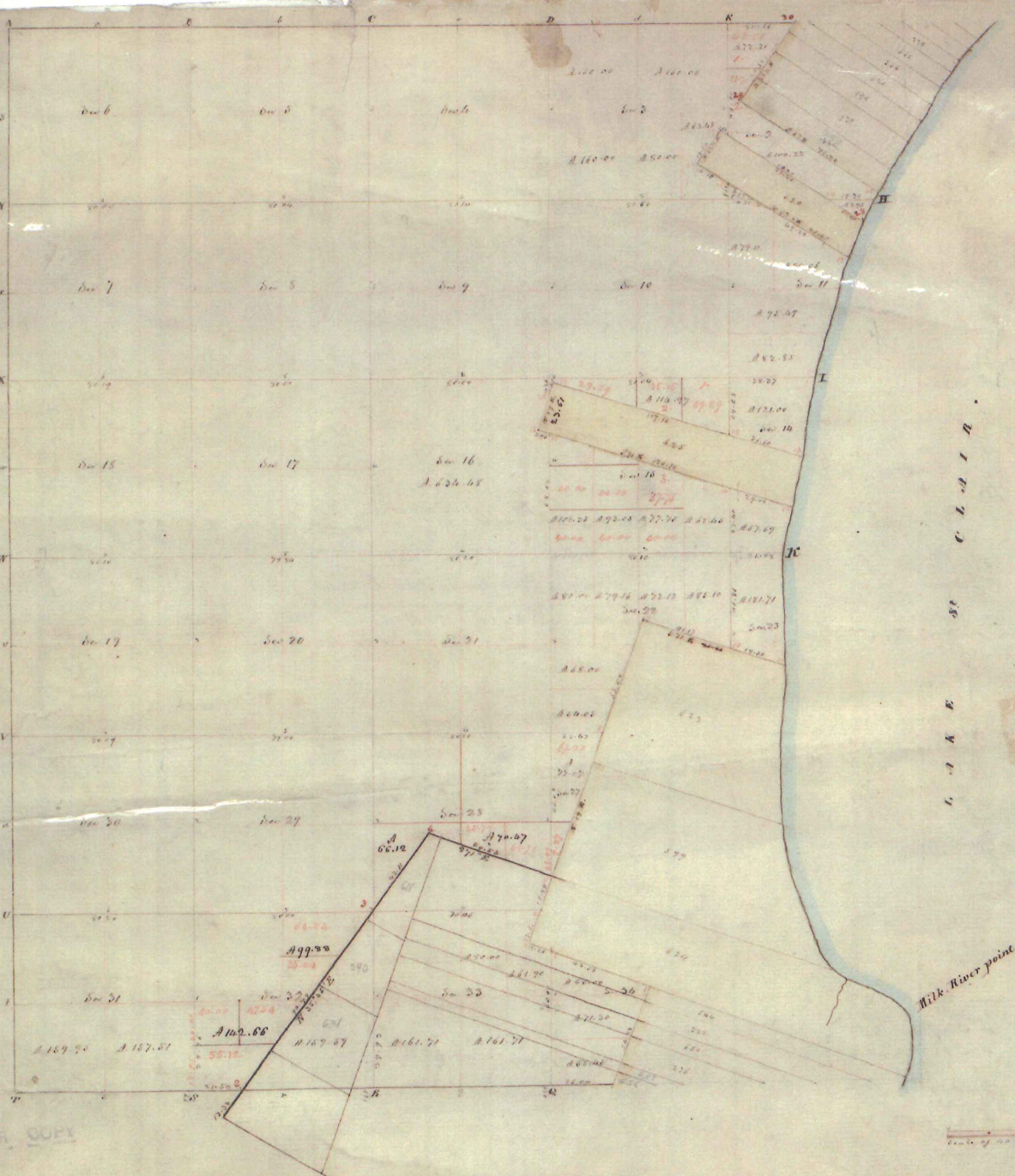
John A. Coffin
 Surveyor General

North, S. 1/2 Sec. 31, T. 12 N., R. 10 E., M. 101. **Anterior Section Corners described** **Anterior Quarter Sec. corners described**

Labels	Bearing trees	Sticks diam	Course they bear	Dist.	Quality of soil &c	Corners of Sections	Bearing trees	Sticks diam	Course they bear	Dist.	How far to	Bearing trees	Sticks diam	Course they bear	Dist.
A Gum		12	S 11 W	19		5. 6. 9. 8	B. Ash	7	Corner		N to W at 5	B. Ash	8	Corner	
M. Oak		36	N 31 W	41											
a Willow		8	Corner			7. 8. 17. 18	Sugar	12	Corner			B. Ash	14	Corner	
B Hornbeam		8	Corner			17. 18. 19. 20	Gum	10	S 82 W	18	E to V at 4	Gum	12	Corner	
b Hickory		7	Corner			19. 20. 21. 22	Gum	14	S 27 E	21		5 Ironwood	5	Corner	
C Sycamore		40	Corner			27. 30. 31. 32	B. Ash	14	N 7 E	25		6 Sugar	10	Corner	
c Elm		18	Corner				8	S 7 W	8						
D B. Ash		8	N 45 W	11		6. 5. 8. 9	B. Ash	14	Corner		N to W at 3	M. Oak	10	S 4 W	9
do		18	N 61 E	16								12	S 80 W	12	
d B. Ash		10	Corner			7. 7. 16. 17	B. Ash	11	S 61 E	17		4 B. Ash	7	Corner	
E B. Ash		11	N 53 E	17		16. 17. 20. 21	Gum	18	S 55 W	22		5 B. Ash	6	Corner	
do		24	N 5 W	31		20. 21. 25. 27	Hickory	16	N 25 W	7		6 B. Ash	10	Corner	
H B. Ash		10	Corner			22. 27. 28. 33	Gum	8	Corner		I to X at 9	B. Ash	4	Corner	
Hornbeam		4	Corner												
I Sycamore		18	N 37 E	53		3. 4. 9. 10	B. Ash	18	Corner			4 Sugar	24	S 32 E	20
Maple		14	S 47 W	45								5 B. Ash	5	Corner	
K Sycamore		24	S 10 W	250		9. 10. 15. 16	B. Ash	8	S 15 W	10					
Bottomwood		30	North	177											
S M. Oak		11	Corner			15. 16. 20. 22	B. Oak	14	S 5 E	11		1 B. Ash	5	Corner	
						21. 22. 27. 28	B. Ash	18	S 30 W	26					
T Gum		12	N 17 W	8		2. 3. 10. 11	Hickory	8	N 72 E	6		4 Cherry	24	Corner	
W. Ash		10	N 60 E	21											
U Sugar		13	South	9		10. 11. 14. 15	B. Ash	16	N 23 E	8		5 Hickory	8	Corner	
V B. Ash		10	S 77 E	10											
do		10	N 55 W	20		14. 15. 22. 23	do	6	N 65 W	6		6 B. Ash	4	Corner	
W B. Ash		14	N 87 E	17											
X B. Ash		18	S 83 W	26											
Maple		14	S 15 W	33											
Y M. Ash		12	S 50 W	11											
Z Hornbeam		6	N 40 W	11											
do		5	S 42 W	25											
W Elm		18	North	5											
X Elm		24	S 38 W	11											
B. Ash		8	N 58 E	7											
X B. Ash		4	N 74 W	10											
Y B. Ash		6	S 80 W	33											
M. Oak		10	S 32 E	8											
Y M. Oak		30	West	3											

Corners on Private Claims

Labels	Bearing trees	Sticks diam	Course they bear	Dist.	Q. A. D.
1	do	10	Corner		
2	do	10	Corner		
3	Corner of Sec 8	28. 29. 32. 33			
4	M. Oak	32	S 49 E	13	
do	do	30	N 24 W	44	
5	do	16	Corner		
6	B. Ash	10	Corner		N to C at 2
7	B. Ash	7	Corner		
8	no such number on plat				
9	no corner on plat				
10	B. Ash	12	S 71 E	35	
do	Gum	6	N 57 W	10	
11	Post in position on sticks				S to B at 1
12	no post	do			
13	no post	do			
14	B. Ash	12	S 71 E	19	
do	do	9	S 8 W	15	
15	B. Ash	14	Corner		
16	no post	do			
17	do				
18	Ironwood	4	Corner		
19	M. Oak	7	S 5 E	29	
do	B. Ash	14	N 30 E	16	
20	B. Ash	10	S 61 E	14	
do	Gum	40	N 60 W	30	
21					
22	B. Ash	10	S 46 W	14	
do	do	18	S 86 W	16	
23	B. Ash	10	N 70 W	9	
do	M. Oak	40	N 60 E	12	
24	do	12	N 45 E	18	
25	B. Ash	13	N 32 W	15	
26	Sycamore	18	Corner		
27	do	8	Corner		
28	no post	do			
29	do				
30	B. Ash	10	S 17 E	4	
do	Gum	7	N 82 E	2	



Township N: 1 North . Range N: XIII East of Mer. (Nick. Pos) Surveyed by Wm Preston. 1817

Description of the soil &c on the interior sectional lines.

Section	Quality &c	Section	Quality &c
5.6	2 nd rate - part wet; W. Oak, Beech, Elm, Sycam	11.9	2 nd rate level & dry; W. Oak, Beech, Sugar, Elm, Sycam
6.7	3 rd rate, level & wet; B. Ash, Beech, Elm	3.11	Same
7.8	2 nd rate, part dry; B. Ash, Beech, Sugar, Sycam	9.10	Same
7.18	Same	9.16	Same
17.18	2 nd rate, good, level & dry; W. Oak, Poplar, Sugar, Elm	15.16	2 nd rate level, wet; B. Ash, Beech, Elm, Sycam
18.19	Same	16.21	2 nd rate part dry; (same)
19.20	Same	21.22	2 nd rate; W. Oak, Poplar, Beech, Sugar, Sycam
19.30	Same	21.28	Same
29.30	Same	27.28	Same
30.31	Same	28.33	Same (part wet)
31.32	Same	33.34	Same
4.5	Same	2.3	Same
5.5	3 rd rate level & wet; B. Ash, Beech, Elm &c	2.11	Same
8.9	3 rd rate 1/2 M. Mic. level & part dry 2 nd rate; B. Ash, Beech	10.11	2 nd rate; W. Oak, Beech, Sugar, W. Spruce
16.17	Same	14.15	2 nd rate part dry; Beech, Elm &c
17.20	Same	14.23	3 rd rate level & level
20.21	Same	10.15	2 nd rate part wet; Beech, Elm &c
20.29	Same	11.14	Same

129.45

N 240
A 129.45

Surveyed the additional donation to No. 240 in 2 tracts. First began at a post corner to Orig. don 611 & 240 thence

- S 19 W 3.25 to post on line of Orig. don. 37.3
 - S 60 W 16.30 to Mapk. corner to 611 & 240
 - S 71 E 16.00 to the beginning cont. 2.06 ft
- The second commencing at a post on near line of Add. don 651 corner to 611 & 240 thence
- S 19 W 37.00 Set post on near line of 240 & 340 16 ft
- Block 7 in diam. N 57 W 16 ft
W Ash 9 - S 28 1/2 W 16 ft
- N 60 W 30.13 bet. 240 & 631 set post corner thence
- Block 6 in dia. N 45 E 13.5 ft
B Ash 6 - S 12 W 12 ft
- N 55 1/2 E 36.63 to post corner to 240 & 611
 - S 60 E 19.16 to the beg. cont. 89.24 ft

N 631
A 129.45

Surveyed the additional donation to No 631 in right of Louis Fremont commencing at a post corner to add. don 240 & 631 on near line of Add. don. 224 thence

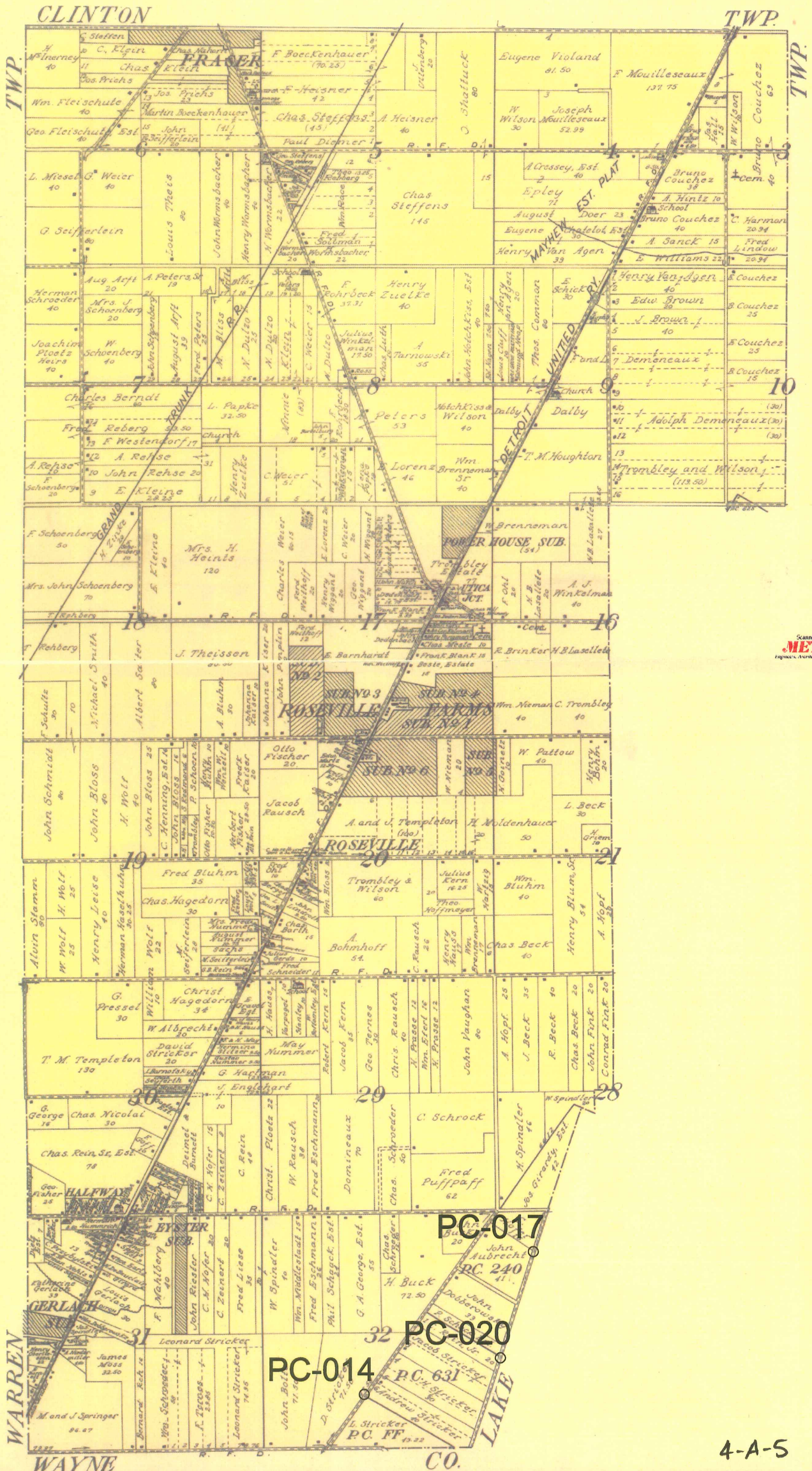
- S 19 W 37.34 set post cor to 631 & 240 on near line of Add. don. 249
- B Ash 9 in dia S 58 W 12 ft
do 6 N 68 42
- N 60 W 41.26 between 631 & 240 set post cor to 631
- Block 12 in dia N 46 E 12 ft
Sugar 7 S 5 E 18
- N 35 1/2 E 37.00 to post corner to 240 & 631
 - S 60 E 30.13 to the begin. cont. 129.45 ft



MAP OF ERIN TOWNSHIP

 Scale 4 inches to 1 mile

Part of Fractional Township 1 North, Range 15 East of the Michigan Meridian



Scanned by METCO
 Michigan Topographic & Surveying Co.

PC-017
 PC-020
 PC-014
 PC-631
 PC-FF

4-A-5

OBERNAUER-BARBER-LAING CO'S. RIDGEMONT PARK No. 1 Part of P. C. F-F. Erin Twp. MACOMB CO. MICHIGAN

Scale: 1" = 200'

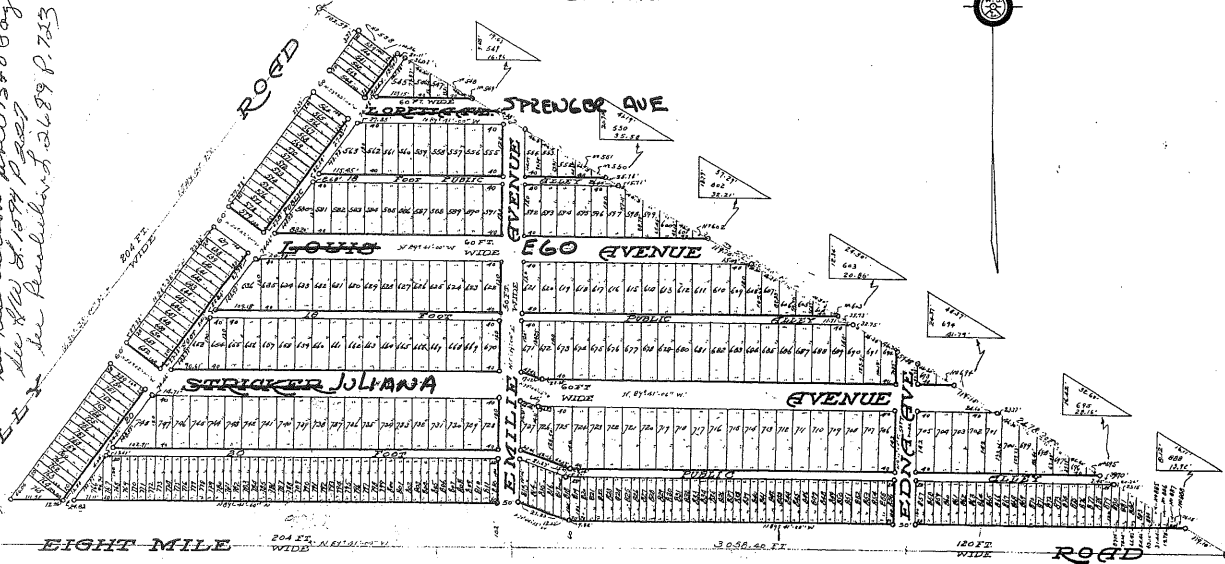
All dimensions are shown in feet and decimals thereof

W. J. Lehner, Reg. C.E.
Mount Clemens, Mich.

1525

PC-014

POINT OF BEGINNING N.W. COR. OF E.C.F.-F.



L. 10
P. 53
See plat for correct location of all streets as shown on this
see plat for correct location of all streets as shown on this
see plat for correct location of all streets as shown on this
see plat for correct location of all streets as shown on this
see plat for correct location of all streets as shown on this
see plat for correct location of all streets as shown on this
see plat for correct location of all streets as shown on this
see plat for correct location of all streets as shown on this
see plat for correct location of all streets as shown on this
see plat for correct location of all streets as shown on this

KNOW ALL MEN BY THESE PRESENTS; That we, Louis Stricker and Emilie Stricker, his wife, as proprietors, and the Lafayette Land Co., a Michigan corporation, by Chas. W. Hess, President, and N. B. Laing, Secretary and Treasurer, as vendees under Land Contract, have caused the land embraced in the annexed plat to be surveyed, laid out and platted, to be known as the OBERNAUER-BARBER-LAING CO'S. RIDGEMONT PARK No. 1, Part of P. C. F-F. Erin Twp. Macomb Co. Michigan, and that the streets and alleys shown on said plat are hereby dedicated to the use of the public

Signed and sealed in presence of witnesses:
By The Lafayette Land Co.
Chas. W. Hess, President (L. S.)
N. B. Laing, Sec. and Treasurer (L. S.)
Louis Stricker (L. S.)
Emilie Stricker (L. S.)

I hereby certify that the plat hereon delineated is a correct one and that permanent monuments consisting of 1" by 15" pipes, set in concrete bases 4" in diameter and 48" in depth, have been placed in the boundaries of the land platted, and at all intersections of streets, of alleys, or of streets and alleys, or of street or alleys with the boundaries of the plat.
W. J. Lehner
Registered Civil Engineer

REGISTER'S OFFICE
County of Macomb
Received for Record this 24th day of February A.D. 1926 at 8:30 o'clock A.M. and Recorded in Liber 10 of Plat 53 on Page 53
Hugh C. Whiting
Register

I hereby certify that this plat has been approved by the Township Board of the Township of Erin, Macomb County, Michigan, at a session held Feb. 22, 1926.
Robert Kern
Clerk

The land embraced in the annexed plat of OBERNAUER BARBER LAING CO'S. RIDGEMONT PARK No. 1, part of P.C.F-F. Erin Twp. Macomb Co. Mich. is described as follows:
Beginning at the N.W. corner of P. C. F-F, thence S. 59° 26' 00" E. 2475.20 ft. thence N. 89° 41' 00" W. 3058.40 ft. thence N. 36° 38' 00" E. 1549.40 ft. to the point of beginning.

COUNTY TREASURERS CERTIFICATE
This plat complies with the provisions of the County Code, and that all taxes on lands described in the annexed instrument have been paid to the County Treasurer, according to the records of the Office.
Feb. 10, 1926 James L. Gillett
County Treasurer, Macomb County, Mich.

STATE OF MICHIGAN SS:
COUNTY OF WAYNE
On this 24th day of February, 1926, before me, a Notary Public in and for said county, personally came the above named Chas. W. Hess and N. B. Laing, to me personally known, who being each by me duly sworn did say that they are the President and Secretary-Treasurer, respectively of the Lafayette Land Co., a Michigan corporation, and that the seal affixed to said instrument was signed and sealed in behalf of said corporation, and the said instrument was signed and sealed in behalf of said corporation by authority of its Board of Directors, and the said Chas. W. Hess and N. B. Laing acknowledged said instrument to be the free act and deed of said corporation.
Louis Stricker
Notary Public, in and for Wayne County, Michigan
My Commission expires Jan. 17, 1929


STATE OF MICHIGAN SS:
COUNTY OF WAYNE
On this 24th day of February, 1926, before me, a Notary Public, personally came the above named Louis Stricker and Emilie Stricker known to me to be the persons who executed the above dedication and acknowledged the same to be their free act and deed.
Louis Stricker
Notary Public, in and for Wayne County, Michigan
My Commission expires Jan. 17, 1929

The plat was approved by the County Board for Record
Feb. 20, 1926
Charles W. Hammon
James L. Gillett
County Treasurer, Macomb County, Michigan

ASSESSOR'S PLAT OF STRICKER'S SMALL FARMS SUB'N

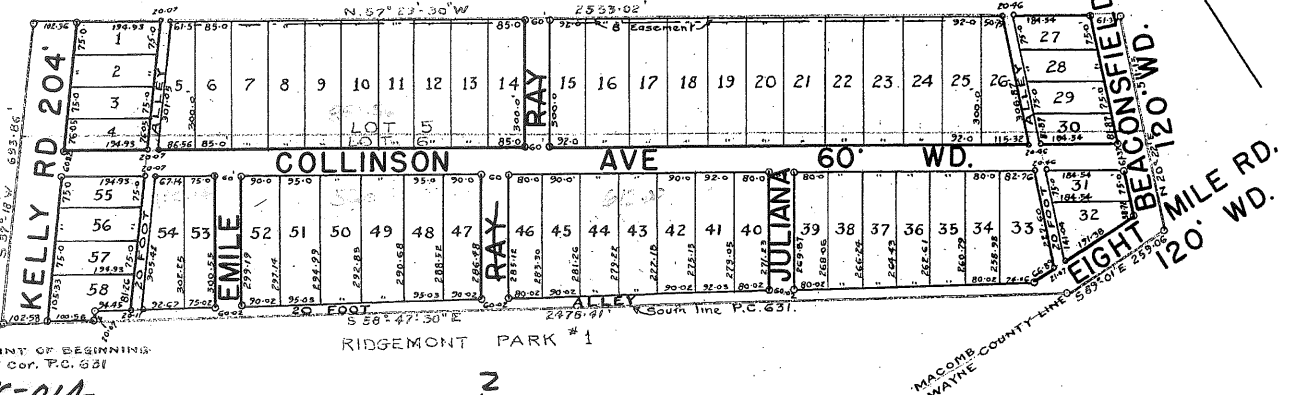
A RE-PLAT OF THE S 1/2 LOT 5 & LOT 6 OF SUB'N. OF P.C. 631
CITY OF EAST DETROIT MACOMB CO. MICH.

3933


Vernon Wilson
Reg. Land Surveyor 5032
St. Clair Shores Mich.

Scale 1 inch = 200 feet
NOTE: All dimensions are in feet and decimals thereof

ASSESSOR'S PLAT OF BOHNOFF'S FARMS #1



POINT OF BEGINNING
S.W. Cor. P.C. 631
PC-014

RIDGEMONT PARK #1

MACOMB COUNTY LINE 589' OF E. 259' 00" N. 120' 00" W. D.
EIGHT MILE RD. 120' W.D.

DESCRIPTION OF LAND PLATTED

The land embraced in the annexed Assessor's Plat of Stricker's Small Farms Subdivision, a replat of the S. 1/2 of lot 5 and 6 of P.C. 631, City of East Detroit, Macomb County, Michigan, is described as follows:

Beginning at the South Westerly corner of P.C. 631; thence S. 53° 47' 30" E. along Southerly line of P.C. 631, 2,478.41 ft. to the Wayne-Macomb County line; thence S. 89° 01' E. along said Wayne-Macomb County line 259.06 ft. to a point in center of Beaconfield Rd; thence N. 20° 22' E. along the center of Beaconfield Rd. 511.15 ft. to a point; thence S. 57° 29' 30" W. 2,533.02 ft. to a point in center of Kelly Rd; thence N. 37° 18' W. along the center of Kelly Rd. 693.86 ft. to point of beginning.

DEDICATION

KNOW ALL MEN BY THESE PRESENTS, that I, Stephen R. Henderson Assessor of the City of East Detroit, Macomb Co., Michigan, by virtue of authority in me vested by Section 51 of Act 172, P.A. of Michigan, 1929, having been duly authorized by the City Council of the City of East Detroit, have caused the land described in the annexed plat to be surveyed, laid out and platted, to be known as

"Assessor's Plat of Stricker's Small Farms Subdivision, a replat of the S. 1/2 of lot 5 and 6 of P.C. 631, City of East Detroit, Macomb County, Michigan, and that the streets and alleys as shown on said plat are now being used for such purposes.

Witnesses:
Paul F. Linenger (L.S.)
Assessor of the City of East Detroit
Frank Cougbran
STEPHEN R. HENDERSON

CERTIFICATE OF MUNICIPAL APPROVAL

This plat was approved by the City Council of the City of East Detroit, Macomb County, Michigan, at a meeting held Oct 27 1940.

Stephen R. Henderson
City Clerk
STEPHEN R. HENDERSON

Examined and Approved

Wayne Jewel
Wayne Jewel, Deputy Auditor General

REGISTER'S OFFICE
County of Macomb

Received for Record this 16 day
of APR 16 1941 A.D. 1941 at
10:24 o'clock A.M. and Recorded
in Liber 30 of Plats
on Page 37
Vernon Wilson Register

ACKNOWLEDGEMENT

STATE OF MICHIGAN)
) SS
COUNTY OF MACOMB)

On this 28th day of November A.D., 1940, before me a Notary Public in and for said County, personally came the above named Stephen R. Henderson, Assessor of the City of East Detroit, Macomb County, Michigan, known to me to be the Person who executed the above dedication, and acknowledged the same to be his free act and deed as such Assessor.

Frank M. May
Notary Public in and for Macomb County, Michigan.

My commission expires Feb. 22 - 1942

CERTIFICATION OF APPROVAL BY COUNTY BOARD

This Plat was approved on the 17th day February A.D. 1941

James Scamley
Judge of Probate
Guy L. Brown
County Clerk
Guy L. Brown
Carl E. Brandenburg
County Treasurer
Carl E. Brandenburg

I hereby certify that the plat hereon delineated is a correct one, and that permanent monuments consisting of bars 2" in diam 48" long set in concrete bases 4" in diameter and 48" in depth, have been placed in the ground at all points marked thus (o) as shown thereon at all angles in the boundaries of the land platted, and at the intersection of streets, of alleys, or of streets and alleys, or of streets or alleys with the boundaries of the plat.

Vernon Wilson
Vernon Wilson,
Registered Land Surveyor 3032

CERTIFICATE OF APPROVAL BY BOARD OF COUNTY ROAD COMMISSIONERS

This plat has been examined and approved on the 7th day of January 1941 by the Board of County Road Commissioners of Macomb County.

Henry W. Lusk
Chairman
F. S. Finch
Vice-Chairman
Paul M. Ross
Member

APR 16 10 24 AM '41