

**LAND CORNER RECORDATION CERTIFICATE**  
**Filing Requirement of Act 74, Mich. P.A. 1970 as Amended**

For corners in Township of Erin  
 City of Eastpointe  
 Located In: Corner Code #

MACOMB COUNTY  
 (County)

Intersection west line Private Claim 611 and the north line section 29  
 Northwest corner Private Claim 631

1. Public Land Survey T \_\_\_\_\_ R \_\_\_\_\_  
 T \_\_\_\_\_ R \_\_\_\_\_  
 T \_\_\_\_\_ R \_\_\_\_\_  
 T \_\_\_\_\_ R \_\_\_\_\_
2. Property Controlling S 29 T 1N R 13E PCC-006  
 In Section s \_\_\_\_\_ T \_\_\_\_\_ R \_\_\_\_\_
3. Miscellaneous S \_\_\_\_\_ T \_\_\_\_\_ R \_\_\_\_\_  
 Property in Sec. S \_\_\_\_\_ T \_\_\_\_\_ R \_\_\_\_\_
4. Lot No. \_\_\_\_\_, Recorded Plat \_\_\_\_\_
5. Private Claims 611



01/19/2005 12:18:55 P.M.  
 MACOMB COUNTY, MI SEAL  
 CARMELLA SABAUGH, REGISTER OF DEEDS

Register of Deeds Stamp & File  
 Number

I, Robert H. Birkett, in a field survey on November 20, 20 04 do hereby state that under requirements of P.A. 74, Michigan P.A. of 1970, the corner points mentioned in lines 1 and 2 above were in conformance with regulations and rules therefore as required in the current manual of survey instructions of the United States Department of the Interior, Bureau of Land Management or by a decree of a Court of Law and /or that the corner points mentioned in lines 3, 4 and 5 above were in conformance with the rules of the Michigan Board of Land Surveyors or by a Decree of a Court of Law; established, re-established, monumented, recovered, found as expressed below:

	A	B	C	D	E	F	G	H	I	J	K	L	M
1													
2	6		5		4		3		2		1		
3													
4	7		8		9		10		11		12		
5													
6	18		17		16		15		14		13		
7													
8	19		20		21		22		23		24		
9													
10	30		29		28		27		26		25		
11													
12	31		32		33		34		35		36		
13													

NOTE: Not more than 2 corners, all in the same town and range, may be recorded on this certificate.

A. Description of original monument and accessories and/or subsequent restoration:

PCC-006 Intersection west line Private Claim 611 and the south line section 29  
 Not set by General Land Office.

ACCEPTED BY THE MACOMB COUNTY SURVEY PEE GROUP AS THE OFFICIAL CORNER UNDER MICHIGAN PUBLIC ACT 345 OF 1990 AT A MEETING HELD ON 12/7/04  
  
 MARTIN C. DUNN, P.S. CHAIRMAN

B. Description of corner evidence found and/or method applied in restoring or reestablishing corner:

PCC-006 The Intersection west line Private Claim 611 and the south line section 29. The corner was set using existing field information of the following recorded subdivisions:

- \* 1924, A. Brauch, "Elm Tree Sub.", Liber 007, Page 073, M.C.R
- \* 1924, G. Jerome, No. 2, "Kelly - Halfway Sub.", Liber 007, Page 076, M.C.R
- \* 1924, J. W. Irwin, "Snyders Elmridge Subdivision", Liber 008, Page 030, M.C.R.
- \* 1925, H. R. O'mara, "Lake Breeze Park Sub.", Liber 010, Page 006, M.C.R.
- \* 1926, W. J. Lehner No. 123, "Morningside Park", Liber 011, Page 002, M.C.R.
- \* 1926, H. J. Fuller, No. 1645, "Babcock & Crawford & Strevenson's Bacreson Sub.", Liber 011, Page 028, M.C.R
- \* 1942, V. Wilson No. 3032, "Replat of Kelly-Duffalo Park Subdivision", Liber 022, Page 025, M.C.R.
- \* 1955, H. J. Fuller No. 1645, "Eastland Courts Subd'n.", Liber 034, Page 002, M.C.R.

**FIELD MEASUREMENTS BETWEEN CORNERS** (SEE REVERSE FOR SKETCH)

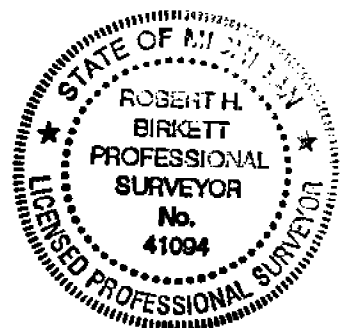
- PCC-006 to D-11 - Remon (2700.92), Plats South of Nine Mile (2701.38)
- PCC-006 to PCC-004 - Remon (5854.22), 1823 GLO 43.11 Ch. (2854.26')
- PCC-006 to PCC-005 - Remon (1988.58') 1823 GLO 30.13 Ch. (1988.58')
- PCC-006 to E-11 - Remon (17.24')

C. Description of monument for corner and accessories established to perpetuate locating the position of the corner:

PCC-006 Set 3/4" x 24" Iron with aluminum cap marked "Macomb County Monument, MI, Act 345, 41094, PCC-006",  
 In a new monument box.

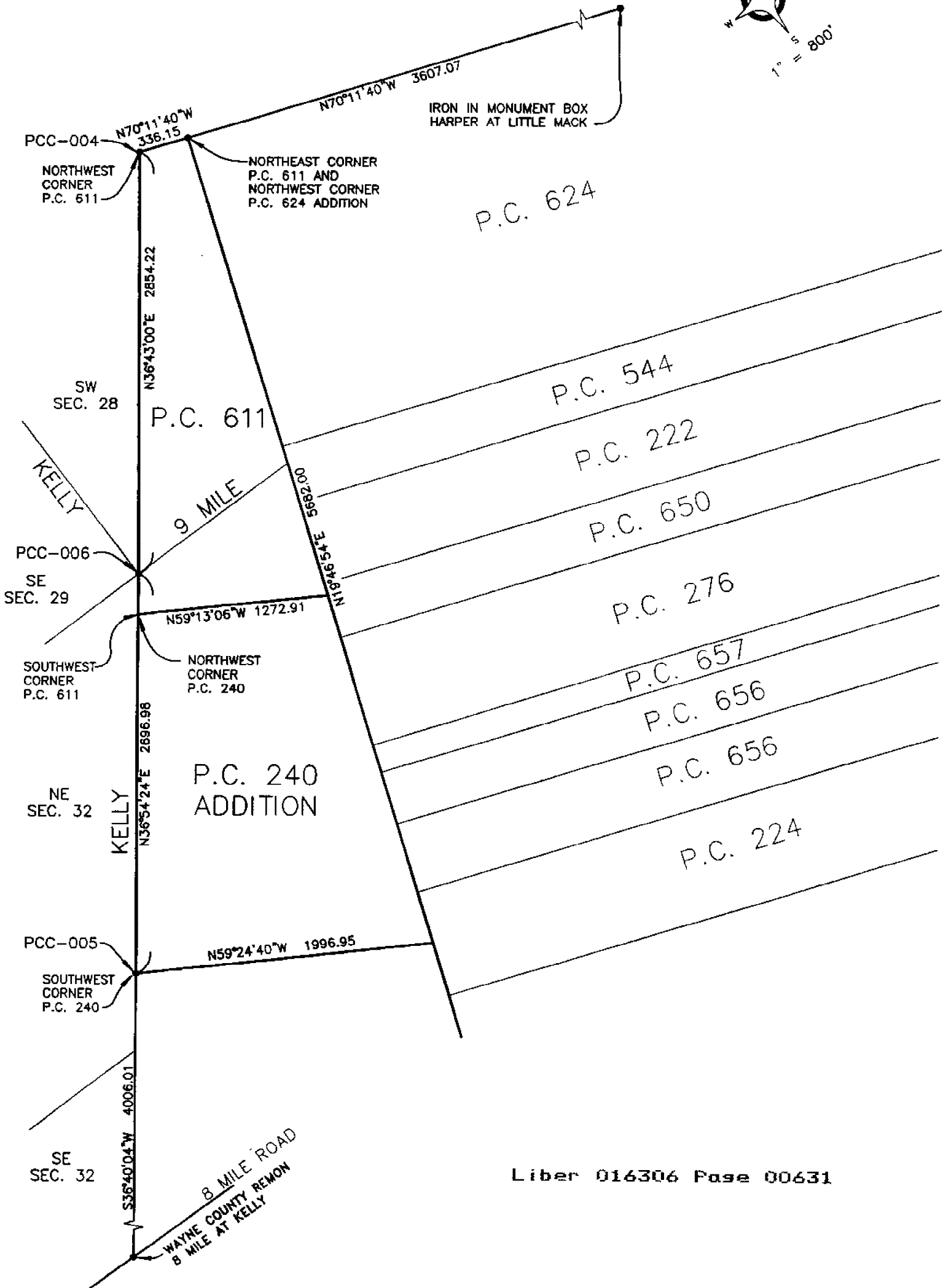
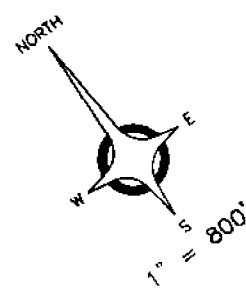
- Az. 130° - 83.24' - Set chiseled 'x' west bolt metal traffic light base.
- Az. 240° - 121.76' - Set chiseled 'x' north bolt metal pole base.
- Az. 298° - 102.58' - Set Remon tag in northeast face utility pole with light.
- Az. 270° - 128.05' - Set chiseled 'x' southeast bolt metal traffic light base.

The Selected location is accepted by me and is generally accepted by Professional Surveyors as the best available evidence of the position of the original corner.



Signed by R. H. Birkett  
 Surveyor's Michigan License No. 41094

Date 12-21-04



PCC-004

NORTHWEST CORNER P.C. 611

N70°11'40"W 336.15

N70°11'40"W 3607.07

IRON IN MONUMENT BOX HARPER AT LITTLE MACK

NORTHEAST CORNER P.C. 611 AND NORTHWEST CORNER P.C. 624 ADDITION

P.C. 624

N36°43'00"E 2854.22

SW SEC. 28

P.C. 611

P.C. 544

P.C. 222

9 MILE

N118°59'45"E 1100.2895

P.C. 650

PCC-006

SE SEC. 29

N59°13'06"W 1272.91

P.C. 276

SOUTHWEST CORNER P.C. 611

NORTHWEST CORNER P.C. 240

P.C. 657

P.C. 656

N36°54'24"E 2696.98

P.C. 240 ADDITION

P.C. 656

P.C. 224

NE SEC. 32

KELLY

PCC-005

SOUTHWEST CORNER P.C. 240

N59°24'40"W 1996.95

SE SEC. 32

S36°40'04"W 4006.01

WAYNE COUNTY REMON 8 MILE AT KELLY

**2004 MACOMB COUNTY RE-MONUMENTATION  
PCC-006 – THE INTERSECTION OF WEST LINE PRIVATE CLAIM 611 AND  
THE NORTH LINE OF SECTION 29  
TOWN 1 NORTH, RANGE 13 EAST,  
ERIN TOWNSHIP, CITY OF EASTPOINT, MICHIGAN**

**GENERAL LAND OFFICE HISTORY**

Private Claim 611 and the Additions to existing Private Claims.  
J. Mullet surveyed the additional private claims in December of 1823.

**EXISTING CONDITIONS**

PCC-006 Set ¾" Iron in monument box at the intersection of the south line section 29 and the west line Private Claim 611 using the found monumentation in the field for the plat "Snyders Elmridge Subdivision".

**CERTIFICATE OF SURVEYS & LAND CORNER RECORDATION CERTIFICATES**

- \* No Act 132 Certificates were available for this corner.
- \* No Land Corner Recordation Certificates were available for this corner.

**UNRECORDED INFORMATION**

- \* No unrecorded information was recovered for this corner.

**SUBDIVISION REFERENCING PCC-006**

- \* 1924, A. Brauch, "Elm Tree Sub.", Liber 007, Page 073, M.C.R
- \* 1924, G. Jerome, "Kelly - Halfway Sub.", Liber 007, Page 076, M.C.R
- \* 1924, J. W. Irwin, "Snyders Elmridge Subdivision", Liber 008, Page 030, M.C.R.
- \* 1925, H. R. O'mara, "Lake Breeze Park Sub.", Liber 010, Page 006, M.C.R.
- \* 1926, W. J. Lehner No. 123, "Morningside Park", Liber 011, Page 002, M.C.R.
- \* 1926, H. J. Fuller, "Babcock & Crawford & Strevenson's Bacreson Sub.", Liber 011, Page 028, M.C.R
- \* 1942, V. Wilson No. 3032, "Replat of Kelly-Duffalo Park Subdivision", Liber 022, Page 025, M.C.R.
- \* 1955, H. J. Fuller No. 1645, "Eastland Courts Subd'n.", Liber 034, Page 002, M.C.R.

**WITNESSES RECOVERED**

- \* No previous witnesses for this corner.

**FIELD MEASUREMENTS BETWEEN CORNERS**

PCC-006 to D-11 – Remon (2700.92), Plats South of Nine Mile (2701.38)  
PCC-006 to PCC-004 – Remon (5854.22), 1823 GLO 43.11 Ch. (2854.26')  
PCC-006 to PCC-005 - Remon (1988.58') 1823 GLO 30.13 Ch. (1988.58')  
PCC-006 to E-11 – Remon (17.24')

**RECOMMENDATIONS**

To accept the Location on this document as the faithful recovery of the obliterated corner PCC-004.

Place the following statement on a new LCRC:

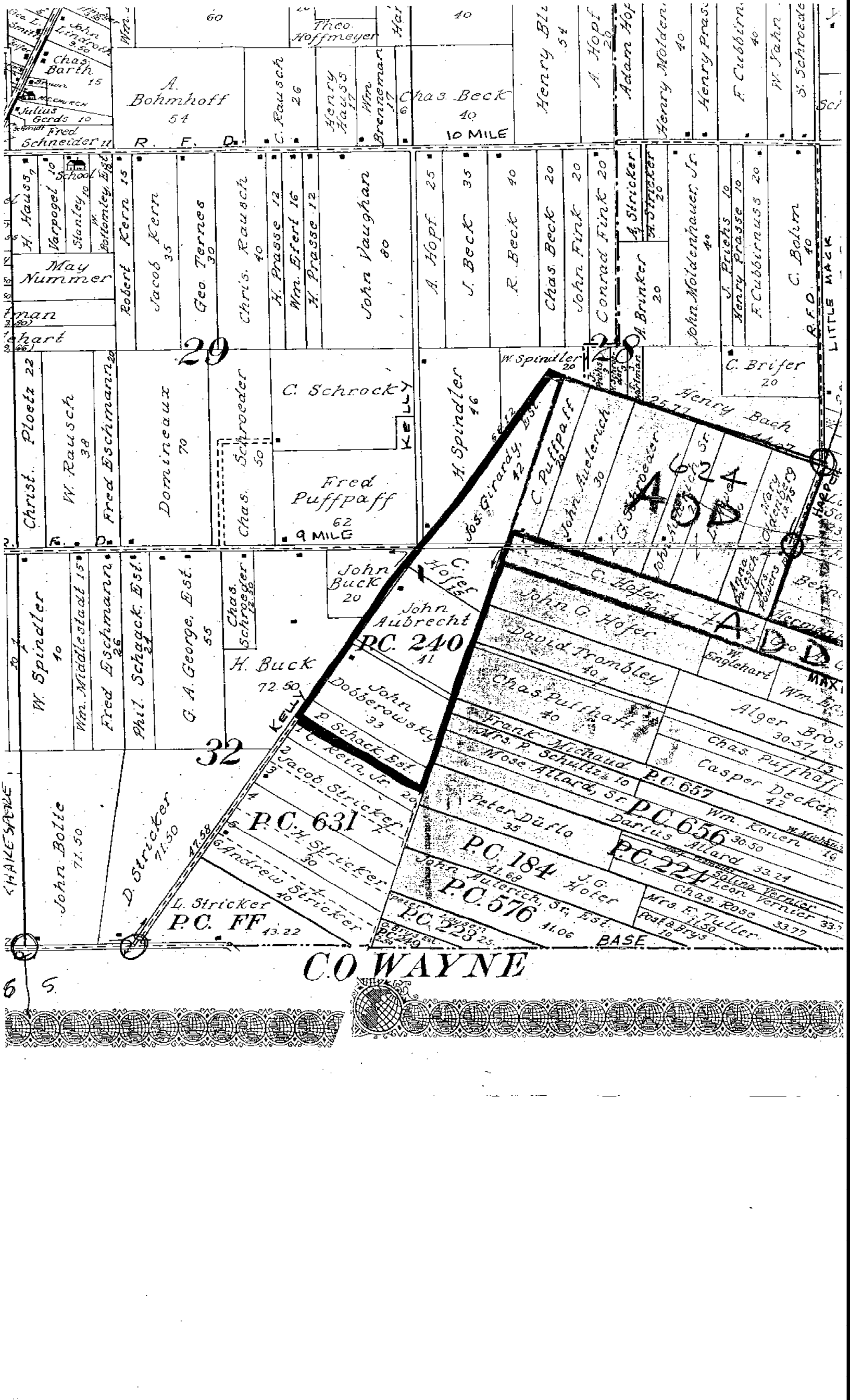
"The Selected Location is accepted by me and is generally accepted by Professional Surveyors as the best available evidence of the position."

**MONUMENT SET AND WITNESSES**

PCC-006 Set ¾" Iron with aluminum cap marked "Macomb County Monument, MI, Act 345, 41094, PCC-006", In a new monument box.

- Az. 130° - 83.24' - Set chiseled 'x' west bolt metal traffic light base.
- Az. 240° - 121.76' - Set chiseled 'x' north bolt metal pole base.
- Az. 298° - 102.58' - Set Remon tag in northeast face utility pole with light.
- Az. 270° - 128.05' - Set chiseled 'x' southeast bolt metal traffic light base.

  
ROBERT H. BIRKETT, P.S.      41094      12-14-04      DATE



A. Bohmhoff  
51

R. F. D.

C. Rausch  
26

Henry Hauss  
17

Wm. Brenner  
17

Chas. Beck  
40  
10 MILE

Henry Bl...  
54

A. Hopf  
26

Adam Hof

Henry Molden  
40

Henry Prasi

F. Cubbirn  
40

W. Jahn  
40

S. Schroede

H. Hauss  
10  
Varpogel  
10  
Stanley  
10  
Bottamley  
10  
May Nummer  
man  
chart

Robert Kern  
15

Jacob Kern  
35

Geo. Ternes  
30

Chris. Rausch  
40

H. Prasse  
12

Wm. Efert  
16

H. Prasse  
12

John Vaughan  
80

A. Hopf  
25

J. Beck  
35

R. Beck  
40

Chas. Beck  
20

John Firk  
20

Conrad Firk  
20

A. Stricker  
20

A. Brinker  
20

John Moldenhauer, Jr.  
40

J. Fricks  
10

Henry Prasse  
10

F. Cubbirnuss  
20

C. Bohm  
40

R.F.D. 40  
LITTLE MACK

29

Christ. Ploetz  
22  
W. Rausch  
38  
Fred Eschmann  
20

Domineaux  
70

Chas. Schroeder  
50

C. Schrocky

Fred Puffpaff  
62  
9 MILE

H. Spindler  
16

W. Spindler  
20

H. Spindler  
16

W. Spindler  
20

H. Spindler  
16

W. Spindler  
20

H. Spindler  
16

W. Spindler  
20

H. Spindler  
16

W. Spindler  
20

H. Spindler  
16

W. Spindler  
20

H. Spindler  
16

W. Spindler  
20

H. Spindler  
16

W. Spindler  
20

H. Spindler  
16

W. Spindler  
20

W. Spindler  
10  
Wm. Middlestadt  
15  
Fred Eschmann  
26  
Phil. Schagack, Est.  
22

G. A. George, Est.  
55

Chas. Schroeger  
12.50

H. Buck  
72.50

John Buck  
20

John Aubrecht  
41

John Dobberowsky  
33

P. Schack, Est.  
20

Jacob Stricker, Jr.  
20

L. Stricker  
43.22

John C. Hofer  
16

John G. Hofer

David Trombley  
40

Chas. Puffpaff  
40

Frank Michaud  
10

Mose Altard, Sr.  
10

Peter Duflo  
35

John Juterich, Sr., Est.  
11.68

J.G. Hofer

Wm. Englehart  
20

Alger Bros  
30.57

Chas. Puffhoff  
42

Casper Decker  
42

John Bolle  
71.50  
D. Stricker  
71.50  
L. Stricker  
43.22

P.C. 631

P.C. FF

P.C. 240

P.C. 657

P.C. 656

P.C. 224

P.C. 184

P.C. 576

P.C. 223

P.C. 224

P.C. 184

P.C. 576

P.C. 223

P.C. 224

P.C. 184

P.C. 576

P.C. 223

P.C. 224

P.C. 184

P.C. 576

P.C. 223

P.C. 224

C.O. WAYNE







2695.90 PLATTED

V. WILSON No. 3032

1360.57 ALONKA KELLY

MORNINGSIDE PARK

L11 P2

1926

WJ LEHNER No. 123

784.90 ALONKA KELLY

LAKE BREEZE PARK SUB

L10 P6

276.80 ALONKA KELLY

1925

H. R. D'AMARA

N59°24'40"W 1997.07'

610 (3013)

1988.58

F.d.  
Fence

N36°54'24"E 2696'

KELLY

SW COR  
2240

610 = 6652.14 (100.712#)

DIST 8 MILE TO 9 MILE

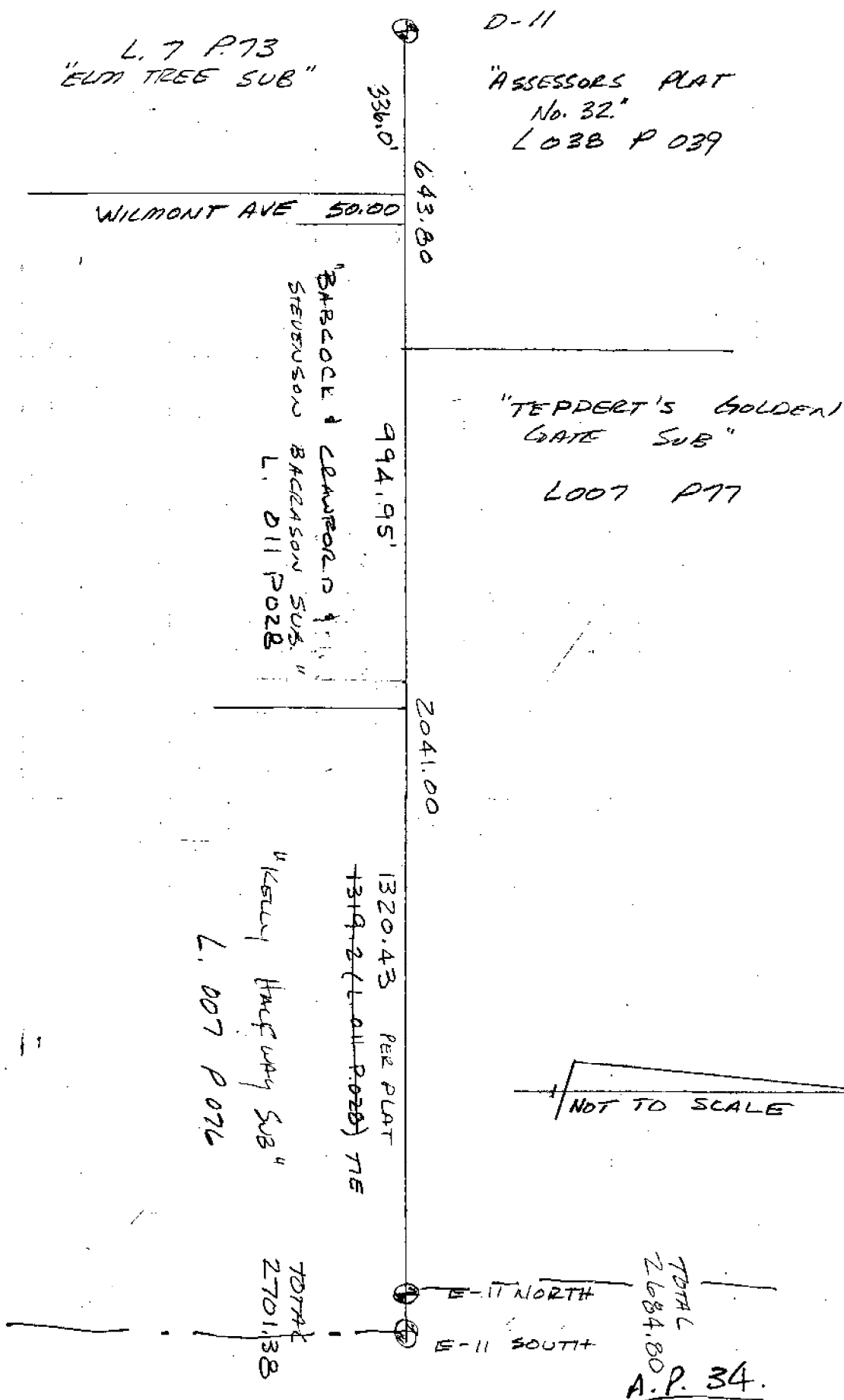
REMON = 6702.99

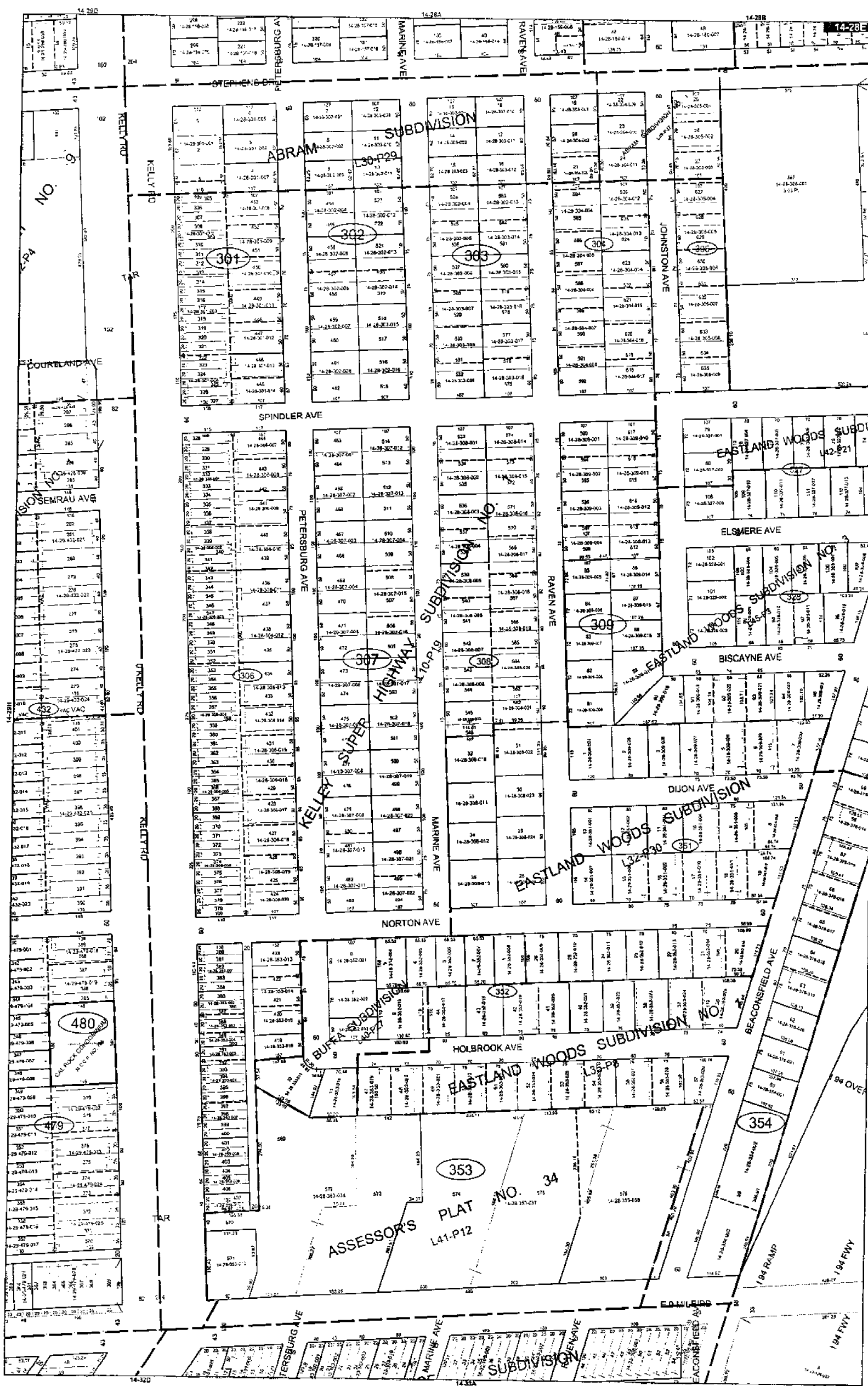
S36°40'04"W 4006.01'

100  
WAYNE CO. REMON  
8 MILE & KELLY









14-290

14-284

14-288

14-291

KELLY RD

COURTLAND AVE

SEMRAU AVE

ORELLY RD

KELLY RD

TAR

STEPHENS DR

ABRAM SUBDIVISION L30-P29

SPINDLER AVE

PETERSBURG AVE

KELLY SUPER HIGHWAY

NORTON AVE

BUFA SUBDIVISION L40-P27

EASTLAND WOODS SUBDIVISION L32-P30

ASSASSOR'S PLAT L41-P12

MARINE AVE

RAVEN AVE

RAVEN AVE

RAVEN AVE

RAVEN AVE

JOHNSTON SUBDIVISION L41-P10

EASTLAND WOODS SUBDIVISION L42-P21

EASTLAND WOODS SUBDIVISION L45-P3

EASTLAND WOODS SUBDIVISION L32-P30

EASTLAND WOODS SUBDIVISION L32-P30

BEACONSFIELD AVE

194 RAMP

194 FWY

NO. 9

NO. 10

NO. 11

NO. 12

NO. 13

301

302

303

304

305

306

307

308

309

310

311

312

313

314

315

480

479

316

317

318

319

320

321

14-320

14-324

14-328

10 MILE  
 N 0° 11' 40" W 3607.07'  
 N 0° 11' 40" W 3607.07'

IRON IN MONUMENT BODY  
 HARPER & LITTLE MACK

NE PC 611  
 NW PC 624 ADDITION

NW PC 611 TO CORNER COMMON TO 599 & 624  
 GLO (59.55 CH) 3930.30  
 REMON 3943.22

NW PC 624 ADDITION TO NW PC 240  
 GLO (59.55 - 54.35 = 5.20 CH) 543.20  
 REMON 336.15

H.B. P.30 ELM RIDGE SUBDIVISION  
 SANDERS (ENGINEER)  
 1924  
 J.W. LEWIN (ENGINEER)  
 273.63 ALONG KELLY

273.63  
 1360.57  
 784.90  
 276.80

P.C. 611

N 19° 46' 54" E 5682.00'

NW COR PC 240  
 RECAP OF  
 KELLY - DUFFO  
 PARK SUBDIVISION  
 L 22 P 25  
 1942

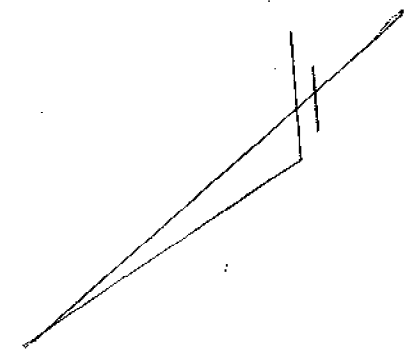
10 MILE

N 0° 11' 40" W 3607.07'  
 565  
 381.15  
 LOSP042  
 565

NW PC 611  
 LOSP042  
 565

N 86° 43' 00" E 2854.22'  
 GLO = 2845.26  
 (43.11 CH)

CENTER BOX G.MILE  
 SW PC 611



2695.90 PLATTED

WILSON No. 3032

1360.57 ALONIA KELLY

PC 240 ADDITION

MORNINGSIDE PARK

L11 P2

1926

W.D. LEAMERL NO. 123

784.90 ALONIA KELLY

LAKE BREEZE PHASE 508

L10 P6

276.80 ALONIA KELLY

1925

H.R. O'MARA

NS9°24'40"W 1997.07'

GLD (30.13)

1988.58'

N3E 54°24' E 2696.9

KELLY

SW CORNER  
PL 240

660 = 6652.14 (2007.14)  
DIST BRACE TO PINS  
REP. 011 = 6702.99

S36°40'04"W 4006.03

100 WAYNE CO. REMON  
O'MARA & KELLY



Surveyed the additional donation to  
 No. 222 on right of Antoine Peneau  
 Commencing at a post corner to Original don.  
 No. 222 & 544 thence

S 19 N 8.71 to post corner to Orig. don. 222 & 650

N 71 W Between Nos 222 & 650

109.26 Set post corner to No. 222 & 650

Elm 16 m dia S 18 E 13 th. dis.

Do 12 - - - N 52 E 44 - -

N 19 E 8.71 to post cor. to No. 222 & 544

S 71 E 109.24 to the beginning  
 containing 95.15 ac.

Commenced at a Beech tree being  
the most northerly corner to Orig. don  
No. 393 thence

N 39° 45' E 13.38 intersected base line 21.50  
East of Township corner A  
Lignum 10 inches diameter  
corner to Trac. Sec 5 T1 S  
+ 32 T1 N R13 E

114.17 post corner to sec 28. 29. 32. 33

157.28 set post corner to base line  
28 + Add. don. 611

W Oak 32. S 47° E 13 links

Elm 20 N 24° W 44

S 71° E 59.55 to post corner to Original  
donations N 599 + 624

NOTE  
LINE FOR  
ADDITIONAL PRIVATE CLAIMS  
PC 611



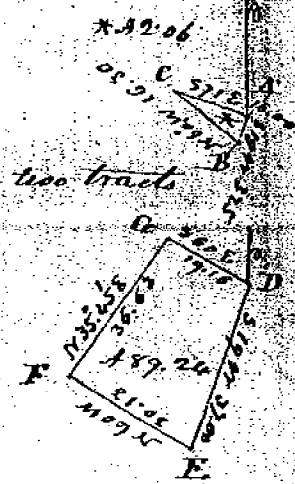
one of the corners

ing	Inches	Course	Dist.
	Dia.	They bear	
sh	11	corner	
~	5	S 63 E	22
~	9	N 45 E	38
sh	7	N 65 E	28
~	14	S 7 W	25

ble	14	corner	
sh	4	corner	
~	8	N 18 E	16
oy	4	S 3 E	32
~	24	S 52 W	7
~	8	N 8 E	25
sh	10	N 10 E	19
~	7	S 76 W	7
sh	32	S 67 E	13
~	20	N 24 W	44

240

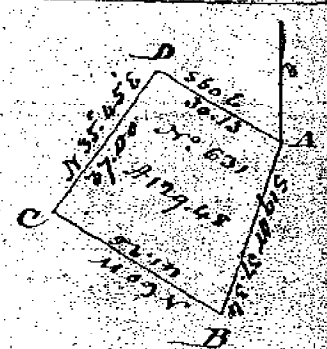
N. 240 in two tracts



Description of the corners

Point	Bearing	Inches	Course	Dist.
	trees	Diam	They bear	
A				
B				
C	Maple	14	corner	
D	Elm	24	S 52 W	7
	Lynn	8	N 8 E	25
E	Hickory	7	N 57 W	4
	W. Ash	9	S 28 E	16
F	Hickory	6	N 45 E	35
	B. Ash	6	S 12 W	22
G	B. Ash	10	N 10 E	19
	do	7	S 26 W	7

631



A	Hickory	7	N 57 W	4
	W. Ash	9	S 28 E	16
B	B. Ash	9	S 55 W	12
	do	6	N 6 E	42
C	Beech	12	N 46 E	12
	Sugar	7	S 5 E	18
D	Hickory	6	N 45 E	35
	B. Ash	6	S 12 W	22



V. Wilson Reg. Land Surveyor  
 1942 N. 235  
 1945 N. 235  
 1945 N. 235  
 1945 N. 235

**RE-PLAT OF**  
**KELLY-DUFFALO PARK SUB'N.**  
 OF PART OF P.C. 240 LYING BETWEEN BEACONSFIELD & KELLY RDS.  
 CITY OF EAST DETROIT, MACOMB CO. MICH.

17018

VERNON WILSON  
REG. LAND SURVEYOR

SCALE 1"=150'

NOTE-ALL DIMENSIONS ARE IN FEET & DECIMALS THEREOF



**CERTIFICATE OF APPROVAL BY BOARD OF COUNTY ROAD COMMISSIONERS**

This plat has been examined and approved on the 13th day of April, 1942 by the Board of County Road Commissioners of Macomb County.

Vernon Wilson, Chairman  
 J. J. ... Member  
 N. F. ... Member

**REGISTER'S OFFICE**

Received for Record this \_\_\_\_\_ day  
 of April, 1942, A.D. 19\_\_\_\_ at  
 \_\_\_\_\_  
 in Liber \_\_\_\_\_ of Plate \_\_\_\_\_  
 in Page \_\_\_\_\_

Notary Public  
 \_\_\_\_\_  
 \_\_\_\_\_

**DEDICATION**

KNOW ALL MEN BY THESE PRESENTS, THAT WE, Robert E. Snyder and Minnie Snyder, his wife, Norman A. Snyder and Allie Snyder, his wife, and Willard M. Snyder and Mable Snyder, his wife, as proprietor's, have caused the land embraced in the annexed plat to be surveyed, laid out and platted, to be known as Replat of Kelly-Duffalo Park Sub'n of Part of P.C. 240 lying between Beaconsfield and Kelly Rds., City of East Detroit, Macomb County, Mich., and that the streets and alleys as shown on said plat are hereby dedicated to the use of the public.

Signed and Sealed in the Presence of:

Robert E. Snyder  
 Minnie Snyder  
 Norman A. Snyder  
 Allie Snyder  
 Willard M. Snyder  
 Mable Snyder

Harold E. Snyder  
 Willard M. Snyder

**DESCRIPTION OF LAND PLATTED**

The land embraced in the annexed Replat of Kelly-Duffalo Park Sub'n of Part of P.C. 240 lying between Beaconsfield and Kelly Rd's City of East Detroit, Macomb County, Mich., is described as follows:  
 Beginning at a point on the Westerly line of P.C. 240 said point lying S. 38°-00' W. 275.63' from the N.E. corner of Section 32, T. 19N32E; thence S 59°-08'-13" E 1288.32 feet to a point; thence S. 20°-51'-30" W 1382.05' to a point; thence N 56°-09'-30" W 1877.33 feet to a point; thence N 38°-00' E 1380.57 feet to the point of beginning.

**SURVEYOR'S CERTIFICATE**

I hereby certify that the plat hereon contained is a correct one and that permanent metal monuments consisting of bars not less than one-half inch in diameter and 48 inches in length, or shorter bars of not less than one-half inch in diameter lapped over each other at least 6 inches with an over-all length of not less than 48 inches, encased in a concrete cylinder at least 4 inches in diameter and 48 inches in depth have been placed at points marked thus (a) as thereon shown at all angles in the boundaries of the land platted, at all the intersections of streets, intersections of alleys, or of straits and alleys, and at the intersections of streets and alleys with the boundaries of the plat as shown on said plat.

Vernon Wilson  
 Registered Land Surveyor

**CERTIFICATE OF MUNICIPAL APPROVAL**

This Plat was approved by the City Council of the City of East Detroit at a meeting held February 12, 1942.

**CERTIFICATE OF APPROVAL BY COUNTY BOARD**

This plat was approved on the 13th day of April, A.D. 1942.

\_\_\_\_\_  
 \_\_\_\_\_  
 \_\_\_\_\_

STATE OF MICHIGAN )  
COUNTY OF MACOMB ) SS.

On this 13th day of March, A.D. 1942, before me, a Notary Public in and for said County, personally came the above named Robert E. Snyder and Minnie Snyder, his wife, Norman A. Snyder and Allie Snyder, his wife, and Willard M. Snyder and Mable Snyder, his wife, known to me to be the persons who executed the above dedication, and acknowledged the same to be their free act and deed.

Notary Public, in and for Macomb County, Michigan  
 \_\_\_\_\_

My Commission expires January 21, 1945

Examined and Approved

\_\_\_\_\_  
 \_\_\_\_\_  
 \_\_\_\_\_

1926  
 No. 123  
 W. J. Lehner  
 L. H. R. 2  
 PARK  
 MORNINGSSIDE

# MORNINGSSIDE PARK

SUBDIVISION OF 6 PERS. OF P.C. 240 T.W.P. 19, 20

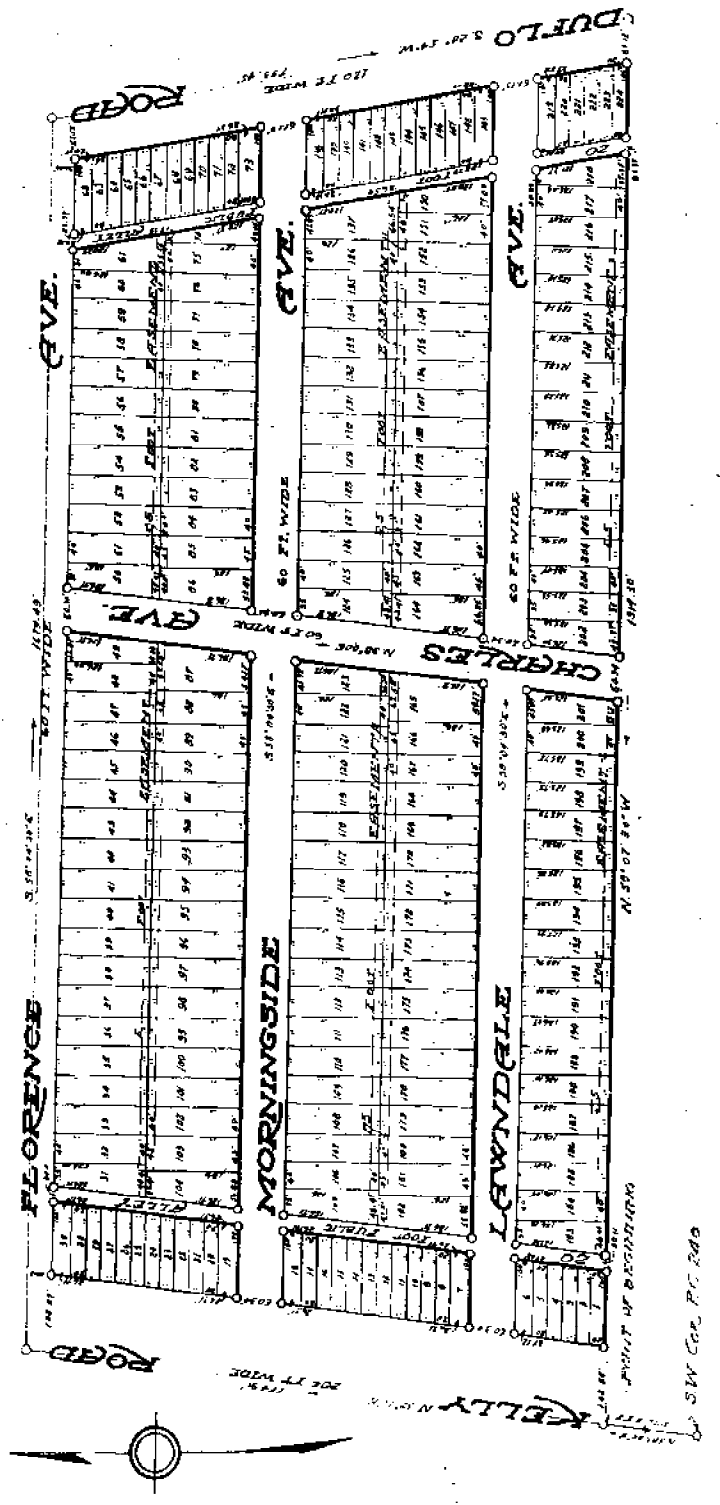
## ERIN TWP. MACOMBS CO. MICHIGAN

Scale: 1" = 150'

4797

W. J. Lehner Reg. C.E.  
 Mount Clemens, Mich.

June 1-1926  
 J. H. Lehner



SW COR. P.C. 240

NOTE: ALL LOTS IN THIS PLAT ARE SUBJECT TO THE MORTGAGE OF MORNINGSSIDE PARK, A SUBDIVISION OF A PART OF P. C. 240, T. 19 N., R. 18 E., 2ND MAIN TWP., MACOMB COUNTY, MICHIGAN, AS OWNERS OF LEGAL TITLE, AND LEASOR OF THE SAME TO MORNINGSSIDE PARK, INC., AS LESSEE, BY DEED DATED AND RECORDED AS ABOVE.

180

SW COR. PG 240

KNOW ALL MEN BY THESE PRESENTS, that we, John Dobrowsky and Augusta Dobrowsky, his wife, as owners of Legal Titles, and Elmer E. O'Hara and Mary A. O'Hara, his wife, and George A. King and Bessie L. King, his wife, as vendees under Land Contract, have caused the plat embraced in the annexed plat to be surveyed, laid out and plotted, to be known as "LAWRENCE ROAD", a subdivision of a part of P.C. 240, T. 18 N., R. 13 E., 3rd 2nd, Macomb Co., Michigan, and that the streets and alleys shown on said plat are hereby dedicated to the use of the public.

Signed and sealed in presence of  
*John E. King*.....L. S.  
*John E. King*.....L. S.  
*John E. King*.....L. S.  
*John E. King*.....L. S.  
*John E. King*.....L. S.

STATE OF MICHIGAN  
 County of, *Shagwon*.  
 On this *14th* day of *April*, 1926, before me, a Notary Public in and for said county, personally came the above named John Dobrowsky and Augusta B. Dobrowsky, his wife, known to me to be the persons who executed the above dedication, and acknowledged the same to be their free act and deed.  
*John E. King*.....  
 My Commission expires.....  
 STATE OF MICHIGAN  
 County of, *Shagwon*.

On this *14th* day of *April*, 1926, before me, a Notary Public in and for said county, personally came the above named Elmer E. O'Hara and Mary A. O'Hara, his wife, and George A. King and Bessie L. King, his wife, known to me to be the persons who executed the above dedication, and acknowledged the same to be their free act and deed.  
*John E. King*.....  
 My Commission expires.....  
 STATE OF MICHIGAN  
 County of, *Shagwon*.

The same embraced in the annexed plat of subdivision in said sub-division of a part of P. C. 240, T. 18 N., R. 13 E., 3rd 2nd, Macomb Co., Michigan, is described as follows:  
 Beginning at a point on the east line of P. C. 240, 276.8 ft., N. 38°00' E., to the S.W. corner of said P. C. 240, thence N. 38°00' E., 755.90 ft., thence S. 50°04'30" E., 1879.49 ft., thence S. 20°54' N., 755.45 ft., thence N. 58°07'30" E., 1914.30 ft. to the point of beginning.

This plat was approved by the Township Board of the Township of Arin, Macomb County, Michigan, at a meeting held *April 14, 1926*.  
*John E. King*.....  
 Township Clerk

I hereby certify that the plat hereon delineated is a correct one and that permanent metal monuments of not less than one inch in diameter and sufficient in length to set in a concrete base of least four inches in diameter and forty-eight inches in depth, have been placed at 92 ft. intervals thus "on" at the corners and at all angles in the boundaries of the lots plotted, at all the intersections of streets, intersections of highways, or of streets and alleys, and at the corners sections of streets and alleys with the boundaries of the plat as shown on said plat.

*John E. King*.....  
 Registered Civil Engineer

This plat was approved by the County Board for Macomb County, Michigan, at a meeting held *May 24, 1926*  
*John E. King*.....  
 County Clerk

REGISTERED OFFICE  
 County of Macomb  
 Recorder for Record this *14th* day of *April*, 1926, at *11:15* o'clock *A.M.* and Recorded in Liber *11* of *Plats*  
 Page *21*  
*John E. King*.....

*Mary A. O'Hara*.....  
 Registered Civil Engineer

911 100-786

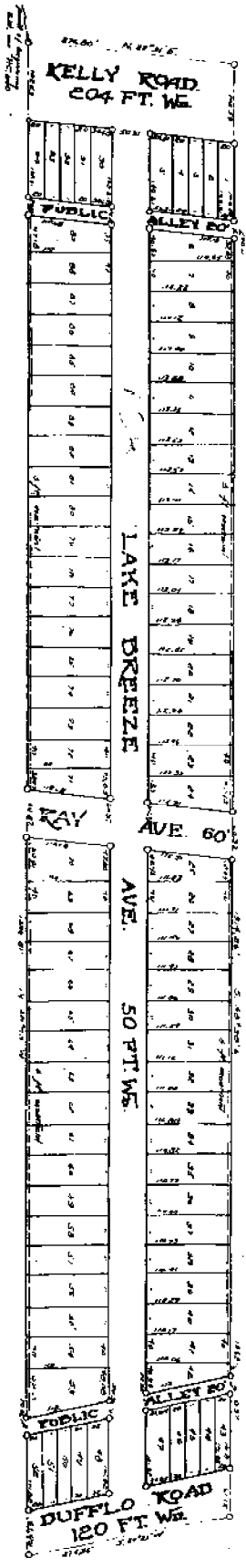
Aug 26 1929  
J. P. Hammond

# LAKE BREEZE PARK SUB.

- OF PART OF P.C. 240 -

## ERIN TWP. MACOMB CO. MICH.

SCALE 1"=100'



~~ACRES KNOWN TO HIS WIFE AND MINOR CHILDREN AND  
 MINOR CHILDREN OF HIS WIFE~~  
 PARK SUB

John Kraus  
 Fred Leis  
 Charles Schuch

Witness  
 11th August 1929  
 James K. ...  
 ...

J. P. Hammond

Oct. 14, 1929

J. P. Hammond

LAKE BREEZE PARK SUB.

Received by Registrar  
 at September 26th 1929  
 in Liber ...  
 on file ...  
 J. P. Hammond Registrar

The above plat and Subdivision is hereby subjected to the following agreement and covenant which shall be observed by those proprietors herein described and their successors and assigns, and the heirs, executors, administrators and assigns of them, to-wit:

That at no time shall any lot in said subdivision or part thereof or any building thereon be sold, rented, leased, transferred, or conveyed to, or shall the same be occupied by, or used as a domestic servant, any Negro or colored persons of any blood.

Filed for Record  
 by the Registrar  
 on the 26th day of  
 September 1929  
 J. P. Hammond  
 Registrar

Filed for Record  
 by the Registrar  
 on the 26th day of  
 September 1929  
 J. P. Hammond  
 Registrar

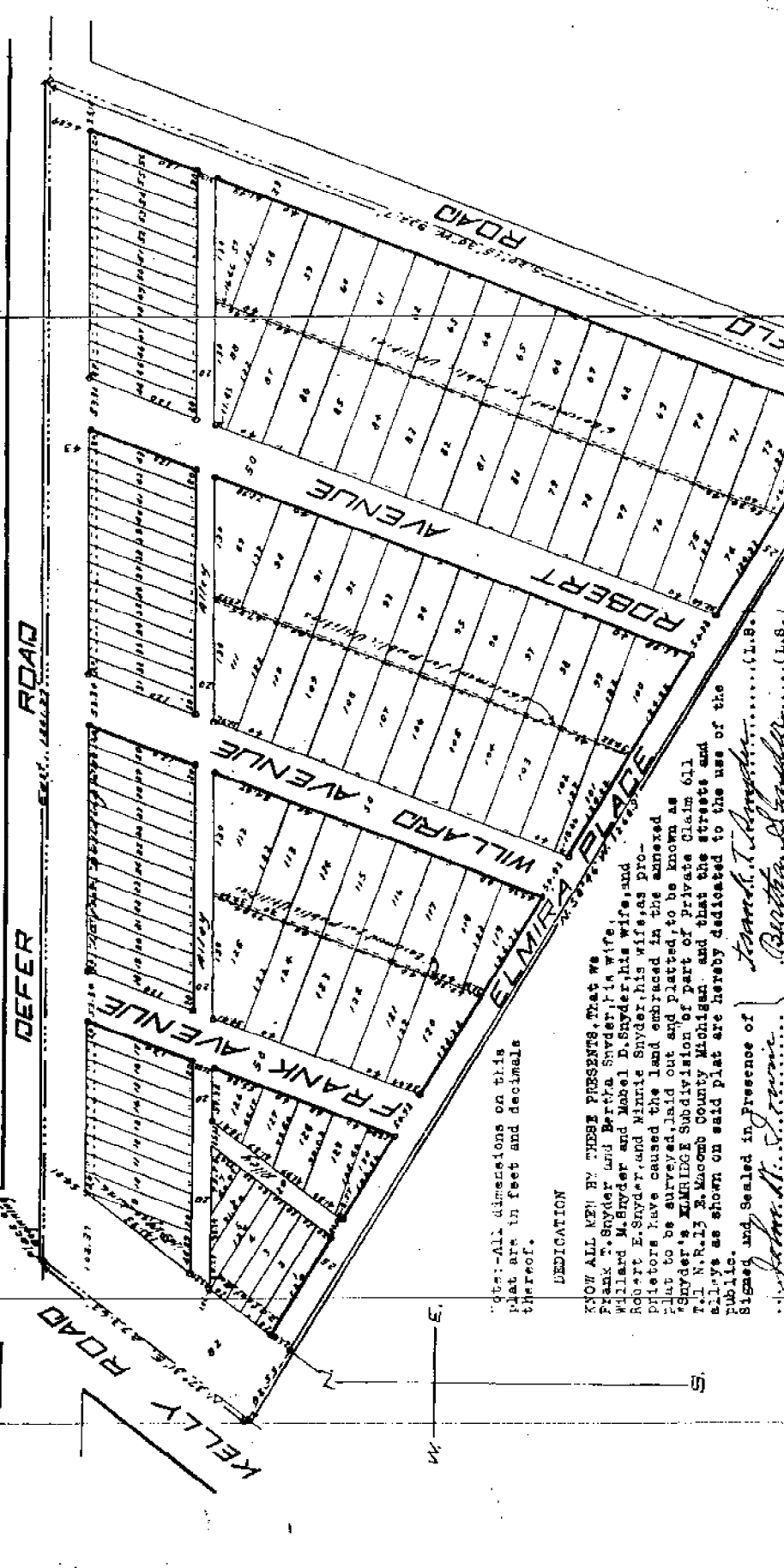
The Subdivision was made by J. P. Hammond

J.W. Lewis  
 1924  
 L. & P. 30  
 Snyder's Eminent  
 Domain  
 508 Division

# SNYDER'S ELMBRIDGE SUBDIVISION

COMMENCED  
 12-1924

OF PART OF PRIVATE CLAIM 611 T. 1 N. R. 13 E. 2 S. 10 W. 10  
 MACOMB COUNTY MICHIGAN



Note: All dimensions on this  
 plat are in feet and decimals  
 thereof.

**DEDICATION**

KNOW ALL MEN BY THESE PRESENTS, that we,  
 Frank T. Snyder and Bertha Snyder, his wife,  
 Willard M. Snyder and Mabel D. Snyder, his wife, and  
 Robert E. Snyder, and Winnie Snyder, his wife, as pro-  
 prietors have caused the land embraced in the annexed  
 plat to be surveyed, laid out and platted, to be known as  
 Snyder's Elmbidge Subdivision of part of Private Claim 611  
 T. 1 N. R. 13 E. 2 S. 10 W. 10, Macomb County Michigan and that the streets and  
 alleys as shown on said plat are hereby dedicated to the use of the  
 public, and sealed in presence of

Signed and Sealed in Presence of  
 Frank T. Snyder, L.S.  
 Bertha D. Snyder, L.S.

