

**LAND CORNER RECORDATION CERTIFICATE**  
**Filing Requirement of Act 74, Mich. P.A. 1970 as Amended**

For corners in Township of Erin  
 City of Eastpointe  
 Located In: Corner Code #  
MACOMB COUNTY  
 (County)

Southwest corner Private Claim 240  
 Northwest corner Private Claim 631

- |                                    |   |           |   |           |                             |
|------------------------------------|---|-----------|---|-----------|-----------------------------|
| 1. Public Land Survey              | T | _____     | R | _____     | _____                       |
|                                    | T | _____     | R | _____     | _____                       |
|                                    | T | _____     | R | _____     | _____                       |
|                                    | T | _____     | R | _____     | _____                       |
| 2. Property Controlling In Section | S | <u>32</u> | T | <u>1N</u> | R <u>13E</u> <u>PCC-005</u> |
|                                    | s | _____     | T | _____     | _____                       |
| 3. Miscellaneous Property in Sec.  | S | _____     | T | _____     | R _____                     |
|                                    | S | _____     | T | _____     | R _____                     |
| 4. Lot No. _____, Recorded Plat    |   |           |   |           |                             |
| 5. Private Claims <u>240</u>       |   |           |   |           |                             |

5011905  
 LIBER 16306 PAGE 628  


01/19/2005 12:18:55 P.M.  
 MACOMB COUNTY, MI  
 CARMELLA SABAUGH, REGISTER OF DEEDS SEAL


I, Robert H. Birkett, in a field survey on November 20, 2004 do hereby state that under requirements of P.A. 74, Michigan P.A. of 1970, the corner points mentioned in lines 1 and 2 above were in conformance with regulations and rules therefore as required in the current manual of survey instructions of the United States Department of the Interior, Bureau of Land Management or by a decree of a Court of Law and /or that the corner points mentioned in lines 3, 4 and 5 above were in conformance with the rules of the Michigan Board of Land Surveyors or by a Decree of a Court of Law; established, re-established, monumented, recovered, found as expressed below:

A	B	C	D	E	F	G	H	I	J	K	L	M
1												
2	6	5	4	3	2	1						
3												
4	7	8	9	10	11	12						
5												
6	18	17	16	15	14	13						
7												
8	19	20	21	22	23	24						
9												
10	30	29	28	27	26	25						
11												
12	31	32	33	34	35	36						
13												

NOTE: Not more than 2 corners, all in the same town and range, may be recorded on this certificate.

A. Description of original monument and accessories and/or subsequent restoration:

PCC-005 The Southwest corner of Addition to Private Claim 240. 1823, J. Mullett set post.

ACCEPTED BY THE MACOMB COUNTY SURVEY PEE. GROUP AS THE OFFICIAL CORNER UNDER MICHIGAN PUBLIC ACT 345 OF 1990 AT A MEETING HELD ON 12/7/04  
  
 MARTIN C. DUNN, P.S. CHAIRMAN

B. Description of corner evidence found and/or method applied in restoring or reestablishing corner:

PCC-005 The Southwest corner of Private Claim 240 Addition is an obliterated corner. The corner was re-established using existing field information of the following recorded subdivisions:

- \* 1924, J. W. Irwin, "Snyders Elmridge Subdivision", Liber 008, Page 030, M.C.R.
- \* 1925, H. R. O'Mara, "Lake Breeze Park Sub.", Liber 010, Page 006, M.C.R.
- \* 1926, W. J. Lehner No. 123, "Morningside Park", Liber 011, Page 002, M.C.R.
- \* 1942, V. Wilson No. 3032, "Replat of Kelly-Duffalo Park Subdivision", Liber 022, Page 025, M.C.R.
- \* 1955, H. J. Fuller No. 1645, "Eastland Courts Subd'n.", Liber 034, Page 002, M.C.R.

**FIELD MEASUREMENTS BETWEEN CORNERS** (See Reverse Side for Sketch)

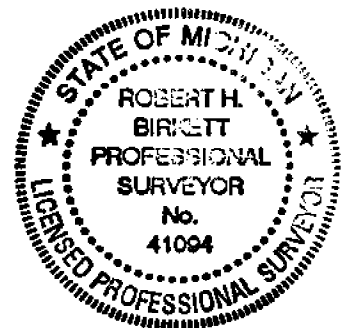
PCC-005 to Intersection North line of Section 32 T. 1 N., R 13 E - 2004 Remon (2696.98'), Plats East of Kelly (2695.90').  
 PCC-005 to the Southeast Corner Private Claim 240 - Remon (1996.95') 1823 GLO 30.13 Ch. (1988.58').

C. Description of monument for corner and accessories established to perpetuate locating the position of the corner:

PCC-005 Set 3/4" x 24" Iron with aluminum cap marked "Macomb County Monument, MI, Act 345, 41094, PCC-005", In a new monument box at the east edge of metal for southwest bound Kelly road.

- Az. 20° - 99.17' - Set Remon tag in west face utility pole.
- Az. 115° - 78.75' - Set Remon tag in south face utility pole.
- Az. 160° - 30.00' - Set chiseled 'x' on west rim MBT man hole.
- Az. 270° - 128.05' - Set Remon tag in south face utility pole.

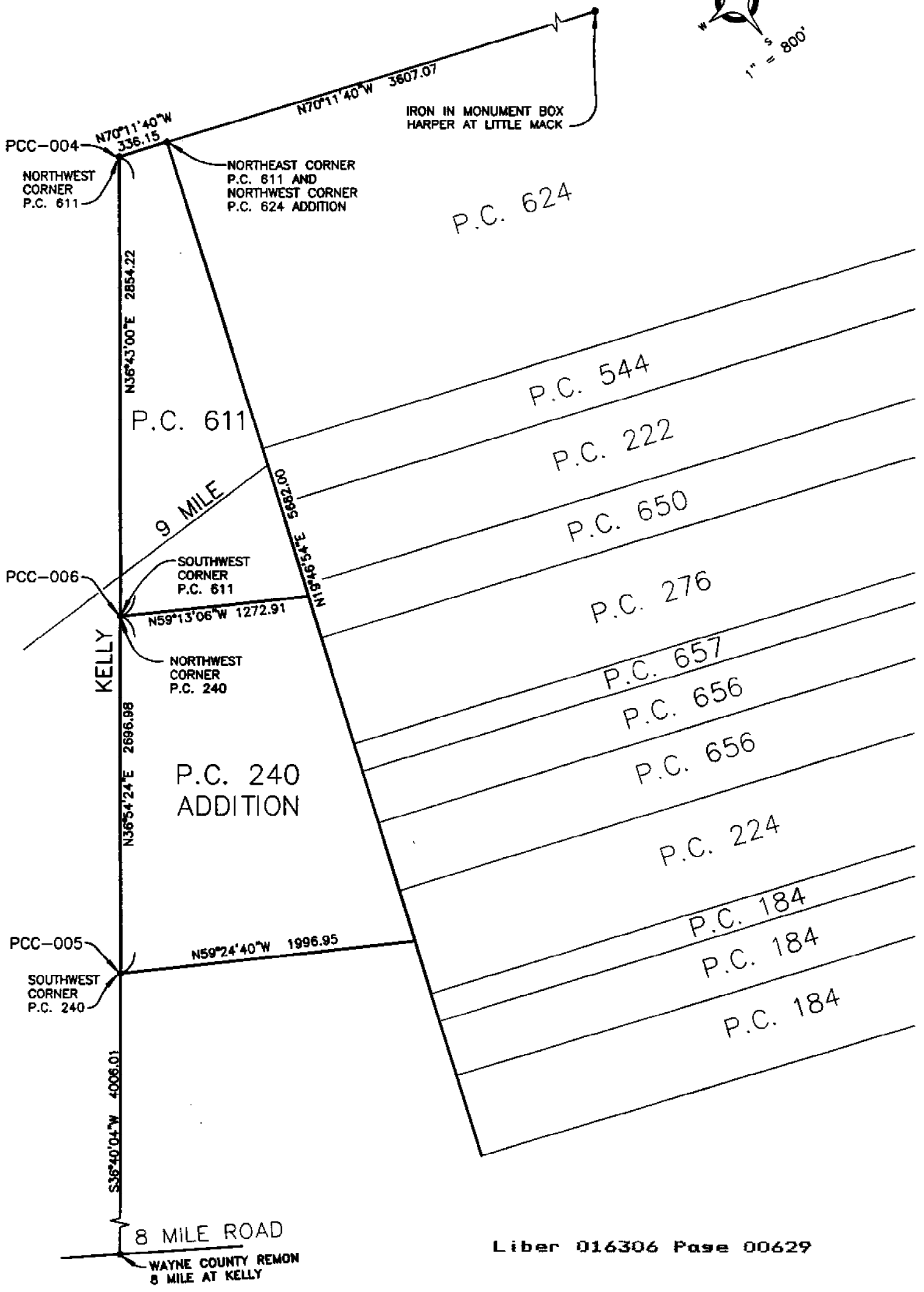
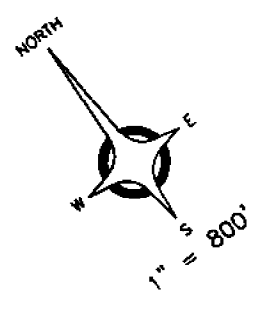
The Selected location is accepted by me and is generally accepted by Professional Surveyors as the best available evidence of the position of the original corner.



Signed by R.H. Birkett  
 Surveyor's Michigan License No. 41094

Date 12-15-04

7



**2004 MACOMB COUNTY RE-MONUMENTATION  
PCC-005 – THE SOUTHWEST CORNER OF PRIVATE CLAIM 240  
AND THE NORTHWEST CORNER PRIVATE CLAIM 631  
TOWN 1 NORTH, RANGE 13 EAST,  
ERIN TOWNSHIP, CITY OF EASTPOINT, MICHIGAN**

**GENERAL LAND OFFICE HISTORY**

Private Claim 611 and the Additions to existing Private Claims.  
J. Mullet surveyed the additional private claims in December of 1823.

**EXISTING CONDITIONS**

PCC-005 SET ¾" iron in a monument box at the intersection of intersection of the centerline of Kelly Road and the south line of Private Claim 240, using the found monumentation in the field for the plat "Eastland Courts Subd'n." at the east edge of metal for southbound Kelly Raod.

**CERTIFICATE OF SURVEYS & LAND CORNER RECORDATION CERTIFICATES**

- \* No Act 132 Certificates were available for this corner.
- \* No Land Corner Recordation Certificates were available for this corner.

**UNRECORDED INFORMATION**

- \* No unrecorded information was recovered for this corner.

**SUBDIVISIONS REFERENCING PCC-005**

- \* 1924, J. W. Irwin, "Snyders Elmridge Subdivision", Liber 008, Page 030, M.C.R.
- \* 1925, H. R. O'mara, "Lake Breeze Park Sub.", Liber 010, Page 006, M.C.R.
- \* 1926, W. J. Lehner No. 123, "Morningside Park", Liber 011, Page 002, M.C.R.
- \* 1942, V. Wilson No. 3032, "Replat of Kelly-Duffalo Park Subdivision", Liber 022, Page 025, M.C.R.
- \* 1955, H. J. Fuller No. 1645, "Eastland Courts Subd'n.", Liber 034, Page 002, M.C.R.

**WITNESSES RECOVERED**

- \* No previous witnesses for this corner were recovered.

**FIELD MEASUREMENTS BETWEEN CORNERS**

PCC-005 to Intersection North line of Section 32 T. 1 N., R 13 E - 2004 Remon (2696.98'), Plats East of Kelly (2695.90').  
PCC-005 to the Southeast Corner Private Claim 240 – Remon (1996.95') 1823 GLO 30.13 Ch. (1988.58').

**RECOMMENDATIONS**

To accept the Location on this document as the faithful recovery of the obliterated corner PCC-004.

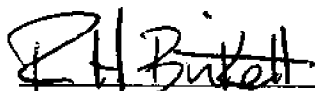
Place the following statement on a new LCRC:

"The Selected Location is accepted by me and is generally accepted by Professional Surveyors as the best available evidence of the position."

**MONUMENT SET AND WITNESSES**

PCC-005 Set ¾" Iron with aluminum cap marked "Macomb County Monument, MI, Act 345, 41094, PCC-005", In a new monument box at the east edge of metal for southwest bound Kelly road.

- Az. 20° - 99.17' - Set Remon tag in west face utility pole.
- Az. 115° - 78.75' - Set Remon tag in south face utility pole.
- Az. 160° - 30.00' - Set chiseled 'x' on west rim MBT man hole.
- Az. 270° - 128.05' - Set Remon tag in south face utility pole.



Robert H. Birkett, P.S. Michigan No. 41094      Date

12-14-04

2004 REMON

223-024  
11-23-04

WAZLENS

NEW COR. PC

SET PC IN SB KELLY RD ASPH

@ 5.41 FICORB

42

DIST DESC

160' 30.00 CHIS X WEST RIM MET WITH  
IN MERIAN

115°

70.75 SET REMON IN S. FACE UP

20°

99.17 SET REMON IN W. FACE UP LIGHT

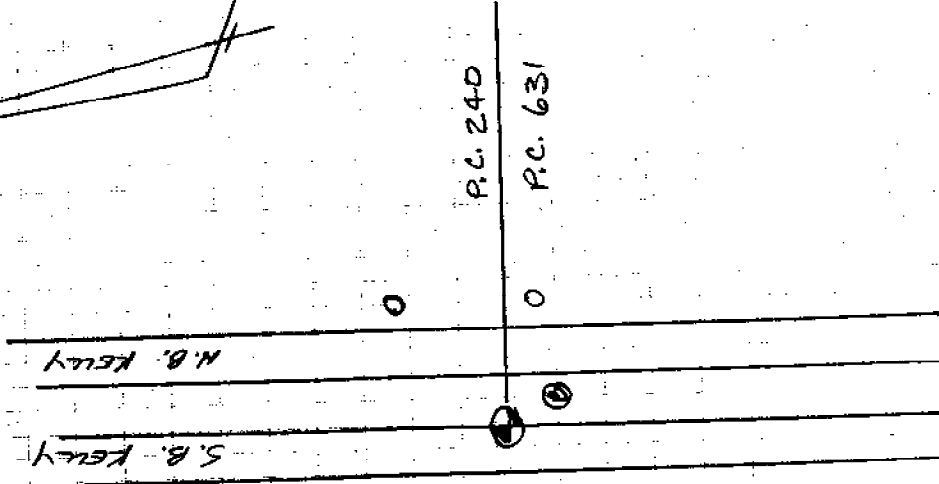
325°

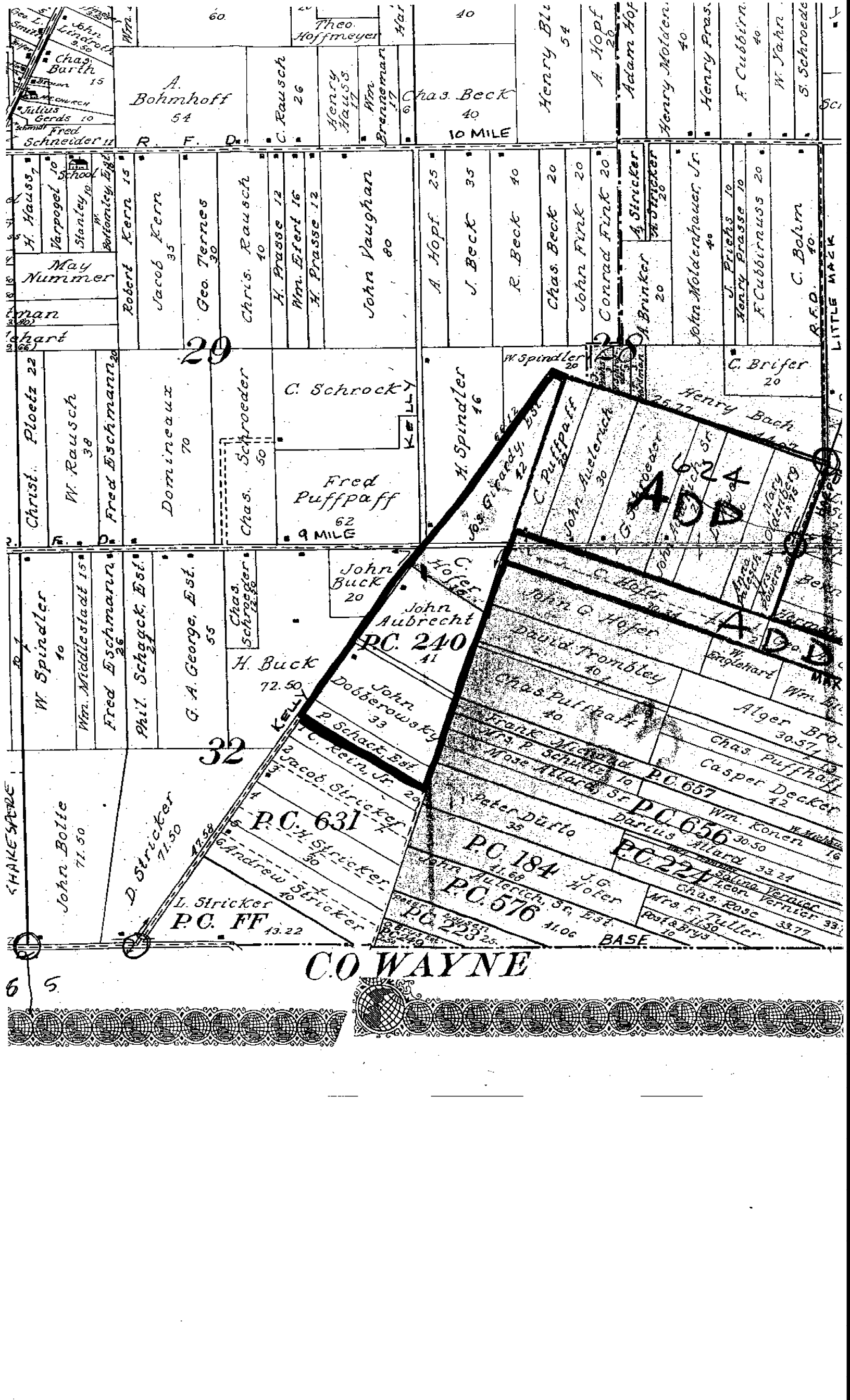
103.71 NE COR BRICK BLDG # 29101

270°

128.15 SET REMON IN S. FACE UP

24003





A. Bohmhoff  
54

C. Rausch  
26

Henry Hauss  
17

Chas. Beck  
40  
10 MILE

Henry Bl...  
54

A Hopf  
20

Adam Hof

Henry Molder.  
40

Henry Pras.  
40

F. Cubbinn  
40

W. Jahr  
40

S. Schroeder

H. Hauss  
7  
Varvogel 10  
Stanley 10  
Botanicy Egg  
May Nummer  
man  
chart

Robert Kern 15  
Jacob Kern 35  
Geo. Ternes 30

Chris. Rausch 40  
H. Prasse 12  
Wm. Ewert 16  
H. Prasse 12

John Vaughan 80

A Hopf 25  
J. Beck 35  
R. Beck 40  
Chas. Beck 20  
John Fink 20  
Conrad Fink 20

A Stricker  
W. Stricker 20  
John Molderhauer, Jr. 40  
J. Fuchs 10  
Henry Prasse 10  
F. Cubbinn 20  
C. Bohm 40  
R.F.O. 40

29

Christ. Ploetz 22  
W. Rausch 38  
Fred Eschmann

Domineaux 70  
Chas. Schroeder 50

C. Schrocky

Fred Puffpaff 62  
9 MILE

H. Spindler 16  
W. Spindler 20  
C. Brifer 20

Henry Bach

John G. Hofer

C. Puffpaff

John Auelerich 30

G. Hofer

John Molderhauer Sr.

John Molderhauer Jr.

John Molderhauer Jr.

W. Spindler 10  
Wm. Middlestadt 15  
Fred Eschmann 26  
Phil. Schggck, Est. 21  
G. A. George, Est. 55  
Chas. Schroeder 12.50

H. Buck 72.50  
John Buck 20  
John Aubrecht 41  
John G. Hofer 30  
David Trombley 40  
Chas. Puffpaff 40  
Frank M... 10  
Wm. Schutte 10  
Mose Allard 57  
Peter Darto 35  
John Auelerich Sr. 57  
John Auelerich Sr. 57  
J.G. Hofer 11.88  
John Auelerich Sr. 57  
Wm. Schutte 10  
Wm. Schutte 10

John G. Hofer 30  
David Trombley 40  
Chas. Puffpaff 40  
Frank M... 10  
Wm. Schutte 10  
Mose Allard 57  
Peter Darto 35  
John Auelerich Sr. 57  
John Auelerich Sr. 57  
J.G. Hofer 11.88  
John Auelerich Sr. 57  
Wm. Schutte 10  
Wm. Schutte 10

John G. Hofer 30  
David Trombley 40  
Chas. Puffpaff 40  
Frank M... 10  
Wm. Schutte 10  
Mose Allard 57  
Peter Darto 35  
John Auelerich Sr. 57  
John Auelerich Sr. 57  
J.G. Hofer 11.88  
John Auelerich Sr. 57  
Wm. Schutte 10  
Wm. Schutte 10

John G. Hofer 30  
David Trombley 40  
Chas. Puffpaff 40  
Frank M... 10  
Wm. Schutte 10  
Mose Allard 57  
Peter Darto 35  
John Auelerich Sr. 57  
John Auelerich Sr. 57  
J.G. Hofer 11.88  
John Auelerich Sr. 57  
Wm. Schutte 10  
Wm. Schutte 10

John G. Hofer 30  
David Trombley 40  
Chas. Puffpaff 40  
Frank M... 10  
Wm. Schutte 10  
Mose Allard 57  
Peter Darto 35  
John Auelerich Sr. 57  
John Auelerich Sr. 57  
J.G. Hofer 11.88  
John Auelerich Sr. 57  
Wm. Schutte 10  
Wm. Schutte 10

John G. Hofer 30  
David Trombley 40  
Chas. Puffpaff 40  
Frank M... 10  
Wm. Schutte 10  
Mose Allard 57  
Peter Darto 35  
John Auelerich Sr. 57  
John Auelerich Sr. 57  
J.G. Hofer 11.88  
John Auelerich Sr. 57  
Wm. Schutte 10  
Wm. Schutte 10

John G. Hofer 30  
David Trombley 40  
Chas. Puffpaff 40  
Frank M... 10  
Wm. Schutte 10  
Mose Allard 57  
Peter Darto 35  
John Auelerich Sr. 57  
John Auelerich Sr. 57  
J.G. Hofer 11.88  
John Auelerich Sr. 57  
Wm. Schutte 10  
Wm. Schutte 10

John G. Hofer 30  
David Trombley 40  
Chas. Puffpaff 40  
Frank M... 10  
Wm. Schutte 10  
Mose Allard 57  
Peter Darto 35  
John Auelerich Sr. 57  
John Auelerich Sr. 57  
J.G. Hofer 11.88  
John Auelerich Sr. 57  
Wm. Schutte 10  
Wm. Schutte 10

John G. Hofer 30  
David Trombley 40  
Chas. Puffpaff 40  
Frank M... 10  
Wm. Schutte 10  
Mose Allard 57  
Peter Darto 35  
John Auelerich Sr. 57  
John Auelerich Sr. 57  
J.G. Hofer 11.88  
John Auelerich Sr. 57  
Wm. Schutte 10  
Wm. Schutte 10

John G. Hofer 30  
David Trombley 40  
Chas. Puffpaff 40  
Frank M... 10  
Wm. Schutte 10  
Mose Allard 57  
Peter Darto 35  
John Auelerich Sr. 57  
John Auelerich Sr. 57  
J.G. Hofer 11.88  
John Auelerich Sr. 57  
Wm. Schutte 10  
Wm. Schutte 10

John G. Hofer 30  
David Trombley 40  
Chas. Puffpaff 40  
Frank M... 10  
Wm. Schutte 10  
Mose Allard 57  
Peter Darto 35  
John Auelerich Sr. 57  
John Auelerich Sr. 57  
J.G. Hofer 11.88  
John Auelerich Sr. 57  
Wm. Schutte 10  
Wm. Schutte 10

John G. Hofer 30  
David Trombley 40  
Chas. Puffpaff 40  
Frank M... 10  
Wm. Schutte 10  
Mose Allard 57  
Peter Darto 35  
John Auelerich Sr. 57  
John Auelerich Sr. 57  
J.G. Hofer 11.88  
John Auelerich Sr. 57  
Wm. Schutte 10  
Wm. Schutte 10

John G. Hofer 30  
David Trombley 40  
Chas. Puffpaff 40  
Frank M... 10  
Wm. Schutte 10  
Mose Allard 57  
Peter Darto 35  
John Auelerich Sr. 57  
John Auelerich Sr. 57  
J.G. Hofer 11.88  
John Auelerich Sr. 57  
Wm. Schutte 10  
Wm. Schutte 10

John G. Hofer 30  
David Trombley 40  
Chas. Puffpaff 40  
Frank M... 10  
Wm. Schutte 10  
Mose Allard 57  
Peter Darto 35  
John Auelerich Sr. 57  
John Auelerich Sr. 57  
J.G. Hofer 11.88  
John Auelerich Sr. 57  
Wm. Schutte 10  
Wm. Schutte 10

John Bolte 71.50  
D. Stricker 71.50  
L. Stricker P.C. FF 13.22

John G. Hofer 30  
David Trombley 40  
Chas. Puffpaff 40  
Frank M... 10  
Wm. Schutte 10  
Mose Allard 57  
Peter Darto 35  
John Auelerich Sr. 57  
John Auelerich Sr. 57  
J.G. Hofer 11.88  
John Auelerich Sr. 57  
Wm. Schutte 10  
Wm. Schutte 10

John G. Hofer 30  
David Trombley 40  
Chas. Puffpaff 40  
Frank M... 10  
Wm. Schutte 10  
Mose Allard 57  
Peter Darto 35  
John Auelerich Sr. 57  
John Auelerich Sr. 57  
J.G. Hofer 11.88  
John Auelerich Sr. 57  
Wm. Schutte 10  
Wm. Schutte 10

John G. Hofer 30  
David Trombley 40  
Chas. Puffpaff 40  
Frank M... 10  
Wm. Schutte 10  
Mose Allard 57  
Peter Darto 35  
John Auelerich Sr. 57  
John Auelerich Sr. 57  
J.G. Hofer 11.88  
John Auelerich Sr. 57  
Wm. Schutte 10  
Wm. Schutte 10

John G. Hofer 30  
David Trombley 40  
Chas. Puffpaff 40  
Frank M... 10  
Wm. Schutte 10  
Mose Allard 57  
Peter Darto 35  
John Auelerich Sr. 57  
John Auelerich Sr. 57  
J.G. Hofer 11.88  
John Auelerich Sr. 57  
Wm. Schutte 10  
Wm. Schutte 10

John G. Hofer 30  
David Trombley 40  
Chas. Puffpaff 40  
Frank M... 10  
Wm. Schutte 10  
Mose Allard 57  
Peter Darto 35  
John Auelerich Sr. 57  
John Auelerich Sr. 57  
J.G. Hofer 11.88  
John Auelerich Sr. 57  
Wm. Schutte 10  
Wm. Schutte 10

John G. Hofer 30  
David Trombley 40  
Chas. Puffpaff 40  
Frank M... 10  
Wm. Schutte 10  
Mose Allard 57  
Peter Darto 35  
John Auelerich Sr. 57  
John Auelerich Sr. 57  
J.G. Hofer 11.88  
John Auelerich Sr. 57  
Wm. Schutte 10  
Wm. Schutte 10

John G. Hofer 30  
David Trombley 40  
Chas. Puffpaff 40  
Frank M... 10  
Wm. Schutte 10  
Mose Allard 57  
Peter Darto 35  
John Auelerich Sr. 57  
John Auelerich Sr. 57  
J.G. Hofer 11.88  
John Auelerich Sr. 57  
Wm. Schutte 10  
Wm. Schutte 10

John G. Hofer 30  
David Trombley 40  
Chas. Puffpaff 40  
Frank M... 10  
Wm. Schutte 10  
Mose Allard 57  
Peter Darto 35  
John Auelerich Sr. 57  
John Auelerich Sr. 57  
J.G. Hofer 11.88  
John Auelerich Sr. 57  
Wm. Schutte 10  
Wm. Schutte 10

John G. Hofer 30  
David Trombley 40  
Chas. Puffpaff 40  
Frank M... 10  
Wm. Schutte 10  
Mose Allard 57  
Peter Darto 35  
John Auelerich Sr. 57  
John Auelerich Sr. 57  
J.G. Hofer 11.88  
John Auelerich Sr. 57  
Wm. Schutte 10  
Wm. Schutte 10

John G. Hofer 30  
David Trombley 40  
Chas. Puffpaff 40  
Frank M... 10  
Wm. Schutte 10  
Mose Allard 57  
Peter Darto 35  
John Auelerich Sr. 57  
John Auelerich Sr. 57  
J.G. Hofer 11.88  
John Auelerich Sr. 57  
Wm. Schutte 10  
Wm. Schutte 10

John G. Hofer 30  
David Trombley 40  
Chas. Puffpaff 40  
Frank M... 10  
Wm. Schutte 10  
Mose Allard 57  
Peter Darto 35  
John Auelerich Sr. 57  
John Auelerich Sr. 57  
J.G. Hofer 11.88  
John Auelerich Sr. 57  
Wm. Schutte 10  
Wm. Schutte 10

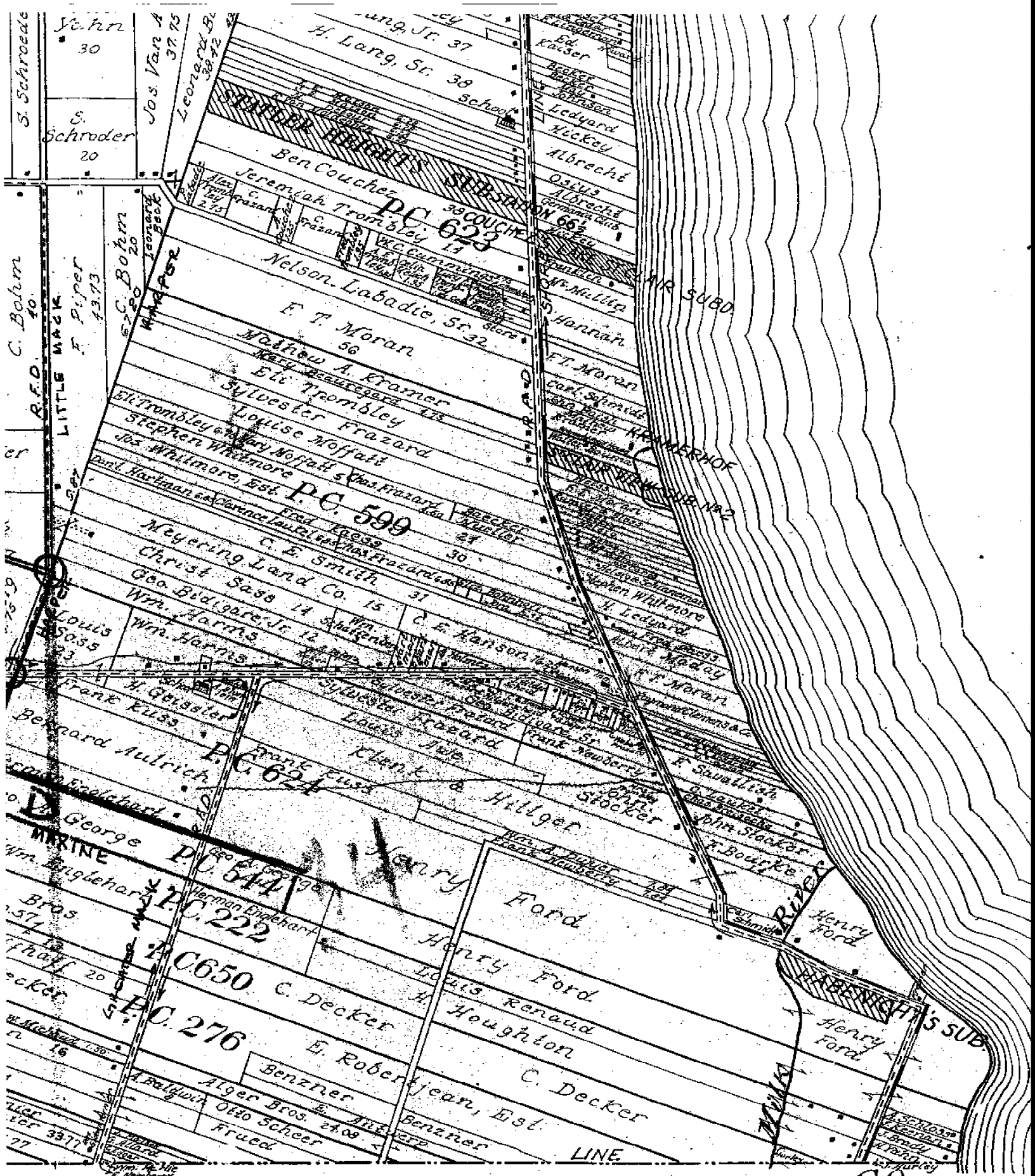
John G. Hofer 30  
David Trombley 40  
Chas. Puffpaff 40  
Frank M... 10  
Wm. Schutte 10  
Mose Allard 57  
Peter Darto 35  
John Auelerich Sr. 57  
John Auelerich Sr. 57  
J.G. Hofer 11.88  
John Auelerich Sr. 57  
Wm. Schutte 10  
Wm. Schutte 10

John G. Hofer 30  
David Trombley 40  
Chas. Puffpaff 40  
Frank M... 10  
Wm. Schutte 10  
Mose Allard 57  
Peter Darto 35  
John Auelerich Sr. 57  
John Auelerich Sr. 57  
J.G. Hofer 11.88  
John Auelerich Sr. 57  
Wm. Schutte 10  
Wm. Schutte 10

John G. Hofer 30  
David Trombley 40  
Chas. Puffpaff 40  
Frank M... 10  
Wm. Schutte 10  
Mose Allard 57  
Peter Darto 35  
John Auelerich Sr. 57  
John Auelerich Sr. 57  
J.G. Hofer 11.88  
John Auelerich Sr. 57  
Wm. Schutte 10  
Wm. Schutte 10

C.O. WAYNE

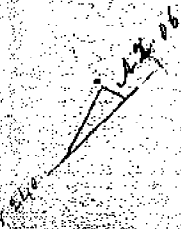




CO.

SCALE 1320

4" = 1 MILE



W 240  
A 89.24

Surveyed the additional donation to  
240 in 2 tape to East began at a post  
to 0.00 don 611 & 240 thence

17/11 3.25 to post on line of 0.00 don 611  
18/11 16.30 to 1st post on line of 611 & 240  
17/12 16.00 to the beginning cont. 2.006

The second commenced at a post  
on near line of 611 & 240  
to 611 & 240 thence

16/11 37.00 set post on near line of 240 & 611  
thick 7 in diam. 187W  
11 inch 9 - 128 ft W 11

18/11 30.13 set 240 & 611 set post on  
thick 6 in dia 145 E  
19.16 to the beg. cont. 89.24

18/11 26.63 to post corner to 240 & 611  
19.16 to the beg. cont. 89.24

W 631  
A 129.48

Surveyed the additional donation to  
40 631 in right of Louis Smith  
commencing at a post corner to add. don

240 & 631 on near line of add. don. 22.4 thence  
19/11 37.34 set post cor to 631 & 33. on near line  
of add. don. 249

13 1349 in dia 558 W 12 N  
20 6 146 E 42

18/11 41.26 Between 631 & 33. set post cor to 631  
thick 12 in dia 146 E 12 N  
Ligon. 7 85 E .18

18/11 37.00 to post corner to 240 & 631  
18/11 30.13 to the beg. cont. 129.48



*Description of the corners*

<i>To</i>	<i>Bearing</i>	<i>Inches</i>	<i>Ground</i>	<i>Dist</i>
<i>lost</i>	<i>tree</i>	<i>Dia.</i>	<i>they bear</i>	
A				
B				
C	P. Ash	4	corner	
D	Sycam	5	S 63 E	10
	do	9	N 45 E	10
E	P. Ash	7	N 65 E	10
	Elm	14	S 7 W	25
A				
B				
C	Maple	14	corner	
D	P. Ash	4	corner	
E	Hickory	8	N 65 E	16
	do	4	S 3 E	37
F	Elm	24	S 52 W	7
	Sycam	8	N 8 E	10
G	P. Ash	10	N 70 E	17
	do	7	S 26 W	7
H	W. oak	32	S 67 E	10
	Elm	20	N 24 W	44

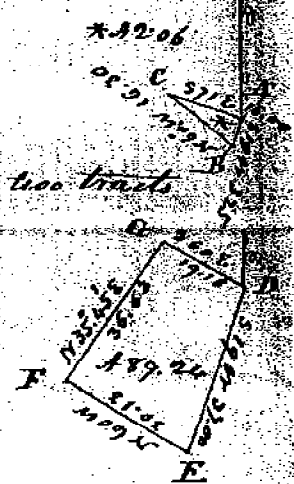


of the corners

Tree	Di.	Course	Dist.
14	corner		
5	S 62 E	20	
9	N 45 E	35	
7	N 65 E	28	
16	S 7 N	25	
14	corner		
14	corner		
8	N 65 E	16	
14	S 3 E	32	
24	S 52 W	7	
8	N 8 E	20	
10	N 10 E	19	
7	S 26 W	7	
32	S 67 E	15	
20	N 24 W	44	

240

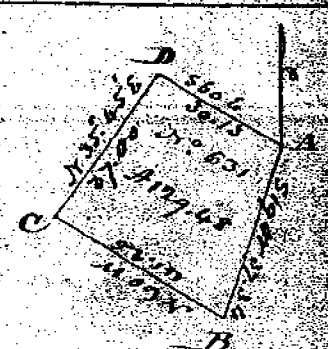
N. 240 in two tracts



Description of the corners

Tree	Bearing	Di.	Course	Dist.
A				
B				
C	Scuple	14	Corner	
D	Elm	24	S 52 W	7
	Lynn	8	N 8 E	25
E	Hickory	7	N 57 W	4
	W. Ash	9	S 25 1/2 W	16
F	Hickory	6	N 45 E	35
	B. Ash	6	S 12 N	22
G	B. Ash	10	N 11 E	17
	do	7	S 26 W	7
A	Hickory	7	N 57 W	4
	W. Ash	9	S 25 1/2 W	16
B	B. Ash	9	S 55 N	12
	do	6	N 6 E	42
C	Buck	12	N 45 E	12
	Sugar	7	S 58	18
D	Hickory	6	N 45 E	35
	B. Ash	6	S 12 N	22

631





Surveyed the additional donation to  
 No. 222 on right of Antoine Pineda  
 Commencing at a post corner to Original don. S  
 N. 22 E & 544 thence

S 19 W 8.71 to post corner to Orig. don. 222 & 650  
 N 71 W Between Nos. 222 & 650

109.26 Set post corner to No. 222 & 650  
 Elm 16 in dia. S 18 E .13 th. dis.  
 Do 12 - - N 52 E .44 - -

S 19 E 8.71 to post cor. to nos. 222 & 544  
 S 71 E 109.24 to the beginning  
 containing 95.15 acs

Commenced at a Beech tree being  
the most northerly corner to Orig. don  
323 therein

456 13.38 intersected base line 21.50  
East of Township corner A  
Lignum 10 inches diameter  
corner to Trac. Sec 5 T1 S  
+ 32 T1 N R13 E

114 17 post corner to sec 28, 29, 32, 33  
157 28 set post corner to Trac. Sec  
28 + Add. don. 611

W Oak 32. 547 E 15 hicks  
E lue 20 N 24 W 44

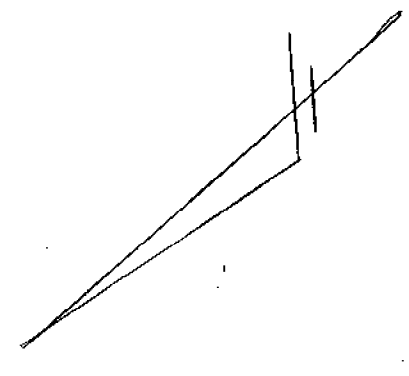
577 E 59.55 to post corner to Original  
donations N 599 + 624

NOTE  
LINE FOR  
ADDITIONAL PRIVATE CLAIMS  
PC 611

298  
 IRON IN MONUMENT BOX  
 HARPER LITTLE MACK  
 N10°11'40"W 3507.07'

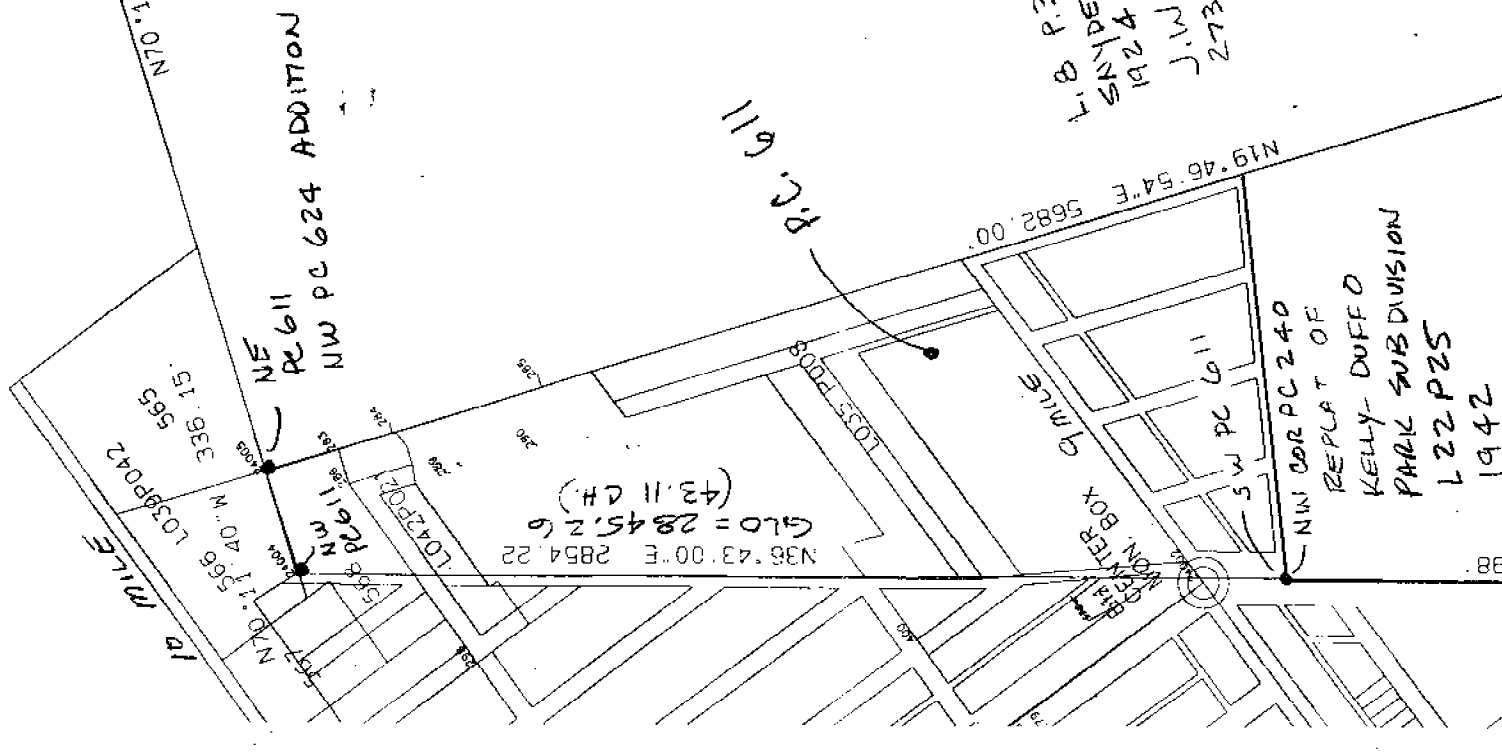
NW PC 611 TO CORNER COMMON TO 5995 624  
 GLO (59.55 CH) 3930.30  
 REMON 3943.22

NW PC 624 ADDITION TO NW PC 240  
 GLO (59.55 - 54.35 = 5.20 CH) 343.20  
 REMON 336.15



L.B. P.30 ELMRIDGE SUBDIVISION  
 SNYDERS (ENGINEER)  
 1924  
 J.W. LEWIN (ENGINEER)  
 273.63 ALONG KELLY

273.63  
 1360.57  
 784.90  
 276.80



1/4 MILE

NE PC 611  
 NW PC 624 ADDITION

N36°43'00\"/>

P.C. 611

N19°46'54\"/>

NW COR PC 240  
 REPLAT OF  
 KELLY-DUFFO  
 PARK SUBDIVISION  
 L 22 P 25  
 1942

2695.90 PLATTED

V. WILSON No. 3032

1360.57 ALONGA KELLY

PC 240 ADDITION

MORNINGSIDE PARK

L11 P2

1926

W.J. LEHNER No. 123

784.90 ALONGA KELLY

LAKE BREEZE PARK SUB

L10 P6

276.80 ALONGA KELLY

1925

H.R. O'MARA

N59°24'40"W 1997.07'

610 (30.13)

1988.58

N&E 54 24 E. 2696.5

KELLY

SW COR. #1240

610 = 6652.14 (2027.24)

DIST 8 MILES TO 4 MILES

REMONI = 6702.99

S36°40'04"W 4006.01

100 WAYNE CO. REMONI SMITH & KELLY

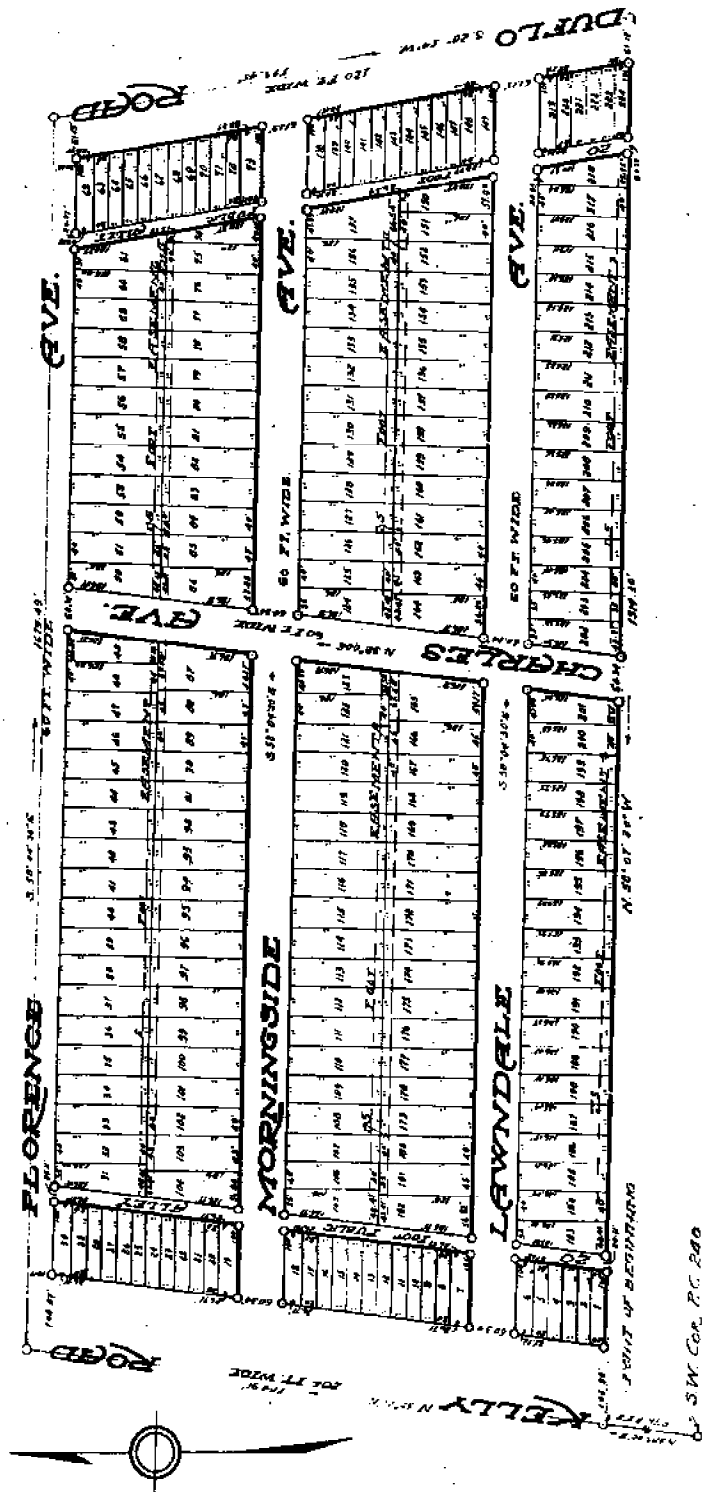
# MORNINGSIDE PARK

SUBDIVISION OF 6 PLOTS OF P.C. 240  
 TWP. 11 N. R. 13 E.  
 ERIN TWP. MACOMB CO. MICHIGEN

Scale: 1" = 150'

4792 W. J. Lehner Reg. C. E.  
 Mount Clemens, Mich.

June 1-1926  
 E. J. Lehner



1926  
 No. 123  
 W. J. Lehner  
 L. H. P. 2  
 Park  
 MorningSide

S.W. Cor. P.C. 240

NOT ALL LOTS BY THESE MEMBERS, THAT W. J. LEHNER, JOHN DOBROSKY, and August Dobrowsky, his wife, as owners of Lot 1, Tit. 8, and 2nd

The land embraced in the annexed plat, is the land of the State of Michigan, and is a part of P. C. 240 T. 11 N. R. 13 E. Macomb Co. Mich.

1852

KING ALL THE PARTS OF THE UNDIVIDED TRACT, THAT is, John Dobrowsky and Augusta Dobrowsky, his wife, as owners of Legal Title, and Elmer B. O'Hara and Mary A. O'Hara, his wife, and George A. King and Bessie L. King, his wife, as vendees under land contract, have caused the land embraced in the annexed plat to be surveyed, laid out and plotted, to be now as correctly shown, a subdivision of a part of P. C. 240, Tr. N. R. 13, S. 1, Erin Tp., Macomb Co., Michigan, and the streets and alleys as shown on said plat are hereby dedicated to the use of the public.

Signed and sealed in  
Presence of

- George A. King*..... L. S.
- Mary A. O'Hara*..... L. S.
- John Dobrowsky*..... L. S.
- Augusta Dobrowsky*..... L. S.
- Elmer B. O'Hara*..... L. S.
- George A. King*..... L. S.
- Bessie L. King*..... L. S.

STATE OF MICHIGAN

County of *Wayne*.

On this 10th day of April, 1926, before me, a Notary Public in and for said county, personally came the above named John Dobrowsky and Augusta B. Dobrowsky, his wife, known to me to be the persons who executed the above dedication, and acknowledged the same to be their free act and deed.

*James M. Keryston*  
Notary Public.....  
My Commission expires.....October 5, 1928.....

STATE OF MICHIGAN

County of *Wayne*.

On this 10th day of April, 1926, before me, a Notary Public in and for said county, personally came the above named Elmer B. O'Hara and Mary A. O'Hara, his wife, and George A. King and Bessie L. King, his wife, known to me to be the persons who executed the above dedication, and acknowledged the same to be their free act and deed.

*James M. Keryston*  
Notary Public.....  
My Commission expires.....October 5, 1928.....

The land embraced in the annexed plat, of Macomb Co., Michigan, a subdivision of a part of P. C. 240, Tr. N. R. 13, S. 1, Erin Tp., Macomb Co., Michigan, is described as follows:

Beginning at a point on the west line of P. C. 240, 276.8 ft., N. 88°00' W., to the S.W. corner of said P. C. 240, thence N. 88°00' E., 766.90 ft., thence S. 56°04'30" W., 1679.49 ft., thence S. 20°54' N., 793.45 ft., thence N. 58°07'30" W., 1914.30 ft., to the point of beginning.

This plat was approved by the Township Board of the Township of Erin, Macomb County, Michigan, at a meeting held April 10, 1926.

*John B. ...*  
Township Clerk

I hereby certify that the plat hereon delineated is a correct one and that permanent monuments of not less than one inch in diameter and sufficient in length to set in a concrete base at least four inches in diameter and forty-eight inches in depth, have been placed at point, marked thus "a" as herein shown at all angles in the boundaries of the land plotted, at all the intersections of streets, intersections of streets, or of streets and alleys, and at the intersections of streets and alleys with the boundaries of the plat as shown on said plat.

*Helen D. ...*  
Registered Civil Engineer

This plat was approved by the County Board for Erin,  
County, Michigan, this 10th day of April, 1926.

*James M. Keryston*  
Notary Public.....  
My Commission Expires.....October 5, 1928.....

REGISTER'S OFFICE }  
County of Macomb  
Received for Record this 10th day  
of April, A. D. 1926, at  
11:00 A.M. and recorded  
in Liber 11 of Plats  
on Page 2  
*John B. ...*

*Mary C. ...*  
Squire

"KELLY-DUFFALO PARK  
 SUB'D" P. 25  
 L. 22  
 1942  
 W. Wilson Ho. 1645

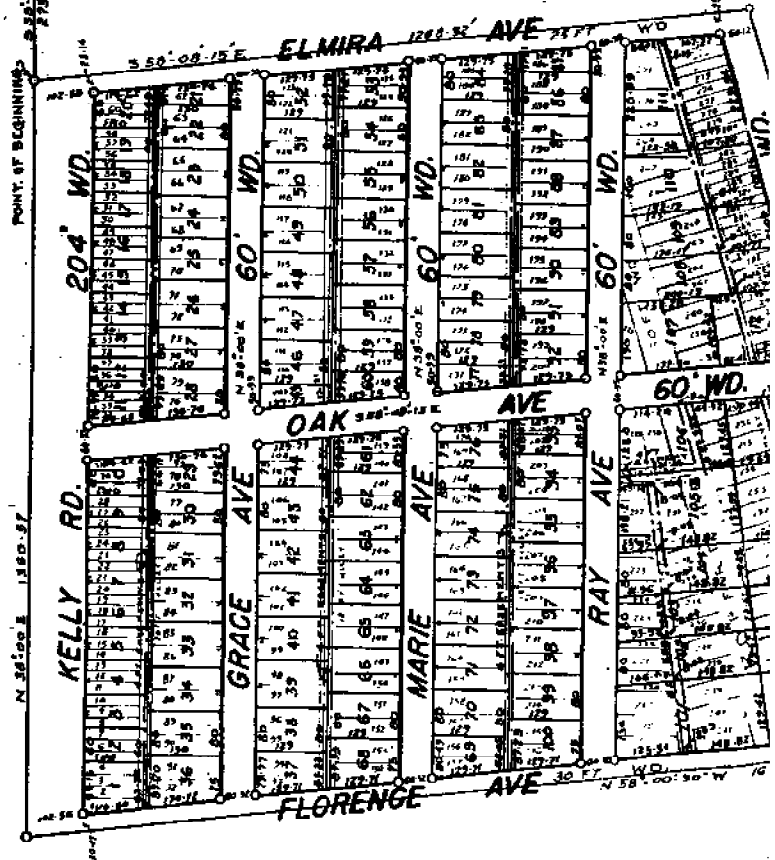
**RE-PLAT OF**  
**KELLY-DUFFALO PARK SUB'D.**  
 OF PART OF P.C. 240 LYING BETWEEN BEACONSFIELD & KELLY RDS.  
 CITY OF EAST DETROIT, MACOMB CO. MICH.

17018

VERNON WILSON  
 REG. LAND SURVEYOR

SCALE 1"=150'

NOTE-ALL DIMENSIONS ARE  
 IN FEET & DECIMALS THEREOF  
 SEC. 32. T.14N.R.15E.



CERTIFICATE OF APPROVAL BY BOARD OF  
 COUNTY ROAD COMMISSIONERS

This plat has been examined and approved on  
 the \_\_\_\_\_ day of \_\_\_\_\_ 1942  
 by the Board of County Road Commissioners  
 of Macomb County.

\_\_\_\_\_  
 Chairman  
 \_\_\_\_\_  
 Member  
 \_\_\_\_\_  
 Member

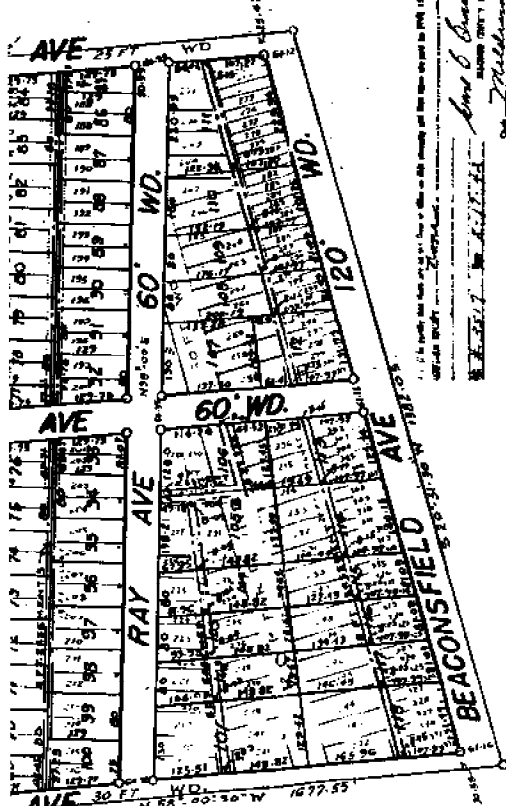
REGISTERED OFFICIAL



This plat has been examined and approved on the day of Sept 1942 by the Board of County Road Commissioners of Macomb County.

James W. D. [Signature]  
Chairman  
[Signature]  
Member  
N. P. [Signature]  
Member

REGISTRARS OFFICE  
County of Macomb  
Presented by Record No. 107 of 1942 A.D. 1942  
in Liber 22 of 1942 A.D. 1942



**DESCRIPTION OF LAND RELATED**  
The land embraced in the annexed Replat of Kelly, DuRoi Part Sub'n of Part of P.C. 240 lying between Beaconsfield and Kelly Rd's City of East Detroit, Macomb County, Mich., is described as follows:  
Beginning at a point on the Western line of P.C. 240 said point lying S. 38° 09' W. 574.83' from the N.E. corner of Section 32, T. 21N36E; thence S 58° 08' 19" E 1248.32 feet to a point; thence S. 20° 51' 30" W 1382.05' to a point; thence N 38° 07' 30" W 1071.55 feet to a point; thence N 38° 00' E 1380.57 feet to the point of beginning.

**SURVEYORS CERTIFICATE**  
I hereby certify that the plat herein delineated is a correct one and that permanent metal monuments consisting of bars not less than one-half inch in diameter and 45 inches in length, or shorter bars of not less than one-half inch in diameter, capped over one inch other at least 6 inches with an over-all length of not less than 40 inches, encased in a concrete cylinder at least 4 inches in diameter and 48 inches in depth have been placed at points marked thus (o) as thereon shown at all angles in the boundaries of the lots shown, at all the intersections of streets, intersections of alleys, or of streets and alleys, and at the intersections of streets and alleys with the boundaries of the plat as shown on said plat.

[Signature]  
Vernon Wilson  
Registered Land Surveyor 1942

**CERTIFICATE OF MUNICIPAL APPROVAL**  
This Plat was approved by the City Council of the City of East Detroit at a meeting held September 11, 1942 1942.  
[Signature]  
STEPHEN W. HENDERSON Clerk

**CERTIFICATE OF APPROVAL BY COUNTY BOARD**  
This plat was approved on the 13th day of Sept, A.D. 1942.  
[Signature]  
Roy L. Brown  
Carl B. Brandenburg  
County Treasurer

**DEDICATION**  
KNOW ALL MEN BY THESE PRESENTS, THAT WE, Robert E. Snyder and Minnie Snyder, his wife, Norman A. Snyder and Allie Snyder, his wife, and William M. Snyder and Mable Snyder, his wife, as proprietor's, have caused the land embraced in the annexed plat to be surveyed, laid out and platted, to be known as Replat of Kelly, DuRoi Part Sub'n of Part of P.C. 240 lying between Beaconsfield and Kelly Rd's, City of East Detroit, Macomb County, Mich., and that the streets and alleys as shown on said plat are here-by dedicated to the use of the public.

Signed and Sealed in the Presence of:  
[Signature]  
Robert E. Snyder  
[Signature]  
Minnie Snyder  
[Signature]  
Norman A. Snyder  
[Signature]  
Allie Snyder  
[Signature]  
William M. Snyder  
[Signature]  
Mable Snyder

STATE OF MICHIGAN ) ss.  
COUNTY OF MACOMB ) ss.  
On this 13th day of September, A.D. 1942, before me, a Notary Public in and for said County, personally came the above named Robert E. Snyder and Minnie Snyder, his wife, Norman A. Snyder and Allie Snyder, his wife, and William M. Snyder and Mable Snyder, his wife known to me to be the persons who executed the above deduction, and acknowledged the same to be their free act and deed.

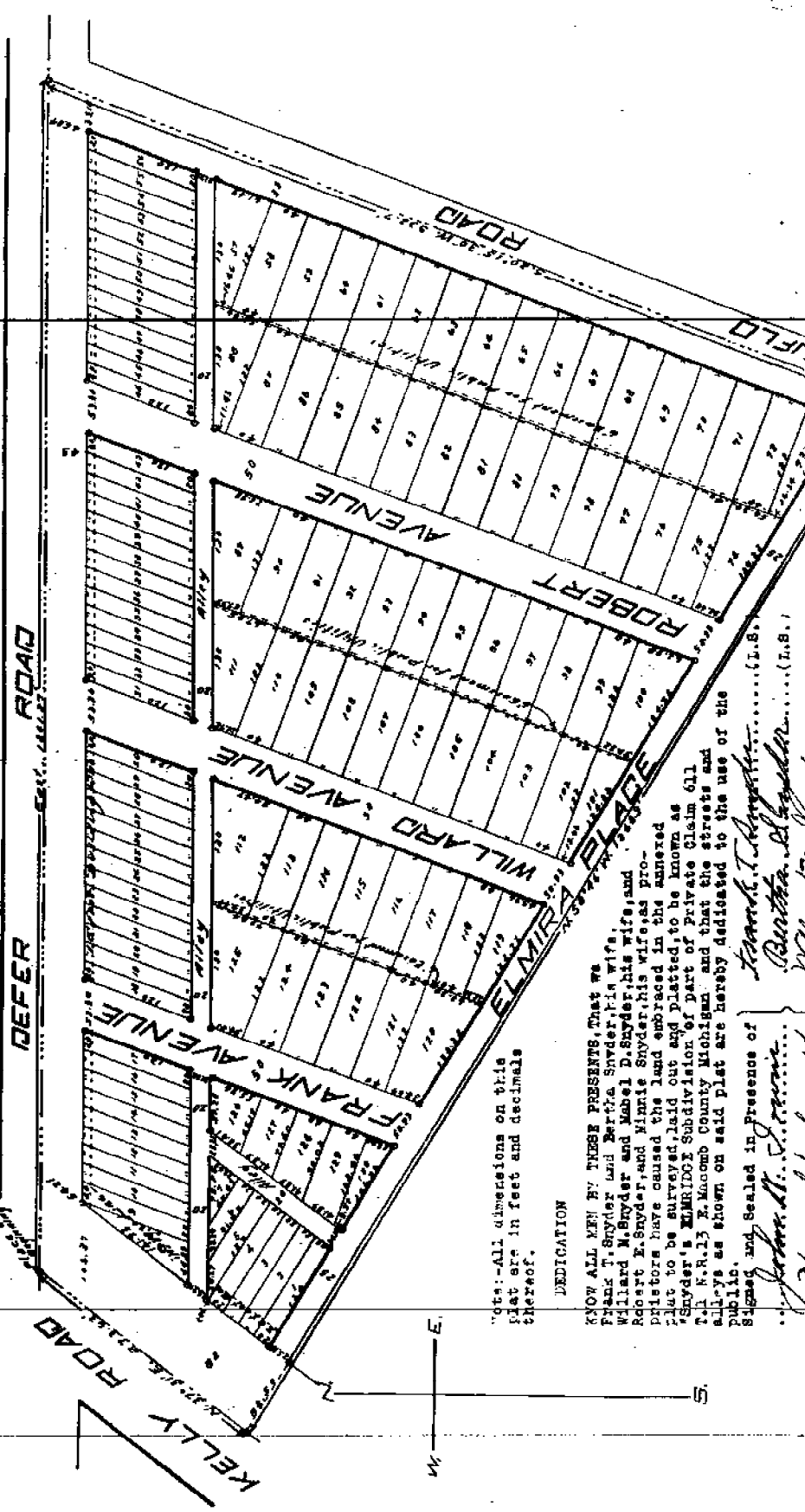
My Commission expires January 21, 1943  
[Signature]  
Notary Public in and for West Michigan County, Michigan  
Examined and Approved  
[Signature]  
August 11, 1942  
[Signature]  
Notary Public in and for West Michigan County, Michigan

Snyder's Elmeridge  
 Subdivision  
 L. B. P. 30  
 1924  
 J.W. Lewis

# SNYDER'S ELMRIDGE SUBDIVISION

Commenced April 10, 1924  
 12-1924  
 E. Lewis

OF PART OF PRIVATE CLAIM 611 T. 1 N. R. 13 E.,  
 MACOMB COUNTY SCALE 100'-1" MICHIGAN



Note: All dimensions on this plat are in feet and decimals thereof.

**DEDICATION**

KNOW ALL MEN BY THESE PRESENTS, That we Frank T. Snyder and Bertie Snyder, his wife, Willard M. Snyder and Mabel D. Snyder, his wife, and Robert E. Snyder, and Minnie Snyder, his wife, and their heirs have caused the land embraced in the annexed plat to be surveyed, laid out and platted, to be known as "Snyder's Elmeridge Subdivision" of part of Private Claim 611 T. 1 N. R. 13 E., Macomb County Michigan, and that the streets and alleys as shown on said plat are hereby dedicated to the use of the public.

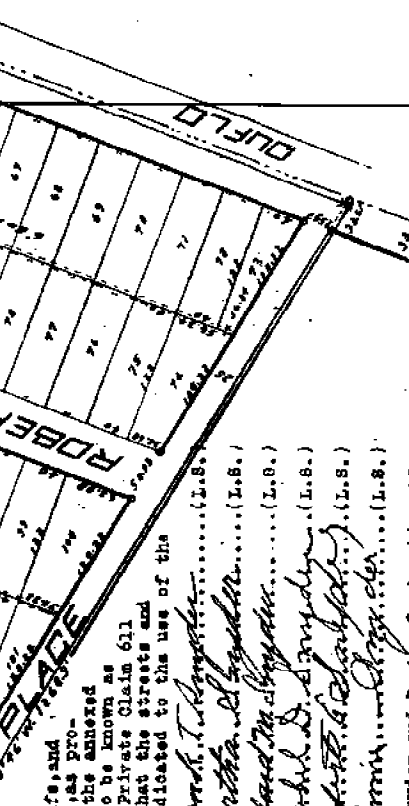
Signed and Sealed in Presence of  
 J. W. Lewis, L.S.  
 Bertie Snyder, L.S.  
 Mabel D. Snyder, L.S.  
 Minnie Snyder, L.S.

KNOW ALL MEN BY THESE PRESENTS, That we FRANK J. SNYDER and Bertha Snyder, his wife, Willard M. Snyder and Minnie Snyder, his wife, and Robert E. Snyder and Minnie Snyder, his wife, as promoters have caused the land embraced in the annexed plat to be surveyed, laid out and platted, to be known as Snyder's EMERSON Subdivision of part of Private Claim 611 T.1 N.R.13 E. Macomb County Michigan, and that the streets and alleys as shown on said plat are hereby dedicated to the use of the public, and sealed in presence of

*James H. S. ...*  
*Edward M. ...*  
*Robert E. Snyder, Jr. ...*  
*Minnie Snyder, ...*

STATE OF MICHIGAN } ss.  
 County of Macomb }  
 On this 5th day of July 1924 before me, a Notary Public in and for said county, personally came the above named Frank J. Snyder and Bertha Snyder, his wife, and Willard M. Snyder and Minnie Snyder, his wife, and Robert E. Snyder and Minnie Snyder, his wife, and acknowledged the same to be the persons who executed the above dedication, and acknowledged the same to be their free act and deed.

My Commission expires January 3rd 1927



**DESCRIPTION**  
 The land embraced in the annexed plat of Snyder's EMERSON Subdivision of part of Private Claim 611 T.1 N.R.13 E. Macomb County Michigan is described as follows: - Beginning on the northwest side line of Private Claim 611 T.1 N.R.13 E. Macomb County Michigan where the same is intersected by the center line of the Defer Road; thence east along the center line of said Defer Road a distance of 1241.27 feet to the southeast line of said Private Claim 611; thence S.20°15'30"W. along said southeast line of said Private Claim 611 a distance of 922.7 feet; thence N.56°46'7.2" E. a distance of 1268.9 feet to the said northwest line of said Private Claim 611; thence N.37°31'2" along said northwest line of said Private Claim 611 a distance of 271.63 feet to the place of beginning. All of the above land is in Private Claim 611 T.1 N.R.13 E. Macomb County, Michigan.

**ENGINEER'S CERTIFICATE**  
 I hereby certify that the plat hereon delineated is a correct one, and that permanent monuments consisting of iron gas pipe 1 1/2 inches long and 1 inch in diameter have been planted at all points marked (o) as thereon shown at all angles in the boundaries of the lands platted and at all intersections of streets or stress and alleys.

*John H. ...*  
 Registered Civil Engineer

**COUNTY TREASURER'S CERTIFICATE**  
 Office of the County Treasurer... July 28, 1924... Macomb County, Michigan.  
 I hereby certify, that there are no tax liens or titles held by the state on the lands described on the annexed plat, and that there are no tax liens or titles held by individuals on said lands, for the five years preceding the 5th day of July 1924, and that the taxes for said period of five years have been paid, as shown by the records of this office.

*James M. ...*  
 County Treasurer

**CERTIFICATE OF TOWNSHIP BOARD**  
 This plat was approved by the Township Board of the Township of Erin, Macomb County, Michigan, at a meeting held... July 19, 1924...  
*James M. ...*  
 Township Clerk.



*See Application for copy of stud map: Apr. 5th of ad abo. - Page 581*

**CERTIFICATE OF COUNTY PLATTING BOARD**  
 This plat was approved on the... 29th... day of... 1924.  
*Charles H. ...*  
 Judge of Probate.  
*James M. ...*  
 County Clerk.  
*James M. ...*  
 County Treasurer.

APPROVED: 1924  
 COUNTY CLERK  
 JAMES M. ...  
 COUNTY TREASURER  
 JAMES M. ...

*Page 700*

*A. J. Fuller No. 1042*

**EASTLAND COURTS SUBDIV.**  
**A PART OF P.C. 631 T. 1 N. R. 13 E.**  
**EAST DETROIT MACOMB CO. MICH.**

SCALE: 1" = 100'

NOTE: ALL MEASUREMENTS ARE IN FEET AND DECIMALS THEREOF.  
 ALL CURVE MEASUREMENTS ARE GIVEN ALONG THE ARC OF THE CURVE.

HARRY J. FULLER  
 REGISTERED CIVIL ENGINEER  
 MICH.

253055

**DEDICATION**

KNOW ALL MEN BY THESE PRESENTS, That we Leonard A. Bokuniewicz and Josephine Bokuniewicz, his wife and Bernard McInerney and Elsie McInerney, his wife and James A. McCormack and Pearl J. McCormack, his wife and Frank E. Josephite and Marietta Josephite, his wife and Fairlane Homes, Inc., a Michigan Corporation by Lloyd Marks, President and George J. Mahoney, Secretary, as proprietors have caused the land embraced in the annexed plat to be surveyed, laid out and platted to be known as "EASTLAND COURTS SUBDIV" a part of P.C. 631 T. 1 N. R. 13 E. East Detroit, Macomb Co., Michigan and that the streets as shown on said plat are hereby dedicated to the use of the public, and that the easements as shown on said plat are hereby reserved for the use of public utilities and no permanent structures are to be erected within the lines of said easements. Regulation of the use thereof is vested in the local governmental authority.

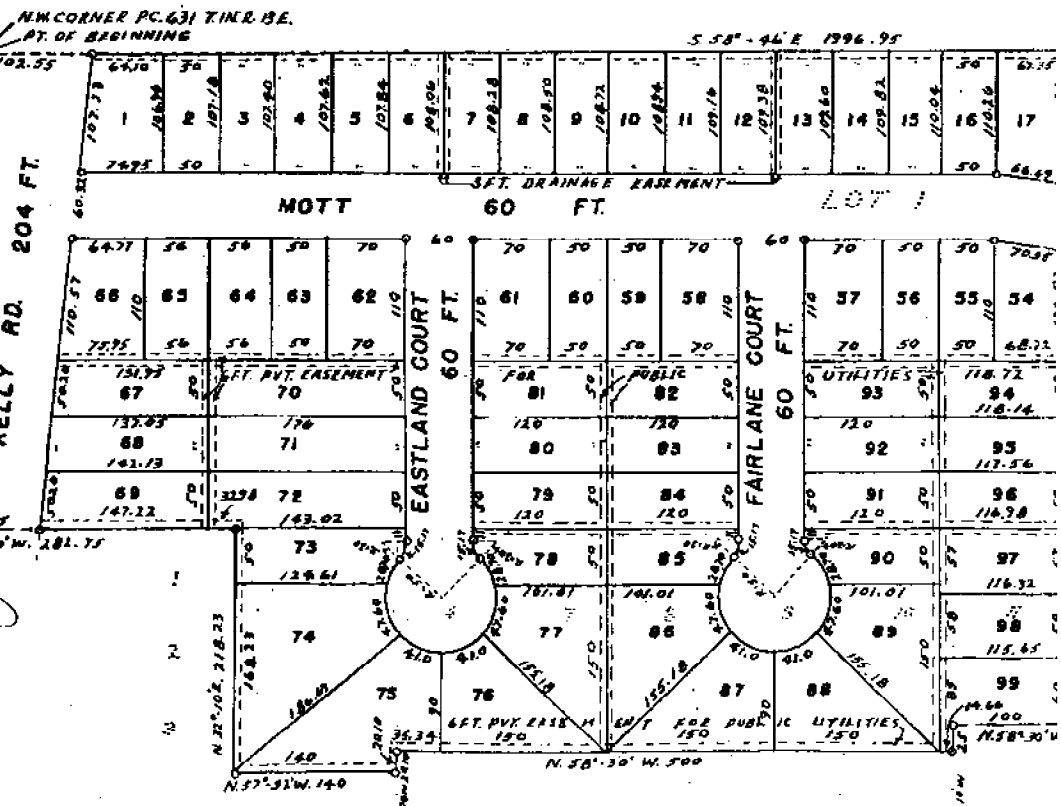
Signed and Sealed in the presence of  
 Margaret M. Feidrick  
 Margaret W. Feidrick  
 Roland O. Feidrick  
 Leonard A. Bokuniewicz  
 Josephine Bokuniewicz  
 Bernard McInerney  
 Elsie McInerney  
 Frank E. Josephite  
 Pearl J. McCormack  
 James A. McCormack  
 Lloyd Marks, President  
 George J. Mahoney, Secretary

**ACKNOWLEDGMENT**

STATE OF MICHIGAN } ss.  
 County of Macomb }  
 On this 1st day of September, A.D. 1955 before me a Notary Public in and for said county appeared Leonard A. Bokuniewicz and Josephine Bokuniewicz his wife, and Bernard McInerney and Elsie McInerney his wife, and James A. McCormack and Pearl J. McCormack his wife, and Frank E. Josephite and Marietta Josephite his wife, known to be to be the persons who executed the above dedication, and acknowledged same to be their free act and deed.  
 Margaret M. Feidrick

EXAMINED AND APPROVED  
 Date \_\_\_\_\_  
 T. J. [Signature]

[Signature]  
 [Signature]



*as Declaration of Restrictions - Liber 1027 Deeds, pg 522*

522

On this 1st day of September, A.D. 1955 before me a Notary Public in and for said county appeared Leonard A. Subunkiewicz and Josephine Subunkiewicz his wife, and Edward McInerney and Elizabeth McInerney his wife, and James A. McCormack and Pearl J. McCormack his wife, and Frank E. Jankovic and Marietta Jankovic his wife, known to me to be the persons who executed the above dedication, and acknowledged same to be their free act and deed.

*Margaret M. DeBenedictis*  
 Notary Public Macomb Co., Michigan

My Commission expires Dec. 30, 1957.

STATE OF MICHIGAN }  
 County of Macomb }

On this 30th day of September, A.D. 1955 before me a Notary Public in and for said county appeared Lloyd Marks and George J. Mahoney to me personally known, who being each by me duly sworn did say that they are the president and Secretary respectively, of the FAIRLANE HOMES INC., a Michigan Corporation, and that the seal affixed to said instrument is the corporate seal of said corporation and that said instrument was signed and sealed in behalf of said corporation by authority of its Board of Directors and the said Lloyd Marks and George J. Mahoney acknowledged said instrument to be the free act and deed of said corporation.

*George J. Mahoney*  
 Notary Public Macomb Co., Michigan  
 ACTING IN ABSENCE

My Commission expires September 1957.

DESCRIPTION

The land embraced in the annexed plat of "EASTLAND COURTS SUBDIVISION" a part of P.C. 631 T. 1 N.R. 13 E. East Detroit, Macomb Co., Michigan, a replat of Lot 1 of the survey of a Sub. of P.C. 631 T. 1 N.R. 13 E. and a replat of parts of Lots 1, 2, 3, 4, 5, 6, 7, 8, 9, 10 & 11 of Assessment Plat of Bohner Farms, a replat of Lots 2 & 3 of the survey of a Subdiv. of P.C. 631 T. 1 N.R. 13 E., East Detroit, Macomb Co., Michigan, as described as follows: Commencing at the N.W. corner of P.C. 631 T. 1 N.R. 13 E. as a point of beginning, thence S 80° 14' 00" W 196.95 feet, thence S 20° 25' 00" W 443.90 feet, thence N 58° 30' 10" W 1072.35 feet, thence S 32° 10' 10" W 175 feet, thence N 58° 30' 10" W 130 feet, thence S 32° 10' 10" W 25 feet, thence N 58° 30' 10" W 500 feet, thence S 32° 08' 10" W 20.10 feet, thence N 57° 52' 10" W 140 feet, thence N 32° 10' 10" W 218.23 feet, thence N 58° 30' 10" W 282.75 feet, thence N 37° 18' 10" W 428.19 feet to the point of beginning.

I hereby certify that the plat hereon delineated is a correct one and that permanent metal monuments consisting of bars of not less than one-half inch in diameter and thirty six inches in length encased in a concrete cylinder at least 4 inches in diameter and thirty six inches in depth have been placed at points marked this (a) as thereon shown at all angles in the boundaries of the land platted, at all the intersections of the streets, intersections of alleys, or of streets and alleys, and at the intersections of streets and alleys with the boundaries of the plat as shown on said plat.

*Henry J. Fuller*  
 Registered Land Surveyor

CERTIFICATE OF MUNICIPAL APPROVAL

This plat was approved by the City Council of the City of East Detroit of Macomb County, Michigan at a meeting held September 1, 1955

Charles Beaubien (Clerk)

CERTIFICATE OF APPROVAL BY COUNTY BOARD

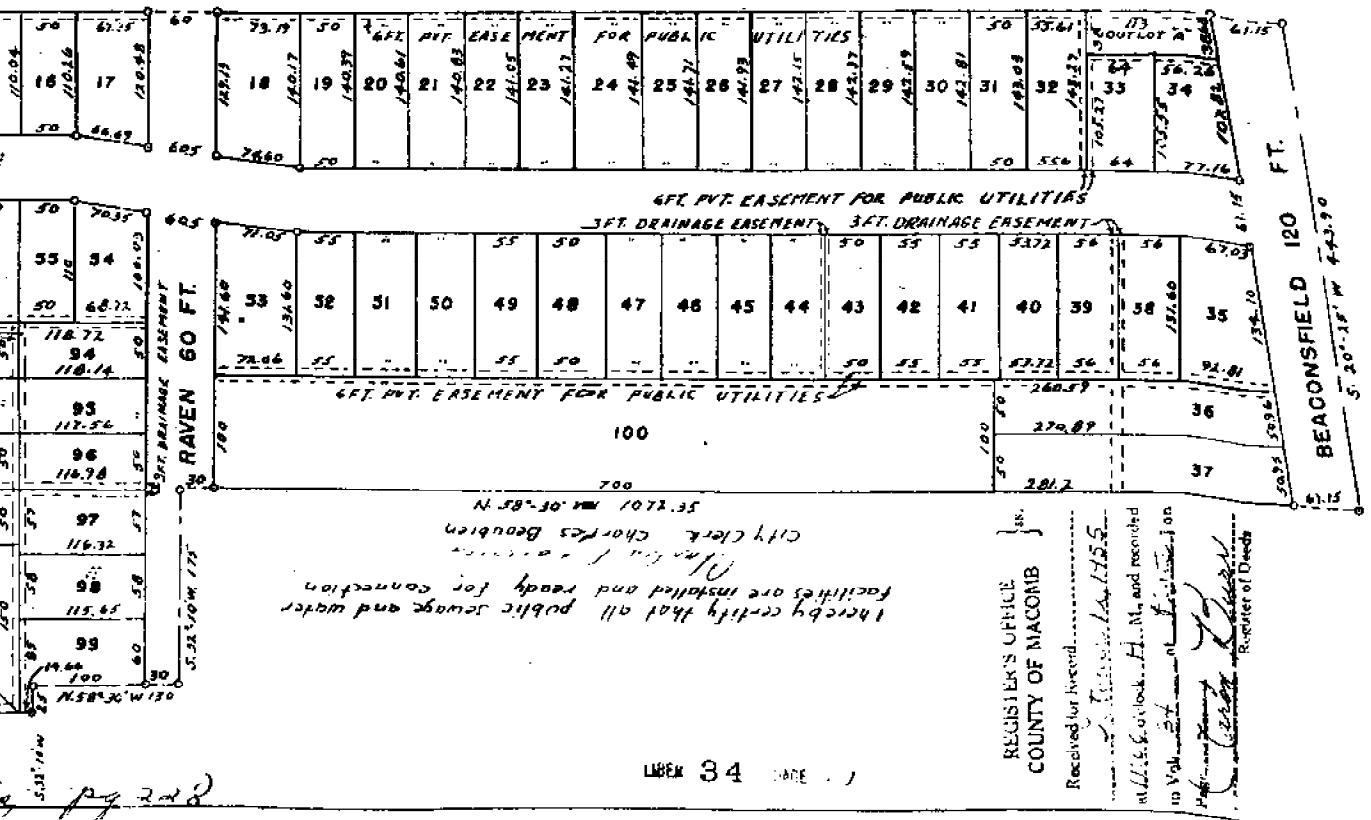
This plat was approved on the 6th day of September, 1955.

*Albert Wagner* (County Clerk)  
*Frank Lehr* (County Drain Commissioner)

THIS IS TO CERTIFY THAT according to the County Records the records thereon are the last plat in the history and that they are not for five years previous to date of this instrument.

THE COUNTY CLERK HAS NOTED THAT THE COUNTY BOARD HAS APPROVED THIS PLAT AND THAT THE COUNTY BOARD HAS NO OBJECTION TO THE PLAT BEING RECORDED.

*Albert Wagner* (County Clerk)  
*Frank Lehr* (County Drain Commissioner)



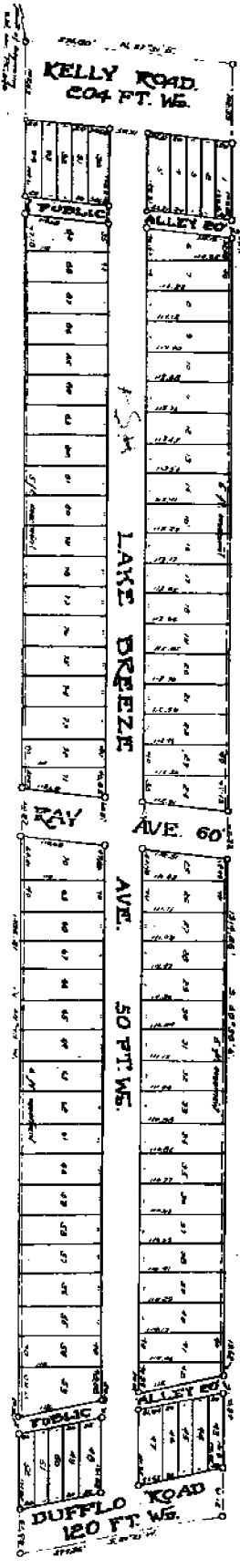
Aug 26 1924  
J. R. Hummel

# LAKE BREEZE PARK SUB.

-OF PART OF PG 240-

## ERIN TWP. MACOMB CO. MICH.

SCALE 1"=100'



~~John Kraus, et al vs Wm. H. ...~~  
~~John Kraus, et al vs Wm. H. ...~~  
 PARK SUB

John Kraus  
 Fred Leiss  
 Charles Schuch

~~...~~  
~~...~~  
~~...~~

H. R. ...

Oct. 14, 1927

H. R. ...

LAKE BREEZE PARK SUB.

Received for Record this 22nd day of September, 1927, by the County Clerk of Macomb County, Michigan, the following plat and subdivision of land, as shown on the plat attached hereto, and as the same appears on page ... of the ...

The above plat and Subdivision is hereby subjected to the following agreement and covenant which shall be observed by those proprietors herein described and their successors and assigns, and the heirs, executors, administrators and assigns of them, to-wit:

That at no time shall any lot in said subdivision or part thereof or any building thereon be sold, rented, leased, transferred, or conveyed to, or shall the same be occupied by, excepting as a domestic servant, any Negro or colored persons of Negro blood.

Order Noted of ...  
 Charles N. Hummel  
 Deputy

Aug 22 1925  
 Public