

LAND CORNER RECORDATION CERTIFICATE
Filing Requirement of Act 74, Mich. P.A. 1970 as Amended

For corners in Township of Erin
 City of Eastpointe
 Located In: _____ Corner Code # _____
MACOMB COUNTY
 (County)

The northwest corner Private Claim 611

- | | | | | | |
|------------------------------------|---|-----------|---|-----------|-----------------------------|
| 1. Public Land Survey | T | _____ | R | _____ | _____ |
| | T | _____ | R | _____ | _____ |
| | T | _____ | R | _____ | _____ |
| | T | _____ | R | _____ | _____ |
| 2. Property Controlling In Section | S | <u>28</u> | T | <u>1N</u> | R <u>13E</u> <u>PCC-004</u> |
| | s | _____ | T | _____ | _____ |
| 3. Miscellaneous Property in Sec. | S | _____ | T | _____ | R _____ |
| | S | _____ | T | _____ | R _____ |
| 4. Lot No. _____, Recorded Plat | | | | | |
| 5. Private Claims <u>611</u> | | | | | |

5011904
 LIBER 16306 PAGE 626


01/19/2005 12:18:39 P.M.
 MACOMB COUNTY, MI SEAL
 CARNELLA SABAUGH, REGISTER OF DEEDS

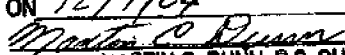
I, Robert H. Birkett, in a field survey on November 20, 2004 do hereby state that under requirements of P.A. 74, Michigan P.A. of 1970, the corner points mentioned in lines 1 and 2 above were in conformance with regulations and rules therefore as required in the current manual of survey instructions of the United States Department of the Interior, Bureau of Land Management or by a decree of a Court of Law and /or that the corner points mentioned in lines 3, 4 and 5 above were in conformance with the rules of the Michigan Board of Land Surveyors or by a Decree of a Court of Law; established, re-established, monumented, recovered, found as expressed below:

	A	B	C	D	E	F	G	H	I	J	K	L	M
1													
2	6		5		4		3		2		1		
3													
4	7		8		9		10		11		12		
5													
6	19		17		16		15		14		13		
7													
8	19		20		21		22		23		24		
9													
10	30		29		28		27		26		25		
11													
12	31		32		33		34		35		36		
13													

NOTE: Not more than 2 corners, all in the same town and range, may be recorded on this certificate.

A. Description of original monument and accessories and/or subsequent restoration:

PCC-004 The northwest corner Private Claim 611.
 1823, J. Mullett set wooden post.

ACCEPTED BY THE MACOMB COUNTY SURVEY PEE.
 GROUP AS THE OFFICIAL CORNER UNDER MICHIGAN
 PUBLIC ACT 345 OF 1990 AT A MEETING HELD
 ON 12/17/04

 MARTIN C. DUNN, P.S. CHAIRMAN

B. Description of corner evidence found and/or method applied in restoring or reestablishing corner:

PCC-004 The northwest corner Private Claim 611. The corner was set using existing field information of the following recorded subdivisions, no visible occupation lines in the field:

- * 1925, G. H. Rubling, "Kelly Super Highway Subdivision No. 1", Liber 010, Page 019, M. C. R.
- * 1956, H. J. Fuller No. 1645, "Eastland Woods Sub'n. No. 1", Liber 035, Page 008, M. C. R.
- * 1957, H. J. Fuller No. 1645, "Assessors Plat No. 33", Liber 039, Page 042, M. C. R.
- * 1958, H. J. Fuller No. 1645, "Eastland Woods Sub'n. No. 2", Liber 042, Page 021, M. C. R.
- * 1959, H. J. Fuller No. 1645, "Eastland Woods Sub'n. No. 3", Liber 045, Page 003, M. C. R.

FIELD MEASUREMENTS BETWEEN CORNERS (See reverse Side for Sketch)

PCC-004 to PCC-006 (2004) Remon-2854.22', (1823) GLO- 2845.26' [43.11 Ch.]
 PCC-004 to northwest corner PC 624 (2004) Remon-3943.22, (1823) GLO-3930.30' [59.55 Ch.]

C. Description of monument for corner and accessories established to perpetuate locating the position of the corner:

PCC-004 Set 1/2" x 24" iron, 36" long encased with 4" concrete with an aluminum cap marked "Macomb County Monument, MI, Act 345, 41094, PCC-004".

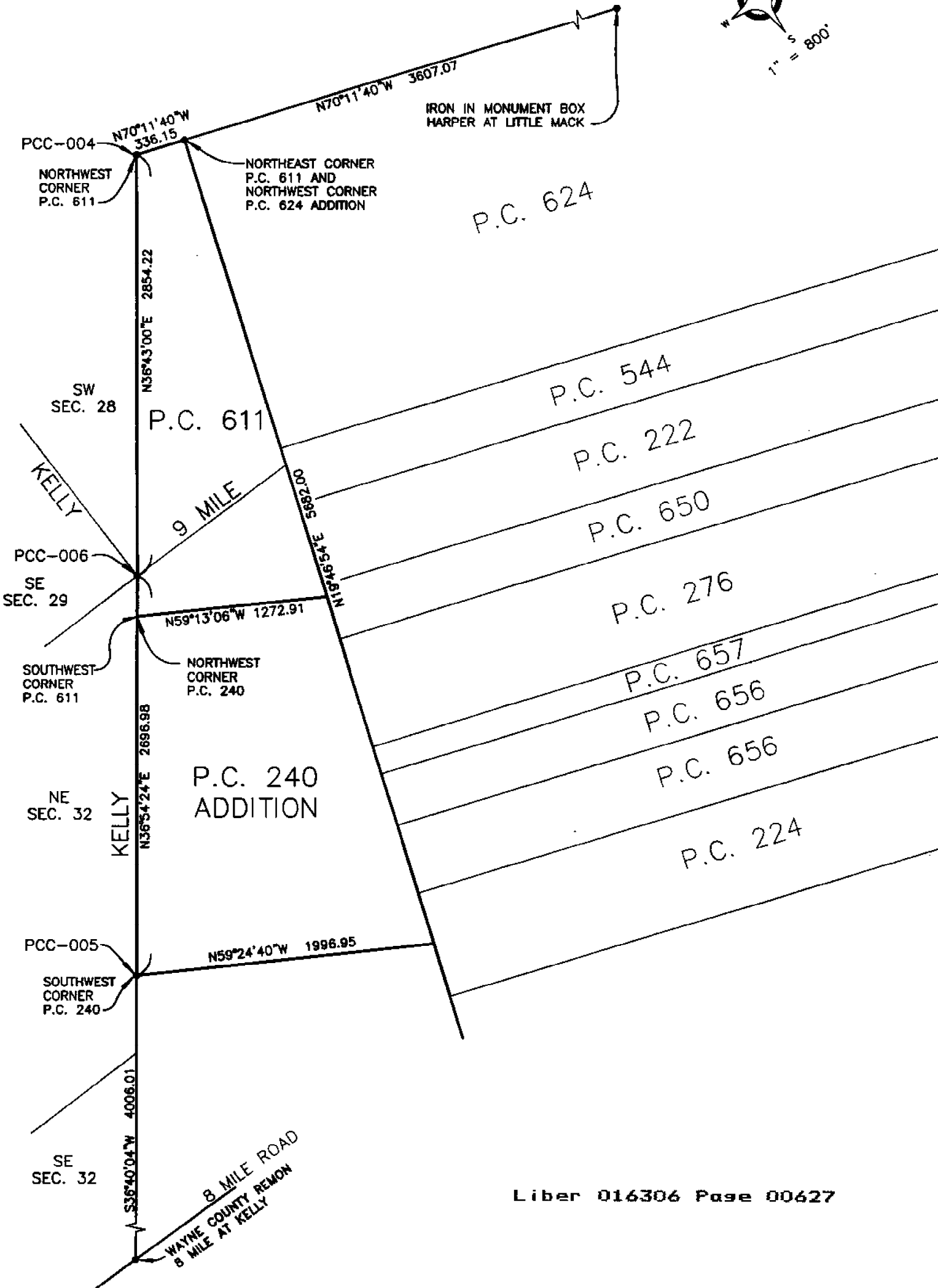
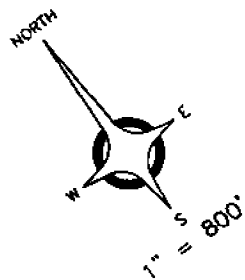
- Az. 50° - 168.81' - Set remon tag in southeast face utility pole.
- Az. 210° - 124.51' - Set remon tag in southeast face 16" tree.
- Az. 300° - 81.77' - Set remon tag in north face D.E. pole.
- Az. 350° - 132.62' - Set remon tag in southeast face 30" tree.

The Selected location is accepted by me and is generally accepted by Professional Surveyors as the best available evidence of the position of the original corner.



Signed by R.H. Birkett
 Surveyor's Michigan License No. 41094

Date 12-21-04



**2004 MACOMB COUNTY RE-MONUMENTATION
PCC-004 – THE NORTHWEST CORNER PRIVATE CLAIM 611
TOWN 1 NORTH, RANGE 13 EAST,
ERIN TOWNSHIP, CITY OF EASTPOINTE, MICHIGAN**

GENERAL LAND OFFICE HISTORY

Private Claim 611 and the Additions to existing Private Claims.
J. Mullet surveyed the additional private claims in December of 1823.

EXISTING CONDITIONS

PCC-004 SET ¾" Iron at the northwest corner Private Claim No. 611 using the found monumentation in the field and record measurements of the plat "Kelly Superhighway No. 1".

CERTIFICATE OF SURVEYS & LAND CORNER RECORDATION CERTIFICATES

- * No Act 132 Certificates were available for this corner.
- * No Land Corner Recordation Certificates were available for this corner.

UNRECORDED INFORMATION

- * No unrecorded information was recovered for this corner.

SUBDIVISION REFERENCING PCC-004

- * 1925, G. H. Rubling, "Kelly Super Highway Subdivision No. 1", Liber 010, Page 019, M. C. R.
- * 1956, H. J. Fuller No. 1645, "Eastland Woods Sub'n. No. 1", Liber 035, Page 008, M. C. R
- * 1956, H. J. Fuller No. 1645, "Eastland Woods Sub'n. No. 2", Liber 042, Page 021, M. C. R
- * 1957, H. J. Fuller No. 1645, "Assessors Plat No. 33", Liber 039, Page 042, M. C. R.
- * 1956, H. J. Fuller No. 1645, "Eastland Woods Sub'n. No. 3", Liber 045, Page 003, M. C. R

WITNESSES RECOVERED

- * No previous witnesses for this corner were recovered.

FIELD MEASUREMENTS BETWEEN CORNERS

PCC-004 to PCC-006 (2004) Remon-2854.22', (1823) GLO- 2845.26' [43.11 Ch.]
PCC-004 to northwest corner PC 624 (2004) Remon-3943.22, (1823) GLO-3930.30' [59.55 Ch.]

RECOMMENDATIONS

To accept the Location on this document as the faithful recovery of the obliterated corner PCC-004.

Place the following statement on a new LCRC:

"The Selected Location is accepted by me and is generally accepted by Professional Surveyors as the best available evidence of the position."

MONUMENT SET AND WITNESSES

PCC-004 Set ½" iron, 36" long encased with 4" concrete with an aluminum cap marked "Macomb County Monument, MI, Act 345, 41094, PCC-004".

- Az. 50° - 168.81' - Set remon tag in southeast face utility pole.
- Az. 210° - 124.51' - Set remon tag in southeast face 16" tree.
- Az. 300° - 81.77' - Set remon tag in north face D.E. pole.
- Az. 350° - 132.62' - Set remon tag in southeast face 30" tree.

 12-14-04
Robert H. Birkett, P.S. Michigan No. 41094 Date

223-024

2004 MARCH 18

NW124D

SET 3/4" IRON @ 10' MARKS
FOLLOWING

300° 91.77 SET REMON TAG IN NORTH
1" IRON D.E. FACE

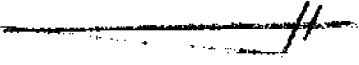
50° 168.31 SET REMON TAG IN SE
FACE OUTLINE, FACE

350° 132.62 SET REMON TAG IN
EAST FACE 30" TREE

210° 124.51 SET REMON TAG IN SE
FACE 16" TREE

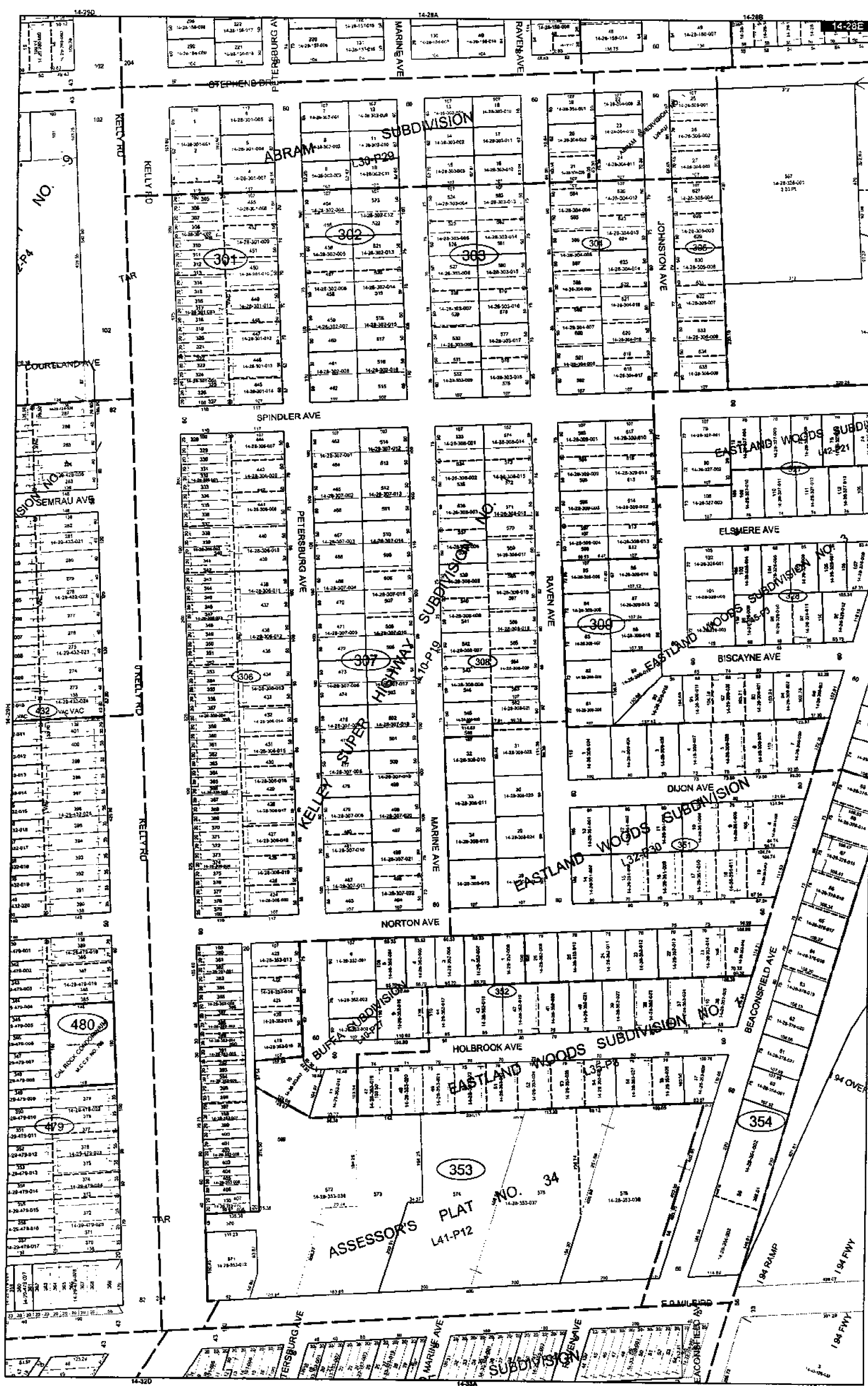
26

No 2340



2004
MARCH
18





NO. 9

NO. 10

NO. 432

NO. 480

NO. 479

ABRAM SUBDIVISION
L30-P20

302

303

304

305

306

307

308

309

310

EASTLAND WOODS SUBDIVISION
L32-P30

KELLY SUPER HIGHWAY
L40-P19

BUENA SUBDIVISION
L40-P17

EASTLAND WOODS SUBDIVISION
L32-P30

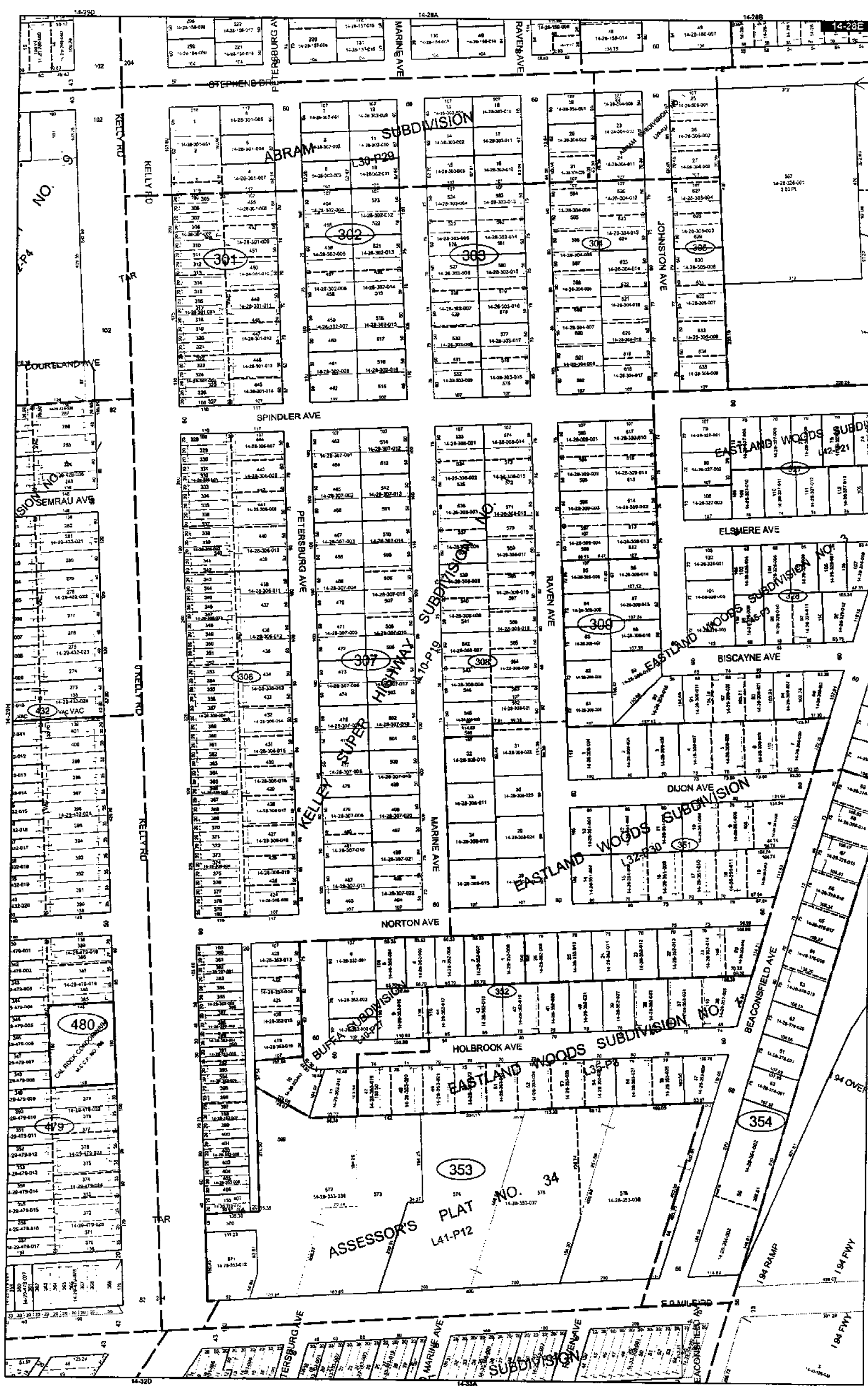
ASSESSOR'S PLAT
L41-P12

353

354

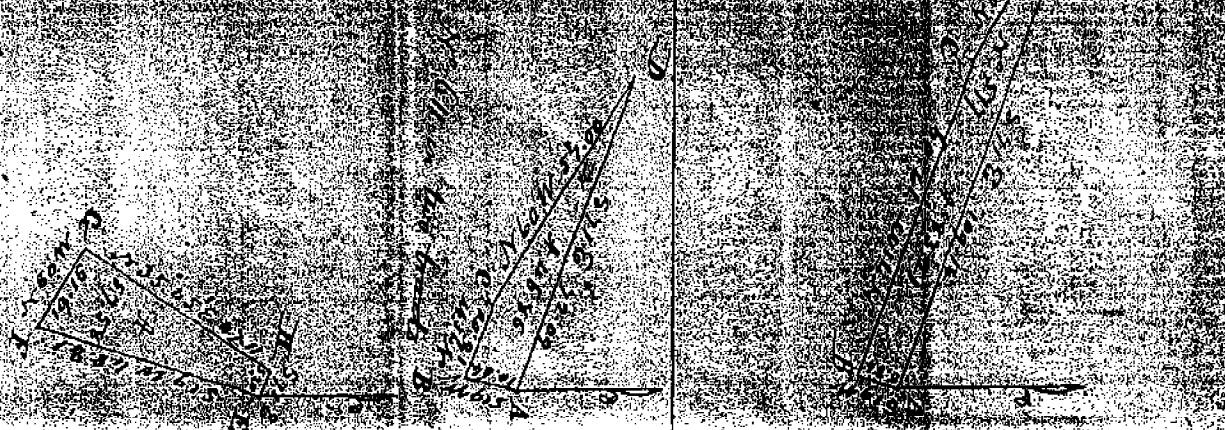
NO. 34

EASTLAND WOODS SUBDIVISION
L32-P30



Description of the corners

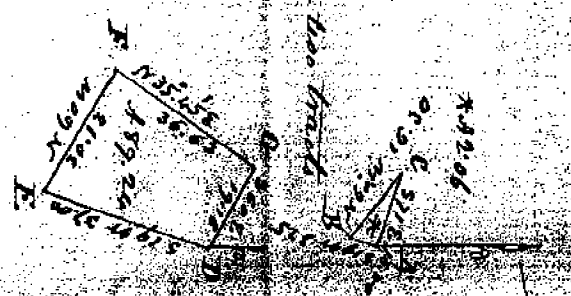
119



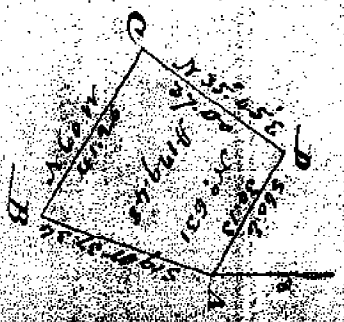
Lot	Plowing	Mealy	Combs	Other
A	10	10	526.11	
B	10	10	526.11	
C	10	10	526.11	
D	10	10	526.11	
E	10	10	526.11	
F	10	10	526.11	
G	10	10	526.11	
H	10	10	526.11	

N 20°

N 20° in the tract

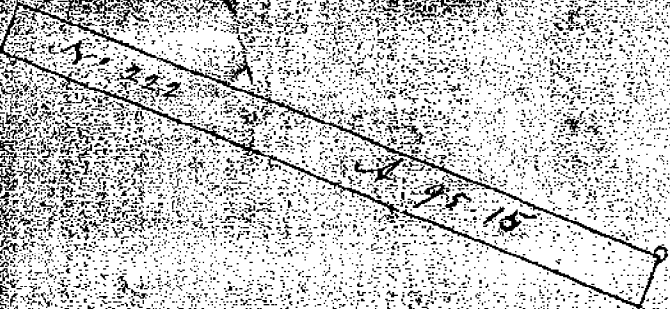


N 15°



Description of the corners

Lot	Plowing	Mealy	Combs	Other
A	10	10	526.11	
B	10	10	526.11	
C	10	10	526.11	
D	10	10	526.11	
E	10	10	526.11	
F	10	10	526.11	



Surveyed the additional donation to
 No. 222 in right of Antoine Peneau
 Commencing at a post corner to Original don. 222 & 544 thence

S 19 71 to post corner to Orig. don. 222 & 650
 N 71 71 Between Nos. 222 & 650

109.86 Set post corner to No. 222 & 650
 Elm 16 in dia S 18 E 13 the dis.
 Do 12 - - N 52 E 44 - -

N 19 E 8.71 to post cor. to Nos. 222 & 544
 S 71 E 109.24 to the beginning
 containing 95.15 acs

Commenced at a Beech tree being
the most northerly corner to Orig. don
393 thence

107-45 E 13.38 intersected base line 21.50
East of Township corner
Lignum 10 inches diameter
corner to Trac. Sec 5. T1 S
& 32. R13 E

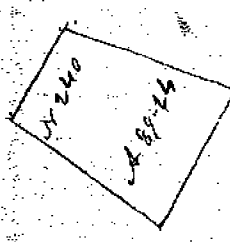
114-17 post corner to sec 28. 29. 32. 33

157-28 set post corner to Trac. sec
28 & Add. don. 611

W Oak 32. 547 E .13 hick
Elm 20 N 24 W 44

577 C 59.55 to post corner to Original
donations N 599 & 624

NOTE
LINE FOR
ADDITIONAL PRIVATE CLAIMS
PC 611



Surveyed the additional donation to No. 240 in 2 lines. First began at a post corner 611 & 240. Then

577 M 3.25 to post on line of 611 & 240
 580 M 16.20 to high corner to 611 & 240
 577 E 16.00 to the beginning cont. 2.06

The second commenced at a post on near line of 631 & 240 to 611 & 240. Then

577 M 37.00 set post on near line of 240 & 240
 thick 7 in diam. 577 M 11
 M 14.9 - 5.25 ft. M 11

580 M 30.13 set 240 & 631 set post corner
 thick 6 in dia. 580 E
 M 14.6 - 5.12 M

580 E 36.63 to post corner to 240 & 611
 580 E 19.16 to the beg. cont. 89.24 ft.



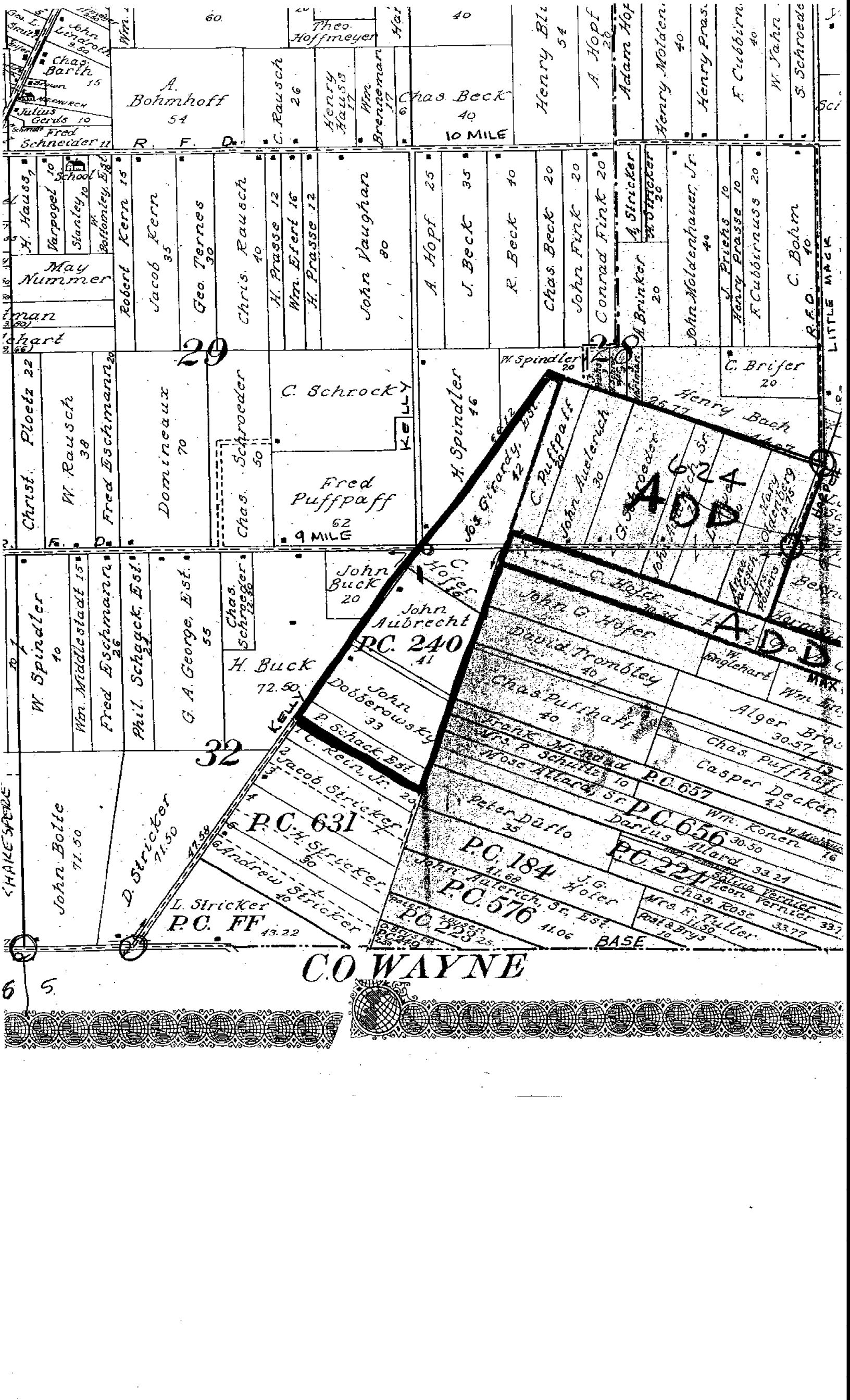
Surveyed the additional donation to No. 631 in report of Louis J. Smith & commencing at a post corner to add don.

240 & 631 on near line of old. don. 224. Thence
 579 M 37.34 set post cor to 631 & 240. on near line

of add. don. 249
 M 14.9 in dia. 579 M 12 1/2
 580 E 4.6 E 4.2

580 E 41.26 between 631 & 240 set post cor to 631
 thick 12 in. dia. 580 E 12 1/2
 580 E 7 8.5 E 1.8

585' 40' 37.00 to post corner to 240 & 631
 580 E 30.13 to the beg. in. cont. 129.48 ft.



A. Bohmhoff
54

R. F. D.

C. Rausch
26

Henry Hauss
17

Wm. Breneman
17

Chas Beck
40

10 MILE

Henry Bl...
54

A Hopf
26

Adam Hopf

Henry Molden.
40

Henry Prase

F. Cubbirn
40

W. Jahn

S. Schroede

May Nummer
man
chart

Robert Kern 15

Jacob Kern 35

Geo. Ternes 30

Chris. Rausch 40

H. Prasse 12

Wm. Erert 16

H. Prasse 12

John Vaughan 80

A. Hopf 25

J. Beck 35

R. Beck 40

Chas. Beck 20

John Firk 20

Conrad Firk 20

A. Stricker 20

John Moldenhauer, Jr. 40

J. Priests 10

Henry Prasse 10

F. Cubbirnuss 20

R.F.D. Bohm 40

29

Christ. Ploetz 22
W. Rausch 38
Fred Eschmann

Domincaux 70

Chas. Schroeder 50

C. Schrocky
Fred Puffpaff 62
9 MILE

H. Spindler 16

W. Spindler 20
G. Hardy, Esq. 12

C. Puffpaff
John Auernach 30

Henry Bach 40

C. Brifer 20

W. Spindler 10
Wm. Middlestadt 15
Fred Eschmann

Phil. Schagck, Est. 26
G. A. George, Est. 55

Chas. Schreger 12

John Buck 20
John Aubrecht
RC. 240 41

H. Buck 72.50

John G. Hofer
David Trombley 40

Chas. Puffpaff 40

John G. Hofer 20

Alger Brock 30.57

Wm. M... 16

32

John Bolle 71.50

D. Stricker 71.50

L. Stricker
PC. FF 43.22

John Dobberowsky
C. Schack, Est. 33
Jacob Stricker, Jr. 20
PC. 631

Frank Michael 40

Mose Allard 10
Peter Darlo 35

John G. Hofer 41.68

PC. 184
PC. 576

Wm. Koner 30.50

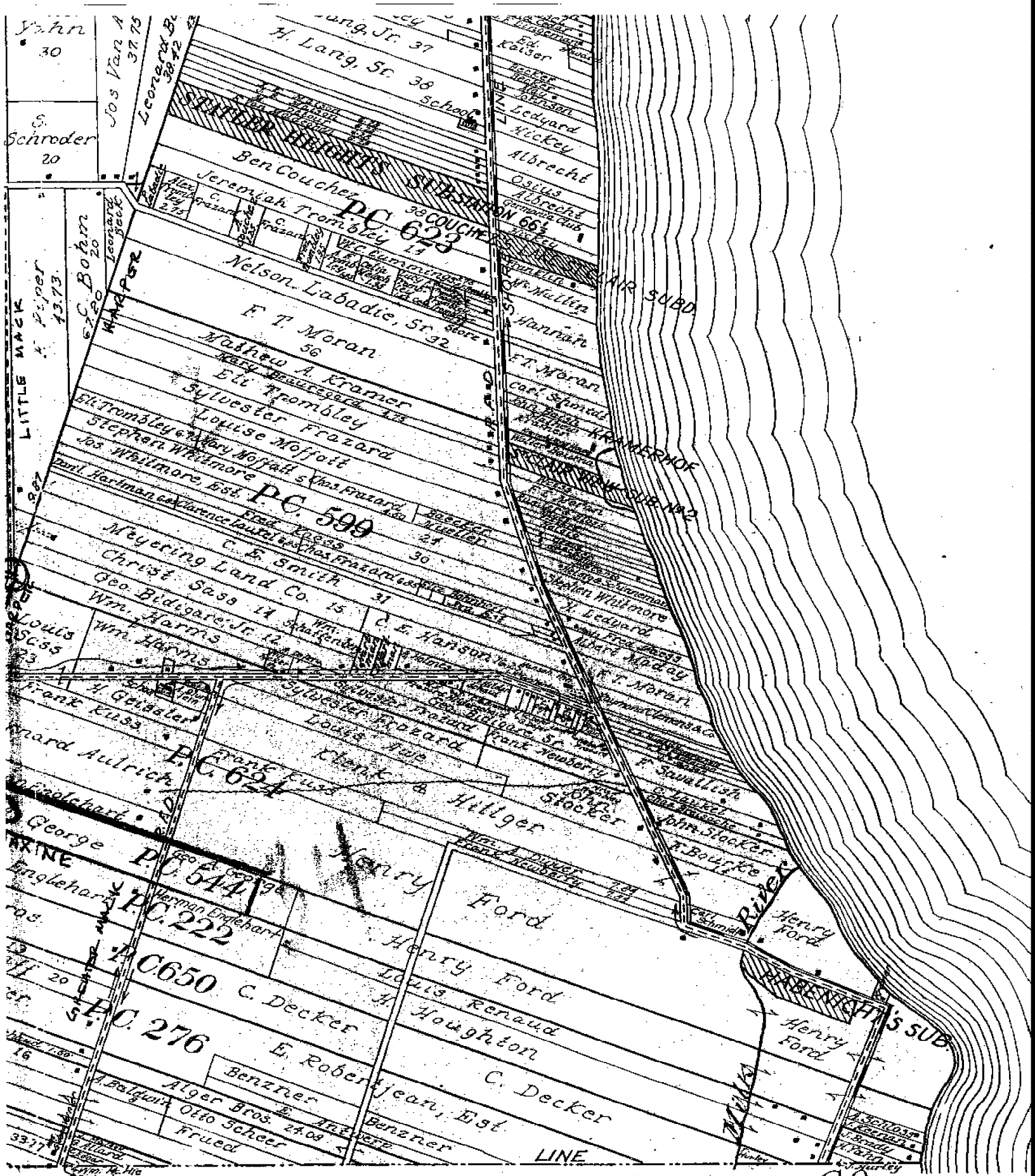
Wm. M... 16

C.O. WAYNE

SHAKESPEARE

6 5





SCALE 1320

4" = 1 MILE

CO.