

LAND CORNER RECORDATION CERTIFICATE
Filing Requirement of Act 74, Mich. P.A. 1970

For corners in

<u>MACOMB</u> (County)	Located In: ERIN	Corner Code # <u>PCC-002</u>
1. Public Land Survey	T ___ R ___ T ___ R ___ T ___ R ___ T ___ R ___	_____
2. Property Controlling in Section	S <u>32</u> T <u>1N</u> R <u>13E</u> S ___ T ___ R ___	_____
3. Miscellaneous Property in Sec.	S ___ T ___ R ___ S ___ T ___ R ___	_____

1163
 LIBER 9275 PAGE 514
 01/04/2000 09:29:18 A.M.
 MACOMB COUNTY, MI
 CARNELLA SABAUGH, REG/DEEDS

Register of Deeds Stamp & File Number

4. Lot No. _____, Recorded Plat _____
 5. Private Claims Intersection of South line Erin Township and westerly line PC FF

I, STEVEN E. DUNN, in a field survey on August 18, 1999, do hereby certify that under requirements of P.A. 74, Michigan P.A. of 1970, the corner points mentioned in lines 1 and 2 above were in conformance with regulations and rules therefore as required in the current manual of survey instructions of the United States Department of the Interior, Bureau of Land Management or by a decree of a Court of Law and/or that the corner points mentioned in lines 3, 4 and 5 above were in conformance with the rules of the Michigan Board of Land Surveyors or by a Decree of a Court of Law; established, re-established, monumented, re-monumented, recovered, found as expressed below:

NOTE: Not more than 2 corners, all in the same town and range, may be recorded on this certificate.

A. Description of original monument and accessories and/or subsequent restoration:

NO CORNER ORIGINALLY SET

PLATS:
 L.9, P.7 Obenauer Barber Laing Co's. Ridgemont Park
 L.9, P.60 John Bold's Avon Park Subdivision

April 28, 1925
 July 15, 1925

MDOT: Macomb County Right-of-way maps Sheet No. 12

September, 1981

AFFIDAVIT:
 L.15965, P.486-536(WCR) Joint Survey by Macomb and Wayne Counties of the Boundary Line from Kelly Road to Lake St. Clair.
 Brass plug in concrete base at intersection of Baseline and c/l Kelly Road. Recorded April 6, 1966.

L.C.R.C.: L.27797, P.684(WCR) Martin C. Dunn #30081 Baseline and Beaconsfield November 21, 1994

B. Description of corner evidence found and/or method applied in restoring or reestablishing corner:
 Found "+" stamped in bronze cap set in 3" diameter concrete stamped "City of Detroit Monument and Benchmark" in grass island at c/l intersection of 8 Mile Road and Kelly Road.

I verified the location of found bronze cap by comparing field measurements to record measurements of plats listed above.

FIELD MEASUREMENTS & RECORD MEASUREMENTS:
 C-13 to Corner: Angle C-12/C-13/Corner: Corner to corner at Beaconsfield:
 Plats-1415.95' Plat-89°44'40" 3316.15'-Affidavit
 Field-1415.69' Field-89°43'39" 3316.03'-Field

C. Description of monument for corner and accessories established to perpetuate locating the position of the corner:
 Intersection of South line of Town 1 North, Range 13 East, with the Westerly line of Private Claim FF.

I accepted the bronze cap with the "+" and stamped "City of Detroit Monument and Benchmark" in grass island at c/l intersection of 8 Mile Road and Kelly Road.

WITNESSES:

S.60°W. 104.56'	Found nail & MSHD tag in west face of utility pole stump.
S.60°W. 106.23'	Set Mag nail and Macomb County witness tag in northeast face of utility pole.
S.46°W. 118.11'	Center top nut of hydrant.
S.61°W. 222.78'	Found City of Detroit control monument in handhole.
N.08°W. 131.76'	Set Mag nail and Macomb County witness tag in south face of utility pole.
N.60°E. 103.76'	Set Mag nail and Macomb County witness tag in southwest face of utility pole.
S.55°E. 121.08'	Set Mag nail and Macomb County witness tag in northwest face of utility pole.
N.30°W. 2.83'	Set Mag nail and Macomb County witness tag in northeast face of utility pole.
North 23.73'	Back of concrete curb at north curb line of median.



THE SELECTED LOCATION IS ACCEPTED BY ME AND IS GENERALLY ACCEPTED BY PROFESSIONAL SURVEYORS AS THE BEST AVAILABLE EVIDENCE OF THE POSITION OF THE ORIGINAL CORNER.

Signed by Steven E. Dunn Date Dec 21, 1999
 Surveyor's Michigan License No. 28408

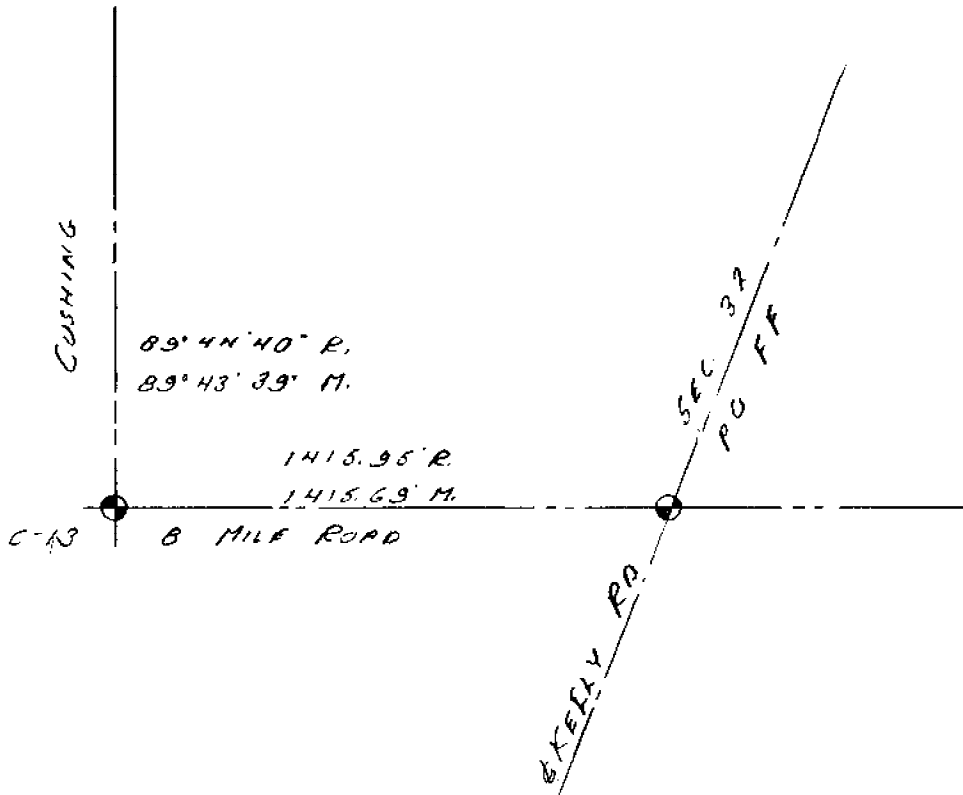
FORM APPROVED BY MICHIGAN STATE BOARD OF LAND SURVEYORS, JAN. 28, 1971
 REVISED MAY 14, 1975
 REVISED JAN., 1983

ACCEPTED BY THE MACOMB COUNTY SURVEY PEER GROUP AS THE OFFICIAL CORNER UNDER MICHIGAN PUBLIC ACT 345 OF 1990 AT A MEETING HELD ON 10/12/99
William E. Soderberg
 WILLIAM E. SODERBERG, P.S., CHAIRMAN

22-141 50 SHEETS
22-142 100 SHEETS
22-144 200 SHEETS



N



RC 1521

LAND CORNER RECORDATION CERTIFICATE
Filing Requirement of Act 74, Mich. P.A. 1970

For corners in

WAYNE

(County)

Located In: HARPER WOODS

Corner Code #

- 1. Public Land Survey
2. Property Controlling in Section
3. Miscellaneous Property in Sec.
Each item has T and R options and a line for Corner Code #.

4. Lot No. , Recorded Plat
5. Private Claims POINT COMMON TO BASELINE AND C/L OF BEACONSFIELD ROAD (P.C.'S 249 & 631)

I, MARTIN C. DUNN, in a field survey on MAY 6, 19 94, do hereby certify that under requirements of P.A. 74, Michigan P.A. of 1970, the corner points mentioned in lines 1 and 2 above were in conformance with regulations and rules therefore as required in the current manual of survey instructions of the United States Department of the Interior, Bureau of Land Management or by a decree of a Court of Law and/or that the corner points mentioned in lines 3, 4 and 5 above were in conformance with the rules of the Michigan Board of Land Surveyors or by a Decree of a Court of Law; established, re-established, monumented, re-monumented, recovered, found as expressed below:

NOTE: Not more than 4 corners, all in the same town and range, may be recorded on this certificate.

A. Description of original monument and accessories and/or subsequent restoration: NO CORNER SET IN ORIGINAL GOVERNMENT SURVEY.

PLATS

L. 59 P. 19 OBENAUER BARBER LAING CO.'S LAFAYETTE SUBDIVISION MARCH 4, 1928
L. 78 P. 82 ASSESSOR'S HARPER WOOD'S PLAT NO. 1 JANUARY 30, 1956

AFFIDAVIT

L. 15965 P. 486-536 JOINT SURVEY BY MACOMB AND WAYNE COUNTIES OF THE BOUNDARY LINE FROM KELLY ROAD TO LAKE ST. CLAIR

B. Description of corner evidence found and/or method applied in restoring or reestablishing corner:

FOUND CONCRETE MONUMENT IN MONUMENT BOX (IN PAVEMENT)
VERIFIED LOCATION WITH TIE TO ADJACENT CORNER WITH REFERENCE TO THE ABOVE LISTED AFFIDAVIT.

FIELD MEASUREMENTS AND RECORDED DISTANCES

3316.03' (M.) 3316.15' (R.) AS PER L. 15965 P. 486-536

PLACED WAYNE COUNTY REMONUMENTATION MARKER AND ALUMINUM CAP #30081 ON 1/2" x 36" IRON WITHIN A MONUMENT BOX.

C. Description of monument for corner and accessories established to perpetuate locating the position of the corner:

WAYNE COUNTY REMONUMENTATION MARKER AND ALUMINUM CAP #30081 ON 1/2" x 36" IRON WITHIN A MONUMENT BOX.

WITNESSES

- AZ. 54° 67.57' SET PK NAIL AND TAG IN SOUTHEAST FACE OF UTILITY POLE
AZ. 171° 53.41' SET PK NAIL AND TAG IN SOUTHWEST FACE OF UTILITY POLE
AZ. 235° 57.29' SET PK NAIL AND TAG IN CONCRETE CURB
AZ. 325° 66.06' SET PK NAIL AND TAG IN CONCRETE SIDEWALK

THE SELECTED LOCATION FOR THIS PROPERTY CONTROLLING MONUMENT IS ACCEPTED AS A CAREFUL AND FAITHFUL DETERMINATION OF THE POSITION AS INDICATED.

Signed by Martin C. Dunn Date 12/22/94
Surveyor's Michigan License No. 30081

L127797PA684

Compliance with ACT 345, P.A. 1990

APPROVED ON: 11-21-94 [Signature]
WAYNE COUNTY REMONUMENTATION PEER GROUP COMMITTEE

Register of Deeds Stamp & File Number

Grid table with columns A-M and rows 1-13. Contains handwritten numbers 1-36. Vertical text 'RC 1521' is written on the right side of the grid.

\$ 13.00 MISCELLANEOUS RECORDING
27 DEC 94 10:56 A.M. RECEIPT# 47A
RECORDED
FOREST E. YOUNGLOOD, REGISTER OF DEEDS
WAYNE COUNTY, MI



2R
110
MISC

15965 PA 492

Join

NOV. 23, 1965

15 MPH WINDS

53° F

CLOUDY, SLIGHT DRIZZLE

CREW. SEE P. 1

MON @
E INT OF KELLY
E BASELINE

180° 55'

670.70

180° 00' 49"

E 670.70

1251.62

F

ANGLE	1ST	3RD	6TH	MEAN
-------	-----	-----	-----	------

BCD	179° 22' 40"	178° 33' 00"	357° 15' 40"	179° 27' 33"
-----	--------------	--------------	--------------	--------------

CDE	179° 28' 20"	178° 25' 00"	357° 51' 20"	179° 27' 33"
-----	--------------	--------------	--------------	--------------

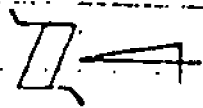
179° 58' 40"

Δ

F

G

15963 493



MERIDIAN LINE

0400 SET IRON

588-42-18E

171-32-33

588-42-51

149-51

2657.66

588-21-38E

E=33415.22

33127.32

THIS PLUG IN
CONE BASE AT
INTERSECTION OF
THE LINE & KEY B

581.1

ASSUME IRON D AS 0400
INCREASING STATIONING TO
EAST.

Fig. A

Revised

