

**LAND CORNER RECORDATION CERTIFICATE**  
Filing Requirement of Act 74, Mich. P.A. 1970

For corners in

Macomb  
(County)

Located In: Armada Township Corner Code # \_\_\_\_\_

1. Public Land Survey	T <u>5N</u>	R <u>13E</u>	<u>M-12</u>
	T _____	R _____	_____
	T _____	R _____	_____
	T _____	R _____	_____
2. Property Controlling in Section	S _____	T _____	R _____
	S _____	T _____	R _____
3. Miscellaneous Property in Sec.	S _____	T _____	R _____
	S _____	T _____	R _____

4. Lot No. \_\_\_\_\_, Recorded Plat \_\_\_\_\_

5. Private Claims \_\_\_\_\_

114759  
LIBER 9643 PAGE 786  
07/11/2000 08:03:43 A.M.  
MACOMB COUNTY, MI  
CARMELLA SABAUGH, REG/DEEDS

Register of Deeds Stamp & File Number

I, Huston K. Kennedy, in a field survey on March 2, 2000 do hereby state that under requirements of P.A. 74, Michigan P.A. of 1970, the corner points mentioned in lines 1 and 2 above were in conformance with regulations and rules therefore as required in the current manual of survey instructions of the United States Department of the Interior, Bureau of Land Management or by a decree of a Court of Law and/or that the corner points mentioned in lines 3, 4 and 5 above were in conformance with the rules of the Michigan Board of Land Surveyors or by a Decree of a Court of Law; established, re-established, monumented, recovered, found as expressed below:

NOTE: Not more than 2 corners, all in the same town and range, may be recorded on this certificate.

A	B	C	D	E	F	G	H	I	J	K	L	M
1												
2	6		5		4		3		2		1	
3												
4	7		8		9		10		11		12	
5												
6	18		17		16		15		14		13	
7												
8	19		20		21		22		23		24	
9												
10	30		29		28		27		26		25	
11												
12	31		32		33		34		35		36	
13												

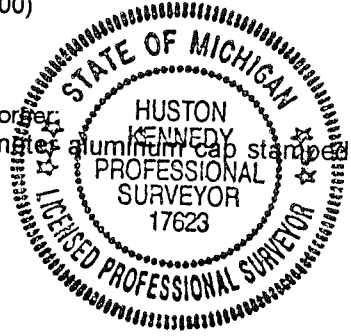
- A. Description of original monument and accessories and/or subsequent restoration:  
1817-GLO Preston, D.S.; 4" Sugar Tree as the corner, no witnesses
- B. Description of corner evidence found and/or method applied in restoring or reestablishing corner:  
2000-Kennedy Surveying, Inc. - Kennedy, PS #17623 - Fnd a 1/2" Iron Rod in a Monument Box located 2.50 feet West of the existing centerline of Omo Road extending to the North & South, which has a bituminous surface. A tree row extends to the East & West. This corner is being accepted and used as a common corner with the West 1/4 corner of Section 31, T5N, R14E, Richmond Township (A-12).

I could not find any evidence to dispute the location of the found 1/2" Iron Rod, therefore I accepted it as the best evidence of the corner position.

FIELD MEASUREMENTS BETWEEN

<u>M-12 to A-12</u> No GLO This corner has been accepted and used as a common corner to A-12	<u>M-12 to M-11</u> GLO = 40 chains or 2640.00 Ft 2664.98 Ft. (MEA-2000)	<u>M-12 to M-13</u> GLO = 40 chains or 2640.00 Ft. 2685.50 Ft. (MEA-2000)
--	--	---

- C. Description of monument for corner and accessories established to perpetuate locating the position of the corner:  
M-12 I replaced the found 1/2" Iron Rod in a Monument Box with a 3/4" x 24" Iron Rod w/2" diameter aluminum cap stamped "Macomb County Monument MI Act #345", PS #17623 in the existing Monument Box  
N23°W 90.95' Set Mag Nail & Remon Washer NE face Power Pole  
S79°W 29.05' Set Mag Nail & Remon Washer South face 14" clump Maple  
Due East 62.55' Set Mag Nail & Remon Washer North face 12" Elm  
S20°E 94.00' Set Mag Nail & Remon Washer Top of Wooden Fence Post  
N88°E 33.11 feet found 1/2" capped Iron Rod



The selected location is accepted by me and is generally accepted by Professional Surveyors as the best available evidence of the position of the original corner.

Signed by: [Signature] Date 6-12-00  
Surveyor's Michigan License No. 17623

FORM APPROVED BY MICHIGAN STATE BOARD OF PROFESSIONAL SURVEYOR'S, JAN. 28, 1971  
REVISED MAY 14, 1975  
REVISED JAN., 1983  
REVISED OCT., 1995

ACCEPTED BY THE MACOMB COUNTY SURVEY PEER GROUP AS THE OFFICIAL CORNER UNDER MICHIGAN PUBLIC ACT 345 OF 1990 AT A MEETING HELD ON 6/16/00  
[Signature]  
WILLIAM E. SODERBERG, P.S., CHAIRMAN



**2000**  
**MACOMB COUNTY REMONUMENTATION**  
**PROGRAM FOR ARMADA TOWNSHIP**

**Research Dossier for M-12**

Prepared by:  
Kennedy Surveying, Inc.  
105 North Washington Street  
Oxford, Michigan 48371  
00-5020

# Sources of Information Researched For Macomb 2000 Remonumentation Program FOR ARMADA TOWNSHIP

- 1.) GLO Notes
- 2.) Act 74 Recorded LCRC
- 3.) Act 132 Recorded Surveys
- 4.) Personal History and Records
- 5.) Letters to the Following Requesting Unrecorded  
LCRCs and Surveys
  - a.) Anderson, Eckstein & Westrick
  - b.) Fenn & Associates Surveying, Inc.
  - c.) King & Associates
  - d.) AES Engineers & Surveyors, Inc.
  - e.) Metco Land Sea Corp.
  - f.) Raymond Donnelly & Associates
  - g.) Metco-Dunn, Inc.
  - h.) Road Commission for Macomb County
  - i.) Macomb County Public Works
  - j.) George Jerome & Company
  - k.) Kem-Tec Surveying
  - l.) Mickalich & Associates
  - m.) Lehner Associates, Inc.
  - n.) Spalding, DeDecker & Associates
  - o.) M.C.S. Associates, Inc.
  - p.) Urban Land Consultants

## GLO NOTES

Researching the government survey records for Macomb County shows that the post was set at the East ¼ of corner of Section 36 in 1817 by William Preston, D.S.

4" Sugar Tree as the corner, no witnesses

## EXISTING CONDITIONS

The original government post has been obliterated and the witness trees have been destroyed. The corner has been perpetuated with a ½" Iron Rod in a Monument Box located 2.50 feet West of the existing centerline of Ormo Road extending to the North & South, which has a bituminous surface. A tree row extends to the East & West. This corner is being accepted and used as a common corner with the West ¼ corner of Section 31, T5N, R14E, Richmond Township (A-12).

## LCRC AND RECORDED SURVEYS

Researching the Macomb County Records for Land Corner Recordation Certificates (LCRC) shows that nothing has been recorded for this corner. I did not receive any other information regarding this corner from any other sources.

## FIELD MEASUREMENTS BETWEEN

### M-12 to A-12

No GLO

This corner has been accepted and used as a common corner with A-12

### M-12 to M-11

GLO = 40 chains or 2640.00 Ft.  
2664.98 Ft. (MEA-2000)

### M-12 to M-13

GLO = 40 chains or 2640.00 Ft.  
2685.50 Ft. (MEA-2000)

I could not find any evidence to dispute the location of the found ½" Iron Rod in a Monument Box as of March 1, 2000. I therefore, recommend to the Macomb County Peer Group that they accept the ½" Iron Rod as found as the best evidence of the original corner position.



Huston K. Kennedy, PS  
Kennedy Surveying, Inc.

22.00 Running (up & down 338) 1/4 40' the dist  
17.50 Run 6 links wide corner S.E.  
19.00 Elm 18 in diam

17.56 Run 6 links wide C.S.E.

20.00 Set 1/4 mile post for cor of sections  
24 & 25 from which an Elm 8 in diam  
bears N77 E 46 lks distant also  
an Elm 10 in diam bears N53 W 37  
lks distant

Land first half mile 2<sup>nd</sup> rate  
last half same

Timber fallen Undergrowth Thorn Briers etc

South Belvoir Range 13414 East Township 5 North

00.06 Run 6 lks wide corner S East

1.44 Run 6 lks wide S.E.

18.00 Elm 10 in diam

40.00 Made cor for 1/4 sec on an Ironwood 4  
in diam

79.50 Sugar tree 12 in diam

80.00 Set 5 mile post for cor of sections 23 & 26  
from which a Sugar tree 12 in diam  
bears N108 49 lks distant also a  
Sugar tree 12 in diam bears N16 1/2 W  
66 lks distant Timber fallen Young growth  
& Undergrowth Maple Willow Thorn  
Briers etc Land first half mile 2<sup>nd</sup>  
rate last half same

South Belvoir Range 13414 East Township 5 North

5.58 Buck 14 in diam

40.00 Made cor for 1/4 section on a Sugar tree  
4 in diam

M-12

SURVEY 4-920930-4-1226

04-29-2000

2:04 AM

Page 14

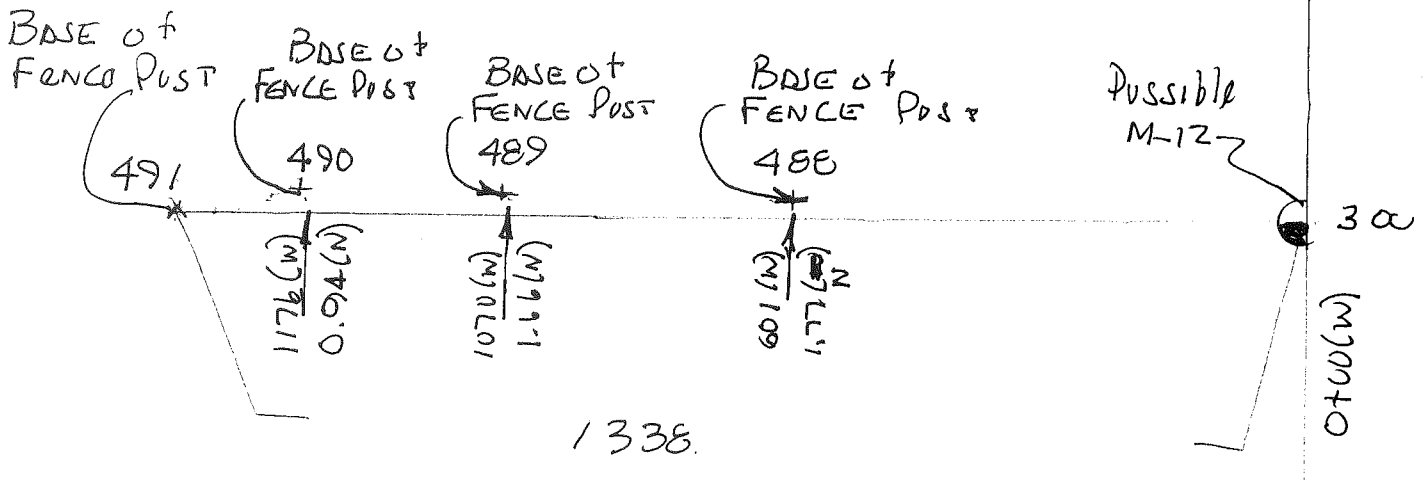
Req. to: Kennedy Surveying Inc.\

File Name: C:\SIMPLCTY\DATA\96-4013.DAT

Job: 1996 MACOMB COUNTY REMONUMENTATION PROGRAM FOR WASHINGTON, BRUCE & RAT TWP.

By: HUSTON K. KENNEDY

Point	Direction	Distance	Northing	Easting	Elevation
Start 491			970378.5788	998852.1962	
IN 300	N 89x31'23.8" E	1337.994			
PO 488	S 89x31'23.8" W	601.094	970389.7111	1000190.1437	
Temporary Intersection Point			970384.7099	999589.0700	
PO 489	N 0x28'36.2" W	1.765	970386.4752	999589.0554	
Start 300			970389.7111	1000190.1437	
PO 489	S 89x31'23.8" W	1070.691	970380.8028	999119.4898	
Temporary Intersection Point			970382.4655	999119.4760	
PO 490	N 0x28'36.2" W	1.663	970389.7111	1000190.1437	
Start 300			970389.7111	1000190.1437	
PO 490	S 89x31'23.8" W	1176.287	970379.9242	999013.8970	
Temporary Intersection Point			970380.8664	999013.8891	
PO 491	N 0x28'36.2" W	0.942	970389.7111	1000190.1437	



M-9

SURVEY 4-920930-4-1226

04-29-2000 1:19 AM Page 9

Rep. to: Kennedy Surveying Inc.\

File Name: C:\SIMPLCTY\DATA\96-4013.DAT

Job: 1996 MACOMB COUNTY REMONUMENTATION PROGRAM FOR WASHINGTON, BRUCE & RAT TWP.

By: HUSTON K. KENNEDY

Point	Direction	Distance	Northing	Easting	Elevation
-------	-----------	----------	----------	---------	-----------

*M-9 South to M-10*

Start					
295			981254.2806	1000068.8365	
IN	S	0x35'32.6" E	2829.650		
288			978424.7820	1000098.0924	
PO	S	0x49'36.0" E	686.081		
Temporary Intersection Point			977738.7725	1000107.9909	
PO	S	89x10'24.0" W	32.911		
484			977738.2977	1000075.0834	
Start					
288			978424.7820	1000098.0924	
PO	S	0x49'36.0" E	851.077		
Temporary Intersection Point			977573.7938	1000110.3713	
PO	S	89x10'24.0" W	32.911		
485			977573.3190	1000077.4642	
Start					
288			978424.7820	1000098.0924	
PO	S	0x49'36.0" E	1346.099		
Temporary Intersection Point			977078.8231	1000117.5133	
PO	S	89x10'24.0" W	32.956		
486			977078.3476	1000084.5605	
Start					
288			978424.7820	1000098.0924	



Req. to: Kennedy Surveying Inc.  
 File Name: C:\SIMPLCTY\DATA\96-4013.DAT

Job: 1996 MACOMB COUNTY REMONUMENTATION PROGRAM FOR WASHINGTON, BRUCE & RAT TWP.  
 by: HUSTON K. KENNEDY

Point	Direction	Distance	Northing	Easting	Elevation
-------	-----------	----------	----------	---------	-----------

*A - 9 South to M-10*

Start					
294			975737.1618	1000136.8722	
IN 287	N 0x49'34.9" W	2800.081			
PO 287		<i>797.75 (e)</i>	978536.9515	1000096.4882	
PO 484	S 0x49'34.9" E	798.262			
Temporary Intersection Point			977738.7725	1000108.0011	
PO 484	S 89x10'25.1" W	32.921			
			977738.2977	1000075.0834	

Start					
287			978536.9515	1000096.4882	
PO 485	S 0x49'34.9" E	963.258			
Temporary Intersection Point			977573.7938	1000110.3807	
PO 485	S 89x10'25.1" W	32.920			
			977573.3190	1000077.4642	

Start					
287		<i>1457.75</i>	978536.9515	1000096.4882	
PO 486	S 0x49'34.9" E	1458.280			
Temporary Intersection Point			977078.8230	1000117.5202	
PO 486	S 89x10'25.1" W	32.963			
			977078.3476	1000084.5605	

Start					
287			978536.9515	1000096.4882	

*486 = SW R/W Cor. Parcel 200-012*  
*484 = SW R/W Cor. Parcel 200-007*

*797.75*  
~~*660.00*~~  
*137.75 STAGGER*

Job: 1996 MACOMB COUNTY REMONUMENTATION PROGRAM FOR WASHINGTON, BRUCE & RAT TWP.

By: HUSTON K. KENNEDY

Point	Direction	Distance	Northing	Easting	Elevation
-------	-----------	----------	----------	---------	-----------

*HOLDING THE EXISTING FENCE LINE  
 PT # 488 WEST 358 (4 NUMER OF THE Corner Post)*

Start 358			970362.0028	997508.7603	
IN 488	N 89°19'33.6" E	2080.439	970386.4752	999589.0554	
PO	N 89°19'33.6" E	601.085	970393.5458	1000190.0985	
Temporary Intersection Point					
PO 300	S 0°40'26.4" E	3.835	970389.7111	1000190.1437	
Start 488					
PO	N 0°00'00.0" E	0.000	970386.4752	999589.0554	
Temporary Intersection Point					
PO 488	N 0°00'00.0" E	0.000	970386.4752	999589.0554	
Start 488					
PO	S 89°19'33.6" W	469.594	970386.4752	999589.0554	
Temporary Intersection Point					
PO 489	N 0°40'26.4" W	1.514	970380.9513	999119.4938	
Start 488					
PO	S 89°19'33.6" W	575.192	970386.4752	999589.0554	
Temporary Intersection Point					
PO 490	N 0°40'26.4" W	1.157	970379.7092	999013.9028	
Start 488					
PO	S 89°19'33.6" W	736.901	970386.4752	999589.0554	
Temporary Intersection Point					
PO 491	N 0°40'26.4" W	0.772	970377.8070	998852.2053	
Start 488					
PO	S 89°19'33.6" W	2080.434	970386.4752	999589.0554	
Temporary Intersection Point					
PO 357	S 0°40'26.4" E	4.000	970362.0029	997508.7552	
			970358.0031	997508.8123	

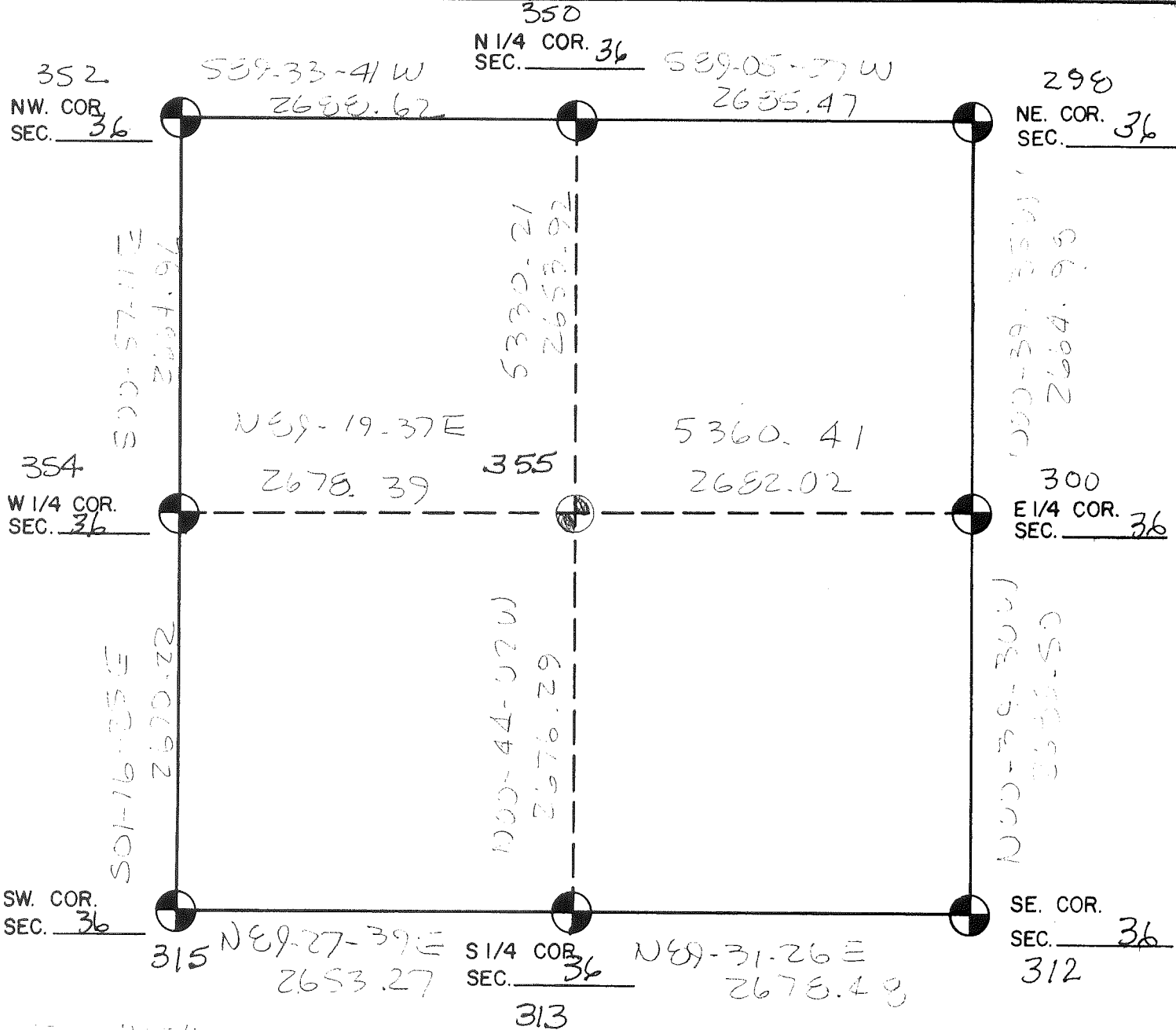
Job: 1996 MACOMB COUNTY REMONUMENTATION PROGRAM FOR WASHINGTON, BRUCE & RAT TWP.

By: HUSTON K. KENNEDY

Point	Direction	Distance	Northing	Easting	Elevation
-----					
<i>EAST 1/4 NE 1/4 to the Center Post</i>					
Start					
357			970358.0031	997508.8123	
IN	N 89°19'20.9" E	2681.519	970389.7111	1000190.1437	
300					
PO	S 89°19'20.9" W	601.085	970382.6035	999589.1011	
Temporary Intersection Point					
PO	N 0°40'39.1" W	3.872	970386.4752	999589.0554	
488					
Start					
300			970389.7111	1000190.1437	
PO	S 89°19'20.9" W	1070.679	970377.0507	999119.5400	
Temporary Intersection Point					
PO	N 0°40'39.1" W	5.415	970382.4655	999119.4760	
489					
Start					
300			970389.7111	1000190.1437	
PO	S 89°19'20.9" W	1176.277	970375.8021	999013.9490	
Temporary Intersection Point					
PO	N 0°40'39.1" W	5.065	970380.8664	999013.8891	
490					
Start					
300			970389.7111	1000190.1437	
PO	S 89°19'20.9" W	1337.986	970373.8899	998852.2516	
Temporary Intersection Point					
PO	N 0°40'39.1" W	4.689	970378.5788	998852.1962	
491					
Start					
300			970389.7111	1000190.1437	

96-4013

KENNEDY SURVEYING COMPANY				831 Sebek Blvd. Oxford, Michigan 48051		Section <u>36</u>
Revisions						<del>150</del> <u>DR mod</u> Township
Date	Job No.	Quarter	Date	Job No.	Quarter	Town <u>5</u> North
						Range <u>13</u> East
						<u>Moulton</u> County



From "T" SR 010  
0.50 EW ± 0.21 E  
0.1000 (357)



A-11  
M-11

M-12  
Armada Twp.

M-13

COPYRIGHT 1995 MACOMB COI  
All Rights Reserved.

SCALE 1" =

ARMADA TWP

SECTION 36 T5N R13E

A-9  
Richman Twp.

M-9  
Armoda Twp.

454

486.0

M-10

7

P.L. 2284.175-003

P.L. 2285 501-002

RD. 1305

RD. 165

RD. 165

703.10 RD.

2-

1334.19

25

2101.03

56.09

94

-009 10.444

56

-010 10.442

25.07

-011 10.440

724.64

-012 10.439

2724.22

200

-003  
7.00

-013  
48.0

400

-001  
168.00 C.R.  
174.52 PL.

75  
17.591  
386

300

201

201

201

201

201

201