

**LAND CORNER RECORDATION CERTIFICATE**  
Filing Requirement of Act 74, Mich. P.A. 1970

For corners in

Macomb Located In: Corner Code #  
(County) Armada Township

1. Public Land Survey T 5N R 13E L-12  
T \_\_\_\_\_ R \_\_\_\_\_  
T \_\_\_\_\_ R \_\_\_\_\_  
T \_\_\_\_\_ R \_\_\_\_\_

2. Property Controlling S \_\_\_\_\_ T \_\_\_\_\_ R \_\_\_\_\_  
in Section S \_\_\_\_\_ T \_\_\_\_\_ R \_\_\_\_\_

3. Miscellaneous S \_\_\_\_\_ T \_\_\_\_\_ R \_\_\_\_\_  
Property in Sec. S \_\_\_\_\_ T \_\_\_\_\_ R \_\_\_\_\_

1115689  
LIBER 10463 PAGE 954  
06/26/2001 08:54:34 A.M.  
MACOMB COUNTY, MI  
CARMELLA SABAUGH, REGISTER OF DEEDS

Register of Deeds Stamp & File Number

4. Lot No. \_\_\_\_\_, Recorded Plat \_\_\_\_\_  
5. Private Claims \_\_\_\_\_

	A	B	C	D	E	F	G	H	I	J	K	L	M
1													
2		6		5		4		3		2		1	
3													
4		7		8		9		10		11		12	
5													
6		18		17		16		15		14		13	
7													
8		19		20		21		22		23		24	
9													
10		30		29		28		27		26		25	
11													
12		31		32		33		34		35		36	
13													

I, Huston K. Kennedy, in a field survey on February, 2001 do hereby state that under requirements of P.A. 74, Michigan P.A. of 1970, the corner points mentioned in lines 1 and 2 above were in conformance with regulations and rules therefore as required in the current manual of survey instructions of the United States Department of the Interior, Bureau of Land Management or by a decree of a Court of Law and/or that the corner points mentioned in lines 3, 4 and 5 above were in conformance with the rules of the Michigan Board of Land Surveyors or by a Decree of a Court of Law; established, re-established, monumented, recovered, found as expressed below:

NOTE: Not more than 2 corners, all in the same town and range, may be recorded on this certificate.

- A. Description of original monument and accessories and/or subsequent restoration:  
1817-No GLO
- B. Description of corner evidence found and/or method applied in restoring or reestablishing corner:  
2001-Kennedy Surveying, Inc. – Kennedy, PS #17623 – Fnd a "T" Iron in a existing fence line extending to the East & West. The distance from L-12 (as found) to the theoretical center of section is insignificant.

I accepted the found "T" as the best evidence of the corner position as being perpetuated.

Field measurements see back side LCRC

- C. Description of monument for corner and accessories established to perpetuate locating the position of the corner:  
L-12 I replaced the found "T" Iron with a 4" diameter Concrete Monument with a 1/2" Iron Rod 36" long w/ 2" diameter aluminum cap stamped "Macomb County Monument, MI Act #345", PS #17623  
N05°E 13.01' Set Mag Nail & Remon Washer East face 9" Elm  
N31°W 29.10' Set Mag Nail & Remon Washer SW face 13" Ash  
S39°E 2.45' Set Mag Nail & Remon Washer SW face 8" Apple  
S68°W 14.56' Set Mag Nail & Remon Washer North face 10" Thornapple



The selected location is accepted by me and is generally accepted by Professional Surveyors as the best available evidence of the position of the corner as being perpetuated.

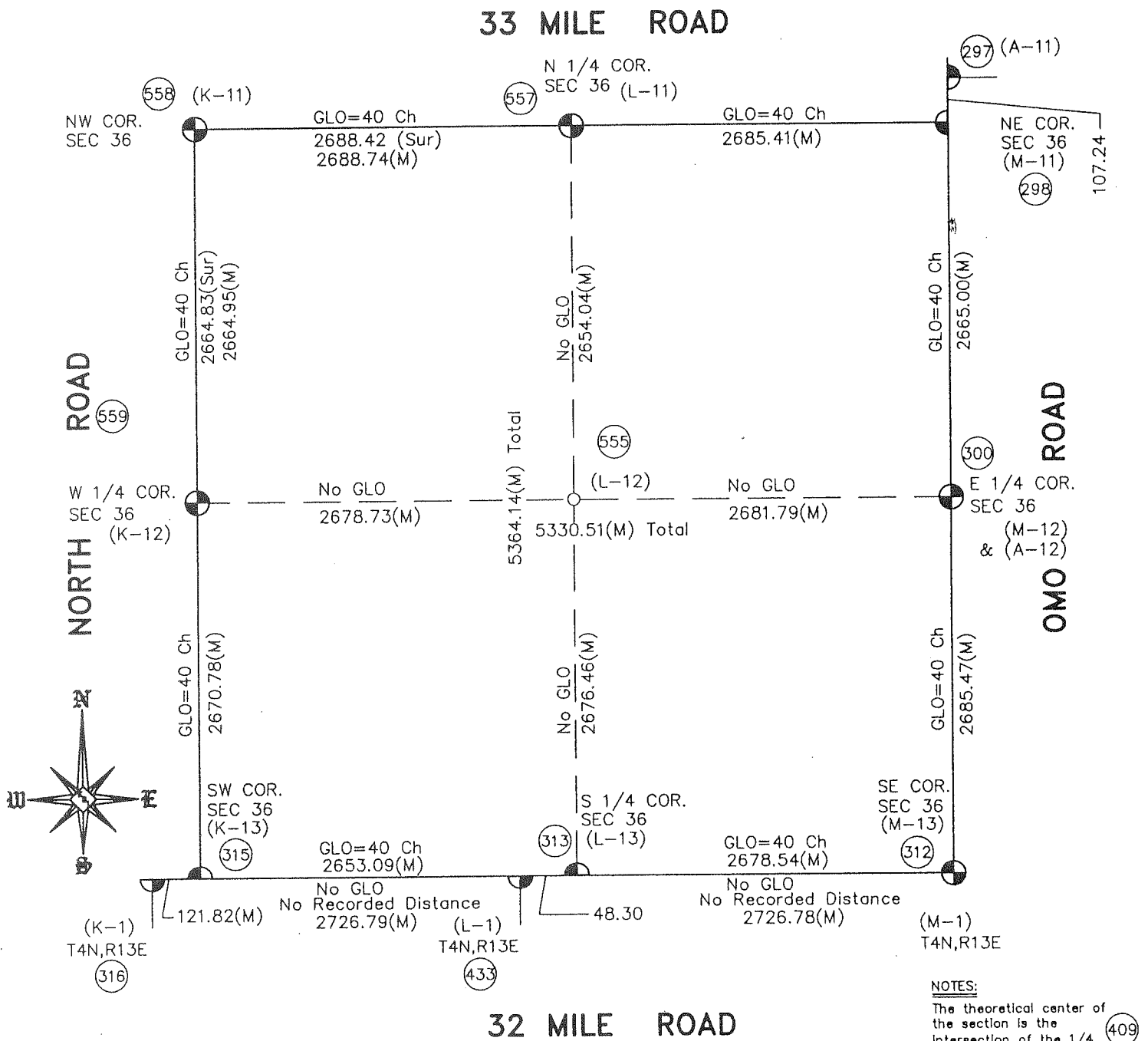
Signed by: Huston K. Kennedy Date 5-24-2001  
Surveyor's Michigan License No. 17623

FORM APPROVED BY MICHIGAN STATE BOARD OF PROFESSIONAL SURVEYOR'S, JAN. 28, 1971  
REVISED MAY 14, 1975  
REVISED JAN., 1983  
REVISED OCT., 1995

ACCEPTED BY THE MACOMB COUNTY SURVEY PEER GROUP AS THE OFFICIAL CORNER UNDER MICHIGAN PUBLIC ACT 345 OF 1990 AT A MEETING HELD ON 5-22-01

William E. Soderberg  
WILLIAM E. SODERBERG, P.S., CHAIRMAN

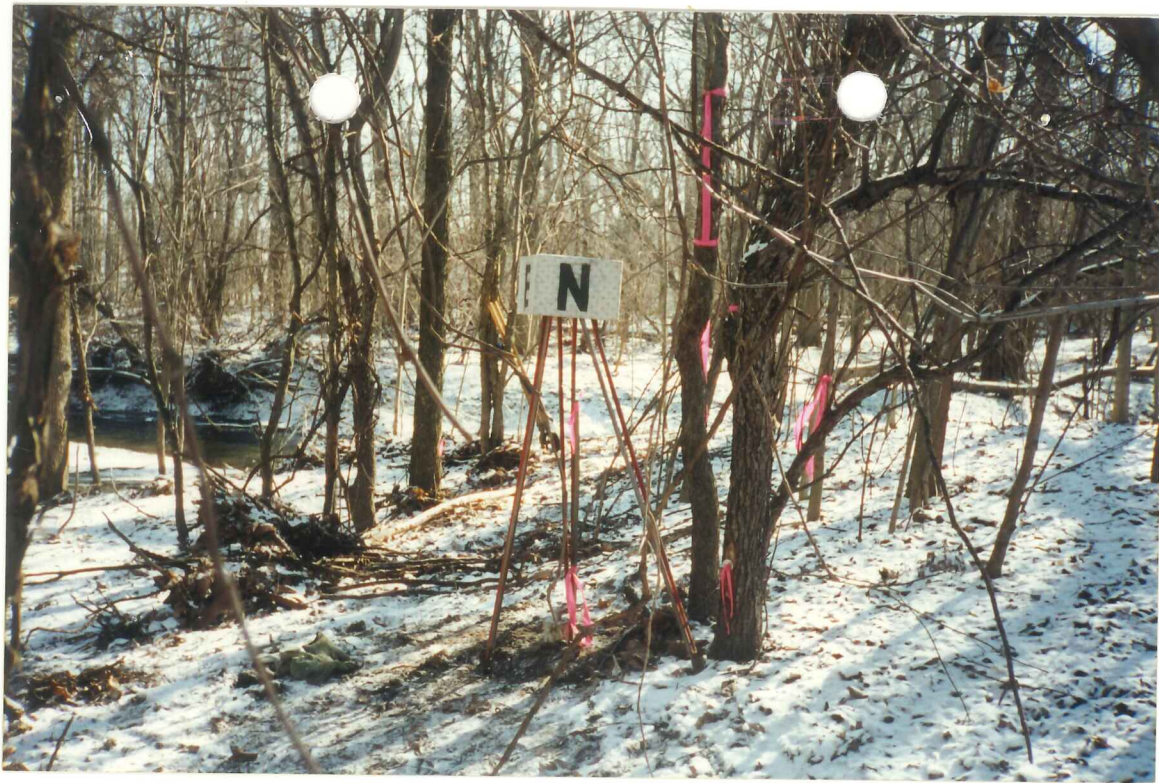
29

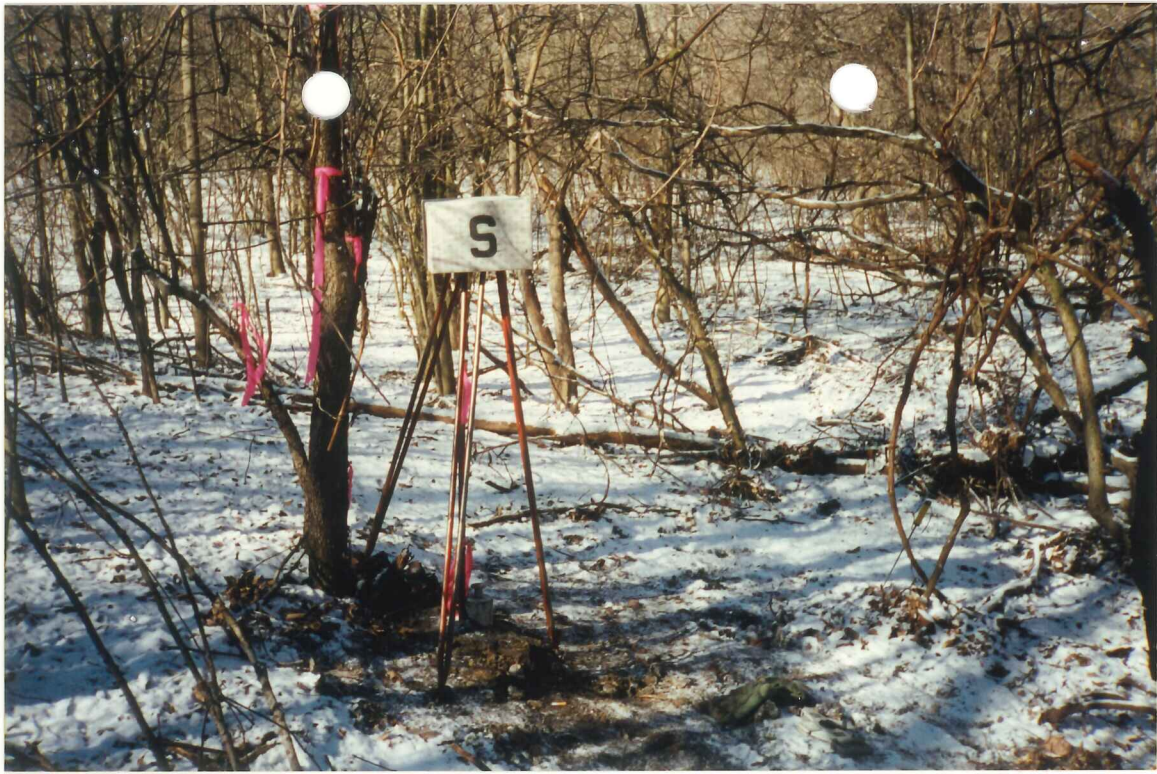


**NOTES:**  
The theoretical center of the section is the intersection of the 1/4 section lines. (409)

The distance from L-12 (as found) to the theoretical Center of Section is an insignificant distance.

REVISED: 5/23/01





**2001**  
**MACOMB COUNTY REMONUMENTATION**  
**PROGRAM FOR ARMADA TOWNSHIP**

**Research Dossier for L-12**

Prepared by:  
Kennedy Surveying, Inc.  
105 North Washington Street  
Oxford, Michigan 48371  
01-5276 (96-4013)

# Sources of Information Researched For Macomb 2001 Remonumentation Program FOR ARMADA TOWNSHIP

- 1.) GLO Notes
- 2.) Act 74 Recorded LCRC
- 3.) Act 132 Recorded Surveys
- 4.) Personal History and Records
- 5.) Letters to the Following Requesting Unrecorded  
LCRCs and Surveys
  - a.) Anderson, Eckstein & Westrick
  - b.) Fenn & Associates Surveying, Inc.
  - c.) King & Associates
  - d.) AES Engineers & Surveyors, Inc.
  - e.) Metco Land Sea Corp.
  - f.) Raymond Donnelly & Associates
  - g.) Metco-Dunn, Inc.
  - h.) Road Commission for Macomb County
  - i.) Macomb County Public Works
  - j.) George Jerome & Company
  - k.) Kem-Tec Surveying
  - l.) Mickalich & Associates
  - m.) Lehner Associates, Inc.
  - n.) Spalding, DeDecker & Associates
  - o.) M.C.S. Associates, Inc.
  - p.) Urban Land Consultants

**GLO NOTES**

No GLO

No Witnesses

**EXISTING CONDITIONS**

This corner was not set during the original government survey. The corner has been perpetuated with a "T" Iron in a existing fence line extending to the East & West. The distance from L-12 (as found) to the theoretical center of section is insignificant.

**LCRC AND RECORDED SURVEYS**

Researching the Macomb County Records for Land Corner Recordation Certificates (LCRC) and Certificate of Surveys shows that nothing has been recorded for this corner. I did not receive any other information regarding this corner.

**FIELD MEASUREMENTS BETWEEN**

**L-12 to K-12**

No GLO  
No recorded distances  
S87°27'43" W 2678.73 Ft. (MEA-2001)

**L-12 to L-11**

No GLO  
No recorded distances  
N02°36'16" W 2654.04 Ft. (MEA-2001)

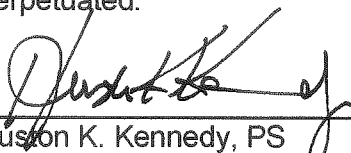
**L-12 to L-13**

No GLO  
No recorded distances  
S02°35'59" E 2676.46 Ft. (MEA-2001)

**L-12 to M-12**

No GLO  
No recorded distances  
N87°27'35" E 2681.79 Ft. (MEA-2001)

I could not find any evidence to dispute the position of this corner, also the distance that this corner is off the intersection of the quarter section lines is insignificant. I therefore, recommend to the Macomb County Peer Group that they accept the "T" Iron as found as the best evidence of the corner position as being perpetuated.

  
Huston K. Kennedy, PS  
Kennedy Surveying, Inc.



-002  
551.76

36

L-12

OWO

M-13

RD.

L-13

5-F

ARMADA TWP

300

Armada and Roy

Creek

Drain

0.32 MILE

NORTH

K-13

K-12

- REV 12-97
- REV 1-71
- REV 3-88
- REV 5-87
- REV 5-86
- REV 5-83
- REV 9-81
- REV 4-80
- REV 7-79
- REV 2-78
- REV 2-77
- REV 1-76
- REV 3-75

1280.05

-011  
39.078

1134.10

217.80

-003  
150

1134.29

217.9

600.715

453.60

207

330

-002 1.00

330